

## FINAL SCORE



**Texas A&M-Corpus  
Christi**

**59**



**Oklahoma State**

**69**

December 29, 2018 • Gallagher-Iba Arena (Eddie Sutton Court) - Stillwater,  
Okla.

## FINAL STATISTICS

**Official Box Score**  
**Texas A&M-Corpus Christi vs Oklahoma State**  
**Game Totals -- Final Statistics**  
 December 29, 2018 at Gallagher-Iba Arena (Eddie Sutton Court) - Stillwater, Okla.



**Texas A&M-Corpus Christi 59**

No.	Player	S	Pts	FG	3FG	FT	OR	DR	TR	PF	A	TO	Blk	Stl	Min	+/-
02	SMITH, MYLES	0	0-9	0-5	0-0	1	2	3	3	2	0	0	0	0	18	1
04	TALTON, JASHAWN	7	3-6	1-4	0-0	2	2	4	0	0	0	0	0	0	30	-7
11	SOUTH, KAREEM	18	6-16	4-5	2-2	2	4	6	1	5	2	0	4	35	-6	
14	SCHMIDT, ELIJAH	14	5-7	0-0	4-6	3	2	5	3	1	1	1	0	27	-6	
45	BABIC, JAKE	6	2-4	2-4	0-0	0	2	2	2	3	1	0	2	22	-2	
00	BROWN, KYLE	0	0-0	0-0	0-0	0	1	1	1	0	1	0	1	10	-4	
15	HUNTE, IRSHAAD	2	1-5	0-1	0-0	0	0	0	2	0	0	0	0	6	2	
21	GRAY, TRE	9	3-8	1-4	2-2	1	0	1	0	0	0	0	0	12	-13	
22	TONEY, EMMANUEL	3	1-4	1-2	0-0	0	1	1	2	3	2	1	0	20	-8	
23	CLARK, JALON	0	0-1	0-0	0-2	0	0	0	1	0	1	0	0	6	-3	
35	LEWIS, TONY	0	0-2	0-0	0-0	1	2	3	0	1	1	0	0	13	-4	
	TEAM					4	3	7	0		4					
<b>TOTALS</b>		<b>59</b>	<b>21-62</b>	<b>9-25</b>	<b>8-12</b>	<b>14</b>	<b>19</b>	<b>33</b>	<b>15</b>	<b>15</b>	<b>13</b>	<b>2</b>	<b>7</b>	<b>200</b>		

*Shooting By Period*

Period	FG	FG%	3FG	3FG%	FT	FT%
1st Half	9-32	28%	5-14	36%	5-6	83%
2nd Half	12-30	40%	4-11	36%	3-6	50%
<b>Game</b>	<b>21-62</b>	<b>33.9%</b>	<b>9-25</b>	<b>36.0%</b>	<b>8-12</b>	<b>66.7%</b>

Last FG: 2nd-01:04  
 Biggest Run: 6-0  
 Largest lead: By 6 at 1-15:21  
 Technical Fouls: None.

**Oklahoma State 69**

No.	Player	S	Pts	FG	3FG	FT	OR	DR	TR	PF	A	TO	Blk	Stl	Min	+/-
04	DZIAGWA, THOMAS	12	4-8	4-7	0-0	0	1	1	3	1	0	0	0	0	19	0
12	MCGRIFF, CAMERON	15	4-10	2-4	5-6	3	8	11	2	2	1	2	0	33	9	
13	LIKEKELE, ISAAC	8	3-4	0-0	2-2	1	2	3	0	2	2	2	2	27	6	
14	ANEI, YOR	7	2-3	0-0	3-4	1	4	5	2	0	1	2	0	18	2	
21	WATERS, III, LINDY	5	2-5	1-3	0-0	1	1	2	3	4	2	0	1	24	8	
01	JONES, CURTIS	12	4-10	1-5	3-5	1	4	5	1	2	3	0	0	27	11	
02	CALLOO, MAURICE	4	1-1	0-0	2-4	0	3	3	1	0	4	0	0	17	8	
05	DEMUTH, DUNCAN	0	0-0	0-0	0-0	0	1	1	0	0	0	0	0	7	6	
23	WEATHERS, MICHAEL	4	2-5	0-1	0-0	0	1	1	1	3	2	0	2	22	1	
24	MAJOR, LUKE	2	1-3	0-2	0-2	0	1	1	0	0	0	0	0	5	-1	
	TEAM					2	2	4	0		0					
<b>TOTALS</b>		<b>69</b>	<b>23-49</b>	<b>8-22</b>	<b>15-23</b>	<b>9</b>	<b>28</b>	<b>37</b>	<b>13</b>	<b>14</b>	<b>15</b>	<b>6</b>	<b>5</b>	<b>200</b>		

*Shooting By Period*

Period	FG	FG%	3FG	3FG%	FT	FT%
1st Half	10-20	50%	5-8	63%	10-15	67%
2nd Half	13-29	45%	3-14	21%	5-8	63%
<b>Game</b>	<b>23-49</b>	<b>46.9%</b>	<b>8-22</b>	<b>36.4%</b>	<b>15-23</b>	<b>65.2%</b>

Last FG: 2nd-01:54  
 Biggest Run: 7-0  
 Largest lead: By 16 at 2-02:46  
 Technical Fouls: None.

Game Notes:

Officials: Kipp Kissinger, Marques Pettigrew, Craig Murley  
 Attendance: 6745

Start Time: 2018-12-29 19:06:10  
 End Time: 2018-12-29 21:06:41  
 Game Duration: 120

Score	1st	2nd	TOT
AMC	28	31	59
OSU	35	34	69

AMC led for 14:16. OSU led for 24:18.  
 Game was tied for 1:21.  
 Times tied: 8      Lead Changes: 5

Points from	AMC	OSU
In the Paint	18	28
Off Turns	15	14
2nd Chance	7	13
Fast Break	8	10
Bench	14	22

**Official Box Score**  
**Texas A&M-Corpus Christi vs Oklahoma State**  
**First Half Statistics Only**  
 December 29, 2018 at Gallagher-Iba Arena (Eddie Sutton Court) - Stillwater, Okla.



**Texas A&M-Corpus Christi 28**

No.	Player	S	Pts	FG	3FG	FT	OR	DR	TR	PF	A	TO	Blk	Stl	Min	+/-
02	SMITH, MYLES		0	0-5	0-2	0-0	1	0	1	2	1	0	0	0	11	4
04	TALTON, JASHAWN		3	1-4	1-4	0-0	2	1	3	0	0	0	0	0	17	-5
11	SOUTH, KAREEM		7	3-9	1-2	0-0	2	1	3	1	2	1	0	2	18	-5
14	SCHMIDT, ELIJAH		3	0-1	0-0	3-4	0	2	2	1	0	1	1	0	12	-3
45	BABIC, JAKE		3	1-2	1-2	0-0	0	2	2	1	1	0	0	0	11	-2
00	BROWN, KYLE		0	0-0	0-0	0-0	0	1	1	0	0	0	0	1	4	-3
15	HUNTE, IRSHAAD		0	0-2	0-0	0-0	0	0	0	2	0	0	0	0	3	-2
21	GRAY, TRE		9	3-6	1-3	2-2	0	0	0	0	0	0	0	0	5	-8
22	TONEY, EMMANUEL		3	1-1	1-1	0-0	0	0	0	1	1	2	0	0	10	-7
23	CLARK, JALON		0	0-0	0-0	0-0	0	0	0	0	0	0	0	0	0	0
35	LEWIS, TONY		0	0-2	0-0	0-0	1	0	1	0	0	0	0	0	8	-4
	TEAM						3	1	4	0		3				
<b>TOTALS</b>			<b>28</b>	<b>9-32</b>	<b>5-14</b>	<b>5-6</b>	<b>9</b>	<b>8</b>	<b>17</b>	<b>8</b>	<b>5</b>	<b>7</b>	<b>1</b>	<b>3</b>	<b>100</b>	

*Shooting By Period*

Period	FG	FG%	3FG	3FG%	FT	FT%
1st Half	9-32	28%	5-14	36%	5-6	83%
Game	21-62	33.9%	9-25	36.0%	8-12	66.7%

*Last FG Half: AMC 2nd-01:04*

**Oklahoma State 35**

No.	Player	S	Pts	FG	3FG	FT	OR	DR	TR	PF	A	TO	Blk	Stl	Min	+/-
04	DZIAGWA, THOMAS		3	1-1	1-1	0-0	0	1	1	2	1	0	0	0	12	-5
12	MCGRIFF, CAMERON		9	3-6	2-2	1-2	1	2	3	0	0	1	1	0	17	6
13	LIKEKELE, ISAAC		6	2-3	0-0	2-2	1	1	2	0	2	0	2	1	17	6
14	ANEI, YOR		2	0-1	0-0	2-2	0	1	1	2	0	1	2	0	8	2
21	WATERS, III, LINDY		3	1-2	1-1	0-0	0	0	0	1	2	1	0	0	14	4
01	JONES, CURTIS		8	2-4	1-3	3-5	0	3	3	0	1	1	0	0	11	10
02	CALLOO, MAURICE		4	1-1	0-0	2-4	0	3	3	1	0	3	0	0	8	5
05	DEMUTH, DUNCAN		0	0-0	0-0	0-0	0	0	0	0	0	0	0	0	3	4
23	WEATHERS, MICHAEL		0	0-2	0-1	0-0	0	1	1	1	0	1	0	2	9	3
24	MAJOR, LUKE		0	0-0	0-0	0-0	0	0	0	0	0	0	0	0	0	0
	TEAM						1	2	3	0		0				
<b>TOTALS</b>			<b>35</b>	<b>10-20</b>	<b>5-8</b>	<b>10-15</b>	<b>3</b>	<b>14</b>	<b>17</b>	<b>7</b>	<b>6</b>	<b>8</b>	<b>5</b>	<b>3</b>	<b>100</b>	

*Shooting By Period*

Period	FG	FG%	3FG	3FG%	FT	FT%
1st Half	10-20	50%	5-8	63%	10-15	67%
Game	23-49	46.9%	8-22	36.4%	15-23	65.2%

*Last FG Half: OSU 2nd-01:54*

*Game Notes:*

Officials: Kipp Kissinger, Marques Pettigrew, Craig Murley  
 Attendance: 6745

Start Time: 2018-12-29 19:06:10  
 End Time: 2018-12-29 21:06:41  
 Game Duration: 120

Score	1st	2nd	TOT
AMC	28	31	59
OSU	35	34	69

Points from (This Period)	AMC	OSU
In the Paint	4	8
Off Turns	10	5
2nd Chance	0	2
Fast Break	3	4
Bench	12	12

**Official Play-By-Play**  
**Texas A&M-Corpus Christi vs Oklahoma State**  
**First Half**



**December 29, 2018 at Gallagher-Iba Arena (Eddie Sutton Court) - Stillwater, Okla.**

**Period 1**

**Starters:**

**Texas A&M-Corpus Christi:** 11 SOUTH,KAREEM; 14 SCHMIDT,ELIJAH; 45 BABIC,JAKE; 2 SMITH,MYLES; 4 TALTON,JASHAWN;

**Oklahoma State:** 4 DZIAGWA,THOMAS; 12 MCGRIFF,CAMERON; 13 LIKEKELE,ISAAC; 14 ANEI,YOR; 21 WATERS, III,LINDY;

Time	VISITORS: Texas A&M-Corpus Christi	Score	Margin	HOME: Oklahoma State
19:49	GOOD! 3PTR by TALTON, JASHAWN	0-3	V 3	
19:49	ASSIST by SOUTH, KAREEM			
19:21				MISSED LAYUP by ANEI, YOR
19:18	REBOUND (DEF) by TEAM			
18:54	GOOD! 3PTR by BABIC, JAKE	0-6	V 6	
18:54	ASSIST by SOUTH, KAREEM			
18:28				MISSED JUMPER by MCGRIFF, CAMERON
18:24	REBOUND (DEF) by SCHMIDT, ELIJAH			
17:55	TURNOVER (SHOTCLOCK) by			
17:39				MISSED LAYUP by MCGRIFF, CAMERON
17:36	REBOUND (DEF) by BABIC, JAKE			
17:26	MISSED 3PTR by TALTON, JASHAWN			
17:22	REBOUND (OFF) by TEAM			
17:22				SUB OUT: ANEI, YOR
17:22				SUB IN: CALLOO, MAURICE
17:10	MISSED JUMPER by SMITH, MYLES			
17:06				REBOUND (DEF) by CALLOO, MAURICE
16:55				TURNOVER (TRAVEL) by CALLOO, MAURICE
16:55	SUB OUT: SMITH, MYLES			
16:55	SUB IN: TONEY, EMMANUEL			
16:36	MISSED JUMPER by SOUTH, KAREEM			
16:32				REBOUND (DEF) by CALLOO, MAURICE
16:21	FOUL (PERSONAL) by TONEY, EMMANUEL			
16:21				MISSED FT by CALLOO, MAURICE
16:21				REBOUND (OFF) by TEAM
16:21	SUB OUT: SCHMIDT, ELIJAH			
16:21	SUB IN: LEWIS, TONY			
16:21		1-6	V 5	GOOD! FT by CALLOO, MAURICE
16:21				SUB OUT: DZIAGWA, THOMAS
16:21				SUB IN: WEATHERS, MICHAEL
16:02	TURNOVER (LOSTBALL) by TONEY, EMMANUEL			
16:02				STEAL by WEATHERS, MICHAEL
16:00				MISSED 3PTR by WEATHERS, MICHAEL
16:00				REBOUND (OFF) by LIKEKELE, ISAAC
16:00		3-6	V 3	GOOD! LAYUP by LIKEKELE, ISAAC
16:00	MISSED JUMPER by SOUTH, KAREEM			
16:00				REBOUND (DEF) by WEATHERS, MICHAEL
15:26				FOUL (OFF) by CALLOO, MAURICE
15:26				TURNOVER (OFFENSIVE) by CALLOO, MAURICE
15:26				
15:26				SUB OUT: LIKEKELE, ISAAC
15:26				SUB IN: JONES, CURTIS
15:21	GOOD! 3PTR by TONEY, EMMANUEL	3-9	V 6	
15:21	ASSIST by BABIC, JAKE			
14:47		6-9	V 3	GOOD! 3PTR by JONES, CURTIS
14:47				ASSIST by WATERS, III,LINDY
14:16	GOOD! LAYUP by SOUTH, KAREEM [PNT]	6-11	V 5	
13:55	FOUL (PERSONAL) by BABIC, JAKE			
13:55		7-11	V 4	GOOD! FT by JONES, CURTIS
13:55				MISSED FT by JONES, CURTIS
13:55				REBOUND (OFF) by TEAM
13:55				SUB OUT: MCGRIFF, CAMERON
13:55				SUB IN: LIKEKELE, ISAAC
13:55				SUB OUT: WATERS, III,LINDY
13:55				SUB IN: ANEI, YOR
13:55	SUB OUT: TALTON, JASHAWN			
13:55	SUB IN: HUNTE, IRSHAAD			
13:55	SUB OUT: BABIC, JAKE			
13:55	SUB IN: SMITH, MYLES			
13:55				MISSED FT by JONES, CURTIS
13:55	REBOUND (DEF) by SOUTH, KAREEM			
13:55	MISSED JUMPER by SOUTH, KAREEM			
13:55				BLOCK by ANEI, YOR
13:49	REBOUND (OFF) by SOUTH, KAREEM			
13:47	MISSED LAYUP by SOUTH, KAREEM			
13:47				BLOCK by ANEI, YOR
13:39	REBOUND (OFF) by SMITH, MYLES			
13:38	TURNOVER (SHOTCLOCK) by			
13:01	FOUL (PERSONAL) by SMITH, MYLES			
13:01				MISSED FT by CALLOO, MAURICE

Time	VISITORS: Texas A&M-Corpus Christi	Score	Margin	HOME: Oklahoma State
13:01				REBOUND (OFF) by TEAM
13:01	SUB OUT: SOUTH, KAREEM			
13:01	SUB IN: GRAY, TRE			
13:01		8-11	V 3	GOOD! FT by CALLOO, MAURICE
12:51				SUB OUT: CALLOO, MAURICE
12:51				SUB IN: MCGRIFF, CAMERON
12:33	MISSED LAYUP by SMITH, MYLES			
12:30				REBOUND (DEF) by LIKEKELE, ISAAC
12:22	FOUL (PERSONAL) by HUNTE, IRSHAAD			
12:22		9-11	V 2	GOOD! FT by ANEI, YOR
12:22		10-11	V 1	GOOD! FT by ANEI, YOR
12:00	MISSED LAYUP by HUNTE, IRSHAAD			
11:58				REBOUND (DEF) by MCGRIFF, CAMERON
11:53				FOUL (OFF) by ANEI, YOR
11:53				TURNOVER (OFFENSIVE) by ANEI, YOR
11:53				
11:53				SUB OUT: ANEI, YOR
11:53				SUB IN: DEMUTH, DUNCAN
11:53				SUB OUT: WEATHERS, MICHAEL
11:53				SUB IN: DZIAGWA, THOMAS
11:44	GOOD! 3PTR by GRAY, TRE	10-14	V 4	
11:44	ASSIST by SMITH, MYLES			
11:35	FOUL (PERSONAL) by HUNTE, IRSHAAD			
11:35		11-14	V 3	GOOD! FT by LIKEKELE, ISAAC
11:35		12-14	V 2	GOOD! FT by LIKEKELE, ISAAC
11:22	MISSED JUMPER by SMITH, MYLES			
11:22				BLOCK by LIKEKELE, ISAAC
11:22	REBOUND (OFF) by TEAM			
11:22				SUB OUT: JONES, CURTIS
11:22				SUB IN: WATERS, III,LINDY
11:21	MISSED LAYUP by HUNTE, IRSHAAD			
11:21	REBOUND (OFF) by TEAM			
11:21				BLOCK by LIKEKELE, ISAAC
11:07	MISSED 3PTR by GRAY, TRE			
11:05				REBOUND (DEF) by TEAM
11:05	SUB OUT: HUNTE, IRSHAAD			
11:05	SUB IN: TALTON, JASHAWN			
11:05	SUB OUT: TONEY, EMMANUEL			
11:05	SUB IN: SOUTH, KAREEM			
11:05	SUB OUT: LEWIS, TONY			
11:05	SUB IN: SCHMIDT, ELIJAH			
10:51		14-14	T	GOOD! LAYUP by MCGRIFF, CAMERON
10:51				ASSIST by WATERS, III,LINDY
10:39	GOOD! LAYUP by GRAY, TRE [PNT]	14-16	V 2	
10:24		17-16	H 1	GOOD! 3PTR by DZIAGWA, THOMAS
10:24				ASSIST by LIKEKELE, ISAAC
10:06				SUB OUT: DEMUTH, DUNCAN
10:06				SUB IN: WEATHERS, MICHAEL
10:01	GOOD! JUMPER by GRAY, TRE	17-18	V 1	
09:50	FOUL (PERSONAL) by SCHMIDT, ELIJAH			
09:50				MISSED FT by MCGRIFF, CAMERON
09:50				REBOUND (OFF) by TEAM
09:50		18-18	T	GOOD! FT by MCGRIFF, CAMERON
09:41				FOUL (PERSONAL) by DZIAGWA, THOMAS
09:41	GOOD! FT by GRAY, TRE	18-19	V 1	
09:41	GOOD! FT by GRAY, TRE	18-20	V 2	
09:41	SUB OUT: GRAY, TRE			
09:41	SUB IN: BABIC, JAKE			
09:23				MISSED LAYUP by WEATHERS, MICHAEL
09:23	BLOCK by SCHMIDT, ELIJAH			
09:23				REBOUND (OFF) by TEAM
09:10				MISSED JUMPER by LIKEKELE, ISAAC
09:08	REBOUND (DEF) by SCHMIDT, ELIJAH			
08:54	MISSED 3PTR by TALTON, JASHAWN			
08:51				REBOUND (DEF) by MCGRIFF, CAMERON
08:32				MISSED LAYUP by MCGRIFF, CAMERON
08:29				REBOUND (OFF) by MCGRIFF, CAMERON
08:28				TURNOVER (BADPASS) by MCGRIFF, CAMERON
08:28	STEAL by SOUTH, KAREEM			
08:20	MISSED 3PTR by SMITH, MYLES			
08:18	REBOUND (OFF) by TALTON, JASHAWN			
08:18				FOUL (PERSONAL) by WATERS, III,LINDY
08:18				SUB OUT: MCGRIFF, CAMERON
08:18				SUB IN: ANEI, YOR
07:57	MISSED 3PTR by SMITH, MYLES			
07:54	REBOUND (OFF) by SOUTH, KAREEM			
07:36	FOUL (OFF) by SOUTH, KAREEM			
07:36				
07:36				SUB OUT: LIKEKELE, ISAAC
07:36				SUB IN: JONES, CURTIS

Time	VISITORS: Texas A&M-Corpus Christi	Score	Margin	HOME: Oklahoma State
07:36	TURNOVER (OFFENSIVE) by SOUTH, KAREEM			
07:13				MISSED 3PTR by JONES, CURTIS
07:10	REBOUND (DEF) by BABIC, JAKE			
07:00	MISSED 3PTR by SOUTH, KAREEM			
06:57				REBOUND (DEF) by DZIAGWA, THOMAS
06:54				MISSED LAYUP by WATERS, III,LINDY
06:51	REBOUND (DEF) by TALTON, JASHAWN			
06:42	MISSED LAYUP by SCHMIDT, ELIJAH			
06:42				REBOUND (DEF) by JONES, CURTIS
06:42	FOUL (PERSONAL) by SMITH, MYLES			
06:42				SUB OUT: WATERS, III,LINDY
06:42				SUB IN: MCGRIFF, CAMERON
06:42	SUB OUT: SMITH, MYLES			
06:42	SUB IN: BROWN, KYLE			
06:42	SUB OUT: BABIC, JAKE			
06:42	SUB IN: TONEY, EMMANUEL			
06:42		19-20	V 1	GOOD! FT by JONES, CURTIS
06:42		20-20	T	GOOD! FT by JONES, CURTIS
06:21	TURNOVER (LOSTBALL) by SCHMIDT, ELIJAH			
06:21				STEAL by WEATHERS, MICHAEL
06:18				FOUL (OFF) by WEATHERS, MICHAEL
06:18				TURNOVER (OFFENSIVE) by WEATHERS, MICHAEL
06:07				FOUL (PERSONAL) by DZIAGWA, THOMAS
06:07	MISSED FT by SCHMIDT, ELIJAH			
06:07	REBOUND (OFF) by TEAM			
06:07				SUB OUT: WEATHERS, MICHAEL
06:07				SUB IN: LIKEKELE, ISAAC
06:07				SUB OUT: ANEI, YOR
06:07				SUB IN: CALLOO, MAURICE
06:07	GOOD! FT by SCHMIDT, ELIJAH	20-21	V 1	
06:07	SUB OUT: SCHMIDT, ELIJAH			
06:07	SUB IN: LEWIS, TONY			
05:41				TURNOVER (LOSTBALL) by CALLOO, MAURICE
05:41	STEAL by BROWN, KYLE			
05:15	MISSED LAYUP by LEWIS, TONY			
05:15				BLOCK by MCGRIFF, CAMERON
05:15	REBOUND (OFF) by LEWIS, TONY			
05:12	MISSED JUMPER by SOUTH, KAREEM			
05:10				REBOUND (DEF) by TEAM
04:44		23-21	H 2	GOOD! 3PTR by MCGRIFF, CAMERON
04:44				ASSIST by DZIAGWA, THOMAS
04:19	GOOD! JUMPER by SOUTH, KAREEM	23-23	T	
04:10		25-23	H 2	GOOD! JUMPER by CALLOO, MAURICE
04:10				ASSIST by LIKEKELE, ISAAC
03:49	MISSED JUMPER by LEWIS, TONY			
03:46				REBOUND (DEF) by JONES, CURTIS
03:40				TURNOVER (BADPASS) by JONES, CURTIS
03:40	STEAL by SOUTH, KAREEM			
03:36	GOOD! 3PTR by SOUTH, KAREEM (FB)	25-26	V 1	
03:36	ASSIST by TONEY, EMMANUEL			
03:13				
03:13				SUB OUT: DZIAGWA, THOMAS
03:13				SUB IN: WATERS, III,LINDY
03:13	SUB OUT: BROWN, KYLE			
03:13	SUB IN: BABIC, JAKE			
03:13	SUB OUT: TONEY, EMMANUEL			
03:13	SUB IN: SCHMIDT, ELIJAH			
03:13	SUB OUT: LEWIS, TONY			
03:13	SUB IN: GRAY, TRE			
03:06		28-26	H 2	GOOD! 3PTR by MCGRIFF, CAMERON
03:06				ASSIST by JONES, CURTIS
02:44	MISSED LAYUP by GRAY, TRE			
02:41				REBOUND (DEF) by CALLOO, MAURICE
02:28				TURNOVER (OTHER) by WATERS, III,LINDY
02:13				SUB OUT: CALLOO, MAURICE
02:13				SUB IN: ANEI, YOR
02:04	MISSED 3PTR by GRAY, TRE			
02:00				REBOUND (DEF) by ANEI, YOR
01:48		31-26	H 5	GOOD! 3PTR by WATERS, III,LINDY
01:26				FOUL (PERSONAL) by ANEI, YOR
01:26				SUB OUT: ANEI, YOR
01:26				SUB IN: DEMUTH, DUNCAN
01:26	SUB OUT: GRAY, TRE			
01:26	SUB IN: TONEY, EMMANUEL			
01:26	SUB OUT: BABIC, JAKE			
01:26	SUB IN: BROWN, KYLE			
01:26	GOOD! FT by SCHMIDT, ELIJAH	31-27	H 4	
01:26	GOOD! FT by SCHMIDT, ELIJAH	31-28	H 3	
01:09				MISSED 3PTR by JONES, CURTIS
01:06	REBOUND (DEF) by BROWN, KYLE			

Time	VISITORS: Texas A&M-Corpus Christi	Score	Margin	HOME: Oklahoma State
01:02	MISSED 3PTR by TALTON, JASHAWN			
00:58				REBOUND (DEF) by JONES, CURTIS
00:53		33-28	H 5	GOOD! LAYUP by JONES, CURTIS [FB]
00:38	TURNOVER (BADPASS) by TONEY, EMMANUEL			
00:38				STEAL by LIKEKELE, ISAAC
00:32		35-28	H 7	GOOD! DUNK by LIKEKELE, ISAAC [FB]
00:28	TIMEOUT 30SEC			
00:28				SUB OUT: JONES, CURTIS
00:28				SUB IN: WEATHERS, MICHAEL
00:28	SUB OUT: BROWN, KYLE			
00:28	SUB IN: BABIC, JAKE			
00:28	SUB OUT: TONEY, EMMANUEL			
00:28	SUB IN: SMITH, MYLES			
00:04	MISSED 3PTR by BABIC, JAKE			
00:03	REBOUND (OFF) by TALTON, JASHAWN			
00:02	TURNOVER (SHOTCLOCK) by			
00:02				TIMEOUT 30SEC
00:02				SUB OUT: DEMUTH, DUNCAN
00:02				SUB IN: JONES, CURTIS
00:02	SUB OUT: SMITH, MYLES			
00:02	SUB IN: BROWN, KYLE			
00:02	SUB OUT: BABIC, JAKE			
00:02	SUB IN: HUNTE, IRSHAAD			

### Texas A&M-Corpus Christi 28, Oklahoma State 35

Points from (This Period)	AMC	OSU
In the Paint	4	8
Off Turns	10	5
2nd Chance	0	2
Fast Break	3	4
Bench	12	12

**Official Box Score**  
**Texas A&M-Corpus Christi vs Oklahoma State**  
**Second Half Statistics Only**  
 December 29, 2018 at Gallagher-Iba Arena (Eddie Sutton Court) - Stillwater, Okla.



**Texas A&M-Corpus Christi 31**

No.	Player	S	Pts	FG	3FG	FT	OR	DR	TR	PF	A	TO	Blk	Stl	Min	+/-
02	SMITH, MYLES		0	0-4	0-3	0-0	0	2	2	1	1	0	0	0	7	-3
04	TALTON, JASHAWN		4	2-2	0-0	0-0	0	1	1	0	0	0	0	0	13	-2
11	SOUTH, KAREEM		11	3-7	3-3	2-2	0	3	3	0	3	1	0	2	17	-1
14	SCHMIDT, ELIJAH		11	5-6	0-0	1-2	3	0	3	2	1	0	0	0	15	-3
45	BABIC, JAKE		3	1-2	1-2	0-0	0	0	0	1	2	1	0	2	11	0
00	BROWN, KYLE		0	0-0	0-0	0-0	0	0	0	1	0	1	0	0	6	-1
15	HUNTE, IRSHAAD		2	1-3	0-1	0-0	0	0	0	0	0	0	0	0	3	4
21	GRAY, TRE		0	0-2	0-1	0-0	1	0	1	0	0	0	0	0	7	-5
22	TONEY, EMMANUEL		0	0-3	0-1	0-0	0	1	1	1	2	0	1	0	10	-1
23	CLARK, JALON		0	0-1	0-0	0-2	0	0	0	1	0	1	0	0	6	-3
35	LEWIS, TONY		0	0-0	0-0	0-0	0	2	2	0	1	1	0	0	4	0
	TEAM						1	2	3	0		1				
	<b>TOTALS</b>		<b>31</b>	<b>12-30</b>	<b>4-11</b>	<b>3-6</b>	<b>5</b>	<b>11</b>	<b>16</b>	<b>7</b>	<b>10</b>	<b>6</b>	<b>1</b>	<b>4</b>	<b>100</b>	

*Shooting By Period*

Period	FG	FG%	3FG	3FG%	FT	FT%
2nd Half	12-30	40%	4-11	36%	3-6	50%
Game	21-62	33.9%	9-25	36.0%	8-12	66.7%

*Last FG Half: AMC -*

**Oklahoma State 34**

No.	Player	S	Pts	FG	3FG	FT	OR	DR	TR	PF	A	TO	Blk	Stl	Min	+/-
04	DZIAGWA, THOMAS		9	3-7	3-6	0-0	0	0	0	1	0	0	0	0	7	5
12	MCGRIFF, CAMERON		6	1-4	0-2	4-4	2	6	8	2	2	0	1	0	16	3
13	LIKEKELE, ISAAC		2	1-1	0-0	0-0	0	1	1	0	0	2	0	1	10	0
14	ANEI, YOR		5	2-2	0-0	1-2	1	3	4	0	0	0	0	0	11	0
21	WATERS, III, LINDY		2	1-3	0-2	0-0	1	1	2	2	2	1	0	1	10	4
01	JONES, CURTIS		4	2-6	0-2	0-0	1	1	2	1	1	2	0	0	15	1
02	CALLOO, MAURICE		0	0-0	0-0	0-0	0	0	0	0	0	1	0	0	9	3
05	DEMUTH, DUNCAN		0	0-0	0-0	0-0	0	1	1	0	0	0	0	0	4	2
23	WEATHERS, MICHAEL		4	2-3	0-0	0-0	0	0	0	0	3	1	0	0	13	-2
24	MAJOR, LUKE		2	1-3	0-2	0-2	0	1	1	0	0	0	0	0	5	-1
	TEAM						1	0	1	0		0				
	<b>TOTALS</b>		<b>34</b>	<b>13-29</b>	<b>3-14</b>	<b>5-8</b>	<b>6</b>	<b>14</b>	<b>20</b>	<b>6</b>	<b>8</b>	<b>7</b>	<b>1</b>	<b>2</b>	<b>100</b>	

*Shooting By Period*

Period	FG	FG%	3FG	3FG%	FT	FT%
2nd Half	13-29	45%	3-14	21%	5-8	63%
Game	23-49	46.9%	8-22	36.4%	15-23	65.2%

*Last FG Half: OSU -*

Game Notes:

Officials: Kipp Kissinger, Marques Pettigrew, Craig Murley  
 Attendance: 6745

Start Time: 2018-12-29 19:06:10  
 End Time: 2018-12-29 21:06:41  
 Game Duration: 120

Score	1st	2nd	TOT
AMC	28	31	59
OSU	35	34	69

Points from (This Period)	AMC	OSU
In the Paint	14	20
Off Turns	5	9
2nd Chance	7	11
Fast Break	5	6
Bench	2	10



**Official Play-By-Play**  
**Texas A&M-Corpus Christi vs Oklahoma State**  
**Second Half**



**December 29, 2018 at Gallagher-Iba Arena (Eddie Sutton Court) - Stillwater, Okla.**

**Period 2**

**Starters:**

**Texas A&M-Corpus Christi:** 11 SOUTH,KAREEM; 14 SCHMIDT,ELIJAH; 45 BABIC,JAKE; 2 SMITH,MYLES; 4 TALTON,JASHAWN;

**Oklahoma State:** 4 DZIAGWA,THOMAS; 12 MCGRIFF,CAMERON; 13 LIKEKELE,ISAAC; 14 ANEI,YOR; 21 WATERS, III,LINDY;

Time	VISITORS: Texas A&M-Corpus Christi	Score	Margin	HOME: Oklahoma State
19:45				MISSED 3PTR by WATERS, III,LINDY
19:42	REBOUND (DEF) by SMITH, MYLES			
19:28	MISSED JUMPER by SOUTH, KAREEM			
19:24	REBOUND (OFF) by SCHMIDT, ELIJAH			
19:22	GOOD! 3PTR by SOUTH, KAREEM	35-31	H 4	
19:22	ASSIST by SCHMIDT, ELIJAH			
19:10				MISSED 3PTR by DZIAGWA, THOMAS
19:03				REBOUND (OFF) by WATERS, III,LINDY
19:03		37-31	H 6	GOOD! LAYUP by WATERS, III,LINDY
18:38	GOOD! JUMPER by SCHMIDT, ELIJAH [PNT]	37-33	H 4	
18:38	ASSIST by BABIC, JAKE			
18:24				MISSED 3PTR by DZIAGWA, THOMAS
18:21				REBOUND (OFF) by MCGRIFF, CAMERON
18:20		40-33	H 7	GOOD! 3PTR by DZIAGWA, THOMAS
18:20				ASSIST by MCGRIFF, CAMERON
18:00	MISSED JUMPER by SOUTH, KAREEM			
17:57				REBOUND (DEF) by ANEI, YOR
17:41				MISSED 3PTR by WATERS, III,LINDY
17:37	REBOUND (DEF) by SMITH, MYLES			
17:34	GOOD! 3PTR by SOUTH, KAREEM [FB]	40-36	H 4	
17:34	ASSIST by SMITH, MYLES			
17:18				MISSED JUMPER by DZIAGWA, THOMAS
17:14				REBOUND (OFF) by ANEI, YOR
17:14		42-36	H 6	GOOD! LAYUP by ANEI, YOR
17:00	TURNOVER (LOSTBALL) by SOUTH, KAREEM			
17:00				SUB OUT: DZIAGWA, THOMAS
17:00				SUB IN: CALLOO, MAURICE
17:00				SUB OUT: MCGRIFF, CAMERON
17:00				SUB IN: DEMUTH, DUNCAN
17:00				SUB OUT: LIKEKELE, ISAAC
17:00				SUB IN: MAJOR, LUKE
17:00				SUB OUT: ANEI, YOR
17:00				SUB IN: WEATHERS, MICHAEL
17:00				SUB OUT: WATERS, III,LINDY
17:00				SUB IN: JONES, CURTIS
17:00	SUB OUT: BABIC, JAKE			
17:00	SUB IN: TONEY, EMMANUEL			
17:00	SUB OUT: SOUTH, KAREEM			
17:00	SUB IN: CLARK, JALON			
17:00				STEAL by WATERS, III,LINDY
16:47	FOUL (PERSONAL) by CLARK, JALON			
16:38		44-36	H 8	GOOD! LAYUP by MAJOR, LUKE [PNT]
16:38				ASSIST by WEATHERS, MICHAEL
16:21	MISSED JUMPER by SMITH, MYLES			
16:17				REBOUND (DEF) by MAJOR, LUKE
16:16		46-36	H 10	GOOD! DUNK by JONES, CURTIS [FB/PNT]
16:16				ASSIST by WEATHERS, MICHAEL
16:06	TIMEOUT 30SEC			
15:46				
15:40	MISSED 3PTR by SMITH, MYLES			
15:36	REBOUND (OFF) by SCHMIDT, ELIJAH			
15:23	GOOD! LAYUP by TALTON, JASHAWN [PNT]	46-38	H 8	
15:06				MISSED 3PTR by MAJOR, LUKE
15:02	REBOUND (DEF) by TONEY, EMMANUEL			
14:53	MISSED LAYUP by CLARK, JALON			
14:49	REBOUND (OFF) by SCHMIDT, ELIJAH			
14:49	GOOD! LAYUP by SCHMIDT, ELIJAH	46-40	H 6	
14:35		48-40	H 8	GOOD! LAYUP by WEATHERS, MICHAEL [PNT]
14:11	MISSED 3PTR by SMITH, MYLES			
14:06				REBOUND (DEF) by JONES, CURTIS
13:59				FOUL (OFF) by JONES, CURTIS
13:59				TURNOVER (OFFENSIVE) by JONES, CURTIS
13:59				SUB OUT: DEMUTH, DUNCAN
13:59				SUB IN: WATERS, III,LINDY
13:59	SUB OUT: SMITH, MYLES			
13:59	SUB IN: SOUTH, KAREEM			
13:59	SUB OUT: CLARK, JALON			
13:59	SUB IN: GRAY, TRE			
13:42	GOOD! LAYUP by SCHMIDT, ELIJAH	48-42	H 6	
13:42	ASSIST by SOUTH, KAREEM			

Time	VISITORS: Texas A&M-Corpus Christi	Score	Margin	HOME: Oklahoma State
13:19				MISSED 3PTR by MAJOR, LUKE
13:16				REBOUND (OFF) by JONES, CURTIS
13:16				MISSED LAYUP by JONES, CURTIS
13:16	REBOUND (DEF) by TEAM			
13:16				SUB OUT: JONES, CURTIS
13:16				SUB IN: LIKEKELE, ISAAC
13:16	SUB OUT: TALTON, JASHAWN			
13:16	SUB IN: BABIC, JAKE			
13:01				FOUL (PERSONAL) by WATERS, III,LINDY
13:01	MISSED FT by SCHMIDT, ELIJAH			
13:01	REBOUND (OFF) by TEAM			
13:01				SUB OUT: MAJOR, LUKE
13:01				SUB IN: MCGRIFF, CAMERON
13:01	GOOD! FT by SCHMIDT, ELIJAH	48-43	H 5	
13:01	SUB OUT: SCHMIDT, ELIJAH			
13:01	SUB IN: LEWIS, TONY			
12:48				TURNOVER (BADPASS) by WEATHERS, MICHAEL
12:48	STEAL by BABIC, JAKE			
12:47	TURNOVER (TRAVEL) by BABIC, JAKE			
12:38	FOUL (PERSONAL) by BABIC, JAKE			
12:28	FOUL (PERSONAL) by TONEY, EMMANUEL			
12:28		49-43	H 6	GOOD! FT by MCGRIFF, CAMERON
12:28		50-43	H 7	GOOD! FT by MCGRIFF, CAMERON
12:28				SUB OUT: WEATHERS, MICHAEL
12:28				SUB IN: DZIAGWA, THOMAS
12:10	MISSED LAYUP by TONEY, EMMANUEL			
12:07				REBOUND (DEF) by WATERS, III,LINDY
12:00				MISSED 3PTR by MCGRIFF, CAMERON
11:56	REBOUND (DEF) by LEWIS, TONY			
11:52	TURNOVER (BADPASS) by LEWIS, TONY			
11:52				STEAL by LIKEKELE, ISAAC
11:48		52-43	H 9	GOOD! LAYUP by LIKEKELE, ISAAC [FB]
11:46				
11:46				SUB OUT: LIKEKELE, ISAAC
11:46				SUB IN: JONES, CURTIS
11:35				FOUL (PERSONAL) by MCGRIFF, CAMERON
11:14	MISSED JUMPER by SOUTH, KAREEM			
11:14	REBOUND (OFF) by GRAY, TRE			
11:14	MISSED LAYUP by TONEY, EMMANUEL			
11:14	REBOUND (OFF) by TEAM			
11:14	TURNOVER (SHOTCLOCK) by			
11:14	SUB OUT: BABIC, JAKE			
11:14	SUB IN: TALTON, JASHAWN			
11:14	SUB OUT: LEWIS, TONY			
11:14	SUB IN: SCHMIDT, ELIJAH			
11:04				MISSED 3PTR by DZIAGWA, THOMAS
11:04	BLOCK by TONEY, EMMANUEL			
11:04				REBOUND (OFF) by TEAM
10:51		55-43	H 12	GOOD! 3PTR by DZIAGWA, THOMAS
10:51				ASSIST by MCGRIFF, CAMERON
10:37	GOOD! LAYUP by TALTON, JASHAWN	55-45	H 10	
10:37	ASSIST by SOUTH, KAREEM			
10:20		58-45	H 13	GOOD! 3PTR by DZIAGWA, THOMAS
10:20				ASSIST by WATERS, III,LINDY
10:16				SUB OUT: CALLOO, MAURICE
10:16				SUB IN: ANEI, YOR
10:00	MISSED 3PTR by GRAY, TRE			
09:56				REBOUND (DEF) by MCGRIFF, CAMERON
09:46				MISSED 3PTR by MCGRIFF, CAMERON
09:44	REBOUND (DEF) by SOUTH, KAREEM			
09:39				FOUL (PERSONAL) by WATERS, III,LINDY
09:39	GOOD! FT by SOUTH, KAREEM [FB]	58-46	H 12	
09:39	GOOD! FT by SOUTH, KAREEM [FB]	58-47	H 11	
09:37	SUB OUT: TALTON, JASHAWN			
09:37	SUB IN: SMITH, MYLES			
09:37	SUB OUT: TONEY, EMMANUEL			
09:37	SUB IN: CLARK, JALON			
09:20		60-47	H 13	GOOD! JUMPER by ANEI, YOR [PNT]
09:20				ASSIST by WATERS, III,LINDY
09:06	MISSED 3PTR by SMITH, MYLES			
09:02				REBOUND (DEF) by MCGRIFF, CAMERON
09:01	FOUL (PERSONAL) by SMITH, MYLES			
08:51				MISSED JUMPER by MCGRIFF, CAMERON
08:46	REBOUND (DEF) by SOUTH, KAREEM			
08:36				FOUL (PERSONAL) by DZIAGWA, THOMAS
08:36	MISSED FT by CLARK, JALON			
08:36	REBOUND (OFF) by TEAM			
08:36	SUB OUT: SMITH, MYLES			
08:36	SUB IN: BROWN, KYLE			
08:36	MISSED FT by CLARK, JALON			

Time	VISITORS: Texas A&M-Corpus Christi	Score	Margin	HOME: Oklahoma State
08:35				REBOUND (DEF) by MCGRIFF, CAMERON
08:33				SUB OUT: DZIAGWA, THOMAS
08:33				SUB IN: WEATHERS, MICHAEL
08:17				TURNOVER (BADPASS) by WATERS, III,LINDY
07:51	MISSED JUMPER by GRAY, TRE			
07:46				REBOUND (DEF) by MCGRIFF, CAMERON
07:40				MISSED 3PTR by JONES, CURTIS
07:36				REBOUND (OFF) by MCGRIFF, CAMERON
07:09	FOUL (PERSONAL) by SCHMIDT, ELIJAH			
07:09				
07:09				SUB OUT: WATERS, III,LINDY
07:09				SUB IN: MAJOR, LUKE
07:09	SUB OUT: GRAY, TRE			
07:09	SUB IN: TALTON, JASHAWN			
07:09				MISSED FT by ANEI, YOR
07:09				REBOUND (OFF) by TEAM
07:09		61-47	H 14	GOOD! FT by ANEI, YOR
06:41	GOOD! JUMPER by SCHMIDT, ELIJAH [PNT]	61-49	H 12	
06:41	ASSIST by SOUTH, KAREEM			
06:27	FOUL (PERSONAL) by BROWN, KYLE			
06:27				MISSED FT by MAJOR, LUKE
06:27				REBOUND (OFF) by TEAM
06:27				MISSED FT by MAJOR, LUKE
06:26	REBOUND (DEF) by TALTON, JASHAWN			
06:13	TURNOVER (TRAVEL) by CLARK, JALON			
06:13	SUB OUT: CLARK, JALON			
06:13	SUB IN: BABIC, JAKE			
05:46				MISSED 3PTR by JONES, CURTIS
05:43	REBOUND (DEF) by TEAM			
05:43				SUB OUT: MAJOR, LUKE
05:43				SUB IN: LIKEKELE, ISAAC
05:32	TURNOVER (BADPASS) by BROWN, KYLE			
05:32	TIMEOUT 30SEC			
04:59				MISSED JUMPER by JONES, CURTIS
04:59	REBOUND (DEF) by SOUTH, KAREEM			
04:59				FOUL (PERSONAL) by MCGRIFF, CAMERON
04:39	MISSED JUMPER by SCHMIDT, ELIJAH			
04:36				REBOUND (DEF) by ANEI, YOR
04:33				TURNOVER (BADPASS) by LIKEKELE, ISAAC
04:33	STEAL by SOUTH, KAREEM			
04:27	MISSED 3PTR by BABIC, JAKE			
04:24				REBOUND (DEF) by MCGRIFF, CAMERON
03:55		63-49	H 14	GOOD! LAYUP by JONES, CURTIS
03:38	MISSED LAYUP by SOUTH, KAREEM			
03:38				BLOCK by MCGRIFF, CAMERON
03:27				REBOUND (DEF) by ANEI, YOR
03:21		65-49	H 16	GOOD! DUNK by WEATHERS, MICHAEL [FB]
03:21				ASSIST by JONES, CURTIS
03:09	GOOD! LAYUP by SCHMIDT, ELIJAH	65-51	H 14	
03:09	ASSIST by BABIC, JAKE			
02:46	FOUL (PERSONAL) by SCHMIDT, ELIJAH			
02:46				SUB OUT: ANEI, YOR
02:46				SUB IN: CALLOO, MAURICE
02:46	SUB OUT: BROWN, KYLE			
02:46	SUB IN: LEWIS, TONY			
02:46	SUB OUT: TALTON, JASHAWN			
02:46	SUB IN: HUNTE, IRSHAAD			
02:46	SUB OUT: SCHMIDT, ELIJAH			
02:46	SUB IN: TONEY, EMMANUEL			
02:46		66-51	H 15	GOOD! FT by MCGRIFF, CAMERON
02:46		67-51	H 16	GOOD! FT by MCGRIFF, CAMERON
02:21	GOOD! 3PTR by BABIC, JAKE	67-54	H 13	
02:21	ASSIST by TONEY, EMMANUEL			
01:54		69-54	H 15	GOOD! DUNK by MCGRIFF, CAMERON
01:54				ASSIST by WEATHERS, MICHAEL
01:42	GOOD! JUMPER by HUNTE, IRSHAAD	69-56	H 13	
01:42	ASSIST by TONEY, EMMANUEL			
01:21				TURNOVER (BADPASS) by JONES, CURTIS
01:04	GOOD! 3PTR by SOUTH, KAREEM	69-59	H 10	
01:04	ASSIST by LEWIS, TONY			
01:03	TIMEOUT TEAM			
00:57				TURNOVER (BADPASS) by CALLOO, MAURICE
00:57	STEAL by SOUTH, KAREEM			
00:49	MISSED 3PTR by HUNTE, IRSHAAD			
00:49				REBOUND (DEF) by LIKEKELE, ISAAC
00:49				TURNOVER (LOSTBALL) by LIKEKELE, ISAAC
00:49	STEAL by BABIC, JAKE			
00:49				SUB OUT: CALLOO, MAURICE
00:49				SUB IN: DEMUTH, DUNCAN

Time	VISITORS: Texas A&M-Corpus Christi	Score	Margin	HOME: Oklahoma State
00:45	MISSED JUMPER by HUNTE, IRSHAAD			
00:33				REBOUND (DEF) by MCGRIFF, CAMERON
00:23				MISSED LAYUP by WEATHERS, MICHAEL
00:18	REBOUND (DEF) by LEWIS, TONY			
00:10	MISSED 3PTR by TONEY, EMMANUEL			
00:05				REBOUND (DEF) by DEMUTH, DUNCAN

**Texas A&M-Corpus Christi 59, Oklahoma State 69**

Points from (This Period)	AMC	OSU
In the Paint	14	20
Off Turns	5	9
2nd Chance	7	11
Fast Break	5	6
Bench	2	10

**Official Scoring/Possession Reference Chart  
Texas A&M-Corpus Christi vs Oklahoma State  
Period 1**



**December 29, 2018 at Gallagher-Iba Arena (Eddie Sutton Court) - Stillwater, Okla.**

**Period 1**

**Starters:**

**Texas A&M-Corpus Christi:** 11 SOUTH,KAREEM; 14 SCHMIDT,ELIJAH; 45 BABIC,JAKE; 2 SMITH,MYLES; 4 TALTON,JASHAWN;

**Oklahoma State:** 4 DZIAGWA,THOMAS; 12 MCGRIFF,CAMERON; 13 LIKEKELE,ISAAC; 14 ANEI,YOR; 21 WATERS, III,LINDY;

Time	VISITORS: Texas A&M-Corpus Christi	Score	Margin	HOME: Oklahoma State
19:49	GOOD! 3PTR by TALTON, JASHAWN	0-3	V 3	
18:54	GOOD! 3PTR by BABIC, JAKE	0-6	V 6	
16:21		1-6	V 5	GOOD! FT by CALLOO, MAURICE
16:00		3-6	V 3	GOOD! LAYUP by LIKEKELE, ISAAC
15:21	GOOD! 3PTR by TONEY, EMMANUEL	3-9	V 6	
14:47		6-9	V 3	GOOD! 3PTR by JONES, CURTIS
14:16	GOOD! LAYUP by SOUTH, KAREEM [PNT]	6-11	V 5	
13:55		7-11	V 4	GOOD! FT by JONES, CURTIS
13:01		8-11	V 3	GOOD! FT by CALLOO, MAURICE
12:22		9-11	V 2	GOOD! FT by ANEI, YOR
12:22		10-11	V 1	GOOD! FT by ANEI, YOR
11:44	GOOD! 3PTR by GRAY, TRE	10-14	V 4	
11:35		11-14	V 3	GOOD! FT by LIKEKELE, ISAAC
11:35		12-14	V 2	GOOD! FT by LIKEKELE, ISAAC
10:51		14-14	T	GOOD! LAYUP by MCGRIFF, CAMERON
10:39	GOOD! LAYUP by GRAY, TRE [PNT]	14-16	V 2	
10:24		17-16	H 1	GOOD! 3PTR by DZIAGWA, THOMAS
10:01	GOOD! JUMPER by GRAY, TRE	17-18	V 1	
09:50		18-18	T	GOOD! FT by MCGRIFF, CAMERON
09:41	GOOD! FT by GRAY, TRE	18-19	V 1	
09:41	GOOD! FT by GRAY, TRE	18-20	V 2	
06:42		19-20	V 1	GOOD! FT by JONES, CURTIS
06:42		20-20	T	GOOD! FT by JONES, CURTIS
06:07	GOOD! FT by SCHMIDT, ELIJAH	20-21	V 1	
04:44		23-21	H 2	GOOD! 3PTR by MCGRIFF, CAMERON
04:19	GOOD! JUMPER by SOUTH, KAREEM	23-23	T	
04:10		25-23	H 2	GOOD! JUMPER by CALLOO, MAURICE
03:36	GOOD! 3PTR by SOUTH, KAREEM [FB]	25-26	V 1	
03:06		28-26	H 2	GOOD! 3PTR by MCGRIFF, CAMERON
01:48		31-26	H 5	GOOD! 3PTR by WATERS, III,LINDY
01:26	GOOD! FT by SCHMIDT, ELIJAH	31-27	H 4	
01:26	GOOD! FT by SCHMIDT, ELIJAH	31-28	H 3	
00:53		33-28	H 5	GOOD! LAYUP by JONES, CURTIS [FB]
00:32		35-28	H 7	GOOD! DUNK by LIKEKELE, ISAAC [FB]

**Texas A&M-Corpus Christi 28, Oklahoma State 35**

**Official Scoring/Possession Reference Chart  
Texas A&M-Corpus Christi vs Oklahoma State  
Period 2**



**December 29, 2018 at Gallagher-Iba Arena (Eddie Sutton Court) - Stillwater, Okla.**

**Period 2**

**Starters:**

**Texas A&M-Corpus Christi:** 11 SOUTH,KAREEM; 14 SCHMIDT,ELIJAH; 45 BABIC,JAKE; 2 SMITH,MYLES; 4 TALTON,JASHAWN;

**Oklahoma State:** 4 DZIAGWA,THOMAS; 12 MCGRIFF,CAMERON; 13 LIKEKELE,ISAAC; 14 ANEI,YOR; 21 WATERS, III,LINDY;

Time	VISITORS: Texas A&M-Corpus Christi	Score	Margin	HOME: Oklahoma State
19:22	GOOD! 3PTR by SOUTH, KAREEM	35-31	H 4	
19:03		37-31	H 6	GOOD! LAYUP by WATERS, III,LINDY
18:38	GOOD! JUMPER by SCHMIDT, ELIJAH [PNT]	37-33	H 4	
18:20		40-33	H 7	GOOD! 3PTR by DZIAGWA, THOMAS
17:34	GOOD! 3PTR by SOUTH, KAREEM [FB]	40-36	H 4	
17:14		42-36	H 6	GOOD! LAYUP by ANEI, YOR
16:38		44-36	H 8	GOOD! LAYUP by MAJOR, LUKE [PNT]
16:16		46-36	H 10	GOOD! DUNK by JONES, CURTIS [FB/PNT]
15:23	GOOD! LAYUP by TALTON, JASHAWN [PNT]	46-38	H 8	
14:49	GOOD! LAYUP by SCHMIDT, ELIJAH	46-40	H 6	
14:35		48-40	H 8	GOOD! LAYUP by WEATHERS, MICHAEL [PNT]
13:42	GOOD! LAYUP by SCHMIDT, ELIJAH	48-42	H 6	
13:01	GOOD! FT by SCHMIDT, ELIJAH	48-43	H 5	
12:28		49-43	H 6	GOOD! FT by MCGRIFF, CAMERON
12:28		50-43	H 7	GOOD! FT by MCGRIFF, CAMERON
11:48		52-43	H 9	GOOD! LAYUP by LIKEKELE, ISAAC [FB]
10:51		55-43	H 12	GOOD! 3PTR by DZIAGWA, THOMAS
10:37	GOOD! LAYUP by TALTON, JASHAWN	55-45	H 10	
10:20		58-45	H 13	GOOD! 3PTR by DZIAGWA, THOMAS
09:39	GOOD! FT by SOUTH, KAREEM [FB]	58-46	H 12	
09:39	GOOD! FT by SOUTH, KAREEM [FB]	58-47	H 11	
09:20		60-47	H 13	GOOD! JUMPER by ANEI, YOR [PNT]
07:09		61-47	H 14	GOOD! FT by ANEI, YOR
06:41	GOOD! JUMPER by SCHMIDT, ELIJAH [PNT]	61-49	H 12	
03:55		63-49	H 14	GOOD! LAYUP by JONES, CURTIS
03:21		65-49	H 16	GOOD! DUNK by WEATHERS, MICHAEL [FB]
03:09	GOOD! LAYUP by SCHMIDT, ELIJAH	65-51	H 14	
02:46		66-51	H 15	GOOD! FT by MCGRIFF, CAMERON
02:46		67-51	H 16	GOOD! FT by MCGRIFF, CAMERON
02:21	GOOD! 3PTR by BABIC, JAKE	67-54	H 13	
01:54		69-54	H 15	GOOD! DUNK by MCGRIFF, CAMERON
01:42	GOOD! JUMPER by HUNTE, IRSHAAD	69-56	H 13	
01:04	GOOD! 3PTR by SOUTH, KAREEM	69-59	H 10	

**Texas A&M-Corpus Christi 59, Oklahoma State 69**

**Official Substitutions Log  
Texas A&M-Corpus Christi vs Oklahoma State  
Period 1**

**December 29, 2018 at Gallagher-Iba Arena (Eddie Sutton Court) - Stillwater, Okla.**



VISITORS: Texas A&M-Corpus Christi	Time	Score	HOME: Oklahoma State
11 SOUTH,KAREEM			4 DZIAGWA,THOMAS
14 SCHMIDT,ELIJAH			12 MCGRIFF,CAMERON
45 BABIC,JAKE			13 LIKEKELE,ISAAC
2 SMITH,MYLES			14 ANEI,YOR
4 TALTON,JASHAWN			21 WATERS, III,LINDY
	17:22	6-0	SUB OUT: ANEI,YOR
	17:22		SUB IN: CALLOO,MAURICE
SUB OUT: 2 SMITH,MYLES	16:55	6-0	
SUB IN: 22 TONEY,EMMANUEL	16:55		
SUB OUT: 14 SCHMIDT,ELIJAH	16:21	6-0	
SUB IN: 35 LEWIS,TONY	16:21		
	16:21		SUB OUT: DZIAGWA,THOMAS
	16:21		SUB IN: WEATHERS,MICHAEL
	15:26	6-3	SUB OUT: LIKEKELE,ISAAC
	15:26		SUB IN: JONES,CURTIS
	13:55	11-7	SUB OUT: MCGRIFF,CAMERON
	13:55		SUB IN: LIKEKELE,ISAAC
	13:55		SUB OUT: WATERS, III,LINDY
	13:55		SUB IN: ANEI,YOR
SUB OUT: 4 TALTON,JASHAWN	13:55		
SUB IN: 15 HUNTE,IRSHAAD	13:55		
SUB OUT: 45 BABIC,JAKE	13:55		
SUB IN: 2 SMITH,MYLES	13:55		
SUB OUT: 11 SOUTH,KAREEM	13:01	11-7	
SUB IN: 21 GRAY,TRE	13:01		
	12:51	11-8	SUB OUT: CALLOO,MAURICE
	12:51		SUB IN: MCGRIFF,CAMERON
	11:53	11-10	SUB OUT: ANEI,YOR
	11:53		SUB IN: DEMUTH,DUNCAN
	11:53		SUB OUT: WEATHERS,MICHAEL
	11:53		SUB IN: DZIAGWA,THOMAS
	11:22	14-12	SUB OUT: JONES,CURTIS
	11:22		SUB IN: WATERS, III,LINDY
SUB OUT: 15 HUNTE,IRSHAAD	11:05	14-12	
SUB IN: 4 TALTON,JASHAWN	11:05		
SUB OUT: 22 TONEY,EMMANUEL	11:05		
SUB IN: 11 SOUTH,KAREEM	11:05		
SUB OUT: 35 LEWIS,TONY	11:05		
SUB IN: 14 SCHMIDT,ELIJAH	11:05		
	10:06	16-17	SUB OUT: DEMUTH,DUNCAN
	10:06		SUB IN: WEATHERS,MICHAEL
SUB OUT: 21 GRAY,TRE	09:41	20-18	
SUB IN: 45 BABIC,JAKE	09:41		
	08:18	20-18	SUB OUT: MCGRIFF,CAMERON
	08:18		SUB IN: ANEI,YOR
	07:36	20-18	SUB OUT: LIKEKELE,ISAAC
	07:36		SUB IN: JONES,CURTIS
	06:42	20-18	SUB OUT: WATERS, III,LINDY
	06:42		SUB IN: MCGRIFF,CAMERON
SUB OUT: 2 SMITH,MYLES	06:42		
SUB IN: 0 BROWN,KYLE	06:42		
SUB OUT: 45 BABIC,JAKE	06:42		
SUB IN: 22 TONEY,EMMANUEL	06:42		
	06:07	20-20	SUB OUT: WEATHERS,MICHAEL
	06:07		SUB IN: LIKEKELE,ISAAC
	06:07		SUB OUT: ANEI,YOR
	06:07		SUB IN: CALLOO,MAURICE
SUB OUT: 14 SCHMIDT,ELIJAH	06:07		
SUB IN: 35 LEWIS,TONY	06:07		
	03:13	26-25	SUB OUT: DZIAGWA,THOMAS
	03:13		SUB IN: WATERS, III,LINDY
SUB OUT: 0 BROWN,KYLE	03:13		
SUB IN: 45 BABIC,JAKE	03:13		
SUB OUT: 22 TONEY,EMMANUEL	03:13		
SUB IN: 14 SCHMIDT,ELIJAH	03:13		
SUB OUT: 35 LEWIS,TONY	03:13		
SUB IN: 21 GRAY,TRE	03:13		
	02:13	26-28	SUB OUT: CALLOO,MAURICE
	02:13		SUB IN: ANEI,YOR
	01:26	26-31	SUB OUT: ANEI,YOR
	01:26		SUB IN: DEMUTH,DUNCAN
SUB OUT: 21 GRAY,TRE	01:26		
SUB IN: 22 TONEY,EMMANUEL	01:26		
SUB OUT: 45 BABIC,JAKE	01:26		
SUB IN: 0 BROWN,KYLE	01:26		

VISITORS: Texas A&M-Corpus Christi	Time	Score	HOME: Oklahoma State
	00:28	28-35	SUB OUT: JONES,CURTIS
	00:28		SUB IN: WEATHERS,MICHAEL
SUB OUT: 0 BROWN,KYLE	00:28		
SUB IN: 45 BABIC,JAKE	00:28		
SUB OUT: 22 TONEY,EMMANUEL	00:28		
SUB IN: 2 SMITH,MYLES	00:28		
	00:02	28-35	SUB OUT: DEMUTH,DUNCAN
	00:02		SUB IN: JONES,CURTIS
SUB OUT: 2 SMITH,MYLES	00:02		
SUB IN: 0 BROWN,KYLE	00:02		
SUB OUT: 45 BABIC,JAKE	00:02		
SUB IN: 15 HUNTE,IRSHAAD	00:02		

**Texas A&M-Corpus Christi 28, Oklahoma State 35**



**Official Substitutions Log  
Texas A&M-Corpus Christi vs Oklahoma State  
Period 2**

**December 29, 2018 at Gallagher-Iba Arena (Eddie Sutton Court) - Stillwater, Okla.**



VISITORS: Texas A&M-Corpus Christi	Time	Score	HOME: Oklahoma State
11 SOUTH,KAREEM			4 DZIAGWA,THOMAS
14 SCHMIDT,ELIJAH			12 MCGRIFF,CAMERON
45 BABIC,JAKE			13 LIKEKELE,ISAAC
2 SMITH,MYLES			14 ANEI,YOR
4 TALTON,JASHAWN			21 WATERS, III,LINDY
	17:00	36-42	SUB OUT: DZIAGWA,THOMAS
	17:00		SUB IN: CALLOO,MAURICE
	17:00		SUB OUT: MCGRIFF,CAMERON
	17:00		SUB IN: DEMUTH,DUNCAN
	17:00		SUB OUT: LIKEKELE,ISAAC
	17:00		SUB IN: MAJOR,LUKE
	17:00		SUB OUT: ANEI,YOR
	17:00		SUB IN: WEATHERS,MICHAEL
	17:00		SUB OUT: WATERS, III,LINDY
	17:00		SUB IN: JONES,CURTIS
SUB OUT: 45 BABIC,JAKE	17:00		
SUB IN: 22 TONEY,EMMANUEL	17:00		
SUB OUT: 11 SOUTH,KAREEM	17:00		
SUB IN: 23 CLARK,JALON	17:00		
	13:59	40-48	SUB OUT: DEMUTH,DUNCAN
	13:59		SUB IN: WATERS, III,LINDY
SUB OUT: 2 SMITH,MYLES	13:59		
SUB IN: 11 SOUTH,KAREEM	13:59		
SUB OUT: 23 CLARK,JALON	13:59		
SUB IN: 21 GRAY,TRE	13:59		
	13:16	42-48	SUB OUT: JONES,CURTIS
	13:16		SUB IN: LIKEKELE,ISAAC
SUB OUT: 4 TALTON,JASHAWN	13:16		
SUB IN: 45 BABIC,JAKE	13:16		
	13:01	42-48	SUB OUT: MAJOR,LUKE
	13:01		SUB IN: MCGRIFF,CAMERON
SUB OUT: 14 SCHMIDT,ELIJAH	13:01		
SUB IN: 35 LEWIS,TONY	13:01		
	12:28	43-50	SUB OUT: WEATHERS,MICHAEL
	12:28		SUB IN: DZIAGWA,THOMAS
	11:46	43-52	SUB OUT: LIKEKELE,ISAAC
	11:46		SUB IN: JONES,CURTIS
SUB OUT: 45 BABIC,JAKE	11:14	43-52	
SUB IN: 4 TALTON,JASHAWN	11:14		
SUB OUT: 35 LEWIS,TONY	11:14		
SUB IN: 14 SCHMIDT,ELIJAH	11:14		
	10:16	45-58	SUB OUT: CALLOO,MAURICE
	10:16		SUB IN: ANEI,YOR
SUB OUT: 4 TALTON,JASHAWN	09:37	47-58	
SUB IN: 2 SMITH,MYLES	09:37		
SUB OUT: 22 TONEY,EMMANUEL	09:37		
SUB IN: 23 CLARK,JALON	09:37		
SUB OUT: 2 SMITH,MYLES	08:36	47-60	
SUB IN: 0 BROWN,KYLE	08:36		
	08:33	47-60	SUB OUT: DZIAGWA,THOMAS
	08:33		SUB IN: WEATHERS,MICHAEL
	07:09	47-60	SUB OUT: WATERS, III,LINDY
	07:09		SUB IN: MAJOR,LUKE
SUB OUT: 21 GRAY,TRE	07:09		
SUB IN: 4 TALTON,JASHAWN	07:09		
SUB OUT: 23 CLARK,JALON	06:13	49-61	
SUB IN: 45 BABIC,JAKE	06:13		
	05:43	49-61	SUB OUT: MAJOR,LUKE
	05:43		SUB IN: LIKEKELE,ISAAC
	02:46	51-65	SUB OUT: ANEI,YOR
	02:46		SUB IN: CALLOO,MAURICE
SUB OUT: 0 BROWN,KYLE	02:46		
SUB IN: 35 LEWIS,TONY	02:46		
SUB OUT: 4 TALTON,JASHAWN	02:46		
SUB IN: 15 HUNTE,IRSHAAD	02:46		
SUB OUT: 14 SCHMIDT,ELIJAH	02:46		
SUB IN: 22 TONEY,EMMANUEL	02:46		
	00:49	59-69	SUB OUT: CALLOO,MAURICE
	00:49		SUB IN: DEMUTH,DUNCAN

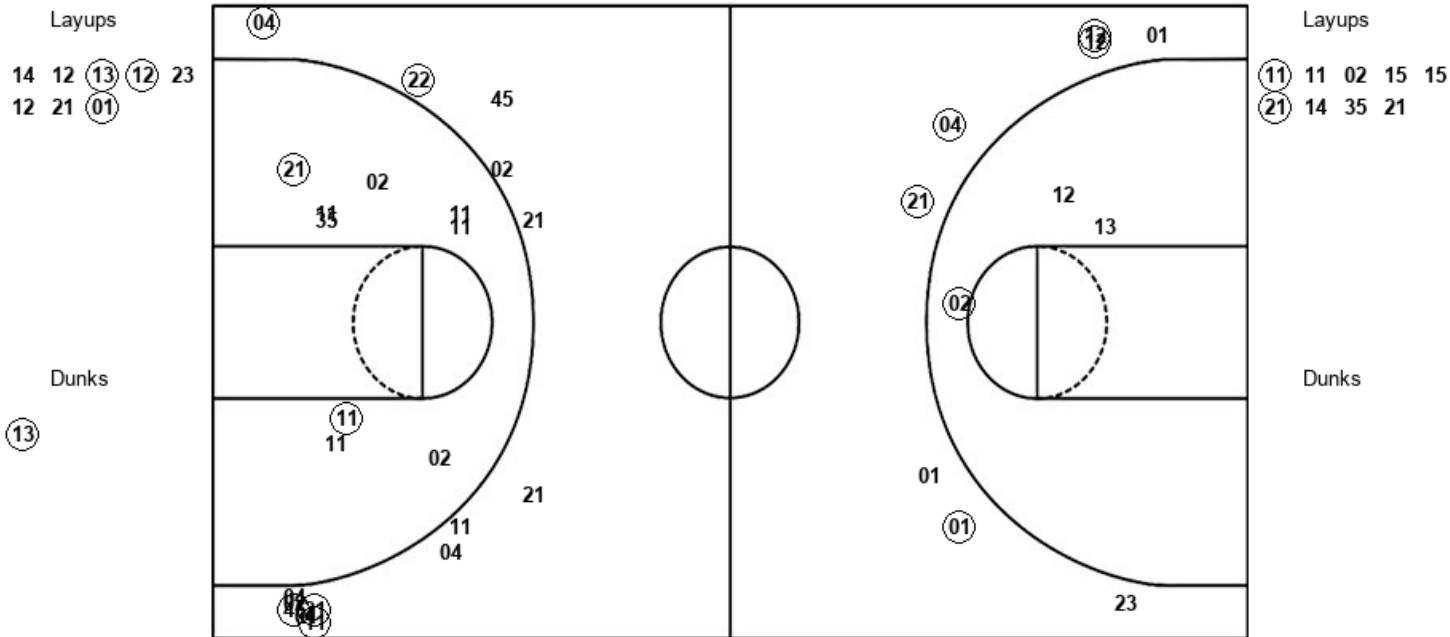
**Texas A&M-Corpus Christi 59, Oklahoma State 69**

Official Shot Chart  
**Texas A&M-Corpus Christi vs Oklahoma State**  
 PERIOD 1 Shots  
 December 29, 2018 at Gallagher-Iba Arena (Eddie Sutton Court) - Stillwater, Okla.



Oklahoma State

Texas A&M-Corpus Christi



OSU : Period 1	Made	Att	Pct
Layups	3	8	37.5
Dunks	1	1	100.0
2PT Field Goals	5	12	41.7
3PT Field Goals	5	8	62.5
<b>Total Field Goals</b>	<b>10</b>	<b>20</b>	<b>50.0</b>

AMC : Period 1	Made	Att	Pct
Layups	2	9	22.2
Dunks	0	0	0
2PT Field Goals	4	18	22.2
3PT Field Goals	5	14	35.7
<b>Total Field Goals</b>	<b>9</b>	<b>32</b>	<b>28.1</b>

Official Shot Chart  
**Texas A&M-Corpus Christi vs Oklahoma State**  
 PERIOD 2 Shots  
 December 29, 2018 at Gallagher-Iba Arena (Eddie Sutton Court) - Stillwater, Okla.

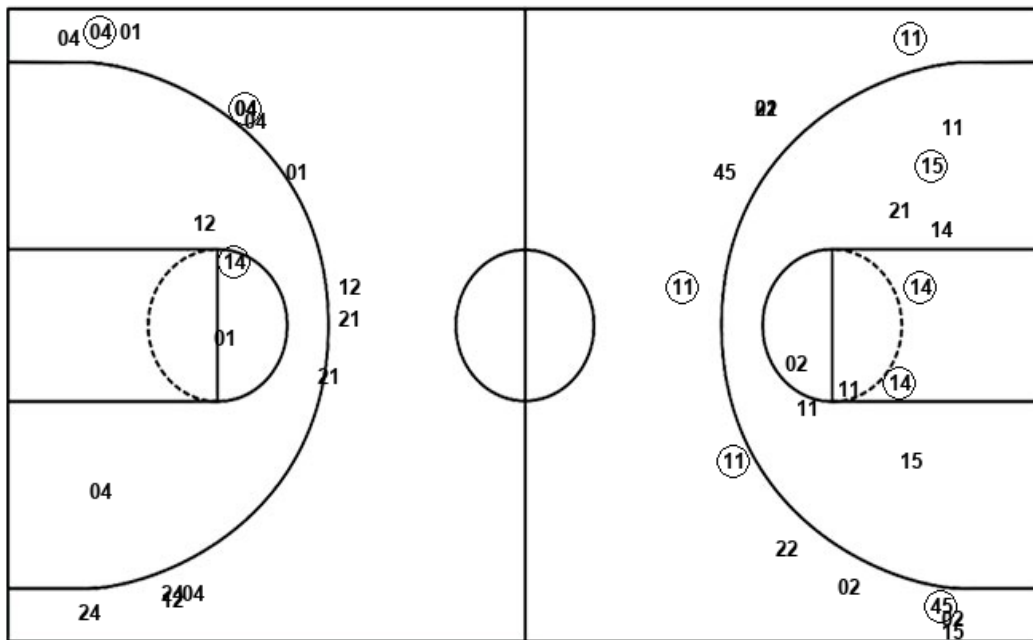


Oklahoma State

Texas A&M-Corpus Christi

Layups  
 21 14 24 23 01  
 13 01 23

Dunks  
 01 23 12



Layups  
 04 23 14 14 22  
 22 04 11 14

Dunks

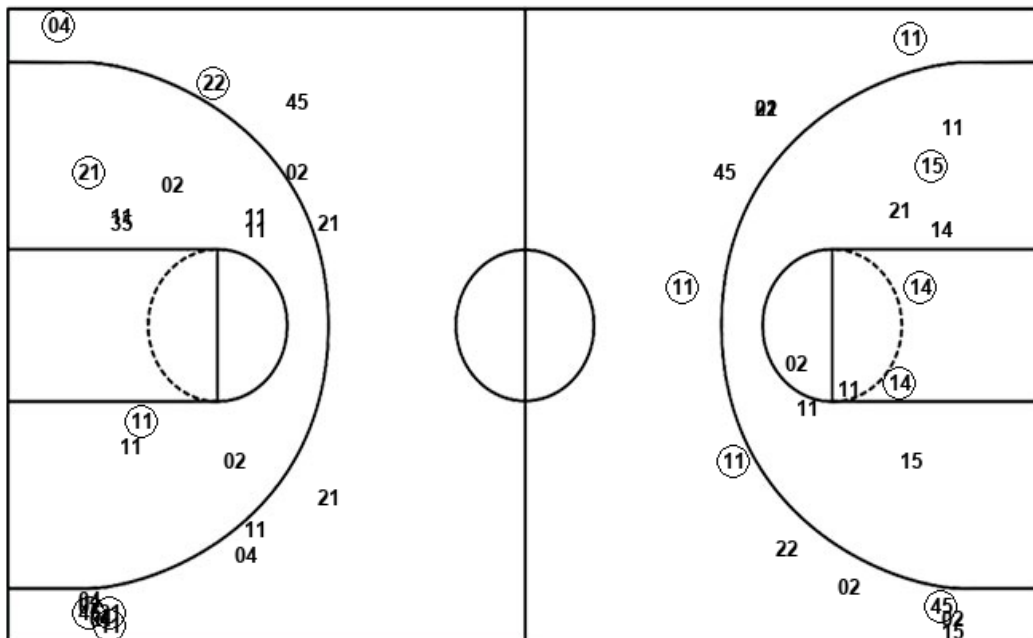
OSU : Period 2	Made	Att	Pct
Layups	6	8	75.0
Dunks	3	3	100.0
2PT Field Goals	10	15	66.7
3PT Field Goals	3	14	21.4
<b>Total Field Goals</b>	<b>13</b>	<b>29</b>	<b>44.8</b>

AMC : Period 2	Made	Att	Pct
Layups	5	9	55.6
Dunks	0	0	0
2PT Field Goals	8	19	42.1
3PT Field Goals	4	11	36.4
<b>Total Field Goals</b>	<b>12</b>	<b>30</b>	<b>40.0</b>

**Official Shot Chart**  
**Texas A&M-Corpus Christi vs Oklahoma State**  
 Texas A&M-Corpus Christi Team Shots  
 December 29, 2018 at Gallagher-Iba Arena (Eddie Sutton Court) - Stillwater, Okla.



Layups



Layups

11	11	02	15	15
21	14	35	21	04
23	14	14	22	22
04	11	14		

Dunks

Dunks

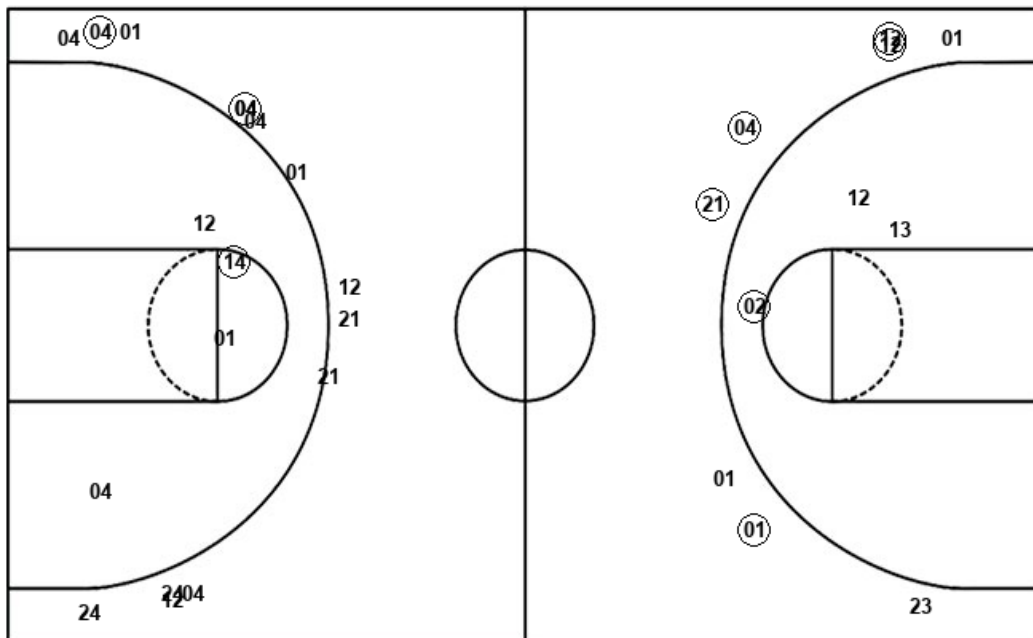
AMC : Period 1	Made	Att	Pct
Layups	2	9	22.2
Dunks	0	0	0
2PT Field Goals	4	18	22.2
3PT Field Goals	5	14	35.7
<b>Total Field Goals</b>	<b>9</b>	<b>32</b>	<b>28.1</b>

AMC : Period 2	Made	Att	Pct
Layups	5	9	55.6
Dunks	0	0	0
2PT Field Goals	8	19	42.1
3PT Field Goals	4	11	36.4
<b>Total Field Goals</b>	<b>12</b>	<b>30</b>	<b>40.0</b>

**Official Shot Chart**  
**Texas A&M-Corpus Christi vs Oklahoma State**  
**Oklahoma State Team Shots**  
 December 29, 2018 at Gallagher-Iba Arena (Eddie Sutton Court) - Stillwater, Okla.



Layups



Layups

14 12 (13) (12) 23  
 12 21 (01) (21) (14)  
 (24) (23) 01 (13) (01)  
 23

Dunks

Dunks

(13) (01) (23) (12)

OSU : Period 1	Made	Att	Pct
Layups	3	8	37.5
Dunks	1	1	100.0
2PT Field Goals	5	12	41.7
3PT Field Goals	5	8	62.5
<b>Total Field Goals</b>	<b>10</b>	<b>20</b>	<b>50.0</b>

OSU : Period 2	Made	Att	Pct
Layups	6	8	75.0
Dunks	3	3	100.0
2PT Field Goals	10	15	66.7
3PT Field Goals	3	14	21.4
<b>Total Field Goals</b>	<b>13</b>	<b>29</b>	<b>44.8</b>