

## FINAL SCORE



**Indiana**

**82**



**Nebraska**

**78**

February 03, 2019 • Pinnacle Bank Arena - Lincoln, Neb.

## FINAL STATISTICS

**Official Box Score**  
**Indiana vs Nebraska**  
**Game Totals -- Final Statistics**  
**February 03, 2019 at Pinnacle Bank Arena - Lincoln, Neb.**



**Indiana 82**

No.	Player	S	Pts	FG	3FG	FT	OR	DR	TR	PF	A	TO	Blk	Stl	Min	+/-
01	YEANEY, BENDU		1	0-8	0-2	1-2	0	2	2	3	6	1	1	1	31	1
11	ROYSTER, KYM		19	7-8	0-0	5-6	6	8	14	4	1	4	0	0	29	5
13	PENN, JAELYNN		20	7-15	1-5	5-5	0	5	5	5	0	1	0	1	29	-1
14	PATBERG, ALI		22	8-12	2-3	4-5	1	1	2	2	6	0	0	0	39	4
50	WISE, BRENNNA		4	1-6	1-3	1-1	0	4	4	3	2	1	0	3	33	-2
02	WARTHEN, KEYANNA		0	0-0	0-0	0-0	0	0	0	0	0	0	0	0	2	2
10	GULBE, ALEKSA		7	3-4	1-2	0-0	1	2	3	5	0	0	0	0	16	1
34	BERGER, GRACE		9	3-10	1-3	2-2	0	5	5	2	0	3	0	0	21	10
TEAM								1	1	2	0	2				
<b>TOTALS</b>			<b>82</b>	<b>29-63</b>	<b>6-18</b>	<b>18-21</b>	<b>9</b>	<b>28</b>	<b>37</b>	<b>24</b>	<b>15</b>	<b>12</b>	<b>1</b>	<b>5</b>	<b>200</b>	

*Shooting By Period*

Period	FG	FG%	3FG	3FG%	FT	FT%
1st Qtr	4-16	25%	0-3	00%	4-4	100%
2nd Qtr	11-15	73%	0-1	00%	2-2	100%
3rd Qtr	10-19	53%	3-8	38%	1-1	100%
4th Qtr	4-13	31%	3-6	50%	11-14	79%
1st Half	15-31	48%	0-4	00%	6-6	100%
2nd Half	14-32	44%	6-14	43%	12-15	80%
<b>Game</b>	<b>29-63</b>	<b>46.0%</b>	<b>6-18</b>	<b>33.3%</b>	<b>18-21</b>	<b>85.7%</b>

*Last FG: 4th-02:09*  
*Biggest Run: 8-0*  
*Largest lead: By 12 at 3-02:51*  
*Technical Fouls: None.*

**Nebraska 78**

No.	Player	S	Pts	FG	3FG	FT	OR	DR	TR	PF	A	TO	Blk	Stl	Min	+/-
03	WHITISH, HANNAH		16	6-12	3-6	1-4	1	2	3	2	2	1	0	0	33	-1
05	ELIELY, NICEA		7	2-5	0-3	3-3	2	1	3	4	0	3	1	0	20	3
31	CAIN, KATE		9	4-9	0-0	1-2	1	5	6	4	2	1	2	0	27	3
33	KISSINGER, TAYLOR		8	4-11	0-5	0-0	3	0	3	3	2	2	0	1	29	3
44	MERSON, KAYLA		2	1-3	0-2	0-0	0	3	3	1	2	0	1	0	12	0
04	HAIBY, SAM		17	5-8	0-0	7-8	0	3	3	2	1	2	0	0	22	-14
13	VEERBEEK, ASHTYN		5	1-3	0-1	3-4	2	3	5	2	0	3	1	0	12	-6
14	MITCHELL, GRACE		2	1-1	0-0	0-2	0	1	1	1	0	0	0	0	7	-4
24	SIMON, MADDIE		12	3-7	1-4	5-6	1	6	7	0	1	1	0	2	22	-1
32	BROWN, LEIGHA		0	0-2	0-1	0-0	0	2	2	1	1	0	0	0	16	-3
TEAM								0	0	0	0	0				
<b>TOTALS</b>			<b>78</b>	<b>27-61</b>	<b>4-22</b>	<b>20-29</b>	<b>10</b>	<b>26</b>	<b>36</b>	<b>20</b>	<b>11</b>	<b>13</b>	<b>5</b>	<b>3</b>	<b>200</b>	

*Shooting By Period*

Period	FG	FG%	3FG	3FG%	FT	FT%
1st Qtr	7-17	41%	1-4	25%	2-4	50%
2nd Qtr	7-14	50%	1-6	17%	0-2	00%
3rd Qtr	7-17	41%	0-5	00%	9-10	90%
4th Qtr	6-13	46%	2-7	29%	9-13	69%
1st Half	14-31	45%	2-10	20%	2-6	33%
2nd Half	13-30	43%	2-12	17%	18-23	78%
<b>Game</b>	<b>27-61</b>	<b>44.3%</b>	<b>4-22</b>	<b>18.2%</b>	<b>20-29</b>	<b>69.0%</b>

*Last FG: 4th-01:08*  
*Biggest Run: 7-0*  
*Largest lead: By 7 at 1-01:11*  
*Technical Fouls: None.*

*Game Notes:*

Officials: Jesse Dickerson, Brian Garland, Missy Brooks  
 Attendance: 3893

Start Time: 2019-02-03 20:01:06  
 End Time: 2019-02-03 22:02:15  
 Game Duration: 121  
 Conference Game;

Score	1st	2nd	3rd	4th	TOT
IND	12	24	24	22	<b>82</b>
NEB	17	15	23	23	<b>78</b>

IND led for 24:06. NEB led for 13:58.  
 Game was tied for 1:57.  
 Times tied: 4      Lead Changes: 1

Points from	IND	NEB
In the Paint	34	42
Off Turns	14	10
2nd Chance	11	15
Fast Break	2	9
Bench	16	36

**Official Box Score**  
**Indiana vs Nebraska**  
**First Half Statistics Only**  
**February 03, 2019 at Pinnacle Bank Arena - Lincoln, Neb.**



**Indiana 36**

No.	Player	S	Pts	FG	3FG	FT	OR	DR	TR	PF	A	TO	Blk	Stl	Min	+/-
01	YEANEY, BENDU		0	0-3	0-0	0-0	0	2	2	2	2	1	1	1	13	3
02	WARTHEN, KEYANNA		0	0-0	0-0	0-0	0	0	0	0	0	0	0	0	1	4
10	GULBE, ALEKSA		4	2-2	0-0	0-0	0	1	1	1	0	0	0	0	9	-1
11	ROYSTER, KYM		12	4-4	0-0	4-4	2	4	6	1	1	3	0	0	12	7
13	PENN, JAELYNN		6	3-7	0-2	0-0	0	2	2	0	0	0	0	1	15	4
14	PATBERG, ALI		8	4-6	0-0	0-0	1	1	2	0	4	0	0	0	19	2
34	BERGER, GRACE		6	2-6	0-1	2-2	0	2	2	1	0	2	0	0	13	3
50	WISE, BRENNNA		0	0-3	0-1	0-0	0	3	3	1	0	1	0	3	18	-2
	TEAM		0	0-0	0-0	0-0	0	0	0	0	0	0	0	0	0	
	<b>TOTALS</b>		<b>36</b>	<b>15-31</b>	<b>0-4</b>	<b>6-6</b>	<b>3</b>	<b>15</b>	<b>18</b>	<b>6</b>	<b>7</b>	<b>7</b>	<b>1</b>	<b>5</b>	<b>100</b>	

*Shooting By Period*

Period	FG	FG%	3FG	3FG%	FT	FT%
1st Qtr	4-16	25%	0-3	00%	4-4	100%
2nd Qtr	11-15	73%	0-1	00%	2-2	100%
1st Half	15-31	48%	0-4	00%	6-6	100%
Game	29-63	46.0%	6-18	33.3%	18-21	85.7%

*Last FG Half: IND 2nd-01:08*

**Nebraska 32**

No.	Player	S	Pts	FG	3FG	FT	OR	DR	TR	PF	A	TO	Blk	Stl	Min	+/-
13	VEERBEEK, ASHTYN		3	1-2	0-0	1-2	1	3	4	0	0	2	1	0	11	-1
14	MITCHELL, GRACE		2	1-1	0-0	0-2	0	1	1	1	0	0	0	0	5	-5
24	SIMON, MADDIE		0	0-2	0-2	0-0	0	1	1	0	1	1	0	1	7	0
31	CAIN, KATE		4	2-5	0-0	0-0	0	1	1	2	1	1	1	0	9	-3
32	BROWN, LEIGHA		0	0-1	0-1	0-0	0	1	1	1	1	0	0	0	8	0
33	KISSINGER, TAYLOR		8	4-8	0-2	0-0	3	0	3	1	1	2	0	1	17	-7
44	MERSHON, KAYLA		0	0-2	0-2	0-0	0	3	3	1	1	0	1	0	8	1
03	WHITISH, HANNAH		11	4-6	2-2	1-2	0	1	1	0	1	0	0	0	15	-1
04	HAIBY, SAM		4	2-3	0-0	0-0	0	2	2	0	0	1	0	0	12	-7
05	ELIELY, NICEA		0	0-1	0-1	0-0	0	0	0	2	0	2	0	0	8	3
	TEAM		0	0-0	0-0	0-0	0	0	0	0	0	0	0	0	0	
	<b>TOTALS</b>		<b>32</b>	<b>14-31</b>	<b>2-10</b>	<b>2-6</b>	<b>4</b>	<b>13</b>	<b>17</b>	<b>8</b>	<b>6</b>	<b>9</b>	<b>3</b>	<b>2</b>	<b>100</b>	

*Shooting By Period*

Period	FG	FG%	3FG	3FG%	FT	FT%
1st Qtr	7-17	41%	1-4	25%	2-4	50%
2nd Qtr	7-14	50%	1-6	17%	0-2	00%
1st Half	14-31	45%	2-10	20%	2-6	33%
Game	27-61	44.3%	4-22	18.2%	20-29	69.0%

*Last FG Half: NEB 2nd-00:50*

Game Notes:

Officials: **Jesse Dickerson, Brian Garland, Missy Brooks**  
 Attendance: **3893**

Start Time: **2019-02-03 20:01:06**  
 End Time: **2019-02-03 22:02:15**  
 Game Duration: **121**  
 Conference Game;

Score	1st	2nd	3rd	4th	TOT
IND	12	24	24	22	<b>82</b>
NEB	17	15	23	23	<b>78</b>

Points from (This Period)	IND	NEB
In the Paint	20	24
Off Turns	8	6
2nd Chance	6	5
Fast Break	0	1
Bench	10	9

**Official Box Score**  
**Indiana vs Nebraska**  
**First Quarter Statistics Only**  
**February 03, 2019 at Pinnacle Bank Arena - Lincoln, Neb.**



**Indiana 12**

No.	Player	S	Pts	FG	3FG	FT	OR	DR	TR	PF	A	TO	Blk	Stl	Min	+/-
01	YEANEY, BENDU		0	0-3	0-0	0-0	0	2	2	1	1	1	1	0	10	-5
11	ROYSTER, KYM		4	1-1	0-0	2-2	1	2	3	1	1	2	0	0	4	-2
13	PENN, JAELYNN		2	1-4	0-1	0-0	0	1	1	0	0	0	0	1	6	-1
14	PATBERG, ALI		4	2-3	0-0	0-0	1	1	2	0	0	0	0	0	9	-7
50	WISE, BRENNNA		0	0-2	0-1	0-0	0	1	1	0	0	1	0	2	9	-7
02	WARTHEN, KEYANNA		0	0-0	0-0	0-0	0	0	0	0	0	0	0	0	0	0
10	GULBE, ALEKSA		0	0-0	0-0	0-0	0	1	1	1	0	0	0	0	7	-1
34	BERGER, GRACE		2	0-3	0-1	2-2	0	0	0	0	0	1	0	0	5	-2
	TEAM						0	0	0	0		0				
<b>TOTALS</b>			<b>12</b>	<b>4-16</b>	<b>0-3</b>	<b>4-4</b>	<b>2</b>	<b>8</b>	<b>10</b>	<b>3</b>	<b>2</b>	<b>5</b>	<b>1</b>	<b>3</b>	<b>50</b>	

*Shooting By Period*

Period	FG	FG%	3FG	3FG%	FT	FT%
1st Qtr	4-16	25%	0-3	00%	4-4	100%
2nd Qtr	11-15	73%	0-1	00%	2-2	100%
1st Half	4-16	25%	0-3	00%	4-4	100%
1st Half	15-31	48%	0-4	00%	6-6	100%
Game	29-63	46.0%	6-18	33.3%	18-21	85.7%

**Nebraska 17**

No.	Player	S	Pts	FG	3FG	FT	OR	DR	TR	PF	A	TO	Blk	Stl	Min	+/-
03	WHITISH, HANNAH		6	2-4	1-1	1-2	0	0	0	0	1	0	0	0	7	2
05	ELIELY, NICEA		0	0-1	0-1	0-0	0	0	0	2	0	2	0	0	7	5
31	CAIN, KATE		2	1-3	0-0	0-0	0	1	1	1	0	1	1	0	5	2
33	KISSINGER, TAYLOR		4	2-5	0-1	0-0	2	0	2	1	0	0	0	0	7	2
44	MERSHON, KAYLA		0	0-0	0-0	0-0	0	3	3	1	1	0	0	0	4	3
04	HAIBY, SAM		4	2-3	0-0	0-0	0	1	1	0	0	1	0	0	6	3
13	VEERBEEK, ASHTYN		1	0-0	0-0	1-2	1	3	4	0	0	1	1	0	5	3
14	MITCHELL, GRACE		0	0-0	0-0	0-0	0	0	0	0	0	0	0	0	0	0
24	SIMON, MADDIE		0	0-1	0-1	0-0	0	1	1	0	1	0	0	1	6	2
32	BROWN, LEIGHA		0	0-0	0-0	0-0	0	1	1	1	0	0	0	0	3	3
	TEAM						0	0	0	0		0				
<b>TOTALS</b>			<b>17</b>	<b>7-17</b>	<b>1-4</b>	<b>2-4</b>	<b>3</b>	<b>10</b>	<b>13</b>	<b>6</b>	<b>3</b>	<b>5</b>	<b>2</b>	<b>1</b>	<b>50</b>	

*Shooting By Period*

Period	FG	FG%	3FG	3FG%	FT	FT%
1st Qtr	7-17	41%	1-4	25%	2-4	50%
2nd Qtr	7-14	50%	1-6	17%	0-2	00%
1st Half	7-17	41%	1-4	25%	2-4	50%
1st Half	14-31	45%	2-10	20%	2-6	33%
Game	27-61	44.3%	4-22	18.2%	20-29	69.0%

*Game Notes:*

Officials: Jesse Dickerson, Brian Garland, Missy Brooks  
 Attendance: 3893

Start Time: 2019-02-03 20:01:06  
 End Time: 2019-02-03 22:02:15  
 Game Duration: 121  
 Conference Game;

Score	1st	2nd	3rd	4th	TOT
IND	12	24	24	22	<b>82</b>
NEB	17	15	23	23	<b>78</b>

Points from (This Period)	IND	NEB
In the Paint	4	12
Off Turns	2	6
2nd Chance	4	5
Fast Break	0	1
Bench	2	5

**Official Play-By-Play  
Indiana vs Nebraska  
First Quarter  
February 03, 2019 at Pinnacle Bank Arena - Lincoln, Neb.**



**Period 1**

**Starters:**

**Indiana:** 1 YEANEY, BENDU; 11 ROYSTER, KYM; 13 PENN, JAELYNN; 14 PATBERG, ALI; 50 WISE, BRENNNA;

**Nebraska:** 31 CAIN, KATE; 33 KISSINGER, TAYLOR; 44 MERSHON, KAYLA; 3 WHITISH, HANNAH; 5 ELIELY, NICEA;

Time	VISITORS: Indiana	Score	Margin	HOME: Nebraska
09:45	TURNOVER (TRAVEL) by ROYSTER, KYM			
09:27		2-0	H 2	GOOD! LAYUP by WHITISH, HANNAH
09:10	TURNOVER (BADPASS) by WISE, BRENNNA			
08:56		4-0	H 4	GOOD! JUMPER by CAIN, KATE [PNT]
08:56				ASSIST by MERSHON, KAYLA
08:50	FOUL (OFF) by ROYSTER, KYM			
08:50	TURNOVER (OFFENSIVE) by ROYSTER, KYM			
08:36				MISSED JUMPER by CAIN, KATE
08:33	REBOUND (DEF) by ROYSTER, KYM			
08:25				FOUL (PERSONAL) by MERSHON, KAYLA
08:17	MISSED JUMPER by PENN, JAELYNN			
08:14	REBOUND (OFF) by ROYSTER, KYM			
08:12	GOOD! JUMPER by PATBERG, ALI	4-2	H 2	
08:12	ASSIST by ROYSTER, KYM			
07:45				MISSED JUMPER by CAIN, KATE
07:43				REBOUND (OFF) by KISSINGER, TAYLOR
07:42				MISSED LAYUP by KISSINGER, TAYLOR
07:38				REBOUND (OFF) by KISSINGER, TAYLOR
07:38		6-2	H 4	GOOD! LAYUP by KISSINGER, TAYLOR
07:19	MISSED LAYUP by YEANEY, BENDU			
07:16				REBOUND (DEF) by MERSHON, KAYLA
07:11				TURNOVER (LOSTBALL) by ELIELY, NICEA
07:11	STEAL by PENN, JAELYNN			
07:09				FOUL (PERSONAL) by ELIELY, NICEA
07:06	MISSED JUMPER by PENN, JAELYNN			
07:06				BLOCK by CAIN, KATE
07:01				REBOUND (DEF) by MERSHON, KAYLA
07:00		8-2	H 6	GOOD! LAYUP by KISSINGER, TAYLOR
06:57	GOOD! JUMPER by ROYSTER, KYM [PNT]	8-4	H 4	
06:57	ASSIST by YEANEY, BENDU			
06:53	FOUL (PERSONAL) by YEANEY, BENDU			
06:53				MISSED FT by WHITISH, HANNAH
06:53				REBOUND (OFF) by TEAM
06:53	SUB OUT: ROYSTER, KYM			
06:53	SUB IN: GULBE, ALEKSA			
06:53		9-4	H 5	GOOD! FT by WHITISH, HANNAH [FB]
06:41	GOOD! JUMPER by PENN, JAELYNN	9-6	H 3	
06:23				MISSED 3PTR by ELIELY, NICEA
06:20	REBOUND (DEF) by PATBERG, ALI			
06:12	MISSED LAYUP by PATBERG, ALI			
06:09				REBOUND (DEF) by MERSHON, KAYLA
05:58				TURNOVER (3SEC) by CAIN, KATE
05:58				SUB OUT: MERSHON, KAYLA
05:58				SUB IN: HAIBY, SAM
05:58				SUB OUT: CAIN, KATE
05:58				SUB IN: VEERBEEK, ASHTYN
05:58				SUB OUT: ELIELY, NICEA
05:58				SUB IN: SIMON, MADDIE
05:42	MISSED 3PTR by PENN, JAELYNN			
05:39				REBOUND (DEF) by SIMON, MADDIE
05:31				TURNOVER (BADPASS) by HAIBY, SAM
05:31	STEAL by WISE, BRENNNA			
05:26	MISSED LAYUP by WISE, BRENNNA			
05:24	REBOUND (OFF) by PATBERG, ALI			
05:24				FOUL (PERSONAL) by KISSINGER, TAYLOR
05:24	SUB OUT: PENN, JAELYNN			
05:24	SUB IN: BERGER, GRACE			
05:11	GOOD! LAYUP by PATBERG, ALI	9-8	H 1	
04:53				MISSED LAYUP by KISSINGER, TAYLOR
04:50				REBOUND (OFF) by VEERBEEK, ASHTYN
04:48		12-8	H 4	GOOD! 3PTR by WHITISH, HANNAH
04:48				ASSIST by SIMON, MADDIE
04:31	TURNOVER (BADPASS) by BERGER, GRACE			
04:31				STEAL by SIMON, MADDIE
04:25				MISSED 3PTR by KISSINGER, TAYLOR
04:22	REBOUND (DEF) by WISE, BRENNNA			
04:12	MISSED JUMPER by BERGER, GRACE			
04:09				REBOUND (DEF) by HAIBY, SAM
04:01				TURNOVER (TRAVEL) by VEERBEEK, ASHTYN
04:01				

Time	VISITORS: Indiana	Score	Margin	HOME: Nebraska
04:01				SUB OUT: WHITISH, HANNAH
04:01				SUB IN: BROWN, LEIGHA
04:01				SUB OUT: KISSINGER, TAYLOR
04:01				SUB IN: ELIELY, NICEA
03:45	TURNOVER (TRAVEL) by YEANEY, BENDU			
03:34		14-8	H 6	GOOD! LAYUP by HAIBY, SAM
03:16				FOUL (PERSONAL) by BROWN, LEIGHA
03:13	MISSED 3PTR by WISE, BRENNNA			
03:10				REBOUND (DEF) by VEERBEEK, ASHTYN
02:49				MISSED 3PTR by SIMON, MADDIE
02:46	REBOUND (DEF) by YEANEY, BENDU			
02:41	MISSED LAYUP by YEANEY, BENDU			
02:37				REBOUND (DEF) by VEERBEEK, ASHTYN
02:21				TURNOVER (LOSTBALL) by ELIELY, NICEA
02:21	STEAL by WISE, BRENNNA			
02:09	MISSED 3PTR by BERGER, GRACE			
02:07				REBOUND (DEF) by VEERBEEK, ASHTYN
01:38				MISSED LAYUP by HAIBY, SAM
01:35	REBOUND (DEF) by GULBE, ALEKSA			
01:29	MISSED LAYUP by YEANEY, BENDU			
01:29				BLOCK by VEERBEEK, ASHTYN
01:25				REBOUND (DEF) by BROWN, LEIGHA
01:11	FOUL (PERSONAL) by GULBE, ALEKSA			
01:11		15-8	H 7	GOOD! FT by VEERBEEK, ASHTYN
01:11				SUB OUT: BROWN, LEIGHA
01:11				SUB IN: KISSINGER, TAYLOR
01:11				SUB OUT: HAIBY, SAM
01:11				SUB IN: WHITISH, HANNAH
01:11	SUB OUT: WISE, BRENNNA			
01:11	SUB IN: ROYSTER, KYM			
01:11	SUB OUT: PATBERG, ALI			
01:11	SUB IN: PENN, JAELYNN			
01:11				MISSED FT by VEERBEEK, ASHTYN
01:08	REBOUND (DEF) by YEANEY, BENDU			
00:59				FOUL (PERSONAL) by ELIELY, NICEA
00:59	GOOD! FT by BERGER, GRACE	15-9	H 6	
00:59				SUB OUT: ELIELY, NICEA
00:59				SUB IN: HAIBY, SAM
00:59				SUB OUT: VEERBEEK, ASHTYN
00:59				SUB IN: CAIN, KATE
00:59	GOOD! FT by BERGER, GRACE	15-10	H 5	
00:45				MISSED LAYUP by WHITISH, HANNAH
00:45	BLOCK by YEANEY, BENDU			
00:43	REBOUND (DEF) by ROYSTER, KYM			
00:43				FOUL (PERSONAL) by CAIN, KATE
00:43	GOOD! FT by ROYSTER, KYM	15-11	H 4	
00:43	GOOD! FT by ROYSTER, KYM	15-12	H 3	
00:31				MISSED LAYUP by WHITISH, HANNAH
00:29	REBOUND (DEF) by PENN, JAELYNN			
00:26	MISSED LAYUP by BERGER, GRACE			
00:23				REBOUND (DEF) by CAIN, KATE
00:04		17-12	H 5	GOOD! LAYUP by HAIBY, SAM [PNT]
00:04				ASSIST by WHITISH, HANNAH

### Indiana 12, Nebraska 17

Points from (This Period)	IND	NEB
In the Paint	4	12
Off Turns	2	6
2nd Chance	4	5
Fast Break	0	1
Bench	2	5

**Official Box Score**  
**Indiana vs Nebraska**  
**Second Quarter Statistics Only**  
**February 03, 2019 at Pinnacle Bank Arena - Lincoln, Neb.**



**Indiana 24**

No.	Player	S	Pts	FG	3FG	FT	OR	DR	TR	PF	A	TO	Blk	Stl	Min	+/-
01	YEANEY, BENDU		0	0-0	0-0	0-0	0	0	0	1	1	0	0	1	3	8
11	ROYSTER, KYM		8	3-3	0-0	2-2	1	2	3	0	0	1	0	0	8	9
13	PENN, JAELYNN		4	2-3	0-1	0-0	0	1	1	0	0	0	0	0	9	5
14	PATBERG, ALI		4	2-3	0-0	0-0	0	0	0	0	4	0	0	0	10	9
50	WISE, BRENNIA		0	0-1	0-0	0-0	0	2	2	1	0	0	0	1	9	5
02	WARTHEN, KEYANNA		0	0-0	0-0	0-0	0	0	0	0	0	0	0	0	1	4
10	GULBE, ALEKSA		4	2-2	0-0	0-0	0	0	0	0	0	0	0	0	2	0
34	BERGER, GRACE		4	2-3	0-0	0-0	0	2	2	1	0	1	0	0	8	5
	TEAM						0	0	0	0		0				
<b>TOTALS</b>			<b>24</b>	<b>11-15</b>	<b>0-1</b>	<b>2-2</b>	<b>1</b>	<b>7</b>	<b>8</b>	<b>3</b>	<b>5</b>	<b>2</b>	<b>0</b>	<b>2</b>	<b>50</b>	

*Shooting By Period*

Period	FG	FG%	3FG	3FG%	FT	FT%
3rd Qtr	10-19	53%	3-8	38%	1-1	100%
4th Qtr	4-13	31%	3-6	50%	11-14	79%
2nd Half	11-15	73%	0-1	00%	2-2	100%
2nd Half	14-32	44%	6-14	43%	12-15	80%
Game	29-63	46.0%	6-18	33.3%	18-21	85.7%

**Nebraska 15**

No.	Player	S	Pts	FG	3FG	FT	OR	DR	TR	PF	A	TO	Blk	Stl	Min	+/-
03	WHITISH, HANNAH		5	2-2	1-1	0-0	0	1	1	0	0	0	0	0	8	-3
05	ELIELY, NICEA		0	0-0	0-0	0-0	0	0	0	0	0	0	0	0	1	-2
31	CAIN, KATE		2	1-2	0-0	0-0	0	0	0	1	1	0	0	0	4	-5
33	KISSINGER, TAYLOR		4	2-3	0-1	0-0	1	0	1	0	1	2	0	1	10	-9
44	MERSHON, KAYLA		0	0-2	0-2	0-0	0	0	0	0	0	0	1	0	4	-2
04	HAIBY, SAM		0	0-0	0-0	0-0	0	1	1	0	0	0	0	0	6	-10
13	VEERBEEK, ASHTYN		2	1-2	0-0	0-0	0	0	0	0	0	1	0	0	6	-4
14	MITCHELL, GRACE		2	1-1	0-0	0-2	0	1	1	1	0	0	0	0	5	-5
24	SIMON, MADDIE		0	0-1	0-1	0-0	0	0	0	0	0	1	0	0	1	-2
32	BROWN, LEIGHA		0	0-1	0-1	0-0	0	0	0	0	1	0	0	0	5	-3
	TEAM						0	0	0	0		0				
<b>TOTALS</b>			<b>15</b>	<b>7-14</b>	<b>1-6</b>	<b>0-2</b>	<b>1</b>	<b>3</b>	<b>4</b>	<b>2</b>	<b>3</b>	<b>4</b>	<b>1</b>	<b>1</b>	<b>50</b>	

*Shooting By Period*

Period	FG	FG%	3FG	3FG%	FT	FT%
3rd Qtr	7-17	41%	0-5	00%	9-10	90%
4th Qtr	6-13	46%	2-7	29%	9-13	69%
2nd Half	7-14	50%	1-6	17%	0-2	00%
2nd Half	13-30	43%	2-12	17%	18-23	78%
Game	27-61	44.3%	4-22	18.2%	20-29	69.0%

*Game Notes:*

Officials: Jesse Dickerson, Brian Garland, Missy Brooks  
Attendance: 3893

Start Time: 2019-02-03 20:01:06  
End Time: 2019-02-03 22:02:15  
Game Duration: 121  
Conference Game;

Score	1st	2nd	3rd	4th	TOT
IND	12	24	24	22	<b>82</b>
NEB	17	15	23	23	<b>78</b>

Points from (This Period)	IND	NEB
In the Paint	16	12
Off Turns	6	0
2nd Chance	2	0
Fast Break	0	0
Bench	8	4

**Official Play-By-Play**  
**Indiana vs Nebraska**  
**Second Quarter**  
**February 03, 2019 at Pinnacle Bank Arena - Lincoln, Neb.**



**Period 2**

**Starters:**

**Indiana:** 1 YEANEY, BENDU; 11 ROYSTER, KYM; 13 PENN, JAELYNN; 14 PATBERG, ALI; 50 WISE, BRENNNA;

**Nebraska:** 31 CAIN, KATE; 33 KISSINGER, TAYLOR; 44 MERSHON, KAYLA; 3 WHITISH, HANNAH; 5 ELIELY, NICEA;

Time	VISITORS: Indiana	Score	Margin	HOME: Nebraska
09:44				MISSED 3PTR by SIMON, MADDIE
09:42				REBOUND (OFF) by KISSINGER, TAYLOR
09:39				TURNOVER (LOSTBALL) by KISSINGER, TAYLOR
09:39	STEAL by YEANEY, BENDU			
09:26	GOOD! LAYUP by PENN, JAELYNN	17-14	H 3	
09:26	ASSIST by YEANEY, BENDU			
09:08				TURNOVER (TRAVEL) by SIMON, MADDIE
09:08				SUB OUT: SIMON, MADDIE
09:08				SUB IN: MITCHELL, GRACE
08:56	MISSED JUMPER by PATBERG, ALI			
08:53	REBOUND (OFF) by ROYSTER, KYM			
08:52	GOOD! LAYUP by ROYSTER, KYM	17-16	H 1	
08:30				TURNOVER (BADPASS) by KISSINGER, TAYLOR
08:30	STEAL by WISE, BRENNNA			
08:19	MISSED 3PTR by PENN, JAELYNN			
08:17				REBOUND (DEF) by MITCHELL, GRACE
08:17	FOUL (PERSONAL) by WISE, BRENNNA			
08:17				SUB OUT: HAIBY, SAM
08:17				SUB IN: BROWN, LEIGHA
08:17	SUB OUT: YEANEY, BENDU			
08:17	SUB IN: BERGER, GRACE			
07:58		19-16	H 3	GOOD! JUMPER by CAIN, KATE [PNT]
07:58				ASSIST by BROWN, LEIGHA
07:43				FOUL (PERSONAL) by CAIN, KATE
07:43	GOOD! FT by ROYSTER, KYM	19-17	H 2	
07:43				SUB OUT: CAIN, KATE
07:43				SUB IN: VEERBEEK, ASHTYN
07:43	GOOD! FT by ROYSTER, KYM	19-18	H 1	
07:43	SUB OUT: ROYSTER, KYM			
07:43	SUB IN: GULBE, ALEKSA			
07:32	FOUL (PERSONAL) by BERGER, GRACE			
07:16		21-18	H 3	GOOD! LAYUP by KISSINGER, TAYLOR
07:00	GOOD! JUMPER by PATBERG, ALI	21-20	H 1	
06:42		23-20	H 3	GOOD! JUMPER by VEERBEEK, ASHTYN
06:29	GOOD! LAYUP by GULBE, ALEKSA [PNT]	23-22	H 1	
06:29	ASSIST by PATBERG, ALI			
06:16		25-22	H 3	GOOD! LAYUP by MITCHELL, GRACE
06:01	GOOD! JUMPER by GULBE, ALEKSA	25-24	H 1	
06:01	ASSIST by PATBERG, ALI			
05:44				TURNOVER (TRAVEL) by VEERBEEK, ASHTYN
05:44				SUB OUT: WHITISH, HANNAH
05:44				SUB IN: HAIBY, SAM
05:44	SUB OUT: GULBE, ALEKSA			
05:44	SUB IN: ROYSTER, KYM			
05:44	SUB OUT: PENN, JAELYNN			
05:44	SUB IN: YEANEY, BENDU			
05:44	SUB OUT: WISE, BRENNNA			
05:44	SUB IN: WARTHEN, KEYANNA			
05:29	GOOD! JUMPER by PATBERG, ALI [PNT]	25-26	V 1	
05:08				MISSED 3PTR by BROWN, LEIGHA
05:05	REBOUND (DEF) by ROYSTER, KYM			
04:55	GOOD! JUMPER by BERGER, GRACE [PNT]	25-28	V 3	
04:55	ASSIST by PATBERG, ALI			
04:53				TIMEOUT 30SEC
04:53				
04:29	FOUL (PERSONAL) by YEANEY, BENDU			
04:29				MISSED FT by MITCHELL, GRACE
04:29				REBOUND (OFF) by TEAM
04:29				MISSED FT by MITCHELL, GRACE
04:29	REBOUND (DEF) by BERGER, GRACE			
04:20	SUB OUT: YEANEY, BENDU			
04:20	SUB IN: WISE, BRENNNA			
04:20	SUB OUT: WARTHEN, KEYANNA			
04:20	SUB IN: PENN, JAELYNN			
04:14	GOOD! LAYUP by ROYSTER, KYM	25-30	V 5	
03:59				SUB OUT: HAIBY, SAM
03:59				SUB IN: WHITISH, HANNAH
03:58		28-30	V 2	GOOD! 3PTR by WHITISH, HANNAH
03:58				ASSIST by KISSINGER, TAYLOR
03:45				FOUL (PERSONAL) by MITCHELL, GRACE



Time	VISITORS: Indiana	Score	Margin	HOME: Nebraska
03:45				SUB OUT: MITCHELL, GRACE
03:45				SUB IN: MERSHON, KAYLA
03:45				SUB OUT: BROWN, LEIGHA
03:45				SUB IN: ELIELY, NICEA
03:26	TURNOVER (BADPASS) by BERGER, GRACE			
03:26				STEAL by KISSINGER, TAYLOR
03:21				MISSED LAYUP by VEERBEEK, ASHTYN
03:17	REBOUND (DEF) by WISE, BRENNNA			
03:08	GOOD! LAYUP by PENN, JAELYNN	28-32	V 4	
02:58				MISSED 3PTR by KISSINGER, TAYLOR
02:56	REBOUND (DEF) by PENN, JAELYNN			
02:56				SUB OUT: ELIELY, NICEA
02:56				SUB IN: HAIBY, SAM
02:34	MISSED LAYUP by WISE, BRENNNA			
02:34				BLOCK by MERSHON, KAYLA
02:31				REBOUND (DEF) by HAIBY, SAM
02:14		30-32	V 2	GOOD! LAYUP by KISSINGER, TAYLOR
01:55	TURNOVER (TRAVEL) by ROYSTER, KYM			
01:55				SUB OUT: VEERBEEK, ASHTYN
01:55				SUB IN: CAIN, KATE
01:41				MISSED JUMPER by CAIN, KATE
01:37	REBOUND (DEF) by WISE, BRENNNA			
01:31	GOOD! LAYUP by ROYSTER, KYM	30-34	V 4	
01:31	ASSIST by PATBERG, ALI			
01:21				MISSED 3PTR by MERSHON, KAYLA
01:17	REBOUND (DEF) by BERGER, GRACE			
01:08	GOOD! JUMPER by BERGER, GRACE	30-36	V 6	
00:50		32-36	V 4	GOOD! LAYUP by WHITISH, HANNAH
00:50				ASSIST by CAIN, KATE
00:31	MISSED JUMPER by BERGER, GRACE			
00:27				REBOUND (DEF) by WHITISH, HANNAH
00:05				MISSED 3PTR by MERSHON, KAYLA
00:00	REBOUND (DEF) by ROYSTER, KYM			

### Indiana 36, Nebraska 32

Points from (This Period)	IND	NEB
In the Paint	16	12
Off Turns	6	0
2nd Chance	2	0
Fast Break	0	0
Bench	8	4

**Official Box Score**  
**Indiana vs Nebraska**  
**Second Half Statistics Only**  
**February 03, 2019 at Pinnacle Bank Arena - Lincoln, Neb.**



**Indiana 46**

No.	Player	S	Pts	FG	3FG	FT	OR	DR	TR	PF	A	TO	Blk	Stl	Min	+/-
01	YEANEY, BENDU		1	0-5	0-2	1-2	0	0	0	1	4	0	0	0	18	-2
02	WARTHEN, KEYANNA		0	0-0	0-0	0-0	0	0	0	0	0	0	0	0	0	-2
10	GULBE, ALEKSA		3	1-2	1-2	0-0	1	1	2	4	0	0	0	0	7	2
11	ROYSTER, KYM		7	3-4	0-0	1-2	4	4	8	3	0	1	0	0	17	-2
13	PENN, JAELYNN		14	4-8	1-3	5-5	0	3	3	5	0	1	0	0	15	-5
14	PATBERG, ALI		14	4-6	2-3	4-5	0	0	0	2	2	0	0	0	20	2
34	BERGER, GRACE		3	1-4	1-2	0-0	0	3	3	1	0	1	0	0	7	7
50	WISE, BRENNNA		4	1-3	1-2	1-1	0	1	1	2	2	0	0	0	16	0
	TEAM		0	0-0	0-0	0-0	1	1	2	0	0	2	0	0	0	0
<b>TOTALS</b>			<b>46</b>	<b>14-32</b>	<b>6-14</b>	<b>12-15</b>	<b>6</b>	<b>13</b>	<b>19</b>	<b>18</b>	<b>8</b>	<b>5</b>	<b>0</b>	<b>0</b>	<b>100</b>	

*Shooting By Period*

Period	FG	FG%	3FG	3FG%	FT	FT%
3rd Qtr	10-19	53%	3-8	38%	1-1	100%
4th Qtr	4-13	31%	3-6	50%	11-14	79%
2nd Half	14-32	44%	6-14	43%	12-15	80%
Game	29-63	46.0%	6-18	33.3%	18-21	85.7%

*Last FG Half: IND 4th-02:09*

**Nebraska 46**

No.	Player	S	Pts	FG	3FG	FT	OR	DR	TR	PF	A	TO	Blk	Stl	Min	+/-
13	VEERBEEK, ASHTYN		2	0-1	0-1	2-2	1	0	1	2	0	1	0	0	1	-5
14	MITCHELL, GRACE		0	0-0	0-0	0-0	0	0	0	0	0	0	0	0	2	1
24	SIMON, MADDIE		12	3-5	1-2	5-6	1	5	6	0	0	0	0	1	15	-1
31	CAIN, KATE		5	2-4	0-0	1-2	1	4	5	2	1	0	1	0	18	6
32	BROWN, LEIGHA		0	0-1	0-0	0-0	0	1	1	0	0	0	0	0	9	-3
33	KISSINGER, TAYLOR		0	0-3	0-3	0-0	0	0	0	2	1	0	0	0	12	10
44	MERSHON, KAYLA		2	1-1	0-0	0-0	0	0	0	0	1	0	0	0	4	-1
03	WHITISH, HANNAH		5	2-6	1-4	0-2	1	1	2	2	1	1	0	0	18	0
04	HAIBY, SAM		13	3-5	0-0	7-8	0	1	1	2	1	1	0	0	10	-7
05	ELIELY, NICEA		7	2-4	0-2	3-3	2	1	3	2	0	1	1	0	12	0
	TEAM		0	0-0	0-0	0-0	0	0	0	0	0	0	0	0	0	0
<b>TOTALS</b>			<b>46</b>	<b>13-30</b>	<b>2-12</b>	<b>18-23</b>	<b>6</b>	<b>13</b>	<b>19</b>	<b>12</b>	<b>5</b>	<b>4</b>	<b>2</b>	<b>1</b>	<b>100</b>	

*Shooting By Period*

Period	FG	FG%	3FG	3FG%	FT	FT%
3rd Qtr	7-17	41%	0-5	00%	9-10	90%
4th Qtr	6-13	46%	2-7	29%	9-13	69%
2nd Half	13-30	43%	2-12	17%	18-23	78%
Game	27-61	44.3%	4-22	18.2%	20-29	69.0%

*Last FG Half: NEB 4th-01:08*

*Game Notes:*

Officials: Jesse Dickerson, Brian Garland, Missy Brooks  
 Attendance: 3893

Start Time: 2019-02-03 20:01:06  
 End Time: 2019-02-03 22:02:15  
 Game Duration: 121  
 Conference Game;

Score	1st	2nd	3rd	4th	TOT
IND	12	24	24	22	<b>82</b>
NEB	17	15	23	23	<b>78</b>

Points from (This Period)	IND	NEB
In the Paint	14	18
Off Turns	6	4
2nd Chance	5	10
Fast Break	2	8
Bench	6	27

**Official Box Score**  
**Indiana vs Nebraska**  
**Third Quarter Statistics Only**  
**February 03, 2019 at Pinnacle Bank Arena - Lincoln, Neb.**



**Indiana 46**

No.	Player	S	Pts	FG	3FG	FT	OR	DR	TR	PF	A	TO	Blk	Stl	Min	+/-
01	YEANEY, BENDU		0	0-2	0-1	0-0	0	0	0	1	2	0	0	0	8	-1
11	ROYSTER, KYM		6	3-3	0-0	0-0	3	3	6	0	0	0	0	0	8	-4
13	PENN, JAELYNN		4	2-5	0-2	0-0	0	2	2	3	0	1	0	0	8	-4
14	PATBERG, ALI		8	3-5	1-2	1-1	0	0	0	0	1	0	0	0	10	3
50	WISE, BRENNIA		0	0-0	0-0	0-0	0	1	1	2	2	0	0	0	8	1
02	WARTHEN, KEYANNA		0	0-0	0-0	0-0	0	0	0	0	0	0	0	0	0	-2
10	GULBE, ALEKSA		3	1-2	1-2	0-0	0	1	1	2	0	0	0	0	5	5
34	BERGER, GRACE		3	1-2	1-1	0-0	0	1	1	0	0	0	0	0	4	7
	TEAM						0	0	0	0		2				
<b>TOTALS</b>			<b>24</b>	<b>10-19</b>	<b>3-8</b>	<b>1-1</b>	<b>3</b>	<b>8</b>	<b>11</b>	<b>8</b>	<b>5</b>	<b>3</b>	<b>0</b>	<b>0</b>	<b>50</b>	

*Shooting By Period*

Period	FG	FG%	3FG	3FG%	FT	FT%
2nd Half	0-0	0%	0-0	0%	0-0	0%
Game	29-63	46.0%	6-18	33.3%	18-21	85.7%

**Nebraska 46**

No.	Player	S	Pts	FG	3FG	FT	OR	DR	TR	PF	A	TO	Blk	Stl	Min	+/-
03	WHITISH, HANNAH		0	0-3	0-2	0-0	0	1	1	0	0	1	0	0	10	-3
05	ELIELY, NICEA		7	2-3	0-1	3-3	2	0	2	1	0	0	0	0	7	7
31	CAIN, KATE		2	1-2	0-0	0-0	0	2	2	0	0	0	1	0	9	3
33	KISSINGER, TAYLOR		0	0-1	0-1	0-0	0	0	0	0	1	0	0	0	6	7
44	MERSHON, KAYLA		2	1-1	0-0	0-0	0	0	0	0	1	0	0	0	3	0
04	HAIBY, SAM		4	2-4	0-0	0-0	0	0	0	1	0	0	0	0	4	-6
13	VEERBEEK, ASHTYN		2	0-0	0-0	2-2	1	0	1	1	0	1	0	0	1	-4
14	MITCHELL, GRACE		0	0-0	0-0	0-0	0	0	0	0	0	0	0	0	0	0
24	SIMON, MADDIE		6	1-2	0-1	4-5	0	3	3	0	0	0	0	1	7	-1
32	BROWN, LEIGHA		0	0-1	0-0	0-0	0	0	0	0	0	0	0	0	4	-8
	TEAM						0	0	0	0		0				
<b>TOTALS</b>			<b>23</b>	<b>7-17</b>	<b>0-5</b>	<b>9-10</b>	<b>3</b>	<b>6</b>	<b>9</b>	<b>3</b>	<b>2</b>	<b>2</b>	<b>1</b>	<b>1</b>	<b>50</b>	

*Shooting By Period*

Period	FG	FG%	3FG	3FG%	FT	FT%
2nd Half	0-0	0%	0-0	0%	0-0	0%
Game	27-61	44.3%	4-22	18.2%	20-29	69.0%

Game Notes:

Officials: Jesse Dickerson, Brian Garland, Missy Brooks  
Attendance: 3893

Start Time: 2019-02-03 20:01:06  
End Time: 2019-02-03 22:02:15  
Game Duration: 121  
Conference Game;

Score	1st	2nd	3rd	4th	TOT
IND	12	24	24	22	<b>82</b>
NEB	17	15	23	23	<b>78</b>

Points from (This Period)	IND	NEB
In the Paint	12	12
Off Turns	3	4
2nd Chance	2	7
Fast Break	0	6
Bench	6	12

**Official Play-By-Play**  
**Indiana vs Nebraska**  
**Third Quarter**  
**February 03, 2019 at Pinnacle Bank Arena - Lincoln, Neb.**



**Period 3**

**Starters:**

**Indiana:** 1 YEANEY, BENDU; 11 ROYSTER, KYM; 13 PENN, JAELYNN; 14 PATBERG, ALI; 50 WISE, BRENNNA;

**Nebraska:** 31 CAIN, KATE; 33 KISSINGER, TAYLOR; 44 MERSHON, KAYLA; 3 WHITISH, HANNAH; 5 ELIELY, NICEA;

Time	VISITORS: Indiana	Score	Margin	HOME: Nebraska
09:46				TURNOVER (BADPASS) by WHITISH, HANNAH
09:32	MISSED JUMPER by PENN, JAELYNN			
09:28				REBOUND (DEF) by CAIN, KATE
09:23		34-36	V 2	GOOD! LAYUP by MERSHON, KAYLA
09:23				ASSIST by KISSINGER, TAYLOR
09:05	MISSED 3PTR by PENN, JAELYNN			
09:02				REBOUND (DEF) by WHITISH, HANNAH
08:57		36-36	T	GOOD! LAYUP by ELIELY, NICEA [FB]
08:38	GOOD! LAYUP by PENN, JAELYNN	36-38	V 2	
08:14		38-38	T	GOOD! JUMPER by CAIN, KATE
08:14				ASSIST by MERSHON, KAYLA
07:56	MISSED JUMPER by PATBERG, ALI			
07:51	REBOUND (OFF) by ROYSTER, KYM			
07:51	GOOD! LAYUP by ROYSTER, KYM	38-40	V 2	
07:31				MISSED 3PTR by WHITISH, HANNAH
07:29	REBOUND (DEF) by ROYSTER, KYM			
07:22	GOOD! JUMPER by PENN, JAELYNN	38-42	V 4	
06:59				MISSED 3PTR by ELIELY, NICEA
06:56	REBOUND (DEF) by ROYSTER, KYM			
06:50	MISSED 3PTR by PENN, JAELYNN			
06:47	REBOUND (OFF) by ROYSTER, KYM			
06:41				SUB OUT: CAIN, KATE
06:41				SUB IN: SIMON, MADDIE
06:41				SUB OUT: KISSINGER, TAYLOR
06:41				SUB IN: HAIBY, SAM
06:41				SUB OUT: MERSHON, KAYLA
06:41				SUB IN: BROWN, LEIGHA
06:41				SUB OUT: WHITISH, HANNAH
06:41				SUB IN: VEERBEEK, ASHTYN
06:41	SUB OUT: ROYSTER, KYM			
06:41	SUB IN: GULBE, ALEKSA			
06:41	TURNOVER (LOSTBALL) by ROYSTER, KYM			
06:30				MISSED JUMPER by BROWN, LEIGHA
06:27	REBOUND (DEF) by GULBE, ALEKSA			
06:22				FOUL (PERSONAL) by ELIELY, NICEA
06:22	SUB OUT: PENN, JAELYNN			
06:22	SUB IN: BERGER, GRACE			
06:22				SUB OUT: ELIELY, NICEA
06:22				SUB IN: WHITISH, HANNAH
06:19	GOOD! 3PTR by GULBE, ALEKSA	38-45	V 7	
06:19	ASSIST by WISE, BRENNNA			
06:00				MISSED JUMPER by HAIBY, SAM
05:57				REBOUND (OFF) by VEERBEEK, ASHTYN
05:57	FOUL (PERSONAL) by GULBE, ALEKSA			
05:57		39-45	V 6	GOOD! FT by VEERBEEK, ASHTYN
05:57		40-45	V 5	GOOD! FT by VEERBEEK, ASHTYN
05:47	GOOD! LAYUP by PATBERG, ALI	40-47	V 7	
05:47				FOUL (PERSONAL) by HAIBY, SAM
05:47	GOOD! FT by PATBERG, ALI	40-48	V 8	
05:39				FOUL (OFF) by VEERBEEK, ASHTYN
05:39				TURNOVER (OFFENSIVE) by VEERBEEK, ASHTYN
05:39				SUB OUT: VEERBEEK, ASHTYN
05:39				SUB IN: CAIN, KATE
05:17	GOOD! 3PTR by PATBERG, ALI	40-51	V 11	
05:17	ASSIST by WISE, BRENNNA			
05:07	FOUL (PERSONAL) by WISE, BRENNNA			
05:07		41-51	V 10	GOOD! FT by SIMON, MADDIE
05:07	SUB OUT: YEANEY, BENDU			
05:07	SUB IN: PENN, JAELYNN			
05:07		42-51	V 9	GOOD! FT by SIMON, MADDIE
04:35	GOOD! LAYUP by PATBERG, ALI [PNT]	42-53	V 11	
04:26		44-53	V 9	GOOD! LAYUP by HAIBY, SAM
04:15	MISSED 3PTR by GULBE, ALEKSA			
04:13				REBOUND (DEF) by SIMON, MADDIE
04:13	FOUL (PERSONAL) by WISE, BRENNNA			
04:13				
04:13	SUB OUT: WISE, BRENNNA			
04:13	SUB IN: ROYSTER, KYM			
04:00				MISSED LAYUP by HAIBY, SAM
03:58	REBOUND (DEF) by BERGER, GRACE			

Time	VISITORS: Indiana	Score	Margin	HOME: Nebraska
03:45	MISSED JUMPER by BERGER, GRACE			
03:40				REBOUND (DEF) by SIMON, MADDIE
03:38				MISSED 3PTR by WHITISH, HANNAH
03:35	REBOUND (DEF) by PENN, JAELYNN			
03:13	GOOD! 3PTR by BERGER, GRACE	44-56	V 12	
03:13	ASSIST by PATBERG, ALI			
03:08	FOUL (PERSONAL) by PENN, JAELYNN			
03:08				SUB OUT: HAIBY, SAM
03:08				SUB IN: KISSINGER, TAYLOR
03:08				SUB OUT: BROWN, LEIGHA
03:08				SUB IN: ELIELY, NICEA
03:08	SUB OUT: BERGER, GRACE			
03:08	SUB IN: YEANEY, BENDU			
03:08	FOUL (PERSONAL) by GULBE, ALEKSA			
03:08		45-56	V 11	GOOD! FT by SIMON, MADDIE [FB]
03:08		46-56	V 10	GOOD! FT by SIMON, MADDIE [FB]
02:51	GOOD! JUMPER by ROYSTER, KYM	46-58	V 12	
02:51	ASSIST by YEANEY, BENDU			
02:31				MISSED 3PTR by SIMON, MADDIE
02:27	REBOUND (DEF) by PENN, JAELYNN			
02:26	TURNOVER (LOSTBALL) by PENN, JAELYNN			
02:26				STEAL by SIMON, MADDIE
02:24		48-58	V 10	GOOD! LAYUP by SIMON, MADDIE [PNT]
02:24	FOUL (PERSONAL) by PENN, JAELYNN			
02:24				MISSED FT by SIMON, MADDIE
02:24	REBOUND (DEF) by ROYSTER, KYM			
01:59	MISSED 3PTR by YEANEY, BENDU			
01:56				REBOUND (DEF) by CAIN, KATE
01:50				MISSED 3PTR by KISSINGER, TAYLOR
01:47				REBOUND (OFF) by ELIELY, NICEA
01:47	FOUL (PERSONAL) by YEANEY, BENDU			
01:47		49-58	V 9	GOOD! FT by ELIELY, NICEA
01:47	SUB OUT: GULBE, ALEKSA			
01:47	SUB IN: WISE, BRENNNA			
01:47		50-58	V 8	GOOD! FT by ELIELY, NICEA
01:21	MISSED 3PTR by PATBERG, ALI			
01:19				REBOUND (DEF) by SIMON, MADDIE
01:09				MISSED LAYUP by CAIN, KATE
01:09				REBOUND (OFF) by ELIELY, NICEA
01:09		52-58	V 6	GOOD! LAYUP by ELIELY, NICEA
01:09	FOUL (PERSONAL) by PENN, JAELYNN			
01:09	SUB OUT: PENN, JAELYNN			
01:09	SUB IN: BERGER, GRACE			
01:09		53-58	V 5	GOOD! FT by ELIELY, NICEA
00:57	GOOD! LAYUP by ROYSTER, KYM	53-60	V 7	
00:57	ASSIST by YEANEY, BENDU			
00:38				MISSED LAYUP by WHITISH, HANNAH
00:37	REBOUND (DEF) by WISE, BRENNNA			
00:10	MISSED LAYUP by YEANEY, BENDU			
00:10				BLOCK by CAIN, KATE
00:06	REBOUND (OFF) by ROYSTER, KYM			
00:06	TURNOVER (SHOTCLOCK) by			
00:06				SUB OUT: WHITISH, HANNAH
00:06				SUB IN: HAIBY, SAM
00:03	SUB OUT: PATBERG, ALI			
00:03	SUB IN: WARTHEN, KEYANNA			
00:00		55-60	V 5	GOOD! LAYUP by HAIBY, SAM [FB]

### Indiana 60, Nebraska 55

Points from (This Period)	IND	NEB
In the Paint	12	12
Off Turns	3	4
2nd Chance	2	7
Fast Break	0	6
Bench	6	12

**Official Box Score**  
**Indiana vs Nebraska**  
**Fourth Quarter Statistics Only**  
**February 03, 2019 at Pinnacle Bank Arena - Lincoln, Neb.**



**Indiana 22**

No.	Player	S	Pts	FG	3FG	FT	OR	DR	TR	PF	A	TO	Blk	Stl	Min	+/-
01	YEANEY, BENDU		1	0-3	0-1	1-2	0	0	0	0	2	0	0	0	10	-1
11	ROYSTER, KYM		1	0-1	0-0	1-2	1	1	2	3	0	1	0	0	9	2
13	PENN, JAELYNN		10	2-3	1-1	5-5	0	1	1	2	0	0	0	0	7	-1
14	PATBERG, ALI		6	1-1	1-1	3-4	0	0	0	2	1	0	0	0	10	-1
50	WISE, BRENNIA		4	1-3	1-2	1-1	0	0	0	0	0	0	0	0	8	-1
02	WARTHEN, KEYANNA		0	0-0	0-0	0-0	0	0	0	0	0	0	0	0	0	0
10	GULBE, ALEKSA		0	0-0	0-0	0-0	1	0	1	2	0	0	0	0	2	-3
34	BERGER, GRACE		0	0-2	0-1	0-0	0	2	2	1	0	1	0	0	3	0
	TEAM						1	1	2	0		0				
<b>TOTALS</b>			<b>22</b>	<b>4-13</b>	<b>3-6</b>	<b>11-14</b>	<b>3</b>	<b>5</b>	<b>8</b>	<b>10</b>	<b>3</b>	<b>2</b>	<b>0</b>	<b>0</b>	<b>50</b>	

*Shooting By Period*

Period	FG	FG%	3FG	3FG%	FT	FT%
Game	29-63	46.0%	6-18	33.3%	18-21	85.7%

**Nebraska 23**

No.	Player	S	Pts	FG	3FG	FT	OR	DR	TR	PF	A	TO	Blk	Stl	Min	+/-
03	WHITISH, HANNAH		5	2-3	1-2	0-2	1	0	1	2	1	0	0	0	8	3
05	ELIELY, NICEA		0	0-1	0-1	0-0	0	1	1	1	0	1	1	0	5	-7
31	CAIN, KATE		3	1-2	0-0	1-2	1	2	3	2	1	0	0	0	9	3
33	KISSINGER, TAYLOR		0	0-2	0-2	0-0	0	0	0	2	0	0	0	0	6	3
44	MERSON, KAYLA		0	0-0	0-0	0-0	0	0	0	0	0	0	0	0	1	-1
04	HAIBY, SAM		9	1-1	0-0	7-8	0	1	1	1	1	1	0	0	6	-1
13	VEERBEEK, ASHTYN		0	0-1	0-1	0-0	0	0	0	1	0	0	0	0	0	-1
14	MITCHELL, GRACE		0	0-0	0-0	0-0	0	0	0	0	0	0	0	0	2	1
24	SIMON, MADDIE		6	2-3	1-1	1-1	1	2	3	0	0	0	0	0	8	0
32	BROWN, LEIGHA		0	0-0	0-0	0-0	0	1	1	0	0	0	0	0	5	5
	TEAM						0	0	0	0		0				
<b>TOTALS</b>			<b>23</b>	<b>6-13</b>	<b>2-7</b>	<b>9-13</b>	<b>3</b>	<b>7</b>	<b>10</b>	<b>9</b>	<b>3</b>	<b>2</b>	<b>1</b>	<b>0</b>	<b>50</b>	

*Shooting By Period*

Period	FG	FG%	3FG	3FG%	FT	FT%
Game	27-61	44.3%	4-22	18.2%	20-29	69.0%

Game Notes:

Officials: Jesse Dickerson, Brian Garland, Missy Brooks  
 Attendance: 3893

Start Time: 2019-02-03 20:01:06  
 End Time: 2019-02-03 22:02:15  
 Game Duration: 121  
 Conference Game;

Score	1st	2nd	3rd	4th	TOT
IND	12	24	24	22	<b>82</b>
NEB	17	15	23	23	<b>78</b>

Points from (This Period)	IND	NEB
In the Paint	2	6
Off Turns	3	0
2nd Chance	3	3
Fast Break	2	2
Bench	0	15

**Official Play-By-Play**  
**Indiana vs Nebraska**  
**Fourth Quarter**  
**February 03, 2019 at Pinnacle Bank Arena - Lincoln, Neb.**



**Period 4**

**Starters:**

**Indiana:** 1 YEANEY, BENDU; 11 ROYSTER, KYM; 13 PENN, JAELYNN; 14 PATBERG, ALI; 50 WISE, BRENNNA;

**Nebraska:** 31 CAIN, KATE; 33 KISSINGER, TAYLOR; 44 MERSHON, KAYLA; 3 WHITISH, HANNAH; 5 ELIELY, NICEA;

Time	VISITORS: Indiana	Score	Margin	HOME: Nebraska
09:54	SUB OUT: WARTHEN, KEYANNA			
09:54	SUB IN: PATBERG, ALI			
09:36		57-60	V 3	GOOD! JUMPER by CAIN, KATE
09:21	GOOD! 3PTR by WISE, BRENNNA	57-63	V 6	
09:21	ASSIST by PATBERG, ALI			
09:21				FOUL (PERSONAL) by KISSINGER, TAYLOR
09:21	GOOD! FT by WISE, BRENNNA	57-64	V 7	
09:11	FOUL (PERSONAL) by BERGER, GRACE			
08:57				MISSED LAYUP by CAIN, KATE
08:55	REBOUND (DEF) by BERGER, GRACE			
08:38	MISSED 3PTR by BERGER, GRACE			
08:35				REBOUND (DEF) by HAIBY, SAM
08:33				TURNOVER (TRAVEL) by HAIBY, SAM
08:12	MISSED LAYUP by YEANEY, BENDU			
08:10				REBOUND (DEF) by ELIELY, NICEA
08:02	FOUL (PERSONAL) by PATBERG, ALI			
08:02				SUB OUT: HAIBY, SAM
08:02				SUB IN: WHITISH, HANNAH
08:02				SUB OUT: ELIELY, NICEA
08:02				SUB IN: BROWN, LEIGHA
08:02	SUB OUT: ROYSTER, KYM			
08:02	SUB IN: GULBE, ALEKSA			
08:00		59-64	V 5	GOOD! JUMPER by SIMON, MADDIE
08:00				ASSIST by WHITISH, HANNAH
07:46	MISSED JUMPER by BERGER, GRACE			
07:43				REBOUND (DEF) by CAIN, KATE
07:24	FOUL (PERSONAL) by GULBE, ALEKSA			
07:24		60-64	V 4	GOOD! FT by SIMON, MADDIE
07:24	SUB OUT: BERGER, GRACE			
07:24	SUB IN: ROYSTER, KYM			
07:24	SUB OUT: GULBE, ALEKSA			
07:24	SUB IN: PENN, JAELYNN			
07:11	MISSED 3PTR by WISE, BRENNNA			
07:08				REBOUND (DEF) by SIMON, MADDIE
06:51		62-64	V 2	GOOD! LAYUP by WHITISH, HANNAH
06:32				SUB OUT: KISSINGER, TAYLOR
06:32				SUB IN: ELIELY, NICEA
06:26				FOUL (PERSONAL) by CAIN, KATE
06:26	FOUL (OFF) by ROYSTER, KYM			
06:26	TURNOVER (OFFENSIVE) by ROYSTER, KYM			
06:11				MISSED JUMPER by SIMON, MADDIE
06:08	REBOUND (DEF) by PENN, JAELYNN			
06:00				FOUL (PERSONAL) by ELIELY, NICEA
06:00	MISSED FT by YEANEY, BENDU			
06:00	REBOUND (OFF) by TEAM			
06:00				SUB OUT: ELIELY, NICEA
06:00				SUB IN: HAIBY, SAM
06:00	SUB OUT: WISE, BRENNNA			
06:00	SUB IN: GULBE, ALEKSA			
06:00	GOOD! FT by YEANEY, BENDU	62-65	V 3	
05:42		65-65	T	GOOD! 3PTR by SIMON, MADDIE
05:42				ASSIST by HAIBY, SAM
05:23	GOOD! LAYUP by PENN, JAELYNN [PNT]	65-67	V 2	
05:23				FOUL (PERSONAL) by WHITISH, HANNAH
05:23	GOOD! FT by PENN, JAELYNN	65-68	V 3	
05:14	FOUL (PERSONAL) by PENN, JAELYNN			
05:14				MISSED FT by HAIBY, SAM
05:14				REBOUND (OFF) by TEAM
05:14				SUB OUT: SIMON, MADDIE
05:14				SUB IN: MITCHELL, GRACE
05:14		66-68	V 2	GOOD! FT by HAIBY, SAM
04:58	MISSED JUMPER by YEANEY, BENDU			
04:55	REBOUND (OFF) by GULBE, ALEKSA			
04:38	MISSED 3PTR by YEANEY, BENDU			
04:36				REBOUND (DEF) by BROWN, LEIGHA
04:23	FOUL (PERSONAL) by GULBE, ALEKSA			
04:23				
04:23	SUB OUT: GULBE, ALEKSA			
04:23	SUB IN: WISE, BRENNNA			
04:23		67-68	V 1	GOOD! FT by HAIBY, SAM

Time	VISITORS: Indiana	Score	Margin	HOME: Nebraska
04:23		68-68	T	GOOD! FT by HAIBY, SAM
04:04	GOOD! 3PTR by PATBERG, ALI	68-71	V 3	
04:04	ASSIST by YEANEY, BENDU			
03:35		70-71	V 1	GOOD! LAYUP by HAIBY, SAM
03:14				FOUL (PERSONAL) by CAIN, KATE
03:14	GOOD! FT by PENN, JAELYNN	70-72	V 2	
03:14				SUB OUT: HAIBY, SAM
03:14				SUB IN: SIMON, MADDIE
03:14				SUB OUT: MITCHELL, GRACE
03:14				SUB IN: ELIELY, NICEA
03:14				SUB OUT: BROWN, LEIGHA
03:14				SUB IN: KISSINGER, TAYLOR
03:14	GOOD! FT by PENN, JAELYNN	70-73	V 3	
02:52				MISSED 3PTR by ELIELY, NICEA
02:49				REBOUND (OFF) by WHITISH, HANNAH
02:49				TURNOVER (TRAVEL) by ELIELY, NICEA
02:32	MISSED JUMPER by PENN, JAELYNN			
02:29	REBOUND (OFF) by ROYSTER, KYM			
02:28	MISSED JUMPER by ROYSTER, KYM			
02:27	REBOUND (OFF) by TEAM			
02:09	GOOD! 3PTR by PENN, JAELYNN	70-76	V 6	
02:09	ASSIST by YEANEY, BENDU			
01:59	FOUL (PERSONAL) by ROYSTER, KYM			
01:59				MISSED FT by CAIN, KATE
01:59				REBOUND (OFF) by TEAM
01:59		71-76	V 5	GOOD! FT by CAIN, KATE
01:59				SUB OUT: CAIN, KATE
01:59				SUB IN: MERSHON, KAYLA
01:59				SUB OUT: KISSINGER, TAYLOR
01:59				SUB IN: HAIBY, SAM
01:59	TIMEOUT 30SEC			
01:59				
01:30	MISSED JUMPER by WISE, BRENNIA			
01:30				BLOCK by ELIELY, NICEA
01:27				REBOUND (DEF) by SIMON, MADDIE
01:18				TIMEOUT 30SEC
01:18				SUB OUT: MERSHON, KAYLA
01:18				SUB IN: CAIN, KATE
01:18				SUB OUT: ELIELY, NICEA
01:18				SUB IN: KISSINGER, TAYLOR
01:11				MISSED 3PTR by WHITISH, HANNAH
01:09				REBOUND (OFF) by CAIN, KATE
01:08		74-76	V 2	GOOD! 3PTR by WHITISH, HANNAH
01:08				ASSIST by CAIN, KATE
00:58				FOUL (PERSONAL) by KISSINGER, TAYLOR
00:58	GOOD! FT by PENN, JAELYNN	74-77	V 3	
00:58	GOOD! FT by PENN, JAELYNN	74-78	V 4	
00:51	FOUL (PERSONAL) by ROYSTER, KYM			
00:51		75-78	V 3	GOOD! FT by HAIBY, SAM [FB]
00:51				SUB OUT: KISSINGER, TAYLOR
00:51				SUB IN: ELIELY, NICEA
00:51		76-78	V 2	GOOD! FT by HAIBY, SAM [FB]
00:30				FOUL (PERSONAL) by HAIBY, SAM
00:30	GOOD! FT by PATBERG, ALI	76-79	V 3	
00:30	MISSED FT by PATBERG, ALI			
00:28				REBOUND (DEF) by CAIN, KATE
00:27				TIMEOUT TEAM
00:27				SUB OUT: ELIELY, NICEA
00:27				SUB IN: KISSINGER, TAYLOR
00:27	FOUL (PERSONAL) by PENN, JAELYNN			
00:27	SUB OUT: PENN, JAELYNN			
00:27	SUB IN: BERGER, GRACE			
00:27		77-79	V 2	GOOD! FT by HAIBY, SAM
00:27				SUB OUT: KISSINGER, TAYLOR
00:27				SUB IN: ELIELY, NICEA
00:27				SUB OUT: CAIN, KATE
00:27				SUB IN: MERSHON, KAYLA
00:27		78-79	V 1	GOOD! FT by HAIBY, SAM
00:27	TIMEOUT 30SEC			
00:24				FOUL (PERSONAL) by WHITISH, HANNAH
00:24	GOOD! FT by PATBERG, ALI [FB]	78-80	V 2	
00:24	GOOD! FT by PATBERG, ALI [FB]	78-81	V 3	
00:24				TIMEOUT 30SEC
00:24				SUB OUT: MERSHON, KAYLA
00:24				SUB IN: KISSINGER, TAYLOR
00:24				SUB OUT: HAIBY, SAM
00:24				SUB IN: VEERBEEK, ASHTYN
00:17				MISSED 3PTR by VEERBEEK, ASHTYN
00:14				REBOUND (OFF) by SIMON, MADDIE
00:10				MISSED 3PTR by KISSINGER, TAYLOR



Time	VISITORS: Indiana	Score	Margin	HOME: Nebraska
00:08	REBOUND (DEF) by BERGER, GRACE			
00:08	TURNOVER (TRAVEL) by BERGER, GRACE			
00:08	FOUL (PERSONAL) by PATBERG, ALI			
00:08				MISSED FT by WHITISH, HANNAH
00:08				REBOUND (OFF) by TEAM
00:08				SUB OUT: KISSINGER, TAYLOR
00:08				SUB IN: HAIBY, SAM
00:08				MISSED FT by WHITISH, HANNAH
00:08	REBOUND (DEF) by ROYSTER, KYM			
00:08				FOUL (PERSONAL) by VEERBEEK, ASHTYN
00:08	MISSED FT by ROYSTER, KYM			
00:08	REBOUND (OFF) by TEAM			
00:08	GOOD! FT by ROYSTER, KYM	78-82	V 4	
00:08				SUB OUT: ELIELY, NICEA
00:08				SUB IN: KISSINGER, TAYLOR
00:03				MISSED 3PTR by KISSINGER, TAYLOR
00:00	REBOUND (DEF) by TEAM			

**Indiana 82, Nebraska 78**

Points from (This Period)	IND	NEB
In the Paint	2	6
Off Turns	3	0
2nd Chance	3	3
Fast Break	2	2
Bench	0	15

**Official Scoring/Possession Reference Chart**  
**Indiana vs Nebraska**  
**Period 1**  
**February 03, 2019 at Pinnacle Bank Arena - Lincoln, Neb.**



**Period 1**

**Starters:**

**Indiana:** 1 YEANEY,BENDU; 11 ROYSTER,KYM; 13 PENN,JAELYNN; 14 PATBERG,ALI; 50 WISE,BRENNA;

**Nebraska:** 31 CAIN,KATE; 33 KISSINGER,TAYLOR; 44 MERSHON,KAYLA; 3 WHITISH,HANNAH; 5 ELIELY,NICEA;

Time	VISITORS: Indiana	Score	Margin	HOME: Nebraska
09:27		2-0	H 2	GOOD! LAYUP by WHITISH, HANNAH
08:56		4-0	H 4	GOOD! JUMPER by CAIN, KATE [PNT]
08:12	GOOD! JUMPER by PATBERG, ALI	4-2	H 2	
07:38		6-2	H 4	GOOD! LAYUP by KISSINGER, TAYLOR
07:00		8-2	H 6	GOOD! LAYUP by KISSINGER, TAYLOR
06:57	GOOD! JUMPER by ROYSTER, KYM [PNT]	8-4	H 4	
06:53		9-4	H 5	GOOD! FT by WHITISH, HANNAH [FB]
06:41	GOOD! JUMPER by PENN, JAELYNN	9-6	H 3	
05:11	GOOD! LAYUP by PATBERG, ALI	9-8	H 1	
04:48		12-8	H 4	GOOD! 3PTR by WHITISH, HANNAH
03:34		14-8	H 6	GOOD! LAYUP by HAIBY, SAM
01:11		15-8	H 7	GOOD! FT by VEERBEEK, ASHTYN
00:59	GOOD! FT by BERGER, GRACE	15-9	H 6	
00:59	GOOD! FT by BERGER, GRACE	15-10	H 5	
00:43	GOOD! FT by ROYSTER, KYM	15-11	H 4	
00:43	GOOD! FT by ROYSTER, KYM	15-12	H 3	
00:04		17-12	H 5	GOOD! LAYUP by HAIBY, SAM [PNT]

**Indiana 12, Nebraska 17**

**Official Scoring/Possession Reference Chart**  
**Indiana vs Nebraska**  
**Period 2**  
**February 03, 2019 at Pinnacle Bank Arena - Lincoln, Neb.**



**Period 2**

**Starters:**

**Indiana:** 1 YEANEY,BENDU; 11 ROYSTER,KYM; 13 PENN,JAELYNN; 14 PATBERG,ALI; 50 WISE,BRENNA;

**Nebraska:** 31 CAIN,KATE; 33 KISSINGER,TAYLOR; 44 MERSHON,KAYLA; 3 WHITISH,HANNAH; 5 ELIELY,NICEA;

Time	VISITORS: Indiana	Score	Margin	HOME: Nebraska
09:26	GOOD! LAYUP by PENN, JAELYNN	17-14	H 3	
08:52	GOOD! LAYUP by ROYSTER, KYM	17-16	H 1	
07:58		19-16	H 3	GOOD! JUMPER by CAIN, KATE [PNT]
07:43	GOOD! FT by ROYSTER, KYM	19-17	H 2	
07:43	GOOD! FT by ROYSTER, KYM	19-18	H 1	
07:16		21-18	H 3	GOOD! LAYUP by KISSINGER, TAYLOR
07:00	GOOD! JUMPER by PATBERG, ALI	21-20	H 1	
06:42		23-20	H 3	GOOD! JUMPER by VEERBEEK, ASHTYN
06:29	GOOD! LAYUP by GULBE, ALEKSA [PNT]	23-22	H 1	
06:16		25-22	H 3	GOOD! LAYUP by MITCHELL, GRACE
06:01	GOOD! JUMPER by GULBE, ALEKSA	25-24	H 1	
05:29	GOOD! JUMPER by PATBERG, ALI [PNT]	25-26	V 1	
04:55	GOOD! JUMPER by BERGER, GRACE [PNT]	25-28	V 3	
04:14	GOOD! LAYUP by ROYSTER, KYM	25-30	V 5	
03:58		28-30	V 2	GOOD! 3PTR by WHITISH, HANNAH
03:08	GOOD! LAYUP by PENN, JAELYNN	28-32	V 4	
02:14		30-32	V 2	GOOD! LAYUP by KISSINGER, TAYLOR
01:31	GOOD! LAYUP by ROYSTER, KYM	30-34	V 4	
01:08	GOOD! JUMPER by BERGER, GRACE	30-36	V 6	
00:50		32-36	V 4	GOOD! LAYUP by WHITISH, HANNAH

**Indiana 36, Nebraska 32**

**Official Scoring/Possession Reference Chart**  
**Indiana vs Nebraska**  
**Period 3**  
**February 03, 2019 at Pinnacle Bank Arena - Lincoln, Neb.**



**Period 3**

**Starters:**

**Indiana:** 1 YEANEY,BENDU; 11 ROYSTER,KYM; 13 PENN,JAELYNN; 14 PATBERG,ALI; 50 WISE,BRENNA;

**Nebraska:** 31 CAIN,KATE; 33 KISSINGER,TAYLOR; 44 MERSHON,KAYLA; 3 WHITISH,HANNAH; 5 ELIELY,NICEA;

Time	VISITORS: Indiana	Score	Margin	HOME: Nebraska
09:23		34-36	V 2	GOOD! LAYUP by MERSHON, KAYLA
08:57		36-36	T	GOOD! LAYUP by ELIELY, NICEA [FB]
08:38	GOOD! LAYUP by PENN, JAELYNN	36-38	V 2	
08:14		38-38	T	GOOD! JUMPER by CAIN, KATE
07:51	GOOD! LAYUP by ROYSTER, KYM	38-40	V 2	
07:22	GOOD! JUMPER by PENN, JAELYNN	38-42	V 4	
06:19	GOOD! 3PTR by GULBE, ALEKSA	38-45	V 7	
05:57		39-45	V 6	GOOD! FT by VEERBEEK, ASHTYN
05:57		40-45	V 5	GOOD! FT by VEERBEEK, ASHTYN
05:47	GOOD! LAYUP by PATBERG, ALI	40-47	V 7	
05:47	GOOD! FT by PATBERG, ALI	40-48	V 8	
05:17	GOOD! 3PTR by PATBERG, ALI	40-51	V 11	
05:07		41-51	V 10	GOOD! FT by SIMON, MADDIE
05:07		42-51	V 9	GOOD! FT by SIMON, MADDIE
04:35	GOOD! LAYUP by PATBERG, ALI [PNT]	42-53	V 11	
04:26		44-53	V 9	GOOD! LAYUP by HAIBY, SAM
03:13	GOOD! 3PTR by BERGER, GRACE	44-56	V 12	
03:08		45-56	V 11	GOOD! FT by SIMON, MADDIE [FB]
03:08		46-56	V 10	GOOD! FT by SIMON, MADDIE [FB]
02:51	GOOD! JUMPER by ROYSTER, KYM	46-58	V 12	
02:24		48-58	V 10	GOOD! LAYUP by SIMON, MADDIE [PNT]
01:47		49-58	V 9	GOOD! FT by ELIELY, NICEA
01:47		50-58	V 8	GOOD! FT by ELIELY, NICEA
01:09		52-58	V 6	GOOD! LAYUP by ELIELY, NICEA
01:09		53-58	V 5	GOOD! FT by ELIELY, NICEA
00:57	GOOD! LAYUP by ROYSTER, KYM	53-60	V 7	
00:00		55-60	V 5	GOOD! LAYUP by HAIBY, SAM [FB]

**Indiana 60, Nebraska 55**

**Official Scoring/Possession Reference Chart**  
**Indiana vs Nebraska**  
**Period 4**  
**February 03, 2019 at Pinnacle Bank Arena - Lincoln, Neb.**



**Period 4**

**Starters:**

**Indiana:** 1 YEANEY, BENDU; 11 ROYSTER, KYM; 13 PENN, JAELYNN; 14 PATBERG, ALI; 50 WISE, BRENNNA;

**Nebraska:** 31 CAIN, KATE; 33 KISSINGER, TAYLOR; 44 MERSHON, KAYLA; 3 WHITISH, HANNAH; 5 ELIELY, NICEA;

Time	VISITORS: Indiana	Score	Margin	HOME: Nebraska
09:36		57-60	V 3	GOOD! JUMPER by CAIN, KATE
09:21	GOOD! 3PTR by WISE, BRENNNA	57-63	V 6	
09:21	GOOD! FT by WISE, BRENNNA	57-64	V 7	
08:00		59-64	V 5	GOOD! JUMPER by SIMON, MADDIE
07:24		60-64	V 4	GOOD! FT by SIMON, MADDIE
06:51		62-64	V 2	GOOD! LAYUP by WHITISH, HANNAH
06:00	GOOD! FT by YEANEY, BENDU	62-65	V 3	
05:42		65-65	T	GOOD! 3PTR by SIMON, MADDIE
05:23	GOOD! LAYUP by PENN, JAELYNN [PNT]	65-67	V 2	
05:23	GOOD! FT by PENN, JAELYNN	65-68	V 3	
05:14		66-68	V 2	GOOD! FT by HAIBY, SAM
04:23		67-68	V 1	GOOD! FT by HAIBY, SAM
04:23		68-68	T	GOOD! FT by HAIBY, SAM
04:04	GOOD! 3PTR by PATBERG, ALI	68-71	V 3	
03:35		70-71	V 1	GOOD! LAYUP by HAIBY, SAM
03:14	GOOD! FT by PENN, JAELYNN	70-72	V 2	
03:14	GOOD! FT by PENN, JAELYNN	70-73	V 3	
02:09	GOOD! 3PTR by PENN, JAELYNN	70-76	V 6	
01:59		71-76	V 5	GOOD! FT by CAIN, KATE
01:08		74-76	V 2	GOOD! 3PTR by WHITISH, HANNAH
00:58	GOOD! FT by PENN, JAELYNN	74-77	V 3	
00:58	GOOD! FT by PENN, JAELYNN	74-78	V 4	
00:51		75-78	V 3	GOOD! FT by HAIBY, SAM [FB]
00:51		76-78	V 2	GOOD! FT by HAIBY, SAM [FB]
00:30	GOOD! FT by PATBERG, ALI	76-79	V 3	
00:27		77-79	V 2	GOOD! FT by HAIBY, SAM
00:27		78-79	V 1	GOOD! FT by HAIBY, SAM
00:24	GOOD! FT by PATBERG, ALI [FB]	78-80	V 2	
00:24	GOOD! FT by PATBERG, ALI [FB]	78-81	V 3	
00:08	GOOD! FT by ROYSTER, KYM	78-82	V 4	

**Indiana 82, Nebraska 78**

**Official Substitutions Log  
Indiana vs Nebraska  
Period 1  
February 03, 2019 at Pinnacle Bank Arena - Lincoln, Neb.**



VISITORS: Indiana	Time	Score	HOME: Nebraska
1 YEANEY, BENDU			31 CAIN, KATE
11 ROYSTER, KYM			33 KISSINGER, TAYLOR
13 PENN, JAELYNN			44 MERSHON, KAYLA
14 PATBERG, ALI			3 WHITISH, HANNAH
50 WISE, BRENNIA			5 ELIELY, NICEA
SUB OUT: 11 ROYSTER, KYM	06:53	4-8	
SUB IN: 10 GULBE, ALEKSA	06:53		
	05:58	6-9	SUB OUT: MERSHON, KAYLA
	05:58		SUB IN: HAIBY, SAM
	05:58		SUB OUT: CAIN, KATE
	05:58		SUB IN: VEERBEEK, ASHTYN
	05:58		SUB OUT: ELIELY, NICEA
	05:58		SUB IN: SIMON, MADDIE
SUB OUT: 13 PENN, JAELYNN	05:24	6-9	
SUB IN: 34 BERGER, GRACE	05:24		
	04:01	8-12	SUB OUT: WHITISH, HANNAH
	04:01		SUB IN: BROWN, LEIGHA
	04:01		SUB OUT: KISSINGER, TAYLOR
	04:01		SUB IN: ELIELY, NICEA
	01:11	8-15	SUB OUT: BROWN, LEIGHA
	01:11		SUB IN: KISSINGER, TAYLOR
	01:11		SUB OUT: HAIBY, SAM
	01:11		SUB IN: WHITISH, HANNAH
SUB OUT: 50 WISE, BRENNIA	01:11		
SUB IN: 11 ROYSTER, KYM	01:11		
SUB OUT: 14 PATBERG, ALI	01:11		
SUB IN: 13 PENN, JAELYNN	01:11		
	00:59	9-15	SUB OUT: ELIELY, NICEA
	00:59		SUB IN: HAIBY, SAM
	00:59		SUB OUT: VEERBEEK, ASHTYN
	00:59		SUB IN: CAIN, KATE

**Indiana 12, Nebraska 17**

**Official Substitutions Log  
Indiana vs Nebraska  
Period 2  
February 03, 2019 at Pinnacle Bank Arena - Lincoln, Neb.**



VISITORS: Indiana	Time	Score	HOME: Nebraska
1 YEANEY, BENDU			31 CAIN, KATE
11 ROYSTER, KYM			33 KISSINGER, TAYLOR
13 PENN, JAELYNN			44 MERSHON, KAYLA
14 PATBERG, ALI			3 WHITISH, HANNAH
50 WISE, BRENNNA			5 ELIELY, NICEA
	09:08	14-17	SUB OUT: SIMON, MADDIE
	09:08		SUB IN: MITCHELL, GRACE
	08:17	16-17	SUB OUT: HAIBY, SAM
	08:17		SUB IN: BROWN, LEIGHA
SUB OUT: 1 YEANEY, BENDU	08:17		
SUB IN: 34 BERGER, GRACE	08:17		
	07:43	17-19	SUB OUT: CAIN, KATE
	07:43		SUB IN: VEERBEEK, ASHTYN
SUB OUT: 11 ROYSTER, KYM	07:43		
SUB IN: 10 GULBE, ALEKSA	07:43		
	05:44	24-25	SUB OUT: WHITISH, HANNAH
	05:44		SUB IN: HAIBY, SAM
SUB OUT: 10 GULBE, ALEKSA	05:44		
SUB IN: 11 ROYSTER, KYM	05:44		
SUB OUT: 13 PENN, JAELYNN	05:44		
SUB IN: 1 YEANEY, BENDU	05:44		
SUB OUT: 50 WISE, BRENNNA	05:44		
SUB IN: 2 WARTHEN, KEYANNA	05:44		
SUB OUT: 1 YEANEY, BENDU	04:20	28-25	
SUB IN: 50 WISE, BRENNNA	04:20		
SUB OUT: 2 WARTHEN, KEYANNA	04:20		
SUB IN: 13 PENN, JAELYNN	04:20		
	03:59	30-25	SUB OUT: HAIBY, SAM
	03:59		SUB IN: WHITISH, HANNAH
	03:45	30-28	SUB OUT: MITCHELL, GRACE
	03:45		SUB IN: MERSHON, KAYLA
	03:45		SUB OUT: BROWN, LEIGHA
	03:45		SUB IN: ELIELY, NICEA
	02:56	32-28	SUB OUT: ELIELY, NICEA
	02:56		SUB IN: HAIBY, SAM
	01:55	32-30	SUB OUT: VEERBEEK, ASHTYN
	01:55		SUB IN: CAIN, KATE

**Indiana 36, Nebraska 32**

**Official Substitutions Log**  
**Indiana vs Nebraska**  
**Period 3**  
**February 03, 2019 at Pinnacle Bank Arena - Lincoln, Neb.**



VISITORS: Indiana	Time	Score	HOME: Nebraska
1 YEANEY, BENDU			31 CAIN, KATE
11 ROYSTER, KYM			33 KISSINGER, TAYLOR
13 PENN, JAELYNN			44 MERSHON, KAYLA
14 PATBERG, ALI			3 WHITISH, HANNAH
50 WISE, BRENNNA			5 ELIELY, NICEA
	06:41	42-38	SUB OUT: CAIN, KATE
	06:41		SUB IN: SIMON, MADDIE
	06:41		SUB OUT: KISSINGER, TAYLOR
	06:41		SUB IN: HAIBY, SAM
	06:41		SUB OUT: MERSHON, KAYLA
	06:41		SUB IN: BROWN, LEIGHA
	06:41		SUB OUT: WHITISH, HANNAH
	06:41		SUB IN: VEERBEEK, ASHTYN
SUB OUT: 11 ROYSTER, KYM	06:41		
SUB IN: 10 GULBE, ALEKSA	06:41		
SUB OUT: 13 PENN, JAELYNN	06:22	42-38	
SUB IN: 34 BERGER, GRACE	06:22		
	06:22		SUB OUT: ELIELY, NICEA
	06:22		SUB IN: WHITISH, HANNAH
	05:39	48-40	SUB OUT: VEERBEEK, ASHTYN
	05:39		SUB IN: CAIN, KATE
SUB OUT: 1 YEANEY, BENDU	05:07	51-41	
SUB IN: 13 PENN, JAELYNN	05:07		
SUB OUT: 50 WISE, BRENNNA	04:13	53-44	
SUB IN: 11 ROYSTER, KYM	04:13		
	03:08	56-44	SUB OUT: HAIBY, SAM
	03:08		SUB IN: KISSINGER, TAYLOR
	03:08		SUB OUT: BROWN, LEIGHA
	03:08		SUB IN: ELIELY, NICEA
SUB OUT: 34 BERGER, GRACE	03:08		
SUB IN: 1 YEANEY, BENDU	03:08		
SUB OUT: 10 GULBE, ALEKSA	01:47	58-49	
SUB IN: 50 WISE, BRENNNA	01:47		
SUB OUT: 13 PENN, JAELYNN	01:09	58-52	
SUB IN: 34 BERGER, GRACE	01:09		
	00:06	60-53	SUB OUT: WHITISH, HANNAH
	00:06		SUB IN: HAIBY, SAM
SUB OUT: 14 PATBERG, ALI	00:03	60-53	
SUB IN: 2 WARTHEN, KEYANNA	00:03		

**Indiana 60, Nebraska 55**



**Official Substitutions Log**  
**Indiana vs Nebraska**  
**Period 4**  
**February 03, 2019 at Pinnacle Bank Arena - Lincoln, Neb.**



VISITORS: Indiana	Time	Score	HOME: Nebraska
1 YEANEY, BENDU			31 CAIN, KATE
11 ROYSTER, KYM			33 KISSINGER, TAYLOR
13 PENN, JAELYNN			44 MERSHON, KAYLA
14 PATBERG, ALI			3 WHITISH, HANNAH
50 WISE, BRENNNA			5 ELIELY, NICEA
SUB OUT: 2 WARTHEN, KEYANNA	09:54	-	
SUB IN: 14 PATBERG, ALI	09:54		
	08:02	64-57	SUB OUT: HAIBY, SAM
	08:02		SUB IN: WHITISH, HANNAH
	08:02		SUB OUT: ELIELY, NICEA
	08:02		SUB IN: BROWN, LEIGHA
SUB OUT: 11 ROYSTER, KYM	08:02		
SUB IN: 10 GULBE, ALEKSA	08:02		
SUB OUT: 34 BERGER, GRACE	07:24	64-60	
SUB IN: 11 ROYSTER, KYM	07:24		
SUB OUT: 10 GULBE, ALEKSA	07:24		
SUB IN: 13 PENN, JAELYNN	07:24		
	06:32	64-62	SUB OUT: KISSINGER, TAYLOR
	06:32		SUB IN: ELIELY, NICEA
	06:00	64-62	SUB OUT: ELIELY, NICEA
	06:00		SUB IN: HAIBY, SAM
SUB OUT: 50 WISE, BRENNNA	06:00		
SUB IN: 10 GULBE, ALEKSA	06:00		
	05:14	68-65	SUB OUT: SIMON, MADDIE
	05:14		SUB IN: MITCHELL, GRACE
SUB OUT: 10 GULBE, ALEKSA	04:23	68-66	
SUB IN: 50 WISE, BRENNNA	04:23		
	03:14	72-70	SUB OUT: HAIBY, SAM
	03:14		SUB IN: SIMON, MADDIE
	03:14		SUB OUT: MITCHELL, GRACE
	03:14		SUB IN: ELIELY, NICEA
	03:14		SUB OUT: BROWN, LEIGHA
	03:14		SUB IN: KISSINGER, TAYLOR
	01:59	76-71	SUB OUT: CAIN, KATE
	01:59		SUB IN: MERSHON, KAYLA
	01:59		SUB OUT: KISSINGER, TAYLOR
	01:59		SUB IN: HAIBY, SAM
	01:18	76-71	SUB OUT: MERSHON, KAYLA
	01:18		SUB IN: CAIN, KATE
	01:18		SUB OUT: ELIELY, NICEA
	01:18		SUB IN: KISSINGER, TAYLOR
	00:51	78-75	SUB OUT: KISSINGER, TAYLOR
	00:51		SUB IN: ELIELY, NICEA
	00:27	79-76	SUB OUT: ELIELY, NICEA
	00:27		SUB IN: KISSINGER, TAYLOR
SUB OUT: 13 PENN, JAELYNN	00:27		
SUB IN: 34 BERGER, GRACE	00:27		
	00:27		SUB OUT: KISSINGER, TAYLOR
	00:27		SUB IN: ELIELY, NICEA
	00:27		SUB OUT: CAIN, KATE
	00:27		SUB IN: MERSHON, KAYLA
	00:24	81-78	SUB OUT: MERSHON, KAYLA
	00:24		SUB IN: KISSINGER, TAYLOR
	00:24		SUB OUT: HAIBY, SAM
	00:24		SUB IN: VEERBEEK, ASHTYN
	00:08	81-78	SUB OUT: KISSINGER, TAYLOR
	00:08		SUB IN: HAIBY, SAM
	00:08		SUB OUT: ELIELY, NICEA
	00:08		SUB IN: KISSINGER, TAYLOR

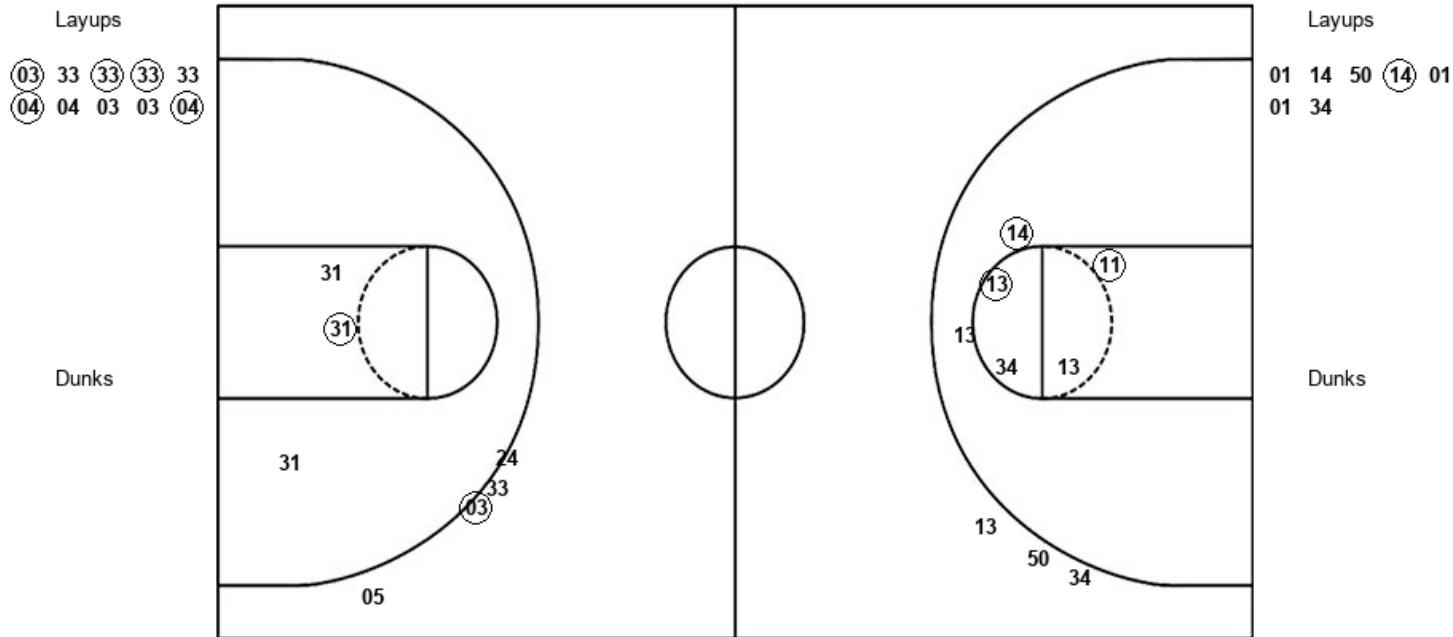
**Indiana 82, Nebraska 78**

**Official Shot Chart**  
**Indiana vs Nebraska**  
**PERIOD 1 Shots**  
 February 03, 2019 at Pinnacle Bank Arena - Lincoln, Neb.



**Nebraska**

**Indiana**



NEB : Period 1	Made	Att	Pct
Layups	5	10	50.0
Dunks	0	0	0
2PT Field Goals	6	13	46.2
3PT Field Goals	1	4	25.0
<b>Total Field Goals</b>	<b>7</b>	<b>17</b>	<b>41.2</b>

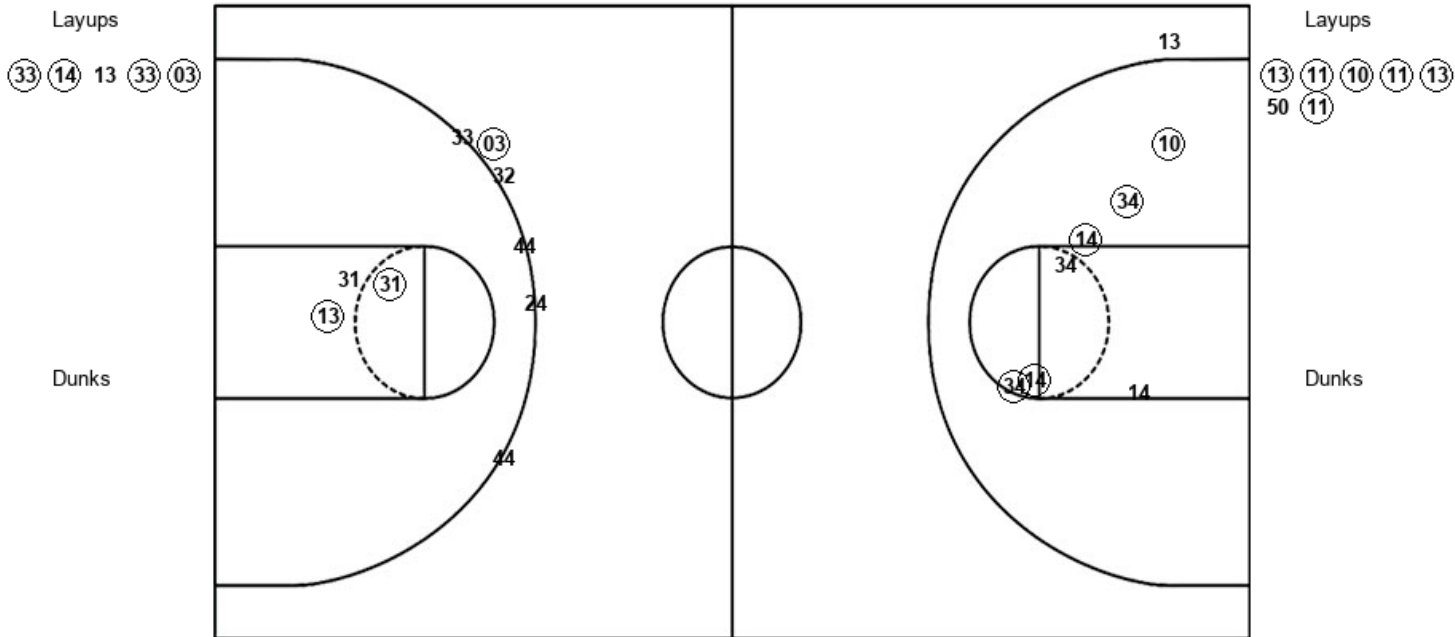
IND : Period 1	Made	Att	Pct
Layups	1	7	14.3
Dunks	0	0	0
2PT Field Goals	4	13	30.8
3PT Field Goals	0	3	00.0
<b>Total Field Goals</b>	<b>4</b>	<b>16</b>	<b>25.0</b>

**Official Shot Chart**  
**Indiana vs Nebraska**  
**PERIOD 2 Shots**  
 February 03, 2019 at Pinnacle Bank Arena - Lincoln, Neb.



**Nebraska**

**Indiana**



<b>NEB : Period 2</b>	<b>Made</b>	<b>Att</b>	<b>Pct</b>
Layups	4	5	80.0
Dunks	0	0	0
2PT Field Goals	6	8	75.0
3PT Field Goals	1	6	16.7
<b>Total Field Goals</b>	<b>7</b>	<b>14</b>	<b>50.0</b>

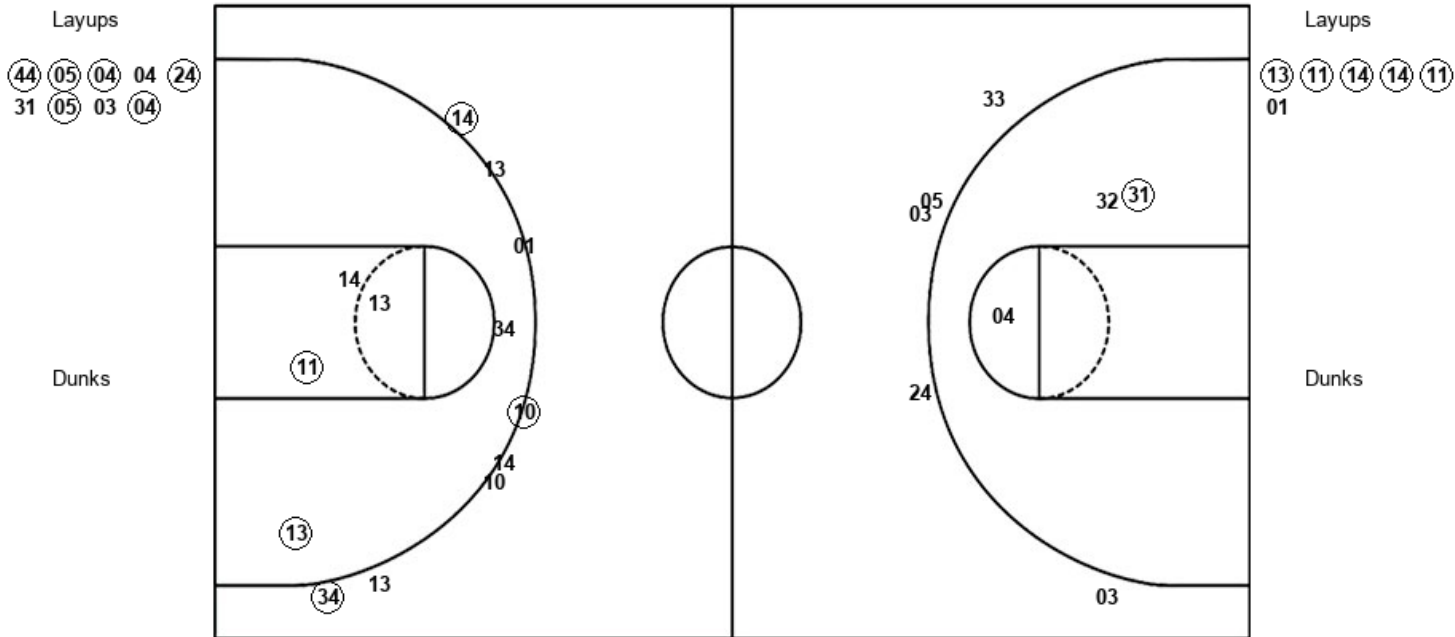
<b>IND : Period 2</b>	<b>Made</b>	<b>Att</b>	<b>Pct</b>
Layups	6	7	85.7
Dunks	0	0	0
2PT Field Goals	11	14	78.6
3PT Field Goals	0	1	00.0
<b>Total Field Goals</b>	<b>11</b>	<b>15</b>	<b>73.3</b>

**Official Shot Chart**  
**Indiana vs Nebraska**  
**PERIOD 3 Shots**  
 February 03, 2019 at Pinnacle Bank Arena - Lincoln, Neb.



**Nebraska**

**Indiana**



NEB : Period 3	Made	Att	Pct
Layups	6	9	66.7
Dunks	0	0	0
2PT Field Goals	7	12	58.3
3PT Field Goals	0	5	00.0
<b>Total Field Goals</b>	<b>7</b>	<b>17</b>	<b>41.2</b>

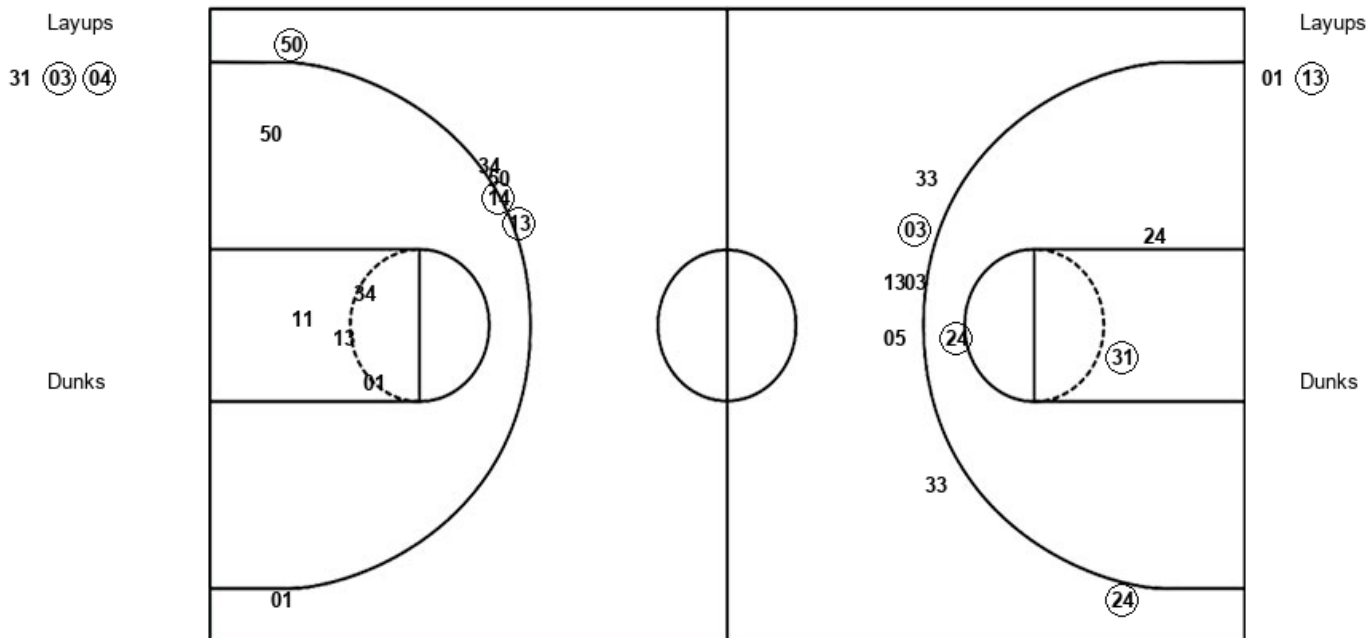
IND : Period 3	Made	Att	Pct
Layups	5	6	83.3
Dunks	0	0	0
2PT Field Goals	7	11	63.6
3PT Field Goals	3	8	37.5
<b>Total Field Goals</b>	<b>10</b>	<b>19</b>	<b>52.6</b>

**Official Shot Chart**  
**Indiana vs Nebraska**  
**PERIOD 4 Shots**  
 February 03, 2019 at Pinnacle Bank Arena - Lincoln, Neb.



**Nebraska**

**Indiana**



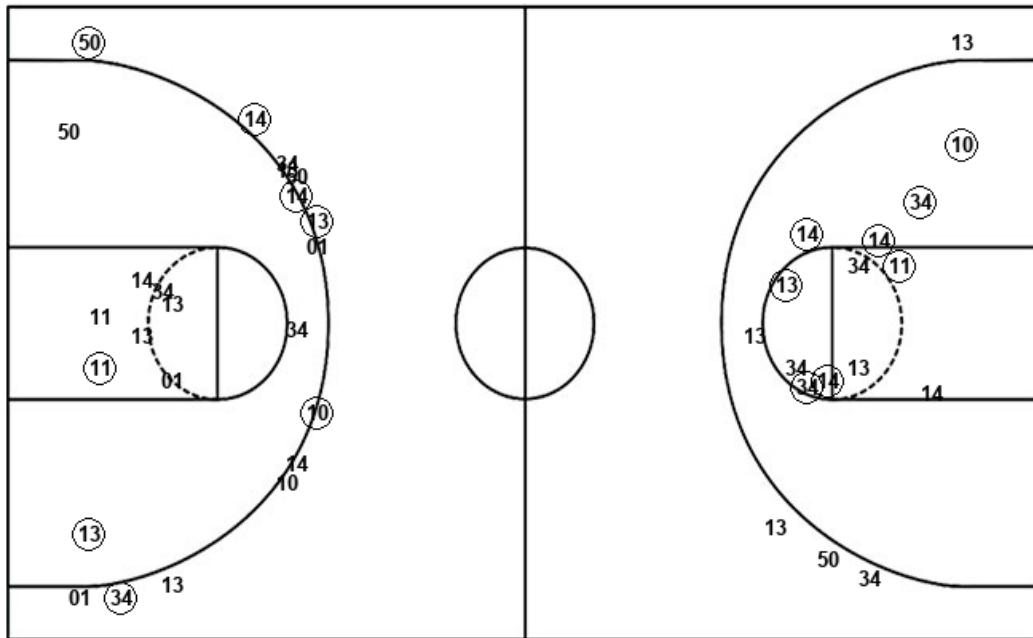
NEB : Period 4	Made	Att	Pct
Layups	2	3	66.7
Dunks	0	0	0
2PT Field Goals	4	6	66.7
3PT Field Goals	2	7	28.6
<b>Total Field Goals</b>	<b>6</b>	<b>13</b>	<b>46.2</b>

IND : Period 4	Made	Att	Pct
Layups	1	2	50.0
Dunks	0	0	0
2PT Field Goals	1	7	14.3
3PT Field Goals	3	6	50.0
<b>Total Field Goals</b>	<b>4</b>	<b>13</b>	<b>30.8</b>

**Official Shot Chart**  
**Indiana vs Nebraska**  
**Indiana Team Shots**  
 February 03, 2019 at Pinnacle Bank Arena - Lincoln, Neb.



Layups



Layups

01 14 50 (14) 01  
 01 34 (13) (11) (10)  
 (11) (13) 50 (11) (13)  
 (11) (14) (14) (11) 01  
 01 (13)

Dunks

Dunks

IND : Period 1	Made	Att	Pct
Layups	1	7	14.3
Dunks	0	0	0
2PT Field Goals	4	13	30.8
3PT Field Goals	0	3	00.0
<b>Total Field Goals</b>	<b>4</b>	<b>16</b>	<b>25.0</b>

IND : Period 3	Made	Att	Pct
Layups	5	6	83.3
Dunks	0	0	0
2PT Field Goals	7	11	63.6
3PT Field Goals	3	8	37.5
<b>Total Field Goals</b>	<b>10</b>	<b>19</b>	<b>52.6</b>

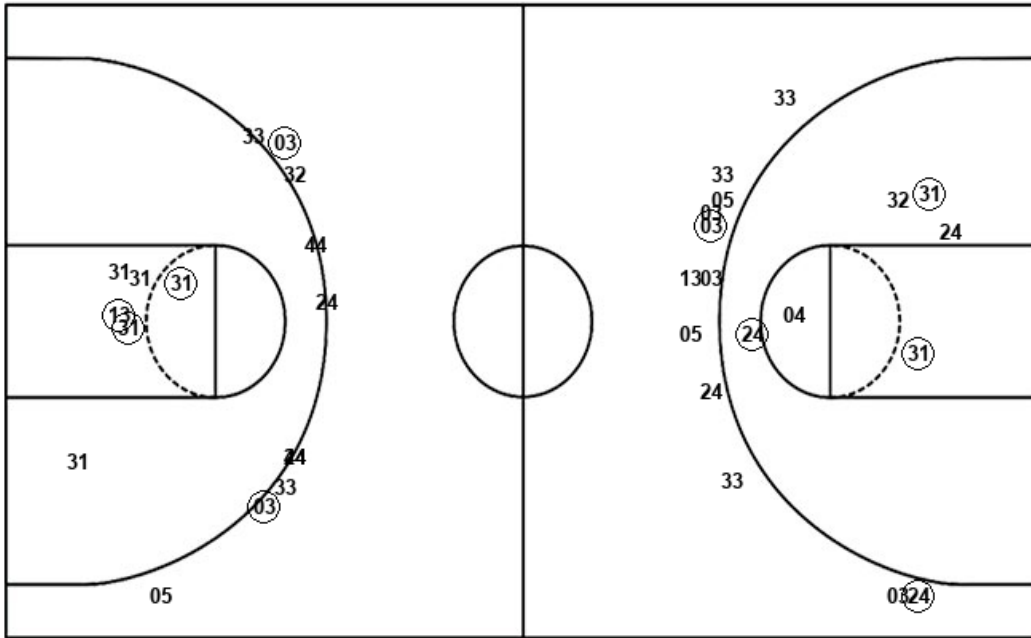
IND : Period 2	Made	Att	Pct
Layups	6	7	85.7
Dunks	0	0	0
2PT Field Goals	11	14	78.6
3PT Field Goals	0	1	00.0
<b>Total Field Goals</b>	<b>11</b>	<b>15</b>	<b>73.3</b>

IND : Period 4	Made	Att	Pct
Layups	1	2	50.0
Dunks	0	0	0
2PT Field Goals	1	7	14.3
3PT Field Goals	3	6	50.0
<b>Total Field Goals</b>	<b>4</b>	<b>13</b>	<b>30.8</b>

Official Shot Chart  
 Indiana vs Nebraska  
 Nebraska Team Shots  
 February 03, 2019 at Pinnacle Bank Arena - Lincoln, Neb.



Layups



Layups

Dunks

Dunks

NEB : Period 1	Made	Att	Pct
Layups	5	10	50.0
Dunks	0	0	0
2PT Field Goals	6	13	46.2
3PT Field Goals	1	4	25.0
<b>Total Field Goals</b>	<b>7</b>	<b>17</b>	<b>41.2</b>

NEB : Period 2	Made	Att	Pct
Layups	4	5	80.0
Dunks	0	0	0
2PT Field Goals	6	8	75.0
3PT Field Goals	1	6	16.7
<b>Total Field Goals</b>	<b>7</b>	<b>14</b>	<b>50.0</b>

NEB : Period 3	Made	Att	Pct
Layups	6	9	66.7
Dunks	0	0	0
2PT Field Goals	7	12	58.3
3PT Field Goals	0	5	00.0
<b>Total Field Goals</b>	<b>7</b>	<b>17</b>	<b>41.2</b>

NEB : Period 4	Made	Att	Pct
Layups	2	3	66.7
Dunks	0	0	0
2PT Field Goals	4	6	66.7
3PT Field Goals	2	7	28.6
<b>Total Field Goals</b>	<b>6</b>	<b>13</b>	<b>46.2</b>