

FINAL SCORE

Hofstra

47



Delaware

57



February 17, 2019 • Bob Carpenter Center - Newark, DE

FINAL STATISTICS

Official Box Score
Hofstra vs Delaware
Game Totals -- Final Statistics
February 17, 2019 at Bob Carpenter Center - Newark, DE



Hofstra 47

| No. | Player | S | Pts | FG | 3FG | FT | OR | DR | TR | PF | A | TO | Blk | Stl | Min | +/- |
|---------------|--------------------|---|-----------|--------------|-------------|------------|-----------|-----------|-----------|-----------|-----------|-----------|----------|----------|------------|-----|
| 10 | HERNANDEZ GIL, ANA | | 11 | 4-9 | 3-8 | 0-0 | 0 | 2 | 2 | 2 | 2 | 3 | 0 | 0 | 31 | -1 |
| 11 | HINES, JAYLEN | | 2 | 1-4 | 0-0 | 0-0 | 2 | 0 | 2 | 2 | 0 | 0 | 0 | 1 | 13 | -6 |
| 34 | BROZOSKI, BOOGIE | | 6 | 2-18 | 0-5 | 2-2 | 0 | 3 | 3 | 2 | 8 | 3 | 0 | 4 | 40 | -10 |
| 53 | KALIN, MARIANNE | | 4 | 1-8 | 0-0 | 2-2 | 0 | 9 | 9 | 1 | 0 | 2 | 2 | 2 | 32 | -7 |
| 54 | KARSTEN, SANDRA | | 3 | 1-3 | 1-3 | 0-0 | 0 | 0 | 0 | 1 | 0 | 2 | 1 | 0 | 22 | -13 |
| 00 | REYNOLDS, CARIA | | 2 | 1-3 | 0-0 | 0-0 | 2 | 2 | 4 | 4 | 0 | 0 | 0 | 1 | 9 | 0 |
| 02 | BROWN, JAKAYLA | | 6 | 3-7 | 0-0 | 0-1 | 2 | 2 | 4 | 1 | 0 | 0 | 1 | 1 | 21 | -2 |
| 04 | MILLS, SHAWN | | 0 | 0-0 | 0-0 | 0-2 | 1 | 1 | 2 | 0 | 0 | 0 | 0 | 0 | 7 | -4 |
| 21 | CROSKEY, MIKIYAH | | 13 | 6-8 | 0-0 | 1-1 | 1 | 6 | 7 | 2 | 0 | 0 | 1 | 0 | 25 | -7 |
| | TEAM | | | | | | 3 | 1 | 4 | 0 | | 1 | | | | |
| TOTALS | | | 47 | 19-60 | 4-16 | 5-8 | 11 | 26 | 37 | 15 | 10 | 11 | 5 | 9 | 200 | |

Shooting By Period

| Period | FG | FG% | 3FG | 3FG% | FT | FT% |
|-------------|--------------|--------------|-------------|--------------|------------|--------------|
| 1st Qtr | 7-14 | 50% | 1-2 | 50% | 0-0 | 0% |
| 2nd Qtr | 1-13 | 08% | 0-5 | 00% | 2-2 | 100% |
| 3rd Qtr | 5-16 | 31% | 1-4 | 25% | 3-3 | 100% |
| 4th Qtr | 6-17 | 35% | 2-5 | 40% | 0-3 | 00% |
| 1st Half | 8-27 | 30% | 1-7 | 14% | 2-2 | 100% |
| 2nd Half | 11-33 | 33% | 3-9 | 33% | 3-6 | 50% |
| Game | 19-60 | 31.7% | 4-16 | 25.0% | 5-8 | 62.5% |

Last FG: 4th-02:03

Biggest Run: 7-0

Largest lead: By 4 at 1-05:08

Technical Fouls: None.

Delaware 57

| No. | Player | S | Pts | FG | 3FG | FT | OR | DR | TR | PF | A | TO | Blk | Stl | Min | +/- |
|---------------|-------------------|---|-----------|--------------|-------------|--------------|-----------|-----------|-----------|-----------|----------|-----------|----------|----------|------------|-----|
| 02 | GONZALES, ABBY | | 9 | 3-12 | 3-8 | 0-0 | 1 | 1 | 2 | 0 | 4 | 2 | 0 | 3 | 31 | 3 |
| 12 | OLEARY, LIZZIE | | 7 | 3-6 | 0-0 | 1-2 | 7 | 4 | 11 | 5 | 0 | 0 | 0 | 0 | 22 | 3 |
| 22 | DEFREESE, SAMONE | | 11 | 3-13 | 0-0 | 5-5 | 6 | 4 | 10 | 2 | 1 | 1 | 0 | 0 | 27 | 3 |
| 23 | KARGO, BAILEY | | 5 | 2-8 | 1-4 | 0-0 | 0 | 0 | 0 | 1 | 0 | 4 | 0 | 0 | 18 | 1 |
| 25 | LAWRENCE, REBECCA | | 2 | 1-4 | 0-2 | 0-0 | 5 | 5 | 10 | 1 | 0 | 0 | 1 | 0 | 25 | 4 |
| 00 | LEFFT, GADSON | | 2 | 1-3 | 0-0 | 0-0 | 1 | 6 | 7 | 0 | 1 | 0 | 0 | 2 | 14 | 13 |
| 04 | MCBRIDE, PARIS | | 5 | 2-9 | 0-1 | 1-2 | 1 | 2 | 3 | 0 | 2 | 2 | 0 | 0 | 24 | 9 |
| 05 | NICHOLAS, MAKEDA | | 6 | 1-7 | 0-0 | 4-4 | 1 | 5 | 6 | 1 | 0 | 1 | 1 | 3 | 19 | 0 |
| 35 | LEWIS, ALISON | | 10 | 4-11 | 0-2 | 2-2 | 5 | 3 | 8 | 0 | 0 | 1 | 0 | 1 | 19 | 14 |
| | TEAM | | | | | | 1 | 2 | 3 | 0 | | 0 | | | | |
| TOTALS | | | 57 | 20-73 | 4-17 | 13-15 | 28 | 32 | 60 | 10 | 8 | 11 | 2 | 9 | 200 | |

Shooting By Period

| Period | FG | FG% | 3FG | 3FG% | FT | FT% |
|-------------|--------------|--------------|-------------|--------------|--------------|--------------|
| 1st Qtr | 6-20 | 30% | 1-6 | 17% | 5-6 | 83% |
| 2nd Qtr | 2-20 | 10% | 0-3 | 00% | 6-7 | 86% |
| 3rd Qtr | 7-15 | 47% | 1-3 | 33% | 2-2 | 100% |
| 4th Qtr | 5-18 | 28% | 2-5 | 40% | 0-0 | 0% |
| 1st Half | 8-40 | 20% | 1-9 | 11% | 11-13 | 85% |
| 2nd Half | 12-33 | 36% | 3-8 | 38% | 2-2 | 100% |
| Game | 20-73 | 27.4% | 4-17 | 23.5% | 13-15 | 86.7% |

Last FG: 4th-01:04

Biggest Run: 10-0

Largest lead: By 15 at 4-08:25

Technical Fouls: None.

Game Notes:

Officials: Daryl Humphrey, Hillary Harwell, Scott Perkins
Attendance: 1171

Start Time: 2019-02-17 19:07:07
End Time: 2019-02-17 20:53:22
Game Duration: 106
Conference Game;

| Score | 1st | 2nd | 3rd | 4th | TOT |
|-------|-----|-----|-----|-----|-----------|
| HOF | 15 | 4 | 14 | 14 | 47 |
| DEL | 18 | 10 | 17 | 12 | 57 |

HOF led for 2:00. DEL led for 34:51.
Game was tied for 3:10.
Times tied: 2 Lead Changes: 4

| Points from | HOF | DEL |
|--------------|-----|-----|
| In the Paint | 24 | 26 |
| Off Turns | 6 | 14 |
| 2nd Chance | 8 | 18 |
| Fast Break | 2 | 13 |
| Bench | 21 | 23 |

Official Box Score
Hofstra vs Delaware
First Half Statistics Only
February 17, 2019 at Bob Carpenter Center - Newark, DE



Hofstra 19

| No. | Player | S | Pts | FG | 3FG | FT | OR | DR | TR | PF | A | TO | Blk | Stl | Min | +/- |
|---------------|--------------------|---|-----------|-------------|------------|------------|----------|-----------|-----------|-----------|----------|----------|----------|----------|------------|-----|
| 00 | REYNOLDS, CARIA | | 0 | 0-0 | 0-0 | 0-0 | 0 | 0 | 0 | 2 | 0 | 0 | 0 | 0 | 3 | -1 |
| 10 | HERNANDEZ GIL, ANA | | 0 | 0-2 | 0-2 | 0-0 | 0 | 1 | 1 | 2 | 1 | 1 | 0 | 0 | 13 | -3 |
| 11 | HINES, JAYLEN | | 2 | 1-3 | 0-0 | 0-0 | 0 | 0 | 0 | 2 | 0 | 0 | 0 | 1 | 3 | -1 |
| 21 | CROSKEY, MIKIYAH | | 8 | 4-6 | 0-0 | 0-0 | 1 | 5 | 6 | 0 | 0 | 0 | 1 | 0 | 14 | -8 |
| 34 | BROZOSKI, BOOGIE | | 2 | 1-8 | 0-2 | 0-0 | 0 | 1 | 1 | 1 | 2 | 2 | 0 | 2 | 20 | -9 |
| 53 | KALIN, MARIANNE | | 2 | 0-4 | 0-0 | 2-2 | 0 | 5 | 5 | 1 | 0 | 2 | 1 | 1 | 20 | -8 |
| 54 | KARSTEN, SANDRA | | 3 | 1-3 | 1-3 | 0-0 | 0 | 0 | 0 | 1 | 0 | 1 | 1 | 0 | 18 | -6 |
| 02 | BROWN, JAKAYLA | | 2 | 1-1 | 0-0 | 0-0 | 0 | 0 | 0 | 1 | 0 | 0 | 1 | 0 | 7 | -6 |
| 04 | MILLS, SHAWN | | 0 | 0-0 | 0-0 | 0-0 | 0 | 0 | 0 | 0 | 0 | 0 | 0 | 0 | 2 | -3 |
| | TEAM | | 0 | 0-0 | 0-0 | 0-0 | 3 | 0 | 3 | 0 | 0 | 0 | 0 | 0 | 0 | |
| TOTALS | | | 19 | 8-27 | 1-7 | 2-2 | 4 | 12 | 16 | 10 | 3 | 6 | 4 | 4 | 100 | |

Shooting By Period

| Period | FG | FG% | 3FG | 3FG% | FT | FT% |
|----------|-------|-------|------|-------|-----|-------|
| 1st Qtr | 7-14 | 50% | 1-2 | 50% | 0-0 | 0% |
| 2nd Qtr | 1-13 | 08% | 0-5 | 00% | 2-2 | 100% |
| 1st Half | 8-27 | 30% | 1-7 | 14% | 2-2 | 100% |
| Game | 19-60 | 31.7% | 4-16 | 25.0% | 5-8 | 62.5% |

Last FG Half: HOF 2nd-05:51

Delaware 28

| No. | Player | S | Pts | FG | 3FG | FT | OR | DR | TR | PF | A | TO | Blk | Stl | Min | +/- |
|---------------|-------------------|---|-----------|-------------|------------|--------------|-----------|-----------|-----------|----------|----------|----------|----------|----------|------------|-----|
| 00 | LEFFT, GADSON | | 2 | 1-1 | 0-0 | 0-0 | 0 | 2 | 2 | 0 | 0 | 0 | 0 | 0 | 5 | 7 |
| 12 | OLEARY, LIZZIE | | 1 | 0-2 | 0-0 | 1-2 | 6 | 4 | 10 | 0 | 0 | 0 | 0 | 0 | 12 | 1 |
| 22 | DEFREESE, SAMONE | | 11 | 3-10 | 0-0 | 5-5 | 5 | 3 | 8 | 0 | 0 | 1 | 0 | 0 | 16 | 6 |
| 23 | KARGO, BAILEY | | 0 | 0-3 | 0-2 | 0-0 | 0 | 0 | 0 | 1 | 0 | 1 | 0 | 0 | 8 | 2 |
| 25 | LAWRENCE, REBECCA | | 2 | 1-2 | 0-0 | 0-0 | 4 | 3 | 7 | 0 | 0 | 0 | 0 | 0 | 14 | 10 |
| 35 | LEWIS, ALISON | | 4 | 1-4 | 0-2 | 2-2 | 2 | 0 | 2 | 0 | 0 | 1 | 0 | 1 | 10 | 10 |
| 02 | GONZALES, ABBY | | 3 | 1-8 | 1-4 | 0-0 | 1 | 0 | 1 | 0 | 2 | 1 | 0 | 2 | 14 | 5 |
| 04 | MCBRIDE, PARIS | | 1 | 0-6 | 0-1 | 1-2 | 1 | 1 | 2 | 0 | 1 | 0 | 0 | 0 | 12 | 4 |
| 05 | NICHOLAS, MAKEDA | | 4 | 1-4 | 0-0 | 2-2 | 1 | 2 | 3 | 1 | 0 | 1 | 0 | 2 | 9 | 0 |
| | TEAM | | 0 | 0-0 | 0-0 | 0-0 | 1 | 0 | 1 | 0 | 0 | 0 | 0 | 0 | 0 | |
| TOTALS | | | 28 | 8-40 | 1-9 | 11-13 | 21 | 15 | 36 | 2 | 3 | 5 | 0 | 5 | 100 | |

Shooting By Period

| Period | FG | FG% | 3FG | 3FG% | FT | FT% |
|----------|-------|-------|------|-------|-------|-------|
| 1st Qtr | 6-20 | 30% | 1-6 | 17% | 5-6 | 83% |
| 2nd Qtr | 2-20 | 10% | 0-3 | 00% | 6-7 | 86% |
| 1st Half | 8-40 | 20% | 1-9 | 11% | 11-13 | 85% |
| Game | 20-73 | 27.4% | 4-17 | 23.5% | 13-15 | 86.7% |

Last FG Half: DEL 2nd-00:41

Game Notes:

Officials: Daryl Humphrey, Hillary Harwell, Scott Perkins
Attendance: 1171

Start Time: 2019-02-17 19:07:07
End Time: 2019-02-17 20:53:22
Game Duration: 106
Conference Game;

| Score | 1st | 2nd | 3rd | 4th | TOT |
|-------|-----|-----|-----|-----|-----------|
| HOF | 15 | 4 | 14 | 14 | 47 |
| DEL | 18 | 10 | 17 | 12 | 57 |

| Points from (This Period) | HOF | DEL |
|---------------------------|-----|-----|
| In the Paint | 12 | 10 |
| Off Turns | 2 | 4 |
| 2nd Chance | 4 | 11 |
| Fast Break | 0 | 7 |
| Bench | 10 | 11 |

Official Box Score
Hofstra vs Delaware
First Quarter Statistics Only
February 17, 2019 at Bob Carpenter Center - Newark, DE



Hofstra 15

| No. | Player | S | Pts | FG | 3FG | FT | OR | DR | TR | PF | A | TO | Blk | Stl | Min | +/- |
|---------------|--------------------|---|-----------|-------------|------------|------------|----------|----------|----------|----------|----------|----------|----------|----------|-----------|-----|
| 10 | HERNANDEZ GIL, ANA | | 0 | 0-1 | 0-1 | 0-0 | 0 | 1 | 1 | 1 | 1 | 1 | 0 | 0 | 10 | -3 |
| 11 | HINES, JAYLEN | | 2 | 1-3 | 0-0 | 0-0 | 0 | 0 | 0 | 2 | 0 | 0 | 0 | 1 | 3 | -1 |
| 34 | BROZOSKI, BOOGIE | | 2 | 1-4 | 0-0 | 0-0 | 0 | 0 | 0 | 0 | 2 | 1 | 0 | 2 | 10 | -3 |
| 53 | KALIN, MARIANNE | | 0 | 0-1 | 0-0 | 0-0 | 0 | 1 | 1 | 1 | 0 | 1 | 1 | 0 | 10 | -3 |
| 54 | KARSTEN, SANDRA | | 3 | 1-1 | 1-1 | 0-0 | 0 | 0 | 0 | 0 | 0 | 0 | 1 | 0 | 8 | 0 |
| 00 | REYNOLDS, CARIA | | 0 | 0-0 | 0-0 | 0-0 | 0 | 0 | 0 | 0 | 0 | 0 | 0 | 0 | 0 | 0 |
| 02 | BROWN, JAKAYLA | | 0 | 0-0 | 0-0 | 0-0 | 0 | 0 | 0 | 1 | 0 | 0 | 0 | 0 | 2 | -3 |
| 04 | MILLS, SHAWN | | 0 | 0-0 | 0-0 | 0-0 | 0 | 0 | 0 | 0 | 0 | 0 | 0 | 0 | 0 | 0 |
| 21 | CROSKEY, MIKIYAH | | 8 | 4-4 | 0-0 | 0-0 | 1 | 1 | 2 | 0 | 0 | 0 | 0 | 0 | 7 | -2 |
| | TEAM | | | | | | 0 | 0 | 0 | 0 | | 0 | | | | |
| TOTALS | | | 15 | 7-14 | 1-2 | 0-0 | 1 | 3 | 4 | 5 | 3 | 3 | 2 | 3 | 50 | |

Shooting By Period

| Period | FG | FG% | 3FG | 3FG% | FT | FT% |
|----------|-------|-------|------|-------|-----|-------|
| 1st Qtr | 7-14 | 50% | 1-2 | 50% | 0-0 | 0% |
| 2nd Qtr | 1-13 | 08% | 0-5 | 00% | 2-2 | 100% |
| 1st Half | 7-14 | 50% | 1-2 | 50% | 0-0 | 0% |
| 1st Half | 8-27 | 30% | 1-7 | 14% | 2-2 | 100% |
| Game | 19-60 | 31.7% | 4-16 | 25.0% | 5-8 | 62.5% |

Delaware 18

| No. | Player | S | Pts | FG | 3FG | FT | OR | DR | TR | PF | A | TO | Blk | Stl | Min | +/- |
|---------------|-------------------|---|-----------|-------------|------------|------------|-----------|----------|-----------|----------|----------|----------|----------|----------|-----------|-----|
| 02 | GONZALES, ABBY | | 3 | 1-5 | 1-4 | 0-0 | 1 | 0 | 1 | 0 | 1 | 1 | 0 | 1 | 7 | 1 |
| 12 | OLEARY, LIZZIE | | 1 | 0-0 | 0-0 | 1-2 | 3 | 1 | 4 | 0 | 0 | 0 | 0 | 0 | 7 | 1 |
| 22 | DEFREESE, SAMONE | | 6 | 2-6 | 0-0 | 2-2 | 2 | 1 | 3 | 0 | 0 | 1 | 0 | 0 | 8 | 0 |
| 23 | KARGO, BAILEY | | 0 | 0-1 | 0-1 | 0-0 | 0 | 0 | 0 | 0 | 0 | 1 | 0 | 0 | 3 | 1 |
| 25 | LAWRENCE, REBECCA | | 2 | 1-1 | 0-0 | 0-0 | 1 | 1 | 2 | 0 | 0 | 0 | 0 | 0 | 5 | 4 |
| 00 | LEFFT, GADSON | | 0 | 0-0 | 0-0 | 0-0 | 0 | 0 | 0 | 0 | 0 | 0 | 0 | 0 | 3 | 2 |
| 04 | MCBRIDE, PARIS | | 0 | 0-3 | 0-0 | 0-0 | 0 | 1 | 1 | 0 | 1 | 0 | 0 | 0 | 7 | 2 |
| 05 | NICHOLAS, MAKEDA | | 2 | 1-2 | 0-0 | 0-0 | 1 | 2 | 3 | 1 | 0 | 1 | 0 | 1 | 5 | -1 |
| 35 | LEWIS, ALISON | | 4 | 1-2 | 0-1 | 2-2 | 2 | 0 | 2 | 0 | 0 | 0 | 0 | 1 | 5 | 5 |
| | TEAM | | | | | | 1 | 0 | 1 | 0 | | 0 | | | | |
| TOTALS | | | 18 | 6-20 | 1-6 | 5-6 | 11 | 6 | 17 | 1 | 2 | 4 | 0 | 3 | 50 | |

Shooting By Period

| Period | FG | FG% | 3FG | 3FG% | FT | FT% |
|----------|-------|-------|------|-------|-------|-------|
| 1st Qtr | 6-20 | 30% | 1-6 | 17% | 5-6 | 83% |
| 2nd Qtr | 2-20 | 10% | 0-3 | 00% | 6-7 | 86% |
| 1st Half | 6-20 | 30% | 1-6 | 17% | 5-6 | 83% |
| 1st Half | 8-40 | 20% | 1-9 | 11% | 11-13 | 85% |
| Game | 20-73 | 27.4% | 4-17 | 23.5% | 13-15 | 86.7% |

Game Notes:

Officials: **Daryl Humphrey, Hillary Harwell, Scott Perkins**
Attendance: 1171

Start Time: **2019-02-17 19:07:07**
End Time: **2019-02-17 20:53:22**
Game Duration: **106**
Conference Game;

| Score | 1st | 2nd | 3rd | 4th | TOT |
|-------|-----|-----|-----|-----|-----------|
| HOF | 15 | 4 | 14 | 14 | 47 |
| DEL | 18 | 10 | 17 | 12 | 57 |

| Points from (This Period) | HOF | DEL |
|---------------------------|-----|-----|
| In the Paint | 12 | 8 |
| Off Turns | 2 | 2 |
| 2nd Chance | 2 | 8 |
| Fast Break | 0 | 2 |
| Bench | 8 | 6 |

Official Play-By-Play
Hofstra vs Delaware
First Quarter
February 17, 2019 at Bob Carpenter Center - Newark, DE



Period 1

Starters:

Hofstra: 10 HERNANDEZ GIL, ANA; 11 HINES, JAYLEN; 34 BROZOSKI, BOOGIE; 53 KALIN, MARIANNE; 54 KARSTEN, SANDRA;

Delaware: 12 OLEARY, LIZZIE; 22 DEFREESE, SAMONE; 23 KARGO, BAILEY; 25 LAWRENCE, REBECCA; 2 GONZALES, ABBY;

| Time | VISITORS: Hofstra | Score | Margin | HOME: Delaware |
|-------|--|-------|--------|--|
| 09:47 | | | | TURNOVER (BADPASS) by DEFREESE, SAMONE |
| 09:47 | STEAL by BROZOSKI, BOOGIE | | | |
| 09:40 | TURNOVER (BADPASS) by KALIN, MARIANNE | | | |
| 09:40 | | | | STEAL by GONZALES, ABBY |
| 09:27 | | | | TURNOVER (LOSTBALL) by GONZALES, ABBY |
| 09:27 | STEAL by HINES, JAYLEN | | | |
| 09:23 | MISSED JUMPER by HINES, JAYLEN | | | |
| 09:19 | | | | REBOUND (DEF) by LAWRENCE, REBECCA |
| 09:09 | | | | MISSED 3PTR by KARGO, BAILEY |
| 09:06 | | | | REBOUND (OFF) by DEFREESE, SAMONE |
| 09:05 | | | | MISSED JUMPER by DEFREESE, SAMONE |
| 09:04 | | | | REBOUND (OFF) by OLEARY, LIZZIE |
| 09:04 | FOUL (PERSONAL) by HINES, JAYLEN | | | |
| 09:04 | | | | MISSED FT by OLEARY, LIZZIE |
| 09:04 | | | | REBOUND (OFF) by TEAM |
| 09:04 | | 1-0 | H 1 | GOOD! FT by OLEARY, LIZZIE |
| 08:41 | MISSED JUMPER by KALIN, MARIANNE | | | |
| 08:37 | | | | REBOUND (DEF) by OLEARY, LIZZIE |
| 08:33 | | 3-0 | H 3 | GOOD! JUMPER by LAWRENCE, REBECCA |
| 08:33 | | | | ASSIST by GONZALES, ABBY |
| 08:18 | MISSED LAYUP by HINES, JAYLEN | | | |
| 08:12 | | | | REBOUND (DEF) by DEFREESE, SAMONE |
| 08:05 | | | | MISSED JUMPER by DEFREESE, SAMONE |
| 08:02 | | | | REBOUND (OFF) by OLEARY, LIZZIE |
| 07:47 | | | | TURNOVER (LOSTBALL) by KARGO, BAILEY |
| 07:47 | STEAL by BROZOSKI, BOOGIE | | | |
| 07:18 | GOOD! LAYUP by HINES, JAYLEN | 3-2 | H 1 | |
| 07:04 | FOUL (PERSONAL) by HINES, JAYLEN | | | |
| 07:04 | | | | SUB OUT: KARGO, BAILEY |
| 07:04 | | | | SUB IN: MCBRIDE, PARIS |
| 07:04 | | | | SUB OUT: LAWRENCE, REBECCA |
| 07:04 | | | | SUB IN: NICHOLAS, MAKEDA |
| 07:04 | SUB OUT: HINES, JAYLEN | | | |
| 07:04 | SUB IN: CROSKEY, MIKIYAH | | | |
| 06:57 | | | | MISSED JUMPER by DEFREESE, SAMONE |
| 06:57 | BLOCK by KARSTEN, SANDRA | | | |
| 06:57 | | | | REBOUND (OFF) by TEAM |
| 06:53 | | | | MISSED 3PTR by GONZALES, ABBY |
| 06:50 | REBOUND (DEF) by HERNANDEZ GIL, ANA | | | |
| 06:45 | TURNOVER (BADPASS) by HERNANDEZ GIL, ANA | | | |
| 06:45 | | | | STEAL by NICHOLAS, MAKEDA |
| 06:38 | | | | MISSED JUMPER by MCBRIDE, PARIS |
| 06:34 | REBOUND (DEF) by CROSKEY, MIKIYAH | | | |
| 06:26 | MISSED JUMPER by BROZOSKI, BOOGIE | | | |
| 06:23 | REBOUND (OFF) by CROSKEY, MIKIYAH | | | |
| 06:22 | GOOD! LAYUP by CROSKEY, MIKIYAH | 3-4 | V 1 | |
| 06:09 | | | | MISSED JUMPER by NICHOLAS, MAKEDA |
| 06:06 | | | | REBOUND (OFF) by DEFREESE, SAMONE |
| 06:05 | | 5-4 | H 1 | GOOD! LAYUP by DEFREESE, SAMONE |
| 05:47 | GOOD! 3PTR by KARSTEN, SANDRA | 5-7 | V 2 | |
| 05:47 | ASSIST by HERNANDEZ GIL, ANA | | | |
| 05:23 | | | | MISSED 3PTR by GONZALES, ABBY |
| 05:20 | | | | REBOUND (OFF) by NICHOLAS, MAKEDA |
| 05:20 | FOUL (PERSONAL) by KALIN, MARIANNE | | | |
| 05:20 | | | | SUB OUT: OLEARY, LIZZIE |
| 05:20 | | | | SUB IN: LEFFT, GADSON |
| 05:20 | | | | SUB OUT: GONZALES, ABBY |
| 05:20 | | | | SUB IN: LEWIS, ALISON |
| 05:20 | SUB OUT: KARSTEN, SANDRA | | | |
| 05:20 | SUB IN: BROWN, JAKAYLA | | | |
| 05:18 | | | | MISSED LAYUP by DEFREESE, SAMONE |
| 05:15 | REBOUND (DEF) by KALIN, MARIANNE | | | |
| 05:08 | GOOD! LAYUP by CROSKEY, MIKIYAH [PNT] | 5-9 | V 4 | |
| 05:08 | ASSIST by BROZOSKI, BOOGIE | | | |
| 05:07 | | | | |
| 04:51 | | 7-9 | V 2 | GOOD! LAYUP by NICHOLAS, MAKEDA |
| 04:24 | MISSED 3PTR by HERNANDEZ GIL, ANA | | | |
| 04:21 | | | | REBOUND (DEF) by NICHOLAS, MAKEDA |
| 04:04 | | 9-9 | T | GOOD! LAYUP by DEFREESE, SAMONE |
| 03:38 | MISSED JUMPER by BROZOSKI, BOOGIE | | | |

| Time | VISITORS: Hofstra | Score | Margin | HOME: Delaware |
|-------|---|-------|--------|-------------------------------------|
| 03:36 | | | | REBOUND (DEF) by NICHOLAS, MAKEDA |
| 03:15 | FOUL (PERSONAL) by BROWN, JAKAYLA | | | |
| 03:15 | | 10-9 | H 1 | GOOD! FT by DEFREESE, SAMONE |
| 03:15 | SUB OUT: BROWN, JAKAYLA | | | |
| 03:15 | SUB IN: KARSTEN, SANDRA | | | |
| 03:15 | | 11-9 | H 2 | GOOD! FT by DEFREESE, SAMONE |
| 02:49 | GOOD! LAYUP by CROSKEY, MIKIYAH | 11-11 | T | |
| 02:49 | ASSIST by BROZOSKI, BOOGIE | | | |
| 02:39 | | | | TURNOVER (3SEC) by NICHOLAS, MAKEDA |
| 02:26 | | | | FOUL (PERSONAL) by NICHOLAS, MAKEDA |
| 02:26 | | | | SUB OUT: NICHOLAS, MAKEDA |
| 02:26 | | | | SUB IN: OLEARY, LIZZIE |
| 02:26 | | | | SUB OUT: LEFFT, GADSON |
| 02:26 | | | | SUB IN: LAWRENCE, REBECCA |
| 02:03 | | | | SUB OUT: DEFREESE, SAMONE |
| 02:03 | | | | SUB IN: GONZALES, ABBY |
| 01:56 | MISSED JUMPER by BROZOSKI, BOOGIE | | | |
| 01:52 | | | | REBOUND (DEF) by MCBRIDE, PARIS |
| 01:48 | | | | MISSED LAYUP by MCBRIDE, PARIS |
| 01:45 | | | | REBOUND (OFF) by GONZALES, ABBY |
| 01:45 | | | | MISSED JUMPER by GONZALES, ABBY |
| 01:45 | BLOCK by KALIN, MARIANNE | | | |
| 01:39 | | | | REBOUND (OFF) by OLEARY, LIZZIE |
| 01:38 | | | | MISSED 3PTR by GONZALES, ABBY |
| 01:37 | | | | REBOUND (OFF) by LEWIS, ALISON |
| 01:36 | FOUL (PERSONAL) by HERNANDEZ GIL, ANA | | | |
| 01:36 | | 12-11 | H 1 | GOOD! FT by LEWIS, ALISON |
| 01:36 | | 13-11 | H 2 | GOOD! FT by LEWIS, ALISON |
| 01:26 | TURNOVER (LOSTBALL) by BROZOSKI, BOOGIE | | | |
| 01:26 | | | | STEAL by LEWIS, ALISON |
| 01:21 | | 15-11 | H 4 | GOOD! LAYUP by LEWIS, ALISON [FB] |
| 01:02 | GOOD! JUMPER by BROZOSKI, BOOGIE [PNT] | 15-13 | H 2 | |
| 00:49 | | | | MISSED JUMPER by MCBRIDE, PARIS |
| 00:45 | | | | REBOUND (OFF) by LAWRENCE, REBECCA |
| 00:39 | | 18-13 | H 5 | GOOD! 3PTR by GONZALES, ABBY |
| 00:39 | | | | ASSIST by MCBRIDE, PARIS |
| 00:19 | GOOD! LAYUP by CROSKEY, MIKIYAH | 18-15 | H 3 | |
| 00:01 | | | | MISSED 3PTR by LEWIS, ALISON |
| 00:00 | | | | REBOUND (OFF) by LEWIS, ALISON |

Hofstra 15, Delaware 18

| Points from (This Period) | HOF | DEL |
|---------------------------|-----|-----|
| In the Paint | 12 | 8 |
| Off Turns | 2 | 2 |
| 2nd Chance | 2 | 8 |
| Fast Break | 0 | 2 |
| Bench | 8 | 6 |

Official Box Score
Hofstra vs Delaware
Second Quarter Statistics Only
February 17, 2019 at Bob Carpenter Center - Newark, DE



Hofstra 4

| No. | Player | S | Pts | FG | 3FG | FT | OR | DR | TR | PF | A | TO | Blk | Stl | Min | +/- |
|---------------|--------------------|---|----------|-------------|------------|------------|----------|----------|-----------|----------|----------|----------|----------|----------|-----------|-----|
| 10 | HERNANDEZ GIL, ANA | | 0 | 0-1 | 0-1 | 0-0 | 0 | 0 | 0 | 1 | 0 | 0 | 0 | 0 | 3 | 0 |
| 11 | HINES, JAYLEN | | 0 | 0-0 | 0-0 | 0-0 | 0 | 0 | 0 | 0 | 0 | 0 | 0 | 0 | 0 | 0 |
| 34 | BROZOSKI, BOOGIE | | 0 | 0-4 | 0-2 | 0-0 | 0 | 1 | 1 | 1 | 0 | 1 | 0 | 0 | 10 | -6 |
| 53 | KALIN, MARIANNE | | 2 | 0-3 | 0-0 | 2-2 | 0 | 4 | 4 | 0 | 0 | 1 | 0 | 1 | 10 | -5 |
| 54 | KARSTEN, SANDRA | | 0 | 0-2 | 0-2 | 0-0 | 0 | 0 | 0 | 1 | 0 | 1 | 0 | 0 | 10 | -6 |
| 00 | REYNOLDS, CARIA | | 0 | 0-0 | 0-0 | 0-0 | 0 | 0 | 0 | 2 | 0 | 0 | 0 | 0 | 3 | -1 |
| 02 | BROWN, JAKAYLA | | 2 | 1-1 | 0-0 | 0-0 | 0 | 0 | 0 | 0 | 0 | 0 | 1 | 0 | 5 | -3 |
| 04 | MILLS, SHAWN | | 0 | 0-0 | 0-0 | 0-0 | 0 | 0 | 0 | 0 | 0 | 0 | 0 | 0 | 2 | -3 |
| 21 | CROSKEY, MIKIYAH | | 0 | 0-2 | 0-0 | 0-0 | 0 | 4 | 4 | 0 | 0 | 0 | 1 | 0 | 7 | -6 |
| | TEAM | | | | | | 3 | 0 | 3 | 0 | | 0 | | | | |
| TOTALS | | | 4 | 1-13 | 0-5 | 2-2 | 3 | 9 | 12 | 5 | 0 | 3 | 2 | 1 | 50 | |

Shooting By Period

| Period | FG | FG% | 3FG | 3FG% | FT | FT% |
|----------|-------|-------|------|-------|-----|-------|
| 3rd Qtr | 5-16 | 31% | 1-4 | 25% | 3-3 | 100% |
| 4th Qtr | 6-17 | 35% | 2-5 | 40% | 0-3 | 00% |
| 2nd Half | 1-13 | 08% | 0-5 | 00% | 2-2 | 100% |
| 2nd Half | 11-33 | 33% | 3-9 | 33% | 3-6 | 50% |
| Game | 19-60 | 31.7% | 4-16 | 25.0% | 5-8 | 62.5% |

Delaware 10

| No. | Player | S | Pts | FG | 3FG | FT | OR | DR | TR | PF | A | TO | Blk | Stl | Min | +/- |
|---------------|-------------------|---|-----------|-------------|------------|------------|-----------|----------|-----------|----------|----------|----------|----------|----------|-----------|-----|
| 02 | GONZALES, ABBY | | 0 | 0-3 | 0-0 | 0-0 | 0 | 0 | 0 | 0 | 1 | 0 | 0 | 1 | 7 | 4 |
| 12 | OLEARY, LIZZIE | | 0 | 0-2 | 0-0 | 0-0 | 3 | 3 | 6 | 0 | 0 | 0 | 0 | 0 | 5 | 0 |
| 22 | DEFREESE, SAMONE | | 5 | 1-4 | 0-0 | 3-3 | 3 | 2 | 5 | 0 | 0 | 0 | 0 | 0 | 8 | 6 |
| 23 | KARGO, BAILEY | | 0 | 0-2 | 0-1 | 0-0 | 0 | 0 | 0 | 1 | 0 | 0 | 0 | 0 | 5 | 1 |
| 25 | LAWRENCE, REBECCA | | 0 | 0-1 | 0-0 | 0-0 | 3 | 2 | 5 | 0 | 0 | 0 | 0 | 0 | 9 | 6 |
| 00 | LEFFT, GADSON | | 2 | 1-1 | 0-0 | 0-0 | 0 | 2 | 2 | 0 | 0 | 0 | 0 | 0 | 2 | 5 |
| 04 | MCBRIDE, PARIS | | 1 | 0-3 | 0-1 | 1-2 | 1 | 0 | 1 | 0 | 0 | 0 | 0 | 0 | 5 | 2 |
| 05 | NICHOLAS, MAKEDA | | 2 | 0-2 | 0-0 | 2-2 | 0 | 0 | 0 | 0 | 0 | 0 | 0 | 1 | 4 | 1 |
| 35 | LEWIS, ALISON | | 0 | 0-2 | 0-1 | 0-0 | 0 | 0 | 0 | 0 | 0 | 1 | 0 | 0 | 5 | 5 |
| | TEAM | | | | | | 0 | 0 | 0 | 0 | | 0 | | | | |
| TOTALS | | | 10 | 2-20 | 0-3 | 6-7 | 10 | 9 | 19 | 1 | 1 | 1 | 0 | 2 | 50 | |

Shooting By Period

| Period | FG | FG% | 3FG | 3FG% | FT | FT% |
|----------|-------|-------|------|-------|-------|-------|
| 3rd Qtr | 7-15 | 47% | 1-3 | 33% | 2-2 | 100% |
| 4th Qtr | 5-18 | 28% | 2-5 | 40% | 0-0 | 0% |
| 2nd Half | 2-20 | 10% | 0-3 | 00% | 6-7 | 86% |
| 2nd Half | 12-33 | 36% | 3-8 | 38% | 2-2 | 100% |
| Game | 20-73 | 27.4% | 4-17 | 23.5% | 13-15 | 86.7% |

Game Notes:

Officials: Daryl Humphrey, Hillary Harwell, Scott Perkins
Attendance: 1171

Start Time: 2019-02-17 19:07:07
End Time: 2019-02-17 20:53:22
Game Duration: 106
Conference Game;

| Score | 1st | 2nd | 3rd | 4th | TOT |
|-------|-----|-----|-----|-----|-----------|
| HOF | 15 | 4 | 14 | 14 | 47 |
| DEL | 18 | 10 | 17 | 12 | 57 |

| Points from (This Period) | HOF | DEL |
|---------------------------|-----|-----|
| In the Paint | 0 | 2 |
| Off Turns | 0 | 2 |
| 2nd Chance | 2 | 3 |
| Fast Break | 0 | 5 |
| Bench | 2 | 5 |

Official Play-By-Play
Hofstra vs Delaware
Second Quarter
February 17, 2019 at Bob Carpenter Center - Newark, DE



Period 2

Starters:

Hofstra: 10 HERNANDEZ GIL, ANA; 11 HINES, JAYLEN; 34 BROZOSKI, BOOGIE; 53 KALIN, MARIANNE; 54 KARSTEN, SANDRA;

Delaware: 12 OLEARY, LIZZIE; 22 DEFREESE, SAMONE; 23 KARGO, BAILEY; 25 LAWRENCE, REBECCA; 2 GONZALES, ABBY;

| Time | VISITORS: Hofstra | Score | Margin | HOME: Delaware |
|-------|--|-------|--------|------------------------------------|
| 09:37 | MISSED 3PTR by BROZOSKI, BOOGIE | | | |
| 09:33 | | | | REBOUND (DEF) by OLEARY, LIZZIE |
| 09:17 | | | | MISSED 3PTR by LEWIS, ALISON |
| 09:15 | | | | REBOUND (OFF) by MCBRIDE, PARIS |
| 09:14 | | | | MISSED JUMPER by MCBRIDE, PARIS |
| 09:10 | REBOUND (DEF) by CROSKEY, MIKIYAH | | | |
| 08:43 | MISSED LAYUP by KALIN, MARIANNE | | | |
| 08:40 | | | | REBOUND (DEF) by LAWRENCE, REBECCA |
| 08:20 | | | | MISSED LAYUP by GONZALES, ABBY |
| 08:17 | | | | REBOUND (OFF) by OLEARY, LIZZIE |
| 07:55 | | | | MISSED LAYUP by MCBRIDE, PARIS |
| 07:52 | REBOUND (DEF) by CROSKEY, MIKIYAH | | | |
| 07:45 | | | | SUB OUT: MCBRIDE, PARIS |
| 07:45 | | | | SUB IN: KARGO, BAILEY |
| 07:45 | | | | SUB OUT: LEWIS, ALISON |
| 07:45 | | | | SUB IN: DEFREESE, SAMONE |
| 07:35 | MISSED JUMPER by BROZOSKI, BOOGIE | | | |
| 07:32 | | | | REBOUND (DEF) by OLEARY, LIZZIE |
| 07:25 | | | | MISSED JUMPER by OLEARY, LIZZIE |
| 07:22 | | | | REBOUND (OFF) by LAWRENCE, REBECCA |
| 07:20 | | | | MISSED 3PTR by KARGO, BAILEY |
| 07:17 | | | | REBOUND (OFF) by OLEARY, LIZZIE |
| 07:14 | | | | MISSED JUMPER by KARGO, BAILEY |
| 07:11 | REBOUND (DEF) by CROSKEY, MIKIYAH | | | |
| 07:11 | SUB OUT: CROSKEY, MIKIYAH | | | |
| 07:11 | SUB IN: MILLS, SHAWN | | | |
| 06:54 | MISSED 3PTR by HERNANDEZ GIL, ANA | | | |
| 06:51 | | | | REBOUND (DEF) by DEFREESE, SAMONE |
| 06:44 | | | | MISSED JUMPER by GONZALES, ABBY |
| 06:41 | | | | REBOUND (OFF) by OLEARY, LIZZIE |
| 06:41 | FOUL (PERSONAL) by HERNANDEZ GIL, ANA | | | |
| 06:41 | | | | SUB OUT: OLEARY, LIZZIE |
| 06:41 | | | | SUB IN: NICHOLAS, MAKEDA |
| 06:41 | SUB OUT: HERNANDEZ GIL, ANA | | | |
| 06:41 | SUB IN: REYNOLDS, CARIA | | | |
| 06:41 | SUB OUT: MILLS, SHAWN | | | |
| 06:41 | SUB IN: BROWN, JAKAYLA | | | |
| 06:37 | | | | MISSED JUMPER by NICHOLAS, MAKEDA |
| 06:35 | REBOUND (DEF) by KALIN, MARIANNE | | | |
| 06:14 | MISSED 3PTR by KARSTEN, SANDRA | | | |
| 06:09 | REBOUND (OFF) by TEAM | | | |
| 05:51 | GOOD! JUMPER by BROWN, JAKAYLA | 18-17 | H 1 | |
| 05:32 | | | | MISSED JUMPER by DEFREESE, SAMONE |
| 05:29 | | | | REBOUND (OFF) by LAWRENCE, REBECCA |
| 05:17 | | | | MISSED JUMPER by NICHOLAS, MAKEDA |
| 05:14 | | | | REBOUND (OFF) by DEFREESE, SAMONE |
| 05:14 | FOUL (PERSONAL) by REYNOLDS, CARIA | | | |
| 05:14 | | 19-17 | H 2 | GOOD! FT by DEFREESE, SAMONE |
| 05:14 | | | | SUB OUT: GONZALES, ABBY |
| 05:14 | | | | SUB IN: MCBRIDE, PARIS |
| 05:14 | | 20-17 | H 3 | GOOD! FT by DEFREESE, SAMONE |
| 05:00 | MISSED LAYUP by KALIN, MARIANNE | | | |
| 04:57 | | | | REBOUND (DEF) by LAWRENCE, REBECCA |
| 04:34 | | | | MISSED JUMPER by DEFREESE, SAMONE |
| 04:34 | BLOCK by BROWN, JAKAYLA | | | |
| 04:26 | | | | REBOUND (OFF) by DEFREESE, SAMONE |
| 04:25 | | | | MISSED LAYUP by LAWRENCE, REBECCA |
| 04:24 | REBOUND (DEF) by KALIN, MARIANNE | | | |
| 04:24 | TURNOVER (BADPASS) by BROZOSKI, BOOGIE | | | |
| 04:24 | | | | |
| 04:24 | SUB OUT: KALIN, MARIANNE | | | |
| 04:24 | SUB IN: CROSKEY, MIKIYAH | | | |
| 04:11 | FOUL (PERSONAL) by REYNOLDS, CARIA | | | |
| 04:11 | | 21-17 | H 4 | GOOD! FT by NICHOLAS, MAKEDA |
| 04:11 | | | | SUB OUT: LAWRENCE, REBECCA |
| 04:11 | | | | SUB IN: OLEARY, LIZZIE |
| 04:11 | SUB OUT: REYNOLDS, CARIA | | | |
| 04:11 | SUB IN: KALIN, MARIANNE | | | |
| 04:11 | | 22-17 | H 5 | GOOD! FT by NICHOLAS, MAKEDA |
| 03:50 | MISSED 3PTR by KARSTEN, SANDRA | | | |

| Time | VISITORS: Hofstra | Score | Margin | HOME: Delaware |
|-------|---------------------------------------|-------|--------|---|
| 03:46 | REBOUND (OFF) by TEAM | | | |
| 03:35 | TURNOVER (BADPASS) by KALIN, MARIANNE | | | |
| 03:35 | | | | STEAL by NICHOLAS, MAKEDA |
| 03:07 | | | | MISSED JUMPER by OLEARY, LIZZIE |
| 03:07 | BLOCK by CROSKEY, MIKIYAH | | | |
| 03:01 | REBOUND (DEF) by CROSKEY, MIKIYAH | | | |
| 03:01 | | | | FOUL (PERSONAL) by KARGO, BAILEY |
| 03:01 | GOOD! FT by KALIN, MARIANNE | 22-18 | H 4 | |
| 03:01 | | | | SUB OUT: NICHOLAS, MAKEDA |
| 03:01 | | | | SUB IN: LEWIS, ALISON |
| 03:01 | | | | SUB OUT: KARGO, BAILEY |
| 03:01 | | | | SUB IN: LAWRENCE, REBECCA |
| 03:01 | GOOD! FT by KALIN, MARIANNE | 22-19 | H 3 | |
| 02:49 | | | | MISSED 3PTR by MCBRIDE, PARIS |
| 02:45 | | | | REBOUND (OFF) by LAWRENCE, REBECCA |
| 02:42 | FOUL (PERSONAL) by BROZOSKI, BOOGIE | | | |
| 02:42 | | 23-19 | H 4 | GOOD! FT by MCBRIDE, PARIS |
| 02:42 | | | | MISSED FT by MCBRIDE, PARIS |
| 02:42 | REBOUND (DEF) by BROZOSKI, BOOGIE | | | |
| 02:22 | MISSED LAYUP by CROSKEY, MIKIYAH | | | |
| 02:19 | | | | REBOUND (DEF) by OLEARY, LIZZIE |
| 02:14 | | | | MISSED JUMPER by LEWIS, ALISON |
| 02:10 | REBOUND (DEF) by KALIN, MARIANNE | | | |
| 02:06 | MISSED 3PTR by BROZOSKI, BOOGIE | | | |
| 02:01 | REBOUND (OFF) by TEAM | | | |
| 02:01 | | | | SUB OUT: MCBRIDE, PARIS |
| 02:01 | | | | SUB IN: GONZALES, ABBY |
| 02:01 | | | | SUB OUT: OLEARY, LIZZIE |
| 02:01 | | | | SUB IN: LEFFT, GADSON |
| 01:54 | MISSED JUMPER by CROSKEY, MIKIYAH | | | |
| 01:50 | | | | REBOUND (DEF) by LEFFT, GADSON |
| 01:31 | | | | MISSED JUMPER by DEFREESE, SAMONE |
| 01:28 | REBOUND (DEF) by KALIN, MARIANNE | | | |
| 01:24 | MISSED JUMPER by BROZOSKI, BOOGIE | | | |
| 01:21 | | | | REBOUND (DEF) by DEFREESE, SAMONE |
| 01:17 | | 25-19 | H 6 | GOOD! JUMPER by DEFREESE, SAMONE [FB/PNT] |
| 01:17 | FOUL (PERSONAL) by KARSTEN, SANDRA | | | |
| 01:17 | SUB OUT: BROWN, JAKAYLA | | | |
| 01:17 | SUB IN: MILLS, SHAWN | | | |
| 01:17 | | 26-19 | H 7 | GOOD! FT by DEFREESE, SAMONE [FB] |
| 00:49 | MISSED LAYUP by KALIN, MARIANNE | | | |
| 00:46 | | | | REBOUND (DEF) by LEFFT, GADSON |
| 00:41 | | 28-19 | H 9 | GOOD! JUMPER by LEFFT, GADSON [FB] |
| 00:41 | | | | ASSIST by GONZALES, ABBY |
| 00:18 | TURNOVER (BADPASS) by KARSTEN, SANDRA | | | |
| 00:18 | | | | STEAL by GONZALES, ABBY |
| 00:05 | | | | MISSED JUMPER by GONZALES, ABBY |
| 00:02 | | | | REBOUND (OFF) by DEFREESE, SAMONE |
| 00:00 | | | | TURNOVER (BADPASS) by LEWIS, ALISON |
| 00:00 | STEAL by KALIN, MARIANNE | | | |

Hofstra 19, Delaware 28

| Points from (This Period) | HOF | DEL |
|---------------------------|-----|-----|
| In the Paint | 0 | 2 |
| Off Turns | 0 | 2 |
| 2nd Chance | 2 | 3 |
| Fast Break | 0 | 5 |
| Bench | 2 | 5 |

Official Box Score
Hofstra vs Delaware
Second Half Statistics Only
February 17, 2019 at Bob Carpenter Center - Newark, DE



Hofstra 28

| No. | Player | S | Pts | FG | 3FG | FT | OR | DR | TR | PF | A | TO | Blk | Stl | Min | +/- |
|---------------|--------------------|---|-----------|--------------|------------|------------|----------|-----------|-----------|----------|----------|----------|----------|----------|------------|-----|
| 00 | REYNOLDS, CARIA | | 2 | 1-3 | 0-0 | 0-0 | 2 | 2 | 4 | 2 | 0 | 0 | 0 | 1 | 6 | 1 |
| 10 | HERNANDEZ GIL, ANA | | 11 | 4-7 | 3-6 | 0-0 | 0 | 1 | 1 | 0 | 1 | 2 | 0 | 0 | 18 | 2 |
| 11 | HINES, JAYLEN | | 0 | 0-1 | 0-0 | 0-0 | 2 | 0 | 2 | 0 | 0 | 0 | 0 | 0 | 11 | -5 |
| 21 | CROSKEY, MIKIYAH | | 5 | 2-2 | 0-0 | 1-1 | 0 | 1 | 1 | 2 | 0 | 0 | 0 | 0 | 10 | 1 |
| 34 | BROZOSKI, BOOGIE | | 4 | 1-10 | 0-3 | 2-2 | 0 | 2 | 2 | 1 | 6 | 1 | 0 | 2 | 20 | -1 |
| 53 | KALIN, MARIANNE | | 2 | 1-4 | 0-0 | 0-0 | 0 | 4 | 4 | 0 | 0 | 0 | 1 | 1 | 13 | 1 |
| 54 | KARSTEN, SANDRA | | 0 | 0-0 | 0-0 | 0-0 | 0 | 0 | 0 | 0 | 0 | 1 | 0 | 0 | 4 | -7 |
| 02 | BROWN, JAKAYLA | | 4 | 2-6 | 0-0 | 0-1 | 2 | 2 | 4 | 0 | 0 | 0 | 0 | 1 | 14 | 4 |
| 04 | MILLS, SHAWN | | 0 | 0-0 | 0-0 | 0-2 | 1 | 1 | 2 | 0 | 0 | 0 | 0 | 0 | 4 | -1 |
| | TEAM | | 0 | 0-0 | 0-0 | 0-0 | 0 | 1 | 1 | 0 | 0 | 1 | 0 | 0 | 0 | |
| TOTALS | | | 28 | 11-33 | 3-9 | 3-6 | 7 | 14 | 21 | 5 | 7 | 5 | 1 | 5 | 100 | |

Shooting By Period

| Period | FG | FG% | 3FG | 3FG% | FT | FT% |
|----------|-------|-------|------|-------|-----|-------|
| 3rd Qtr | 5-16 | 31% | 1-4 | 25% | 3-3 | 100% |
| 4th Qtr | 6-17 | 35% | 2-5 | 40% | 0-3 | 00% |
| 2nd Half | 11-33 | 33% | 3-9 | 33% | 3-6 | 50% |
| Game | 19-60 | 31.7% | 4-16 | 25.0% | 5-8 | 62.5% |

Last FG Half: HOF 4th-02:03

Delaware 29

| No. | Player | S | Pts | FG | 3FG | FT | OR | DR | TR | PF | A | TO | Blk | Stl | Min | +/- |
|---------------|-------------------|---|-----------|--------------|------------|------------|----------|-----------|-----------|----------|----------|----------|----------|----------|------------|-----|
| 00 | LEFFT, GADSON | | 0 | 0-2 | 0-0 | 0-0 | 1 | 4 | 5 | 0 | 1 | 0 | 0 | 2 | 10 | 6 |
| 12 | OLEARY, LIZZIE | | 6 | 3-4 | 0-0 | 0-0 | 1 | 0 | 1 | 5 | 0 | 0 | 0 | 0 | 9 | 2 |
| 22 | DEFREESE, SAMONE | | 0 | 0-3 | 0-0 | 0-0 | 1 | 1 | 2 | 2 | 1 | 0 | 0 | 0 | 11 | -3 |
| 23 | KARGO, BAILEY | | 5 | 2-5 | 1-2 | 0-0 | 0 | 0 | 0 | 0 | 0 | 3 | 0 | 0 | 10 | -1 |
| 25 | LAWRENCE, REBECCA | | 0 | 0-2 | 0-2 | 0-0 | 1 | 2 | 3 | 1 | 0 | 0 | 1 | 0 | 10 | -6 |
| 35 | LEWIS, ALISON | | 6 | 3-7 | 0-0 | 0-0 | 3 | 3 | 6 | 0 | 0 | 0 | 0 | 0 | 9 | 4 |
| 02 | GONZALES, ABBY | | 6 | 2-4 | 2-4 | 0-0 | 0 | 1 | 1 | 0 | 2 | 1 | 0 | 1 | 18 | -2 |
| 04 | MCBRIDE, PARIS | | 4 | 2-3 | 0-0 | 0-0 | 0 | 1 | 1 | 0 | 1 | 2 | 0 | 0 | 12 | 5 |
| 05 | NICHOLAS, MAKEDA | | 2 | 0-3 | 0-0 | 2-2 | 0 | 3 | 3 | 0 | 0 | 0 | 1 | 1 | 11 | 0 |
| | TEAM | | 0 | 0-0 | 0-0 | 0-0 | 0 | 2 | 2 | 0 | 0 | 0 | 0 | 0 | 0 | |
| TOTALS | | | 29 | 12-33 | 3-8 | 2-2 | 7 | 17 | 24 | 8 | 5 | 6 | 2 | 4 | 100 | |

Shooting By Period

| Period | FG | FG% | 3FG | 3FG% | FT | FT% |
|----------|-------|-------|------|-------|-------|-------|
| 3rd Qtr | 7-15 | 47% | 1-3 | 33% | 2-2 | 100% |
| 4th Qtr | 5-18 | 28% | 2-5 | 40% | 0-0 | 0% |
| 2nd Half | 12-33 | 36% | 3-8 | 38% | 2-2 | 100% |
| Game | 20-73 | 27.4% | 4-17 | 23.5% | 13-15 | 86.7% |

Last FG Half: DEL 4th-01:04

Game Notes:

Officials: Daryl Humphrey, Hillary Harwell, Scott Berkins
Attendance: 1171

Start Time: 2019-02-17 19:07:07

End Time: 2019-02-17 20:53:22

Game Duration: 106

Conference Game;

| Score | 1st | 2nd | 3rd | 4th | TOT |
|-------|-----|-----|-----|-----|-----------|
| HOF | 15 | 4 | 14 | 14 | 47 |
| DEL | 18 | 10 | 17 | 12 | 57 |

| Points from (This Period) | HOF | DEL |
|---------------------------|-----|-----|
| In the Paint | 12 | 16 |
| Off Turns | 4 | 10 |
| 2nd Chance | 4 | 7 |
| Fast Break | 2 | 6 |
| Bench | 11 | 12 |

Official Box Score
Hofstra vs Delaware
Third Quarter Statistics Only
February 17, 2019 at Bob Carpenter Center - Newark, DE



Hofstra 28

| No. | Player | S | Pts | FG | 3FG | FT | OR | DR | TR | PF | A | TO | Blk | Stl | Min | +/- |
|---------------|--------------------|---|-----------|-------------|------------|------------|----------|----------|----------|----------|----------|----------|----------|----------|-----------|-----|
| 10 | HERNANDEZ GIL, ANA | | 3 | 1-2 | 1-2 | 0-0 | 0 | 0 | 0 | 0 | 1 | 1 | 0 | 0 | 8 | 0 |
| 11 | HINES, JAYLEN | | 0 | 0-1 | 0-0 | 0-0 | 2 | 0 | 2 | 0 | 0 | 0 | 0 | 0 | 10 | -5 |
| 34 | BROZOSKI, BOOGIE | | 4 | 1-7 | 0-2 | 2-2 | 0 | 2 | 2 | 1 | 1 | 1 | 0 | 2 | 10 | -3 |
| 53 | KALIN, MARIANNE | | 0 | 0-1 | 0-0 | 0-0 | 0 | 1 | 1 | 0 | 0 | 0 | 1 | 0 | 3 | -1 |
| 54 | KARSTEN, SANDRA | | 0 | 0-0 | 0-0 | 0-0 | 0 | 0 | 0 | 0 | 0 | 1 | 0 | 0 | 4 | -7 |
| 00 | REYNOLDS, CARIA | | 2 | 1-1 | 0-0 | 0-0 | 1 | 0 | 1 | 0 | 0 | 0 | 0 | 1 | 0 | 2 |
| 02 | BROWN, JAKAYLA | | 0 | 0-2 | 0-0 | 0-0 | 1 | 1 | 2 | 0 | 0 | 0 | 0 | 0 | 7 | 1 |
| 04 | MILLS, SHAWN | | 0 | 0-0 | 0-0 | 0-0 | 0 | 0 | 0 | 0 | 0 | 0 | 0 | 0 | 1 | 0 |
| 21 | CROSKEY, MIKIYAH | | 5 | 2-2 | 0-0 | 1-1 | 0 | 1 | 1 | 1 | 0 | 0 | 0 | 0 | 7 | -2 |
| | TEAM | | | | | | 0 | 0 | 0 | 0 | | 0 | | | | |
| TOTALS | | | 14 | 5-16 | 1-4 | 3-3 | 4 | 5 | 9 | 2 | 2 | 3 | 1 | 3 | 50 | |

Shooting By Period

| Period | FG | FG% | 3FG | 3FG% | FT | FT% |
|----------|-------|-------|------|-------|-----|-------|
| 2nd Half | 0-0 | 0% | 0-0 | 0% | 0-0 | 0% |
| Game | 19-60 | 31.7% | 4-16 | 25.0% | 5-8 | 62.5% |

Delaware 29

| No. | Player | S | Pts | FG | 3FG | FT | OR | DR | TR | PF | A | TO | Blk | Stl | Min | +/- |
|---------------|-------------------|---|-----------|-------------|------------|------------|----------|----------|-----------|----------|----------|----------|----------|----------|-----------|-----|
| 02 | GONZALES, ABBY | | 0 | 0-1 | 0-1 | 0-0 | 0 | 0 | 0 | 0 | 1 | 0 | 0 | 1 | 8 | 0 |
| 12 | OLEARY, LIZZIE | | 6 | 3-3 | 0-0 | 0-0 | 1 | 0 | 1 | 3 | 0 | 0 | 0 | 0 | 6 | 1 |
| 22 | DEFREESE, SAMONE | | 0 | 0-0 | 0-0 | 0-0 | 1 | 1 | 2 | 1 | 1 | 0 | 0 | 0 | 6 | -1 |
| 23 | KARGO, BAILEY | | 5 | 2-3 | 1-1 | 0-0 | 0 | 0 | 0 | 0 | 0 | 3 | 0 | 0 | 7 | 2 |
| 25 | LAWRENCE, REBECCA | | 0 | 0-1 | 0-1 | 0-0 | 0 | 0 | 0 | 0 | 0 | 0 | 0 | 0 | 5 | -1 |
| 00 | LEFFT, GADSON | | 0 | 0-1 | 0-0 | 0-0 | 1 | 2 | 3 | 0 | 0 | 0 | 0 | 1 | 4 | 4 |
| 04 | MCBRIDE, PARIS | | 2 | 1-2 | 0-0 | 0-0 | 0 | 1 | 1 | 0 | 1 | 1 | 0 | 0 | 5 | 4 |
| 05 | NICHOLAS, MAKEDA | | 2 | 0-1 | 0-0 | 2-2 | 0 | 2 | 2 | 0 | 0 | 0 | 1 | 1 | 5 | 2 |
| 35 | LEWIS, ALISON | | 2 | 1-3 | 0-0 | 0-0 | 0 | 1 | 1 | 0 | 0 | 0 | 0 | 0 | 4 | 4 |
| | TEAM | | | | | | 0 | 0 | 0 | 0 | | 0 | | | | |
| TOTALS | | | 17 | 7-15 | 1-3 | 2-2 | 3 | 7 | 10 | 4 | 3 | 4 | 1 | 3 | 50 | |

Shooting By Period

| Period | FG | FG% | 3FG | 3FG% | FT | FT% |
|----------|-------|-------|------|-------|-------|-------|
| 2nd Half | 0-0 | 0% | 0-0 | 0% | 0-0 | 0% |
| Game | 20-73 | 27.4% | 4-17 | 23.5% | 13-15 | 86.7% |

Game Notes:

Officials: Daryl Humphrey, Hillary Harwell, Scott Berkins
Attendance: 1171

Start Time: 2019-02-17 19:07:07

End Time: 2019-02-17 20:53:22

Game Duration: 106

Conference Game;

| Score | 1st | 2nd | 3rd | 4th | TOT |
|-------|-----|-----|-----|-----|-----------|
| HOF | 15 | 4 | 14 | 14 | 47 |
| DEL | 18 | 10 | 17 | 12 | 57 |

| Points from (This Period) | HOF | DEL |
|---------------------------|-----|-----|
| In the Paint | 8 | 10 |
| Off Turns | 4 | 4 |
| 2nd Chance | 2 | 2 |
| Fast Break | 2 | 4 |
| Bench | 7 | 6 |

Official Play-By-Play
Hofstra vs Delaware
Third Quarter
February 17, 2019 at Bob Carpenter Center - Newark, DE



Period 3

Starters:

Hofstra: 10 HERNANDEZ GIL, ANA; 11 HINES, JAYLEN; 34 BROZOSKI, BOOGIE; 53 KALIN, MARIANNE; 54 KARSTEN, SANDRA;

Delaware: 12 OLEARY, LIZZIE; 22 DEFREESE, SAMONE; 23 KARGO, BAILEY; 25 LAWRENCE, REBECCA; 2 GONZALES, ABBY;

| Time | VISITORS: Hofstra | Score | Margin | HOME: Delaware |
|-------|--|-------|--------|-------------------------------------|
| 09:49 | | | | MISSED 3PTR by LAWRENCE, REBECCA |
| 09:45 | | | | REBOUND (OFF) by OLEARY, LIZZIE |
| 09:28 | | | | MISSED JUMPER by KARGO, BAILEY |
| 09:25 | | | | REBOUND (OFF) by DEFREESE, SAMONE |
| 09:06 | | 30-19 | H 11 | GOOD! JUMPER by OLEARY, LIZZIE |
| 09:06 | | | | ASSIST by DEFREESE, SAMONE |
| 08:50 | TURNOVER (BADPASS) by KARSTEN, SANDRA | | | |
| 08:50 | | | | STEAL by GONZALES, ABBY |
| 08:35 | | 32-19 | H 13 | GOOD! LAYUP by OLEARY, LIZZIE |
| 08:31 | | | | |
| 08:31 | SUB OUT: KARSTEN, SANDRA | | | |
| 08:31 | SUB IN: BROWN, JAKAYLA | | | |
| 08:26 | | | | FOUL (PERSONAL) by DEFREESE, SAMONE |
| 08:22 | MISSED 3PTR by BROZOSKI, BOOGIE | | | |
| 08:18 | REBOUND (OFF) by HINES, JAYLEN | | | |
| 08:04 | MISSED JUMPER by BROWN, JAKAYLA | | | |
| 08:03 | | | | REBOUND (DEF) by DEFREESE, SAMONE |
| 08:03 | FOUL (PERSONAL) by BROZOSKI, BOOGIE | | | |
| 07:48 | | | | TURNOVER (BADPASS) by KARGO, BAILEY |
| 07:48 | STEAL by BROZOSKI, BOOGIE | | | |
| 07:44 | GOOD! LAYUP by BROZOSKI, BOOGIE [FB] | 32-21 | H 11 | |
| 07:31 | | 35-21 | H 14 | GOOD! 3PTR by KARGO, BAILEY |
| 07:04 | GOOD! LAYUP by CROSKEY, MIKIYAH | 35-23 | H 12 | |
| 07:04 | ASSIST by HERNANDEZ GIL, ANA | | | |
| 07:04 | | | | FOUL (PERSONAL) by OLEARY, LIZZIE |
| 07:04 | GOOD! FT by CROSKEY, MIKIYAH | 35-24 | H 11 | |
| 06:53 | | | | TURNOVER (TRAVEL) by KARGO, BAILEY |
| 06:37 | GOOD! LAYUP by CROSKEY, MIKIYAH | 35-26 | H 9 | |
| 06:37 | ASSIST by BROZOSKI, BOOGIE | | | |
| 06:13 | | 37-26 | H 11 | GOOD! LAYUP by OLEARY, LIZZIE |
| 06:13 | | | | ASSIST by GONZALES, ABBY |
| 05:56 | | | | FOUL (PERSONAL) by OLEARY, LIZZIE |
| 05:56 | GOOD! FT by BROZOSKI, BOOGIE | 37-27 | H 10 | |
| 05:56 | | | | SUB OUT: OLEARY, LIZZIE |
| 05:56 | | | | SUB IN: NICHOLAS, MAKEDA |
| 05:56 | GOOD! FT by BROZOSKI, BOOGIE | 37-28 | H 9 | |
| 05:45 | | 39-28 | H 11 | GOOD! JUMPER by KARGO, BAILEY [PNT] |
| 05:18 | GOOD! 3PTR by HERNANDEZ GIL, ANA | 39-31 | H 8 | |
| 04:59 | | | | MISSED JUMPER by NICHOLAS, MAKEDA |
| 04:56 | REBOUND (DEF) by CROSKEY, MIKIYAH | | | |
| 04:49 | | | | |
| 04:49 | | | | SUB OUT: LAWRENCE, REBECCA |
| 04:49 | | | | SUB IN: LEFFT, GADSON |
| 04:49 | | | | SUB OUT: GONZALES, ABBY |
| 04:49 | | | | SUB IN: MCBRIDE, PARIS |
| 04:33 | TURNOVER (BADPASS) by BROZOSKI, BOOGIE | | | |
| 04:33 | | | | STEAL by LEFFT, GADSON |
| 04:19 | | | | TURNOVER (BADPASS) by KARGO, BAILEY |
| 04:19 | STEAL by BROZOSKI, BOOGIE | | | |
| 04:13 | MISSED JUMPER by BROZOSKI, BOOGIE | | | |
| 04:12 | | | | SUB OUT: DEFREESE, SAMONE |
| 04:12 | | | | SUB IN: LEWIS, ALISON |
| 04:09 | REBOUND (OFF) by BROWN, JAKAYLA | | | |
| 04:00 | MISSED 3PTR by HERNANDEZ GIL, ANA | | | |
| 03:57 | | | | REBOUND (DEF) by NICHOLAS, MAKEDA |
| 03:37 | | | | MISSED JUMPER by LEWIS, ALISON |
| 03:33 | REBOUND (DEF) by BROWN, JAKAYLA | | | |
| 03:27 | TURNOVER (BADPASS) by HERNANDEZ GIL, ANA | | | |
| 03:27 | | | | STEAL by NICHOLAS, MAKEDA |
| 03:20 | | 41-31 | H 10 | GOOD! LAYUP by LEWIS, ALISON [FB] |
| 03:20 | | | | ASSIST by MCBRIDE, PARIS |
| 02:59 | MISSED LAYUP by BROWN, JAKAYLA | | | |
| 02:56 | REBOUND (OFF) by HINES, JAYLEN | | | |
| 02:49 | MISSED JUMPER by BROZOSKI, BOOGIE | | | |
| 02:45 | | | | REBOUND (DEF) by MCBRIDE, PARIS |
| 02:40 | FOUL (PERSONAL) by CROSKEY, MIKIYAH | | | |
| 02:40 | | 42-31 | H 11 | GOOD! FT by NICHOLAS, MAKEDA [FB] |
| 02:40 | | | | SUB OUT: KARGO, BAILEY |
| 02:40 | | | | SUB IN: GONZALES, ABBY |
| 02:40 | SUB OUT: HERNANDEZ GIL, ANA | | | |

| Time | VISITORS: Hofstra | Score | Margin | HOME: Delaware |
|-------|-----------------------------------|-------|--------|--------------------------------------|
| 02:40 | SUB IN: KARSTEN, SANDRA | | | |
| 02:40 | SUB OUT: CROSKEY, MIKIYAH | | | |
| 02:40 | SUB IN: KALIN, MARIANNE | | | |
| 02:40 | | 43-31 | H 12 | GOOD! FT by NICHOLAS, MAKEDA [FB] |
| 02:26 | MISSED LAYUP by HINES, JAYLEN | | | |
| 02:22 | | | | REBOUND (DEF) by LEWIS, ALISON |
| 02:19 | | | | SUB OUT: NICHOLAS, MAKEDA |
| 02:19 | | | | SUB IN: OLEARY, LIZZIE |
| 02:14 | | | | MISSED LAYUP by LEWIS, ALISON |
| 02:11 | | | | REBOUND (OFF) by LEFFT, GADSON |
| 02:11 | | | | MISSED JUMPER by LEFFT, GADSON |
| 02:11 | BLOCK by KALIN, MARIANNE | | | |
| 02:05 | REBOUND (DEF) by KALIN, MARIANNE | | | |
| 02:02 | MISSED JUMPER by BROZOSKI, BOOGIE | | | |
| 01:58 | | | | REBOUND (DEF) by LEFFT, GADSON |
| 01:56 | | | | MISSED 3PTR by GONZALES, ABBY |
| 01:53 | REBOUND (DEF) by BROZOSKI, BOOGIE | | | |
| 01:36 | MISSED 3PTR by BROZOSKI, BOOGIE | | | |
| 01:32 | | | | REBOUND (DEF) by LEFFT, GADSON |
| 01:21 | | | | MISSED JUMPER by MCBRIDE, PARIS |
| 01:17 | REBOUND (DEF) by BROZOSKI, BOOGIE | | | |
| 01:17 | | | | FOUL (PERSONAL) by OLEARY, LIZZIE |
| 01:17 | | | | SUB OUT: LEFFT, GADSON |
| 01:17 | | | | SUB IN: NICHOLAS, MAKEDA |
| 01:17 | SUB OUT: BROWN, JAKAYLA | | | |
| 01:17 | SUB IN: MILLS, SHAWN | | | |
| 00:56 | MISSED LAYUP by KALIN, MARIANNE | | | |
| 00:56 | | | | BLOCK by NICHOLAS, MAKEDA |
| 00:52 | | | | REBOUND (DEF) by NICHOLAS, MAKEDA |
| 00:46 | | 45-31 | H 14 | GOOD! JUMPER by MCBRIDE, PARIS [PNT] |
| 00:24 | SUB OUT: KARSTEN, SANDRA | | | |
| 00:24 | SUB IN: HERNANDEZ GIL, ANA | | | |
| 00:24 | SUB OUT: HINES, JAYLEN | | | |
| 00:24 | SUB IN: REYNOLDS, CARIA | | | |
| 00:15 | MISSED LAYUP by BROZOSKI, BOOGIE | | | |
| 00:12 | REBOUND (OFF) by REYNOLDS, CARIA | | | |
| 00:11 | GOOD! LAYUP by REYNOLDS, CARIA | 45-33 | H 12 | |
| 00:00 | | | | TURNOVER (BADPASS) by MCBRIDE, PARIS |
| 00:00 | STEAL by REYNOLDS, CARIA | | | |

Hofstra 33, Delaware 45

| Points from (This Period) | HOF | DEL |
|---------------------------|-----|-----|
| In the Paint | 8 | 10 |
| Off Turns | 4 | 4 |
| 2nd Chance | 2 | 2 |
| Fast Break | 2 | 4 |
| Bench | 7 | 6 |

Official Box Score
Hofstra vs Delaware
Fourth Quarter Statistics Only
February 17, 2019 at Bob Carpenter Center - Newark, DE



Hofstra 14

| No. | Player | S | Pts | FG | 3FG | FT | OR | DR | TR | PF | A | TO | Blk | Stl | Min | +/- |
|---------------|--------------------|---|-----------|-------------|------------|------------|----------|----------|-----------|----------|----------|----------|----------|----------|-----------|-----|
| 10 | HERNANDEZ GIL, ANA | | 8 | 3-5 | 2-4 | 0-0 | 0 | 1 | 1 | 0 | 0 | 1 | 0 | 0 | 10 | 2 |
| 11 | HINES, JAYLEN | | 0 | 0-0 | 0-0 | 0-0 | 0 | 0 | 0 | 0 | 0 | 0 | 0 | 0 | 1 | 0 |
| 34 | BROZOSKI, BOOGIE | | 0 | 0-3 | 0-1 | 0-0 | 0 | 0 | 0 | 0 | 5 | 0 | 0 | 0 | 10 | 2 |
| 53 | KALIN, MARIANNE | | 2 | 1-3 | 0-0 | 0-0 | 0 | 3 | 3 | 0 | 0 | 0 | 0 | 1 | 10 | 2 |
| 54 | KARSTEN, SANDRA | | 0 | 0-0 | 0-0 | 0-0 | 0 | 0 | 0 | 0 | 0 | 0 | 0 | 0 | 0 | 0 |
| 00 | REYNOLDS, CARIA | | 0 | 0-2 | 0-0 | 0-0 | 1 | 2 | 3 | 2 | 0 | 0 | 0 | 0 | 6 | -1 |
| 02 | BROWN, JAKAYLA | | 4 | 2-4 | 0-0 | 0-1 | 1 | 1 | 2 | 0 | 0 | 0 | 0 | 1 | 7 | 3 |
| 04 | MILLS, SHAWN | | 0 | 0-0 | 0-0 | 0-2 | 1 | 1 | 2 | 0 | 0 | 0 | 0 | 0 | 3 | -1 |
| 21 | CROSKEY, MIKIYAH | | 0 | 0-0 | 0-0 | 0-0 | 0 | 0 | 0 | 1 | 0 | 0 | 0 | 0 | 3 | 3 |
| | TEAM | | | | | | 0 | 1 | 1 | 0 | | 1 | | | | |
| TOTALS | | | 14 | 6-17 | 2-5 | 0-3 | 3 | 9 | 12 | 3 | 5 | 2 | 0 | 2 | 50 | |

Shooting By Period

| Period | FG | FG% | 3FG | 3FG% | FT | FT% |
|--------|-------|-------|------|-------|-----|-------|
| Game | 19-60 | 31.7% | 4-16 | 25.0% | 5-8 | 62.5% |

Delaware 12

| No. | Player | S | Pts | FG | 3FG | FT | OR | DR | TR | PF | A | TO | Blk | Stl | Min | +/- |
|---------------|-------------------|---|-----------|-------------|------------|------------|----------|-----------|-----------|----------|----------|----------|----------|----------|-----------|-----|
| 02 | GONZALES, ABBY | | 6 | 2-3 | 2-3 | 0-0 | 0 | 1 | 1 | 0 | 1 | 1 | 0 | 0 | 10 | -2 |
| 12 | OLEARY, LIZZIE | | 0 | 0-1 | 0-0 | 0-0 | 0 | 0 | 0 | 2 | 0 | 0 | 0 | 0 | 3 | 1 |
| 22 | DEFREESE, SAMONE | | 0 | 0-3 | 0-0 | 0-0 | 0 | 0 | 0 | 1 | 0 | 0 | 0 | 0 | 5 | -2 |
| 23 | KARGO, BAILEY | | 0 | 0-2 | 0-1 | 0-0 | 0 | 0 | 0 | 0 | 0 | 0 | 0 | 0 | 3 | -3 |
| 25 | LAWRENCE, REBECCA | | 0 | 0-1 | 0-1 | 0-0 | 1 | 2 | 3 | 1 | 0 | 0 | 1 | 0 | 5 | -5 |
| 00 | LEFFT, GADSON | | 0 | 0-1 | 0-0 | 0-0 | 0 | 2 | 2 | 0 | 1 | 0 | 0 | 1 | 6 | 2 |
| 04 | MCBRIDE, PARIS | | 2 | 1-1 | 0-0 | 0-0 | 0 | 0 | 0 | 0 | 0 | 1 | 0 | 0 | 7 | 1 |
| 05 | NICHOLAS, MAKEDA | | 0 | 0-2 | 0-0 | 0-0 | 0 | 1 | 1 | 0 | 0 | 0 | 0 | 0 | 6 | -2 |
| 35 | LEWIS, ALISON | | 4 | 2-4 | 0-0 | 0-0 | 3 | 2 | 5 | 0 | 0 | 0 | 0 | 0 | 5 | 0 |
| | TEAM | | | | | | 0 | 2 | 2 | 0 | | 0 | | | | |
| TOTALS | | | 12 | 5-18 | 2-5 | 0-0 | 4 | 10 | 14 | 4 | 2 | 2 | 1 | 1 | 50 | |

Shooting By Period

| Period | FG | FG% | 3FG | 3FG% | FT | FT% |
|--------|-------|-------|------|-------|-------|-------|
| Game | 20-73 | 27.4% | 4-17 | 23.5% | 13-15 | 86.7% |

Game Notes:

Officials: Daryl Humphrey, Hillary Harwell, Scott Perkins
Attendance: 1171

Start Time: 2019-02-17 19:07:07
End Time: 2019-02-17 20:53:22
Game Duration: 106
Conference Game;

| Score | 1st | 2nd | 3rd | 4th | TOT |
|-------|-----|-----|-----|-----|-----------|
| HOF | 15 | 4 | 14 | 14 | 47 |
| DEL | 18 | 10 | 17 | 12 | 57 |

| Points from (This Period) | HOF | DEL |
|---------------------------|-----|-----|
| In the Paint | 4 | 6 |
| Off Turns | 0 | 6 |
| 2nd Chance | 2 | 5 |
| Fast Break | 0 | 2 |
| Bench | 4 | 6 |

Official By-By-Play
Hofstra vs Delaware
Fourth Quarter
February 17, 2019 at Bob Carpenter Center - Newark, DE



Period 4

Starters:

Hofstra: 10 HERNANDEZ GIL, ANA; 11 HINES, JAYLEN; 34 BROZOSKI, BOOGIE; 53 KALIN, MARIANNE; 54 KARSTEN, SANDRA;

Delaware: 12 OLEARY, LIZZIE; 22 DEFREESE, SAMONE; 23 KARGO, BAILEY; 25 LAWRENCE, REBECCA; 2 GONZALES, ABBY;

| Time | VISITORS: Hofstra | Score | Margin | HOME: Delaware |
|-------|--|-------|--------|--------------------------------------|
| 09:50 | | | | MISSED LAYUP by OLEARY, LIZZIE |
| 09:47 | REBOUND (DEF) by HERNANDEZ GIL, ANA | | | |
| 09:26 | MISSED 3PTR by HERNANDEZ GIL, ANA | | | |
| 09:23 | REBOUND (OFF) by REYNOLDS, CARIA | | | |
| 09:22 | MISSED JUMPER by REYNOLDS, CARIA | | | |
| 09:19 | | | | REBOUND (DEF) by NICHOLAS, MAKEDA |
| 09:08 | | | | MISSED JUMPER by NICHOLAS, MAKEDA |
| 09:05 | REBOUND (DEF) by TEAM | | | |
| 08:35 | MISSED JUMPER by BROZOSKI, BOOGIE | | | |
| 08:32 | | | | REBOUND (DEF) by TEAM |
| 08:32 | TURNOVER (SHOTCLOCK) by | | | |
| 08:25 | | 48-33 | H 15 | GOOD! 3PTR by GONZALES, ABBY |
| 08:01 | GOOD! JUMPER by HERNANDEZ GIL, ANA | 48-35 | H 13 | |
| 08:01 | ASSIST by BROZOSKI, BOOGIE | | | |
| 07:36 | | | | MISSED LAYUP by DEFREESE, SAMONE |
| 07:32 | REBOUND (DEF) by REYNOLDS, CARIA | | | |
| 07:29 | MISSED JUMPER by REYNOLDS, CARIA | | | |
| 07:28 | REBOUND (OFF) by MILLS, SHAWN | | | |
| 07:28 | | | | FOUL (PERSONAL) by OLEARY, LIZZIE |
| 07:28 | MISSED FT by MILLS, SHAWN | | | |
| 07:28 | REBOUND (OFF) by TEAM | | | |
| 07:28 | | | | SUB OUT: NICHOLAS, MAKEDA |
| 07:28 | | | | SUB IN: LAWRENCE, REBECCA |
| 07:28 | | | | SUB OUT: OLEARY, LIZZIE |
| 07:28 | | | | SUB IN: LEFFT, GADSON |
| 07:28 | MISSED FT by MILLS, SHAWN | | | |
| 07:28 | | | | REBOUND (DEF) by LAWRENCE, REBECCA |
| 07:22 | | | | MISSED 3PTR by LAWRENCE, REBECCA |
| 07:19 | REBOUND (DEF) by MILLS, SHAWN | | | |
| 07:19 | | | | FOUL (PERSONAL) by DEFREESE, SAMONE |
| 07:19 | SUB OUT: MILLS, SHAWN | | | |
| 07:19 | SUB IN: BROWN, JAKAYLA | | | |
| 07:04 | GOOD! 3PTR by HERNANDEZ GIL, ANA | 48-38 | H 10 | |
| 07:04 | ASSIST by BROZOSKI, BOOGIE | | | |
| 06:52 | | | | MISSED LAYUP by DEFREESE, SAMONE |
| 06:49 | REBOUND (DEF) by REYNOLDS, CARIA | | | |
| 06:46 | MISSED LAYUP by BROWN, JAKAYLA | | | |
| 06:46 | REBOUND (OFF) by BROWN, JAKAYLA | | | |
| 06:45 | GOOD! LAYUP by BROWN, JAKAYLA [PNT] | 48-40 | H 8 | |
| 06:44 | | | | FOUL (PERSONAL) by LAWRENCE, REBECCA |
| 06:44 | | | | |
| 06:43 | | | | SUB OUT: DEFREESE, SAMONE |
| 06:43 | | | | SUB IN: LEWIS, ALISON |
| 06:43 | MISSED FT by BROWN, JAKAYLA | | | |
| 06:43 | | | | REBOUND (DEF) by GONZALES, ABBY |
| 06:14 | | | | TURNOVER (BADPASS) by MCBRIDE, PARIS |
| 06:14 | STEAL by KALIN, MARIANNE | | | |
| 05:46 | TURNOVER (BADPASS) by HERNANDEZ GIL, ANA | | | |
| 05:46 | | | | STEAL by LEFFT, GADSON |
| 05:40 | | | | MISSED 3PTR by GONZALES, ABBY |
| 05:36 | | | | REBOUND (OFF) by LAWRENCE, REBECCA |
| 05:22 | | 51-40 | H 11 | GOOD! 3PTR by GONZALES, ABBY |
| 05:22 | | | | ASSIST by LEFFT, GADSON |
| 04:57 | MISSED JUMPER by BROZOSKI, BOOGIE | | | |
| 04:55 | | | | REBOUND (DEF) by LEWIS, ALISON |
| 04:55 | FOUL (PERSONAL) by REYNOLDS, CARIA | | | |
| 04:55 | | | | SUB OUT: MCBRIDE, PARIS |
| 04:55 | | | | SUB IN: KARGO, BAILEY |
| 04:50 | | 53-40 | H 13 | GOOD! LAYUP by LEWIS, ALISON [FB] |
| 04:50 | | | | ASSIST by GONZALES, ABBY |
| 04:35 | GOOD! LAYUP by KALIN, MARIANNE [PNT] | 53-42 | H 11 | |
| 04:35 | ASSIST by BROZOSKI, BOOGIE | | | |
| 04:21 | | | | MISSED JUMPER by LEFFT, GADSON |
| 04:17 | | | | REBOUND (OFF) by LEWIS, ALISON |
| 04:17 | | 55-42 | H 13 | GOOD! LAYUP by LEWIS, ALISON |
| 03:58 | MISSED JUMPER by KALIN, MARIANNE | | | |
| 03:55 | | | | REBOUND (DEF) by LAWRENCE, REBECCA |
| 03:55 | FOUL (PERSONAL) by REYNOLDS, CARIA | | | |
| 03:55 | | | | SUB OUT: LEFFT, GADSON |
| 03:55 | | | | SUB IN: OLEARY, LIZZIE |

| Time | VISITORS: Hofstra | Score | Margin | HOME: Delaware |
|-------|-------------------------------------|-------|--------|---------------------------------------|
| 03:55 | SUB OUT: REYNOLDS, CARIA | | | |
| 03:55 | SUB IN: CROSKEY, MIKIYAH | | | |
| 03:32 | | | | MISSED JUMPER by LEWIS, ALISON |
| 03:29 | REBOUND (DEF) by BROWN, JAKAYLA | | | |
| 03:29 | | | | FOUL (PERSONAL) by OLEARY, LIZZIE |
| 03:29 | | | | SUB OUT: OLEARY, LIZZIE |
| 03:29 | | | | SUB IN: NICHOLAS, MAKEDA |
| 03:23 | GOOD! 3PTR by HERNANDEZ GIL, ANA | 55-45 | H 10 | |
| 03:23 | ASSIST by BROZOSKI, BOOGIE | | | |
| 03:23 | TIMEOUT 30SEC | | | |
| 03:17 | | | | MISSED JUMPER by KARGO, BAILEY |
| 03:10 | | | | REBOUND (OFF) by LEWIS, ALISON |
| 03:10 | | | | MISSED LAYUP by LEWIS, ALISON |
| 03:07 | REBOUND (DEF) by KALIN, MARIANNE | | | |
| 02:53 | MISSED JUMPER by BROWN, JAKAYLA | | | |
| 02:53 | | | | BLOCK by LAWRENCE, REBECCA |
| 02:49 | | | | REBOUND (DEF) by LEWIS, ALISON |
| 02:24 | | | | MISSED LAYUP by NICHOLAS, MAKEDA |
| 02:22 | | | | REBOUND (OFF) by LEWIS, ALISON |
| 02:22 | FOUL (PERSONAL) by CROSKEY, MIKIYAH | | | |
| 02:16 | | | | MISSED 3PTR by KARGO, BAILEY |
| 02:13 | REBOUND (DEF) by KALIN, MARIANNE | | | |
| 02:03 | GOOD! JUMPER by BROWN, JAKAYLA | 55-47 | H 8 | |
| 02:03 | ASSIST by BROZOSKI, BOOGIE | | | |
| 02:03 | TIMEOUT 30SEC | | | |
| 02:03 | | | | SUB OUT: LAWRENCE, REBECCA |
| 02:03 | | | | SUB IN: LEFFT, GADSON |
| 02:03 | | | | SUB OUT: LEWIS, ALISON |
| 02:03 | | | | SUB IN: DEFREESE, SAMONE |
| 01:34 | | | | TURNOVER (LOSTBALL) by GONZALES, ABBY |
| 01:34 | STEAL by BROWN, JAKAYLA | | | |
| 01:28 | MISSED 3PTR by BROZOSKI, BOOGIE | | | |
| 01:27 | | | | REBOUND (DEF) by LEFFT, GADSON |
| 01:27 | | | | SUB OUT: KARGO, BAILEY |
| 01:27 | | | | SUB IN: MCBRIDE, PARIS |
| 01:04 | | 57-47 | H 10 | GOOD! LAYUP by MCBRIDE, PARIS |
| 00:48 | MISSED LAYUP by KALIN, MARIANNE | | | |
| 00:48 | | | | REBOUND (DEF) by LEFFT, GADSON |
| 00:48 | | | | TIMEOUT 30SEC |
| 00:48 | SUB OUT: BROWN, JAKAYLA | | | |
| 00:48 | SUB IN: MILLS, SHAWN | | | |
| 00:48 | SUB OUT: CROSKEY, MIKIYAH | | | |
| 00:48 | SUB IN: HINES, JAYLEN | | | |
| 00:20 | | | | MISSED JUMPER by DEFREESE, SAMONE |
| 00:14 | REBOUND (DEF) by KALIN, MARIANNE | | | |
| 00:11 | MISSED 3PTR by HERNANDEZ GIL, ANA | | | |
| 00:09 | | | | REBOUND (DEF) by TEAM |

Hofstra 47, Delaware 57

| Points from (This Period) | HOF | DEL |
|---------------------------|-----|-----|
| In the Paint | 4 | 6 |
| Off Turns | 0 | 6 |
| 2nd Chance | 2 | 5 |
| Fast Break | 0 | 2 |
| Bench | 4 | 6 |

Official Scoring/Possession Reference Chart
Hofstra vs Delaware
Period 1
February 17, 2019 at Bob Carpenter Center - Newark, DE



Period 1

Starters:

Hofstra: 10 HERNANDEZ GIL, ANA; 11 HINES, JAYLEN; 34 BROZOSKI, BOOGIE; 53 KALIN, MARIANNE; 54 KARSTEN, SANDRA;

Delaware: 12 OLEARY, LIZZIE; 22 DEFREESE, SAMONE; 23 KARGO, BAILEY; 25 LAWRENCE, REBECCA; 2 GONZALES, ABBY;

| Time | VISITORS: Hofstra | Score | Margin | HOME: Delaware |
|-------|--|-------|--------|-----------------------------------|
| 09:04 | | 1-0 | H 1 | GOOD! FT by OLEARY, LIZZIE |
| 08:33 | | 3-0 | H 3 | GOOD! JUMPER by LAWRENCE, REBECCA |
| 07:18 | GOOD! LAYUP by HINES, JAYLEN | 3-2 | H 1 | |
| 06:22 | GOOD! LAYUP by CROSKEY, MIKIYAH | 3-4 | V 1 | |
| 06:05 | | 5-4 | H 1 | GOOD! LAYUP by DEFREESE, SAMONE |
| 05:47 | GOOD! 3PTR by KARSTEN, SANDRA | 5-7 | V 2 | |
| 05:08 | GOOD! LAYUP by CROSKEY, MIKIYAH [PNT] | 5-9 | V 4 | |
| 04:51 | | 7-9 | V 2 | GOOD! LAYUP by NICHOLAS, MAKEDA |
| 04:04 | | 9-9 | T | GOOD! LAYUP by DEFREESE, SAMONE |
| 03:15 | | 10-9 | H 1 | GOOD! FT by DEFREESE, SAMONE |
| 03:15 | | 11-9 | H 2 | GOOD! FT by DEFREESE, SAMONE |
| 02:49 | GOOD! LAYUP by CROSKEY, MIKIYAH | 11-11 | T | |
| 01:36 | | 12-11 | H 1 | GOOD! FT by LEWIS, ALISON |
| 01:36 | | 13-11 | H 2 | GOOD! FT by LEWIS, ALISON |
| 01:21 | | 15-11 | H 4 | GOOD! LAYUP by LEWIS, ALISON [FB] |
| 01:02 | GOOD! JUMPER by BROZOSKI, BOOGIE [PNT] | 15-13 | H 2 | |
| 00:39 | | 18-13 | H 5 | GOOD! 3PTR by GONZALES, ABBY |
| 00:19 | GOOD! LAYUP by CROSKEY, MIKIYAH | 18-15 | H 3 | |

Hofstra 15, Delaware 18

Official Scoring/Possession Reference Chart
Hofstra vs Delaware
Period 2
February 17, 2019 at Bob Carpenter Center - Newark, DE



Period 2

Starters:

Hofstra: 10 HERNANDEZ GIL, ANA; 11 HINES, JAYLEN; 34 BROZOSKI, BOOGIE; 53 KALIN, MARIANNE; 54 KARSTEN, SANDRA;

Delaware: 12 OLEARY, LIZZIE; 22 DEFREESE, SAMONE; 23 KARGO, BAILEY; 25 LAWRENCE, REBECCA; 2 GONZALES, ABBY;

| Time | VISITORS: Hofstra | Score | Margin | HOME: Delaware |
|-------|--------------------------------|-------|--------|---|
| 05:51 | GOOD! JUMPER by BROWN, JAKAYLA | 18-17 | H 1 | |
| 05:14 | | 19-17 | H 2 | GOOD! FT by DEFREESE, SAMONE |
| 05:14 | | 20-17 | H 3 | GOOD! FT by DEFREESE, SAMONE |
| 04:11 | | 21-17 | H 4 | GOOD! FT by NICHOLAS, MAKEDA |
| 04:11 | | 22-17 | H 5 | GOOD! FT by NICHOLAS, MAKEDA |
| 03:01 | GOOD! FT by KALIN, MARIANNE | 22-18 | H 4 | |
| 03:01 | GOOD! FT by KALIN, MARIANNE | 22-19 | H 3 | |
| 02:42 | | 23-19 | H 4 | GOOD! FT by MCBRIDE, PARIS |
| 01:17 | | 25-19 | H 6 | GOOD! JUMPER by DEFREESE, SAMONE [FB/PNT] |
| 01:17 | | 26-19 | H 7 | GOOD! FT by DEFREESE, SAMONE [FB] |
| 00:41 | | 28-19 | H 9 | GOOD! JUMPER by LEFFT, GADSON [FB] |

Hofstra 19, Delaware 28

Official Scoring/Possession Reference Chart
Hofstra vs Delaware
Period 3
February 17, 2019 at Bob Carpenter Center - Newark, DE



Period 3

Starters:

Hofstra: 10 HERNANDEZ GIL, ANA; 11 HINES, JAYLEN; 34 BROZOSKI, BOOGIE; 53 KALIN, MARIANNE; 54 KARSTEN, SANDRA;

Delaware: 12 OLEARY, LIZZIE; 22 DEFRESE, SAMONE; 23 KARGO, BAILEY; 25 LAWRENCE, REBECCA; 2 GONZALES, ABBY;

| Time | VISITORS: Hofstra | Score | Margin | HOME: Delaware |
|-------|--------------------------------------|-------|--------|--------------------------------------|
| 09:06 | | 30-19 | H 11 | GOOD! JUMPER by OLEARY, LIZZIE |
| 08:35 | | 32-19 | H 13 | GOOD! LAYUP by OLEARY, LIZZIE |
| 07:44 | GOOD! LAYUP by BROZOSKI, BOOGIE [FB] | 32-21 | H 11 | |
| 07:31 | | 35-21 | H 14 | GOOD! 3PTR by KARGO, BAILEY |
| 07:04 | GOOD! LAYUP by CROSKEY, MIKIYAH | 35-23 | H 12 | |
| 07:04 | GOOD! FT by CROSKEY, MIKIYAH | 35-24 | H 11 | |
| 06:37 | GOOD! LAYUP by CROSKEY, MIKIYAH | 35-26 | H 9 | |
| 06:13 | | 37-26 | H 11 | GOOD! LAYUP by OLEARY, LIZZIE |
| 05:56 | GOOD! FT by BROZOSKI, BOOGIE | 37-27 | H 10 | |
| 05:56 | GOOD! FT by BROZOSKI, BOOGIE | 37-28 | H 9 | |
| 05:45 | | 39-28 | H 11 | GOOD! JUMPER by KARGO, BAILEY [PNT] |
| 05:18 | GOOD! 3PTR by HERNANDEZ GIL, ANA | 39-31 | H 8 | |
| 03:20 | | 41-31 | H 10 | GOOD! LAYUP by LEWIS, ALISON [FB] |
| 02:40 | | 42-31 | H 11 | GOOD! FT by NICHOLAS, MAKEDA [FB] |
| 02:40 | | 43-31 | H 12 | GOOD! FT by NICHOLAS, MAKEDA [FB] |
| 00:46 | | 45-31 | H 14 | GOOD! JUMPER by MCBRIDE, PARIS [PNT] |
| 00:11 | GOOD! LAYUP by REYNOLDS, CARIA | 45-33 | H 12 | |

Hofstra 33, Delaware 45

Official Scoring/Possession Reference Chart
Hofstra vs Delaware
Period 4
February 17, 2019 at Bob Carpenter Center - Newark, DE



Period 4

Starters:

Hofstra: 10 HERNANDEZ GIL, ANA; 11 HINES, JAYLEN; 34 BROZOSKI, BOOGIE; 53 KALIN, MARIANNE; 54 KARSTEN, SANDRA;

Delaware: 12 OLEARY, LIZZIE; 22 DEFREESE, SAMONE; 23 KARGO, BAILEY; 25 LAWRENCE, REBECCA; 2 GONZALES, ABBY;

| Time | VISITORS: Hofstra | Score | Margin | HOME: Delaware |
|-------|--------------------------------------|-------|--------|-----------------------------------|
| 08:25 | | 48-33 | H 15 | GOOD! 3PTR by GONZALES, ABBY |
| 08:01 | GOOD! JUMPER by HERNANDEZ GIL, ANA | 48-35 | H 13 | |
| 07:04 | GOOD! 3PTR by HERNANDEZ GIL, ANA | 48-38 | H 10 | |
| 06:45 | GOOD! LAYUP by BROWN, JAKAYLA [PNT] | 48-40 | H 8 | |
| 05:22 | | 51-40 | H 11 | GOOD! 3PTR by GONZALES, ABBY |
| 04:50 | | 53-40 | H 13 | GOOD! LAYUP by LEWIS, ALISON [FB] |
| 04:35 | GOOD! LAYUP by KALIN, MARIANNE [PNT] | 53-42 | H 11 | |
| 04:17 | | 55-42 | H 13 | GOOD! LAYUP by LEWIS, ALISON |
| 03:23 | GOOD! 3PTR by HERNANDEZ GIL, ANA | 55-45 | H 10 | |
| 02:03 | GOOD! JUMPER by BROWN, JAKAYLA | 55-47 | H 8 | |
| 01:04 | | 57-47 | H 10 | GOOD! LAYUP by MCBRIDE, PARIS |

Hofstra 47, Delaware 57

Official Substitutions Log
Hofstra vs Delaware
Period 1
February 17, 2019 at Bob Carpenter Center - Newark, DE



| VISITORS: Hofstra | Time | Score | HOME: Delaware |
|-----------------------------|-------|-------|----------------------------|
| 10 HERNANDEZ GIL, ANA | | | 12 OLEARY, LIZZIE |
| 11 HINES, JAYLEN | | | 22 DEFREESE, SAMONE |
| 34 BROZOSKI, BOOGIE | | | 23 KARGO, BAILEY |
| 53 KALIN, MARIANNE | | | 25 LAWRENCE, REBECCA |
| 54 KARSTEN, SANDRA | | | 2 GONZALES, ABBY |
| | 07:04 | 2-3 | SUB OUT: KARGO, BAILEY |
| | 07:04 | | SUB IN: MCBRIDE, PARIS |
| | 07:04 | | SUB OUT: LAWRENCE, REBECCA |
| | 07:04 | | SUB IN: NICHOLAS, MAKEDA |
| SUB OUT: 11 HINES, JAYLEN | 07:04 | | |
| SUB IN: 21 CROSKEY, MIKIYAH | 07:04 | | |
| | 05:20 | 7-5 | SUB OUT: OLEARY, LIZZIE |
| | 05:20 | | SUB IN: LEFFT, GADSON |
| | 05:20 | | SUB OUT: GONZALES, ABBY |
| | 05:20 | | SUB IN: LEWIS, ALISON |
| SUB OUT: 54 KARSTEN, SANDRA | 05:20 | | |
| SUB IN: 2 BROWN, JAKAYLA | 05:20 | | |
| SUB OUT: 2 BROWN, JAKAYLA | 03:15 | 9-10 | |
| SUB IN: 54 KARSTEN, SANDRA | 03:15 | | |
| | 02:26 | 11-11 | SUB OUT: NICHOLAS, MAKEDA |
| | 02:26 | | SUB IN: OLEARY, LIZZIE |
| | 02:26 | | SUB OUT: LEFFT, GADSON |
| | 02:26 | | SUB IN: LAWRENCE, REBECCA |
| | 02:03 | 11-11 | SUB OUT: DEFREESE, SAMONE |
| | 02:03 | | SUB IN: GONZALES, ABBY |

Hofstra 15, Delaware 18

Official Substitutions Log
Hofstra vs Delaware
Period 2
February 17, 2019 at Bob Carpenter Center - Newark, DE



| VISITORS: Hofstra | Time | Score | HOME: Delaware |
|-------------------------------|-------|-------|---------------------------|
| 10 HERNANDEZ GIL,ANA | | | 12 OLEARY,LIZZIE |
| 11 HINES,JAYLEN | | | 22 DEFREESE,SAMONE |
| 34 BROZOSKI,BOOGIE | | | 23 KARGO,BAILEY |
| 53 KALIN,MARIANNE | | | 25 LAWRENCE,REBECCA |
| 54 KARSTEN,SANDRA | | | 2 GONZALES,ABBY |
| | 07:45 | - | SUB OUT: MCBRIDE,PARIS |
| | 07:45 | | SUB IN: KARGO,BAILEY |
| | 07:45 | | SUB OUT: LEWIS,ALISON |
| | 07:45 | | SUB IN: DEFREESE,SAMONE |
| SUB OUT: 21 CROSKEY,MIKIYAH | 07:11 | - | |
| SUB IN: 4 MILLS,SHAWN | 07:11 | | |
| | 06:41 | - | SUB OUT: OLEARY,LIZZIE |
| | 06:41 | | SUB IN: NICHOLAS,MAKEDA |
| SUB OUT: 10 HERNANDEZ GIL,ANA | 06:41 | | |
| SUB IN: 00 REYNOLDS,CARIA | 06:41 | | |
| SUB OUT: 4 MILLS,SHAWN | 06:41 | | |
| SUB IN: 2 BROWN,JAKAYLA | 06:41 | | |
| | 05:14 | 17-19 | SUB OUT: GONZALES,ABBY |
| | 05:14 | | SUB IN: MCBRIDE,PARIS |
| SUB OUT: 53 KALIN,MARIANNE | 04:24 | 17-20 | |
| SUB IN: 21 CROSKEY,MIKIYAH | 04:24 | | |
| | 04:11 | 17-21 | SUB OUT: LAWRENCE,REBECCA |
| | 04:11 | | SUB IN: OLEARY,LIZZIE |
| SUB OUT: 00 REYNOLDS,CARIA | 04:11 | | |
| SUB IN: 53 KALIN,MARIANNE | 04:11 | | |
| | 03:01 | 18-22 | SUB OUT: NICHOLAS,MAKEDA |
| | 03:01 | | SUB IN: LEWIS,ALISON |
| | 03:01 | | SUB OUT: KARGO,BAILEY |
| | 03:01 | | SUB IN: LAWRENCE,REBECCA |
| | 02:01 | 19-23 | SUB OUT: MCBRIDE,PARIS |
| | 02:01 | | SUB IN: GONZALES,ABBY |
| | 02:01 | | SUB OUT: OLEARY,LIZZIE |
| | 02:01 | | SUB IN: LEFFT,GADSON |
| SUB OUT: 2 BROWN,JAKAYLA | 01:17 | 19-25 | |
| SUB IN: 4 MILLS,SHAWN | 01:17 | | |

Hofstra 19, Delaware 28

Official Substitutions Log
Hofstra vs Delaware
Period 3
February 17, 2019 at Bob Carpenter Center - Newark, DE



| VISITORS: Hofstra | Time | Score | HOME: Delaware |
|-------------------------------|-------|-------|---------------------------|
| 10 HERNANDEZ GIL,ANA | | | 12 OLEARY,LIZZIE |
| 11 HINES,JAYLEN | | | 22 DEFREESE,SAMONE |
| 34 BROZOSKI,BOOGIE | | | 23 KARGO,BAILEY |
| 53 KALIN,MARIANNE | | | 25 LAWRENCE,REBECCA |
| 54 KARSTEN,SANDRA | | | 2 GONZALES,ABBY |
| SUB OUT: 54 KARSTEN,SANDRA | 08:31 | 19-32 | |
| SUB IN: 2 BROWN,JAKAYLA | 08:31 | | |
| | 05:56 | 27-37 | SUB OUT: OLEARY,LIZZIE |
| | 05:56 | | SUB IN: NICHOLAS,MAKEDA |
| | 04:49 | 31-39 | SUB OUT: LAWRENCE,REBECCA |
| | 04:49 | | SUB IN: LEFFT,GADSON |
| | 04:49 | | SUB OUT: GONZALES,ABBY |
| | 04:49 | | SUB IN: MCBRIDE,PARIS |
| | 04:12 | 31-39 | SUB OUT: DEFREESE,SAMONE |
| | 04:12 | | SUB IN: LEWIS,ALISON |
| | 02:40 | 31-42 | SUB OUT: KARGO,BAILEY |
| | 02:40 | | SUB IN: GONZALES,ABBY |
| SUB OUT: 10 HERNANDEZ GIL,ANA | 02:40 | | |
| SUB IN: 54 KARSTEN,SANDRA | 02:40 | | |
| SUB OUT: 21 CROSKEY,MIKIYAH | 02:40 | | |
| SUB IN: 53 KALIN,MARIANNE | 02:40 | | |
| | 02:19 | 31-43 | SUB OUT: NICHOLAS,MAKEDA |
| | 02:19 | | SUB IN: OLEARY,LIZZIE |
| | 01:17 | 31-43 | SUB OUT: LEFFT,GADSON |
| | 01:17 | | SUB IN: NICHOLAS,MAKEDA |
| SUB OUT: 2 BROWN,JAKAYLA | 01:17 | | |
| SUB IN: 4 MILLS,SHAWN | 01:17 | | |
| SUB OUT: 54 KARSTEN,SANDRA | 00:24 | 31-45 | |
| SUB IN: 10 HERNANDEZ GIL,ANA | 00:24 | | |
| SUB OUT: 11 HINES,JAYLEN | 00:24 | | |
| SUB IN: 00 REYNOLDS,CARIA | 00:24 | | |

Hofstra 33, Delaware 45

Official Substitutions Log
Hofstra vs Delaware
Period 4
February 17, 2019 at Bob Carpenter Center - Newark, DE



| VISITORS: Hofstra | Time | Score | HOME: Delaware |
|------------------------------|-------|-------|----------------------------|
| 10 HERNANDEZ GIL, ANA | | | 12 OLEARY, LIZZIE |
| 11 HINES, JAYLEN | | | 22 DEFREESE, SAMONE |
| 34 BROZOSKI, BOOGIE | | | 23 KARGO, BAILEY |
| 53 KALIN, MARIANNE | | | 25 LAWRENCE, REBECCA |
| 54 KARSTEN, SANDRA | | | 2 GONZALES, ABBY |
| | 07:28 | 35-48 | SUB OUT: NICHOLAS, MAKEDA |
| | 07:28 | | SUB IN: LAWRENCE, REBECCA |
| | 07:28 | | SUB OUT: OLEARY, LIZZIE |
| | 07:28 | | SUB IN: LEFFT, GADSON |
| SUB OUT: 4 MILLS, SHAWN | 07:19 | 35-48 | |
| SUB IN: 2 BROWN, JAKAYLA | 07:19 | | |
| | 06:43 | 40-48 | SUB OUT: DEFREESE, SAMONE |
| | 06:43 | | SUB IN: LEWIS, ALISON |
| | 04:55 | 40-51 | SUB OUT: MCBRIDE, PARIS |
| | 04:55 | | SUB IN: KARGO, BAILEY |
| | 03:55 | 42-55 | SUB OUT: LEFFT, GADSON |
| | 03:55 | | SUB IN: OLEARY, LIZZIE |
| SUB OUT: 00 REYNOLDS, CARIA | 03:55 | | |
| SUB IN: 21 CROSKEY, MIKIYAH | 03:55 | | |
| | 03:29 | 42-55 | SUB OUT: OLEARY, LIZZIE |
| | 03:29 | | SUB IN: NICHOLAS, MAKEDA |
| | 02:03 | 47-55 | SUB OUT: LAWRENCE, REBECCA |
| | 02:03 | | SUB IN: LEFFT, GADSON |
| | 02:03 | | SUB OUT: LEWIS, ALISON |
| | 02:03 | | SUB IN: DEFREESE, SAMONE |
| | 01:27 | 47-55 | SUB OUT: KARGO, BAILEY |
| | 01:27 | | SUB IN: MCBRIDE, PARIS |
| SUB OUT: 2 BROWN, JAKAYLA | 00:48 | 47-57 | |
| SUB IN: 4 MILLS, SHAWN | 00:48 | | |
| SUB OUT: 21 CROSKEY, MIKIYAH | 00:48 | | |
| SUB IN: 11 HINES, JAYLEN | 00:48 | | |

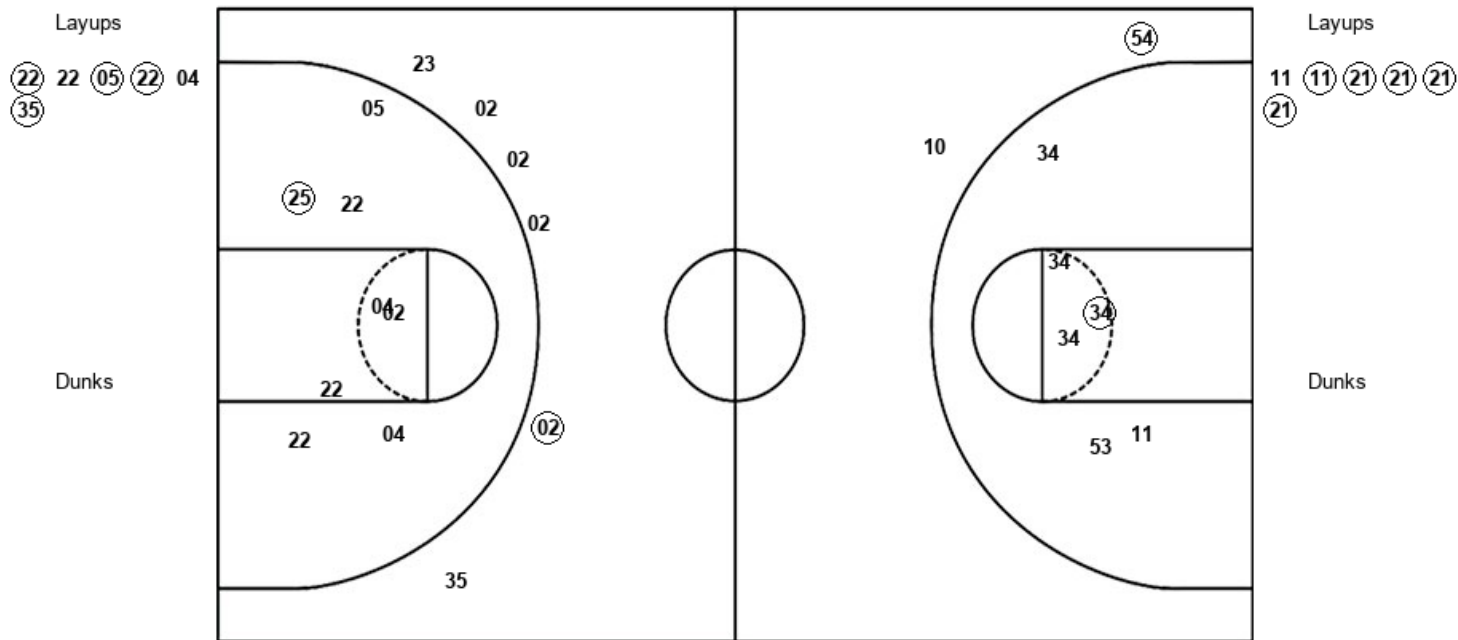
Hofstra 47, Delaware 57

Official Shot Chart
Hofstra vs Delaware
 PERIOD 1 Shots
 February 17, 2019 at Bob Carpenter Center - Newark, DE



Delaware

Hofstra



| DEL : Period 1 | Made | Att | Pct |
|--------------------------|----------|-----------|-------------|
| Layups | 4 | 6 | 66.7 |
| Dunks | 0 | 0 | 0 |
| 2PT Field Goals | 5 | 14 | 35.7 |
| 3PT Field Goals | 1 | 6 | 16.7 |
| Total Field Goals | 6 | 20 | 30.0 |

| HOF : Period 1 | Made | Att | Pct |
|--------------------------|----------|-----------|-------------|
| Layups | 5 | 6 | 83.3 |
| Dunks | 0 | 0 | 0 |
| 2PT Field Goals | 6 | 12 | 50.0 |
| 3PT Field Goals | 1 | 2 | 50.0 |
| Total Field Goals | 7 | 14 | 50.0 |

Official Shot Chart
Hofstra vs Delaware
 PERIOD 2 Shots
 February 17, 2019 at Bob Carpenter Center - Newark, DE



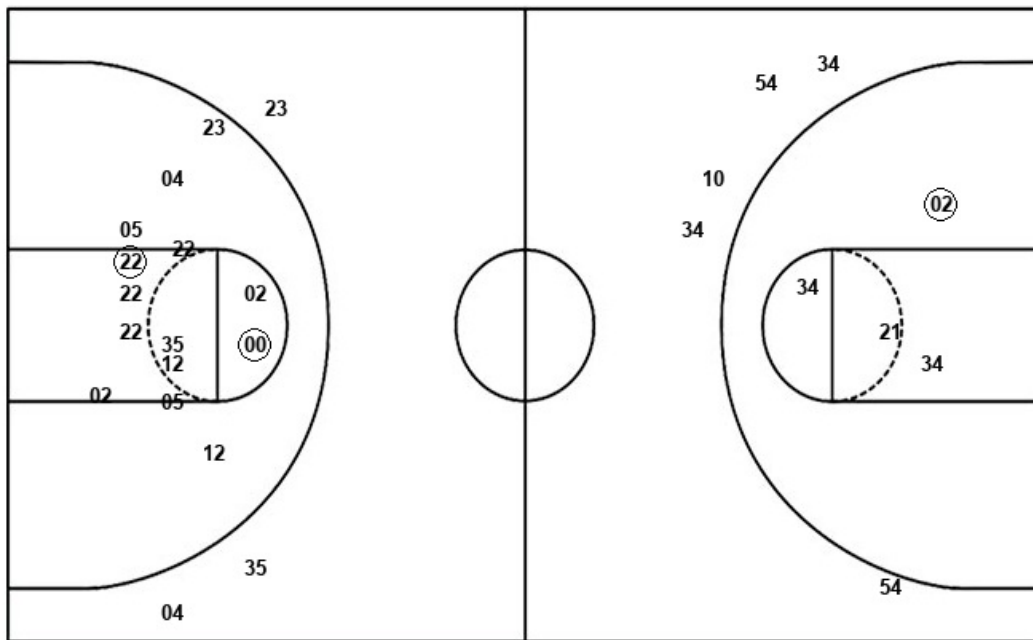
Delaware

Hofstra

Layups

02 04 25

Dunks



Layups

53 53 21 53

Dunks

| DEL : Period 2 | Made | Att | Pct |
|--------------------------|----------|-----------|-------------|
| Layups | 0 | 3 | 00.0 |
| Dunks | 0 | 0 | 0 |
| 2PT Field Goals | 2 | 17 | 11.8 |
| 3PT Field Goals | 0 | 3 | 00.0 |
| Total Field Goals | 2 | 20 | 10.0 |

| HOF : Period 2 | Made | Att | Pct |
|--------------------------|----------|-----------|-------------|
| Layups | 0 | 4 | 00.0 |
| Dunks | 0 | 0 | 0 |
| 2PT Field Goals | 1 | 8 | 12.5 |
| 3PT Field Goals | 0 | 5 | 00.0 |
| Total Field Goals | 1 | 13 | 07.7 |

Official Shot Chart
Hofstra vs Delaware
 PERIOD 3 Shots
 February 17, 2019 at Bob Carpenter Center - Newark, DE

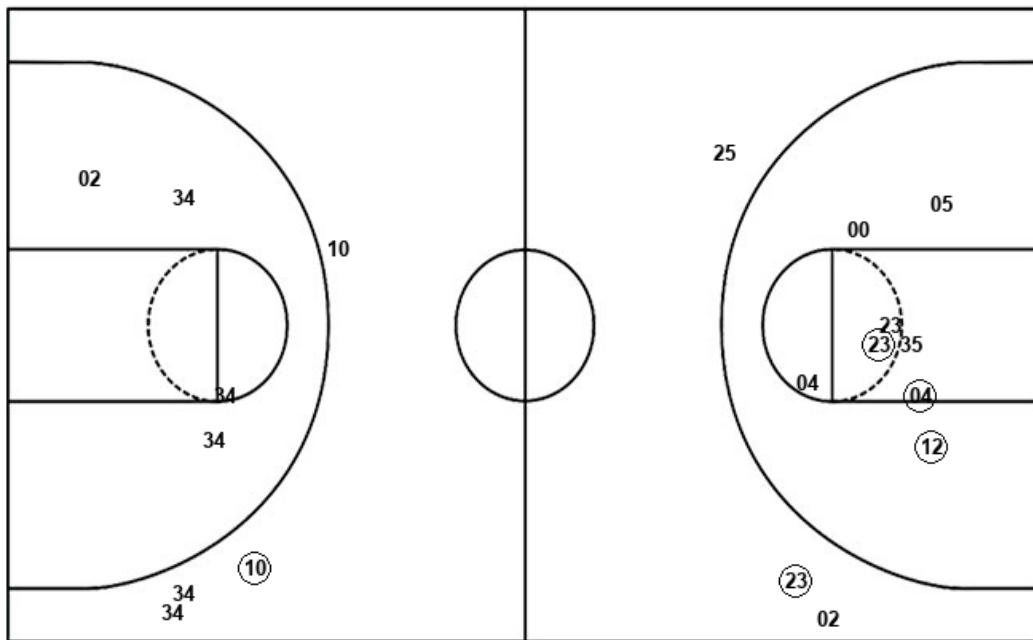


Delaware

Hofstra

Layups
 (12) (12) (35) 35

Dunks



Layups
 (34) (21) (21) 02 11
 53 34 (00)

Dunks

| DEL : Period 3 | Made | Att | Pct |
|--------------------------|----------|-----------|-------------|
| Layups | 3 | 4 | 75.0 |
| Dunks | 0 | 0 | 0 |
| 2PT Field Goals | 6 | 12 | 50.0 |
| 3PT Field Goals | 1 | 3 | 33.3 |
| Total Field Goals | 7 | 15 | 46.7 |

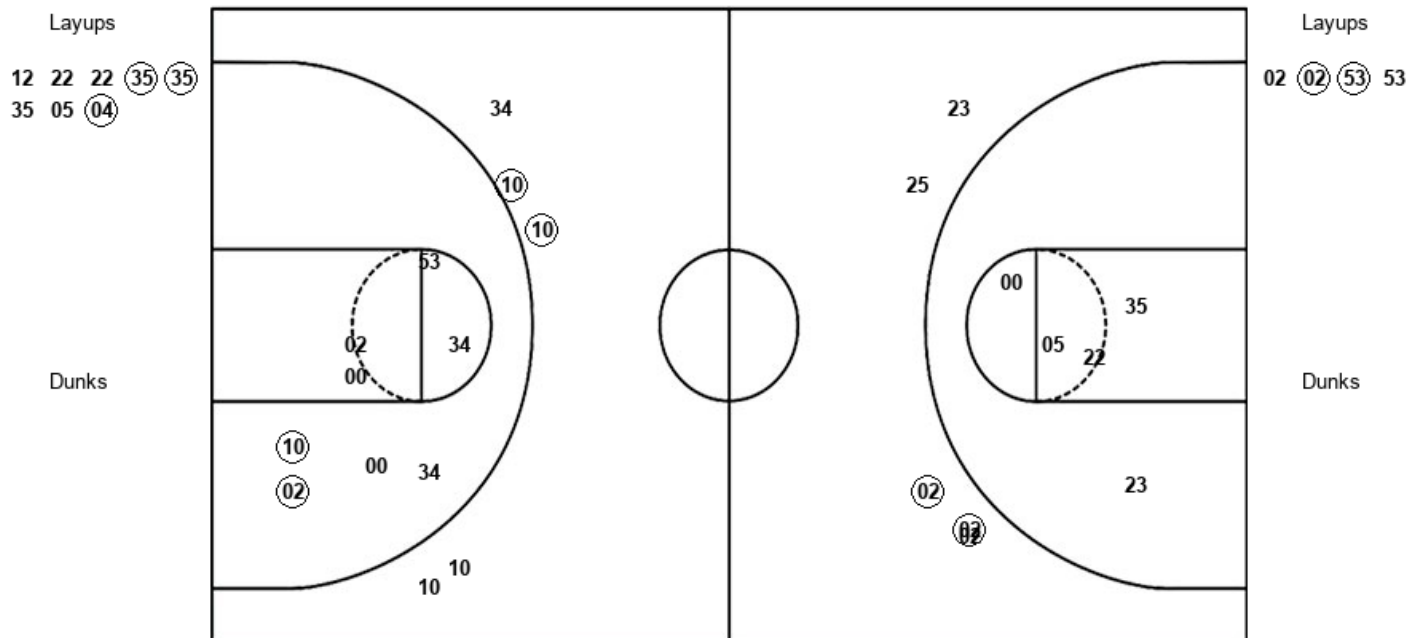
| HOF : Period 3 | Made | Att | Pct |
|--------------------------|----------|-----------|-------------|
| Layups | 4 | 8 | 50.0 |
| Dunks | 0 | 0 | 0 |
| 2PT Field Goals | 4 | 12 | 33.3 |
| 3PT Field Goals | 1 | 4 | 25.0 |
| Total Field Goals | 5 | 16 | 31.3 |

Official Shot Chart
Hofstra vs Delaware
 PERIOD 4 Shots
 February 17, 2019 at Bob Carpenter Center - Newark, DE



Delaware

Hofstra



| DEL : Period 4 | Made | Att | Pct |
|--------------------------|----------|-----------|-------------|
| Layups | 3 | 8 | 37.5 |
| Dunks | 0 | 0 | 0 |
| 2PT Field Goals | 3 | 13 | 23.1 |
| 3PT Field Goals | 2 | 5 | 40.0 |
| Total Field Goals | 5 | 18 | 27.8 |

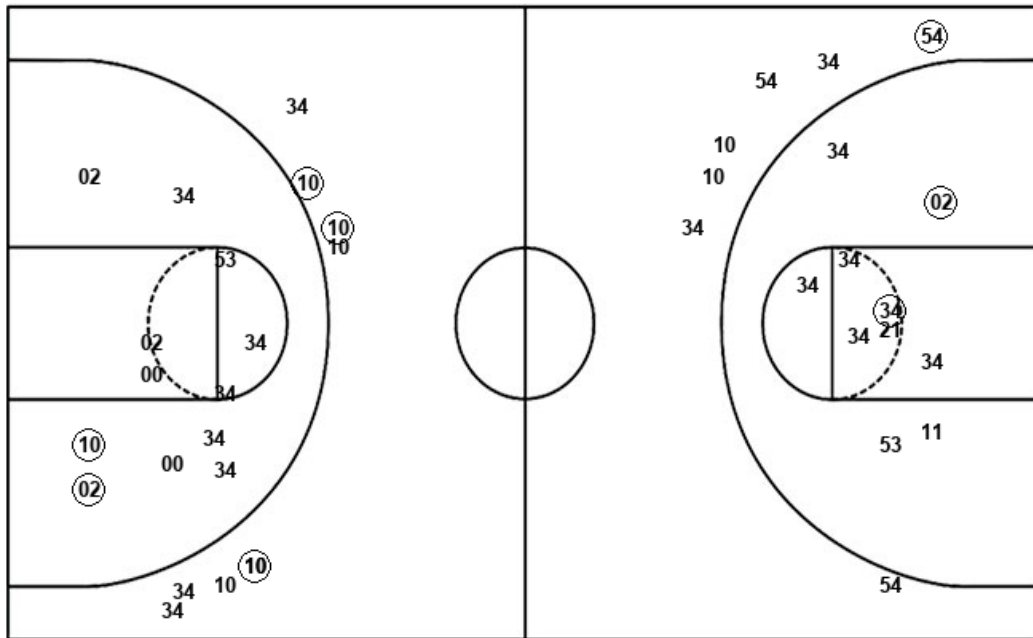
| HOF : Period 4 | Made | Att | Pct |
|--------------------------|----------|-----------|-------------|
| Layups | 2 | 4 | 50.0 |
| Dunks | 0 | 0 | 0 |
| 2PT Field Goals | 4 | 12 | 33.3 |
| 3PT Field Goals | 2 | 5 | 40.0 |
| Total Field Goals | 6 | 17 | 35.3 |

Official Shot Chart
Hofstra vs Delaware
Hofstra Team Shots
February 17, 2019 at Bob Carpenter Center - Newark, DE



Layups

Dunks



Layups

Dunks

11 (11) (21) (21) (21)
(21) 53 53 21 53
(34) (21) (21) 02 11
53 34 (00) 02 (02)
(53) 53

| HOF : Period 1 | Made | Att | Pct |
|--------------------------|----------|-----------|-------------|
| Layups | 5 | 6 | 83.3 |
| Dunks | 0 | 0 | 0 |
| 2PT Field Goals | 6 | 12 | 50.0 |
| 3PT Field Goals | 1 | 2 | 50.0 |
| Total Field Goals | 7 | 14 | 50.0 |

| HOF : Period 3 | Made | Att | Pct |
|--------------------------|----------|-----------|-------------|
| Layups | 4 | 8 | 50.0 |
| Dunks | 0 | 0 | 0 |
| 2PT Field Goals | 4 | 12 | 33.3 |
| 3PT Field Goals | 1 | 4 | 25.0 |
| Total Field Goals | 5 | 16 | 31.3 |

| HOF : Period 2 | Made | Att | Pct |
|--------------------------|----------|-----------|-------------|
| Layups | 0 | 4 | 00.0 |
| Dunks | 0 | 0 | 0 |
| 2PT Field Goals | 1 | 8 | 12.5 |
| 3PT Field Goals | 0 | 5 | 00.0 |
| Total Field Goals | 1 | 13 | 07.7 |

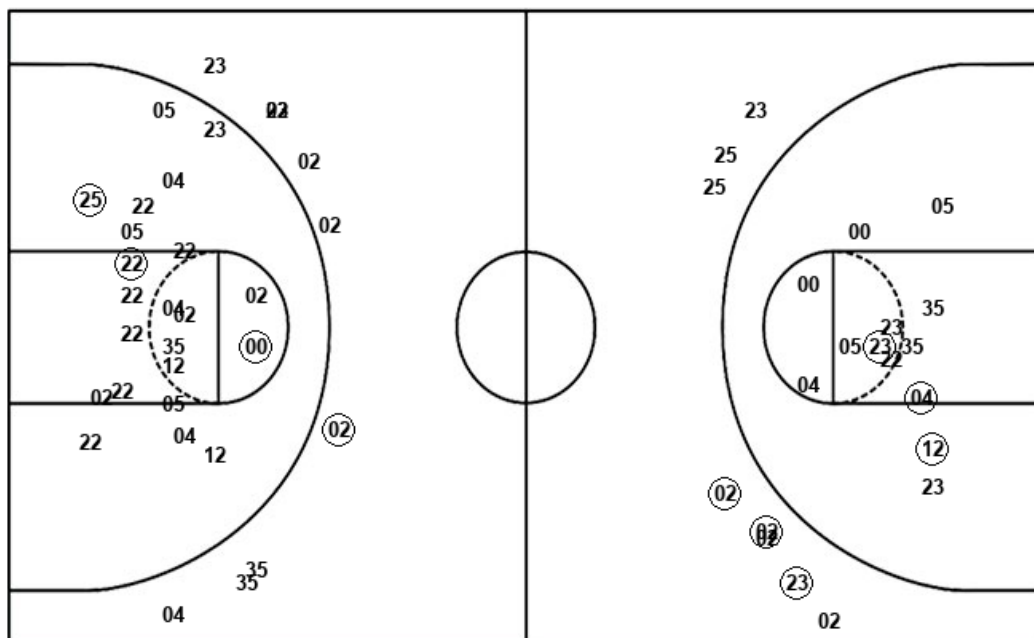
| HOF : Period 4 | Made | Att | Pct |
|--------------------------|----------|-----------|-------------|
| Layups | 2 | 4 | 50.0 |
| Dunks | 0 | 0 | 0 |
| 2PT Field Goals | 4 | 12 | 33.3 |
| 3PT Field Goals | 2 | 5 | 40.0 |
| Total Field Goals | 6 | 17 | 35.3 |

Official Shot Chart
Hofstra vs Delaware
Delaware Team Shots
February 17, 2019 at Bob Carpenter Center - Newark, DE



Layups

Dunks



Layups

Dunks

| DEL : Period 1 | Made | Att | Pct |
|--------------------------|----------|-----------|-------------|
| Layups | 4 | 6 | 66.7 |
| Dunks | 0 | 0 | 0 |
| 2PT Field Goals | 5 | 14 | 35.7 |
| 3PT Field Goals | 1 | 6 | 16.7 |
| Total Field Goals | 6 | 20 | 30.0 |

| DEL : Period 3 | Made | Att | Pct |
|--------------------------|----------|-----------|-------------|
| Layups | 3 | 4 | 75.0 |
| Dunks | 0 | 0 | 0 |
| 2PT Field Goals | 6 | 12 | 50.0 |
| 3PT Field Goals | 1 | 3 | 33.3 |
| Total Field Goals | 7 | 15 | 46.7 |

| DEL : Period 2 | Made | Att | Pct |
|--------------------------|----------|-----------|-------------|
| Layups | 0 | 3 | 00.0 |
| Dunks | 0 | 0 | 0 |
| 2PT Field Goals | 2 | 17 | 11.8 |
| 3PT Field Goals | 0 | 3 | 00.0 |
| Total Field Goals | 2 | 20 | 10.0 |

| DEL : Period 4 | Made | Att | Pct |
|--------------------------|----------|-----------|-------------|
| Layups | 3 | 8 | 37.5 |
| Dunks | 0 | 0 | 0 |
| 2PT Field Goals | 3 | 13 | 23.1 |
| 3PT Field Goals | 2 | 5 | 40.0 |
| Total Field Goals | 5 | 18 | 27.8 |