

FINAL SCORE



Col. of Charleston

50



Delaware

74

January 27, 2019 • Bob Carpenter Center - Newark, Del.

FINAL STATISTICS

Official Box Score
Col. of Charleston vs Delaware
Game Totals -- Final Statistics
January 27, 2019 at Bob Carpenter Center - Newark, Del.



Col. of Charleston 50

No.	Player	S	Pts	FG	3FG	FT	OR	DR	TR	PF	A	TO	Blk	Stl	Min	+/-
02	HUFF, DARIEN		8	3-12	2-8	0-0	1	2	3	2	2	3	0	1	36	-21
15	EADY, ARYNN		6	3-4	0-0	0-0	5	3	8	3	0	1	2	0	13	0
20	SULLIVAN, BRI		0	0-1	0-0	0-0	0	0	0	1	0	1	0	0	9	-16
23	COLLINS, TYLER		8	3-13	2-8	0-0	1	3	4	0	3	4	0	0	34	-19
25	FORD, DEJA		10	2-11	1-6	5-8	1	4	5	3	1	3	1	2	26	-17
00	TAYLOR, MADISON		1	0-3	0-2	1-2	1	2	3	5	1	2	1	2	29	-11
03	PERKINS, LATRICE		8	2-6	0-1	4-4	4	2	6	3	0	1	0	2	15	-11
21	LARSON, BAILEIGH		4	2-7	0-0	0-0	0	3	3	5	1	2	1	0	15	-14
24	MADDOX, LEXI		0	0-0	0-0	0-0	0	0	0	0	0	1	0	0	1	-2
42	BROUGHTON, ERICKA		5	2-7	0-0	1-2	2	4	6	1	1	0	0	1	21	-9
TEAM							3	3	6	0		0				
TOTALS			50	17-64	5-25	11-16	18	26	44	23	9	18	5	8	199	

Shooting By Period

Period	FG	FG%	3FG	3FG%	FT	FT%
1st Qtr	5-19	26%	0-4	00%	0-0	0%
2nd Qtr	4-13	31%	2-6	33%	6-8	75%
3rd Qtr	5-18	28%	3-9	33%	1-2	50%
4th Qtr	3-14	21%	0-6	00%	4-6	67%
1st Half	9-32	28%	2-10	20%	6-8	75%
2nd Half	8-32	25%	3-15	20%	5-8	63%
Game	17-64	26.6%	5-25	20.0%	11-16	68.8%

Last FG: 4th-01:02
Biggest Run: 11-0
Largest lead: By 1 at 3-06:34
Technical Fouls: None.

Delaware 74

No.	Player	S	Pts	FG	3FG	FT	OR	DR	TR	PF	A	TO	Blk	Stl	Min	+/-
02	GONZALES, ABBY		6	2-6	2-4	0-0	0	0	0	0	3	1	0	2	31	18
12	OLEARY, LIZZIE		5	1-4	0-0	3-4	0	6	6	1	1	0	1	1	20	0
22	DEFREESE, SAMONE		14	4-10	0-0	6-7	0	6	6	3	4	1	0	2	27	26
23	KARGO, BAILEY		2	1-3	0-1	0-0	1	1	2	1	0	2	0	2	24	8
25	LAWRENCE, REBECCA		10	5-12	0-2	0-1	2	9	11	2	0	1	4	2	26	3
04	MCBRIDE, PARIS		12	5-8	1-2	1-2	2	1	3	2	3	2	0	0	24	22
05	NICHOLAS, MAKEDA		4	1-4	0-0	2-2	1	4	5	3	3	1	0	1	14	20
20	DICKEY, JASMINE		17	5-6	0-0	7-8	1	3	4	1	1	1	2	3	22	26
35	LEWIS, ALISON		4	0-4	0-0	4-4	0	1	1	1	0	2	0	2	9	-3
TEAM							3	2	5	0		0				
TOTALS			74	24-57	3-9	23-28	10	33	43	14	15	11	7	15	199	

Shooting By Period

Period	FG	FG%	3FG	3FG%	FT	FT%
1st Qtr	8-19	42%	1-2	50%	5-5	100%
2nd Qtr	4-10	40%	0-2	00%	5-6	83%
3rd Qtr	7-15	47%	2-4	50%	11-14	79%
4th Qtr	5-13	38%	0-1	00%	2-3	67%
1st Half	12-29	41%	1-4	25%	10-11	91%
2nd Half	12-28	43%	2-5	40%	13-17	76%
Game	24-57	42.1%	3-9	33.3%	23-28	82.1%

Last FG: 4th-01:44
Biggest Run: 14-0
Largest lead: By 26 at 4-01:44
Technical Fouls: None.

Game Notes:

Officials: **Mark McClenney, Kris Denson, Kelsey Reynold**
Attendance: **1212**

Start Time: **2019-01-27 18:06:33**
End Time: **2019-01-27 20:00:57**
Game Duration: **114**
Conference Game;

Score	1st	2nd	3rd	4th	TOT
COC	10	16	14	10	50
DEL	22	13	27	12	74

COC led for **0:50**. DEL led for **38:28**.
Game was tied for 0:24.
Times tied: **0** Lead Changes: **2**

Points from	COC	DEL
In the Paint	22	36
Off Turns	8	24
2nd Chance	11	8
Fast Break	4	17
Bench	18	37

Official Box Score
Col. of Charleston vs Delaware
First Half Statistics Only
January 27, 2019 at Bob Carpenter Center - Newark, Del.



Col. of Charleston 26

No.	Player	S	Pts	FG	3FG	FT	OR	DR	TR	PF	A	TO	Blk	Stl	Min	+/-
00	TAYLOR, MADISON		1	0-3	0-2	1-2	1	2	3	1	0	1	1	2	16	3
15	EADY, ARYNN		2	1-1	0-0	0-0	1	2	3	1	0	0	2	0	6	-5
20	SULLIVAN, BRI		0	0-1	0-0	0-0	0	0	0	1	0	1	0	0	6	-10
21	LARSON, BAILEIGH		4	2-6	0-0	0-0	0	2	2	1	1	1	1	0	11	-4
23	COLLINS, TYLER		5	2-5	1-2	0-0	1	2	3	0	1	2	0	0	16	-6
24	MADDOX, LEXI		0	0-0	0-0	0-0	0	0	0	0	0	1	0	0	1	-2
25	FORD, DEJA		1	0-4	0-2	1-2	1	1	2	2	1	2	0	1	8	-10
42	BROUGHTON, ERICKA		2	1-4	0-0	0-0	1	1	2	1	1	0	0	0	13	-5
02	HUFF, DARIEN		5	2-6	1-4	0-0	1	2	3	1	0	2	0	1	19	-9
03	PERKINS, LATRICE		6	1-2	0-0	4-4	3	0	3	1	0	0	0	0	3	3
	TEAM		0	0-0	0-0	0-0	2	0	2	0	0	0	0	0	0	0
TOTALS			26	9-32	2-10	6-8	11	12	23	9	4	10	4	4	100	

Shooting By Period

Period	FG	FG%	3FG	3FG%	FT	FT%
1st Qtr	5-19	26%	0-4	00%	0-0	0%
2nd Qtr	4-13	31%	2-6	33%	6-8	75%
1st Half	9-32	28%	2-10	20%	6-8	75%
Game	17-64	26.6%	5-25	20.0%	11-16	68.8%

Last FG Half: COC 2nd-00:55

Delaware 35

No.	Player	S	Pts	FG	3FG	FT	OR	DR	TR	PF	A	TO	Blk	Stl	Min	+/-
12	OLEARY, LIZZIE		3	0-3	0-0	3-4	0	4	4	1	1	0	1	0	10	5
20	DICKEY, JASMINE		4	2-2	0-0	0-0	0	0	0	0	0	0	1	1	11	5
22	DEFREESE, SAMONE		11	3-7	0-0	5-5	0	3	3	2	1	1	0	0	13	9
23	KARGO, BAILEY		2	1-3	0-1	0-0	1	1	2	1	0	1	0	2	16	11
25	LAWRENCE, REBECCA		6	3-8	0-2	0-0	1	2	3	1	0	0	3	2	15	2
35	LEWIS, ALISON		2	0-1	0-0	2-2	0	0	0	0	0	0	0	1	2	-3
02	GONZALES, ABBY		3	1-1	1-1	0-0	0	0	0	0	2	1	0	1	15	6
04	MCBRIDE, PARIS		2	1-2	0-0	0-0	1	0	1	1	2	1	0	0	8	1
05	NICHOLAS, MAKEDA		2	1-2	0-0	0-0	1	3	4	2	1	1	0	1	8	9
	TEAM		0	0-0	0-0	0-0	1	1	2	0	0	0	0	0	0	0
TOTALS			35	12-29	1-4	10-11	5	14	19	8	7	5	5	8	100	

Shooting By Period

Period	FG	FG%	3FG	3FG%	FT	FT%
1st Qtr	8-19	42%	1-2	50%	5-5	100%
2nd Qtr	4-10	40%	0-2	00%	5-6	83%
1st Half	12-29	41%	1-4	25%	10-11	91%
Game	24-57	42.1%	3-9	33.3%	23-28	82.1%

Last FG Half: DEL 2nd-02:04

Game Notes:

Officials: Mark McClenney, Kris Denson, Kelsey Reynold
 Attendance: 1212

Start Time: 2019-01-27 18:06:33

End Time: 2019-01-27 20:00:57

Game Duration: 114

Conference Game;

Score	1st	2nd	3rd	4th	TOT
COC	10	16	14	10	50
DEL	22	13	27	12	74

Points from (This Period)	COC	DEL
In the Paint	12	18
Off Turns	3	10
2nd Chance	8	0
Fast Break	2	9
Bench	13	10

Official Box Score
Col. of Charleston vs Delaware
First Quarter Statistics Only
January 27, 2019 at Bob Carpenter Center - Newark, Del.



Col. of Charleston 10

No.	Player	S	Pts	FG	3FG	FT	OR	DR	TR	PF	A	TO	Blk	Stl	Min	+/-
02	HUFF, DARIEN		2	1-4	0-2	0-0	1	1	2	1	0	1	0	1	9	-12
15	EADY, ARYNN		2	1-1	0-0	0-0	1	2	3	0	0	0	2	0	6	-4
20	SULLIVAN, BRI		0	0-1	0-0	0-0	0	0	0	1	0	1	0	0	5	-12
23	COLLINS, TYLER		2	1-3	0-0	0-0	0	0	0	0	0	1	0	0	8	-10
25	FORD, DEJA		0	0-4	0-2	0-0	1	0	1	1	0	2	0	1	6	-12
00	TAYLOR, MADISON		0	0-1	0-0	0-0	1	2	3	0	0	0	1	0	6	0
03	PERKINS, LATRICE		0	0-0	0-0	0-0	0	0	0	0	0	0	0	0	0	-2
21	LARSON, BAILEIGH		2	1-3	0-0	0-0	0	1	1	1	0	0	1	0	4	-6
24	MADDOX, LEXI		0	0-0	0-0	0-0	0	0	0	0	0	0	0	0	0	0
42	BROUGHTON, ERICKA		2	1-2	0-0	0-0	1	0	1	1	0	0	0	0	5	-2
TEAM							0	0	0	0		0				
TOTALS			10	5-19	0-4	0-0	5	6	11	5	0	5	4	2	50	

Shooting By Period

Period	FG	FG%	3FG	3FG%	FT	FT%
1st Qtr	5-19	26%	0-4	00%	0-0	0%
2nd Qtr	4-13	31%	2-6	33%	6-8	75%
1st Half	5-19	26%	0-4	00%	0-0	0%
1st Half	9-32	28%	2-10	20%	6-8	75%
Game	17-64	26.6%	5-25	20.0%	11-16	68.8%

Delaware 22

No.	Player	S	Pts	FG	3FG	FT	OR	DR	TR	PF	A	TO	Blk	Stl	Min	+/-
02	GONZALES, ABBY		3	1-1	1-1	0-0	0	0	0	0	1	0	0	0	7	10
12	OLEARY, LIZZIE		0	0-2	0-0	0-0	0	2	2	1	1	0	1	0	6	6
22	DEFREESE, SAMONE		9	3-6	0-0	3-3	0	2	2	0	0	0	0	0	9	10
23	KARGO, BAILEY		2	1-2	0-0	0-0	1	0	1	0	0	1	0	2	8	8
25	LAWRENCE, REBECCA		4	2-5	0-1	0-0	1	1	2	0	0	0	2	1	6	6
04	MCBRIDE, PARIS		0	0-1	0-0	0-0	1	0	1	1	2	1	0	0	4	6
05	NICHOLAS, MAKEDA		0	0-1	0-0	0-0	1	3	4	0	1	1	0	0	4	6
20	DICKEY, JASMINE		2	1-1	0-0	0-0	0	0	0	0	0	0	0	1	4	6
35	LEWIS, ALISON		2	0-0	0-0	2-2	0	0	0	0	0	0	0	1	1	2
TEAM							1	1	2	0		0				
TOTALS			22	8-19	1-2	5-5	5	9	14	2	5	3	3	5	50	

Shooting By Period

Period	FG	FG%	3FG	3FG%	FT	FT%
1st Qtr	8-19	42%	1-2	50%	5-5	100%
2nd Qtr	4-10	40%	0-2	00%	5-6	83%
1st Half	8-19	42%	1-2	50%	5-5	100%
1st Half	12-29	41%	1-4	25%	10-11	91%
Game	24-57	42.1%	3-9	33.3%	23-28	82.1%

Game Notes:

Officials: Mark McClenney, Kris Denson, Kelsey Reynold
 Attendance: 1212

Start Time: 2019-01-27 18:06:33
 End Time: 2019-01-27 20:00:57
 Game Duration: 114
 Conference Game;

Score	1st	2nd	3rd	4th	TOT
COC	10	16	14	10	50
DEL	22	13	27	12	74

Points from (This Period)	COC	DEL
In the Paint	10	10
Off Turns	2	6
2nd Chance	6	0
Fast Break	0	7
Bench	4	4

Official Play-By-Play
Col. of Charleston vs Delaware
First Quarter
January 27, 2019 at Bob Carpenter Center - Newark, Del.



Period 1

Starters:

Col. of Charleston: 15 EADY, ARYNN; 20 SULLIVAN, BRI; 23 COLLINS, TYLER; 25 FORD, DEJA; 2 HUFF, DARIEN;

Delaware: 12 OLEARY, LIZZIE; 22 DEFREESE, SAMONE; 23 KARGO, BAILEY; 25 LAWRENCE, REBECCA; 2 GONZALES, ABBY;

Time	VISITORS: Col. of Charleston	Score	Margin	HOME: Delaware
09:39		2-0	H 2	GOOD! JUMPER by LAWRENCE, REBECCA
09:39				ASSIST by GONZALES, ABBY
09:16	MISSED 3PTR by HUFF, DARIEN			
09:12				REBOUND (DEF) by OLEARY, LIZZIE
09:06		4-0	H 4	GOOD! LAYUP by DEFREESE, SAMONE
08:52	MISSED 3PTR by FORD, DEJA			
08:48				REBOUND (DEF) by DEFREESE, SAMONE
08:30		6-0	H 6	GOOD! LAYUP by DEFREESE, SAMONE [PNT]
08:17	MISSED 3PTR by FORD, DEJA			
08:13				REBOUND (DEF) by TEAM
08:09	FOUL (PERSONAL) by FORD, DEJA			
08:04		8-0	H 8	GOOD! LAYUP by LAWRENCE, REBECCA
08:04				ASSIST by OLEARY, LIZZIE
08:00				
08:00	SUB OUT: EADY, ARYNN			
08:00	SUB IN: BROUGHTON, ERICKA			
08:00	SUB OUT: COLLINS, TYLER			
08:00	SUB IN: TAYLOR, MADISON			
07:50	MISSED JUMPER by SULLIVAN, BRI			
07:47				REBOUND (DEF) by OLEARY, LIZZIE
07:43	FOUL (PERSONAL) by SULLIVAN, BRI			
07:43		9-0	H 9	GOOD! FT by DEFREESE, SAMONE [FB]
07:43		10-0	H 10	GOOD! FT by DEFREESE, SAMONE [FB]
07:18	MISSED JUMPER by FORD, DEJA			
07:14	REBOUND (OFF) by TAYLOR, MADISON			
07:11				FOUL (PERSONAL) by OLEARY, LIZZIE
06:59	TURNOVER (BADPASS) by FORD, DEJA			
06:59				STEAL by LAWRENCE, REBECCA
06:52	FOUL (PERSONAL) by BROUGHTON, ERICKA			
06:47				TURNOVER (LOSTBALL) by KARGO, BAILEY
06:47	STEAL by FORD, DEJA			
06:39	MISSED JUMPER by FORD, DEJA			
06:39				BLOCK by LAWRENCE, REBECCA
06:34				REBOUND (DEF) by LAWRENCE, REBECCA
06:32				MISSED JUMPER by DEFREESE, SAMONE
06:28				REBOUND (OFF) by LAWRENCE, REBECCA
06:27				MISSED JUMPER by LAWRENCE, REBECCA
06:27	BLOCK by TAYLOR, MADISON			
06:22				REBOUND (OFF) by TEAM
06:21	SUB OUT: FORD, DEJA			
06:21	SUB IN: COLLINS, TYLER			
06:21	SUB OUT: SULLIVAN, BRI			
06:21	SUB IN: EADY, ARYNN			
06:16				MISSED LAYUP by OLEARY, LIZZIE
06:16	BLOCK by EADY, ARYNN			
06:13	REBOUND (DEF) by EADY, ARYNN			
06:03	MISSED LAYUP by HUFF, DARIEN			
06:03				BLOCK by OLEARY, LIZZIE
05:57				REBOUND (DEF) by DEFREESE, SAMONE
05:52				MISSED LAYUP by OLEARY, LIZZIE
05:48	REBOUND (DEF) by EADY, ARYNN			
05:39	TURNOVER (BADPASS) by COLLINS, TYLER			
05:39				STEAL by KARGO, BAILEY
05:34		12-0	H 12	GOOD! JUMPER by KARGO, BAILEY [FB]
05:05	MISSED LAYUP by BROUGHTON, ERICKA			
05:02	REBOUND (OFF) by BROUGHTON, ERICKA			
05:01	GOOD! LAYUP by BROUGHTON, ERICKA	12-2	H 10	
04:56				MISSED JUMPER by KARGO, BAILEY
04:52				REBOUND (OFF) by KARGO, BAILEY
04:45				MISSED JUMPER by LAWRENCE, REBECCA
04:42	REBOUND (DEF) by TAYLOR, MADISON			
04:32	MISSED JUMPER by COLLINS, TYLER			
04:30	REBOUND (OFF) by EADY, ARYNN			
04:29	GOOD! LAYUP by EADY, ARYNN [PNT]	12-4	H 8	
04:15				MISSED 3PTR by LAWRENCE, REBECCA
04:12	REBOUND (DEF) by HUFF, DARIEN			
04:09	MISSED LAYUP by TAYLOR, MADISON			
04:09				BLOCK by LAWRENCE, REBECCA
04:08	REBOUND (OFF) by HUFF, DARIEN			
04:06	GOOD! LAYUP by HUFF, DARIEN [PNT]	12-6	H 6	

Time	VISITORS: Col. of Charleston	Score	Margin	HOME: Delaware
04:05				TIMEOUT TEAM
04:05				SUB OUT: OLEARY, LIZZIE
04:05				SUB IN: MCBRIDE, PARIS
04:05				SUB OUT: KARGO, BAILEY
04:05				SUB IN: NICHOLAS, MAKEDA
04:05				SUB OUT: LAWRENCE, REBECCA
04:05				SUB IN: DICKEY, JASMINE
04:05	SUB OUT: TAYLOR, MADISON			
04:05	SUB IN: FORD, DEJA			
04:05	SUB OUT: EADY, ARYNN			
04:05	SUB IN: LARSON, BAILEIGH			
04:04		15-6	H 9	GOOD! 3PTR by GONZALES, ABBY
04:04				ASSIST by MCBRIDE, PARIS
03:32	GOOD! LAYUP by LARSON, BAILEIGH	15-8	H 7	
03:08				MISSED JUMPER by DEFREESE, SAMONE
03:05				REBOUND (OFF) by NICHOLAS, MAKEDA
03:04				MISSED JUMPER by NICHOLAS, MAKEDA
03:00	REBOUND (DEF) by LARSON, BAILEIGH			
02:50	MISSED 3PTR by HUFF, DARIEN			
02:46				REBOUND (DEF) by NICHOLAS, MAKEDA
02:41		17-8	H 9	GOOD! LAYUP by DEFREESE, SAMONE [FB/PNT]
02:41				ASSIST by MCBRIDE, PARIS
02:41	FOUL (PERSONAL) by HUFF, DARIEN			
02:41		18-8	H 10	GOOD! FT by DEFREESE, SAMONE [FB]
02:33				SUB OUT: GONZALES, ABBY
02:33				SUB IN: KARGO, BAILEY
02:33	SUB OUT: FORD, DEJA			
02:33	SUB IN: TAYLOR, MADISON			
02:33	SUB OUT: BROUGHTON, ERICKA			
02:33	SUB IN: SULLIVAN, BRI			
02:29	MISSED JUMPER by LARSON, BAILEIGH			
02:21				REBOUND (DEF) by NICHOLAS, MAKEDA
02:20				MISSED LAYUP by MCBRIDE, PARIS
02:20	BLOCK by LARSON, BAILEIGH			
02:14				REBOUND (OFF) by MCBRIDE, PARIS
02:14				TURNOVER (LOSTBALL) by MCBRIDE, PARIS
02:14	STEAL by HUFF, DARIEN			
02:10	TURNOVER (BADPASS) by HUFF, DARIEN			
02:10				STEAL by KARGO, BAILEY
01:59		20-8	H 12	GOOD! LAYUP by DICKEY, JASMINE
01:59				ASSIST by NICHOLAS, MAKEDA
01:39	TURNOVER (LOSTBALL) by SULLIVAN, BRI			
01:39				STEAL by DICKEY, JASMINE
01:29				TURNOVER (TRAVEL) by NICHOLAS, MAKEDA
01:29	SUB OUT: SULLIVAN, BRI			
01:29	SUB IN: EADY, ARYNN			
01:29	SUB OUT: HUFF, DARIEN			
01:29	SUB IN: FORD, DEJA			
01:20	GOOD! JUMPER by COLLINS, TYLER [PNT]	20-10	H 10	
00:53				MISSED JUMPER by DEFREESE, SAMONE
00:53	BLOCK by EADY, ARYNN			
00:52	REBOUND (DEF) by TAYLOR, MADISON			
00:48				FOUL (PERSONAL) by MCBRIDE, PARIS
00:48				SUB OUT: DEFREESE, SAMONE
00:48				SUB IN: LEWIS, ALISON
00:31	MISSED JUMPER by LARSON, BAILEIGH			
00:27	REBOUND (OFF) by FORD, DEJA			
00:25	TURNOVER (LOSTBALL) by FORD, DEJA			
00:25				STEAL by LEWIS, ALISON
00:25	SUB OUT: FORD, DEJA			
00:25	SUB IN: PERKINS, LATRICE			
00:09	FOUL (PERSONAL) by LARSON, BAILEIGH			
00:09		21-10	H 11	GOOD! FT by LEWIS, ALISON
00:09		22-10	H 12	GOOD! FT by LEWIS, ALISON
00:00	MISSED JUMPER by COLLINS, TYLER			
00:00				REBOUND (DEF) by NICHOLAS, MAKEDA

Col. of Charleston 10, Delaware 22

Points from (This Period)	COC	DEL
In the Paint	10	10
Off Turns	2	6
2nd Chance	6	0
Fast Break	0	7
Bench	4	4

Official Box Score
Col. of Charleston vs Delaware
Second Quarter Statistics Only
January 27, 2019 at Bob Carpenter Center - Newark, Del.



Col. of Charleston 16

No.	Player	S	Pts	FG	3FG	FT	OR	DR	TR	PF	A	TO	Blk	Stl	Min	+/-
02	HUFF, DARIEN		3	1-2	1-2	0-0	0	1	1	0	0	1	0	0	10	3
15	EADY, ARYNN		0	0-0	0-0	0-0	0	0	0	1	0	0	0	0	0	-1
20	SULLIVAN, BRI		0	0-0	0-0	0-0	0	0	0	0	0	0	0	0	1	2
23	COLLINS, TYLER		3	1-2	1-2	0-0	1	2	3	0	1	1	0	0	8	4
25	FORD, DEJA		1	0-0	0-0	1-2	0	1	1	1	1	0	0	0	2	2
00	TAYLOR, MADISON		1	0-2	0-2	1-2	0	0	0	1	0	1	0	2	10	3
03	PERKINS, LATRICE		6	1-2	0-0	4-4	3	0	3	1	0	0	0	0	3	5
21	LARSON, BAILEIGH		2	1-3	0-0	0-0	0	1	1	0	1	1	0	0	7	2
24	MADDOX, LEXI		0	0-0	0-0	0-0	0	0	0	0	0	1	0	0	1	-2
42	BROUGHTON, ERICKA		0	0-2	0-0	0-0	0	1	1	0	1	0	0	0	8	-3
	TEAM						2	0	2	0		0				
TOTALS			16	4-13	2-6	6-8	6	6	12	4	4	5	0	2	50	

Shooting By Period

Period	FG	FG%	3FG	3FG%	FT	FT%
3rd Qtr	5-18	28%	3-9	33%	1-2	50%
4th Qtr	3-14	21%	0-6	00%	4-6	67%
2nd Half	4-13	31%	2-6	33%	6-8	75%
2nd Half	8-32	25%	3-15	20%	5-8	63%
Game	17-64	26.6%	5-25	20.0%	11-16	68.8%

Delaware 13

No.	Player	S	Pts	FG	3FG	FT	OR	DR	TR	PF	A	TO	Blk	Stl	Min	+/-
02	GONZALES, ABBY		0	0-0	0-0	0-0	0	0	0	0	1	1	0	1	8	-4
12	OLEARY, LIZZIE		3	0-1	0-0	3-4	0	2	2	0	0	0	0	0	4	-1
22	DEFRESE, SAMONE		2	0-1	0-0	2-2	0	1	1	2	1	1	0	0	4	-1
23	KARGO, BAILEY		0	0-1	0-1	0-0	0	1	1	1	0	0	0	0	8	3
25	LAWRENCE, REBECCA		2	1-3	0-1	0-0	0	1	1	1	0	0	1	1	9	-4
04	MCBRIDE, PARIS		2	1-1	0-0	0-0	0	0	0	0	0	0	0	0	4	-5
05	NICHOLAS, MAKEDA		2	1-1	0-0	0-0	0	0	0	2	0	0	0	1	4	3
20	DICKEY, JASMINE		2	1-1	0-0	0-0	0	0	0	0	0	0	1	0	7	-1
35	LEWIS, ALISON		0	0-1	0-0	0-0	0	0	0	0	0	0	0	0	1	-5
	TEAM						0	0	0	0		0				
TOTALS			13	4-10	0-2	5-6	0	5	5	6	2	2	2	3	50	

Shooting By Period

Period	FG	FG%	3FG	3FG%	FT	FT%
3rd Qtr	7-15	47%	2-4	50%	11-14	79%
4th Qtr	5-13	38%	0-1	00%	2-3	67%
2nd Half	4-10	40%	0-2	00%	5-6	83%
2nd Half	12-28	43%	2-5	40%	13-17	76%
Game	24-57	42.1%	3-9	33.3%	23-28	82.1%

Game Notes:

Officials: Mark McClenney, Kris Denson, Kelsey Reynold
 Attendance: 1212

Start Time: 2019-01-27 18:06:33
 End Time: 2019-01-27 20:00:57
 Game Duration: 114
 Conference Game;

Score	1st	2nd	3rd	4th	TOT
COC	10	16	14	10	50
DEL	22	13	27	12	74

Points from (This Period)	COC	DEL
In the Paint	2	8
Off Turns	1	4
2nd Chance	2	0
Fast Break	2	2
Bench	9	6

Official Play-By-Play
Col. of Charleston vs Delaware
Second Quarter
January 27, 2019 at Bob Carpenter Center - Newark, Del.



Period 2

Starters:

Col. of Charleston: 15 EADY, ARYNN; 20 SULLIVAN, BRI; 23 COLLINS, TYLER; 25 FORD, DEJA; 2 HUFF, DARIEN;

Delaware: 12 OLEARY, LIZZIE; 22 DEFREESE, SAMONE; 23 KARGO, BAILEY; 25 LAWRENCE, REBECCA; 2 GONZALES, ABBY;

Time	VISITORS: Col. of Charleston	Score	Margin	HOME: Delaware
09:49	GOOD! 3PTR by COLLINS, TYLER	22-13	H 9	
09:49	ASSIST by LARSON, BAILEIGH			
09:34				MISSED JUMPER by LEWIS, ALISON
09:30	REBOUND (DEF) by COLLINS, TYLER			
09:25	GOOD! JUMPER by PERKINS, LATRICE	22-15	H 7	
09:25	ASSIST by COLLINS, TYLER			
09:12				MISSED JUMPER by LAWRENCE, REBECCA
09:09	REBOUND (DEF) by HUFF, DARIEN			
08:45	MISSED 3PTR by COLLINS, TYLER			
08:42	REBOUND (OFF) by TEAM			
08:42				SUB OUT: LEWIS, ALISON
08:42				SUB IN: DEFREESE, SAMONE
08:42	SUB OUT: PERKINS, LATRICE			
08:42	SUB IN: FORD, DEJA			
08:39	TURNOVER (LOSTBALL) by LARSON, BAILEIGH			
08:39				STEAL by LAWRENCE, REBECCA
08:39				SUB OUT: DICKEY, JASMINE
08:39				SUB IN: OLEARY, LIZZIE
08:08				TURNOVER (LOSTBALL) by DEFREESE, SAMONE
08:08	STEAL by TAYLOR, MADISON			
08:01				FOUL (PERSONAL) by DEFREESE, SAMONE
08:01	GOOD! FT by FORD, DEJA [FB]	22-16	H 6	
08:01				SUB OUT: MCBRIDE, PARIS
08:01				SUB IN: KARGO, BAILEY
08:01	MISSED FT by FORD, DEJA			
08:01				REBOUND (DEF) by OLEARY, LIZZIE
07:50	FOUL (PERSONAL) by FORD, DEJA			
07:50				MISSED FT by OLEARY, LIZZIE
07:50				REBOUND (OFF) by TEAM
07:50	SUB OUT: FORD, DEJA			
07:50	SUB IN: BROUGHTON, ERICKA			
07:50		23-16	H 7	GOOD! FT by OLEARY, LIZZIE
07:32	TURNOVER (LOSTBALL) by COLLINS, TYLER			
07:32				STEAL by GONZALES, ABBY
07:25				MISSED JUMPER by OLEARY, LIZZIE
07:19	REBOUND (DEF) by BROUGHTON, ERICKA			
07:02	GOOD! LAYUP by LARSON, BAILEIGH	23-18	H 5	
07:02	ASSIST by BROUGHTON, ERICKA			
06:48				TURNOVER (LOSTBALL) by GONZALES, ABBY
06:48	STEAL by TAYLOR, MADISON			
06:48				FOUL (PERSONAL) by LAWRENCE, REBECCA
06:48				SUB OUT: OLEARY, LIZZIE
06:48				SUB IN: NICHOLAS, MAKEDA
06:35	SUB OUT: LARSON, BAILEIGH			
06:35	SUB IN: PERKINS, LATRICE			
06:34				FOUL (PERSONAL) by NICHOLAS, MAKEDA
06:27	MISSED 3PTR by HUFF, DARIEN			
06:22	REBOUND (OFF) by PERKINS, LATRICE			
06:13	MISSED LAYUP by BROUGHTON, ERICKA			
06:10	REBOUND (OFF) by PERKINS, LATRICE			
06:09	MISSED LAYUP by PERKINS, LATRICE			
06:06				REBOUND (DEF) by DEFREESE, SAMONE
06:01				MISSED JUMPER by DEFREESE, SAMONE
05:57	REBOUND (DEF) by COLLINS, TYLER			
05:57				FOUL (PERSONAL) by KARGO, BAILEY
05:57	GOOD! FT by PERKINS, LATRICE	23-19	H 4	
05:57	GOOD! FT by PERKINS, LATRICE	23-20	H 3	
05:57	SUB OUT: PERKINS, LATRICE			
05:57	SUB IN: MADDOX, LEXI			
05:33		25-20	H 5	GOOD! JUMPER by LAWRENCE, REBECCA [PNT]
05:33				ASSIST by DEFREESE, SAMONE
05:28				SUB OUT: LAWRENCE, REBECCA
05:28				SUB IN: DICKEY, JASMINE
05:10	TURNOVER (TRAVEL) by MADDOX, LEXI			
05:10	SUB OUT: MADDOX, LEXI			
05:10	SUB IN: PERKINS, LATRICE			
05:00	FOUL (PERSONAL) by PERKINS, LATRICE			
05:00		26-20	H 6	GOOD! FT by DEFREESE, SAMONE
05:00		27-20	H 7	GOOD! FT by DEFREESE, SAMONE

Time	VISITORS: Col. of Charleston	Score	Margin	HOME: Delaware
04:45	MISSED LAYUP by BROUGHTON, ERICKA			
04:45				BLOCK by DICKEY, JASMINE
04:40	REBOUND (OFF) by PERKINS, LATRICE			
04:39				FOUL (PERSONAL) by DEFREESE, SAMONE
04:39	GOOD! FT by PERKINS, LATRICE	27-21	H 6	
04:39				SUB OUT: DEFREESE, SAMONE
04:39				SUB IN: LAWRENCE, REBECCA
04:39	GOOD! FT by PERKINS, LATRICE	27-22	H 5	
04:39	SUB OUT: PERKINS, LATRICE			
04:39	SUB IN: LARSON, BAILEIGH			
04:12		29-22	H 7	GOOD! JUMPER by NICHOLAS, MAKEDA [PNT]
03:46	MISSED JUMPER by LARSON, BAILEIGH			
03:39	REBOUND (OFF) by COLLINS, TYLER			
03:32	TURNOVER (BADPASS) by TAYLOR, MADISON			
03:32				STEAL by NICHOLAS, MAKEDA
03:26		31-22	H 9	GOOD! LAYUP by DICKEY, JASMINE [FB/PNT]
03:26				ASSIST by GONZALES, ABBY
02:53	MISSED 3PTR by TAYLOR, MADISON			
02:48				REBOUND (DEF) by KARGO, BAILEY
02:33				MISSED 3PTR by KARGO, BAILEY
02:29	REBOUND (DEF) by LARSON, BAILEIGH			
02:25				FOUL (PERSONAL) by NICHOLAS, MAKEDA
02:25	GOOD! FT by TAYLOR, MADISON [FB]	31-23	H 8	
02:25				SUB OUT: NICHOLAS, MAKEDA
02:25				SUB IN: OLEARY, LIZZIE
02:25				SUB OUT: GONZALES, ABBY
02:25				SUB IN: MCBRIDE, PARIS
02:25	MISSED FT by TAYLOR, MADISON			
02:25				REBOUND (DEF) by OLEARY, LIZZIE
02:18	SUB OUT: COLLINS, TYLER			
02:18	SUB IN: PERKINS, LATRICE			
02:09	FOUL (PERSONAL) by TAYLOR, MADISON			
02:04		33-23	H 10	GOOD! LAYUP by MCBRIDE, PARIS
01:38	MISSED JUMPER by LARSON, BAILEIGH			
01:38				BLOCK by LAWRENCE, REBECCA
01:34	REBOUND (OFF) by TEAM			
01:34	SUB OUT: PERKINS, LATRICE			
01:34	SUB IN: FORD, DEJA			
01:34	SUB OUT: LARSON, BAILEIGH			
01:34	SUB IN: EADY, ARYNN			
01:32	MISSED 3PTR by TAYLOR, MADISON			
01:28				REBOUND (DEF) by LAWRENCE, REBECCA
01:14	FOUL (PERSONAL) by EADY, ARYNN			
01:14		34-23	H 11	GOOD! FT by OLEARY, LIZZIE
01:14	SUB OUT: EADY, ARYNN			
01:14	SUB IN: SULLIVAN, BRI			
01:14		35-23	H 12	GOOD! FT by OLEARY, LIZZIE
00:55	GOOD! 3PTR by HUFF, DARIEN	35-26	H 9	
00:55	ASSIST by FORD, DEJA			
00:36				MISSED 3PTR by LAWRENCE, REBECCA
00:32	REBOUND (DEF) by FORD, DEJA			
00:03	TURNOVER (OTHER) by HUFF, DARIEN			
00:03	SUB OUT: FORD, DEJA			
00:03	SUB IN: PERKINS, LATRICE			

Col. of Charleston 26, Delaware 35

Points from (This Period)	COC	DEL
In the Paint	2	8
Off Turns	1	4
2nd Chance	2	0
Fast Break	2	2
Bench	9	6

Official Box Score
Col. of Charleston vs Delaware
Second Half Statistics Only
January 27, 2019 at Bob Carpenter Center - Newark, Del.



Col. of Charleston 24

No.	Player	S	Pts	FG	3FG	FT	OR	DR	TR	PF	A	TO	Blk	Stl	Min	+/-
00	TAYLOR, MADISON		0	0-0	0-0	0-0	0	0	0	4	1	1	0	0	12	-14
15	EADY, ARYNN		4	2-3	0-0	0-0	4	1	5	2	0	1	0	0	8	5
20	SULLIVAN, BRI		0	0-0	0-0	0-0	0	0	0	0	0	0	0	0	3	-6
21	LARSON, BAILEIGH		0	0-1	0-0	0-0	0	1	1	4	0	1	0	0	4	-10
23	COLLINS, TYLER		3	1-8	1-6	0-0	0	1	1	0	2	2	0	0	18	-13
24	MADDOX, LEXI		0	0-0	0-0	0-0	0	0	0	0	0	0	0	0	0	0
25	FORD, DEJA		9	2-7	1-4	4-6	0	3	3	1	0	1	1	1	17	-7
42	BROUGHTON, ERICKA		3	1-3	0-0	1-2	1	3	4	0	0	0	0	1	8	-4
02	HUFF, DARIEN		3	1-6	1-4	0-0	0	0	0	1	2	1	0	0	18	-12
03	PERKINS, LATRICE		2	1-4	0-1	0-0	1	2	3	2	0	1	0	2	11	-14
	TEAM		0	0-0	0-0	0-0	1	3	4	0	0	0	0	0	0	0
	TOTALS		24	8-32	3-15	5-8	7	14	21	14	5	8	1	4	99	

Shooting By Period

Period	FG	FG%	3FG	3FG%	FT	FT%
3rd Qtr	5-18	28%	3-9	33%	1-2	50%
4th Qtr	3-14	21%	0-6	00%	4-6	67%
2nd Half	8-32	25%	3-15	20%	5-8	63%
Game	17-64	26.6%	5-25	20.0%	11-16	68.8%

Last FG Half: COC 4th-01:02

Delaware 39

No.	Player	S	Pts	FG	3FG	FT	OR	DR	TR	PF	A	TO	Blk	Stl	Min	+/-
12	OLEARY, LIZZIE		2	1-1	0-0	0-0	0	2	2	0	0	0	0	1	10	-5
20	DICKEY, JASMINE		13	3-4	0-0	7-8	1	3	4	1	1	1	1	2	11	21
22	DEFREESE, SAMONE		3	1-3	0-0	1-2	0	3	3	1	3	0	0	2	14	17
23	KARGO, BAILEY		0	0-0	0-0	0-0	0	0	0	0	0	1	0	0	8	-3
25	LAWRENCE, REBECCA		4	2-4	0-0	0-1	1	7	8	1	0	1	1	0	10	1
35	LEWIS, ALISON		2	0-3	0-0	2-2	0	1	1	1	0	2	0	1	7	0
02	GONZALES, ABBY		3	1-5	1-3	0-0	0	0	0	0	1	0	0	1	16	12
04	MCBRIDE, PARIS		10	4-6	1-2	1-2	1	1	2	1	1	1	0	0	15	21
05	NICHOLAS, MAKEDA		2	0-2	0-0	2-2	0	1	1	1	2	0	0	0	6	11
	TEAM		0	0-0	0-0	0-0	2	1	3	0	0	0	0	0	0	0
	TOTALS		39	12-28	2-5	13-17	5	19	24	6	8	6	2	7	99	

Shooting By Period

Period	FG	FG%	3FG	3FG%	FT	FT%
3rd Qtr	7-15	47%	2-4	50%	11-14	79%
4th Qtr	5-13	38%	0-1	00%	2-3	67%
2nd Half	12-28	43%	2-5	40%	13-17	76%
Game	24-57	42.1%	3-9	33.3%	23-28	82.1%

Last FG Half: DEL 4th-01:44

Game Notes:

Officials: Mark McClenney, Kris Denson, Kelsey Reynold
 Attendance: 1212

Start Time: 2019-01-27 18:06:33
 End Time: 2019-01-27 20:00:57
 Game Duration: 114
 Conference Game;

Score	1st	2nd	3rd	4th	TOT
COC	10	16	14	10	50
DEL	22	13	27	12	74

Points from (This Period)	COC	DEL
In the Paint	10	18
Off Turns	5	14
2nd Chance	3	8
Fast Break	2	8
Bench	5	27

Official Box Score
Col. of Charleston vs Delaware
Third Quarter Statistics Only
January 27, 2019 at Bob Carpenter Center - Newark, Del.



Col. of Charleston 24

No.	Player	S	Pts	FG	3FG	FT	OR	DR	TR	PF	A	TO	Blk	Stl	Min	+/-
02	HUFF, DARIEN		3	1-3	1-2	0-0	0	0	0	1	1	1	0	0	10	-13
15	EADY, ARYNN		2	1-2	0-0	0-0	2	1	3	2	0	0	0	0	6	7
20	SULLIVAN, BRI		0	0-0	0-0	0-0	0	0	0	0	0	0	0	0	1	-6
23	COLLINS, TYLER		3	1-6	1-4	0-0	0	1	1	0	1	2	0	0	10	-13
25	FORD, DEJA		5	2-5	1-2	0-0	0	2	2	1	0	0	1	1	8	-5
00	TAYLOR, MADISON		0	0-0	0-0	0-0	0	0	0	2	1	1	0	0	9	-11
03	PERKINS, LATRICE		0	0-1	0-1	0-0	1	0	1	2	0	1	0	0	3	-10
21	LARSON, BAILEIGH		0	0-0	0-0	0-0	0	0	0	2	0	0	0	0	1	-8
24	MADDOX, LEXI		0	0-0	0-0	0-0	0	0	0	0	0	0	0	0	0	0
42	BROUGHTON, ERICKA		1	0-1	0-0	1-2	1	0	1	0	0	0	0	0	2	-6
TEAM							1	1	2	0		0				
TOTALS			14	5-18	3-9	1-2	5	5	10	10	3	5	1	1	50	

Shooting By Period

Period	FG	FG%	3FG	3FG%	FT	FT%
2nd Half	0-0	0%	0-0	0%	0-0	0%
Game	17-64	26.6%	5-25	20.0%	11-16	68.8%

Delaware 39

No.	Player	S	Pts	FG	3FG	FT	OR	DR	TR	PF	A	TO	Blk	Stl	Min	+/-
02	GONZALES, ABBY		3	1-2	1-2	0-0	0	0	0	0	0	0	0	1	10	13
12	OLEARY, LIZZIE		0	0-0	0-0	0-0	0	0	0	0	0	0	0	0	4	-10
22	DEFREESE, SAMONE		1	0-2	0-0	1-2	0	2	2	0	1	0	0	1	10	13
23	KARGO, BAILEY		0	0-0	0-0	0-0	0	0	0	0	0	1	0	0	2	-8
25	LAWRENCE, REBECCA		0	0-0	0-0	0-0	1	4	5	0	0	1	0	0	4	2
04	MCBRIDE, PARIS		10	4-6	1-2	1-2	1	0	1	0	1	0	0	0	8	21
05	NICHOLAS, MAKEDA		2	0-2	0-0	2-2	0	1	1	1	2	0	0	0	6	11
20	DICKEY, JASMINE		11	2-3	0-0	7-8	1	1	2	0	0	0	0	2	6	23
35	LEWIS, ALISON		0	0-0	0-0	0-0	0	0	0	0	0	0	0	0	0	0
TEAM							2	1	3	0		0				
TOTALS			27	7-15	2-4	11-14	5	9	14	1	4	2	0	4	50	

Shooting By Period

Period	FG	FG%	3FG	3FG%	FT	FT%
2nd Half	0-0	0%	0-0	0%	0-0	0%
Game	24-57	42.1%	3-9	33.3%	23-28	82.1%

Game Notes:

Officials: Mark McClenney, Kris Denson, Kelsey Reynold
Attendance: 1212

Start Time: 2019-01-27 18:06:33
End Time: 2019-01-27 20:00:57
Game Duration: 114
Conference Game;

Score	1st	2nd	3rd	4th	TOT
COC	10	16	14	10	50
DEL	22	13	27	12	74

Points from (This Period)	COC	DEL
In the Paint	4	10
Off Turns	5	10
2nd Chance	3	8
Fast Break	0	8
Bench	1	23

Official Play-By-Play
Col. of Charleston vs Delaware
Third Quarter
January 27, 2019 at Bob Carpenter Center - Newark, Del.



Period 3

Starters:

Col. of Charleston: 15 EADY, ARYNN; 20 SULLIVAN, BRI; 23 COLLINS, TYLER; 25 FORD, DEJA; 2 HUFF, DARIEN;

Delaware: 12 OLEARY, LIZZIE; 22 DEFREESE, SAMONE; 23 KARGO, BAILEY; 25 LAWRENCE, REBECCA; 2 GONZALES, ABBY;

Time	VISITORS: Col. of Charleston	Score	Margin	HOME: Delaware
09:49	GOOD! 3PTR by FORD, DEJA	35-29	H 6	
09:49	ASSIST by COLLINS, TYLER			
09:06				TURNOVER (OTHER) by LAWRENCE, REBECCA
09:00	GOOD! 3PTR by HUFF, DARIEN	35-32	H 3	
09:00	ASSIST by TAYLOR, MADISON			
08:59				TIMEOUT TEAM
08:51				TURNOVER (LOSTBALL) by KARGO, BAILEY
08:51	STEAL by FORD, DEJA			
08:47	MISSED LAYUP by HUFF, DARIEN			
08:42	REBOUND (OFF) by EADY, ARYNN			
08:38	MISSED 3PTR by HUFF, DARIEN			
08:34	REBOUND (OFF) by EADY, ARYNN			
08:33	GOOD! LAYUP by EADY, ARYNN	35-34	H 1	
08:21				MISSED 3PTR by GONZALES, ABBY
08:16	REBOUND (DEF) by TEAM			
08:16				SUB OUT: LAWRENCE, REBECCA
08:16				SUB IN: NICHOLAS, MAKEDA
08:16				SUB OUT: KARGO, BAILEY
08:16				SUB IN: MCBRIDE, PARIS
07:54	TURNOVER (TRAVEL) by COLLINS, TYLER			
07:34		38-34	H 4	GOOD! 3PTR by MCBRIDE, PARIS
07:34				ASSIST by NICHOLAS, MAKEDA
07:16	GOOD! LAYUP by FORD, DEJA	38-36	H 2	
06:59				MISSED JUMPER by NICHOLAS, MAKEDA
06:54				REBOUND (OFF) by TEAM
06:46				MISSED LAYUP by NICHOLAS, MAKEDA
06:42	REBOUND (DEF) by EADY, ARYNN			
06:34	GOOD! 3PTR by COLLINS, TYLER	38-39	V 1	
06:34	ASSIST by HUFF, DARIEN			
06:06				MISSED LAYUP by DEFREESE, SAMONE
06:06	BLOCK by FORD, DEJA			
06:05	REBOUND (DEF) by FORD, DEJA			
06:03				SUB OUT: OLEARY, LIZZIE
06:03				SUB IN: DICKEY, JASMINE
05:56	MISSED JUMPER by EADY, ARYNN			
05:52				REBOUND (DEF) by NICHOLAS, MAKEDA
05:50	FOUL (PERSONAL) by EADY, ARYNN			
05:44		40-39	H 1	GOOD! LAYUP by DICKEY, JASMINE [PNT]
05:44				ASSIST by NICHOLAS, MAKEDA
05:33	SUB OUT: EADY, ARYNN			
05:33	SUB IN: LARSON, BAILEIGH			
05:32	MISSED 3PTR by COLLINS, TYLER			
05:27				REBOUND (DEF) by DEFREESE, SAMONE
05:25		43-39	H 4	GOOD! 3PTR by GONZALES, ABBY [FB]
05:25				ASSIST by MCBRIDE, PARIS
05:03	MISSED LAYUP by COLLINS, TYLER			
04:59				REBOUND (DEF) by DEFREESE, SAMONE
04:57				MISSED LAYUP by MCBRIDE, PARIS
04:54				REBOUND (OFF) by MCBRIDE, PARIS
04:41		45-39	H 6	GOOD! LAYUP by MCBRIDE, PARIS
04:41	FOUL (PERSONAL) by FORD, DEJA			
04:41				
04:41	SUB OUT: FORD, DEJA			
04:41	SUB IN: PERKINS, LATRICE			
04:41				MISSED FT by MCBRIDE, PARIS
04:39				REBOUND (OFF) by TEAM
04:37	FOUL (PERSONAL) by LARSON, BAILEIGH			
04:37		46-39	H 7	GOOD! FT by NICHOLAS, MAKEDA [FB]
04:37		47-39	H 8	GOOD! FT by NICHOLAS, MAKEDA [FB]
04:17	MISSED JUMPER by COLLINS, TYLER			
04:14				REBOUND (DEF) by DICKEY, JASMINE
04:07	FOUL (PERSONAL) by LARSON, BAILEIGH			
04:07		48-39	H 9	GOOD! FT by DICKEY, JASMINE [FB]
04:07	SUB OUT: LARSON, BAILEIGH			
04:07	SUB IN: BROUGHTON, ERICKA			
04:07		49-39	H 10	GOOD! FT by DICKEY, JASMINE [FB]
03:41	TURNOVER (BADPASS) by HUFF, DARIEN			
03:41				STEAL by DICKEY, JASMINE
03:39	FOUL (PERSONAL) by HUFF, DARIEN			
03:39				MISSED FT by DEFREESE, SAMONE

Time	VISITORS: Col. of Charleston	Score	Margin	HOME: Delaware
03:39				REBOUND (OFF) by TEAM
03:39	SUB OUT: TAYLOR, MADISON			
03:39	SUB IN: FORD, DEJA			
03:39		50-39	H 11	GOOD! FT by DEFREESE, SAMONE [FB]
03:22	TURNOVER (BADPASS) by COLLINS, TYLER			
03:22				STEAL by GONZALES, ABBY
03:22	FOUL (PERSONAL) by PERKINS, LATRICE			
03:22	TIMEOUT 30SEC			
03:02		52-39	H 13	GOOD! LAYUP by DICKEY, JASMINE
02:43	MISSED JUMPER by FORD, DEJA			
02:40	REBOUND (OFF) by BROUGHTON, ERICKA			
02:39				FOUL (PERSONAL) by NICHOLAS, MAKEDA
02:39	GOOD! FT by BROUGHTON, ERICKA	52-40	H 12	
02:39				SUB OUT: NICHOLAS, MAKEDA
02:39				SUB IN: LAWRENCE, REBECCA
02:39	SUB OUT: FORD, DEJA			
02:39	SUB IN: TAYLOR, MADISON			
02:39	MISSED FT by BROUGHTON, ERICKA			
02:39	REBOUND (OFF) by TEAM			
02:31	MISSED LAYUP by BROUGHTON, ERICKA			
02:28				REBOUND (DEF) by LAWRENCE, REBECCA
02:19		54-40	H 14	GOOD! LAYUP by MCBRIDE, PARIS
02:10	TURNOVER (LOSTBALL) by PERKINS, LATRICE			
02:10				STEAL by DICKEY, JASMINE
02:10	FOUL (PERSONAL) by PERKINS, LATRICE			
02:10		55-40	H 15	GOOD! FT by DICKEY, JASMINE
02:10	SUB OUT: BROUGHTON, ERICKA			
02:10	SUB IN: EADY, ARYNN			
02:10	SUB OUT: PERKINS, LATRICE			
02:10	SUB IN: FORD, DEJA			
02:10				MISSED FT by DICKEY, JASMINE
02:10	REBOUND (DEF) by COLLINS, TYLER			
01:53	MISSED 3PTR by FORD, DEJA			
01:50				REBOUND (DEF) by TEAM
01:36				MISSED 3PTR by MCBRIDE, PARIS
01:33	REBOUND (DEF) by FORD, DEJA			
01:17	MISSED 3PTR by COLLINS, TYLER			
01:13				REBOUND (DEF) by LAWRENCE, REBECCA
01:09				MISSED LAYUP by DEFREESE, SAMONE
01:06				REBOUND (OFF) by DICKEY, JASMINE
01:05	FOUL (PERSONAL) by EADY, ARYNN			
01:05		56-40	H 16	GOOD! FT by DICKEY, JASMINE
01:05	SUB OUT: EADY, ARYNN			
01:05	SUB IN: SULLIVAN, BRI			
01:05		57-40	H 17	GOOD! FT by DICKEY, JASMINE
00:54	MISSED LAYUP by FORD, DEJA			
00:51				REBOUND (DEF) by LAWRENCE, REBECCA
00:43				MISSED LAYUP by DICKEY, JASMINE
00:40				REBOUND (OFF) by LAWRENCE, REBECCA
00:35	FOUL (PERSONAL) by TAYLOR, MADISON			
00:35		58-40	H 18	GOOD! FT by DICKEY, JASMINE
00:35		59-40	H 19	GOOD! FT by DICKEY, JASMINE
00:25	TURNOVER (LOSTBALL) by TAYLOR, MADISON			
00:25				STEAL by DEFREESE, SAMONE
00:21		61-40	H 21	GOOD! LAYUP by MCBRIDE, PARIS
00:21				ASSIST by DEFREESE, SAMONE
00:21	FOUL (PERSONAL) by TAYLOR, MADISON			
00:21	SUB OUT: FORD, DEJA			
00:21	SUB IN: PERKINS, LATRICE			
00:21		62-40	H 22	GOOD! FT by MCBRIDE, PARIS
00:07	MISSED 3PTR by COLLINS, TYLER			
00:03	REBOUND (OFF) by PERKINS, LATRICE			
00:00	MISSED 3PTR by PERKINS, LATRICE			
00:00				REBOUND (DEF) by LAWRENCE, REBECCA

Col. of Charleston 40, Delaware 62

Points from (This Period)	COC	DEL
In the Paint	4	10
Off Turns	5	10
2nd Chance	3	8
Fast Break	0	8
Bench	1	23

Official Box Score
Col. of Charleston vs Delaware
Fourth Quarter Statistics Only
January 27, 2019 at Bob Carpenter Center - Newark, Del.



Col. of Charleston 10

No.	Player	S	Pts	FG	3FG	FT	OR	DR	TR	PF	A	TO	Blk	Stl	Min	+/-
02	HUFF, DARIEN		0	0-3	0-2	0-0	0	0	0	0	1	0	0	0	8	1
15	EADY, ARYNN		2	1-1	0-0	0-0	2	0	2	0	0	1	0	0	2	-2
20	SULLIVAN, BRI		0	0-0	0-0	0-0	0	0	0	0	0	0	0	0	2	0
23	COLLINS, TYLER		0	0-2	0-2	0-0	0	0	0	0	1	0	0	0	8	0
25	FORD, DEJA		4	0-2	0-2	4-6	0	1	1	0	0	1	0	0	9	-2
00	TAYLOR, MADISON		0	0-0	0-0	0-0	0	0	0	2	0	0	0	0	3	-3
03	PERKINS, LATRICE		2	1-3	0-0	0-0	0	2	2	0	0	0	0	2	8	-4
21	LARSON, BAILEIGH		0	0-1	0-0	0-0	0	1	1	2	0	1	0	0	3	-2
24	MADDOX, LEXI		0	0-0	0-0	0-0	0	0	0	0	0	0	0	0	0	0
42	BROUGHTON, ERICKA		2	1-2	0-0	0-0	0	3	3	0	0	0	0	1	6	2
	TEAM						0	2	2	0		0				
TOTALS			10	3-14	0-6	4-6	2	9	11	4	2	3	0	3	49	

Shooting By Period

Period	FG	FG%	3FG	3FG%	FT	FT%
Game	17-64	26.6%	5-25	20.0%	11-16	68.8%

Delaware 12

No.	Player	S	Pts	FG	3FG	FT	OR	DR	TR	PF	A	TO	Blk	Stl	Min	+/-
02	GONZALES, ABBY		0	0-3	0-1	0-0	0	0	0	0	1	0	0	0	6	-1
12	OLEARY, LIZZIE		2	1-1	0-0	0-0	0	2	2	0	0	0	0	1	6	5
22	DEFREESE, SAMONE		2	1-1	0-0	0-0	0	1	1	1	2	0	0	1	4	4
23	KARGO, BAILEY		0	0-0	0-0	0-0	0	0	0	0	0	0	0	0	6	5
25	LAWRENCE, REBECCA		4	2-4	0-0	0-1	0	3	3	1	0	0	1	0	6	-1
04	MCBRIDE, PARIS		0	0-0	0-0	0-0	0	1	1	1	0	1	0	0	7	0
05	NICHOLAS, MAKEDA		0	0-0	0-0	0-0	0	0	0	0	0	0	0	0	0	0
20	DICKEY, JASMINE		2	1-1	0-0	0-0	0	2	2	1	1	1	1	0	5	-2
35	LEWIS, ALISON		2	0-3	0-0	2-2	0	1	1	1	0	2	0	1	7	0
	TEAM						0	0	0	0		0				
TOTALS			12	5-13	0-1	2-3	0	10	10	5	4	4	2	3	49	

Shooting By Period

Period	FG	FG%	3FG	3FG%	FT	FT%
Game	24-57	42.1%	3-9	33.3%	23-28	82.1%

Game Notes:

Officials: **Mark McClenney, Kris Denson, Kelsey Reynold**
Attendance: **1212**

Start Time: **2019-01-27 18:06:33**
End Time: **2019-01-27 20:00:57**
Game Duration: **114**
Conference Game;

Score	1st	2nd	3rd	4th	TOT
COC	10	16	14	10	50
DEL	22	13	27	12	74

Points from (This Period)	COC	DEL
In the Paint	6	8
Off Turns	0	4
2nd Chance	0	0
Fast Break	2	0
Bench	4	4

Official Play-By-Play
Col. of Charleston vs Delaware
Fourth Quarter
January 27, 2019 at Bob Carpenter Center - Newark, Del.



Period 4

Starters:

Col. of Charleston: 15 EADY, ARYNN; 20 SULLIVAN, BRI; 23 COLLINS, TYLER; 25 FORD, DEJA; 2 HUFF, DARIEN;

Delaware: 12 OLEARY, LIZZIE; 22 DEFREESE, SAMONE; 23 KARGO, BAILEY; 25 LAWRENCE, REBECCA; 2 GONZALES, ABBY;

Time	VISITORS: Col. of Charleston	Score	Margin	HOME: Delaware
09:59				MISSED JUMPER by GONZALES, ABBY
09:55	REBOUND (DEF) by PERKINS, LATRICE			
09:52	MISSED JUMPER by PERKINS, LATRICE			
09:49				REBOUND (DEF) by MCBRIDE, PARIS
09:46				MISSED JUMPER by LAWRENCE, REBECCA
09:42	REBOUND (DEF) by PERKINS, LATRICE			
09:18				FOUL (PERSONAL) by DEFREESE, SAMONE
09:18	SUB OUT: TAYLOR, MADISON			
09:18	SUB IN: FORD, DEJA			
09:15	MISSED JUMPER by LARSON, BAILEIGH			
09:12				REBOUND (DEF) by LAWRENCE, REBECCA
09:00				TURNOVER (TRAVEL) by DICKEY, JASMINE
08:44	MISSED 3PTR by FORD, DEJA			
08:40				REBOUND (DEF) by DEFREESE, SAMONE
08:34				MISSED JUMPER by LAWRENCE, REBECCA
08:31	REBOUND (DEF) by TEAM			
08:31				SUB OUT: DEFREESE, SAMONE
08:31				SUB IN: LEWIS, ALISON
08:31	SUB OUT: HUFF, DARIEN			
08:31	SUB IN: TAYLOR, MADISON			
08:31	SUB OUT: LARSON, BAILEIGH			
08:31	SUB IN: BROUGHTON, ERICKA			
08:10				FOUL (PERSONAL) by MCBRIDE, PARIS
08:10	GOOD! FT by FORD, DEJA	62-41	H 21	
08:10	GOOD! FT by FORD, DEJA	62-42	H 20	
07:58		64-42	H 22	GOOD! LAYUP by LAWRENCE, REBECCA
07:58				ASSIST by DICKEY, JASMINE
07:58	FOUL (PERSONAL) by TAYLOR, MADISON			
07:58	SUB OUT: TAYLOR, MADISON			
07:58	SUB IN: HUFF, DARIEN			
07:58				MISSED FT by LAWRENCE, REBECCA
07:58	REBOUND (DEF) by FORD, DEJA			
07:50	MISSED LAYUP by HUFF, DARIEN			
07:47				REBOUND (DEF) by DICKEY, JASMINE
07:26				MISSED 3PTR by GONZALES, ABBY
07:22	REBOUND (DEF) by BROUGHTON, ERICKA			
07:18	GOOD! LAYUP by PERKINS, LATRICE [FB]	64-44	H 20	
07:18	ASSIST by HUFF, DARIEN			
06:49				MISSED JUMPER by GONZALES, ABBY
06:45	REBOUND (DEF) by BROUGHTON, ERICKA			
06:29				FOUL (PERSONAL) by LAWRENCE, REBECCA
06:29	GOOD! FT by FORD, DEJA	64-45	H 19	
06:29				SUB OUT: LAWRENCE, REBECCA
06:29				SUB IN: OLEARY, LIZZIE
06:29				SUB OUT: GONZALES, ABBY
06:29				SUB IN: KARGO, BAILEY
06:29	GOOD! FT by FORD, DEJA	64-46	H 18	
06:29	SUB OUT: COLLINS, TYLER			
06:29	SUB IN: TAYLOR, MADISON			
06:06				TURNOVER (LOSTBALL) by LEWIS, ALISON
06:06	STEAL by BROUGHTON, ERICKA			
05:57				FOUL (PERSONAL) by LEWIS, ALISON
05:45				FOUL (PERSONAL) by DICKEY, JASMINE
05:45	MISSED FT by FORD, DEJA			
05:45	REBOUND (OFF) by TEAM			
05:45				SUB OUT: LEWIS, ALISON
05:45				SUB IN: DEFREESE, SAMONE
05:45	MISSED FT by FORD, DEJA			
05:45				REBOUND (DEF) by DICKEY, JASMINE
05:27		66-46	H 20	GOOD! LAYUP by DICKEY, JASMINE [PNT]
05:27				ASSIST by DEFREESE, SAMONE
05:06	MISSED LAYUP by BROUGHTON, ERICKA			
05:06				BLOCK by DICKEY, JASMINE
05:00				REBOUND (DEF) by OLEARY, LIZZIE
04:47				TURNOVER (LOSTBALL) by MCBRIDE, PARIS
04:47	STEAL by PERKINS, LATRICE			
04:45				SUB OUT: DICKEY, JASMINE
04:45				SUB IN: LEWIS, ALISON
04:45	SUB OUT: TAYLOR, MADISON			

Time	VISITORS: Col. of Charleston	Score	Margin	HOME: Delaware
04:45	SUB IN: COLLINS, TYLER			
04:45	SUB OUT: BROUGHTON, ERICKA			
04:45	SUB IN: EADY, ARYNN			
04:39	MISSED 3PTR by HUFF, DARIEN			
04:36	REBOUND (OFF) by EADY, ARYNN			
04:35	TURNOVER (LOSTBALL) by EADY, ARYNN			
04:35				STEAL by DEFREESE, SAMONE
04:19		68-46	H 22	GOOD! LAYUP by DEFREESE, SAMONE
04:05	GOOD! LAYUP by EADY, ARYNN	68-48	H 20	
03:30		70-48	H 22	GOOD! LAYUP by OLEARY, LIZZIE [PNT]
03:30				ASSIST by DEFREESE, SAMONE
03:15	MISSED 3PTR by COLLINS, TYLER			
03:11	REBOUND (OFF) by EADY, ARYNN			
03:10	TURNOVER (LOSTBALL) by FORD, DEJA			
03:10				STEAL by OLEARY, LIZZIE
03:10				SUB OUT: MCBRIDE, PARIS
03:10				SUB IN: GONZALES, ABBY
03:10				SUB OUT: DEFREESE, SAMONE
03:10				SUB IN: LAWRENCE, REBECCA
03:10	SUB OUT: EADY, ARYNN			
03:10	SUB IN: LARSON, BAILEIGH			
02:51	FOUL (PERSONAL) by LARSON, BAILEIGH			
02:51		71-48	H 23	GOOD! FT by LEWIS, ALISON
02:51	SUB OUT: HUFF, DARIEN			
02:51	SUB IN: TAYLOR, MADISON			
02:51		72-48	H 24	GOOD! FT by LEWIS, ALISON
02:34	MISSED 3PTR by FORD, DEJA			
02:30				REBOUND (DEF) by LAWRENCE, REBECCA
02:21	FOUL (PERSONAL) by TAYLOR, MADISON			
02:21	SUB OUT: TAYLOR, MADISON			
02:21	SUB IN: BROUGHTON, ERICKA			
02:18				MISSED LAYUP by LEWIS, ALISON
02:15	REBOUND (DEF) by LARSON, BAILEIGH			
02:14	TURNOVER (LOSTBALL) by LARSON, BAILEIGH			
02:14				STEAL by LEWIS, ALISON
02:05	FOUL (PERSONAL) by LARSON, BAILEIGH			
02:05	SUB OUT: LARSON, BAILEIGH			
02:05	SUB IN: SULLIVAN, BRI			
02:03				TURNOVER (LOSTBALL) by LEWIS, ALISON
02:03	STEAL by PERKINS, LATRICE			
01:58	MISSED LAYUP by PERKINS, LATRICE			
01:55				REBOUND (DEF) by LEWIS, ALISON
01:44		74-48	H 26	GOOD! JUMPER by LAWRENCE, REBECCA
01:44				ASSIST by GONZALES, ABBY
01:39	TIMEOUT 30SEC			
01:39	SUB OUT: PERKINS, LATRICE			
01:39	SUB IN: HUFF, DARIEN			
01:35	MISSED 3PTR by HUFF, DARIEN			
01:35				BLOCK by LAWRENCE, REBECCA
01:30				REBOUND (DEF) by OLEARY, LIZZIE
01:13				MISSED JUMPER by LEWIS, ALISON
01:12	REBOUND (DEF) by TEAM			
01:02	GOOD! LAYUP by BROUGHTON, ERICKA	74-50	H 24	
01:02	ASSIST by COLLINS, TYLER			
00:30				MISSED JUMPER by LEWIS, ALISON
00:26	REBOUND (DEF) by BROUGHTON, ERICKA			
00:21	MISSED 3PTR by COLLINS, TYLER			
00:17				REBOUND (DEF) by LAWRENCE, REBECCA

Col. of Charleston 50, Delaware 74

Points from (This Period)	COC	DEL
In the Paint	6	8
Off Turns	0	4
2nd Chance	0	0
Fast Break	2	0
Bench	4	4

Official Scoring/Possession Reference Chart
Col. of Charleston vs Delaware
Period 1
January 27, 2019 at Bob Carpenter Center - Newark, Del.



Period 1

Starters:

Col. of Charleston: 15 EADY, ARYNN; 20 SULLIVAN, BRI; 23 COLLINS, TYLER; 25 FORD, DEJA; 2 HUFF, DARIEN;

Delaware: 12 OLEARY, LIZZIE; 22 DEFREESE, SAMONE; 23 KARGO, BAILEY; 25 LAWRENCE, REBECCA; 2 GONZALES, ABBY;

Time	VISITORS: Col. of Charleston	Score	Margin	HOME: Delaware
09:39		2-0	H 2	GOOD! JUMPER by LAWRENCE, REBECCA
09:06		4-0	H 4	GOOD! LAYUP by DEFREESE, SAMONE
08:30		6-0	H 6	GOOD! LAYUP by DEFREESE, SAMONE [PNT]
08:04		8-0	H 8	GOOD! LAYUP by LAWRENCE, REBECCA
07:43		9-0	H 9	GOOD! FT by DEFREESE, SAMONE [FB]
07:43		10-0	H 10	GOOD! FT by DEFREESE, SAMONE [FB]
05:34		12-0	H 12	GOOD! JUMPER by KARGO, BAILEY [FB]
05:01	GOOD! LAYUP by BROUGHTON, ERICKA	12-2	H 10	
04:29	GOOD! LAYUP by EADY, ARYNN [PNT]	12-4	H 8	
04:06	GOOD! LAYUP by HUFF, DARIEN [PNT]	12-6	H 6	
04:04		15-6	H 9	GOOD! 3PTR by GONZALES, ABBY
03:32	GOOD! LAYUP by LARSON, BAILEIGH	15-8	H 7	
02:41		17-8	H 9	GOOD! LAYUP by DEFREESE, SAMONE [FB/PNT]
02:41		18-8	H 10	GOOD! FT by DEFREESE, SAMONE [FB]
01:59		20-8	H 12	GOOD! LAYUP by DICKEY, JASMINE
01:20	GOOD! JUMPER by COLLINS, TYLER [PNT]	20-10	H 10	
00:09		21-10	H 11	GOOD! FT by LEWIS, ALISON
00:09		22-10	H 12	GOOD! FT by LEWIS, ALISON

Col. of Charleston 10, Delaware 22

Official Scoring/Possession Reference Chart
Col. of Charleston vs Delaware
Period 2
January 27, 2019 at Bob Carpenter Center - Newark, Del.



Period 2

Starters:

Col. of Charleston: 15 EADY, ARYNN; 20 SULLIVAN, BRI; 23 COLLINS, TYLER; 25 FORD, DEJA; 2 HUFF, DARIEN;

Delaware: 12 OLEARY, LIZZIE; 22 DEFREESE, SAMONE; 23 KARGO, BAILEY; 25 LAWRENCE, REBECCA; 2 GONZALES, ABBY;

Time	VISITORS: Col. of Charleston	Score	Margin	HOME: Delaware
09:49	GOOD! 3PTR by COLLINS, TYLER	22-13	H 9	
09:25	GOOD! JUMPER by PERKINS, LATRICE	22-15	H 7	
08:01	GOOD! FT by FORD, DEJA [FB]	22-16	H 6	
07:50		23-16	H 7	GOOD! FT by OLEARY, LIZZIE
07:02	GOOD! LAYUP by LARSON, BAILEIGH	23-18	H 5	
05:57	GOOD! FT by PERKINS, LATRICE	23-19	H 4	
05:57	GOOD! FT by PERKINS, LATRICE	23-20	H 3	
05:33		25-20	H 5	GOOD! JUMPER by LAWRENCE, REBECCA [PNT]
05:00		26-20	H 6	GOOD! FT by DEFREESE, SAMONE
05:00		27-20	H 7	GOOD! FT by DEFREESE, SAMONE
04:39	GOOD! FT by PERKINS, LATRICE	27-21	H 6	
04:39	GOOD! FT by PERKINS, LATRICE	27-22	H 5	
04:12		29-22	H 7	GOOD! JUMPER by NICHOLAS, MAKEDA [PNT]
03:26		31-22	H 9	GOOD! LAYUP by DICKEY, JASMINE [FB/PNT]
02:25	GOOD! FT by TAYLOR, MADISON [FB]	31-23	H 8	
02:04		33-23	H 10	GOOD! LAYUP by MCBRIDE, PARIS
01:14		34-23	H 11	GOOD! FT by OLEARY, LIZZIE
01:14		35-23	H 12	GOOD! FT by OLEARY, LIZZIE
00:55	GOOD! 3PTR by HUFF, DARIEN	35-26	H 9	

Col. of Charleston 26, Delaware 35

Official Scoring/Possession Reference Chart
Col. of Charleston vs Delaware
Period 3
January 27, 2019 at Bob Carpenter Center - Newark, Del.



Period 3

Starters:

Col. of Charleston: 15 EADY, ARYNN; 20 SULLIVAN, BRI; 23 COLLINS, TYLER; 25 FORD, DEJA; 2 HUFF, DARIEN;

Delaware: 12 OLEARY, LIZZIE; 22 DEFREESE, SAMONE; 23 KARGO, BAILEY; 25 LAWRENCE, REBECCA; 2 GONZALES, ABBY;

Time	VISITORS: Col. of Charleston	Score	Margin	HOME: Delaware
09:49	GOOD! 3PTR by FORD, DEJA	35-29	H 6	
09:00	GOOD! 3PTR by HUFF, DARIEN	35-32	H 3	
08:33	GOOD! LAYUP by EADY, ARYNN	35-34	H 1	
07:34		38-34	H 4	GOOD! 3PTR by MCBRIDE, PARIS
07:16	GOOD! LAYUP by FORD, DEJA	38-36	H 2	
06:34	GOOD! 3PTR by COLLINS, TYLER	38-39	V 1	
05:44		40-39	H 1	GOOD! LAYUP by DICKEY, JASMINE [PNT]
05:25		43-39	H 4	GOOD! 3PTR by GONZALES, ABBY [FB]
04:41		45-39	H 6	GOOD! LAYUP by MCBRIDE, PARIS
04:37		46-39	H 7	GOOD! FT by NICHOLAS, MAKEDA [FB]
04:37		47-39	H 8	GOOD! FT by NICHOLAS, MAKEDA [FB]
04:07		48-39	H 9	GOOD! FT by DICKEY, JASMINE [FB]
04:07		49-39	H 10	GOOD! FT by DICKEY, JASMINE [FB]
03:39		50-39	H 11	GOOD! FT by DEFREESE, SAMONE [FB]
03:02		52-39	H 13	GOOD! LAYUP by DICKEY, JASMINE
02:39	GOOD! FT by BROUGHTON, ERICKA	52-40	H 12	
02:19		54-40	H 14	GOOD! LAYUP by MCBRIDE, PARIS
02:10		55-40	H 15	GOOD! FT by DICKEY, JASMINE
01:05		56-40	H 16	GOOD! FT by DICKEY, JASMINE
01:05		57-40	H 17	GOOD! FT by DICKEY, JASMINE
00:35		58-40	H 18	GOOD! FT by DICKEY, JASMINE
00:35		59-40	H 19	GOOD! FT by DICKEY, JASMINE
00:21		61-40	H 21	GOOD! LAYUP by MCBRIDE, PARIS
00:21		62-40	H 22	GOOD! FT by MCBRIDE, PARIS

Col. of Charleston 40, Delaware 62

Official Scoring/Possession Reference Chart
Col. of Charleston vs Delaware
Period 4
January 27, 2019 at Bob Carpenter Center - Newark, Del.



Period 4

Starters:

Col. of Charleston: 15 EADY, ARYNN; 20 SULLIVAN, BRI; 23 COLLINS, TYLER; 25 FORD, DEJA; 2 HUFF, DARIEN;

Delaware: 12 OLEARY, LIZZIE; 22 DEFREESE, SAMONE; 23 KARGO, BAILEY; 25 LAWRENCE, REBECCA; 2 GONZALES, ABBY;

Time	VISITORS: Col. of Charleston	Score	Margin	HOME: Delaware
08:10	GOOD! FT by FORD, DEJA	62-41	H 21	
08:10	GOOD! FT by FORD, DEJA	62-42	H 20	
07:58		64-42	H 22	GOOD! LAYUP by LAWRENCE, REBECCA
07:18	GOOD! LAYUP by PERKINS, LATRICE [FB]	64-44	H 20	
06:29	GOOD! FT by FORD, DEJA	64-45	H 19	
06:29	GOOD! FT by FORD, DEJA	64-46	H 18	
05:27		66-46	H 20	GOOD! LAYUP by DICKEY, JASMINE [PNT]
04:19		68-46	H 22	GOOD! LAYUP by DEFREESE, SAMONE
04:05	GOOD! LAYUP by EADY, ARYNN	68-48	H 20	
03:30		70-48	H 22	GOOD! LAYUP by OLEARY, LIZZIE [PNT]
02:51		71-48	H 23	GOOD! FT by LEWIS, ALISON
02:51		72-48	H 24	GOOD! FT by LEWIS, ALISON
01:44		74-48	H 26	GOOD! JUMPER by LAWRENCE, REBECCA
01:02	GOOD! LAYUP by BROUGHTON, ERICKA	74-50	H 24	

Col. of Charleston 50, Delaware 74

Official Substitutions Log
Col. of Charleston vs Delaware
Period 1
January 27, 2019 at Bob Carpenter Center - Newark, Del.



VISITORS: Col. of Charleston	Time	Score	HOME: Delaware
15 EADY,ARYNN			12 OLEARY,LIZZIE
20 SULLIVAN,BRI			22 DEFREESE,SAMONE
23 COLLINS,TYLER			23 KARGO,BAILEY
25 FORD,DEJA			25 LAWRENCE,REBECCA
2 HUFF,DARIEN			2 GONZALES,ABBY
SUB OUT: 15 EADY,ARYNN	08:00	0-8	
SUB IN: 42 BROUGHTON,ERICKA	08:00		
SUB OUT: 23 COLLINS,TYLER	08:00		
SUB IN: 0 TAYLOR,MADISON	08:00		
SUB OUT: 25 FORD,DEJA	06:21	0-10	
SUB IN: 23 COLLINS,TYLER	06:21		
SUB OUT: 20 SULLIVAN,BRI	06:21		
SUB IN: 15 EADY,ARYNN	06:21		
	04:05	6-12	SUB OUT: OLEARY,LIZZIE
	04:05		SUB IN: MCBRIDE,PARIS
	04:05		SUB OUT: KARGO,BAILEY
	04:05		SUB IN: NICHOLAS,MAKEDA
	04:05		SUB OUT: LAWRENCE,REBECCA
	04:05		SUB IN: DICKEY,JASMINE
SUB OUT: 0 TAYLOR,MADISON	04:05		
SUB IN: 25 FORD,DEJA	04:05		
SUB OUT: 15 EADY,ARYNN	04:05		
SUB IN: 21 LARSON,BAILEIGH	04:05		
	02:33	8-18	SUB OUT: GONZALES,ABBY
	02:33		SUB IN: KARGO,BAILEY
SUB OUT: 25 FORD,DEJA	02:33		
SUB IN: 0 TAYLOR,MADISON	02:33		
SUB OUT: 42 BROUGHTON,ERICKA	02:33		
SUB IN: 20 SULLIVAN,BRI	02:33		
SUB OUT: 20 SULLIVAN,BRI	01:29	8-20	
SUB IN: 15 EADY,ARYNN	01:29		
SUB OUT: 2 HUFF,DARIEN	01:29		
SUB IN: 25 FORD,DEJA	01:29		
	00:48	10-20	SUB OUT: DEFREESE,SAMONE
	00:48		SUB IN: LEWIS,ALISON
SUB OUT: 25 FORD,DEJA	00:25	10-20	
SUB IN: 3 PERKINS,LATRICE	00:25		

Col. of Charleston 10, Delaware 22

Official Substitutions Log
Col. of Charleston vs Delaware
Period 2
January 27, 2019 at Bob Carpenter Center - Newark, Del.



VISITORS: Col. of Charleston	Time	Score	HOME: Delaware
15 EADY,ARYNN			12 OLEARY,LIZZIE
20 SULLIVAN,BRI			22 DEFREESE,SAMONE
23 COLLINS, TYLER			23 KARGO,BAILEY
25 FORD,DEJA			25 LAWRENCE,REBECCA
2 HUFF,DARIEN			2 GONZALES,ABBY
	08:42	15-22	SUB OUT: LEWIS,ALISON
	08:42		SUB IN: DEFREESE,SAMONE
SUB OUT: 3 PERKINS,LATRICE	08:42		
SUB IN: 25 FORD,DEJA	08:42		
	08:39	15-22	SUB OUT: DICKEY,JASMINE
	08:39		SUB IN: OLEARY,LIZZIE
	08:01	16-22	SUB OUT: MCBRIDE,PARIS
	08:01		SUB IN: KARGO,BAILEY
SUB OUT: 25 FORD,DEJA	07:50	16-22	
SUB IN: 42 BROUGHTON,ERICKA	07:50		
	06:48	18-23	SUB OUT: OLEARY,LIZZIE
	06:48		SUB IN: NICHOLAS,MAKEDA
SUB OUT: 21 LARSON,BAILEIGH	06:35	18-23	
SUB IN: 3 PERKINS,LATRICE	06:35		
SUB OUT: 3 PERKINS,LATRICE	05:57	20-23	
SUB IN: 24 MADDOX,LEXI	05:57		
	05:28	20-25	SUB OUT: LAWRENCE,REBECCA
	05:28		SUB IN: DICKEY,JASMINE
SUB OUT: 24 MADDOX,LEXI	05:10	20-25	
SUB IN: 3 PERKINS,LATRICE	05:10		
	04:39	21-27	SUB OUT: DEFREESE,SAMONE
	04:39		SUB IN: LAWRENCE,REBECCA
SUB OUT: 3 PERKINS,LATRICE	04:39		
SUB IN: 21 LARSON,BAILEIGH	04:39		
	02:25	23-31	SUB OUT: NICHOLAS,MAKEDA
	02:25		SUB IN: OLEARY,LIZZIE
	02:25		SUB OUT: GONZALES,ABBY
	02:25		SUB IN: MCBRIDE,PARIS
SUB OUT: 23 COLLINS, TYLER	02:18	23-31	
SUB IN: 3 PERKINS,LATRICE	02:18		
SUB OUT: 3 PERKINS,LATRICE	01:34	23-33	
SUB IN: 25 FORD,DEJA	01:34		
SUB OUT: 21 LARSON,BAILEIGH	01:34		
SUB IN: 15 EADY,ARYNN	01:34		
SUB OUT: 15 EADY,ARYNN	01:14	23-34	
SUB IN: 20 SULLIVAN,BRI	01:14		
SUB OUT: 25 FORD,DEJA	00:03	26-35	
SUB IN: 3 PERKINS,LATRICE	00:03		

Col. of Charleston 26, Delaware 35

**Official Substitutions Log
Col. of Charleston vs Delaware
Period 3
January 27, 2019 at Bob Carpenter Center - Newark, Del.**



VISITORS: Col. of Charleston	Time	Score	HOME: Delaware
15 EADY,ARYNN			12 OLEARY,LIZZIE
20 SULLIVAN,BRI			22 DEFREESE,SAMONE
23 COLLINS,TYLER			23 KARGO,BAILEY
25 FORD,DEJA			25 LAWRENCE,REBECCA
2 HUFF,DARIEN			2 GONZALES,ABBY
	08:16	34-35	SUB OUT: LAWRENCE,REBECCA
	08:16		SUB IN: NICHOLAS,MAKEDA
	08:16		SUB OUT: KARGO,BAILEY
	08:16		SUB IN: MCBRIDE,PARIS
	06:03	39-38	SUB OUT: OLEARY,LIZZIE
	06:03		SUB IN: DICKEY,JASMINE
SUB OUT: 15 EADY,ARYNN	05:33	39-40	
SUB IN: 21 LARSON,BAILEIGH	05:33		
SUB OUT: 25 FORD,DEJA	04:41	39-45	
SUB IN: 3 PERKINS,LATRICE	04:41		
SUB OUT: 21 LARSON,BAILEIGH	04:07	39-48	
SUB IN: 42 BROUGHTON,ERICKA	04:07		
SUB OUT: 0 TAYLOR,MADISON	03:39	39-49	
SUB IN: 25 FORD,DEJA	03:39		
	02:39	40-52	SUB OUT: NICHOLAS,MAKEDA
	02:39		SUB IN: LAWRENCE,REBECCA
SUB OUT: 25 FORD,DEJA	02:39		
SUB IN: 0 TAYLOR,MADISON	02:39		
SUB OUT: 42 BROUGHTON,ERICKA	02:10	40-55	
SUB IN: 15 EADY,ARYNN	02:10		
SUB OUT: 3 PERKINS,LATRICE	02:10		
SUB IN: 25 FORD,DEJA	02:10		
SUB OUT: 15 EADY,ARYNN	01:05	40-56	
SUB IN: 20 SULLIVAN,BRI	01:05		
SUB OUT: 25 FORD,DEJA	00:21	40-61	
SUB IN: 3 PERKINS,LATRICE	00:21		

Col. of Charleston 40, Delaware 62

Official Substitutions Log
Col. of Charleston vs Delaware
Period 4
January 27, 2019 at Bob Carpenter Center - Newark, Del.



VISITORS: Col. of Charleston	Time	Score	HOME: Delaware
15 EADY,ARYNN			12 OLEARY,LIZZIE
20 SULLIVAN,BRI			22 DEFREESE,SAMONE
23 COLLINS,TYLER			23 KARGO,BAILEY
25 FORD,DEJA			25 LAWRENCE,REBECCA
2 HUFF,DARIEN			2 GONZALES,ABBY
SUB OUT: 0 TAYLOR,MADISON	09:18	-	
SUB IN: 25 FORD,DEJA	09:18		
	08:31	-	SUB OUT: DEFREESE,SAMONE
	08:31		SUB IN: LEWIS,ALISON
SUB OUT: 2 HUFF,DARIEN	08:31		
SUB IN: 0 TAYLOR,MADISON	08:31		
SUB OUT: 21 LARSON,BAILEIGH	08:31		
SUB IN: 42 BROUGHTON,ERICKA	08:31		
SUB OUT: 0 TAYLOR,MADISON	07:58	42-64	
SUB IN: 2 HUFF,DARIEN	07:58		
	06:29	45-64	SUB OUT: LAWRENCE,REBECCA
	06:29		SUB IN: OLEARY,LIZZIE
	06:29		SUB OUT: GONZALES,ABBY
	06:29		SUB IN: KARGO,BAILEY
SUB OUT: 23 COLLINS,TYLER	06:29		
SUB IN: 0 TAYLOR,MADISON	06:29		
	05:45	46-64	SUB OUT: LEWIS,ALISON
	05:45		SUB IN: DEFREESE,SAMONE
	04:45	46-66	SUB OUT: DICKEY,JASMINE
	04:45		SUB IN: LEWIS,ALISON
SUB OUT: 0 TAYLOR,MADISON	04:45		
SUB IN: 23 COLLINS,TYLER	04:45		
SUB OUT: 42 BROUGHTON,ERICKA	04:45		
SUB IN: 15 EADY,ARYNN	04:45		
	03:10	48-70	SUB OUT: MCBRIDE,PARIS
	03:10		SUB IN: GONZALES,ABBY
	03:10		SUB OUT: DEFREESE,SAMONE
	03:10		SUB IN: LAWRENCE,REBECCA
SUB OUT: 15 EADY,ARYNN	03:10		
SUB IN: 21 LARSON,BAILEIGH	03:10		
SUB OUT: 2 HUFF,DARIEN	02:51	48-71	
SUB IN: 0 TAYLOR,MADISON	02:51		
SUB OUT: 0 TAYLOR,MADISON	02:21	48-72	
SUB IN: 42 BROUGHTON,ERICKA	02:21		
SUB OUT: 21 LARSON,BAILEIGH	02:05	48-72	
SUB IN: 20 SULLIVAN,BRI	02:05		
SUB OUT: 3 PERKINS,LATRICE	01:39	48-74	
SUB IN: 2 HUFF,DARIEN	01:39		

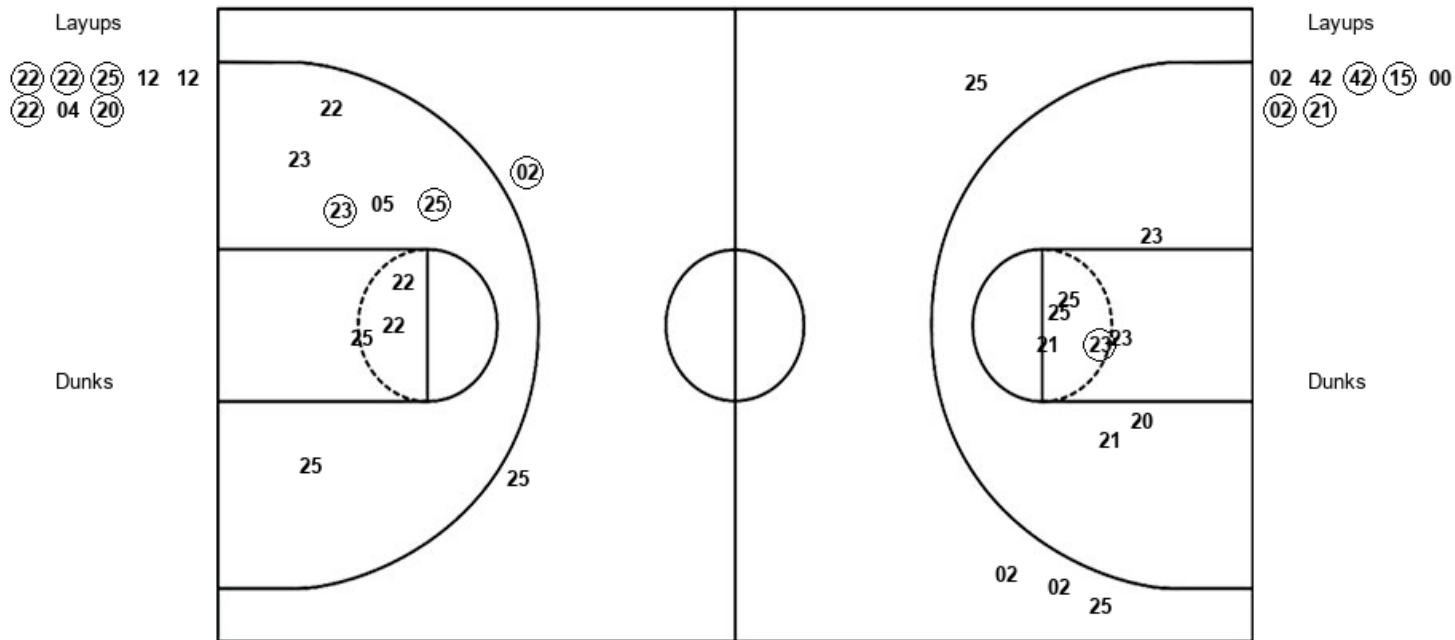
Col. of Charleston 50, Delaware 74

Official Shot Chart
Col. of Charleston vs Delaware
PERIOD 1 Shots
 January 27, 2019 at Bob Carpenter Center - Newark, Del.



Delaware

Col. of Charleston



DEL : Period 1	Made	Att	Pct
Layups	5	8	62.5
Dunks	0	0	0
2PT Field Goals	7	17	41.2
3PT Field Goals	1	2	50.0
Total Field Goals	8	19	42.1

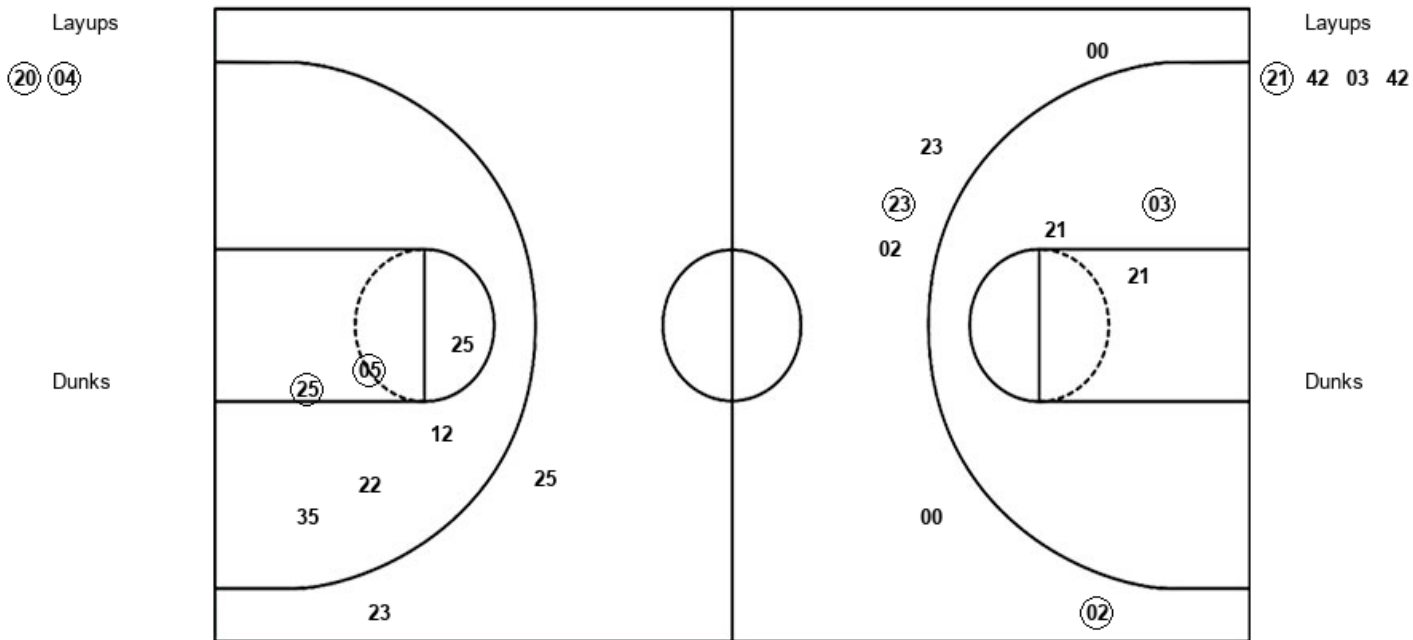
COC : Period 1	Made	Att	Pct
Layups	4	7	57.1
Dunks	0	0	0
2PT Field Goals	5	15	33.3
3PT Field Goals	0	4	00.0
Total Field Goals	5	19	26.3

Official Shot Chart
Col. of Charleston vs Delaware
PERIOD 2 Shots
January 27, 2019 at Bob Carpenter Center - Newark, Del.



Delaware

Col. of Charleston



DEL : Period 2	Made	Att	Pct
Layups	2	2	100.0
Dunks	0	0	0
2PT Field Goals	4	8	50.0
3PT Field Goals	0	2	00.0
Total Field Goals	4	10	40.0

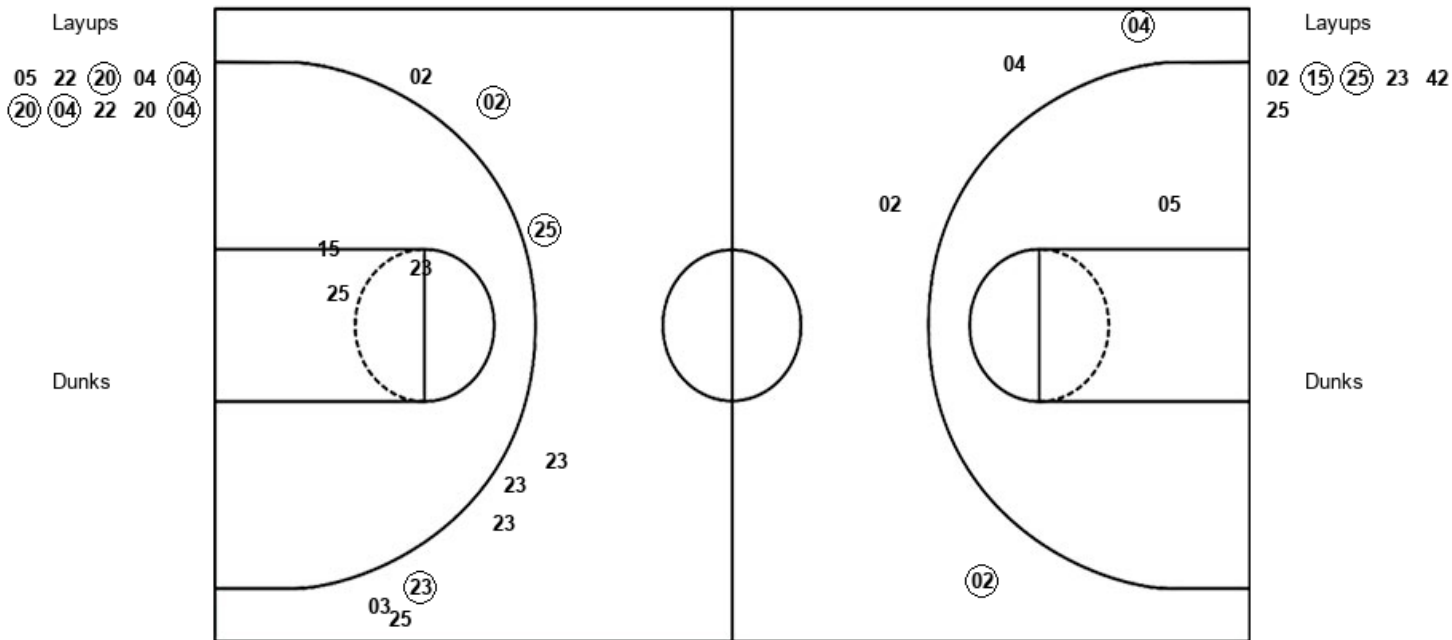
COC : Period 2	Made	Att	Pct
Layups	1	4	25.0
Dunks	0	0	0
2PT Field Goals	2	7	28.6
3PT Field Goals	2	6	33.3
Total Field Goals	4	13	30.8

Official Shot Chart
Col. of Charleston vs Delaware
PERIOD 3 Shots
 January 27, 2019 at Bob Carpenter Center - Newark, Del.



Delaware

Col. of Charleston



DEL : Period 3	Made	Att	Pct
Layups	5	10	50.0
Dunks	0	0	0
2PT Field Goals	5	11	45.5
3PT Field Goals	2	4	50.0
Total Field Goals	7	15	46.7

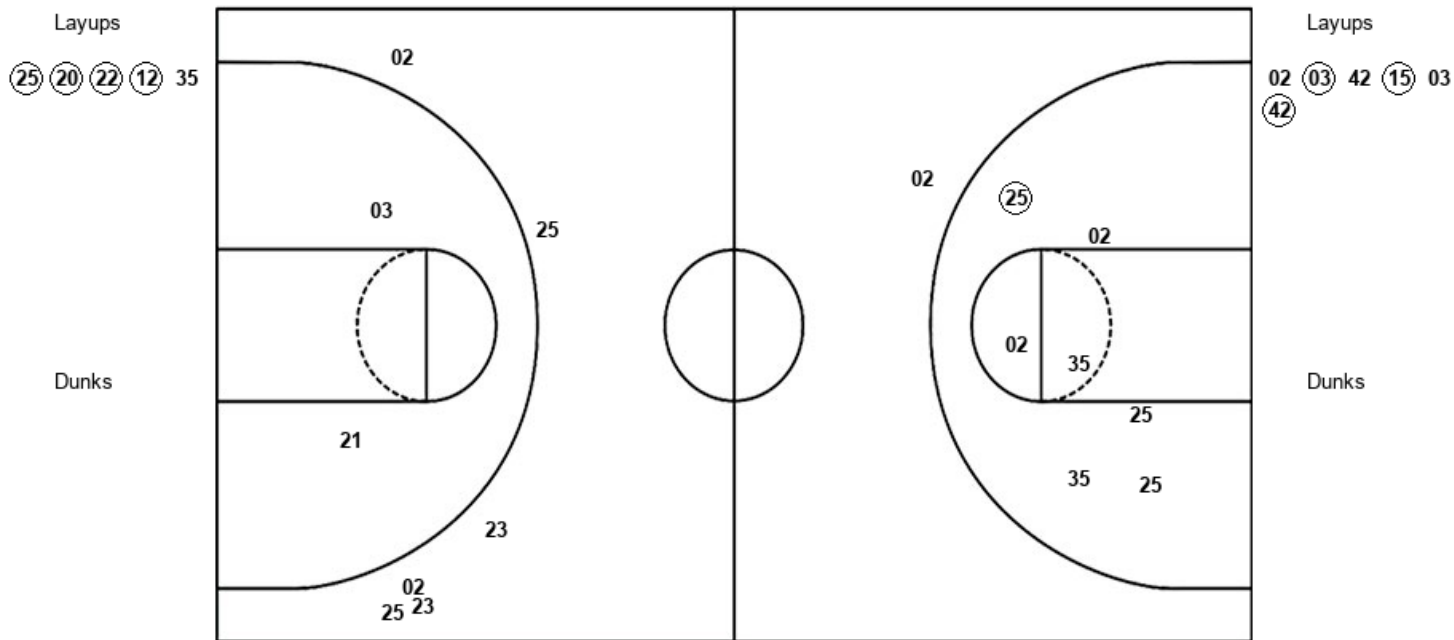
COC : Period 3	Made	Att	Pct
Layups	2	6	33.3
Dunks	0	0	0
2PT Field Goals	2	9	22.2
3PT Field Goals	3	9	33.3
Total Field Goals	5	18	27.8

Official Shot Chart
Col. of Charleston vs Delaware
PERIOD 4 Shots
January 27, 2019 at Bob Carpenter Center - Newark, Del.



Delaware

Col. of Charleston



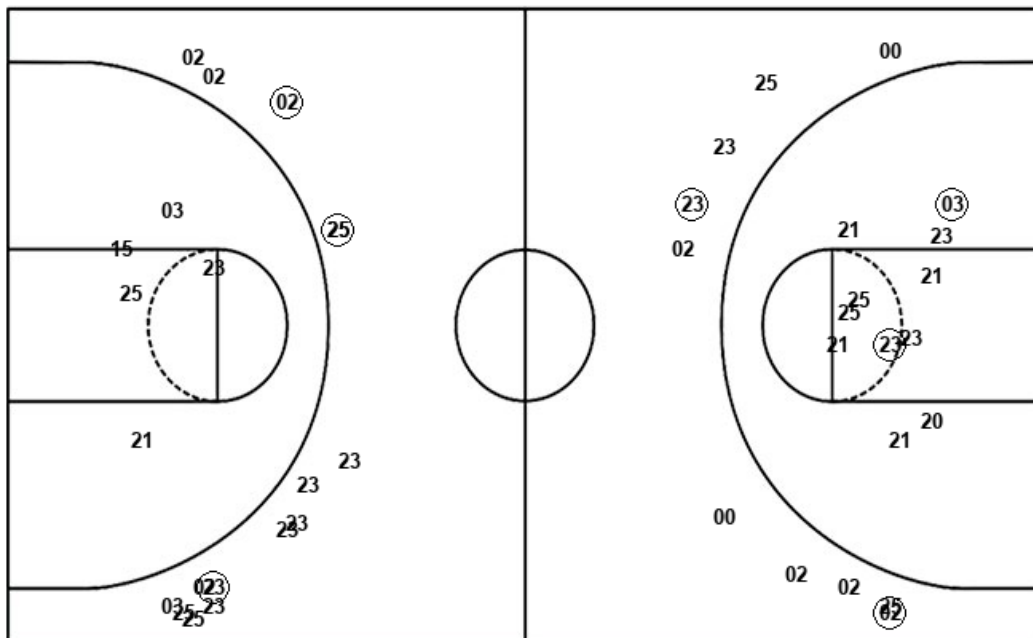
DEL : Period 4	Made	Att	Pct
Layups	4	5	80.0
Dunks	0	0	0
2PT Field Goals	5	12	41.7
3PT Field Goals	0	1	00.0
Total Field Goals	5	13	38.5

COC : Period 4	Made	Att	Pct
Layups	3	6	50.0
Dunks	0	0	0
2PT Field Goals	3	8	37.5
3PT Field Goals	0	6	00.0
Total Field Goals	3	14	21.4

Official Shot Chart
Col. of Charleston vs Delaware
Col. of Charleston Team Shots
January 27, 2019 at Bob Carpenter Center - Newark, Del.



Layups



Layups

02 42 (42) (15) 00
 (02) (21) (21) 42 03
 42 02 (15) (25) 23
 42 25 02 (03) 42
 (15) 03 (42)

Dunks

Dunks

COC : Period 1	Made	Att	Pct
Layups	4	7	57.1
Dunks	0	0	0
2PT Field Goals	5	15	33.3
3PT Field Goals	0	4	00.0
Total Field Goals	5	19	26.3

COC : Period 2	Made	Att	Pct
Layups	1	4	25.0
Dunks	0	0	0
2PT Field Goals	2	7	28.6
3PT Field Goals	2	6	33.3
Total Field Goals	4	13	30.8

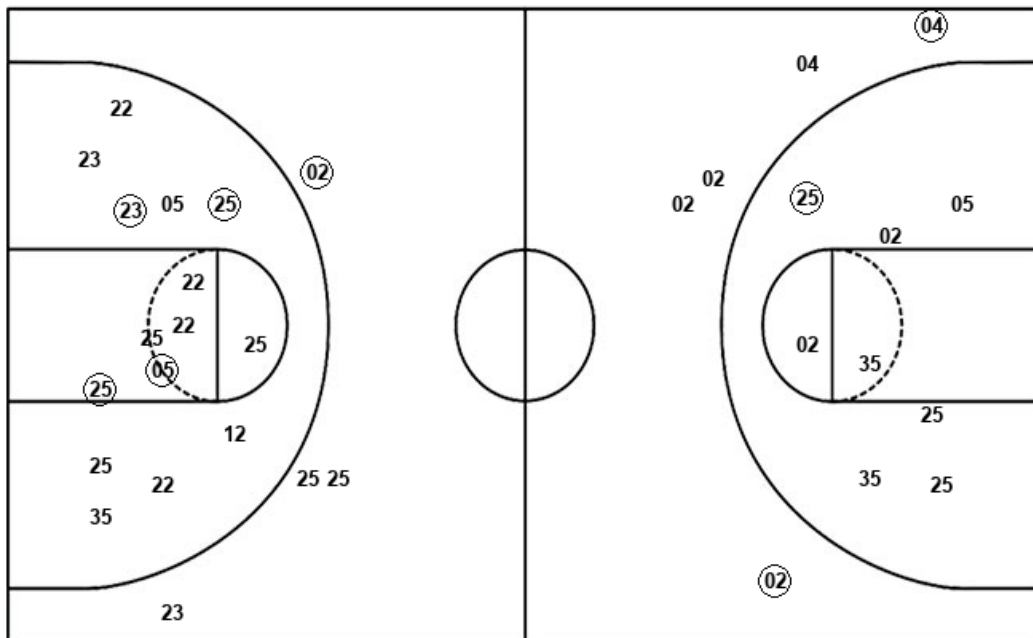
COC : Period 3	Made	Att	Pct
Layups	2	6	33.3
Dunks	0	0	0
2PT Field Goals	2	9	22.2
3PT Field Goals	3	9	33.3
Total Field Goals	5	18	27.8

COC : Period 4	Made	Att	Pct
Layups	3	6	50.0
Dunks	0	0	0
2PT Field Goals	3	8	37.5
3PT Field Goals	0	6	00.0
Total Field Goals	3	14	21.4

Official Shot Chart
Col. of Charleston vs Delaware
Delaware Team Shots
January 27, 2019 at Bob Carpenter Center - Newark, Del.



Layups



Layups

Dunks

Dunks

DEL : Period 1	Made	Att	Pct
Layups	5	8	62.5
Dunks	0	0	0
2PT Field Goals	7	17	41.2
3PT Field Goals	1	2	50.0
Total Field Goals	8	19	42.1

DEL : Period 2	Made	Att	Pct
Layups	2	2	100.0
Dunks	0	0	0
2PT Field Goals	4	8	50.0
3PT Field Goals	0	2	00.0
Total Field Goals	4	10	40.0

DEL : Period 3	Made	Att	Pct
Layups	5	10	50.0
Dunks	0	0	0
2PT Field Goals	5	11	45.5
3PT Field Goals	2	4	50.0
Total Field Goals	7	15	46.7

DEL : Period 4	Made	Att	Pct
Layups	4	5	80.0
Dunks	0	0	0
2PT Field Goals	5	12	41.7
3PT Field Goals	0	1	00.0
Total Field Goals	5	13	38.5