

FINAL SCORE



UNCW

53



Delaware

65

January 25, 2019 • Bob Carpenter Center - Newark, Del.

FINAL STATISTICS

Official Box Score
UNCW vs Delaware
Game Totals -- Final Statistics
January 25, 2019 at Bob Carpenter Center - Newark, Del.



UNCW 53

No.	Player	S	Pts	FG	3FG	FT	OR	DR	TR	PF	A	TO	Blk	Stl	Min	+/-
04	PARKER, SHRITA		10	3-15	3-5	1-2	2	2	4	0	4	3	0	0	36	-12
05	SMITH, GIGI		20	9-18	1-3	1-1	3	6	9	4	0	5	0	2	33	-6
10	VASON, AHYIONA		5	1-3	1-2	2-2	0	1	1	2	5	1	0	0	31	-7
13	SUGGS, LACEY		6	2-6	1-3	1-2	1	4	5	4	2	3	0	0	27	1
24	BELL, CHINYERE		3	1-5	0-0	1-6	3	3	6	3	2	4	0	0	20	0
00	JEUNE, ASHLI		0	0-2	0-2	0-0	2	1	3	0	0	0	0	0	3	-2
01	POWELL, PAIGE		2	1-2	0-0	0-2	1	2	3	2	1	0	0	0	12	-8
02	CRISP, MORIAH		0	0-0	0-0	0-0	0	0	0	0	1	3	0	0	11	-5
14	TATE, TIMBER		5	2-6	1-5	0-0	0	1	1	2	0	0	0	0	18	-10
22	THYBULLE, ZHANEIA		0	0-0	0-0	0-0	0	0	0	0	0	0	0	0	0	0
31	MITCHELL, JESSICA		0	0-0	0-0	0-0	0	0	0	0	0	0	0	0	0	0
32	OBUSEK, CAROL-ANNE		2	1-2	0-0	0-0	2	0	2	3	0	2	0	0	8	-11
TEAM							0	3	3	0		0				
TOTALS			53	20-59	7-20	6-15	14	23	37	20	15	21	0	2	200	

Shooting By Period

Period	FG	FG%	3FG	3FG%	FT	FT%
1st Qtr	5-15	33%	3-5	60%	0-0	0%
2nd Qtr	5-13	38%	1-6	17%	4-6	67%
3rd Qtr	5-15	33%	1-3	33%	0-2	00%
4th Qtr	5-16	31%	2-6	33%	2-7	29%
1st Half	10-28	36%	4-11	36%	4-6	67%
2nd Half	10-31	32%	3-9	33%	2-9	22%
Game	20-59	33.9%	7-20	35.0%	6-15	40.0%

Last FG: 4th-03:22
Biggest Run: 8-0
Largest lead: By 5 at 1-02:18
Technical Fouls: None.

Delaware 65

No.	Player	S	Pts	FG	3FG	FT	OR	DR	TR	PF	A	TO	Blk	Stl	Min	+/-
02	GONZALES, ABBY		4	1-6	1-5	1-4	0	2	2	3	5	5	0	3	35	9
12	OLEARY, LIZZIE		3	1-3	0-0	1-2	0	3	3	3	1	2	0	0	16	5
22	DEFREESE, SAMONE		26	10-19	0-1	6-6	5	6	11	2	3	1	0	0	30	13
23	KARGO, BAILEY		3	1-4	1-3	0-0	1	2	3	3	1	1	0	0	19	3
25	LAWRENCE, REBECCA		4	2-5	0-0	0-0	3	2	5	4	0	0	2	2	22	10
04	MCBRIDE, PARIS		6	3-8	0-1	0-0	1	2	3	0	1	2	0	3	18	9
05	NICHOLAS, MAKEDA		11	4-9	0-0	3-4	2	2	4	1	0	1	1	1	25	-1
20	DICKEY, JASMINE		0	0-1	0-0	0-0	0	3	3	4	1	2	2	0	15	6
35	LEWIS, ALISON		8	4-8	0-0	0-0	2	1	3	1	1	1	0	2	19	6
TEAM							1	5	6	0		0				
TOTALS			65	26-63	2-10	11-16	15	28	43	21	13	15	5	11	200	

Shooting By Period

Period	FG	FG%	3FG	3FG%	FT	FT%
1st Qtr	6-13	46%	0-2	00%	2-2	100%
2nd Qtr	6-17	35%	0-1	00%	2-2	100%
3rd Qtr	7-14	50%	1-1	100%	4-9	44%
4th Qtr	7-19	37%	1-6	17%	3-3	100%
1st Half	12-30	40%	0-3	00%	4-4	100%
2nd Half	14-33	42%	2-7	29%	7-12	58%
Game	26-63	41.3%	2-10	20.0%	11-16	68.8%

Last FG: 4th-01:34
Biggest Run: 10-0
Largest lead: By 13 at 4-05:41
Technical Fouls: None.

Game Notes:

Officials: Luis Gonzales, Angela Lewis, Angel Stanton
Attendance: 1633

Start Time: 2019-01-25 17:06:58
End Time: 2019-01-25 19:03:02
Game Duration: 116
Conference Game;

Score	1st	2nd	3rd	4th	TOT
UNC	13	15	11	14	53
DEL	14	14	19	18	65

UNC led for 4:56. DEL led for 31:29.
Game was tied for 3:35.
Times tied: 8 Lead Changes: 6

Points from	UNC	DEL
In the Paint	22	34
Off Turns	7	18
2nd Chance	0	14
Fast Break	5	10
Bench	9	25

Official Box Score
UNCW vs Delaware
First Half Statistics Only
January 25, 2019 at Bob Carpenter Center - Newark, Del.



UNCW 28

No.	Player	S	Pts	FG	3FG	FT	OR	DR	TR	PF	A	TO	Blk	Stl	Min	+/-
00	JEUNE, ASHLI		0	0-2	0-2	0-0	1	1	2	0	0	0	0	0	2	-2
10	VASON, AHYIONA		2	0-2	0-1	2-2	0	0	0	0	2	0	0	0	15	4
13	SUGGS, LACEY		3	1-3	1-2	0-0	1	4	5	1	1	3	0	0	16	6
14	TATE, TIMBER		0	0-0	0-0	0-0	0	0	0	0	0	0	0	0	3	-4
22	THYBULLE, ZHANEIA		0	0-0	0-0	0-0	0	0	0	0	0	0	0	0	0	0
24	BELL, CHINYERE		1	0-2	0-0	1-2	1	0	1	1	2	1	0	0	14	6
31	MITCHELL, JESSICA		0	0-0	0-0	0-0	0	0	0	0	0	0	0	0	0	0
32	OBUSEK, CAROL-ANNE		2	1-2	0-0	0-0	2	0	2	3	0	2	0	0	8	-11
01	POWELL, PAIGE		2	1-2	0-0	0-0	0	1	1	2	0	0	0	0	3	-2
02	CRISP, MORIAH		0	0-0	0-0	0-0	0	0	0	0	0	1	0	0	5	-4
04	PARKER, SHRITA		7	2-7	2-4	1-2	0	1	1	0	3	1	0	0	18	0
05	SMITH, GIGI		11	5-8	1-2	0-0	1	3	4	2	0	2	0	1	15	7
	TEAM		0	0-0	0-0	0-0	0	1	1	0	0	0	0	0	0	0
TOTALS			28	10-28	4-11	4-6	6	11	17	9	8	10	0	1	100	

Shooting By Period

Period	FG	FG%	3FG	3FG%	FT	FT%
1st Qtr	5-15	33%	3-5	60%	0-0	0%
2nd Qtr	5-13	38%	1-6	17%	4-6	67%
1st Half	10-28	36%	4-11	36%	4-6	67%
Game	20-59	33.9%	7-20	35.0%	6-15	40.0%

Last FG Half: UNC 2nd-01:31

Delaware 28

No.	Player	S	Pts	FG	3FG	FT	OR	DR	TR	PF	A	TO	Blk	Stl	Min	+/-
12	OLEARY, LIZZIE		0	0-1	0-0	0-0	0	0	0	3	0	2	0	0	5	-5
20	DICKEY, JASMINE		0	0-0	0-0	0-0	0	1	1	2	0	1	1	0	5	3
22	DEFREESE, SAMONE		12	5-9	0-0	2-2	2	2	4	1	1	0	0	0	12	2
23	KARGO, BAILEY		0	0-2	0-1	0-0	1	1	2	1	1	1	0	0	13	1
25	LAWRENCE, REBECCA		2	1-3	0-0	0-0	0	1	1	2	0	0	1	0	12	-1
35	LEWIS, ALISON		2	1-3	0-0	0-0	1	0	1	0	0	1	0	1	9	2
02	GONZALES, ABBY		0	0-2	0-2	0-0	0	1	1	2	1	3	0	0	17	-3
04	MCBRIDE, PARIS		4	2-4	0-0	0-0	1	0	1	0	0	1	0	2	9	2
05	NICHOLAS, MAKEDA		8	3-6	0-0	2-2	1	2	3	1	0	0	0	0	16	-1
	TEAM		0	0-0	0-0	0-0	1	4	5	0	0	0	0	0	0	0
TOTALS			28	12-30	0-3	4-4	7	12	19	12	3	9	2	3	100	

Shooting By Period

Period	FG	FG%	3FG	3FG%	FT	FT%
1st Qtr	6-13	46%	0-2	00%	2-2	100%
2nd Qtr	6-17	35%	0-1	00%	2-2	100%
1st Half	12-30	40%	0-3	00%	4-4	100%
Game	26-63	41.3%	2-10	20.0%	11-16	68.8%

Last FG Half: DEL 2nd-04:40

Game Notes:

Officials: Luis Gonzales, Angela Lewis, Angel Stanton
Attendance: 1633

Start Time: 2019-01-25 17:06:58
End Time: 2019-01-25 19:03:02
Game Duration: 116
Conference Game;

Score	1st	2nd	3rd	4th	TOT
UNC	13	15	11	14	53
DEL	14	14	19	18	65

Points from (This Period)	UNC	DEL
In the Paint	10	16
Off Turns	4	6
2nd Chance	0	6
Fast Break	2	0
Bench	4	14

Official Box Score
UNCW vs Delaware
First Quarter Statistics Only
January 25, 2019 at Bob Carpenter Center - Newark, Del.



UNCW 13

No.	Player	S	Pts	FG	3FG	FT	OR	DR	TR	PF	A	TO	Blk	Stl	Min	+/-
04	PARKER, SHRITA		3	1-5	1-2	0-0	0	0	0	0	2	1	0	0	8	-1
05	SMITH, GIGI		5	2-4	1-2	0-0	1	0	1	1	0	2	0	1	9	1
10	VASON, AHYIONA		0	0-1	0-0	0-0	0	0	0	0	1	0	0	0	6	3
13	SUGGS, LACEY		3	1-2	1-1	0-0	1	3	4	1	1	1	0	0	8	3
24	BELL, CHINYERE		0	0-1	0-0	0-0	1	0	1	0	0	1	0	0	6	3
00	JEUNE, ASHLI		0	0-0	0-0	0-0	0	0	0	0	0	0	0	0	0	0
01	POWELL, PAIGE		2	1-2	0-0	0-0	0	1	1	2	0	0	0	0	3	-2
02	CRISP, MORIAH		0	0-0	0-0	0-0	0	0	0	0	0	0	0	0	4	-4
14	TATE, TIMBER		0	0-0	0-0	0-0	0	0	0	0	0	0	0	0	3	-4
22	THYBULLE, ZHANEIA		0	0-0	0-0	0-0	0	0	0	0	0	0	0	0	0	0
31	MITCHELL, JESSICA		0	0-0	0-0	0-0	0	0	0	0	0	0	0	0	0	0
32	OBUSEK, CAROL-ANNE		0	0-0	0-0	0-0	1	0	1	0	0	1	0	0	2	-4
	TEAM						0	0	0	0		0				
TOTALS			13	5-15	3-5	0-0	4	4	8	4	4	6	0	1	50	

Shooting By Period

Period	FG	FG%	3FG	3FG%	FT	FT%
1st Qtr	5-15	33%	3-5	60%	0-0	0%
2nd Qtr	5-13	38%	1-6	17%	4-6	67%
1st Half	5-15	33%	3-5	60%	0-0	0%
1st Half	10-28	36%	4-11	36%	4-6	67%
Game	20-59	33.9%	7-20	35.0%	6-15	40.0%

Delaware 14

No.	Player	S	Pts	FG	3FG	FT	OR	DR	TR	PF	A	TO	Blk	Stl	Min	+/-
02	GONZALES, ABBY		0	0-1	0-1	0-0	0	1	1	0	0	1	0	0	8	-3
12	OLEARY, LIZZIE		0	0-0	0-0	0-0	0	0	0	2	0	2	0	0	1	0
22	DEFREESE, SAMONE		8	4-5	0-0	0-0	1	1	2	0	1	0	0	0	7	1
23	KARGO, BAILEY		0	0-1	0-1	0-0	1	1	2	1	1	0	0	0	7	1
25	LAWRENCE, REBECCA		2	1-2	0-0	0-0	0	1	1	1	0	0	1	0	6	-3
04	MCBRIDE, PARIS		0	0-1	0-0	0-0	1	0	1	0	0	1	0	1	4	4
05	NICHOLAS, MAKEDA		4	1-3	0-0	2-2	0	1	1	0	0	0	0	0	8	-3
20	DICKEY, JASMINE		0	0-0	0-0	0-0	0	0	0	1	0	1	1	0	4	4
35	LEWIS, ALISON		0	0-0	0-0	0-0	0	0	0	0	0	1	0	0	4	4
	TEAM						0	1	1	0		0				
TOTALS			14	6-13	0-2	2-2	3	6	9	5	2	6	2	1	50	

Shooting By Period

Period	FG	FG%	3FG	3FG%	FT	FT%
1st Qtr	6-13	46%	0-2	00%	2-2	100%
2nd Qtr	6-17	35%	0-1	00%	2-2	100%
1st Half	6-13	46%	0-2	00%	2-2	100%
1st Half	12-30	40%	0-3	00%	4-4	100%
Game	26-63	41.3%	2-10	20.0%	11-16	68.8%

Game Notes:

Officials: Luis Gonzales, Angela Lewis, Angel Stanton
Attendance: 1633

Start Time: 2019-01-25 17:06:58

End Time: 2019-01-25 19:03:02

Game Duration: 116

Conference Game;

Score	1st	2nd	3rd	4th	TOT
UNC	13	15	11	14	53
DEL	14	14	19	18	65

Points from (This Period)	UNC	DEL
In the Paint	2	6
Off Turns	2	4
2nd Chance	0	2
Fast Break	0	0
Bench	2	4

Official Play-By-Play
UNCW vs Delaware
First Quarter
January 25, 2019 at Bob Carpenter Center - Newark, Del.



Period 1

Starters:

UNCW: 10 VASON, AHYIONA; 13 SUGGS, LACEY; 24 BELL, CHINYERE; 4 PARKER, SHRITA; 5 SMITH, GIGI;

Delaware: 12 OLEARY, LIZZIE; 22 DEFREESE, SAMONE; 23 KARGO, BAILEY; 25 LAWRENCE, REBECCA; 2 GONZALES, ABBY;

Time	VISITORS: UNCW	Score	Margin	HOME: Delaware
09:34				FOUL (OFF) by OLEARY, LIZZIE
09:34				TURNOVER (OFFENSIVE) by OLEARY, LIZZIE
09:18	TURNOVER (BADPASS) by BELL, CHINYERE			
09:08				FOUL (OFF) by OLEARY, LIZZIE
09:08				TURNOVER (OFFENSIVE) by OLEARY, LIZZIE
09:08				SUB OUT: OLEARY, LIZZIE
09:08				SUB IN: NICHOLAS, MAKEDA
08:54	TURNOVER (LOSTBALL) by SMITH, GIGI			
08:41		2-0	H 2	GOOD! LAYUP by DEFREESE, SAMONE
08:21	GOOD! 3PTR by SMITH, GIGI	2-3	V 1	
08:21	ASSIST by PARKER, SHRITA			
08:02		4-3	H 1	GOOD! LAYUP by DEFREESE, SAMONE
08:02				ASSIST by KARGO, BAILEY
07:55	MISSED LAYUP by PARKER, SHRITA			
07:48				REBOUND (DEF) by NICHOLAS, MAKEDA
07:40				MISSED 3PTR by KARGO, BAILEY
07:35				REBOUND (OFF) by KARGO, BAILEY
07:23				MISSED JUMPER by LAWRENCE, REBECCA
07:18	REBOUND (DEF) by SUGGS, LACEY			
06:55	GOOD! JUMPER by SMITH, GIGI	4-5	V 1	
06:45	FOUL (PERSONAL) by SMITH, GIGI			
06:45		5-5	T	GOOD! FT by NICHOLAS, MAKEDA
06:45		6-5	H 1	GOOD! FT by NICHOLAS, MAKEDA
06:32	MISSED LAYUP by BELL, CHINYERE			
06:29				REBOUND (DEF) by GONZALES, ABBY
06:29				TURNOVER (OTHER) by GONZALES, ABBY
06:18	MISSED JUMPER by PARKER, SHRITA			
06:15				REBOUND (DEF) by DEFREESE, SAMONE
06:02		8-5	H 3	GOOD! JUMPER by LAWRENCE, REBECCA
06:02				ASSIST by DEFREESE, SAMONE
05:39				FOUL (PERSONAL) by LAWRENCE, REBECCA
05:33	GOOD! 3PTR by PARKER, SHRITA	8-8	T	
05:33	ASSIST by VASON, AHYIONA			
05:16				MISSED LAYUP by DEFREESE, SAMONE
05:13	REBOUND (DEF) by SUGGS, LACEY			
05:04	GOOD! 3PTR by SUGGS, LACEY	8-11	V 3	
05:04	ASSIST by PARKER, SHRITA			
04:34				MISSED JUMPER by NICHOLAS, MAKEDA
04:31	REBOUND (DEF) by SUGGS, LACEY			
04:18	MISSED 3PTR by SMITH, GIGI			
04:16	REBOUND (OFF) by BELL, CHINYERE			
04:16				FOUL (PERSONAL) by KARGO, BAILEY
04:16				
04:16	SUB OUT: VASON, AHYIONA			
04:16	SUB IN: POWELL, PAIGE			
04:16	SUB OUT: BELL, CHINYERE			
04:16	SUB IN: CRISP, MORIAH			
04:16				SUB OUT: DEFREESE, SAMONE
04:16				SUB IN: MCBRIDE, PARIS
04:16				SUB OUT: KARGO, BAILEY
04:16				SUB IN: DICKEY, JASMINE
04:16				SUB OUT: LAWRENCE, REBECCA
04:16				SUB IN: LEWIS, ALISON
04:14	TURNOVER (BADPASS) by PARKER, SHRITA			
04:01				TURNOVER (TRAVEL) by LEWIS, ALISON
03:43	MISSED JUMPER by SMITH, GIGI			
03:38	REBOUND (OFF) by SUGGS, LACEY			
03:34	MISSED LAYUP by POWELL, PAIGE			
03:31				REBOUND (DEF) by TEAM
03:31	SUB OUT: PARKER, SHRITA			
03:31	SUB IN: TATE, TIMBER			
03:22	FOUL (PERSONAL) by POWELL, PAIGE			
03:03				MISSED JUMPER by NICHOLAS, MAKEDA
03:00	REBOUND (DEF) by POWELL, PAIGE			
02:51	TURNOVER (TRAVEL) by SMITH, GIGI			
02:35				MISSED 3PTR by GONZALES, ABBY
02:31				REBOUND (OFF) by MCBRIDE, PARIS
02:29				TURNOVER (BADPASS) by MCBRIDE, PARIS
02:29	STEAL by SMITH, GIGI			
02:18	GOOD! LAYUP by POWELL, PAIGE	8-13	V 5	

Time	VISITORS: UNCW	Score	Margin	HOME: Delaware
02:18	ASSIST by SUGGS, LACEY			
02:03		10-13	V 3	GOOD! JUMPER by NICHOLAS, MAKEDA
01:41	MISSED LAYUP by SUGGS, LACEY			
01:36	REBOUND (OFF) by SMITH, GIGI			
01:36				SUB OUT: GONZALES, ABBY
01:36				SUB IN: DEFREESE, SAMONE
01:36				SUB OUT: NICHOLAS, MAKEDA
01:36				SUB IN: KARGO, BAILEY
01:34	SUB OUT: SMITH, GIGI			
01:34	SUB IN: PARKER, SHRITA			
01:34	SUB OUT: SUGGS, LACEY			
01:34	SUB IN: OBUSEK, CAROL-ANNE			
01:34	FOUL (OFF) by SUGGS, LACEY			
01:34	TURNOVER (OFFENSIVE) by SUGGS, LACEY			
01:30		12-13	V 1	GOOD! JUMPER by DEFREESE, SAMONE
00:56	MISSED 3PTR by PARKER, SHRITA			
00:54				REBOUND (DEF) by KARGO, BAILEY
00:54	FOUL (PERSONAL) by POWELL, PAIGE			
00:54	SUB OUT: POWELL, PAIGE			
00:54	SUB IN: SMITH, GIGI			
00:41				MISSED JUMPER by MCBRIDE, PARIS
00:38				REBOUND (OFF) by DEFREESE, SAMONE
00:37		14-13	H 1	GOOD! LAYUP by DEFREESE, SAMONE [PNT]
00:26	MISSED LAYUP by PARKER, SHRITA			
00:26				BLOCK by DICKEY, JASMINE
00:19	REBOUND (OFF) by OBUSEK, CAROL-ANNE			
00:19	TURNOVER (LOSTBALL) by OBUSEK, CAROL-ANNE			
00:19				STEAL by MCBRIDE, PARIS
00:19	SUB OUT: CRISP, MORIAH			
00:19	SUB IN: JEUNE, ASHLI			
00:19	SUB OUT: TATE, TIMBER			
00:19	SUB IN: VASON, AHYIONA			
00:10				FOUL (OFF) by DICKEY, JASMINE
00:10				TURNOVER (OFFENSIVE) by DICKEY, JASMINE
00:03	MISSED JUMPER by VASON, AHYIONA			
00:03				BLOCK by LAWRENCE, REBECCA
00:03				REBOUND (DEF) by LAWRENCE, REBECCA

UNCW 13, Delaware 14

Points from (This Period)	UNC	DEL
In the Paint	2	6
Off Turns	2	4
2nd Chance	0	2
Fast Break	0	0
Bench	2	4

Official Box Score
UNCW vs Delaware
Second Quarter Statistics Only
January 25, 2019 at Bob Carpenter Center - Newark, Del.



UNCW 15

No.	Player	S	Pts	FG	3FG	FT	OR	DR	TR	PF	A	TO	Blk	Stl	Min	+/-
04	PARKER, SHRITA		4	1-2	1-2	1-2	0	1	1	0	1	0	0	0	10	1
05	SMITH, GIGI		6	3-4	0-0	0-0	0	3	3	1	0	0	0	0	6	6
10	VASON, AHYIONA		2	0-1	0-1	2-2	0	0	0	0	1	0	0	0	9	1
13	SUGGS, LACEY		0	0-1	0-1	0-0	0	1	1	0	0	2	0	0	8	3
24	BELL, CHINYERE		1	0-1	0-0	1-2	0	0	0	1	2	0	0	0	8	3
00	JEUNE, ASHLI		0	0-2	0-2	0-0	1	1	2	0	0	0	0	0	2	-2
01	POWELL, PAIGE		0	0-0	0-0	0-0	0	0	0	0	0	0	0	0	0	0
02	CRISP, MORIAH		0	0-0	0-0	0-0	0	0	0	0	0	1	0	0	1	0
14	TATE, TIMBER		0	0-0	0-0	0-0	0	0	0	0	0	0	0	0	0	0
22	THYBULLE, ZHANEIA		0	0-0	0-0	0-0	0	0	0	0	0	0	0	0	0	0
31	MITCHELL, JESSICA		0	0-0	0-0	0-0	0	0	0	0	0	0	0	0	0	0
32	OBUSEK, CAROL-ANNE		2	1-2	0-0	0-0	1	0	1	3	0	1	0	0	6	-7
	TEAM						0	1	1	0		0				
TOTALS			15	5-13	1-6	4-6	2	7	9	5	4	4	0	0	50	

Shooting By Period

Period	FG	FG%	3FG	3FG%	FT	FT%
3rd Qtr	5-15	33%	1-3	33%	0-2	00%
4th Qtr	5-16	31%	2-6	33%	2-7	29%
2nd Half	5-13	38%	1-6	17%	4-6	67%
2nd Half	10-31	32%	3-9	33%	2-9	22%
Game	20-59	33.9%	7-20	35.0%	6-15	40.0%

Delaware 14

No.	Player	S	Pts	FG	3FG	FT	OR	DR	TR	PF	A	TO	Blk	Stl	Min	+/-
02	GONZALES, ABBY		0	0-1	0-1	0-0	0	0	0	2	1	2	0	0	9	0
12	OLEARY, LIZZIE		0	0-1	0-0	0-0	0	0	0	1	0	0	0	0	4	-5
22	DEFREESE, SAMONE		4	1-4	0-0	2-2	1	1	2	1	0	0	0	0	5	1
23	KARGO, BAILEY		0	0-1	0-0	0-0	0	0	0	0	0	1	0	0	6	0
25	LAWRENCE, REBECCA		0	0-1	0-0	0-0	0	0	0	1	0	0	0	0	6	2
04	MCBRIDE, PARIS		4	2-3	0-0	0-0	0	0	0	0	0	0	0	1	5	-2
05	NICHOLAS, MAKEDA		4	2-3	0-0	0-0	1	1	2	1	0	0	0	0	8	2
20	DICKEY, JASMINE		0	0-0	0-0	0-0	0	1	1	1	0	0	0	0	1	-1
35	LEWIS, ALISON		2	1-3	0-0	0-0	1	0	1	0	0	0	0	1	5	-2
	TEAM						1	3	4	0		0				
TOTALS			14	6-17	0-1	2-2	4	6	10	7	1	3	0	2	50	

Shooting By Period

Period	FG	FG%	3FG	3FG%	FT	FT%
3rd Qtr	7-14	50%	1-1	100%	4-9	44%
4th Qtr	7-19	37%	1-6	17%	3-3	100%
2nd Half	6-17	35%	0-1	00%	2-2	100%
2nd Half	14-33	42%	2-7	29%	7-12	58%
Game	26-63	41.3%	2-10	20.0%	11-16	68.8%

Game Notes:

Officials: Luis Gonzales, Angela Lewis, Angel Stanton
Attendance: 1633

Start Time: 2019-01-25 17:06:58

End Time: 2019-01-25 19:03:02

Game Duration: 116

Conference Game;

Score	1st	2nd	3rd	4th	TOT
UNC	13	15	11	14	53
DEL	14	14	19	18	65

Points from (This Period)	UNC	DEL
In the Paint	8	10
Off Turns	2	2
2nd Chance	0	4
Fast Break	2	0
Bench	2	10

Official Play-By-Play
UNCW vs Delaware
Second Quarter
January 25, 2019 at Bob Carpenter Center - Newark, Del.



Period 2

Starters:

UNCW: 10 VASON, AHYIONA; 13 SUGGS, LACEY; 24 BELL, CHINYERE; 4 PARKER, SHRITA; 5 SMITH, GIGI;

Delaware: 12 OLEARY, LIZZIE; 22 DEFREESE, SAMONE; 23 KARGO, BAILEY; 25 LAWRENCE, REBECCA; 2 GONZALES, ABBY;

Time	VISITORS: UNCW	Score	Margin	HOME: Delaware
09:46				FOUL (PERSONAL) by DICKEY, JASMINE
09:46				SUB OUT: DICKEY, JASMINE
09:46				SUB IN: LAWRENCE, REBECCA
09:34	MISSED JUMPER by SMITH, GIGI			
09:32				REBOUND (DEF) by NICHOLAS, MAKEDA
09:32	FOUL (PERSONAL) by SMITH, GIGI			
09:32	SUB OUT: SMITH, GIGI			
09:32	SUB IN: BELL, CHINYERE			
09:24				MISSED JUMPER by DEFREESE, SAMONE
09:19	REBOUND (DEF) by JEUNE, ASHLI			
08:59	MISSED 3PTR by JEUNE, ASHLI			
08:55				REBOUND (DEF) by TEAM
08:41		16-13	H 3	GOOD! JUMPER by DEFREESE, SAMONE [PNT]
08:23	MISSED JUMPER by OBUSEK, CAROL-ANNE			
08:20	REBOUND (OFF) by JEUNE, ASHLI			
08:09	MISSED 3PTR by JEUNE, ASHLI			
08:05	REBOUND (OFF) by OBUSEK, CAROL-ANNE			
08:03	MISSED 3PTR by PARKER, SHRITA			
08:00				REBOUND (DEF) by TEAM
08:00	SUB OUT: JEUNE, ASHLI			
08:00	SUB IN: SUGGS, LACEY			
07:50				MISSED JUMPER by DEFREESE, SAMONE
07:46	REBOUND (DEF) by SUGGS, LACEY			
07:46				FOUL (PERSONAL) by DEFREESE, SAMONE
07:29	MISSED LAYUP by BELL, CHINYERE			
07:25				REBOUND (DEF) by DEFREESE, SAMONE
07:20				MISSED JUMPER by LAWRENCE, REBECCA
07:16				REBOUND (OFF) by NICHOLAS, MAKEDA
07:15		18-13	H 5	GOOD! LAYUP by NICHOLAS, MAKEDA [PNT]
07:00				FOUL (PERSONAL) by GONZALES, ABBY
07:00	MISSED FT by PARKER, SHRITA			
07:00	REBOUND (OFF) by TEAM			
07:00				SUB OUT: DEFREESE, SAMONE
07:00				SUB IN: LEWIS, ALISON
07:00	GOOD! FT by PARKER, SHRITA	18-14	H 4	
07:00				SUB OUT: KARGO, BAILEY
07:00				SUB IN: MCBRIDE, PARIS
06:49		20-14	H 6	GOOD! LAYUP by MCBRIDE, PARIS
06:49				ASSIST by GONZALES, ABBY
06:37	FOUL (OFF) by OBUSEK, CAROL-ANNE			
06:37	TURNOVER (OFFENSIVE) by OBUSEK, CAROL-ANNE			
06:24				TURNOVER (BADPASS) by GONZALES, ABBY
06:09	GOOD! LAYUP by OBUSEK, CAROL-ANNE	20-16	H 4	
06:09	ASSIST by BELL, CHINYERE			
05:51		22-16	H 6	GOOD! JUMPER by NICHOLAS, MAKEDA
05:33	TURNOVER (OTHER) by SUGGS, LACEY			
05:33				SUB OUT: LAWRENCE, REBECCA
05:33				SUB IN: OLEARY, LIZZIE
05:33	SUB OUT: BELL, CHINYERE			
05:33	SUB IN: SMITH, GIGI			
05:24		24-16	H 8	GOOD! LAYUP by LEWIS, ALISON [PNT]
05:19	TIMEOUT 30SEC			
05:19	SUB OUT: VASON, AHYIONA			
05:19	SUB IN: CRISP, MORIAH			
05:07	GOOD! LAYUP by SMITH, GIGI [PNT]	24-18	H 6	
05:07	ASSIST by PARKER, SHRITA			
04:51				MISSED 3PTR by GONZALES, ABBY
04:47				REBOUND (OFF) by TEAM
04:47	FOUL (PERSONAL) by OBUSEK, CAROL-ANNE			
04:40		26-18	H 8	GOOD! LAYUP by MCBRIDE, PARIS
04:18	TURNOVER (BADPASS) by CRISP, MORIAH			
04:18				STEAL by LEWIS, ALISON
04:18	FOUL (PERSONAL) by OBUSEK, CAROL-ANNE			
04:18	SUB OUT: CRISP, MORIAH			
04:18	SUB IN: VASON, AHYIONA			
04:04				MISSED JUMPER by LEWIS, ALISON
04:03	REBOUND (DEF) by SMITH, GIGI			
04:03				FOUL (PERSONAL) by NICHOLAS, MAKEDA
04:03	SUB OUT: OBUSEK, CAROL-ANNE			
04:03	SUB IN: BELL, CHINYERE			

Time	VISITORS: UNCW	Score	Margin	HOME: Delaware
03:58	GOOD! 3PTR by PARKER, SHRITA	26-21	H 5	
03:58	ASSIST by VASON, AHYIONA			
03:31				MISSED JUMPER by NICHOLAS, MAKEDA
03:28	REBOUND (DEF) by SMITH, GIGI			
03:27				SUB OUT: LEWIS, ALISON
03:27				SUB IN: DEFREESE, SAMONE
03:27				SUB OUT: NICHOLAS, MAKEDA
03:27				SUB IN: LAWRENCE, REBECCA
03:15	GOOD! LAYUP by SMITH, GIGI	26-23	H 3	
03:15	ASSIST by BELL, CHINYERE			
03:04				MISSED JUMPER by OLEARY, LIZZIE
02:58				REBOUND (OFF) by DEFREESE, SAMONE
02:58				SUB OUT: GONZALES, ABBY
02:58				SUB IN: KARGO, BAILEY
02:57				TURNOVER (OTHER) by KARGO, BAILEY
02:45	TURNOVER (LOSTBALL) by SUGGS, LACEY			
02:45				STEAL by MCBRIDE, PARIS
02:37				MISSED JUMPER by DEFREESE, SAMONE
02:34	REBOUND (DEF) by SMITH, GIGI			
02:21				FOUL (PERSONAL) by LAWRENCE, REBECCA
02:21	MISSED FT by BELL, CHINYERE			
02:21	REBOUND (OFF) by TEAM			
02:21	GOOD! FT by BELL, CHINYERE	26-24	H 2	
01:54				MISSED JUMPER by MCBRIDE, PARIS
01:51	REBOUND (DEF) by TEAM			
01:51				SUB OUT: LAWRENCE, REBECCA
01:51				SUB IN: NICHOLAS, MAKEDA
01:51				SUB OUT: MCBRIDE, PARIS
01:51				SUB IN: GONZALES, ABBY
01:31	GOOD! LAYUP by SMITH, GIGI [PNT]	26-26	T	
01:09	FOUL (PERSONAL) by BELL, CHINYERE			
01:09		27-26	H 1	GOOD! FT by DEFREESE, SAMONE
01:09		28-26	H 2	GOOD! FT by DEFREESE, SAMONE
01:09				SUB OUT: DEFREESE, SAMONE
01:09				SUB IN: LEWIS, ALISON
01:04				FOUL (PERSONAL) by OLEARY, LIZZIE
01:04	GOOD! FT by VASON, AHYIONA [FB]	28-27	H 1	
01:04				SUB OUT: OLEARY, LIZZIE
01:04				SUB IN: DICKEY, JASMINE
01:04	GOOD! FT by VASON, AHYIONA [FB]	28-28	T	
00:59				MISSED JUMPER by KARGO, BAILEY
00:56				REBOUND (OFF) by LEWIS, ALISON
00:55				MISSED LAYUP by LEWIS, ALISON
00:51	REBOUND (DEF) by PARKER, SHRITA			
00:28	MISSED 3PTR by SUGGS, LACEY			
00:23				REBOUND (DEF) by DICKEY, JASMINE
00:20				FOUL (OFF) by GONZALES, ABBY
00:20				TURNOVER (OFFENSIVE) by GONZALES, ABBY
00:00	MISSED 3PTR by VASON, AHYIONA			
00:00				REBOUND (DEF) by TEAM

UNCW 28, Delaware 28

Points from (This Period)	UNC	DEL
In the Paint	8	10
Off Turns	2	2
2nd Chance	0	4
Fast Break	2	0
Bench	2	10

Official Box Score
UNCW vs Delaware
Second Half Statistics Only
January 25, 2019 at Bob Carpenter Center - Newark, Del.



UNCW 25

No.	Player	S	Pts	FG	3FG	FT	OR	DR	TR	PF	A	TO	Blk	Stl	Min	+/-
00	JEUNE, ASHLI		0	0-0	0-0	0-0	1	0	1	0	0	0	0	0	1	0
10	VASON, AHYIONA		3	1-1	1-1	0-0	0	1	1	2	3	1	0	0	16	-11
13	SUGGS, LACEY		3	1-3	0-1	1-2	0	0	0	3	1	0	0	0	10	-5
14	TATE, TIMBER		5	2-6	1-5	0-0	0	1	1	2	0	0	0	0	16	-6
22	THYBULLE, ZHANEIA		0	0-0	0-0	0-0	0	0	0	0	0	0	0	0	0	0
24	BELL, CHINYERE		2	1-3	0-0	0-4	2	3	5	2	0	3	0	0	6	-6
31	MITCHELL, JESSICA		0	0-0	0-0	0-0	0	0	0	0	0	0	0	0	0	0
32	OBUSEK, CAROL-ANNE		0	0-0	0-0	0-0	0	0	0	0	0	0	0	0	0	0
01	POWELL, PAIGE		0	0-0	0-0	0-2	1	1	2	0	1	0	0	0	9	-6
02	CRISP, MORIAH		0	0-0	0-0	0-0	0	0	0	0	1	2	0	0	6	-1
04	PARKER, SHRITA		3	1-8	1-1	0-0	2	1	3	0	1	2	0	0	17	-12
05	SMITH, GIGI		9	4-10	0-1	1-1	2	3	5	2	0	3	0	1	18	-13
	TEAM		0	0-0	0-0	0-0	0	2	2	0	0	0	0	0	0	0
TOTALS			25	10-31	3-9	2-9	8	12	20	11	7	11	0	1	100	

Shooting By Period

Period	FG	FG%	3FG	3FG%	FT	FT%
3rd Qtr	5-15	33%	1-3	33%	0-2	00%
4th Qtr	5-16	31%	2-6	33%	2-7	29%
2nd Half	10-31	32%	3-9	33%	2-9	22%
Game	20-59	33.9%	7-20	35.0%	6-15	40.0%

Last FG Half: UNC 4th-03:22

Delaware 37

No.	Player	S	Pts	FG	3FG	FT	OR	DR	TR	PF	A	TO	Blk	Stl	Min	+/-
12	OLEARY, LIZZIE		3	1-2	0-0	1-2	0	3	3	0	1	0	0	0	10	10
20	DICKEY, JASMINE		0	0-1	0-0	0-0	0	2	2	2	1	1	1	0	10	3
22	DEFREESE, SAMONE		14	5-10	0-1	4-4	3	4	7	1	2	1	0	0	18	11
23	KARGO, BAILEY		3	1-2	1-2	0-0	0	1	1	2	0	0	0	0	6	2
25	LAWRENCE, REBECCA		2	1-2	0-0	0-0	3	1	4	2	0	0	1	2	11	11
35	LEWIS, ALISON		6	3-5	0-0	0-0	1	1	2	1	1	0	0	1	10	4
02	GONZALES, ABBY		4	1-4	1-3	1-4	0	1	1	1	4	2	0	3	17	12
04	MCBRIDE, PARIS		2	1-4	0-1	0-0	0	2	2	0	1	1	0	1	9	7
05	NICHOLAS, MAKEDA		3	1-3	0-0	1-2	1	0	1	0	0	1	1	1	9	0
	TEAM		0	0-0	0-0	0-0	0	1	1	0	0	0	0	0	0	0
TOTALS			37	14-33	2-7	7-12	8	16	24	9	10	6	3	8	100	

Shooting By Period

Period	FG	FG%	3FG	3FG%	FT	FT%
3rd Qtr	7-14	50%	1-1	100%	4-9	44%
4th Qtr	7-19	37%	1-6	17%	3-3	100%
2nd Half	14-33	42%	2-7	29%	7-12	58%
Game	26-63	41.3%	2-10	20.0%	11-16	68.8%

Last FG Half: DEL 4th-01:34

Game Notes:

Officials: Luis Gonzales, Angela Lewis, Angel Stanton
Attendance: 1633

Start Time: 2019-01-25 17:06:58

End Time: 2019-01-25 19:03:02

Game Duration: 116

Conference Game;

Score	1st	2nd	3rd	4th	TOT
UNC	13	15	11	14	53
DEL	14	14	19	18	65

Points from (This Period)	UNC	DEL
In the Paint	12	18
Off Turns	3	12
2nd Chance	0	8
Fast Break	3	10
Bench	5	11

Official Box Score
UNCW vs Delaware
Third Quarter Statistics Only
January 25, 2019 at Bob Carpenter Center - Newark, Del.



UNCW 25

No.	Player	S	Pts	FG	3FG	FT	OR	DR	TR	PF	A	TO	Blk	Stl	Min	+/-
04	PARKER, SHRITA		0	0-3	0-0	0-0	0	0	0	0	0	1	0	0	9	-8
05	SMITH, GIGI		4	2-5	0-0	0-0	1	2	3	0	0	3	0	0	10	-8
10	VASON, AHYIONA		3	1-1	1-1	0-0	0	0	0	1	2	0	0	0	10	-8
13	SUGGS, LACEY		2	1-1	0-0	0-0	0	0	0	3	0	0	0	0	3	-4
24	BELL, CHINYERE		0	0-2	0-0	0-2	2	2	4	2	0	3	0	0	4	-5
00	JEUNE, ASHLI		0	0-0	0-0	0-0	0	0	0	0	0	0	0	0	0	0
01	POWELL, PAIGE		0	0-0	0-0	0-0	0	1	1	0	1	0	0	0	6	-3
02	CRISP, MORIAH		0	0-0	0-0	0-0	0	0	0	0	0	0	0	0	1	0
14	TATE, TIMBER		2	1-3	0-2	0-0	0	0	0	0	0	0	0	0	7	-4
22	THYBULLE, ZHANEIA		0	0-0	0-0	0-0	0	0	0	0	0	0	0	0	0	0
31	MITCHELL, JESSICA		0	0-0	0-0	0-0	0	0	0	0	0	0	0	0	0	0
32	OBUSEK, CAROL-ANNE		0	0-0	0-0	0-0	0	0	0	0	0	0	0	0	0	0
	TEAM						0	2	2	0		0				
TOTALS			11	5-15	1-3	0-2	3	7	10	6	3	7	0	0	50	

Shooting By Period

Period	FG	FG%	3FG	3FG%	FT	FT%
2nd Half	0-0	0%	0-0	0%	0-0	0%
Game	20-59	33.9%	7-20	35.0%	6-15	40.0%

Delaware 37

No.	Player	S	Pts	FG	3FG	FT	OR	DR	TR	PF	A	TO	Blk	Stl	Min	+/-
02	GONZALES, ABBY		4	1-1	1-1	1-4	0	0	0	0	2	1	0	1	9	8
12	OLEARY, LIZZIE		1	0-1	0-0	1-2	0	2	2	0	0	0	0	0	3	6
22	DEFREESE, SAMONE		9	4-5	0-0	1-1	0	3	3	1	0	1	0	0	10	8
23	KARGO, BAILEY		0	0-0	0-0	0-0	0	0	0	2	0	0	0	0	1	2
25	LAWRENCE, REBECCA		0	0-1	0-0	0-0	0	0	0	0	0	0	1	1	4	7
04	MCBRIDE, PARIS		2	1-1	0-0	0-0	0	0	0	0	0	0	0	0	4	3
05	NICHOLAS, MAKEDA		1	0-1	0-0	1-2	0	0	0	0	0	0	1	1	5	0
20	DICKEY, JASMINE		0	0-1	0-0	0-0	0	2	2	0	1	0	1	0	8	3
35	LEWIS, ALISON		2	1-3	0-0	0-0	1	1	2	0	1	0	0	1	6	3
	TEAM						0	0	0	0		0				
TOTALS			19	7-14	1-1	4-9	1	8	9	3	4	2	3	4	50	

Shooting By Period

Period	FG	FG%	3FG	3FG%	FT	FT%
2nd Half	0-0	0%	0-0	0%	0-0	0%
Game	26-63	41.3%	2-10	20.0%	11-16	68.8%

Game Notes:

Officials: Luis Gonzales, Angela Lewis, Angel Stanton
Attendance: 1633

Start Time: 2019-01-25 17:06:58
End Time: 2019-01-25 19:03:02
Game Duration: 116
Conference Game;

Score	1st	2nd	3rd	4th	TOT
UNC	13	15	11	14	53
DEL	14	14	19	18	65

Points from (This Period)	UNC	DEL
In the Paint	6	10
Off Turns	0	9
2nd Chance	0	0
Fast Break	0	5
Bench	2	5

Official Play-By-Play
UNCW vs Delaware
Third Quarter
January 25, 2019 at Bob Carpenter Center - Newark, Del.



Period 3

Starters:

UNCW: 10 VASON, AHYIONA; 13 SUGGS, LACEY; 24 BELL, CHINYERE; 4 PARKER, SHRITA; 5 SMITH, GIGI;

Delaware: 12 OLEARY, LIZZIE; 22 DEFREESE, SAMONE; 23 KARGO, BAILEY; 25 LAWRENCE, REBECCA; 2 GONZALES, ABBY;

Time	VISITORS: UNCW	Score	Margin	HOME: Delaware
09:51				FOUL (PERSONAL) by KARGO, BAILEY
09:50	MISSED LAYUP by PARKER, SHRITA			
09:47				REBOUND (DEF) by OLEARY, LIZZIE
09:44		30-28	H 2	GOOD! JUMPER by DEFREESE, SAMONE
09:17	MISSED LAYUP by BELL, CHINYERE			
09:17				BLOCK by LAWRENCE, REBECCA
09:11	REBOUND (OFF) by BELL, CHINYERE			
09:10	TURNOVER (LOSTBALL) by BELL, CHINYERE			
08:55				MISSED JUMPER by LAWRENCE, REBECCA
08:48	REBOUND (DEF) by BELL, CHINYERE			
08:47				FOUL (PERSONAL) by KARGO, BAILEY
08:47				SUB OUT: KARGO, BAILEY
08:47				SUB IN: MCBRIDE, PARIS
08:42	TURNOVER (LOSTBALL) by SMITH, GIGI			
08:42				STEAL by LAWRENCE, REBECCA
08:31		32-28	H 4	GOOD! LAYUP by DEFREESE, SAMONE
08:31	FOUL (PERSONAL) by SUGGS, LACEY			
08:31		33-28	H 5	GOOD! FT by DEFREESE, SAMONE
08:23				FOUL (PERSONAL) by DEFREESE, SAMONE
08:23	MISSED FT by BELL, CHINYERE			
08:23	REBOUND (OFF) by TEAM			
08:23	MISSED FT by BELL, CHINYERE			
08:23				REBOUND (DEF) by OLEARY, LIZZIE
08:17				SUB OUT: LAWRENCE, REBECCA
08:17				SUB IN: DICKEY, JASMINE
08:02				MISSED JUMPER by OLEARY, LIZZIE
07:55	REBOUND (DEF) by BELL, CHINYERE			
07:44	FOUL (OFF) by BELL, CHINYERE			
07:44	TURNOVER (OFFENSIVE) by BELL, CHINYERE			
07:26	FOUL (PERSONAL) by VASON, AHYIONA			
07:26				MISSED FT by GONZALES, ABBY
07:26				REBOUND (OFF) by TEAM
07:26				MISSED FT by GONZALES, ABBY
07:26	REBOUND (DEF) by SMITH, GIGI			
07:22	MISSED JUMPER by PARKER, SHRITA			
07:18	REBOUND (OFF) by BELL, CHINYERE			
07:14	TURNOVER (3SEC) by BELL, CHINYERE			
06:58	FOUL (PERSONAL) by SUGGS, LACEY			
06:58				
06:58				MISSED FT by OLEARY, LIZZIE
06:58				REBOUND (OFF) by TEAM
06:58		34-28	H 6	GOOD! FT by OLEARY, LIZZIE
06:58				SUB OUT: OLEARY, LIZZIE
06:58				SUB IN: NICHOLAS, MAKEDA
06:42	GOOD! LAYUP by SUGGS, LACEY	34-30	H 4	
06:42	ASSIST by VASON, AHYIONA			
06:32	FOUL (PERSONAL) by SUGGS, LACEY			
06:32				MISSED FT by GONZALES, ABBY
06:32				REBOUND (OFF) by TEAM
06:32	SUB OUT: SUGGS, LACEY			
06:32	SUB IN: TATE, TIMBER			
06:32		35-30	H 5	GOOD! FT by GONZALES, ABBY
06:20	MISSED JUMPER by BELL, CHINYERE			
06:20				BLOCK by NICHOLAS, MAKEDA
06:15				REBOUND (DEF) by DICKEY, JASMINE
06:11	FOUL (PERSONAL) by BELL, CHINYERE			
06:11				MISSED FT by NICHOLAS, MAKEDA
06:11				REBOUND (OFF) by TEAM
06:11				SUB OUT: MCBRIDE, PARIS
06:11				SUB IN: LEWIS, ALISON
06:11	SUB OUT: BELL, CHINYERE			
06:11	SUB IN: POWELL, PAIGE			
06:11		36-30	H 6	GOOD! FT by NICHOLAS, MAKEDA [FB]
06:00	MISSED 3PTR by TATE, TIMBER			
05:55	REBOUND (OFF) by SMITH, GIGI			
05:51	MISSED LAYUP by SMITH, GIGI			
05:47				REBOUND (DEF) by LEWIS, ALISON
05:41				MISSED LAYUP by DICKEY, JASMINE
05:37	REBOUND (DEF) by SMITH, GIGI			
05:30	GOOD! LAYUP by SMITH, GIGI [PNT]	36-32	H 4	

Time	VISITORS: UNCW	Score	Margin	HOME: Delaware
05:09				MISSED LAYUP by NICHOLAS, MAKEDA
05:07	REBOUND (DEF) by TEAM			
04:42	GOOD! JUMPER by SMITH, GIGI [PNT]	36-34	H 2	
04:35				TURNOVER (BADPASS) by GONZALES, ABBY
04:35				
04:24	TURNOVER (BADPASS) by SMITH, GIGI			
04:24				STEAL by NICHOLAS, MAKEDA
04:03		39-34	H 5	GOOD! 3PTR by GONZALES, ABBY
04:03				ASSIST by LEWIS, ALISON
03:32	GOOD! 3PTR by VASON, AHYIONA	39-37	H 2	
03:32	ASSIST by POWELL, PAIGE			
03:17		41-37	H 4	GOOD! LAYUP by LEWIS, ALISON
03:17				ASSIST by GONZALES, ABBY
02:53	TURNOVER (LOSTBALL) by SMITH, GIGI			
02:53				STEAL by LEWIS, ALISON
02:48				MISSED LAYUP by LEWIS, ALISON
02:46				REBOUND (OFF) by LEWIS, ALISON
02:45				MISSED LAYUP by LEWIS, ALISON
02:42	REBOUND (DEF) by POWELL, PAIGE			
02:38	TURNOVER (LOSTBALL) by PARKER, SHRITA			
02:38				STEAL by GONZALES, ABBY
02:32		43-37	H 6	GOOD! LAYUP by DEFREESE, SAMONE [FB]
02:32				ASSIST by DICKEY, JASMINE
02:05	MISSED LAYUP by SMITH, GIGI			
02:02				REBOUND (DEF) by DICKEY, JASMINE
01:57				TURNOVER (BADPASS) by DEFREESE, SAMONE
01:57				SUB OUT: NICHOLAS, MAKEDA
01:57				SUB IN: LAWRENCE, REBECCA
01:45	MISSED JUMPER by PARKER, SHRITA			
01:45				BLOCK by DICKEY, JASMINE
01:39				REBOUND (DEF) by DEFREESE, SAMONE
01:37		45-37	H 8	GOOD! LAYUP by DEFREESE, SAMONE [FB]
01:37				ASSIST by GONZALES, ABBY
01:22	MISSED LAYUP by SMITH, GIGI			
01:19				REBOUND (DEF) by DEFREESE, SAMONE
00:58				MISSED JUMPER by DEFREESE, SAMONE
00:56	REBOUND (DEF) by TEAM			
00:56				SUB OUT: GONZALES, ABBY
00:56				SUB IN: MCBRIDE, PARIS
00:56	SUB OUT: PARKER, SHRITA			
00:56	SUB IN: CRISP, MORIAH			
00:43	GOOD! JUMPER by TATE, TIMBER	45-39	H 6	
00:43	ASSIST by VASON, AHYIONA			
00:15		47-39	H 8	GOOD! LAYUP by MCBRIDE, PARIS [PNT]
00:02	MISSED 3PTR by TATE, TIMBER			
00:00				REBOUND (DEF) by DEFREESE, SAMONE

UNCW 39, Delaware 47

Points from (This Period)	UNC	DEL
In the Paint	6	10
Off Turns	0	9
2nd Chance	0	0
Fast Break	0	5
Bench	2	5

Official Box Score
UNCW vs Delaware
Fourth Quarter Statistics Only
January 25, 2019 at Bob Carpenter Center - Newark, Del.



UNCW 14

No.	Player	S	Pts	FG	3FG	FT	OR	DR	TR	PF	A	TO	Blk	Stl	Min	+/-
04	PARKER, SHRITA		3	1-5	1-1	0-0	2	1	3	0	1	1	0	0	8	-4
05	SMITH, GIGI		5	2-5	0-1	1-1	1	1	2	2	0	0	0	1	8	-5
10	VASON, AHYIONA		0	0-0	0-0	0-0	0	1	1	1	1	1	0	0	6	-3
13	SUGGS, LACEY		1	0-2	0-1	1-2	0	0	0	0	1	0	0	0	7	-1
24	BELL, CHINYERE		2	1-1	0-0	0-2	0	1	1	0	0	0	0	0	2	-1
00	JEUNE, ASHLI		0	0-0	0-0	0-0	1	0	1	0	0	0	0	0	1	0
01	POWELL, PAIGE		0	0-0	0-0	0-2	1	0	1	0	0	0	0	0	3	-3
02	CRISP, MORIAH		0	0-0	0-0	0-0	0	0	0	0	1	2	0	0	5	-1
14	TATE, TIMBER		3	1-3	1-3	0-0	0	1	1	2	0	0	0	0	9	-2
22	THYBULLE, ZHANEIA		0	0-0	0-0	0-0	0	0	0	0	0	0	0	0	0	0
31	MITCHELL, JESSICA		0	0-0	0-0	0-0	0	0	0	0	0	0	0	0	0	0
32	OBUSEK, CAROL-ANNE		0	0-0	0-0	0-0	0	0	0	0	0	0	0	0	0	0
	TEAM						0	0	0	0		0				
TOTALS			14	5-16	2-6	2-7	5	5	10	5	4	4	0	1	50	

Shooting By Period

Period	FG	FG%	3FG	3FG%	FT	FT%
Game	20-59	33.9%	7-20	35.0%	6-15	40.0%

Delaware 18

No.	Player	S	Pts	FG	3FG	FT	OR	DR	TR	PF	A	TO	Blk	Stl	Min	+/-
02	GONZALES, ABBY		0	0-3	0-2	0-0	0	1	1	1	2	1	0	2	8	4
12	OLEARY, LIZZIE		2	1-1	0-0	0-0	0	1	1	0	1	0	0	0	7	4
22	DEFREESE, SAMONE		5	1-5	0-1	3-3	3	1	4	0	2	0	0	0	8	3
23	KARGO, BAILEY		3	1-2	1-2	0-0	0	1	1	0	0	0	0	0	5	0
25	LAWRENCE, REBECCA		2	1-1	0-0	0-0	3	1	4	2	0	0	0	1	7	4
04	MCBRIDE, PARIS		0	0-3	0-1	0-0	0	2	2	0	1	1	0	1	5	4
05	NICHOLAS, MAKEDA		2	1-2	0-0	0-0	1	0	1	0	0	1	0	0	4	0
20	DICKEY, JASMINE		0	0-0	0-0	0-0	0	0	0	2	0	1	0	0	2	0
35	LEWIS, ALISON		4	2-2	0-0	0-0	0	0	0	1	0	0	0	0	4	1
	TEAM						0	1	1	0		0				
TOTALS			18	7-19	1-6	3-3	7	8	15	6	6	4	0	4	50	

Shooting By Period

Period	FG	FG%	3FG	3FG%	FT	FT%
Game	26-63	41.3%	2-10	20.0%	11-16	68.8%

Game Notes:

Officials: Luis Gonzales, Angela Lewis, Angel Stanton
Attendance: 1633

Start Time: 2019-01-25 17:06:58
End Time: 2019-01-25 19:03:02
Game Duration: 116
Conference Game;

Score	1st	2nd	3rd	4th	TOT
UNC	13	15	11	14	53
DEL	14	14	19	18	65

Points from (This Period)	UNC	DEL
In the Paint	6	8
Off Turns	3	3
2nd Chance	0	8
Fast Break	3	5
Bench	3	6

Official Play-By-Play
UNCW vs Delaware
Fourth Quarter
January 25, 2019 at Bob Carpenter Center - Newark, Del.



Period 4

Starters:

UNCW: 10 VASON, AHYIONA; 13 SUGGS, LACEY; 24 BELL, CHINYERE; 4 PARKER, SHRITA; 5 SMITH, GIGI;

Delaware: 12 OLEARY, LIZZIE; 22 DEFREESE, SAMONE; 23 KARGO, BAILEY; 25 LAWRENCE, REBECCA; 2 GONZALES, ABBY;

Time	VISITORS: UNCW	Score	Margin	HOME: Delaware
09:46	MISSED 3PTR by TATE, TIMBER			
09:42				REBOUND (DEF) by TEAM
09:27				FOUL (OFF) by DICKEY, JASMINE
09:27				TURNOVER (OFFENSIVE) by DICKEY, JASMINE
09:07	TURNOVER (LOSTBALL) by CRISP, MORIAH			
09:07				STEAL by LAWRENCE, REBECCA
08:59				MISSED JUMPER by MCBRIDE, PARIS
08:55				REBOUND (OFF) by LAWRENCE, REBECCA
08:42				MISSED LAYUP by DEFREESE, SAMONE
08:38	REBOUND (DEF) by TATE, TIMBER			
08:33	MISSED 3PTR by TATE, TIMBER			
08:30	REBOUND (OFF) by POWELL, PAIGE			
08:29				FOUL (PERSONAL) by DICKEY, JASMINE
08:29	MISSED FT by POWELL, PAIGE			
08:29	REBOUND (OFF) by TEAM			
08:29				SUB OUT: MCBRIDE, PARIS
08:29				SUB IN: OLEARY, LIZZIE
08:29				SUB OUT: DICKEY, JASMINE
08:29				SUB IN: KARGO, BAILEY
08:29				SUB OUT: LEWIS, ALISON
08:29				SUB IN: GONZALES, ABBY
08:29	SUB OUT: CRISP, MORIAH			
08:29	SUB IN: PARKER, SHRITA			
08:29	MISSED FT by POWELL, PAIGE			
08:29				REBOUND (DEF) by OLEARY, LIZZIE
08:15				MISSED 3PTR by DEFREESE, SAMONE
08:11				REBOUND (OFF) by LAWRENCE, REBECCA
08:11	FOUL (PERSONAL) by TATE, TIMBER			
08:06		50-39	H 11	GOOD! 3PTR by KARGO, BAILEY
08:06				ASSIST by DEFREESE, SAMONE
07:50	TURNOVER (LOSTBALL) by VASON, AHYIONA			
07:50				STEAL by GONZALES, ABBY
07:45				MISSED LAYUP by DEFREESE, SAMONE
07:42	REBOUND (DEF) by PARKER, SHRITA			
07:38	MISSED LAYUP by PARKER, SHRITA			
07:35				REBOUND (DEF) by LAWRENCE, REBECCA
07:17	FOUL (PERSONAL) by VASON, AHYIONA			
07:17				SUB OUT: DEFREESE, SAMONE
07:17				SUB IN: LEWIS, ALISON
07:17	SUB OUT: TATE, TIMBER			
07:17	SUB IN: SUGGS, LACEY			
07:17	SUB OUT: POWELL, PAIGE			
07:17	SUB IN: BELL, CHINYERE			
07:09				MISSED 3PTR by KARGO, BAILEY
07:05				REBOUND (OFF) by LAWRENCE, REBECCA
07:02				MISSED 3PTR by GONZALES, ABBY
06:58	REBOUND (DEF) by BELL, CHINYERE			
06:53	MISSED 3PTR by SUGGS, LACEY			
06:49				REBOUND (DEF) by GONZALES, ABBY
06:44		52-39	H 13	GOOD! JUMPER by LEWIS, ALISON [FB]
06:44				ASSIST by GONZALES, ABBY
06:42	TIMEOUT TEAM			
06:42	SUB OUT: SMITH, GIGI			
06:42	SUB IN: TATE, TIMBER			
06:33				FOUL (PERSONAL) by LAWRENCE, REBECCA
06:33	MISSED FT by BELL, CHINYERE			
06:33	REBOUND (OFF) by TEAM			
06:33	MISSED FT by BELL, CHINYERE			
06:33				REBOUND (DEF) by KARGO, BAILEY
06:27				MISSED 3PTR by GONZALES, ABBY
06:23	REBOUND (DEF) by VASON, AHYIONA			
06:09	GOOD! LAYUP by BELL, CHINYERE [PNT]	52-41	H 11	
06:09	ASSIST by PARKER, SHRITA			
05:41		54-41	H 13	GOOD! JUMPER by LAWRENCE, REBECCA
05:41				ASSIST by GONZALES, ABBY
05:22	GOOD! 3PTR by PARKER, SHRITA	54-44	H 10	
05:22	ASSIST by VASON, AHYIONA			
05:13	SUB OUT: VASON, AHYIONA			
05:13	SUB IN: CRISP, MORIAH			
05:06		56-44	H 12	GOOD! LAYUP by LEWIS, ALISON

Time	VISITORS: UNCW	Score	Margin	HOME: Delaware
05:06				ASSIST by OLEARY, LIZZIE
04:48				FOUL (PERSONAL) by LEWIS, ALISON
04:48				SUB OUT: LEWIS, ALISON
04:48				SUB IN: DEFREESE, SAMONE
04:48	SUB OUT: BELL, CHINYERE			
04:48	SUB IN: SMITH, GIGI			
04:46	GOOD! 3PTR by TATE, TIMBER	56-47	H 9	
04:46	ASSIST by CRISP, MORIAH			
04:33	FOUL (PERSONAL) by SMITH, GIGI			
04:33		57-47	H 10	GOOD! FT by DEFREESE, SAMONE
04:33		58-47	H 11	GOOD! FT by DEFREESE, SAMONE
04:22				FOUL (PERSONAL) by LAWRENCE, REBECCA
04:22	MISSED FT by SUGGS, LACEY			
04:22	REBOUND (OFF) by TEAM			
04:22				SUB OUT: LAWRENCE, REBECCA
04:22				SUB IN: NICHOLAS, MAKEDA
04:22	GOOD! FT by SUGGS, LACEY	58-48	H 10	
04:03				TURNOVER (LOSTBALL) by NICHOLAS, MAKEDA
04:03	STEAL by SMITH, GIGI			
03:58	GOOD! LAYUP by SMITH, GIGI [FB/PNT]	58-50	H 8	
03:58				FOUL (PERSONAL) by GONZALES, ABBY
03:58				TIMEOUT TEAM
03:58				SUB OUT: KARGO, BAILEY
03:58				SUB IN: MCBRIDE, PARIS
03:58	GOOD! FT by SMITH, GIGI [FB]	58-51	H 7	
03:42	FOUL (PERSONAL) by SMITH, GIGI			
03:40		60-51	H 9	GOOD! LAYUP by OLEARY, LIZZIE [PNT]
03:40				ASSIST by DEFREESE, SAMONE
03:22	GOOD! LAYUP by SMITH, GIGI	60-53	H 7	
03:22	ASSIST by SUGGS, LACEY			
02:53				MISSED 3PTR by MCBRIDE, PARIS
02:49				REBOUND (OFF) by DEFREESE, SAMONE
02:45				MISSED LAYUP by DEFREESE, SAMONE
02:42	REBOUND (DEF) by SMITH, GIGI			
02:36	MISSED LAYUP by PARKER, SHRITA			
02:33				REBOUND (DEF) by MCBRIDE, PARIS
02:11				MISSED JUMPER by NICHOLAS, MAKEDA
02:07				REBOUND (OFF) by NICHOLAS, MAKEDA
01:57		62-53	H 9	GOOD! LAYUP by NICHOLAS, MAKEDA
01:57				ASSIST by MCBRIDE, PARIS
01:42	TURNOVER (BADPASS) by CRISP, MORIAH			
01:42				STEAL by GONZALES, ABBY
01:37				MISSED LAYUP by GONZALES, ABBY
01:35				REBOUND (OFF) by DEFREESE, SAMONE
01:34		64-53	H 11	GOOD! LAYUP by DEFREESE, SAMONE [FB]
01:34	FOUL (PERSONAL) by TATE, TIMBER			
01:34				SUB OUT: NICHOLAS, MAKEDA
01:34				SUB IN: LAWRENCE, REBECCA
01:34	SUB OUT: CRISP, MORIAH			
01:34	SUB IN: VASON, AHYIONA			
01:34		65-53	H 12	GOOD! FT by DEFREESE, SAMONE [FB]
01:23	MISSED JUMPER by PARKER, SHRITA			
01:20	REBOUND (OFF) by PARKER, SHRITA			
01:19	MISSED LAYUP by SUGGS, LACEY			
01:16				REBOUND (DEF) by DEFREESE, SAMONE
01:06				MISSED LAYUP by MCBRIDE, PARIS
01:05				REBOUND (OFF) by DEFREESE, SAMONE
01:05				SUB OUT: OLEARY, LIZZIE
01:05				SUB IN: NICHOLAS, MAKEDA
00:44				TURNOVER (TRAVEL) by GONZALES, ABBY
00:44	SUB OUT: TATE, TIMBER			
00:44	SUB IN: JEUNE, ASHLI			
00:39	MISSED 3PTR by SMITH, GIGI			
00:33	REBOUND (OFF) by JEUNE, ASHLI			
00:27	MISSED LAYUP by SMITH, GIGI			
00:24	REBOUND (OFF) by SMITH, GIGI			
00:23	MISSED LAYUP by SMITH, GIGI			
00:19				REBOUND (DEF) by MCBRIDE, PARIS
00:17				TURNOVER (OTHER) by MCBRIDE, PARIS
00:17	SUB OUT: VASON, AHYIONA			
00:17	SUB IN: THYBULLE, ZHANEIA			
00:17	SUB OUT: SUGGS, LACEY			
00:17	SUB IN: MITCHELL, JESSICA			
00:09	MISSED LAYUP by PARKER, SHRITA			
00:06	REBOUND (OFF) by PARKER, SHRITA			
00:05	TURNOVER (LOSTBALL) by PARKER, SHRITA			
00:05				STEAL by MCBRIDE, PARIS

Points from (This Period)	UNC	DEL
In the Paint	6	8
Off Turns	3	3
2nd Chance	0	8
Fast Break	3	5
Bench	3	6

Official Scoring/Possession Reference Chart
UNCW vs Delaware
Period 1
January 25, 2019 at Bob Carpenter Center - Newark, Del.



Period 1

Starters:

UNCW: 10 VASON, AHYIONA; 13 SUGGS, LACEY; 24 BELL, CHINYERE; 4 PARKER, SHRITA; 5 SMITH, GIGI;

Delaware: 12 OLEARY, LIZZIE; 22 DEFREESE, SAMONE; 23 KARGO, BAILEY; 25 LAWRENCE, REBECCA; 2 GONZALES, ABBY;

Time	VISITORS: UNCW	Score	Margin	HOME: Delaware
08:41		2-0	H 2	GOOD! LAYUP by DEFREESE, SAMONE
08:21	GOOD! 3PTR by SMITH, GIGI	2-3	V 1	
08:02		4-3	H 1	GOOD! LAYUP by DEFREESE, SAMONE
06:55	GOOD! JUMPER by SMITH, GIGI	4-5	V 1	
06:45		5-5	T	GOOD! FT by NICHOLAS, MAKEDA
06:45		6-5	H 1	GOOD! FT by NICHOLAS, MAKEDA
06:02		8-5	H 3	GOOD! JUMPER by LAWRENCE, REBECCA
05:33	GOOD! 3PTR by PARKER, SHRITA	8-8	T	
05:04	GOOD! 3PTR by SUGGS, LACEY	8-11	V 3	
02:18	GOOD! LAYUP by POWELL, PAIGE	8-13	V 5	
02:03		10-13	V 3	GOOD! JUMPER by NICHOLAS, MAKEDA
01:30		12-13	V 1	GOOD! JUMPER by DEFREESE, SAMONE
00:37		14-13	H 1	GOOD! LAYUP by DEFREESE, SAMONE [PNT]

UNCW 13, Delaware 14

Official Scoring/Possession Reference Chart
UNCW vs Delaware
Period 2
January 25, 2019 at Bob Carpenter Center - Newark, Del.



Period 2

Starters:

UNCW: 10 VASON, AHYIONA; 13 SUGGS, LACEY; 24 BELL, CHINYERE; 4 PARKER, SHRITA; 5 SMITH, GIGI;

Delaware: 12 OLEARY, LIZZIE; 22 DEFREESE, SAMONE; 23 KARGO, BAILEY; 25 LAWRENCE, REBECCA; 2 GONZALES, ABBY;

Time	VISITORS: UNCW	Score	Margin	HOME: Delaware
08:41		16-13	H 3	GOOD! JUMPER by DEFREESE, SAMONE [PNT]
07:15		18-13	H 5	GOOD! LAYUP by NICHOLAS, MAKEDA [PNT]
07:00	GOOD! FT by PARKER, SHRITA	18-14	H 4	
06:49		20-14	H 6	GOOD! LAYUP by MCBRIDE, PARIS
06:09	GOOD! LAYUP by OBUSEK, CAROL-ANNE	20-16	H 4	
05:51		22-16	H 6	GOOD! JUMPER by NICHOLAS, MAKEDA
05:24		24-16	H 8	GOOD! LAYUP by LEWIS, ALISON [PNT]
05:07	GOOD! LAYUP by SMITH, GIGI [PNT]	24-18	H 6	
04:40		26-18	H 8	GOOD! LAYUP by MCBRIDE, PARIS
03:58	GOOD! 3PTR by PARKER, SHRITA	26-21	H 5	
03:15	GOOD! LAYUP by SMITH, GIGI	26-23	H 3	
02:21	GOOD! FT by BELL, CHINYERE	26-24	H 2	
01:31	GOOD! LAYUP by SMITH, GIGI [PNT]	26-26	T	
01:09		27-26	H 1	GOOD! FT by DEFREESE, SAMONE
01:09		28-26	H 2	GOOD! FT by DEFREESE, SAMONE
01:04	GOOD! FT by VASON, AHYIONA [FB]	28-27	H 1	
01:04	GOOD! FT by VASON, AHYIONA [FB]	28-28	T	

UNCW 28, Delaware 28

Official Scoring/Possession Reference Chart
UNCW vs Delaware
Period 3
January 25, 2019 at Bob Carpenter Center - Newark, Del.



Period 3

Starters:

UNCW: 10 VASON, AHYIONA; 13 SUGGS, LACEY; 24 BELL, CHINYERE; 4 PARKER, SHRITA; 5 SMITH, GIGI;

Delaware: 12 OLEARY, LIZZIE; 22 DEFREESE, SAMONE; 23 KARGO, BAILEY; 25 LAWRENCE, REBECCA; 2 GONZALES, ABBY;

Time	VISITORS: UNCW	Score	Margin	HOME: Delaware
09:44		30-28	H 2	GOOD! JUMPER by DEFREESE, SAMONE
08:31		32-28	H 4	GOOD! LAYUP by DEFREESE, SAMONE
08:31		33-28	H 5	GOOD! FT by DEFREESE, SAMONE
06:58		34-28	H 6	GOOD! FT by OLEARY, LIZZIE
06:42	GOOD! LAYUP by SUGGS, LACEY	34-30	H 4	
06:32		35-30	H 5	GOOD! FT by GONZALES, ABBY
06:11		36-30	H 6	GOOD! FT by NICHOLAS, MAKEDA [FB]
05:30	GOOD! LAYUP by SMITH, GIGI [PNT]	36-32	H 4	
04:42	GOOD! JUMPER by SMITH, GIGI [PNT]	36-34	H 2	
04:03		39-34	H 5	GOOD! 3PTR by GONZALES, ABBY
03:32	GOOD! 3PTR by VASON, AHYIONA	39-37	H 2	
03:17		41-37	H 4	GOOD! LAYUP by LEWIS, ALISON
02:32		43-37	H 6	GOOD! LAYUP by DEFREESE, SAMONE [FB]
01:37		45-37	H 8	GOOD! LAYUP by DEFREESE, SAMONE [FB]
00:43	GOOD! JUMPER by TATE, TIMBER	45-39	H 6	
00:15		47-39	H 8	GOOD! LAYUP by MCBRIDE, PARIS [PNT]

UNCW 39, Delaware 47

Official Scoring/Possession Reference Chart
UNCW vs Delaware
Period 4
January 25, 2019 at Bob Carpenter Center - Newark, Del.



Period 4

Starters:

UNCW: 10 VASON, AHYIONA; 13 SUGGS, LACEY; 24 BELL, CHINYERE; 4 PARKER, SHRITA; 5 SMITH, GIGI;

Delaware: 12 OLEARY, LIZZIE; 22 DEFREESE, SAMONE; 23 KARGO, BAILEY; 25 LAWRENCE, REBECCA; 2 GONZALES, ABBY;

Time	VISITORS: UNCW	Score	Margin	HOME: Delaware
08:06		50-39	H 11	GOOD! 3PTR by KARGO, BAILEY
06:44		52-39	H 13	GOOD! JUMPER by LEWIS, ALISON [FB]
06:09	GOOD! LAYUP by BELL, CHINYERE [PNT]	52-41	H 11	
05:41		54-41	H 13	GOOD! JUMPER by LAWRENCE, REBECCA
05:22	GOOD! 3PTR by PARKER, SHRITA	54-44	H 10	
05:06		56-44	H 12	GOOD! LAYUP by LEWIS, ALISON
04:46	GOOD! 3PTR by TATE, TIMBER	56-47	H 9	
04:33		57-47	H 10	GOOD! FT by DEFREESE, SAMONE
04:33		58-47	H 11	GOOD! FT by DEFREESE, SAMONE
04:22	GOOD! FT by SUGGS, LACEY	58-48	H 10	
03:58	GOOD! LAYUP by SMITH, GIGI [FB/PNT]	58-50	H 8	
03:58	GOOD! FT by SMITH, GIGI [FB]	58-51	H 7	
03:40		60-51	H 9	GOOD! LAYUP by OLEARY, LIZZIE [PNT]
03:22	GOOD! LAYUP by SMITH, GIGI	60-53	H 7	
01:57		62-53	H 9	GOOD! LAYUP by NICHOLAS, MAKEDA
01:34		64-53	H 11	GOOD! LAYUP by DEFREESE, SAMONE [FB]
01:34		65-53	H 12	GOOD! FT by DEFREESE, SAMONE [FB]

UNCW 53, Delaware 65

Official Substitutions Log
UNCW vs Delaware
Period 1
January 25, 2019 at Bob Carpenter Center - Newark, Del.



VISITORS: UNCW	Time	Score	HOME: Delaware
10 VASON,AHYIONA			12 OLEARY,LIZZIE
13 SUGGS,LACEY			22 DEFREESE,SAMONE
24 BELL,CHINYERE			23 KARGO,BAILEY
4 PARKER,SHRITA			25 LAWRENCE,REBECCA
5 SMITH,GIGI			2 GONZALES,ABBY
	09:08	-	SUB OUT: OLEARY,LIZZIE
	09:08		SUB IN: NICHOLAS,MAKEDA
SUB OUT: 10 VASON,AHYIONA	04:16	11-8	
SUB IN: 1 POWELL,PAIGE	04:16		
SUB OUT: 24 BELL,CHINYERE	04:16		
SUB IN: 2 CRISP,MORIAH	04:16		
	04:16		SUB OUT: DEFREESE,SAMONE
	04:16		SUB IN: MCBRIDE,PARIS
	04:16		SUB OUT: KARGO,BAILEY
	04:16		SUB IN: DICKEY,JASMINE
	04:16		SUB OUT: LAWRENCE,REBECCA
	04:16		SUB IN: LEWIS,ALISON
SUB OUT: 4 PARKER,SHRITA	03:31	11-8	
SUB IN: 14 TATE,TIMBER	03:31		
	01:36	13-10	SUB OUT: GONZALES,ABBY
	01:36		SUB IN: DEFREESE,SAMONE
	01:36		SUB OUT: NICHOLAS,MAKEDA
	01:36		SUB IN: KARGO,BAILEY
SUB OUT: 5 SMITH,GIGI	01:34	13-10	
SUB IN: 4 PARKER,SHRITA	01:34		
SUB OUT: 13 SUGGS,LACEY	01:34		
SUB IN: 32 OBUSEK,CAROL-ANNE	01:34		
SUB OUT: 1 POWELL,PAIGE	00:54	13-12	
SUB IN: 5 SMITH,GIGI	00:54		
SUB OUT: 2 CRISP,MORIAH	00:19	13-14	
SUB IN: 0 JEUNE,ASHLI	00:19		
SUB OUT: 14 TATE,TIMBER	00:19		
SUB IN: 10 VASON,AHYIONA	00:19		

UNCW 13, Delaware 14

Official Substitutions Log
UNCW vs Delaware
Period 2
January 25, 2019 at Bob Carpenter Center - Newark, Del.



VISITORS: UNCW	Time	Score	HOME: Delaware
10 VASON,AHYIONA			12 OLEARY,LIZZIE
13 SUGGS,LACEY			22 DEFREESE,SAMONE
24 BELL,CHINYERE			23 KARGO,BAILEY
4 PARKER,SHRITA			25 LAWRENCE,REBECCA
5 SMITH,GIGI			2 GONZALES,ABBY
	09:46	-	SUB OUT: DICKEY,JASMINE
	09:46		SUB IN: LAWRENCE,REBECCA
SUB OUT: 5 SMITH,GIGI	09:32	-	
SUB IN: 24 BELL,CHINYERE	09:32		
SUB OUT: 0 JEUNE,ASHLI	08:00	13-16	
SUB IN: 13 SUGGS,LACEY	08:00		
	07:00	13-18	SUB OUT: DEFREESE,SAMONE
	07:00		SUB IN: LEWIS,ALISON
	07:00		SUB OUT: KARGO,BAILEY
	07:00		SUB IN: MCBRIDE,PARIS
	05:33	16-22	SUB OUT: LAWRENCE,REBECCA
	05:33		SUB IN: OLEARY,LIZZIE
SUB OUT: 24 BELL,CHINYERE	05:33		
SUB IN: 5 SMITH,GIGI	05:33		
SUB OUT: 10 VASON,AHYIONA	05:19	16-24	
SUB IN: 2 CRISP,MORIAH	05:19		
SUB OUT: 2 CRISP,MORIAH	04:18	18-26	
SUB IN: 10 VASON,AHYIONA	04:18		
SUB OUT: 32 OBUSEK,CAROL-ANNE	04:03	18-26	
SUB IN: 24 BELL,CHINYERE	04:03		
	03:27	21-26	SUB OUT: LEWIS,ALISON
	03:27		SUB IN: DEFREESE,SAMONE
	03:27		SUB OUT: NICHOLAS,MAKEDA
	03:27		SUB IN: LAWRENCE,REBECCA
	02:58	23-26	SUB OUT: GONZALES,ABBY
	02:58		SUB IN: KARGO,BAILEY
	01:51	24-26	SUB OUT: LAWRENCE,REBECCA
	01:51		SUB IN: NICHOLAS,MAKEDA
	01:51		SUB OUT: MCBRIDE,PARIS
	01:51		SUB IN: GONZALES,ABBY
	01:09	26-28	SUB OUT: DEFREESE,SAMONE
	01:09		SUB IN: LEWIS,ALISON
	01:04	27-28	SUB OUT: OLEARY,LIZZIE
	01:04		SUB IN: DICKEY,JASMINE

UNCW 28, Delaware 28

Official Substitutions Log
UNCW vs Delaware
Period 3
January 25, 2019 at Bob Carpenter Center - Newark, Del.



VISITORS: UNCW	Time	Score	HOME: Delaware
10 VASON,AHYIONA			12 OLEARY,LIZZIE
13 SUGGS,LACEY			22 DEFREESE,SAMONE
24 BELL,CHINYERE			23 KARGO,BAILEY
4 PARKER,SHRITA			25 LAWRENCE,REBECCA
5 SMITH,GIGI			2 GONZALES,ABBY
	08:47	28-30	SUB OUT: KARGO,BAILEY
	08:47		SUB IN: MCBRIDE,PARIS
	08:17	28-33	SUB OUT: LAWRENCE,REBECCA
	08:17		SUB IN: DICKEY,JASMINE
	06:58	28-34	SUB OUT: OLEARY,LIZZIE
	06:58		SUB IN: NICHOLAS,MAKEDA
SUB OUT: 13 SUGGS,LACEY	06:32	30-34	
SUB IN: 14 TATE,TIMBER	06:32		
	06:11	30-35	SUB OUT: MCBRIDE,PARIS
	06:11		SUB IN: LEWIS,ALISON
SUB OUT: 24 BELL,CHINYERE	06:11		
SUB IN: 1 POWELL,PAIGE	06:11		
	01:57	37-43	SUB OUT: NICHOLAS,MAKEDA
	01:57		SUB IN: LAWRENCE,REBECCA
	00:56	37-45	SUB OUT: GONZALES,ABBY
	00:56		SUB IN: MCBRIDE,PARIS
SUB OUT: 4 PARKER,SHRITA	00:56		
SUB IN: 2 CRISP,MORIAH	00:56		

UNCW 39, Delaware 47

Official Substitutions Log
UNCW vs Delaware
Period 4
January 25, 2019 at Bob Carpenter Center - Newark, Del.



VISITORS: UNCW	Time	Score	HOME: Delaware
10 VASON,AHYIONA			12 OLEARY,LIZZIE
13 SUGGS,LACEY			22 DEFREESE,SAMONE
24 BELL,CHINYERE			23 KARGO,BAILEY
4 PARKER,SHRITA			25 LAWRENCE,REBECCA
5 SMITH,GIGI			2 GONZALES,ABBY
	08:29	-	SUB OUT: MCBRIDE,PARIS
	08:29		SUB IN: OLEARY,LIZZIE
	08:29		SUB OUT: DICKEY,JASMINE
	08:29		SUB IN: KARGO,BAILEY
	08:29		SUB OUT: LEWIS,ALISON
	08:29		SUB IN: GONZALES,ABBY
SUB OUT: 2 CRISP,MORIAH	08:29		
SUB IN: 4 PARKER,SHRITA	08:29		
	07:17	39-50	SUB OUT: DEFREESE,SAMONE
	07:17		SUB IN: LEWIS,ALISON
SUB OUT: 14 TATE,TIMBER	07:17		
SUB IN: 13 SUGGS,LACEY	07:17		
SUB OUT: 1 POWELL,PAIGE	07:17		
SUB IN: 24 BELL,CHINYERE	07:17		
SUB OUT: 5 SMITH,GIGI	06:42	39-52	
SUB IN: 14 TATE,TIMBER	06:42		
SUB OUT: 10 VASON,AHYIONA	05:13	44-54	
SUB IN: 2 CRISP,MORIAH	05:13		
	04:48	44-56	SUB OUT: LEWIS,ALISON
	04:48		SUB IN: DEFREESE,SAMONE
SUB OUT: 24 BELL,CHINYERE	04:48		
SUB IN: 5 SMITH,GIGI	04:48		
	04:22	47-58	SUB OUT: LAWRENCE,REBECCA
	04:22		SUB IN: NICHOLAS,MAKEDA
	03:58	50-58	SUB OUT: KARGO,BAILEY
	03:58		SUB IN: MCBRIDE,PARIS
	01:34	53-64	SUB OUT: NICHOLAS,MAKEDA
	01:34		SUB IN: LAWRENCE,REBECCA
SUB OUT: 2 CRISP,MORIAH	01:34		
SUB IN: 10 VASON,AHYIONA	01:34		
	01:05	53-65	SUB OUT: OLEARY,LIZZIE
	01:05		SUB IN: NICHOLAS,MAKEDA
SUB OUT: 14 TATE,TIMBER	00:44	53-65	
SUB IN: 0 JEUNE,ASHLI	00:44		
SUB OUT: 10 VASON,AHYIONA	00:17	53-65	
SUB IN: 22 THYBULLE,ZHANEIA	00:17		
SUB OUT: 13 SUGGS,LACEY	00:17		
SUB IN: 31 MITCHELL,JESSICA	00:17		

UNCW 53, Delaware 65

Official Shot Chart
UNCW vs Delaware
 PERIOD 1 Shots
 January 25, 2019 at Bob Carpenter Center - Newark, Del.

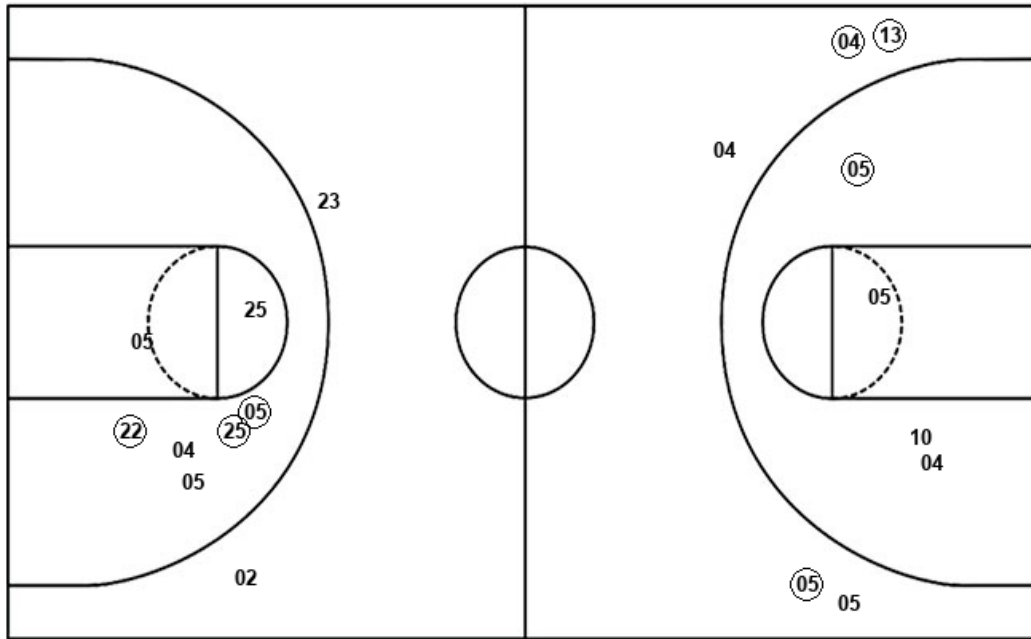


Delaware

UNCW

Layups
 (22) (22) 22 (22)

Dunks



Layups

04 24 01 (01) 13
 04

Dunks

DEL : Period 1	Made	Att	Pct
Layups	3	4	75.0
Dunks	0	0	0
2PT Field Goals	6	11	54.5
3PT Field Goals	0	2	00.0
Total Field Goals	6	13	46.2

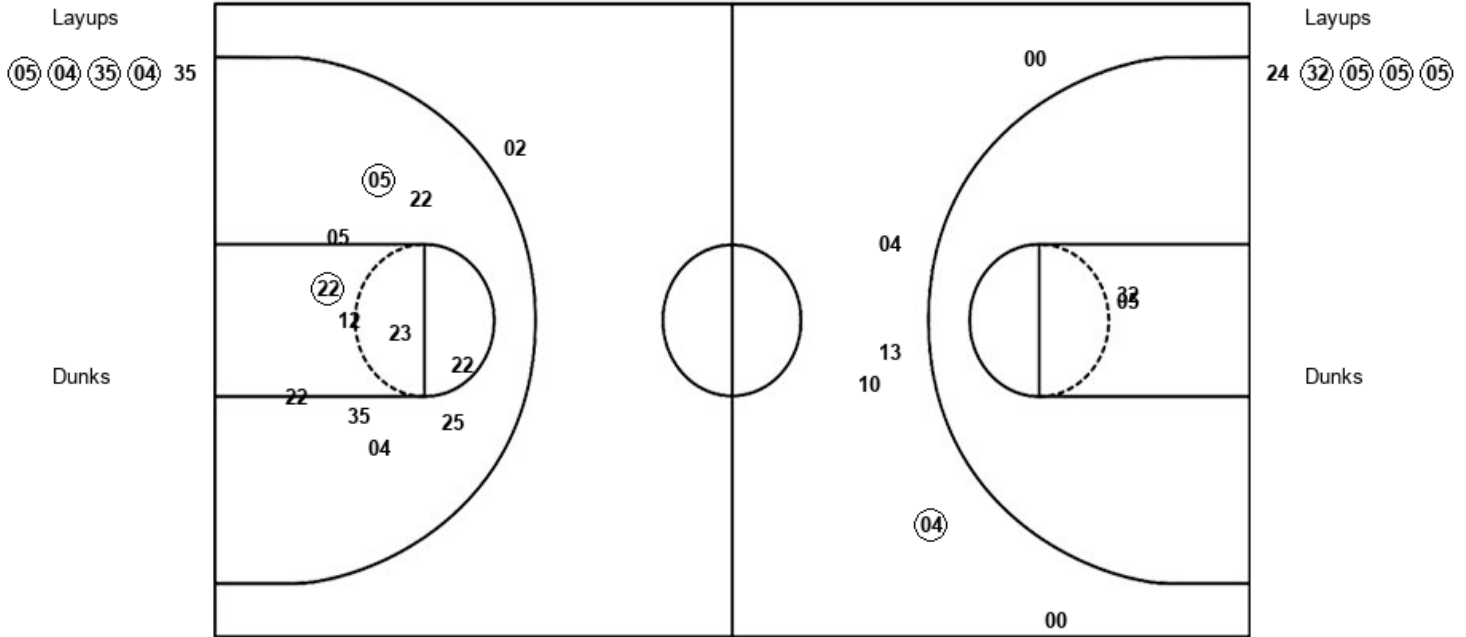
UNC : Period 1	Made	Att	Pct
Layups	1	6	16.7
Dunks	0	0	0
2PT Field Goals	2	10	20.0
3PT Field Goals	3	5	60.0
Total Field Goals	5	15	33.3

Official Shot Chart
UNCW vs Delaware
 PERIOD 2 Shots
 January 25, 2019 at Bob Carpenter Center - Newark, Del.



Delaware

UNCW



DEL : Period 2	Made	Att	Pct
Layups	4	5	80.0
Dunks	0	0	0
2PT Field Goals	6	16	37.5
3PT Field Goals	0	1	00.0
Total Field Goals	6	17	35.3

UNC : Period 2	Made	Att	Pct
Layups	4	5	80.0
Dunks	0	0	0
2PT Field Goals	4	7	57.1
3PT Field Goals	1	6	16.7
Total Field Goals	5	13	38.5

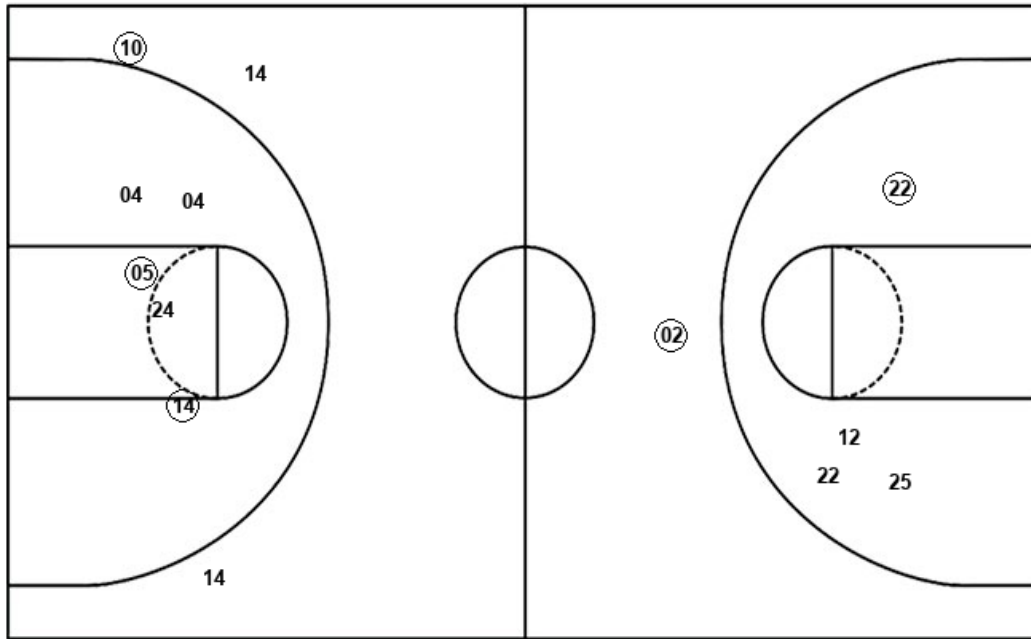
Official Shot Chart
UNCW vs Delaware
 PERIOD 3 Shots
 January 25, 2019 at Bob Carpenter Center - Newark, Del.



Delaware

UNCW

Layups
 (22) 20 05 (35) 35
 35 (22) (22) (04)



Layups
 04 24 (13) 05 (05)
 05 05

Dunks

Dunks

DEL : Period 3	Made	Att	Pct
Layups	5	9	55.6
Dunks	0	0	0
2PT Field Goals	6	13	46.2
3PT Field Goals	1	1	100.0
Total Field Goals	7	14	50.0

UNC : Period 3	Made	Att	Pct
Layups	2	7	28.6
Dunks	0	0	0
2PT Field Goals	4	12	33.3
3PT Field Goals	1	3	33.3
Total Field Goals	5	15	33.3

Official Shot Chart
UNCW vs Delaware
 PERIOD 4 Shots
 January 25, 2019 at Bob Carpenter Center - Newark, Del.

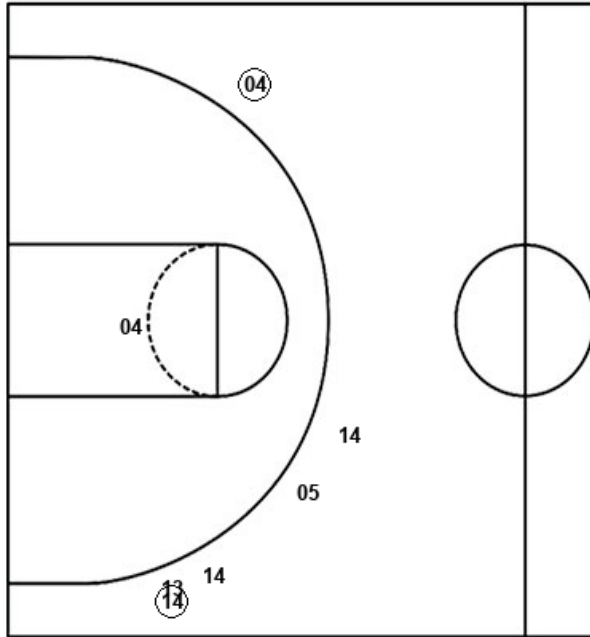


Delaware

UNCW

Layups
 22 22 (35) (12) 22
 (05) 02 (22) 04

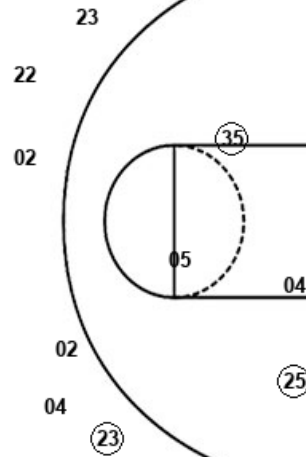
Dunks



DEL : Period 4	Made	Att	Pct
Layups	4	9	44.4
Dunks	0	0	0
2PT Field Goals	6	13	46.2
3PT Field Goals	1	6	16.7
Total Field Goals	7	19	36.8

Layups
 04 (24) (05) (05) 04
 13 05 05 04

Dunks



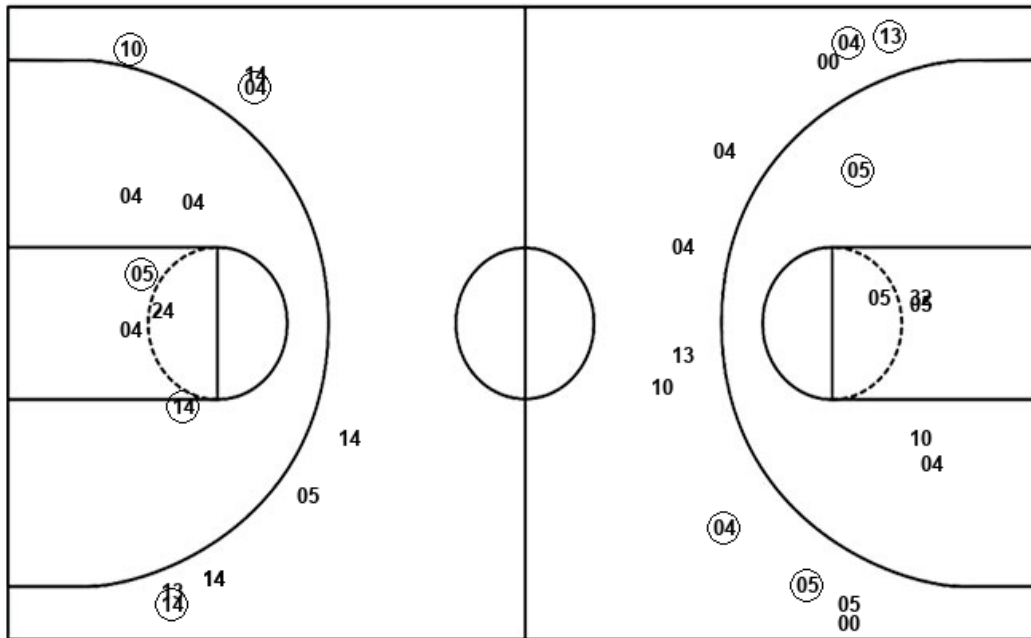
UNC : Period 4	Made	Att	Pct
Layups	3	9	33.3
Dunks	0	0	0
2PT Field Goals	3	10	30.0
3PT Field Goals	2	6	33.3
Total Field Goals	5	16	31.3

Official Shot Chart
UNCW vs Delaware
UNCW Team Shots
January 25, 2019 at Bob Carpenter Center - Newark, Del.



Layups

Dunks



Layups

Dunks

04 24 01 01 13
 04 24 32 05 05
 05 04 24 13 05
 05 05 05 04 24
 05 05 04 13 05
 05 04

UNC : Period 1	Made	Att	Pct
Layups	1	6	16.7
Dunks	0	0	0
2PT Field Goals	2	10	20.0
3PT Field Goals	3	5	60.0
Total Field Goals	5	15	33.3

UNC : Period 3	Made	Att	Pct
Layups	2	7	28.6
Dunks	0	0	0
2PT Field Goals	4	12	33.3
3PT Field Goals	1	3	33.3
Total Field Goals	5	15	33.3

UNC : Period 2	Made	Att	Pct
Layups	4	5	80.0
Dunks	0	0	0
2PT Field Goals	4	7	57.1
3PT Field Goals	1	6	16.7
Total Field Goals	5	13	38.5

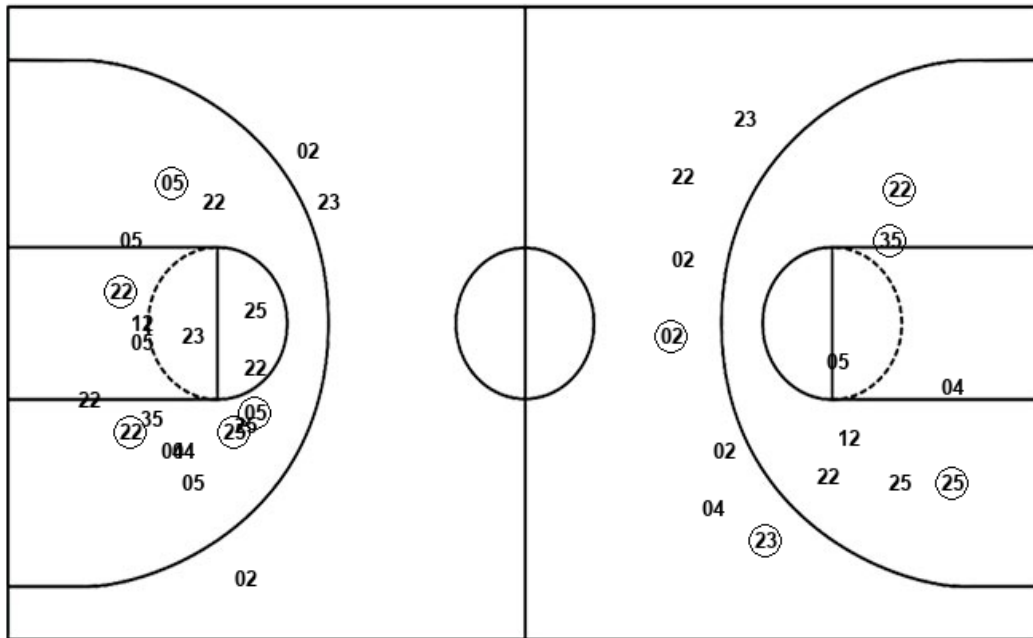
UNC : Period 4	Made	Att	Pct
Layups	3	9	33.3
Dunks	0	0	0
2PT Field Goals	3	10	30.0
3PT Field Goals	2	6	33.3
Total Field Goals	5	16	31.3

Official Shot Chart
UNCW vs Delaware
 Delaware Team Shots
 January 25, 2019 at Bob Carpenter Center - Newark, Del.



Layups

Dunks



Layups

Dunks

(22) (22) 22 (22) (05)
 (04) (35) (04) 35 (22)
 20 05 (35) 35 35
 (22) (22) (04) 22 22
 (35) (12) 22 (05) 02
 (22) 04

DEL : Period 1	Made	Att	Pct
Layups	3	4	75.0
Dunks	0	0	0
2PT Field Goals	6	11	54.5
3PT Field Goals	0	2	00.0
Total Field Goals	6	13	46.2

DEL : Period 3	Made	Att	Pct
Layups	5	9	55.6
Dunks	0	0	0
2PT Field Goals	6	13	46.2
3PT Field Goals	1	1	100.0
Total Field Goals	7	14	50.0

DEL : Period 2	Made	Att	Pct
Layups	4	5	80.0
Dunks	0	0	0
2PT Field Goals	6	16	37.5
3PT Field Goals	0	1	00.0
Total Field Goals	6	17	35.3

DEL : Period 4	Made	Att	Pct
Layups	4	9	44.4
Dunks	0	0	0
2PT Field Goals	6	13	46.2
3PT Field Goals	1	6	16.7
Total Field Goals	7	19	36.8