

FINAL SCORE

SIUE

55



UT Martin

68



January 26, 2019 • Kathleen and Tom Elam Center - Martin, Tenn.

FINAL STATISTICS

Official Box Score
SIUE vs UT Martin
Game Totals -- Final Statistics
January 26, 2019 at Kathleen and Tom Elam Center - Martin, Tenn.

SIUE 55

No.	Player	S	Pts	FG	3FG	FT	OR	DR	TR	PF	A	TO	Blk	Stl	Min	+/-
02	Bell, Nakiah		8	3-13	2-10	0-0	0	3	3	0	1	2	1	1	37	-11
05	Alston, Jaynee		18	6-11	4-9	2-2	0	7	7	2	2	3	0	1	34	-12
23	Troeckler, Allie		3	1-5	0-0	1-2	2	4	6	1	0	2	0	0	31	-11
25	Whitlock, Zaria		2	1-2	0-0	0-0	1	1	2	2	2	0	0	0	11	1
34	Bauman, Sydney		2	1-3	0-0	0-0	4	4	8	4	1	1	3	2	20	3
01	King, Christen		7	3-5	0-0	1-2	0	1	1	4	1	6	0	1	15	-7
11	Keith, Mikia		2	0-2	0-1	2-2	0	0	0	0	0	0	0	1	9	-3
12	Koehler, Kai		0	0-1	0-1	0-0	0	0	0	1	0	0	0	0	0	-4
14	Jones, Micah		7	2-8	0-0	3-6	2	0	2	5	2	0	0	0	15	-2
21	Akuen, Alek		6	1-1	0-0	4-4	2	3	5	3	0	1	1	0	19	-12
35	Hall, Mikala		0	0-1	0-0	0-0	0	0	0	1	0	0	0	0	3	-3
44	Everidge, Riana		0	0-1	0-0	0-0	0	2	2	2	0	2	0	1	5	-4
	Team						2	1	3	0		2				
TOTALS			55	18-53	6-21	13-18	13	26	39	25	9	21	5	7	199	

Shooting By Period

Period	FG	FG%	3FG	3FG%	FT	FT%
1st Qtr	3-11	27%	0-3	00%	6-8	75%
2nd Qtr	5-15	33%	2-5	40%	1-2	50%
3rd Qtr	4-13	31%	2-6	33%	4-4	100%
4th Qtr	6-14	43%	2-7	29%	2-4	50%
1st Half	8-26	31%	2-8	25%	7-10	70%
2nd Half	10-27	37%	4-13	31%	6-8	75%
Game	18-53	34.0%	6-21	28.6%	13-18	72.2%

Last FG: 4th-00:59
Biggest Run: 6-0
Largest lead: By 6 at 1-08:23
Technical Fouls: None.

UT Martin 68

No.	Player	S	Pts	FG	3FG	FT	OR	DR	TR	PF	A	TO	Blk	Stl	Min	+/-
04	Robertson, Emanye		6	0-5	0-1	6-10	2	1	3	0	5	1	1	2	35	14
14	Hicks, Zaire		2	1-4	0-2	0-2	0	2	2	1	2	2	0	1	23	11
15	Moore, Brittini		6	2-7	2-5	0-0	2	4	6	3	2	1	0	3	33	13
20	Perry, Chelsey		19	6-13	0-1	7-8	4	4	8	3	2	3	3	2	29	13
21	Waldrop, Maddie		10	3-10	1-4	3-4	1	4	5	4	1	0	2	2	28	17
00	Davis, Emma		0	0-0	0-0	0-0	0	0	0	0	0	0	0	0	1	-2
02	Hudson, Sade'		5	2-4	1-1	0-0	1	3	4	1	1	2	0	0	8	1
11	Adams, Aundrea		3	1-5	0-0	1-2	2	0	2	1	0	0	0	0	15	-1
13	Stanford, Tamiah		0	0-1	0-0	0-0	0	0	0	0	0	0	0	0	2	-1
22	Griffin, Damiah		6	2-5	0-0	2-4	5	1	6	2	0	1	0	2	9	-2
31	Grant, Kyannah		11	3-5	2-4	3-4	1	2	3	1	2	2	0	1	16	3
33	Burdick, Demi		0	0-0	0-0	0-0	0	1	1	0	0	0	0	0	0	-1
	Team						1	3	4	0		0				
TOTALS			68	20-59	6-18	22-34	19	25	44	16	15	12	6	13	199	

Shooting By Period

Period	FG	FG%	3FG	3FG%	FT	FT%
1st Qtr	4-12	33%	0-1	00%	4-10	40%
2nd Qtr	4-23	17%	2-8	25%	3-4	75%
3rd Qtr	6-12	50%	2-5	40%	6-8	75%
4th Qtr	6-12	50%	2-4	50%	9-12	75%
1st Half	8-35	23%	2-9	22%	7-14	50%
2nd Half	12-24	50%	4-9	44%	15-20	75%
Game	20-59	33.9%	6-18	33.3%	22-34	64.7%

Last FG: 4th-02:44
Biggest Run: 7-0
Largest lead: By 13 at 4-00:22
Technical Fouls: None.

Game Notes:

Officials: **Stephanie Barksdale, Trey Miles, Randy Robertson**
Attendance: **1097**

Start Time: **2019-01-26 19:02:52**
End Time: **2019-01-26 20:58:01**
Game Duration: **115**
Conference Game:

Score	1st	2nd	3rd	4th	TOT
SIE	12	13	14	16	55
UTM	12	13	20	23	68

SIE led for 5:45. UTM led for 25:25.
Game was tied for 8:43.
Times tied: **12** Lead Changes: **5**

Points from	SIE	UTM
In the Paint	22	22
Off Turns	11	23
2nd Chance	9	18
Fast Break	9	5
Bench	22	25

Official Box Score
SIUE vs UT Martin
First Half Statistics Only
January 26, 2019 at Kathleen and Tom Elam Center - Martin, Tenn.

SIUE 25

No.	Player	S	Pts	FG	3FG	FT	OR	DR	TR	PF	A	TO	Blk	Stl	Min	+/-
11	Keith, Mikia		2	0-2	0-1	2-2	0	0	0	0	0	0	0	1	7	1
12	Koehler, Kai		0	0-0	0-0	0-0	0	0	0	0	0	0	0	0	0	0
14	Jones, Micah		2	1-4	0-0	0-2	2	0	2	3	1	0	0	0	6	0
21	Akuen, Alek		2	0-0	0-0	2-2	0	3	3	0	0	1	1	0	11	-4
23	Troeckler, Allie		0	0-2	0-0	0-0	0	2	2	0	0	1	0	0	14	-2
25	Whitlock, Zaria		2	1-2	0-0	0-0	0	0	0	1	1	1	0	0	7	1
34	Bauman, Sydney		2	1-2	0-0	0-0	2	3	5	2	1	0	2	1	7	8
35	Hall, Mikala		0	0-0	0-0	0-0	0	0	0	0	0	0	0	0	2	1
44	Everidge, Riana		0	0-1	0-0	0-0	0	0	0	1	0	2	0	1	3	-2
01	King, Christen		5	2-4	0-0	1-2	0	1	1	2	0	5	0	1	9	-2
02	Bell, Nakiah		3	1-6	1-5	0-0	0	2	2	0	0	0	1	0	17	2
05	Alston, Jaynee		7	2-3	1-2	2-2	0	6	6	1	1	1	0	1	16	-3
	Team		0	0-0	0-0	0-0	0	1	1	0	0	1	0	0	0	0
TOTALS			25	8-26	2-8	7-10	4	18	22	10	4	12	4	5	100	

Shooting By Period

Period	FG	FG%	3FG	3FG%	FT	FT%
1st Qtr	3-11	27%	0-3	00%	6-8	75%
2nd Qtr	5-15	33%	2-5	40%	1-2	50%
1st Half	8-26	31%	2-8	25%	7-10	70%
Game	18-53	34.0%	6-21	28.6%	13-18	72.2%

Last FG Half: SIE 2nd-00:30

UT Martin 25

No.	Player	S	Pts	FG	3FG	FT	OR	DR	TR	PF	A	TO	Blk	Stl	Min	+/-
00	Davis, Emma		0	0-0	0-0	0-0	0	0	0	0	0	0	0	0	1	-2
02	Hudson, Sade'		0	0-0	0-0	0-0	0	1	1	0	0	1	0	0	3	2
04	Robertson, Emanyne		1	0-1	0-0	1-4	1	1	2	0	2	1	1	1	20	0
11	Adams, Aundrea		3	1-5	0-0	1-2	1	0	1	0	0	0	0	0	7	0
13	Stanford, Tamiah		0	0-1	0-0	0-0	0	0	0	0	0	0	0	0	2	-1
14	Hicks, Zaire		0	0-2	0-1	0-0	0	2	2	0	1	1	0	0	9	1
15	Moore, Brittni		0	0-3	0-1	0-0	1	3	4	1	2	1	0	2	13	0
20	Perry, Chelsey		8	3-8	0-1	2-2	3	2	5	2	0	1	2	0	13	0
21	Waldrop, Maddie		2	0-7	0-3	2-2	1	3	4	2	0	0	1	2	15	3
22	Griffin, Damiah		4	2-5	0-0	0-2	4	0	4	2	0	1	0	2	7	-2
31	Grant, Kyannah		7	2-3	2-3	1-2	1	2	3	1	1	2	0	1	10	0
33	Burdick, Demi		0	0-0	0-0	0-0	0	1	1	0	0	0	0	0	0	-1
	Team		0	0-0	0-0	0-0	0	1	1	0	0	0	0	0	0	0
TOTALS			25	8-35	2-9	7-14	12	16	28	8	6	8	4	8	100	

Shooting By Period

Period	FG	FG%	3FG	3FG%	FT	FT%
1st Qtr	4-12	33%	0-1	00%	4-10	40%
2nd Qtr	4-23	17%	2-8	25%	3-4	75%
1st Half	8-35	23%	2-9	22%	7-14	50%
Game	20-59	33.9%	6-18	33.3%	22-34	64.7%

Last FG Half: UTM 2nd-05:16

Game Notes:

Officials: **Stephanie Barksdale, Trey Miles, Randy Robertson**
Attendance: **1097**

Start Time: **2019-01-26 19:02:52**
End Time: **2019-01-26 20:58:01**
Game Duration: **115**
Conference Game;

Score	1st	2nd	3rd	4th	TOT
SIUE	12	13	14	16	55
UTM	12	13	20	23	68

Points from (This Period)	SIUE	UTM
In the Paint	10	10
Off Turns	7	13
2nd Chance	2	9
Fast Break	7	3
Bench	11	14

Official Box Score
SIUE vs UT Martin
First Quarter Statistics Only
January 26, 2019 at Kathleen and Tom Elam Center - Martin, Tenn.

SIUE 12

No.	Player	S	Pts	FG	3FG	FT	OR	DR	TR	PF	A	TO	Blk	Stl	Min	+/-
02	Bell, Nakiah		0	0-3	0-3	0-0	0	0	0	0	0	0	1	0	10	0
05	Alston, Jaynee		4	1-1	0-0	2-2	0	4	4	0	0	1	0	1	9	-3
23	Troeckler, Allie		0	0-1	0-0	0-0	0	1	1	0	0	1	0	0	9	1
25	Whitlock, Zaria		2	1-2	0-0	0-0	0	0	0	1	0	0	0	0	5	1
34	Bauman, Sydney		2	1-1	0-0	0-0	1	1	2	2	1	0	1	0	3	5
01	King, Christen		0	0-0	0-0	0-0	0	1	1	1	0	3	0	0	2	0
11	Keith, Mikia		2	0-0	0-0	2-2	0	0	0	0	0	0	0	1	1	3
12	Koehler, Kai		0	0-0	0-0	0-0	0	0	0	0	0	0	0	0	0	0
14	Jones, Micah		0	0-2	0-0	0-2	1	0	1	2	0	0	0	0	2	-5
21	Akuen, Alek		2	0-0	0-0	2-2	0	1	1	0	0	0	0	0	5	-1
35	Hall, Mikala		0	0-0	0-0	0-0	0	0	0	0	0	0	0	0	0	1
44	Everidge, Riana		0	0-1	0-0	0-0	0	0	0	1	0	2	0	1	3	-2
	Team						0	0	0	0		0				
TOTALS			12	3-11	0-3	6-8	2	8	10	7	1	7	2	3	50	

Shooting By Period

Period	FG	FG%	3FG	3FG%	FT	FT%
1st Qtr	3-11	27%	0-3	00%	6-8	75%
2nd Qtr	5-15	33%	2-5	40%	1-2	50%
1st Half	3-11	27%	0-3	00%	6-8	75%
1st Half	8-26	31%	2-8	25%	7-10	70%
Game	18-53	34.0%	6-21	28.6%	13-18	72.2%

UT Martin 12

No.	Player	S	Pts	FG	3FG	FT	OR	DR	TR	PF	A	TO	Blk	Stl	Min	+/-
04	Robertson, Emanyne		1	0-1	0-0	1-4	1	0	1	0	0	1	0	0	10	0
14	Hicks, Zaire		0	0-1	0-0	0-0	0	1	1	0	1	1	0	0	5	-1
15	Moore, Brittni		0	0-1	0-0	0-0	1	2	3	0	2	1	0	1	9	2
20	Perry, Chelsey		2	1-2	0-0	0-0	0	0	0	2	0	1	1	0	4	-2
21	Waldrop, Maddie		2	0-1	0-1	2-2	0	1	1	2	0	0	0	2	6	1
00	Davis, Emma		0	0-0	0-0	0-0	0	0	0	0	0	0	0	0	1	-2
02	Hudson, Sade'		0	0-0	0-0	0-0	0	1	1	0	0	1	0	0	3	2
11	Adams, Aundrea		3	1-3	0-0	1-2	0	0	0	0	0	0	0	0	6	2
13	Stanford, Tamiah		0	0-0	0-0	0-0	0	0	0	0	0	0	0	0	0	-1
22	Griffin, Damiah		4	2-3	0-0	0-2	1	0	1	2	0	1	0	2	4	0
31	Grant, Kyannah		0	0-0	0-0	0-0	0	1	1	0	0	0	0	0	2	0
33	Burdick, Demi		0	0-0	0-0	0-0	0	1	1	0	0	0	0	0	0	-1
	Team						0	0	0	0		0				
TOTALS			12	4-12	0-1	4-10	3	7	10	6	3	6	1	5	50	

Shooting By Period

Period	FG	FG%	3FG	3FG%	FT	FT%
1st Qtr	4-12	33%	0-1	00%	4-10	40%
2nd Qtr	4-23	17%	2-8	25%	3-4	75%
1st Half	4-12	33%	0-1	00%	4-10	40%
1st Half	8-35	23%	2-9	22%	7-14	50%
Game	20-59	33.9%	6-18	33.3%	22-34	64.7%

Game Notes:

Officials: **Stephanie Barksdale, Trey Miles, Randy Robertson**
Attendance: **1097**

Start Time: **2019-01-26 19:02:52**
End Time: **2019-01-26 20:58:01**
Game Duration: **115**
Conference Game;

Score	1st	2nd	3rd	4th	TOT
SIE	12	13	14	16	55
UTM	12	13	20	23	68

Points from (This Period)	SIE	UTM
In the Paint	6	6
Off Turns	6	7
2nd Chance	2	4
Fast Break	6	0
Bench	4	7

**Official Play-By-Play
SIUE vs UT Martin
First Quarter**

January 26, 2019 at Kathleen and Tom Elam Center - Martin, Tenn.

Period 1

Starters:

SIUE: 23 TROECKLER, ALLIE; 25 WHITLOCK, ZARIA; 34 BAUMAN, SYDNEY; 2 BELL, NAKIAH; 5 ALSTON, JAY'NEE;

UT Martin: 4 ROBERTSON, EMANYE; 14 HICKS, ZAIRE; 15 MOORE, BRITTNI; 20 PERRY, CHELSEY; 21 WALDROP, MADDIE;

Time	VISITORS: SIUE	Score	Margin	HOME: UT Martin
09:47				MISSED LAYUP by PERRY, CHELSEY
09:47	BLOCK by BAUMAN, SYDNEY			
09:42	REBOUND (DEF) by ALSTON, JAY'NEE			
09:24	TURNOVER (BADPASS) by TROECKLER, ALLIE			
09:24				STEAL by WALDROP, MADDIE
09:19				TURNOVER (LOSTBALL) by ROBERTSON, EMANYE
09:19	STEAL by ALSTON, JAY'NEE			
09:12	GOOD! JUMPER by ALSTON, JAY'NEE [FB/PNT]	0-2	V 2	
08:57				TURNOVER (BADPASS) by HICKS, ZAIRE
08:48	MISSED JUMPER by TROECKLER, ALLIE			
08:45	REBOUND (OFF) by BAUMAN, SYDNEY			
08:44	GOOD! LAYUP by BAUMAN, SYDNEY	0-4	V 4	
08:38				MISSED LAYUP by ROBERTSON, EMANYE
08:35	REBOUND (DEF) by BAUMAN, SYDNEY			
08:23	GOOD! LAYUP by WHITLOCK, ZARIA	0-6	V 6	
08:23	ASSIST by BAUMAN, SYDNEY			
07:54	FOUL (PERSONAL) by BAUMAN, SYDNEY			
07:54				FOUL (OFF) by PERRY, CHELSEY
07:54				TURNOVER (OFFENSIVE) by PERRY, CHELSEY
07:40				FOUL (PERSONAL) by WALDROP, MADDIE
07:38	MISSED 3PTR by BELL, NAKIAH			
07:35				REBOUND (DEF) by MOORE, BRITTNI
07:30				MISSED 3PTR by WALDROP, MADDIE
07:27				REBOUND (OFF) by MOORE, BRITTNI
07:13				MISSED JUMPER by HICKS, ZAIRE
07:10				REBOUND (OFF) by ROBERTSON, EMANYE
07:03	FOUL (PERSONAL) by BAUMAN, SYDNEY			
07:03		1-6	V 5	GOOD! FT by WALDROP, MADDIE
07:03	SUB OUT: BAUMAN, SYDNEY			
07:03	SUB IN: JONES, MICAH			
07:03		2-6	V 4	GOOD! FT by WALDROP, MADDIE
06:54	TURNOVER (BADPASS) by ALSTON, JAY'NEE			
06:54				STEAL by WALDROP, MADDIE
06:34		4-6	V 2	GOOD! JUMPER by PERRY, CHELSEY
06:34				ASSIST by HICKS, ZAIRE
06:21	MISSED JUMPER by JONES, MICAH			
06:21				BLOCK by PERRY, CHELSEY
06:21	REBOUND (OFF) by JONES, MICAH			
06:21				FOUL (PERSONAL) by PERRY, CHELSEY
06:21	MISSED FT by JONES, MICAH			
06:21	REBOUND (OFF) by TEAM			
06:21				SUB OUT: PERRY, CHELSEY
06:21				SUB IN: ADAMS, AUNDREA
06:21	MISSED FT by JONES, MICAH			
06:21				REBOUND (DEF) by WALDROP, MADDIE
06:00	FOUL (PERSONAL) by JONES, MICAH			
06:00				MISSED FT by ADAMS, AUNDREA
06:00				REBOUND (OFF) by TEAM
06:00		5-6	V 1	GOOD! FT by ADAMS, AUNDREA
05:36	MISSED LAYUP by JONES, MICAH			
05:32				REBOUND (DEF) by HICKS, ZAIRE
05:29				TURNOVER (TRAVEL) by MOORE, BRITTNI
05:29				SUB OUT: HICKS, ZAIRE
05:29				SUB IN: HUDSON, SADE'
05:29	SUB OUT: WHITLOCK, ZARIA			
05:29	SUB IN: EVERIDGE, RIANA			
05:29	SUB OUT: JONES, MICAH			
05:29	SUB IN: AKUEN, ALEK			
05:03	MISSED 3PTR by BELL, NAKIAH			
04:58				REBOUND (DEF) by MOORE, BRITTNI
04:51		7-6	H 1	GOOD! LAYUP by ADAMS, AUNDREA
04:51				ASSIST by MOORE, BRITTNI
04:31	MISSED JUMPER by EVERIDGE, RIANA			
04:28				REBOUND (DEF) by HUDSON, SADE'
04:09				MISSED JUMPER by MOORE, BRITTNI
04:09	BLOCK by BELL, NAKIAH			
04:05	REBOUND (DEF) by ALSTON, JAY'NEE			
04:03				FOUL (PERSONAL) by WALDROP, MADDIE
04:03				
04:03				SUB OUT: WALDROP, MADDIE
04:03				SUB IN: GRIFFIN, DAMIAH
04:03	GOOD! FT by ALSTON, JAY'NEE [FB]	7-7	T	
04:03	GOOD! FT by ALSTON, JAY'NEE [FB]	7-8	V 1	
03:38				TURNOVER (BADPASS) by HUDSON, SADE'
03:38	STEAL by EVERIDGE, RIANA			
03:23	TURNOVER (BADPASS) by EVERIDGE, RIANA			

Time	VISITORS: SIUE	Score	Margin	HOME: UT Martin
03:10				MISSED JUMPER by ADAMS,AUNDREA
03:06				REBOUND (OFF) by GRIFFIN,DAMIAH
03:05		9-8	H 1	GOOD! LAYUP by GRIFFIN,DAMIAH
02:41	FOUL (OFF) by EVERIDGE,RIANA			
02:41	TURNOVER (OFFENSIVE) by EVERIDGE,RIANA			
02:41				SUB OUT: HUDSON,SADE'
02:41				SUB IN: GRANT,KYANNAH
02:41	SUB OUT: EVERIDGE,RIANA			
02:41	SUB IN: JONES,MICAH			
02:41	SUB OUT: TROECKLER,ALLIE			
02:41	SUB IN: KING,CHRISTEN			
02:32	FOUL (PERSONAL) by JONES,MICAH			
02:32		10-8	H 2	GOOD! FT by ROBERTSON,EMANYE
02:32	SUB OUT: JONES,MICAH			
02:32	SUB IN: WHITLOCK,ZARIA			
02:32				MISSED FT by ROBERTSON,EMANYE
02:32	REBOUND (DEF) by ALSTON,JAY'NEE			
02:14	MISSED JUMPER by WHITLOCK,ZARIA			
02:10				REBOUND (DEF) by GRANT,KYANNAH
01:56	FOUL (PERSONAL) by WHITLOCK,ZARIA			
01:56				MISSED FT by GRIFFIN,DAMIAH
01:56				REBOUND (OFF) by TEAM
01:56	SUB OUT: WHITLOCK,ZARIA			
01:56	SUB IN: TROECKLER,ALLIE			
01:56				MISSED FT by GRIFFIN,DAMIAH
01:56	REBOUND (DEF) by AKUEN,ALEK			
01:43	TURNOVER (BADPASS) by KING,CHRISTEN			
01:43				STEAL by MOORE,BRITTNI
01:36		12-8	H 4	GOOD! JUMPER by GRIFFIN,DAMIAH
01:36				ASSIST by MOORE,BRITTNI
01:23	TURNOVER (LOSTBALL) by KING,CHRISTEN			
01:23				STEAL by GRIFFIN,DAMIAH
01:12				MISSED JUMPER by GRIFFIN,DAMIAH
01:10	REBOUND (DEF) by ALSTON,JAY'NEE			
00:54				FOUL (PERSONAL) by GRIFFIN,DAMIAH
00:54	GOOD! FT by AKUEN,ALEK	12-9	H 3	
00:54	SUB OUT: ALSTON,JAY'NEE			
00:54	SUB IN: KEITH,MIKIA			
00:54	GOOD! FT by AKUEN,ALEK	12-10	H 2	
00:46	FOUL (PERSONAL) by KING,CHRISTEN			
00:46				MISSED FT by ROBERTSON,EMANYE
00:46				REBOUND (OFF) by TEAM
00:46				SUB OUT: MOORE,BRITTNI
00:46				SUB IN: DAVIS,EMMA
00:46				MISSED FT by ROBERTSON,EMANYE
00:46	REBOUND (DEF) by KING,CHRISTEN			
00:37	TURNOVER (BADPASS) by KING,CHRISTEN			
00:37				STEAL by GRIFFIN,DAMIAH
00:32				TURNOVER (BADPASS) by GRIFFIN,DAMIAH
00:32	STEAL by KEITH,MIKIA			
00:28				FOUL (PERSONAL) by GRIFFIN,DAMIAH
00:28	GOOD! FT by KEITH,MIKIA [FB]	12-11	H 1	
00:28				SUB OUT: GRIFFIN,DAMIAH
00:28				SUB IN: BURDICK,DEMI
00:28				SUB OUT: GRANT,KYANNAH
00:28				SUB IN: STANFORD,TAMIAH
00:28	SUB OUT: KING,CHRISTEN			
00:28	SUB IN: HALL,MIKALA			
00:28	GOOD! FT by KEITH,MIKIA [FB]	12-12	T	
00:07				MISSED JUMPER by ADAMS,AUNDREA
00:04	REBOUND (DEF) by TROECKLER,ALLIE			
00:00	MISSED 3PTR by BELL,NAKIAH			
00:00				REBOUND (DEF) by BURDICK,DEMI

SIUE 12, UT Martin 12

Points from (This Period)	SIUE	UTM
In the Paint	6	6
Off Turns	6	7
2nd Chance	2	4
Fast Break	6	0
Bench	4	7

Official Box Score
SIUE vs UT Martin
Second Quarter Statistics Only
January 26, 2019 at Kathleen and Tom Elam Center - Martin, Tenn.

SIUE 13

No.	Player	S	Pts	FG	3FG	FT	OR	DR	TR	PF	A	TO	Blk	Stl	Min	+/-
02	Bell, Nakiah		3	1-3	1-2	0-0	0	2	2	0	0	0	0	0	7	2
05	Alston, Jaynee		3	1-2	1-2	0-0	0	2	2	1	1	0	0	0	7	0
23	Troeckler, Allie		0	0-1	0-0	0-0	0	1	1	0	0	0	0	0	5	-3
25	Whitlock, Zaria		0	0-0	0-0	0-0	0	0	0	0	1	1	0	0	2	0
34	Bauman, Sydney		0	0-1	0-0	0-0	1	2	3	0	0	0	1	1	4	3
01	King, Christen		5	2-4	0-0	1-2	0	0	0	1	0	2	0	1	7	-2
11	Keith, Mikia		0	0-2	0-1	0-0	0	0	0	0	0	0	0	0	6	-2
12	Koehler, Kai		0	0-0	0-0	0-0	0	0	0	0	0	0	0	0	0	0
14	Jones, Micah		2	1-2	0-0	0-0	1	0	1	1	1	0	0	0	4	5
21	Akuen, Alek		0	0-0	0-0	0-0	0	2	2	0	0	1	1	0	6	-3
35	Hall, Mikala		0	0-0	0-0	0-0	0	0	0	0	0	0	0	0	2	0
44	Everidge, Riana		0	0-0	0-0	0-0	0	0	0	0	0	0	0	0	0	0
	Team						0	1	1	0		1				
TOTALS			13	5-15	2-5	1-2	2	10	12	3	3	5	2	2	50	

Shooting By Period

Period	FG	FG%	3FG	3FG%	FT	FT%
3rd Qtr	4-13	31%	2-6	33%	4-4	100%
4th Qtr	6-14	43%	2-7	29%	2-4	50%
2nd Half	5-15	33%	2-5	40%	1-2	50%
2nd Half	10-27	37%	4-13	31%	6-8	75%
Game	18-53	34.0%	6-21	28.6%	13-18	72.2%

UT Martin 13

No.	Player	S	Pts	FG	3FG	FT	OR	DR	TR	PF	A	TO	Blk	Stl	Min	+/-
04	Robertson, Emanye		0	0-0	0-0	0-0	0	1	1	0	2	0	1	1	10	0
14	Hicks, Zaire		0	0-1	0-1	0-0	0	1	1	0	0	0	0	0	4	2
15	Moore, Brittni		0	0-2	0-1	0-0	0	1	1	1	0	0	0	1	4	-2
20	Perry, Chelsey		6	2-6	0-1	2-2	3	2	5	0	0	0	1	0	9	2
21	Waldrop, Maddie		0	0-6	0-2	0-0	1	2	3	0	0	0	1	0	9	2
00	Davis, Emma		0	0-0	0-0	0-0	0	0	0	0	0	0	0	0	0	0
02	Hudson, Sade'		0	0-0	0-0	0-0	0	0	0	0	0	0	0	0	0	0
11	Adams, Aundrea		0	0-2	0-0	0-0	1	0	1	0	0	0	0	0	1	-2
13	Stanford, Tamiah		0	0-1	0-0	0-0	0	0	0	0	0	0	0	0	2	0
22	Griffin, Damiah		0	0-2	0-0	0-0	3	0	3	0	0	0	0	0	3	-2
31	Grant, Kyannah		7	2-3	2-3	1-2	1	1	2	1	1	2	0	1	8	0
33	Burdick, Demi		0	0-0	0-0	0-0	0	0	0	0	0	0	0	0	0	0
	Team						0	1	1	0		0				
TOTALS			13	4-23	2-8	3-4	9	9	18	2	3	2	3	3	50	

Shooting By Period

Period	FG	FG%	3FG	3FG%	FT	FT%
3rd Qtr	6-12	50%	2-5	40%	6-8	75%
4th Qtr	6-12	50%	2-4	50%	9-12	75%
2nd Half	4-23	17%	2-8	25%	3-4	75%
2nd Half	12-24	50%	4-9	44%	15-20	75%
Game	20-59	33.9%	6-18	33.3%	22-34	64.7%

Game Notes:

Officials: **Stephanie Barksdale, Trey Miles, Randy Robertson**
Attendance: **1097**

Start Time: **2019-01-26 19:02:52**
End Time: **2019-01-26 20:58:01**
Game Duration: **115**
Conference Game;

Score	1st	2nd	3rd	4th	TOT
SIE	12	13	14	16	55
UTM	12	13	20	23	68

Points from (This Period)	SIE	UTM
In the Paint	4	4
Off Turns	1	6
2nd Chance	0	5
Fast Break	1	3
Bench	7	7

Official Play-By-Play
SIUE vs UT Martin
Second Quarter
January 26, 2019 at Kathleen and Tom Elam Center - Martin, Tenn.

Period 2

Starters:

SIUE: 23 TROECKLER,ALLIE; 25 WHITLOCK,ZARIA; 34 BAUMAN,SYDNEY; 2 BELL,NAKIAH; 5 ALSTON,JAY'NEE;

UT Martin: 4 ROBERTSON,EMANYE; 14 HICKS,ZAIRE; 15 MOORE,BRITTON; 20 PERRY,CHELSEY; 21 WALDROP,MADDIE;

Time	VISITORS: SIUE	Score	Margin	HOME: UT Martin
09:53				SUB OUT: DAVIS,EMMA
09:53				SUB IN: GRIFFIN,DAMIAH
09:41	MISSED JUMPER by KEITH,MIKIA			
09:41				BLOCK by ROBERTSON,EMANYE
09:39				REBOUND (DEF) by TEAM
09:25				MISSED 3PTR by PERRY,CHELSEY
09:21				REBOUND (OFF) by GRIFFIN,DAMIAH
09:20				MISSED LAYUP by GRIFFIN,DAMIAH
09:18				REBOUND (OFF) by WALDROP,MADDIE
09:17				MISSED JUMPER by WALDROP,MADDIE
09:13				REBOUND (OFF) by GRIFFIN,DAMIAH
09:08				MISSED LAYUP by STANFORD,TAMIAH
09:05				REBOUND (OFF) by GRIFFIN,DAMIAH
09:04				MISSED LAYUP by GRIFFIN,DAMIAH
09:02	REBOUND (DEF) by TROECKLER,ALLIE			
08:55	MISSED LAYUP by TROECKLER,ALLIE			
08:55				BLOCK by WALDROP,MADDIE
08:51				REBOUND (DEF) by WALDROP,MADDIE
08:41				MISSED JUMPER by PERRY,CHELSEY
08:38	REBOUND (DEF) by AKUEN,ALEK			
08:05	TURNOVER (SHOTCLOCK) by			
08:05				SUB OUT: GRIFFIN,DAMIAH
08:05				SUB IN: HICKS,ZAIRE
08:05	SUB OUT: HALL,MIKALA			
08:05	SUB IN: KING,CHRISTEN			
08:05				SUB OUT: STANFORD,TAMIAH
08:05				SUB IN: GRANT,KYANNAH
07:47				MISSED 3PTR by WALDROP,MADDIE
07:45				REBOUND (OFF) by PERRY,CHELSEY
07:42		14-12	H 2	GOOD! JUMPER by PERRY,CHELSEY [PNT]
07:22	GOOD! JUMPER by KING,CHRISTEN [PNT]	14-14	T	
07:04				MISSED LAYUP by WALDROP,MADDIE
07:01				REBOUND (OFF) by PERRY,CHELSEY
06:59				MISSED JUMPER by PERRY,CHELSEY
06:57	REBOUND (DEF) by BELL,NAKIAH			
06:47	TURNOVER (3SEC) by AKUEN,ALEK			
06:47	SUB OUT: BELL,NAKIAH			
06:47	SUB IN: ALSTON,JAY'NEE			
06:29		17-14	H 3	GOOD! 3PTR by GRANT,KYANNAH
06:29				ASSIST by ROBERTSON,EMANYE
06:15	SUB OUT: AKUEN,ALEK			
06:15	SUB IN: BAUMAN,SYDNEY			
06:13	MISSED 3PTR by ALSTON,JAY'NEE			
06:10				REBOUND (DEF) by HICKS,ZAIRE
06:05		19-14	H 5	GOOD! LAYUP by PERRY,CHELSEY [FB]
06:05				ASSIST by GRANT,KYANNAH
06:03	TIMEOUT 30SEC			
06:03				
06:03	SUB OUT: TROECKLER,ALLIE			
06:03	SUB IN: JONES,MICAH			
05:43	GOOD! JUMPER by KING,CHRISTEN	19-16	H 3	
05:16		22-16	H 6	GOOD! 3PTR by GRANT,KYANNAH
05:16				ASSIST by ROBERTSON,EMANYE
05:01	GOOD! 3PTR by ALSTON,JAY'NEE	22-19	H 3	
05:01	ASSIST by JONES,MICAH			
04:49				TURNOVER (BADPASS) by GRANT,KYANNAH
04:49	STEAL by KING,CHRISTEN			
04:45				FOUL (PERSONAL) by GRANT,KYANNAH
04:45	GOOD! FT by KING,CHRISTEN [FB]	22-20	H 2	
04:45	MISSED FT by KING,CHRISTEN			
04:45				REBOUND (DEF) by PERRY,CHELSEY
04:33				MISSED 3PTR by HICKS,ZAIRE
04:30	REBOUND (DEF) by BAUMAN,SYDNEY			
04:26	MISSED LAYUP by JONES,MICAH			
04:23	REBOUND (OFF) by JONES,MICAH			
04:20	MISSED 3PTR by KEITH,MIKIA			
04:17				REBOUND (DEF) by WALDROP,MADDIE
03:57				MISSED JUMPER by PERRY,CHELSEY
03:55	REBOUND (DEF) by TEAM			
03:53				SUB OUT: HICKS,ZAIRE
03:53				SUB IN: MOORE,BRITTON
03:53	SUB OUT: KEITH,MIKIA			
03:53	SUB IN: BELL,NAKIAH			
03:39	GOOD! LAYUP by JONES,MICAH	22-22	T	
03:39	ASSIST by ALSTON,JAY'NEE			
03:27				TURNOVER (BADPASS) by GRANT,KYANNAH

Time	VISITORS: SIUE	Score	Margin	HOME: UT Martin
03:27	STEAL by BAUMAN,SYDNEY			
03:17	TURNOVER (LOSTBALL) by KING,CHRISTEN			
03:17				STEAL by ROBERTSON,EMANYE
03:02				MISSED LAYUP by WALDROP,MADDIE
03:02	BLOCK by BAUMAN,SYDNEY			
02:58	REBOUND (DEF) by BAUMAN,SYDNEY			
02:51	MISSED JUMPER by KING,CHRISTEN			
02:49	REBOUND (OFF) by BAUMAN,SYDNEY			
02:48	MISSED LAYUP by BAUMAN,SYDNEY			
02:44				REBOUND (DEF) by MOORE,BRITTNI
02:28				MISSED 3PTR by MOORE,BRITTNI
02:24	REBOUND (DEF) by ALSTON,JAY'NEE			
02:07	MISSED JUMPER by BELL,NAKIAH			
02:06				REBOUND (DEF) by PERRY,CHELSEY
02:06	FOUL (PERSONAL) by JONES,MICAH			
02:06	SUB OUT: JONES,MICAH			
02:06	SUB IN: AKUEN,ALEK			
02:06	SUB OUT: BAUMAN,SYDNEY			
02:06	SUB IN: WHITLOCK,ZARIA			
01:50				MISSED JUMPER by WALDROP,MADDIE
01:50				REBOUND (OFF) by PERRY,CHELSEY
01:49	FOUL (PERSONAL) by KING,CHRISTEN			
01:49		23-22	H 1	GOOD! FT by PERRY,CHELSEY
01:49		24-22	H 2	GOOD! FT by PERRY,CHELSEY
01:41	MISSED LAYUP by KING,CHRISTEN			
01:41				BLOCK by PERRY,CHELSEY
01:36				REBOUND (DEF) by ROBERTSON,EMANYE
01:29				MISSED 3PTR by WALDROP,MADDIE
01:27	REBOUND (DEF) by BELL,NAKIAH			
01:21	TURNOVER (LOSTBALL) by KING,CHRISTEN			
01:21				STEAL by MOORE,BRITTNI
01:16				MISSED LAYUP by MOORE,BRITTNI
01:15				REBOUND (OFF) by GRANT,KYANNAH
01:15	FOUL (PERSONAL) by ALSTON,JAY'NEE			
01:15				MISSED FT by GRANT,KYANNAH
01:15				REBOUND (OFF) by TEAM
01:15				SUB OUT: PERRY,CHELSEY
01:15				SUB IN: ADAMS,AUNDREA
01:15				SUB OUT: WALDROP,MADDIE
01:15				SUB IN: GRIFFIN,DAMIAH
01:15	SUB OUT: KING,CHRISTEN			
01:15	SUB IN: TROECKLER,ALLIE			
01:15		25-22	H 3	GOOD! FT by GRANT,KYANNAH [FB]
01:06	TURNOVER (LOSTBALL) by WHITLOCK,ZARIA			
01:06				STEAL by GRANT,KYANNAH
00:45				MISSED 3PTR by GRANT,KYANNAH
00:43				REBOUND (OFF) by ADAMS,AUNDREA
00:42				MISSED LAYUP by ADAMS,AUNDREA
00:42	BLOCK by AKUEN,ALEK			
00:42	REBOUND (DEF) by ALSTON,JAY'NEE			
00:41				FOUL (PERSONAL) by MOORE,BRITTNI
00:30	GOOD! 3PTR by BELL,NAKIAH	25-25	T	
00:30	ASSIST by WHITLOCK,ZARIA			
00:22				MISSED JUMPER by ADAMS,AUNDREA
00:19	REBOUND (DEF) by AKUEN,ALEK			
00:04	MISSED 3PTR by BELL,NAKIAH			
00:01				REBOUND (DEF) by GRANT,KYANNAH

SIUE 25, UT Martin 25

Points from (This Period)	SIE	UTM
In the Paint	4	4
Off Turns	1	6
2nd Chance	0	5
Fast Break	1	3
Bench	7	7

Official Box Score
SIUE vs UT Martin
Second Half Statistics Only
January 26, 2019 at Kathleen and Tom Elam Center - Martin, Tenn.

SIUE 30

No.	Player	S	Pts	FG	3FG	FT	OR	DR	TR	PF	A	TO	Blk	Stl	Min	+/-
11	Keith, Mikia		0	0-0	0-0	0-0	0	0	0	0	0	0	0	0	2	-4
12	Koehler, Kai		0	0-1	0-1	0-0	0	0	0	1	0	0	0	0	0	-4
14	Jones, Micah		5	1-4	0-0	3-4	0	0	0	2	1	0	0	0	10	-2
21	Akuen, Alek		4	1-1	0-0	2-2	2	0	2	3	0	0	0	0	8	-8
23	Troeckler, Allie		3	1-3	0-0	1-2	2	2	4	1	0	1	0	0	16	-9
25	Whitlock, Zaria		0	0-0	0-0	0-0	1	1	2	1	1	1	0	0	4	0
34	Bauman, Sydney		0	0-1	0-0	0-0	2	1	3	2	0	1	1	1	13	-5
35	Hall, Mikala		0	0-1	0-0	0-0	0	0	0	1	0	0	0	0	1	-4
44	Everidge, Riana		0	0-0	0-0	0-0	0	2	2	1	0	0	0	0	2	-2
01	King, Christen		2	1-1	0-0	0-0	0	0	0	2	1	1	0	0	6	-5
02	Bell, Nakiah		5	2-7	1-5	0-0	0	1	1	0	1	2	0	1	20	-13
05	Alston, Jaynee		11	4-8	3-7	0-0	0	1	1	1	1	2	0	0	18	-9
	Team		0	0-0	0-0	0-0	2	0	2	0	0	1	0	0	0	0
	TOTALS		30	10-27	4-13	6-8	9	8	17	15	5	9	1	2	99	

Shooting By Period

Period	FG	FG%	3FG	3FG%	FT	FT%
3rd Qtr	4-13	31%	2-6	33%	4-4	100%
4th Qtr	6-14	43%	2-7	29%	2-4	50%
2nd Half	10-27	37%	4-13	31%	6-8	75%
Game	18-53	34.0%	6-21	28.6%	13-18	72.2%

Last FG Half: SIE 4th-00:59

UT Martin 43

No.	Player	S	Pts	FG	3FG	FT	OR	DR	TR	PF	A	TO	Blk	Stl	Min	+/-
00	Davis, Emma		0	0-0	0-0	0-0	0	0	0	0	0	0	0	0	0	0
02	Hudson, Sade'		5	2-4	1-1	0-0	1	2	3	1	1	1	0	0	5	-1
04	Robertson, Emanyne		5	0-4	0-1	5-6	1	0	1	0	3	0	0	1	15	14
11	Adams, Aundrea		0	0-0	0-0	0-0	1	0	1	1	0	0	0	0	7	-1
13	Stanford, Tamiah		0	0-0	0-0	0-0	0	0	0	0	0	0	0	0	0	0
14	Hicks, Zaire		2	1-2	0-1	0-2	0	0	0	1	1	1	0	1	14	10
15	Moore, Brittini		6	2-4	2-4	0-0	1	1	2	2	0	0	0	1	20	13
20	Perry, Chelsey		11	3-5	0-0	5-6	1	2	3	1	2	2	1	2	17	13
21	Waldrop, Maddie		8	3-3	1-1	1-2	0	1	1	2	1	0	1	0	14	14
22	Griffin, Damiah		2	0-0	0-0	2-2	1	1	2	0	0	0	0	0	2	0
31	Grant, Kyannah		4	1-2	0-1	2-2	0	0	0	0	1	0	0	0	6	3
33	Burdick, Demi		0	0-0	0-0	0-0	0	0	0	0	0	0	0	0	0	0
	Team		0	0-0	0-0	0-0	1	2	3	0	0	0	0	0	0	0
	TOTALS		43	12-24	4-9	15-20	7	9	16	8	9	4	2	5	99	

Shooting By Period

Period	FG	FG%	3FG	3FG%	FT	FT%
3rd Qtr	6-12	50%	2-5	40%	6-8	75%
4th Qtr	6-12	50%	2-4	50%	9-12	75%
2nd Half	12-24	50%	4-9	44%	15-20	75%
Game	20-59	33.9%	6-18	33.3%	22-34	64.7%

Last FG Half: UTM 4th-02:44

Game Notes:

Officials: Stephanie Barksdale, Trey Miles, Randy Robertson
 Attendance: 1097

Start Time: 2019-01-26 19:02:52

End Time: 2019-01-26 20:58:01

Game Duration: 115

Conference Game:

Score	1st	2nd	3rd	4th	TOT
SIE	12	13	14	16	55
UTM	12	13	20	23	68

Points from (This Period)	SIE	UTM
In the Paint	12	12
Off Turns	4	10
2nd Chance	7	9
Fast Break	2	2
Bench	11	11

Official Box Score
SIUE vs UT Martin
Third Quarter Statistics Only
January 26, 2019 at Kathleen and Tom Elam Center - Martin, Tenn.

SIUE 30

No.	Player	S	Pts	FG	3FG	FT	OR	DR	TR	PF	A	TO	Blk	Stl	Min	+/-
02	Bell, Nakiah		3	1-4	1-3	0-0	0	1	1	0	1	2	0	0	10	-6
05	Alston, Jaynee		5	2-4	1-3	0-0	0	0	0	1	0	0	0	0	8	-2
23	Troeckler, Allie		0	0-2	0-0	0-0	1	2	3	1	0	1	0	0	8	-2
25	Whitlock, Zaria		0	0-0	0-0	0-0	1	1	2	1	1	1	0	0	4	0
34	Bauman, Sydney		0	0-0	0-0	0-0	0	0	0	1	0	1	0	1	6	-3
01	King, Christen		0	0-0	0-0	0-0	0	0	0	1	0	0	0	0	2	-4
11	Keith, Mikia		0	0-0	0-0	0-0	0	0	0	0	0	0	0	0	2	-4
12	Koehler, Kai		0	0-0	0-0	0-0	0	0	0	0	0	0	0	0	0	0
14	Jones, Micah		2	0-2	0-0	2-2	0	0	0	0	0	0	0	0	4	-4
21	Akuen, Alek		4	1-1	0-0	2-2	2	0	2	0	0	0	0	0	4	-3
35	Hall, Mikala		0	0-0	0-0	0-0	0	0	0	0	0	0	0	0	0	0
44	Everidge, Riana		0	0-0	0-0	0-0	0	2	2	1	0	0	0	0	2	-2
	Team						2	0	2	0		1				
TOTALS			14	4-13	2-6	4-4	6	6	12	6	2	6	0	1	50	

Shooting By Period

Period	FG	FG%	3FG	3FG%	FT	FT%
2nd Half	0-0	0%	0-0	0%	0-0	0%
Game	18-53	34.0%	6-21	28.6%	13-18	72.2%

UT Martin 43

No.	Player	S	Pts	FG	3FG	FT	OR	DR	TR	PF	A	TO	Blk	Stl	Min	+/-
04	Robertson, Emanye		3	0-3	0-1	3-4	1	0	1	0	2	0	0	0	10	6
14	Hicks, Zaire		2	1-2	0-1	0-0	0	0	0	1	0	0	0	1	10	6
15	Moore, Brittni		6	2-3	2-3	0-0	0	0	0	1	0	0	0	0	10	6
20	Perry, Chelsey		2	1-2	0-0	0-0	0	0	0	0	2	1	0	1	7	6
21	Waldrop, Maddie		5	2-2	0-0	1-2	0	0	0	0	1	0	1	0	8	6
00	Davis, Emma		0	0-0	0-0	0-0	0	0	0	0	0	0	0	0	0	0
02	Hudson, Sade'		0	0-0	0-0	0-0	0	0	0	0	0	0	0	0	0	0
11	Adams, Aundrea		0	0-0	0-0	0-0	0	0	0	1	0	0	0	0	3	0
13	Stanford, Tamiah		0	0-0	0-0	0-0	0	0	0	0	0	0	0	0	0	0
22	Griffin, Damiah		2	0-0	0-0	2-2	1	1	2	0	0	0	0	0	2	0
31	Grant, Kyannah		0	0-0	0-0	0-0	0	0	0	0	0	0	0	0	0	0
33	Burdick, Demi		0	0-0	0-0	0-0	0	0	0	0	0	0	0	0	0	0
	Team						0	2	2	0		0				
TOTALS			20	6-12	2-5	6-8	2	3	5	3	5	1	1	2	50	

Shooting By Period

Period	FG	FG%	3FG	3FG%	FT	FT%
2nd Half	0-0	0%	0-0	0%	0-0	0%
Game	20-59	33.9%	6-18	33.3%	22-34	64.7%

Game Notes:

Officials: Stephanie Barksdale, Trey Miles, Randy Robertson
Attendance: 1097

Start Time: 2019-01-26 19:02:52

End Time: 2019-01-26 20:58:01

Game Duration: 115

Conference Game:

Score	1st	2nd	3rd	4th	TOT
SIE	12	13	14	16	55
UTM	12	13	20	23	68

Points from (This Period)	SIE	UTM
In the Paint	4	8
Off Turns	0	7
2nd Chance	7	2
Fast Break	0	0
Bench	6	2

Official Play-By-Play
SIUE vs UT Martin
Third Quarter
January 26, 2019 at Kathleen and Tom Elam Center - Martin, Tenn.

Period 3

Starters:

SIUE: 23 TROECKLER,ALLIE; 25 WHITLOCK,ZARIA; 34 BAUMAN,SYDNEY; 2 BELL,NAKIAH; 5 ALSTON,JAY'NEE;

UT Martin: 4 ROBERTSON,EMANYE; 14 HICKS,ZAIRE; 15 MOORE,BRITTNI; 20 PERRY,CHELSEY; 21 WALDROP,MADDIE;

Time	VISITORS: SIUE	Score	Margin	HOME: UT Martin
09:36		27-25	H 2	GOOD! JUMPER by PERRY,CHELSEY [PNT]
09:36				ASSIST by ROBERTSON,EMANYE
09:20	TURNOVER (BADPASS) by BAUMAN,SYDNEY			
09:20				STEAL by PERRY,CHELSEY
09:10				MISSED 3PTR by MOORE,BRITTNI
09:08	REBOUND (DEF) by WHITLOCK,ZARIA			
08:51	MISSED JUMPER by BELL,NAKIAH			
08:49	REBOUND (OFF) by TEAM			
08:43				FOUL (PERSONAL) by MOORE,BRITTNI
08:25	GOOD! 3PTR by ALSTON,JAY'NEE	27-28	V 1	
08:25	ASSIST by WHITLOCK,ZARIA			
07:59		29-28	H 1	GOOD! LAYUP by WALDROP,MADDIE
07:59				ASSIST by PERRY,CHELSEY
07:50	TURNOVER (LOSTBALL) by TROECKLER,ALLIE			
07:50				STEAL by HICKS,ZAIRE
07:39		31-28	H 3	GOOD! LAYUP by HICKS,ZAIRE
07:27	FOUL (OFF) by WHITLOCK,ZARIA			
07:27	TURNOVER (OFFENSIVE) by WHITLOCK,ZARIA			
07:17				MISSED 3PTR by HICKS,ZAIRE
07:15	REBOUND (DEF) by BELL,NAKIAH			
06:47	GOOD! 3PTR by BELL,NAKIAH	31-31	T	
06:29				MISSED JUMPER by PERRY,CHELSEY
06:26	REBOUND (DEF) by TROECKLER,ALLIE			
06:03	MISSED 3PTR by BELL,NAKIAH			
06:00	REBOUND (OFF) by WHITLOCK,ZARIA			
05:57	MISSED LAYUP by TROECKLER,ALLIE			
05:56				REBOUND (DEF) by TEAM
05:55	SUB OUT: WHITLOCK,ZARIA			
05:55	SUB IN: JONES,MICAH			
05:38				TURNOVER (LOSTBALL) by PERRY,CHELSEY
05:38	STEAL by BAUMAN,SYDNEY			
05:32	MISSED JUMPER by TROECKLER,ALLIE			
05:32				BLOCK by WALDROP,MADDIE
05:28	REBOUND (OFF) by TROECKLER,ALLIE			
05:28	MISSED 3PTR by ALSTON,JAY'NEE			
05:28				REBOUND (DEF) by TEAM
05:20	FOUL (PERSONAL) by ALSTON,JAY'NEE			
05:20		32-31	H 1	GOOD! FT by WALDROP,MADDIE
05:20	SUB OUT: ALSTON,JAY'NEE			
05:20	SUB IN: KEITH,MIKIA			
05:20	SUB OUT: TROECKLER,ALLIE			
05:20	SUB IN: KING,CHRISTEN			
05:20				MISSED FT by WALDROP,MADDIE
05:20				REBOUND (OFF) by ROBERTSON,EMANYE
05:11	FOUL (PERSONAL) by BAUMAN,SYDNEY			
04:59		34-31	H 3	GOOD! LAYUP by WALDROP,MADDIE
04:59				ASSIST by PERRY,CHELSEY
04:26	TURNOVER (SHOTCLOCK) by			
04:26				
04:26	SUB OUT: BAUMAN,SYDNEY			
04:26	SUB IN: AKUEN,ALEK			
04:09		37-31	H 6	GOOD! 3PTR by MOORE,BRITTNI
04:09				ASSIST by ROBERTSON,EMANYE
03:51	MISSED JUMPER by JONES,MICAH			
03:51	REBOUND (OFF) by TEAM			
03:41				FOUL (PERSONAL) by HICKS,ZAIRE
03:41	GOOD! FT by JONES,MICAH	37-32	H 5	
03:41	GOOD! FT by JONES,MICAH	37-33	H 4	
03:28	FOUL (PERSONAL) by KING,CHRISTEN			
03:28		38-33	H 5	GOOD! FT by ROBERTSON,EMANYE
03:28	SUB OUT: KING,CHRISTEN			
03:28	SUB IN: TROECKLER,ALLIE			
03:28	SUB OUT: KEITH,MIKIA			
03:28	SUB IN: ALSTON,JAY'NEE			
03:28		39-33	H 6	GOOD! FT by ROBERTSON,EMANYE
03:28				SUB OUT: PERRY,CHELSEY
03:28				SUB IN: ADAMS,AUNDREA
03:13	GOOD! LAYUP by AKUEN,ALEK	39-35	H 4	
03:13	ASSIST by BELL,NAKIAH			
02:57		42-35	H 7	GOOD! 3PTR by MOORE,BRITTNI
02:57				ASSIST by WALDROP,MADDIE
02:30	GOOD! JUMPER by ALSTON,JAY'NEE [PNT]	42-37	H 5	
02:21	FOUL (PERSONAL) by TROECKLER,ALLIE			
02:21		43-37	H 6	GOOD! FT by ROBERTSON,EMANYE
02:21				SUB OUT: WALDROP,MADDIE
02:21				SUB IN: GRIFFIN,DAMIAH

Time	VISITORS: SIUE	Score	Margin	HOME: UT Martin
02:21				MISSED FT by ROBERTSON,EMANYE
02:21	REBOUND (DEF) by TROECKLER,ALLIE			
02:13	MISSED 3PTR by ALSTON,JAY'NEE			
02:09	REBOUND (OFF) by AKUEN,ALEK			
02:07	MISSED JUMPER by JONES,MICAH			
02:07	REBOUND (OFF) by AKUEN,ALEK			
02:05				FOUL (PERSONAL) by ADAMS,AUNDREA
02:05	GOOD! FT by AKUEN,ALEK	43-38	H 5	
02:05	GOOD! FT by AKUEN,ALEK	43-39	H 4	
02:05	SUB OUT: JONES,MICAH			
02:05	SUB IN: EVERIDGE,RIANA			
01:53				MISSED JUMPER by ROBERTSON,EMANYE
01:50	REBOUND (DEF) by EVERIDGE,RIANA			
01:45	TURNOVER (TRAVEL) by BELL,NAKIAH			
01:31	FOUL (PERSONAL) by EVERIDGE,RIANA			
01:31		44-39	H 5	GOOD! FT by GRIFFIN,DAMIAH
01:31		45-39	H 6	GOOD! FT by GRIFFIN,DAMIAH
01:13	TURNOVER (BADPASS) by BELL,NAKIAH			
00:50				MISSED 3PTR by ROBERTSON,EMANYE
00:48	REBOUND (DEF) by EVERIDGE,RIANA			
00:26	MISSED 3PTR by BELL,NAKIAH			
00:21				REBOUND (DEF) by GRIFFIN,DAMIAH
00:02				MISSED LAYUP by ROBERTSON,EMANYE
00:00				REBOUND (OFF) by GRIFFIN,DAMIAH

SIUE 39, UT Martin 45

Points from (This Period)	SIUE	UTM
In the Paint	4	8
Off Turns	0	7
2nd Chance	7	2
Fast Break	0	0
Bench	6	2

Official Box Score
SIUE vs UT Martin
Fourth Quarter Statistics Only
January 26, 2019 at Kathleen and Tom Elam Center - Martin, Tenn.

SIUE 16

No.	Player	S	Pts	FG	3FG	FT	OR	DR	TR	PF	A	TO	Blk	Stl	Min	+/-
02	Bell, Nakiah		2	1-3	0-2	0-0	0	0	0	0	0	0	0	1	10	-7
05	Alston, Jaynee		6	2-4	2-4	0-0	0	1	1	0	1	2	0	0	10	-7
23	Troeckler, Allie		3	1-1	0-0	1-2	1	0	1	0	0	0	0	0	8	-7
25	Whitlock, Zaria		0	0-0	0-0	0-0	0	0	0	0	0	0	0	0	0	0
34	Bauman, Sydney		0	0-1	0-0	0-0	2	1	3	1	0	0	1	0	7	-2
01	King, Christen		2	1-1	0-0	0-0	0	0	0	1	1	1	0	0	4	-1
11	Keith, Mikia		0	0-0	0-0	0-0	0	0	0	0	0	0	0	0	0	0
12	Koehler, Kai		0	0-1	0-1	0-0	0	0	0	1	0	0	0	0	0	-4
14	Jones, Micah		3	1-2	0-0	1-2	0	0	0	2	1	0	0	0	6	2
21	Akuen, Alek		0	0-0	0-0	0-0	0	0	0	3	0	0	0	0	4	-5
35	Hall, Mikala		0	0-1	0-0	0-0	0	0	0	1	0	0	0	0	1	-4
44	Everidge, Riana		0	0-0	0-0	0-0	0	0	0	0	0	0	0	0	0	0
	Team						0	0	0	0		0				
TOTALS			16	6-14	2-7	2-4	3	2	5	9	3	3	1	1	49	

Shooting By Period

Period	FG	FG%	3FG	3FG%	FT	FT%
Game	18-53	34.0%	6-21	28.6%	13-18	72.2%

UT Martin 23

No.	Player	S	Pts	FG	3FG	FT	OR	DR	TR	PF	A	TO	Blk	Stl	Min	+/-
04	Robertson, Emanye		2	0-1	0-0	2-2	0	0	0	0	1	0	0	1	5	8
14	Hicks, Zaire		0	0-0	0-0	0-2	0	0	0	0	1	1	0	0	4	4
15	Moore, Brittni		0	0-1	0-1	0-0	1	1	2	1	0	0	0	1	10	7
20	Perry, Chelsey		9	2-3	0-0	5-6	1	2	3	1	0	1	1	1	10	7
21	Waldrop, Maddie		3	1-1	1-1	0-0	0	1	1	2	0	0	0	0	6	8
00	Davis, Emma		0	0-0	0-0	0-0	0	0	0	0	0	0	0	0	0	0
02	Hudson, Sade'		5	2-4	1-1	0-0	1	2	3	1	1	1	0	0	5	-1
11	Adams, Aundrea		0	0-0	0-0	0-0	1	0	1	0	0	0	0	0	4	-1
13	Stanford, Tamiah		0	0-0	0-0	0-0	0	0	0	0	0	0	0	0	0	0
22	Griffin, Damiah		0	0-0	0-0	0-0	0	0	0	0	0	0	0	0	0	0
31	Grant, Kyannah		4	1-2	0-1	2-2	0	0	0	0	1	0	0	0	6	3
33	Burdick, Demi		0	0-0	0-0	0-0	0	0	0	0	0	0	0	0	0	0
	Team						1	0	1	0		0				
TOTALS			23	6-12	2-4	9-12	5	6	11	5	4	3	1	3	49	

Shooting By Period

Period	FG	FG%	3FG	3FG%	FT	FT%
Game	20-59	33.9%	6-18	33.3%	22-34	64.7%

Game Notes:

Officials: **Stephanie Barksdale, Trey Miles, Randy Robertson**
Attendance: **1097**

Start Time: **2019-01-26 19:02:52**

End Time: **2019-01-26 20:58:01**

Game Duration: **115**

Conference Game;

Score	1st	2nd	3rd	4th	TOT
SIE	12	13	14	16	55
UTM	12	13	20	23	68

Points from (This Period)	SIE	UTM
In the Paint	8	4
Off Turns	4	3
2nd Chance	0	7
Fast Break	2	2
Bench	5	9

Official Play-By-Play
SIUE vs UT Martin
Fourth Quarter
January 26, 2019 at Kathleen and Tom Elam Center - Martin, Tenn.

Period 4

Starters:

SIUE: 23 TROECKLER,ALLIE; 25 WHITLOCK,ZARIA; 34 BAUMAN,SYDNEY; 2 BELL,NAKIAH; 5 ALSTON,JAY'NEE;

UT Martin: 4 ROBERTSON,EMANYE; 14 HICKS,ZAIRE; 15 MOORE,BRITTNI; 20 PERRY,CHELSEY; 21 WALDROP,MADDIE;

Time	VISITORS: SIUE	Score	Margin	HOME: UT Martin
09:44				TURNOVER (TRAVEL) by PERRY,CHELSEY
09:33				FOUL (PERSONAL) by WALDROP,MADDIE
09:29	GOOD! LAYUP by JONES,MICAH	45-41	H 4	
09:14				MISSED 3PTR by GRANT,KYANNAH
09:10				REBOUND (OFF) by HUDSON,SADE'
09:08		47-41	H 6	GOOD! JUMPER by HUDSON,SADE' [PNT]
08:58				FOUL (PERSONAL) by PERRY,CHELSEY
08:53	MISSED 3PTR by ALSTON,JAY'NEE			
08:51	REBOUND (OFF) by BAUMAN,SYDNEY			
08:48	MISSED LAYUP by JONES,MICAH			
08:48				BLOCK by PERRY,CHELSEY
08:44	REBOUND (OFF) by BAUMAN,SYDNEY			
08:42				FOUL (PERSONAL) by WALDROP,MADDIE
08:42				SUB OUT: WALDROP,MADDIE
08:42				SUB IN: ADAMS,AUNDREA
08:42	MISSED LAYUP by BAUMAN,SYDNEY			
08:42	REBOUND (OFF) by TROECKLER,ALLIE			
08:37	MISSED 3PTR by BELL,NAKIAH			
08:33				REBOUND (DEF) by HUDSON,SADE'
08:29				MISSED JUMPER by HUDSON,SADE'
08:29	BLOCK by BAUMAN,SYDNEY			
08:29				REBOUND (OFF) by TEAM
08:19				MISSED 3PTR by MOORE,BRITTNI
08:16	REBOUND (DEF) by ALSTON,JAY'NEE			
08:00				FOUL (PERSONAL) by MOORE,BRITTNI
08:00	GOOD! FT by JONES,MICAH	47-42	H 5	
08:00	MISSED FT by JONES,MICAH			
08:00				REBOUND (DEF) by HUDSON,SADE'
07:46		49-42	H 7	GOOD! JUMPER by GRANT,KYANNAH
07:25				FOUL (PERSONAL) by HUDSON,SADE'
07:25	MISSED FT by TROECKLER,ALLIE			
07:25	REBOUND (OFF) by TEAM			
07:25	GOOD! FT by TROECKLER,ALLIE	49-43	H 6	
07:25	SUB OUT: TROECKLER,ALLIE			
07:25	SUB IN: KING,CHRISTEN			
07:08		52-43	H 9	GOOD! 3PTR by HUDSON,SADE'
07:08				ASSIST by GRANT,KYANNAH
06:38	GOOD! 3PTR by ALSTON,JAY'NEE	52-46	H 6	
06:38	ASSIST by KING,CHRISTEN			
06:27				MISSED JUMPER by HUDSON,SADE'
06:27				REBOUND (OFF) by ADAMS,AUNDREA
06:26	FOUL (PERSONAL) by JONES,MICAH			
06:17		54-46	H 8	GOOD! JUMPER by PERRY,CHELSEY [PNT]
06:17				ASSIST by HUDSON,SADE'
06:02	GOOD! 3PTR by ALSTON,JAY'NEE	54-49	H 5	
06:02	ASSIST by JONES,MICAH			
05:40	FOUL (PERSONAL) by BAUMAN,SYDNEY			
05:40		55-49	H 6	GOOD! FT by PERRY,CHELSEY
05:40	SUB OUT: JONES,MICAH			
05:40	SUB IN: AKUEN,ALEK			
05:40	SUB OUT: BAUMAN,SYDNEY			
05:40	SUB IN: TROECKLER,ALLIE			
05:40		56-49	H 7	GOOD! FT by PERRY,CHELSEY
05:13	GOOD! JUMPER by KING,CHRISTEN [PNT]	56-51	H 5	
05:03	FOUL (PERSONAL) by AKUEN,ALEK			
04:50				TURNOVER (TRAVEL) by HUDSON,SADE'
04:50				
04:50				SUB OUT: HUDSON,SADE'
04:50				SUB IN: WALDROP,MADDIE
04:50				SUB OUT: ADAMS,AUNDREA
04:50				SUB IN: HICKS,ZAIRE
04:50				SUB OUT: GRANT,KYANNAH
04:50				SUB IN: ROBERTSON,EMANYE
04:37	TURNOVER (BADPASS) by KING,CHRISTEN			
04:37				STEAL by MOORE,BRITTNI
04:13		58-51	H 7	GOOD! JUMPER by PERRY,CHELSEY [PNT]
04:13				ASSIST by HICKS,ZAIRE
04:00	TURNOVER (LOSTBALL) by ALSTON,JAY'NEE			
04:00				STEAL by ROBERTSON,EMANYE
03:44				MISSED JUMPER by PERRY,CHELSEY
03:42				REBOUND (OFF) by PERRY,CHELSEY
03:41	FOUL (PERSONAL) by KING,CHRISTEN			
03:30	FOUL (PERSONAL) by AKUEN,ALEK			
03:30				MISSED FT by PERRY,CHELSEY
03:30				REBOUND (OFF) by TEAM
03:30	SUB OUT: KING,CHRISTEN			

Time	VISITORS: SIUE	Score	Margin	HOME: UT Martin
03:30	SUB IN: BAUMAN, SYDNEY			
03:30		59-51	H 8	GOOD! FT by PERRY, CHELSEY
03:12	GOOD! LAYUP by TROECKLER, ALLIE	59-53	H 6	
03:12	ASSIST by ALSTON, JAY'NEE			
02:44		62-53	H 9	GOOD! 3PTR by WALDROP, MADDIE
02:44				ASSIST by ROBERTSON, EMANYE
02:14	MISSED 3PTR by ALSTON, JAY'NEE			
02:11				REBOUND (DEF) by PERRY, CHELSEY
02:10	FOUL (PERSONAL) by AKUEN, ALEK			
02:10		63-53	H 10	GOOD! FT by PERRY, CHELSEY [FB]
02:10		64-53	H 11	GOOD! FT by PERRY, CHELSEY [FB]
02:10	SUB OUT: AKUEN, ALEK			
02:10	SUB IN: JONES, MICAH			
01:43	MISSED 3PTR by BELL, NAKIAH			
01:40				REBOUND (DEF) by PERRY, CHELSEY
01:14				MISSED LAYUP by ROBERTSON, EMANYE
01:12	REBOUND (DEF) by BAUMAN, SYDNEY			
01:07	TURNOVER (BADPASS) by ALSTON, JAY'NEE			
01:07				STEAL by PERRY, CHELSEY
01:03				TURNOVER (LOSTBALL) by HICKS, ZAIRE
01:03	STEAL by BELL, NAKIAH			
00:59	GOOD! JUMPER by BELL, NAKIAH [FB/PNT]	64-55	H 9	
00:59	TIMEOUT 30SEC			
00:59				
00:59	SUB OUT: BAUMAN, SYDNEY			
00:59	SUB IN: HALL, MIKALA			
00:37	FOUL (PERSONAL) by JONES, MICAH			
00:37	SUB OUT: JONES, MICAH			
00:37	SUB IN: KOEHLER, KAI			
00:37				MISSED FT by HICKS, ZAIRE
00:37				REBOUND (OFF) by TEAM
00:37				MISSED FT by HICKS, ZAIRE
00:37				REBOUND (OFF) by MOORE, BRITTNI
00:34				TIMEOUT 30SEC
00:34				SUB OUT: HICKS, ZAIRE
00:34				SUB IN: GRANT, KYANNAH
00:32	FOUL (PERSONAL) by HALL, MIKALA			
00:32		65-55	H 10	GOOD! FT by GRANT, KYANNAH
00:32		66-55	H 11	GOOD! FT by GRANT, KYANNAH
00:32	TIMEOUT 30SEC			
00:25	MISSED JUMPER by HALL, MIKALA			
00:22	FOUL (PERSONAL) by KOEHLER, KAI			
00:22		67-55	H 12	GOOD! FT by ROBERTSON, EMANYE
00:22		68-55	H 13	GOOD! FT by ROBERTSON, EMANYE
00:22				REBOUND (DEF) by WALDROP, MADDIE
00:11	MISSED 3PTR by KOEHLER, KAI			
00:08				REBOUND (DEF) by MOORE, BRITTNI

SIUE 55, UT Martin 68

Points from (This Period)	SIUE	UTM
In the Paint	8	4
Off Turns	4	3
2nd Chance	0	7
Fast Break	2	2
Bench	5	9

Official Scoring/Possession Reference Chart
SIUE vs UT Martin
Period 1
January 26, 2019 at Kathleen and Tom Elam Center - Martin, Tenn.

Period 1

Starters:

SIUE: 23 TROECKLER, ALLIE; 25 WHITLOCK, ZARIA; 34 BAUMAN, SYDNEY; 2 BELL, NAKIAH; 5 ALSTON, JAY'NEE;

UT Martin: 4 ROBERTSON, EMANYE; 14 HICKS, ZAIRE; 15 MOORE, BRITTNI; 20 PERRY, CHELSEY; 21 WALDROP, MADDIE;

Time	VISITORS: SIUE	Score	Margin	HOME: UT Martin
09:12	GOOD! JUMPER by ALSTON, JAY'NEE [FB/PNT]	0-2	V 2	
08:44	GOOD! LAYUP by BAUMAN, SYDNEY	0-4	V 4	
08:23	GOOD! LAYUP by WHITLOCK, ZARIA	0-6	V 6	
07:03		1-6	V 5	GOOD! FT by WALDROP, MADDIE
07:03		2-6	V 4	GOOD! FT by WALDROP, MADDIE
06:34		4-6	V 2	GOOD! JUMPER by PERRY, CHELSEY
06:00		5-6	V 1	GOOD! FT by ADAMS, AUNDREA
04:51		7-6	H 1	GOOD! LAYUP by ADAMS, AUNDREA
04:03	GOOD! FT by ALSTON, JAY'NEE [FB]	7-7	T	
04:03	GOOD! FT by ALSTON, JAY'NEE [FB]	7-8	V 1	
03:05		9-8	H 1	GOOD! LAYUP by GRIFFIN, DAMIAH
02:32		10-8	H 2	GOOD! FT by ROBERTSON, EMANYE
01:36		12-8	H 4	GOOD! JUMPER by GRIFFIN, DAMIAH
00:54	GOOD! FT by AKUEN, ALEK	12-9	H 3	
00:54	GOOD! FT by AKUEN, ALEK	12-10	H 2	
00:28	GOOD! FT by KEITH, MIKIA [FB]	12-11	H 1	
00:28	GOOD! FT by KEITH, MIKIA [FB]	12-12	T	

SIUE 12, UT Martin 12

Official Scoring/Possession Reference Chart
SIUE vs UT Martin
Period 2
January 26, 2019 at Kathleen and Tom Elam Center - Martin, Tenn.

Period 2

Starters:

SIUE: 23 TROECKLER, ALLIE; 25 WHITLOCK, ZARIA; 34 BAUMAN, SYDNEY; 2 BELL, NAKIAH; 5 ALSTON, JAY'NEE;
 UT Martin: 4 ROBERTSON, EMANYE; 14 HICKS, ZAIRE; 15 MOORE, BRITTNI; 20 PERRY, CHELSEY; 21 WALDROP, MADDIE;

Time	VISITORS: SIUE	Score	Margin	HOME: UT Martin
07:42		14-12	H 2	GOOD! JUMPER by PERRY, CHELSEY [PNT]
07:22	GOOD! JUMPER by KING, CHRISTEN [PNT]	14-14	T	
06:29		17-14	H 3	GOOD! 3PTR by GRANT, KYANNAH
06:05		19-14	H 5	GOOD! LAYUP by PERRY, CHELSEY [FB]
05:43	GOOD! JUMPER by KING, CHRISTEN	19-16	H 3	
05:16		22-16	H 6	GOOD! 3PTR by GRANT, KYANNAH
05:01	GOOD! 3PTR by ALSTON, JAY'NEE	22-19	H 3	
04:45	GOOD! FT by KING, CHRISTEN [FB]	22-20	H 2	
03:39	GOOD! LAYUP by JONES, MICAH	22-22	T	
01:49		23-22	H 1	GOOD! FT by PERRY, CHELSEY
01:49		24-22	H 2	GOOD! FT by PERRY, CHELSEY
01:15		25-22	H 3	GOOD! FT by GRANT, KYANNAH [FB]
00:30	GOOD! 3PTR by BELL, NAKIAH	25-25	T	

SIUE 25, UT Martin 25

Official Scoring/Possession Reference Chart
SIUE vs UT Martin
Period 3
January 26, 2019 at Kathleen and Tom Elam Center - Martin, Tenn.

Period 3

Starters:

SIUE: 23 TROECKLER, ALLIE; 25 WHITLOCK, ZARIA; 34 BAUMAN, SYDNEY; 2 BELL, NAKIAH; 5 ALSTON, JAY'NEE;

UT Martin: 4 ROBERTSON, EMANYE; 14 HICKS, ZAIRES; 15 MOORE, BRITTNI; 20 PERRY, CHELSEY; 21 WALDROP, MADDIE;

Time	VISITORS: SIUE	Score	Margin	HOME: UT Martin
09:36		27-25	H 2	GOOD! JUMPER by PERRY, CHELSEY [PNT]
08:25	GOOD! 3PTR by ALSTON, JAY'NEE	27-28	V 1	
07:59		29-28	H 1	GOOD! LAYUP by WALDROP, MADDIE
07:39		31-28	H 3	GOOD! LAYUP by HICKS, ZAIRES
06:47	GOOD! 3PTR by BELL, NAKIAH	31-31	T	
05:20		32-31	H 1	GOOD! FT by WALDROP, MADDIE
04:59		34-31	H 3	GOOD! LAYUP by WALDROP, MADDIE
04:09		37-31	H 6	GOOD! 3PTR by MOORE, BRITTNI
03:41	GOOD! FT by JONES, MICAH	37-32	H 5	
03:41	GOOD! FT by JONES, MICAH	37-33	H 4	
03:28		38-33	H 5	GOOD! FT by ROBERTSON, EMANYE
03:28		39-33	H 6	GOOD! FT by ROBERTSON, EMANYE
03:13	GOOD! LAYUP by AKUEN, ALEK	39-35	H 4	
02:57		42-35	H 7	GOOD! 3PTR by MOORE, BRITTNI
02:30	GOOD! JUMPER by ALSTON, JAY'NEE [PNT]	42-37	H 5	
02:21		43-37	H 6	GOOD! FT by ROBERTSON, EMANYE
02:05	GOOD! FT by AKUEN, ALEK	43-38	H 5	
02:05	GOOD! FT by AKUEN, ALEK	43-39	H 4	
01:31		44-39	H 5	GOOD! FT by GRIFFIN, DAMIAH
01:31		45-39	H 6	GOOD! FT by GRIFFIN, DAMIAH

SIUE 39, UT Martin 45

Official Scoring/Possession Reference Chart
SIUE vs UT Martin
Period 4
January 26, 2019 at Kathleen and Tom Elam Center - Martin, Tenn.

Period 4

Starters:

SIUE: 23 TROECKLER, ALLIE; 25 WHITLOCK, ZARIA; 34 BAUMAN, SYDNEY; 2 BELL, NAKIAH; 5 ALSTON, JAY'NEE;

UT Martin: 4 ROBERTSON, EMANYE; 14 HICKS, ZAIRE; 15 MOORE, BRITTON; 20 PERRY, CHELSEY; 21 WALDROP, MADDIE;

Time	VISITORS: SIUE	Score	Margin	HOME: UT Martin
09:29	GOOD! LAYUP by JONES, MICAH	45-41	H 4	
09:08		47-41	H 6	GOOD! JUMPER by HUDSON, SADE [PNT]
08:00	GOOD! FT by JONES, MICAH	47-42	H 5	
07:46		49-42	H 7	GOOD! JUMPER by GRANT, KYANNAH
07:25	GOOD! FT by TROECKLER, ALLIE	49-43	H 6	
07:08		52-43	H 9	GOOD! 3PTR by HUDSON, SADE
06:38	GOOD! 3PTR by ALSTON, JAY'NEE	52-46	H 6	
06:17		54-46	H 8	GOOD! JUMPER by PERRY, CHELSEY [PNT]
06:02	GOOD! 3PTR by ALSTON, JAY'NEE	54-49	H 5	
05:40		55-49	H 6	GOOD! FT by PERRY, CHELSEY
05:40		56-49	H 7	GOOD! FT by PERRY, CHELSEY
05:13	GOOD! JUMPER by KING, CHRISTEN [PNT]	56-51	H 5	
04:13		58-51	H 7	GOOD! JUMPER by PERRY, CHELSEY [PNT]
03:30		59-51	H 8	GOOD! FT by PERRY, CHELSEY
03:12	GOOD! LAYUP by TROECKLER, ALLIE	59-53	H 6	
02:44		62-53	H 9	GOOD! 3PTR by WALDROP, MADDIE
02:10		63-53	H 10	GOOD! FT by PERRY, CHELSEY [FB]
02:10		64-53	H 11	GOOD! FT by PERRY, CHELSEY [FB]
00:59	GOOD! JUMPER by BELL, NAKIAH [FB/PNT]	64-55	H 9	
00:32		65-55	H 10	GOOD! FT by GRANT, KYANNAH
00:32		66-55	H 11	GOOD! FT by GRANT, KYANNAH
00:22		67-55	H 12	GOOD! FT by ROBERTSON, EMANYE
00:22		68-55	H 13	GOOD! FT by ROBERTSON, EMANYE

SIUE 55, UT Martin 68

Official Substitutions Log
SIUE vs UT Martin
Period 1
January 26, 2019 at Kathleen and Tom Elam Center - Martin, Tenn.

VISITORS: SIUE	Time	Score	HOME: UT Martin
23 TROECKLER, ALLIE			4 ROBERTSON, EMANYE
25 WHITLOCK, ZARIA			14 HICKS, ZAIRE
34 BAUMAN, SYDNEY			15 MOORE, BRITNI
2 BELL, NAKIAH			20 PERRY, CHELSEY
5 ALSTON, JAY'NEE			21 WALDROP, MADDIE
SUB OUT: 34 BAUMAN, SYDNEY	07:03	6-1	
SUB IN: 14 JONES, MICAH	07:03		
	06:21	6-4	SUB OUT: PERRY, CHELSEY
	06:21		SUB IN: ADAMS, AUNDREA
	05:29	6-5	SUB OUT: HICKS, ZAIRE
	05:29		SUB IN: HUDSON, SADE'
SUB OUT: 25 WHITLOCK, ZARIA	05:29		
SUB IN: 44 EVERIDGE, RIANA	05:29		
SUB OUT: 14 JONES, MICAH	05:29		
SUB IN: 21 AKUEN, ALEK	05:29		
	04:03	6-7	SUB OUT: WALDROP, MADDIE
	04:03		SUB IN: GRIFFIN, DAMIAH
	02:41	8-9	SUB OUT: HUDSON, SADE'
	02:41		SUB IN: GRANT, KYANNAH
SUB OUT: 44 EVERIDGE, RIANA	02:41		
SUB IN: 14 JONES, MICAH	02:41		
SUB OUT: 23 TROECKLER, ALLIE	02:41		
SUB IN: 1 KING, CHRISTEN	02:41		
SUB OUT: 14 JONES, MICAH	02:32	8-10	
SUB IN: 25 WHITLOCK, ZARIA	02:32		
SUB OUT: 25 WHITLOCK, ZARIA	01:56	8-10	
SUB IN: 23 TROECKLER, ALLIE	01:56		
SUB OUT: 5 ALSTON, JAY'NEE	00:54	9-12	
SUB IN: 11 KEITH, MIKIA	00:54		
	00:46	10-12	SUB OUT: MOORE, BRITNI
	00:46		SUB IN: DAVIS, EMMA
	00:28	11-12	SUB OUT: GRIFFIN, DAMIAH
	00:28		SUB IN: BURDICK, DEMI
	00:28		SUB OUT: GRANT, KYANNAH
	00:28		SUB IN: STANFORD, TAMIAH
SUB OUT: 1 KING, CHRISTEN	00:28		
SUB IN: 35 HALL, MIKALA	00:28		

SIUE 12, UT Martin 12

Official Substitutions Log
SIUE vs UT Martin
Period 2
January 26, 2019 at Kathleen and Tom Elam Center - Martin, Tenn.

VISITORS: SIUE	Time	Score	HOME: UT Martin
23 TROECKLER, ALLIE			4 ROBERTSON, EMANYE
25 WHITLOCK, ZARIA			14 HICKS, ZAIRE
34 BAUMAN, SYDNEY			15 MOORE, BRITTNI
2 BELL, NAKIAH			20 PERRY, CHELSEY
5 ALSTON, JAY'NEE			21 WALDROP, MADDIE
	09:53	-	SUB OUT: DAVIS, EMMA
	09:53		SUB IN: GRIFFIN, DAMIAH
	08:05	-	SUB OUT: GRIFFIN, DAMIAH
	08:05		SUB IN: HICKS, ZAIRE
SUB OUT: 35 HALL, MIKALA	08:05		
SUB IN: 1 KING, CHRISTEN	08:05		
	08:05		SUB OUT: STANFORD, TAMIAH
	08:05		SUB IN: GRANT, KYANNAH
SUB OUT: 2 BELL, NAKIAH	06:47	14-14	
SUB IN: 5 ALSTON, JAY'NEE	06:47		
SUB OUT: 21 AKUEN, ALEK	06:15	14-17	
SUB IN: 34 BAUMAN, SYDNEY	06:15		
SUB OUT: 23 TROECKLER, ALLIE	06:03	14-19	
SUB IN: 14 JONES, MICAH	06:03		
	03:53	20-22	SUB OUT: HICKS, ZAIRE
	03:53		SUB IN: MOORE, BRITTNI
SUB OUT: 11 KEITH, MIKIA	03:53		
SUB IN: 2 BELL, NAKIAH	03:53		
SUB OUT: 14 JONES, MICAH	02:06	22-22	
SUB IN: 21 AKUEN, ALEK	02:06		
SUB OUT: 34 BAUMAN, SYDNEY	02:06		
SUB IN: 25 WHITLOCK, ZARIA	02:06		
	01:15	22-24	SUB OUT: PERRY, CHELSEY
	01:15		SUB IN: ADAMS, AUNDREA
	01:15		SUB OUT: WALDROP, MADDIE
	01:15		SUB IN: GRIFFIN, DAMIAH
SUB OUT: 1 KING, CHRISTEN	01:15		
SUB IN: 23 TROECKLER, ALLIE	01:15		

SIUE 25, UT Martin 25

Official Substitutions Log
SIUE vs UT Martin
Period 3
January 26, 2019 at Kathleen and Tom Elam Center - Martin, Tenn.

VISITORS: SIUE	Time	Score	HOME: UT Martin
23 TROECKLER, ALLIE			4 ROBERTSON, EMANYE
25 WHITLOCK, ZARIA			14 HICKS, ZAIRE
34 BAUMAN, SYDNEY			15 MOORE, BRITTNI
2 BELL, NAKIAH			20 PERRY, CHELSEY
5 ALSTON, JAY'NEE			21 WALDROP, MADDIE
SUB OUT: 25 WHITLOCK, ZARIA	05:55	31-31	
SUB IN: 14 JONES, MICAH	05:55		
SUB OUT: 5 ALSTON, JAY'NEE	05:20	31-32	
SUB IN: 11 KEITH, MIKIA	05:20		
SUB OUT: 23 TROECKLER, ALLIE	05:20		
SUB IN: 1 KING, CHRISTEN	05:20		
SUB OUT: 34 BAUMAN, SYDNEY	04:26	31-34	
SUB IN: 21 AKUEN, ALEK	04:26		
SUB OUT: 1 KING, CHRISTEN	03:28	33-38	
SUB IN: 23 TROECKLER, ALLIE	03:28		
SUB OUT: 11 KEITH, MIKIA	03:28		
SUB IN: 5 ALSTON, JAY'NEE	03:28		
	03:28		SUB OUT: PERRY, CHELSEY
	03:28		SUB IN: ADAMS, AUNDREA
	02:21	37-43	SUB OUT: WALDROP, MADDIE
	02:21		SUB IN: GRIFFIN, DAMIAH
SUB OUT: 14 JONES, MICAH	02:05	39-43	
SUB IN: 44 EVERIDGE, RIANA	02:05		

SIUE 39, UT Martin 45

Official Substitutions Log
SIUE vs UT Martin
Period 4
January 26, 2019 at Kathleen and Tom Elam Center - Martin, Tenn.

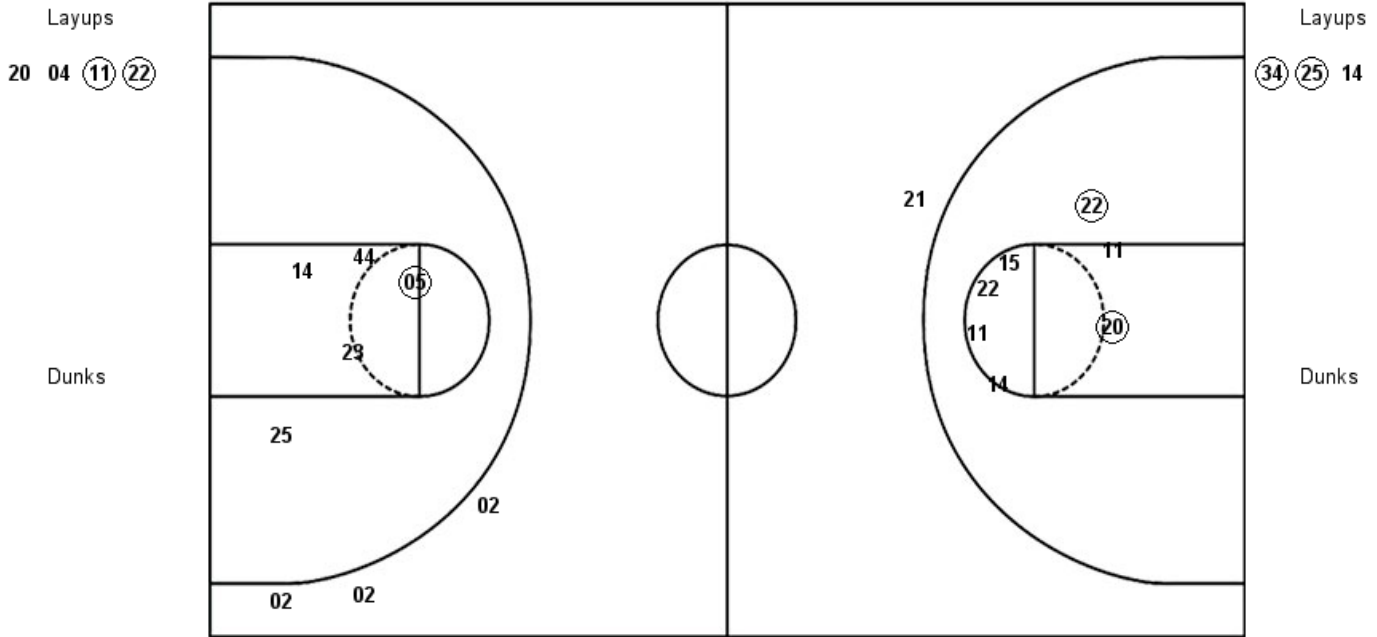
VISITORS: SIUE	Time	Score	HOME: UT Martin
23 TROECKLER, ALLIE			4 ROBERTSON, EMANYE
25 WHITLOCK, ZARIA			14 HICKS, ZAIRE
34 BAUMAN, SYDNEY			15 MOORE, BRITTNI
2 BELL, NAKIAH			20 PERRY, CHELSEY
5 ALSTON, JAY'NEE			21 WALDROP, MADDIE
	08:42	41-47	SUB OUT: WALDROP, MADDIE
	08:42		SUB IN: ADAMS, AUNDREA
SUB OUT: 23 TROECKLER, ALLIE	07:25	43-49	
SUB IN: 1 KING, CHRISTEN	07:25		
SUB OUT: 14 JONES, MICAH	05:40	49-55	
SUB IN: 21 AKUEN, ALEK	05:40		
SUB OUT: 34 BAUMAN, SYDNEY	05:40		
SUB IN: 23 TROECKLER, ALLIE	05:40		
	04:50	51-56	SUB OUT: HUDSON, SADE'
	04:50		SUB IN: WALDROP, MADDIE
	04:50		SUB OUT: ADAMS, AUNDREA
	04:50		SUB IN: HICKS, ZAIRE
	04:50		SUB OUT: GRANT, KYANNAH
	04:50		SUB IN: ROBERTSON, EMANYE
SUB OUT: 1 KING, CHRISTEN	03:30	51-58	
SUB IN: 34 BAUMAN, SYDNEY	03:30		
SUB OUT: 21 AKUEN, ALEK	02:10	53-64	
SUB IN: 14 JONES, MICAH	02:10		
SUB OUT: 34 BAUMAN, SYDNEY	00:59	55-64	
SUB IN: 35 HALL, MIKALA	00:59		
SUB OUT: 14 JONES, MICAH	00:37	55-64	
SUB IN: 12 KOEHLER, KAI	00:37		
	00:34	55-64	SUB OUT: HICKS, ZAIRE
	00:34		SUB IN: GRANT, KYANNAH

SIUE 55, UT Martin 68

Official Shot Chart
SIUE vs UT Martin
PERIOD 1 Shots
 January 26, 2019 at Kathleen and Tom Elam Center - Martin, Tenn.

UT Martin

SIUE



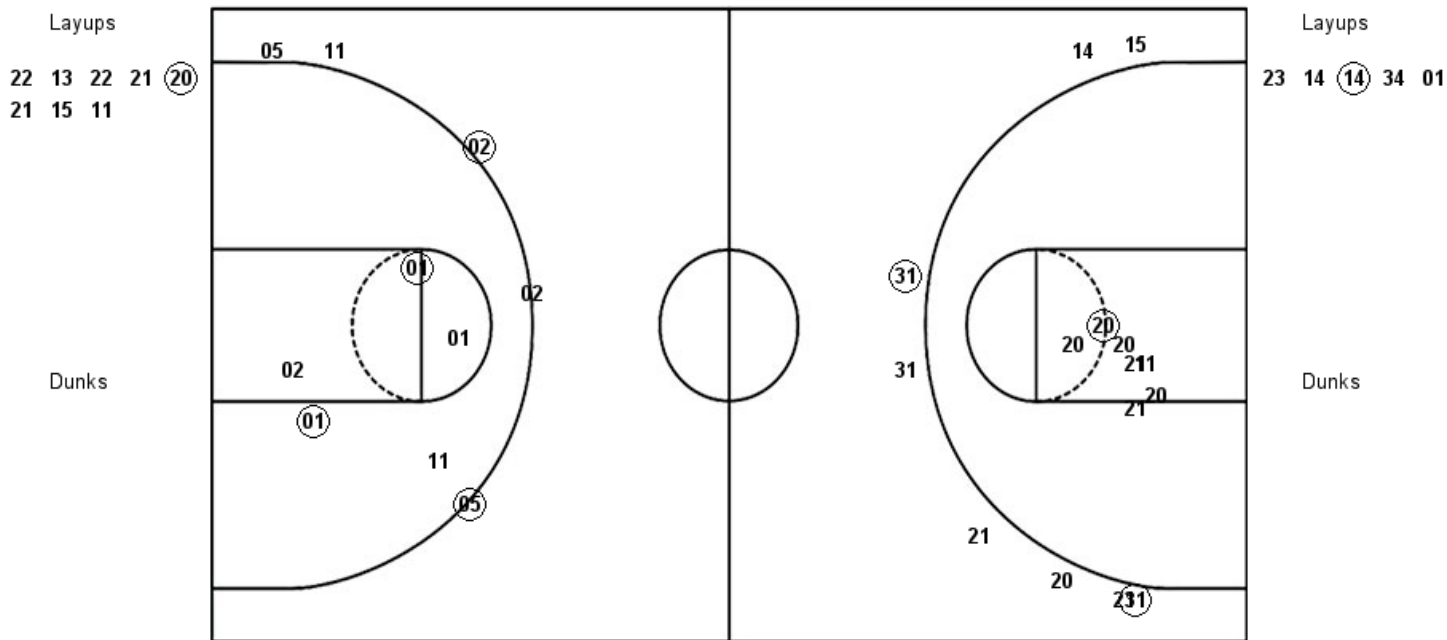
UTM : Period 1	Made	Att	Pct
Layups	2	4	50.0
Dunks	0	0	0
2PT Field Goals	4	11	36.4
3PT Field Goals	0	1	00.0
Total Field Goals	4	12	33.3

SIE : Period 1	Made	Att	Pct
Layups	2	3	66.7
Dunks	0	0	0
2PT Field Goals	3	8	37.5
3PT Field Goals	0	3	00.0
Total Field Goals	3	11	27.3

Official Shot Chart
SIUE vs UT Martin
PERIOD 2 Shots
 January 26, 2019 at Kathleen and Tom Elam Center - Martin, Tenn.

UT Martin

SIUE



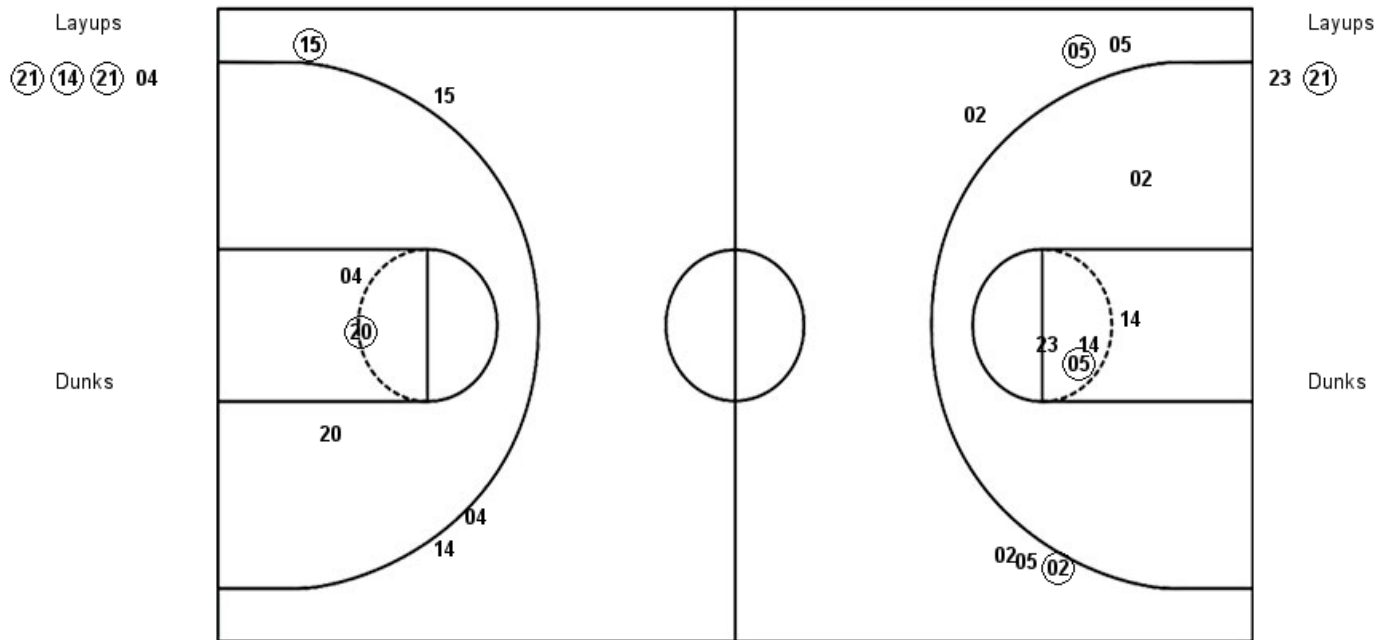
UTM : Period 2	Made	Att	Pct
Layups	1	8	12.5
Dunks	0	0	0
2PT Field Goals	2	15	13.3
3PT Field Goals	2	8	25.0
Total Field Goals	4	23	17.4

SIE : Period 2	Made	Att	Pct
Layups	1	5	20.0
Dunks	0	0	0
2PT Field Goals	3	10	30.0
3PT Field Goals	2	5	40.0
Total Field Goals	5	15	33.3

Official Shot Chart
SIUE vs UT Martin
PERIOD 3 Shots
 January 26, 2019 at Kathleen and Tom Elam Center - Martin, Tenn.

UT Martin

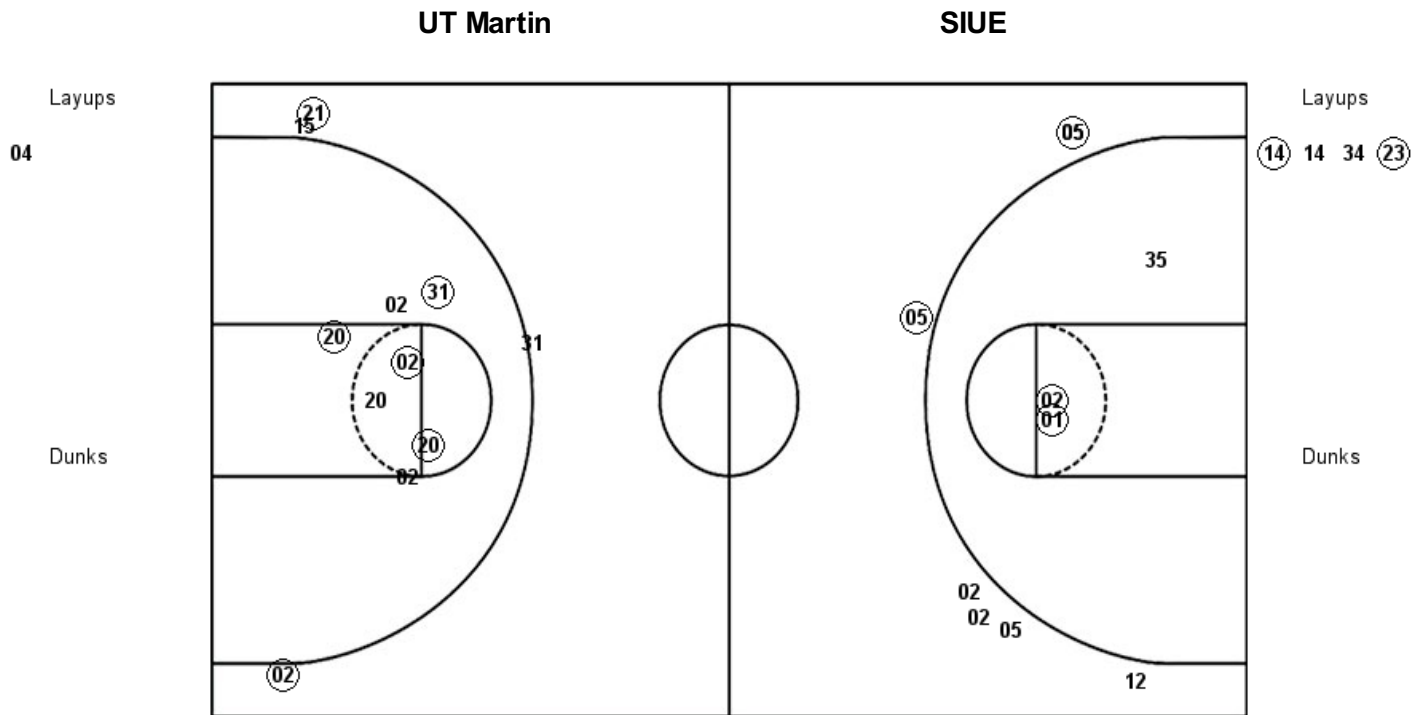
SIUE



UTM : Period 3	Made	Att	Pct
Layups	3	4	75.0
Dunks	0	0	0
2PT Field Goals	4	7	57.1
3PT Field Goals	2	5	40.0
Total Field Goals	6	12	50.0

SIE : Period 3	Made	Att	Pct
Layups	1	2	50.0
Dunks	0	0	0
2PT Field Goals	2	7	28.6
3PT Field Goals	2	6	33.3
Total Field Goals	4	13	30.8

Official Shot Chart
SIUE vs UT Martin
PERIOD 4 Shots
 January 26, 2019 at Kathleen and Tom Elam Center - Martin, Tenn.

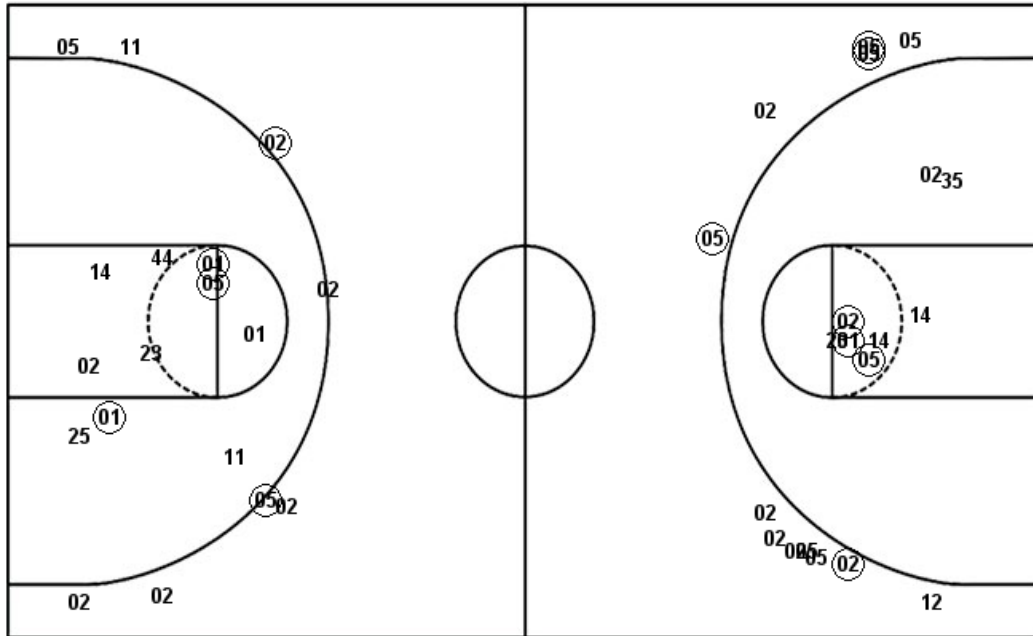


UTM : Period 4	Made	Att	Pct
Layups	0	1	00.0
Dunks	0	0	0
2PT Field Goals	4	8	50.0
3PT Field Goals	2	4	50.0
Total Field Goals	6	12	50.0

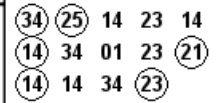
SIE : Period 4	Made	Att	Pct
Layups	2	4	50.0
Dunks	0	0	0
2PT Field Goals	4	7	57.1
3PT Field Goals	2	7	28.6
Total Field Goals	6	14	42.9

Official Shot Chart
SIUE vs UT Martin
SIUE Team Shots
 January 26, 2019 at Kathleen and Tom Elam Center - Martin, Tenn.

Layups



Layups



Dunks

Dunks

SIUE: Period 1	Made	Att	Pct
Layups	2	3	66.7
Dunks	0	0	0
2PT Field Goals	3	8	37.5
3PT Field Goals	0	3	00.0
Total Field Goals	3	11	27.3

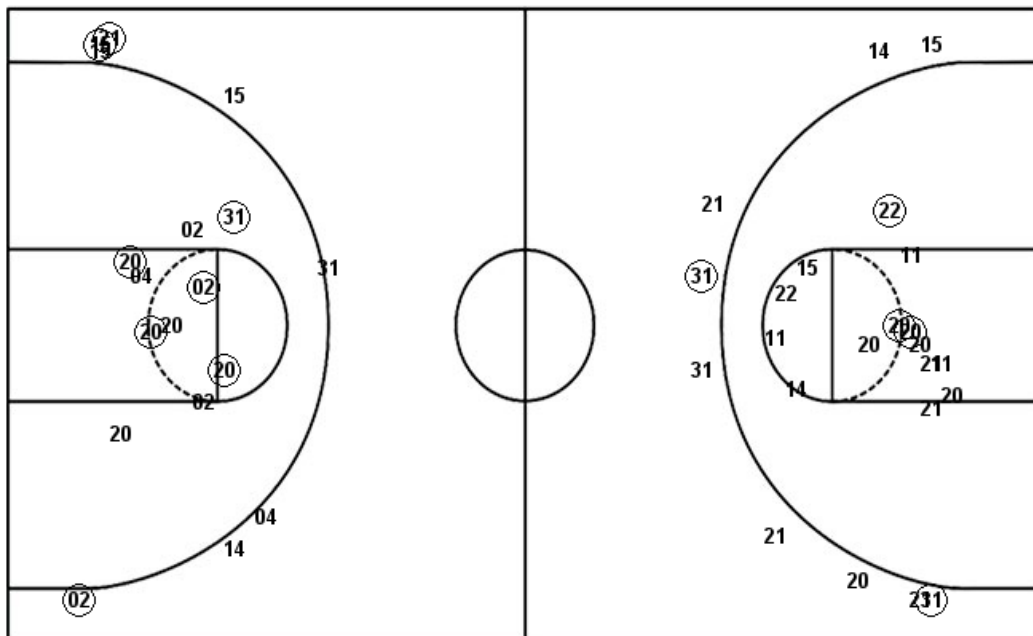
SIUE: Period 3	Made	Att	Pct
Layups	1	2	50.0
Dunks	0	0	0
2PT Field Goals	2	7	28.6
3PT Field Goals	2	6	33.3
Total Field Goals	4	13	30.8

SIUE: Period 2	Made	Att	Pct
Layups	1	5	20.0
Dunks	0	0	0
2PT Field Goals	3	10	30.0
3PT Field Goals	2	5	40.0
Total Field Goals	5	15	33.3

SIUE: Period 4	Made	Att	Pct
Layups	2	4	50.0
Dunks	0	0	0
2PT Field Goals	4	7	57.1
3PT Field Goals	2	7	28.6
Total Field Goals	6	14	42.9

Official Shot Chart
SIUE vs UT Martin
UT Martin Team Shots
 January 26, 2019 at Kathleen and Tom Elam Center - Martin, Tenn.

Layups



Layups

20 04 (11) (22) 22
 13 22 21 (20) 21
 15 11 (21) (14) (21)
 04 04

Dunks

Dunks

UTM : Period 1	Made	Att	Pct
Layups	2	4	50.0
Dunks	0	0	0
2PT Field Goals	4	11	36.4
3PT Field Goals	0	1	00.0
Total Field Goals	4	12	33.3

UTM : Period 2	Made	Att	Pct
Layups	1	8	12.5
Dunks	0	0	0
2PT Field Goals	2	15	13.3
3PT Field Goals	2	8	25.0
Total Field Goals	4	23	17.4

UTM : Period 3	Made	Att	Pct
Layups	3	4	75.0
Dunks	0	0	0
2PT Field Goals	4	7	57.1
3PT Field Goals	2	5	40.0
Total Field Goals	6	12	50.0

UTM : Period 4	Made	Att	Pct
Layups	0	1	00.0
Dunks	0	0	0
2PT Field Goals	4	8	50.0
3PT Field Goals	2	4	50.0
Total Field Goals	6	12	50.0