

FINAL SCORE



Grambling

40



Oklahoma St.

86

December 30, 2018 • Gallagher-Iba Arena (Eddie Sutton Court) - Stillwater, Oklahoma

FINAL STATISTICS

Official Box Score
Grambling vs Oklahoma St.
Game Totals -- Final Statistics
December 30, 2018 at Gallagher-Iba Arena (Eddie Sutton Court) - Stillwater, Oklahoma



Grambling 40

No.	Player	S	Pts	FG	3FG	FT	OR	DR	TR	PF	A	TO	Blk	Stl	Min	+/-
01	FORTE, JASMINE		0	0-3	0-0	0-2	3	1	4	3	1	0	0	0	8	-5
02	HILL, SHAKYLA		16	5-13	1-1	5-9	2	4	6	3	1	3	0	3	29	-32
12	COLEMAN, JUSTICE		1	0-12	0-1	1-2	2	2	4	2	0	1	0	0	24	-37
13	BOYD, JAZMINE		7	2-8	1-3	2-2	0	3	3	2	1	3	0	0	24	-35
20	WASHINGTON, KENDRIANA		2	1-12	0-1	0-2	2	2	4	2	0	2	0	4	24	-31
03	PARSONS, TAKERRA		0	0-2	0-0	0-0	1	5	6	0	0	1	0	0	21	-22
05	BODY, MARKISHA		0	0-1	0-0	0-0	0	1	1	0	0	0	0	0	6	-10
11	WILLIAMS, ARIEL		2	0-1	0-1	2-2	0	2	2	1	1	0	0	0	9	0
15	PARRAMORE, CANDICE		2	0-3	0-1	2-2	2	0	2	1	1	1	0	0	10	-21
21	LONDON, CAMRYN		5	2-3	1-2	0-0	0	0	0	1	0	2	0	0	13	-11
22	JAMES, RAYGHAN		0	0-2	0-0	0-0	1	1	2	0	0	0	0	0	2	-1
23	YANCY, MYLASHIA		2	1-2	0-0	0-0	1	0	1	0	0	1	0	0	9	-4
25	CONNALLY-BANKS, MADISON		3	1-3	0-0	1-2	2	2	4	4	0	0	0	0	17	-12
32	HENDERSON, HANNAH		0	0-3	0-2	0-0	0	0	0	0	0	0	0	0	5	-9
	TEAM						4	4	8	0		3				
TOTALS			40	12-68	3-12	13-23	20	27	47	19	5	17	0	7	199	

Shooting By Period

Period	FG	FG%	3FG	3FG%	FT	FT%
1st Qtr	6-18	33%	0-2	00%	0-3	00%
2nd Qtr	2-18	11%	0-1	00%	6-8	75%
3rd Qtr	2-13	15%	2-3	67%	4-8	50%
4th Qtr	2-19	11%	1-6	17%	3-4	75%
1st Half	8-36	22%	0-3	00%	6-11	55%
2nd Half	4-32	13%	3-9	33%	7-12	58%
Game	12-68	17.6%	3-12	25.0%	13-23	56.5%

Last FG: 4th-06:45
Biggest Run: 6-0
Largest lead: By 1 at 1-06:19
Technical Fouls: None.

Oklahoma St. 86

No.	Player	S	Pts	FG	3FG	FT	OR	DR	TR	PF	A	TO	Blk	Stl	Min	+/-
12	GRAY, VIVIAN		11	5-14	1-1	0-0	3	7	10	3	4	2	1	2	25	28
14	MILLER, BRAXTIN		22	8-18	2-6	4-7	1	3	4	3	5	1	0	0	31	43
15	GNANOU, MARIAM		11	3-7	0-0	5-6	5	3	8	5	4	0	0	2	20	38
23	HOBBS, JADEN		3	1-2	1-2	0-0	1	1	2	1	0	3	0	0	23	23
30	CASTRO, MARIA		13	5-10	3-7	0-0	0	7	7	1	2	0	1	2	24	41
01	DE LAPP, KASSIDY		3	1-6	0-0	1-2	2	5	7	3	0	2	3	0	20	8
10	GERLICH, BRYN		7	1-4	1-3	4-4	0	3	3	0	0	0	1	0	12	18
21	ASBERRY, JA'MEE		5	2-7	1-4	0-0	2	1	3	0	2	1	0	3	17	22
24	WHEELER, KARLI		8	2-2	1-1	3-4	0	0	0	0	0	1	0	1	8	7
25	WINCHESTER, ABBIE		1	0-1	0-0	1-2	2	3	5	1	0	0	0	0	12	1
33	DE SOUSA, CLITAN		2	1-2	0-1	0-0	1	2	3	1	0	0	0	0	6	1
	TEAM						1	5	6	0		0				
TOTALS			86	29-73	10-25	18-25	18	40	58	18	17	10	6	10	199	

Shooting By Period

Period	FG	FG%	3FG	3FG%	FT	FT%
1st Qtr	4-18	22%	0-5	00%	5-7	71%
2nd Qtr	8-20	40%	4-7	57%	3-4	75%
3rd Qtr	9-17	53%	4-7	57%	5-6	83%
4th Qtr	8-18	44%	2-6	33%	5-8	63%
1st Half	12-38	32%	4-12	33%	8-11	73%
2nd Half	17-35	49%	6-13	46%	10-14	71%
Game	29-73	39.7%	10-25	40.0%	18-25	72.0%

Last FG: 4th-01:17
Biggest Run: 14-0
Largest lead: By 46 at 4-01:17
Technical Fouls: None.

Game Notes:

Officials: Felicia Grinter, Billy Smith, Marty Cook
 Attendance: 1651

Start Time: 2018-12-30 19:05:37
 End Time: 2018-12-30 21:00:28
 Game Duration: 114

Score	1st	2nd	3rd	4th	TOT
GSU	12	10	10	8	40
OSU	13	23	27	23	86

GSU led for 1:20. OSU led for 37:12.
 Game was tied for 1:14.
 Times tied: 2 Lead Changes: 4

Points from	GSU	OSU
In the Paint	16	34
Off Turns	1	18
2nd Chance	7	20
Fast Break	15	18
Bench	14	26

Official Box Score
Grambling vs Oklahoma St.
First Half Statistics Only

December 30, 2018 at Gallagher-Iba Arena (Eddie Sutton Court) - Stillwater, Oklahoma



Grambling 22

No.	Player	S	Pts	FG	3FG	FT	OR	DR	TR	PF	A	TO	Blk	Stl	Min	+/-
23	YANCY, MYLASHIA		2	1-1	0-0	0-0	1	0	1	0	0	1	0	0	7	1
11	WILLIAMS, ARIEL		0	0-0	0-0	0-0	0	1	1	0	1	0	0	0	3	2
12	COLEMAN, JUSTICE		0	0-8	0-1	0-0	2	2	4	1	0	1	0	0	14	-20
13	BOYD, JAZMINE		4	1-5	0-1	2-2	0	1	1	0	1	2	0	0	17	-16
15	PARRAMORE, CANDICE		0	0-0	0-0	0-0	0	0	0	0	0	0	0	0	0	0
20	WASHINGTON, KENDRIANA		2	1-7	0-1	0-2	1	1	2	1	0	1	0	2	12	-7
21	LONDON, CAMRYN		2	1-1	0-0	0-0	0	0	0	0	0	1	0	0	4	-5
25	CONNALLY-BANKS, MADISON		2	1-2	0-0	0-0	1	1	2	2	0	0	0	0	9	-1
32	HENDERSON, HANNAH		0	0-0	0-0	0-0	0	0	0	0	0	0	0	0	0	0
01	FORTE, JASMINE		0	0-1	0-0	0-0	1	0	1	2	1	0	0	0	4	1
02	HILL, SHAKYLA		10	3-9	0-0	4-7	2	3	5	2	0	1	0	3	17	-16
03	PARSONS, TAKERRA		0	0-2	0-0	0-0	1	5	6	0	0	1	0	0	14	-9
05	BODY, MARKISHA		0	0-0	0-0	0-0	0	0	0	0	0	0	0	0	0	0
22	JAMES, RAYGHAN		0	0-0	0-0	0-0	0	0	0	0	0	0	0	0	0	0
	TEAM		0	0-0	0-0	0-0	2	3	5	0	0	2	0	0	0	0
	TOTALS		22	8-36	0-3	6-11	11	17	28	8	3	10	0	5	100	

Shooting By Period

Period	FG	FG%	3FG	3FG%	FT	FT%
1st Qtr	6-18	33%	0-2	00%	0-3	00%
2nd Qtr	2-18	11%	0-1	00%	6-8	75%
1st Half	8-36	22%	0-3	00%	6-11	55%
Game	12-68	17.6%	3-12	25.0%	13-23	56.5%

Last FG Half: GSU 2nd-03:36

Oklahoma St. 36

No.	Player	S	Pts	FG	3FG	FT	OR	DR	TR	PF	A	TO	Blk	Stl	Min	+/-
01	DE LAPP, KASSIDY		3	1-3	0-0	1-2	1	3	4	1	0	1	2	0	10	4
10	GERLICH, BRYN		2	0-1	0-1	2-2	0	1	1	0	0	0	0	0	3	5
12	GRAY, VIVIAN		4	2-8	0-0	0-0	1	4	5	1	4	1	1	2	14	10
14	MILLER, BRAXTIN		9	3-9	1-3	2-3	0	2	2	2	1	1	0	0	17	19
15	GNANOU, MARIAM		4	1-3	0-0	2-2	2	3	5	2	2	0	0	0	10	10
21	ASBERRY, JA'MEE		3	1-4	1-2	0-0	1	0	1	0	0	0	0	2	6	2
23	HOBBS, JADEN		3	1-2	1-2	0-0	1	0	1	1	0	2	0	0	17	9
24	WHEELER, KARLI		0	0-0	0-0	0-0	0	0	0	0	0	0	0	0	0	0
25	WINCHESTER, ABBIE		1	0-1	0-0	1-2	1	2	3	0	0	0	0	0	5	-3
30	CASTRO, MARIA		5	2-6	1-4	0-0	0	3	3	0	1	0	1	2	15	17
33	DE SOUSA, CLITAN		2	1-1	0-0	0-0	1	0	1	1	0	0	0	0	3	-3
	TEAM		0	0-0	0-0	0-0	0	2	2	0	0	0	0	0	0	0
	TOTALS		36	12-38	4-12	8-11	8	20	28	8	8	5	4	6	100	

Shooting By Period

Period	FG	FG%	3FG	3FG%	FT	FT%
1st Qtr	4-18	22%	0-5	00%	5-7	71%
2nd Qtr	8-20	40%	4-7	57%	3-4	75%
1st Half	12-38	32%	4-12	33%	8-11	73%
Game	29-73	39.7%	10-25	40.0%	18-25	72.0%

Last FG Half: OSU 2nd-00:38

Game Notes:

Officials: Felicia Grinter, Billy Smith, Marty Cook
Attendance: 1651

Start Time: 2018-12-30 19:05:37
End Time: 2018-12-30 21:00:28
Game Duration: 114

Score	1st	2nd	3rd	4th	TOT
GSU	12	10	10	8	40
OSU	13	23	27	23	86

Points from (This Period)	GSU	OSU
In the Paint	14	14
Off Turns	0	11
2nd Chance	4	7
Fast Break	8	6
Bench	6	11

Official Box Score
Grambling vs Oklahoma St.
First Quarter Statistics Only
 December 30, 2018 at Gallagher-Iba Arena (Eddie Sutton Court) - Stillwater, Oklahoma



Grambling 12

No.	Player	S	Pts	FG	3FG	FT	OR	DR	TR	PF	A	TO	Blk	Stl	Min	+/-
01	FORTE, JASMINE		0	0-0	0-0	0-0	1	0	1	1	1	0	0	0	3	1
02	HILL, SHAKYLA		6	3-6	0-0	0-1	0	3	3	1	0	1	0	1	8	-3
12	COLEMAN, JUSTICE		0	0-3	0-1	0-0	0	1	1	0	0	1	0	0	7	-4
13	BOYD, JAZMINE		0	0-3	0-1	0-0	0	1	1	0	1	1	0	0	8	-3
20	WASHINGTON, KENDRIANA		0	0-1	0-0	0-2	1	0	1	1	0	0	0	1	4	-1
03	PARSONS, TAKERRA		0	0-1	0-0	0-0	0	1	1	0	0	0	0	0	4	4
05	BODY, MARKISHA		0	0-0	0-0	0-0	0	0	0	0	0	0	0	0	0	0
11	WILLIAMS, ARIEL		0	0-0	0-0	0-0	0	1	1	0	1	0	0	0	2	2
15	PARRAMORE, CANDICE		0	0-0	0-0	0-0	0	0	0	0	0	0	0	0	0	0
21	LONDON, CAMRYN		2	1-1	0-0	0-0	0	0	0	0	0	0	0	0	2	2
22	JAMES, RAYGHAN		0	0-0	0-0	0-0	0	0	0	0	0	0	0	0	0	0
23	YANCY, MYLASHIA		2	1-1	0-0	0-0	0	0	0	0	0	0	0	0	6	1
25	CONNALLY-BANKS, MADISON		2	1-2	0-0	0-0	1	1	2	2	0	0	0	0	7	-4
32	HENDERSON, HANNAH		0	0-0	0-0	0-0	0	0	0	0	0	0	0	0	0	0
	TEAM						1	1	2	0		0				
	TOTALS		12	6-18	0-2	0-3	4	9	13	5	3	3	0	2	50	

Shooting By Period

Period	FG	FG%	3FG	3FG%	FT	FT%
1st Qtr	6-18	33%	0-2	00%	0-3	00%
2nd Qtr	2-18	11%	0-1	00%	6-8	75%
1st Half	6-18	33%	0-2	00%	0-3	00%
1st Half	8-36	22%	0-3	00%	6-11	55%
Game	12-68	17.6%	3-12	25.0%	13-23	56.5%

Oklahoma St. 13

No.	Player	S	Pts	FG	3FG	FT	OR	DR	TR	PF	A	TO	Blk	Stl	Min	+/-
12	GRAY, VIVIAN		2	1-4	0-0	0-0	1	2	3	0	2	0	0	1	8	1
14	MILLER, BRAXTIN		3	1-4	0-2	1-1	0	1	1	1	0	0	0	0	9	3
15	GNANOU, MARIAM		4	1-2	0-0	2-2	2	1	3	1	1	0	0	0	5	0
23	HOBBS, JADEN		0	0-0	0-0	0-0	0	0	0	0	0	2	0	0	8	-3
30	CASTRO, MARIA		0	0-2	0-2	0-0	0	2	2	0	0	0	1	0	7	3
01	DE LAPP, KASSIDY		3	1-3	0-0	1-2	0	1	1	0	0	0	1	0	5	1
10	GERLICH, BRYN		0	0-0	0-0	0-0	0	0	0	0	0	0	0	0	0	0
21	ASBERRY, JA'MEE		0	0-3	0-1	0-0	1	0	1	0	0	0	0	1	5	1
24	WHEELER, KARLI		0	0-0	0-0	0-0	0	0	0	0	0	0	0	0	0	0
25	WINCHESTER, ABBIE		1	0-0	0-0	1-2	1	2	3	0	0	0	0	0	3	-2
33	DE SOUSA, CLITAN		0	0-0	0-0	0-0	0	0	0	0	0	0	0	0	0	1
	TEAM						0	1	1	0		0				
	TOTALS		13	4-18	0-5	5-7	5	10	15	2	3	2	2	2	50	

Shooting By Period

Period	FG	FG%	3FG	3FG%	FT	FT%
1st Qtr	4-18	22%	0-5	00%	5-7	71%
2nd Qtr	8-20	40%	4-7	57%	3-4	75%
1st Half	4-18	22%	0-5	00%	5-7	71%
1st Half	12-38	32%	4-12	33%	8-11	73%
Game	29-73	39.7%	10-25	40.0%	18-25	72.0%

Game Notes:

Officials: Felicia Grinter, Billy Smith, Marty Cook
 Attendance: 1651

Start Time: 2018-12-30 19:05:37
 End Time: 2018-12-30 21:00:28
 Game Duration: 114

Score	1st	2nd	3rd	4th	TOT
GSU	12	10	10	8	40
OSU	13	23	27	23	86

Points from (This Period)	GSU	OSU
In the Paint	12	6
Off Turns	0	3
2nd Chance	2	3
Fast Break	6	3
Bench	6	4

**Official Play-By-Play
Grambling vs Oklahoma St.
First Quarter**

December 30, 2018 at Gallagher-Iba Arena (Eddie Sutton Court) - Stillwater, Oklahoma



Period 1

Starters:

Grambling: 12 COLEMAN,JUSTICE; 13 BOYD,JAZMINE; 20 WASHINGTON,KENDRIANA; 1 FORTE,JASMINE; 2 HILL,SHAKYLA ;

Oklahoma St.: 12 GRAY,VIVIAN; 14 MILLER,BRAXTIN; 15 GNANOU,MARIAM ; 23 HOBBS,JADEN; 30 CASTRO,MARIA;

Time	VISITORS: Grambling	Score	Margin	HOME: Oklahoma St.
09:47				TURNOVER (BADPASS) by HOBBS, JADEN
09:47	STEAL by WASHINGTON, KENDRIANA			
09:41	MISSED LAYUP by WASHINGTON, KENDRIANA			
09:38				REBOUND (DEF) by GNANOU, MARIAM
09:31				MISSED 3PTR by CASTRO, MARIA
09:28				REBOUND (OFF) by GNANOU, MARIAM
09:28	FOUL (PERSONAL) by HILL, SHAKYLA			
09:28				MISSED JUMPER by MILLER, BRAXTIN
09:28	REBOUND (DEF) by TEAM			
08:50	TURNOVER (BADPASS) by BOYD, JAZMINE			
08:50				STEAL by GRAY, VIVIAN
08:50		2-0	H 2	GOOD! LAYUP by MILLER, BRAXTIN [FB]
08:50				ASSIST by GNANOU, MARIAM
08:50	FOUL (PERSONAL) by FORTE, JASMINE			
08:50		3-0	H 3	GOOD! FT by MILLER, BRAXTIN [FB]
08:11	MISSED LAYUP by HILL, SHAKYLA			
08:07				REBOUND (DEF) by GRAY, VIVIAN
08:00				MISSED JUMPER by GRAY, VIVIAN
07:57	REBOUND (DEF) by COLEMAN, JUSTICE			
07:53	MISSED LAYUP by COLEMAN, JUSTICE			
07:49	REBOUND (OFF) by FORTE, JASMINE			
07:46	GOOD! JUMPER by HILL, SHAKYLA [PNT]	3-2	H 1	
07:46	ASSIST by FORTE, JASMINE			
07:39				MISSED JUMPER by GNANOU, MARIAM
07:36	REBOUND (DEF) by HILL, SHAKYLA			
07:33	GOOD! LAYUP by HILL, SHAKYLA [FB]	3-4	V 1	
07:20				MISSED 3PTR by CASTRO, MARIA
07:16	REBOUND (DEF) by HILL, SHAKYLA			
07:12	MISSED LAYUP by HILL, SHAKYLA			
07:12	REBOUND (OFF) by TEAM			
07:12				BLOCK by CASTRO, MARIA
06:53	SUB OUT: FORTE, JASMINE			
06:53	SUB IN: CONNALLY-BANKS, MADISON			
06:43	MISSED JUMPER by BOYD, JAZMINE			
06:43				REBOUND (DEF) by CASTRO, MARIA
06:29		5-4	H 1	GOOD! LAYUP by GNANOU, MARIAM
06:29				ASSIST by GRAY, VIVIAN
06:19	GOOD! LAYUP by HILL, SHAKYLA	5-6	V 1	
06:19				FOUL (PERSONAL) by GNANOU, MARIAM
06:19	MISSED FT by HILL, SHAKYLA			
06:19				REBOUND (DEF) by GRAY, VIVIAN
06:19				TURNOVER (BADPASS) by HOBBS, JADEN
06:19	STEAL by HILL, SHAKYLA			
06:19	MISSED JUMPER by COLEMAN, JUSTICE			
06:19				REBOUND (DEF) by CASTRO, MARIA
06:15				MISSED 3PTR by MILLER, BRAXTIN
06:15				REBOUND (OFF) by GNANOU, MARIAM
06:03	FOUL (PERSONAL) by WASHINGTON, KENDRIANA			
06:03		6-6	T	GOOD! FT by GNANOU, MARIAM
06:03	TIMEOUT 30SEC			
06:03		7-6	H 1	GOOD! FT by GNANOU, MARIAM
05:40	MISSED 3PTR by COLEMAN, JUSTICE			
05:40	REBOUND (OFF) by WASHINGTON, KENDRIANA			
05:35				FOUL (PERSONAL) by MILLER, BRAXTIN
05:35	MISSED FT by WASHINGTON, KENDRIANA			
05:35	REBOUND (OFF) by TEAM			
05:35				SUB OUT: HOBBS, JADEN
05:35				SUB IN: ASBERRY, JA'MEE
05:35				SUB OUT: GNANOU, MARIAM
05:35				SUB IN: DE LAPP, KASSIDY
05:35	MISSED FT by WASHINGTON, KENDRIANA			
05:35				REBOUND (DEF) by TEAM
05:35	SUB OUT: WASHINGTON, KENDRIANA			
05:35	SUB IN: YANCY, MYLASHIA			
05:26		9-6	H 3	GOOD! LAYUP by DE LAPP, KASSIDY
05:26				ASSIST by GRAY, VIVIAN
05:03	TURNOVER (TRAVEL) by COLEMAN, JUSTICE			
04:51				MISSED JUMPER by GRAY, VIVIAN
04:48	REBOUND (DEF) by CONNALLY-BANKS, MADISON			
04:43	TURNOVER (LOSTBALL) by HILL, SHAKYLA			

Time	VISITORS: Grambling	Score	Margin	HOME: Oklahoma St.
04:43				STEAL by ASBERRY, JA'MEE
04:37				MISSED LAYUP by ASBERRY, JA'MEE
04:32				REBOUND (OFF) by GRAY, VIVIAN
04:32				MISSED LAYUP by GRAY, VIVIAN
04:28				REBOUND (OFF) by ASBERRY, JA'MEE
04:22				MISSED JUMPER by ASBERRY, JA'MEE
04:17	REBOUND (DEF) by HILL, SHAKYLA			
04:04	MISSED 3PTR by BOYD, JAZMINE			
03:59	REBOUND (OFF) by CONNALLY-BANKS, MADISON			
03:55	MISSED LAYUP by HILL, SHAKYLA			
03:52				REBOUND (DEF) by MILLER, BRAXTIN
03:43		11-6	H 5	GOOD! JUMPER by GRAY, VIVIAN
03:31				SUB OUT: MILLER, BRAXTIN
03:31				SUB IN: HOBBS, JADEN
03:31				SUB OUT: CASTRO, MARIA
03:31				SUB IN: WINCHESTER, ABBIE
03:31	SUB OUT: COLEMAN, JUSTICE			
03:31	SUB IN: PARSONS, TAKERRA			
03:08	MISSED JUMPER by BOYD, JAZMINE			
03:03				REBOUND (DEF) by WINCHESTER, ABBIE
03:01				MISSED 3PTR by ASBERRY, JA'MEE
02:56	REBOUND (DEF) by BOYD, JAZMINE			
02:51	GOOD! JUMPER by YANCY, MYLASHIA [FB/PNT]	11-8	H 3	
02:51	ASSIST by BOYD, JAZMINE			
02:20	FOUL (PERSONAL) by CONNALLY-BANKS, MADISON			
02:20				MISSED FT by DE LAPP, KASSIDY
02:20				REBOUND (OFF) by TEAM
02:20				SUB OUT: GRAY, VIVIAN
02:20				SUB IN: MILLER, BRAXTIN
02:20	SUB OUT: HILL, SHAKYLA			
02:20	SUB IN: WILLIAMS, ARIEL			
02:20	SUB OUT: BOYD, JAZMINE			
02:20	SUB IN: LONDON, CAMRYN			
02:20		12-8	H 4	GOOD! FT by DE LAPP, KASSIDY
01:59	MISSED JUMPER by CONNALLY-BANKS, MADISON			
01:59				REBOUND (DEF) by DE LAPP, KASSIDY
01:59				BLOCK by DE LAPP, KASSIDY
01:35				MISSED LAYUP by DE LAPP, KASSIDY
01:31	REBOUND (DEF) by WILLIAMS, ARIEL			
01:05	MISSED JUMPER by PARSONS, TAKERRA			
01:02				REBOUND (DEF) by WINCHESTER, ABBIE
00:54				MISSED 3PTR by MILLER, BRAXTIN
00:49	REBOUND (DEF) by PARSONS, TAKERRA			
00:42	GOOD! LAYUP by CONNALLY-BANKS, MADISON [FB]	12-10	H 2	
00:42	ASSIST by WILLIAMS, ARIEL			
00:22				MISSED JUMPER by DE LAPP, KASSIDY
00:22				REBOUND (OFF) by WINCHESTER, ABBIE
00:22	FOUL (PERSONAL) by CONNALLY-BANKS, MADISON			
00:22				MISSED FT by WINCHESTER, ABBIE
00:22				REBOUND (OFF) by TEAM
00:22				SUB OUT: DE LAPP, KASSIDY
00:22				SUB IN: GNANOU, MARIAM
00:22				SUB OUT: ASBERRY, JA'MEE
00:22				SUB IN: DE SOUSA, CLITAN
00:22	SUB OUT: YANCY, MYLASHIA			
00:22	SUB IN: COLEMAN, JUSTICE			
00:22		13-10	H 3	GOOD! FT by WINCHESTER, ABBIE
00:22				SUB OUT: WINCHESTER, ABBIE
00:22				SUB IN: GRAY, VIVIAN
00:22				SUB OUT: DE SOUSA, CLITAN
00:22				SUB IN: CASTRO, MARIA
00:22	SUB OUT: CONNALLY-BANKS, MADISON			
00:22	SUB IN: YANCY, MYLASHIA			
00:01	GOOD! LAYUP by LONDON, CAMRYN	13-12	H 1	

Grambling 12, Oklahoma St. 13

Points from (This Period)	GSU	OSU
In the Paint	12	6
Off Turns	0	3
2nd Chance	2	3
Fast Break	6	3
Bench	6	4

Official Box Score
Grambling vs Oklahoma St.
Second Quarter Statistics Only
 December 30, 2018 at Gallagher-Iba Arena (Eddie Sutton Court) - Stillwater, Oklahoma



Grambling 10

No.	Player	S	Pts	FG	3FG	FT	OR	DR	TR	PF	A	TO	Blk	Stl	Min	+/-
01	FORTE, JASMINE		0	0-1	0-0	0-0	0	0	0	1	0	0	0	0	1	0
02	HILL, SHAKYLA		4	0-3	0-0	4-6	2	0	2	1	0	0	0	2	9	-13
12	COLEMAN, JUSTICE		0	0-5	0-0	0-0	2	1	3	1	0	0	0	0	7	-16
13	BOYD, JAZMINE		4	1-2	0-0	2-2	0	0	0	0	0	1	0	0	9	-13
20	WASHINGTON, KENDRIANA		2	1-6	0-1	0-0	0	1	1	0	0	1	0	1	8	-6
03	PARSONS, TAKERRA		0	0-1	0-0	0-0	1	4	5	0	0	1	0	0	10	-13
05	BODY, MARKISHA		0	0-0	0-0	0-0	0	0	0	0	0	0	0	0	0	0
11	WILLIAMS, ARIEL		0	0-0	0-0	0-0	0	0	0	0	0	0	0	0	1	0
15	PARRAMORE, CANDICE		0	0-0	0-0	0-0	0	0	0	0	0	0	0	0	0	0
21	LONDON, CAMRYN		0	0-0	0-0	0-0	0	0	0	0	0	1	0	0	2	-7
22	JAMES, RAYGHAN		0	0-0	0-0	0-0	0	0	0	0	0	0	0	0	0	0
23	YANCY, MYLASHIA		0	0-0	0-0	0-0	1	0	1	0	0	1	0	0	1	0
25	CONNALLY-BANKS, MADISON		0	0-0	0-0	0-0	0	0	0	0	0	0	0	0	2	3
32	HENDERSON, HANNAH		0	0-0	0-0	0-0	0	0	0	0	0	0	0	0	0	0
	TEAM						1	2	3	0		2				
	TOTALS		10	2-18	0-1	6-8	7	8	15	3	0	7	0	3	50	

Shooting By Period

Period	FG	FG%	3FG	3FG%	FT	FT%
3rd Qtr	2-13	15%	2-3	67%	4-8	50%
4th Qtr	2-19	11%	1-6	17%	3-4	75%
2nd Half	2-18	11%	0-1	00%	6-8	75%
2nd Half	4-32	13%	3-9	33%	7-12	58%
Game	12-68	17.6%	3-12	25.0%	13-23	56.5%

Oklahoma St. 23

No.	Player	S	Pts	FG	3FG	FT	OR	DR	TR	PF	A	TO	Blk	Stl	Min	+/-
12	GRAY, VIVIAN		2	1-4	0-0	0-0	0	2	2	1	2	1	1	1	6	9
14	MILLER, BRAXTIN		6	2-5	1-1	1-2	0	1	1	1	1	1	0	0	8	16
15	GNANOU, MARIAM		0	0-1	0-0	0-0	0	2	2	1	1	0	0	0	5	10
23	HOBBS, JADEN		3	1-2	1-2	0-0	1	0	1	1	0	0	0	0	9	12
30	CASTRO, MARIA		5	2-4	1-2	0-0	0	1	1	0	1	0	0	2	8	14
01	DE LAPP, KASSIDY		0	0-0	0-0	0-0	1	2	3	1	0	1	1	0	5	3
10	GERLICH, BRYN		2	0-1	0-1	2-2	0	1	1	0	0	0	0	0	3	5
21	ASBERRY, JA'MEE		3	1-1	1-1	0-0	0	0	0	0	0	0	0	1	1	1
24	WHEELER, KARLI		0	0-0	0-0	0-0	0	0	0	0	0	0	0	0	0	0
25	WINCHESTER, ABBIE		0	0-1	0-0	0-0	0	0	0	0	0	0	0	0	2	-1
33	DE SOUSA, CLITAN		2	1-1	0-0	0-0	1	0	1	1	0	0	0	0	3	-4
	TEAM						0	1	1	0		0				
	TOTALS		23	8-20	4-7	3-4	3	10	13	6	5	3	2	4	50	

Shooting By Period

Period	FG	FG%	3FG	3FG%	FT	FT%
3rd Qtr	9-17	53%	4-7	57%	5-6	83%
4th Qtr	8-18	44%	2-6	33%	5-8	63%
2nd Half	8-20	40%	4-7	57%	3-4	75%
2nd Half	17-35	49%	6-13	46%	10-14	71%
Game	29-73	39.7%	10-25	40.0%	18-25	72.0%

Game Notes:

Officials: Felicia Grinter, Billy Smith, Marty Cook
 Attendance: 1651

Start Time: 2018-12-30 19:05:37
 End Time: 2018-12-30 21:00:28
 Game Duration: 114

Score	1st	2nd	3rd	4th	TOT
GSU	12	10	10	8	40
OSU	13	23	27	23	86

Points from (This Period)	GSU	OSU
In the Paint	2	8
Off Turns	0	8
2nd Chance	2	4
Fast Break	2	3
Bench	0	7

**Official Play-By-Play
Grambling vs Oklahoma St.
Second Quarter**

December 30, 2018 at Gallagher-Iba Arena (Eddie Sutton Court) - Stillwater, Oklahoma



Period 2

Starters:

Grambling: 12 COLEMAN,JUSTICE; 13 BOYD,JAZMINE; 20 WASHINGTON,KENDRIANA; 1 FORTE,JASMINE; 2 HILL,SHAKYLA ;

Oklahoma St.: 12 GRAY,VIVIAN; 14 MILLER,BRAXTIN; 15 GNANOU,MARIAM ; 23 HOBBS,JADEN; 30 CASTRO,MARIA;

Time	VISITORS: Grambling	Score	Margin	HOME: Oklahoma St.
09:59	SUB OUT: COLEMAN, JUSTICE			
09:59	SUB IN: FORTE, JASMINE			
09:58	MISSED JUMPER by FORTE, JASMINE			
09:58	REBOUND (OFF) by YANCY, MYLASHIA			
09:58	TURNOVER (LOSTBALL) by YANCY, MYLASHIA			
09:58				STEAL by CASTRO, MARIA
09:48				MISSED JUMPER by GRAY, VIVIAN
09:43	REBOUND (DEF) by PARSONS, TAKERRA			
09:19	MISSED JUMPER by PARSONS, TAKERRA			
09:14				REBOUND (DEF) by GNANOU, MARIAM
09:10				MISSED JUMPER by GRAY, VIVIAN
09:07	REBOUND (DEF) by PARSONS, TAKERRA			
09:02	TURNOVER (LOSTBALL) by PARSONS, TAKERRA			
09:02	FOUL (PERSONAL) by FORTE, JASMINE			
09:02				MISSED FT by MILLER, BRAXTIN
09:02				REBOUND (OFF) by TEAM
09:02	SUB OUT: FORTE, JASMINE			
09:02	SUB IN: HILL, SHAKYLA			
09:02	SUB OUT: WILLIAMS, ARIEL			
09:02	SUB IN: BOYD, JAZMINE			
09:02	SUB OUT: YANCY, MYLASHIA			
09:02	SUB IN: COLEMAN, JUSTICE			
09:02		14-12	H 2	GOOD! FT by MILLER, BRAXTIN
08:54	TURNOVER (BADPASS) by LONDON, CAMRYN			
08:54				STEAL by CASTRO, MARIA
08:43		17-12	H 5	GOOD! 3PTR by MILLER, BRAXTIN
08:43				ASSIST by GRAY, VIVIAN
08:26	MISSED LAYUP by COLEMAN, JUSTICE			
08:22				REBOUND (DEF) by GNANOU, MARIAM
08:11		20-12	H 8	GOOD! 3PTR by CASTRO, MARIA
08:11				ASSIST by MILLER, BRAXTIN
07:51	MISSED LAYUP by COLEMAN, JUSTICE			
07:51	REBOUND (OFF) by COLEMAN, JUSTICE			
07:51	SUB OUT: LONDON, CAMRYN			
07:51	SUB IN: WASHINGTON, KENDRIANA			
07:51	TURNOVER (LOSTBALL) by COLEMAN, JUSTICE			
07:51				STEAL by GRAY, VIVIAN
07:30				MISSED JUMPER by GNANOU, MARIAM
07:27	REBOUND (DEF) by COLEMAN, JUSTICE			
07:24	MISSED LAYUP by HILL, SHAKYLA			
07:22				REBOUND (DEF) by CASTRO, MARIA
07:02				MISSED LAYUP by CASTRO, MARIA
06:59	REBOUND (DEF) by PARSONS, TAKERRA			
06:56	MISSED LAYUP by WASHINGTON, KENDRIANA			
06:49				REBOUND (DEF) by GRAY, VIVIAN
06:46				TURNOVER (BADPASS) by MILLER, BRAXTIN
06:46	STEAL by WASHINGTON, KENDRIANA			
06:41	MISSED LAYUP by WASHINGTON, KENDRIANA			
06:41				BLOCK by GRAY, VIVIAN
06:40				REBOUND (DEF) by TEAM
06:24		22-12	H 10	GOOD! LAYUP by CASTRO, MARIA
06:24				ASSIST by GRAY, VIVIAN
06:18	TURNOVER (TRAVEL) by BOYD, JAZMINE			
05:59		24-12	H 12	GOOD! JUMPER by MILLER, BRAXTIN [PNT]
05:59				ASSIST by GNANOU, MARIAM
05:40	MISSED JUMPER by COLEMAN, JUSTICE			
05:36	REBOUND (OFF) by COLEMAN, JUSTICE			
05:35				FOUL (PERSONAL) by GRAY, VIVIAN
05:35				SUB OUT: MILLER, BRAXTIN
05:35				SUB IN: DE SOUSA, CLITAN
05:29				FOUL (PERSONAL) by GNANOU, MARIAM
05:29	GOOD! FT by HILL, SHAKYLA	24-13	H 11	
05:29				SUB OUT: GNANOU, MARIAM
05:29				SUB IN: DE LAPP, KASSIDY
05:29	GOOD! FT by HILL, SHAKYLA	24-14	H 10	
05:09				MISSED 3PTR by HOBBS, JADEN
05:06				REBOUND (OFF) by HOBBS, JADEN
05:00		26-14	H 12	GOOD! JUMPER by GRAY, VIVIAN [PNT]
05:00				ASSIST by CASTRO, MARIA
04:58				FOUL (PERSONAL) by DE SOUSA, CLITAN

Time	VISITORS: Grambling	Score	Margin	HOME: Oklahoma St.
04:58				
04:58	SUB OUT: COLEMAN, JUSTICE			
04:58	SUB IN: CONNALLY-BANKS, MADISON			
04:43	GOOD! LAYUP by BOYD, JAZMINE	26-16	H 10	
04:36				MISSED JUMPER by GRAY, VIVIAN
04:30				REBOUND (OFF) by DE LAPP, KASSIDY
04:29				TURNOVER (LOSTBALL) by DE LAPP, KASSIDY
04:29	STEAL by HILL, SHAKYLA			
04:23	MISSED LAYUP by HILL, SHAKYLA			
04:20				REBOUND (DEF) by GRAY, VIVIAN
04:20				TURNOVER (LOSTBALL) by GRAY, VIVIAN
04:20	STEAL by HILL, SHAKYLA			
04:20	MISSED LAYUP by HILL, SHAKYLA			
04:20	REBOUND (OFF) by HILL, SHAKYLA			
04:20				FOUL (PERSONAL) by HOBBS, JADEN
04:20	MISSED FT by HILL, SHAKYLA			
04:20	REBOUND (OFF) by TEAM			
04:20				SUB OUT: CASTRO, MARIA
04:20				SUB IN: MILLER, BRAXTIN
04:20				SUB OUT: GRAY, VIVIAN
04:20				SUB IN: WINCHESTER, ABBIE
04:20	MISSED FT by HILL, SHAKYLA			
04:20				REBOUND (DEF) by DE LAPP, KASSIDY
04:09				MISSED JUMPER by WINCHESTER, ABBIE
04:09	REBOUND (DEF) by TEAM			
03:50	MISSED LAYUP by WASHINGTON, KENDRIANA			
03:47				REBOUND (DEF) by DE LAPP, KASSIDY
03:45				MISSED JUMPER by MILLER, BRAXTIN
03:40	REBOUND (DEF) by PARSONS, TAKERRA			
03:36	GOOD! JUMPER by WASHINGTON, KENDRIANA [FB]	26-18	H 8	
03:05				MISSED JUMPER by MILLER, BRAXTIN
02:59				REBOUND (OFF) by DE SOUSA, CLITAN
02:59		28-18	H 10	GOOD! LAYUP by DE SOUSA, CLITAN
02:45				FOUL (PERSONAL) by DE LAPP, KASSIDY
02:45	GOOD! FT by BOYD, JAZMINE	28-19	H 9	
02:45				SUB OUT: WINCHESTER, ABBIE
02:45				SUB IN: GERLICH, BRYN
02:45				SUB OUT: DE SOUSA, CLITAN
02:45				SUB IN: CASTRO, MARIA
02:45	SUB OUT: CONNALLY-BANKS, MADISON			
02:45	SUB IN: COLEMAN, JUSTICE			
02:45	GOOD! FT by BOYD, JAZMINE	28-20	H 8	
02:27		31-20	H 11	GOOD! 3PTR by HOBBS, JADEN
02:10	MISSED JUMPER by COLEMAN, JUSTICE			
02:08	REBOUND (OFF) by HILL, SHAKYLA			
01:57	MISSED 3PTR by WASHINGTON, KENDRIANA			
01:53	REBOUND (OFF) by PARSONS, TAKERRA			
01:39	MISSED JUMPER by COLEMAN, JUSTICE			
01:38	REBOUND (OFF) by TEAM			
01:38	TURNOVER (SHOTCLOCK) by			
01:26	FOUL (PERSONAL) by COLEMAN, JUSTICE			
01:26		32-20	H 12	GOOD! FT by GERLICH, BRYN
01:26		33-20	H 13	GOOD! FT by GERLICH, BRYN
01:12	MISSED JUMPER by BOYD, JAZMINE			
01:09				REBOUND (DEF) by MILLER, BRAXTIN
01:04				MISSED JUMPER by MILLER, BRAXTIN
01:02	REBOUND (DEF) by TEAM			
01:02				SUB OUT: HOBBS, JADEN
01:02				SUB IN: ASBERRY, JA'MEE
00:45	MISSED LAYUP by WASHINGTON, KENDRIANA			
00:45				REBOUND (DEF) by GERLICH, BRYN
00:45				BLOCK by DE LAPP, KASSIDY
00:38		36-20	H 16	GOOD! 3PTR by ASBERRY, JA'MEE [FB]
00:32				FOUL (PERSONAL) by MILLER, BRAXTIN
00:32	GOOD! FT by HILL, SHAKYLA	36-21	H 15	
00:32				SUB OUT: MILLER, BRAXTIN
00:32				SUB IN: DE SOUSA, CLITAN
00:32	GOOD! FT by HILL, SHAKYLA	36-22	H 14	
00:16				MISSED 3PTR by CASTRO, MARIA
00:11	REBOUND (DEF) by WASHINGTON, KENDRIANA			
00:06	TURNOVER (LOSTBALL) by WASHINGTON, KENDRIANA			
00:06				STEAL by ASBERRY, JA'MEE
00:04	FOUL (PERSONAL) by HILL, SHAKYLA			
00:04	SUB OUT: WASHINGTON, KENDRIANA			
00:04	SUB IN: YANCY, MYLASHIA			
00:00				MISSED 3PTR by GERLICH, BRYN
00:00				REBOUND (OFF) by TEAM

Points from (This Period)	GSU	OSU
In the Paint	2	8
Off Turns	0	8
2nd Chance	2	4
Fast Break	2	3
Bench	0	7

Official Box Score
Grambling vs Oklahoma St.
Second Half Statistics Only

December 30, 2018 at Gallagher-Iba Arena (Eddie Sutton Court) - Stillwater, Oklahoma



Grambling 18

No.	Player	S	Pts	FG	3FG	FT	OR	DR	TR	PF	A	TO	Blk	Stl	Min	+/-
23	YANCY, MYLASHIA		0	0-1	0-0	0-0	0	0	0	0	0	0	0	0	3	-5
11	WILLIAMS, ARIEL		2	0-1	0-1	2-2	0	1	1	1	0	0	0	0	6	-2
12	COLEMAN, JUSTICE		1	0-4	0-0	1-2	0	0	0	1	0	0	0	0	10	-17
13	BOYD, JAZMINE		3	1-3	1-2	0-0	0	2	2	2	0	1	0	0	7	-19
15	PARRAMORE, CANDICE		2	0-3	0-1	2-2	2	0	2	1	1	1	0	0	10	-21
20	WASHINGTON, KENDRIANA		0	0-5	0-0	0-0	1	1	2	1	0	1	0	2	11	-24
21	LONDON, CAMRYN		3	1-2	1-2	0-0	0	0	0	1	0	1	0	0	8	-6
25	CONNALLY-BANKS, MADISON		1	0-1	0-0	1-2	1	1	2	2	0	0	0	0	9	-11
32	HENDERSON, HANNAH		0	0-3	0-2	0-0	0	0	0	0	0	0	0	0	5	-9
01	FORTE, JASMINE		0	0-2	0-0	0-2	2	1	3	1	0	0	0	0	4	-6
02	HILL, SHAKYLA		6	2-4	1-1	1-2	0	1	1	1	1	2	0	0	12	-16
03	PARSONS, TAKERRA		0	0-0	0-0	0-0	0	0	0	0	0	0	0	0	8	-13
05	BODY, MARKISHA		0	0-1	0-0	0-0	0	1	1	0	0	0	0	0	6	-10
22	JAMES, RAYGHAN		0	0-2	0-0	0-0	1	1	2	0	0	0	0	0	2	-1
	TEAM		0	0-0	0-0	0-0	2	1	3	0	0	1	0	0	0	
	TOTALS		18	4-32	3-9	7-12	9	10	19	11	2	7	0	2	99	

Shooting By Period

Period	FG	FG%	3FG	3FG%	FT	FT%
3rd Qtr	2-13	15%	2-3	67%	4-8	50%
4th Qtr	2-19	11%	1-6	17%	3-4	75%
2nd Half	4-32	13%	3-9	33%	7-12	58%
Game	12-68	17.6%	3-12	25.0%	13-23	56.5%

Last FG Half: GSU 4th-06:45

Oklahoma St. 50

No.	Player	S	Pts	FG	3FG	FT	OR	DR	TR	PF	A	TO	Blk	Stl	Min	+/-
01	DE LAPP, KASSIDY		0	0-3	0-0	0-0	1	2	3	2	0	1	1	0	9	4
10	GERLICH, BRYN		5	1-3	1-2	2-2	0	2	2	0	0	0	1	0	9	13
12	GRAY, VIVIAN		7	3-6	1-1	0-0	2	3	5	2	0	1	0	0	12	18
14	MILLER, BRAXTIN		13	5-9	1-3	2-4	1	1	2	1	4	0	0	0	14	24
15	GNANOU, MARIAM		7	2-4	0-0	3-4	3	0	3	3	2	0	0	2	10	28
21	ASBERRY, JA'MEE		2	1-3	0-2	0-0	1	1	2	0	2	1	0	1	11	20
23	HOBBS, JADEN		0	0-0	0-0	0-0	0	1	1	0	0	1	0	0	6	14
24	WHEELER, KARLI		8	2-2	1-1	3-4	0	0	0	0	0	1	0	1	8	7
25	WINCHESTER, ABBIE		0	0-0	0-0	0-0	1	1	2	1	0	0	0	0	8	4
30	CASTRO, MARIA		8	3-4	2-3	0-0	0	4	4	1	1	0	0	0	9	24
33	DE SOUSA, CLITAN		0	0-1	0-1	0-0	0	2	2	0	0	0	0	0	3	4
	TEAM		0	0-0	0-0	0-0	1	3	4	0	0	0	0	0	0	
	TOTALS		50	17-35	6-13	10-14	10	20	30	10	9	5	2	4	99	

Shooting By Period

Period	FG	FG%	3FG	3FG%	FT	FT%
3rd Qtr	9-17	53%	4-7	57%	5-6	83%
4th Qtr	8-18	44%	2-6	33%	5-8	63%
2nd Half	17-35	49%	6-13	46%	10-14	71%
Game	29-73	39.7%	10-25	40.0%	18-25	72.0%

Last FG Half: OSU 4th-01:17

Game Notes:

Officials: Felicia Grinter, Billy Smith, Marty Cook
 Attendance: 1651

Start Time: 2018-12-30 19:05:37
 End Time: 2018-12-30 21:00:28
 Game Duration: 114

Score	1st	2nd	3rd	4th	TOT
GSU	12	10	10	8	40
OSU	13	23	27	23	86

Points from (This Period)	GSU	OSU
In the Paint	2	20
Off Turns	1	7
2nd Chance	3	13
Fast Break	7	12
Bench	8	15

Official Box Score
Grambling vs Oklahoma St.
Third Quarter Statistics Only
December 30, 2018 at Gallagher-Iba Arena (Eddie Sutton Court) - Stillwater, Oklahoma



Grambling 18

No.	Player	S	Pts	FG	3FG	FT	OR	DR	TR	PF	A	TO	Blk	Stl	Min	+/-
01	FORTE, JASMINE		0	0-0	0-0	0-2	1	0	1	1	0	0	0	0	2	-4
02	HILL, SHAKYLA		0	0-1	0-0	0-0	0	1	1	1	1	2	0	0	5	-5
12	COLEMAN, JUSTICE		1	0-4	0-0	1-2	0	0	0	1	0	0	0	0	10	-17
13	BOYD, JAZMINE		3	1-3	1-2	0-0	0	2	2	2	0	1	0	0	7	-19
20	WASHINGTON, KENDRIANA		0	0-1	0-0	0-0	0	0	0	0	0	0	0	1	4	-14
03	PARSONS, TAKERRA		0	0-0	0-0	0-0	0	0	0	0	0	0	0	0	3	-6
05	BODY, MARKISHA		0	0-0	0-0	0-0	0	0	0	0	0	0	0	0	0	0
11	WILLIAMS, ARIEL		2	0-0	0-0	2-2	0	1	1	0	0	0	0	0	3	2
15	PARRAMORE, CANDICE		0	0-1	0-0	0-0	0	0	0	1	1	0	0	0	5	-12
21	LONDON, CAMRYN		3	1-1	1-1	0-0	0	0	0	0	0	0	0	0	3	2
22	JAMES, RAYGHAN		0	0-0	0-0	0-0	0	0	0	0	0	0	0	0	0	0
23	YANCY, MYLASHIA		0	0-1	0-0	0-0	0	0	0	0	0	0	0	0	3	-5
25	CONNALLY-BANKS, MADISON		1	0-1	0-0	1-2	1	1	2	0	0	0	0	0	6	-7
32	HENDERSON, HANNAH		0	0-0	0-0	0-0	0	0	0	0	0	0	0	0	0	0
	TEAM						0	0	0	0		1				
	TOTALS		10	2-13	2-3	4-8	2	5	7	6	2	4	0	1	50	

Shooting By Period

Period	FG	FG%	3FG	3FG%	FT	FT%
2nd Half	0-0	0%	0-0	0%	0-0	0%
Game	12-68	17.6%	3-12	25.0%	13-23	56.5%

Oklahoma St. 50

No.	Player	S	Pts	FG	3FG	FT	OR	DR	TR	PF	A	TO	Blk	Stl	Min	+/-
12	GRAY, VIVIAN		5	2-4	1-1	0-0	0	2	2	2	0	1	0	0	7	12
14	MILLER, BRAXTIN		10	4-5	1-1	1-2	1	1	2	1	3	0	0	0	9	18
15	GNANOU, MARIAM		4	1-2	0-0	2-2	2	0	2	1	0	0	0	1	7	19
23	HOBBS, JADEN		0	0-0	0-0	0-0	0	1	1	0	0	1	0	0	3	7
30	CASTRO, MARIA		3	1-2	1-2	0-0	0	3	3	1	1	0	0	0	7	19
01	DE LAPP, KASSIDY		0	0-0	0-0	0-0	0	0	0	1	0	1	0	0	3	-2
10	GERLICH, BRYN		5	1-2	1-1	2-2	0	1	1	0	0	0	0	0	4	4
21	ASBERRY, JA'MEE		0	0-2	0-2	0-0	0	1	1	0	1	0	0	1	6	11
24	WHEELER, KARLI		0	0-0	0-0	0-0	0	0	0	0	0	1	0	0	1	-1
25	WINCHESTER, ABBIE		0	0-0	0-0	0-0	0	0	0	1	0	0	0	0	3	-2
33	DE SOUSA, CLITAN		0	0-0	0-0	0-0	0	0	0	0	0	0	0	0	0	0
	TEAM						1	1	2	0		0				
	TOTALS		27	9-17	4-7	5-6	4	10	14	7	5	4	0	2	50	

Shooting By Period

Period	FG	FG%	3FG	3FG%	FT	FT%
2nd Half	0-0	0%	0-0	0%	0-0	0%
Game	29-73	39.7%	10-25	40.0%	18-25	72.0%

Game Notes:

Officials: Felicia Grinter, Billy Smith, Marty Cook
 Attendance: 1651

Start Time: 2018-12-30 19:05:37
 End Time: 2018-12-30 21:00:28
 Game Duration: 114

Score	1st	2nd	3rd	4th	TOT
GSU	12	10	10	8	40
OSU	13	23	27	23	86

Points from (This Period)	GSU	OSU
In the Paint	0	10
Off Turns	1	4
2nd Chance	1	8
Fast Break	5	7
Bench	6	5

**Official Play-By-Play
Grambling vs Oklahoma St.
Third Quarter**

December 30, 2018 at Gallagher-Iba Arena (Eddie Sutton Court) - Stillwater, Oklahoma



Period 3

Starters:

Grambling: 12 COLEMAN,JUSTICE; 13 BOYD,JAZMINE; 20 WASHINGTON,KENDRIANA; 1 FORTE,JASMINE; 2 HILL,SHAKYLA ;

Oklahoma St.: 12 GRAY,VIVIAN; 14 MILLER,BRAXTIN; 15 GNANOU,MARIAM ; 23 HOBBS,JADEN; 30 CASTRO,MARIA;

Time	VISITORS: Grambling	Score	Margin	HOME: Oklahoma St.
09:48				MISSED JUMPER by GRAY, VIVIAN
09:46				REBOUND (OFF) by GNANOU, MARIAM
09:46	FOUL (PERSONAL) by BOYD, JAZMINE			
09:46		37-22	H 15	GOOD! FT by GNANOU, MARIAM
09:46		38-22	H 16	GOOD! FT by GNANOU, MARIAM
09:27	MISSED 3PTR by BOYD, JAZMINE			
09:23				REBOUND (DEF) by HOBBS, JADEN
09:17		40-22	H 18	GOOD! JUMPER by MILLER, BRAXTIN [FB/PNT]
08:53	TURNOVER (BADPASS) by HILL, SHAKYLA			
08:53				STEAL by GNANOU, MARIAM
08:46				TURNOVER (LOSTBALL) by HOBBS, JADEN
08:46	STEAL by WASHINGTON, KENDRIANA			
08:40	MISSED LAYUP by WASHINGTON, KENDRIANA			
08:40	REBOUND (OFF) by FORTE, JASMINE			
08:40				FOUL (PERSONAL) by MILLER, BRAXTIN
08:40	MISSED FT by FORTE, JASMINE			
08:40	REBOUND (OFF) by TEAM			
08:40	MISSED FT by FORTE, JASMINE			
08:39				REBOUND (DEF) by TEAM
08:24				MISSED 3PTR by CASTRO, MARIA
08:19				REBOUND (OFF) by GNANOU, MARIAM
08:19	FOUL (PERSONAL) by FORTE, JASMINE			
08:19	SUB OUT: FORTE, JASMINE			
08:19	SUB IN: CONNALLY-BANKS, MADISON			
08:07		43-22	H 21	GOOD! 3PTR by MILLER, BRAXTIN
08:04	TIMEOUT TEAM			
08:04	SUB OUT: CONNALLY-BANKS, MADISON			
08:04	SUB IN: PARSONS, TAKERRA			
07:46	MISSED JUMPER by COLEMAN, JUSTICE			
07:45				REBOUND (DEF) by CASTRO, MARIA
07:45	FOUL (PERSONAL) by HILL, SHAKYLA			
07:45	SUB OUT: HILL, SHAKYLA			
07:45	SUB IN: PARRAMORE, CANDICE			
07:30				MISSED LAYUP by GNANOU, MARIAM
07:27	REBOUND (DEF) by BOYD, JAZMINE			
07:15				FOUL (PERSONAL) by CASTRO, MARIA
07:09	MISSED JUMPER by COLEMAN, JUSTICE			
07:06				REBOUND (DEF) by GRAY, VIVIAN
07:06				TURNOVER (TRAVEL) by GRAY, VIVIAN
07:06				SUB OUT: HOBBS, JADEN
07:06				SUB IN: ASBERRY, JA'MEE
07:06	MISSED JUMPER by BOYD, JAZMINE			
07:06				REBOUND (DEF) by CASTRO, MARIA
06:59	FOUL (PERSONAL) by BOYD, JAZMINE			
06:43		45-22	H 23	GOOD! JUMPER by GRAY, VIVIAN [PNT]
06:33	TURNOVER (BADPASS) by BOYD, JAZMINE			
06:33				STEAL by ASBERRY, JA'MEE
06:27		48-22	H 26	GOOD! 3PTR by GRAY, VIVIAN [FB]
06:27				ASSIST by MILLER, BRAXTIN
06:01	MISSED JUMPER by COLEMAN, JUSTICE			
05:57				REBOUND (DEF) by GRAY, VIVIAN
05:53		50-22	H 28	GOOD! LAYUP by GNANOU, MARIAM [FB]
05:53				ASSIST by MILLER, BRAXTIN
05:34				FOUL (PERSONAL) by GRAY, VIVIAN
05:34	MISSED FT by COLEMAN, JUSTICE			
05:34	REBOUND (OFF) by TEAM			
05:34				SUB OUT: MILLER, BRAXTIN
05:34				SUB IN: GERLICH, BRYN
05:34	SUB OUT: WASHINGTON, KENDRIANA			
05:34	SUB IN: YANCY, MYLASHIA			
05:34	GOOD! FT by COLEMAN, JUSTICE	50-23	H 27	
05:34	SUB OUT: PARSONS, TAKERRA			
05:34	SUB IN: CONNALLY-BANKS, MADISON			
05:15				MISSED 3PTR by ASBERRY, JA'MEE
05:12	REBOUND (DEF) by BOYD, JAZMINE			
05:12				FOUL (PERSONAL) by GNANOU, MARIAM
04:54	MISSED LAYUP by PARRAMORE, CANDICE			
04:51				MISSED JUMPER by GERLICH, BRYN
04:50				REBOUND (DEF) by ASBERRY, JA'MEE
04:50				REBOUND (OFF) by TEAM

Time	VISITORS: Grambling	Score	Margin	HOME: Oklahoma St.
04:50				
04:50				SUB OUT: GRAY, VIVIAN
04:50				SUB IN: MILLER, BRAXTIN
04:46		52-23	H 29	GOOD! LAYUP by MILLER, BRAXTIN [PNT]
04:46				ASSIST by ASBERRY, JA'MEE
04:27	MISSED JUMPER by CONNALLY-BANKS, MADISON			
04:23				REBOUND (DEF) by MILLER, BRAXTIN
04:02		55-23	H 32	GOOD! 3PTR by CASTRO, MARIA
04:02				ASSIST by MILLER, BRAXTIN
03:49	MISSED JUMPER by YANCY, MYLASHIA			
03:45				REBOUND (DEF) by CASTRO, MARIA
03:35		58-23	H 35	GOOD! 3PTR by GERLICH, BRYN
03:35				ASSIST by CASTRO, MARIA
03:12	GOOD! 3PTR by BOYD, JAZMINE	58-26	H 32	
03:12	ASSIST by PARRAMORE, CANDICE			
02:56	FOUL (PERSONAL) by PARRAMORE, CANDICE			
02:56		59-26	H 33	GOOD! FT by GERLICH, BRYN
02:56				SUB OUT: CASTRO, MARIA
02:56				SUB IN: DE LAPP, KASSIDY
02:56				SUB OUT: GNANOU, MARIAM
02:56				SUB IN: WINCHESTER, ABBIE
02:56	SUB OUT: BOYD, JAZMINE			
02:56	SUB IN: HILL, SHAKYLA			
02:56	SUB OUT: PARRAMORE, CANDICE			
02:56	SUB IN: LONDON, CAMRYN			
02:56	SUB OUT: YANCY, MYLASHIA			
02:56	SUB IN: WILLIAMS, ARIEL			
02:56		60-26	H 34	GOOD! FT by GERLICH, BRYN
02:43	TURNOVER (TRAVEL) by HILL, SHAKYLA			
02:32				MISSED 3PTR by ASBERRY, JA'MEE
02:32				REBOUND (OFF) by MILLER, BRAXTIN
02:32	FOUL (PERSONAL) by COLEMAN, JUSTICE			
02:32		61-26	H 35	GOOD! FT by MILLER, BRAXTIN
02:32				MISSED FT by MILLER, BRAXTIN
02:28	REBOUND (DEF) by CONNALLY-BANKS, MADISON			
02:12	MISSED LAYUP by HILL, SHAKYLA			
02:08				REBOUND (DEF) by GERLICH, BRYN
02:05				MISSED LAYUP by MILLER, BRAXTIN
02:01	REBOUND (DEF) by HILL, SHAKYLA			
01:58	GOOD! 3PTR by LONDON, CAMRYN [FB]	61-29	H 32	
01:58	ASSIST by HILL, SHAKYLA			
01:44				FOUL (OFF) by DE LAPP, KASSIDY
01:44				TURNOVER (OFFENSIVE) by DE LAPP, KASSIDY
01:29				SUB OUT: GERLICH, BRYN
01:29				SUB IN: GRAY, VIVIAN
01:29				SUB OUT: ASBERRY, JA'MEE
01:29				SUB IN: WHEELER, KARLI
01:14	TURNOVER (SHOTCLOCK) by			
00:56				MISSED JUMPER by GRAY, VIVIAN
00:54	REBOUND (DEF) by WILLIAMS, ARIEL			
00:51				FOUL (PERSONAL) by GRAY, VIVIAN
00:51	GOOD! FT by WILLIAMS, ARIEL [FB]	61-30	H 31	
00:51	GOOD! FT by WILLIAMS, ARIEL [FB]	61-31	H 30	
00:39				TURNOVER (BADPASS) by WHEELER, KARLI
00:27	MISSED JUMPER by COLEMAN, JUSTICE			
00:27	REBOUND (OFF) by CONNALLY-BANKS, MADISON			
00:27				FOUL (PERSONAL) by WINCHESTER, ABBIE
00:27	MISSED FT by CONNALLY-BANKS, MADISON			
00:27	REBOUND (OFF) by TEAM			
00:27	GOOD! FT by CONNALLY-BANKS, MADISON	61-32	H 29	
00:02		63-32	H 31	GOOD! JUMPER by MILLER, BRAXTIN [PNT]

Grambling 32, Oklahoma St. 63

Points from (This Period)	GSU	OSU
In the Paint	0	10
Off Turns	1	4
2nd Chance	1	8
Fast Break	5	7
Bench	6	5

Official Box Score
Grambling vs Oklahoma St.
Fourth Quarter Statistics Only
December 30, 2018 at Gallagher-Iba Arena (Eddie Sutton Court) - Stillwater, Oklahoma



Grambling 8

No.	Player	S	Pts	FG	3FG	FT	OR	DR	TR	PF	A	TO	Blk	Stl	Min	+/-
01	FORTE, JASMINE		0	0-2	0-0	0-0	1	1	2	0	0	0	0	0	2	-2
02	HILL, SHAKYLA		6	2-3	1-1	1-2	0	0	0	0	0	0	0	0	7	-11
12	COLEMAN, JUSTICE		0	0-0	0-0	0-0	0	0	0	0	0	0	0	0	0	0
13	BOYD, JAZMINE		0	0-0	0-0	0-0	0	0	0	0	0	0	0	0	0	0
20	WASHINGTON, KENDRIANA		0	0-4	0-0	0-0	1	1	2	1	0	1	0	1	7	-10
03	PARSONS, TAKERRA		0	0-0	0-0	0-0	0	0	0	0	0	0	0	0	5	-7
05	BODY, MARKISHA		0	0-1	0-0	0-0	0	1	1	0	0	0	0	0	6	-10
11	WILLIAMS, ARIEL		0	0-1	0-1	0-0	0	0	0	1	0	0	0	0	3	-4
15	PARRAMORE, CANDICE		2	0-2	0-1	2-2	2	0	2	0	0	1	0	0	5	-9
21	LONDON, CAMRYN		0	0-1	0-1	0-0	0	0	0	1	0	1	0	0	5	-8
22	JAMES, RAYGHAN		0	0-2	0-0	0-0	1	1	2	0	0	0	0	0	2	-1
23	YANCY, MYLASHIA		0	0-0	0-0	0-0	0	0	0	0	0	0	0	0	0	0
25	CONNALLY-BANKS, MADISON		0	0-0	0-0	0-0	0	0	0	2	0	0	0	0	3	-4
32	HENDERSON, HANNAH		0	0-3	0-2	0-0	0	0	0	0	0	0	0	0	5	-9
	TEAM						2	1	3	0		0				
	TOTALS		8	2-19	1-6	3-4	7	5	12	5	0	3	0	1	49	

Shooting By Period

Period	FG	FG%	3FG	3FG%	FT	FT%
Game	12-68	17.6%	3-12	25.0%	13-23	56.5%

Oklahoma St. 23

No.	Player	S	Pts	FG	3FG	FT	OR	DR	TR	PF	A	TO	Blk	Stl	Min	+/-
12	GRAY, VIVIAN		2	1-2	0-0	0-0	2	1	3	0	0	0	0	0	5	6
14	MILLER, BRAXTIN		3	1-4	0-2	1-2	0	0	0	0	1	0	0	0	5	6
15	GNANOU, MARIAM		3	1-2	0-0	1-2	1	0	1	2	2	0	0	1	3	9
23	HOBBS, JADEN		0	0-0	0-0	0-0	0	0	0	0	0	0	0	0	3	7
30	CASTRO, MARIA		5	2-2	1-1	0-0	0	1	1	0	0	0	0	0	2	5
01	DE LAPP, KASSIDY		0	0-3	0-0	0-0	1	2	3	1	0	0	1	0	6	6
10	GERLICH, BRYN		0	0-1	0-1	0-0	0	1	1	0	0	0	1	0	5	9
21	ASBERRY, JA'MEE		2	1-1	0-0	0-0	1	0	1	0	1	1	0	0	5	9
24	WHEELER, KARLI		8	2-2	1-1	3-4	0	0	0	0	0	0	0	1	7	8
25	WINCHESTER, ABBIE		0	0-0	0-0	0-0	1	1	2	0	0	0	0	0	5	6
33	DE SOUSA, CLITAN		0	0-1	0-1	0-0	0	2	2	0	0	0	0	0	3	4
	TEAM						0	2	2	0		0				
	TOTALS		23	8-18	2-6	5-8	6	10	16	3	4	1	2	2	49	

Shooting By Period

Period	FG	FG%	3FG	3FG%	FT	FT%
Game	29-73	39.7%	10-25	40.0%	18-25	72.0%

Game Notes:

Officials: Felicia Grinter, Billy Smith, Marty Cook
 Attendance: 1651

Start Time: 2018-12-30 19:05:37
 End Time: 2018-12-30 21:00:28
 Game Duration: 114

Score	1st	2nd	3rd	4th	TOT
GSU	12	10	10	8	40
OSU	13	23	27	23	86

Points from (This Period)	GSU	OSU
In the Paint	2	10
Off Turns	0	3
2nd Chance	2	5
Fast Break	2	5
Bench	2	10

**Official Play-By-Play
Grambling vs Oklahoma St.
Fourth Quarter**

December 30, 2018 at Gallagher-Iba Arena (Eddie Sutton Court) - Stillwater, Oklahoma



Period 4

Starters:

Grambling: 12 COLEMAN,JUSTICE; 13 BOYD,JAZMINE; 20 WASHINGTON,KENDRIANA; 1 FORTE,JASMINE; 2 HILL,SHAKYLA ;

Oklahoma St.: 12 GRAY,VIVIAN; 14 MILLER,BRAXTIN; 15 GNANOU,MARIAM ; 23 HOBBS,JADEN; 30 CASTRO,MARIA;

Time	VISITORS: Grambling	Score	Margin	HOME: Oklahoma St.
09:55	SUB OUT: COLEMAN, JUSTICE			
09:55	SUB IN: PARSONS, TAKERRA			
09:35	FOUL (PERSONAL) by CONNALLY-BANKS, MADISON			
09:30		65-32	H 33	GOOD! JUMPER by MILLER, BRAXTIN
09:15	MISSED 3PTR by WILLIAMS, ARIEL			
09:11				REBOUND (DEF) by GRAY, VIVIAN
08:57	FOUL (PERSONAL) by LONDON, CAMRYN			
08:57		66-32	H 34	GOOD! FT by WHEELER, KARLI
08:57		67-32	H 35	GOOD! FT by WHEELER, KARLI
08:40				FOUL (PERSONAL) by DE LAPP, KASSIDY
08:32	GOOD! 3PTR by HILL, SHAKYLA	67-35	H 32	
08:18		70-35	H 35	GOOD! 3PTR by WHEELER, KARLI
08:18				ASSIST by MILLER, BRAXTIN
07:53	MISSED LAYUP by HILL, SHAKYLA			
07:47				REBOUND (DEF) by WINCHESTER, ABBIE
07:40				MISSED LAYUP by DE LAPP, KASSIDY
07:36				REBOUND (OFF) by DE LAPP, KASSIDY
07:36				MISSED LAYUP by DE LAPP, KASSIDY
07:36				REBOUND (OFF) by GRAY, VIVIAN
07:36				MISSED LAYUP by GRAY, VIVIAN
07:36	REBOUND (DEF) by TEAM			
07:31	TURNOVER (LOSTBALL) by LONDON, CAMRYN			
07:31				STEAL by WHEELER, KARLI
07:30	FOUL (PERSONAL) by WILLIAMS, ARIEL			
07:30	SUB OUT: CONNALLY-BANKS, MADISON			
07:30	SUB IN: FORTE, JASMINE			
07:30	SUB OUT: LONDON, CAMRYN			
07:30	SUB IN: BODY, MARKISHA			
07:30	SUB OUT: WILLIAMS, ARIEL			
07:30	SUB IN: WASHINGTON, KENDRIANA			
07:30		71-35	H 36	GOOD! FT by WHEELER, KARLI [FB]
07:30				MISSED FT by WHEELER, KARLI
07:28				REBOUND (OFF) by WINCHESTER, ABBIE
07:11	FOUL (PERSONAL) by WASHINGTON, KENDRIANA			
07:11				MISSED FT by MILLER, BRAXTIN
07:11				REBOUND (OFF) by TEAM
07:11		72-35	H 37	GOOD! FT by MILLER, BRAXTIN
06:54	MISSED LAYUP by WASHINGTON, KENDRIANA			
06:54	REBOUND (OFF) by TEAM			
06:45	GOOD! LAYUP by HILL, SHAKYLA	72-37	H 35	
06:26				MISSED JUMPER by MILLER, BRAXTIN
06:23	REBOUND (DEF) by FORTE, JASMINE			
06:17	MISSED LAYUP by BODY, MARKISHA			
06:15	REBOUND (OFF) by WASHINGTON, KENDRIANA			
06:09	MISSED LAYUP by WASHINGTON, KENDRIANA			
06:02	REBOUND (OFF) by FORTE, JASMINE			
06:02	MISSED LAYUP by FORTE, JASMINE			
05:58				REBOUND (DEF) by DE LAPP, KASSIDY
05:55				MISSED 3PTR by MILLER, BRAXTIN
05:42				REBOUND (OFF) by GRAY, VIVIAN
05:42		74-37	H 37	GOOD! LAYUP by GRAY, VIVIAN
05:29	MISSED JUMPER by FORTE, JASMINE			
05:29				BLOCK by DE LAPP, KASSIDY
05:24				REBOUND (DEF) by DE LAPP, KASSIDY
05:22				MISSED 3PTR by MILLER, BRAXTIN
05:18	REBOUND (DEF) by BODY, MARKISHA			
05:15	MISSED JUMPER by WASHINGTON, KENDRIANA			
05:14				REBOUND (DEF) by TEAM
05:14				SUB OUT: DE LAPP, KASSIDY
05:14				SUB IN: GERLICH, BRYN
05:14				SUB OUT: GRAY, VIVIAN
05:14				SUB IN: GNANOU, MARIAM
05:14				SUB OUT: MILLER, BRAXTIN
05:14				SUB IN: ASBERRY, JA'MEE
05:14				SUB OUT: WHEELER, KARLI
05:14				SUB IN: HOBBS, JADEN
05:14				SUB OUT: WINCHESTER, ABBIE
05:14				SUB IN: CASTRO, MARIA
05:14	SUB OUT: FORTE, JASMINE			
05:14	SUB IN: CONNALLY-BANKS, MADISON			

Time	VISITORS: Grambling	Score	Margin	HOME: Oklahoma St.
05:14	SUB OUT: WASHINGTON, KENDRIANA			
05:14	SUB IN: PARRAMORE, CANDICE			
04:58	FOUL (PERSONAL) by CONNALLY-BANKS, MADISON			
04:58				
04:58	SUB IN: HENDERSON, HANNAH			
04:58	SUB OUT: CONNALLY-BANKS, MADISON			
04:58				MISSED FT by GNANOU, MARIAM
04:58				REBOUND (OFF) by TEAM
04:58		75-37	H 38	GOOD! FT by GNANOU, MARIAM
04:58	SUB OUT: PARSONS, TAKERRA			
04:58	SUB IN: WASHINGTON, KENDRIANA			
04:40	MISSED JUMPER by HENDERSON, HANNAH			
04:37				REBOUND (DEF) by GERLICH, BRYN
04:24		78-37	H 41	GOOD! 3PTR by CASTRO, MARIA
04:24				ASSIST by ASBERRY, JA'MEE
04:10				FOUL (PERSONAL) by GNANOU, MARIAM
04:10	MISSED FT by HILL, SHAKYLA			
04:10	REBOUND (OFF) by TEAM			
04:10	GOOD! FT by HILL, SHAKYLA	78-38	H 40	
03:45		80-38	H 42	GOOD! LAYUP by CASTRO, MARIA
03:45				ASSIST by GNANOU, MARIAM
03:38	MISSED 3PTR by PARRAMORE, CANDICE			
03:34				REBOUND (DEF) by CASTRO, MARIA
03:29				TURNOVER (LOSTBALL) by ASBERRY, JA'MEE
03:29	STEAL by WASHINGTON, KENDRIANA			
03:17	MISSED JUMPER by WASHINGTON, KENDRIANA			
03:14	REBOUND (OFF) by PARRAMORE, CANDICE			
03:12	MISSED 3PTR by HENDERSON, HANNAH			
03:08				REBOUND (DEF) by TEAM
03:08				SUB OUT: CASTRO, MARIA
03:08				SUB IN: DE SOUSA, CLITAN
03:08	SUB OUT: HILL, SHAKYLA			
03:08	SUB IN: LONDON, CAMRYN			
02:53				MISSED LAYUP by GNANOU, MARIAM
02:48				REBOUND (OFF) by GNANOU, MARIAM
02:48		82-38	H 44	GOOD! LAYUP by GNANOU, MARIAM
02:35	MISSED 3PTR by HENDERSON, HANNAH			
02:31	REBOUND (OFF) by PARRAMORE, CANDICE			
02:26	MISSED LAYUP by PARRAMORE, CANDICE			
02:26	REBOUND (OFF) by TEAM			
02:26				SUB OUT: HOBBS, JADEN
02:26				SUB IN: WHEELER, KARLI
01:59	TURNOVER (LOSTBALL) by WASHINGTON, KENDRIANA			
01:59				STEAL by GNANOU, MARIAM
01:54		84-38	H 46	GOOD! LAYUP by ASBERRY, JA'MEE [FB]
01:54				ASSIST by GNANOU, MARIAM
01:47				FOUL (PERSONAL) by GNANOU, MARIAM
01:47				SUB OUT: GNANOU, MARIAM
01:47				SUB IN: DE LAPP, KASSIDY
01:47	GOOD! FT by PARRAMORE, CANDICE [FB]	84-39	H 45	
01:47	SUB OUT: BODY, MARKISHA			
01:47	SUB IN: JAMES, RAYGHAN			
01:47	GOOD! FT by PARRAMORE, CANDICE [FB]	84-40	H 44	
01:35				MISSED LAYUP by DE LAPP, KASSIDY
01:33	REBOUND (DEF) by JAMES, RAYGHAN			
01:28	MISSED 3PTR by LONDON, CAMRYN			
01:23				REBOUND (DEF) by DE SOUSA, CLITAN
01:17		86-40	H 46	GOOD! JUMPER by WHEELER, KARLI [FB/PNT]
01:11	TURNOVER (BADPASS) by PARRAMORE, CANDICE			
00:44				MISSED 3PTR by DE SOUSA, CLITAN
00:38				REBOUND (OFF) by ASBERRY, JA'MEE
00:35				MISSED 3PTR by GERLICH, BRYN
00:31	REBOUND (DEF) by WASHINGTON, KENDRIANA			
00:26	MISSED JUMPER by JAMES, RAYGHAN			
00:26				BLOCK by GERLICH, BRYN
00:19	REBOUND (OFF) by JAMES, RAYGHAN			
00:18	MISSED LAYUP by JAMES, RAYGHAN			
00:13				REBOUND (DEF) by DE SOUSA, CLITAN

Grambling 40, Oklahoma St. 86

Points from (This Period)	GSU	OSU
In the Paint	2	10
Off Turns	0	3
2nd Chance	2	5
Fast Break	2	5
Bench	2	10

**Official Scoring/Possession Reference Chart
 Grambling vs Oklahoma St.
 Period 1**

December 30, 2018 at Gallagher-Iba Arena (Eddie Sutton Court) - Stillwater, Oklahoma



Period 1

Starters:

Grambling: 12 COLEMAN,JUSTICE; 13 BOYD,JAZMINE; 20 WASHINGTON,KENDRIANA; 1 FORTE,JASMINE; 2 HILL,SHAKYLA ;

Oklahoma St.: 12 GRAY,VIVIAN; 14 MILLER,BRAXTIN; 15 GNANOU,MARIAM ; 23 HOBBS,JADEN; 30 CASTRO,MARIA;

Time	VISITORS: Grambling	Score	Margin	HOME: Oklahoma St.
08:50		2-0	H 2	GOOD! LAYUP by MILLER, BRAXTIN [FB]
08:50		3-0	H 3	GOOD! FT by MILLER, BRAXTIN [FB]
07:46	GOOD! JUMPER by HILL, SHAKYLA [PNT]	3-2	H 1	
07:33	GOOD! LAYUP by HILL, SHAKYLA [FB]	3-4	V 1	
06:29		5-4	H 1	GOOD! LAYUP by GNANOU, MARIAM
06:19	GOOD! LAYUP by HILL, SHAKYLA	5-6	V 1	
06:03		6-6	T	GOOD! FT by GNANOU, MARIAM
06:03		7-6	H 1	GOOD! FT by GNANOU, MARIAM
05:26		9-6	H 3	GOOD! LAYUP by DE LAPP, KASSIDY
03:43		11-6	H 5	GOOD! JUMPER by GRAY, VIVIAN
02:51	GOOD! JUMPER by YANCY, MYLASHIA [FB/PNT]	11-8	H 3	
02:20		12-8	H 4	GOOD! FT by DE LAPP, KASSIDY
00:42	GOOD! LAYUP by CONNALLY-BANKS, MADISON [FB]	12-10	H 2	
00:22		13-10	H 3	GOOD! FT by WINCHESTER, ABBIE
00:01	GOOD! LAYUP by LONDON, CAMRYN	13-12	H 1	

Grambling 12, Oklahoma St. 13

**Official Scoring/Possession Reference Chart
Grambling vs Oklahoma St.
Period 2**

December 30, 2018 at Gallagher-Iba Arena (Eddie Sutton Court) - Stillwater, Oklahoma



Period 2

Starters:

Grambling: 12 COLEMAN,JUSTICE; 13 BOYD,JAZMINE; 20 WASHINGTON,KENDRIANA; 1 FORTE,JASMINE; 2 HILL,SHAKYLA ;

Oklahoma St.: 12 GRAY,VIVIAN; 14 MILLER,BRAXTIN; 15 GNANOU,MARIAM ; 23 HOBBS,JADEN; 30 CASTRO,MARIA;

Time	VISITORS: Grambling	Score	Margin	HOME: Oklahoma St.
09:02		14-12	H 2	GOOD! FT by MILLER, BRAXTIN
08:43		17-12	H 5	GOOD! 3PTR by MILLER, BRAXTIN
08:11		20-12	H 8	GOOD! 3PTR by CASTRO, MARIA
06:24		22-12	H 10	GOOD! LAYUP by CASTRO, MARIA
05:59		24-12	H 12	GOOD! JUMPER by MILLER, BRAXTIN [PNT]
05:29	GOOD! FT by HILL, SHAKYLA	24-13	H 11	
05:29	GOOD! FT by HILL, SHAKYLA	24-14	H 10	
05:00		26-14	H 12	GOOD! JUMPER by GRAY, VIVIAN [PNT]
04:43	GOOD! LAYUP by BOYD, JAZMINE	26-16	H 10	
03:36	GOOD! JUMPER by WASHINGTON, KENDRIANA [FB]	26-18	H 8	
02:59		28-18	H 10	GOOD! LAYUP by DE SOUSA, CLITAN
02:45	GOOD! FT by BOYD, JAZMINE	28-19	H 9	
02:45	GOOD! FT by BOYD, JAZMINE	28-20	H 8	
02:27		31-20	H 11	GOOD! 3PTR by HOBBS, JADEN
01:26		32-20	H 12	GOOD! FT by GERLICH, BRYN
01:26		33-20	H 13	GOOD! FT by GERLICH, BRYN
00:38		36-20	H 16	GOOD! 3PTR by ASBERRY, JA'MEE [FB]
00:32	GOOD! FT by HILL, SHAKYLA	36-21	H 15	
00:32	GOOD! FT by HILL, SHAKYLA	36-22	H 14	

Grambling 22, Oklahoma St. 36

**Official Scoring/Possession Reference Chart
Grambling vs Oklahoma St.
Period 3**

December 30, 2018 at Gallagher-Iba Arena (Eddie Sutton Court) - Stillwater, Oklahoma



Period 3

Starters:

Grambling: 12 COLEMAN,JUSTICE; 13 BOYD,JAZMINE; 20 WASHINGTON,KENDRIANA; 1 FORTE,JASMINE; 2 HILL,SHAKYLA ;

Oklahoma St.: 12 GRAY,VIVIAN; 14 MILLER,BRAXTIN; 15 GNANOU,MARIAM ; 23 HOBBS,JADEN; 30 CASTRO,MARIA;

Time	VISITORS: Grambling	Score	Margin	HOME: Oklahoma St.
09:46		37-22	H 15	GOOD! FT by GNANOU, MARIAM
09:46		38-22	H 16	GOOD! FT by GNANOU, MARIAM
09:17		40-22	H 18	GOOD! JUMPER by MILLER, BRAXTIN [FB/PNT]
08:07		43-22	H 21	GOOD! 3PTR by MILLER, BRAXTIN
06:43		45-22	H 23	GOOD! JUMPER by GRAY, VIVIAN [PNT]
06:27		48-22	H 26	GOOD! 3PTR by GRAY, VIVIAN [FB]
05:53		50-22	H 28	GOOD! LAYUP by GNANOU, MARIAM [FB]
05:34	GOOD! FT by COLEMAN, JUSTICE	50-23	H 27	
04:46		52-23	H 29	GOOD! LAYUP by MILLER, BRAXTIN [PNT]
04:02		55-23	H 32	GOOD! 3PTR by CASTRO, MARIA
03:35		58-23	H 35	GOOD! 3PTR by GERLICH, BRYN
03:12	GOOD! 3PTR by BOYD, JAZMINE	58-26	H 32	
02:56		59-26	H 33	GOOD! FT by GERLICH, BRYN
02:56		60-26	H 34	GOOD! FT by GERLICH, BRYN
02:32		61-26	H 35	GOOD! FT by MILLER, BRAXTIN
01:58	GOOD! 3PTR by LONDON, CAMRYN [FB]	61-29	H 32	
00:51	GOOD! FT by WILLIAMS, ARIEL [FB]	61-30	H 31	
00:51	GOOD! FT by WILLIAMS, ARIEL [FB]	61-31	H 30	
00:27	GOOD! FT by CONNALLY-BANKS, MADISON	61-32	H 29	
00:02		63-32	H 31	GOOD! JUMPER by MILLER, BRAXTIN [PNT]

Grambling 32, Oklahoma St. 63

**Official Scoring/Possession Reference Chart
Grambling vs Oklahoma St.
Period 4**

December 30, 2018 at Gallagher-Iba Arena (Eddie Sutton Court) - Stillwater, Oklahoma



Period 4

Starters:

Grambling: 12 COLEMAN,JUSTICE; 13 BOYD,JAZMINE; 20 WASHINGTON,KENDRIANA; 1 FORTE,JASMINE; 2 HILL,SHAKYLA ;

Oklahoma St.: 12 GRAY,VIVIAN; 14 MILLER,BRAXTIN; 15 GNANOU,MARIAM ; 23 HOBBS,JADEN; 30 CASTRO,MARIA;

Time	VISITORS: Grambling	Score	Margin	HOME: Oklahoma St.
09:30		65-32	H 33	GOOD! JUMPER by MILLER, BRAXTIN
08:57		66-32	H 34	GOOD! FT by WHEELER, KARLI
08:57		67-32	H 35	GOOD! FT by WHEELER, KARLI
08:32	GOOD! 3PTR by HILL, SHAKYLA	67-35	H 32	
08:18		70-35	H 35	GOOD! 3PTR by WHEELER, KARLI
07:30		71-35	H 36	GOOD! FT by WHEELER, KARLI [FB]
07:11		72-35	H 37	GOOD! FT by MILLER, BRAXTIN
06:45	GOOD! LAYUP by HILL, SHAKYLA	72-37	H 35	
05:42		74-37	H 37	GOOD! LAYUP by GRAY, VIVIAN
04:58		75-37	H 38	GOOD! FT by GNANOU, MARIAM
04:24		78-37	H 41	GOOD! 3PTR by CASTRO, MARIA
04:10	GOOD! FT by HILL, SHAKYLA	78-38	H 40	
03:45		80-38	H 42	GOOD! LAYUP by CASTRO, MARIA
02:48		82-38	H 44	GOOD! LAYUP by GNANOU, MARIAM
01:54		84-38	H 46	GOOD! LAYUP by ASBERRY, JAMEE [FB]
01:47	GOOD! FT by PARRAMORE, CANDICE [FB]	84-39	H 45	
01:47	GOOD! FT by PARRAMORE, CANDICE [FB]	84-40	H 44	
01:17		86-40	H 46	GOOD! JUMPER by WHEELER, KARLI [FB/PNT]

Grambling 40, Oklahoma St. 86

**Official Substitutions Log
Grambling vs Oklahoma St.
Period 1**

December 30, 2018 at Gallagher-Iba Arena (Eddie Sutton Court) - Stillwater, Oklahoma



VISITORS: Grambling	Time	Score	HOME: Oklahoma St.
12 COLEMAN,JUSTICE			12 GRAY,VIVIAN
13 BOYD,JAZMINE			14 MILLER,BRAXTIN
20 WASHINGTON,KENDRIANA			15 GNANOU,MARIAM
1 FORTE,JASMINE			23 HOBBS,JADEN
2 HILL,SHAKYLA			30 CASTRO,MARIA
SUB OUT: 1 FORTE,JASMINE	06:53	4-3	
SUB IN: 25 CONNALLY-BANKS,MADISON	06:53		
	05:35	6-7	SUB OUT: HOBBS,JADEN
	05:35		SUB IN: ASBERRY,JA'MEE
	05:35		SUB OUT: GNANOU,MARIAM
	05:35		SUB IN: DE LAPP,KASSIDY
SUB OUT: 20 WASHINGTON,KENDRIANA	05:35		
SUB IN: 23 YANCY,MYLASHIA	05:35		
	03:31	6-11	SUB OUT: MILLER,BRAXTIN
	03:31		SUB IN: HOBBS,JADEN
	03:31		SUB OUT: CASTRO,MARIA
	03:31		SUB IN: WINCHESTER,ABBIE
SUB OUT: 12 COLEMAN,JUSTICE	03:31		
SUB IN: 3 PARSONS,TAKERRA	03:31		
	02:20	8-11	SUB OUT: GRAY,VIVIAN
	02:20		SUB IN: MILLER,BRAXTIN
SUB OUT: 2 HILL,SHAKYLA	02:20		
SUB IN: 11 WILLIAMS,ARIEL	02:20		
SUB OUT: 13 BOYD,JAZMINE	02:20		
SUB IN: 21 LONDON,CAMRYN	02:20		
	00:22	10-12	SUB OUT: DE LAPP,KASSIDY
	00:22		SUB IN: GNANOU,MARIAM
	00:22		SUB OUT: ASBERRY,JA'MEE
	00:22		SUB IN: DE SOUSA,CLITAN
SUB OUT: 23 YANCY,MYLASHIA	00:22		
SUB IN: 12 COLEMAN,JUSTICE	00:22		
	00:22		SUB OUT: WINCHESTER,ABBIE
	00:22		SUB IN: GRAY,VIVIAN
	00:22		SUB OUT: DE SOUSA,CLITAN
	00:22		SUB IN: CASTRO,MARIA
SUB OUT: 25 CONNALLY-BANKS,MADISON	00:22		
SUB IN: 23 YANCY,MYLASHIA	00:22		

Grambling 12, Oklahoma St. 13

**Official Substitutions Log
Grambling vs Oklahoma St.
Period 2**

December 30, 2018 at Gallagher-Iba Arena (Eddie Sutton Court) - Stillwater, Oklahoma



VISITORS: Grambling	Time	Score	HOME: Oklahoma St.
12 COLEMAN,JUSTICE			12 GRAY,VIVIAN
13 BOYD,JAZMINE			14 MILLER,BRAXTIN
20 WASHINGTON,KENDRIANA			15 GNANOU,MARIAM
1 FORTE,JASMINE			23 HOBBS,JADEN
2 HILL,SHAKYLA			30 CASTRO,MARIA
SUB OUT: 12 COLEMAN,JUSTICE	09:59	-	
SUB IN: 1 FORTE,JASMINE	09:59		
SUB OUT: 1 FORTE,JASMINE	09:02	-	
SUB IN: 2 HILL,SHAKYLA	09:02		
SUB OUT: 11 WILLIAMS,ARIEL	09:02		
SUB IN: 13 BOYD,JAZMINE	09:02		
SUB OUT: 23 YANCY,MYLASHIA	09:02		
SUB IN: 12 COLEMAN,JUSTICE	09:02		
SUB OUT: 21 LONDON,CAMRYN	07:51	12-20	
SUB IN: 20 WASHINGTON,KENDRIANA	07:51		
	05:35	12-24	SUB OUT: MILLER,BRAXTIN
	05:35		SUB IN: DE SOUSA,CLITAN
	05:29	13-24	SUB OUT: GNANOU,MARIAM
	05:29		SUB IN: DE LAPP,KASSIDY
SUB OUT: 12 COLEMAN,JUSTICE	04:58	14-26	
SUB IN: 25 CONNALLY-BANKS,MADISON	04:58		
	04:20	16-26	SUB OUT: CASTRO,MARIA
	04:20		SUB IN: MILLER,BRAXTIN
	04:20		SUB OUT: GRAY,VIVIAN
	04:20		SUB IN: WINCHESTER,ABBIE
	02:45	19-28	SUB OUT: WINCHESTER,ABBIE
	02:45		SUB IN: GERLICH,BRYN
	02:45		SUB OUT: DE SOUSA,CLITAN
	02:45		SUB IN: CASTRO,MARIA
SUB OUT: 25 CONNALLY-BANKS,MADISON	02:45		
SUB IN: 12 COLEMAN,JUSTICE	02:45		
	01:02	20-33	SUB OUT: HOBBS,JADEN
	01:02		SUB IN: ASBERRY,JA'MEE
	00:32	21-36	SUB OUT: MILLER,BRAXTIN
	00:32		SUB IN: DE SOUSA,CLITAN
SUB OUT: 20 WASHINGTON,KENDRIANA	00:04	22-36	
SUB IN: 23 YANCY,MYLASHIA	00:04		

Grambling 22, Oklahoma St. 36

**Official Substitutions Log
Grambling vs Oklahoma St.
Period 3**

December 30, 2018 at Gallagher-Iba Arena (Eddie Sutton Court) - Stillwater, Oklahoma



VISITORS: Grambling	Time	Score	HOME: Oklahoma St.
12 COLEMAN,JUSTICE			12 GRAY,VIVIAN
13 BOYD,JAZMINE			14 MILLER,BRAXTIN
20 WASHINGTON,KENDRIANA			15 GNANOU,MARIAM
1 FORTE,JASMINE			23 HOBBS,JADEN
2 HILL,SHAKYLA			30 CASTRO,MARIA
SUB OUT: 1 FORTE,JASMINE	08:19	22-40	
SUB IN: 25 CONNALLY-BANKS,MADISON	08:19		
SUB OUT: 25 CONNALLY-BANKS,MADISON	08:04	22-43	
SUB IN: 3 PARSONS,TAKERRA	08:04		
SUB OUT: 2 HILL,SHAKYLA	07:45	22-43	
SUB IN: 15 PARRAMORE,CANDICE	07:45		
	07:06	22-43	SUB OUT: HOBBS,JADEN
	07:06		SUB IN: ASBERRY,JA'MEE
	05:34	22-50	SUB OUT: MILLER,BRAXTIN
	05:34		SUB IN: GERLICH,BRYN
SUB OUT: 20 WASHINGTON,KENDRIANA	05:34		
SUB IN: 23 YANCY,MYLASHIA	05:34		
SUB OUT: 3 PARSONS,TAKERRA	05:34		
SUB IN: 25 CONNALLY-BANKS,MADISON	05:34		
	04:50	23-50	SUB OUT: GRAY,VIVIAN
	04:50		SUB IN: MILLER,BRAXTIN
	02:56	26-59	SUB OUT: CASTRO,MARIA
	02:56		SUB IN: DE LAPP,KASSIDY
	02:56		SUB OUT: GNANOU,MARIAM
	02:56		SUB IN: WINCHESTER,ABBIE
SUB OUT: 13 BOYD,JAZMINE	02:56		
SUB IN: 2 HILL,SHAKYLA	02:56		
SUB OUT: 15 PARRAMORE,CANDICE	02:56		
SUB IN: 21 LONDON,CAMRYN	02:56		
SUB OUT: 23 YANCY,MYLASHIA	02:56		
SUB IN: 11 WILLIAMS,ARIEL	02:56		
	01:29	29-61	SUB OUT: GERLICH,BRYN
	01:29		SUB IN: GRAY,VIVIAN
	01:29		SUB OUT: ASBERRY,JA'MEE
	01:29		SUB IN: WHEELER,KARLI

Grambling 32, Oklahoma St. 63

**Official Substitutions Log
Grambling vs Oklahoma St.
Period 4**

December 30, 2018 at Gallagher-Iba Arena (Eddie Sutton Court) - Stillwater, Oklahoma



VISITORS: Grambling	Time	Score	HOME: Oklahoma St.
12 COLEMAN,JUSTICE			12 GRAY,VIVIAN
13 BOYD,JAZMINE			14 MILLER,BRAXTIN
20 WASHINGTON,KENDRIANA			15 GNANOU,MARIAM
1 FORTE,JASMINE			23 HOBBS,JADEN
2 HILL,SHAKYLA			30 CASTRO,MARIA
SUB OUT: 12 COLEMAN,JUSTICE	09:55	-	
SUB IN: 3 PARSONS,TAKERRA	09:55		
SUB OUT: 25 CONNALLY-BANKS,MADISON	07:30	35-70	
SUB IN: 1 FORTE,JASMINE	07:30		
SUB OUT: 21 LONDON,CAMRYN	07:30		
SUB IN: 5 BODY,MARKISHA	07:30		
SUB OUT: 11 WILLIAMS,ARIEL	07:30		
SUB IN: 20 WASHINGTON,KENDRIANA	07:30		
	05:14	37-74	SUB OUT: DE LAPP,KASSIDY
	05:14		SUB IN: GERLICH,BRYN
	05:14		SUB OUT: GRAY,VIVIAN
	05:14		SUB IN: GNANOU,MARIAM
	05:14		SUB OUT: MILLER,BRAXTIN
	05:14		SUB IN: ASBERRY,JA'MEE
	05:14		SUB OUT: WHEELER,KARLI
	05:14		SUB IN: HOBBS,JADEN
	05:14		SUB OUT: WINCHESTER,ABBIE
	05:14		SUB IN: CASTRO,MARIA
SUB OUT: 1 FORTE,JASMINE	05:14		
SUB IN: 25 CONNALLY-BANKS,MADISON	05:14		
SUB OUT: 20 WASHINGTON,KENDRIANA	05:14		
SUB IN: 15 PARRAMORE,CANDICE	05:14		
SUB IN: 32 HENDERSON,HANNAH	04:58	37-74	
SUB OUT: 25 CONNALLY-BANKS,MADISON	04:58		
SUB OUT: 3 PARSONS,TAKERRA	04:58		
SUB IN: 20 WASHINGTON,KENDRIANA	04:58		
	03:08	38-80	SUB OUT: CASTRO,MARIA
	03:08		SUB IN: DE SOUSA,CLITAN
SUB OUT: 2 HILL,SHAKYLA	03:08		
SUB IN: 21 LONDON,CAMRYN	03:08		
	02:26	38-82	SUB OUT: HOBBS,JADEN
	02:26		SUB IN: WHEELER,KARLI
	01:47	38-84	SUB OUT: GNANOU,MARIAM
	01:47		SUB IN: DE LAPP,KASSIDY
SUB OUT: 5 BODY,MARKISHA	01:47		
SUB IN: 22 JAMES,RAYGHAN	01:47		

Grambling 40, Oklahoma St. 86

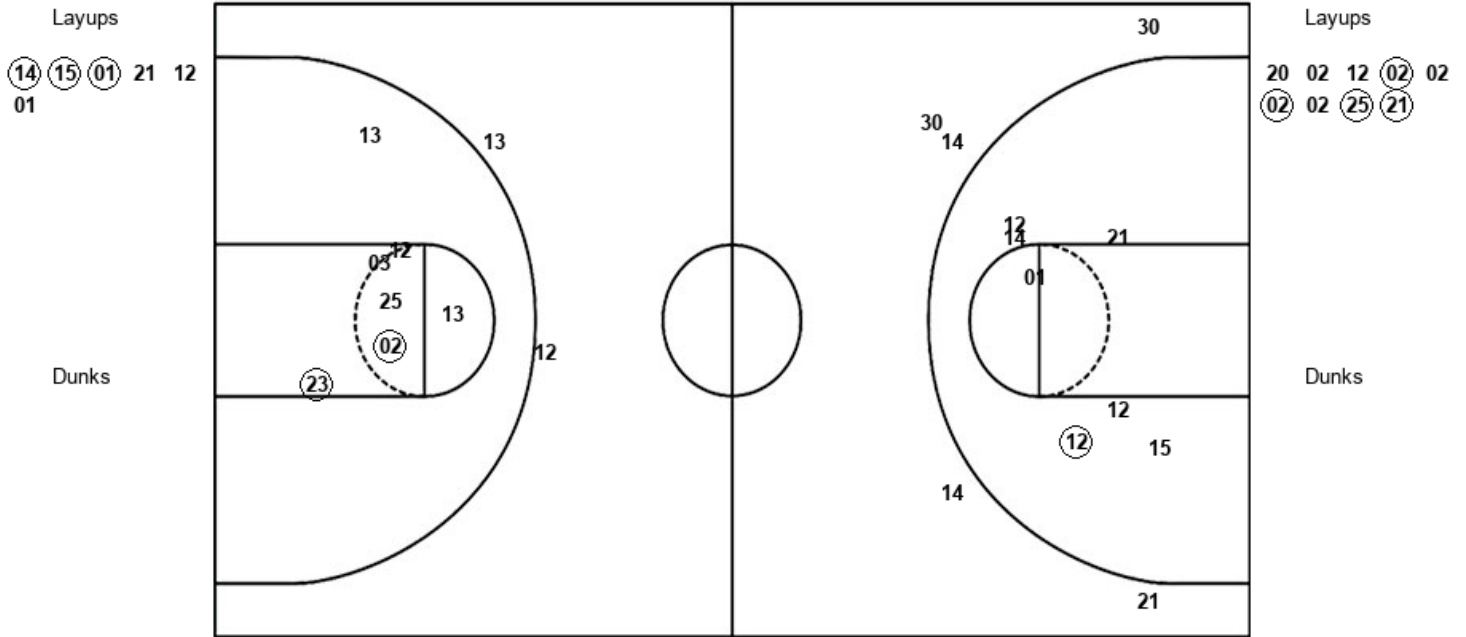
Official Shot Chart
 Grambling vs Oklahoma St.
 PERIOD 1 Shots

December 30, 2018 at Gallagher-Iba Arena (Eddie Sutton Court) - Stillwater, Oklahoma



Oklahoma St.

Grambling



OSU : Period 1	Made	Att	Pct
Layups	3	6	50.0
Dunks	0	0	0
2PT Field Goals	4	13	30.8
3PT Field Goals	0	5	00.0
Total Field Goals	4	18	22.2

GSU : Period 1	Made	Att	Pct
Layups	4	9	44.4
Dunks	0	0	0
2PT Field Goals	6	16	37.5
3PT Field Goals	0	2	00.0
Total Field Goals	6	18	33.3

Official Shot Chart
 Grambling vs Oklahoma St.
 PERIOD 2 Shots

December 30, 2018 at Gallagher-Iba Arena (Eddie Sutton Court) - Stillwater, Oklahoma



Oklahoma St.

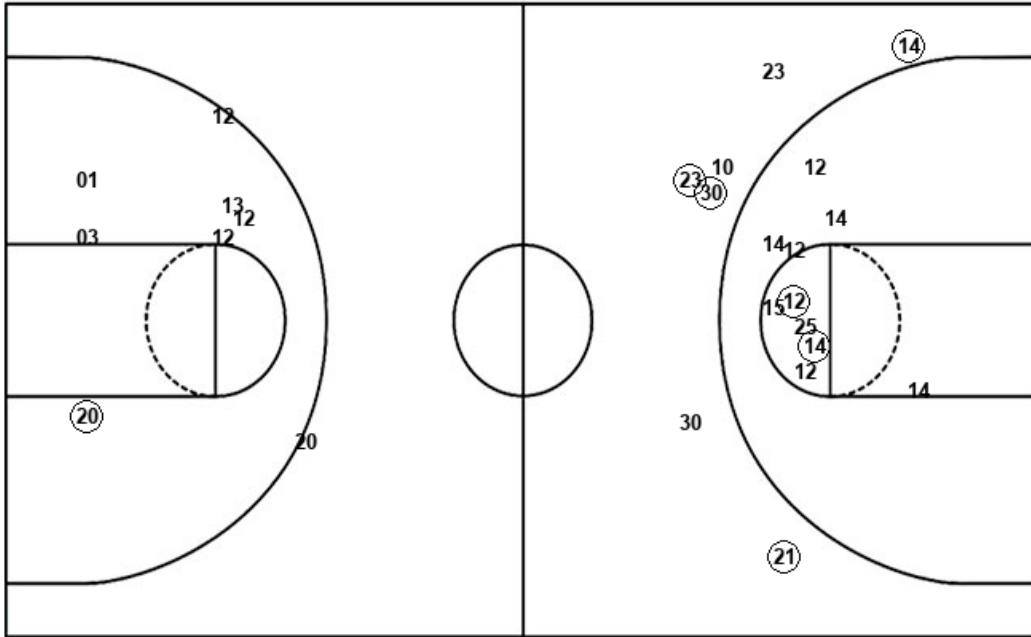
Grambling

Layups
 30 (30) (33)

Layups
 12 12 02 20 20
 (13) 02 02 20 20

Dunks

Dunks



OSU : Period 2	Made	Att	Pct
Layups	2	3	66.7
Dunks	0	0	0
2PT Field Goals	4	13	30.8
3PT Field Goals	4	7	57.1
Total Field Goals	8	20	40.0

GSU : Period 2	Made	Att	Pct
Layups	1	10	10.0
Dunks	0	0	0
2PT Field Goals	2	17	11.8
3PT Field Goals	0	1	00.0
Total Field Goals	2	18	11.1

Official Shot Chart
 Grambling vs Oklahoma St.
 PERIOD 3 Shots

December 30, 2018 at Gallagher-Iba Arena (Eddie Sutton Court) - Stillwater, Oklahoma



Oklahoma St.

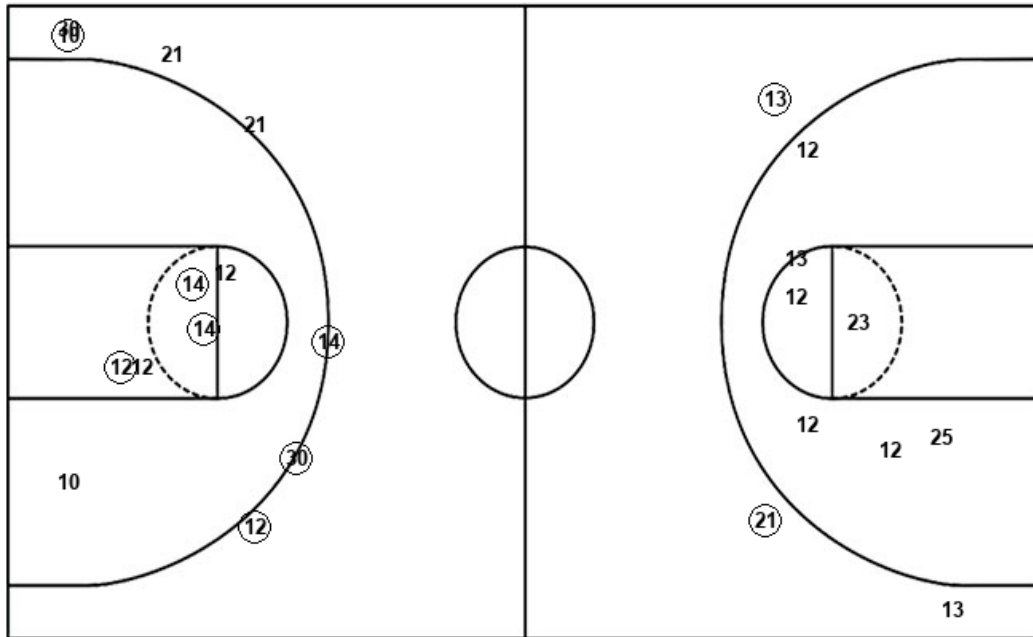
Grambling

Layups
 15 (15) (14) 14

Layups
 20 15 02

Dunks

Dunks



OSU : Period 3	Made	Att	Pct
Layups	2	4	50.0
Dunks	0	0	0
2PT Field Goals	5	10	50.0
3PT Field Goals	4	7	57.1
Total Field Goals	9	17	52.9

GSU : Period 3	Made	Att	Pct
Layups	0	3	00.0
Dunks	0	0	0
2PT Field Goals	0	10	00.0
3PT Field Goals	2	3	66.7
Total Field Goals	2	13	15.4

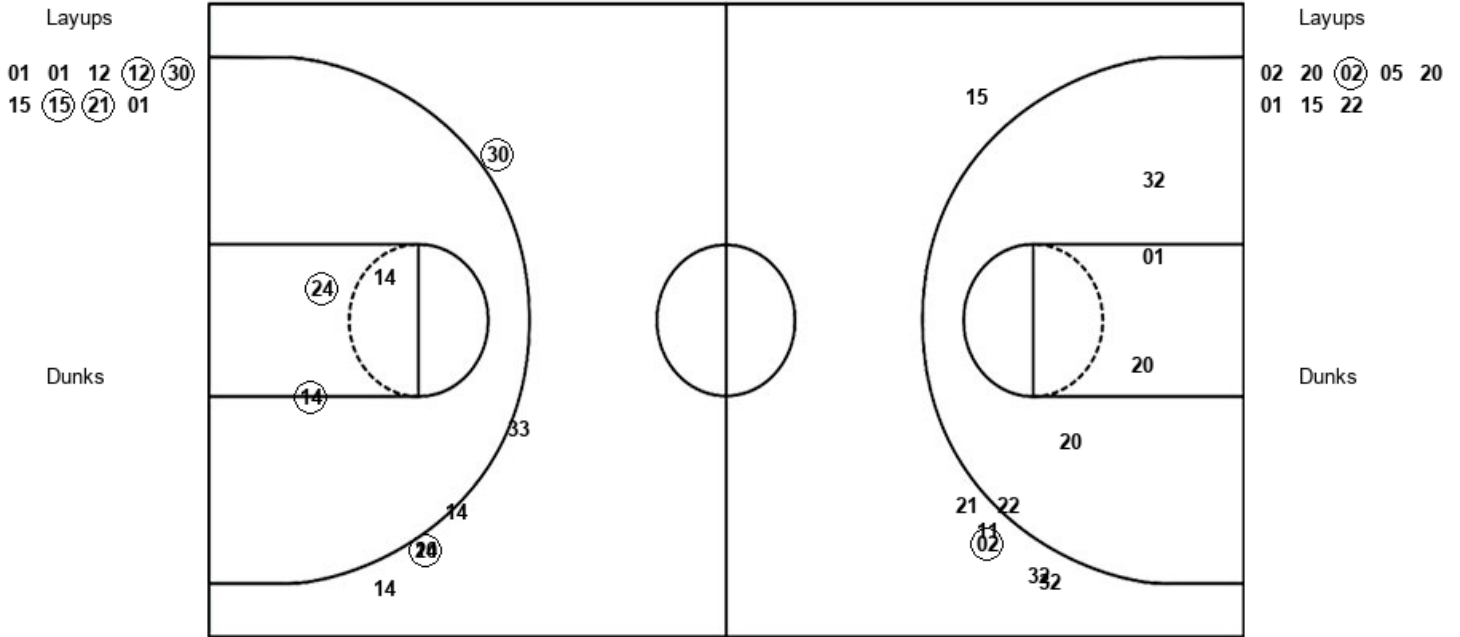
Official Shot Chart
 Grambling vs Oklahoma St.
 PERIOD 4 Shots

December 30, 2018 at Gallagher-Iba Arena (Eddie Sutton Court) - Stillwater, Oklahoma



Oklahoma St.

Grambling



OSU : Period 4	Made	Att	Pct
Layups	4	9	44.4
Dunks	0	0	0
2PT Field Goals	6	12	50.0
3PT Field Goals	2	6	33.3
Total Field Goals	8	18	44.4

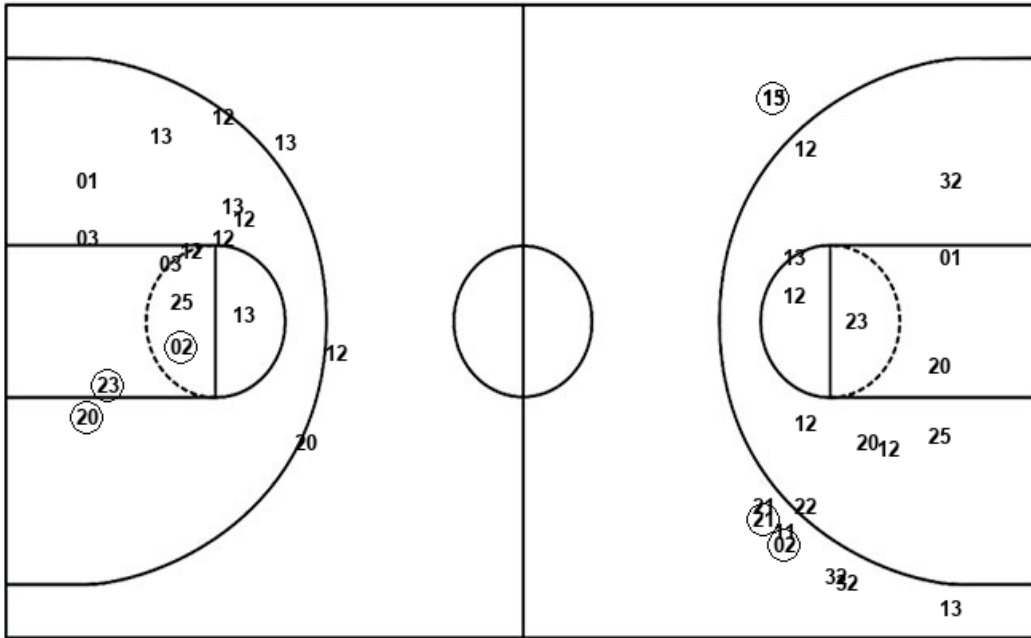
GSU : Period 4	Made	Att	Pct
Layups	1	8	12.5
Dunks	0	0	0
2PT Field Goals	1	13	07.7
3PT Field Goals	1	6	16.7
Total Field Goals	2	19	10.5

Official Shot Chart
Grambling vs Oklahoma St.
Grambling Team Shots

December 30, 2018 at Gallagher-Iba Arena (Eddie Sutton Court) - Stillwater, Oklahoma



Layups



Layups

20 02 12 (02) 02
 (02) 02 (25) (21) 12
 12 02 20 20 (13)
 02 02 20 20 20
 15 02 02 20 (02)
 05 20 01 15 22

Dunks

Dunks

GSU : Period 1	Made	Att	Pct
Layups	4	9	44.4
Dunks	0	0	0
2PT Field Goals	6	16	37.5
3PT Field Goals	0	2	00.0
Total Field Goals	6	18	33.3

GSU : Period 2	Made	Att	Pct
Layups	1	10	10.0
Dunks	0	0	0
2PT Field Goals	2	17	11.8
3PT Field Goals	0	1	00.0
Total Field Goals	2	18	11.1

GSU : Period 3	Made	Att	Pct
Layups	0	3	00.0
Dunks	0	0	0
2PT Field Goals	0	10	00.0
3PT Field Goals	2	3	66.7
Total Field Goals	2	13	15.4

GSU : Period 4	Made	Att	Pct
Layups	1	8	12.5
Dunks	0	0	0
2PT Field Goals	1	13	07.7
3PT Field Goals	1	6	16.7
Total Field Goals	2	19	10.5

