

FINAL SCORE

Delaware

64



UNCW

72



February 24, 2019 • Trask Coliseum - Wilmington, N.C.

FINAL STATISTICS

Official Box Score
Delaware vs UNCW
Game Totals -- Final Statistics
February 24, 2019 at Trask Coliseum - Wilmington, N.C.



Delaware 64

| No. | Player | S | Pts | FG | 3FG | FT | OR | DR | TR | PF | A | TO | Blk | Stl | Min | +/- |
|---------------|-------------------|---|-----------|--------------|-------------|------------|----------|-----------|-----------|-----------|-----------|-----------|----------|----------|------------|-----|
| 02 | GONZALES, ABBY | | 9 | 3-9 | 3-6 | 0-0 | 0 | 2 | 2 | 4 | 4 | 3 | 0 | 2 | 33 | -5 |
| 12 | OLEARY, LIZZIE | | 4 | 1-4 | 0-0 | 2-2 | 3 | 3 | 6 | 4 | 1 | 4 | 0 | 1 | 27 | 1 |
| 22 | DEFREESE, SAMONE | | 2 | 1-5 | 0-0 | 0-0 | 1 | 2 | 3 | 3 | 1 | 3 | 0 | 1 | 14 | -11 |
| 23 | KARGO, BAILEY | | 4 | 2-4 | 0-2 | 0-0 | 0 | 0 | 0 | 2 | 1 | 1 | 0 | 1 | 21 | 0 |
| 25 | LAWRENCE, REBECCA | | 19 | 9-11 | 1-1 | 0-0 | 1 | 3 | 4 | 3 | 3 | 1 | 2 | 0 | 36 | -3 |
| 00 | LEFFT, GADSON | | 0 | 0-0 | 0-0 | 0-0 | 1 | 2 | 3 | 1 | 0 | 1 | 0 | 0 | 5 | -3 |
| 04 | MCBRIDE, PARIS | | 6 | 2-5 | 0-1 | 2-2 | 0 | 3 | 3 | 3 | 3 | 4 | 0 | 1 | 26 | -11 |
| 05 | NICHOLAS, MAKEDA | | 0 | 0-2 | 0-0 | 0-0 | 1 | 2 | 3 | 3 | 0 | 2 | 0 | 0 | 9 | -7 |
| 35 | LEWIS, ALISON | | 20 | 8-12 | 0-1 | 4-5 | 2 | 5 | 7 | 3 | 2 | 4 | 0 | 0 | 29 | -1 |
| | TEAM | | | | | | 0 | 2 | 2 | 0 | | 0 | | | | |
| TOTALS | | | 64 | 26-52 | 4-11 | 8-9 | 9 | 24 | 33 | 26 | 15 | 23 | 2 | 6 | 200 | |

Shooting By Period

| Period | FG | FG% | 3FG | 3FG% | FT | FT% |
|-------------|--------------|--------------|-------------|--------------|------------|--------------|
| 1st Qtr | 6-13 | 46% | 3-5 | 60% | 2-2 | 100% |
| 2nd Qtr | 6-12 | 50% | 0-1 | 00% | 2-2 | 100% |
| 3rd Qtr | 7-14 | 50% | 1-3 | 33% | 0-1 | 00% |
| 4th Qtr | 7-13 | 54% | 0-2 | 00% | 4-4 | 100% |
| 1st Half | 12-25 | 48% | 3-6 | 50% | 4-4 | 100% |
| 2nd Half | 14-27 | 52% | 1-5 | 20% | 4-5 | 80% |
| Game | 26-52 | 50.0% | 4-11 | 36.4% | 8-9 | 88.9% |

Last FG: 4th-00:04
Biggest Run: 8-0
Largest lead: By 8 at 1-05:45
Technical Fouls: None.

UNCW 72

| No. | Player | S | Pts | FG | 3FG | FT | OR | DR | TR | PF | A | TO | Blk | Stl | Min | +/- |
|---------------|--------------------|---|-----------|--------------|-------------|--------------|----------|-----------|-----------|-----------|-----------|-----------|----------|-----------|------------|-----|
| 00 | JEUNE, ASHLI | | 5 | 2-5 | 1-3 | 0-0 | 0 | 2 | 2 | 2 | 2 | 0 | 0 | 1 | 13 | -7 |
| 04 | PARKER, SHRITA | | 4 | 1-4 | 1-4 | 1-2 | 0 | 1 | 1 | 1 | 1 | 4 | 0 | 0 | 22 | -10 |
| 05 | SMITH, GIGI | | 19 | 7-13 | 2-3 | 3-4 | 1 | 3 | 4 | 1 | 5 | 3 | 0 | 5 | 37 | 11 |
| 12 | BUEHLER, JULIA | | 0 | 0-0 | 0-0 | 0-0 | 0 | 0 | 0 | 0 | 0 | 0 | 0 | 0 | 3 | -9 |
| 24 | BELL, CHINYERE | | 20 | 6-10 | 0-0 | 8-11 | 3 | 5 | 8 | 4 | 3 | 2 | 2 | 0 | 28 | 5 |
| 01 | POWELL, PAIGE | | 0 | 0-0 | 0-0 | 0-0 | 0 | 1 | 1 | 0 | 0 | 1 | 0 | 0 | 2 | 2 |
| 02 | CRISP, MORIAH | | 0 | 0-0 | 0-0 | 0-0 | 0 | 1 | 1 | 0 | 1 | 2 | 0 | 0 | 19 | 2 |
| 10 | VASON, AHYIONA | | 7 | 2-4 | 0-0 | 3-4 | 1 | 3 | 4 | 0 | 4 | 1 | 0 | 3 | 27 | 30 |
| 13 | SUGGS, LACEY | | 12 | 3-9 | 0-1 | 6-8 | 1 | 2 | 3 | 3 | 1 | 0 | 1 | 2 | 37 | 18 |
| 14 | TATE, TIMBER | | 3 | 1-2 | 1-2 | 0-0 | 0 | 0 | 0 | 0 | 0 | 0 | 0 | 0 | 3 | -3 |
| 32 | OBUSEK, CAROL-ANNE | | 2 | 1-3 | 0-0 | 0-0 | 0 | 0 | 0 | 1 | 1 | 0 | 0 | 0 | 10 | 1 |
| | TEAM | | | | | | 0 | 0 | 0 | 0 | | 0 | | | | |
| TOTALS | | | 72 | 23-50 | 5-13 | 21-29 | 6 | 18 | 24 | 12 | 18 | 13 | 3 | 11 | 200 | |

Shooting By Period

| Period | FG | FG% | 3FG | 3FG% | FT | FT% |
|-------------|--------------|--------------|-------------|--------------|--------------|--------------|
| 1st Qtr | 7-14 | 50% | 1-2 | 50% | 5-6 | 83% |
| 2nd Qtr | 3-11 | 27% | 2-5 | 40% | 6-8 | 75% |
| 3rd Qtr | 6-11 | 55% | 1-2 | 50% | 6-11 | 55% |
| 4th Qtr | 7-14 | 50% | 1-4 | 25% | 4-4 | 100% |
| 1st Half | 10-25 | 40% | 3-7 | 43% | 11-14 | 79% |
| 2nd Half | 13-25 | 52% | 2-6 | 33% | 10-15 | 67% |
| Game | 23-50 | 46.0% | 5-13 | 38.5% | 21-29 | 72.4% |

Last FG: 4th-00:33
Biggest Run: 12-0
Largest lead: By 10 at 4-00:19
Technical Fouls: None.

Game Notes:

Officials: Jennifer Rezac, Roy Jackson, Carmen Portorreal
 Attendance: 726

Start Time: 2019-02-24 18:05:54
 End Time: 2019-02-24 20:00:50
 Game Duration: 114
 Conference Game;

| Score | 1st | 2nd | 3rd | 4th | TOT |
|-------|-----|-----|-----|-----|-----------|
| DEL | 17 | 14 | 15 | 18 | 64 |
| NCW | 20 | 14 | 19 | 19 | 72 |

DEL led for 8:52. NCW led for 28:13.
 Game was tied for 2:55.
 Times tied: 4 Lead Changes: 5

| Points from | DEL | NCW |
|--------------|-----|-----|
| In the Paint | 20 | 30 |
| Off Turns | 16 | 28 |
| 2nd Chance | 12 | 9 |
| Fast Break | 17 | 13 |
| Bench | 26 | 24 |

Official Box Score
Delaware vs UNCW
First Half Statistics Only
February 24, 2019 at Trask Coliseum - Wilmington, N.C.



Delaware 31

| No. | Player | S | Pts | FG | 3FG | FT | OR | DR | TR | PF | A | TO | Blk | Stl | Min | +/- |
|---------------|-------------------|---|-----------|--------------|------------|------------|----------|-----------|-----------|-----------|----------|-----------|----------|----------|------------|-----|
| 00 | LEFFT, GADSON | | 0 | 0-0 | 0-0 | 0-0 | 1 | 1 | 2 | 1 | 0 | 1 | 0 | 0 | 5 | -2 |
| 12 | OLEARY, LIZZIE | | 4 | 1-3 | 0-0 | 2-2 | 2 | 3 | 5 | 1 | 1 | 3 | 0 | 1 | 15 | 5 |
| 22 | DEFREESE, SAMONE | | 2 | 1-4 | 0-0 | 0-0 | 1 | 2 | 3 | 2 | 0 | 2 | 0 | 1 | 10 | -4 |
| 23 | KARGO, BAILEY | | 4 | 2-3 | 0-1 | 0-0 | 0 | 0 | 0 | 2 | 1 | 1 | 0 | 1 | 13 | 5 |
| 25 | LAWRENCE, REBECCA | | 7 | 3-4 | 1-1 | 0-0 | 0 | 3 | 3 | 1 | 1 | 1 | 0 | 0 | 18 | 0 |
| 35 | LEWIS, ALISON | | 6 | 2-3 | 0-0 | 2-2 | 2 | 0 | 2 | 3 | 0 | 3 | 0 | 0 | 10 | 1 |
| 02 | GONZALES, ABBY | | 6 | 2-6 | 2-4 | 0-0 | 0 | 0 | 0 | 2 | 3 | 2 | 0 | 1 | 18 | -5 |
| 04 | MCBRIDE, PARIS | | 2 | 1-1 | 0-0 | 0-0 | 0 | 2 | 2 | 0 | 1 | 1 | 0 | 1 | 9 | -6 |
| 05 | NICHOLAS, MAKEDA | | 0 | 0-1 | 0-0 | 0-0 | 1 | 0 | 1 | 2 | 0 | 2 | 0 | 0 | 3 | -9 |
| | TEAM | | 0 | 0-0 | 0-0 | 0-0 | 0 | 1 | 1 | 0 | 0 | 0 | 0 | 0 | 0 | 0 |
| TOTALS | | | 31 | 12-25 | 3-6 | 4-4 | 7 | 12 | 19 | 14 | 7 | 16 | 0 | 5 | 100 | |

Shooting By Period

| Period | FG | FG% | 3FG | 3FG% | FT | FT% |
|----------|-------|-------|------|-------|-----|-------|
| 1st Qtr | 6-13 | 46% | 3-5 | 60% | 2-2 | 100% |
| 2nd Qtr | 6-12 | 50% | 0-1 | 00% | 2-2 | 100% |
| 1st Half | 12-25 | 48% | 3-6 | 50% | 4-4 | 100% |
| Game | 26-52 | 50.0% | 4-11 | 36.4% | 8-9 | 88.9% |

Last FG Half: DEL 2nd-02:08

UNCW 34

| No. | Player | S | Pts | FG | 3FG | FT | OR | DR | TR | PF | A | TO | Blk | Stl | Min | +/- |
|---------------|--------------------|---|-----------|--------------|------------|--------------|----------|----------|----------|----------|----------|----------|----------|----------|------------|-----|
| 00 | JEUNE, ASHLI | | 0 | 0-0 | 0-0 | 0-0 | 0 | 1 | 1 | 2 | 1 | 0 | 0 | 0 | 6 | -8 |
| 01 | POWELL, PAIGE | | 0 | 0-0 | 0-0 | 0-0 | 0 | 1 | 1 | 0 | 0 | 1 | 0 | 0 | 3 | 2 |
| 02 | CRISP, MORIAH | | 0 | 0-0 | 0-0 | 0-0 | 0 | 0 | 0 | 0 | 0 | 1 | 0 | 0 | 4 | 3 |
| 04 | PARKER, SHRITA | | 4 | 1-2 | 1-2 | 1-2 | 0 | 1 | 1 | 0 | 1 | 4 | 0 | 0 | 14 | 0 |
| 05 | SMITH, GIGI | | 10 | 3-8 | 1-2 | 3-4 | 1 | 0 | 1 | 1 | 2 | 2 | 0 | 3 | 17 | 6 |
| 10 | VASON, AHYIONA | | 5 | 1-3 | 0-0 | 3-4 | 1 | 2 | 3 | 0 | 2 | 0 | 0 | 2 | 16 | 11 |
| 12 | BUEHLER, JULIA | | 0 | 0-0 | 0-0 | 0-0 | 0 | 0 | 0 | 0 | 0 | 0 | 0 | 0 | 2 | -7 |
| 13 | SUGGS, LACEY | | 2 | 0-3 | 0-1 | 2-2 | 0 | 1 | 1 | 0 | 1 | 0 | 0 | 1 | 18 | 10 |
| 14 | TATE, TIMBER | | 3 | 1-2 | 1-2 | 0-0 | 0 | 0 | 0 | 0 | 0 | 0 | 0 | 0 | 3 | -3 |
| 24 | BELL, CHINYERE | | 8 | 3-5 | 0-0 | 2-2 | 1 | 0 | 1 | 2 | 0 | 0 | 1 | 0 | 12 | -9 |
| 32 | OBUSEK, CAROL-ANNE | | 2 | 1-2 | 0-0 | 0-0 | 0 | 0 | 0 | 0 | 1 | 0 | 0 | 0 | 6 | 10 |
| | TEAM | | 0 | 0-0 | 0-0 | 0-0 | 0 | 0 | 0 | 0 | 0 | 0 | 0 | 0 | 0 | 0 |
| TOTALS | | | 34 | 10-25 | 3-7 | 11-14 | 3 | 6 | 9 | 5 | 8 | 8 | 1 | 6 | 100 | |

Shooting By Period

| Period | FG | FG% | 3FG | 3FG% | FT | FT% |
|----------|-------|-------|------|-------|-------|-------|
| 1st Qtr | 7-14 | 50% | 1-2 | 50% | 5-6 | 83% |
| 2nd Qtr | 3-11 | 27% | 2-5 | 40% | 6-8 | 75% |
| 1st Half | 10-25 | 40% | 3-7 | 43% | 11-14 | 79% |
| Game | 23-50 | 46.0% | 5-13 | 38.5% | 21-29 | 72.4% |

Last FG Half: NCW 2nd-04:01

Game Notes:

Officials: Jennifer Rezac, Roy Jackson, Carmen Portorreal
 Attendance: 726

Start Time: 2019-02-24 18:05:54
 End Time: 2019-02-24 20:00:50
 Game Duration: 114
 Conference Game;

| Score | 1st | 2nd | 3rd | 4th | TOT |
|-------|-----|-----|-----|-----|-----------|
| DEL | 17 | 14 | 15 | 18 | 64 |
| NCW | 20 | 14 | 19 | 19 | 72 |

| Points from (This Period) | DEL | NCW |
|---------------------------|-----|-----|
| In the Paint | 12 | 10 |
| Off Turns | 12 | 18 |
| 2nd Chance | 8 | 6 |
| Fast Break | 13 | 5 |
| Bench | 8 | 12 |

Official Box Score
Delaware vs UNCW
First Quarter Statistics Only
February 24, 2019 at Trask Coliseum - Wilmington, N.C.



Delaware 17

| No. | Player | S | Pts | FG | 3FG | FT | OR | DR | TR | PF | A | TO | Blk | Stl | Min | +/- |
|---------------|-------------------|---|-----------|-------------|------------|------------|----------|----------|----------|----------|----------|----------|----------|----------|-----------|-----|
| 02 | GONZALES, ABBY | | 6 | 2-4 | 2-3 | 0-0 | 0 | 0 | 0 | 0 | 2 | 2 | 0 | 0 | 10 | -3 |
| 12 | OLEARY, LIZZIE | | 2 | 0-0 | 0-0 | 2-2 | 1 | 2 | 3 | 0 | 1 | 0 | 0 | 0 | 7 | 6 |
| 22 | DEFREESE, SAMONE | | 0 | 0-3 | 0-0 | 0-0 | 1 | 1 | 2 | 1 | 0 | 1 | 0 | 0 | 8 | -2 |
| 23 | KARGO, BAILEY | | 4 | 2-3 | 0-1 | 0-0 | 0 | 0 | 0 | 1 | 1 | 0 | 0 | 1 | 7 | 5 |
| 25 | LAWRENCE, REBECCA | | 5 | 2-2 | 1-1 | 0-0 | 0 | 2 | 2 | 0 | 1 | 1 | 0 | 0 | 8 | 0 |
| 00 | LEFFT, GADSON | | 0 | 0-0 | 0-0 | 0-0 | 0 | 0 | 0 | 0 | 0 | 0 | 0 | 0 | 2 | -3 |
| 04 | MCBRIDE, PARIS | | 0 | 0-0 | 0-0 | 0-0 | 0 | 0 | 0 | 0 | 0 | 1 | 0 | 1 | 3 | -8 |
| 05 | NICHOLAS, MAKEDA | | 0 | 0-1 | 0-0 | 0-0 | 1 | 0 | 1 | 2 | 0 | 2 | 0 | 0 | 3 | -9 |
| 35 | LEWIS, ALISON | | 0 | 0-0 | 0-0 | 0-0 | 0 | 0 | 0 | 1 | 0 | 0 | 0 | 0 | 2 | -1 |
| | TEAM | | | | | | 0 | 0 | 0 | 0 | | 0 | | | | |
| TOTALS | | | 17 | 6-13 | 3-5 | 2-2 | 3 | 5 | 8 | 5 | 5 | 7 | 0 | 2 | 50 | |

Shooting By Period

| Period | FG | FG% | 3FG | 3FG% | FT | FT% |
|----------|-------|-------|------|-------|-----|-------|
| 1st Qtr | 6-13 | 46% | 3-5 | 60% | 2-2 | 100% |
| 2nd Qtr | 6-12 | 50% | 0-1 | 00% | 2-2 | 100% |
| 1st Half | 6-13 | 46% | 3-5 | 60% | 2-2 | 100% |
| 1st Half | 12-25 | 48% | 3-6 | 50% | 4-4 | 100% |
| Game | 26-52 | 50.0% | 4-11 | 36.4% | 8-9 | 88.9% |

UNCW 20

| No. | Player | S | Pts | FG | 3FG | FT | OR | DR | TR | PF | A | TO | Blk | Stl | Min | +/- |
|---------------|--------------------|---|-----------|-------------|------------|------------|----------|----------|----------|----------|----------|----------|----------|----------|-----------|-----|
| 00 | JEUNE, ASHLI | | 0 | 0-0 | 0-0 | 0-0 | 0 | 1 | 1 | 1 | 1 | 0 | 0 | 0 | 5 | -8 |
| 04 | PARKER, SHRITA | | 1 | 0-0 | 0-0 | 1-2 | 0 | 1 | 1 | 0 | 1 | 2 | 0 | 0 | 7 | 4 |
| 05 | SMITH, GIGI | | 9 | 3-7 | 1-2 | 2-2 | 1 | 0 | 1 | 0 | 2 | 1 | 0 | 1 | 10 | 3 |
| 12 | BUEHLER, JULIA | | 0 | 0-0 | 0-0 | 0-0 | 0 | 0 | 0 | 0 | 0 | 0 | 0 | 0 | 2 | -7 |
| 24 | BELL, CHINYERE | | 8 | 3-4 | 0-0 | 2-2 | 1 | 0 | 1 | 0 | 0 | 0 | 1 | 0 | 7 | -7 |
| 01 | POWELL, PAIGE | | 0 | 0-0 | 0-0 | 0-0 | 0 | 1 | 1 | 0 | 0 | 1 | 0 | 0 | 2 | 3 |
| 02 | CRISP, MORIAH | | 0 | 0-0 | 0-0 | 0-0 | 0 | 0 | 0 | 0 | 0 | 0 | 0 | 0 | 0 | 0 |
| 10 | VASON, AHYIONA | | 0 | 0-1 | 0-0 | 0-0 | 0 | 0 | 0 | 0 | 1 | 0 | 0 | 1 | 8 | 10 |
| 13 | SUGGS, LACEY | | 0 | 0-1 | 0-0 | 0-0 | 0 | 1 | 1 | 0 | 0 | 0 | 0 | 1 | 8 | 10 |
| 14 | TATE, TIMBER | | 0 | 0-0 | 0-0 | 0-0 | 0 | 0 | 0 | 0 | 0 | 0 | 0 | 0 | 0 | 0 |
| 32 | OBUSEK, CAROL-ANNE | | 2 | 1-1 | 0-0 | 0-0 | 0 | 0 | 0 | 0 | 1 | 0 | 0 | 0 | 2 | 7 |
| | TEAM | | | | | | 0 | 0 | 0 | 0 | | 0 | | | | |
| TOTALS | | | 20 | 7-14 | 1-2 | 5-6 | 2 | 4 | 6 | 1 | 6 | 4 | 1 | 3 | 50 | |

Shooting By Period

| Period | FG | FG% | 3FG | 3FG% | FT | FT% |
|----------|-------|-------|------|-------|-------|-------|
| 1st Qtr | 7-14 | 50% | 1-2 | 50% | 5-6 | 83% |
| 2nd Qtr | 3-11 | 27% | 2-5 | 40% | 6-8 | 75% |
| 1st Half | 7-14 | 50% | 1-2 | 50% | 5-6 | 83% |
| 1st Half | 10-25 | 40% | 3-7 | 43% | 11-14 | 79% |
| Game | 23-50 | 46.0% | 5-13 | 38.5% | 21-29 | 72.4% |

Game Notes:

Officials: Jennifer Rezac, Roy Jackson, Carmen Portorreal
Attendance: 726

Start Time: 2019-02-24 18:05:54
End Time: 2019-02-24 20:00:50
Game Duration: 114
Conference Game;

| Score | 1st | 2nd | 3rd | 4th | TOT |
|-------|-----|-----|-----|-----|-----------|
| DEL | 17 | 14 | 15 | 18 | 64 |
| NCW | 20 | 14 | 19 | 19 | 72 |

| Points from (This Period) | DEL | NCW |
|---------------------------|-----|-----|
| In the Paint | 4 | 8 |
| Off Turns | 6 | 12 |
| 2nd Chance | 2 | 4 |
| Fast Break | 9 | 4 |
| Bench | 0 | 2 |

Official Play-By-Play
Delaware vs UNCW
First Quarter
February 24, 2019 at Trask Coliseum - Wilmington, N.C.



Period 1

Starters:

Delaware: 12 OLEARY, LIZZIE; 22 DEFREESE, SAMONE; 23 KARGO, BAILEY; 25 LAWRENCE, REBECCA; 2 GONZALES, ABBY;
UNCW: 0 JEUNE, ASHLI; 4 PARKER, SHRITA; 5 SMITH, GIGI; 12 BUEHLER, JULIA; 24 BELL, CHINYERE;

| Time | VISITORS: Delaware | Score | Margin | HOME: UNCW |
|-------|--|-------|--------|--------------------------------------|
| 09:38 | GOOD! LAYUP by KARGO, BAILEY | 0-2 | V 2 | |
| 09:31 | | | | TURNOVER (3SEC) by SMITH, GIGI |
| 09:19 | GOOD! 3PTR by GONZALES, ABBY | 0-5 | V 5 | |
| 09:19 | ASSIST by KARGO, BAILEY | | | |
| 09:00 | | | | TURNOVER (BADPASS) by PARKER, SHRITA |
| 09:00 | STEAL by KARGO, BAILEY | | | |
| 08:52 | GOOD! 3PTR by LAWRENCE, REBECCA [FB] | 0-8 | V 8 | |
| 08:52 | ASSIST by GONZALES, ABBY | | | |
| 08:29 | | 2-8 | V 6 | GOOD! LAYUP by BELL, CHINYERE |
| 08:29 | | | | ASSIST by JEUNE, ASHLI |
| 08:12 | MISSED JUMPER by DEFREESE, SAMONE | | | |
| 08:12 | | | | BLOCK by BELL, CHINYERE |
| 08:05 | | | | REBOUND (DEF) by JEUNE, ASHLI |
| 07:47 | | | | MISSED LAYUP by SMITH, GIGI |
| 07:44 | REBOUND (DEF) by OLEARY, LIZZIE | | | |
| 07:40 | MISSED LAYUP by GONZALES, ABBY | | | |
| 07:39 | REBOUND (OFF) by OLEARY, LIZZIE | | | |
| 07:39 | | | | FOUL (PERSONAL) by JEUNE, ASHLI |
| 07:39 | GOOD! FT by OLEARY, LIZZIE [FB] | 2-9 | V 7 | |
| 07:39 | | | | SUB OUT: PARKER, SHRITA |
| 07:39 | | | | SUB IN: SUGGS, LACEY |
| 07:39 | | | | SUB OUT: BUEHLER, JULIA |
| 07:39 | | | | SUB IN: VASON, AHYIONA |
| 07:39 | GOOD! FT by OLEARY, LIZZIE [FB] | 2-10 | V 8 | |
| 07:20 | | 4-10 | V 6 | GOOD! JUMPER by BELL, CHINYERE |
| 07:20 | | | | ASSIST by SMITH, GIGI |
| 06:59 | TURNOVER (BADPASS) by GONZALES, ABBY | | | |
| 06:59 | | | | STEAL by SUGGS, LACEY |
| 06:53 | | | | MISSED LAYUP by SUGGS, LACEY |
| 06:52 | | | | REBOUND (OFF) by SMITH, GIGI |
| 06:52 | FOUL (PERSONAL) by DEFREESE, SAMONE | | | |
| 06:52 | | 5-10 | V 5 | GOOD! FT by SMITH, GIGI [FB] |
| 06:52 | | 6-10 | V 4 | GOOD! FT by SMITH, GIGI [FB] |
| 06:35 | TURNOVER (OTHER) by DEFREESE, SAMONE | | | |
| 06:25 | | | | MISSED LAYUP by VASON, AHYIONA |
| 06:22 | REBOUND (DEF) by OLEARY, LIZZIE | | | |
| 06:16 | GOOD! JUMPER by LAWRENCE, REBECCA [FB/PNT] | 6-12 | V 6 | |
| 06:16 | ASSIST by OLEARY, LIZZIE | | | |
| 05:52 | | | | MISSED JUMPER by SMITH, GIGI |
| 05:48 | REBOUND (DEF) by LAWRENCE, REBECCA | | | |
| 05:45 | GOOD! JUMPER by KARGO, BAILEY [FB] | 6-14 | V 8 | |
| 05:45 | ASSIST by GONZALES, ABBY | | | |
| 05:25 | | | | MISSED JUMPER by BELL, CHINYERE |
| 05:22 | REBOUND (DEF) by LAWRENCE, REBECCA | | | |
| 05:18 | TURNOVER (BADPASS) by GONZALES, ABBY | | | |
| 05:18 | | | | STEAL by SMITH, GIGI |
| 05:03 | | | | SUB OUT: JEUNE, ASHLI |
| 05:03 | | | | SUB IN: POWELL, PAIGE |
| 05:03 | | | | SUB OUT: BELL, CHINYERE |
| 05:03 | | | | SUB IN: PARKER, SHRITA |
| 05:03 | SUB OUT: OLEARY, LIZZIE | | | |
| 05:03 | SUB IN: LEFFT, GADSON | | | |
| 05:03 | SUB OUT: LAWRENCE, REBECCA | | | |
| 05:03 | SUB IN: NICHOLAS, MAKEDA | | | |
| 04:51 | FOUL (PERSONAL) by NICHOLAS, MAKEDA | | | |
| 04:51 | | | | |
| 04:42 | FOUL (PERSONAL) by KARGO, BAILEY | | | |
| 04:30 | | 9-14 | V 5 | GOOD! 3PTR by SMITH, GIGI |
| 04:30 | | | | ASSIST by VASON, AHYIONA |
| 04:14 | MISSED LAYUP by DEFREESE, SAMONE | | | |
| 04:10 | | | | REBOUND (DEF) by SUGGS, LACEY |
| 04:03 | | | | MISSED 3PTR by SMITH, GIGI |
| 03:59 | REBOUND (DEF) by DEFREESE, SAMONE | | | |
| 03:50 | MISSED JUMPER by NICHOLAS, MAKEDA | | | |
| 03:47 | REBOUND (OFF) by DEFREESE, SAMONE | | | |
| 03:35 | MISSED 3PTR by KARGO, BAILEY | | | |
| 03:32 | | | | REBOUND (DEF) by POWELL, PAIGE |
| 03:24 | | | | TURNOVER (LOSTBALL) by POWELL, PAIGE |
| 03:24 | | | | SUB OUT: POWELL, PAIGE |
| 03:24 | | | | SUB IN: OBUSEK, CAROL-ANNE |

| Time | VISITORS: Delaware | Score | Margin | HOME: UNCW |
|-------|--|-------|--------|--|
| 03:24 | SUB OUT: LEFFT, GADSON | | | |
| 03:24 | SUB IN: LAWRENCE, REBECCA | | | |
| 03:24 | SUB OUT: KARGO, BAILEY | | | |
| 03:24 | SUB IN: MCBRIDE, PARIS | | | |
| 03:12 | MISSED 3PTR by GONZALES, ABBY | | | |
| 03:09 | REBOUND (OFF) by NICHOLAS, MAKEDA | | | |
| 03:09 | TURNOVER (LOSTBALL) by NICHOLAS, MAKEDA | | | |
| 02:47 | | 11-14 | V 3 | GOOD! JUMPER by SMITH, GIGI |
| 02:47 | | | | ASSIST by OBUSEK, CAROL-ANNE |
| 02:24 | TURNOVER (LOSTBALL) by MCBRIDE, PARIS | | | |
| 02:24 | | | | STEAL by VASON, AHYIONA |
| 02:06 | | 13-14 | V 1 | GOOD! JUMPER by OBUSEK, CAROL-ANNE [PNT] |
| 02:06 | | | | ASSIST by SMITH, GIGI |
| 01:51 | MISSED JUMPER by DEFREESE, SAMONE | | | |
| 01:46 | | | | REBOUND (DEF) by PARKER, SHRITA |
| 01:43 | | 15-14 | H 1 | GOOD! LAYUP by SMITH, GIGI [FB] |
| 01:43 | | | | ASSIST by PARKER, SHRITA |
| 01:43 | FOUL (UNSPORTSMANLIKE) by NICHOLAS, MAKEDA | | | |
| 01:43 | TURNOVER (OFFENSIVE) by NICHOLAS, MAKEDA | | | |
| 01:43 | | | | REBOUND (OFF) by TEAM |
| 01:43 | SUB OUT: NICHOLAS, MAKEDA | | | |
| 01:43 | SUB IN: OLEARY, LIZZIE | | | |
| 01:42 | | | | SUB OUT: OBUSEK, CAROL-ANNE |
| 01:42 | | | | SUB IN: BELL, CHINYERE |
| 01:42 | | | | MISSED FT by PARKER, SHRITA |
| 01:42 | | 16-14 | H 2 | GOOD! FT by PARKER, SHRITA |
| 01:32 | SUB OUT: DEFREESE, SAMONE | | | |
| 01:32 | SUB IN: LEWIS, ALISON | | | |
| 01:32 | FOUL (PERSONAL) by LEWIS, ALISON | | | |
| 01:32 | | 17-14 | H 3 | GOOD! FT by BELL, CHINYERE |
| 01:32 | | 18-14 | H 4 | GOOD! FT by BELL, CHINYERE |
| 01:10 | GOOD! 3PTR by GONZALES, ABBY | 18-17 | H 1 | |
| 01:10 | ASSIST by LAWRENCE, REBECCA | | | |
| 00:32 | | | | TURNOVER (BADPASS) by PARKER, SHRITA |
| 00:32 | STEAL by MCBRIDE, PARIS | | | |
| 00:18 | TURNOVER (3SEC) by LAWRENCE, REBECCA | | | |
| 00:02 | | | | MISSED LAYUP by SMITH, GIGI |
| 00:00 | | | | REBOUND (OFF) by BELL, CHINYERE |
| 00:00 | | 20-17 | H 3 | GOOD! LAYUP by BELL, CHINYERE |

Delaware 17, UNCW 20

| Points from (This Period) | DEL | NCW |
|---------------------------|-----|-----|
| In the Paint | 4 | 8 |
| Off Turns | 6 | 12 |
| 2nd Chance | 2 | 4 |
| Fast Break | 9 | 4 |
| Bench | 0 | 2 |

Official Box Score
Delaware vs UNCW
Second Quarter Statistics Only
February 24, 2019 at Trask Coliseum - Wilmington, N.C.



Delaware 14

| No. | Player | S | Pts | FG | 3FG | FT | OR | DR | TR | PF | A | TO | Blk | Stl | Min | +/- |
|---------------|-------------------|---|-----------|-------------|------------|------------|----------|----------|-----------|----------|----------|----------|----------|----------|-----------|-----|
| 02 | GONZALES, ABBY | | 0 | 0-2 | 0-1 | 0-0 | 0 | 0 | 0 | 2 | 1 | 0 | 0 | 1 | 8 | -2 |
| 12 | OLEARY, LIZZIE | | 2 | 1-3 | 0-0 | 0-0 | 1 | 1 | 2 | 1 | 0 | 3 | 0 | 1 | 8 | -1 |
| 22 | DEFREESE, SAMONE | | 2 | 1-1 | 0-0 | 0-0 | 0 | 1 | 1 | 1 | 0 | 1 | 0 | 1 | 2 | -2 |
| 23 | KARGO, BAILEY | | 0 | 0-0 | 0-0 | 0-0 | 0 | 0 | 0 | 1 | 0 | 1 | 0 | 0 | 6 | 0 |
| 25 | LAWRENCE, REBECCA | | 2 | 1-2 | 0-0 | 0-0 | 0 | 1 | 1 | 1 | 0 | 0 | 0 | 0 | 10 | 0 |
| 00 | LEFFT, GADSON | | 0 | 0-0 | 0-0 | 0-0 | 1 | 1 | 2 | 1 | 0 | 1 | 0 | 0 | 3 | 1 |
| 04 | MCBRIDE, PARIS | | 2 | 1-1 | 0-0 | 0-0 | 0 | 2 | 2 | 0 | 1 | 0 | 0 | 0 | 6 | 2 |
| 05 | NICHOLAS, MAKEDA | | 0 | 0-0 | 0-0 | 0-0 | 0 | 0 | 0 | 0 | 0 | 0 | 0 | 0 | 0 | 0 |
| 35 | LEWIS, ALISON | | 6 | 2-3 | 0-0 | 2-2 | 2 | 0 | 2 | 2 | 0 | 3 | 0 | 0 | 8 | 2 |
| | TEAM | | | | | | 0 | 1 | 1 | 0 | | 0 | | | | |
| TOTALS | | | 14 | 6-12 | 0-1 | 2-2 | 4 | 7 | 11 | 9 | 2 | 9 | 0 | 3 | 50 | |

Shooting By Period

| Period | FG | FG% | 3FG | 3FG% | FT | FT% |
|----------|-------|-------|------|-------|-----|-------|
| 3rd Qtr | 7-14 | 50% | 1-3 | 33% | 0-1 | 00% |
| 4th Qtr | 7-13 | 54% | 0-2 | 00% | 4-4 | 100% |
| 2nd Half | 6-12 | 50% | 0-1 | 00% | 2-2 | 100% |
| 2nd Half | 14-27 | 52% | 1-5 | 20% | 4-5 | 80% |
| Game | 26-52 | 50.0% | 4-11 | 36.4% | 8-9 | 88.9% |

UNCW 14

| No. | Player | S | Pts | FG | 3FG | FT | OR | DR | TR | PF | A | TO | Blk | Stl | Min | +/- |
|---------------|--------------------|---|-----------|-------------|------------|------------|----------|----------|----------|----------|----------|----------|----------|----------|-----------|-----|
| 00 | JEUNE, ASHLI | | 0 | 0-0 | 0-0 | 0-0 | 0 | 0 | 0 | 1 | 0 | 0 | 0 | 0 | 1 | 0 |
| 04 | PARKER, SHRITA | | 3 | 1-2 | 1-2 | 0-0 | 0 | 0 | 0 | 0 | 0 | 2 | 0 | 0 | 7 | -4 |
| 05 | SMITH, GIGI | | 1 | 0-1 | 0-0 | 1-2 | 0 | 0 | 0 | 1 | 0 | 1 | 0 | 2 | 7 | 3 |
| 12 | BUEHLER, JULIA | | 0 | 0-0 | 0-0 | 0-0 | 0 | 0 | 0 | 0 | 0 | 0 | 0 | 0 | 0 | 0 |
| 24 | BELL, CHINYERE | | 0 | 0-1 | 0-0 | 0-0 | 0 | 0 | 0 | 2 | 0 | 0 | 0 | 0 | 5 | -2 |
| 01 | POWELL, PAIGE | | 0 | 0-0 | 0-0 | 0-0 | 0 | 0 | 0 | 0 | 0 | 0 | 0 | 0 | 1 | -1 |
| 02 | CRISP, MORIAH | | 0 | 0-0 | 0-0 | 0-0 | 0 | 0 | 0 | 0 | 0 | 1 | 0 | 0 | 4 | 3 |
| 10 | VASON, AHYIONA | | 5 | 1-2 | 0-0 | 3-4 | 1 | 2 | 3 | 0 | 1 | 0 | 0 | 1 | 8 | 1 |
| 13 | SUGGS, LACEY | | 2 | 0-2 | 0-1 | 2-2 | 0 | 0 | 0 | 0 | 1 | 0 | 0 | 0 | 10 | 0 |
| 14 | TATE, TIMBER | | 3 | 1-2 | 1-2 | 0-0 | 0 | 0 | 0 | 0 | 0 | 0 | 0 | 0 | 3 | -3 |
| 32 | OBUSEK, CAROL-ANNE | | 0 | 0-1 | 0-0 | 0-0 | 0 | 0 | 0 | 0 | 0 | 0 | 0 | 0 | 4 | 3 |
| | TEAM | | | | | | 0 | 0 | 0 | 0 | | 0 | | | | |
| TOTALS | | | 14 | 3-11 | 2-5 | 6-8 | 1 | 2 | 3 | 4 | 2 | 4 | 0 | 3 | 50 | |

Shooting By Period

| Period | FG | FG% | 3FG | 3FG% | FT | FT% |
|----------|-------|-------|------|-------|-------|-------|
| 3rd Qtr | 6-11 | 55% | 1-2 | 50% | 6-11 | 55% |
| 4th Qtr | 7-14 | 50% | 1-4 | 25% | 4-4 | 100% |
| 2nd Half | 3-11 | 27% | 2-5 | 40% | 6-8 | 75% |
| 2nd Half | 13-25 | 52% | 2-6 | 33% | 10-15 | 67% |
| Game | 23-50 | 46.0% | 5-13 | 38.5% | 21-29 | 72.4% |

Game Notes:

Officials: Jennifer Rezac, Roy Jackson, Carmen Portorreal
 Attendance: 726

Start Time: 2019-02-24 18:05:54
 End Time: 2019-02-24 20:00:50
 Game Duration: 114
 Conference Game;

| Score | 1st | 2nd | 3rd | 4th | TOT |
|-------|-----|-----|-----|-----|-----------|
| DEL | 17 | 14 | 15 | 18 | 64 |
| NCW | 20 | 14 | 19 | 19 | 72 |

| Points from (This Period) | DEL | NCW |
|---------------------------|-----|-----|
| In the Paint | 8 | 2 |
| Off Turns | 6 | 6 |
| 2nd Chance | 6 | 2 |
| Fast Break | 4 | 1 |
| Bench | 8 | 10 |

Official Play-By-Play
Delaware vs UNCW
Second Quarter
February 24, 2019 at Trask Coliseum - Wilmington, N.C.



Period 2

Starters:

Delaware: 12 OLEARY, LIZZIE; 22 DEFREESE, SAMONE; 23 KARGO, BAILEY; 25 LAWRENCE, REBECCA; 2 GONZALES, ABBY;
UNCW: 0 JEUNE, ASHLI; 4 PARKER, SHRITA; 5 SMITH, GIGI; 12 BUEHLER, JULIA; 24 BELL, CHINYERE;

| Time | VISITORS: Delaware | Score | Margin | HOME: UNCW |
|-------|--|-------|--------|--------------------------------------|
| 09:51 | | | | FOUL (PERSONAL) by BELL, CHINYERE |
| 09:39 | TURNOVER (TRAVEL) by OLEARY, LIZZIE | | | |
| 09:27 | | 23-17 | H 6 | GOOD! 3PTR by PARKER, SHRITA |
| 09:27 | | | | ASSIST by VASON, AHYIONA |
| 09:08 | GOOD! JUMPER by DEFREESE, SAMONE [PNT] | 23-19 | H 4 | |
| 09:03 | FOUL (PERSONAL) by DEFREESE, SAMONE | | | |
| 09:03 | SUB OUT: DEFREESE, SAMONE | | | |
| 09:03 | SUB IN: LEWIS, ALISON | | | |
| 08:43 | | | | TURNOVER (3SEC) by SMITH, GIGI |
| 08:30 | GOOD! JUMPER by LAWRENCE, REBECCA | 23-21 | H 2 | |
| 08:17 | | | | TURNOVER (BADPASS) by PARKER, SHRITA |
| 08:17 | STEAL by GONZALES, ABBY | | | |
| 08:09 | GOOD! JUMPER by LEWIS, ALISON [FB] | 23-23 | T | |
| 08:09 | ASSIST by GONZALES, ABBY | | | |
| 07:54 | | 25-23 | H 2 | GOOD! LAYUP by VASON, AHYIONA |
| 07:35 | TURNOVER (BADPASS) by LEWIS, ALISON | | | |
| 07:35 | | | | STEAL by SMITH, GIGI |
| 07:35 | | | | SUB OUT: PARKER, SHRITA |
| 07:35 | | | | SUB IN: JEUNE, ASHLI |
| 07:35 | | | | SUB OUT: BELL, CHINYERE |
| 07:35 | | | | SUB IN: OBUSEK, CAROL-ANNE |
| 07:35 | SUB OUT: KARGO, BAILEY | | | |
| 07:35 | SUB IN: MCBRIDE, PARIS | | | |
| 07:35 | SUB OUT: OLEARY, LIZZIE | | | |
| 07:35 | SUB IN: LEFFT, GADSON | | | |
| 07:23 | FOUL (PERSONAL) by GONZALES, ABBY | | | |
| 07:23 | | | | MISSED FT by VASON, AHYIONA |
| 07:23 | | | | REBOUND (OFF) by TEAM |
| 07:23 | | 26-23 | H 3 | GOOD! FT by VASON, AHYIONA |
| 07:11 | SUB OUT: GONZALES, ABBY | | | |
| 07:11 | SUB IN: KARGO, BAILEY | | | |
| 07:06 | MISSED JUMPER by LEWIS, ALISON | | | |
| 06:59 | | | | REBOUND (DEF) by VASON, AHYIONA |
| 06:38 | | | | MISSED JUMPER by SMITH, GIGI |
| 06:38 | REBOUND (DEF) by TEAM | | | |
| 06:18 | MISSED JUMPER by LAWRENCE, REBECCA | | | |
| 06:14 | REBOUND (OFF) by LEFFT, GADSON | | | |
| 06:09 | | | | SUB OUT: SMITH, GIGI |
| 06:09 | | | | SUB IN: CRISP, MORIAH |
| 06:09 | | | | SUB OUT: VASON, AHYIONA |
| 06:09 | | | | SUB IN: TATE, TIMBER |
| 06:06 | | | | FOUL (PERSONAL) by JEUNE, ASHLI |
| 06:06 | GOOD! FT by LEWIS, ALISON | 26-24 | H 2 | |
| 06:06 | | | | SUB OUT: JEUNE, ASHLI |
| 06:06 | | | | SUB IN: PARKER, SHRITA |
| 06:06 | GOOD! FT by LEWIS, ALISON | 26-25 | H 1 | |
| 05:48 | | | | MISSED JUMPER by SUGGS, LACEY |
| 05:44 | REBOUND (DEF) by LEFFT, GADSON | | | |
| 05:32 | FOUL (OFF) by KARGO, BAILEY | | | |
| 05:32 | TURNOVER (OFFENSIVE) by KARGO, BAILEY | | | |
| 05:16 | | | | MISSED JUMPER by OBUSEK, CAROL-ANNE |
| 05:12 | REBOUND (DEF) by MCBRIDE, PARIS | | | |
| 05:05 | FOUL (OFF) by LEFFT, GADSON | | | |
| 05:05 | TURNOVER (OFFENSIVE) by LEFFT, GADSON | | | |
| 05:05 | | | | SUB OUT: OBUSEK, CAROL-ANNE |
| 05:05 | | | | SUB IN: BELL, CHINYERE |
| 05:05 | SUB OUT: KARGO, BAILEY | | | |
| 05:05 | SUB IN: GONZALES, ABBY | | | |
| 05:05 | SUB OUT: LEFFT, GADSON | | | |
| 05:05 | SUB IN: OLEARY, LIZZIE | | | |
| 04:50 | | | | TURNOVER (BADPASS) by PARKER, SHRITA |
| 04:50 | STEAL by OLEARY, LIZZIE | | | |
| 04:30 | MISSED JUMPER by OLEARY, LIZZIE | | | |
| 04:26 | REBOUND (OFF) by LEWIS, ALISON | | | |
| 04:24 | GOOD! LAYUP by LEWIS, ALISON | 26-27 | V 1 | |
| 04:01 | | 29-27 | H 2 | GOOD! 3PTR by TATE, TIMBER |
| 04:01 | | | | ASSIST by SUGGS, LACEY |
| 03:50 | FOUL (OFF) by OLEARY, LIZZIE | | | |
| 03:50 | TURNOVER (OFFENSIVE) by OLEARY, LIZZIE | | | |
| 03:50 | | | | |

| Time | VISITORS: Delaware | Score | Margin | HOME: UNCW |
|-------|---|-------|--------|-------------------------------------|
| 03:50 | | | | SUB OUT: CRISP, MORIAH |
| 03:50 | | | | SUB IN: VASON, AHYIONA |
| 03:35 | | | | MISSED 3PTR by TATE, TIMBER |
| 03:31 | REBOUND (DEF) by MCBRIDE, PARIS | | | |
| 03:26 | GOOD! LAYUP by MCBRIDE, PARIS [FB] | 29-29 | T | |
| 03:06 | | | | MISSED LAYUP by VASON, AHYIONA |
| 03:01 | REBOUND (DEF) by LAWRENCE, REBECCA | | | |
| 02:58 | MISSED JUMPER by GONZALES, ABBY | | | |
| 02:57 | REBOUND (OFF) by OLEARY, LIZZIE | | | |
| 02:57 | | | | FOUL (PERSONAL) by BELL, CHINYERE |
| 02:57 | | | | SUB OUT: TATE, TIMBER |
| 02:57 | | | | SUB IN: SMITH, GIGI |
| 02:54 | TURNOVER (BADPASS) by LEWIS, ALISON | | | |
| 02:38 | | | | MISSED JUMPER by BELL, CHINYERE |
| 02:34 | REBOUND (DEF) by OLEARY, LIZZIE | | | |
| 02:13 | MISSED JUMPER by OLEARY, LIZZIE | | | |
| 02:11 | REBOUND (OFF) by LEWIS, ALISON | | | |
| 02:11 | | | | FOUL (PERSONAL) by SMITH, GIGI |
| 02:11 | | | | SUB OUT: BELL, CHINYERE |
| 02:11 | | | | SUB IN: POWELL, PAIGE |
| 02:08 | GOOD! LAYUP by OLEARY, LIZZIE | 29-31 | V 2 | |
| 02:08 | ASSIST by MCBRIDE, PARIS | | | |
| 01:37 | | | | MISSED 3PTR by PARKER, SHRITA |
| 01:34 | | | | REBOUND (OFF) by VASON, AHYIONA |
| 01:34 | FOUL (PERSONAL) by LAWRENCE, REBECCA | | | |
| 01:34 | | 30-31 | V 1 | GOOD! FT by VASON, AHYIONA |
| 01:34 | | | | SUB OUT: POWELL, PAIGE |
| 01:34 | | | | SUB IN: OBUSEK, CAROL-ANNE |
| 01:34 | | | | SUB OUT: PARKER, SHRITA |
| 01:34 | | | | SUB IN: CRISP, MORIAH |
| 01:34 | | 31-31 | T | GOOD! FT by VASON, AHYIONA |
| 01:23 | MISSED 3PTR by GONZALES, ABBY | | | |
| 01:19 | | | | REBOUND (DEF) by VASON, AHYIONA |
| 01:18 | FOUL (PERSONAL) by GONZALES, ABBY | | | |
| 01:18 | | | | MISSED FT by SMITH, GIGI |
| 01:18 | | | | REBOUND (OFF) by TEAM |
| 01:18 | SUB OUT: MCBRIDE, PARIS | | | |
| 01:18 | SUB IN: KARGO, BAILEY | | | |
| 01:18 | | 32-31 | H 1 | GOOD! FT by SMITH, GIGI [FB] |
| 00:57 | FOUL (OFF) by LEWIS, ALISON | | | |
| 00:57 | TURNOVER (OFFENSIVE) by LEWIS, ALISON | | | |
| 00:45 | FOUL (PERSONAL) by LEWIS, ALISON | | | |
| 00:45 | | 33-31 | H 2 | GOOD! FT by SUGGS, LACEY |
| 00:45 | SUB OUT: LEWIS, ALISON | | | |
| 00:45 | SUB IN: DEFREESE, SAMONE | | | |
| 00:45 | | 34-31 | H 3 | GOOD! FT by SUGGS, LACEY |
| 00:27 | TURNOVER (LOSTBALL) by OLEARY, LIZZIE | | | |
| 00:27 | | | | STEAL by SMITH, GIGI |
| 00:22 | | | | TURNOVER (BADPASS) by CRISP, MORIAH |
| 00:22 | STEAL by DEFREESE, SAMONE | | | |
| 00:07 | TURNOVER (LOSTBALL) by DEFREESE, SAMONE | | | |
| 00:07 | | | | STEAL by VASON, AHYIONA |
| 00:02 | | | | MISSED 3PTR by SUGGS, LACEY |
| 00:02 | REBOUND (DEF) by DEFREESE, SAMONE | | | |

Delaware 31, UNCW 34

| Points from (This Period) | DEL | NCW |
|---------------------------|-----|-----|
| In the Paint | 8 | 2 |
| Off Turns | 6 | 6 |
| 2nd Chance | 6 | 2 |
| Fast Break | 4 | 1 |
| Bench | 8 | 10 |

Official Box Score
Delaware vs UNCW
Second Half Statistics Only
February 24, 2019 at Trask Coliseum - Wilmington, N.C.



Delaware 33

| No. | Player | S | Pts | FG | 3FG | FT | OR | DR | TR | PF | A | TO | Blk | Stl | Min | +/- |
|-----|-------------------|---|-----------|--------------|------------|------------|----------|-----------|-----------|-----------|----------|----------|----------|----------|------------|-----|
| 00 | LEFFT, GADSON | | 0 | 0-0 | 0-0 | 0-0 | 0 | 1 | 1 | 0 | 0 | 0 | 0 | 0 | 1 | -1 |
| 12 | OLEARY, LIZZIE | | 0 | 0-1 | 0-0 | 0-0 | 1 | 0 | 1 | 3 | 0 | 1 | 0 | 0 | 13 | -4 |
| 22 | DEFREESE, SAMONE | | 0 | 0-1 | 0-0 | 0-0 | 0 | 0 | 0 | 1 | 1 | 1 | 0 | 0 | 4 | -7 |
| 23 | KARGO, BAILEY | | 0 | 0-1 | 0-1 | 0-0 | 0 | 0 | 0 | 0 | 0 | 0 | 0 | 0 | 9 | -5 |
| 25 | LAWRENCE, REBECCA | | 12 | 6-7 | 0-0 | 0-0 | 1 | 0 | 1 | 2 | 2 | 0 | 2 | 0 | 18 | -3 |
| 35 | LEWIS, ALISON | | 14 | 6-9 | 0-1 | 2-3 | 0 | 5 | 5 | 0 | 2 | 1 | 0 | 0 | 19 | -2 |
| 02 | GONZALES, ABBY | | 3 | 1-3 | 1-2 | 0-0 | 0 | 2 | 2 | 2 | 1 | 1 | 0 | 1 | 15 | 0 |
| 04 | MCBRIDE, PARIS | | 4 | 1-4 | 0-1 | 2-2 | 0 | 1 | 1 | 3 | 2 | 3 | 0 | 0 | 16 | -5 |
| 05 | NICHOLAS, MAKEDA | | 0 | 0-1 | 0-0 | 0-0 | 0 | 2 | 2 | 1 | 0 | 0 | 0 | 0 | 5 | 2 |
| | TEAM | | 0 | 0-0 | 0-0 | 0-0 | 0 | 1 | 1 | 0 | 0 | 0 | 0 | 0 | 0 | |
| | TOTALS | | 33 | 14-27 | 1-5 | 4-5 | 2 | 12 | 14 | 12 | 8 | 7 | 2 | 1 | 100 | |

Shooting By Period

| Period | FG | FG% | 3FG | 3FG% | FT | FT% |
|----------|-------|-------|------|-------|-----|-------|
| 3rd Qtr | 7-14 | 50% | 1-3 | 33% | 0-1 | 00% |
| 4th Qtr | 7-13 | 54% | 0-2 | 00% | 4-4 | 100% |
| 2nd Half | 14-27 | 52% | 1-5 | 20% | 4-5 | 80% |
| Game | 26-52 | 50.0% | 4-11 | 36.4% | 8-9 | 88.9% |

Last FG Half: DEL 4th-00:04

UNCW 38

| No. | Player | S | Pts | FG | 3FG | FT | OR | DR | TR | PF | A | TO | Blk | Stl | Min | +/- |
|-----|--------------------|---|-----------|--------------|------------|--------------|----------|-----------|-----------|----------|-----------|----------|----------|----------|------------|-----|
| 00 | JEUNE, ASHLI | | 5 | 2-5 | 1-3 | 0-0 | 0 | 1 | 1 | 0 | 1 | 0 | 0 | 1 | 7 | 1 |
| 01 | POWELL, PAIGE | | 0 | 0-0 | 0-0 | 0-0 | 0 | 0 | 0 | 0 | 0 | 0 | 0 | 0 | 0 | 0 |
| 02 | CRISP, MORIAH | | 0 | 0-0 | 0-0 | 0-0 | 0 | 1 | 1 | 0 | 1 | 1 | 0 | 0 | 14 | -1 |
| 04 | PARKER, SHRITA | | 0 | 0-2 | 0-2 | 0-0 | 0 | 0 | 0 | 1 | 0 | 0 | 0 | 0 | 8 | -10 |
| 05 | SMITH, GIGI | | 9 | 4-5 | 1-1 | 0-0 | 0 | 3 | 3 | 0 | 3 | 1 | 0 | 2 | 20 | 5 |
| 10 | VASON, AHYIONA | | 2 | 1-1 | 0-0 | 0-0 | 0 | 1 | 1 | 0 | 2 | 1 | 0 | 1 | 11 | 19 |
| 12 | BUEHLER, JULIA | | 0 | 0-0 | 0-0 | 0-0 | 0 | 0 | 0 | 0 | 0 | 0 | 0 | 0 | 0 | -2 |
| 13 | SUGGS, LACEY | | 10 | 3-6 | 0-0 | 4-6 | 1 | 1 | 2 | 3 | 0 | 0 | 1 | 1 | 20 | 8 |
| 14 | TATE, TIMBER | | 0 | 0-0 | 0-0 | 0-0 | 0 | 0 | 0 | 0 | 0 | 0 | 0 | 0 | 0 | 0 |
| 24 | BELL, CHINYERE | | 12 | 3-5 | 0-0 | 6-9 | 2 | 5 | 7 | 2 | 3 | 2 | 1 | 0 | 16 | 14 |
| 32 | OBUSEK, CAROL-ANNE | | 0 | 0-1 | 0-0 | 0-0 | 0 | 0 | 0 | 1 | 0 | 0 | 0 | 0 | 4 | -9 |
| | TEAM | | 0 | 0-0 | 0-0 | 0-0 | 0 | 0 | 0 | 0 | 0 | 0 | 0 | 0 | 0 | |
| | TOTALS | | 38 | 13-25 | 2-6 | 10-15 | 3 | 12 | 15 | 7 | 10 | 5 | 2 | 5 | 100 | |

Shooting By Period

| Period | FG | FG% | 3FG | 3FG% | FT | FT% |
|----------|-------|-------|------|-------|-------|-------|
| 3rd Qtr | 6-11 | 55% | 1-2 | 50% | 6-11 | 55% |
| 4th Qtr | 7-14 | 50% | 1-4 | 25% | 4-4 | 100% |
| 2nd Half | 13-25 | 52% | 2-6 | 33% | 10-15 | 67% |
| Game | 23-50 | 46.0% | 5-13 | 38.5% | 21-29 | 72.4% |

Last FG Half: NCW 4th-00:33

Game Notes:

Officials: Jennifer Rezac, Roy Jackson, Carmen Portorreal
 Attendance: 726

Start Time: 2019-02-24 18:05:54

End Time: 2019-02-24 20:00:50

Game Duration: 114

Conference Game;

| Score | 1st | 2nd | 3rd | 4th | TOT |
|-------|-----|-----|-----|-----|-----------|
| DEL | 17 | 14 | 15 | 18 | 64 |
| NCW | 20 | 14 | 19 | 19 | 72 |

| Points from (This Period) | DEL | NCW |
|---------------------------|-----|-----|
| In the Paint | 8 | 20 |
| Off Turns | 4 | 10 |
| 2nd Chance | 4 | 3 |
| Fast Break | 4 | 8 |
| Bench | 18 | 12 |

Official Box Score
Delaware vs UNCW
Third Quarter Statistics Only
February 24, 2019 at Trask Coliseum - Wilmington, N.C.



Delaware 33

| No. | Player | S | Pts | FG | 3FG | FT | OR | DR | TR | PF | A | TO | Blk | Stl | Min | +/- |
|---------------|-------------------|---|-----------|-------------|------------|------------|----------|----------|----------|----------|----------|----------|----------|----------|-----------|-----|
| 02 | GONZALES, ABBY | | 3 | 1-1 | 1-1 | 0-0 | 0 | 1 | 1 | 1 | 1 | 1 | 0 | 0 | 9 | -2 |
| 12 | OLEARY, LIZZIE | | 0 | 0-1 | 0-0 | 0-0 | 0 | 0 | 0 | 2 | 0 | 0 | 0 | 0 | 3 | -3 |
| 22 | DEFREESE, SAMONE | | 0 | 0-1 | 0-0 | 0-0 | 0 | 0 | 0 | 1 | 1 | 1 | 0 | 0 | 4 | -7 |
| 23 | KARGO, BAILEY | | 0 | 0-0 | 0-0 | 0-0 | 0 | 0 | 0 | 0 | 0 | 0 | 0 | 0 | 3 | -5 |
| 25 | LAWRENCE, REBECCA | | 6 | 3-4 | 0-0 | 0-0 | 0 | 0 | 0 | 1 | 1 | 0 | 1 | 0 | 8 | -2 |
| 00 | LEFFT, GADSON | | 0 | 0-0 | 0-0 | 0-0 | 0 | 1 | 1 | 0 | 0 | 0 | 0 | 0 | 1 | -1 |
| 04 | MCBRIDE, PARIS | | 2 | 1-2 | 0-1 | 0-0 | 0 | 0 | 0 | 1 | 2 | 2 | 0 | 0 | 9 | -1 |
| 05 | NICHOLAS, MAKEDA | | 0 | 0-1 | 0-0 | 0-0 | 0 | 2 | 2 | 1 | 0 | 0 | 0 | 0 | 5 | 2 |
| 35 | LEWIS, ALISON | | 4 | 2-4 | 0-1 | 0-1 | 0 | 2 | 2 | 0 | 0 | 0 | 0 | 0 | 9 | -1 |
| | TEAM | | | | | | 0 | 0 | 0 | 0 | | 0 | | | | |
| TOTALS | | | 15 | 7-14 | 1-3 | 0-1 | 0 | 6 | 6 | 7 | 5 | 4 | 1 | 0 | 50 | |

Shooting By Period

| Period | FG | FG% | 3FG | 3FG% | FT | FT% |
|----------|-------|-------|------|-------|-----|-------|
| 2nd Half | 0-0 | 0% | 0-0 | 0% | 0-0 | 0% |
| Game | 26-52 | 50.0% | 4-11 | 36.4% | 8-9 | 88.9% |

UNCW 38

| No. | Player | S | Pts | FG | 3FG | FT | OR | DR | TR | PF | A | TO | Blk | Stl | Min | +/- |
|---------------|--------------------|---|-----------|-------------|------------|-------------|----------|----------|-----------|----------|----------|----------|----------|----------|-----------|-----|
| 00 | JEUNE, ASHLI | | 3 | 1-3 | 1-2 | 0-0 | 0 | 1 | 1 | 0 | 0 | 0 | 0 | 0 | 3 | 0 |
| 04 | PARKER, SHRITA | | 0 | 0-0 | 0-0 | 0-0 | 0 | 0 | 0 | 0 | 0 | 0 | 0 | 0 | 2 | -2 |
| 05 | SMITH, GIGI | | 4 | 2-2 | 0-0 | 0-0 | 0 | 2 | 2 | 0 | 2 | 1 | 0 | 1 | 10 | 4 |
| 12 | BUEHLER, JULIA | | 0 | 0-0 | 0-0 | 0-0 | 0 | 0 | 0 | 0 | 0 | 0 | 0 | 0 | 0 | 0 |
| 24 | BELL, CHINYERE | | 10 | 2-4 | 0-0 | 6-9 | 2 | 4 | 6 | 1 | 0 | 1 | 1 | 0 | 10 | 6 |
| 01 | POWELL, PAIGE | | 0 | 0-0 | 0-0 | 0-0 | 0 | 0 | 0 | 0 | 0 | 0 | 0 | 0 | 0 | 0 |
| 02 | CRISP, MORIAH | | 0 | 0-0 | 0-0 | 0-0 | 0 | 1 | 1 | 0 | 0 | 1 | 0 | 0 | 8 | -1 |
| 10 | VASON, AHYIONA | | 2 | 1-1 | 0-0 | 0-0 | 0 | 0 | 0 | 0 | 2 | 1 | 0 | 1 | 7 | 10 |
| 13 | SUGGS, LACEY | | 0 | 0-1 | 0-0 | 0-2 | 0 | 0 | 0 | 1 | 0 | 0 | 1 | 1 | 10 | 5 |
| 14 | TATE, TIMBER | | 0 | 0-0 | 0-0 | 0-0 | 0 | 0 | 0 | 0 | 0 | 0 | 0 | 0 | 0 | 0 |
| 32 | OBUSEK, CAROL-ANNE | | 0 | 0-0 | 0-0 | 0-0 | 0 | 0 | 0 | 0 | 0 | 0 | 0 | 0 | 0 | -2 |
| | TEAM | | | | | | 0 | 0 | 0 | 0 | | 0 | | | | |
| TOTALS | | | 19 | 6-11 | 1-2 | 6-11 | 2 | 8 | 10 | 2 | 4 | 4 | 2 | 3 | 50 | |

Shooting By Period

| Period | FG | FG% | 3FG | 3FG% | FT | FT% |
|----------|-------|-------|------|-------|-------|-------|
| 2nd Half | 0-0 | 0% | 0-0 | 0% | 0-0 | 0% |
| Game | 23-50 | 46.0% | 5-13 | 38.5% | 21-29 | 72.4% |

Game Notes:

Officials: Jennifer Rezac, Roy Jackson, Carmen Portorreal
Attendance: 726

Start Time: 2019-02-24 18:05:54
End Time: 2019-02-24 20:00:50
Game Duration: 114
Conference Game;

| Score | 1st | 2nd | 3rd | 4th | TOT |
|-------|-----|-----|-----|-----|-----------|
| DEL | 17 | 14 | 15 | 18 | 64 |
| NCW | 20 | 14 | 19 | 19 | 72 |

| Points from (This Period) | DEL | NCW |
|---------------------------|-----|-----|
| In the Paint | 4 | 8 |
| Off Turns | 4 | 6 |
| 2nd Chance | 0 | 1 |
| Fast Break | 0 | 6 |
| Bench | 6 | 2 |

Official Play-By-Play
Delaware vs UNCW
Third Quarter
February 24, 2019 at Trask Coliseum - Wilmington, N.C.



Period 3

Starters:

Delaware: 12 OLEARY, LIZZIE; 22 DEFREESE, SAMONE; 23 KARGO, BAILEY; 25 LAWRENCE, REBECCA; 2 GONZALES, ABBY;
UNCW: 0 JEUNE, ASHLI; 4 PARKER, SHRITA; 5 SMITH, GIGI; 12 BUEHLER, JULIA; 24 BELL, CHINYERE;

| Time | VISITORS: Delaware | Score | Margin | HOME: UNCW |
|-------|--|-------|--------|--------------------------------------|
| 09:40 | | 36-31 | H 5 | GOOD! LAYUP by VASON, AHYIONA |
| 09:21 | GOOD! JUMPER by LAWRENCE, REBECCA | 36-33 | H 3 | |
| 09:21 | ASSIST by DEFREESE, SAMONE | | | |
| 09:06 | | 39-33 | H 6 | GOOD! 3PTR by JEUNE, ASHLI |
| 09:06 | | | | ASSIST by VASON, AHYIONA |
| 08:49 | SUB OUT: KARGO, BAILEY | | | |
| 08:49 | SUB IN: MCBRIDE, PARIS | | | |
| 08:49 | SUB OUT: DEFREESE, SAMONE | | | |
| 08:49 | SUB IN: LEWIS, ALISON | | | |
| 08:33 | TURNOVER (BADPASS) by MCBRIDE, PARIS | | | |
| 08:33 | | | | STEAL by VASON, AHYIONA |
| 08:27 | | 41-33 | H 8 | GOOD! LAYUP by SMITH, GIGI [FB] |
| 08:27 | | | | ASSIST by VASON, AHYIONA |
| 08:27 | | | | |
| 08:27 | | | | SUB OUT: VASON, AHYIONA |
| 08:27 | | | | SUB IN: CRISP, MORIAH |
| 08:15 | GOOD! 3PTR by GONZALES, ABBY | 41-36 | H 5 | |
| 08:15 | ASSIST by LAWRENCE, REBECCA | | | |
| 07:58 | FOUL (PERSONAL) by OLEARY, LIZZIE | | | |
| 07:58 | | 42-36 | H 6 | GOOD! FT by BELL, CHINYERE |
| 07:58 | SUB OUT: OLEARY, LIZZIE | | | |
| 07:58 | SUB IN: NICHOLAS, MAKEDA | | | |
| 07:58 | | | | MISSED FT by BELL, CHINYERE |
| 07:55 | REBOUND (DEF) by NICHOLAS, MAKEDA | | | |
| 07:43 | MISSED 3PTR by LEWIS, ALISON | | | |
| 07:39 | | | | REBOUND (DEF) by JEUNE, ASHLI |
| 07:36 | | | | MISSED LAYUP by JEUNE, ASHLI |
| 07:31 | REBOUND (DEF) by GONZALES, ABBY | | | |
| 07:22 | GOOD! JUMPER by LAWRENCE, REBECCA | 42-38 | H 4 | |
| 07:22 | ASSIST by GONZALES, ABBY | | | |
| 07:06 | | | | MISSED 3PTR by JEUNE, ASHLI |
| 07:05 | REBOUND (DEF) by LEWIS, ALISON | | | |
| 07:05 | | | | FOUL (PERSONAL) by SUGGS, LACEY |
| 07:05 | | | | SUB OUT: JEUNE, ASHLI |
| 07:05 | | | | SUB IN: PARKER, SHRITA |
| 06:52 | MISSED JUMPER by NICHOLAS, MAKEDA | | | |
| 06:52 | | | | BLOCK by BELL, CHINYERE |
| 06:45 | | | | REBOUND (DEF) by BELL, CHINYERE |
| 06:44 | | 44-38 | H 6 | GOOD! LAYUP by SMITH, GIGI [FB] |
| 06:26 | MISSED JUMPER by LEWIS, ALISON | | | |
| 06:22 | | | | REBOUND (DEF) by SMITH, GIGI |
| 06:19 | | | | MISSED LAYUP by SUGGS, LACEY |
| 06:15 | REBOUND (DEF) by LEWIS, ALISON | | | |
| 05:54 | GOOD! JUMPER by LAWRENCE, REBECCA | 44-40 | H 4 | |
| 05:54 | ASSIST by MCBRIDE, PARIS | | | |
| 05:40 | | | | TURNOVER (TRAVEL) by BELL, CHINYERE |
| 05:27 | GOOD! LAYUP by LEWIS, ALISON [PNT] | 44-42 | H 2 | |
| 05:27 | | | | FOUL (PERSONAL) by BELL, CHINYERE |
| 05:27 | | | | SUB OUT: PARKER, SHRITA |
| 05:27 | | | | SUB IN: VASON, AHYIONA |
| 05:27 | MISSED FT by LEWIS, ALISON | | | |
| 05:26 | | | | REBOUND (DEF) by BELL, CHINYERE |
| 05:07 | | | | MISSED JUMPER by BELL, CHINYERE |
| 05:04 | | | | REBOUND (OFF) by BELL, CHINYERE |
| 04:49 | | | | TURNOVER (TRAVEL) by VASON, AHYIONA |
| 04:49 | | | | |
| 04:41 | SUB OUT: NICHOLAS, MAKEDA | | | |
| 04:41 | SUB IN: LEFFT, GADSON | | | |
| 04:28 | GOOD! LAYUP by MCBRIDE, PARIS | 44-44 | T | |
| 04:09 | | | | MISSED LAYUP by BELL, CHINYERE |
| 04:09 | BLOCK by LAWRENCE, REBECCA | | | |
| 04:04 | REBOUND (DEF) by LEFFT, GADSON | | | |
| 04:04 | FOUL (OFF) by MCBRIDE, PARIS | | | |
| 04:04 | TURNOVER (OFFENSIVE) by MCBRIDE, PARIS | | | |
| 03:44 | | 46-44 | H 2 | GOOD! JUMPER by BELL, CHINYERE [PNT] |
| 03:44 | | | | ASSIST by SMITH, GIGI |
| 03:44 | FOUL (PERSONAL) by LAWRENCE, REBECCA | | | |
| 03:44 | | 47-44 | H 3 | GOOD! FT by BELL, CHINYERE |
| 03:44 | SUB OUT: LAWRENCE, REBECCA | | | |
| 03:44 | SUB IN: NICHOLAS, MAKEDA | | | |

| Time | VISITORS: Delaware | Score | Margin | HOME: UNCW |
|-------|--|-------|--------|--------------------------------------|
| 03:44 | SUB OUT: LEFFT, GADSON | | | |
| 03:44 | SUB IN: OLEARY, LIZZIE | | | |
| 03:26 | MISSED JUMPER by OLEARY, LIZZIE | | | |
| 03:21 | | | | REBOUND (DEF) by CRISP, MORIAH |
| 03:20 | | | | TURNOVER (LOSTBALL) by CRISP, MORIAH |
| 02:56 | MISSED 3PTR by MCBRIDE, PARIS | | | |
| 02:52 | | | | REBOUND (DEF) by SMITH, GIGI |
| 02:34 | FOUL (PERSONAL) by OLEARY, LIZZIE | | | |
| 02:34 | | | | MISSED FT by SUGGS, LACEY |
| 02:34 | | | | REBOUND (OFF) by TEAM |
| 02:34 | SUB OUT: OLEARY, LIZZIE | | | |
| 02:34 | SUB IN: DEFREESE, SAMONE | | | |
| 02:33 | | | | MISSED FT by SUGGS, LACEY |
| 02:33 | | | | REBOUND (OFF) by BELL, CHINYERE |
| 02:33 | FOUL (PERSONAL) by NICHOLAS, MAKEDA | | | |
| 02:33 | | | | MISSED FT by BELL, CHINYERE |
| 02:33 | | | | REBOUND (OFF) by TEAM |
| 02:33 | | 48-44 | H 4 | GOOD! FT by BELL, CHINYERE |
| 02:11 | TURNOVER (BADPASS) by DEFREESE, SAMONE | | | |
| 02:11 | | | | STEAL by SMITH, GIGI |
| 01:53 | FOUL (PERSONAL) by GONZALES, ABBY | | | |
| 01:53 | | 49-44 | H 5 | GOOD! FT by BELL, CHINYERE |
| 01:53 | | | | MISSED FT by BELL, CHINYERE |
| 01:49 | REBOUND (DEF) by NICHOLAS, MAKEDA | | | |
| 01:42 | TURNOVER (BADPASS) by GONZALES, ABBY | | | |
| 01:42 | | | | STEAL by SUGGS, LACEY |
| 01:42 | SUB OUT: NICHOLAS, MAKEDA | | | |
| 01:42 | SUB IN: LAWRENCE, REBECCA | | | |
| 01:26 | | | | TURNOVER (TRAVEL) by SMITH, GIGI |
| 01:26 | SUB OUT: GONZALES, ABBY | | | |
| 01:26 | SUB IN: KARGO, BAILEY | | | |
| 01:10 | MISSED JUMPER by DEFREESE, SAMONE | | | |
| 01:10 | | | | BLOCK by SUGGS, LACEY |
| 01:05 | | | | REBOUND (DEF) by BELL, CHINYERE |
| 00:58 | | 51-44 | H 7 | GOOD! JUMPER by BELL, CHINYERE [FB] |
| 00:58 | | | | ASSIST by SMITH, GIGI |
| 00:41 | MISSED JUMPER by LAWRENCE, REBECCA | | | |
| 00:38 | | | | REBOUND (DEF) by BELL, CHINYERE |
| 00:20 | FOUL (PERSONAL) by DEFREESE, SAMONE | | | |
| 00:20 | | 52-44 | H 8 | GOOD! FT by BELL, CHINYERE |
| 00:20 | | | | SUB OUT: SUGGS, LACEY |
| 00:20 | | | | SUB IN: JEUNE, ASHLI |
| 00:20 | | 53-44 | H 9 | GOOD! FT by BELL, CHINYERE |
| 00:20 | | | | SUB OUT: BELL, CHINYERE |
| 00:20 | | | | SUB IN: OBUSEK, CAROL-ANNE |
| 00:02 | GOOD! JUMPER by LEWIS, ALISON | 53-46 | H 7 | |
| 00:02 | ASSIST by MCBRIDE, PARIS | | | |

Delaware 46, UNCW 53

| Points from (This Period) | DEL | NCW |
|---------------------------|-----|-----|
| In the Paint | 4 | 8 |
| Off Turns | 4 | 6 |
| 2nd Chance | 0 | 1 |
| Fast Break | 0 | 6 |
| Bench | 6 | 2 |

Official Box Score
Delaware vs UNCW
Fourth Quarter Statistics Only
February 24, 2019 at Trask Coliseum - Wilmington, N.C.



Delaware 18

| No. | Player | S | Pts | FG | 3FG | FT | OR | DR | TR | PF | A | TO | Blk | Stl | Min | +/- |
|---------------|-------------------|---|-----------|-------------|------------|------------|----------|----------|----------|----------|----------|----------|----------|----------|-----------|-----|
| 02 | GONZALES, ABBY | | 0 | 0-2 | 0-1 | 0-0 | 0 | 1 | 1 | 1 | 0 | 0 | 0 | 1 | 6 | 2 |
| 12 | OLEARY, LIZZIE | | 0 | 0-0 | 0-0 | 0-0 | 1 | 0 | 1 | 1 | 0 | 1 | 0 | 0 | 10 | -1 |
| 22 | DEFREESE, SAMONE | | 0 | 0-0 | 0-0 | 0-0 | 0 | 0 | 0 | 0 | 0 | 0 | 0 | 0 | 0 | 0 |
| 23 | KARGO, BAILEY | | 0 | 0-1 | 0-1 | 0-0 | 0 | 0 | 0 | 0 | 0 | 0 | 0 | 0 | 6 | 0 |
| 25 | LAWRENCE, REBECCA | | 6 | 3-3 | 0-0 | 0-0 | 1 | 0 | 1 | 1 | 1 | 0 | 1 | 0 | 10 | -1 |
| 00 | LEFFT, GADSON | | 0 | 0-0 | 0-0 | 0-0 | 0 | 0 | 0 | 0 | 0 | 0 | 0 | 0 | 0 | 0 |
| 04 | MCBRIDE, PARIS | | 2 | 0-2 | 0-0 | 2-2 | 0 | 1 | 1 | 2 | 0 | 1 | 0 | 0 | 7 | -4 |
| 05 | NICHOLAS, MAKEDA | | 0 | 0-0 | 0-0 | 0-0 | 0 | 0 | 0 | 0 | 0 | 0 | 0 | 0 | 0 | 0 |
| 35 | LEWIS, ALISON | | 10 | 4-5 | 0-0 | 2-2 | 0 | 3 | 3 | 0 | 2 | 1 | 0 | 0 | 10 | -1 |
| TEAM | | | | | | | 0 | 1 | 1 | 0 | | 0 | | | | |
| TOTALS | | | 18 | 7-13 | 0-2 | 4-4 | 2 | 6 | 8 | 5 | 3 | 3 | 1 | 1 | 50 | |

Shooting By Period

| Period | FG | FG% | 3FG | 3FG% | FT | FT% |
|--------|-------|-------|------|-------|-----|-------|
| Game | 26-52 | 50.0% | 4-11 | 36.4% | 8-9 | 88.9% |

UNCW 19

| No. | Player | S | Pts | FG | 3FG | FT | OR | DR | TR | PF | A | TO | Blk | Stl | Min | +/- |
|---------------|--------------------|---|-----------|-------------|------------|------------|----------|----------|----------|----------|----------|----------|----------|----------|-----------|-----|
| 00 | JEUNE, ASHLI | | 2 | 1-2 | 0-1 | 0-0 | 0 | 0 | 0 | 0 | 1 | 0 | 0 | 1 | 4 | 1 |
| 04 | PARKER, SHRITA | | 0 | 0-2 | 0-2 | 0-0 | 0 | 0 | 0 | 1 | 0 | 0 | 0 | 0 | 6 | -8 |
| 05 | SMITH, GIGI | | 5 | 2-3 | 1-1 | 0-0 | 0 | 1 | 1 | 0 | 1 | 0 | 0 | 1 | 10 | 1 |
| 12 | BUEHLER, JULIA | | 0 | 0-0 | 0-0 | 0-0 | 0 | 0 | 0 | 0 | 0 | 0 | 0 | 0 | 0 | -2 |
| 24 | BELL, CHINYERE | | 2 | 1-1 | 0-0 | 0-0 | 0 | 1 | 1 | 1 | 3 | 1 | 0 | 0 | 6 | 8 |
| 01 | POWELL, PAIGE | | 0 | 0-0 | 0-0 | 0-0 | 0 | 0 | 0 | 0 | 0 | 0 | 0 | 0 | 0 | 0 |
| 02 | CRISP, MORIAH | | 0 | 0-0 | 0-0 | 0-0 | 0 | 0 | 0 | 0 | 1 | 0 | 0 | 0 | 6 | 0 |
| 10 | VASON, AHYIONA | | 0 | 0-0 | 0-0 | 0-0 | 0 | 1 | 1 | 0 | 0 | 0 | 0 | 0 | 4 | 9 |
| 13 | SUGGS, LACEY | | 10 | 3-5 | 0-0 | 4-4 | 1 | 1 | 2 | 2 | 0 | 0 | 0 | 0 | 10 | 3 |
| 14 | TATE, TIMBER | | 0 | 0-0 | 0-0 | 0-0 | 0 | 0 | 0 | 0 | 0 | 0 | 0 | 0 | 0 | 0 |
| 32 | OBUSEK, CAROL-ANNE | | 0 | 0-1 | 0-0 | 0-0 | 0 | 0 | 0 | 1 | 0 | 0 | 0 | 0 | 4 | -7 |
| TEAM | | | | | | | 0 | 0 | 0 | 0 | | 0 | | | | |
| TOTALS | | | 19 | 7-14 | 1-4 | 4-4 | 1 | 4 | 5 | 5 | 6 | 1 | 0 | 2 | 50 | |

Shooting By Period

| Period | FG | FG% | 3FG | 3FG% | FT | FT% |
|--------|-------|-------|------|-------|-------|-------|
| Game | 23-50 | 46.0% | 5-13 | 38.5% | 21-29 | 72.4% |

Game Notes:

Officials: Jennifer Rezac, Roy Jackson, Carmen Portorreal
Attendance: 726

Start Time: 2019-02-24 18:05:54

End Time: 2019-02-24 20:00:50

Game Duration: 114

Conference Game;

| Score | 1st | 2nd | 3rd | 4th | TOT |
|-------|-----|-----|-----|-----|-----------|
| DEL | 17 | 14 | 15 | 18 | 64 |
| NCW | 20 | 14 | 19 | 19 | 72 |

| Points from (This Period) | DEL | NCW |
|---------------------------|-----|-----|
| In the Paint | 4 | 12 |
| Off Turns | 0 | 4 |
| 2nd Chance | 4 | 2 |
| Fast Break | 4 | 2 |
| Bench | 12 | 10 |

**Official Play-By-Play
Delaware vs UNCW
Fourth Quarter
February 24, 2019 at Trask Coliseum - Wilmington, N.C.**



Period 4

Starters:

Delaware: 12 OLEARY, LIZZIE; 22 DEFREESE, SAMONE; 23 KARGO, BAILEY; 25 LAWRENCE, REBECCA; 2 GONZALES, ABBY;

UNCW: 0 JEUNE, ASHLI; 4 PARKER, SHRITA; 5 SMITH, GIGI; 12 BUEHLER, JULIA; 24 BELL, CHINYERE;

| Time | VISITORS: Delaware | Score | Margin | HOME: UNCW |
|-------|---------------------------------------|-------|--------|---------------------------------------|
| 09:43 | | 55-46 | H 9 | GOOD! LAYUP by SMITH, GIGI |
| 09:43 | | | | ASSIST by BELL, CHINYERE |
| 09:25 | TURNOVER (LOSTBALL) by OLEARY, LIZZIE | | | |
| 09:25 | | | | STEAL by SMITH, GIGI |
| 09:03 | | | | MISSED 3PTR by PARKER, SHRITA |
| 09:00 | REBOUND (DEF) by LEWIS, ALISON | | | |
| 08:48 | GOOD! JUMPER by LAWRENCE, REBECCA | 55-48 | H 7 | |
| 08:48 | ASSIST by LEWIS, ALISON | | | |
| 08:26 | | | | MISSED LAYUP by SUGGS, LACEY |
| 08:26 | BLOCK by LAWRENCE, REBECCA | | | |
| 08:26 | REBOUND (DEF) by TEAM | | | |
| 08:20 | GOOD! LAYUP by LEWIS, ALISON [FB] | 55-50 | H 5 | |
| 08:20 | ASSIST by LAWRENCE, REBECCA | | | |
| 07:55 | | | | TURNOVER (LOSTBALL) by BELL, CHINYERE |
| 07:55 | STEAL by GONZALES, ABBY | | | |
| 07:49 | MISSED JUMPER by GONZALES, ABBY | | | |
| 07:49 | | | | REBOUND (DEF) by SUGGS, LACEY |
| 07:49 | FOUL (PERSONAL) by GONZALES, ABBY | | | |
| 07:49 | | | | SUB OUT: PARKER, SHRITA |
| 07:49 | | | | SUB IN: VASON, AHYIONA |
| 07:49 | SUB OUT: GONZALES, ABBY | | | |
| 07:49 | SUB IN: MCBRIDE, PARIS | | | |
| 07:31 | | | | MISSED JUMPER by SMITH, GIGI |
| 07:27 | | | | REBOUND (OFF) by SUGGS, LACEY |
| 07:26 | | 57-50 | H 7 | GOOD! JUMPER by SUGGS, LACEY [PNT] |
| 07:09 | MISSED 3PTR by KARGO, BAILEY | | | |
| 07:04 | | | | REBOUND (DEF) by VASON, AHYIONA |
| 06:56 | | | | TIMEOUT 30SEC |
| 06:56 | TIMEOUT 30SEC | | | |
| 06:34 | | 59-50 | H 9 | GOOD! LAYUP by SUGGS, LACEY |
| 06:34 | | | | ASSIST by BELL, CHINYERE |
| 06:18 | GOOD! JUMPER by LEWIS, ALISON | 59-52 | H 7 | |
| 05:54 | | 62-52 | H 10 | GOOD! 3PTR by SMITH, GIGI |
| 05:54 | | | | ASSIST by CRISP, MORIAH |
| 05:47 | | | | FOUL (PERSONAL) by BELL, CHINYERE |
| 05:47 | | | | SUB OUT: BELL, CHINYERE |
| 05:47 | | | | SUB IN: OBUSEK, CAROL-ANNE |
| 05:39 | MISSED JUMPER by MCBRIDE, PARIS | | | |
| 05:38 | REBOUND (OFF) by OLEARY, LIZZIE | | | |
| 05:38 | | | | FOUL (PERSONAL) by SUGGS, LACEY |
| 05:30 | GOOD! JUMPER by LAWRENCE, REBECCA | 62-54 | H 8 | |
| 05:30 | ASSIST by LEWIS, ALISON | | | |
| 04:58 | FOUL (PERSONAL) by OLEARY, LIZZIE | | | |
| 04:58 | | 63-54 | H 9 | GOOD! FT by SUGGS, LACEY |
| 04:58 | | | | SUB OUT: VASON, AHYIONA |
| 04:58 | | | | SUB IN: PARKER, SHRITA |
| 04:58 | | 64-54 | H 10 | GOOD! FT by SUGGS, LACEY |
| 04:42 | GOOD! JUMPER by LEWIS, ALISON | 64-56 | H 8 | |
| 04:18 | | | | MISSED JUMPER by OBUSEK, CAROL-ANNE |
| 04:18 | REBOUND (DEF) by LEWIS, ALISON | | | |
| 04:18 | | | | FOUL (PERSONAL) by SUGGS, LACEY |
| 04:18 | SUB OUT: KARGO, BAILEY | | | |
| 04:18 | SUB IN: GONZALES, ABBY | | | |
| 04:07 | MISSED JUMPER by LEWIS, ALISON | | | |
| 04:03 | | | | REBOUND (DEF) by SMITH, GIGI |
| 03:51 | | | | TIMEOUT 30SEC |
| 03:44 | | | | MISSED 3PTR by PARKER, SHRITA |
| 03:40 | REBOUND (DEF) by GONZALES, ABBY | | | |
| 03:36 | | | | FOUL (PERSONAL) by OBUSEK, CAROL-ANNE |
| 03:36 | GOOD! FT by MCBRIDE, PARIS [FB] | 64-57 | H 7 | |
| 03:36 | | | | SUB OUT: CRISP, MORIAH |
| 03:36 | | | | SUB IN: JEUNE, ASHLI |
| 03:36 | GOOD! FT by MCBRIDE, PARIS [FB] | 64-58 | H 6 | |
| 03:18 | | | | MISSED 3PTR by JEUNE, ASHLI |
| 03:14 | REBOUND (DEF) by MCBRIDE, PARIS | | | |
| 02:55 | GOOD! LAYUP by LEWIS, ALISON [PNT] | 64-60 | H 4 | |
| 02:21 | | | | MISSED JUMPER by SUGGS, LACEY |
| 02:17 | REBOUND (DEF) by LEWIS, ALISON | | | |
| 01:59 | | | | FOUL (PERSONAL) by PARKER, SHRITA |

| Time | VISITORS: Delaware | Score | Margin | HOME: UNCW |
|-------|---------------------------------------|-------|--------|--------------------------------------|
| 01:59 | GOOD! FT by LEWIS, ALISON | 64-61 | H 3 | |
| 01:59 | | | | SUB OUT: PARKER, SHRITA |
| 01:59 | | | | SUB IN: VASON, AHYIONA |
| 01:59 | | | | SUB OUT: OBUSEK, CAROL-ANNE |
| 01:59 | | | | SUB IN: BELL, CHINYERE |
| 01:59 | GOOD! FT by LEWIS, ALISON | 64-62 | H 2 | |
| 01:39 | FOUL (PERSONAL) by LAWRENCE, REBECCA | | | |
| 01:34 | | 66-62 | H 4 | GOOD! JUMPER by BELL, CHINYERE [PNT] |
| 01:34 | | | | ASSIST by JEUNE, ASHLI |
| 01:26 | TURNOVER (LOSTBALL) by MCBRIDE, PARIS | | | |
| 01:26 | | | | STEAL by JEUNE, ASHLI |
| 01:00 | | 68-62 | H 6 | GOOD! LAYUP by SUGGS, LACEY [PNT] |
| 01:00 | | | | ASSIST by BELL, CHINYERE |
| 00:59 | TIMEOUT TEAM | | | |
| 00:51 | TURNOVER (BADPASS) by LEWIS, ALISON | | | |
| 00:33 | | 70-62 | H 8 | GOOD! LAYUP by JEUNE, ASHLI |
| 00:33 | | | | ASSIST by SMITH, GIGI |
| 00:24 | MISSED JUMPER by MCBRIDE, PARIS | | | |
| 00:24 | | | | REBOUND (DEF) by BELL, CHINYERE |
| 00:21 | FOUL (PERSONAL) by MCBRIDE, PARIS | | | |
| 00:21 | | | | SUB OUT: VASON, AHYIONA |
| 00:21 | | | | SUB IN: PARKER, SHRITA |
| 00:19 | FOUL (PERSONAL) by MCBRIDE, PARIS | | | |
| 00:19 | | 71-62 | H 9 | GOOD! FT by SUGGS, LACEY [FB] |
| 00:19 | SUB OUT: MCBRIDE, PARIS | | | |
| 00:19 | SUB IN: KARGO, BAILEY | | | |
| 00:19 | | 72-62 | H 10 | GOOD! FT by SUGGS, LACEY [FB] |
| 00:19 | TIMEOUT 30SEC | | | |
| 00:19 | | | | SUB OUT: SUGGS, LACEY |
| 00:19 | | | | SUB IN: BUEHLER, JULIA |
| 00:07 | MISSED 3PTR by GONZALES, ABBY | | | |
| 00:04 | REBOUND (OFF) by LAWRENCE, REBECCA | | | |
| 00:04 | GOOD! JUMPER by LAWRENCE, REBECCA | 72-64 | H 8 | |

Delaware 64, UNCW 72

| Points from (This Period) | DEL | NCW |
|---------------------------|-----|-----|
| In the Paint | 4 | 12 |
| Off Turns | 0 | 4 |
| 2nd Chance | 4 | 2 |
| Fast Break | 4 | 2 |
| Bench | 12 | 10 |

Official Scoring/Possession Reference Chart
Delaware vs UNCW
Period 1
February 24, 2019 at Trask Coliseum - Wilmington, N.C.



Period 1

Starters:

Delaware: 12 OLEARY, LIZZIE; 22 DEFREESE, SAMONE; 23 KARGO, BAILEY; 25 LAWRENCE, REBECCA; 2 GONZALES, ABBY;

UNCW: 0 JEUNE, ASHLI; 4 PARKER, SHRITA; 5 SMITH, GIGI; 12 BUEHLER, JULIA; 24 BELL, CHINYERE;

| Time | VISITORS: Delaware | Score | Margin | HOME: UNCW |
|-------|--|-------|--------|--|
| 09:38 | GOOD! LAYUP by KARGO, BAILEY | 0-2 | V 2 | |
| 09:19 | GOOD! 3PTR by GONZALES, ABBY | 0-5 | V 5 | |
| 08:52 | GOOD! 3PTR by LAWRENCE, REBECCA [FB] | 0-8 | V 8 | |
| 08:29 | | 2-8 | V 6 | GOOD! LAYUP by BELL, CHINYERE |
| 07:39 | GOOD! FT by OLEARY, LIZZIE [FB] | 2-9 | V 7 | |
| 07:39 | GOOD! FT by OLEARY, LIZZIE [FB] | 2-10 | V 8 | |
| 07:20 | | 4-10 | V 6 | GOOD! JUMPER by BELL, CHINYERE |
| 06:52 | | 5-10 | V 5 | GOOD! FT by SMITH, GIGI [FB] |
| 06:52 | | 6-10 | V 4 | GOOD! FT by SMITH, GIGI [FB] |
| 06:16 | GOOD! JUMPER by LAWRENCE, REBECCA [FB/PNT] | 6-12 | V 6 | |
| 05:45 | GOOD! JUMPER by KARGO, BAILEY [FB] | 6-14 | V 8 | |
| 04:30 | | 9-14 | V 5 | GOOD! 3PTR by SMITH, GIGI |
| 02:47 | | 11-14 | V 3 | GOOD! JUMPER by SMITH, GIGI |
| 02:06 | | 13-14 | V 1 | GOOD! JUMPER by OBUSEK, CAROL-ANNE [PNT] |
| 01:43 | | 15-14 | H 1 | GOOD! LAYUP by SMITH, GIGI [FB] |
| 01:42 | | 16-14 | H 2 | GOOD! FT by PARKER, SHRITA |
| 01:32 | | 17-14 | H 3 | GOOD! FT by BELL, CHINYERE |
| 01:32 | | 18-14 | H 4 | GOOD! FT by BELL, CHINYERE |
| 01:10 | GOOD! 3PTR by GONZALES, ABBY | 18-17 | H 1 | |
| 00:00 | | 20-17 | H 3 | GOOD! LAYUP by BELL, CHINYERE |

Delaware 17, UNCW 20

Official Scoring/Possession Reference Chart
Delaware vs UNCW
Period 2
February 24, 2019 at Trask Coliseum - Wilmington, N.C.



Period 2

Starters:

Delaware: 12 OLEARY, LIZZIE; 22 DEFREESE, SAMONE; 23 KARGO, BAILEY; 25 LAWRENCE, REBECCA; 2 GONZALES, ABBY;

UNCW: 0 JEUNE, ASHLI; 4 PARKER, SHRITA; 5 SMITH, GIGI; 12 BUEHLER, JULIA; 24 BELL, CHINYERE;

| Time | VISITORS: Delaware | Score | Margin | HOME: UNCW |
|-------|--|-------|--------|-------------------------------|
| 09:27 | | 23-17 | H 6 | GOOD! 3PTR by PARKER, SHRITA |
| 09:08 | GOOD! JUMPER by DEFREESE, SAMONE [PNT] | 23-19 | H 4 | |
| 08:30 | GOOD! JUMPER by LAWRENCE, REBECCA | 23-21 | H 2 | |
| 08:09 | GOOD! JUMPER by LEWIS, ALISON [FB] | 23-23 | T | |
| 07:54 | | 25-23 | H 2 | GOOD! LAYUP by VASON, AHYIONA |
| 07:23 | | 26-23 | H 3 | GOOD! FT by VASON, AHYIONA |
| 06:06 | GOOD! FT by LEWIS, ALISON | 26-24 | H 2 | |
| 06:06 | GOOD! FT by LEWIS, ALISON | 26-25 | H 1 | |
| 04:24 | GOOD! LAYUP by LEWIS, ALISON | 26-27 | V 1 | |
| 04:01 | | 29-27 | H 2 | GOOD! 3PTR by TATE, TIMBER |
| 03:26 | GOOD! LAYUP by MCBRIDE, PARIS [FB] | 29-29 | T | |
| 02:08 | GOOD! LAYUP by OLEARY, LIZZIE | 29-31 | V 2 | |
| 01:34 | | 30-31 | V 1 | GOOD! FT by VASON, AHYIONA |
| 01:34 | | 31-31 | T | GOOD! FT by VASON, AHYIONA |
| 01:18 | | 32-31 | H 1 | GOOD! FT by SMITH, GIGI [FB] |
| 00:45 | | 33-31 | H 2 | GOOD! FT by SUGGS, LACEY |
| 00:45 | | 34-31 | H 3 | GOOD! FT by SUGGS, LACEY |

Delaware 31, UNCW 34

Official Scoring/Possession Reference Chart
Delaware vs UNCW
Period 3
February 24, 2019 at Trask Coliseum - Wilmington, N.C.



Period 3

Starters:

Delaware: 12 OLEARY, LIZZIE; 22 DEFREESE, SAMONE; 23 KARGO, BAILEY; 25 LAWRENCE, REBECCA; 2 GONZALES, ABBY;

UNCW: 0 JEUNE, ASHLI; 4 PARKER, SHRITA; 5 SMITH, GIGI; 12 BUEHLER, JULIA; 24 BELL, CHINYERE;

| Time | VISITORS: Delaware | Score | Margin | HOME: UNCW |
|-------|------------------------------------|-------|--------|--------------------------------------|
| 09:40 | | 36-31 | H 5 | GOOD! LAYUP by VASON, AHYIONA |
| 09:21 | GOOD! JUMPER by LAWRENCE, REBECCA | 36-33 | H 3 | |
| 09:06 | | 39-33 | H 6 | GOOD! 3PTR by JEUNE, ASHLI |
| 08:27 | | 41-33 | H 8 | GOOD! LAYUP by SMITH, GIGI [FB] |
| 08:15 | GOOD! 3PTR by GONZALES, ABBY | 41-36 | H 5 | |
| 07:58 | | 42-36 | H 6 | GOOD! FT by BELL, CHINYERE |
| 07:22 | GOOD! JUMPER by LAWRENCE, REBECCA | 42-38 | H 4 | |
| 06:44 | | 44-38 | H 6 | GOOD! LAYUP by SMITH, GIGI [FB] |
| 05:54 | GOOD! JUMPER by LAWRENCE, REBECCA | 44-40 | H 4 | |
| 05:27 | GOOD! LAYUP by LEWIS, ALISON [PNT] | 44-42 | H 2 | |
| 04:28 | GOOD! LAYUP by MCBRIDE, PARIS | 44-44 | T | |
| 03:44 | | 46-44 | H 2 | GOOD! JUMPER by BELL, CHINYERE [PNT] |
| 03:44 | | 47-44 | H 3 | GOOD! FT by BELL, CHINYERE |
| 02:33 | | 48-44 | H 4 | GOOD! FT by BELL, CHINYERE |
| 01:53 | | 49-44 | H 5 | GOOD! FT by BELL, CHINYERE |
| 00:58 | | 51-44 | H 7 | GOOD! JUMPER by BELL, CHINYERE [FB] |
| 00:20 | | 52-44 | H 8 | GOOD! FT by BELL, CHINYERE |
| 00:20 | | 53-44 | H 9 | GOOD! FT by BELL, CHINYERE |
| 00:02 | GOOD! JUMPER by LEWIS, ALISON | 53-46 | H 7 | |

Delaware 46, UNCW 53

Official Scoring/Possession Reference Chart
Delaware vs UNCW
Period 4
February 24, 2019 at Trask Coliseum - Wilmington, N.C.



Period 4

Starters:

Delaware: 12 OLEARY, LIZZIE; 22 DEFREESE, SAMONE; 23 KARGO, BAILEY; 25 LAWRENCE, REBECCA; 2 GONZALES, ABBY;

UNCW: 0 JEUNE, ASHLI; 4 PARKER, SHRITA; 5 SMITH, GIGI; 12 BUEHLER, JULIA; 24 BELL, CHINYERE;

| Time | VISITORS: Delaware | Score | Margin | HOME: UNCW |
|-------|------------------------------------|-------|--------|--------------------------------------|
| 09:43 | | 55-46 | H 9 | GOOD! LAYUP by SMITH, GIGI |
| 08:48 | GOOD! JUMPER by LAWRENCE, REBECCA | 55-48 | H 7 | |
| 08:20 | GOOD! LAYUP by LEWIS, ALISON [FB] | 55-50 | H 5 | |
| 07:26 | | 57-50 | H 7 | GOOD! JUMPER by SUGGS, LACEY [PNT] |
| 06:34 | | 59-50 | H 9 | GOOD! LAYUP by SUGGS, LACEY |
| 06:18 | GOOD! JUMPER by LEWIS, ALISON | 59-52 | H 7 | |
| 05:54 | | 62-52 | H 10 | GOOD! 3PTR by SMITH, GIGI |
| 05:30 | GOOD! JUMPER by LAWRENCE, REBECCA | 62-54 | H 8 | |
| 04:58 | | 63-54 | H 9 | GOOD! FT by SUGGS, LACEY |
| 04:58 | | 64-54 | H 10 | GOOD! FT by SUGGS, LACEY |
| 04:42 | GOOD! JUMPER by LEWIS, ALISON | 64-56 | H 8 | |
| 03:36 | GOOD! FT by MCBRIDE, PARIS [FB] | 64-57 | H 7 | |
| 03:36 | GOOD! FT by MCBRIDE, PARIS [FB] | 64-58 | H 6 | |
| 02:55 | GOOD! LAYUP by LEWIS, ALISON [PNT] | 64-60 | H 4 | |
| 01:59 | GOOD! FT by LEWIS, ALISON | 64-61 | H 3 | |
| 01:59 | GOOD! FT by LEWIS, ALISON | 64-62 | H 2 | |
| 01:34 | | 66-62 | H 4 | GOOD! JUMPER by BELL, CHINYERE [PNT] |
| 01:00 | | 68-62 | H 6 | GOOD! LAYUP by SUGGS, LACEY [PNT] |
| 00:33 | | 70-62 | H 8 | GOOD! LAYUP by JEUNE, ASHLI |
| 00:19 | | 71-62 | H 9 | GOOD! FT by SUGGS, LACEY [FB] |
| 00:19 | | 72-62 | H 10 | GOOD! FT by SUGGS, LACEY [FB] |
| 00:04 | GOOD! JUMPER by LAWRENCE, REBECCA | 72-64 | H 8 | |

Delaware 64, UNCW 72

Official Substitutions Log
Delaware vs UNCW
Period 1
February 24, 2019 at Trask Coliseum - Wilmington, N.C.



| VISITORS: Delaware | Time | Score | HOME: UNCW |
|-------------------------------|-------|-------|-----------------------------|
| 12 OLEARY, LIZZIE | | | 0 JEUNE, ASHLI |
| 22 DEFREESE, SAMONE | | | 4 PARKER, SHRITA |
| 23 KARGO, BAILEY | | | 5 SMITH, GIGI |
| 25 LAWRENCE, REBECCA | | | 12 BUEHLER, JULIA |
| 2 GONZALES, ABBY | | | 24 BELL, CHINYERE |
| | 07:39 | 9-2 | SUB OUT: PARKER, SHRITA |
| | 07:39 | | SUB IN: SUGGS, LACEY |
| | 07:39 | | SUB OUT: BUEHLER, JULIA |
| | 07:39 | | SUB IN: VASON, AHYIONA |
| | 05:03 | 14-6 | SUB OUT: JEUNE, ASHLI |
| | 05:03 | | SUB IN: POWELL, PAIGE |
| | 05:03 | | SUB OUT: BELL, CHINYERE |
| | 05:03 | | SUB IN: PARKER, SHRITA |
| SUB OUT: 12 OLEARY, LIZZIE | 05:03 | | |
| SUB IN: 0 LEFFT, GADSON | 05:03 | | |
| SUB OUT: 25 LAWRENCE, REBECCA | 05:03 | | |
| SUB IN: 5 NICHOLAS, MAKEDA | 05:03 | | |
| | 03:24 | 14-9 | SUB OUT: POWELL, PAIGE |
| | 03:24 | | SUB IN: OBUSEK, CAROL-ANNE |
| SUB OUT: 0 LEFFT, GADSON | 03:24 | | |
| SUB IN: 25 LAWRENCE, REBECCA | 03:24 | | |
| SUB OUT: 23 KARGO, BAILEY | 03:24 | | |
| SUB IN: 4 MCBRIDE, PARIS | 03:24 | | |
| SUB OUT: 5 NICHOLAS, MAKEDA | 01:43 | 14-15 | |
| SUB IN: 12 OLEARY, LIZZIE | 01:43 | | |
| | 01:42 | 14-15 | SUB OUT: OBUSEK, CAROL-ANNE |
| | 01:42 | | SUB IN: BELL, CHINYERE |
| SUB OUT: 22 DEFREESE, SAMONE | 01:32 | 14-16 | |
| SUB IN: 35 LEWIS, ALISON | 01:32 | | |

Delaware 17, UNCW 20

Official Substitutions Log
Delaware vs UNCW
Period 2
February 24, 2019 at Trask Coliseum - Wilmington, N.C.



| VISITORS: Delaware | Time | Score | HOME: UNCW |
|------------------------------|-------|-------|-----------------------------|
| 12 OLEARY, LIZZIE | | | 0 JEUNE, ASHLI |
| 22 DEFREESE, SAMONE | | | 4 PARKER, SHRITA |
| 23 KARGO, BAILEY | | | 5 SMITH, GIGI |
| 25 LAWRENCE, REBECCA | | | 12 BUEHLER, JULIA |
| 2 GONZALES, ABBY | | | 24 BELL, CHINYERE |
| SUB OUT: 22 DEFREESE, SAMONE | 09:03 | 19-23 | |
| SUB IN: 35 LEWIS, ALISON | 09:03 | | |
| | 07:35 | 23-25 | SUB OUT: PARKER, SHRITA |
| | 07:35 | | SUB IN: JEUNE, ASHLI |
| | 07:35 | | SUB OUT: BELL, CHINYERE |
| | 07:35 | | SUB IN: OBUSEK, CAROL-ANNE |
| SUB OUT: 23 KARGO, BAILEY | 07:35 | | |
| SUB IN: 4 MCBRIDE, PARIS | 07:35 | | |
| SUB OUT: 12 OLEARY, LIZZIE | 07:35 | | |
| SUB IN: 0 LEFFT, GADSON | 07:35 | | |
| SUB OUT: 2 GONZALES, ABBY | 07:11 | 23-26 | |
| SUB IN: 23 KARGO, BAILEY | 07:11 | | |
| | 06:09 | 23-26 | SUB OUT: SMITH, GIGI |
| | 06:09 | | SUB IN: CRISP, MORIAH |
| | 06:09 | | SUB OUT: VASON, AHYIONA |
| | 06:09 | | SUB IN: TATE, TIMBER |
| | 06:06 | 24-26 | SUB OUT: JEUNE, ASHLI |
| | 06:06 | | SUB IN: PARKER, SHRITA |
| | 05:05 | 25-26 | SUB OUT: OBUSEK, CAROL-ANNE |
| | 05:05 | | SUB IN: BELL, CHINYERE |
| SUB OUT: 23 KARGO, BAILEY | 05:05 | | |
| SUB IN: 2 GONZALES, ABBY | 05:05 | | |
| SUB OUT: 0 LEFFT, GADSON | 05:05 | | |
| SUB IN: 12 OLEARY, LIZZIE | 05:05 | | |
| | 03:50 | 27-29 | SUB OUT: CRISP, MORIAH |
| | 03:50 | | SUB IN: VASON, AHYIONA |
| | 02:57 | 29-29 | SUB OUT: TATE, TIMBER |
| | 02:57 | | SUB IN: SMITH, GIGI |
| | 02:11 | 29-29 | SUB OUT: BELL, CHINYERE |
| | 02:11 | | SUB IN: POWELL, PAIGE |
| | 01:34 | 31-30 | SUB OUT: POWELL, PAIGE |
| | 01:34 | | SUB IN: OBUSEK, CAROL-ANNE |
| | 01:34 | | SUB OUT: PARKER, SHRITA |
| | 01:34 | | SUB IN: CRISP, MORIAH |
| SUB OUT: 4 MCBRIDE, PARIS | 01:18 | 31-31 | |
| SUB IN: 23 KARGO, BAILEY | 01:18 | | |
| SUB OUT: 35 LEWIS, ALISON | 00:45 | 31-33 | |
| SUB IN: 22 DEFREESE, SAMONE | 00:45 | | |

Delaware 31, UNCW 34

Official Substitutions Log
Delaware vs UNCW
Period 3
February 24, 2019 at Trask Coliseum - Wilmington, N.C.



| VISITORS: Delaware | Time | Score | HOME: UNCW |
|-------------------------------|-------|-------|----------------------------|
| 12 OLEARY, LIZZIE | | | 0 JEUNE, ASHLI |
| 22 DEFREESE, SAMONE | | | 4 PARKER, SHRITA |
| 23 KARGO, BAILEY | | | 5 SMITH, GIGI |
| 25 LAWRENCE, REBECCA | | | 12 BUEHLER, JULIA |
| 2 GONZALES, ABBY | | | 24 BELL, CHINYERE |
| SUB OUT: 23 KARGO, BAILEY | 08:49 | 33-39 | |
| SUB IN: 4 MCBRIDE, PARIS | 08:49 | | |
| SUB OUT: 22 DEFREESE, SAMONE | 08:49 | | |
| SUB IN: 35 LEWIS, ALISON | 08:49 | | |
| | 08:27 | 33-41 | SUB OUT: VASON, AHYIONA |
| | 08:27 | | SUB IN: CRISP, MORIAH |
| SUB OUT: 12 OLEARY, LIZZIE | 07:58 | 36-42 | |
| SUB IN: 5 NICHOLAS, MAKEDA | 07:58 | | |
| | 07:05 | 38-42 | SUB OUT: JEUNE, ASHLI |
| | 07:05 | | SUB IN: PARKER, SHRITA |
| | 05:27 | 42-44 | SUB OUT: PARKER, SHRITA |
| | 05:27 | | SUB IN: VASON, AHYIONA |
| SUB OUT: 5 NICHOLAS, MAKEDA | 04:41 | 42-44 | |
| SUB IN: 0 LEFFT, GADSON | 04:41 | | |
| SUB OUT: 25 LAWRENCE, REBECCA | 03:44 | 44-47 | |
| SUB IN: 5 NICHOLAS, MAKEDA | 03:44 | | |
| SUB OUT: 0 LEFFT, GADSON | 03:44 | | |
| SUB IN: 12 OLEARY, LIZZIE | 03:44 | | |
| SUB OUT: 12 OLEARY, LIZZIE | 02:34 | 44-47 | |
| SUB IN: 22 DEFREESE, SAMONE | 02:34 | | |
| SUB OUT: 5 NICHOLAS, MAKEDA | 01:42 | 44-49 | |
| SUB IN: 25 LAWRENCE, REBECCA | 01:42 | | |
| SUB OUT: 2 GONZALES, ABBY | 01:26 | 44-49 | |
| SUB IN: 23 KARGO, BAILEY | 01:26 | | |
| | 00:20 | 44-52 | SUB OUT: SUGGS, LACEY |
| | 00:20 | | SUB IN: JEUNE, ASHLI |
| | 00:20 | | SUB OUT: BELL, CHINYERE |
| | 00:20 | | SUB IN: OBUSEK, CAROL-ANNE |

Delaware 46, UNCW 53

Official Substitutions Log
Delaware vs UNCW
Period 4
February 24, 2019 at Trask Coliseum - Wilmington, N.C.



| VISITORS: Delaware | Time | Score | HOME: UNCW |
|---------------------------|-------|-------|-----------------------------|
| 12 OLEARY, LIZZIE | | | 0 JEUNE, ASHLI |
| 22 DEFREESE, SAMONE | | | 4 PARKER, SHRITA |
| 23 KARGO, BAILEY | | | 5 SMITH, GIGI |
| 25 LAWRENCE, REBECCA | | | 12 BUEHLER, JULIA |
| 2 GONZALES, ABBY | | | 24 BELL, CHINYERE |
| | 07:49 | 50-55 | SUB OUT: PARKER, SHRITA |
| | 07:49 | | SUB IN: VASON, AHYIONA |
| SUB OUT: 2 GONZALES, ABBY | 07:49 | | |
| SUB IN: 4 MCBRIDE, PARIS | 07:49 | | |
| | 05:47 | 52-62 | SUB OUT: BELL, CHINYERE |
| | 05:47 | | SUB IN: OBUSEK, CAROL-ANNE |
| | 04:58 | 54-63 | SUB OUT: VASON, AHYIONA |
| | 04:58 | | SUB IN: PARKER, SHRITA |
| SUB OUT: 23 KARGO, BAILEY | 04:18 | 56-64 | |
| SUB IN: 2 GONZALES, ABBY | 04:18 | | |
| | 03:36 | 57-64 | SUB OUT: CRISP, MORIAH |
| | 03:36 | | SUB IN: JEUNE, ASHLI |
| | 01:59 | 61-64 | SUB OUT: PARKER, SHRITA |
| | 01:59 | | SUB IN: VASON, AHYIONA |
| | 01:59 | | SUB OUT: OBUSEK, CAROL-ANNE |
| | 01:59 | | SUB IN: BELL, CHINYERE |
| | 00:21 | 62-70 | SUB OUT: VASON, AHYIONA |
| | 00:21 | | SUB IN: PARKER, SHRITA |
| SUB OUT: 4 MCBRIDE, PARIS | 00:19 | 62-71 | |
| SUB IN: 23 KARGO, BAILEY | 00:19 | | |
| | 00:19 | | SUB OUT: SUGGS, LACEY |
| | 00:19 | | SUB IN: BUEHLER, JULIA |

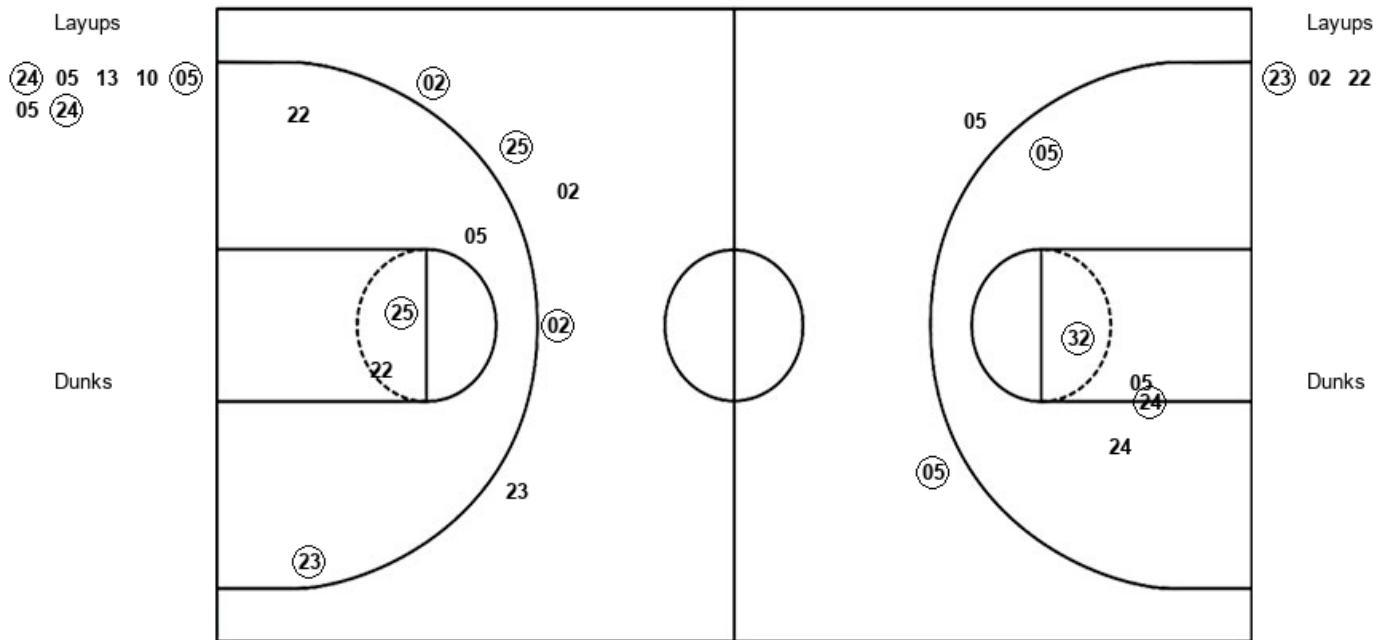
Delaware 64, UNCW 72

Official Shot Chart
Delaware vs UNCW
PERIOD 1 Shots
 February 24, 2019 at Trask Coliseum - Wilmington, N.C.



UNCW

Delaware



| UNCW : Period 1 | Made | Att | Pct |
|--------------------------|-------------|------------|-------------|
| Layups | 3 | 7 | 42.9 |
| Dunks | 0 | 0 | 0 |
| 2PT Field Goals | 6 | 12 | 50.0 |
| 3PT Field Goals | 1 | 2 | 50.0 |
| Total Field Goals | 7 | 14 | 50.0 |

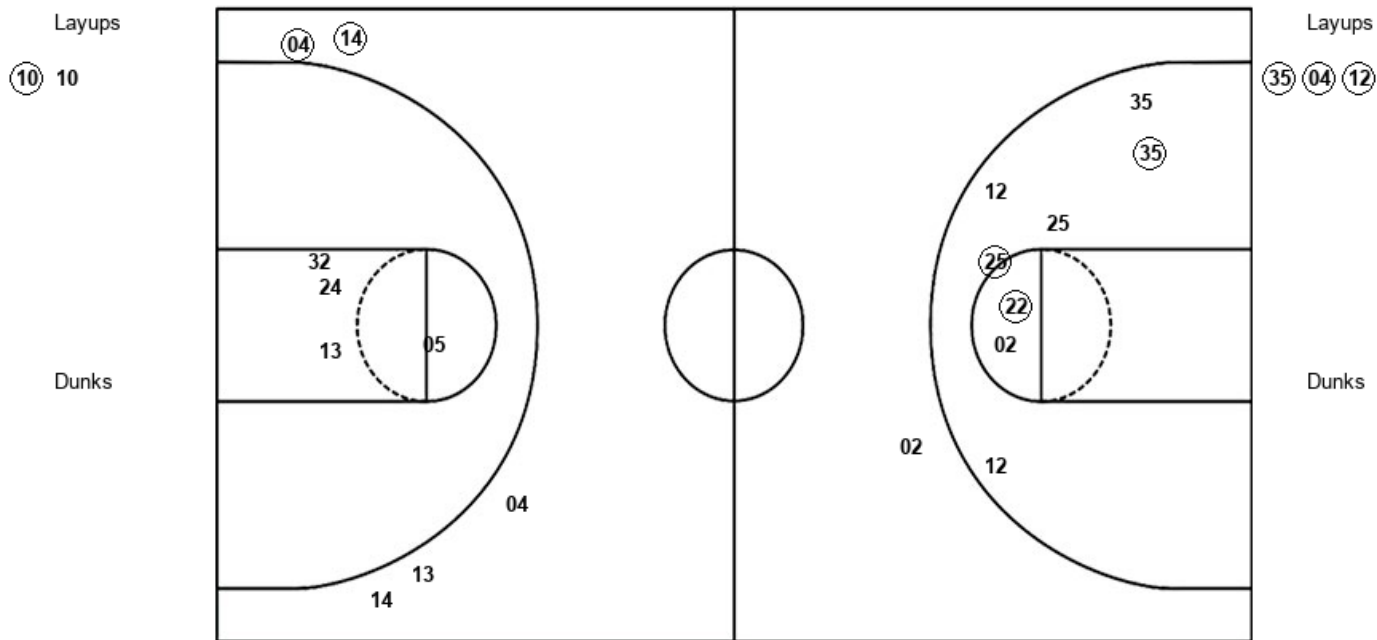
| DEL : Period 1 | Made | Att | Pct |
|--------------------------|-------------|------------|-------------|
| Layups | 1 | 3 | 33.3 |
| Dunks | 0 | 0 | 0 |
| 2PT Field Goals | 3 | 8 | 37.5 |
| 3PT Field Goals | 3 | 5 | 60.0 |
| Total Field Goals | 6 | 13 | 46.2 |

Official Shot Chart
Delaware vs UNCW
PERIOD 2 Shots
 February 24, 2019 at Trask Coliseum - Wilmington, N.C.



UNCW

Delaware



| UNCW : Period 2 | Made | Att | Pct |
|--------------------------|-------------|------------|-------------|
| Layups | 1 | 2 | 50.0 |
| Dunks | 0 | 0 | 0 |
| 2PT Field Goals | 1 | 6 | 16.7 |
| 3PT Field Goals | 2 | 5 | 40.0 |
| Total Field Goals | 3 | 11 | 27.3 |

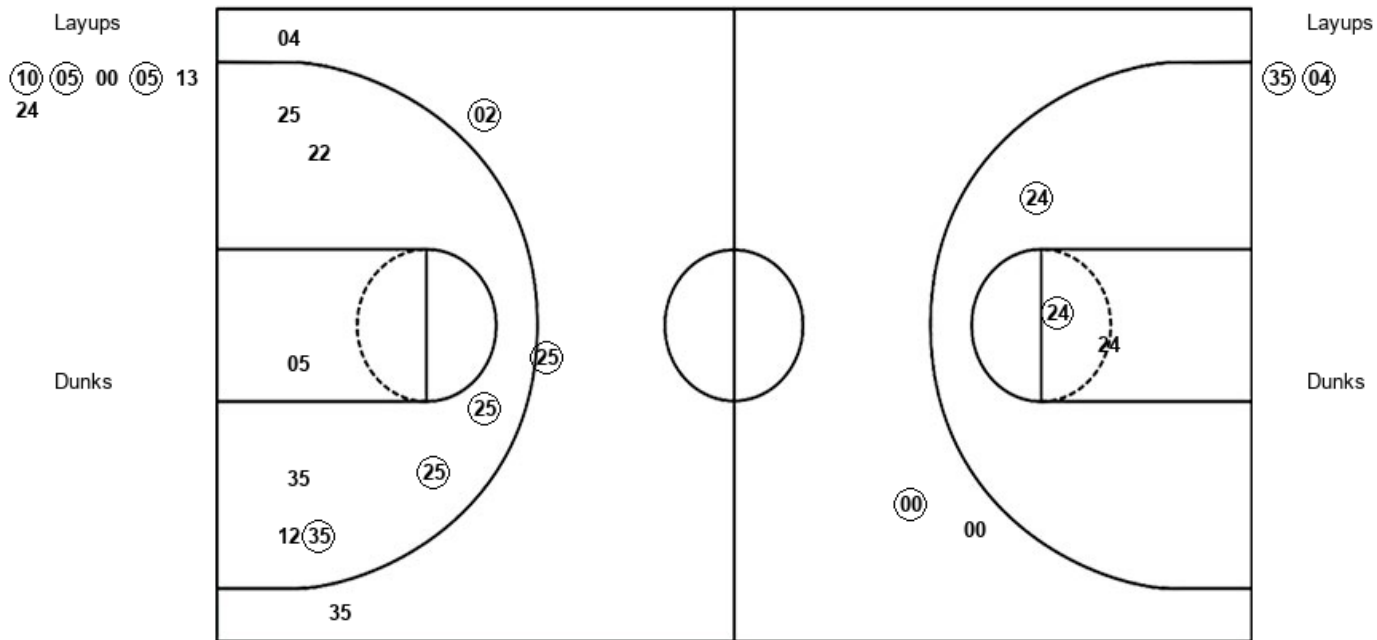
| DEL : Period 2 | Made | Att | Pct |
|--------------------------|-------------|------------|-------------|
| Layups | 3 | 3 | 100.0 |
| Dunks | 0 | 0 | 0 |
| 2PT Field Goals | 6 | 11 | 54.5 |
| 3PT Field Goals | 0 | 1 | 00.0 |
| Total Field Goals | 6 | 12 | 50.0 |

Official Shot Chart
Delaware vs UNCW
PERIOD 3 Shots
 February 24, 2019 at Trask Coliseum - Wilmington, N.C.



UNCW

Delaware



| UNCW : Period 3 | Made | Att | Pct |
|--------------------------|----------|-----------|-------------|
| Layups | 3 | 6 | 50.0 |
| Dunks | 0 | 0 | 0 |
| 2PT Field Goals | 5 | 9 | 55.6 |
| 3PT Field Goals | 1 | 2 | 50.0 |
| Total Field Goals | 6 | 11 | 54.5 |

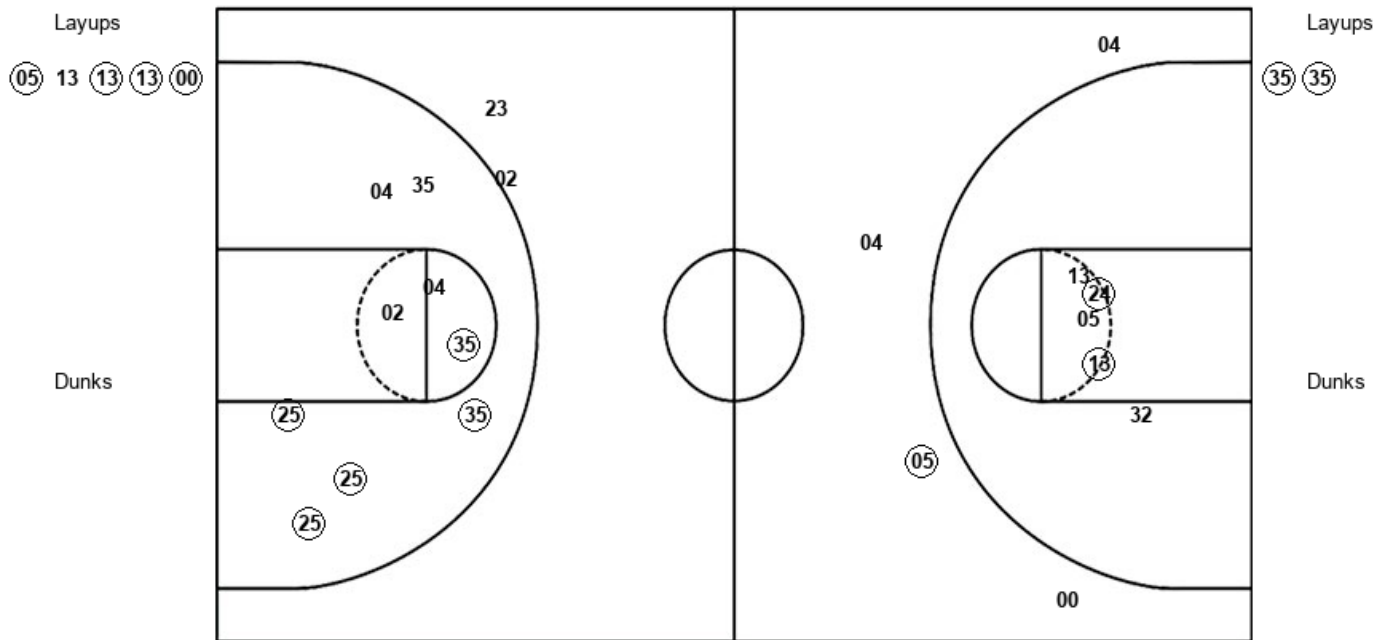
| DEL : Period 3 | Made | Att | Pct |
|--------------------------|----------|-----------|-------------|
| Layups | 2 | 2 | 100.0 |
| Dunks | 0 | 0 | 0 |
| 2PT Field Goals | 6 | 11 | 54.5 |
| 3PT Field Goals | 1 | 3 | 33.3 |
| Total Field Goals | 7 | 14 | 50.0 |

Official Shot Chart
Delaware vs UNCW
PERIOD 4 Shots
 February 24, 2019 at Trask Coliseum - Wilmington, N.C.



UNCW

Delaware



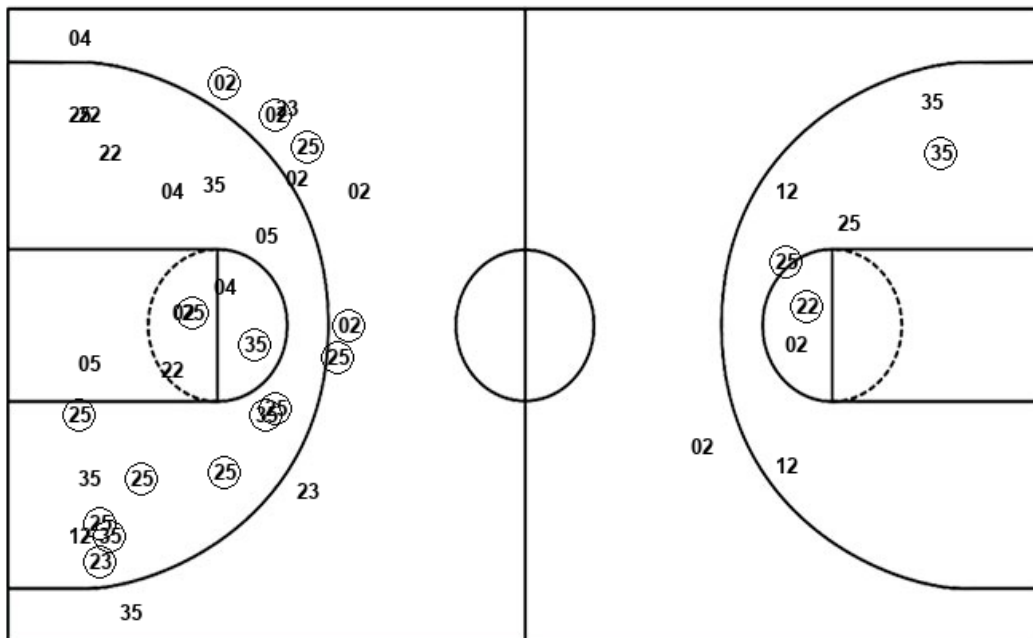
| NCW : Period 4 | Made | Att | Pct |
|--------------------------|-------------|------------|-------------|
| Layups | 4 | 5 | 80.0 |
| Dunks | 0 | 0 | 0 |
| 2PT Field Goals | 6 | 10 | 60.0 |
| 3PT Field Goals | 1 | 4 | 25.0 |
| Total Field Goals | 7 | 14 | 50.0 |

| DEL : Period 4 | Made | Att | Pct |
|--------------------------|-------------|------------|-------------|
| Layups | 2 | 2 | 100.0 |
| Dunks | 0 | 0 | 0 |
| 2PT Field Goals | 7 | 11 | 63.6 |
| 3PT Field Goals | 0 | 2 | 00.0 |
| Total Field Goals | 7 | 13 | 53.8 |

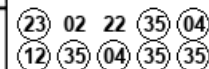
Official Shot Chart
Delaware vs UNCW
Delaware Team Shots
 February 24, 2019 at Trask Coliseum - Wilmington, N.C.



Layups



Layups



Dunks

Dunks

| DEL : Period 1 | Made | Att | Pct |
|--------------------------|----------|-----------|-------------|
| Layups | 1 | 3 | 33.3 |
| Dunks | 0 | 0 | 0 |
| 2PT Field Goals | 3 | 8 | 37.5 |
| 3PT Field Goals | 3 | 5 | 60.0 |
| Total Field Goals | 6 | 13 | 46.2 |

| DEL : Period 2 | Made | Att | Pct |
|--------------------------|----------|-----------|-------------|
| Layups | 3 | 3 | 100.0 |
| Dunks | 0 | 0 | 0 |
| 2PT Field Goals | 6 | 11 | 54.5 |
| 3PT Field Goals | 0 | 1 | 00.0 |
| Total Field Goals | 6 | 12 | 50.0 |

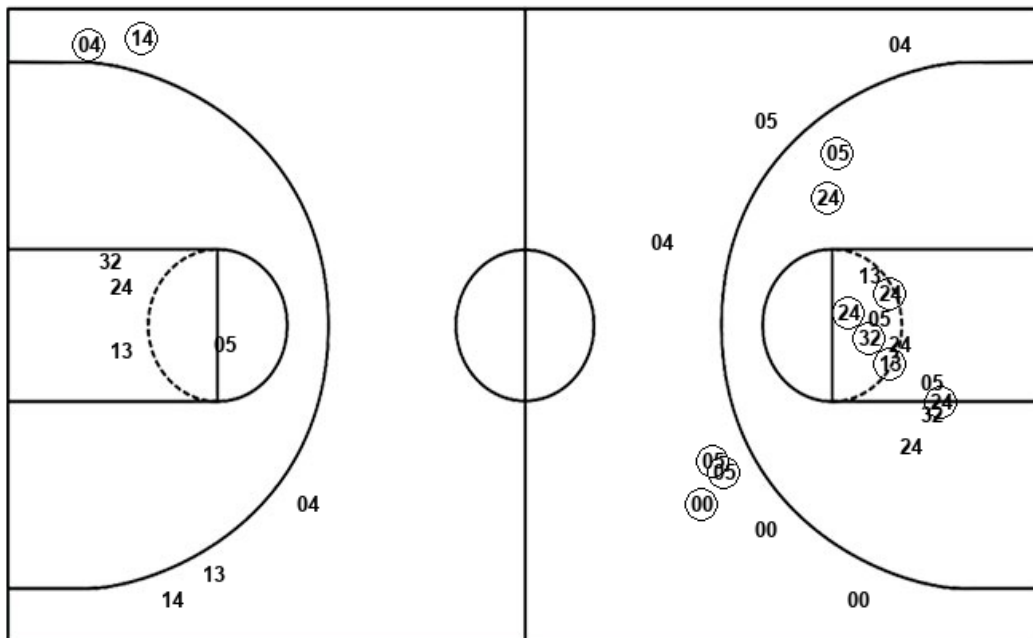
| DEL : Period 3 | Made | Att | Pct |
|--------------------------|----------|-----------|-------------|
| Layups | 2 | 2 | 100.0 |
| Dunks | 0 | 0 | 0 |
| 2PT Field Goals | 6 | 11 | 54.5 |
| 3PT Field Goals | 1 | 3 | 33.3 |
| Total Field Goals | 7 | 14 | 50.0 |

| DEL : Period 4 | Made | Att | Pct |
|--------------------------|----------|-----------|-------------|
| Layups | 2 | 2 | 100.0 |
| Dunks | 0 | 0 | 0 |
| 2PT Field Goals | 7 | 11 | 63.6 |
| 3PT Field Goals | 0 | 2 | 00.0 |
| Total Field Goals | 7 | 13 | 53.8 |

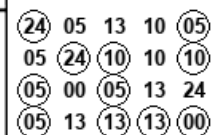
Official Shot Chart
Delaware vs UNCW
UNCW Team Shots
 February 24, 2019 at Trask Coliseum - Wilmington, N.C.



Layups



Layups



Dunks

Dunks

| NCW : Period 1 | Made | Att | Pct |
|--------------------------|----------|-----------|-------------|
| Layups | 3 | 7 | 42.9 |
| Dunks | 0 | 0 | 0 |
| 2PT Field Goals | 6 | 12 | 50.0 |
| 3PT Field Goals | 1 | 2 | 50.0 |
| Total Field Goals | 7 | 14 | 50.0 |

| NCW : Period 2 | Made | Att | Pct |
|--------------------------|----------|-----------|-------------|
| Layups | 1 | 2 | 50.0 |
| Dunks | 0 | 0 | 0 |
| 2PT Field Goals | 1 | 6 | 16.7 |
| 3PT Field Goals | 2 | 5 | 40.0 |
| Total Field Goals | 3 | 11 | 27.3 |

| NCW : Period 3 | Made | Att | Pct |
|--------------------------|----------|-----------|-------------|
| Layups | 3 | 6 | 50.0 |
| Dunks | 0 | 0 | 0 |
| 2PT Field Goals | 5 | 9 | 55.6 |
| 3PT Field Goals | 1 | 2 | 50.0 |
| Total Field Goals | 6 | 11 | 54.5 |

| NCW : Period 4 | Made | Att | Pct |
|--------------------------|----------|-----------|-------------|
| Layups | 4 | 5 | 80.0 |
| Dunks | 0 | 0 | 0 |
| 2PT Field Goals | 6 | 10 | 60.0 |
| 3PT Field Goals | 1 | 4 | 25.0 |
| Total Field Goals | 7 | 14 | 50.0 |