

## FINAL SCORE



**Drexel**

**65**



**UNCW**

**53**

**February 23, 2019 • Trask Coliseum - Wilmington, N.C.**

## FINAL STATISTICS



**Official Box Score**  
**Drexel vs UNCW**  
**Game Totals -- Final Statistics**  
**February 23, 2019 at Trask Coliseum - Wilmington, N.C.**



### Drexel 65

No.	Player	S	Pts	FG	3FG	FT	OR	DR	TR	PF	A	TO	Blk	Stl	Min	+/-
01	WASHINGTON, KEISHANA		21	8-12	3-6	2-4	1	2	3	3	3	1	0	2	37	12
11	BROWN, AUBREE		6	2-8	2-4	0-0	1	0	1	3	6	2	0	2	34	11
12	NIHILL, HANNAH		2	0-4	0-4	2-2	1	5	6	2	2	4	0	3	33	8
23	GREENBERG, BAILEY		14	5-10	3-4	1-2	3	7	10	5	3	3	0	0	33	1
24	METZEL, NIKI		13	4-9	0-0	5-6	1	2	3	3	0	1	0	0	18	8
22	HENDRIXSON, MAURA		0	0-0	0-0	0-0	0	0	0	0	0	1	0	0	3	2
30	LEONARD, MARIAH		1	0-3	0-0	1-2	0	1	1	1	0	0	1	0	14	14
34	KRACIKOVA, TEREZA		4	2-2	0-0	0-0	0	1	1	0	0	0	0	0	14	1
50	FERARIU, ANA		4	2-2	0-0	0-0	0	2	2	2	0	2	1	0	12	3
	TEAM						2	2	4	0		1				
<b>TOTALS</b>			<b>65</b>	<b>23-50</b>	<b>8-18</b>	<b>11-16</b>	<b>9</b>	<b>22</b>	<b>31</b>	<b>19</b>	<b>14</b>	<b>15</b>	<b>2</b>	<b>7</b>	<b>200</b>	

#### Shooting By Period

Period	FG	FG%	3FG	3FG%	FT	FT%
1st Qtr	7-13	54%	3-4	75%	3-4	75%
2nd Qtr	6-14	43%	0-5	00%	0-0	0%
3rd Qtr	5-10	50%	3-5	60%	1-2	50%
4th Qtr	5-13	38%	2-4	50%	7-10	70%
1st Half	13-27	48%	3-9	33%	3-4	75%
2nd Half	10-23	43%	5-9	56%	8-12	67%
<b>Game</b>	<b>23-50</b>	<b>46.0%</b>	<b>8-18</b>	<b>44.4%</b>	<b>11-16</b>	<b>68.8%</b>

Last FG: 4th-01:15  
Biggest Run: 10-0  
Largest lead: By 13 at 3-04:11  
Technical Fouls: None.

### UNCW 53

No.	Player	S	Pts	FG	3FG	FT	OR	DR	TR	PF	A	TO	Blk	Stl	Min	+/-
00	JEUNE, ASHLI		9	2-5	1-3	4-5	4	1	5	5	3	2	0	3	30	-3
05	SMITH, GIGI		13	5-20	1-4	2-2	1	1	2	5	3	2	0	0	36	-9
10	VASON, AHYIONA		9	3-11	0-0	3-3	0	5	5	1	3	3	1	3	34	-7
13	SUGGS, LACEY		2	0-5	0-2	2-2	2	2	4	3	0	1	0	0	24	-18
24	BELL, CHINYERE		6	2-3	0-0	2-2	2	4	6	4	1	2	0	0	15	-9
01	POWELL, PAIGE		0	0-0	0-0	0-0	0	0	0	0	0	1	0	0	2	-1
02	CRISP, MORIAH		6	2-2	2-2	0-0	1	3	4	1	0	0	0	1	20	-6
04	PARKER, SHRITA		0	0-0	0-0	0-0	0	0	0	0	0	2	0	0	4	-3
14	TATE, TIMBER		0	0-4	0-4	0-0	0	1	1	0	1	1	0	0	12	-5
32	OBUSEK, CAROL-ANNE		8	4-6	0-0	0-0	5	3	8	3	0	2	0	1	23	1
	TEAM						2	0	2	0		1				
<b>TOTALS</b>			<b>53</b>	<b>18-56</b>	<b>4-15</b>	<b>13-14</b>	<b>17</b>	<b>20</b>	<b>37</b>	<b>22</b>	<b>11</b>	<b>17</b>	<b>1</b>	<b>8</b>	<b>200</b>	

#### Shooting By Period

Period	FG	FG%	3FG	3FG%	FT	FT%
1st Qtr	5-10	50%	0-2	00%	3-3	100%
2nd Qtr	5-19	26%	1-6	17%	1-2	50%
3rd Qtr	4-12	33%	2-2	100%	4-4	100%
4th Qtr	4-15	27%	1-5	20%	5-5	100%
1st Half	10-29	34%	1-8	13%	4-5	80%
2nd Half	8-27	30%	3-7	43%	9-9	100%
<b>Game</b>	<b>18-56</b>	<b>32.1%</b>	<b>4-15</b>	<b>26.7%</b>	<b>13-14</b>	<b>92.9%</b>

Last FG: 4th-02:10  
Biggest Run: 7-0  
Largest lead: By 1 at 1-07:42  
Technical Fouls: #0 TEAM @ 4th - 00:48;

#### Game Notes:

Officials: Mark Resch, Fatou Cissoko-Stephens, Timothy Greene  
Attendance: 752

Start Time: 2019-02-23 00:06:22

End Time: 2019-02-23 02:06:36

Game Duration: 120

Conference Game;

Score	1st	2nd	3rd	4th	TOT
DRX	20	12	14	19	<b>65</b>
NCW	13	12	14	14	<b>53</b>

DRX led for 39:09. NCW led for 0:30.  
Game was tied for 0:15.  
Times tied: 0      Lead Changes: 2

Points from	DRX	NCW
In the Paint	18	28
Off Turns	16	11
2nd Chance	7	15
Fast Break	9	9
Bench	9	14



**Official Box Score**  
**Drexel vs UNCW**  
**First Half Statistics Only**  
**February 23, 2019 at Trask Coliseum - Wilmington, N.C.**



### Drexel 32

No.	Player	S	Pts	FG	3FG	FT	OR	DR	TR	PF	A	TO	Blk	Stl	Min	+/-
11	BROWN, AUBREE		3	1-5	1-2	0-0	0	0	0	2	2	1	0	1	14	6
12	NIHILL, HANNAH		2	0-3	0-3	2-2	0	3	3	0	2	1	0	2	19	5
22	HENDRIXSON, MAURA		0	0-0	0-0	0-0	0	0	0	0	0	1	0	0	4	2
23	GREENBERG, BAILEY		10	4-7	2-2	0-0	3	4	7	1	2	3	0	0	20	7
24	METZEL, NIKI		3	1-2	0-0	1-2	0	1	1	2	0	1	0	0	6	6
30	LEONARD, MARIAH		0	0-0	0-0	0-0	0	0	0	1	0	0	0	0	4	1
34	KRACIKOVA, TEREZA		4	2-2	0-0	0-0	0	1	1	0	0	0	0	0	10	0
50	FERARIU, ANA		2	1-1	0-0	0-0	0	2	2	1	0	0	1	0	6	1
01	WASHINGTON, KEISHANA		8	4-7	0-2	0-0	0	1	1	1	1	0	0	0	17	7
	TEAM		0	0-0	0-0	0-0	1	1	2	0	0	0	0	0	0	0
<b>TOTALS</b>			<b>32</b>	<b>13-27</b>	<b>3-9</b>	<b>3-4</b>	<b>4</b>	<b>13</b>	<b>17</b>	<b>8</b>	<b>7</b>	<b>7</b>	<b>1</b>	<b>3</b>	<b>100</b>	

#### Shooting By Period

Period	FG	FG%	3FG	3FG%	FT	FT%
1st Qtr	7-13	54%	3-4	75%	3-4	75%
2nd Qtr	6-14	43%	0-5	00%	0-0	0%
1st Half	13-27	48%	3-9	33%	3-4	75%
Game	23-50	46.0%	8-18	44.4%	11-16	68.8%

Last FG Half: DRX 2nd-00:25

### UNCW 25

No.	Player	S	Pts	FG	3FG	FT	OR	DR	TR	PF	A	TO	Blk	Stl	Min	+/-
00	JEUNE, ASHLI		4	1-3	1-3	1-2	3	0	3	1	0	0	0	2	14	-4
01	POWELL, PAIGE		0	0-0	0-0	0-0	0	0	0	0	0	1	0	0	2	-1
02	CRISP, MORIAH		0	0-0	0-0	0-0	0	1	1	0	0	0	0	0	6	-5
04	PARKER, SHRITA		0	0-0	0-0	0-0	0	0	0	0	0	2	0	0	4	-3
05	SMITH, GIGI		2	1-6	0-0	0-0	0	0	0	1	3	0	0	0	16	-8
10	VASON, AHYIONA		7	3-7	0-0	1-1	0	3	3	0	1	1	0	1	14	-2
13	SUGGS, LACEY		2	0-4	0-2	2-2	1	1	2	3	0	1	0	0	16	-5
14	TATE, TIMBER		0	0-3	0-3	0-0	0	1	1	0	0	0	0	0	10	-1
24	BELL, CHINYERE		4	2-3	0-0	0-0	1	4	5	2	0	0	0	0	11	-9
32	OBUSEK, CAROL-ANNE		6	3-3	0-0	0-0	2	1	3	1	0	1	0	0	7	3
	TEAM		0	0-0	0-0	0-0	0	0	0	0	0	1	0	0	0	0
<b>TOTALS</b>			<b>25</b>	<b>10-29</b>	<b>1-8</b>	<b>4-5</b>	<b>7</b>	<b>11</b>	<b>18</b>	<b>8</b>	<b>4</b>	<b>7</b>	<b>0</b>	<b>3</b>	<b>100</b>	

#### Shooting By Period

Period	FG	FG%	3FG	3FG%	FT	FT%
1st Qtr	5-10	50%	0-2	00%	3-3	100%
2nd Qtr	5-19	26%	1-6	17%	1-2	50%
1st Half	10-29	34%	1-8	13%	4-5	80%
Game	18-56	32.1%	4-15	26.7%	13-14	92.9%

Last FG Half: NCW 2nd-00:02

#### Game Notes:

Officials: **Mark Resch, Fatou Cissoko-Stephens, Timothy Greene**  
Attendance: **752**

Start Time: **2019-02-23 00:06:22**

End Time: **2019-02-23 02:06:36**

Game Duration: **120**

Conference Game;

Score	1st	2nd	3rd	4th	TOT
DRX	20	12	14	19	<b>65</b>
NCW	13	12	14	14	<b>53</b>

Points from (This Period)	DRX	NCW
In the Paint	10	18
Off Turns	8	7
2nd Chance	4	9
Fast Break	6	2
Bench	6	6



**Official Box Score**  
**Drexel vs UNCW**  
**First Quarter Statistics Only**  
**February 23, 2019 at Trask Coliseum - Wilmington, N.C.**



### Drexel 20

No.	Player	S	Pts	FG	3FG	FT	OR	DR	TR	PF	A	TO	Blk	Stl	Min	+/-
01	WASHINGTON, KEISHANA		2	1-3	0-1	0-0	0	0	0	1	0	0	0	0	7	7
11	BROWN, AUBREE		3	1-3	1-1	0-0	0	0	0	0	2	1	0	1	10	7
12	NIHILL, HANNAH		2	0-0	0-0	2-2	0	1	1	0	1	0	0	2	10	7
23	GREENBERG, BAILEY		10	4-5	2-2	0-0	2	0	2	0	1	0	0	0	10	7
24	METZEL, NIKI		3	1-2	0-0	1-2	0	1	1	2	0	1	0	0	6	6
22	HENDRIXSON, MAURA		0	0-0	0-0	0-0	0	0	0	0	0	1	0	0	3	0
30	LEONARD, MARIAH		0	0-0	0-0	0-0	0	0	0	1	0	0	0	0	4	1
34	KRACIKOVA, TEREZA		0	0-0	0-0	0-0	0	0	0	0	0	0	0	0	0	0
50	FERARIU, ANA		0	0-0	0-0	0-0	0	0	0	0	0	0	0	0	0	0
	TEAM						1	0	1	0		0				
<b>TOTALS</b>			<b>20</b>	<b>7-13</b>	<b>3-4</b>	<b>3-4</b>	<b>3</b>	<b>2</b>	<b>5</b>	<b>4</b>	<b>4</b>	<b>3</b>	<b>0</b>	<b>3</b>	<b>50</b>	

#### Shooting By Period

Period	FG	FG%	3FG	3FG%	FT	FT%
1st Qtr	7-13	54%	3-4	75%	3-4	75%
2nd Qtr	6-14	43%	0-5	00%	0-0	0%
1st Half	7-13	54%	3-4	75%	3-4	75%
1st Half	13-27	48%	3-9	33%	3-4	75%
Game	23-50	46.0%	8-18	44.4%	11-16	68.8%

### UNCW 13

No.	Player	S	Pts	FG	3FG	FT	OR	DR	TR	PF	A	TO	Blk	Stl	Min	+/-
00	JEUNE, ASHLI		0	0-1	0-1	0-0	1	0	1	1	0	0	0	0	4	-4
05	SMITH, GIGI		0	0-2	0-0	0-0	0	0	0	1	2	0	0	0	10	-7
10	VASON, AHYIONA		7	3-4	0-0	1-1	0	0	0	0	0	1	0	0	9	-5
13	SUGGS, LACEY		2	0-0	0-0	2-2	1	0	1	2	0	1	0	0	9	-6
24	BELL, CHINYERE		4	2-2	0-0	0-0	1	4	5	1	0	0	0	0	8	-6
01	POWELL, PAIGE		0	0-0	0-0	0-0	0	0	0	0	0	1	0	0	2	-1
02	CRISP, MORIAH		0	0-0	0-0	0-0	0	0	0	0	0	0	0	0	1	-2
04	PARKER, SHRITA		0	0-0	0-0	0-0	0	0	0	0	0	2	0	0	4	-3
14	TATE, TIMBER		0	0-1	0-1	0-0	0	0	0	0	0	0	0	0	3	-1
32	OBUSEK, CAROL-ANNE		0	0-0	0-0	0-0	0	0	0	0	0	0	0	0	0	0
	TEAM						0	0	0	0		1				
<b>TOTALS</b>			<b>13</b>	<b>5-10</b>	<b>0-2</b>	<b>3-3</b>	<b>3</b>	<b>4</b>	<b>7</b>	<b>5</b>	<b>2</b>	<b>6</b>	<b>0</b>	<b>0</b>	<b>50</b>	

#### Shooting By Period

Period	FG	FG%	3FG	3FG%	FT	FT%
1st Qtr	5-10	50%	0-2	00%	3-3	100%
2nd Qtr	5-19	26%	1-6	17%	1-2	50%
1st Half	5-10	50%	0-2	00%	3-3	100%
1st Half	10-29	34%	1-8	13%	4-5	80%
Game	18-56	32.1%	4-15	26.7%	13-14	92.9%

#### Game Notes:

Officials: Mark Resch, Fatou Cissoko-Stephens, Timothy Greene  
Attendance: 752

Start Time: 2019-02-23 00:06:22  
End Time: 2019-02-23 02:06:36  
Game Duration: 120  
Conference Game;

Score	1st	2nd	3rd	4th	TOT
DRX	20	12	14	19	<b>65</b>
NCW	13	12	14	14	<b>53</b>

Points from (This Period)	DRX	NCW
In the Paint	6	10
Off Turns	8	4
2nd Chance	2	2
Fast Break	4	2
Bench	0	0



**Official Play-By-Play  
Drexel vs UNCW  
First Quarter  
February 23, 2019 at Trask Coliseum - Wilmington, N.C.**



**Period 1**

**Starters:**

**Drexel:** 11 BROWN,AUBREE; 12 NIHILL,HANNAH; 23 GREENBERG,BAILEY; 24 METZEL,NIKI; 1 WASHINGTON,KEISHANA;

**UNCW:** 0 JEUNE,ASHLI; 5 SMITH,GIGI; 10 VASON,AHYIONA; 13 SUGGS,LACEY; 24 BELL,CHINYERE;

Time	VISITORS: Drexel	Score	Margin	HOME: UNCW
09:45	GOOD! 3PTR by GREENBERG, BAILEY	0-3	V 3	
09:45	ASSIST by BROWN, AUBREE			
09:18				MISSED 3PTR by JEUNE, ASHLI
09:13	REBOUND (DEF) by NIHILL, HANNAH			
08:56	TURNOVER (LOSTBALL) by BROWN, AUBREE			
08:29		2-3	V 1	GOOD! LAYUP by VASON, AHYIONA
08:10	FOUL (OFF) by METZEL, NIKI			
08:10	TURNOVER (OFFENSIVE) by METZEL, NIKI			
07:59	FOUL (PERSONAL) by WASHINGTON, KEISHANA			
07:42		4-3	H 1	GOOD! LAYUP by BELL, CHINYERE
07:42				ASSIST by SMITH, GIGI
07:24				FOUL (PERSONAL) by BELL, CHINYERE
07:12	GOOD! 3PTR by BROWN, AUBREE	4-6	V 2	
07:12	ASSIST by GREENBERG, BAILEY			
07:00				TURNOVER (LOSTBALL) by VASON, AHYIONA
07:00	STEAL by NIHILL, HANNAH			
06:44				FOUL (PERSONAL) by SMITH, GIGI
06:44	GOOD! FT by METZEL, NIKI	4-7	V 3	
06:44				SUB OUT: JEUNE, ASHLI
06:44				SUB IN: PARKER, SHRITA
06:44	MISSED FT by METZEL, NIKI			
06:43	REBOUND (OFF) by TEAM			
06:19	MISSED JUMPER by METZEL, NIKI			
06:15	REBOUND (OFF) by GREENBERG, BAILEY			
06:13	MISSED JUMPER by WASHINGTON, KEISHANA			
06:06				REBOUND (DEF) by BELL, CHINYERE
06:04				TURNOVER (BADPASS) by PARKER, SHRITA
06:04	STEAL by BROWN, AUBREE			
05:56	GOOD! LAYUP by WASHINGTON, KEISHANA [FB]	4-9	V 5	
05:47	SUB OUT: WASHINGTON, KEISHANA			
05:47	SUB IN: LEONARD, MARIAH			
05:42	SUB OUT: METZEL, NIKI			
05:42	SUB IN: WASHINGTON, KEISHANA			
05:31				TURNOVER (SHOTCLOCK) by
05:08	GOOD! 3PTR by GREENBERG, BAILEY	4-12	V 8	
05:08	ASSIST by NIHILL, HANNAH			
04:49				MISSED LAYUP by VASON, AHYIONA
04:49				REBOUND (OFF) by BELL, CHINYERE
04:49				
04:47				TURNOVER (LOSTBALL) by PARKER, SHRITA
04:18	MISSED LAYUP by BROWN, AUBREE			
04:12				REBOUND (DEF) by BELL, CHINYERE
04:11		6-12	V 6	GOOD! LAYUP by VASON, AHYIONA [FB]
03:55	MISSED 3PTR by WASHINGTON, KEISHANA			
03:48				REBOUND (DEF) by BELL, CHINYERE
03:40		8-12	V 4	GOOD! LAYUP by BELL, CHINYERE
03:40				ASSIST by SMITH, GIGI
03:10	MISSED JUMPER by BROWN, AUBREE			
03:06	REBOUND (OFF) by GREENBERG, BAILEY			
03:03	GOOD! JUMPER by GREENBERG, BAILEY [PNT]	8-14	V 6	
02:52				FOUL (OFF) by SUGGS, LACEY
02:52				TURNOVER (OFFENSIVE) by SUGGS, LACEY
02:52				SUB OUT: PARKER, SHRITA
02:52				SUB IN: TATE, TIMBER
02:52	SUB OUT: WASHINGTON, KEISHANA			
02:52	SUB IN: HENDRIXSON, MAURA			
02:35	MISSED JUMPER by GREENBERG, BAILEY			
02:31				REBOUND (DEF) by BELL, CHINYERE
02:22				MISSED JUMPER by SMITH, GIGI
02:19				REBOUND (OFF) by SUGGS, LACEY
02:19	FOUL (PERSONAL) by LEONARD, MARIAH			
02:19		9-14	V 5	GOOD! FT by SUGGS, LACEY
02:19				SUB OUT: BELL, CHINYERE
02:19				SUB IN: POWELL, PAIGE
02:19	SUB OUT: LEONARD, MARIAH			
02:19	SUB IN: METZEL, NIKI			
02:19		10-14	V 4	GOOD! FT by SUGGS, LACEY
02:07				FOUL (PERSONAL) by SUGGS, LACEY
01:57	GOOD! JUMPER by METZEL, NIKI	10-16	V 6	
01:49				MISSED 3PTR by TATE, TIMBER



Time	VISITORS: Drexel	Score	Margin	HOME: UNCW
01:43	REBOUND (DEF) by METZEL, NIKI			
01:20	GOOD! JUMPER by GREENBERG, BAILEY	10-18	V 8	
01:20	ASSIST by BROWN, AUBREE			
01:01		12-18	V 6	GOOD! LAYUP by VASON, AHYIONA [PNT]
01:01	FOUL (PERSONAL) by METZEL, NIKI			
01:01	SUB OUT: METZEL, NIKI			
01:01	SUB IN: LEONARD, MARIAH			
01:01				SUB OUT: SUGGS, LACEY
01:01				SUB IN: JEUNE, ASHLI
01:01		13-18	V 5	GOOD! FT by VASON, AHYIONA
00:42	TURNOVER (BADPASS) by HENDRIXSON, MAURA			
00:42				SUB OUT: VASON, AHYIONA
00:42				SUB IN: CRISP, MORIAH
00:13				TURNOVER (LOSTBALL) by POWELL, PAIGE
00:13	STEAL by NIHILL, HANNAH			
00:10				FOUL (PERSONAL) by JEUNE, ASHLI
00:10	GOOD! FT by NIHILL, HANNAH [FB]	13-19	V 6	
00:10				SUB OUT: POWELL, PAIGE
00:10				SUB IN: BELL, CHINYERE
00:10	SUB OUT: HENDRIXSON, MAURA			
00:10	SUB IN: WASHINGTON, KEISHANA			
00:10	GOOD! FT by NIHILL, HANNAH [FB]	13-20	V 7	
00:00				MISSED JUMPER by SMITH, GIGI
00:00				REBOUND (OFF) by JEUNE, ASHLI

Drexel 20, UNCW 13

Points from (This Period)	DRX	NCW
In the Paint	6	10
Off Turns	8	4
2nd Chance	2	2
Fast Break	4	2
Bench	0	0



**Official Box Score**  
**Drexel vs UNCW**  
**Second Quarter Statistics Only**  
**February 23, 2019 at Trask Coliseum - Wilmington, N.C.**



### Drexel 12

No.	Player	S	Pts	FG	3FG	FT	OR	DR	TR	PF	A	TO	Blk	Stl	Min	+/-
01	WASHINGTON, KEISHANA		6	3-4	0-1	0-0	0	1	1	0	1	0	0	0	10	0
11	BROWN, AUBREE		0	0-2	0-1	0-0	0	0	0	2	0	0	0	0	4	-1
12	NIHILL, HANNAH		0	0-3	0-3	0-0	0	2	2	0	1	1	0	0	9	-2
23	GREENBERG, BAILEY		0	0-2	0-0	0-0	1	4	5	1	1	3	0	0	10	0
24	METZEL, NIKI		0	0-0	0-0	0-0	0	0	0	0	0	0	0	0	0	0
22	HENDRIXSON, MAURA		0	0-0	0-0	0-0	0	0	0	0	0	0	0	0	1	2
30	LEONARD, MARIAH		0	0-0	0-0	0-0	0	0	0	0	0	0	0	0	0	0
34	KRACIKOVA, TEREZA		4	2-2	0-0	0-0	0	1	1	0	0	0	0	0	10	0
50	FERARIU, ANA		2	1-1	0-0	0-0	0	2	2	1	0	0	1	0	6	1
	TEAM						0	1	1	0		0				
<b>TOTALS</b>			<b>12</b>	<b>6-14</b>	<b>0-5</b>	<b>0-0</b>	<b>1</b>	<b>11</b>	<b>12</b>	<b>4</b>	<b>3</b>	<b>4</b>	<b>1</b>	<b>0</b>	<b>50</b>	

#### Shooting By Period

Period	FG	FG%	3FG	3FG%	FT	FT%
3rd Qtr	5-10	50%	3-5	60%	1-2	50%
4th Qtr	5-13	38%	2-4	50%	7-10	70%
2nd Half	6-14	43%	0-5	00%	0-0	0%
2nd Half	10-23	43%	5-9	56%	8-12	67%
Game	23-50	46.0%	8-18	44.4%	11-16	68.8%

### UNCW 12

No.	Player	S	Pts	FG	3FG	FT	OR	DR	TR	PF	A	TO	Blk	Stl	Min	+/-
00	JEUNE, ASHLI		4	1-2	1-2	1-2	2	0	2	0	0	0	0	2	10	0
05	SMITH, GIGI		2	1-4	0-0	0-0	0	0	0	0	1	0	0	0	6	-1
10	VASON, AHYIONA		0	0-3	0-0	0-0	0	3	3	0	1	0	0	1	5	3
13	SUGGS, LACEY		0	0-4	0-2	0-0	0	1	1	1	0	0	0	0	7	1
24	BELL, CHINYERE		0	0-1	0-0	0-0	0	0	0	1	0	0	0	0	3	-3
01	POWELL, PAIGE		0	0-0	0-0	0-0	0	0	0	0	0	0	0	0	0	0
02	CRISP, MORIAH		0	0-0	0-0	0-0	0	1	1	0	0	0	0	0	5	-3
04	PARKER, SHRITA		0	0-0	0-0	0-0	0	0	0	0	0	0	0	0	0	0
14	TATE, TIMBER		0	0-2	0-2	0-0	0	1	1	0	0	0	0	0	7	0
32	OBUSEK, CAROL-ANNE		6	3-3	0-0	0-0	2	1	3	1	0	1	0	0	7	3
	TEAM						0	0	0	0		0				
<b>TOTALS</b>			<b>12</b>	<b>5-19</b>	<b>1-6</b>	<b>1-2</b>	<b>4</b>	<b>7</b>	<b>11</b>	<b>3</b>	<b>2</b>	<b>1</b>	<b>0</b>	<b>3</b>	<b>50</b>	

#### Shooting By Period

Period	FG	FG%	3FG	3FG%	FT	FT%
3rd Qtr	4-12	33%	2-2	100%	4-4	100%
4th Qtr	4-15	27%	1-5	20%	5-5	100%
2nd Half	5-19	26%	1-6	17%	1-2	50%
2nd Half	8-27	30%	3-7	43%	9-9	100%
Game	18-56	32.1%	4-15	26.7%	13-14	92.9%

#### Game Notes:

Officials: Mark Resch, Fatou Cissoko-Stephens, Timothy Greene  
Attendance: 752

Start Time: 2019-02-23 00:06:22  
End Time: 2019-02-23 02:06:36  
Game Duration: 120  
Conference Game;

Score	1st	2nd	3rd	4th	TOT
DRX	20	12	14	19	<b>65</b>
NCW	13	12	14	14	<b>53</b>

Points from (This Period)	DRX	NCW
In the Paint	4	8
Off Turns	0	3
2nd Chance	2	7
Fast Break	2	0
Bench	6	6



**Official Play-By-Play  
Drexel vs UNCW  
Second Quarter  
February 23, 2019 at Trask Coliseum - Wilmington, N.C.**



**Period 2**

**Starters:**

**Drexel:** 11 BROWN,AUBREE; 12 NIHILL,HANNAH; 23 GREENBERG,BAILEY; 24 METZEL,NIKI; 1 WASHINGTON,KEISHANA;

**UNCW:** 0 JEUNE,ASHLI; 5 SMITH,GIGI; 10 VASON,AHYIONA; 13 SUGGS,LACEY; 24 BELL,CHINYERE;

Time	VISITORS: Drexel	Score	Margin	HOME: UNCW
09:47	GOOD! JUMPER by KRACIKOVA, TEREZA	13-22	V 9	
09:47	ASSIST by GREENBERG, BAILEY			
09:13				MISSED 3PTR by TATE, TIMBER
09:12	REBOUND (DEF) by GREENBERG, BAILEY			
09:12	TURNOVER (TRAVEL) by GREENBERG, BAILEY			
09:07				MISSED JUMPER by BELL, CHINYERE
09:03	REBOUND (DEF) by GREENBERG, BAILEY			
08:52				FOUL (PERSONAL) by BELL, CHINYERE
08:52				SUB OUT: CRISP, MORIAH
08:52				SUB IN: VASON, AHYIONA
08:52				SUB OUT: BELL, CHINYERE
08:52				SUB IN: OBUSEK, CAROL-ANNE
08:48	MISSED 3PTR by NIHILL, HANNAH			
08:42				REBOUND (DEF) by VASON, AHYIONA
08:38				TURNOVER (LOSTBALL) by OBUSEK, CAROL-ANNE
08:17	MISSED JUMPER by BROWN, AUBREE			
08:13				REBOUND (DEF) by VASON, AHYIONA
08:06				MISSED 3PTR by TATE, TIMBER
08:03				REBOUND (OFF) by JEUNE, ASHLI
08:03	FOUL (PERSONAL) by GREENBERG, BAILEY			
07:55		16-22	V 6	GOOD! 3PTR by JEUNE, ASHLI
07:55				ASSIST by VASON, AHYIONA
07:27	MISSED JUMPER by GREENBERG, BAILEY			
07:24				REBOUND (DEF) by SUGGS, LACEY
07:12	FOUL (PERSONAL) by BROWN, AUBREE			
07:12				SUB OUT: TATE, TIMBER
07:12				SUB IN: SMITH, GIGI
07:02		18-22	V 4	GOOD! JUMPER by SMITH, GIGI [PNT]
06:45	MISSED 3PTR by NIHILL, HANNAH			
06:37				REBOUND (DEF) by VASON, AHYIONA
06:34				MISSED JUMPER by VASON, AHYIONA
06:31	REBOUND (DEF) by WASHINGTON, KEISHANA			
06:23	MISSED 3PTR by BROWN, AUBREE			
06:22	REBOUND (OFF) by GREENBERG, BAILEY			
06:22				FOUL (PERSONAL) by OBUSEK, CAROL-ANNE
06:22	SUB OUT: NIHILL, HANNAH			
06:22	SUB IN: HENDRIXSON, MAURA			
06:20	GOOD! JUMPER by WASHINGTON, KEISHANA	18-24	V 6	
06:12				MISSED 3PTR by SUGGS, LACEY
06:05	REBOUND (DEF) by GREENBERG, BAILEY			
06:03	TURNOVER (LOSTBALL) by GREENBERG, BAILEY			
06:03				STEAL by JEUNE, ASHLI
05:48				MISSED JUMPER by VASON, AHYIONA
05:47				REBOUND (OFF) by JEUNE, ASHLI
05:36	FOUL (PERSONAL) by BROWN, AUBREE			
05:36	SUB OUT: HENDRIXSON, MAURA			
05:36	SUB IN: NIHILL, HANNAH			
05:36	SUB OUT: BROWN, AUBREE			
05:36	SUB IN: FERARIU, ANA			
05:27				MISSED JUMPER by SMITH, GIGI
05:21	REBOUND (DEF) by FERARIU, ANA			
05:16	TURNOVER (LOSTBALL) by GREENBERG, BAILEY			
05:16				STEAL by VASON, AHYIONA
05:05				MISSED LAYUP by VASON, AHYIONA
05:01				REBOUND (OFF) by OBUSEK, CAROL-ANNE
05:00		20-24	V 4	GOOD! JUMPER by OBUSEK, CAROL-ANNE
04:36	GOOD! JUMPER by WASHINGTON, KEISHANA	20-26	V 6	
04:16				MISSED 3PTR by SUGGS, LACEY
04:11	REBOUND (DEF) by NIHILL, HANNAH			
03:57	MISSED 3PTR by WASHINGTON, KEISHANA			
03:54				REBOUND (DEF) by OBUSEK, CAROL-ANNE
03:54				
03:54				SUB OUT: OBUSEK, CAROL-ANNE
03:54				SUB IN: CRISP, MORIAH
03:54				SUB OUT: SMITH, GIGI
03:54				SUB IN: TATE, TIMBER
03:54				SUB OUT: VASON, AHYIONA
03:54				SUB IN: BELL, CHINYERE
03:39				MISSED JUMPER by SUGGS, LACEY
03:36	REBOUND (DEF) by GREENBERG, BAILEY			



Time	VISITORS: Drexel	Score	Margin	HOME: UNCW
03:13	MISSED 3PTR by NIHILL, HANNAH			
03:08				REBOUND (DEF) by CRISP, MORIAH
03:03				MISSED JUMPER by SUGGS, LACEY
03:03	BLOCK by FERARIU, ANA			
02:57	REBOUND (DEF) by FERARIU, ANA			
02:47				FOUL (PERSONAL) by SUGGS, LACEY
02:47				SUB OUT: SUGGS, LACEY
02:47				SUB IN: SMITH, GIGI
02:47	GOOD! JUMPER by KRACIKOVA, TEREZA	20-28	V 8	
02:37				MISSED 3PTR by JEUNE, ASHLI
02:33	REBOUND (DEF) by NIHILL, HANNAH			
02:29	TURNOVER (BADPASS) by NIHILL, HANNAH			
02:29				STEAL by JEUNE, ASHLI
02:09	FOUL (PERSONAL) by FERARIU, ANA			
02:09		21-28	V 7	GOOD! FT by JEUNE, ASHLI
02:09				SUB OUT: BELL, CHINYERE
02:09				SUB IN: OBUSEK, CAROL-ANNE
02:08				MISSED FT by JEUNE, ASHLI
02:08	REBOUND (DEF) by TEAM			
01:43	MISSED JUMPER by GREENBERG, BAILEY			
01:40				REBOUND (DEF) by TATE, TIMBER
01:24				MISSED LAYUP by SMITH, GIGI
01:21	REBOUND (DEF) by KRACIKOVA, TEREZA			
01:17	GOOD! JUMPER by FERARIU, ANA [FB]	21-30	V 9	
01:17	ASSIST by WASHINGTON, KEISHANA			
00:55				MISSED JUMPER by SMITH, GIGI
00:52				REBOUND (OFF) by OBUSEK, CAROL-ANNE
00:50		23-30	V 7	GOOD! LAYUP by OBUSEK, CAROL-ANNE
00:25	GOOD! LAYUP by WASHINGTON, KEISHANA	23-32	V 9	
00:25	ASSIST by NIHILL, HANNAH			
00:02		25-32	V 7	GOOD! JUMPER by OBUSEK, CAROL-ANNE [PNT]
00:02				ASSIST by SMITH, GIGI

Drexel 32, UNCW 25

Points from (This Period)	DRX	NCW
In the Paint	4	8
Off Turns	0	3
2nd Chance	2	7
Fast Break	2	0
Bench	6	6



**Official Box Score**  
**Drexel vs UNCW**  
**Second Half Statistics Only**  
**February 23, 2019 at Trask Coliseum - Wilmington, N.C.**



### Drexel 33

No.	Player	S	Pts	FG	3FG	FT	OR	DR	TR	PF	A	TO	Blk	Stl	Min	+/-
11	BROWN, AUBREE		3	1-3	1-2	0-0	1	0	1	1	4	1	0	1	20	5
12	NIHILL, HANNAH		0	0-1	0-1	0-0	1	2	3	2	0	3	0	1	14	3
22	HENDRIXSON, MAURA		0	0-0	0-0	0-0	0	0	0	0	0	0	0	0	0	0
23	GREENBERG, BAILEY		4	1-3	1-2	1-2	0	3	3	4	1	0	0	0	13	-6
24	METZEL, NIKI		10	3-7	0-0	4-4	1	1	2	1	0	0	0	0	12	2
30	LEONARD, MARIAH		1	0-3	0-0	1-2	0	1	1	0	0	0	1	0	10	13
34	KRACIKOVA, TEREZA		0	0-0	0-0	0-0	0	0	0	0	0	0	0	0	5	1
50	FERARIU, ANA		2	1-1	0-0	0-0	0	0	0	1	0	2	0	0	6	2
01	WASHINGTON, KEISHANA		13	4-5	3-4	2-4	1	1	2	2	2	1	0	2	20	5
	TEAM		0	0-0	0-0	0-0	1	1	2	0	0	1	0	0	0	
<b>TOTALS</b>			<b>33</b>	<b>10-23</b>	<b>5-9</b>	<b>8-12</b>	<b>5</b>	<b>9</b>	<b>14</b>	<b>11</b>	<b>7</b>	<b>8</b>	<b>1</b>	<b>4</b>	<b>100</b>	

#### Shooting By Period

Period	FG	FG%	3FG	3FG%	FT	FT%
3rd Qtr	5-10	50%	3-5	60%	1-2	50%
4th Qtr	5-13	38%	2-4	50%	7-10	70%
2nd Half	10-23	43%	5-9	56%	8-12	67%
Game	23-50	46.0%	8-18	44.4%	11-16	68.8%

Last FG Half: DRX 4th-01:15

### UNCW 28

No.	Player	S	Pts	FG	3FG	FT	OR	DR	TR	PF	A	TO	Blk	Stl	Min	+/-
00	JEUNE, ASHLI		5	1-2	0-0	3-3	1	1	2	4	3	2	0	1	16	1
01	POWELL, PAIGE		0	0-0	0-0	0-0	0	0	0	0	0	0	0	0	0	0
02	CRISP, MORIAH		6	2-2	2-2	0-0	1	2	3	1	0	0	0	1	15	-1
04	PARKER, SHRITA		0	0-0	0-0	0-0	0	0	0	0	0	0	0	0	0	0
05	SMITH, GIGI		11	4-14	1-4	2-2	1	1	2	4	0	2	0	0	19	-1
10	VASON, AHYIONA		2	0-4	0-0	2-2	0	2	2	1	2	2	1	2	20	-5
13	SUGGS, LACEY		0	0-1	0-0	0-0	1	1	2	0	0	0	0	0	7	-13
14	TATE, TIMBER		0	0-1	0-1	0-0	0	0	0	0	1	1	0	0	3	-4
24	BELL, CHINYERE		2	0-0	0-0	2-2	1	0	1	2	1	2	0	0	4	0
32	OBUSEK, CAROL-ANNE		2	1-3	0-0	0-0	3	2	5	2	0	1	0	1	16	-2
	TEAM		0	0-0	0-0	0-0	2	0	2	0	0	0	0	0	0	
<b>TOTALS</b>			<b>28</b>	<b>8-27</b>	<b>3-7</b>	<b>9-9</b>	<b>10</b>	<b>9</b>	<b>19</b>	<b>14</b>	<b>7</b>	<b>10</b>	<b>1</b>	<b>5</b>	<b>100</b>	

#### Shooting By Period

Period	FG	FG%	3FG	3FG%	FT	FT%
3rd Qtr	4-12	33%	2-2	100%	4-4	100%
4th Qtr	4-15	27%	1-5	20%	5-5	100%
2nd Half	8-27	30%	3-7	43%	9-9	100%
Game	18-56	32.1%	4-15	26.7%	13-14	92.9%

Last FG Half: NCW 4th-02:10

#### Game Notes:

Officials: Mark Resch, Fatou Cissoko-Stephens, Timothy Greene  
Attendance: 752

Start Time: 2019-02-23 00:06:22

End Time: 2019-02-23 02:06:36

Game Duration: 120

Conference Game;

Score	1st	2nd	3rd	4th	TOT
DRX	20	12	14	19	<b>65</b>
NCW	13	12	14	14	<b>53</b>

Points from (This Period)	DRX	NCW
In the Paint	8	10
Off Turns	8	4
2nd Chance	3	6
Fast Break	3	7
Bench	3	8



**Official Box Score**  
**Drexel vs UNCW**  
**Third Quarter Statistics Only**  
**February 23, 2019 at Trask Coliseum - Wilmington, N.C.**



### Drexel 33

No.	Player	S	Pts	FG	3FG	FT	OR	DR	TR	PF	A	TO	Blk	Stl	Min	+/-
01	WASHINGTON, KEISHANA		5	2-2	1-1	0-0	0	0	0	1	1	1	0	1	10	0
11	BROWN, AUBREE		3	1-2	1-2	0-0	0	0	0	0	1	0	0	1	10	0
12	NIHILL, HANNAH		0	0-1	0-1	0-0	0	0	0	2	0	0	0	0	4	-2
23	GREENBERG, BAILEY		4	1-2	1-1	1-2	0	3	3	2	0	0	0	0	10	0
24	METZEL, NIKI		0	0-1	0-0	0-0	0	0	0	0	0	0	0	0	2	-3
22	HENDRIXSON, MAURA		0	0-0	0-0	0-0	0	0	0	0	0	0	0	0	0	0
30	LEONARD, MARIAH		0	0-1	0-0	0-0	0	1	1	0	0	0	0	0	4	3
34	KRACIKOVA, TEREZA		0	0-0	0-0	0-0	0	0	0	0	0	0	0	0	4	0
50	FERARIU, ANA		2	1-1	0-0	0-0	0	0	0	1	0	2	0	0	6	2
	TEAM						1	0	1	0		1				
<b>TOTALS</b>			<b>14</b>	<b>5-10</b>	<b>3-5</b>	<b>1-2</b>	<b>1</b>	<b>4</b>	<b>5</b>	<b>6</b>	<b>2</b>	<b>4</b>	<b>0</b>	<b>2</b>	<b>50</b>	

#### Shooting By Period

Period	FG	FG%	3FG	3FG%	FT	FT%
2nd Half	0-0	0%	0-0	0%	0-0	0%
Game	23-50	46.0%	8-18	44.4%	11-16	68.8%

### UNCW 28

No.	Player	S	Pts	FG	3FG	FT	OR	DR	TR	PF	A	TO	Blk	Stl	Min	+/-
00	JEUNE, ASHLI		2	0-1	0-0	2-2	0	1	1	0	3	1	0	1	10	0
05	SMITH, GIGI		4	1-4	0-0	2-2	0	0	0	2	0	1	0	0	10	0
10	VASON, AHYIONA		0	0-2	0-0	0-0	0	0	0	0	0	1	1	1	10	0
13	SUGGS, LACEY		0	0-1	0-0	0-0	1	1	2	0	0	0	0	0	5	-4
24	BELL, CHINYERE		0	0-0	0-0	0-0	0	0	0	1	1	1	0	0	1	2
01	POWELL, PAIGE		0	0-0	0-0	0-0	0	0	0	0	0	0	0	0	0	0
02	CRISP, MORIAH		6	2-2	2-2	0-0	0	0	0	0	0	0	0	0	5	4
04	PARKER, SHRITA		0	0-0	0-0	0-0	0	0	0	0	0	0	0	0	0	0
14	TATE, TIMBER		0	0-0	0-0	0-0	0	0	0	0	0	0	0	0	0	0
32	OBUSEK, CAROL-ANNE		2	1-2	0-0	0-0	2	2	4	2	0	1	0	0	9	-2
	TEAM						1	0	1	0		0				
<b>TOTALS</b>			<b>14</b>	<b>4-12</b>	<b>2-2</b>	<b>4-4</b>	<b>4</b>	<b>4</b>	<b>8</b>	<b>5</b>	<b>4</b>	<b>5</b>	<b>1</b>	<b>2</b>	<b>50</b>	

#### Shooting By Period

Period	FG	FG%	3FG	3FG%	FT	FT%
2nd Half	0-0	0%	0-0	0%	0-0	0%
Game	18-56	32.1%	4-15	26.7%	13-14	92.9%

#### Game Notes:

Officials: Mark Resch, Fatou Cissoko-Stephens, Timothy Greene  
Attendance: 752

Start Time: 2019-02-23 00:06:22

End Time: 2019-02-23 02:06:36

Game Duration: 120

Conference Game:

Score	1st	2nd	3rd	4th	TOT
DRX	20	12	14	19	<b>65</b>
NCW	13	12	14	14	<b>53</b>

Points from (This Period)	DRX	NCW
In the Paint	4	4
Off Turns	3	2
2nd Chance	0	2
Fast Break	0	2
Bench	2	8



**Official Play-By-Play**  
**Drexel vs UNCW**  
**Third Quarter**  
**February 23, 2019 at Trask Coliseum - Wilmington, N.C.**



**Period 3**

**Starters:**

**Drexel:** 11 BROWN,AUBREE; 12 NIHILL,HANNAH; 23 GREENBERG,BAILEY; 24 METZEL,NIKI; 1 WASHINGTON,KEISHANA;

**UNCW:** 0 JEUNE,ASHLI; 5 SMITH,GIGI; 10 VASON,AHYIONA; 13 SUGGS,LACEY; 24 BELL,CHINYERE;

Time	VISITORS: Drexel	Score	Margin	HOME: UNCW
09:43		27-32	V 5	GOOD! LAYUP by SMITH, GIGI
09:43				ASSIST by BELL, CHINYERE
09:25	MISSED JUMPER by METZEL, NIKI			
09:24				REBOUND (DEF) by SUGGS, LACEY
09:11	FOUL (PERSONAL) by NIHILL, HANNAH			
08:54				TURNOVER (LOSTBALL) by BELL, CHINYERE
08:52				FOUL (PERSONAL) by BELL, CHINYERE
08:52				SUB OUT: BELL, CHINYERE
08:52				SUB IN: OBUSEK, CAROL-ANNE
08:43	MISSED 3PTR by NIHILL, HANNAH			
08:38				REBOUND (DEF) by OBUSEK, CAROL-ANNE
08:35				MISSED LAYUP by JEUNE, ASHLI
08:34				REBOUND (OFF) by TEAM
08:30		29-32	V 3	GOOD! JUMPER by OBUSEK, CAROL-ANNE [PNT]
08:30				ASSIST by JEUNE, ASHLI
08:09	GOOD! LAYUP by WASHINGTON, KEISHANA	29-34	V 5	
07:42	FOUL (PERSONAL) by NIHILL, HANNAH			
07:42	SUB OUT: NIHILL, HANNAH			
07:42	SUB IN: FERARIU, ANA			
07:42	SUB OUT: METZEL, NIKI			
07:42	SUB IN: LEONARD, MARIAH			
07:25				TURNOVER (BADPASS) by JEUNE, ASHLI
07:25	STEAL by BROWN, AUBREE			
07:02	GOOD! 3PTR by WASHINGTON, KEISHANA	29-37	V 8	
07:02	ASSIST by BROWN, AUBREE			
06:34				FOUL (OFF) by SMITH, GIGI
06:34				TURNOVER (OFFENSIVE) by SMITH, GIGI
06:14	MISSED 3PTR by BROWN, AUBREE			
06:12				REBOUND (DEF) by OBUSEK, CAROL-ANNE
06:12	FOUL (PERSONAL) by WASHINGTON, KEISHANA			
05:42				MISSED JUMPER by SMITH, GIGI
05:39				REBOUND (OFF) by OBUSEK, CAROL-ANNE
05:39				MISSED LAYUP by OBUSEK, CAROL-ANNE
05:39				REBOUND (OFF) by SUGGS, LACEY
05:23				MISSED JUMPER by SUGGS, LACEY
05:23	REBOUND (DEF) by LEONARD, MARIAH			
05:23				FOUL (PERSONAL) by OBUSEK, CAROL-ANNE
05:23	SUB OUT: LEONARD, MARIAH			
05:23	SUB IN: KRACIKOVA, TEREZA			
05:01	GOOD! 3PTR by GREENBERG, BAILEY	29-40	V 11	
04:52				TIMEOUT 30SEC
04:52				
04:52				SUB OUT: SUGGS, LACEY
04:52				SUB IN: TATE, TIMBER
04:36				MISSED JUMPER by SMITH, GIGI
04:35	REBOUND (DEF) by GREENBERG, BAILEY			
04:35				FOUL (PERSONAL) by SMITH, GIGI
04:35				
04:35				SUB OUT: TATE, TIMBER
04:35				SUB IN: CRISP, MORIAH
04:11	GOOD! JUMPER by FERARIU, ANA [PNT]	29-42	V 13	
04:11	ASSIST by WASHINGTON, KEISHANA			
03:41		32-42	V 10	GOOD! 3PTR by CRISP, MORIAH
03:41				ASSIST by JEUNE, ASHLI
03:08	TURNOVER (SHOTCLOCK) by			
02:52				MISSED JUMPER by VASON, AHYIONA
02:50				REBOUND (OFF) by OBUSEK, CAROL-ANNE
02:50	FOUL (PERSONAL) by FERARIU, ANA			
02:42				MISSED JUMPER by VASON, AHYIONA
02:42	REBOUND (DEF) by GREENBERG, BAILEY			
02:42				FOUL (PERSONAL) by OBUSEK, CAROL-ANNE
02:42	MISSED FT by GREENBERG, BAILEY			
02:42	REBOUND (OFF) by TEAM			
02:42	GOOD! FT by GREENBERG, BAILEY	32-43	V 11	
02:22		35-43	V 8	GOOD! 3PTR by CRISP, MORIAH
02:22				ASSIST by JEUNE, ASHLI
01:53	TURNOVER (LOSTBALL) by FERARIU, ANA			
01:53				STEAL by VASON, AHYIONA
01:53	SUB OUT: KRACIKOVA, TEREZA			
01:53	SUB IN: LEONARD, MARIAH			



Time	VISITORS: Drexel	Score	Margin	HOME: UNCW
01:35				MISSED JUMPER by SMITH, GIGI
01:31	REBOUND (DEF) by GREENBERG, BAILEY			
01:27	TURNOVER (LOSTBALL) by FERARIU, ANA			
01:27				STEAL by JEUNE, ASHLI
01:24	FOUL (PERSONAL) by GREENBERG, BAILEY			
01:24		36-43	V 7	GOOD! FT by SMITH, GIGI [FB]
01:24	SUB OUT: FERARIU, ANA			
01:24	SUB IN: NIHILL, HANNAH			
01:24		37-43	V 6	GOOD! FT by SMITH, GIGI [FB]
00:54	GOOD! 3PTR by BROWN, AUBREE	37-46	V 9	
00:35				TURNOVER (BADPASS) by OBUSEK, CAROL-ANNE
00:23	MISSED JUMPER by LEONARD, MARIAH			
00:23				BLOCK by VASON, AHYIONA
00:23	REBOUND (OFF) by TEAM			
00:11	MISSED JUMPER by GREENBERG, BAILEY			
00:10				REBOUND (DEF) by JEUNE, ASHLI
00:10	FOUL (PERSONAL) by GREENBERG, BAILEY			
00:10		38-46	V 8	GOOD! FT by JEUNE, ASHLI
00:10	SUB OUT: LEONARD, MARIAH			
00:10	SUB IN: METZEL, NIKI			
00:10		39-46	V 7	GOOD! FT by JEUNE, ASHLI
00:04	TURNOVER (TRAVEL) by WASHINGTON, KEISHANA			
00:00				TURNOVER (LOSTBALL) by VASON, AHYIONA
00:00	STEAL by WASHINGTON, KEISHANA			

Drexel 46, UNCW 39

Points from (This Period)	DRX	NCW
In the Paint	4	4
Off Turns	3	2
2nd Chance	0	2
Fast Break	0	2
Bench	2	8



**Official Box Score**  
**Drexel vs UNCW**  
**Fourth Quarter Statistics Only**  
**February 23, 2019 at Trask Coliseum - Wilmington, N.C.**



**Drexel 19**

No.	Player	S	Pts	FG	3FG	FT	OR	DR	TR	PF	A	TO	Blk	Stl	Min	+/-
01	WASHINGTON, KEISHANA		8	2-3	2-3	2-4	1	1	2	1	1	0	0	1	10	5
11	BROWN, AUBREE		0	0-1	0-0	0-0	1	0	1	1	3	1	0	0	10	5
12	NIHILL, HANNAH		0	0-0	0-0	0-0	1	2	3	0	0	3	0	1	10	5
23	GREENBERG, BAILEY		0	0-1	0-1	0-0	0	0	0	2	1	0	0	0	3	-6
24	METZEL, NIKI	10	3-6	0-0	4-4		1	1	2	1	0	0	0	0	10	5
22	HENDRIXSON, MAURA		0	0-0	0-0	0-0	0	0	0	0	0	0	0	0	0	0
30	LEONARD, MARIAH		1	0-2	0-0	1-2	0	0	0	0	0	0	1	0	6	10
34	KRACIKOVA, TEREZA		0	0-0	0-0	0-0	0	0	0	0	0	0	0	0	1	1
50	FERARIU, ANA		0	0-0	0-0	0-0	0	0	0	0	0	0	0	0	0	0
	TEAM						0	1	1	0		0				
<b>TOTALS</b>			<b>19</b>	<b>5-13</b>	<b>2-4</b>	<b>7-10</b>	<b>4</b>	<b>5</b>	<b>9</b>	<b>5</b>	<b>5</b>	<b>4</b>	<b>1</b>	<b>2</b>	<b>50</b>	

*Shooting By Period*

Period	FG	FG%	3FG	3FG%	FT	FT%
Game	23-50	46.0%	8-18	44.4%	11-16	68.8%

**UNCW 14**

No.	Player	S	Pts	FG	3FG	FT	OR	DR	TR	PF	A	TO	Blk	Stl	Min	+/-
00	JEUNE, ASHLI		3	1-1	0-0	1-1	1	0	1	4	0	1	0	0	6	1
05	SMITH, GIGI		7	3-10	1-4	0-0	1	1	2	2	0	1	0	0	9	-1
10	VASON, AHYIONA		2	0-2	0-0	2-2	0	2	2	1	2	1	0	1	10	-5
13	SUGGS, LACEY		0	0-0	0-0	0-0	0	0	0	0	0	0	0	0	2	-9
24	BELL, CHINYERE		2	0-0	0-0	2-2	1	0	1	1	0	1	0	0	3	-2
01	POWELL, PAIGE		0	0-0	0-0	0-0	0	0	0	0	0	0	0	0	0	0
02	CRISP, MORIAH		0	0-0	0-0	0-0	1	2	3	1	0	0	0	1	10	-5
04	PARKER, SHRITA		0	0-0	0-0	0-0	0	0	0	0	0	0	0	0	0	0
14	TATE, TIMBER		0	0-1	0-1	0-0	0	0	0	0	1	1	0	0	3	-4
32	OBUSEK, CAROL-ANNE		0	0-1	0-0	0-0	1	0	1	0	0	0	0	1	7	0
	TEAM						1	0	1	0		0				
<b>TOTALS</b>			<b>14</b>	<b>4-15</b>	<b>1-5</b>	<b>5-5</b>	<b>6</b>	<b>5</b>	<b>11</b>	<b>9</b>	<b>3</b>	<b>5</b>	<b>0</b>	<b>3</b>	<b>50</b>	

*Shooting By Period*

Period	FG	FG%	3FG	3FG%	FT	FT%
Game	18-56	32.1%	4-15	26.7%	13-14	92.9%

Game Notes:

Officials: **Mark Resch, Fatou Cissoko-Stephens, Timothy Greene**  
Attendance: **752**

Start Time: **2019-02-23 00:06:22**

End Time: **2019-02-23 02:06:36**

Game Duration: **120**

Conference Game;

Score	1st	2nd	3rd	4th	TOT
DRX	20	12	14	19	<b>65</b>
NCW	13	12	14	14	<b>53</b>

Points from (This Period)	DRX	NCW
In the Paint	4	6
Off Turns	5	2
2nd Chance	3	4
Fast Break	3	5
Bench	1	0



**Official Play-By-Play**  
**Drexel vs UNCW**  
**Fourth Quarter**  
**February 23, 2019 at Trask Coliseum - Wilmington, N.C.**



**Period 4**

**Starters:**

**Drexel:** 11 BROWN,AUBREE; 12 NIHILL,HANNAH; 23 GREENBERG,BAILEY; 24 METZEL,NIKI; 1 WASHINGTON,KEISHANA;

**UNCW:** 0 JEUNE,ASHLI; 5 SMITH,GIGI; 10 VASON,AHYIONA; 13 SUGGS,LACEY; 24 BELL,CHINYERE;

Time	VISITORS: Drexel	Score	Margin	HOME: UNCW
09:49	GOOD! 3PTR by WASHINGTON, KEISHANA	39-49	V 10	
09:49	ASSIST by GREENBERG, BAILEY			
09:32		42-49	V 7	GOOD! 3PTR by SMITH, GIGI
09:32				ASSIST by VASON, AHYIONA
09:03	TURNOVER (LOSTBALL) by NIHILL, HANNAH			
09:03				STEAL by CRISP, MORIAH
08:58				MISSED LAYUP by SMITH, GIGI
08:57				REBOUND (OFF) by CRISP, MORIAH
08:57	FOUL (PERSONAL) by GREENBERG, BAILEY			
08:57	SUB OUT: GREENBERG, BAILEY			
08:57	SUB IN: KRACIKOVA, TEREZA			
08:49				MISSED JUMPER by OBUSEK, CAROL-ANNE
08:46	REBOUND (DEF) by NIHILL, HANNAH			
08:27	GOOD! JUMPER by METZEL, NIKI	42-51	V 9	
08:27	ASSIST by BROWN, AUBREE			
08:12	FOUL (PERSONAL) by WASHINGTON, KEISHANA			
08:12		43-51	V 8	GOOD! FT by VASON, AHYIONA
08:12				SUB OUT: OBUSEK, CAROL-ANNE
08:12				SUB IN: BELL, CHINYERE
08:12				SUB OUT: JEUNE, ASHLI
08:12				SUB IN: SUGGS, LACEY
08:12	SUB OUT: KRACIKOVA, TEREZA			
08:12	SUB IN: LEONARD, MARIAH			
08:12		44-51	V 7	GOOD! FT by VASON, AHYIONA
07:55	GOOD! 3PTR by WASHINGTON, KEISHANA	44-54	V 10	
07:55	ASSIST by BROWN, AUBREE			
07:30				MISSED LAYUP by SMITH, GIGI
07:30	BLOCK by LEONARD, MARIAH			
07:30				REBOUND (OFF) by BELL, CHINYERE
07:30	FOUL (PERSONAL) by METZEL, NIKI			
07:30		45-54	V 9	GOOD! FT by BELL, CHINYERE
07:30		46-54	V 8	GOOD! FT by BELL, CHINYERE
07:00	MISSED LAYUP by METZEL, NIKI			
06:56				REBOUND (DEF) by VASON, AHYIONA
06:56				TURNOVER (LOSTBALL) by VASON, AHYIONA
06:52	GOOD! LAYUP by METZEL, NIKI	46-56	V 10	
06:52	ASSIST by BROWN, AUBREE			
06:36				FOUL (OFF) by BELL, CHINYERE
06:36				TURNOVER (OFFENSIVE) by BELL, CHINYERE
06:36				SUB OUT: SUGGS, LACEY
06:36				SUB IN: JEUNE, ASHLI
06:20				FOUL (PERSONAL) by JEUNE, ASHLI
06:13	MISSED JUMPER by LEONARD, MARIAH			
06:09				REBOUND (DEF) by CRISP, MORIAH
05:59				MISSED 3PTR by SMITH, GIGI
05:55	REBOUND (DEF) by NIHILL, HANNAH			
05:29	MISSED JUMPER by METZEL, NIKI			
05:26	REBOUND (OFF) by BROWN, AUBREE			
05:26				FOUL (PERSONAL) by JEUNE, ASHLI
05:26				SUB OUT: JEUNE, ASHLI
05:26				SUB IN: TATE, TIMBER
05:26				SUB OUT: BELL, CHINYERE
05:26				SUB IN: OBUSEK, CAROL-ANNE
05:01	MISSED LAYUP by LEONARD, MARIAH			
04:55				REBOUND (DEF) by SMITH, GIGI
04:48				MISSED 3PTR by TATE, TIMBER
04:44	REBOUND (DEF) by WASHINGTON, KEISHANA			
04:25	TURNOVER (BADPASS) by NIHILL, HANNAH			
04:25				STEAL by OBUSEK, CAROL-ANNE
04:20				MISSED LAYUP by VASON, AHYIONA
04:18				REBOUND (OFF) by OBUSEK, CAROL-ANNE
04:18	FOUL (PERSONAL) by BROWN, AUBREE			
04:18				
04:18	SUB OUT: LEONARD, MARIAH			
04:18	SUB IN: GREENBERG, BAILEY			
04:17		48-56	V 8	GOOD! LAYUP by SMITH, GIGI
04:17				ASSIST by TATE, TIMBER
03:52	MISSED LAYUP by BROWN, AUBREE			
03:48	REBOUND (OFF) by METZEL, NIKI			
03:48	MISSED 3PTR by WASHINGTON, KEISHANA			



Time	VISITORS: Drexel	Score	Margin	HOME: UNCW
03:44	REBOUND (OFF) by NIHILL, HANNAH			
03:28				FOUL (PERSONAL) by VASON, AHYIONA
03:28				SUB OUT: TATE, TIMBER
03:28				SUB IN: JEUNE, ASHLI
03:15	TURNOVER (BADPASS) by NIHILL, HANNAH			
03:15				STEAL by VASON, AHYIONA
03:07				TURNOVER (LOSTBALL) by JEUNE, ASHLI
03:07	STEAL by WASHINGTON, KEISHANA			
02:54	MISSED 3PTR by GREENBERG, BAILEY			
02:50				REBOUND (DEF) by CRISP, MORIAH
02:42		50-56	V 6	GOOD! JUMPER by SMITH, GIGI [FB/PNT]
02:17	MISSED JUMPER by METZEL, NIKI			
02:13				REBOUND (DEF) by VASON, AHYIONA
02:10		52-56	V 4	GOOD! LAYUP by JEUNE, ASHLI [FB]
02:10				ASSIST by VASON, AHYIONA
02:10	FOUL (PERSONAL) by GREENBERG, BAILEY			
02:10	SUB OUT: GREENBERG, BAILEY			
02:10	SUB IN: LEONARD, MARIAH			
02:10		53-56	V 3	GOOD! FT by JEUNE, ASHLI [FB]
01:47	TURNOVER (BADPASS) by BROWN, AUBREE			
01:35				MISSED 3PTR by SMITH, GIGI
01:34	REBOUND (DEF) by TEAM			
01:15	GOOD! LAYUP by METZEL, NIKI	53-58	V 5	
01:15	ASSIST by WASHINGTON, KEISHANA			
01:01				MISSED LAYUP by VASON, AHYIONA
00:58				REBOUND (OFF) by JEUNE, ASHLI
00:57				MISSED 3PTR by SMITH, GIGI
00:55				REBOUND (OFF) by TEAM
00:55				TIMEOUT 30SEC
00:48				FOUL (OFF) by SMITH, GIGI
00:48				TURNOVER (OFFENSIVE) by SMITH, GIGI
00:48				FOUL (TECH) by TEAM
00:48	MISSED FT by WASHINGTON, KEISHANA			
00:48	REBOUND (OFF) by TEAM			
00:48	MISSED FT by WASHINGTON, KEISHANA			
00:48	REBOUND (OFF) by TEAM			
00:48	TIMEOUT 30SEC			
00:48				SUB OUT: OBUSEK, CAROL-ANNE
00:48				SUB IN: SUGGS, LACEY
00:47				FOUL (PERSONAL) by JEUNE, ASHLI
00:47	GOOD! FT by LEONARD, MARIAH [FB]	53-59	V 6	
00:47	MISSED FT by LEONARD, MARIAH			
00:45	REBOUND (OFF) by WASHINGTON, KEISHANA			
00:45				FOUL (PERSONAL) by JEUNE, ASHLI
00:45				SUB OUT: JEUNE, ASHLI
00:45				SUB IN: TATE, TIMBER
00:45	GOOD! FT by WASHINGTON, KEISHANA [FB]	53-60	V 7	
00:45	GOOD! FT by WASHINGTON, KEISHANA [FB]	53-61	V 8	
00:45				TIMEOUT TEAM
00:37				MISSED LAYUP by SMITH, GIGI
00:34				REBOUND (OFF) by SMITH, GIGI
00:33				MISSED LAYUP by SMITH, GIGI
00:31	REBOUND (DEF) by METZEL, NIKI			
00:31				FOUL (PERSONAL) by SMITH, GIGI
00:31				SUB OUT: SMITH, GIGI
00:31				SUB IN: OBUSEK, CAROL-ANNE
00:31	GOOD! FT by METZEL, NIKI	53-62	V 9	
00:31	GOOD! FT by METZEL, NIKI	53-63	V 10	
00:31				TIMEOUT 30SEC
00:27				TURNOVER (BADPASS) by TATE, TIMBER
00:27	STEAL by NIHILL, HANNAH			
00:06				FOUL (PERSONAL) by CRISP, MORIAH
00:06	GOOD! FT by METZEL, NIKI	53-64	V 11	
00:06	GOOD! FT by METZEL, NIKI	53-65	V 12	

Drexel 65, UNCW 53

Points from (This Period)	DRX	NCW
In the Paint	4	6
Off Turns	5	2
2nd Chance	3	4
Fast Break	3	5
Bench	1	0



**Official Scoring/Possession Reference Chart**  
**Drexel vs UNCW**  
**Period 1**  
**February 23, 2019 at Trask Coliseum - Wilmington, N.C.**



**Period 1**

**Starters:**

**Drexel:** 11 BROWN,AUBREE; 12 NIHILL,HANNAH; 23 GREENBERG,BAILEY; 24 METZEL,NIKI; 1 WASHINGTON,KEISHANA;

**UNCW:** 0 JEUNE,ASHLI; 5 SMITH,GIGI; 10 VASON,AHYIONA; 13 SUGGS,LACEY; 24 BELL,CHINYERE;

Time	VISITORS: Drexel	Score	Margin	HOME: UNCW
09:45	GOOD! 3PTR by GREENBERG, BAILEY	0-3	V 3	
08:29		2-3	V 1	GOOD! LAYUP by VASON, AHYIONA
07:42		4-3	H 1	GOOD! LAYUP by BELL, CHINYERE
07:12	GOOD! 3PTR by BROWN, AUBREE	4-6	V 2	
06:44	GOOD! FT by METZEL, NIKI	4-7	V 3	
05:56	GOOD! LAYUP by WASHINGTON, KEISHANA [FB]	4-9	V 5	
05:08	GOOD! 3PTR by GREENBERG, BAILEY	4-12	V 8	
04:11		6-12	V 6	GOOD! LAYUP by VASON, AHYIONA [FB]
03:40		8-12	V 4	GOOD! LAYUP by BELL, CHINYERE
03:03	GOOD! JUMPER by GREENBERG, BAILEY [PNT]	8-14	V 6	
02:19		9-14	V 5	GOOD! FT by SUGGS, LACEY
02:19		10-14	V 4	GOOD! FT by SUGGS, LACEY
01:57	GOOD! JUMPER by METZEL, NIKI	10-16	V 6	
01:20	GOOD! JUMPER by GREENBERG, BAILEY	10-18	V 8	
01:01		12-18	V 6	GOOD! LAYUP by VASON, AHYIONA [PNT]
01:01		13-18	V 5	GOOD! FT by VASON, AHYIONA
00:10	GOOD! FT by NIHILL, HANNAH [FB]	13-19	V 6	
00:10	GOOD! FT by NIHILL, HANNAH [FB]	13-20	V 7	

**Drexel 20, UNCW 13**



**Official Scoring/Possession Reference Chart**  
**Drexel vs UNCW**  
**Period 2**  
**February 23, 2019 at Trask Coliseum - Wilmington, N.C.**



**Period 2**

**Starters:**

**Drexel:** 11 BROWN,AUBREE; 12 NIHILL,HANNAH; 23 GREENBERG,BAILEY; 24 METZEL,NIKI; 1 WASHINGTON,KEISHANA;

**UNCW:** 0 JEUNE,ASHLI; 5 SMITH,GIGI; 10 VASON,AHYIONA; 13 SUGGS,LACEY; 24 BELL,CHINYERE;

Time	VISITORS: Drexel	Score	Margin	HOME: UNCW
09:47	GOOD! JUMPER by KRACIKOVA, TEREZA	13-22	V 9	
07:55		16-22	V 6	GOOD! 3PTR by JEUNE, ASHLI
07:02		18-22	V 4	GOOD! JUMPER by SMITH, GIGI [PNT]
06:20	GOOD! JUMPER by WASHINGTON, KEISHANA	18-24	V 6	
05:00		20-24	V 4	GOOD! JUMPER by OBUSEK, CAROL-ANNE
04:36	GOOD! JUMPER by WASHINGTON, KEISHANA	20-26	V 6	
02:47	GOOD! JUMPER by KRACIKOVA, TEREZA	20-28	V 8	
02:09		21-28	V 7	GOOD! FT by JEUNE, ASHLI
01:17	GOOD! JUMPER by FERARIU, ANA [FB]	21-30	V 9	
00:50		23-30	V 7	GOOD! LAYUP by OBUSEK, CAROL-ANNE
00:25	GOOD! LAYUP by WASHINGTON, KEISHANA	23-32	V 9	
00:02		25-32	V 7	GOOD! JUMPER by OBUSEK, CAROL-ANNE [PNT]

**Drexel 32, UNCW 25**



**Official Scoring/Possession Reference Chart**  
**Drexel vs UNCW**  
**Period 3**  
**February 23, 2019 at Trask Coliseum - Wilmington, N.C.**



**Period 3**

**Starters:**

**Drexel:** 11 BROWN,AUBREE; 12 NIHILL,HANNAH; 23 GREENBERG,BAILEY; 24 METZEL,NIKI; 1 WASHINGTON,KEISHANA;

**UNCW:** 0 JEUNE,ASHLI; 5 SMITH,GIGI; 10 VASON,AHYIONA; 13 SUGGS,LACEY; 24 BELL,CHINYERE;

Time	VISITORS: Drexel	Score	Margin	HOME: UNCW
09:43		27-32	V 5	GOOD! LAYUP by SMITH, GIGI
08:30		29-32	V 3	GOOD! JUMPER by OBUSEK, CAROL-ANNE [PNT]
08:09	GOOD! LAYUP by WASHINGTON, KEISHANA	29-34	V 5	
07:02	GOOD! 3PTR by WASHINGTON, KEISHANA	29-37	V 8	
05:01	GOOD! 3PTR by GREENBERG, BAILEY	29-40	V 11	
04:11	GOOD! JUMPER by FERARIU, ANA [PNT]	29-42	V 13	
03:41		32-42	V 10	GOOD! 3PTR by CRISP, MORIAH
02:42	GOOD! FT by GREENBERG, BAILEY	32-43	V 11	
02:22		35-43	V 8	GOOD! 3PTR by CRISP, MORIAH
01:24		36-43	V 7	GOOD! FT by SMITH, GIGI [FB]
01:24		37-43	V 6	GOOD! FT by SMITH, GIGI [FB]
00:54	GOOD! 3PTR by BROWN, AUBREE	37-46	V 9	
00:10		38-46	V 8	GOOD! FT by JEUNE, ASHLI
00:10		39-46	V 7	GOOD! FT by JEUNE, ASHLI

**Drexel 46, UNCW 39**



**Official Scoring/Possession Reference Chart**  
**Drexel vs UNCW**  
**Period 4**  
**February 23, 2019 at Trask Coliseum - Wilmington, N.C.**



**Period 4**

**Starters:**

**Drexel:** 11 BROWN,AUBREE; 12 NIHILL,HANNAH; 23 GREENBERG,BAILEY; 24 METZEL,NIKI; 1 WASHINGTON,KEISHANA;

**UNCW:** 0 JEUNE,ASHLI; 5 SMITH,GIGI; 10 VASON,AHYIONA; 13 SUGGS,LACEY; 24 BELL,CHINYERE;

Time	VISITORS: Drexel	Score	Margin	HOME: UNCW
09:49	GOOD! 3PTR by WASHINGTON, KEISHANA	39-49	V 10	
09:32		42-49	V 7	GOOD! 3PTR by SMITH, GIGI
08:27	GOOD! JUMPER by METZEL, NIKI	42-51	V 9	
08:12		43-51	V 8	GOOD! FT by VASON, AHYIONA
08:12		44-51	V 7	GOOD! FT by VASON, AHYIONA
07:55	GOOD! 3PTR by WASHINGTON, KEISHANA	44-54	V 10	
07:30		45-54	V 9	GOOD! FT by BELL, CHINYERE
07:30		46-54	V 8	GOOD! FT by BELL, CHINYERE
06:52	GOOD! LAYUP by METZEL, NIKI	46-56	V 10	
04:17		48-56	V 8	GOOD! LAYUP by SMITH, GIGI
02:42		50-56	V 6	GOOD! JUMPER by SMITH, GIGI [FB/PNT]
02:10		52-56	V 4	GOOD! LAYUP by JEUNE, ASHLI [FB]
02:10		53-56	V 3	GOOD! FT by JEUNE, ASHLI [FB]
01:15	GOOD! LAYUP by METZEL, NIKI	53-58	V 5	
00:47	GOOD! FT by LEONARD, MARIAH [FB]	53-59	V 6	
00:45	GOOD! FT by WASHINGTON, KEISHANA [FB]	53-60	V 7	
00:45	GOOD! FT by WASHINGTON, KEISHANA [FB]	53-61	V 8	
00:31	GOOD! FT by METZEL, NIKI	53-62	V 9	
00:31	GOOD! FT by METZEL, NIKI	53-63	V 10	
00:06	GOOD! FT by METZEL, NIKI	53-64	V 11	
00:06	GOOD! FT by METZEL, NIKI	53-65	V 12	

**Drexel 65, UNCW 53**



**Official Substitutions Log**  
**Drexel vs UNCW**  
**Period 1**  
**February 23, 2019 at Trask Coliseum - Wilmington, N.C.**



VISITORS: Drexel	Time	Score	HOME: UNCW
11 BROWN,AUBREE			0 JEUNE,ASHLI
12 NIHILL,HANNAH			5 SMITH,GIGI
23 GREENBERG,BAILEY			10 VASON,AHYIONA
24 METZEL,NIKI			13 SUGGS,LACEY
1 WASHINGTON,KEISHANA			24 BELL,CHINYERE
	06:44	7-4	SUB OUT: JEUNE,ASHLI
	06:44		SUB IN: PARKER,SHRITA
SUB OUT: 1 WASHINGTON,KEISHANA	05:47	9-4	
SUB IN: 30 LEONARD,MARIAH	05:47		
SUB OUT: 24 METZEL,NIKI	05:42	9-4	
SUB IN: 1 WASHINGTON,KEISHANA	05:42		
	02:52	14-8	SUB OUT: PARKER,SHRITA
	02:52		SUB IN: TATE,TIMBER
SUB OUT: 1 WASHINGTON,KEISHANA	02:52		
SUB IN: 22 HENDRIXSON,MAURA	02:52		
	02:19	14-9	SUB OUT: BELL,CHINYERE
	02:19		SUB IN: POWELL,PAIGE
SUB OUT: 30 LEONARD,MARIAH	02:19		
SUB IN: 24 METZEL,NIKI	02:19		
SUB OUT: 24 METZEL,NIKI	01:01	18-12	
SUB IN: 30 LEONARD,MARIAH	01:01		
	01:01		SUB OUT: SUGGS,LACEY
	01:01		SUB IN: JEUNE,ASHLI
	00:42	18-13	SUB OUT: VASON,AHYIONA
	00:42		SUB IN: CRISP,MORIAH
	00:10	19-13	SUB OUT: POWELL,PAIGE
	00:10		SUB IN: BELL,CHINYERE
SUB OUT: 22 HENDRIXSON,MAURA	00:10		
SUB IN: 1 WASHINGTON,KEISHANA	00:10		

**Drexel 20, UNCW 13**



**Official Substitutions Log**  
**Drexel vs UNCW**  
**Period 2**  
**February 23, 2019 at Trask Coliseum - Wilmington, N.C.**



VISITORS: Drexel	Time	Score	HOME: UNCW
11 BROWN,AUBREE			0 JEUNE,ASHLI
12 NIHILL,HANNAH			5 SMITH,GIGI
23 GREENBERG,BAILEY			10 VASON,AHYIONA
24 METZEL,NIKI			13 SUGGS,LACEY
1 WASHINGTON,KEISHANA			24 BELL,CHINYERE
	08:52	22-13	SUB OUT: CRISP,MORIAH
	08:52		SUB IN: VASON,AHYIONA
	08:52		SUB OUT: BELL,CHINYERE
	08:52		SUB IN: OBUSEK,CAROL-ANNE
	07:12	22-16	SUB OUT: TATE,TIMBER
	07:12		SUB IN: SMITH,GIGI
SUB OUT: 12 NIHILL,HANNAH	06:22	22-18	
SUB IN: 22 HENDRIXSON,MAURA	06:22		
SUB OUT: 22 HENDRIXSON,MAURA	05:36	24-18	
SUB IN: 12 NIHILL,HANNAH	05:36		
SUB OUT: 11 BROWN,AUBREE	05:36		
SUB IN: 50 FERARIU,ANA	05:36		
	03:54	26-20	SUB OUT: OBUSEK,CAROL-ANNE
	03:54		SUB IN: CRISP,MORIAH
	03:54		SUB OUT: SMITH,GIGI
	03:54		SUB IN: TATE,TIMBER
	03:54		SUB OUT: VASON,AHYIONA
	03:54		SUB IN: BELL,CHINYERE
	02:47	26-20	SUB OUT: SUGGS,LACEY
	02:47		SUB IN: SMITH,GIGI
	02:09	28-21	SUB OUT: BELL,CHINYERE
	02:09		SUB IN: OBUSEK,CAROL-ANNE

**Drexel 32, UNCW 25**



**Official Substitutions Log**  
**Drexel vs UNCW**  
**Period 3**  
**February 23, 2019 at Trask Coliseum - Wilmington, N.C.**



VISITORS: Drexel	Time	Score	HOME: UNCW
11 BROWN,AUBREE			0 JEUNE,ASHLI
12 NIHILL,HANNAH			5 SMITH,GIGI
23 GREENBERG,BAILEY			10 VASON,AHYIONA
24 METZEL,NIKI			13 SUGGS,LACEY
1 WASHINGTON,KEISHANA			24 BELL,CHINYERE
	08:52	32-27	SUB OUT: BELL,CHINYERE
	08:52		SUB IN: OBUSEK,CAROL-ANNE
SUB OUT: 12 NIHILL,HANNAH	07:42	34-29	
SUB IN: 50 FERARIU,ANA	07:42		
SUB OUT: 24 METZEL,NIKI	07:42		
SUB IN: 30 LEONARD,MARIAH	07:42		
SUB OUT: 30 LEONARD,MARIAH	05:23	37-29	
SUB IN: 34 KRACIKOVA,TEREZA	05:23		
	04:52	40-29	SUB OUT: SUGGS,LACEY
	04:52		SUB IN: TATE,TIMBER
	04:35	40-29	SUB OUT: TATE,TIMBER
	04:35		SUB IN: CRISP,MORIAH
SUB OUT: 34 KRACIKOVA,TEREZA	01:53	43-35	
SUB IN: 30 LEONARD,MARIAH	01:53		
SUB OUT: 50 FERARIU,ANA	01:24	43-36	
SUB IN: 12 NIHILL,HANNAH	01:24		
SUB OUT: 30 LEONARD,MARIAH	00:10	46-38	
SUB IN: 24 METZEL,NIKI	00:10		

**Drexel 46, UNCW 39**



**Official Substitutions Log**  
**Drexel vs UNCW**  
**Period 4**  
**February 23, 2019 at Trask Coliseum - Wilmington, N.C.**



<b>VISITORS: Drexel</b>	<b>Time</b>	<b>Score</b>	<b>HOME: UNCW</b>
11 BROWN,AUBREE			0 JEUNE,ASHLI
12 NIHILL,HANNAH			5 SMITH,GIGI
23 GREENBERG,BAILEY			10 VASON,AHYIONA
24 METZEL,NIKI			13 SUGGS,LACEY
1 WASHINGTON,KEISHANA			24 BELL,CHINYERE
SUB OUT: 23 GREENBERG,BAILEY	08:57	49-42	
SUB IN: 34 KRACIKOVA,TEREZA	08:57		
	08:12	51-43	SUB OUT: OBUSEK,CAROL-ANNE
	08:12		SUB IN: BELL,CHINYERE
	08:12		SUB OUT: JEUNE,ASHLI
	08:12		SUB IN: SUGGS,LACEY
SUB OUT: 34 KRACIKOVA,TEREZA	08:12		
SUB IN: 30 LEONARD,MARIAH	08:12		
	06:36	56-46	SUB OUT: SUGGS,LACEY
	06:36		SUB IN: JEUNE,ASHLI
	05:26	56-46	SUB OUT: JEUNE,ASHLI
	05:26		SUB IN: TATE,TIMBER
	05:26		SUB OUT: BELL,CHINYERE
	05:26		SUB IN: OBUSEK,CAROL-ANNE
SUB OUT: 30 LEONARD,MARIAH	04:18	56-46	
SUB IN: 23 GREENBERG,BAILEY	04:18		
	03:28	56-48	SUB OUT: TATE,TIMBER
	03:28		SUB IN: JEUNE,ASHLI
SUB OUT: 23 GREENBERG,BAILEY	02:10	56-52	
SUB IN: 30 LEONARD,MARIAH	02:10		
	00:48	58-53	SUB OUT: OBUSEK,CAROL-ANNE
	00:48		SUB IN: SUGGS,LACEY
	00:45	59-53	SUB OUT: JEUNE,ASHLI
	00:45		SUB IN: TATE,TIMBER
	00:31	61-53	SUB OUT: SMITH,GIGI
	00:31		SUB IN: OBUSEK,CAROL-ANNE

**Drexel 65, UNCW 53**

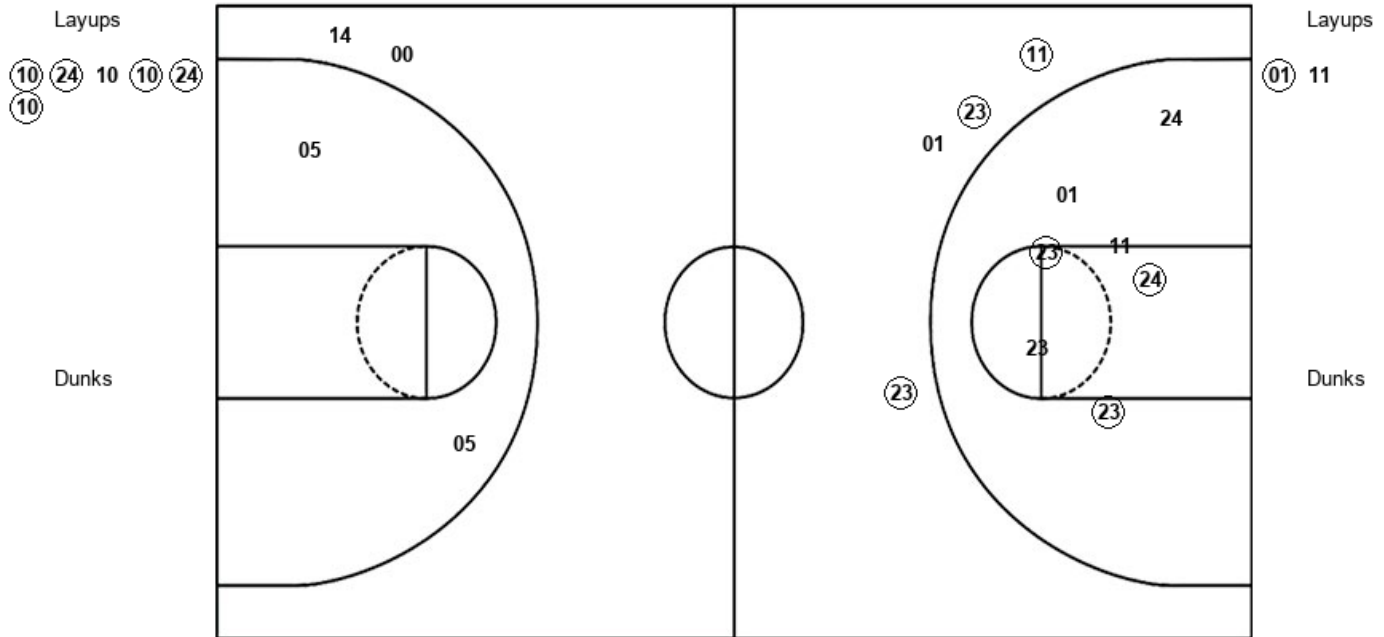


Official Shot Chart  
**Drexel vs UNCW**  
 PERIOD 1 Shots  
 February 23, 2019 at Trask Coliseum - Wilmington, N.C.



**UNCW**

**Drexel**



UNCW : Period 1	Made	Att	Pct
Layups	5	6	83.3
Dunks	0	0	0
2PT Field Goals	5	8	62.5
3PT Field Goals	0	2	00.0
<b>Total Field Goals</b>	<b>5</b>	<b>10</b>	<b>50.0</b>

DRX : Period 1	Made	Att	Pct
Layups	1	2	50.0
Dunks	0	0	0
2PT Field Goals	4	9	44.4
3PT Field Goals	3	4	75.0
<b>Total Field Goals</b>	<b>7</b>	<b>13</b>	<b>53.8</b>



**Official Shot Chart**  
**Drexel vs UNCW**  
**PERIOD 2 Shots**  
**February 23, 2019 at Trask Coliseum - Wilmington, N.C.**

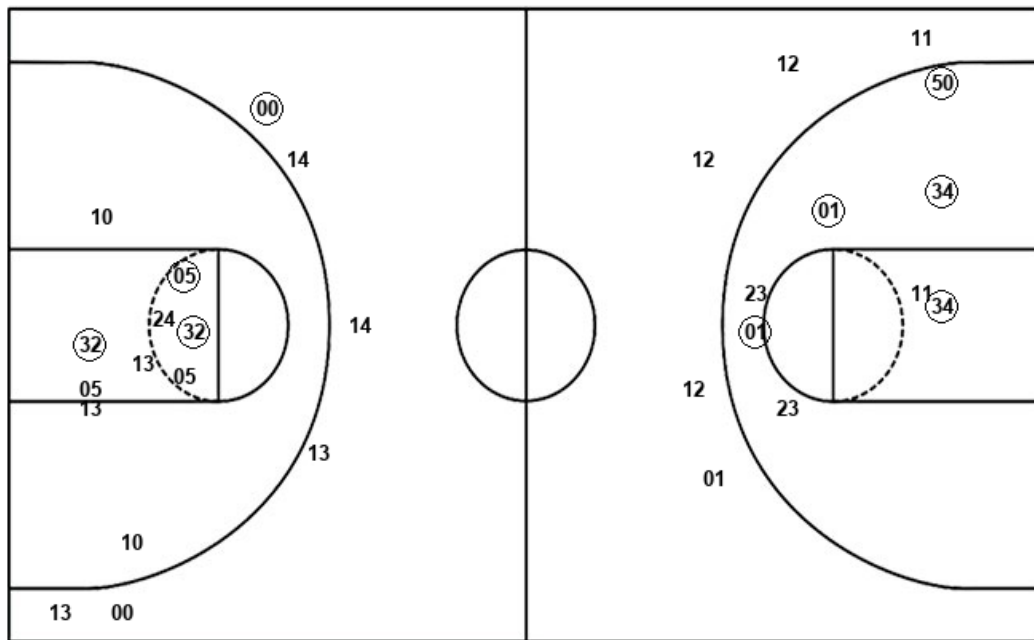


**UNCW**

**Drexel**

Layups  
10 05 (32)

Dunks



Layups

Dunks

NCW : Period 2	Made	Att	Pct
Layups	1	3	33.3
Dunks	0	0	0
2PT Field Goals	4	13	30.8
3PT Field Goals	1	6	16.7
<b>Total Field Goals</b>	<b>5</b>	<b>19</b>	<b>26.3</b>

DRX : Period 2	Made	Att	Pct
Layups	1	1	100.0
Dunks	0	0	0
2PT Field Goals	6	9	66.7
3PT Field Goals	0	5	00.0
<b>Total Field Goals</b>	<b>6</b>	<b>14</b>	<b>42.9</b>

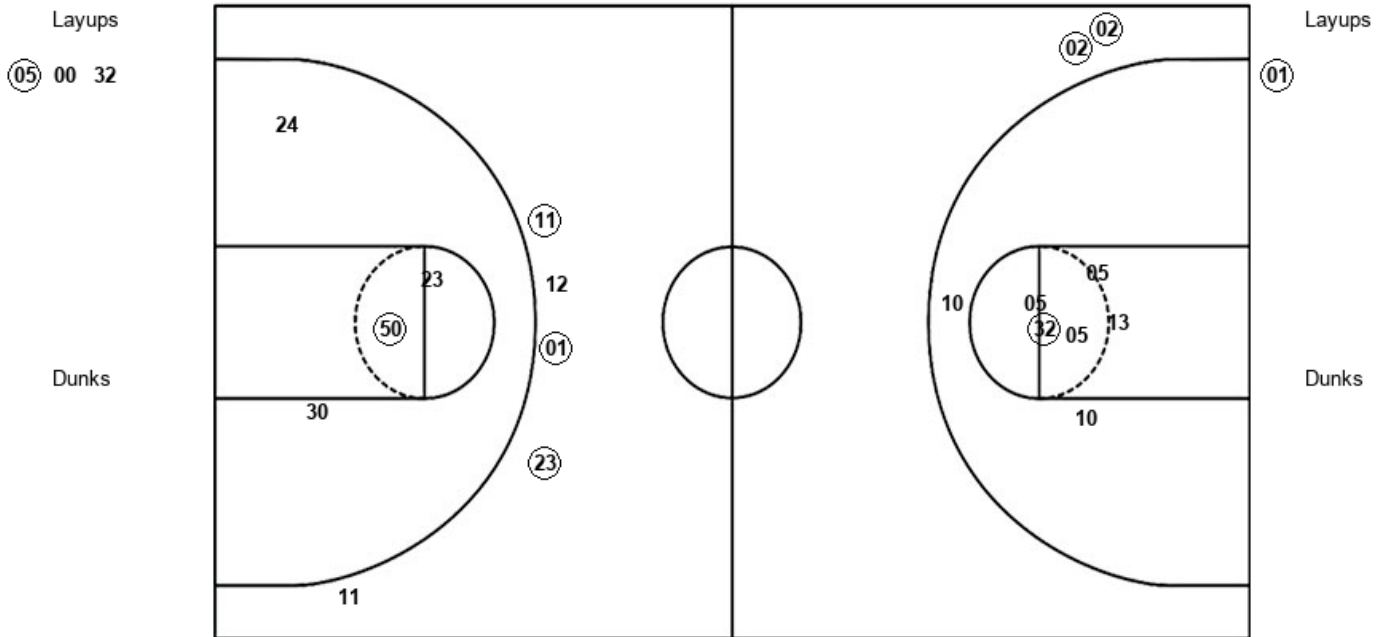


Official Shot Chart  
**Drexel vs UNCW**  
 PERIOD 3 Shots  
 February 23, 2019 at Trask Coliseum - Wilmington, N.C.



**UNCW**

**Drexel**



UNCW : Period 3	Made	Att	Pct
Layups	1	3	33.3
Dunks	0	0	0
2PT Field Goals	2	10	20.0
3PT Field Goals	2	2	100.0
<b>Total Field Goals</b>	<b>4</b>	<b>12</b>	<b>33.3</b>

DRX : Period 3	Made	Att	Pct
Layups	1	1	100.0
Dunks	0	0	0
2PT Field Goals	2	5	40.0
3PT Field Goals	3	5	60.0
<b>Total Field Goals</b>	<b>5</b>	<b>10</b>	<b>50.0</b>

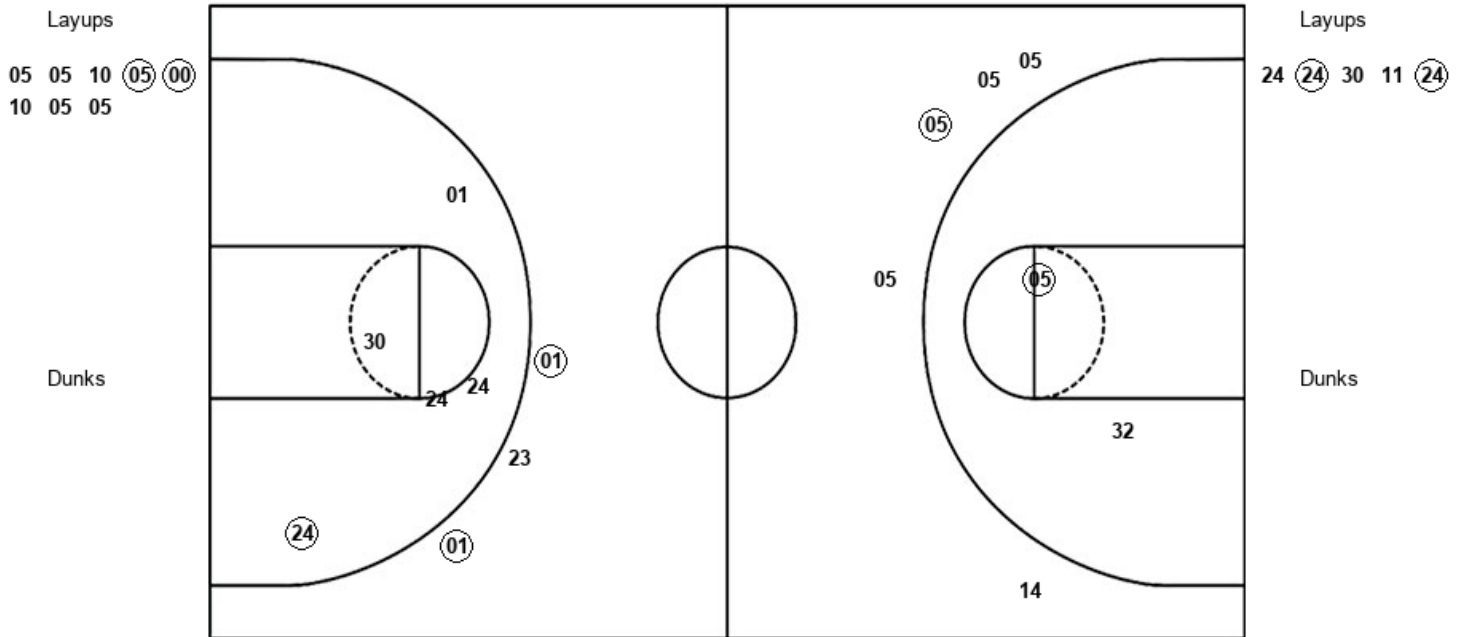


**Official Shot Chart**  
**Drexel vs UNCW**  
**PERIOD 4 Shots**  
**February 23, 2019 at Trask Coliseum - Wilmington, N.C.**



**UNCW**

**Drexel**



UNCW : Period 4	Made	Att	Pct
Layups	2	8	25.0
Dunks	0	0	0
2PT Field Goals	3	10	30.0
3PT Field Goals	1	5	20.0
<b>Total Field Goals</b>	<b>4</b>	<b>15</b>	<b>26.7</b>

DRX : Period 4	Made	Att	Pct
Layups	2	5	40.0
Dunks	0	0	0
2PT Field Goals	3	9	33.3
3PT Field Goals	2	4	50.0
<b>Total Field Goals</b>	<b>5</b>	<b>13</b>	<b>38.5</b>

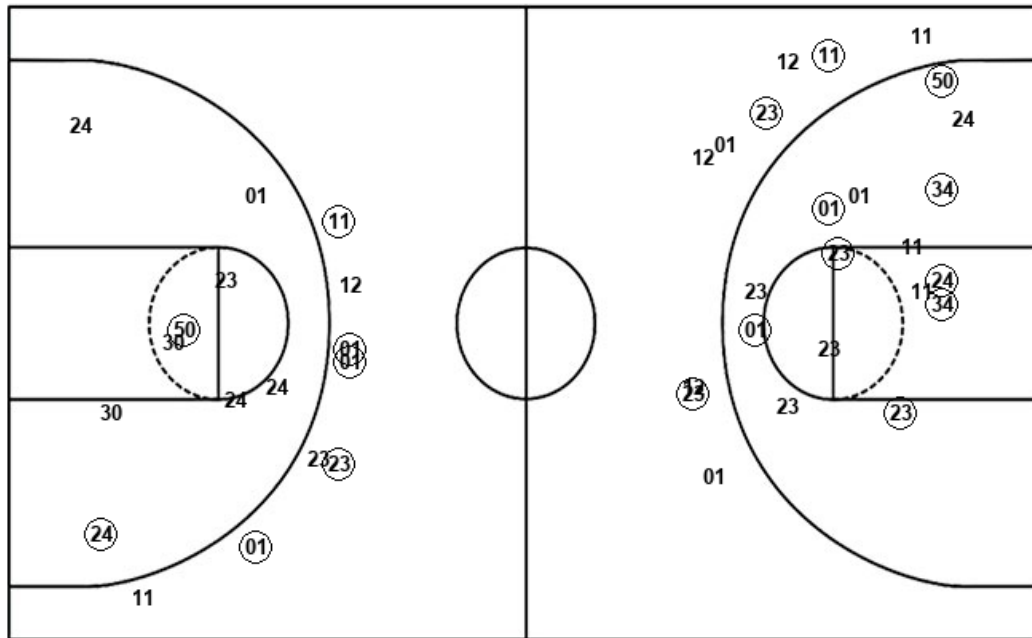


**Official Shot Chart**  
**Drexel vs UNCW**  
**Drexel Team Shots**  
**February 23, 2019 at Trask Coliseum - Wilmington, N.C.**



Layups

Dunks



Layups

Dunks

DRX : Period 1	Made	Att	Pct
Layups	1	2	50.0
Dunks	0	0	0
2PT Field Goals	4	9	44.4
3PT Field Goals	3	4	75.0
<b>Total Field Goals</b>	<b>7</b>	<b>13</b>	<b>53.8</b>

DRX : Period 3	Made	Att	Pct
Layups	1	1	100.0
Dunks	0	0	0
2PT Field Goals	2	5	40.0
3PT Field Goals	3	5	60.0
<b>Total Field Goals</b>	<b>5</b>	<b>10</b>	<b>50.0</b>

DRX : Period 2	Made	Att	Pct
Layups	1	1	100.0
Dunks	0	0	0
2PT Field Goals	6	9	66.7
3PT Field Goals	0	5	00.0
<b>Total Field Goals</b>	<b>6</b>	<b>14</b>	<b>42.9</b>

DRX : Period 4	Made	Att	Pct
Layups	2	5	40.0
Dunks	0	0	0
2PT Field Goals	3	9	33.3
3PT Field Goals	2	4	50.0
<b>Total Field Goals</b>	<b>5</b>	<b>13</b>	<b>38.5</b>



