

## FINAL SCORE



**William & Mary**

**58**



**UNCW**

**66**

February 10, 2019 • Trask Coliseum - Wilmington, N.C.

## FINAL STATISTICS

**Official Box Score**  
**William & Mary vs UNCW**  
**Game Totals -- Final Statistics**  
**February 10, 2019 at Trask Coliseum - Wilmington, N.C.**



**William & Mary 58**

No.	Player	S	Pts	FG	3FG	FT	OR	DR	TR	PF	A	TO	Blk	Stl	Min	+/-
02	BOGGS, BIANCA		16	7-15	1-5	1-3	1	9	10	3	3	4	1	5	38	-6
10	HODGSON, EVA		24	9-15	4-6	2-2	1	4	5	4	2	6	0	0	38	-6
11	POLLARD, NYLA		0	0-3	0-1	0-0	2	0	2	0	2	1	0	0	16	-13
20	SMITH, CHANDLER		2	1-2	0-0	0-2	2	4	6	1	0	0	1	0	20	-17
30	REYNOLDS, VICTORIA		10	4-11	0-2	2-2	1	3	4	5	3	6	0	1	40	-6
05	JONES, MISHA		0	0-1	0-1	0-0	0	0	0	2	0	0	0	0	5	-12
12	BIRDSONG, HARPER		0	0-10	0-4	0-0	2	2	4	1	4	2	0	0	29	-1
15	KRAUSE, EMMA		6	2-5	2-5	0-0	1	2	3	5	0	0	0	0	14	21
<b>TEAM</b>							5	2	7	0		0				
<b>TOTALS</b>			<b>58</b>	<b>23-62</b>	<b>7-24</b>	<b>5-9</b>	<b>15</b>	<b>26</b>	<b>41</b>	<b>21</b>	<b>14</b>	<b>19</b>	<b>2</b>	<b>6</b>	<b>200</b>	

*Shooting By Period*

Period	FG	FG%	3FG	3FG%	FT	FT%
1st Qtr	6-17	35%	0-5	00%	0-2	00%
2nd Qtr	6-13	46%	3-7	43%	0-0	0%
3rd Qtr	8-21	38%	3-8	38%	3-3	100%
4th Qtr	3-11	27%	1-4	25%	2-4	50%
1st Half	12-30	40%	3-12	25%	0-2	00%
2nd Half	11-32	34%	4-12	33%	5-7	71%
<b>Game</b>	<b>23-62</b>	<b>37.1%</b>	<b>7-24</b>	<b>29.2%</b>	<b>5-9</b>	<b>55.6%</b>

*Last FG: 4th-06:21*  
*Biggest Run: 8-0*  
*Largest lead: By 4 at 1-07:25*  
*Technical Fouls: None.*

**UNCW 66**

No.	Player	S	Pts	FG	3FG	FT	OR	DR	TR	PF	A	TO	Blk	Stl	Min	+/-
00	JEUNE, ASHLI		3	1-4	1-3	0-0	0	3	3	0	2	2	0	0	23	0
05	SMITH, GIGI		15	7-24	0-3	1-2	5	6	11	2	1	1	0	4	40	8
10	VASON, AHYIONA		13	3-7	1-2	6-9	1	1	2	1	5	4	0	1	32	11
13	SUGGS, LACEY		18	5-10	4-5	4-4	4	4	8	1	3	2	0	4	40	8
24	BELL, CHINYERE		10	3-7	0-0	4-9	1	10	11	1	1	2	1	2	29	19
01	POWELL, PAIGE		4	2-2	0-0	0-0	1	0	1	2	2	1	0	0	13	2
02	CRISP, MORIAH		0	0-0	0-0	0-0	0	0	0	0	0	2	0	1	10	-5
14	TATE, TIMBER		3	1-5	0-3	1-2	2	1	3	3	1	1	0	0	14	-4
22	THYBULLE, ZHANEIA		0	0-0	0-0	0-0	0	0	0	0	0	0	0	0	0	1
<b>TEAM</b>							3	1	4	0		1				
<b>TOTALS</b>			<b>66</b>	<b>22-59</b>	<b>6-16</b>	<b>16-26</b>	<b>17</b>	<b>26</b>	<b>43</b>	<b>10</b>	<b>15</b>	<b>16</b>	<b>1</b>	<b>12</b>	<b>200</b>	

*Shooting By Period*

Period	FG	FG%	3FG	3FG%	FT	FT%
1st Qtr	5-15	33%	2-6	33%	2-3	67%
2nd Qtr	9-15	60%	3-5	60%	1-1	100%
3rd Qtr	6-14	43%	0-2	00%	5-6	83%
4th Qtr	2-15	13%	1-3	33%	8-16	50%
1st Half	14-30	47%	5-11	45%	3-4	75%
2nd Half	8-29	28%	1-5	20%	13-22	59%
<b>Game</b>	<b>22-59</b>	<b>37.3%</b>	<b>6-16</b>	<b>37.5%</b>	<b>16-26</b>	<b>61.5%</b>

*Last FG: 4th-05:46*  
*Biggest Run: 10-0*  
*Largest lead: By 11 at 3-08:19*  
*Technical Fouls: None.*

*Game Notes:*

Officials: **Dan Outlaw, Kris Denson, Warren Harding**  
Attendance: **945**

Start Time: **2019-02-10 19:07:54**  
End Time: **2019-02-10 21:02:40**  
Game Duration: **114**  
Conference Game;

Score	1st	2nd	3rd	4th	TOT
CWM	12	15	22	9	<b>58</b>
NCW	14	22	17	13	<b>66</b>

CWM led for 5:19. NCW led for 28:40.  
**Game was tied for 6:02.**  
Times tied: **4**      Lead Changes: **5**

Points from	CWM	NCW
In the Paint	28	32
Off Turns	14	25
2nd Chance	13	12
Fast Break	9	12
Bench	6	7

**Official Box Score**  
**William & Mary vs UNCW**  
**First Half Statistics Only**  
**February 10, 2019 at Trask Coliseum - Wilmington, N.C.**



**William & Mary 27**

No.	Player	S	Pts	FG	3FG	FT	OR	DR	TR	PF	A	TO	Blk	Stl	Min	+/-
10	HODGSON, EVA		9	4-6	1-1	0-0	1	2	3	1	0	2	0	0	18	-7
11	POLLARD, NYLA		0	0-2	0-1	0-0	1	0	1	0	2	0	0	0	13	-11
12	BIRDSONG, HARPER		0	0-5	0-3	0-0	0	1	1	0	1	1	0	0	10	-2
15	KRAUSE, EMMA		3	1-2	1-2	0-0	0	0	0	2	0	0	0	0	7	2
20	SMITH, CHANDLER		2	1-1	0-0	0-0	1	0	1	0	0	0	0	0	11	-5
30	REYNOLDS, VICTORIA		4	2-5	0-1	0-0	1	3	4	0	3	4	0	1	20	-9
02	BOGGS, BIANCA		9	4-8	1-3	0-2	1	4	5	1	1	3	0	2	18	-7
05	JONES, MISHA		0	0-1	0-1	0-0	0	0	0	1	0	0	0	0	2	-6
	TEAM		0	0-0	0-0	0-0	2	1	3	0	0	0	0	0	0	0
<b>TOTALS</b>			<b>27</b>	<b>12-30</b>	<b>3-12</b>	<b>0-2</b>	<b>7</b>	<b>11</b>	<b>18</b>	<b>5</b>	<b>7</b>	<b>10</b>	<b>0</b>	<b>3</b>	<b>100</b>	

*Shooting By Period*

Period	FG	FG%	3FG	3FG%	FT	FT%
1st Qtr	6-17	35%	0-5	00%	0-2	00%
2nd Qtr	6-13	46%	3-7	43%	0-0	0%
1st Half	12-30	40%	3-12	25%	0-2	00%
Game	23-62	37.1%	7-24	29.2%	5-9	55.6%

*Last FG Half: CWM 2nd-02:19*

**UNCW 36**

No.	Player	S	Pts	FG	3FG	FT	OR	DR	TR	PF	A	TO	Blk	Stl	Min	+/-
00	JEUNE, ASHLI		3	1-3	1-2	0-0	0	2	2	0	2	1	0	0	11	-2
01	POWELL, PAIGE		4	2-2	0-0	0-0	0	0	0	2	2	1	0	0	8	5
02	CRISP, MORIAH		0	0-0	0-0	0-0	0	0	0	0	0	2	0	1	6	-4
05	SMITH, GIGI		4	2-9	0-3	0-0	1	2	3	0	1	0	0	0	20	9
10	VASON, AHYIONA		7	2-5	0-1	3-3	1	1	2	0	2	2	0	0	14	13
13	SUGGS, LACEY		14	5-7	4-5	0-0	1	2	3	1	2	0	0	2	20	9
14	TATE, TIMBER		0	0-0	0-0	0-0	1	0	1	0	1	0	0	0	4	1
22	THYBULLE, ZHANEIA		0	0-0	0-0	0-0	0	0	0	0	0	0	0	0	0	0
24	BELL, CHINYERE		4	2-4	0-0	0-1	1	4	5	0	0	2	1	1	17	14
	TEAM		0	0-0	0-0	0-0	1	1	2	0	0	0	0	0	0	0
<b>TOTALS</b>			<b>36</b>	<b>14-30</b>	<b>5-11</b>	<b>3-4</b>	<b>6</b>	<b>12</b>	<b>18</b>	<b>3</b>	<b>10</b>	<b>8</b>	<b>1</b>	<b>4</b>	<b>100</b>	

*Shooting By Period*

Period	FG	FG%	3FG	3FG%	FT	FT%
1st Qtr	5-15	33%	2-6	33%	2-3	67%
2nd Qtr	9-15	60%	3-5	60%	1-1	100%
1st Half	14-30	47%	5-11	45%	3-4	75%
Game	22-59	37.3%	6-16	37.5%	16-26	61.5%

*Last FG Half: NCW 2nd-00:22*

Game Notes:

Officials: Dan Outlaw, Kris Denson, Warren Harding  
 Attendance: 945

Start Time: 2019-02-10 19:07:54  
 End Time: 2019-02-10 21:02:40  
 Game Duration: 114  
 Conference Game;

Score	1st	2nd	3rd	4th	TOT
CWM	12	15	22	9	<b>58</b>
NCW	14	22	17	13	<b>66</b>

Points from (This Period)	CWM	NCW
In the Paint	16	18
Off Turns	9	13
2nd Chance	4	6
Fast Break	4	3
Bench	3	4

**Official Box Score**  
**William & Mary vs UNCW**  
**First Quarter Statistics Only**  
**February 10, 2019 at Trask Coliseum - Wilmington, N.C.**



### William & Mary 12

No.	Player	S	Pts	FG	3FG	FT	OR	DR	TR	PF	A	TO	Blk	Stl	Min	+/-
02	BOGGS, BIANCA		4	2-6	0-2	0-2	1	1	2	1	1	1	0	2	8	0
10	HODGSON, EVA		4	2-4	0-0	0-0	1	1	2	1	0	0	0	0	10	-2
11	POLLARD, NYLA		0	0-1	0-1	0-0	0	0	0	0	1	0	0	0	6	0
20	SMITH, CHANDLER		2	1-1	0-0	0-0	1	0	1	0	0	0	0	0	8	0
30	REYNOLDS, VICTORIA		2	1-3	0-1	0-0	1	3	4	0	1	2	0	0	10	-2
05	JONES, MISHA		0	0-0	0-0	0-0	0	0	0	0	0	0	0	0	0	0
12	BIRDSONG, HARPER		0	0-2	0-1	0-0	0	0	0	0	0	0	0	0	5	-4
15	KRAUSE, EMMA		0	0-0	0-0	0-0	0	0	0	1	0	0	0	0	2	-2
	TEAM						1	1	2	0		0				
<b>TOTALS</b>			<b>12</b>	<b>6-17</b>	<b>0-5</b>	<b>0-2</b>	<b>5</b>	<b>6</b>	<b>11</b>	<b>3</b>	<b>3</b>	<b>3</b>	<b>0</b>	<b>2</b>	<b>50</b>	

#### Shooting By Period

Period	FG	FG%	3FG	3FG%	FT	FT%
1st Qtr	6-17	35%	0-5	00%	0-2	00%
2nd Qtr	6-13	46%	3-7	43%	0-0	0%
1st Half	6-17	35%	0-5	00%	0-2	00%
1st Half	12-30	40%	3-12	25%	0-2	00%
Game	23-62	37.1%	7-24	29.2%	5-9	55.6%

### UNCW 14

No.	Player	S	Pts	FG	3FG	FT	OR	DR	TR	PF	A	TO	Blk	Stl	Min	+/-
00	JEUNE, ASHLI		0	0-2	0-1	0-0	0	0	0	0	0	0	0	0	5	-2
05	SMITH, GIGI		4	2-6	0-2	0-0	1	1	2	0	0	0	0	0	10	2
10	VASON, AHYIONA		2	0-1	0-1	2-2	0	1	1	0	1	2	0	0	6	1
13	SUGGS, LACEY		6	2-3	2-2	0-0	1	1	2	1	0	0	0	0	10	2
24	BELL, CHINYERE		2	1-3	0-0	0-1	1	4	5	0	0	1	1	0	9	4
01	POWELL, PAIGE		0	0-0	0-0	0-0	0	0	0	0	1	0	0	0	2	1
02	CRISP, MORIAH		0	0-0	0-0	0-0	0	0	0	0	0	2	0	1	4	1
14	TATE, TIMBER		0	0-0	0-0	0-0	1	0	1	0	1	0	0	0	4	1
22	THYBULLE, ZHANEIA		0	0-0	0-0	0-0	0	0	0	0	0	0	0	0	0	0
	TEAM						1	0	1	0		0				
<b>TOTALS</b>			<b>14</b>	<b>5-15</b>	<b>2-6</b>	<b>2-3</b>	<b>5</b>	<b>7</b>	<b>12</b>	<b>1</b>	<b>3</b>	<b>5</b>	<b>1</b>	<b>1</b>	<b>50</b>	

#### Shooting By Period

Period	FG	FG%	3FG	3FG%	FT	FT%
1st Qtr	5-15	33%	2-6	33%	2-3	67%
2nd Qtr	9-15	60%	3-5	60%	1-1	100%
1st Half	5-15	33%	2-6	33%	2-3	67%
1st Half	14-30	47%	5-11	45%	3-4	75%
Game	22-59	37.3%	6-16	37.5%	16-26	61.5%

#### Game Notes:

Officials: Dan Outlaw, Kris Denson, Warren Harding  
Attendance: 945

Start Time: 2019-02-10 19:07:54  
End Time: 2019-02-10 21:02:40  
Game Duration: 114  
Conference Game;

Score	1st	2nd	3rd	4th	TOT
CWM	12	15	22	9	<b>58</b>
NCW	14	22	17	13	<b>66</b>

Points from (This Period)	CWM	NCW
In the Paint	12	6
Off Turns	6	3
2nd Chance	2	4
Fast Break	4	0
Bench	0	0

**Official Play-By-Play**  
**William & Mary vs UNCW**  
**First Quarter**  
**February 10, 2019 at Trask Coliseum - Wilmington, N.C.**



**Period 1**

**Starters:**

**William & Mary:** 10 HODGSON,EVA; 11 POLLARD,NYLA; 20 SMITH,CHANDLER; 30 REYNOLDS,VICTORIA; 2 BOGGS,BIANCA;

**UNCW:** 0 JEUNE,ASHLI; 5 SMITH,GIGI; 10 VASON,AHYIONA; 13 SUGGS,LACEY; 24 BELL,CHINYERE;

Time	VISITORS: William & Mary	Score	Margin	HOME: UNCW
09:47				MISSED 3PTR by SMITH, GIGI
09:42	REBOUND (DEF) by BOGGS, BIANCA			
09:29				FOUL (PERSONAL) by SUGGS, LACEY
09:29	MISSED FT by BOGGS, BIANCA			
09:29	REBOUND (OFF) by TEAM			
09:29	MISSED FT by BOGGS, BIANCA			
09:26				REBOUND (DEF) by SMITH, GIGI
09:18				TURNOVER (BADPASS) by VASON, AHYIONA
08:49	MISSED JUMPER by BOGGS, BIANCA			
08:49				BLOCK by BELL, CHINYERE
08:44	REBOUND (OFF) by BOGGS, BIANCA			
08:43	MISSED JUMPER by BOGGS, BIANCA			
08:37	REBOUND (OFF) by SMITH, CHANDLER			
08:36	GOOD! LAYUP by SMITH, CHANDLER [PNT]	0-2	V 2	
08:23				MISSED JUMPER by SMITH, GIGI
08:20				REBOUND (OFF) by SMITH, GIGI
08:19				MISSED LAYUP by SMITH, GIGI
08:17	REBOUND (DEF) by TEAM			
07:53	MISSED 3PTR by POLLARD, NYLA			
07:49	REBOUND (OFF) by HODGSON, EVA			
07:41	MISSED 3PTR by BOGGS, BIANCA			
07:38				REBOUND (DEF) by BELL, CHINYERE
07:32				MISSED LAYUP by JEUNE, ASHLI
07:28	REBOUND (DEF) by REYNOLDS, VICTORIA			
07:25	GOOD! LAYUP by REYNOLDS, VICTORIA [FB]	0-4	V 4	
07:03	FOUL (PERSONAL) by BOGGS, BIANCA			
07:03		1-4	V 3	GOOD! FT by VASON, AHYIONA
07:03		2-4	V 2	GOOD! FT by VASON, AHYIONA
06:39	MISSED 3PTR by REYNOLDS, VICTORIA			
06:36	REBOUND (OFF) by REYNOLDS, VICTORIA			
06:36	TURNOVER (3SEC) by BOGGS, BIANCA			
06:18				MISSED 3PTR by VASON, AHYIONA
06:14	REBOUND (DEF) by REYNOLDS, VICTORIA			
06:06	MISSED 3PTR by BOGGS, BIANCA			
06:02				REBOUND (DEF) by BELL, CHINYERE
05:59				TURNOVER (BADPASS) by VASON, AHYIONA
05:59	STEAL by BOGGS, BIANCA			
05:53	MISSED JUMPER by HODGSON, EVA			
05:50				REBOUND (DEF) by VASON, AHYIONA
05:30				MISSED 3PTR by JEUNE, ASHLI
05:27				REBOUND (OFF) by SUGGS, LACEY
05:25				MISSED JUMPER by BELL, CHINYERE
05:25				REBOUND (OFF) by TEAM
05:25				SUB OUT: JEUNE, ASHLI
05:25				SUB IN: CRISP, MORIAH
05:25				SUB OUT: VASON, AHYIONA
05:25				SUB IN: TATE, TIMBER
05:25	SUB OUT: BOGGS, BIANCA			
05:25	SUB IN: BIRDSONG, HARPER			
05:25	SUB OUT: SMITH, CHANDLER			
05:25	SUB IN: KRAUSE, EMMA			
05:04		4-4	T	GOOD! LAYUP by SMITH, GIGI
04:48	GOOD! LAYUP by HODGSON, EVA [PNT]	4-6	V 2	
04:48	ASSIST by POLLARD, NYLA			
04:33				MISSED JUMPER by SUGGS, LACEY
04:31				REBOUND (OFF) by BELL, CHINYERE
04:31		6-6	T	GOOD! LAYUP by BELL, CHINYERE
04:31	FOUL (PERSONAL) by HODGSON, EVA			
04:31				
04:30				MISSED FT by BELL, CHINYERE
04:28	REBOUND (DEF) by REYNOLDS, VICTORIA			
04:08	MISSED LAYUP by HODGSON, EVA			
04:04				REBOUND (DEF) by SUGGS, LACEY
04:02	FOUL (PERSONAL) by KRAUSE, EMMA			
03:51				MISSED JUMPER by BELL, CHINYERE
03:47	REBOUND (DEF) by HODGSON, EVA			
03:43	TURNOVER (3SEC) by REYNOLDS, VICTORIA			
03:43	SUB OUT: POLLARD, NYLA			
03:43	SUB IN: SMITH, CHANDLER			
03:43	SUB OUT: KRAUSE, EMMA			

Time	VISITORS: William & Mary	Score	Margin	HOME: UNCW
03:43	SUB IN: BOGGS, BIANCA			
03:19		9-6	H 3	GOOD! 3PTR by SUGGS, LACEY
03:19				ASSIST by TATE, TIMBER
03:10	GOOD! LAYUP by BOGGS, BIANCA	9-8	H 1	
03:10	ASSIST by REYNOLDS, VICTORIA			
02:42				MISSED 3PTR by SMITH, GIGI
02:39				REBOUND (OFF) by TATE, TIMBER
02:27				TURNOVER (3SEC) by BELL, CHINYERE
02:27				SUB OUT: BELL, CHINYERE
02:27				SUB IN: POWELL, PAIGE
02:11	MISSED 3PTR by BIRDSONG, HARPER			
02:06	REBOUND (OFF) by TEAM			
01:53	TURNOVER (LOSTBALL) by REYNOLDS, VICTORIA			
01:53				STEAL by CRISP, MORIAH
01:48				TURNOVER (BADPASS) by CRISP, MORIAH
01:48	STEAL by BOGGS, BIANCA			
01:42	GOOD! LAYUP by HODGSON, EVA [FB]	9-10	V 1	
01:42	ASSIST by BOGGS, BIANCA			
01:20				TURNOVER (BADPASS) by CRISP, MORIAH
01:20				SUB OUT: CRISP, MORIAH
01:20				SUB IN: VASON, AHYIONA
01:20				SUB OUT: TATE, TIMBER
01:20				SUB IN: BELL, CHINYERE
01:04	GOOD! LAYUP by BOGGS, BIANCA	9-12	V 3	
00:47		12-12	T	GOOD! 3PTR by SUGGS, LACEY
00:47				ASSIST by VASON, AHYIONA
00:35	MISSED JUMPER by BIRDSONG, HARPER			
00:31				REBOUND (DEF) by BELL, CHINYERE
00:22		14-12	H 2	GOOD! LAYUP by SMITH, GIGI
00:22				ASSIST by POWELL, PAIGE
00:00	MISSED JUMPER by REYNOLDS, VICTORIA			
00:00				REBOUND (DEF) by BELL, CHINYERE

### William & Mary 12, UNCW 14

Points from (This Period)	CWM	NCW
In the Paint	12	6
Off Turns	6	3
2nd Chance	2	4
Fast Break	4	0
Bench	0	0

**Official Box Score**  
**William & Mary vs UNCW**  
**Second Quarter Statistics Only**  
**February 10, 2019 at Trask Coliseum - Wilmington, N.C.**



### William & Mary 15

No.	Player	S	Pts	FG	3FG	FT	OR	DR	TR	PF	A	TO	Blk	Stl	Min	+/-
02	BOGGS, BIANCA		5	2-2	1-1	0-0	0	3	3	0	0	2	0	0	10	-7
10	HODGSON, EVA		5	2-2	1-1	0-0	0	1	1	0	0	2	0	0	8	-5
11	POLLARD, NYLA		0	0-1	0-0	0-0	1	0	1	0	1	0	0	0	7	-11
20	SMITH, CHANDLER		0	0-0	0-0	0-0	0	0	0	0	0	0	0	0	3	-5
30	REYNOLDS, VICTORIA		2	1-2	0-0	0-0	0	0	0	0	2	2	0	1	10	-7
05	JONES, MISHA		0	0-1	0-1	0-0	0	0	0	1	0	0	0	0	2	-6
12	BIRDSONG, HARPER		0	0-3	0-2	0-0	0	1	1	0	1	1	0	0	5	2
15	KRAUSE, EMMA		3	1-2	1-2	0-0	0	0	0	1	0	0	0	0	5	4
	TEAM						1	0	1	0		0				
<b>TOTALS</b>			<b>15</b>	<b>6-13</b>	<b>3-7</b>	<b>0-0</b>	<b>2</b>	<b>5</b>	<b>7</b>	<b>2</b>	<b>4</b>	<b>7</b>	<b>0</b>	<b>1</b>	<b>50</b>	

*Shooting By Period*

Period	FG	FG%	3FG	3FG%	FT	FT%
3rd Qtr	8-21	38%	3-8	38%	3-3	100%
4th Qtr	3-11	27%	1-4	25%	2-4	50%
2nd Half	6-13	46%	3-7	43%	0-0	0%
2nd Half	11-32	34%	4-12	33%	5-7	71%
Game	23-62	37.1%	7-24	29.2%	5-9	55.6%

### UNCW 22

No.	Player	S	Pts	FG	3FG	FT	OR	DR	TR	PF	A	TO	Blk	Stl	Min	+/-
00	JEUNE, ASHLI		3	1-1	1-1	0-0	0	2	2	0	2	1	0	0	6	0
05	SMITH, GIGI		0	0-3	0-1	0-0	0	1	1	0	1	0	0	0	10	7
10	VASON, AHYIONA		5	2-4	0-0	1-1	1	0	1	0	1	0	0	0	8	12
13	SUGGS, LACEY		8	3-4	2-3	0-0	0	1	1	0	2	0	0	2	10	7
24	BELL, CHINYERE		2	1-1	0-0	0-0	0	0	0	0	0	1	0	1	8	10
01	POWELL, PAIGE		4	2-2	0-0	0-0	0	0	0	2	1	1	0	0	6	4
02	CRISP, MORIAH		0	0-0	0-0	0-0	0	0	0	0	0	0	0	0	2	-5
14	TATE, TIMBER		0	0-0	0-0	0-0	0	0	0	0	0	0	0	0	0	0
22	THYBULLE, ZHANEIA		0	0-0	0-0	0-0	0	0	0	0	0	0	0	0	0	0
	TEAM						0	1	1	0		0				
<b>TOTALS</b>			<b>22</b>	<b>9-15</b>	<b>3-5</b>	<b>1-1</b>	<b>1</b>	<b>5</b>	<b>6</b>	<b>2</b>	<b>7</b>	<b>3</b>	<b>0</b>	<b>3</b>	<b>50</b>	

*Shooting By Period*

Period	FG	FG%	3FG	3FG%	FT	FT%
3rd Qtr	6-14	43%	0-2	00%	5-6	83%
4th Qtr	2-15	13%	1-3	33%	8-16	50%
2nd Half	9-15	60%	3-5	60%	1-1	100%
2nd Half	8-29	28%	1-5	20%	13-22	59%
Game	22-59	37.3%	6-16	37.5%	16-26	61.5%

*Game Notes:*

Officials: **Dan Outlaw, Kris Denson, Warren Harding**  
Attendance: **945**

Start Time: **2019-02-10 19:07:54**  
End Time: **2019-02-10 21:02:40**  
Game Duration: **114**  
Conference Game;

Score	1st	2nd	3rd	4th	TOT
CWM	12	15	22	9	<b>58</b>
NCW	14	22	17	13	<b>66</b>

Points from (This Period)	CWM	NCW
In the Paint	4	12
Off Turns	3	10
2nd Chance	2	2
Fast Break	0	3
Bench	3	4

**Official Play-By-Play**  
**William & Mary vs UNCW**  
**Second Quarter**  
**February 10, 2019 at Trask Coliseum - Wilmington, N.C.**



**Period 2**

**Starters:**

**William & Mary:** 10 HODGSON,EVA; 11 POLLARD,NYLA; 20 SMITH,CHANDLER; 30 REYNOLDS,VICTORIA; 2 BOGGS,BIANCA;

**UNCW:** 0 JEUNE,ASHLI; 5 SMITH,GIGI; 10 VASON,AHYIONA; 13 SUGGS,LACEY; 24 BELL,CHINYERE;

Time	VISITORS: William & Mary	Score	Margin	HOME: UNCW
09:46	MISSED 3PTR by BIRDSONG, HARPER			
09:42				REBOUND (DEF) by SUGGS, LACEY
09:36		16-12	H 4	GOOD! LAYUP by VASON, AHYIONA
09:36				ASSIST by SUGGS, LACEY
09:20	GOOD! 3PTR by BOGGS, BIANCA	16-15	H 1	
09:20	ASSIST by REYNOLDS, VICTORIA			
08:55		19-15	H 4	GOOD! 3PTR by SUGGS, LACEY
08:55				ASSIST by POWELL, PAIGE
08:29	TURNOVER (BADPASS) by REYNOLDS, VICTORIA			
08:29	SUB OUT: BIRDSONG, HARPER			
08:29	SUB IN: HODGSON, EVA			
08:10	FOUL (PERSONAL) by JONES, MISHA			
08:07		21-15	H 6	GOOD! LAYUP by POWELL, PAIGE
08:07				ASSIST by SUGGS, LACEY
07:54	MISSED 3PTR by JONES, MISHA			
07:51				REBOUND (DEF) by SMITH, GIGI
07:46				MISSED JUMPER by VASON, AHYIONA
07:42				REBOUND (OFF) by VASON, AHYIONA
07:40		23-15	H 8	GOOD! LAYUP by BELL, CHINYERE
07:40				ASSIST by SMITH, GIGI
07:39	TIMEOUT 30SEC			
07:39				
07:39	SUB OUT: JONES, MISHA			
07:39	SUB IN: KRAUSE, EMMA			
07:15	TURNOVER (LOSTBALL) by REYNOLDS, VICTORIA			
07:15				STEAL by BELL, CHINYERE
07:09		25-15	H 10	GOOD! LAYUP by VASON, AHYIONA [FB]
07:09	FOUL (PERSONAL) by KRAUSE, EMMA			
07:09	SUB OUT: POLLARD, NYLA			
07:09	SUB IN: BIRDSONG, HARPER			
07:09		26-15	H 11	GOOD! FT by VASON, AHYIONA [FB]
06:47	GOOD! LAYUP by HODGSON, EVA	26-17	H 9	
06:27				MISSED 3PTR by SUGGS, LACEY
06:22	REBOUND (DEF) by BIRDSONG, HARPER			
06:10	MISSED 3PTR by BIRDSONG, HARPER			
06:09	REBOUND (OFF) by TEAM			
06:09				SUB OUT: BELL, CHINYERE
06:09				SUB IN: JEUNE, ASHLI
06:02	MISSED JUMPER by BIRDSONG, HARPER			
05:58				REBOUND (DEF) by JEUNE, ASHLI
05:54				MISSED 3PTR by SMITH, GIGI
05:50	REBOUND (DEF) by BOGGS, BIANCA			
05:38	GOOD! LAYUP by REYNOLDS, VICTORIA	26-19	H 7	
05:16		28-19	H 9	GOOD! LAYUP by POWELL, PAIGE
05:16				ASSIST by JEUNE, ASHLI
05:01	GOOD! 3PTR by KRAUSE, EMMA	28-22	H 6	
05:01	ASSIST by BIRDSONG, HARPER			
04:41				MISSED LAYUP by VASON, AHYIONA
04:37	REBOUND (DEF) by BOGGS, BIANCA			
04:37	TURNOVER (TRAVEL) by BOGGS, BIANCA			
04:37				SUB OUT: VASON, AHYIONA
04:37				SUB IN: CRISP, MORIAH
04:26				FOUL (OFF) by POWELL, PAIGE
04:26				TURNOVER (OFFENSIVE) by POWELL, PAIGE
04:04	TURNOVER (TRAVEL) by BIRDSONG, HARPER			
04:04	SUB OUT: BIRDSONG, HARPER			
04:04	SUB IN: POLLARD, NYLA			
03:51				MISSED JUMPER by SMITH, GIGI
03:48	REBOUND (DEF) by BOGGS, BIANCA			
03:39				FOUL (PERSONAL) by POWELL, PAIGE
03:39				SUB OUT: POWELL, PAIGE
03:39				SUB IN: BELL, CHINYERE
03:31	MISSED LAYUP by POLLARD, NYLA			
03:28	REBOUND (OFF) by POLLARD, NYLA			
03:26	GOOD! JUMPER by BOGGS, BIANCA	28-24	H 4	
03:26	ASSIST by POLLARD, NYLA			
03:06				TURNOVER (LOSTBALL) by BELL, CHINYERE
03:06	STEAL by REYNOLDS, VICTORIA			
02:58	MISSED 3PTR by KRAUSE, EMMA			
02:57				REBOUND (DEF) by TEAM



Time	VISITORS: William & Mary	Score	Margin	HOME: UNCW
02:57	SUB OUT: KRAUSE, EMMA			
02:57	SUB IN: SMITH, CHANDLER			
02:36				TURNOVER (TRAVEL) by JEUNE, ASHLI
02:19	GOOD! 3PTR by HODGSON, EVA	28-27	H 1	
02:19	ASSIST by REYNOLDS, VICTORIA			
02:13				TIMEOUT 30SEC
02:13				SUB OUT: CRISP, MORIAH
02:13				SUB IN: VASON, AHYIONA
01:58		31-27	H 4	GOOD! 3PTR by JEUNE, ASHLI
01:58				ASSIST by VASON, AHYIONA
01:43	TURNOVER (DRIBBLING) by HODGSON, EVA			
01:15		34-27	H 7	GOOD! 3PTR by SUGGS, LACEY
01:15				ASSIST by JEUNE, ASHLI
01:04	TURNOVER (LOSTBALL) by HODGSON, EVA			
01:04				STEAL by SUGGS, LACEY
00:58				MISSED JUMPER by SMITH, GIGI
00:54	REBOUND (DEF) by HODGSON, EVA			
00:41	TURNOVER (BADPASS) by BOGGS, BIANCA			
00:41				STEAL by SUGGS, LACEY
00:22		36-27	H 9	GOOD! LAYUP by SUGGS, LACEY [PNT]
00:00	MISSED JUMPER by REYNOLDS, VICTORIA			
00:00				REBOUND (DEF) by JEUNE, ASHLI

### William & Mary 27, UNCW 36

Points from (This Period)	CWM	NCW
In the Paint	4	12
Off Turns	3	10
2nd Chance	2	2
Fast Break	0	3
Bench	3	4

**Official Box Score**  
**William & Mary vs UNCW**  
**Second Half Statistics Only**  
**February 10, 2019 at Trask Coliseum - Wilmington, N.C.**



**William & Mary 31**

No.	Player	S	Pts	FG	3FG	FT	OR	DR	TR	PF	A	TO	Blk	Stl	Min	+/-
10	HODGSON, EVA		15	5-9	3-5	2-2	0	2	2	3	2	4	0	0	20	1
11	POLLARD, NYLA		0	0-1	0-0	0-0	1	0	1	0	0	1	0	0	3	-2
12	BIRDSONG, HARPER		0	0-5	0-1	0-0	2	1	3	1	3	1	0	0	19	1
15	KRAUSE, EMMA		3	1-3	1-3	0-0	1	2	3	3	0	0	0	0	7	19
20	SMITH, CHANDLER		0	0-1	0-0	0-2	1	4	5	1	0	0	1	0	9	-12
30	REYNOLDS, VICTORIA		6	2-6	0-1	2-2	0	0	0	5	0	2	0	0	20	3
02	BOGGS, BIANCA		7	3-7	0-2	1-1	0	5	5	2	2	1	1	3	20	1
05	JONES, MISHA		0	0-0	0-0	0-0	0	0	0	1	0	0	0	0	2	-6
	TEAM		0	0-0	0-0	0-0	3	1	4	0	0	0	0	0	0	0
<b>TOTALS</b>			<b>31</b>	<b>11-32</b>	<b>4-12</b>	<b>5-7</b>	<b>8</b>	<b>15</b>	<b>23</b>	<b>16</b>	<b>7</b>	<b>9</b>	<b>2</b>	<b>3</b>	<b>100</b>	

*Shooting By Period*

Period	FG	FG%	3FG	3FG%	FT	FT%
3rd Qtr	8-21	38%	3-8	38%	3-3	100%
4th Qtr	3-11	27%	1-4	25%	2-4	50%
2nd Half	11-32	34%	4-12	33%	5-7	71%
Game	23-62	37.1%	7-24	29.2%	5-9	55.6%

*Last FG Half: CWM 4th-06:21*

**UNCW 30**

No.	Player	S	Pts	FG	3FG	FT	OR	DR	TR	PF	A	TO	Blk	Stl	Min	+/-
00	JEUNE, ASHLI		0	0-1	0-1	0-0	0	1	1	0	0	1	0	0	12	2
01	POWELL, PAIGE		0	0-0	0-0	0-0	1	0	1	0	0	0	0	0	5	-3
02	CRISP, MORIAH		0	0-0	0-0	0-0	0	0	0	0	0	0	0	0	3	-1
05	SMITH, GIGI		11	5-15	0-0	1-2	4	4	8	2	0	1	0	4	20	-1
10	VASON, AHYIONA		6	1-2	1-1	3-6	0	0	0	1	3	2	0	1	18	-2
13	SUGGS, LACEY		4	0-3	0-0	4-4	3	2	5	0	1	2	0	2	20	-1
14	TATE, TIMBER		3	1-5	0-3	1-2	1	1	2	3	0	1	0	0	10	-5
22	THYBULLE, ZHANEIA		0	0-0	0-0	0-0	0	0	0	0	0	0	0	0	0	1
24	BELL, CHINYERE		6	1-3	0-0	4-8	0	6	6	1	1	0	0	1	12	5
	TEAM		0	0-0	0-0	0-0	2	0	2	0	0	1	0	0	0	0
<b>TOTALS</b>			<b>30</b>	<b>8-29</b>	<b>1-5</b>	<b>13-22</b>	<b>11</b>	<b>14</b>	<b>25</b>	<b>7</b>	<b>5</b>	<b>8</b>	<b>0</b>	<b>8</b>	<b>100</b>	

*Shooting By Period*

Period	FG	FG%	3FG	3FG%	FT	FT%
3rd Qtr	6-14	43%	0-2	00%	5-6	83%
4th Qtr	2-15	13%	1-3	33%	8-16	50%
2nd Half	8-29	28%	1-5	20%	13-22	59%
Game	22-59	37.3%	6-16	37.5%	16-26	61.5%

*Last FG Half: NCW 4th-05:46*

*Game Notes:*

Officials: **Dan Outlaw, Kris Denson, Warren Harding**

Attendance: **945**

Start Time: **2019-02-10 19:07:54**

End Time: **2019-02-10 21:02:40**

Game Duration: **114**

Conference Game;

Score	1st	2nd	3rd	4th	TOT
CWM	12	15	22	9	<b>58</b>
NCW	14	22	17	13	<b>66</b>

Points from (This Period)	CWM	NCW
In the Paint	12	14
Off Turns	5	12
2nd Chance	9	6
Fast Break	5	9
Bench	3	3

**Official Box Score**  
**William & Mary vs UNCW**  
**Third Quarter Statistics Only**  
**February 10, 2019 at Trask Coliseum - Wilmington, N.C.**



**William & Mary 31**

No.	Player	S	Pts	FG	3FG	FT	OR	DR	TR	PF	A	TO	Blk	Stl	Min	+/-
02	BOGGS, BIANCA		5	2-3	0-0	1-1	0	3	3	1	1	1	0	2	10	5
10	HODGSON, EVA		12	4-6	2-4	2-2	0	1	1	0	1	1	0	0	10	5
11	POLLARD, NYLA		0	0-1	0-0	0-0	1	0	1	0	0	1	0	0	3	-2
20	SMITH, CHANDLER		0	0-1	0-0	0-0	1	0	1	0	0	0	0	0	3	-1
30	REYNOLDS, VICTORIA		2	1-4	0-1	0-0	0	0	0	2	0	0	0	0	10	5
05	JONES, MISHA		0	0-0	0-0	0-0	0	0	0	1	0	0	0	0	2	-2
12	BIRDSONG, HARPER		0	0-3	0-0	0-0	2	0	2	0	3	0	0	0	9	5
15	KRAUSE, EMMA		3	1-3	1-3	0-0	0	1	1	1	0	0	0	0	4	10
	TEAM						3	0	3	0		0				
<b>TOTALS</b>			<b>22</b>	<b>8-21</b>	<b>3-8</b>	<b>3-3</b>	<b>7</b>	<b>5</b>	<b>12</b>	<b>5</b>	<b>5</b>	<b>3</b>	<b>0</b>	<b>2</b>	<b>50</b>	

*Shooting By Period*

Period	FG	FG%	3FG	3FG%	FT	FT%
2nd Half	0-0	0%	0-0	0%	0-0	0%
Game	23-62	37.1%	7-24	29.2%	5-9	55.6%

**UNCW 30**

No.	Player	S	Pts	FG	3FG	FT	OR	DR	TR	PF	A	TO	Blk	Stl	Min	+/-
00	JEUNE, ASHLI		0	0-0	0-0	0-0	0	1	1	0	0	0	0	0	5	-3
05	SMITH, GIGI		8	4-6	0-0	0-0	1	2	3	0	0	0	0	2	10	-5
10	VASON, AHYIONA		2	0-1	0-0	2-2	0	0	0	1	3	1	0	0	8	-5
13	SUGGS, LACEY		2	0-2	0-0	2-2	1	2	3	0	0	2	0	1	10	-5
24	BELL, CHINYERE		2	1-2	0-0	0-0	0	0	0	0	1	0	0	0	3	-1
01	POWELL, PAIGE		0	0-0	0-0	0-0	1	0	1	0	0	0	0	0	4	-1
02	CRISP, MORIAH		0	0-0	0-0	0-0	0	0	0	0	0	0	0	0	3	-1
14	TATE, TIMBER		3	1-3	0-2	1-2	0	1	1	2	0	1	0	0	7	-4
22	THYBULLE, ZHANEIA		0	0-0	0-0	0-0	0	0	0	0	0	0	0	0	0	0
	TEAM						0	0	0	0		0				
<b>TOTALS</b>			<b>17</b>	<b>6-14</b>	<b>0-2</b>	<b>5-6</b>	<b>3</b>	<b>6</b>	<b>9</b>	<b>3</b>	<b>4</b>	<b>4</b>	<b>0</b>	<b>3</b>	<b>50</b>	

*Shooting By Period*

Period	FG	FG%	3FG	3FG%	FT	FT%
2nd Half	0-0	0%	0-0	0%	0-0	0%
Game	22-59	37.3%	6-16	37.5%	16-26	61.5%

Game Notes:

Officials: Dan Outlaw, Kris Denson, Warren Harding  
 Attendance: 945

Start Time: 2019-02-10 19:07:54  
 End Time: 2019-02-10 21:02:40  
 Game Duration: 114  
 Conference Game;

Score	1st	2nd	3rd	4th	TOT
CWM	12	15	22	9	<b>58</b>
NCW	14	22	17	13	<b>66</b>

Points from (This Period)	CWM	NCW
In the Paint	8	12
Off Turns	0	6
2nd Chance	9	4
Fast Break	2	6
Bench	3	3

**Official Play-By-Play**  
**William & Mary vs UNCW**  
**Third Quarter**  
**February 10, 2019 at Trask Coliseum - Wilmington, N.C.**



**Period 3**

**Starters:**

**William & Mary:** 10 HODGSON,EVA; 11 POLLARD,NYLA; 20 SMITH,CHANDLER; 30 REYNOLDS,VICTORIA; 2 BOGGS,BIANCA;

**UNCW:** 0 JEUNE,ASHLI; 5 SMITH,GIGI; 10 VASON,AHYIONA; 13 SUGGS,LACEY; 24 BELL,CHINYERE;

Time	VISITORS: William & Mary	Score	Margin	HOME: UNCW
09:38				MISSED LAYUP by SUGGS, LACEY
09:35	REBOUND (DEF) by BOGGS, BIANCA			
09:31	MISSED JUMPER by POLLARD, NYLA			
09:28	REBOUND (OFF) by POLLARD, NYLA			
09:21	GOOD! JUMPER by HODGSON, EVA	36-29	H 7	
08:55		38-29	H 9	
08:55				GOOD! LAYUP by SMITH, GIGI
08:37	MISSED LAYUP by REYNOLDS, VICTORIA			ASSIST by BELL, CHINYERE
08:34	REBOUND (OFF) by SMITH, CHANDLER			
08:33	MISSED JUMPER by SMITH, CHANDLER			
08:33				REBOUND (DEF) by SUGGS, LACEY
08:33				TURNOVER (LOSTBALL) by SUGGS, LACEY
08:33	SUB OUT: POLLARD, NYLA			
08:33	SUB IN: BIRDSONG, HARPER			
08:24	TURNOVER (LOSTBALL) by HODGSON, EVA			
08:24				STEAL by SMITH, GIGI
08:19		40-29	H 11	GOOD! LAYUP by SMITH, GIGI [FB]
08:19				ASSIST by VASON, AHYIONA
07:59	GOOD! LAYUP by BOGGS, BIANCA	40-31	H 9	
07:59				FOUL (PERSONAL) by VASON, AHYIONA
07:59	GOOD! FT by BOGGS, BIANCA	40-32	H 8	
07:51		42-32	H 10	GOOD! LAYUP by BELL, CHINYERE [FB]
07:51				ASSIST by VASON, AHYIONA
07:31	MISSED 3PTR by HODGSON, EVA			
07:27	REBOUND (OFF) by BIRDSONG, HARPER			
07:27	SUB OUT: SMITH, CHANDLER			
07:27	SUB IN: KRAUSE, EMMA			
07:23	GOOD! LAYUP by REYNOLDS, VICTORIA	42-34	H 8	
07:23	ASSIST by HODGSON, EVA			
07:06				MISSED JUMPER by SMITH, GIGI
07:03	REBOUND (DEF) by BOGGS, BIANCA			
06:56	MISSED 3PTR by HODGSON, EVA			
06:51				REBOUND (DEF) by SUGGS, LACEY
06:42				MISSED JUMPER by BELL, CHINYERE
06:40	REBOUND (DEF) by KRAUSE, EMMA			
06:40				SUB OUT: BELL, CHINYERE
06:40				SUB IN: POWELL, PAIGE
06:40				SUB OUT: JEUNE, ASHLI
06:40				SUB IN: TATE, TIMBER
06:25	GOOD! LAYUP by BOGGS, BIANCA	42-36	H 6	
06:09				MISSED JUMPER by VASON, AHYIONA
06:08				REBOUND (OFF) by POWELL, PAIGE
06:01		44-36	H 8	GOOD! JUMPER by TATE, TIMBER [PNT]
05:46	GOOD! 3PTR by KRAUSE, EMMA	44-39	H 5	
05:46	ASSIST by BIRDSONG, HARPER			
05:32				MISSED 3PTR by TATE, TIMBER
05:30				REBOUND (OFF) by SUGGS, LACEY
05:30	FOUL (PERSONAL) by REYNOLDS, VICTORIA			
05:24				TURNOVER (BADPASS) by TATE, TIMBER
05:24	STEAL by BOGGS, BIANCA			
05:19	MISSED LAYUP by BOGGS, BIANCA			
05:19	REBOUND (OFF) by TEAM			
05:13	MISSED JUMPER by BIRDSONG, HARPER			
05:10				REBOUND (DEF) by SMITH, GIGI
05:05				TURNOVER (BADPASS) by VASON, AHYIONA
05:05	STEAL by BOGGS, BIANCA			
04:59	TURNOVER (BADPASS) by BOGGS, BIANCA			
04:59				STEAL by SUGGS, LACEY
04:55	FOUL (PERSONAL) by KRAUSE, EMMA			
04:55				
04:55	SUB OUT: KRAUSE, EMMA			
04:55	SUB IN: JONES, MISHA			
04:55		45-39	H 6	GOOD! FT by VASON, AHYIONA [FB]
04:55		46-39	H 7	GOOD! FT by VASON, AHYIONA [FB]
04:55				SUB OUT: VASON, AHYIONA
04:55				SUB IN: CRISP, MORIAH
04:30	GOOD! 3PTR by HODGSON, EVA	46-42	H 4	
04:30	ASSIST by BIRDSONG, HARPER			
04:13				MISSED 3PTR by TATE, TIMBER
04:09				REBOUND (OFF) by SMITH, GIGI

Time	VISITORS: William & Mary	Score	Margin	HOME: UNCW
04:08		48-42	H 6	GOOD! LAYUP by SMITH, GIGI
03:44	MISSED JUMPER by BIRDSONG, HARPER			
03:39				REBOUND (DEF) by TATE, TIMBER
03:25	FOUL (PERSONAL) by JONES, MISHA			
03:25				MISSED FT by TATE, TIMBER
03:25				REBOUND (OFF) by TEAM
03:25		49-42	H 7	GOOD! FT by TATE, TIMBER
03:10				FOUL (PERSONAL) by TATE, TIMBER
03:00	SUB OUT: JONES, MISHA			
03:00	SUB IN: POLLARD, NYLA			
02:56				SUB OUT: POWELL, PAIGE
02:56				SUB IN: VASON, AHYIONA
02:38	MISSED 3PTR by REYNOLDS, VICTORIA			
02:35				REBOUND (DEF) by SMITH, GIGI
02:34	FOUL (PERSONAL) by BOGGS, BIANCA			
02:21				MISSED JUMPER by SMITH, GIGI
02:17	REBOUND (DEF) by BOGGS, BIANCA			
02:14	GOOD! LAYUP by HODGSON, EVA [FB]	49-44	H 5	
02:14	ASSIST by BIRDSONG, HARPER			
01:54	FOUL (PERSONAL) by REYNOLDS, VICTORIA			
01:54		50-44	H 6	GOOD! FT by SUGGS, LACEY
01:54				SUB OUT: CRISP, MORIAH
01:54				SUB IN: JEUNE, ASHLI
01:54		51-44	H 7	GOOD! FT by SUGGS, LACEY
01:40	TURNOVER (LOSTBALL) by POLLARD, NYLA			
01:40				STEAL by SMITH, GIGI
01:30		53-44	H 9	GOOD! LAYUP by SMITH, GIGI
01:30				ASSIST by VASON, AHYIONA
01:21	MISSED LAYUP by REYNOLDS, VICTORIA			
01:20	REBOUND (OFF) by TEAM			
01:20	SUB OUT: POLLARD, NYLA			
01:20	SUB IN: KRAUSE, EMMA			
01:11	MISSED JUMPER by BIRDSONG, HARPER			
01:11	REBOUND (OFF) by TEAM			
01:07				FOUL (PERSONAL) by TATE, TIMBER
01:07	GOOD! FT by HODGSON, EVA	53-45	H 8	
01:07	GOOD! FT by HODGSON, EVA	53-46	H 7	
00:55				MISSED LAYUP by SUGGS, LACEY
00:47	REBOUND (DEF) by HODGSON, EVA			
00:42	MISSED 3PTR by KRAUSE, EMMA			
00:39	REBOUND (OFF) by BIRDSONG, HARPER			
00:33	GOOD! 3PTR by HODGSON, EVA	53-49	H 4	
00:33	ASSIST by BOGGS, BIANCA			
00:12				TURNOVER (BADPASS) by SUGGS, LACEY
00:04	MISSED 3PTR by KRAUSE, EMMA			
00:00				REBOUND (DEF) by JEUNE, ASHLI

### William & Mary 49, UNCW 53

Points from (This Period)	CWM	NCW
In the Paint	8	12
Off Turns	0	6
2nd Chance	9	4
Fast Break	2	6
Bench	3	3

**Official Box Score**  
**William & Mary vs UNCW**  
**Fourth Quarter Statistics Only**  
**February 10, 2019 at Trask Coliseum - Wilmington, N.C.**



**William & Mary 9**

No.	Player	S	Pts	FG	3FG	FT	OR	DR	TR	PF	A	TO	Blk	Stl	Min	+/-
02	BOGGS, BIANCA		2	1-4	0-2	0-0	0	2	2	1	1	0	1	1	10	-4
10	HODGSON, EVA		3	1-3	1-1	0-0	0	1	1	3	1	3	0	0	10	-4
11	POLLARD, NYLA		0	0-0	0-0	0-0	0	0	0	0	0	0	0	0	0	0
20	SMITH, CHANDLER		0	0-0	0-0	0-2	0	4	4	1	0	0	1	0	6	-11
30	REYNOLDS, VICTORIA		4	1-2	0-0	2-2	0	0	0	3	0	2	0	0	10	-2
05	JONES, MISHA		0	0-0	0-0	0-0	0	0	0	0	0	0	0	0	0	-4
12	BIRDSONG, HARPER		0	0-2	0-1	0-0	0	1	1	1	0	1	0	0	10	-4
15	KRAUSE, EMMA		0	0-0	0-0	0-0	1	1	2	2	0	0	0	0	3	9
	TEAM						0	1	1	0		0				
<b>TOTALS</b>			<b>9</b>	<b>3-11</b>	<b>1-4</b>	<b>2-4</b>	<b>1</b>	<b>10</b>	<b>11</b>	<b>11</b>	<b>2</b>	<b>6</b>	<b>2</b>	<b>1</b>	<b>50</b>	

*Shooting By Period*

Period	FG	FG%	3FG	3FG%	FT	FT%
Game	23-62	37.1%	7-24	29.2%	5-9	55.6%

**UNCW 13**

No.	Player	S	Pts	FG	3FG	FT	OR	DR	TR	PF	A	TO	Blk	Stl	Min	+/-
00	JEUNE, ASHLI		0	0-1	0-1	0-0	0	0	0	0	0	1	0	0	7	5
05	SMITH, GIGI		3	1-9	0-0	1-2	3	2	5	2	0	1	0	2	10	4
10	VASON, AHYIONA		4	1-1	1-1	1-4	0	0	0	0	0	1	0	1	10	3
13	SUGGS, LACEY		2	0-1	0-0	2-2	2	0	2	0	1	0	0	1	10	4
24	BELL, CHINYERE		4	0-1	0-0	4-8	0	6	6	1	0	0	0	1	9	6
01	POWELL, PAIGE		0	0-0	0-0	0-0	0	0	0	0	0	0	0	0	1	-2
02	CRISP, MORIAH		0	0-0	0-0	0-0	0	0	0	0	0	0	0	0	0	0
14	TATE, TIMBER		0	0-2	0-1	0-0	1	0	1	1	0	0	0	0	3	-1
22	THYBULLE, ZHANEIA		0	0-0	0-0	0-0	0	0	0	0	0	0	0	0	0	1
	TEAM						2	0	2	0		1				
<b>TOTALS</b>			<b>13</b>	<b>2-15</b>	<b>1-3</b>	<b>8-16</b>	<b>8</b>	<b>8</b>	<b>16</b>	<b>4</b>	<b>1</b>	<b>4</b>	<b>0</b>	<b>5</b>	<b>50</b>	

*Shooting By Period*

Period	FG	FG%	3FG	3FG%	FT	FT%
Game	22-59	37.3%	6-16	37.5%	16-26	61.5%

Game Notes:

Officials: Dan Outlaw, Kris Denson, Warren Harding  
Attendance: 945

Start Time: 2019-02-10 19:07:54  
End Time: 2019-02-10 21:02:40  
Game Duration: 114  
Conference Game;

Score	1st	2nd	3rd	4th	TOT
CWM	12	15	22	9	<b>58</b>
NCW	14	22	17	13	<b>66</b>

Points from (This Period)	CWM	NCW
In the Paint	4	2
Off Turns	5	6
2nd Chance	0	2
Fast Break	3	3
Bench	0	0

**Official Play-By-Play**  
**William & Mary vs UNCW**  
**Fourth Quarter**  
**February 10, 2019 at Trask Coliseum - Wilmington, N.C.**



**Period 4**

**Starters:**

**William & Mary:** 10 HODGSON,EVA; 11 POLLARD,NYLA; 20 SMITH,CHANDLER; 30 REYNOLDS,VICTORIA; 2 BOGGS,BIANCA;

**UNCW:** 0 JEUNE,ASHLI; 5 SMITH,GIGI; 10 VASON,AHYIONA; 13 SUGGS,LACEY; 24 BELL,CHINYERE;

Time	VISITORS: William & Mary	Score	Margin	HOME: UNCW
09:40				MISSED LAYUP by SMITH, GIGI
09:36	REBOUND (DEF) by KRAUSE, EMMA			
09:24				FOUL (PERSONAL) by SMITH, GIGI
09:24	GOOD! FT by REYNOLDS, VICTORIA	53-50	H 3	
09:24	GOOD! FT by REYNOLDS, VICTORIA	53-51	H 2	
09:24				SUB OUT: POWELL, PAIGE
09:24				SUB IN: BELL, CHINYERE
09:12	SUB OUT: KRAUSE, EMMA			
09:12	SUB IN: SMITH, CHANDLER			
09:10				MISSED LAYUP by SMITH, GIGI
09:07				REBOUND (OFF) by SMITH, GIGI
09:06				MISSED LAYUP by SMITH, GIGI
09:05				REBOUND (OFF) by TATE, TIMBER
09:05				MISSED JUMPER by TATE, TIMBER
09:05	BLOCK by SMITH, CHANDLER			
09:05				REBOUND (OFF) by TEAM
09:03	FOUL (PERSONAL) by REYNOLDS, VICTORIA			
08:40				MISSED JUMPER by SMITH, GIGI
08:40	REBOUND (DEF) by SMITH, CHANDLER			
08:40				FOUL (PERSONAL) by BELL, CHINYERE
08:28	TURNOVER (BADPASS) by BIRDSONG, HARPER			
08:28				STEAL by SUGGS, LACEY
08:22		56-51	H 5	GOOD! 3PTR by VASON, AHYIONA [FB]
08:22				ASSIST by SUGGS, LACEY
08:17	TURNOVER (OTHER) by REYNOLDS, VICTORIA			
08:11				MISSED LAYUP by SMITH, GIGI
08:09	REBOUND (DEF) by SMITH, CHANDLER			
08:09	SUB OUT: SMITH, CHANDLER			
08:09	SUB IN: KRAUSE, EMMA			
07:58	GOOD! LAYUP by BOGGS, BIANCA	56-53	H 3	
07:58	ASSIST by HODGSON, EVA			
07:39				MISSED 3PTR by TATE, TIMBER
07:35	REBOUND (DEF) by BIRDSONG, HARPER			
07:30	MISSED JUMPER by HODGSON, EVA			
07:29	REBOUND (OFF) by KRAUSE, EMMA			
07:29				FOUL (PERSONAL) by TATE, TIMBER
07:22	MISSED 3PTR by BIRDSONG, HARPER			
07:19				REBOUND (DEF) by SMITH, GIGI
07:02				TURNOVER (BADPASS) by VASON, AHYIONA
07:02				SUB OUT: TATE, TIMBER
07:02				SUB IN: JEUNE, ASHLI
06:46	GOOD! LAYUP by REYNOLDS, VICTORIA	56-55	H 1	
06:28				TURNOVER (BADPASS) by SMITH, GIGI
06:28	STEAL by BOGGS, BIANCA			
06:21	GOOD! 3PTR by HODGSON, EVA [FB]	56-58	V 2	
06:21	ASSIST by BOGGS, BIANCA			
06:02	FOUL (PERSONAL) by KRAUSE, EMMA			
06:02	SUB OUT: KRAUSE, EMMA			
06:02	SUB IN: SMITH, CHANDLER			
05:46		58-58	T	GOOD! LAYUP by SMITH, GIGI
05:32	TIMEOUT 30SEC			
05:32				
05:21				FOUL (PERSONAL) by SMITH, GIGI
05:21	MISSED FT by SMITH, CHANDLER			
05:21	REBOUND (OFF) by TEAM			
05:21	MISSED FT by SMITH, CHANDLER			
05:19				REBOUND (DEF) by BELL, CHINYERE
04:50				MISSED JUMPER by SMITH, GIGI
04:49				REBOUND (OFF) by SMITH, GIGI
04:49				TURNOVER (SHOTCLOCK) by
04:49				
04:24	TURNOVER (BADPASS) by REYNOLDS, VICTORIA			
04:24				STEAL by SMITH, GIGI
04:18				MISSED LAYUP by SMITH, GIGI
04:18	BLOCK by BOGGS, BIANCA			
04:13	REBOUND (DEF) by SMITH, CHANDLER			
03:50	MISSED JUMPER by HODGSON, EVA			
03:47				REBOUND (DEF) by BELL, CHINYERE
03:34	FOUL (PERSONAL) by REYNOLDS, VICTORIA			
03:34	SUB OUT: SMITH, CHANDLER			

Time	VISITORS: William & Mary	Score	Margin	HOME: UNCW
03:34	SUB IN: KRAUSE, EMMA			
03:21				MISSED JUMPER by SUGGS, LACEY
03:19	REBOUND (DEF) by HODGSON, EVA			
03:19	TURNOVER (BADPASS) by HODGSON, EVA			
03:19				STEAL by BELL, CHINYERE
03:19				TIMEOUT 30SEC
03:11	FOUL (PERSONAL) by KRAUSE, EMMA			
03:11	SUB OUT: KRAUSE, EMMA			
03:11	SUB IN: SMITH, CHANDLER			
03:11				MISSED FT by BELL, CHINYERE
03:11				REBOUND (OFF) by TEAM
03:11				MISSED FT by BELL, CHINYERE
03:08				REBOUND (OFF) by SUGGS, LACEY
03:01	FOUL (PERSONAL) by BOGGS, BIANCA			
03:01		59-58	H 1	GOOD! FT by VASON, AHYIONA
02:59				MISSED FT by VASON, AHYIONA
02:58	REBOUND (DEF) by SMITH, CHANDLER			
02:51	TURNOVER (BADPASS) by HODGSON, EVA			
02:51				STEAL by SMITH, GIGI
02:34				MISSED JUMPER by BELL, CHINYERE
02:32	REBOUND (DEF) by TEAM			
02:10	MISSED 3PTR by BOGGS, BIANCA			
02:10				REBOUND (DEF) by BELL, CHINYERE
02:10	FOUL (PERSONAL) by SMITH, CHANDLER			
02:10		60-58	H 2	GOOD! FT by BELL, CHINYERE
02:10				MISSED FT by BELL, CHINYERE
02:08	REBOUND (DEF) by BOGGS, BIANCA			
01:40	MISSED JUMPER by REYNOLDS, VICTORIA			
01:40				REBOUND (DEF) by BELL, CHINYERE
01:40	FOUL (PERSONAL) by HODGSON, EVA			
01:40		61-58	H 3	GOOD! FT by BELL, CHINYERE
01:40				MISSED FT by BELL, CHINYERE
01:39	REBOUND (DEF) by BOGGS, BIANCA			
01:21	MISSED JUMPER by BIRDSONG, HARPER			
01:17				REBOUND (DEF) by BELL, CHINYERE
00:51				MISSED 3PTR by JEUNE, ASHLI
00:50				REBOUND (OFF) by SMITH, GIGI
00:50	FOUL (PERSONAL) by BIRDSONG, HARPER			
00:50				MISSED FT by SMITH, GIGI
00:50				REBOUND (OFF) by TEAM
00:50		62-58	H 4	GOOD! FT by SMITH, GIGI
00:48	TIMEOUT 30SEC			
00:40	MISSED JUMPER by BOGGS, BIANCA			
00:37				REBOUND (DEF) by SMITH, GIGI
00:33				MISSED LAYUP by SMITH, GIGI
00:33				REBOUND (OFF) by SUGGS, LACEY
00:33				TIMEOUT TEAM
00:33	SUB OUT: SMITH, CHANDLER			
00:33	SUB IN: POLLARD, NYLA			
00:28	FOUL (PERSONAL) by HODGSON, EVA			
00:28				MISSED FT by VASON, AHYIONA
00:28				REBOUND (OFF) by TEAM
00:28				MISSED FT by VASON, AHYIONA
00:25				REBOUND (OFF) by TEAM
00:25	SUB OUT: REYNOLDS, VICTORIA			
00:25	SUB IN: JONES, MISHA			
00:25				TURNOVER (BADPASS) by JEUNE, ASHLI
00:25	TIMEOUT TEAM			
00:25	SUB OUT: POLLARD, NYLA			
00:25	SUB IN: REYNOLDS, VICTORIA			
00:23	TURNOVER (BADPASS) by HODGSON, EVA			
00:23				STEAL by VASON, AHYIONA
00:12	FOUL (PERSONAL) by HODGSON, EVA			
00:12		63-58	H 5	GOOD! FT by SUGGS, LACEY
00:12		64-58	H 6	GOOD! FT by SUGGS, LACEY
00:03	MISSED 3PTR by BOGGS, BIANCA			
00:03				REBOUND (DEF) by BELL, CHINYERE
00:01	FOUL (PERSONAL) by REYNOLDS, VICTORIA			
00:01	SUB OUT: REYNOLDS, VICTORIA			
00:01	SUB IN: SMITH, CHANDLER			
00:01		65-58	H 7	GOOD! FT by BELL, CHINYERE
00:01				SUB OUT: VASON, AHYIONA
00:01				SUB IN: THYBULLE, ZHANEIA
00:01		66-58	H 8	GOOD! FT by BELL, CHINYERE

William & Mary 58, UNCW 66



<b>Points from (This Period)</b>	<b>CWM</b>	<b>NCW</b>
In the Paint	4	2
Off Turns	5	6
2nd Chance	0	2
Fast Break	3	3
Bench	0	0

**Official Scoring/Possession Reference Chart**  
**William & Mary vs UNCW**  
**Period 1**  
**February 10, 2019 at Trask Coliseum - Wilmington, N.C.**



**Period 1**

**Starters:**

**William & Mary:** 10 HODGSON,EVA; 11 POLLARD,NYLA; 20 SMITH,CHANDLER; 30 REYNOLDS,VICTORIA; 2 BOGGS,BIANCA;

**UNCW:** 0 JEUNE,ASHLI; 5 SMITH,GIGI; 10 VASON,AHYIONA; 13 SUGGS,LACEY; 24 BELL,CHINYERE;

Time	VISITORS: William & Mary	Score	Margin	HOME: UNCW
08:36	GOOD! LAYUP by SMITH, CHANDLER [PNT]	0-2	V 2	
07:25	GOOD! LAYUP by REYNOLDS, VICTORIA [FB]	0-4	V 4	
07:03		1-4	V 3	GOOD! FT by VASON, AHYIONA
07:03		2-4	V 2	GOOD! FT by VASON, AHYIONA
05:04		4-4	T	GOOD! LAYUP by SMITH, GIGI
04:48	GOOD! LAYUP by HODGSON, EVA [PNT]	4-6	V 2	
04:31		6-6	T	GOOD! LAYUP by BELL, CHINYERE
03:19		9-6	H 3	GOOD! 3PTR by SUGGS, LACEY
03:10	GOOD! LAYUP by BOGGS, BIANCA	9-8	H 1	
01:42	GOOD! LAYUP by HODGSON, EVA [FB]	9-10	V 1	
01:04	GOOD! LAYUP by BOGGS, BIANCA	9-12	V 3	
00:47		12-12	T	GOOD! 3PTR by SUGGS, LACEY
00:22		14-12	H 2	GOOD! LAYUP by SMITH, GIGI

**William & Mary 12, UNCW 14**

**Official Scoring/Possession Reference Chart**  
**William & Mary vs UNCW**  
**Period 2**  
**February 10, 2019 at Trask Coliseum - Wilmington, N.C.**



**Period 2**

**Starters:**

**William & Mary:** 10 HODGSON,EVA; 11 POLLARD,NYLA; 20 SMITH,CHANDLER; 30 REYNOLDS,VICTORIA; 2 BOGGS,BIANCA;  
**UNCW:** 0 JEUNE,ASHLI; 5 SMITH,GIGI; 10 VASON,AHYIONA; 13 SUGGS,LACEY; 24 BELL,CHINYERE;

Time	VISITORS: William & Mary	Score	Margin	HOME: UNCW
09:36		16-12	H 4	GOOD! LAYUP by VASON, AHYIONA
09:20	GOOD! 3PTR by BOGGS, BIANCA	16-15	H 1	
08:55		19-15	H 4	GOOD! 3PTR by SUGGS, LACEY
08:07		21-15	H 6	GOOD! LAYUP by POWELL, PAIGE
07:40		23-15	H 8	GOOD! LAYUP by BELL, CHINYERE
07:09		25-15	H 10	GOOD! LAYUP by VASON, AHYIONA [FB]
07:09		26-15	H 11	GOOD! FT by VASON, AHYIONA [FB]
06:47	GOOD! LAYUP by HODGSON, EVA	26-17	H 9	
05:38	GOOD! LAYUP by REYNOLDS, VICTORIA	26-19	H 7	
05:16		28-19	H 9	GOOD! LAYUP by POWELL, PAIGE
05:01	GOOD! 3PTR by KRAUSE, EMMA	28-22	H 6	
03:26	GOOD! JUMPER by BOGGS, BIANCA	28-24	H 4	
02:19	GOOD! 3PTR by HODGSON, EVA	28-27	H 1	
01:58		31-27	H 4	GOOD! 3PTR by JEUNE, ASHLI
01:15		34-27	H 7	GOOD! 3PTR by SUGGS, LACEY
00:22		36-27	H 9	GOOD! LAYUP by SUGGS, LACEY [PNT]

**William & Mary 27, UNCW 36**

**Official Scoring/Possession Reference Chart**  
**William & Mary vs UNCW**  
**Period 3**  
**February 10, 2019 at Trask Coliseum - Wilmington, N.C.**



**Period 3**

**Starters:**

**William & Mary:** 10 HODGSON,EVA; 11 POLLARD,NYLA; 20 SMITH,CHANDLER; 30 REYNOLDS,VICTORIA; 2 BOGGS,BIANCA;  
**UNCW:** 0 JEUNE,ASHLI; 5 SMITH,GIGI; 10 VASON,AHYIONA; 13 SUGGS,LACEY; 24 BELL,CHINYERE;

Time	VISITORS: William & Mary	Score	Margin	HOME: UNCW
09:21	GOOD! JUMPER by HODGSON, EVA	36-29	H 7	
08:55		38-29	H 9	GOOD! LAYUP by SMITH, GIGI
08:19		40-29	H 11	GOOD! LAYUP by SMITH, GIGI [FB]
07:59	GOOD! LAYUP by BOGGS, BIANCA	40-31	H 9	
07:59	GOOD! FT by BOGGS, BIANCA	40-32	H 8	
07:51		42-32	H 10	GOOD! LAYUP by BELL, CHINYERE [FB]
07:23	GOOD! LAYUP by REYNOLDS, VICTORIA	42-34	H 8	
06:25	GOOD! LAYUP by BOGGS, BIANCA	42-36	H 6	
06:01		44-36	H 8	GOOD! JUMPER by TATE, TIMBER [PNT]
05:46	GOOD! 3PTR by KRAUSE, EMMA	44-39	H 5	
04:55		45-39	H 6	GOOD! FT by VASON, AHYIONA [FB]
04:55		46-39	H 7	GOOD! FT by VASON, AHYIONA [FB]
04:30	GOOD! 3PTR by HODGSON, EVA	46-42	H 4	
04:08		48-42	H 6	GOOD! LAYUP by SMITH, GIGI
03:25		49-42	H 7	GOOD! FT by TATE, TIMBER
02:14	GOOD! LAYUP by HODGSON, EVA [FB]	49-44	H 5	
01:54		50-44	H 6	GOOD! FT by SUGGS, LACEY
01:54		51-44	H 7	GOOD! FT by SUGGS, LACEY
01:30		53-44	H 9	GOOD! LAYUP by SMITH, GIGI
01:07	GOOD! FT by HODGSON, EVA	53-45	H 8	
01:07	GOOD! FT by HODGSON, EVA	53-46	H 7	
00:33	GOOD! 3PTR by HODGSON, EVA	53-49	H 4	

**William & Mary 49, UNCW 53**

**Official Scoring/Possession Reference Chart**  
**William & Mary vs UNCW**  
**Period 4**  
**February 10, 2019 at Trask Coliseum - Wilmington, N.C.**



**Period 4**

**Starters:**

**William & Mary:** 10 HODGSON,EVA; 11 POLLARD,NYLA; 20 SMITH,CHANDLER; 30 REYNOLDS,VICTORIA; 2 BOGGS,BIANCA;  
**UNCW:** 0 JEUNE,ASHLI; 5 SMITH,GIGI; 10 VASON,AHYIONA; 13 SUGGS,LACEY; 24 BELL,CHINYERE;

Time	VISITORS: William & Mary	Score	Margin	HOME: UNCW
09:24	GOOD! FT by REYNOLDS, VICTORIA	53-50	H 3	
09:24	GOOD! FT by REYNOLDS, VICTORIA	53-51	H 2	
08:22		56-51	H 5	GOOD! 3PTR by VASON, AHYIONA [FB]
07:58	GOOD! LAYUP by BOGGS, BIANCA	56-53	H 3	
06:46	GOOD! LAYUP by REYNOLDS, VICTORIA	56-55	H 1	
06:21	GOOD! 3PTR by HODGSON, EVA [FB]	56-58	V 2	
05:46		58-58	T	GOOD! LAYUP by SMITH, GIGI
03:01		59-58	H 1	GOOD! FT by VASON, AHYIONA
02:10		60-58	H 2	GOOD! FT by BELL, CHINYERE
01:40		61-58	H 3	GOOD! FT by BELL, CHINYERE
00:50		62-58	H 4	GOOD! FT by SMITH, GIGI
00:12		63-58	H 5	GOOD! FT by SUGGS, LACEY
00:12		64-58	H 6	GOOD! FT by SUGGS, LACEY
00:01		65-58	H 7	GOOD! FT by BELL, CHINYERE
00:01		66-58	H 8	GOOD! FT by BELL, CHINYERE

**William & Mary 58, UNCW 66**

**Official Substitutions Log**  
**William & Mary vs UNCW**  
**Period 1**  
**February 10, 2019 at Trask Coliseum - Wilmington, N.C.**



VISITORS: William & Mary	Time	Score	HOME: UNCW
10 HODGSON,EVA			0 JEUNE,ASHLI
11 POLLARD,NYLA			5 SMITH,GIGI
20 SMITH,CHANDLER			10 VASON,AHYIONA
30 REYNOLDS,VICTORIA			13 SUGGS,LACEY
2 BOGGS,BIANCA			24 BELL,CHINYERE
	05:25	4-2	SUB OUT: JEUNE,ASHLI
	05:25		SUB IN: CRISP,MORIAH
	05:25		SUB OUT: VASON,AHYIONA
	05:25		SUB IN: TATE,TIMBER
SUB OUT: 2 BOGGS,BIANCA	05:25		
SUB IN: 12 BIRDSONG,HARPER	05:25		
SUB OUT: 20 SMITH,CHANDLER	05:25		
SUB IN: 15 KRAUSE,EMMA	05:25		
SUB OUT: 11 POLLARD,NYLA	03:43	6-6	
SUB IN: 20 SMITH,CHANDLER	03:43		
SUB OUT: 15 KRAUSE,EMMA	03:43		
SUB IN: 2 BOGGS,BIANCA	03:43		
	02:27	8-9	SUB OUT: BELL,CHINYERE
	02:27		SUB IN: POWELL,PAIGE
	01:20	10-9	SUB OUT: CRISP,MORIAH
	01:20		SUB IN: VASON,AHYIONA
	01:20		SUB OUT: TATE,TIMBER
	01:20		SUB IN: BELL,CHINYERE

**William & Mary 12, UNCW 14**

**Official Substitutions Log**  
**William & Mary vs UNCW**  
**Period 2**  
**February 10, 2019 at Trask Coliseum - Wilmington, N.C.**



VISITORS: William & Mary	Time	Score	HOME: UNCW
10 HODGSON,EVA			0 JEUNE,ASHLI
11 POLLARD,NYLA			5 SMITH,GIGI
20 SMITH,CHANDLER			10 VASON,AHYIONA
30 REYNOLDS,VICTORIA			13 SUGGS,LACEY
2 BOGGS,BIANCA			24 BELL,CHINYERE
SUB OUT: 12 BIRDSONG,HARPER	08:29	15-19	
SUB IN: 10 HODGSON,EVA	08:29		
SUB OUT: 5 JONES,MISHA	07:39	15-23	
SUB IN: 15 KRAUSE,EMMA	07:39		
SUB OUT: 11 POLLARD,NYLA	07:09	15-25	
SUB IN: 12 BIRDSONG,HARPER	07:09		
	06:09	17-26	SUB OUT: BELL,CHINYERE
	06:09		SUB IN: JEUNE,ASHLI
	04:37	22-28	SUB OUT: VASON,AHYIONA
	04:37		SUB IN: CRISP,MORIAH
SUB OUT: 12 BIRDSONG,HARPER	04:04	22-28	
SUB IN: 11 POLLARD,NYLA	04:04		
	03:39	22-28	SUB OUT: POWELL,PAIGE
	03:39		SUB IN: BELL,CHINYERE
SUB OUT: 15 KRAUSE,EMMA	02:57	24-28	
SUB IN: 20 SMITH,CHANDLER	02:57		
	02:13	27-28	SUB OUT: CRISP,MORIAH
	02:13		SUB IN: VASON,AHYIONA

**William & Mary 27, UNCW 36**

**Official Substitutions Log**  
**William & Mary vs UNCW**  
**Period 3**  
**February 10, 2019 at Trask Coliseum - Wilmington, N.C.**



VISITORS: William & Mary	Time	Score	HOME: UNCW
10 HODGSON,EVA			0 JEUNE,ASHLI
11 POLLARD,NYLA			5 SMITH,GIGI
20 SMITH,CHANDLER			10 VASON,AHYIONA
30 REYNOLDS,VICTORIA			13 SUGGS,LACEY
2 BOGGS,BIANCA			24 BELL,CHINYERE
SUB OUT: 11 POLLARD,NYLA	08:33	29-38	
SUB IN: 12 BIRDSONG,HARPER	08:33		
SUB OUT: 20 SMITH,CHANDLER	07:27	32-42	
SUB IN: 15 KRAUSE,EMMA	07:27		
	06:40	34-42	SUB OUT: BELL,CHINYERE
	06:40		SUB IN: POWELL,PAIGE
	06:40		SUB OUT: JEUNE,ASHLI
	06:40		SUB IN: TATE,TIMBER
SUB OUT: 15 KRAUSE,EMMA	04:55	39-44	
SUB IN: 5 JONES,MISHA	04:55		
	04:55		SUB OUT: VASON,AHYIONA
	04:55		SUB IN: CRISP,MORIAH
SUB OUT: 5 JONES,MISHA	03:00	42-49	
SUB IN: 11 POLLARD,NYLA	03:00		
	02:56	42-49	SUB OUT: POWELL,PAIGE
	02:56		SUB IN: VASON,AHYIONA
	01:54	44-50	SUB OUT: CRISP,MORIAH
	01:54		SUB IN: JEUNE,ASHLI
SUB OUT: 11 POLLARD,NYLA	01:20	44-53	
SUB IN: 15 KRAUSE,EMMA	01:20		

**William & Mary 49, UNCW 53**



**Official Substitutions Log**  
**William & Mary vs UNCW**  
**Period 4**  
**February 10, 2019 at Trask Coliseum - Wilmington, N.C.**



VISITORS: William & Mary	Time	Score	HOME: UNCW
10 HODGSON,EVA			0 JEUNE,ASHLI
11 POLLARD,NYLA			5 SMITH,GIGI
20 SMITH,CHANDLER			10 VASON,AHYIONA
30 REYNOLDS,VICTORIA			13 SUGGS,LACEY
2 BOGGS,BIANCA			24 BELL,CHINYERE
	09:24	51-53	SUB OUT: POWELL,PAIGE
	09:24		SUB IN: BELL,CHINYERE
SUB OUT: 15 KRAUSE,EMMA	09:12	51-53	
SUB IN: 20 SMITH,CHANDLER	09:12		
SUB OUT: 20 SMITH,CHANDLER	08:09	51-56	
SUB IN: 15 KRAUSE,EMMA	08:09		
	07:02	53-56	SUB OUT: TATE,TIMBER
	07:02		SUB IN: JEUNE,ASHLI
SUB OUT: 15 KRAUSE,EMMA	06:02	58-56	
SUB IN: 20 SMITH,CHANDLER	06:02		
SUB OUT: 20 SMITH,CHANDLER	03:34	58-58	
SUB IN: 15 KRAUSE,EMMA	03:34		
SUB OUT: 15 KRAUSE,EMMA	03:11	58-58	
SUB IN: 20 SMITH,CHANDLER	03:11		
SUB OUT: 20 SMITH,CHANDLER	00:33	58-62	
SUB IN: 11 POLLARD,NYLA	00:33		
SUB OUT: 30 REYNOLDS,VICTORIA	00:25	58-62	
SUB IN: 5 JONES,MISHA	00:25		
SUB OUT: 11 POLLARD,NYLA	00:25		
SUB IN: 30 REYNOLDS,VICTORIA	00:25		
SUB OUT: 30 REYNOLDS,VICTORIA	00:01	58-64	
SUB IN: 20 SMITH,CHANDLER	00:01		
	00:01		SUB OUT: VASON,AHYIONA
	00:01		SUB IN: THYBULLE,ZHANEIA

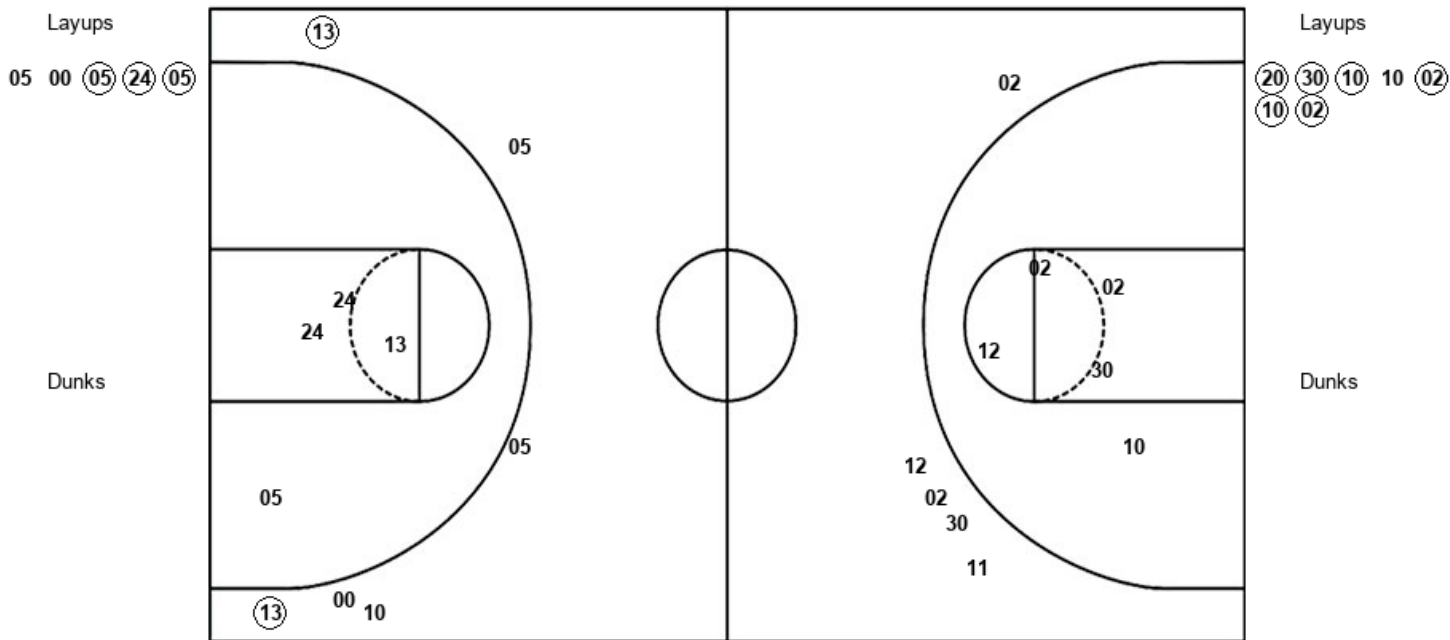
**William & Mary 58, UNCW 66**

**Official Shot Chart**  
**William & Mary vs UNCW**  
**PERIOD 1 Shots**  
 February 10, 2019 at Trask Coliseum - Wilmington, N.C.



**UNCW**

**William & Mary**



UNCW : Period 1	Made	Att	Pct
Layups	3	5	60.0
Dunks	0	0	0
2PT Field Goals	3	9	33.3
3PT Field Goals	2	6	33.3
<b>Total Field Goals</b>	<b>5</b>	<b>15</b>	<b>33.3</b>

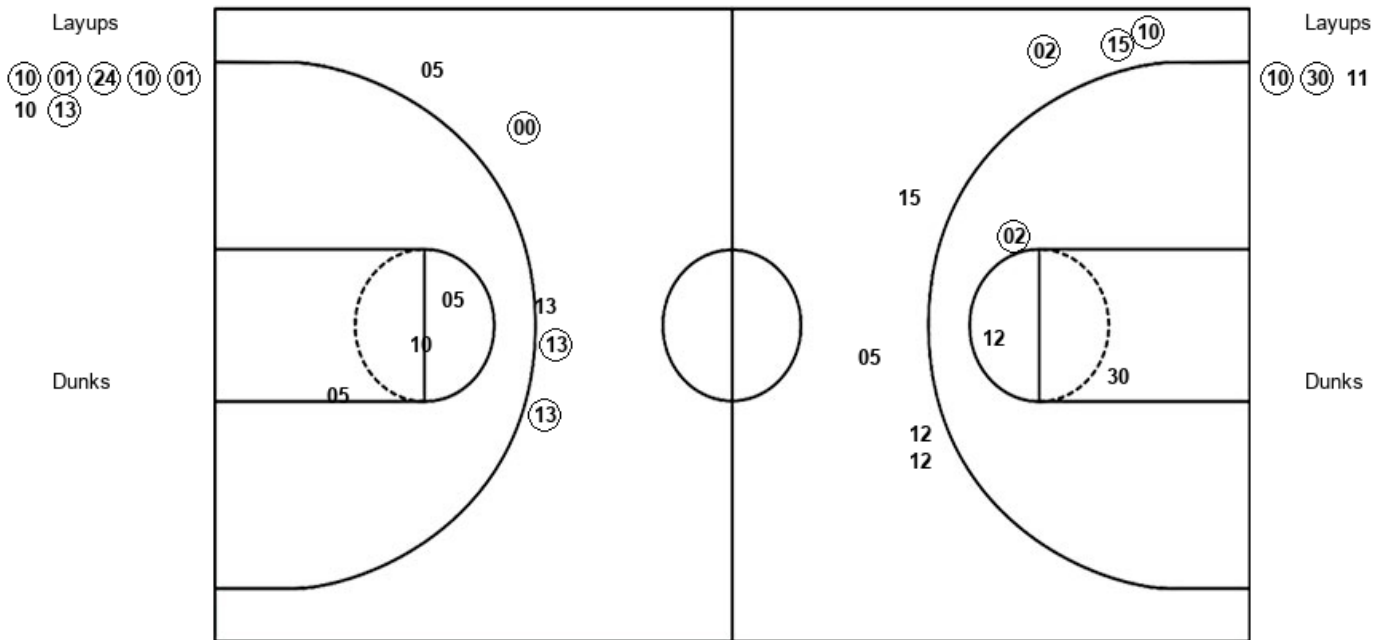
CWM : Period 1	Made	Att	Pct
Layups	6	7	85.7
Dunks	0	0	0
2PT Field Goals	6	12	50.0
3PT Field Goals	0	5	00.0
<b>Total Field Goals</b>	<b>6</b>	<b>17</b>	<b>35.3</b>

Official Shot Chart  
**William & Mary vs UNCW**  
 PERIOD 2 Shots  
 February 10, 2019 at Trask Coliseum - Wilmington, N.C.



**UNCW**

**William & Mary**



UNCW : Period 2	Made	Att	Pct
Layups	6	7	85.7
Dunks	0	0	0
2PT Field Goals	6	10	60.0
3PT Field Goals	3	5	60.0
<b>Total Field Goals</b>	<b>9</b>	<b>15</b>	<b>60.0</b>

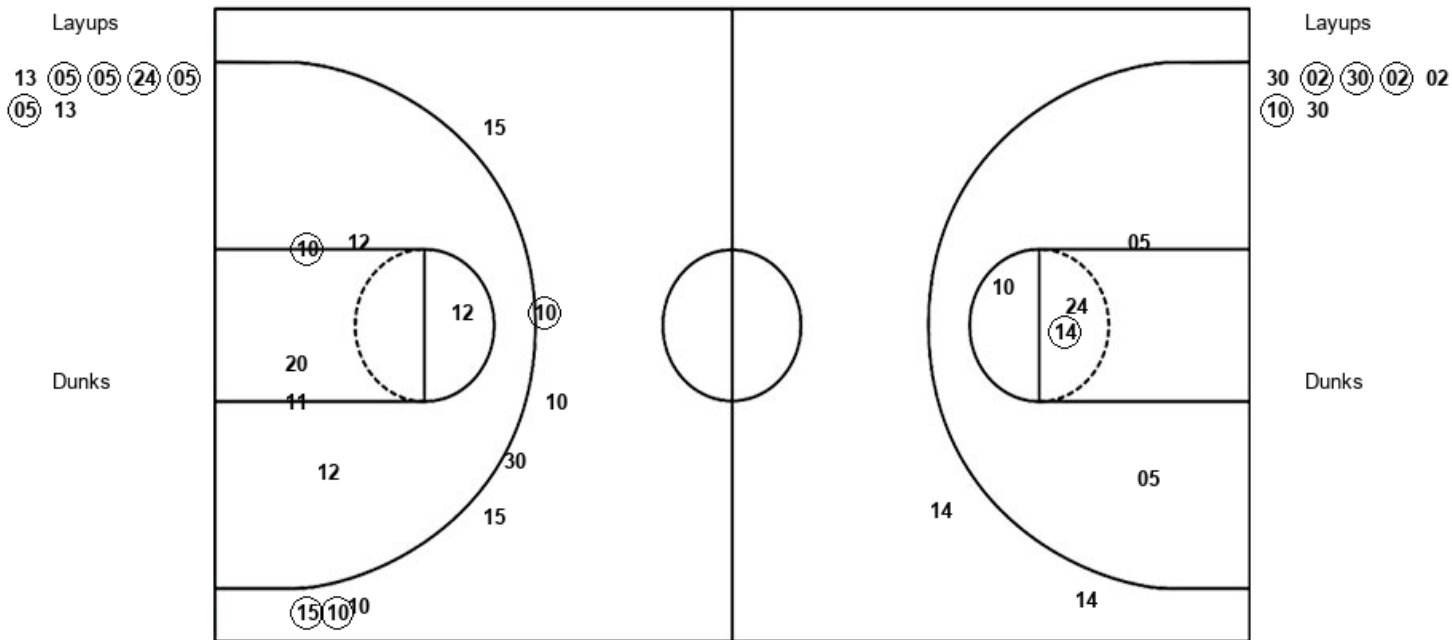
CWM : Period 2	Made	Att	Pct
Layups	2	3	66.7
Dunks	0	0	0
2PT Field Goals	3	6	50.0
3PT Field Goals	3	7	42.9
<b>Total Field Goals</b>	<b>6</b>	<b>13</b>	<b>46.2</b>

**Official Shot Chart**  
**William & Mary vs UNCW**  
**PERIOD 3 Shots**  
 February 10, 2019 at Trask Coliseum - Wilmington, N.C.



**UNCW**

**William & Mary**



UNCW : Period 3	Made	Att	Pct
Layups	5	7	71.4
Dunks	0	0	0
2PT Field Goals	6	12	50.0
3PT Field Goals	0	2	00.0
<b>Total Field Goals</b>	<b>6</b>	<b>14</b>	<b>42.9</b>

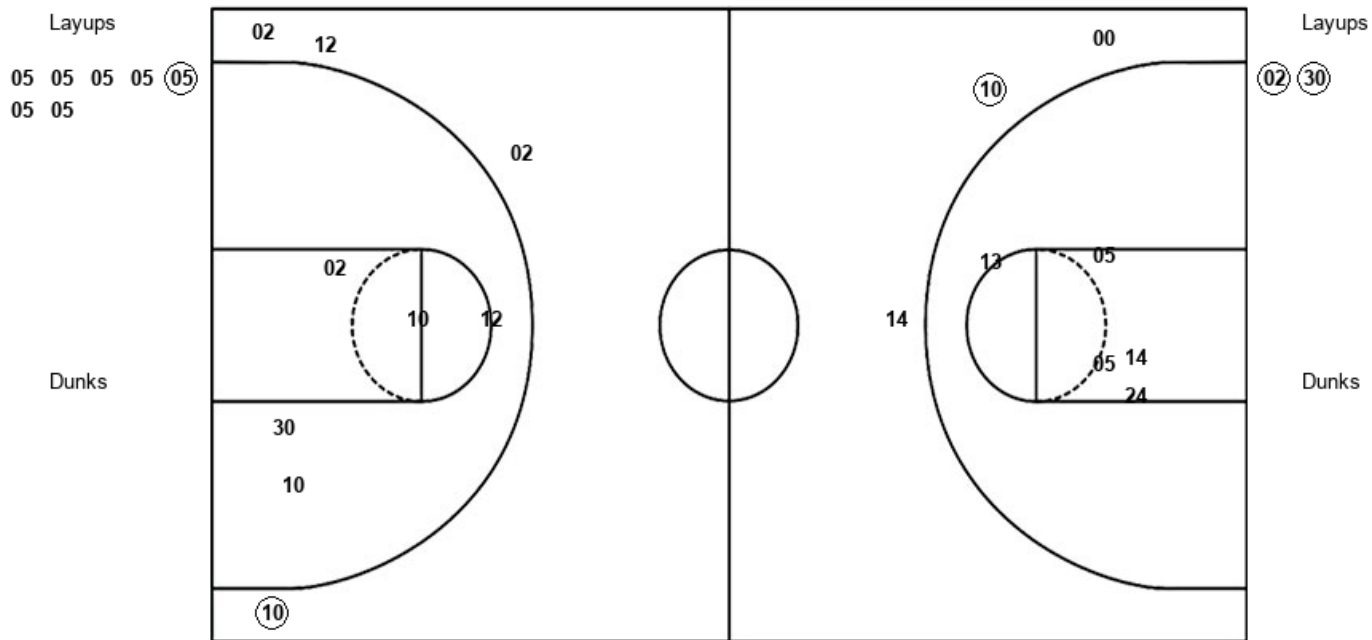
CWM : Period 3	Made	Att	Pct
Layups	4	7	57.1
Dunks	0	0	0
2PT Field Goals	5	13	38.5
3PT Field Goals	3	8	37.5
<b>Total Field Goals</b>	<b>8</b>	<b>21</b>	<b>38.1</b>

**Official Shot Chart**  
**William & Mary vs UNCW**  
**PERIOD 4 Shots**  
 February 10, 2019 at Trask Coliseum - Wilmington, N.C.



**UNCW**

**William & Mary**



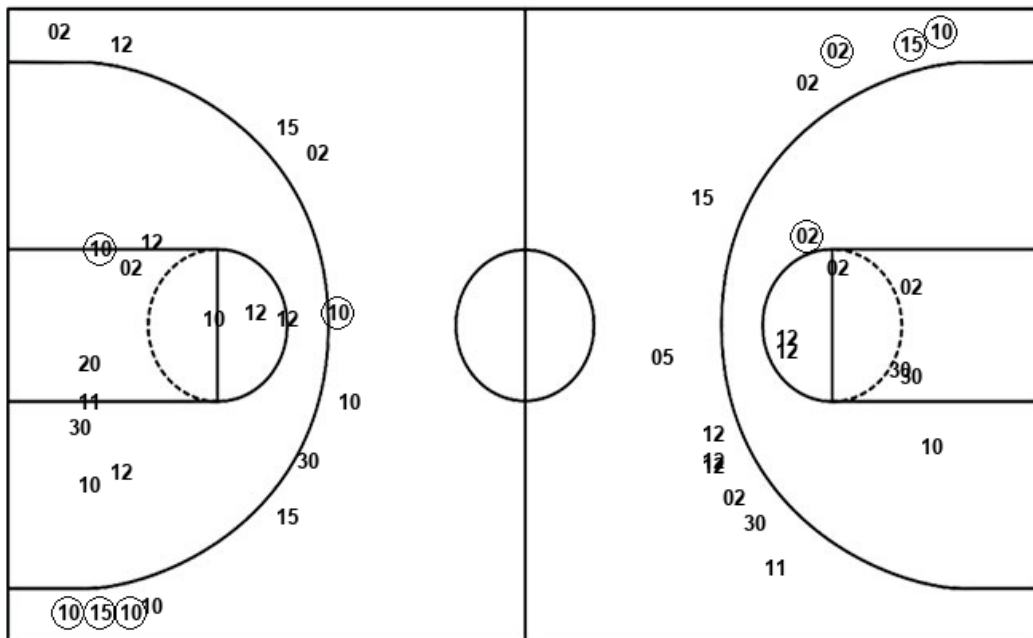
<b>UNCW : Period 4</b>	<b>Made</b>	<b>Att</b>	<b>Pct</b>
Layups	1	7	14.3
Dunks	0	0	0
2PT Field Goals	1	12	08.3
3PT Field Goals	1	3	33.3
<b>Total Field Goals</b>	<b>2</b>	<b>15</b>	<b>13.3</b>

<b>CWM : Period 4</b>	<b>Made</b>	<b>Att</b>	<b>Pct</b>
Layups	2	2	100.0
Dunks	0	0	0
2PT Field Goals	2	7	28.6
3PT Field Goals	1	4	25.0
<b>Total Field Goals</b>	<b>3</b>	<b>11</b>	<b>27.3</b>

**Official Shot Chart**  
**William & Mary vs UNCW**  
**William & Mary Team Shots**  
 February 10, 2019 at Trask Coliseum - Wilmington, N.C.



Layups



Layups



Dunks

Dunks

CWM : Period 1	Made	Att	Pct
Layups	6	7	85.7
Dunks	0	0	0
2PT Field Goals	6	12	50.0
3PT Field Goals	0	5	00.0
<b>Total Field Goals</b>	<b>6</b>	<b>17</b>	<b>35.3</b>

CWM : Period 2	Made	Att	Pct
Layups	2	3	66.7
Dunks	0	0	0
2PT Field Goals	3	6	50.0
3PT Field Goals	3	7	42.9
<b>Total Field Goals</b>	<b>6</b>	<b>13</b>	<b>46.2</b>

CWM : Period 3	Made	Att	Pct
Layups	4	7	57.1
Dunks	0	0	0
2PT Field Goals	5	13	38.5
3PT Field Goals	3	8	37.5
<b>Total Field Goals</b>	<b>8</b>	<b>21</b>	<b>38.1</b>

CWM : Period 4	Made	Att	Pct
Layups	2	2	100.0
Dunks	0	0	0
2PT Field Goals	2	7	28.6
3PT Field Goals	1	4	25.0
<b>Total Field Goals</b>	<b>3</b>	<b>11</b>	<b>27.3</b>

