

## FINAL SCORE



**Elon**

**51**



**UNCW**

**76**

February 09, 2019 • TraskColiseum - Wilmington, N.C.

## FINAL STATISTICS

**Official Box Score**  
**Elon vs UNCW**  
**Game Totals -- Final Statistics**  
**February 09, 2019 at TraskColiseum - Wilmington, N.C.**



**Elon 51**

No.	Player	S	Pts	FG	3FG	FT	OR	DR	TR	PF	A	TO	Blk	Stl	Min	+/-
00	PERPIGNAN, BRIE		10	4-10	0-2	2-2	0	1	1	1	1	2	0	0	24	-22
13	POWELL, JAYLIN		6	3-6	0-0	0-0	2	2	4	3	2	2	0	2	28	-18
21	COLON, ARIEL		9	3-8	1-2	2-2	0	2	2	4	0	3	0	0	22	-12
22	MERCER, LEXI		9	3-8	1-2	2-2	1	2	3	0	0	1	1	0	25	-12
42	MAUPIN, EMILY		4	1-5	0-0	2-4	4	5	9	1	0	1	2	1	25	-20
01	MUNFORD, SAADIA		4	1-6	1-3	1-2	1	1	2	2	0	3	0	1	21	-10
02	LILES, KAYLA		3	1-2	0-0	1-4	2	3	5	4	1	2	0	0	16	-5
03	POPOVIC, ANNA		4	1-1	0-0	2-2	0	2	2	3	0	2	0	0	14	-4
04	TASMAN, DURU		0	0-1	0-0	0-0	0	0	0	1	0	0	0	0	4	-3
23	NANCE, ARIANA		0	0-2	0-1	0-0	1	1	2	1	0	2	0	0	8	-7
30	TRAORE, TYJA		0	0-0	0-0	0-0	0	0	0	3	0	1	0	1	6	-7
52	RYAN, MICAELA		2	0-0	0-0	2-2	1	1	2	1	0	0	0	0	5	-5
	TEAM						1	2	3	0		0				
<b>TOTALS</b>			<b>51</b>	<b>17-49</b>	<b>3-10</b>	<b>14-20</b>	<b>13</b>	<b>22</b>	<b>35</b>	<b>24</b>	<b>4</b>	<b>19</b>	<b>3</b>	<b>5</b>	<b>199</b>	

*Shooting By Period*

Period	FG	FG%	3FG	3FG%	FT	FT%
1st Qtr	5-10	50%	1-1	100%	4-6	67%
2nd Qtr	5-12	42%	1-4	25%	2-2	100%
3rd Qtr	4-13	31%	1-2	50%	3-4	75%
4th Qtr	3-14	21%	0-3	00%	5-8	63%
1st Half	10-22	45%	2-5	40%	6-8	75%
2nd Half	7-27	26%	1-5	20%	8-12	67%
<b>Game</b>	<b>17-49</b>	<b>34.7%</b>	<b>3-10</b>	<b>30.0%</b>	<b>14-20</b>	<b>70.0%</b>

*Last FG: 4th-00:16*  
*Biggest Run: 5-0*  
*Largest lead: By 2 at 1-09:02*  
*Technical Fouls: #02 LILES @ 3rd - 00:26;*

**UNCW 76**

No.	Player	S	Pts	FG	3FG	FT	OR	DR	TR	PF	A	TO	Blk	Stl	Min	+/-
04	PARKER, SHRITA		6	2-9	2-5	0-0	0	1	1	1	3	1	0	1	25	14
05	SMITH, GIGI		20	6-14	1-2	7-8	0	3	3	4	2	0	0	2	23	19
10	VASON, AHYIONA		0	0-2	0-1	0-0	0	2	2	3	2	1	0	0	21	17
13	SUGGS, LACEY		29	11-16	2-4	5-5	1	3	4	3	1	1	0	1	37	25
24	BELL, CHINYERE		13	5-6	0-0	3-4	1	7	8	0	2	1	2	2	27	20
00	JEUNE, ASHLI		1	0-1	0-1	1-4	0	2	2	1	1	1	1	2	19	10
01	POWELL, PAIGE		0	0-2	0-0	0-0	4	0	4	0	0	1	0	1	12	8
02	CRISP, MORIAH		0	0-0	0-0	0-0	1	0	1	3	2	1	0	1	9	4
12	BUEHLER, JULIA		0	0-0	0-0	0-0	0	1	1	1	0	0	0	0	2	1
14	TATE, TIMBER		3	1-4	1-4	0-0	0	2	2	0	2	0	0	0	15	3
22	THYBULLE, ZHANEIA		2	1-1	0-0	0-0	0	0	0	0	0	0	0	0	2	1
25	HOGGATT, MICAH		0	0-0	0-0	0-0	0	0	0	1	0	0	0	0	2	1
32	OBUSEK, CAROL-ANNE		1	0-0	0-0	1-2	0	1	1	0	0	0	0	0	2	1
33	SACCO, GRACE		1	0-0	0-0	1-2	0	0	0	0	0	0	0	0	2	1
	TEAM						3	1	4	0		1				
<b>TOTALS</b>			<b>76</b>	<b>26-55</b>	<b>6-17</b>	<b>18-25</b>	<b>10</b>	<b>23</b>	<b>33</b>	<b>17</b>	<b>15</b>	<b>8</b>	<b>3</b>	<b>10</b>	<b>199</b>	

*Shooting By Period*

Period	FG	FG%	3FG	3FG%	FT	FT%
1st Qtr	9-19	47%	2-7	29%	1-1	100%
2nd Qtr	8-14	57%	1-2	50%	2-4	50%
3rd Qtr	3-10	30%	1-3	33%	10-12	83%
4th Qtr	6-12	50%	2-5	40%	5-8	63%
1st Half	17-33	52%	3-9	33%	3-5	60%
2nd Half	9-22	41%	3-8	38%	15-20	75%
<b>Game</b>	<b>26-55</b>	<b>47.3%</b>	<b>6-17</b>	<b>35.3%</b>	<b>18-25</b>	<b>72.0%</b>

*Last FG: 4th-00:40*  
*Biggest Run: 8-0*  
*Largest lead: By 27 at 4-00:40*  
*Technical Fouls: None.*

*Game Notes:*

Officials: **Carla Fountain, Norma Jones, Jennifer Rezac**  
Attendance: **1122**

Start Time: **2019-02-09 00:05:29**  
End Time: **2019-02-09 01:57:52**  
Game Duration: **112**  
Conference Game;

Score	1st	2nd	3rd	4th	TOT
ELO	15	13	12	11	<b>51</b>
NCW	21	19	17	19	<b>76</b>

ELO led for **0:50**. NCW led for **37:07**.  
**Game was tied for 1:47**.  
Times tied: **2**      Lead Changes: **1**

Points from	ELO	NCW
In the Paint	26	32
Off Turns	8	18
2nd Chance	12	12
Fast Break	2	18
Bench	13	8

**Official Box Score**  
**Elon vs UNCW**  
**First Half Statistics Only**  
**February 09, 2019 at TraskColiseum - Wilmington, N.C.**



**Elon 28**

No.	Player	S	Pts	FG	3FG	FT	OR	DR	TR	PF	A	TO	Blk	Stl	Min	+/-
00	PERPIGNAN, BRIE		6	2-6	0-2	2-2	0	0	0	1	1	1	0	0	11	-11
13	POWELL, JAYLIN		2	1-2	0-0	0-0	1	0	1	1	1	0	0	0	13	-9
21	COLON, ARIEL		4	2-3	0-0	0-0	0	0	0	3	0	3	0	0	9	-4
22	MERCER, LEXI		5	2-3	1-1	0-0	0	2	2	0	0	1	0	0	15	-8
23	NANCE, ARIANA		0	0-0	0-0	0-0	0	0	0	0	0	0	0	0	3	-4
30	TRAORE, TYJA		0	0-0	0-0	0-0	0	0	0	0	0	0	0	0	0	0
42	MAUPIN, EMILY		3	1-4	0-0	1-2	1	3	4	1	0	1	1	0	16	-13
52	RYAN, MICAELA		0	0-0	0-0	0-0	0	0	0	0	0	0	0	0	0	0
01	MUNFORD, SAADIA		4	1-2	1-2	1-2	0	0	0	1	0	1	0	1	12	-5
02	LILES, KAYLA		0	0-1	0-0	0-0	1	3	4	0	1	2	0	0	8	1
03	POPOVIC, ANNA		4	1-1	0-0	2-2	0	1	1	1	0	1	0	0	11	-5
04	TASMAN, DURU		0	0-0	0-0	0-0	0	0	0	1	0	0	0	0	2	-2
	TEAM		0	0-0	0-0	0-0	1	2	3	0	0	0	0	0	0	0
	<b>TOTALS</b>		<b>28</b>	<b>10-22</b>	<b>2-5</b>	<b>6-8</b>	<b>4</b>	<b>11</b>	<b>15</b>	<b>9</b>	<b>3</b>	<b>11</b>	<b>1</b>	<b>1</b>	<b>100</b>	

*Shooting By Period*

Period	FG	FG%	3FG	3FG%	FT	FT%
1st Qtr	5-10	50%	1-1	100%	4-6	67%
2nd Qtr	5-12	42%	1-4	25%	2-2	100%
1st Half	10-22	45%	2-5	40%	6-8	75%
Game	17-49	34.7%	3-10	30.0%	14-20	70.0%

*Last FG Half: ELO 2nd-00:01*

**UNCW 40**

No.	Player	S	Pts	FG	3FG	FT	OR	DR	TR	PF	A	TO	Blk	Stl	Min	+/-
00	JEUNE, ASHLI		0	0-1	0-1	0-2	0	0	0	1	1	1	1	0	10	1
01	POWELL, PAIGE		0	0-1	0-0	0-0	3	0	3	0	0	1	0	1	8	-1
02	CRISP, MORIAH		0	0-0	0-0	0-0	1	0	1	3	1	1	0	1	7	0
04	PARKER, SHRITA		3	1-5	1-2	0-0	0	1	1	0	3	0	0	1	16	13
05	SMITH, GIGI		11	5-8	1-2	0-0	0	1	1	2	1	0	0	2	8	9
10	VASON, AHYIONA		0	0-1	0-1	0-0	0	1	1	2	2	0	0	0	5	9
12	BUEHLER, JULIA		0	0-0	0-0	0-0	0	0	0	0	0	0	0	0	0	0
13	SUGGS, LACEY		15	6-10	0-1	3-3	1	2	3	1	0	0	0	1	20	12
14	TATE, TIMBER		3	1-2	1-2	0-0	0	2	2	0	2	0	0	0	14	4
22	THYBULLE, ZHANEIA		0	0-0	0-0	0-0	0	0	0	0	0	0	0	0	0	0
24	BELL, CHINYERE		8	4-5	0-0	0-0	0	1	1	0	1	0	1	1	12	13
25	HOGGATT, MICAH		0	0-0	0-0	0-0	0	0	0	0	0	0	0	0	0	0
32	OBUSEK, CAROL-ANNE		0	0-0	0-0	0-0	0	0	0	0	0	0	0	0	0	0
33	SACCO, GRACE		0	0-0	0-0	0-0	0	0	0	0	0	0	0	0	0	0
	TEAM		0	0-0	0-0	0-0	1	1	2	0	0	1	0	0	0	0
	<b>TOTALS</b>		<b>40</b>	<b>17-33</b>	<b>3-9</b>	<b>3-5</b>	<b>6</b>	<b>9</b>	<b>15</b>	<b>9</b>	<b>11</b>	<b>4</b>	<b>2</b>	<b>7</b>	<b>100</b>	

*Shooting By Period*

Period	FG	FG%	3FG	3FG%	FT	FT%
1st Qtr	9-19	47%	2-7	29%	1-1	100%
2nd Qtr	8-14	57%	1-2	50%	2-4	50%
1st Half	17-33	52%	3-9	33%	3-5	60%
Game	26-55	47.3%	6-17	35.3%	18-25	72.0%

*Last FG Half: NCW 2nd-00:26*

Game Notes:

Officials: **Carla Fountain, Norma Jones, Jennifer Rezac**  
Attendance: 1122

Start Time: **2019-02-09 00:05:29**  
End Time: **2019-02-09 01:57:52**  
Game Duration: **112**  
Conference Game;

Score	1st	2nd	3rd	4th	TOT
ELO	15	13	12	11	<b>51</b>
NCW	21	19	17	19	<b>76</b>

Points from (This Period)	ELO	NCW
In the Paint	14	22
Off Turns	4	14
2nd Chance	4	5
Fast Break	0	9
Bench	8	3

**Official Box Score**  
**Elon vs UNCW**  
**First Quarter Statistics Only**  
**February 09, 2019 at TraskColiseum - Wilmington, N.C.**



**Elon 15**

No.	Player	S	Pts	FG	3FG	FT	OR	DR	TR	PF	A	TO	Blk	Stl	Min	+/-
00	PERPIGNAN, BRIE		0	0-1	0-0	0-0	0	0	0	1	1	0	0	0	4	-5
13	POWELL, JAYLIN		0	0-0	0-0	0-0	1	0	1	1	0	1	0	0	7	-7
21	COLON, ARIEL		4	2-3	0-0	0-0	0	0	0	1	0	3	0	0	6	-2
22	MERCER, LEXI		5	2-2	1-1	0-0	0	1	1	0	0	1	0	0	8	-4
42	MAUPIN, EMILY		1	0-2	0-0	1-2	1	0	1	0	0	0	0	0	8	-9
01	MUNFORD, SAADIA		1	0-0	0-0	1-2	0	0	0	1	0	1	0	1	6	-1
02	LILES, KAYLA		0	0-1	0-0	0-0	1	3	4	0	1	1	0	0	6	-1
03	POPOVIC, ANNA		4	1-1	0-0	2-2	0	0	0	0	0	0	0	0	6	-1
04	TASMAN, DURU		0	0-0	0-0	0-0	0	0	0	0	0	0	0	0	0	0
23	NANCE, ARIANA		0	0-0	0-0	0-0	0	0	0	0	0	0	0	0	0	0
30	TRAORE, TYJA		0	0-0	0-0	0-0	0	0	0	0	0	0	0	0	0	0
52	RYAN, MICAELA		0	0-0	0-0	0-0	0	0	0	0	0	0	0	0	0	0
	TEAM						0	1	1	0		0				
<b>TOTALS</b>			<b>15</b>	<b>5-10</b>	<b>1-1</b>	<b>4-6</b>	<b>3</b>	<b>5</b>	<b>8</b>	<b>4</b>	<b>2</b>	<b>7</b>	<b>0</b>	<b>1</b>	<b>50</b>	

*Shooting By Period*

Period	FG	FG%	3FG	3FG%	FT	FT%
1st Qtr	5-10	50%	1-1	100%	4-6	67%
2nd Qtr	5-12	42%	1-4	25%	2-2	100%
1st Half	5-10	50%	1-1	100%	4-6	67%
1st Half	10-22	45%	2-5	40%	6-8	75%
Game	17-49	34.7%	3-10	30.0%	14-20	70.0%

**UNCW 21**

No.	Player	S	Pts	FG	3FG	FT	OR	DR	TR	PF	A	TO	Blk	Stl	Min	+/-
04	PARKER, SHRITA		0	0-2	0-1	0-0	0	0	0	0	1	0	0	0	6	7
05	SMITH, GIGI		11	5-8	1-2	0-0	0	1	1	2	1	0	0	2	8	9
10	VASON, AHYIONA		0	0-1	0-1	0-0	0	1	1	2	2	0	0	0	5	9
13	SUGGS, LACEY		5	2-4	0-1	1-1	1	0	1	1	0	0	0	1	10	6
24	BELL, CHINYERE		2	1-1	0-0	0-0	0	0	0	0	0	0	0	1	4	5
00	JEUNE, ASHLI		0	0-1	0-1	0-0	0	0	0	0	0	1	0	0	2	-3
01	POWELL, PAIGE		0	0-1	0-0	0-0	3	0	3	0	0	1	0	1	6	1
02	CRISP, MORIAH		0	0-0	0-0	0-0	1	0	1	1	1	1	0	0	4	-1
12	BUEHLER, JULIA		0	0-0	0-0	0-0	0	0	0	0	0	0	0	0	0	0
14	TATE, TIMBER		3	1-1	1-1	0-0	0	1	1	0	0	0	0	0	5	-3
22	THYBULLE, ZHANEIA		0	0-0	0-0	0-0	0	0	0	0	0	0	0	0	0	0
25	HOGGATT, MICAH		0	0-0	0-0	0-0	0	0	0	0	0	0	0	0	0	0
32	OBUSEK, CAROL-ANNE		0	0-0	0-0	0-0	0	0	0	0	0	0	0	0	0	0
33	SACCO, GRACE		0	0-0	0-0	0-0	0	0	0	0	0	0	0	0	0	0
	TEAM						0	0	0	0		0				
<b>TOTALS</b>			<b>21</b>	<b>9-19</b>	<b>2-7</b>	<b>1-1</b>	<b>5</b>	<b>3</b>	<b>8</b>	<b>6</b>	<b>5</b>	<b>3</b>	<b>0</b>	<b>5</b>	<b>50</b>	

*Shooting By Period*

Period	FG	FG%	3FG	3FG%	FT	FT%
1st Qtr	9-19	47%	2-7	29%	1-1	100%
2nd Qtr	8-14	57%	1-2	50%	2-4	50%
1st Half	9-19	47%	2-7	29%	1-1	100%
1st Half	17-33	52%	3-9	33%	3-5	60%
Game	26-55	47.3%	6-17	35.3%	18-25	72.0%

Game Notes:

Officials: **Carla Fountain, Norma Jones, Jennifer Rezac**  
Attendance: **1122**

Start Time: **2019-02-09 00:05:29**

End Time: **2019-02-09 01:57:52**

Game Duration: **112**

Conference Game;

Score	1st	2nd	3rd	4th	TOT
ELO	15	13	12	11	<b>51</b>
NCW	21	19	17	19	<b>76</b>

Points from (This Period)	ELO	NCW
In the Paint	8	10
Off Turns	4	10
2nd Chance	2	5
Fast Break	0	7
Bench	5	3

**Official Play-By-Play**  
**Elon vs UNCW**  
**First Quarter**  
**February 09, 2019 at TraskColiseum - Wilmington, N.C.**



**Period 1**

**Starters:**

**Elon:** 0 PERPIGNAN, BRIE; 13 POWELL, JAYLIN; 21 COLON, ARIEL; 22 MERCER, LEXI; 42 MAUPIN, EMILY;

**UNCW:** 4 PARKER, SHRITA; 5 SMITH, GIGI; 10 VASON, AHYIONA; 13 SUGGS, LACEY; 24 BELL, CHINYERE;

Time	VISITORS: Elon	Score	Margin	HOME: UNCW
09:48	TURNOVER (BADPASS) by COLON, ARIEL			
09:48				STEAL by BELL, CHINYERE
09:38	FOUL (PERSONAL) by PERPIGNAN, BRIE			
09:22				MISSED 3PTR by PARKER, SHRITA
09:17	REBOUND (DEF) by MERCER, LEXI			
09:02	GOOD! LAYUP by MERCER, LEXI	0-2	V 2	
08:45				MISSED JUMPER by SMITH, GIGI
08:44	REBOUND (DEF) by TEAM			
08:23	MISSED JUMPER by MAUPIN, EMILY			
08:18				REBOUND (DEF) by VASON, AHYIONA
08:12		2-2	T	GOOD! LAYUP by SUGGS, LACEY [FB]
08:12				ASSIST by VASON, AHYIONA
08:05				FOUL (PERSONAL) by VASON, AHYIONA
07:55	MISSED JUMPER by PERPIGNAN, BRIE			
07:51	REBOUND (OFF) by MAUPIN, EMILY			
07:51	MISSED JUMPER by MAUPIN, EMILY			
07:51	REBOUND (OFF) by POWELL, JAYLIN			
07:51				FOUL (PERSONAL) by SMITH, GIGI
07:47	TURNOVER (BADPASS) by COLON, ARIEL			
07:47				STEAL by SMITH, GIGI
07:42		4-2	H 2	GOOD! LAYUP by SMITH, GIGI [FB]
07:28	GOOD! LAYUP by COLON, ARIEL	4-4	T	
07:09		6-4	H 2	GOOD! LAYUP by BELL, CHINYERE
06:58	TURNOVER (LOSTBALL) by MERCER, LEXI			
06:58				STEAL by SUGGS, LACEY
06:30		8-4	H 4	GOOD! LAYUP by SMITH, GIGI
06:18	GOOD! 3PTR by MERCER, LEXI	8-7	H 1	
06:18	ASSIST by PERPIGNAN, BRIE			
05:55		10-7	H 3	GOOD! JUMPER by SMITH, GIGI
05:55				ASSIST by PARKER, SHRITA
05:41	TURNOVER (LOSTBALL) by POWELL, JAYLIN			
05:41				STEAL by SMITH, GIGI
05:33		12-7	H 5	GOOD! LAYUP by SUGGS, LACEY [FB]
05:33				ASSIST by SMITH, GIGI
05:33	FOUL (PERSONAL) by COLON, ARIEL			
05:33				SUB OUT: BELL, CHINYERE
05:33				SUB IN: POWELL, PAIGE
05:33	SUB OUT: COLON, ARIEL			
05:33	SUB IN: MUNFORD, SAADIA			
05:33	SUB OUT: POWELL, JAYLIN			
05:33	SUB IN: POPOVIC, ANNA			
05:33	SUB OUT: PERPIGNAN, BRIE			
05:33	SUB IN: LILES, KAYLA			
05:33		13-7	H 6	GOOD! FT by SUGGS, LACEY [FB]
05:26	TURNOVER (TRAVEL) by MUNFORD, SAADIA			
05:08				MISSED 3PTR by VASON, AHYIONA
05:04				REBOUND (OFF) by POWELL, PAIGE
05:02		16-7	H 9	GOOD! 3PTR by SMITH, GIGI
05:02				ASSIST by VASON, AHYIONA
04:48				FOUL (PERSONAL) by VASON, AHYIONA
04:48				
04:48				SUB OUT: VASON, AHYIONA
04:48				SUB IN: TATE, TIMBER
04:48				SUB OUT: PARKER, SHRITA
04:48				SUB IN: CRISP, MORIAH
04:48	GOOD! FT by MAUPIN, EMILY	16-8	H 8	
04:48	MISSED FT by MAUPIN, EMILY			
04:45				REBOUND (DEF) by SMITH, GIGI
04:41				MISSED 3PTR by SUGGS, LACEY
04:37	REBOUND (DEF) by LILES, KAYLA			
04:27				FOUL (PERSONAL) by SUGGS, LACEY
04:23				FOUL (PERSONAL) by CRISP, MORIAH
04:23	MISSED FT by MUNFORD, SAADIA			
04:23	REBOUND (OFF) by TEAM			
04:23	GOOD! FT by MUNFORD, SAADIA	16-9	H 7	
04:23	SUB OUT: MERCER, LEXI			
04:23	SUB IN: POWELL, JAYLIN			
04:09				MISSED 3PTR by SMITH, GIGI
04:04	REBOUND (DEF) by LILES, KAYLA			
04:01	MISSED LAYUP by LILES, KAYLA			

Time	VISITORS: Elon	Score	Margin	HOME: UNCW
03:58				REBOUND (DEF) by TATE, TIMBER
03:40	FOUL (PERSONAL) by POWELL, JAYLIN			
03:34				MISSED JUMPER by SMITH, GIGI
03:32				REBOUND (OFF) by POWELL, PAIGE
03:28				MISSED JUMPER by POWELL, PAIGE
03:25				REBOUND (OFF) by CRISP, MORIAH
03:10		18-9	H 9	GOOD! JUMPER by SMITH, GIGI
03:02	TURNOVER (LOSTBALL) by LILES, KAYLA			
02:45				TURNOVER (BADPASS) by CRISP, MORIAH
02:27	GOOD! JUMPER by POPOVIC, ANNA	18-11	H 7	
02:27	ASSIST by LILES, KAYLA			
02:11		21-11	H 10	GOOD! 3PTR by TATE, TIMBER
02:11				ASSIST by CRISP, MORIAH
01:59				FOUL (PERSONAL) by SMITH, GIGI
01:59	GOOD! FT by POPOVIC, ANNA	21-12	H 9	
01:59				SUB OUT: SMITH, GIGI
01:59				SUB IN: JEUNE, ASHLI
01:59	SUB OUT: MAUPIN, EMILY			
01:59	SUB IN: MERCER, LEXI			
01:59	SUB OUT: POWELL, JAYLIN			
01:59	SUB IN: COLON, ARIEL			
01:59	GOOD! FT by POPOVIC, ANNA	21-13	H 8	
01:30				TURNOVER (LOSTBALL) by JEUNE, ASHLI
01:16	TURNOVER (BADPASS) by COLON, ARIEL			
01:16				STEAL by POWELL, PAIGE
00:51				TURNOVER (BADPASS) by POWELL, PAIGE
00:51	STEAL by MUNFORD, SAADIA			
00:45	MISSED LAYUP by COLON, ARIEL			
00:41	REBOUND (OFF) by LILES, KAYLA			
00:36				SUB OUT: CRISP, MORIAH
00:36				SUB IN: PARKER, SHRITA
00:31	GOOD! JUMPER by COLON, ARIEL [PNT]	21-15	H 6	
00:05				MISSED JUMPER by PARKER, SHRITA
00:02				REBOUND (OFF) by SUGGS, LACEY
00:00				MISSED LAYUP by SUGGS, LACEY
00:00				REBOUND (OFF) by POWELL, PAIGE
00:00	FOUL (PERSONAL) by MUNFORD, SAADIA			
00:00				MISSED 3PTR by JEUNE, ASHLI
00:00	REBOUND (DEF) by LILES, KAYLA			

### Elon 15, UNCW 21

Points from (This Period)	ELO	NCW
In the Paint	8	10
Off Turns	4	10
2nd Chance	2	5
Fast Break	0	7
Bench	5	3

**Official Box Score**  
**Elon vs UNCW**  
**Second Quarter Statistics Only**  
**February 09, 2019 at TraskColiseum - Wilmington, N.C.**



**Elon 13**

No.	Player	S	Pts	FG	3FG	FT	OR	DR	TR	PF	A	TO	Blk	Stl	Min	+/-
00	PERPIGNAN, BRIE		6	2-5	0-2	2-2	0	0	0	0	0	1	0	0	7	-6
13	POWELL, JAYLIN		2	1-2	0-0	0-0	0	0	0	0	1	0	0	0	6	-2
21	COLON, ARIEL		0	0-0	0-0	0-0	0	0	0	2	0	0	0	0	3	-2
22	MERCER, LEXI		0	0-1	0-0	0-0	0	1	1	0	0	0	0	0	7	-4
42	MAUPIN, EMILY		2	1-2	0-0	0-0	0	3	3	1	0	1	1	0	8	-4
01	MUNFORD, SAADIA		3	1-2	1-2	0-0	0	0	0	0	0	0	0	0	6	-4
02	LILES, KAYLA		0	0-0	0-0	0-0	0	0	0	0	0	1	0	0	2	2
03	POPOVIC, ANNA		0	0-0	0-0	0-0	0	1	1	1	0	1	0	0	5	-4
04	TASMAN, DURU		0	0-0	0-0	0-0	0	0	0	1	0	0	0	0	2	-2
23	NANCE, ARIANA		0	0-0	0-0	0-0	0	0	0	0	0	0	0	0	3	-4
30	TRAORE, TYJA		0	0-0	0-0	0-0	0	0	0	0	0	0	0	0	0	0
52	RYAN, MICAELA		0	0-0	0-0	0-0	0	0	0	0	0	0	0	0	0	0
	TEAM						1	1	2	0		0				
<b>TOTALS</b>			<b>13</b>	<b>5-12</b>	<b>1-4</b>	<b>2-2</b>	<b>1</b>	<b>6</b>	<b>7</b>	<b>5</b>	<b>1</b>	<b>4</b>	<b>1</b>	<b>0</b>	<b>50</b>	

*Shooting By Period*

Period	FG	FG%	3FG	3FG%	FT	FT%
3rd Qtr	4-13	31%	1-2	50%	3-4	75%
4th Qtr	3-14	21%	0-3	00%	5-8	63%
2nd Half	5-12	42%	1-4	25%	2-2	100%
2nd Half	7-27	26%	1-5	20%	8-12	67%
Game	17-49	34.7%	3-10	30.0%	14-20	70.0%

**UNCW 19**

No.	Player	S	Pts	FG	3FG	FT	OR	DR	TR	PF	A	TO	Blk	Stl	Min	+/-
04	PARKER, SHRITA		3	1-3	1-1	0-0	0	1	1	0	2	0	0	1	10	6
05	SMITH, GIGI		0	0-0	0-0	0-0	0	0	0	0	0	0	0	0	0	0
10	VASON, AHYIONA		0	0-0	0-0	0-0	0	0	0	0	0	0	0	0	0	0
13	SUGGS, LACEY		10	4-6	0-0	2-2	0	2	2	0	0	0	0	0	10	6
24	BELL, CHINYERE		6	3-4	0-0	0-0	0	1	1	0	1	0	1	0	8	8
00	JEUNE, ASHLI		0	0-0	0-0	0-2	0	0	0	1	1	0	1	0	8	4
01	POWELL, PAIGE		0	0-0	0-0	0-0	0	0	0	0	0	0	0	0	2	-2
02	CRISP, MORIAH		0	0-0	0-0	0-0	0	0	0	2	0	0	0	1	3	1
12	BUEHLER, JULIA		0	0-0	0-0	0-0	0	0	0	0	0	0	0	0	0	0
14	TATE, TIMBER		0	0-1	0-1	0-0	0	1	1	0	2	0	0	0	9	7
22	THYBULLE, ZHANEIA		0	0-0	0-0	0-0	0	0	0	0	0	0	0	0	0	0
25	HOGGATT, MICAH		0	0-0	0-0	0-0	0	0	0	0	0	0	0	0	0	0
32	OBUSEK, CAROL-ANNE		0	0-0	0-0	0-0	0	0	0	0	0	0	0	0	0	0
33	SACCO, GRACE		0	0-0	0-0	0-0	0	0	0	0	0	0	0	0	0	0
	TEAM						1	1	2	0		1				
<b>TOTALS</b>			<b>19</b>	<b>8-14</b>	<b>1-2</b>	<b>2-4</b>	<b>1</b>	<b>6</b>	<b>7</b>	<b>3</b>	<b>6</b>	<b>1</b>	<b>2</b>	<b>2</b>	<b>50</b>	

*Shooting By Period*

Period	FG	FG%	3FG	3FG%	FT	FT%
3rd Qtr	3-10	30%	1-3	33%	10-12	83%
4th Qtr	6-12	50%	2-5	40%	5-8	63%
2nd Half	8-14	57%	1-2	50%	2-4	50%
2nd Half	9-22	41%	3-8	38%	15-20	75%
Game	26-55	47.3%	6-17	35.3%	18-25	72.0%

Game Notes:

Officials: Carla Fountain, Norma Jones, Jennifer Rezac  
Attendance: 1122

Start Time: 2019-02-09 00:05:29

End Time: 2019-02-09 01:57:52

Game Duration: 112

Conference Game;

Score	1st	2nd	3rd	4th	TOT
ELO	15	13	12	11	<b>51</b>
NCW	21	19	17	19	<b>76</b>

Points from (This Period)	ELO	NCW
In the Paint	6	12
Off Turns	0	4
2nd Chance	2	0
Fast Break	0	2
Bench	3	0

**Official Play-By-Play**  
**Elon vs UNCW**  
**Second Quarter**  
**February 09, 2019 at TraskColiseum - Wilmington, N.C.**



**Period 2**

**Starters:**

**Elon:** 0 PERPIGNAN,BRIE; 13 POWELL,JAYLIN; 21 COLON,ARIEL; 22 MERCER,LEXI; 42 MAUPIN,EMILY;  
**UNCW:** 4 PARKER,SHRITA; 5 SMITH,GIGI; 10 VASON,AHYIONA; 13 SUGGS,LACEY; 24 BELL,CHINYERE;

Time	VISITORS: Elon	Score	Margin	HOME: UNCW
09:32	FOUL (PERSONAL) by COLON, ARIEL			
09:32				MISSED FT by JEUNE, ASHLI
09:32				REBOUND (OFF) by TEAM
09:32				SUB OUT: POWELL, PAIGE
09:32				SUB IN: BELL, CHINYERE
09:32	SUB OUT: COLON, ARIEL			
09:32	SUB IN: NANCE, ARIANA			
09:32				MISSED FT by JEUNE, ASHLI
09:31	REBOUND (DEF) by MAUPIN, EMILY			
09:10	MISSED LAYUP by MERCER, LEXI			
09:10				BLOCK by JEUNE, ASHLI
09:04				REBOUND (DEF) by SUGGS, LACEY
09:03				MISSED LAYUP by PARKER, SHRITA
09:00	REBOUND (DEF) by MERCER, LEXI			
08:54	TURNOVER (BADPASS) by LILES, KAYLA			
08:54	SUB OUT: LILES, KAYLA			
08:54	SUB IN: PERPIGNAN, BRIE			
08:37				MISSED LAYUP by SUGGS, LACEY
08:33	REBOUND (DEF) by MAUPIN, EMILY			
08:24	MISSED LAYUP by MAUPIN, EMILY			
08:20				REBOUND (DEF) by BELL, CHINYERE
07:58		23-15	H 8	GOOD! JUMPER by BELL, CHINYERE [PNT]
07:58				ASSIST by PARKER, SHRITA
07:46	FOUL (OFF) by MAUPIN, EMILY			
07:46	TURNOVER (OFFENSIVE) by MAUPIN, EMILY			
07:46				SUB OUT: JEUNE, ASHLI
07:46				SUB IN: CRISP, MORIAH
07:29		25-15	H 10	GOOD! LAYUP by BELL, CHINYERE
07:29				ASSIST by PARKER, SHRITA
07:19	MISSED 3PTR by PERPIGNAN, BRIE			
07:16				REBOUND (DEF) by TATE, TIMBER
06:56				MISSED 3PTR by TATE, TIMBER
06:53	REBOUND (DEF) by MAUPIN, EMILY			
06:42	MISSED 3PTR by MUNFORD, SAADIA			
06:38				REBOUND (DEF) by PARKER, SHRITA
06:15				MISSED LAYUP by SUGGS, LACEY
06:15	BLOCK by MAUPIN, EMILY			
06:15				REBOUND (OFF) by TEAM
06:15	SUB OUT: MUNFORD, SAADIA			
06:15	SUB IN: POPOVIC, ANNA			
06:15	SUB OUT: NANCE, ARIANA			
06:15	SUB IN: TASMAN, DURU			
06:15	SUB OUT: MAUPIN, EMILY			
06:15	SUB IN: POWELL, JAYLIN			
06:15				SUB OUT: TATE, TIMBER
06:15				SUB IN: JEUNE, ASHLI
06:11				TURNOVER (SHOTCLOCK) by
06:03	TURNOVER (LOSTBALL) by PERPIGNAN, BRIE			
06:03				STEAL by CRISP, MORIAH
05:48	FOUL (PERSONAL) by POPOVIC, ANNA			
05:23				MISSED JUMPER by BELL, CHINYERE
05:20	REBOUND (DEF) by POPOVIC, ANNA			
05:16				FOUL (PERSONAL) by CRISP, MORIAH
05:11				FOUL (PERSONAL) by CRISP, MORIAH
05:11	GOOD! FT by PERPIGNAN, BRIE	25-16	H 9	
05:11				SUB OUT: CRISP, MORIAH
05:11				SUB IN: TATE, TIMBER
05:11	GOOD! FT by PERPIGNAN, BRIE	25-17	H 8	
04:53	FOUL (PERSONAL) by TASMAN, DURU			
04:49		27-17	H 10	GOOD! JUMPER by SUGGS, LACEY
04:49				ASSIST by TATE, TIMBER
04:27	MISSED JUMPER by POWELL, JAYLIN			
04:23				REBOUND (DEF) by SUGGS, LACEY
04:06		29-17	H 12	GOOD! LAYUP by BELL, CHINYERE [PNT]
04:06				ASSIST by JEUNE, ASHLI
03:56				FOUL (PERSONAL) by JEUNE, ASHLI
03:56	SUB OUT: MERCER, LEXI			
03:56	SUB IN: MAUPIN, EMILY			
03:56	SUB OUT: TASMAN, DURU			



Time	VISITORS: Elon	Score	Margin	HOME: UNCW
03:56	SUB IN: COLON, ARIEL			
03:45	GOOD! JUMPER by PERPIGNAN, BRIE [PNT]	29-19	H 10	
03:22		31-19	H 12	GOOD! LAYUP by SUGGS, LACEY
03:07	MISSED 3PTR by PERPIGNAN, BRIE			
03:04	REBOUND (OFF) by TEAM			
02:50	GOOD! LAYUP by PERPIGNAN, BRIE	31-21	H 10	
02:26		33-21	H 12	GOOD! LAYUP by SUGGS, LACEY
02:23	TIMEOUT 30SEC			
02:07	MISSED JUMPER by PERPIGNAN, BRIE			
02:07				BLOCK by BELL, CHINYERE
02:05				REBOUND (DEF) by TEAM
02:05	SUB OUT: PERPIGNAN, BRIE			
02:05	SUB IN: MUNFORD, SAADIA			
01:54				MISSED JUMPER by PARKER, SHRITA
01:54	REBOUND (DEF) by TEAM			
01:42	GOOD! JUMPER by POWELL, JAYLIN	33-23	H 10	
01:20		36-23	H 13	GOOD! 3PTR by PARKER, SHRITA
01:20				ASSIST by BELL, CHINYERE
01:10	TURNOVER (BADPASS) by POPOVIC, ANNA			
01:10				STEAL by PARKER, SHRITA
01:06	FOUL (PERSONAL) by COLON, ARIEL			
01:06		37-23	H 14	GOOD! FT by SUGGS, LACEY [FB]
01:06				SUB OUT: BELL, CHINYERE
01:06				SUB IN: POWELL, PAIGE
01:06	SUB OUT: COLON, ARIEL			
01:06	SUB IN: LILES, KAYLA			
01:06	SUB OUT: POPOVIC, ANNA			
01:06	SUB IN: MERCER, LEXI			
01:06		38-23	H 15	GOOD! FT by SUGGS, LACEY [FB]
00:44	GOOD! LAYUP by MAUPIN, EMILY	38-25	H 13	
00:44	ASSIST by POWELL, JAYLIN			
00:26		40-25	H 15	GOOD! LAYUP by SUGGS, LACEY
00:26				ASSIST by TATE, TIMBER
00:01	GOOD! 3PTR by MUNFORD, SAADIA	40-28	H 12	

### Elon 28, UNCW 40

Points from (This Period)	ELO	NCW
In the Paint	6	12
Off Turns	0	4
2nd Chance	2	0
Fast Break	0	2
Bench	3	0

**Official Box Score**  
**Elon vs UNCW**  
**Second Half Statistics Only**  
**February 09, 2019 at TraskColiseum - Wilmington, N.C.**



**Elon 23**

No.	Player	S	Pts	FG	3FG	FT	OR	DR	TR	PF	A	TO	Blk	Stl	Min	+/-
00	PERPIGNAN, BRIE		4	2-4	0-0	0-0	0	1	1	0	0	1	0	0	13	-11
13	POWELL, JAYLIN		4	2-4	0-0	0-0	1	2	3	2	1	1	0	2	15	-9
21	COLON, ARIEL		5	1-5	1-2	2-2	0	2	2	1	0	0	0	0	12	-8
22	MERCER, LEXI		4	1-5	0-1	2-2	1	0	1	0	0	0	1	0	11	-4
23	NANCE, ARIANA		0	0-2	0-1	0-0	1	1	2	1	0	2	0	0	4	-3
30	TRAORE, TYJA		0	0-0	0-0	0-0	0	0	0	3	0	1	0	1	6	-7
42	MAUPIN, EMILY		1	0-1	0-0	1-2	3	2	5	0	0	0	1	1	9	-7
52	RYAN, MICAELA		2	0-0	0-0	2-2	1	1	2	1	0	0	0	0	5	-5
01	MUNFORD, SAADIA		0	0-4	0-1	0-0	1	1	2	1	0	2	0	0	9	-5
02	LILES, KAYLA		3	1-1	0-0	1-4	1	0	1	4	0	0	0	0	8	-6
03	POPOVIC, ANNA		0	0-0	0-0	0-0	0	1	1	2	0	1	0	0	4	1
04	TASMAN, DURU		0	0-1	0-0	0-0	0	0	0	0	0	0	0	0	2	-1
	TEAM		0	0-0	0-0	0-0	0	0	0	0	0	0	0	0	0	0
<b>TOTALS</b>			<b>23</b>	<b>7-27</b>	<b>1-5</b>	<b>8-12</b>	<b>9</b>	<b>11</b>	<b>20</b>	<b>15</b>	<b>1</b>	<b>8</b>	<b>2</b>	<b>4</b>	<b>99</b>	

*Shooting By Period*

Period	FG	FG%	3FG	3FG%	FT	FT%
3rd Qtr	4-13	31%	1-2	50%	3-4	75%
4th Qtr	3-14	21%	0-3	00%	5-8	63%
2nd Half	7-27	26%	1-5	20%	8-12	67%
Game	17-49	34.7%	3-10	30.0%	14-20	70.0%

*Last FG Half: ELO 4th-00:16*

**UNCW 36**

No.	Player	S	Pts	FG	3FG	FT	OR	DR	TR	PF	A	TO	Blk	Stl	Min	+/-
00	JEUNE, ASHLI		1	0-0	0-0	1-2	0	2	2	0	0	0	0	2	9	9
01	POWELL, PAIGE		0	0-1	0-0	0-0	1	0	1	0	0	0	0	0	5	9
02	CRISP, MORIAH		0	0-0	0-0	0-0	0	0	0	0	1	0	0	0	2	4
04	PARKER, SHRITA		3	1-4	1-3	0-0	0	0	0	1	0	1	0	0	10	1
05	SMITH, GIGI		9	1-6	0-0	7-8	0	2	2	2	1	0	0	0	15	10
10	VASON, AHYIONA		0	0-1	0-0	0-0	0	1	1	1	0	1	0	0	16	8
12	BUEHLER, JULIA		0	0-0	0-0	0-0	0	1	1	1	0	0	0	0	2	1
13	SUGGS, LACEY		14	5-6	2-3	2-2	0	1	1	2	1	1	0	0	17	13
14	TATE, TIMBER		0	0-2	0-2	0-0	0	0	0	0	0	0	0	0	1	-1
22	THYBULLE, ZHANEIA		2	1-1	0-0	0-0	0	0	0	0	0	0	0	0	2	1
24	BELL, CHINYERE		5	1-1	0-0	3-4	1	6	7	0	1	1	1	1	15	7
25	HOGGATT, MICAH		0	0-0	0-0	0-0	0	0	0	1	0	0	0	0	2	1
32	OBUSEK, CAROL-ANNE		1	0-0	0-0	1-2	0	1	1	0	0	0	0	0	2	1
33	SACCO, GRACE		1	0-0	0-0	1-2	0	0	0	0	0	0	0	0	2	1
	TEAM		0	0-0	0-0	0-0	2	0	2	0	0	0	0	0	0	0
<b>TOTALS</b>			<b>36</b>	<b>9-22</b>	<b>3-8</b>	<b>15-20</b>	<b>4</b>	<b>14</b>	<b>18</b>	<b>8</b>	<b>4</b>	<b>4</b>	<b>1</b>	<b>3</b>	<b>99</b>	

*Shooting By Period*

Period	FG	FG%	3FG	3FG%	FT	FT%
3rd Qtr	3-10	30%	1-3	33%	10-12	83%
4th Qtr	6-12	50%	2-5	40%	5-8	63%
2nd Half	9-22	41%	3-8	38%	15-20	75%
Game	26-55	47.3%	6-17	35.3%	18-25	72.0%

*Last FG Half: NCW 4th-00:40*

**Game Notes:**

Officials: **Carla Fountain, Norma Jones, Jennifer Rezac**  
 Attendance: **1122**

Start Time: **2019-02-09 00:05:29**  
 End Time: **2019-02-09 01:57:52**  
 Game Duration: **112**  
 Conference Game;

Score	1st	2nd	3rd	4th	TOT
ELO	15	13	12	11	<b>51</b>
NCW	21	19	17	19	<b>76</b>

Points from (This Period)	ELO	NCW
In the Paint	12	10
Off Turns	4	4
2nd Chance	8	7
Fast Break	2	9
Bench	5	5

**Official Box Score**  
**Elon vs UNCW**  
**Third Quarter Statistics Only**  
**February 09, 2019 at TraskColiseum - Wilmington, N.C.**



**Elon 23**

No.	Player	S	Pts	FG	3FG	FT	OR	DR	TR	PF	A	TO	Blk	Stl	Min	+/-
00	PERPIGNAN, BRIE		0	0-1	0-0	0-0	0	0	0	0	0	0	0	0	5	-6
13	POWELL, JAYLIN		4	2-4	0-0	0-0	0	1	1	2	1	1	0	1	10	-5
21	COLON, ARIEL		5	1-3	1-1	2-2	0	2	2	1	0	0	0	0	7	-2
22	MERCER, LEXI		0	0-2	0-1	0-0	0	0	0	0	0	0	1	0	8	-3
42	MAUPIN, EMILY		1	0-1	0-0	1-2	3	2	5	0	0	0	1	0	6	-6
01	MUNFORD, SAADIA		0	0-1	0-0	0-0	1	1	2	0	0	2	0	0	6	-3
02	LILES, KAYLA		2	1-1	0-0	0-0	0	0	0	3	0	0	0	0	4	-1
03	POPOVIC, ANNA		0	0-0	0-0	0-0	0	1	1	2	0	1	0	0	4	1
04	TASMAN, DURU		0	0-0	0-0	0-0	0	0	0	0	0	0	0	0	0	0
23	NANCE, ARIANA		0	0-0	0-0	0-0	0	0	0	0	0	0	0	0	0	0
30	TRAORE, TYJA		0	0-0	0-0	0-0	0	0	0	0	0	0	0	0	0	0
52	RYAN, MICAELA		0	0-0	0-0	0-0	0	0	0	0	0	0	0	0	0	0
	TEAM						0	0	0	0		0				
	<b>TOTALS</b>		<b>12</b>	<b>4-13</b>	<b>1-2</b>	<b>3-4</b>	<b>4</b>	<b>7</b>	<b>11</b>	<b>8</b>	<b>1</b>	<b>4</b>	<b>2</b>	<b>1</b>	<b>50</b>	

*Shooting By Period*

Period	FG	FG%	3FG	3FG%	FT	FT%
2nd Half	0-0	0%	0-0	0%	0-0	0%
Game	17-49	34.7%	3-10	30.0%	14-20	70.0%

**UNCW 36**

No.	Player	S	Pts	FG	3FG	FT	OR	DR	TR	PF	A	TO	Blk	Stl	Min	+/-
04	PARKER, SHRITA		3	1-4	1-3	0-0	0	0	0	1	0	0	0	0	7	-1
05	SMITH, GIGI		9	1-4	0-0	7-8	0	1	1	0	0	0	0	0	10	5
10	VASON, AHYIONA		0	0-1	0-0	0-0	0	1	1	1	0	0	0	0	10	5
13	SUGGS, LACEY		2	0-0	0-0	2-2	0	1	1	2	1	0	0	0	9	6
24	BELL, CHINYERE		3	1-1	0-0	1-2	0	2	2	0	0	1	1	0	9	2
00	JEUNE, ASHLI		0	0-0	0-0	0-0	0	1	1	0	0	0	0	2	4	5
01	POWELL, PAIGE		0	0-0	0-0	0-0	0	0	0	0	0	0	0	0	1	3
02	CRISP, MORIAH		0	0-0	0-0	0-0	0	0	0	0	0	0	0	0	0	0
12	BUEHLER, JULIA		0	0-0	0-0	0-0	0	0	0	0	0	0	0	0	0	0
14	TATE, TIMBER		0	0-0	0-0	0-0	0	0	0	0	0	0	0	0	0	0
22	THYBULLE, ZHANEIA		0	0-0	0-0	0-0	0	0	0	0	0	0	0	0	0	0
25	HOGGATT, MICAH		0	0-0	0-0	0-0	0	0	0	0	0	0	0	0	0	0
32	OBUSEK, CAROL-ANNE		0	0-0	0-0	0-0	0	0	0	0	0	0	0	0	0	0
33	SACCO, GRACE		0	0-0	0-0	0-0	0	0	0	0	0	0	0	0	0	0
	TEAM						2	0	2	0		0				
	<b>TOTALS</b>		<b>17</b>	<b>3-10</b>	<b>1-3</b>	<b>10-12</b>	<b>2</b>	<b>6</b>	<b>8</b>	<b>4</b>	<b>1</b>	<b>1</b>	<b>1</b>	<b>2</b>	<b>50</b>	

*Shooting By Period*

Period	FG	FG%	3FG	3FG%	FT	FT%
2nd Half	0-0	0%	0-0	0%	0-0	0%
Game	26-55	47.3%	6-17	35.3%	18-25	72.0%

Game Notes:

Officials: Carla Fountain, Norma Jones, Jennifer Rezac  
Attendance: 1122

Start Time: 2019-02-09 00:05:29

End Time: 2019-02-09 01:57:52

Game Duration: 112

Conference Game;

Score	1st	2nd	3rd	4th	TOT
ELO	15	13	12	11	51
NCW	21	19	17	19	76

Points from (This Period)	ELO	NCW
In the Paint	6	4
Off Turns	2	3
2nd Chance	2	2
Fast Break	2	4
Bench	2	0

**Official Play-By-Play**  
**Elon vs UNCW**  
**Third Quarter**  
**February 09, 2019 at TraskColiseum - Wilmington, N.C.**



**Period 3**

**Starters:**

**Elon:** 0 PERPIGNAN,BRIE; 13 POWELL,JAYLIN; 21 COLON,ARIEL; 22 MERCER,LEXI; 42 MAUPIN,EMILY;  
**UNCW:** 4 PARKER,SHRITA; 5 SMITH,GIGI; 10 VASON,AHYIONA; 13 SUGGS,LACEY; 24 BELL,CHINYERE;

Time	VISITORS: Elon	Score	Margin	HOME: UNCW
09:37	MISSED LAYUP by POWELL, JAYLIN			
09:34	REBOUND (OFF) by MAUPIN, EMILY			
09:30	MISSED LAYUP by MERCER, LEXI			
09:26				REBOUND (DEF) by BELL, CHINYERE
09:09				MISSED LAYUP by VASON, AHYIONA
09:09	BLOCK by MAUPIN, EMILY			
09:09				REBOUND (OFF) by TEAM
09:02				MISSED LAYUP by SMITH, GIGI
08:59	REBOUND (DEF) by COLON, ARIEL			
08:58				FOUL (PERSONAL) by SUGGS, LACEY
08:58	GOOD! FT by COLON, ARIEL [FB]	40-29	H 11	
08:58	GOOD! FT by COLON, ARIEL [FB]	40-30	H 10	
08:39		42-30	H 12	GOOD! LAYUP by SMITH, GIGI [PNT]
08:30	GOOD! 3PTR by COLON, ARIEL	42-33	H 9	
07:59				MISSED LAYUP by SMITH, GIGI
07:56	REBOUND (DEF) by MAUPIN, EMILY			
07:40	MISSED JUMPER by COLON, ARIEL			
07:37				REBOUND (DEF) by SMITH, GIGI
07:19				MISSED 3PTR by PARKER, SHRITA
07:19	BLOCK by MERCER, LEXI			
07:19				REBOUND (OFF) by TEAM
07:12	FOUL (PERSONAL) by POWELL, JAYLIN			
07:02		44-33	H 11	GOOD! JUMPER by BELL, CHINYERE
06:47	MISSED JUMPER by COLON, ARIEL			
06:47	REBOUND (OFF) by MAUPIN, EMILY			
06:47				FOUL (PERSONAL) by PARKER, SHRITA
06:30	MISSED JUMPER by MAUPIN, EMILY			
06:30				BLOCK by BELL, CHINYERE
06:23	REBOUND (OFF) by MAUPIN, EMILY			
06:22	MISSED JUMPER by PERPIGNAN, BRIE			
06:18				REBOUND (DEF) by VASON, AHYIONA
06:18		47-33	H 14	GOOD! 3PTR by PARKER, SHRITA [FB]
06:18				ASSIST by SUGGS, LACEY
06:16	TIMEOUT 30SEC			
06:16				
06:16	SUB OUT: PERPIGNAN, BRIE			
06:16	SUB IN: MUNFORD, SAADIA			
06:16	SUB OUT: MAUPIN, EMILY			
06:16	SUB IN: POPOVIC, ANNA			
05:49	TURNOVER (BADPASS) by POPOVIC, ANNA			
05:29				MISSED 3PTR by PARKER, SHRITA
05:26	REBOUND (DEF) by POWELL, JAYLIN			
05:15	TURNOVER (BADPASS) by MUNFORD, SAADIA			
04:55				TURNOVER (BADPASS) by BELL, CHINYERE
04:55	STEAL by POWELL, JAYLIN			
04:37	SUB OUT: COLON, ARIEL			
04:37	SUB IN: LILES, KAYLA			
04:36	GOOD! LAYUP by LILES, KAYLA	47-35	H 12	
04:36	ASSIST by POWELL, JAYLIN			
04:09				SUB OUT: SUGGS, LACEY
04:09				SUB IN: JEUNE, ASHLI
04:09				SUB OUT: PARKER, SHRITA
04:09				SUB IN: SUGGS, LACEY
04:09				SUB OUT: SUGGS, LACEY
04:09				SUB IN: PARKER, SHRITA
04:08	FOUL (PERSONAL) by POPOVIC, ANNA			
03:59				MISSED JUMPER by PARKER, SHRITA
03:55	REBOUND (DEF) by POPOVIC, ANNA			
03:43	MISSED 3PTR by MERCER, LEXI			
03:40	REBOUND (OFF) by MUNFORD, SAADIA			
03:21	GOOD! LAYUP by POWELL, JAYLIN	47-37	H 10	
03:07	FOUL (PERSONAL) by POPOVIC, ANNA			
03:07		48-37	H 11	GOOD! FT by SMITH, GIGI
03:07				SUB OUT: PARKER, SHRITA
03:07				SUB IN: SUGGS, LACEY
03:07		49-37	H 12	GOOD! FT by SMITH, GIGI
02:52	MISSED JUMPER by POWELL, JAYLIN			
02:48				REBOUND (DEF) by BELL, CHINYERE
02:43	FOUL (PERSONAL) by POWELL, JAYLIN			

Time	VISITORS: Elon	Score	Margin	HOME: UNCW
02:43		50-37	H 13	GOOD! FT by SMITH, GIGI [FB]
02:43	SUB OUT: POPOVIC, ANNA			
02:43	SUB IN: MAUPIN, EMILY			
02:43	SUB OUT: MERCER, LEXI			
02:43	SUB IN: COLON, ARIEL			
02:43				MISSED FT by SMITH, GIGI
02:42	REBOUND (DEF) by MUNFORD, SAADIA			
02:11				FOUL (PERSONAL) by SUGGS, LACEY
02:11	GOOD! FT by MAUPIN, EMILY	50-38	H 12	
02:10	MISSED FT by MAUPIN, EMILY			
02:09				REBOUND (DEF) by JEUNE, ASHLI
01:59				MISSED JUMPER by SMITH, GIGI
01:56	REBOUND (DEF) by COLON, ARIEL			
01:55				FOUL (PERSONAL) by VASON, AHYIONA
01:45	TURNOVER (LOSTBALL) by POWELL, JAYLIN			
01:45				STEAL by JEUNE, ASHLI
01:15	FOUL (PERSONAL) by COLON, ARIEL			
01:15		51-38	H 13	GOOD! FT by BELL, CHINYERE
01:15	SUB OUT: COLON, ARIEL			
01:15	SUB IN: PERPIGNAN, BRIE			
01:13				MISSED FT by BELL, CHINYERE
01:12	REBOUND (DEF) by MAUPIN, EMILY			
01:07	TURNOVER (LOSTBALL) by MUNFORD, SAADIA			
01:07				STEAL by JEUNE, ASHLI
01:07	FOUL (PERSONAL) by LILES, KAYLA			
01:07		52-38	H 14	GOOD! FT by SMITH, GIGI
01:07				SUB OUT: BELL, CHINYERE
01:07				SUB IN: POWELL, PAIGE
01:07		53-38	H 15	GOOD! FT by SMITH, GIGI
00:49	GOOD! JUMPER by POWELL, JAYLIN [PNT]	53-40	H 13	
00:26	FOUL (PERSONAL) by LILES, KAYLA			
00:26	FOUL (TECH) by LILES, KAYLA			
00:26		54-40	H 14	GOOD! FT by SMITH, GIGI
00:26		55-40	H 15	GOOD! FT by SMITH, GIGI
00:26	SUB OUT: LILES, KAYLA			
00:26	SUB IN: MERCER, LEXI			
00:26		56-40	H 16	GOOD! FT by SUGGS, LACEY
00:26		57-40	H 17	GOOD! FT by SUGGS, LACEY
00:02	MISSED JUMPER by MUNFORD, SAADIA			
00:00				REBOUND (DEF) by SUGGS, LACEY

### Elon 40, UNCW 57

Points from (This Period)	ELO	NCW
In the Paint	6	4
Off Turns	2	3
2nd Chance	2	2
Fast Break	2	4
Bench	2	0

**Official Box Score**  
**Elon vs UNCW**  
**Fourth Quarter Statistics Only**  
**February 09, 2019 at TraskColiseum - Wilmington, N.C.**



**Elon 11**

No.	Player	S	Pts	FG	3FG	FT	OR	DR	TR	PF	A	TO	Blk	Stl	Min	+/-
00	PERPIGNAN, BRIE		4	2-3	0-0	0-0	0	1	1	0	0	1	0	0	8	-5
13	POWELL, JAYLIN		0	0-0	0-0	0-0	1	1	2	0	0	0	0	1	5	-4
21	COLON, ARIEL		0	0-2	0-1	0-0	0	0	0	0	0	0	0	0	5	-6
22	MERCER, LEXI		4	1-3	0-0	2-2	1	0	1	0	0	0	0	0	3	-1
42	MAUPIN, EMILY		0	0-0	0-0	0-0	0	0	0	0	0	0	0	1	3	-1
01	MUNFORD, SAADIA		0	0-3	0-1	0-0	0	0	0	1	0	0	0	0	3	-2
02	LILES, KAYLA		1	0-0	0-0	1-4	1	0	1	1	0	0	0	0	4	-5
03	POPOVIC, ANNA		0	0-0	0-0	0-0	0	0	0	0	0	0	0	0	0	0
04	TASMAN, DURU		0	0-1	0-0	0-0	0	0	0	0	0	0	0	0	2	-1
23	NANCE, ARIANA		0	0-2	0-1	0-0	1	1	2	1	0	2	0	0	4	-3
30	TRAORE, TYJA		0	0-0	0-0	0-0	0	0	0	3	0	1	0	1	6	-7
52	RYAN, MICAELA		2	0-0	0-0	2-2	1	1	2	1	0	0	0	0	5	-5
	TEAM						0	0	0	0		0				
<b>TOTALS</b>			<b>11</b>	<b>3-14</b>	<b>0-3</b>	<b>5-8</b>	<b>5</b>	<b>4</b>	<b>9</b>	<b>7</b>	<b>0</b>	<b>4</b>	<b>0</b>	<b>3</b>	<b>49</b>	

*Shooting By Period*

Period	FG	FG%	3FG	3FG%	FT	FT%
Game	17-49	34.7%	3-10	30.0%	14-20	70.0%

**UNCW 19**

No.	Player	S	Pts	FG	3FG	FT	OR	DR	TR	PF	A	TO	Blk	Stl	Min	+/-
04	PARKER, SHRITA		0	0-0	0-0	0-0	0	0	0	0	0	1	0	0	3	2
05	SMITH, GIGI		0	0-2	0-0	0-0	0	1	1	2	1	0	0	0	5	5
10	VASON, AHYIONA		0	0-0	0-0	0-0	0	0	0	0	0	1	0	0	6	3
13	SUGGS, LACEY		12	5-6	2-3	0-0	0	0	0	0	0	1	0	0	8	7
24	BELL, CHINYERE		2	0-0	0-0	2-2	1	4	5	0	1	0	0	1	6	5
00	JEUNE, ASHLI		1	0-0	0-0	1-2	0	1	1	0	0	0	0	0	5	4
01	POWELL, PAIGE		0	0-1	0-0	0-0	1	0	1	0	0	0	0	0	4	6
02	CRISP, MORIAH		0	0-0	0-0	0-0	0	0	0	0	1	0	0	0	2	4
12	BUEHLER, JULIA		0	0-0	0-0	0-0	0	1	1	1	0	0	0	0	2	1
14	TATE, TIMBER		0	0-2	0-2	0-0	0	0	0	0	0	0	0	0	1	-1
22	THYBULLE, ZHANEIA		2	1-1	0-0	0-0	0	0	0	0	0	0	0	0	2	1
25	HOGGATT, MICAH		0	0-0	0-0	0-0	0	0	0	1	0	0	0	0	2	1
32	OBUSEK, CAROL-ANNE		1	0-0	0-0	1-2	0	1	1	0	0	0	0	0	2	1
33	SACCO, GRACE		1	0-0	0-0	1-2	0	0	0	0	0	0	0	0	2	1
	TEAM						0	0	0	0		0				
<b>TOTALS</b>			<b>19</b>	<b>6-12</b>	<b>2-5</b>	<b>5-8</b>	<b>2</b>	<b>8</b>	<b>10</b>	<b>4</b>	<b>3</b>	<b>3</b>	<b>0</b>	<b>1</b>	<b>49</b>	

*Shooting By Period*

Period	FG	FG%	3FG	3FG%	FT	FT%
Game	26-55	47.3%	6-17	35.3%	18-25	72.0%

Game Notes:

Officials: Carla Fountain, Norma Jones, Jennifer Rezac  
Attendance: 1122

Start Time: 2019-02-09 00:05:29

End Time: 2019-02-09 01:57:52

Game Duration: 112

Conference Game:

Score	1st	2nd	3rd	4th	TOT
ELO	15	13	12	11	<b>51</b>
NCW	21	19	17	19	<b>76</b>

Points from (This Period)	ELO	NCW
In the Paint	6	6
Off Turns	2	1
2nd Chance	6	5
Fast Break	0	5
Bench	3	5

**Official Play-By-Play**  
**Elon vs UNCW**  
**Fourth Quarter**  
**February 09, 2019 at TraskColiseum - Wilmington, N.C.**



**Period 4**

**Starters:**

**Elon:** 0 PERPIGNAN, BRIE; 13 POWELL, JAYLIN; 21 COLON, ARIEL; 22 MERCER, LEXI; 42 MAUPIN, EMILY;

**UNCW:** 4 PARKER, SHRITA; 5 SMITH, GIGI; 10 VASON, AHYIONA; 13 SUGGS, LACEY; 24 BELL, CHINYERE;

Time	VISITORS: Elon	Score	Margin	HOME: UNCW
09:37		59-40	H 19	GOOD! LAYUP by SUGGS, LACEY
09:15	MISSED LAYUP by MERCER, LEXI			
09:11	REBOUND (OFF) by MERCER, LEXI			
09:10	GOOD! LAYUP by MERCER, LEXI	59-42	H 17	
08:58		62-42	H 20	GOOD! 3PTR by SUGGS, LACEY
08:58				ASSIST by SMITH, GIGI
08:31	MISSED JUMPER by NANCE, ARIANA			
08:29	REBOUND (OFF) by NANCE, ARIANA			
08:29	TURNOVER (LOSTBALL) by NANCE, ARIANA			
08:14	FOUL (PERSONAL) by NANCE, ARIANA			
08:10				MISSED JUMPER by SMITH, GIGI
08:06	REBOUND (DEF) by POWELL, JAYLIN			
07:55	MISSED 3PTR by NANCE, ARIANA			
07:52	REBOUND (OFF) by POWELL, JAYLIN			
07:48				FOUL (PERSONAL) by SMITH, GIGI
07:48	GOOD! FT by MERCER, LEXI	62-43	H 19	
07:48				SUB OUT: POWELL, PAIGE
07:48				SUB IN: TATE, TIMBER
07:48				SUB OUT: JEUNE, ASHLI
07:48				SUB IN: BELL, CHINYERE
07:48	GOOD! FT by MERCER, LEXI	62-44	H 18	
07:30				MISSED 3PTR by TATE, TIMBER
07:26	REBOUND (DEF) by NANCE, ARIANA			
07:20	MISSED JUMPER by MERCER, LEXI			
07:17				REBOUND (DEF) by SMITH, GIGI
07:12				MISSED 3PTR by TATE, TIMBER
07:06	REBOUND (DEF) by PERPIGNAN, BRIE			
07:06	TURNOVER (TRAVEL) by PERPIGNAN, BRIE			
07:06	SUB OUT: PERPIGNAN, BRIE			
07:06	SUB IN: MUNFORD, SAADIA			
07:06	SUB OUT: MERCER, LEXI			
07:06	SUB IN: COLON, ARIEL			
06:44				TURNOVER (LOSTBALL) by VASON, AHYIONA
06:44	STEAL by MAUPIN, EMILY			
06:44	SUB OUT: MAUPIN, EMILY			
06:44	SUB IN: TRAORE, TYJA			
06:44				SUB OUT: TATE, TIMBER
06:44				SUB IN: PARKER, SHRITA
06:33	MISSED LAYUP by MUNFORD, SAADIA			
06:29				REBOUND (DEF) by BELL, CHINYERE
06:27		64-44	H 20	GOOD! LAYUP by SUGGS, LACEY [FB]
06:08	TURNOVER (LOSTBALL) by NANCE, ARIANA			
06:08				STEAL by BELL, CHINYERE
06:03				TURNOVER (LOSTBALL) by PARKER, SHRITA
06:03	STEAL by POWELL, JAYLIN			
05:39	MISSED JUMPER by MUNFORD, SAADIA			
05:38				REBOUND (DEF) by BELL, CHINYERE
05:38	FOUL (PERSONAL) by TRAORE, TYJA			
05:38	SUB OUT: NANCE, ARIANA			
05:38	SUB IN: RYAN, MICAELA			
05:22				MISSED JUMPER by SMITH, GIGI
05:21				REBOUND (OFF) by BELL, CHINYERE
05:21	FOUL (PERSONAL) by MUNFORD, SAADIA			
05:21		65-44	H 21	GOOD! FT by BELL, CHINYERE
05:21	SUB OUT: POWELL, JAYLIN			
05:21	SUB IN: PERPIGNAN, BRIE			
05:21		66-44	H 22	GOOD! FT by BELL, CHINYERE
05:07	MISSED JUMPER by COLON, ARIEL			
05:05				REBOUND (DEF) by BELL, CHINYERE
04:45				TURNOVER (BADPASS) by SUGGS, LACEY
04:45	STEAL by TRAORE, TYJA			
04:37	MISSED 3PTR by MUNFORD, SAADIA			
04:36	REBOUND (OFF) by RYAN, MICAELA			
04:36				FOUL (PERSONAL) by SMITH, GIGI
04:36				SUB OUT: SMITH, GIGI
04:36				SUB IN: JEUNE, ASHLI
04:36	GOOD! FT by RYAN, MICAELA	66-45	H 21	
04:36	GOOD! FT by RYAN, MICAELA	66-46	H 20	
04:10				SUB OUT: PARKER, SHRITA

Time	VISITORS: Elon	Score	Margin	HOME: UNCW
04:10				SUB IN: POWELL, PAIGE
04:09				MISSED JUMPER by POWELL, PAIGE
04:09				REBOUND (OFF) by POWELL, PAIGE
04:09	SUB OUT: MUNFORD, SAADIA			
04:09	SUB IN: LILES, KAYLA			
04:08	FOUL (PERSONAL) by RYAN, MICAELA			
04:08				SUB OUT: VASON, AHYIONA
04:08				SUB IN: CRISP, MORIAH
03:50		69-46	H 23	GOOD! 3PTR by SUGGS, LACEY
03:50				ASSIST by CRISP, MORIAH
03:37	MISSED JUMPER by PERPIGNAN, BRIE			
03:35				REBOUND (DEF) by JEUNE, ASHLI
03:35	FOUL (PERSONAL) by LILES, KAYLA			
03:35				MISSED FT by JEUNE, ASHLI
03:35				REBOUND (OFF) by TEAM
03:35		70-46	H 24	GOOD! FT by JEUNE, ASHLI
03:20	GOOD! LAYUP by PERPIGNAN, BRIE	70-48	H 22	
03:03				MISSED 3PTR by SUGGS, LACEY
02:59	REBOUND (DEF) by RYAN, MICAELA			
02:50	MISSED 3PTR by COLON, ARIEL			
02:45				REBOUND (DEF) by BELL, CHINYERE
02:42		72-48	H 24	GOOD! LAYUP by SUGGS, LACEY [FB]
02:42				ASSIST by BELL, CHINYERE
02:17	TURNOVER (TRAVEL) by TRAORE, TYJA			
02:17				SUB OUT: JEUNE, ASHLI
02:17				SUB IN: OBUSEK, CAROL-ANNE
02:17				SUB OUT: CRISP, MORIAH
02:17				SUB IN: SACCO, GRACE
02:17				SUB OUT: SUGGS, LACEY
02:17				SUB IN: BUEHLER, JULIA
02:17				SUB OUT: BELL, CHINYERE
02:17				SUB IN: THYBULLE, ZHANEIA
02:08				SUB OUT: POWELL, PAIGE
02:08				SUB IN: HOGGATT, MICAH
01:52	FOUL (PERSONAL) by TRAORE, TYJA			
01:52				MISSED FT by OBUSEK, CAROL-ANNE
01:52				REBOUND (OFF) by TEAM
01:52	SUB OUT: COLON, ARIEL			
01:52	SUB IN: TASMAN, DURU			
01:52		73-48	H 25	GOOD! FT by OBUSEK, CAROL-ANNE
01:28	MISSED JUMPER by TASMAN, DURU			
01:25	REBOUND (OFF) by LILES, KAYLA			
01:25				FOUL (PERSONAL) by HOGGATT, MICAH
01:25	MISSED FT by LILES, KAYLA			
01:25	REBOUND (OFF) by TEAM			
01:25	MISSED FT by LILES, KAYLA			
01:22				REBOUND (DEF) by OBUSEK, CAROL-ANNE
01:16	FOUL (PERSONAL) by TRAORE, TYJA			
01:16				MISSED FT by SACCO, GRACE
01:16				REBOUND (OFF) by TEAM
01:16		74-48	H 26	GOOD! FT by SACCO, GRACE [FB]
01:01				FOUL (PERSONAL) by BUEHLER, JULIA
01:01	GOOD! FT by LILES, KAYLA	74-49	H 25	
01:01	MISSED FT by LILES, KAYLA			
01:00				REBOUND (DEF) by BUEHLER, JULIA
00:40		76-49	H 27	GOOD! JUMPER by THYBULLE, ZHANEIA
00:16	GOOD! JUMPER by PERPIGNAN, BRIE [PNT]	76-51	H 25	

### Elon 51, UNCW 76

Points from (This Period)	ELO	NCW
In the Paint	6	6
Off Turns	2	1
2nd Chance	6	5
Fast Break	0	5
Bench	3	5



**Official Scoring/Possession Reference Chart**  
**Elon vs UNCW**  
**Period 1**  
**February 09, 2019 at TraskColiseum - Wilmington, N.C.**



**Period 1**

**Starters:**

**Elon:** 0 PERPIGNAN,BRIE; 13 POWELL,JAYLIN; 21 COLON,ARIEL; 22 MERCER,LEXI; 42 MAUPIN,EMILY;  
**UNCW:** 4 PARKER,SHRITA; 5 SMITH,GIGI; 10 VASON,AHYIONA; 13 SUGGS,LACEY; 24 BELL,CHINYERE;

Time	VISITORS: Elon	Score	Margin	HOME: UNCW
09:02	GOOD! LAYUP by MERCER, LEXI	0-2	V 2	
08:12		2-2	T	GOOD! LAYUP by SUGGS, LACEY [FB]
07:42		4-2	H 2	GOOD! LAYUP by SMITH, GIGI [FB]
07:28	GOOD! LAYUP by COLON, ARIEL	4-4	T	
07:09		6-4	H 2	GOOD! LAYUP by BELL, CHINYERE
06:30		8-4	H 4	GOOD! LAYUP by SMITH, GIGI
06:18	GOOD! 3PTR by MERCER, LEXI	8-7	H 1	
05:55		10-7	H 3	GOOD! JUMPER by SMITH, GIGI
05:33		12-7	H 5	GOOD! LAYUP by SUGGS, LACEY [FB]
05:33		13-7	H 6	GOOD! FT by SUGGS, LACEY [FB]
05:02		16-7	H 9	GOOD! 3PTR by SMITH, GIGI
04:48	GOOD! FT by MAUPIN, EMILY	16-8	H 8	
04:23	GOOD! FT by MUNFORD, SAADIA	16-9	H 7	
03:10		18-9	H 9	GOOD! JUMPER by SMITH, GIGI
02:27	GOOD! JUMPER by POPOVIC, ANNA	18-11	H 7	
02:11		21-11	H 10	GOOD! 3PTR by TATE, TIMBER
01:59	GOOD! FT by POPOVIC, ANNA	21-12	H 9	
01:59	GOOD! FT by POPOVIC, ANNA	21-13	H 8	
00:31	GOOD! JUMPER by COLON, ARIEL [PNT]	21-15	H 6	

**Elon 15, UNCW 21**

**Official Scoring/Possession Reference Chart**  
**Elon vs UNCW**  
**Period 2**  
**February 09, 2019 at TraskColiseum - Wilmington, N.C.**



**Period 2**

**Starters:**

**Elon:** 0 PERPIGNAN,BRIE; 13 POWELL,JAYLIN; 21 COLON,ARIEL; 22 MERCER,LEXI; 42 MAUPIN,EMILY;  
**UNCW:** 4 PARKER,SHRITA; 5 SMITH,GIGI; 10 VASON,AHYIONA; 13 SUGGS,LACEY; 24 BELL,CHINYERE;

Time	VISITORS: Elon	Score	Margin	HOME: UNCW
07:58		23-15	H 8	GOOD! JUMPER by BELL, CHINYERE [PNT]
07:29		25-15	H 10	GOOD! LAYUP by BELL, CHINYERE
05:11	GOOD! FT by PERPIGNAN, BRIE	25-16	H 9	
05:11	GOOD! FT by PERPIGNAN, BRIE	25-17	H 8	
04:49		27-17	H 10	GOOD! JUMPER by SUGGS, LACEY
04:06		29-17	H 12	GOOD! LAYUP by BELL, CHINYERE [PNT]
03:45	GOOD! JUMPER by PERPIGNAN, BRIE [PNT]	29-19	H 10	
03:22		31-19	H 12	GOOD! LAYUP by SUGGS, LACEY
02:50	GOOD! LAYUP by PERPIGNAN, BRIE	31-21	H 10	
02:26		33-21	H 12	GOOD! LAYUP by SUGGS, LACEY
01:42	GOOD! JUMPER by POWELL, JAYLIN	33-23	H 10	
01:20		36-23	H 13	GOOD! 3PTR by PARKER, SHRITA
01:06		37-23	H 14	GOOD! FT by SUGGS, LACEY [FB]
01:06		38-23	H 15	GOOD! FT by SUGGS, LACEY [FB]
00:44	GOOD! LAYUP by MAUPIN, EMILY	38-25	H 13	
00:26		40-25	H 15	GOOD! LAYUP by SUGGS, LACEY
00:01	GOOD! 3PTR by MUNFORD, SAADIA	40-28	H 12	

**Elon 28, UNCW 40**

**Official Scoring/Possession Reference Chart**  
**Elon vs UNCW**  
**Period 3**  
**February 09, 2019 at TraskColiseum - Wilmington, N.C.**



**Period 3**

**Starters:**

**Elon:** 0 PERPIGNAN,BRIE; 13 POWELL,JAYLIN; 21 COLON,ARIEL; 22 MERCER,LEXI; 42 MAUPIN,EMILY;  
**UNCW:** 4 PARKER,SHRITA; 5 SMITH,GIGI; 10 VASON,AHYIONA; 13 SUGGS,LACEY; 24 BELL,CHINYERE;

Time	VISITORS: Elon	Score	Margin	HOME: UNCW
08:58	GOOD! FT by COLON, ARIEL [FB]	40-29	H 11	
08:58	GOOD! FT by COLON, ARIEL [FB]	40-30	H 10	
08:39		42-30	H 12	GOOD! LAYUP by SMITH, GIGI [PNT]
08:30	GOOD! 3PTR by COLON, ARIEL	42-33	H 9	
07:02		44-33	H 11	GOOD! JUMPER by BELL, CHINYERE
06:18		47-33	H 14	GOOD! 3PTR by PARKER, SHRITA [FB]
04:36	GOOD! LAYUP by LILES, KAYLA	47-35	H 12	
03:21	GOOD! LAYUP by POWELL, JAYLIN	47-37	H 10	
03:07		48-37	H 11	GOOD! FT by SMITH, GIGI
03:07		49-37	H 12	GOOD! FT by SMITH, GIGI
02:43		50-37	H 13	GOOD! FT by SMITH, GIGI [FB]
02:11	GOOD! FT by MAUPIN, EMILY	50-38	H 12	
01:15		51-38	H 13	GOOD! FT by BELL, CHINYERE
01:07		52-38	H 14	GOOD! FT by SMITH, GIGI
01:07		53-38	H 15	GOOD! FT by SMITH, GIGI
00:49	GOOD! JUMPER by POWELL, JAYLIN [PNT]	53-40	H 13	
00:26		54-40	H 14	GOOD! FT by SMITH, GIGI
00:26		55-40	H 15	GOOD! FT by SMITH, GIGI
00:26		56-40	H 16	GOOD! FT by SUGGS, LACEY
00:26		57-40	H 17	GOOD! FT by SUGGS, LACEY

**Elon 40, UNCW 57**

**Official Scoring/Possession Reference Chart**  
**Elon vs UNCW**  
**Period 4**  
**February 09, 2019 at TraskColiseum - Wilmington, N.C.**



**Period 4**

**Starters:**

**Elon:** 0 PERPIGNAN,BRIE; 13 POWELL,JAYLIN; 21 COLON,ARIEL; 22 MERCER,LEXI; 42 MAUPIN,EMILY;  
**UNCW:** 4 PARKER,SHRITA; 5 SMITH,GIGI; 10 VASON,AHYIONA; 13 SUGGS,LACEY; 24 BELL,CHINYERE;

Time	VISITORS: Elon	Score	Margin	HOME: UNCW
09:37		59-40	H 19	GOOD! LAYUP by SUGGS, LACEY
09:10	GOOD! LAYUP by MERCER, LEXI	59-42	H 17	
08:58		62-42	H 20	GOOD! 3PTR by SUGGS, LACEY
07:48	GOOD! FT by MERCER, LEXI	62-43	H 19	
07:48	GOOD! FT by MERCER, LEXI	62-44	H 18	
06:27		64-44	H 20	GOOD! LAYUP by SUGGS, LACEY [FB]
05:21		65-44	H 21	GOOD! FT by BELL, CHINYERE
05:21		66-44	H 22	GOOD! FT by BELL, CHINYERE
04:36	GOOD! FT by RYAN, MICAELA	66-45	H 21	
04:36	GOOD! FT by RYAN, MICAELA	66-46	H 20	
03:50		69-46	H 23	GOOD! 3PTR by SUGGS, LACEY
03:35		70-46	H 24	GOOD! FT by JEUNE, ASHLI
03:20	GOOD! LAYUP by PERPIGNAN, BRIE	70-48	H 22	
02:42		72-48	H 24	GOOD! LAYUP by SUGGS, LACEY [FB]
01:52		73-48	H 25	GOOD! FT by OBUSEK, CAROL-ANNE
01:16		74-48	H 26	GOOD! FT by SACCO, GRACE [FB]
01:01	GOOD! FT by LILES, KAYLA	74-49	H 25	
00:40		76-49	H 27	GOOD! JUMPER by THYBULLE, ZHANEIA
00:16	GOOD! JUMPER by PERPIGNAN, BRIE [PNT]	76-51	H 25	

**Elon 51, UNCW 76**

**Official Substitutions Log**  
**Elon vs UNCW**  
**Period 1**  
**February 09, 2019 at TraskColiseum - Wilmington, N.C.**



VISITORS: <b>Elon</b>	Time	Score	HOME: <b>UNCW</b>
0 PERPIGNAN,BRIE			4 PARKER,SHRITA
13 POWELL,JAYLIN			5 SMITH,GIGI
21 COLON,ARIEL			10 VASON,AHYIONA
22 MERCER,LEXI			13 SUGGS,LACEY
42 MAUPIN,EMILY			24 BELL,CHINYERE
	05:33	7-12	SUB OUT: BELL,CHINYERE
	05:33		SUB IN: POWELL,PAIGE
SUB OUT: 21 COLON,ARIEL	05:33		
SUB IN: 1 MUNFORD,SAADIA	05:33		
SUB OUT: 13 POWELL,JAYLIN	05:33		
SUB IN: 3 POPOVIC,ANNA	05:33		
SUB OUT: 0 PERPIGNAN,BRIE	05:33		
SUB IN: 2 LILES,KAYLA	05:33		
	04:48	7-16	SUB OUT: VASON,AHYIONA
	04:48		SUB IN: TATE,TIMBER
	04:48		SUB OUT: PARKER,SHRITA
	04:48		SUB IN: CRISP,MORIAH
SUB OUT: 22 MERCER,LEXI	04:23	9-16	
SUB IN: 13 POWELL,JAYLIN	04:23		
	01:59	12-21	SUB OUT: SMITH,GIGI
	01:59		SUB IN: JEUNE,ASHLI
SUB OUT: 42 MAUPIN,EMILY	01:59		
SUB IN: 22 MERCER,LEXI	01:59		
SUB OUT: 13 POWELL,JAYLIN	01:59		
SUB IN: 21 COLON,ARIEL	01:59		
	00:36	13-21	SUB OUT: CRISP,MORIAH
	00:36		SUB IN: PARKER,SHRITA

**Elon 15, UNCW 21**

**Official Substitutions Log**  
**Elon vs UNCW**  
**Period 2**  
**February 09, 2019 at TraskColiseum - Wilmington, N.C.**



VISITORS: <b>Elon</b>	Time	Score	HOME: <b>UNCW</b>
0 PERPIGNAN,BRIE			4 PARKER,SHRITA
13 POWELL,JAYLIN			5 SMITH,GIGI
21 COLON,ARIEL			10 VASON,AHYIONA
22 MERCER,LEXI			13 SUGGS,LACEY
42 MAUPIN,EMILY			24 BELL,CHINYERE
	09:32	-	SUB OUT: POWELL,PAIGE
	09:32		SUB IN: BELL,CHINYERE
SUB OUT: 21 COLON,ARIEL	09:32		
SUB IN: 23 NANCE,ARIANA	09:32		
SUB OUT: 2 LILES,KAYLA	08:54	-	
SUB IN: 0 PERPIGNAN,BRIE	08:54		
	07:46	15-23	SUB OUT: JEUNE,ASHLI
	07:46		SUB IN: CRISP,MORIAH
SUB OUT: 1 MUNFORD,SAADIA	06:15	15-25	
SUB IN: 3 POPOVIC,ANNA	06:15		
SUB OUT: 23 NANCE,ARIANA	06:15		
SUB IN: 4 TASMAN,DURU	06:15		
SUB OUT: 42 MAUPIN,EMILY	06:15		
SUB IN: 13 POWELL,JAYLIN	06:15		
	06:15		SUB OUT: TATE,TIMBER
	06:15		SUB IN: JEUNE,ASHLI
	05:11	16-25	SUB OUT: CRISP,MORIAH
	05:11		SUB IN: TATE,TIMBER
SUB OUT: 22 MERCER,LEXI	03:56	17-29	
SUB IN: 42 MAUPIN,EMILY	03:56		
SUB OUT: 4 TASMAN,DURU	03:56		
SUB IN: 21 COLON,ARIEL	03:56		
SUB OUT: 0 PERPIGNAN,BRIE	02:05	21-33	
SUB IN: 1 MUNFORD,SAADIA	02:05		
	01:06	23-37	SUB OUT: BELL,CHINYERE
	01:06		SUB IN: POWELL,PAIGE
SUB OUT: 21 COLON,ARIEL	01:06		
SUB IN: 2 LILES,KAYLA	01:06		
SUB OUT: 3 POPOVIC,ANNA	01:06		
SUB IN: 22 MERCER,LEXI	01:06		

**Elon 28, UNCW 40**

**Official Substitutions Log**  
**Elon vs UNCW**  
**Period 3**  
**February 09, 2019 at TraskColiseum - Wilmington, N.C.**



VISITORS: <b>Elon</b>	Time	Score	HOME: <b>UNCW</b>
0 PERPIGNAN,BRIE			4 PARKER,SHRITA
13 POWELL,JAYLIN			5 SMITH,GIGI
21 COLON,ARIEL			10 VASON,AHYIONA
22 MERCER,LEXI			13 SUGGS,LACEY
42 MAUPIN,EMILY			24 BELL,CHINYERE
SUB OUT: 0 PERPIGNAN,BRIE	06:16	33-47	
SUB IN: 1 MUNFORD,SAADIA	06:16		
SUB OUT: 42 MAUPIN,EMILY	06:16		
SUB IN: 3 POPOVIC,ANNA	06:16		
SUB OUT: 21 COLON,ARIEL	04:37	33-47	
SUB IN: 2 LILES,KAYLA	04:37		
	04:09	35-47	SUB OUT: SUGGS,LACEY
	04:09		SUB IN: JEUNE,ASHLI
	04:09		SUB OUT: PARKER,SHRITA
	04:09		SUB IN: SUGGS,LACEY
	04:09		SUB OUT: SUGGS,LACEY
	04:09		SUB IN: PARKER,SHRITA
	03:07	37-48	SUB OUT: PARKER,SHRITA
	03:07		SUB IN: SUGGS,LACEY
SUB OUT: 3 POPOVIC,ANNA	02:43	37-50	
SUB IN: 42 MAUPIN,EMILY	02:43		
SUB OUT: 22 MERCER,LEXI	02:43		
SUB IN: 21 COLON,ARIEL	02:43		
SUB OUT: 21 COLON,ARIEL	01:15	38-51	
SUB IN: 0 PERPIGNAN,BRIE	01:15		
	01:07	38-52	SUB OUT: BELL,CHINYERE
	01:07		SUB IN: POWELL,PAIGE
SUB OUT: 2 LILES,KAYLA	00:26	40-55	
SUB IN: 22 MERCER,LEXI	00:26		

**Elon 40, UNCW 57**

**Official Substitutions Log**  
**Elon vs UNCW**  
**Period 4**  
**February 09, 2019 at TraskColiseum - Wilmington, N.C.**



VISITORS: Elon	Time	Score	HOME: UNCW
0 PERPIGNAN,BRIE			4 PARKER,SHRITA
13 POWELL,JAYLIN			5 SMITH,GIGI
21 COLON,ARIEL			10 VASON,AHYIONA
22 MERCER,LEXI			13 SUGGS,LACEY
42 MAUPIN,EMILY			24 BELL,CHINYERE
	07:48	43-62	SUB OUT: POWELL,PAIGE
	07:48		SUB IN: TATE,TIMBER
	07:48		SUB OUT: JEUNE,ASHLI
	07:48		SUB IN: BELL,CHINYERE
SUB OUT: 0 PERPIGNAN,BRIE	07:06	44-62	
SUB IN: 1 MUNFORD,SAADIA	07:06		
SUB OUT: 22 MERCER,LEXI	07:06		
SUB IN: 21 COLON,ARIEL	07:06		
SUB OUT: 42 MAUPIN,EMILY	06:44	44-62	
SUB IN: 30 TRAORE,TYJA	06:44		
	06:44		SUB OUT: TATE,TIMBER
	06:44		SUB IN: PARKER,SHRITA
SUB OUT: 23 NANCE,ARIANA	05:38	44-64	
SUB IN: 52 RYAN,MICHAELA	05:38		
SUB OUT: 13 POWELL,JAYLIN	05:21	44-65	
SUB IN: 0 PERPIGNAN,BRIE	05:21		
	04:36	44-66	SUB OUT: SMITH,GIGI
	04:36		SUB IN: JEUNE,ASHLI
	04:10	46-66	SUB OUT: PARKER,SHRITA
	04:10		SUB IN: POWELL,PAIGE
SUB OUT: 1 MUNFORD,SAADIA	04:09	46-66	
SUB IN: 2 LILES,KAYLA	04:09		
	04:08	46-66	SUB OUT: VASON,AHYIONA
	04:08		SUB IN: CRISP,MORIAH
	02:17	48-72	SUB OUT: JEUNE,ASHLI
	02:17		SUB IN: OBUSEK,CAROL-ANNE
	02:17		SUB OUT: CRISP,MORIAH
	02:17		SUB IN: SACCO,GRACE
	02:17		SUB OUT: SUGGS,LACEY
	02:17		SUB IN: BUEHLER,JULIA
	02:17		SUB OUT: BELL,CHINYERE
	02:17		SUB IN: THYBULLE,ZHANEIA
	02:08	48-72	SUB OUT: POWELL,PAIGE
	02:08		SUB IN: HOGGATT,MICAH
SUB OUT: 21 COLON,ARIEL	01:52	48-72	
SUB IN: 4 TASMAN,DURU	01:52		

**Elon 51, UNCW 76**

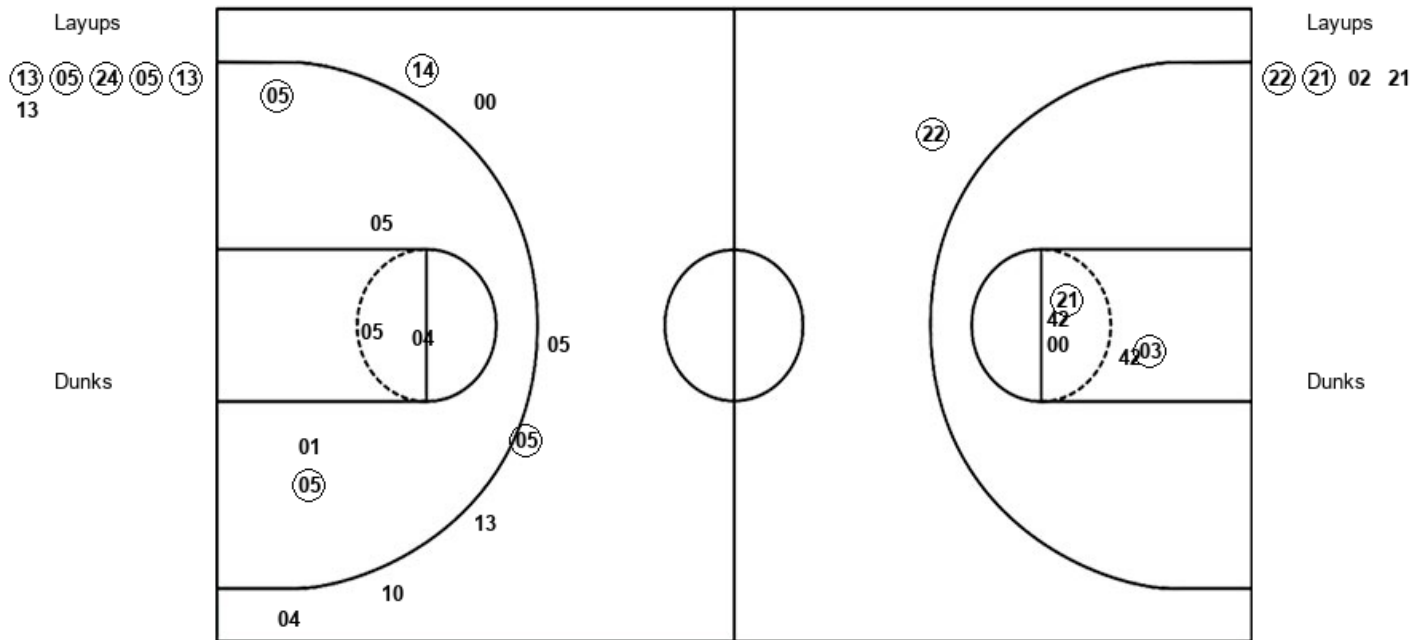


**Official Shot Chart**  
**Elon vs UNCW**  
**PERIOD 1 Shots**  
 February 09, 2019 at TraskColiseum - Wilmington, N.C.



**UNCW**

**Elon**



UNCW : Period 1	Made	Att	Pct
Layups	5	6	83.3
Dunks	0	0	0
2PT Field Goals	7	12	58.3
3PT Field Goals	2	7	28.6
<b>Total Field Goals</b>	<b>9</b>	<b>19</b>	<b>47.4</b>

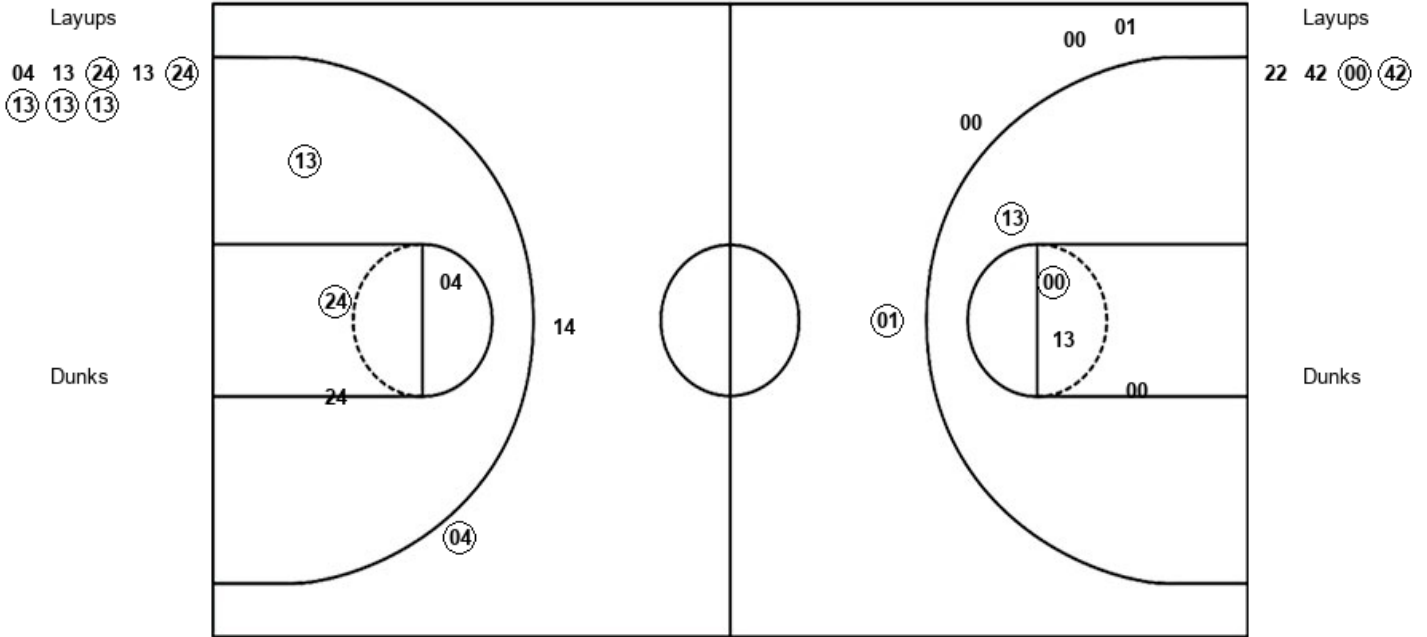
ELO : Period 1	Made	Att	Pct
Layups	2	4	50.0
Dunks	0	0	0
2PT Field Goals	4	9	44.4
3PT Field Goals	1	1	100.0
<b>Total Field Goals</b>	<b>5</b>	<b>10</b>	<b>50.0</b>

**Official Shot Chart**  
**Elon vs UNCW**  
**PERIOD 2 Shots**  
 February 09, 2019 at TraskColiseum - Wilmington, N.C.



**UNCW**

**Elon**



<b>UNCW : Period 2</b>	<b>Made</b>	<b>Att</b>	<b>Pct</b>
Layups	5	8	62.5
Dunks	0	0	0
2PT Field Goals	7	12	58.3
3PT Field Goals	1	2	50.0
<b>Total Field Goals</b>	<b>8</b>	<b>14</b>	<b>57.1</b>

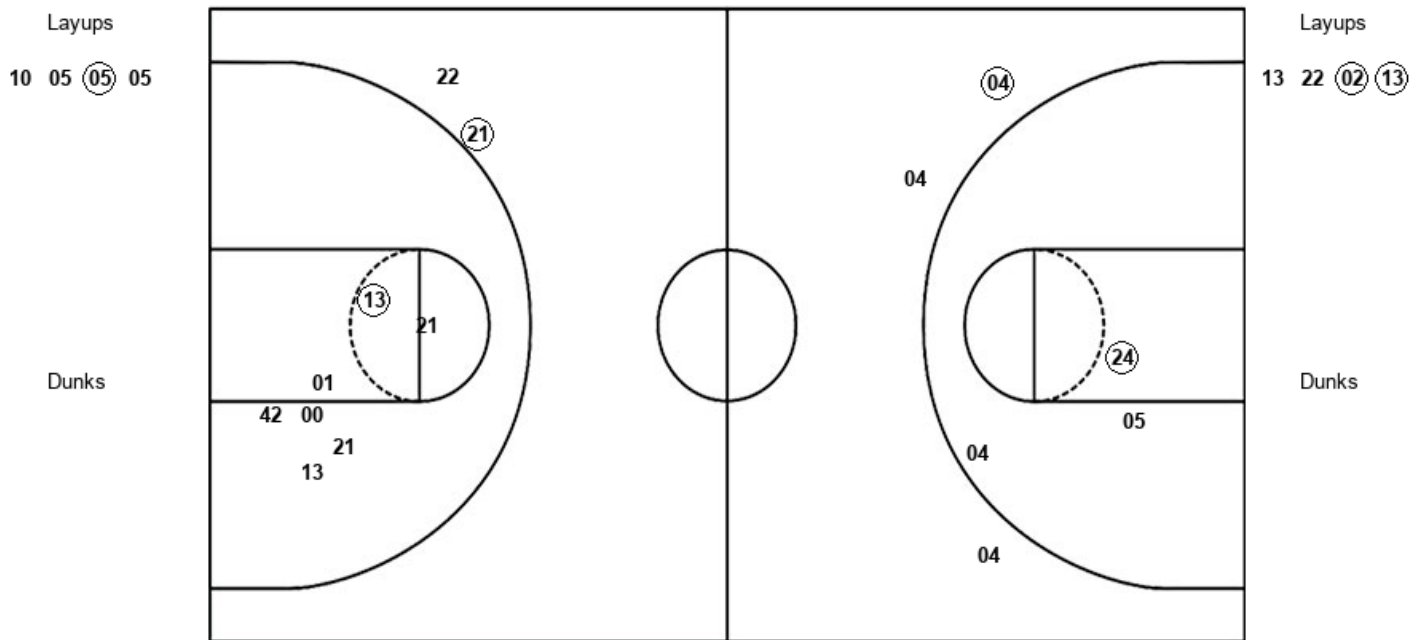
<b>ELO : Period 2</b>	<b>Made</b>	<b>Att</b>	<b>Pct</b>
Layups	2	4	50.0
Dunks	0	0	0
2PT Field Goals	4	8	50.0
3PT Field Goals	1	4	25.0
<b>Total Field Goals</b>	<b>5</b>	<b>12</b>	<b>41.7</b>

**Official Shot Chart**  
**Elon vs UNCW**  
**PERIOD 3 Shots**  
 February 09, 2019 at TraskColiseum - Wilmington, N.C.



**UNCW**

**Elon**



UNCW : Period 3	Made	Att	Pct
Layups	1	4	25.0
Dunks	0	0	0
2PT Field Goals	2	7	28.6
3PT Field Goals	1	3	33.3
<b>Total Field Goals</b>	<b>3</b>	<b>10</b>	<b>30.0</b>

ELO : Period 3	Made	Att	Pct
Layups	2	4	50.0
Dunks	0	0	0
2PT Field Goals	3	11	27.3
3PT Field Goals	1	2	50.0
<b>Total Field Goals</b>	<b>4</b>	<b>13</b>	<b>30.8</b>

**Official Shot Chart**  
**Elon vs UNCW**  
**PERIOD 4 Shots**  
 February 09, 2019 at TraskColiseum - Wilmington, N.C.



**UNCW**

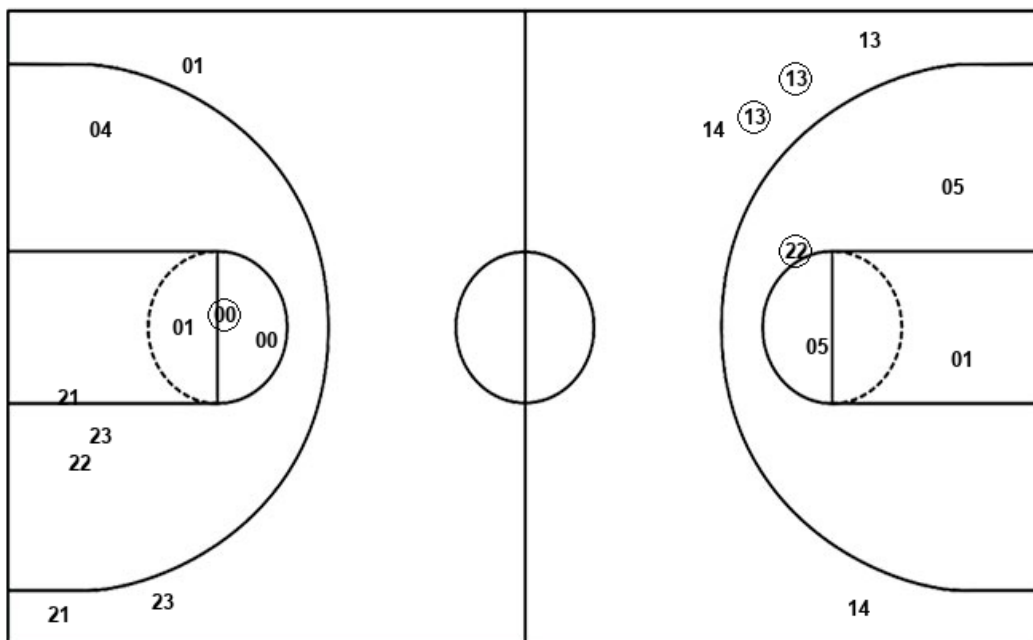
**Elon**

Layups  
 13 13 13

Layups  
 22 22 01 00

Dunks

Dunks



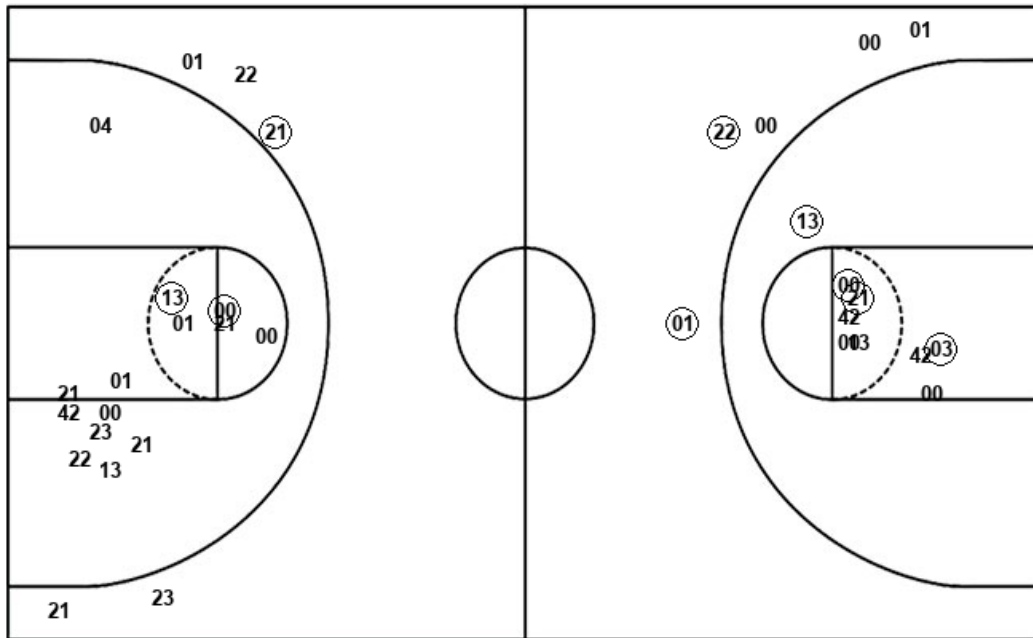
UNCW : Period 4	Made	Att	Pct
Layups	3	3	100.0
Dunks	0	0	0
2PT Field Goals	4	7	57.1
3PT Field Goals	2	5	40.0
<b>Total Field Goals</b>	<b>6</b>	<b>12</b>	<b>50.0</b>

ELO : Period 4	Made	Att	Pct
Layups	2	4	50.0
Dunks	0	0	0
2PT Field Goals	3	11	27.3
3PT Field Goals	0	3	00.0
<b>Total Field Goals</b>	<b>3</b>	<b>14</b>	<b>21.4</b>

**Official Shot Chart**  
**Elon vs UNCW**  
**Elon Team Shots**  
 February 09, 2019 at TraskColiseum - Wilmington, N.C.



Layups



Layups

(22) (21) 02 21 22  
 42 (00) (42) 13 22  
 (02) (13) 22 (22) 01  
 (00)

Dunks

Dunks

ELO : Period 1	Made	Att	Pct
Layups	2	4	50.0
Dunks	0	0	0
2PT Field Goals	4	9	44.4
3PT Field Goals	1	1	100.0
<b>Total Field Goals</b>	<b>5</b>	<b>10</b>	<b>50.0</b>

ELO : Period 2	Made	Att	Pct
Layups	2	4	50.0
Dunks	0	0	0
2PT Field Goals	4	8	50.0
3PT Field Goals	1	4	25.0
<b>Total Field Goals</b>	<b>5</b>	<b>12</b>	<b>41.7</b>

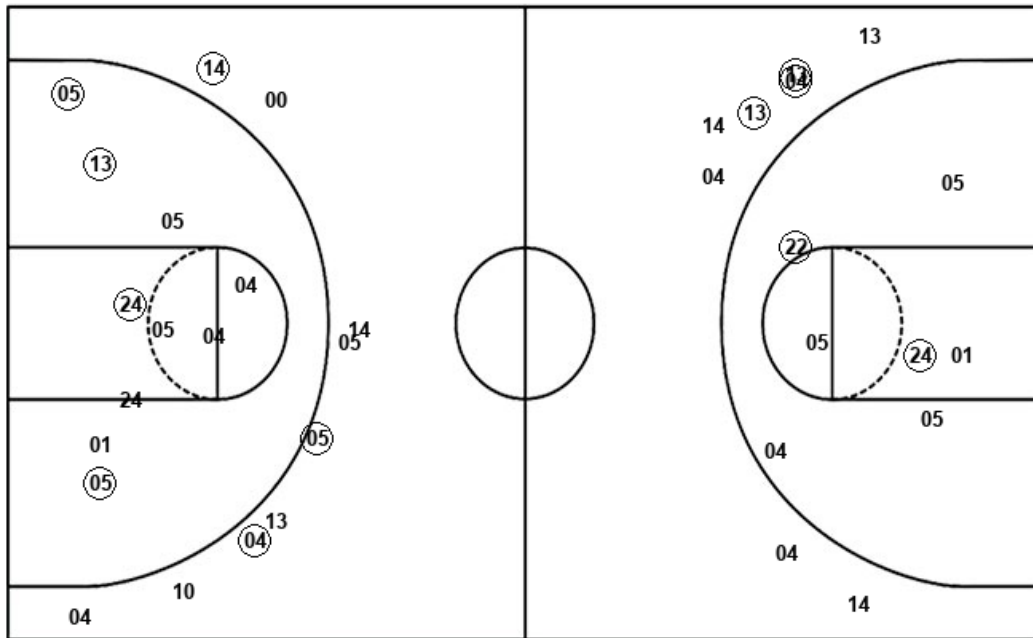
ELO : Period 3	Made	Att	Pct
Layups	2	4	50.0
Dunks	0	0	0
2PT Field Goals	3	11	27.3
3PT Field Goals	1	2	50.0
<b>Total Field Goals</b>	<b>4</b>	<b>13</b>	<b>30.8</b>

ELO : Period 4	Made	Att	Pct
Layups	2	4	50.0
Dunks	0	0	0
2PT Field Goals	3	11	27.3
3PT Field Goals	0	3	00.0
<b>Total Field Goals</b>	<b>3</b>	<b>14</b>	<b>21.4</b>

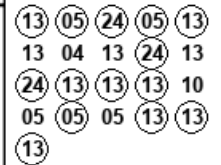
**Official Shot Chart**  
**Elon vs UNCW**  
**UNCW Team Shots**  
 February 09, 2019 at TraskColiseum - Wilmington, N.C.



Layups



Layups



Dunks

Dunks

NCW : Period 1	Made	Att	Pct
Layups	5	6	83.3
Dunks	0	0	0
2PT Field Goals	7	12	58.3
3PT Field Goals	2	7	28.6
<b>Total Field Goals</b>	<b>9</b>	<b>19</b>	<b>47.4</b>

NCW : Period 3	Made	Att	Pct
Layups	1	4	25.0
Dunks	0	0	0
2PT Field Goals	2	7	28.6
3PT Field Goals	1	3	33.3
<b>Total Field Goals</b>	<b>3</b>	<b>10</b>	<b>30.0</b>

NCW : Period 2	Made	Att	Pct
Layups	5	8	62.5
Dunks	0	0	0
2PT Field Goals	7	12	58.3
3PT Field Goals	1	2	50.0
<b>Total Field Goals</b>	<b>8</b>	<b>14</b>	<b>57.1</b>

NCW : Period 4	Made	Att	Pct
Layups	3	3	100.0
Dunks	0	0	0
2PT Field Goals	4	7	57.1
3PT Field Goals	2	5	40.0
<b>Total Field Goals</b>	<b>6</b>	<b>12</b>	<b>50.0</b>