

## FINAL SCORE

NORTHEASTERN



**Northeastern**

**70**



**UNCW**

**83**

February 03, 2019 • Trask Coliseum - Wilmington, N.C.

## FINAL STATISTICS

**Official Box Score**  
**Northeastern vs UNCW**  
**Game Totals -- Final Statistics**  
**February 03, 2019 at Trask Coliseum - Wilmington, N.C.**



**Northeastern 70**

No.	Player	S	Pts	FG	3FG	FT	OR	DR	TR	PF	A	TO	Blk	Stl	Min	+/-
12	DUBLIN, AYANNA		4	1-4	0-0	2-2	3	3	6	2	2	4	0	0	28	-12
13	MAY, KATIE		4	2-4	0-1	0-0	0	1	1	1	1	0	0	1	20	-11
14	TODD, SHANNON		18	7-19	2-9	2-2	1	4	5	5	1	3	1	2	33	-14
20	GENCO, JESS		10	5-12	0-3	0-0	1	2	3	1	5	5	0	2	40	-13
24	GIACONE, GABBY		3	1-7	0-0	1-2	2	6	8	3	0	1	0	2	19	-12
01	CURRENCE, KENDALL		10	4-6	2-4	0-0	2	0	2	3	1	2	0	2	20	-8
03	ZWERLING, ZOE		6	2-3	2-3	0-0	0	0	0	1	0	1	0	0	4	7
04	HILL, ALEXIS		7	2-7	0-0	3-5	6	2	8	1	0	1	0	1	23	-3
11	CLARK, STELLA		8	3-8	2-5	0-0	1	0	1	3	1	1	0	1	12	1
	TEAM						0	1	1	0		1				
<b>TOTALS</b>			<b>70</b>	<b>27-70</b>	<b>8-25</b>	<b>8-11</b>	<b>16</b>	<b>19</b>	<b>35</b>	<b>20</b>	<b>11</b>	<b>19</b>	<b>1</b>	<b>11</b>	<b>200</b>	

*Shooting By Period*

Period	FG	FG%	3FG	3FG%	FT	FT%
1st Qtr	5-15	33%	2-9	22%	3-4	75%
2nd Qtr	8-17	47%	3-5	60%	1-2	50%
3rd Qtr	5-16	31%	0-3	00%	2-3	67%
4th Qtr	9-22	41%	3-8	38%	2-2	100%
1st Half	13-32	41%	5-14	36%	4-6	67%
2nd Half	14-38	37%	3-11	27%	4-5	80%
<b>Game</b>	<b>27-70</b>	<b>38.6%</b>	<b>8-25</b>	<b>32.0%</b>	<b>8-11</b>	<b>72.7%</b>

*Last FG: 4th-00:01*  
*Biggest Run: 9-0*  
*Largest lead: By 0 at 1-07:34*  
*Technical Fouls: None.*

**UNCW 83**

No.	Player	S	Pts	FG	3FG	FT	OR	DR	TR	PF	A	TO	Blk	Stl	Min	+/-
04	PARKER, SHRITA		19	7-13	1-2	4-5	0	4	4	0	3	3	0	4	36	15
05	SMITH, GIGI		20	8-17	3-5	1-2	3	2	5	3	2	5	1	2	29	12
10	VASON, AHYIONA		0	0-1	0-0	0-0	0	2	2	4	3	3	0	0	22	11
13	SUGGS, LACEY		15	6-8	1-2	2-4	1	6	7	2	3	2	0	3	34	19
24	BELL, CHINYERE		14	6-7	0-0	2-2	2	7	9	4	2	3	1	0	26	29
00	JEUNE, ASHLI		0	0-1	0-1	0-0	0	0	0	0	0	1	0	1	4	3
01	POWELL, PAIGE		6	2-3	0-0	2-3	1	6	7	1	2	0	0	0	19	-2
02	CRISP, MORIAH		0	0-1	0-1	0-0	0	0	0	0	3	1	0	1	17	7
12	BUEHLER, JULIA		1	0-0	0-0	1-2	0	0	0	0	0	1	0	0	1	-5
14	TATE, TIMBER		6	2-3	2-3	0-0	1	0	1	1	0	0	0	1	5	-1
22	THYBULLE, ZHANEIA		0	0-0	0-0	0-0	0	0	0	0	0	1	0	0	1	-5
25	HOGGATT, MICAH		2	1-1	0-0	0-0	0	1	1	0	0	0	0	0	1	-5
31	MITCHELL, JESSICA		0	0-1	0-0	0-0	0	0	0	1	0	0	0	0	4	-7
32	OBUSEK, CAROL-ANNE		0	0-0	0-0	0-0	0	0	0	1	0	1	0	0	1	-1
33	SACCO, GRACE		0	0-0	0-0	0-0	0	0	0	0	1	1	0	0	1	-5
	TEAM						0	0	0	0		1				
<b>TOTALS</b>			<b>83</b>	<b>32-56</b>	<b>7-14</b>	<b>12-18</b>	<b>8</b>	<b>28</b>	<b>36</b>	<b>17</b>	<b>19</b>	<b>23</b>	<b>2</b>	<b>12</b>	<b>200</b>	

*Shooting By Period*

Period	FG	FG%	3FG	3FG%	FT	FT%
1st Qtr	8-16	50%	2-4	50%	2-2	100%
2nd Qtr	9-16	56%	3-6	50%	0-3	00%
3rd Qtr	7-13	54%	2-4	50%	5-6	83%
4th Qtr	8-11	73%	0-0	0%	5-7	71%
1st Half	17-32	53%	5-10	50%	2-5	40%
2nd Half	15-24	63%	2-4	50%	10-13	77%
<b>Game</b>	<b>32-56</b>	<b>57.1%</b>	<b>7-14</b>	<b>50.0%</b>	<b>12-18</b>	<b>66.7%</b>

*Last FG: 4th-00:00*  
*Biggest Run: 10-0*  
*Largest lead: By 19 at 4-00:59*  
*Technical Fouls: None.*

Game Notes:

Officials: Daryl Humphrey, Mark McClenney, Toni Patillo  
 Attendance: 634

Start Time: 2019-02-03 18:05:56  
 End Time: 2019-02-03 20:04:09  
 Game Duration: 118  
 Conference Game;

Score	1st	2nd	3rd	4th	TOT
NOR	15	20	12	23	<b>70</b>
NCW	20	21	21	21	<b>83</b>

NOR led for 0:00. NCW led for 38:04.  
 Game was tied for 1:56.  
 Times tied: 2      Lead Changes: 0

Points from	NOR	NCW
In the Paint	28	44
Off Turns	21	24
2nd Chance	7	10
Fast Break	8	30
Bench	31	15

**Official Box Score**  
**Northeastern vs UNCW**  
**First Half Statistics Only**  
**February 03, 2019 at Trask Coliseum - Wilmington, N.C.**



**Northeastern 35**

No.	Player	S	Pts	FG	3FG	FT	OR	DR	TR	PF	A	TO	Blk	Stl	Min	+/-
11	CLARK, STELLA		3	1-2	1-2	0-0	0	0	0	3	1	0	0	0	6	2
12	DUBLIN, AYANNA		2	1-3	0-0	0-0	2	1	3	0	2	2	0	0	15	-5
13	MAY, KATIE		0	0-0	0-0	0-0	0	1	1	1	0	0	0	0	6	-5
14	TODD, SHANNON		7	2-9	1-6	2-2	1	4	5	1	0	1	1	1	17	-8
20	GENCO, JESS		6	3-6	0-1	0-0	0	1	1	1	2	2	0	1	20	-6
24	GIACONE, GABBY		0	0-2	0-0	0-0	1	2	3	0	0	0	0	0	6	-6
01	CURRENCE, KENDALL		10	4-6	2-4	0-0	1	0	1	1	1	1	0	0	13	-2
03	ZWERLING, ZOE		3	1-1	1-1	0-0	0	0	0	1	0	1	0	0	3	1
04	HILL, ALEXIS		4	1-3	0-0	2-4	4	1	5	0	0	0	0	0	15	-1
	TEAM		0	0-0	0-0	0-0	0	0	0	0	0	1	0	0	0	
<b>TOTALS</b>			<b>35</b>	<b>13-32</b>	<b>5-14</b>	<b>4-6</b>	<b>9</b>	<b>10</b>	<b>19</b>	<b>8</b>	<b>6</b>	<b>8</b>	<b>1</b>	<b>2</b>	<b>100</b>	

*Shooting By Period*

Period	FG	FG%	3FG	3FG%	FT	FT%
1st Qtr	5-15	33%	2-9	22%	3-4	75%
2nd Qtr	8-17	47%	3-5	60%	1-2	50%
1st Half	13-32	41%	5-14	36%	4-6	67%
Game	27-70	38.6%	8-25	32.0%	8-11	72.7%

*Last FG Half: NOR 2nd-01:17*

**UNCW 41**

No.	Player	S	Pts	FG	3FG	FT	OR	DR	TR	PF	A	TO	Blk	Stl	Min	+/-
00	JEUNE, ASHLI		0	0-1	0-1	0-0	0	0	0	0	0	0	0	0	2	4
01	POWELL, PAIGE		2	1-1	0-0	0-1	1	4	5	1	2	0	0	0	13	8
02	CRISP, MORIAH		0	0-1	0-1	0-0	0	0	0	0	2	0	0	0	8	-1
04	PARKER, SHRITA		9	3-7	1-2	2-2	0	2	2	0	2	1	0	4	17	3
05	SMITH, GIGI		9	4-9	1-2	0-0	3	0	3	2	0	2	0	1	11	0
10	VASON, AHYIONA		0	0-1	0-0	0-0	0	1	1	1	1	2	0	0	13	7
12	BUEHLER, JULIA		0	0-0	0-0	0-0	0	0	0	0	0	0	0	0	0	0
13	SUGGS, LACEY		7	3-4	1-1	0-2	0	1	1	1	1	0	0	1	17	6
14	TATE, TIMBER		6	2-3	2-3	0-0	1	0	1	0	0	0	0	1	4	-1
22	THYBULLE, ZHANEIA		0	0-0	0-0	0-0	0	0	0	0	0	0	0	0	0	0
24	BELL, CHINYERE		8	4-5	0-0	0-0	2	3	5	2	1	1	1	0	13	8
25	HOGGATT, MICAH		0	0-0	0-0	0-0	0	0	0	0	0	0	0	0	0	0
31	MITCHELL, JESSICA		0	0-0	0-0	0-0	0	0	0	0	0	0	0	0	3	-3
32	OBUSEK, CAROL-ANNE		0	0-0	0-0	0-0	0	0	0	1	0	1	0	0	1	-1
33	SACCO, GRACE		0	0-0	0-0	0-0	0	0	0	0	0	0	0	0	0	0
	TEAM		0	0-0	0-0	0-0	0	0	0	0	0	0	0	0	0	
<b>TOTALS</b>			<b>41</b>	<b>17-32</b>	<b>5-10</b>	<b>2-5</b>	<b>7</b>	<b>11</b>	<b>18</b>	<b>8</b>	<b>9</b>	<b>7</b>	<b>1</b>	<b>7</b>	<b>100</b>	

*Shooting By Period*

Period	FG	FG%	3FG	3FG%	FT	FT%
1st Qtr	8-16	50%	2-4	50%	2-2	100%
2nd Qtr	9-16	56%	3-6	50%	0-3	00%
1st Half	17-32	53%	5-10	50%	2-5	40%
Game	32-56	57.1%	7-14	50.0%	12-18	66.7%

*Last FG Half: NCW 2nd-00:04*

*Game Notes:*

Officials: Daryl Humphrey, Mark McClenney, Toni Patillo  
 Attendance: 634

Start Time: 2019-02-03 18:05:56  
 End Time: 2019-02-03 20:04:09  
 Game Duration: 118  
 Conference Game;

Score	1st	2nd	3rd	4th	TOT
NOR	15	20	12	23	<b>70</b>
NCW	20	21	21	21	<b>83</b>

**Points from (This Period)**

	NOR	NCW
In the Paint	10	22
Off Turns	6	9
2nd Chance	6	8
Fast Break	3	13
Bench	20	8

**Official Box Score**  
**Northeastern vs UNCW**  
**First Quarter Statistics Only**  
**February 03, 2019 at Trask Coliseum - Wilmington, N.C.**



**Northeastern 15**

No.	Player	S	Pts	FG	3FG	FT	OR	DR	TR	PF	A	TO	Blk	Stl	Min	+/-
12	DUBLIN, AYANNA		2	1-2	0-0	0-0	1	1	2	0	2	2	0	0	9	-3
13	MAY, KATIE		0	0-0	0-0	0-0	0	1	1	1	0	0	0	0	6	-5
14	TODD, SHANNON		4	1-6	0-4	2-2	1	1	2	0	0	1	0	0	8	-6
20	GENCO, JESS		2	1-2	0-1	0-0	0	1	1	0	0	1	0	1	10	-5
24	GIACONE, GABBY		0	0-1	0-0	0-0	1	1	2	0	0	0	0	0	5	-6
01	CURRENCE, KENDALL		3	1-2	1-2	0-0	0	0	0	0	0	0	0	0	3	-1
03	ZWERLING, ZOE		0	0-0	0-0	0-0	0	0	0	0	0	0	0	0	0	0
04	HILL, ALEXIS		1	0-0	0-0	1-2	1	0	1	0	0	0	0	0	5	0
11	CLARK, STELLA		3	1-2	1-2	0-0	0	0	0	2	1	0	0	0	5	1
	TEAM						0	0	0	0		1				
<b>TOTALS</b>			<b>15</b>	<b>5-15</b>	<b>2-9</b>	<b>3-4</b>	<b>4</b>	<b>5</b>	<b>9</b>	<b>3</b>	<b>3</b>	<b>5</b>	<b>0</b>	<b>1</b>	<b>50</b>	

*Shooting By Period*

Period	FG	FG%	3FG	3FG%	FT	FT%
1st Qtr	5-15	33%	2-9	22%	3-4	75%
2nd Qtr	8-17	47%	3-5	60%	1-2	50%
1st Half	5-15	33%	2-9	22%	3-4	75%
1st Half	13-32	41%	5-14	36%	4-6	67%
Game	27-70	38.6%	8-25	32.0%	8-11	72.7%

**UNCW 20**

No.	Player	S	Pts	FG	3FG	FT	OR	DR	TR	PF	A	TO	Blk	Stl	Min	+/-
04	PARKER, SHRITA		2	0-1	0-0	2-2	0	1	1	0	1	1	0	2	7	2
05	SMITH, GIGI		6	3-7	0-1	0-0	1	0	1	2	0	2	0	0	8	1
10	VASON, AHYIONA		0	0-1	0-0	0-0	0	1	1	0	0	0	0	0	6	5
13	SUGGS, LACEY		2	1-1	0-0	0-0	0	1	1	1	1	0	0	1	7	5
24	BELL, CHINYERE		4	2-3	0-0	0-0	1	1	2	1	0	1	0	0	7	5
00	JEUNE, ASHLI		0	0-1	0-1	0-0	0	0	0	0	0	0	0	0	2	4
01	POWELL, PAIGE		0	0-0	0-0	0-0	1	2	3	1	1	0	0	0	6	4
02	CRISP, MORIAH		0	0-0	0-0	0-0	0	0	0	0	1	0	0	0	5	0
12	BUEHLER, JULIA		0	0-0	0-0	0-0	0	0	0	0	0	0	0	0	0	0
14	TATE, TIMBER		6	2-2	2-2	0-0	0	0	0	0	0	0	0	1	4	-1
22	THYBULLE, ZHANEIA		0	0-0	0-0	0-0	0	0	0	0	0	0	0	0	0	0
25	HOGGATT, MICAH		0	0-0	0-0	0-0	0	0	0	0	0	0	0	0	0	0
31	MITCHELL, JESSICA		0	0-0	0-0	0-0	0	0	0	0	0	0	0	0	0	0
32	OBUSEK, CAROL-ANNE		0	0-0	0-0	0-0	0	0	0	0	0	0	0	0	0	0
33	SACCO, GRACE		0	0-0	0-0	0-0	0	0	0	0	0	0	0	0	0	0
	TEAM						0	0	0	0		0				
<b>TOTALS</b>			<b>20</b>	<b>8-16</b>	<b>2-4</b>	<b>2-2</b>	<b>3</b>	<b>6</b>	<b>9</b>	<b>5</b>	<b>4</b>	<b>4</b>	<b>0</b>	<b>4</b>	<b>50</b>	

*Shooting By Period*

Period	FG	FG%	3FG	3FG%	FT	FT%
1st Qtr	8-16	50%	2-4	50%	2-2	100%
2nd Qtr	9-16	56%	3-6	50%	0-3	00%
1st Half	8-16	50%	2-4	50%	2-2	100%
1st Half	17-32	53%	5-10	50%	2-5	40%
Game	32-56	57.1%	7-14	50.0%	12-18	66.7%

Game Notes:

Officials: Daryl Humphrey, Mark McClenney, Toni Patillo  
Attendance: 634

Start Time: 2019-02-03 18:05:56  
End Time: 2019-02-03 20:04:09  
Game Duration: 118  
Conference Game;

Score	1st	2nd	3rd	4th	TOT
NOR	15	20	12	23	<b>70</b>
NCW	20	21	21	21	<b>83</b>

Points from (This Period)	NOR	NCW
In the Paint	4	12
Off Turns	3	5
2nd Chance	3	4
Fast Break	0	7
Bench	7	6

**Official By-By-Play  
Northeastern vs UNCW  
First Quarter  
February 03, 2019 at Trask Coliseum - Wilmington, N.C.**



**Period 1**

**Starters:**

**Northeastern:** 12 DUBLIN, AYANNA; 13 MAY, KATIE; 14 TODD, SHANNON; 20 GENCO, JESS; 24 GIACONE, GABBY;

**UNCW:** 4 PARKER, SHRITA; 5 SMITH, GIGI; 10 VASON, AHYIONA; 13 SUGGS, LACEY; 24 BELL, CHINYERE;

Time	VISITORS: Northeastern	Score	Margin	HOME: UNCW
09:50	MISSED 3PTR by TODD, SHANNON			
09:44				REBOUND (DEF) by VASON, AHYIONA
09:31				MISSED LAYUP by SMITH, GIGI
09:28	REBOUND (DEF) by GIACONE, GABBY			
09:25	TURNOVER (BADPASS) by GENCO, JESS			
09:25				STEAL by PARKER, SHRITA
09:17				MISSED JUMPER by SMITH, GIGI
09:13	REBOUND (DEF) by MAY, KATIE			
09:06	MISSED 3PTR by GENCO, JESS			
09:03				REBOUND (DEF) by SUGGS, LACEY
08:46				MISSED 3PTR by SMITH, GIGI
08:42				REBOUND (OFF) by BELL, CHINYERE
08:40		2-0	H 2	GOOD! LAYUP by BELL, CHINYERE
08:18	MISSED JUMPER by GIACONE, GABBY			
08:13	REBOUND (OFF) by DUBLIN, AYANNA			
08:12	GOOD! LAYUP by DUBLIN, AYANNA	2-2	T	
08:03	FOUL (PERSONAL) by MAY, KATIE			
07:55				MISSED JUMPER by PARKER, SHRITA
07:52				REBOUND (OFF) by SMITH, GIGI
07:51		4-2	H 2	GOOD! LAYUP by SMITH, GIGI
07:34	GOOD! LAYUP by TODD, SHANNON	4-4	T	
07:34	ASSIST by DUBLIN, AYANNA			
07:19		6-4	H 2	GOOD! LAYUP by SUGGS, LACEY
07:11	TURNOVER (LOSTBALL) by TODD, SHANNON			
07:11				STEAL by SUGGS, LACEY
07:06				FOUL (OFF) by SMITH, GIGI
07:06				TURNOVER (OFFENSIVE) by SMITH, GIGI
06:39	MISSED JUMPER by DUBLIN, AYANNA			
06:36				REBOUND (DEF) by BELL, CHINYERE
06:28		8-4	H 4	GOOD! LAYUP by SMITH, GIGI [FB]
06:28				ASSIST by PARKER, SHRITA
06:19				SUB OUT: BELL, CHINYERE
06:19				SUB IN: POWELL, PAIGE
06:19	SUB OUT: GIACONE, GABBY			
06:19	SUB IN: CLARK, STELLA			
06:10				FOUL (PERSONAL) by SUGGS, LACEY
06:10	GOOD! FT by TODD, SHANNON	8-5	H 3	
06:10	GOOD! FT by TODD, SHANNON	8-6	H 2	
05:54	FOUL (PERSONAL) by CLARK, STELLA			
05:54				SUB OUT: PARKER, SHRITA
05:54				SUB IN: TATE, TIMBER
05:37		11-6	H 5	GOOD! 3PTR by TATE, TIMBER
05:37				ASSIST by SUGGS, LACEY
05:23	MISSED 3PTR by TODD, SHANNON			
05:18				REBOUND (DEF) by POWELL, PAIGE
04:59		13-6	H 7	GOOD! LAYUP by SMITH, GIGI [PNT]
04:48	GOOD! JUMPER by GENCO, JESS	13-8	H 5	
04:31				MISSED JUMPER by VASON, AHYIONA
04:30				REBOUND (OFF) by POWELL, PAIGE
04:30				SUB OUT: VASON, AHYIONA
04:30				SUB IN: CRISP, MORIAH
04:30	SUB OUT: MAY, KATIE			
04:30	SUB IN: HILL, ALEXIS			
04:26				MISSED JUMPER by SMITH, GIGI
04:22	REBOUND (DEF) by TODD, SHANNON			
04:03	GOOD! 3PTR by CLARK, STELLA	13-11	H 2	
04:03	ASSIST by DUBLIN, AYANNA			
03:41				TURNOVER (LOSTBALL) by SMITH, GIGI
03:34	MISSED 3PTR by CLARK, STELLA			
03:31	REBOUND (OFF) by TODD, SHANNON			
03:18	TURNOVER (LOSTBALL) by DUBLIN, AYANNA			
03:18				STEAL by TATE, TIMBER
03:11		16-11	H 5	GOOD! 3PTR by TATE, TIMBER [FB]
03:11				ASSIST by CRISP, MORIAH
03:01	MISSED 3PTR by TODD, SHANNON			
02:58	REBOUND (OFF) by HILL, ALEXIS			
02:55				FOUL (PERSONAL) by POWELL, PAIGE
02:55	MISSED FT by HILL, ALEXIS			
02:55	REBOUND (OFF) by TEAM			

Time	VISITORS: Northeastern	Score	Margin	HOME: UNCW
02:55				SUB OUT: SUGGS, LACEY
02:55				SUB IN: PARKER, SHRITA
02:55	GOOD! FT by HILL, ALEXIS	16-12	H 4	
02:55				SUB OUT: POWELL, PAIGE
02:55				SUB IN: BELL, CHINYERE
02:55	SUB OUT: TODD, SHANNON			
02:55	SUB IN: CURRENCE, KENDALL			
02:48				TURNOVER (LOSTBALL) by PARKER, SHRITA
02:48	STEAL by GENCO, JESS			
02:38	GOOD! 3PTR by CURRENCE, KENDALL	16-15	H 1	
02:38	ASSIST by CLARK, STELLA			
02:14				MISSED JUMPER by BELL, CHINYERE
02:14	REBOUND (DEF) by DUBLIN, AYANNA			
02:14				FOUL (PERSONAL) by SMITH, GIGI
02:14				SUB OUT: SMITH, GIGI
02:14				SUB IN: JEUNE, ASHLI
02:14				SUB OUT: TATE, TIMBER
02:14				SUB IN: POWELL, PAIGE
01:58	TURNOVER (LOSTBALL) by DUBLIN, AYANNA			
01:58				STEAL by PARKER, SHRITA
01:55	FOUL (PERSONAL) by CLARK, STELLA			
01:55		17-15	H 2	GOOD! FT by PARKER, SHRITA [FB]
01:55		18-15	H 3	GOOD! FT by PARKER, SHRITA [FB]
01:30	SUB OUT: DUBLIN, AYANNA			
01:30	SUB IN: GIACONE, GABBY			
01:28	TURNOVER (SHOTCLOCK) by			
01:19	SUB OUT: CLARK, STELLA			
01:19	SUB IN: TODD, SHANNON			
01:08				FOUL (OFF) by BELL, CHINYERE
01:08				TURNOVER (OFFENSIVE) by BELL, CHINYERE
00:53	MISSED LAYUP by TODD, SHANNON			
00:50				REBOUND (DEF) by POWELL, PAIGE
00:33		20-15	H 5	GOOD! JUMPER by BELL, CHINYERE [PNT]
00:33				ASSIST by POWELL, PAIGE
00:17	MISSED 3PTR by TODD, SHANNON			
00:14	REBOUND (OFF) by GIACONE, GABBY			
00:12	MISSED 3PTR by CURRENCE, KENDALL			
00:08				REBOUND (DEF) by PARKER, SHRITA
00:05				MISSED 3PTR by JEUNE, ASHLI
00:00	REBOUND (DEF) by GENCO, JESS			

### Northeastern 15, UNCW 20

Points from (This Period)	NOR	NCW
In the Paint	4	12
Off Turns	3	5
2nd Chance	3	4
Fast Break	0	7
Bench	7	6

**Official Box Score**  
**Northeastern vs UNCW**  
**Second Quarter Statistics Only**  
**February 03, 2019 at Trask Coliseum - Wilmington, N.C.**



**Northeastern 20**

No.	Player	S	Pts	FG	3FG	FT	OR	DR	TR	PF	A	TO	Blk	Stl	Min	+/-
12	DUBLIN, AYANNA		0	0-1	0-0	0-0	1	0	1	0	0	0	0	0	6	-2
13	MAY, KATIE		0	0-0	0-0	0-0	0	0	0	0	0	0	0	0	0	0
14	TODD, SHANNON		3	1-3	1-2	0-0	0	3	3	1	0	0	1	1	9	-2
20	GENCO, JESS		4	2-4	0-0	0-0	0	0	0	1	2	1	0	0	10	-1
24	GIACONE, GABBY		0	0-1	0-0	0-0	0	1	1	0	0	0	0	0	1	0
01	CURRENCE, KENDALL		7	3-4	1-2	0-0	1	0	1	1	1	1	0	0	10	-1
03	ZWERLING, ZOE		3	1-1	1-1	0-0	0	0	0	1	0	1	0	0	3	1
04	HILL, ALEXIS		3	1-3	0-0	1-2	3	1	4	0	0	0	0	0	10	-1
11	CLARK, STELLA		0	0-0	0-0	0-0	0	0	0	1	0	0	0	0	1	1
	TEAM						0	0	0	0		0				
<b>TOTALS</b>			<b>20</b>	<b>8-17</b>	<b>3-5</b>	<b>1-2</b>	<b>5</b>	<b>5</b>	<b>10</b>	<b>5</b>	<b>3</b>	<b>3</b>	<b>1</b>	<b>1</b>	<b>50</b>	

*Shooting By Period*

Period	FG	FG%	3FG	3FG%	FT	FT%
3rd Qtr	5-16	31%	0-3	00%	2-3	67%
4th Qtr	9-22	41%	3-8	38%	2-2	100%
2nd Half	8-17	47%	3-5	60%	1-2	50%
2nd Half	14-38	37%	3-11	27%	4-5	80%
Game	27-70	38.6%	8-25	32.0%	8-11	72.7%

**UNCW 21**

No.	Player	S	Pts	FG	3FG	FT	OR	DR	TR	PF	A	TO	Blk	Stl	Min	+/-
04	PARKER, SHRITA		7	3-6	1-2	0-0	0	1	1	0	1	0	0	2	10	1
05	SMITH, GIGI		3	1-2	1-1	0-0	2	0	2	0	0	0	0	1	3	-1
10	VASON, AHYIONA		0	0-0	0-0	0-0	0	0	0	1	1	2	0	0	7	2
13	SUGGS, LACEY		5	2-3	1-1	0-2	0	0	0	0	0	0	0	0	10	1
24	BELL, CHINYERE		4	2-2	0-0	0-0	1	2	3	1	1	0	1	0	6	3
00	JEUNE, ASHLI		0	0-0	0-0	0-0	0	0	0	0	0	0	0	0	0	0
01	POWELL, PAIGE		2	1-1	0-0	0-1	0	2	2	0	1	0	0	0	7	4
02	CRISP, MORIAH		0	0-1	0-1	0-0	0	0	0	0	1	0	0	0	3	-1
12	BUEHLER, JULIA		0	0-0	0-0	0-0	0	0	0	0	0	0	0	0	0	0
14	TATE, TIMBER		0	0-1	0-1	0-0	1	0	1	0	0	0	0	0	0	0
22	THYBULLE, ZHANEIA		0	0-0	0-0	0-0	0	0	0	0	0	0	0	0	0	0
25	HOGGATT, MICAH		0	0-0	0-0	0-0	0	0	0	0	0	0	0	0	0	0
31	MITCHELL, JESSICA		0	0-0	0-0	0-0	0	0	0	0	0	0	0	0	3	-3
32	OBUSEK, CAROL-ANNE		0	0-0	0-0	0-0	0	0	0	1	0	1	0	0	1	-1
33	SACCO, GRACE		0	0-0	0-0	0-0	0	0	0	0	0	0	0	0	0	0
	TEAM						0	0	0	0		0				
<b>TOTALS</b>			<b>21</b>	<b>9-16</b>	<b>3-6</b>	<b>0-3</b>	<b>4</b>	<b>5</b>	<b>9</b>	<b>3</b>	<b>5</b>	<b>3</b>	<b>1</b>	<b>3</b>	<b>50</b>	

*Shooting By Period*

Period	FG	FG%	3FG	3FG%	FT	FT%
3rd Qtr	7-13	54%	2-4	50%	5-6	83%
4th Qtr	8-11	73%	0-0	0%	5-7	71%
2nd Half	9-16	56%	3-6	50%	0-3	00%
2nd Half	15-24	63%	2-4	50%	10-13	77%
Game	32-56	57.1%	7-14	50.0%	12-18	66.7%

Game Notes:

Officials: Daryl Humphrey, Mark McClenney, Toni Patillo  
 Attendance: 634

Start Time: 2019-02-03 18:05:56  
 End Time: 2019-02-03 20:04:09  
 Game Duration: 118  
 Conference Game;

Score	1st	2nd	3rd	4th	TOT
NOR	15	20	12	23	<b>70</b>
NCW	20	21	21	21	<b>83</b>

Points from (This Period)	NOR	NCW
In the Paint	6	10
Off Turns	3	4
2nd Chance	3	4
Fast Break	3	6
Bench	13	2

**Official Play-By-Play**  
**Northeastern vs UNCW**  
**Second Quarter**  
**February 03, 2019 at Trask Coliseum - Wilmington, N.C.**



**Period 2**

**Starters:**

**Northeastern:** 12 DUBLIN, AYANNA; 13 MAY, KATIE; 14 TODD, SHANNON; 20 GENCO, JESS; 24 GIACONE, GABBY;

**UNCW:** 4 PARKER, SHRITA; 5 SMITH, GIGI; 10 VASON, AHYIONA; 13 SUGGS, LACEY; 24 BELL, CHINYERE;

Time	VISITORS: Northeastern	Score	Margin	HOME: UNCW
09:37	MISSED JUMPER by GIACONE, GABBY			
09:37				BLOCK by BELL, CHINYERE
09:32				REBOUND (DEF) by BELL, CHINYERE
09:29				MISSED LAYUP by PARKER, SHRITA
09:25	REBOUND (DEF) by GIACONE, GABBY			
09:22				FOUL (PERSONAL) by VASON, AHYIONA
09:22	SUB OUT: GIACONE, GABBY			
09:22	SUB IN: DUBLIN, AYANNA			
09:00	MISSED JUMPER by TODD, SHANNON			
09:00	REBOUND (OFF) by DUBLIN, AYANNA			
08:55				TIMEOUT 30SEC
08:55				
08:53	MISSED JUMPER by DUBLIN, AYANNA			
08:53				REBOUND (DEF) by BELL, CHINYERE
08:47		22-15	H 7	GOOD! JUMPER by PARKER, SHRITA [FB]
08:37	MISSED 3PTR by TODD, SHANNON			
08:33	REBOUND (OFF) by HILL, ALEXIS			
08:32	MISSED LAYUP by HILL, ALEXIS			
08:29				REBOUND (DEF) by POWELL, PAIGE
08:25		24-15	H 9	GOOD! LAYUP by SUGGS, LACEY [FB]
08:25				ASSIST by VASON, AHYIONA
08:12	GOOD! JUMPER by GENCO, JESS [PNT]	24-17	H 7	
07:54		27-17	H 10	GOOD! 3PTR by SUGGS, LACEY
07:54				ASSIST by BELL, CHINYERE
07:33	MISSED 3PTR by CURRENCE, KENDALL			
07:29	REBOUND (OFF) by HILL, ALEXIS			
07:28	GOOD! LAYUP by HILL, ALEXIS	27-19	H 8	
06:57				TURNOVER (LOSTBALL) by VASON, AHYIONA
06:57	STEAL by TODD, SHANNON			
06:53	TURNOVER (BADPASS) by CURRENCE, KENDALL			
06:53				STEAL by PARKER, SHRITA
06:53				SUB OUT: BELL, CHINYERE
06:53				SUB IN: OBUSEK, CAROL-ANNE
06:53	SUB OUT: TODD, SHANNON			
06:53	SUB IN: CLARK, STELLA			
06:41	FOUL (PERSONAL) by GENCO, JESS			
06:30				TURNOVER (3SEC) by OBUSEK, CAROL-ANNE
06:07	MISSED JUMPER by GENCO, JESS			
06:05	REBOUND (OFF) by HILL, ALEXIS			
06:05				FOUL (PERSONAL) by OBUSEK, CAROL-ANNE
06:05	GOOD! FT by HILL, ALEXIS	27-20	H 7	
06:05				SUB OUT: OBUSEK, CAROL-ANNE
06:05				SUB IN: BELL, CHINYERE
06:04	MISSED FT by HILL, ALEXIS			
06:04				REBOUND (DEF) by POWELL, PAIGE
06:04	FOUL (PERSONAL) by CLARK, STELLA			
06:04	SUB OUT: CLARK, STELLA			
06:04	SUB IN: TODD, SHANNON			
05:47				MISSED JUMPER by PARKER, SHRITA
05:43				REBOUND (OFF) by BELL, CHINYERE
05:42		29-20	H 9	GOOD! JUMPER by BELL, CHINYERE [PNT]
05:28	GOOD! JUMPER by CURRENCE, KENDALL	29-22	H 7	
04:59		31-22	H 9	GOOD! LAYUP by BELL, CHINYERE
04:59				ASSIST by POWELL, PAIGE
04:39	MISSED JUMPER by HILL, ALEXIS			
04:37	REBOUND (OFF) by CURRENCE, KENDALL			
04:35	MISSED JUMPER by GENCO, JESS			
04:30				REBOUND (DEF) by PARKER, SHRITA
04:25				TURNOVER (LOSTBALL) by VASON, AHYIONA
04:06	GOOD! JUMPER by GENCO, JESS	31-24	H 7	
03:49		34-24	H 10	GOOD! 3PTR by PARKER, SHRITA
03:25	GOOD! 3PTR by TODD, SHANNON	34-27	H 7	
03:25	ASSIST by CURRENCE, KENDALL			
03:04				MISSED 3PTR by PARKER, SHRITA
03:03	REBOUND (DEF) by HILL, ALEXIS			
03:03				FOUL (PERSONAL) by BELL, CHINYERE
03:03				SUB OUT: VASON, AHYIONA
03:03				SUB IN: CRISP, MORIAH
03:03				SUB OUT: BELL, CHINYERE
03:03				SUB IN: SMITH, GIGI



Time	VISITORS: Northeastern	Score	Margin	HOME: UNCW
03:03				SUB OUT: POWELL, PAIGE
03:03				SUB IN: MITCHELL, JESSICA
03:03	SUB OUT: DUBLIN, AYANNA			
03:03	SUB IN: ZWERLING, ZOE			
02:45	GOOD! 3PTR by CURRENCE, KENDALL	34-30	H 4	
02:45	ASSIST by GENCO, JESS			
02:27	FOUL (PERSONAL) by TODD, SHANNON			
02:27				MISSED FT by SUGGS, LACEY
02:27				REBOUND (OFF) by TEAM
02:27				MISSED FT by SUGGS, LACEY
02:25	REBOUND (DEF) by TODD, SHANNON			
02:18	GOOD! 3PTR by ZWERLING, ZOE [FB]	34-33	H 1	
02:18	ASSIST by GENCO, JESS			
01:57				MISSED 3PTR by CRISP, MORIAH
01:53				REBOUND (OFF) by SMITH, GIGI
01:52				MISSED JUMPER by SMITH, GIGI
01:52	BLOCK by TODD, SHANNON			
01:48	REBOUND (DEF) by TODD, SHANNON			
01:44	TURNOVER (BADPASS) by GENCO, JESS			
01:44				STEAL by PARKER, SHRITA
01:38		36-33	H 3	GOOD! LAYUP by PARKER, SHRITA [FB]
01:17	GOOD! LAYUP by CURRENCE, KENDALL [PNT]	36-35	H 1	
00:59		39-35	H 4	GOOD! 3PTR by SMITH, GIGI
00:59				ASSIST by CRISP, MORIAH
00:37	TURNOVER (BADPASS) by ZWERLING, ZOE			
00:37				STEAL by SMITH, GIGI
00:09				MISSED JUMPER by SUGGS, LACEY
00:09				REBOUND (OFF) by SMITH, GIGI
00:09	FOUL (PERSONAL) by CURRENCE, KENDALL			
00:09				SUB OUT: MITCHELL, JESSICA
00:09				SUB IN: POWELL, PAIGE
00:04		41-35	H 6	GOOD! LAYUP by POWELL, PAIGE [PNT]
00:04				ASSIST by PARKER, SHRITA
00:04	FOUL (PERSONAL) by ZWERLING, ZOE			
00:04				SUB OUT: SMITH, GIGI
00:04				SUB IN: TATE, TIMBER
00:04				MISSED FT by POWELL, PAIGE
00:03				REBOUND (OFF) by TATE, TIMBER
00:01				MISSED 3PTR by TATE, TIMBER
00:00	REBOUND (DEF) by TODD, SHANNON			

### Northeastern 35, UNCW 41

Points from (This Period)	NOR	NCW
In the Paint	6	10
Off Turns	3	4
2nd Chance	3	4
Fast Break	3	6
Bench	13	2

**Official Box Score**  
**Northeastern vs UNCW**  
**Second Half Statistics Only**  
**February 03, 2019 at Trask Coliseum - Wilmington, N.C.**



**Northeastern 35**

No.	Player	S	Pts	FG	3FG	FT	OR	DR	TR	PF	A	TO	Blk	Stl	Min	+/-
11	CLARK, STELLA		5	2-6	1-3	0-0	1	0	1	0	0	1	0	1	6	-1
12	DUBLIN, AYANNA		2	0-1	0-0	2-2	1	2	3	2	0	2	0	0	13	-7
13	MAY, KATIE		4	2-4	0-1	0-0	0	0	0	0	1	0	0	1	14	-6
14	TODD, SHANNON		11	5-10	1-3	0-0	0	0	0	4	1	2	0	1	16	-6
20	GENCO, JESS		4	2-6	0-2	0-0	1	1	2	0	3	3	0	1	20	-7
24	GIACONE, GABBY		3	1-5	0-0	1-2	1	4	5	3	0	1	0	2	14	-6
01	CURRENCE, KENDALL		0	0-0	0-0	0-0	1	0	1	2	0	1	0	2	7	-6
03	ZWERLING, ZOE		3	1-2	1-2	0-0	0	0	0	0	0	0	0	0	1	6
04	HILL, ALEXIS		3	1-4	0-0	1-1	2	1	3	1	0	1	0	1	9	-2
	TEAM		0	0-0	0-0	0-0	0	1	1	0	0	0	0	0	0	0
<b>TOTALS</b>			<b>35</b>	<b>14-38</b>	<b>3-11</b>	<b>4-5</b>	<b>7</b>	<b>9</b>	<b>16</b>	<b>12</b>	<b>5</b>	<b>11</b>	<b>0</b>	<b>9</b>	<b>100</b>	

*Shooting By Period*

Period	FG	FG%	3FG	3FG%	FT	FT%
3rd Qtr	5-16	31%	0-3	00%	2-3	67%
4th Qtr	9-22	41%	3-8	38%	2-2	100%
2nd Half	14-38	37%	3-11	27%	4-5	80%
Game	27-70	38.6%	8-25	32.0%	8-11	72.7%

*Last FG Half: NOR 4th-00:01*

**UNCW 42**

No.	Player	S	Pts	FG	3FG	FT	OR	DR	TR	PF	A	TO	Blk	Stl	Min	+/-
00	JEUNE, ASHLI		0	0-0	0-0	0-0	0	0	0	0	0	1	0	1	2	-1
01	POWELL, PAIGE		4	1-2	0-0	2-2	0	2	2	0	0	0	0	0	6	-10
02	CRISP, MORIAH		0	0-0	0-0	0-0	0	0	0	0	1	1	0	1	9	8
04	PARKER, SHRITA		10	4-6	0-0	2-3	0	2	2	0	1	2	0	0	19	12
05	SMITH, GIGI		11	4-8	2-3	1-2	0	2	2	1	2	3	1	1	18	12
10	VASON, AHYIONA		0	0-0	0-0	0-0	0	1	1	3	2	1	0	0	10	4
12	BUEHLER, JULIA		1	0-0	0-0	1-2	0	0	0	0	0	1	0	0	1	-5
13	SUGGS, LACEY		8	3-4	0-1	2-2	1	5	6	1	2	2	0	2	17	13
14	TATE, TIMBER		0	0-0	0-0	0-0	0	0	0	1	0	0	0	0	1	0
22	THYBULLE, ZHANEIA		0	0-0	0-0	0-0	0	0	0	0	0	1	0	0	1	-5
24	BELL, CHINYERE		6	2-2	0-0	2-2	0	4	4	2	1	2	0	0	13	21
25	HOGGATT, MICAH		2	1-1	0-0	0-0	0	1	1	0	0	0	0	0	1	-5
31	MITCHELL, JESSICA		0	0-1	0-0	0-0	0	0	0	1	0	0	0	0	1	-4
32	OBUSEK, CAROL-ANNE		0	0-0	0-0	0-0	0	0	0	0	0	0	0	0	0	0
33	SACCO, GRACE		0	0-0	0-0	0-0	0	0	0	0	1	1	0	0	1	-5
	TEAM		0	0-0	0-0	0-0	0	0	0	0	0	1	0	0	0	0
<b>TOTALS</b>			<b>42</b>	<b>15-24</b>	<b>2-4</b>	<b>10-13</b>	<b>1</b>	<b>17</b>	<b>18</b>	<b>9</b>	<b>10</b>	<b>16</b>	<b>1</b>	<b>5</b>	<b>100</b>	

*Shooting By Period*

Period	FG	FG%	3FG	3FG%	FT	FT%
3rd Qtr	7-13	54%	2-4	50%	5-6	83%
4th Qtr	8-11	73%	0-0	0%	5-7	71%
2nd Half	15-24	63%	2-4	50%	10-13	77%
Game	32-56	57.1%	7-14	50.0%	12-18	66.7%

*Last FG Half: NCW 4th-00:00*

*Game Notes:*

Officials: Daryl Humphrey, Mark McClenney, Toni Patillo  
 Attendance: 634

Start Time: 2019-02-03 18:05:56  
 End Time: 2019-02-03 20:04:09  
 Game Duration: 118  
 Conference Game;

Score	1st	2nd	3rd	4th	TOT
NOR	15	20	12	23	<b>70</b>
NCW	20	21	21	21	<b>83</b>

Points from (This Period)	NOR	NCW
In the Paint	18	22
Off Turns	15	15
2nd Chance	1	2
Fast Break	5	17
Bench	11	7

**Official Box Score**  
**Northeastern vs UNCW**  
**Third Quarter Statistics Only**  
**February 03, 2019 at Trask Coliseum - Wilmington, N.C.**



**Northeastern 35**

No.	Player	S	Pts	FG	3FG	FT	OR	DR	TR	PF	A	TO	Blk	Stl	Min	+/-
12	DUBLIN, AYANNA		0	0-1	0-0	0-0	0	1	1	0	0	1	0	0	7	-6
13	MAY, KATIE		2	1-2	0-1	0-0	0	0	0	0	0	0	0	0	7	-5
14	TODD, SHANNON		0	0-2	0-1	0-0	0	0	0	1	1	0	0	0	7	-2
20	GENCO, JESS		2	1-3	0-1	0-0	0	0	0	0	0	1	0	1	10	-9
24	GIACONE, GABBY		3	1-4	0-0	1-2	1	2	3	2	0	1	0	1	8	-7
01	CURRENCE, KENDALL		0	0-0	0-0	0-0	0	0	0	2	0	1	0	0	3	-7
03	ZWERLING, ZOE		0	0-0	0-0	0-0	0	0	0	0	0	0	0	0	0	0
04	HILL, ALEXIS		3	1-2	0-0	1-1	0	1	1	1	0	0	0	1	5	-5
11	CLARK, STELLA		2	1-2	0-0	0-0	1	0	1	0	0	0	0	0	3	-4
	TEAM						0	1	1	0		0				
<b>TOTALS</b>			<b>12</b>	<b>5-16</b>	<b>0-3</b>	<b>2-3</b>	<b>2</b>	<b>5</b>	<b>7</b>	<b>6</b>	<b>1</b>	<b>4</b>	<b>0</b>	<b>3</b>	<b>50</b>	

*Shooting By Period*

Period	FG	FG%	3FG	3FG%	FT	FT%
2nd Half	0-0	0%	0-0	0%	0-0	0%
Game	27-70	38.6%	8-25	32.0%	8-11	72.7%

**UNCW 42**

No.	Player	S	Pts	FG	3FG	FT	OR	DR	TR	PF	A	TO	Blk	Stl	Min	+/-
04	PARKER, SHRITA		2	0-2	0-0	2-2	0	2	2	0	0	0	0	0	10	9
05	SMITH, GIGI		11	4-6	2-3	1-2	0	0	0	0	0	1	0	0	9	9
10	VASON, AHYIONA		0	0-0	0-0	0-0	0	1	1	1	2	0	0	0	6	6
13	SUGGS, LACEY		4	2-3	0-1	0-0	1	2	3	0	0	0	0	0	8	10
24	BELL, CHINYERE		2	1-1	0-0	0-0	0	2	2	2	1	2	0	0	7	10
00	JEUNE, ASHLI		0	0-0	0-0	0-0	0	0	0	0	0	1	0	1	2	-1
01	POWELL, PAIGE		2	0-1	0-0	2-2	0	2	2	0	0	0	0	0	3	-1
02	CRISP, MORIAH		0	0-0	0-0	0-0	0	0	0	0	1	0	0	1	4	3
12	BUEHLER, JULIA		0	0-0	0-0	0-0	0	0	0	0	0	0	0	0	0	0
14	TATE, TIMBER		0	0-0	0-0	0-0	0	0	0	1	0	0	0	0	1	0
22	THYBULLE, ZHANEIA		0	0-0	0-0	0-0	0	0	0	0	0	0	0	0	0	0
25	HOGGATT, MICAH		0	0-0	0-0	0-0	0	0	0	0	0	0	0	0	0	0
31	MITCHELL, JESSICA		0	0-0	0-0	0-0	0	0	0	0	0	0	0	0	0	0
32	OBUSEK, CAROL-ANNE		0	0-0	0-0	0-0	0	0	0	0	0	0	0	0	0	0
33	SACCO, GRACE		0	0-0	0-0	0-0	0	0	0	0	0	0	0	0	0	0
	TEAM						0	0	0	0		0				
<b>TOTALS</b>			<b>21</b>	<b>7-13</b>	<b>2-4</b>	<b>5-6</b>	<b>1</b>	<b>9</b>	<b>10</b>	<b>4</b>	<b>4</b>	<b>4</b>	<b>0</b>	<b>2</b>	<b>50</b>	

*Shooting By Period*

Period	FG	FG%	3FG	3FG%	FT	FT%
2nd Half	0-0	0%	0-0	0%	0-0	0%
Game	32-56	57.1%	7-14	50.0%	12-18	66.7%

*Game Notes:*

Officials: Daryl Humphrey, Mark McClenney, Toni Patillo  
 Attendance: 634

Start Time: 2019-02-03 18:05:56  
 End Time: 2019-02-03 20:04:09  
 Game Duration: 118  
 Conference Game;

Score	1st	2nd	3rd	4th	TOT
NOR	15	20	12	23	<b>70</b>
NCW	20	21	21	21	<b>83</b>

Points from (This Period)	NOR	NCW
In the Paint	10	6
Off Turns	1	6
2nd Chance	1	2
Fast Break	0	7
Bench	5	2

**Official Play-By-Play**  
**Northeastern vs UNCW**  
**Third Quarter**  
**February 03, 2019 at Trask Coliseum - Wilmington, N.C.**



**Period 3**

**Starters:**

**Northeastern:** 12 DUBLIN, AYANNA; 13 MAY, KATIE; 14 TODD, SHANNON; 20 GENCO, JESS; 24 GIACONE, GABBY;

**UNCW:** 4 PARKER, SHRITA; 5 SMITH, GIGI; 10 VASON, AHYIONA; 13 SUGGS, LACEY; 24 BELL, CHINYERE;

Time	VISITORS: Northeastern	Score	Margin	HOME: UNCW
09:44	MISSED 3PTR by TODD, SHANNON			
09:40				REBOUND (DEF) by VASON, AHYIONA
09:21				MISSED JUMPER by PARKER, SHRITA
09:18	REBOUND (DEF) by GIACONE, GABBY			
09:02	MISSED 3PTR by MAY, KATIE			
08:59				REBOUND (DEF) by PARKER, SHRITA
08:47		43-35	H 8	GOOD! LAYUP by BELL, CHINYERE
08:47				ASSIST by VASON, AHYIONA
08:36	MISSED LAYUP by TODD, SHANNON			
08:32				REBOUND (DEF) by BELL, CHINYERE
08:25		46-35	H 11	GOOD! 3PTR by SMITH, GIGI [FB]
08:25				ASSIST by VASON, AHYIONA
08:23	TIMEOUT 30SEC			
08:23				
08:11	MISSED 3PTR by GENCO, JESS			
08:07				REBOUND (DEF) by PARKER, SHRITA
07:48				MISSED 3PTR by SMITH, GIGI
07:44	REBOUND (DEF) by DUBLIN, AYANNA			
07:34	MISSED JUMPER by GIACONE, GABBY			
07:29				REBOUND (DEF) by BELL, CHINYERE
07:29				TURNOVER (LOSTBALL) by BELL, CHINYERE
07:29	STEAL by GENCO, JESS			
07:26	TURNOVER (LOSTBALL) by GENCO, JESS			
07:12				TURNOVER (3SEC) by BELL, CHINYERE
06:59	MISSED JUMPER by DUBLIN, AYANNA			
06:59	REBOUND (OFF) by GIACONE, GABBY			
06:59				FOUL (PERSONAL) by BELL, CHINYERE
06:59	MISSED FT by GIACONE, GABBY			
06:59	REBOUND (OFF) by TEAM			
06:59				SUB OUT: BELL, CHINYERE
06:59				SUB IN: POWELL, PAIGE
06:59	GOOD! FT by GIACONE, GABBY	46-36	H 10	
06:42				MISSED 3PTR by SUGGS, LACEY
06:41	REBOUND (DEF) by TEAM			
06:27	GOOD! LAYUP by GIACONE, GABBY	46-38	H 8	
06:27	ASSIST by TODD, SHANNON			
06:16				MISSED LAYUP by POWELL, PAIGE
06:12	REBOUND (DEF) by GIACONE, GABBY			
06:00	MISSED JUMPER by GIACONE, GABBY			
05:56				REBOUND (DEF) by POWELL, PAIGE
05:41				MISSED JUMPER by PARKER, SHRITA
05:37				REBOUND (OFF) by SUGGS, LACEY
05:36		48-38	H 10	GOOD! LAYUP by SUGGS, LACEY
05:22	MISSED LAYUP by GIACONE, GABBY			
05:18				REBOUND (DEF) by POWELL, PAIGE
05:13	FOUL (PERSONAL) by TODD, SHANNON			
05:13				MISSED FT by SMITH, GIGI
05:13				REBOUND (OFF) by TEAM
05:13	SUB OUT: GIACONE, GABBY			
05:13	SUB IN: HILL, ALEXIS			
05:13	SUB OUT: MAY, KATIE			
05:13	SUB IN: CLARK, STELLA			
05:13		49-38	H 11	GOOD! FT by SMITH, GIGI [FB]
05:06				SUB OUT: POWELL, PAIGE
05:06				SUB IN: BELL, CHINYERE
04:49	GOOD! LAYUP by CLARK, STELLA	49-40	H 9	
04:31				TURNOVER (LOSTBALL) by SMITH, GIGI
04:31	STEAL by HILL, ALEXIS			
04:26	MISSED LAYUP by HILL, ALEXIS			
04:22	REBOUND (OFF) by CLARK, STELLA			
04:21	MISSED JUMPER by CLARK, STELLA			
04:18				REBOUND (DEF) by SUGGS, LACEY
04:13		52-40	H 12	GOOD! 3PTR by SMITH, GIGI [FB]
04:13				ASSIST by BELL, CHINYERE
04:04				FOUL (PERSONAL) by VASON, AHYIONA
04:04				
04:04				SUB OUT: VASON, AHYIONA
04:04				SUB IN: CRISP, MORIAH
03:49	GOOD! JUMPER by GENCO, JESS [PNT]	52-42	H 10	
03:32	SUB OUT: TODD, SHANNON			

Time	VISITORS: Northeastern	Score	Margin	HOME: UNCW
03:32	SUB IN: CURRENCE, KENDALL			
03:20		54-42	H 12	GOOD! JUMPER by SMITH, GIGI
03:03	TURNOVER (LOSTBALL) by DUBLIN, AYANNA			
03:03				STEAL by CRISP, MORIAH
03:02	FOUL (PERSONAL) by HILL, ALEXIS			
03:02	SUB OUT: DUBLIN, AYANNA			
03:02	SUB IN: GIACONE, GABBY			
02:33		56-42	H 14	GOOD! LAYUP by SUGGS, LACEY
02:21	FOUL (OFF) by CURRENCE, KENDALL			
02:21	TURNOVER (OFFENSIVE) by CURRENCE, KENDALL			
02:21	SUB OUT: CLARK, STELLA			
02:21	SUB IN: MAY, KATIE			
02:06		58-42	H 16	GOOD! JUMPER by SMITH, GIGI
02:06				ASSIST by CRISP, MORIAH
01:57	MISSED JUMPER by GENCO, JESS			
01:55				REBOUND (DEF) by SUGGS, LACEY
01:55	FOUL (PERSONAL) by GIACONE, GABBY			
01:55				SUB OUT: SUGGS, LACEY
01:55				SUB IN: JEUNE, ASHLI
01:38				MISSED JUMPER by SMITH, GIGI
01:36	REBOUND (DEF) by HILL, ALEXIS			
01:36				FOUL (PERSONAL) by BELL, CHINYERE
01:36				SUB OUT: BELL, CHINYERE
01:36				SUB IN: POWELL, PAIGE
01:18	GOOD! JUMPER by MAY, KATIE [PNT]	58-44	H 14	
01:06	FOUL (PERSONAL) by GIACONE, GABBY			
01:06		59-44	H 15	GOOD! FT by POWELL, PAIGE
01:06				SUB OUT: SMITH, GIGI
01:06				SUB IN: TATE, TIMBER
01:06		60-44	H 16	GOOD! FT by POWELL, PAIGE
00:51	TURNOVER (LOSTBALL) by GIACONE, GABBY			
00:51				STEAL by JEUNE, ASHLI
00:28	FOUL (PERSONAL) by CURRENCE, KENDALL			
00:28		61-44	H 17	GOOD! FT by PARKER, SHRITA
00:28	SUB OUT: CURRENCE, KENDALL			
00:28	SUB IN: TODD, SHANNON			
00:28		62-44	H 18	GOOD! FT by PARKER, SHRITA
00:15	GOOD! JUMPER by HILL, ALEXIS [PNT]	62-46	H 16	
00:15				FOUL (PERSONAL) by TATE, TIMBER
00:15	GOOD! FT by HILL, ALEXIS	62-47	H 15	
00:02				TURNOVER (LOSTBALL) by JEUNE, ASHLI
00:02	STEAL by GIACONE, GABBY			

### Northeastern 47, UNCW 62

Points from (This Period)	NOR	NCW
In the Paint	10	6
Off Turns	1	6
2nd Chance	1	2
Fast Break	0	7
Bench	5	2

**Official Box Score**  
**Northeastern vs UNCW**  
**Fourth Quarter Statistics Only**  
**February 03, 2019 at Trask Coliseum - Wilmington, N.C.**



**Northeastern 23**

No.	Player	S	Pts	FG	3FG	FT	OR	DR	TR	PF	A	TO	Blk	Stl	Min	+/-
12	DUBLIN, AYANNA		2	0-0	0-0	2-2	1	1	2	2	0	1	0	0	6	-1
13	MAY, KATIE		2	1-2	0-0	0-0	0	0	0	0	1	0	0	1	7	-1
14	TODD, SHANNON		11	5-8	1-2	0-0	0	0	0	3	0	2	0	1	9	-4
20	GENCO, JESS		2	1-3	0-1	0-0	1	1	2	0	3	2	0	0	10	2
24	GIACONE, GABBY		0	0-1	0-0	0-0	0	2	2	1	0	0	0	1	6	1
01	CURRENCE, KENDALL		0	0-0	0-0	0-0	1	0	1	0	0	0	0	2	4	1
03	ZWERLING, ZOE		3	1-2	1-2	0-0	0	0	0	0	0	0	0	1	6	
04	HILL, ALEXIS		0	0-2	0-0	0-0	2	0	2	0	0	1	0	0	4	3
11	CLARK, STELLA		3	1-4	1-3	0-0	0	0	0	0	0	1	0	1	3	3
	TEAM						0	0	0	0		0				
<b>TOTALS</b>			<b>23</b>	<b>9-22</b>	<b>3-8</b>	<b>2-2</b>	<b>5</b>	<b>4</b>	<b>9</b>	<b>6</b>	<b>4</b>	<b>7</b>	<b>0</b>	<b>6</b>	<b>50</b>	

*Shooting By Period*

Period	FG	FG%	3FG	3FG%	FT	FT%
Game	27-70	38.6%	8-25	32.0%	8-11	72.7%

**UNCW 21**

No.	Player	S	Pts	FG	3FG	FT	OR	DR	TR	PF	A	TO	Blk	Stl	Min	+/-
04	PARKER, SHRITA		8	4-4	0-0	0-1	0	0	0	0	1	2	0	0	9	3
05	SMITH, GIGI		0	0-2	0-0	0-0	0	2	2	1	2	2	1	1	9	3
10	VASON, AHYIONA		0	0-0	0-0	0-0	0	0	0	2	0	1	0	0	4	-2
13	SUGGS, LACEY		4	1-1	0-0	2-2	0	3	3	1	2	2	0	2	9	3
24	BELL, CHINYERE		4	1-1	0-0	2-2	0	2	2	0	0	0	0	0	6	11
00	JEUNE, ASHLI		0	0-0	0-0	0-0	0	0	0	0	0	0	0	0	0	0
01	POWELL, PAIGE		2	1-1	0-0	0-0	0	0	0	0	0	0	0	0	3	-9
02	CRISP, MORIAH		0	0-0	0-0	0-0	0	0	0	0	0	1	0	0	5	5
12	BUEHLER, JULIA		1	0-0	0-0	1-2	0	0	0	0	0	1	0	0	1	-5
14	TATE, TIMBER		0	0-0	0-0	0-0	0	0	0	0	0	0	0	0	0	0
22	THYBULLE, ZHANEIA		0	0-0	0-0	0-0	0	0	0	0	0	1	0	0	1	-5
25	HOGGATT, MICAH		2	1-1	0-0	0-0	0	1	1	0	0	0	0	0	1	-5
31	MITCHELL, JESSICA		0	0-1	0-0	0-0	0	0	0	1	0	0	0	0	1	-4
32	OBUSEK, CAROL-ANNE		0	0-0	0-0	0-0	0	0	0	0	0	0	0	0	0	0
33	SACCO, GRACE		0	0-0	0-0	0-0	0	0	0	0	1	1	0	0	1	-5
	TEAM						0	0	0	0		1				
<b>TOTALS</b>			<b>21</b>	<b>8-11</b>	<b>0-0</b>	<b>5-7</b>	<b>0</b>	<b>8</b>	<b>8</b>	<b>5</b>	<b>6</b>	<b>12</b>	<b>1</b>	<b>3</b>	<b>50</b>	

*Shooting By Period*

Period	FG	FG%	3FG	3FG%	FT	FT%
Game	32-56	57.1%	7-14	50.0%	12-18	66.7%

Game Notes:

Officials: Daryl Humphrey, Mark McClenney, Toni Patillo  
Attendance: 634

Start Time: 2019-02-03 18:05:56  
End Time: 2019-02-03 20:04:09  
Game Duration: 118  
Conference Game;

Score	1st	2nd	3rd	4th	TOT
NOR	15	20	12	23	<b>70</b>
NCW	20	21	21	21	<b>83</b>

Points from (This Period)	NOR	NCW
In the Paint	8	16
Off Turns	14	9
2nd Chance	0	0
Fast Break	5	10
Bench	6	5

**Official By-By-Play  
Northeastern vs UNCW  
Fourth Quarter  
February 03, 2019 at Trask Coliseum - Wilmington, N.C.**



**Period 4**

**Starters:**

**Northeastern:** 12 DUBLIN, AYANNA; 13 MAY, KATIE; 14 TODD, SHANNON; 20 GENCO, JESS; 24 GIACONE, GABBY;

**UNCW:** 4 PARKER, SHRITA; 5 SMITH, GIGI; 10 VASON, AHYIONA; 13 SUGGS, LACEY; 24 BELL, CHINYERE;

Time	VISITORS: Northeastern	Score	Margin	HOME: UNCW
09:45	GOOD! JUMPER by TODD, SHANNON	62-49	H 13	
09:28				TURNOVER (LOSTBALL) by VASON, AHYIONA
09:28	STEAL by GIACONE, GABBY			
09:23	GOOD! LAYUP by GENCO, JESS [FB]	62-51	H 11	
09:23				TIMEOUT 30SEC
09:23				
09:13				TURNOVER (LOSTBALL) by SUGGS, LACEY
09:13	STEAL by TODD, SHANNON			
09:08	GOOD! LAYUP by TODD, SHANNON	62-53	H 9	
09:00		64-53	H 11	GOOD! LAYUP by POWELL, PAIGE [FB]
09:00				ASSIST by SMITH, GIGI
08:49				FOUL (PERSONAL) by VASON, AHYIONA
08:42	MISSED JUMPER by HILL, ALEXIS			
08:39	REBOUND (OFF) by HILL, ALEXIS			
08:39	MISSED JUMPER by HILL, ALEXIS			
08:39	REBOUND (OFF) by HILL, ALEXIS			
08:39	TURNOVER (TRAVEL) by HILL, ALEXIS			
08:12				MISSED JUMPER by SMITH, GIGI
08:11	REBOUND (DEF) by GIACONE, GABBY			
07:47	GOOD! LAYUP by TODD, SHANNON	64-55	H 9	
07:38	SUB OUT: HILL, ALEXIS			
07:38	SUB IN: DUBLIN, AYANNA			
07:32				TURNOVER (LOSTBALL) by SUGGS, LACEY
07:32	STEAL by MAY, KATIE			
07:25				FOUL (PERSONAL) by VASON, AHYIONA
07:25				SUB OUT: VASON, AHYIONA
07:25				SUB IN: CRISP, MORIAH
07:22	GOOD! 3PTR by TODD, SHANNON	64-58	H 6	
07:22	ASSIST by MAY, KATIE			
07:14				TURNOVER (BADPASS) by PARKER, SHRITA
07:14				SUB OUT: POWELL, PAIGE
07:14				SUB IN: BELL, CHINYERE
06:59	TURNOVER (LOSTBALL) by GENCO, JESS			
06:59				STEAL by SMITH, GIGI
06:59				TIMEOUT 30SEC
06:41	FOUL (PERSONAL) by GIACONE, GABBY			
06:41		65-58	H 7	GOOD! FT by BELL, CHINYERE
06:41		66-58	H 8	GOOD! FT by BELL, CHINYERE
06:27	GOOD! JUMPER by MAY, KATIE	66-60	H 6	
06:27	ASSIST by GENCO, JESS			
06:13				FOUL (OFF) by SMITH, GIGI
06:13				TURNOVER (OFFENSIVE) by SMITH, GIGI
05:54	TURNOVER (TRAVEL) by TODD, SHANNON			
05:36		68-60	H 8	GOOD! LAYUP by PARKER, SHRITA
05:36	FOUL (PERSONAL) by DUBLIN, AYANNA			
05:36				MISSED FT by PARKER, SHRITA
05:34	REBOUND (DEF) by GIACONE, GABBY			
05:22	MISSED LAYUP by GIACONE, GABBY			
05:22	REBOUND (OFF) by DUBLIN, AYANNA			
05:22	TURNOVER (LOSTBALL) by DUBLIN, AYANNA			
05:07		70-60	H 10	GOOD! JUMPER by PARKER, SHRITA [PNT]
04:55	MISSED JUMPER by GENCO, JESS			
04:52				REBOUND (DEF) by SMITH, GIGI
04:48		72-60	H 12	GOOD! LAYUP by SUGGS, LACEY [FB/PNT]
04:48				ASSIST by SMITH, GIGI
04:39	TURNOVER (BADPASS) by GENCO, JESS			
04:39				STEAL by SUGGS, LACEY
04:34		74-60	H 14	GOOD! LAYUP by PARKER, SHRITA [FB]
04:34				ASSIST by SUGGS, LACEY
04:32	TIMEOUT 30SEC			
04:32	SUB OUT: GENCO, JESS			
04:32	SUB IN: CLARK, STELLA			
04:32				SUB OUT: PARKER, SHRITA
04:32				SUB IN: JEUNE, ASHLI
04:23	MISSED 3PTR by CLARK, STELLA			
04:22				REBOUND (DEF) by SMITH, GIGI
04:22	FOUL (PERSONAL) by TODD, SHANNON			
04:22	SUB OUT: TODD, SHANNON			
04:22	SUB IN: GENCO, JESS			
04:22	SUB OUT: GIACONE, GABBY			

Time	VISITORS: Northeastern	Score	Margin	HOME: UNCW
04:22	SUB IN: CURRENCE, KENDALL			
04:22				SUB OUT: JEUNE, ASHLI
04:22				SUB IN: PARKER, SHRITA
04:18				TIMEOUT TEAM
04:18	SUB OUT: CLARK, STELLA			
04:18	SUB IN: TODD, SHANNON			
04:10				TURNOVER (10SEC) by
03:56	MISSED 3PTR by TODD, SHANNON			
03:53	REBOUND (OFF) by GENCO, JESS			
03:52	MISSED 3PTR by GENCO, JESS			
03:48				REBOUND (DEF) by SUGGS, LACEY
03:46		76-60	H 16	GOOD! LAYUP by PARKER, SHRITA [FB]
03:46				ASSIST by SUGGS, LACEY
03:23	MISSED JUMPER by MAY, KATIE			
03:22				REBOUND (DEF) by BELL, CHINYERE
03:22	FOUL (PERSONAL) by DUBLIN, AYANNA			
03:12				MISSED JUMPER by SMITH, GIGI
03:12	REBOUND (DEF) by DUBLIN, AYANNA			
03:12				FOUL (PERSONAL) by SUGGS, LACEY
02:55	MISSED LAYUP by TODD, SHANNON			
02:51				REBOUND (DEF) by SUGGS, LACEY
02:48	SUB OUT: MAY, KATIE			
02:48	SUB IN: CLARK, STELLA			
02:31				TURNOVER (BADPASS) by PARKER, SHRITA
02:16	GOOD! JUMPER by TODD, SHANNON [PNT]	76-62	H 14	
02:09				TURNOVER (LOSTBALL) by CRISP, MORIAH
02:09				SUB OUT: CRISP, MORIAH
02:09				SUB IN: VASON, AHYIONA
02:09	SUB OUT: DUBLIN, AYANNA			
02:09	SUB IN: HILL, ALEXIS			
01:52	TURNOVER (BADPASS) by CLARK, STELLA			
01:52				STEAL by SUGGS, LACEY
01:47				TURNOVER (LOSTBALL) by SMITH, GIGI
01:47	STEAL by CLARK, STELLA			
01:41	MISSED JUMPER by CLARK, STELLA			
01:38	REBOUND (OFF) by CURRENCE, KENDALL			
01:37	MISSED 3PTR by CLARK, STELLA			
01:33				REBOUND (DEF) by BELL, CHINYERE
01:18		78-62	H 16	GOOD! LAYUP by BELL, CHINYERE
01:18				ASSIST by PARKER, SHRITA
01:02	MISSED JUMPER by TODD, SHANNON			
01:02				BLOCK by SMITH, GIGI
00:59				REBOUND (DEF) by SUGGS, LACEY
00:59	FOUL (PERSONAL) by TODD, SHANNON			
00:59		79-62	H 17	GOOD! FT by SUGGS, LACEY
00:59				SUB OUT: BELL, CHINYERE
00:59				SUB IN: MITCHELL, JESSICA
00:59	SUB OUT: HILL, ALEXIS			
00:59	SUB IN: DUBLIN, AYANNA			
00:59		80-62	H 18	GOOD! FT by SUGGS, LACEY
00:59				SUB OUT: PARKER, SHRITA
00:59				SUB IN: HOGGATT, MICAH
00:59				SUB OUT: SMITH, GIGI
00:59				SUB IN: BUEHLER, JULIA
00:59				SUB OUT: VASON, AHYIONA
00:59				SUB IN: THYBULLE, ZHANEIA
00:59				SUB OUT: SUGGS, LACEY
00:59				SUB IN: SACCO, GRACE
00:59	SUB OUT: TODD, SHANNON			
00:59	SUB IN: ZWERLING, ZOE			
00:59	SUB OUT: ZWERLING, ZOE			
00:59	SUB IN: TODD, SHANNON			
00:59	FOUL (UNSPORTSMANLIKE) by TODD, SHANNON			
00:59	TURNOVER (OFFENSIVE) by TODD, SHANNON			
00:59		81-62	H 19	GOOD! FT by BUEHLER, JULIA
00:59				MISSED FT by BUEHLER, JULIA
00:59				REBOUND (OFF) by TEAM
00:59	SUB OUT: TODD, SHANNON			
00:59	SUB IN: ZWERLING, ZOE			
00:47				MISSED JUMPER by MITCHELL, JESSICA
00:42	REBOUND (DEF) by GENCO, JESS			
00:40	GOOD! 3PTR by ZWERLING, ZOE [FB]	81-65	H 16	
00:40	ASSIST by GENCO, JESS			
00:40	TIMEOUT 30SEC			
00:32				TURNOVER (LOSTBALL) by THYBULLE, ZHANEIA
00:32	STEAL by CURRENCE, KENDALL			
00:28	MISSED 3PTR by ZWERLING, ZOE			
00:23				REBOUND (DEF) by HOGGATT, MICAH
00:08				TURNOVER (LOSTBALL) by SACCO, GRACE
00:08	STEAL by CURRENCE, KENDALL			



Time	VISITORS: Northeastern	Score	Margin	HOME: UNCW
00:08				FOUL (PERSONAL) by MITCHELL, JESSICA
00:08	GOOD! FT by DUBLIN, AYANNA	81-66	H 15	
00:08	GOOD! FT by DUBLIN, AYANNA	81-67	H 14	
00:06				TURNOVER (BADPASS) by BUEHLER, JULIA
00:01	GOOD! 3PTR by CLARK, STELLA	81-70	H 11	
00:01	ASSIST by GENCO, JESS			
00:01	TIMEOUT TEAM			
00:00		83-70	H 13	GOOD! LAYUP by HOGGATT, MICAH [FB/PNT]
00:00				ASSIST by SACCO, GRACE

**Northeastern 70, UNCW 83**

Points from (This Period)	NOR	NCW
In the Paint	8	16
Off Turns	14	9
2nd Chance	0	0
Fast Break	5	10
Bench	6	5

**Official Scoring/Possession Reference Chart**  
**Northeastern vs UNCW**  
**Period 1**  
**February 03, 2019 at Trask Coliseum - Wilmington, N.C.**



**Period 1**

**Starters:**

**Northeastern:** 12 DUBLIN, AYANNA; 13 MAY, KATIE; 14 TODD, SHANNON; 20 GENCO, JESS; 24 GIACONE, GABBY;

**UNCW:** 4 PARKER, SHRITA; 5 SMITH, GIGI; 10 VASON, AHYIONA; 13 SUGGS, LACEY; 24 BELL, CHINYERE;

Time	VISITORS: Northeastern	Score	Margin	HOME: UNCW
08:40		2-0	H 2	GOOD! LAYUP by BELL, CHINYERE
08:12	GOOD! LAYUP by DUBLIN, AYANNA	2-2	T	
07:51		4-2	H 2	GOOD! LAYUP by SMITH, GIGI
07:34	GOOD! LAYUP by TODD, SHANNON	4-4	T	
07:19		6-4	H 2	GOOD! LAYUP by SUGGS, LACEY
06:28		8-4	H 4	GOOD! LAYUP by SMITH, GIGI [FB]
06:10	GOOD! FT by TODD, SHANNON	8-5	H 3	
06:10	GOOD! FT by TODD, SHANNON	8-6	H 2	
05:37		11-6	H 5	GOOD! 3PTR by TATE, TIMBER
04:59		13-6	H 7	GOOD! LAYUP by SMITH, GIGI [PNT]
04:48	GOOD! JUMPER by GENCO, JESS	13-8	H 5	
04:03	GOOD! 3PTR by CLARK, STELLA	13-11	H 2	
03:11		16-11	H 5	GOOD! 3PTR by TATE, TIMBER [FB]
02:55	GOOD! FT by HILL, ALEXIS	16-12	H 4	
02:38	GOOD! 3PTR by CURRENCE, KENDALL	16-15	H 1	
01:55		17-15	H 2	GOOD! FT by PARKER, SHRITA [FB]
01:55		18-15	H 3	GOOD! FT by PARKER, SHRITA [FB]
00:33		20-15	H 5	GOOD! JUMPER by BELL, CHINYERE [PNT]

**Northeastern 15, UNCW 20**

**Official Scoring/Possession Reference Chart**  
**Northeastern vs UNCW**  
**Period 2**  
**February 03, 2019 at Trask Coliseum - Wilmington, N.C.**



**Period 2**

**Starters:**

**Northeastern:** 12 DUBLIN, AYANNA; 13 MAY, KATIE; 14 TODD, SHANNON; 20 GENCO, JESS; 24 GIACONE, GABBY;

**UNCW:** 4 PARKER, SHRITA; 5 SMITH, GIGI; 10 VASON, AHYIONA; 13 SUGGS, LACEY; 24 BELL, CHINYERE;

Time	VISITORS: Northeastern	Score	Margin	HOME: UNCW
08:47		22-15	H 7	GOOD! JUMPER by PARKER, SHRITA [FB]
08:25		24-15	H 9	GOOD! LAYUP by SUGGS, LACEY [FB]
08:12	GOOD! JUMPER by GENCO, JESS [PNT]	24-17	H 7	
07:54		27-17	H 10	GOOD! 3PTR by SUGGS, LACEY
07:28	GOOD! LAYUP by HILL, ALEXIS	27-19	H 8	
06:05	GOOD! FT by HILL, ALEXIS	27-20	H 7	
05:42		29-20	H 9	GOOD! JUMPER by BELL, CHINYERE [PNT]
05:28	GOOD! JUMPER by CURRENCE, KENDALL	29-22	H 7	
04:59		31-22	H 9	GOOD! LAYUP by BELL, CHINYERE
04:06	GOOD! JUMPER by GENCO, JESS	31-24	H 7	
03:49		34-24	H 10	GOOD! 3PTR by PARKER, SHRITA
03:25	GOOD! 3PTR by TODD, SHANNON	34-27	H 7	
02:45	GOOD! 3PTR by CURRENCE, KENDALL	34-30	H 4	
02:18	GOOD! 3PTR by ZWERLING, ZOE [FB]	34-33	H 1	
01:38		36-33	H 3	GOOD! LAYUP by PARKER, SHRITA [FB]
01:17	GOOD! LAYUP by CURRENCE, KENDALL [PNT]	36-35	H 1	
00:59		39-35	H 4	GOOD! 3PTR by SMITH, GIGI
00:04		41-35	H 6	GOOD! LAYUP by POWELL, PAIGE [PNT]

**Northeastern 35, UNCW 41**

**Official Scoring/Possession Reference Chart**  
**Northeastern vs UNCW**  
**Period 3**  
**February 03, 2019 at Trask Coliseum - Wilmington, N.C.**



**Period 3**

**Starters:**

**Northeastern:** 12 DUBLIN, AYANNA; 13 MAY, KATIE; 14 TODD, SHANNON; 20 GENCO, JESS; 24 GIACONE, GABBY;

**UNCW:** 4 PARKER, SHRITA; 5 SMITH, GIGI; 10 VASON, AHYIONA; 13 SUGGS, LACEY; 24 BELL, CHINYERE;

Time	VISITORS: Northeastern	Score	Margin	HOME: UNCW
08:47		43-35	H 8	GOOD! LAYUP by BELL, CHINYERE
08:25		46-35	H 11	GOOD! 3PTR by SMITH, GIGI [FB]
06:59	GOOD! FT by GIACONE, GABBY	46-36	H 10	
06:27	GOOD! LAYUP by GIACONE, GABBY	46-38	H 8	
05:36		48-38	H 10	GOOD! LAYUP by SUGGS, LACEY
05:13		49-38	H 11	GOOD! FT by SMITH, GIGI [FB]
04:49	GOOD! LAYUP by CLARK, STELLA	49-40	H 9	
04:13		52-40	H 12	GOOD! 3PTR by SMITH, GIGI [FB]
03:49	GOOD! JUMPER by GENCO, JESS [PNT]	52-42	H 10	
03:20		54-42	H 12	GOOD! JUMPER by SMITH, GIGI
02:33		56-42	H 14	GOOD! LAYUP by SUGGS, LACEY
02:06		58-42	H 16	GOOD! JUMPER by SMITH, GIGI
01:18	GOOD! JUMPER by MAY, KATIE [PNT]	58-44	H 14	
01:06		59-44	H 15	GOOD! FT by POWELL, PAIGE
01:06		60-44	H 16	GOOD! FT by POWELL, PAIGE
00:28		61-44	H 17	GOOD! FT by PARKER, SHRITA
00:28		62-44	H 18	GOOD! FT by PARKER, SHRITA
00:15	GOOD! JUMPER by HILL, ALEXIS [PNT]	62-46	H 16	
00:15	GOOD! FT by HILL, ALEXIS	62-47	H 15	

**Northeastern 47, UNCW 62**

**Official Scoring/Possession Reference Chart**  
**Northeastern vs UNCW**  
**Period 4**  
**February 03, 2019 at Trask Coliseum - Wilmington, N.C.**



**Period 4**

**Starters:**

**Northeastern:** 12 DUBLIN, AYANNA; 13 MAY, KATIE; 14 TODD, SHANNON; 20 GENCO, JESS; 24 GIACONE, GABBY;

**UNCW:** 4 PARKER, SHRITA; 5 SMITH, GIGI; 10 VASON, AHYIONA; 13 SUGGS, LACEY; 24 BELL, CHINYERE;

Time	VISITORS: Northeastern	Score	Margin	HOME: UNCW
09:45	GOOD! JUMPER by TODD, SHANNON	62-49	H 13	
09:23	GOOD! LAYUP by GENCO, JESS [FB]	62-51	H 11	
09:08	GOOD! LAYUP by TODD, SHANNON	62-53	H 9	
09:00		64-53	H 11	GOOD! LAYUP by POWELL, PAIGE [FB]
07:47	GOOD! LAYUP by TODD, SHANNON	64-55	H 9	
07:22	GOOD! 3PTR by TODD, SHANNON	64-58	H 6	
06:41		65-58	H 7	GOOD! FT by BELL, CHINYERE
06:41		66-58	H 8	GOOD! FT by BELL, CHINYERE
06:27	GOOD! JUMPER by MAY, KATIE	66-60	H 6	
05:36		68-60	H 8	GOOD! LAYUP by PARKER, SHRITA
05:07		70-60	H 10	GOOD! JUMPER by PARKER, SHRITA [PNT]
04:48		72-60	H 12	GOOD! LAYUP by SUGGS, LACEY [FB/PNT]
04:34		74-60	H 14	GOOD! LAYUP by PARKER, SHRITA [FB]
03:46		76-60	H 16	GOOD! LAYUP by PARKER, SHRITA [FB]
02:16	GOOD! JUMPER by TODD, SHANNON [PNT]	76-62	H 14	
01:18		78-62	H 16	GOOD! LAYUP by BELL, CHINYERE
00:59		79-62	H 17	GOOD! FT by SUGGS, LACEY
00:59		80-62	H 18	GOOD! FT by SUGGS, LACEY
00:59		81-62	H 19	GOOD! FT by BUEHLER, JULIA
00:40	GOOD! 3PTR by ZWERLING, ZOE [FB]	81-65	H 16	
00:08	GOOD! FT by DUBLIN, AYANNA	81-66	H 15	
00:08	GOOD! FT by DUBLIN, AYANNA	81-67	H 14	
00:01	GOOD! 3PTR by CLARK, STELLA	81-70	H 11	
00:00		83-70	H 13	GOOD! LAYUP by HOGGATT, MICAH [FB/PNT]

**Northeastern 70, UNCW 83**

**Official Substitutions Log  
 Northeastern vs UNCW  
 Period 1  
 February 03, 2019 at Trask Coliseum - Wilmington, N.C.**



VISITORS: Northeastern	Time	Score	HOME: UNCW
12 DUBLIN, AYANNA			4 PARKER, SHRITA
13 MAY, KATIE			5 SMITH, GIGI
14 TODD, SHANNON			10 VASON, AHYIONA
20 GENCO, JESS			13 SUGGS, LACEY
24 GIACONE, GABBY			24 BELL, CHINYERE
	06:19	4-8	SUB OUT: BELL, CHINYERE
	06:19		SUB IN: POWELL, PAIGE
SUB OUT: 24 GIACONE, GABBY	06:19		
SUB IN: 11 CLARK, STELLA	06:19		
	05:54	6-8	SUB OUT: PARKER, SHRITA
	05:54		SUB IN: TATE, TIMBER
	04:30	8-13	SUB OUT: VASON, AHYIONA
	04:30		SUB IN: CRISP, MORIAH
SUB OUT: 13 MAY, KATIE	04:30		
SUB IN: 4 HILL, ALEXIS	04:30		
	02:55	11-16	SUB OUT: SUGGS, LACEY
	02:55		SUB IN: PARKER, SHRITA
	02:55		SUB OUT: POWELL, PAIGE
	02:55		SUB IN: BELL, CHINYERE
SUB OUT: 14 TODD, SHANNON	02:55		
SUB IN: 1 CURRENCE, KENDALL	02:55		
	02:14	15-16	SUB OUT: SMITH, GIGI
	02:14		SUB IN: JEUNE, ASHLI
	02:14		SUB OUT: TATE, TIMBER
	02:14		SUB IN: POWELL, PAIGE
SUB OUT: 12 DUBLIN, AYANNA	01:30	15-18	
SUB IN: 24 GIACONE, GABBY	01:30		
SUB OUT: 11 CLARK, STELLA	01:19	15-18	
SUB IN: 14 TODD, SHANNON	01:19		

**Northeastern 15, UNCW 20**

**Official Substitutions Log**  
**Northeastern vs UNCW**  
**Period 2**  
**February 03, 2019 at Trask Coliseum - Wilmington, N.C.**



VISITORS: Northeastern	Time	Score	HOME: UNCW
12 DUBLIN, AYANNA			4 PARKER, SHRITA
13 MAY, KATIE			5 SMITH, GIGI
14 TODD, SHANNON			10 VASON, AHYIONA
20 GENCO, JESS			13 SUGGS, LACEY
24 GIACONE, GABBY			24 BELL, CHINYERE
SUB OUT: 24 GIACONE, GABBY	09:22	-	
SUB IN: 12 DUBLIN, AYANNA	09:22		
	06:53	19-27	SUB OUT: BELL, CHINYERE
	06:53		SUB IN: OBUSEK, CAROL-ANNE
SUB OUT: 14 TODD, SHANNON	06:53		
SUB IN: 11 CLARK, STELLA	06:53		
	06:05	20-27	SUB OUT: OBUSEK, CAROL-ANNE
	06:05		SUB IN: BELL, CHINYERE
SUB OUT: 11 CLARK, STELLA	06:04	20-27	
SUB IN: 14 TODD, SHANNON	06:04		
	03:03	27-34	SUB OUT: VASON, AHYIONA
	03:03		SUB IN: CRISP, MORIAH
	03:03		SUB OUT: BELL, CHINYERE
	03:03		SUB IN: SMITH, GIGI
	03:03		SUB OUT: POWELL, PAIGE
	03:03		SUB IN: MITCHELL, JESSICA
SUB OUT: 12 DUBLIN, AYANNA	03:03		
SUB IN: 3 ZWERLING, ZOE	03:03		
	00:09	35-39	SUB OUT: MITCHELL, JESSICA
	00:09		SUB IN: POWELL, PAIGE
	00:04	35-41	SUB OUT: SMITH, GIGI
	00:04		SUB IN: TATE, TIMBER

**Northeastern 35, UNCW 41**

**Official Substitutions Log**  
**Northeastern vs UNCW**  
**Period 3**  
**February 03, 2019 at Trask Coliseum - Wilmington, N.C.**



VISITORS: Northeastern	Time	Score	HOME: UNCW
12 DUBLIN, AYANNA			4 PARKER, SHRITA
13 MAY, KATIE			5 SMITH, GIGI
14 TODD, SHANNON			10 VASON, AHYIONA
20 GENCO, JESS			13 SUGGS, LACEY
24 GIACONE, GABBY			24 BELL, CHINYERE
	06:59	35-46	SUB OUT: BELL, CHINYERE
	06:59		SUB IN: POWELL, PAIGE
SUB OUT: 24 GIACONE, GABBY	05:13	38-48	
SUB IN: 4 HILL, ALEXIS	05:13		
SUB OUT: 13 MAY, KATIE	05:13		
SUB IN: 11 CLARK, STELLA	05:13		
	05:06	38-49	SUB OUT: POWELL, PAIGE
	05:06		SUB IN: BELL, CHINYERE
	04:04	40-52	SUB OUT: VASON, AHYIONA
	04:04		SUB IN: CRISP, MORIAH
SUB OUT: 14 TODD, SHANNON	03:32	42-52	
SUB IN: 1 CURRENCE, KENDALL	03:32		
SUB OUT: 12 DUBLIN, AYANNA	03:02	42-54	
SUB IN: 24 GIACONE, GABBY	03:02		
SUB OUT: 11 CLARK, STELLA	02:21	42-56	
SUB IN: 13 MAY, KATIE	02:21		
	01:55	42-58	SUB OUT: SUGGS, LACEY
	01:55		SUB IN: JEUNE, ASHLI
	01:36	42-58	SUB OUT: BELL, CHINYERE
	01:36		SUB IN: POWELL, PAIGE
	01:06	44-59	SUB OUT: SMITH, GIGI
	01:06		SUB IN: TATE, TIMBER
SUB OUT: 1 CURRENCE, KENDALL	00:28	44-61	
SUB IN: 14 TODD, SHANNON	00:28		

**Northeastern 47, UNCW 62**



**Official Substitutions Log**  
**Northeastern vs UNCW**  
**Period 4**  
**February 03, 2019 at Trask Coliseum - Wilmington, N.C.**



VISITORS: Northeastern	Time	Score	HOME: UNCW
12 DUBLIN,AYANNA			4 PARKER,SHRITA
13 MAY,KATIE			5 SMITH,GIGI
14 TODD,SHANNON			10 VASON,AHYIONA
20 GENCO,JESS			13 SUGGS,LACEY
24 GIACONE,GABBY			24 BELL,CHINYERE
SUB OUT: 4 HILL,ALEXIS	07:38	55-64	
SUB IN: 12 DUBLIN,AYANNA	07:38		
	07:25	55-64	SUB OUT: VASON,AHYIONA
	07:25		SUB IN: CRISP,MORIAH
	07:14	58-64	SUB OUT: POWELL,PAIGE
	07:14		SUB IN: BELL,CHINYERE
SUB OUT: 20 GENCO,JESS	04:32	60-74	
SUB IN: 11 CLARK,STELLA	04:32		
	04:32		SUB OUT: PARKER,SHRITA
	04:32		SUB IN: JEUNE,ASHLI
SUB OUT: 14 TODD,SHANNON	04:22	60-74	
SUB IN: 20 GENCO,JESS	04:22		
SUB OUT: 24 GIACONE,GABBY	04:22		
SUB IN: 1 CURRENCE,KENDALL	04:22		
	04:22		SUB OUT: JEUNE,ASHLI
	04:22		SUB IN: PARKER,SHRITA
SUB OUT: 11 CLARK,STELLA	04:18	60-74	
SUB IN: 14 TODD,SHANNON	04:18		
SUB OUT: 13 MAY,KATIE	02:48	60-76	
SUB IN: 11 CLARK,STELLA	02:48		
	02:09	62-76	SUB OUT: CRISP,MORIAH
	02:09		SUB IN: VASON,AHYIONA
SUB OUT: 12 DUBLIN,AYANNA	02:09		
SUB IN: 4 HILL,ALEXIS	02:09		
	00:59	62-79	SUB OUT: BELL,CHINYERE
	00:59		SUB IN: MITCHELL,JESSICA
SUB OUT: 4 HILL,ALEXIS	00:59		
SUB IN: 12 DUBLIN,AYANNA	00:59		
	00:59		SUB OUT: PARKER,SHRITA
	00:59		SUB IN: HOGGATT,MICAH
	00:59		SUB OUT: SMITH,GIGI
	00:59		SUB IN: BUEHLER,JULIA
	00:59		SUB OUT: VASON,AHYIONA
	00:59		SUB IN: THYBULLE,ZHANEIA
	00:59		SUB OUT: SUGGS,LACEY
	00:59		SUB IN: SACCO,GRACE
SUB OUT: 14 TODD,SHANNON	00:59		
SUB IN: 3 ZWERLING,ZOE	00:59		
SUB OUT: 3 ZWERLING,ZOE	00:59		
SUB IN: 14 TODD,SHANNON	00:59		
SUB OUT: 14 TODD,SHANNON	00:59		
SUB IN: 3 ZWERLING,ZOE	00:59		

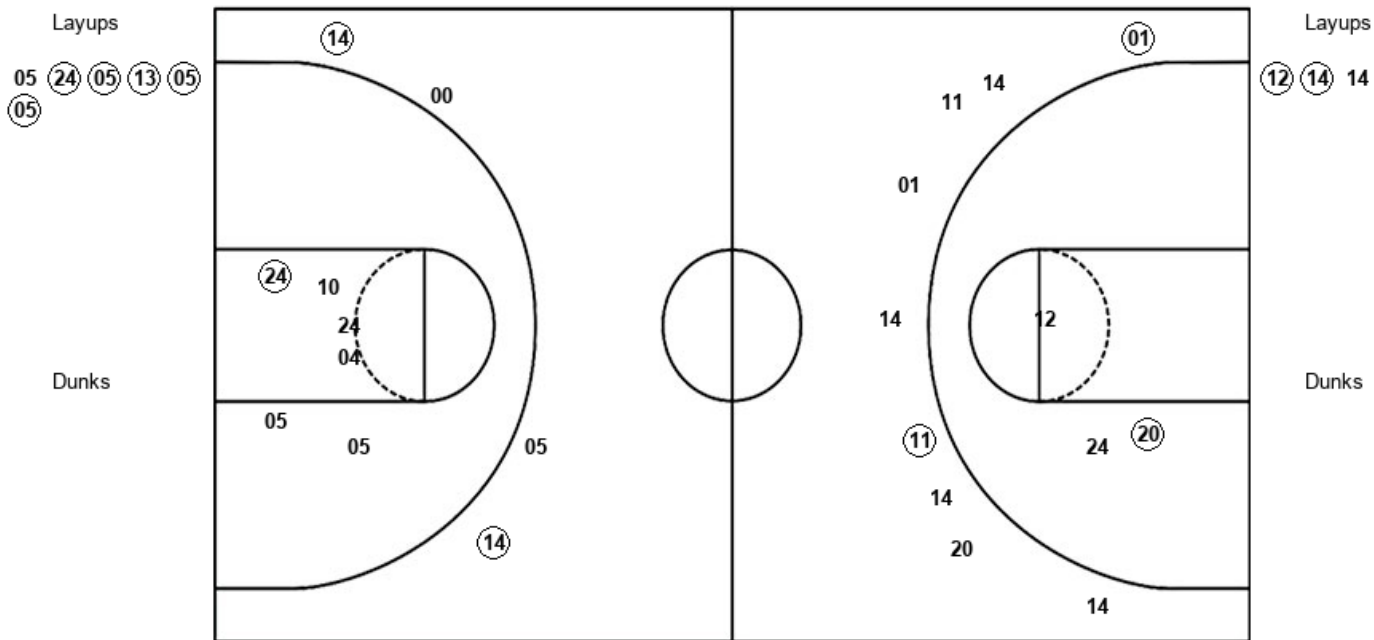
**Northeastern 70, UNCW 83**

**Official Shot Chart**  
**Northeastern vs UNCW**  
**PERIOD 1 Shots**  
 February 03, 2019 at Trask Coliseum - Wilmington, N.C.



**UNCW**

**Northeastern**



UNCW : Period 1	Made	Att	Pct
Layups	5	6	83.3
Dunks	0	0	0
2PT Field Goals	6	12	50.0
3PT Field Goals	2	4	50.0
<b>Total Field Goals</b>	<b>8</b>	<b>16</b>	<b>50.0</b>

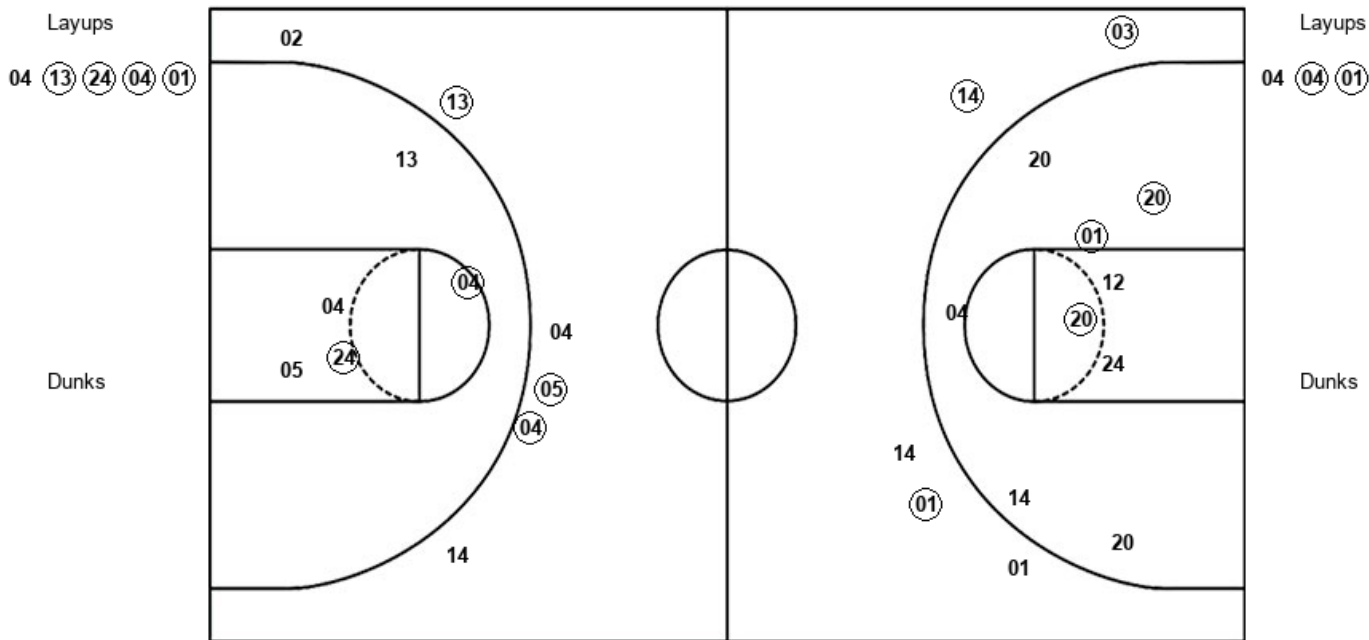
NOR : Period 1	Made	Att	Pct
Layups	2	3	66.7
Dunks	0	0	0
2PT Field Goals	3	6	50.0
3PT Field Goals	2	9	22.2
<b>Total Field Goals</b>	<b>5</b>	<b>15</b>	<b>33.3</b>

**Official Shot Chart**  
**Northeastern vs UNCW**  
**PERIOD 2 Shots**  
 February 03, 2019 at Trask Coliseum - Wilmington, N.C.



**UNCW**

**Northeastern**



NCW : Period 2	Made	Att	Pct
Layups	4	5	80.0
Dunks	0	0	0
2PT Field Goals	6	10	60.0
3PT Field Goals	3	6	50.0
<b>Total Field Goals</b>	<b>9</b>	<b>16</b>	<b>56.3</b>

NOR : Period 2	Made	Att	Pct
Layups	2	3	66.7
Dunks	0	0	0
2PT Field Goals	5	12	41.7
3PT Field Goals	3	5	60.0
<b>Total Field Goals</b>	<b>8</b>	<b>17</b>	<b>47.1</b>

**Official Shot Chart**  
**Northeastern vs UNCW**  
**PERIOD 3 Shots**  
 February 03, 2019 at Trask Coliseum - Wilmington, N.C.



**UNCW**

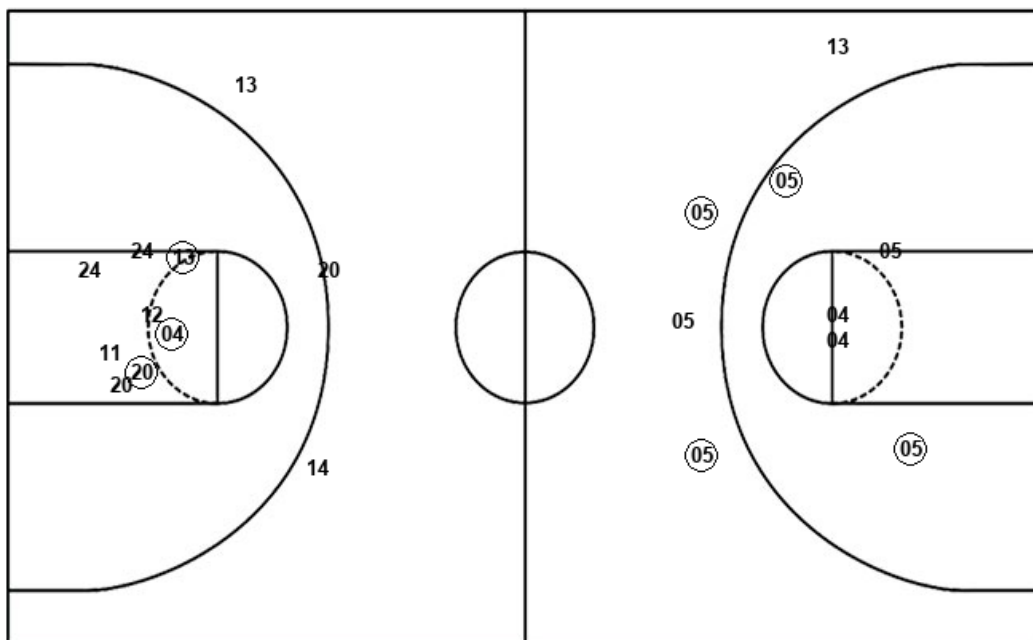
**Northeastern**

Layups  
 (24) 01 (13) (13)

Layups  
 14 (24) 24 (11) 04

Dunks

Dunks



UNCW : Period 3	Made	Att	Pct
Layups	3	4	75.0
Dunks	0	0	0
2PT Field Goals	5	9	55.6
3PT Field Goals	2	4	50.0
<b>Total Field Goals</b>	<b>7</b>	<b>13</b>	<b>53.8</b>

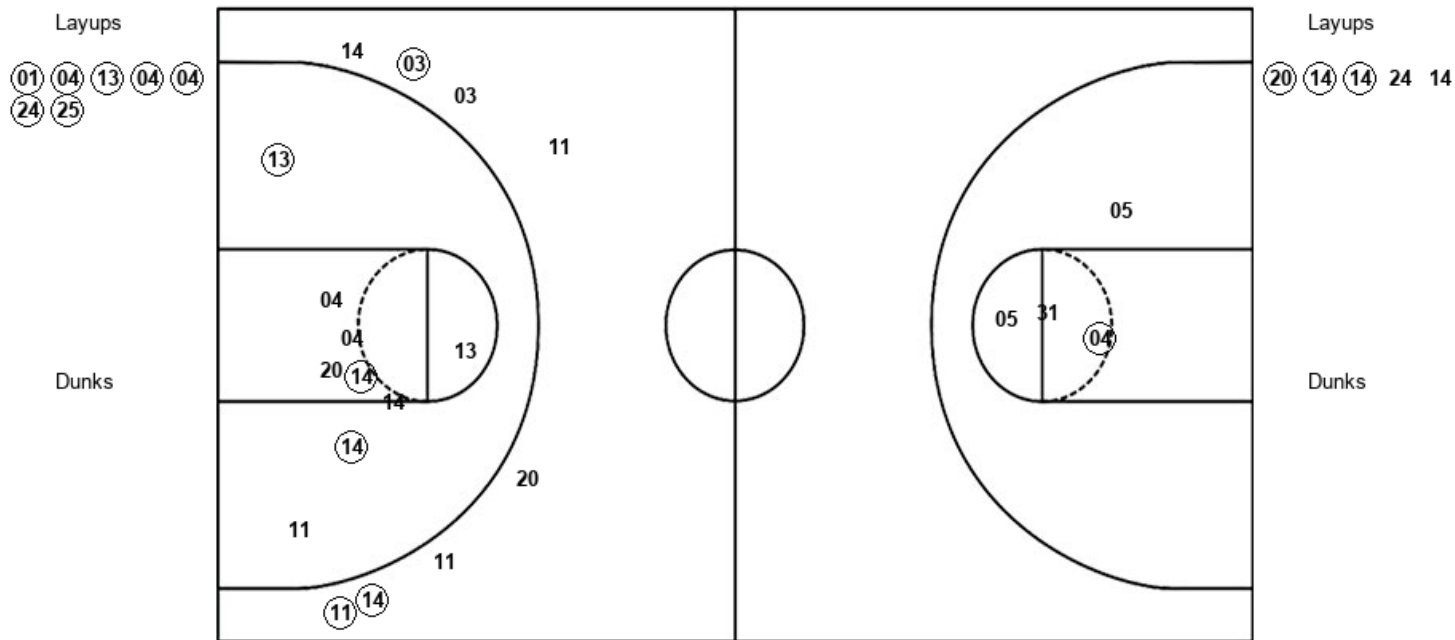
NOR : Period 3	Made	Att	Pct
Layups	2	5	40.0
Dunks	0	0	0
2PT Field Goals	5	13	38.5
3PT Field Goals	0	3	00.0
<b>Total Field Goals</b>	<b>5</b>	<b>16</b>	<b>31.3</b>

**Official Shot Chart**  
**Northeastern vs UNCW**  
**PERIOD 4 Shots**  
 February 03, 2019 at Trask Coliseum - Wilmington, N.C.



**UNCW**

**Northeastern**



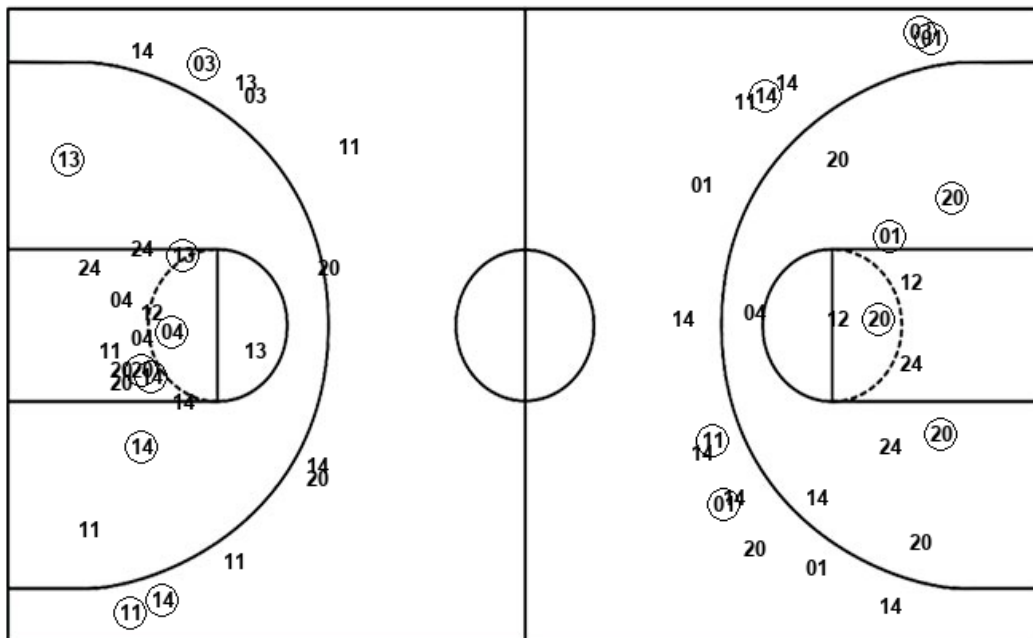
UNCW : Period 4	Made	Att	Pct
Layups	7	7	100.0
Dunks	0	0	0
2PT Field Goals	8	11	72.7
3PT Field Goals	0	0	0
<b>Total Field Goals</b>	<b>8</b>	<b>11</b>	<b>72.7</b>

NOR : Period 4	Made	Att	Pct
Layups	3	5	60.0
Dunks	0	0	0
2PT Field Goals	6	14	42.9
3PT Field Goals	3	8	37.5
<b>Total Field Goals</b>	<b>9</b>	<b>22</b>	<b>40.9</b>

**Official Shot Chart**  
**Northeastern vs UNCW**  
**Northeastern Team Shots**  
**February 03, 2019 at Trask Coliseum - Wilmington, N.C.**



Layups



Layups

(12) (14) 14 04 (04)  
 (01) 14 (24) 24 (11)  
 04 (20) (14) (14) 24  
 14

Dunks

Dunks

NOR : Period 1	Made	Att	Pct
Layups	2	3	66.7
Dunks	0	0	0
2PT Field Goals	3	6	50.0
3PT Field Goals	2	9	22.2
<b>Total Field Goals</b>	<b>5</b>	<b>15</b>	<b>33.3</b>

NOR : Period 2	Made	Att	Pct
Layups	2	3	66.7
Dunks	0	0	0
2PT Field Goals	5	12	41.7
3PT Field Goals	3	5	60.0
<b>Total Field Goals</b>	<b>8</b>	<b>17</b>	<b>47.1</b>

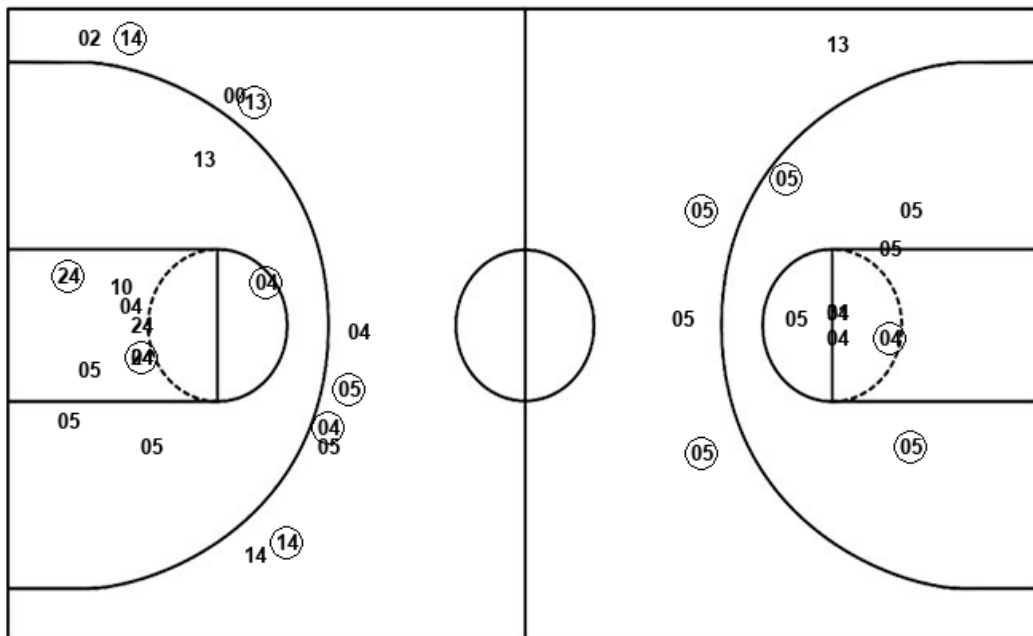
NOR : Period 3	Made	Att	Pct
Layups	2	5	40.0
Dunks	0	0	0
2PT Field Goals	5	13	38.5
3PT Field Goals	0	3	00.0
<b>Total Field Goals</b>	<b>5</b>	<b>16</b>	<b>31.3</b>

NOR : Period 4	Made	Att	Pct
Layups	3	5	60.0
Dunks	0	0	0
2PT Field Goals	6	14	42.9
3PT Field Goals	3	8	37.5
<b>Total Field Goals</b>	<b>9</b>	<b>22</b>	<b>40.9</b>

**Official Shot Chart**  
**Northeastern vs UNCW**  
**UNCW Team Shots**  
 February 03, 2019 at Trask Coliseum - Wilmington, N.C.



Layups



Layups



Dunks

Dunks

NCW : Period 1	Made	Att	Pct
Layups	5	6	83.3
Dunks	0	0	0
2PT Field Goals	6	12	50.0
3PT Field Goals	2	4	50.0
<b>Total Field Goals</b>	<b>8</b>	<b>16</b>	<b>50.0</b>

NCW : Period 2	Made	Att	Pct
Layups	4	5	80.0
Dunks	0	0	0
2PT Field Goals	6	10	60.0
3PT Field Goals	3	6	50.0
<b>Total Field Goals</b>	<b>9</b>	<b>16</b>	<b>56.3</b>

NCW : Period 3	Made	Att	Pct
Layups	3	4	75.0
Dunks	0	0	0
2PT Field Goals	5	9	55.6
3PT Field Goals	2	4	50.0
<b>Total Field Goals</b>	<b>7</b>	<b>13</b>	<b>53.8</b>

NCW : Period 4	Made	Att	Pct
Layups	7	7	100.0
Dunks	0	0	0
2PT Field Goals	8	11	72.7
3PT Field Goals	0	0	0
<b>Total Field Goals</b>	<b>8</b>	<b>11</b>	<b>72.7</b>