

FINAL SCORE



Towson

73



UNCW

77

January 20, 2019 • Trask Coliseum - Wilmington, N.C.

FINAL STATISTICS

Official Box Score
Towson vs UNCW
Game Totals -- Final Statistics
January 20, 2019 at Trask Coliseum - Wilmington, N.C.



Towson 73

No.	Player	S	Pts	FG	3FG	FT	OR	DR	TR	PF	A	TO	Blk	Stl	Min	+/-
01	MAYO, NUKIYA		20	8-19	3-5	1-2	3	4	7	2	2	4	2	0	40	-4
11	MURRAY, QIERRA		7	3-10	0-3	1-2	0	1	1	3	8	3	0	1	40	-4
21	JETER, KIONNA		28	11-19	2-6	4-5	3	1	4	0	2	2	0	0	40	-4
25	LEE, MAIA		8	4-6	0-0	0-0	4	8	12	3	0	1	1	0	32	3
32	HOLDER, RYAN		0	0-1	0-1	0-0	1	1	2	3	1	1	0	1	17	-7
00	DURJAN, DANIELLE		0	0-1	0-1	0-0	0	0	0	1	1	0	0	0	4	-4
03	FLYNN, AISLINN		0	0-1	0-0	0-0	0	0	0	0	0	0	0	0	1	0
04	HOLMES, JALYNN		6	3-4	0-0	0-0	1	3	4	3	1	0	0	4	19	7
10	CAMP, JANEEN		4	2-3	0-0	0-2	1	0	1	4	0	0	0	0	5	-2
24	BORGOSZ, TESS		0	0-0	0-0	0-0	0	0	0	0	0	0	0	0	1	-5
TEAM							0	0	0	0		0				
TOTALS			73	31-64	5-16	6-11	13	18	31	19	15	11	3	6	200	

Shooting By Period

Period	FG	FG%	3FG	3FG%	FT	FT%
1st Qtr	9-14	64%	2-3	67%	0-0	0%
2nd Qtr	8-15	53%	3-6	50%	3-4	75%
3rd Qtr	10-19	53%	0-3	00%	1-1	100%
4th Qtr	4-16	25%	0-4	00%	2-6	33%
1st Half	17-29	59%	5-9	56%	3-4	75%
2nd Half	14-35	40%	0-7	00%	3-7	43%
Game	31-64	48.4%	5-16	31.3%	6-11	54.5%

Last FG: 4th-00:07
Biggest Run: 7-0
Largest lead: By 7 at 3-00:55
Technical Fouls: None.

UNCW 77

No.	Player	S	Pts	FG	3FG	FT	OR	DR	TR	PF	A	TO	Blk	Stl	Min	+/-
04	PARKER, SHRITA		17	7-14	2-5	1-3	1	3	4	2	3	2	0	0	34	9
05	SMITH, GIGI		18	4-14	2-5	8-10	0	3	3	1	2	0	0	1	32	2
10	VASON, AHYIONA		6	2-4	1-1	1-1	0	1	1	2	3	3	0	1	25	-4
13	SUGGS, LACEY		20	9-10	1-1	1-2	1	3	4	3	0	4	0	0	39	4
24	BELL, CHINYERE		8	4-8	0-0	0-0	3	7	10	1	2	1	0	1	33	6
01	POWELL, PAIGE		2	1-3	0-0	0-0	3	2	5	0	1	1	0	0	13	-5
02	CRISP, MORIAH		6	2-3	0-0	2-2	0	1	1	4	2	0	0	2	16	8
14	TATE, TIMBER		0	0-1	0-1	0-0	0	2	2	0	0	1	0	0	6	0
32	OBUSEK, CAROL-ANNE		0	0-0	0-0	0-0	0	0	0	1	0	0	1	0	1	0
TEAM							4	1	5	0		0				
TOTALS			77	29-57	6-13	13-18	12	23	35	14	13	12	1	5	200	

Shooting By Period

Period	FG	FG%	3FG	3FG%	FT	FT%
1st Qtr	9-14	64%	2-2	100%	0-0	0%
2nd Qtr	9-18	50%	3-7	43%	5-5	100%
3rd Qtr	3-9	33%	0-2	00%	4-6	67%
4th Qtr	8-16	50%	1-2	50%	4-7	57%
1st Half	18-32	56%	5-9	56%	5-5	100%
2nd Half	11-25	44%	1-4	25%	8-13	62%
Game	29-57	50.9%	6-13	46.2%	13-18	72.2%

Last FG: 4th-00:32
Biggest Run: 9-0
Largest lead: By 12 at 2-05:23
Technical Fouls: None.

Game Notes:

Officials: Kevin Sparrock, Mark Hardcastle, Ray Bullock, Jr.
Attendance: 1027

Start Time: 2019-01-20 19:05:03
End Time: 2019-01-20 20:55:55
Game Duration: 110
Conference Game;

Score	1st	2nd	3rd	4th	TOT
Tow	20	22	21	10	73
NCW	20	26	10	21	77

Tow led for 13:31. NCW led for 23:06.
Game was tied for 3:24.
Times tied: 14 Lead Changes: 15

Points from	Tow	NCW
In the Paint	32	36
Off Turns	17	13
2nd Chance	9	13
Fast Break	23	10
Bench	10	8

Official Box Score
Towson vs UNCW
First Half Statistics Only
January 20, 2019 at Trask Coliseum - Wilmington, N.C.



Towson 42

No.	Player	S	Pts	FG	3FG	FT	OR	DR	TR	PF	A	TO	Blk	Stl	Min	+/-
00	DURJAN, DANIELLE		0	0-1	0-1	0-0	0	0	0	1	1	0	0	0	4	-4
10	CAMP, JANEEN		4	2-3	0-0	0-0	1	0	1	2	0	0	0	0	3	-2
11	MURRAY, QIERRA		5	2-4	0-1	1-2	0	1	1	0	3	2	0	0	20	-4
21	JETER, KIONNA		10	3-5	2-4	2-2	0	1	1	0	2	0	0	0	20	-4
24	BORGOSZ, TESS		0	0-0	0-0	0-0	0	0	0	0	0	0	0	0	1	-5
25	LEE, MAIA		6	3-4	0-0	0-0	0	1	1	0	0	1	1	0	14	3
32	HOLDER, RYAN		0	0-0	0-0	0-0	0	0	0	2	1	0	0	1	10	-5
01	MAYO, NUKIYA		13	5-9	3-3	0-0	1	2	3	0	2	1	1	0	20	-4
03	FLYNN, AISLINN		0	0-1	0-0	0-0	0	0	0	0	0	0	0	0	1	0
04	HOLMES, JALYNN		4	2-2	0-0	0-0	1	2	3	2	1	0	0	1	6	5
	TEAM		0	0-0	0-0	0-0	0	0	0	0	0	0	0	0	0	
TOTALS			42	17-29	5-9	3-4	3	7	10	7	10	4	2	2	100	

Shooting By Period

Period	FG	FG%	3FG	3FG%	FT	FT%
1st Qtr	9-14	64%	2-3	67%	0-0	0%
2nd Qtr	8-15	53%	3-6	50%	3-4	75%
1st Half	17-29	59%	5-9	56%	3-4	75%
Game	31-64	48.4%	5-16	31.3%	6-11	54.5%

Last FG Half: Tow 2nd-00:52

UNCW 46

No.	Player	S	Pts	FG	3FG	FT	OR	DR	TR	PF	A	TO	Blk	Stl	Min	+/-
01	POWELL, PAIGE		2	1-2	0-0	0-0	3	2	5	0	1	0	0	0	9	0
02	CRISP, MORIAH		0	0-0	0-0	0-0	0	0	0	0	1	0	0	0	4	-1
04	PARKER, SHRITA		5	2-4	1-2	0-0	0	0	0	2	2	1	0	0	15	6
05	SMITH, GIGI		12	3-9	2-5	4-4	0	2	2	1	2	0	0	0	17	3
10	VASON, AHYIONA		6	2-3	1-1	1-1	0	1	1	1	3	2	0	0	17	5
13	SUGGS, LACEY		17	8-8	1-1	0-0	0	0	0	0	0	1	0	0	19	4
14	TATE, TIMBER		0	0-0	0-0	0-0	0	1	1	0	0	1	0	0	3	-2
24	BELL, CHINYERE		4	2-6	0-0	0-0	1	3	4	0	1	1	0	0	16	5
32	OBUSEK, CAROL-ANNE		0	0-0	0-0	0-0	0	0	0	1	0	0	1	0	1	0
	TEAM		0	0-0	0-0	0-0	3	1	4	0	0	0	0	0	0	
TOTALS			46	18-32	5-9	5-5	7	10	17	5	10	6	1	0	100	

Shooting By Period

Period	FG	FG%	3FG	3FG%	FT	FT%
1st Qtr	9-14	64%	2-2	100%	0-0	0%
2nd Qtr	9-18	50%	3-7	43%	5-5	100%
1st Half	18-32	56%	5-9	56%	5-5	100%
Game	29-57	50.9%	6-13	46.2%	13-18	72.2%

Last FG Half: NCW 2nd-01:32

Game Notes:

Officials: Kevin Sparrock, Mark Hardcastle, Ray Bullock, Jr.
Attendance: 1027

Start Time: 2019-01-20 19:05:03

End Time: 2019-01-20 20:55:55

Game Duration: 110

Conference Game:

Score	1st	2nd	3rd	4th	TOT
Tow	20	22	21	10	73
NCW	20	26	10	21	77

Points from (This Period)	Tow	NCW
In the Paint	16	24
Off Turns	10	5
2nd Chance	2	9
Fast Break	12	4
Bench	8	2

Official Box Score
Towson vs UNCW
First Quarter Statistics Only
January 20, 2019 at Trask Coliseum - Wilmington, N.C.



Towson 20

No.	Player	S	Pts	FG	3FG	FT	OR	DR	TR	PF	A	TO	Blk	Stl	Min	+/-
01	MAYO, NUKIYA		5	2-4	1-1	0-0	0	1	1	0	2	0	0	0	10	0
11	MURRAY, QIERRA		2	1-3	0-1	0-0	0	1	1	0	2	1	0	0	10	0
21	JETER, KIONNA		5	2-2	1-1	0-0	0	1	1	0	1	0	0	0	10	0
25	LEE, MAIA		4	2-2	0-0	0-0	0	0	0	0	0	1	0	0	7	2
32	HOLDER, RYAN		0	0-0	0-0	0-0	0	0	0	1	1	0	0	1	9	-1
00	DURJAN, DANIELLE		0	0-0	0-0	0-0	0	0	0	0	0	0	0	0	1	1
03	FLYNN, AISLINN		0	0-0	0-0	0-0	0	0	0	0	0	0	0	0	0	0
04	HOLMES, JALYNN		0	0-0	0-0	0-0	0	0	0	0	0	0	0	0	0	0
10	CAMP, JANEEN		4	2-3	0-0	0-0	1	0	1	2	0	0	0	0	3	-2
24	BORGOSZ, TESS		0	0-0	0-0	0-0	0	0	0	0	0	0	0	0	0	0
	TEAM						0	0	0	0		0				
TOTALS			20	9-14	2-3	0-0	1	3	4	3	6	2	0	1	50	

Shooting By Period

Period	FG	FG%	3FG	3FG%	FT	FT%
1st Qtr	9-14	64%	2-3	67%	0-0	0%
2nd Qtr	8-15	53%	3-6	50%	3-4	75%
1st Half	9-14	64%	2-3	67%	0-0	0%
1st Half	17-29	59%	5-9	56%	3-4	75%
Game	31-64	48.4%	5-16	31.3%	6-11	54.5%

UNCW 20

No.	Player	S	Pts	FG	3FG	FT	OR	DR	TR	PF	A	TO	Blk	Stl	Min	+/-
04	PARKER, SHRITA		2	1-2	0-0	0-0	0	0	0	1	2	1	0	0	9	1
05	SMITH, GIGI		3	1-2	1-1	0-0	0	0	0	1	0	0	0	0	8	-2
10	VASON, AHYIONA		3	1-2	1-1	0-0	0	1	1	0	2	0	0	0	7	1
13	SUGGS, LACEY		8	4-4	0-0	0-0	0	0	0	0	0	1	0	0	9	0
24	BELL, CHINYERE		2	1-2	0-0	0-0	0	3	3	0	0	1	0	0	9	0
01	POWELL, PAIGE		2	1-2	0-0	0-0	2	0	2	0	0	0	0	0	4	1
02	CRISP, MORIAH		0	0-0	0-0	0-0	0	0	0	0	1	0	0	0	3	-1
14	TATE, TIMBER		0	0-0	0-0	0-0	0	0	0	0	0	0	0	0	0	0
32	OBUSEK, CAROL-ANNE		0	0-0	0-0	0-0	0	0	0	1	0	0	1	0	1	0
	TEAM						0	0	0	0		0				
TOTALS			20	9-14	2-2	0-0	2	4	6	3	5	3	1	0	50	

Shooting By Period

Period	FG	FG%	3FG	3FG%	FT	FT%
1st Qtr	9-14	64%	2-2	100%	0-0	0%
2nd Qtr	9-18	50%	3-7	43%	5-5	100%
1st Half	9-14	64%	2-2	100%	0-0	0%
1st Half	18-32	56%	5-9	56%	5-5	100%
Game	29-57	50.9%	6-13	46.2%	13-18	72.2%

Game Notes:

Officials: Kevin Sparrock, Mark Hardcastle, Ray Bullock, Jr.
Attendance: 1027

Start Time: 2019-01-20 19:05:03
End Time: 2019-01-20 20:55:55
Game Duration: 110
Conference Game;

Score	1st	2nd	3rd	4th	TOT
Tow	20	22	21	10	73
NCW	20	26	10	21	77

Points from (This Period)	Tow	NCW
In the Paint	10	14
Off Turns	5	0
2nd Chance	0	2
Fast Break	3	2
Bench	4	2

Official Play-By-Play
Towson vs UNCW
First Quarter
January 20, 2019 at Trask Coliseum - Wilmington, N.C.



Period 1

Starters:

Towson: 11 MURRAY, QIERRA; 21 JETER, KIONNA; 25 LEE, MAIA; 32 HOLDER, RYAN; 1 MAYO, NUKIYA;
UNCW: 4 PARKER, SHRITA; 5 SMITH, GIGI; 10 VASON, AHYIONA; 13 SUGGS, LACEY; 24 BELL, CHINYERE;

Time	VISITORS: Towson	Score	Margin	HOME: UNCW
09:42	GOOD! JUMPER by JETER, KIONNA	0-2	V 2	
09:17		2-2	T	GOOD! JUMPER by SUGGS, LACEY [PNT]
08:57	GOOD! LAYUP by LEE, MAIA	2-4	V 2	
08:57	ASSIST by HOLDER, RYAN			
08:44		5-4	H 1	GOOD! 3PTR by SMITH, GIGI
08:44				ASSIST by VASON, AHYIONA
08:22	MISSED JUMPER by MAYO, NUKIYA			
08:18				REBOUND (DEF) by BELL, CHINYERE
08:17		7-4	H 3	GOOD! LAYUP by SUGGS, LACEY [FB]
07:45	GOOD! JUMPER by MURRAY, QIERRA [PNT]	7-6	H 1	
07:13				TURNOVER (TRAVEL) by SUGGS, LACEY
06:55	GOOD! 3PTR by MAYO, NUKIYA	7-9	V 2	
06:55	ASSIST by MURRAY, QIERRA			
06:33		10-9	H 1	GOOD! 3PTR by VASON, AHYIONA
06:33				ASSIST by PARKER, SHRITA
06:13	TURNOVER (3SEC) by LEE, MAIA			
05:54				TURNOVER (BADPASS) by BELL, CHINYERE
05:54	STEAL by HOLDER, RYAN			
05:45				FOUL (PERSONAL) by PARKER, SHRITA
05:40	GOOD! JUMPER by MAYO, NUKIYA	10-11	V 1	
05:40	ASSIST by JETER, KIONNA			
05:33				MISSED LAYUP by VASON, AHYIONA
05:32	REBOUND (DEF) by JETER, KIONNA			
05:32				FOUL (PERSONAL) by SMITH, GIGI
05:18	MISSED JUMPER by MAYO, NUKIYA			
05:14				REBOUND (DEF) by BELL, CHINYERE
04:55		12-11	H 1	GOOD! LAYUP by SUGGS, LACEY
04:55				ASSIST by VASON, AHYIONA
04:32	GOOD! LAYUP by LEE, MAIA	12-13	V 1	
04:32	ASSIST by MURRAY, QIERRA			
04:06				TURNOVER (TRAVEL) by PARKER, SHRITA
04:06				
04:06				SUB OUT: BELL, CHINYERE
04:06				SUB IN: POWELL, PAIGE
04:06				SUB OUT: SMITH, GIGI
04:06				SUB IN: OBUSEK, CAROL-ANNE
04:06	SUB OUT: LEE, MAIA			
04:06	SUB IN: CAMP, JANEEN			
03:49	MISSED 3PTR by MURRAY, QIERRA			
03:45	REBOUND (OFF) by CAMP, JANEEN			
03:44	MISSED JUMPER by CAMP, JANEEN			
03:44				BLOCK by OBUSEK, CAROL-ANNE
03:39				REBOUND (DEF) by VASON, AHYIONA
03:21		14-13	H 1	GOOD! JUMPER by PARKER, SHRITA [PNT]
03:11				FOUL (PERSONAL) by OBUSEK, CAROL-ANNE
03:11				SUB OUT: VASON, AHYIONA
03:11				SUB IN: CRISP, MORIAH
03:05	GOOD! LAYUP by CAMP, JANEEN	14-15	V 1	
03:05	ASSIST by MAYO, NUKIYA			
03:04				SUB OUT: OBUSEK, CAROL-ANNE
03:04				SUB IN: BELL, CHINYERE
02:50		16-15	H 1	GOOD! LAYUP by SUGGS, LACEY
02:45	TURNOVER (BADPASS) by MURRAY, QIERRA			
02:23				MISSED JUMPER by PARKER, SHRITA
02:20	REBOUND (DEF) by MAYO, NUKIYA			
01:52	MISSED JUMPER by MURRAY, QIERRA			
01:49				REBOUND (DEF) by BELL, CHINYERE
01:41	FOUL (PERSONAL) by HOLDER, RYAN			
01:41				SUB OUT: SUGGS, LACEY
01:41				SUB IN: SMITH, GIGI
01:38		18-15	H 3	GOOD! JUMPER by POWELL, PAIGE [PNT]
01:38				ASSIST by PARKER, SHRITA
01:21	GOOD! LAYUP by CAMP, JANEEN	18-17	H 1	
01:21	ASSIST by MAYO, NUKIYA			
01:06	FOUL (PERSONAL) by CAMP, JANEEN			
01:04				SUB OUT: PARKER, SHRITA
01:04				SUB IN: SUGGS, LACEY
00:57				MISSED JUMPER by BELL, CHINYERE
00:55				REBOUND (OFF) by POWELL, PAIGE
00:55	FOUL (PERSONAL) by CAMP, JANEEN			

Time	VISITORS: Towson	Score	Margin	HOME: UNCW
00:55	SUB OUT: CAMP, JANEEN			
00:55	SUB IN: DURJAN, DANIELLE			
00:55	SUB OUT: HOLDER, RYAN			
00:55	SUB IN: LEE, MAIA			
00:42				MISSED JUMPER by POWELL, PAIGE
00:39	REBOUND (DEF) by MURRAY, QIERRA			
00:34	GOOD! 3PTR by JETER, KIONNA [FB]	18-20	V 2	
00:15				MISSED JUMPER by SMITH, GIGI
00:12				REBOUND (OFF) by POWELL, PAIGE
00:00		20-20	T	GOOD! LAYUP by BELL, CHINYERE
00:00				ASSIST by CRISP, MORIAH

Towson 20, UNCW 20

Points from (This Period)	Tow	NCW
In the Paint	10	14
Off Turns	5	0
2nd Chance	0	2
Fast Break	3	2
Bench	4	2

Official Box Score
Towson vs UNCW
Second Quarter Statistics Only
January 20, 2019 at Trask Coliseum - Wilmington, N.C.



Towson 22

No.	Player	S	Pts	FG	3FG	FT	OR	DR	TR	PF	A	TO	Blk	Stl	Min	+/-
01	MAYO, NUKIYA		8	3-5	2-2	0-0	1	1	2	0	0	1	1	0	10	-4
11	MURRAY, QIERRA		3	1-1	0-0	1-2	0	0	0	0	1	1	0	0	10	-4
21	JETER, KIONNA		5	1-3	1-3	2-2	0	0	0	0	1	0	0	0	10	-4
25	LEE, MAIA		2	1-2	0-0	0-0	0	1	1	0	0	0	1	0	7	1
32	HOLDER, RYAN		0	0-0	0-0	0-0	0	0	0	1	0	0	0	0	1	-4
00	DURJAN, DANIELLE		0	0-1	0-1	0-0	0	0	0	1	1	0	0	0	3	-5
03	FLYNN, AISLINN		0	0-1	0-0	0-0	0	0	0	0	0	0	0	0	1	0
04	HOLMES, JALYNN		4	2-2	0-0	0-0	1	2	3	2	1	0	0	1	6	5
10	CAMP, JANEEN		0	0-0	0-0	0-0	0	0	0	0	0	0	0	0	0	0
24	BORGOSZ, TESS		0	0-0	0-0	0-0	0	0	0	0	0	0	0	0	1	-5
	TEAM						0	0	0	0		0				
TOTALS			22	8-15	3-6	3-4	2	4	6	4	4	2	2	1	50	

Shooting By Period

Period	FG	FG%	3FG	3FG%	FT	FT%
3rd Qtr	10-19	53%	0-3	00%	1-1	100%
4th Qtr	4-16	25%	0-4	00%	2-6	33%
2nd Half	8-15	53%	3-6	50%	3-4	75%
2nd Half	14-35	40%	0-7	00%	3-7	43%
Game	31-64	48.4%	5-16	31.3%	6-11	54.5%

UNCW 26

No.	Player	S	Pts	FG	3FG	FT	OR	DR	TR	PF	A	TO	Blk	Stl	Min	+/-
04	PARKER, SHRITA		3	1-2	1-2	0-0	0	0	0	1	0	0	0	0	6	5
05	SMITH, GIGI		9	2-7	1-4	4-4	0	2	2	0	2	0	0	0	9	5
10	VASON, AHYIONA		3	1-1	0-0	1-1	0	0	0	1	1	2	0	0	10	4
13	SUGGS, LACEY		9	4-4	1-1	0-0	0	0	0	0	0	0	0	0	10	4
24	BELL, CHINYERE		2	1-4	0-0	0-0	1	0	1	0	1	0	0	0	7	5
01	POWELL, PAIGE		0	0-0	0-0	0-0	1	2	3	0	1	0	0	0	5	-1
02	CRISP, MORIAH		0	0-0	0-0	0-0	0	0	0	0	0	0	0	0	1	0
14	TATE, TIMBER		0	0-0	0-0	0-0	0	1	1	0	0	1	0	0	3	-2
32	OBUSEK, CAROL-ANNE		0	0-0	0-0	0-0	0	0	0	0	0	0	0	0	0	0
	TEAM						3	1	4	0		0				
TOTALS			26	9-18	3-7	5-5	5	6	11	2	5	3	0	0	50	

Shooting By Period

Period	FG	FG%	3FG	3FG%	FT	FT%
3rd Qtr	3-9	33%	0-2	00%	4-6	67%
4th Qtr	8-16	50%	1-2	50%	4-7	57%
2nd Half	9-18	50%	3-7	43%	5-5	100%
2nd Half	11-25	44%	1-4	25%	8-13	62%
Game	29-57	50.9%	6-13	46.2%	13-18	72.2%

Game Notes:

Officials: Kevin Sparrock, Mark Hardcastle, Ray Bullock, Jr.
Attendance: 1027

Start Time: 2019-01-20 19:05:03
End Time: 2019-01-20 20:55:55
Game Duration: 110
Conference Game;

Score	1st	2nd	3rd	4th	TOT
Tow	20	22	21	10	73
NCW	20	26	10	21	77

Points from (This Period)	Tow	NCW
In the Paint	6	10
Off Turns	5	5
2nd Chance	2	7
Fast Break	9	2
Bench	4	0

Official Play-By-Play
Towson vs UNCW
Second Quarter
January 20, 2019 at Trask Coliseum - Wilmington, N.C.



Period 2

Starters:

Towson: 11 MURRAY, QIERRA; 21 JETER, KIONNA; 25 LEE, MAIA; 32 HOLDER, RYAN; 1 MAYO, NUKIYA;
UNCW: 4 PARKER, SHRITA; 5 SMITH, GIGI; 10 VASON, AHYIONA; 13 SUGGS, LACEY; 24 BELL, CHINYERE;

Time	VISITORS: Towson	Score	Margin	HOME: UNCW
09:40				TURNOVER (DRIBBLING) by VASON, AHYIONA
09:12	GOOD! LAYUP by LEE, MAIA	20-22	V 2	
09:12	ASSIST by DURJAN, DANIELLE			
08:52		22-22	T	GOOD! JUMPER by SUGGS, LACEY
08:52				ASSIST by SMITH, GIGI
08:23	MISSED 3PTR by DURJAN, DANIELLE			
08:23				REBOUND (DEF) by TEAM
08:02		25-22	H 3	GOOD! 3PTR by PARKER, SHRITA
08:02				ASSIST by BELL, CHINYERE
07:50	MISSED LAYUP by LEE, MAIA			
07:46				REBOUND (DEF) by SMITH, GIGI
07:22		27-22	H 5	GOOD! LAYUP by VASON, AHYIONA
07:22	FOUL (PERSONAL) by DURJAN, DANIELLE			
07:22	SUB OUT: DURJAN, DANIELLE			
07:22	SUB IN: HOLDER, RYAN			
07:22		28-22	H 6	GOOD! FT by VASON, AHYIONA
07:07	GOOD! 3PTR by JETER, KIONNA	28-25	H 3	
06:50		30-25	H 5	GOOD! JUMPER by SMITH, GIGI [PNT]
06:44	TURNOVER (TRAVEL) by MURRAY, QIERRA			
06:44				SUB OUT: BELL, CHINYERE
06:44				SUB IN: POWELL, PAIGE
06:44	SUB OUT: LEE, MAIA			
06:44	SUB IN: BORGOSZ, TESS			
06:25		33-25	H 8	GOOD! 3PTR by SMITH, GIGI
06:25				ASSIST by VASON, AHYIONA
06:08	TURNOVER (BADPASS) by MAYO, NUKIYA			
05:54	FOUL (PERSONAL) by HOLDER, RYAN			
05:54		34-25	H 9	GOOD! FT by SMITH, GIGI
05:54	SUB OUT: HOLDER, RYAN			
05:54	SUB IN: HOLMES, JALYNN			
05:54		35-25	H 10	GOOD! FT by SMITH, GIGI
05:35	MISSED 3PTR by JETER, KIONNA			
05:32	REBOUND (OFF) by MAYO, NUKIYA			
05:30	MISSED JUMPER by MAYO, NUKIYA			
05:27				REBOUND (DEF) by POWELL, PAIGE
05:23	FOUL (PERSONAL) by HOLMES, JALYNN			
05:23	TIMEOUT 30SEC			
05:23				
05:23	SUB OUT: BORGOSZ, TESS			
05:23	SUB IN: LEE, MAIA			
05:23		36-25	H 11	GOOD! FT by SMITH, GIGI [FB]
05:23		37-25	H 12	GOOD! FT by SMITH, GIGI [FB]
05:08	GOOD! JUMPER by HOLMES, JALYNN	37-27	H 10	
04:49				MISSED JUMPER by SMITH, GIGI
04:46	REBOUND (DEF) by LEE, MAIA			
04:43	MISSED LAYUP by MAYO, NUKIYA			
04:40	REBOUND (OFF) by HOLMES, JALYNN			
04:39	GOOD! JUMPER by HOLMES, JALYNN [PNT]	37-29	H 8	
04:23				MISSED 3PTR by PARKER, SHRITA
04:20	REBOUND (DEF) by HOLMES, JALYNN			
04:17	GOOD! 3PTR by MAYO, NUKIYA [FB]	37-32	H 5	
04:17	ASSIST by HOLMES, JALYNN			
03:57				MISSED 3PTR by SMITH, GIGI
03:54				REBOUND (OFF) by POWELL, PAIGE
03:51		39-32	H 7	GOOD! JUMPER by SUGGS, LACEY [PNT]
03:51				ASSIST by POWELL, PAIGE
03:45				FOUL (PERSONAL) by PARKER, SHRITA
03:45	GOOD! FT by MURRAY, QIERRA [FB]	39-33	H 6	
03:45				SUB OUT: PARKER, SHRITA
03:45				SUB IN: BELL, CHINYERE
03:45				SUB OUT: SMITH, GIGI
03:45				SUB IN: CRISP, MORIAH
03:45	MISSED FT by MURRAY, QIERRA			
03:43				REBOUND (DEF) by POWELL, PAIGE
03:23		41-33	H 8	GOOD! JUMPER by SUGGS, LACEY [PNT]
03:00	GOOD! JUMPER by MAYO, NUKIYA	41-35	H 6	
03:00	ASSIST by MURRAY, QIERRA			
02:37	FOUL (PERSONAL) by HOLMES, JALYNN			
02:37				SUB OUT: POWELL, PAIGE
02:37				SUB IN: SMITH, GIGI

Time	VISITORS: Towson	Score	Margin	HOME: UNCW
02:37				SUB OUT: CRISP, MORIAH
02:37				SUB IN: TATE, TIMBER
02:27				MISSED JUMPER by BELL, CHINYERE
02:24				REBOUND (OFF) by BELL, CHINYERE
02:23				MISSED JUMPER by BELL, CHINYERE
02:23	BLOCK by LEE, MAIA			
02:23				REBOUND (OFF) by TEAM
02:17		43-35	H 8	GOOD! LAYUP by BELL, CHINYERE
02:10	GOOD! LAYUP by MURRAY, QIERRA [FB]	43-37	H 6	
01:48				MISSED JUMPER by SMITH, GIGI
01:47				REBOUND (OFF) by TEAM
01:47	SUB OUT: LEE, MAIA			
01:47	SUB IN: FLYNN, AISLINN			
01:32		46-37	H 9	GOOD! 3PTR by SUGGS, LACEY
01:32				ASSIST by SMITH, GIGI
01:21	MISSED JUMPER by FLYNN, AISLINN			
01:18				REBOUND (DEF) by TATE, TIMBER
01:13				MISSED 3PTR by SMITH, GIGI
01:09	REBOUND (DEF) by HOLMES, JALYNN			
01:05	MISSED 3PTR by JETER, KIONNA			
01:01				REBOUND (DEF) by SMITH, GIGI
01:00				TURNOVER (BADPASS) by TATE, TIMBER
01:00	STEAL by HOLMES, JALYNN			
00:52	GOOD! 3PTR by MAYO, NUKIYA [FB]	46-40	H 6	
00:52	ASSIST by JETER, KIONNA			
00:29				MISSED JUMPER by BELL, CHINYERE
00:29	BLOCK by MAYO, NUKIYA			
00:29				REBOUND (OFF) by TEAM
00:29				SUB OUT: BELL, CHINYERE
00:29				SUB IN: POWELL, PAIGE
00:29	SUB OUT: FLYNN, AISLINN			
00:29	SUB IN: LEE, MAIA			
00:21				MISSED 3PTR by SMITH, GIGI
00:17	REBOUND (DEF) by MAYO, NUKIYA			
00:04				FOUL (PERSONAL) by VASON, AHYIONA
00:04	GOOD! FT by JETER, KIONNA	46-41	H 5	
00:04				SUB OUT: SMITH, GIGI
00:04				SUB IN: PARKER, SHRITA
00:04	GOOD! FT by JETER, KIONNA	46-42	H 4	
00:01				TURNOVER (LOSTBALL) by VASON, AHYIONA

Towson 42, UNCW 46

Points from (This Period)	Tow	NCW
In the Paint	6	10
Off Turns	5	5
2nd Chance	2	7
Fast Break	9	2
Bench	4	0

Official Box Score
Towson vs UNCW
Second Half Statistics Only
January 20, 2019 at Trask Coliseum - Wilmington, N.C.



Towson 31

No.	Player	S	Pts	FG	3FG	FT	OR	DR	TR	PF	A	TO	Blk	Stl	Min	+/-
00	DURJAN, DANIELLE		0	0-0	0-0	0-0	0	0	0	0	0	0	0	0	0	0
10	CAMP, JANEEN		0	0-0	0-0	0-2	0	0	0	2	0	0	0	0	2	0
11	MURRAY, QIERRA		2	1-6	0-2	0-0	0	0	0	3	5	1	0	1	20	0
21	JETER, KIONNA		18	8-14	0-2	2-3	3	0	3	0	0	2	0	0	20	0
24	BORGOSZ, TESS		0	0-0	0-0	0-0	0	0	0	0	0	0	0	0	0	0
25	LEE, MAIA		2	1-2	0-0	0-0	4	7	11	3	0	0	0	0	18	0
32	HOLDER, RYAN		0	0-1	0-1	0-0	1	1	2	1	0	1	0	0	7	-2
01	MAYO, NUKIYA		7	3-10	0-2	1-2	2	2	4	2	0	3	1	0	20	0
03	FLYNN, AISLINN		0	0-0	0-0	0-0	0	0	0	0	0	0	0	0	0	0
04	HOLMES, JALYNN		2	1-2	0-0	0-0	0	1	1	1	0	0	0	3	13	2
	TEAM		0	0-0	0-0	0-0	0	0	0	0	0	0	0	0	0	
TOTALS			31	14-35	0-7	3-7	10	11	21	12	5	7	1	4	100	

Shooting By Period

Period	FG	FG%	3FG	3FG%	FT	FT%
3rd Qtr	10-19	53%	0-3	00%	1-1	100%
4th Qtr	4-16	25%	0-4	00%	2-6	33%
2nd Half	14-35	40%	0-7	00%	3-7	43%
Game	31-64	48.4%	5-16	31.3%	6-11	54.5%

Last FG Half: Tow 4th-00:07

UNCW 31

No.	Player	S	Pts	FG	3FG	FT	OR	DR	TR	PF	A	TO	Blk	Stl	Min	+/-
01	POWELL, PAIGE		0	0-1	0-0	0-0	0	0	0	0	0	1	0	0	4	-5
02	CRISP, MORIAH		6	2-3	0-0	2-2	0	1	1	4	1	0	0	2	12	9
04	PARKER, SHRITA		12	5-10	1-3	1-3	1	3	4	0	1	1	0	0	18	3
05	SMITH, GIGI		6	1-5	0-0	4-6	0	1	1	0	0	0	0	1	16	-1
10	VASON, AHYIONA		0	0-1	0-0	0-0	0	0	0	1	0	1	0	1	8	-9
13	SUGGS, LACEY		3	1-2	0-0	1-2	1	3	4	3	0	3	0	0	20	0
14	TATE, TIMBER		0	0-1	0-1	0-0	0	1	1	0	0	0	0	0	3	2
24	BELL, CHINYERE		4	2-2	0-0	0-0	2	4	6	1	1	0	0	1	18	1
32	OBUSEK, CAROL-ANNE		0	0-0	0-0	0-0	0	0	0	0	0	0	0	0	0	0
	TEAM		0	0-0	0-0	0-0	1	0	1	0	0	0	0	0	0	
TOTALS			31	11-25	1-4	8-13	5	13	18	9	3	6	0	5	100	

Shooting By Period

Period	FG	FG%	3FG	3FG%	FT	FT%
3rd Qtr	3-9	33%	0-2	00%	4-6	67%
4th Qtr	8-16	50%	1-2	50%	4-7	57%
2nd Half	11-25	44%	1-4	25%	8-13	62%
Game	29-57	50.9%	6-13	46.2%	13-18	72.2%

Last FG Half: NCW 4th-00:32

Game Notes:

Officials: Kevin Sparrock, Mark Hardcastle, Ray Bullock, Jr.
Attendance: 1027

Start Time: 2019-01-20 19:05:03

End Time: 2019-01-20 20:55:55

Game Duration: 110

Conference Game;

Score	1st	2nd	3rd	4th	TOT
Tow	20	22	21	10	73
NCW	20	26	10	21	77

Points from (This Period)	Tow	NCW
In the Paint	16	12
Off Turns	7	8
2nd Chance	7	4
Fast Break	11	6
Bench	2	6

Official Box Score
Towson vs UNCW
Third Quarter Statistics Only
January 20, 2019 at Trask Coliseum - Wilmington, N.C.



Towson 31

No.	Player	S	Pts	FG	3FG	FT	OR	DR	TR	PF	A	TO	Blk	Stl	Min	+/-
01	MAYO, NUKIYA		4	2-5	0-1	0-0	1	1	2	0	0	1	0	0	10	11
11	MURRAY, QIERRA		0	0-2	0-0	0-0	0	0	0	1	4	0	0	1	10	11
21	JETER, KIONNA		13	6-8	0-1	1-1	0	0	0	0	0	0	0	0	10	11
25	LEE, MAIA		2	1-2	0-0	0-0	3	3	6	2	0	0	0	0	10	11
32	HOLDER, RYAN		0	0-1	0-1	0-0	1	0	1	1	0	1	0	0	5	2
00	DURJAN, DANIELLE		0	0-0	0-0	0-0	0	0	0	0	0	0	0	0	0	0
03	FLYNN, AISLINN		0	0-0	0-0	0-0	0	0	0	0	0	0	0	0	0	0
04	HOLMES, JALYNN		2	1-1	0-0	0-0	0	0	0	1	0	0	0	2	5	9
10	CAMP, JANEEN		0	0-0	0-0	0-0	0	0	0	1	0	0	0	0	0	0
24	BORGOSZ, TESS		0	0-0	0-0	0-0	0	0	0	0	0	0	0	0	0	0
	TEAM						0	0	0	0		0				
TOTALS			21	10-19	0-3	1-1	5	4	9	6	4	2	0	3	50	

Shooting By Period

Period	FG	FG%	3FG	3FG%	FT	FT%
2nd Half	0-0	0%	0-0	0%	0-0	0%
Game	31-64	48.4%	5-16	31.3%	6-11	54.5%

UNCW 31

No.	Player	S	Pts	FG	3FG	FT	OR	DR	TR	PF	A	TO	Blk	Stl	Min	+/-
04	PARKER, SHRITA		2	1-3	0-2	0-0	0	1	1	0	1	1	0	0	8	-8
05	SMITH, GIGI		3	1-2	0-0	1-2	0	1	1	0	0	0	0	0	9	-10
10	VASON, AHYIONA		0	0-1	0-0	0-0	0	0	0	1	0	1	0	1	8	-9
13	SUGGS, LACEY		3	1-2	0-0	1-2	1	2	3	2	0	2	0	0	10	-11
24	BELL, CHINYERE		0	0-0	0-0	0-0	1	0	1	0	1	0	0	0	8	-11
01	POWELL, PAIGE		0	0-1	0-0	0-0	0	0	0	0	0	1	0	0	4	-4
02	CRISP, MORIAH		2	0-0	0-0	2-2	0	0	0	1	0	0	0	0	2	-2
14	TATE, TIMBER		0	0-0	0-0	0-0	0	0	0	0	0	0	0	0	0	0
32	OBUSEK, CAROL-ANNE		0	0-0	0-0	0-0	0	0	0	0	0	0	0	0	0	0
	TEAM						0	0	0	0		0				
TOTALS			10	3-9	0-2	4-6	2	4	6	4	2	5	0	1	50	

Shooting By Period

Period	FG	FG%	3FG	3FG%	FT	FT%
2nd Half	0-0	0%	0-0	0%	0-0	0%
Game	29-57	50.9%	6-13	46.2%	13-18	72.2%

Game Notes:

Officials: Kevin Sparrock, Mark Hardcastle, Ray Bullock, Jr.
Attendance: 1027

Start Time: 2019-01-20 19:05:03

End Time: 2019-01-20 20:55:55

Game Duration: 110

Conference Game;

Score	1st	2nd	3rd	4th	TOT
Tow	20	22	21	10	73
NCW	20	26	10	21	77

Points from (This Period)	Tow	NCW
In the Paint	12	2
Off Turns	4	2
2nd Chance	4	0
Fast Break	9	0
Bench	2	2

Official Play-By-Play
Towson vs UNCW
Third Quarter
January 20, 2019 at Trask Coliseum - Wilmington, N.C.



Period 3

Starters:

Towson: 11 MURRAY, QIERRA; 21 JETER, KIONNA; 25 LEE, MAIA; 32 HOLDER, RYAN; 1 MAYO, NUKIYA;
UNCW: 4 PARKER, SHRITA; 5 SMITH, GIGI; 10 VASON, AHYIONA; 13 SUGGS, LACEY; 24 BELL, CHINYERE;

Time	VISITORS: Towson	Score	Margin	HOME: UNCW
09:43	MISSED 3PTR by MAYO, NUKIYA			
09:40	REBOUND (OFF) by LEE, MAIA			
09:38	MISSED 3PTR by HOLDER, RYAN			
09:34	REBOUND (OFF) by MAYO, NUKIYA			
09:34				FOUL (PERSONAL) by SUGGS, LACEY
09:32				FOUL (PERSONAL) by VASON, AHYIONA
09:27	GOOD! JUMPER by MAYO, NUKIYA [PNT]	46-44	H 2	
09:00				TURNOVER (BADPASS) by VASON, AHYIONA
08:43	MISSED JUMPER by MAYO, NUKIYA			
08:41				REBOUND (DEF) by SMITH, GIGI
08:17		48-44	H 4	GOOD! LAYUP by SMITH, GIGI
08:17				ASSIST by BELL, CHINYERE
07:50	GOOD! LAYUP by JETER, KIONNA	48-46	H 2	
07:29				MISSED JUMPER by VASON, AHYIONA
07:25	REBOUND (DEF) by LEE, MAIA			
07:23	TURNOVER (TRAVEL) by MAYO, NUKIYA			
07:23				SUB OUT: BELL, CHINYERE
07:23				SUB IN: POWELL, PAIGE
07:05		50-46	H 4	GOOD! JUMPER by SUGGS, LACEY
07:05				ASSIST by PARKER, SHRITA
06:52	MISSED JUMPER by MAYO, NUKIYA			
06:49	REBOUND (OFF) by HOLDER, RYAN			
06:36	MISSED JUMPER by MURRAY, QIERRA			
06:31	REBOUND (OFF) by LEE, MAIA			
06:31	MISSED JUMPER by LEE, MAIA			
06:26				REBOUND (DEF) by PARKER, SHRITA
06:18				MISSED 3PTR by PARKER, SHRITA
06:14				REBOUND (OFF) by SUGGS, LACEY
05:58				MISSED JUMPER by POWELL, PAIGE
05:54	REBOUND (DEF) by LEE, MAIA			
05:51	GOOD! LAYUP by JETER, KIONNA [FB]	50-48	H 2	
05:51	ASSIST by MURRAY, QIERRA			
05:35				TURNOVER (LOSTBALL) by POWELL, PAIGE
05:35	SUB OUT: LEE, MAIA			
05:35	SUB IN: CAMP, JANEEN			
05:23	TURNOVER (BADPASS) by HOLDER, RYAN			
05:23				STEAL by VASON, AHYIONA
05:17	FOUL (PERSONAL) by HOLDER, RYAN			
05:17	SUB OUT: HOLDER, RYAN			
05:17	SUB IN: HOLMES, JALYNN			
05:13	FOUL (PERSONAL) by CAMP, JANEEN			
05:13				SUB OUT: PARKER, SHRITA
05:13				SUB IN: BELL, CHINYERE
05:13	SUB OUT: CAMP, JANEEN			
05:13	SUB IN: LEE, MAIA			
04:51	FOUL (PERSONAL) by LEE, MAIA			
04:51				
04:47				MISSED JUMPER by SMITH, GIGI
04:43	REBOUND (DEF) by LEE, MAIA			
04:41	GOOD! LAYUP by MAYO, NUKIYA [FB]	50-50	T	
04:41	ASSIST by MURRAY, QIERRA			
04:20	FOUL (PERSONAL) by LEE, MAIA			
04:20				MISSED FT by SUGGS, LACEY
04:20				REBOUND (OFF) by TEAM
04:20		51-50	H 1	GOOD! FT by SUGGS, LACEY
04:04	GOOD! JUMPER by JETER, KIONNA	51-52	V 1	
03:42	FOUL (PERSONAL) by MURRAY, QIERRA			
03:42				MISSED FT by SMITH, GIGI
03:42				REBOUND (OFF) by TEAM
03:42				SUB OUT: POWELL, PAIGE
03:42				SUB IN: PARKER, SHRITA
03:42		52-52	T	GOOD! FT by SMITH, GIGI
03:26	GOOD! JUMPER by JETER, KIONNA	52-54	V 2	
03:12				TURNOVER (BADPASS) by PARKER, SHRITA
03:12	STEAL by HOLMES, JALYNN			
03:04	MISSED JUMPER by MURRAY, QIERRA			
02:59	REBOUND (OFF) by LEE, MAIA			
02:58	GOOD! LAYUP by LEE, MAIA	52-56	V 4	
02:35		54-56	V 2	GOOD! JUMPER by PARKER, SHRITA
02:29	GOOD! LAYUP by JETER, KIONNA [FB]	54-58	V 4	

Time	VISITORS: Towson	Score	Margin	HOME: UNCW
02:29	ASSIST by MURRAY, QIERRA			
02:29				FOUL (PERSONAL) by SUGGS, LACEY
02:29				TIMEOUT 30SEC
02:29				
02:29				SUB OUT: SMITH, GIGI
02:29				SUB IN: POWELL, PAIGE
02:29	GOOD! FT by JETER, KIONNA [FB]	54-59	V 5	
02:15				TURNOVER (BADPASS) by SUGGS, LACEY
02:15	STEAL by HOLMES, JALYNN			
02:12				SUB OUT: POWELL, PAIGE
02:12				SUB IN: SMITH, GIGI
02:05	MISSED JUMPER by JETER, KIONNA			
02:04				REBOUND (DEF) by SUGGS, LACEY
01:46				SUB OUT: VASON, AHYIONA
01:46				SUB IN: CRISP, MORIAH
01:44				TURNOVER (BADPASS) by SUGGS, LACEY
01:44	STEAL by MURRAY, QIERRA			
01:37	GOOD! JUMPER by JETER, KIONNA [FB]	54-61	V 7	
01:37	ASSIST by MURRAY, QIERRA			
01:21	FOUL (PERSONAL) by HOLMES, JALYNN			
01:21		55-61	V 6	GOOD! FT by CRISP, MORIAH
01:21		56-61	V 5	GOOD! FT by CRISP, MORIAH
01:03				FOUL (PERSONAL) by CRISP, MORIAH
00:55	GOOD! JUMPER by HOLMES, JALYNN	56-63	V 7	
00:24				MISSED 3PTR by PARKER, SHRITA
00:23				REBOUND (OFF) by BELL, CHINYERE
00:23				SUB OUT: SMITH, GIGI
00:23				SUB IN: TATE, TIMBER
00:14				MISSED LAYUP by SUGGS, LACEY
00:10	REBOUND (DEF) by MAYO, NUKIYA			
00:00	MISSED 3PTR by JETER, KIONNA			
00:00				REBOUND (DEF) by SUGGS, LACEY

Towson 63, UNCW 56

Points from (This Period)	Tow	NCW
In the Paint	12	2
Off Turns	4	2
2nd Chance	4	0
Fast Break	9	0
Bench	2	2

Official Box Score
Towson vs UNCW
Fourth Quarter Statistics Only
January 20, 2019 at Trask Coliseum - Wilmington, N.C.



Towson 10

No.	Player	S	Pts	FG	3FG	FT	OR	DR	TR	PF	A	TO	Blk	Stl	Min	+/-
01	MAYO, NUKIYA		3	1-5	0-1	1-2	1	1	2	2	0	2	1	0	10	-11
11	MURRAY, QIERRA		2	1-4	0-2	0-0	0	0	0	2	1	1	0	0	10	-11
21	JETER, KIONNA		5	2-6	0-1	1-2	3	0	3	0	0	2	0	0	10	-11
25	LEE, MAIA		0	0-0	0-0	0-0	1	4	5	1	0	0	0	0	8	-11
32	HOLDER, RYAN		0	0-0	0-0	0-0	0	1	1	0	0	0	0	0	2	-4
00	DURJAN, DANIELLE		0	0-0	0-0	0-0	0	0	0	0	0	0	0	0	0	0
03	FLYNN, AISLINN		0	0-0	0-0	0-0	0	0	0	0	0	0	0	0	0	0
04	HOLMES, JALYNN		0	0-1	0-0	0-0	0	1	1	0	0	0	0	1	8	-7
10	CAMP, JANEEN		0	0-0	0-0	0-2	0	0	0	1	0	0	0	0	2	0
24	BORGOSZ, TESS		0	0-0	0-0	0-0	0	0	0	0	0	0	0	0	0	0
	TEAM						0	0	0	0		0				
TOTALS			10	4-16	0-4	2-6	5	7	12	6	1	5	1	1	50	

Shooting By Period

Period	FG	FG%	3FG	3FG%	FT	FT%
Game	31-64	48.4%	5-16	31.3%	6-11	54.5%

UNCW 21

No.	Player	S	Pts	FG	3FG	FT	OR	DR	TR	PF	A	TO	Blk	Stl	Min	+/-
04	PARKER, SHRITA		10	4-7	1-1	1-3	1	2	3	0	0	0	0	0	10	11
05	SMITH, GIGI		3	0-3	0-0	3-4	0	0	0	0	0	0	0	1	7	9
10	VASON, AHYIONA		0	0-0	0-0	0-0	0	0	0	0	0	0	0	0	0	0
13	SUGGS, LACEY		0	0-0	0-0	0-0	0	1	1	1	0	1	0	0	10	11
24	BELL, CHINYERE		4	2-2	0-0	0-0	1	4	5	1	0	0	0	1	10	12
01	POWELL, PAIGE		0	0-0	0-0	0-0	0	0	0	0	0	0	0	0	0	-1
02	CRISP, MORIAH		4	2-3	0-0	0-0	0	1	1	3	1	0	0	2	10	11
14	TATE, TIMBER		0	0-1	0-1	0-0	0	1	1	0	0	0	0	0	3	2
32	OBUSEK, CAROL-ANNE		0	0-0	0-0	0-0	0	0	0	0	0	0	0	0	0	0
	TEAM						1	0	1	0		0				
TOTALS			21	8-16	1-2	4-7	3	9	12	5	1	1	0	4	50	

Shooting By Period

Period	FG	FG%	3FG	3FG%	FT	FT%
Game	29-57	50.9%	6-13	46.2%	13-18	72.2%

Game Notes:

Officials: Kevin Sparrock, Mark Hardcastle, Ray Bullock, Jr.
Attendance: 1027

Start Time: 2019-01-20 19:05:03
End Time: 2019-01-20 20:55:55
Game Duration: 110
Conference Game;

Score	1st	2nd	3rd	4th	TOT
Tow	20	22	21	10	73
NCW	20	26	10	21	77

Points from (This Period)	Tow	NCW
In the Paint	4	10
Off Turns	3	6
2nd Chance	3	4
Fast Break	2	6
Bench	0	4

**Official Play-By-Play
Towson vs UNCW
Fourth Quarter
January 20, 2019 at Trask Coliseum - Wilmington, N.C.**



Period 4

Starters:

Towson: 11 MURRAY, QIERRA; 21 JETER, KIONNA; 25 LEE, MAIA; 32 HOLDER, RYAN; 1 MAYO, NUKIYA;
UNCW: 4 PARKER, SHRITA; 5 SMITH, GIGI; 10 VASON, AHYIONA; 13 SUGGS, LACEY; 24 BELL, CHINYERE;

Time	VISITORS: Towson	Score	Margin	HOME: UNCW
09:45	MISSED JUMPER by JETER, KIONNA			
09:41				REBOUND (DEF) by BELL, CHINYERE
09:35				MISSED LAYUP by PARKER, SHRITA
09:31	REBOUND (DEF) by HOLDER, RYAN			
09:28	MISSED JUMPER by MAYO, NUKIYA			
09:25	REBOUND (OFF) by JETER, KIONNA			
09:04	MISSED JUMPER by MAYO, NUKIYA			
09:00				REBOUND (DEF) by TATE, TIMBER
08:44		58-63	V 5	GOOD! JUMPER by CRISP, MORIAH
08:32	MISSED JUMPER by MURRAY, QIERRA			
08:28				REBOUND (DEF) by BELL, CHINYERE
08:22				MISSED 3PTR by TATE, TIMBER
08:18				REBOUND (OFF) by BELL, CHINYERE
08:16		60-63	V 3	GOOD! JUMPER by BELL, CHINYERE
08:11	TIMEOUT 30SEC			
08:11				
08:11	SUB OUT: HOLDER, RYAN			
08:11	SUB IN: HOLMES, JALYNN			
08:11	SUB OUT: LEE, MAIA			
08:11	SUB IN: CAMP, JANEEN			
07:59	TURNOVER (BADPASS) by MAYO, NUKIYA			
07:59				STEAL by BELL, CHINYERE
07:35				MISSED JUMPER by PARKER, SHRITA
07:32	REBOUND (DEF) by HOLMES, JALYNN			
07:26	GOOD! LAYUP by MURRAY, QIERRA [FB]	60-65	V 5	
07:08		62-65	V 3	GOOD! LAYUP by BELL, CHINYERE
07:08				ASSIST by CRISP, MORIAH
06:50	GOOD! JUMPER by JETER, KIONNA	62-67	V 5	
06:50				FOUL (PERSONAL) by CRISP, MORIAH
06:48	MISSED FT by JETER, KIONNA			
06:47	REBOUND (OFF) by MAYO, NUKIYA			
06:33				FOUL (PERSONAL) by BELL, CHINYERE
06:33	MISSED FT by CAMP, JANEEN			
06:33	REBOUND (OFF) by TEAM			
06:33				SUB OUT: TATE, TIMBER
06:33				SUB IN: SMITH, GIGI
06:33	MISSED FT by CAMP, JANEEN			
06:31				REBOUND (DEF) by BELL, CHINYERE
06:24	FOUL (PERSONAL) by CAMP, JANEEN			
06:24		63-67	V 4	GOOD! FT by PARKER, SHRITA [FB]
06:24	SUB OUT: CAMP, JANEEN			
06:24	SUB IN: LEE, MAIA			
06:22				MISSED FT by PARKER, SHRITA
06:21	REBOUND (DEF) by LEE, MAIA			
05:55	MISSED JUMPER by JETER, KIONNA			
05:52	REBOUND (OFF) by JETER, KIONNA			
05:51	TURNOVER (LOSTBALL) by JETER, KIONNA			
05:51				STEAL by CRISP, MORIAH
05:47				MISSED JUMPER by SMITH, GIGI
05:47	BLOCK by MAYO, NUKIYA			
05:47				REBOUND (OFF) by TEAM
05:31		65-67	V 2	GOOD! LAYUP by CRISP, MORIAH [PNT]
05:11				FOUL (PERSONAL) by SUGGS, LACEY
05:11	MISSED FT by MAYO, NUKIYA			
05:11	REBOUND (OFF) by TEAM			
05:11	GOOD! FT by MAYO, NUKIYA	65-68	V 3	
04:48		68-68	T	GOOD! 3PTR by PARKER, SHRITA
04:27				FOUL (PERSONAL) by CRISP, MORIAH
04:22	MISSED 3PTR by JETER, KIONNA			
04:19				REBOUND (DEF) by PARKER, SHRITA
04:17		70-68	H 2	GOOD! LAYUP by PARKER, SHRITA [FB/PNT]
04:17	FOUL (PERSONAL) by MURRAY, QIERRA			
04:17				MISSED FT by PARKER, SHRITA
04:16	REBOUND (DEF) by LEE, MAIA			
03:55	MISSED JUMPER by MAYO, NUKIYA			
03:54				REBOUND (DEF) by BELL, CHINYERE
03:34				MISSED LAYUP by PARKER, SHRITA
03:30				REBOUND (OFF) by PARKER, SHRITA
03:03				MISSED JUMPER by CRISP, MORIAH
03:00	REBOUND (DEF) by LEE, MAIA			

Time	VISITORS: Towson	Score	Margin	HOME: UNCW
02:56	TURNOVER (BADPASS) by MURRAY, QIERRA			
02:56				STEAL by SMITH, GIGI
02:50				MISSED LAYUP by SMITH, GIGI
02:47	REBOUND (DEF) by LEE, MAIA			
02:42	MISSED 3PTR by MAYO, NUKIYA			
02:37				REBOUND (DEF) by CRISP, MORIAH
02:30				MISSED JUMPER by SMITH, GIGI
02:27	REBOUND (DEF) by MAYO, NUKIYA			
02:01	MISSED 3PTR by MURRAY, QIERRA			
01:58				REBOUND (DEF) by SUGGS, LACEY
01:48				TIMEOUT TEAM
01:46				TURNOVER (BADPASS) by SUGGS, LACEY
01:46	STEAL by HOLMES, JALYNN			
01:44	MISSED LAYUP by HOLMES, JALYNN			
01:44	REBOUND (OFF) by JETER, KIONNA			
01:44	GOOD! LAYUP by JETER, KIONNA	70-70	T	
01:44				FOUL (PERSONAL) by CRISP, MORIAH
01:44	GOOD! FT by JETER, KIONNA	70-71	V 1	
01:29	FOUL (PERSONAL) by LEE, MAIA			
01:19		72-71	H 1	GOOD! JUMPER by PARKER, SHRITA
00:59	MISSED JUMPER by JETER, KIONNA			
00:58	REBOUND (OFF) by LEE, MAIA			
00:55	FOUL (OFF) by MAYO, NUKIYA			
00:55	TURNOVER (OFFENSIVE) by MAYO, NUKIYA			
00:32		74-71	H 3	GOOD! LAYUP by PARKER, SHRITA [PNT]
00:26	TIMEOUT TEAM			
00:11	TURNOVER (LOSTBALL) by JETER, KIONNA			
00:11				STEAL by CRISP, MORIAH
00:11				TIMEOUT 30SEC
00:11	SUB OUT: LEE, MAIA			
00:11	SUB IN: CAMP, JANEEN			
00:10	FOUL (PERSONAL) by MAYO, NUKIYA			
00:10		75-71	H 4	GOOD! FT by SMITH, GIGI [FB]
00:10	SUB OUT: CAMP, JANEEN			
00:10	SUB IN: DURJAN, DANIELLE			
00:10		76-71	H 5	GOOD! FT by SMITH, GIGI [FB]
00:10	TIMEOUT 30SEC			
00:10				SUB OUT: BELL, CHINYERE
00:10				SUB IN: POWELL, PAIGE
00:07	GOOD! JUMPER by MAYO, NUKIYA	76-73	H 3	
00:07	ASSIST by MURRAY, QIERRA			
00:07				TIMEOUT 30SEC
00:06	FOUL (PERSONAL) by MURRAY, QIERRA			
00:06				MISSED FT by SMITH, GIGI
00:06				REBOUND (OFF) by TEAM
00:06		77-73	H 4	GOOD! FT by SMITH, GIGI [FB]
00:00	MISSED 3PTR by MURRAY, QIERRA			
00:00				REBOUND (DEF) by PARKER, SHRITA

Towson 73, UNCW 77

Points from (This Period)	Tow	NCW
In the Paint	4	10
Off Turns	3	6
2nd Chance	3	4
Fast Break	2	6
Bench	0	4

Official Scoring/Possession Reference Chart
Towson vs UNCW
Period 1
January 20, 2019 at Trask Coliseum - Wilmington, N.C.



Period 1

Starters:

Towson: 11 MURRAY, QIERRA; 21 JETER, KIONNA; 25 LEE, MAIA; 32 HOLDER, RYAN; 1 MAYO, NUKIYA;
UNCW: 4 PARKER, SHRITA; 5 SMITH, GIGI; 10 VASON, AHYIONA; 13 SUGGS, LACEY; 24 BELL, CHINYERE;

Time	VISITORS: Towson	Score	Margin	HOME: UNCW
09:42	GOOD! JUMPER by JETER, KIONNA	0-2	V 2	
09:17		2-2	T	GOOD! JUMPER by SUGGS, LACEY [PNT]
08:57	GOOD! LAYUP by LEE, MAIA	2-4	V 2	
08:44		5-4	H 1	GOOD! 3PTR by SMITH, GIGI
08:17		7-4	H 3	GOOD! LAYUP by SUGGS, LACEY [FB]
07:45	GOOD! JUMPER by MURRAY, QIERRA [PNT]	7-6	H 1	
06:55	GOOD! 3PTR by MAYO, NUKIYA	7-9	V 2	
06:33		10-9	H 1	GOOD! 3PTR by VASON, AHYIONA
05:40	GOOD! JUMPER by MAYO, NUKIYA	10-11	V 1	
04:55		12-11	H 1	GOOD! LAYUP by SUGGS, LACEY
04:32	GOOD! LAYUP by LEE, MAIA	12-13	V 1	
03:21		14-13	H 1	GOOD! JUMPER by PARKER, SHRITA [PNT]
03:05	GOOD! LAYUP by CAMP, JANEEN	14-15	V 1	
02:50		16-15	H 1	GOOD! LAYUP by SUGGS, LACEY
01:38		18-15	H 3	GOOD! JUMPER by POWELL, PAIGE [PNT]
01:21	GOOD! LAYUP by CAMP, JANEEN	18-17	H 1	
00:34	GOOD! 3PTR by JETER, KIONNA [FB]	18-20	V 2	
00:00		20-20	T	GOOD! LAYUP by BELL, CHINYERE

Towson 20, UNCW 20

Official Scoring/Possession Reference Chart
Towson vs UNCW
Period 2
January 20, 2019 at Trask Coliseum - Wilmington, N.C.



Period 2

Starters:

Towson: 11 MURRAY, QIERRA; 21 JETER, KIONNA; 25 LEE, MAIA; 32 HOLDER, RYAN; 1 MAYO, NUKIYA;
UNCW: 4 PARKER, SHRITA; 5 SMITH, GIGI; 10 VASON, AHYIONA; 13 SUGGS, LACEY; 24 BELL, CHINYERE;

Time	VISITORS: Towson	Score	Margin	HOME: UNCW
09:12	GOOD! LAYUP by LEE, MAIA	20-22	V 2	
08:52		22-22	T	GOOD! JUMPER by SUGGS, LACEY
08:02		25-22	H 3	GOOD! 3PTR by PARKER, SHRITA
07:22		27-22	H 5	GOOD! LAYUP by VASON, AHYIONA
07:22		28-22	H 6	GOOD! FT by VASON, AHYIONA
07:07	GOOD! 3PTR by JETER, KIONNA	28-25	H 3	
06:50		30-25	H 5	GOOD! JUMPER by SMITH, GIGI [PNT]
06:25		33-25	H 8	GOOD! 3PTR by SMITH, GIGI
05:54		34-25	H 9	GOOD! FT by SMITH, GIGI
05:54		35-25	H 10	GOOD! FT by SMITH, GIGI
05:23		36-25	H 11	GOOD! FT by SMITH, GIGI [FB]
05:23		37-25	H 12	GOOD! FT by SMITH, GIGI [FB]
05:08	GOOD! JUMPER by HOLMES, JALYNN	37-27	H 10	
04:39	GOOD! JUMPER by HOLMES, JALYNN [PNT]	37-29	H 8	
04:17	GOOD! 3PTR by MAYO, NUKIYA [FB]	37-32	H 5	
03:51		39-32	H 7	GOOD! JUMPER by SUGGS, LACEY [PNT]
03:45	GOOD! FT by MURRAY, QIERRA [FB]	39-33	H 6	
03:23		41-33	H 8	GOOD! JUMPER by SUGGS, LACEY [PNT]
03:00	GOOD! JUMPER by MAYO, NUKIYA	41-35	H 6	
02:17		43-35	H 8	GOOD! LAYUP by BELL, CHINYERE
02:10	GOOD! LAYUP by MURRAY, QIERRA [FB]	43-37	H 6	
01:32		46-37	H 9	GOOD! 3PTR by SUGGS, LACEY
00:52	GOOD! 3PTR by MAYO, NUKIYA [FB]	46-40	H 6	
00:04	GOOD! FT by JETER, KIONNA	46-41	H 5	
00:04	GOOD! FT by JETER, KIONNA	46-42	H 4	

Towson 42, UNCW 46

Official Scoring/Possession Reference Chart
Towson vs UNCW
Period 3
January 20, 2019 at Trask Coliseum - Wilmington, N.C.



Period 3

Starters:

Towson: 11 MURRAY, QIERRA; 21 JETER, KIONNA; 25 LEE, MAIA; 32 HOLDER, RYAN; 1 MAYO, NUKIYA;
UNCW: 4 PARKER, SHRITA; 5 SMITH, GIGI; 10 VASON, AHYIONA; 13 SUGGS, LACEY; 24 BELL, CHINYERE;

Time	VISITORS: Towson	Score	Margin	HOME: UNCW
09:27	GOOD! JUMPER by MAYO, NUKIYA [PNT]	46-44	H 2	
08:17		48-44	H 4	GOOD! LAYUP by SMITH, GIGI
07:50	GOOD! LAYUP by JETER, KIONNA	48-46	H 2	
07:05		50-46	H 4	GOOD! JUMPER by SUGGS, LACEY
05:51	GOOD! LAYUP by JETER, KIONNA [FB]	50-48	H 2	
04:41	GOOD! LAYUP by MAYO, NUKIYA [FB]	50-50	T	
04:20		51-50	H 1	GOOD! FT by SUGGS, LACEY
04:04	GOOD! JUMPER by JETER, KIONNA	51-52	V 1	
03:42		52-52	T	GOOD! FT by SMITH, GIGI
03:26	GOOD! JUMPER by JETER, KIONNA	52-54	V 2	
02:58	GOOD! LAYUP by LEE, MAIA	52-56	V 4	
02:35		54-56	V 2	GOOD! JUMPER by PARKER, SHRITA
02:29	GOOD! LAYUP by JETER, KIONNA [FB]	54-58	V 4	
02:29	GOOD! FT by JETER, KIONNA [FB]	54-59	V 5	
01:37	GOOD! JUMPER by JETER, KIONNA [FB]	54-61	V 7	
01:21		55-61	V 6	GOOD! FT by CRISP, MORIAH
01:21		56-61	V 5	GOOD! FT by CRISP, MORIAH
00:55	GOOD! JUMPER by HOLMES, JALYNN	56-63	V 7	

Towson 63, UNCW 56

Official Scoring/Possession Reference Chart
Towson vs UNCW
Period 4
January 20, 2019 at Trask Coliseum - Wilmington, N.C.



Period 4

Starters:

Towson: 11 MURRAY, QIERRA; 21 JETER, KIONNA; 25 LEE, MAIA; 32 HOLDER, RYAN; 1 MAYO, NUKIYA;
UNCW: 4 PARKER, SHRITA; 5 SMITH, GIGI; 10 VASON, AHYIONA; 13 SUGGS, LACEY; 24 BELL, CHINYERE;

Time	VISITORS: Towson	Score	Margin	HOME: UNCW
08:44		58-63	V 5	GOOD! JUMPER by CRISP, MORIAH
08:16		60-63	V 3	GOOD! JUMPER by BELL, CHINYERE
07:26	GOOD! LAYUP by MURRAY, QIERRA [FB]	60-65	V 5	
07:08		62-65	V 3	GOOD! LAYUP by BELL, CHINYERE
06:50	GOOD! JUMPER by JETER, KIONNA	62-67	V 5	
06:24		63-67	V 4	GOOD! FT by PARKER, SHRITA [FB]
05:31		65-67	V 2	GOOD! LAYUP by CRISP, MORIAH [PNT]
05:11	GOOD! FT by MAYO, NUKIYA	65-68	V 3	
04:48		68-68	T	GOOD! 3PTR by PARKER, SHRITA
04:17		70-68	H 2	GOOD! LAYUP by PARKER, SHRITA [FB/PNT]
01:44	GOOD! LAYUP by JETER, KIONNA	70-70	T	
01:44	GOOD! FT by JETER, KIONNA	70-71	V 1	
01:19		72-71	H 1	GOOD! JUMPER by PARKER, SHRITA
00:32		74-71	H 3	GOOD! LAYUP by PARKER, SHRITA [PNT]
00:10		75-71	H 4	GOOD! FT by SMITH, GIGI [FB]
00:10		76-71	H 5	GOOD! FT by SMITH, GIGI [FB]
00:07	GOOD! JUMPER by MAYO, NUKIYA	76-73	H 3	
00:06		77-73	H 4	GOOD! FT by SMITH, GIGI [FB]

Towson 73, UNCW 77

Official Substitutions Log
Towson vs UNCW
Period 1
January 20, 2019 at Trask Coliseum - Wilmington, N.C.



VISITORS: Towson	Time	Score	HOME: UNCW
11 MURRAY, QIERRA			4 PARKER, SHRITA
21 JETER, KIONNA			5 SMITH, GIGI
25 LEE, MAIA			10 VASON, AHYIONA
32 HOLDER, RYAN			13 SUGGS, LACEY
1 MAYO, NUKIYA			24 BELL, CHINYERE
	04:06	13-12	SUB OUT: BELL, CHINYERE
	04:06		SUB IN: POWELL, PAIGE
	04:06		SUB OUT: SMITH, GIGI
	04:06		SUB IN: OBUSEK, CAROL-ANNE
SUB OUT: 25 LEE, MAIA	04:06		
SUB IN: 10 CAMP, JANEEN	04:06		
	03:11	13-14	SUB OUT: VASON, AHYIONA
	03:11		SUB IN: CRISP, MORIAH
	03:04	15-14	SUB OUT: OBUSEK, CAROL-ANNE
	03:04		SUB IN: BELL, CHINYERE
	01:41	15-16	SUB OUT: SUGGS, LACEY
	01:41		SUB IN: SMITH, GIGI
	01:04	17-18	SUB OUT: PARKER, SHRITA
	01:04		SUB IN: SUGGS, LACEY
SUB OUT: 10 CAMP, JANEEN	00:55	17-18	
SUB IN: 0 DURJAN, DANIELLE	00:55		
SUB OUT: 32 HOLDER, RYAN	00:55		
SUB IN: 25 LEE, MAIA	00:55		

Towson 20, UNCW 20

Official Substitutions Log
Towson vs UNCW
Period 2
January 20, 2019 at Trask Coliseum - Wilmington, N.C.



VISITORS: Towson	Time	Score	HOME: UNCW
11 MURRAY, QIERRA			4 PARKER, SHRITA
21 JETER, KIONNA			5 SMITH, GIGI
25 LEE, MAIA			10 VASON, AHYIONA
32 HOLDER, RYAN			13 SUGGS, LACEY
1 MAYO, NUKIYA			24 BELL, CHINYERE
SUB OUT: 0 DURJAN, DANIELLE	07:22	22-27	
SUB IN: 32 HOLDER, RYAN	07:22		
	06:44	25-30	SUB OUT: BELL, CHINYERE
	06:44		SUB IN: POWELL, PAIGE
SUB OUT: 25 LEE, MAIA	06:44		
SUB IN: 24 BORGOSZ, TESS	06:44		
SUB OUT: 32 HOLDER, RYAN	05:54	25-34	
SUB IN: 4 HOLMES, JALYNN	05:54		
SUB OUT: 24 BORGOSZ, TESS	05:23	25-35	
SUB IN: 25 LEE, MAIA	05:23		
	03:45	33-39	SUB OUT: PARKER, SHRITA
	03:45		SUB IN: BELL, CHINYERE
	03:45		SUB OUT: SMITH, GIGI
	03:45		SUB IN: CRISP, MORIAH
	02:37	35-41	SUB OUT: POWELL, PAIGE
	02:37		SUB IN: SMITH, GIGI
	02:37		SUB OUT: CRISP, MORIAH
	02:37		SUB IN: TATE, TIMBER
SUB OUT: 25 LEE, MAIA	01:47	37-43	
SUB IN: 3 FLYNN, AISLINN	01:47		
	00:29	40-46	SUB OUT: BELL, CHINYERE
	00:29		SUB IN: POWELL, PAIGE
SUB OUT: 3 FLYNN, AISLINN	00:29		
SUB IN: 25 LEE, MAIA	00:29		
	00:04	41-46	SUB OUT: SMITH, GIGI
	00:04		SUB IN: PARKER, SHRITA

Towson 42, UNCW 46

Official Substitutions Log
Towson vs UNCW
Period 3
January 20, 2019 at Trask Coliseum - Wilmington, N.C.



VISITORS: Towson	Time	Score	HOME: UNCW
11 MURRAY, QIERRA			4 PARKER, SHRITA
21 JETER, KIONNA			5 SMITH, GIGI
25 LEE, MAIA			10 VASON, AHYIONA
32 HOLDER, RYAN			13 SUGGS, LACEY
1 MAYO, NUKIYA			24 BELL, CHINYERE
	07:23	46-48	SUB OUT: BELL, CHINYERE
	07:23		SUB IN: POWELL, PAIGE
SUB OUT: 25 LEE, MAIA	05:35	48-50	
SUB IN: 10 CAMP, JANEEN	05:35		
SUB OUT: 32 HOLDER, RYAN	05:17	48-50	
SUB IN: 4 HOLMES, JALYNN	05:17		
	05:13	48-50	SUB OUT: PARKER, SHRITA
	05:13		SUB IN: BELL, CHINYERE
SUB OUT: 10 CAMP, JANEEN	05:13		
SUB IN: 25 LEE, MAIA	05:13		
	03:42	52-51	SUB OUT: POWELL, PAIGE
	03:42		SUB IN: PARKER, SHRITA
	02:29	58-54	SUB OUT: SMITH, GIGI
	02:29		SUB IN: POWELL, PAIGE
	02:12	59-54	SUB OUT: POWELL, PAIGE
	02:12		SUB IN: SMITH, GIGI
	01:46	59-54	SUB OUT: VASON, AHYIONA
	01:46		SUB IN: CRISP, MORIAH
	00:23	63-56	SUB OUT: SMITH, GIGI
	00:23		SUB IN: TATE, TIMBER

Towson 63, UNCW 56

Official Substitutions Log
Towson vs UNCW
Period 4
January 20, 2019 at Trask Coliseum - Wilmington, N.C.



VISITORS: Towson	Time	Score	HOME: UNCW
11 MURRAY, QIERRA			4 PARKER, SHRITA
21 JETER, KIONNA			5 SMITH, GIGI
25 LEE, MAIA			10 VASON, AHYIONA
32 HOLDER, RYAN			13 SUGGS, LACEY
1 MAYO, NUKIYA			24 BELL, CHINYERE
SUB OUT: 32 HOLDER, RYAN	08:11	63-60	
SUB IN: 4 HOLMES, JALYNN	08:11		
SUB OUT: 25 LEE, MAIA	08:11		
SUB IN: 10 CAMP, JANEEN	08:11		
	06:33	67-62	SUB OUT: TATE, TIMBER
	06:33		SUB IN: SMITH, GIGI
SUB OUT: 10 CAMP, JANEEN	06:24	67-63	
SUB IN: 25 LEE, MAIA	06:24		
SUB OUT: 25 LEE, MAIA	00:11	71-74	
SUB IN: 10 CAMP, JANEEN	00:11		
SUB OUT: 10 CAMP, JANEEN	00:10	71-75	
SUB IN: 0 DURJAN, DANIELLE	00:10		
	00:10		SUB OUT: BELL, CHINYERE
	00:10		SUB IN: POWELL, PAIGE

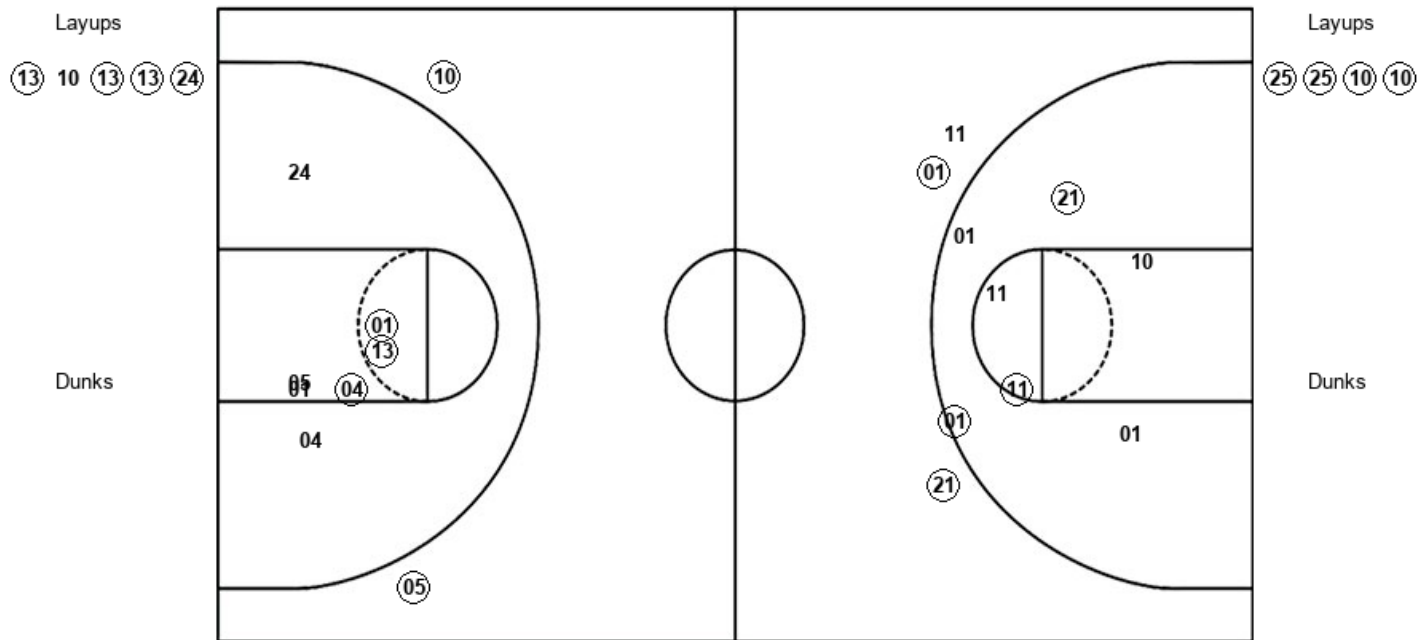
Towson 73, UNCW 77

Official Shot Chart
Towson vs UNCW
 PERIOD 1 Shots
 January 20, 2019 at Trask Coliseum - Wilmington, N.C.



UNCW

Towson



UNCW : Period 1	Made	Att	Pct
Layups	4	5	80.0
Dunks	0	0	0
2PT Field Goals	7	12	58.3
3PT Field Goals	2	2	100.0
Total Field Goals	9	14	64.3

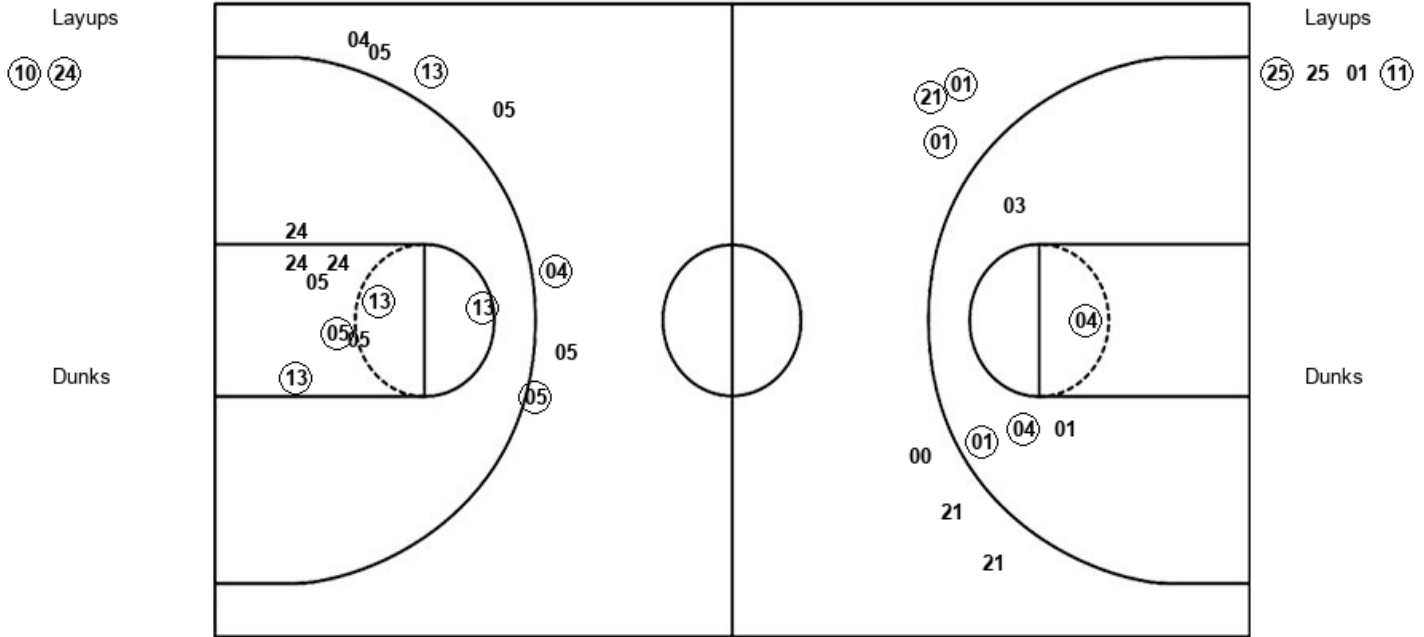
Tow : Period 1	Made	Att	Pct
Layups	4	4	100.0
Dunks	0	0	0
2PT Field Goals	7	11	63.6
3PT Field Goals	2	3	66.7
Total Field Goals	9	14	64.3

Official Shot Chart
Towson vs UNCW
 PERIOD 2 Shots
 January 20, 2019 at Trask Coliseum - Wilmington, N.C.



UNCW

Towson



UNCW : Period 2	Made	Att	Pct
Layups	2	2	100.0
Dunks	0	0	0
2PT Field Goals	6	11	54.5
3PT Field Goals	3	7	42.9
Total Field Goals	9	18	50.0

Tow : Period 2	Made	Att	Pct
Layups	2	4	50.0
Dunks	0	0	0
2PT Field Goals	5	9	55.6
3PT Field Goals	3	6	50.0
Total Field Goals	8	15	53.3

Official Shot Chart
Towson vs UNCW
 PERIOD 3 Shots
 January 20, 2019 at Trask Coliseum - Wilmington, N.C.



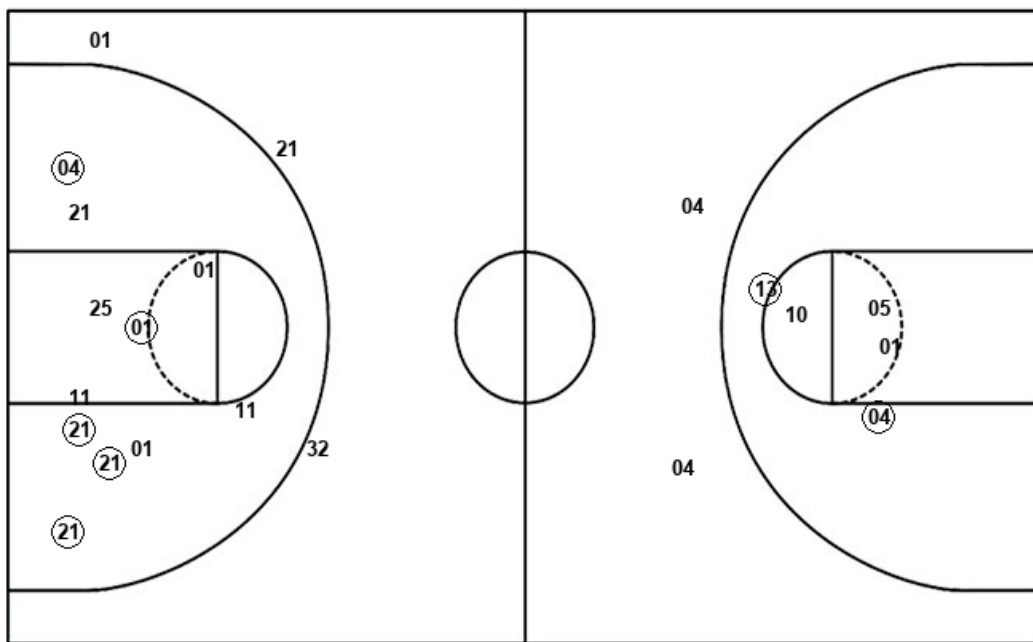
UNCW

Towson

Layups

05 13

Dunks



Layups

21 21 01 25 21

Dunks

UNCW : Period 3	Made	Att	Pct
Layups	1	2	50.0
Dunks	0	0	0
2PT Field Goals	3	7	42.9
3PT Field Goals	0	2	00.0
Total Field Goals	3	9	33.3

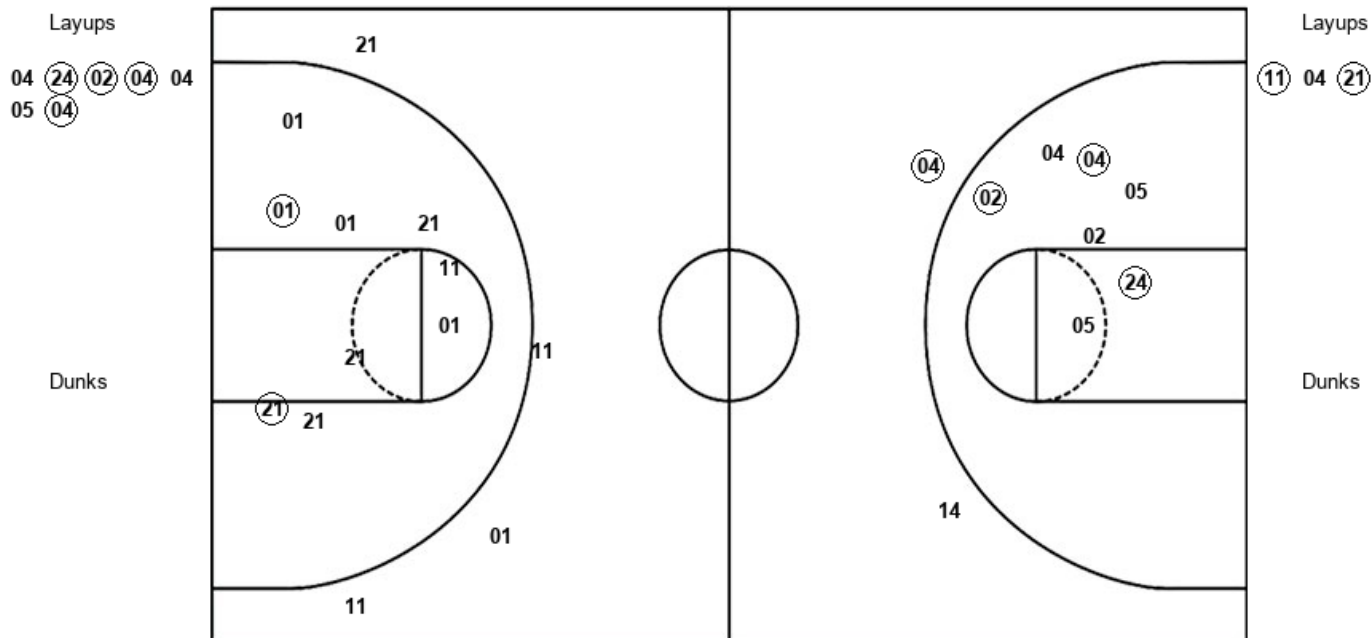
Tow : Period 3	Made	Att	Pct
Layups	5	5	100.0
Dunks	0	0	0
2PT Field Goals	10	16	62.5
3PT Field Goals	0	3	00.0
Total Field Goals	10	19	52.6

Official Shot Chart
Towson vs UNCW
 PERIOD 4 Shots
 January 20, 2019 at Trask Coliseum - Wilmington, N.C.



UNCW

Towson



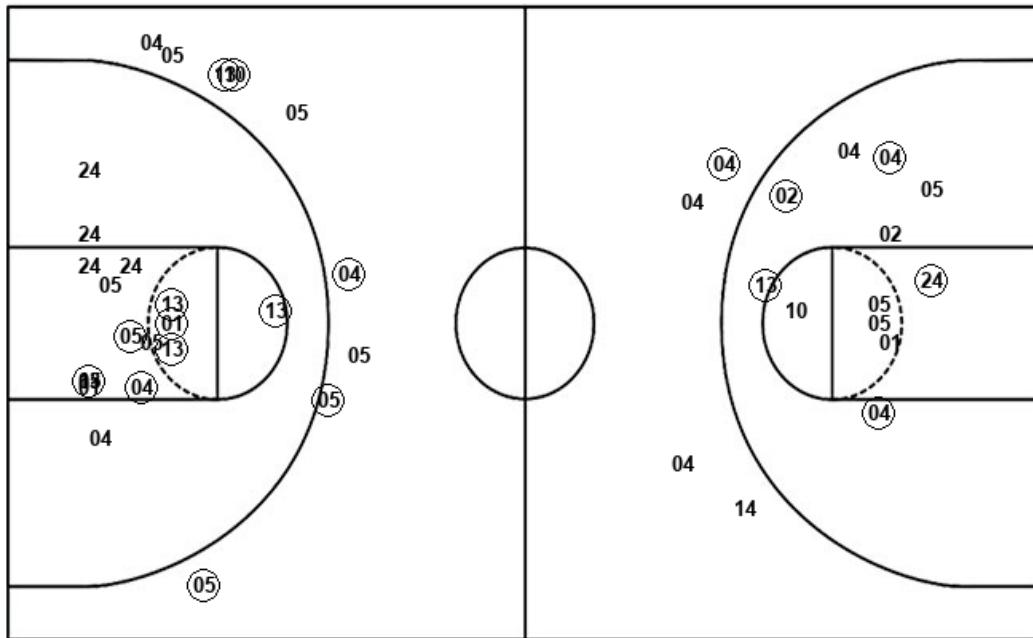
NCW : Period 4	Made	Att	Pct
Layups	4	7	57.1
Dunks	0	0	0
2PT Field Goals	7	14	50.0
3PT Field Goals	1	2	50.0
Total Field Goals	8	16	50.0

Tow : Period 4	Made	Att	Pct
Layups	2	3	66.7
Dunks	0	0	0
2PT Field Goals	4	12	33.3
3PT Field Goals	0	4	00.0
Total Field Goals	4	16	25.0

Official Shot Chart
Towson vs UNCW
UNCW Team Shots
January 20, 2019 at Trask Coliseum - Wilmington, N.C.



Layups



Layups

13 10 13 13 24
 10 24 05 13 04
 24 02 04 04 05
 04

Dunks

Dunks

NCW : Period 1	Made	Att	Pct
Layups	4	5	80.0
Dunks	0	0	0
2PT Field Goals	7	12	58.3
3PT Field Goals	2	2	100.0
Total Field Goals	9	14	64.3

NCW : Period 3	Made	Att	Pct
Layups	1	2	50.0
Dunks	0	0	0
2PT Field Goals	3	7	42.9
3PT Field Goals	0	2	00.0
Total Field Goals	3	9	33.3

NCW : Period 2	Made	Att	Pct
Layups	2	2	100.0
Dunks	0	0	0
2PT Field Goals	6	11	54.5
3PT Field Goals	3	7	42.9
Total Field Goals	9	18	50.0

NCW : Period 4	Made	Att	Pct
Layups	4	7	57.1
Dunks	0	0	0
2PT Field Goals	7	14	50.0
3PT Field Goals	1	2	50.0
Total Field Goals	8	16	50.0