

## FINAL SCORE



**Col. of Charleston**

**49**



**UNCW**

**71**

January 04, 2019 • Trask Coliseum - Wilmington, N.C.

## FINAL STATISTICS

**Official Box Score**  
**Col. of Charleston vs UNCW**  
**Game Totals -- Final Statistics**  
**January 04, 2019 at Trask Coliseum - Wilmington, N.C.**



**Col. of Charleston 49**

No.	Player	S	Pts	FG	3FG	FT	OR	DR	TR	PF	A	TO	Blk	Stl	Min	+/-
00	TAYLOR, MADISON		4	2-8	0-4	0-2	2	2	4	2	2	4	0	1	29	-31
02	HUFF, DARIEN		7	2-7	2-4	1-2	2	3	5	4	2	3	0	0	34	-14
03	PERKINS, LATRICE		2	1-3	0-0	0-0	0	2	2	1	2	1	0	0	13	-8
20	SULLIVAN, BRI		2	0-1	0-0	2-2	1	4	5	1	0	1	1	0	20	-18
25	FORD, DEJA		7	3-9	1-4	0-0	1	0	1	4	1	2	0	1	23	-12
01	BLANDING, SHAI		0	0-0	0-0	0-0	0	0	0	1	0	0	0	0	3	-1
05	DORSEY, CAILIN		0	0-0	0-0	0-0	0	0	0	0	0	0	0	0	2	-5
10	HEATH, DEE		0	0-0	0-0	0-0	0	0	0	0	0	0	0	1	3	-4
11	GOODSON, BRYANNA		0	0-0	0-0	0-0	0	0	0	0	0	0	0	1	1	0
15	EADY, ARYNN		9	3-3	0-0	3-4	0	3	3	3	1	2	0	2	15	6
21	LARSON, BAILEIGH		8	3-5	0-0	2-2	1	1	2	3	0	2	1	1	10	1
23	COLLINS, TYLER		8	3-9	2-5	0-0	1	1	2	0	1	3	0	1	31	-12
24	MADDOX, LEXI		2	1-2	0-0	0-0	1	1	2	0	0	0	0	0	11	-4
42	BROUGHTON, ERICKA		0	0-2	0-0	0-0	1	0	1	3	0	1	0	0	6	-8
	TEAM						2	3	5	0		2				
	<b>TOTALS</b>		<b>49</b>	<b>18-49</b>	<b>5-17</b>	<b>8-12</b>	<b>12</b>	<b>20</b>	<b>32</b>	<b>22</b>	<b>9</b>	<b>21</b>	<b>2</b>	<b>8</b>	<b>200</b>	

*Shooting By Period*

Period	FG	FG%	3FG	3FG%	FT	FT%
1st Qtr	8-11	73%	3-4	75%	2-2	100%
2nd Qtr	2-11	18%	0-5	00%	0-2	00%
3rd Qtr	6-16	38%	1-4	25%	4-4	100%
4th Qtr	2-11	18%	1-4	25%	2-4	50%
1st Half	10-22	45%	3-9	33%	2-4	50%
2nd Half	8-27	30%	2-8	25%	6-8	75%
<b>Game</b>	<b>18-49</b>	<b>36.7%</b>	<b>5-17</b>	<b>29.4%</b>	<b>8-12</b>	<b>66.7%</b>

*Last FG: 4th-04:55*  
*Biggest Run: 8-0*  
*Largest lead: By 2 at 1-00:29*  
*Technical Fouls: None.*

**UNCW 71**

No.	Player	S	Pts	FG	3FG	FT	OR	DR	TR	PF	A	TO	Blk	Stl	Min	+/-
04	PARKER, SHRITA		17	6-12	0-1	5-9	0	2	2	0	5	3	0	2	28	26
05	SMITH, GIGI		13	5-15	2-4	1-2	5	4	9	2	5	2	0	3	31	13
10	VASON, AHYIONA		0	0-1	0-0	0-0	1	1	2	2	5	3	0	0	26	13
13	SUGGS, LACEY		16	6-12	1-1	3-4	5	2	7	0	3	3	0	0	31	25
24	BELL, CHINYERE		12	4-5	0-1	4-4	1	2	3	1	0	1	1	2	21	23
00	JEUNE, ASHLI		4	0-0	0-0	4-4	0	1	1	3	0	0	0	0	14	1
01	POWELL, PAIGE		2	1-2	0-0	0-0	1	1	2	2	0	0	0	0	9	-3
12	BUEHLER, JULIA		0	0-0	0-0	0-0	0	0	0	0	0	0	0	0	2	2
14	TATE, TIMBER		3	1-9	1-6	0-0	2	4	6	1	1	0	0	0	20	5
22	THYBULLE, ZHANEIA		0	0-0	0-0	0-0	0	0	0	0	0	1	0	0	1	1
25	HOGGATT, MICAH		2	1-1	0-0	0-0	0	1	1	0	0	1	0	0	2	2
31	MITCHELL, JESSICA		0	0-0	0-0	0-0	0	0	0	0	0	0	0	0	2	2
32	OBUSEK, CAROL-ANNE		2	1-3	0-0	0-0	2	3	5	1	0	0	0	0	9	0
33	SACCO, GRACE		0	0-0	0-0	0-0	1	0	1	0	0	0	0	1	4	0
	TEAM						2	0	2	0		1				
	<b>TOTALS</b>		<b>71</b>	<b>25-60</b>	<b>4-13</b>	<b>17-23</b>	<b>20</b>	<b>21</b>	<b>41</b>	<b>12</b>	<b>19</b>	<b>15</b>	<b>1</b>	<b>8</b>	<b>200</b>	

*Shooting By Period*

Period	FG	FG%	3FG	3FG%	FT	FT%
1st Qtr	9-13	69%	3-4	75%	0-1	00%
2nd Qtr	6-12	50%	0-3	00%	6-7	86%
3rd Qtr	5-17	29%	1-4	25%	8-11	73%
4th Qtr	5-18	28%	0-2	00%	3-4	75%
1st Half	15-25	60%	3-7	43%	6-8	75%
2nd Half	10-35	29%	1-6	17%	11-15	73%
<b>Game</b>	<b>25-60</b>	<b>41.7%</b>	<b>4-13</b>	<b>30.8%</b>	<b>17-23</b>	<b>73.9%</b>

*Last FG: 4th-01:37*  
*Biggest Run: 10-0*  
*Largest lead: By 22 at 4-01:37*  
*Technical Fouls: None.*

*Game Notes:*

Officials: Eric Brewton, Daryl Humphrey, Roy Jackson  
 Attendance: 4511

Start Time: 2019-01-04 16:35:44  
 End Time: 2019-01-04 18:30:23  
 Game Duration: 114  
 Conference Game;

Score	1st	2nd	3rd	4th	TOT
CfC	21	4	17	7	49
NCW	21	18	19	13	71

CfC led for 0:20. NCW led for 37:46.  
 Game was tied for 1:54.  
 Times tied: 4      Lead Changes: 2

Points from	CfC	NCW
In the Paint	22	42
Off Turns	11	26
2nd Chance	6	14
Fast Break	5	17
Bench	27	13

**Official Box Score**  
**Col. of Charleston vs UNCW**  
**First Half Statistics Only**  
**January 04, 2019 at Trask Coliseum - Wilmington, N.C.**



**Col. of Charleston 25**

No.	Player	S	Pts	FG	3FG	FT	OR	DR	TR	PF	A	TO	Blk	Stl	Min	+/-
00	TAYLOR, MADISON		2	1-3	0-2	0-2	2	1	3	1	1	2	0	0	12	-18
01	BLANDING, SHAI		0	0-0	0-0	0-0	0	0	0	0	0	0	0	0	0	0
02	HUFF, DARIEN		3	1-3	1-2	0-0	0	2	2	0	1	1	0	0	16	-8
03	PERKINS, LATRICE		2	1-3	0-0	0-0	0	2	2	1	1	1	0	0	11	-10
05	DORSEY, CAILIN		0	0-0	0-0	0-0	0	0	0	0	0	0	0	0	0	0
10	HEATH, DEE		0	0-0	0-0	0-0	0	0	0	0	0	0	0	0	1	-2
11	GOODSON, BRYANNA		0	0-0	0-0	0-0	0	0	0	0	0	0	0	0	0	0
15	EADY, ARYNN		2	1-1	0-0	0-0	0	0	0	2	1	0	0	0	6	9
20	SULLIVAN, BRI		2	0-1	0-0	2-2	1	2	3	1	0	1	0	0	12	-14
21	LARSON, BAILEIGH		0	0-0	0-0	0-0	0	0	0	0	0	0	0	0	1	-1
23	COLLINS, TYLER		5	2-4	1-3	0-0	1	0	1	0	1	2	0	1	16	-6
24	MADDOX, LEXI		2	1-1	0-0	0-0	0	0	0	0	0	0	0	0	5	-5
25	FORD, DEJA		7	3-6	1-2	0-0	1	0	1	1	1	2	0	1	17	-12
42	BROUGHTON, ERICKA		0	0-0	0-0	0-0	0	0	0	2	0	0	0	0	3	-3
	TEAM		0	0-0	0-0	0-0	1	1	2	0	0	2	0	0	0	0
	<b>TOTALS</b>		<b>25</b>	<b>10-22</b>	<b>3-9</b>	<b>2-4</b>	<b>6</b>	<b>8</b>	<b>14</b>	<b>8</b>	<b>6</b>	<b>11</b>	<b>0</b>	<b>2</b>	<b>100</b>	

*Shooting By Period*

Period	FG	FG%	3FG	3FG%	FT	FT%
1st Qtr	8-11	73%	3-4	75%	2-2	100%
2nd Qtr	2-11	18%	0-5	00%	0-2	00%
1st Half	10-22	45%	3-9	33%	2-4	50%
Game	18-49	36.7%	5-17	29.4%	8-12	66.7%

*Last FG Half: CfC 2nd-00:35*

**UNCW 39**

No.	Player	S	Pts	FG	3FG	FT	OR	DR	TR	PF	A	TO	Blk	Stl	Min	+/-
00	JEUNE, ASHLI		2	0-0	0-0	2-2	0	0	0	1	0	0	0	0	8	1
01	POWELL, PAIGE		2	1-1	0-0	0-0	1	0	1	2	0	0	0	0	5	-4
04	PARKER, SHRITA		8	4-7	0-1	0-2	0	1	1	0	4	2	0	2	17	18
05	SMITH, GIGI		8	3-6	2-3	0-0	0	1	1	2	3	0	0	2	13	8
10	VASON, AHYIONA		0	0-1	0-0	0-0	1	0	1	0	3	1	0	0	12	3
12	BUEHLER, JULIA		0	0-0	0-0	0-0	0	0	0	0	0	0	0	0	0	0
13	SUGGS, LACEY		8	4-4	0-0	0-0	0	1	1	0	3	1	0	0	16	17
14	TATE, TIMBER		3	1-4	1-3	0-0	1	4	5	0	0	0	0	0	12	8
22	THYBULLE, ZHANEIA		0	0-0	0-0	0-0	0	0	0	0	0	0	0	0	0	1
24	BELL, CHINYERE		8	2-2	0-0	4-4	1	0	1	0	0	1	1	1	13	16
25	HOGGATT, MICAH		0	0-0	0-0	0-0	0	0	0	0	0	0	0	0	0	0
31	MITCHELL, JESSICA		0	0-0	0-0	0-0	0	0	0	0	0	0	0	0	0	0
32	OBUSEK, CAROL-ANNE		0	0-0	0-0	0-0	0	0	0	0	0	0	0	0	3	2
33	SACCO, GRACE		0	0-0	0-0	0-0	0	0	0	0	0	0	0	0	1	0
	TEAM		0	0-0	0-0	0-0	0	0	0	0	0	1	0	0	0	0
	<b>TOTALS</b>		<b>39</b>	<b>15-25</b>	<b>3-7</b>	<b>6-8</b>	<b>4</b>	<b>7</b>	<b>11</b>	<b>5</b>	<b>13</b>	<b>6</b>	<b>1</b>	<b>5</b>	<b>100</b>	

*Shooting By Period*

Period	FG	FG%	3FG	3FG%	FT	FT%
1st Qtr	9-13	69%	3-4	75%	0-1	00%
2nd Qtr	6-12	50%	0-3	00%	6-7	86%
1st Half	15-25	60%	3-7	43%	6-8	75%
Game	25-60	41.7%	4-13	30.8%	17-23	73.9%

*Last FG Half: NCW 2nd-02:58*

Game Notes:

Officials: Eric Brewton, Daryl Humphrey, Roy Jackson  
 Attendance: 4511

Start Time: 2019-01-04 16:35:44  
 End Time: 2019-01-04 18:30:23  
 Game Duration: 114  
 Conference Game;

Score	1st	2nd	3rd	4th	TOT
CfC	21	4	17	7	<b>49</b>
NCW	21	18	19	13	<b>71</b>

Points from (This Period)	CfC	NCW
In the Paint	10	24
Off Turns	8	15
2nd Chance	4	4
Fast Break	0	12
Bench	9	7

**Official Box Score**  
**Col. of Charleston vs UNCW**  
**First Quarter Statistics Only**  
**January 04, 2019 at Trask Coliseum - Wilmington, N.C.**



**Col. of Charleston 21**

No.	Player	S	Pts	FG	3FG	FT	OR	DR	TR	PF	A	TO	Blk	Stl	Min	+/-
00	TAYLOR, MADISON		2	1-1	0-0	0-0	2	0	2	1	1	1	0	0	3	-6
02	HUFF, DARIEN		3	1-2	1-2	0-0	0	1	1	0	1	1	0	0	10	0
03	PERKINS, LATRICE		2	1-1	0-0	0-0	0	0	0	0	1	0	0	0	7	-4
20	SULLIVAN, BRI		2	0-1	0-0	2-2	1	2	3	0	0	0	0	0	6	-3
25	FORD, DEJA		7	3-4	1-1	0-0	0	0	0	1	1	2	0	0	9	0
01	BLANDING, SHAI		0	0-0	0-0	0-0	0	0	0	0	0	0	0	0	0	0
05	DORSEY, CAILIN		0	0-0	0-0	0-0	0	0	0	0	0	0	0	0	0	0
10	HEATH, DEE		0	0-0	0-0	0-0	0	0	0	0	0	0	0	0	0	0
11	GOODSON, BRYANNA		0	0-0	0-0	0-0	0	0	0	0	0	0	0	0	0	0
15	EADY, ARYNN		2	1-1	0-0	0-0	0	0	0	1	0	0	0	0	6	8
21	LARSON, BAILEIGH		0	0-0	0-0	0-0	0	0	0	0	0	0	0	0	0	0
23	COLLINS, TYLER		3	1-1	1-1	0-0	0	0	0	0	1	2	0	0	8	6
24	MADDOX, LEXI		0	0-0	0-0	0-0	0	0	0	0	0	0	0	0	1	-1
42	BROUGHTON, ERICKA		0	0-0	0-0	0-0	0	0	0	0	0	0	0	0	0	0
	TEAM						0	0	0	0		0				
	<b>TOTALS</b>		<b>21</b>	<b>8-11</b>	<b>3-4</b>	<b>2-2</b>	<b>3</b>	<b>3</b>	<b>6</b>	<b>3</b>	<b>5</b>	<b>6</b>	<b>0</b>	<b>0</b>	<b>50</b>	

*Shooting By Period*

Period	FG	FG%	3FG	3FG%	FT	FT%
1st Qtr	8-11	73%	3-4	75%	2-2	100%
2nd Qtr	2-11	18%	0-5	00%	0-2	00%
1st Half	8-11	73%	3-4	75%	2-2	100%
1st Half	10-22	45%	3-9	33%	2-4	50%
Game	18-49	36.7%	5-17	29.4%	8-12	66.7%

**UNCW 21**

No.	Player	S	Pts	FG	3FG	FT	OR	DR	TR	PF	A	TO	Blk	Stl	Min	+/-
04	PARKER, SHRITA		2	1-3	0-1	0-1	0	0	0	0	1	1	0	1	7	4
05	SMITH, GIGI		6	2-3	2-2	0-0	0	0	0	1	2	0	0	1	9	0
10	VASON, AHYIONA		0	0-1	0-0	0-0	1	0	1	0	3	1	0	0	9	-1
13	SUGGS, LACEY		6	3-3	0-0	0-0	0	0	0	0	1	1	0	0	7	3
24	BELL, CHINYERE		2	1-1	0-0	0-0	0	0	0	0	0	0	1	1	6	6
00	JEUNE, ASHLI		0	0-0	0-0	0-0	0	0	0	1	0	0	0	0	4	-3
01	POWELL, PAIGE		2	1-1	0-0	0-0	1	0	1	1	0	0	0	0	4	-6
12	BUEHLER, JULIA		0	0-0	0-0	0-0	0	0	0	0	0	0	0	0	0	0
14	TATE, TIMBER		3	1-1	1-1	0-0	0	0	0	0	0	0	0	0	4	-3
22	THYBULLE, ZHANEIA		0	0-0	0-0	0-0	0	0	0	0	0	0	0	0	0	0
25	HOGGATT, MICAH		0	0-0	0-0	0-0	0	0	0	0	0	0	0	0	0	0
31	MITCHELL, JESSICA		0	0-0	0-0	0-0	0	0	0	0	0	0	0	0	0	0
32	OBUSEK, CAROL-ANNE		0	0-0	0-0	0-0	0	0	0	0	0	0	0	0	0	0
33	SACCO, GRACE		0	0-0	0-0	0-0	0	0	0	0	0	0	0	0	0	0
	TEAM						0	0	0	0		1				
	<b>TOTALS</b>		<b>21</b>	<b>9-13</b>	<b>3-4</b>	<b>0-1</b>	<b>2</b>	<b>0</b>	<b>2</b>	<b>3</b>	<b>7</b>	<b>4</b>	<b>1</b>	<b>3</b>	<b>50</b>	

*Shooting By Period*

Period	FG	FG%	3FG	3FG%	FT	FT%
1st Qtr	9-13	69%	3-4	75%	0-1	00%
2nd Qtr	6-12	50%	0-3	00%	6-7	86%
1st Half	9-13	69%	3-4	75%	0-1	00%
1st Half	15-25	60%	3-7	43%	6-8	75%
Game	25-60	41.7%	4-13	30.8%	17-23	73.9%

**Game Notes:**

Officials: Eric Brewton, Daryl Humphrey, Roy Jackson  
Attendance: 4511

Start Time: 2019-01-04 16:35:44  
End Time: 2019-01-04 18:30:23  
Game Duration: 114  
Conference Game;

Score	1st	2nd	3rd	4th	TOT
CfC	21	4	17	7	<b>49</b>
NCW	21	18	19	13	<b>71</b>

Points from (This Period)	CfC	NCW
In the Paint	8	12
Off Turns	6	11
2nd Chance	4	2
Fast Break	0	6
Bench	5	5

**Official Play-By-Play**  
**Col. of Charleston vs UNCW**  
**First Quarter**  
**January 04, 2019 at Trask Coliseum - Wilmington, N.C.**



**Period 1**

**Starters:**

**Col. of Charleston:** 0 TAYLOR,MADISON; 2 HUFF,DARIEN; 3 PERKINS,LATRICE; 20 SULLIVAN,BRI; 25 FORD,DEJA;

**UNCW:** 4 PARKER,SHRITA; 5 SMITH,GIGI; 10 VASON,AHYIONA; 13 SUGGS,LACEY; 24 BELL,CHINYERE;

Time	VISITORS: Col. of Charleston	Score	Margin	HOME: UNCW
09:52	MISSED JUMPER by FORD, DEJA			
09:52				BLOCK by BELL, CHINYERE
09:45	REBOUND (OFF) by TAYLOR, MADISON			
09:44	TURNOVER (BADPASS) by FORD, DEJA			
09:44				STEAL by BELL, CHINYERE
09:39		2-0	H 2	GOOD! LAYUP by PARKER, SHRITA [FB]
09:39				ASSIST by SMITH, GIGI
09:29	FOUL (PERSONAL) by TAYLOR, MADISON			
09:29				MISSED FT by PARKER, SHRITA
09:29	REBOUND (DEF) by SULLIVAN, BRI			
09:10	TURNOVER (BADPASS) by HUFF, DARIEN			
08:48		4-0	H 4	GOOD! LAYUP by SUGGS, LACEY
08:48				ASSIST by VASON, AHYIONA
08:36	GOOD! 3PTR by HUFF, DARIEN	4-3	H 1	
08:36	ASSIST by TAYLOR, MADISON			
08:08		7-3	H 4	GOOD! 3PTR by SMITH, GIGI
08:08				ASSIST by VASON, AHYIONA
07:54	TURNOVER (BADPASS) by TAYLOR, MADISON			
07:54				STEAL by PARKER, SHRITA
07:49		9-3	H 6	GOOD! LAYUP by SUGGS, LACEY [FB]
07:49				ASSIST by PARKER, SHRITA
07:45	TIMEOUT 30SEC			
07:45				
07:45	SUB OUT: TAYLOR, MADISON			
07:45	SUB IN: COLLINS, TYLER			
07:30	GOOD! 3PTR by COLLINS, TYLER	9-6	H 3	
07:05	FOUL (PERSONAL) by FORD, DEJA			
06:50		12-6	H 6	GOOD! 3PTR by SMITH, GIGI
06:50				ASSIST by SUGGS, LACEY
06:23	TURNOVER (LOSTBALL) by COLLINS, TYLER			
06:23				STEAL by SMITH, GIGI
06:17		14-6	H 8	GOOD! LAYUP by SUGGS, LACEY [FB]
06:11	TURNOVER (TRAVEL) by FORD, DEJA			
06:11				SUB OUT: BELL, CHINYERE
06:11				SUB IN: POWELL, PAIGE
06:11	SUB OUT: PERKINS, LATRICE			
06:11	SUB IN: EADY, ARYNN			
05:56				MISSED JUMPER by PARKER, SHRITA
05:52	REBOUND (DEF) by HUFF, DARIEN			
05:52				FOUL (PERSONAL) by POWELL, PAIGE
05:26	GOOD! 3PTR by FORD, DEJA	14-9	H 5	
05:26	ASSIST by HUFF, DARIEN			
05:01				MISSED 3PTR by PARKER, SHRITA
04:56	REBOUND (DEF) by SULLIVAN, BRI			
04:40	GOOD! LAYUP by FORD, DEJA	14-11	H 3	
04:15				MISSED LAYUP by VASON, AHYIONA
04:12				REBOUND (OFF) by POWELL, PAIGE
04:10		16-11	H 5	GOOD! LAYUP by POWELL, PAIGE
03:53	MISSED LAYUP by SULLIVAN, BRI			
03:50	REBOUND (OFF) by SULLIVAN, BRI			
03:50				FOUL (PERSONAL) by SMITH, GIGI
03:50	GOOD! FT by SULLIVAN, BRI	16-12	H 4	
03:50	SUB OUT: FORD, DEJA			
03:50	SUB IN: PERKINS, LATRICE			
03:50	GOOD! FT by SULLIVAN, BRI	16-13	H 3	
03:47				TURNOVER (BADPASS) by SUGGS, LACEY
03:35	TURNOVER (TRAVEL) by COLLINS, TYLER			
03:35				SUB OUT: SUGGS, LACEY
03:35				SUB IN: JEUNE, ASHLI
03:35				SUB OUT: VASON, AHYIONA
03:35				SUB IN: TATE, TIMBER
03:35	SUB OUT: SULLIVAN, BRI			
03:35	SUB IN: MADDOX, LEXI			
03:16		19-13	H 6	GOOD! 3PTR by TATE, TIMBER
03:16				ASSIST by SMITH, GIGI
02:58				FOUL (PERSONAL) by JEUNE, ASHLI
02:54	GOOD! LAYUP by EADY, ARYNN	19-15	H 4	
02:54	ASSIST by COLLINS, TYLER			
02:42				TURNOVER (BADPASS) by PARKER, SHRITA
02:42				SUB OUT: PARKER, SHRITA

Time	VISITORS: Col. of Charleston	Score	Margin	HOME: UNCW
02:42				SUB IN: VASON, AHYIONA
02:42	SUB OUT: MADDOX, LEXI			
02:42	SUB IN: FORD, DEJA			
02:26	GOOD! LAYUP by PERKINS, LATRICE	19-17	H 2	
02:26	ASSIST by FORD, DEJA			
02:17				SUB OUT: POWELL, PAIGE
02:17				SUB IN: BELL, CHINYERE
02:16	FOUL (PERSONAL) by EADY, ARYNN			
01:58				MISSED JUMPER by SMITH, GIGI
01:55				REBOUND (OFF) by VASON, AHYIONA
01:41				TURNOVER (LOSTBALL) by VASON, AHYIONA
01:26	GOOD! JUMPER by FORD, DEJA	19-19	T	
01:26	ASSIST by PERKINS, LATRICE			
00:52				TURNOVER (SHOTCLOCK) by
00:52				SUB OUT: SMITH, GIGI
00:52				SUB IN: SUGGS, LACEY
00:52	SUB OUT: PERKINS, LATRICE			
00:52	SUB IN: TAYLOR, MADISON			
00:35	MISSED 3PTR by HUFF, DARIEN			
00:31	REBOUND (OFF) by TAYLOR, MADISON			
00:29	GOOD! LAYUP by TAYLOR, MADISON	19-21	V 2	
00:10		21-21	T	GOOD! LAYUP by BELL, CHINYERE
00:10				ASSIST by VASON, AHYIONA

### Col. of Charleston 21, UNCW 21

Points from (This Period)	CfC	NCW
In the Paint	8	12
Off Turns	6	11
2nd Chance	4	2
Fast Break	0	6
Bench	5	5

**Official Box Score**  
**Col. of Charleston vs UNCW**  
**Second Quarter Statistics Only**  
**January 04, 2019 at Trask Coliseum - Wilmington, N.C.**



### Col. of Charleston 4

No.	Player	S	Pts	FG	3FG	FT	OR	DR	TR	PF	A	TO	Blk	Stl	Min	+/-
00	TAYLOR, MADISON		0	0-2	0-2	0-2	0	1	1	0	0	1	0	0	9	-12
02	HUFF, DARIEN		0	0-1	0-0	0-0	0	1	1	0	0	0	0	0	6	-8
03	PERKINS, LATRICE		0	0-2	0-0	0-0	0	2	2	1	0	1	0	0	4	-6
20	SULLIVAN, BRI		0	0-0	0-0	0-0	0	0	0	1	0	1	0	0	6	-11
25	FORD, DEJA		0	0-2	0-1	0-0	1	0	1	0	0	0	0	1	8	-12
01	BLANDING, SHAI		0	0-0	0-0	0-0	0	0	0	0	0	0	0	0	0	0
05	DORSEY, CAILIN		0	0-0	0-0	0-0	0	0	0	0	0	0	0	0	0	0
10	HEATH, DEE		0	0-0	0-0	0-0	0	0	0	0	0	0	0	0	1	-2
11	GOODSON, BRYANNA		0	0-0	0-0	0-0	0	0	0	0	0	0	0	0	0	0
15	EADY, ARYNN		0	0-0	0-0	0-0	0	0	0	1	1	0	0	0	0	1
21	LARSON, BAILEIGH		0	0-0	0-0	0-0	0	0	0	0	0	0	0	0	1	-1
23	COLLINS, TYLER		2	1-3	0-2	0-0	1	0	1	0	0	0	0	1	8	-12
24	MADDOX, LEXI		2	1-1	0-0	0-0	0	0	0	0	0	0	0	0	4	-4
42	BROUGHTON, ERICKA		0	0-0	0-0	0-0	0	0	0	2	0	0	0	0	3	-3
	TEAM						1	1	2	0		2				
	<b>TOTALS</b>		<b>4</b>	<b>2-11</b>	<b>0-5</b>	<b>0-2</b>	<b>3</b>	<b>5</b>	<b>8</b>	<b>5</b>	<b>1</b>	<b>5</b>	<b>0</b>	<b>2</b>	<b>50</b>	

*Shooting By Period*

Period	FG	FG%	3FG	3FG%	FT	FT%
3rd Qtr	6-16	38%	1-4	25%	4-4	100%
4th Qtr	2-11	18%	1-4	25%	2-4	50%
2nd Half	2-11	18%	0-5	00%	0-2	00%
2nd Half	8-27	30%	2-8	25%	6-8	75%
Game	18-49	36.7%	5-17	29.4%	8-12	66.7%

### UNCW 18

No.	Player	S	Pts	FG	3FG	FT	OR	DR	TR	PF	A	TO	Blk	Stl	Min	+/-
04	PARKER, SHRITA		6	3-4	0-0	0-1	0	1	1	0	3	1	0	1	10	14
05	SMITH, GIGI		2	1-3	0-1	0-0	0	1	1	1	1	0	0	1	4	8
10	VASON, AHYIONA		0	0-0	0-0	0-0	0	0	0	0	0	0	0	0	3	4
13	SUGGS, LACEY		2	1-1	0-0	0-0	0	1	1	0	2	0	0	0	9	14
24	BELL, CHINYERE		6	1-1	0-0	4-4	1	0	1	0	0	1	0	0	7	10
00	JEUNE, ASHLI		2	0-0	0-0	2-2	0	0	0	0	0	0	0	0	4	4
01	POWELL, PAIGE		0	0-0	0-0	0-0	0	0	0	1	0	0	0	0	1	2
12	BUEHLER, JULIA		0	0-0	0-0	0-0	0	0	0	0	0	0	0	0	0	0
14	TATE, TIMBER		0	0-3	0-2	0-0	1	4	5	0	0	0	0	0	8	11
22	THYBULLE, ZHANEIA		0	0-0	0-0	0-0	0	0	0	0	0	0	0	0	0	1
25	HOGGATT, MICAH		0	0-0	0-0	0-0	0	0	0	0	0	0	0	0	0	0
31	MITCHELL, JESSICA		0	0-0	0-0	0-0	0	0	0	0	0	0	0	0	0	0
32	OBUSEK, CAROL-ANNE		0	0-0	0-0	0-0	0	0	0	0	0	0	0	0	3	2
33	SACCO, GRACE		0	0-0	0-0	0-0	0	0	0	0	0	0	0	0	1	0
	TEAM						0	0	0	0		0				
	<b>TOTALS</b>		<b>18</b>	<b>6-12</b>	<b>0-3</b>	<b>6-7</b>	<b>2</b>	<b>7</b>	<b>9</b>	<b>2</b>	<b>6</b>	<b>2</b>	<b>0</b>	<b>2</b>	<b>50</b>	

*Shooting By Period*

Period	FG	FG%	3FG	3FG%	FT	FT%
3rd Qtr	5-17	29%	1-4	25%	8-11	73%
4th Qtr	5-18	28%	0-2	00%	3-4	75%
2nd Half	6-12	50%	0-3	00%	6-7	86%
2nd Half	10-35	29%	1-6	17%	11-15	73%
Game	25-60	41.7%	4-13	30.8%	17-23	73.9%

**Game Notes:**

Officials: Eric Brewton, Daryl Humphrey, Roy Jackson  
Attendance: 4511

Start Time: 2019-01-04 16:35:44  
End Time: 2019-01-04 18:30:23  
Game Duration: 114  
Conference Game;

Score	1st	2nd	3rd	4th	TOT
CfC	21	4	17	7	<b>49</b>
NCW	21	18	19	13	<b>71</b>

Points from (This Period)	CfC	NCW
In the Paint	2	12
Off Turns	2	4
2nd Chance	0	2
Fast Break	0	6
Bench	4	2

**Official Play-By-Play**  
**Col. of Charleston vs UNCW**  
**Second Quarter**  
**January 04, 2019 at Trask Coliseum - Wilmington, N.C.**



**Period 2**

**Starters:**

**Col. of Charleston:** 0 TAYLOR, MADISON; 2 HUFF, DARIEN; 3 PERKINS, LATRICE; 20 SULLIVAN, BRI; 25 FORD, DEJA;  
**UNCW:** 4 PARKER, SHRITA; 5 SMITH, GIGI; 10 VASON, AHYIONA; 13 SUGGS, LACEY; 24 BELL, CHINYERE;

Time	VISITORS: Col. of Charleston	Score	Margin	HOME: UNCW
09:42				MISSED JUMPER by PARKER, SHRITA
09:38				REBOUND (OFF) by TATE, TIMBER
09:37				MISSED JUMPER by TATE, TIMBER
09:34				REBOUND (OFF) by BELL, CHINYERE
09:34	FOUL (PERSONAL) by SULLIVAN, BRI			
09:34		22-21	H 1	GOOD! FT by BELL, CHINYERE
09:34		23-21	H 2	GOOD! FT by BELL, CHINYERE
09:03	MISSED 3PTR by FORD, DEJA			
08:59				REBOUND (DEF) by PARKER, SHRITA
08:57				TURNOVER (BADPASS) by PARKER, SHRITA
08:57	STEAL by FORD, DEJA			
08:48	MISSED 3PTR by COLLINS, TYLER			
08:45				REBOUND (DEF) by TATE, TIMBER
08:36		25-21	H 4	GOOD! LAYUP by PARKER, SHRITA
08:36				ASSIST by SUGGS, LACEY
08:03	TURNOVER (SHOTCLOCK) by			
08:03	SUB OUT: HUFF, DARIEN			
08:03	SUB IN: PERKINS, LATRICE			
07:45				MISSED 3PTR by TATE, TIMBER
07:41	REBOUND (DEF) by PERKINS, LATRICE			
07:36	MISSED JUMPER by PERKINS, LATRICE			
07:32	REBOUND (OFF) by COLLINS, TYLER			
07:17	FOUL (OFF) by PERKINS, LATRICE			
07:17	TURNOVER (OFFENSIVE) by PERKINS, LATRICE			
07:17				SUB OUT: VASON, AHYIONA
07:17				SUB IN: SMITH, GIGI
06:56		27-21	H 6	GOOD! LAYUP by SMITH, GIGI
06:56				ASSIST by PARKER, SHRITA
06:28	GOOD! JUMPER by COLLINS, TYLER	27-23	H 4	
06:10		29-23	H 6	GOOD! LAYUP by BELL, CHINYERE
06:10				ASSIST by PARKER, SHRITA
05:49	MISSED JUMPER by PERKINS, LATRICE			
05:45				REBOUND (DEF) by TATE, TIMBER
05:40		31-23	H 8	GOOD! LAYUP by SUGGS, LACEY [FB]
05:40				ASSIST by PARKER, SHRITA
05:08	TURNOVER (BADPASS) by SULLIVAN, BRI			
05:08				STEAL by PARKER, SHRITA
05:02				MISSED JUMPER by SMITH, GIGI
04:59	REBOUND (DEF) by PERKINS, LATRICE			
04:33	TURNOVER (LOSTBALL) by TAYLOR, MADISON			
04:33				STEAL by SMITH, GIGI
04:26		33-23	H 10	GOOD! LAYUP by PARKER, SHRITA [FB/PNT]
04:26				ASSIST by SUGGS, LACEY
04:25	TIMEOUT 30SEC			
04:25				
04:25				SUB OUT: TATE, TIMBER
04:25				SUB IN: OBUSEK, CAROL-ANNE
04:25				SUB OUT: BELL, CHINYERE
04:25				SUB IN: JEUNE, ASHLI
04:25	SUB OUT: SULLIVAN, BRI			
04:25	SUB IN: HUFF, DARIEN			
04:25	SUB OUT: PERKINS, LATRICE			
04:25	SUB IN: MADDOX, LEXI			
04:25	SUB OUT: FORD, DEJA			
04:25	SUB IN: BROUGHTON, ERICKA			
04:09	MISSED 3PTR by TAYLOR, MADISON			
04:04	REBOUND (OFF) by TEAM			
04:04	SUB OUT: TAYLOR, MADISON			
04:04	SUB IN: FORD, DEJA			
03:43	MISSED 3PTR by COLLINS, TYLER			
03:40				REBOUND (DEF) by SMITH, GIGI
03:26				MISSED 3PTR by SMITH, GIGI
03:23	REBOUND (DEF) by TEAM			
03:04	MISSED JUMPER by FORD, DEJA			
03:00				REBOUND (DEF) by SUGGS, LACEY
02:58		35-23	H 12	GOOD! LAYUP by PARKER, SHRITA [FB]
02:58				ASSIST by SMITH, GIGI
02:58	FOUL (PERSONAL) by BROUGHTON, ERICKA			
02:58	SUB OUT: COLLINS, TYLER			
02:58	SUB IN: TAYLOR, MADISON			



Time	VISITORS: Col. of Charleston	Score	Margin	HOME: UNCW
02:58				MISSED FT by PARKER, SHRITA
02:58	REBOUND (DEF) by HUFF, DARIEN			
02:52				FOUL (PERSONAL) by SMITH, GIGI
02:52	MISSED FT by TAYLOR, MADISON			
02:52	REBOUND (OFF) by TEAM			
02:52				SUB OUT: SMITH, GIGI
02:52				SUB IN: TATE, TIMBER
02:52	MISSED FT by TAYLOR, MADISON			
02:52				REBOUND (DEF) by TATE, TIMBER
02:28				MISSED 3PTR by TATE, TIMBER
02:24	REBOUND (DEF) by TAYLOR, MADISON			
02:09	MISSED JUMPER by HUFF, DARIEN			
02:05	REBOUND (OFF) by FORD, DEJA			
02:04	MISSED 3PTR by TAYLOR, MADISON			
02:00				REBOUND (DEF) by TATE, TIMBER
01:38				SUB OUT: OBUSEK, CAROL-ANNE
01:38				SUB IN: POWELL, PAIGE
01:38	SUB OUT: FORD, DEJA			
01:38	SUB IN: HEATH, DEE			
01:36	FOUL (PERSONAL) by BROUGHTON, ERICKA			
01:36		36-23	H 13	GOOD! FT by JEUNE, ASHLI
01:36	SUB OUT: BROUGHTON, ERICKA			
01:36	SUB IN: LARSON, BAILEIGH			
01:36		37-23	H 14	GOOD! FT by JEUNE, ASHLI
01:03	TURNOVER (SHOTCLOCK) by			
01:03				SUB OUT: SUGGS, LACEY
01:03				SUB IN: BELL, CHINYERE
01:03	SUB OUT: HEATH, DEE			
01:03	SUB IN: COLLINS, TYLER			
00:38				TURNOVER (BADPASS) by BELL, CHINYERE
00:38	STEAL by COLLINS, TYLER			
00:38				FOUL (PERSONAL) by POWELL, PAIGE
00:38				SUB OUT: POWELL, PAIGE
00:38				SUB IN: SACCO, GRACE
00:38	SUB OUT: LARSON, BAILEIGH			
00:38	SUB IN: EADY, ARYNN			
00:35	GOOD! LAYUP by MADDOX, LEXI	37-25	H 12	
00:35	ASSIST by EADY, ARYNN			
00:12	FOUL (PERSONAL) by EADY, ARYNN			
00:12		38-25	H 13	GOOD! FT by BELL, CHINYERE
00:12				SUB OUT: TATE, TIMBER
00:12				SUB IN: THYBULLE, ZHANEIA
00:12	SUB OUT: EADY, ARYNN			
00:12	SUB IN: SULLIVAN, BRI			
00:12		39-25	H 14	GOOD! FT by BELL, CHINYERE

Col. of Charleston 25, UNCW 39

Points from (This Period)	CfC	NCW
In the Paint	2	12
Off Turns	2	4
2nd Chance	0	2
Fast Break	0	6
Bench	4	2

**Official Box Score**  
**Col. of Charleston vs UNCW**  
**Second Half Statistics Only**  
**January 04, 2019 at Trask Coliseum - Wilmington, N.C.**



**Col. of Charleston 24**

No.	Player	S	Pts	FG	3FG	FT	OR	DR	TR	PF	A	TO	Blk	Stl	Min	+/-
00	TAYLOR, MADISON		2	1-5	0-2	0-0	0	1	1	1	1	2	0	1	17	-13
01	BLANDING, SHAI		0	0-0	0-0	0-0	0	0	0	1	0	0	0	0	3	-1
02	HUFF, DARIEN		4	1-4	1-2	1-2	2	1	3	4	1	2	0	0	18	-6
03	PERKINS, LATRICE		0	0-0	0-0	0-0	0	0	0	0	1	0	0	0	3	2
05	DORSEY, CAILIN		0	0-0	0-0	0-0	0	0	0	0	0	0	0	0	2	-5
10	HEATH, DEE		0	0-0	0-0	0-0	0	0	0	0	0	0	0	1	2	-2
11	GOODSON, BRYANNA		0	0-0	0-0	0-0	0	0	0	0	0	0	0	1	1	0
15	EADY, ARYNN		7	2-2	0-0	3-4	0	3	3	1	0	2	0	2	9	-3
20	SULLIVAN, BRI		0	0-0	0-0	0-0	0	2	2	0	0	0	1	0	8	-4
21	LARSON, BAILEIGH		8	3-5	0-0	2-2	1	1	2	3	0	2	1	1	9	2
23	COLLINS, TYLER		3	1-5	1-2	0-0	0	1	1	0	0	1	0	0	15	-6
24	MADDOX, LEXI		0	0-1	0-0	0-0	1	1	2	0	0	0	0	0	6	1
25	FORD, DEJA		0	0-3	0-2	0-0	0	0	0	3	0	0	0	0	6	0
42	BROUGHTON, ERICKA		0	0-2	0-0	0-0	1	0	1	1	0	1	0	0	3	-5
	TEAM		0	0-0	0-0	0-0	1	2	3	0	0	0	0	0	0	0
	<b>TOTALS</b>		<b>24</b>	<b>8-27</b>	<b>2-8</b>	<b>6-8</b>	<b>6</b>	<b>12</b>	<b>18</b>	<b>14</b>	<b>3</b>	<b>10</b>	<b>2</b>	<b>6</b>	<b>100</b>	

*Shooting By Period*

Period	FG	FG%	3FG	3FG%	FT	FT%
3rd Qtr	6-16	38%	1-4	25%	4-4	100%
4th Qtr	2-11	18%	1-4	25%	2-4	50%
2nd Half	8-27	30%	2-8	25%	6-8	75%
Game	18-49	36.7%	5-17	29.4%	8-12	66.7%

*Last FG Half: Cfc 4th-04:55*

**UNCW 32**

No.	Player	S	Pts	FG	3FG	FT	OR	DR	TR	PF	A	TO	Blk	Stl	Min	+/-
00	JEUNE, ASHLI		2	0-0	0-0	2-2	0	1	1	2	0	0	0	0	5	0
01	POWELL, PAIGE		0	0-1	0-0	0-0	0	1	1	0	0	0	0	0	5	1
04	PARKER, SHRITA		9	2-5	0-0	5-7	0	1	1	0	1	1	0	0	11	8
05	SMITH, GIGI		5	2-9	0-1	1-2	5	3	8	0	2	2	0	1	17	5
10	VASON, AHYIONA		0	0-0	0-0	0-0	0	1	1	2	2	2	0	0	14	10
12	BUEHLER, JULIA		0	0-0	0-0	0-0	0	0	0	0	0	0	0	0	2	2
13	SUGGS, LACEY		8	2-8	1-1	3-4	5	1	6	0	0	2	0	0	15	8
14	TATE, TIMBER		0	0-5	0-3	0-0	1	0	1	1	1	0	0	0	8	-3
22	THYBULLE, ZHANEIA		0	0-0	0-0	0-0	0	0	0	0	0	1	0	0	1	0
24	BELL, CHINYERE		4	2-3	0-1	0-0	0	2	2	1	0	0	0	1	8	7
25	HOGGATT, MICAH		2	1-1	0-0	0-0	0	1	1	0	0	1	0	0	2	2
31	MITCHELL, JESSICA		0	0-0	0-0	0-0	0	0	0	0	0	0	0	0	2	2
32	OBUSEK, CAROL-ANNE		2	1-3	0-0	0-0	2	3	5	1	0	0	0	0	6	-2
33	SACCO, GRACE		0	0-0	0-0	0-0	1	0	1	0	0	0	0	1	3	0
	TEAM		0	0-0	0-0	0-0	2	0	2	0	0	0	0	0	0	0
	<b>TOTALS</b>		<b>32</b>	<b>10-35</b>	<b>1-6</b>	<b>11-15</b>	<b>16</b>	<b>14</b>	<b>30</b>	<b>7</b>	<b>6</b>	<b>9</b>	<b>0</b>	<b>3</b>	<b>100</b>	

*Shooting By Period*

Period	FG	FG%	3FG	3FG%	FT	FT%
3rd Qtr	5-17	29%	1-4	25%	8-11	73%
4th Qtr	5-18	28%	0-2	00%	3-4	75%
2nd Half	10-35	29%	1-6	17%	11-15	73%
Game	25-60	41.7%	4-13	30.8%	17-23	73.9%

*Last FG Half: NCW 4th-01:37*

*Game Notes:*

Officials: Eric Brewton, Daryl Humphrey, Roy Jackson  
 Attendance: 4511

Start Time: 2019-01-04 16:35:44  
 End Time: 2019-01-04 18:30:23  
 Game Duration: 114  
 Conference Game;

Score	1st	2nd	3rd	4th	TOT
CfC	21	4	17	7	<b>49</b>
NCW	21	18	19	13	<b>71</b>

Points from (This Period)	CfC	NCW
In the Paint	12	18
Off Turns	3	11
2nd Chance	2	10
Fast Break	5	5
Bench	18	6

**Official Box Score**  
**Col. of Charleston vs UNCW**  
**Third Quarter Statistics Only**  
**January 04, 2019 at Trask Coliseum - Wilmington, N.C.**



**Col. of Charleston 24**

No.	Player	S	Pts	FG	3FG	FT	OR	DR	TR	PF	A	TO	Blk	Stl	Min	+/-
00	TAYLOR, MADISON		2	1-4	0-1	0-0	0	0	0	1	1	0	0	1	9	-4
02	HUFF, DARIEN		0	0-2	0-0	0-0	1	1	2	2	1	1	0	0	10	-2
03	PERKINS, LATRICE		0	0-0	0-0	0-0	0	0	0	0	0	0	0	0	2	-1
20	SULLIVAN, BRI		0	0-0	0-0	0-0	0	2	2	0	0	0	0	0	5	-4
25	FORD, DEJA		0	0-2	0-1	0-0	0	0	0	3	0	0	0	0	2	1
01	BLANDING, SHAI		0	0-0	0-0	0-0	0	0	0	0	0	0	0	0	0	0
05	DORSEY, CAILIN		0	0-0	0-0	0-0	0	0	0	0	0	0	0	0	0	0
10	HEATH, DEE		0	0-0	0-0	0-0	0	0	0	0	0	0	0	0	0	0
11	GOODSON, BRYANNA		0	0-0	0-0	0-0	0	0	0	0	0	0	0	0	0	0
15	EADY, ARYNN		6	2-2	0-0	2-2	0	1	1	1	0	1	0	1	5	-4
21	LARSON, BAILEIGH		6	2-2	0-0	2-2	1	1	2	0	0	1	1	1	5	2
23	COLLINS, TYLER		3	1-4	1-2	0-0	0	1	1	0	0	1	0	0	8	-1
24	MADDOX, LEXI		0	0-0	0-0	0-0	0	1	1	0	0	0	0	0	5	3
42	BROUGHTON, ERICKA		0	0-0	0-0	0-0	0	0	0	0	0	0	0	0	0	0
	TEAM						0	1	1	0		0				
	<b>TOTALS</b>		<b>17</b>	<b>6-16</b>	<b>1-4</b>	<b>4-4</b>	<b>2</b>	<b>8</b>	<b>10</b>	<b>7</b>	<b>2</b>	<b>4</b>	<b>1</b>	<b>3</b>	<b>50</b>	

*Shooting By Period*

Period	FG	FG%	3FG	3FG%	FT	FT%
2nd Half	0-0	0%	0-0	0%	0-0	0%
Game	18-49	36.7%	5-17	29.4%	8-12	66.7%

**UNCW 32**

No.	Player	S	Pts	FG	3FG	FT	OR	DR	TR	PF	A	TO	Blk	Stl	Min	+/-
04	PARKER, SHRITA		9	2-5	0-0	5-7	0	1	1	0	0	0	0	0	9	4
05	SMITH, GIGI		2	1-5	0-1	0-0	3	2	5	0	1	1	0	1	9	1
10	VASON, AHYIONA		0	0-0	0-0	0-0	0	1	1	1	2	2	0	0	6	6
13	SUGGS, LACEY		6	1-3	1-1	3-4	1	1	2	0	0	1	0	0	7	4
24	BELL, CHINYERE		2	1-1	0-0	0-0	0	1	1	1	0	0	0	1	6	2
00	JEUNE, ASHLI		0	0-0	0-0	0-0	0	0	0	1	0	0	0	0	3	-2
01	POWELL, PAIGE		0	0-0	0-0	0-0	0	0	0	0	0	0	0	0	2	1
12	BUEHLER, JULIA		0	0-0	0-0	0-0	0	0	0	0	0	0	0	0	0	0
14	TATE, TIMBER		0	0-3	0-2	0-0	0	0	0	0	0	0	0	0	4	-3
22	THYBULLE, ZHANEIA		0	0-0	0-0	0-0	0	0	0	0	0	0	0	0	0	0
25	HOGGATT, MICAH		0	0-0	0-0	0-0	0	0	0	0	0	0	0	0	0	0
31	MITCHELL, JESSICA		0	0-0	0-0	0-0	0	0	0	0	0	0	0	0	0	0
32	OBUSEK, CAROL-ANNE		0	0-0	0-0	0-0	0	2	2	1	0	0	0	0	3	-1
33	SACCO, GRACE		0	0-0	0-0	0-0	1	0	1	0	0	0	0	0	1	-2
	TEAM						1	0	1	0		0				
	<b>TOTALS</b>		<b>19</b>	<b>5-17</b>	<b>1-4</b>	<b>8-11</b>	<b>6</b>	<b>8</b>	<b>14</b>	<b>4</b>	<b>3</b>	<b>4</b>	<b>0</b>	<b>2</b>	<b>50</b>	

*Shooting By Period*

Period	FG	FG%	3FG	3FG%	FT	FT%
2nd Half	0-0	0%	0-0	0%	0-0	0%
Game	25-60	41.7%	4-13	30.8%	17-23	73.9%

Game Notes:

Officials: Eric Brewton, Daryl Humphrey, Roy Jackson  
Attendance: 4511

Start Time: 2019-01-04 16:35:44  
End Time: 2019-01-04 18:30:23  
Game Duration: 114  
Conference Game;

Score	1st	2nd	3rd	4th	TOT
CfC	21	4	17	7	<b>49</b>
NCW	21	18	19	13	<b>71</b>

Points from (This Period)	CfC	NCW
In the Paint	10	8
Off Turns	0	3
2nd Chance	2	5
Fast Break	5	5
Bench	15	0

**Official Play-By-Play**  
**Col. of Charleston vs UNCW**  
**Third Quarter**  
**January 04, 2019 at Trask Coliseum - Wilmington, N.C.**



**Period 3**

**Starters:**

**Col. of Charleston:** 0 TAYLOR,MADISON; 2 HUFF,DARIEN; 3 PERKINS,LATRICE; 20 SULLIVAN,BRI; 25 FORD,DEJA;

**UNCW:** 4 PARKER,SHRITA; 5 SMITH,GIGI; 10 VASON,AHYIONA; 13 SUGGS,LACEY; 24 BELL,CHINYERE;

Time	VISITORS: Col. of Charleston	Score	Margin	HOME: UNCW
09:57	MISSED 3PTR by FORD, DEJA			
09:53				REBOUND (DEF) by PARKER, SHRITA
09:36	FOUL (PERSONAL) by FORD, DEJA			
09:36		40-25	H 15	GOOD! FT by SUGGS, LACEY
09:36				MISSED FT by SUGGS, LACEY
09:34	REBOUND (DEF) by SULLIVAN, BRI			
09:13	TURNOVER (BADPASS) by HUFF, DARIEN			
09:13				STEAL by SMITH, GIGI
09:07				MISSED LAYUP by PARKER, SHRITA
09:05				REBOUND (OFF) by SMITH, GIGI
09:05	FOUL (PERSONAL) by FORD, DEJA			
09:05	SUB OUT: COLLINS, TYLER			
09:05	SUB IN: EADY, ARYNN			
09:05	SUB OUT: FORD, DEJA			
09:05	SUB IN: COLLINS, TYLER			
09:01				TURNOVER (BADPASS) by SUGGS, LACEY
09:01	STEAL by TAYLOR, MADISON			
08:46	TURNOVER (TRAVEL) by EADY, ARYNN			
08:26	FOUL (PERSONAL) by HUFF, DARIEN			
08:26				MISSED FT by PARKER, SHRITA
08:26				REBOUND (OFF) by TEAM
08:26		41-25	H 16	GOOD! FT by PARKER, SHRITA
08:14	TURNOVER (BADPASS) by COLLINS, TYLER			
08:14				STEAL by BELL, CHINYERE
08:04		43-25	H 18	GOOD! LAYUP by BELL, CHINYERE
08:04				ASSIST by VASON, AHYIONA
07:51	MISSED JUMPER by HUFF, DARIEN			
07:48	REBOUND (OFF) by HUFF, DARIEN			
07:47	MISSED LAYUP by HUFF, DARIEN			
07:43				REBOUND (DEF) by SMITH, GIGI
07:40				TURNOVER (LOSTBALL) by SMITH, GIGI
07:40	STEAL by EADY, ARYNN			
07:22	MISSED JUMPER by COLLINS, TYLER			
07:19				REBOUND (DEF) by SUGGS, LACEY
07:12				MISSED LAYUP by PARKER, SHRITA
07:09	REBOUND (DEF) by EADY, ARYNN			
06:50				FOUL (PERSONAL) by BELL, CHINYERE
06:50	GOOD! FT by EADY, ARYNN	43-26	H 17	
06:50				SUB OUT: SMITH, GIGI
06:50				SUB IN: TATE, TIMBER
06:50				SUB OUT: BELL, CHINYERE
06:50				SUB IN: OBUSEK, CAROL-ANNE
06:50	SUB OUT: SULLIVAN, BRI			
06:50	SUB IN: LARSON, BAILEIGH			
06:50	GOOD! FT by EADY, ARYNN	43-27	H 16	
06:29				TURNOVER (BADPASS) by VASON, AHYIONA
06:29	STEAL by LARSON, BAILEIGH			
06:24	MISSED LAYUP by TAYLOR, MADISON			
06:20				REBOUND (DEF) by OBUSEK, CAROL-ANNE
06:18		45-27	H 18	GOOD! LAYUP by PARKER, SHRITA [FB]
06:18	FOUL (PERSONAL) by EADY, ARYNN			
06:18				SUB OUT: VASON, AHYIONA
06:18				SUB IN: SMITH, GIGI
06:18	SUB OUT: EADY, ARYNN			
06:18	SUB IN: MADDOX, LEXI			
06:18		46-27	H 19	GOOD! FT by PARKER, SHRITA [FB]
06:04	MISSED JUMPER by COLLINS, TYLER			
06:00				REBOUND (DEF) by OBUSEK, CAROL-ANNE
05:55				MISSED LAYUP by SMITH, GIGI
05:54	REBOUND (DEF) by LARSON, BAILEIGH			
05:54				FOUL (PERSONAL) by OBUSEK, CAROL-ANNE
05:54	SUB OUT: TAYLOR, MADISON			
05:54	SUB IN: FORD, DEJA			
05:38	MISSED JUMPER by FORD, DEJA			
05:35				REBOUND (DEF) by SMITH, GIGI
05:30				MISSED 3PTR by TATE, TIMBER
05:26				REBOUND (OFF) by SUGGS, LACEY
05:24				MISSED JUMPER by SUGGS, LACEY
05:21	REBOUND (DEF) by HUFF, DARIEN			
05:18	GOOD! 3PTR by COLLINS, TYLER [FB]	46-30	H 16	

Time	VISITORS: Col. of Charleston	Score	Margin	HOME: UNCW
05:18	ASSIST by HUFF, DARIEN			
05:01	FOUL (PERSONAL) by FORD, DEJA			
05:01		47-30	H 17	GOOD! FT by PARKER, SHRITA
05:01				SUB OUT: SUGGS, LACEY
05:01				SUB IN: JEUNE, ASHLI
05:01	SUB OUT: FORD, DEJA			
05:01	SUB IN: TAYLOR, MADISON			
05:01		48-30	H 18	GOOD! FT by PARKER, SHRITA
04:41	GOOD! LAYUP by TAYLOR, MADISON	48-32	H 16	
04:31				MISSED JUMPER by SMITH, GIGI
04:31	BLOCK by LARSON, BAILEIGH			
04:25				REBOUND (OFF) by SMITH, GIGI
04:24				MISSED 3PTR by TATE, TIMBER
04:19				REBOUND (OFF) by SMITH, GIGI
04:18		50-32	H 18	GOOD! LAYUP by SMITH, GIGI
04:13				FOUL (PERSONAL) by JEUNE, ASHLI
04:13				
04:13	GOOD! FT by LARSON, BAILEIGH [FB]	50-33	H 17	
04:13	GOOD! FT by LARSON, BAILEIGH [FB]	50-34	H 16	
04:08				SUB OUT: OBUSEK, CAROL-ANNE
04:08				SUB IN: BELL, CHINYERE
03:57				MISSED JUMPER by TATE, TIMBER
03:54	REBOUND (DEF) by TEAM			
03:43	MISSED JUMPER by TAYLOR, MADISON			
03:39	REBOUND (OFF) by LARSON, BAILEIGH			
03:38	GOOD! LAYUP by LARSON, BAILEIGH	50-36	H 14	
03:27	FOUL (PERSONAL) by TAYLOR, MADISON			
03:27		51-36	H 15	GOOD! FT by PARKER, SHRITA
03:27				SUB OUT: TATE, TIMBER
03:27				SUB IN: VASON, AHYIONA
03:27				MISSED FT by PARKER, SHRITA
03:25	REBOUND (DEF) by MADDOX, LEXI			
03:17	GOOD! JUMPER by LARSON, BAILEIGH [PNT]	51-38	H 13	
03:17	ASSIST by TAYLOR, MADISON			
02:53				TURNOVER (BADPASS) by VASON, AHYIONA
02:41	TURNOVER (BADPASS) by LARSON, BAILEIGH			
02:27				MISSED 3PTR by SMITH, GIGI
02:23	REBOUND (DEF) by COLLINS, TYLER			
02:17	MISSED 3PTR by TAYLOR, MADISON			
02:13				REBOUND (DEF) by VASON, AHYIONA
02:10		53-38	H 15	GOOD! LAYUP by PARKER, SHRITA [FB]
02:10				ASSIST by VASON, AHYIONA
01:52	MISSED 3PTR by COLLINS, TYLER			
01:47				REBOUND (DEF) by BELL, CHINYERE
01:45				MISSED LAYUP by PARKER, SHRITA
01:44				REBOUND (OFF) by TEAM
01:44				SUB OUT: BELL, CHINYERE
01:44				SUB IN: POWELL, PAIGE
01:44				SUB OUT: JEUNE, ASHLI
01:44				SUB IN: SUGGS, LACEY
01:44	SUB OUT: LARSON, BAILEIGH			
01:44	SUB IN: EADY, ARYNN			
01:44	SUB OUT: MADDOX, LEXI			
01:44	SUB IN: SULLIVAN, BRI			
01:44	SUB OUT: COLLINS, TYLER			
01:44	SUB IN: PERKINS, LATRICE			
01:34		56-38	H 18	GOOD! 3PTR by SUGGS, LACEY
01:34				ASSIST by SMITH, GIGI
01:10				FOUL (PERSONAL) by VASON, AHYIONA
01:10				SUB OUT: PARKER, SHRITA
01:10				SUB IN: SACCO, GRACE
01:07	GOOD! LAYUP by EADY, ARYNN [PNT]	56-40	H 16	
00:46	FOUL (PERSONAL) by HUFF, DARIEN			
00:46		57-40	H 17	GOOD! FT by SUGGS, LACEY
00:46				SUB OUT: VASON, AHYIONA
00:46				SUB IN: TATE, TIMBER
00:46		58-40	H 18	GOOD! FT by SUGGS, LACEY
00:28	GOOD! JUMPER by EADY, ARYNN [PNT]	58-42	H 16	
00:04				MISSED LAYUP by SMITH, GIGI
00:01				REBOUND (OFF) by SACCO, GRACE
00:01				MISSED JUMPER by SUGGS, LACEY
00:00	REBOUND (DEF) by SULLIVAN, BRI			

Col. of Charleston 42, UNCW 58

<b>Points from (This Period)</b>	<b>CfC</b>	<b>NCW</b>
In the Paint	10	8
Off Turns	0	3
2nd Chance	2	5
Fast Break	5	5
Bench	15	0

**Official Box Score**  
**Col. of Charleston vs UNCW**  
**Fourth Quarter Statistics Only**  
**January 04, 2019 at Trask Coliseum - Wilmington, N.C.**



**Col. of Charleston 7**

No.	Player	S	Pts	FG	3FG	FT	OR	DR	TR	PF	A	TO	Blk	Stl	Min	+/-
00	TAYLOR, MADISON		0	0-1	0-1	0-0	0	1	1	0	0	2	0	0	8	-9
02	HUFF, DARIEN		4	1-2	1-2	1-2	1	0	1	2	0	1	0	0	8	-4
03	PERKINS, LATRICE		0	0-0	0-0	0-0	0	0	0	0	1	0	0	0	1	3
20	SULLIVAN, BRI		0	0-0	0-0	0-0	0	0	0	0	0	0	1	0	3	0
25	FORD, DEJA		0	0-1	0-1	0-0	0	0	0	0	0	0	0	0	4	-1
01	BLANDING, SHAI		0	0-0	0-0	0-0	0	0	0	1	0	0	0	0	3	-1
05	DORSEY, CAILIN		0	0-0	0-0	0-0	0	0	0	0	0	0	0	0	2	-5
10	HEATH, DEE		0	0-0	0-0	0-0	0	0	0	0	0	0	0	1	2	-2
11	GOODSON, BRYANNA		0	0-0	0-0	0-0	0	0	0	0	0	0	0	1	1	0
15	EADY, ARYNN		1	0-0	0-0	1-2	0	2	2	0	0	1	0	1	4	1
21	LARSON, BAILEIGH		2	1-3	0-0	0-0	0	0	0	3	0	1	0	0	4	0
23	COLLINS, TYLER		0	0-1	0-0	0-0	0	0	0	0	0	0	0	0	7	-5
24	MADDOX, LEXI		0	0-1	0-0	0-0	1	0	1	0	0	0	0	0	1	-2
42	BROUGHTON, ERICKA		0	0-2	0-0	0-0	1	0	1	1	0	1	0	0	3	-5
	TEAM						1	1	2	0		0				
	<b>TOTALS</b>		<b>7</b>	<b>2-11</b>	<b>1-4</b>	<b>2-4</b>	<b>4</b>	<b>4</b>	<b>8</b>	<b>7</b>	<b>1</b>	<b>6</b>	<b>1</b>	<b>3</b>	<b>50</b>	

*Shooting By Period*

Period	FG	FG%	3FG	3FG%	FT	FT%
Game	18-49	36.7%	5-17	29.4%	8-12	66.7%

**UNCW 13**

No.	Player	S	Pts	FG	3FG	FT	OR	DR	TR	PF	A	TO	Blk	Stl	Min	+/-
04	PARKER, SHRITA		0	0-0	0-0	0-0	0	0	0	0	1	1	0	0	2	4
05	SMITH, GIGI		3	1-4	0-0	1-2	2	1	3	0	1	1	0	0	8	4
10	VASON, AHYIONA		0	0-0	0-0	0-0	0	0	0	1	0	0	0	0	8	4
13	SUGGS, LACEY		2	1-5	0-0	0-0	4	0	4	0	0	1	0	0	8	4
24	BELL, CHINYERE		2	1-2	0-1	0-0	0	1	1	0	0	0	0	0	2	5
00	JEUNE, ASHLI		2	0-0	0-0	2-2	0	1	1	1	0	0	0	0	2	2
01	POWELL, PAIGE		0	0-1	0-0	0-0	0	1	1	0	0	0	0	0	3	0
12	BUEHLER, JULIA		0	0-0	0-0	0-0	0	0	0	0	0	0	0	0	2	2
14	TATE, TIMBER		0	0-2	0-1	0-0	1	0	1	1	1	0	0	0	4	0
22	THYBULLE, ZHANEIA		0	0-0	0-0	0-0	0	0	0	0	0	1	0	0	1	0
25	HOGGATT, MICAH		2	1-1	0-0	0-0	0	1	1	0	0	1	0	0	2	2
31	MITCHELL, JESSICA		0	0-0	0-0	0-0	0	0	0	0	0	0	0	0	2	2
32	OBUSEK, CAROL-ANNE		2	1-3	0-0	0-0	2	1	3	0	0	0	0	0	3	-1
33	SACCO, GRACE		0	0-0	0-0	0-0	0	0	0	0	0	0	0	1	2	2
	TEAM						1	0	1	0		0				
	<b>TOTALS</b>		<b>13</b>	<b>5-18</b>	<b>0-2</b>	<b>3-4</b>	<b>10</b>	<b>6</b>	<b>16</b>	<b>3</b>	<b>3</b>	<b>5</b>	<b>0</b>	<b>1</b>	<b>50</b>	

*Shooting By Period*

Period	FG	FG%	3FG	3FG%	FT	FT%
Game	25-60	41.7%	4-13	30.8%	17-23	73.9%

*Game Notes:*

Officials: Eric Brewton, Daryl Humphrey, Roy Jackson  
 Attendance: 4511

Start Time: 2019-01-04 16:35:44  
 End Time: 2019-01-04 18:30:23  
 Game Duration: 114  
 Conference Game:

Score	1st	2nd	3rd	4th	TOT
CfC	21	4	17	7	<b>49</b>
NCW	21	18	19	13	<b>71</b>

Points from (This Period)	CfC	NCW
In the Paint	2	10
Off Turns	3	8
2nd Chance	0	5
Fast Break	0	0
Bench	3	6

**Official Play-By-Play**  
**Col. of Charleston vs UNCW**  
**Fourth Quarter**  
**January 04, 2019 at Trask Coliseum - Wilmington, N.C.**



**Period 4**

**Starters:**

**Col. of Charleston:** 0 TAYLOR,MADISON; 2 HUFF,DARIEN; 3 PERKINS,LATRICE; 20 SULLIVAN,BRI; 25 FORD,DEJA;

**UNCW:** 4 PARKER,SHRITA; 5 SMITH,GIGI; 10 VASON,AHYIONA; 13 SUGGS,LACEY; 24 BELL,CHINYERE;

Time	VISITORS: Col. of Charleston	Score	Margin	HOME: UNCW
09:45				SUB OUT: TATE, TIMBER
09:45				SUB IN: PARKER, SHRITA
09:45				SUB OUT: SACCO, GRACE
09:45				SUB IN: VASON, AHYIONA
09:45	SUB OUT: PERKINS, LATRICE			
09:45	SUB IN: COLLINS, TYLER			
09:41	TURNOVER (BADPASS) by EADY, ARYNN			
09:28	SUB OUT: EADY, ARYNN			
09:28	SUB IN: MADDOX, LEXI			
09:12	FOUL (PERSONAL) by HUFF, DARIEN			
09:08				MISSED JUMPER by POWELL, PAIGE
09:05				REBOUND (OFF) by SMITH, GIGI
09:03		60-42	H 18	GOOD! LAYUP by SMITH, GIGI
08:51	MISSED JUMPER by COLLINS, TYLER			
08:47	REBOUND (OFF) by MADDOX, LEXI			
08:46	MISSED LAYUP by MADDOX, LEXI			
08:42				REBOUND (DEF) by POWELL, PAIGE
08:38				MISSED JUMPER by SUGGS, LACEY
08:38	BLOCK by SULLIVAN, BRI			
08:32				REBOUND (OFF) by SUGGS, LACEY
08:32				TURNOVER (LOSTBALL) by SUGGS, LACEY
08:32	TURNOVER (BADPASS) by TAYLOR, MADISON			
08:32	SUB OUT: MADDOX, LEXI			
08:32	SUB IN: LARSON, BAILEIGH			
08:18				TURNOVER (TRAVEL) by PARKER, SHRITA
08:18				SUB OUT: PARKER, SHRITA
08:18				SUB IN: TATE, TIMBER
07:56	GOOD! LAYUP by LARSON, BAILEIGH	60-44	H 16	
07:36				MISSED 3PTR by TATE, TIMBER
07:32	REBOUND (DEF) by TAYLOR, MADISON			
07:19				SUB OUT: POWELL, PAIGE
07:19				SUB IN: BELL, CHINYERE
07:16				FOUL (PERSONAL) by TATE, TIMBER
07:13	FOUL (OFF) by LARSON, BAILEIGH			
07:13	TURNOVER (OFFENSIVE) by LARSON, BAILEIGH			
07:01	FOUL (PERSONAL) by LARSON, BAILEIGH			
06:57				MISSED 3PTR by BELL, CHINYERE
06:53				REBOUND (OFF) by SUGGS, LACEY
06:52				MISSED JUMPER by SMITH, GIGI
06:49				REBOUND (OFF) by TEAM
06:49	SUB OUT: SULLIVAN, BRI			
06:49	SUB IN: EADY, ARYNN			
06:44	FOUL (PERSONAL) by LARSON, BAILEIGH			
06:44	SUB OUT: LARSON, BAILEIGH			
06:44	SUB IN: BROUGHTON, ERICKA			
06:44	SUB OUT: EADY, ARYNN			
06:44	SUB IN: DORSEY, CAILIN			
06:37		62-44	H 18	GOOD! LAYUP by SUGGS, LACEY
06:37				ASSIST by TATE, TIMBER
06:16	MISSED JUMPER by BROUGHTON, ERICKA			
06:12				REBOUND (DEF) by BELL, CHINYERE
06:05				MISSED JUMPER by SMITH, GIGI
06:04				REBOUND (OFF) by TATE, TIMBER
05:56				MISSED JUMPER by SMITH, GIGI
05:54				REBOUND (OFF) by SMITH, GIGI
05:54	FOUL (PERSONAL) by HUFF, DARIEN			
05:54		63-44	H 19	GOOD! FT by SMITH, GIGI
05:54	SUB OUT: HUFF, DARIEN			
05:54	SUB IN: HEATH, DEE			
05:54				MISSED FT by SMITH, GIGI
05:54				REBOUND (OFF) by SUGGS, LACEY
05:52				MISSED JUMPER by TATE, TIMBER
05:52	REBOUND (DEF) by TEAM			
05:31	FOUL (OFF) by BROUGHTON, ERICKA			
05:31	TURNOVER (OFFENSIVE) by BROUGHTON, ERICKA			
05:09		65-44	H 21	GOOD! LAYUP by BELL, CHINYERE
05:09				ASSIST by SMITH, GIGI
05:06	TIMEOUT 30SEC			
05:06				
05:06				SUB OUT: BELL, CHINYERE



Time	VISITORS: Col. of Charleston	Score	Margin	HOME: UNCW
05:06				SUB IN: OBUSEK, CAROL-ANNE
05:06	SUB OUT: TAYLOR, MADISON			
05:06	SUB IN: HUFF, DARIEN			
05:06	SUB OUT: DORSEY, CAILIN			
05:06	SUB IN: FORD, DEJA			
05:06	SUB OUT: HEATH, DEE			
05:06	SUB IN: EADY, ARYNN			
05:06	SUB OUT: BROUGHTON, ERICKA			
05:06	SUB IN: PERKINS, LATRICE			
04:55	GOOD! 3PTR by HUFF, DARIEN	65-47	H 18	
04:55	ASSIST by PERKINS, LATRICE			
04:44				MISSED LAYUP by SUGGS, LACEY
04:40				REBOUND (OFF) by OBUSEK, CAROL-ANNE
04:39				MISSED LAYUP by OBUSEK, CAROL-ANNE
04:36				REBOUND (OFF) by SUGGS, LACEY
04:22				MISSED LAYUP by SUGGS, LACEY
04:19				REBOUND (OFF) by OBUSEK, CAROL-ANNE
04:17				MISSED LAYUP by OBUSEK, CAROL-ANNE
04:14	REBOUND (DEF) by EADY, ARYNN			
04:12	TURNOVER (BADPASS) by HUFF, DARIEN			
04:12				SUB OUT: TATE, TIMBER
04:12				SUB IN: JEUNE, ASHLI
04:12	SUB OUT: PERKINS, LATRICE			
04:12	SUB IN: TAYLOR, MADISON			
04:12	SUB OUT: COLLINS, TYLER			
04:12	SUB IN: BLANDING, SHAI			
04:02	FOUL (PERSONAL) by BLANDING, SHAI			
04:02		66-47	H 19	GOOD! FT by JEUNE, ASHLI
04:02	SUB OUT: BLANDING, SHAI			
04:02	SUB IN: COLLINS, TYLER			
04:02		67-47	H 20	GOOD! FT by JEUNE, ASHLI
03:49				FOUL (PERSONAL) by VASON, AHYIONA
03:49	MISSED FT by HUFF, DARIEN			
03:49	REBOUND (OFF) by TEAM			
03:49	SUB OUT: COLLINS, TYLER			
03:49	SUB IN: BLANDING, SHAI			
03:49	GOOD! FT by HUFF, DARIEN	67-48	H 19	
03:31				TURNOVER (LOSTBALL) by SMITH, GIGI
03:31	STEAL by EADY, ARYNN			
03:21				FOUL (PERSONAL) by JEUNE, ASHLI
03:21	GOOD! FT by EADY, ARYNN	67-49	H 18	
03:21	MISSED FT by EADY, ARYNN			
03:21				REBOUND (DEF) by SMITH, GIGI
02:53		69-49	H 20	GOOD! JUMPER by OBUSEK, CAROL-ANNE [PNT]
02:40	MISSED 3PTR by FORD, DEJA			
02:37	REBOUND (OFF) by HUFF, DARIEN			
02:34	MISSED 3PTR by TAYLOR, MADISON			
02:30				REBOUND (DEF) by JEUNE, ASHLI
02:11				MISSED LAYUP by SUGGS, LACEY
02:07	REBOUND (DEF) by EADY, ARYNN			
02:01	MISSED 3PTR by HUFF, DARIEN			
01:59				REBOUND (DEF) by OBUSEK, CAROL-ANNE
01:59				SUB OUT: JEUNE, ASHLI
01:59				SUB IN: SACCO, GRACE
01:59				SUB OUT: SMITH, GIGI
01:59				SUB IN: BUEHLER, JULIA
01:59				SUB OUT: VASON, AHYIONA
01:59				SUB IN: PARKER, SHRITA
01:59				SUB OUT: SUGGS, LACEY
01:59				SUB IN: MITCHELL, JESSICA
01:59				SUB OUT: OBUSEK, CAROL-ANNE
01:59				SUB IN: HOGGATT, MICAH
01:59	SUB OUT: BLANDING, SHAI			
01:59	SUB IN: COLLINS, TYLER			
01:59	SUB OUT: EADY, ARYNN			
01:59	SUB IN: LARSON, BAILEIGH			
01:37		71-49	H 22	GOOD! LAYUP by HOGGATT, MICAH
01:37				ASSIST by PARKER, SHRITA
01:24	TURNOVER (BADPASS) by TAYLOR, MADISON			
01:24				STEAL by SACCO, GRACE
01:14				TIMEOUT 30SEC
01:14				SUB OUT: PARKER, SHRITA
01:14				SUB IN: THYBULLE, ZHANEIA
01:14	SUB OUT: TAYLOR, MADISON			
01:14	SUB IN: BLANDING, SHAI			
01:14	SUB OUT: HUFF, DARIEN			
01:14	SUB IN: GOODSON, BRYANNA			
01:14	SUB OUT: COLLINS, TYLER			
01:14	SUB IN: BROUGHTON, ERICKA			

Time	VISITORS: Col. of Charleston	Score	Margin	HOME: UNCW
01:14	SUB OUT: FORD, DEJA			
01:14	SUB IN: HEATH, DEE			
01:00				TURNOVER (LOSTBALL) by THYBULLE, ZHANEIA
01:00	STEAL by HEATH, DEE			
00:43	MISSED JUMPER by LARSON, BAILEIGH			
00:39				REBOUND (DEF) by HOGGATT, MICAH
00:18				TURNOVER (BADPASS) by HOGGATT, MICAH
00:18	STEAL by GOODSON, BRYANNA			
00:07	MISSED JUMPER by BROUGHTON, ERICKA			
00:04	REBOUND (OFF) by BROUGHTON, ERICKA			
00:01	MISSED JUMPER by LARSON, BAILEIGH			
00:01	REBOUND (OFF) by TEAM			

**Col. of Charleston 49, UNCW 71**

Points from (This Period)	CfC	NCW
In the Paint	2	10
Off Turns	3	8
2nd Chance	0	5
Fast Break	0	0
Bench	3	6

**Official Scoring/Possession Reference Chart**  
**Col. of Charleston vs UNCW**  
**Period 1**  
**January 04, 2019 at Trask Coliseum - Wilmington, N.C.**



**Period 1**

**Starters:**

**Col. of Charleston:** 0 TAYLOR,MADISON; 2 HUFF,DARIEN; 3 PERKINS,LATRICE; 20 SULLIVAN,BRI; 25 FORD,DEJA;  
**UNCW:** 4 PARKER,SHRITA; 5 SMITH,GIGI; 10 VASON,AHYIONA; 13 SUGGS,LACEY; 24 BELL,CHINYERE;

Time	VISITORS: Col. of Charleston	Score	Margin	HOME: UNCW
09:39		2-0	H 2	GOOD! LAYUP by PARKER, SHRITA [FB]
08:48		4-0	H 4	GOOD! LAYUP by SUGGS, LACEY
08:36	GOOD! 3PTR by HUFF, DARIEN	4-3	H 1	
08:08		7-3	H 4	GOOD! 3PTR by SMITH, GIGI
07:49		9-3	H 6	GOOD! LAYUP by SUGGS, LACEY [FB]
07:30	GOOD! 3PTR by COLLINS, TYLER	9-6	H 3	
06:50		12-6	H 6	GOOD! 3PTR by SMITH, GIGI
06:17		14-6	H 8	GOOD! LAYUP by SUGGS, LACEY [FB]
05:26	GOOD! 3PTR by FORD, DEJA	14-9	H 5	
04:40	GOOD! LAYUP by FORD, DEJA	14-11	H 3	
04:10		16-11	H 5	GOOD! LAYUP by POWELL, PAIGE
03:50	GOOD! FT by SULLIVAN, BRI	16-12	H 4	
03:50	GOOD! FT by SULLIVAN, BRI	16-13	H 3	
03:16		19-13	H 6	GOOD! 3PTR by TATE, TIMBER
02:54	GOOD! LAYUP by EADY, ARYNN	19-15	H 4	
02:26	GOOD! LAYUP by PERKINS, LATRICE	19-17	H 2	
01:26	GOOD! JUMPER by FORD, DEJA	19-19	T	
00:29	GOOD! LAYUP by TAYLOR, MADISON	19-21	V 2	
00:10		21-21	T	GOOD! LAYUP by BELL, CHINYERE

**Col. of Charleston 21, UNCW 21**

**Official Scoring/Possession Reference Chart**  
**Col. of Charleston vs UNCW**  
**Period 2**  
**January 04, 2019 at Trask Coliseum - Wilmington, N.C.**



**Period 2**

**Starters:**

**Col. of Charleston:** 0 TAYLOR,MADISON; 2 HUFF,DARIEN; 3 PERKINS,LATRICE; 20 SULLIVAN,BRI; 25 FORD,DEJA;  
**UNCW:** 4 PARKER,SHRITA; 5 SMITH,GIGI; 10 VASON,AHYIONA; 13 SUGGS,LACEY; 24 BELL,CHINYERE;

Time	VISITORS: Col. of Charleston	Score	Margin	HOME: UNCW
09:34		22-21	H 1	GOOD! FT by BELL, CHINYERE
09:34		23-21	H 2	GOOD! FT by BELL, CHINYERE
08:36		25-21	H 4	GOOD! LAYUP by PARKER, SHRITA
06:56		27-21	H 6	GOOD! LAYUP by SMITH, GIGI
06:28	GOOD! JUMPER by COLLINS, TYLER	27-23	H 4	
06:10		29-23	H 6	GOOD! LAYUP by BELL, CHINYERE
05:40		31-23	H 8	GOOD! LAYUP by SUGGS, LACEY [FB]
04:26		33-23	H 10	GOOD! LAYUP by PARKER, SHRITA [FB/PNT]
02:58		35-23	H 12	GOOD! LAYUP by PARKER, SHRITA [FB]
01:36		36-23	H 13	GOOD! FT by JEUNE, ASHLI
01:36		37-23	H 14	GOOD! FT by JEUNE, ASHLI
00:35	GOOD! LAYUP by MADDOX, LEXI	37-25	H 12	
00:12		38-25	H 13	GOOD! FT by BELL, CHINYERE
00:12		39-25	H 14	GOOD! FT by BELL, CHINYERE

**Col. of Charleston 25, UNCW 39**

**Official Scoring/Possession Reference Chart**  
**Col. of Charleston vs UNCW**  
**Period 3**  
**January 04, 2019 at Trask Coliseum - Wilmington, N.C.**



**Period 3**

**Starters:**

**Col. of Charleston:** 0 TAYLOR,MADISON; 2 HUFF,DARIEN; 3 PERKINS,LATRICE; 20 SULLIVAN,BRI; 25 FORD,DEJA;  
**UNCW:** 4 PARKER,SHRITA; 5 SMITH,GIGI; 10 VASON,AHYIONA; 13 SUGGS,LACEY; 24 BELL,CHINYERE;

Time	VISITORS: Col. of Charleston	Score	Margin	HOME: UNCW
09:36		40-25	H 15	GOOD! FT by SUGGS, LACEY
08:26		41-25	H 16	GOOD! FT by PARKER, SHRITA
08:04		43-25	H 18	GOOD! LAYUP by BELL, CHINYERE
06:50	GOOD! FT by EADY, ARYNN	43-26	H 17	
06:50	GOOD! FT by EADY, ARYNN	43-27	H 16	
06:18		45-27	H 18	GOOD! LAYUP by PARKER, SHRITA [FB]
06:18		46-27	H 19	GOOD! FT by PARKER, SHRITA [FB]
05:18	GOOD! 3PTR by COLLINS, TYLER [FB]	46-30	H 16	
05:01		47-30	H 17	GOOD! FT by PARKER, SHRITA
05:01		48-30	H 18	GOOD! FT by PARKER, SHRITA
04:41	GOOD! LAYUP by TAYLOR, MADISON	48-32	H 16	
04:18		50-32	H 18	GOOD! LAYUP by SMITH, GIGI
04:13	GOOD! FT by LARSON, BAILEIGH [FB]	50-33	H 17	
04:13	GOOD! FT by LARSON, BAILEIGH [FB]	50-34	H 16	
03:38	GOOD! LAYUP by LARSON, BAILEIGH	50-36	H 14	
03:27		51-36	H 15	GOOD! FT by PARKER, SHRITA
03:17	GOOD! JUMPER by LARSON, BAILEIGH [PNT]	51-38	H 13	
02:10		53-38	H 15	GOOD! LAYUP by PARKER, SHRITA [FB]
01:34		56-38	H 18	GOOD! 3PTR by SUGGS, LACEY
01:07	GOOD! LAYUP by EADY, ARYNN [PNT]	56-40	H 16	
00:46		57-40	H 17	GOOD! FT by SUGGS, LACEY
00:46		58-40	H 18	GOOD! FT by SUGGS, LACEY
00:28	GOOD! JUMPER by EADY, ARYNN [PNT]	58-42	H 16	

**Col. of Charleston 42, UNCW 58**

**Official Scoring/Possession Reference Chart**  
**Col. of Charleston vs UNCW**  
**Period 4**  
**January 04, 2019 at Trask Coliseum - Wilmington, N.C.**



**Period 4**

**Starters:**

**Col. of Charleston:** 0 TAYLOR,MADISON; 2 HUFF,DARIEN; 3 PERKINS,LATRICE; 20 SULLIVAN,BRI; 25 FORD,DEJA;  
**UNCW:** 4 PARKER,SHRITA; 5 SMITH,GIGI; 10 VASON,AHYIONA; 13 SUGGS,LACEY; 24 BELL,CHINYERE;

Time	VISITORS: Col. of Charleston	Score	Margin	HOME: UNCW
09:03		60-42	H 18	GOOD! LAYUP by SMITH, GIGI
07:56	GOOD! LAYUP by LARSON, BAILEIGH	60-44	H 16	
06:37		62-44	H 18	GOOD! LAYUP by SUGGS, LACEY
05:54		63-44	H 19	GOOD! FT by SMITH, GIGI
05:09		65-44	H 21	GOOD! LAYUP by BELL, CHINYERE
04:55	GOOD! 3PTR by HUFF, DARIEN	65-47	H 18	
04:02		66-47	H 19	GOOD! FT by JEUNE, ASHLI
04:02		67-47	H 20	GOOD! FT by JEUNE, ASHLI
03:49	GOOD! FT by HUFF, DARIEN	67-48	H 19	
03:21	GOOD! FT by EADY, ARYNN	67-49	H 18	
02:53		69-49	H 20	GOOD! JUMPER by OBUSEK, CAROL-ANNE [PNT]
01:37		71-49	H 22	GOOD! LAYUP by HOGGATT, MICAH

**Col. of Charleston 49, UNCW 71**

**Official Substitutions Log**  
**Col. of Charleston vs UNCW**  
**Period 1**  
**January 04, 2019 at Trask Coliseum - Wilmington, N.C.**



VISITORS: Col. of Charleston	Time	Score	HOME: UNCW
0 TAYLOR,MADISON			4 PARKER,SHRITA
2 HUFF,DARIEN			5 SMITH,GIGI
3 PERKINS,LATRICE			10 VASON,AHYIONA
20 SULLIVAN,BRI			13 SUGGS,LACEY
25 FORD,DEJA			24 BELL,CHINYERE
SUB OUT: 0 TAYLOR,MADISON	07:45	3-9	
SUB IN: 23 COLLINS,TYLER	07:45		
	06:11	6-14	SUB OUT: BELL,CHINYERE
	06:11		SUB IN: POWELL,PAIGE
SUB OUT: 3 PERKINS,LATRICE	06:11		
SUB IN: 15 EADY,ARYNN	06:11		
SUB OUT: 25 FORD,DEJA	03:50	12-16	
SUB IN: 3 PERKINS,LATRICE	03:50		
	03:35	13-16	SUB OUT: SUGGS,LACEY
	03:35		SUB IN: JEUNE,ASHLI
	03:35		SUB OUT: VASON,AHYIONA
	03:35		SUB IN: TATE,TIMBER
SUB OUT: 20 SULLIVAN,BRI	03:35		
SUB IN: 24 MADDOX,LEXI	03:35		
	02:42	15-19	SUB OUT: PARKER,SHRITA
	02:42		SUB IN: VASON,AHYIONA
SUB OUT: 24 MADDOX,LEXI	02:42		
SUB IN: 25 FORD,DEJA	02:42		
	02:17	17-19	SUB OUT: POWELL,PAIGE
	02:17		SUB IN: BELL,CHINYERE
	00:52	19-19	SUB OUT: SMITH,GIGI
	00:52		SUB IN: SUGGS,LACEY
SUB OUT: 3 PERKINS,LATRICE	00:52		
SUB IN: 0 TAYLOR,MADISON	00:52		

**Col. of Charleston 21, UNCW 21**

**Official Substitutions Log**  
**Col. of Charleston vs UNCW**  
**Period 2**  
**January 04, 2019 at Trask Coliseum - Wilmington, N.C.**



VISITORS: Col. of Charleston	Time	Score	HOME: UNCW
0 TAYLOR,MADISON			4 PARKER,SHRITA
2 HUFF,DARIEN			5 SMITH,GIGI
3 PERKINS,LATRICE			10 VASON,AHYIONA
20 SULLIVAN,BRI			13 SUGGS,LACEY
25 FORD,DEJA			24 BELL,CHINYERE
SUB OUT: 2 HUFF,DARIEN	08:03	21-25	
SUB IN: 3 PERKINS,LATRICE	08:03		
	07:17	21-25	SUB OUT: VASON,AHYIONA
	07:17		SUB IN: SMITH,GIGI
	04:25	23-33	SUB OUT: TATE,TIMBER
	04:25		SUB IN: OBUSEK,CAROL-ANNE
	04:25		SUB OUT: BELL,CHINYERE
	04:25		SUB IN: JEUNE,ASHLI
SUB OUT: 20 SULLIVAN,BRI	04:25		
SUB IN: 2 HUFF,DARIEN	04:25		
SUB OUT: 3 PERKINS,LATRICE	04:25		
SUB IN: 24 MADDOX,LEXI	04:25		
SUB OUT: 25 FORD,DEJA	04:25		
SUB IN: 42 BROUGHTON,ERICKA	04:25		
SUB OUT: 0 TAYLOR,MADISON	04:04	23-33	
SUB IN: 25 FORD,DEJA	04:04		
SUB OUT: 23 COLLINS,TYLER	02:58	23-35	
SUB IN: 0 TAYLOR,MADISON	02:58		
	02:52	23-35	SUB OUT: SMITH,GIGI
	02:52		SUB IN: TATE,TIMBER
	01:38	23-35	SUB OUT: OBUSEK,CAROL-ANNE
	01:38		SUB IN: POWELL,PAIGE
SUB OUT: 25 FORD,DEJA	01:38		
SUB IN: 10 HEATH,DEE	01:38		
SUB OUT: 42 BROUGHTON,ERICKA	01:36	23-36	
SUB IN: 21 LARSON,BAILEIGH	01:36		
	01:03	23-37	SUB OUT: SUGGS,LACEY
	01:03		SUB IN: BELL,CHINYERE
SUB OUT: 10 HEATH,DEE	01:03		
SUB IN: 23 COLLINS,TYLER	01:03		
	00:38	23-37	SUB OUT: POWELL,PAIGE
	00:38		SUB IN: SACCO,GRACE
SUB OUT: 21 LARSON,BAILEIGH	00:38		
SUB IN: 15 EADY,ARYNN	00:38		
	00:12	25-38	SUB OUT: TATE,TIMBER
	00:12		SUB IN: THYBULLE,ZHANEIA
SUB OUT: 15 EADY,ARYNN	00:12		
SUB IN: 20 SULLIVAN,BRI	00:12		

**Col. of Charleston 25, UNCW 39**



**Official Substitutions Log**  
**Col. of Charleston vs UNCW**  
**Period 3**  
**January 04, 2019 at Trask Coliseum - Wilmington, N.C.**



VISITORS: Col. of Charleston	Time	Score	HOME: UNCW
0 TAYLOR,MADISON			4 PARKER,SHRITA
2 HUFF,DARIEN			5 SMITH,GIGI
3 PERKINS,LATRICE			10 VASON,AHYIONA
20 SULLIVAN,BRI			13 SUGGS,LACEY
25 FORD,DEJA			24 BELL,CHINYERE
SUB OUT: 23 COLLINS, TYLER	09:05	25-40	
SUB IN: 15 EADY,ARYNN	09:05		
SUB OUT: 25 FORD,DEJA	09:05		
SUB IN: 23 COLLINS, TYLER	09:05		
	06:50	26-43	SUB OUT: SMITH,GIGI
	06:50		SUB IN: TATE,TIMBER
	06:50		SUB OUT: BELL,CHINYERE
	06:50		SUB IN: OBUSEK,CAROL-ANNE
SUB OUT: 20 SULLIVAN,BRI	06:50		
SUB IN: 21 LARSON,BAILEIGH	06:50		
	06:18	27-45	SUB OUT: VASON,AHYIONA
	06:18		SUB IN: SMITH,GIGI
SUB OUT: 15 EADY,ARYNN	06:18		
SUB IN: 24 MADDOX,LEXI	06:18		
SUB OUT: 0 TAYLOR,MADISON	05:54	27-46	
SUB IN: 25 FORD,DEJA	05:54		
	05:01	30-47	SUB OUT: SUGGS,LACEY
	05:01		SUB IN: JEUNE,ASHLI
SUB OUT: 25 FORD,DEJA	05:01		
SUB IN: 0 TAYLOR,MADISON	05:01		
	04:08	34-50	SUB OUT: OBUSEK,CAROL-ANNE
	04:08		SUB IN: BELL,CHINYERE
	03:27	36-51	SUB OUT: TATE,TIMBER
	03:27		SUB IN: VASON,AHYIONA
	01:44	38-53	SUB OUT: BELL,CHINYERE
	01:44		SUB IN: POWELL,PAIGE
	01:44		SUB OUT: JEUNE,ASHLI
	01:44		SUB IN: SUGGS,LACEY
SUB OUT: 21 LARSON,BAILEIGH	01:44		
SUB IN: 15 EADY,ARYNN	01:44		
SUB OUT: 24 MADDOX,LEXI	01:44		
SUB IN: 20 SULLIVAN,BRI	01:44		
SUB OUT: 23 COLLINS, TYLER	01:44		
SUB IN: 3 PERKINS,LATRICE	01:44		
	01:10	38-56	SUB OUT: PARKER,SHRITA
	01:10		SUB IN: SACCO,GRACE
	00:46	40-57	SUB OUT: VASON,AHYIONA
	00:46		SUB IN: TATE,TIMBER

**Col. of Charleston 42, UNCW 58**

**Official Substitutions Log**  
**Col. of Charleston vs UNCW**  
**Period 4**  
**January 04, 2019 at Trask Coliseum - Wilmington, N.C.**



VISITORS: Col. of Charleston	Time	Score	HOME: UNCW
0 TAYLOR,MADISON			4 PARKER,SHRITA
2 HUFF,DARIEN			5 SMITH,GIGI
3 PERKINS,LATRICE			10 VASON,AHYIONA
20 SULLIVAN,BRI			13 SUGGS,LACEY
25 FORD,DEJA			24 BELL,CHINYERE
	09:45	-	SUB OUT: TATE,TIMBER
	09:45		SUB IN: PARKER,SHRITA
	09:45		SUB OUT: SACCO,GRACE
	09:45		SUB IN: VASON,AHYIONA
SUB OUT: 3 PERKINS,LATRICE	09:45		
SUB IN: 23 COLLINS,TYLER	09:45		
SUB OUT: 15 EADY,ARYNN	09:28	-	
SUB IN: 24 MADDOX,LEXI	09:28		
SUB OUT: 24 MADDOX,LEXI	08:32	42-60	
SUB IN: 21 LARSON,BAILEIGH	08:32		
	08:18	42-60	SUB OUT: PARKER,SHRITA
	08:18		SUB IN: TATE,TIMBER
	07:19	44-60	SUB OUT: POWELL,PAIGE
	07:19		SUB IN: BELL,CHINYERE
SUB OUT: 20 SULLIVAN,BRI	06:49	44-60	
SUB IN: 15 EADY,ARYNN	06:49		
SUB OUT: 21 LARSON,BAILEIGH	06:44	44-60	
SUB IN: 42 BROUGHTON,ERICKA	06:44		
SUB OUT: 15 EADY,ARYNN	06:44		
SUB IN: 5 DORSEY,CAILIN	06:44		
SUB OUT: 2 HUFF,DARIEN	05:54	44-63	
SUB IN: 10 HEATH,DEE	05:54		
	05:06	44-65	SUB OUT: BELL,CHINYERE
	05:06		SUB IN: OBUSEK,CAROL-ANNE
SUB OUT: 0 TAYLOR,MADISON	05:06		
SUB IN: 2 HUFF,DARIEN	05:06		
SUB OUT: 5 DORSEY,CAILIN	05:06		
SUB IN: 25 FORD,DEJA	05:06		
SUB OUT: 10 HEATH,DEE	05:06		
SUB IN: 15 EADY,ARYNN	05:06		
SUB OUT: 42 BROUGHTON,ERICKA	05:06		
SUB IN: 3 PERKINS,LATRICE	05:06		
	04:12	47-65	SUB OUT: TATE,TIMBER
	04:12		SUB IN: JEUNE,ASHLI
SUB OUT: 3 PERKINS,LATRICE	04:12		
SUB IN: 0 TAYLOR,MADISON	04:12		
SUB OUT: 23 COLLINS,TYLER	04:12		
SUB IN: 1 BLANDING,SHAI	04:12		
SUB OUT: 1 BLANDING,SHAI	04:02	47-66	
SUB IN: 23 COLLINS,TYLER	04:02		
SUB OUT: 23 COLLINS,TYLER	03:49	47-67	
SUB IN: 1 BLANDING,SHAI	03:49		
	01:59	49-69	SUB OUT: JEUNE,ASHLI
	01:59		SUB IN: SACCO,GRACE
	01:59		SUB OUT: SMITH,GIGI
	01:59		SUB IN: BUEHLER,JULIA
	01:59		SUB OUT: VASON,AHYIONA
	01:59		SUB IN: PARKER,SHRITA
	01:59		SUB OUT: SUGGS,LACEY
	01:59		SUB IN: MITCHELL,JESSICA
	01:59		SUB OUT: OBUSEK,CAROL-ANNE
	01:59		SUB IN: HOGGATT,MICAH
SUB OUT: 1 BLANDING,SHAI	01:59		
SUB IN: 23 COLLINS,TYLER	01:59		
SUB OUT: 15 EADY,ARYNN	01:59		
SUB IN: 21 LARSON,BAILEIGH	01:59		
	01:14	49-71	SUB OUT: PARKER,SHRITA
	01:14		SUB IN: THYBULLE,ZHANEIA
SUB OUT: 0 TAYLOR,MADISON	01:14		
SUB IN: 1 BLANDING,SHAI	01:14		
SUB OUT: 2 HUFF,DARIEN	01:14		
SUB IN: 11 GOODSON,BRYANNA	01:14		
SUB OUT: 23 COLLINS,TYLER	01:14		
SUB IN: 42 BROUGHTON,ERICKA	01:14		
SUB OUT: 25 FORD,DEJA	01:14		
SUB IN: 10 HEATH,DEE	01:14		

**Col. of Charleston 49, UNCW 71**

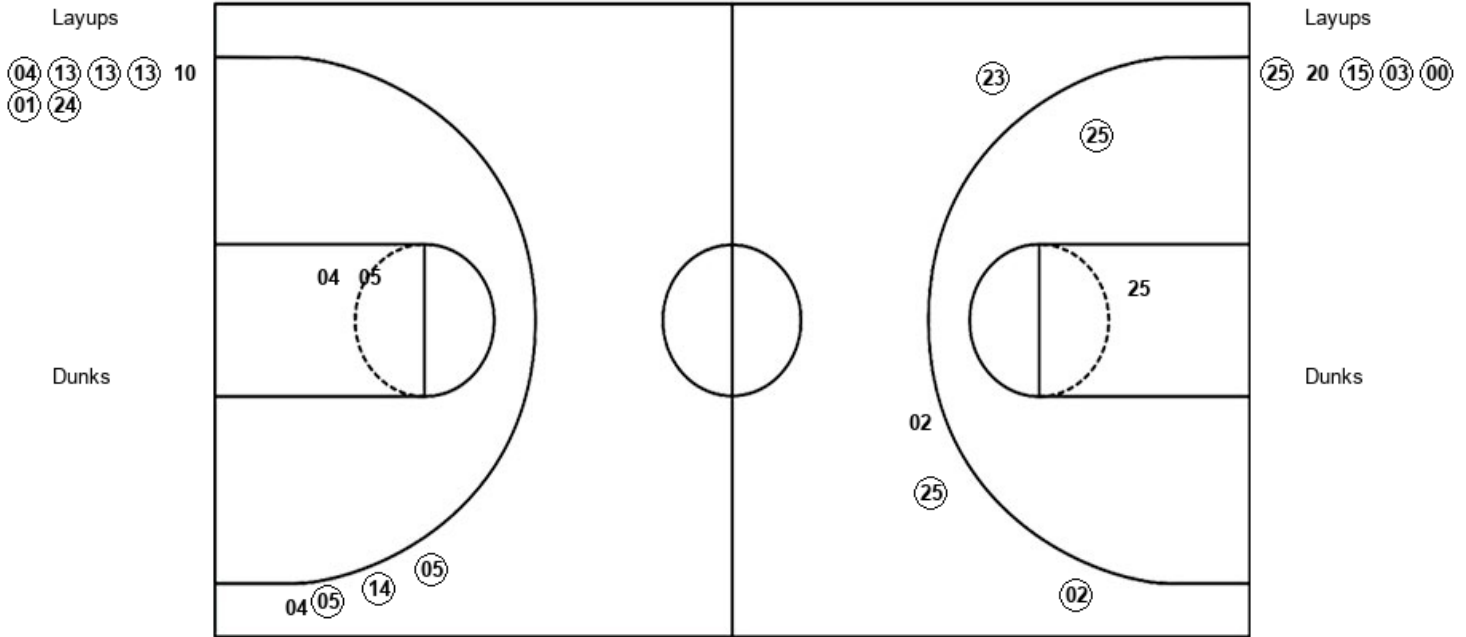


**Official Shot Chart**  
**Col. of Charleston vs UNCW**  
**PERIOD 1 Shots**  
 January 04, 2019 at Trask Coliseum - Wilmington, N.C.



**UNCW**

**Col. of Charleston**



UNCW : Period 1	Made	Att	Pct
Layups	6	7	85.7
Dunks	0	0	0
2PT Field Goals	6	9	66.7
3PT Field Goals	3	4	75.0
<b>Total Field Goals</b>	<b>9</b>	<b>13</b>	<b>69.2</b>

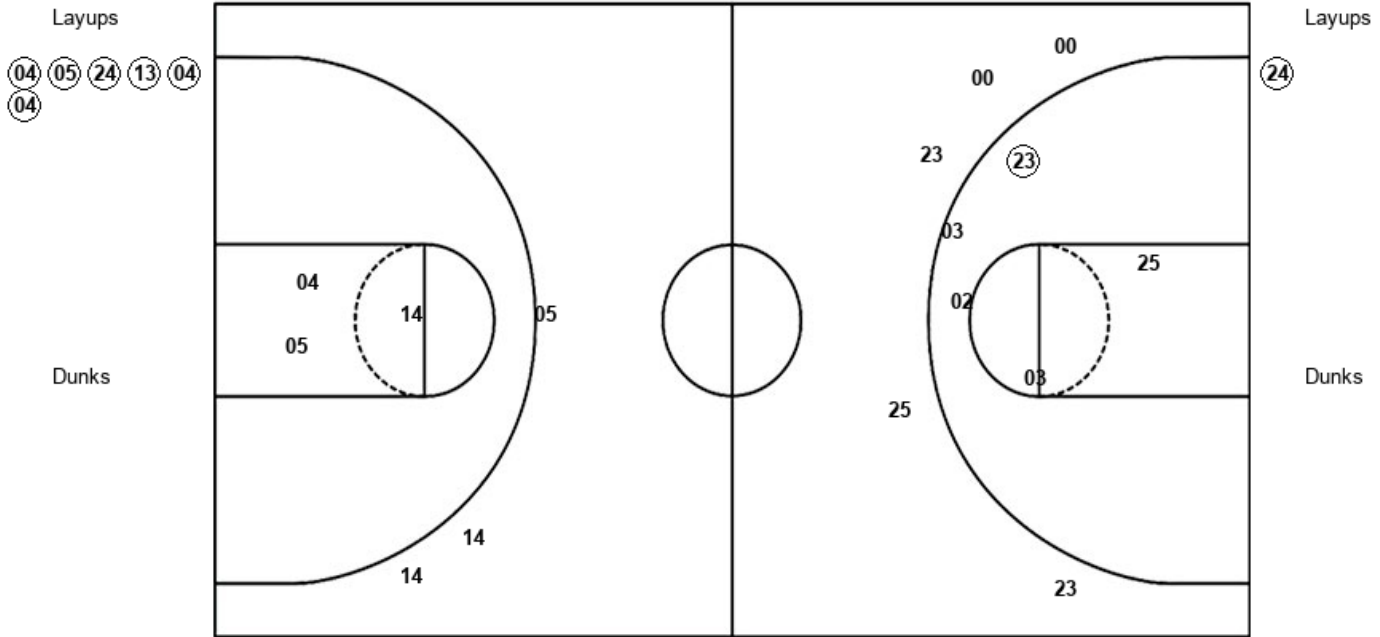
CfC : Period 1	Made	Att	Pct
Layups	4	5	80.0
Dunks	0	0	0
2PT Field Goals	5	7	71.4
3PT Field Goals	3	4	75.0
<b>Total Field Goals</b>	<b>8</b>	<b>11</b>	<b>72.7</b>

**Official Shot Chart**  
**Col. of Charleston vs UNCW**  
**PERIOD 2 Shots**  
 January 04, 2019 at Trask Coliseum - Wilmington, N.C.



**UNCW**

**Col. of Charleston**



<b>UNCW : Period 2</b>	<b>Made</b>	<b>Att</b>	<b>Pct</b>
Layups	6	6	100.0
Dunks	0	0	0
2PT Field Goals	6	9	66.7
3PT Field Goals	0	3	00.0
<b>Total Field Goals</b>	<b>6</b>	<b>12</b>	<b>50.0</b>

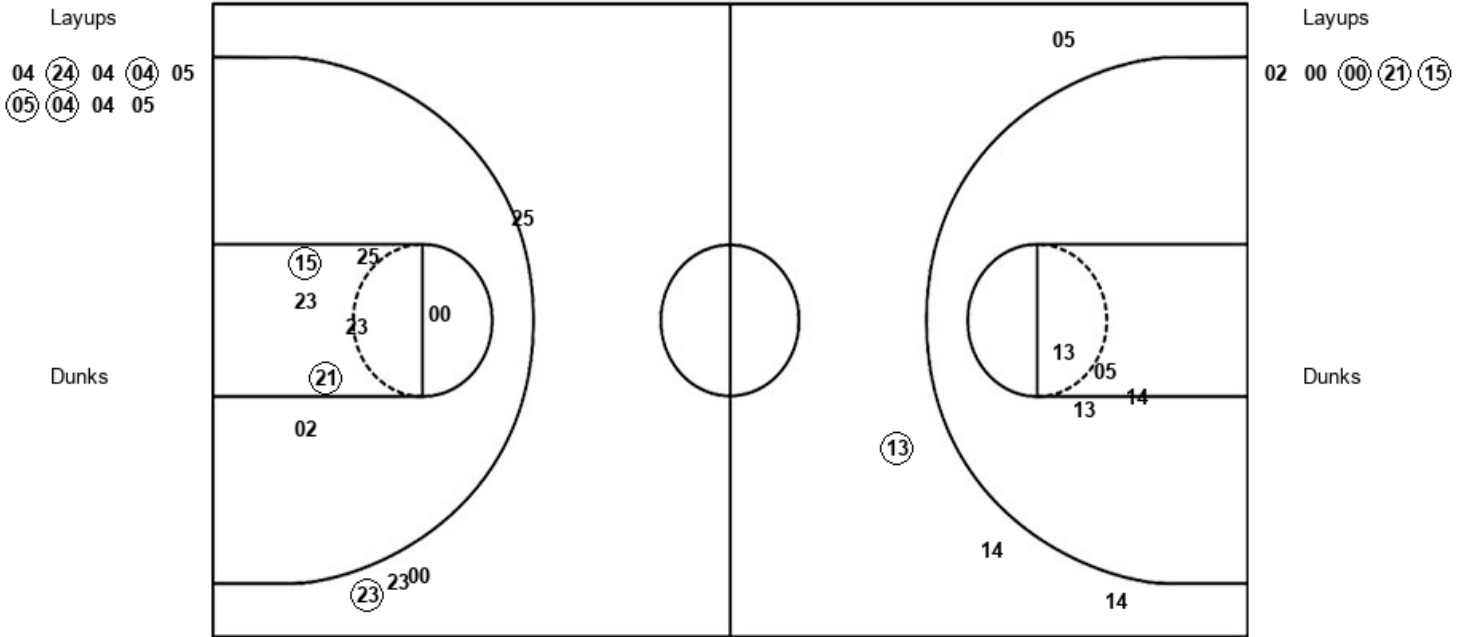
<b>CfC : Period 2</b>	<b>Made</b>	<b>Att</b>	<b>Pct</b>
Layups	1	1	100.0
Dunks	0	0	0
2PT Field Goals	2	6	33.3
3PT Field Goals	0	5	00.0
<b>Total Field Goals</b>	<b>2</b>	<b>11</b>	<b>18.2</b>

**Official Shot Chart**  
**Col. of Charleston vs UNCW**  
**PERIOD 3 Shots**  
 January 04, 2019 at Trask Coliseum - Wilmington, N.C.



**UNCW**

**Col. of Charleston**



UNCW : Period 3	Made	Att	Pct
Layups	4	9	44.4
Dunks	0	0	0
2PT Field Goals	4	13	30.8
3PT Field Goals	1	4	25.0
<b>Total Field Goals</b>	<b>5</b>	<b>17</b>	<b>29.4</b>

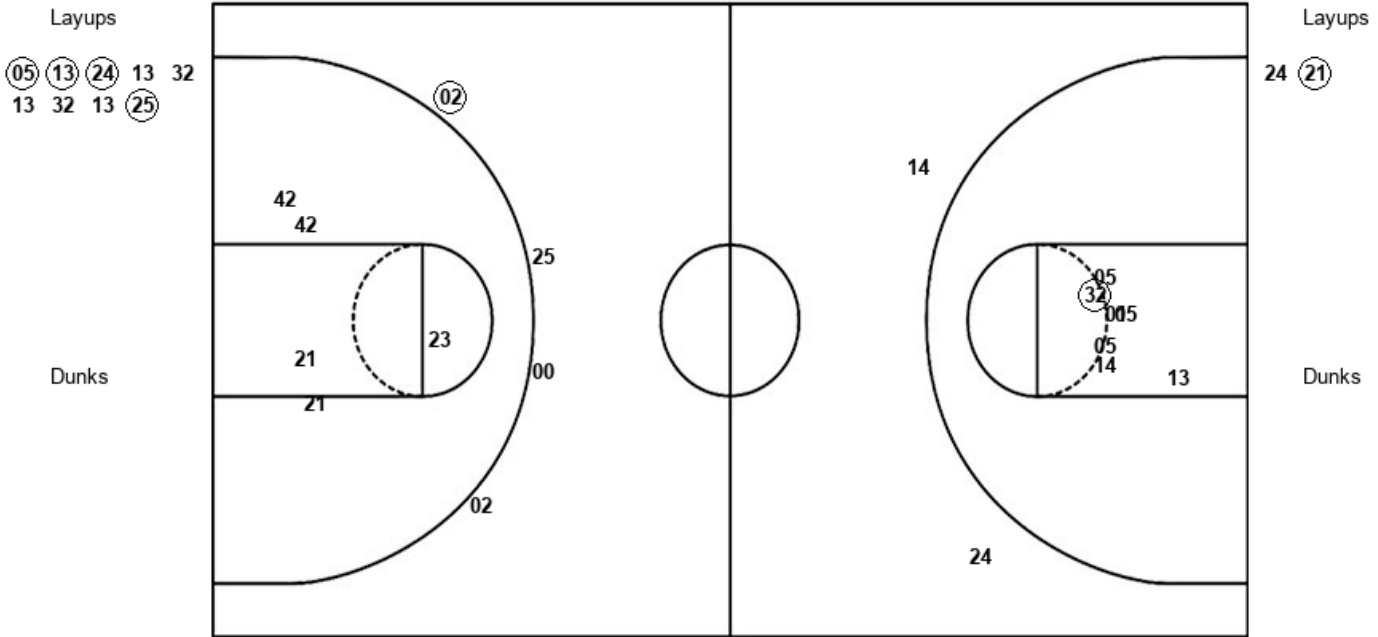
CfC : Period 3	Made	Att	Pct
Layups	3	5	60.0
Dunks	0	0	0
2PT Field Goals	5	12	41.7
3PT Field Goals	1	4	25.0
<b>Total Field Goals</b>	<b>6</b>	<b>16</b>	<b>37.5</b>

**Official Shot Chart**  
**Col. of Charleston vs UNCW**  
**PERIOD 4 Shots**  
 January 04, 2019 at Trask Coliseum - Wilmington, N.C.



**UNCW**

**Col. of Charleston**



UNCW : Period 4	Made	Att	Pct
Layups	4	9	44.4
Dunks	0	0	0
2PT Field Goals	5	16	31.3
3PT Field Goals	0	2	00.0
<b>Total Field Goals</b>	<b>5</b>	<b>18</b>	<b>27.8</b>

CfC : Period 4	Made	Att	Pct
Layups	1	2	50.0
Dunks	0	0	0
2PT Field Goals	1	7	14.3
3PT Field Goals	1	4	25.0
<b>Total Field Goals</b>	<b>2</b>	<b>11</b>	<b>18.2</b>



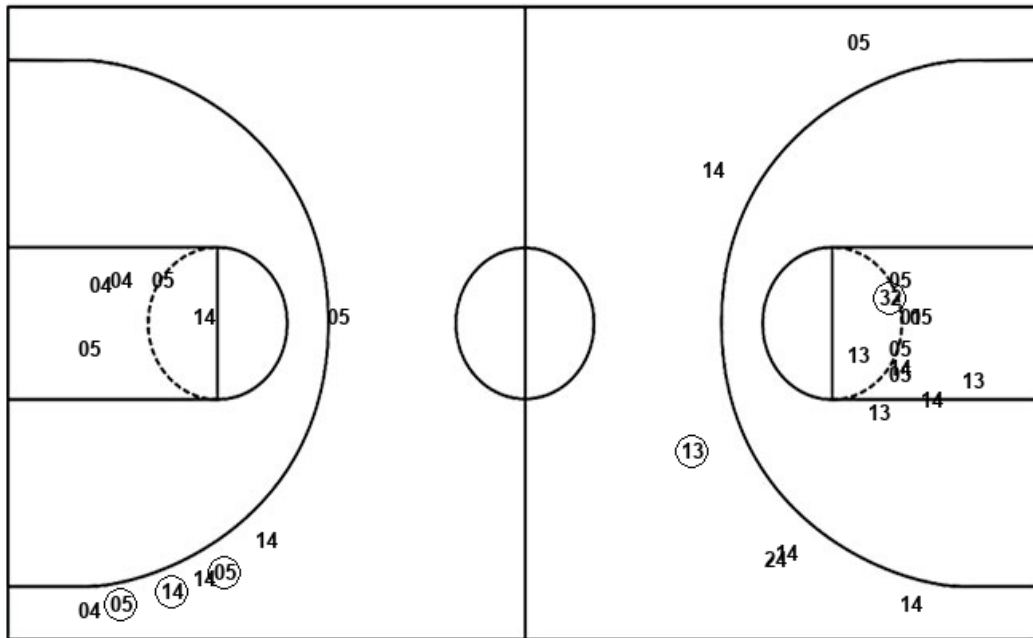


**Official Shot Chart**  
**Col. of Charleston vs UNCW**  
**UNCW Team Shots**  
 January 04, 2019 at Trask Coliseum - Wilmington, N.C.



Layups

Dunks



Layups

Dunks

- (04) (13) (13) (13) 10
- (01) (24) (04) (05) (24)
- (13) (04) (04) (04) (24)
- 04 (04) (05) (05) (04)
- 04 05 (05) (13) (24)
- 13 32 13 32 13
- (25)

NCW : Period 1	Made	Att	Pct
Layups	6	7	85.7
Dunks	0	0	0
2PT Field Goals	6	9	66.7
3PT Field Goals	3	4	75.0
<b>Total Field Goals</b>	<b>9</b>	<b>13</b>	<b>69.2</b>

NCW : Period 3	Made	Att	Pct
Layups	4	9	44.4
Dunks	0	0	0
2PT Field Goals	4	13	30.8
3PT Field Goals	1	4	25.0
<b>Total Field Goals</b>	<b>5</b>	<b>17</b>	<b>29.4</b>

NCW : Period 2	Made	Att	Pct
Layups	6	6	100.0
Dunks	0	0	0
2PT Field Goals	6	9	66.7
3PT Field Goals	0	3	00.0
<b>Total Field Goals</b>	<b>6</b>	<b>12</b>	<b>50.0</b>

NCW : Period 4	Made	Att	Pct
Layups	4	9	44.4
Dunks	0	0	0
2PT Field Goals	5	16	31.3
3PT Field Goals	0	2	00.0
<b>Total Field Goals</b>	<b>5</b>	<b>18</b>	<b>27.8</b>