

FINAL SCORE



Fayetteville St.

54



UNCW

72

December 01, 2018 • Trask Coliseum - Wilmington, N.C.

FINAL STATISTICS

Official Box Score
Fayetteville St. vs UNCW
Game Totals -- Final Statistics
December 01, 2018 at Trask Coliseum - Wilmington, N.C.

Fayetteville St. 54

No.	Player	S	Pts	FG	3FG	FT	OR	DR	TR	PF	A	TO	Blk	Stl	Min	+/-
1	Hewitt, Darria		0	0-1	0-0	0-0	2	2	4	3	1	3	0	1	11	-5
13	Williams, Chantel		1	0-4	0-1	1-2	1	1	2	1	0	5	1	1	25	-11
14	Bennett, Shantel		15	5-11	0-0	5-8	0	1	1	1	3	1	0	3	34	-10
30	Hyman, Katisha		17	7-13	2-5	1-3	3	3	6	2	2	3	0	3	29	-5
32	Johnson, Aminata		6	3-5	0-0	0-0	1	3	4	5	0	2	1	2	22	8
2	Gainey, Michelle		0	0-1	0-0	0-0	0	0	0	0	0	0	0	0	5	-3
3	Mccaskill, Nikki		0	0-1	0-1	0-0	0	0	0	1	0	2	0	1	3	-7
11	Clifton, Yakima		8	4-10	0-0	0-0	1	6	7	4	1	3	1	2	26	-7
15	Muhammad, Amani		0	0-2	0-1	0-0	0	1	1	1	0	2	0	0	3	-5
21	Maduegbunam, Chinwendu		0	0-0	0-0	0-0	1	1	2	2	0	1	1	0	7	-12
22	Drumgoole, Brittany		7	2-10	1-4	2-4	0	3	3	3	2	2	0	1	24	-14
31	James, Shaiquandra		0	0-1	0-0	0-0	1	0	1	2	0	0	0	1	2	-4
33	Lindsay, Corinthia		0	0-1	0-0	0-0	2	0	2	1	0	2	0	0	5	-10
34	Page, Kiara		0	0-2	0-0	0-0	1	1	2	0	0	1	0	0	2	-5
	Team						2	1	3	0		0				
TOTALS			54	21-62	3-12	9-17	15	23	38	26	9	27	4	15	198	

Shooting By Period

Period	FG	FG%	3FG	3FG%	FT	FT%
1st Qtr	4-13	31%	0-2	00%	2-4	50%
2nd Qtr	1-13	08%	0-2	00%	4-7	57%
3rd Qtr	8-17	47%	1-2	50%	1-3	33%
4th Qtr	8-19	42%	2-6	33%	2-3	67%
1st Half	4-13	31%	0-2	00%	2-4	50%
2nd Half	1-13	08%	0-2	00%	4-7	57%
3rd Half	8-17	47%	1-2	50%	1-3	33%
4th Half	8-19	42%	2-6	33%	2-3	67%
Game	21-62	33.9%	3-12	25.0%	9-17	52.9%

Deadball Rebounds:

Last FG: 4th-03:45

Biggest Run: 7-0

Largest lead: By 2 at 1-08:25

Technical Fouls: None.

UNCW 72

No.	Player	S	Pts	FG	3FG	FT	OR	DR	TR	PF	A	TO	Blk	Stl	Min	+/-
0	Jeune, Ashli		3	1-2	1-2	0-0	1	2	3	2	0	3	0	3	17	-1
4	Parker, Shrita		27	7-14	1-5	12-15	0	3	3	3	5	5	0	6	32	21
5	Smith, Gigi		14	5-11	1-3	3-3	0	3	3	2	1	6	0	0	28	16
13	Suggs, Lacey		4	2-6	0-1	0-0	2	4	6	2	1	2	0	2	29	19
24	Bell, Chinyere		9	3-6	0-0	3-5	2	2	4	3	2	0	1	1	18	9
1	Powell, Paige		12	5-7	0-0	2-4	2	8	10	4	0	3	0	2	25	9
2	Crisp, Moriah		3	1-1	0-0	1-2	0	4	4	2	3	1	0	1	21	18
10	Vason, Ahyiona		0	0-1	0-1	0-0	1	0	1	1	0	2	0	0	11	1
12	Buehler, Julia		0	0-0	0-0	0-0	0	0	0	0	0	0	0	0	2	0
14	Tate, Timber		0	0-2	0-2	0-0	0	4	4	2	1	5	0	0	13	-1
31	Mitchell, Jessica		0	0-1	0-0	0-0	0	0	0	0	0	0	0	2	2	-1
33	Sacco, Grace		0	0-0	0-0	0-0	0	0	0	0	0	0	0	1	1	0
	Team						2	1	3	0		0				
TOTALS			72	24-51	3-14	21-29	10	31	41	21	13	27	1	18	198	

Shooting By Period

Period	FG	FG%	3FG	3FG%	FT	FT%
1st Qtr	7-13	54%	2-5	40%	4-4	100%
2nd Qtr	4-8	50%	0-3	00%	5-9	56%
3rd Qtr	8-20	40%	1-5	20%	6-7	86%
4th Qtr	5-10	50%	0-1	00%	6-9	67%
1st Half	7-13	54%	2-5	40%	4-4	100%
2nd Half	4-8	50%	0-3	00%	5-9	56%
3rd Half	8-20	40%	1-5	20%	6-7	86%
4th Half	5-10	50%	0-1	00%	6-9	67%
Game	24-51	47.1%	3-14	21.4%	21-29	72.4%

Deadball Rebounds:

Last FG: 4th-01:51

Biggest Run: 10-0

Largest lead: By 24 at 4-08:19

Technical Fouls: None.

Game Notes:	
Officials: Luis Gonzalez, Josh Howell, Rebecca Taylor	
Attendance: 570	
Start Time: 2018-12-01 19:05:51	End Time: 2018-12-01 20:58:30
Game Duration: 112	

Score by Period	1st	2nd	3rd	4th	TOT
FSU	10	6	18	20	54
NCW	20	13	23	16	72

FSU led for 0:26. NCW led for 35:53.

Game was tied for 3:17.

Times tied: 6 Lead Changes: 2

Points from	FSU	NCW
In the Paint	26	34
Off Turns	18	26
2nd Chance	8	11
Fast Break	14	24
Bench	15	15

Official Box Score
Fayetteville St. vs UNCW
First Half Statistics Only
December 01, 2018 at Trask Coliseum - Wilmington, N.C.

Fayetteville St. 54

No.	Player	S	Pts	FG	3FG	FT	OR	DR	TR	PF	A	TO	Blk	Stl	Min	+/-
1	Hewitt, Darria		0	0-0	0-0	0-0	0	1	1	1	0	1	0	0	3	-2
13	Williams, Chantel		1	0-1	0-0	1-2	1	0	1	1	0	2	0	0	8	-8
14	Bennett, Shantel		5	2-4	0-0	1-2	0	0	0	0	1	0	0	1	10	-10
30	Hyman, Katisha		2	1-2	0-1	0-0	0	0	0	0	1	1	0	1	6	-3
32	Johnson, Aminata		0	0-1	0-0	0-0	0	2	2	1	0	0	1	0	9	-1
2	Gainey, Michelle		0	0-0	0-0	0-0	0	0	0	0	0	0	0	0	0	0
3	Mccaskill, Nikki		0	0-1	0-1	0-0	0	0	0	0	0	2	0	1	2	-2
11	Clifton, Yakima		2	1-2	0-0	0-0	0	1	1	0	0	0	0	1	7	-8
15	Muhammad, Amani		0	0-0	0-0	0-0	0	0	0	0	0	0	0	0	0	0
21	Maduegbunam, Chinwendu		0	0-0	0-0	0-0	0	0	0	0	0	0	0	0	0	0
22	Drumgoole, Brittany		0	0-2	0-0	0-0	0	0	0	0	0	1	0	1	4	-7
31	James, Shaiquandra		0	0-0	0-0	0-0	0	0	0	0	0	0	0	0	0	0
33	Lindsay, Corinthia		0	0-0	0-0	0-0	0	0	0	0	0	1	0	0	1	-9
34	Page, Kiara		0	0-0	0-0	0-0	0	0	0	0	0	0	0	0	0	0
	Team						0	1	1	0		0				
TOTALS			10	4-13	0-2	2-4	0	0	6	3	2	8	1	5	50	

Shooting By Period

Period	FG	FG%	3FG	3FG%	FT	FT%
1st Qtr	4-13	31%	0-2	00%	2-4	50%
2nd Qtr	1-13	08%	0-2	00%	4-7	57%
3rd Qtr	8-17	47%	1-2	50%	1-3	33%
4th Qtr	8-19	42%	2-6	33%	2-3	67%
1st Half	4-13	31%	0-2	00%	2-4	50%
2nd Half	1-13	08%	0-2	00%	4-7	57%
3rd Half	8-17	47%	1-2	50%	1-3	33%
4th Half	8-19	42%	2-6	33%	2-3	67%
Game	21-62	33.9%	3-12	25.0%	9-17	52.9%

Deadball Rebounds:
Last FG: 4th-03:45
Biggest Run: 7-0
Largest lead: By 2 at 1-08:25
Technical Fouls: None.

UNCW 72

No.	Player	S	Pts	FG	3FG	FT	OR	DR	TR	PF	A	TO	Blk	Stl	Min	+/-
0	Jeune, Ashli		0	0-1	0-1	0-0	0	1	1	0	0	1	0	1	4	0
4	Parker, Shrita		7	2-2	1-1	2-2	0	0	0	1	2	2	0	3	8	10
5	Smith, Gigi		3	1-3	1-2	0-0	0	0	0	2	0	1	0	0	9	9
13	Suggs, Lacey		4	2-3	0-0	0-0	1	0	1	1	0	0	0	0	7	10
24	Bell, Chinyere		4	1-1	0-0	2-2	0	1	1	2	0	0	0	0	3	2
1	Powell, Paige		0	0-0	0-0	0-0	0	3	3	0	0	1	0	2	6	9
2	Crisp, Moriah		2	1-1	0-0	0-0	0	2	2	0	3	0	0	0	6	10
10	Vason, Ahyiona		0	0-0	0-0	0-0	0	0	0	1	0	1	0	0	2	0
12	Buehler, Julia		0	0-0	0-0	0-0	0	0	0	0	0	0	0	0	0	0
14	Tate, Timber		0	0-1	0-1	0-0	0	1	1	0	0	1	0	0	4	1
31	Mitchell, Jessica		0	0-1	0-0	0-0	0	0	0	0	0	0	0	1	1	-1
33	Sacco, Grace		0	0-0	0-0	0-0	0	0	0	0	0	0	0	0	0	0
	Team						0	1	1	0		0				
TOTALS			20	7-13	2-5	4-4	0	0	10	7	5	7	0	7	50	

Shooting By Period

Period	FG	FG%	3FG	3FG%	FT	FT%
1st Qtr	7-13	54%	2-5	40%	4-4	100%
2nd Qtr	4-8	50%	0-3	00%	5-9	56%
3rd Qtr	8-20	40%	1-5	20%	6-7	86%
4th Qtr	5-10	50%	0-1	00%	6-9	67%
1st Half	7-13	54%	2-5	40%	4-4	100%
2nd Half	4-8	50%	0-3	00%	5-9	56%
3rd Half	8-20	40%	1-5	20%	6-7	86%
4th Half	5-10	50%	0-1	00%	6-9	67%
Game	24-51	47.1%	3-14	21.4%	21-29	72.4%

Deadball Rebounds:
Last FG: 4th-01:51
Biggest Run: 10-0
Largest lead: By 24 at 4-08:19
Technical Fouls: None.

Game Notes:	
Officials: Luis Gonzalez, Josh Howell, Rebecca Taylor	
Attendance: 570	
Start Time: 2018-12-01 19:05:51	End Time: 2018-12-01 20:58:30
Game Duration: 112	

Score by Period	1st	2nd	3rd	4th	TOT
FSU	10	6	18	20	54
NCW	20	13	23	16	72

This period only: FSU led for 0:26. NCW led for 0:52.
Game was tied for 0:17.

Points from (This Period)	FSU	NCW
In the Paint	4	10
Off Turns	4	9
2nd Chance	0	0
Fast Break	2	8
Bench	2	2

Official Play-By-Play
Fayetteville St. vs UNCW
First Quarter
December 01, 2018 at Trask Coliseum - Wilmington, N.C.

Starters:

Fayetteville St.: 1 HEWITT,DARRIA; 13 WILLIAMS,CHANTEL; 14 BENNETT,SHANTEL; 32 JOHNSON,AMINATA; 30 HYMAN,KATISHA;

UNCW: 0 JEUNE,ASHLI; 4 PARKER,SHRITA; 5 SMITH,GIGI; 13 SUGGS,LACEY; 24 BELL,CHINYERE;

Period 1

Time	VISITORS: Fayetteville St.	Score	Margin	HOME: UNCW
09:40	MISSED JUMPER by WILLIAMS,CHANTEL			
09:35				REBOUND (DEF) by BELL,CHINYERE
09:28				MISSED 3PTR by JEUNE,ASHLI
09:21	REBOUND (DEF) by HEWITT,DARRIA			
09:19	TURNOVER (BADPASS) by WILLIAMS,CHANTEL			
09:19				STEAL by PARKER,SHRITA
09:15	FOUL (PERSONAL) by HEWITT,DARRIA			
09:15		1-0	H 1	GOOD! FT by PARKER,SHRITA [FB]
09:15		2-0	H 2	GOOD! FT by PARKER,SHRITA [FB]
09:03	GOOD! LAYUP by HYMAN,KATISHA [PNT]	2-2	T	
08:53				MISSED JUMPER by SUGGS,LACEY
08:53	BLOCK by JOHNSON,AMINATA			
08:51				REBOUND (OFF) by SUGGS,LACEY
08:51	FOUL (PERSONAL) by WILLIAMS,CHANTEL			
08:46				TURNOVER (BADPASS) by JEUNE,ASHLI
08:46	STEAL by HYMAN,KATISHA			
08:41	TURNOVER (BADPASS) by HYMAN,KATISHA			
08:41				STEAL by JEUNE,ASHLI
08:35				MISSED 3PTR by SMITH,GIGI
08:34	REBOUND (DEF) by JOHNSON,AMINATA			
08:34				FOUL (PERSONAL) by BELL,CHINYERE
08:25	GOOD! JUMPER by BENNETT,SHANTEL	2-4	V 2	
08:25	ASSIST by HYMAN,KATISHA			
07:59		4-4	T	GOOD! LAYUP by BELL,CHINYERE
07:59				ASSIST by PARKER,SHRITA
07:48	TURNOVER (TRAVEL) by HEWITT,DARRIA			
07:31	FOUL (PERSONAL) by JOHNSON,AMINATA			
07:31		5-4	H 1	GOOD! FT by BELL,CHINYERE
07:31		6-4	H 2	GOOD! FT by BELL,CHINYERE
07:21				FOUL (PERSONAL) by BELL,CHINYERE
07:21				SUB OUT: BELL,CHINYERE
07:21				SUB IN: POWELL,PAIGE
07:21	MISSED JUMPER by BENNETT,SHANTEL			
07:21	REBOUND (OFF) by WILLIAMS,CHANTEL			
07:21	MISSED 3PTR by HYMAN,KATISHA			
07:21				REBOUND (DEF) by JEUNE,ASHLI
07:16				FOUL (OFF) by SMITH,GIGI
07:16				TURNOVER (OFFENSIVE) by SMITH,GIGI
07:01	SUB OUT: HEWITT,DARRIA			
07:01	SUB IN: CLIFTON,YAKIMA			
06:48	SUB OUT: HYMAN,KATISHA			
06:48	SUB IN: DRUMGOOLE,BRITTANY			
06:45	GOOD! JUMPER by CLIFTON,YAKIMA	6-6	T	
06:45	ASSIST by BENNETT,SHANTEL			
06:43				TURNOVER (BADPASS) by PARKER,SHRITA
06:43	STEAL by DRUMGOOLE,BRITTANY			
06:38				FOUL (PERSONAL) by SUGGS,LACEY
06:28				SUB OUT: JEUNE,ASHLI
06:28				SUB IN: CRISP,MORIAH
06:03	MISSED JUMPER by DRUMGOOLE,BRITTANY			
05:57				REBOUND (DEF) by CRISP,MORIAH
05:43	SUB OUT: JOHNSON,AMINATA			
05:43	SUB IN: LINDSAY,CORINTHIA			
05:25		8-6	H 2	GOOD! JUMPER by SUGGS,LACEY [PNT]
05:17	MISSED LAYUP by DRUMGOOLE,BRITTANY			
05:13				REBOUND (DEF) by POWELL,PAIGE
05:10		10-6	H 4	GOOD! LAYUP by SUGGS,LACEY [FB]
05:10				ASSIST by CRISP,MORIAH
04:54	TURNOVER (LOSTBALL) by LINDSAY,CORINTHIA			
04:54				STEAL by POWELL,PAIGE
04:41		13-6	H 7	GOOD! 3PTR by PARKER,SHRITA
04:41				ASSIST by CRISP,MORIAH
04:22	TURNOVER (LOSTBALL) by DRUMGOOLE,BRITTANY			
04:22				STEAL by PARKER,SHRITA
04:17		15-6	H 9	GOOD! LAYUP by PARKER,SHRITA [FB]
04:17	TIMEOUT 30SEC			
04:17				
04:17				SUB OUT: SUGGS,LACEY
04:17				SUB IN: TATE,TIMBER
04:17				SUB OUT: PARKER,SHRITA
04:17				SUB IN: VASON,AHYIONA
04:17	SUB OUT: LINDSAY,CORINTHIA			
04:17	SUB IN: JOHNSON,AMINATA			
03:59	MISSED JUMPER by CLIFTON,YAKIMA			
03:55				REBOUND (DEF) by TATE,TIMBER
03:54				TURNOVER (BADPASS) by VASON,AHYIONA

Time	VISITORS: Fayetteville St.	Score	Margin	HOME: UNCW
03:54	STEAL by BENNETT,SHANTEL			
03:49	GOOD! LAYUP by BENNETT,SHANTEL [FB]	15-8	H 7	
03:23		18-8	H 10	GOOD! 3PTR by SMITH,GIGI
03:23				ASSIST by CRISP,MORIAH
02:57	MISSED JUMPER by JOHNSON,AMINATA			
02:51				REBOUND (DEF) by POWELL,PAIGE
02:47				MISSED 3PTR by TATE,TIMBER
02:43	REBOUND (DEF) by JOHNSON,AMINATA			
02:31				FOUL (PERSONAL) by VASON,AHYIONA
02:31	GOOD! FT by BENNETT,SHANTEL	18-9	H 9	
02:31				SUB OUT: SMITH,GIGI
02:31				SUB IN: PARKER,SHRITA
02:31				SUB OUT: VASON,AHYIONA
02:31				SUB IN: SUGGS,LACEY
02:31	SUB OUT: WILLIAMS,CHANTEL			
02:31	SUB IN: MCCASKILL,NIKKI			
02:31	MISSED FT by BENNETT,SHANTEL			
02:31				REBOUND (DEF) by POWELL,PAIGE
02:26				FOUL (OFF) by PARKER,SHRITA
02:26				TURNOVER (OFFENSIVE) by PARKER,SHRITA
02:26	SUB OUT: DRUMGOOLE,BRITTANY			
02:26	SUB IN: HYMAN,KATISHA			
02:22	TURNOVER (BADPASS) by MCCASKILL,NIKKI			
02:22				STEAL by PARKER,SHRITA
02:17		20-9	H 11	GOOD! LAYUP by CRISP,MORIAH [FB]
02:17				ASSIST by PARKER,SHRITA
01:57				SUB OUT: SUGGS,LACEY
01:57				SUB IN: SMITH,GIGI
01:49	MISSED 3PTR by MCCASKILL,NIKKI			
01:46				REBOUND (DEF) by TEAM
01:27				TURNOVER (BADPASS) by TATE,TIMBER
01:27	STEAL by CLIFTON,YAKIMA			
01:22	MISSED LAYUP by BENNETT,SHANTEL			
01:19				REBOUND (DEF) by CRISP,MORIAH
01:13				TURNOVER (BADPASS) by POWELL,PAIGE
01:13	STEAL by MCCASKILL,NIKKI			
01:05	TURNOVER (BADPASS) by MCCASKILL,NIKKI			
01:05				STEAL by POWELL,PAIGE
00:58				MISSED JUMPER by SMITH,GIGI
00:57	REBOUND (DEF) by TEAM			
00:57				SUB OUT: POWELL,PAIGE
00:57				SUB IN: MITCHELL,JESSICA
00:57				SUB OUT: CRISP,MORIAH
00:57				SUB IN: SUGGS,LACEY
00:57	SUB OUT: MCCASKILL,NIKKI			
00:57	SUB IN: WILLIAMS,CHANTEL			
00:31	TURNOVER (LOSTBALL) by WILLIAMS,CHANTEL			
00:31				STEAL by MITCHELL,JESSICA
00:23				MISSED JUMPER by MITCHELL,JESSICA
00:19	REBOUND (DEF) by CLIFTON,YAKIMA			
00:04				FOUL (PERSONAL) by SMITH,GIGI
00:04	MISSED FT by WILLIAMS,CHANTEL			
00:04	REBOUND (OFF) by TEAM			
00:04				SUB OUT: SMITH,GIGI
00:04				SUB IN: CRISP,MORIAH
00:04	GOOD! FT by WILLIAMS,CHANTEL	20-10	H 10	

Fayetteville St. 10, UNCW 20

Points from (This Period)	FSU	NCW
In the Paint	4	10
Off Turns	4	9
2nd Chance	0	0
Fast Break	2	8
Bench	2	2

This period only:FSU led for 0:26. NCW led for 0:52.
Game was tied for 0:17.

Official Play-By-Play
Fayetteville St. vs UNCW
Second Quarter
December 01, 2018 at Trask Coliseum - Wilmington, N.C.

Starters:

Fayetteville St.: 1 HEWITT,DARRIA; 13 WILLIAMS,CHANTEL; 14 BENNETT,SHANTEL; 32 JOHNSON,AMINATA; 30 HYMAN,KATISHA;
UNCW: 0 JEUNE,ASHLI; 4 PARKER,SHRITA; 5 SMITH,GIGI; 13 SUGGS,LACEY; 24 BELL,CHINYERE;

Period 2

Time	VISITORS: Fayetteville St.	Score	Margin	HOME: UNCW
09:50				MISSED LAYUP by SUGGS,LACEY
09:45	REBOUND (DEF) by WILLIAMS,CHANTEL			
09:32	TURNOVER (BADPASS) by WILLIAMS,CHANTEL			
09:32				STEAL by MITCHELL,JESSICA
09:18				TURNOVER (BADPASS) by TATE,TIMBER
09:18	STEAL by HEWITT,DARRIA			
09:18				SUB OUT: TATE,TIMBER
09:18				SUB IN: JEUNE,ASHLI
09:18				SUB OUT: MITCHELL,JESSICA
09:18				SUB IN: POWELL,PAIGE
09:02	MISSED JUMPER by DRUMGOOLE,BRITTANY			
08:57				REBOUND (DEF) by SUGGS,LACEY
08:40	FOUL (PERSONAL) by JOHNSON,AMINATA			
08:40		21-10	H 11	GOOD! FT by PARKER,SHRITA
08:40		22-10	H 12	GOOD! FT by PARKER,SHRITA
08:40	SUB OUT: JOHNSON,AMINATA			
08:40	SUB IN: CLIFTON,YAKIMA			
08:26	MISSED JUMPER by DRUMGOOLE,BRITTANY			
08:23	REBOUND (OFF) by HYMAN,KATISHA			
08:21	MISSED JUMPER by HEWITT,DARRIA			
08:19	REBOUND (OFF) by TEAM			
08:15	MISSED JUMPER by WILLIAMS,CHANTEL			
08:10				REBOUND (DEF) by POWELL,PAIGE
07:44				TURNOVER (LOSTBALL) by JEUNE,ASHLI
07:44	STEAL by CLIFTON,YAKIMA			
07:39	TURNOVER (TRAVEL) by HYMAN,KATISHA			
07:39				SUB OUT: CRISP,MORIAH
07:39				SUB IN: VASON,AHYIONA
07:19				MISSED 3PTR by SUGGS,LACEY
07:18	REBOUND (DEF) by CLIFTON,YAKIMA			
07:18				FOUL (PERSONAL) by POWELL,PAIGE
07:13	MISSED JUMPER by CLIFTON,YAKIMA			
07:09	REBOUND (OFF) by HEWITT,DARRIA			
07:08	TURNOVER (LOSTBALL) by HEWITT,DARRIA			
07:08				STEAL by JEUNE,ASHLI
07:02	FOUL (PERSONAL) by HEWITT,DARRIA			
07:02		23-10	H 13	GOOD! FT by PARKER,SHRITA [FB]
07:02				SUB OUT: SUGGS,LACEY
07:02				SUB IN: SMITH,GIGI
07:02	SUB OUT: WILLIAMS,CHANTEL			
07:02	SUB IN: LINDSAY,CORINTHIA			
07:02	SUB OUT: HEWITT,DARRIA			
07:02	SUB IN: BENNETT,SHANTEL			
07:00				MISSED FT by PARKER,SHRITA
06:57				REBOUND (OFF) by VASON,AHYIONA
06:35	FOUL (PERSONAL) by CLIFTON,YAKIMA			
06:35		24-10	H 14	GOOD! FT by PARKER,SHRITA
06:35				MISSED FT by PARKER,SHRITA
06:33	REBOUND (DEF) by CLIFTON,YAKIMA			
06:30	TURNOVER (BADPASS) by DRUMGOOLE,BRITTANY			
06:03				TURNOVER (TRAVEL) by VASON,AHYIONA
06:03				SUB OUT: PARKER,SHRITA
06:03				SUB IN: TATE,TIMBER
05:49	FOUL (OFF) by LINDSAY,CORINTHIA			
05:49	TURNOVER (OFFENSIVE) by LINDSAY,CORINTHIA			
05:49	SUB OUT: LINDSAY,CORINTHIA			
05:49	SUB IN: MADUEGBUNAM,CHINWENDU			
05:33				MISSED 3PTR by TATE,TIMBER
05:29	REBOUND (DEF) by DRUMGOOLE,BRITTANY			
05:24				FOUL (PERSONAL) by TATE,TIMBER
05:24	MISSED FT by DRUMGOOLE,BRITTANY			
05:24	REBOUND (OFF) by TEAM			
05:24	MISSED FT by DRUMGOOLE,BRITTANY			
05:22				REBOUND (DEF) by POWELL,PAIGE
04:55				MISSED 3PTR by VASON,AHYIONA
04:51	REBOUND (DEF) by BENNETT,SHANTEL			
04:44	MISSED LAYUP by BENNETT,SHANTEL			
04:38				REBOUND (DEF) by JEUNE,ASHLI
04:26				TURNOVER (BADPASS) by TATE,TIMBER
04:26	STEAL by HYMAN,KATISHA			
04:15	MISSED 3PTR by DRUMGOOLE,BRITTANY			
04:10				REBOUND (DEF) by TATE,TIMBER
04:01		26-10	H 16	GOOD! LAYUP by SMITH,GIGI
03:40				FOUL (PERSONAL) by JEUNE,ASHLI
03:40				
03:40				SUB OUT: POWELL,PAIGE

Time	VISITORS: Fayetteville St.	Score	Margin	HOME: UNCW
03:40				SUB IN: SUGGS,LACEY
03:40				SUB OUT: VASON,AHYIONA
03:40				SUB IN: PARKER,SHRITA
03:40				SUB OUT: TATE,TIMBER
03:40				SUB IN: BELL,CHINYERE
03:40	SUB OUT: CLIFTON,YAKIMA			
03:40	SUB IN: GAINEY,MICHELLE			
03:40	SUB OUT: HYMAN,KATISHA			
03:40	SUB IN: WILLIAMS,CHANTEL			
03:16	TURNOVER (LOSTBALL) by MADUEGBUNAM,CHINWENDU			
03:16				STEAL by PARKER,SHRITA
03:12				TURNOVER (TRAVEL) by PARKER,SHRITA
03:04	MISSED LAYUP by GAINEY,MICHELLE			
03:01				REBOUND (DEF) by SUGGS,LACEY
02:57		28-10	H 18	GOOD! JUMPER by SMITH,GIGI [FB]
02:57				ASSIST by SUGGS,LACEY
02:40	MISSED 3PTR by WILLIAMS,CHANTEL			
02:35				REBOUND (DEF) by BELL,CHINYERE
02:34		30-10	H 20	GOOD! LAYUP by PARKER,SHRITA [FB]
02:34				ASSIST by SMITH,GIGI
02:29	TIMEOUT 30SEC			
02:16	MISSED JUMPER by BENNETT,SHANTEL			
02:12	REBOUND (OFF) by MADUEGBUNAM,CHINWENDU			
02:10				FOUL (PERSONAL) by BELL,CHINYERE
02:10	GOOD! FT by DRUMGOOLE,BRITTANY	30-11	H 19	
02:10				SUB OUT: BELL,CHINYERE
02:10				SUB IN: POWELL,PAIGE
02:10	SUB OUT: MADUEGBUNAM,CHINWENDU			
02:10	SUB IN: CLIFTON,YAKIMA			
02:10	GOOD! FT by DRUMGOOLE,BRITTANY	30-12	H 18	
01:54				TURNOVER (TRAVEL) by JEUNE,ASHLI
01:46				FOUL (PERSONAL) by POWELL,PAIGE
01:46	GOOD! FT by BENNETT,SHANTEL	30-13	H 17	
01:46				SUB OUT: JEUNE,ASHLI
01:46				SUB IN: CRISP,MORIAH
01:44	MISSED FT by BENNETT,SHANTEL			
01:43				REBOUND (DEF) by SUGGS,LACEY
01:40				TURNOVER (BADPASS) by SMITH,GIGI
01:25	MISSED LAYUP by CLIFTON,YAKIMA			
01:21				REBOUND (DEF) by CRISP,MORIAH
01:19				TURNOVER (BADPASS) by PARKER,SHRITA
01:08	TURNOVER (BADPASS) by WILLIAMS,CHANTEL			
01:08				STEAL by SUGGS,LACEY
01:03				TURNOVER (BADPASS) by CRISP,MORIAH
01:03	STEAL by WILLIAMS,CHANTEL			
00:59	TURNOVER (LOSTBALL) by CLIFTON,YAKIMA			
00:59				SUB OUT: PARKER,SHRITA
00:59				SUB IN: BUEHLER,JULIA
00:43		32-13	H 19	GOOD! JUMPER by SMITH,GIGI
00:43	FOUL (PERSONAL) by CLIFTON,YAKIMA			
00:43		33-13	H 20	
00:31	GOOD! LAYUP by BENNETT,SHANTEL	33-15	H 18	
00:31				FOUL (PERSONAL) by CRISP,MORIAH
00:31				SUB OUT: SMITH,GIGI
00:31				SUB IN: TATE,TIMBER
00:31	SUB OUT: CLIFTON,YAKIMA			
00:31	SUB IN: JAMES,SHAIQUANDRA			
00:31	GOOD! FT by BENNETT,SHANTEL	33-16	H 17	
00:18				TURNOVER (BADPASS) by TATE,TIMBER
00:18	STEAL by JAMES,SHAIQUANDRA			
00:02	MISSED JUMPER by DRUMGOOLE,BRITTANY			
00:01				REBOUND (DEF) by POWELL,PAIGE
00:01	FOUL (PERSONAL) by JAMES,SHAIQUANDRA			
00:01				MISSED FT by POWELL,PAIGE
00:01				REBOUND (OFF) by TEAM
00:01				MISSED FT by POWELL,PAIGE
00:01				REBOUND (OFF) by SUGGS,LACEY

Fayetteville St. 16, UNCW 33

Points from (This Period)	FSU	NCW
In the Paint	2	4
Off Turns	1	4
2nd Chance	2	1
Fast Break	0	5
Bench	2	0

This period only:FSU led for 0:26. NCW led for 0:52.
Game was tied for 0:17.

Official Box Score
Fayetteville St. vs UNCW
Second Half Statistics Only
December 01, 2018 at Trask Coliseum - Wilmington, N.C.

Fayetteville St. 54

No.	Player	S	Pts	FG	3FG	FT	OR	DR	TR	PF	A	TO	Blk	Stl	Min	+/-
1	Hewitt, Darria		0	0-1	0-0	0-0	1	0	1	1	0	1	0	1	3	-3
13	Williams, Chantel		0	0-2	0-1	0-0	0	1	1	0	0	2	0	1	7	-4
14	Bennett, Shantel		4	1-3	0-0	2-3	0	1	1	0	0	0	0	0	7	-4
30	Hyman, Katisha		0	0-0	0-0	0-0	1	0	1	0	0	1	0	1	6	-6
32	Johnson, Aminata		0	0-0	0-0	0-0	0	0	0	1	0	0	0	0	1	-2
2	Gainey, Michelle		0	0-1	0-0	0-0	0	0	0	0	0	0	0	0	4	-1
3	Mccaskill, Nikki		0	0-0	0-0	0-0	0	0	0	0	0	0	0	0	0	0
11	Clifton, Yakima		0	0-2	0-0	0-0	0	2	2	2	0	1	0	1	7	-3
15	Muhammad, Amani		0	0-0	0-0	0-0	0	0	0	0	0	0	0	0	0	0
21	Maduegbunam, Chinwendu		0	0-0	0-0	0-0	1	0	1	0	0	1	0	0	4	-5
22	Drumgoole, Brittany		2	0-4	0-1	2-4	0	1	1	0	0	1	0	0	10	-7
31	James, Shaiquandra		0	0-0	0-0	0-0	0	0	0	1	0	0	0	1	1	1
33	Lindsay, Corinthia		0	0-0	0-0	0-0	0	0	0	1	0	1	0	0	1	-1
34	Page, Kiara		0	0-0	0-0	0-0	0	0	0	0	0	0	0	0	0	0
Team							1	0	1	0		0				
TOTALS			6	1-13	0-2	4-7	0	0	9	6	0	8	0	5	50	

Shooting By Period

Period	FG	FG%	3FG	3FG%	FT	FT%
1st Qtr	4-13	31%	0-2	00%	2-4	50%
2nd Qtr	1-13	08%	0-2	00%	4-7	57%
3rd Qtr	8-17	47%	1-2	50%	1-3	33%
4th Qtr	8-19	42%	2-6	33%	2-3	67%
1st Half	4-13	31%	0-2	00%	2-4	50%
2nd Half	1-13	08%	0-2	00%	4-7	57%
3rd Half	8-17	47%	1-2	50%	1-3	33%
4th Half	8-19	42%	2-6	33%	2-3	67%
Game	21-62	33.9%	3-12	25.0%	9-17	52.9%

Deadball Rebounds:
Last FG: 4th-03:45
Biggest Run: 7-0
Largest lead: By 2 at 1-08:25
Technical Fouls: None.

UNCW 72

No.	Player	S	Pts	FG	3FG	FT	OR	DR	TR	PF	A	TO	Blk	Stl	Min	+/-
0	Jeune, Ashli		0	0-0	0-0	0-0	0	1	1	1	0	2	0	1	8	7
4	Parker, Shrita		6	1-1	0-0	4-6	0	0	0	0	0	2	0	1	7	5
5	Smith, Gigi		7	3-3	0-0	1-1	0	0	0	0	1	1	0	0	7	5
13	Suggs, Lacey		0	0-2	0-1	0-0	1	3	4	0	1	0	0	1	7	4
24	Bell, Chinyere		0	0-0	0-0	0-0	0	1	1	1	0	0	0	0	2	3
1	Powell, Paige		0	0-0	0-0	0-2	0	3	3	2	0	0	0	0	8	4
2	Crisp, Moriah		0	0-0	0-0	0-0	0	1	1	1	0	1	0	0	4	2
10	Vason, Ahyiona		0	0-1	0-1	0-0	1	0	1	0	0	1	0	0	4	4
12	Buehler, Julia		0	0-0	0-0	0-0	0	0	0	0	0	0	0	0	1	0
14	Tate, Timber		0	0-1	0-1	0-0	0	1	1	1	0	3	0	0	4	1
31	Mitchell, Jessica		0	0-0	0-0	0-0	0	0	0	0	0	0	0	1	1	0
33	Sacco, Grace		0	0-0	0-0	0-0	0	0	0	0	0	0	0	0	0	0
Team							0	0	0	0		0				
TOTALS			13	4-8	0-3	5-9	0	0	12	6	2	10	0	4	50	

Shooting By Period

Period	FG	FG%	3FG	3FG%	FT	FT%
1st Qtr	7-13	54%	2-5	40%	4-4	100%
2nd Qtr	4-8	50%	0-3	00%	5-9	56%
3rd Qtr	8-20	40%	1-5	20%	6-7	86%
4th Qtr	5-10	50%	0-1	00%	6-9	67%
1st Half	7-13	54%	2-5	40%	4-4	100%
2nd Half	4-8	50%	0-3	00%	5-9	56%
3rd Half	8-20	40%	1-5	20%	6-7	86%
4th Half	5-10	50%	0-1	00%	6-9	67%
Game	24-51	47.1%	3-14	21.4%	21-29	72.4%

Deadball Rebounds:
Last FG: 4th-01:51
Biggest Run: 10-0
Largest lead: By 24 at 4-08:19
Technical Fouls: None.

Game Notes:	
Officials: Luis Gonzalez, Josh Howell, Rebecca Taylor	
Attendance: 570	
Start Time: 2018-12-01 19:05:51	End Time: 2018-12-01
20:58:30	
Game Duration: 112	

Score by Period	1st	2nd	3rd	4th	TOT
FSU	10	6	18	20	54
NCW	20	13	23	16	72

This period only: FSU led for 0:26. NCW led for 0:52.
Game was tied for 0:17.

Points from (This Period)	FSU	NCW
In the Paint	2	4
Off Turns	1	4
2nd Chance	2	1
Fast Break	0	5
Bench	2	0

Official Play-By-Play
Fayetteville St. vs UNCW
Third Quarter
December 01, 2018 at Trask Coliseum - Wilmington, N.C.

Starters:

Fayetteville St.: 1 HEWITT,DARRIA; 13 WILLIAMS,CHANTEL; 14 BENNETT,SHANTEL; 32 JOHNSON,AMINATA; 30 HYMAN,KATISHA;

UNCW: 0 JEUNE,ASHLI; 4 PARKER,SHRITA; 5 SMITH,GIGI; 13 SUGGS,LACEY; 24 BELL,CHINYERE;

Period 3

Time	VISITORS: Fayetteville St.	Score	Margin	HOME: UNCW
09:44				MISSED 3PTR by PARKER,SHRITA
09:41				REBOUND (OFF) by BELL,CHINYERE
09:39				MISSED JUMPER by BELL,CHINYERE
09:35	REBOUND (DEF) by HEWITT,DARRIA			
09:34	TURNOVER (BADPASS) by HEWITT,DARRIA			
09:34				
09:13				STEAL by PARKER,SHRITA
09:10				MISSED JUMPER by SMITH,GIGI
09:10				REBOUND (OFF) by JEUNE,ASHLI
09:10	FOUL (PERSONAL) by HEWITT,DARRIA			
08:53		36-16	H 20	GOOD! 3PTR by JEUNE,ASHLI
08:53				ASSIST by BELL,CHINYERE
08:41	MISSED JUMPER by JOHNSON,AMINATA			
08:38	REBOUND (OFF) by HEWITT,DARRIA			
08:36	GOOD! LAYUP by JOHNSON,AMINATA	36-18	H 18	
08:36	ASSIST by HEWITT,DARRIA			
08:07				MISSED JUMPER by SMITH,GIGI
08:03	REBOUND (DEF) by HYMAN,KATISHA			
08:00	GOOD! JUMPER by HYMAN,KATISHA [FB]	36-20	H 16	
07:36				MISSED 3PTR by PARKER,SHRITA
07:33				REBOUND (OFF) by BELL,CHINYERE
07:31		38-20	H 18	GOOD! LAYUP by BELL,CHINYERE
07:15	TURNOVER (LOSTBALL) by WILLIAMS,CHANTEL			
07:15				STEAL by JEUNE,ASHLI
07:07		40-20	H 20	GOOD! LAYUP by PARKER,SHRITA [FB]
06:43	GOOD! 3PTR by HYMAN,KATISHA	40-23	H 17	
06:43	ASSIST by BENNETT,SHANTEL			
06:35		42-23	H 19	GOOD! JUMPER by PARKER,SHRITA [FB/PNT]
06:10	TURNOVER (LOSTBALL) by JOHNSON,AMINATA			
06:10				STEAL by BELL,CHINYERE
06:06	SUB OUT: HEWITT,DARRIA			
06:06	SUB IN: CLIFTON,YAKIMA			
06:06	SUB OUT: WILLIAMS,CHANTEL			
06:06	SUB IN: DRUMGOOLE,BRITTANY			
06:01	FOUL (PERSONAL) by JOHNSON,AMINATA			
05:59				MISSED JUMPER by BELL,CHINYERE
05:56	REBOUND (DEF) by HYMAN,KATISHA			
05:49	GOOD! JUMPER by DRUMGOOLE,BRITTANY [FB/PNT]	42-25	H 17	
05:42				TURNOVER (BADPASS) by SMITH,GIGI
05:42	STEAL by HYMAN,KATISHA			
05:41	GOOD! JUMPER by HYMAN,KATISHA [FB]	42-27	H 15	
05:41				TIMEOUT 30SEC
05:41				
05:41	SUB OUT: JOHNSON,AMINATA			
05:41	SUB IN: MADUEGBUNAM,CHINWENDU			
05:41				SUB OUT: JEUNE,ASHLI
05:41				SUB IN: CRISP,MORIAH
05:31		44-27	H 17	GOOD! LAYUP by BELL,CHINYERE
05:31				ASSIST by PARKER,SHRITA
05:31	FOUL (PERSONAL) by DRUMGOOLE,BRITTANY			
05:31		45-27	H 18	GOOD! FT by BELL,CHINYERE
05:21	MISSED 3PTR by DRUMGOOLE,BRITTANY			
05:17				REBOUND (DEF) by PARKER,SHRITA
04:58				MISSED 3PTR by SMITH,GIGI
04:52	REBOUND (DEF) by CLIFTON,YAKIMA			
04:50	MISSED LAYUP by BENNETT,SHANTEL			
04:46	REBOUND (OFF) by HYMAN,KATISHA			
04:46	MISSED JUMPER by HYMAN,KATISHA			
04:46				REBOUND (DEF) by SMITH,GIGI
04:46	FOUL (PERSONAL) by MADUEGBUNAM,CHINWENDU			
04:46				
04:25				MISSED JUMPER by BELL,CHINYERE
04:25	BLOCK by MADUEGBUNAM,CHINWENDU			
04:25				REBOUND (OFF) by TEAM
04:15				MISSED JUMPER by SMITH,GIGI
04:15	BLOCK by CLIFTON,YAKIMA			
04:10	REBOUND (DEF) by MADUEGBUNAM,CHINWENDU			
04:10				FOUL (PERSONAL) by CRISP,MORIAH
04:10	GOOD! FT by BENNETT,SHANTEL	45-28	H 17	
04:10				SUB OUT: SUGGS,LACEY
04:10				SUB IN: POWELL,PAIGE
04:10	MISSED FT by BENNETT,SHANTEL			
04:08				REBOUND (DEF) by POWELL,PAIGE
04:04				MISSED JUMPER by PARKER,SHRITA
04:00	REBOUND (DEF) by HYMAN,KATISHA			
03:58	TURNOVER (BADPASS) by CLIFTON,YAKIMA			
03:58				STEAL by PARKER,SHRITA

Time	VISITORS: Fayetteville St.	Score	Margin	HOME: UNCW
03:58		47-28	H 19	GOOD! LAYUP by PARKER,SHRITA [FB]
03:58	FOUL (PERSONAL) by MADUEGBUNAM,CHINWENDU			
03:58		48-28	H 20	GOOD! FT by PARKER,SHRITA [FB]
03:47	MISSED JUMPER by HYMAN,KATISHA			
03:43				REBOUND (DEF) by PARKER,SHRITA
03:35				MISSED JUMPER by POWELL,PAIGE
03:32	REBOUND (DEF) by DRUMGOOLE,BRITTANY			
03:29	MISSED JUMPER by HYMAN,KATISHA			
03:26	REBOUND (OFF) by HYMAN,KATISHA			
03:24	GOOD! LAYUP by HYMAN,KATISHA	48-30	H 18	
03:08				MISSED 3PTR by PARKER,SHRITA
03:06				REBOUND (OFF) by POWELL,PAIGE
03:06		50-30	H 20	GOOD! LAYUP by POWELL,PAIGE
03:06	FOUL (PERSONAL) by DRUMGOOLE,BRITTANY			
03:06		51-30	H 21	GOOD! FT by POWELL,PAIGE
02:36	GOOD! LAYUP by CLIFTON,YAKIMA [PNT]	51-32	H 19	
02:36	ASSIST by DRUMGOOLE,BRITTANY			
02:19	FOUL (PERSONAL) by HYMAN,KATISHA			
02:19		52-32	H 20	GOOD! FT by PARKER,SHRITA [FB]
02:19				MISSED FT by PARKER,SHRITA
02:19	MISSED JUMPER by CLIFTON,YAKIMA			
02:19				REBOUND (DEF) by CRISP,MORIAH
02:19	REBOUND (DEF) by CLIFTON,YAKIMA			
02:15	FOUL (PERSONAL) by CLIFTON,YAKIMA			
02:15		53-32	H 21	GOOD! FT by PARKER,SHRITA
02:15		54-32	H 22	GOOD! FT by PARKER,SHRITA
02:13				SUB OUT: SMITH,GIGI
02:13				SUB IN: SUGGS,LACEY
02:13				SUB OUT: BELL,CHINYERE
02:13				SUB IN: TATE,TIMBER
02:13	SUB OUT: MADUEGBUNAM,CHINWENDU			
02:13	SUB IN: WILLIAMS,CHANTEL			
02:13	SUB OUT: HYMAN,KATISHA			
02:13	SUB IN: LINDSAY,CORINTHIA			
02:13				FOUL (PERSONAL) by PARKER,SHRITA
02:10	MISSED JUMPER by LINDSAY,CORINTHIA			
02:06	REBOUND (OFF) by LINDSAY,CORINTHIA			
02:05	MISSED JUMPER by CLIFTON,YAKIMA			
02:02	REBOUND (OFF) by LINDSAY,CORINTHIA			
01:49				SUB OUT: PARKER,SHRITA
01:49				SUB IN: VASON,AHYIONA
01:35	TURNOVER (LOSTBALL) by CLIFTON,YAKIMA			
01:35				STEAL by SUGGS,LACEY
01:26				TIMEOUT 30SEC
01:26	SUB OUT: DRUMGOOLE,BRITTANY			
01:26	SUB IN: HYMAN,KATISHA			
01:00				FOUL (OFF) by SUGGS,LACEY
01:00				TURNOVER (OFFENSIVE) by SUGGS,LACEY
00:47	FOUL (OFF) by BENNETT,SHANTEL			
00:47	TURNOVER (OFFENSIVE) by BENNETT,SHANTEL			
00:47				SUB OUT: CRISP,MORIAH
00:47				SUB IN: PARKER,SHRITA
00:20		56-32	H 24	GOOD! LAYUP by POWELL,PAIGE
00:20				ASSIST by PARKER,SHRITA
00:00	GOOD! LAYUP by HYMAN,KATISHA	56-34	H 22	
00:00				FOUL (PERSONAL) by POWELL,PAIGE
00:00	MISSED FT by HYMAN,KATISHA			
00:00	REBOUND (OFF) by CLIFTON,YAKIMA			

Fayetteville St. 34, UNCW 56

Points from (This Period)	FSU	NCW
In the Paint	10	14
Off Turns	2	10
2nd Chance	4	8
Fast Break	6	8
Bench	4	5

This period only:FSU led for 0:26. NCW led for 0:52.
Game was tied for 0:17.

Official Play-By-Play
Fayetteville St. vs UNCW
Fourth Quarter
December 01, 2018 at Trask Coliseum - Wilmington, N.C.

Starters:

Fayetteville St.: 1 HEWITT,DARRIA; 13 WILLIAMS,CHANTEL; 14 BENNETT,SHANTEL; 32 JOHNSON,AMINATA; 30 HYMAN,KATISHA;

UNCW: 0 JEUNE,ASHLI; 4 PARKER,SHRITA; 5 SMITH,GIGI; 13 SUGGS,LACEY; 24 BELL,CHINYERE;

Period 4

Time	VISITORS: Fayetteville St.	Score	Margin	HOME: UNCW
09:49	MISSED JUMPER by CLIFTON,YAKIMA			
09:45				REBOUND (DEF) by TATE,TIMBER
09:37				MISSED JUMPER by SUGGS,LACEY
09:34	REBOUND (DEF) by JOHNSON,AMINATA			
09:17	GOOD! JUMPER by CLIFTON,YAKIMA	56-36	H 20	
09:17	ASSIST by HYMAN,KATISHA			
08:59				MISSED JUMPER by PARKER,SHRITA
08:55				REBOUND (OFF) by POWELL,PAIGE
08:54		58-36	H 22	GOOD! LAYUP by POWELL,PAIGE
08:35	MISSED 3PTR by HYMAN,KATISHA			
08:30				REBOUND (DEF) by POWELL,PAIGE
08:19		60-36	H 24	GOOD! JUMPER by POWELL,PAIGE
08:19				ASSIST by TATE,TIMBER
07:56	MISSED JUMPER by WILLIAMS,CHANTEL			
07:51				REBOUND (DEF) by TATE,TIMBER
07:49				TURNOVER (LOSTBALL) by PARKER,SHRITA
07:49	STEAL by BENNETT,SHANTEL			
07:44	GOOD! LAYUP by BENNETT,SHANTEL [FB]	60-38	H 22	
07:44				FOUL (PERSONAL) by TATE,TIMBER
07:44				SUB OUT: SUGGS,LACEY
07:44				SUB IN: SMITH,GIGI
07:44	SUB OUT: CLIFTON,YAKIMA			
07:44	SUB IN: HEWITT,DARRIA			
07:44	GOOD! FT by BENNETT,SHANTEL [FB]	60-39	H 21	
07:31				MISSED JUMPER by POWELL,PAIGE
07:31	BLOCK by WILLIAMS,CHANTEL			
07:31				REBOUND (OFF) by TEAM
07:29				TURNOVER (BADPASS) by TATE,TIMBER
07:29	STEAL by JOHNSON,AMINATA			
07:03	MISSED LAYUP by BENNETT,SHANTEL			
06:58	REBOUND (OFF) by JOHNSON,AMINATA			
06:57	GOOD! LAYUP by JOHNSON,AMINATA	60-41	H 19	
06:45				TURNOVER (LOSTBALL) by SMITH,GIGI
06:45	STEAL by JOHNSON,AMINATA			
06:40				FOUL (PERSONAL) by PARKER,SHRITA
06:40	MISSED FT by HYMAN,KATISHA			
06:40	REBOUND (OFF) by TEAM			
06:40				SUB OUT: SMITH,GIGI
06:40				SUB IN: BELL,CHINYERE
06:40				SUB OUT: TATE,TIMBER
06:40				SUB IN: JEUNE,ASHLI
06:40	SUB OUT: WILLIAMS,CHANTEL			
06:40	SUB IN: DRUMGOOLE,BRITTANY			
06:40				SUB OUT: VASON,AHYIONA
06:40				SUB IN: CRISP,MORIAH
06:40	GOOD! FT by HYMAN,KATISHA [FB]	60-42	H 18	
06:31	FOUL (PERSONAL) by JOHNSON,AMINATA			
06:31		61-42	H 19	GOOD! FT by PARKER,SHRITA
06:31		62-42	H 20	GOOD! FT by PARKER,SHRITA
06:31	SUB OUT: HEWITT,DARRIA			
06:31	SUB IN: CLIFTON,YAKIMA			
06:08	GOOD! LAYUP by JOHNSON,AMINATA	62-44	H 18	
06:08	ASSIST by CLIFTON,YAKIMA			
05:59				MISSED JUMPER by PARKER,SHRITA
05:55	REBOUND (DEF) by DRUMGOOLE,BRITTANY			
05:52				FOUL (PERSONAL) by JEUNE,ASHLI
05:52				SUB OUT: PARKER,SHRITA
05:52				SUB IN: SMITH,GIGI
05:47	GOOD! 3PTR by HYMAN,KATISHA	62-47	H 15	
05:32				TURNOVER (BADPASS) by SMITH,GIGI
05:32	STEAL by BENNETT,SHANTEL			
05:27	GOOD! LAYUP by BENNETT,SHANTEL [FB]	62-49	H 13	
05:27				TIMEOUT 30SEC
05:27				
05:27				SUB OUT: SMITH,GIGI
05:27				SUB IN: PARKER,SHRITA
05:27				SUB OUT: JEUNE,ASHLI
05:27				SUB IN: SUGGS,LACEY
05:18		64-49	H 15	GOOD! LAYUP by POWELL,PAIGE
05:18				ASSIST by BELL,CHINYERE
05:18	FOUL (PERSONAL) by CLIFTON,YAKIMA			
05:18		65-49	H 16	GOOD! FT by POWELL,PAIGE
05:03	MISSED 3PTR by HYMAN,KATISHA			
05:00				REBOUND (DEF) by PARKER,SHRITA
04:55		67-49	H 18	GOOD! JUMPER by PARKER,SHRITA [FB]
04:29	GOOD! JUMPER by CLIFTON,YAKIMA	67-51	H 16	

Time	VISITORS: Fayetteville St.	Score	Margin	HOME: UNCW
04:29	ASSIST by DRUMGOOLE,BRITTANY			
04:07				TURNOVER (3SEC) by POWELL,PAIGE
03:45	GOOD! 3PTR by DRUMGOOLE,BRITTANY	67-54	H 13	
03:45	ASSIST by BENNETT,SHANTEL			
03:20				FOUL (OFF) by POWELL,PAIGE
03:20				TURNOVER (OFFENSIVE) by POWELL,PAIGE
03:20				SUB OUT: POWELL,PAIGE
03:20				SUB IN: SMITH,GIGI
03:20	SUB OUT: BENNETT,SHANTEL			
03:20	SUB IN: MUHAMMAD,AMANI			
03:07	MISSED 3PTR by DRUMGOOLE,BRITTANY			
03:03				REBOUND (DEF) by SUGGS,LACEY
03:01				TURNOVER (BADPASS) by SUGGS,LACEY
02:48	FOUL (OFF) by JOHNSON,AMINATA			
02:48	TURNOVER (OFFENSIVE) by JOHNSON,AMINATA			
02:48				MISSED 3PTR by PARKER,SHRITA
02:48	REBOUND (DEF) by MUHAMMAD,AMANI			
02:42	FOUL (OFF) by HYMAN,KATISHA			
02:42	TURNOVER (OFFENSIVE) by HYMAN,KATISHA			
02:09	FOUL (PERSONAL) by DRUMGOOLE,BRITTANY			
02:09				MISSED FT by BELL,CHINYERE
02:09				REBOUND (OFF) by TEAM
02:09				MISSED FT by BELL,CHINYERE
02:09	REBOUND (DEF) by CLIFTON,YAKIMA			
02:08	SUB OUT: HYMAN,KATISHA			
02:08	SUB IN: BENNETT,SHANTEL			
02:08	SUB OUT: JOHNSON,AMINATA			
02:08	SUB IN: PAGE,KIARA			
02:07	FOUL (OFF) by MUHAMMAD,AMANI			
02:07	TURNOVER (OFFENSIVE) by MUHAMMAD,AMANI			
02:07	SUB OUT: CLIFTON,YAKIMA			
02:07	SUB IN: JAMES,SHAIQUANDRA			
02:07	SUB OUT: BENNETT,SHANTEL			
02:07	SUB IN: MCCASKILL,NIKKI			
01:51		69-54	H 15	GOOD! LAYUP by SMITH,GIGI [PNT]
01:51				ASSIST by PARKER,SHRITA
01:42	MISSED JUMPER by MUHAMMAD,AMANI			
01:38	REBOUND (OFF) by JAMES,SHAIQUANDRA			
01:38	MISSED JUMPER by JAMES,SHAIQUANDRA			
01:38				REBOUND (DEF) by SMITH,GIGI
01:38	FOUL (PERSONAL) by JAMES,SHAIQUANDRA			
01:38		70-54	H 16	GOOD! FT by SMITH,GIGI
01:38	SUB OUT: DRUMGOOLE,BRITTANY			
01:38	SUB IN: GAINEY,MICHELLE			
01:38		71-54	H 17	GOOD! FT by SMITH,GIGI
01:27	MISSED JUMPER by PAGE,KIARA			
01:27				BLOCK by BELL,CHINYERE
01:27	REBOUND (OFF) by TEAM			
01:12	MISSED 3PTR by MUHAMMAD,AMANI			
01:07	REBOUND (OFF) by PAGE,KIARA			
01:07	MISSED JUMPER by PAGE,KIARA			
01:04				REBOUND (DEF) by SMITH,GIGI
01:02				TURNOVER (BADPASS) by SMITH,GIGI
00:57	TURNOVER (BADPASS) by PAGE,KIARA			
00:57				STEAL by CRISP,MORIAH
00:55	FOUL (PERSONAL) by MCCASKILL,NIKKI			
00:55		72-54	H 18	GOOD! FT by CRISP,MORIAH [FB]
00:55				SUB OUT: SMITH,GIGI
00:55				SUB IN: MITCHELL,JESSICA
00:55				SUB OUT: PARKER,SHRITA
00:55				SUB IN: SACCO,GRACE
00:55				SUB OUT: BELL,CHINYERE
00:55				SUB IN: BUEHLER,JULIA
00:55				MISSED FT by CRISP,MORIAH
00:55	REBOUND (DEF) by PAGE,KIARA			
00:30	TURNOVER (LOSTBALL) by MUHAMMAD,AMANI			
00:30				STEAL by SACCO,GRACE

Fayetteville St. 54, UNCW 72

Points from (This Period)	FSU	NCW
In the Paint	10	6
Off Turns	11	3
2nd Chance	2	2
Fast Break	6	3
Bench	7	8

This period only:FSU led for 0:26. NCW led for 0:52.
Game was tied for 0:17.

Official Scoring/Possession Reference Chart
Fayetteville St. vs UNCW
Period 1
December 01, 2018 at Trask Coliseum - Wilmington, N.C.

Starters:

Fayetteville St.: 1 HEWITT,DARRIA; 13 WILLIAMS,CHANTEL; 14 BENNETT,SHANTEL; 32 JOHNSON,AMINATA; 30 HYMAN,KATISHA;
UNCW: 0 JEUNE,ASHLI; 4 PARKER,SHRITA; 5 SMITH,GIGI; 13 SUGGS,LACEY; 24 BELL,CHINYERE;

Period 1

Time	VISITORS: Fayetteville St.	Score	Margin	HOME: UNCW
09:15		1-0	H 1	GOOD! FT by PARKER,SHRITA [FB]
09:15		2-0	H 2	GOOD! FT by PARKER,SHRITA [FB]
09:03	GOOD! LAYUP by HYMAN,KATISHA [PNT]	2-2	T	
08:25	GOOD! JUMPER by BENNETT,SHANTEL	2-4	V 2	
07:59		4-4	T	GOOD! LAYUP by BELL,CHINYERE
07:31		5-4	H 1	GOOD! FT by BELL,CHINYERE
07:31		6-4	H 2	GOOD! FT by BELL,CHINYERE
06:45	GOOD! JUMPER by CLIFTON,YAKIMA	6-6	T	
05:25		8-6	H 2	GOOD! JUMPER by SUGGS,LACEY [PNT]
05:10		10-6	H 4	GOOD! LAYUP by SUGGS,LACEY [FB]
04:41		13-6	H 7	GOOD! 3PTR by PARKER,SHRITA
04:17		15-6	H 9	GOOD! LAYUP by PARKER,SHRITA [FB]
03:49	GOOD! LAYUP by BENNETT,SHANTEL [FB]	15-8	H 7	
03:23		18-8	H 10	GOOD! 3PTR by SMITH,GIGI
02:31	GOOD! FT by BENNETT,SHANTEL	18-9	H 9	
02:17		20-9	H 11	GOOD! LAYUP by CRISP,MORIAH [FB]
00:04	GOOD! FT by WILLIAMS,CHANTEL	20-10	H 10	

Fayetteville St. 10, UNCW 20

Official Scoring/Possession Reference Chart
Fayetteville St. vs UNCW
Period 2
December 01, 2018 at Trask Coliseum - Wilmington, N.C.

Starters:

Fayetteville St.: 1 HEWITT,DARRIA; 13 WILLIAMS,CHANTEL; 14 BENNETT,SHANTEL; 32 JOHNSON,AMINATA; 30 HYMAN,KATISHA;
UNCW: 0 JEUNE,ASHLI; 4 PARKER,SHRITA; 5 SMITH,GIGI; 13 SUGGS,LACEY; 24 BELL,CHINYERE;

Period 2

Time	VISITORS: Fayetteville St.	Score	Margin	HOME: UNCW
08:40		21-10	H 11	GOOD! FT by PARKER,SHRITA
08:40		22-10	H 12	GOOD! FT by PARKER,SHRITA
07:02		23-10	H 13	GOOD! FT by PARKER,SHRITA [FB]
06:35		24-10	H 14	GOOD! FT by PARKER,SHRITA
04:01		26-10	H 16	GOOD! LAYUP by SMITH,GIGI
02:57		28-10	H 18	GOOD! JUMPER by SMITH,GIGI [FB]
02:34		30-10	H 20	GOOD! LAYUP by PARKER,SHRITA [FB]
02:10	GOOD! FT by DRUMGOOLE,BRITTANY	30-11	H 19	
02:10	GOOD! FT by DRUMGOOLE,BRITTANY	30-12	H 18	
01:46	GOOD! FT by BENNETT,SHANTEL	30-13	H 17	
00:43		32-13	H 19	GOOD! JUMPER by SMITH,GIGI
00:43		33-13	H 20	GOOD! FT by SMITH,GIGI
00:31	GOOD! LAYUP by BENNETT,SHANTEL	33-15	H 18	
00:31	GOOD! FT by BENNETT,SHANTEL	33-16	H 17	

Fayetteville St. 16, UNCW 33

Official Scoring/Possession Reference Chart
Fayetteville St. vs UNCW
Period 3
December 01, 2018 at Trask Coliseum - Wilmington, N.C.

Starters:

Fayetteville St.: 1 HEWITT,DARRIA; 13 WILLIAMS,CHANTEL; 14 BENNETT,SHANTEL; 32 JOHNSON,AMINATA; 30 HYMAN,KATISHA;

UNCW: 0 JEUNE,ASHLI; 4 PARKER,SHRITA; 5 SMITH,GIGI; 13 SUGGS,LACEY; 24 BELL,CHINYERE;

Period 3

Time	VISITORS: Fayetteville St.	Score	Margin	HOME: UNCW
08:53		36-16	H 20	GOOD! 3PTR by JEUNE,ASHLI
08:36	GOOD! LAYUP by JOHNSON,AMINATA	36-18	H 18	
08:00	GOOD! JUMPER by HYMAN,KATISHA [FB]	36-20	H 16	
07:31		38-20	H 18	GOOD! LAYUP by BELL,CHINYERE
07:07		40-20	H 20	GOOD! LAYUP by PARKER,SHRITA [FB]
06:43	GOOD! 3PTR by HYMAN,KATISHA	40-23	H 17	
06:35		42-23	H 19	GOOD! JUMPER by PARKER,SHRITA [FB/PNT]
05:49	GOOD! JUMPER by DRUMGOOLE,BRITTANY [FB/PNT]	42-25	H 17	
05:41	GOOD! JUMPER by HYMAN,KATISHA [FB]	42-27	H 15	
05:31		44-27	H 17	GOOD! LAYUP by BELL,CHINYERE
05:31		45-27	H 18	GOOD! FT by BELL,CHINYERE
04:10	GOOD! FT by BENNETT,SHANTEL	45-28	H 17	
03:58		47-28	H 19	GOOD! LAYUP by PARKER,SHRITA [FB]
03:58		48-28	H 20	GOOD! FT by PARKER,SHRITA [FB]
03:24	GOOD! LAYUP by HYMAN,KATISHA	48-30	H 18	
03:06		50-30	H 20	GOOD! LAYUP by POWELL,PAIGE
03:06		51-30	H 21	GOOD! FT by POWELL,PAIGE
02:36	GOOD! LAYUP by CLIFTON,YAKIMA [PNT]	51-32	H 19	
02:19		52-32	H 20	GOOD! FT by PARKER,SHRITA [FB]
02:15		53-32	H 21	GOOD! FT by PARKER,SHRITA
02:15		54-32	H 22	GOOD! FT by PARKER,SHRITA
00:20		56-32	H 24	GOOD! LAYUP by POWELL,PAIGE
00:00	GOOD! LAYUP by HYMAN,KATISHA	56-34	H 22	

Fayetteville St. 34, UNCW 56

Official Scoring/Possession Reference Chart Fayetteville St. vs UNCW

Period 4

December 01, 2018 at Trask Coliseum - Wilmington, N.C.

Starters:

Fayetteville St.: 1 HEWITT,DARRIA; 13 WILLIAMS,CHANTEL; 14 BENNETT,SHANTEL; 32 JOHNSON,AMINATA; 30 HYMAN,KATISHA;

UNCW: 0 JEUNE,ASHLI; 4 PARKER,SHRITA; 5 SMITH,GIGI; 13 SUGGS,LACEY; 24 BELL,CHINYERE;

Period 4

Time	VISITORS: Fayetteville St.	Score	Margin	HOME: UNCW
09:17	GOOD! JUMPER by CLIFTON,YAKIMA	56-36	H 20	
08:54		58-36	H 22	GOOD! LAYUP by POWELL,PAIGE
08:19		60-36	H 24	GOOD! JUMPER by POWELL,PAIGE
07:44	GOOD! LAYUP by BENNETT,SHANTEL [FB]	60-38	H 22	
07:44	GOOD! FT by BENNETT,SHANTEL [FB]	60-39	H 21	
06:57	GOOD! LAYUP by JOHNSON,AMINATA	60-41	H 19	
06:40	GOOD! FT by HYMAN,KATISHA [FB]	60-42	H 18	
06:31		61-42	H 19	GOOD! FT by PARKER,SHRITA
06:31		62-42	H 20	GOOD! FT by PARKER,SHRITA
06:08	GOOD! LAYUP by JOHNSON,AMINATA	62-44	H 18	
05:47	GOOD! 3PTR by HYMAN,KATISHA	62-47	H 15	
05:27	GOOD! LAYUP by BENNETT,SHANTEL [FB]	62-49	H 13	
05:18		64-49	H 15	GOOD! LAYUP by POWELL,PAIGE
05:18		65-49	H 16	GOOD! FT by POWELL,PAIGE
04:55		67-49	H 18	GOOD! JUMPER by PARKER,SHRITA [FB]
04:29	GOOD! JUMPER by CLIFTON,YAKIMA	67-51	H 16	
03:45	GOOD! 3PTR by DRUMGOOLE,BRITTANY	67-54	H 13	
01:51		69-54	H 15	GOOD! LAYUP by SMITH,GIGI [PNT]
01:38		70-54	H 16	GOOD! FT by SMITH,GIGI
01:38		71-54	H 17	GOOD! FT by SMITH,GIGI
00:55		72-54	H 18	GOOD! FT by CRISP,MORIAH [FB]

Fayetteville St. 54, UNCW 72

Official Substitutions Log
Fayetteville St. vs UNCW
Period 1
December 01, 2018 at Trask Coliseum - Wilmington, N.C.

VISITORS: Fayetteville St.	Time	Score	HOME: UNCW
1 HEWITT,DARRIA			0 JEUNE,ASHLI
13 WILLIAMS,CHANTEL			4 PARKER,SHRITA
14 BENNETT,SHANTEL			5 SMITH,GIGI
32 JOHNSON,AMINATA			13 SUGGS,LACEY
30 HYMAN,KATISHA			24 BELL,CHINYERE
	07:21	4-6	SUB OUT: BELL,CHINYERE
	07:21		SUB IN: POWELL,PAIGE
SUB OUT: 1 HEWITT,DARRIA	07:01	4-6	
SUB IN: 11 CLIFTON,YAKIMA	07:01		
SUB OUT: 30 HYMAN,KATISHA	06:48	4-6	
SUB IN: 22 DRUMGOOLE,BRITTANY	06:48		
	06:28	6-6	SUB OUT: JEUNE,ASHLI
	06:28		SUB IN: CRISP,MORIAH
SUB OUT: 32 JOHNSON,AMINATA	05:43	6-6	
SUB IN: 33 LINDSAY,CORINTHIA	05:43		
	04:17	6-15	SUB OUT: SUGGS,LACEY
	04:17		SUB IN: TATE,TIMBER
	04:17		SUB OUT: PARKER,SHRITA
	04:17		SUB IN: VASON,AHYIONA
SUB OUT: 33 LINDSAY,CORINTHIA	04:17		
SUB IN: 32 JOHNSON,AMINATA	04:17		
	02:31	9-18	SUB OUT: SMITH,GIGI
	02:31		SUB IN: PARKER,SHRITA
	02:31		SUB OUT: VASON,AHYIONA
	02:31		SUB IN: SUGGS,LACEY
SUB OUT: 13 WILLIAMS,CHANTEL	02:31		
SUB IN: 3 MCCASKILL,NIKKI	02:31		
SUB OUT: 22 DRUMGOOLE,BRITTANY	02:26	9-18	
SUB IN: 30 HYMAN,KATISHA	02:26		
	01:57	9-20	SUB OUT: SUGGS,LACEY
	01:57		SUB IN: SMITH,GIGI
	00:57	9-20	SUB OUT: POWELL,PAIGE
	00:57		SUB IN: MITCHELL,JESSICA
	00:57		SUB OUT: CRISP,MORIAH
	00:57		SUB IN: SUGGS,LACEY
SUB OUT: 3 MCCASKILL,NIKKI	00:57		
SUB IN: 13 WILLIAMS,CHANTEL	00:57		
	00:04	9-20	SUB OUT: SMITH,GIGI
	00:04		SUB IN: CRISP,MORIAH

Fayetteville St. 10, UNCW 20

**Official Substitutions Log
Fayetteville St. vs UNCW
Period 2
December 01, 2018 at Trask Coliseum - Wilmington, N.C.**

VISITORS: Fayetteville St.	Time	Score	HOME: UNCW
1 HEWITT,DARRIA			0 JEUNE,ASHLI
13 WILLIAMS,CHANTEL			4 PARKER,SHRITA
14 BENNETT,SHANTEL			5 SMITH,GIGI
32 JOHNSON,AMINATA			13 SUGGS,LACEY
30 HYMAN,KATISHA			24 BELL,CHINYERE
	09:18	-	SUB OUT: TATE,TIMBER
	09:18		SUB IN: JEUNE,ASHLI
	09:18		SUB OUT: MITCHELL,JESSICA
	09:18		SUB IN: POWELL,PAIGE
SUB OUT: 32 JOHNSON,AMINATA	08:40	10-22	
SUB IN: 11 CLIFTON,YAKIMA	08:40		
	07:39	10-22	SUB OUT: CRISP,MORIAH
	07:39		SUB IN: VASON,AHYIONA
	07:02	10-23	SUB OUT: SUGGS,LACEY
	07:02		SUB IN: SMITH,GIGI
SUB OUT: 13 WILLIAMS,CHANTEL	07:02		
SUB IN: 33 LINDSAY,CORINTHIA	07:02		
SUB OUT: 1 HEWITT,DARRIA	07:02		
SUB IN: 14 BENNETT,SHANTEL	07:02		
	06:03	10-24	SUB OUT: PARKER,SHRITA
	06:03		SUB IN: TATE,TIMBER
SUB OUT: 33 LINDSAY,CORINTHIA	05:49	10-24	
SUB IN: 21 MADUEGBUNAM,CHINWENDU	05:49		
	03:40	10-26	SUB OUT: POWELL,PAIGE
	03:40		SUB IN: SUGGS,LACEY
	03:40		SUB OUT: VASON,AHYIONA
	03:40		SUB IN: PARKER,SHRITA
	03:40		SUB OUT: TATE,TIMBER
	03:40		SUB IN: BELL,CHINYERE
SUB OUT: 11 CLIFTON,YAKIMA	03:40		
SUB IN: 2 GAINEY,MICHELLE	03:40		
SUB OUT: 30 HYMAN,KATISHA	03:40		
SUB IN: 13 WILLIAMS,CHANTEL	03:40		
	02:10	11-30	SUB OUT: BELL,CHINYERE
	02:10		SUB IN: POWELL,PAIGE
SUB OUT: 21 MADUEGBUNAM,CHINWENDU	02:10		
SUB IN: 11 CLIFTON,YAKIMA	02:10		
	01:46	13-30	SUB OUT: JEUNE,ASHLI
	01:46		SUB IN: CRISP,MORIAH
	00:59	13-30	SUB OUT: PARKER,SHRITA
	00:59		SUB IN: BUEHLER,JULIA
	00:31	15-33	SUB OUT: SMITH,GIGI
	00:31		SUB IN: TATE,TIMBER
SUB OUT: 11 CLIFTON,YAKIMA	00:31		
SUB IN: 31 JAMES,SHAIQUANDRA	00:31		

Fayetteville St. 16, UNCW 33

**Official Substitutions Log
Fayetteville St. vs UNCW
Period 3
December 01, 2018 at Trask Coliseum - Wilmington, N.C.**

VISITORS: Fayetteville St.	Time	Score	HOME: UNCW
1 HEWITT,DARRIA			0 JEUNE,ASHLI
13 WILLIAMS,CHANTEL			4 PARKER,SHRITA
14 BENNETT,SHANTEL			5 SMITH,GIGI
32 JOHNSON,AMINATA			13 SUGGS,LACEY
30 HYMAN,KATISHA			24 BELL,CHINYERE
SUB OUT: 1 HEWITT,DARRIA	06:06	23-42	
SUB IN: 11 CLIFTON,YAKIMA	06:06		
SUB OUT: 13 WILLIAMS,CHANTEL	06:06		
SUB IN: 22 DRUMGOOLE,BRITTANY	06:06		
SUB OUT: 32 JOHNSON,AMINATA	05:41	27-42	
SUB IN: 21 MADUEGBUNAM,CHINWENDU	05:41		
	05:41		SUB OUT: JEUNE,ASHLI
	05:41		SUB IN: CRISP,MORIAH
	04:10	28-45	SUB OUT: SUGGS,LACEY
	04:10		SUB IN: POWELL,PAIGE
	02:13	32-54	SUB OUT: SMITH,GIGI
	02:13		SUB IN: SUGGS,LACEY
	02:13		SUB OUT: BELL,CHINYERE
	02:13		SUB IN: TATE,TIMBER
SUB OUT: 21 MADUEGBUNAM,CHINWENDU	02:13		
SUB IN: 13 WILLIAMS,CHANTEL	02:13		
SUB OUT: 30 HYMAN,KATISHA	02:13		
SUB IN: 33 LINDSAY,CORINTHIA	02:13		
	01:49	32-54	SUB OUT: PARKER,SHRITA
	01:49		SUB IN: VASON,AHYIONA

VISITORS: Fayetteville St.		Time	Score	HOME: UNCW
SUB OUT: 22 DRUMGOOLE,BRITTANY		01:26	32-54	
SUB IN: 30 HYMAN,KATISHA		01:26		
		00:47	32-54	SUB OUT: CRISP,MORIAH
		00:47		SUB IN: PARKER,SHRITA

Fayetteville St. 34, UNCW 56

Official Substitutions Log
Fayetteville St. vs UNCW
Period 4
December 01, 2018 at Trask Coliseum - Wilmington, N.C.

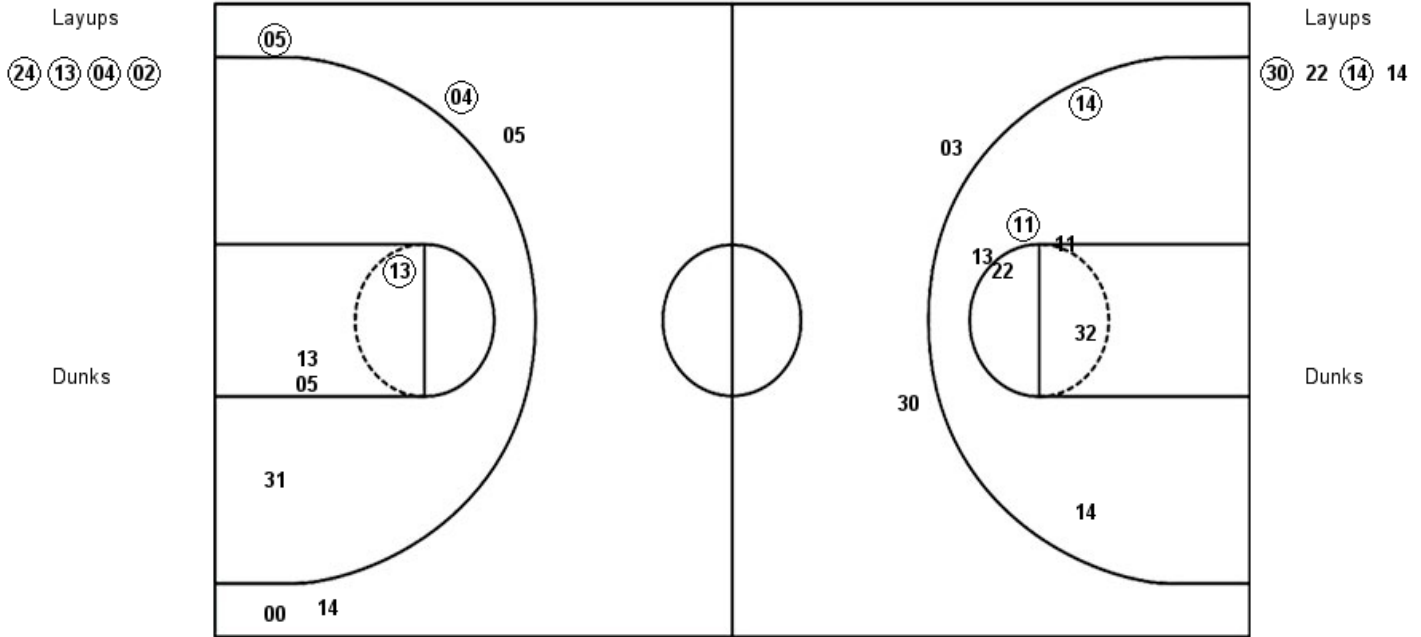
VISITORS: Fayetteville St.	Time	Score	HOME: UNCW
1 HEWITT,DARRIA			0 JEUNE,ASHLI
13 WILLIAMS,CHANTEL			4 PARKER,SHRITA
14 BENNETT,SHANTEL			5 SMITH,GIGI
32 JOHNSON,AMINATA			13 SUGGS,LACEY
30 HYMAN,KATISHA			24 BELL,CHINYERE
	07:44	38-60	SUB OUT: SUGGS,LACEY
	07:44		SUB IN: SMITH,GIGI
SUB OUT: 11 CLIFTON,YAKIMA	07:44		
SUB IN: 1 HEWITT,DARRIA	07:44		
	06:40	41-60	SUB OUT: SMITH,GIGI
	06:40		SUB IN: BELL,CHINYERE
	06:40		SUB OUT: TATE,TIMBER
	06:40		SUB IN: JEUNE,ASHLI
SUB OUT: 13 WILLIAMS,CHANTEL	06:40		
SUB IN: 22 DRUMGOOLE,BRITTANY	06:40		
	06:40		SUB OUT: VASON,AHYIONA
	06:40		SUB IN: CRISP,MORIAH
SUB OUT: 1 HEWITT,DARRIA	06:31	42-62	
SUB IN: 11 CLIFTON,YAKIMA	06:31		
	05:52	44-62	SUB OUT: PARKER,SHRITA
	05:52		SUB IN: SMITH,GIGI
	05:27	49-62	SUB OUT: SMITH,GIGI
	05:27		SUB IN: PARKER,SHRITA
	05:27		SUB OUT: JEUNE,ASHLI
	05:27		SUB IN: SUGGS,LACEY
	03:20	54-67	SUB OUT: POWELL,PAIGE
	03:20		SUB IN: SMITH,GIGI
SUB OUT: 14 BENNETT,SHANTEL	03:20		
SUB IN: 15 MUHAMMAD,AMANI	03:20		
SUB OUT: 30 HYMAN,KATISHA	02:08	54-67	
SUB IN: 14 BENNETT,SHANTEL	02:08		
SUB OUT: 32 JOHNSON,AMINATA	02:08		
SUB IN: 34 PAGE,KIARA	02:08		
SUB OUT: 11 CLIFTON,YAKIMA	02:07	54-67	
SUB IN: 31 JAMES,SHAIQUANDRA	02:07		
SUB OUT: 14 BENNETT,SHANTEL	02:07		
SUB IN: 3 MCCASKILL,NIKKI	02:07		
SUB OUT: 22 DRUMGOOLE,BRITTANY	01:38	54-70	
SUB IN: 2 GAINEY,MICHELLE	01:38		
	00:55	54-72	SUB OUT: SMITH,GIGI
	00:55		SUB IN: MITCHELL,JESSICA
	00:55		SUB OUT: PARKER,SHRITA
	00:55		SUB IN: SACCO,GRACE
	00:55		SUB OUT: BELL,CHINYERE
	00:55		SUB IN: BUEHLER,JULIA

Fayetteville St. 54, UNCW 72

Official Shot Chart
Fayetteville St. vs UNCW
 PERIOD 1 Shots
 December 01, 2018 at Trask Coliseum - Wilmington, N.C.

UNCW

Fayetteville St.



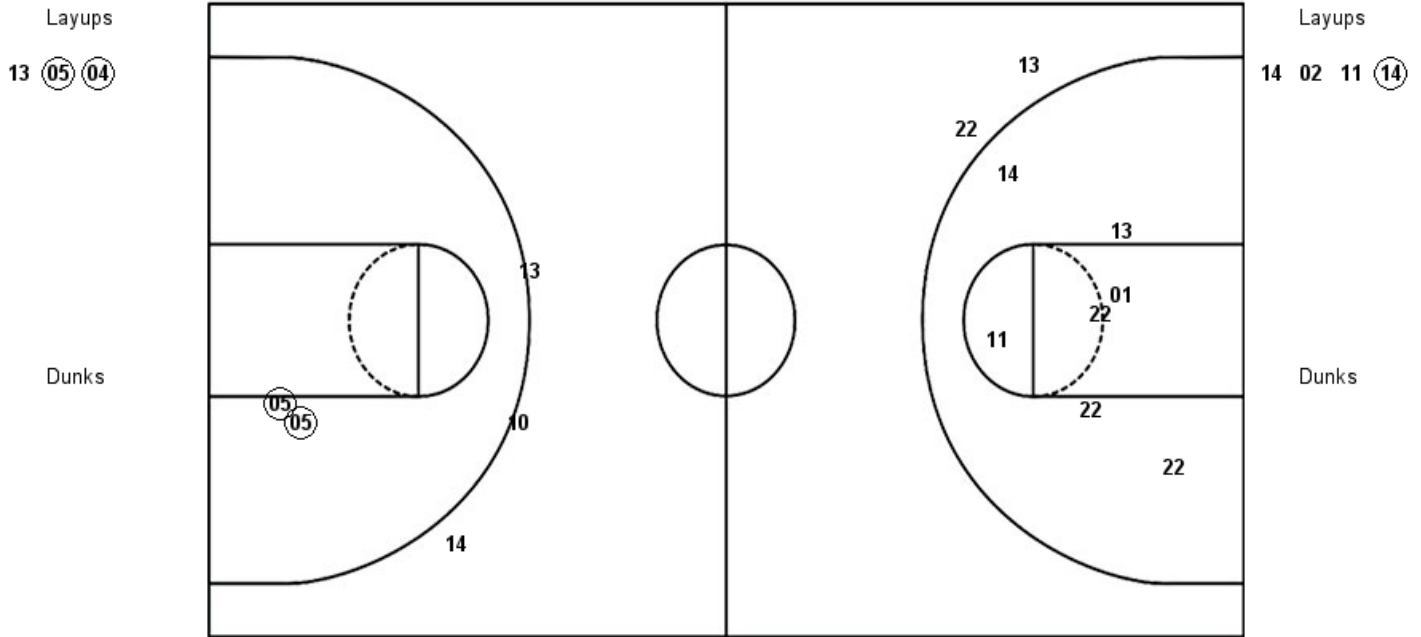
UNCW : Period 1	Made	Att	Pct
Layups	4	4	100.0
Dunks	0	0	0
2PT Field Goals	5	8	62.5
3PT Field Goals	2	5	40.0
Total Field Goals	7	13	53.8

FSU : Period 1	Made	Att	Pct
Layups	2	4	50.0
Dunks	0	0	0
2PT Field Goals	4	11	36.4
3PT Field Goals	0	2	00.0
Total Field Goals	4	13	30.8

Official Shot Chart
Fayetteville St. vs UNCW
PERIOD 2 Shots
December 01, 2018 at Trask Coliseum - Wilmington, N.C.

UNCW

Fayetteville St.



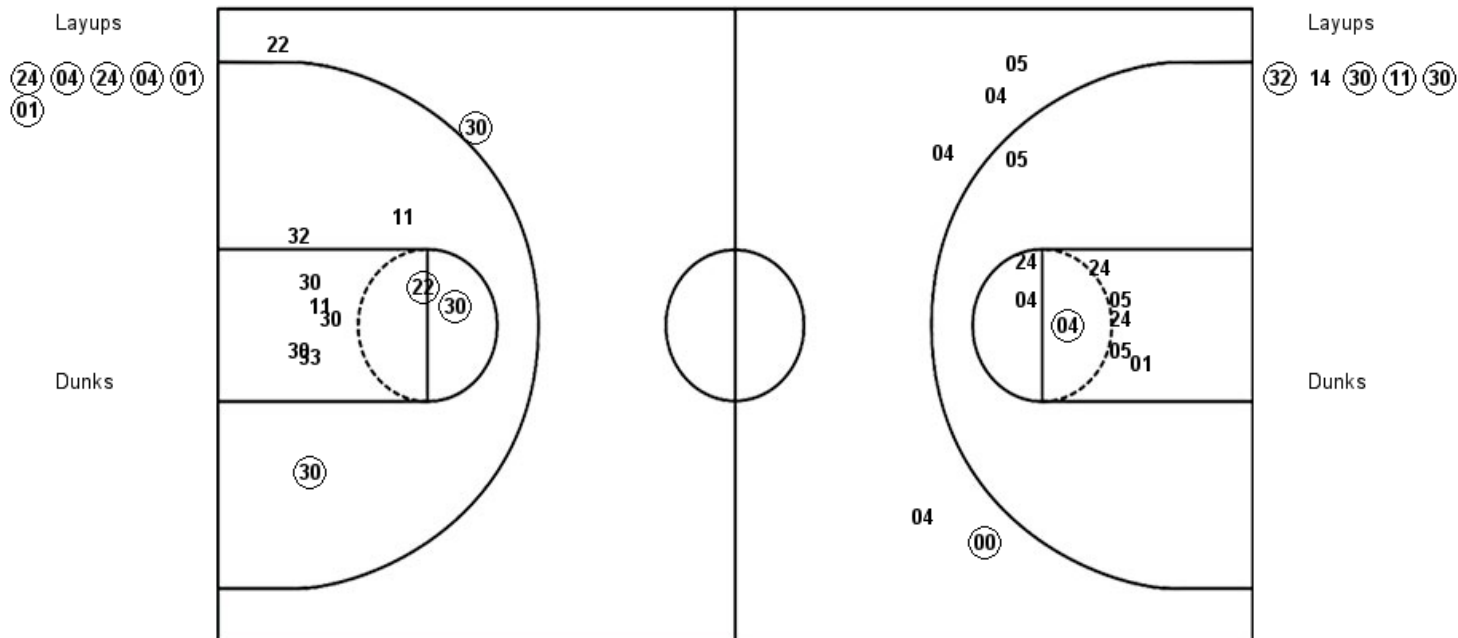
UNCW : Period 2	Made	Att	Pct
Layups	2	3	66.7
Dunks	0	0	0
2PT Field Goals	4	5	80.0
3PT Field Goals	0	3	00.0
Total Field Goals	4	8	50.0

FSU : Period 2	Made	Att	Pct
Layups	1	4	25.0
Dunks	0	0	0
2PT Field Goals	1	11	09.1
3PT Field Goals	0	2	00.0
Total Field Goals	1	13	07.7

Official Shot Chart
Fayetteville St. vs UNCW
 PERIOD 3 Shots
 December 01, 2018 at Trask Coliseum - Wilmington, N.C.

UNCW

Fayetteville St.



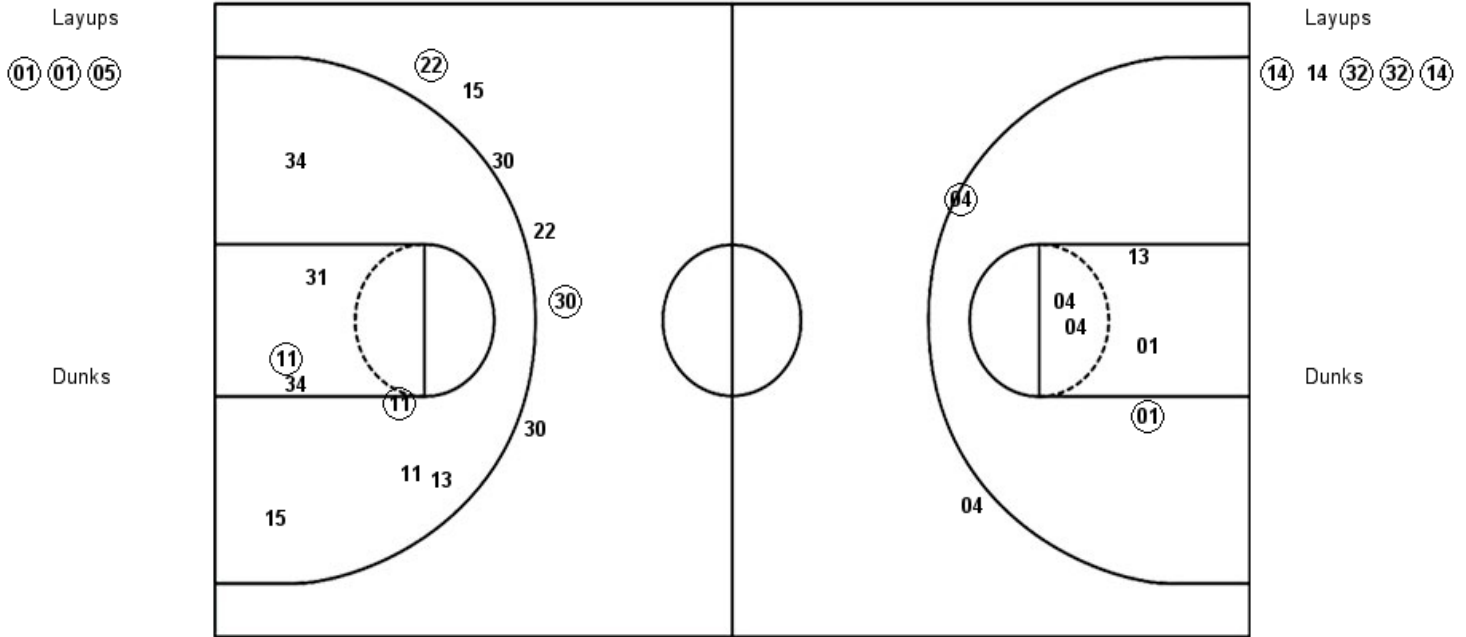
UNCW : Period 3	Made	Att	Pct
Layups	6	6	100.0
Dunks	0	0	0
2PT Field Goals	7	15	46.7
3PT Field Goals	1	5	20.0
Total Field Goals	8	20	40.0

FSU : Period 3	Made	Att	Pct
Layups	4	5	80.0
Dunks	0	0	0
2PT Field Goals	7	15	46.7
3PT Field Goals	1	2	50.0
Total Field Goals	8	17	47.1

Official Shot Chart
Fayetteville St. vs UNCW
PERIOD 4 Shots
December 01, 2018 at Trask Coliseum - Wilmington, N.C.

UNCW

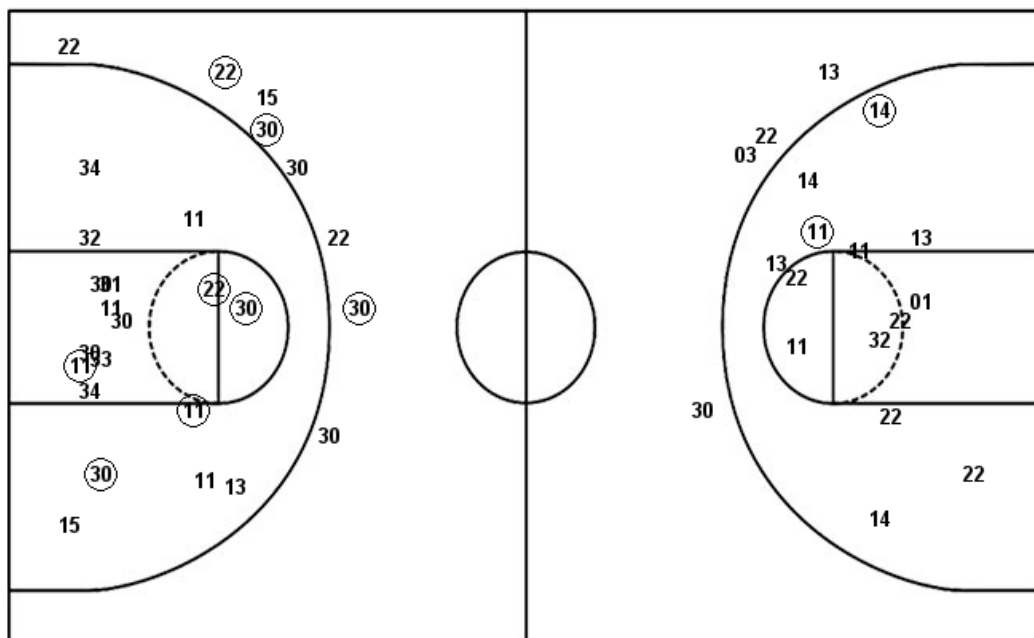
Fayetteville St.



UNCW : Period 4	Made	Att	Pct
Layups	3	3	100.0
Dunks	0	0	0
2PT Field Goals	5	9	55.6
3PT Field Goals	0	1	00.0
Total Field Goals	5	10	50.0

FSU : Period 4	Made	Att	Pct
Layups	4	5	80.0
Dunks	0	0	0
2PT Field Goals	6	13	46.2
3PT Field Goals	2	6	33.3
Total Field Goals	8	19	42.1

Layups



Layups



Dunks

Dunks

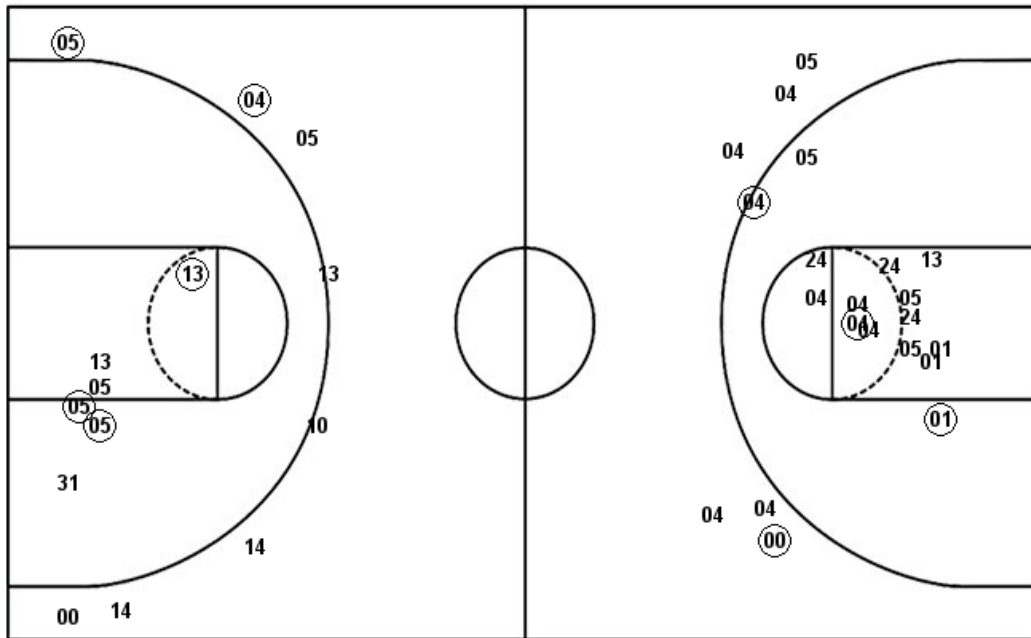
FSU : Period 1	Made	Att	Pct
Layups	2	4	50.0
Dunks	0	0	0
2PT Field Goals	4	11	36.4
3PT Field Goals	0	2	00.0
Total Field Goals	4	13	30.8
FSU : Period 3	Made	Att	Pct
Layups	4	5	80.0
Dunks	0	0	0
2PT Field Goals	7	15	46.7
3PT Field Goals	1	2	50.0
Total Field Goals	8	17	47.1

FSU : Period 2	Made	Att	Pct
Layups	1	4	25.0
Dunks	0	0	0
2PT Field Goals	1	11	09.1
3PT Field Goals	0	2	00.0
Total Field Goals	1	13	07.7
FSU : Period 4	Made	Att	Pct
Layups	4	5	80.0
Dunks	0	0	0
2PT Field Goals	6	13	46.2
3PT Field Goals	2	6	33.3
Total Field Goals	8	19	42.1

Official Shot Chart
Fayetteville St. vs UNCW
UNCW Team Shots
December 01, 2018 at Trask Coliseum - Wilmington, N.C.

Layups

Dunks



Layups

Dunks

NCW : Period 1	Made	Att	Pct
Layups	4	4	100.0
Dunks	0	0	0
2PT Field Goals	5	8	62.5
3PT Field Goals	2	5	40.0
Total Field Goals	7	13	53.8
NCW : Period 3	Made	Att	Pct
Layups	6	6	100.0
Dunks	0	0	0
2PT Field Goals	7	15	46.7
3PT Field Goals	1	5	20.0
Total Field Goals	8	20	40.0

NCW : Period 2	Made	Att	Pct
Layups	2	3	66.7
Dunks	0	0	0
2PT Field Goals	4	5	80.0
3PT Field Goals	0	3	00.0
Total Field Goals	4	8	50.0
NCW : Period 4	Made	Att	Pct
Layups	3	3	100.0
Dunks	0	0	0
2PT Field Goals	5	9	55.6
3PT Field Goals	0	1	00.0
Total Field Goals	5	10	50.0