

## FINAL SCORE



**Elon**

**89**



**UNCW**

**82**

January 26, 2019 • Trask Coliseum - Wilmington, N.C.

## FINAL STATISTICS

**Official Box Score**  
**Elon vs UNCW**  
**Game Totals -- Final Statistics**  
**January 26, 2019 at Trask Coliseum - Wilmington, N.C.**



**Elon 89**

No.	Player	S	Pts	FG	3FG	FT	OR	DR	TR	PF	A	TO	Blk	Stl	Min	+/-
00	WOOTEN, KRIS		13	5-9	3-7	0-0	0	3	3	1	3	0	0	0	32	-4
01	HANNAH, CHUCK		0	0-2	0-2	0-0	1	1	2	3	0	0	0	0	15	-8
12	PRIDDY, NATHAN		13	4-11	3-9	2-2	3	3	6	3	7	1	0	0	34	14
22	SANTA ANA, STEVEN		24	8-17	2-8	6-9	1	7	8	2	1	1	0	0	33	16
41	SEIBRING, TYLER		32	12-16	5-7	3-3	1	6	7	1	1	1	0	1	37	3
03	FULLER, SETH		0	0-2	0-1	0-0	0	0	0	0	0	0	0	0	3	-6
05	POSER, FEDERICO		4	1-2	0-0	2-2	2	3	5	4	1	5	0	0	22	11
20	EBERHARDT, SHELDON		0	0-3	0-2	0-0	0	0	0	2	1	3	0	0	8	2
21	PACK, ANDY		3	1-1	0-0	1-1	0	3	3	0	0	0	0	0	10	-1
33	WRIGHT, SIMON		0	0-0	0-0	0-0	0	1	1	2	0	0	0	1	6	8
	TEAM						0	1	1	0		0				
<b>TOTALS</b>			<b>89</b>	<b>31-63</b>	<b>13-36</b>	<b>14-17</b>	<b>8</b>	<b>28</b>	<b>36</b>	<b>18</b>	<b>14</b>	<b>11</b>	<b>0</b>	<b>2</b>	<b>200</b>	

*Shooting By Period*

Period	FG	FG%	3FG	3FG%	FT	FT%
1st Half	17-35	49%	6-19	32%	1-1	100%
2nd Half	14-28	50%	7-17	41%	13-16	81%
<b>Game</b>	<b>31-63</b>	<b>49.2%</b>	<b>13-36</b>	<b>36.1%</b>	<b>14-17</b>	<b>82.4%</b>

*Last FG: 2nd-01:09*  
*Biggest Run: 12-0*  
*Largest lead: By 19 at 1-02:52*  
*Technical Fouls: None.*

**UNCW 82**

No.	Player	S	Pts	FG	3FG	FT	OR	DR	TR	PF	A	TO	Blk	Stl	Min	+/-
00	GADSDEN, TY		22	6-13	5-11	5-5	2	0	2	4	1	2	0	0	33	0
02	CYLLA, JEANTAL		9	4-14	0-7	1-2	3	1	4	5	1	1	0	0	28	1
10	TOEWS, KAI		13	4-10	1-4	4-4	0	7	7	0	12	2	0	0	36	5
12	ESTIME, JAY		10	3-10	3-9	1-2	0	2	2	1	1	1	0	0	29	5
15	CACOK, DEVONTAE		20	8-9	0-0	4-6	7	12	19	3	2	3	0	4	36	-6
01	FORNES, JAYLEN		0	0-0	0-0	0-0	0	0	0	0	0	0	0	0	3	-5
04	O'CONNELL, SHAWN		2	1-1	0-0	0-0	0	2	2	0	0	0	0	0	12	-3
21	TAYLOR, TY		3	1-5	0-3	1-4	0	0	0	1	0	1	0	2	11	-19
30	SIMS, JAYLEN		3	1-6	1-5	0-0	0	2	2	3	0	0	0	0	11	-13
	TEAM						2	0	2	0		0				
<b>TOTALS</b>			<b>82</b>	<b>28-68</b>	<b>10-39</b>	<b>16-23</b>	<b>14</b>	<b>26</b>	<b>40</b>	<b>17</b>	<b>17</b>	<b>10</b>	<b>0</b>	<b>6</b>	<b>200</b>	

*Shooting By Period*

Period	FG	FG%	3FG	3FG%	FT	FT%
1st Half	11-35	31%	4-20	20%	2-5	40%
2nd Half	17-33	52%	6-19	32%	14-18	78%
<b>Game</b>	<b>28-68</b>	<b>41.2%</b>	<b>10-39</b>	<b>25.6%</b>	<b>16-23</b>	<b>69.6%</b>

*Last FG: 2nd-00:10*  
*Biggest Run: 8-0*  
*Largest lead: By 1 at 1-16:22*  
*Technical Fouls: None.*

Game Notes:

Officials: Keith Fogelman, Anthony Franklin, Ty Meixsell  
 Attendance: 4196

Start Time: 2019-01-26 21:07:35  
 End Time: 2019-01-26 23:01:11  
 Game Duration: 113  
 Conference Game:

Score	1st	2nd	TOT
Elo	41	48	<b>89</b>
NCW	28	54	<b>82</b>

Elo led for 38:49. NCW led for 0:11.  
 Game was tied for 1:01.  
 Times tied: 2      Lead Changes: 2

Points from	Elo	NCW
In the Paint	22	34
Off Turns	12	9
2nd Chance	11	17
Fast Break	8	19
Bench	7	8

**Official Box Score**  
**Elon vs UNCW**  
**First Half Statistics Only**  
**January 26, 2019 at Trask Coliseum - Wilmington, N.C.**



**Elon 41**

No.	Player	S	Pts	FG	3FG	FT	OR	DR	TR	PF	A	TO	Blk	Stl	Min	+/-
00	WOOTEN, KRIS		5	2-5	1-4	0-0	0	3	3	0	1	0	0	0	15	6
01	HANNAH, CHUCK		0	0-1	0-1	0-0	0	0	0	2	0	0	0	0	3	2
12	PRIDDY, NATHAN		8	3-6	2-4	0-0	2	0	2	0	4	1	0	0	16	17
22	SANTA ANA, STEVEN		12	5-9	2-6	0-0	1	4	5	0	0	0	0	0	16	18
41	SEIBRING, TYLER		11	5-8	1-3	0-0	0	4	4	0	0	1	0	1	18	12
03	FULLER, SETH		0	0-2	0-1	0-0	0	0	0	0	0	0	0	0	3	-6
05	POSER, FEDERICO		2	1-2	0-0	0-0	1	0	1	1	0	2	0	0	13	4
20	EBERHARDT, SHELDON		0	0-1	0-0	0-0	0	0	0	2	1	0	0	0	1	2
21	PACK, ANDY		3	1-1	0-0	1-1	0	3	3	0	0	0	0	0	9	2
33	WRIGHT, SIMON		0	0-0	0-0	0-0	0	1	1	2	0	0	0	1	6	8
	TEAM						0	1	1	0		0				
<b>TOTALS</b>			<b>41</b>	<b>17-35</b>	<b>6-19</b>	<b>1-1</b>	<b>4</b>	<b>16</b>	<b>20</b>	<b>7</b>	<b>6</b>	<b>4</b>	<b>0</b>	<b>2</b>	<b>100</b>	

*Shooting By Period*

Period	FG	FG%	3FG	3FG%	FT	FT%
1st Half	17-35	49%	6-19	32%	1-1	100%
Game	31-63	49.2%	13-36	36.1%	14-17	82.4%

*Last FG Half: Elo 2nd-01:09*

**UNCW 28**

No.	Player	S	Pts	FG	3FG	FT	OR	DR	TR	PF	A	TO	Blk	Stl	Min	+/-
00	GADSDEN, TY		3	1-4	1-3	0-0	2	0	2	1	1	2	0	0	16	-10
02	CYLLA, JEANTAL		3	1-7	0-4	1-2	2	1	3	1	0	0	0	0	12	-6
10	TOEWS, KAI		3	1-4	1-2	0-0	0	4	4	0	4	2	0	0	17	-1
12	ESTIME, JAY		4	1-4	1-4	1-2	0	1	1	0	0	1	0	0	11	-2
15	CACOK, DEVONTAE		8	4-5	0-0	0-1	4	5	9	1	1	2	0	1	17	-10
01	FORNES, JAYLEN		0	0-0	0-0	0-0	0	0	0	0	0	0	0	0	3	-5
04	O'CONNELL, SHAWN		2	1-1	0-0	0-0	0	2	2	0	0	0	0	0	7	-5
21	TAYLOR, TY		2	1-5	0-3	0-0	0	0	0	0	0	1	0	1	9	-17
30	SIMS, JAYLEN		3	1-5	1-4	0-0	0	1	1	2	0	0	0	0	8	-9
	TEAM						1	0	1	0		0				
<b>TOTALS</b>			<b>28</b>	<b>11-35</b>	<b>4-20</b>	<b>2-5</b>	<b>9</b>	<b>14</b>	<b>23</b>	<b>5</b>	<b>6</b>	<b>8</b>	<b>0</b>	<b>2</b>	<b>100</b>	

*Shooting By Period*

Period	FG	FG%	3FG	3FG%	FT	FT%
1st Half	11-35	31%	4-20	20%	2-5	40%
Game	28-68	41.2%	10-39	25.6%	16-23	69.6%

*Last FG Half: NCW 2nd-00:10*

**Game Notes:**

Officials: Keith Fogelman, Anthony Franklin, Ty Meixsell  
 Attendance: 4196

Start Time: 2019-01-26 21:07:35  
 End Time: 2019-01-26 23:01:11  
 Game Duration: 113  
 Conference Game;

Score	1st	2nd	TOT
Elo	41	48	<b>89</b>
NCW	28	54	<b>82</b>

Points from (This Period)	Elo	NCW
In the Paint	14	14
Off Turns	10	2
2nd Chance	5	12
Fast Break	0	1
Bench	5	7

**Official Play-By-Play**  
**Elon vs UNCW**  
**First Half**  
**January 26, 2019 at Trask Coliseum - Wilmington, N.C.**



**Period 1**

**Starters:**

**Elon:** 0 WOOTEN, KRIS; 12 PRIDDY, NATHAN; 22 SANTA ANA, STEVEN; 41 SEIBRING, TYLER; 1 HANNAH, CHUCK;  
**UNCW:** 0 GADSDEN, TY; 10 TOEWS, KAI; 12 ESTIME', JAY; 15 CACOK, DEVONTAE; 2 CYLLA, JEANTAL;

Time	VISITORS: Elon	Score	Margin	HOME: UNCW
19:47				TURNOVER (LOSTBALL) by CACOK, DEVONTAE
19:29	MISSED 3PTR by HANNAH, CHUCK			
19:25	REBOUND (OFF) by PRIDDY, NATHAN			
19:23	GOOD! 3PTR by SANTA ANA, STEVEN	0-3	V 3	
19:23	ASSIST by PRIDDY, NATHAN			
19:08				MISSED 3PTR by CYLLA, JEANTAL
19:05	REBOUND (DEF) by SANTA ANA, STEVEN			
18:52				FOUL (PERSONAL) by CACOK, DEVONTAE
18:43	MISSED 3PTR by SANTA ANA, STEVEN			
18:40				REBOUND (DEF) by CACOK, DEVONTAE
18:31				MISSED JUMPER by CYLLA, JEANTAL
18:28	REBOUND (DEF) by SANTA ANA, STEVEN			
18:17	MISSED 3PTR by PRIDDY, NATHAN			
18:13				REBOUND (DEF) by CACOK, DEVONTAE
18:11				TURNOVER (BADPASS) by TOEWS, KAI
17:58	GOOD! 3PTR by SANTA ANA, STEVEN	0-6	V 6	
17:58	ASSIST by PRIDDY, NATHAN			
17:44				MISSED JUMPER by GADSDEN, TY
17:40				REBOUND (OFF) by CYLLA, JEANTAL
17:39		2-6	V 4	GOOD! JUMPER by CYLLA, JEANTAL
17:19	MISSED 3PTR by PRIDDY, NATHAN			
17:15	REBOUND (OFF) by SANTA ANA, STEVEN			
17:12	MISSED 3PTR by WOOTEN, KRIS			
17:12				REBOUND (DEF) by CACOK, DEVONTAE
17:12	FOUL (PERSONAL) by HANNAH, CHUCK			
16:56		4-6	V 2	GOOD! LAYUP by CACOK, DEVONTAE
16:56				ASSIST by TOEWS, KAI
16:56	FOUL (PERSONAL) by HANNAH, CHUCK			
16:56	SUB OUT: HANNAH, CHUCK			
16:56	SUB IN: POSER, FEDERICO			
16:55				MISSED FT by CACOK, DEVONTAE
16:52	REBOUND (DEF) by SANTA ANA, STEVEN			
16:39	MISSED 3PTR by SANTA ANA, STEVEN			
16:35				REBOUND (DEF) by TOEWS, KAI
16:28				MISSED 3PTR by CYLLA, JEANTAL
16:25				REBOUND (OFF) by GADSDEN, TY
16:22		7-6	H 1	GOOD! 3PTR by ESTIME', JAY
16:22				ASSIST by GADSDEN, TY
16:11	GOOD! 3PTR by WOOTEN, KRIS	7-9	V 2	
16:11	ASSIST by PRIDDY, NATHAN			
15:40		9-9	T	GOOD! LAYUP by CACOK, DEVONTAE
15:40				ASSIST by TOEWS, KAI
15:29				FOUL (PERSONAL) by GADSDEN, TY
15:29				SUB OUT: ESTIME', JAY
15:29				SUB IN: SIMS, JAYLEN
15:29				SUB OUT: TOEWS, KAI
15:29				SUB IN: TAYLOR, TY
15:29				SUB OUT: CYLLA, JEANTAL
15:29				SUB IN: O'CONNELL, SHAWN
15:19	GOOD! JUMPER by SANTA ANA, STEVEN [PNT]	9-11	V 2	
15:11				TURNOVER (BADPASS) by GADSDEN, TY
15:11	STEAL by SEIBRING, TYLER			
15:11				FOUL (PERSONAL) by SIMS, JAYLEN
14:56	GOOD! LAYUP by SANTA ANA, STEVEN	9-13	V 4	
14:34		12-13	V 1	GOOD! 3PTR by GADSDEN, TY
14:21	GOOD! 3PTR by SEIBRING, TYLER	12-16	V 4	
14:21	ASSIST by PRIDDY, NATHAN			
14:04				MISSED 3PTR by SIMS, JAYLEN
14:00	REBOUND (DEF) by WOOTEN, KRIS			
13:49	GOOD! JUMPER by SEIBRING, TYLER	12-18	V 6	
13:34				MISSED JUMPER by TAYLOR, TY
13:31	REBOUND (DEF) by SANTA ANA, STEVEN			
13:23	GOOD! JUMPER by WOOTEN, KRIS [PNT]	12-20	V 8	
13:22				TIMEOUT 30SEC
13:22				SUB OUT: CACOK, DEVONTAE
13:22				SUB IN: FORNES, JAYLEN
13:22				SUB OUT: GADSDEN, TY
13:22				SUB IN: CYLLA, JEANTAL
13:22				SUB OUT: O'CONNELL, SHAWN

Time	VISITORS: Elon	Score	Margin	HOME: UNCW
13:22				SUB IN: TOEWS, KAI
13:22	SUB OUT: POSER, FEDERICO			
13:22	SUB IN: EBERHARDT, SHELDON			
13:17	SUB OUT: PRIDDY, NATHAN			
13:17	SUB IN: POSER, FEDERICO			
13:15				MISSED 3PTR by TAYLOR, TY
13:11	REBOUND (DEF) by SEIBRING, TYLER			
12:55	GOOD! JUMPER by POSER, FEDERICO	12-22	V 10	
12:55	ASSIST by EBERHARDT, SHELDON			
12:39				MISSED JUMPER by SIMS, JAYLEN
12:36				REBOUND (OFF) by CYLLA, JEANTAL
12:35				MISSED 3PTR by CYLLA, JEANTAL
12:31	REBOUND (DEF) by WOOTEN, KRIS			
12:20	MISSED JUMPER by EBERHARDT, SHELDON			
12:17				REBOUND (DEF) by SIMS, JAYLEN
12:14	FOUL (PERSONAL) by EBERHARDT, SHELDON			
12:14				SUB OUT: SIMS, JAYLEN
12:14				SUB IN: ESTIME', JAY
12:14				SUB OUT: CYLLA, JEANTAL
12:14				SUB IN: CACOK, DEVONTAE
12:14	SUB OUT: SANTA ANA, STEVEN			
12:14	SUB IN: PACK, ANDY			
12:14	SUB OUT: WOOTEN, KRIS			
12:14	SUB IN: PRIDDY, NATHAN			
12:14	SUB OUT: SEIBRING, TYLER			
12:14	SUB IN: WRIGHT, SIMON			
12:01	FOUL (PERSONAL) by EBERHARDT, SHELDON			
12:01	SUB OUT: EBERHARDT, SHELDON			
12:01	SUB IN: WOOTEN, KRIS			
12:01				MISSED JUMPER by CACOK, DEVONTAE
12:01	REBOUND (DEF) by WRIGHT, SIMON			
12:01	GOOD! 3PTR by PRIDDY, NATHAN	12-25	V 13	
12:01	ASSIST by WOOTEN, KRIS			
11:54		14-25	V 11	GOOD! LAYUP by TAYLOR, TY
11:29	MISSED 3PTR by WOOTEN, KRIS			
11:25				REBOUND (DEF) by CACOK, DEVONTAE
11:15				TURNOVER (DRIBBLING) by ESTIME', JAY
11:15				
11:15				SUB OUT: TAYLOR, TY
11:15				SUB IN: GADSDEN, TY
10:58	FOUL (OFF) by POSER, FEDERICO			
10:58	TURNOVER (OFFENSIVE) by POSER, FEDERICO			
10:48				TURNOVER (TRAVEL) by GADSDEN, TY
10:48	SUB OUT: POSER, FEDERICO			
10:48	SUB IN: SEIBRING, TYLER			
10:48	SUB OUT: WOOTEN, KRIS			
10:48	SUB IN: SANTA ANA, STEVEN			
10:30	GOOD! JUMPER by SEIBRING, TYLER [PNT]	14-27	V 13	
10:15				MISSED 3PTR by ESTIME', JAY
10:12				REBOUND (OFF) by CACOK, DEVONTAE
10:09				MISSED 3PTR by ESTIME', JAY
10:09	REBOUND (DEF) by TEAM			
10:09				SUB OUT: FORNES, JAYLEN
10:09				SUB IN: CYLLA, JEANTAL
09:55	MISSED 3PTR by SANTA ANA, STEVEN			
09:52				REBOUND (DEF) by TOEWS, KAI
09:50	FOUL (PERSONAL) by WRIGHT, SIMON			
09:50				MISSED FT by ESTIME', JAY
09:50				REBOUND (OFF) by TEAM
09:50		15-27	V 12	GOOD! FT by ESTIME', JAY [FB]
09:29	GOOD! LAYUP by SANTA ANA, STEVEN	15-29	V 14	
09:15				MISSED 3PTR by GADSDEN, TY
09:11				REBOUND (OFF) by CACOK, DEVONTAE
09:10		17-29	V 12	GOOD! LAYUP by CACOK, DEVONTAE
08:58	SUB OUT: WRIGHT, SIMON			
08:58	SUB IN: POSER, FEDERICO			
08:46	TURNOVER (BADPASS) by SEIBRING, TYLER			
08:46				STEAL by CACOK, DEVONTAE
08:37				MISSED LAYUP by CYLLA, JEANTAL
08:37				REBOUND (OFF) by TEAM
08:37				SUB OUT: CACOK, DEVONTAE
08:37				SUB IN: O'CONNELL, SHAWN
08:21				MISSED 3PTR by ESTIME', JAY
08:17	REBOUND (DEF) by SEIBRING, TYLER			
08:06	TURNOVER (TRAVEL) by POSER, FEDERICO			
08:06				SUB OUT: ESTIME', JAY
08:06				SUB IN: SIMS, JAYLEN
08:06	SUB OUT: POSER, FEDERICO			
08:06	SUB IN: WRIGHT, SIMON			
07:54		19-29	V 10	GOOD! LAYUP by O'CONNELL, SHAWN

Time	VISITORS: Elon	Score	Margin	HOME: UNCW
07:54				ASSIST by TOEWS, KAI
07:26	GOOD! 3PTR by PRIDDY, NATHAN	19-32	V 13	
07:11				MISSED 3PTR by SIMS, JAYLEN
07:08	REBOUND (DEF) by PACK, ANDY			
07:08				FOUL (PERSONAL) by CYLLA, JEANTAL
07:08				
07:08				SUB OUT: O'CONNELL, SHAWN
07:08				SUB IN: CACOK, DEVONTAE
07:08				SUB OUT: TOEWS, KAI
07:08				SUB IN: TAYLOR, TY
06:44	GOOD! JUMPER by SEIBRING, TYLER	19-34	V 15	
06:15				MISSED 3PTR by TAYLOR, TY
06:11	REBOUND (DEF) by PACK, ANDY			
06:04	MISSED 3PTR by SEIBRING, TYLER			
06:01	REBOUND (OFF) by PRIDDY, NATHAN			
05:54	GOOD! LAYUP by PACK, ANDY	19-36	V 17	
05:54				FOUL (PERSONAL) by SIMS, JAYLEN
05:54				SUB OUT: GADSDEN, TY
05:54				SUB IN: TOEWS, KAI
05:54				SUB OUT: SIMS, JAYLEN
05:54				SUB IN: ESTIME', JAY
05:54	GOOD! FT by PACK, ANDY	19-37	V 18	
05:54	SUB OUT: PACK, ANDY			
05:54	SUB IN: WOOTEN, KRIS			
05:42	FOUL (PERSONAL) by WRIGHT, SIMON			
05:42				MISSED FT by CYLLA, JEANTAL
05:42				REBOUND (OFF) by TEAM
05:42	SUB OUT: WRIGHT, SIMON			
05:42	SUB IN: POSER, FEDERICO			
05:42		20-37	V 17	GOOD! FT by CYLLA, JEANTAL
05:33	MISSED 3PTR by SANTA ANA, STEVEN			
05:29				REBOUND (DEF) by CYLLA, JEANTAL
05:22				MISSED 3PTR by CYLLA, JEANTAL
05:18	REBOUND (DEF) by WOOTEN, KRIS			
05:12	MISSED 3PTR by SEIBRING, TYLER			
05:07				REBOUND (DEF) by CACOK, DEVONTAE
05:00				MISSED JUMPER by TOEWS, KAI
04:57				REBOUND (OFF) by CACOK, DEVONTAE
04:56		22-37	V 15	GOOD! LAYUP by CACOK, DEVONTAE
04:37	GOOD! JUMPER by PRIDDY, NATHAN	22-39	V 17	
04:20				TURNOVER (BADPASS) by TOEWS, KAI
04:20	SUB OUT: SEIBRING, TYLER			
04:20	SUB IN: WRIGHT, SIMON			
04:20	TIMEOUT 30SEC			
04:20				
04:07	MISSED LAYUP by PRIDDY, NATHAN			
04:03				REBOUND (DEF) by ESTIME', JAY
03:57				TURNOVER (BADPASS) by TAYLOR, TY
03:57	STEAL by WRIGHT, SIMON			
03:48				SUB OUT: CYLLA, JEANTAL
03:48				SUB IN: GADSDEN, TY
03:48				SUB OUT: ESTIME', JAY
03:48				SUB IN: O'CONNELL, SHAWN
03:48	SUB OUT: WRIGHT, SIMON			
03:48	SUB IN: SEIBRING, TYLER			
03:40	MISSED 3PTR by WOOTEN, KRIS			
03:36				REBOUND (DEF) by TOEWS, KAI
03:26				MISSED 3PTR by TAYLOR, TY
03:23	REBOUND (DEF) by SEIBRING, TYLER			
03:18	TURNOVER (LOSTBALL) by PRIDDY, NATHAN			
03:18				STEAL by TAYLOR, TY
03:13				MISSED 3PTR by GADSDEN, TY
03:09	REBOUND (DEF) by SEIBRING, TYLER			
02:52	GOOD! JUMPER by SEIBRING, TYLER	22-41	V 19	
02:52				SUB OUT: TAYLOR, TY
02:52				SUB IN: SIMS, JAYLEN
02:52	SUB OUT: SANTA ANA, STEVEN			
02:52	SUB IN: PACK, ANDY			
02:52	SUB OUT: PRIDDY, NATHAN			
02:52	SUB IN: FULLER, SETH			
02:28				MISSED 3PTR by TOEWS, KAI
02:26				REBOUND (OFF) by CACOK, DEVONTAE
02:04				TURNOVER (TRAVEL) by CACOK, DEVONTAE
01:45	MISSED JUMPER by SEIBRING, TYLER			
01:41				REBOUND (DEF) by TOEWS, KAI
01:36				MISSED JUMPER by TOEWS, KAI
01:33				REBOUND (OFF) by GADSDEN, TY
01:23		25-41	V 16	GOOD! 3PTR by TOEWS, KAI
01:23				ASSIST by CACOK, DEVONTAE
01:08	MISSED 3PTR by FULLER, SETH			

Time	VISITORS: Elon	Score	Margin	HOME: UNCW
01:05	REBOUND (OFF) by POSER, FEDERICO			
01:03	MISSED LAYUP by POSER, FEDERICO			
00:58				REBOUND (DEF) by O'CONNELL, SHAWN
00:51				MISSED 3PTR by SIMS, JAYLEN
00:46	REBOUND (DEF) by PACK, ANDY			
00:28	MISSED JUMPER by FULLER, SETH			
00:24				REBOUND (DEF) by O'CONNELL, SHAWN
00:01		28-41	V 13	GOOD! 3PTR by SIMS, JAYLEN
00:01				ASSIST by TOEWS, KAI

**Elon 41, UNCW 28**

Points from (This Period)	Elo	NCW
In the Paint	14	14
Off Turns	10	2
2nd Chance	5	12
Fast Break	0	1
Bench	5	7

**Official Box Score**  
**Elon vs UNCW**  
**Second Half Statistics Only**  
**January 26, 2019 at Trask Coliseum - Wilmington, N.C.**



**Elon 48**

No.	Player	S	Pts	FG	3FG	FT	OR	DR	TR	PF	A	TO	Blk	Stl	Min	+/-
00	WOOTEN, KRIS		8	3-4	2-3	0-0	0	0	0	1	2	0	0	0	17	-10
01	HANNAH, CHUCK		0	0-1	0-1	0-0	1	1	2	1	0	0	0	0	12	-10
12	PRIDDY, NATHAN		5	1-5	1-5	2-2	1	3	4	3	3	0	0	0	18	-3
22	SANTA ANA, STEVEN		12	3-8	0-2	6-9	0	3	3	2	1	1	0	0	18	-2
41	SEIBRING, TYLER		21	7-8	4-4	3-3	1	2	3	1	1	0	0	0	19	-9
03	FULLER, SETH		0	0-0	0-0	0-0	0	0	0	0	0	0	0	0	0	0
05	POSER, FEDERICO		2	0-0	0-0	2-2	1	3	4	3	1	3	0	0	10	7
20	EBERHARDT, SHELDON		0	0-2	0-2	0-0	0	0	0	0	0	3	0	0	6	0
21	PACK, ANDY		0	0-0	0-0	0-0	0	0	0	0	0	0	0	0	1	-3
33	WRIGHT, SIMON		0	0-0	0-0	0-0	0	0	0	0	0	0	0	0	0	0
	TEAM						0	0	0	0		0				
<b>TOTALS</b>			<b>48</b>	<b>14-28</b>	<b>7-17</b>	<b>13-16</b>	<b>4</b>	<b>12</b>	<b>16</b>	<b>11</b>	<b>8</b>	<b>7</b>	<b>0</b>	<b>0</b>	<b>100</b>	

*Shooting By Period*

Period	FG	FG%	3FG	3FG%	FT	FT%
2nd Half	14-28	50%	7-17	41%	13-16	81%
Game	31-63	49.2%	13-36	36.1%	14-17	82.4%

Last FG Half: Elo -

**UNCW 54**

No.	Player	S	Pts	FG	3FG	FT	OR	DR	TR	PF	A	TO	Blk	Stl	Min	+/-
00	GADSDEN, TY		19	5-9	4-8	5-5	0	0	0	3	0	0	0	0	17	10
02	CYLLA, JEANTAL		6	3-7	0-3	0-0	1	0	1	4	1	1	0	0	16	7
10	TOEWS, KAI		10	3-6	0-2	4-4	0	3	3	0	8	0	0	0	19	6
12	ESTIME, JAY		6	2-6	2-5	0-0	0	1	1	1	1	0	0	0	18	7
15	CACOK, DEVONTAE		12	4-4	0-0	4-5	3	7	10	2	1	1	0	3	19	4
01	FORNES, JAYLEN		0	0-0	0-0	0-0	0	0	0	0	0	0	0	0	0	0
04	O'CONNELL, SHAWN		0	0-0	0-0	0-0	0	0	0	0	0	0	0	0	5	2
21	TAYLOR, TY		1	0-0	0-0	1-4	0	0	0	1	0	0	0	1	3	-2
30	SIMS, JAYLEN		0	0-1	0-1	0-0	0	1	1	1	0	0	0	0	3	-4
	TEAM						1	0	1	0		0				
<b>TOTALS</b>			<b>54</b>	<b>17-33</b>	<b>6-19</b>	<b>14-18</b>	<b>5</b>	<b>12</b>	<b>17</b>	<b>12</b>	<b>11</b>	<b>2</b>	<b>0</b>	<b>4</b>	<b>100</b>	

*Shooting By Period*

Period	FG	FG%	3FG	3FG%	FT	FT%
2nd Half	17-33	52%	6-19	32%	14-18	78%
Game	28-68	41.2%	10-39	25.6%	16-23	69.6%

Last FG Half: NCW -

Game Notes:

Officials: Keith Fogelman, Anthony Franklin, Ty Meixsell  
 Attendance: 4196

Start Time: 2019-01-26 21:07:35  
 End Time: 2019-01-26 23:01:11  
 Game Duration: 113  
 Conference Game;

Score	1st	2nd	TOT
Elo	41	48	<b>89</b>
NCW	28	54	<b>82</b>

Points from (This Period)	Elo	NCW
In the Paint	8	20
Off Turns	2	7
2nd Chance	6	5
Fast Break	8	18
Bench	2	1



**Official Play-By-Play**  
**Elon vs UNCW**  
**Second Half**  
**January 26, 2019 at Trask Coliseum - Wilmington, N.C.**



**Period 2**

**Starters:**

**Elon:** 0 WOOTEN, KRIS; 12 PRIDDY, NATHAN; 22 SANTA ANA, STEVEN; 41 SEIBRING, TYLER; 1 HANNAH, CHUCK;  
**UNCW:** 0 GADSDEN, TY; 10 TOEWS, KAI; 12 ESTIME', JAY; 15 CACOK, DEVONTAE; 2 CYLLA, JEANTAL;

Time	VISITORS: Elon	Score	Margin	HOME: UNCW
19:44		30-41	V 11	GOOD! LAYUP by CYLLA, JEANTAL
19:44				ASSIST by CACOK, DEVONTAE
19:33	GOOD! 3PTR by WOOTEN, KRIS	30-44	V 14	
19:33	ASSIST by PRIDDY, NATHAN			
19:12		33-44	V 11	GOOD! 3PTR by ESTIME', JAY
19:12				ASSIST by TOEWS, KAI
18:46	MISSED 3PTR by HANNAH, CHUCK			
18:40				REBOUND (DEF) by TOEWS, KAI
18:33				MISSED 3PTR by CYLLA, JEANTAL
18:29	REBOUND (DEF) by PRIDDY, NATHAN			
18:19	GOOD! 3PTR by SEIBRING, TYLER	33-47	V 14	
18:19	ASSIST by WOOTEN, KRIS			
17:54		35-47	V 12	GOOD! LAYUP by CYLLA, JEANTAL
17:32	MISSED JUMPER by SANTA ANA, STEVEN			
17:28				REBOUND (DEF) by CACOK, DEVONTAE
17:19				MISSED 3PTR by GADSDEN, TY
17:16				REBOUND (OFF) by CYLLA, JEANTAL
17:15				MISSED JUMPER by CYLLA, JEANTAL
17:11	REBOUND (DEF) by HANNAH, CHUCK			
17:00	MISSED JUMPER by SANTA ANA, STEVEN			
16:57				REBOUND (DEF) by ESTIME', JAY
16:52		38-47	V 9	GOOD! 3PTR by ESTIME', JAY [FB]
16:52				ASSIST by TOEWS, KAI
16:35	GOOD! 3PTR by SEIBRING, TYLER	38-50	V 12	
16:35	ASSIST by WOOTEN, KRIS			
16:18		40-50	V 10	GOOD! DUNK by CACOK, DEVONTAE
16:18				ASSIST by CYLLA, JEANTAL
15:54	GOOD! 3PTR by WOOTEN, KRIS	40-53	V 13	
15:54	ASSIST by PRIDDY, NATHAN			
15:36		42-53	V 11	GOOD! LAYUP by CACOK, DEVONTAE
15:36				ASSIST by TOEWS, KAI
15:36	FOUL (PERSONAL) by WOOTEN, KRIS			
15:36	SUB OUT: HANNAH, CHUCK			
15:36	SUB IN: POSER, FEDERICO			
15:36		43-53	V 10	GOOD! FT by CACOK, DEVONTAE
15:22	GOOD! 3PTR by SEIBRING, TYLER	43-56	V 13	
15:22	ASSIST by PRIDDY, NATHAN			
15:08				FOUL (OFF) by CYLLA, JEANTAL
15:08				TURNOVER (OFFENSIVE) by CYLLA, JEANTAL
15:08	SUB OUT: PRIDDY, NATHAN			
15:08	SUB IN: EBERHARDT, SHELDON			
14:50	TURNOVER (BADPASS) by SANTA ANA, STEVEN			
14:50				STEAL by CACOK, DEVONTAE
14:41				MISSED 3PTR by CYLLA, JEANTAL
14:37	REBOUND (DEF) by SEIBRING, TYLER			
14:31	MISSED 3PTR by SANTA ANA, STEVEN			
14:27	REBOUND (OFF) by POSER, FEDERICO			
14:26	GOOD! LAYUP by WOOTEN, KRIS	43-58	V 15	
14:26	ASSIST by POSER, FEDERICO			
14:19		46-58	V 12	GOOD! 3PTR by GADSDEN, TY [FB]
14:19				ASSIST by TOEWS, KAI
13:54	MISSED 3PTR by WOOTEN, KRIS			
13:50				REBOUND (DEF) by CACOK, DEVONTAE
13:39	FOUL (PERSONAL) by POSER, FEDERICO			
13:39		47-58	V 11	GOOD! FT by GADSDEN, TY
13:39				SUB OUT: CYLLA, JEANTAL
13:39				SUB IN: O'CONNELL, SHAWN
13:39				SUB OUT: ESTIME', JAY
13:39				SUB IN: SIMS, JAYLEN
13:39	SUB OUT: SANTA ANA, STEVEN			
13:39	SUB IN: PRIDDY, NATHAN			
13:39		48-58	V 10	GOOD! FT by GADSDEN, TY
13:39				SUB OUT: GADSDEN, TY
13:39				SUB IN: TAYLOR, TY
13:15	TURNOVER (LOSTBALL) by EBERHARDT, SHELDON			
13:15				STEAL by CACOK, DEVONTAE
13:09		50-58	V 8	GOOD! LAYUP by TOEWS, KAI [FB]
12:53	MISSED 3PTR by EBERHARDT, SHELDON			
12:49	REBOUND (OFF) by PRIDDY, NATHAN			

Time	VISITORS: Elon	Score	Margin	HOME: UNCW
12:46	GOOD! JUMPER by SEIBRING, TYLER	50-60	V 10	
12:45	TIMEOUT 30SEC			
12:45				
12:30	FOUL (PERSONAL) by SEIBRING, TYLER			
12:30				MISSED FT by TAYLOR, TY
12:30				REBOUND (OFF) by TEAM
12:30	SUB OUT: WOOTEN, KRIS			
12:30	SUB IN: SANTA ANA, STEVEN			
12:30		51-60	V 9	GOOD! FT by TAYLOR, TY
12:15	GOOD! LAYUP by SANTA ANA, STEVEN	51-62	V 11	
12:15				FOUL (PERSONAL) by TAYLOR, TY
12:15	SUB OUT: SEIBRING, TYLER			
12:15	SUB IN: HANNAH, CHUCK			
12:15	GOOD! FT by SANTA ANA, STEVEN	51-63	V 12	
12:00				MISSED 3PTR by SIMS, JAYLEN
11:56	REBOUND (DEF) by PRIDDY, NATHAN			
11:42	TURNOVER (TRAVEL) by POSER, FEDERICO			
11:42				
11:42				SUB OUT: O'CONNELL, SHAWN
11:42				SUB IN: CYLLA, JEANTAL
11:42				SUB OUT: TAYLOR, TY
11:42				SUB IN: ESTIME', JAY
11:27				MISSED JUMPER by ESTIME', JAY
11:23	REBOUND (DEF) by PRIDDY, NATHAN			
11:19	GOOD! LAYUP by SANTA ANA, STEVEN [FB/PNT]	51-65	V 14	
11:01	FOUL (PERSONAL) by POSER, FEDERICO			
11:01				SUB OUT: SIMS, JAYLEN
11:01				SUB IN: GADSDEN, TY
11:01	SUB OUT: POSER, FEDERICO			
11:01	SUB IN: SEIBRING, TYLER			
10:57				MISSED 3PTR by GADSDEN, TY
10:53	REBOUND (DEF) by SEIBRING, TYLER			
10:36	GOOD! 3PTR by PRIDDY, NATHAN	51-68	V 17	
10:36	ASSIST by SEIBRING, TYLER			
10:19		53-68	V 15	GOOD! JUMPER by CYLLA, JEANTAL
10:19				ASSIST by TOEWS, KAI
10:00	TURNOVER (TRAVEL) by EBERHARDT, SHELDON			
10:00				SUB OUT: CACOK, DEVONTAE
10:00				SUB IN: O'CONNELL, SHAWN
09:46				MISSED LAYUP by TOEWS, KAI
09:43	REBOUND (DEF) by SANTA ANA, STEVEN			
09:16	MISSED 3PTR by EBERHARDT, SHELDON			
09:16				REBOUND (DEF) by TOEWS, KAI
09:14	FOUL (PERSONAL) by PRIDDY, NATHAN			
09:14		54-68	V 14	GOOD! FT by TOEWS, KAI
09:14	SUB OUT: PRIDDY, NATHAN			
09:14	SUB IN: WOOTEN, KRIS			
09:14		55-68	V 13	GOOD! FT by TOEWS, KAI
09:14				SUB OUT: TOEWS, KAI
09:14				SUB IN: TAYLOR, TY
08:42	TURNOVER (BADPASS) by EBERHARDT, SHELDON			
08:42				STEAL by TAYLOR, TY
08:39	FOUL (PERSONAL) by SANTA ANA, STEVEN			
08:39				MISSED FT by TAYLOR, TY
08:39				REBOUND (OFF) by TEAM
08:39				SUB OUT: CYLLA, JEANTAL
08:39				SUB IN: CACOK, DEVONTAE
08:39	SUB OUT: SANTA ANA, STEVEN			
08:39	SUB IN: PRIDDY, NATHAN			
08:39	SUB OUT: EBERHARDT, SHELDON			
08:39	SUB IN: PACK, ANDY			
08:39	SUB OUT: HANNAH, CHUCK			
08:39	SUB IN: POSER, FEDERICO			
08:39				MISSED FT by TAYLOR, TY
08:39				REBOUND (OFF) by CACOK, DEVONTAE
08:33				SUB OUT: TAYLOR, TY
08:33				SUB IN: TOEWS, KAI
08:24		57-68	V 11	GOOD! LAYUP by TOEWS, KAI [PNT]
08:03	MISSED 3PTR by PRIDDY, NATHAN			
08:01	REBOUND (OFF) by SEIBRING, TYLER			
08:01				FOUL (PERSONAL) by CACOK, DEVONTAE
08:01				
08:01	GOOD! FT by SEIBRING, TYLER	57-69	V 12	
08:01	GOOD! FT by SEIBRING, TYLER	57-70	V 13	
08:01	SUB OUT: POSER, FEDERICO			
08:01	SUB IN: HANNAH, CHUCK			
07:46		60-70	V 10	GOOD! 3PTR by GADSDEN, TY
07:46				ASSIST by TOEWS, KAI
07:25	SUB OUT: PACK, ANDY			
07:25	SUB IN: SANTA ANA, STEVEN			

Time	VISITORS: Elon	Score	Margin	HOME: UNCW
07:14	GOOD! JUMPER by SANTA ANA, STEVEN [PNT]	60-72	V 12	
06:59				FOUL (OFF) by CACOK, DEVONTAE
06:59				TURNOVER (OFFENSIVE) by CACOK, DEVONTAE
06:59				SUB OUT: O'CONNELL, SHAWN
06:59				SUB IN: CYLLA, JEANTAL
06:43	GOOD! JUMPER by SEIBRING, TYLER	60-74	V 14	
06:27		62-74	V 12	GOOD! LAYUP by GADSDEN, TY
06:14	MISSED 3PTR by PRIDDY, NATHAN			
06:10	REBOUND (OFF) by HANNAH, CHUCK			
05:55	MISSED 3PTR by PRIDDY, NATHAN			
05:51				REBOUND (DEF) by CACOK, DEVONTAE
05:47	FOUL (PERSONAL) by PRIDDY, NATHAN			
05:47	SUB OUT: HANNAH, CHUCK			
05:47	SUB IN: POSER, FEDERICO			
05:47		63-74	V 11	GOOD! FT by CACOK, DEVONTAE [FB]
05:47		64-74	V 10	GOOD! FT by CACOK, DEVONTAE [FB]
05:25	MISSED 3PTR by PRIDDY, NATHAN			
05:19				REBOUND (DEF) by CACOK, DEVONTAE
05:08		66-74	V 8	GOOD! JUMPER by CACOK, DEVONTAE [PNT]
05:08				ASSIST by ESTIME', JAY
04:48	MISSED 3PTR by SANTA ANA, STEVEN			
04:44				REBOUND (DEF) by CACOK, DEVONTAE
04:32				MISSED 3PTR by GADSDEN, TY
04:29	REBOUND (DEF) by POSER, FEDERICO			
04:09	GOOD! 3PTR by SEIBRING, TYLER	66-77	V 11	
04:09	ASSIST by SANTA ANA, STEVEN			
04:09				FOUL (PERSONAL) by CYLLA, JEANTAL
04:09	SUB OUT: POSER, FEDERICO			
04:09	SUB IN: HANNAH, CHUCK			
04:09	GOOD! FT by SEIBRING, TYLER	66-78	V 12	
03:59	FOUL (PERSONAL) by HANNAH, CHUCK			
03:59				
03:59	SUB OUT: HANNAH, CHUCK			
03:59	SUB IN: POSER, FEDERICO			
03:59		67-78	V 11	GOOD! FT by TOEWS, KAI
03:59		68-78	V 10	GOOD! FT by TOEWS, KAI
03:45	TURNOVER (LOSTBALL) by POSER, FEDERICO			
03:45				STEAL by CACOK, DEVONTAE
03:23				MISSED 3PTR by ESTIME', JAY
03:19	REBOUND (DEF) by POSER, FEDERICO			
02:54	MISSED JUMPER by SEIBRING, TYLER			
02:50				REBOUND (DEF) by CACOK, DEVONTAE
02:38				MISSED 3PTR by TOEWS, KAI
02:34	REBOUND (DEF) by SANTA ANA, STEVEN			
02:24	FOUL (OFF) by POSER, FEDERICO			
02:24	TURNOVER (OFFENSIVE) by POSER, FEDERICO			
02:24	SUB OUT: POSER, FEDERICO			
02:24	SUB IN: HANNAH, CHUCK			
02:12		71-78	V 7	GOOD! 3PTR by GADSDEN, TY
02:12				ASSIST by TOEWS, KAI
01:40	MISSED LAYUP by SANTA ANA, STEVEN			
01:36				REBOUND (DEF) by TOEWS, KAI
01:33		74-78	V 4	GOOD! 3PTR by GADSDEN, TY [FB]
01:33				ASSIST by TOEWS, KAI
01:32	TIMEOUT 30SEC			
01:32	SUB OUT: HANNAH, CHUCK			
01:32	SUB IN: POSER, FEDERICO			
01:09	GOOD! JUMPER by SEIBRING, TYLER	74-80	V 6	
01:02				MISSED 3PTR by GADSDEN, TY
00:59				REBOUND (OFF) by CACOK, DEVONTAE
00:59	FOUL (PERSONAL) by PRIDDY, NATHAN			
00:59				MISSED FT by CACOK, DEVONTAE
00:59				REBOUND (OFF) by TEAM
00:59		75-80	V 5	GOOD! FT by CACOK, DEVONTAE
00:55				FOUL (PERSONAL) by CYLLA, JEANTAL
00:52				FOUL (PERSONAL) by ESTIME', JAY
00:52	GOOD! FT by PRIDDY, NATHAN [FB]	75-81	V 6	
00:52	GOOD! FT by PRIDDY, NATHAN [FB]	75-82	V 7	
00:41				MISSED 3PTR by CYLLA, JEANTAL
00:38				REBOUND (OFF) by TEAM
00:36				MISSED 3PTR by ESTIME', JAY
00:36	REBOUND (DEF) by POSER, FEDERICO			
00:36				FOUL (PERSONAL) by GADSDEN, TY
00:36	GOOD! FT by POSER, FEDERICO	75-83	V 8	
00:36	GOOD! FT by POSER, FEDERICO	75-84	V 9	
00:29		77-84	V 7	GOOD! LAYUP by TOEWS, KAI [FB]
00:29				TIMEOUT 30SEC
00:28				FOUL (PERSONAL) by GADSDEN, TY
00:28	GOOD! FT by SANTA ANA, STEVEN [FB]	77-85	V 8	
00:28	GOOD! FT by SANTA ANA, STEVEN [FB]	77-86	V 9	

Time	VISITORS: Elon	Score	Margin	HOME: UNCW
00:28	SUB OUT: POSER, FEDERICO			
00:28	SUB IN: HANNAH, CHUCK			
00:22	FOUL (PERSONAL) by SANTA ANA, STEVEN			
00:22		78-86	V 8	GOOD! FT by GADSDEN, TY [FB]
00:22		79-86	V 7	GOOD! FT by GADSDEN, TY [FB]
00:22	SUB OUT: HANNAH, CHUCK			
00:22	SUB IN: POSER, FEDERICO			
00:22		80-86	V 6	GOOD! FT by GADSDEN, TY [FB]
00:22				TIMEOUT 30SEC
00:20				FOUL (PERSONAL) by CYLLA, JEANTAL
00:20				SUB OUT: CYLLA, JEANTAL
00:20				SUB IN: SIMS, JAYLEN
00:20	GOOD! FT by SANTA ANA, STEVEN [FB]	80-87	V 7	
00:20	GOOD! FT by SANTA ANA, STEVEN [FB]	80-88	V 8	
00:20	SUB OUT: POSER, FEDERICO			
00:20	SUB IN: HANNAH, CHUCK			
00:12				MISSED 3PTR by ESTIME', JAY
00:10				REBOUND (OFF) by CACOK, DEVONTAE
00:10		82-88	V 6	GOOD! LAYUP by CACOK, DEVONTAE
00:10				TIMEOUT TEAM
00:10	SUB OUT: HANNAH, CHUCK			
00:10	SUB IN: POSER, FEDERICO			
00:09				FOUL (PERSONAL) by GADSDEN, TY
00:09	MISSED FT by SANTA ANA, STEVEN			
00:09	REBOUND (OFF) by TEAM			
00:09	MISSED FT by SANTA ANA, STEVEN			
00:07				REBOUND (DEF) by SIMS, JAYLEN
00:02				MISSED 3PTR by TOEWS, KAI
00:02	REBOUND (DEF) by SANTA ANA, STEVEN			
00:02				FOUL (PERSONAL) by SIMS, JAYLEN
00:02	GOOD! FT by SANTA ANA, STEVEN	82-89	V 7	
00:02	MISSED FT by SANTA ANA, STEVEN			
00:02				REBOUND (DEF) by CACOK, DEVONTAE

Elon 89, UNCW 82

Points from (This Period)	Elo	NCW
In the Paint	8	20
Off Turns	2	7
2nd Chance	6	5
Fast Break	8	18
Bench	2	1

**Official Scoring/Possession Reference Chart**  
**Elon vs UNCW**  
**Period 1**  
**January 26, 2019 at Trask Coliseum - Wilmington, N.C.**



**Period 1**

**Starters:**

**Elon:** 0 WOOTEN, KRIS; 12 PRIDY, NATHAN; 22 SANTA ANA, STEVEN; 41 SEIBRING, TYLER; 1 HANNAH, CHUCK;  
**UNCW:** 0 GADSDEN, TY; 10 TOEWS, KAI; 12 ESTIME', JAY; 15 CACOK, DEVONTAE; 2 CYLLA, JEANTAL;

Time	VISITORS: Elon	Score	Margin	HOME: UNCW
19:23	GOOD! 3PTR by SANTA ANA, STEVEN	0-3	V 3	
17:58	GOOD! 3PTR by SANTA ANA, STEVEN	0-6	V 6	
17:39		2-6	V 4	GOOD! JUMPER by CYLLA, JEANTAL
16:56		4-6	V 2	GOOD! LAYUP by CACOK, DEVONTAE
16:22		7-6	H 1	GOOD! 3PTR by ESTIME', JAY
16:11	GOOD! 3PTR by WOOTEN, KRIS	7-9	V 2	
15:40		9-9	T	GOOD! LAYUP by CACOK, DEVONTAE
15:19	GOOD! JUMPER by SANTA ANA, STEVEN [PNT]	9-11	V 2	
14:56	GOOD! LAYUP by SANTA ANA, STEVEN	9-13	V 4	
14:34		12-13	V 1	GOOD! 3PTR by GADSDEN, TY
14:21	GOOD! 3PTR by SEIBRING, TYLER	12-16	V 4	
13:49	GOOD! JUMPER by SEIBRING, TYLER	12-18	V 6	
13:23	GOOD! JUMPER by WOOTEN, KRIS [PNT]	12-20	V 8	
12:55	GOOD! JUMPER by POSER, FEDERICO	12-22	V 10	
12:01	GOOD! 3PTR by PRIDY, NATHAN	12-25	V 13	
11:54		14-25	V 11	GOOD! LAYUP by TAYLOR, TY
10:30	GOOD! JUMPER by SEIBRING, TYLER [PNT]	14-27	V 13	
09:50		15-27	V 12	GOOD! FT by ESTIME', JAY [FB]
09:29	GOOD! LAYUP by SANTA ANA, STEVEN	15-29	V 14	
09:10		17-29	V 12	GOOD! LAYUP by CACOK, DEVONTAE
07:54		19-29	V 10	GOOD! LAYUP by O'CONNELL, SHAWN
07:26	GOOD! 3PTR by PRIDY, NATHAN	19-32	V 13	
06:44	GOOD! JUMPER by SEIBRING, TYLER	19-34	V 15	
05:54	GOOD! LAYUP by PACK, ANDY	19-36	V 17	
05:54	GOOD! FT by PACK, ANDY	19-37	V 18	
05:42		20-37	V 17	GOOD! FT by CYLLA, JEANTAL
04:56		22-37	V 15	GOOD! LAYUP by CACOK, DEVONTAE
04:37	GOOD! JUMPER by PRIDY, NATHAN	22-39	V 17	
02:52	GOOD! JUMPER by SEIBRING, TYLER	22-41	V 19	
01:23		25-41	V 16	GOOD! 3PTR by TOEWS, KAI
00:01		28-41	V 13	GOOD! 3PTR by SIMS, JAYLEN

**Elon 41, UNCW 28**

**Official Scoring/Possession Reference Chart**  
**Elon vs UNCW**  
**Period 2**  
**January 26, 2019 at Trask Coliseum - Wilmington, N.C.**



**Period 2**

**Starters:**

**Elon:** 0 WOOTEN, KRIS; 12 PRIDDY, NATHAN; 22 SANTA ANA, STEVEN; 41 SEIBRING, TYLER; 1 HANNAH, CHUCK;  
**UNCW:** 0 GADSDEN, TY; 10 TOEWS, KAI; 12 ESTIME', JAY; 15 CACOK, DEVONTAE; 2 CYLLA, JEANTAL;

Time	VISITORS: Elon	Score	Margin	HOME: UNCW
19:44		30-41	V 11	GOOD! LAYUP by CYLLA, JEANTAL
19:33	GOOD! 3PTR by WOOTEN, KRIS	30-44	V 14	
19:12		33-44	V 11	GOOD! 3PTR by ESTIME', JAY
18:19	GOOD! 3PTR by SEIBRING, TYLER	33-47	V 14	
17:54		35-47	V 12	GOOD! LAYUP by CYLLA, JEANTAL
16:52		38-47	V 9	GOOD! 3PTR by ESTIME', JAY [FB]
16:35	GOOD! 3PTR by SEIBRING, TYLER	38-50	V 12	
16:18		40-50	V 10	GOOD! DUNK by CACOK, DEVONTAE
15:54	GOOD! 3PTR by WOOTEN, KRIS	40-53	V 13	
15:36		42-53	V 11	GOOD! LAYUP by CACOK, DEVONTAE
15:36		43-53	V 10	GOOD! FT by CACOK, DEVONTAE
15:22	GOOD! 3PTR by SEIBRING, TYLER	43-56	V 13	
14:26	GOOD! LAYUP by WOOTEN, KRIS	43-58	V 15	
14:19		46-58	V 12	GOOD! 3PTR by GADSDEN, TY [FB]
13:39		47-58	V 11	GOOD! FT by GADSDEN, TY
13:39		48-58	V 10	GOOD! FT by GADSDEN, TY
13:09		50-58	V 8	GOOD! LAYUP by TOEWS, KAI [FB]
12:46	GOOD! JUMPER by SEIBRING, TYLER	50-60	V 10	
12:30		51-60	V 9	GOOD! FT by TAYLOR, TY
12:15	GOOD! LAYUP by SANTA ANA, STEVEN	51-62	V 11	
12:15	GOOD! FT by SANTA ANA, STEVEN	51-63	V 12	
11:19	GOOD! LAYUP by SANTA ANA, STEVEN [FB/PNT]	51-65	V 14	
10:36	GOOD! 3PTR by PRIDDY, NATHAN	51-68	V 17	
10:19		53-68	V 15	GOOD! JUMPER by CYLLA, JEANTAL
09:14		54-68	V 14	GOOD! FT by TOEWS, KAI
09:14		55-68	V 13	GOOD! FT by TOEWS, KAI
08:24		57-68	V 11	GOOD! LAYUP by TOEWS, KAI [PNT]
08:01	GOOD! FT by SEIBRING, TYLER	57-69	V 12	
08:01	GOOD! FT by SEIBRING, TYLER	57-70	V 13	
07:46		60-70	V 10	GOOD! 3PTR by GADSDEN, TY
07:14	GOOD! JUMPER by SANTA ANA, STEVEN [PNT]	60-72	V 12	
06:43	GOOD! JUMPER by SEIBRING, TYLER	60-74	V 14	
06:27		62-74	V 12	GOOD! LAYUP by GADSDEN, TY
05:47		63-74	V 11	GOOD! FT by CACOK, DEVONTAE [FB]
05:47		64-74	V 10	GOOD! FT by CACOK, DEVONTAE [FB]
05:08		66-74	V 8	GOOD! JUMPER by CACOK, DEVONTAE [PNT]
04:09	GOOD! 3PTR by SEIBRING, TYLER	66-77	V 11	
04:09	GOOD! FT by SEIBRING, TYLER	66-78	V 12	
03:59		67-78	V 11	GOOD! FT by TOEWS, KAI
03:59		68-78	V 10	GOOD! FT by TOEWS, KAI
02:12		71-78	V 7	GOOD! 3PTR by GADSDEN, TY
01:33		74-78	V 4	GOOD! 3PTR by GADSDEN, TY [FB]
01:09	GOOD! JUMPER by SEIBRING, TYLER	74-80	V 6	
00:59		75-80	V 5	GOOD! FT by CACOK, DEVONTAE
00:52	GOOD! FT by PRIDDY, NATHAN [FB]	75-81	V 6	
00:52	GOOD! FT by PRIDDY, NATHAN [FB]	75-82	V 7	
00:36	GOOD! FT by POSER, FEDERICO	75-83	V 8	
00:36	GOOD! FT by POSER, FEDERICO	75-84	V 9	
00:29		77-84	V 7	GOOD! LAYUP by TOEWS, KAI [FB]
00:28	GOOD! FT by SANTA ANA, STEVEN [FB]	77-85	V 8	
00:28	GOOD! FT by SANTA ANA, STEVEN [FB]	77-86	V 9	
00:22		78-86	V 8	GOOD! FT by GADSDEN, TY [FB]

Time	VISITORS: Elon	Score	Margin	HOME: UNCW
00:22		79-86	V 7	GOOD! FT by GADSDEN, TY [FB]
00:22		80-86	V 6	GOOD! FT by GADSDEN, TY [FB]
00:20	GOOD! FT by SANTA ANA, STEVEN [FB]	80-87	V 7	
00:20	GOOD! FT by SANTA ANA, STEVEN [FB]	80-88	V 8	
00:10		82-88	V 6	GOOD! LAYUP by CACOK, DEVONTAE
00:02	GOOD! FT by SANTA ANA, STEVEN	82-89	V 7	

**Elon 89, UNCW 82**

**Official Substitutions Log**  
**Elon vs UNCW**  
**Period 1**  
**January 26, 2019 at Trask Coliseum - Wilmington, N.C.**



VISITORS: Elon	Time	Score	HOME: UNCW
0 WOOTEN, KRIS			0 GADSDEN, TY
12 PRIDDY, NATHAN			10 TOEWS, KAI
22 SANTA ANA, STEVEN			12 ESTIME, JAY
41 SEIBRING, TYLER			15 CACOK, DEVONTAE
1 HANNAH, CHUCK			2 CYLLA, JEANTAL
SUB OUT: 1 HANNAH, CHUCK	16:56	6-4	
SUB IN: 5 POSER, FEDERICO	16:56		
	15:29	9-9	SUB OUT: ESTIME, JAY
	15:29		SUB IN: SIMS, JAYLEN
	15:29		SUB OUT: TOEWS, KAI
	15:29		SUB IN: TAYLOR, TY
	15:29		SUB OUT: CYLLA, JEANTAL
	15:29		SUB IN: O'CONNELL, SHAWN
	13:22	20-12	SUB OUT: CACOK, DEVONTAE
	13:22		SUB IN: FORNES, JAYLEN
	13:22		SUB OUT: GADSDEN, TY
	13:22		SUB IN: CYLLA, JEANTAL
	13:22		SUB OUT: O'CONNELL, SHAWN
	13:22		SUB IN: TOEWS, KAI
SUB OUT: 5 POSER, FEDERICO	13:22		
SUB IN: 20 EBERHARDT, SHELDON	13:22		
SUB OUT: 12 PRIDDY, NATHAN	13:17	20-12	
SUB IN: 5 POSER, FEDERICO	13:17		
	12:14	22-12	SUB OUT: SIMS, JAYLEN
	12:14		SUB IN: ESTIME, JAY
	12:14		SUB OUT: CYLLA, JEANTAL
	12:14		SUB IN: CACOK, DEVONTAE
SUB OUT: 22 SANTA ANA, STEVEN	12:14		
SUB IN: 21 PACK, ANDY	12:14		
SUB OUT: 0 WOOTEN, KRIS	12:14		
SUB IN: 12 PRIDDY, NATHAN	12:14		
SUB OUT: 41 SEIBRING, TYLER	12:14		
SUB IN: 33 WRIGHT, SIMON	12:14		
SUB OUT: 20 EBERHARDT, SHELDON	12:01	22-12	
SUB IN: 0 WOOTEN, KRIS	12:01		
	11:15	25-14	SUB OUT: TAYLOR, TY
	11:15		SUB IN: GADSDEN, TY
SUB OUT: 5 POSER, FEDERICO	10:48	25-14	
SUB IN: 41 SEIBRING, TYLER	10:48		
SUB OUT: 0 WOOTEN, KRIS	10:48		
SUB IN: 22 SANTA ANA, STEVEN	10:48		
	10:09	27-14	SUB OUT: FORNES, JAYLEN
	10:09		SUB IN: CYLLA, JEANTAL
SUB OUT: 33 WRIGHT, SIMON	08:58	29-17	
SUB IN: 5 POSER, FEDERICO	08:58		
	08:37	29-17	SUB OUT: CACOK, DEVONTAE
	08:37		SUB IN: O'CONNELL, SHAWN
	08:06	29-17	SUB OUT: ESTIME, JAY
	08:06		SUB IN: SIMS, JAYLEN
SUB OUT: 5 POSER, FEDERICO	08:06		
SUB IN: 33 WRIGHT, SIMON	08:06		
	07:08	32-19	SUB OUT: O'CONNELL, SHAWN
	07:08		SUB IN: CACOK, DEVONTAE
	07:08		SUB OUT: TOEWS, KAI
	07:08		SUB IN: TAYLOR, TY
	05:54	36-19	SUB OUT: GADSDEN, TY
	05:54		SUB IN: TOEWS, KAI
	05:54		SUB OUT: SIMS, JAYLEN
	05:54		SUB IN: ESTIME, JAY
SUB OUT: 21 PACK, ANDY	05:54		
SUB IN: 0 WOOTEN, KRIS	05:54		
SUB OUT: 33 WRIGHT, SIMON	05:42	37-19	
SUB IN: 5 POSER, FEDERICO	05:42		
SUB OUT: 41 SEIBRING, TYLER	04:20	39-22	
SUB IN: 33 WRIGHT, SIMON	04:20		
	03:48	39-22	SUB OUT: CYLLA, JEANTAL
	03:48		SUB IN: GADSDEN, TY
	03:48		SUB OUT: ESTIME, JAY
	03:48		SUB IN: O'CONNELL, SHAWN
SUB OUT: 33 WRIGHT, SIMON	03:48		
SUB IN: 41 SEIBRING, TYLER	03:48		
	02:52	41-22	SUB OUT: TAYLOR, TY
	02:52		SUB IN: SIMS, JAYLEN
SUB OUT: 22 SANTA ANA, STEVEN	02:52		
SUB IN: 21 PACK, ANDY	02:52		



<b>VISITORS: Elon</b>	<b>Time</b>	<b>Score</b>	<b>HOME: UNCW</b>
SUB OUT: 12 PRIDDY,NATHAN	02:52		
SUB IN: 3 FULLER,SETH	02:52		

**Elon 41, UNCW 28**

**Official Substitutions Log**  
**Elon vs UNCW**  
**Period 2**  
**January 26, 2019 at Trask Coliseum - Wilmington, N.C.**



VISITORS: Elon	Time	Score	HOME: UNCW
0 WOOTEN,KRIS			0 GADSDEN, TY
12 PRIDDY, NATHAN			10 TOEWS, KAI
22 SANTA ANA, STEVEN			12 ESTIME', JAY
41 SEIBRING, TYLER			15 CACOK, DEVONTAE
1 HANNAH, CHUCK			2 CYLLA, JEANTAL
SUB OUT: 1 HANNAH, CHUCK	15:36	53-42	
SUB IN: 5 POSER, FEDERICO	15:36		
SUB OUT: 12 PRIDDY, NATHAN	15:08	56-43	
SUB IN: 20 EBERHARDT, SHELDON	15:08		
	13:39	58-47	SUB OUT: CYLLA, JEANTAL
	13:39		SUB IN: O'CONNELL, SHAWN
	13:39		SUB OUT: ESTIME', JAY
	13:39		SUB IN: SIMS, JAYLEN
SUB OUT: 22 SANTA ANA, STEVEN	13:39		
SUB IN: 12 PRIDDY, NATHAN	13:39		
	13:39		SUB OUT: GADSDEN, TY
	13:39		SUB IN: TAYLOR, TY
SUB OUT: 0 WOOTEN, KRIS	12:30	60-50	
SUB IN: 22 SANTA ANA, STEVEN	12:30		
SUB OUT: 41 SEIBRING, TYLER	12:15	62-51	
SUB IN: 1 HANNAH, CHUCK	12:15		
	11:42	63-51	SUB OUT: O'CONNELL, SHAWN
	11:42		SUB IN: CYLLA, JEANTAL
	11:42		SUB OUT: TAYLOR, TY
	11:42		SUB IN: ESTIME', JAY
	11:01	65-51	SUB OUT: SIMS, JAYLEN
	11:01		SUB IN: GADSDEN, TY
SUB OUT: 5 POSER, FEDERICO	11:01		
SUB IN: 41 SEIBRING, TYLER	11:01		
	10:00	68-53	SUB OUT: CACOK, DEVONTAE
	10:00		SUB IN: O'CONNELL, SHAWN
SUB OUT: 12 PRIDDY, NATHAN	09:14	68-54	
SUB IN: 0 WOOTEN, KRIS	09:14		
	09:14		SUB OUT: TOEWS, KAI
	09:14		SUB IN: TAYLOR, TY
	08:39	68-55	SUB OUT: CYLLA, JEANTAL
	08:39		SUB IN: CACOK, DEVONTAE
SUB OUT: 22 SANTA ANA, STEVEN	08:39		
SUB IN: 12 PRIDDY, NATHAN	08:39		
SUB OUT: 20 EBERHARDT, SHELDON	08:39		
SUB IN: 21 PACK, ANDY	08:39		
SUB OUT: 1 HANNAH, CHUCK	08:39		
SUB IN: 5 POSER, FEDERICO	08:39		
	08:33	68-55	SUB OUT: TAYLOR, TY
	08:33		SUB IN: TOEWS, KAI
SUB OUT: 5 POSER, FEDERICO	08:01	70-57	
SUB IN: 1 HANNAH, CHUCK	08:01		
SUB OUT: 21 PACK, ANDY	07:25	70-60	
SUB IN: 22 SANTA ANA, STEVEN	07:25		
	06:59	72-60	SUB OUT: O'CONNELL, SHAWN
	06:59		SUB IN: CYLLA, JEANTAL
SUB OUT: 1 HANNAH, CHUCK	05:47	74-62	
SUB IN: 5 POSER, FEDERICO	05:47		
SUB OUT: 5 POSER, FEDERICO	04:09	77-66	
SUB IN: 1 HANNAH, CHUCK	04:09		
SUB OUT: 1 HANNAH, CHUCK	03:59	78-66	
SUB IN: 5 POSER, FEDERICO	03:59		
SUB OUT: 5 POSER, FEDERICO	02:24	78-68	
SUB IN: 1 HANNAH, CHUCK	02:24		
SUB OUT: 1 HANNAH, CHUCK	01:32	78-74	
SUB IN: 5 POSER, FEDERICO	01:32		
SUB OUT: 5 POSER, FEDERICO	00:28	86-77	
SUB IN: 1 HANNAH, CHUCK	00:28		
SUB OUT: 1 HANNAH, CHUCK	00:22	86-79	
SUB IN: 5 POSER, FEDERICO	00:22		
	00:20	86-80	SUB OUT: CYLLA, JEANTAL
	00:20		SUB IN: SIMS, JAYLEN
SUB OUT: 5 POSER, FEDERICO	00:20		
SUB IN: 1 HANNAH, CHUCK	00:20		
SUB OUT: 1 HANNAH, CHUCK	00:10	88-82	
SUB IN: 5 POSER, FEDERICO	00:10		





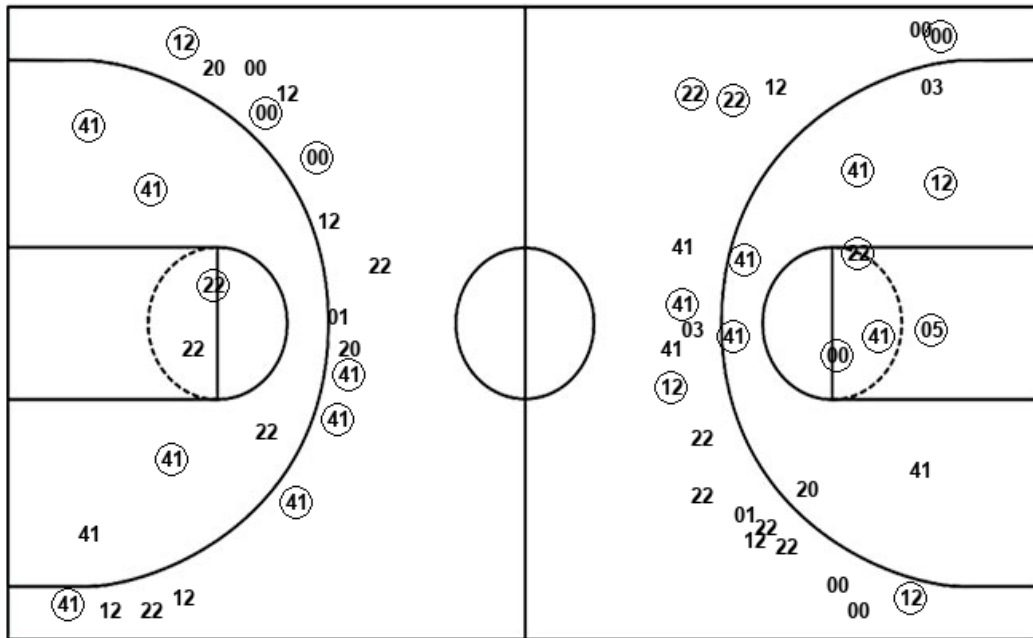


**Official Shot Chart**  
**Elon vs UNCW**  
**Elon Team Shots**  
 January 26, 2019 at Trask Coliseum - Wilmington, N.C.



Layups

Dunks



Layups

Dunks

Elo : Period 1	Made	Att	Pct
Layups	3	5	60.0
Dunks	0	0	0
2PT Field Goals	11	16	68.8
3PT Field Goals	6	19	31.6
<b>Total Field Goals</b>	<b>17</b>	<b>35</b>	<b>48.6</b>

Elo : Period 2	Made	Att	Pct
Layups	3	4	75.0
Dunks	0	0	0
2PT Field Goals	7	11	63.6
3PT Field Goals	7	17	41.2
<b>Total Field Goals</b>	<b>14</b>	<b>28</b>	<b>50.0</b>

