

FINAL SCORE



Arizona

88



Washington St.

90

February 09, 2019 • Beasley Coliseum - Pullman, WA

FINAL STATISTICS

Official Box Score
Arizona vs Washington St.
Game Totals -- Final Statistics
February 09, 2019 at Beasley Coliseum - Pullman, WA

Arizona 88

No.	Player	S	Pts	FG	3FG	FT	OR	DR	TR	PF	A	TO	Blk	Stl	Min	+/-
02	Mcdonald, Aari		26	7-16	0-3	12-14	1	5	6	4	6	4	0	1	35	2
04	Alonso, Lucia		14	5-7	4-5	0-0	0	2	2	0	4	0	0	2	35	-2
14	Thomas, Sam		16	7-9	2-2	0-0	0	1	1	5	2	0	0	1	39	-1
20	Mcbryde, Dominique		8	3-7	1-1	1-1	1	3	4	4	1	1	1	0	18	5
25	Reese, Cate		19	8-15	1-3	2-4	3	2	5	2	1	2	1	1	33	-9
21	Graham, Destiny		0	0-2	0-0	0-0	0	2	2	2	1	2	0	0	17	5
24	Nixon, Bryce		3	1-1	1-1	0-0	0	0	0	0	0	0	0	0	10	-2
34	Smith, Semaj		2	1-2	0-0	0-0	1	2	3	2	0	0	0	0	13	-8
	Team						1	1	2	0		0				
TOTALS			88	32-59	9-15	15-19	7	18	25	19	15	9	2	5	200	

Shooting By Period

Period	FG	FG%	3FG	3FG%	FT	FT%
1st Qtr	7-15	47%	1-4	25%	0-0	0%
2nd Qtr	8-15	53%	3-4	75%	4-4	100%
3rd Qtr	7-11	64%	1-2	50%	5-8	63%
4th Qtr	10-18	56%	4-5	80%	6-7	86%
1st Half	15-30	50%	4-8	50%	4-4	100%
2nd Half	17-29	59%	5-7	71%	11-15	73%
Game	32-59	54.2%	9-15	60.0%	15-19	78.9%

Last FG: 4th-00:05
Biggest Run: 8-0
Largest lead: By 6 at 2-04:45
Technical Fouls: None.

Washington St. 90

No.	Player	S	Pts	FG	3FG	FT	OR	DR	TR	PF	A	TO	Blk	Stl	Min	+/-
11	Molina, Chanelle		28	11-16	4-7	2-2	0	3	3	3	9	1	1	0	40	2
15	Motuga, Ula		2	1-3	0-2	0-0	0	5	5	1	6	1	0	1	23	5
20	Kostourkova, Maria		1	0-4	0-0	1-2	4	2	6	4	3	3	2	0	19	-5
23	Swedlund, Alexys		12	5-11	2-5	0-0	1	2	3	2	0	4	0	1	38	-2
45	Hristova, Borislava		37	14-19	1-1	8-10	2	4	6	3	3	1	0	3	36	4
02	Jones, Michaela		4	1-2	1-2	1-2	0	4	4	2	1	1	0	0	20	2
13	Levy, Shir		0	0-2	0-1	0-0	0	0	0	0	0	0	0	0	7	-2
22	Molina, Celena		0	0-0	0-0	0-0	0	0	0	0	0	0	0	0	0	0
41	Subasic, Jovana		6	3-4	0-0	0-0	1	1	2	2	3	1	1	0	17	6
	Team						1	0	1	0		0				
TOTALS			90	35-61	8-18	12-16	9	21	30	17	25	12	4	5	200	

Shooting By Period

Period	FG	FG%	3FG	3FG%	FT	FT%
1st Qtr	7-15	47%	3-7	43%	1-2	50%
2nd Qtr	10-16	63%	2-4	50%	2-2	100%
3rd Qtr	9-14	64%	2-4	50%	3-5	60%
4th Qtr	9-16	56%	1-3	33%	6-7	86%
1st Half	17-31	55%	5-11	45%	3-4	75%
2nd Half	18-30	60%	3-7	43%	9-12	75%
Game	35-61	57.4%	8-18	44.4%	12-16	75.0%

Last FG: 4th-00:11
Biggest Run: 11-0
Largest lead: By 11 at 4-09:17
Technical Fouls: None.

Game Notes:

Officials: Lisa Jones, Clarke Stevens, Brian Woods
Attendance: 711

Start Time: 2019-02-09 20:06:34
End Time: 2019-02-09 22:04:33
Game Duration: 117
Conference Game:

Score	1st	2nd	3rd	4th	TOT
ARZ	15	23	20	30	88
WSU	18	24	23	25	90

ARZ led for 9:47. WSU led for 26:28.
Game was tied for 3:46.
Times tied: 5 Lead Changes: 12

Points from	ARZ	WSU
In the Paint	36	46
Off Turns	12	8
2nd Chance	7	7
Fast Break	6	16
Bench	5	10

Official Box Score
Arizona vs Washington St.
First Half Statistics Only
February 09, 2019 at Beasley Coliseum - Pullman, WA

Arizona 38

No.	Player	S	Pts	FG	3FG	FT	OR	DR	TR	PF	A	TO	Blk	Stl	Min	+/-
14	Thomas, Sam		10	4-5	2-2	0-0	0	0	0	0	1	0	0	0	19	-3
20	Mcbryde, Dominique		0	0-2	0-0	0-0	0	1	1	2	0	0	0	0	6	4
21	Graham, Destiny		0	0-2	0-0	0-0	0	1	1	0	1	1	0	0	7	-3
24	Nixon, Bryce		3	1-1	1-1	0-0	0	0	0	0	0	0	0	0	10	-1
25	Reese, Cate		13	6-11	1-3	0-0	2	2	4	1	0	1	1	0	18	-5
34	Smith, Semaj		0	0-0	0-0	0-0	0	1	1	2	0	0	0	0	5	-8
02	Mcdonald, Aari		10	3-6	0-1	4-4	0	2	2	1	1	0	0	0	15	0
04	Alonso, Lucia		2	1-3	0-1	0-0	0	2	2	0	4	0	0	0	20	-4
	Team		0	0-0	0-0	0-0	0	0	0	0	0	0	0	0	0	
TOTALS			38	15-30	4-8	4-4	2	9	11	6	7	2	1	0	100	

Shooting By Period

Period	FG	FG%	3FG	3FG%	FT	FT%
1st Qtr	7-15	47%	1-4	25%	0-0	0%
2nd Qtr	8-15	53%	3-4	75%	4-4	100%
1st Half	15-30	50%	4-8	50%	4-4	100%
Game	32-59	54.2%	9-15	60.0%	15-19	78.9%

Last FG Half: ARZ 2nd-00:57

Washington St. 42

No.	Player	S	Pts	FG	3FG	FT	OR	DR	TR	PF	A	TO	Blk	Stl	Min	+/-
11	Molina, Chanelle		19	8-9	3-4	0-0	0	3	3	1	3	0	0	0	20	4
13	Levy, Shir		0	0-2	0-1	0-0	0	0	0	0	0	0	0	0	7	-2
15	Motuga, Ula		0	0-2	0-2	0-0	0	4	4	0	4	1	0	0	16	8
20	Kostourkova, Maria		1	0-3	0-0	1-2	4	2	6	2	3	2	2	0	15	-4
22	Molina, Celena		0	0-0	0-0	0-0	0	0	0	0	0	0	0	0	0	0
23	Swedlund, Alexys		5	2-6	1-3	0-0	0	1	1	0	0	1	0	0	20	4
41	Subasic, Jovana		2	1-1	0-0	0-0	0	0	0	0	1	0	0	0	2	5
45	Hristova, Borislava		12	5-7	0-0	2-2	1	1	2	1	0	1	0	1	17	2
02	Jones, Michaela		3	1-1	1-1	0-0	0	2	2	0	0	0	0	0	3	3
	Team		0	0-0	0-0	0-0	0	0	0	0	0	0	0	0	0	
TOTALS			42	17-31	5-11	3-4	5	13	18	4	11	5	2	1	100	

Shooting By Period

Period	FG	FG%	3FG	3FG%	FT	FT%
1st Qtr	7-15	47%	3-7	43%	1-2	50%
2nd Qtr	10-16	63%	2-4	50%	2-2	100%
1st Half	17-31	55%	5-11	45%	3-4	75%
Game	35-61	57.4%	8-18	44.4%	12-16	75.0%

Last FG Half: WSU 2nd-00:39

Game Notes:

Officials: Lisa Jones,Clarke Stevens,Brian Woods
Attendance: 711

Start Time: 2019-02-09 20:06:34

End Time: 2019-02-09 22:04:33

Game Duration: 117

Conference Game;

Score	1st	2nd	3rd	4th	TOT
ARZ	15	23	20	30	88
WSU	18	24	23	25	90

Points from (This Period)	ARZ	WSU
In the Paint	12	24
Off Turns	7	2
2nd Chance	2	3
Fast Break	0	7
Bench	3	5

Official Box Score
Arizona vs Washington St.
First Quarter Statistics Only
February 09, 2019 at Beasley Coliseum - Pullman, WA

Arizona 15

No.	Player	S	Pts	FG	3FG	FT	OR	DR	TR	PF	A	TO	Blk	Stl	Min	+/-
02	Mcdonald, Aari		4	2-3	0-1	0-0	0	0	0	1	0	0	0	0	5	1
04	Alonso, Lucia		2	1-3	0-1	0-0	0	2	2	0	0	0	0	0	10	-3
14	Thomas, Sam		7	3-4	1-1	0-0	0	0	0	0	0	0	0	0	10	-3
20	Mcbryde, Dominique		0	0-2	0-0	0-0	0	1	1	2	0	0	0	0	6	4
25	Reese, Cate		2	1-2	0-1	0-0	1	0	1	0	0	0	1	0	10	-3
21	Graham, Destiny		0	0-1	0-0	0-0	0	1	1	0	1	1	0	0	5	-4
24	Nixon, Bryce		0	0-0	0-0	0-0	0	0	0	0	0	0	0	0	0	0
34	Smith, Semaj		0	0-0	0-0	0-0	0	1	1	1	0	0	0	0	4	-7
	Team						0	0	0	0		0				
TOTALS			15	7-15	1-4	0-0	1	5	6	4	1	1	1	0	50	

Shooting By Period

Period	FG	FG%	3FG	3FG%	FT	FT%
1st Qtr	7-15	47%	1-4	25%	0-0	0%
2nd Qtr	8-15	53%	3-4	75%	4-4	100%
1st Half	7-15	47%	1-4	25%	0-0	0%
1st Half	15-30	50%	4-8	50%	4-4	100%
Game	32-59	54.2%	9-15	60.0%	15-19	78.9%

Washington St. 18

No.	Player	S	Pts	FG	3FG	FT	OR	DR	TR	PF	A	TO	Blk	Stl	Min	+/-
11	Molina, Chanelle		12	5-6	2-3	0-0	0	3	3	1	1	0	0	0	10	3
15	Motuga, Ula		0	0-2	0-2	0-0	0	2	2	0	1	1	0	0	10	3
20	Kostourkova, Maria		1	0-2	0-0	1-2	2	1	3	0	3	1	1	0	10	3
23	Swedlund, Alexys		3	1-3	1-2	0-0	0	1	1	0	0	1	0	0	10	3
45	Hristova, Borislava		2	1-2	0-0	0-0	1	0	1	0	0	0	0	0	10	3
02	Jones, Michaela		0	0-0	0-0	0-0	0	0	0	0	0	0	0	0	0	0
13	Levy, Shir		0	0-0	0-0	0-0	0	0	0	0	0	0	0	0	0	0
22	Molina, Celena		0	0-0	0-0	0-0	0	0	0	0	0	0	0	0	0	0
41	Subasic, Jovana		0	0-0	0-0	0-0	0	0	0	0	0	0	0	0	0	0
	Team						0	0	0	0		0				
TOTALS			18	7-15	3-7	1-2	3	7	10	1	5	3	1	0	50	

Shooting By Period

Period	FG	FG%	3FG	3FG%	FT	FT%
1st Qtr	7-15	47%	3-7	43%	1-2	50%
2nd Qtr	10-16	63%	2-4	50%	2-2	100%
1st Half	7-15	47%	3-7	43%	1-2	50%
1st Half	17-31	55%	5-11	45%	3-4	75%
Game	35-61	57.4%	8-18	44.4%	12-16	75.0%

Game Notes:

Officials: **Lisa Jones,Clarke Stevens,Brian Woods**
Attendance: 711

Start Time: **2019-02-09 20:06:34**
End Time: **2019-02-09 22:04:33**
Game Duration: 117
Conference Game;

Score	1st	2nd	3rd	4th	TOT
ARZ	15	23	20	30	88
WSU	18	24	23	25	90

Points from (This Period)	ARZ	WSU
In the Paint	8	8
Off Turns	3	0
2nd Chance	2	3
Fast Break	0	3
Bench	0	0

Official Play-By-Play
Arizona vs Washington St.
First Quarter
February 09, 2019 at Beasley Coliseum - Pullman, WA

Period 1

Starters:

Arizona: 14 THOMAS,SAM; 20 MCBRYDE,DOMINIQUE; 25 REESE,CATE; 2 MCDONALD,AARI; 4 ALONSO,LUCIA;

Washington St.: 11 MOLINA,CHANELLE; 15 MOTUGA,ULA; 20 KOSTOURKOVA,MARIA; 23 SWEDLUND,ALEXYS; 45 HRISTOVA,BORISLAVA;

Time	VISITORS: Arizona	Score	Margin	HOME: Washington St.
09:48		2-0	H 2	GOOD! LAYUP by MOLINA,CHANELLE
09:26	GOOD! JUMPER by ALONSO,LUCIA	2-2	T	
08:54				TURNOVER (BADPASS) by MOTUGA,ULA
08:32	MISSED 3PTR by ALONSO,LUCIA			
08:30				REBOUND (DEF) by MOLINA,CHANELLE
08:25				TURNOVER (TRAVEL) by SWEDLUND,ALEXYS
08:11	MISSED JUMPER by MCBRYDE,DOMINIQUE			
08:09				REBOUND (DEF) by MOLINA,CHANELLE
08:00				MISSED 3PTR by MOTUGA,ULA
07:58	REBOUND (DEF) by ALONSO,LUCIA			
07:46	GOOD! LAYUP by THOMAS,SAM	2-4	V 2	
07:23		5-4	H 1	GOOD! 3PTR by MOLINA,CHANELLE
07:23				ASSIST by KOSTOURKOVA,MARIA
07:04	GOOD! JUMPER by MCDONALD,AARI	5-6	V 1	
06:43				MISSED LAYUP by KOSTOURKOVA,MARIA
06:41				REBOUND (OFF) by HRISTOVA,BORISLAVA
06:38				MISSED LAYUP by HRISTOVA,BORISLAVA
06:36				REBOUND (OFF) by KOSTOURKOVA,MARIA
06:34		8-6	H 2	GOOD! 3PTR by MOLINA,CHANELLE
06:34				ASSIST by KOSTOURKOVA,MARIA
06:17	GOOD! LAYUP by MCDONALD,AARI	8-8	T	
06:07	FOUL (PERSONAL) by MCDONALD,AARI			
06:05				MISSED LAYUP by SWEDLUND,ALEXYS
06:02	REBOUND (DEF) by ALONSO,LUCIA			
05:58				FOUL (PERSONAL) by MOLINA,CHANELLE
05:53	MISSED LAYUP by MCBRYDE,DOMINIQUE			
05:53				BLOCK by KOSTOURKOVA,MARIA
05:49	REBOUND (OFF) by REESE,CATE			
05:48	GOOD! LAYUP by REESE,CATE	8-10	V 2	
05:30	FOUL (PERSONAL) by MCBRYDE,DOMINIQUE			
05:30				MISSED FT by KOSTOURKOVA,MARIA
05:30				REBOUND (OFF) by TEAM
05:30		9-10	V 1	GOOD! FT by KOSTOURKOVA,MARIA
05:18	MISSED 3PTR by MCDONALD,AARI			
05:15				REBOUND (DEF) by MOTUGA,ULA
05:09				TURNOVER (TRAVEL) by KOSTOURKOVA,MARIA
05:09	SUB OUT: MCDONALD,AARI			
05:09	SUB IN: GRAHAM,DESTINY			
04:57	GOOD! 3PTR by THOMAS,SAM	9-13	V 4	
04:57	ASSIST by GRAHAM,DESTINY			
04:20				MISSED LAYUP by KOSTOURKOVA,MARIA
04:20	BLOCK by REESE,CATE			
04:17	REBOUND (DEF) by MCBRYDE,DOMINIQUE			
04:10	MISSED 3PTR by REESE,CATE			
04:07				REBOUND (DEF) by MOLINA,CHANELLE
04:02				MISSED 3PTR by MOLINA,CHANELLE
04:01				REBOUND (OFF) by KOSTOURKOVA,MARIA
04:01	FOUL (PERSONAL) by MCBRYDE,DOMINIQUE			
04:01				
04:01	SUB OUT: MCBRYDE,DOMINIQUE			
04:01	SUB IN: SMITH,SEMAJ			
03:38	FOUL (PERSONAL) by SMITH,SEMAJ			
03:32				MISSED 3PTR by SWEDLUND,ALEXYS
03:30	REBOUND (DEF) by SMITH,SEMAJ			
03:04	GOOD! LAYUP by THOMAS,SAM	9-15	V 6	
02:45		11-15	V 4	GOOD! LAYUP by MOLINA,CHANELLE [PNT]
02:45				ASSIST by MOTUGA,ULA
02:18	TURNOVER (LOSTBALL) by GRAHAM,DESTINY			
02:02				MISSED 3PTR by MOTUGA,ULA
01:59	REBOUND (DEF) by GRAHAM,DESTINY			
01:32	MISSED JUMPER by ALONSO,LUCIA			
01:29				REBOUND (DEF) by KOSTOURKOVA,MARIA
01:18		13-15	V 2	GOOD! JUMPER by MOLINA,CHANELLE [PNT]
00:54	MISSED LAYUP by GRAHAM,DESTINY			
00:52				REBOUND (DEF) by SWEDLUND,ALEXYS
00:39		15-15	T	GOOD! LAYUP by HRISTOVA,BORISLAVA
00:39				ASSIST by KOSTOURKOVA,MARIA
00:12	MISSED JUMPER by THOMAS,SAM			
00:09				REBOUND (DEF) by MOTUGA,ULA
00:03		18-15	H 3	GOOD! 3PTR by SWEDLUND,ALEXYS [FB]
00:03				ASSIST by MOLINA,CHANELLE

Points from (This Period)	ARZ	WSU
In the Paint	8	8
Off Turns	3	0
2nd Chance	2	3
Fast Break	0	3
Bench	0	0

Official Box Score
Arizona vs Washington St.
Second Quarter Statistics Only
February 09, 2019 at Beasley Coliseum - Pullman, WA

Arizona 23

No.	Player	S	Pts	FG	3FG	FT	OR	DR	TR	PF	A	TO	Blk	Stl	Min	+/-
02	Mcdonald, Aari		6	1-3	0-0	4-4	0	2	2	0	1	0	0	0	10	-1
04	Alonso, Lucia		0	0-0	0-0	0-0	0	0	0	0	4	0	0	0	10	-1
14	Thomas, Sam		3	1-1	1-1	0-0	0	0	0	0	1	0	0	0	9	0
20	Mcbryde, Dominique		0	0-0	0-0	0-0	0	0	0	0	0	0	0	0	0	0
25	Reese, Cate		11	5-9	1-2	0-0	1	2	3	1	0	1	0	0	8	-2
21	Graham, Destiny		0	0-1	0-0	0-0	0	0	0	0	0	0	0	0	2	1
24	Nixon, Bryce		3	1-1	1-1	0-0	0	0	0	0	0	0	0	0	10	-1
34	Smith, Semaj		0	0-0	0-0	0-0	0	0	0	1	0	0	0	0	1	-1
	Team						0	0	0	0		0				
TOTALS			23	8-15	3-4	4-4	1	4	5	2	6	1	0	0	50	

Shooting By Period

Period	FG	FG%	3FG	3FG%	FT	FT%
3rd Qtr	7-11	64%	1-2	50%	5-8	63%
4th Qtr	10-18	56%	4-5	80%	6-7	86%
2nd Half	8-15	53%	3-4	75%	4-4	100%
2nd Half	17-29	59%	5-7	71%	11-15	73%
Game	32-59	54.2%	9-15	60.0%	15-19	78.9%

Washington St. 24

No.	Player	S	Pts	FG	3FG	FT	OR	DR	TR	PF	A	TO	Blk	Stl	Min	+/-
11	Molina, Chanelle		7	3-3	1-1	0-0	0	0	0	0	2	0	0	0	10	1
15	Motuga, Ula		0	0-0	0-0	0-0	0	2	2	0	3	0	0	0	6	5
20	Kostourkova, Maria		0	0-1	0-0	0-0	2	1	3	2	0	1	1	0	5	-7
23	Swedlund, Alexys		2	1-3	0-1	0-0	0	0	0	0	0	0	0	0	10	1
45	Hristova, Borislava		10	4-5	0-0	2-2	0	1	1	1	0	1	0	1	7	-1
02	Jones, Michaela		3	1-1	1-1	0-0	0	2	2	0	0	0	0	0	3	3
13	Levy, Shir		0	0-2	0-1	0-0	0	0	0	0	0	0	0	0	7	-2
22	Molina, Celena		0	0-0	0-0	0-0	0	0	0	0	0	0	0	0	0	0
41	Subasic, Jovana		2	1-1	0-0	0-0	0	0	0	0	1	0	0	0	2	5
	Team						0	0	0	0		0				
TOTALS			24	10-16	2-4	2-2	2	6	8	3	6	2	1	1	50	

Shooting By Period

Period	FG	FG%	3FG	3FG%	FT	FT%
3rd Qtr	9-14	64%	2-4	50%	3-5	60%
4th Qtr	9-16	56%	1-3	33%	6-7	86%
2nd Half	10-16	63%	2-4	50%	2-2	100%
2nd Half	18-30	60%	3-7	43%	9-12	75%
Game	35-61	57.4%	8-18	44.4%	12-16	75.0%

Game Notes:

Officials: **Lisa Jones,Clarke Stevens,Brian Woods**
Attendance: 711

Start Time: **2019-02-09 20:06:34**
End Time: **2019-02-09 22:04:33**
Game Duration: 117
Conference Game;

Score	1st	2nd	3rd	4th	TOT
ARZ	15	23	20	30	88
WSU	18	24	23	25	90

Points from (This Period)	ARZ	WSU
In the Paint	4	16
Off Turns	4	2
2nd Chance	0	0
Fast Break	0	4
Bench	3	5

Official Play-By-Play
Arizona vs Washington St.
Second Quarter
February 09, 2019 at Beasley Coliseum - Pullman, WA

Period 2

Starters:

Arizona: 14 THOMAS,SAM; 20 MCBRYDE,DOMINIQUE; 25 REESE,CATE; 2 MCDONALD,AARI; 4 ALONSO,LUCIA;

Washington St.: 11 MOLINA,CHANELLE; 15 MOTUGA,ULA; 20 KOSTOURKOVA,MARIA; 23 SWEDLUND,ALEXYS; 45 HRISTOVA,BORISLAVA;

Time	VISITORS: Arizona	Score	Margin	HOME: Washington St.
09:48	MISSED JUMPER by MCDONALD,AARI			
09:45				REBOUND (DEF) by HRISTOVA,BORISLAVA
09:34				MISSED 3PTR by SWEDLUND,ALEXYS
09:32				REBOUND (OFF) by KOSTOURKOVA,MARIA
09:24				MISSED LAYUP by KOSTOURKOVA,MARIA
09:22	REBOUND (DEF) by MCDONALD,AARI			
08:58	MISSED LAYUP by GRAHAM,DESTINY			
08:58				BLOCK by KOSTOURKOVA,MARIA
08:55				REBOUND (DEF) by KOSTOURKOVA,MARIA
08:52	FOUL (PERSONAL) by SMITH,SEMAJ			
08:52		19-15	H 4	GOOD! FT by HRISTOVA,BORISLAVA [FB]
08:52	SUB OUT: SMITH,SEMAJ			
08:52	SUB IN: THOMAS,SAM			
08:52		20-15	H 5	GOOD! FT by HRISTOVA,BORISLAVA [FB]
08:37				FOUL (PERSONAL) by HRISTOVA,BORISLAVA
08:37	GOOD! FT by MCDONALD,AARI	20-16	H 4	
08:37	GOOD! FT by MCDONALD,AARI	20-17	H 3	
08:18		22-17	H 5	GOOD! LAYUP by HRISTOVA,BORISLAVA
08:18				ASSIST by MOLINA,CHANELLE
08:04	GOOD! 3PTR by THOMAS,SAM	22-20	H 2	
08:04	ASSIST by ALONSO,LUCIA			
07:41				TURNOVER (3SEC) by HRISTOVA,BORISLAVA
07:41	SUB OUT: GRAHAM,DESTINY			
07:41	SUB IN: REESE,CATE			
07:20	GOOD! JUMPER by REESE,CATE	22-22	T	
07:20	ASSIST by MCDONALD,AARI			
06:52				MISSED LAYUP by LEVY,SHIR
06:49	REBOUND (DEF) by REESE,CATE			
06:48	TURNOVER (BADPASS) by REESE,CATE			
06:48				STEAL by HRISTOVA,BORISLAVA
06:43		24-22	H 2	GOOD! LAYUP by HRISTOVA,BORISLAVA [FB]
06:34				FOUL (PERSONAL) by KOSTOURKOVA,MARIA
06:34	GOOD! FT by MCDONALD,AARI	24-23	H 1	
06:34	GOOD! FT by MCDONALD,AARI	24-24	T	
06:22		26-24	H 2	GOOD! LAYUP by MOLINA,CHANELLE
06:08	GOOD! 3PTR by REESE,CATE	26-27	V 1	
06:08	ASSIST by ALONSO,LUCIA			
05:44				MISSED 3PTR by LEVY,SHIR
05:43				REBOUND (OFF) by KOSTOURKOVA,MARIA
05:43	FOUL (PERSONAL) by REESE,CATE			
05:43				SUB OUT: HRISTOVA,BORISLAVA
05:43				SUB IN: MOTUGA,ULA
05:41				MISSED JUMPER by SWEDLUND,ALEXYS
05:38	REBOUND (DEF) by REESE,CATE			
05:16	GOOD! 3PTR by NIXON,BRYCE	26-30	V 4	
05:16	ASSIST by ALONSO,LUCIA			
04:59				FOUL (OFF) by KOSTOURKOVA,MARIA
04:59				TURNOVER (OFFENSIVE) by KOSTOURKOVA,MARIA
04:59				SUB OUT: KOSTOURKOVA,MARIA
04:59				SUB IN: SUBASIC,JOVANA
04:45	GOOD! LAYUP by REESE,CATE	26-32	V 6	
04:45	ASSIST by ALONSO,LUCIA			
04:29		28-32	V 4	GOOD! LAYUP by SUBASIC,JOVANA
04:29				ASSIST by MOTUGA,ULA
04:10	MISSED LAYUP by REESE,CATE			
04:07	REBOUND (OFF) by REESE,CATE			
04:07	MISSED LAYUP by REESE,CATE			
04:04				REBOUND (DEF) by MOTUGA,ULA
03:53		30-32	V 2	GOOD! LAYUP by MOLINA,CHANELLE
03:53				ASSIST by SUBASIC,JOVANA
03:33	MISSED LAYUP by MCDONALD,AARI			
03:31				REBOUND (DEF) by MOTUGA,ULA
03:13		33-32	H 1	GOOD! 3PTR by MOLINA,CHANELLE
03:05	TIMEOUT 30SEC			
03:05				SUB OUT: LEVY,SHIR
03:05				SUB IN: JONES,MICHAELA
03:05				SUB OUT: SUBASIC,JOVANA
03:05				SUB IN: HRISTOVA,BORISLAVA
02:55	GOOD! JUMPER by REESE,CATE [PNT]	33-34	V 1	
02:55	ASSIST by THOMAS,SAM			
02:29		35-34	H 1	GOOD! LAYUP by HRISTOVA,BORISLAVA [PNT]
02:29				ASSIST by MOLINA,CHANELLE
02:14	GOOD! JUMPER by REESE,CATE	35-36	V 1	
01:50		37-36	H 1	GOOD! LAYUP by SWEDLUND,ALEXYS
01:50				ASSIST by MOTUGA,ULA

Time	VISITORS: Arizona	Score	Margin	HOME: Washington St.
01:34	MISSED 3PTR by REESE,CATE			
01:31				REBOUND (DEF) by JONES,MICHAELA
01:22		40-36	H 4	GOOD! 3PTR by JONES,MICHAELA
01:22				ASSIST by MOTUGA,ULA
00:57	GOOD! JUMPER by MCDONALD,AARI	40-38	H 2	
00:39		42-38	H 4	GOOD! LAYUP by HRISTOVA,BORISLAVA
00:15	MISSED JUMPER by REESE,CATE			
00:12				REBOUND (DEF) by JONES,MICHAELA
00:01				MISSED JUMPER by HRISTOVA,BORISLAVA
00:01	REBOUND (DEF) by MCDONALD,AARI			

Arizona 38, Washington St. 42

Points from (This Period)	ARZ	WSU
In the Paint	4	16
Off Turns	4	2
2nd Chance	0	0
Fast Break	0	4
Bench	3	5

Official Box Score
Arizona vs Washington St.
Second Half Statistics Only
February 09, 2019 at Beasley Coliseum - Pullman, WA

Arizona 50

No.	Player	S	Pts	FG	3FG	FT	OR	DR	TR	PF	A	TO	Blk	Stl	Min	+/-
14	Thomas, Sam		6	3-4	0-0	0-0	0	1	1	5	1	0	0	1	20	2
20	Mcbryde, Dominique		8	3-5	1-1	1-1	1	2	3	2	1	1	1	0	12	1
21	Graham, Destiny		0	0-0	0-0	0-0	0	1	1	2	0	1	0	0	10	8
24	Nixon, Bryce		0	0-0	0-0	0-0	0	0	0	0	0	0	0	0	0	-1
25	Reese, Cate		6	2-4	0-0	2-4	1	0	1	1	1	1	0	1	16	-4
34	Smith, Semaj		2	1-2	0-0	0-0	1	1	2	0	0	0	0	0	8	0
02	Mcdonald, Aari		16	4-10	0-2	8-10	1	3	4	3	5	4	0	1	20	2
04	Alonso, Lucia		12	4-4	4-4	0-0	0	0	0	0	0	0	0	2	15	2
	Team		0	0-0	0-0	0-0	1	1	2	0	0	0	0	0	0	
TOTALS			50	17-29	5-7	11-15	5	9	14	13	8	7	1	5	100	

Shooting By Period

Period	FG	FG%	3FG	3FG%	FT	FT%
3rd Qtr	7-11	64%	1-2	50%	5-8	63%
4th Qtr	10-18	56%	4-5	80%	6-7	86%
2nd Half	17-29	59%	5-7	71%	11-15	73%
Game	32-59	54.2%	9-15	60.0%	15-19	78.9%

Last FG Half: ARZ 4th-00:05

Washington St. 48

No.	Player	S	Pts	FG	3FG	FT	OR	DR	TR	PF	A	TO	Blk	Stl	Min	+/-
11	Molina, Chanelle		9	3-7	1-3	2-2	0	0	0	2	6	1	1	0	20	-2
13	Levy, Shir		0	0-0	0-0	0-0	0	0	0	0	0	0	0	0	0	0
15	Motuga, Ula		2	1-1	0-0	0-0	0	1	1	1	2	0	0	1	7	-3
20	Kostourkova, Maria		0	0-1	0-0	0-0	0	0	0	2	0	1	0	0	4	-1
22	Molina, Celena		0	0-0	0-0	0-0	0	0	0	0	0	0	0	0	0	0
23	Swedlund, Alexys		7	3-5	1-2	0-0	1	1	2	2	0	3	0	1	18	-6
41	Subasic, Jovana		4	2-3	0-0	0-0	1	1	2	2	2	1	1	0	15	1
45	Hristova, Borislava		25	9-12	1-1	6-8	1	3	4	2	3	0	0	2	19	2
02	Jones, Michaela		1	0-1	0-1	1-2	0	2	2	2	1	1	0	0	17	-1
	Team		0	0-0	0-0	0-0	1	0	1	0	0	0	0	0	0	
TOTALS			48	18-30	3-7	9-12	4	8	12	13	14	7	2	4	100	

Shooting By Period

Period	FG	FG%	3FG	3FG%	FT	FT%
3rd Qtr	9-14	64%	2-4	50%	3-5	60%
4th Qtr	9-16	56%	1-3	33%	6-7	86%
2nd Half	18-30	60%	3-7	43%	9-12	75%
Game	35-61	57.4%	8-18	44.4%	12-16	75.0%

Last FG Half: WSU 4th-00:11

Game Notes:

Officials: Lisa Jones, Clarke Stevens, Brian Woods
Attendance: 711

Start Time: 2019-02-09 20:06:34
End Time: 2019-02-09 22:04:33
Game Duration: 117
Conference Game;

Score	1st	2nd	3rd	4th	TOT
ARZ	15	23	20	30	88
WSU	18	24	23	25	90

Points from (This Period)	ARZ	WSU
In the Paint	24	22
Off Turns	5	6
2nd Chance	5	4
Fast Break	6	9
Bench	2	5

Official Box Score
Arizona vs Washington St.
Third Quarter Statistics Only
February 09, 2019 at Beasley Coliseum - Pullman, WA

Arizona 50

No.	Player	S	Pts	FG	3FG	FT	OR	DR	TR	PF	A	TO	Blk	Stl	Min	+/-
02	Mcdonald, Aari		7	2-5	0-1	3-4	0	3	3	1	3	4	0	1	10	-3
04	Alonso, Lucia		0	0-0	0-0	0-0	0	0	0	0	0	0	0	1	5	-3
14	Thomas, Sam		4	2-2	0-0	0-0	0	0	0	2	0	0	0	0	10	-3
20	Mcbryde, Dominique		5	2-3	1-1	0-0	0	2	2	1	0	0	0	0	5	-3
25	Reese, Cate		4	1-1	0-0	2-4	1	0	1	1	0	0	0	0	10	-3
21	Graham, Destiny		0	0-0	0-0	0-0	0	0	0	1	0	1	0	0	5	0
24	Nixon, Bryce		0	0-0	0-0	0-0	0	0	0	0	0	0	0	0	0	0
34	Smith, Semaj		0	0-0	0-0	0-0	0	1	1	0	0	0	0	0	5	0
	Team						0	0	0	0		0				
TOTALS			20	7-11	1-2	5-8	1	6	7	6	3	5	0	2	50	

Shooting By Period

Period	FG	FG%	3FG	3FG%	FT	FT%
2nd Half	0-0	0%	0-0	0%	0-0	0%
Game	32-59	54.2%	9-15	60.0%	15-19	78.9%

Washington St. 48

No.	Player	S	Pts	FG	3FG	FT	OR	DR	TR	PF	A	TO	Blk	Stl	Min	+/-
11	Molina, Chanelle		0	0-3	0-1	0-0	0	0	0	1	4	0	0	0	10	3
15	Motuga, Ula		2	1-1	0-0	0-0	0	1	1	1	1	0	0	1	6	-1
20	Kostourkova, Maria		0	0-1	0-0	0-0	0	0	0	2	0	1	0	0	4	-1
23	Swedlund, Alexys		5	2-3	1-2	0-0	0	1	1	0	0	1	0	0	8	-1
45	Hristova, Borislava		12	4-4	1-1	3-5	0	1	1	0	2	0	0	1	9	7
02	Jones, Michaela		0	0-0	0-0	0-0	0	1	1	1	1	0	0	0	7	4
13	Lewy, Shir		0	0-0	0-0	0-0	0	0	0	0	0	0	0	0	0	0
22	Molina, Celena		0	0-0	0-0	0-0	0	0	0	0	0	0	0	0	0	0
41	Subasic, Jovana		4	2-2	0-0	0-0	0	0	0	2	0	1	0	0	6	4
	Team						0	0	0	0		0				
TOTALS			23	9-14	2-4	3-5	0	4	4	7	8	3	0	2	50	

Shooting By Period

Period	FG	FG%	3FG	3FG%	FT	FT%
2nd Half	0-0	0%	0-0	0%	0-0	0%
Game	35-61	57.4%	8-18	44.4%	12-16	75.0%

Game Notes:

Officials: Lisa Jones,Clarke Stevens,Brian Woods
Attendance: 711

Start Time: 2019-02-09 20:06:34

End Time: 2019-02-09 22:04:33

Game Duration: 117

Conference Game;

Score	1st	2nd	3rd	4th	TOT
ARZ	15	23	20	30	88
WSU	18	24	23	25	90

Points from (This Period)	ARZ	WSU
In the Paint	12	8
Off Turns	0	4
2nd Chance	1	0
Fast Break	1	0
Bench	0	4

Official Play-By-Play
Arizona vs Washington St.
Third Quarter
February 09, 2019 at Beasley Coliseum - Pullman, WA

Period 3

Starters:

Arizona: 14 THOMAS,SAM; 20 MCBRYDE,DOMINIQUE; 25 REESE,CATE; 2 MCDONALD,AARI; 4 ALONSO,LUCIA;

Washington St.: 11 MOLINA,CHANELLE; 15 MOTUGA,ULA; 20 KOSTOURKOVA,MARIA; 23 SWEDLUND,ALEXYS; 45 HRISTOVA,BORISLAVA;

Time	VISITORS: Arizona	Score	Margin	HOME: Washington St.
09:50		44-38	H 6	GOOD! LAYUP by HRISTOVA,BORISLAVA
09:50				ASSIST by MOLINA,CHANELLE
09:25	GOOD! LAYUP by MCBRYDE,DOMINIQUE	44-40	H 4	
09:25	ASSIST by MCDONALD,AARI			
09:11				MISSED 3PTR by MOLINA,CHANELLE
09:08	REBOUND (DEF) by MCDONALD,AARI			
08:58				FOUL (PERSONAL) by MOTUGA,ULA
08:58	MISSED FT by REESE,CATE			
08:58	REBOUND (OFF) by TEAM			
08:58	GOOD! FT by REESE,CATE	44-41	H 3	
08:42		46-41	H 5	GOOD! LAYUP by MOTUGA,ULA [PNT]
08:27	GOOD! 3PTR by MCBRYDE,DOMINIQUE	46-44	H 2	
08:27	ASSIST by MCDONALD,AARI			
08:11		49-44	H 5	GOOD! 3PTR by SWEDLUND,ALEXYS
08:11				ASSIST by MOTUGA,ULA
07:58				FOUL (PERSONAL) by KOSTOURKOVA,MARIA
07:43	GOOD! LAYUP by REESE,CATE	49-46	H 3	
07:43	ASSIST by MCDONALD,AARI			
07:28				TURNOVER (BADPASS) by SWEDLUND,ALEXYS
07:28	STEAL by ALONSO,LUCIA			
07:20	TURNOVER (BADPASS) by MCDONALD,AARI			
07:14				MISSED 3PTR by SWEDLUND,ALEXYS
07:11	REBOUND (DEF) by MCBRYDE,DOMINIQUE			
07:03	FOUL (OFF) by MCDONALD,AARI			
07:03	TURNOVER (OFFENSIVE) by MCDONALD,AARI			
07:03				SUB OUT: SWEDLUND,ALEXYS
07:03				SUB IN: JONES,MICHAELA
06:48				MISSED JUMPER by KOSTOURKOVA,MARIA
06:46	REBOUND (DEF) by MCDONALD,AARI			
06:46				FOUL (PERSONAL) by JONES,MICHAELA
06:32	TURNOVER (BADPASS) by MCDONALD,AARI			
06:32				STEAL by MOTUGA,ULA
06:23				FOUL (OFF) by KOSTOURKOVA,MARIA
06:23				TURNOVER (OFFENSIVE) by KOSTOURKOVA,MARIA
06:23				SUB OUT: KOSTOURKOVA,MARIA
06:23				SUB IN: SUBASIC,JOVANA
06:06	MISSED 3PTR by MCDONALD,AARI			
06:03				REBOUND (DEF) by HRISTOVA,BORISLAVA
05:54		51-46	H 5	GOOD! JUMPER by SUBASIC,JOVANA
05:54				ASSIST by HRISTOVA,BORISLAVA
05:31	MISSED LAYUP by MCBRYDE,DOMINIQUE			
05:29				REBOUND (DEF) by MOTUGA,ULA
05:19		53-46	H 7	GOOD! LAYUP by HRISTOVA,BORISLAVA
05:19				ASSIST by JONES,MICHAELA
05:19	FOUL (PERSONAL) by MCBRYDE,DOMINIQUE			
05:19	SUB OUT: ALONSO,LUCIA			
05:19	SUB IN: GRAHAM,DESTINY			
05:19				MISSED FT by HRISTOVA,BORISLAVA
05:17	REBOUND (DEF) by MCBRYDE,DOMINIQUE			
04:59				FOUL (PERSONAL) by MOLINA,CHANELLE
04:59				
04:59				SUB OUT: HRISTOVA,BORISLAVA
04:59				SUB IN: SWEDLUND,ALEXYS
04:59	SUB OUT: MCBRYDE,DOMINIQUE			
04:59	SUB IN: SMITH,SEMAJ			
04:59	GOOD! FT by MCDONALD,AARI	53-47	H 6	
04:59	GOOD! FT by MCDONALD,AARI	53-48	H 5	
04:37	FOUL (PERSONAL) by THOMAS,SAM			
04:16				MISSED LAYUP by MOLINA,CHANELLE
04:13	REBOUND (DEF) by SMITH,SEMAJ			
04:04	GOOD! LAYUP by THOMAS,SAM	53-50	H 3	
03:48				SUB OUT: MOTUGA,ULA
03:48				SUB IN: HRISTOVA,BORISLAVA
03:48	FOUL (PERSONAL) by REESE,CATE			
03:44				MISSED JUMPER by MOLINA,CHANELLE
03:42	REBOUND (DEF) by MCDONALD,AARI			
03:39	TURNOVER (TRAVEL) by MCDONALD,AARI			
03:17		55-50	H 5	GOOD! JUMPER by HRISTOVA,BORISLAVA
03:17				ASSIST by MOLINA,CHANELLE
03:06	GOOD! LAYUP by MCDONALD,AARI	55-52	H 3	
02:47		57-52	H 5	GOOD! JUMPER by SUBASIC,JOVANA
02:47				ASSIST by MOLINA,CHANELLE
02:18	GOOD! LAYUP by MCDONALD,AARI	57-54	H 3	
02:03	FOUL (PERSONAL) by THOMAS,SAM			
02:03				MISSED FT by HRISTOVA,BORISLAVA
02:03				REBOUND (OFF) by TEAM

Time	VISITORS: Arizona	Score	Margin	HOME: Washington St.
02:03		58-54	H 4	GOOD! FT by HRISTOVA,BORISLAVA
01:36	MISSED JUMPER by MCDONALD,AARI			
01:34				REBOUND (DEF) by JONES,MICHAELA
01:14		61-54	H 7	GOOD! 3PTR by HRISTOVA,BORISLAVA
01:14				ASSIST by MOLINA,CHANELLE
00:50	GOOD! LAYUP by THOMAS,SAM	61-56	H 5	
00:36		63-56	H 7	GOOD! LAYUP by SWEDLUND,ALEXYS
00:36				ASSIST by HRISTOVA,BORISLAVA
00:10				FOUL (PERSONAL) by SUBASIC,JOVANA
00:10	GOOD! FT by MCDONALD,AARI	63-57	H 6	
00:10	MISSED FT by MCDONALD,AARI			
00:07	REBOUND (OFF) by REESE,CATE			
00:07				FOUL (PERSONAL) by SUBASIC,JOVANA
00:07	MISSED FT by REESE,CATE			
00:07	REBOUND (OFF) by TEAM			
00:07	GOOD! FT by REESE,CATE [FB]	63-58	H 5	
00:07				TURNOVER (BADPASS) by SUBASIC,JOVANA
00:07	STEAL by MCDONALD,AARI			
00:05	TURNOVER (LOSTBALL) by GRAHAM,DESTINY			
00:05				STEAL by HRISTOVA,BORISLAVA
00:05	FOUL (PERSONAL) by GRAHAM,DESTINY			
00:05		64-58	H 6	GOOD! FT by HRISTOVA,BORISLAVA
00:05		65-58	H 7	GOOD! FT by HRISTOVA,BORISLAVA
00:05				SUB OUT: SUBASIC,JOVANA
00:05				SUB IN: MOLINA,CELENA
00:05	SUB OUT: GRAHAM,DESTINY			
00:05	SUB IN: NIXON,BRYCE			
00:05	SUB OUT: SMITH,SEMAJ			
00:05	SUB IN: ALONSO,LUCIA			
00:00	MISSED LAYUP by MCDONALD,AARI			
00:00				REBOUND (DEF) by SWEDLUND,ALEXYS

Arizona 58, Washington St. 65

Points from (This Period)	ARZ	WSU
In the Paint	12	8
Off Turns	0	4
2nd Chance	1	0
Fast Break	1	0
Bench	0	4

Official Box Score
Arizona vs Washington St.
Fourth Quarter Statistics Only
February 09, 2019 at Beasley Coliseum - Pullman, WA

Arizona 30

No.	Player	S	Pts	FG	3FG	FT	OR	DR	TR	PF	A	TO	Blk	Stl	Min	+/-
02	Mcdonald, Aari		9	2-5	0-1	5-6	1	0	1	2	2	0	0	0	10	5
04	Alonso, Lucia		12	4-4	4-4	0-0	0	0	0	0	0	0	0	1	10	5
14	Thomas, Sam		2	1-2	0-0	0-0	0	1	1	3	1	0	0	1	10	5
20	Mcbryde, Dominique		3	1-2	0-0	1-1	1	0	1	1	1	1	1	0	7	4
25	Reese, Cate		2	1-3	0-0	0-0	0	0	0	0	1	1	0	1	6	-1
21	Graham, Destiny		0	0-0	0-0	0-0	0	1	1	1	0	0	0	0	5	8
24	Nixon, Bryce		0	0-0	0-0	0-0	0	0	0	0	0	0	0	0	0	-1
34	Smith, Semaj		2	1-2	0-0	0-0	1	0	1	0	0	0	0	0	3	0
	Team						1	1	2	0		0				
TOTALS			30	10-18	4-5	6-7	4	3	7	7	5	2	1	3	50	

Shooting By Period

Period	FG	FG%	3FG	3FG%	FT	FT%
Game	32-59	54.2%	9-15	60.0%	15-19	78.9%

Washington St. 25

No.	Player	S	Pts	FG	3FG	FT	OR	DR	TR	PF	A	TO	Blk	Stl	Min	+/-
11	Molina, Chanelle		9	3-4	1-2	2-2	0	0	0	1	2	1	1	0	10	-5
15	Motuga, Ula		0	0-0	0-0	0-0	0	0	0	0	1	0	0	0	1	-2
20	Kostourkova, Maria		0	0-0	0-0	0-0	0	0	0	0	0	0	0	0	0	0
23	Swedlund, Alexys		2	1-2	0-0	0-0	1	0	1	2	0	2	0	1	10	-5
45	Hristova, Borislava		13	5-8	0-0	3-3	1	2	3	2	1	0	0	1	10	-5
02	Jones, Michaela		1	0-1	0-1	1-2	0	1	1	1	0	1	0	0	10	-5
13	Levy, Shir		0	0-0	0-0	0-0	0	0	0	0	0	0	0	0	0	0
22	Molina, Celena		0	0-0	0-0	0-0	0	0	0	0	0	0	0	0	0	0
41	Subasic, Jovana		0	0-1	0-0	0-0	1	1	2	0	2	0	1	0	9	-3
	Team						1	0	1	0		0				
TOTALS			25	9-16	1-3	6-7	4	4	8	6	6	4	2	2	50	

Shooting By Period

Period	FG	FG%	3FG	3FG%	FT	FT%
Game	35-61	57.4%	8-18	44.4%	12-16	75.0%

Game Notes:

Officials: Lisa Jones, Clarke Stevens, Brian Woods
Attendance: 711

Start Time: 2019-02-09 20:06:34
End Time: 2019-02-09 22:04:33
Game Duration: 117
Conference Game;

Score	1st	2nd	3rd	4th	TOT
ARZ	15	23	20	30	88
WSU	18	24	23	25	90

Points from (This Period)	ARZ	WSU
In the Paint	12	14
Off Turns	5	2
2nd Chance	4	4
Fast Break	5	9
Bench	2	1

Official Play-By-Play
Arizona vs Washington St.
Fourth Quarter
February 09, 2019 at Beasley Coliseum - Pullman, WA

Period 4

Starters:

Arizona: 14 THOMAS,SAM; 20 MCBRYDE,DOMINIQUE; 25 REESE,CATE; 2 MCDONALD,AARI; 4 ALONSO,LUCIA;

Washington St.: 11 MOLINA,CHANELLE; 15 MOTUGA,ULA; 20 KOSTOURKOVA,MARIA; 23 SWEDLUND,ALEXYS; 45 HRISTOVA,BORISLAVA;

Time	VISITORS: Arizona	Score	Margin	HOME: Washington St.
09:51		67-58	H 9	GOOD! LAYUP by MOLINA,CHANELLE
09:51				ASSIST by SUBASIC,JOVANA
09:27	MISSED LAYUP by THOMAS,SAM			
09:23	REBOUND (OFF) by MCBRYDE,DOMINIQUE			
09:21	TURNOVER (BADPASS) by MCBRYDE,DOMINIQUE			
09:21				STEAL by HRISTOVA,BORISLAVA
09:17		69-58	H 11	GOOD! LAYUP by HRISTOVA,BORISLAVA [FB]
09:17				ASSIST by MOLINA,CHANELLE
08:57	TURNOVER (BADPASS) by REESE,CATE			
08:57				STEAL by SWEDLUND,ALEXYS
08:52				TURNOVER (BADPASS) by SWEDLUND,ALEXYS
08:52	STEAL by REESE,CATE			
08:43	GOOD! 3PTR by ALONSO,LUCIA	69-61	H 8	
08:43	ASSIST by MCDONALD,AARI			
08:11				MISSED JUMPER by HRISTOVA,BORISLAVA
08:10				REBOUND (OFF) by SWEDLUND,ALEXYS
08:10	FOUL (PERSONAL) by MCBRYDE,DOMINIQUE			
07:45				MISSED LAYUP by HRISTOVA,BORISLAVA
07:45	BLOCK by MCBRYDE,DOMINIQUE			
07:45	REBOUND (DEF) by TEAM			
07:45	SUB OUT: MCBRYDE,DOMINIQUE			
07:45	SUB IN: SMITH,SEMAJ			
07:35	MISSED JUMPER by REESE,CATE			
07:32	REBOUND (OFF) by SMITH,SEMAJ			
07:21	GOOD! LAYUP by REESE,CATE	69-63	H 6	
07:11				TURNOVER (BADPASS) by MOLINA,CHANELLE
07:11	STEAL by THOMAS,SAM			
07:07	GOOD! LAYUP by THOMAS,SAM [FB]	69-65	H 4	
07:04				TIMEOUT 30SEC
07:04				
06:55				MISSED 3PTR by JONES,MICHAELA
06:52				REBOUND (OFF) by SUBASIC,JOVANA
06:47				MISSED 3PTR by MOLINA,CHANELLE
06:45				REBOUND (OFF) by HRISTOVA,BORISLAVA
06:43		71-65	H 6	GOOD! LAYUP by HRISTOVA,BORISLAVA
06:34	GOOD! 3PTR by ALONSO,LUCIA	71-68	H 3	
06:34	ASSIST by MCDONALD,AARI			
06:18		74-68	H 6	GOOD! 3PTR by MOLINA,CHANELLE
06:18				ASSIST by HRISTOVA,BORISLAVA
06:00	GOOD! LAYUP by SMITH,SEMAJ	74-70	H 4	
06:00	ASSIST by REESE,CATE			
05:37		76-70	H 6	GOOD! LAYUP by MOLINA,CHANELLE
05:37				ASSIST by SUBASIC,JOVANA
05:23	MISSED LAYUP by SMITH,SEMAJ			
05:20				REBOUND (DEF) by JONES,MICHAELA
05:10		78-70	H 8	GOOD! LAYUP by HRISTOVA,BORISLAVA
05:10	FOUL (PERSONAL) by THOMAS,SAM			
05:10	SUB OUT: SMITH,SEMAJ			
05:10	SUB IN: MCBRYDE,DOMINIQUE			
05:10		79-70	H 9	GOOD! FT by HRISTOVA,BORISLAVA
04:59	MISSED LAYUP by MCDONALD,AARI			
04:59				BLOCK by SUBASIC,JOVANA
04:59	REBOUND (OFF) by TEAM			
04:48	MISSED JUMPER by REESE,CATE			
04:45				REBOUND (DEF) by HRISTOVA,BORISLAVA
04:38				
04:38	SUB OUT: REESE,CATE			
04:38	SUB IN: GRAHAM,DESTINY			
04:25				TURNOVER (TRAVEL) by SWEDLUND,ALEXYS
04:09	MISSED JUMPER by MCBRYDE,DOMINIQUE			
04:06				REBOUND (DEF) by SUBASIC,JOVANA
03:50				MISSED JUMPER by SUBASIC,JOVANA
03:47	REBOUND (DEF) by GRAHAM,DESTINY			
03:35	GOOD! 3PTR by ALONSO,LUCIA	79-73	H 6	
03:35	ASSIST by THOMAS,SAM			
03:05				MISSED JUMPER by SWEDLUND,ALEXYS
03:02				REBOUND (OFF) by TEAM
02:48		81-73	H 8	GOOD! JUMPER by SWEDLUND,ALEXYS
02:30	GOOD! 3PTR by ALONSO,LUCIA	81-76	H 5	
02:30	ASSIST by MCBRYDE,DOMINIQUE			
02:01				MISSED JUMPER by HRISTOVA,BORISLAVA
01:59	REBOUND (DEF) by THOMAS,SAM			
01:59				FOUL (PERSONAL) by HRISTOVA,BORISLAVA
01:59				FOUL (PERSONAL) by SWEDLUND,ALEXYS
01:48	GOOD! LAYUP by MCDONALD,AARI	81-78	H 3	
01:15		83-78	H 5	GOOD! JUMPER by HRISTOVA,BORISLAVA [PNT]

Time	VISITORS: Arizona	Score	Margin	HOME: Washington St.
01:15				ASSIST by MOLINA,CHANELLE
01:06				FOUL (PERSONAL) by HRISTOVA,BORISLAVA
01:06	GOOD! FT by MCDONALD,AARI	83-79	H 4	
01:06				SUB OUT: SUBASIC,JOVANA
01:06				SUB IN: MOTUGA,ULA
01:06	GOOD! FT by MCDONALD,AARI	83-80	H 3	
00:40				TURNOVER (BADPASS) by JONES,MICHAELA
00:40	STEAL by ALONSO,LUCIA			
00:35	TIMEOUT TEAM			
00:29	MISSED LAYUP by MCDONALD,AARI			
00:29				REBOUND (DEF) by HRISTOVA,BORISLAVA
00:28				TIMEOUT 30SEC
00:23	FOUL (PERSONAL) by MCDONALD,AARI			
00:23	FOUL (PERSONAL) by GRAHAM,DESTINY			
00:23	SUB OUT: MCBRYDE,DOMINIQUE			
00:23	SUB IN: REESE,CATE			
00:22	FOUL (PERSONAL) by THOMAS,SAM			
00:22		84-80	H 4	GOOD! FT by HRISTOVA,BORISLAVA [FB]
00:22		85-80	H 5	GOOD! FT by HRISTOVA,BORISLAVA [FB]
00:22	TIMEOUT 30SEC			
00:20				FOUL (PERSONAL) by SWEDLUND,ALEXYS
00:20	GOOD! FT by MCDONALD,AARI [FB]	85-81	H 4	
00:20	MISSED FT by MCDONALD,AARI			
00:19	REBOUND (OFF) by MCDONALD,AARI			
00:19				FOUL (PERSONAL) by MOLINA,CHANELLE
00:19	GOOD! FT by MCDONALD,AARI [FB]	85-82	H 3	
00:19	GOOD! FT by MCDONALD,AARI [FB]	85-83	H 2	
00:19				TIMEOUT TEAM
00:18	FOUL (PERSONAL) by THOMAS,SAM			
00:18	SUB OUT: THOMAS,SAM			
00:18	SUB IN: MCBRYDE,DOMINIQUE			
00:18		86-83	H 3	GOOD! FT by MOLINA,CHANELLE [FB]
00:18		87-83	H 4	GOOD! FT by MOLINA,CHANELLE [FB]
00:18	TIMEOUT 30SEC			
00:16	GOOD! LAYUP by MCBRYDE,DOMINIQUE	87-85	H 2	
00:16				FOUL (PERSONAL) by JONES,MICHAELA
00:16	GOOD! FT by MCBRYDE,DOMINIQUE	87-86	H 1	
00:16				TIMEOUT 30SEC
00:16	SUB OUT: MCBRYDE,DOMINIQUE			
00:16	SUB IN: NIXON,BRYCE			
00:11		89-86	H 3	GOOD! LAYUP by HRISTOVA,BORISLAVA [FB]
00:11				ASSIST by MOTUGA,ULA
00:05	GOOD! LAYUP by MCDONALD,AARI	89-88	H 1	
00:04	FOUL (PERSONAL) by MCDONALD,AARI			
00:04				MISSED FT by JONES,MICHAELA
00:04				REBOUND (OFF) by TEAM
00:04	SUB OUT: GRAHAM,DESTINY			
00:04	SUB IN: MCBRYDE,DOMINIQUE			
00:04		90-88	H 2	GOOD! FT by JONES,MICHAELA [FB]
00:00	MISSED 3PTR by MCDONALD,AARI			
00:00				BLOCK by MOLINA,CHANELLE
00:00	REBOUND (OFF) by TEAM			

Arizona 88, Washington St. 90

Points from (This Period)	ARZ	WSU
In the Paint	12	14
Off Turns	5	2
2nd Chance	4	4
Fast Break	5	9
Bench	2	1

**Official Scoring/Possession Reference Chart
Arizona vs Washington St.**

Period 1

February 09, 2019 at Beasley Coliseum - Pullman, WA

Period 1

Starters:

Arizona: 14 THOMAS,SAM; 20 MCBRYDE,DOMINIQUE; 25 REESE,CATE; 2 MCDONALD,AARI; 4 ALONSO,LUCIA;

Washington St.: 11 MOLINA,CHANELLE; 15 MOTUGA,ULA; 20 KOSTOURKOVA,MARIA; 23 SWEDLUND,ALEXYS; 45 HRISTOVA,BORISLAVA;

Time	VISITORS: Arizona	Score	Margin	HOME: Washington St.
09:48		2-0	H 2	GOOD! LAYUP by MOLINA,CHANELLE
09:26	GOOD! JUMPER by ALONSO,LUCIA	2-2	T	
07:46	GOOD! LAYUP by THOMAS,SAM	2-4	V 2	
07:23		5-4	H 1	GOOD! 3PTR by MOLINA,CHANELLE
07:04	GOOD! JUMPER by MCDONALD,AARI	5-6	V 1	
06:34		8-6	H 2	GOOD! 3PTR by MOLINA,CHANELLE
06:17	GOOD! LAYUP by MCDONALD,AARI	8-8	T	
05:48	GOOD! LAYUP by REESE,CATE	8-10	V 2	
05:30		9-10	V 1	GOOD! FT by KOSTOURKOVA,MARIA
04:57	GOOD! 3PTR by THOMAS,SAM	9-13	V 4	
03:04	GOOD! LAYUP by THOMAS,SAM	9-15	V 6	
02:45		11-15	V 4	GOOD! LAYUP by MOLINA,CHANELLE [PNT]
01:18		13-15	V 2	GOOD! JUMPER by MOLINA,CHANELLE [PNT]
00:39		15-15	T	GOOD! LAYUP by HRISTOVA,BORISLAVA
00:03		18-15	H 3	GOOD! 3PTR by SWEDLUND,ALEXYS [FB]

Arizona 15, Washington St. 18

Official Scoring/Possession Reference Chart
Arizona vs Washington St.
Period 2
February 09, 2019 at Beasley Coliseum - Pullman, WA

Period 2

Starters:

Arizona: 14 THOMAS,SAM; 20 MCBRYDE,DOMINIQUE; 25 REESE,CATE; 2 MCDONALD,AARI; 4 ALONSO,LUCIA;

Washington St.: 11 MOLINA,CHANELLE; 15 MOTUGA,ULA; 20 KOSTOURKOVA,MARIA; 23 SWEDLUND,ALEXYS; 45 HRISTOVA,BORISLAVA;

Time	VISITORS: Arizona	Score	Margin	HOME: Washington St.
08:52		19-15	H 4	GOOD! FT by HRISTOVA,BORISLAVA [FB]
08:52		20-15	H 5	GOOD! FT by HRISTOVA,BORISLAVA [FB]
08:37	GOOD! FT by MCDONALD,AARI	20-16	H 4	
08:37	GOOD! FT by MCDONALD,AARI	20-17	H 3	
08:18		22-17	H 5	GOOD! LAYUP by HRISTOVA,BORISLAVA
08:04	GOOD! 3PTR by THOMAS,SAM	22-20	H 2	
07:20	GOOD! JUMPER by REESE,CATE	22-22	T	
06:43		24-22	H 2	GOOD! LAYUP by HRISTOVA,BORISLAVA [FB]
06:34	GOOD! FT by MCDONALD,AARI	24-23	H 1	
06:34	GOOD! FT by MCDONALD,AARI	24-24	T	
06:22		26-24	H 2	GOOD! LAYUP by MOLINA,CHANELLE
06:08	GOOD! 3PTR by REESE,CATE	26-27	V 1	
05:16	GOOD! 3PTR by NIXON,BRYCE	26-30	V 4	
04:45	GOOD! LAYUP by REESE,CATE	26-32	V 6	
04:29		28-32	V 4	GOOD! LAYUP by SUBASIC,JOVANA
03:53		30-32	V 2	GOOD! LAYUP by MOLINA,CHANELLE
03:13		33-32	H 1	GOOD! 3PTR by MOLINA,CHANELLE
02:55	GOOD! JUMPER by REESE,CATE [PNT]	33-34	V 1	
02:29		35-34	H 1	GOOD! LAYUP by HRISTOVA,BORISLAVA [PNT]
02:14	GOOD! JUMPER by REESE,CATE	35-36	V 1	
01:50		37-36	H 1	GOOD! LAYUP by SWEDLUND,ALEXYS
01:22		40-36	H 4	GOOD! 3PTR by JONES,MICHAELA
00:57	GOOD! JUMPER by MCDONALD,AARI	40-38	H 2	
00:39		42-38	H 4	GOOD! LAYUP by HRISTOVA,BORISLAVA

Arizona 38, Washington St. 42

Official Scoring/Possession Reference Chart
Arizona vs Washington St.
Period 3
February 09, 2019 at Beasley Coliseum - Pullman, WA

Period 3

Starters:

Arizona: 14 THOMAS,SAM; 20 MCBRYDE,DOMINIQUE; 25 REESE,CATE; 2 MCDONALD,AARI; 4 ALONSO,LUCIA;

Washington St.: 11 MOLINA,CHANELLE; 15 MOTUGA,ULA; 20 KOSTOURKOVA,MARIA; 23 SWEDLUND,ALEXYS; 45 HRISTOVA,BORISLAVA;

Time	VISITORS: Arizona	Score	Margin	HOME: Washington St.
09:50		44-38	H 6	GOOD! LAYUP by HRISTOVA,BORISLAVA
09:25	GOOD! LAYUP by MCBRYDE,DOMINIQUE	44-40	H 4	
08:58	GOOD! FT by REESE,CATE	44-41	H 3	
08:42		46-41	H 5	GOOD! LAYUP by MOTUGA,ULA [PNT]
08:27	GOOD! 3PTR by MCBRYDE,DOMINIQUE	46-44	H 2	
08:11		49-44	H 5	GOOD! 3PTR by SWEDLUND,ALEXYS
07:43	GOOD! LAYUP by REESE,CATE	49-46	H 3	
05:54		51-46	H 5	GOOD! JUMPER by SUBASIC,JOVANA
05:19		53-46	H 7	GOOD! LAYUP by HRISTOVA,BORISLAVA
04:59	GOOD! FT by MCDONALD,AARI	53-47	H 6	
04:59	GOOD! FT by MCDONALD,AARI	53-48	H 5	
04:04	GOOD! LAYUP by THOMAS,SAM	53-50	H 3	
03:17		55-50	H 5	GOOD! JUMPER by HRISTOVA,BORISLAVA
03:06	GOOD! LAYUP by MCDONALD,AARI	55-52	H 3	
02:47		57-52	H 5	GOOD! JUMPER by SUBASIC,JOVANA
02:18	GOOD! LAYUP by MCDONALD,AARI	57-54	H 3	
02:03		58-54	H 4	GOOD! FT by HRISTOVA,BORISLAVA
01:14		61-54	H 7	GOOD! 3PTR by HRISTOVA,BORISLAVA
00:50	GOOD! LAYUP by THOMAS,SAM	61-56	H 5	
00:36		63-56	H 7	GOOD! LAYUP by SWEDLUND,ALEXYS
00:10	GOOD! FT by MCDONALD,AARI	63-57	H 6	
00:07	GOOD! FT by REESE,CATE [FB]	63-58	H 5	
00:05		64-58	H 6	GOOD! FT by HRISTOVA,BORISLAVA
00:05		65-58	H 7	GOOD! FT by HRISTOVA,BORISLAVA

Arizona 58, Washington St. 65

Official Scoring/Possession Reference Chart
Arizona vs Washington St.
Period 4
February 09, 2019 at Beasley Coliseum - Pullman, WA

Period 4

Starters:

Arizona: 14 THOMAS,SAM; 20 MCBRYDE,DOMINIQUE; 25 REESE,CATE; 2 MCDONALD,AARI; 4 ALONSO,LUCIA;

Washington St.: 11 MOLINA,CHANELLE; 15 MOTUGA,ULA; 20 KOSTOURKOVA,MARIA; 23 SWEDLUND,ALEXYS; 45 HRISTOVA,BORISLAVA;

Time	VISITORS: Arizona	Score	Margin	HOME: Washington St.
09:51		67-58	H 9	GOOD! LAYUP by MOLINA,CHANELLE
09:17		69-58	H 11	GOOD! LAYUP by HRISTOVA,BORISLAVA [FB]
08:43	GOOD! 3PTR by ALONSO,LUCIA	69-61	H 8	
07:21	GOOD! LAYUP by REESE,CATE	69-63	H 6	
07:07	GOOD! LAYUP by THOMAS,SAM [FB]	69-65	H 4	
06:43		71-65	H 6	GOOD! LAYUP by HRISTOVA,BORISLAVA
06:34	GOOD! 3PTR by ALONSO,LUCIA	71-68	H 3	
06:18		74-68	H 6	GOOD! 3PTR by MOLINA,CHANELLE
06:00	GOOD! LAYUP by SMITH,SEMAJ	74-70	H 4	
05:37		76-70	H 6	GOOD! LAYUP by MOLINA,CHANELLE
05:10		78-70	H 8	GOOD! LAYUP by HRISTOVA,BORISLAVA
05:10		79-70	H 9	GOOD! FT by HRISTOVA,BORISLAVA
03:35	GOOD! 3PTR by ALONSO,LUCIA	79-73	H 6	
02:48		81-73	H 8	GOOD! JUMPER by SWEDLUND,ALEXYS
02:30	GOOD! 3PTR by ALONSO,LUCIA	81-76	H 5	
01:48	GOOD! LAYUP by MCDONALD,AARI	81-78	H 3	
01:15		83-78	H 5	GOOD! JUMPER by HRISTOVA,BORISLAVA [PNT]
01:06	GOOD! FT by MCDONALD,AARI	83-79	H 4	
01:06	GOOD! FT by MCDONALD,AARI	83-80	H 3	
00:22		84-80	H 4	GOOD! FT by HRISTOVA,BORISLAVA [FB]
00:22		85-80	H 5	GOOD! FT by HRISTOVA,BORISLAVA [FB]
00:20	GOOD! FT by MCDONALD,AARI [FB]	85-81	H 4	
00:19	GOOD! FT by MCDONALD,AARI [FB]	85-82	H 3	
00:19	GOOD! FT by MCDONALD,AARI [FB]	85-83	H 2	
00:18		86-83	H 3	GOOD! FT by MOLINA,CHANELLE [FB]
00:18		87-83	H 4	GOOD! FT by MOLINA,CHANELLE [FB]
00:16	GOOD! LAYUP by MCBRYDE,DOMINIQUE	87-85	H 2	
00:16	GOOD! FT by MCBRYDE,DOMINIQUE	87-86	H 1	
00:11		89-86	H 3	GOOD! LAYUP by HRISTOVA,BORISLAVA [FB]
00:05	GOOD! LAYUP by MCDONALD,AARI	89-88	H 1	
00:04		90-88	H 2	GOOD! FT by JONES,MICHAELA [FB]

Arizona 88, Washington St. 90

**Official Substitutions Log
Arizona vs Washington St.**

Period 1

February 09, 2019 at Beasley Coliseum - Pullman, WA

VISITORS: Arizona	Time	Score	HOME: Washington St.
14 THOMAS, SAM			11 MOLINA, CHANELLE
20 MCBRYDE, DOMINIQUE			15 MOTUGA, ULA
25 REESE, CATE			20 KOSTOURKOVA, MARIA
2 MCDONALD, AARI			23 SWEDLUND, ALEXYS
4 ALONSO, LUCIA			45 HRISTOVA, BORISLAVA
SUB OUT: 2 MCDONALD, AARI	05:09	10-9	
SUB IN: 21 GRAHAM, DESTINY	05:09		
SUB OUT: 20 MCBRYDE, DOMINIQUE	04:01	13-9	
SUB IN: 34 SMITH, SEMAJ	04:01		

Arizona 15, Washington St. 18

Official Substitutions Log
Arizona vs Washington St.
Period 2
February 09, 2019 at Beasley Coliseum - Pullman, WA

VISITORS: Arizona	Time	Score	HOME: Washington St.
14 THOMAS,SAM			11 MOLINA,CHANELLE
20 MCBRYDE,DOMINIQUE			15 MOTUGA,ULA
25 REESE,CATE			20 KOSTOURKOVA,MARIA
2 MCDONALD,AARI			23 SWEDLUND,ALEXYS
4 ALONSO,LUCIA			45 HRISTOVA,BORISLAVA
SUB OUT: 34 SMITH,SEMAJ	08:52	15-19	
SUB IN: 14 THOMAS,SAM	08:52		
SUB OUT: 21 GRAHAM,DESTINY	07:41	20-22	
SUB IN: 25 REESE,CATE	07:41		
	05:43	27-26	SUB OUT: HRISTOVA,BORISLAVA
	05:43		SUB IN: MOTUGA,ULA
	04:59	30-26	SUB OUT: KOSTOURKOVA,MARIA
	04:59		SUB IN: SUBASIC,JOVANA
	03:05	32-33	SUB OUT: LEVY,SHIR
	03:05		SUB IN: JONES,MICHAELA
	03:05		SUB OUT: SUBASIC,JOVANA
	03:05		SUB IN: HRISTOVA,BORISLAVA

Arizona 38, Washington St. 42

Official Substitutions Log
Arizona vs Washington St.
Period 3
February 09, 2019 at Beasley Coliseum - Pullman, WA

VISITORS: Arizona	Time	Score	HOME: Washington St.
14 THOMAS,SAM			11 MOLINA,CHANELLE
20 MCBRYDE,DOMINIQUE			15 MOTUGA,ULA
25 REESE,CATE			20 KOSTOURKOVA,MARIA
2 MCDONALD,AARI			23 SWEDLUND,ALEXYS
4 ALONSO,LUCIA			45 HRISTOVA,BORISLAVA
	07:03	46-49	SUB OUT: SWEDLUND,ALEXYS
	07:03		SUB IN: JONES,MICHAELA
	06:23	46-49	SUB OUT: KOSTOURKOVA,MARIA
	06:23		SUB IN: SUBASIC,JOVANA
SUB OUT: 4 ALONSO,LUCIA	05:19	46-53	
SUB IN: 21 GRAHAM,DESTINY	05:19		
	04:59	46-53	SUB OUT: HRISTOVA,BORISLAVA
	04:59		SUB IN: SWEDLUND,ALEXYS
SUB OUT: 20 MCBRYDE,DOMINIQUE	04:59		
SUB IN: 34 SMITH,SEMAJ	04:59		
	03:48	50-53	SUB OUT: MOTUGA,ULA
	03:48		SUB IN: HRISTOVA,BORISLAVA
	00:05	58-65	SUB OUT: SUBASIC,JOVANA
	00:05		SUB IN: MOLINA,CELENA
SUB OUT: 21 GRAHAM,DESTINY	00:05		
SUB IN: 24 NIXON,BRYCE	00:05		
SUB OUT: 34 SMITH,SEMAJ	00:05		
SUB IN: 4 ALONSO,LUCIA	00:05		

Arizona 58, Washington St. 65

**Official Substitutions Log
Arizona vs Washington St.
Period 4**

February 09, 2019 at Beasley Coliseum - Pullman, WA

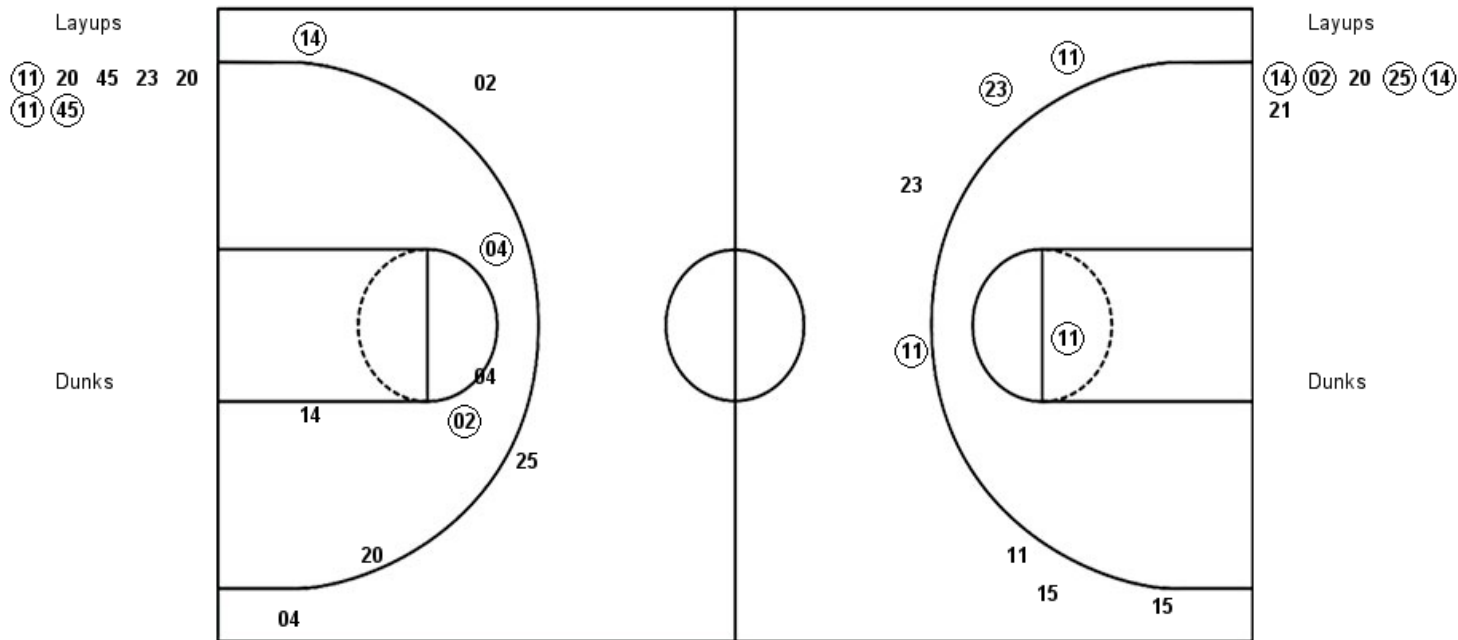
VISITORS: Arizona	Time	Score	HOME: Washington St.
14 THOMAS,SAM			11 MOLINA,CHANELLE
20 MCBRYDE,DOMINIQUE			15 MOTUGA,ULA
25 REESE,CATE			20 KOSTOURKOVA,MARIA
2 MCDONALD,AARI			23 SWEDLUND,ALEXYS
4 ALONSO,LUCIA			45 HRISTOVA,BORISLAVA
SUB OUT: 20 MCBRYDE,DOMINIQUE	07:45	61-69	
SUB IN: 34 SMITH,SEMAJ	07:45		
SUB OUT: 34 SMITH,SEMAJ	05:10	70-78	
SUB IN: 20 MCBRYDE,DOMINIQUE	05:10		
SUB OUT: 25 REESE,CATE	04:38	70-79	
SUB IN: 21 GRAHAM,DESTINY	04:38		
	01:06	79-83	SUB OUT: SUBASIC,JOVANA
	01:06		SUB IN: MOTUGA,ULA
SUB OUT: 20 MCBRYDE,DOMINIQUE	00:23	80-83	
SUB IN: 25 REESE,CATE	00:23		
SUB OUT: 14 THOMAS,SAM	00:18	83-85	
SUB IN: 20 MCBRYDE,DOMINIQUE	00:18		
SUB OUT: 20 MCBRYDE,DOMINIQUE	00:16	86-87	
SUB IN: 24 NIXON,BRYCE	00:16		
SUB OUT: 21 GRAHAM,DESTINY	00:04	88-89	
SUB IN: 20 MCBRYDE,DOMINIQUE	00:04		

Arizona 88, Washington St. 90

Official Shot Chart
Arizona vs Washington St.
 PERIOD 1 Shots
 February 09, 2019 at Beasley Coliseum - Pullman, WA

Washington St.

Arizona



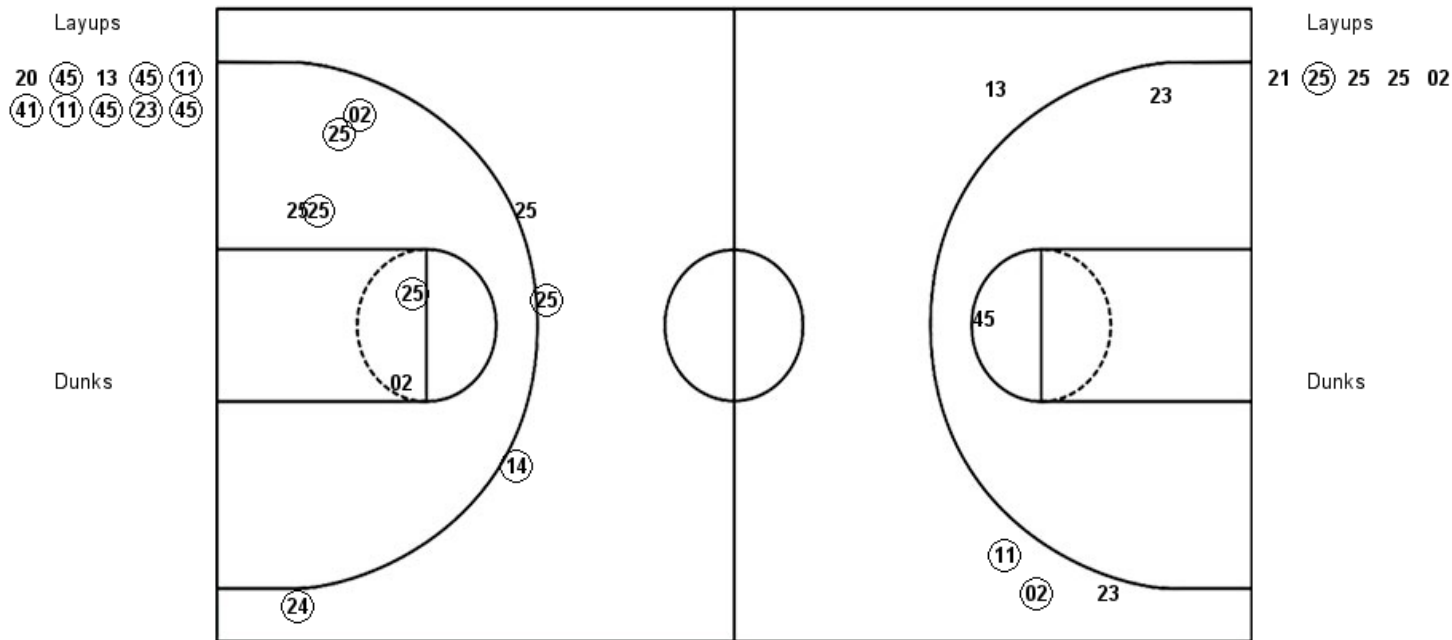
WSU : Period 1	Made	Att	Pct
Layups	3	7	42.9
Dunks	0	0	0
2PT Field Goals	4	8	50.0
3PT Field Goals	3	7	42.9
Total Field Goals	7	15	46.7

ARZ : Period 1	Made	Att	Pct
Layups	4	6	66.7
Dunks	0	0	0
2PT Field Goals	6	11	54.5
3PT Field Goals	1	4	25.0
Total Field Goals	7	15	46.7

Official Shot Chart
Arizona vs Washington St.
 PERIOD 2 Shots
 February 09, 2019 at Beasley Coliseum - Pullman, WA

Washington St.

Arizona



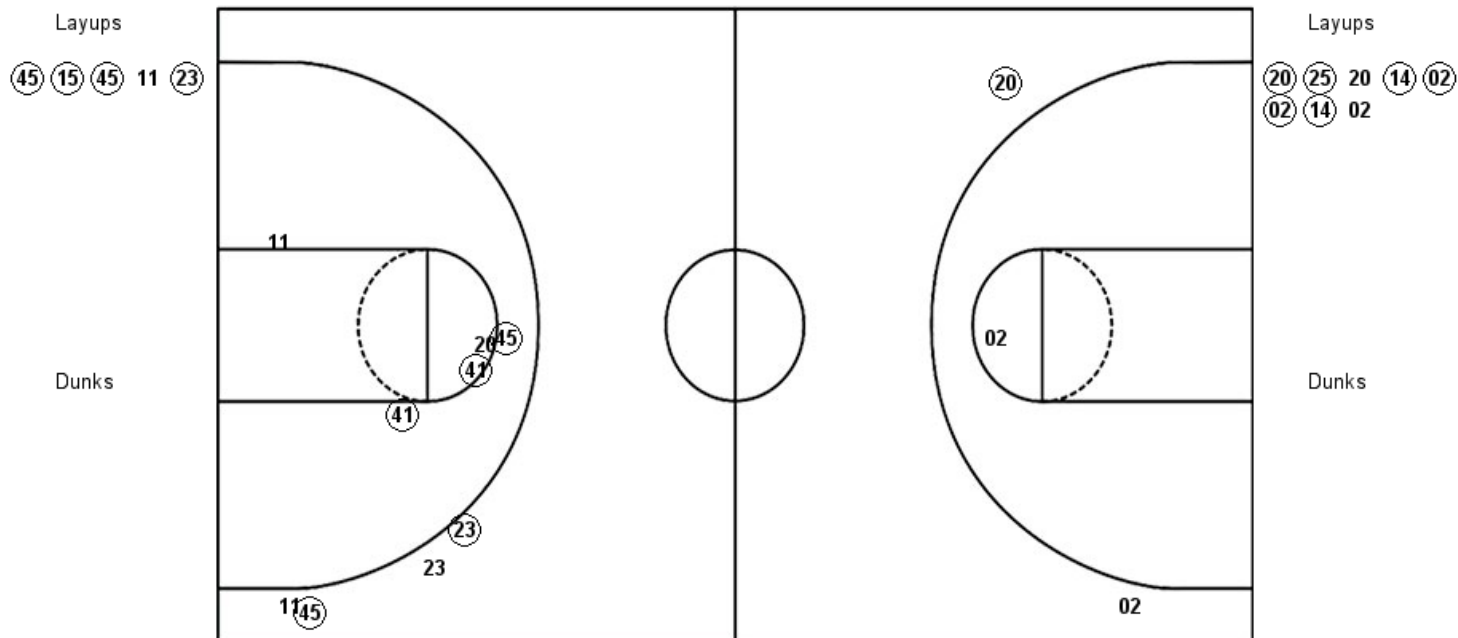
WSU : Period 2	Made	Att	Pct
Layups	8	10	80.0
Dunks	0	0	0
2PT Field Goals	8	12	66.7
3PT Field Goals	2	4	50.0
Total Field Goals	10	16	62.5

ARZ : Period 2	Made	Att	Pct
Layups	1	5	20.0
Dunks	0	0	0
2PT Field Goals	5	11	45.5
3PT Field Goals	3	4	75.0
Total Field Goals	8	15	53.3

Official Shot Chart
Arizona vs Washington St.
 PERIOD 3 Shots
 February 09, 2019 at Beasley Coliseum - Pullman, WA

Washington St.

Arizona



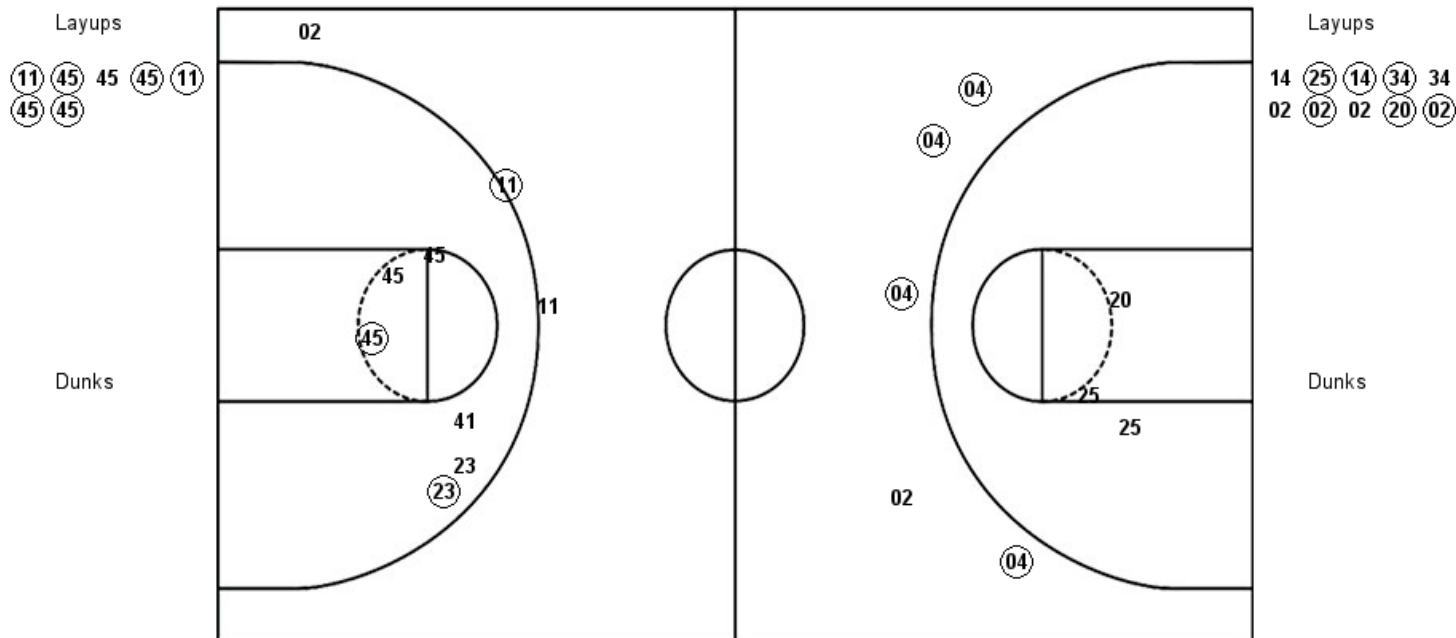
WSU : Period 3	Made	Att	Pct
Layups	4	5	80.0
Dunks	0	0	0
2PT Field Goals	7	10	70.0
3PT Field Goals	2	4	50.0
Total Field Goals	9	14	64.3

ARZ : Period 3	Made	Att	Pct
Layups	6	8	75.0
Dunks	0	0	0
2PT Field Goals	6	9	66.7
3PT Field Goals	1	2	50.0
Total Field Goals	7	11	63.6

Official Shot Chart
Arizona vs Washington St.
 PERIOD 4 Shots
 February 09, 2019 at Beasley Coliseum - Pullman, WA

Washington St.

Arizona

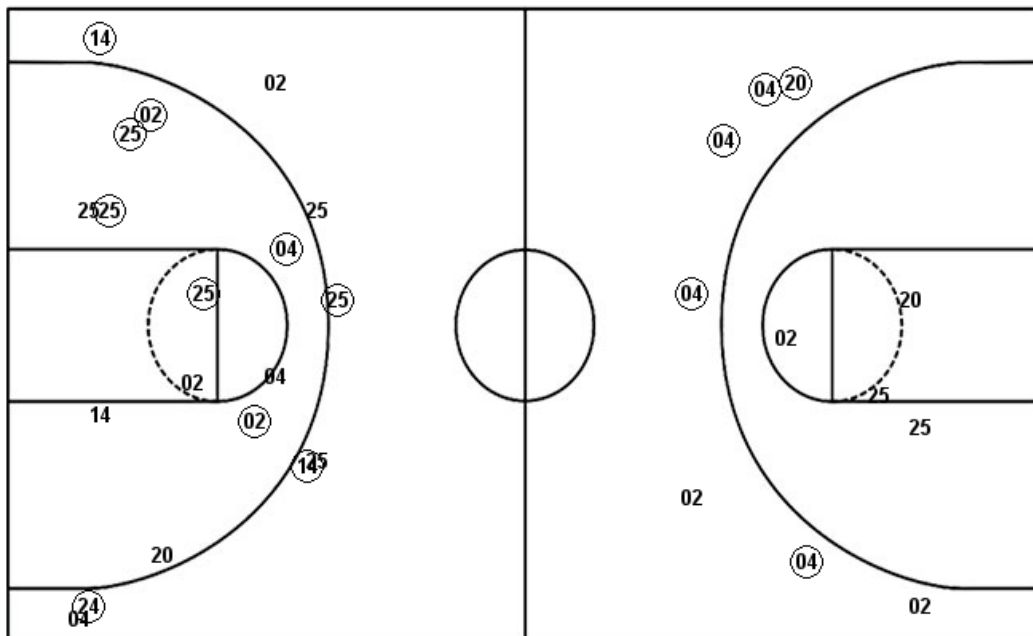


WSU : Period 4	Made	Att	Pct
Layups	6	7	85.7
Dunks	0	0	0
2PT Field Goals	8	13	61.5
3PT Field Goals	1	3	33.3
Total Field Goals	9	16	56.3

ARZ : Period 4	Made	Att	Pct
Layups	6	10	60.0
Dunks	0	0	0
2PT Field Goals	6	13	46.2
3PT Field Goals	4	5	80.0
Total Field Goals	10	18	55.6

Official Shot Chart
Arizona vs Washington St.
Arizona Team Shots
February 09, 2019 at Beasley Coliseum - Pullman, WA

Layups



Dunks

Layups

14 02 20 25 14
 21 21 25 25 25
 02 20 25 20 14
 02 02 14 02 14
 25 14 34 34 02
 02 02 20 02

Dunks

ARZ : Period 1	Made	Att	Pct
Layups	4	6	66.7
Dunks	0	0	0
2PT Field Goals	6	11	54.5
3PT Field Goals	1	4	25.0
Total Field Goals	7	15	46.7

ARZ : Period 3	Made	Att	Pct
Layups	6	8	75.0
Dunks	0	0	0
2PT Field Goals	6	9	66.7
3PT Field Goals	1	2	50.0
Total Field Goals	7	11	63.6

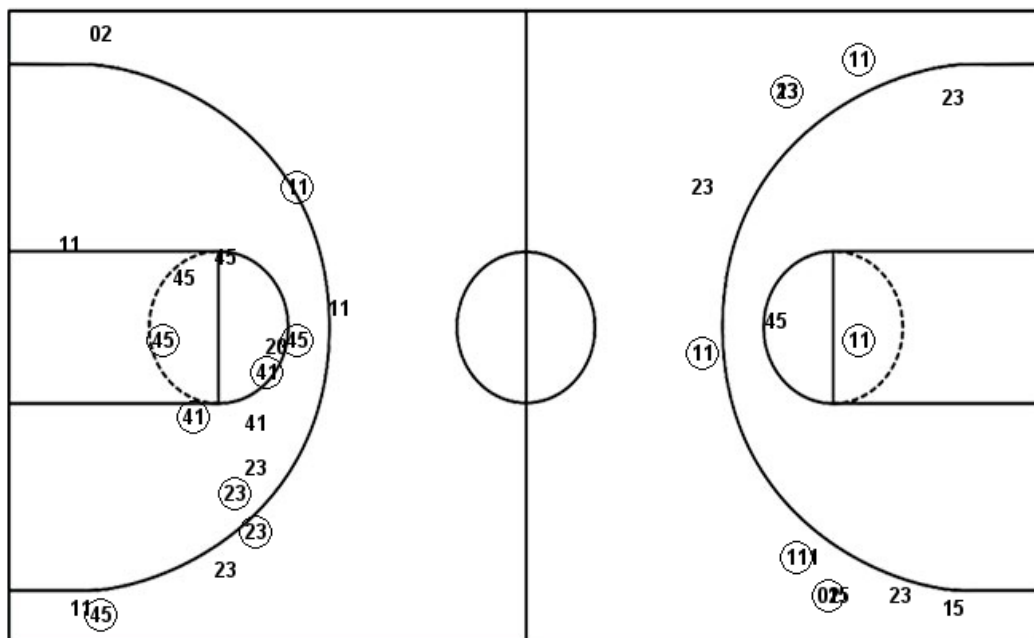
ARZ : Period 2	Made	Att	Pct
Layups	1	5	20.0
Dunks	0	0	0
2PT Field Goals	5	11	45.5
3PT Field Goals	3	4	75.0
Total Field Goals	8	15	53.3

ARZ : Period 4	Made	Att	Pct
Layups	6	10	60.0
Dunks	0	0	0
2PT Field Goals	6	13	46.2
3PT Field Goals	4	5	80.0
Total Field Goals	10	18	55.6

Official Shot Chart
Arizona vs Washington St.
Washington St. Team Shots
February 09, 2019 at Beasley Coliseum - Pullman, WA

Layups

Dunks



Layups

Dunks

(11)	20	45	23	20
(11)	45	20	45	13
(45)	(11)	(41)	(11)	(45)
(23)	45	(45)	(15)	(45)
11	23	(11)	(45)	45
(45)	(11)	(45)	(45)	

WSU : Period 1	Made	Att	Pct
Layups	3	7	42.9
Dunks	0	0	0
2PT Field Goals	4	8	50.0
3PT Field Goals	3	7	42.9
Total Field Goals	7	15	46.7

WSU : Period 3	Made	Att	Pct
Layups	4	5	80.0
Dunks	0	0	0
2PT Field Goals	7	10	70.0
3PT Field Goals	2	4	50.0
Total Field Goals	9	14	64.3

WSU : Period 2	Made	Att	Pct
Layups	8	10	80.0
Dunks	0	0	0
2PT Field Goals	8	12	66.7
3PT Field Goals	2	4	50.0
Total Field Goals	10	16	62.5

WSU : Period 4	Made	Att	Pct
Layups	6	7	85.7
Dunks	0	0	0
2PT Field Goals	8	13	61.5
3PT Field Goals	1	3	33.3
Total Field Goals	9	16	56.3