

FINAL SCORE



#20 Arizona St.

61



Washington St.

46

February 08, 2019 • Beasley Coliseum - Pullman, WA

FINAL STATISTICS

Official Box Score
#20 Arizona St. vs Washington St.
Game Totals -- Final Statistics
February 08, 2019 at Beasley Coliseum - Pullman, WA

#20 Arizona St. 61

No.	Player	S	Pts	FG	3FG	FT	OR	DR	TR	PF	A	TO	Blk	Stl	Min	+/-
01	Richardson, Reili		0	0-0	0-0	0-0	0	1	1	1	5	1	0	0	22	14
11	Ryan, Robbi		13	5-8	3-3	0-0	0	3	3	2	2	1	0	0	23	14
22	Ekmark, Courtney		5	2-11	1-8	0-0	1	1	2	3	3	0	0	0	32	13
33	Johnson-Chapman, Charnea		6	3-6	0-0	0-0	3	5	8	1	0	0	1	1	18	8
42	Ibis, Kianna		22	10-21	1-3	1-2	2	6	8	1	0	1	0	0	25	16
00	Hanson, Taya		0	0-2	0-1	0-0	0	0	0	1	2	0	0	1	13	7
05	Loera, Jamie		0	0-0	0-0	0-0	0	0	0	0	0	2	0	0	8	0
21	Elenga, Sophia		2	1-2	0-0	0-0	1	3	4	1	0	0	0	1	20	1
23	Mbulito, Iris		4	2-4	0-0	0-3	0	7	7	0	5	2	1	0	19	-1
24	Sanders, Bre'yanna		0	0-0	0-0	0-0	0	0	0	1	0	0	0	0	2	-2
32	Van Hyfte, Jayde		2	1-1	0-0	0-0	0	0	0	3	0	1	1	0	7	-2
44	Rubin, Eva		0	0-0	0-0	0-0	0	0	0	0	0	0	0	0	1	-1
52	Ruden, Jamie		7	3-5	1-1	0-0	1	2	3	1	0	1	1	0	9	8
	Team						4	0	4	0		1				
TOTALS			61	27-60	6-16	1-5	12	28	40	15	17	10	4	3	199	

Shooting By Period

Period	FG	FG%	3FG	3FG%	FT	FT%
1st Qtr	5-17	29%	1-4	25%	0-0	0%
2nd Qtr	7-18	39%	2-7	29%	0-1	00%
3rd Qtr	9-14	64%	3-4	75%	0-2	00%
4th Qtr	6-11	55%	0-1	00%	1-2	50%
1st Half	12-35	34%	3-11	27%	0-1	00%
2nd Half	15-25	60%	3-5	60%	1-4	25%
Game	27-60	45.0%	6-16	37.5%	1-5	20.0%

Last FG: 4th-01:17
 Biggest Run: 10-0
 Largest lead: By 20 at 4-04:01
 Technical Fouls: None.

Washington St. 46

No.	Player	S	Pts	FG	3FG	FT	OR	DR	TR	PF	A	TO	Blk	Stl	Min	+/-
11	Molina, Chanelle		8	4-13	0-3	0-0	1	3	4	1	6	1	1	0	36	-18
15	Motuga, Ula		6	3-7	0-1	0-0	3	5	8	1	1	0	0	0	19	-10
20	Kostourkova, Maria		9	3-6	0-0	3-3	0	6	6	2	0	2	0	0	28	-14
23	Swedlund, Alexys		3	1-5	1-5	0-0	1	0	1	4	0	2	0	2	32	-17
45	Hristova, Borislava		11	4-16	1-5	2-4	1	2	3	2	3	4	0	0	35	-12
02	Jones, Michaela		4	1-1	1-1	1-2	1	3	4	0	0	0	0	0	24	-6
13	Lewy, Shir		0	0-3	0-1	0-0	0	1	1	1	0	0	1	0	8	2
22	Molina, Celena		0	0-0	0-0	0-0	0	0	0	0	0	0	0	0	2	2
33	Molina, Cherilyn		3	1-3	1-2	0-0	0	0	0	1	0	2	0	2	4	3
41	Subasic, Jovana		2	1-2	0-0	0-0	0	2	2	0	0	0	0	0	12	-5
	Team						5	2	7	0		1				
TOTALS			46	18-56	4-18	6-9	12	24	36	12	10	12	2	4	199	

Shooting By Period

Period	FG	FG%	3FG	3FG%	FT	FT%
1st Qtr	7-17	41%	0-2	00%	0-0	0%
2nd Qtr	6-13	46%	1-3	33%	1-1	100%
3rd Qtr	2-12	17%	2-7	29%	3-6	50%
4th Qtr	3-14	21%	1-6	17%	2-2	100%
1st Half	13-30	43%	1-5	20%	1-1	100%
2nd Half	5-26	19%	3-13	23%	5-8	63%
Game	18-56	32.1%	4-18	22.2%	6-9	66.7%

Last FG: 4th-00:13
 Biggest Run: 6-0
 Largest lead: By 8 at 2-05:26
 Technical Fouls: None.

Game Notes:

Officials: **Melissa Barlow, Cathi Cornell, Tyler Trimble**
 Attendance: 591

Start Time: 2019-02-08 03:00:39
 End Time: 2019-02-08 04:39:08
 Game Duration: 98
 Conference Game;

Score	1st	2nd	3rd	4th	TOT
ASU	11	16	21	13	61
WSU	14	14	9	9	46

ASU led for 19:53. WSU led for 17:37.
 Game was tied for 2:20.
 Times tied: 2 Lead Changes: 3

Points from	ASU	WSU
In the Paint	28	20
Off Turns	10	14
2nd Chance	13	9
Fast Break	11	2
Bench	15	9

Official Box Score
#20 Arizona St. vs Washington St.
First Half Statistics Only
February 08, 2019 at Beasley Coliseum - Pullman, WA

#20 Arizona St. 27

No.	Player	S	Pts	FG	3FG	FT	OR	DR	TR	PF	A	TO	Blk	Stl	Min	+/-
00	Hanson, Taya		0	0-2	0-1	0-0	0	0	0	0	2	0	0	1	10	2
11	Ryan, Robbi		7	3-6	1-1	0-0	0	2	2	1	1	0	0	0	13	4
21	Elenga, Sophia		0	0-0	0-0	0-0	1	0	1	1	0	0	0	1	11	-4
22	Ekmark, Courtney		2	1-8	0-5	0-0	0	0	0	1	0	0	0	0	16	-6
23	Mbulito, Iris		2	1-2	0-0	0-1	0	4	4	0	2	1	0	0	9	-3
24	Sanders, Bre'yanna		0	0-0	0-0	0-0	0	0	0	0	0	0	0	0	0	0
32	Van Hyfte, Jayde		0	0-0	0-0	0-0	0	0	0	0	0	0	1	0	4	0
33	Johnson-Chapman, Charnea		2	1-4	0-0	0-0	1	2	3	1	0	0	0	1	9	-5
42	Ibis, Kianna		11	5-11	1-3	0-0	1	4	5	0	0	0	0	0	13	1
44	Rubin, Eva		0	0-0	0-0	0-0	0	0	0	0	0	0	0	0	0	0
52	Ruden, Jamie		3	1-2	1-1	0-0	0	1	1	0	0	0	0	0	5	6
01	Richardson, Reili		0	0-0	0-0	0-0	0	0	0	1	2	1	0	0	12	0
05	Loera, Jamie		0	0-0	0-0	0-0	0	0	0	0	0	0	0	0	0	0
	Team		0	0-0	0-0	0-0	3	0	3	0	0	0	0	0	0	0
TOTALS			27	12-35	3-11	0-1	6	13	19	5	7	2	1	3	100	

Shooting By Period

Period	FG	FG%	3FG	3FG%	FT	FT%
1st Qtr	5-17	29%	1-4	25%	0-0	0%
2nd Qtr	7-18	39%	2-7	29%	0-1	00%
1st Half	12-35	34%	3-11	27%	0-1	00%
Game	27-60	45.0%	6-16	37.5%	1-5	20.0%

Last FG Half: ASU 2nd-01:57

Washington St. 28

No.	Player	S	Pts	FG	3FG	FT	OR	DR	TR	PF	A	TO	Blk	Stl	Min	+/-
11	Molina, Chanelle		6	3-9	0-1	0-0	0	1	1	1	4	0	1	0	20	1
13	Levy, Shir		0	0-0	0-0	0-0	0	0	0	1	0	0	0	0	3	1
15	Motuga, Ula		4	2-4	0-0	0-0	2	3	5	1	1	0	0	0	9	4
20	Kostourkova, Maria		7	3-5	0-0	1-1	0	6	6	1	0	2	0	0	17	0
22	Molina, Celena		0	0-0	0-0	0-0	0	0	0	0	0	0	0	0	0	0
23	Swedlund, Alexys		0	0-2	0-2	0-0	0	0	0	2	0	1	0	1	17	0
33	Molina, Cherilyn		0	0-0	0-0	0-0	0	0	0	0	0	0	0	0	0	0
41	Subasic, Jovana		2	1-2	0-0	0-0	0	2	2	0	0	0	0	0	5	-6
45	Hristova, Borislava		6	3-7	0-1	0-0	1	2	3	1	3	2	0	0	16	6
02	Jones, Michaela		3	1-1	1-1	0-0	0	2	2	0	0	0	0	0	12	-1
	Team		0	0-0	0-0	0-0	1	2	3	0	0	0	0	0	0	0
TOTALS			28	13-30	1-5	1-1	4	18	22	7	8	5	1	1	100	

Shooting By Period

Period	FG	FG%	3FG	3FG%	FT	FT%
1st Qtr	7-17	41%	0-2	00%	0-0	0%
2nd Qtr	6-13	46%	1-3	33%	1-1	100%
1st Half	13-30	43%	1-5	20%	1-1	100%
Game	18-56	32.1%	4-18	22.2%	6-9	66.7%

Last FG Half: WSU 2nd-00:46

Game Notes:

Officials: **Melissa Barlow, Cathi Cornell, Tyler Trimble**
 Attendance: **591**

Start Time: **2019-02-08 03:00:39**
 End Time: **2019-02-08 04:39:08**
 Game Duration: **98**
 Conference Game;

Score	1st	2nd	3rd	4th	TOT
ASU	11	16	21	13	61
WSU	14	14	9	9	46

Points from (This Period)	ASU	WSU
In the Paint	10	16
Off Turns	4	2
2nd Chance	3	4
Fast Break	5	2
Bench	5	5

Official Box Score
#20 Arizona St. vs Washington St.
First Quarter Statistics Only
February 08, 2019 at Beasley Coliseum - Pullman, WA

#20 Arizona St. 11

No.	Player	S	Pts	FG	3FG	FT	OR	DR	TR	PF	A	TO	Blk	Stl	Min	+/-
01	Richardson, Reili		0	0-0	0-0	0-0	0	0	0	0	1	1	0	0	6	-1
11	Ryan, Robbi		2	1-3	0-0	0-0	0	1	1	0	0	0	0	0	5	-2
22	Ekmark, Courtney		2	1-4	0-1	0-0	0	0	0	0	0	0	0	0	9	-1
33	Johnson-Chapman, Charnea		0	0-0	0-0	0-0	0	1	1	0	0	0	0	0	4	0
42	Ibis, Kianna		4	2-5	0-1	0-0	0	1	1	0	0	0	0	0	7	-4
00	Hanson, Taya		0	0-2	0-1	0-0	0	0	0	0	1	0	0	0	6	-3
05	Loera, Jamie		0	0-0	0-0	0-0	0	0	0	0	0	0	0	0	0	0
21	Elenga, Sophia		0	0-0	0-0	0-0	1	0	1	1	0	0	0	0	6	-3
23	Mbulito, Iris		0	0-1	0-0	0-0	0	3	3	0	1	1	0	0	4	-2
24	Sanders, Bre'yanna		0	0-0	0-0	0-0	0	0	0	0	0	0	0	0	0	0
32	Van Hyfte, Jayde		0	0-0	0-0	0-0	0	0	0	0	0	0	1	0	2	2
44	Rubin, Eva		0	0-0	0-0	0-0	0	0	0	0	0	0	0	0	0	0
52	Ruden, Jamie		3	1-2	1-1	0-0	0	1	1	0	0	0	0	0	2	-1
	Team						3	0	3	0		0				
TOTALS			11	5-17	1-4	0-0	4	7	11	1	3	2	1	0	50	

Shooting By Period

Period	FG	FG%	3FG	3FG%	FT	FT%
1st Qtr	5-17	29%	1-4	25%	0-0	0%
2nd Qtr	7-18	39%	2-7	29%	0-1	00%
1st Half	5-17	29%	1-4	25%	0-0	0%
1st Half	12-35	34%	3-11	27%	0-1	00%
Game	27-60	45.0%	6-16	37.5%	1-5	20.0%

Washington St. 14

No.	Player	S	Pts	FG	3FG	FT	OR	DR	TR	PF	A	TO	Blk	Stl	Min	+/-
11	Molina, Chanelle		2	1-4	0-0	0-0	0	0	0	0	3	0	1	0	10	3
15	Motuga, Ula		2	1-3	0-0	0-0	1	3	4	0	1	0	0	0	8	2
20	Kostourkova, Maria		4	2-3	0-0	0-0	0	2	2	1	0	1	0	0	10	3
23	Swedlund, Alexys		0	0-1	0-1	0-0	0	0	0	1	0	0	0	1	10	3
45	Hristova, Borislava		6	3-6	0-1	0-0	1	2	3	0	1	0	0	0	10	3
02	Jones, Michaela		0	0-0	0-0	0-0	0	0	0	0	0	0	0	0	2	1
13	Lewy, Shir		0	0-0	0-0	0-0	0	0	0	0	0	0	0	0	0	0
22	Molina, Celena		0	0-0	0-0	0-0	0	0	0	0	0	0	0	0	0	0
33	Molina, Cherilyn		0	0-0	0-0	0-0	0	0	0	0	0	0	0	0	0	0
41	Subasic, Jovana		0	0-0	0-0	0-0	0	0	0	0	0	0	0	0	0	0
	Team						1	1	2	0		0				
TOTALS			14	7-17	0-2	0-0	3	8	11	2	5	1	1	1	50	

Shooting By Period

Period	FG	FG%	3FG	3FG%	FT	FT%
1st Qtr	7-17	41%	0-2	00%	0-0	0%
2nd Qtr	6-13	46%	1-3	33%	1-1	100%
1st Half	7-17	41%	0-2	00%	0-0	0%
1st Half	13-30	43%	1-5	20%	1-1	100%
Game	18-56	32.1%	4-18	22.2%	6-9	66.7%

Game Notes:

Officials: Melissa Barlow, Cathi Cornell, Tyler Trimble
 Attendance: 591

Start Time: 2019-02-08 03:00:39
 End Time: 2019-02-08 04:39:08
 Game Duration: 98
 Conference Game:

Score	1st	2nd	3rd	4th	TOT
ASU	11	16	21	13	61
WSU	14	14	9	9	46

Points from (This Period)	ASU	WSU
In the Paint	4	10
Off Turns	0	2
2nd Chance	3	2
Fast Break	0	2
Bench	3	0

Official Play-By-Play
#20 Arizona St. vs Washington St.
First Quarter
February 08, 2019 at Beasley Coliseum - Pullman, WA

Period 1

Starters:

#20 Arizona St.: 11 RYAN,ROBBI; 22 EKMARK,COURTNEY; 33 JOHNSON-CHAPMAN,CHARNEA; 42 IBIS,KIANNA; 1 RICHARDSON,REILI;
Washington St.: 11 MOLINA,CHANELLE; 15 MOTUGA,ULA; 20 KOSTOURKOVA,MARIA; 23 SWEDLUND,ALEXYS; 45 HRISTOVA,BORISLAVA;

Time	VISITORS: #20 Arizona St.	Score	Margin	HOME: Washington St.
09:48	MISSED JUMPER by IBIS,KIANNA			
09:45				REBOUND (DEF) by HRISTOVA,BORISLAVA
09:28		2-0	H 2	GOOD! JUMPER by MOTUGA,ULA
09:28				ASSIST by HRISTOVA,BORISLAVA
09:14	MISSED JUMPER by EKMARK,COURTNEY			
09:11				REBOUND (DEF) by TEAM
08:49				MISSED 3PTR by SWEDLUND,ALEXYS
08:48	REBOUND (DEF) by IBIS,KIANNA			
08:48				FOUL (PERSONAL) by KOSTOURKOVA,MARIA
08:36	MISSED 3PTR by EKMARK,COURTNEY			
08:33				REBOUND (DEF) by MOTUGA,ULA
08:25		4-0	H 4	GOOD! LAYUP by KOSTOURKOVA,MARIA
08:25				ASSIST by MOTUGA,ULA
08:15	GOOD! JUMPER by RYAN,ROBBI	4-2	H 2	
07:54				MISSED 3PTR by HRISTOVA,BORISLAVA
07:49	REBOUND (DEF) by JOHNSON-CHAPMAN,CHARNEA			
07:40	MISSED LAYUP by RYAN,ROBBI			
07:40				BLOCK by MOLINA,CHANELLE
07:40	REBOUND (OFF) by TEAM			
07:40	SUB OUT: RYAN,ROBBI			
07:40	SUB IN: HANSON,TAYA			
07:40	SUB OUT: JOHNSON-CHAPMAN,CHARNEA			
07:40	SUB IN: ELENGA,SOPHIA			
07:40	SUB OUT: RICHARDSON,REILI			
07:40	SUB IN: MBULITO,IRIS			
07:23	MISSED LAYUP by MBULITO,IRIS			
07:21				REBOUND (DEF) by MOTUGA,ULA
07:09				MISSED JUMPER by HRISTOVA,BORISLAVA
07:06	REBOUND (DEF) by MBULITO,IRIS			
07:00	MISSED 3PTR by IBIS,KIANNA			
06:57	REBOUND (OFF) by TEAM			
06:39	MISSED JUMPER by IBIS,KIANNA			
06:35				REBOUND (DEF) by MOTUGA,ULA
06:10		6-2	H 4	GOOD! LAYUP by KOSTOURKOVA,MARIA
06:10				ASSIST by MOLINA,CHANELLE
05:56	MISSED 3PTR by HANSON,TAYA			
05:53				REBOUND (DEF) by KOSTOURKOVA,MARIA
05:37		8-2	H 6	GOOD! LAYUP by MOLINA,CHANELLE
05:33	TIMEOUT 30SEC			
05:33				
05:33	SUB OUT: MBULITO,IRIS			
05:33	SUB IN: VAN HYFTE,JAYDE			
05:33	SUB OUT: IBIS,KIANNA			
05:33	SUB IN: RICHARDSON,REILI			
05:19	GOOD! LAYUP by EKMARK,COURTNEY	8-4	H 4	
05:19	ASSIST by HANSON,TAYA			
04:55				MISSED LAYUP by MOTUGA,ULA
04:52				REBOUND (OFF) by MOTUGA,ULA
04:52				MISSED LAYUP by MOTUGA,ULA
04:52	BLOCK by VAN HYFTE,JAYDE			
04:52				REBOUND (OFF) by TEAM
04:29				TURNOVER (BADPASS) by KOSTOURKOVA,MARIA
04:03	TURNOVER (TRAVEL) by RICHARDSON,REILI			
04:03	SUB OUT: HANSON,TAYA			
04:03	SUB IN: JOHNSON-CHAPMAN,CHARNEA			
04:03	SUB OUT: RICHARDSON,REILI			
04:03	SUB IN: IBIS,KIANNA			
04:03	SUB OUT: ELENGA,SOPHIA			
04:03	SUB IN: MBULITO,IRIS			
04:03	SUB OUT: VAN HYFTE,JAYDE			
04:03	SUB IN: RYAN,ROBBI			
03:50				MISSED JUMPER by MOLINA,CHANELLE
03:48	REBOUND (DEF) by RYAN,ROBBI			
03:41	GOOD! LAYUP by IBIS,KIANNA [PNT]	8-6	H 2	
03:41	ASSIST by MBULITO,IRIS			
03:18				MISSED LAYUP by KOSTOURKOVA,MARIA
03:16	REBOUND (DEF) by MBULITO,IRIS			
03:06	GOOD! JUMPER by IBIS,KIANNA	8-8	T	
02:48				MISSED JUMPER by MOLINA,CHANELLE
02:45	REBOUND (DEF) by MBULITO,IRIS			
02:37	TURNOVER (LOSTBALL) by MBULITO,IRIS			
02:37				STEAL by SWEDLUND,ALEXYS
02:32		10-8	H 2	GOOD! LAYUP by HRISTOVA,BORISLAVA [FB]
02:32				ASSIST by MOLINA,CHANELLE
02:19				FOUL (PERSONAL) by SWEDLUND,ALEXYS
02:19				SUB OUT: MOTUGA,ULA

Time	VISITORS: #20 Arizona St.	Score	Margin	HOME: Washington St.
02:19				SUB IN: JONES,MICHAELA
02:19	SUB OUT: MBULITO,IRIS			
02:19	SUB IN: RICHARDSON,REILI			
02:19	SUB OUT: EKMARK,COURTNEY			
02:19	SUB IN: HANSON,TAYA			
02:19	SUB OUT: JOHNSON-CHAPMAN,CHARNEA			
02:19	SUB IN: ELENGA,SOPHIA			
02:09	MISSED JUMPER by RYAN,ROBBI			
02:06				REBOUND (DEF) by HRISTOVA,BORISLAVA
01:59	FOUL (PERSONAL) by ELENGA,SOPHIA			
01:59	SUB OUT: IBIS,KIANNA			
01:59	SUB IN: RUDEN,JAMIE			
01:44				MISSED LAYUP by MOLINA,CHANELLE
01:42				REBOUND (OFF) by HRISTOVA,BORISLAVA
01:41		12-8	H 4	GOOD! LAYUP by HRISTOVA,BORISLAVA
01:30	MISSED JUMPER by RUDEN,JAMIE			
01:28	REBOUND (OFF) by TEAM			
01:28	SUB OUT: RYAN,ROBBI			
01:28	SUB IN: EKMARK,COURTNEY			
00:58	GOOD! 3PTR by RUDEN,JAMIE	12-11	H 1	
00:58	ASSIST by RICHARDSON,REILI			
00:41		14-11	H 3	GOOD! JUMPER by HRISTOVA,BORISLAVA
00:41				ASSIST by MOLINA,CHANELLE
00:32	MISSED JUMPER by HANSON,TAYA			
00:30				REBOUND (DEF) by KOSTOURKOVA,MARIA
00:06				MISSED JUMPER by HRISTOVA,BORISLAVA
00:04	REBOUND (DEF) by RUDEN,JAMIE			
00:00	MISSED JUMPER by EKMARK,COURTNEY			
00:00	REBOUND (OFF) by ELENGA,SOPHIA			

#20 Arizona St. 11, Washington St. 14

Points from (This Period)	ASU	WSU
In the Paint	4	10
Off Turns	0	2
2nd Chance	3	2
Fast Break	0	2
Bench	3	0

Official Box Score
#20 Arizona St. vs Washington St.
Second Quarter Statistics Only
February 08, 2019 at Beasley Coliseum - Pullman, WA

#20 Arizona St. 16

No.	Player	S	Pts	FG	3FG	FT	OR	DR	TR	PF	A	TO	Blk	Stl	Min	+/-
01	Richardson, Reili		0	0-0	0-0	0-0	0	0	0	1	1	0	0	0	6	1
11	Ryan, Robbi		5	2-3	1-1	0-0	0	1	1	1	1	0	0	0	8	6
22	Ekmark, Courtney		0	0-4	0-4	0-0	0	0	0	1	0	0	0	0	7	-5
33	Johnson-Chapman, Charnea		2	1-4	0-0	0-0	1	1	2	1	0	0	0	1	5	-5
42	Ibis, Kianna		7	3-6	1-2	0-0	1	3	4	0	0	0	0	0	6	5
00	Hanson, Taya		0	0-0	0-0	0-0	0	0	0	0	1	0	0	1	4	5
05	Loera, Jamie		0	0-0	0-0	0-0	0	0	0	0	0	0	0	0	0	0
21	Elenga, Sophia		0	0-0	0-0	0-0	0	0	0	0	0	0	0	1	5	-1
23	Mbulito, Iris		2	1-1	0-0	0-1	0	1	1	0	1	0	0	0	5	-1
24	Sanders, Bre'yanna		0	0-0	0-0	0-0	0	0	0	0	0	0	0	0	0	0
32	Van Hyfte, Jayde		0	0-0	0-0	0-0	0	0	0	0	0	0	0	0	2	-2
44	Rubin, Eva		0	0-0	0-0	0-0	0	0	0	0	0	0	0	0	0	0
52	Ruden, Jamie		0	0-0	0-0	0-0	0	0	0	0	0	0	0	0	3	7
	Team						0	0	0	0		0				
TOTALS			16	7-18	2-7	0-1	2	6	8	4	4	0	0	3	50	

Shooting By Period

Period	FG	FG%	3FG	3FG%	FT	FT%
3rd Qtr	9-14	64%	3-4	75%	0-2	00%
4th Qtr	6-11	55%	0-1	00%	1-2	50%
2nd Half	7-18	39%	2-7	29%	0-1	00%
2nd Half	15-25	60%	3-5	60%	1-4	25%
Game	27-60	45.0%	6-16	37.5%	1-5	20.0%

Washington St. 14

No.	Player	S	Pts	FG	3FG	FT	OR	DR	TR	PF	A	TO	Blk	Stl	Min	+/-
11	Molina, Chanelle		4	2-5	0-1	0-0	0	1	1	1	1	0	0	0	10	-2
15	Motuga, Ula		2	1-1	0-0	0-0	1	0	1	1	0	0	0	0	1	2
20	Kostourkova, Maria		3	1-2	0-0	1-1	0	4	4	0	0	1	0	0	7	-3
23	Swedlund, Alexys		0	0-1	0-1	0-0	0	0	0	1	0	1	0	0	7	-3
45	Hristova, Borislava		0	0-1	0-0	0-0	0	0	0	1	2	2	0	0	6	3
02	Jones, Michaela		3	1-1	1-1	0-0	0	2	2	0	0	0	0	0	10	-2
13	Lewy, Shir		0	0-0	0-0	0-0	0	0	0	1	0	0	0	0	3	1
22	Molina, Celena		0	0-0	0-0	0-0	0	0	0	0	0	0	0	0	0	0
33	Molina, Cherilyn		0	0-0	0-0	0-0	0	0	0	0	0	0	0	0	0	0
41	Subasic, Jovana		2	1-2	0-0	0-0	0	2	2	0	0	0	0	0	5	-6
	Team						0	1	1	0		0				
TOTALS			14	6-13	1-3	1-1	1	10	11	5	3	4	0	0	50	

Shooting By Period

Period	FG	FG%	3FG	3FG%	FT	FT%
3rd Qtr	2-12	17%	2-7	29%	3-6	50%
4th Qtr	3-14	21%	1-6	17%	2-2	100%
2nd Half	6-13	46%	1-3	33%	1-1	100%
2nd Half	5-26	19%	3-13	23%	5-8	63%
Game	18-56	32.1%	4-18	22.2%	6-9	66.7%

Game Notes:

Officials: Melissa Barlow, Cathi Cornell, Tyler Trimble
Attendance: 591

Start Time: 2019-02-08 03:00:39
End Time: 2019-02-08 04:39:08
Game Duration: 98
Conference Game:

Score	1st	2nd	3rd	4th	TOT
ASU	11	16	21	13	61
WSU	14	14	9	9	46

Points from (This Period)	ASU	WSU
In the Paint	6	6
Off Turns	4	0
2nd Chance	0	2
Fast Break	5	0
Bench	2	5

Official Play-By-Play
#20 Arizona St. vs Washington St.
Second Quarter
February 08, 2019 at Beasley Coliseum - Pullman, WA

Period 2

Starters:

#20 Arizona St.: 11 RYAN,ROBBI; 22 EKMARK,COURTNEY; 33 JOHNSON-CHAPMAN,CHARNEA; 42 IBIS,KIANNA; 1 RICHARDSON,REILI;
Washington St.: 11 MOLINA,CHANELLE; 15 MOTUGA,ULA; 20 KOSTOURKOVA,MARIA; 23 SWEDLUND,ALEXYS; 45 HRISTOVA,BORISLAVA;

Time	VISITORS: #20 Arizona St.	Score	Margin	HOME: Washington St.
09:51	MISSED JUMPER by IBIS,KIANNA			
09:50				REBOUND (DEF) by KOSTOURKOVA,MARIA
09:50	FOUL (PERSONAL) by JOHNSON-CHAPMAN,CHARNEA			
09:43				MISSED LAYUP by MOLINA,CHANELLE
09:38				REBOUND (OFF) by MOTUGA,ULA
09:38		16-11	H 5	GOOD! LAYUP by MOTUGA,ULA
09:31	MISSED JUMPER by JOHNSON-CHAPMAN,CHARNEA			
09:29				REBOUND (DEF) by KOSTOURKOVA,MARIA
09:17				MISSED 3PTR by MOLINA,CHANELLE
09:14	REBOUND (DEF) by IBIS,KIANNA			
09:14				FOUL (PERSONAL) by MOTUGA,ULA
09:14				SUB OUT: MOTUGA,ULA
09:14				SUB IN: HRISTOVA,BORISLAVA
09:14	SUB OUT: HANSON,TAYA			
09:14	SUB IN: RYAN,ROBBI			
08:54				FOUL (PERSONAL) by HRISTOVA,BORISLAVA
08:34	MISSED JUMPER by JOHNSON-CHAPMAN,CHARNEA			
08:30	REBOUND (OFF) by IBIS,KIANNA			
08:23	MISSED 3PTR by EKMARK,COURTNEY			
08:20				REBOUND (DEF) by KOSTOURKOVA,MARIA
08:11		18-11	H 7	GOOD! JUMPER by MOLINA,CHANELLE [PNT]
07:57	MISSED JUMPER by IBIS,KIANNA			
07:54				REBOUND (DEF) by TEAM
07:54	SUB OUT: RICHARDSON,REILI			
07:54	SUB IN: MBULITO,IRIS			
07:54	SUB OUT: JOHNSON-CHAPMAN,CHARNEA			
07:54	SUB IN: ELENGA,SOPHIA			
07:45	FOUL (PERSONAL) by EKMARK,COURTNEY			
07:35				MISSED LAYUP by HRISTOVA,BORISLAVA
07:33	REBOUND (DEF) by MBULITO,IRIS			
07:20	GOOD! JUMPER by IBIS,KIANNA	18-13	H 5	
07:20	ASSIST by RYAN,ROBBI			
07:02	SUB OUT: IBIS,KIANNA			
07:02	SUB IN: RICHARDSON,REILI			
07:02	SUB OUT: RYAN,ROBBI			
07:02	SUB IN: VAN HYFTE,JAYDE			
06:52				TURNOVER (LOSTBALL) by KOSTOURKOVA,MARIA
06:52	STEAL by ELENGA,SOPHIA			
06:36	MISSED 3PTR by EKMARK,COURTNEY			
06:32				REBOUND (DEF) by KOSTOURKOVA,MARIA
06:13				TURNOVER (LOSTBALL) by HRISTOVA,BORISLAVA
05:44	MISSED 3PTR by EKMARK,COURTNEY			
05:42				REBOUND (DEF) by JONES,MICHAELA
05:26		20-13	H 7	GOOD! LAYUP by KOSTOURKOVA,MARIA
05:26				ASSIST by HRISTOVA,BORISLAVA
05:26	FOUL (PERSONAL) by RICHARDSON,REILI			
05:26				SUB OUT: HRISTOVA,BORISLAVA
05:26				SUB IN: SUBASIC,JOVANA
05:26	SUB OUT: ELENGA,SOPHIA			
05:26	SUB IN: HANSON,TAYA			
05:26	SUB OUT: EKMARK,COURTNEY			
05:26	SUB IN: RUDEN,JAMIE			
05:26	SUB OUT: MBULITO,IRIS			
05:26	SUB IN: RYAN,ROBBI			
05:26	SUB OUT: VAN HYFTE,JAYDE			
05:26	SUB IN: IBIS,KIANNA			
05:26		21-13	H 8	GOOD! FT by KOSTOURKOVA,MARIA
05:13	GOOD! JUMPER by IBIS,KIANNA [PNT]	21-15	H 6	
04:40				MISSED LAYUP by MOLINA,CHANELLE
04:37	REBOUND (DEF) by IBIS,KIANNA			
04:33	GOOD! 3PTR by IBIS,KIANNA [FB]	21-18	H 3	
04:33	ASSIST by RICHARDSON,REILI			
04:13				MISSED 3PTR by SWEDLUND,ALEXYS
04:10	REBOUND (DEF) by RYAN,ROBBI			
04:05	GOOD! LAYUP by RYAN,ROBBI [FB]	21-20	H 1	
03:44		23-20	H 3	GOOD! JUMPER by MOLINA,CHANELLE
03:32	GOOD! 3PTR by RYAN,ROBBI	23-23	T	
03:32	ASSIST by HANSON,TAYA			
03:15				MISSED LAYUP by KOSTOURKOVA,MARIA
03:12	REBOUND (DEF) by IBIS,KIANNA			
03:07	MISSED 3PTR by IBIS,KIANNA			
03:04				REBOUND (DEF) by SUBASIC,JOVANA
02:42				TURNOVER (LOSTBALL) by SWEDLUND,ALEXYS
02:42	STEAL by HANSON,TAYA			
02:41				FOUL (PERSONAL) by SWEDLUND,ALEXYS
02:41				

Time	VISITORS: #20 Arizona St.	Score	Margin	HOME: Washington St.
02:41				SUB OUT: SWEDLUND,ALEXYS
02:41				SUB IN: LEVY,SHIR
02:41	SUB OUT: HANSON,TAYA			
02:41	SUB IN: EKMARK,COURTNEY			
02:41	SUB OUT: IBIS,KIANNA			
02:41	SUB IN: ELENGA,SOPHIA			
02:41	SUB OUT: RUDEN,JAMIE			
02:41	SUB IN: JOHNSON-CHAPMAN,CHARNEA			
02:41	SUB OUT: RICHARDSON,REILI			
02:41	SUB IN: MBULITO,IRIS			
02:41				SUB OUT: KOSTOURKOVA,MARIA
02:41				SUB IN: HRISTOVA,BORISLAVA
02:23				FOUL (PERSONAL) by LEVY,SHIR
02:18	GOOD! LAYUP by JOHNSON-CHAPMAN,CHARNEA	23-25	V 2	
02:18	ASSIST by MBULITO,IRIS			
02:04				TURNOVER (BADPASS) by HRISTOVA,BORISLAVA
02:04	STEAL by JOHNSON-CHAPMAN,CHARNEA			
01:57	GOOD! JUMPER by MBULITO,IRIS	23-27	V 4	
01:57				FOUL (PERSONAL) by MOLINA,CHANELLE
01:57	MISSED FT by MBULITO,IRIS			
01:54	REBOUND (OFF) by JOHNSON-CHAPMAN,CHARNEA			
01:42	MISSED JUMPER by RYAN,ROBBI			
01:41				REBOUND (DEF) by SUBASIC,JOVANA
01:41	FOUL (PERSONAL) by RYAN,ROBBI			
01:23		25-27	V 2	GOOD! JUMPER by SUBASIC,JOVANA
01:23				ASSIST by HRISTOVA,BORISLAVA
01:07	MISSED LAYUP by JOHNSON-CHAPMAN,CHARNEA			
01:04				REBOUND (DEF) by MOLINA,CHANELLE
00:46		28-27	H 1	GOOD! 3PTR by JONES,MICHAELA
00:46				ASSIST by MOLINA,CHANELLE
00:28	MISSED 3PTR by EKMARK,COURTNEY			
00:24				REBOUND (DEF) by JONES,MICHAELA
00:00				MISSED JUMPER by SUBASIC,JOVANA
00:00	REBOUND (DEF) by JOHNSON-CHAPMAN,CHARNEA			

#20 Arizona St. 27, Washington St. 28

Points from (This Period)	ASU	WSU
In the Paint	6	6
Off Turns	4	0
2nd Chance	0	2
Fast Break	5	0
Bench	2	5

Official Box Score
#20 Arizona St. vs Washington St.
Second Half Statistics Only
February 08, 2019 at Beasley Coliseum - Pullman, WA

#20 Arizona St. 34

No.	Player	S	Pts	FG	3FG	FT	OR	DR	TR	PF	A	TO	Blk	Stl	Min	+/-
00	Hanson, Taya		0	0-0	0-0	0-0	0	0	0	1	0	0	0	0	3	5
11	Ryan, Robbi		6	2-2	2-2	0-0	0	1	1	1	1	1	0	0	10	10
21	Elanga, Sophia		2	1-2	0-0	0-0	0	3	3	0	0	0	0	0	9	5
22	Ekmark, Courtney		3	1-3	1-3	0-0	1	1	2	2	3	0	0	0	16	19
23	Mbulito, Iris		2	1-2	0-0	0-2	0	3	3	0	3	1	1	0	11	2
24	Sanders, Bre'yanna		0	0-0	0-0	0-0	0	0	0	1	0	0	0	0	2	-2
32	Van Hyfte, Jayde		2	1-1	0-0	0-0	0	0	0	3	0	1	0	0	4	-2
33	Johnson-Chapman, Charnea		4	2-2	0-0	0-0	2	3	5	0	0	0	1	0	9	13
42	Ibis, Kianna		11	5-10	0-0	1-2	1	2	3	1	0	1	0	0	12	15
44	Rubin, Eva		0	0-0	0-0	0-0	0	0	0	0	0	0	0	0	1	-1
52	Ruden, Jamie		4	2-3	0-0	0-0	1	1	2	1	0	1	1	0	4	2
01	Richardson, Reili		0	0-0	0-0	0-0	0	1	1	0	3	0	0	0	9	14
05	Loera, Jamie		0	0-0	0-0	0-0	0	0	0	0	0	2	0	0	7	0
	Team		0	0-0	0-0	0-0	1	0	1	0	0	1	0	0	0	0
TOTALS			34	15-25	3-5	1-4	6	15	21	10	10	8	3	0	99	

Shooting By Period

Period	FG	FG%	3FG	3FG%	FT	FT%
3rd Qtr	9-14	64%	3-4	75%	0-2	00%
4th Qtr	6-11	55%	0-1	00%	1-2	50%
2nd Half	15-25	60%	3-5	60%	1-4	25%
Game	27-60	45.0%	6-16	37.5%	1-5	20.0%

Last FG Half: ASU 4th-01:17

Washington St. 18

No.	Player	S	Pts	FG	3FG	FT	OR	DR	TR	PF	A	TO	Blk	Stl	Min	+/-
11	Molina, Chanelle		2	1-4	0-2	0-0	1	2	3	0	2	1	0	0	16	-19
13	Levy, Shir		0	0-3	0-1	0-0	0	1	1	0	0	0	1	0	5	1
15	Motuga, Ula		2	1-3	0-1	0-0	1	2	3	0	0	0	0	0	11	-14
20	Kostourkova, Maria		2	0-1	0-0	2-2	0	0	0	1	0	0	0	0	11	-14
22	Molina, Celena		0	0-0	0-0	0-0	0	0	0	0	0	0	0	0	2	2
23	Swedlund, Alexys		3	1-3	1-3	0-0	1	0	1	2	0	1	0	1	14	-17
33	Molina, Cherilyn		3	1-3	1-2	0-0	0	0	0	1	0	2	0	2	4	3
41	Subasic, Jovana		0	0-0	0-0	0-0	0	0	0	0	0	0	0	0	7	1
45	Hristova, Borislava		5	1-9	1-4	2-4	0	0	0	1	0	2	0	0	18	-18
02	Jones, Michaela		1	0-0	0-0	1-2	1	1	2	0	0	0	0	0	11	-5
	Team		0	0-0	0-0	0-0	4	0	4	0	0	1	0	0	0	0
TOTALS			18	5-26	3-13	5-8	8	6	14	5	2	7	1	3	99	

Shooting By Period

Period	FG	FG%	3FG	3FG%	FT	FT%
3rd Qtr	2-12	17%	2-7	29%	3-6	50%
4th Qtr	3-14	21%	1-6	17%	2-2	100%
2nd Half	5-26	19%	3-13	23%	5-8	63%
Game	18-56	32.1%	4-18	22.2%	6-9	66.7%

Last FG Half: WSU 4th-00:13

Game Notes:

Officials: **Melissa Barlow, Cathi Cornell, Tyler Trimble**
Attendance: **591**

Start Time: **2019-02-08 03:00:39**
End Time: **2019-02-08 04:39:08**
Game Duration: **98**
Conference Game;

Score	1st	2nd	3rd	4th	TOT
ASU	11	16	21	13	61
WSU	14	14	9	9	46

Points from (This Period)	ASU	WSU
In the Paint	18	4
Off Turns	6	12
2nd Chance	10	5
Fast Break	6	0
Bench	10	4

Official Box Score
#20 Arizona St. vs Washington St.
Third Quarter Statistics Only
February 08, 2019 at Beasley Coliseum - Pullman, WA

#20 Arizona St. 34

No.	Player	S	Pts	FG	3FG	FT	OR	DR	TR	PF	A	TO	Blk	Stl	Min	+/-
01	Richardson, Reili		0	0-0	0-0	0-0	0	0	0	0	2	0	0	0	5	9
11	Ryan, Robbi		6	2-2	2-2	0-0	0	0	0	0	1	0	0	0	6	5
22	Ekmark, Courtney		3	1-2	1-2	0-0	0	0	0	2	2	0	0	0	9	13
33	Johnson-Chapman, Charnea		2	1-1	0-0	0-0	1	2	3	0	0	0	0	0	6	10
42	Ibis, Kianna		6	3-6	0-0	0-0	0	2	2	1	0	1	0	0	7	8
00	Hanson, Taya		0	0-0	0-0	0-0	0	0	0	1	0	0	0	0	3	5
05	Loera, Jamie		0	0-0	0-0	0-0	0	0	0	0	0	0	0	0	2	1
21	Elenga, Sophia		2	1-1	0-0	0-0	0	2	2	0	0	0	0	0	4	2
23	Mbulito, Iris		0	0-0	0-0	0-2	0	1	1	0	2	0	0	0	5	3
24	Sanders, Bre'yanna		0	0-0	0-0	0-0	0	0	0	0	0	0	0	0	0	0
32	Van Hyfte, Jayde		0	0-0	0-0	0-0	0	0	0	1	0	0	0	0	1	0
44	Rubin, Eva		0	0-0	0-0	0-0	0	0	0	0	0	0	0	0	0	0
52	Ruden, Jamie		2	1-2	0-0	0-0	1	1	2	1	0	1	1	0	2	4
	Team						1	0	1	0		0				
TOTALS			21	9-14	3-4	0-2	3	8	11	6	7	2	1	0	50	

Shooting By Period

Period	FG	FG%	3FG	3FG%	FT	FT%
2nd Half	0-0	0%	0-0	0%	0-0	0%
Game	27-60	45.0%	6-16	37.5%	1-5	20.0%

Washington St. 18

No.	Player	S	Pts	FG	3FG	FT	OR	DR	TR	PF	A	TO	Blk	Stl	Min	+/-
11	Molina, Chanelle		0	0-3	0-2	0-0	1	1	2	0	2	1	0	0	10	-12
15	Motuga, Ula		0	0-1	0-1	0-0	0	2	2	0	0	0	0	0	6	-13
20	Kostourkova, Maria		0	0-1	0-0	0-0	0	0	0	1	0	0	0	0	6	-13
23	Swedlund, Alexys		3	1-2	1-2	0-0	1	0	1	1	0	1	0	1	10	-12
45	Hristova, Borislava		5	1-5	1-2	2-4	0	0	0	0	0	0	0	0	10	-12
02	Jones, Michaela		1	0-0	0-0	1-2	1	0	1	0	0	0	0	0	4	1
13	Levy, Shir		0	0-0	0-0	0-0	0	0	0	0	0	0	0	0	0	0
22	Molina, Celena		0	0-0	0-0	0-0	0	0	0	0	0	0	0	0	0	0
33	Molina, Cherilyn		0	0-0	0-0	0-0	0	0	0	0	0	0	0	0	0	0
41	Subasic, Jovana		0	0-0	0-0	0-0	0	0	0	0	0	0	0	0	4	1
	Team						1	0	1	0		0				
TOTALS			9	2-12	2-7	3-6	4	3	7	2	2	2	0	1	50	

Shooting By Period

Period	FG	FG%	3FG	3FG%	FT	FT%
2nd Half	0-0	0%	0-0	0%	0-0	0%
Game	18-56	32.1%	4-18	22.2%	6-9	66.7%

Game Notes:

Officials: **Melissa Barlow, Cathi Cornell, Tyler Trimble**
Attendance: **591**

Start Time: **2019-02-08 03:00:39**
End Time: **2019-02-08 04:39:08**
Game Duration: **98**
Conference Game;

Score	1st	2nd	3rd	4th	TOT
ASU	11	16	21	13	61
WSU	14	14	9	9	46

Points from (This Period)	ASU	WSU
In the Paint	8	0
Off Turns	2	3
2nd Chance	4	1
Fast Break	3	0
Bench	4	1

Official Play-By-Play
#20 Arizona St. vs Washington St.
Third Quarter
February 08, 2019 at Beasley Coliseum - Pullman, WA

Period 3

Starters:

#20 Arizona St.: 11 RYAN,ROBBI; 22 EKMARK,COURTNEY; 33 JOHNSON-CHAPMAN,CHARNEA; 42 IBIS,KIANNA; 1 RICHARDSON,REILI;
Washington St.: 11 MOLINA,CHANELLE; 15 MOTUGA,ULA; 20 KOSTOURKOVA,MARIA; 23 SWEDLUND,ALEXYS; 45 HRISTOVA,BORISLAVA;

Time	VISITORS: #20 Arizona St.	Score	Margin	HOME: Washington St.
09:42	MISSED JUMPER by IBIS,KIANNA			
09:38				REBOUND (DEF) by MOTUGA,ULA
09:30				FOUL (OFF) by SWEDLUND,ALEXYS
09:30				TURNOVER (OFFENSIVE) by SWEDLUND,ALEXYS
09:11	MISSED LAYUP by IBIS,KIANNA			
09:09				REBOUND (DEF) by MOTUGA,ULA
08:49				MISSED JUMPER by HRISTOVA,BORISLAVA
08:45	REBOUND (DEF) by IBIS,KIANNA			
08:32	GOOD! 3PTR by RYAN,ROBBI	28-30	V 2	
08:32	ASSIST by EKMARK,COURTNEY			
08:12				MISSED LAYUP by MOLINA,CHANELLE
08:09	REBOUND (DEF) by JOHNSON-CHAPMAN,CHARNEA			
08:02	GOOD! JUMPER by IBIS,KIANNA	28-32	V 4	
08:02	ASSIST by RYAN,ROBBI			
07:33				MISSED 3PTR by MOLINA,CHANELLE
07:30	REBOUND (DEF) by JOHNSON-CHAPMAN,CHARNEA			
07:25	GOOD! 3PTR by RYAN,ROBBI [FB]	28-35	V 7	
07:25	ASSIST by RICHARDSON,REILI			
07:18				TIMEOUT 30SEC
07:18				
07:18	SUB OUT: RYAN,ROBBI			
07:18	SUB IN: MBULITO,IRIS			
07:18	SUB OUT: RICHARDSON,REILI			
07:18	SUB IN: HANSON,TAYA			
06:50				TURNOVER (DRIBBLING) by MOLINA,CHANELLE
06:33	GOOD! JUMPER by IBIS,KIANNA	28-37	V 9	
06:33	ASSIST by EKMARK,COURTNEY			
06:17	FOUL (PERSONAL) by IBIS,KIANNA			
06:17		29-37	V 8	GOOD! FT by HRISTOVA,BORISLAVA
06:17	SUB OUT: JOHNSON-CHAPMAN,CHARNEA			
06:17	SUB IN: ELENGA,SOPHIA			
06:17	SUB OUT: IBIS,KIANNA			
06:17	SUB IN: RUDEN,JAMIE			
06:17		30-37	V 7	GOOD! FT by HRISTOVA,BORISLAVA
06:09	MISSED JUMPER by RUDEN,JAMIE			
06:05				REBOUND (DEF) by MOLINA,CHANELLE
05:52				MISSED LAYUP by KOSTOURKOVA,MARIA
05:50	REBOUND (DEF) by ELENGA,SOPHIA			
05:45				FOUL (PERSONAL) by KOSTOURKOVA,MARIA
05:45	MISSED FT by MBULITO,IRIS			
05:45	REBOUND (OFF) by TEAM			
05:45	MISSED FT by MBULITO,IRIS			
05:43	REBOUND (OFF) by RUDEN,JAMIE			
05:43	GOOD! LAYUP by RUDEN,JAMIE	30-39	V 9	
05:18				MISSED 3PTR by MOTUGA,ULA
05:16				REBOUND (OFF) by MOLINA,CHANELLE
05:16	FOUL (PERSONAL) by HANSON,TAYA			
05:06				MISSED 3PTR by SWEDLUND,ALEXYS
05:06	BLOCK by RUDEN,JAMIE			
05:02	REBOUND (DEF) by MBULITO,IRIS			
04:59	GOOD! 3PTR by EKMARK,COURTNEY	30-42	V 12	
04:59	ASSIST by MBULITO,IRIS			
04:28				MISSED 3PTR by HRISTOVA,BORISLAVA
04:24	REBOUND (DEF) by RUDEN,JAMIE			
04:16	FOUL (OFF) by RUDEN,JAMIE			
04:16	TURNOVER (OFFENSIVE) by RUDEN,JAMIE			
04:16				
04:16				SUB OUT: MOTUGA,ULA
04:16				SUB IN: SUBASIC,JOVANA
04:16				SUB OUT: KOSTOURKOVA,MARIA
04:16				SUB IN: JONES,MICHAELA
04:16	SUB OUT: HANSON,TAYA			
04:16	SUB IN: RICHARDSON,REILI			
04:16	SUB OUT: ELENGA,SOPHIA			
04:16	SUB IN: RYAN,ROBBI			
04:16	SUB OUT: EKMARK,COURTNEY			
04:16	SUB IN: LOERA,JAMIE			
04:16	SUB OUT: MBULITO,IRIS			
04:16	SUB IN: IBIS,KIANNA			
04:16	SUB OUT: RUDEN,JAMIE			
04:16	SUB IN: JOHNSON-CHAPMAN,CHARNEA			
03:55				MISSED JUMPER by HRISTOVA,BORISLAVA
03:52	REBOUND (DEF) by IBIS,KIANNA			
03:34	GOOD! LAYUP by JOHNSON-CHAPMAN,CHARNEA	30-44	V 14	
03:34	ASSIST by RICHARDSON,REILI			
03:11		33-44	V 11	GOOD! 3PTR by SWEDLUND,ALEXYS

Time	VISITORS: #20 Arizona St.	Score	Margin	HOME: Washington St.
03:11				ASSIST by MOLINA,CHANELLE
02:56	MISSED JUMPER by IBIS,KIANNA			
02:53	REBOUND (OFF) by TEAM			
02:53	SUB OUT: RYAN,ROBBI			
02:53	SUB IN: EKMARK,COURTNEY			
02:49	MISSED 3PTR by EKMARK,COURTNEY			
02:45	REBOUND (OFF) by JOHNSON-CHAPMAN,CHARNEA			
02:30	GOOD! JUMPER by IBIS,KIANNA	33-46	V 13	
01:57				MISSED JUMPER by HRISTOVA,BORISLAVA
01:56				REBOUND (OFF) by SWEDLUND,ALEXYS
01:56	FOUL (PERSONAL) by EKMARK,COURTNEY			
01:56	SUB OUT: LOERA,JAMIE			
01:56	SUB IN: HANSON,TAYA			
01:56	SUB OUT: JOHNSON-CHAPMAN,CHARNEA			
01:56	SUB IN: VAN HYFTE,JAYDE			
01:56	SUB OUT: IBIS,KIANNA			
01:56	SUB IN: ELENGA,SOPHIA			
01:36	FOUL (PERSONAL) by VAN HYFTE,JAYDE			
01:36	SUB OUT: HANSON,TAYA			
01:36	SUB IN: RYAN,ROBBI			
01:36				MISSED FT by HRISTOVA,BORISLAVA
01:36				REBOUND (OFF) by TEAM
01:36	SUB OUT: RICHARDSON,REILI			
01:36	SUB IN: MBULITO,IRIS			
01:36				MISSED FT by HRISTOVA,BORISLAVA
01:34	REBOUND (DEF) by ELENGA,SOPHIA			
01:14	TIMEOUT 30SEC			
01:14	SUB OUT: VAN HYFTE,JAYDE			
01:14	SUB IN: IBIS,KIANNA			
01:08	TURNOVER (LOSTBALL) by IBIS,KIANNA			
01:08				STEAL by SWEDLUND,ALEXYS
00:42		36-46	V 10	GOOD! 3PTR by HRISTOVA,BORISLAVA
00:42				ASSIST by MOLINA,CHANELLE
00:20	GOOD! LAYUP by ELENGA,SOPHIA	36-48	V 12	
00:20	ASSIST by MBULITO,IRIS			
00:07				MISSED 3PTR by MOLINA,CHANELLE
00:04				REBOUND (OFF) by JONES,MICHAELA
00:04	FOUL (PERSONAL) by EKMARK,COURTNEY			
00:04		37-48	V 11	GOOD! FT by JONES,MICHAELA
00:04	SUB OUT: EKMARK,COURTNEY			
00:04	SUB IN: RICHARDSON,REILI			
00:04				MISSED FT by JONES,MICHAELA
00:03				REBOUND (OFF) by TEAM

#20 Arizona St. 48, Washington St. 37

Points from (This Period)	ASU	WSU
In the Paint	8	0
Off Turns	2	3
2nd Chance	4	1
Fast Break	3	0
Bench	4	1

Official Box Score
#20 Arizona St. vs Washington St.
Fourth Quarter Statistics Only
February 08, 2019 at Beasley Coliseum - Pullman, WA

#20 Arizona St. 13

No.	Player	S	Pts	FG	3FG	FT	OR	DR	TR	PF	A	TO	Blk	Stl	Min	+/-
01	Richardson, Reili		0	0-0	0-0	0-0	0	1	1	0	1	0	0	0	4	5
11	Ryan, Robbi		0	0-0	0-0	0-0	0	1	1	1	0	1	0	0	4	5
22	Ekmark, Courtney		0	0-1	0-1	0-0	1	1	2	0	1	0	0	0	7	6
33	Johnson-Chapman, Charnea		2	1-1	0-0	0-0	1	1	2	0	0	0	1	0	3	3
42	Ibis, Kianna		5	2-4	0-0	1-2	1	0	1	0	0	0	0	0	5	7
00	Hanson, Taya		0	0-0	0-0	0-0	0	0	0	0	0	0	0	0	0	0
05	Loera, Jamie		0	0-0	0-0	0-0	0	0	0	0	0	2	0	0	5	-1
21	Elenga, Sophia		0	0-1	0-0	0-0	0	1	1	0	0	0	0	0	5	3
23	Mbulito, Iris		2	1-2	0-0	0-0	0	2	2	0	1	1	1	0	6	-1
24	Sanders, Bre'yanna		0	0-0	0-0	0-0	0	0	0	1	0	0	0	0	2	-2
32	Van Hyfte, Jayde		2	1-1	0-0	0-0	0	0	0	2	0	1	0	0	3	-2
44	Rubin, Eva		0	0-0	0-0	0-0	0	0	0	0	0	0	0	0	1	-1
52	Ruden, Jamie		2	1-1	0-0	0-0	0	0	0	0	0	0	0	0	2	-2
	Team						0	0	0	0		1				
TOTALS			13	6-11	0-1	1-2	3	7	10	4	3	6	2	0	49	

Shooting By Period

Period	FG	FG%	3FG	3FG%	FT	FT%
Game	27-60	45.0%	6-16	37.5%	1-5	20.0%

Washington St. 9

No.	Player	S	Pts	FG	3FG	FT	OR	DR	TR	PF	A	TO	Blk	Stl	Min	+/-
11	Molina, Chanelle		2	1-1	0-0	0-0	0	1	1	0	0	0	0	0	6	-7
15	Motuga, Ula		2	1-2	0-0	0-0	1	0	1	0	0	0	0	0	5	-1
20	Kostourkova, Maria		2	0-0	0-0	2-2	0	0	0	0	0	0	0	0	5	-1
23	Swedlund, Alexys		0	0-1	0-1	0-0	0	0	0	1	0	0	0	0	4	-5
45	Hristova, Borislava		0	0-4	0-2	0-0	0	0	0	1	0	2	0	0	8	-6
02	Jones, Michaela		0	0-0	0-0	0-0	0	1	1	0	0	0	0	0	7	-6
13	Levy, Shir		0	0-3	0-1	0-0	0	1	1	0	0	0	1	0	5	1
22	Molina, Celena		0	0-0	0-0	0-0	0	0	0	0	0	0	0	0	2	2
33	Molina, Cherilyn		3	1-3	1-2	0-0	0	0	0	1	0	2	0	2	4	3
41	Subasic, Jovana		0	0-0	0-0	0-0	0	0	0	0	0	0	0	0	3	0
	Team						3	0	3	0		1				
TOTALS			9	3-14	1-6	2-2	4	3	7	3	0	5	1	2	49	

Shooting By Period

Period	FG	FG%	3FG	3FG%	FT	FT%
Game	18-56	32.1%	4-18	22.2%	6-9	66.7%

Game Notes:

Officials: **Melissa Barlow, Cathi Cornell, Tyler Trimble**
Attendance: **591**

Start Time: **2019-02-08 03:00:39**
End Time: **2019-02-08 04:39:08**
Game Duration: **98**
Conference Game;

Score	1st	2nd	3rd	4th	TOT
ASU	11	16	21	13	61
WSU	14	14	9	9	46

Points from (This Period)	ASU	WSU
In the Paint	10	4
Off Turns	4	9
2nd Chance	6	4
Fast Break	3	0
Bench	6	3

Official Play-By-Play
#20 Arizona St. vs Washington St.
Fourth Quarter
February 08, 2019 at Beasley Coliseum - Pullman, WA

Period 4

Starters:

#20 Arizona St.: 11 RYAN,ROBBI; 22 EKMARK,COURTNEY; 33 JOHNSON-CHAPMAN,CHARNEA; 42 IBIS,KIANNA; 1 RICHARDSON,REILI;
Washington St.: 11 MOLINA,CHANELLE; 15 MOTUGA,ULA; 20 KOSTOURKOVA,MARIA; 23 SWEDLUND,ALEXYS; 45 HRISTOVA,BORISLAVA;

Time	VISITORS: #20 Arizona St.	Score	Margin	HOME: Washington St.
09:42				FOUL (OFF) by HRISTOVA,BORISLAVA
09:42				TURNOVER (OFFENSIVE) by HRISTOVA,BORISLAVA
09:42	SUB OUT: MBULITO,IRIS			
09:42	SUB IN: EKMARK,COURTNEY			
09:28	MISSED JUMPER by IBIS,KIANNA			
09:24				REBOUND (DEF) by MOLINA,CHANELLE
09:01				MISSED 3PTR by HRISTOVA,BORISLAVA
08:57	REBOUND (DEF) by EKMARK,COURTNEY			
08:52	MISSED JUMPER by ELENGA,SOPHIA			
08:50	REBOUND (OFF) by IBIS,KIANNA			
08:48	GOOD! LAYUP by IBIS,KIANNA	37-50	V 13	
08:19				MISSED 3PTR by HRISTOVA,BORISLAVA
08:17				REBOUND (OFF) by TEAM
08:17				TIMEOUT 30SEC
08:17				
08:17				SUB OUT: SUBASIC,JOVANA
08:17				SUB IN: MOTUGA,ULA
08:17	SUB OUT: ELENGA,SOPHIA			
08:17	SUB IN: JOHNSON-CHAPMAN,CHARNEA			
08:15				TURNOVER (SHOTCLOCK) by
08:01	MISSED JUMPER by IBIS,KIANNA			
07:55	REBOUND (OFF) by JOHNSON-CHAPMAN,CHARNEA			
07:55	GOOD! LAYUP by JOHNSON-CHAPMAN,CHARNEA	37-52	V 15	
07:34				MISSED 3PTR by SWEDLUND,ALEXYS
07:32	REBOUND (DEF) by RICHARDSON,REILI			
07:10	FOUL (OFF) by RYAN,ROBBI			
07:10	TURNOVER (OFFENSIVE) by RYAN,ROBBI			
06:48		39-52	V 13	GOOD! JUMPER by MOLINA,CHANELLE [PNT]
06:21	MISSED 3PTR by EKMARK,COURTNEY			
06:17				REBOUND (DEF) by JONES,MICHAELA
06:09				MISSED JUMPER by HRISTOVA,BORISLAVA
06:09	BLOCK by JOHNSON-CHAPMAN,CHARNEA			
06:05	REBOUND (DEF) by JOHNSON-CHAPMAN,CHARNEA			
06:03	GOOD! LAYUP by IBIS,KIANNA [FB/PNT]	39-54	V 15	
06:03	ASSIST by RICHARDSON,REILI			
05:45				MISSED LAYUP by HRISTOVA,BORISLAVA
05:40	REBOUND (DEF) by RYAN,ROBBI			
05:38				FOUL (PERSONAL) by SWEDLUND,ALEXYS
05:38	GOOD! FT by IBIS,KIANNA [FB]	39-55	V 16	
05:38				SUB OUT: MOTUGA,ULA
05:38				SUB IN: KOSTOURKOVA,MARIA
05:38				SUB OUT: SWEDLUND,ALEXYS
05:38				SUB IN: LEVY,SHIR
05:38	SUB OUT: RICHARDSON,REILI			
05:38	SUB IN: MBULITO,IRIS			
05:38	SUB OUT: RYAN,ROBBI			
05:38	SUB IN: LOERA,JAMIE			
05:38	SUB OUT: JOHNSON-CHAPMAN,CHARNEA			
05:38	SUB IN: ELENGA,SOPHIA			
05:37	MISSED FT by IBIS,KIANNA			
05:35	REBOUND (OFF) by EKMARK,COURTNEY			
05:17	GOOD! LAYUP by MBULITO,IRIS	39-57	V 18	
04:59				MISSED 3PTR by LEVY,SHIR
04:55	REBOUND (DEF) by ELENGA,SOPHIA			
04:55	SUB OUT: IBIS,KIANNA			
04:55	SUB IN: VAN HYFTE,JAYDE			
04:35	MISSED JUMPER by MBULITO,IRIS			
04:35				BLOCK by LEVY,SHIR
04:30				REBOUND (DEF) by LEVY,SHIR
04:30				TURNOVER (LOSTBALL) by HRISTOVA,BORISLAVA
04:30				SUB OUT: MOLINA,CHANELLE
04:30				SUB IN: MOLINA,CHERILYN
04:16	TURNOVER (BADPASS) by LOERA,JAMIE			
04:08				TURNOVER (TRAVEL) by MOLINA,CHERILYN
04:01	GOOD! LAYUP by VAN HYFTE,JAYDE	39-59	V 20	
04:01	ASSIST by EKMARK,COURTNEY			
03:35				TURNOVER (TRAVEL) by MOLINA,CHERILYN
03:13	TURNOVER (BADPASS) by LOERA,JAMIE			
03:13				STEAL by MOLINA,CHERILYN
02:52		42-59	V 17	GOOD! 3PTR by MOLINA,CHERILYN
02:32	TIMEOUT 30SEC			
02:32				SUB OUT: JONES,MICHAELA
02:32				SUB IN: MOTUGA,ULA
02:32	SUB OUT: ELENGA,SOPHIA			
02:32	SUB IN: RUDEN,JAMIE			
02:32	SUB OUT: EKMARK,COURTNEY			

Time	VISITORS: #20 Arizona St.	Score	Margin	HOME: Washington St.
02:32	SUB IN: SANDERS,BRE'YANNA			
02:17	TURNOVER (SHOTCLOCK) by			
02:11				MISSED JUMPER by MOLINA,CHERILYN
02:09	REBOUND (DEF) by MBULITO,IRIS			
02:06				FOUL (PERSONAL) by MOLINA,CHERILYN
01:54	FOUL (OFF) by VAN HYFTE,JAYDE			
01:54	TURNOVER (OFFENSIVE) by VAN HYFTE,JAYDE			
01:54				SUB OUT: HRISTOVA,BORISLAVA
01:54				SUB IN: MOLINA,CELENA
01:38				MISSED JUMPER by MOTUGA,ULA
01:38	BLOCK by MBULITO,IRIS			
01:38				REBOUND (OFF) by TEAM
01:35	FOUL (PERSONAL) by SANDERS,BRE'YANNA			
01:27	FOUL (PERSONAL) by VAN HYFTE,JAYDE			
01:27		43-59	V 16	GOOD! FT by KOSTOURKOVA,MARIA
01:27	SUB OUT: VAN HYFTE,JAYDE			
01:27	SUB IN: RUBIN,EVA			
01:27		44-59	V 15	GOOD! FT by KOSTOURKOVA,MARIA
01:17	GOOD! JUMPER by RUDEN,JAMIE	44-61	V 17	
01:17	ASSIST by MBULITO,IRIS			
01:07				MISSED 3PTR by MOLINA,CHERILYN
01:02				REBOUND (OFF) by TEAM
01:02				SUB OUT: KOSTOURKOVA,MARIA
01:02				SUB IN: SUBASIC,JOVANA
00:46				MISSED LAYUP by LEVY,SHIR
00:44	REBOUND (DEF) by MBULITO,IRIS			
00:30	TURNOVER (LOSTBALL) by MBULITO,IRIS			
00:30				STEAL by MOLINA,CHERILYN
00:17				MISSED JUMPER by LEVY,SHIR
00:14				REBOUND (OFF) by MOTUGA,ULA
00:13		46-61	V 15	GOOD! LAYUP by MOTUGA,ULA

#20 Arizona St. 61, Washington St. 46

Points from (This Period)	ASU	WSU
In the Paint	10	4
Off Turns	4	9
2nd Chance	6	4
Fast Break	3	0
Bench	6	3

Official Scoring/Possession Reference Chart
#20 Arizona St. vs Washington St.
Period 1
February 08, 2019 at Beasley Coliseum - Pullman, WA

Period 1

Starters:

#20 Arizona St.: 11 RYAN,ROBBI; 22 EKMARK,COURTNEY; 33 JOHNSON-CHAPMAN,CHARNEA; 42 IBIS,KIANNA; 1 RICHARDSON,REILI;
Washington St.: 11 MOLINA,CHANELLE; 15 MOTUGA,ULA; 20 KOSTOURKOVA,MARIA; 23 SWEDLUND,ALEXYS; 45 HRISTOVA,BORISLAVA;

Time	VISITORS: #20 Arizona St.	Score	Margin	HOME: Washington St.
09:28		2-0	H 2	GOOD! JUMPER by MOTUGA,ULA
08:25		4-0	H 4	GOOD! LAYUP by KOSTOURKOVA,MARIA
08:15	GOOD! JUMPER by RYAN,ROBBI	4-2	H 2	
06:10		6-2	H 4	GOOD! LAYUP by KOSTOURKOVA,MARIA
05:37		8-2	H 6	GOOD! LAYUP by MOLINA,CHANELLE
05:19	GOOD! LAYUP by EKMARK,COURTNEY	8-4	H 4	
03:41	GOOD! LAYUP by IBIS,KIANNA [PNT]	8-6	H 2	
03:06	GOOD! JUMPER by IBIS,KIANNA	8-8	T	
02:32		10-8	H 2	GOOD! LAYUP by HRISTOVA,BORISLAVA [FB]
01:41		12-8	H 4	GOOD! LAYUP by HRISTOVA,BORISLAVA
00:58	GOOD! 3PTR by RUDEN,JAMIE	12-11	H 1	
00:41		14-11	H 3	GOOD! JUMPER by HRISTOVA,BORISLAVA

#20 Arizona St. 11, Washington St. 14

Official Scoring/Possession Reference Chart
#20 Arizona St. vs Washington St.
Period 2
February 08, 2019 at Beasley Coliseum - Pullman, WA

Period 2

Starters:

#20 Arizona St.: 11 RYAN,ROBBI; 22 EKMARK,COURTNEY; 33 JOHNSON-CHAPMAN,CHARNEA; 42 IBIS,KIANNA; 1 RICHARDSON,REILI;
Washington St.: 11 MOLINA,CHANELLE; 15 MOTUGA,ULA; 20 KOSTOURKOVA,MARIA; 23 SWEDLUND,ALEXYS; 45 HRISTOVA,BORISLAVA;

Time	VISITORS: #20 Arizona St.	Score	Margin	HOME: Washington St.
09:38		16-11	H 5	GOOD! LAYUP by MOTUGA,ULA
08:11		18-11	H 7	GOOD! JUMPER by MOLINA,CHANELLE [PNT]
07:20	GOOD! JUMPER by IBIS,KIANNA	18-13	H 5	
05:26		20-13	H 7	GOOD! LAYUP by KOSTOURKOVA,MARIA
05:26		21-13	H 8	GOOD! FT by KOSTOURKOVA,MARIA
05:13	GOOD! JUMPER by IBIS,KIANNA [PNT]	21-15	H 6	
04:33	GOOD! 3PTR by IBIS,KIANNA [FB]	21-18	H 3	
04:05	GOOD! LAYUP by RYAN,ROBBI [FB]	21-20	H 1	
03:44		23-20	H 3	GOOD! JUMPER by MOLINA,CHANELLE
03:32	GOOD! 3PTR by RYAN,ROBBI	23-23	T	
02:18	GOOD! LAYUP by JOHNSON-CHAPMAN,CHARNEA	23-25	V 2	
01:57	GOOD! JUMPER by MBULITO,IRIS	23-27	V 4	
01:23		25-27	V 2	GOOD! JUMPER by SUBASIC,JOVANA
00:46		28-27	H 1	GOOD! 3PTR by JONES,MICHAELA

#20 Arizona St. 27, Washington St. 28

Official Scoring/Possession Reference Chart
#20 Arizona St. vs Washington St.
Period 3
February 08, 2019 at Beasley Coliseum - Pullman, WA

Period 3

Starters:

#20 Arizona St.: 11 RYAN,ROBBI; 22 EKMARK,COURTNEY; 33 JOHNSON-CHAPMAN,CHARNEA; 42 IBIS,KIANNA; 1 RICHARDSON,REILI;
Washington St.: 11 MOLINA,CHANELLE; 15 MOTUGA,ULA; 20 KOSTOURKOVA,MARIA; 23 SWEDLUND,ALEXYS; 45 HRISTOVA,BORISLAVA;

Time	VISITORS: #20 Arizona St.	Score	Margin	HOME: Washington St.
08:32	GOOD! 3PTR by RYAN,ROBBI	28-30	V 2	
08:02	GOOD! JUMPER by IBIS,KIANNA	28-32	V 4	
07:25	GOOD! 3PTR by RYAN,ROBBI [FB]	28-35	V 7	
06:33	GOOD! JUMPER by IBIS,KIANNA	28-37	V 9	
06:17		29-37	V 8	GOOD! FT by HRISTOVA,BORISLAVA
06:17		30-37	V 7	GOOD! FT by HRISTOVA,BORISLAVA
05:43	GOOD! LAYUP by RUDEN,JAMIE	30-39	V 9	
04:59	GOOD! 3PTR by EKMARK,COURTNEY	30-42	V 12	
03:34	GOOD! LAYUP by JOHNSON-CHAPMAN,CHARNEA	30-44	V 14	
03:11		33-44	V 11	GOOD! 3PTR by SWEDLUND,ALEXYS
02:30	GOOD! JUMPER by IBIS,KIANNA	33-46	V 13	
00:42		36-46	V 10	GOOD! 3PTR by HRISTOVA,BORISLAVA
00:20	GOOD! LAYUP by ELENGA,SOPHIA	36-48	V 12	
00:04		37-48	V 11	GOOD! FT by JONES,MICHAELA

#20 Arizona St. 48, Washington St. 37

Official Scoring/Possession Reference Chart
#20 Arizona St. vs Washington St.
Period 4
February 08, 2019 at Beasley Coliseum - Pullman, WA

Period 4

Starters:

#20 Arizona St.: 11 RYAN,ROBBI; 22 EKMARK,COURTNEY; 33 JOHNSON-CHAPMAN,CHARNEA; 42 IBIS,KIANNA; 1 RICHARDSON,REILI;
Washington St.: 11 MOLINA,CHANELLE; 15 MOTUGA,ULA; 20 KOSTOURKOVA,MARIA; 23 SWEDLUND,ALEXYS; 45 HRISTOVA,BORISLAVA;

Time	VISITORS: #20 Arizona St.	Score	Margin	HOME: Washington St.
08:48	GOOD! LAYUP by IBIS,KIANNA	37-50	V 13	
07:55	GOOD! LAYUP by JOHNSON-CHAPMAN,CHARNEA	37-52	V 15	
06:48		39-52	V 13	GOOD! JUMPER by MOLINA,CHANELLE [PNT]
06:03	GOOD! LAYUP by IBIS,KIANNA [FB/PNT]	39-54	V 15	
05:38	GOOD! FT by IBIS,KIANNA [FB]	39-55	V 16	
05:17	GOOD! LAYUP by MBULITO,IRIS	39-57	V 18	
04:01	GOOD! LAYUP by VAN HYFTE,JAYDE	39-59	V 20	
02:52		42-59	V 17	GOOD! 3PTR by MOLINA,CHERYLYN
01:27		43-59	V 16	GOOD! FT by KOSTOURKOVA,MARIA
01:27		44-59	V 15	GOOD! FT by KOSTOURKOVA,MARIA
01:17	GOOD! JUMPER by RUDEN,JAMIE	44-61	V 17	
00:13		46-61	V 15	GOOD! LAYUP by MOTUGA,ULA

#20 Arizona St. 61, Washington St. 46

Official Substitutions Log
#20 Arizona St. vs Washington St.
Period 1
February 08, 2019 at Beasley Coliseum - Pullman, WA

VISITORS: #20 Arizona St.	Time	Score	HOME: Washington St.
11 RYAN,ROBBI			11 MOLINA,CHANELLE
22 EKMARK,COURTNEY			15 MOTUGA,ULA
33 JOHNSON-CHAPMAN,CHARNEA			20 KOSTOURKOVA,MARIA
42 IBIS,KIANNA			23 SWEDLUND,ALEXYS
1 RICHARDSON,REILI			45 HRISTOVA,BORISLAVA
SUB OUT: 11 RYAN,ROBBI	07:40	2-4	
SUB IN: 00 HANSON,TAYA	07:40		
SUB OUT: 33 JOHNSON-CHAPMAN,CHARNEA	07:40		
SUB IN: 21 ELENGA,SOPHIA	07:40		
SUB OUT: 1 RICHARDSON,REILI	07:40		
SUB IN: 23 MBULITO,IRIS	07:40		
SUB OUT: 23 MBULITO,IRIS	05:33	2-8	
SUB IN: 32 VAN HYFTE,JAYDE	05:33		
SUB OUT: 42 IBIS,KIANNA	05:33		
SUB IN: 1 RICHARDSON,REILI	05:33		
SUB OUT: 00 HANSON,TAYA	04:03	4-8	
SUB IN: 33 JOHNSON-CHAPMAN,CHARNEA	04:03		
SUB OUT: 1 RICHARDSON,REILI	04:03		
SUB IN: 42 IBIS,KIANNA	04:03		
SUB OUT: 21 ELENGA,SOPHIA	04:03		
SUB IN: 23 MBULITO,IRIS	04:03		
SUB OUT: 32 VAN HYFTE,JAYDE	04:03		
SUB IN: 11 RYAN,ROBBI	04:03		
	02:19	8-10	
	02:19		SUB OUT: MOTUGA,ULA
	02:19		SUB IN: JONES,MICHAELA
SUB OUT: 23 MBULITO,IRIS	02:19		
SUB IN: 1 RICHARDSON,REILI	02:19		
SUB OUT: 22 EKMARK,COURTNEY	02:19		
SUB IN: 00 HANSON,TAYA	02:19		
SUB OUT: 33 JOHNSON-CHAPMAN,CHARNEA	02:19		
SUB IN: 21 ELENGA,SOPHIA	02:19		
SUB OUT: 42 IBIS,KIANNA	01:59	8-10	
SUB IN: 52 RUDEN,JAMIE	01:59		
SUB OUT: 11 RYAN,ROBBI	01:28	8-12	
SUB IN: 22 EKMARK,COURTNEY	01:28		

#20 Arizona St. 11, Washington St. 14

Official Substitutions Log
#20 Arizona St. vs Washington St.
Period 2
February 08, 2019 at Beasley Coliseum - Pullman, WA

VISITORS: #20 Arizona St.	Time	Score	HOME: Washington St.
11 RYAN,ROBBI			11 MOLINA,CHANELLE
22 EKMARK,COURTNEY			15 MOTUGA,ULA
33 JOHNSON-CHAPMAN,CHARNEA			20 KOSTOURKOVA,MARIA
42 IBIS,KIANNA			23 SWEDLUND,ALEXYS
1 RICHARDSON,REILI			45 HRISTOVA,BORISLAVA
	09:14	11-16	SUB OUT: MOTUGA,ULA
	09:14		SUB IN: HRISTOVA,BORISLAVA
SUB OUT: 00 HANSON,TAYA	09:14		
SUB IN: 11 RYAN,ROBBI	09:14		
SUB OUT: 1 RICHARDSON,REILI	07:54	11-18	
SUB IN: 23 MBULITO,IRIS	07:54		
SUB OUT: 33 JOHNSON-CHAPMAN,CHARNEA	07:54		
SUB IN: 21 ELENGA,SOPHIA	07:54		
SUB OUT: 42 IBIS,KIANNA	07:02	13-18	
SUB IN: 1 RICHARDSON,REILI	07:02		
SUB OUT: 11 RYAN,ROBBI	07:02		
SUB IN: 32 VAN HYFTE,JAYDE	07:02		
	05:26	13-20	SUB OUT: HRISTOVA,BORISLAVA
	05:26		SUB IN: SUBASIC,JOVANA
SUB OUT: 21 ELENGA,SOPHIA	05:26		
SUB IN: 00 HANSON,TAYA	05:26		
SUB OUT: 22 EKMARK,COURTNEY	05:26		
SUB IN: 52 RUDEN,JAMIE	05:26		
SUB OUT: 23 MBULITO,IRIS	05:26		
SUB IN: 11 RYAN,ROBBI	05:26		
SUB OUT: 32 VAN HYFTE,JAYDE	05:26		
SUB IN: 42 IBIS,KIANNA	05:26		
	02:41	23-23	SUB OUT: SWEDLUND,ALEXYS
	02:41		SUB IN: LEVY,SHIR
SUB OUT: 00 HANSON,TAYA	02:41		
SUB IN: 22 EKMARK,COURTNEY	02:41		
SUB OUT: 42 IBIS,KIANNA	02:41		
SUB IN: 21 ELENGA,SOPHIA	02:41		
SUB OUT: 52 RUDEN,JAMIE	02:41		
SUB IN: 33 JOHNSON-CHAPMAN,CHARNEA	02:41		
SUB OUT: 1 RICHARDSON,REILI	02:41		
SUB IN: 23 MBULITO,IRIS	02:41		
	02:41		SUB OUT: KOSTOURKOVA,MARIA
	02:41		SUB IN: HRISTOVA,BORISLAVA

#20 Arizona St. 27, Washington St. 28

Official Substitutions Log
#20 Arizona St. vs Washington St.
Period 3
February 08, 2019 at Beasley Coliseum - Pullman, WA

VISITORS: #20 Arizona St.	Time	Score	HOME: Washington St.
11 RYAN,ROBBI			11 MOLINA,CHANELLE
22 EKMARK,COURTNEY			15 MOTUGA,ULA
33 JOHNSON-CHAPMAN,CHARNEA			20 KOSTOURKOVA,MARIA
42 IBIS,KIANNA			23 SWEDLUND,ALEXYS
1 RICHARDSON,REILI			45 HRISTOVA,BORISLAVA
SUB OUT: 11 RYAN,ROBBI	07:18	35-28	
SUB IN: 23 MBULITO,IRIS	07:18		
SUB OUT: 1 RICHARDSON,REILI	07:18		
SUB IN: 00 HANSON,TAYA	07:18		
SUB OUT: 33 JOHNSON-CHAPMAN,CHARNEA	06:17	37-29	
SUB IN: 21 ELENGA,SOPHIA	06:17		
SUB OUT: 42 IBIS,KIANNA	06:17		
SUB IN: 52 RUDEN,JAMIE	06:17		
	04:16	42-30	SUB OUT: MOTUGA,ULA
	04:16		SUB IN: SUBASIC,JOVANA
	04:16		SUB OUT: KOSTOURKOVA,MARIA
	04:16		SUB IN: JONES,MICHAELA
SUB OUT: 00 HANSON,TAYA	04:16		
SUB IN: 1 RICHARDSON,REILI	04:16		
SUB OUT: 21 ELENGA,SOPHIA	04:16		
SUB IN: 11 RYAN,ROBBI	04:16		
SUB OUT: 22 EKMARK,COURTNEY	04:16		
SUB IN: 5 LOERA,JAMIE	04:16		
SUB OUT: 23 MBULITO,IRIS	04:16		
SUB IN: 42 IBIS,KIANNA	04:16		
SUB OUT: 52 RUDEN,JAMIE	04:16		
SUB IN: 33 JOHNSON-CHAPMAN,CHARNEA	04:16		
SUB OUT: 11 RYAN,ROBBI	02:53	44-33	
SUB IN: 22 EKMARK,COURTNEY	02:53		
SUB OUT: 5 LOERA,JAMIE	01:56	46-33	
SUB IN: 00 HANSON,TAYA	01:56		
SUB OUT: 33 JOHNSON-CHAPMAN,CHARNEA	01:56		
SUB IN: 32 VAN HYFTE,JAYDE	01:56		
SUB OUT: 42 IBIS,KIANNA	01:56		
SUB IN: 21 ELENGA,SOPHIA	01:56		
SUB OUT: 00 HANSON,TAYA	01:36	46-33	
SUB IN: 11 RYAN,ROBBI	01:36		
SUB OUT: 1 RICHARDSON,REILI	01:36		
SUB IN: 23 MBULITO,IRIS	01:36		
SUB OUT: 32 VAN HYFTE,JAYDE	01:14	46-33	
SUB IN: 42 IBIS,KIANNA	01:14		
SUB OUT: 22 EKMARK,COURTNEY	00:04	48-37	
SUB IN: 1 RICHARDSON,REILI	00:04		

#20 Arizona St. 48, Washington St. 37

Official Substitutions Log
#20 Arizona St. vs Washington St.
Period 4
February 08, 2019 at Beasley Coliseum - Pullman, WA

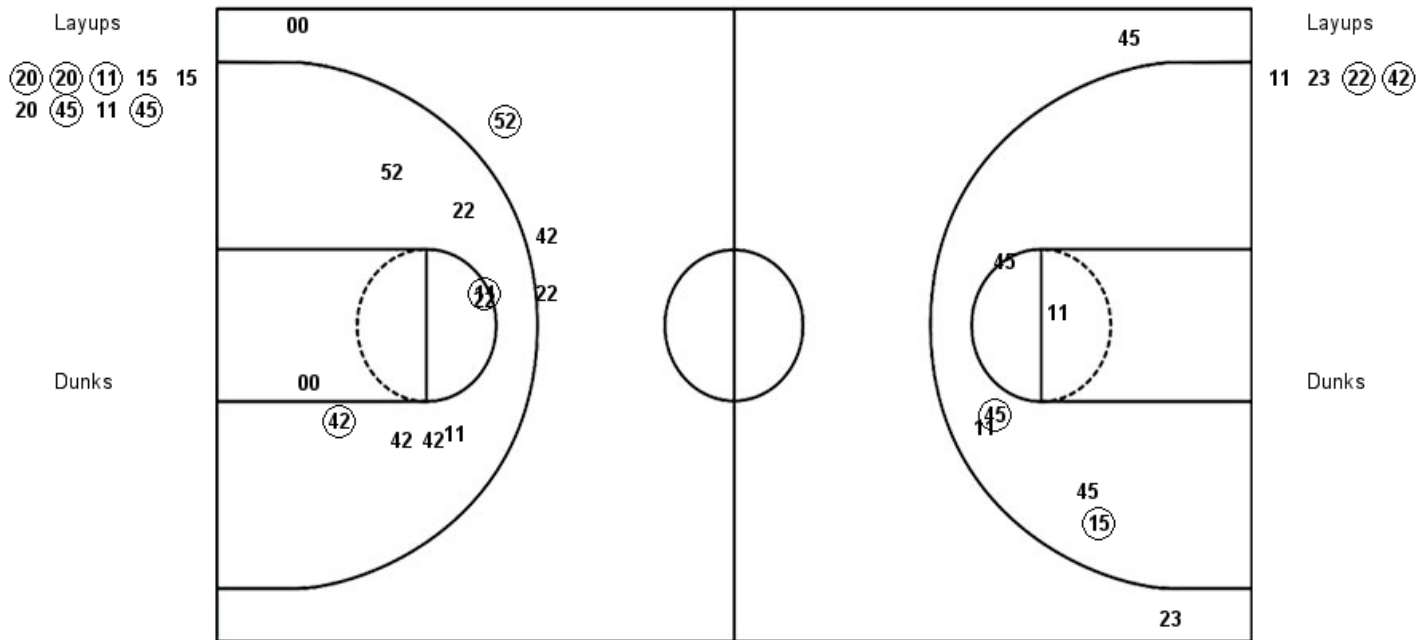
VISITORS: #20 Arizona St.	Time	Score	HOME: Washington St.
11 RYAN,ROBBI			11 MOLINA,CHANELLE
22 EKMARK,COURTNEY			15 MOTUGA,ULA
33 JOHNSON-CHAPMAN,CHARNEA			20 KOSTOURKOVA,MARIA
42 IBIS,KIANNA			23 SWEDLUND,ALEXYS
1 RICHARDSON,REILI			45 HRISTOVA,BORISLAVA
SUB OUT: 23 MBULITO,IRIS	09:42	-	
SUB IN: 22 EKMARK,COURTNEY	09:42		
	08:17	50-37	SUB OUT: SUBASIC,JOVANA
	08:17		SUB IN: MOTUGA,ULA
SUB OUT: 21 ELENGA,SOPHIA	08:17		
SUB IN: 33 JOHNSON-CHAPMAN,CHARNEA	08:17		
	05:38	55-39	SUB OUT: MOTUGA,ULA
	05:38		SUB IN: KOSTOURKOVA,MARIA
	05:38		SUB OUT: SWEDLUND,ALEXYS
	05:38		SUB IN: LEVY,SHIR
SUB OUT: 1 RICHARDSON,REILI	05:38		
SUB IN: 23 MBULITO,IRIS	05:38		
SUB OUT: 11 RYAN,ROBBI	05:38		
SUB IN: 5 LOERA,JAMIE	05:38		
SUB OUT: 33 JOHNSON-CHAPMAN,CHARNEA	05:38		
SUB IN: 21 ELENGA,SOPHIA	05:38		
SUB OUT: 42 IBIS,KIANNA	04:55	57-39	
SUB IN: 32 VAN HYFTE,JAYDE	04:55		
	04:30	57-39	SUB OUT: MOLINA,CHANELLE
	04:30		SUB IN: MOLINA,CHERILYN
	02:32	59-42	SUB OUT: JONES,MICHAELA
	02:32		SUB IN: MOTUGA,ULA
SUB OUT: 21 ELENGA,SOPHIA	02:32		
SUB IN: 52 RUDEN,JAMIE	02:32		
SUB OUT: 22 EKMARK,COURTNEY	02:32		
SUB IN: 24 SANDERS,BRE'YANNA	02:32		
	01:54	59-42	SUB OUT: HRISTOVA,BORISLAVA
	01:54		SUB IN: MOLINA,CELENA
SUB OUT: 32 VAN HYFTE,JAYDE	01:27	59-43	
SUB IN: 44 RUBIN,EVA	01:27		
	01:02	61-44	SUB OUT: KOSTOURKOVA,MARIA
	01:02		SUB IN: SUBASIC,JOVANA

#20 Arizona St. 61, Washington St. 46

Official Shot Chart
#20 Arizona St. vs Washington St.
PERIOD 1 Shots
February 08, 2019 at Beasley Coliseum - Pullman, WA

Washington St.

#20 Arizona St.



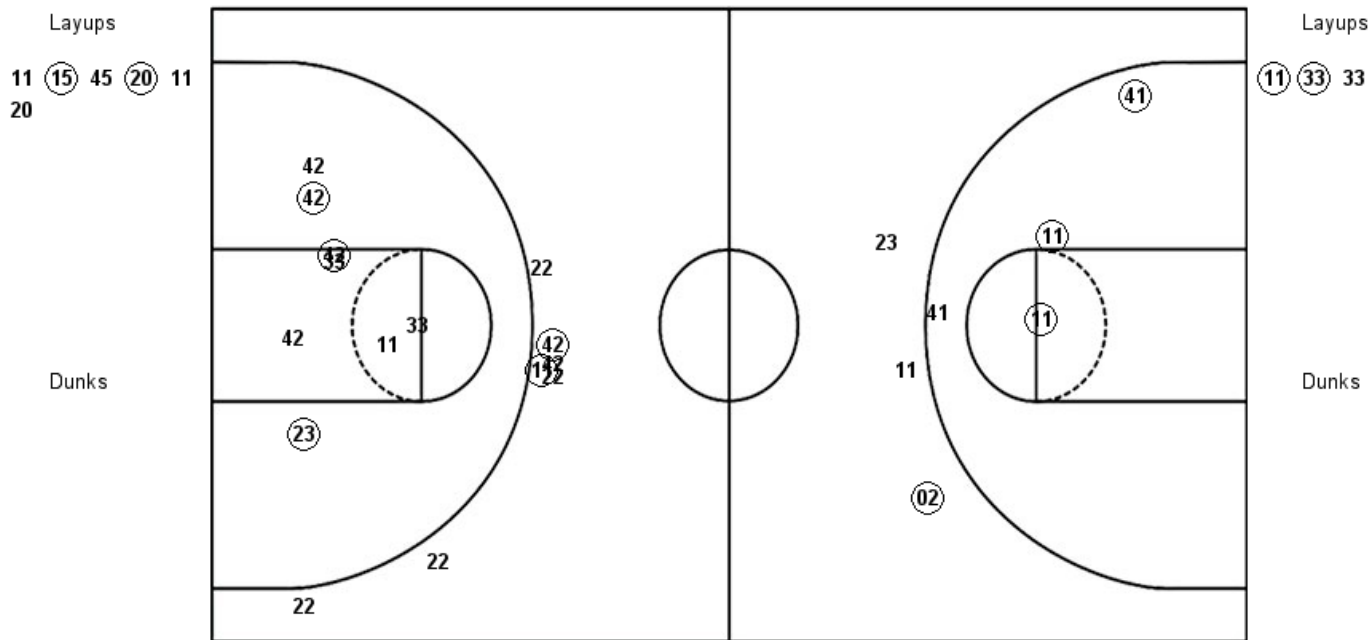
WSU : Period 1	Made	Att	Pct
Layups	5	9	55.6
Dunks	0	0	0
2PT Field Goals	7	15	46.7
3PT Field Goals	0	2	00.0
Total Field Goals	7	17	41.2

ASU : Period 1	Made	Att	Pct
Layups	2	4	50.0
Dunks	0	0	0
2PT Field Goals	4	13	30.8
3PT Field Goals	1	4	25.0
Total Field Goals	5	17	29.4

Official Shot Chart
#20 Arizona St. vs Washington St.
PERIOD 2 Shots
February 08, 2019 at Beasley Coliseum - Pullman, WA

Washington St.

#20 Arizona St.



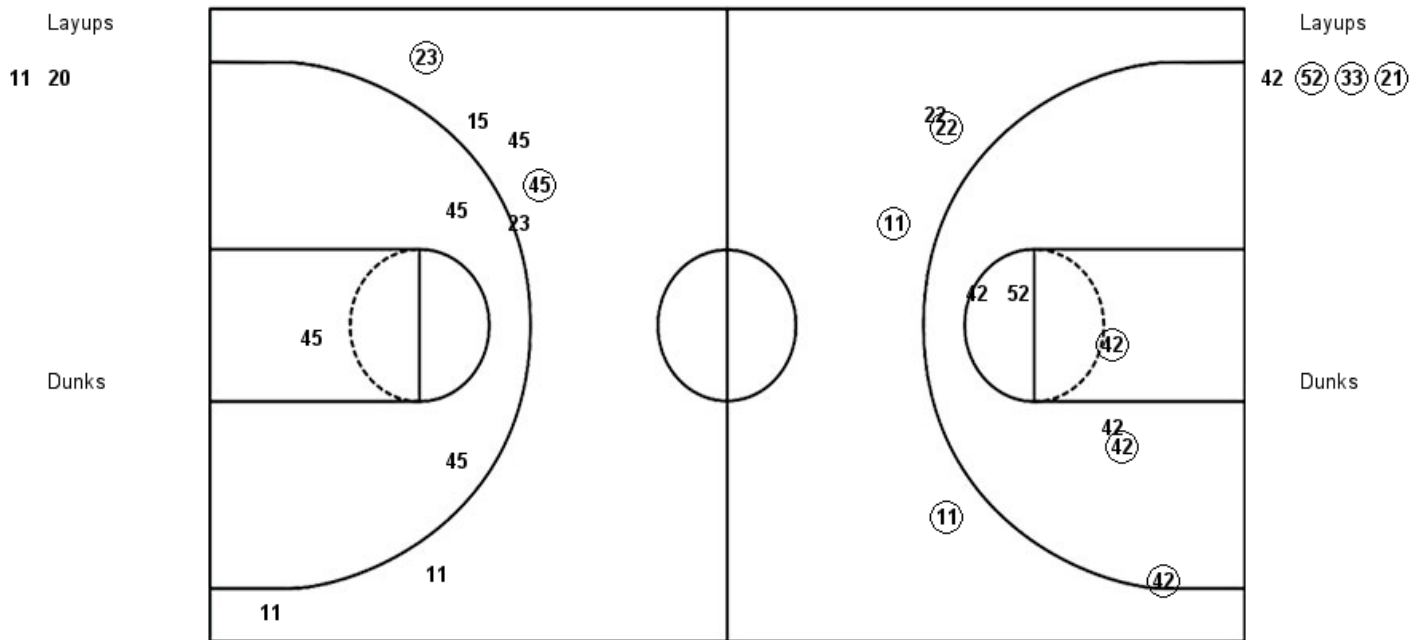
WSU : Period 2	Made	Att	Pct
Layups	2	6	33.3
Dunks	0	0	0
2PT Field Goals	5	10	50.0
3PT Field Goals	1	3	33.3
Total Field Goals	6	13	46.2

ASU : Period 2	Made	Att	Pct
Layups	2	3	66.7
Dunks	0	0	0
2PT Field Goals	5	11	45.5
3PT Field Goals	2	7	28.6
Total Field Goals	7	18	38.9

Official Shot Chart
#20 Arizona St. vs Washington St.
PERIOD 3 Shots
February 08, 2019 at Beasley Coliseum - Pullman, WA

Washington St.

#20 Arizona St.



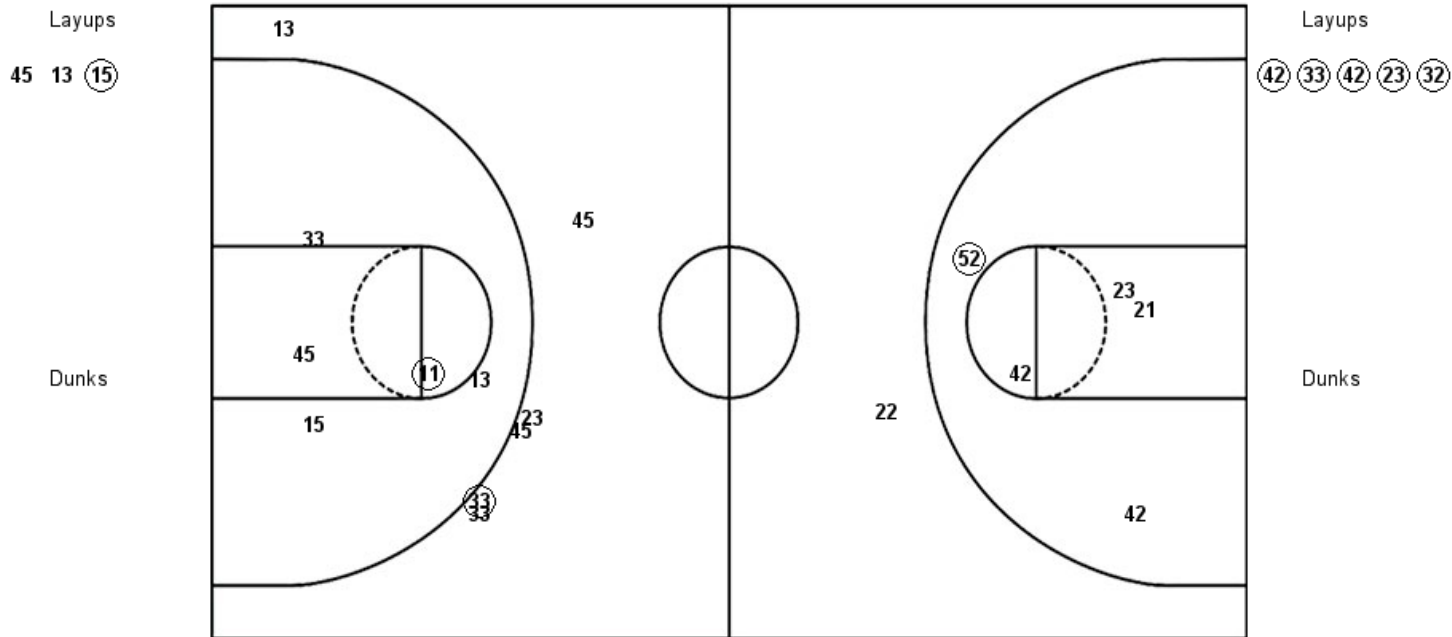
WSU : Period 3	Made	Att	Pct
Layups	0	2	00.0
Dunks	0	0	0
2PT Field Goals	0	5	00.0
3PT Field Goals	2	7	28.6
Total Field Goals	2	12	16.7

ASU : Period 3	Made	Att	Pct
Layups	3	4	75.0
Dunks	0	0	0
2PT Field Goals	6	10	60.0
3PT Field Goals	3	4	75.0
Total Field Goals	9	14	64.3

Official Shot Chart
#20 Arizona St. vs Washington St.
PERIOD 4 Shots
February 08, 2019 at Beasley Coliseum - Pullman, WA

Washington St.

#20 Arizona St.

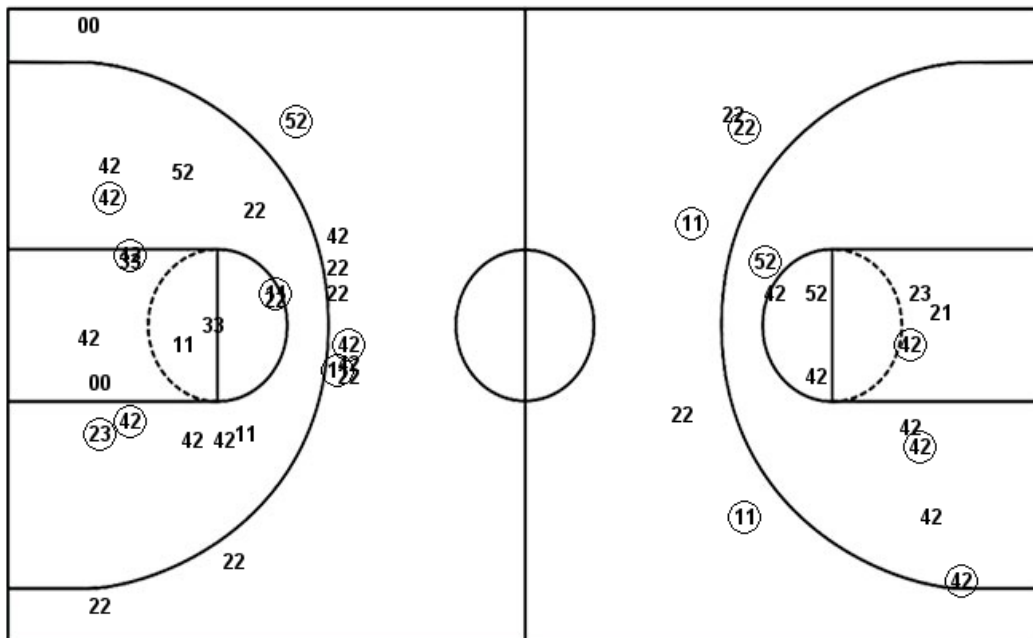


WSU : Period 4	Made	Att	Pct
Layups	1	3	33.3
Dunks	0	0	0
2PT Field Goals	2	8	25.0
3PT Field Goals	1	6	16.7
Total Field Goals	3	14	21.4

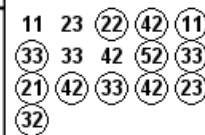
ASU : Period 4	Made	Att	Pct
Layups	5	5	100.0
Dunks	0	0	0
2PT Field Goals	6	10	60.0
3PT Field Goals	0	1	00.0
Total Field Goals	6	11	54.5

Official Shot Chart
#20 Arizona St. vs Washington St.
#20 Arizona St. Team Shots
February 08, 2019 at Beasley Coliseum - Pullman, WA

Layups



Layups



Dunks

Dunks

ASU : Period 1	Made	Att	Pct
Layups	2	4	50.0
Dunks	0	0	0
2PT Field Goals	4	13	30.8
3PT Field Goals	1	4	25.0
Total Field Goals	5	17	29.4

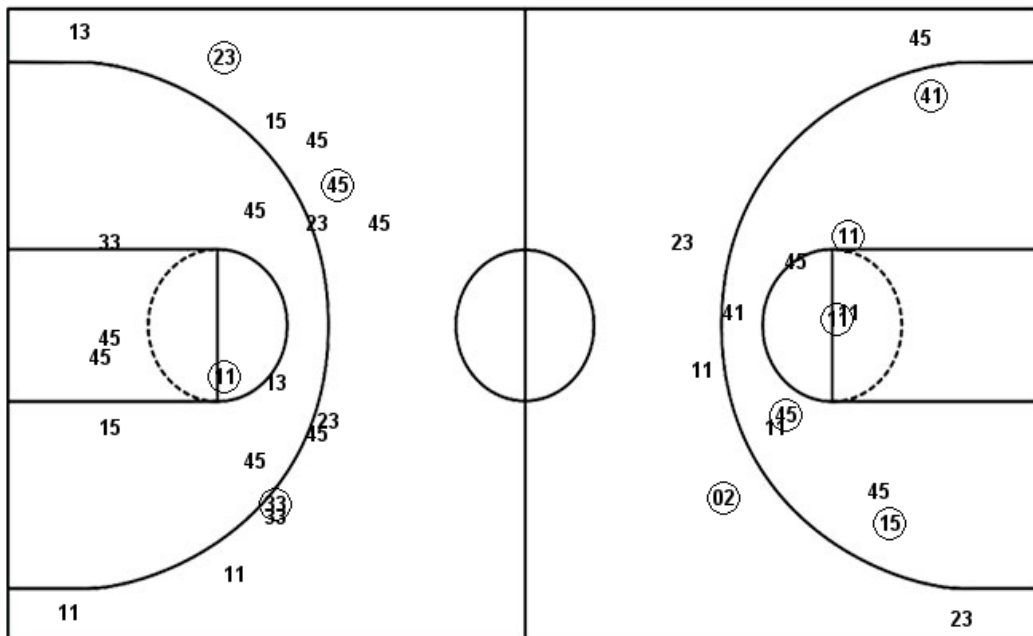
ASU : Period 2	Made	Att	Pct
Layups	2	3	66.7
Dunks	0	0	0
2PT Field Goals	5	11	45.5
3PT Field Goals	2	7	28.6
Total Field Goals	7	18	38.9

ASU : Period 3	Made	Att	Pct
Layups	3	4	75.0
Dunks	0	0	0
2PT Field Goals	6	10	60.0
3PT Field Goals	3	4	75.0
Total Field Goals	9	14	64.3

ASU : Period 4	Made	Att	Pct
Layups	5	5	100.0
Dunks	0	0	0
2PT Field Goals	6	10	60.0
3PT Field Goals	0	1	00.0
Total Field Goals	6	11	54.5

Official Shot Chart
#20 Arizona St. vs Washington St.
Washington St. Team Shots
February 08, 2019 at Beasley Coliseum - Pullman, WA

Layups



Layups

Dunks

Dunks

WSU : Period 1	Made	Att	Pct
Layups	5	9	55.6
Dunks	0	0	0
2PT Field Goals	7	15	46.7
3PT Field Goals	0	2	00.0
Total Field Goals	7	17	41.2

WSU : Period 2	Made	Att	Pct
Layups	2	6	33.3
Dunks	0	0	0
2PT Field Goals	5	10	50.0
3PT Field Goals	1	3	33.3
Total Field Goals	6	13	46.2

WSU : Period 3	Made	Att	Pct
Layups	0	2	00.0
Dunks	0	0	0
2PT Field Goals	0	5	00.0
3PT Field Goals	2	7	28.6
Total Field Goals	2	12	16.7

WSU : Period 4	Made	Att	Pct
Layups	1	3	33.3
Dunks	0	0	0
2PT Field Goals	2	8	25.0
3PT Field Goals	1	6	16.7
Total Field Goals	3	14	21.4