

FINAL SCORE



Utah

72



Washington St.

68

January 12, 2019 • Beasley Coliseum - Pullman, WA

FINAL STATISTICS

Official Box Score
Utah vs Washington St.
Game Totals -- Final Statistics
January 12, 2019 at Beasley Coliseum - Pullman, WA

Utah 72

No.	Player	S	Pts	FG	3FG	FT	OR	DR	TR	PF	A	TO	Blk	Stl	Min	+/-
00	Moore, Kiana		6	3-6	0-2	0-1	2	1	3	1	1	0	0	1	36	2
05	Huff, Megan		21	7-13	0-2	7-9	3	5	8	1	1	4	0	1	34	-2
10	Gylten, Dru		8	3-6	2-2	0-2	0	1	1	2	6	5	0	1	37	3
11	Bean, Erika		8	3-5	0-0	2-2	0	4	4	2	4	1	2	1	34	4
44	Edwards, Dre'una		20	9-15	0-0	2-4	1	5	6	4	2	3	1	2	29	8
03	Becker, Niyah		2	1-1	0-0	0-0	0	1	1	0	2	0	0	0	5	7
14	Torres, Andrea		5	2-3	1-1	0-0	1	4	5	1	0	1	1	1	12	-5
24	Porter, Sarah		2	1-3	0-2	0-0	0	1	1	0	1	1	0	0	14	3
Team							1	2	3	0		0				
TOTALS			72	29-52	3-9	11-18	8	24	32	11	17	15	4	7	200	

Shooting By Period

Period	FG	FG%	3FG	3FG%	FT	FT%
1st Qtr	9-17	53%	2-5	40%	2-2	100%
2nd Qtr	11-12	92%	1-2	50%	1-2	50%
3rd Qtr	6-13	46%	0-0	0%	2-5	40%
4th Qtr	3-10	30%	0-2	00%	6-9	67%
1st Half	20-29	69%	3-7	43%	3-4	75%
2nd Half	9-23	39%	0-2	00%	8-14	57%
Game	29-52	55.8%	3-9	33.3%	11-18	61.1%

Last FG: 4th-02:27
Biggest Run: 11-0
Largest lead: By 21 at 2-05:12
Technical Fouls: None.

Washington St. 68

No.	Player	S	Pts	FG	3FG	FT	OR	DR	TR	PF	A	TO	Blk	Stl	Min	+/-
11	Molina, Chanelle		17	8-21	1-7	0-0	3	2	5	0	5	2	0	1	40	-4
13	Levy, Shir		7	3-5	1-2	0-0	0	2	2	0	0	1	0	0	19	-2
20	Kostourkova, Maria		9	4-7	0-0	1-2	2	10	12	4	4	0	5	2	34	7
23	Swedlund, Alexys		17	6-12	3-5	2-2	1	1	2	1	0	4	0	2	38	-9
45	Hristova, Borislava		13	6-12	0-1	1-1	0	2	2	4	1	3	0	1	33	7
15	Motuga, Ula		0	0-0	0-0	0-0	0	1	1	0	0	0	0	1	8	-9
33	Molina, Cherilyn		3	1-3	1-3	0-0	0	0	0	1	2	2	0	2	22	1
41	Subasic, Jovana		2	1-1	0-0	0-0	0	0	0	1	1	0	1	0	6	-11
Team							2	1	3	0		1				
TOTALS			68	29-61	6-18	4-5	8	19	27	11	13	13	6	9	200	

Shooting By Period

Period	FG	FG%	3FG	3FG%	FT	FT%
1st Qtr	5-14	36%	0-1	00%	0-0	0%
2nd Qtr	10-17	59%	2-5	40%	0-0	0%
3rd Qtr	8-14	57%	4-5	80%	1-2	50%
4th Qtr	6-16	38%	0-7	00%	3-3	100%
1st Half	15-31	48%	2-6	33%	0-0	0%
2nd Half	14-30	47%	4-12	33%	4-5	80%
Game	29-61	47.5%	6-18	33.3%	4-5	80.0%

Last FG: 4th-04:27
Biggest Run: 7-0
Largest lead: By 2 at 1-09:40
Technical Fouls: None.

Game Notes:

Officials: Anita Ortega, Tiffany Bird, Alejandro Moreno
 Attendance: 555

Start Time: 2019-01-12 03:06:15
 End Time: 2019-01-12 04:48:03
 Game Duration: 101
 Conference Game:

Score	1st	2nd	3rd	4th	TOT
UTA	22	24	14	12	72
WSU	10	22	21	15	68

UTA led for 37:57. WSU led for 0:35.
 Game was tied for 1:29.
 Times tied: 4 Lead Changes: 3

Points from	UTA	WSU
In the Paint	46	38
Off Turns	12	15
2nd Chance	7	5
Fast Break	11	6
Bench	9	5

Official Box Score
Utah vs Washington St.
First Half Statistics Only
January 12, 2019 at Beasley Coliseum - Pullman, WA

Utah 46

No.	Player	S	Pts	FG	3FG	FT	OR	DR	TR	PF	A	TO	Blk	Stl	Min	+/-
00	Moore, Kiana		2	1-3	0-2	0-0	1	1	2	1	0	0	0	1	16	12
03	Becker, Niyah		2	1-1	0-0	0-0	0	1	1	0	2	0	0	0	5	7
05	Huff, Megan		11	4-7	0-1	3-4	1	4	5	0	0	2	0	0	15	7
10	Gylten, Dru		8	3-4	2-2	0-0	0	1	1	1	4	2	0	1	18	9
11	Bean, Erika		4	2-2	0-0	0-0	0	1	1	0	4	0	0	0	18	12
14	Torres, Andrea		5	2-2	1-1	0-0	0	2	2	0	0	0	1	0	6	2
24	Porter, Sarah		2	1-2	0-1	0-0	0	1	1	0	1	0	0	0	9	9
44	Edwards, Dre'una		12	6-8	0-0	0-0	0	2	2	2	2	2	0	1	14	12
	Team		0	0-0	0-0	0-0	0	2	2	0	0	0	0	0	0	0
TOTALS			46	20-29	3-7	3-4	2	15	17	4	13	6	1	3	100	

Shooting By Period

Period	FG	FG%	3FG	3FG%	FT	FT%
1st Qtr	9-17	53%	2-5	40%	2-2	100%
2nd Qtr	11-12	92%	1-2	50%	1-2	50%
1st Half	20-29	69%	3-7	43%	3-4	75%
Game	29-52	55.8%	3-9	33.3%	11-18	61.1%

Last FG Half: UTA 2nd-00:07

Washington St. 32

No.	Player	S	Pts	FG	3FG	FT	OR	DR	TR	PF	A	TO	Blk	Stl	Min	+/-
11	Molina, Chanelle		15	7-13	1-3	0-0	1	0	1	0	1	1	0	0	20	-14
13	Levy, Shir		4	2-3	0-0	0-0	0	1	1	0	0	1	0	0	11	-5
15	Motuga, Ula		0	0-0	0-0	0-0	0	1	1	0	0	0	0	1	8	-9
20	Kostourkova, Maria		4	2-3	0-0	0-0	0	4	4	1	1	0	1	0	16	-5
23	Swedlund, Alexys		2	1-3	0-0	0-0	0	1	1	0	0	1	0	0	18	-19
33	Molina, Cherilyn		3	1-2	1-2	0-0	0	0	0	0	2	1	0	0	10	-6
41	Subasic, Jovana		2	1-1	0-0	0-0	0	0	0	0	1	0	0	0	4	-9
45	Hristova, Borislava		2	1-6	0-1	0-0	0	0	0	2	1	1	0	1	14	-3
	Team		0	0-0	0-0	0-0	0	1	1	0	0	0	0	0	0	0
TOTALS			32	15-31	2-6	0-0	1	8	9	3	6	5	1	2	100	

Shooting By Period

Period	FG	FG%	3FG	3FG%	FT	FT%
1st Qtr	5-14	36%	0-1	00%	0-0	0%
2nd Qtr	10-17	59%	2-5	40%	0-0	0%
1st Half	15-31	48%	2-6	33%	0-0	0%
Game	29-61	47.5%	6-18	33.3%	4-5	80.0%

Last FG Half: WSU 2nd-00:00

Game Notes:

Officials: Anita Ortega, Tiffany Bird, Alejandro Moreno
 Attendance: 555

Start Time: 2019-01-12 03:06:15

End Time: 2019-01-12 04:48:03

Game Duration: 101

Conference Game;

Score	1st	2nd	3rd	4th	TOT
UTA	22	24	14	12	72
WSU	10	22	21	15	68

Points from (This Period)	UTA	WSU
In the Paint	30	20
Off Turns	5	7
2nd Chance	2	2
Fast Break	9	0
Bench	9	5

Official Box Score
Utah vs Washington St.
First Quarter Statistics Only
January 12, 2019 at Beasley Coliseum - Pullman, WA

Utah 22

No.	Player	S	Pts	FG	3FG	FT	OR	DR	TR	PF	A	TO	Blk	Stl	Min	+/-
00	Moore, Kiana		2	1-3	0-2	0-0	1	1	2	1	0	0	0	0	10	12
05	Huff, Megan		8	3-5	0-0	2-2	1	2	3	0	0	0	0	0	10	12
10	Gylten, Dru		6	2-3	2-2	0-0	0	1	1	0	3	0	0	0	10	12
11	Bean, Erika		0	0-0	0-0	0-0	0	1	1	0	3	0	0	0	9	10
44	Edwards, Dre'una		4	2-4	0-0	0-0	0	1	1	0	2	1	0	1	9	10
03	Becker, Niyah		0	0-0	0-0	0-0	0	0	0	0	0	0	0	0	0	0
14	Torres, Andrea		2	1-1	0-0	0-0	0	0	0	0	0	0	0	0	1	2
24	Porter, Sarah		0	0-1	0-1	0-0	0	1	1	0	0	0	0	0	1	2
	Team						0	2	2	0		0				
TOTALS			22	9-17	2-5	2-2	2	9	11	1	8	1	0	1	50	

Shooting By Period

Period	FG	FG%	3FG	3FG%	FT	FT%
1st Qtr	9-17	53%	2-5	40%	2-2	100%
2nd Qtr	11-12	92%	1-2	50%	1-2	50%
1st Half	9-17	53%	2-5	40%	2-2	100%
1st Half	20-29	69%	3-7	43%	3-4	75%
Game	29-52	55.8%	3-9	33.3%	11-18	61.1%

Washington St. 10

No.	Player	S	Pts	FG	3FG	FT	OR	DR	TR	PF	A	TO	Blk	Stl	Min	+/-
11	Molina, Chanelle		0	0-4	0-1	0-0	0	0	0	0	0	1	0	0	10	-12
13	Levy, Shir		4	2-3	0-0	0-0	0	1	1	0	0	1	0	0	9	-10
20	Kostourkova, Maria		2	1-2	0-0	0-0	0	3	3	0	1	0	1	0	10	-12
23	Swedlund, Alexys		2	1-2	0-0	0-0	0	1	1	0	0	0	0	0	10	-12
45	Hristova, Borislava		2	1-3	0-0	0-0	0	0	0	2	1	1	0	0	6	-6
15	Motuga, Ula		0	0-0	0-0	0-0	0	0	0	0	0	0	0	0	4	-6
33	Molina, Cherilyn		0	0-0	0-0	0-0	0	0	0	0	0	0	0	0	1	-2
41	Subasic, Jovana		0	0-0	0-0	0-0	0	0	0	0	0	0	0	0	0	0
	Team						0	1	1	0		0				
TOTALS			10	5-14	0-1	0-0	0	6	6	2	2	3	1	0	50	

Shooting By Period

Period	FG	FG%	3FG	3FG%	FT	FT%
1st Qtr	5-14	36%	0-1	00%	0-0	0%
2nd Qtr	10-17	59%	2-5	40%	0-0	0%
1st Half	5-14	36%	0-1	00%	0-0	0%
1st Half	15-31	48%	2-6	33%	0-0	0%
Game	29-61	47.5%	6-18	33.3%	4-5	80.0%

Game Notes:

Officials: Anita Ortega, Tiffany Bird, Alejandro Moreno
Attendance: 555

Start Time: 2019-01-12 03:06:15
End Time: 2019-01-12 04:48:03
Game Duration: 101
Conference Game;

Score	1st	2nd	3rd	4th	TOT
UTA	22	24	14	12	72
WSU	10	22	21	15	68

Points from (This Period)	UTA	WSU
In the Paint	12	8
Off Turns	5	0
2nd Chance	2	0
Fast Break	7	0
Bench	2	0

Official Play-By-Play
Utah vs Washington St.
First Quarter
January 12, 2019 at Beasley Coliseum - Pullman, WA

Period 1

Starters:

Utah: 00 MOORE,KIANA; 5 HUFF,MEGAN; 10 GYLLEN,DRU; 11 BEAN,ERIKA; 44 EDWARDS,DRE'UNA;

Washington St.: 11 MOLINA,CHANELLE; 13 LEVY,SHIR; 20 KOSTOURKOVA,MARIA; 23 SWEDLUND,ALEXYS; 45 HRISTOVA,BORISLAVA;

Time	VISITORS: Utah	Score	Margin	HOME: Washington St.
09:40		2-0	H 2	GOOD! LAYUP by HRISTOVA,BORISLAVA
09:40				ASSIST by KOSTOURKOVA,MARIA
09:22	GOOD! LAYUP by EDWARDS,DRE'UNA [PNT]	2-2	T	
09:22	ASSIST by GYLLEN,DRU			
09:04				TURNOVER (BADPASS) by MOLINA,CHANELLE
08:42	GOOD! 3PTR by GYLLEN,DRU	2-5	V 3	
08:42	ASSIST by EDWARDS,DRE'UNA			
08:14		4-5	V 1	GOOD! LAYUP by KOSTOURKOVA,MARIA
08:14				ASSIST by HRISTOVA,BORISLAVA
08:00	GOOD! LAYUP by EDWARDS,DRE'UNA [PNT]	4-7	V 3	
08:00	ASSIST by BEAN,ERIKA			
07:50	FOUL (PERSONAL) by MOORE,KIANA			
07:33		6-7	V 1	GOOD! JUMPER by LEVY,SHIR
07:09	MISSED JUMPER by HUFF,MEGAN			
07:05				REBOUND (DEF) by KOSTOURKOVA,MARIA
06:51				MISSED JUMPER by HRISTOVA,BORISLAVA
06:46	REBOUND (DEF) by BEAN,ERIKA			
06:43				FOUL (PERSONAL) by HRISTOVA,BORISLAVA
06:43	GOOD! FT by HUFF,MEGAN [FB]	6-8	V 2	
06:43	GOOD! FT by HUFF,MEGAN [FB]	6-9	V 3	
06:18				MISSED JUMPER by MOLINA,CHANELLE
06:15	REBOUND (DEF) by GYLLEN,DRU			
06:11	TURNOVER (LOSTBALL) by EDWARDS,DRE'UNA			
05:55				MISSED JUMPER by SWEDLUND,ALEXYS
05:51	REBOUND (DEF) by EDWARDS,DRE'UNA			
05:47	GOOD! 3PTR by GYLLEN,DRU [FB]	6-12	V 6	
05:47	ASSIST by EDWARDS,DRE'UNA			
05:24		8-12	V 4	GOOD! JUMPER by LEVY,SHIR [PNT]
05:08	GOOD! JUMPER by HUFF,MEGAN	8-14	V 6	
05:08	ASSIST by BEAN,ERIKA			
04:50				MISSED LAYUP by HRISTOVA,BORISLAVA
04:48	REBOUND (DEF) by TEAM			
04:48				
04:40	MISSED 3PTR by MOORE,KIANA			
04:36				REBOUND (DEF) by LEVY,SHIR
04:25				FOUL (OFF) by HRISTOVA,BORISLAVA
04:25				TURNOVER (OFFENSIVE) by HRISTOVA,BORISLAVA
04:25				SUB OUT: HRISTOVA,BORISLAVA
04:25				SUB IN: MOTUGA,ULA
04:04	MISSED LAYUP by GYLLEN,DRU			
04:01				REBOUND (DEF) by KOSTOURKOVA,MARIA
03:51				MISSED JUMPER by LEVY,SHIR
03:48	REBOUND (DEF) by HUFF,MEGAN			
03:36	GOOD! LAYUP by HUFF,MEGAN	8-16	V 8	
03:36	ASSIST by GYLLEN,DRU			
03:20				MISSED JUMPER by MOLINA,CHANELLE
03:15	REBOUND (DEF) by MOORE,KIANA			
03:10	MISSED LAYUP by EDWARDS,DRE'UNA			
03:08				REBOUND (DEF) by KOSTOURKOVA,MARIA
02:54		10-16	V 6	GOOD! LAYUP by SWEDLUND,ALEXYS
02:46	GOOD! LAYUP by MOORE,KIANA [FB]	10-18	V 8	
02:46	ASSIST by BEAN,ERIKA			
02:21				TURNOVER (BADPASS) by LEVY,SHIR
02:21	STEAL by EDWARDS,DRE'UNA			
02:14	MISSED LAYUP by EDWARDS,DRE'UNA			
02:12	REBOUND (OFF) by HUFF,MEGAN			
02:11	MISSED LAYUP by HUFF,MEGAN			
02:11				BLOCK by KOSTOURKOVA,MARIA
02:06	REBOUND (OFF) by MOORE,KIANA			
01:55	GOOD! LAYUP by HUFF,MEGAN	10-20	V 10	
01:28				MISSED 3PTR by MOLINA,CHANELLE
01:24	REBOUND (DEF) by TEAM			
01:24				SUB OUT: LEVY,SHIR
01:24				SUB IN: MOLINA,CHERILYN
01:24	SUB OUT: EDWARDS,DRE'UNA			
01:24	SUB IN: TORRES,ANDREA			
01:24	SUB OUT: BEAN,ERIKA			
01:24	SUB IN: PORTER,SARAH			
01:02	MISSED 3PTR by PORTER,SARAH			
00:57				REBOUND (DEF) by SWEDLUND,ALEXYS
00:53				MISSED JUMPER by MOLINA,CHANELLE
00:50	REBOUND (DEF) by PORTER,SARAH			
00:41	GOOD! LAYUP by TORRES,ANDREA	10-22	V 12	
00:41	ASSIST by GYLLEN,DRU			
00:41				TIMEOUT 30SEC
00:28				MISSED JUMPER by KOSTOURKOVA,MARIA

Time	VISITORS: Utah	Score	Margin	HOME: Washington St.
00:24	REBOUND (DEF) by HUFF,MEGAN			
00:04	MISSED 3PTR by MOORE,KIANA			
00:00				REBOUND (DEF) by TEAM

Utah 22, Washington St. 10

Points from (This Period)	UTA	WSU
In the Paint	12	8
Off Turns	5	0
2nd Chance	2	0
Fast Break	7	0
Bench	2	0

Official Box Score
Utah vs Washington St.
Second Quarter Statistics Only
January 12, 2019 at Beasley Coliseum - Pullman, WA

Utah 24

No.	Player	S	Pts	FG	3FG	FT	OR	DR	TR	PF	A	TO	Blk	Stl	Min	+/-
00	Moore, Kiana		0	0-0	0-0	0-0	0	0	0	0	0	0	0	1	6	0
05	Huff, Megan		3	1-2	0-1	1-2	0	2	2	0	0	2	0	0	5	-5
10	Gylten, Dru		2	1-1	0-0	0-0	0	0	0	1	1	2	0	1	8	-3
11	Bean, Erika		4	2-2	0-0	0-0	0	0	0	0	1	0	0	0	9	2
44	Edwards, Dre'una		8	4-4	0-0	0-0	0	1	1	2	0	1	0	0	5	2
03	Becker, Niyah		2	1-1	0-0	0-0	0	1	1	0	2	0	0	0	5	7
14	Torres, Andrea		3	1-1	1-1	0-0	0	2	2	0	0	0	1	0	5	0
24	Porter, Sarah		2	1-1	0-0	0-0	0	0	0	0	1	0	0	0	8	7
	Team						0	0	0	0		0				
TOTALS			24	11-12	1-2	1-2	0	6	6	3	5	5	1	2	50	

Shooting By Period

Period	FG	FG%	3FG	3FG%	FT	FT%
3rd Qtr	6-13	46%	0-0	0%	2-5	40%
4th Qtr	3-10	30%	0-2	00%	6-9	67%
2nd Half	11-12	92%	1-2	50%	1-2	50%
2nd Half	9-23	39%	0-2	00%	8-14	57%
Game	29-52	55.8%	3-9	33.3%	11-18	61.1%

Washington St. 22

No.	Player	S	Pts	FG	3FG	FT	OR	DR	TR	PF	A	TO	Blk	Stl	Min	+/-
11	Molina, Chanelle		15	7-9	1-2	0-0	1	0	1	0	1	0	0	0	10	-2
13	Levy, Shir		0	0-0	0-0	0-0	0	0	0	0	0	0	0	0	2	5
20	Kostourkova, Maria		2	1-1	0-0	0-0	0	1	1	1	0	0	0	0	6	7
23	Swedlund, Alexys		0	0-1	0-0	0-0	0	0	0	0	0	1	0	0	8	-7
45	Hristova, Borislava		0	0-3	0-1	0-0	0	0	0	0	0	0	0	1	8	3
15	Motuga, Ula		0	0-0	0-0	0-0	0	1	1	0	0	0	0	1	4	-3
33	Molina, Cherilyn		3	1-2	1-2	0-0	0	0	0	0	2	1	0	0	9	-4
41	Subasic, Jovana		2	1-1	0-0	0-0	0	0	0	0	1	0	0	0	4	-9
	Team						0	0	0	0		0				
TOTALS			22	10-17	2-5	0-0	1	2	3	1	4	2	0	2	50	

Shooting By Period

Period	FG	FG%	3FG	3FG%	FT	FT%
3rd Qtr	8-14	57%	4-5	80%	1-2	50%
4th Qtr	6-16	38%	0-7	00%	3-3	100%
2nd Half	10-17	59%	2-5	40%	0-0	0%
2nd Half	14-30	47%	4-12	33%	4-5	80%
Game	29-61	47.5%	6-18	33.3%	4-5	80.0%

Game Notes:

Officials: Anita Ortega, Tiffany Bird, Alejandro Moreno
Attendance: 555

Start Time: 2019-01-12 03:06:15
End Time: 2019-01-12 04:48:03
Game Duration: 101
Conference Game;

Score	1st	2nd	3rd	4th	TOT
UTA	22	24	14	12	72
WSU	10	22	21	15	68

Points from (This Period)	UTA	WSU
In the Paint	18	12
Off Turns	0	7
2nd Chance	0	2
Fast Break	2	0
Bench	7	5

Official Play-By-Play
Utah vs Washington St.
Second Quarter
January 12, 2019 at Beasley Coliseum - Pullman, WA

Period 2

Starters:

Utah: 00 MOORE,KIANA; 5 HUFF,MEGAN; 10 GYLLEN,DRU; 11 BEAN,ERIKA; 44 EDWARDS,DRE'UNA;

Washington St.: 11 MOLINA,CHANELLE; 13 LEVY,SHIR; 20 KOSTOURKOVA,MARIA; 23 SWEDLUND,ALEXYS; 45 HRISTOVA,BORISLAVA;

Time	VISITORS: Utah	Score	Margin	HOME: Washington St.
09:34	GOOD! 3PTR by TORRES,ANDREA	10-25	V 15	
09:34	ASSIST by BEAN,ERIKA			
09:07				MISSED JUMPER by SWEDLUND,ALEXYS
09:07	BLOCK by TORRES,ANDREA			
09:03	REBOUND (DEF) by TORRES,ANDREA			
08:59	GOOD! LAYUP by BEAN,ERIKA [FB]	10-27	V 17	
08:43		12-27	V 15	GOOD! LAYUP by MOLINA,CHANELLE
08:43				ASSIST by SUBASIC,JOVANA
08:28	GOOD! JUMPER by BECKER,NIYAH	12-29	V 17	
08:11		14-29	V 15	GOOD! JUMPER by SUBASIC,JOVANA
08:11				ASSIST by MOLINA,CHERILYN
07:59	GOOD! LAYUP by PORTER,SARAH	14-31	V 17	
07:59	ASSIST by BECKER,NIYAH			
07:46				SUB OUT: MOTUGA,ULA
07:46				SUB IN: HRISTOVA,BORISLAVA
07:46	SUB OUT: TORRES,ANDREA			
07:46	SUB IN: EDWARDS,DRE'UNA			
07:46	SUB OUT: MOORE,KIANA			
07:46	SUB IN: GYLLEN,DRU			
07:37		16-31	V 15	GOOD! JUMPER by MOLINA,CHANELLE [PNT]
07:17	GOOD! JUMPER by EDWARDS,DRE'UNA	16-33	V 17	
07:06				MISSED JUMPER by HRISTOVA,BORISLAVA
07:03	REBOUND (DEF) by EDWARDS,DRE'UNA			
06:51	GOOD! LAYUP by EDWARDS,DRE'UNA	16-35	V 19	
06:51	ASSIST by GYLLEN,DRU			
06:21				MISSED 3PTR by HRISTOVA,BORISLAVA
06:18	REBOUND (DEF) by BECKER,NIYAH			
06:09	GOOD! LAYUP by EDWARDS,DRE'UNA	16-37	V 21	
06:09	ASSIST by BECKER,NIYAH			
06:06				TIMEOUT 30SEC
06:06				
06:06				SUB OUT: SUBASIC,JOVANA
06:06				SUB IN: KOSTOURKOVA,MARIA
05:39		18-37	V 19	GOOD! JUMPER by MOLINA,CHANELLE [PNT]
05:12	GOOD! LAYUP by EDWARDS,DRE'UNA	18-39	V 21	
04:58		20-39	V 19	GOOD! LAYUP by KOSTOURKOVA,MARIA
04:58				ASSIST by MOLINA,CHERILYN
04:38	TURNOVER (BADPASS) by EDWARDS,DRE'UNA			
04:38	SUB OUT: BECKER,NIYAH			
04:38	SUB IN: HUFF,MEGAN			
04:29				MISSED 3PTR by MOLINA,CHERILYN
04:25				REBOUND (OFF) by MOLINA,CHANELLE
04:24		22-39	V 17	GOOD! LAYUP by MOLINA,CHANELLE
04:02	GOOD! LAYUP by GYLLEN,DRU	22-41	V 19	
03:53		24-41	V 17	GOOD! JUMPER by MOLINA,CHANELLE
03:39	GOOD! LAYUP by HUFF,MEGAN	24-43	V 19	
03:39	ASSIST by PORTER,SARAH			
03:24	FOUL (PERSONAL) by EDWARDS,DRE'UNA			
03:24	SUB OUT: BEAN,ERIKA			
03:24	SUB IN: MOORE,KIANA			
03:17				TURNOVER (BADPASS) by MOLINA,CHERILYN
03:17	STEAL by GYLLEN,DRU			
03:07	TURNOVER (BADPASS) by HUFF,MEGAN			
03:07				STEAL by HRISTOVA,BORISLAVA
02:58	FOUL (PERSONAL) by EDWARDS,DRE'UNA			
02:58	SUB OUT: EDWARDS,DRE'UNA			
02:58	SUB IN: TORRES,ANDREA			
02:51				MISSED JUMPER by MOLINA,CHANELLE
02:47	REBOUND (DEF) by HUFF,MEGAN			
02:34	MISSED 3PTR by HUFF,MEGAN			
02:30				REBOUND (DEF) by KOSTOURKOVA,MARIA
02:23				TURNOVER (BADPASS) by SWEDLUND,ALEXYS
02:23	STEAL by MOORE,KIANA			
02:07	TURNOVER (BADPASS) by GYLLEN,DRU			
02:07				SUB OUT: SWEDLUND,ALEXYS
02:07				SUB IN: LEVY,SHIR
02:07	SUB OUT: PORTER,SARAH			
02:07	SUB IN: BEAN,ERIKA			
01:39		27-43	V 16	GOOD! 3PTR by MOLINA,CHERILYN
01:39				ASSIST by MOLINA,CHANELLE
01:17	FOUL (OFF) by GYLLEN,DRU			
01:17	TURNOVER (OFFENSIVE) by GYLLEN,DRU			
01:17				SUB OUT: MOLINA,CHERILYN
01:17				SUB IN: MOTUGA,ULA
01:02				MISSED LAYUP by HRISTOVA,BORISLAVA
00:58	REBOUND (DEF) by HUFF,MEGAN			

Time	VISITORS: Utah	Score	Margin	HOME: Washington St.
00:56	TURNOVER (LOSTBALL) by HUFF,MEGAN			
00:56				STEAL by MOTUGA,ULA
00:41		29-43	V 14	GOOD! JUMPER by MOLINA,CHANELLE
00:32				FOUL (PERSONAL) by KOSTOURKOVA,MARIA
00:32	GOOD! FT by HUFF,MEGAN	29-44	V 15	
00:32	MISSED FT by HUFF,MEGAN			
00:30				REBOUND (DEF) by MOTUGA,ULA
00:22				MISSED 3PTR by MOLINA,CHANELLE
00:18	REBOUND (DEF) by TORRES,ANDREA			
00:07	GOOD! LAYUP by BEAN,ERIKA	29-46	V 17	
00:00		32-46	V 14	GOOD! 3PTR by MOLINA,CHANELLE

Utah 46, Washington St. 32

Points from (This Period)	UTA	WSU
In the Paint	18	12
Off Turns	0	7
2nd Chance	0	2
Fast Break	2	0
Bench	7	5

Official Box Score
Utah vs Washington St.
Second Half Statistics Only
January 12, 2019 at Beasley Coliseum - Pullman, WA

Utah 26

No.	Player	S	Pts	FG	3FG	FT	OR	DR	TR	PF	A	TO	Blk	Stl	Min	+/-
00	Moore, Kiana		4	2-3	0-0	0-1	1	0	1	0	1	0	0	0	20	-10
03	Becker, Niyah		0	0-0	0-0	0-0	0	0	0	0	0	0	0	0	0	0
05	Huff, Megan		10	3-6	0-1	4-5	2	1	3	1	1	2	0	1	20	-9
10	Gylten, Dru		0	0-2	0-0	0-2	0	0	0	1	2	3	0	0	19	-6
11	Bean, Erika		4	1-3	0-0	2-2	0	3	3	2	0	1	2	1	16	-8
14	Torres, Andrea		0	0-1	0-0	0-0	1	2	3	1	0	1	0	1	5	-7
24	Porter, Sarah		0	0-1	0-1	0-0	0	0	0	0	0	1	0	0	5	-6
44	Edwards, Dre'una		8	3-7	0-0	2-4	1	3	4	2	0	1	1	1	15	-4
	Team		0	0-0	0-0	0-0	1	0	1	0	0	0	0	0	0	0
TOTALS			26	9-23	0-2	8-14	6	9	15	7	4	9	3	4	100	

Shooting By Period

Period	FG	FG%	3FG	3FG%	FT	FT%
3rd Qtr	6-13	46%	0-0	0%	2-5	40%
4th Qtr	3-10	30%	0-2	00%	6-9	67%
2nd Half	9-23	39%	0-2	00%	8-14	57%
Game	29-52	55.8%	3-9	33.3%	11-18	61.1%

Last FG Half: UTA 4th-02:27

Washington St. 36

No.	Player	S	Pts	FG	3FG	FT	OR	DR	TR	PF	A	TO	Blk	Stl	Min	+/-
11	Molina, Chanelle		2	1-8	0-4	0-0	2	2	4	0	4	1	0	1	20	10
13	Levy, Shir		3	1-2	1-2	0-0	0	1	1	0	0	0	0	0	8	3
15	Motuga, Ula		0	0-0	0-0	0-0	0	0	0	0	0	0	0	0	0	0
20	Kostourkova, Maria		5	2-4	0-0	1-2	2	6	8	3	3	0	4	2	18	12
23	Swedlund, Alexys		15	5-9	3-5	2-2	1	0	1	1	0	3	0	2	20	10
33	Molina, Cherilyn		0	0-1	0-1	0-0	0	0	0	1	0	1	0	2	12	7
41	Subasic, Jovana		0	0-0	0-0	0-0	0	0	0	1	0	0	1	0	2	-2
45	Hristova, Borislava		11	5-6	0-0	1-1	0	2	2	2	0	2	0	0	20	10
	Team		0	0-0	0-0	0-0	2	0	2	0	0	1	0	0	0	0
TOTALS			36	14-30	4-12	4-5	7	11	18	8	7	8	5	7	100	

Shooting By Period

Period	FG	FG%	3FG	3FG%	FT	FT%
3rd Qtr	8-14	57%	4-5	80%	1-2	50%
4th Qtr	6-16	38%	0-7	00%	3-3	100%
2nd Half	14-30	47%	4-12	33%	4-5	80%
Game	29-61	47.5%	6-18	33.3%	4-5	80.0%

Last FG Half: WSU 4th-04:27

Game Notes:

Officials: Anita Ortega, Tiffany Bird, Alejandro Moreno
Attendance: 555

Start Time: 2019-01-12 03:06:15
End Time: 2019-01-12 04:48:03
Game Duration: 101
Conference Game;

Score	1st	2nd	3rd	4th	TOT
UTA	22	24	14	12	72
WSU	10	22	21	15	68

Points from (This Period)	UTA	WSU
In the Paint	16	18
Off Turns	7	8
2nd Chance	5	3
Fast Break	2	6
Bench	0	0

Official Box Score
Utah vs Washington St.
Third Quarter Statistics Only
January 12, 2019 at Beasley Coliseum - Pullman, WA

Utah 26

No.	Player	S	Pts	FG	3FG	FT	OR	DR	TR	PF	A	TO	Blk	Stl	Min	+/-
00	Moore, Kiana		2	1-2	0-0	0-0	0	0	0	0	1	0	0	0	10	-7
05	Huff, Megan		8	3-4	0-0	2-3	1	1	2	1	1	2	0	1	10	-7
10	Gylten, Dru		0	0-1	0-0	0-2	0	0	0	1	1	1	0	0	10	-7
11	Bean, Erika		2	1-2	0-0	0-0	0	1	1	0	0	1	1	0	10	-7
44	Edwards, Dre'una		2	1-4	0-0	0-0	0	1	1	1	0	0	0	1	10	-7
03	Becker, Niyah		0	0-0	0-0	0-0	0	0	0	0	0	0	0	0	0	0
14	Torres, Andrea		0	0-0	0-0	0-0	0	0	0	0	0	0	0	1	0	0
24	Porter, Sarah		0	0-0	0-0	0-0	0	0	0	0	0	0	0	0	0	0
	Team						1	0	1	0		0				
TOTALS			14	6-13	0-0	2-5	2	3	5	3	3	4	1	3	50	

Shooting By Period

Period	FG	FG%	3FG	3FG%	FT	FT%
2nd Half	0-0	0%	0-0	0%	0-0	0%
Game	29-52	55.8%	3-9	33.3%	11-18	61.1%

Washington St. 36

No.	Player	S	Pts	FG	3FG	FT	OR	DR	TR	PF	A	TO	Blk	Stl	Min	+/-
11	Molina, Chanelle		0	0-2	0-0	0-0	1	2	3	0	4	1	0	0	10	7
13	Levy, Shir		3	1-2	1-2	0-0	0	1	1	0	0	0	0	0	8	3
20	Kostourkova, Maria		5	2-4	0-0	1-2	2	3	5	2	2	0	3	2	10	7
23	Swedlund, Alexys		9	3-4	3-3	0-0	0	0	0	0	0	1	0	1	10	7
45	Hristova, Borislava		4	2-2	0-0	0-0	0	0	0	0	0	2	0	0	10	7
15	Motuga, Ula		0	0-0	0-0	0-0	0	0	0	0	0	0	0	0	0	0
33	Molina, Cherilyn		0	0-0	0-0	0-0	0	0	0	1	0	1	0	0	2	4
41	Subasic, Jovana		0	0-0	0-0	0-0	0	0	0	0	0	0	0	0	0	0
	Team						0	0	0	0		1				
TOTALS			21	8-14	4-5	1-2	3	6	9	3	6	6	3	3	50	

Shooting By Period

Period	FG	FG%	3FG	3FG%	FT	FT%
2nd Half	0-0	0%	0-0	0%	0-0	0%
Game	29-61	47.5%	6-18	33.3%	4-5	80.0%

Game Notes:

Officials: Anita Ortega, Tiffany Bird, Alejandro Moreno
Attendance: 555

Start Time: 2019-01-12 03:06:15
End Time: 2019-01-12 04:48:03
Game Duration: 101
Conference Game;

Score	1st	2nd	3rd	4th	TOT
UTA	22	24	14	12	72
WSU	10	22	21	15	68

Points from (This Period)	UTA	WSU
In the Paint	10	8
Off Turns	3	2
2nd Chance	2	3
Fast Break	2	1
Bench	0	0

Official Play-By-Play
Utah vs Washington St.
Third Quarter
January 12, 2019 at Beasley Coliseum - Pullman, WA

Period 3

Starters:

Utah: 00 MOORE,KIANA; 5 HUFF,MEGAN; 10 GYLLEN,DRU; 11 BEAN,ERIKA; 44 EDWARDS,DRE'UNA;

Washington St.: 11 MOLINA,CHANELLE; 13 LEVY,SHIR; 20 KOSTOURKOVA,MARIA; 23 SWEDLUND,ALEXYS; 45 HRISTOVA,BORISLAVA;

Time	VISITORS: Utah	Score	Margin	HOME: Washington St.
09:48				MISSED JUMPER by MOLINA,CHANELLE
09:46				REBOUND (OFF) by KOSTOURKOVA,MARIA
09:45				MISSED LAYUP by KOSTOURKOVA,MARIA
09:45	BLOCK by BEAN,ERIKA			
09:41	REBOUND (DEF) by BEAN,ERIKA			
09:38	GOOD! LAYUP by EDWARDS,DRE'UNA [FB]	32-48	V 16	
09:38	ASSIST by HUFF,MEGAN			
09:22		34-48	V 14	GOOD! LAYUP by KOSTOURKOVA,MARIA
09:22				ASSIST by MOLINA,CHANELLE
09:00	MISSED LAYUP by EDWARDS,DRE'UNA			
09:00				BLOCK by KOSTOURKOVA,MARIA
08:56				REBOUND (DEF) by KOSTOURKOVA,MARIA
08:50				MISSED JUMPER by SWEDLUND,ALEXYS
08:50	REBOUND (DEF) by EDWARDS,DRE'UNA			
08:50	MISSED LAYUP by MOORE,KIANA			
08:50				REBOUND (DEF) by KOSTOURKOVA,MARIA
08:50		37-48	V 11	GOOD! 3PTR by LEVY,SHIR
08:50				ASSIST by MOLINA,CHANELLE
08:50	TURNOVER (BADPASS) by GYLLEN,DRU			
08:50				STEAL by KOSTOURKOVA,MARIA
08:50				TURNOVER (BADPASS) by HRISTOVA,BORISLAVA
08:50	STEAL by HUFF,MEGAN			
08:50	MISSED LAYUP by BEAN,ERIKA			
08:50				REBOUND (DEF) by MOLINA,CHANELLE
08:50		39-48	V 9	GOOD! LAYUP by HRISTOVA,BORISLAVA
08:50	GOOD! JUMPER by BEAN,ERIKA	39-50	V 11	
06:33		42-50	V 8	GOOD! 3PTR by SWEDLUND,ALEXYS
06:33				ASSIST by KOSTOURKOVA,MARIA
06:17	TURNOVER (LOSTBALL) by HUFF,MEGAN			
06:00		44-50	V 6	GOOD! LAYUP by KOSTOURKOVA,MARIA
06:00				ASSIST by MOLINA,CHANELLE
05:38	MISSED LAYUP by GYLLEN,DRU			
05:38				BLOCK by KOSTOURKOVA,MARIA
05:34	REBOUND (OFF) by HUFF,MEGAN			
05:30	GOOD! LAYUP by HUFF,MEGAN [PNT]	44-52	V 8	
05:30	ASSIST by GYLLEN,DRU			
05:29	TIMEOUT 30SEC			
05:29				
05:14		47-52	V 5	GOOD! 3PTR by SWEDLUND,ALEXYS
04:46	TURNOVER (BADPASS) by BEAN,ERIKA			
04:46				STEAL by KOSTOURKOVA,MARIA
04:37				TURNOVER (BADPASS) by MOLINA,CHANELLE
04:37	STEAL by EDWARDS,DRE'UNA			
04:32	MISSED LAYUP by EDWARDS,DRE'UNA			
04:28				REBOUND (DEF) by LEVY,SHIR
04:08				TURNOVER (TRAVEL) by SWEDLUND,ALEXYS
04:08				
03:55	TURNOVER (LOSTBALL) by HUFF,MEGAN			
03:55				STEAL by SWEDLUND,ALEXYS
03:43				TURNOVER (TRAVEL) by HRISTOVA,BORISLAVA
03:31				FOUL (PERSONAL) by KOSTOURKOVA,MARIA
03:31	MISSED FT by HUFF,MEGAN			
03:31	REBOUND (OFF) by TEAM			
03:31	GOOD! FT by HUFF,MEGAN	47-53	V 6	
03:21				TURNOVER (10SEC) by
03:01	GOOD! LAYUP by MOORE,KIANA	47-55	V 8	
02:36	FOUL (PERSONAL) by GYLLEN,DRU			
02:25				MISSED 3PTR by LEVY,SHIR
02:19	REBOUND (DEF) by HUFF,MEGAN			
02:12	GOOD! LAYUP by HUFF,MEGAN	47-57	V 10	
02:12	ASSIST by MOORE,KIANA			
02:12				FOUL (PERSONAL) by KOSTOURKOVA,MARIA
02:12	GOOD! FT by HUFF,MEGAN	47-58	V 11	
02:12				SUB OUT: LEVY,SHIR
02:12				SUB IN: MOLINA,CHERILYN
01:58	FOUL (PERSONAL) by HUFF,MEGAN			
01:58				MISSED FT by KOSTOURKOVA,MARIA
01:58				REBOUND (OFF) by TEAM
01:58		48-58	V 10	GOOD! FT by KOSTOURKOVA,MARIA [FB]
01:45	MISSED LAYUP by EDWARDS,DRE'UNA			
01:45				BLOCK by KOSTOURKOVA,MARIA
01:45	REBOUND (OFF) by TEAM			
01:45				FOUL (PERSONAL) by MOLINA,CHERILYN
01:45	MISSED FT by GYLLEN,DRU			
01:45	REBOUND (OFF) by TEAM			
01:45	MISSED FT by GYLLEN,DRU			

Time	VISITORS: Utah	Score	Margin	HOME: Washington St.
01:45				REBOUND (DEF) by KOSTOURKOVA, MARIA
01:27		50-58	V 8	GOOD! LAYUP by HRISTOVA, BORISLAVA
01:27				ASSIST by MOLINA, CHANELLE
00:59	MISSED JUMPER by HUFF, MEGAN			
00:56				REBOUND (DEF) by MOLINA, CHANELLE
00:52				MISSED JUMPER by MOLINA, CHANELLE
00:50				REBOUND (OFF) by KOSTOURKOVA, MARIA
00:49				MISSED LAYUP by KOSTOURKOVA, MARIA
00:49				REBOUND (OFF) by MOLINA, CHANELLE
00:44		53-58	V 5	GOOD! 3PTR by SWEDLUND, ALEXYS
00:44				ASSIST by KOSTOURKOVA, MARIA
00:07	GOOD! LAYUP by HUFF, MEGAN	53-60	V 7	
00:01	FOUL (PERSONAL) by EDWARDS, DRE'UNA			
00:01	SUB OUT: EDWARDS, DRE'UNA			
00:01	SUB IN: TORRES, ANDREA			
00:01				TURNOVER (BADPASS) by MOLINA, CHERILYN
00:01	STEAL by TORRES, ANDREA			

Utah 60, Washington St. 53

Points from (This Period)	UTA	WSU
In the Paint	10	8
Off Turns	3	2
2nd Chance	2	3
Fast Break	2	1
Bench	0	0

Official Box Score
Utah vs Washington St.
Fourth Quarter Statistics Only
January 12, 2019 at Beasley Coliseum - Pullman, WA

Utah 12

No.	Player	S	Pts	FG	3FG	FT	OR	DR	TR	PF	A	TO	Blk	Stl	Min	+/-
00	Moore, Kiana		2	1-1	0-0	0-1	1	0	1	0	0	0	0	0	10	-3
05	Huff, Megan		2	0-2	0-1	2-2	1	0	1	0	0	0	0	0	10	-2
10	Gylten, Dru		0	0-1	0-0	0-0	0	0	0	0	1	2	0	0	9	1
11	Bean, Erika		2	0-1	0-0	2-2	0	2	2	2	0	0	1	1	6	-1
44	Edwards, Dre'una		6	2-3	0-0	2-4	1	2	3	1	0	1	1	0	5	3
03	Becker, Niyah		0	0-0	0-0	0-0	0	0	0	0	0	0	0	0	0	0
14	Torres, Andrea		0	0-1	0-0	0-0	1	2	3	1	0	1	0	0	5	-7
24	Porter, Sarah		0	0-1	0-1	0-0	0	0	0	0	0	1	0	0	5	-6
	Team						0	0	0	0		0				
TOTALS			12	3-10	0-2	6-9	4	6	10	4	1	5	2	1	50	

Shooting By Period

Period	FG	FG%	3FG	3FG%	FT	FT%
Game	29-52	55.8%	3-9	33.3%	11-18	61.1%

Washington St. 15

No.	Player	S	Pts	FG	3FG	FT	OR	DR	TR	PF	A	TO	Blk	Stl	Min	+/-
11	Molina, Chanelle		2	1-6	0-4	0-0	1	0	1	0	0	0	0	1	10	3
13	Levy, Shir		0	0-0	0-0	0-0	0	0	0	0	0	0	0	0	0	0
20	Kostourkova, Maria		0	0-0	0-0	0-0	0	3	3	1	1	0	1	0	8	5
23	Swedlund, Alexys		6	2-5	0-2	2-2	1	0	1	1	0	2	0	1	10	3
45	Hristova, Borislava		7	3-4	0-0	1-1	0	2	2	2	0	0	0	0	10	3
15	Motuga, Ula		0	0-0	0-0	0-0	0	0	0	0	0	0	0	0	0	0
33	Molina, Cherilyn		0	0-1	0-1	0-0	0	0	0	0	0	0	0	2	10	3
41	Subasic, Jovana		0	0-0	0-0	0-0	0	0	0	1	0	0	1	0	2	-2
	Team						2	0	2	0		0				
TOTALS			15	6-16	0-7	3-3	4	5	9	5	1	2	2	4	50	

Shooting By Period

Period	FG	FG%	3FG	3FG%	FT	FT%
Game	29-61	47.5%	6-18	33.3%	4-5	80.0%

Game Notes:

Officials: Anita Ortega, Tiffany Bird, Alejandro Moreno
Attendance: 555

Start Time: 2019-01-12 03:06:15

End Time: 2019-01-12 04:48:03

Game Duration: 101

Conference Game;

Score	1st	2nd	3rd	4th	TOT
UTA	22	24	14	12	72
WSU	10	22	21	15	68

Points from (This Period)	UTA	WSU
In the Paint	6	10
Off Turns	4	6
2nd Chance	3	0
Fast Break	0	5
Bench	0	0

**Official Play-By-Play
Utah vs Washington St.
Fourth Quarter
January 12, 2019 at Beasley Coliseum - Pullman, WA**

Period 4

Starters:

Utah: 00 MOORE,KIANA; 5 HUFF,MEGAN; 10 GYLTEN,DRU; 11 BEAN,ERIKA; 44 EDWARDS,DRE'UNA;

Washington St.: 11 MOLINA,CHANELLE; 13 LEVY,SHIR; 20 KOSTOURKOVA,MARIA; 23 SWEDLUND,ALEXYS; 45 HRISTOVA,BORISLAVA;

Time	VISITORS: Utah	Score	Margin	HOME: Washington St.
09:49	MISSED LAYUP by TORRES,ANDREA			
09:46	REBOUND (OFF) by TORRES,ANDREA			
09:37	TURNOVER (LOSTBALL) by GYLTEN,DRU			
09:21		55-60	V 5	GOOD! LAYUP by SWEDLUND,ALEXYS
08:58	TURNOVER (LOSTBALL) by TORRES,ANDREA			
08:58				STEAL by MOLINA,CHERILYN
08:33		57-60	V 3	GOOD! LAYUP by HRISTOVA,BORISLAVA
08:14	MISSED LAYUP by GYLTEN,DRU			
08:11				REBOUND (DEF) by KOSTOURKOVA,MARIA
08:07				MISSED 3PTR by SWEDLUND,ALEXYS
08:03	REBOUND (DEF) by TORRES,ANDREA			
07:41	GOOD! LAYUP by MOORE,KIANA	57-62	V 5	
07:41				FOUL (PERSONAL) by SWEDLUND,ALEXYS
07:40	MISSED FT by MOORE,KIANA			
07:39				REBOUND (DEF) by HRISTOVA,BORISLAVA
07:27		59-62	V 3	GOOD! JUMPER by MOLINA,CHANELLE
07:27				ASSIST by KOSTOURKOVA,MARIA
07:05	TURNOVER (LOSTBALL) by PORTER,SARAH			
07:05				STEAL by MOLINA,CHERILYN
07:00				TURNOVER (BADPASS) by SWEDLUND,ALEXYS
07:00	STEAL by BEAN,ERIKA			
06:38	MISSED 3PTR by HUFF,MEGAN			
06:34	REBOUND (OFF) by MOORE,KIANA			
06:25	MISSED JUMPER by HUFF,MEGAN			
06:25	REBOUND (OFF) by HUFF,MEGAN			
06:25				BLOCK by KOSTOURKOVA,MARIA
06:22				FOUL (PERSONAL) by HRISTOVA,BORISLAVA
06:22	GOOD! FT by HUFF,MEGAN	59-63	V 4	
06:22	GOOD! FT by HUFF,MEGAN	59-64	V 5	
06:22	SUB OUT: GYLTEN,DRU			
06:22	SUB IN: BEAN,ERIKA			
06:05				MISSED LAYUP by MOLINA,CHANELLE
06:02	REBOUND (DEF) by TORRES,ANDREA			
05:54	MISSED JUMPER by BEAN,ERIKA			
05:50				REBOUND (DEF) by KOSTOURKOVA,MARIA
05:47		61-64	V 3	GOOD! JUMPER by HRISTOVA,BORISLAVA [FB/PNT]
05:20	MISSED 3PTR by PORTER,SARAH			
05:17				REBOUND (DEF) by KOSTOURKOVA,MARIA
05:09		63-64	V 1	GOOD! LAYUP by HRISTOVA,BORISLAVA [FB/PNT]
05:09	FOUL (PERSONAL) by TORRES,ANDREA			
05:09	SUB IN: EDWARDS,DRE'UNA			
05:09		64-64	T	GOOD! FT by HRISTOVA,BORISLAVA [FB]
05:09				SUB OUT: HRISTOVA,BORISLAVA
05:09				SUB IN: MOTUGA,ULA
05:09				SUB OUT: KOSTOURKOVA,MARIA
05:09				SUB IN: SUBASIC,JOVANA
05:09	SUB OUT: PORTER,SARAH			
05:09	SUB OUT: HUFF,MEGAN			
05:09	SUB IN: GYLTEN,DRU			
04:52				SUB OUT: MOTUGA,ULA
04:52				SUB IN: HRISTOVA,BORISLAVA
04:45	MISSED LAYUP by EDWARDS,DRE'UNA			
04:45				BLOCK by SUBASIC,JOVANA
04:45	REBOUND (OFF) by EDWARDS,DRE'UNA			
04:45				FOUL (PERSONAL) by HRISTOVA,BORISLAVA
04:45	MISSED FT by EDWARDS,DRE'UNA			
04:45	REBOUND (OFF) by TEAM			
04:45	SUB OUT: TORRES,ANDREA			
04:45	SUB IN: HUFF,MEGAN			
04:45	GOOD! FT by EDWARDS,DRE'UNA	64-65	V 1	
04:27		66-65	H 1	GOOD! LAYUP by SWEDLUND,ALEXYS
04:10	GOOD! LAYUP by EDWARDS,DRE'UNA	66-67	V 1	
04:10	ASSIST by GYLTEN,DRU			
03:46				MISSED 3PTR by MOLINA,CHERILYN
03:43				REBOUND (OFF) by MOLINA,CHANELLE
03:27				MISSED LAYUP by HRISTOVA,BORISLAVA
03:22	REBOUND (DEF) by EDWARDS,DRE'UNA			
03:02				FOUL (PERSONAL) by SUBASIC,JOVANA
03:02	GOOD! FT by BEAN,ERIKA	66-68	V 2	
03:02				SUB OUT: SUBASIC,JOVANA
03:02				SUB IN: KOSTOURKOVA,MARIA
03:02	GOOD! FT by BEAN,ERIKA	66-69	V 3	
02:44				TURNOVER (BADPASS) by SWEDLUND,ALEXYS
02:27	GOOD! LAYUP by EDWARDS,DRE'UNA	66-71	V 5	
02:05	FOUL (PERSONAL) by BEAN,ERIKA			
01:56	FOUL (PERSONAL) by BEAN,ERIKA			

Time	VISITORS: Utah	Score	Margin	HOME: Washington St.
01:53				MISSED 3PTR by MOLINA,CHANELLE
01:49	REBOUND (DEF) by BEAN,ERIKA			
01:25	TIMEOUT 30SEC			
01:22	TURNOVER (BADPASS) by GYLTEN,DRU			
01:22				STEAL by MOLINA,CHANELLE
01:04	FOUL (PERSONAL) by EDWARDS,DRE'UNA			
01:04		67-71	V 4	GOOD! FT by SWEDLUND,ALEXYS
01:04		68-71	V 3	GOOD! FT by SWEDLUND,ALEXYS
00:37	TURNOVER (LOSTBALL) by EDWARDS,DRE'UNA			
00:37				STEAL by SWEDLUND,ALEXYS
00:16				MISSED 3PTR by MOLINA,CHANELLE
00:14	REBOUND (DEF) by EDWARDS,DRE'UNA			
00:14				FOUL (PERSONAL) by KOSTOURKOVA,MARIA
00:14	GOOD! FT by EDWARDS,DRE'UNA	68-72	V 4	
00:14	MISSED FT by EDWARDS,DRE'UNA			
00:14				REBOUND (DEF) by HRISTOVA,BORISLAVA
00:14				TIMEOUT TEAM
00:09				MISSED 3PTR by SWEDLUND,ALEXYS
00:09	BLOCK by BEAN,ERIKA			
00:09				REBOUND (OFF) by TEAM
00:09				MISSED 3PTR by MOLINA,CHANELLE
00:06				REBOUND (OFF) by SWEDLUND,ALEXYS
00:06				MISSED JUMPER by SWEDLUND,ALEXYS
00:06	BLOCK by EDWARDS,DRE'UNA			
00:06				REBOUND (OFF) by TEAM
00:04				MISSED 3PTR by MOLINA,CHANELLE
00:00	REBOUND (DEF) by BEAN,ERIKA			

Utah 72, Washington St. 68

Points from (This Period)	UTA	WSU
In the Paint	6	10
Off Turns	4	6
2nd Chance	3	0
Fast Break	0	5
Bench	0	0

Official Scoring/Possession Reference Chart
Utah vs Washington St.
Period 1
January 12, 2019 at Beasley Coliseum - Pullman, WA

Period 1

Starters:

Utah: 00 MOORE, KIANA; 5 HUFF, MEGAN; 10 GYLTEN, DRU; 11 BEAN, ERIKA; 44 EDWARDS, DRE'UNA;

Washington St.: 11 MOLINA, CHANELLE; 13 LEVY, SHIR; 20 KOSTOURKOVA, MARIA; 23 SWEDLUND, ALEXYS; 45 HRISTOVA, BORISLAVA;

Time	VISITORS: Utah	Score	Margin	HOME: Washington St.
09:40		2-0	H 2	GOOD! LAYUP by HRISTOVA, BORISLAVA
09:22	GOOD! LAYUP by EDWARDS, DRE'UNA [PNT]	2-2	T	
08:42	GOOD! 3PTR by GYLTEN, DRU	2-5	V 3	
08:14		4-5	V 1	GOOD! LAYUP by KOSTOURKOVA, MARIA
08:00	GOOD! LAYUP by EDWARDS, DRE'UNA [PNT]	4-7	V 3	
07:33		6-7	V 1	GOOD! JUMPER by LEVY, SHIR
06:43	GOOD! FT by HUFF, MEGAN [FB]	6-8	V 2	
06:43	GOOD! FT by HUFF, MEGAN [FB]	6-9	V 3	
05:47	GOOD! 3PTR by GYLTEN, DRU [FB]	6-12	V 6	
05:24		8-12	V 4	GOOD! JUMPER by LEVY, SHIR [PNT]
05:08	GOOD! JUMPER by HUFF, MEGAN	8-14	V 6	
03:36	GOOD! LAYUP by HUFF, MEGAN	8-16	V 8	
02:54		10-16	V 6	GOOD! LAYUP by SWEDLUND, ALEXYS
02:46	GOOD! LAYUP by MOORE, KIANA [FB]	10-18	V 8	
01:55	GOOD! LAYUP by HUFF, MEGAN	10-20	V 10	
00:41	GOOD! LAYUP by TORRES, ANDREA	10-22	V 12	

Utah 22, Washington St. 10

Official Scoring/Possession Reference Chart
Utah vs Washington St.
Period 2
January 12, 2019 at Beasley Coliseum - Pullman, WA

Period 2

Starters:

Utah: 00 MOORE, KIANA; 5 HUFF, MEGAN; 10 GYLTEN, DRU; 11 BEAN, ERIKA; 44 EDWARDS, DRE'UNA;

Washington St.: 11 MOLINA, CHANELLE; 13 LEVY, SHIR; 20 KOSTOURKOVA, MARIA; 23 SWEDLUND, ALEXYS; 45 HRISTOVA, BORISLAVA;

Time	VISITORS: Utah	Score	Margin	HOME: Washington St.
09:34	GOOD! 3PTR by TORRES, ANDREA	10-25	V 15	
08:59	GOOD! LAYUP by BEAN, ERIKA [FB]	10-27	V 17	
08:43		12-27	V 15	GOOD! LAYUP by MOLINA, CHANELLE
08:28	GOOD! JUMPER by BECKER, NIYAH	12-29	V 17	
08:11		14-29	V 15	GOOD! JUMPER by SUBASIC, JOVANA
07:59	GOOD! LAYUP by PORTER, SARAH	14-31	V 17	
07:37		16-31	V 15	GOOD! JUMPER by MOLINA, CHANELLE [PNT]
07:17	GOOD! JUMPER by EDWARDS, DRE'UNA	16-33	V 17	
06:51	GOOD! LAYUP by EDWARDS, DRE'UNA	16-35	V 19	
06:09	GOOD! LAYUP by EDWARDS, DRE'UNA	16-37	V 21	
05:39		18-37	V 19	GOOD! JUMPER by MOLINA, CHANELLE [PNT]
05:12	GOOD! LAYUP by EDWARDS, DRE'UNA	18-39	V 21	
04:58		20-39	V 19	GOOD! LAYUP by KOSTOURKOVA, MARIA
04:24		22-39	V 17	GOOD! LAYUP by MOLINA, CHANELLE
04:02	GOOD! LAYUP by GYLTEN, DRU	22-41	V 19	
03:53		24-41	V 17	GOOD! JUMPER by MOLINA, CHANELLE
03:39	GOOD! LAYUP by HUFF, MEGAN	24-43	V 19	
01:39		27-43	V 16	GOOD! 3PTR by MOLINA, CHERILYN
00:41		29-43	V 14	GOOD! JUMPER by MOLINA, CHANELLE
00:32	GOOD! FT by HUFF, MEGAN	29-44	V 15	
00:07	GOOD! LAYUP by BEAN, ERIKA	29-46	V 17	
00:00		32-46	V 14	GOOD! 3PTR by MOLINA, CHANELLE

Utah 46, Washington St. 32

Official Scoring/Possession Reference Chart
Utah vs Washington St.
Period 3
January 12, 2019 at Beasley Coliseum - Pullman, WA

Period 3

Starters:

Utah: 00 MOORE, KIANA; 5 HUFF, MEGAN; 10 GYLTEN, DRU; 11 BEAN, ERIKA; 44 EDWARDS, DRE'UNA;

Washington St.: 11 MOLINA, CHANELLE; 13 LEVY, SHIR; 20 KOSTOURKOVA, MARIA; 23 SWEDLUND, ALEXYS; 45 HRISTOVA, BORISLAVA;

Time	VISITORS: Utah	Score	Margin	HOME: Washington St.
09:38	GOOD! LAYUP by EDWARDS, DRE'UNA [FB]	32-48	V 16	
09:22		34-48	V 14	GOOD! LAYUP by KOSTOURKOVA, MARIA
08:50		37-48	V 11	GOOD! 3PTR by LEVY, SHIR
08:50		39-48	V 9	GOOD! LAYUP by HRISTOVA, BORISLAVA
08:50	GOOD! JUMPER by BEAN, ERIKA	39-50	V 11	
06:33		42-50	V 8	GOOD! 3PTR by SWEDLUND, ALEXYS
06:00		44-50	V 6	GOOD! LAYUP by KOSTOURKOVA, MARIA
05:30	GOOD! LAYUP by HUFF, MEGAN [PNT]	44-52	V 8	
05:14		47-52	V 5	GOOD! 3PTR by SWEDLUND, ALEXYS
03:31	GOOD! FT by HUFF, MEGAN	47-53	V 6	
03:01	GOOD! LAYUP by MOORE, KIANA	47-55	V 8	
02:12	GOOD! LAYUP by HUFF, MEGAN	47-57	V 10	
02:12	GOOD! FT by HUFF, MEGAN	47-58	V 11	
01:58		48-58	V 10	GOOD! FT by KOSTOURKOVA, MARIA [FB]
01:27		50-58	V 8	GOOD! LAYUP by HRISTOVA, BORISLAVA
00:44		53-58	V 5	GOOD! 3PTR by SWEDLUND, ALEXYS
00:07	GOOD! LAYUP by HUFF, MEGAN	53-60	V 7	

Utah 60, Washington St. 53

Official Scoring/Possession Reference Chart
Utah vs Washington St.
Period 4
January 12, 2019 at Beasley Coliseum - Pullman, WA

Period 4

Starters:

Utah: 00 MOORE,KIANA; 5 HUFF,MEGAN; 10 GYLTEN,DRU; 11 BEAN,ERIKA; 44 EDWARDS,DRE'UNA;

Washington St.: 11 MOLINA,CHANELLE; 13 LEVY,SHIR; 20 KOSTOURKOVA,MARIA; 23 SWEDLUND,ALEXYS; 45 HRISTOVA,BORISLAVA;

Time	VISITORS: Utah	Score	Margin	HOME: Washington St.
09:21		55-60	V 5	GOOD! LAYUP by SWEDLUND,ALEXYS
08:33		57-60	V 3	GOOD! LAYUP by HRISTOVA,BORISLAVA
07:41	GOOD! LAYUP by MOORE,KIANA	57-62	V 5	
07:27		59-62	V 3	GOOD! JUMPER by MOLINA,CHANELLE
06:22	GOOD! FT by HUFF,MEGAN	59-63	V 4	
06:22	GOOD! FT by HUFF,MEGAN	59-64	V 5	
05:47		61-64	V 3	GOOD! JUMPER by HRISTOVA,BORISLAVA [FB/PNT]
05:09		63-64	V 1	GOOD! LAYUP by HRISTOVA,BORISLAVA [FB/PNT]
05:09		64-64	T	GOOD! FT by HRISTOVA,BORISLAVA [FB]
04:45	GOOD! FT by EDWARDS,DRE'UNA	64-65	V 1	
04:27		66-65	H 1	GOOD! LAYUP by SWEDLUND,ALEXYS
04:10	GOOD! LAYUP by EDWARDS,DRE'UNA	66-67	V 1	
03:02	GOOD! FT by BEAN,ERIKA	66-68	V 2	
03:02	GOOD! FT by BEAN,ERIKA	66-69	V 3	
02:27	GOOD! LAYUP by EDWARDS,DRE'UNA	66-71	V 5	
01:04		67-71	V 4	GOOD! FT by SWEDLUND,ALEXYS
01:04		68-71	V 3	GOOD! FT by SWEDLUND,ALEXYS
00:14	GOOD! FT by EDWARDS,DRE'UNA	68-72	V 4	

Utah 72, Washington St. 68

Official Substitutions Log
Utah vs Washington St.
Period 1
January 12, 2019 at Beasley Coliseum - Pullman, WA

VISITORS: Utah	Time	Score	HOME: Washington St.
00 MOORE, KIANA			11 MOLINA, CHANELLE
5 HUFF, MEGAN			13 LEVY, SHIR
10 GYLTEN, DRU			20 KOSTOURKOVA, MARIA
11 BEAN, ERIKA			23 SWEDLUND, ALEXYS
44 EDWARDS, DRE'UNA			45 HRISTOVA, BORISLAVA
	04:25	14-8	SUB OUT: HRISTOVA, BORISLAVA
	04:25		SUB IN: MOTUGA, ULA
	01:24	20-10	SUB OUT: LEVY, SHIR
	01:24		SUB IN: MOLINA, CHERILYN
SUB OUT: 44 EDWARDS, DRE'UNA	01:24		
SUB IN: 14 TORRES, ANDREA	01:24		
SUB OUT: 11 BEAN, ERIKA	01:24		
SUB IN: 24 PORTER, SARAH	01:24		

Utah 22, Washington St. 10

Official Substitutions Log
Utah vs Washington St.
Period 2
January 12, 2019 at Beasley Coliseum - Pullman, WA

VISITORS: Utah	Time	Score	HOME: Washington St.
00 MOORE,KIANA			11 MOLINA,CHANELLE
5 HUFF,MEGAN			13 LEVY,SHIR
10 GYLTEN,DRU			20 KOSTOURKOVA,MARIA
11 BEAN,ERIKA			23 SWEDLUND,ALEXYS
44 EDWARDS,DRE'UNA			45 HRISTOVA,BORISLAVA
	07:46	31-14	SUB OUT: MOTUGA,ULA
	07:46		SUB IN: HRISTOVA,BORISLAVA
SUB OUT: 14 TORRES,ANDREA	07:46		
SUB IN: 44 EDWARDS,DRE'UNA	07:46		
SUB OUT: 00 MOORE,KIANA	07:46		
SUB IN: 10 GYLTEN,DRU	07:46		
	06:06	37-16	SUB OUT: SUBASIC,JOVANA
	06:06		SUB IN: KOSTOURKOVA,MARIA
SUB OUT: 3 BECKER,NIYAH	04:38	39-20	
SUB IN: 5 HUFF,MEGAN	04:38		
SUB OUT: 11 BEAN,ERIKA	03:24	43-24	
SUB IN: 00 MOORE,KIANA	03:24		
SUB OUT: 44 EDWARDS,DRE'UNA	02:58	43-24	
SUB IN: 14 TORRES,ANDREA	02:58		
	02:07	43-24	SUB OUT: SWEDLUND,ALEXYS
	02:07		SUB IN: LEVY,SHIR
SUB OUT: 24 PORTER,SARAH	02:07		
SUB IN: 11 BEAN,ERIKA	02:07		
	01:17	43-27	SUB OUT: MOLINA,CHERILYN
	01:17		SUB IN: MOTUGA,ULA

Utah 46, Washington St. 32

Official Substitutions Log
Utah vs Washington St.
Period 3
January 12, 2019 at Beasley Coliseum - Pullman, WA

VISITORS: Utah	Time	Score	HOME: Washington St.
00 MOORE, KIANA			11 MOLINA, CHANELLE
5 HUFF, MEGAN			13 LEVY, SHIR
10 GYLTEN, DRU			20 KOSTOURKOVA, MARIA
11 BEAN, ERIKA			23 SWEDLUND, ALEXYS
44 EDWARDS, DRE'UNA			45 HRISTOVA, BORISLAVA
	02:12	58-47	SUB OUT: LEVY, SHIR
	02:12		SUB IN: MOLINA, CHERILYN
SUB OUT: 44 EDWARDS, DRE'UNA	00:01	60-53	
SUB IN: 14 TORRES, ANDREA	00:01		

Utah 60, Washington St. 53

Official Substitutions Log
Utah vs Washington St.
Period 4
January 12, 2019 at Beasley Coliseum - Pullman, WA

VISITORS: Utah	Time	Score	HOME: Washington St.
00 MOORE,KIANA			11 MOLINA,CHANELLE
5 HUFF,MEGAN			13 LEVY,SHIR
10 GYLTEN,DRU			20 KOSTOURKOVA,MARIA
11 BEAN,ERIKA			23 SWEDLUND,ALEXYS
44 EDWARDS,DRE'UNA			45 HRISTOVA,BORISLAVA
SUB OUT: 10 GYLTEN,DRU	06:22	64-59	
SUB IN: 11 BEAN,ERIKA	06:22		
SUB IN: 44 EDWARDS,DRE'UNA	05:09	64-63	
	05:09		SUB OUT: HRISTOVA,BORISLAVA
	05:09		SUB IN: MOTUGA,ULA
	05:09		SUB OUT: KOSTOURKOVA,MARIA
	05:09		SUB IN: SUBASIC,JOVANA
SUB OUT: 24 PORTER,SARAH	05:09		
SUB OUT: 5 HUFF,MEGAN	05:09		
SUB IN: 10 GYLTEN,DRU	05:09		
	04:52	64-64	SUB OUT: MOTUGA,ULA
	04:52		SUB IN: HRISTOVA,BORISLAVA
SUB OUT: 14 TORRES,ANDREA	04:45	64-64	
SUB IN: 5 HUFF,MEGAN	04:45		
	03:02	68-66	SUB OUT: SUBASIC,JOVANA
	03:02		SUB IN: KOSTOURKOVA,MARIA

Utah 72, Washington St. 68

Official Shot Chart
Utah vs Washington St.
PERIOD 1 Shots
 January 12, 2019 at Beasley Coliseum - Pullman, WA

Washington St.

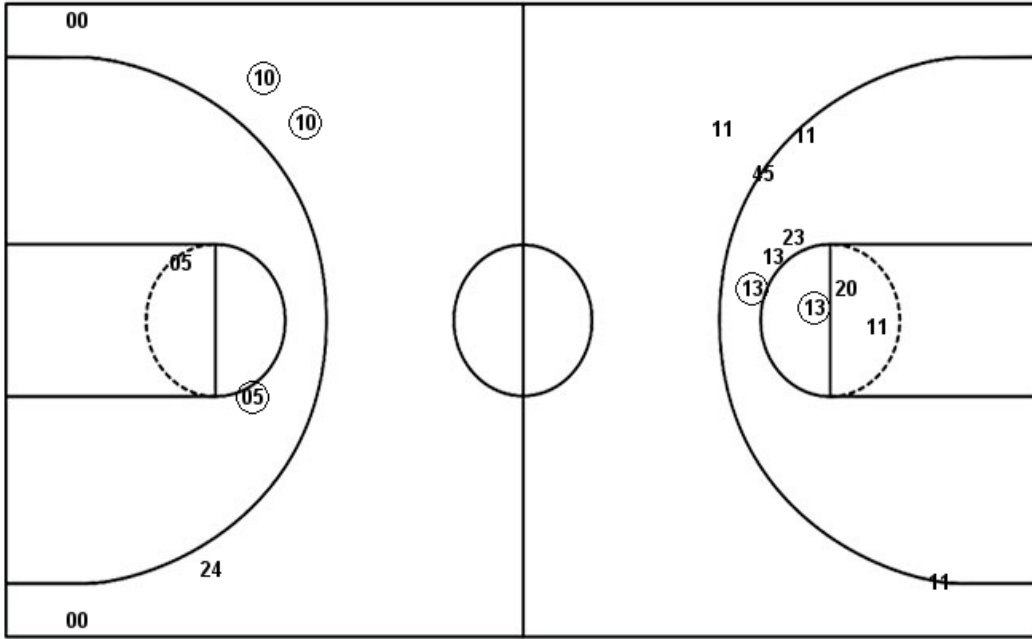
Utah

Layups
 (45) (20) 45 (23)

Layups
 (44) (44) 10 (05) 44
 (00) 44 05 (05) (14)

Dunks

Dunks



WSU : Period 1	Made	Att	Pct
Layups	3	4	75.0
Dunks	0	0	0
2PT Field Goals	5	13	38.5
3PT Field Goals	0	1	00.0
Total Field Goals	5	14	35.7

UTA : Period 1	Made	Att	Pct
Layups	6	10	60.0
Dunks	0	0	0
2PT Field Goals	7	12	58.3
3PT Field Goals	2	5	40.0
Total Field Goals	9	17	52.9

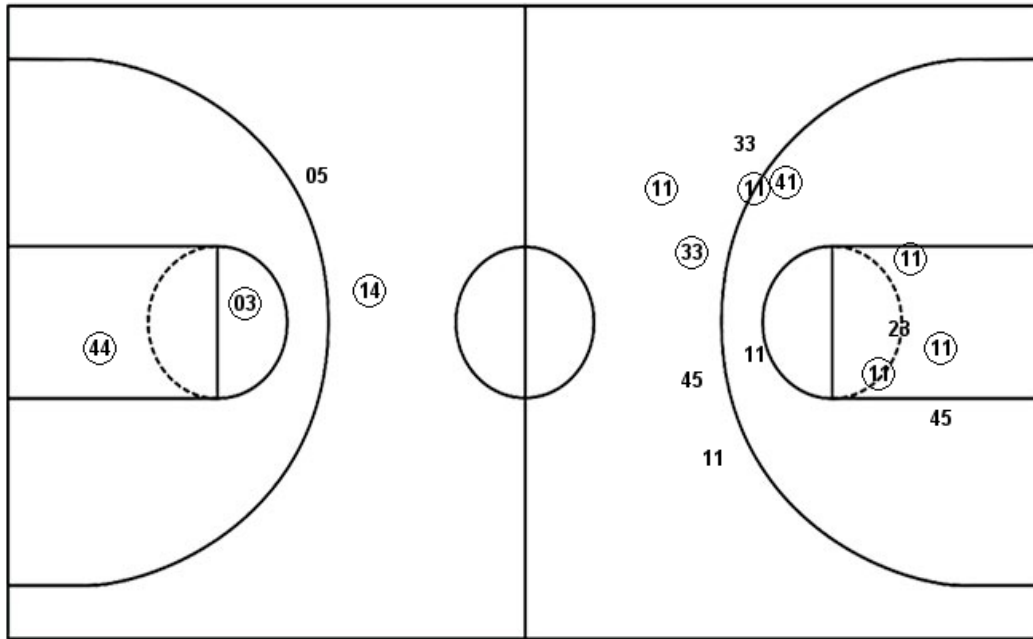
Official Shot Chart
Utah vs Washington St.
PERIOD 2 Shots
 January 12, 2019 at Beasley Coliseum - Pullman, WA

Washington St.

Utah

Layups
 (11) (20) (11) 45

Layups
 (11) (24) (44) (44) (44)
 (10) (05) (11)



Dunks

Dunks

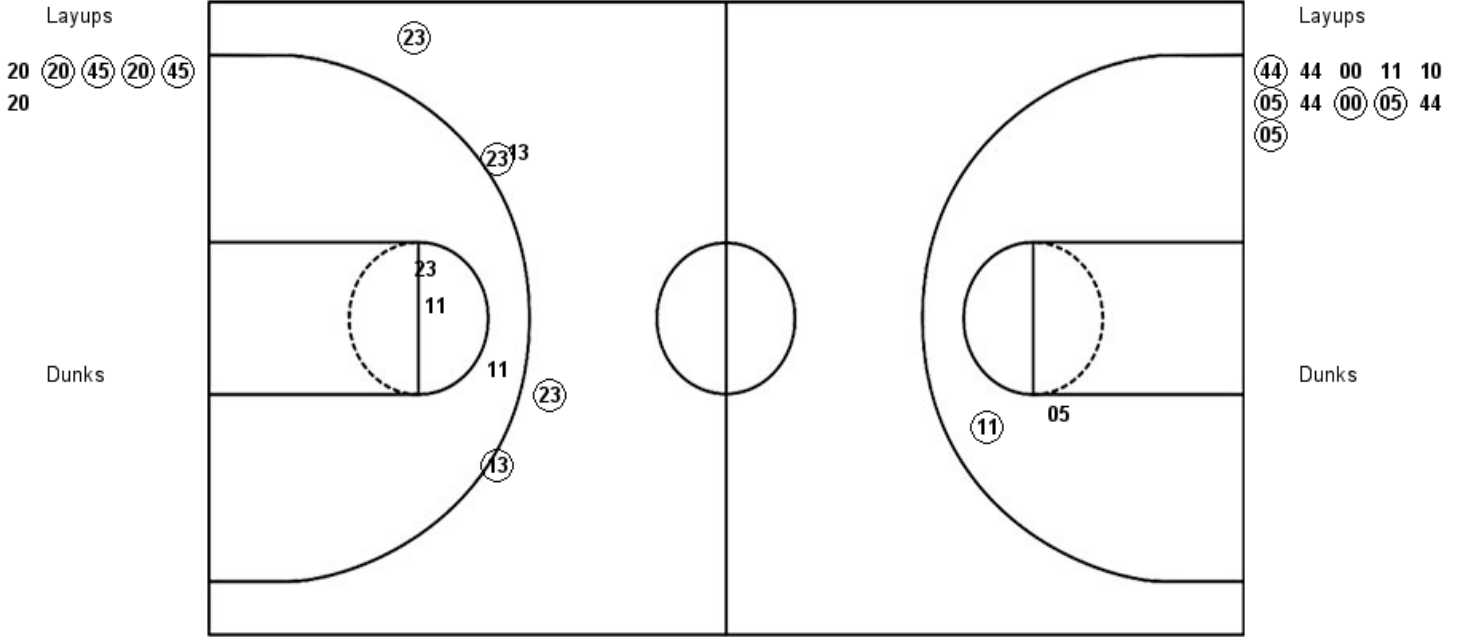
WSU : Period 2	Made	Att	Pct
Layups	3	4	75.0
Dunks	0	0	0
2PT Field Goals	8	12	66.7
3PT Field Goals	2	5	40.0
Total Field Goals	10	17	58.8

UTA : Period 2	Made	Att	Pct
Layups	8	8	100.0
Dunks	0	0	0
2PT Field Goals	10	10	100.0
3PT Field Goals	1	2	50.0
Total Field Goals	11	12	91.7

Official Shot Chart
Utah vs Washington St.
PERIOD 3 Shots
 January 12, 2019 at Beasley Coliseum - Pullman, WA

Washington St.

Utah



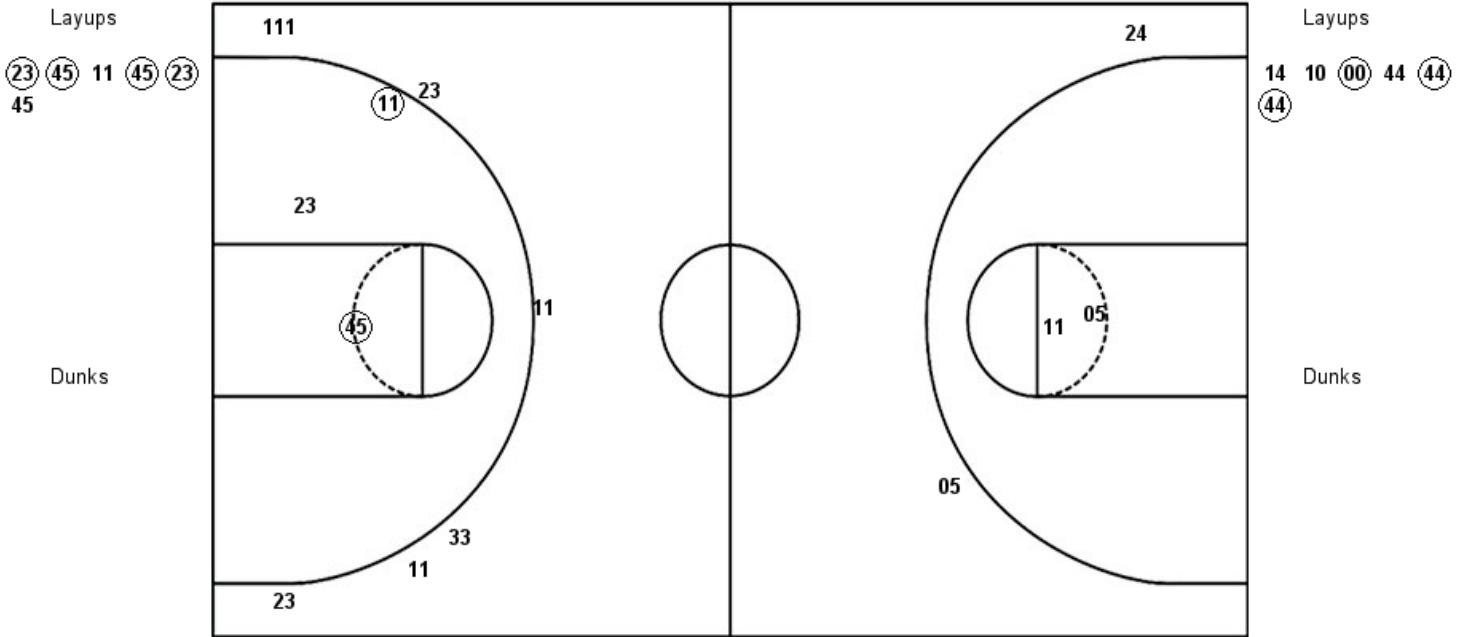
WSU : Period 3	Made	Att	Pct
Layups	4	6	66.7
Dunks	0	0	0
2PT Field Goals	4	9	44.4
3PT Field Goals	4	5	80.0
Total Field Goals	8	14	57.1

UTA : Period 3	Made	Att	Pct
Layups	5	11	45.5
Dunks	0	0	0
2PT Field Goals	6	13	46.2
3PT Field Goals	0	0	0
Total Field Goals	6	13	46.2

Official Shot Chart
Utah vs Washington St.
PERIOD 4 Shots
 January 12, 2019 at Beasley Coliseum - Pullman, WA

Washington St.

Utah

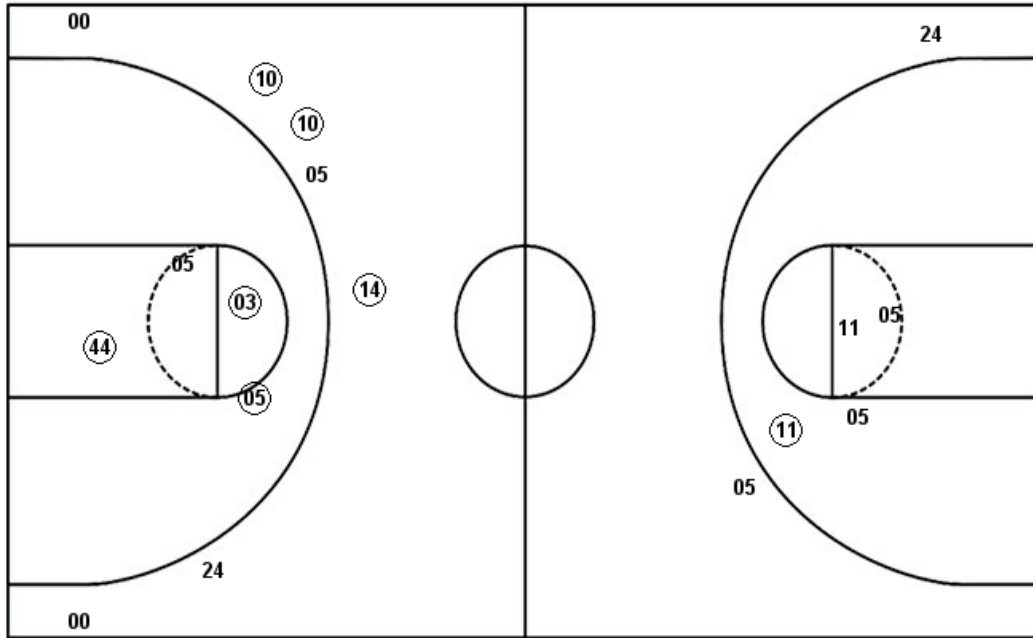


WSU : Period 4	Made	Att	Pct
Layups	4	6	66.7
Dunks	0	0	0
2PT Field Goals	6	9	66.7
3PT Field Goals	0	7	00.0
Total Field Goals	6	16	37.5

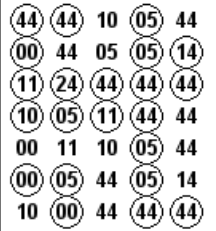
UTA : Period 4	Made	Att	Pct
Layups	3	6	50.0
Dunks	0	0	0
2PT Field Goals	3	8	37.5
3PT Field Goals	0	2	00.0
Total Field Goals	3	10	30.0

Official Shot Chart
Utah vs Washington St.
Utah Team Shots
January 12, 2019 at Beasley Coliseum - Pullman, WA

Layups



Layups



Dunks

Dunks

UTA : Period 1	Made	Att	Pct
Layups	6	10	60.0
Dunks	0	0	0
2PT Field Goals	7	12	58.3
3PT Field Goals	2	5	40.0
Total Field Goals	9	17	52.9

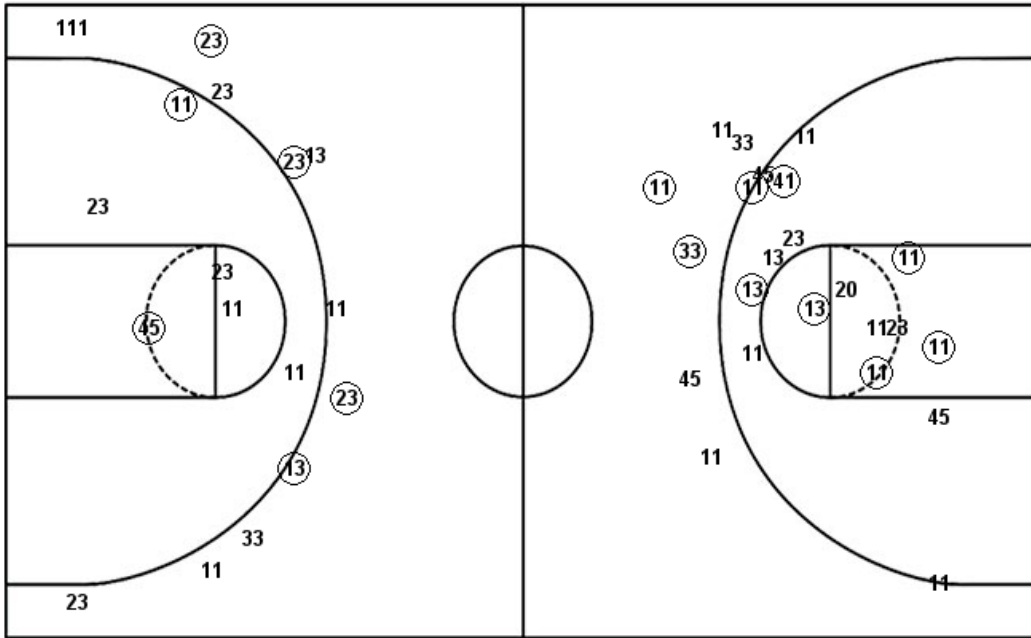
UTA : Period 3	Made	Att	Pct
Layups	5	11	45.5
Dunks	0	0	0
2PT Field Goals	6	13	46.2
3PT Field Goals	0	0	0
Total Field Goals	6	13	46.2

UTA : Period 2	Made	Att	Pct
Layups	8	8	100.0
Dunks	0	0	0
2PT Field Goals	10	10	100.0
3PT Field Goals	1	2	50.0
Total Field Goals	11	12	91.7

UTA : Period 4	Made	Att	Pct
Layups	3	6	50.0
Dunks	0	0	0
2PT Field Goals	3	8	37.5
3PT Field Goals	0	2	00.0
Total Field Goals	3	10	30.0

Official Shot Chart
Utah vs Washington St.
Washington St. Team Shots
January 12, 2019 at Beasley Coliseum - Pullman, WA

Layups



Layups



Dunks

Dunks

WSU : Period 1	Made	Att	Pct
Layups	3	4	75.0
Dunks	0	0	0
2PT Field Goals	5	13	38.5
3PT Field Goals	0	1	00.0
Total Field Goals	5	14	35.7

WSU : Period 2	Made	Att	Pct
Layups	3	4	75.0
Dunks	0	0	0
2PT Field Goals	8	12	66.7
3PT Field Goals	2	5	40.0
Total Field Goals	10	17	58.8

WSU : Period 3	Made	Att	Pct
Layups	4	6	66.7
Dunks	0	0	0
2PT Field Goals	4	9	44.4
3PT Field Goals	4	5	80.0
Total Field Goals	8	14	57.1

WSU : Period 4	Made	Att	Pct
Layups	4	6	66.7
Dunks	0	0	0
2PT Field Goals	6	9	66.7
3PT Field Goals	0	7	00.0
Total Field Goals	6	16	37.5