

FINAL SCORE



Boise St.

71



Washington St.

95

December 01, 2018 • Beasley Coliseum - Pullman, WA

FINAL STATISTICS

Official Box Score
Boise St. vs Washington St.
Game Totals -- Final Statistics
December 01, 2018 at Beasley Coliseum - Pullman, WA

Boise St. 71

No.	Player	S	Pts	FG	3FG	FT	OR	DR	TR	PF	A	TO	Blk	Stl	Min	+/-
20	Hermida, Marta		4	1-12	0-7	2-2	1	2	3	0	2	2	0	0	21	-31
21	Lupfer, Riley		12	4-12	2-9	2-2	3	4	7	1	0	0	1	0	28	-29
23	Christopher, Jayde		11	5-7	1-1	0-0	0	3	3	0	5	1	0	0	27	-22
33	Harrell, Joyce		2	1-4	0-0	0-0	2	0	2	3	0	1	1	1	19	-21
42	Coleman, A'shanti		2	1-6	0-0	0-0	3	2	5	2	0	2	0	0	20	-17
3	Galeron, Sofia		3	1-2	1-2	0-0	2	1	3	1	0	1	0	0	15	-2
14	Hodgins, Braydey		6	1-7	0-3	4-6	0	3	3	2	3	2	0	1	21	3
22	Woerner, Ellie		5	2-6	0-1	1-2	0	3	3	2	0	1	1	1	19	5
25	Bowers, Rachel		8	3-9	0-0	2-2	2	0	2	2	0	1	0	0	15	-5
30	Loville, Jade		18	7-9	3-4	1-2	1	1	2	3	0	2	0	1	11	-1
44	Toth, Emerald		0	0-0	0-0	0-0	1	0	1	1	0	0	0	0	3	0
	Team						4	1	5	0		0				
TOTALS			71	26-74	7-27	12-16	19	20	39	17	10	13	3	4	199	

Shooting By Period

Period	FG	FG%	3FG	3FG%	FT	FT%
1st Qtr	6-21	29%	1-8	13%	2-4	50%
2nd Qtr	4-15	27%	1-6	17%	5-6	83%
3rd Qtr	9-18	50%	2-5	40%	0-0	0%
4th Qtr	7-20	35%	3-8	38%	5-6	83%
1st Half	6-21	29%	1-8	13%	2-4	50%
2nd Half	4-15	27%	1-6	17%	5-6	83%
3rd Half	9-18	50%	2-5	40%	0-0	0%
4th Half	7-20	35%	3-8	38%	5-6	83%
Game	26-74	35.1%	7-27	25.9%	12-16	75.0%

Deadball Rebounds:
Last FG: 4th-00:22
Biggest Run: 8-0
Largest lead: By 0 at -
Technical Fouls: None.

Washington St. 95

No.	Player	S	Pts	FG	3FG	FT	OR	DR	TR	PF	A	TO	Blk	Stl	Min	+/-
11	Molina, Chanelle		9	4-8	1-3	0-0	0	6	6	2	11	3	0	2	34	23
13	Levy, Shir		13	5-7	3-4	0-0	0	4	4	1	2	1	0	0	33	25
20	Kostourkova, Maria		9	4-5	0-0	1-3	2	10	12	1	4	1	2	3	28	25
23	Swedlund, Alexys		24	9-14	5-8	1-1	2	1	3	1	1	1	2	3	31	25
45	Hristova, Borislava		30	11-20	4-5	4-6	2	2	4	2	2	3	0	1	29	24
2	Jones, Michaela		0	0-1	0-0	0-0	1	0	1	0	1	0	0	0	2	-1
15	Motuga, Ula		3	0-5	0-2	3-4	1	3	4	3	1	2	1	0	12	2
22	Molina, Celena		1	0-0	0-0	1-2	2	0	2	0	0	0	0	0	2	-1
33	Molina, Cherilyn		2	1-1	0-0	0-0	0	2	2	4	4	1	0	0	18	1
41	Subasic, Jovana		4	2-4	0-1	0-0	0	1	1	1	0	1	1	0	10	-3
	Team						1	0	1	0		1				
TOTALS			95	36-65	13-23	10-16	11	29	40	15	26	14	6	9	199	

Shooting By Period

Period	FG	FG%	3FG	3FG%	FT	FT%
1st Qtr	12-16	75%	5-6	83%	1-3	33%
2nd Qtr	10-19	53%	6-11	55%	0-1	00%
3rd Qtr	6-13	46%	1-3	33%	3-4	75%
4th Qtr	8-17	47%	1-3	33%	6-8	75%
1st Half	12-16	75%	5-6	83%	1-3	33%
2nd Half	10-19	53%	6-11	55%	0-1	00%
3rd Half	6-13	46%	1-3	33%	3-4	75%
4th Half	8-17	47%	1-3	33%	6-8	75%
Game	36-65	55.4%	13-23	56.5%	10-16	62.5%

Deadball Rebounds:
Last FG: 4th-01:24
Biggest Run: 20-0
Largest lead: By 31 at 2-01:48
Technical Fouls: None.

Game Notes:
 Officials: Lisa Jones, Julie Krommenhoek, Kimberly Hobbs
 Attendance: 547
 Start Time: 2018-12-01 21:00:43 End Time: 2018-12-01 22:38:25
 Game Duration: 97

Score by Period	1st	2nd	3rd	4th	TOT
BSU	15	14	20	22	71
WSU	30	26	16	23	95

BSU led for 0:00. WSU led for 38:52.
Game was tied for 0:50.
 Times tied: 0 Lead Changes: 0

Points from	BSU	WSU
In the Paint	30	40
Off Turns	12	17
2nd Chance	16	11
Fast Break	7	23
Bench	40	10

Official Box Score
Boise St. vs Washington St.
First Half Statistics Only
December 01, 2018 at Beasley Coliseum - Pullman, WA

Boise St. 71

No.	Player	S	Pts	FG	3FG	FT	OR	DR	TR	PF	A	TO	Blk	Stl	Min	+/-
20	Hermida, Marta		2	1-4	0-2	0-0	0	1	1	0	0	1	0	0	7	-14
21	Lupfer, Riley		5	2-5	1-4	0-0	2	0	2	1	0	0	0	0	9	-17
23	Christopher, Jayde		2	1-2	0-0	0-0	0	0	0	0	1	1	0	0	8	-13
33	Harrell, Joyce		0	0-1	0-0	0-0	1	0	1	1	0	0	0	0	7	-14
42	Coleman, A'shanti		0	0-2	0-0	0-0	2	2	4	0	0	1	0	0	5	-12
3	Galeron, Sofia		0	0-0	0-0	0-0	1	1	2	0	0	0	0	0	1	2
14	Hodgins, Braydey		0	0-3	0-2	0-2	0	0	0	0	1	0	0	0	5	-3
22	Woerner, Ellie		0	0-1	0-0	0-0	0	1	1	0	0	0	0	0	5	-3
25	Bowers, Rachel		6	2-3	0-0	2-2	2	0	2	1	0	0	0	0	3	-1
30	Loville, Jade		0	0-0	0-0	0-0	0	0	0	0	0	0	0	0	0	0
44	Toth, Emerald		0	0-0	0-0	0-0	0	0	0	0	0	0	0	0	0	0
	Team						1	0	1	0		0				
TOTALS			15	6-21	1-8	2-4	0	0	14	3	2	3	0	0	50	

Shooting By Period

Period	FG	FG%	3FG	3FG%	FT	FT%
1st Qtr	6-21	29%	1-8	13%	2-4	50%
2nd Qtr	4-15	27%	1-6	17%	5-6	83%
3rd Qtr	9-18	50%	2-5	40%	0-0	0%
4th Qtr	7-20	35%	3-8	38%	5-6	83%
1st Half	6-21	29%	1-8	13%	2-4	50%
2nd Half	4-15	27%	1-6	17%	5-6	83%
3rd Half	9-18	50%	2-5	40%	0-0	0%
4th Half	7-20	35%	3-8	38%	5-6	83%
Game	26-74	35.1%	7-27	25.9%	12-16	75.0%

Deadball Rebounds:
Last FG: 4th-00:22
Biggest Run: 8-0
Largest lead: By 0 at -
Technical Fouls: None.

Washington St. 95

No.	Player	S	Pts	FG	3FG	FT	OR	DR	TR	PF	A	TO	Blk	Stl	Min	+/-
11	Molina, Chanelle		5	2-3	1-2	0-0	0	2	2	0	6	0	0	1	10	15
13	Lewy, Shir		2	1-1	0-0	0-0	0	1	1	0	1	0	0	0	10	15
20	Kostourkova, Maria		2	1-1	0-0	0-0	0	3	3	0	1	0	0	1	9	16
23	Swedlund, Alexys		8	3-3	2-2	0-0	0	0	0	0	0	0	0	1	7	14
45	Hristova, Borislava		11	4-7	2-2	1-3	1	0	1	0	0	0	0	0	8	13
2	Jones, Michaela		0	0-0	0-0	0-0	0	0	0	0	0	0	0	0	0	0
15	Motuga, Ula		0	0-0	0-0	0-0	0	0	0	2	0	0	0	0	2	2
22	Molina, Celena		0	0-0	0-0	0-0	0	0	0	0	0	0	0	0	0	0
33	Molina, Cherilyn		2	1-1	0-0	0-0	0	0	0	1	0	0	0	0	3	1
41	Subasic, Jovana		0	0-0	0-0	0-0	0	0	0	0	0	0	1	0	1	-1
	Team						0	0	0	0		0				
TOTALS			30	12-16	5-6	1-3	0	0	7	3	8	0	1	3	50	

Shooting By Period

Period	FG	FG%	3FG	3FG%	FT	FT%
1st Qtr	12-16	75%	5-6	83%	1-3	33%
2nd Qtr	10-19	53%	6-11	55%	0-1	00%
3rd Qtr	6-13	46%	1-3	33%	3-4	75%
4th Qtr	8-17	47%	1-3	33%	6-8	75%
1st Half	12-16	75%	5-6	83%	1-3	33%
2nd Half	10-19	53%	6-11	55%	0-1	00%
3rd Half	6-13	46%	1-3	33%	3-4	75%
4th Half	8-17	47%	1-3	33%	6-8	75%
Game	36-65	55.4%	13-23	56.5%	10-16	62.5%

Deadball Rebounds:
Last FG: 4th-01:24
Biggest Run: 20-0
Largest lead: By 31 at 2-01:48
Technical Fouls: None.

Game Notes:
 Officials: Lisa Jones, Julie Krommenhoek, Kimberly Hobbs
 Attendance: 547
 Start Time: 2018-12-01 21:00:43 End Time: 2018-12-01 22:38:25
 Game Duration: 97

Score by Period	1st	2nd	3rd	4th	TOT
BSU	15	14	20	22	71
WSU	30	26	16	23	95

This period only: BSU led for 0:00. WSU led for 0:52.
Game was tied for 0:50.

Points from (This Period)	BSU	WSU
In the Paint	8	14
Off Turns	0	8
2nd Chance	9	2
Fast Break	0	7
Bench	6	2

Official Play-By-Play
Boise St. vs Washington St.
First Quarter
December 01, 2018 at Beasley Coliseum - Pullman, WA

Starters:

Boise St.: 20 HERMIDA,MARTA; 21 LUPFER,RILEY; 23 CHRISTOPHER,JAYDE; 33 HARRELL,JOYCE; 42 COLEMAN,A'SHANTI;

Washington St.: 11 MOLINA,CHANELLE; 13 LEVY,SHIR; 20 KOSTOURKOVA,MARIA; 23 SWEDLUND,ALEXYS; 45 HRISTOVA,BORISLAVA;

Period 1

Time	VISITORS: Boise St.	Score	Margin	HOME: Washington St.
09:49				MISSED 3PTR by MOLINA,CHANELLE
09:45	REBOUND (DEF) by HERMIDA,MARTA			
09:29	MISSED LAYUP by CHRISTOPHER,JAYDE			
09:26				REBOUND (DEF) by KOSTOURKOVA,MARIA
09:14		2-0	H 2	GOOD! LAYUP by MOLINA,CHANELLE
08:59	MISSED LAYUP by COLEMAN,A'SHANTI			
08:57				REBOUND (DEF) by KOSTOURKOVA,MARIA
08:51				MISSED LAYUP by HRISTOVA,BORISLAVA
08:49	REBOUND (DEF) by COLEMAN,A'SHANTI			
08:40	MISSED 3PTR by LUPFER,RILEY			
08:36				REBOUND (DEF) by KOSTOURKOVA,MARIA
08:32	FOUL (PERSONAL) by LUPFER,RILEY			
08:21		4-0	H 4	GOOD! LAYUP by KOSTOURKOVA,MARIA
08:21				ASSIST by MOLINA,CHANELLE
08:09	MISSED 3PTR by LUPFER,RILEY			
08:06	REBOUND (OFF) by COLEMAN,A'SHANTI			
07:59	MISSED LAYUP by HERMIDA,MARTA			
07:58	REBOUND (OFF) by LUPFER,RILEY			
07:49	MISSED JUMPER by HARRELL,JOYCE			
07:46	REBOUND (OFF) by TEAM			
07:38	TURNOVER (BADPASS) by COLEMAN,A'SHANTI			
07:38				STEAL by MOLINA,CHANELLE
07:30		7-0	H 7	GOOD! 3PTR by SWEDLUND,ALEXYS
07:30				ASSIST by MOLINA,CHANELLE
07:02	MISSED 3PTR by HERMIDA,MARTA			
06:58	REBOUND (OFF) by LUPFER,RILEY			
06:28	MISSED JUMPER by COLEMAN,A'SHANTI			
06:25				REBOUND (DEF) by LEVY,SHIR
06:09				MISSED JUMPER by HRISTOVA,BORISLAVA
06:06				REBOUND (OFF) by HRISTOVA,BORISLAVA
06:06		9-0	H 9	GOOD! JUMPER by HRISTOVA,BORISLAVA
06:06	FOUL (PERSONAL) by HARRELL,JOYCE			
06:06				MISSED FT by HRISTOVA,BORISLAVA
06:04	REBOUND (DEF) by COLEMAN,A'SHANTI			
05:47	MISSED 3PTR by HERMIDA,MARTA			
05:44	REBOUND (OFF) by COLEMAN,A'SHANTI			
05:39	GOOD! 3PTR by LUPFER,RILEY	9-3	H 6	
05:39	ASSIST by CHRISTOPHER,JAYDE			
05:28		12-3	H 9	GOOD! 3PTR by SWEDLUND,ALEXYS
05:28				ASSIST by MOLINA,CHANELLE
05:12	TURNOVER (LOSTBALL) by CHRISTOPHER,JAYDE			
05:12				STEAL by KOSTOURKOVA,MARIA
05:07		15-3	H 12	GOOD! 3PTR by HRISTOVA,BORISLAVA [FB]
05:07				ASSIST by MOLINA,CHANELLE
05:04	TIMEOUT 30SEC			
05:04				
04:52	SUB OUT: CHRISTOPHER,JAYDE			
04:52	SUB IN: HODGINS,BRAYDEY			
04:52	SUB OUT: COLEMAN,A'SHANTI			
04:52	SUB IN: WOERNER,ELLIE			
04:32	MISSED 3PTR by HODGINS,BRAYDEY			
04:30	REBOUND (OFF) by HARRELL,JOYCE			
04:28	MISSED 3PTR by LUPFER,RILEY			
04:24				REBOUND (DEF) by MOLINA,CHANELLE
04:09		17-3	H 14	GOOD! LAYUP by HRISTOVA,BORISLAVA
04:09				ASSIST by LEVY,SHIR
03:56	GOOD! JUMPER by HERMIDA,MARTA	17-5	H 12	
03:37				MISSED JUMPER by HRISTOVA,BORISLAVA
03:34	REBOUND (DEF) by WOERNER,ELLIE			
03:27	TURNOVER (LOSTBALL) by HERMIDA,MARTA			
03:27				STEAL by SWEDLUND,ALEXYS
03:21		19-5	H 14	GOOD! LAYUP by SWEDLUND,ALEXYS [FB/PNT]
02:59				SUB OUT: HRISTOVA,BORISLAVA
02:59				SUB IN: MOTUGA,ULA
02:59				SUB OUT: SWEDLUND,ALEXYS
02:59				SUB IN: MOLINA,CHERILYN
02:59	SUB OUT: HERMIDA,MARTA			
02:59	SUB IN: CHRISTOPHER,JAYDE			
02:59	SUB OUT: HARRELL,JOYCE			
02:59	SUB IN: BOWERS,RACHEL			
02:53				FOUL (PERSONAL) by MOTUGA,ULA
02:42	GOOD! LAYUP by BOWERS,RACHEL	19-7	H 12	
02:42	ASSIST by HODGINS,BRAYDEY			
02:31		22-7	H 15	GOOD! 3PTR by MOLINA,CHANELLE
02:31				ASSIST by KOSTOURKOVA,MARIA
02:16	MISSED 3PTR by HODGINS,BRAYDEY			

Time	VISITORS: Boise St.	Score	Margin	HOME: Washington St.
02:13	REBOUND (OFF) by BOWERS,RACHEL			
02:11	MISSED JUMPER by WOERNER,ELLIE			
02:08				REBOUND (DEF) by MOLINA,CHANELLE
02:03		24-7	H 17	GOOD! LAYUP by MOLINA,CHERILYN [FB]
02:03				ASSIST by MOLINA,CHANELLE
01:45	GOOD! LAYUP by LUPFER,RILEY [PNT]	24-9	H 15	
01:29		26-9	H 17	GOOD! LAYUP by LEVY,SHIR
01:15	MISSED JUMPER by BOWERS,RACHEL			
01:13	REBOUND (OFF) by TEAM			
01:13	SUB OUT: LUPFER,RILEY			
01:13	SUB IN: GALERON,SOFIA			
01:13				FOUL (PERSONAL) by MOTUGA,ULA
01:13	GOOD! FT by BOWERS,RACHEL	26-10	H 16	
01:13				SUB OUT: MOTUGA,ULA
01:13				SUB IN: HRISTOVA,BORISLAVA
01:13	GOOD! FT by BOWERS,RACHEL	26-11	H 15	
01:05	FOUL (PERSONAL) by BOWERS,RACHEL			
01:05		27-11	H 16	GOOD! FT by HRISTOVA,BORISLAVA
01:05				SUB OUT: KOSTOURKOVA,MARIA
01:05				SUB IN: SUBASIC,JOVANA
01:05				MISSED FT by HRISTOVA,BORISLAVA
01:03	REBOUND (DEF) by GALERON,SOFIA			
00:57	MISSED JUMPER by HODGINS,BRAYDEY			
00:57				BLOCK by SUBASIC,JOVANA
00:52	REBOUND (OFF) by BOWERS,RACHEL			
00:49	GOOD! LAYUP by BOWERS,RACHEL	27-13	H 14	
00:41		30-13	H 17	GOOD! 3PTR by HRISTOVA,BORISLAVA
00:41				ASSIST by MOLINA,CHANELLE
00:17				FOUL (PERSONAL) by MOLINA,CHERILYN
00:17	MISSED FT by HODGINS,BRAYDEY			
00:17	REBOUND (OFF) by TEAM			
00:17	MISSED FT by HODGINS,BRAYDEY			
00:15	REBOUND (OFF) by GALERON,SOFIA			
00:00	GOOD! LAYUP by CHRISTOPHER,JAYDE	30-15	H 15	

Boise St. 15, Washington St. 30

Points from (This Period)	BSU	WSU
In the Paint	8	14
Off Turns	0	8
2nd Chance	9	2
Fast Break	0	7
Bench	6	2

**This period only:BSU led for 0:00. WSU led for 0:52.
Game was tied for 0:50.**

Official Play-By-Play
Boise St. vs Washington St.
Second Quarter
December 01, 2018 at Beasley Coliseum - Pullman, WA

Starters:

Boise St.: 20 HERMIDA,MARTA; 21 LUPFER,RILEY; 23 CHRISTOPHER,JAYDE; 33 HARRELL,JOYCE; 42 COLEMAN,A'SHANTI;

Washington St.: 11 MOLINA,CHANELLE; 13 LEVY,SHIR; 20 KOSTOURKOVA,MARIA; 23 SWEDLUND,ALEXYS; 45 HRISTOVA,BORISLAVA;

Period 2

Time	VISITORS: Boise St.	Score	Margin	HOME: Washington St.
09:54				MISSED JUMPER by HRISTOVA,BORISLAVA
09:50	REBOUND (DEF) by HODGINS,BRAYDEY			
09:45	GOOD! LAYUP by BOWERS,RACHEL	30-17	H 13	
09:45	ASSIST by CHRISTOPHER,JAYDE			
09:31		33-17	H 16	GOOD! 3PTR by LEVY,SHIR
09:31				ASSIST by MOLINA,CHANELLE
09:20	GOOD! LAYUP by WOERNER,ELLIE	33-19	H 14	
09:10				TURNOVER (TRAVEL) by SUBASIC,JOVANA
09:10				SUB OUT: SUBASIC,JOVANA
09:10				SUB IN: SWEDLUND,ALEXYS
09:10				SUB OUT: LEVY,SHIR
09:10				SUB IN: KOSTOURKOVA,MARIA
08:58				FOUL (PERSONAL) by MOLINA,CHERILYN
08:58	GOOD! FT by HODGINS,BRAYDEY	33-20	H 13	
08:58				SUB OUT: MOLINA,CHERILYN
08:58				SUB IN: LEVY,SHIR
08:58	GOOD! FT by HODGINS,BRAYDEY	33-21	H 12	
08:48				MISSED 3PTR by SWEDLUND,ALEXYS
08:45				REBOUND (OFF) by KOSTOURKOVA,MARIA
08:43				MISSED LAYUP by MOLINA,CHANELLE
08:43	REBOUND (DEF) by CHRISTOPHER,JAYDE			
08:43				FOUL (PERSONAL) by HRISTOVA,BORISLAVA
08:43	SUB OUT: BOWERS,RACHEL			
08:43	SUB IN: HARRELL,JOYCE			
08:26	GOOD! 3PTR by GALERON,SOFIA	33-24	H 9	
08:26	ASSIST by HODGINS,BRAYDEY			
07:56				MISSED JUMPER by MOLINA,CHANELLE
07:55	REBOUND (DEF) by CHRISTOPHER,JAYDE			
07:42	TURNOVER (LOSTBALL) by HODGINS,BRAYDEY			
07:42				STEAL by HRISTOVA,BORISLAVA
07:39		35-24	H 11	GOOD! LAYUP by HRISTOVA,BORISLAVA [FB]
07:23	MISSED JUMPER by WOERNER,ELLIE			
07:23				BLOCK by KOSTOURKOVA,MARIA
07:19				REBOUND (DEF) by KOSTOURKOVA,MARIA
07:16				TURNOVER (BADPASS) by HRISTOVA,BORISLAVA
07:16	STEAL by HARRELL,JOYCE			
07:10	MISSED JUMPER by CHRISTOPHER,JAYDE			
07:08				REBOUND (DEF) by LEVY,SHIR
07:08	FOUL (PERSONAL) by HODGINS,BRAYDEY			
07:08	SUB OUT: WOERNER,ELLIE			
07:08	SUB IN: HERMIDA,MARTA			
07:08	SUB OUT: HODGINS,BRAYDEY			
07:08	SUB IN: LUPFER,RILEY			
06:52		38-24	H 14	GOOD! 3PTR by HRISTOVA,BORISLAVA
06:52				ASSIST by KOSTOURKOVA,MARIA
06:29	MISSED 3PTR by GALERON,SOFIA			
06:26				REBOUND (DEF) by KOSTOURKOVA,MARIA
06:13				TURNOVER (OTHER) by SWEDLUND,ALEXYS
05:45	MISSED LAYUP by HARRELL,JOYCE			
05:42				REBOUND (DEF) by MOLINA,CHANELLE
05:38		41-24	H 17	GOOD! 3PTR by SWEDLUND,ALEXYS [FB]
05:38				ASSIST by MOLINA,CHANELLE
05:23	TURNOVER (BADPASS) by GALERON,SOFIA			
05:23				STEAL by KOSTOURKOVA,MARIA
05:16		43-24	H 19	GOOD! LAYUP by KOSTOURKOVA,MARIA
05:16				ASSIST by MOLINA,CHANELLE
05:01	MISSED 3PTR by LUPFER,RILEY			
04:58				REBOUND (DEF) by MOLINA,CHANELLE
04:53		45-24	H 21	GOOD! LAYUP by KOSTOURKOVA,MARIA [FB]
04:53				ASSIST by HRISTOVA,BORISLAVA
04:53	FOUL (PERSONAL) by HARRELL,JOYCE			
04:53				
04:53	SUB OUT: HARRELL,JOYCE			
04:53	SUB IN: BOWERS,RACHEL			
04:53	SUB OUT: GALERON,SOFIA			
04:53	SUB IN: COLEMAN,A'SHANTI			
04:52				MISSED FT by KOSTOURKOVA,MARIA
04:50				REBOUND (OFF) by SWEDLUND,ALEXYS
04:46		47-24	H 23	GOOD! JUMPER by SWEDLUND,ALEXYS
04:23	MISSED LAYUP by LUPFER,RILEY			
04:23				BLOCK by SWEDLUND,ALEXYS
04:19				REBOUND (DEF) by HRISTOVA,BORISLAVA
04:14		50-24	H 26	GOOD! 3PTR by HRISTOVA,BORISLAVA
03:57	MISSED JUMPER by BOWERS,RACHEL			
03:55				REBOUND (DEF) by HRISTOVA,BORISLAVA
03:55				TURNOVER (TRAVEL) by HRISTOVA,BORISLAVA

Time	VISITORS: Boise St.	Score	Margin	HOME: Washington St.
03:42	MISSED 3PTR by HERMIDA,MARTA			
03:38				REBOUND (DEF) by KOSTOURKOVA,MARIA
03:11				MISSED 3PTR by LEVY,SHIR
03:08	REBOUND (DEF) by CHRISTOPHER,JAYDE			
02:57	MISSED JUMPER by HERMIDA,MARTA			
02:57				BLOCK by SWEDLUND,ALEXYS
02:52				REBOUND (DEF) by LEVY,SHIR
02:45		53-24	H 29	GOOD! 3PTR by LEVY,SHIR
02:45				ASSIST by MOLINA,CHANELLE
02:31	MISSED 3PTR by HERMIDA,MARTA			
02:28				REBOUND (DEF) by MOLINA,CHANELLE
02:23				FOUL (OFF) by HRISTOVA,BORISLAVA
02:23				TURNOVER (OFFENSIVE) by HRISTOVA,BORISLAVA
02:23				SUB OUT: HRISTOVA,BORISLAVA
02:23				SUB IN: SUBASIC,JOVANA
02:23	SUB OUT: HERMIDA,MARTA			
02:23	SUB IN: HODGINS,BRAYDEY			
02:23	SUB OUT: COLEMAN,A'SHANTI			
02:23	SUB IN: GALERON,SOFIA			
02:23	SUB OUT: BOWERS,RACHEL			
02:23	SUB IN: WOERNER,ELLIE			
02:11				FOUL (PERSONAL) by SWEDLUND,ALEXYS
02:11	MISSED FT by WOERNER,ELLIE			
02:11	REBOUND (OFF) by TEAM			
02:11	GOOD! FT by WOERNER,ELLIE [FB]	53-25	H 28	
02:08				TIMEOUT 30SEC
01:48		56-25	H 31	GOOD! 3PTR by LEVY,SHIR
01:48				ASSIST by KOSTOURKOVA,MARIA
01:37	MISSED 3PTR by WOERNER,ELLIE			
01:34	REBOUND (OFF) by LUPFER,RILEY			
01:34				FOUL (PERSONAL) by SUBASIC,JOVANA
01:34	GOOD! FT by LUPFER,RILEY	56-26	H 30	
01:34	GOOD! FT by LUPFER,RILEY	56-27	H 29	
01:24				MISSED JUMPER by SWEDLUND,ALEXYS
01:20	REBOUND (DEF) by LUPFER,RILEY			
01:13	GOOD! LAYUP by HODGINS,BRAYDEY	56-29	H 27	
00:50				MISSED 3PTR by SWEDLUND,ALEXYS
00:47	REBOUND (DEF) by LUPFER,RILEY			
00:23	TURNOVER (LOSTBALL) by HODGINS,BRAYDEY			
00:23				STEAL by MOLINA,CHANELLE
00:00				MISSED 3PTR by SUBASIC,JOVANA
00:00				REBOUND (OFF) by SWEDLUND,ALEXYS
00:00				MISSED 3PTR by SWEDLUND,ALEXYS
00:00				REBOUND (OFF) by TEAM

Boise St. 29, Washington St. 56

Points from (This Period)	BSU	WSU
In the Paint	6	6
Off Turns	2	4
2nd Chance	2	2
Fast Break	1	7
Bench	12	0

**This period only:BSU led for 0:00. WSU led for 0:52.
Game was tied for 0:50.**

Official Box Score
Boise St. vs Washington St.
Second Half Statistics Only
December 01, 2018 at Beasley Coliseum - Pullman, WA

Boise St. 71

No.	Player	S	Pts	FG	3FG	FT	OR	DR	TR	PF	A	TO	Blk	Stl	Min	+/-
20	Hermida, Marta		0	0-3	0-2	0-0	0	0	0	0	0	0	0	0	5	-18
21	Lupfer, Riley		2	0-2	0-1	2-2	1	2	3	0	0	0	0	0	7	-16
23	Christopher, Jayde		0	0-1	0-0	0-0	0	3	3	0	1	0	0	0	10	-12
33	Harrell, Joyce		0	0-1	0-0	0-0	0	0	0	1	0	0	0	1	4	-9
42	Coleman, A'shanti		0	0-0	0-0	0-0	0	0	0	0	0	0	0	0	3	-8
3	Galeron, Sofia		3	1-2	1-2	0-0	0	0	0	0	0	1	0	0	8	-4
14	Hodgins, Braydey		4	1-1	0-0	2-2	0	1	1	1	1	2	0	0	5	6
22	Woerner, Ellie		3	1-3	0-1	1-2	0	0	0	0	0	0	0	0	5	6
25	Bowers, Rachel		2	1-2	0-0	0-0	0	0	0	0	0	0	0	0	4	-5
30	Loville, Jade		0	0-0	0-0	0-0	0	0	0	0	0	0	0	0	0	0
44	Toth, Emerald		0	0-0	0-0	0-0	0	0	0	0	0	0	0	0	0	0
	Team						0	0	0	0		0				
TOTALS			14	4-15	1-6	5-6	0	0	7	2	2	3	0	1	50	

Shooting By Period

Period	FG	FG%	3FG	3FG%	FT	FT%
1st Qtr	6-21	29%	1-8	13%	2-4	50%
2nd Qtr	4-15	27%	1-6	17%	5-6	83%
3rd Qtr	9-18	50%	2-5	40%	0-0	0%
4th Qtr	7-20	35%	3-8	38%	5-6	83%
1st Half	6-21	29%	1-8	13%	2-4	50%
2nd Half	4-15	27%	1-6	17%	5-6	83%
3rd Half	9-18	50%	2-5	40%	0-0	0%
4th Half	7-20	35%	3-8	38%	5-6	83%
Game	26-74	35.1%	7-27	25.9%	12-16	75.0%

Deadball Rebounds:
Last FG: 4th-00:22
Biggest Run: 8-0
Largest lead: By 0 at -
Technical Fouls: None.

Washington St. 95

No.	Player	S	Pts	FG	3FG	FT	OR	DR	TR	PF	A	TO	Blk	Stl	Min	+/-
11	Molina, Chanelle		0	0-2	0-0	0-0	0	3	3	0	4	0	0	1	10	12
13	Levy, Shir		9	3-4	3-4	0-0	0	2	2	0	0	0	0	0	10	13
20	Kostourkova, Maria		4	2-2	0-0	0-1	1	3	4	0	2	0	1	1	9	13
23	Swedlund, Alexys		5	2-6	1-4	0-0	2	0	2	1	0	1	2	0	9	13
45	Hristova, Borislava		8	3-4	2-2	0-0	0	2	2	2	1	3	0	1	8	14
2	Jones, Michaela		0	0-0	0-0	0-0	0	0	0	0	0	0	0	0	0	0
15	Motuga, Ula		0	0-0	0-0	0-0	0	0	0	0	0	0	0	0	0	0
22	Molina, Celena		0	0-0	0-0	0-0	0	0	0	0	0	0	0	0	0	0
33	Molina, Cherilyn		0	0-0	0-0	0-0	0	0	0	1	0	0	0	0	1	-2
41	Subasic, Jovana		0	0-1	0-1	0-0	0	0	0	1	0	1	0	0	3	-3
	Team						0	0	0	0		0				
TOTALS			26	10-19	6-11	0-1	0	0	13	5	7	5	3	3	50	

Shooting By Period

Period	FG	FG%	3FG	3FG%	FT	FT%
1st Qtr	12-16	75%	5-6	83%	1-3	33%
2nd Qtr	10-19	53%	6-11	55%	0-1	00%
3rd Qtr	6-13	46%	1-3	33%	3-4	75%
4th Qtr	8-17	47%	1-3	33%	6-8	75%
1st Half	12-16	75%	5-6	83%	1-3	33%
2nd Half	10-19	53%	6-11	55%	0-1	00%
3rd Half	6-13	46%	1-3	33%	3-4	75%
4th Half	8-17	47%	1-3	33%	6-8	75%
Game	36-65	55.4%	13-23	56.5%	10-16	62.5%

Deadball Rebounds:
Last FG: 4th-01:24
Biggest Run: 20-0
Largest lead: By 31 at 2-01:48
Technical Fouls: None.

Game Notes:
Officials: Lisa Jones, Julie Krommenhoek, Kimberly Hobbs
Attendance: 547
Start Time: 2018-12-01 21:00:43 **End Time: 2018-12-01**
22:38:25
Game Duration: 97

Score by Period	1st	2nd	3rd	4th	TOT
BSU	15	14	20	22	71
WSU	30	26	16	23	95

This period only: BSU led for 0:00. WSU led for 0:52.
Game was tied for 0:50.

Points from (This Period)	BSU	WSU
In the Paint	6	6
Off Turns	2	4
2nd Chance	2	2
Fast Break	1	7
Bench	12	0

Official Play-By-Play
Boise St. vs Washington St.
Third Quarter
December 01, 2018 at Beasley Coliseum - Pullman, WA

Starters:

Boise St.: 20 HERMIDA,MARTA; 21 LUPFER,RILEY; 23 CHRISTOPHER,JAYDE; 33 HARRELL,JOYCE; 42 COLEMAN,A'SHANTI;

Washington St.: 11 MOLINA,CHANELLE; 13 LEVY,SHIR; 20 KOSTOURKOVA,MARIA; 23 SWEDLUND,ALEXYS; 45 HRISTOVA,BORISLAVA;

Period 3

Time	VISITORS: Boise St.	Score	Margin	HOME: Washington St.
09:48	GOOD! LAYUP by CHRISTOPHER,JAYDE	56-31	H 25	
09:34				TURNOVER (BADPASS) by MOLINA,CHANELLE
09:18	GOOD! LAYUP by CHRISTOPHER,JAYDE	56-33	H 23	
09:05				MISSED JUMPER by HRISTOVA,BORISLAVA
09:03				REBOUND (OFF) by TEAM
08:54		58-33	H 25	GOOD! LAYUP by KOSTOURKOVA,MARIA
08:54				ASSIST by SWEDLUND,ALEXYS
08:40	MISSED LAYUP by HERMIDA,MARTA			
08:38	REBOUND (OFF) by HARRELL,JOYCE			
08:38	TURNOVER (LOSTBALL) by HARRELL,JOYCE			
08:38				STEAL by KOSTOURKOVA,MARIA
08:38	SUB OUT: HARRELL,JOYCE			
08:38	SUB IN: BOWERS,RACHEL			
08:38	SUB OUT: HERMIDA,MARTA			
08:38	SUB IN: WOERNER,ELLIE			
08:15		60-33	H 27	GOOD! LAYUP by SWEDLUND,ALEXYS
08:00				FOUL (PERSONAL) by KOSTOURKOVA,MARIA
07:49	MISSED 3PTR by LUPFER,RILEY			
07:45				REBOUND (DEF) by LEVY,SHIR
07:40				MISSED LAYUP by HRISTOVA,BORISLAVA
07:36	REBOUND (DEF) by TEAM			
07:25	GOOD! LAYUP by CHRISTOPHER,JAYDE [PNT]	60-35	H 25	
07:09				MISSED LAYUP by SWEDLUND,ALEXYS
07:07	REBOUND (DEF) by LUPFER,RILEY			
07:04	GOOD! JUMPER by WOERNER,ELLIE [FB]	60-37	H 23	
07:04	ASSIST by CHRISTOPHER,JAYDE			
06:45				MISSED JUMPER by HRISTOVA,BORISLAVA
06:43				REBOUND (OFF) by KOSTOURKOVA,MARIA
06:43	FOUL (PERSONAL) by WOERNER,ELLIE			
06:43	SUB OUT: CHRISTOPHER,JAYDE			
06:43	SUB IN: LOVILLE,JADE			
06:43	SUB OUT: COLEMAN,A'SHANTI			
06:43	SUB IN: HODGINS,BRAYDEY			
06:34				TURNOVER (DRIBBLING) by MOLINA,CHANELLE
06:24	FOUL (OFF) by WOERNER,ELLIE			
06:24	TURNOVER (OFFENSIVE) by WOERNER,ELLIE			
06:08				TURNOVER (BADPASS) by LEVY,SHIR
06:08	STEAL by WOERNER,ELLIE			
05:58	MISSED LAYUP by BOWERS,RACHEL			
05:55				REBOUND (DEF) by KOSTOURKOVA,MARIA
05:51		62-37	H 25	GOOD! JUMPER by MOLINA,CHANELLE [FB]
05:42	GOOD! LAYUP by LOVILLE,JADE	62-39	H 23	
05:30	FOUL (PERSONAL) by LOVILLE,JADE			
05:30	SUB OUT: BOWERS,RACHEL			
05:30	SUB IN: HARRELL,JOYCE			
05:30	SUB OUT: WOERNER,ELLIE			
05:30	SUB IN: GALERON,SOFIA			
05:17				MISSED 3PTR by HRISTOVA,BORISLAVA
05:13	REBOUND (DEF) by LOVILLE,JADE			
05:04	MISSED JUMPER by LOVILLE,JADE			
05:04				BLOCK by KOSTOURKOVA,MARIA
05:01	REBOUND (OFF) by GALERON,SOFIA			
04:47	MISSED JUMPER by HARRELL,JOYCE			
04:45				REBOUND (DEF) by KOSTOURKOVA,MARIA
04:30		64-39	H 25	GOOD! JUMPER by HRISTOVA,BORISLAVA [PNT]
04:30				ASSIST by MOLINA,CHANELLE
04:18	GOOD! 3PTR by LOVILLE,JADE	64-42	H 22	
04:18	ASSIST by HODGINS,BRAYDEY			
03:57				
03:57				SUB OUT: LEVY,SHIR
03:57				SUB IN: MOLINA,CHERILYN
03:57	SUB OUT: LUPFER,RILEY			
03:57	SUB IN: HERMIDA,MARTA			
03:52	FOUL (PERSONAL) by HARRELL,JOYCE			
03:52	SUB OUT: HARRELL,JOYCE			
03:52	SUB IN: BOWERS,RACHEL			
03:45				TURNOVER (3SEC) by KOSTOURKOVA,MARIA
03:36	GOOD! LAYUP by LOVILLE,JADE	64-44	H 20	
03:16				MISSED JUMPER by KOSTOURKOVA,MARIA
03:14	REBOUND (DEF) by HODGINS,BRAYDEY			
03:09	MISSED LAYUP by HODGINS,BRAYDEY			
03:06				REBOUND (DEF) by KOSTOURKOVA,MARIA
02:58				MISSED 3PTR by MOLINA,CHANELLE
02:54	REBOUND (DEF) by HERMIDA,MARTA			
02:50	TURNOVER (BADPASS) by HERMIDA,MARTA			
02:50	SUB OUT: BOWERS,RACHEL			

Time	VISITORS: Boise St.	Score	Margin	HOME: Washington St.
02:50	SUB IN: TOTH,EMERALD			
02:50	SUB OUT: GALERON,SOFIA			
02:50	SUB IN: COLEMAN,A'SHANTI			
02:27		66-44	H 22	GOOD! LAYUP by HRISTOVA,BORISLAVA
02:27				ASSIST by MOLINA,CHERILYN
02:16	GOOD! 3PTR by LOVILLE,JADE	66-47	H 19	
01:55		69-47	H 22	GOOD! 3PTR by SWEDLUND,ALEXYS
01:55				ASSIST by KOSTOURKOVA,MARIA
01:42	MISSED 3PTR by HODGINS,BRAYDEY			
01:39	REBOUND (OFF) by TOTH,EMERALD			
01:39	SUB OUT: HODGINS,BRAYDEY			
01:39	SUB IN: CHRISTOPHER,JAYDE			
01:39	SUB OUT: HERMIDA,MARTA			
01:39	SUB IN: LUPFER,RILEY			
01:36	TURNOVER (LOSTBALL) by LOVILLE,JADE			
01:36				STEAL by SWEDLUND,ALEXYS
01:28				TURNOVER (BADPASS) by MOLINA,CHANELLE
01:17				FOUL (PERSONAL) by MOLINA,CHANELLE
01:09	MISSED 3PTR by LOVILLE,JADE			
01:06				REBOUND (DEF) by KOSTOURKOVA,MARIA
00:53	FOUL (PERSONAL) by COLEMAN,A'SHANTI			
00:53		70-47	H 23	GOOD! FT by HRISTOVA,BORISLAVA
00:53	SUB OUT: LOVILLE,JADE			
00:53	SUB IN: WOERNER,ELLIE			
00:53		71-47	H 24	GOOD! FT by HRISTOVA,BORISLAVA
00:53				SUB OUT: HRISTOVA,BORISLAVA
00:53				SUB IN: MOTUGA,ULA
00:35	GOOD! JUMPER by COLEMAN,A'SHANTI	71-49	H 22	
00:24	FOUL (PERSONAL) by TOTH,EMERALD			
00:24				MISSED FT by KOSTOURKOVA,MARIA
00:24				REBOUND (OFF) by TEAM
00:24		72-49	H 23	GOOD! FT by KOSTOURKOVA,MARIA
00:01	MISSED LAYUP by COLEMAN,A'SHANTI			
00:00	REBOUND (OFF) by TEAM			

Boise St. 49, Washington St. 72

Points from (This Period)	BSU	WSU
In the Paint	10	10
Off Turns	4	4
2nd Chance	0	2
Fast Break	2	2
Bench	12	0

**This period only:BSU led for 0:00. WSU led for 0:52.
Game was tied for 0:50.**

Official Play-By-Play
Boise St. vs Washington St.
Fourth Quarter
December 01, 2018 at Beasley Coliseum - Pullman, WA

Starters:

Boise St.: 20 HERMIDA,MARTA; 21 LUPFER,RILEY; 23 CHRISTOPHER,JAYDE; 33 HARRELL,JOYCE; 42 COLEMAN,A'SHANTI;

Washington St.: 11 MOLINA,CHANELLE; 13 LEVY,SHIR; 20 KOSTOURKOVA,MARIA; 23 SWEDLUND,ALEXYS; 45 HRISTOVA,BORISLAVA;

Period 4

Time	VISITORS: Boise St.	Score	Margin	HOME: Washington St.
09:53				FOUL (PERSONAL) by MOLINA,CHANELLE
09:46	GOOD! 3PTR by LUPFER,RILEY	72-52	H 20	
09:46	ASSIST by CHRISTOPHER,JAYDE			
09:28	FOUL (PERSONAL) by COLEMAN,A'SHANTI			
09:28				MISSED FT by MOTUGA,ULA
09:28				REBOUND (OFF) by TEAM
09:28	SUB OUT: COLEMAN,A'SHANTI			
09:28	SUB IN: GALERON,SOFIA			
09:28	SUB OUT: TOTH,EMERALD			
09:28	SUB IN: BOWERS,RACHEL			
09:28		73-52	H 21	GOOD! FT by MOTUGA,ULA
09:20	MISSED 3PTR by LUPFER,RILEY			
09:16				REBOUND (DEF) by MOTUGA,ULA
09:02		75-52	H 23	GOOD! LAYUP by HRISTOVA,BORISLAVA
09:02				ASSIST by MOLINA,CHERILYN
09:02	FOUL (PERSONAL) by GALERON,SOFIA			
09:02				SUB OUT: SWEDLUND,ALEXYS
09:02				SUB IN: LEVY,SHIR
09:02		76-52	H 24	GOOD! FT by HRISTOVA,BORISLAVA
08:57	GOOD! LAYUP by LUPFER,RILEY [FB]	76-54	H 22	
08:57	ASSIST by CHRISTOPHER,JAYDE			
08:33				TURNOVER (TRAVEL) by MOTUGA,ULA
08:17	GOOD! 3PTR by CHRISTOPHER,JAYDE	76-57	H 19	
07:59				MISSED LAYUP by MOTUGA,ULA
07:59	BLOCK by WOERNER,ELLIE			
07:54				REBOUND (OFF) by HRISTOVA,BORISLAVA
07:53		78-57	H 21	GOOD! JUMPER by MOLINA,CHANELLE [PNT]
07:53				ASSIST by HRISTOVA,BORISLAVA
07:43	MISSED LAYUP by BOWERS,RACHEL			
07:43	REBOUND (OFF) by TEAM			
07:35	FOUL (OFF) by BOWERS,RACHEL			
07:35	TURNOVER (OFFENSIVE) by BOWERS,RACHEL			
07:20				MISSED JUMPER by HRISTOVA,BORISLAVA
07:20	BLOCK by LUPFER,RILEY			
07:18	REBOUND (DEF) by WOERNER,ELLIE			
07:18				FOUL (PERSONAL) by MOTUGA,ULA
07:07	MISSED LAYUP by BOWERS,RACHEL			
07:05				REBOUND (DEF) by MOLINA,CHERILYN
06:47		80-57	H 23	GOOD! LAYUP by HRISTOVA,BORISLAVA
06:47				ASSIST by LEVY,SHIR
06:41	MISSED LAYUP by WOERNER,ELLIE			
06:41				REBOUND (DEF) by MOLINA,CHERILYN
06:41				MISSED 3PTR by MOTUGA,ULA
06:41	REBOUND (DEF) by LUPFER,RILEY			
06:41	MISSED LAYUP by BOWERS,RACHEL			
06:41				REBOUND (DEF) by MOLINA,CHANELLE
05:46				MISSED LAYUP by LEVY,SHIR
05:41	REBOUND (DEF) by WOERNER,ELLIE			
05:41	MISSED 3PTR by LUPFER,RILEY			
05:37	REBOUND (OFF) by TEAM			
05:37				SUB OUT: HRISTOVA,BORISLAVA
05:37				SUB IN: SUBASIC,JOVANA
05:37				SUB OUT: MOLINA,CHANELLE
05:37				SUB IN: SWEDLUND,ALEXYS
05:37	SUB OUT: GALERON,SOFIA			
05:37	SUB IN: LOVILLE,JADE			
05:37	SUB OUT: LUPFER,RILEY			
05:37	SUB IN: HODGINS,BRAYDEY			
05:37	SUB OUT: WOERNER,ELLIE			
05:37	SUB IN: COLEMAN,A'SHANTI			
05:37	SUB OUT: CHRISTOPHER,JAYDE			
05:37	SUB IN: HERMIDA,MARTA			
05:37	SUB OUT: BOWERS,RACHEL			
05:37	SUB IN: HARRELL,JOYCE			
05:35	MISSED LAYUP by HODGINS,BRAYDEY			
05:33	REBOUND (OFF) by TEAM			
05:33	TURNOVER (TRAVEL) by COLEMAN,A'SHANTI			
05:22				MISSED LAYUP by MOTUGA,ULA
05:22	BLOCK by HARRELL,JOYCE			
05:20				REBOUND (OFF) by MOTUGA,ULA
05:20	FOUL (PERSONAL) by LOVILLE,JADE			
05:20		81-57	H 24	GOOD! FT by MOTUGA,ULA
05:20		82-57	H 25	GOOD! FT by MOTUGA,ULA
05:10	MISSED LAYUP by COLEMAN,A'SHANTI			
05:10				BLOCK by MOTUGA,ULA
05:06				REBOUND (DEF) by MOTUGA,ULA

Time	VISITORS: Boise St.	Score	Margin	HOME: Washington St.
04:55				MISSED 3PTR by MOTUGA,ULA
04:52	REBOUND (DEF) by HODGINS,BRAYDEY			
04:48	MISSED 3PTR by HERMIDA,MARTA			
04:45				REBOUND (DEF) by MOTUGA,ULA
04:43				TURNOVER (BADPASS) by MOTUGA,ULA
04:43	STEAL by LOVILLE,JADE			
04:43				FOUL (PERSONAL) by LEVY,SHIR
04:43				
04:43	GOOD! FT by LOVILLE,JADE	82-58	H 24	
04:43	MISSED FT by LOVILLE,JADE			
04:42	REBOUND (OFF) by COLEMAN,A'SHANTI			
04:37	GOOD! 3PTR by LOVILLE,JADE	82-61	H 21	
04:37	ASSIST by HERMIDA,MARTA			
04:27		84-61	H 23	GOOD! LAYUP by SWEDLUND,ALEXYS [FB]
04:27				ASSIST by MOTUGA,ULA
04:27	FOUL (PERSONAL) by LOVILLE,JADE			
04:27		85-61	H 24	GOOD! FT by SWEDLUND,ALEXYS [FB]
04:16	TURNOVER (BADPASS) by LOVILLE,JADE			
04:16				STEAL by SWEDLUND,ALEXYS
03:46				TURNOVER (SHOTCLOCK) by
03:39				FOUL (PERSONAL) by MOLINA,CHERILYN
03:39	GOOD! FT by HERMIDA,MARTA [FB]	85-62	H 23	
03:39	GOOD! FT by HERMIDA,MARTA [FB]	85-63	H 22	
03:32		87-63	H 24	GOOD! JUMPER by SUBASIC,JOVANA [FB]
03:32				ASSIST by MOLINA,CHERILYN
03:15	GOOD! LAYUP by HARRELL,JOYCE	87-65	H 22	
03:15	ASSIST by HERMIDA,MARTA			
03:00		89-65	H 24	GOOD! LAYUP by LEVY,SHIR [FB]
02:49	MISSED JUMPER by COLEMAN,A'SHANTI			
02:45	REBOUND (OFF) by HERMIDA,MARTA			
02:43	MISSED JUMPER by HERMIDA,MARTA			
02:39				REBOUND (DEF) by SWEDLUND,ALEXYS
02:24		92-65	H 27	GOOD! 3PTR by SWEDLUND,ALEXYS
02:24				ASSIST by MOLINA,CHERILYN
02:07	GOOD! JUMPER by LOVILLE,JADE	92-67	H 25	
02:01				SUB OUT: LEVY,SHIR
02:01				SUB IN: JONES,MICHAELA
02:01				SUB OUT: SWEDLUND,ALEXYS
02:01				SUB IN: MOLINA,CELENA
01:50				TURNOVER (LOSTBALL) by MOLINA,CHERILYN
01:50	STEAL by HODGINS,BRAYDEY			
01:50				FOUL (PERSONAL) by MOLINA,CHERILYN
01:50	GOOD! FT by HODGINS,BRAYDEY	92-68	H 24	
01:50	GOOD! FT by HODGINS,BRAYDEY	92-69	H 23	
01:24		94-69	H 25	GOOD! JUMPER by SUBASIC,JOVANA
01:24				ASSIST by JONES,MICHAELA
01:02	MISSED 3PTR by HERMIDA,MARTA			
00:59				REBOUND (DEF) by SUBASIC,JOVANA
00:48				MISSED JUMPER by MOTUGA,ULA
00:45				REBOUND (OFF) by MOLINA,CELENA
00:43				MISSED JUMPER by SUBASIC,JOVANA
00:41				REBOUND (OFF) by JONES,MICHAELA
00:40				MISSED LAYUP by JONES,MICHAELA
00:38				REBOUND (OFF) by MOLINA,CELENA
00:38	FOUL (PERSONAL) by HODGINS,BRAYDEY			
00:38				MISSED FT by MOLINA,CELENA
00:38				REBOUND (OFF) by TEAM
00:38		95-69	H 26	GOOD! FT by MOLINA,CELENA
00:26	MISSED 3PTR by HERMIDA,MARTA			
00:23	REBOUND (OFF) by LOVILLE,JADE			
00:22	GOOD! LAYUP by LOVILLE,JADE	95-71	H 24	

Boise St. 71, Washington St. 95

Points from (This Period)	BSU	WSU
In the Paint	6	10
Off Turns	6	1
2nd Chance	5	5
Fast Break	4	7
Bench	10	8

**This period only:BSU led for 0:00. WSU led for 0:52.
Game was tied for 0:50.**

Official Scoring/Possession Reference Chart
Boise St. vs Washington St.
Period 1
December 01, 2018 at Beasley Coliseum - Pullman, WA

Starters:

Boise St.: 20 HERMIDA,MARTA; 21 LUPFER,RILEY; 23 CHRISTOPHER,JAYDE; 33 HARRELL,JOYCE; 42 COLEMAN,A'SHANTI;
Washington St.: 11 MOLINA,CHANELLE; 13 LEVY,SHIR; 20 KOSTOURKOVA,MARIA; 23 SWEDLUND,ALEXYS; 45 HRISTOVA,BORISLAVA;

Period 1

Time	VISITORS: Boise St.	Score	Margin	HOME: Washington St.
09:14		2-0	H 2	GOOD! LAYUP by MOLINA,CHANELLE
08:21		4-0	H 4	GOOD! LAYUP by KOSTOURKOVA,MARIA
07:30		7-0	H 7	GOOD! 3PTR by SWEDLUND,ALEXYS
06:06		9-0	H 9	GOOD! JUMPER by HRISTOVA,BORISLAVA
05:39	GOOD! 3PTR by LUPFER,RILEY	9-3	H 6	
05:28		12-3	H 9	GOOD! 3PTR by SWEDLUND,ALEXYS
05:07		15-3	H 12	GOOD! 3PTR by HRISTOVA,BORISLAVA [FB]
04:09		17-3	H 14	GOOD! LAYUP by HRISTOVA,BORISLAVA
03:56	GOOD! JUMPER by HERMIDA,MARTA	17-5	H 12	
03:21		19-5	H 14	GOOD! LAYUP by SWEDLUND,ALEXYS [FB/PNT]
02:42	GOOD! LAYUP by BOWERS,RACHEL	19-7	H 12	
02:31		22-7	H 15	GOOD! 3PTR by MOLINA,CHANELLE
02:03		24-7	H 17	GOOD! LAYUP by MOLINA,CHERILYN [FB]
01:45	GOOD! LAYUP by LUPFER,RILEY [PNT]	24-9	H 15	
01:29		26-9	H 17	GOOD! LAYUP by LEVY,SHIR
01:13	GOOD! FT by BOWERS,RACHEL	26-10	H 16	
01:13	GOOD! FT by BOWERS,RACHEL	26-11	H 15	
01:05		27-11	H 16	GOOD! FT by HRISTOVA,BORISLAVA
00:49	GOOD! LAYUP by BOWERS,RACHEL	27-13	H 14	
00:41		30-13	H 17	GOOD! 3PTR by HRISTOVA,BORISLAVA
00:00	GOOD! LAYUP by CHRISTOPHER,JAYDE	30-15	H 15	

Boise St. 15, Washington St. 30

Official Scoring/Possession Reference Chart
Boise St. vs Washington St.
Period 2
December 01, 2018 at Beasley Coliseum - Pullman, WA

Starters:

Boise St.: 20 HERMIDA,MARTA; 21 LUPFER,RILEY; 23 CHRISTOPHER,JAYDE; 33 HARRELL,JOYCE; 42 COLEMAN,A'SHANTI;
Washington St.: 11 MOLINA,CHANELLE; 13 LEVY,SHIR; 20 KOSTOURKOVA,MARIA; 23 SWEDLUND,ALEXYS; 45 HRISTOVA,BORISLAVA;

Period 2

Time	VISITORS: Boise St.	Score	Margin	HOME: Washington St.
09:45	GOOD! LAYUP by BOWERS,RACHEL	30-17	H 13	
09:31		33-17	H 16	GOOD! 3PTR by LEVY,SHIR
09:20	GOOD! LAYUP by WOERNER,ELLIE	33-19	H 14	
08:58	GOOD! FT by HODGINS,BRAYDEY	33-20	H 13	
08:58	GOOD! FT by HODGINS,BRAYDEY	33-21	H 12	
08:26	GOOD! 3PTR by GALERON,SOFIA	33-24	H 9	
07:39		35-24	H 11	GOOD! LAYUP by HRISTOVA,BORISLAVA [FB]
06:52		38-24	H 14	GOOD! 3PTR by HRISTOVA,BORISLAVA
05:38		41-24	H 17	GOOD! 3PTR by SWEDLUND,ALEXYS [FB]
05:16		43-24	H 19	GOOD! LAYUP by KOSTOURKOVA,MARIA
04:53		45-24	H 21	GOOD! LAYUP by KOSTOURKOVA,MARIA [FB]
04:46		47-24	H 23	GOOD! JUMPER by SWEDLUND,ALEXYS
04:14		50-24	H 26	GOOD! 3PTR by HRISTOVA,BORISLAVA
02:45		53-24	H 29	GOOD! 3PTR by LEVY,SHIR
02:11	GOOD! FT by WOERNER,ELLIE [FB]	53-25	H 28	
01:48		56-25	H 31	GOOD! 3PTR by LEVY,SHIR
01:34	GOOD! FT by LUPFER,RILEY	56-26	H 30	
01:34	GOOD! FT by LUPFER,RILEY	56-27	H 29	
01:13	GOOD! LAYUP by HODGINS,BRAYDEY	56-29	H 27	

Boise St. 29, Washington St. 56

Official Scoring/Possession Reference Chart
Boise St. vs Washington St.
Period 3

December 01, 2018 at Beasley Coliseum - Pullman, WA

Starters:

Boise St.: 20 HERMIDA,MARTA; 21 LUPFER,RILEY; 23 CHRISTOPHER,JAYDE; 33 HARRELL,JOYCE; 42 COLEMAN,A'SHANTI;

Washington St.: 11 MOLINA,CHANELLE; 13 LEVY,SHIR; 20 KOSTOURKOVA,MARIA; 23 SWEDLUND,ALEXYS; 45 HRISTOVA,BORISLAVA;

Period 3

Time	VISITORS: Boise St.	Score	Margin	HOME: Washington St.
09:48	GOOD! LAYUP by CHRISTOPHER,JAYDE	56-31	H 25	
09:18	GOOD! LAYUP by CHRISTOPHER,JAYDE	56-33	H 23	
08:54		58-33	H 25	GOOD! LAYUP by KOSTOURKOVA,MARIA
08:15		60-33	H 27	GOOD! LAYUP by SWEDLUND,ALEXYS
07:25	GOOD! LAYUP by CHRISTOPHER,JAYDE [PNT]	60-35	H 25	
07:04	GOOD! JUMPER by WOERNER,ELLIE [FB]	60-37	H 23	
05:51		62-37	H 25	GOOD! JUMPER by MOLINA,CHANELLE [FB]
05:42	GOOD! LAYUP by LOVILLE,JADE	62-39	H 23	
04:30		64-39	H 25	GOOD! JUMPER by HRISTOVA,BORISLAVA [PNT]
04:18	GOOD! 3PTR by LOVILLE,JADE	64-42	H 22	
03:36	GOOD! LAYUP by LOVILLE,JADE	64-44	H 20	
02:27		66-44	H 22	GOOD! LAYUP by HRISTOVA,BORISLAVA
02:16	GOOD! 3PTR by LOVILLE,JADE	66-47	H 19	
01:55		69-47	H 22	GOOD! 3PTR by SWEDLUND,ALEXYS
00:53		70-47	H 23	GOOD! FT by HRISTOVA,BORISLAVA
00:53		71-47	H 24	GOOD! FT by HRISTOVA,BORISLAVA
00:35	GOOD! JUMPER by COLEMAN,A'SHANTI	71-49	H 22	
00:24		72-49	H 23	GOOD! FT by KOSTOURKOVA,MARIA

Boise St. 49, Washington St. 72

Official Scoring/Possession Reference Chart
Boise St. vs Washington St.
Period 4

December 01, 2018 at Beasley Coliseum - Pullman, WA

Starters:

Boise St.: 20 HERMIDA,MARTA; 21 LUPFER,RILEY; 23 CHRISTOPHER,JAYDE; 33 HARRELL,JOYCE; 42 COLEMAN,A'SHANTI;

Washington St.: 11 MOLINA,CHANELLE; 13 LEVY,SHIR; 20 KOSTOURKOVA,MARIA; 23 SWEDLUND,ALEXYS; 45 HRISTOVA,BORISLAVA;

Period 4

Time	VISITORS: Boise St.	Score	Margin	HOME: Washington St.
09:46	GOOD! 3PTR by LUPFER,RILEY	72-52	H 20	
09:28		73-52	H 21	GOOD! FT by MOTUGA,ULA
09:02		75-52	H 23	GOOD! LAYUP by HRISTOVA,BORISLAVA
09:02		76-52	H 24	GOOD! FT by HRISTOVA,BORISLAVA
08:57	GOOD! LAYUP by LUPFER,RILEY [FB]	76-54	H 22	
08:17	GOOD! 3PTR by CHRISTOPHER,JAYDE	76-57	H 19	
07:53		78-57	H 21	GOOD! JUMPER by MOLINA,CHANELLE [PNT]
06:47		80-57	H 23	GOOD! LAYUP by HRISTOVA,BORISLAVA
05:20		81-57	H 24	GOOD! FT by MOTUGA,ULA
05:20		82-57	H 25	GOOD! FT by MOTUGA,ULA
04:43	GOOD! FT by LOVILLE,JADE	82-58	H 24	
04:37	GOOD! 3PTR by LOVILLE,JADE	82-61	H 21	
04:27		84-61	H 23	GOOD! LAYUP by SWEDLUND,ALEXYS [FB]
04:27		85-61	H 24	GOOD! FT by SWEDLUND,ALEXYS [FB]
03:39	GOOD! FT by HERMIDA,MARTA [FB]	85-62	H 23	
03:39	GOOD! FT by HERMIDA,MARTA [FB]	85-63	H 22	
03:32		87-63	H 24	GOOD! JUMPER by SUBASIC,JOVANA [FB]
03:15	GOOD! LAYUP by HARRELL,JOYCE	87-65	H 22	

Time	VISITORS: Boise St.	Score	Margin	HOME: Washington St.
03:00		89-65	H 24	GOOD! LAYUP by LEVY,SHIR [FB]
02:24		92-65	H 27	GOOD! 3PTR by SWEDLUND,ALEXYS
02:07	GOOD! JUMPER by LOVILLE,JADE	92-67	H 25	
01:50	GOOD! FT by HODGINS,BRAYDEY	92-68	H 24	
01:50	GOOD! FT by HODGINS,BRAYDEY	92-69	H 23	
01:24		94-69	H 25	GOOD! JUMPER by SUBASIC,JOVANA
00:38		95-69	H 26	GOOD! FT by MOLINA,CELENA
00:22	GOOD! LAYUP by LOVILLE,JADE	95-71	H 24	

Boise St. 71, Washington St. 95

**Official Substitutions Log
Boise St. vs Washington St.**

Period 1

December 01, 2018 at Beasley Coliseum - Pullman, WA

VISITORS: Boise St.	Time	Score	HOME: Washington St.
20 HERMIDA,MARTA			11 MOLINA,CHANELLE
21 LUPFER,RILEY			13 LEVY,SHIR
23 CHRISTOPHER,JAYDE			20 KOSTOURKOVA,MARIA
33 HARRELL,JOYCE			23 SWEDLUND,ALEXYS
42 COLEMAN,A'SHANTI			45 HRISTOVA,BORISLAVA
SUB OUT: 23 CHRISTOPHER,JAYDE	04:52	3-15	
SUB IN: 14 HODGINS,BRAYDEY	04:52		
SUB OUT: 42 COLEMAN,A'SHANTI	04:52		
SUB IN: 22 WOERNER,ELLIE	04:52		
	02:59	5-19	SUB OUT: HRISTOVA,BORISLAVA
	02:59		SUB IN: MOTUGA,ULA
	02:59		SUB OUT: SWEDLUND,ALEXYS
	02:59		SUB IN: MOLINA,CHERILYN
SUB OUT: 20 HERMIDA,MARTA	02:59		
SUB IN: 23 CHRISTOPHER,JAYDE	02:59		
SUB OUT: 33 HARRELL,JOYCE	02:59		
SUB IN: 25 BOWERS,RACHEL	02:59		
SUB OUT: 21 LUPFER,RILEY	01:13	9-26	
SUB IN: 3 GALERON,SOFIA	01:13		
	01:13		SUB OUT: MOTUGA,ULA
	01:13		SUB IN: HRISTOVA,BORISLAVA
	01:05	11-27	SUB OUT: KOSTOURKOVA,MARIA
	01:05		SUB IN: SUBASIC,JOVANA

Boise St. 15, Washington St. 30

**Official Substitutions Log
Boise St. vs Washington St.
Period 2
December 01, 2018 at Beasley Coliseum - Pullman, WA**

VISITORS: Boise St.	Time	Score	HOME: Washington St.
20 HERMIDA, MARTA			11 MOLINA, CHANELLE
21 LUPFER, RILEY			13 LEVY, SHIR
23 CHRISTOPHER, JAYDE			20 KOSTOURKOVA, MARIA
33 HARRELL, JOYCE			23 SWEDLUND, ALEXYS
42 COLEMAN, A'SHANTI			45 HRISTOVA, BORISLAVA
	09:10	19-33	SUB OUT: SUBASIC, JOVANA
	09:10		SUB IN: SWEDLUND, ALEXYS
	09:10		SUB OUT: LEVY, SHIR
	09:10		SUB IN: KOSTOURKOVA, MARIA
	08:58	20-33	SUB OUT: MOLINA, CHERILYN
	08:58		SUB IN: LEVY, SHIR
SUB OUT: 25 BOWERS, RACHEL	08:43	21-33	
SUB IN: 33 HARRELL, JOYCE	08:43		
SUB OUT: 22 WOERNER, ELLIE	07:08	24-35	
SUB IN: 20 HERMIDA, MARTA	07:08		
SUB OUT: 14 HODGINS, BRAYDEY	07:08		
SUB IN: 21 LUPFER, RILEY	07:08		
SUB OUT: 33 HARRELL, JOYCE	04:53	24-45	
SUB IN: 25 BOWERS, RACHEL	04:53		
SUB OUT: 3 GALERON, SOFIA	04:53		
SUB IN: 42 COLEMAN, A'SHANTI	04:53		
	02:23	24-53	SUB OUT: HRISTOVA, BORISLAVA
	02:23		SUB IN: SUBASIC, JOVANA
SUB OUT: 20 HERMIDA, MARTA	02:23		
SUB IN: 14 HODGINS, BRAYDEY	02:23		
SUB OUT: 42 COLEMAN, A'SHANTI	02:23		
SUB IN: 3 GALERON, SOFIA	02:23		
SUB OUT: 25 BOWERS, RACHEL	02:23		
SUB IN: 22 WOERNER, ELLIE	02:23		

Boise St. 29, Washington St. 56

**Official Substitutions Log
Boise St. vs Washington St.
Period 3
December 01, 2018 at Beasley Coliseum - Pullman, WA**

VISITORS: Boise St.	Time	Score	HOME: Washington St.
20 HERMIDA, MARTA			11 MOLINA, CHANELLE
21 LUPFER, RILEY			13 LEVY, SHIR
23 CHRISTOPHER, JAYDE			20 KOSTOURKOVA, MARIA
33 HARRELL, JOYCE			23 SWEDLUND, ALEXYS
42 COLEMAN, A'SHANTI			45 HRISTOVA, BORISLAVA
SUB OUT: 33 HARRELL, JOYCE	08:38	33-58	
SUB IN: 25 BOWERS, RACHEL	08:38		
SUB OUT: 20 HERMIDA, MARTA	08:38		
SUB IN: 22 WOERNER, ELLIE	08:38		
SUB OUT: 23 CHRISTOPHER, JAYDE	06:43	37-60	
SUB IN: 30 LOVILLE, JADE	06:43		
SUB OUT: 42 COLEMAN, A'SHANTI	06:43		
SUB IN: 14 HODGINS, BRAYDEY	06:43		
SUB OUT: 25 BOWERS, RACHEL	05:30	39-62	
SUB IN: 33 HARRELL, JOYCE	05:30		
SUB OUT: 22 WOERNER, ELLIE	05:30		
SUB IN: 3 GALERON, SOFIA	05:30		
	03:57	42-64	SUB OUT: LEVY, SHIR
	03:57		SUB IN: MOLINA, CHERILYN
SUB OUT: 21 LUPFER, RILEY	03:57		
SUB IN: 20 HERMIDA, MARTA	03:57		
SUB OUT: 33 HARRELL, JOYCE	03:52	42-64	
SUB IN: 25 BOWERS, RACHEL	03:52		
SUB OUT: 25 BOWERS, RACHEL	02:50	44-64	
SUB IN: 44 TOTH, EMERALD	02:50		
SUB OUT: 3 GALERON, SOFIA	02:50		
SUB IN: 42 COLEMAN, A'SHANTI	02:50		
SUB OUT: 14 HODGINS, BRAYDEY	01:39	47-69	
SUB IN: 23 CHRISTOPHER, JAYDE	01:39		
SUB OUT: 20 HERMIDA, MARTA	01:39		
SUB IN: 21 LUPFER, RILEY	01:39		
SUB OUT: 30 LOVILLE, JADE	00:53	47-70	
SUB IN: 22 WOERNER, ELLIE	00:53		
	00:53		SUB OUT: HRISTOVA, BORISLAVA
	00:53		SUB IN: MOTUGA, ULA

Boise St. 49, Washington St. 72

Official Substitutions Log
Boise St. vs Washington St.
Period 4
December 01, 2018 at Beasley Coliseum - Pullman, WA

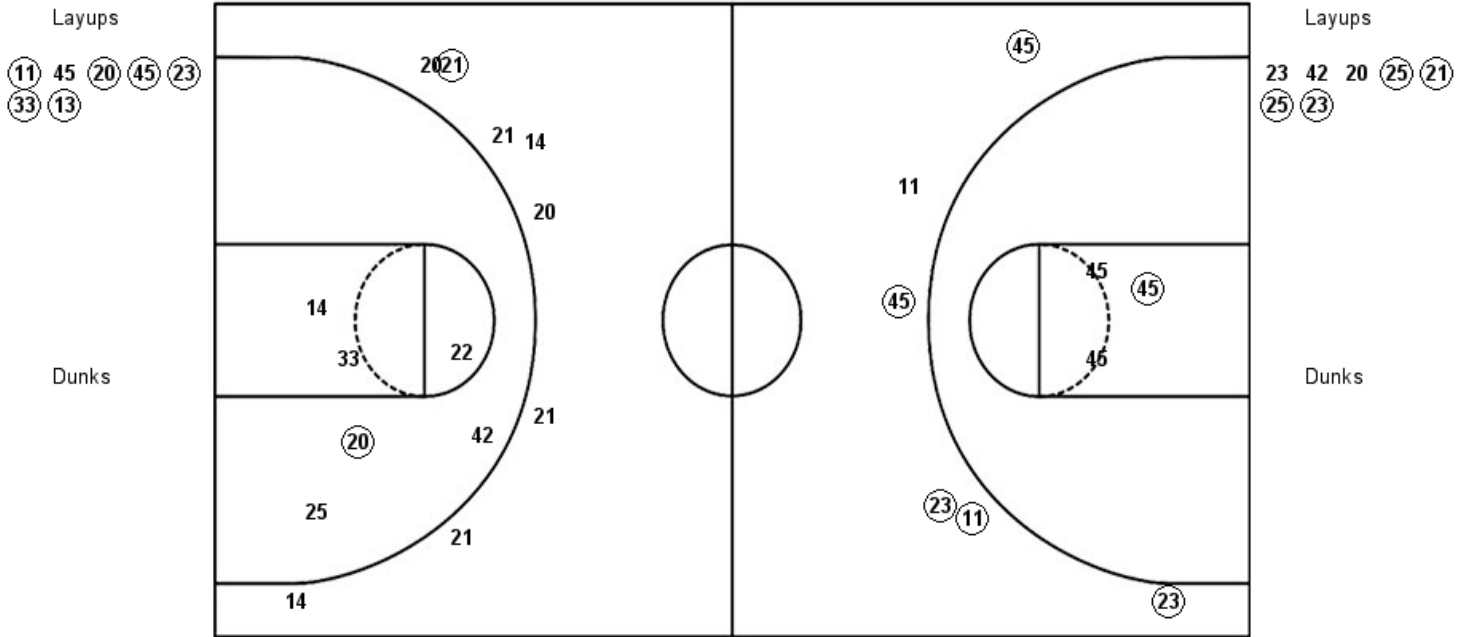
VISITORS: Boise St.	Time	Score	HOME: Washington St.
20 HERMIDA, MARTA			11 MOLINA, CHANELLE
21 LUPFER, RILEY			13 LEVY, SHIR
23 CHRISTOPHER, JAYDE			20 KOSTOURKOVA, MARIA
33 HARRELL, JOYCE			23 SWEDLUND, ALEXYS
42 COLEMAN, A'SHANTI			45 HRISTOVA, BORISLAVA
SUB OUT: 42 COLEMAN, A'SHANTI	09:28	52-72	
SUB IN: 3 GALERON, SOFIA	09:28		
SUB OUT: 44 TOTH, EMERALD	09:28		
SUB IN: 25 BOWERS, RACHEL	09:28		
	09:02	52-75	SUB OUT: SWEDLUND, ALEXYS
	09:02		SUB IN: LEVY, SHIR
	05:37	57-80	SUB OUT: HRISTOVA, BORISLAVA
	05:37		SUB IN: SUBASIC, JOVANA
	05:37		SUB OUT: MOLINA, CHANELLE
	05:37		SUB IN: SWEDLUND, ALEXYS
SUB OUT: 3 GALERON, SOFIA	05:37		
SUB IN: 30 LOVILLE, JADE	05:37		
SUB OUT: 21 LUPFER, RILEY	05:37		
SUB IN: 14 HODGINS, BRAYDEY	05:37		
SUB OUT: 22 WOERNER, ELLIE	05:37		
SUB IN: 42 COLEMAN, A'SHANTI	05:37		
SUB OUT: 23 CHRISTOPHER, JAYDE	05:37		
SUB IN: 20 HERMIDA, MARTA	05:37		
SUB OUT: 25 BOWERS, RACHEL	05:37		
SUB IN: 33 HARRELL, JOYCE	05:37		
	02:01	67-92	SUB OUT: LEVY, SHIR
	02:01		SUB IN: JONES, MICHAELA
	02:01		SUB OUT: SWEDLUND, ALEXYS
	02:01		SUB IN: MOLINA, CELENA

Boise St. 71, Washington St. 95

Official Shot Chart
Boise St. vs Washington St.
PERIOD 1 Shots
 December 01, 2018 at Beasley Coliseum - Pullman, WA

Washington St.

Boise St.



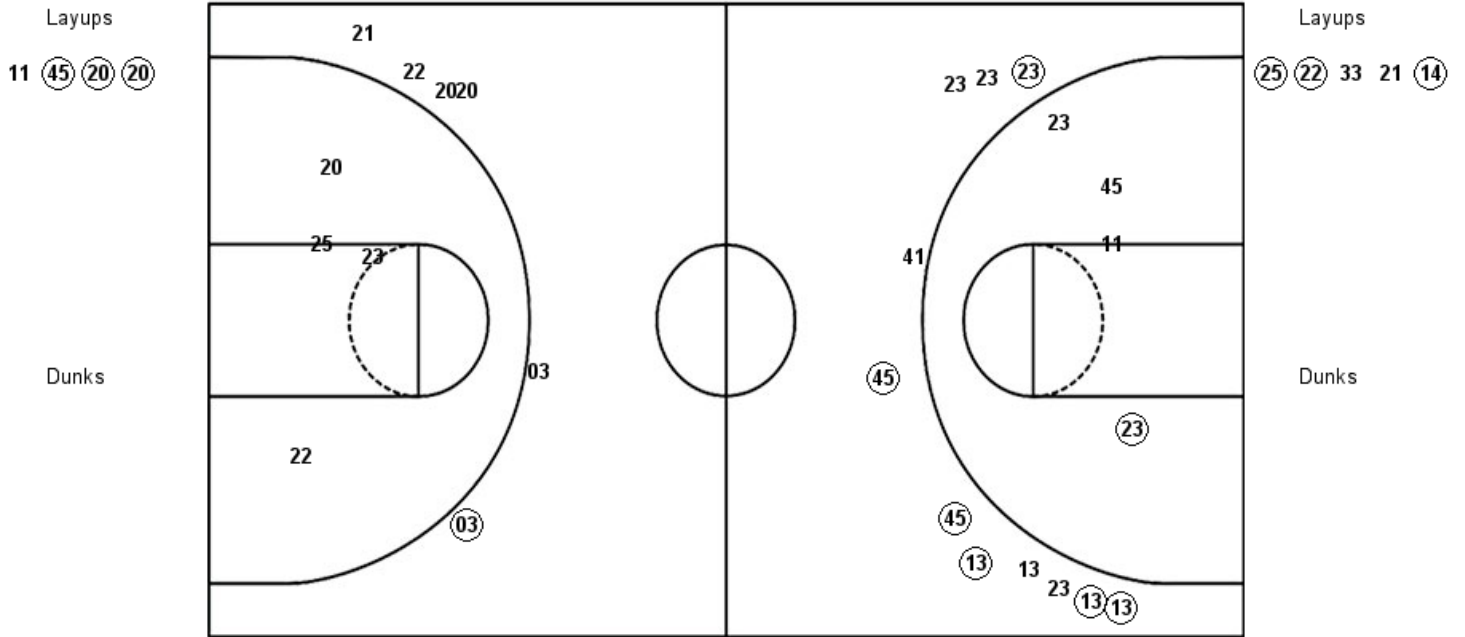
WSU : Period 1	Made	Att	Pct
Layups	6	7	85.7
Dunks	0	0	0
2PT Field Goals	7	10	70.0
3PT Field Goals	5	6	83.3
Total Field Goals	12	16	75.0

BSU : Period 1	Made	Att	Pct
Layups	4	7	57.1
Dunks	0	0	0
2PT Field Goals	5	13	38.5
3PT Field Goals	1	8	12.5
Total Field Goals	6	21	28.6

Official Shot Chart
Boise St. vs Washington St.
PERIOD 2 Shots
 December 01, 2018 at Beasley Coliseum - Pullman, WA

Washington St.

Boise St.



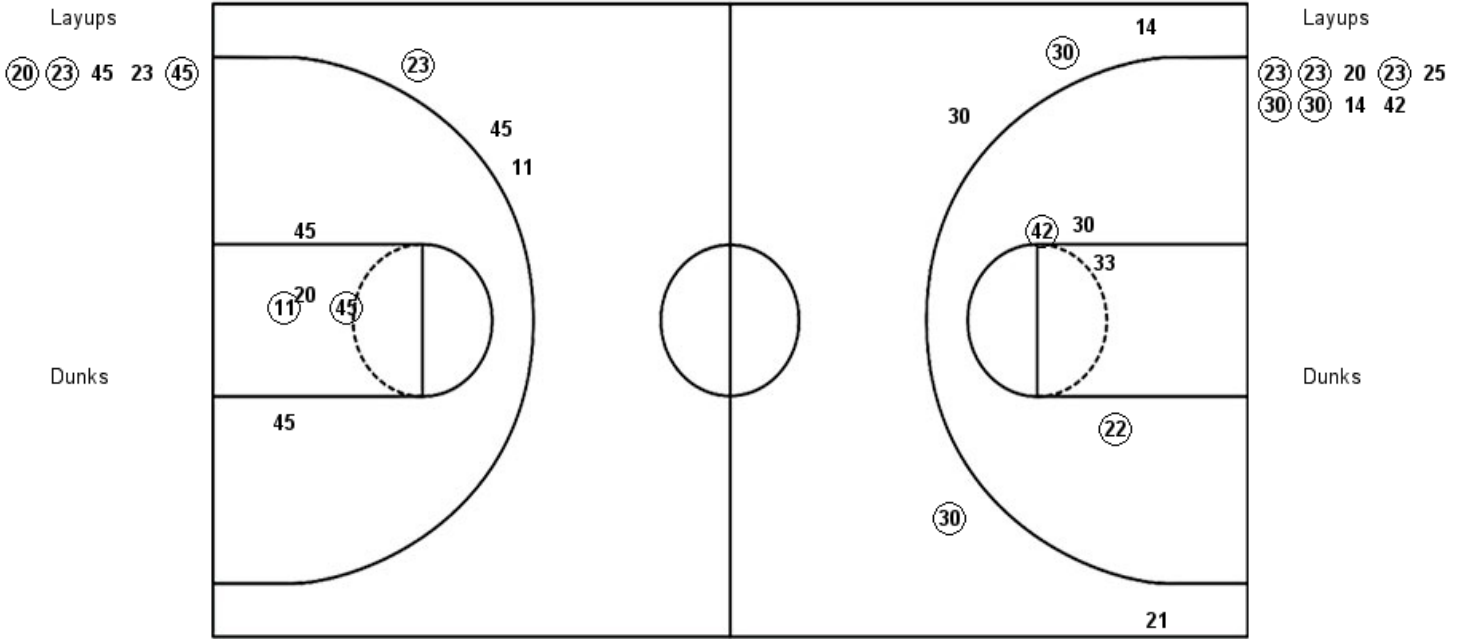
WSU : Period 2	Made	Att	Pct
Layups	3	4	75.0
Dunks	0	0	0
2PT Field Goals	4	8	50.0
3PT Field Goals	6	11	54.5
Total Field Goals	10	19	52.6

BSU : Period 2	Made	Att	Pct
Layups	3	5	60.0
Dunks	0	0	0
2PT Field Goals	3	9	33.3
3PT Field Goals	1	6	16.7
Total Field Goals	4	15	26.7

Official Shot Chart
Boise St. vs Washington St.
PERIOD 3 Shots
 December 01, 2018 at Beasley Coliseum - Pullman, WA

Washington St.

Boise St.



WSU : Period 3	Made	Att	Pct
Layups	3	5	60.0
Dunks	0	0	0
2PT Field Goals	5	10	50.0
3PT Field Goals	1	3	33.3
Total Field Goals	6	13	46.2

BSU : Period 3	Made	Att	Pct
Layups	5	9	55.6
Dunks	0	0	0
2PT Field Goals	7	13	53.8
3PT Field Goals	2	5	40.0
Total Field Goals	9	18	50.0

Official Shot Chart
Boise St. vs Washington St.
PERIOD 4 Shots
 December 01, 2018 at Beasley Coliseum - Pullman, WA

Washington St.

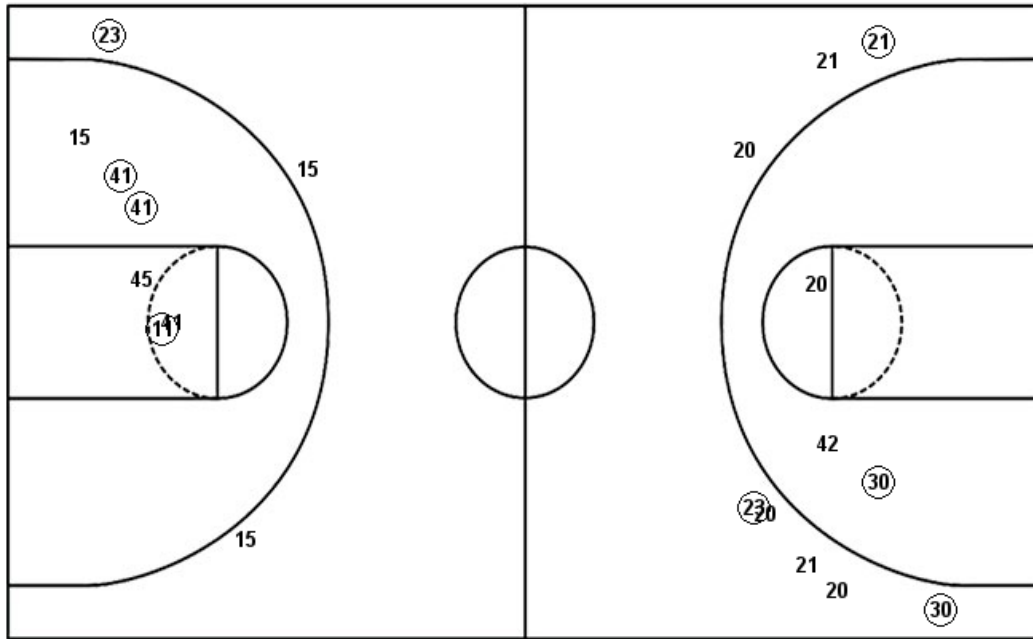
Boise St.

Layups
 (45) 15 (45) 13 15
 (23) (13) 02

Layups
 (21) 25 25 22 25
 14 42 (33) (30)

Dunks

Dunks

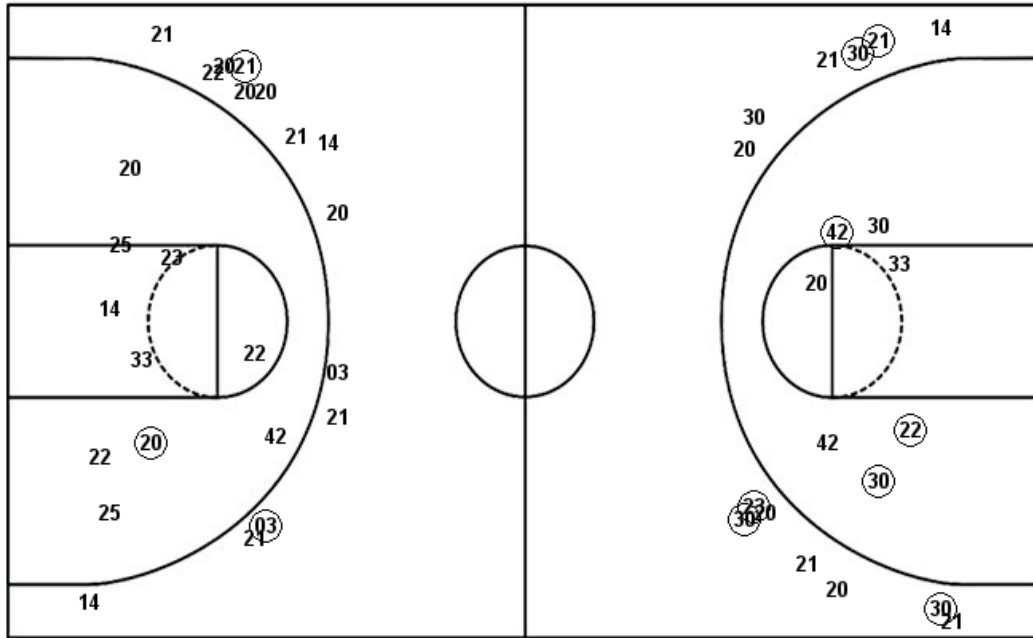


WSU : Period 4	Made	Att	Pct
Layups	4	8	50.0
Dunks	0	0	0
2PT Field Goals	7	14	50.0
3PT Field Goals	1	3	33.3
Total Field Goals	8	17	47.1

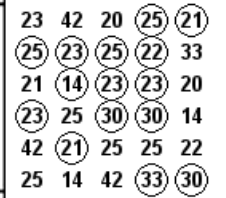
BSU : Period 4	Made	Att	Pct
Layups	3	9	33.3
Dunks	0	0	0
2PT Field Goals	4	12	33.3
3PT Field Goals	3	8	37.5
Total Field Goals	7	20	35.0

Official Shot Chart
Boise St. vs Washington St.
Boise St. Team Shots
December 01, 2018 at Beasley Coliseum - Pullman, WA

Layups



Layups



Dunks

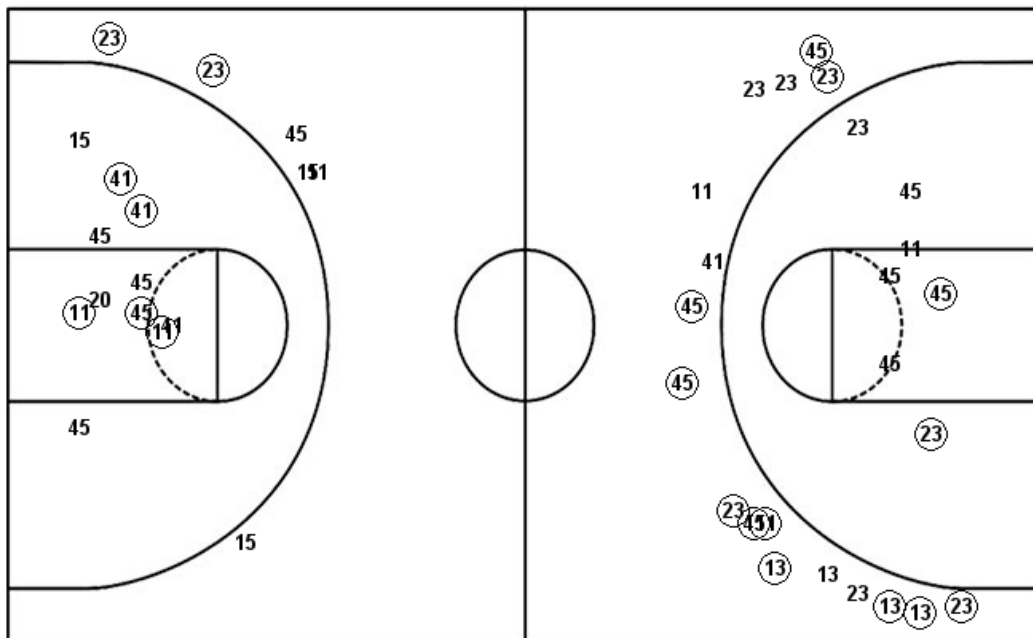
Dunks

BSU : Period 1	Made	Att	Pct
Layups	4	7	57.1
Dunks	0	0	0
2PT Field Goals	5	13	38.5
3PT Field Goals	1	8	12.5
Total Field Goals	6	21	28.6
BSU : Period 3	Made	Att	Pct
Layups	5	9	55.6
Dunks	0	0	0
2PT Field Goals	7	13	53.8
3PT Field Goals	2	5	40.0
Total Field Goals	9	18	50.0

BSU : Period 2	Made	Att	Pct
Layups	3	5	60.0
Dunks	0	0	0
2PT Field Goals	3	9	33.3
3PT Field Goals	1	6	16.7
Total Field Goals	4	15	26.7
BSU : Period 4	Made	Att	Pct
Layups	3	9	33.3
Dunks	0	0	0
2PT Field Goals	4	12	33.3
3PT Field Goals	3	8	37.5
Total Field Goals	7	20	35.0

Official Shot Chart
Boise St. vs Washington St.
Washington St. Team Shots
December 01, 2018 at Beasley Coliseum - Pullman, WA

Layups



Layups

(11)	45	(20)	(45)	(23)
(33)	(13)	11	(45)	(20)
(20)	(20)	(23)	45	23
(45)	(45)	15	(45)	13
15	(23)	(13)	02	

Dunks

Dunks

WSU : Period 1	Made	Att	Pct
Layups	6	7	85.7
Dunks	0	0	0
2PT Field Goals	7	10	70.0
3PT Field Goals	5	6	83.3
Total Field Goals	12	16	75.0
WSU : Period 3	Made	Att	Pct
Layups	3	5	60.0
Dunks	0	0	0
2PT Field Goals	5	10	50.0
3PT Field Goals	1	3	33.3
Total Field Goals	6	13	46.2

WSU : Period 2	Made	Att	Pct
Layups	3	4	75.0
Dunks	0	0	0
2PT Field Goals	4	8	50.0
3PT Field Goals	6	11	54.5
Total Field Goals	10	19	52.6
WSU : Period 4	Made	Att	Pct
Layups	4	8	50.0
Dunks	0	0	0
2PT Field Goals	7	14	50.0
3PT Field Goals	1	3	33.3
Total Field Goals	8	17	47.1