

FINAL SCORE



UCLA

55



Washington

69

February 02, 2019 • Alaska Airlines Arena - Seattle, Wash.

FINAL STATISTICS

Official Box Score
UCLA vs Washington
Game Totals -- Final Statistics
February 02, 2019 at Alaska Airlines Arena - Seattle, Wash.



UCLA 55

No.	Player	S	Pts	FG	3FG	FT	OR	DR	TR	PF	A	TO	Blk	Stl	Min	+/-
01	BROWN, MOSES		9	4-8	0-0	1-2	1	6	7	3	1	2	0	1	30	-13
04	HANDS, JAYLEN		8	3-11	2-7	0-0	1	2	3	1	4	5	0	2	29	-5
13	WILKES, KRIS		20	8-19	0-5	4-5	3	3	6	2	1	1	0	1	34	-14
23	ALI, PRINCE		12	5-8	2-3	0-0	1	4	5	2	4	4	0	4	29	-14
24	HILL, JALEN		2	1-2	0-0	0-0	0	4	4	4	1	1	0	0	23	-13
00	OLESINSKI, ALEX		0	0-0	0-0	0-0	0	1	1	1	0	1	0	0	14	3
02	RILEY, CODY		2	1-2	0-0	0-0	0	1	1	2	1	3	0	0	12	-4
03	BERNARD, JULES		2	1-3	0-0	0-2	0	1	1	0	1	1	0	0	10	0
05	SMITH, CHRIS		0	0-0	0-0	0-0	0	1	1	0	0	3	0	0	5	0
34	SINGLETON, DAVID		0	0-1	0-0	0-0	1	1	2	0	0	1	2	1	11	-10
	TEAM						1	1	2	0		1				
TOTALS			55	23-54	4-15	5-9	8	25	33	15	13	23	2	9	198	

Shooting By Period

Period	FG	FG%	3FG	3FG%	FT	FT%
1st Half	10-23	43%	2-7	29%	1-2	50%
2nd Half	13-31	42%	2-8	25%	4-7	57%
Game	23-54	42.6%	4-15	26.7%	5-9	55.6%

Last FG: 2nd-01:42

Biggest Run: 7-0

Largest lead: By 8 at 1-15:49

Technical Fouls: #02 RILEY (Class B) @ 2nd - 12:35;

Washington 69

No.	Player	S	Pts	FG	3FG	FT	OR	DR	TR	PF	A	TO	Blk	Stl	Min	+/-
01	CRISP, DAVID		15	5-13	4-7	1-2	1	3	4	3	1	2	0	2	31	12
04	THYBULLE, MATISSE		14	4-8	3-5	3-5	0	4	4	0	3	4	1	7	35	17
05	NOWELL, JAYLEN		15	5-11	1-2	4-5	0	8	8	2	4	2	0	2	36	17
13	WRIGHT, HAMEIR		0	0-1	0-1	0-0	0	0	0	4	1	1	1	0	10	2
15	DICKERSON, NOAH		3	1-2	0-0	1-2	2	4	6	0	0	0	2	1	14	6
00	BEY, JAMAL		0	0-0	0-0	0-0	0	0	0	1	1	0	0	1	6	-1
10	HARDY, ELIJAH		0	0-0	0-0	0-0	0	0	0	0	0	0	0	1	1	0
11	CARTER, NAHZIAH		5	2-5	1-3	0-0	0	0	0	2	1	1	0	0	17	6
22	GREEN, DOMINIC		8	3-9	2-6	0-0	0	1	1	1	0	2	0	0	24	4
33	TIMMINS, SAM		9	3-5	0-0	3-3	2	4	6	3	0	2	3	0	24	7
	TEAM						0	0	0	0		3				
TOTALS			69	23-54	11-24	12-17	5	24	29	16	11	17	7	14	198	

Shooting By Period

Period	FG	FG%	3FG	3FG%	FT	FT%
1st Half	11-28	39%	7-14	50%	2-4	50%
2nd Half	12-26	46%	4-10	40%	10-13	77%
Game	23-54	42.6%	11-24	45.8%	12-17	70.6%

Last FG: 2nd-02:13

Biggest Run: 6-0

Largest lead: By 15 at 2-02:13

Technical Fouls: None.

Game Notes:

Officials: Verne Harris, Bob Staffen, Kevin Brill

Attendance: 10000

Start Time: 2019-02-02 21:05:58

End Time: 2019-02-02 23:03:56

Game Duration: 117

Conference Game;

Score	1st	2nd	TOT
UCL	23	32	55
WSH	31	38	69

UCL led for 7:30. WSH led for 27:22.

Game was tied for 4:45.

Times tied: 4 Lead Changes: 3

Points from	UCL	WSH
In the Paint	34	20
Off Turns	18	21
2nd Chance	10	11
Fast Break	13	12
Bench	4	22

Official Box Score
UCLA vs Washington
First Half Statistics Only
February 02, 2019 at Alaska Airlines Arena - Seattle, Wash.



UCLA 23

No.	Player	S	Pts	FG	3FG	FT	OR	DR	TR	PF	A	TO	Blk	Stl	Min	+/-
01	BROWN, MOSES		9	4-6	0-0	1-2	1	4	5	1	0	2	0	1	15	-5
04	HANDS, JAYLEN		3	1-3	1-3	0-0	0	2	2	0	3	4	0	1	14	1
13	WILKES, KRIS		4	2-7	0-2	0-0	0	2	2	1	1	1	0	1	15	-8
23	ALI, PRINCE		7	3-4	1-2	0-0	1	1	2	0	2	2	0	4	15	-8
24	HILL, JALEN		0	0-1	0-0	0-0	0	1	1	1	0	1	0	0	12	-4
00	OLESINSKI, ALEX		0	0-0	0-0	0-0	0	1	1	0	0	1	0	0	5	0
02	RILEY, CODY		0	0-0	0-0	0-0	0	0	0	1	0	2	0	0	7	-7
03	BERNARD, JULES		0	0-1	0-0	0-0	0	0	0	0	1	0	0	0	5	0
05	SMITH, CHRIS		0	0-0	0-0	0-0	0	1	1	0	0	3	0	0	5	0
34	SINGLETON, DAVID		0	0-1	0-0	0-0	1	1	2	0	0	1	2	0	6	-9
	TEAM						1	1	2	0		1				
TOTALS			23	10-23	2-7	1-2	4	14	18	4	7	18	2	7	100	

Shooting By Period

Period	FG	FG%	3FG	3FG%	FT	FT%
1st Half	10-23	43%	2-7	29%	1-2	50%
Game	23-54	42.6%	4-15	26.7%	5-9	55.6%

Last FG Half: UCL 2nd-01:42

Washington 31

No.	Player	S	Pts	FG	3FG	FT	OR	DR	TR	PF	A	TO	Blk	Stl	Min	+/-
01	CRISP, DAVID		12	4-8	4-5	0-0	1	0	1	2	0	2	0	1	12	6
04	THYBULLE, MATISSE		4	1-2	1-2	1-2	0	1	1	0	1	4	1	6	18	5
05	NOWELL, JAYLEN		6	2-7	1-2	1-2	0	2	2	0	1	1	0	2	19	5
13	WRIGHT, HAMEIR		0	0-1	0-1	0-0	0	0	0	2	1	1	0	0	7	-2
15	DICKERSON, NOAH		2	1-2	0-0	0-0	2	3	5	0	0	0	2	1	12	3
00	BEY, JAMAL		0	0-0	0-0	0-0	0	0	0	1	1	0	0	1	3	5
10	HARDY, ELIJAH		0	0-0	0-0	0-0	0	0	0	0	0	0	0	0	0	0
11	CARTER, NAHZIAH		5	2-3	1-2	0-0	0	0	0	1	1	1	0	0	11	8
22	GREEN, DOMINIC		2	1-5	0-2	0-0	0	0	0	0	0	1	0	0	10	5
33	TIMMINS, SAM		0	0-0	0-0	0-0	0	3	3	0	0	0	0	0	8	5
	TEAM						0	0	0	0		1				
TOTALS			31	11-28	7-14	2-4	3	9	12	6	5	11	3	11	100	

Shooting By Period

Period	FG	FG%	3FG	3FG%	FT	FT%
1st Half	11-28	39%	7-14	50%	2-4	50%
Game	23-54	42.6%	11-24	45.8%	12-17	70.6%

Last FG Half: WSH 2nd-02:13

Game Notes:

Officials: Verne Harris, Bob Staffen, Kevin Brill
Attendance: 10000

Start Time: 2019-02-02 21:05:58
End Time: 2019-02-02 23:03:56
Game Duration: 117
Conference Game;

Score	1st	2nd	TOT
UCL	23	32	55
WSH	31	38	69

Points from (This Period)	UCL	WSH
In the Paint	14	6
Off Turns	12	19
2nd Chance	3	2
Fast Break	4	7
Bench	0	7

Official Play-By-Play
UCLA vs Washington
First Half
February 02, 2019 at Alaska Airlines Arena - Seattle, Wash.



Period 1

Starters:

UCLA: 1 BROWN, MOSES; 4 HANDS, JAYLEN; 13 WILKES, KRIS; 23 ALI, PRINCE; 24 HILL, JALEN;

Washington: 1 CRISP, DAVID; 4 THYBULLE, MATISSE; 5 NOWELL, JAYLEN; 13 WRIGHT, HAMEIR; 15 DICKERSON, NOAH;

Time	VISITORS: UCLA	Score	Margin	HOME: Washington
19:47				MISSED 3PTR by NOWELL, JAYLEN
19:43	REBOUND (DEF) by WILKES, KRIS			
19:13	GOOD! DUNK by BROWN, MOSES	0-2	V 2	
19:13	ASSIST by WILKES, KRIS			
18:51		3-2	H 1	GOOD! 3PTR by CRISP, DAVID
18:20	TURNOVER (LOSTBALL) by BROWN, MOSES			
18:11				TURNOVER (BADPASS) by CRISP, DAVID
18:11	STEAL by ALI, PRINCE			
18:07	GOOD! DUNK by WILKES, KRIS	3-4	V 1	
18:07	ASSIST by ALI, PRINCE			
17:57				TURNOVER (BADPASS) by WRIGHT, HAMEIR
17:51	MISSED 3PTR by ALI, PRINCE			
17:47				REBOUND (DEF) by DICKERSON, NOAH
17:44				TURNOVER (LOSTBALL) by CRISP, DAVID
17:44	STEAL by ALI, PRINCE			
17:31	GOOD! 3PTR by HANDS, JAYLEN	3-7	V 4	
17:14				MISSED JUMPER by NOWELL, JAYLEN
17:11	REBOUND (DEF) by BROWN, MOSES			
17:08	TURNOVER (BADPASS) by HANDS, JAYLEN			
17:08				STEAL by THYBULLE, MATISSE
17:08	FOUL (PERSONAL) by BROWN, MOSES			
17:08	SUB OUT: BROWN, MOSES			
17:08	SUB IN: RILEY, CODY			
16:58				MISSED JUMPER by NOWELL, JAYLEN
16:55	REBOUND (DEF) by HILL, JALEN			
16:53	MISSED 3PTR by WILKES, KRIS			
16:49				REBOUND (DEF) by THYBULLE, MATISSE
16:47				TURNOVER (BADPASS) by THYBULLE, MATISSE
16:47	STEAL by HANDS, JAYLEN			
16:42	TURNOVER (BADPASS) by HANDS, JAYLEN			
16:42				STEAL by THYBULLE, MATISSE
16:36	FOUL (PERSONAL) by HILL, JALEN			
16:36				MISSED FT by NOWELL, JAYLEN
16:36				REBOUND (OFF) by TEAM
16:36		4-7	V 3	GOOD! FT by NOWELL, JAYLEN
16:22	MISSED 3PTR by WILKES, KRIS			
16:18	REBOUND (OFF) by ALI, PRINCE			
16:16	GOOD! LAYUP by ALI, PRINCE	4-9	V 5	
16:03				TURNOVER (LOSTBALL) by NOWELL, JAYLEN
16:03	STEAL by ALI, PRINCE			
15:49	GOOD! 3PTR by ALI, PRINCE	4-12	V 8	
15:49	ASSIST by HANDS, JAYLEN			
15:48				TIMEOUT 30SEC
15:48				SUB OUT: DICKERSON, NOAH
15:48				SUB IN: CARTER, NAHZIAH
15:48				SUB OUT: NOWELL, JAYLEN
15:48				SUB IN: TIMMINS, SAM
15:27		7-12	V 5	GOOD! 3PTR by THYBULLE, MATISSE
15:27				ASSIST by WRIGHT, HAMEIR
15:01	TURNOVER (BADPASS) by ALI, PRINCE			
15:01				STEAL by CRISP, DAVID
14:56				MISSED LAYUP by CRISP, DAVID
14:52	REBOUND (DEF) by WILKES, KRIS			
14:52				FOUL (PERSONAL) by WRIGHT, HAMEIR
14:52				SUB OUT: CRISP, DAVID
14:52				SUB IN: NOWELL, JAYLEN
14:52				SUB OUT: WRIGHT, HAMEIR
14:52				SUB IN: GREEN, DOMINIC
14:30	TURNOVER (BADPASS) by HANDS, JAYLEN			
14:30				STEAL by THYBULLE, MATISSE
14:09		10-12	V 2	GOOD! 3PTR by CARTER, NAHZIAH
14:09				ASSIST by NOWELL, JAYLEN
13:39	MISSED 3PTR by HANDS, JAYLEN			
13:35				REBOUND (DEF) by TIMMINS, SAM
13:27				TURNOVER (LOSTBALL) by GREEN, DOMINIC
13:23	GOOD! DUNK by ALI, PRINCE [FB]	10-14	V 4	
13:23	ASSIST by HANDS, JAYLEN			
12:58				TURNOVER (BADPASS) by CARTER, NAHZIAH
12:48	TURNOVER (BADPASS) by WILKES, KRIS			
12:48				SUB OUT: CARTER, NAHZIAH

Time	VISITORS: UCLA	Score	Margin	HOME: Washington
12:48				SUB IN: CRISP, DAVID
12:48				SUB OUT: TIMMINS, SAM
12:48				SUB IN: DICKERSON, NOAH
12:48	SUB OUT: HANDS, JAYLEN			
12:48	SUB IN: BROWN, MOSES			
12:48	SUB OUT: HILL, JALEN			
12:48	SUB IN: SINGLETON, DAVID			
12:36	FOUL (PERSONAL) by WILKES, KRIS			
12:36				MISSED FT by THYBULLE, MATISSE
12:36				REBOUND (OFF) by TEAM
12:36		11-14	V 3	GOOD! FT by THYBULLE, MATISSE
12:13	FOUL (OFF) by RILEY, CODY			
12:13	TURNOVER (OFFENSIVE) by RILEY, CODY			
12:13				SUB OUT: THYBULLE, MATISSE
12:13				SUB IN: CARTER, NAHZIAH
11:56				MISSED JUMPER by NOWELL, JAYLEN
11:53				REBOUND (OFF) by DICKERSON, NOAH
11:53	TURNOVER (TRAVEL) by BROWN, MOSES			
11:53				
11:53				TURNOVER (LOSTBALL) by DICKERSON, NOAH
11:53	STEAL by BROWN, MOSES			
11:34				MISSED JUMPER by CRISP, DAVID
11:32	REBOUND (DEF) by BROWN, MOSES			
11:14	MISSED JUMPER by SINGLETON, DAVID			
11:11	REBOUND (OFF) by SINGLETON, DAVID			
11:08	TURNOVER (LOSTBALL) by SINGLETON, DAVID			
11:08				STEAL by NOWELL, JAYLEN
10:59		14-14	T	GOOD! 3PTR by CRISP, DAVID
10:59				ASSIST by CARTER, NAHZIAH
10:39	MISSED JUMPER by WILKES, KRIS			
10:35				REBOUND (DEF) by DICKERSON, NOAH
10:30				MISSED JUMPER by CRISP, DAVID
10:30	BLOCK by SINGLETON, DAVID			
10:30	REBOUND (DEF) by TEAM			
10:30				SUB OUT: CRISP, DAVID
10:30				SUB IN: THYBULLE, MATISSE
10:30	SUB OUT: WILKES, KRIS			
10:30	SUB IN: BERNARD, JULES			
10:30	SUB OUT: ALI, PRINCE			
10:30	SUB IN: SMITH, CHRIS			
10:30	SUB OUT: SINGLETON, DAVID			
10:30	SUB IN: HANDS, JAYLEN			
10:30	SUB OUT: RILEY, CODY			
10:30	SUB IN: OLESINSKI, ALEX			
10:10	TURNOVER (BADPASS) by OLESINSKI, ALEX			
10:10				STEAL by DICKERSON, NOAH
10:06		16-14	H 2	GOOD! JUMPER by GREEN, DOMINIC [FB]
09:34				FOUL (PERSONAL) by CARTER, NAHZIAH
09:32	TURNOVER (BADPASS) by SMITH, CHRIS			
09:32				STEAL by THYBULLE, MATISSE
09:27				TURNOVER (BADPASS) by THYBULLE, MATISSE
09:09	GOOD! DUNK by BROWN, MOSES	16-16	T	
09:09	ASSIST by BERNARD, JULES			
09:09				SUB OUT: DICKERSON, NOAH
09:09				SUB IN: TIMMINS, SAM
08:56				MISSED 3PTR by GREEN, DOMINIC
08:52	REBOUND (DEF) by HANDS, JAYLEN			
08:47	TURNOVER (LOSTBALL) by HANDS, JAYLEN			
08:47				STEAL by THYBULLE, MATISSE
08:22		18-16	H 2	GOOD! LAYUP by CARTER, NAHZIAH
08:09	MISSED JUMPER by BROWN, MOSES			
08:06				REBOUND (DEF) by NOWELL, JAYLEN
08:01				MISSED 3PTR by CARTER, NAHZIAH
07:57	REBOUND (DEF) by HANDS, JAYLEN			
07:51	GOOD! DUNK by BROWN, MOSES [FB]	18-18	T	
07:51	ASSIST by HANDS, JAYLEN			
07:30				MISSED JUMPER by NOWELL, JAYLEN
07:27	REBOUND (DEF) by BROWN, MOSES			
07:23	MISSED 3PTR by HANDS, JAYLEN			
07:19				REBOUND (DEF) by TIMMINS, SAM
07:04				MISSED JUMPER by GREEN, DOMINIC
07:02	REBOUND (DEF) by SMITH, CHRIS			
06:57	TURNOVER (LOSTBALL) by SMITH, CHRIS			
06:57				STEAL by THYBULLE, MATISSE
06:52		20-18	H 2	GOOD! LAYUP by NOWELL, JAYLEN [FB/PNT]
06:31	MISSED JUMPER by BERNARD, JULES			
06:26				REBOUND (DEF) by TIMMINS, SAM
06:14				MISSED 3PTR by THYBULLE, MATISSE
06:10	REBOUND (DEF) by BROWN, MOSES			
05:57	GOOD! JUMPER by BROWN, MOSES [PNT]	20-20	T	

Time	VISITORS: UCLA	Score	Margin	HOME: Washington
05:34				MISSED JUMPER by GREEN, DOMINIC
05:30	REBOUND (DEF) by OLESINSKI, ALEX			
05:13	TURNOVER (BADPASS) by SMITH, CHRIS			
05:13				
05:13				SUB OUT: CARTER, NAHZIAH
05:13				SUB IN: WRIGHT, HAMEIR
05:13				SUB OUT: GREEN, DOMINIC
05:13				SUB IN: CRISP, DAVID
05:13				SUB OUT: TIMMINS, SAM
05:13				SUB IN: DICKERSON, NOAH
05:13	SUB OUT: OLESINSKI, ALEX			
05:13	SUB IN: WILKES, KRIS			
05:13	SUB OUT: BROWN, MOSES			
05:13	SUB IN: HILL, JALEN			
05:13	SUB OUT: BERNARD, JULES			
05:13	SUB IN: ALI, PRINCE			
05:13	SUB OUT: SMITH, CHRIS			
05:13	SUB IN: RILEY, CODY			
05:09				TURNOVER (BADPASS) by THYBULLE, MATISSE
05:09	STEAL by WILKES, KRIS			
05:07	MISSED JUMPER by WILKES, KRIS			
05:07				BLOCK by THYBULLE, MATISSE
05:07	REBOUND (OFF) by TEAM			
04:47	TURNOVER (LOSTBALL) by RILEY, CODY			
04:47				STEAL by NOWELL, JAYLEN
04:41		23-20	H 3	GOOD! 3PTR by CRISP, DAVID [FB]
04:41				ASSIST by THYBULLE, MATISSE
04:30	TIMEOUT 30SEC			
04:30	SUB OUT: RILEY, CODY			
04:30	SUB IN: BROWN, MOSES			
04:07	TURNOVER (SHOTCLOCK) by			
04:07	SUB OUT: HANDS, JAYLEN			
04:07	SUB IN: SINGLETON, DAVID			
04:01				MISSED 3PTR by WRIGHT, HAMEIR
04:01	REBOUND (DEF) by ALI, PRINCE			
03:45				FOUL (PERSONAL) by WRIGHT, HAMEIR
03:45				SUB OUT: WRIGHT, HAMEIR
03:45				SUB IN: GREEN, DOMINIC
03:31	MISSED LAYUP by BROWN, MOSES			
03:31				BLOCK by DICKERSON, NOAH
03:27				REBOUND (DEF) by NOWELL, JAYLEN
03:22				MISSED 3PTR by GREEN, DOMINIC
03:18				REBOUND (OFF) by CRISP, DAVID
03:04				FOUL (PERSONAL) by CRISP, DAVID
03:04				SUB OUT: GREEN, DOMINIC
03:04				SUB IN: BEY, JAMAL
02:56	MISSED LAYUP by WILKES, KRIS			
02:56				BLOCK by DICKERSON, NOAH
02:53	REBOUND (OFF) by BROWN, MOSES			
02:53				FOUL (PERSONAL) by BEY, JAMAL
02:53	MISSED FT by BROWN, MOSES			
02:53	REBOUND (OFF) by TEAM			
02:53	GOOD! FT by BROWN, MOSES	23-21	H 2	
02:31		26-21	H 5	GOOD! 3PTR by CRISP, DAVID
02:31				ASSIST by BEY, JAMAL
02:14	MISSED LAYUP by HILL, JALEN			
02:10				REBOUND (DEF) by DICKERSON, NOAH
01:45				TURNOVER (BADPASS) by THYBULLE, MATISSE
01:45	STEAL by ALI, PRINCE			
01:41	TURNOVER (LOSTBALL) by HILL, JALEN			
01:41				STEAL by BEY, JAMAL
01:36				MISSED LAYUP by DICKERSON, NOAH
01:36	BLOCK by SINGLETON, DAVID			
01:32	REBOUND (DEF) by SINGLETON, DAVID			
01:29	TURNOVER (LOSTBALL) by ALI, PRINCE			
01:05				MISSED 3PTR by CRISP, DAVID
01:02				REBOUND (OFF) by DICKERSON, NOAH
01:01		28-21	H 7	GOOD! LAYUP by DICKERSON, NOAH [PNT]
00:46				FOUL (PERSONAL) by CRISP, DAVID
00:46				SUB OUT: DICKERSON, NOAH
00:46				SUB IN: TIMMINS, SAM
00:46				SUB OUT: CRISP, DAVID
00:46				SUB IN: CARTER, NAHZIAH
00:36	GOOD! JUMPER by WILKES, KRIS	28-23	H 5	
00:36	ASSIST by ALI, PRINCE			
00:02		31-23	H 8	GOOD! 3PTR by NOWELL, JAYLEN

UCLA 23, Washington 31

Points from (This Period)	UCL	WSH
In the Paint	14	6
Off Turns	12	19
2nd Chance	3	2
Fast Break	4	7
Bench	0	7

Official Box Score
UCLA vs Washington
Second Half Statistics Only
February 02, 2019 at Alaska Airlines Arena - Seattle, Wash.



UCLA 32

No.	Player	S	Pts	FG	3FG	FT	OR	DR	TR	PF	A	TO	Blk	Stl	Min	+/-
01	BROWN, MOSES		0	0-2	0-0	0-0	0	2	2	2	1	0	0	0	15	-8
04	HANDS, JAYLEN		5	2-8	1-4	0-0	1	0	1	1	1	1	0	1	16	-6
13	WILKES, KRIS		16	6-12	0-3	4-5	3	1	4	1	0	0	0	0	20	-6
23	ALI, PRINCE		5	2-4	1-1	0-0	0	3	3	2	2	2	0	0	14	-6
24	HILL, JALEN		2	1-1	0-0	0-0	0	3	3	3	1	0	0	0	10	-9
00	OLESINSKI, ALEX		0	0-0	0-0	0-0	0	0	0	1	0	0	0	0	9	3
02	RILEY, CODY		2	1-2	0-0	0-0	0	1	1	1	1	1	0	0	4	3
03	BERNARD, JULES		2	1-2	0-0	0-2	0	1	1	0	0	1	0	0	5	0
05	SMITH, CHRIS		0	0-0	0-0	0-0	0	0	0	0	0	0	0	0	0	0
34	SINGLETON, DAVID		0	0-0	0-0	0-0	0	0	0	0	0	0	0	1	5	-1
	TEAM						0	0	0	0		0				
TOTALS			32	13-31	2-8	4-7	4	11	15	11	6	5	0	2	98	

Shooting By Period

Period	FG	FG%	3FG	3FG%	FT	FT%
2nd Half	13-31	42%	2-8	25%	4-7	57%
Game	23-54	42.6%	4-15	26.7%	5-9	55.6%

Last FG Half: UCL -

Washington 38

No.	Player	S	Pts	FG	3FG	FT	OR	DR	TR	PF	A	TO	Blk	Stl	Min	+/-
01	CRISP, DAVID		3	1-5	0-2	1-2	0	3	3	1	1	0	0	1	19	6
04	THYBULLE, MATISSE		10	3-6	2-3	2-3	0	3	3	0	2	0	0	1	17	12
05	NOWELL, JAYLEN		9	3-4	0-0	3-3	0	6	6	2	3	1	0	0	17	12
13	WRIGHT, HAMEIR		0	0-0	0-0	0-0	0	0	0	2	0	0	1	0	3	4
15	DICKERSON, NOAH		1	0-0	0-0	1-2	0	1	1	0	0	0	0	0	2	3
00	BEY, JAMAL		0	0-0	0-0	0-0	0	0	0	0	0	0	0	0	3	-6
10	HARDY, ELIJAH		0	0-0	0-0	0-0	0	0	0	0	0	0	0	1	1	0
11	CARTER, NAHZIAH		0	0-2	0-1	0-0	0	0	0	1	0	0	0	0	6	-2
22	GREEN, DOMINIC		6	2-4	2-4	0-0	0	1	1	1	0	1	0	0	14	-1
33	TIMMINS, SAM		9	3-5	0-0	3-3	2	1	3	3	0	2	3	0	16	2
	TEAM						0	0	0	0		2				
TOTALS			38	12-26	4-10	10-13	2	15	17	10	6	6	4	3	98	

Shooting By Period

Period	FG	FG%	3FG	3FG%	FT	FT%
2nd Half	12-26	46%	4-10	40%	10-13	77%
Game	23-54	42.6%	11-24	45.8%	12-17	70.6%

Last FG Half: WSH -

Game Notes:

Officials: Verne Harris, Bob Staffen, Kevin Brill
Attendance: 10000

Start Time: 2019-02-02 21:05:58
End Time: 2019-02-02 23:03:56
Game Duration: 117
Conference Game;

Score	1st	2nd	TOT
UCL	23	32	55
WSH	31	38	69

Points from (This Period)	UCL	WSH
In the Paint	20	14
Off Turns	6	2
2nd Chance	7	9
Fast Break	9	5
Bench	4	15

Official Play-By-Play
UCLA vs Washington
Second Half
February 02, 2019 at Alaska Airlines Arena - Seattle, Wash.



Period 2

Starters:

UCLA: 1 BROWN, MOSES; 4 HANDS, JAYLEN; 13 WILKES, KRIS; 23 ALI, PRINCE; 24 HILL, JALEN;

Washington: 1 CRISP, DAVID; 4 THYBULLE, MATISSE; 5 NOWELL, JAYLEN; 13 WRIGHT, HAMEIR; 15 DICKERSON, NOAH;

Time	VISITORS: UCLA	Score	Margin	HOME: Washington
19:47				FOUL (PERSONAL) by WRIGHT, HAMEIR
19:46				FOUL (PERSONAL) by WRIGHT, HAMEIR
19:46				SUB OUT: WRIGHT, HAMEIR
19:46				SUB IN: TIMMINS, SAM
19:38	TURNOVER (BADPASS) by HANDS, JAYLEN			
19:07				MISSED LAYUP by TIMMINS, SAM
19:05	REBOUND (DEF) by HILL, JALEN			
18:52	MISSED 3PTR by WILKES, KRIS			
18:48				REBOUND (DEF) by DICKERSON, NOAH
18:41				MISSED LAYUP by TIMMINS, SAM
18:38	REBOUND (DEF) by HILL, JALEN			
18:33	MISSED LAYUP by ALI, PRINCE			
18:31				REBOUND (DEF) by NOWELL, JAYLEN
18:22	FOUL (PERSONAL) by BROWN, MOSES			
18:22				MISSED FT by DICKERSON, NOAH
18:22				REBOUND (OFF) by TEAM
18:22		32-23	H 9	GOOD! FT by DICKERSON, NOAH
18:03	MISSED JUMPER by WILKES, KRIS			
18:01				REBOUND (DEF) by CRISP, DAVID
17:59		34-23	H 11	GOOD! LAYUP by CRISP, DAVID [FB]
17:58				SUB OUT: DICKERSON, NOAH
17:58				SUB IN: GREEN, DOMINIC
17:35	GOOD! JUMPER by WILKES, KRIS [PNT]	34-25	H 9	
17:15				MISSED JUMPER by CRISP, DAVID
17:13				REBOUND (OFF) by TEAM
17:13	FOUL (PERSONAL) by HILL, JALEN			
16:58		37-25	H 12	GOOD! 3PTR by GREEN, DOMINIC
16:58				ASSIST by THYBULLE, MATISSE
16:44	TURNOVER (BADPASS) by ALI, PRINCE			
16:44				STEAL by CRISP, DAVID
16:27		39-25	H 14	GOOD! JUMPER by NOWELL, JAYLEN
16:27				ASSIST by THYBULLE, MATISSE
16:26	TIMEOUT 30SEC			
16:26	SUB OUT: HANDS, JAYLEN			
16:26	SUB IN: OLESINSKI, ALEX			
16:26	SUB OUT: ALI, PRINCE			
16:26	SUB IN: BERNARD, JULES			
16:26	SUB OUT: HILL, JALEN			
16:26	SUB IN: SINGLETON, DAVID			
16:03	GOOD! LAYUP by BERNARD, JULES [PNT]	39-27	H 12	
16:03	ASSIST by BROWN, MOSES			
15:39		41-27	H 14	GOOD! DUNK by THYBULLE, MATISSE
15:32	GOOD! LAYUP by WILKES, KRIS [FB/PNT]	41-29	H 12	
15:12				MISSED 3PTR by THYBULLE, MATISSE
15:08	REBOUND (DEF) by BROWN, MOSES			
15:05				FOUL (PERSONAL) by NOWELL, JAYLEN
15:05				
15:05				SUB OUT: GREEN, DOMINIC
15:05				SUB IN: CARTER, NAHZIAH
15:05	GOOD! FT by WILKES, KRIS [FB]	41-30	H 11	
15:05	MISSED FT by WILKES, KRIS			
15:05				REBOUND (DEF) by NOWELL, JAYLEN
14:46				MISSED LAYUP by CARTER, NAHZIAH
14:42				REBOUND (OFF) by TIMMINS, SAM
14:42		43-30	H 13	GOOD! LAYUP by TIMMINS, SAM
14:26	MISSED JUMPER by BERNARD, JULES			
14:26				BLOCK by TIMMINS, SAM
14:22				REBOUND (DEF) by TIMMINS, SAM
14:16				TURNOVER (LOSTBALL) by NOWELL, JAYLEN
14:16	STEAL by SINGLETON, DAVID			
14:06	MISSED JUMPER by BROWN, MOSES			
14:06				BLOCK by TIMMINS, SAM
14:01	REBOUND (OFF) by WILKES, KRIS			
14:01	GOOD! LAYUP by WILKES, KRIS [PNT]	43-32	H 11	
13:41	FOUL (PERSONAL) by BROWN, MOSES			
13:41		44-32	H 12	GOOD! FT by NOWELL, JAYLEN
13:41		45-32	H 13	GOOD! FT by NOWELL, JAYLEN
13:41				SUB OUT: NOWELL, JAYLEN
13:41				SUB IN: BEY, JAMAL
13:41	SUB OUT: BROWN, MOSES			

Time	VISITORS: UCLA	Score	Margin	HOME: Washington
13:41	SUB IN: RILEY, CODY			
13:19	TURNOVER (LOSTBALL) by BERNARD, JULES			
13:19				STEAL by THYBULLE, MATISSE
13:19	SUB OUT: BERNARD, JULES			
13:19	SUB IN: ALI, PRINCE			
13:10	FOUL (PERSONAL) by ALI, PRINCE			
12:52				MISSED JUMPER by THYBULLE, MATISSE
12:49	REBOUND (DEF) by TEAM			
12:49				FOUL (PERSONAL) by TIMMINS, SAM
12:49				SUB OUT: THYBULLE, MATISSE
12:49				SUB IN: GREEN, DOMINIC
12:35	MISSED DUNK by RILEY, CODY			
12:35				REBOUND (DEF) by TEAM
12:35	FOUL (TECH) by RILEY, CODY			
12:35		46-32	H 14	GOOD! FT by CRISP, DAVID
12:35	SUB OUT: SINGLETON, DAVID			
12:35	SUB IN: HANDS, JAYLEN			
12:27				FOUL (OFF) by TIMMINS, SAM
12:27				TURNOVER (OFFENSIVE) by TIMMINS, SAM
12:07	GOOD! LAYUP by RILEY, CODY	46-34	H 12	
11:43				MISSED JUMPER by CRISP, DAVID
11:39	REBOUND (DEF) by WILKES, KRIS			
11:30	GOOD! 3PTR by HANDS, JAYLEN	46-37	H 9	
11:30	ASSIST by ALI, PRINCE			
11:16				TURNOVER (LOSTBALL) by GREEN, DOMINIC
11:16	STEAL by HANDS, JAYLEN			
11:12	GOOD! DUNK by ALI, PRINCE [FB]	46-39	H 7	
11:12	ASSIST by RILEY, CODY			
11:11				TIMEOUT 30SEC
11:11				SUB OUT: CRISP, DAVID
11:11				SUB IN: NOWELL, JAYLEN
11:00				TURNOVER (10SEC) by
11:00				SUB OUT: BEY, JAMAL
11:00				SUB IN: CRISP, DAVID
10:49	MISSED 3PTR by HANDS, JAYLEN			
10:42				REBOUND (DEF) by NOWELL, JAYLEN
10:41				MISSED 3PTR by GREEN, DOMINIC
10:39	REBOUND (DEF) by RILEY, CODY			
10:39				FOUL (PERSONAL) by CARTER, NAHZIAH
10:39				SUB OUT: GREEN, DOMINIC
10:39				SUB IN: THYBULLE, MATISSE
10:22	MISSED 3PTR by WILKES, KRIS			
10:17				REBOUND (DEF) by CRISP, DAVID
10:13		48-39	H 9	GOOD! JUMPER by NOWELL, JAYLEN [FB/PNT]
10:13	FOUL (PERSONAL) by OLESINSKI, ALEX			
10:13		49-39	H 10	GOOD! FT by NOWELL, JAYLEN [FB]
09:47	MISSED JUMPER by HANDS, JAYLEN			
09:44	REBOUND (OFF) by HANDS, JAYLEN			
09:42	MISSED JUMPER by HANDS, JAYLEN			
09:42				BLOCK by TIMMINS, SAM
09:38				REBOUND (DEF) by THYBULLE, MATISSE
09:29				FOUL (OFF) by TIMMINS, SAM
09:29				TURNOVER (OFFENSIVE) by TIMMINS, SAM
09:29				SUB OUT: CARTER, NAHZIAH
09:29				SUB IN: GREEN, DOMINIC
09:29	SUB OUT: OLESINSKI, ALEX			
09:29	SUB IN: BROWN, MOSES			
09:17	FOUL (OFF) by RILEY, CODY			
09:17	TURNOVER (OFFENSIVE) by RILEY, CODY			
09:17				SUB OUT: TIMMINS, SAM
09:17				SUB IN: WRIGHT, HAMEIR
09:17	SUB OUT: RILEY, CODY			
09:17	SUB IN: HILL, JALEN			
09:08	FOUL (PERSONAL) by HANDS, JAYLEN			
09:08				MISSED FT by CRISP, DAVID
09:08	REBOUND (DEF) by ALI, PRINCE			
08:54				FOUL (PERSONAL) by NOWELL, JAYLEN
08:54	GOOD! FT by WILKES, KRIS	49-40	H 9	
08:54	GOOD! FT by WILKES, KRIS	49-41	H 8	
08:27		52-41	H 11	GOOD! 3PTR by THYBULLE, MATISSE
08:27				ASSIST by CRISP, DAVID
08:12	MISSED LAYUP by ALI, PRINCE			
08:08				REBOUND (DEF) by NOWELL, JAYLEN
07:38		54-41	H 13	GOOD! JUMPER by NOWELL, JAYLEN
07:14	MISSED LAYUP by WILKES, KRIS			
07:14				BLOCK by WRIGHT, HAMEIR
07:09	REBOUND (OFF) by WILKES, KRIS			
07:08	GOOD! LAYUP by WILKES, KRIS	54-43	H 11	
07:02		57-43	H 14	GOOD! 3PTR by GREEN, DOMINIC
07:02				ASSIST by NOWELL, JAYLEN

Time	VISITORS: UCLA	Score	Margin	HOME: Washington
06:53	TIMEOUT 30SEC			
06:53				SUB OUT: WRIGHT, HAMEIR
06:53				SUB IN: TIMMINS, SAM
06:37	MISSED LAYUP by WILKES, KRIS			
06:34				REBOUND (DEF) by THYBULLE, MATISSE
06:23				MISSED 3PTR by CRISP, DAVID
06:19	REBOUND (DEF) by ALI, PRINCE			
06:15	GOOD! LAYUP by HILL, JALEN [FB/PNT]	57-45	H 12	
06:15	ASSIST by HANDS, JAYLEN			
05:57				MISSED JUMPER by THYBULLE, MATISSE
05:54	REBOUND (DEF) by HILL, JALEN			
05:46	MISSED 3PTR by WILKES, KRIS			
05:35				REBOUND (DEF) by NOWELL, JAYLEN
05:18		59-45	H 14	GOOD! DUNK by TIMMINS, SAM
05:18				ASSIST by NOWELL, JAYLEN
05:18	FOUL (PERSONAL) by HILL, JALEN			
05:18	SUB OUT: ALI, PRINCE			
05:18	SUB IN: OLESINSKI, ALEX			
05:18	SUB OUT: HILL, JALEN			
05:18	SUB IN: BERNARD, JULES			
05:18		60-45	H 15	GOOD! FT by TIMMINS, SAM
04:55	MISSED 3PTR by HANDS, JAYLEN			
04:52	REBOUND (OFF) by WILKES, KRIS			
04:51	GOOD! LAYUP by WILKES, KRIS	60-47	H 13	
04:51				FOUL (PERSONAL) by GREEN, DOMINIC
04:51	GOOD! FT by WILKES, KRIS	60-48	H 12	
04:26		63-48	H 15	GOOD! 3PTR by THYBULLE, MATISSE
04:26				ASSIST by NOWELL, JAYLEN
04:04	MISSED LAYUP by BROWN, MOSES			
03:59				REBOUND (DEF) by GREEN, DOMINIC
03:44				MISSED 3PTR by CRISP, DAVID
03:43	REBOUND (DEF) by BERNARD, JULES			
03:43				FOUL (PERSONAL) by CRISP, DAVID
03:43				
03:43	MISSED FT by BERNARD, JULES			
03:43	REBOUND (OFF) by TEAM			
03:43	MISSED FT by BERNARD, JULES			
03:43				REBOUND (DEF) by NOWELL, JAYLEN
03:13				TURNOVER (SHOTCLOCK) by
03:13	SUB OUT: OLESINSKI, ALEX			
03:13	SUB IN: ALI, PRINCE			
03:13	SUB OUT: BERNARD, JULES			
03:13	SUB IN: HILL, JALEN			
03:04	MISSED 3PTR by HANDS, JAYLEN			
03:00				REBOUND (DEF) by THYBULLE, MATISSE
02:52	FOUL (PERSONAL) by ALI, PRINCE			
02:52				MISSED FT by THYBULLE, MATISSE
02:51	REBOUND (DEF) by BROWN, MOSES			
02:44	GOOD! LAYUP by WILKES, KRIS [FB]	63-50	H 13	
02:44	ASSIST by ALI, PRINCE			
02:20				MISSED JUMPER by NOWELL, JAYLEN
02:13				REBOUND (OFF) by TIMMINS, SAM
02:13		65-50	H 15	GOOD! DUNK by TIMMINS, SAM
02:00	GOOD! 3PTR by ALI, PRINCE	65-53	H 12	
02:00	ASSIST by HILL, JALEN			
01:57	TIMEOUT TEAM			
01:55	FOUL (PERSONAL) by HILL, JALEN			
01:55		66-53	H 13	GOOD! FT by TIMMINS, SAM
01:55		67-53	H 14	GOOD! FT by TIMMINS, SAM
01:42	GOOD! JUMPER by HANDS, JAYLEN	67-55	H 12	
01:13				MISSED 3PTR by GREEN, DOMINIC
01:13				REBOUND (OFF) by TEAM
01:13	FOUL (PERSONAL) by WILKES, KRIS			
01:13		68-55	H 13	GOOD! FT by THYBULLE, MATISSE
01:13	SUB OUT: BROWN, MOSES			
01:13	SUB IN: SINGLETON, DAVID			
01:13		69-55	H 14	GOOD! FT by THYBULLE, MATISSE
01:06	MISSED LAYUP by HANDS, JAYLEN			
01:03				REBOUND (DEF) by CRISP, DAVID
00:53				SUB OUT: TIMMINS, SAM
00:53				SUB IN: WRIGHT, HAMEIR
00:53				SUB OUT: CRISP, DAVID
00:53				SUB IN: CARTER, NAHZIAH
00:53				SUB OUT: THYBULLE, MATISSE
00:53				SUB IN: HARDY, ELIJAH
00:53				SUB OUT: GREEN, DOMINIC
00:53				SUB IN: BEY, JAMAL
00:34				MISSED 3PTR by CARTER, NAHZIAH
00:31	REBOUND (DEF) by ALI, PRINCE			
00:26	TURNOVER (LOSTBALL) by ALI, PRINCE			

Time	VISITORS: UCLA	Score	Margin	HOME: Washington
00:26				STEAL by HARDY, ELIJAH

UCLA 55, Washington 69

Points from (This Period)	UCL	WSH
In the Paint	20	14
Off Turns	6	2
2nd Chance	7	9
Fast Break	9	5
Bench	4	15

Official Scoring/Possession Reference Chart

UCLA vs Washington

Period 1

February 02, 2019 at Alaska Airlines Arena - Seattle, Wash.



Period 1

Starters:

UCLA: 1 BROWN, MOSES; 4 HANDS, JAYLEN; 13 WILKES, KRIS; 23 ALI, PRINCE; 24 HILL, JALEN;

Washington: 1 CRISP, DAVID; 4 THYBULLE, MATISSE; 5 NOWELL, JAYLEN; 13 WRIGHT, HAMEIR; 15 DICKERSON, NOAH;

Time	VISITORS: UCLA	Score	Margin	HOME: Washington
19:13	GOOD! DUNK by BROWN, MOSES	0-2	V 2	
18:51		3-2	H 1	GOOD! 3PTR by CRISP, DAVID
18:07	GOOD! DUNK by WILKES, KRIS	3-4	V 1	
17:31	GOOD! 3PTR by HANDS, JAYLEN	3-7	V 4	
16:36		4-7	V 3	GOOD! FT by NOWELL, JAYLEN
16:16	GOOD! LAYUP by ALI, PRINCE	4-9	V 5	
15:49	GOOD! 3PTR by ALI, PRINCE	4-12	V 8	
15:27		7-12	V 5	GOOD! 3PTR by THYBULLE, MATISSE
14:09		10-12	V 2	GOOD! 3PTR by CARTER, NAHZIAH
13:23	GOOD! DUNK by ALI, PRINCE [FB]	10-14	V 4	
12:36		11-14	V 3	GOOD! FT by THYBULLE, MATISSE
10:59		14-14	T	GOOD! 3PTR by CRISP, DAVID
10:06		16-14	H 2	GOOD! JUMPER by GREEN, DOMINIC [FB]
09:09	GOOD! DUNK by BROWN, MOSES	16-16	T	
08:22		18-16	H 2	GOOD! LAYUP by CARTER, NAHZIAH
07:51	GOOD! DUNK by BROWN, MOSES [FB]	18-18	T	
06:52		20-18	H 2	GOOD! LAYUP by NOWELL, JAYLEN [FB/PNT]
05:57	GOOD! JUMPER by BROWN, MOSES [PNT]	20-20	T	
04:41		23-20	H 3	GOOD! 3PTR by CRISP, DAVID [FB]
02:53	GOOD! FT by BROWN, MOSES	23-21	H 2	
02:31		26-21	H 5	GOOD! 3PTR by CRISP, DAVID
01:01		28-21	H 7	GOOD! LAYUP by DICKERSON, NOAH [PNT]
00:36	GOOD! JUMPER by WILKES, KRIS	28-23	H 5	
00:02		31-23	H 8	GOOD! 3PTR by NOWELL, JAYLEN

UCLA 23, Washington 31

Official Scoring/Possession Reference Chart
UCLA vs Washington
Period 2
February 02, 2019 at Alaska Airlines Arena - Seattle, Wash.



Period 2

Starters:

UCLA: 1 BROWN, MOSES; 4 HANDS, JAYLEN; 13 WILKES, KRIS; 23 ALI, PRINCE; 24 HILL, JALEN;

Washington: 1 CRISP, DAVID; 4 THYBULLE, MATISSE; 5 NOWELL, JAYLEN; 13 WRIGHT, HAMEIR; 15 DICKERSON, NOAH;

Time	VISITORS: UCLA	Score	Margin	HOME: Washington
18:22		32-23	H 9	GOOD! FT by DICKERSON, NOAH
17:59		34-23	H 11	GOOD! LAYUP by CRISP, DAVID [FB]
17:35	GOOD! JUMPER by WILKES, KRIS [PNT]	34-25	H 9	
16:58		37-25	H 12	GOOD! 3PTR by GREEN, DOMINIC
16:27		39-25	H 14	GOOD! JUMPER by NOWELL, JAYLEN
16:03	GOOD! LAYUP by BERNARD, JULES [PNT]	39-27	H 12	
15:39		41-27	H 14	GOOD! DUNK by THYBULLE, MATISSE
15:32	GOOD! LAYUP by WILKES, KRIS [FB/PNT]	41-29	H 12	
15:05	GOOD! FT by WILKES, KRIS [FB]	41-30	H 11	
14:42		43-30	H 13	GOOD! LAYUP by TIMMINS, SAM
14:01	GOOD! LAYUP by WILKES, KRIS [PNT]	43-32	H 11	
13:41		44-32	H 12	GOOD! FT by NOWELL, JAYLEN
13:41		45-32	H 13	GOOD! FT by NOWELL, JAYLEN
12:35		46-32	H 14	GOOD! FT by CRISP, DAVID
12:07	GOOD! LAYUP by RILEY, CODY	46-34	H 12	
11:30	GOOD! 3PTR by HANDS, JAYLEN	46-37	H 9	
11:12	GOOD! DUNK by ALI, PRINCE [FB]	46-39	H 7	
10:13		48-39	H 9	GOOD! JUMPER by NOWELL, JAYLEN [FB/PNT]
10:13		49-39	H 10	GOOD! FT by NOWELL, JAYLEN [FB]
08:54	GOOD! FT by WILKES, KRIS	49-40	H 9	
08:54	GOOD! FT by WILKES, KRIS	49-41	H 8	
08:27		52-41	H 11	GOOD! 3PTR by THYBULLE, MATISSE
07:38		54-41	H 13	GOOD! JUMPER by NOWELL, JAYLEN
07:08	GOOD! LAYUP by WILKES, KRIS	54-43	H 11	
07:02		57-43	H 14	GOOD! 3PTR by GREEN, DOMINIC
06:15	GOOD! LAYUP by HILL, JALEN [FB/PNT]	57-45	H 12	
05:18		59-45	H 14	GOOD! DUNK by TIMMINS, SAM
05:18		60-45	H 15	GOOD! FT by TIMMINS, SAM
04:51	GOOD! LAYUP by WILKES, KRIS	60-47	H 13	
04:51	GOOD! FT by WILKES, KRIS	60-48	H 12	
04:26		63-48	H 15	GOOD! 3PTR by THYBULLE, MATISSE
02:44	GOOD! LAYUP by WILKES, KRIS [FB]	63-50	H 13	
02:13		65-50	H 15	GOOD! DUNK by TIMMINS, SAM
02:00	GOOD! 3PTR by ALI, PRINCE	65-53	H 12	
01:55		66-53	H 13	GOOD! FT by TIMMINS, SAM
01:55		67-53	H 14	GOOD! FT by TIMMINS, SAM
01:42	GOOD! JUMPER by HANDS, JAYLEN	67-55	H 12	
01:13		68-55	H 13	GOOD! FT by THYBULLE, MATISSE
01:13		69-55	H 14	GOOD! FT by THYBULLE, MATISSE

UCLA 55, Washington 69

Official Substitutions Log
UCLA vs Washington
Period 1
February 02, 2019 at Alaska Airlines Arena - Seattle, Wash.



VISITORS: UCLA	Time	Score	HOME: Washington
1 BROWN,MOSES			1 CRISP,DAVID
4 HANDS,JAYLEN			4 THYBULLE,MATISSE
13 WILKES,KRIS			5 NOWELL,JAYLEN
23 ALI,PRINCE			13 WRIGHT,HAMEIR
24 HILL,JALEN			15 DICKERSON,NOAH
SUB OUT: 1 BROWN,MOSES	17:08	7-3	
SUB IN: 2 RILEY,CODY	17:08		
	15:48	12-4	SUB OUT: DICKERSON,NOAH
	15:48		SUB IN: CARTER,NAHZIAH
	15:48		SUB OUT: NOWELL,JAYLEN
	15:48		SUB IN: TIMMINS,SAM
	14:52	12-7	SUB OUT: CRISP,DAVID
	14:52		SUB IN: NOWELL,JAYLEN
	14:52		SUB OUT: WRIGHT,HAMEIR
	14:52		SUB IN: GREEN,DOMINIC
	12:48	14-10	SUB OUT: CARTER,NAHZIAH
	12:48		SUB IN: CRISP,DAVID
	12:48		SUB OUT: TIMMINS,SAM
	12:48		SUB IN: DICKERSON,NOAH
SUB OUT: 4 HANDS,JAYLEN	12:48		
SUB IN: 1 BROWN,MOSES	12:48		
SUB OUT: 24 HILL,JALEN	12:48		
SUB IN: 34 SINGLETON,DAVID	12:48		
	12:13	14-11	SUB OUT: THYBULLE,MATISSE
	12:13		SUB IN: CARTER,NAHZIAH
	10:30	14-14	SUB OUT: CRISP,DAVID
	10:30		SUB IN: THYBULLE,MATISSE
SUB OUT: 13 WILKES,KRIS	10:30		
SUB IN: 3 BERNARD,JULES	10:30		
SUB OUT: 23 ALI,PRINCE	10:30		
SUB IN: 5 SMITH,CHRIS	10:30		
SUB OUT: 34 SINGLETON,DAVID	10:30		
SUB IN: 4 HANDS,JAYLEN	10:30		
SUB OUT: 2 RILEY,CODY	10:30		
SUB IN: 0 OLESINSKI,ALEX	10:30		
	09:09	16-16	SUB OUT: DICKERSON,NOAH
	09:09		SUB IN: TIMMINS,SAM
	05:13	20-20	SUB OUT: CARTER,NAHZIAH
	05:13		SUB IN: WRIGHT,HAMEIR
	05:13		SUB OUT: GREEN,DOMINIC
	05:13		SUB IN: CRISP,DAVID
	05:13		SUB OUT: TIMMINS,SAM
	05:13		SUB IN: DICKERSON,NOAH
SUB OUT: 0 OLESINSKI,ALEX	05:13		
SUB IN: 13 WILKES,KRIS	05:13		
SUB OUT: 1 BROWN,MOSES	05:13		
SUB IN: 24 HILL,JALEN	05:13		
SUB OUT: 3 BERNARD,JULES	05:13		
SUB IN: 23 ALI,PRINCE	05:13		
SUB OUT: 5 SMITH,CHRIS	05:13		
SUB IN: 2 RILEY,CODY	05:13		
SUB OUT: 2 RILEY,CODY	04:30	20-23	
SUB IN: 1 BROWN,MOSES	04:30		
SUB OUT: 4 HANDS,JAYLEN	04:07	20-23	
SUB IN: 34 SINGLETON,DAVID	04:07		
	03:45	20-23	SUB OUT: WRIGHT,HAMEIR
	03:45		SUB IN: GREEN,DOMINIC
	03:04	20-23	SUB OUT: GREEN,DOMINIC
	03:04		SUB IN: BEY,JAMAL
	00:46	21-28	SUB OUT: DICKERSON,NOAH
	00:46		SUB IN: TIMMINS,SAM
	00:46		SUB OUT: CRISP,DAVID
	00:46		SUB IN: CARTER,NAHZIAH

UCLA 23, Washington 31

Official Substitutions Log
UCLA vs Washington
Period 2
February 02, 2019 at Alaska Airlines Arena - Seattle, Wash.



VISITORS: UCLA	Time	Score	HOME: Washington
1 BROWN,MOSES			1 CRISP,DAVID
4 HANDS,JAYLEN			4 THYBULLE,MATISSE
13 WILKES,KRIS			5 NOWELL,JAYLEN
23 ALI,PRINCE			13 WRIGHT,HAMEIR
24 HILL,JALEN			15 DICKERSON,NOAH
	19:46	-	SUB OUT: WRIGHT,HAMEIR
	19:46		SUB IN: TIMMINS,SAM
	17:58	23-34	SUB OUT: DICKERSON,NOAH
	17:58		SUB IN: GREEN,DOMINIC
SUB OUT: 4 HANDS,JAYLEN	16:26	25-39	
SUB IN: 0 OLESINSKI,ALEX	16:26		
SUB OUT: 23 ALI,PRINCE	16:26		
SUB IN: 3 BERNARD,JULES	16:26		
SUB OUT: 24 HILL,JALEN	16:26		
SUB IN: 34 SINGLETON,DAVID	16:26		
	15:05	29-41	SUB OUT: GREEN,DOMINIC
	15:05		SUB IN: CARTER,NAHZIAH
	13:41	32-45	SUB OUT: NOWELL,JAYLEN
	13:41		SUB IN: BEY,JAMAL
SUB OUT: 1 BROWN,MOSES	13:41		
SUB IN: 2 RILEY,CODY	13:41		
SUB OUT: 3 BERNARD,JULES	13:19	32-45	
SUB IN: 23 ALI,PRINCE	13:19		
	12:49	32-45	SUB OUT: THYBULLE,MATISSE
	12:49		SUB IN: GREEN,DOMINIC
SUB OUT: 34 SINGLETON,DAVID	12:35	32-46	
SUB IN: 4 HANDS,JAYLEN	12:35		
	11:11	39-46	SUB OUT: CRISP,DAVID
	11:11		SUB IN: NOWELL,JAYLEN
	11:00	39-46	SUB OUT: BEY,JAMAL
	11:00		SUB IN: CRISP,DAVID
	10:39	39-46	SUB OUT: GREEN,DOMINIC
	10:39		SUB IN: THYBULLE,MATISSE
	09:29	39-49	SUB OUT: CARTER,NAHZIAH
	09:29		SUB IN: GREEN,DOMINIC
SUB OUT: 0 OLESINSKI,ALEX	09:29		
SUB IN: 1 BROWN,MOSES	09:29		
	09:17	39-49	SUB OUT: TIMMINS,SAM
	09:17		SUB IN: WRIGHT,HAMEIR
SUB OUT: 2 RILEY,CODY	09:17		
SUB IN: 24 HILL,JALEN	09:17		
	06:53	43-57	SUB OUT: WRIGHT,HAMEIR
	06:53		SUB IN: TIMMINS,SAM
SUB OUT: 23 ALI,PRINCE	05:18	45-59	
SUB IN: 0 OLESINSKI,ALEX	05:18		
SUB OUT: 24 HILL,JALEN	05:18		
SUB IN: 3 BERNARD,JULES	05:18		
SUB OUT: 0 OLESINSKI,ALEX	03:13	48-63	
SUB IN: 23 ALI,PRINCE	03:13		
SUB OUT: 3 BERNARD,JULES	03:13		
SUB IN: 24 HILL,JALEN	03:13		
SUB OUT: 1 BROWN,MOSES	01:13	55-68	
SUB IN: 34 SINGLETON,DAVID	01:13		
	00:53	55-69	SUB OUT: TIMMINS,SAM
	00:53		SUB IN: WRIGHT,HAMEIR
	00:53		SUB OUT: CRISP,DAVID
	00:53		SUB IN: CARTER,NAHZIAH
	00:53		SUB OUT: THYBULLE,MATISSE
	00:53		SUB IN: HARDY,ELIJAH
	00:53		SUB OUT: GREEN,DOMINIC
	00:53		SUB IN: BEY,JAMAL

UCLA 55, Washington 69

Official Shot Chart
UCLA vs Washington
 PERIOD 2 Shots
 February 02, 2019 at Alaska Airlines Arena - Seattle, Wash.

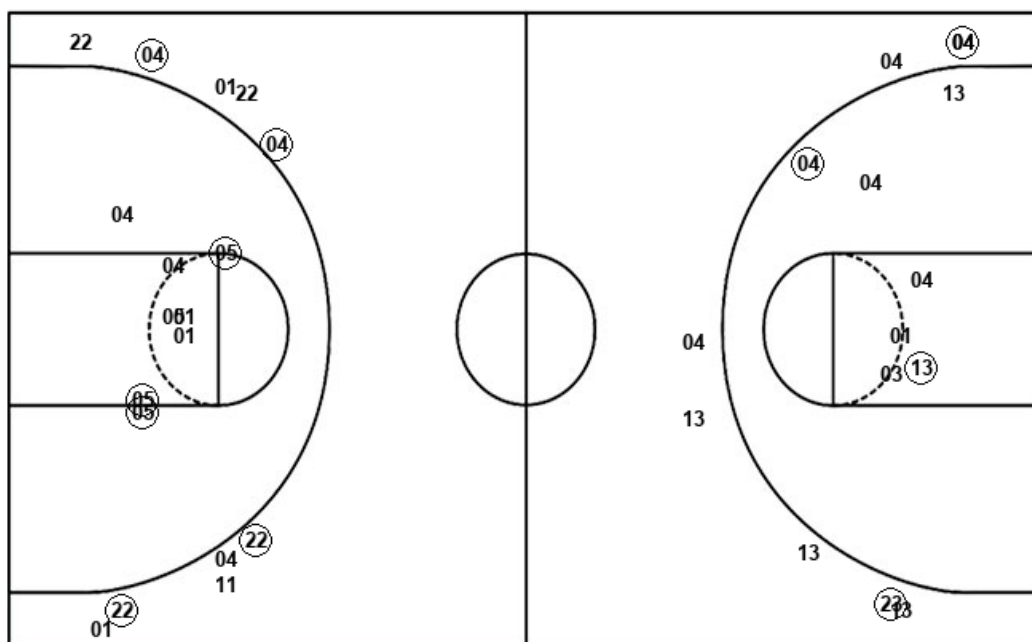


Washington

UCLA

Layups
 33 33 (01) 11 (33)

Dunks
 (04) (33) (33)



Layups
 23 (03) (13) (13) (02)
 23 13 (13) 13 (24)
 (13) 01 (13) 04

Dunks
 02 (23)

WSH : Period 2	Made	Att	Pct
Layups	2	5	40.0
Dunks	3	3	100.0
2PT Field Goals	8	16	50.0
3PT Field Goals	4	10	40.0
Total Field Goals	12	26	46.2

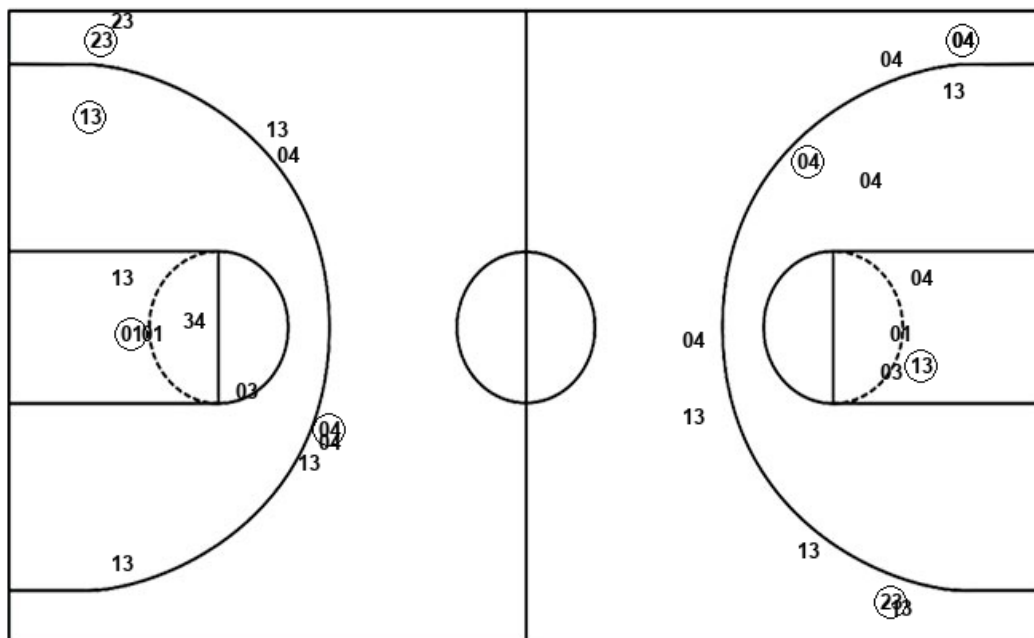
UCL : Period 2	Made	Att	Pct
Layups	8	14	57.1
Dunks	1	2	50.0
2PT Field Goals	11	23	47.8
3PT Field Goals	2	8	25.0
Total Field Goals	13	31	41.9

Official Shot Chart
UCLA vs Washington
 UCLA Team Shots
 February 02, 2019 at Alaska Airlines Arena - Seattle, Wash.



Layups

Dunks



Layups

23 01 13 24 23
 03 13 13 02 23
 13 13 13 24 13
 01 13 04

Dunks

01 13 23 01 01
 02 23

UCL : Period 1	Made	Att	Pct
Layups	1	4	25.0
Dunks	5	5	100.0
2PT Field Goals	8	16	50.0
3PT Field Goals	2	7	28.6
Total Field Goals	10	23	43.5

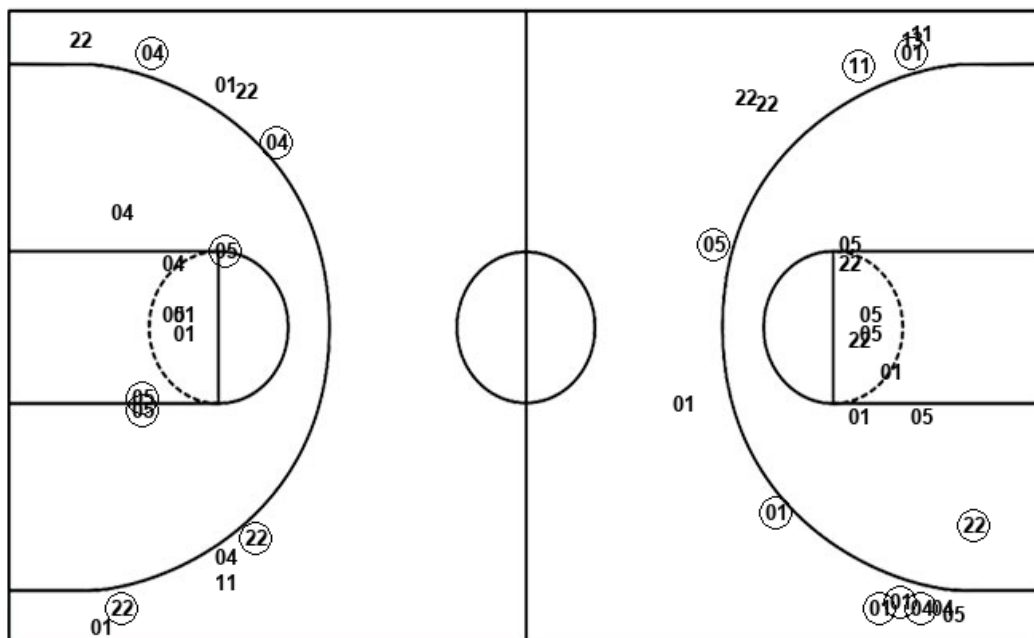
UCL : Period 2	Made	Att	Pct
Layups	8	14	57.1
Dunks	1	2	50.0
2PT Field Goals	11	23	47.8
3PT Field Goals	2	8	25.0
Total Field Goals	13	31	41.9

Official Shot Chart
UCLA vs Washington
 Washington Team Shots
 February 02, 2019 at Alaska Airlines Arena - Seattle, Wash.



Layups

Dunks



Layups

Dunks

WSH : Period 1	Made	Att	Pct
Layups	3	5	60.0
Dunks	0	0	0
2PT Field Goals	4	14	28.6
3PT Field Goals	7	14	50.0
Total Field Goals	11	28	39.3

WSH : Period 2	Made	Att	Pct
Layups	2	5	40.0
Dunks	3	3	100.0
2PT Field Goals	8	16	50.0
3PT Field Goals	4	10	40.0
Total Field Goals	12	26	46.2