

FINAL SCORE



Stanford

65

UCLA



51

February 15, 2019 • Pauley Pavilion - Los Angeles CA

FINAL STATISTICS

Official Box Score
Stanford vs UCLA
Game Totals -- Final Statistics
February 15, 2019 at Pauley Pavilion - Los Angeles CA



Stanford 65

No.	Player	S	Pts	FG	3FG	FT	OR	DR	TR	PF	A	TO	Blk	Stl	Min	+/-
10	JEROME, ALYSSA		2	1-2	0-1	0-0	1	0	1	0	0	1	0	0	6	-7
11	SMITH, ALANNA		22	9-17	2-7	2-2	4	9	13	3	0	5	4	0	38	13
21	CARRINGTON, DIJONAI		13	6-12	1-2	0-0	1	8	9	3	1	2	0	2	36	7
23	WILLIAMS, KIANA		15	5-13	3-9	2-2	0	2	2	1	4	3	0	1	37	8
24	HULL, LACIE		6	2-5	2-4	0-0	0	3	3	2	1	5	0	1	26	6
02	COFFEE, SHANNON		3	1-1	1-1	0-0	1	3	4	2	2	1	1	0	25	18
03	WILSON, ANNA		0	0-0	0-0	0-0	0	2	2	0	2	0	0	0	7	10
12	HULL, LEXIE		4	1-5	0-1	2-2	2	3	5	0	1	2	0	1	18	9
54	BROWN, JENNA		0	0-1	0-1	0-0	0	0	0	0	3	0	0	0	5	6
	TEAM						1	3	4	0		0				
TOTALS			65	25-56	9-26	6-6	10	33	43	11	14	19	5	5	199	

Shooting By Period

Period	FG	FG%	3FG	3FG%	FT	FT%
1st Qtr	4-17	24%	0-7	00%	0-0	0%
2nd Qtr	10-13	77%	5-7	71%	2-2	100%
3rd Qtr	3-12	25%	1-5	20%	2-2	100%
4th Qtr	8-14	57%	3-7	43%	2-2	100%
1st Half	14-30	47%	5-14	36%	2-2	100%
2nd Half	11-26	42%	4-12	33%	4-4	100%
Game	25-56	44.6%	9-26	34.6%	6-6	100.0%

Last FG: 4th-00:33
Biggest Run: 13-0
Largest lead: By 16 at 2-00:40
Technical Fouls: None.

UCLA 51

No.	Player	S	Pts	FG	3FG	FT	OR	DR	TR	PF	A	TO	Blk	Stl	Min	+/-
04	CORSARO, LINDSEY		2	1-8	0-4	0-1	1	3	4	0	1	1	0	0	34	-12
11	DRUMMER, LAJAHNA		6	3-9	0-0	0-2	7	5	12	2	2	1	0	1	30	-10
21	ONYENWERE, MICHAELA		21	7-16	0-1	7-7	3	3	6	2	1	4	0	2	36	-8
22	BURKE, KENNEDY		12	4-12	0-2	4-4	1	3	4	2	3	3	1	1	32	0
24	DEAN, JAPREECE		5	2-14	1-2	0-0	3	3	6	2	2	2	0	3	36	-15
02	SMITH, AHLANA		3	1-6	1-2	0-0	0	1	1	0	0	1	0	0	16	-16
33	MILLER, LAURYN		2	1-4	0-1	0-0	2	3	5	1	0	0	2	0	14	-9
	TEAM						2	0	2	0		1				
TOTALS			51	19-69	2-12	11-14	19	21	40	9	9	13	3	7	199	

Shooting By Period

Period	FG	FG%	3FG	3FG%	FT	FT%
1st Qtr	5-22	23%	1-2	50%	2-2	100%
2nd Qtr	2-16	13%	0-5	00%	2-4	50%
3rd Qtr	8-17	47%	0-2	00%	5-6	83%
4th Qtr	4-14	29%	1-3	33%	2-2	100%
1st Half	7-38	18%	1-7	14%	4-6	67%
2nd Half	12-31	39%	1-5	20%	7-8	88%
Game	19-69	27.5%	2-12	16.7%	11-14	78.6%

Last FG: 4th-01:06
Biggest Run: 14-0
Largest lead: By 8 at 1-05:47
Technical Fouls: None.

Game Notes:

Officials: Brenda Pantoja, Charles Gonzalez, Shelley Nakasone
Attendance: 2479

Start Time: 2019-02-16 02:09:36
End Time: 2019-02-16 03:52:45
Game Duration: 103
Conference Game;

Score	1st	2nd	3rd	4th	TOT
STA	8	27	9	21	65
UCL	13	6	21	11	51

STA led for 27:42. UCLA led for 11:44.
Game was tied for 0:20.
Times tied: 1 Lead Changes: 1

Points from	STA	UCL
In the Paint	30	26
Off Turns	20	16
2nd Chance	5	12
Fast Break	8	13
Bench	7	5

Official Box Score
Stanford vs UCLA
First Half Statistics Only
February 15, 2019 at Pauley Pavilion - Los Angeles CA



Stanford 35

No.	Player	S	Pts	FG	3FG	FT	OR	DR	TR	PF	A	TO	Blk	Stl	Min	+/-
10	JEROME, ALYSSA		0	0-1	0-1	0-0	1	0	1	0	0	1	0	0	5	-5
11	SMITH, ALANNA		13	5-10	1-3	2-2	2	6	8	1	0	4	3	0	18	16
12	HULL, LEXIE		2	1-4	0-1	0-0	1	3	4	0	1	1	0	0	12	9
21	CARRINGTON, DIJONAI		11	5-7	1-2	0-0	1	4	5	2	0	2	0	1	17	10
23	WILLIAMS, KIANA		3	1-4	1-3	0-0	0	2	2	1	2	1	0	0	18	10
24	HULL, LACIE		6	2-4	2-4	0-0	0	3	3	1	1	2	0	0	15	14
54	BROWN, JENNA		0	0-0	0-0	0-0	0	0	0	0	2	0	0	0	2	6
02	COFFEE, SHANNON		0	0-0	0-0	0-0	0	1	1	0	1	1	0	0	9	9
03	WILSON, ANNA		0	0-0	0-0	0-0	0	2	2	0	2	0	0	0	4	11
	TEAM		0	0-0	0-0	0-0	1	2	3	0	0	0	0	0	0	
TOTALS			35	14-30	5-14	2-2	6	23	29	5	9	12	3	1	100	

Shooting By Period

Period	FG	FG%	3FG	3FG%	FT	FT%
1st Qtr	4-17	24%	0-7	00%	0-0	0%
2nd Qtr	10-13	77%	5-7	71%	2-2	100%
1st Half	14-30	47%	5-14	36%	2-2	100%
Game	25-56	44.6%	9-26	34.6%	6-6	100.0%

Last FG Half: STA 2nd-00:40

UCLA 19

No.	Player	S	Pts	FG	3FG	FT	OR	DR	TR	PF	A	TO	Blk	Stl	Min	+/-
11	DRUMMER, LAJAHNA		2	1-6	0-0	0-2	4	1	5	0	1	1	0	0	15	-12
21	ONYENWERE, MICHAELA		12	4-9	0-0	4-4	1	1	2	1	0	2	0	2	18	-13
22	BURKE, KENNEDY		2	1-8	0-1	0-0	0	2	2	2	2	2	0	0	14	-5
24	DEAN, JAPREECE		0	0-6	0-1	0-0	2	1	3	0	1	0	0	3	18	-16
33	MILLER, LAURYN		0	0-2	0-1	0-0	0	3	3	0	0	0	1	0	8	-6
02	SMITH, AHLANA		3	1-4	1-2	0-0	0	1	1	0	0	0	0	0	9	-11
04	CORSARO, LINDSEY		0	0-3	0-2	0-0	0	1	1	0	0	0	0	0	18	-17
	TEAM		0	0-0	0-0	0-0	2	0	2	0	0	1	0	0	0	
TOTALS			19	7-38	1-7	4-6	9	10	19	3	4	6	1	5	100	

Shooting By Period

Period	FG	FG%	3FG	3FG%	FT	FT%
1st Qtr	5-22	23%	1-2	50%	2-2	100%
2nd Qtr	2-16	13%	0-5	00%	2-4	50%
1st Half	7-38	18%	1-7	14%	4-6	67%
Game	19-69	27.5%	2-12	16.7%	11-14	78.6%

Last FG Half: UCL 2nd-05:04

Game Notes:

Officials: Brenda Pantoja, Charles Gonzalez, Shelley Nakasone
Attendance: 2479

Start Time: 2019-02-16 02:09:36
End Time: 2019-02-16 03:52:45
Game Duration: 103
Conference Game;

Score	1st	2nd	3rd	4th	TOT
STA	8	27	9	21	65
UCL	13	6	21	11	51

Points from (This Period)	STA	UCL
In the Paint	18	8
Off Turns	11	8
2nd Chance	2	6
Fast Break	6	6
Bench	2	3

Official Box Score
Stanford vs UCLA
First Quarter Statistics Only
February 15, 2019 at Pauley Pavilion - Los Angeles CA



Stanford 8

No.	Player	S	Pts	FG	3FG	FT	OR	DR	TR	PF	A	TO	Blk	Stl	Min	+/-
10	JEROME, ALYSSA		0	0-1	0-1	0-0	1	0	1	0	0	1	0	0	5	-5
11	SMITH, ALANNA		4	2-6	0-2	0-0	1	3	4	1	0	1	2	0	8	-5
21	CARRINGTON, DIJONAI		2	1-2	0-0	0-0	1	4	5	1	0	1	0	0	9	-5
23	WILLIAMS, KIANA		0	0-3	0-2	0-0	0	1	1	0	1	1	0	0	10	-5
24	HULL, LACIE		0	0-1	0-1	0-0	0	2	2	1	1	1	0	0	8	-4
02	COFFEE, SHANNON		0	0-0	0-0	0-0	0	1	1	0	0	0	0	0	3	-1
03	WILSON, ANNA		0	0-0	0-0	0-0	0	0	0	0	0	0	0	0	0	0
12	HULL, LEXIE		2	1-4	0-1	0-0	0	2	2	0	0	1	0	0	6	0
54	BROWN, JENNA		0	0-0	0-0	0-0	0	0	0	0	0	0	0	0	0	0
	TEAM						1	0	1	0		0				
TOTALS			8	4-17	0-7	0-0	4	13	17	3	2	6	2	0	50	

Shooting By Period

Period	FG	FG%	3FG	3FG%	FT	FT%
1st Qtr	4-17	24%	0-7	00%	0-0	0%
2nd Qtr	10-13	77%	5-7	71%	2-2	100%
1st Half	4-17	24%	0-7	00%	0-0	0%
1st Half	14-30	47%	5-14	36%	2-2	100%
Game	25-56	44.6%	9-26	34.6%	6-6	100.0%

UCLA 13

No.	Player	S	Pts	FG	3FG	FT	OR	DR	TR	PF	A	TO	Blk	Stl	Min	+/-
04	CORSARO, LINDSEY		0	0-1	0-0	0-0	0	1	1	0	0	0	0	0	8	4
11	DRUMMER, LAJAHNA		2	1-4	0-0	0-0	2	1	3	0	1	0	0	0	7	7
21	ONYENWERE, MICHAELA		8	3-6	0-0	2-2	1	1	2	0	0	0	0	0	10	5
22	BURKE, KENNEDY		0	0-5	0-0	0-0	0	2	2	0	2	0	0	0	8	6
24	DEAN, JAPREECE		0	0-3	0-0	0-0	0	0	0	0	0	0	0	1	8	5
02	SMITH, AHLANA		3	1-2	1-1	0-0	0	1	1	0	0	0	0	0	5	-1
33	MILLER, LAURYN		0	0-1	0-1	0-0	0	3	3	0	0	0	1	0	4	-1
	TEAM						1	0	1	0		1				
TOTALS			13	5-22	1-2	2-2	4	9	13	0	3	1	1	1	50	

Shooting By Period

Period	FG	FG%	3FG	3FG%	FT	FT%
1st Qtr	5-22	23%	1-2	50%	2-2	100%
2nd Qtr	2-16	13%	0-5	00%	2-4	50%
1st Half	5-22	23%	1-2	50%	2-2	100%
1st Half	7-38	18%	1-7	14%	4-6	67%
Game	19-69	27.5%	2-12	16.7%	11-14	78.6%

Game Notes:

Officials: Brenda Pantoja, Charles Gonzalez, Shelley Nakasone
Attendance: 2479

Start Time: 2019-02-16 02:09:36

End Time: 2019-02-16 03:52:45

Game Duration: 103

Conference Game;

Score	1st	2nd	3rd	4th	TOT
STA	8	27	9	21	65
UCL	13	6	21	11	51

Points from (This Period)	STA	UCL
In the Paint	8	4
Off Turns	0	4
2nd Chance	0	6
Fast Break	2	2
Bench	2	3

Official Play-By-Play
Stanford vs UCLA
First Quarter
February 15, 2019 at Pauley Pavilion - Los Angeles CA



Period 1

Starters:

Stanford: 10 JEROME, ALYSSA; 11 SMITH, ALANNA; 21 CARRINGTON, DIJONAI; 23 WILLIAMS, KIANA; 24 HULL, LACIE;

UCLA: 11 DRUMMER, LAJAHNA; 21 ONYENWERE, MICHAELA; 22 BURKE, KENNEDY; 24 DEAN, JAPREECE; 4 CORSARO, LINDSEY;

Time	VISITORS: Stanford	Score	Margin	HOME: UCLA
09:44				MISSED LAYUP by CORSARO, LINDSEY
09:44	BLOCK by SMITH, ALANNA			
09:44				REBOUND (OFF) by TEAM
09:40		2-0	H 2	GOOD! JUMPER by ONYENWERE, MICHAELA [PNT]
09:40				ASSIST by BURKE, KENNEDY
09:20	MISSED 3PTR by SMITH, ALANNA			
09:15				REBOUND (DEF) by ONYENWERE, MICHAELA
09:12		4-0	H 4	GOOD! LAYUP by ONYENWERE, MICHAELA [FB]
09:03	TURNOVER (BADPASS) by HULL, LACIE			
08:45				MISSED LAYUP by DRUMMER, LAJAHNA
08:42	REBOUND (DEF) by SMITH, ALANNA			
08:37	MISSED JUMPER by CARRINGTON, DIJONAI			
08:33				REBOUND (DEF) by BURKE, KENNEDY
08:25				MISSED LAYUP by DEAN, JAPREECE
08:22	REBOUND (DEF) by WILLIAMS, KIANA			
08:08	MISSED 3PTR by HULL, LACIE			
08:04				REBOUND (DEF) by DRUMMER, LAJAHNA
07:56				MISSED JUMPER by BURKE, KENNEDY
07:52	REBOUND (DEF) by SMITH, ALANNA			
07:47	MISSED 3PTR by JEROME, ALYSSA			
07:43				REBOUND (DEF) by BURKE, KENNEDY
07:43	FOUL (PERSONAL) by CARRINGTON, DIJONAI			
07:43	SUB OUT: JEROME, ALYSSA			
07:43	SUB IN: HULL, LEXIE			
07:17				MISSED JUMPER by DRUMMER, LAJAHNA
07:17	BLOCK by SMITH, ALANNA			
07:10	REBOUND (DEF) by HULL, LACIE			
06:54	MISSED 3PTR by HULL, LEXIE			
06:51	REBOUND (OFF) by CARRINGTON, DIJONAI			
06:51	TURNOVER (TRAVEL) by CARRINGTON, DIJONAI			
06:30				MISSED JUMPER by ONYENWERE, MICHAELA
06:27				REBOUND (OFF) by DRUMMER, LAJAHNA
06:25		6-0	H 6	GOOD! JUMPER by ONYENWERE, MICHAELA
06:25				ASSIST by DRUMMER, LAJAHNA
06:05	MISSED LAYUP by HULL, LEXIE			
06:03	REBOUND (OFF) by SMITH, ALANNA			
06:03	TURNOVER (LOSTBALL) by SMITH, ALANNA			
05:47		8-0	H 8	GOOD! JUMPER by DRUMMER, LAJAHNA
05:31	GOOD! LAYUP by SMITH, ALANNA	8-2	H 6	
05:11				MISSED LAYUP by ONYENWERE, MICHAELA
05:07				REBOUND (OFF) by DRUMMER, LAJAHNA
05:07				MISSED LAYUP by DRUMMER, LAJAHNA
05:06	REBOUND (DEF) by HULL, LACIE			
05:02	GOOD! LAYUP by HULL, LEXIE [FB]	8-4	H 4	
05:02	ASSIST by HULL, LACIE			
04:51				MISSED JUMPER by DEAN, JAPREECE
04:50				REBOUND (OFF) by ONYENWERE, MICHAELA
04:50	FOUL (PERSONAL) by SMITH, ALANNA			
04:50		9-4	H 5	GOOD! FT by ONYENWERE, MICHAELA
04:50		10-4	H 6	GOOD! FT by ONYENWERE, MICHAELA
04:38				SUB OUT: DRUMMER, LAJAHNA
04:38				SUB IN: SMITH, AHLANA
04:38				SUB OUT: BURKE, KENNEDY
04:38				SUB IN: MILLER, LAURYN
04:36	GOOD! LAYUP by CARRINGTON, DIJONAI	10-6	H 4	
04:36	ASSIST by WILLIAMS, KIANA			
04:30				TURNOVER (OTHER) by
04:30	TURNOVER (TRAVEL) by WILLIAMS, KIANA			
04:30				SUB OUT: DEAN, JAPREECE
04:30				SUB IN: BURKE, KENNEDY
04:09				MISSED LAYUP by BURKE, KENNEDY
04:06	REBOUND (DEF) by CARRINGTON, DIJONAI			
03:58	MISSED LAYUP by SMITH, ALANNA			
03:55				REBOUND (DEF) by CORSARO, LINDSEY
03:44				MISSED JUMPER by ONYENWERE, MICHAELA
03:41	REBOUND (DEF) by SMITH, ALANNA			
03:30	MISSED LAYUP by SMITH, ALANNA			
03:29				REBOUND (DEF) by MILLER, LAURYN
03:29	SUB OUT: SMITH, ALANNA			
03:29	SUB IN: COFFEE, SHANNON			

Time	VISITORS: Stanford	Score	Margin	HOME: UCLA
03:15				MISSED JUMPER by SMITH, AHLANA
03:12	REBOUND (DEF) by HULL, LEXIE			
02:50	MISSED LAYUP by HULL, LEXIE			
02:46				REBOUND (DEF) by MILLER, LAURYN
02:34				MISSED 3PTR by MILLER, LAURYN
02:29	REBOUND (DEF) by CARRINGTON, DIJONAI			
02:25	MISSED LAYUP by WILLIAMS, KIANA			
02:25				BLOCK by MILLER, LAURYN
02:25	REBOUND (OFF) by TEAM			
02:25				SUB OUT: CORSARO, LINDSEY
02:25				SUB IN: DEAN, JAPREECE
02:25	SUB OUT: CARRINGTON, DIJONAI			
02:25	SUB IN: JEROME, ALYSSA			
02:13	MISSED 3PTR by WILLIAMS, KIANA			
02:08				REBOUND (DEF) by SMITH, AHLANA
01:58				MISSED JUMPER by BURKE, KENNEDY
01:54	REBOUND (DEF) by HULL, LEXIE			
01:52	TURNOVER (BADPASS) by HULL, LEXIE			
01:52				STEAL by DEAN, JAPREECE
01:47	FOUL (PERSONAL) by HULL, LACIE			
01:46	SUB OUT: HULL, LEXIE			
01:46	SUB IN: SMITH, ALANNA			
01:46	SUB OUT: HULL, LACIE			
01:46	SUB IN: CARRINGTON, DIJONAI			
01:46				SUB OUT: BURKE, KENNEDY
01:46				SUB IN: DRUMMER, LAJAHNA
01:40				MISSED JUMPER by BURKE, KENNEDY
01:40	REBOUND (DEF) by CARRINGTON, DIJONAI			
01:40	MISSED 3PTR by SMITH, ALANNA			
01:40				REBOUND (DEF) by MILLER, LAURYN
01:20				MISSED LAYUP by BURKE, KENNEDY
01:14	REBOUND (DEF) by CARRINGTON, DIJONAI			
01:04	GOOD! LAYUP by SMITH, ALANNA	10-8	H 2	
00:45		13-8	H 5	GOOD! 3PTR by SMITH, AHLANA
00:45				ASSIST by BURKE, KENNEDY
00:26				SUB OUT: ONYENWERE, MICHAELA
00:26				SUB IN: BURKE, KENNEDY
00:23	MISSED 3PTR by WILLIAMS, KIANA			
00:19	REBOUND (OFF) by JEROME, ALYSSA			
00:14	TURNOVER (BADPASS) by JEROME, ALYSSA			
00:14				SUB OUT: MILLER, LAURYN
00:14				SUB IN: CORSARO, LINDSEY
00:14				SUB OUT: BURKE, KENNEDY
00:14				SUB IN: ONYENWERE, MICHAELA
00:03				MISSED JUMPER by DEAN, JAPREECE
00:00	REBOUND (DEF) by COFFEE, SHANNON			

Stanford 8, UCLA 13

Points from (This Period)	STA	UCL
In the Paint	8	4
Off Turns	0	4
2nd Chance	0	6
Fast Break	2	2
Bench	2	3

Official Box Score
Stanford vs UCLA
Second Quarter Statistics Only
February 15, 2019 at Pauley Pavilion - Los Angeles CA



Stanford 27

No.	Player	S	Pts	FG	3FG	FT	OR	DR	TR	PF	A	TO	Blk	Stl	Min	+/-
10	JEROME, ALYSSA		0	0-0	0-0	0-0	0	0	0	0	0	0	0	0	0	0
11	SMITH, ALANNA		9	3-4	1-1	2-2	1	3	4	0	0	3	1	0	10	21
21	CARRINGTON, DIJONAI		9	4-5	1-2	0-0	0	0	0	1	0	1	0	1	8	15
23	WILLIAMS, KIANA		3	1-1	1-1	0-0	0	1	1	1	1	0	0	0	8	15
24	HULL, LACIE		6	2-3	2-3	0-0	0	1	1	0	0	1	0	0	7	18
02	COFFEE, SHANNON		0	0-0	0-0	0-0	0	0	0	0	1	1	0	0	6	10
03	WILSON, ANNA		0	0-0	0-0	0-0	0	2	2	0	2	0	0	0	4	11
12	HULL, LEXIE		0	0-0	0-0	0-0	1	1	2	0	1	0	0	0	6	9
54	BROWN, JENNA		0	0-0	0-0	0-0	0	0	0	0	2	0	0	0	2	6
	TEAM						0	2	2	0		0				
TOTALS			27	10-13	5-7	2-2	2	10	12	2	7	6	1	1	50	

Shooting By Period

Period	FG	FG%	3FG	3FG%	FT	FT%
3rd Qtr	3-12	25%	1-5	20%	2-2	100%
4th Qtr	8-14	57%	3-7	43%	2-2	100%
2nd Half	10-13	77%	5-7	71%	2-2	100%
2nd Half	11-26	42%	4-12	33%	4-4	100%
Game	25-56	44.6%	9-26	34.6%	6-6	100.0%

UCLA 6

No.	Player	S	Pts	FG	3FG	FT	OR	DR	TR	PF	A	TO	Blk	Stl	Min	+/-
04	CORSARO, LINDSEY		0	0-2	0-2	0-0	0	0	0	0	0	0	0	0	10	-21
11	DRUMMER, LAJAHNA		0	0-2	0-0	0-2	2	0	2	0	0	1	0	0	8	-19
21	ONYENWERE, MICHAELA		4	1-3	0-0	2-2	0	0	0	1	0	2	0	2	8	-18
22	BURKE, KENNEDY		2	1-3	0-1	0-0	0	0	0	2	0	2	0	0	6	-11
24	DEAN, JAPREECE		0	0-3	0-1	0-0	2	1	3	0	1	0	0	2	10	-21
02	SMITH, AHLANA		0	0-2	0-1	0-0	0	0	0	0	0	0	0	0	4	-10
33	MILLER, LAURYN		0	0-1	0-0	0-0	0	0	0	0	0	0	0	0	4	-5
	TEAM						1	0	1	0		0				
TOTALS			6	2-16	0-5	2-4	5	1	6	3	1	5	0	4	50	

Shooting By Period

Period	FG	FG%	3FG	3FG%	FT	FT%
3rd Qtr	8-17	47%	0-2	00%	5-6	83%
4th Qtr	4-14	29%	1-3	33%	2-2	100%
2nd Half	2-16	13%	0-5	00%	2-4	50%
2nd Half	12-31	39%	1-5	20%	7-8	88%
Game	19-69	27.5%	2-12	16.7%	11-14	78.6%

Game Notes:

Officials: Brenda Pantoja, Charles Gonzalez, Shelley Nakasone
Attendance: 2479

Start Time: 2019-02-16 02:09:36

End Time: 2019-02-16 03:52:45

Game Duration: 103

Conference Game;

Score	1st	2nd	3rd	4th	TOT
STA	8	27	9	21	65
UCL	13	6	21	11	51

Points from (This Period)	STA	UCL
In the Paint	10	4
Off Turns	11	4
2nd Chance	2	0
Fast Break	4	4
Bench	0	0

**Official Play-By-Play
Stanford vs UCLA
Second Quarter
February 15, 2019 at Pauley Pavilion - Los Angeles CA**



Period 2

Starters:

Stanford: 10 JEROME, ALYSSA; 11 SMITH, ALANNA; 21 CARRINGTON, DIJONAI; 23 WILLIAMS, KIANA; 24 HULL, LACIE;

UCLA: 11 DRUMMER, LAJAHNA; 21 ONYENWERE, MICHAELA; 22 BURKE, KENNEDY; 24 DEAN, JAPREECE; 4 CORSARO, LINDSEY;

Time	VISITORS: Stanford	Score	Margin	HOME: UCLA
09:48	TURNOVER (LOSTBALL) by SMITH, ALANNA			
09:48				STEAL by DEAN, JAPREECE
09:39				TURNOVER (BADPASS) by ONYENWERE, MICHAELA
09:39	STEAL by CARRINGTON, DIJONAI			
09:35	GOOD! LAYUP by CARRINGTON, DIJONAI [FB]	13-10	H 3	
09:07				MISSED 3PTR by SMITH, AHLANA
09:03				REBOUND (OFF) by DEAN, JAPREECE
09:01				MISSED 3PTR by CORSARO, LINDSEY
08:57				REBOUND (OFF) by DRUMMER, LAJAHNA
08:55				MISSED LAYUP by DRUMMER, LAJAHNA
08:52	REBOUND (DEF) by WILLIAMS, KIANA			
08:49	MISSED LAYUP by SMITH, ALANNA			
08:44	REBOUND (OFF) by SMITH, ALANNA			
08:44	GOOD! LAYUP by SMITH, ALANNA	13-12	H 1	
08:19				TURNOVER (TRAVEL) by DRUMMER, LAJAHNA
08:19				SUB OUT: SMITH, AHLANA
08:19				SUB IN: BURKE, KENNEDY
08:19	SUB OUT: HULL, LACIE			
08:19	SUB IN: HULL, LEXIE			
07:56				FOUL (PERSONAL) by BURKE, KENNEDY
07:56	GOOD! FT by SMITH, ALANNA	13-13	T	
07:56				SUB OUT: DRUMMER, LAJAHNA
07:56				SUB IN: MILLER, LAURYN
07:56	GOOD! FT by SMITH, ALANNA	13-14	V 1	
07:47				MISSED JUMPER by MILLER, LAURYN
07:43				REBOUND (OFF) by DEAN, JAPREECE
07:37				FOUL (OFF) by ONYENWERE, MICHAELA
07:37				TURNOVER (OFFENSIVE) by ONYENWERE, MICHAELA
07:24	GOOD! LAYUP by CARRINGTON, DIJONAI	13-16	V 3	
06:53				MISSED JUMPER by DEAN, JAPREECE
06:49	REBOUND (DEF) by SMITH, ALANNA			
06:35	GOOD! 3PTR by WILLIAMS, KIANA	13-19	V 6	
06:35	ASSIST by COFFEE, SHANNON			
06:31				TIMEOUT 30SEC
06:21				MISSED JUMPER by BURKE, KENNEDY
06:19	REBOUND (DEF) by TEAM			
06:06	TURNOVER (BADPASS) by SMITH, ALANNA			
06:06				STEAL by ONYENWERE, MICHAELA
06:03		15-19	V 4	GOOD! LAYUP by ONYENWERE, MICHAELA [FB]
05:51	MISSED 3PTR by CARRINGTON, DIJONAI			
05:46	REBOUND (OFF) by HULL, LEXIE			
05:36	TURNOVER (BADPASS) by COFFEE, SHANNON			
05:36				STEAL by ONYENWERE, MICHAELA
05:31	FOUL (PERSONAL) by WILLIAMS, KIANA			
05:31		16-19	V 3	GOOD! FT by ONYENWERE, MICHAELA [FB]
05:31		17-19	V 2	GOOD! FT by ONYENWERE, MICHAELA [FB]
05:31				SUB OUT: ONYENWERE, MICHAELA
05:31				SUB IN: DRUMMER, LAJAHNA
05:31	SUB OUT: COFFEE, SHANNON			
05:31	SUB IN: HULL, LACIE			
05:18	GOOD! 3PTR by CARRINGTON, DIJONAI	17-22	V 5	
05:18	ASSIST by HULL, LEXIE			
05:04		19-22	V 3	GOOD! LAYUP by BURKE, KENNEDY
05:04				ASSIST by DEAN, JAPREECE
04:52	MISSED 3PTR by HULL, LACIE			
04:47				REBOUND (DEF) by DEAN, JAPREECE
04:33				MISSED JUMPER by DRUMMER, LAJAHNA
04:30	REBOUND (DEF) by SMITH, ALANNA			
04:26	GOOD! LAYUP by CARRINGTON, DIJONAI [FB]	19-24	V 5	
04:26	ASSIST by WILLIAMS, KIANA			
04:00				FOUL (OFF) by BURKE, KENNEDY
04:00				TURNOVER (OFFENSIVE) by BURKE, KENNEDY
04:00				SUB OUT: MILLER, LAURYN
04:00				SUB IN: ONYENWERE, MICHAELA
04:00	SUB OUT: HULL, LEXIE			
04:00	SUB IN: WILSON, ANNA			
03:34	GOOD! LAYUP by SMITH, ALANNA	19-26	V 7	
03:34	ASSIST by WILSON, ANNA			
03:28				TURNOVER (LOSTBALL) by BURKE, KENNEDY
03:18	GOOD! 3PTR by HULL, LACIE	19-29	V 10	

Time	VISITORS: Stanford	Score	Margin	HOME: UCLA
03:18	ASSIST by WILSON, ANNA			
02:56				MISSED 3PTR by BURKE, KENNEDY
02:52	REBOUND (DEF) by WILSON, ANNA			
02:34	TURNOVER (LOSTBALL) by CARRINGTON, DIJONAI			
02:34				
02:20				STEAL by DEAN, JAPREECE
02:19				MISSED LAYUP by ONYENWERE, MICHAELA
02:19				REBOUND (OFF) by DRUMMER, LAJAHNA
02:19	FOUL (PERSONAL) by CARRINGTON, DIJONAI			
02:19				MISSED FT by DRUMMER, LAJAHNA
02:19				REBOUND (OFF) by TEAM
02:19				SUB OUT: BURKE, KENNEDY
02:19				SUB IN: SMITH, AHLANA
02:19	SUB OUT: WILLIAMS, KIANA			
02:19	SUB IN: HULL, LEXIE			
02:19	SUB OUT: CARRINGTON, DIJONAI			
02:19	SUB IN: BROWN, JENNA			
02:19				MISSED FT by DRUMMER, LAJAHNA
02:17	REBOUND (DEF) by TEAM			
01:50	GOOD! 3PTR by HULL, LACIE	19-32	V 13	
01:50	ASSIST by BROWN, JENNA			
01:34				MISSED 3PTR by DEAN, JAPREECE
01:26	REBOUND (DEF) by HULL, LEXIE			
01:06	TURNOVER (LOSTBALL) by SMITH, ALANNA			
01:06	SUB OUT: HULL, LEXIE			
01:06	SUB IN: COFFEE, SHANNON			
00:50				MISSED 3PTR by CORSARO, LINDSEY
00:46	REBOUND (DEF) by SMITH, ALANNA			
00:40	GOOD! 3PTR by SMITH, ALANNA	19-35	V 16	
00:40	ASSIST by BROWN, JENNA			
00:07				MISSED JUMPER by SMITH, AHLANA
00:07	BLOCK by SMITH, ALANNA			
00:07				REBOUND (OFF) by TEAM
00:03				MISSED JUMPER by DEAN, JAPREECE
00:00	REBOUND (DEF) by HULL, LACIE			
00:00	TURNOVER (TRAVEL) by HULL, LACIE			
00:00				MISSED JUMPER by ONYENWERE, MICHAELA
00:00	REBOUND (DEF) by WILSON, ANNA			

Stanford 35, UCLA 19

Points from (This Period)	STA	UCL
In the Paint	10	4
Off Turns	11	4
2nd Chance	2	0
Fast Break	4	4
Bench	0	0

Official Box Score
Stanford vs UCLA
Second Half Statistics Only
February 15, 2019 at Pauley Pavilion - Los Angeles CA



Stanford 30

No.	Player	S	Pts	FG	3FG	FT	OR	DR	TR	PF	A	TO	Blk	Stl	Min	+/-
10	JEROME, ALYSSA		2	1-1	0-0	0-0	0	0	0	0	0	0	0	0	1	-2
11	SMITH, ALANNA		9	4-7	1-4	0-0	2	3	5	2	0	1	1	0	20	-3
12	HULL, LEXIE		2	0-1	0-0	2-2	1	0	1	0	0	1	0	1	7	0
21	CARRINGTON, DIJONAI		2	1-5	0-0	0-0	0	4	4	1	1	0	0	1	19	-3
23	WILLIAMS, KIANA		12	4-9	2-6	2-2	0	0	0	0	2	2	0	1	20	-2
24	HULL, LACIE		0	0-1	0-0	0-0	0	0	0	1	0	3	0	1	11	-8
54	BROWN, JENNA		0	0-1	0-1	0-0	0	0	0	0	1	0	0	0	3	0
02	COFFEE, SHANNON		3	1-1	1-1	0-0	1	2	3	2	1	0	1	0	16	9
03	WILSON, ANNA		0	0-0	0-0	0-0	0	0	0	0	0	0	0	0	3	-1
	TEAM		0	0-0	0-0	0-0	0	1	1	0	0	0	0	0	0	
TOTALS			30	11-26	4-12	4-4	4	10	14	6	5	7	2	4	99	

Shooting By Period

Period	FG	FG%	3FG	3FG%	FT	FT%
3rd Qtr	3-12	25%	1-5	20%	2-2	100%
4th Qtr	8-14	57%	3-7	43%	2-2	100%
2nd Half	11-26	42%	4-12	33%	4-4	100%
Game	25-56	44.6%	9-26	34.6%	6-6	100.0%

Last FG Half: STA 4th-00:33

UCLA 32

No.	Player	S	Pts	FG	3FG	FT	OR	DR	TR	PF	A	TO	Blk	Stl	Min	+/-
11	DRUMMER, LAJAHNA		4	2-3	0-0	0-0	3	4	7	2	1	0	0	1	15	2
21	ONYENWERE, MICHAELA		9	3-7	0-1	3-3	2	2	4	1	1	2	0	0	18	5
22	BURKE, KENNEDY		10	3-4	0-1	4-4	1	1	2	0	1	1	1	1	18	5
24	DEAN, JAPREECE		5	2-8	1-1	0-0	1	2	3	2	1	2	0	0	18	1
33	MILLER, LAURYN		2	1-2	0-0	0-0	2	0	2	1	0	0	1	0	7	-3
02	SMITH, AHLANA		0	0-2	0-0	0-0	0	0	0	0	0	1	0	0	7	-5
04	CORSARO, LINDSEY		2	1-5	0-2	0-1	1	2	3	0	1	1	0	0	16	5
	TEAM		0	0-0	0-0	0-0	0	0	0	0	0	0	0	0	0	
TOTALS			32	12-31	1-5	7-8	10	11	21	6	5	7	2	2	99	

Shooting By Period

Period	FG	FG%	3FG	3FG%	FT	FT%
3rd Qtr	8-17	47%	0-2	00%	5-6	83%
4th Qtr	4-14	29%	1-3	33%	2-2	100%
2nd Half	12-31	39%	1-5	20%	7-8	88%
Game	19-69	27.5%	2-12	16.7%	11-14	78.6%

Last FG Half: UCL 4th-01:06

Game Notes:

Officials: Brenda Pantoja, Charles Gonzalez, Shelley Nakasone
Attendance: 2479

Start Time: 2019-02-16 02:09:36

End Time: 2019-02-16 03:52:45

Game Duration: 103

Conference Game;

Score	1st	2nd	3rd	4th	TOT
STA	8	27	9	21	65
UCL	13	6	21	11	51

Points from (This Period)	STA	UCL
In the Paint	12	18
Off Turns	9	8
2nd Chance	3	6
Fast Break	2	7
Bench	5	2

Official Box Score
Stanford vs UCLA
Third Quarter Statistics Only
February 15, 2019 at Pauley Pavilion - Los Angeles CA



Stanford 30

No.	Player	S	Pts	FG	3FG	FT	OR	DR	TR	PF	A	TO	Blk	Stl	Min	+/-
10	JEROME, ALYSSA		2	1-1	0-0	0-0	0	0	0	0	0	0	0	0	1	-2
11	SMITH, ALANNA		5	2-3	1-2	0-0	2	2	4	2	0	1	0	0	10	-13
21	CARRINGTON, DIJONAI		0	0-2	0-0	0-0	0	0	0	1	0	0	0	1	9	-13
23	WILLIAMS, KIANA		0	0-3	0-2	0-0	0	0	0	0	2	1	0	0	10	-12
24	HULL, LACIE		0	0-1	0-0	0-0	0	0	0	1	0	2	0	0	4	-11
02	COFFEE, SHANNON		0	0-0	0-0	0-0	0	1	1	1	0	0	1	0	6	-1
03	WILSON, ANNA		0	0-0	0-0	0-0	0	0	0	0	0	0	0	0	3	-1
12	HULL, LEXIE		2	0-1	0-0	2-2	1	0	1	0	0	1	0	0	4	-7
54	BROWN, JENNA		0	0-1	0-1	0-0	0	0	0	0	1	0	0	0	3	0
	TEAM						0	1	1	0		0				
TOTALS			9	3-12	1-5	2-2	3	4	7	5	3	5	1	1	50	

Shooting By Period

Period	FG	FG%	3FG	3FG%	FT	FT%
2nd Half	0-0	0%	0-0	0%	0-0	0%
Game	25-56	44.6%	9-26	34.6%	6-6	100.0%

UCLA 32

No.	Player	S	Pts	FG	3FG	FT	OR	DR	TR	PF	A	TO	Blk	Stl	Min	+/-
04	CORSARO, LINDSEY		2	1-4	0-1	0-1	1	1	2	0	1	0	0	0	9	13
11	DRUMMER, LAJAHNA		4	2-2	0-0	0-0	1	2	3	2	1	0	0	1	8	11
21	ONYENWERE, MICHAELA		7	2-3	0-1	3-3	1	0	1	1	1	1	0	0	8	15
22	BURKE, KENNEDY		8	3-3	0-0	2-2	1	1	2	0	0	0	1	1	8	15
24	DEAN, JAPREECE		0	0-2	0-0	0-0	0	2	2	1	0	0	0	0	8	11
02	SMITH, AHLANA		0	0-2	0-0	0-0	0	0	0	0	0	1	0	0	5	-3
33	MILLER, LAURYN		0	0-1	0-0	0-0	2	0	2	1	0	0	1	0	4	-2
	TEAM						0	0	0	0		0				
TOTALS			21	8-17	0-2	5-6	6	6	12	5	3	2	2	2	50	

Shooting By Period

Period	FG	FG%	3FG	3FG%	FT	FT%
2nd Half	0-0	0%	0-0	0%	0-0	0%
Game	19-69	27.5%	2-12	16.7%	11-14	78.6%

Game Notes:

Officials: **Brenda Pantoja, Charles Gonzalez, Shelley Nakasone**
Attendance: **2479**

Start Time: **2019-02-16 02:09:36**
End Time: **2019-02-16 03:52:45**
Game Duration: **103**
Conference Game;

Score	1st	2nd	3rd	4th	TOT
STA	8	27	9	21	65
UCL	13	6	21	11	51

Points from (This Period)	STA	UCL
In the Paint	4	14
Off Turns	0	6
2nd Chance	0	4
Fast Break	0	4
Bench	2	0

**Official Play-By-Play
Stanford vs UCLA
Third Quarter
February 15, 2019 at Pauley Pavilion - Los Angeles CA**



Period 3

Starters:

Stanford: 10 JEROME, ALYSSA; 11 SMITH, ALANNA; 21 CARRINGTON, DIJONAI; 23 WILLIAMS, KIANA; 24 HULL, LACIE;

UCLA: 11 DRUMMER, LAJAHNA; 21 ONYENWERE, MICHAELA; 22 BURKE, KENNEDY; 24 DEAN, JAPREECE; 4 CORSARO, LINDSEY;

Time	VISITORS: Stanford	Score	Margin	HOME: UCLA
09:45		21-35	V 14	GOOD! LAYUP by ONYENWERE, MICHAELA
09:45	FOUL (PERSONAL) by SMITH, ALANNA			
09:45		22-35	V 13	GOOD! FT by ONYENWERE, MICHAELA
09:34	GOOD! LAYUP by JEROME, ALYSSA	22-37	V 15	
09:34	ASSIST by WILLIAMS, KIANA			
09:26				TURNOVER (TRAVEL) by ONYENWERE, MICHAELA
09:12	MISSED JUMPER by HULL, LACIE			
09:08				REBOUND (DEF) by DRUMMER, LAJAHNA
09:03		24-37	V 13	GOOD! JUMPER by BURKE, KENNEDY
08:42				FOUL (PERSONAL) by DRUMMER, LAJAHNA
08:42	SUB OUT: JEROME, ALYSSA			
08:42	SUB IN: HULL, LEXIE			
08:40	TURNOVER (LOSTBALL) by HULL, LACIE			
08:26		26-37	V 11	GOOD! LAYUP by DRUMMER, LAJAHNA
08:26				ASSIST by ONYENWERE, MICHAELA
08:04	MISSED 3PTR by WILLIAMS, KIANA			
08:04	REBOUND (OFF) by SMITH, ALANNA			
08:04				FOUL (PERSONAL) by ONYENWERE, MICHAELA
08:04	MISSED 3PTR by SMITH, ALANNA			
08:01	REBOUND (OFF) by HULL, LEXIE			
08:01	TURNOVER (OTHER) by HULL, LEXIE			
07:35		28-37	V 9	GOOD! LAYUP by CORSARO, LINDSEY
07:34	FOUL (PERSONAL) by HULL, LACIE			
07:34				MISSED FT by CORSARO, LINDSEY
07:34	REBOUND (DEF) by TEAM			
07:28	TURNOVER (BADPASS) by HULL, LACIE			
07:28				STEAL by DRUMMER, LAJAHNA
07:22		30-37	V 7	GOOD! LAYUP by BURKE, KENNEDY [FB]
07:22				ASSIST by DRUMMER, LAJAHNA
06:52	MISSED JUMPER by HULL, LEXIE			
06:52				BLOCK by BURKE, KENNEDY
06:47				REBOUND (DEF) by BURKE, KENNEDY
06:41		32-37	V 5	GOOD! LAYUP by DRUMMER, LAJAHNA
06:41				ASSIST by CORSARO, LINDSEY
06:15	MISSED LAYUP by CARRINGTON, DIJONAI			
06:14	REBOUND (OFF) by SMITH, ALANNA			
06:14	SUB OUT: HULL, LACIE			
06:14	SUB IN: COFFEE, SHANNON			
06:14	SUB OUT: HULL, LEXIE			
06:14	SUB IN: WILSON, ANNA			
06:00	TURNOVER (BADPASS) by SMITH, ALANNA			
06:00				STEAL by BURKE, KENNEDY
05:55		34-37	V 3	GOOD! LAYUP by BURKE, KENNEDY [FB]
05:22	MISSED 3PTR by WILLIAMS, KIANA			
05:19				REBOUND (DEF) by DRUMMER, LAJAHNA
05:07		36-37	V 1	GOOD! JUMPER by ONYENWERE, MICHAELA
04:45	TURNOVER (BADPASS) by WILLIAMS, KIANA			
04:45				
04:45				SUB OUT: BURKE, KENNEDY
04:45				SUB IN: SMITH, AHLANA
04:45				SUB OUT: ONYENWERE, MICHAELA
04:45				SUB IN: MILLER, LAURYN
04:18				MISSED JUMPER by SMITH, AHLANA
04:15				REBOUND (OFF) by MILLER, LAURYN
04:11				MISSED JUMPER by DEAN, JAPREECE
04:07				REBOUND (OFF) by MILLER, LAURYN
04:06				MISSED LAYUP by MILLER, LAURYN
04:06	BLOCK by COFFEE, SHANNON			
04:00	REBOUND (DEF) by SMITH, ALANNA			
03:54	MISSED LAYUP by WILLIAMS, KIANA			
03:54				BLOCK by MILLER, LAURYN
03:48				REBOUND (DEF) by DEAN, JAPREECE
03:44				MISSED 3PTR by CORSARO, LINDSEY
03:40				REBOUND (OFF) by CORSARO, LINDSEY
03:38				MISSED JUMPER by CORSARO, LINDSEY
03:35	REBOUND (DEF) by COFFEE, SHANNON			
03:25	GOOD! 3PTR by SMITH, ALANNA	36-40	V 4	
03:25	ASSIST by WILLIAMS, KIANA			
02:54				MISSED JUMPER by DEAN, JAPREECE
02:51				REBOUND (OFF) by DRUMMER, LAJAHNA

Time	VISITORS: Stanford	Score	Margin	HOME: UCLA
02:51	FOUL (PERSONAL) by CARRINGTON, DIJONAI			
02:51				SUB OUT: DRUMMER, LAJAHNA
02:51				SUB IN: ONYENWERE, MICHAELA
02:51				SUB OUT: DEAN, JAPREECE
02:51				SUB IN: BURKE, KENNEDY
02:51	SUB OUT: WILSON, ANNA			
02:51	SUB IN: BROWN, JENNA			
02:49	FOUL (PERSONAL) by SMITH, ALANNA			
02:49		37-40	V 3	GOOD! FT by ONYENWERE, MICHAELA
02:49		38-40	V 2	GOOD! FT by ONYENWERE, MICHAELA
02:28				FOUL (PERSONAL) by MILLER, LAURYN
02:09	GOOD! LAYUP by SMITH, ALANNA	38-42	V 4	
02:09	ASSIST by BROWN, JENNA			
01:53				TURNOVER (BADPASS) by SMITH, AHLANA
01:53	STEAL by CARRINGTON, DIJONAI			
01:47	MISSED LAYUP by CARRINGTON, DIJONAI			
01:44				REBOUND (DEF) by CORSARO, LINDSEY
01:35				MISSED LAYUP by CORSARO, LINDSEY
01:30				REBOUND (OFF) by ONYENWERE, MICHAELA
01:19				MISSED JUMPER by SMITH, AHLANA
01:15				REBOUND (OFF) by BURKE, KENNEDY
01:15	FOUL (PERSONAL) by COFFEE, SHANNON			
01:15		39-42	V 3	GOOD! FT by BURKE, KENNEDY
01:15				SUB OUT: MILLER, LAURYN
01:15				SUB IN: DRUMMER, LAJAHNA
01:15				SUB OUT: CORSARO, LINDSEY
01:15				SUB IN: DEAN, JAPREECE
01:15	SUB OUT: CARRINGTON, DIJONAI			
01:15	SUB IN: HULL, LEXIE			
01:15		40-42	V 2	GOOD! FT by BURKE, KENNEDY
00:57				FOUL (PERSONAL) by DRUMMER, LAJAHNA
00:45	MISSED 3PTR by BROWN, JENNA			
00:39				REBOUND (DEF) by DEAN, JAPREECE
00:21				MISSED 3PTR by ONYENWERE, MICHAELA
00:17	REBOUND (DEF) by SMITH, ALANNA			
00:06				FOUL (PERSONAL) by DEAN, JAPREECE
00:06	GOOD! FT by HULL, LEXIE	40-43	V 3	
00:06	SUB OUT: SMITH, ALANNA			
00:06	SUB IN: JEROME, ALYSSA			
00:06	GOOD! FT by HULL, LEXIE	40-44	V 4	

Stanford 44, UCLA 40

Points from (This Period)	STA	UCL
In the Paint	4	14
Off Turns	0	6
2nd Chance	0	4
Fast Break	0	4
Bench	2	0

Official Box Score
Stanford vs UCLA
Fourth Quarter Statistics Only
February 15, 2019 at Pauley Pavilion - Los Angeles CA



Stanford 21

No.	Player	S	Pts	FG	3FG	FT	OR	DR	TR	PF	A	TO	Blk	Stl	Min	+/-
10	JEROME, ALYSSA		0	0-0	0-0	0-0	0	0	0	0	0	0	0	0	0	0
11	SMITH, ALANNA		4	2-4	0-2	0-0	0	1	1	0	0	0	1	0	10	10
21	CARRINGTON, DIJONAI		2	1-3	0-0	0-0	0	4	4	0	1	0	0	0	10	10
23	WILLIAMS, KIANA		12	4-6	2-4	2-2	0	0	0	0	0	1	0	1	10	10
24	HULL, LACIE		0	0-0	0-0	0-0	0	0	0	0	0	1	0	1	7	3
02	COFFEE, SHANNON		3	1-1	1-1	0-0	1	1	2	1	1	0	0	0	10	10
03	WILSON, ANNA		0	0-0	0-0	0-0	0	0	0	0	0	0	0	0	0	0
12	HULL, LEXIE		0	0-0	0-0	0-0	0	0	0	0	0	0	0	1	3	7
54	BROWN, JENNA		0	0-0	0-0	0-0	0	0	0	0	0	0	0	0	0	0
	TEAM						0	0	0	0		0				
TOTALS			21	8-14	3-7	2-2	1	6	7	1	2	2	1	3	49	

Shooting By Period

Period	FG	FG%	3FG	3FG%	FT	FT%
Game	25-56	44.6%	9-26	34.6%	6-6	100.0%

UCLA 11

No.	Player	S	Pts	FG	3FG	FT	OR	DR	TR	PF	A	TO	Blk	Stl	Min	+/-
04	CORSARO, LINDSEY		0	0-1	0-1	0-0	0	1	1	0	0	1	0	0	7	-8
11	DRUMMER, LAJAHNA		0	0-1	0-0	0-0	2	2	4	0	0	0	0	0	7	-9
21	ONYENWERE, MICHAELA		2	1-4	0-0	0-0	1	2	3	0	0	1	0	0	10	-10
22	BURKE, KENNEDY		2	0-1	0-1	2-2	0	0	0	0	1	1	0	0	10	-10
24	DEAN, JAPREECE		5	2-6	1-1	0-0	1	0	1	1	1	2	0	0	10	-10
02	SMITH, AHLANA		0	0-0	0-0	0-0	0	0	0	0	0	0	0	0	2	-2
33	MILLER, LAURYN		2	1-1	0-0	0-0	0	0	0	0	0	0	0	0	3	-1
	TEAM						0	0	0	0		0				
TOTALS			11	4-14	1-3	2-2	4	5	9	1	2	5	0	0	49	

Shooting By Period

Period	FG	FG%	3FG	3FG%	FT	FT%
Game	19-69	27.5%	2-12	16.7%	11-14	78.6%

Game Notes:

Officials: **Brenda Pantoja, Charles Gonzalez, Shelley Nakasone**
Attendance: **2479**

Start Time: **2019-02-16 02:09:36**

End Time: **2019-02-16 03:52:45**

Game Duration: **103**

Conference Game;

Score	1st	2nd	3rd	4th	TOT
STA	8	27	9	21	65
UCL	13	6	21	11	51

Points from (This Period)	STA	UCL
In the Paint	8	4
Off Turns	9	2
2nd Chance	3	2
Fast Break	2	3
Bench	3	2

Official Play-By-Play
Stanford vs UCLA
Fourth Quarter
February 15, 2019 at Pauley Pavilion - Los Angeles CA



Period 4

Starters:

Stanford: 10 JEROME, ALYSSA; 11 SMITH, ALANNA; 21 CARRINGTON, DIJONAI; 23 WILLIAMS, KIANA; 24 HULL, LACIE;

UCLA: 11 DRUMMER, LAJAHNA; 21 ONYENWERE, MICHAELA; 22 BURKE, KENNEDY; 24 DEAN, JAPREECE; 4 CORSARO, LINDSEY;

Time	VISITORS: Stanford	Score	Margin	HOME: UCLA
09:31	TURNOVER (BADPASS) by HULL, LACIE			
09:04		42-44	V 2	GOOD! LAYUP by ONYENWERE, MICHAELA
09:04				ASSIST by BURKE, KENNEDY
08:48	TIMEOUT 30SEC			
08:48				
08:48	SUB OUT: HULL, LACIE			
08:48	SUB IN: HULL, LEXIE			
08:32	MISSED 3PTR by SMITH, ALANNA			
08:27	REBOUND (OFF) by COFFEE, SHANNON			
08:26	GOOD! 3PTR by WILLIAMS, KIANA	42-47	V 5	
07:59				MISSED JUMPER by DEAN, JAPREECE
07:55				REBOUND (OFF) by DEAN, JAPREECE
07:53				TURNOVER (BADPASS) by DEAN, JAPREECE
07:53	STEAL by HULL, LEXIE			
07:37				FOUL (PERSONAL) by DEAN, JAPREECE
07:37	GOOD! FT by WILLIAMS, KIANA	42-48	V 6	
07:37				SUB OUT: SMITH, AHLANA
07:37				SUB IN: CORSARO, LINDSEY
07:37	GOOD! FT by WILLIAMS, KIANA	42-49	V 7	
07:17				MISSED LAYUP by DRUMMER, LAJAHNA
07:14	REBOUND (DEF) by CARRINGTON, DIJONAI			
06:57	GOOD! LAYUP by CARRINGTON, DIJONAI	42-51	V 9	
06:48				TURNOVER (LOSTBALL) by BURKE, KENNEDY
06:33	MISSED 3PTR by WILLIAMS, KIANA			
06:29				REBOUND (DEF) by DRUMMER, LAJAHNA
06:21				MISSED JUMPER by DEAN, JAPREECE
06:18	REBOUND (DEF) by SMITH, ALANNA			
06:13	MISSED LAYUP by CARRINGTON, DIJONAI			
06:09				REBOUND (DEF) by DRUMMER, LAJAHNA
05:47				MISSED JUMPER by ONYENWERE, MICHAELA
05:47	BLOCK by SMITH, ALANNA			
05:41				REBOUND (OFF) by ONYENWERE, MICHAELA
05:41				TURNOVER (LOSTBALL) by ONYENWERE, MICHAELA
05:41	SUB OUT: HULL, LEXIE			
05:41	SUB IN: HULL, LACIE			
05:41				SUB OUT: DRUMMER, LAJAHNA
05:41				SUB IN: MILLER, LAURYN
05:23	GOOD! 3PTR by COFFEE, SHANNON	42-54	V 12	
05:23	ASSIST by CARRINGTON, DIJONAI			
05:10		44-54	V 10	GOOD! JUMPER by MILLER, LAURYN
05:10				ASSIST by DEAN, JAPREECE
05:00	MISSED 3PTR by SMITH, ALANNA			
04:56				REBOUND (DEF) by CORSARO, LINDSEY
04:53		47-54	V 7	GOOD! 3PTR by DEAN, JAPREECE [FB]
04:39	MISSED 3PTR by WILLIAMS, KIANA			
04:35				REBOUND (DEF) by ONYENWERE, MICHAELA
04:30				TURNOVER (LOSTBALL) by DEAN, JAPREECE
04:30	STEAL by HULL, LACIE			
04:16	GOOD! LAYUP by SMITH, ALANNA	47-56	V 9	
03:57				MISSED JUMPER by ONYENWERE, MICHAELA
03:54	REBOUND (DEF) by COFFEE, SHANNON			
03:50	MISSED LAYUP by CARRINGTON, DIJONAI			
03:46				REBOUND (DEF) by ONYENWERE, MICHAELA
03:42				TURNOVER (LOSTBALL) by CORSARO, LINDSEY
03:42	STEAL by WILLIAMS, KIANA			
03:37	GOOD! LAYUP by WILLIAMS, KIANA [FB]	47-58	V 11	
03:37				TIMEOUT 30SEC
03:37				
03:27				MISSED JUMPER by DEAN, JAPREECE
03:21				REBOUND (OFF) by DRUMMER, LAJAHNA
03:11	FOUL (PERSONAL) by COFFEE, SHANNON			
03:11		48-58	V 10	GOOD! FT by BURKE, KENNEDY
03:11				SUB OUT: MILLER, LAURYN
03:11				SUB IN: DRUMMER, LAJAHNA
03:11		49-58	V 9	GOOD! FT by BURKE, KENNEDY
02:51	GOOD! JUMPER by WILLIAMS, KIANA	49-60	V 11	
02:34				MISSED 3PTR by BURKE, KENNEDY
02:30				REBOUND (OFF) by DRUMMER, LAJAHNA
02:27				MISSED JUMPER by DEAN, JAPREECE
02:22	REBOUND (DEF) by CARRINGTON, DIJONAI			

Time	VISITORS: Stanford	Score	Margin	HOME: UCLA
02:13	TURNOVER (TRAVEL) by WILLIAMS, KIANA			
01:59				MISSED JUMPER by ONYENWERE, MICHAELA
01:54	REBOUND (DEF) by CARRINGTON, DIJONAI			
01:29	GOOD! JUMPER by SMITH, ALANNA [PNT]	49-62	V 13	
01:06		51-62	V 11	GOOD! JUMPER by DEAN, JAPREECE
00:33	GOOD! 3PTR by WILLIAMS, KIANA	51-65	V 14	
00:33	ASSIST by COFFEE, SHANNON			
00:22				MISSED 3PTR by CORSARO, LINDSEY
00:18	REBOUND (DEF) by CARRINGTON, DIJONAI			
00:14	SUB OUT: WILLIAMS, KIANA			
00:14	SUB IN: BROWN, JENNA			

Stanford 65, UCLA 51

Points from (This Period)	STA	UCL
In the Paint	8	4
Off Turns	9	2
2nd Chance	3	2
Fast Break	2	3
Bench	3	2

Official Scoring/Possession Reference Chart
Stanford vs UCLA
Period 1
February 15, 2019 at Pauley Pavilion - Los Angeles CA



Period 1

Starters:

Stanford: 10 JEROME,ALYSSA; 11 SMITH,ALANNA; 21 CARRINGTON,DIJONAI; 23 WILLIAMS,KIANA; 24 HULL,LACIE;

UCLA: 11 DRUMMER,LAJAHNA; 21 ONYENWERE,MICHAELA; 22 BURKE,KENNEDY; 24 DEAN,JAPREECE; 4 CORSARO,LINDSEY;

Time	VISITORS: Stanford	Score	Margin	HOME: UCLA
09:40		2-0	H 2	GOOD! JUMPER by ONYENWERE, MICHAELA [PNT]
09:12		4-0	H 4	GOOD! LAYUP by ONYENWERE, MICHAELA [FB]
06:25		6-0	H 6	GOOD! JUMPER by ONYENWERE, MICHAELA
05:47		8-0	H 8	GOOD! JUMPER by DRUMMER, LAJAHNA
05:31	GOOD! LAYUP by SMITH, ALANNA	8-2	H 6	
05:02	GOOD! LAYUP by HULL, LEXIE [FB]	8-4	H 4	
04:50		9-4	H 5	GOOD! FT by ONYENWERE, MICHAELA
04:50		10-4	H 6	GOOD! FT by ONYENWERE, MICHAELA
04:36	GOOD! LAYUP by CARRINGTON, DIJONAI	10-6	H 4	
01:04	GOOD! LAYUP by SMITH, ALANNA	10-8	H 2	
00:45		13-8	H 5	GOOD! 3PTR by SMITH, AHLANA

Stanford 8, UCLA 13

Official Scoring/Possession Reference Chart
Stanford vs UCLA
Period 2
February 15, 2019 at Pauley Pavilion - Los Angeles CA



Period 2

Starters:

Stanford: 10 JEROME, ALYSSA; 11 SMITH, ALANNA; 21 CARRINGTON, DIJONAI; 23 WILLIAMS, KIANA; 24 HULL, LACIE;

UCLA: 11 DRUMMER, LAJAHNA; 21 ONYENWERE, MICHAELA; 22 BURKE, KENNEDY; 24 DEAN, JAPREECE; 4 CORSARO, LINDSEY;

Time	VISITORS: Stanford	Score	Margin	HOME: UCLA
09:35	GOOD! LAYUP by CARRINGTON, DIJONAI [FB]	13-10	H 3	
08:44	GOOD! LAYUP by SMITH, ALANNA	13-12	H 1	
07:56	GOOD! FT by SMITH, ALANNA	13-13	T	
07:56	GOOD! FT by SMITH, ALANNA	13-14	V 1	
07:24	GOOD! LAYUP by CARRINGTON, DIJONAI	13-16	V 3	
06:35	GOOD! 3PTR by WILLIAMS, KIANA	13-19	V 6	
06:03		15-19	V 4	GOOD! LAYUP by ONYENWERE, MICHAELA [FB]
05:31		16-19	V 3	GOOD! FT by ONYENWERE, MICHAELA [FB]
05:31		17-19	V 2	GOOD! FT by ONYENWERE, MICHAELA [FB]
05:18	GOOD! 3PTR by CARRINGTON, DIJONAI	17-22	V 5	
05:04		19-22	V 3	GOOD! LAYUP by BURKE, KENNEDY
04:26	GOOD! LAYUP by CARRINGTON, DIJONAI [FB]	19-24	V 5	
03:34	GOOD! LAYUP by SMITH, ALANNA	19-26	V 7	
03:18	GOOD! 3PTR by HULL, LACIE	19-29	V 10	
01:50	GOOD! 3PTR by HULL, LACIE	19-32	V 13	
00:40	GOOD! 3PTR by SMITH, ALANNA	19-35	V 16	

Stanford 35, UCLA 19

Official Scoring/Possession Reference Chart
Stanford vs UCLA
Period 3
February 15, 2019 at Pauley Pavilion - Los Angeles CA



Period 3

Starters:

Stanford: 10 JEROME,ALYSSA; 11 SMITH,ALANNA; 21 CARRINGTON,DIJONAI; 23 WILLIAMS,KIANA; 24 HULL,LACIE;

UCLA: 11 DRUMMER,LAJAHNA; 21 ONYENWERE,MICHAELA; 22 BURKE,KENNEDY; 24 DEAN,JAPREECE; 4 CORSARO,LINDSEY;

Time	VISITORS: Stanford	Score	Margin	HOME: UCLA
09:45		21-35	V 14	GOOD! LAYUP by ONYENWERE, MICHAELA
09:45		22-35	V 13	GOOD! FT by ONYENWERE, MICHAELA
09:34	GOOD! LAYUP by JEROME, ALYSSA	22-37	V 15	
09:03		24-37	V 13	GOOD! JUMPER by BURKE, KENNEDY
08:26		26-37	V 11	GOOD! LAYUP by DRUMMER, LAJAHNA
07:35		28-37	V 9	GOOD! LAYUP by CORSARO, LINDSEY
07:22		30-37	V 7	GOOD! LAYUP by BURKE, KENNEDY [FB]
06:41		32-37	V 5	GOOD! LAYUP by DRUMMER, LAJAHNA
05:55		34-37	V 3	GOOD! LAYUP by BURKE, KENNEDY [FB]
05:07		36-37	V 1	GOOD! JUMPER by ONYENWERE, MICHAELA
03:25	GOOD! 3PTR by SMITH, ALANNA	36-40	V 4	
02:49		37-40	V 3	GOOD! FT by ONYENWERE, MICHAELA
02:49		38-40	V 2	GOOD! FT by ONYENWERE, MICHAELA
02:09	GOOD! LAYUP by SMITH, ALANNA	38-42	V 4	
01:15		39-42	V 3	GOOD! FT by BURKE, KENNEDY
01:15		40-42	V 2	GOOD! FT by BURKE, KENNEDY
00:06	GOOD! FT by HULL, LEXIE	40-43	V 3	
00:06	GOOD! FT by HULL, LEXIE	40-44	V 4	

Stanford 44, UCLA 40

Official Scoring/Possession Reference Chart
Stanford vs UCLA
Period 4
February 15, 2019 at Pauley Pavilion - Los Angeles CA



Period 4

Starters:

Stanford: 10 JEROME,ALYSSA; 11 SMITH,ALANNA; 21 CARRINGTON,DIJONAI; 23 WILLIAMS,KIANA; 24 HULL,LACIE;

UCLA: 11 DRUMMER,LAJAHNA; 21 ONYENWERE,MICHAELA; 22 BURKE,KENNEDY; 24 DEAN,JAPREECE; 4 CORSARO,LINDSEY;

Time	VISITORS: Stanford	Score	Margin	HOME: UCLA
09:04		42-44	V 2	GOOD! LAYUP by ONYENWERE, MICHAELA
08:26	GOOD! 3PTR by WILLIAMS, KIANA	42-47	V 5	
07:37	GOOD! FT by WILLIAMS, KIANA	42-48	V 6	
07:37	GOOD! FT by WILLIAMS, KIANA	42-49	V 7	
06:57	GOOD! LAYUP by CARRINGTON, DIJONAI	42-51	V 9	
05:23	GOOD! 3PTR by COFFEE, SHANNON	42-54	V 12	
05:10		44-54	V 10	GOOD! JUMPER by MILLER, LAURYN
04:53		47-54	V 7	GOOD! 3PTR by DEAN, JAPREECE [FB]
04:16	GOOD! LAYUP by SMITH, ALANNA	47-56	V 9	
03:37	GOOD! LAYUP by WILLIAMS, KIANA [FB]	47-58	V 11	
03:11		48-58	V 10	GOOD! FT by BURKE, KENNEDY
03:11		49-58	V 9	GOOD! FT by BURKE, KENNEDY
02:51	GOOD! JUMPER by WILLIAMS, KIANA	49-60	V 11	
01:29	GOOD! JUMPER by SMITH, ALANNA [PNT]	49-62	V 13	
01:06		51-62	V 11	GOOD! JUMPER by DEAN, JAPREECE
00:33	GOOD! 3PTR by WILLIAMS, KIANA	51-65	V 14	

Stanford 65, UCLA 51

Official Substitutions Log
Stanford vs UCLA
Period 1
February 15, 2019 at Pauley Pavilion - Los Angeles CA



VISITORS: Stanford	Time	Score	HOME: UCLA
10 JEROME,ALYSSA			11 DRUMMER,LAJAHNA
11 SMITH,ALANNA			21 ONYENWERE,MICHAELA
21 CARRINGTON,DIJONAI			22 BURKE,KENNEDY
23 WILLIAMS,KIANA			24 DEAN,JAPREECE
24 HULL,LACIE			4 CORSARO,LINDSEY
SUB OUT: 10 JEROME,ALYSSA	07:43	0-4	
SUB IN: 12 HULL,LEXIE	07:43		
	04:38	4-10	SUB OUT: DRUMMER,LAJAHNA
	04:38		SUB IN: SMITH,AHLANA
	04:38		SUB OUT: BURKE,KENNEDY
	04:38		SUB IN: MILLER,LAURYN
	04:30	6-10	SUB OUT: DEAN,JAPREECE
	04:30		SUB IN: BURKE,KENNEDY
SUB OUT: 11 SMITH,ALANNA	03:29	6-10	
SUB IN: 2 COFFEE,SHANNON	03:29		
	02:25	6-10	SUB OUT: CORSARO,LINDSEY
	02:25		SUB IN: DEAN,JAPREECE
SUB OUT: 21 CARRINGTON,DIJONAI	02:25		
SUB IN: 10 JEROME,ALYSSA	02:25		
SUB OUT: 12 HULL,LEXIE	01:46	6-10	
SUB IN: 11 SMITH,ALANNA	01:46		
SUB OUT: 24 HULL,LACIE	01:46		
SUB IN: 21 CARRINGTON,DIJONAI	01:46		
	01:46		SUB OUT: BURKE,KENNEDY
	01:46		SUB IN: DRUMMER,LAJAHNA
	00:26	8-13	SUB OUT: ONYENWERE,MICHAELA
	00:26		SUB IN: BURKE,KENNEDY
	00:14	8-13	SUB OUT: MILLER,LAURYN
	00:14		SUB IN: CORSARO,LINDSEY
	00:14		SUB OUT: BURKE,KENNEDY
	00:14		SUB IN: ONYENWERE,MICHAELA

Stanford 8, UCLA 13

Official Substitutions Log
Stanford vs UCLA
Period 2
February 15, 2019 at Pauley Pavilion - Los Angeles CA



VISITORS: Stanford	Time	Score	HOME: UCLA
10 JEROME,ALYSSA			11 DRUMMER,LAJAHNA
11 SMITH,ALANNA			21 ONYENWERE,MICHAELA
21 CARRINGTON,DIJONAI			22 BURKE,KENNEDY
23 WILLIAMS,KIANA			24 DEAN,JAPREECE
24 HULL,LACIE			4 CORSARO,LINDSEY
	08:19	12-13	SUB OUT: SMITH,AHLANA
	08:19		SUB IN: BURKE,KENNEDY
SUB OUT: 24 HULL,LACIE	08:19		
SUB IN: 12 HULL,LEXIE	08:19		
	07:56	13-13	SUB OUT: DRUMMER,LAJAHNA
	07:56		SUB IN: MILLER,LAURYN
	05:31	19-17	SUB OUT: ONYENWERE,MICHAELA
	05:31		SUB IN: DRUMMER,LAJAHNA
SUB OUT: 2 COFFEE,SHANNON	05:31		
SUB IN: 24 HULL,LACIE	05:31		
	04:00	24-19	SUB OUT: MILLER,LAURYN
	04:00		SUB IN: ONYENWERE,MICHAELA
SUB OUT: 12 HULL,LEXIE	04:00		
SUB IN: 3 WILSON,ANNA	04:00		
	02:19	29-19	SUB OUT: BURKE,KENNEDY
	02:19		SUB IN: SMITH,AHLANA
SUB OUT: 23 WILLIAMS,KIANA	02:19		
SUB IN: 12 HULL,LEXIE	02:19		
SUB OUT: 21 CARRINGTON,DIJONAI	02:19		
SUB IN: 54 BROWN,JENNA	02:19		
SUB OUT: 12 HULL,LEXIE	01:06	32-19	
SUB IN: 2 COFFEE,SHANNON	01:06		

Stanford 35, UCLA 19

Official Substitutions Log
Stanford vs UCLA
Period 3
February 15, 2019 at Pauley Pavilion - Los Angeles CA



VISITORS: Stanford	Time	Score	HOME: UCLA
10 JEROME,ALYSSA			11 DRUMMER,LAJAHNA
11 SMITH,ALANNA			21 ONYENWERE,MICHAELA
21 CARRINGTON,DIJONAI			22 BURKE,KENNEDY
23 WILLIAMS,KIANA			24 DEAN,JAPREECE
24 HULL,LACIE			4 CORSARO,LINDSEY
SUB OUT: 10 JEROME,ALYSSA	08:42	37-24	
SUB IN: 12 HULL,LEXIE	08:42		
SUB OUT: 24 HULL,LACIE	06:14	37-32	
SUB IN: 2 COFFEE,SHANNON	06:14		
SUB OUT: 12 HULL,LEXIE	06:14		
SUB IN: 3 WILSON,ANNA	06:14		
	04:45	37-36	SUB OUT: BURKE,KENNEDY
	04:45		SUB IN: SMITH,AHLANA
	04:45		SUB OUT: ONYENWERE,MICHAELA
	04:45		SUB IN: MILLER,LAURYN
	02:51	40-36	SUB OUT: DRUMMER,LAJAHNA
	02:51		SUB IN: ONYENWERE,MICHAELA
	02:51		SUB OUT: DEAN,JAPREECE
	02:51		SUB IN: BURKE,KENNEDY
SUB OUT: 3 WILSON,ANNA	02:51		
SUB IN: 54 BROWN,JENNA	02:51		
	01:15	42-39	SUB OUT: MILLER,LAURYN
	01:15		SUB IN: DRUMMER,LAJAHNA
	01:15		SUB OUT: CORSARO,LINDSEY
	01:15		SUB IN: DEAN,JAPREECE
SUB OUT: 21 CARRINGTON,DIJONAI	01:15		
SUB IN: 12 HULL,LEXIE	01:15		
SUB OUT: 11 SMITH,ALANNA	00:06	43-40	
SUB IN: 10 JEROME,ALYSSA	00:06		

Stanford 44, UCLA 40

Official Substitutions Log
Stanford vs UCLA
Period 4
February 15, 2019 at Pauley Pavilion - Los Angeles CA



VISITORS: Stanford		Time	Score	HOME: UCLA
10 JEROME,ALYSSA				11 DRUMMER,LAJAHNA
11 SMITH,ALANNA				21 ONYENWERE,MICHAELA
21 CARRINGTON,DIJONAI				22 BURKE,KENNEDY
23 WILLIAMS,KIANA				24 DEAN,JAPREECE
24 HULL,LACIE				4 CORSARO,LINDSEY
SUB OUT: 24 HULL,LACIE	08:48	44-42		
SUB IN: 12 HULL,LEXIE	08:48			
	07:37	48-42		SUB OUT: SMITH,AHLANA
	07:37			SUB IN: CORSARO,LINDSEY
SUB OUT: 12 HULL,LEXIE	05:41	51-42		
SUB IN: 24 HULL,LACIE	05:41			
	05:41			SUB OUT: DRUMMER,LAJAHNA
	05:41			SUB IN: MILLER,LAURYN
	03:11	58-48		SUB OUT: MILLER,LAURYN
	03:11			SUB IN: DRUMMER,LAJAHNA
SUB OUT: 23 WILLIAMS,KIANA	00:14	65-51		
SUB IN: 54 BROWN,JENNA	00:14			

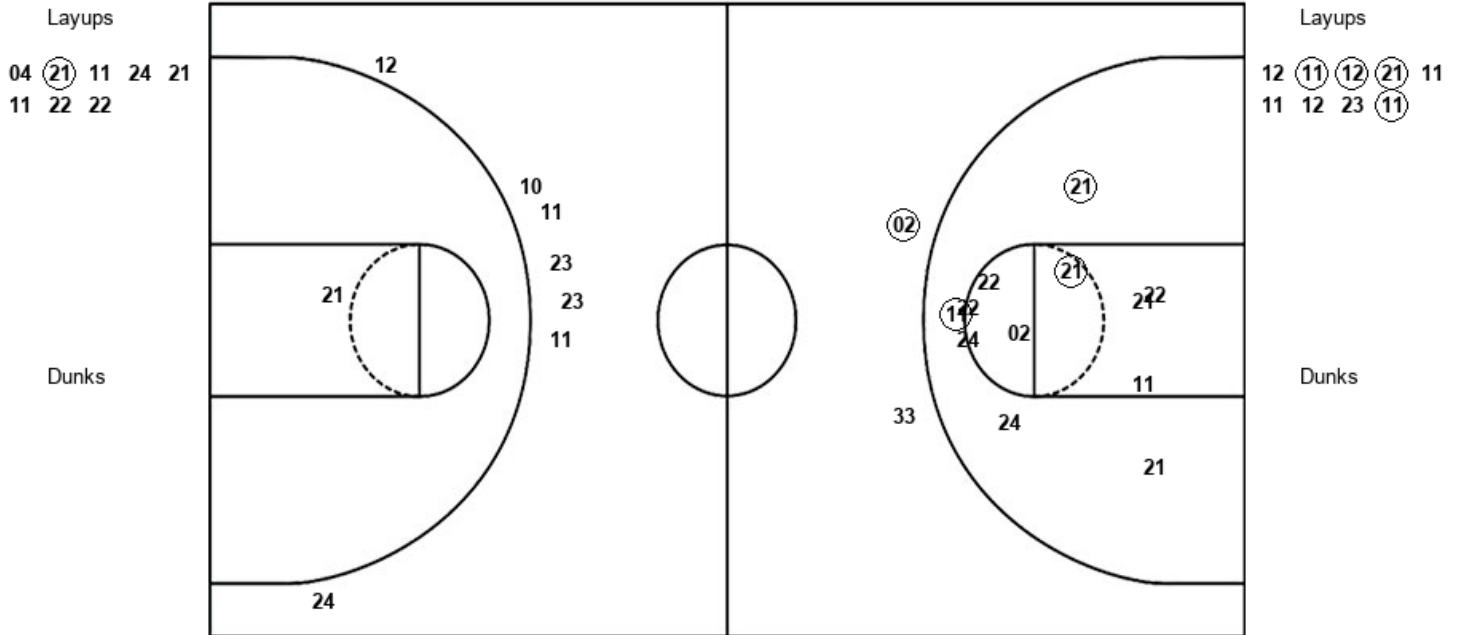
Stanford 65, UCLA 51

Official Shot Chart
Stanford vs UCLA
 PERIOD 1 Shots
 February 15, 2019 at Pauley Pavilion - Los Angeles CA



UCLA

Stanford



UCL : Period 1	Made	Att	Pct
Layups	1	8	12.5
Dunks	0	0	0
2PT Field Goals	4	20	20.0
3PT Field Goals	1	2	50.0
Total Field Goals	5	22	22.7

STA : Period 1	Made	Att	Pct
Layups	4	9	44.4
Dunks	0	0	0
2PT Field Goals	4	10	40.0
3PT Field Goals	0	7	00.0
Total Field Goals	4	17	23.5

Official Shot Chart
Stanford vs UCLA
 PERIOD 2 Shots
 February 15, 2019 at Pauley Pavilion - Los Angeles CA

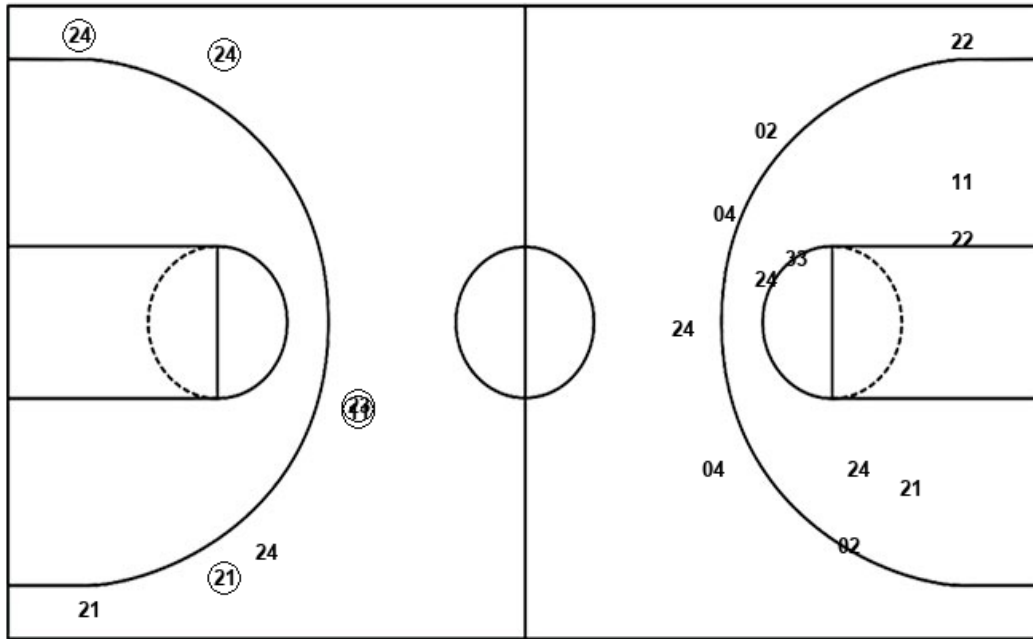


UCLA

Stanford

Layups
 11 (21) (22) 21

Dunks



Layups
 (21) 11 (11) (21) (21)
 (11)

Dunks

UCL : Period 2	Made	Att	Pct
Layups	2	4	50.0
Dunks	0	0	0
2PT Field Goals	2	11	18.2
3PT Field Goals	0	5	00.0
Total Field Goals	2	16	12.5

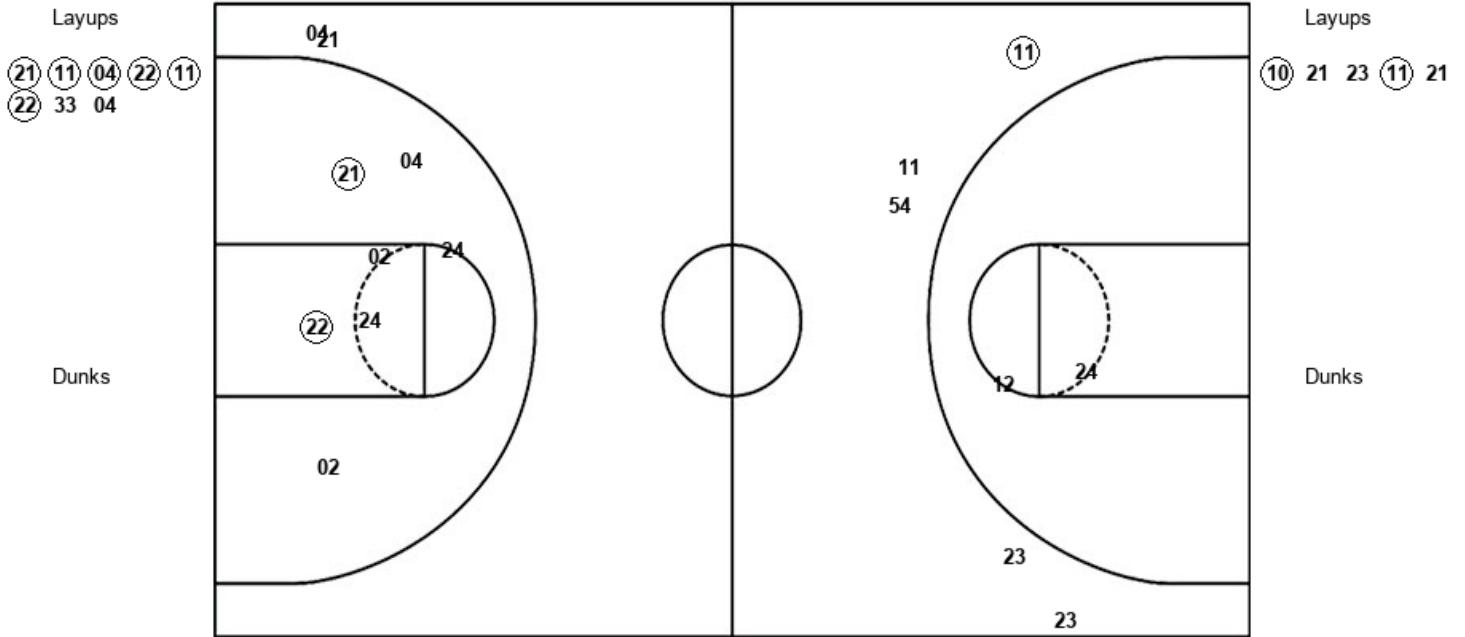
STA : Period 2	Made	Att	Pct
Layups	5	6	83.3
Dunks	0	0	0
2PT Field Goals	5	6	83.3
3PT Field Goals	5	7	71.4
Total Field Goals	10	13	76.9

Official Shot Chart
Stanford vs UCLA
 PERIOD 3 Shots
 February 15, 2019 at Pauley Pavilion - Los Angeles CA



UCLA

Stanford



UCL : Period 3	Made	Att	Pct
Layups	6	8	75.0
Dunks	0	0	0
2PT Field Goals	8	15	53.3
3PT Field Goals	0	2	00.0
Total Field Goals	8	17	47.1

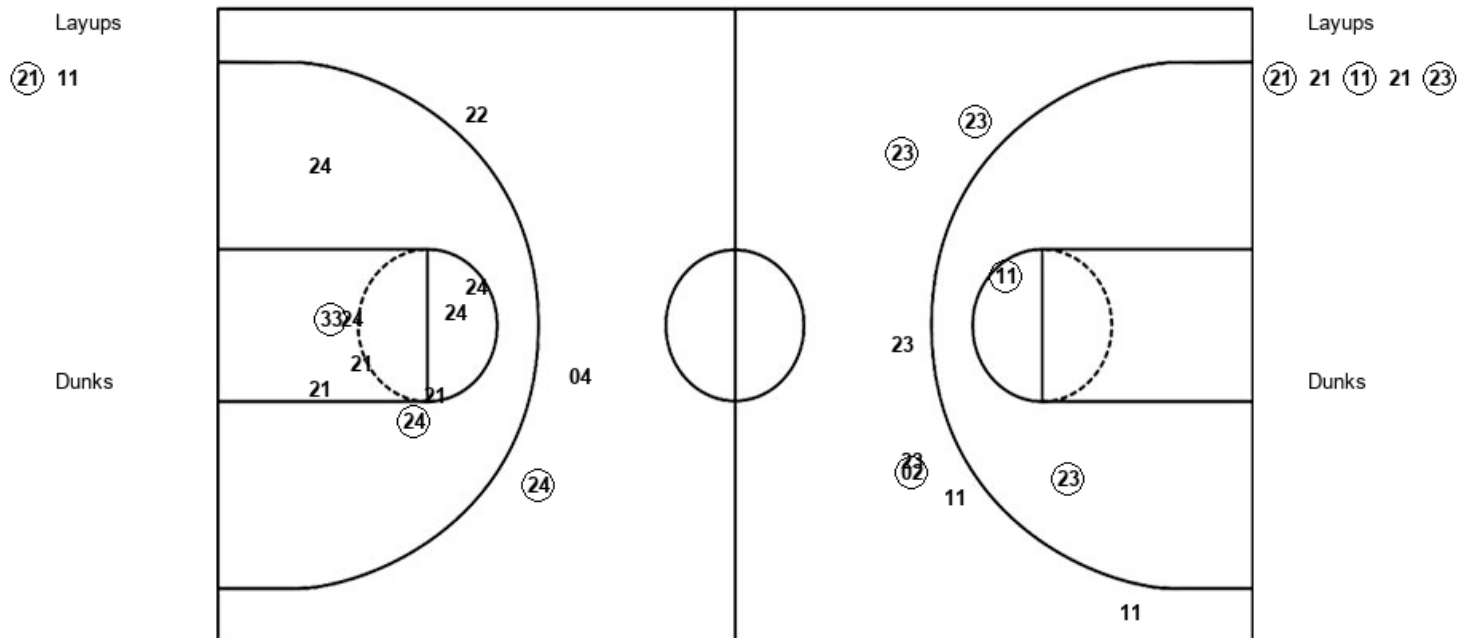
STA : Period 3	Made	Att	Pct
Layups	2	5	40.0
Dunks	0	0	0
2PT Field Goals	2	7	28.6
3PT Field Goals	1	5	20.0
Total Field Goals	3	12	25.0

Official Shot Chart
Stanford vs UCLA
 PERIOD 4 Shots
 February 15, 2019 at Pauley Pavilion - Los Angeles CA



UCLA

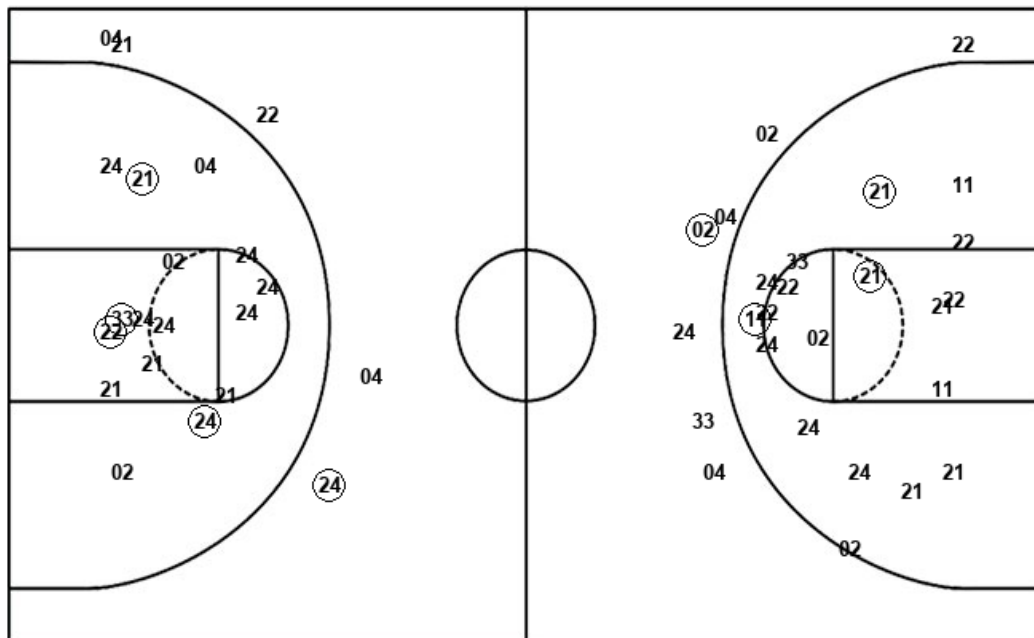
Stanford



UCL : Period 4	Made	Att	Pct
Layups	1	2	50.0
Dunks	0	0	0
2PT Field Goals	3	11	27.3
3PT Field Goals	1	3	33.3
Total Field Goals	4	14	28.6

STA : Period 4	Made	Att	Pct
Layups	3	5	60.0
Dunks	0	0	0
2PT Field Goals	5	7	71.4
3PT Field Goals	3	7	42.9
Total Field Goals	8	14	57.1

Ucla



04 21 11 24 21
11 22 22 11 21
22 21 21 11 04
22 11 22 33 04
21 11

Dunks

UCL : Period 4	Made	Att	Pct
Layups	1	2	50.0
Dunks	0	0	0
2PT Field Goals	3	11	27.3
3PT Field Goals	1	3	33.3
Total Field Goals	4	14	28.6