

## FINAL SCORE



**Washington**

**60**

**UCLA**



**76**

February 03, 2019 • Pauley Pavilion - Los Angeles CA

## FINAL STATISTICS

**Official Box Score**  
**Washington vs UCLA**  
**Game Totals -- Final Statistics**  
**February 03, 2019 at Pauley Pavilion - Los Angeles CA**



**Washington 60**

No.	Player	S	Pts	FG	3FG	FT	OR	DR	TR	PF	A	TO	Blk	Stl	Min	+/-
03	HENSON, MAI-LONI		0	0-1	0-0	0-0	0	1	1	1	3	1	0	0	18	-17
04	MELGOZA, AMBER		23	8-18	3-5	4-7	4	0	4	3	3	1	0	1	33	-3
24	MOSER, JENNA		2	1-5	0-4	0-0	3	0	3	1	1	3	0	1	17	-19
44	PETERSON, MISSY		10	4-13	2-7	0-0	2	2	4	2	4	4	0	2	29	-12
53	REES, DARCY		10	4-5	0-0	2-4	1	3	4	5	1	0	2	1	29	-9
01	JOHNSON, HANNAH		5	1-2	0-0	3-4	2	4	6	0	1	0	0	1	17	1
12	HAGSTROM, MONTANA		0	0-2	0-2	0-0	0	0	0	0	0	0	0	0	2	-5
15	VAN DYKE, HALEY		1	0-0	0-0	1-2	0	0	0	0	0	0	0	0	7	-8
20	ROOKS, KHAYLA		2	0-5	0-3	2-2	0	1	1	0	0	0	0	0	11	-5
25	WATKINS, T.T.		4	2-7	0-0	0-0	1	1	2	2	2	2	0	1	23	4
35	GRIGGSBY, ALEXIS		3	1-2	1-1	0-0	0	1	1	1	0	3	0	2	14	-7
	TEAM						0	1	1	0		2				
<b>TOTALS</b>			<b>60</b>	<b>21-60</b>	<b>6-22</b>	<b>12-19</b>	<b>13</b>	<b>14</b>	<b>27</b>	<b>15</b>	<b>15</b>	<b>16</b>	<b>2</b>	<b>9</b>	<b>200</b>	

*Shooting By Period*

Period	FG	FG%	3FG	3FG%	FT	FT%
1st Qtr	4-13	31%	1-3	33%	2-2	100%
2nd Qtr	2-15	13%	1-7	14%	3-6	50%
3rd Qtr	7-15	47%	2-6	33%	5-7	71%
4th Qtr	8-17	47%	2-6	33%	2-4	50%
1st Half	6-28	21%	2-10	20%	5-8	63%
2nd Half	15-32	47%	4-12	33%	7-11	64%
<b>Game</b>	<b>21-60</b>	<b>35.0%</b>	<b>6-22</b>	<b>27.3%</b>	<b>12-19</b>	<b>63.2%</b>

Last FG: 4th-00:46  
 Biggest Run: 9-0  
 Largest lead: By 0 at -  
 Technical Fouls: None.

**UCLA 76**

No.	Player	S	Pts	FG	3FG	FT	OR	DR	TR	PF	A	TO	Blk	Stl	Min	+/-
04	CORSARO, LINDSEY		14	4-7	3-4	3-3	1	3	4	2	5	0	0	1	23	19
11	DRUMMER, LAJAHNA		10	4-8	0-0	2-4	3	4	7	3	0	2	1	2	30	10
21	ONYENWERE, MICHAELA		12	4-8	1-2	3-3	1	4	5	2	0	3	2	1	27	10
22	BURKE, KENNEDY		12	5-8	0-0	2-2	2	2	4	1	5	6	1	0	26	8
24	DEAN, JAPREECE		13	6-9	1-1	0-0	0	1	1	4	7	7	0	1	30	21
01	OWENS, KAYLA		0	0-1	0-0	0-0	0	1	1	0	0	0	0	0	5	3
02	SMITH, AHLANA		4	2-6	0-1	0-0	0	1	1	4	0	2	1	0	18	3
03	JEFFERSON, KIARA		3	1-1	1-1	0-0	0	1	1	0	1	1	0	1	17	-6
25	HARRIS, SHAYLEY		0	0-0	0-0	0-0	0	1	1	2	0	0	0	0	6	-3
32	BAIRD, CHRISSY		0	0-0	0-0	0-0	0	1	1	0	0	0	0	0	1	-3
33	MILLER, LAURYN		8	4-5	0-0	0-0	1	4	5	1	1	0	0	3	16	18
51	SIGAL, ELIANA		0	0-0	0-0	0-0	0	0	0	0	0	1	0	0	1	0
	TEAM						2	2	4	0		1				
<b>TOTALS</b>			<b>76</b>	<b>30-53</b>	<b>6-9</b>	<b>10-12</b>	<b>10</b>	<b>25</b>	<b>35</b>	<b>19</b>	<b>19</b>	<b>23</b>	<b>5</b>	<b>9</b>	<b>200</b>	

*Shooting By Period*

Period	FG	FG%	3FG	3FG%	FT	FT%
1st Qtr	13-17	76%	2-2	100%	2-2	100%
2nd Qtr	5-10	50%	1-2	50%	2-2	100%
3rd Qtr	6-12	50%	1-3	33%	6-8	75%
4th Qtr	6-14	43%	2-2	100%	0-0	0%
1st Half	18-27	67%	3-4	75%	4-4	100%
2nd Half	12-26	46%	3-5	60%	6-8	75%
<b>Game</b>	<b>30-53</b>	<b>56.6%</b>	<b>6-9</b>	<b>66.7%</b>	<b>10-12</b>	<b>83.3%</b>

Last FG: 4th-01:23  
 Biggest Run: 9-0  
 Largest lead: By 28 at 3-09:22  
 Technical Fouls: None.

Game Notes:

Officials: Michael Price, Tiffany Bird, Brian Woods  
 Attendance: 1042

Start Time: 2019-02-03 20:35:27  
 End Time: 2019-02-03 22:31:38  
 Game Duration: 116  
 Conference Game;

Score	1st	2nd	3rd	4th	TOT
WU	11	8	21	20	<b>60</b>
UCL	30	13	19	14	<b>76</b>

WU led for 0:00. UCL led for 39:43.  
 Game was tied for 0:17.  
 Times tied: 0      Lead Changes: 0

Points from	WU	UCL
In the Paint	24	40
Off Turns	14	21
2nd Chance	14	10
Fast Break	4	15
Bench	15	15

**Official Box Score**  
**Washington vs UCLA**  
**First Half Statistics Only**  
**February 03, 2019 at Pauley Pavilion - Los Angeles CA**



**Washington 19**

No.	Player	S	Pts	FG	3FG	FT	OR	DR	TR	PF	A	TO	Blk	Stl	Min	+/-
12	HAGSTROM, MONTANA		0	0-2	0-2	0-0	0	0	0	0	0	0	0	0	2	-5
15	VAN DYKE, HALEY		0	0-0	0-0	0-0	0	0	0	0	0	0	0	0	5	-7
20	ROOKS, KHAYLA		0	0-3	0-1	0-0	0	1	1	0	0	0	0	0	6	-4
24	MOSER, JENNA		2	1-2	0-1	0-0	3	0	3	0	0	2	0	1	10	-16
25	WATKINS, T.T.		2	1-5	0-0	0-0	0	1	1	1	0	1	0	1	10	-8
35	GRIGGSBY, ALEXIS		3	1-2	1-1	0-0	0	0	0	1	0	2	0	2	8	-7
44	PETERSON, MISSY		3	1-6	1-4	0-0	1	0	1	0	2	2	0	0	13	-19
53	REES, DARCY		4	1-2	0-0	2-4	1	1	2	2	0	0	1	1	15	-18
01	JOHNSON, HANNAH		2	0-1	0-0	2-2	0	1	1	0	1	0	0	0	5	-6
03	HENSON, MAI-LONI		0	0-0	0-0	0-0	0	1	1	0	1	1	0	0	11	-19
04	MELGOZA, AMBER		3	1-5	0-1	1-2	3	0	3	0	1	1	0	1	14	-11
	TEAM		0	0-0	0-0	0-0	0	0	0	0	0	2	0	0	0	0
<b>TOTALS</b>			<b>19</b>	<b>6-28</b>	<b>2-10</b>	<b>5-8</b>	<b>8</b>	<b>5</b>	<b>13</b>	<b>4</b>	<b>5</b>	<b>11</b>	<b>1</b>	<b>6</b>	<b>100</b>	

*Shooting By Period*

Period	FG	FG%	3FG	3FG%	FT	FT%
1st Qtr	4-13	31%	1-3	33%	2-2	100%
2nd Qtr	2-15	13%	1-7	14%	3-6	50%
1st Half	6-28	21%	2-10	20%	5-8	63%
Game	21-60	35.0%	6-22	27.3%	12-19	63.2%

*Last FG Half: WAU 2nd-00:56*

**UCLA 43**

No.	Player	S	Pts	FG	3FG	FT	OR	DR	TR	PF	A	TO	Blk	Stl	Min	+/-
11	DRUMMER, LAJAHNA		6	3-6	0-0	0-0	1	3	4	0	0	1	1	2	16	16
21	ONYENWERE, MICHAELA		10	4-5	1-1	1-1	0	3	3	1	0	0	2	1	13	18
22	BURKE, KENNEDY		4	2-3	0-0	0-0	1	1	2	1	3	5	1	0	13	18
24	DEAN, JAPREECE		6	3-4	0-0	0-0	0	0	0	1	3	4	0	1	18	22
25	HARRIS, SHAYLEY		0	0-0	0-0	0-0	0	1	1	1	0	0	0	0	5	0
32	BAIRD, CHRISSY		0	0-0	0-0	0-0	0	0	0	0	0	0	0	0	0	0
33	MILLER, LAURYN		4	2-2	0-0	0-0	0	1	1	1	0	0	0	2	7	14
51	SIGAL, ELIANA		0	0-0	0-0	0-0	0	0	0	0	0	0	0	0	0	0
01	OWENS, KAYLA		0	0-0	0-0	0-0	0	0	0	0	0	0	0	0	0	0
02	SMITH, AHLANA		2	1-2	0-0	0-0	0	0	0	2	0	0	0	0	8	12
03	JEFFERSON, KIARA		3	1-1	1-1	0-0	0	1	1	0	1	0	0	1	8	4
04	CORSARO, LINDSEY		8	2-4	1-2	3-3	1	2	3	1	4	0	0	1	12	16
	TEAM		0	0-0	0-0	0-0	1	1	2	0	0	1	0	0	0	0
<b>TOTALS</b>			<b>43</b>	<b>18-27</b>	<b>3-4</b>	<b>4-4</b>	<b>4</b>	<b>13</b>	<b>17</b>	<b>8</b>	<b>11</b>	<b>11</b>	<b>4</b>	<b>8</b>	<b>100</b>	

*Shooting By Period*

Period	FG	FG%	3FG	3FG%	FT	FT%
1st Qtr	13-17	76%	2-2	100%	2-2	100%
2nd Qtr	5-10	50%	1-2	50%	2-2	100%
1st Half	18-27	67%	3-4	75%	4-4	100%
Game	30-53	56.6%	6-9	66.7%	10-12	83.3%

*Last FG Half: UCL 2nd-01:48*

*Game Notes:*

Officials: Michael Price, Tiffany Bird, Brian Woods

Attendance: 1042

Start Time: 2019-02-03 20:35:27

End Time: 2019-02-03 22:31:38

Game Duration: 116

Conference Game;

Score	1st	2nd	3rd	4th	TOT
WAU	11	8	21	20	<b>60</b>
UCL	30	13	19	14	<b>76</b>

Points from (This Period)	WAU	UCL
In the Paint	6	24
Off Turns	2	19
2nd Chance	6	5
Fast Break	1	9
Bench	7	9

**Official Box Score**  
**Washington vs UCLA**  
**First Quarter Statistics Only**  
**February 03, 2019 at Pauley Pavilion - Los Angeles CA**



### Washington 11

No.	Player	S	Pts	FG	3FG	FT	OR	DR	TR	PF	A	TO	Blk	Stl	Min	+/-
03	HENSON, MAI-LONI		0	0-0	0-0	0-0	0	0	0	0	1	0	0	0	6	-14
04	MELGOZA, AMBER		0	0-2	0-0	0-0	0	0	0	0	1	0	0	0	5	-11
24	MOSER, JENNA		2	1-2	0-1	0-0	1	0	1	0	0	0	0	1	7	-12
44	PETERSON, MISSY		0	0-2	0-1	0-0	0	0	0	0	1	2	0	0	7	-12
53	REES, DARCY		2	1-2	0-0	0-0	0	1	1	1	0	0	1	1	9	-19
01	JOHNSON, HANNAH		2	0-1	0-0	2-2	0	0	0	0	0	0	0	0	1	0
12	HAGSTROM, MONTANA		0	0-0	0-0	0-0	0	0	0	0	0	0	0	0	1	0
15	VAN DYKE, HALEY		0	0-0	0-0	0-0	0	0	0	0	0	0	0	0	5	-7
20	ROOKS, KHAYLA		0	0-1	0-0	0-0	0	0	0	0	0	0	0	0	4	-5
25	WATKINS, T.T.		2	1-2	0-0	0-0	0	0	0	1	0	1	0	0	2	-8
35	GRIGGSBY, ALEXIS		3	1-1	1-1	0-0	0	0	0	0	0	2	0	0	3	-7
	TEAM						0	0	0	0		0				
<b>TOTALS</b>			<b>11</b>	<b>4-13</b>	<b>1-3</b>	<b>2-2</b>	<b>1</b>	<b>1</b>	<b>2</b>	<b>2</b>	<b>3</b>	<b>5</b>	<b>1</b>	<b>2</b>	<b>50</b>	

#### Shooting By Period

Period	FG	FG%	3FG	3FG%	FT	FT%
1st Qtr	4-13	31%	1-3	33%	2-2	100%
2nd Qtr	2-15	13%	1-7	14%	3-6	50%
1st Half	4-13	31%	1-3	33%	2-2	100%
1st Half	6-28	21%	2-10	20%	5-8	63%
Game	21-60	35.0%	6-22	27.3%	12-19	63.2%

### UCLA 30

No.	Player	S	Pts	FG	3FG	FT	OR	DR	TR	PF	A	TO	Blk	Stl	Min	+/-
04	CORSARO, LINDSEY		5	1-1	1-1	2-2	0	2	2	0	3	0	0	1	6	15
11	DRUMMER, LAJAHNA		6	3-4	0-0	0-0	1	0	1	0	0	0	1	1	8	10
21	ONYENWERE, MICHAELA		7	3-4	1-1	0-0	0	2	2	1	0	0	2	1	8	18
22	BURKE, KENNEDY		4	2-3	0-0	0-0	1	0	1	1	2	3	1	0	9	14
24	DEAN, JAPREECE		6	3-4	0-0	0-0	0	0	0	1	2	0	0	0	8	17
01	OWENS, KAYLA		0	0-0	0-0	0-0	0	0	0	0	0	0	0	0	0	0
02	SMITH, AHLANA		2	1-1	0-0	0-0	0	0	0	0	0	0	0	0	5	11
03	JEFFERSON, KIARA		0	0-0	0-0	0-0	0	1	1	0	1	0	0	0	1	0
25	HARRIS, SHAYLEY		0	0-0	0-0	0-0	0	0	0	0	0	0	0	0	0	0
32	BAIRD, CHRISSY		0	0-0	0-0	0-0	0	0	0	0	0	0	0	0	0	0
33	MILLER, LAURYN		0	0-0	0-0	0-0	0	1	1	0	0	0	0	1	4	10
51	SIGAL, ELIANA		0	0-0	0-0	0-0	0	0	0	0	0	0	0	0	0	0
	TEAM						1	1	2	0		0				
<b>TOTALS</b>			<b>30</b>	<b>13-17</b>	<b>2-2</b>	<b>2-2</b>	<b>3</b>	<b>7</b>	<b>10</b>	<b>3</b>	<b>8</b>	<b>3</b>	<b>4</b>	<b>4</b>	<b>50</b>	

#### Shooting By Period

Period	FG	FG%	3FG	3FG%	FT	FT%
1st Qtr	13-17	76%	2-2	100%	2-2	100%
2nd Qtr	5-10	50%	1-2	50%	2-2	100%
1st Half	13-17	76%	2-2	100%	2-2	100%
1st Half	18-27	67%	3-4	75%	4-4	100%
Game	30-53	56.6%	6-9	66.7%	10-12	83.3%

#### Game Notes:

Officials: Michael Price, Tiffany Bird, Brian Woods  
 Attendance: 1042

Start Time: 2019-02-03 20:35:27  
 End Time: 2019-02-03 22:31:38  
 Game Duration: 116  
 Conference Game;

Score	1st	2nd	3rd	4th	TOT
WAU	11	8	21	20	<b>60</b>
UCL	30	13	19	14	<b>76</b>

Points from (This Period)	WAU	UCL
In the Paint	4	16
Off Turns	0	11
2nd Chance	0	2
Fast Break	0	4
Bench	7	2

**Official Play-By-Play**  
**Washington vs UCLA**  
**First Quarter**  
**February 03, 2019 at Pauley Pavilion - Los Angeles CA**



**Period 1**

**Starters:**

**Washington:** 24 MOSER, JENNA; 44 PETERSON, MISSY; 53 REES, DARCY; 3 HENSON, MAI-LONI; 4 MELGOZA, AMBER;  
**UCLA:** 11 DRUMMER, LAJAHNA; 21 ONYENWERE, MICHAELA; 22 BURKE, KENNEDY; 24 DEAN, JAPREECE; 4 CORSARO, LINDSEY;

Time	VISITORS: Washington	Score	Margin	HOME: UCLA
09:43		2-0	H 2	GOOD! JUMPER by ONYENWERE, MICHAELA
09:43				ASSIST by CORSARO, LINDSEY
09:23	MISSED JUMPER by MELGOZA, AMBER			
09:18				REBOUND (DEF) by CORSARO, LINDSEY
09:15		4-0	H 4	GOOD! JUMPER by BURKE, KENNEDY
09:15				ASSIST by CORSARO, LINDSEY
08:53	GOOD! LAYUP by MOSER, JENNA	4-2	H 2	
08:53	ASSIST by PETERSON, MISSY			
08:39				MISSED JUMPER by ONYENWERE, MICHAELA
08:35				REBOUND (OFF) by TEAM
08:20				TURNOVER (BADPASS) by BURKE, KENNEDY
08:20	STEAL by REES, DARCY			
08:03	MISSED JUMPER by PETERSON, MISSY			
08:03				BLOCK by ONYENWERE, MICHAELA
07:58				REBOUND (DEF) by ONYENWERE, MICHAELA
07:56		6-2	H 4	GOOD! LAYUP by DRUMMER, LAJAHNA
07:56				ASSIST by DEAN, JAPREECE
07:45				SUB OUT: DRUMMER, LAJAHNA
07:45				SUB IN: MILLER, LAURYN
07:45	SUB OUT: MELGOZA, AMBER			
07:45	SUB IN: WATKINS, T.T.			
07:30	TURNOVER (LOSTBALL) by WATKINS, T.T.			
07:30				STEAL by ONYENWERE, MICHAELA
07:25		8-2	H 6	GOOD! LAYUP by DEAN, JAPREECE [FB]
07:25				ASSIST by BURKE, KENNEDY
07:16	TURNOVER (LOSTBALL) by PETERSON, MISSY			
07:03		10-2	H 8	GOOD! JUMPER by ONYENWERE, MICHAELA
06:55	GOOD! JUMPER by WATKINS, T.T.	10-4	H 6	
06:55	ASSIST by HENSON, MAI-LONI			
06:44				MISSED LAYUP by DEAN, JAPREECE
06:41				REBOUND (OFF) by BURKE, KENNEDY
06:41		12-4	H 8	GOOD! LAYUP by BURKE, KENNEDY
06:41	TIMEOUT 30SEC			
06:41				
06:41				SUB OUT: BURKE, KENNEDY
06:41				SUB IN: SMITH, AHLANA
06:41	SUB OUT: PETERSON, MISSY			
06:41	SUB IN: GRIGGSBY, ALEXIS			
06:41	SUB OUT: MOSER, JENNA			
06:41	SUB IN: MELGOZA, AMBER			
06:24	TURNOVER (BADPASS) by GRIGGSBY, ALEXIS			
06:24				STEAL by MILLER, LAURYN
06:15		15-4	H 11	GOOD! 3PTR by ONYENWERE, MICHAELA
06:15				ASSIST by CORSARO, LINDSEY
05:59	MISSED JUMPER by WATKINS, T.T.			
05:56				REBOUND (DEF) by MILLER, LAURYN
05:42	FOUL (PERSONAL) by WATKINS, T.T.			
05:42		16-4	H 12	GOOD! FT by CORSARO, LINDSEY
05:42	SUB OUT: WATKINS, T.T.			
05:42	SUB IN: VAN DYKE, HALEY			
05:42		17-4	H 13	GOOD! FT by CORSARO, LINDSEY
05:42				SUB OUT: ONYENWERE, MICHAELA
05:42				SUB IN: DRUMMER, LAJAHNA
05:42				SUB OUT: DEAN, JAPREECE
05:42				SUB IN: BURKE, KENNEDY
05:21	MISSED LAYUP by MELGOZA, AMBER			
05:17				REBOUND (DEF) by CORSARO, LINDSEY
05:07		19-4	H 15	GOOD! JUMPER by SMITH, AHLANA [PNT]
04:56	GOOD! 3PTR by GRIGGSBY, ALEXIS	19-7	H 12	
04:56	ASSIST by MELGOZA, AMBER			
04:29		22-7	H 15	GOOD! 3PTR by CORSARO, LINDSEY
04:29				ASSIST by BURKE, KENNEDY
04:11	TURNOVER (BADPASS) by GRIGGSBY, ALEXIS			
04:11				STEAL by CORSARO, LINDSEY
04:06				SUB OUT: MILLER, LAURYN
04:06				SUB IN: ONYENWERE, MICHAELA
04:06				SUB OUT: CORSARO, LINDSEY
04:06				SUB IN: DEAN, JAPREECE
04:06	SUB OUT: HENSON, MAI-LONI			
04:06	SUB IN: PETERSON, MISSY			

Time	VISITORS: Washington	Score	Margin	HOME: UCLA
04:06	SUB OUT: MELGOZA, AMBER			
04:06	SUB IN: ROOKS, KHAYLA			
04:06	SUB OUT: GRIGGSBY, ALEXIS			
04:06	SUB IN: MOSER, JENNA			
04:01		24-7	H 17	GOOD! JUMPER by DEAN, JAPREECE
03:50				FOUL (PERSONAL) by DEAN, JAPREECE
03:47	TURNOVER (BADPASS) by PETERSON, MISSY			
03:47				STEAL by DRUMMER, LAJAHNA
03:47	FOUL (PERSONAL) by REES, DARCY			
03:34		26-7	H 19	GOOD! JUMPER by DEAN, JAPREECE [PNT]
03:02	MISSED LAYUP by ROOKS, KHAYLA			
03:02				BLOCK by BURKE, KENNEDY
02:55				REBOUND (DEF) by ONYENWERE, MICHAELA
02:49				MISSED JUMPER by BURKE, KENNEDY
02:46				REBOUND (OFF) by DRUMMER, LAJAHNA
02:31				MISSED LAYUP by DRUMMER, LAJAHNA
02:31	BLOCK by REES, DARCY			
02:24	REBOUND (DEF) by REES, DARCY			
02:17	GOOD! LAYUP by REES, DARCY	26-9	H 17	
01:54		28-9	H 19	GOOD! LAYUP by DRUMMER, LAJAHNA
01:54				ASSIST by DEAN, JAPREECE
01:25	MISSED LAYUP by REES, DARCY			
01:25				BLOCK by ONYENWERE, MICHAELA
01:24				REBOUND (DEF) by TEAM
01:24				SUB OUT: SMITH, AHLANA
01:24				SUB IN: JEFFERSON, KIARA
01:24	SUB OUT: REES, DARCY			
01:24	SUB IN: JOHNSON, HANNAH			
01:14				TURNOVER (BADPASS) by BURKE, KENNEDY
01:14	STEAL by MOSER, JENNA			
01:08	MISSED 3PTR by PETERSON, MISSY			
01:03	REBOUND (OFF) by MOSER, JENNA			
00:58				FOUL (PERSONAL) by BURKE, KENNEDY
00:55	MISSED LAYUP by JOHNSON, HANNAH			
00:52				REBOUND (DEF) by JEFFERSON, KIARA
00:45		30-9	H 21	GOOD! JUMPER by DRUMMER, LAJAHNA [FB]
00:45				ASSIST by JEFFERSON, KIARA
00:30				FOUL (PERSONAL) by ONYENWERE, MICHAELA
00:30	GOOD! FT by JOHNSON, HANNAH	30-10	H 20	
00:30				SUB OUT: ONYENWERE, MICHAELA
00:30				SUB IN: MILLER, LAURYN
00:30	SUB OUT: ROOKS, KHAYLA			
00:30	SUB IN: HENSON, MAI-LONI			
00:30	GOOD! FT by JOHNSON, HANNAH	30-11	H 19	
00:30	SUB OUT: VAN DYKE, HALEY			
00:30	SUB IN: HAGSTROM, MONTANA			
00:03				TURNOVER (LOSTBALL) by BURKE, KENNEDY
00:00	MISSED 3PTR by MOSER, JENNA			
00:00				BLOCK by DRUMMER, LAJAHNA
00:00				REBOUND (DEF) by TEAM

Washington 11, UCLA 30

Points from (This Period)	WU	UCL
In the Paint	4	16
Off Turns	0	11
2nd Chance	0	2
Fast Break	0	4
Bench	7	2

**Official Box Score**  
**Washington vs UCLA**  
**Second Quarter Statistics Only**  
**February 03, 2019 at Pauley Pavilion - Los Angeles CA**



### Washington 8

No.	Player	S	Pts	FG	3FG	FT	OR	DR	TR	PF	A	TO	Blk	Stl	Min	+/-
03	HENSON, MAI-LONI		0	0-0	0-0	0-0	0	1	1	0	0	1	0	0	5	-5
04	MELGOZA, AMBER		3	1-3	0-1	1-2	3	0	3	0	0	1	0	1	9	0
24	MOSER, JENNA		0	0-0	0-0	0-0	2	0	2	0	0	2	0	0	3	-4
44	PETERSON, MISSY		3	1-4	1-3	0-0	1	0	1	0	1	0	0	0	6	-7
53	REES, DARCY		2	0-0	0-0	2-4	1	0	1	1	0	0	0	0	6	1
01	JOHNSON, HANNAH		0	0-0	0-0	0-0	0	1	1	0	1	0	0	0	4	-6
12	HAGSTROM, MONTANA		0	0-2	0-2	0-0	0	0	0	0	0	0	0	0	1	-5
15	VAN DYKE, HALEY		0	0-0	0-0	0-0	0	0	0	0	0	0	0	0	0	0
20	ROOKS, KHAYLA		0	0-2	0-1	0-0	0	1	1	0	0	0	0	0	2	1
25	WATKINS, T.T.		0	0-3	0-0	0-0	0	1	1	0	0	0	0	1	8	0
35	GRIGGSBY, ALEXIS		0	0-1	0-0	0-0	0	0	0	1	0	0	0	2	5	0
	TEAM						0	0	0	0		2				
<b>TOTALS</b>			<b>8</b>	<b>2-15</b>	<b>1-7</b>	<b>3-6</b>	<b>7</b>	<b>4</b>	<b>11</b>	<b>2</b>	<b>2</b>	<b>6</b>	<b>0</b>	<b>4</b>	<b>50</b>	

#### Shooting By Period

Period	FG	FG%	3FG	3FG%	FT	FT%
3rd Qtr	7-15	47%	2-6	33%	5-7	71%
4th Qtr	8-17	47%	2-6	33%	2-4	50%
2nd Half	2-15	13%	1-7	14%	3-6	50%
2nd Half	15-32	47%	4-12	33%	7-11	64%
Game	21-60	35.0%	6-22	27.3%	12-19	63.2%

### UCLA 13

No.	Player	S	Pts	FG	3FG	FT	OR	DR	TR	PF	A	TO	Blk	Stl	Min	+/-
04	CORSARO, LINDSEY		3	1-3	0-1	1-1	1	0	1	1	1	0	0	0	6	1
11	DRUMMER, LAJAHNA		0	0-2	0-0	0-0	0	3	3	0	0	1	0	1	8	6
21	ONYENWERE, MICHAELA		3	1-1	0-0	1-1	0	1	1	0	0	0	0	0	5	0
22	BURKE, KENNEDY		0	0-0	0-0	0-0	0	1	1	0	1	2	0	0	4	4
24	DEAN, JAPREECE		0	0-0	0-0	0-0	0	0	0	0	1	4	0	1	10	5
01	OWENS, KAYLA		0	0-0	0-0	0-0	0	0	0	0	0	0	0	0	0	0
02	SMITH, AHLANA		0	0-1	0-0	0-0	0	0	0	2	0	0	0	0	3	1
03	JEFFERSON, KIARA		3	1-1	1-1	0-0	0	0	0	0	0	0	0	1	7	4
25	HARRIS, SHAYLEY		0	0-0	0-0	0-0	0	1	1	1	0	0	0	0	5	0
32	BAIRD, CHRISSY		0	0-0	0-0	0-0	0	0	0	0	0	0	0	0	0	0
33	MILLER, LAURYN		4	2-2	0-0	0-0	0	0	0	1	0	0	0	1	3	4
51	SIGAL, ELIANA		0	0-0	0-0	0-0	0	0	0	0	0	0	0	0	0	0
	TEAM						0	0	0	0		1				
<b>TOTALS</b>			<b>13</b>	<b>5-10</b>	<b>1-2</b>	<b>2-2</b>	<b>1</b>	<b>6</b>	<b>7</b>	<b>5</b>	<b>3</b>	<b>8</b>	<b>0</b>	<b>4</b>	<b>50</b>	

#### Shooting By Period

Period	FG	FG%	3FG	3FG%	FT	FT%
3rd Qtr	6-12	50%	1-3	33%	6-8	75%
4th Qtr	6-14	43%	2-2	100%	0-0	0%
2nd Half	5-10	50%	1-2	50%	2-2	100%
2nd Half	12-26	46%	3-5	60%	6-8	75%
Game	30-53	56.6%	6-9	66.7%	10-12	83.3%

#### Game Notes:

Officials: Michael Price, Tiffany Bird, Brian Woods  
 Attendance: 1042

Start Time: 2019-02-03 20:35:27  
 End Time: 2019-02-03 22:31:38  
 Game Duration: 116  
 Conference Game;

Score	1st	2nd	3rd	4th	TOT
WAU	11	8	21	20	<b>60</b>
UCL	30	13	19	14	<b>76</b>

Points from (This Period)	WAU	UCL
In the Paint	2	8
Off Turns	2	8
2nd Chance	6	3
Fast Break	1	5
Bench	0	7

**Official Play-By-Play**  
**Washington vs UCLA**  
**Second Quarter**  
**February 03, 2019 at Pauley Pavilion - Los Angeles CA**



**Period 2**

**Starters:**

**Washington:** 24 MOSER, JENNA; 44 PETERSON, MISSY; 53 REES, DARCY; 3 HENSON, MAI-LONI; 4 MELGOZA, AMBER;

**UCLA:** 11 DRUMMER, LAJAHNA; 21 ONYENWERE, MICHAELA; 22 BURKE, KENNEDY; 24 DEAN, JAPREECE; 4 CORSARO, LINDSEY;

Time	VISITORS: Washington	Score	Margin	HOME: UCLA
09:38		32-11	H 21	GOOD! JUMPER by MILLER, LAURYN
09:38				ASSIST by BURKE, KENNEDY
09:16	TURNOVER (BADPASS) by HENSON, MAI-LONI			
09:16				STEAL by MILLER, LAURYN
09:09		35-11	H 24	GOOD! 3PTR by JEFFERSON, KIARA [FB]
09:09				ASSIST by DEAN, JAPREECE
08:51	MISSED 3PTR by HAGSTROM, MONTANA			
08:46	REBOUND (OFF) by MOSER, JENNA			
08:43	MISSED 3PTR by HAGSTROM, MONTANA			
08:39				REBOUND (DEF) by DRUMMER, LAJAHNA
08:38				TURNOVER (LOSTBALL) by DEAN, JAPREECE
08:38				SUB OUT: BURKE, KENNEDY
08:38				SUB IN: CORSARO, LINDSEY
08:38	SUB OUT: HAGSTROM, MONTANA			
08:38	SUB IN: MELGOZA, AMBER			
08:19	TURNOVER (TRAVEL) by MOSER, JENNA			
08:19	SUB OUT: HENSON, MAI-LONI			
08:19	SUB IN: WATKINS, T.T.			
08:12		37-11	H 26	GOOD! LAYUP by MILLER, LAURYN [FB/PNT]
08:12				ASSIST by CORSARO, LINDSEY
07:58	MISSED 3PTR by MELGOZA, AMBER			
07:53	REBOUND (OFF) by MOSER, JENNA			
07:45	GOOD! 3PTR by PETERSON, MISSY	37-14	H 23	
07:45	ASSIST by JOHNSON, HANNAH			
07:32				MISSED JUMPER by CORSARO, LINDSEY
07:30	REBOUND (DEF) by JOHNSON, HANNAH			
07:30				FOUL (PERSONAL) by MILLER, LAURYN
07:30				SUB OUT: MILLER, LAURYN
07:30				SUB IN: ONYENWERE, MICHAELA
07:11	MISSED LAYUP by PETERSON, MISSY			
07:08	REBOUND (OFF) by PETERSON, MISSY			
07:05	TURNOVER (BADPASS) by MOSER, JENNA			
07:05				STEAL by DRUMMER, LAJAHNA
07:00				MISSED LAYUP by DRUMMER, LAJAHNA
06:57	REBOUND (DEF) by WATKINS, T.T.			
06:46				FOUL (PERSONAL) by CORSARO, LINDSEY
06:46	MISSED FT by MELGOZA, AMBER			
06:46	REBOUND (OFF) by TEAM			
06:46				SUB OUT: JEFFERSON, KIARA
06:46				SUB IN: SMITH, AHLANA
06:46	SUB OUT: MOSER, JENNA			
06:46	SUB IN: GRIGGSBY, ALEXIS			
06:46	GOOD! FT by MELGOZA, AMBER	37-15	H 22	
06:41		39-15	H 24	GOOD! LAYUP by ONYENWERE, MICHAELA
06:35	FOUL (PERSONAL) by GRIGGSBY, ALEXIS			
06:35		40-15	H 25	GOOD! FT by ONYENWERE, MICHAELA
06:06	MISSED 3PTR by PETERSON, MISSY			
06:03				REBOUND (DEF) by DRUMMER, LAJAHNA
05:40				TURNOVER (TRAVEL) by DRUMMER, LAJAHNA
05:40	SUB OUT: JOHNSON, HANNAH			
05:40	SUB IN: ROOKS, KHAYLA			
05:40	SUB OUT: PETERSON, MISSY			
05:40	SUB IN: REES, DARCY			
05:19				FOUL (PERSONAL) by SMITH, AHLANA
05:19	GOOD! FT by REES, DARCY	40-16	H 24	
05:19	MISSED FT by REES, DARCY			
05:18				REBOUND (DEF) by DRUMMER, LAJAHNA
05:02				MISSED JUMPER by SMITH, AHLANA
04:58	REBOUND (DEF) by ROOKS, KHAYLA			
04:40	MISSED JUMPER by WATKINS, T.T.			
04:36				REBOUND (DEF) by ONYENWERE, MICHAELA
04:33				TURNOVER (BADPASS) by DEAN, JAPREECE
04:32				
04:32				SUB OUT: CORSARO, LINDSEY
04:32				SUB IN: BURKE, KENNEDY
04:32				SUB OUT: DRUMMER, LAJAHNA
04:32				SUB IN: HARRIS, SHAYLEY
04:17	TURNOVER (LOSTBALL) by REES, DARCY			
04:17				STEAL by DEAN, JAPREECE
04:13				TURNOVER (LOSTBALL) by BURKE, KENNEDY



Time	VISITORS: Washington	Score	Margin	HOME: UCLA
04:13	STEAL by WATKINS, T.T.			
04:08	MISSED JUMPER by ROOKS, KHAYLA			
03:57	REBOUND (OFF) by REES, DARCY			
03:56	MISSED 3PTR by ROOKS, KHAYLA			
03:51				REBOUND (DEF) by BURKE, KENNEDY
03:39				TURNOVER (LOSTBALL) by DEAN, JAPREECE
03:39	STEAL by GRIGGSBY, ALEXIS			
03:34	MISSED LAYUP by GRIGGSBY, ALEXIS			
03:34	REBOUND (OFF) by MELGOZA, AMBER			
03:34				FOUL (PERSONAL) by SMITH, AHLANA
03:34				SUB OUT: SMITH, AHLANA
03:34				SUB IN: JEFFERSON, KIARA
03:34	SUB OUT: ROOKS, KHAYLA			
03:34	SUB IN: HENSON, MAI-LONI			
03:32				FOUL (PERSONAL) by HARRIS, SHAYLEY
03:32	MISSED FT by REES, DARCY			
03:32	REBOUND (OFF) by TEAM			
03:32	GOOD! FT by REES, DARCY [FB]	40-17	H 23	
03:06				TURNOVER (BADPASS) by BURKE, KENNEDY
03:06	STEAL by GRIGGSBY, ALEXIS			
03:01	MISSED LAYUP by WATKINS, T.T.			
02:58	REBOUND (OFF) by MELGOZA, AMBER			
02:58	TURNOVER (LOSTBALL) by MELGOZA, AMBER			
02:58				STEAL by JEFFERSON, KIARA
02:47				TURNOVER (BADPASS) by BURKE, KENNEDY
02:47	STEAL by MELGOZA, AMBER			
02:16	TURNOVER (SHOTCLOCK) by			
02:08				SUB OUT: ONYENWERE, MICHAELA
02:08				SUB IN: CORSARO, LINDSEY
02:08				SUB OUT: BURKE, KENNEDY
02:08				SUB IN: DRUMMER, LAJAHNA
02:08	SUB OUT: GRIGGSBY, ALEXIS			
02:08	SUB IN: PETERSON, MISSY			
01:52				MISSED 3PTR by CORSARO, LINDSEY
01:48				REBOUND (OFF) by CORSARO, LINDSEY
01:48		42-17	H 25	GOOD! LAYUP by CORSARO, LINDSEY
01:48	FOUL (PERSONAL) by REES, DARCY			
01:48		43-17	H 26	GOOD! FT by CORSARO, LINDSEY
01:32	MISSED JUMPER by WATKINS, T.T.			
01:28				REBOUND (DEF) by HARRIS, SHAYLEY
01:22				TURNOVER (OTHER) by DEAN, JAPREECE
01:02	MISSED JUMPER by MELGOZA, AMBER			
00:56	REBOUND (OFF) by MELGOZA, AMBER			
00:56	GOOD! LAYUP by MELGOZA, AMBER	43-19	H 24	
00:56	ASSIST by PETERSON, MISSY			
00:37				MISSED LAYUP by DRUMMER, LAJAHNA
00:35	REBOUND (DEF) by HENSON, MAI-LONI			
00:05	MISSED 3PTR by PETERSON, MISSY			
00:01				REBOUND (DEF) by TEAM

### Washington 19, UCLA 43

Points from (This Period)	WAU	UCL
In the Paint	2	8
Off Turns	2	8
2nd Chance	6	3
Fast Break	1	5
Bench	0	7

**Official Box Score**  
**Washington vs UCLA**  
**Second Half Statistics Only**  
**February 03, 2019 at Pauley Pavilion - Los Angeles CA**



**Washington 41**

No.	Player	S	Pts	FG	3FG	FT	OR	DR	TR	PF	A	TO	Blk	Stl	Min	+/-
12	HAGSTROM, MONTANA		0	0-0	0-0	0-0	0	0	0	0	0	0	0	0	0	0
15	VAN DYKE, HALEY		1	0-0	0-0	1-2	0	0	0	0	0	0	0	0	2	-1
20	ROOKS, KHAYLA		2	0-2	0-2	2-2	0	0	0	0	0	0	0	0	5	-1
24	MOSER, JENNA		0	0-3	0-3	0-0	0	0	0	1	1	1	0	0	6	-3
25	WATKINS, T.T.		2	1-2	0-0	0-0	1	0	1	1	2	1	0	0	12	12
35	GRIGGSBY, ALEXIS		0	0-0	0-0	0-0	0	1	1	0	0	1	0	0	6	0
44	PETERSON, MISSY		7	3-7	1-3	0-0	1	2	3	2	2	2	0	2	16	7
53	REES, DARCY		6	3-3	0-0	0-0	0	2	2	3	1	0	1	0	15	9
01	JOHNSON, HANNAH		3	1-1	0-0	1-2	2	3	5	0	0	0	0	1	11	7
03	HENSON, MAI-LONI		0	0-1	0-0	0-0	0	0	0	1	2	0	0	0	7	2
04	MELGOZA, AMBER		20	7-13	3-4	3-5	1	0	1	3	2	0	0	0	20	8
	TEAM		0	0-0	0-0	0-0	0	1	1	0	0	0	0	0	0	0
	<b>TOTALS</b>		<b>41</b>	<b>15-32</b>	<b>4-12</b>	<b>7-11</b>	<b>5</b>	<b>9</b>	<b>14</b>	<b>11</b>	<b>10</b>	<b>5</b>	<b>1</b>	<b>3</b>	<b>100</b>	

*Shooting By Period*

Period	FG	FG%	3FG	3FG%	FT	FT%
3rd Qtr	7-15	47%	2-6	33%	5-7	71%
4th Qtr	8-17	47%	2-6	33%	2-4	50%
2nd Half	15-32	47%	4-12	33%	7-11	64%
Game	21-60	35.0%	6-22	27.3%	12-19	63.2%

*Last FG Half: WAU 4th-00:46*

**UCLA 33**

No.	Player	S	Pts	FG	3FG	FT	OR	DR	TR	PF	A	TO	Blk	Stl	Min	+/-
11	DRUMMER, LAJAHNA		4	1-2	0-0	2-4	2	1	3	3	0	1	0	0	15	-6
21	ONYENWERE, MICHAELA		2	0-3	0-1	2-2	1	1	2	1	0	3	0	0	14	-8
22	BURKE, KENNEDY		8	3-5	0-0	2-2	1	1	2	0	2	1	0	0	14	-10
24	DEAN, JAPREECE		7	3-5	1-1	0-0	0	1	1	3	4	3	0	0	11	-1
25	HARRIS, SHAYLEY		0	0-0	0-0	0-0	0	0	0	1	0	0	0	0	1	-3
32	BAIRD, CHRISSY		0	0-0	0-0	0-0	0	1	1	0	0	0	0	0	1	-3
33	MILLER, LAURYN		4	2-3	0-0	0-0	1	3	4	0	1	0	0	1	10	4
51	SIGAL, ELIANA		0	0-0	0-0	0-0	0	0	0	0	0	1	0	0	1	0
01	OWENS, KAYLA		0	0-1	0-0	0-0	0	1	1	0	0	0	0	0	5	3
02	SMITH, AHLANA		2	1-4	0-1	0-0	0	1	1	2	0	2	1	0	9	-9
03	JEFFERSON, KIARA		0	0-0	0-0	0-0	0	0	0	0	0	1	0	0	9	-10
04	CORSARO, LINDSEY		6	2-3	2-2	0-0	0	1	1	1	1	0	0	0	11	3
	TEAM		0	0-0	0-0	0-0	1	1	2	0	0	0	0	0	0	0
	<b>TOTALS</b>		<b>33</b>	<b>12-26</b>	<b>3-5</b>	<b>6-8</b>	<b>6</b>	<b>12</b>	<b>18</b>	<b>11</b>	<b>8</b>	<b>12</b>	<b>1</b>	<b>1</b>	<b>100</b>	

*Shooting By Period*

Period	FG	FG%	3FG	3FG%	FT	FT%
3rd Qtr	6-12	50%	1-3	33%	6-8	75%
4th Qtr	6-14	43%	2-2	100%	0-0	0%
2nd Half	12-26	46%	3-5	60%	6-8	75%
Game	30-53	56.6%	6-9	66.7%	10-12	83.3%

*Last FG Half: UCL 4th-01:23*

Game Notes:

Officials: Michael Price, Tiffany Bird, Brian Woods

Attendance: 1042

Start Time: 2019-02-03 20:35:27

End Time: 2019-02-03 22:31:38

Game Duration: 116

Conference Game;

Score	1st	2nd	3rd	4th	TOT
WAU	11	8	21	20	<b>60</b>
UCL	30	13	19	14	<b>76</b>

Points from (This Period)	WAU	UCL
In the Paint	18	16
Off Turns	12	2
2nd Chance	8	5
Fast Break	3	6
Bench	8	6

**Official Box Score**  
**Washington vs UCLA**  
**Third Quarter Statistics Only**  
**February 03, 2019 at Pauley Pavilion - Los Angeles CA**



### Washington 41

No.	Player	S	Pts	FG	3FG	FT	OR	DR	TR	PF	A	TO	Blk	Stl	Min	+/-
03	HENSON, MAI-LONI		0	0-1	0-0	0-0	0	0	0	1	2	0	0	0	7	2
04	MELGOZA, AMBER		8	3-6	1-2	1-1	0	0	0	2	0	0	0	0	10	2
24	MOSER, JENNA		0	0-1	0-1	0-0	0	0	0	0	1	1	0	0	4	0
44	PETERSON, MISSY		7	3-5	1-2	0-0	1	1	2	2	0	1	0	2	9	1
53	REES, DARCY		2	1-1	0-0	0-0	0	1	1	1	1	0	0	0	9	1
01	JOHNSON, HANNAH		1	0-0	0-0	1-2	1	0	1	0	0	0	0	0	1	1
12	HAGSTROM, MONTANA		0	0-0	0-0	0-0	0	0	0	0	0	0	0	0	0	0
15	VAN DYKE, HALEY		1	0-0	0-0	1-2	0	0	0	0	0	0	0	0	2	-1
20	ROOKS, KHAYLA		2	0-1	0-1	2-2	0	0	0	0	0	0	0	0	1	1
25	WATKINS, T.T.		0	0-0	0-0	0-0	0	0	0	1	0	1	0	0	4	3
35	GRIGGSBY, ALEXIS		0	0-0	0-0	0-0	0	0	0	0	0	0	0	0	3	0
	TEAM						0	1	1	0		0				
<b>TOTALS</b>			<b>21</b>	<b>7-15</b>	<b>2-6</b>	<b>5-7</b>	<b>2</b>	<b>3</b>	<b>5</b>	<b>7</b>	<b>4</b>	<b>3</b>	<b>0</b>	<b>2</b>	<b>50</b>	

*Shooting By Period*

Period	FG	FG%	3FG	3FG%	FT	FT%
2nd Half	0-0	0%	0-0	0%	0-0	0%
Game	21-60	35.0%	6-22	27.3%	12-19	63.2%

### UCLA 33

No.	Player	S	Pts	FG	3FG	FT	OR	DR	TR	PF	A	TO	Blk	Stl	Min	+/-
04	CORSARO, LINDSEY		3	1-1	1-1	0-0	0	1	1	1	1	0	0	0	8	0
11	DRUMMER, LAJAHNA		4	1-2	0-0	2-4	2	0	2	2	0	1	0	0	8	0
21	ONYENWERE, MICHAELA		2	0-2	0-1	2-2	1	1	2	1	0	2	0	0	8	-3
22	BURKE, KENNEDY		6	2-3	0-0	2-2	1	1	2	0	1	0	0	0	9	-1
24	DEAN, JAPREECE		2	1-2	0-0	0-0	0	0	0	2	3	2	0	0	7	-5
01	OWENS, KAYLA		0	0-0	0-0	0-0	0	0	0	0	0	0	0	0	0	0
02	SMITH, AHLANA		0	0-1	0-1	0-0	0	1	1	1	0	1	0	0	2	0
03	JEFFERSON, KIARA		0	0-0	0-0	0-0	0	0	0	0	0	1	0	0	4	0
25	HARRIS, SHAYLEY		0	0-0	0-0	0-0	0	0	0	0	0	0	0	0	0	0
32	BAIRD, CHRISSY		0	0-0	0-0	0-0	0	0	0	0	0	0	0	0	0	0
33	MILLER, LAURYN		2	1-1	0-0	0-0	0	1	1	0	0	0	0	1	5	-1
51	SIGAL, ELIANA		0	0-0	0-0	0-0	0	0	0	0	0	0	0	0	0	0
	TEAM						0	1	1	0		0				
<b>TOTALS</b>			<b>19</b>	<b>6-12</b>	<b>1-3</b>	<b>6-8</b>	<b>4</b>	<b>6</b>	<b>10</b>	<b>7</b>	<b>5</b>	<b>7</b>	<b>0</b>	<b>1</b>	<b>50</b>	

*Shooting By Period*

Period	FG	FG%	3FG	3FG%	FT	FT%
2nd Half	0-0	0%	0-0	0%	0-0	0%
Game	30-53	56.6%	6-9	66.7%	10-12	83.3%

*Game Notes:*

Officials: Michael Price, Tiffany Bird, Brian Woods  
Attendance: 1042

Start Time: 2019-02-03 20:35:27  
End Time: 2019-02-03 22:31:38  
Game Duration: 116  
Conference Game;

Score	1st	2nd	3rd	4th	TOT
WAU	11	8	21	20	<b>60</b>
UCL	30	13	19	14	<b>76</b>

Points from (This Period)	WAU	UCL
In the Paint	8	8
Off Turns	8	2
2nd Chance	3	5
Fast Break	3	4
Bench	4	2

**Official Play-By-Play**  
**Washington vs UCLA**  
**Third Quarter**  
**February 03, 2019 at Pauley Pavilion - Los Angeles CA**



**Period 3**

**Starters:**

**Washington:** 24 MOSER, JENNA; 44 PETERSON, MISSY; 53 REES, DARCY; 3 HENSON, MAI-LONI; 4 MELGOZA, AMBER;

**UCLA:** 11 DRUMMER, LAJAHNA; 21 ONYENWERE, MICHAELA; 22 BURKE, KENNEDY; 24 DEAN, JAPREECE; 4 CORSARO, LINDSEY;

Time	VISITORS: Washington	Score	Margin	HOME: UCLA
09:43	FOUL (PERSONAL) by MELGOZA, AMBER			
09:35	FOUL (PERSONAL) by PETERSON, MISSY			
09:35		44-19	H 25	GOOD! FT by ONYENWERE, MICHAELA
09:35		45-19	H 26	GOOD! FT by ONYENWERE, MICHAELA
09:30	MISSED JUMPER by MELGOZA, AMBER			
09:27				REBOUND (DEF) by BURKE, KENNEDY
09:22	FOUL (PERSONAL) by PETERSON, MISSY			
09:22		46-19	H 27	GOOD! FT by BURKE, KENNEDY [FB]
09:22		47-19	H 28	GOOD! FT by BURKE, KENNEDY [FB]
09:07	GOOD! LAYUP by PETERSON, MISSY	47-21	H 26	
09:07	ASSIST by MOSER, JENNA			
08:55				MISSED JUMPER by ONYENWERE, MICHAELA
08:52				REBOUND (OFF) by DRUMMER, LAJAHNA
08:52	FOUL (PERSONAL) by MELGOZA, AMBER			
08:49				TURNOVER (DRIBBLING) by DRUMMER, LAJAHNA
08:42	MISSED JUMPER by PETERSON, MISSY			
08:37	REBOUND (OFF) by PETERSON, MISSY			
08:37	GOOD! LAYUP by PETERSON, MISSY	47-23	H 24	
08:27				MISSED JUMPER by DRUMMER, LAJAHNA
08:23				REBOUND (OFF) by ONYENWERE, MICHAELA
08:10		50-23	H 27	GOOD! 3PTR by CORSARO, LINDSEY
08:10				ASSIST by DEAN, JAPREECE
07:50	MISSED 3PTR by MOSER, JENNA			
07:45				REBOUND (DEF) by CORSARO, LINDSEY
07:43				TURNOVER (TRAVEL) by ONYENWERE, MICHAELA
07:22	GOOD! LAYUP by REES, DARCY	50-25	H 25	
07:22	ASSIST by HENSON, MAI-LONI			
07:10				TIMEOUT 30SEC
07:10				
07:10	SUB OUT: MOSER, JENNA			
07:10	SUB IN: WATKINS, T.T.			
07:00				MISSED LAYUP by BURKE, KENNEDY
06:56	REBOUND (DEF) by REES, DARCY			
06:51	GOOD! 3PTR by MELGOZA, AMBER	50-28	H 22	
06:44				TURNOVER (BADPASS) by DEAN, JAPREECE
06:44				SUB OUT: CORSARO, LINDSEY
06:44				SUB IN: JEFFERSON, KIARA
06:41	GOOD! LAYUP by MELGOZA, AMBER [FB]	50-30	H 20	
06:41				FOUL (PERSONAL) by DRUMMER, LAJAHNA
06:41	GOOD! FT by MELGOZA, AMBER [FB]	50-31	H 19	
06:17		52-31	H 21	GOOD! LAYUP by BURKE, KENNEDY
06:17				ASSIST by DEAN, JAPREECE
05:52	FOUL (OFF) by WATKINS, T.T.			
05:52	TURNOVER (OFFENSIVE) by WATKINS, T.T.			
05:31				MISSED 3PTR by ONYENWERE, MICHAELA
05:26	REBOUND (DEF) by PETERSON, MISSY			
05:19	MISSED LAYUP by HENSON, MAI-LONI			
05:15				REBOUND (DEF) by ONYENWERE, MICHAELA
05:10		54-31	H 23	GOOD! LAYUP by BURKE, KENNEDY [FB]
05:10				ASSIST by DEAN, JAPREECE
04:57				FOUL (PERSONAL) by DRUMMER, LAJAHNA
04:57				
04:57				SUB OUT: ONYENWERE, MICHAELA
04:57				SUB IN: MILLER, LAURYN
04:51	GOOD! 3PTR by PETERSON, MISSY	54-34	H 20	
04:51	ASSIST by REES, DARCY			
04:39				TURNOVER (BADPASS) by DEAN, JAPREECE
04:39	STEAL by PETERSON, MISSY			
04:34	MISSED JUMPER by MELGOZA, AMBER			
04:31				REBOUND (DEF) by MILLER, LAURYN
04:27				MISSED LAYUP by DEAN, JAPREECE
04:26				REBOUND (OFF) by DRUMMER, LAJAHNA
04:26	FOUL (PERSONAL) by HENSON, MAI-LONI			
04:26				MISSED FT by DRUMMER, LAJAHNA
04:26				REBOUND (OFF) by TEAM
04:26				SUB OUT: DEAN, JAPREECE
04:26				SUB IN: CORSARO, LINDSEY
04:26				MISSED FT by DRUMMER, LAJAHNA
04:24				REBOUND (OFF) by BURKE, KENNEDY
04:06	FOUL (PERSONAL) by REES, DARCY			

Time	VISITORS: Washington	Score	Margin	HOME: UCLA
04:06		55-34	H 21	GOOD! FT by DRUMMER, LAJAHNA
04:06		56-34	H 22	GOOD! FT by DRUMMER, LAJAHNA
03:54	GOOD! JUMPER by MELGOZA, AMBER	56-36	H 20	
03:54	ASSIST by HENSON, MAI-LONI			
03:28		58-36	H 22	GOOD! LAYUP by MILLER, LAURYN
03:28				ASSIST by BURKE, KENNEDY
03:14	MISSED 3PTR by MELGOZA, AMBER			
03:11				REBOUND (DEF) by TEAM
03:11	SUB OUT: HENSON, MAI-LONI			
03:11	SUB IN: VAN DYKE, HALEY			
03:11	SUB OUT: WATKINS, T.T.			
03:11	SUB IN: GRIGGSBY, ALEXIS			
03:01				TURNOVER (BADPASS) by JEFFERSON, KIARA
03:01	STEAL by PETERSON, MISSY			
02:57	TURNOVER (DRIBBLING) by PETERSON, MISSY			
02:57				SUB OUT: JEFFERSON, KIARA
02:57				SUB IN: SMITH, AHLANA
02:47		60-36	H 24	GOOD! JUMPER by DRUMMER, LAJAHNA [PNT]
02:28				FOUL (PERSONAL) by CORSARO, LINDSEY
02:28	MISSED FT by VAN DYKE, HALEY			
02:28	REBOUND (OFF) by TEAM			
02:28				SUB OUT: DRUMMER, LAJAHNA
02:28				SUB IN: ONYENWERE, MICHAELA
02:28	GOOD! FT by VAN DYKE, HALEY	60-37	H 23	
02:00				MISSED 3PTR by SMITH, AHLANA
02:00	REBOUND (DEF) by TEAM			
01:52				FOUL (PERSONAL) by SMITH, AHLANA
01:38	MISSED 3PTR by PETERSON, MISSY			
01:29				REBOUND (DEF) by SMITH, AHLANA
01:24				TURNOVER (BADPASS) by SMITH, AHLANA
01:24				SUB OUT: BURKE, KENNEDY
01:24				SUB IN: DEAN, JAPREECE
01:24	SUB OUT: PETERSON, MISSY			
01:24	SUB IN: ROOKS, KHAYLA			
01:24	SUB OUT: VAN DYKE, HALEY			
01:24	SUB IN: MOSER, JENNA			
01:13	TURNOVER (BADPASS) by MOSER, JENNA			
01:13				STEAL by MILLER, LAURYN
01:08				FOUL (OFF) by ONYENWERE, MICHAELA
01:08				TURNOVER (OFFENSIVE) by ONYENWERE, MICHAELA
01:08	SUB OUT: REES, DARCY			
01:08	SUB IN: JOHNSON, HANNAH			
00:42	MISSED 3PTR by ROOKS, KHAYLA			
00:40	REBOUND (OFF) by JOHNSON, HANNAH			
00:40				FOUL (PERSONAL) by DEAN, JAPREECE
00:40	MISSED FT by JOHNSON, HANNAH			
00:40	REBOUND (OFF) by TEAM			
00:40	GOOD! FT by JOHNSON, HANNAH	60-38	H 22	
00:27				SUB OUT: SMITH, AHLANA
00:27				SUB IN: OWENS, KAYLA
00:20		62-38	H 24	GOOD! JUMPER by DEAN, JAPREECE
00:20				ASSIST by CORSARO, LINDSEY
00:00				FOUL (PERSONAL) by DEAN, JAPREECE
00:00	GOOD! FT by ROOKS, KHAYLA	62-39	H 23	
00:00	GOOD! FT by ROOKS, KHAYLA	62-40	H 22	

### Washington 40, UCLA 62

Points from (This Period)	WAU	UCL
In the Paint	8	8
Off Turns	8	2
2nd Chance	3	5
Fast Break	3	4
Bench	4	2

**Official Box Score**  
**Washington vs UCLA**  
**Fourth Quarter Statistics Only**  
**February 03, 2019 at Pauley Pavilion - Los Angeles CA**



**Washington 20**

No.	Player	S	Pts	FG	3FG	FT	OR	DR	TR	PF	A	TO	Blk	Stl	Min	+/-
03	HENSON, MAI-LONI		0	0-0	0-0	0-0	0	0	0	0	0	0	0	0	0	0
04	MELGOZA, AMBER	12	4-7	2-2	2-4		1	0	1	1	2	0	0	0	10	6
24	MOSER, JENNA	0	0-2	0-2	0-0		0	0	0	1	0	0	0	0	2	-3
44	PETERSON, MISSY	0	0-2	0-1	0-0		0	1	1	0	2	1	0	0	7	6
53	REES, DARCY	4	2-2	0-0	0-0		0	1	1	2	0	0	1	0	6	8
01	JOHNSON, HANNAH	2	1-1	0-0	0-0		1	3	4	0	0	0	0	1	10	6
12	HAGSTROM, MONTANA	0	0-0	0-0	0-0		0	0	0	0	0	0	0	0	0	0
15	VAN DYKE, HALEY	0	0-0	0-0	0-0		0	0	0	0	0	0	0	0	0	0
20	ROOKS, KHAYLA	0	0-1	0-1	0-0		0	0	0	0	0	0	0	0	4	-2
25	WATKINS, T.T.	2	1-2	0-0	0-0		1	0	1	0	2	0	0	0	8	9
35	GRIGGSBY, ALEXIS	0	0-0	0-0	0-0		0	1	1	0	0	1	0	0	3	0
	TEAM						0	0	0	0		0				
<b>TOTALS</b>		<b>20</b>	<b>8-17</b>	<b>2-6</b>	<b>2-4</b>		<b>3</b>	<b>6</b>	<b>9</b>	<b>4</b>	<b>6</b>	<b>2</b>	<b>1</b>	<b>1</b>	<b>50</b>	

*Shooting By Period*

Period	FG	FG%	3FG	3FG%	FT	FT%
Game	21-60	35.0%	6-22	27.3%	12-19	63.2%

**UCLA 14**

No.	Player	S	Pts	FG	3FG	FT	OR	DR	TR	PF	A	TO	Blk	Stl	Min	+/-
04	CORSARO, LINDSEY	3	1-2	1-1	0-0		0	0	0	0	0	0	0	0	3	3
11	DRUMMER, LAJAHNA	0	0-0	0-0	0-0		0	1	1	1	0	0	0	0	7	-6
21	ONYENWERE, MICHAELA	0	0-1	0-0	0-0		0	0	0	0	0	1	0	0	6	-5
22	BURKE, KENNEDY	2	1-2	0-0	0-0		0	0	0	0	1	1	0	0	5	-9
24	DEAN, JAPREECE	5	2-3	1-1	0-0		0	1	1	1	1	1	0	0	4	4
01	OWENS, KAYLA	0	0-1	0-0	0-0		0	1	1	0	0	0	0	0	5	3
02	SMITH, AHLANA	2	1-3	0-0	0-0		0	0	0	1	0	1	1	0	7	-9
03	JEFFERSON, KIARA	0	0-0	0-0	0-0		0	0	0	0	0	0	0	0	5	-10
25	HARRIS, SHAYLEY	0	0-0	0-0	0-0		0	0	0	1	0	0	0	0	1	-3
32	BAIRD, CHRISSY	0	0-0	0-0	0-0		0	1	1	0	0	0	0	0	1	-3
33	MILLER, LAURYN	2	1-2	0-0	0-0		1	2	3	0	1	0	0	0	5	5
51	SIGAL, ELIANA	0	0-0	0-0	0-0		0	0	0	0	0	1	0	0	1	0
	TEAM						1	0	1	0		0				
<b>TOTALS</b>		<b>14</b>	<b>6-14</b>	<b>2-2</b>	<b>0-0</b>		<b>2</b>	<b>6</b>	<b>8</b>	<b>4</b>	<b>3</b>	<b>5</b>	<b>1</b>	<b>0</b>	<b>50</b>	

*Shooting By Period*

Period	FG	FG%	3FG	3FG%	FT	FT%
Game	30-53	56.6%	6-9	66.7%	10-12	83.3%

**Game Notes:**

Officials: **Michael Price, Tiffany Bird, Brian Woods**  
Attendance: **1042**

Start Time: **2019-02-03 20:35:27**  
End Time: **2019-02-03 22:31:38**  
Game Duration: **116**  
Conference Game;

Score	1st	2nd	3rd	4th	TOT
WAU	11	8	21	20	<b>60</b>
UCL	30	13	19	14	<b>76</b>

Points from (This Period)	WAU	UCL
In the Paint	10	8
Off Turns	4	0
2nd Chance	5	0
Fast Break	0	2
Bench	4	4

**Official Play-By-Play**  
**Washington vs UCLA**  
**Fourth Quarter**  
**February 03, 2019 at Pauley Pavilion - Los Angeles CA**



**Period 4**

**Starters:**

**Washington:** 24 MOSER, JENNA; 44 PETERSON, MISSY; 53 REES, DARCY; 3 HENSON, MAI-LONI; 4 MELGOZA, AMBER;  
**UCLA:** 11 DRUMMER, LAJAHNA; 21 ONYENWERE, MICHAELA; 22 BURKE, KENNEDY; 24 DEAN, JAPREECE; 4 CORSARO, LINDSEY;

Time	VISITORS: Washington	Score	Margin	HOME: UCLA
09:50	MISSED JUMPER by MELGOZA, AMBER			
09:47	REBOUND (OFF) by JOHNSON, HANNAH			
09:45	MISSED 3PTR by ROOKS, KHAYLA			
09:44				REBOUND (DEF) by MILLER, LAURYN
09:44	FOUL (PERSONAL) by MELGOZA, AMBER			
09:15		65-40	H 25	GOOD! 3PTR by CORSARO, LINDSEY
09:15				ASSIST by DEAN, JAPREECE
09:01	MISSED 3PTR by MOSER, JENNA			
08:56				REBOUND (DEF) by MILLER, LAURYN
08:48				MISSED LAYUP by MILLER, LAURYN
08:45	REBOUND (DEF) by GRIGGSBY, ALEXIS			
08:38	MISSED 3PTR by MOSER, JENNA			
08:33				REBOUND (DEF) by OWENS, KAYLA
08:12	FOUL (PERSONAL) by MOSER, JENNA			
08:12				SUB OUT: MILLER, LAURYN
08:12				SUB IN: DRUMMER, LAJAHNA
08:12	SUB OUT: ROOKS, KHAYLA			
08:12	SUB IN: REES, DARCY			
08:12	SUB OUT: MOSER, JENNA			
08:12	SUB IN: WATKINS, T.T.			
08:12	SUB OUT: GRIGGSBY, ALEXIS			
08:12	SUB IN: PETERSON, MISSY			
08:05				FOUL (OFF) by DEAN, JAPREECE
08:05				TURNOVER (OFFENSIVE) by DEAN, JAPREECE
07:57	MISSED LAYUP by WATKINS, T.T.			
07:53				REBOUND (DEF) by DEAN, JAPREECE
07:49		67-40	H 27	GOOD! LAYUP by DEAN, JAPREECE [FB]
07:29	MISSED 3PTR by PETERSON, MISSY			
07:24	REBOUND (OFF) by WATKINS, T.T.			
07:23	GOOD! JUMPER by MELGOZA, AMBER	67-42	H 25	
07:23	ASSIST by WATKINS, T.T.			
07:22	TIMEOUT 30SEC			
07:22				SUB OUT: OWENS, KAYLA
07:22				SUB IN: SMITH, AHLANA
07:22				SUB OUT: DEAN, JAPREECE
07:22				SUB IN: BURKE, KENNEDY
06:54				MISSED JUMPER by CORSARO, LINDSEY
06:54	BLOCK by REES, DARCY			
06:54				REBOUND (OFF) by TEAM
06:52				MISSED JUMPER by ONYENWERE, MICHAELA
06:49	REBOUND (DEF) by JOHNSON, HANNAH			
06:36	TIMEOUT 30SEC			
06:36				SUB OUT: CORSARO, LINDSEY
06:36				SUB IN: JEFFERSON, KIARA
06:33	GOOD! LAYUP by WATKINS, T.T.	67-44	H 23	
06:33	ASSIST by MELGOZA, AMBER			
06:13				MISSED LAYUP by BURKE, KENNEDY
06:10	REBOUND (DEF) by REES, DARCY			
06:05	MISSED JUMPER by PETERSON, MISSY			
06:05				BLOCK by SMITH, AHLANA
05:57	REBOUND (OFF) by MELGOZA, AMBER			
05:54	GOOD! 3PTR by MELGOZA, AMBER	67-47	H 20	
05:54	ASSIST by PETERSON, MISSY			
05:44				TURNOVER (BADPASS) by ONYENWERE, MICHAELA
05:18	GOOD! LAYUP by REES, DARCY	67-49	H 18	
05:18	ASSIST by WATKINS, T.T.			
04:49		69-49	H 20	GOOD! JUMPER by BURKE, KENNEDY [PNT]
04:34	MISSED JUMPER by MELGOZA, AMBER			
04:30				REBOUND (DEF) by DRUMMER, LAJAHNA
04:25				MISSED LAYUP by SMITH, AHLANA
04:21	REBOUND (DEF) by PETERSON, MISSY			
04:09	GOOD! 3PTR by MELGOZA, AMBER	69-52	H 17	
04:03				TIMEOUT 30SEC
04:03				SUB OUT: JEFFERSON, KIARA
04:03				SUB IN: MILLER, LAURYN
04:03				SUB OUT: ONYENWERE, MICHAELA
04:03				SUB IN: DEAN, JAPREECE
04:03				SUB OUT: BURKE, KENNEDY
04:03				SUB IN: OWENS, KAYLA
04:03	SUB OUT: MELGOZA, AMBER			

Time	VISITORS: Washington	Score	Margin	HOME: UCLA
04:03	SUB IN: GRIGGSBY, ALEXIS			
03:41	FOUL (PERSONAL) by REES, DARCY			
03:41	SUB OUT: GRIGGSBY, ALEXIS			
03:41	SUB IN: MELGOZA, AMBER			
03:27				MISSED JUMPER by DEAN, JAPREECE
03:22				REBOUND (OFF) by MILLER, LAURYN
03:21				MISSED JUMPER by OWENS, KAYLA
03:18	REBOUND (DEF) by JOHNSON, HANNAH			
03:10	TURNOVER (TRAVEL) by PETERSON, MISSY			
02:58				MISSED JUMPER by SMITH, AHLANA
02:55	REBOUND (DEF) by JOHNSON, HANNAH			
02:50	GOOD! LAYUP by REES, DARCY	69-54	H 15	
02:50	ASSIST by PETERSON, MISSY			
02:28		72-54	H 18	GOOD! 3PTR by DEAN, JAPREECE
02:15				FOUL (PERSONAL) by DRUMMER, LAJAHNA
02:15	MISSED FT by MELGOZA, AMBER			
02:15	REBOUND (OFF) by TEAM			
02:15				SUB OUT: DEAN, JAPREECE
02:15				SUB IN: JEFFERSON, KIARA
02:15	GOOD! FT by MELGOZA, AMBER	72-55	H 17	
01:59	FOUL (PERSONAL) by REES, DARCY			
01:59	SUB OUT: REES, DARCY			
01:59	SUB IN: ROOKS, KHAYLA			
01:59				SUB OUT: OWENS, KAYLA
01:59				SUB IN: BURKE, KENNEDY
01:47		74-55	H 19	GOOD! LAYUP by MILLER, LAURYN
01:47				ASSIST by BURKE, KENNEDY
01:34	GOOD! LAYUP by JOHNSON, HANNAH	74-57	H 17	
01:34	ASSIST by MELGOZA, AMBER			
01:23		76-57	H 19	GOOD! LAYUP by SMITH, AHLANA
01:23				ASSIST by MILLER, LAURYN
01:14				FOUL (PERSONAL) by SMITH, AHLANA
01:14	MISSED FT by MELGOZA, AMBER			
01:14	REBOUND (OFF) by TEAM			
01:14				SUB OUT: MILLER, LAURYN
01:14				SUB IN: HARRIS, SHAYLEY
01:14				SUB OUT: DRUMMER, LAJAHNA
01:14				SUB IN: BAIRD, CHRISSY
01:14	SUB OUT: PETERSON, MISSY			
01:14	SUB IN: GRIGGSBY, ALEXIS			
01:14	GOOD! FT by MELGOZA, AMBER	76-58	H 18	
00:56				TURNOVER (BADPASS) by BURKE, KENNEDY
00:46	GOOD! JUMPER by MELGOZA, AMBER [PNT]	76-60	H 16	
00:41				TIMEOUT 30SEC
00:41				SUB OUT: BURKE, KENNEDY
00:41				SUB IN: SIGAL, ELIANA
00:32				TURNOVER (BADPASS) by SIGAL, ELIANA
00:32	STEAL by JOHNSON, HANNAH			
00:32				FOUL (PERSONAL) by HARRIS, SHAYLEY
00:19	TURNOVER (BADPASS) by GRIGGSBY, ALEXIS			
00:05				TURNOVER (BADPASS) by SMITH, AHLANA
00:00	MISSED JUMPER by MELGOZA, AMBER			
00:00				REBOUND (DEF) by BAIRD, CHRISSY

### Washington 60, UCLA 76

Points from (This Period)	WAU	UCL
In the Paint	10	8
Off Turns	4	0
2nd Chance	5	0
Fast Break	0	2
Bench	4	4



**Official Scoring/Possession Reference Chart**  
**Washington vs UCLA**  
**Period 1**  
**February 03, 2019 at Pauley Pavilion - Los Angeles CA**



**Period 1**

**Starters:**

**Washington:** 24 MOSER, JENNA; 44 PETERSON, MISSY; 53 REES, DARCY; 3 HENSON, MAI-LONI; 4 MELGOZA, AMBER;

**UCLA:** 11 DRUMMER, LAJAHNA; 21 ONYENWERE, MICHAELA; 22 BURKE, KENNEDY; 24 DEAN, JAPREECE; 4 CORSARO, LINDSEY;

Time	VISITORS: Washington	Score	Margin	HOME: UCLA
09:43		2-0	H 2	GOOD! JUMPER by ONYENWERE, MICHAELA
09:15		4-0	H 4	GOOD! JUMPER by BURKE, KENNEDY
08:53	GOOD! LAYUP by MOSER, JENNA	4-2	H 2	
07:56		6-2	H 4	GOOD! LAYUP by DRUMMER, LAJAHNA
07:25		8-2	H 6	GOOD! LAYUP by DEAN, JAPREECE [FB]
07:03		10-2	H 8	GOOD! JUMPER by ONYENWERE, MICHAELA
06:55	GOOD! JUMPER by WATKINS, T.T.	10-4	H 6	
06:41		12-4	H 8	GOOD! LAYUP by BURKE, KENNEDY
06:15		15-4	H 11	GOOD! 3PTR by ONYENWERE, MICHAELA
05:42		16-4	H 12	GOOD! FT by CORSARO, LINDSEY
05:42		17-4	H 13	GOOD! FT by CORSARO, LINDSEY
05:07		19-4	H 15	GOOD! JUMPER by SMITH, AHLANA [PNT]
04:56	GOOD! 3PTR by GRIGGSBY, ALEXIS	19-7	H 12	
04:29		22-7	H 15	GOOD! 3PTR by CORSARO, LINDSEY
04:01		24-7	H 17	GOOD! JUMPER by DEAN, JAPREECE
03:34		26-7	H 19	GOOD! JUMPER by DEAN, JAPREECE [PNT]
02:17	GOOD! LAYUP by REES, DARCY	26-9	H 17	
01:54		28-9	H 19	GOOD! LAYUP by DRUMMER, LAJAHNA
00:45		30-9	H 21	GOOD! JUMPER by DRUMMER, LAJAHNA [FB]
00:30	GOOD! FT by JOHNSON, HANNAH	30-10	H 20	
00:30	GOOD! FT by JOHNSON, HANNAH	30-11	H 19	

**Washington 11, UCLA 30**

**Official Scoring/Possession Reference Chart**  
**Washington vs UCLA**  
**Period 2**  
**February 03, 2019 at Pauley Pavilion - Los Angeles CA**



**Period 2**

**Starters:**

**Washington:** 24 MOSER, JENNA; 44 PETERSON, MISSY; 53 REES, DARCY; 3 HENSON, MAI-LONI; 4 MELGOZA, AMBER;

**UCLA:** 11 DRUMMER, LAJAHNA; 21 ONYENWERE, MICHAELA; 22 BURKE, KENNEDY; 24 DEAN, JAPREECE; 4 CORSARO, LINDSEY;

Time	VISITORS: Washington	Score	Margin	HOME: UCLA
09:38		32-11	H 21	GOOD! JUMPER by MILLER, LAURYN
09:09		35-11	H 24	GOOD! 3PTR by JEFFERSON, KIARA [FB]
08:12		37-11	H 26	GOOD! LAYUP by MILLER, LAURYN [FB/PNT]
07:45	GOOD! 3PTR by PETERSON, MISSY	37-14	H 23	
06:46	GOOD! FT by MELGOZA, AMBER	37-15	H 22	
06:41		39-15	H 24	GOOD! LAYUP by ONYENWERE, MICHAELA
06:35		40-15	H 25	GOOD! FT by ONYENWERE, MICHAELA
05:19	GOOD! FT by REES, DARCY	40-16	H 24	
03:32	GOOD! FT by REES, DARCY [FB]	40-17	H 23	
01:48		42-17	H 25	GOOD! LAYUP by CORSARO, LINDSEY
01:48		43-17	H 26	GOOD! FT by CORSARO, LINDSEY
00:56	GOOD! LAYUP by MELGOZA, AMBER	43-19	H 24	

**Washington 19, UCLA 43**

**Official Scoring/Possession Reference Chart**  
**Washington vs UCLA**  
**Period 3**  
**February 03, 2019 at Pauley Pavilion - Los Angeles CA**



**Period 3**

**Starters:**

**Washington:** 24 MOSER, JENNA; 44 PETERSON, MISSY; 53 REES, DARCY; 3 HENSON, MAI-LONI; 4 MELGOZA, AMBER;

**UCLA:** 11 DRUMMER, LAJAHNA; 21 ONYENWERE, MICHAELA; 22 BURKE, KENNEDY; 24 DEAN, JAPREECE; 4 CORSARO, LINDSEY;

Time	VISITORS: Washington	Score	Margin	HOME: UCLA
09:35		44-19	H 25	GOOD! FT by ONYENWERE, MICHAELA
09:35		45-19	H 26	GOOD! FT by ONYENWERE, MICHAELA
09:22		46-19	H 27	GOOD! FT by BURKE, KENNEDY [FB]
09:22		47-19	H 28	GOOD! FT by BURKE, KENNEDY [FB]
09:07	GOOD! LAYUP by PETERSON, MISSY	47-21	H 26	
08:37	GOOD! LAYUP by PETERSON, MISSY	47-23	H 24	
08:10		50-23	H 27	GOOD! 3PTR by CORSARO, LINDSEY
07:22	GOOD! LAYUP by REES, DARCY	50-25	H 25	
06:51	GOOD! 3PTR by MELGOZA, AMBER	50-28	H 22	
06:41	GOOD! LAYUP by MELGOZA, AMBER [FB]	50-30	H 20	
06:41	GOOD! FT by MELGOZA, AMBER [FB]	50-31	H 19	
06:17		52-31	H 21	GOOD! LAYUP by BURKE, KENNEDY
05:10		54-31	H 23	GOOD! LAYUP by BURKE, KENNEDY [FB]
04:51	GOOD! 3PTR by PETERSON, MISSY	54-34	H 20	
04:06		55-34	H 21	GOOD! FT by DRUMMER, LAJAHNA
04:06		56-34	H 22	GOOD! FT by DRUMMER, LAJAHNA
03:54	GOOD! JUMPER by MELGOZA, AMBER	56-36	H 20	
03:28		58-36	H 22	GOOD! LAYUP by MILLER, LAURYN
02:47		60-36	H 24	GOOD! JUMPER by DRUMMER, LAJAHNA [PNT]
02:28	GOOD! FT by VAN DYKE, HALEY	60-37	H 23	
00:40	GOOD! FT by JOHNSON, HANNAH	60-38	H 22	
00:20		62-38	H 24	GOOD! JUMPER by DEAN, JAPREECE
00:00	GOOD! FT by ROOKS, KHAYLA	62-39	H 23	
00:00	GOOD! FT by ROOKS, KHAYLA	62-40	H 22	

**Washington 40, UCLA 62**

**Official Scoring/Possession Reference Chart**  
**Washington vs UCLA**  
**Period 4**  
**February 03, 2019 at Pauley Pavilion - Los Angeles CA**



**Period 4**

**Starters:**

**Washington:** 24 MOSER, JENNA; 44 PETERSON, MISSY; 53 REES, DARCY; 3 HENSON, MAI-LONI; 4 MELGOZA, AMBER;

**UCLA:** 11 DRUMMER, LAJAHNA; 21 ONYENWERE, MICHAELA; 22 BURKE, KENNEDY; 24 DEAN, JAPREECE; 4 CORSARO, LINDSEY;

Time	VISITORS: Washington	Score	Margin	HOME: UCLA
09:15		65-40	H 25	GOOD! 3PTR by CORSARO, LINDSEY
07:49		67-40	H 27	GOOD! LAYUP by DEAN, JAPREECE [FB]
07:23	GOOD! JUMPER by MELGOZA, AMBER	67-42	H 25	
06:33	GOOD! LAYUP by WATKINS, T.T.	67-44	H 23	
05:54	GOOD! 3PTR by MELGOZA, AMBER	67-47	H 20	
05:18	GOOD! LAYUP by REES, DARCY	67-49	H 18	
04:49		69-49	H 20	GOOD! JUMPER by BURKE, KENNEDY [PNT]
04:09	GOOD! 3PTR by MELGOZA, AMBER	69-52	H 17	
02:50	GOOD! LAYUP by REES, DARCY	69-54	H 15	
02:28		72-54	H 18	GOOD! 3PTR by DEAN, JAPREECE
02:15	GOOD! FT by MELGOZA, AMBER	72-55	H 17	
01:47		74-55	H 19	GOOD! LAYUP by MILLER, LAURYN
01:34	GOOD! LAYUP by JOHNSON, HANNAH	74-57	H 17	
01:23		76-57	H 19	GOOD! LAYUP by SMITH, AHLANA
01:14	GOOD! FT by MELGOZA, AMBER	76-58	H 18	
00:46	GOOD! JUMPER by MELGOZA, AMBER [PNT]	76-60	H 16	

**Washington 60, UCLA 76**

**Official Substitutions Log**  
**Washington vs UCLA**  
**Period 1**  
**February 03, 2019 at Pauley Pavilion - Los Angeles CA**



VISITORS: Washington	Time	Score	HOME: UCLA
24 MOSER, JENNA			11 DRUMMER, LAJAHNA
44 PETERSON, MISSY			21 ONYENWERE, MICHAELA
53 REES, DARCY			22 BURKE, KENNEDY
3 HENSON, MAI-LONI			24 DEAN, JAPREECE
4 MELGOZA, AMBER			4 CORSARO, LINDSEY
	07:45	2-6	SUB OUT: DRUMMER, LAJAHNA
	07:45		SUB IN: MILLER, LAURYN
SUB OUT: 4 MELGOZA, AMBER	07:45		
SUB IN: 25 WATKINS, T. T.	07:45		
	06:41	4-12	SUB OUT: BURKE, KENNEDY
	06:41		SUB IN: SMITH, AHLANA
SUB OUT: 44 PETERSON, MISSY	06:41		
SUB IN: 35 GRIGGSBY, ALEXIS	06:41		
SUB OUT: 24 MOSER, JENNA	06:41		
SUB IN: 4 MELGOZA, AMBER	06:41		
SUB OUT: 25 WATKINS, T. T.	05:42	4-16	
SUB IN: 15 VAN DYKE, HALEY	05:42		
	05:42		SUB OUT: ONYENWERE, MICHAELA
	05:42		SUB IN: DRUMMER, LAJAHNA
	05:42		SUB OUT: DEAN, JAPREECE
	05:42		SUB IN: BURKE, KENNEDY
	04:06	7-22	SUB OUT: MILLER, LAURYN
	04:06		SUB IN: ONYENWERE, MICHAELA
	04:06		SUB OUT: CORSARO, LINDSEY
	04:06		SUB IN: DEAN, JAPREECE
SUB OUT: 3 HENSON, MAI-LONI	04:06		
SUB IN: 44 PETERSON, MISSY	04:06		
SUB OUT: 4 MELGOZA, AMBER	04:06		
SUB IN: 20 ROOKS, KHAYLA	04:06		
SUB OUT: 35 GRIGGSBY, ALEXIS	04:06		
SUB IN: 24 MOSER, JENNA	04:06		
	01:24	9-28	SUB OUT: SMITH, AHLANA
	01:24		SUB IN: JEFFERSON, KIARA
SUB OUT: 53 REES, DARCY	01:24		
SUB IN: 1 JOHNSON, HANNAH	01:24		
	00:30	10-30	SUB OUT: ONYENWERE, MICHAELA
	00:30		SUB IN: MILLER, LAURYN
SUB OUT: 20 ROOKS, KHAYLA	00:30		
SUB IN: 3 HENSON, MAI-LONI	00:30		
SUB OUT: 15 VAN DYKE, HALEY	00:30		
SUB IN: 12 HAGSTROM, MONTANA	00:30		

**Washington 11, UCLA 30**

**Official Substitutions Log  
Washington vs UCLA  
Period 2  
February 03, 2019 at Pauley Pavilion - Los Angeles CA**



VISITORS: Washington	Time	Score	HOME: UCLA
24 MOSER, JENNA			11 DRUMMER, LAJAHNA
44 PETERSON, MISSY			21 ONYENWERE, MICHAELA
53 REES, DARCY			22 BURKE, KENNEDY
3 HENSON, MAI-LONI			24 DEAN, JAPREECE
4 MELGOZA, AMBER			4 CORSARO, LINDSEY
	08:38	11-35	SUB OUT: BURKE, KENNEDY
	08:38		SUB IN: CORSARO, LINDSEY
SUB OUT: 12 HAGSTROM, MONTANA	08:38		
SUB IN: 4 MELGOZA, AMBER	08:38		
SUB OUT: 3 HENSON, MAI-LONI	08:19	11-35	
SUB IN: 25 WATKINS, T. T.	08:19		
	07:30	14-37	SUB OUT: MILLER, LAURYN
	07:30		SUB IN: ONYENWERE, MICHAELA
	06:46	14-37	SUB OUT: JEFFERSON, KIARA
	06:46		SUB IN: SMITH, AHLANA
SUB OUT: 24 MOSER, JENNA	06:46		
SUB IN: 35 GRIGGSBY, ALEXIS	06:46		
SUB OUT: 1 JOHNSON, HANNAH	05:40	15-40	
SUB IN: 20 ROOKS, KHAYLA	05:40		
SUB OUT: 44 PETERSON, MISSY	05:40		
SUB IN: 53 REES, DARCY	05:40		
	04:32	16-40	SUB OUT: CORSARO, LINDSEY
	04:32		SUB IN: BURKE, KENNEDY
	04:32		SUB OUT: DRUMMER, LAJAHNA
	04:32		SUB IN: HARRIS, SHAYLEY
	03:34	16-40	SUB OUT: SMITH, AHLANA
	03:34		SUB IN: JEFFERSON, KIARA
SUB OUT: 20 ROOKS, KHAYLA	03:34		
SUB IN: 3 HENSON, MAI-LONI	03:34		
	02:08	17-40	SUB OUT: ONYENWERE, MICHAELA
	02:08		SUB IN: CORSARO, LINDSEY
	02:08		SUB OUT: BURKE, KENNEDY
	02:08		SUB IN: DRUMMER, LAJAHNA
SUB OUT: 35 GRIGGSBY, ALEXIS	02:08		
SUB IN: 44 PETERSON, MISSY	02:08		

**Washington 19, UCLA 43**

**Official Substitutions Log  
Washington vs UCLA  
Period 3  
February 03, 2019 at Pauley Pavilion - Los Angeles CA**



VISITORS: Washington	Time	Score	HOME: UCLA
24 MOSER, JENNA			11 DRUMMER, LAJAHNA
44 PETERSON, MISSY			21 ONYENWERE, MICHAELA
53 REES, DARCY			22 BURKE, KENNEDY
3 HENSON, MAI-LONI			24 DEAN, JAPREECE
4 MELGOZA, AMBER			4 CORSARO, LINDSEY
SUB OUT: 24 MOSER, JENNA	07:10	25-50	
SUB IN: 25 WATKINS, T.T.	07:10		
	06:44	28-50	SUB OUT: CORSARO, LINDSEY
	06:44		SUB IN: JEFFERSON, KIARA
	04:57	31-54	SUB OUT: ONYENWERE, MICHAELA
	04:57		SUB IN: MILLER, LAURYN
	04:26	34-54	SUB OUT: DEAN, JAPREECE
	04:26		SUB IN: CORSARO, LINDSEY
SUB OUT: 3 HENSON, MAI-LONI	03:11	36-58	
SUB IN: 15 VAN DYKE, HALEY	03:11		
SUB OUT: 25 WATKINS, T.T.	03:11		
SUB IN: 35 GRIGGSBY, ALEXIS	03:11		
	02:57	36-58	SUB OUT: JEFFERSON, KIARA
	02:57		SUB IN: SMITH, AHLANA
	02:28	36-60	SUB OUT: DRUMMER, LAJAHNA
	02:28		SUB IN: ONYENWERE, MICHAELA
	01:24	37-60	SUB OUT: BURKE, KENNEDY
	01:24		SUB IN: DEAN, JAPREECE
SUB OUT: 44 PETERSON, MISSY	01:24		
SUB IN: 20 ROOKS, KHAYLA	01:24		
SUB OUT: 15 VAN DYKE, HALEY	01:24		
SUB IN: 24 MOSER, JENNA	01:24		
SUB OUT: 53 REES, DARCY	01:08	37-60	
SUB IN: 1 JOHNSON, HANNAH	01:08		
	00:27	38-60	SUB OUT: SMITH, AHLANA
	00:27		SUB IN: OWENS, KAYLA

**Washington 40, UCLA 62**

**Official Substitutions Log**  
**Washington vs UCLA**  
**Period 4**  
**February 03, 2019 at Pauley Pavilion - Los Angeles CA**



VISITORS: Washington	Time	Score	HOME: UCLA
24 MOSER, JENNA			11 DRUMMER, LAJAHNA
44 PETERSON, MISSY			21 ONYENWERE, MICHAELA
53 REES, DARCY			22 BURKE, KENNEDY
3 HENSON, MAI-LONI			24 DEAN, JAPREECE
4 MELGOZA, AMBER			4 CORSARO, LINDSEY
	08:12	40-65	SUB OUT: MILLER, LAURYN
	08:12		SUB IN: DRUMMER, LAJAHNA
SUB OUT: 20 ROOKS, KHAYLA	08:12		
SUB IN: 53 REES, DARCY	08:12		
SUB OUT: 24 MOSER, JENNA	08:12		
SUB IN: 25 WATKINS, T.T.	08:12		
SUB OUT: 35 GRIGGSBY, ALEXIS	08:12		
SUB IN: 44 PETERSON, MISSY	08:12		
	07:22	42-67	SUB OUT: OWENS, KAYLA
	07:22		SUB IN: SMITH, AHLANA
	07:22		SUB OUT: DEAN, JAPREECE
	07:22		SUB IN: BURKE, KENNEDY
	06:36	42-67	SUB OUT: CORSARO, LINDSEY
	06:36		SUB IN: JEFFERSON, KIARA
	04:03	52-69	SUB OUT: JEFFERSON, KIARA
	04:03		SUB IN: MILLER, LAURYN
	04:03		SUB OUT: ONYENWERE, MICHAELA
	04:03		SUB IN: DEAN, JAPREECE
	04:03		SUB OUT: BURKE, KENNEDY
	04:03		SUB IN: OWENS, KAYLA
SUB OUT: 4 MELGOZA, AMBER	04:03		
SUB IN: 35 GRIGGSBY, ALEXIS	04:03		
SUB OUT: 35 GRIGGSBY, ALEXIS	03:41	52-69	
SUB IN: 4 MELGOZA, AMBER	03:41		
	02:15	54-72	SUB OUT: DEAN, JAPREECE
	02:15		SUB IN: JEFFERSON, KIARA
SUB OUT: 53 REES, DARCY	01:59	55-72	
SUB IN: 20 ROOKS, KHAYLA	01:59		
	01:59		SUB OUT: OWENS, KAYLA
	01:59		SUB IN: BURKE, KENNEDY
	01:14	57-76	SUB OUT: MILLER, LAURYN
	01:14		SUB IN: HARRIS, SHAYLEY
	01:14		SUB OUT: DRUMMER, LAJAHNA
	01:14		SUB IN: BAIRD, CHRISSY
SUB OUT: 44 PETERSON, MISSY	01:14		
SUB IN: 35 GRIGGSBY, ALEXIS	01:14		
	00:41	60-76	SUB OUT: BURKE, KENNEDY
	00:41		SUB IN: SIGAL, ELIANA

**Washington 60, UCLA 76**

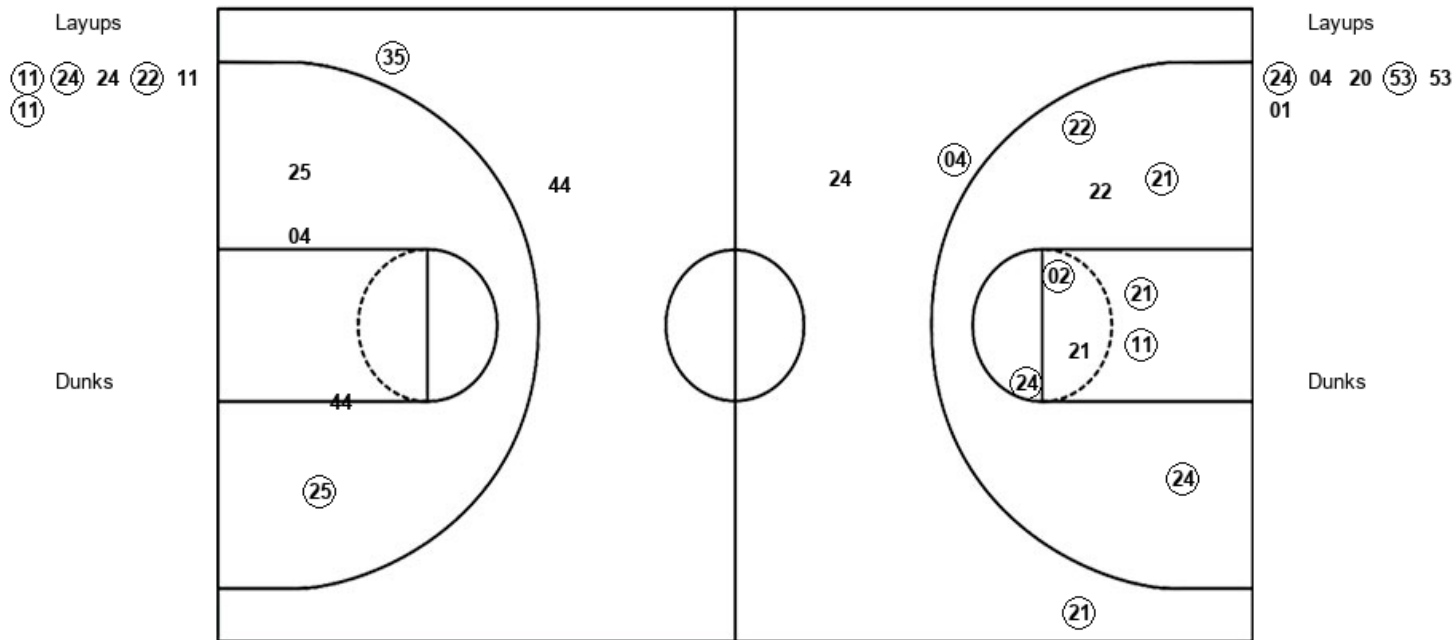


**Official Shot Chart**  
**Washington vs UCLA**  
**PERIOD 1 Shots**  
 February 03, 2019 at Pauley Pavilion - Los Angeles CA



**UCLA**

**Washington**



UCL : Period 1	Made	Att	Pct
Layups	4	6	66.7
Dunks	0	0	0
2PT Field Goals	11	15	73.3
3PT Field Goals	2	2	100.0
<b>Total Field Goals</b>	<b>13</b>	<b>17</b>	<b>76.5</b>

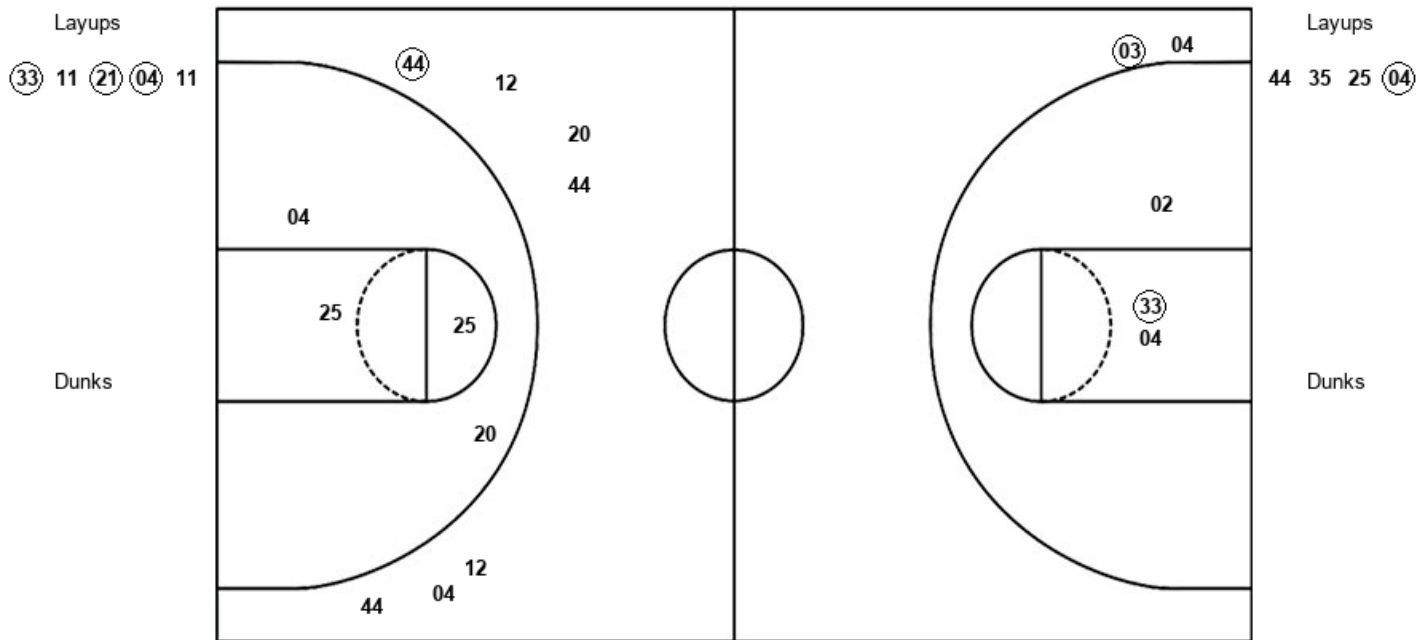
WAU : Period 1	Made	Att	Pct
Layups	2	6	33.3
Dunks	0	0	0
2PT Field Goals	3	10	30.0
3PT Field Goals	1	3	33.3
<b>Total Field Goals</b>	<b>4</b>	<b>13</b>	<b>30.8</b>

**Official Shot Chart**  
**Washington vs UCLA**  
**PERIOD 2 Shots**  
 February 03, 2019 at Pauley Pavilion - Los Angeles CA



**UCLA**

**Washington**



UCL : Period 2	Made	Att	Pct
Layups	3	5	60.0
Dunks	0	0	0
2PT Field Goals	4	8	50.0
3PT Field Goals	1	2	50.0
<b>Total Field Goals</b>	<b>5</b>	<b>10</b>	<b>50.0</b>

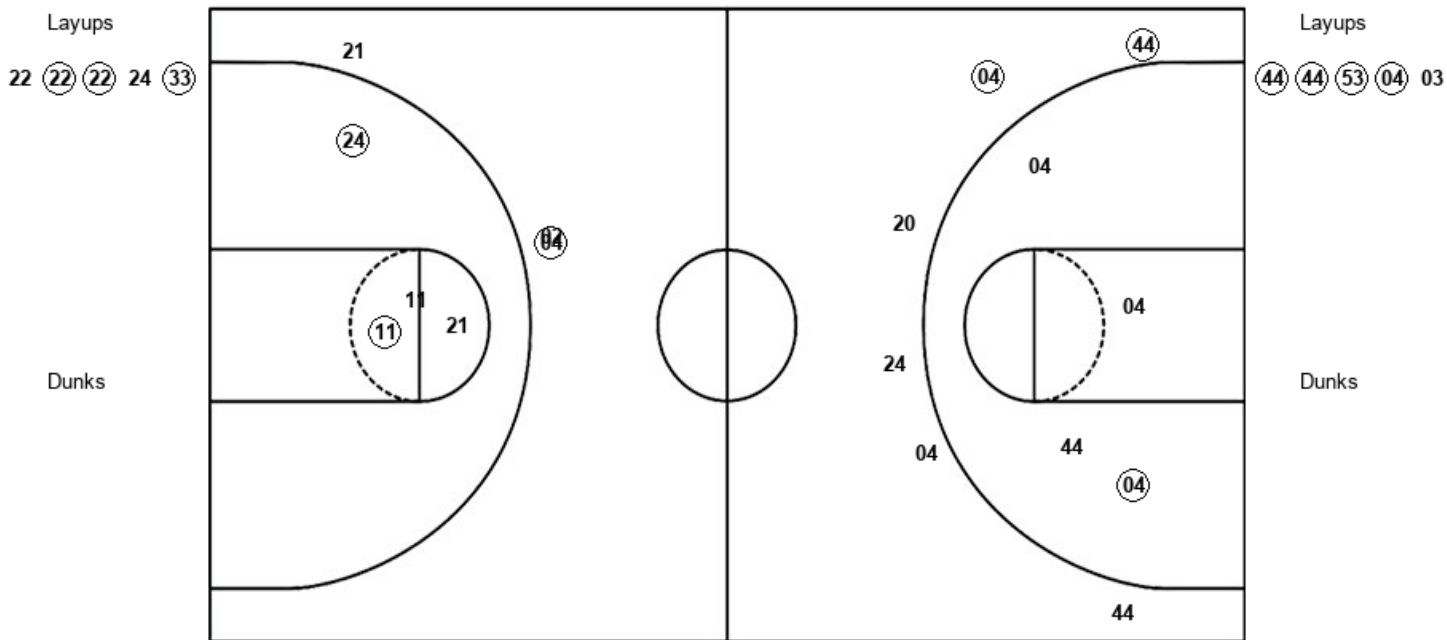
WAU : Period 2	Made	Att	Pct
Layups	1	4	25.0
Dunks	0	0	0
2PT Field Goals	1	8	12.5
3PT Field Goals	1	7	14.3
<b>Total Field Goals</b>	<b>2</b>	<b>15</b>	<b>13.3</b>

**Official Shot Chart**  
**Washington vs UCLA**  
**PERIOD 3 Shots**  
 February 03, 2019 at Pauley Pavilion - Los Angeles CA



**UCLA**

**Washington**



UCL : Period 3	Made	Att	Pct
Layups	3	5	60.0
Dunks	0	0	0
2PT Field Goals	5	9	55.6
3PT Field Goals	1	3	33.3
<b>Total Field Goals</b>	<b>6</b>	<b>12</b>	<b>50.0</b>

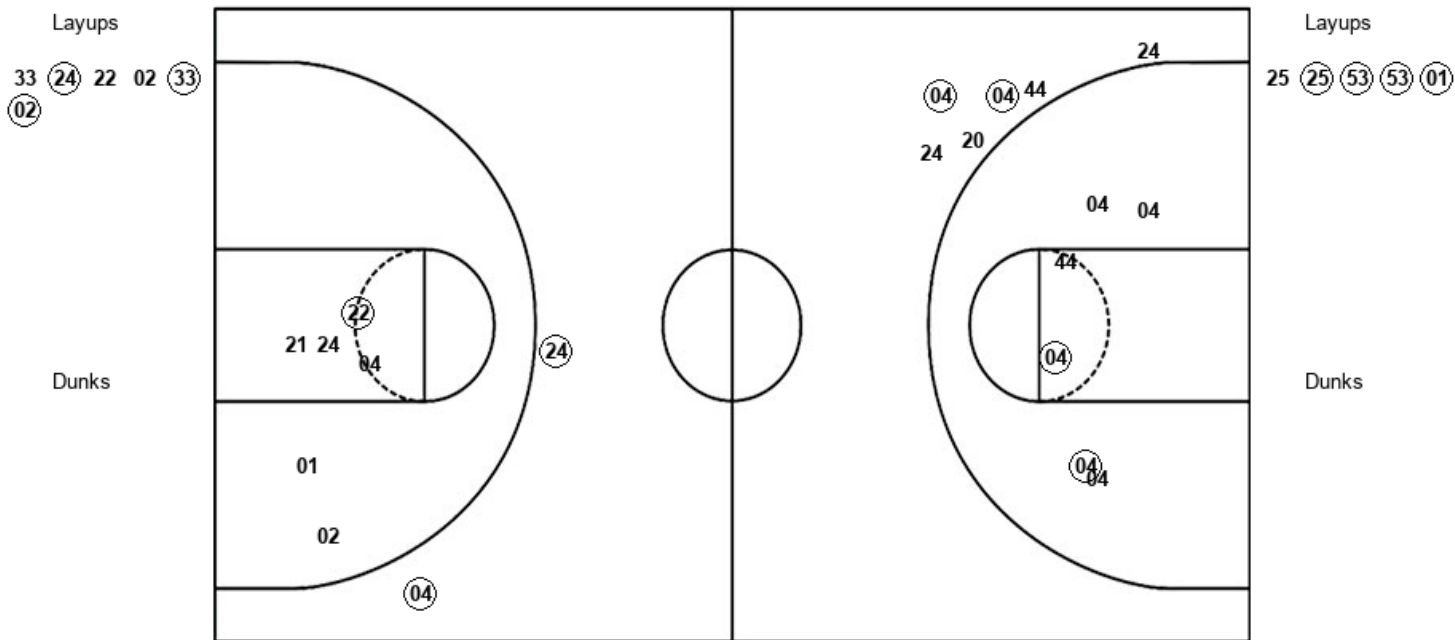
WAU : Period 3	Made	Att	Pct
Layups	4	5	80.0
Dunks	0	0	0
2PT Field Goals	5	9	55.6
3PT Field Goals	2	6	33.3
<b>Total Field Goals</b>	<b>7</b>	<b>15</b>	<b>46.7</b>

**Official Shot Chart**  
**Washington vs UCLA**  
**PERIOD 4 Shots**  
 February 03, 2019 at Pauley Pavilion - Los Angeles CA



**UCLA**

**Washington**



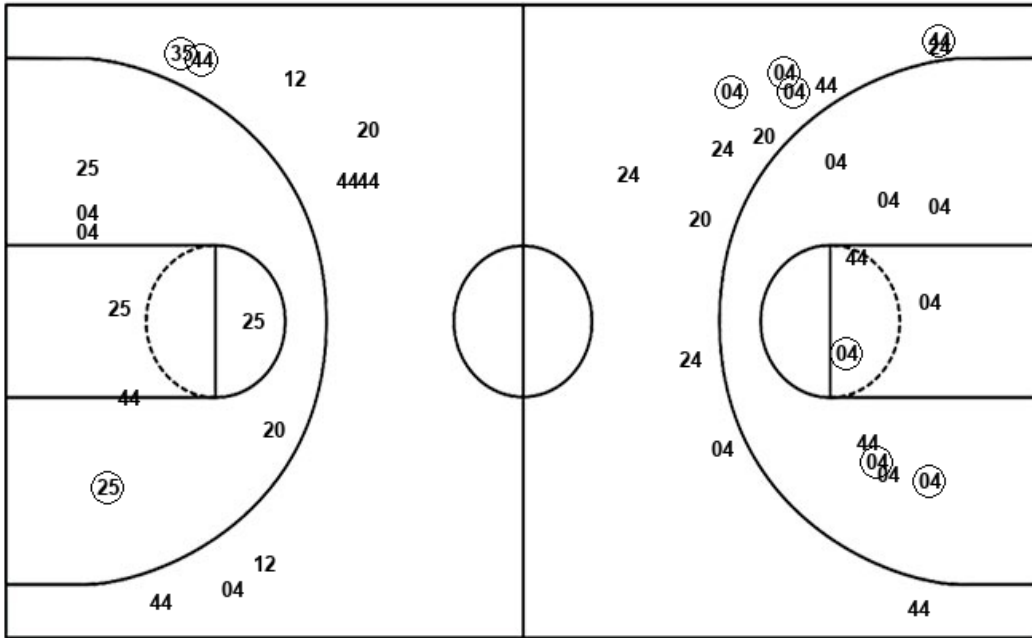
UCL : Period 4	Made	Att	Pct
Layups	3	6	50.0
Dunks	0	0	0
2PT Field Goals	4	12	33.3
3PT Field Goals	2	2	100.0
<b>Total Field Goals</b>	<b>6</b>	<b>14</b>	<b>42.9</b>

WAU : Period 4	Made	Att	Pct
Layups	4	5	80.0
Dunks	0	0	0
2PT Field Goals	6	11	54.5
3PT Field Goals	2	6	33.3
<b>Total Field Goals</b>	<b>8</b>	<b>17</b>	<b>47.1</b>

**Official Shot Chart**  
**Washington vs UCLA**  
**Washington Team Shots**  
 February 03, 2019 at Pauley Pavilion - Los Angeles CA



Layups



Layups

(24) 04 20 (53) 53  
 01 44 35 25 (04)  
 (44) (44) (53) (04) 03  
 25 (25) (53) (53) (01)

Dunks

Dunks

WAU : Period 1	Made	Att	Pct
Layups	2	6	33.3
Dunks	0	0	0
2PT Field Goals	3	10	30.0
3PT Field Goals	1	3	33.3
<b>Total Field Goals</b>	<b>4</b>	<b>13</b>	<b>30.8</b>

WAU : Period 2	Made	Att	Pct
Layups	1	4	25.0
Dunks	0	0	0
2PT Field Goals	1	8	12.5
3PT Field Goals	1	7	14.3
<b>Total Field Goals</b>	<b>2</b>	<b>15</b>	<b>13.3</b>

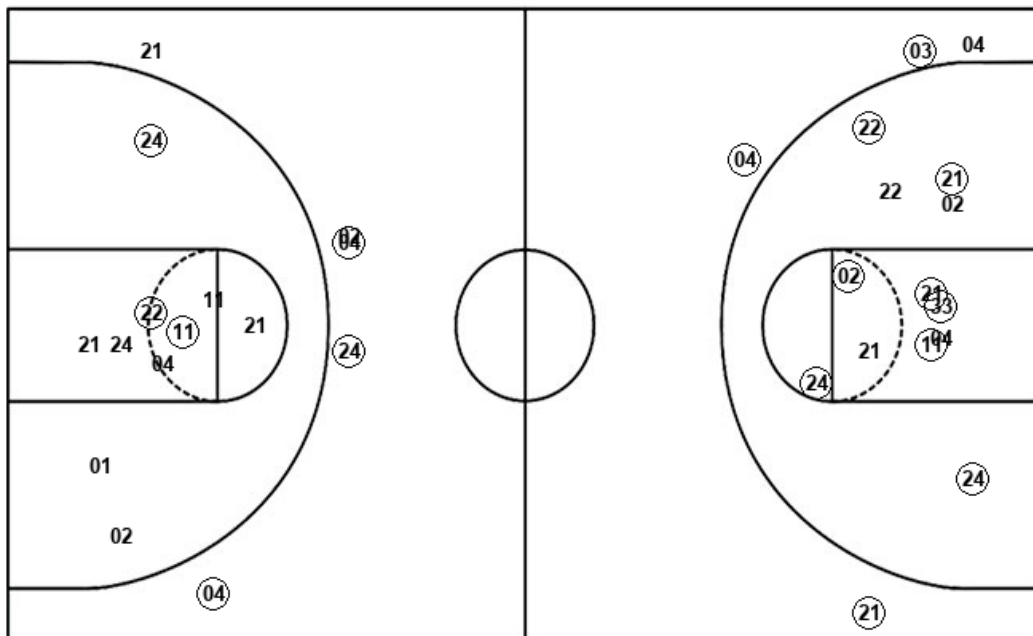
WAU : Period 3	Made	Att	Pct
Layups	4	5	80.0
Dunks	0	0	0
2PT Field Goals	5	9	55.6
3PT Field Goals	2	6	33.3
<b>Total Field Goals</b>	<b>7</b>	<b>15</b>	<b>46.7</b>

WAU : Period 4	Made	Att	Pct
Layups	4	5	80.0
Dunks	0	0	0
2PT Field Goals	6	11	54.5
3PT Field Goals	2	6	33.3
<b>Total Field Goals</b>	<b>8</b>	<b>17</b>	<b>47.1</b>

**Official Shot Chart**  
**Washington vs UCLA**  
**UCLA Team Shots**  
 February 03, 2019 at Pauley Pavilion - Los Angeles CA



Layups



Layups

11	24	24	22	11
11	33	11	21	04
11	22	22	22	24
33	33	24	22	02
33	02			

Dunks

Dunks

UCL : Period 1	Made	Att	Pct
Layups	4	6	66.7
Dunks	0	0	0
2PT Field Goals	11	15	73.3
3PT Field Goals	2	2	100.0
<b>Total Field Goals</b>	<b>13</b>	<b>17</b>	<b>76.5</b>

UCL : Period 2	Made	Att	Pct
Layups	3	5	60.0
Dunks	0	0	0
2PT Field Goals	4	8	50.0
3PT Field Goals	1	2	50.0
<b>Total Field Goals</b>	<b>5</b>	<b>10</b>	<b>50.0</b>

UCL : Period 3	Made	Att	Pct
Layups	3	5	60.0
Dunks	0	0	0
2PT Field Goals	5	9	55.6
3PT Field Goals	1	3	33.3
<b>Total Field Goals</b>	<b>6</b>	<b>12</b>	<b>50.0</b>

UCL : Period 4	Made	Att	Pct
Layups	3	6	50.0
Dunks	0	0	0
2PT Field Goals	4	12	33.3
3PT Field Goals	2	2	100.0
<b>Total Field Goals</b>	<b>6</b>	<b>14</b>	<b>42.9</b>