

## FINAL SCORE

**Oregon St.**

**83**



**UCLA**

**73**

*Ucla*<sup>®</sup>

January 12, 2019 • Pauley Pavilion - Los Angeles CA

## FINAL STATISTICS

**Official Box Score**  
**Oregon St. vs UCLA**  
**Game Totals -- Final Statistics**  
**January 12, 2019 at Pauley Pavilion - Los Angeles CA**



**Oregon St. 83**

No.	Player	S	Pts	FG	3FG	FT	OR	DR	TR	PF	A	TO	Blk	Stl	Min	+/-
00	PIVEC, MIKAYLA		21	8-11	1-1	4-4	1	6	7	2	1	3	0	1	40	10
03	WASHINGTON, MADDIE		6	3-4	0-0	0-0	1	2	3	3	1	2	0	0	28	6
05	COROSDALE, TAYA		13	5-9	0-1	3-3	0	9	9	3	2	0	0	0	29	2
10	MCWILLIAMS, KATIE		2	1-5	0-0	0-0	0	2	2	1	1	2	0	0	25	10
24	SLOCUM, DESTINY		22	7-15	2-5	6-7	0	3	3	1	8	3	0	0	35	0
01	GOODMAN, ALEAH		7	2-4	1-2	2-2	0	0	0	4	3	0	0	2	24	9
11	GRYMEK, JOANNA		12	6-9	0-0	0-0	3	1	4	1	0	0	2	0	17	13
43	SIMMONS, JASMINE		0	0-0	0-0	0-0	0	0	0	1	0	0	0	0	2	0
<b>TEAM</b>							3	3	6	0		0				
<b>TOTALS</b>			<b>83</b>	<b>32-57</b>	<b>4-9</b>	<b>15-16</b>	<b>8</b>	<b>26</b>	<b>34</b>	<b>16</b>	<b>16</b>	<b>10</b>	<b>2</b>	<b>3</b>	<b>200</b>	

*Shooting By Period*

Period	FG	FG%	3FG	3FG%	FT	FT%
1st Qtr	5-15	33%	1-3	33%	2-2	100%
2nd Qtr	8-14	57%	2-2	100%	5-5	100%
3rd Qtr	11-17	65%	1-3	33%	0-0	0%
4th Qtr	8-11	73%	0-1	00%	8-9	89%
1st Half	13-29	45%	3-5	60%	7-7	100%
2nd Half	19-28	68%	1-4	25%	8-9	89%
<b>Game</b>	<b>32-57</b>	<b>56.1%</b>	<b>4-9</b>	<b>44.4%</b>	<b>15-16</b>	<b>93.8%</b>

*Last FG: 4th-00:25*  
*Biggest Run: 9-0*  
*Largest lead: By 13 at 4-00:25*  
*Technical Fouls: None.*

**UCLA 73**

No.	Player	S	Pts	FG	3FG	FT	OR	DR	TR	PF	A	TO	Blk	Stl	Min	+/-
04	CORSARO, LINDSEY		11	4-8	1-4	2-2	0	5	5	2	2	1	0	1	31	0
11	DRUMMER, LAJAHNA		18	7-12	1-3	3-6	5	5	10	3	0	2	1	0	36	-6
21	ONYENWERE, MICHAELA		24	8-20	0-0	8-9	4	2	6	4	0	1	1	2	36	-9
22	BURKE, KENNEDY		18	6-14	2-3	4-5	3	0	3	3	4	2	0	0	34	-7
24	DEAN, JAPREECE		0	0-5	0-4	0-0	0	0	0	2	5	1	0	1	26	-20
00	HORVAT, CHANTEL		0	0-4	0-2	0-0	1	1	2	0	5	0	0	0	22	-1
02	SMITH, AHLANA		2	1-3	0-0	0-0	1	0	1	0	0	0	0	1	9	-4
33	MILLER, LAURYN		0	0-1	0-0	0-0	1	3	4	1	0	0	1	0	6	-3
<b>TEAM</b>							2	2	4	0		1				
<b>TOTALS</b>			<b>73</b>	<b>26-67</b>	<b>4-16</b>	<b>17-22</b>	<b>17</b>	<b>18</b>	<b>35</b>	<b>15</b>	<b>16</b>	<b>8</b>	<b>3</b>	<b>5</b>	<b>200</b>	

*Shooting By Period*

Period	FG	FG%	3FG	3FG%	FT	FT%
1st Qtr	3-15	20%	1-5	20%	4-4	100%
2nd Qtr	7-18	39%	0-2	00%	5-6	83%
3rd Qtr	9-17	53%	1-3	33%	3-5	60%
4th Qtr	7-17	41%	2-6	33%	5-7	71%
1st Half	10-33	30%	1-7	14%	9-10	90%
2nd Half	16-34	47%	3-9	33%	8-12	67%
<b>Game</b>	<b>26-67</b>	<b>38.8%</b>	<b>4-16</b>	<b>25.0%</b>	<b>17-22</b>	<b>77.3%</b>

*Last FG: 4th-00:07*  
*Biggest Run: 6-0*  
*Largest lead: By 3 at 1-09:17*  
*Technical Fouls: None.*

Game Notes:

Officials: Charles Gonzalez, Cameron Inouye, Brian Woods  
 Attendance: 2404

Start Time: 2019-01-12 03:06:00  
 End Time: 2019-01-12 05:08:40  
 Game Duration: 122  
 Conference Game;

Score	1st	2nd	3rd	4th	TOT
OSU	13	23	23	24	<b>83</b>
UCL	11	19	22	21	<b>73</b>

OSU led for 35:19. UCL led for 3:51.  
 Game was tied for 0:50.  
 Times tied: 6      Lead Changes: 7

Points from	OSU	UCL
In the Paint	50	32
Off Turns	10	11
2nd Chance	7	14
Fast Break	12	8
Bench	19	2

**Official Box Score**  
**Oregon St. vs UCLA**  
**First Half Statistics Only**  
**January 12, 2019 at Pauley Pavilion - Los Angeles CA**



**Oregon St. 36**

No.	Player	S	Pts	FG	3FG	FT	OR	DR	TR	PF	A	TO	Blk	Stl	Min	+/-
00	PIVEC, MIKAYLA		17	6-9	1-1	4-4	1	3	4	0	0	2	0	0	20	6
01	GOODMAN, ALEAH		3	1-2	1-1	0-0	0	0	0	1	0	0	0	0	10	4
05	COROSDALE, TAYA		2	1-3	0-0	0-0	0	3	3	2	0	0	0	0	10	-2
10	MCWILLIAMS, KATIE		0	0-3	0-0	0-0	0	1	1	1	1	2	0	0	14	2
11	GRYMEK, JOANNA		4	2-2	0-0	0-0	1	1	2	0	0	0	1	0	10	14
24	SLOCUM, DESTINY		8	2-9	1-3	3-3	0	3	3	0	6	1	0	0	19	5
43	SIMMONS, JASMINE		0	0-0	0-0	0-0	0	0	0	1	0	0	0	0	2	0
03	WASHINGTON, MADDIE		2	1-1	0-0	0-0	1	2	3	1	0	1	0	0	15	1
	TEAM		0	0-0	0-0	0-0	3	2	5	0	0	0	0	0	0	0
<b>TOTALS</b>			<b>36</b>	<b>13-29</b>	<b>3-5</b>	<b>7-7</b>	<b>6</b>	<b>15</b>	<b>21</b>	<b>6</b>	<b>7</b>	<b>6</b>	<b>1</b>	<b>0</b>	<b>100</b>	

*Shooting By Period*

Period	FG	FG%	3FG	3FG%	FT	FT%
1st Qtr	5-15	33%	1-3	33%	2-2	100%
2nd Qtr	8-14	57%	2-2	100%	5-5	100%
1st Half	13-29	45%	3-5	60%	7-7	100%
Game	32-57	56.1%	4-9	44.4%	15-16	93.8%

*Last FG Half: OSU 2nd-00:51*

**UCLA 30**

No.	Player	S	Pts	FG	3FG	FT	OR	DR	TR	PF	A	TO	Blk	Stl	Min	+/-
00	HORVAT, CHANTEL		0	0-2	0-1	0-0	1	0	1	0	2	0	0	0	14	-5
02	SMITH, AHLANA		2	1-3	0-0	0-0	1	0	1	0	0	0	0	1	7	0
04	CORSARO, LINDSEY		3	1-3	0-1	1-1	0	3	3	1	1	1	0	1	16	-2
11	DRUMMER, LAJAHNA		11	4-8	1-3	2-3	1	4	5	1	0	0	1	0	16	-2
21	ONYENWERE, MICHAELA		12	4-9	0-0	4-4	3	0	3	2	0	1	0	1	16	-6
22	BURKE, KENNEDY		2	0-6	0-1	2-2	0	0	0	2	2	0	0	0	14	-3
24	DEAN, JAPREECE		0	0-1	0-1	0-0	0	0	0	2	2	0	0	1	11	-10
33	MILLER, LAURYN		0	0-1	0-0	0-0	1	3	4	0	0	0	1	0	5	-2
	TEAM		0	0-0	0-0	0-0	1	0	1	0	0	1	0	0	0	0
<b>TOTALS</b>			<b>30</b>	<b>10-33</b>	<b>1-7</b>	<b>9-10</b>	<b>8</b>	<b>10</b>	<b>18</b>	<b>8</b>	<b>7</b>	<b>3</b>	<b>2</b>	<b>4</b>	<b>100</b>	

*Shooting By Period*

Period	FG	FG%	3FG	3FG%	FT	FT%
1st Qtr	3-15	20%	1-5	20%	4-4	100%
2nd Qtr	7-18	39%	0-2	00%	5-6	83%
1st Half	10-33	30%	1-7	14%	9-10	90%
Game	26-67	38.8%	4-16	25.0%	17-22	77.3%

*Last FG Half: UCL 2nd-01:03*

**Game Notes:**

Officials: Charles Gonzalez, Cameron Inouye, Brian Woods  
 Attendance: 2404

Start Time: 2019-01-12 03:06:00  
 End Time: 2019-01-12 05:08:40  
 Game Duration: 122  
 Conference Game;

Score	1st	2nd	3rd	4th	TOT
OSU	13	23	23	24	<b>83</b>
UCL	11	19	22	21	<b>73</b>

Points from (This Period)	OSU	UCL
In the Paint	18	10
Off Turns	2	6
2nd Chance	7	5
Fast Break	6	4
Bench	7	2

**Official Box Score**  
**Oregon St. vs UCLA**  
**First Quarter Statistics Only**  
**January 12, 2019 at Pauley Pavilion - Los Angeles CA**



**Oregon St. 13**

No.	Player	S	Pts	FG	3FG	FT	OR	DR	TR	PF	A	TO	Blk	Stl	Min	+/-
00	PIVEC, MIKAYLA		9	3-5	1-1	2-2	1	3	4	0	0	1	0	0	10	2
03	WASHINGTON, MADDIE		2	1-1	0-0	0-0	0	2	2	0	0	1	0	0	8	-1
05	COROSDALE, TAYA		2	1-2	0-0	0-0	0	3	3	1	0	0	0	0	9	0
10	MCWILLIAMS, KATIE		0	0-2	0-0	0-0	0	1	1	1	1	1	0	0	10	2
24	SLOCUM, DESTINY		0	0-4	0-2	0-0	0	1	1	0	1	0	0	0	9	1
01	GOODMAN, ALEAH		0	0-1	0-0	0-0	0	0	0	0	0	0	0	0	2	3
11	GRYMEK, JOANNA		0	0-0	0-0	0-0	0	0	0	0	0	0	0	0	2	3
43	SIMMONS, JASMINE		0	0-0	0-0	0-0	0	0	0	0	0	0	0	0	0	0
	TEAM						3	0	3	0		0				
<b>TOTALS</b>			<b>13</b>	<b>5-15</b>	<b>1-3</b>	<b>2-2</b>	<b>4</b>	<b>10</b>	<b>14</b>	<b>2</b>	<b>2</b>	<b>3</b>	<b>0</b>	<b>0</b>	<b>50</b>	

*Shooting By Period*

Period	FG	FG%	3FG	3FG%	FT	FT%
1st Qtr	5-15	33%	1-3	33%	2-2	100%
2nd Qtr	8-14	57%	2-2	100%	5-5	100%
1st Half	5-15	33%	1-3	33%	2-2	100%
1st Half	13-29	45%	3-5	60%	7-7	100%
Game	32-57	56.1%	4-9	44.4%	15-16	93.8%

**UCLA 11**

No.	Player	S	Pts	FG	3FG	FT	OR	DR	TR	PF	A	TO	Blk	Stl	Min	+/-
04	CORSARO, LINDSEY		0	0-1	0-1	0-0	0	3	3	0	0	0	0	1	9	0
11	DRUMMER, LAJAHNA		3	1-5	1-3	0-0	1	3	4	0	0	0	1	0	9	0
21	ONYENWERE, MICHAELA		6	2-3	0-0	2-2	0	0	0	1	0	0	0	1	8	0
22	BURKE, KENNEDY		2	0-4	0-0	2-2	0	0	0	1	1	0	0	0	9	-1
24	DEAN, JAPREECE		0	0-0	0-0	0-0	0	0	0	2	0	0	0	0	6	-3
00	HORVAT, CHANTEL		0	0-2	0-1	0-0	1	0	1	0	1	0	0	0	6	-1
02	SMITH, AHLANA		0	0-0	0-0	0-0	0	0	0	0	0	0	0	0	2	-3
33	MILLER, LAURYN		0	0-0	0-0	0-0	0	0	0	0	0	0	1	0	1	-2
	TEAM						0	0	0	0		1				
<b>TOTALS</b>			<b>11</b>	<b>3-15</b>	<b>1-5</b>	<b>4-4</b>	<b>2</b>	<b>6</b>	<b>8</b>	<b>4</b>	<b>2</b>	<b>1</b>	<b>2</b>	<b>2</b>	<b>50</b>	

*Shooting By Period*

Period	FG	FG%	3FG	3FG%	FT	FT%
1st Qtr	3-15	20%	1-5	20%	4-4	100%
2nd Qtr	7-18	39%	0-2	00%	5-6	83%
1st Half	3-15	20%	1-5	20%	4-4	100%
1st Half	10-33	30%	1-7	14%	9-10	90%
Game	26-67	38.8%	4-16	25.0%	17-22	77.3%

Game Notes:

Officials: Charles Gonzalez, Cameron Inouye, Brian Woods  
 Attendance: 2404

Start Time: 2019-01-12 03:06:00  
 End Time: 2019-01-12 05:08:40  
 Game Duration: 122  
 Conference Game;

Score	1st	2nd	3rd	4th	TOT
OSU	13	23	23	24	<b>83</b>
UCL	11	19	22	21	<b>73</b>

Points from (This Period)	OSU	UCL
In the Paint	6	2
Off Turns	0	2
2nd Chance	5	0
Fast Break	2	4
Bench	0	0

**Official Play-By-Play**  
**Oregon St. vs UCLA**  
**First Quarter**  
**January 12, 2019 at Pauley Pavilion - Los Angeles CA**



**Period 1**

**Starters:**

**Oregon St.:** 0 PIVEC, MIKAYLA; 5 COROSDALE, TAYA; 10 MCWILLIAMS, KATIE; 24 SLOCUM, DESTINY; 3 WASHINGTON, MADDIE;

**UCLA:** 4 CORSARO, LINDSEY; 11 DRUMMER, LAJAHNA; 21 ONYENWERE, MICHAELA; 22 BURKE, KENNEDY; 24 DEAN, JAPREECE;

Time	VISITORS: Oregon St.	Score	Margin	HOME: UCLA
09:39				MISSED LAYUP by BURKE, KENNEDY
09:36	REBOUND (DEF) by PIVEC, MIKAYLA			
09:29	MISSED LAYUP by SLOCUM, DESTINY			
09:29				BLOCK by DRUMMER, LAJAHNA
09:29	REBOUND (OFF) by TEAM			
09:26	MISSED JUMPER by MCWILLIAMS, KATIE			
09:23				REBOUND (DEF) by DRUMMER, LAJAHNA
09:17		3-0	H 3	GOOD! 3PTR by DRUMMER, LAJAHNA
09:17				ASSIST by BURKE, KENNEDY
08:49	TURNOVER (TRAVEL) by WASHINGTON, MADDIE			
08:34				MISSED LAYUP by DRUMMER, LAJAHNA
08:29	REBOUND (DEF) by COROSDALE, TAYA			
08:18	GOOD! LAYUP by PIVEC, MIKAYLA	3-2	H 1	
08:18	ASSIST by MCWILLIAMS, KATIE			
07:58				MISSED 3PTR by DRUMMER, LAJAHNA
07:54	REBOUND (DEF) by SLOCUM, DESTINY			
07:47				FOUL (PERSONAL) by DEAN, JAPREECE
07:47	GOOD! FT by PIVEC, MIKAYLA [FB]	3-3	T	
07:47	GOOD! FT by PIVEC, MIKAYLA [FB]	3-4	V 1	
07:32				MISSED 3PTR by CORSARO, LINDSEY
07:28	REBOUND (DEF) by WASHINGTON, MADDIE			
07:11	MISSED JUMPER by PIVEC, MIKAYLA			
07:09	REBOUND (OFF) by TEAM			
06:37	MISSED 3PTR by SLOCUM, DESTINY			
06:33				REBOUND (DEF) by CORSARO, LINDSEY
06:31				TURNOVER (OTHER) by
06:26				SUB OUT: ONYENWERE, MICHAELA
06:26				SUB IN: HORVAT, CHANTEL
06:14	MISSED LAYUP by COROSDALE, TAYA			
06:11				REBOUND (DEF) by CORSARO, LINDSEY
05:44				MISSED JUMPER by BURKE, KENNEDY
05:41	REBOUND (DEF) by MCWILLIAMS, KATIE			
05:31	MISSED 3PTR by SLOCUM, DESTINY			
05:26	REBOUND (OFF) by PIVEC, MIKAYLA			
05:13	GOOD! LAYUP by PIVEC, MIKAYLA	3-6	V 3	
05:08	FOUL (PERSONAL) by MCWILLIAMS, KATIE			
05:08		4-6	V 2	GOOD! FT by BURKE, KENNEDY [FB]
05:08		5-6	V 1	GOOD! FT by BURKE, KENNEDY [FB]
04:41	GOOD! JUMPER by WASHINGTON, MADDIE	5-8	V 3	
04:11				MISSED JUMPER by BURKE, KENNEDY
04:07				REBOUND (OFF) by DRUMMER, LAJAHNA
04:06				MISSED JUMPER by DRUMMER, LAJAHNA
04:03	REBOUND (DEF) by COROSDALE, TAYA			
04:00				FOUL (PERSONAL) by DEAN, JAPREECE
04:00				
04:00				SUB OUT: DEAN, JAPREECE
04:00				SUB IN: ONYENWERE, MICHAELA
03:58	TURNOVER (BADPASS) by MCWILLIAMS, KATIE			
03:58				STEAL by ONYENWERE, MICHAELA
03:52		7-8	V 1	GOOD! LAYUP by ONYENWERE, MICHAELA [FB]
03:36	MISSED JUMPER by MCWILLIAMS, KATIE			
03:33				REBOUND (DEF) by DRUMMER, LAJAHNA
03:26				MISSED LAYUP by HORVAT, CHANTEL
03:22	REBOUND (DEF) by WASHINGTON, MADDIE			
03:10	MISSED LAYUP by PIVEC, MIKAYLA			
03:07				REBOUND (DEF) by CORSARO, LINDSEY
03:01		9-8	H 1	GOOD! JUMPER by ONYENWERE, MICHAELA
03:01				ASSIST by HORVAT, CHANTEL
02:38	TURNOVER (BADPASS) by PIVEC, MIKAYLA			
02:38				STEAL by CORSARO, LINDSEY
02:31				MISSED JUMPER by ONYENWERE, MICHAELA
02:28	REBOUND (DEF) by COROSDALE, TAYA			
02:28				FOUL (PERSONAL) by ONYENWERE, MICHAELA
02:28				SUB OUT: BURKE, KENNEDY
02:28				SUB IN: SMITH, AHLANA
02:28	SUB OUT: WASHINGTON, MADDIE			
02:28	SUB IN: GOODMAN, ALEAH			
02:28	SUB OUT: SLOCUM, DESTINY			
02:28	SUB IN: GRYMEK, JOANNA			
02:18	MISSED LAYUP by GOODMAN, ALEAH			

Time	VISITORS: Oregon St.	Score	Margin	HOME: UCLA
02:15				REBOUND (DEF) by DRUMMER, LAJAHNA
02:05				MISSED 3PTR by DRUMMER, LAJAHNA
02:01	REBOUND (DEF) by PIVEC, MIKAYLA			
01:42	GOOD! LAYUP by COROSDALE, TAYA	9-10	V 1	
01:28	FOUL (PERSONAL) by COROSDALE, TAYA			
01:28		10-10	T	GOOD! FT by ONYENWERE, MICHAELA
01:28				SUB OUT: DRUMMER, LAJAHNA
01:28				SUB IN: MILLER, LAURYN
01:28	SUB OUT: COROSDALE, TAYA			
01:28	SUB IN: SLOCUM, DESTINY			
01:28				SUB OUT: CORSARO, LINDSEY
01:28				SUB IN: BURKE, KENNEDY
01:28		11-10	H 1	GOOD! FT by ONYENWERE, MICHAELA
01:10				FOUL (PERSONAL) by BURKE, KENNEDY
01:02	MISSED LAYUP by SLOCUM, DESTINY			
01:02				BLOCK by MILLER, LAURYN
01:02	REBOUND (OFF) by TEAM			
00:43	GOOD! 3PTR by PIVEC, MIKAYLA	11-13	V 2	
00:43	ASSIST by SLOCUM, DESTINY			
00:16				MISSED LAYUP by BURKE, KENNEDY
00:12				REBOUND (OFF) by HORVAT, CHANTEL
00:01				MISSED 3PTR by HORVAT, CHANTEL
00:00	REBOUND (DEF) by PIVEC, MIKAYLA			

### Oregon St. 13, UCLA 11

Points from (This Period)	OSU	UCL
In the Paint	6	2
Off Turns	0	2
2nd Chance	5	0
Fast Break	2	4
Bench	0	0

**Official Box Score**  
**Oregon St. vs UCLA**  
**Second Quarter Statistics Only**  
**January 12, 2019 at Pauley Pavilion - Los Angeles CA**



### Oregon St. 23

No.	Player	S	Pts	FG	3FG	FT	OR	DR	TR	PF	A	TO	Blk	Stl	Min	+/-
00	PIVEC, MIKAYLA		8	3-4	0-0	2-2	0	0	0	0	0	1	0	0	10	4
03	WASHINGTON, MADDIE		0	0-0	0-0	0-0	1	0	1	1	0	0	0	0	7	2
05	COROSDALE, TAYA		0	0-1	0-0	0-0	0	0	0	1	0	0	0	0	1	-2
10	MCWILLIAMS, KATIE		0	0-1	0-0	0-0	0	0	0	0	0	1	0	0	4	0
24	SLOCUM, DESTINY		8	2-5	1-1	3-3	0	2	2	0	5	1	0	0	10	4
01	GOODMAN, ALEAH		3	1-1	1-1	0-0	0	0	0	1	0	0	0	0	8	1
11	GRYMEK, JOANNA		4	2-2	0-0	0-0	1	1	2	0	0	0	1	0	8	11
43	SIMMONS, JASMINE		0	0-0	0-0	0-0	0	0	0	1	0	0	0	0	2	0
	TEAM						0	2	2	0		0				
<b>TOTALS</b>			<b>23</b>	<b>8-14</b>	<b>2-2</b>	<b>5-5</b>	<b>2</b>	<b>5</b>	<b>7</b>	<b>4</b>	<b>5</b>	<b>3</b>	<b>1</b>	<b>0</b>	<b>50</b>	

*Shooting By Period*

Period	FG	FG%	3FG	3FG%	FT	FT%
3rd Qtr	11-17	65%	1-3	33%	0-0	0%
4th Qtr	8-11	73%	0-1	00%	8-9	89%
2nd Half	8-14	57%	2-2	100%	5-5	100%
2nd Half	19-28	68%	1-4	25%	8-9	89%
Game	32-57	56.1%	4-9	44.4%	15-16	93.8%

### UCLA 19

No.	Player	S	Pts	FG	3FG	FT	OR	DR	TR	PF	A	TO	Blk	Stl	Min	+/-
04	CORSARO, LINDSEY		3	1-2	0-0	1-1	0	0	0	1	1	1	0	0	7	-2
11	DRUMMER, LAJAHNA		8	3-3	0-0	2-3	0	1	1	1	0	0	0	0	7	-2
21	ONYENWERE, MICHAELA		6	2-6	0-0	2-2	3	0	3	1	0	1	0	0	8	-6
22	BURKE, KENNEDY		0	0-2	0-1	0-0	0	0	0	1	1	0	0	0	5	-2
24	DEAN, JAPREECE		0	0-1	0-1	0-0	0	0	0	0	2	0	0	1	5	-7
00	HORVAT, CHANTEL		0	0-0	0-0	0-0	0	0	0	0	1	0	0	0	8	-4
02	SMITH, AHLANA		2	1-3	0-0	0-0	1	0	1	0	0	0	0	1	5	3
33	MILLER, LAURYN		0	0-1	0-0	0-0	1	3	4	0	0	0	0	0	4	0
	TEAM						1	0	1	0		0				
<b>TOTALS</b>			<b>19</b>	<b>7-18</b>	<b>0-2</b>	<b>5-6</b>	<b>6</b>	<b>4</b>	<b>10</b>	<b>4</b>	<b>5</b>	<b>2</b>	<b>0</b>	<b>2</b>	<b>50</b>	

*Shooting By Period*

Period	FG	FG%	3FG	3FG%	FT	FT%
3rd Qtr	9-17	53%	1-3	33%	3-5	60%
4th Qtr	7-17	41%	2-6	33%	5-7	71%
2nd Half	7-18	39%	0-2	00%	5-6	83%
2nd Half	16-34	47%	3-9	33%	8-12	67%
Game	26-67	38.8%	4-16	25.0%	17-22	77.3%

Game Notes:

Officials: Charles Gonzalez, Cameron Inouye, Brian Woods  
 Attendance: 2404

Start Time: 2019-01-12 03:06:00  
 End Time: 2019-01-12 05:08:40  
 Game Duration: 122  
 Conference Game;

Score	1st	2nd	3rd	4th	TOT
OSU	13	23	23	24	<b>83</b>
UCL	11	19	22	21	<b>73</b>

Points from (This Period)	OSU	UCL
In the Paint	12	8
Off Turns	2	4
2nd Chance	2	5
Fast Break	4	0
Bench	7	2

**Official Play-By-Play  
Oregon St. vs UCLA**

Second Quarter  
January 12, 2019 at Pauley Pavilion - Los Angeles CA



**Period 2**

**Starters:**

**Oregon St.:** 0 PIVEC, MIKAYLA; 5 COROSDALE, TAYA; 10 MCWILLIAMS, KATIE; 24 SLOCUM, DESTINY; 3 WASHINGTON, MADDIE;  
**UCLA:** 4 CORSARO, LINDSEY; 11 DRUMMER, LAJAHNA; 21 ONYENWERE, MICHAELA; 22 BURKE, KENNEDY; 24 DEAN, JAPREECE;

Time	VISITORS: Oregon St.	Score	Margin	HOME: UCLA
09:47	TURNOVER (BADPASS) by MCWILLIAMS, KATIE			
09:47				STEAL by SMITH, AHLANA
09:41				MISSED LAYUP by ONYENWERE, MICHAELA
09:38	REBOUND (DEF) by TEAM			
09:26	GOOD! LAYUP by GRYMEK, JOANNA	11-15	V 4	
09:26	ASSIST by SLOCUM, DESTINY			
09:16				MISSED JUMPER by MILLER, LAURYN
09:14	REBOUND (DEF) by TEAM			
09:02	MISSED JUMPER by SLOCUM, DESTINY			
08:57				REBOUND (DEF) by MILLER, LAURYN
08:38				MISSED JUMPER by ONYENWERE, MICHAELA
08:34				REBOUND (OFF) by MILLER, LAURYN
08:18				MISSED JUMPER by BURKE, KENNEDY
08:13				REBOUND (OFF) by ONYENWERE, MICHAELA
08:11				MISSED JUMPER by ONYENWERE, MICHAELA
08:08				REBOUND (OFF) by SMITH, AHLANA
08:07		13-15	V 2	GOOD! JUMPER by SMITH, AHLANA
07:46	MISSED JUMPER by MCWILLIAMS, KATIE			
07:39	REBOUND (OFF) by GRYMEK, JOANNA			
07:39	GOOD! LAYUP by GRYMEK, JOANNA	13-17	V 4	
07:19				MISSED JUMPER by SMITH, AHLANA
07:16				REBOUND (OFF) by ONYENWERE, MICHAELA
07:14				MISSED LAYUP by ONYENWERE, MICHAELA
07:14				REBOUND (OFF) by TEAM
07:14				SUB OUT: HORVAT, CHANTEL
07:14				SUB IN: CORSARO, LINDSEY
07:14				SUB OUT: MILLER, LAURYN
07:14				SUB IN: DRUMMER, LAJAHNA
07:14	SUB OUT: MCWILLIAMS, KATIE			
07:14	SUB IN: WASHINGTON, MADDIE			
07:14	SUB OUT: GRYMEK, JOANNA			
07:14	SUB IN: SIMMONS, JASMINE			
07:11				MISSED JUMPER by SMITH, AHLANA
07:07				REBOUND (OFF) by ONYENWERE, MICHAELA
07:03		15-17	V 2	GOOD! JUMPER by CORSARO, LINDSEY
07:03	FOUL (PERSONAL) by SIMMONS, JASMINE			
07:03		16-17	V 1	GOOD! FT by CORSARO, LINDSEY
07:03				SUB OUT: SMITH, AHLANA
07:03				SUB IN: DEAN, JAPREECE
07:03	SUB OUT: GOODMAN, ALEAH			
07:03	SUB IN: COROSDALE, TAYA			
06:42	MISSED LAYUP by COROSDALE, TAYA			
06:36	REBOUND (OFF) by WASHINGTON, MADDIE			
06:36	TURNOVER (TRAVEL) by PIVEC, MIKAYLA			
06:22	FOUL (PERSONAL) by COROSDALE, TAYA			
06:22		17-17	T	GOOD! FT by ONYENWERE, MICHAELA
06:22		18-17	H 1	GOOD! FT by ONYENWERE, MICHAELA
06:22	SUB OUT: COROSDALE, TAYA			
06:22	SUB IN: GRYMEK, JOANNA			
06:05	GOOD! 3PTR by SLOCUM, DESTINY	18-20	V 2	
05:58				MISSED 3PTR by BURKE, KENNEDY
05:55	REBOUND (DEF) by SLOCUM, DESTINY			
05:51	GOOD! LAYUP by PIVEC, MIKAYLA [FB]	18-22	V 4	
05:51	ASSIST by SLOCUM, DESTINY			
05:27		20-22	V 2	GOOD! JUMPER by DRUMMER, LAJAHNA
05:27				ASSIST by BURKE, KENNEDY
05:12				FOUL (PERSONAL) by BURKE, KENNEDY
05:12	GOOD! FT by SLOCUM, DESTINY	20-23	V 3	
05:12	GOOD! FT by SLOCUM, DESTINY	20-24	V 4	
05:12				SUB OUT: BURKE, KENNEDY
05:12				SUB IN: HORVAT, CHANTEL
05:12	SUB OUT: SIMMONS, JASMINE			
05:12	SUB IN: GOODMAN, ALEAH			
05:12	GOOD! FT by SLOCUM, DESTINY	20-25	V 5	
04:53				MISSED JUMPER by CORSARO, LINDSEY
04:53	BLOCK by GRYMEK, JOANNA			
04:44	REBOUND (DEF) by GRYMEK, JOANNA			
04:43	TURNOVER (LOSTBALL) by SLOCUM, DESTINY			
04:43				STEAL by DEAN, JAPREECE
04:35		22-25	V 3	GOOD! JUMPER by ONYENWERE, MICHAELA



Time	VISITORS: Oregon St.	Score	Margin	HOME: UCLA
04:35				ASSIST by DEAN, JAPREECE
04:19				FOUL (PERSONAL) by DRUMMER, LAJAHNA
04:19	GOOD! FT by PIVEC, MIKAYLA	22-26	V 4	
04:19	GOOD! FT by PIVEC, MIKAYLA	22-27	V 5	
03:59				FOUL (OFF) by ONYENWERE, MICHAELA
03:59				TURNOVER (OFFENSIVE) by ONYENWERE, MICHAELA
03:50	GOOD! LAYUP by SLOCUM, DESTINY	22-29	V 7	
03:29		24-29	V 5	GOOD! JUMPER by ONYENWERE, MICHAELA
03:29				ASSIST by HORVAT, CHANTEL
03:06	MISSED LAYUP by PIVEC, MIKAYLA			
03:02				REBOUND (DEF) by DRUMMER, LAJAHNA
02:49				MISSED 3PTR by DEAN, JAPREECE
02:45	REBOUND (DEF) by SLOCUM, DESTINY			
02:40	GOOD! LAYUP by PIVEC, MIKAYLA [FB]	24-31	V 7	
02:40	ASSIST by SLOCUM, DESTINY			
02:28		26-31	V 5	GOOD! JUMPER by DRUMMER, LAJAHNA
02:28				ASSIST by DEAN, JAPREECE
02:07	GOOD! 3PTR by GOODMAN, ALEAH	26-34	V 8	
02:07	ASSIST by SLOCUM, DESTINY			
01:35	FOUL (PERSONAL) by GOODMAN, ALEAH			
01:35				MISSED FT by DRUMMER, LAJAHNA
01:35				REBOUND (OFF) by TEAM
01:35				SUB OUT: ONYENWERE, MICHAELA
01:35				SUB IN: SMITH, AHLANA
01:35				SUB OUT: DEAN, JAPREECE
01:35				SUB IN: MILLER, LAURYN
01:35	SUB OUT: GRZYMEK, JOANNA			
01:35	SUB IN: MCWILLIAMS, KATIE			
01:35		27-34	V 7	GOOD! FT by DRUMMER, LAJAHNA
01:21	MISSED JUMPER by SLOCUM, DESTINY			
01:17				REBOUND (DEF) by MILLER, LAURYN
01:03		29-34	V 5	GOOD! LAYUP by DRUMMER, LAJAHNA
01:03				ASSIST by CORSARO, LINDSEY
01:03	FOUL (PERSONAL) by WASHINGTON, MADDIE			
01:03		30-34	V 4	GOOD! FT by DRUMMER, LAJAHNA
01:03				TIMEOUT 30SEC
00:51	GOOD! LAYUP by PIVEC, MIKAYLA	30-36	V 6	
00:51	ASSIST by SLOCUM, DESTINY			
00:33				FOUL (OFF) by CORSARO, LINDSEY
00:33				TURNOVER (OFFENSIVE) by CORSARO, LINDSEY
00:05	MISSED JUMPER by SLOCUM, DESTINY			
00:01				REBOUND (DEF) by MILLER, LAURYN

### Oregon St. 36, UCLA 30

Points from (This Period)	OSU	UCL
In the Paint	12	8
Off Turns	2	4
2nd Chance	2	5
Fast Break	4	0
Bench	7	2

**Official Box Score**  
**Oregon St. vs UCLA**  
**Second Half Statistics Only**  
**January 12, 2019 at Pauley Pavilion - Los Angeles CA**



**Oregon St. 47**

No.	Player	S	Pts	FG	3FG	FT	OR	DR	TR	PF	A	TO	Blk	Stl	Min	+/-
00	PIVEC, MIKAYLA		4	2-2	0-0	0-0	0	3	3	2	1	1	0	1	20	4
01	GOODMAN, ALEAH		4	1-2	0-1	2-2	0	0	0	3	3	0	0	2	14	5
05	COROSDALE, TAYA		11	4-6	0-1	3-3	0	6	6	1	2	0	0	0	20	4
10	MCWILLIAMS, KATIE		2	1-2	0-0	0-0	0	1	1	0	0	0	0	0	10	8
11	GRYMEK, JOANNA		8	4-7	0-0	0-0	2	0	2	1	0	0	1	0	7	-1
24	SLOCUM, DESTINY		14	5-6	1-2	3-4	0	0	0	1	2	2	0	0	16	-5
43	SIMMONS, JASMINE		0	0-0	0-0	0-0	0	0	0	0	0	0	0	0	0	0
03	WASHINGTON, MADDIE		4	2-3	0-0	0-0	0	0	0	2	1	1	0	0	13	5
	TEAM		0	0-0	0-0	0-0	0	1	1	0	0	0	0	0	0	0
<b>TOTALS</b>			<b>47</b>	<b>19-28</b>	<b>1-4</b>	<b>8-9</b>	<b>2</b>	<b>11</b>	<b>13</b>	<b>10</b>	<b>9</b>	<b>4</b>	<b>1</b>	<b>3</b>	<b>100</b>	

*Shooting By Period*

Period	FG	FG%	3FG	3FG%	FT	FT%
3rd Qtr	11-17	65%	1-3	33%	0-0	0%
4th Qtr	8-11	73%	0-1	00%	8-9	89%
2nd Half	19-28	68%	1-4	25%	8-9	89%
Game	32-57	56.1%	4-9	44.4%	15-16	93.8%

*Last FG Half: OSU 4th-00:25*

**UCLA 43**

No.	Player	S	Pts	FG	3FG	FT	OR	DR	TR	PF	A	TO	Blk	Stl	Min	+/-
00	HORVAT, CHANTEL		0	0-2	0-1	0-0	0	1	1	0	3	0	0	0	7	4
02	SMITH, AHLANA		0	0-0	0-0	0-0	0	0	0	0	0	0	0	0	2	-4
04	CORSARO, LINDSEY		8	3-5	1-3	1-1	0	2	2	1	1	0	0	0	15	2
11	DRUMMER, LAJAHNA		7	3-4	0-0	1-3	4	1	5	2	0	2	0	0	20	-4
21	ONYENWERE, MICHAELA		12	4-11	0-0	4-5	1	2	3	2	0	0	1	1	20	-3
22	BURKE, KENNEDY		16	6-8	2-2	2-3	3	0	3	1	2	2	0	0	20	-4
24	DEAN, JAPREECE		0	0-4	0-3	0-0	0	0	0	0	3	1	0	0	15	-10
33	MILLER, LAURYN		0	0-0	0-0	0-0	0	0	0	1	0	0	0	0	0	-1
	TEAM		0	0-0	0-0	0-0	1	2	3	0	0	0	0	0	0	0
<b>TOTALS</b>			<b>43</b>	<b>16-34</b>	<b>3-9</b>	<b>8-12</b>	<b>9</b>	<b>8</b>	<b>17</b>	<b>7</b>	<b>9</b>	<b>5</b>	<b>1</b>	<b>1</b>	<b>100</b>	

*Shooting By Period*

Period	FG	FG%	3FG	3FG%	FT	FT%
3rd Qtr	9-17	53%	1-3	33%	3-5	60%
4th Qtr	7-17	41%	2-6	33%	5-7	71%
2nd Half	16-34	47%	3-9	33%	8-12	67%
Game	26-67	38.8%	4-16	25.0%	17-22	77.3%

*Last FG Half: UCL 4th-00:07*

Game Notes:

Officials: Charles Gonzalez, Cameron Inouye, Brian Woods  
Attendance: 2404

Start Time: 2019-01-12 03:06:00  
End Time: 2019-01-12 05:08:40  
Game Duration: 122  
Conference Game;

Score	1st	2nd	3rd	4th	TOT
OSU	13	23	23	24	<b>83</b>
UCL	11	19	22	21	<b>73</b>

Points from (This Period)	OSU	UCL
In the Paint	32	22
Off Turns	8	5
2nd Chance	0	9
Fast Break	6	4
Bench	12	0

**Official Box Score**  
**Oregon St. vs UCLA**  
**Third Quarter Statistics Only**  
**January 12, 2019 at Pauley Pavilion - Los Angeles CA**



**Oregon St. 47**

No.	Player	S	Pts	FG	3FG	FT	OR	DR	TR	PF	A	TO	Blk	Stl	Min	+/-
00	PIVEC, MIKAYLA		2	1-1	0-0	0-0	0	0	0	1	1	0	0	1	10	1
03	WASHINGTON, MADDIE		4	2-3	0-0	0-0	0	0	0	0	1	0	0	0	6	-1
05	COROSDALE, TAYA		6	3-3	0-0	0-0	0	2	2	1	0	0	0	0	10	1
10	MCWILLIAMS, KATIE		0	0-1	0-0	0-0	0	1	1	0	0	0	0	0	6	-1
24	SLOCUM, DESTINY		7	3-4	1-2	0-0	0	0	0	1	1	0	0	0	10	1
01	GOODMAN, ALEAH		0	0-1	0-1	0-0	0	0	0	1	1	0	0	0	4	2
11	GRYMEK, JOANNA		4	2-4	0-0	0-0	2	0	2	0	0	0	0	0	4	2
43	SIMMONS, JASMINE		0	0-0	0-0	0-0	0	0	0	0	0	0	0	0	0	0
	TEAM						0	0	0	0		0				
<b>TOTALS</b>			<b>23</b>	<b>11-17</b>	<b>1-3</b>	<b>0-0</b>	<b>2</b>	<b>3</b>	<b>5</b>	<b>4</b>	<b>4</b>	<b>0</b>	<b>0</b>	<b>1</b>	<b>50</b>	

*Shooting By Period*

Period	FG	FG%	3FG	3FG%	FT	FT%
2nd Half	0-0	0%	0-0	0%	0-0	0%
Game	32-57	56.1%	4-9	44.4%	15-16	93.8%

**UCLA 43**

No.	Player	S	Pts	FG	3FG	FT	OR	DR	TR	PF	A	TO	Blk	Stl	Min	+/-
04	CORSARO, LINDSEY		5	2-2	1-1	0-0	0	2	2	0	0	0	0	0	8	0
11	DRUMMER, LAJAHNA		3	1-2	0-0	1-2	2	0	2	1	0	1	0	0	10	-1
21	ONYENWERE, MICHAELA		7	3-6	0-0	1-2	1	1	2	0	0	0	0	0	10	-1
22	BURKE, KENNEDY		7	3-4	0-0	1-1	3	0	3	0	2	1	0	0	10	-1
24	DEAN, JAPREECE		0	0-1	0-1	0-0	0	0	0	0	1	0	0	0	6	-3
00	HORVAT, CHANTEL		0	0-2	0-1	0-0	0	1	1	0	3	0	0	0	6	1
02	SMITH, AHLANA		0	0-0	0-0	0-0	0	0	0	0	0	0	0	0	0	0
33	MILLER, LAURYN		0	0-0	0-0	0-0	0	0	0	0	0	0	0	0	0	0
	TEAM						0	0	0	0		0				
<b>TOTALS</b>			<b>22</b>	<b>9-17</b>	<b>1-3</b>	<b>3-5</b>	<b>6</b>	<b>4</b>	<b>10</b>	<b>1</b>	<b>6</b>	<b>2</b>	<b>0</b>	<b>0</b>	<b>50</b>	

*Shooting By Period*

Period	FG	FG%	3FG	3FG%	FT	FT%
2nd Half	0-0	0%	0-0	0%	0-0	0%
Game	26-67	38.8%	4-16	25.0%	17-22	77.3%

Game Notes:

Officials: Charles Gonzalez, Cameron Inouye, Brian Woods  
 Attendance: 2404

Start Time: 2019-01-12 03:06:00  
 End Time: 2019-01-12 05:08:40  
 Game Duration: 122  
 Conference Game;

Score	1st	2nd	3rd	4th	TOT
OSU	13	23	23	24	<b>83</b>
UCL	11	19	22	21	<b>73</b>

Points from (This Period)	OSU	UCL
In the Paint	16	12
Off Turns	2	0
2nd Chance	0	2
Fast Break	0	3
Bench	4	0

**Official Play-By-Play**  
**Oregon St. vs UCLA**  
**Third Quarter**  
**January 12, 2019 at Pauley Pavilion - Los Angeles CA**



**Period 3**

**Starters:**

**Oregon St.:** 0 PIVEC, MIKAYLA; 5 COROSDALE, TAYA; 10 MCWILLIAMS, KATIE; 24 SLOCUM, DESTINY; 3 WASHINGTON, MADDIE;

**UCLA:** 4 CORSARO, LINDSEY; 11 DRUMMER, LAJAHNA; 21 ONYENWERE, MICHAELA; 22 BURKE, KENNEDY; 24 DEAN, JAPREECE;

Time	VISITORS: Oregon St.	Score	Margin	HOME: UCLA
09:52		32-36	V 4	GOOD! JUMPER by BURKE, KENNEDY
09:28	GOOD! JUMPER by WASHINGTON, MADDIE	32-38	V 6	
09:16				MISSED JUMPER by ONYENWERE, MICHAELA
09:12				REBOUND (OFF) by BURKE, KENNEDY
09:03				MISSED JUMPER by ONYENWERE, MICHAELA
09:00				REBOUND (OFF) by DRUMMER, LAJAHNA
08:59				MISSED JUMPER by DRUMMER, LAJAHNA
08:56	REBOUND (DEF) by MCWILLIAMS, KATIE			
08:33	GOOD! LAYUP by PIVEC, MIKAYLA	32-40	V 8	
08:14	FOUL (PERSONAL) by SLOCUM, DESTINY			
08:14		33-40	V 7	GOOD! FT by DRUMMER, LAJAHNA
08:14				SUB OUT: DEAN, JAPREECE
08:14				SUB IN: HORVAT, CHANTEL
08:14				MISSED FT by DRUMMER, LAJAHNA
08:12				REBOUND (OFF) by BURKE, KENNEDY
08:05		35-40	V 5	GOOD! JUMPER by ONYENWERE, MICHAELA [PNT]
08:05				ASSIST by BURKE, KENNEDY
07:53	MISSED JUMPER by MCWILLIAMS, KATIE			
07:49				REBOUND (DEF) by CORSARO, LINDSEY
07:42		38-40	V 2	GOOD! 3PTR by CORSARO, LINDSEY
07:42				ASSIST by BURKE, KENNEDY
07:23	MISSED JUMPER by WASHINGTON, MADDIE			
07:19				REBOUND (DEF) by CORSARO, LINDSEY
07:05				MISSED LAYUP by HORVAT, CHANTEL
07:01	REBOUND (DEF) by COROSDALE, TAYA			
06:41	GOOD! LAYUP by SLOCUM, DESTINY	38-42	V 4	
06:22	FOUL (PERSONAL) by COROSDALE, TAYA			
06:22				MISSED FT by ONYENWERE, MICHAELA
06:22				REBOUND (OFF) by TEAM
06:22		39-42	V 3	GOOD! FT by ONYENWERE, MICHAELA
05:56	GOOD! LAYUP by COROSDALE, TAYA	39-44	V 5	
05:56	ASSIST by WASHINGTON, MADDIE			
05:46		41-44	V 3	GOOD! JUMPER by CORSARO, LINDSEY
05:25	GOOD! JUMPER by COROSDALE, TAYA	41-46	V 5	
05:02		43-46	V 3	GOOD! LAYUP by BURKE, KENNEDY
04:41	GOOD! JUMPER by SLOCUM, DESTINY	43-48	V 5	
04:24		45-48	V 3	GOOD! LAYUP by DRUMMER, LAJAHNA
04:24				ASSIST by HORVAT, CHANTEL
04:03	GOOD! LAYUP by WASHINGTON, MADDIE	45-50	V 5	
04:03	ASSIST by SLOCUM, DESTINY			
03:51				MISSED 3PTR by HORVAT, CHANTEL
03:46				REBOUND (OFF) by DRUMMER, LAJAHNA
03:45				TURNOVER (LOSTBALL) by DRUMMER, LAJAHNA
03:45	STEAL by PIVEC, MIKAYLA			
03:45				
03:45				SUB OUT: HORVAT, CHANTEL
03:45				SUB IN: DEAN, JAPREECE
03:45				SUB OUT: CORSARO, LINDSEY
03:45				SUB IN: HORVAT, CHANTEL
03:45	SUB OUT: WASHINGTON, MADDIE			
03:45	SUB IN: GOODMAN, ALEAH			
03:45	SUB OUT: MCWILLIAMS, KATIE			
03:45	SUB IN: GRYMEK, JOANNA			
03:35	MISSED 3PTR by GOODMAN, ALEAH			
03:28	REBOUND (OFF) by GRYMEK, JOANNA			
03:28	MISSED LAYUP by GRYMEK, JOANNA			
03:23	REBOUND (OFF) by GRYMEK, JOANNA			
03:23	MISSED LAYUP by GRYMEK, JOANNA			
03:20				REBOUND (DEF) by HORVAT, CHANTEL
03:14				MISSED 3PTR by DEAN, JAPREECE
03:14	FOUL (PERSONAL) by PIVEC, MIKAYLA			
03:09				REBOUND (OFF) by ONYENWERE, MICHAELA
03:08				MISSED LAYUP by ONYENWERE, MICHAELA
03:07				REBOUND (OFF) by BURKE, KENNEDY
03:07				TURNOVER (TRAVEL) by BURKE, KENNEDY
02:50	GOOD! LAYUP by COROSDALE, TAYA	45-52	V 7	
02:29		47-52	V 5	GOOD! JUMPER by ONYENWERE, MICHAELA [PNT]
02:29				ASSIST by HORVAT, CHANTEL
02:04	GOOD! 3PTR by SLOCUM, DESTINY	47-55	V 8	
01:52		49-55	V 6	GOOD! JUMPER by ONYENWERE, MICHAELA

Time	VISITORS: Oregon St.	Score	Margin	HOME: UCLA
01:52				ASSIST by HORVAT, CHANTEL
01:48				FOUL (PERSONAL) by DRUMMER, LAJAHNA
01:48				SUB OUT: HORVAT, CHANTEL
01:48				SUB IN: CORSARO, LINDSEY
01:39	MISSED 3PTR by SLOCUM, DESTINY			
01:36				REBOUND (DEF) by ONYENWERE, MICHAELA
01:34		51-55	V 4	GOOD! LAYUP by BURKE, KENNEDY [FB]
01:34				ASSIST by DEAN, JAPREECE
01:34	FOUL (PERSONAL) by GOODMAN, ALEAH			
01:34		52-55	V 3	GOOD! FT by BURKE, KENNEDY [FB]
01:11	GOOD! LAYUP by GRYMEK, JOANNA	52-57	V 5	
01:11	ASSIST by GOODMAN, ALEAH			
01:05				MISSED LAYUP by BURKE, KENNEDY
01:01	REBOUND (DEF) by COROSDALE, TAYA			
00:35	GOOD! LAYUP by GRYMEK, JOANNA	52-59	V 7	
00:35	ASSIST by PIVEC, MIKAYLA			

**Oregon St. 59, UCLA 52**

Points from (This Period)	OSU	UCL
In the Paint	16	12
Off Turns	2	0
2nd Chance	0	2
Fast Break	0	3
Bench	4	0

**Official Box Score**  
**Oregon St. vs UCLA**  
**Fourth Quarter Statistics Only**  
**January 12, 2019 at Pauley Pavilion - Los Angeles CA**



**Oregon St. 24**

No.	Player	S	Pts	FG	3FG	FT	OR	DR	TR	PF	A	TO	Blk	Stl	Min	+/-
00	PIVEC, MIKAYLA		2	1-1	0-0	0-0	0	3	3	1	0	1	0	0	10	3
03	WASHINGTON, MADDIE		0	0-0	0-0	0-0	0	0	0	2	0	1	0	0	7	6
05	COROSDALE, TAYA		5	1-3	0-1	3-3	0	4	4	0	2	0	0	0	10	3
10	MCWILLIAMS, KATIE		2	1-1	0-0	0-0	0	0	0	0	0	0	0	0	4	9
24	SLOCUM, DESTINY		7	2-2	0-0	3-4	0	0	0	0	1	2	0	0	6	-6
01	GOODMAN, ALEAH		4	1-1	0-0	2-2	0	0	0	2	2	0	0	2	10	3
11	GRYMEK, JOANNA		4	2-3	0-0	0-0	0	0	0	1	0	0	1	0	3	-3
43	SIMMONS, JASMINE		0	0-0	0-0	0-0	0	0	0	0	0	0	0	0	0	0
	TEAM						0	1	1	0		0				
<b>TOTALS</b>			<b>24</b>	<b>8-11</b>	<b>0-1</b>	<b>8-9</b>	<b>0</b>	<b>8</b>	<b>8</b>	<b>6</b>	<b>5</b>	<b>4</b>	<b>1</b>	<b>2</b>	<b>50</b>	

*Shooting By Period*

Period	FG	FG%	3FG	3FG%	FT	FT%
Game	32-57	56.1%	4-9	44.4%	15-16	93.8%

**UCLA 21**

No.	Player	S	Pts	FG	3FG	FT	OR	DR	TR	PF	A	TO	Blk	Stl	Min	+/-
04	CORSARO, LINDSEY		3	1-3	0-2	1-1	0	0	0	1	1	0	0	0	7	2
11	DRUMMER, LAJAHNA		4	2-2	0-0	0-1	2	1	3	1	0	1	0	0	10	-3
21	ONYENWERE, MICHAELA		5	1-5	0-0	3-3	0	1	1	2	0	0	1	1	10	-2
22	BURKE, KENNEDY		9	3-4	2-2	1-2	0	0	0	1	0	1	0	0	10	-3
24	DEAN, JAPREECE		0	0-3	0-2	0-0	0	0	0	0	2	1	0	0	9	-7
00	HORVAT, CHANTEL		0	0-0	0-0	0-0	0	0	0	0	0	0	0	0	1	3
02	SMITH, AHLANA		0	0-0	0-0	0-0	0	0	0	0	0	0	0	0	2	-4
33	MILLER, LAURYN		0	0-0	0-0	0-0	0	0	0	1	0	0	0	0	0	-1
	TEAM						1	2	3	0		0				
<b>TOTALS</b>			<b>21</b>	<b>7-17</b>	<b>2-6</b>	<b>5-7</b>	<b>3</b>	<b>4</b>	<b>7</b>	<b>6</b>	<b>3</b>	<b>3</b>	<b>1</b>	<b>1</b>	<b>50</b>	

*Shooting By Period*

Period	FG	FG%	3FG	3FG%	FT	FT%
Game	26-67	38.8%	4-16	25.0%	17-22	77.3%

Game Notes:

Officials: Charles Gonzalez, Cameron Inouye, Brian Woods  
Attendance: 2404

Start Time: 2019-01-12 03:06:00  
End Time: 2019-01-12 05:08:40  
Game Duration: 122  
Conference Game;

Score	1st	2nd	3rd	4th	TOT
OSU	13	23	23	24	<b>83</b>
UCL	11	19	22	21	<b>73</b>

Points from (This Period)	OSU	UCL
In the Paint	16	10
Off Turns	6	5
2nd Chance	0	7
Fast Break	6	1
Bench	8	0

**Official Play-By-Play**  
**Oregon St. vs UCLA**  
**Fourth Quarter**  
**January 12, 2019 at Pauley Pavilion - Los Angeles CA**



**Period 4**

**Starters:**

**Oregon St.:** 0 PIVEC, MIKAYLA; 5 COROSDALE, TAYA; 10 MCWILLIAMS, KATIE; 24 SLOCUM, DESTINY; 3 WASHINGTON, MADDIE;

**UCLA:** 4 CORSARO, LINDSEY; 11 DRUMMER, LAJAHNA; 21 ONYENWERE, MICHAELA; 22 BURKE, KENNEDY; 24 DEAN, JAPREECE;

Time	VISITORS: Oregon St.	Score	Margin	HOME: UCLA
09:48	TURNOVER (TRAVEL) by PIVEC, MIKAYLA			
09:30		54-59	V 5	GOOD! LAYUP by BURKE, KENNEDY
09:30				ASSIST by DEAN, JAPREECE
09:11	MISSED JUMPER by GRYMEK, JOANNA			
09:07				REBOUND (DEF) by DRUMMER, LAJAHNA
08:59	FOUL (PERSONAL) by GRYMEK, JOANNA			
08:59		55-59	V 4	GOOD! FT by ONYENWERE, MICHAELA
08:59	SUB OUT: GRYMEK, JOANNA			
08:59	SUB IN: WASHINGTON, MADDIE			
08:59		56-59	V 3	GOOD! FT by ONYENWERE, MICHAELA
08:39	MISSED 3PTR by COROSDALE, TAYA			
08:38				REBOUND (DEF) by TEAM
08:23				MISSED 3PTR by DEAN, JAPREECE
08:18	REBOUND (DEF) by COROSDALE, TAYA			
08:13	GOOD! LAYUP by SLOCUM, DESTINY [FB]	56-61	V 5	
08:00				MISSED JUMPER by ONYENWERE, MICHAELA
07:56	REBOUND (DEF) by PIVEC, MIKAYLA			
07:43	TURNOVER (BADPASS) by SLOCUM, DESTINY			
07:43				STEAL by ONYENWERE, MICHAELA
07:32				MISSED LAYUP by BURKE, KENNEDY
07:31				REBOUND (OFF) by DRUMMER, LAJAHNA
07:31		58-61	V 3	GOOD! LAYUP by DRUMMER, LAJAHNA
07:31	FOUL (PERSONAL) by PIVEC, MIKAYLA			
07:31	SUB OUT: SLOCUM, DESTINY			
07:31	SUB IN: MCWILLIAMS, KATIE			
07:31				MISSED FT by DRUMMER, LAJAHNA
07:29	REBOUND (DEF) by TEAM			
07:16	GOOD! LAYUP by GOODMAN, ALEAH	58-63	V 5	
07:16	ASSIST by COROSDALE, TAYA			
07:04				MISSED 3PTR by CORSARO, LINDSEY
07:00	REBOUND (DEF) by COROSDALE, TAYA			
06:54	GOOD! LAYUP by COROSDALE, TAYA [FB]	58-65	V 7	
06:54	ASSIST by GOODMAN, ALEAH			
06:54				FOUL (PERSONAL) by ONYENWERE, MICHAELA
06:54	GOOD! FT by COROSDALE, TAYA [FB]	58-66	V 8	
06:29				MISSED JUMPER by ONYENWERE, MICHAELA
06:26	REBOUND (DEF) by COROSDALE, TAYA			
06:20	MISSED LAYUP by COROSDALE, TAYA			
06:20				BLOCK by ONYENWERE, MICHAELA
06:20				REBOUND (DEF) by TEAM
06:01				TURNOVER (LOSTBALL) by DRUMMER, LAJAHNA
06:01				TIMEOUT 30SEC
06:01				SUB OUT: CORSARO, LINDSEY
06:01				SUB IN: SMITH, AHLANA
05:47				FOUL (PERSONAL) by ONYENWERE, MICHAELA
05:47	GOOD! FT by COROSDALE, TAYA	58-67	V 9	
05:47	GOOD! FT by COROSDALE, TAYA	58-68	V 10	
05:30				TURNOVER (LOSTBALL) by BURKE, KENNEDY
05:30	STEAL by GOODMAN, ALEAH			
05:25	GOOD! LAYUP by PIVEC, MIKAYLA	58-70	V 12	
05:25	ASSIST by GOODMAN, ALEAH			
05:11		61-70	V 9	GOOD! 3PTR by BURKE, KENNEDY
05:11				ASSIST by DEAN, JAPREECE
04:47	FOUL (OFF) by WASHINGTON, MADDIE			
04:47	TURNOVER (OFFENSIVE) by WASHINGTON, MADDIE			
04:47				
04:42	FOUL (PERSONAL) by WASHINGTON, MADDIE			
04:42				MISSED FT by BURKE, KENNEDY
04:42				REBOUND (OFF) by TEAM
04:42				SUB OUT: ONYENWERE, MICHAELA
04:42				SUB IN: MILLER, LAURYN
04:42		62-70	V 8	GOOD! FT by BURKE, KENNEDY [FB]
04:18				FOUL (PERSONAL) by MILLER, LAURYN
04:18	GOOD! FT by GOODMAN, ALEAH	62-71	V 9	
04:18				SUB OUT: MILLER, LAURYN
04:18				SUB IN: ONYENWERE, MICHAELA
04:18	GOOD! FT by GOODMAN, ALEAH	62-72	V 10	
04:06				MISSED JUMPER by DEAN, JAPREECE
04:02	REBOUND (DEF) by PIVEC, MIKAYLA			
03:48	GOOD! JUMPER by MCWILLIAMS, KATIE [PNT]	62-74	V 12	

Time	VISITORS: Oregon St.	Score	Margin	HOME: UCLA
03:33				MISSED 3PTR by DEAN, JAPREECE
03:32	REBOUND (DEF) by PIVEC, MIKAYLA			
03:32				FOUL (PERSONAL) by DRUMMER, LAJAHNA
03:32				SUB OUT: SMITH, AHLANA
03:32				SUB IN: HORVAT, CHANTEL
03:32				SUB OUT: ONYENWERE, MICHAELA
03:32				SUB IN: MILLER, LAURYN
03:32	SUB OUT: MCWILLIAMS, KATIE			
03:32	SUB IN: SLOCUM, DESTINY			
03:27				FOUL (PERSONAL) by BURKE, KENNEDY
03:27	GOOD! FT by SLOCUM, DESTINY [FB]	62-75	V 13	
03:27				SUB OUT: MILLER, LAURYN
03:27				SUB IN: ONYENWERE, MICHAELA
03:27	MISSED FT by SLOCUM, DESTINY			
03:25				REBOUND (DEF) by ONYENWERE, MICHAELA
03:19				SUB OUT: DEAN, JAPREECE
03:19				SUB IN: CORSARO, LINDSEY
03:13		65-75	V 10	GOOD! 3PTR by BURKE, KENNEDY
02:44	GOOD! LAYUP by SLOCUM, DESTINY	65-77	V 12	
02:36		67-77	V 10	GOOD! JUMPER by ONYENWERE, MICHAELA
02:36				ASSIST by CORSARO, LINDSEY
02:36	FOUL (PERSONAL) by GOODMAN, ALEAH			
02:36		68-77	V 9	GOOD! FT by ONYENWERE, MICHAELA
02:33	TURNOVER (LOSTBALL) by SLOCUM, DESTINY			
02:32	TIMEOUT 30SEC			
02:32				SUB OUT: HORVAT, CHANTEL
02:32				SUB IN: DEAN, JAPREECE
02:19				MISSED LAYUP by ONYENWERE, MICHAELA
02:15	REBOUND (DEF) by COROSDALE, TAYA			
01:56				FOUL (PERSONAL) by CORSARO, LINDSEY
01:56	GOOD! FT by SLOCUM, DESTINY	68-78	V 10	
01:56	SUB OUT: WASHINGTON, MADDIE			
01:56	SUB IN: GRYMEK, JOANNA			
01:56	GOOD! FT by SLOCUM, DESTINY	68-79	V 11	
01:27				TURNOVER (LOSTBALL) by DEAN, JAPREECE
01:27	STEAL by GOODMAN, ALEAH			
01:05	GOOD! LAYUP by GRYMEK, JOANNA	68-81	V 13	
01:05	ASSIST by COROSDALE, TAYA			
00:50				MISSED JUMPER by ONYENWERE, MICHAELA
00:50	BLOCK by GRYMEK, JOANNA			
00:40				REBOUND (OFF) by DRUMMER, LAJAHNA
00:38		70-81	V 11	GOOD! LAYUP by DRUMMER, LAJAHNA
00:25	GOOD! LAYUP by GRYMEK, JOANNA	70-83	V 13	
00:25	ASSIST by SLOCUM, DESTINY			
00:13				MISSED 3PTR by CORSARO, LINDSEY
00:12				REBOUND (OFF) by TEAM
00:07		72-83	V 11	GOOD! JUMPER by CORSARO, LINDSEY [PNT]
00:07	FOUL (PERSONAL) by GOODMAN, ALEAH			
00:07		73-83	V 10	GOOD! FT by CORSARO, LINDSEY

### Oregon St. 83, UCLA 73

Points from (This Period)	OSU	UCL
In the Paint	16	10
Off Turns	6	5
2nd Chance	0	7
Fast Break	6	1
Bench	8	0



**Official Scoring/Possession Reference Chart**  
**Oregon St. vs UCLA**  
**Period 1**  
**January 12, 2019 at Pauley Pavilion - Los Angeles CA**



**Period 1**

**Starters:**

**Oregon St.:** 0 PIVEC, MIKAYLA; 5 COROSDALE, TAYA; 10 MCWILLIAMS, KATIE; 24 SLOCUM, DESTINY; 3 WASHINGTON, MADDIE;  
**UCLA:** 4 CORSARO, LINDSEY; 11 DRUMMER, LAJAHNA; 21 ONYENWERE, MICHAELA; 22 BURKE, KENNEDY; 24 DEAN, JAPREECE;

Time	VISITORS: Oregon St.	Score	Margin	HOME: UCLA
09:17		3-0	H 3	GOOD! 3PTR by DRUMMER, LAJAHNA
08:18	GOOD! LAYUP by PIVEC, MIKAYLA	3-2	H 1	
07:47	GOOD! FT by PIVEC, MIKAYLA [FB]	3-3	T	
07:47	GOOD! FT by PIVEC, MIKAYLA [FB]	3-4	V 1	
05:13	GOOD! LAYUP by PIVEC, MIKAYLA	3-6	V 3	
05:08		4-6	V 2	GOOD! FT by BURKE, KENNEDY [FB]
05:08		5-6	V 1	GOOD! FT by BURKE, KENNEDY [FB]
04:41	GOOD! JUMPER by WASHINGTON, MADDIE	5-8	V 3	
03:52		7-8	V 1	GOOD! LAYUP by ONYENWERE, MICHAELA [FB]
03:01		9-8	H 1	GOOD! JUMPER by ONYENWERE, MICHAELA
01:42	GOOD! LAYUP by COROSDALE, TAYA	9-10	V 1	
01:28		10-10	T	GOOD! FT by ONYENWERE, MICHAELA
01:28		11-10	H 1	GOOD! FT by ONYENWERE, MICHAELA
00:43	GOOD! 3PTR by PIVEC, MIKAYLA	11-13	V 2	

**Oregon St. 13, UCLA 11**

**Official Scoring/Possession Reference Chart**  
**Oregon St. vs UCLA**  
**Period 2**  
**January 12, 2019 at Pauley Pavilion - Los Angeles CA**



**Period 2**

**Starters:**

**Oregon St.:** 0 PIVEC, MIKAYLA; 5 COROSDALE, TAYA; 10 MCWILLIAMS, KATIE; 24 SLOCUM, DESTINY; 3 WASHINGTON, MADDIE;

**UCLA:** 4 CORSARO, LINDSEY; 11 DRUMMER, LAJAHNA; 21 ONYENWERE, MICHAELA; 22 BURKE, KENNEDY; 24 DEAN, JAPREECE;

Time	VISITORS: Oregon St.	Score	Margin	HOME: UCLA
09:26	GOOD! LAYUP by GRYMEK, JOANNA	11-15	V 4	
08:07		13-15	V 2	GOOD! JUMPER by SMITH, AHLANA
07:39	GOOD! LAYUP by GRYMEK, JOANNA	13-17	V 4	
07:03		15-17	V 2	GOOD! JUMPER by CORSARO, LINDSEY
07:03		16-17	V 1	GOOD! FT by CORSARO, LINDSEY
06:22		17-17	T	GOOD! FT by ONYENWERE, MICHAELA
06:22		18-17	H 1	GOOD! FT by ONYENWERE, MICHAELA
06:05	GOOD! 3PTR by SLOCUM, DESTINY	18-20	V 2	
05:51	GOOD! LAYUP by PIVEC, MIKAYLA [FB]	18-22	V 4	
05:27		20-22	V 2	GOOD! JUMPER by DRUMMER, LAJAHNA
05:12	GOOD! FT by SLOCUM, DESTINY	20-23	V 3	
05:12	GOOD! FT by SLOCUM, DESTINY	20-24	V 4	
05:12	GOOD! FT by SLOCUM, DESTINY	20-25	V 5	
04:35		22-25	V 3	GOOD! JUMPER by ONYENWERE, MICHAELA
04:19	GOOD! FT by PIVEC, MIKAYLA	22-26	V 4	
04:19	GOOD! FT by PIVEC, MIKAYLA	22-27	V 5	
03:50	GOOD! LAYUP by SLOCUM, DESTINY	22-29	V 7	
03:29		24-29	V 5	GOOD! JUMPER by ONYENWERE, MICHAELA
02:40	GOOD! LAYUP by PIVEC, MIKAYLA [FB]	24-31	V 7	
02:28		26-31	V 5	GOOD! JUMPER by DRUMMER, LAJAHNA
02:07	GOOD! 3PTR by GOODMAN, ALEAH	26-34	V 8	
01:35		27-34	V 7	GOOD! FT by DRUMMER, LAJAHNA
01:03		29-34	V 5	GOOD! LAYUP by DRUMMER, LAJAHNA
01:03		30-34	V 4	GOOD! FT by DRUMMER, LAJAHNA
00:51	GOOD! LAYUP by PIVEC, MIKAYLA	30-36	V 6	

**Oregon St. 36, UCLA 30**

**Official Scoring/Possession Reference Chart**  
**Oregon St. vs UCLA**  
**Period 3**  
**January 12, 2019 at Pauley Pavilion - Los Angeles CA**



**Period 3**

**Starters:**

**Oregon St.:** 0 PIVEC, MIKAYLA; 5 COROSDALE, TAYA; 10 MCWILLIAMS, KATIE; 24 SLOCUM, DESTINY; 3 WASHINGTON, MADDIE;

**UCLA:** 4 CORSARO, LINDSEY; 11 DRUMMER, LAJAHNA; 21 ONYENWERE, MICHAELA; 22 BURKE, KENNEDY; 24 DEAN, JAPREECE;

Time	VISITORS: Oregon St.	Score	Margin	HOME: UCLA
09:52		32-36	V 4	GOOD! JUMPER by BURKE, KENNEDY
09:28	GOOD! JUMPER by WASHINGTON, MADDIE	32-38	V 6	
08:33	GOOD! LAYUP by PIVEC, MIKAYLA	32-40	V 8	
08:14		33-40	V 7	GOOD! FT by DRUMMER, LAJAHNA
08:05		35-40	V 5	GOOD! JUMPER by ONYENWERE, MICHAELA [PNT]
07:42		38-40	V 2	GOOD! 3PTR by CORSARO, LINDSEY
06:41	GOOD! LAYUP by SLOCUM, DESTINY	38-42	V 4	
06:22		39-42	V 3	GOOD! FT by ONYENWERE, MICHAELA
05:56	GOOD! LAYUP by COROSDALE, TAYA	39-44	V 5	
05:46		41-44	V 3	GOOD! JUMPER by CORSARO, LINDSEY
05:25	GOOD! JUMPER by COROSDALE, TAYA	41-46	V 5	
05:02		43-46	V 3	GOOD! LAYUP by BURKE, KENNEDY
04:41	GOOD! JUMPER by SLOCUM, DESTINY	43-48	V 5	
04:24		45-48	V 3	GOOD! LAYUP by DRUMMER, LAJAHNA
04:03	GOOD! LAYUP by WASHINGTON, MADDIE	45-50	V 5	
02:50	GOOD! LAYUP by COROSDALE, TAYA	45-52	V 7	
02:29		47-52	V 5	GOOD! JUMPER by ONYENWERE, MICHAELA [PNT]
02:04	GOOD! 3PTR by SLOCUM, DESTINY	47-55	V 8	
01:52		49-55	V 6	GOOD! JUMPER by ONYENWERE, MICHAELA
01:34		51-55	V 4	GOOD! LAYUP by BURKE, KENNEDY [FB]
01:34		52-55	V 3	GOOD! FT by BURKE, KENNEDY [FB]
01:11	GOOD! LAYUP by GRZYMEK, JOANNA	52-57	V 5	
00:35	GOOD! LAYUP by GRZYMEK, JOANNA	52-59	V 7	

**Oregon St. 59, UCLA 52**

**Official Scoring/Possession Reference Chart**  
**Oregon St. vs UCLA**  
**Period 4**  
**January 12, 2019 at Pauley Pavilion - Los Angeles CA**



**Period 4**

**Starters:**

**Oregon St.:** 0 PIVEC, MIKAYLA; 5 COROSDALE, TAYA; 10 MCWILLIAMS, KATIE; 24 SLOCUM, DESTINY; 3 WASHINGTON, MADDIE;

**UCLA:** 4 CORSARO, LINDSEY; 11 DRUMMER, LAJAHNA; 21 ONYENWERE, MICHAELA; 22 BURKE, KENNEDY; 24 DEAN, JAPREECE;

Time	VISITORS: Oregon St.	Score	Margin	HOME: UCLA
09:30		54-59	V 5	GOOD! LAYUP by BURKE, KENNEDY
08:59		55-59	V 4	GOOD! FT by ONYENWERE, MICHAELA
08:59		56-59	V 3	GOOD! FT by ONYENWERE, MICHAELA
08:13	GOOD! LAYUP by SLOCUM, DESTINY [FB]	56-61	V 5	
07:31		58-61	V 3	GOOD! LAYUP by DRUMMER, LAJAHNA
07:16	GOOD! LAYUP by GOODMAN, ALEAH	58-63	V 5	
06:54	GOOD! LAYUP by COROSDALE, TAYA [FB]	58-65	V 7	
06:54	GOOD! FT by COROSDALE, TAYA [FB]	58-66	V 8	
05:47	GOOD! FT by COROSDALE, TAYA	58-67	V 9	
05:47	GOOD! FT by COROSDALE, TAYA	58-68	V 10	
05:25	GOOD! LAYUP by PIVEC, MIKAYLA	58-70	V 12	
05:11		61-70	V 9	GOOD! 3PTR by BURKE, KENNEDY
04:42		62-70	V 8	GOOD! FT by BURKE, KENNEDY [FB]
04:18	GOOD! FT by GOODMAN, ALEAH	62-71	V 9	
04:18	GOOD! FT by GOODMAN, ALEAH	62-72	V 10	
03:48	GOOD! JUMPER by MCWILLIAMS, KATIE [PNT]	62-74	V 12	
03:27	GOOD! FT by SLOCUM, DESTINY [FB]	62-75	V 13	
03:13		65-75	V 10	GOOD! 3PTR by BURKE, KENNEDY
02:44	GOOD! LAYUP by SLOCUM, DESTINY	65-77	V 12	
02:36		67-77	V 10	GOOD! JUMPER by ONYENWERE, MICHAELA
02:36		68-77	V 9	GOOD! FT by ONYENWERE, MICHAELA
01:56	GOOD! FT by SLOCUM, DESTINY	68-78	V 10	
01:56	GOOD! FT by SLOCUM, DESTINY	68-79	V 11	
01:05	GOOD! LAYUP by GRZYMEK, JOANNA	68-81	V 13	
00:38		70-81	V 11	GOOD! LAYUP by DRUMMER, LAJAHNA
00:25	GOOD! LAYUP by GRZYMEK, JOANNA	70-83	V 13	
00:07		72-83	V 11	GOOD! JUMPER by CORSARO, LINDSEY [PNT]
00:07		73-83	V 10	GOOD! FT by CORSARO, LINDSEY

**Oregon St. 83, UCLA 73**

**Official Substitutions Log**  
**Oregon St. vs UCLA**  
**Period 1**  
**January 12, 2019 at Pauley Pavilion - Los Angeles CA**



VISITORS: Oregon St.	Time	Score	HOME: UCLA
0 PIVEC, MIKAYLA			4 CORSARO, LINDSEY
5 COROSDALE, TAYA			11 DRUMMER, LAJAHNA
10 MCWILLIAMS, KATIE			21 ONYENWERE, MICHAELA
24 SLOCUM, DESTINY			22 BURKE, KENNEDY
3 WASHINGTON, MADDIE			24 DEAN, JAPREECE
	06:26	4-3	SUB OUT: ONYENWERE, MICHAELA
	06:26		SUB IN: HORVAT, CHANTEL
	04:00	8-5	SUB OUT: DEAN, JAPREECE
	04:00		SUB IN: ONYENWERE, MICHAELA
	02:28	8-9	SUB OUT: BURKE, KENNEDY
	02:28		SUB IN: SMITH, AHLANA
SUB OUT: 3 WASHINGTON, MADDIE	02:28		
SUB IN: 1 GOODMAN, ALEAH	02:28		
SUB OUT: 24 SLOCUM, DESTINY	02:28		
SUB IN: 11 GRYMEK, JOANNA	02:28		
	01:28	10-10	SUB OUT: DRUMMER, LAJAHNA
	01:28		SUB IN: MILLER, LAURYN
SUB OUT: 5 COROSDALE, TAYA	01:28		
SUB IN: 24 SLOCUM, DESTINY	01:28		
	01:28		SUB OUT: CORSARO, LINDSEY
	01:28		SUB IN: BURKE, KENNEDY

**Oregon St. 13, UCLA 11**

**Official Substitutions Log**  
**Oregon St. vs UCLA**  
**Period 2**  
**January 12, 2019 at Pauley Pavilion - Los Angeles CA**



VISITORS: Oregon St.	Time	Score	HOME: UCLA
0 PIVEC, MIKAYLA			4 CORSARO, LINDSEY
5 COROSDALE, TAYA			11 DRUMMER, LAJAHNA
10 MCWILLIAMS, KATIE			21 ONYENWERE, MICHAELA
24 SLOCUM, DESTINY			22 BURKE, KENNEDY
3 WASHINGTON, MADDIE			24 DEAN, JAPREECE
	07:14	17-13	SUB OUT: HORVAT, CHANTEL
	07:14		SUB IN: CORSARO, LINDSEY
	07:14		SUB OUT: MILLER, LAURYN
	07:14		SUB IN: DRUMMER, LAJAHNA
SUB OUT: 10 MCWILLIAMS, KATIE	07:14		
SUB IN: 3 WASHINGTON, MADDIE	07:14		
SUB OUT: 11 GRYMEK, JOANNA	07:14		
SUB IN: 43 SIMMONS, JASMINE	07:14		
	07:03	17-16	SUB OUT: SMITH, AHLANA
	07:03		SUB IN: DEAN, JAPREECE
SUB OUT: 1 GOODMAN, ALEAH	07:03		
SUB IN: 5 COROSDALE, TAYA	07:03		
SUB OUT: 5 COROSDALE, TAYA	06:22	17-18	
SUB IN: 11 GRYMEK, JOANNA	06:22		
	05:12	24-20	SUB OUT: BURKE, KENNEDY
	05:12		SUB IN: HORVAT, CHANTEL
SUB OUT: 43 SIMMONS, JASMINE	05:12		
SUB IN: 1 GOODMAN, ALEAH	05:12		
	01:35	34-26	SUB OUT: ONYENWERE, MICHAELA
	01:35		SUB IN: SMITH, AHLANA
	01:35		SUB OUT: DEAN, JAPREECE
	01:35		SUB IN: MILLER, LAURYN
SUB OUT: 11 GRYMEK, JOANNA	01:35		
SUB IN: 10 MCWILLIAMS, KATIE	01:35		

**Oregon St. 36, UCLA 30**

**Official Substitutions Log**  
**Oregon St. vs UCLA**  
**Period 3**  
**January 12, 2019 at Pauley Pavilion - Los Angeles CA**



VISITORS: Oregon St.	Time	Score	HOME: UCLA
0 PIVEC, MIKAYLA			4 CORSARO, LINDSEY
5 COROSDALE, TAYA			11 DRUMMER, LAJAHNA
10 MCWILLIAMS, KATIE			21 ONYENWERE, MICHAELA
24 SLOCUM, DESTINY			22 BURKE, KENNEDY
3 WASHINGTON, MADDIE			24 DEAN, JAPREECE
	08:14	40-33	SUB OUT: DEAN, JAPREECE
	08:14		SUB IN: HORVAT, CHANTEL
	03:45	50-45	SUB OUT: HORVAT, CHANTEL
	03:45		SUB IN: DEAN, JAPREECE
	03:45		SUB OUT: CORSARO, LINDSEY
	03:45		SUB IN: HORVAT, CHANTEL
SUB OUT: 3 WASHINGTON, MADDIE	03:45		
SUB IN: 1 GOODMAN, ALEAH	03:45		
SUB OUT: 10 MCWILLIAMS, KATIE	03:45		
SUB IN: 11 GRYMEK, JOANNA	03:45		
	01:48	55-49	SUB OUT: HORVAT, CHANTEL
	01:48		SUB IN: CORSARO, LINDSEY

**Oregon St. 59, UCLA 52**

**Official Substitutions Log**  
**Oregon St. vs UCLA**  
**Period 4**  
**January 12, 2019 at Pauley Pavilion - Los Angeles CA**



VISITORS: Oregon St.	Time	Score	HOME: UCLA
0 PIVEC, MIKAYLA			4 CORSARO, LINDSEY
5 COROSDALE, TAYA			11 DRUMMER, LAJAHNA
10 MCWILLIAMS, KATIE			21 ONYENWERE, MICHAELA
24 SLOCUM, DESTINY			22 BURKE, KENNEDY
3 WASHINGTON, MADDIE			24 DEAN, JAPREECE
SUB OUT: 11 GRYMEK, JOANNA	08:59	59-55	
SUB IN: 3 WASHINGTON, MADDIE	08:59		
SUB OUT: 24 SLOCUM, DESTINY	07:31	61-58	
SUB IN: 10 MCWILLIAMS, KATIE	07:31		
	06:01	66-58	SUB OUT: CORSARO, LINDSEY
	06:01		SUB IN: SMITH, AHLANA
	04:42	70-61	SUB OUT: ONYENWERE, MICHAELA
	04:42		SUB IN: MILLER, LAURYN
	04:18	71-62	SUB OUT: MILLER, LAURYN
	04:18		SUB IN: ONYENWERE, MICHAELA
	03:32	74-62	SUB OUT: SMITH, AHLANA
	03:32		SUB IN: HORVAT, CHANTEL
	03:32		SUB OUT: ONYENWERE, MICHAELA
	03:32		SUB IN: MILLER, LAURYN
SUB OUT: 10 MCWILLIAMS, KATIE	03:32		
SUB IN: 24 SLOCUM, DESTINY	03:32		
	03:27	75-62	SUB OUT: MILLER, LAURYN
	03:27		SUB IN: ONYENWERE, MICHAELA
	03:19	75-62	SUB OUT: DEAN, JAPREECE
	03:19		SUB IN: CORSARO, LINDSEY
	02:32	77-68	SUB OUT: HORVAT, CHANTEL
	02:32		SUB IN: DEAN, JAPREECE
SUB OUT: 3 WASHINGTON, MADDIE	01:56	78-68	
SUB IN: 11 GRYMEK, JOANNA	01:56		

**Oregon St. 83, UCLA 73**

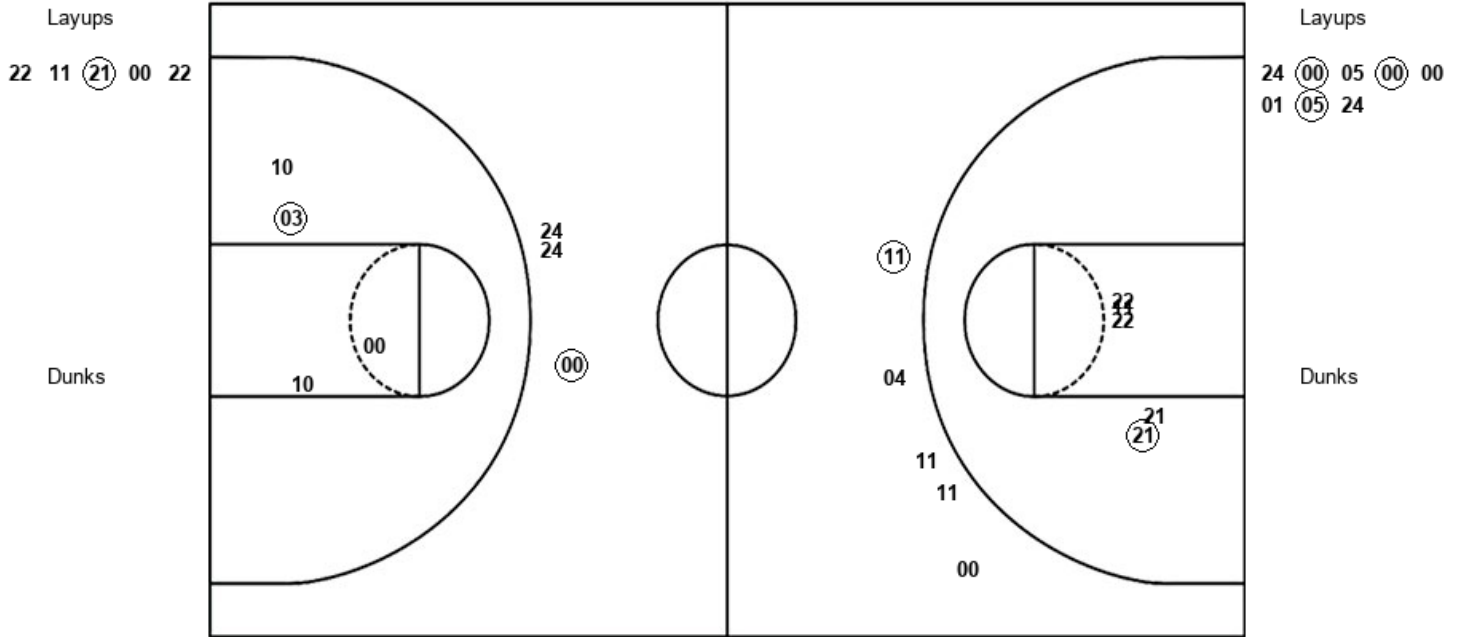


**Official Shot Chart**  
**Oregon St. vs UCLA**  
**PERIOD 1 Shots**  
 January 12, 2019 at Pauley Pavilion - Los Angeles CA



**UCLA**

**Oregon St.**



UCL : Period 1	Made	Att	Pct
Layups	1	5	20.0
Dunks	0	0	0
2PT Field Goals	2	10	20.0
3PT Field Goals	1	5	20.0
<b>Total Field Goals</b>	<b>3</b>	<b>15</b>	<b>20.0</b>

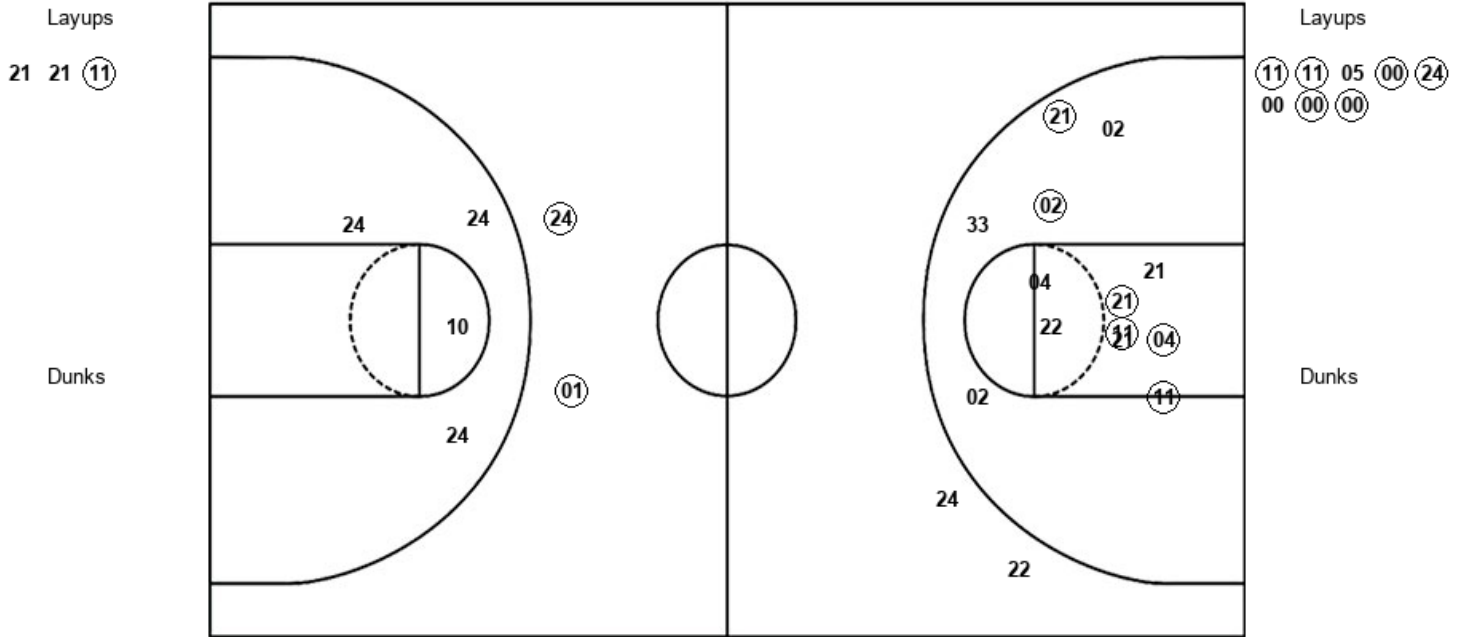
OSU : Period 1	Made	Att	Pct
Layups	3	8	37.5
Dunks	0	0	0
2PT Field Goals	4	12	33.3
3PT Field Goals	1	3	33.3
<b>Total Field Goals</b>	<b>5</b>	<b>15</b>	<b>33.3</b>

**Official Shot Chart**  
**Oregon St. vs UCLA**  
**PERIOD 2 Shots**  
 January 12, 2019 at Pauley Pavilion - Los Angeles CA



**UCLA**

**Oregon St.**



UCL : Period 2	Made	Att	Pct
Layups	1	3	33.3
Dunks	0	0	0
2PT Field Goals	7	16	43.8
3PT Field Goals	0	2	00.0
<b>Total Field Goals</b>	<b>7</b>	<b>18</b>	<b>38.9</b>

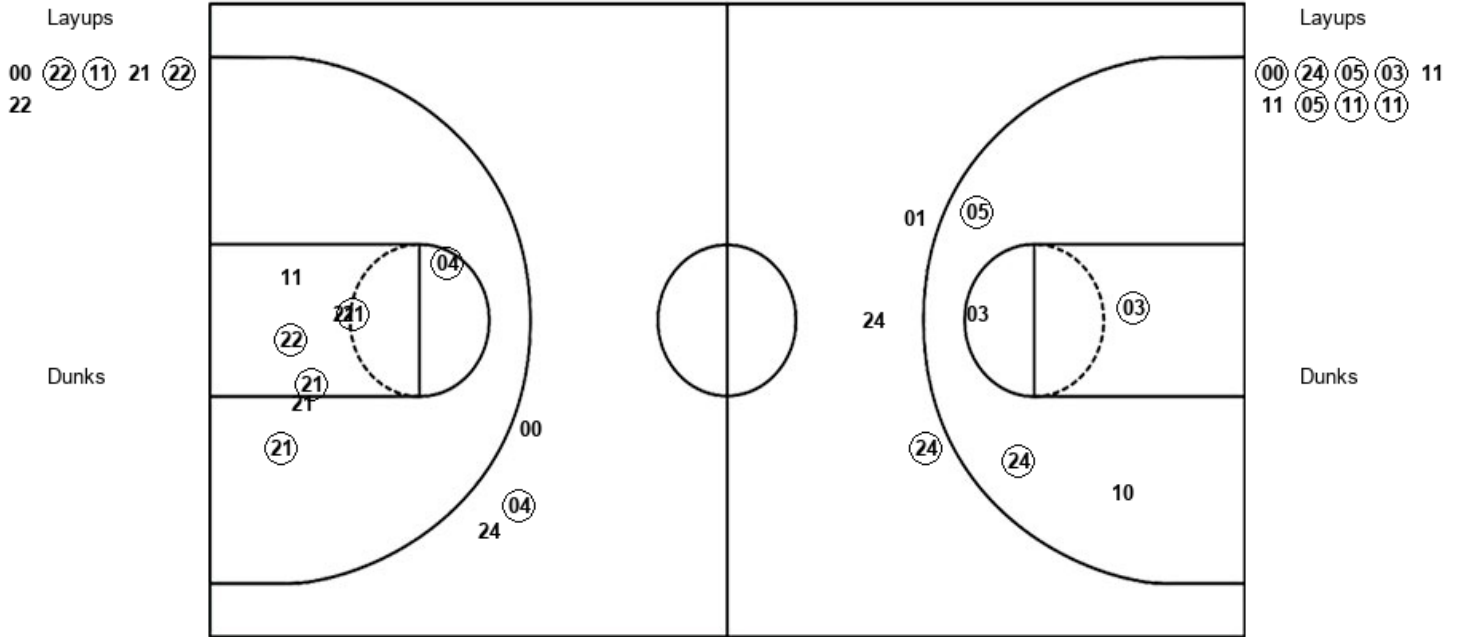
OSU : Period 2	Made	Att	Pct
Layups	6	8	75.0
Dunks	0	0	0
2PT Field Goals	6	12	50.0
3PT Field Goals	2	2	100.0
<b>Total Field Goals</b>	<b>8</b>	<b>14</b>	<b>57.1</b>

**Official Shot Chart**  
**Oregon St. vs UCLA**  
**PERIOD 3 Shots**  
 January 12, 2019 at Pauley Pavilion - Los Angeles CA



**UCLA**

**Oregon St.**



UCL : Period 3	Made	Att	Pct
Layups	3	6	50.0
Dunks	0	0	0
2PT Field Goals	8	14	57.1
3PT Field Goals	1	3	33.3
<b>Total Field Goals</b>	<b>9</b>	<b>17</b>	<b>52.9</b>

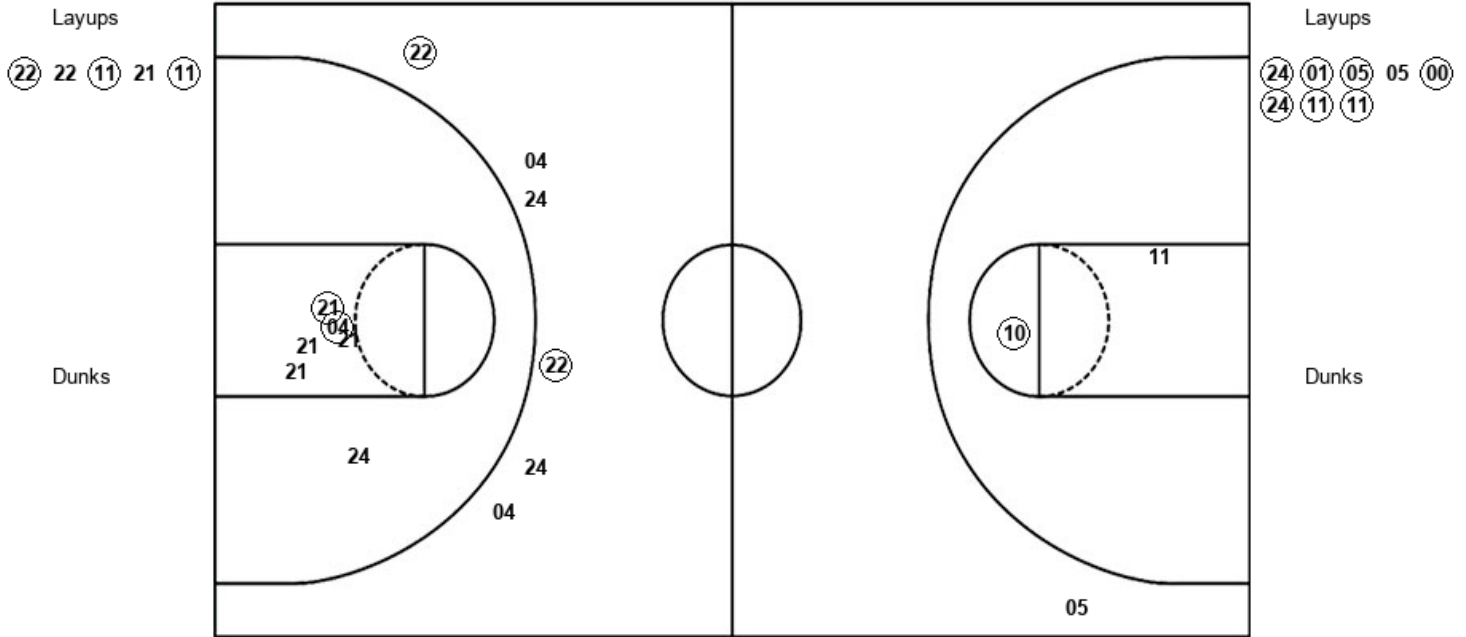
OSU : Period 3	Made	Att	Pct
Layups	7	9	77.8
Dunks	0	0	0
2PT Field Goals	10	14	71.4
3PT Field Goals	1	3	33.3
<b>Total Field Goals</b>	<b>11</b>	<b>17</b>	<b>64.7</b>

**Official Shot Chart**  
**Oregon St. vs UCLA**  
**PERIOD 4 Shots**  
 January 12, 2019 at Pauley Pavilion - Los Angeles CA



**UCLA**

**Oregon St.**



UCL : Period 4	Made	Att	Pct
Layups	3	5	60.0
Dunks	0	0	0
2PT Field Goals	5	11	45.5
3PT Field Goals	2	6	33.3
<b>Total Field Goals</b>	<b>7</b>	<b>17</b>	<b>41.2</b>

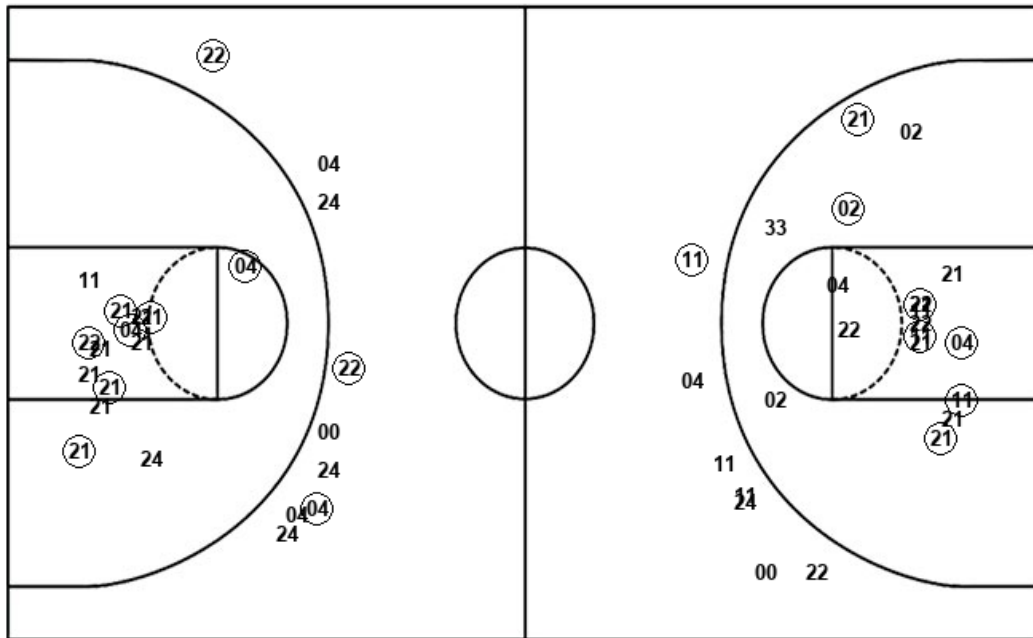
OSU : Period 4	Made	Att	Pct
Layups	7	8	87.5
Dunks	0	0	0
2PT Field Goals	8	10	80.0
3PT Field Goals	0	1	00.0
<b>Total Field Goals</b>	<b>8</b>	<b>11</b>	<b>72.7</b>



**Official Shot Chart**  
**Oregon St. vs UCLA**  
**UCLA Team Shots**  
 January 12, 2019 at Pauley Pavilion - Los Angeles CA



Layups



Layups

22 11 (21) 00 22  
 21 21 (11) 00 (22)  
 (11) 21 (22) 22 (22)  
 22 (11) 21 (11)

Dunks

Dunks

UCL : Period 1	Made	Att	Pct
Layups	1	5	20.0
Dunks	0	0	0
2PT Field Goals	2	10	20.0
3PT Field Goals	1	5	20.0
<b>Total Field Goals</b>	<b>3</b>	<b>15</b>	<b>20.0</b>

UCL : Period 3	Made	Att	Pct
Layups	3	6	50.0
Dunks	0	0	0
2PT Field Goals	8	14	57.1
3PT Field Goals	1	3	33.3
<b>Total Field Goals</b>	<b>9</b>	<b>17</b>	<b>52.9</b>

UCL : Period 2	Made	Att	Pct
Layups	1	3	33.3
Dunks	0	0	0
2PT Field Goals	7	16	43.8
3PT Field Goals	0	2	00.0
<b>Total Field Goals</b>	<b>7</b>	<b>18</b>	<b>38.9</b>

UCL : Period 4	Made	Att	Pct
Layups	3	5	60.0
Dunks	0	0	0
2PT Field Goals	5	11	45.5
3PT Field Goals	2	6	33.3
<b>Total Field Goals</b>	<b>7</b>	<b>17</b>	<b>41.2</b>