

## FINAL SCORE

**UCLA**

*Ucla*

**74**

**Oregon**

**O**

**69**

February 23, 2019 • Matthew Knight Arena - Eugene, Ore.

## FINAL STATISTICS

**Official Box Score**  
**UCLA vs Oregon**  
**Game Totals -- Final Statistics**  
**February 23, 2019 at Matthew Knight Arena - Eugene, Ore.**



**UCLA 74**

No.	Player	S	Pts	FG	3FG	FT	OR	DR	TR	PF	A	TO	Blk	Stl	Min	+/-
04	CORSARO, LINDSEY		6	2-6	2-4	0-0	1	1	2	4	3	1	1	4	29	11
11	DRUMMER, LAJAHNA		8	4-9	0-0	0-0	3	8	11	2	0	1	0	2	37	6
21	ONYENWERE, MICHAELA		12	3-7	0-0	6-6	1	1	2	4	1	3	0	0	18	-1
22	BURKE, KENNEDY		29	12-17	2-3	3-4	2	6	8	1	2	1	0	1	37	7
24	DEAN, JAPREECE		14	4-13	2-8	4-4	0	2	2	0	9	2	0	0	37	6
02	SMITH, AHLANA		5	2-6	1-3	0-2	1	3	4	3	1	1	1	1	24	10
03	JEFFERSON, KIARA		0	0-1	0-1	0-0	0	0	0	1	1	0	0	0	7	-2
33	MILLER, LAURYN		0	0-3	0-1	0-0	1	1	2	2	0	0	0	0	10	-12
<b>TEAM</b>							1	1	2	0		1				
<b>TOTALS</b>			<b>74</b>	<b>27-62</b>	<b>7-20</b>	<b>13-16</b>	<b>10</b>	<b>23</b>	<b>33</b>	<b>17</b>	<b>17</b>	<b>10</b>	<b>2</b>	<b>8</b>	<b>200</b>	

*Shooting By Period*

Period	FG	FG%	3FG	3FG%	FT	FT%
1st Qtr	4-14	29%	2-4	50%	2-2	100%
2nd Qtr	6-17	35%	0-5	00%	3-4	75%
3rd Qtr	8-15	53%	3-6	50%	2-2	100%
4th Qtr	9-16	56%	2-5	40%	6-8	75%
1st Half	10-31	32%	2-9	22%	5-6	83%
2nd Half	17-31	55%	5-11	45%	8-10	80%
<b>Game</b>	<b>27-62</b>	<b>43.5%</b>	<b>7-20</b>	<b>35.0%</b>	<b>13-16</b>	<b>81.3%</b>

*Last FG: 4th-00:43*  
*Biggest Run: 12-0*  
*Largest lead: By 8 at 4-03:46*  
*Technical Fouls: None.*

**Oregon 69**

No.	Player	S	Pts	FG	3FG	FT	OR	DR	TR	PF	A	TO	Blk	Stl	Min	+/-
00	SABALLY, SATOU		8	3-14	0-7	2-2	0	2	2	5	4	2	0	0	31	1
05	CAZORLA, MAITE		13	6-12	1-5	0-1	0	4	4	1	1	3	0	0	36	-2
20	IONESCU, SABRINA		18	7-15	2-5	2-3	2	4	6	5	8	3	1	0	38	-5
21	BOLEY, ERIN		20	8-11	3-5	1-1	1	4	5	2	2	2	0	2	35	-1
32	GILDON, OTI		6	2-5	0-0	2-2	4	4	8	0	1	1	2	0	33	-7
02	YAEGER, MORGAN		2	1-2	0-1	0-0	0	1	1	2	0	1	0	0	5	4
03	CHAVEZ, TAYLOR		0	0-3	0-3	0-0	1	1	2	3	2	1	0	1	14	-15
14	GIOMI, LYDIA		2	1-1	0-0	0-0	1	1	2	0	0	1	0	0	7	0
<b>TEAM</b>							1	1	2	0		0				
<b>TOTALS</b>			<b>69</b>	<b>28-63</b>	<b>6-26</b>	<b>7-9</b>	<b>10</b>	<b>22</b>	<b>32</b>	<b>18</b>	<b>18</b>	<b>14</b>	<b>3</b>	<b>3</b>	<b>200</b>	

*Shooting By Period*

Period	FG	FG%	3FG	3FG%	FT	FT%
1st Qtr	10-16	63%	2-6	33%	1-2	50%
2nd Qtr	7-16	44%	2-6	33%	3-4	75%
3rd Qtr	4-16	25%	1-8	13%	2-2	100%
4th Qtr	7-15	47%	1-6	17%	1-1	100%
1st Half	17-32	53%	4-12	33%	4-6	67%
2nd Half	11-31	35%	2-14	14%	3-3	100%
<b>Game</b>	<b>28-63</b>	<b>44.4%</b>	<b>6-26</b>	<b>23.1%</b>	<b>7-9</b>	<b>77.8%</b>

*Last FG: 4th-00:35*  
*Biggest Run: 10-0*  
*Largest lead: By 22 at 2-02:46*  
*Technical Fouls: None.*

Game Notes:

Officials: Lisa Jones, Penny Davis, Julie Krommenhoek  
 Attendance: 8858

Start Time: 2019-02-23 04:06:26  
 End Time: 2019-02-23 05:52:00  
 Game Duration: 105  
 Conference Game;

Score	1st	2nd	3rd	4th	TOT
UCL	12	15	21	26	<b>74</b>
ORE	23	19	11	16	<b>69</b>

UCL led for 9:53. ORE led for 29:52.  
 Game was tied for 0:15.  
 Times tied: 1      Lead Changes: 2

Points from	UCL	ORE
In the Paint	30	42
Off Turns	12	13
2nd Chance	14	8
Fast Break	8	7
Bench	5	4

**Official Box Score**  
**UCLA vs Oregon**  
**First Half Statistics Only**  
**February 23, 2019 at Matthew Knight Arena - Eugene, Ore.**



**UCLA 27**

No.	Player	S	Pts	FG	3FG	FT	OR	DR	TR	PF	A	TO	Blk	Stl	Min	+/-
11	DRUMMER, LAJAHNA		4	2-4	0-0	0-0	2	3	5	1	0	1	0	1	18	-11
21	ONYENWERE, MICHAELA		2	1-5	0-0	0-0	1	1	2	3	1	3	0	0	13	-7
22	BURKE, KENNEDY		14	6-9	1-2	1-2	0	2	2	0	1	1	0	0	19	-13
24	DEAN, JAPREECE		4	0-4	0-2	4-4	0	2	2	0	4	2	0	0	18	-13
33	MILLER, LAURYN		0	0-2	0-1	0-0	1	1	2	2	0	0	0	0	9	-12
02	SMITH, AHLANA		3	1-4	1-2	0-0	1	1	2	1	0	0	0	1	10	-7
03	JEFFERSON, KIARA		0	0-1	0-1	0-0	0	0	0	1	0	0	0	0	4	-4
04	CORSARO, LINDSEY		0	0-2	0-1	0-0	0	0	0	2	0	1	0	2	10	-8
	TEAM		0	0-0	0-0	0-0	0	0	0	0	0	0	0	0	0	
	<b>TOTALS</b>		<b>27</b>	<b>10-31</b>	<b>2-9</b>	<b>5-6</b>	<b>5</b>	<b>10</b>	<b>15</b>	<b>10</b>	<b>6</b>	<b>8</b>	<b>0</b>	<b>4</b>	<b>100</b>	

*Shooting By Period*

Period	FG	FG%	3FG	3FG%	FT	FT%
1st Qtr	4-14	29%	2-4	50%	2-2	100%
2nd Qtr	6-17	35%	0-5	00%	3-4	75%
1st Half	10-31	32%	2-9	22%	5-6	83%
Game	27-62	43.5%	7-20	35.0%	13-16	81.3%

*Last FG Half: UCL 2nd-01:20*

**Oregon 42**

No.	Player	S	Pts	FG	3FG	FT	OR	DR	TR	PF	A	TO	Blk	Stl	Min	+/-
00	SABALLY, SATOU		8	3-8	0-3	2-2	0	2	2	2	3	1	0	0	17	13
14	GIOMI, LYDIA		2	1-1	0-0	0-0	1	1	2	0	0	1	0	0	5	7
20	IONESCU, SABRINA		6	2-5	0-1	2-3	1	1	2	0	6	1	0	0	18	13
21	BOLEY, ERIN		13	5-6	3-3	0-0	0	3	3	2	1	1	0	2	17	18
32	GILDON, OTI		2	1-3	0-0	0-0	3	3	6	0	1	1	1	0	15	8
02	YAEGER, MORGAN		2	1-2	0-1	0-0	0	0	0	1	0	1	0	0	4	2
03	CHAVEZ, TAYLOR		0	0-0	0-0	0-0	0	0	0	1	1	0	0	1	6	1
05	CAZORLA, MAITE		9	4-7	1-4	0-1	0	3	3	1	1	2	0	0	18	13
	TEAM		0	0-0	0-0	0-0	0	0	0	0	0	0	0	0	0	
	<b>TOTALS</b>		<b>42</b>	<b>17-32</b>	<b>4-12</b>	<b>4-6</b>	<b>5</b>	<b>13</b>	<b>18</b>	<b>7</b>	<b>13</b>	<b>8</b>	<b>1</b>	<b>3</b>	<b>100</b>	

*Shooting By Period*

Period	FG	FG%	3FG	3FG%	FT	FT%
1st Qtr	10-16	63%	2-6	33%	1-2	50%
2nd Qtr	7-16	44%	2-6	33%	3-4	75%
1st Half	17-32	53%	4-12	33%	4-6	67%
Game	28-63	44.4%	6-26	23.1%	7-9	77.8%

*Last FG Half: ORE 2nd-02:46*

*Game Notes:*

Officials: Lisa Jones, Penny Davis, Julie Krommenhoek  
 Attendance: 8858

Start Time: 2019-02-23 04:06:26  
 End Time: 2019-02-23 05:52:00  
 Game Duration: 105  
 Conference Game;

Score	1st	2nd	3rd	4th	TOT
UCL	12	15	21	26	<b>74</b>
ORE	23	19	11	16	<b>69</b>

Points from (This Period)	UCL	ORE
In the Paint	14	24
Off Turns	6	11
2nd Chance	4	6
Fast Break	4	5
Bench	3	4

**Official Box Score**  
**UCLA vs Oregon**  
**First Quarter Statistics Only**  
**February 23, 2019 at Matthew Knight Arena - Eugene, Ore.**



**UCLA 12**

No.	Player	S	Pts	FG	3FG	FT	OR	DR	TR	PF	A	TO	Blk	Stl	Min	+/-
04	CORSARO, LINDSEY		0	0-1	0-0	0-0	0	0	0	1	0	1	0	2	6	-5
11	DRUMMER, LAJAHNA		2	1-2	0-0	0-0	0	1	1	1	0	0	0	1	8	-7
21	ONYENWERE, MICHAELA		0	0-3	0-0	0-0	1	1	2	1	1	2	0	0	8	-7
22	BURKE, KENNEDY		5	2-3	1-1	0-0	0	0	0	0	0	1	0	0	10	-11
24	DEAN, JAPREECE		2	0-3	0-2	2-2	0	1	1	0	2	2	0	0	8	-9
02	SMITH, AHLANA		3	1-2	1-1	0-0	0	1	1	0	0	0	0	1	4	-6
03	JEFFERSON, KIARA		0	0-0	0-0	0-0	0	0	0	0	0	0	0	0	2	-2
33	MILLER, LAURYN		0	0-0	0-0	0-0	0	1	1	1	0	0	0	0	4	-8
	TEAM						0	0	0	0		0				
<b>TOTALS</b>			<b>12</b>	<b>4-14</b>	<b>2-4</b>	<b>2-2</b>	<b>1</b>	<b>5</b>	<b>6</b>	<b>4</b>	<b>3</b>	<b>6</b>	<b>0</b>	<b>4</b>	<b>50</b>	

*Shooting By Period*

Period	FG	FG%	3FG	3FG%	FT	FT%
1st Qtr	4-14	29%	2-4	50%	2-2	100%
2nd Qtr	6-17	35%	0-5	00%	3-4	75%
1st Half	4-14	29%	2-4	50%	2-2	100%
1st Half	10-31	32%	2-9	22%	5-6	83%
Game	27-62	43.5%	7-20	35.0%	13-16	81.3%

**Oregon 23**

No.	Player	S	Pts	FG	3FG	FT	OR	DR	TR	PF	A	TO	Blk	Stl	Min	+/-
00	SABALLY, SATOU		4	2-4	0-2	0-0	0	2	2	0	2	1	0	0	8	9
05	CAZORLA, MAITE		9	4-5	1-2	0-1	0	1	1	1	1	1	0	0	10	11
20	IONESCU, SABRINA		3	1-3	0-1	1-1	0	1	1	0	2	1	0	0	8	9
21	BOLEY, ERIN		5	2-3	1-1	0-0	0	2	2	1	1	0	0	2	10	11
32	GILDON, OTI		2	1-1	0-0	0-0	1	1	2	0	1	1	1	0	10	11
02	YAEGER, MORGAN		0	0-0	0-0	0-0	0	0	0	0	0	0	0	0	0	0
03	CHAVEZ, TAYLOR		0	0-0	0-0	0-0	0	0	0	0	1	0	0	1	4	4
14	GIOMI, LYDIA		0	0-0	0-0	0-0	0	0	0	0	0	0	0	0	0	0
	TEAM						0	0	0	0		0				
<b>TOTALS</b>			<b>23</b>	<b>10-16</b>	<b>2-6</b>	<b>1-2</b>	<b>1</b>	<b>7</b>	<b>8</b>	<b>2</b>	<b>8</b>	<b>4</b>	<b>1</b>	<b>3</b>	<b>50</b>	

*Shooting By Period*

Period	FG	FG%	3FG	3FG%	FT	FT%
1st Qtr	10-16	63%	2-6	33%	1-2	50%
2nd Qtr	7-16	44%	2-6	33%	3-4	75%
1st Half	10-16	63%	2-6	33%	1-2	50%
1st Half	17-32	53%	4-12	33%	4-6	67%
Game	28-63	44.4%	6-26	23.1%	7-9	77.8%

Game Notes:

Officials: Lisa Jones, Penny Davis, Julie Krommenhoek  
 Attendance: 8858

Start Time: 2019-02-23 04:06:26  
 End Time: 2019-02-23 05:52:00  
 Game Duration: 105  
 Conference Game;

Score	1st	2nd	3rd	4th	TOT
UCL	12	15	21	26	<b>74</b>
ORE	23	19	11	16	<b>69</b>

Points from (This Period)	UCL	ORE
In the Paint	4	16
Off Turns	2	9
2nd Chance	2	0
Fast Break	2	2
Bench	3	0

**Official Play-By-Play**  
**UCLA vs Oregon**  
**First Quarter**  
**February 23, 2019 at Matthew Knight Arena - Eugene, Ore.**



**Period 1**

**Starters:**

**UCLA:** 11 DRUMMER, LAJAHNA; 21 ONYENWERE, MICHAELA; 22 BURKE, KENNEDY; 24 DEAN, JAPREECE; 4 CORSARO, LINDSEY;

**Oregon:** 0 SABALLY, SATOU; 20 IONESCU, SABRINA; 21 BOLEY, ERIN; 32 GILDON, OTI; 5 CAZORLA, MAITE;

Time	VISITORS: UCLA	Score	Margin	HOME: Oregon
09:45	GOOD! 3PTR by BURKE, KENNEDY	0-3	V 3	
09:45	ASSIST by DEAN, JAPREECE			
09:23				TURNOVER (LOSTBALL) by CAZORLA, MAITE
09:23	STEAL by CORSARO, LINDSEY			
09:16	TURNOVER (TRAVEL) by ONYENWERE, MICHAELA			
08:54		2-3	V 1	GOOD! LAYUP by CAZORLA, MAITE
08:54				ASSIST by IONESCU, SABRINA
08:43	MISSED LAYUP by ONYENWERE, MICHAELA			
08:40				REBOUND (DEF) by GILDON, OTI
08:34				MISSED 3PTR by SABALLY, SATOU
08:29	REBOUND (DEF) by DEAN, JAPREECE			
08:20	MISSED JUMPER by ONYENWERE, MICHAELA			
08:18	REBOUND (OFF) by TEAM			
08:18				FOUL (PERSONAL) by BOLEY, ERIN
08:08	GOOD! JUMPER by DRUMMER, LAJAHNA [PNT]	2-5	V 3	
07:52		4-5	V 1	GOOD! LAYUP by SABALLY, SATOU
07:52				ASSIST by IONESCU, SABRINA
07:46	FOUL (OFF) by CORSARO, LINDSEY			
07:46	TURNOVER (OFFENSIVE) by CORSARO, LINDSEY			
07:46	SUB OUT: ONYENWERE, MICHAELA			
07:46	SUB IN: MILLER, LAURYN			
07:33				TURNOVER (BADPASS) by IONESCU, SABRINA
07:33	STEAL by DRUMMER, LAJAHNA			
07:18	MISSED JUMPER by DEAN, JAPREECE			
07:15				REBOUND (DEF) by SABALLY, SATOU
07:15	FOUL (PERSONAL) by DRUMMER, LAJAHNA			
06:58		7-5	H 2	GOOD! 3PTR by CAZORLA, MAITE
06:58				ASSIST by GILDON, OTI
06:45	MISSED LAYUP by BURKE, KENNEDY			
06:42				REBOUND (DEF) by CAZORLA, MAITE
06:39		9-5	H 4	GOOD! LAYUP by CAZORLA, MAITE [FB]
06:14	MISSED LAYUP by CORSARO, LINDSEY			
06:11				REBOUND (DEF) by BOLEY, ERIN
05:58				MISSED LAYUP by IONESCU, SABRINA
05:53				REBOUND (OFF) by GILDON, OTI
05:52				TURNOVER (LOSTBALL) by GILDON, OTI
05:52	STEAL by CORSARO, LINDSEY			
05:48				FOUL (PERSONAL) by CAZORLA, MAITE
05:48	GOOD! FT by DEAN, JAPREECE [FB]	9-6	H 3	
05:48	SUB OUT: CORSARO, LINDSEY			
05:48	SUB IN: SMITH, AHLANA			
05:48	SUB OUT: DRUMMER, LAJAHNA			
05:48	SUB IN: ONYENWERE, MICHAELA			
05:48	GOOD! FT by DEAN, JAPREECE [FB]	9-7	H 2	
05:33		12-7	H 5	GOOD! 3PTR by BOLEY, ERIN
05:33				ASSIST by SABALLY, SATOU
05:13	MISSED 3PTR by DEAN, JAPREECE			
05:08				REBOUND (DEF) by SABALLY, SATOU
04:55				MISSED JUMPER by BOLEY, ERIN
04:51	REBOUND (DEF) by SMITH, AHLANA			
04:49	MISSED LAYUP by ONYENWERE, MICHAELA			
04:49				BLOCK by GILDON, OTI
04:44				REBOUND (DEF) by IONESCU, SABRINA
04:38				TURNOVER (LOSTBALL) by SABALLY, SATOU
04:38	STEAL by SMITH, AHLANA			
04:31	TURNOVER (LOSTBALL) by DEAN, JAPREECE			
04:31				STEAL by BOLEY, ERIN
04:25				MISSED 3PTR by SABALLY, SATOU
04:21	REBOUND (DEF) by MILLER, LAURYN			
03:58	TURNOVER (LOSTBALL) by BURKE, KENNEDY			
03:58				STEAL by BOLEY, ERIN
03:46		14-7	H 7	GOOD! LAYUP by IONESCU, SABRINA
03:46	FOUL (PERSONAL) by MILLER, LAURYN			
03:46				
03:46				SUB OUT: SABALLY, SATOU
03:46				SUB IN: CHAVEZ, TAYLOR
03:46	SUB OUT: MILLER, LAURYN			
03:46	SUB IN: DRUMMER, LAJAHNA			
03:46		15-7	H 8	GOOD! FT by IONESCU, SABRINA
03:31	GOOD! 3PTR by SMITH, AHLANA	15-10	H 5	

Time	VISITORS: UCLA	Score	Margin	HOME: Oregon
03:31	ASSIST by DEAN, JAPREECE			
03:13				MISSED 3PTR by IONESCU, SABRINA
03:10	REBOUND (DEF) by DRUMMER, LAJAHNA			
03:05	TURNOVER (BADPASS) by DEAN, JAPREECE			
02:55		17-10	H 7	GOOD! LAYUP by BOLEY, ERIN
02:55				ASSIST by CAZORLA, MAITE
02:31	MISSED JUMPER by SMITH, AHLANA			
02:27				REBOUND (DEF) by BOLEY, ERIN
02:11		19-10	H 9	GOOD! LAYUP by GILDON, OTI
02:11				ASSIST by BOLEY, ERIN
01:38	MISSED 3PTR by DEAN, JAPREECE			
01:36				REBOUND (DEF) by TEAM
01:36				SUB OUT: IONESCU, SABRINA
01:36				SUB IN: SABALLY, SATOU
01:36	SUB OUT: DEAN, JAPREECE			
01:36	SUB IN: CORSARO, LINDSEY			
01:36	SUB OUT: SMITH, AHLANA			
01:36	SUB IN: JEFFERSON, KIARA			
01:17		21-10	H 11	GOOD! LAYUP by SABALLY, SATOU
01:17				ASSIST by CHAVEZ, TAYLOR
00:58	MISSED JUMPER by DRUMMER, LAJAHNA			
00:55	REBOUND (OFF) by ONYENWERE, MICHAELA			
00:50	TURNOVER (BADPASS) by ONYENWERE, MICHAELA			
00:50				STEAL by CHAVEZ, TAYLOR
00:30		23-10	H 13	GOOD! LAYUP by CAZORLA, MAITE
00:30				ASSIST by SABALLY, SATOU
00:30	FOUL (PERSONAL) by ONYENWERE, MICHAELA			
00:30				MISSED FT by CAZORLA, MAITE
00:27	REBOUND (DEF) by ONYENWERE, MICHAELA			
00:06	GOOD! LAYUP by BURKE, KENNEDY	23-12	H 11	
00:06	ASSIST by ONYENWERE, MICHAELA			
00:00				MISSED 3PTR by CAZORLA, MAITE
00:00				REBOUND (OFF) by TEAM

### UCLA 12, Oregon 23

Points from (This Period)	UCL	ORE
In the Paint	4	16
Off Turns	2	9
2nd Chance	2	0
Fast Break	2	2
Bench	3	0

**Official Box Score**  
**UCLA vs Oregon**  
**Second Quarter Statistics Only**  
**February 23, 2019 at Matthew Knight Arena - Eugene, Ore.**



**UCLA 15**

No.	Player	S	Pts	FG	3FG	FT	OR	DR	TR	PF	A	TO	Blk	Stl	Min	+/-
04	CORSARO, LINDSEY		0	0-1	0-1	0-0	0	0	0	1	0	0	0	0	4	-3
11	DRUMMER, LAJAHNA		2	1-2	0-0	0-0	2	2	4	0	0	1	0	0	10	-4
21	ONYENWERE, MICHAELA		2	1-2	0-0	0-0	0	0	0	2	0	1	0	0	5	0
22	BURKE, KENNEDY		9	4-6	0-1	1-2	0	2	2	0	1	0	0	0	9	-2
24	DEAN, JAPREECE		2	0-1	0-0	2-2	0	1	1	0	2	0	0	0	10	-4
02	SMITH, AHLANA		0	0-2	0-1	0-0	1	0	1	1	0	0	0	0	6	-1
03	JEFFERSON, KIARA		0	0-1	0-1	0-0	0	0	0	1	0	0	0	0	2	-2
33	MILLER, LAURYN		0	0-2	0-1	0-0	1	0	1	1	0	0	0	0	5	-4
	TEAM						0	0	0	0		0				
<b>TOTALS</b>			<b>15</b>	<b>6-17</b>	<b>0-5</b>	<b>3-4</b>	<b>4</b>	<b>5</b>	<b>9</b>	<b>6</b>	<b>3</b>	<b>2</b>	<b>0</b>	<b>0</b>	<b>50</b>	

*Shooting By Period*

Period	FG	FG%	3FG	3FG%	FT	FT%
3rd Qtr	8-15	53%	3-6	50%	2-2	100%
4th Qtr	9-16	56%	2-5	40%	6-8	75%
2nd Half	6-17	35%	0-5	00%	3-4	75%
2nd Half	17-31	55%	5-11	45%	8-10	80%
Game	27-62	43.5%	7-20	35.0%	13-16	81.3%

**Oregon 19**

No.	Player	S	Pts	FG	3FG	FT	OR	DR	TR	PF	A	TO	Blk	Stl	Min	+/-
00	SABALLY, SATOU		4	1-4	0-1	2-2	0	0	0	2	1	0	0	0	9	4
05	CAZORLA, MAITE		0	0-2	0-2	0-0	0	2	2	0	0	1	0	0	8	2
20	IONESCU, SABRINA		3	1-2	0-0	1-2	1	0	1	0	4	0	0	0	10	4
21	BOLEY, ERIN		8	3-3	2-2	0-0	0	1	1	1	0	1	0	0	7	7
32	GILDON, OTI		0	0-2	0-0	0-0	2	2	4	0	0	0	0	0	5	-3
02	YAEGER, MORGAN		2	1-2	0-1	0-0	0	0	0	1	0	1	0	0	4	2
03	CHAVEZ, TAYLOR		0	0-0	0-0	0-0	0	0	0	1	0	0	0	0	2	-3
14	GIOMI, LYDIA		2	1-1	0-0	0-0	1	1	2	0	0	1	0	0	5	7
	TEAM						0	0	0	0		0				
<b>TOTALS</b>			<b>19</b>	<b>7-16</b>	<b>2-6</b>	<b>3-4</b>	<b>4</b>	<b>6</b>	<b>10</b>	<b>5</b>	<b>5</b>	<b>4</b>	<b>0</b>	<b>0</b>	<b>50</b>	

*Shooting By Period*

Period	FG	FG%	3FG	3FG%	FT	FT%
3rd Qtr	4-16	25%	1-8	13%	2-2	100%
4th Qtr	7-15	47%	1-6	17%	1-1	100%
2nd Half	7-16	44%	2-6	33%	3-4	75%
2nd Half	11-31	35%	2-14	14%	3-3	100%
Game	28-63	44.4%	6-26	23.1%	7-9	77.8%

Game Notes:

Officials: Lisa Jones, Penny Davis, Julie Krommenhoek  
 Attendance: 8858

Start Time: 2019-02-23 04:06:26  
 End Time: 2019-02-23 05:52:00  
 Game Duration: 105  
 Conference Game;

Score	1st	2nd	3rd	4th	TOT
UCL	12	15	21	26	<b>74</b>
ORE	23	19	11	16	<b>69</b>

Points from (This Period)	UCL	ORE
In the Paint	10	8
Off Turns	4	2
2nd Chance	2	6
Fast Break	2	3
Bench	0	4

**Official Play-By-Play**  
**UCLA vs Oregon**  
**Second Quarter**  
**February 23, 2019 at Matthew Knight Arena - Eugene, Ore.**



**Period 2**

**Starters:**

**UCLA:** 11 DRUMMER, LAJAHNA; 21 ONYENWERE, MICHAELA; 22 BURKE, KENNEDY; 24 DEAN, JAPREECE; 4 CORSARO, LINDSEY;

**Oregon:** 0 SABALLY, SATOU; 20 IONESCU, SABRINA; 21 BOLEY, ERIN; 32 GILDON, OTI; 5 CAZORLA, MAITE;

Time	VISITORS: UCLA	Score	Margin	HOME: Oregon
09:45				MISSED LAYUP by SABALLY, SATOU
09:38				REBOUND (OFF) by GILDON, OTI
09:38				MISSED LAYUP by GILDON, OTI
09:37				REBOUND (OFF) by GILDON, OTI
09:35	FOUL (PERSONAL) by JEFFERSON, KIARA			
09:19		25-12	H 13	GOOD! LAYUP by BOLEY, ERIN
09:19				ASSIST by IONESCU, SABRINA
08:49	MISSED JUMPER by ONYENWERE, MICHAELA			
08:45	REBOUND (OFF) by DRUMMER, LAJAHNA			
08:44	MISSED LAYUP by DRUMMER, LAJAHNA			
08:41				REBOUND (DEF) by GILDON, OTI
08:38				TURNOVER (TRAVEL) by YAEGER, MORGAN
08:38	SUB OUT: JEFFERSON, KIARA			
08:38	SUB IN: BURKE, KENNEDY			
08:29	GOOD! JUMPER by ONYENWERE, MICHAELA [PNT]	25-14	H 11	
08:29	ASSIST by DEAN, JAPREECE			
08:17		28-14	H 14	GOOD! 3PTR by BOLEY, ERIN
08:17				ASSIST by SABALLY, SATOU
08:07				FOUL (PERSONAL) by YAEGER, MORGAN
08:07	GOOD! FT by DEAN, JAPREECE	28-15	H 13	
08:07				SUB OUT: GILDON, OTI
08:07				SUB IN: CAZORLA, MAITE
08:07				SUB OUT: BOLEY, ERIN
08:07				SUB IN: GIOMI, LYDIA
08:07	GOOD! FT by DEAN, JAPREECE	28-16	H 12	
07:46		30-16	H 14	GOOD! LAYUP by YAEGER, MORGAN [PNT]
07:46				ASSIST by IONESCU, SABRINA
07:32	TURNOVER (TRAVEL) by DRUMMER, LAJAHNA			
07:11				MISSED LAYUP by IONESCU, SABRINA
07:06				REBOUND (OFF) by GIOMI, LYDIA
07:05				MISSED 3PTR by YAEGER, MORGAN
07:02	REBOUND (DEF) by BURKE, KENNEDY			
06:59	GOOD! JUMPER by BURKE, KENNEDY [FB]	30-18	H 12	
06:42	FOUL (PERSONAL) by ONYENWERE, MICHAELA			
06:42		31-18	H 13	GOOD! FT by SABALLY, SATOU
06:42				SUB OUT: YAEGER, MORGAN
06:42				SUB IN: BOLEY, ERIN
06:42	SUB OUT: ONYENWERE, MICHAELA			
06:42	SUB IN: MILLER, LAURYN			
06:42		32-18	H 14	GOOD! FT by SABALLY, SATOU
06:29	MISSED 3PTR by CORSARO, LINDSEY			
06:26				REBOUND (DEF) by CAZORLA, MAITE
06:21				MISSED 3PTR by CAZORLA, MAITE
06:19				REBOUND (OFF) by TEAM
06:19	FOUL (PERSONAL) by CORSARO, LINDSEY			
06:19	SUB OUT: CORSARO, LINDSEY			
06:19	SUB IN: SMITH, AHLANA			
06:14		34-18	H 16	GOOD! LAYUP by GIOMI, LYDIA
06:14				ASSIST by IONESCU, SABRINA
06:01	MISSED 3PTR by MILLER, LAURYN			
05:59				REBOUND (DEF) by TEAM
05:59	FOUL (PERSONAL) by SMITH, AHLANA			
05:36				TURNOVER (BADPASS) by CAZORLA, MAITE
05:17	MISSED 3PTR by SMITH, AHLANA			
05:13				REBOUND (DEF) by BOLEY, ERIN
05:03	FOUL (PERSONAL) by MILLER, LAURYN			
05:03		35-18	H 17	GOOD! FT by IONESCU, SABRINA
05:03				MISSED FT by IONESCU, SABRINA
05:01	REBOUND (DEF) by DRUMMER, LAJAHNA			
04:58	MISSED 3PTR by BURKE, KENNEDY			
04:54				REBOUND (DEF) by CAZORLA, MAITE
04:46				MISSED 3PTR by SABALLY, SATOU
04:42				REBOUND (OFF) by IONESCU, SABRINA
04:35		37-18	H 19	GOOD! JUMPER by IONESCU, SABRINA
04:26	MISSED LAYUP by SMITH, AHLANA			
04:23				REBOUND (DEF) by GIOMI, LYDIA
04:19		40-18	H 22	GOOD! 3PTR by BOLEY, ERIN [FB]
04:19				ASSIST by IONESCU, SABRINA
04:15	TIMEOUT 30SEC			
04:15				



Time	VISITORS: UCLA	Score	Margin	HOME: Oregon
04:02	MISSED JUMPER by DEAN, JAPREECE			
03:56	REBOUND (OFF) by MILLER, LAURYN			
03:56	MISSED LAYUP by MILLER, LAURYN			
03:53	REBOUND (OFF) by DRUMMER, LAJAHNA			
03:42	MISSED JUMPER by BURKE, KENNEDY			
03:39	REBOUND (OFF) by SMITH, AHLANA			
03:33	GOOD! DUNK by BURKE, KENNEDY	40-20	H 20	
03:33	ASSIST by DEAN, JAPREECE			
03:09				TURNOVER (TRAVEL) by GIOMI, LYDIA
03:09				SUB OUT: GIOMI, LYDIA
03:09				SUB IN: GILDON, OTI
03:09	SUB OUT: MILLER, LAURYN			
03:09	SUB IN: ONYENWERE, MICHAELA			
03:00	FOUL (OFF) by ONYENWERE, MICHAELA			
03:00	TURNOVER (OFFENSIVE) by ONYENWERE, MICHAELA			
02:46		42-20	H 22	GOOD! LAYUP by SABALLY, SATOU
02:32	GOOD! JUMPER by DRUMMER, LAJAHNA [PNT]	42-22	H 20	
02:32	ASSIST by BURKE, KENNEDY			
02:21				MISSED JUMPER by SABALLY, SATOU
02:17	REBOUND (DEF) by DRUMMER, LAJAHNA			
02:10	GOOD! JUMPER by BURKE, KENNEDY [PNT]	42-24	H 18	
01:56				FOUL (OFF) by BOLEY, ERIN
01:56				TURNOVER (OFFENSIVE) by BOLEY, ERIN
01:56				SUB OUT: BOLEY, ERIN
01:56				SUB IN: CHAVEZ, TAYLOR
01:56	SUB OUT: ONYENWERE, MICHAELA			
01:56	SUB IN: MILLER, LAURYN			
01:38				FOUL (PERSONAL) by SABALLY, SATOU
01:34				FOUL (PERSONAL) by CHAVEZ, TAYLOR
01:20	GOOD! JUMPER by BURKE, KENNEDY [PNT]	42-26	H 16	
01:04				MISSED JUMPER by GILDON, OTI
01:01	REBOUND (DEF) by DEAN, JAPREECE			
00:46				FOUL (PERSONAL) by SABALLY, SATOU
00:46	GOOD! FT by BURKE, KENNEDY	42-27	H 15	
00:46				SUB OUT: SABALLY, SATOU
00:46				SUB IN: YAEGER, MORGAN
00:46	SUB OUT: MILLER, LAURYN			
00:46	SUB IN: JEFFERSON, KIARA			
00:46	MISSED FT by BURKE, KENNEDY			
00:45				REBOUND (DEF) by GILDON, OTI
00:31				MISSED 3PTR by CAZORLA, MAITE
00:24	REBOUND (DEF) by BURKE, KENNEDY			
00:02	MISSED 3PTR by JEFFERSON, KIARA			
00:00	REBOUND (OFF) by TEAM			

### UCLA 27, Oregon 42

Points from (This Period)	UCL	ORE
In the Paint	10	8
Off Turns	4	2
2nd Chance	2	6
Fast Break	2	3
Bench	0	4

**Official Box Score**  
**UCLA vs Oregon**  
**Second Half Statistics Only**  
**February 23, 2019 at Matthew Knight Arena - Eugene, Ore.**



**UCLA 47**

No.	Player	S	Pts	FG	3FG	FT	OR	DR	TR	PF	A	TO	Blk	Stl	Min	+/-
11	DRUMMER, LAJAHNA		4	2-5	0-0	0-0	1	5	6	1	0	0	0	1	19	17
21	ONYENWERE, MICHAELA		10	2-2	0-0	6-6	0	0	0	1	0	0	0	0	5	6
22	BURKE, KENNEDY		15	6-8	1-1	2-2	2	4	6	1	1	0	0	1	19	20
24	DEAN, JAPREECE		10	4-9	2-6	0-0	0	0	0	0	5	0	0	0	19	19
33	MILLER, LAURYN		0	0-1	0-0	0-0	0	0	0	0	0	0	0	0	1	0
02	SMITH, AHLANA		2	1-2	0-1	0-2	0	2	2	2	1	1	1	0	13	17
03	JEFFERSON, KIARA		0	0-0	0-0	0-0	0	0	0	0	1	0	0	0	4	2
04	CORSARO, LINDSEY		6	2-4	2-3	0-0	1	1	2	2	3	0	1	2	20	19
	TEAM		0	0-0	0-0	0-0	1	1	2	0	0	1	0	0	0	0
<b>TOTALS</b>			<b>47</b>	<b>17-31</b>	<b>5-11</b>	<b>8-10</b>	<b>5</b>	<b>13</b>	<b>18</b>	<b>7</b>	<b>11</b>	<b>2</b>	<b>2</b>	<b>4</b>	<b>100</b>	

*Shooting By Period*

Period	FG	FG%	3FG	3FG%	FT	FT%
3rd Qtr	8-15	53%	3-6	50%	2-2	100%
4th Qtr	9-16	56%	2-5	40%	6-8	75%
2nd Half	17-31	55%	5-11	45%	8-10	80%
Game	27-62	43.5%	7-20	35.0%	13-16	81.3%

*Last FG Half: UCL 4th-00:43*

**Oregon 27**

No.	Player	S	Pts	FG	3FG	FT	OR	DR	TR	PF	A	TO	Blk	Stl	Min	+/-
00	SABALLY, SATOU		0	0-6	0-4	0-0	0	0	0	3	1	1	0	0	14	-12
14	GIOMI, LYDIA		0	0-0	0-0	0-0	0	0	0	0	0	0	0	0	2	-7
20	IONESCU, SABRINA		12	5-10	2-4	0-0	1	3	4	5	2	2	1	0	20	-18
21	BOLEY, ERIN		7	3-5	0-2	1-1	1	1	2	0	1	1	0	0	19	-19
32	GILDON, OTI		4	1-2	0-0	2-2	1	1	2	0	0	0	1	0	18	-15
02	YAEGER, MORGAN		0	0-0	0-0	0-0	0	1	1	1	0	0	0	0	1	2
03	CHAVEZ, TAYLOR		0	0-3	0-3	0-0	1	1	2	2	1	1	0	0	8	-16
05	CAZORLA, MAITE		4	2-5	0-1	0-0	0	1	1	0	0	1	0	0	18	-15
	TEAM		0	0-0	0-0	0-0	1	1	2	0	0	0	0	0	0	0
<b>TOTALS</b>			<b>27</b>	<b>11-31</b>	<b>2-14</b>	<b>3-3</b>	<b>5</b>	<b>9</b>	<b>14</b>	<b>11</b>	<b>5</b>	<b>6</b>	<b>2</b>	<b>0</b>	<b>100</b>	

*Shooting By Period*

Period	FG	FG%	3FG	3FG%	FT	FT%
3rd Qtr	4-16	25%	1-8	13%	2-2	100%
4th Qtr	7-15	47%	1-6	17%	1-1	100%
2nd Half	11-31	35%	2-14	14%	3-3	100%
Game	28-63	44.4%	6-26	23.1%	7-9	77.8%

*Last FG Half: ORE 4th-00:35*

Game Notes:

Officials: Lisa Jones, Penny Davis, Julie Krommenhoek  
Attendance: 8858

Start Time: 2019-02-23 04:06:26  
End Time: 2019-02-23 05:52:00  
Game Duration: 105  
Conference Game;

Score	1st	2nd	3rd	4th	TOT
UCL	12	15	21	26	<b>74</b>
ORE	23	19	11	16	<b>69</b>

Points from (This Period)	UCL	ORE
In the Paint	16	18
Off Turns	6	2
2nd Chance	10	2
Fast Break	4	2
Bench	2	0

**Official Box Score**  
**UCLA vs Oregon**  
**Third Quarter Statistics Only**  
**February 23, 2019 at Matthew Knight Arena - Eugene, Ore.**



**UCLA 47**

No.	Player	S	Pts	FG	3FG	FT	OR	DR	TR	PF	A	TO	Blk	Stl	Min	+/-
04	CORSARO, LINDSEY		6	2-3	2-3	0-0	0	0	0	0	1	0	1	2	10	10
11	DRUMMER, LAJAHNA		0	0-2	0-0	0-0	0	3	3	1	0	0	0	0	9	7
21	ONYENWERE, MICHAELA		2	0-0	0-0	2-2	0	0	0	1	0	0	0	0	1	3
22	BURKE, KENNEDY		9	4-5	1-1	0-0	0	3	3	1	0	0	0	0	10	10
24	DEAN, JAPREECE		2	1-3	0-1	0-0	0	0	0	0	4	0	0	0	9	9
02	SMITH, AHLANA		2	1-2	0-1	0-0	0	0	0	0	0	1	1	0	7	9
03	JEFFERSON, KIARA		0	0-0	0-0	0-0	0	0	0	0	1	0	0	0	4	2
33	MILLER, LAURYN		0	0-0	0-0	0-0	0	0	0	0	0	0	0	0	0	0
	TEAM						1	1	2	0		0				
<b>TOTALS</b>			<b>21</b>	<b>8-15</b>	<b>3-6</b>	<b>2-2</b>	<b>1</b>	<b>7</b>	<b>8</b>	<b>3</b>	<b>6</b>	<b>1</b>	<b>2</b>	<b>2</b>	<b>50</b>	

*Shooting By Period*

Period	FG	FG%	3FG	3FG%	FT	FT%
2nd Half	0-0	0%	0-0	0%	0-0	0%
Game	27-62	43.5%	7-20	35.0%	13-16	81.3%

**Oregon 27**

No.	Player	S	Pts	FG	3FG	FT	OR	DR	TR	PF	A	TO	Blk	Stl	Min	+/-
00	SABALLY, SATOU		0	0-2	0-2	0-0	0	0	0	1	0	0	0	0	4	-4
05	CAZORLA, MAITE		2	1-3	0-1	0-0	0	1	1	0	0	1	0	0	10	-10
20	IONESCU, SABRINA		7	3-7	1-2	0-0	1	1	2	2	0	0	0	0	10	-10
21	BOLEY, ERIN		0	0-2	0-2	0-0	1	1	2	0	0	1	0	0	10	-10
32	GILDON, OTI		2	0-1	0-0	2-2	1	1	2	0	0	0	0	0	8	-5
02	YAEGER, MORGAN		0	0-0	0-0	0-0	0	1	1	1	0	0	0	0	1	2
03	CHAVEZ, TAYLOR		0	0-1	0-1	0-0	0	0	0	0	1	0	0	0	5	-8
14	GIOMI, LYDIA		0	0-0	0-0	0-0	0	0	0	0	0	0	0	0	2	-5
	TEAM						1	0	1	0		0				
<b>TOTALS</b>			<b>11</b>	<b>4-16</b>	<b>1-8</b>	<b>2-2</b>	<b>4</b>	<b>5</b>	<b>9</b>	<b>4</b>	<b>1</b>	<b>2</b>	<b>0</b>	<b>0</b>	<b>50</b>	

*Shooting By Period*

Period	FG	FG%	3FG	3FG%	FT	FT%
2nd Half	0-0	0%	0-0	0%	0-0	0%
Game	28-63	44.4%	6-26	23.1%	7-9	77.8%

Game Notes:

Officials: Lisa Jones, Penny Davis, Julie Krommenhoek  
Attendance: 8858

Start Time: 2019-02-23 04:06:26  
End Time: 2019-02-23 05:52:00  
Game Duration: 105  
Conference Game;

Score	1st	2nd	3rd	4th	TOT
UCL	12	15	21	26	<b>74</b>
ORE	23	19	11	16	<b>69</b>

Points from (This Period)	UCL	ORE
In the Paint	6	6
Off Turns	0	0
2nd Chance	2	2
Fast Break	0	2
Bench	2	0

**Official Play-By-Play**  
**UCLA vs Oregon**  
**Third Quarter**  
**February 23, 2019 at Matthew Knight Arena - Eugene, Ore.**



**Period 3**

**Starters:**

**UCLA:** 11 DRUMMER, LAJAHNA; 21 ONYENWERE, MICHAELA; 22 BURKE, KENNEDY; 24 DEAN, JAPREECE; 4 CORSARO, LINDSEY;

**Oregon:** 0 SABALLY, SATOU; 20 IONESCU, SABRINA; 21 BOLEY, ERIN; 32 GILDON, OTI; 5 CAZORLA, MAITE;

Time	VISITORS: UCLA	Score	Margin	HOME: Oregon
09:50	GOOD! LAYUP by BURKE, KENNEDY	42-29	H 13	
09:50	ASSIST by DEAN, JAPREECE			
09:32				MISSED 3PTR by BOLEY, ERIN
09:28	REBOUND (DEF) by BURKE, KENNEDY			
09:19	MISSED LAYUP by DRUMMER, LAJAHNA			
09:15				REBOUND (DEF) by BOLEY, ERIN
09:03				MISSED 3PTR by SABALLY, SATOU
08:58	REBOUND (DEF) by TEAM			
08:33	GOOD! 3PTR by CORSARO, LINDSEY	42-32	H 10	
08:33	ASSIST by DEAN, JAPREECE			
08:13		44-32	H 12	GOOD! LAYUP by IONESCU, SABRINA
07:49	MISSED LAYUP by DEAN, JAPREECE			
07:46				REBOUND (DEF) by CAZORLA, MAITE
07:43		46-32	H 14	GOOD! LAYUP by CAZORLA, MAITE [FB]
07:32	GOOD! LAYUP by BURKE, KENNEDY	46-34	H 12	
07:13				TURNOVER (BADPASS) by BOLEY, ERIN
07:13	STEAL by CORSARO, LINDSEY			
07:07	TURNOVER (LOSTBALL) by SMITH, AHLANA			
06:52				MISSED 3PTR by SABALLY, SATOU
06:52	BLOCK by CORSARO, LINDSEY			
06:50				REBOUND (OFF) by TEAM
06:48				TURNOVER (BADPASS) by CAZORLA, MAITE
06:48	STEAL by CORSARO, LINDSEY			
06:34	MISSED 3PTR by DEAN, JAPREECE			
06:29				REBOUND (DEF) by TEAM
06:29	FOUL (PERSONAL) by DRUMMER, LAJAHNA			
06:29	SUB OUT: SMITH, AHLANA			
06:29	SUB IN: JEFFERSON, KIARA			
06:14				MISSED 3PTR by CAZORLA, MAITE
06:10				REBOUND (OFF) by GILDON, OTI
06:06				MISSED 3PTR by BOLEY, ERIN
06:05	REBOUND (DEF) by TEAM			
06:05				FOUL (PERSONAL) by IONESCU, SABRINA
06:05	SUB OUT: DRUMMER, LAJAHNA			
06:05	SUB IN: ONYENWERE, MICHAELA			
05:50				FOUL (PERSONAL) by SABALLY, SATOU
05:50	GOOD! FT by ONYENWERE, MICHAELA	46-35	H 11	
05:50				SUB OUT: SABALLY, SATOU
05:50				SUB IN: CHAVEZ, TAYLOR
05:50	GOOD! FT by ONYENWERE, MICHAELA	46-36	H 10	
05:26		48-36	H 12	GOOD! LAYUP by IONESCU, SABRINA [PNT]
05:15	GOOD! 3PTR by CORSARO, LINDSEY	48-39	H 9	
05:15	ASSIST by DEAN, JAPREECE			
04:54				MISSED 3PTR by CHAVEZ, TAYLOR
04:50				REBOUND (OFF) by IONESCU, SABRINA
04:43				MISSED 3PTR by IONESCU, SABRINA
04:41				REBOUND (OFF) by BOLEY, ERIN
04:41	FOUL (PERSONAL) by ONYENWERE, MICHAELA			
04:41				
04:41	SUB OUT: ONYENWERE, MICHAELA			
04:41	SUB IN: DRUMMER, LAJAHNA			
04:41				SUB OUT: CHAVEZ, TAYLOR
04:41				SUB IN: YAEGER, MORGAN
04:41		49-39	H 10	GOOD! FT by GILDON, OTI
04:41		50-39	H 11	GOOD! FT by GILDON, OTI
04:32	MISSED 3PTR by CORSARO, LINDSEY			
04:27				REBOUND (DEF) by YAEGER, MORGAN
04:16				MISSED LAYUP by IONESCU, SABRINA
04:13	REBOUND (DEF) by DRUMMER, LAJAHNA			
03:53				FOUL (PERSONAL) by YAEGER, MORGAN
03:53				SUB OUT: YAEGER, MORGAN
03:53				SUB IN: CHAVEZ, TAYLOR
03:53	SUB OUT: DEAN, JAPREECE			
03:53	SUB IN: SMITH, AHLANA			
03:44	MISSED LAYUP by DRUMMER, LAJAHNA			
03:42	REBOUND (OFF) by TEAM			
03:35	GOOD! LAYUP by BURKE, KENNEDY	50-41	H 9	
03:20				MISSED LAYUP by GILDON, OTI
03:18	REBOUND (DEF) by DRUMMER, LAJAHNA			
03:03				FOUL (PERSONAL) by IONESCU, SABRINA

Time	VISITORS: UCLA	Score	Margin	HOME: Oregon
03:00	GOOD! JUMPER by SMITH, AHLANA	50-43	H 7	
03:00	ASSIST by JEFFERSON, KIARA			
02:47		53-43	H 10	GOOD! 3PTR by IONESCU, SABRINA
02:47				ASSIST by CHAVEZ, TAYLOR
02:46				TIMEOUT 30SEC
02:46				
02:46	SUB OUT: JEFFERSON, KIARA			
02:46	SUB IN: DEAN, JAPREECE			
02:21	MISSED 3PTR by SMITH, AHLANA			
02:17				REBOUND (DEF) by GILDON, OTI
02:16	FOUL (PERSONAL) by BURKE, KENNEDY			
02:06				SUB OUT: GILDON, OTI
02:06				SUB IN: GIOMI, LYDIA
01:58				MISSED LAYUP by CAZORLA, MAITE
01:58	BLOCK by SMITH, AHLANA			
01:58	REBOUND (DEF) by DRUMMER, LAJAHNA			
01:31	GOOD! JUMPER by DEAN, JAPREECE	53-45	H 8	
01:31	ASSIST by CORSARO, LINDSEY			
01:04				MISSED JUMPER by IONESCU, SABRINA
01:01	REBOUND (DEF) by BURKE, KENNEDY			
00:56	GOOD! 3PTR by BURKE, KENNEDY	53-48	H 5	
00:56	ASSIST by DEAN, JAPREECE			
00:24				MISSED JUMPER by IONESCU, SABRINA
00:22	REBOUND (DEF) by BURKE, KENNEDY			
00:06	MISSED LAYUP by BURKE, KENNEDY			
00:02				REBOUND (DEF) by IONESCU, SABRINA

### UCLA 48, Oregon 53

Points from (This Period)	UCL	ORE
In the Paint	6	6
Off Turns	0	0
2nd Chance	2	2
Fast Break	0	2
Bench	2	0

**Official Box Score**  
**UCLA vs Oregon**  
**Fourth Quarter Statistics Only**  
**February 23, 2019 at Matthew Knight Arena - Eugene, Ore.**



**UCLA 26**

No.	Player	S	Pts	FG	3FG	FT	OR	DR	TR	PF	A	TO	Blk	Stl	Min	+/-
04	CORSARO, LINDSEY		0	0-1	0-0	0-0	1	1	2	2	2	0	0	0	10	9
11	DRUMMER, LAJAHNA		4	2-3	0-0	0-0	1	2	3	0	0	0	0	1	10	10
21	ONYENWERE, MICHAELA		8	2-2	0-0	4-4	0	0	0	0	0	0	0	0	4	3
22	BURKE, KENNEDY		6	2-3	0-0	2-2	2	1	3	0	1	0	0	1	9	10
24	DEAN, JAPREECE		8	3-6	2-5	0-0	0	0	0	0	1	0	0	0	10	10
02	SMITH, AHLANA		0	0-0	0-0	0-2	0	2	2	2	1	0	0	0	6	8
03	JEFFERSON, KIARA		0	0-0	0-0	0-0	0	0	0	0	0	0	0	0	0	0
33	MILLER, LAURYN		0	0-1	0-0	0-0	0	0	0	0	0	0	0	0	1	0
	TEAM						0	0	0	0		1				
<b>TOTALS</b>			<b>26</b>	<b>9-16</b>	<b>2-5</b>	<b>6-8</b>	<b>4</b>	<b>6</b>	<b>10</b>	<b>4</b>	<b>5</b>	<b>1</b>	<b>0</b>	<b>2</b>	<b>50</b>	

*Shooting By Period*

Period	FG	FG%	3FG	3FG%	FT	FT%
Game	27-62	43.5%	7-20	35.0%	13-16	81.3%

**Oregon 16**

No.	Player	S	Pts	FG	3FG	FT	OR	DR	TR	PF	A	TO	Blk	Stl	Min	+/-
00	SABALLY, SATOU		0	0-4	0-2	0-0	0	0	0	2	1	1	0	0	10	-8
05	CAZORLA, MAITE		2	1-2	0-0	0-0	0	0	0	0	0	0	0	0	8	-5
20	IONESCU, SABRINA		5	2-3	1-2	0-0	0	2	2	3	2	2	1	0	10	-8
21	BOLEY, ERIN		7	3-3	0-0	1-1	0	0	0	0	1	0	0	0	9	-9
32	GILDON, OTI		2	1-1	0-0	0-0	0	0	0	0	0	0	1	0	10	-10
02	YAEGER, MORGAN		0	0-0	0-0	0-0	0	0	0	0	0	0	0	0	0	0
03	CHAVEZ, TAYLOR		0	0-2	0-2	0-0	1	1	2	2	0	1	0	0	3	-8
14	GIOMI, LYDIA		0	0-0	0-0	0-0	0	0	0	0	0	0	0	0	0	-2
	TEAM						0	1	1	0		0				
<b>TOTALS</b>			<b>16</b>	<b>7-15</b>	<b>1-6</b>	<b>1-1</b>	<b>1</b>	<b>4</b>	<b>5</b>	<b>7</b>	<b>4</b>	<b>4</b>	<b>2</b>	<b>0</b>	<b>50</b>	

*Shooting By Period*

Period	FG	FG%	3FG	3FG%	FT	FT%
Game	28-63	44.4%	6-26	23.1%	7-9	77.8%

Game Notes:

Officials: Lisa Jones, Penny Davis, Julie Krommenhoek  
Attendance: 8858

Start Time: 2019-02-23 04:06:26  
End Time: 2019-02-23 05:52:00  
Game Duration: 105  
Conference Game;

Score	1st	2nd	3rd	4th	TOT
UCL	12	15	21	26	<b>74</b>
ORE	23	19	11	16	<b>69</b>

Points from (This Period)	UCL	ORE
In the Paint	10	12
Off Turns	6	2
2nd Chance	8	0
Fast Break	4	0
Bench	0	0

**Official Play-By-Play**  
**UCLA vs Oregon**  
**Fourth Quarter**  
**February 23, 2019 at Matthew Knight Arena - Eugene, Ore.**



**Period 4**

**Starters:**

**UCLA:** 11 DRUMMER, LAJAHNA; 21 ONYENWERE, MICHAELA; 22 BURKE, KENNEDY; 24 DEAN, JAPREECE; 4 CORSARO, LINDSEY;

**Oregon:** 0 SABALLY, SATOU; 20 IONESCU, SABRINA; 21 BOLEY, ERIN; 32 GILDON, OTI; 5 CAZORLA, MAITE;

Time	VISITORS: UCLA	Score	Margin	HOME: Oregon
09:43				MISSED 3PTR by CHAVEZ, TAYLOR
09:39	REBOUND (DEF) by CORSARO, LINDSEY			
09:32	MISSED LAYUP by MILLER, LAURYN			
09:29				REBOUND (DEF) by IONESCU, SABRINA
09:08				TURNOVER (TRAVEL) by SABALLY, SATOU
08:52	MISSED 3PTR by DEAN, JAPREECE			
08:48	REBOUND (OFF) by DRUMMER, LAJAHNA			
08:48				SUB OUT: CAZORLA, MAITE
08:48				SUB IN: BOLEY, ERIN
08:48	SUB OUT: MILLER, LAURYN			
08:48	SUB IN: BURKE, KENNEDY			
08:46	GOOD! JUMPER by DEAN, JAPREECE	53-50	H 3	
08:46	ASSIST by SMITH, AHLANA			
08:30		55-50	H 5	GOOD! JUMPER by BOLEY, ERIN [PNT]
08:30				ASSIST by IONESCU, SABRINA
08:30	FOUL (PERSONAL) by CORSARO, LINDSEY			
08:30		56-50	H 6	GOOD! FT by BOLEY, ERIN
08:20	GOOD! 3PTR by DEAN, JAPREECE	56-53	H 3	
08:02				TURNOVER (BADPASS) by IONESCU, SABRINA
08:02	SUB OUT: SMITH, AHLANA			
08:02	SUB IN: ONYENWERE, MICHAELA			
07:44	GOOD! JUMPER by DRUMMER, LAJAHNA [PNT]	56-55	H 1	
07:27				MISSED 3PTR by SABALLY, SATOU
07:24	REBOUND (DEF) by DRUMMER, LAJAHNA			
07:19	MISSED 3PTR by DEAN, JAPREECE			
07:15				REBOUND (DEF) by CHAVEZ, TAYLOR
07:12				TURNOVER (BADPASS) by CHAVEZ, TAYLOR
07:12	STEAL by DRUMMER, LAJAHNA			
07:06				FOUL (PERSONAL) by SABALLY, SATOU
07:06	GOOD! FT by ONYENWERE, MICHAELA [FB]	56-56	T	
07:06				SUB OUT: CHAVEZ, TAYLOR
07:06				SUB IN: CAZORLA, MAITE
07:06	GOOD! FT by ONYENWERE, MICHAELA [FB]	56-57	V 1	
06:54				TURNOVER (BADPASS) by IONESCU, SABRINA
06:54	STEAL by BURKE, KENNEDY			
06:49	GOOD! LAYUP by ONYENWERE, MICHAELA	56-59	V 3	
06:49	ASSIST by BURKE, KENNEDY			
06:45				TIMEOUT 30SEC
06:45				
06:45	SUB OUT: ONYENWERE, MICHAELA			
06:45	SUB IN: SMITH, AHLANA			
06:32		58-59	V 1	GOOD! LAYUP by CAZORLA, MAITE
06:04	MISSED LAYUP by DRUMMER, LAJAHNA			
06:00	REBOUND (OFF) by CORSARO, LINDSEY			
05:40	GOOD! LAYUP by DRUMMER, LAJAHNA	58-61	V 3	
05:40	ASSIST by DEAN, JAPREECE			
05:24		60-61	V 1	GOOD! LAYUP by IONESCU, SABRINA [PNT]
05:04	MISSED LAYUP by BURKE, KENNEDY			
05:04				BLOCK by GILDON, OTI
04:55	REBOUND (OFF) by BURKE, KENNEDY			
04:55	GOOD! LAYUP by BURKE, KENNEDY	60-63	V 3	
04:52				MISSED 3PTR by IONESCU, SABRINA
04:48	REBOUND (DEF) by SMITH, AHLANA			
04:27	GOOD! LAYUP by BURKE, KENNEDY	60-65	V 5	
04:08				MISSED 3PTR by SABALLY, SATOU
04:03	REBOUND (DEF) by BURKE, KENNEDY			
03:46	GOOD! 3PTR by DEAN, JAPREECE	60-68	V 8	
03:46	ASSIST by CORSARO, LINDSEY			
03:26		62-68	V 6	GOOD! LAYUP by GILDON, OTI
03:26				ASSIST by BOLEY, ERIN
03:07	TIMEOUT 30SEC			
03:07	SUB OUT: SMITH, AHLANA			
03:07	SUB IN: ONYENWERE, MICHAELA			
02:51	TURNOVER (SHOTCLOCK) by			
02:33		64-68	V 4	GOOD! LAYUP by BOLEY, ERIN
02:05	MISSED 3PTR by DEAN, JAPREECE			
01:59				REBOUND (DEF) by IONESCU, SABRINA
01:48				MISSED LAYUP by SABALLY, SATOU
01:45	REBOUND (DEF) by DRUMMER, LAJAHNA			
01:24	MISSED LAYUP by CORSARO, LINDSEY			

Time	VISITORS: UCLA	Score	Margin	HOME: Oregon
01:24				BLOCK by IONESCU, SABRINA
01:23				REBOUND (DEF) by TEAM
01:07		66-68	V 2	GOOD! LAYUP by BOLEY, ERIN
01:07				ASSIST by IONESCU, SABRINA
00:43	GOOD! JUMPER by ONYENWERE, MICHAELA	66-70	V 4	
00:43	ASSIST by CORSARO, LINDSEY			
00:35		69-70	V 1	GOOD! 3PTR by IONESCU, SABRINA
00:35				ASSIST by SABALLY, SATOU
00:28				FOUL (PERSONAL) by IONESCU, SABRINA
00:28				SUB OUT: BOLEY, ERIN
00:28				SUB IN: CHAVEZ, TAYLOR
00:27				FOUL (PERSONAL) by CHAVEZ, TAYLOR
00:24				FOUL (PERSONAL) by CHAVEZ, TAYLOR
00:22				FOUL (PERSONAL) by IONESCU, SABRINA
00:22	GOOD! FT by ONYENWERE, MICHAELA	69-71	V 2	
00:22				SUB OUT: CHAVEZ, TAYLOR
00:22				SUB IN: BOLEY, ERIN
00:22	SUB OUT: CORSARO, LINDSEY			
00:22	SUB IN: SMITH, AHLANA			
00:22	GOOD! FT by ONYENWERE, MICHAELA	69-72	V 3	
00:22				TIMEOUT 30SEC
00:22	SUB OUT: ONYENWERE, MICHAELA			
00:22	SUB IN: CORSARO, LINDSEY			
00:21	FOUL (PERSONAL) by SMITH, AHLANA			
00:19	FOUL (PERSONAL) by SMITH, AHLANA			
00:18	FOUL (PERSONAL) by CORSARO, LINDSEY			
00:18	TIMEOUT 30SEC			
00:14				MISSED LAYUP by SABALLY, SATOU
00:12	REBOUND (DEF) by SMITH, AHLANA			
00:12				FOUL (PERSONAL) by SABALLY, SATOU
00:12				SUB OUT: SABALLY, SATOU
00:12				SUB IN: CHAVEZ, TAYLOR
00:12	MISSED FT by SMITH, AHLANA			
00:12	REBOUND (OFF) by TEAM			
00:12	MISSED FT by SMITH, AHLANA			
00:12	REBOUND (OFF) by BURKE, KENNEDY			
00:12				FOUL (PERSONAL) by IONESCU, SABRINA
00:12				SUB OUT: IONESCU, SABRINA
00:12				SUB IN: GIOMI, LYDIA
00:12	GOOD! FT by BURKE, KENNEDY [FB]	69-73	V 4	
00:12	GOOD! FT by BURKE, KENNEDY [FB]	69-74	V 5	
00:12				TIMEOUT TEAM
00:12				SUB OUT: GIOMI, LYDIA
00:12				SUB IN: YAEGER, MORGAN
00:05				MISSED JUMPER by CAZORLA, MAITE
00:02				REBOUND (OFF) by CHAVEZ, TAYLOR
00:00				MISSED 3PTR by CHAVEZ, TAYLOR
00:00				REBOUND (OFF) by TEAM

### UCLA 74, Oregon 69

Points from (This Period)	UCL	ORE
In the Paint	10	12
Off Turns	6	2
2nd Chance	8	0
Fast Break	4	0
Bench	0	0



**Official Scoring/Possession Reference Chart**  
**UCLA vs Oregon**  
**Period 1**  
**February 23, 2019 at Matthew Knight Arena - Eugene, Ore.**



**Period 1**

**Starters:**

**UCLA:** 11 DRUMMER, LAJAHNA; 21 ONYENWERE, MICHAELA; 22 BURKE, KENNEDY; 24 DEAN, JAPREECE; 4 CORSARO, LINDSEY;

**Oregon:** 0 SABALLY, SATOU; 20 IONESCU, SABRINA; 21 BOLEY, ERIN; 32 GILDON, OTI; 5 CAZORLA, MAITE;

Time	VISITORS: UCLA	Score	Margin	HOME: Oregon
09:45	GOOD! 3PTR by BURKE, KENNEDY	0-3	V 3	
08:54		2-3	V 1	GOOD! LAYUP by CAZORLA, MAITE
08:08	GOOD! JUMPER by DRUMMER, LAJAHNA [PNT]	2-5	V 3	
07:52		4-5	V 1	GOOD! LAYUP by SABALLY, SATOU
06:58		7-5	H 2	GOOD! 3PTR by CAZORLA, MAITE
06:39		9-5	H 4	GOOD! LAYUP by CAZORLA, MAITE [FB]
05:48	GOOD! FT by DEAN, JAPREECE [FB]	9-6	H 3	
05:48	GOOD! FT by DEAN, JAPREECE [FB]	9-7	H 2	
05:33		12-7	H 5	GOOD! 3PTR by BOLEY, ERIN
03:46		14-7	H 7	GOOD! LAYUP by IONESCU, SABRINA
03:46		15-7	H 8	GOOD! FT by IONESCU, SABRINA
03:31	GOOD! 3PTR by SMITH, AHLANA	15-10	H 5	
02:55		17-10	H 7	GOOD! LAYUP by BOLEY, ERIN
02:11		19-10	H 9	GOOD! LAYUP by GILDON, OTI
01:17		21-10	H 11	GOOD! LAYUP by SABALLY, SATOU
00:30		23-10	H 13	GOOD! LAYUP by CAZORLA, MAITE
00:06	GOOD! LAYUP by BURKE, KENNEDY	23-12	H 11	

**UCLA 12, Oregon 23**

**Official Scoring/Possession Reference Chart**  
**UCLA vs Oregon**  
**Period 2**  
**February 23, 2019 at Matthew Knight Arena - Eugene, Ore.**



**Period 2**

**Starters:**

**UCLA:** 11 DRUMMER, LAJAHNA; 21 ONYENWERE, MICHAELA; 22 BURKE, KENNEDY; 24 DEAN, JAPREECE; 4 CORSARO, LINDSEY;

**Oregon:** 0 SABALLY, SATOU; 20 IONESCU, SABRINA; 21 BOLEY, ERIN; 32 GILDON, OTI; 5 CAZORLA, MAITE;

Time	VISITORS: UCLA	Score	Margin	HOME: Oregon
09:19		25-12	H 13	GOOD! LAYUP by BOLEY, ERIN
08:29	GOOD! JUMPER by ONYENWERE, MICHAELA [PNT]	25-14	H 11	
08:17		28-14	H 14	GOOD! 3PTR by BOLEY, ERIN
08:07	GOOD! FT by DEAN, JAPREECE	28-15	H 13	
08:07	GOOD! FT by DEAN, JAPREECE	28-16	H 12	
07:46		30-16	H 14	GOOD! LAYUP by YAEGER, MORGAN [PNT]
06:59	GOOD! JUMPER by BURKE, KENNEDY [FB]	30-18	H 12	
06:42		31-18	H 13	GOOD! FT by SABALLY, SATOU
06:42		32-18	H 14	GOOD! FT by SABALLY, SATOU
06:14		34-18	H 16	GOOD! LAYUP by GIOMI, LYDIA
05:03		35-18	H 17	GOOD! FT by IONESCU, SABRINA
04:35		37-18	H 19	GOOD! JUMPER by IONESCU, SABRINA
04:19		40-18	H 22	GOOD! 3PTR by BOLEY, ERIN [FB]
03:33	GOOD! DUNK by BURKE, KENNEDY	40-20	H 20	
02:46		42-20	H 22	GOOD! LAYUP by SABALLY, SATOU
02:32	GOOD! JUMPER by DRUMMER, LAJAHNA [PNT]	42-22	H 20	
02:10	GOOD! JUMPER by BURKE, KENNEDY [PNT]	42-24	H 18	
01:20	GOOD! JUMPER by BURKE, KENNEDY [PNT]	42-26	H 16	
00:46	GOOD! FT by BURKE, KENNEDY	42-27	H 15	

**UCLA 27, Oregon 42**

**Official Scoring/Possession Reference Chart**  
**UCLA vs Oregon**  
**Period 3**  
**February 23, 2019 at Matthew Knight Arena - Eugene, Ore.**



**Period 3**

**Starters:**

**UCLA:** 11 DRUMMER, LAJAHNA; 21 ONYENWERE, MICHAELA; 22 BURKE, KENNEDY; 24 DEAN, JAPREECE; 4 CORSARO, LINDSEY;

**Oregon:** 0 SABALLY, SATOU; 20 IONESCU, SABRINA; 21 BOLEY, ERIN; 32 GILDON, OTI; 5 CAZORLA, MAITE;

Time	VISITORS: UCLA	Score	Margin	HOME: Oregon
09:50	GOOD! LAYUP by BURKE, KENNEDY	42-29	H 13	
08:33	GOOD! 3PTR by CORSARO, LINDSEY	42-32	H 10	
08:13		44-32	H 12	GOOD! LAYUP by IONESCU, SABRINA
07:43		46-32	H 14	GOOD! LAYUP by CAZORLA, MAITE [FB]
07:32	GOOD! LAYUP by BURKE, KENNEDY	46-34	H 12	
05:50	GOOD! FT by ONYENWERE, MICHAELA	46-35	H 11	
05:50	GOOD! FT by ONYENWERE, MICHAELA	46-36	H 10	
05:26		48-36	H 12	GOOD! LAYUP by IONESCU, SABRINA [PNT]
05:15	GOOD! 3PTR by CORSARO, LINDSEY	48-39	H 9	
04:41		49-39	H 10	GOOD! FT by GILDON, OTI
04:41		50-39	H 11	GOOD! FT by GILDON, OTI
03:35	GOOD! LAYUP by BURKE, KENNEDY	50-41	H 9	
03:00	GOOD! JUMPER by SMITH, AHLANA	50-43	H 7	
02:47		53-43	H 10	GOOD! 3PTR by IONESCU, SABRINA
01:31	GOOD! JUMPER by DEAN, JAPREECE	53-45	H 8	
00:56	GOOD! 3PTR by BURKE, KENNEDY	53-48	H 5	

**UCLA 48, Oregon 53**

**Official Scoring/Possession Reference Chart**  
**UCLA vs Oregon**  
**Period 4**  
**February 23, 2019 at Matthew Knight Arena - Eugene, Ore.**



**Period 4**

**Starters:**

**UCLA:** 11 DRUMMER, LAJAHNA; 21 ONYENWERE, MICHAELA; 22 BURKE, KENNEDY; 24 DEAN, JAPREECE; 4 CORSARO, LINDSEY;

**Oregon:** 0 SABALLY, SATOU; 20 IONESCU, SABRINA; 21 BOLEY, ERIN; 32 GILDON, OTI; 5 CAZORLA, MAITE;

Time	VISITORS: UCLA	Score	Margin	HOME: Oregon
08:46	GOOD! JUMPER by DEAN, JAPREECE	53-50	H 3	
08:30		55-50	H 5	GOOD! JUMPER by BOLEY, ERIN [PNT]
08:30		56-50	H 6	GOOD! FT by BOLEY, ERIN
08:20	GOOD! 3PTR by DEAN, JAPREECE	56-53	H 3	
07:44	GOOD! JUMPER by DRUMMER, LAJAHNA [PNT]	56-55	H 1	
07:06	GOOD! FT by ONYENWERE, MICHAELA [FB]	56-56	T	
07:06	GOOD! FT by ONYENWERE, MICHAELA [FB]	56-57	V 1	
06:49	GOOD! LAYUP by ONYENWERE, MICHAELA	56-59	V 3	
06:32		58-59	V 1	GOOD! LAYUP by CAZORLA, MAITE
05:40	GOOD! LAYUP by DRUMMER, LAJAHNA	58-61	V 3	
05:24		60-61	V 1	GOOD! LAYUP by IONESCU, SABRINA [PNT]
04:55	GOOD! LAYUP by BURKE, KENNEDY	60-63	V 3	
04:27	GOOD! LAYUP by BURKE, KENNEDY	60-65	V 5	
03:46	GOOD! 3PTR by DEAN, JAPREECE	60-68	V 8	
03:26		62-68	V 6	GOOD! LAYUP by GILDON, OTI
02:33		64-68	V 4	GOOD! LAYUP by BOLEY, ERIN
01:07		66-68	V 2	GOOD! LAYUP by BOLEY, ERIN
00:43	GOOD! JUMPER by ONYENWERE, MICHAELA	66-70	V 4	
00:35		69-70	V 1	GOOD! 3PTR by IONESCU, SABRINA
00:22	GOOD! FT by ONYENWERE, MICHAELA	69-71	V 2	
00:22	GOOD! FT by ONYENWERE, MICHAELA	69-72	V 3	
00:12	GOOD! FT by BURKE, KENNEDY [FB]	69-73	V 4	
00:12	GOOD! FT by BURKE, KENNEDY [FB]	69-74	V 5	

**UCLA 74, Oregon 69**

**Official Substitutions Log**  
**UCLA vs Oregon**  
**Period 1**  
**February 23, 2019 at Matthew Knight Arena - Eugene, Ore.**



VISITORS: UCLA	Time	Score	HOME: Oregon
11 DRUMMER, LAJAHNA			0 SABALLY, SATOU
21 ONYENWERE, MICHAELA			20 IONESCU, SABRINA
22 BURKE, KENNEDY			21 BOLEY, ERIN
24 DEAN, JAPREECE			32 GILDON, OTI
4 CORSARO, LINDSEY			5 CAZORLA, MAITE
SUB OUT: 21 ONYENWERE, MICHAELA	07:46	5-4	
SUB IN: 33 MILLER, LAURYN	07:46		
SUB OUT: 4 CORSARO, LINDSEY	05:48	6-9	
SUB IN: 2 SMITH, AHLANA	05:48		
SUB OUT: 11 DRUMMER, LAJAHNA	05:48		
SUB IN: 21 ONYENWERE, MICHAELA	05:48		
	03:46	7-14	SUB OUT: SABALLY, SATOU
	03:46		SUB IN: CHAVEZ, TAYLOR
SUB OUT: 33 MILLER, LAURYN	03:46		
SUB IN: 11 DRUMMER, LAJAHNA	03:46		
	01:36	10-19	SUB OUT: IONESCU, SABRINA
	01:36		SUB IN: SABALLY, SATOU
SUB OUT: 24 DEAN, JAPREECE	01:36		
SUB IN: 4 CORSARO, LINDSEY	01:36		
SUB OUT: 2 SMITH, AHLANA	01:36		
SUB IN: 3 JEFFERSON, KIARA	01:36		

**UCLA 12, Oregon 23**

**Official Substitutions Log**  
**UCLA vs Oregon**  
**Period 2**  
**February 23, 2019 at Matthew Knight Arena - Eugene, Ore.**



VISITORS: UCLA	Time	Score	HOME: Oregon
11 DRUMMER, LAJAHNA			0 SABALLY, SATOU
21 ONYENWERE, MICHAELA			20 IONESCU, SABRINA
22 BURKE, KENNEDY			21 BOLEY, ERIN
24 DEAN, JAPREECE			32 GILDON, OTI
4 CORSARO, LINDSEY			5 CAZORLA, MAITE
SUB OUT: 3 JEFFERSON, KIARA	08:38	12-25	
SUB IN: 22 BURKE, KENNEDY	08:38		
	08:07	15-28	SUB OUT: GILDON, OTI
	08:07		SUB IN: CAZORLA, MAITE
	08:07		SUB OUT: BOLEY, ERIN
	08:07		SUB IN: GIOMI, LYDIA
	06:42	18-31	SUB OUT: YAEGER, MORGAN
	06:42		SUB IN: BOLEY, ERIN
SUB OUT: 21 ONYENWERE, MICHAELA	06:42		
SUB IN: 33 MILLER, LAURYN	06:42		
SUB OUT: 4 CORSARO, LINDSEY	06:19	18-32	
SUB IN: 2 SMITH, AHLANA	06:19		
	03:09	20-40	SUB OUT: GIOMI, LYDIA
	03:09		SUB IN: GILDON, OTI
SUB OUT: 33 MILLER, LAURYN	03:09		
SUB IN: 21 ONYENWERE, MICHAELA	03:09		
	01:56	24-42	SUB OUT: BOLEY, ERIN
	01:56		SUB IN: CHAVEZ, TAYLOR
SUB OUT: 21 ONYENWERE, MICHAELA	01:56		
SUB IN: 33 MILLER, LAURYN	01:56		
	00:46	27-42	SUB OUT: SABALLY, SATOU
	00:46		SUB IN: YAEGER, MORGAN
SUB OUT: 33 MILLER, LAURYN	00:46		
SUB IN: 3 JEFFERSON, KIARA	00:46		

**UCLA 27, Oregon 42**

**Official Substitutions Log**  
**UCLA vs Oregon**  
**Period 3**  
**February 23, 2019 at Matthew Knight Arena - Eugene, Ore.**



VISITORS: UCLA	Time	Score	HOME: Oregon
11 DRUMMER, LAJAHNA			0 SABALLY, SATOU
21 ONYENWERE, MICHAELA			20 IONESCU, SABRINA
22 BURKE, KENNEDY			21 BOLEY, ERIN
24 DEAN, JAPREECE			32 GILDON, OTI
4 CORSARO, LINDSEY			5 CAZORLA, MAITE
SUB OUT: 2 SMITH, AHLANA	06:29	34-46	
SUB IN: 3 JEFFERSON, KIARA	06:29		
SUB OUT: 11 DRUMMER, LAJAHNA	06:05	34-46	
SUB IN: 21 ONYENWERE, MICHAELA	06:05		
	05:50	35-46	SUB OUT: SABALLY, SATOU
	05:50		SUB IN: CHAVEZ, TAYLOR
SUB OUT: 21 ONYENWERE, MICHAELA	04:41	39-48	
SUB IN: 11 DRUMMER, LAJAHNA	04:41		
	04:41		SUB OUT: CHAVEZ, TAYLOR
	04:41		SUB IN: YAEGER, MORGAN
	03:53	39-50	SUB OUT: YAEGER, MORGAN
	03:53		SUB IN: CHAVEZ, TAYLOR
SUB OUT: 24 DEAN, JAPREECE	03:53		
SUB IN: 2 SMITH, AHLANA	03:53		
SUB OUT: 3 JEFFERSON, KIARA	02:46	43-53	
SUB IN: 24 DEAN, JAPREECE	02:46		
	02:06	43-53	SUB OUT: GILDON, OTI
	02:06		SUB IN: GIOMI, LYDIA

**UCLA 48, Oregon 53**

**Official Substitutions Log**  
**UCLA vs Oregon**  
**Period 4**  
**February 23, 2019 at Matthew Knight Arena - Eugene, Ore.**



VISITORS: UCLA	Time	Score	HOME: Oregon
11 DRUMMER, LAJAHNA			0 SABALLY, SATOU
21 ONYENWERE, MICHAELA			20 IONESCU, SABRINA
22 BURKE, KENNEDY			21 BOLEY, ERIN
24 DEAN, JAPREECE			32 GILDON, OTI
4 CORSARO, LINDSEY			5 CAZORLA, MAITE
	08:48	-	SUB OUT: CAZORLA, MAITE
	08:48		SUB IN: BOLEY, ERIN
SUB OUT: 33 MILLER, LAURYN	08:48		
SUB IN: 22 BURKE, KENNEDY	08:48		
SUB OUT: 2 SMITH, AHLANA	08:02	53-56	
SUB IN: 21 ONYENWERE, MICHAELA	08:02		
	07:06	56-56	SUB OUT: CHAVEZ, TAYLOR
	07:06		SUB IN: CAZORLA, MAITE
SUB OUT: 21 ONYENWERE, MICHAELA	06:45	59-56	
SUB IN: 2 SMITH, AHLANA	06:45		
SUB OUT: 2 SMITH, AHLANA	03:07	68-62	
SUB IN: 21 ONYENWERE, MICHAELA	03:07		
	00:28	70-69	SUB OUT: BOLEY, ERIN
	00:28		SUB IN: CHAVEZ, TAYLOR
	00:22	71-69	SUB OUT: CHAVEZ, TAYLOR
	00:22		SUB IN: BOLEY, ERIN
SUB OUT: 4 CORSARO, LINDSEY	00:22		
SUB IN: 2 SMITH, AHLANA	00:22		
SUB OUT: 21 ONYENWERE, MICHAELA	00:22		
SUB IN: 4 CORSARO, LINDSEY	00:22		
	00:12	72-69	SUB OUT: SABALLY, SATOU
	00:12		SUB IN: CHAVEZ, TAYLOR
	00:12		SUB OUT: IONESCU, SABRINA
	00:12		SUB IN: GIOMI, LYDIA
	00:12		SUB OUT: GIOMI, LYDIA
	00:12		SUB IN: YAEGER, MORGAN

**UCLA 74, Oregon 69**

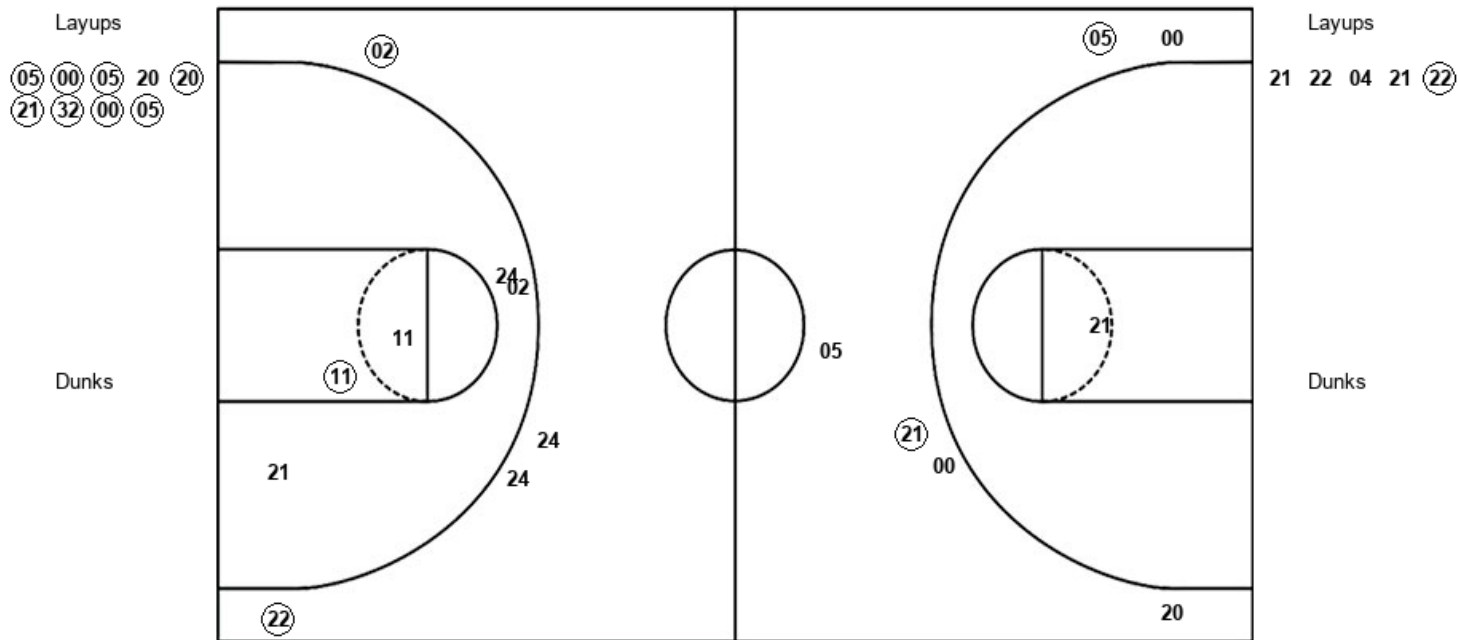


**Official Shot Chart**  
**UCLA vs Oregon**  
**PERIOD 1 Shots**  
 February 23, 2019 at Matthew Knight Arena - Eugene, Ore.



**Oregon**

**UCLA**



ORE : Period 1	Made	Att	Pct
Layups	8	9	88.9
Dunks	0	0	0
2PT Field Goals	8	10	80.0
3PT Field Goals	2	6	33.3
<b>Total Field Goals</b>	<b>10</b>	<b>16</b>	<b>62.5</b>

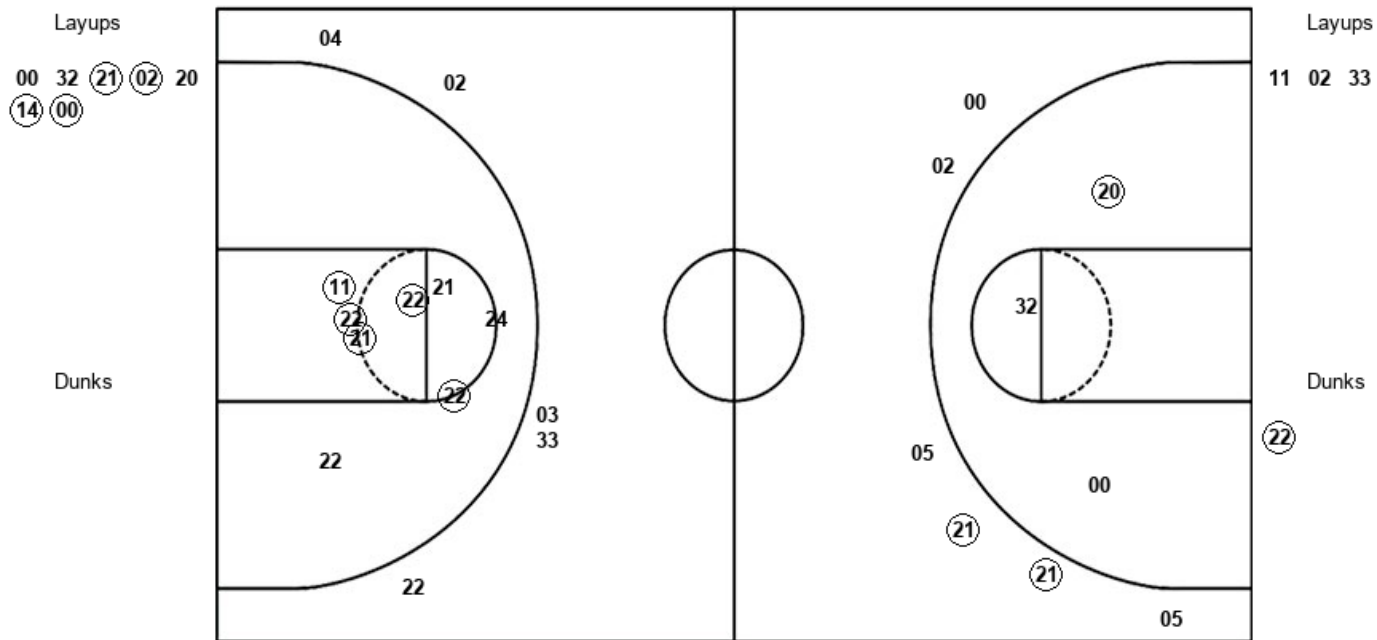
UCL : Period 1	Made	Att	Pct
Layups	1	5	20.0
Dunks	0	0	0
2PT Field Goals	2	10	20.0
3PT Field Goals	2	4	50.0
<b>Total Field Goals</b>	<b>4</b>	<b>14</b>	<b>28.6</b>

**Official Shot Chart**  
**UCLA vs Oregon**  
**PERIOD 2 Shots**  
 February 23, 2019 at Matthew Knight Arena - Eugene, Ore.



**Oregon**

**UCLA**



<b>ORE : Period 2</b>	<b>Made</b>	<b>Att</b>	<b>Pct</b>
Layups	4	7	57.1
Dunks	0	0	0
2PT Field Goals	5	10	50.0
3PT Field Goals	2	6	33.3
<b>Total Field Goals</b>	<b>7</b>	<b>16</b>	<b>43.8</b>

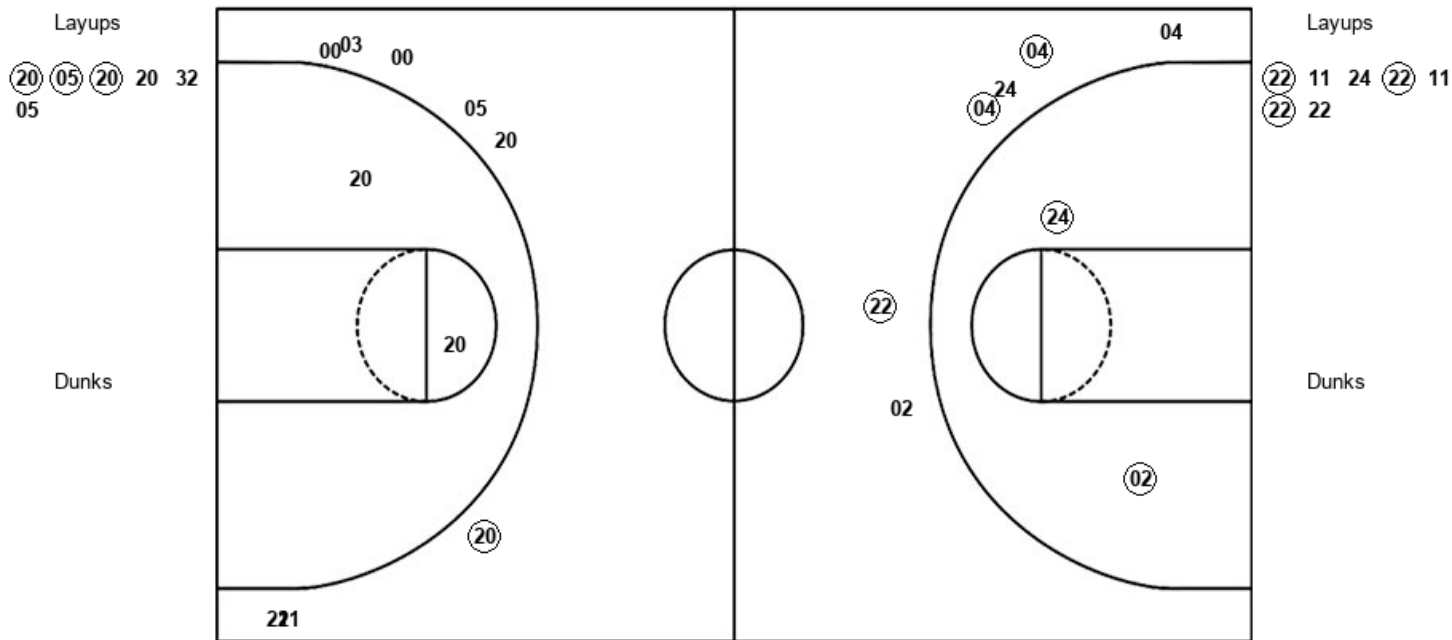
<b>UCL : Period 2</b>	<b>Made</b>	<b>Att</b>	<b>Pct</b>
Layups	0	3	00.0
Dunks	1	1	100.0
2PT Field Goals	6	12	50.0
3PT Field Goals	0	5	00.0
<b>Total Field Goals</b>	<b>6</b>	<b>17</b>	<b>35.3</b>

Official Shot Chart  
**UCLA vs Oregon**  
 PERIOD 3 Shots  
 February 23, 2019 at Matthew Knight Arena - Eugene, Ore.



Oregon

UCLA



ORE : Period 3	Made	Att	Pct
Layups	3	6	50.0
Dunks	0	0	0
2PT Field Goals	3	8	37.5
3PT Field Goals	1	8	12.5
<b>Total Field Goals</b>	<b>4</b>	<b>16</b>	<b>25.0</b>

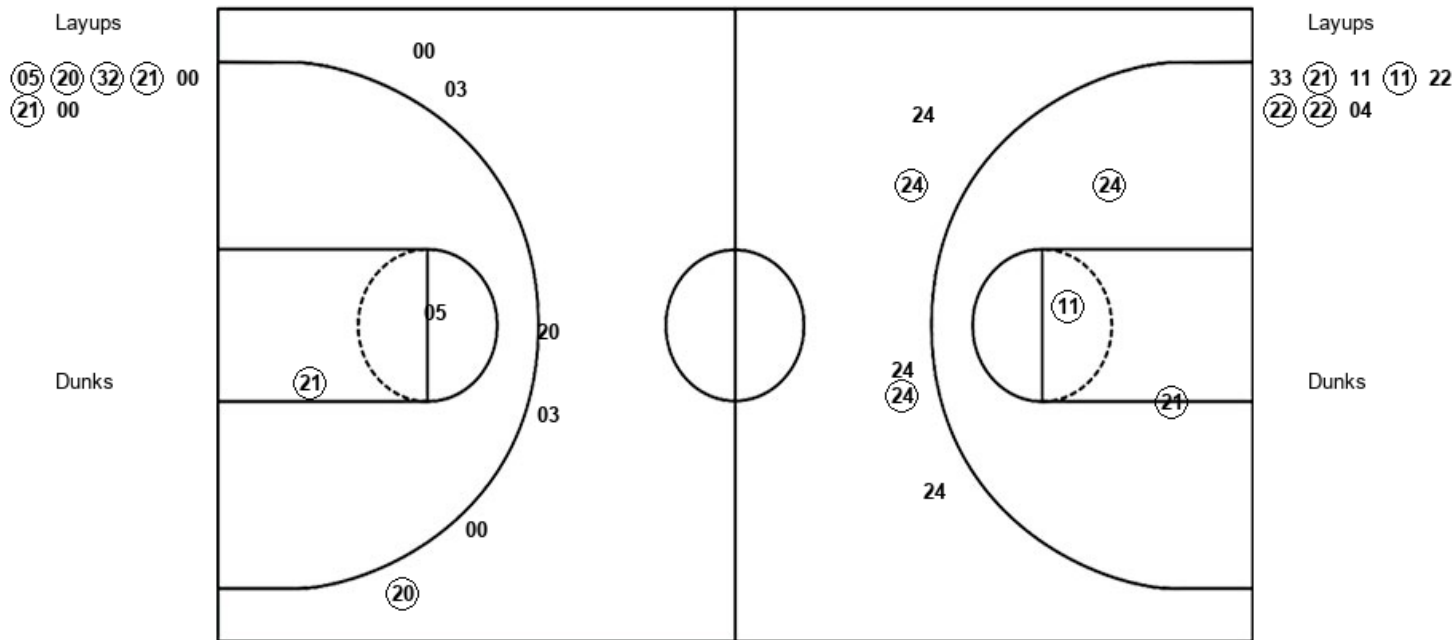
UCL : Period 3	Made	Att	Pct
Layups	3	7	42.9
Dunks	0	0	0
2PT Field Goals	5	9	55.6
3PT Field Goals	3	6	50.0
<b>Total Field Goals</b>	<b>8</b>	<b>15</b>	<b>53.3</b>

**Official Shot Chart**  
**UCLA vs Oregon**  
**PERIOD 4 Shots**  
 February 23, 2019 at Matthew Knight Arena - Eugene, Ore.



**Oregon**

**UCLA**



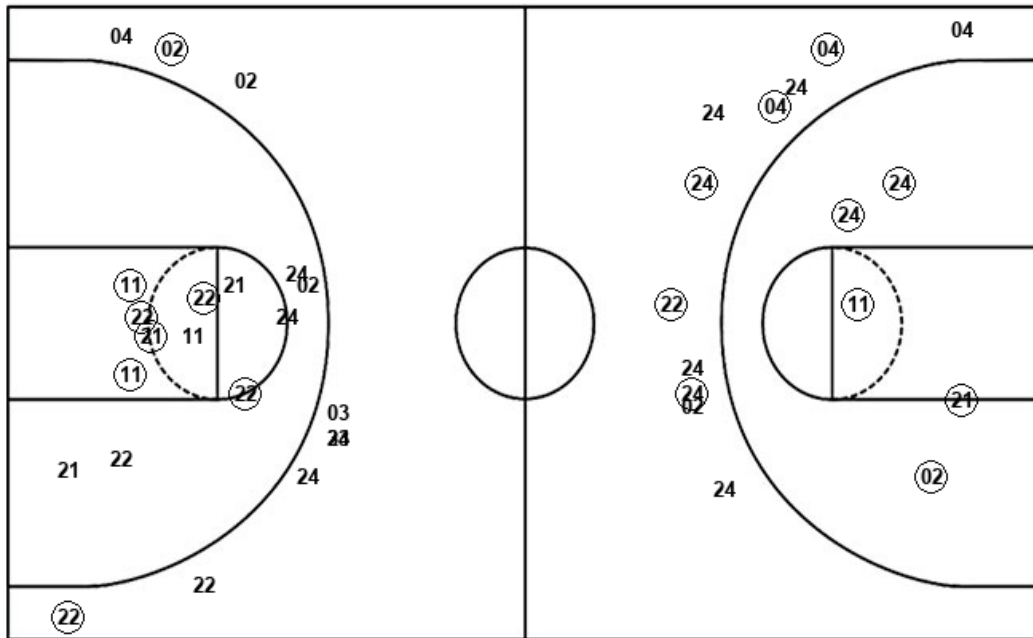
<b>ORE : Period 4</b>	<b>Made</b>	<b>Att</b>	<b>Pct</b>
Layups	5	7	71.4
Dunks	0	0	0
2PT Field Goals	6	9	66.7
3PT Field Goals	1	6	16.7
<b>Total Field Goals</b>	<b>7</b>	<b>15</b>	<b>46.7</b>

<b>UCL : Period 4</b>	<b>Made</b>	<b>Att</b>	<b>Pct</b>
Layups	4	8	50.0
Dunks	0	0	0
2PT Field Goals	7	11	63.6
3PT Field Goals	2	5	40.0
<b>Total Field Goals</b>	<b>9</b>	<b>16</b>	<b>56.3</b>

**Official Shot Chart**  
**UCLA vs Oregon**  
**UCLA Team Shots**  
 February 23, 2019 at Matthew Knight Arena - Eugene, Ore.



Layups



Layups

21 22 04 21 (22)  
 11 02 33 (22) 11  
 24 (22) 11 (22) 22  
 33 (21) 11 (11) 22  
 (22) (22) 04

Dunks

Dunks

(22)

UCL : Period 1	Made	Att	Pct
Layups	1	5	20.0
Dunks	0	0	0
2PT Field Goals	2	10	20.0
3PT Field Goals	2	4	50.0
<b>Total Field Goals</b>	<b>4</b>	<b>14</b>	<b>28.6</b>

UCL : Period 3	Made	Att	Pct
Layups	3	7	42.9
Dunks	0	0	0
2PT Field Goals	5	9	55.6
3PT Field Goals	3	6	50.0
<b>Total Field Goals</b>	<b>8</b>	<b>15</b>	<b>53.3</b>

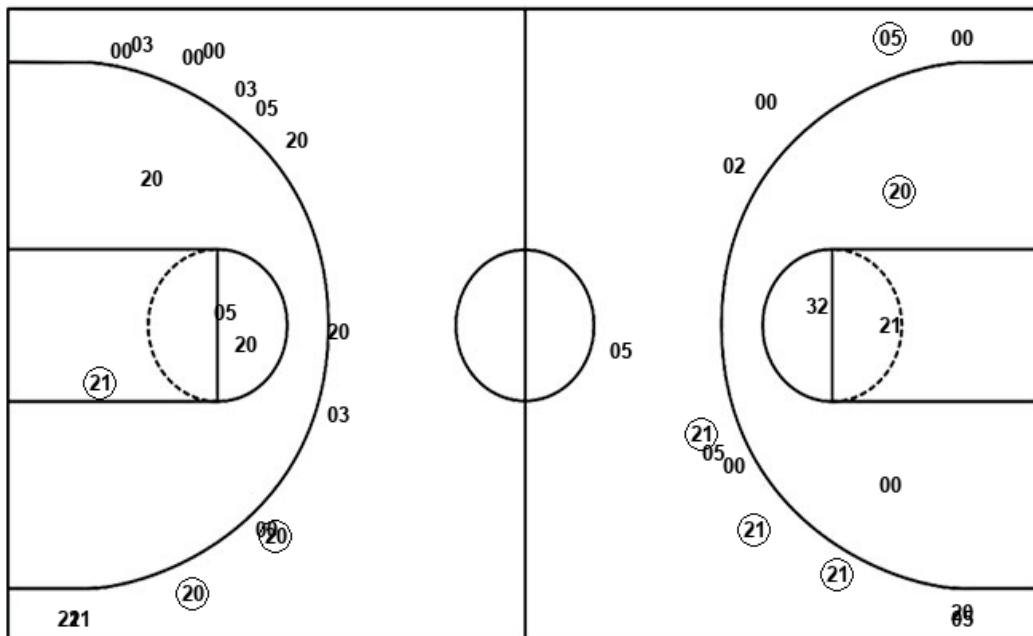
UCL : Period 2	Made	Att	Pct
Layups	0	3	00.0
Dunks	1	1	100.0
2PT Field Goals	6	12	50.0
3PT Field Goals	0	5	00.0
<b>Total Field Goals</b>	<b>6</b>	<b>17</b>	<b>35.3</b>

UCL : Period 4	Made	Att	Pct
Layups	4	8	50.0
Dunks	0	0	0
2PT Field Goals	7	11	63.6
3PT Field Goals	2	5	40.0
<b>Total Field Goals</b>	<b>9</b>	<b>16</b>	<b>56.3</b>

**Official Shot Chart  
UCLA vs Oregon  
Oregon Team Shots  
February 23, 2019 at Matthew Knight Arena - Eugene, Ore.**



Layups



Layups

(05)	(00)	(05)	20	(20)
(21)	(32)	(00)	(05)	00
32	(21)	(02)	20	(14)
(00)	(20)	(05)	(20)	20
32	05	(05)	(20)	(32)
(21)	00	(21)	00	

Dunks

Dunks

ORE : Period 1	Made	Att	Pct
Layups	8	9	88.9
Dunks	0	0	0
2PT Field Goals	8	10	80.0
3PT Field Goals	2	6	33.3
<b>Total Field Goals</b>	<b>10</b>	<b>16</b>	<b>62.5</b>

ORE : Period 2	Made	Att	Pct
Layups	4	7	57.1
Dunks	0	0	0
2PT Field Goals	5	10	50.0
3PT Field Goals	2	6	33.3
<b>Total Field Goals</b>	<b>7</b>	<b>16</b>	<b>43.8</b>

ORE : Period 3	Made	Att	Pct
Layups	3	6	50.0
Dunks	0	0	0
2PT Field Goals	3	8	37.5
3PT Field Goals	1	8	12.5
<b>Total Field Goals</b>	<b>4</b>	<b>16</b>	<b>25.0</b>

ORE : Period 4	Made	Att	Pct
Layups	5	7	71.4
Dunks	0	0	0
2PT Field Goals	6	9	66.7
3PT Field Goals	1	6	16.7
<b>Total Field Goals</b>	<b>7</b>	<b>15</b>	<b>46.7</b>