

FINAL SCORE



Utah

65



Oregon

87

February 02, 2019 • Matthew Knight Arena - Eugene, Ore.

FINAL STATISTICS

Official Box Score
Utah vs Oregon
Game Totals -- Final Statistics
February 02, 2019 at Matthew Knight Arena - Eugene, Ore.



Utah 65

| No. | Player | S | Pts | FG | 3FG | FT | OR | DR | TR | PF | A | TO | Blk | Stl | Min | +/- |
|---------------|------------------|---|-----------|--------------|--------------|-------------|----------|-----------|-----------|-----------|-----------|-----------|----------|----------|------------|-----|
| 00 | MOORE, KIANA | | 7 | 2-9 | 1-7 | 2-3 | 1 | 0 | 1 | 3 | 5 | 2 | 0 | 1 | 33 | -13 |
| 05 | HUFF, MEGAN | | 38 | 13-25 | 6-9 | 6-7 | 6 | 5 | 11 | 2 | 2 | 3 | 1 | 2 | 35 | -15 |
| 10 | GYLTEN, DRU | | 11 | 4-11 | 3-5 | 0-0 | 0 | 3 | 3 | 2 | 1 | 1 | 0 | 1 | 38 | -20 |
| 11 | BEAN, ERIKA | | 0 | 0-1 | 0-0 | 0-0 | 0 | 5 | 5 | 3 | 9 | 5 | 0 | 1 | 37 | -16 |
| 44 | EDWARDS, DRE'UNA | | 9 | 4-6 | 0-1 | 1-2 | 0 | 1 | 1 | 5 | 1 | 2 | 0 | 1 | 16 | 1 |
| 03 | BECKER, NIYAH | | 0 | 0-1 | 0-1 | 0-0 | 0 | 1 | 1 | 0 | 0 | 1 | 0 | 0 | 8 | -12 |
| 14 | TORRES, ANDREA | | 0 | 0-1 | 0-1 | 0-0 | 0 | 3 | 3 | 1 | 0 | 3 | 0 | 0 | 23 | -21 |
| 24 | PORTER, SARAH | | 0 | 0-1 | 0-0 | 0-0 | 0 | 1 | 1 | 2 | 1 | 0 | 0 | 0 | 9 | -14 |
| TEAM | | | | | | | 1 | 1 | 2 | 0 | | 1 | | | | |
| TOTALS | | | 65 | 23-55 | 10-24 | 9-12 | 8 | 20 | 28 | 18 | 19 | 18 | 1 | 6 | 200 | |

Shooting By Period

| Period | FG | FG% | 3FG | 3FG% | FT | FT% |
|-------------|--------------|--------------|--------------|--------------|-------------|--------------|
| 1st Qtr | 4-15 | 27% | 3-7 | 43% | 0-0 | 0% |
| 2nd Qtr | 5-14 | 36% | 3-5 | 60% | 3-5 | 60% |
| 3rd Qtr | 11-16 | 69% | 3-5 | 60% | 4-4 | 100% |
| 4th Qtr | 3-10 | 30% | 1-7 | 14% | 2-3 | 67% |
| 1st Half | 9-29 | 31% | 6-12 | 50% | 3-5 | 60% |
| 2nd Half | 14-26 | 54% | 4-12 | 33% | 6-7 | 86% |
| Game | 23-55 | 41.8% | 10-24 | 41.7% | 9-12 | 75.0% |

Last FG: 4th-03:22
Biggest Run: 6-0
Largest lead: By 2 at 3-00:57
Technical Fouls: None.

Oregon 87

| No. | Player | S | Pts | FG | 3FG | FT | OR | DR | TR | PF | A | TO | Blk | Stl | Min | +/- |
|---------------|------------------|---|-----------|--------------|--------------|--------------|----------|-----------|-----------|-----------|-----------|----------|----------|----------|------------|-----|
| 00 | SABALLY, SATOU | | 20 | 6-9 | 2-3 | 6-6 | 1 | 5 | 6 | 4 | 2 | 2 | 0 | 1 | 28 | 24 |
| 05 | CAZORLA, MAITE | | 16 | 5-10 | 2-7 | 4-4 | 0 | 1 | 1 | 0 | 7 | 1 | 0 | 3 | 38 | 21 |
| 20 | IONESCU, SABRINA | | 11 | 3-11 | 2-5 | 3-4 | 1 | 4 | 5 | 0 | 9 | 4 | 0 | 2 | 37 | 23 |
| 21 | BOLEY, ERIN | | 14 | 5-10 | 4-7 | 0-0 | 0 | 7 | 7 | 2 | 2 | 0 | 0 | 0 | 34 | 25 |
| 24 | HEBARD, RUTHY | | 16 | 8-10 | 0-0 | 0-1 | 3 | 4 | 7 | 2 | 0 | 1 | 1 | 0 | 28 | 18 |
| 02 | YAEGER, MORGAN | | 0 | 0-1 | 0-1 | 0-0 | 0 | 3 | 3 | 0 | 0 | 0 | 0 | 0 | 4 | -1 |
| 03 | CHAVEZ, TAYLOR | | 0 | 0-4 | 0-2 | 0-0 | 0 | 0 | 0 | 1 | 1 | 0 | 0 | 3 | 15 | -1 |
| 14 | GIOMI, LYDIA | | 0 | 0-1 | 0-0 | 0-0 | 0 | 0 | 0 | 1 | 0 | 0 | 0 | 0 | 4 | 3 |
| 32 | GILDON, OTI | | 10 | 5-6 | 0-0 | 0-0 | 2 | 0 | 2 | 0 | 0 | 1 | 0 | 0 | 12 | -2 |
| TEAM | | | | | | | 1 | 0 | 1 | 1 | | 0 | | | | |
| TOTALS | | | 87 | 32-62 | 10-25 | 13-15 | 8 | 24 | 32 | 11 | 21 | 9 | 1 | 9 | 200 | |

Shooting By Period

| Period | FG | FG% | 3FG | 3FG% | FT | FT% |
|-------------|--------------|--------------|--------------|--------------|--------------|--------------|
| 1st Qtr | 10-16 | 63% | 2-5 | 40% | 0-1 | 00% |
| 2nd Qtr | 7-16 | 44% | 1-4 | 25% | 0-0 | 0% |
| 3rd Qtr | 9-17 | 53% | 4-9 | 44% | 1-1 | 100% |
| 4th Qtr | 6-13 | 46% | 3-7 | 43% | 12-13 | 92% |
| 1st Half | 17-32 | 53% | 3-9 | 33% | 0-1 | 00% |
| 2nd Half | 15-30 | 50% | 7-16 | 44% | 13-14 | 93% |
| Game | 32-62 | 51.6% | 10-25 | 40.0% | 13-15 | 86.7% |

Last FG: 4th-01:32
Biggest Run: 11-0
Largest lead: By 22 at 4-00:45
Technical Fouls: None.

Game Notes:

Officials: , ,
Attendance: 7773

Start Time: 2019-02-02 03:06:39
End Time: 2019-02-02 04:47:28
Game Duration: 100
Conference Game;

| Score | 1st | 2nd | 3rd | 4th | TOT |
|-------|-----|-----|-----|-----|-----------|
| UTH | 11 | 16 | 29 | 9 | 65 |
| ORE | 22 | 15 | 23 | 27 | 87 |

UTH led for 0:15. ORE led for 37:20.
Game was tied for 2:26.
Times tied: 2 Lead Changes: 2

| Points from | UTH | ORE |
|--------------|-----|-----|
| In the Paint | 26 | 42 |
| Off Turns | 7 | 30 |
| 2nd Chance | 4 | 7 |
| Fast Break | 7 | 7 |
| Bench | 0 | 10 |

Official Box Score
Utah vs Oregon
First Half Statistics Only
February 02, 2019 at Matthew Knight Arena - Eugene, Ore.



Utah 27

| No. | Player | S | Pts | FG | 3FG | FT | OR | DR | TR | PF | A | TO | Blk | Stl | Min | +/- |
|-----|------------------|---|-----------|-------------|-------------|------------|----------|-----------|-----------|----------|----------|----------|----------|----------|------------|-----|
| 00 | MOORE, KIANA | | 2 | 0-4 | 0-3 | 2-3 | 1 | 0 | 1 | 2 | 2 | 1 | 0 | 0 | 14 | -7 |
| 10 | GYLTEN, DRU | | 5 | 2-8 | 1-2 | 0-0 | 0 | 1 | 1 | 0 | 0 | 1 | 0 | 1 | 18 | -8 |
| 11 | BEAN, ERIKA | | 0 | 0-1 | 0-0 | 0-0 | 0 | 3 | 3 | 0 | 6 | 2 | 0 | 1 | 20 | -10 |
| 14 | TORRES, ANDREA | | 0 | 0-1 | 0-1 | 0-0 | 0 | 2 | 2 | 0 | 0 | 1 | 0 | 0 | 13 | -11 |
| 24 | PORTER, SARAH | | 0 | 0-1 | 0-0 | 0-0 | 0 | 0 | 0 | 2 | 0 | 0 | 0 | 0 | 5 | -2 |
| 44 | EDWARDS, DRE'UNA | | 3 | 1-2 | 0-1 | 1-2 | 0 | 0 | 0 | 2 | 0 | 2 | 0 | 1 | 9 | -2 |
| 03 | BECKER, NIYAH | | 0 | 0-0 | 0-0 | 0-0 | 0 | 0 | 0 | 0 | 0 | 1 | 0 | 0 | 3 | -1 |
| 05 | HUFF, MEGAN | | 17 | 6-12 | 5-5 | 0-0 | 3 | 4 | 7 | 1 | 0 | 1 | 1 | 1 | 19 | -9 |
| | TEAM | | 0 | 0-0 | 0-0 | 0-0 | 1 | 1 | 2 | 0 | 0 | 0 | 0 | 0 | 0 | |
| | TOTALS | | 27 | 9-29 | 6-12 | 3-5 | 5 | 11 | 16 | 7 | 8 | 9 | 1 | 4 | 100 | |

Shooting By Period

| Period | FG | FG% | 3FG | 3FG% | FT | FT% |
|----------|-------|-------|-------|-------|------|-------|
| 1st Qtr | 4-15 | 27% | 3-7 | 43% | 0-0 | 0% |
| 2nd Qtr | 5-14 | 36% | 3-5 | 60% | 3-5 | 60% |
| 1st Half | 9-29 | 31% | 6-12 | 50% | 3-5 | 60% |
| Game | 23-55 | 41.8% | 10-24 | 41.7% | 9-12 | 75.0% |

Last FG Half: UTH 2nd-01:39

Oregon 37

| No. | Player | S | Pts | FG | 3FG | FT | OR | DR | TR | PF | A | TO | Blk | Stl | Min | +/- |
|-----|------------------|---|-----------|--------------|------------|------------|----------|-----------|-----------|----------|-----------|----------|----------|----------|------------|-----|
| 00 | SABALLY, SATOU | | 7 | 3-4 | 1-1 | 0-0 | 1 | 4 | 5 | 2 | 2 | 0 | 0 | 0 | 13 | 12 |
| 14 | GIOMI, LYDIA | | 0 | 0-1 | 0-0 | 0-0 | 0 | 0 | 0 | 1 | 0 | 0 | 0 | 0 | 3 | 1 |
| 20 | IONESCU, SABRINA | | 2 | 1-6 | 0-2 | 0-0 | 1 | 3 | 4 | 0 | 5 | 3 | 0 | 1 | 18 | 12 |
| 21 | BOLEY, ERIN | | 8 | 3-6 | 2-3 | 0-0 | 0 | 2 | 2 | 0 | 1 | 0 | 0 | 0 | 17 | 12 |
| 24 | HEBARD, RUTHY | | 8 | 4-4 | 0-0 | 0-1 | 0 | 3 | 3 | 2 | 0 | 1 | 1 | 0 | 12 | 8 |
| 32 | GILDON, OTI | | 10 | 5-6 | 0-0 | 0-0 | 1 | 0 | 1 | 0 | 0 | 1 | 0 | 0 | 8 | -1 |
| 02 | YAEGER, MORGAN | | 0 | 0-1 | 0-1 | 0-0 | 0 | 2 | 2 | 0 | 0 | 0 | 0 | 0 | 3 | -2 |
| 03 | CHAVEZ, TAYLOR | | 0 | 0-3 | 0-2 | 0-0 | 0 | 0 | 0 | 1 | 1 | 0 | 0 | 3 | 8 | -1 |
| 05 | CAZORLA, MAITE | | 2 | 1-1 | 0-0 | 0-0 | 0 | 1 | 1 | 0 | 4 | 1 | 0 | 1 | 18 | 9 |
| | TEAM | | 0 | 0-0 | 0-0 | 0-0 | 0 | 0 | 0 | 0 | 0 | 0 | 0 | 0 | 0 | |
| | TOTALS | | 37 | 17-32 | 3-9 | 0-1 | 3 | 15 | 18 | 6 | 13 | 6 | 1 | 5 | 100 | |

Shooting By Period

| Period | FG | FG% | 3FG | 3FG% | FT | FT% |
|----------|-------|-------|-------|-------|-------|-------|
| 1st Qtr | 10-16 | 63% | 2-5 | 40% | 0-1 | 00% |
| 2nd Qtr | 7-16 | 44% | 1-4 | 25% | 0-0 | 0% |
| 1st Half | 17-32 | 53% | 3-9 | 33% | 0-1 | 00% |
| Game | 32-62 | 51.6% | 10-25 | 40.0% | 13-15 | 86.7% |

Last FG Half: ORE 2nd-00:00

Game Notes:

Officials: , ,
Attendance: 7773

Start Time: 2019-02-02 03:06:39
End Time: 2019-02-02 04:47:28
Game Duration: 100
Conference Game;

| Score | 1st | 2nd | 3rd | 4th | TOT |
|-------|-----|-----|-----|-----|-----------|
| UTH | 11 | 16 | 29 | 9 | 65 |
| ORE | 22 | 15 | 23 | 27 | 87 |

| Points from (This Period) | UTH | ORE |
|---------------------------|-----|-----|
| In the Paint | 6 | 26 |
| Off Turns | 3 | 13 |
| 2nd Chance | 0 | 2 |
| Fast Break | 2 | 5 |
| Bench | 0 | 10 |

Official Box Score
Utah vs Oregon
First Quarter Statistics Only
February 02, 2019 at Matthew Knight Arena - Eugene, Ore.



Utah 11

| No. | Player | S | Pts | FG | 3FG | FT | OR | DR | TR | PF | A | TO | Blk | Stl | Min | +/- |
|-----|------------------|---|-----------|-------------|------------|------------|----------|----------|----------|----------|----------|----------|----------|----------|-----------|-----|
| 00 | MOORE, KIANA | | 0 | 0-2 | 0-2 | 0-0 | 1 | 0 | 1 | 1 | 1 | 1 | 0 | 0 | 8 | -10 |
| 05 | HUFF, MEGAN | | 6 | 2-5 | 2-2 | 0-0 | 1 | 1 | 2 | 0 | 0 | 1 | 0 | 0 | 9 | -9 |
| 10 | GYLTEN, DRU | | 5 | 2-6 | 1-2 | 0-0 | 0 | 0 | 0 | 0 | 0 | 0 | 0 | 1 | 8 | -9 |
| 11 | BEAN, ERIKA | | 0 | 0-0 | 0-0 | 0-0 | 0 | 1 | 1 | 0 | 2 | 0 | 0 | 1 | 10 | -11 |
| 44 | EDWARDS, DRE'UNA | | 0 | 0-0 | 0-0 | 0-0 | 0 | 0 | 0 | 1 | 0 | 1 | 0 | 0 | 4 | -7 |
| 03 | BECKER, NIYAH | | 0 | 0-0 | 0-0 | 0-0 | 0 | 0 | 0 | 0 | 0 | 1 | 0 | 0 | 3 | -1 |
| 14 | TORRES, ANDREA | | 0 | 0-1 | 0-1 | 0-0 | 0 | 1 | 1 | 0 | 0 | 0 | 0 | 0 | 7 | -6 |
| 24 | PORTER, SARAH | | 0 | 0-1 | 0-0 | 0-0 | 0 | 0 | 0 | 2 | 0 | 0 | 0 | 0 | 1 | -2 |
| | TEAM | | | | | | 1 | 0 | 1 | 0 | | 0 | | | | |
| | TOTALS | | 11 | 4-15 | 3-7 | 0-0 | 3 | 3 | 6 | 4 | 3 | 4 | 0 | 2 | 50 | |

Shooting By Period

| Period | FG | FG% | 3FG | 3FG% | FT | FT% |
|----------|-------|-------|-------|-------|------|-------|
| 1st Qtr | 4-15 | 27% | 3-7 | 43% | 0-0 | 0% |
| 2nd Qtr | 5-14 | 36% | 3-5 | 60% | 3-5 | 60% |
| 1st Half | 4-15 | 27% | 3-7 | 43% | 0-0 | 0% |
| 1st Half | 9-29 | 31% | 6-12 | 50% | 3-5 | 60% |
| Game | 23-55 | 41.8% | 10-24 | 41.7% | 9-12 | 75.0% |

Oregon 22

| No. | Player | S | Pts | FG | 3FG | FT | OR | DR | TR | PF | A | TO | Blk | Stl | Min | +/- |
|-----|------------------|---|-----------|--------------|------------|------------|----------|----------|-----------|----------|----------|----------|----------|----------|-----------|-----|
| 00 | SABALLY, SATOU | | 7 | 3-3 | 1-1 | 0-0 | 1 | 3 | 4 | 1 | 1 | 0 | 0 | 0 | 9 | 11 |
| 05 | CAZORLA, MAITE | | 0 | 0-0 | 0-0 | 0-0 | 0 | 1 | 1 | 0 | 1 | 1 | 0 | 0 | 8 | 10 |
| 20 | IONESCU, SABRINA | | 0 | 0-2 | 0-1 | 0-0 | 1 | 1 | 2 | 0 | 4 | 0 | 0 | 0 | 10 | 11 |
| 21 | BOLEY, ERIN | | 5 | 2-4 | 1-2 | 0-0 | 0 | 2 | 2 | 0 | 1 | 0 | 0 | 0 | 9 | 11 |
| 24 | HEBARD, RUTHY | | 8 | 4-4 | 0-0 | 0-1 | 0 | 1 | 1 | 1 | 0 | 1 | 1 | 0 | 8 | 10 |
| 02 | YAEGER, MORGAN | | 0 | 0-0 | 0-0 | 0-0 | 0 | 0 | 0 | 0 | 0 | 0 | 0 | 0 | 0 | 0 |
| 03 | CHAVEZ, TAYLOR | | 0 | 0-1 | 0-1 | 0-0 | 0 | 0 | 0 | 0 | 1 | 0 | 0 | 3 | 3 | 1 |
| 14 | GIOMI, LYDIA | | 0 | 0-0 | 0-0 | 0-0 | 0 | 0 | 0 | 0 | 0 | 0 | 0 | 0 | 0 | 0 |
| 32 | GILDON, OTI | | 2 | 1-2 | 0-0 | 0-0 | 1 | 0 | 1 | 0 | 0 | 0 | 0 | 0 | 3 | 1 |
| | TEAM | | | | | | 0 | 0 | 0 | 0 | | 0 | | | | |
| | TOTALS | | 22 | 10-16 | 2-5 | 0-1 | 3 | 8 | 11 | 2 | 8 | 2 | 1 | 3 | 50 | |

Shooting By Period

| Period | FG | FG% | 3FG | 3FG% | FT | FT% |
|----------|-------|-------|-------|-------|-------|-------|
| 1st Qtr | 10-16 | 63% | 2-5 | 40% | 0-1 | 00% |
| 2nd Qtr | 7-16 | 44% | 1-4 | 25% | 0-0 | 0% |
| 1st Half | 10-16 | 63% | 2-5 | 40% | 0-1 | 00% |
| 1st Half | 17-32 | 53% | 3-9 | 33% | 0-1 | 00% |
| Game | 32-62 | 51.6% | 10-25 | 40.0% | 13-15 | 86.7% |

Game Notes:

Officials: , ,
Attendance: 7773

Start Time: 2019-02-02 03:06:39
End Time: 2019-02-02 04:47:28
Game Duration: 100
Conference Game;

| Score | 1st | 2nd | 3rd | 4th | TOT |
|-------|-----|-----|-----|-----|-----------|
| UTH | 11 | 16 | 29 | 9 | 65 |
| ORE | 22 | 15 | 23 | 27 | 87 |

| Points from (This Period) | UTH | ORE |
|---------------------------|-----|-----|
| In the Paint | 2 | 16 |
| Off Turns | 0 | 6 |
| 2nd Chance | 0 | 2 |
| Fast Break | 0 | 2 |
| Bench | 0 | 2 |

Official Play-By-Play
Utah vs Oregon
First Quarter
February 02, 2019 at Matthew Knight Arena - Eugene, Ore.



Period 1

Starters:

Utah: 0 MOORE, KIANA; 10 GYLTEN, DRU; 11 BEAN, ERIKA; 44 EDWARDS, DRE'UNA; 5 HUFF, MEGAN;
Oregon: 0 SABALLY, SATOU; 20 IONESCU, SABRINA; 21 BOLEY, ERIN; 24 HEBARD, RUTHY; 5 CAZORLA, MAITE;

| Time | VISITORS: Utah | Score | Margin | HOME: Oregon |
|-------|-------------------------------------|-------|--------|--------------------------------------|
| 09:45 | | | | TURNOVER (BADPASS) by CAZORLA, MAITE |
| 09:45 | STEAL by GYLTEN, DRU | | | |
| 09:37 | MISSED LAYUP by GYLTEN, DRU | | | |
| 09:34 | | | | REBOUND (DEF) by HEBARD, RUTHY |
| 09:32 | | | | MISSED JUMPER by BOLEY, ERIN |
| 09:28 | REBOUND (DEF) by BEAN, ERIKA | | | |
| 09:13 | MISSED 3PTR by GYLTEN, DRU | | | |
| 09:09 | | | | REBOUND (DEF) by BOLEY, ERIN |
| 08:59 | | 2-0 | H 2 | GOOD! LAYUP by SABALLY, SATOU |
| 08:37 | TURNOVER (TRAVEL) by HUFF, MEGAN | | | |
| 08:26 | | 4-0 | H 4 | GOOD! LAYUP by HEBARD, RUTHY |
| 08:26 | | | | ASSIST by IONESCU, SABRINA |
| 08:26 | FOUL (PERSONAL) by EDWARDS, DRE'UNA | | | |
| 08:26 | SUB OUT: EDWARDS, DRE'UNA | | | |
| 08:26 | SUB IN: TORRES, ANDREA | | | |
| 08:26 | | | | MISSED FT by HEBARD, RUTHY |
| 08:24 | REBOUND (DEF) by TORRES, ANDREA | | | |
| 08:16 | GOOD! LAYUP by GYLTEN, DRU | 4-2 | H 2 | |
| 08:02 | | 6-2 | H 4 | GOOD! LAYUP by HEBARD, RUTHY |
| 08:02 | | | | ASSIST by BOLEY, ERIN |
| 07:46 | MISSED LAYUP by HUFF, MEGAN | | | |
| 07:46 | | | | BLOCK by HEBARD, RUTHY |
| 07:46 | REBOUND (OFF) by TEAM | | | |
| 07:39 | MISSED 3PTR by MOORE, KIANA | | | |
| 07:35 | | | | REBOUND (DEF) by SABALLY, SATOU |
| 07:28 | | 9-2 | H 7 | GOOD! 3PTR by BOLEY, ERIN |
| 07:28 | | | | ASSIST by SABALLY, SATOU |
| 07:10 | GOOD! 3PTR by HUFF, MEGAN | 9-5 | H 4 | |
| 07:10 | ASSIST by MOORE, KIANA | | | |
| 06:38 | | | | MISSED JUMPER by IONESCU, SABRINA |
| 06:34 | REBOUND (DEF) by HUFF, MEGAN | | | |
| 06:29 | MISSED LAYUP by HUFF, MEGAN | | | |
| 06:26 | | | | REBOUND (DEF) by CAZORLA, MAITE |
| 06:17 | | | | TURNOVER (LOSTBALL) by HEBARD, RUTHY |
| 06:17 | STEAL by BEAN, ERIKA | | | |
| 06:02 | MISSED 3PTR by TORRES, ANDREA | | | |
| 05:57 | REBOUND (OFF) by MOORE, KIANA | | | |
| 05:50 | MISSED 3PTR by MOORE, KIANA | | | |
| 05:46 | | | | REBOUND (DEF) by IONESCU, SABRINA |
| 05:32 | | 11-5 | H 6 | GOOD! JUMPER by HEBARD, RUTHY [PNT] |
| 05:32 | | | | ASSIST by CAZORLA, MAITE |
| 05:09 | MISSED LAYUP by GYLTEN, DRU | | | |
| 05:06 | | | | REBOUND (DEF) by BOLEY, ERIN |
| 04:55 | | 13-5 | H 8 | GOOD! LAYUP by HEBARD, RUTHY |
| 04:55 | | | | ASSIST by IONESCU, SABRINA |
| 04:22 | | | | |
| 04:22 | SUB OUT: HUFF, MEGAN | | | |
| 04:22 | SUB IN: EDWARDS, DRE'UNA | | | |
| 04:03 | GOOD! 3PTR by GYLTEN, DRU | 13-8 | H 5 | |
| 04:03 | ASSIST by BEAN, ERIKA | | | |
| 03:41 | | 16-8 | H 8 | GOOD! 3PTR by SABALLY, SATOU |
| 03:41 | | | | ASSIST by IONESCU, SABRINA |
| 03:13 | MISSED LAYUP by GYLTEN, DRU | | | |
| 03:10 | | | | REBOUND (DEF) by SABALLY, SATOU |
| 03:01 | | | | MISSED 3PTR by BOLEY, ERIN |
| 02:54 | | | | REBOUND (OFF) by SABALLY, SATOU |
| 02:54 | | 18-8 | H 10 | GOOD! LAYUP by SABALLY, SATOU |
| 02:54 | TIMEOUT 30SEC | | | |
| 02:54 | | | | SUB OUT: CAZORLA, MAITE |
| 02:54 | | | | SUB IN: CHAVEZ, TAYLOR |
| 02:54 | | | | SUB OUT: HEBARD, RUTHY |
| 02:54 | | | | SUB IN: GILDON, OTI |
| 02:54 | SUB OUT: MOORE, KIANA | | | |
| 02:54 | SUB IN: HUFF, MEGAN | | | |
| 02:54 | SUB OUT: TORRES, ANDREA | | | |
| 02:54 | SUB IN: BECKER, NIYAH | | | |
| 02:38 | TURNOVER (BADPASS) by BECKER, NIYAH | | | |
| 02:38 | | | | STEAL by CHAVEZ, TAYLOR |
| 02:11 | | 20-8 | H 12 | GOOD! LAYUP by GILDON, OTI |
| 02:11 | | | | ASSIST by IONESCU, SABRINA |

| Time | VISITORS: Utah | Score | Margin | HOME: Oregon |
|-------|---|-------|--------|-----------------------------------|
| 01:50 | GOOD! 3PTR by HUFF, MEGAN | 20-11 | H 9 | |
| 01:50 | ASSIST by BEAN, ERIKA | | | |
| 01:50 | | | | FOUL (PERSONAL) by SABALLY, SATOU |
| 01:50 | SUB OUT: GYLTEN, DRU | | | |
| 01:50 | SUB IN: PORTER, SARAH | | | |
| 01:49 | TURNOVER (LOSTBALL) by EDWARDS, DRE'UNA | | | |
| 01:49 | | | | STEAL by CHAVEZ, TAYLOR |
| 01:43 | | 22-11 | H 11 | GOOD! LAYUP by BOLEY, ERIN [FB] |
| 01:43 | | | | ASSIST by CHAVEZ, TAYLOR |
| 01:33 | SUB OUT: EDWARDS, DRE'UNA | | | |
| 01:33 | SUB IN: TORRES, ANDREA | | | |
| 01:13 | MISSED LAYUP by PORTER, SARAH | | | |
| 01:11 | | | | REBOUND (DEF) by SABALLY, SATOU |
| 01:11 | FOUL (PERSONAL) by PORTER, SARAH | | | |
| 01:11 | | | | SUB OUT: BOLEY, ERIN |
| 01:11 | | | | SUB IN: HEBARD, RUTHY |
| 01:01 | FOUL (PERSONAL) by PORTER, SARAH | | | |
| 01:01 | SUB OUT: PORTER, SARAH | | | |
| 01:01 | SUB IN: MOORE, KIANA | | | |
| 00:56 | | | | MISSED JUMPER by GILDON, OTI |
| 00:54 | REBOUND (DEF) by TEAM | | | |
| 00:54 | | | | FOUL (PERSONAL) by HEBARD, RUTHY |
| 00:54 | | | | SUB OUT: SABALLY, SATOU |
| 00:54 | | | | SUB IN: CAZORLA, MAITE |
| 00:42 | MISSED JUMPER by HUFF, MEGAN | | | |
| 00:38 | REBOUND (OFF) by HUFF, MEGAN | | | |
| 00:33 | TURNOVER (LOSTBALL) by MOORE, KIANA | | | |
| 00:33 | | | | STEAL by CHAVEZ, TAYLOR |
| 00:15 | FOUL (PERSONAL) by MOORE, KIANA | | | |
| 00:04 | | | | MISSED 3PTR by IONESCU, SABRINA |
| 00:00 | | | | REBOUND (OFF) by GILDON, OTI |
| 00:00 | | | | MISSED 3PTR by CHAVEZ, TAYLOR |
| 00:00 | | | | REBOUND (OFF) by IONESCU, SABRINA |

Utah 11, Oregon 22

| Points from (This Period) | UTH | ORE |
|---------------------------|-----|-----|
| In the Paint | 2 | 16 |
| Off Turns | 0 | 6 |
| 2nd Chance | 0 | 2 |
| Fast Break | 0 | 2 |
| Bench | 0 | 2 |

Official Box Score
Utah vs Oregon
Second Quarter Statistics Only
February 02, 2019 at Matthew Knight Arena - Eugene, Ore.



Utah 16

| No. | Player | S | Pts | FG | 3FG | FT | OR | DR | TR | PF | A | TO | Blk | Stl | Min | +/- |
|---------------|------------------|---|-----------|-------------|------------|------------|----------|----------|-----------|----------|----------|----------|----------|----------|-----------|-----|
| 00 | MOORE, KIANA | | 2 | 0-2 | 0-1 | 2-3 | 0 | 0 | 0 | 1 | 1 | 0 | 0 | 0 | 6 | 3 |
| 05 | HUFF, MEGAN | | 11 | 4-7 | 3-3 | 0-0 | 2 | 3 | 5 | 1 | 0 | 0 | 1 | 1 | 10 | 0 |
| 10 | GYLTEN, DRU | | 0 | 0-2 | 0-0 | 0-0 | 0 | 1 | 1 | 0 | 0 | 1 | 0 | 0 | 10 | 1 |
| 11 | BEAN, ERIKA | | 0 | 0-1 | 0-0 | 0-0 | 0 | 2 | 2 | 0 | 4 | 2 | 0 | 0 | 10 | 1 |
| 44 | EDWARDS, DRE'UNA | | 3 | 1-2 | 0-1 | 1-2 | 0 | 0 | 0 | 1 | 0 | 1 | 0 | 1 | 5 | 5 |
| 03 | BECKER, NIYAH | | 0 | 0-0 | 0-0 | 0-0 | 0 | 0 | 0 | 0 | 0 | 0 | 0 | 0 | 0 | 0 |
| 14 | TORRES, ANDREA | | 0 | 0-0 | 0-0 | 0-0 | 0 | 1 | 1 | 0 | 0 | 1 | 0 | 0 | 6 | -5 |
| 24 | PORTER, SARAH | | 0 | 0-0 | 0-0 | 0-0 | 0 | 0 | 0 | 0 | 0 | 0 | 0 | 0 | 4 | 0 |
| | TEAM | | | | | | 0 | 1 | 1 | 0 | | 0 | | | | |
| TOTALS | | | 16 | 5-14 | 3-5 | 3-5 | 2 | 8 | 10 | 3 | 5 | 5 | 1 | 2 | 50 | |

Shooting By Period

| Period | FG | FG% | 3FG | 3FG% | FT | FT% |
|----------|-------|-------|-------|-------|------|-------|
| 3rd Qtr | 11-16 | 69% | 3-5 | 60% | 4-4 | 100% |
| 4th Qtr | 3-10 | 30% | 1-7 | 14% | 2-3 | 67% |
| 2nd Half | 5-14 | 36% | 3-5 | 60% | 3-5 | 60% |
| 2nd Half | 14-26 | 54% | 4-12 | 33% | 6-7 | 86% |
| Game | 23-55 | 41.8% | 10-24 | 41.7% | 9-12 | 75.0% |

Oregon 15

| No. | Player | S | Pts | FG | 3FG | FT | OR | DR | TR | PF | A | TO | Blk | Stl | Min | +/- |
|---------------|------------------|---|-----------|-------------|------------|------------|----------|----------|----------|----------|----------|----------|----------|----------|-----------|-----|
| 00 | SABALLY, SATOU | | 0 | 0-1 | 0-0 | 0-0 | 0 | 1 | 1 | 1 | 1 | 0 | 0 | 0 | 4 | 1 |
| 05 | CAZORLA, MAITE | | 2 | 1-1 | 0-0 | 0-0 | 0 | 0 | 0 | 0 | 3 | 0 | 0 | 1 | 10 | -1 |
| 20 | IONESCU, SABRINA | | 2 | 1-4 | 0-1 | 0-0 | 0 | 2 | 2 | 0 | 1 | 3 | 0 | 1 | 8 | 1 |
| 21 | BOLEY, ERIN | | 3 | 1-2 | 1-1 | 0-0 | 0 | 0 | 0 | 0 | 0 | 0 | 0 | 0 | 8 | 1 |
| 24 | HEBARD, RUTHY | | 0 | 0-0 | 0-0 | 0-0 | 0 | 2 | 2 | 1 | 0 | 0 | 0 | 0 | 4 | -2 |
| 02 | YAEGER, MORGAN | | 0 | 0-1 | 0-1 | 0-0 | 0 | 2 | 2 | 0 | 0 | 0 | 0 | 0 | 3 | -2 |
| 03 | CHAVEZ, TAYLOR | | 0 | 0-2 | 0-1 | 0-0 | 0 | 0 | 0 | 1 | 0 | 0 | 0 | 0 | 5 | -2 |
| 14 | GIOMI, LYDIA | | 0 | 0-1 | 0-0 | 0-0 | 0 | 0 | 0 | 1 | 0 | 0 | 0 | 0 | 3 | 1 |
| 32 | GILDON, OTI | | 8 | 4-4 | 0-0 | 0-0 | 0 | 0 | 0 | 0 | 0 | 1 | 0 | 0 | 5 | -2 |
| | TEAM | | | | | | 0 | 0 | 0 | 0 | | 0 | | | | |
| TOTALS | | | 15 | 7-16 | 1-4 | 0-0 | 0 | 7 | 7 | 4 | 5 | 4 | 0 | 2 | 50 | |

Shooting By Period

| Period | FG | FG% | 3FG | 3FG% | FT | FT% |
|----------|-------|-------|-------|-------|-------|-------|
| 3rd Qtr | 9-17 | 53% | 4-9 | 44% | 1-1 | 100% |
| 4th Qtr | 6-13 | 46% | 3-7 | 43% | 12-13 | 92% |
| 2nd Half | 7-16 | 44% | 1-4 | 25% | 0-0 | 0% |
| 2nd Half | 15-30 | 50% | 7-16 | 44% | 13-14 | 93% |
| Game | 32-62 | 51.6% | 10-25 | 40.0% | 13-15 | 86.7% |

Game Notes:

Officials: , ,

Attendance: 7773

Start Time: 2019-02-02 03:06:39

End Time: 2019-02-02 04:47:28

Game Duration: 100

Conference Game;

| Score | 1st | 2nd | 3rd | 4th | TOT |
|-------|-----|-----|-----|-----|-----------|
| UTH | 11 | 16 | 29 | 9 | 65 |
| ORE | 22 | 15 | 23 | 27 | 87 |

| Points from (This Period) | UTH | ORE |
|---------------------------|-----|-----|
| In the Paint | 4 | 10 |
| Off Turns | 3 | 7 |
| 2nd Chance | 0 | 0 |
| Fast Break | 2 | 3 |
| Bench | 0 | 8 |

Official Play-By-Play
Utah vs Oregon
Second Quarter
February 02, 2019 at Matthew Knight Arena - Eugene, Ore.



Period 2

Starters:

Utah: 0 MOORE, KIANA; 10 GYLTEN, DRU; 11 BEAN, ERIKA; 44 EDWARDS, DRE'UNA; 5 HUFF, MEGAN;
Oregon: 0 SABALLY, SATOU; 20 IONESCU, SABRINA; 21 BOLEY, ERIN; 24 HEBARD, RUTHY; 5 CAZORLA, MAITE;

| Time | VISITORS: Utah | Score | Margin | HOME: Oregon |
|-------|--|-------|--------|--|
| 09:34 | | 24-11 | H 13 | GOOD! LAYUP by GILDON, OTI |
| 09:34 | | | | ASSIST by CAZORLA, MAITE |
| 09:19 | GOOD! 3PTR by HUFF, MEGAN | 24-14 | H 10 | |
| 09:19 | ASSIST by MOORE, KIANA | | | |
| 09:07 | | | | TURNOVER (TRAVEL) by GILDON, OTI |
| 08:52 | GOOD! 3PTR by HUFF, MEGAN | 24-17 | H 7 | |
| 08:52 | ASSIST by BEAN, ERIKA | | | |
| 08:27 | | 26-17 | H 9 | GOOD! LAYUP by GILDON, OTI |
| 08:27 | | | | ASSIST by IONESCU, SABRINA |
| 08:20 | MISSED LAYUP by GYLTEN, DRU | | | |
| 08:17 | | | | REBOUND (DEF) by IONESCU, SABRINA |
| 08:16 | FOUL (PERSONAL) by HUFF, MEGAN | | | |
| 08:16 | | | | SUB OUT: GILDON, OTI |
| 08:16 | | | | SUB IN: BOLEY, ERIN |
| 08:09 | | | | MISSED JUMPER by BOLEY, ERIN |
| 08:09 | BLOCK by HUFF, MEGAN | | | |
| 08:04 | REBOUND (DEF) by HUFF, MEGAN | | | |
| 08:04 | FOUL (OFF) by EDWARDS, DRE'UNA | | | |
| 08:04 | TURNOVER (OFFENSIVE) by EDWARDS, DRE'UNA | | | |
| 07:59 | | 28-17 | H 11 | GOOD! JUMPER by IONESCU, SABRINA |
| 07:52 | GOOD! LAYUP by EDWARDS, DRE'UNA [FB] | 28-19 | H 9 | |
| 07:52 | ASSIST by BEAN, ERIKA | | | |
| 07:27 | | | | TURNOVER (BADPASS) by IONESCU, SABRINA |
| 07:27 | STEAL by EDWARDS, DRE'UNA | | | |
| 07:18 | MISSED LAYUP by MOORE, KIANA | | | |
| 07:18 | | | | REBOUND (DEF) by HEBARD, RUTHY |
| 07:18 | FOUL (PERSONAL) by MOORE, KIANA | | | |
| 07:18 | | | | SUB OUT: CHAVEZ, TAYLOR |
| 07:18 | | | | SUB IN: SABALLY, SATOU |
| 07:05 | | | | TURNOVER (BADPASS) by IONESCU, SABRINA |
| 07:05 | | | | SUB OUT: IONESCU, SABRINA |
| 07:05 | | | | SUB IN: CHAVEZ, TAYLOR |
| 06:52 | MISSED 3PTR by EDWARDS, DRE'UNA | | | |
| 06:45 | REBOUND (OFF) by HUFF, MEGAN | | | |
| 06:45 | MISSED LAYUP by HUFF, MEGAN | | | |
| 06:44 | | | | REBOUND (DEF) by HEBARD, RUTHY |
| 06:28 | | | | MISSED LAYUP by CHAVEZ, TAYLOR |
| 06:26 | REBOUND (DEF) by TEAM | | | |
| 06:26 | | | | FOUL (PERSONAL) by HEBARD, RUTHY |
| 06:26 | | | | SUB OUT: HEBARD, RUTHY |
| 06:26 | | | | SUB IN: GIOMI, LYDIA |
| 06:01 | GOOD! LAYUP by HUFF, MEGAN | 28-21 | H 7 | |
| 06:01 | ASSIST by BEAN, ERIKA | | | |
| 05:48 | | | | MISSED LAYUP by GIOMI, LYDIA |
| 05:44 | REBOUND (DEF) by TORRES, ANDREA | | | |
| 05:44 | | | | FOUL (PERSONAL) by CHAVEZ, TAYLOR |
| 05:44 | SUB OUT: EDWARDS, DRE'UNA | | | |
| 05:44 | SUB IN: TORRES, ANDREA | | | |
| 05:37 | MISSED 3PTR by MOORE, KIANA | | | |
| 05:32 | | | | REBOUND (DEF) by SABALLY, SATOU |
| 05:20 | | | | MISSED 3PTR by CHAVEZ, TAYLOR |
| 05:16 | REBOUND (DEF) by HUFF, MEGAN | | | |
| 05:08 | TURNOVER (LOSTBALL) by GYLTEN, DRU | | | |
| 05:08 | | | | SUB OUT: CHAVEZ, TAYLOR |
| 05:08 | | | | SUB IN: IONESCU, SABRINA |
| 04:51 | | | | MISSED LAYUP by SABALLY, SATOU |
| 04:47 | REBOUND (DEF) by BEAN, ERIKA | | | |
| 04:21 | TURNOVER (BADPASS) by BEAN, ERIKA | | | |
| 04:21 | | | | STEAL by IONESCU, SABRINA |
| 04:11 | | | | MISSED 3PTR by IONESCU, SABRINA |
| 04:07 | REBOUND (DEF) by BEAN, ERIKA | | | |
| 04:04 | TURNOVER (BADPASS) by BEAN, ERIKA | | | |
| 04:04 | | | | STEAL by CAZORLA, MAITE |
| 03:56 | | 31-21 | H 10 | GOOD! 3PTR by BOLEY, ERIN [FB] |
| 03:56 | | | | ASSIST by SABALLY, SATOU |
| 03:36 | | | | FOUL (PERSONAL) by GIOMI, LYDIA |
| 03:36 | | | | |
| 03:36 | | | | SUB OUT: GIOMI, LYDIA |
| 03:36 | | | | SUB IN: GILDON, OTI |
| 03:36 | SUB OUT: HUFF, MEGAN | | | |

| Time | VISITORS: Utah | Score | Margin | HOME: Oregon |
|-------|--|-------|--------|---|
| 03:36 | SUB IN: PORTER, SARAH | | | |
| 03:36 | SUB OUT: TORRES, ANDREA | | | |
| 03:36 | SUB IN: EDWARDS, DRE'UNA | | | |
| 03:36 | MISSED FT by MOORE, KIANA | | | |
| 03:36 | REBOUND (OFF) by TEAM | | | |
| 03:36 | GOOD! FT by MOORE, KIANA | 31-22 | H 9 | |
| 03:36 | GOOD! FT by MOORE, KIANA | 31-23 | H 8 | |
| 03:36 | SUB OUT: MOORE, KIANA | | | |
| 03:36 | SUB IN: TORRES, ANDREA | | | |
| 03:31 | | 33-23 | H 10 | GOOD! LAYUP by CAZORLA, MAITE |
| 03:06 | | | | FOUL (PERSONAL) by SABALLY, SATOU |
| 03:06 | MISSED FT by EDWARDS, DRE'UNA | | | |
| 03:06 | REBOUND (OFF) by TEAM | | | |
| 03:06 | | | | SUB OUT: SABALLY, SATOU |
| 03:06 | | | | SUB IN: YAEGER, MORGAN |
| 03:06 | GOOD! FT by EDWARDS, DRE'UNA | 33-24 | H 9 | |
| 03:06 | SUB OUT: EDWARDS, DRE'UNA | | | |
| 03:06 | SUB IN: HUFF, MEGAN | | | |
| 02:52 | | | | MISSED JUMPER by IONESCU, SABRINA |
| 02:49 | REBOUND (DEF) by HUFF, MEGAN | | | |
| 02:45 | MISSED LAYUP by BEAN, ERIKA | | | |
| 02:42 | | | | REBOUND (DEF) by YAEGER, MORGAN |
| 02:29 | | 35-24 | H 11 | GOOD! LAYUP by GILDON, OTI [PNT] |
| 02:29 | | | | ASSIST by CAZORLA, MAITE |
| 02:08 | MISSED JUMPER by HUFF, MEGAN | | | |
| 02:01 | REBOUND (OFF) by HUFF, MEGAN | | | |
| 02:01 | MISSED LAYUP by HUFF, MEGAN | | | |
| 02:00 | | | | REBOUND (DEF) by YAEGER, MORGAN |
| 01:47 | | | | MISSED LAYUP by IONESCU, SABRINA |
| 01:44 | REBOUND (DEF) by GYLTEN, DRU | | | |
| 01:39 | GOOD! 3PTR by HUFF, MEGAN | 35-27 | H 8 | |
| 01:39 | ASSIST by BEAN, ERIKA | | | |
| 01:18 | | | | MISSED 3PTR by YAEGER, MORGAN |
| 01:15 | REBOUND (DEF) by TEAM | | | |
| 00:47 | MISSED LAYUP by GYLTEN, DRU | | | |
| 00:43 | | | | REBOUND (DEF) by IONESCU, SABRINA |
| 00:32 | | | | TURNOVER (LOSTBALL) by IONESCU, SABRINA |
| 00:32 | STEAL by HUFF, MEGAN | | | |
| 00:08 | TURNOVER (DRIBBLING) by TORRES, ANDREA | | | |
| 00:08 | | | | SUB OUT: YAEGER, MORGAN |
| 00:08 | | | | SUB IN: CHAVEZ, TAYLOR |
| 00:00 | | 37-27 | H 10 | GOOD! LAYUP by GILDON, OTI |
| 00:00 | | | | ASSIST by CAZORLA, MAITE |

Utah 27, Oregon 37

| Points from (This Period) | UTH | ORE |
|---------------------------|-----|-----|
| In the Paint | 4 | 10 |
| Off Turns | 3 | 7 |
| 2nd Chance | 0 | 0 |
| Fast Break | 2 | 3 |
| Bench | 0 | 8 |

Official Box Score
Utah vs Oregon
Second Half Statistics Only
February 02, 2019 at Matthew Knight Arena - Eugene, Ore.



Utah 38

| No. | Player | S | Pts | FG | 3FG | FT | OR | DR | TR | PF | A | TO | Blk | Stl | Min | +/- |
|---------------|------------------|---|-----------|--------------|-------------|------------|----------|----------|-----------|-----------|-----------|----------|----------|----------|------------|-----|
| 00 | MOORE, KIANA | | 5 | 2-5 | 1-4 | 0-0 | 0 | 0 | 0 | 1 | 3 | 1 | 0 | 1 | 18 | -6 |
| 10 | GYLTEN, DRU | | 6 | 2-3 | 2-3 | 0-0 | 0 | 2 | 2 | 2 | 1 | 0 | 0 | 0 | 20 | -12 |
| 11 | BEAN, ERIKA | | 0 | 0-0 | 0-0 | 0-0 | 0 | 2 | 2 | 3 | 3 | 3 | 0 | 0 | 17 | -6 |
| 14 | TORRES, ANDREA | | 0 | 0-0 | 0-0 | 0-0 | 0 | 1 | 1 | 1 | 0 | 2 | 0 | 0 | 9 | -10 |
| 24 | PORTER, SARAH | | 0 | 0-0 | 0-0 | 0-0 | 0 | 1 | 1 | 0 | 1 | 0 | 0 | 0 | 5 | -12 |
| 44 | EDWARDS, DRE'UNA | | 6 | 3-4 | 0-0 | 0-0 | 0 | 1 | 1 | 3 | 1 | 0 | 0 | 0 | 7 | 3 |
| 03 | BECKER, NIYAH | | 0 | 0-1 | 0-1 | 0-0 | 0 | 1 | 1 | 0 | 0 | 0 | 0 | 0 | 5 | -11 |
| 05 | HUFF, MEGAN | | 21 | 7-13 | 1-4 | 6-7 | 3 | 1 | 4 | 1 | 2 | 2 | 0 | 1 | 18 | -6 |
| | TEAM | | 0 | 0-0 | 0-0 | 0-0 | 0 | 0 | 0 | 0 | 0 | 1 | 0 | 0 | 0 | |
| TOTALS | | | 38 | 14-26 | 4-12 | 6-7 | 3 | 9 | 12 | 11 | 11 | 9 | 0 | 2 | 100 | |

Shooting By Period

| Period | FG | FG% | 3FG | 3FG% | FT | FT% |
|----------|-------|-------|-------|-------|------|-------|
| 3rd Qtr | 11-16 | 69% | 3-5 | 60% | 4-4 | 100% |
| 4th Qtr | 3-10 | 30% | 1-7 | 14% | 2-3 | 67% |
| 2nd Half | 14-26 | 54% | 4-12 | 33% | 6-7 | 86% |
| Game | 23-55 | 41.8% | 10-24 | 41.7% | 9-12 | 75.0% |

Last FG Half: UTH 4th-03:22

Oregon 50

| No. | Player | S | Pts | FG | 3FG | FT | OR | DR | TR | PF | A | TO | Blk | Stl | Min | +/- |
|---------------|------------------|---|-----------|--------------|-------------|--------------|----------|----------|-----------|----------|----------|----------|----------|----------|------------|-----|
| 00 | SABALLY, SATOU | | 13 | 3-5 | 1-2 | 6-6 | 0 | 1 | 1 | 2 | 0 | 2 | 0 | 1 | 15 | 12 |
| 14 | GIOMI, LYDIA | | 0 | 0-0 | 0-0 | 0-0 | 0 | 0 | 0 | 0 | 0 | 0 | 0 | 0 | 1 | 2 |
| 20 | IONESCU, SABRINA | | 9 | 2-5 | 2-3 | 3-4 | 0 | 1 | 1 | 0 | 4 | 1 | 0 | 1 | 19 | 11 |
| 21 | BOLEY, ERIN | | 6 | 2-4 | 2-4 | 0-0 | 0 | 5 | 5 | 2 | 1 | 0 | 0 | 0 | 17 | 13 |
| 24 | HEBAR, RUTHY | | 8 | 4-6 | 0-0 | 0-0 | 3 | 1 | 4 | 0 | 0 | 0 | 0 | 0 | 16 | 10 |
| 32 | GILDON, OTI | | 0 | 0-0 | 0-0 | 0-0 | 1 | 0 | 1 | 0 | 0 | 0 | 0 | 0 | 3 | -1 |
| 02 | YAEGER, MORGAN | | 0 | 0-0 | 0-0 | 0-0 | 0 | 1 | 1 | 0 | 0 | 0 | 0 | 0 | 1 | 1 |
| 03 | CHAVEZ, TAYLOR | | 0 | 0-1 | 0-0 | 0-0 | 0 | 0 | 0 | 0 | 0 | 0 | 0 | 0 | 8 | 0 |
| 05 | CAZORLA, MAITE | | 14 | 4-9 | 2-7 | 4-4 | 0 | 0 | 0 | 0 | 3 | 0 | 0 | 2 | 20 | 12 |
| | TEAM | | 0 | 0-0 | 0-0 | 0-0 | 1 | 0 | 1 | 1 | 0 | 0 | 0 | 0 | 0 | |
| TOTALS | | | 50 | 15-30 | 7-16 | 13-14 | 5 | 9 | 14 | 5 | 8 | 3 | 0 | 4 | 100 | |

Shooting By Period

| Period | FG | FG% | 3FG | 3FG% | FT | FT% |
|----------|-------|-------|-------|-------|-------|-------|
| 3rd Qtr | 9-17 | 53% | 4-9 | 44% | 1-1 | 100% |
| 4th Qtr | 6-13 | 46% | 3-7 | 43% | 12-13 | 92% |
| 2nd Half | 15-30 | 50% | 7-16 | 44% | 13-14 | 93% |
| Game | 32-62 | 51.6% | 10-25 | 40.0% | 13-15 | 86.7% |

Last FG Half: ORE 4th-01:32

Game Notes:

Officials: , ,
Attendance: 7773

Start Time: 2019-02-02 03:06:39
End Time: 2019-02-02 04:47:28
Game Duration: 100
Conference Game;

| Score | 1st | 2nd | 3rd | 4th | TOT |
|-------|-----|-----|-----|-----|-----------|
| UTH | 11 | 16 | 29 | 9 | 65 |
| ORE | 22 | 15 | 23 | 27 | 87 |

| Points from (This Period) | UTH | ORE |
|---------------------------|-----|-----|
| In the Paint | 20 | 16 |
| Off Turns | 4 | 17 |
| 2nd Chance | 4 | 5 |
| Fast Break | 5 | 2 |
| Bench | 0 | 0 |

Official Box Score
Utah vs Oregon
Third Quarter Statistics Only
February 02, 2019 at Matthew Knight Arena - Eugene, Ore.



Utah 38

| No. | Player | S | Pts | FG | 3FG | FT | OR | DR | TR | PF | A | TO | Blk | Stl | Min | +/- |
|---------------|------------------|---|-----------|--------------|------------|------------|----------|----------|----------|----------|----------|----------|----------|----------|-----------|-----|
| 00 | MOORE, KIANA | | 5 | 2-3 | 1-2 | 0-0 | 0 | 0 | 0 | 0 | 1 | 0 | 0 | 1 | 10 | 6 |
| 05 | HUFF, MEGAN | | 15 | 5-8 | 1-2 | 4-4 | 3 | 1 | 4 | 0 | 2 | 2 | 0 | 1 | 10 | 9 |
| 10 | GYLTEN, DRU | | 3 | 1-1 | 1-1 | 0-0 | 0 | 0 | 0 | 0 | 1 | 0 | 0 | 0 | 10 | 6 |
| 11 | BEAN, ERIKA | | 0 | 0-0 | 0-0 | 0-0 | 0 | 2 | 2 | 1 | 3 | 0 | 0 | 0 | 10 | 6 |
| 44 | EDWARDS, DRE'UNA | | 6 | 3-4 | 0-0 | 0-0 | 0 | 1 | 1 | 2 | 1 | 0 | 0 | 0 | 7 | 4 |
| 03 | BECKER, NIYAH | | 0 | 0-0 | 0-0 | 0-0 | 0 | 0 | 0 | 0 | 0 | 0 | 0 | 0 | 0 | 0 |
| 14 | TORRES, ANDREA | | 0 | 0-0 | 0-0 | 0-0 | 0 | 0 | 0 | 1 | 0 | 1 | 0 | 0 | 3 | -1 |
| 24 | PORTER, SARAH | | 0 | 0-0 | 0-0 | 0-0 | 0 | 0 | 0 | 0 | 0 | 0 | 0 | 0 | 0 | 0 |
| | TEAM | | | | | | 0 | 0 | 0 | 0 | | 0 | | | | |
| TOTALS | | | 29 | 11-16 | 3-5 | 4-4 | 3 | 4 | 7 | 4 | 8 | 3 | 0 | 2 | 50 | |

Shooting By Period

| Period | FG | FG% | 3FG | 3FG% | FT | FT% |
|----------|-------|-------|-------|-------|------|-------|
| 2nd Half | 0-0 | 0% | 0-0 | 0% | 0-0 | 0% |
| Game | 23-55 | 41.8% | 10-24 | 41.7% | 9-12 | 75.0% |

Oregon 50

| No. | Player | S | Pts | FG | 3FG | FT | OR | DR | TR | PF | A | TO | Blk | Stl | Min | +/- |
|---------------|------------------|---|-----------|-------------|------------|------------|----------|----------|----------|----------|----------|----------|----------|----------|-----------|-----|
| 00 | SABALLY, SATOU | | 6 | 2-3 | 1-2 | 1-1 | 0 | 0 | 0 | 0 | 0 | 2 | 0 | 0 | 6 | -4 |
| 05 | CAZORLA, MAITE | | 8 | 3-5 | 2-4 | 0-0 | 0 | 0 | 0 | 0 | 2 | 0 | 0 | 1 | 10 | -6 |
| 20 | IONESCU, SABRINA | | 0 | 0-1 | 0-0 | 0-0 | 0 | 0 | 0 | 0 | 2 | 1 | 0 | 0 | 10 | -6 |
| 21 | BOLEY, ERIN | | 3 | 1-3 | 1-3 | 0-0 | 0 | 2 | 2 | 2 | 0 | 0 | 0 | 0 | 8 | -3 |
| 24 | HEBARD, RUTHY | | 6 | 3-4 | 0-0 | 0-0 | 2 | 0 | 2 | 0 | 0 | 0 | 0 | 0 | 7 | -6 |
| 02 | YAEGER, MORGAN | | 0 | 0-0 | 0-0 | 0-0 | 0 | 0 | 0 | 0 | 0 | 0 | 0 | 0 | 0 | 0 |
| 03 | CHAVEZ, TAYLOR | | 0 | 0-1 | 0-0 | 0-0 | 0 | 0 | 0 | 0 | 0 | 0 | 0 | 0 | 7 | -2 |
| 14 | GIOMI, LYDIA | | 0 | 0-0 | 0-0 | 0-0 | 0 | 0 | 0 | 0 | 0 | 0 | 0 | 0 | 0 | 0 |
| 32 | GILDON, OTI | | 0 | 0-0 | 0-0 | 0-0 | 1 | 0 | 1 | 0 | 0 | 0 | 0 | 0 | 2 | -3 |
| | TEAM | | | | | | 0 | 0 | 0 | 1 | | 0 | | | | |
| TOTALS | | | 23 | 9-17 | 4-9 | 1-1 | 3 | 2 | 5 | 3 | 4 | 3 | 0 | 1 | 50 | |

Shooting By Period

| Period | FG | FG% | 3FG | 3FG% | FT | FT% |
|----------|-------|-------|-------|-------|-------|-------|
| 2nd Half | 0-0 | 0% | 0-0 | 0% | 0-0 | 0% |
| Game | 32-62 | 51.6% | 10-25 | 40.0% | 13-15 | 86.7% |

Game Notes:

Officials: , ,
 Attendance: 7773

Start Time: 2019-02-02 03:06:39
 End Time: 2019-02-02 04:47:28
 Game Duration: 100
 Conference Game;

| Score | 1st | 2nd | 3rd | 4th | TOT |
|-------|-----|-----|-----|-----|-----------|
| UTH | 11 | 16 | 29 | 9 | 65 |
| ORE | 22 | 15 | 23 | 27 | 87 |

| Points from (This Period) | UTH | ORE |
|---------------------------|-----|-----|
| In the Paint | 16 | 10 |
| Off Turns | 4 | 5 |
| 2nd Chance | 4 | 0 |
| Fast Break | 4 | 2 |
| Bench | 0 | 0 |

Official Play-By-Play
Utah vs Oregon
Third Quarter
February 02, 2019 at Matthew Knight Arena - Eugene, Ore.



Period 3

Starters:

Utah: 0 MOORE, KIANA; 10 GYLTEN, DRU; 11 BEAN, ERIKA; 44 EDWARDS, DRE'UNA; 5 HUFF, MEGAN;
Oregon: 0 SABALLY, SATOU; 20 IONESCU, SABRINA; 21 BOLEY, ERIN; 24 HEBARD, RUTHY; 5 CAZORLA, MAITE;

| Time | VISITORS: Utah | Score | Margin | HOME: Oregon |
|-------|--------------------------------------|-------|--------|---------------------------------------|
| 09:43 | GOOD! LAYUP by HUFF, MEGAN | 37-29 | H 8 | |
| 09:43 | ASSIST by EDWARDS, DRE'UNA | | | |
| 09:27 | | 39-29 | H 10 | GOOD! LAYUP by HEBARD, RUTHY |
| 09:27 | | | | ASSIST by IONESCU, SABRINA |
| 09:15 | | | | FOUL (PERSONAL) by BOLEY, ERIN |
| 09:15 | GOOD! FT by HUFF, MEGAN [FB] | 39-30 | H 9 | |
| 09:15 | GOOD! FT by HUFF, MEGAN [FB] | 39-31 | H 8 | |
| 09:05 | | | | MISSED 3PTR by SABALLY, SATOU |
| 09:02 | REBOUND (DEF) by EDWARDS, DRE'UNA | | | |
| 08:40 | MISSED LAYUP by EDWARDS, DRE'UNA | | | |
| 08:36 | | | | REBOUND (DEF) by BOLEY, ERIN |
| 08:31 | FOUL (PERSONAL) by EDWARDS, DRE'UNA | | | |
| 08:31 | SUB OUT: EDWARDS, DRE'UNA | | | |
| 08:31 | SUB IN: TORRES, ANDREA | | | |
| 08:19 | | | | TURNOVER (LOSTBALL) by SABALLY, SATOU |
| 08:19 | STEAL by MOORE, KIANA | | | |
| 08:14 | GOOD! LAYUP by MOORE, KIANA [FB] | 39-33 | H 6 | |
| 08:01 | | 42-33 | H 9 | GOOD! 3PTR by CAZORLA, MAITE |
| 07:36 | GOOD! LAYUP by HUFF, MEGAN | 42-35 | H 7 | |
| 07:36 | ASSIST by GYLTEN, DRU | | | |
| 07:22 | | 44-35 | H 9 | GOOD! JUMPER by HEBARD, RUTHY |
| 06:58 | GOOD! 3PTR by GYLTEN, DRU | 44-38 | H 6 | |
| 06:58 | ASSIST by HUFF, MEGAN | | | |
| 06:44 | | | | TURNOVER (BADPASS) by SABALLY, SATOU |
| 06:44 | | | | SUB OUT: SABALLY, SATOU |
| 06:44 | | | | SUB IN: CHAVEZ, TAYLOR |
| 06:33 | TURNOVER (BADPASS) by TORRES, ANDREA | | | |
| 06:33 | | | | STEAL by CAZORLA, MAITE |
| 06:27 | | 46-38 | H 8 | GOOD! LAYUP by CAZORLA, MAITE [FB] |
| 06:00 | MISSED 3PTR by HUFF, MEGAN | | | |
| 05:57 | | | | REBOUND (DEF) by BOLEY, ERIN |
| 05:57 | FOUL (PERSONAL) by TORRES, ANDREA | | | |
| 05:37 | | | | MISSED 3PTR by CAZORLA, MAITE |
| 05:33 | | | | REBOUND (OFF) by HEBARD, RUTHY |
| 05:30 | | | | MISSED 3PTR by BOLEY, ERIN |
| 05:26 | | | | REBOUND (OFF) by HEBARD, RUTHY |
| 05:26 | FOUL (PERSONAL) by BEAN, ERIKA | | | |
| 05:24 | | | | MISSED JUMPER by IONESCU, SABRINA |
| 05:22 | REBOUND (DEF) by TEAM | | | |
| 05:22 | | | | FOUL (PERSONAL) by BOLEY, ERIN |
| 05:22 | | | | FOUL (COACHTECHNICAL) by TEAM |
| 05:22 | GOOD! FT by HUFF, MEGAN | 46-39 | H 7 | |
| 05:22 | GOOD! FT by HUFF, MEGAN | 46-40 | H 6 | |
| 05:22 | SUB OUT: TORRES, ANDREA | | | |
| 05:22 | SUB IN: EDWARDS, DRE'UNA | | | |
| 05:10 | GOOD! 3PTR by MOORE, KIANA | 46-43 | H 3 | |
| 05:10 | ASSIST by HUFF, MEGAN | | | |
| 04:54 | | 48-43 | H 5 | GOOD! LAYUP by HEBARD, RUTHY |
| 04:54 | | | | ASSIST by IONESCU, SABRINA |
| 04:49 | TURNOVER (TRAVEL) by HUFF, MEGAN | | | |
| 04:49 | | | | |
| 04:38 | | | | MISSED 3PTR by BOLEY, ERIN |
| 04:34 | REBOUND (DEF) by BEAN, ERIKA | | | |
| 04:15 | MISSED LAYUP by HUFF, MEGAN | | | |
| 04:10 | REBOUND (OFF) by HUFF, MEGAN | | | |
| 04:10 | MISSED LAYUP by HUFF, MEGAN | | | |
| 04:07 | REBOUND (OFF) by HUFF, MEGAN | | | |
| 04:07 | GOOD! LAYUP by HUFF, MEGAN | 48-45 | H 3 | |
| 03:43 | | | | MISSED JUMPER by HEBARD, RUTHY |
| 03:39 | REBOUND (DEF) by BEAN, ERIKA | | | |
| 03:34 | GOOD! 3PTR by HUFF, MEGAN | 48-48 | T | |
| 03:34 | ASSIST by BEAN, ERIKA | | | |
| 03:19 | | 51-48 | H 3 | GOOD! 3PTR by BOLEY, ERIN |
| 03:19 | | | | ASSIST by CAZORLA, MAITE |
| 02:53 | GOOD! LAYUP by EDWARDS, DRE'UNA | 51-50 | H 1 | |
| 02:53 | ASSIST by BEAN, ERIKA | | | |
| 02:42 | | 54-50 | H 4 | GOOD! 3PTR by CAZORLA, MAITE |
| 02:39 | | | | TIMEOUT 30SEC |
| 02:39 | | | | SUB OUT: BOLEY, ERIN |
| 02:39 | | | | SUB IN: GILDON, OTI |

| Time | VISITORS: Utah | Score | Margin | HOME: Oregon |
|-------|---------------------------------------|-------|--------|--|
| 02:39 | | | | SUB OUT: HEBARD, RUTHY |
| 02:39 | | | | SUB IN: SABALLY, SATOU |
| 02:13 | GOOD! LAYUP by EDWARDS, DRE'UNA [PNT] | 54-52 | H 2 | |
| 02:13 | ASSIST by BEAN, ERIKA | | | |
| 01:56 | | | | TURNOVER (BADPASS) by IONESCU, SABRINA |
| 01:56 | STEAL by HUFF, MEGAN | | | |
| 01:49 | MISSED 3PTR by MOORE, KIANA | | | |
| 01:43 | REBOUND (OFF) by HUFF, MEGAN | | | |
| 01:43 | GOOD! LAYUP by HUFF, MEGAN | 54-54 | T | |
| 01:29 | | | | MISSED LAYUP by CHAVEZ, TAYLOR |
| 01:25 | | | | REBOUND (OFF) by GILDON, OTI |
| 01:11 | | | | MISSED 3PTR by CAZORLA, MAITE |
| 01:08 | REBOUND (DEF) by HUFF, MEGAN | | | |
| 00:57 | GOOD! LAYUP by EDWARDS, DRE'UNA [PNT] | 54-56 | V 2 | |
| 00:57 | ASSIST by MOORE, KIANA | | | |
| 00:42 | | 57-56 | H 1 | GOOD! 3PTR by SABALLY, SATOU |
| 00:42 | | | | ASSIST by CAZORLA, MAITE |
| 00:16 | TURNOVER (BADPASS) by HUFF, MEGAN | | | |
| 00:16 | | | | SUB OUT: GILDON, OTI |
| 00:16 | | | | SUB IN: BOLEY, ERIN |
| 00:16 | SUB OUT: HUFF, MEGAN | | | |
| 00:16 | SUB IN: TORRES, ANDREA | | | |
| 00:02 | | 59-56 | H 3 | GOOD! LAYUP by SABALLY, SATOU [PNT] |
| 00:02 | FOUL (PERSONAL) by EDWARDS, DRE'UNA | | | |
| 00:02 | | 60-56 | H 4 | GOOD! FT by SABALLY, SATOU |

Utah 56, Oregon 60

| Points from (This Period) | UTH | ORE |
|---------------------------|-----|-----|
| In the Paint | 16 | 10 |
| Off Turns | 4 | 5 |
| 2nd Chance | 4 | 0 |
| Fast Break | 4 | 2 |
| Bench | 0 | 0 |

Official Box Score
Utah vs Oregon
Fourth Quarter Statistics Only
February 02, 2019 at Matthew Knight Arena - Eugene, Ore.



Utah 9

| No. | Player | S | Pts | FG | 3FG | FT | OR | DR | TR | PF | A | TO | Blk | Stl | Min | +/- |
|---------------|------------------|---|----------|-------------|------------|------------|----------|----------|----------|----------|----------|----------|----------|----------|-----------|-----|
| 00 | MOORE, KIANA | | 0 | 0-2 | 0-2 | 0-0 | 0 | 0 | 0 | 1 | 2 | 1 | 0 | 0 | 8 | -12 |
| 05 | HUFF, MEGAN | | 6 | 2-5 | 0-2 | 2-3 | 0 | 0 | 0 | 1 | 0 | 0 | 0 | 0 | 8 | -15 |
| 10 | GYLTEN, DRU | | 3 | 1-2 | 1-2 | 0-0 | 0 | 2 | 2 | 2 | 0 | 0 | 0 | 0 | 10 | -18 |
| 11 | BEAN, ERIKA | | 0 | 0-0 | 0-0 | 0-0 | 0 | 0 | 0 | 2 | 0 | 3 | 0 | 0 | 7 | -12 |
| 44 | EDWARDS, DRE'UNA | | 0 | 0-0 | 0-0 | 0-0 | 0 | 0 | 0 | 1 | 0 | 0 | 0 | 0 | 0 | -1 |
| 03 | BECKER, NIYAH | | 0 | 0-1 | 0-1 | 0-0 | 0 | 1 | 1 | 0 | 0 | 0 | 0 | 0 | 5 | -11 |
| 14 | TORRES, ANDREA | | 0 | 0-0 | 0-0 | 0-0 | 0 | 1 | 1 | 0 | 0 | 1 | 0 | 0 | 6 | -9 |
| 24 | PORTER, SARAH | | 0 | 0-0 | 0-0 | 0-0 | 0 | 1 | 1 | 0 | 1 | 0 | 0 | 0 | 5 | -12 |
| | TEAM | | | | | | 0 | 0 | 0 | 0 | | 1 | | | | |
| TOTALS | | | 9 | 3-10 | 1-7 | 2-3 | 0 | 5 | 5 | 7 | 3 | 6 | 0 | 0 | 50 | |

Shooting By Period

| Period | FG | FG% | 3FG | 3FG% | FT | FT% |
|--------|-------|-------|-------|-------|------|-------|
| Game | 23-55 | 41.8% | 10-24 | 41.7% | 9-12 | 75.0% |

Oregon 27

| No. | Player | S | Pts | FG | 3FG | FT | OR | DR | TR | PF | A | TO | Blk | Stl | Min | +/- |
|---------------|------------------|---|-----------|-------------|------------|--------------|----------|----------|----------|----------|----------|----------|----------|----------|-----------|-----|
| 00 | SABALLY, SATOU | | 7 | 1-2 | 0-0 | 5-5 | 0 | 1 | 1 | 2 | 0 | 0 | 0 | 1 | 9 | 16 |
| 05 | CAZORLA, MAITE | | 6 | 1-4 | 0-3 | 4-4 | 0 | 0 | 0 | 0 | 1 | 0 | 0 | 1 | 10 | 18 |
| 20 | IONESCU, SABRINA | | 9 | 2-4 | 2-3 | 3-4 | 0 | 1 | 1 | 0 | 2 | 0 | 0 | 1 | 9 | 17 |
| 21 | BOLEY, ERIN | | 3 | 1-1 | 1-1 | 0-0 | 0 | 3 | 3 | 0 | 1 | 0 | 0 | 0 | 9 | 16 |
| 24 | HEBARD, RUTHY | | 2 | 1-2 | 0-0 | 0-0 | 1 | 1 | 2 | 0 | 0 | 0 | 0 | 0 | 9 | 16 |
| 02 | YAEGER, MORGAN | | 0 | 0-0 | 0-0 | 0-0 | 0 | 1 | 1 | 0 | 0 | 0 | 0 | 0 | 1 | 1 |
| 03 | CHAVEZ, TAYLOR | | 0 | 0-0 | 0-0 | 0-0 | 0 | 0 | 0 | 0 | 0 | 0 | 0 | 0 | 1 | 2 |
| 14 | GIOMI, LYDIA | | 0 | 0-0 | 0-0 | 0-0 | 0 | 0 | 0 | 0 | 0 | 0 | 0 | 0 | 1 | 2 |
| 32 | GILDON, OTI | | 0 | 0-0 | 0-0 | 0-0 | 0 | 0 | 0 | 0 | 0 | 0 | 0 | 0 | 1 | 2 |
| | TEAM | | | | | | 1 | 0 | 1 | 0 | | 0 | | | | |
| TOTALS | | | 27 | 6-13 | 3-7 | 12-13 | 2 | 7 | 9 | 2 | 4 | 0 | 0 | 3 | 50 | |

Shooting By Period

| Period | FG | FG% | 3FG | 3FG% | FT | FT% |
|--------|-------|-------|-------|-------|-------|-------|
| Game | 32-62 | 51.6% | 10-25 | 40.0% | 13-15 | 86.7% |

Game Notes:

Officials: , ,
Attendance: 7773

Start Time: 2019-02-02 03:06:39
End Time: 2019-02-02 04:47:28
Game Duration: 100
Conference Game;

| Score | 1st | 2nd | 3rd | 4th | TOT |
|-------|-----|-----|-----|-----|-----------|
| UTH | 11 | 16 | 29 | 9 | 65 |
| ORE | 22 | 15 | 23 | 27 | 87 |

| Points from (This Period) | UTH | ORE |
|---------------------------|-----|-----|
| In the Paint | 4 | 6 |
| Off Turns | 0 | 12 |
| 2nd Chance | 0 | 5 |
| Fast Break | 1 | 0 |
| Bench | 0 | 0 |

Official Play-By-Play
Utah vs Oregon
Fourth Quarter
February 02, 2019 at Matthew Knight Arena - Eugene, Ore.



Period 4

Starters:

Utah: 0 MOORE, KIANA; 10 GYLTEN, DRU; 11 BEAN, ERIKA; 44 EDWARDS, DRE'UNA; 5 HUFF, MEGAN;
Oregon: 0 SABALLY, SATOU; 20 IONESCU, SABRINA; 21 BOLEY, ERIN; 24 HEBARD, RUTHY; 5 CAZORLA, MAITE;

| Time | VISITORS: Utah | Score | Margin | HOME: Oregon |
|-------|--------------------------------------|-------|--------|-----------------------------------|
| 09:46 | | | | MISSED LAYUP by HEBARD, RUTHY |
| 09:41 | REBOUND (DEF) by TORRES, ANDREA | | | |
| 09:20 | GOOD! LAYUP by HUFF, MEGAN | 60-58 | H 2 | |
| 09:20 | ASSIST by MOORE, KIANA | | | |
| 09:20 | | | | FOUL (PERSONAL) by SABALLY, SATOU |
| 09:20 | GOOD! FT by HUFF, MEGAN | 60-59 | H 1 | |
| 09:07 | | 62-59 | H 3 | GOOD! LAYUP by SABALLY, SATOU |
| 09:07 | FOUL (PERSONAL) by HUFF, MEGAN | | | |
| 09:07 | | 63-59 | H 4 | GOOD! FT by SABALLY, SATOU |
| 08:45 | TURNOVER (BADPASS) by TORRES, ANDREA | | | |
| 08:27 | FOUL (PERSONAL) by GYLTEN, DRU | | | |
| 08:27 | | 64-59 | H 5 | GOOD! FT by SABALLY, SATOU |
| 08:27 | | 65-59 | H 6 | GOOD! FT by SABALLY, SATOU |
| 08:02 | MISSED 3PTR by MOORE, KIANA | | | |
| 07:56 | | | | REBOUND (DEF) by BOLEY, ERIN |
| 07:46 | | | | MISSED 3PTR by CAZORLA, MAITE |
| 07:42 | REBOUND (DEF) by GYLTEN, DRU | | | |
| 07:36 | MISSED 3PTR by HUFF, MEGAN | | | |
| 07:33 | | | | REBOUND (DEF) by SABALLY, SATOU |
| 07:16 | FOUL (PERSONAL) by MOORE, KIANA | | | |
| 07:16 | | | | MISSED FT by IONESCU, SABRINA |
| 07:16 | | | | REBOUND (OFF) by TEAM |
| 07:16 | SUB OUT: TORRES, ANDREA | | | |
| 07:16 | SUB IN: EDWARDS, DRE'UNA | | | |
| 07:16 | | 66-59 | H 7 | GOOD! FT by IONESCU, SABRINA |
| 07:00 | TURNOVER (BADPASS) by BEAN, ERIKA | | | |
| 07:00 | | | | STEAL by IONESCU, SABRINA |
| 06:53 | | | | MISSED LAYUP by IONESCU, SABRINA |
| 06:53 | | | | REBOUND (OFF) by TEAM |
| 06:47 | FOUL (PERSONAL) by EDWARDS, DRE'UNA | | | |
| 06:47 | SUB OUT: EDWARDS, DRE'UNA | | | |
| 06:47 | SUB IN: BECKER, NIYAH | | | |
| 06:47 | | 67-59 | H 8 | GOOD! FT by SABALLY, SATOU |
| 06:47 | | 68-59 | H 9 | GOOD! FT by SABALLY, SATOU |
| 06:24 | MISSED 3PTR by MOORE, KIANA | | | |
| 06:19 | | | | REBOUND (DEF) by HEBARD, RUTHY |
| 06:11 | | | | MISSED 3PTR by CAZORLA, MAITE |
| 06:08 | REBOUND (DEF) by BECKER, NIYAH | | | |
| 06:03 | TIMEOUT 30SEC | | | |
| 06:03 | SUB OUT: HUFF, MEGAN | | | |
| 06:03 | SUB IN: TORRES, ANDREA | | | |
| 05:45 | TURNOVER (SHOTCLOCK) by | | | |
| 05:27 | | | | MISSED 3PTR by CAZORLA, MAITE |
| 05:22 | | | | REBOUND (OFF) by HEBARD, RUTHY |
| 05:21 | | 71-59 | H 12 | GOOD! 3PTR by IONESCU, SABRINA |
| 05:21 | | | | ASSIST by CAZORLA, MAITE |
| 04:53 | GOOD! 3PTR by GYLTEN, DRU | 71-62 | H 9 | |
| 04:53 | ASSIST by MOORE, KIANA | | | |
| 04:44 | FOUL (PERSONAL) by BEAN, ERIKA | | | |
| 04:44 | | 72-62 | H 10 | GOOD! FT by CAZORLA, MAITE |
| 04:44 | SUB OUT: MOORE, KIANA | | | |
| 04:44 | SUB IN: HUFF, MEGAN | | | |
| 04:44 | SUB OUT: TORRES, ANDREA | | | |
| 04:44 | SUB IN: PORTER, SARAH | | | |
| 04:44 | | 73-62 | H 11 | GOOD! FT by CAZORLA, MAITE |
| 04:34 | TURNOVER (BADPASS) by BEAN, ERIKA | | | |
| 04:34 | | | | STEAL by CAZORLA, MAITE |
| 04:25 | | 75-62 | H 13 | GOOD! LAYUP by CAZORLA, MAITE |
| 04:25 | | | | ASSIST by IONESCU, SABRINA |
| 04:09 | MISSED 3PTR by GYLTEN, DRU | | | |
| 03:59 | | | | REBOUND (DEF) by BOLEY, ERIN |
| 03:56 | | | | MISSED JUMPER by SABALLY, SATOU |
| 03:49 | REBOUND (DEF) by PORTER, SARAH | | | |
| 03:48 | MISSED 3PTR by HUFF, MEGAN | | | |
| 03:44 | | | | REBOUND (DEF) by BOLEY, ERIN |
| 03:42 | FOUL (PERSONAL) by BEAN, ERIKA | | | |
| 03:42 | | 76-62 | H 14 | GOOD! FT by IONESCU, SABRINA |
| 03:42 | | 77-62 | H 15 | GOOD! FT by IONESCU, SABRINA |
| 03:22 | GOOD! LAYUP by HUFF, MEGAN | 77-64 | H 13 | |
| 03:22 | ASSIST by PORTER, SARAH | | | |

| Time | VISITORS: Utah | Score | Margin | HOME: Oregon |
|-------|-------------------------------------|-------|--------|-----------------------------------|
| 03:02 | | 80-64 | H 16 | GOOD! 3PTR by IONESCU, SABRINA |
| 02:51 | TURNOVER (BADPASS) by BEAN, ERIKA | | | |
| 02:51 | SUB OUT: BEAN, ERIKA | | | |
| 02:51 | SUB IN: MOORE, KIANA | | | |
| 02:33 | | | | MISSED 3PTR by IONESCU, SABRINA |
| 02:29 | REBOUND (DEF) by GYLTEN, DRU | | | |
| 02:24 | | | | FOUL (PERSONAL) by SABALLY, SATOU |
| 02:24 | MISSED FT by HUFF, MEGAN | | | |
| 02:24 | REBOUND (OFF) by TEAM | | | |
| 02:24 | SUB OUT: BECKER, NIYAH | | | |
| 02:24 | SUB IN: TORRES, ANDREA | | | |
| 02:24 | GOOD! FT by HUFF, MEGAN [FB] | 80-65 | H 15 | |
| 02:11 | | 82-65 | H 17 | GOOD! LAYUP by HEBARD, RUTHY |
| 02:11 | | | | ASSIST by BOLEY, ERIN |
| 01:46 | TURNOVER (LOSTBALL) by MOORE, KIANA | | | |
| 01:46 | | | | STEAL by SABALLY, SATOU |
| 01:32 | | 85-65 | H 20 | GOOD! 3PTR by BOLEY, ERIN |
| 01:32 | | | | ASSIST by IONESCU, SABRINA |
| 01:10 | MISSED LAYUP by HUFF, MEGAN | | | |
| 01:06 | | | | REBOUND (DEF) by IONESCU, SABRINA |
| 01:02 | | | | SUB OUT: SABALLY, SATOU |
| 01:02 | | | | SUB IN: CHAVEZ, TAYLOR |
| 01:02 | | | | SUB OUT: BOLEY, ERIN |
| 01:02 | | | | SUB IN: GIOMI, LYDIA |
| 01:02 | | | | SUB OUT: HEBARD, RUTHY |
| 01:02 | | | | SUB IN: GILDON, OTI |
| 01:02 | SUB OUT: HUFF, MEGAN | | | |
| 01:02 | SUB IN: BECKER, NIYAH | | | |
| 00:45 | FOUL (PERSONAL) by GYLTEN, DRU | | | |
| 00:45 | | 86-65 | H 21 | GOOD! FT by CAZORLA, MAITE |
| 00:45 | | | | SUB OUT: IONESCU, SABRINA |
| 00:45 | | | | SUB IN: YAEGER, MORGAN |
| 00:45 | | 87-65 | H 22 | GOOD! FT by CAZORLA, MAITE |
| 00:24 | MISSED 3PTR by BECKER, NIYAH | | | |
| 00:20 | | | | REBOUND (DEF) by YAEGER, MORGAN |

Utah 65, Oregon 87

| Points from (This Period) | UTH | ORE |
|---------------------------|-----|-----|
| In the Paint | 4 | 6 |
| Off Turns | 0 | 12 |
| 2nd Chance | 0 | 5 |
| Fast Break | 1 | 0 |
| Bench | 0 | 0 |

Official Scoring/Possession Reference Chart
Utah vs Oregon
Period 1
February 02, 2019 at Matthew Knight Arena - Eugene, Ore.



Period 1

Starters:

Utah: 0 MOORE, KIANA; 10 GYLTEN, DRU; 11 BEAN, ERIKA; 44 EDWARDS, DRE'UNA; 5 HUFF, MEGAN;

Oregon: 0 SABALLY, SATOU; 20 IONESCU, SABRINA; 21 BOLEY, ERIN; 24 HEBARD, RUTHY; 5 CAZORLA, MAITE;

| Time | VISITORS: Utah | Score | Margin | HOME: Oregon |
|-------|----------------------------|-------|--------|-------------------------------------|
| 08:59 | | 2-0 | H 2 | GOOD! LAYUP by SABALLY, SATOU |
| 08:26 | | 4-0 | H 4 | GOOD! LAYUP by HEBARD, RUTHY |
| 08:16 | GOOD! LAYUP by GYLTEN, DRU | 4-2 | H 2 | |
| 08:02 | | 6-2 | H 4 | GOOD! LAYUP by HEBARD, RUTHY |
| 07:28 | | 9-2 | H 7 | GOOD! 3PTR by BOLEY, ERIN |
| 07:10 | GOOD! 3PTR by HUFF, MEGAN | 9-5 | H 4 | |
| 05:32 | | 11-5 | H 6 | GOOD! JUMPER by HEBARD, RUTHY [PNT] |
| 04:55 | | 13-5 | H 8 | GOOD! LAYUP by HEBARD, RUTHY |
| 04:03 | GOOD! 3PTR by GYLTEN, DRU | 13-8 | H 5 | |
| 03:41 | | 16-8 | H 8 | GOOD! 3PTR by SABALLY, SATOU |
| 02:54 | | 18-8 | H 10 | GOOD! LAYUP by SABALLY, SATOU |
| 02:11 | | 20-8 | H 12 | GOOD! LAYUP by GILDON, OTI |
| 01:50 | GOOD! 3PTR by HUFF, MEGAN | 20-11 | H 9 | |
| 01:43 | | 22-11 | H 11 | GOOD! LAYUP by BOLEY, ERIN [FB] |

Utah 11, Oregon 22

Official Scoring/Possession Reference Chart
Utah vs Oregon
Period 2
February 02, 2019 at Matthew Knight Arena - Eugene, Ore.



Period 2

Starters:

Utah: 0 MOORE, KIANA; 10 GYLTEN, DRU; 11 BEAN, ERIKA; 44 EDWARDS, DRE'UNA; 5 HUFF, MEGAN;

Oregon: 0 SABALLY, SATOU; 20 IONESCU, SABRINA; 21 BOLEY, ERIN; 24 HEBARD, RUTHY; 5 CAZORLA, MAITE;

| Time | VISITORS: Utah | Score | Margin | HOME: Oregon |
|-------|--------------------------------------|-------|--------|----------------------------------|
| 09:34 | | 24-11 | H 13 | GOOD! LAYUP by GILDON, OTI |
| 09:19 | GOOD! 3PTR by HUFF, MEGAN | 24-14 | H 10 | |
| 08:52 | GOOD! 3PTR by HUFF, MEGAN | 24-17 | H 7 | |
| 08:27 | | 26-17 | H 9 | GOOD! LAYUP by GILDON, OTI |
| 07:59 | | 28-17 | H 11 | GOOD! JUMPER by IONESCU, SABRINA |
| 07:52 | GOOD! LAYUP by EDWARDS, DRE'UNA [FB] | 28-19 | H 9 | |
| 06:01 | GOOD! LAYUP by HUFF, MEGAN | 28-21 | H 7 | |
| 03:56 | | 31-21 | H 10 | GOOD! 3PTR by BOLEY, ERIN [FB] |
| 03:36 | GOOD! FT by MOORE, KIANA | 31-22 | H 9 | |
| 03:36 | GOOD! FT by MOORE, KIANA | 31-23 | H 8 | |
| 03:31 | | 33-23 | H 10 | GOOD! LAYUP by CAZORLA, MAITE |
| 03:06 | GOOD! FT by EDWARDS, DRE'UNA | 33-24 | H 9 | |
| 02:29 | | 35-24 | H 11 | GOOD! LAYUP by GILDON, OTI [PNT] |
| 01:39 | GOOD! 3PTR by HUFF, MEGAN | 35-27 | H 8 | |
| 00:00 | | 37-27 | H 10 | GOOD! LAYUP by GILDON, OTI |

Utah 27, Oregon 37

Official Scoring/Possession Reference Chart
Utah vs Oregon
Period 3
February 02, 2019 at Matthew Knight Arena - Eugene, Ore.



Period 3

Starters:

Utah: 0 MOORE, KIANA; 10 GYLTEN, DRU; 11 BEAN, ERIKA; 44 EDWARDS, DRE'UNA; 5 HUFF, MEGAN;

Oregon: 0 SABALLY, SATOU; 20 IONESCU, SABRINA; 21 BOLEY, ERIN; 24 HEBARD, RUTHY; 5 CAZORLA, MAITE;

| Time | VISITORS: Utah | Score | Margin | HOME: Oregon |
|-------|---------------------------------------|-------|--------|-------------------------------------|
| 09:43 | GOOD! LAYUP by HUFF, MEGAN | 37-29 | H 8 | |
| 09:27 | | 39-29 | H 10 | GOOD! LAYUP by HEBARD, RUTHY |
| 09:15 | GOOD! FT by HUFF, MEGAN [FB] | 39-30 | H 9 | |
| 09:15 | GOOD! FT by HUFF, MEGAN [FB] | 39-31 | H 8 | |
| 08:14 | GOOD! LAYUP by MOORE, KIANA [FB] | 39-33 | H 6 | |
| 08:01 | | 42-33 | H 9 | GOOD! 3PTR by CAZORLA, MAITE |
| 07:36 | GOOD! LAYUP by HUFF, MEGAN | 42-35 | H 7 | |
| 07:22 | | 44-35 | H 9 | GOOD! JUMPER by HEBARD, RUTHY |
| 06:58 | GOOD! 3PTR by GYLTEN, DRU | 44-38 | H 6 | |
| 06:27 | | 46-38 | H 8 | GOOD! LAYUP by CAZORLA, MAITE [FB] |
| 05:22 | GOOD! FT by HUFF, MEGAN | 46-39 | H 7 | |
| 05:22 | GOOD! FT by HUFF, MEGAN | 46-40 | H 6 | |
| 05:10 | GOOD! 3PTR by MOORE, KIANA | 46-43 | H 3 | |
| 04:54 | | 48-43 | H 5 | GOOD! LAYUP by HEBARD, RUTHY |
| 04:07 | GOOD! LAYUP by HUFF, MEGAN | 48-45 | H 3 | |
| 03:34 | GOOD! 3PTR by HUFF, MEGAN | 48-48 | T | |
| 03:19 | | 51-48 | H 3 | GOOD! 3PTR by BOLEY, ERIN |
| 02:53 | GOOD! LAYUP by EDWARDS, DRE'UNA | 51-50 | H 1 | |
| 02:42 | | 54-50 | H 4 | GOOD! 3PTR by CAZORLA, MAITE |
| 02:13 | GOOD! LAYUP by EDWARDS, DRE'UNA [PNT] | 54-52 | H 2 | |
| 01:43 | GOOD! LAYUP by HUFF, MEGAN | 54-54 | T | |
| 00:57 | GOOD! LAYUP by EDWARDS, DRE'UNA [PNT] | 54-56 | V 2 | |
| 00:42 | | 57-56 | H 1 | GOOD! 3PTR by SABALLY, SATOU |
| 00:02 | | 59-56 | H 3 | GOOD! LAYUP by SABALLY, SATOU [PNT] |
| 00:02 | | 60-56 | H 4 | GOOD! FT by SABALLY, SATOU |

Utah 56, Oregon 60

Official Scoring/Possession Reference Chart
Utah vs Oregon
Period 4
February 02, 2019 at Matthew Knight Arena - Eugene, Ore.



Period 4

Starters:

Utah: 0 MOORE, KIANA; 10 GYLTEN, DRU; 11 BEAN, ERIKA; 44 EDWARDS, DRE'UNA; 5 HUFF, MEGAN;

Oregon: 0 SABALLY, SATOU; 20 IONESCU, SABRINA; 21 BOLEY, ERIN; 24 HEBARD, RUTHY; 5 CAZORLA, MAITE;

| Time | VISITORS: Utah | Score | Margin | HOME: Oregon |
|-------|------------------------------|-------|--------|--------------------------------|
| 09:20 | GOOD! LAYUP by HUFF, MEGAN | 60-58 | H 2 | |
| 09:20 | GOOD! FT by HUFF, MEGAN | 60-59 | H 1 | |
| 09:07 | | 62-59 | H 3 | GOOD! LAYUP by SABALLY, SATOU |
| 09:07 | | 63-59 | H 4 | GOOD! FT by SABALLY, SATOU |
| 08:27 | | 64-59 | H 5 | GOOD! FT by SABALLY, SATOU |
| 08:27 | | 65-59 | H 6 | GOOD! FT by SABALLY, SATOU |
| 07:16 | | 66-59 | H 7 | GOOD! FT by IONESCU, SABRINA |
| 06:47 | | 67-59 | H 8 | GOOD! FT by SABALLY, SATOU |
| 06:47 | | 68-59 | H 9 | GOOD! FT by SABALLY, SATOU |
| 05:21 | | 71-59 | H 12 | GOOD! 3PTR by IONESCU, SABRINA |
| 04:53 | GOOD! 3PTR by GYLTEN, DRU | 71-62 | H 9 | |
| 04:44 | | 72-62 | H 10 | GOOD! FT by CAZORLA, MAITE |
| 04:44 | | 73-62 | H 11 | GOOD! FT by CAZORLA, MAITE |
| 04:25 | | 75-62 | H 13 | GOOD! LAYUP by CAZORLA, MAITE |
| 03:42 | | 76-62 | H 14 | GOOD! FT by IONESCU, SABRINA |
| 03:42 | | 77-62 | H 15 | GOOD! FT by IONESCU, SABRINA |
| 03:22 | GOOD! LAYUP by HUFF, MEGAN | 77-64 | H 13 | |
| 03:02 | | 80-64 | H 16 | GOOD! 3PTR by IONESCU, SABRINA |
| 02:24 | GOOD! FT by HUFF, MEGAN [FB] | 80-65 | H 15 | |
| 02:11 | | 82-65 | H 17 | GOOD! LAYUP by HEBARD, RUTHY |
| 01:32 | | 85-65 | H 20 | GOOD! 3PTR by BOLEY, ERIN |
| 00:45 | | 86-65 | H 21 | GOOD! FT by CAZORLA, MAITE |
| 00:45 | | 87-65 | H 22 | GOOD! FT by CAZORLA, MAITE |

Utah 65, Oregon 87

Official Substitutions Log
Utah vs Oregon
Period 1
February 02, 2019 at Matthew Knight Arena - Eugene, Ore.



| VISITORS: Utah | Time | Score | HOME: Oregon |
|-----------------------------|-------|-------|------------------------|
| 0 MOORE,KIANA | | | 0 SABALLY,SATOU |
| 10 GYL TEN,DRU | | | 20 IONESCU,SABRINA |
| 11 BEAN,ERIKA | | | 21 BOLEY,ERIN |
| 44 EDWARDS,DRE'UNA | | | 24 HEBARD,RUTHY |
| 5 HUFF,MEGAN | | | 5 CAZORLA,MAITE |
| SUB OUT: 44 EDWARDS,DRE'UNA | 08:26 | 0-4 | |
| SUB IN: 14 TORRES,ANDREA | 08:26 | | |
| SUB OUT: 5 HUFF,MEGAN | 04:22 | 5-13 | |
| SUB IN: 44 EDWARDS,DRE'UNA | 04:22 | | |
| | 02:54 | 8-18 | SUB OUT: CAZORLA,MAITE |
| | 02:54 | | SUB IN: CHAVEZ,TAYLOR |
| | 02:54 | | SUB OUT: HEBARD,RUTHY |
| | 02:54 | | SUB IN: GILDON,OTI |
| SUB OUT: 0 MOORE,KIANA | 02:54 | | |
| SUB IN: 5 HUFF,MEGAN | 02:54 | | |
| SUB OUT: 14 TORRES,ANDREA | 02:54 | | |
| SUB IN: 3 BECKER,NIYAH | 02:54 | | |
| SUB OUT: 10 GYL TEN,DRU | 01:50 | 11-20 | |
| SUB IN: 24 PORTER,SARAH | 01:50 | | |
| SUB OUT: 44 EDWARDS,DRE'UNA | 01:33 | 11-22 | |
| SUB IN: 14 TORRES,ANDREA | 01:33 | | |
| | 01:11 | 11-22 | SUB OUT: BOLEY,ERIN |
| | 01:11 | | SUB IN: HEBARD,RUTHY |
| SUB OUT: 24 PORTER,SARAH | 01:01 | 11-22 | |
| SUB IN: 0 MOORE,KIANA | 01:01 | | |
| | 00:54 | 11-22 | SUB OUT: SABALLY,SATOU |
| | 00:54 | | SUB IN: CAZORLA,MAITE |

Utah 11, Oregon 22

Official Substitutions Log
Utah vs Oregon
Period 2
February 02, 2019 at Matthew Knight Arena - Eugene, Ore.



| VISITORS: Utah | Time | Score | HOME: Oregon |
|-----------------------------|-------|-------|--------------------------|
| 0 MOORE,KIANA | | | 0 SABALLY,SATOU |
| 10 GYL TEN,DRU | | | 20 IONESCU,SABRINA |
| 11 BEAN,ERIKA | | | 21 BOLEY,ERIN |
| 44 EDWARDS,DRE'UNA | | | 24 HEBARD,RUTHY |
| 5 HUFF,MEGAN | | | 5 CAZORLA,MAITE |
| | 08:16 | 17-26 | SUB OUT: GILDON,OTI |
| | 08:16 | | SUB IN: BOLEY,ERIN |
| | 07:18 | 19-28 | SUB OUT: CHAVEZ,TAYLOR |
| | 07:18 | | SUB IN: SABALLY,SATOU |
| | 07:05 | 19-28 | SUB OUT: IONESCU,SABRINA |
| | 07:05 | | SUB IN: CHAVEZ,TAYLOR |
| | 06:26 | 19-28 | SUB OUT: HEBARD,RUTHY |
| | 06:26 | | SUB IN: GIOMI,LYDIA |
| SUB OUT: 44 EDWARDS,DRE'UNA | 05:44 | 21-28 | |
| SUB IN: 14 TORRES,ANDREA | 05:44 | | |
| | 05:08 | 21-28 | SUB OUT: CHAVEZ,TAYLOR |
| | 05:08 | | SUB IN: IONESCU,SABRINA |
| | 03:36 | 21-31 | SUB OUT: GIOMI,LYDIA |
| | 03:36 | | SUB IN: GILDON,OTI |
| SUB OUT: 5 HUFF,MEGAN | 03:36 | | |
| SUB IN: 24 PORTER,SARAH | 03:36 | | |
| SUB OUT: 14 TORRES,ANDREA | 03:36 | | |
| SUB IN: 44 EDWARDS,DRE'UNA | 03:36 | | |
| SUB OUT: 0 MOORE,KIANA | 03:36 | | |
| SUB IN: 14 TORRES,ANDREA | 03:36 | | |
| | 03:06 | 23-33 | SUB OUT: SABALLY,SATOU |
| | 03:06 | | SUB IN: YAEGER,MORGAN |
| SUB OUT: 44 EDWARDS,DRE'UNA | 03:06 | | |
| SUB IN: 5 HUFF,MEGAN | 03:06 | | |
| | 00:08 | 27-35 | SUB OUT: YAEGER,MORGAN |
| | 00:08 | | SUB IN: CHAVEZ,TAYLOR |

Utah 27, Oregon 37

Official Substitutions Log
Utah vs Oregon
Period 3
February 02, 2019 at Matthew Knight Arena - Eugene, Ore.



| VISITORS: Utah | Time | Score | HOME: Oregon |
|-----------------------------|-------|-------|------------------------|
| 0 MOORE,KIANA | | | 0 SABALLY,SATOU |
| 10 GYL TEN,DRU | | | 20 IONESCU,SABRINA |
| 11 BEAN,ERIKA | | | 21 BOLEY,ERIN |
| 44 EDWARDS,DRE'UNA | | | 24 HEBARD,RUTHY |
| 5 HUFF,MEGAN | | | 5 CAZORLA,MAITE |
| SUB OUT: 44 EDWARDS,DRE'UNA | 08:31 | 31-39 | |
| SUB IN: 14 TORRES,ANDREA | 08:31 | | |
| | 06:44 | 38-44 | SUB OUT: SABALLY,SATOU |
| | 06:44 | | SUB IN: CHAVEZ,TAYLOR |
| SUB OUT: 14 TORRES,ANDREA | 05:22 | 40-46 | |
| SUB IN: 44 EDWARDS,DRE'UNA | 05:22 | | |
| | 02:39 | 50-54 | SUB OUT: BOLEY,ERIN |
| | 02:39 | | SUB IN: GILDON,OTI |
| | 02:39 | | SUB OUT: HEBARD,RUTHY |
| | 02:39 | | SUB IN: SABALLY,SATOU |
| | 00:16 | 56-57 | SUB OUT: GILDON,OTI |
| | 00:16 | | SUB IN: BOLEY,ERIN |
| SUB OUT: 5 HUFF,MEGAN | 00:16 | | |
| SUB IN: 14 TORRES,ANDREA | 00:16 | | |

Utah 56, Oregon 60

Official Substitutions Log
Utah vs Oregon
Period 4
February 02, 2019 at Matthew Knight Arena - Eugene, Ore.



| VISITORS: Utah | Time | Score | HOME: Oregon |
|-----------------------------|-------|-------|--------------------------|
| 0 MOORE,KIANA | | | 0 SABALLY,SATOU |
| 10 GYL TEN,DRU | | | 20 IONESCU,SABRINA |
| 11 BEAN,ERIKA | | | 21 BOLEY,ERIN |
| 44 EDWARDS,DRE'UNA | | | 24 HEBARD,RUTHY |
| 5 HUFF,MEGAN | | | 5 CAZORLA,MAITE |
| SUB OUT: 14 TORRES,ANDREA | 07:16 | 59-65 | |
| SUB IN: 44 EDWARDS,DRE'UNA | 07:16 | | |
| SUB OUT: 44 EDWARDS,DRE'UNA | 06:47 | 59-66 | |
| SUB IN: 3 BECKER,NIYAH | 06:47 | | |
| SUB OUT: 5 HUFF,MEGAN | 06:03 | 59-68 | |
| SUB IN: 14 TORRES,ANDREA | 06:03 | | |
| SUB OUT: 0 MOORE,KIANA | 04:44 | 62-72 | |
| SUB IN: 5 HUFF,MEGAN | 04:44 | | |
| SUB OUT: 14 TORRES,ANDREA | 04:44 | | |
| SUB IN: 24 PORTER,SARAH | 04:44 | | |
| SUB OUT: 11 BEAN,ERIKA | 02:51 | 64-80 | |
| SUB IN: 0 MOORE,KIANA | 02:51 | | |
| SUB OUT: 3 BECKER,NIYAH | 02:24 | 64-80 | |
| SUB IN: 14 TORRES,ANDREA | 02:24 | | |
| | 01:02 | 65-85 | SUB OUT: SABALLY,SATOU |
| | 01:02 | | SUB IN: CHAVEZ,TAYLOR |
| | 01:02 | | SUB OUT: BOLEY,ERIN |
| | 01:02 | | SUB IN: GIOMI,LYDIA |
| | 01:02 | | SUB OUT: HEBARD,RUTHY |
| | 01:02 | | SUB IN: GILDON,OTI |
| SUB OUT: 5 HUFF,MEGAN | 01:02 | | |
| SUB IN: 3 BECKER,NIYAH | 01:02 | | |
| | 00:45 | 65-86 | SUB OUT: IONESCU,SABRINA |
| | 00:45 | | SUB IN: YAEGER,MORGAN |

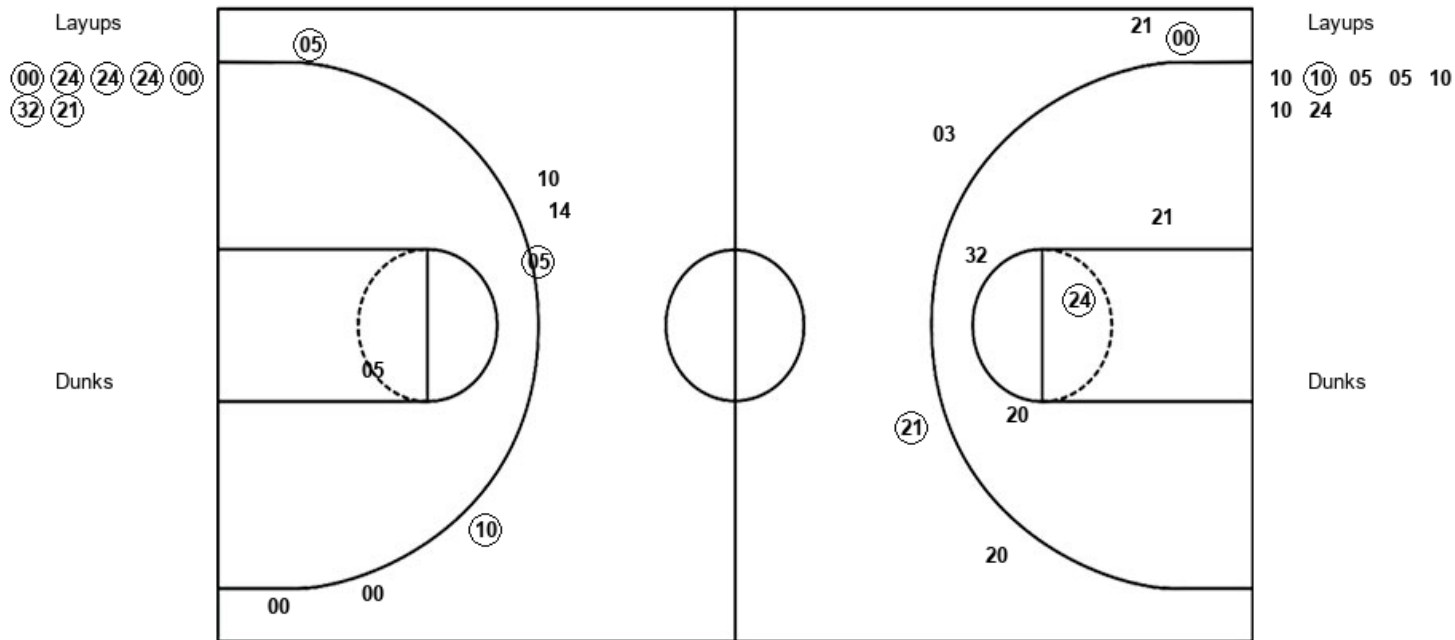
Utah 65, Oregon 87

Official Shot Chart
Utah vs Oregon
PERIOD 1 Shots
 February 02, 2019 at Matthew Knight Arena - Eugene, Ore.



Oregon

Utah



| ORE : Period 1 | Made | Att | Pct |
|--------------------------|-----------|-----------|-------------|
| Layups | 7 | 7 | 100.0 |
| Dunks | 0 | 0 | 0 |
| 2PT Field Goals | 8 | 11 | 72.7 |
| 3PT Field Goals | 2 | 5 | 40.0 |
| Total Field Goals | 10 | 16 | 62.5 |

| UTH : Period 1 | Made | Att | Pct |
|--------------------------|----------|-----------|-------------|
| Layups | 1 | 7 | 14.3 |
| Dunks | 0 | 0 | 0 |
| 2PT Field Goals | 1 | 8 | 12.5 |
| 3PT Field Goals | 3 | 7 | 42.9 |
| Total Field Goals | 4 | 15 | 26.7 |

Official Shot Chart
Utah vs Oregon
PERIOD 2 Shots
 February 02, 2019 at Matthew Knight Arena - Eugene, Ore.

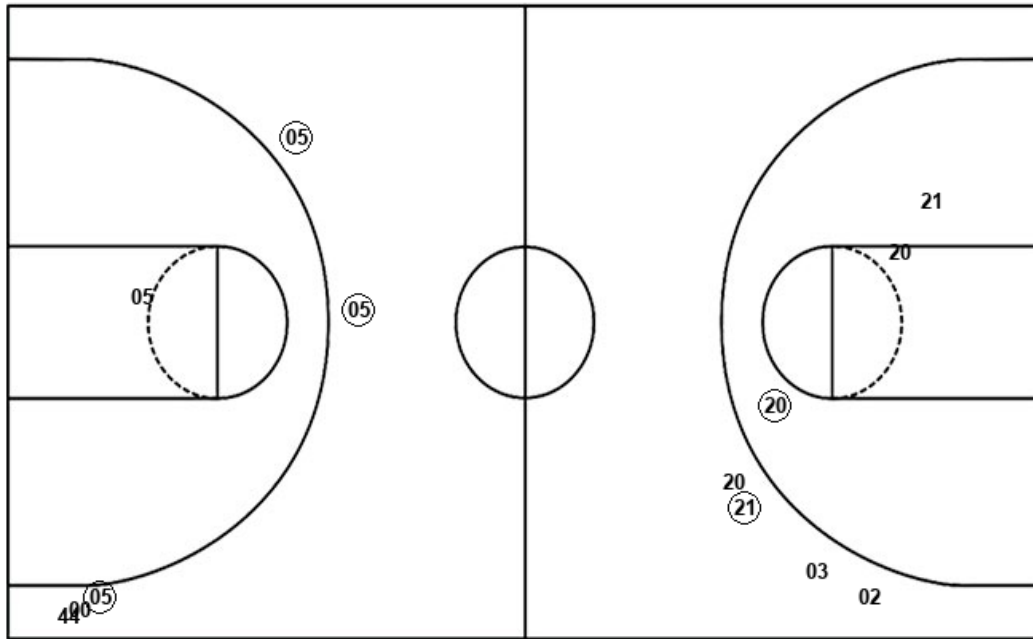


Oregon

Utah

Layups
 32 32 03 14 00
 05 32 20 32

Layups
 10 44 00 05 05
 11 05 10



Dunks

Dunks

| ORE : Period 2 | Made | Att | Pct |
|--------------------------|----------|-----------|-------------|
| Layups | 5 | 9 | 55.6 |
| Dunks | 0 | 0 | 0 |
| 2PT Field Goals | 6 | 12 | 50.0 |
| 3PT Field Goals | 1 | 4 | 25.0 |
| Total Field Goals | 7 | 16 | 43.8 |

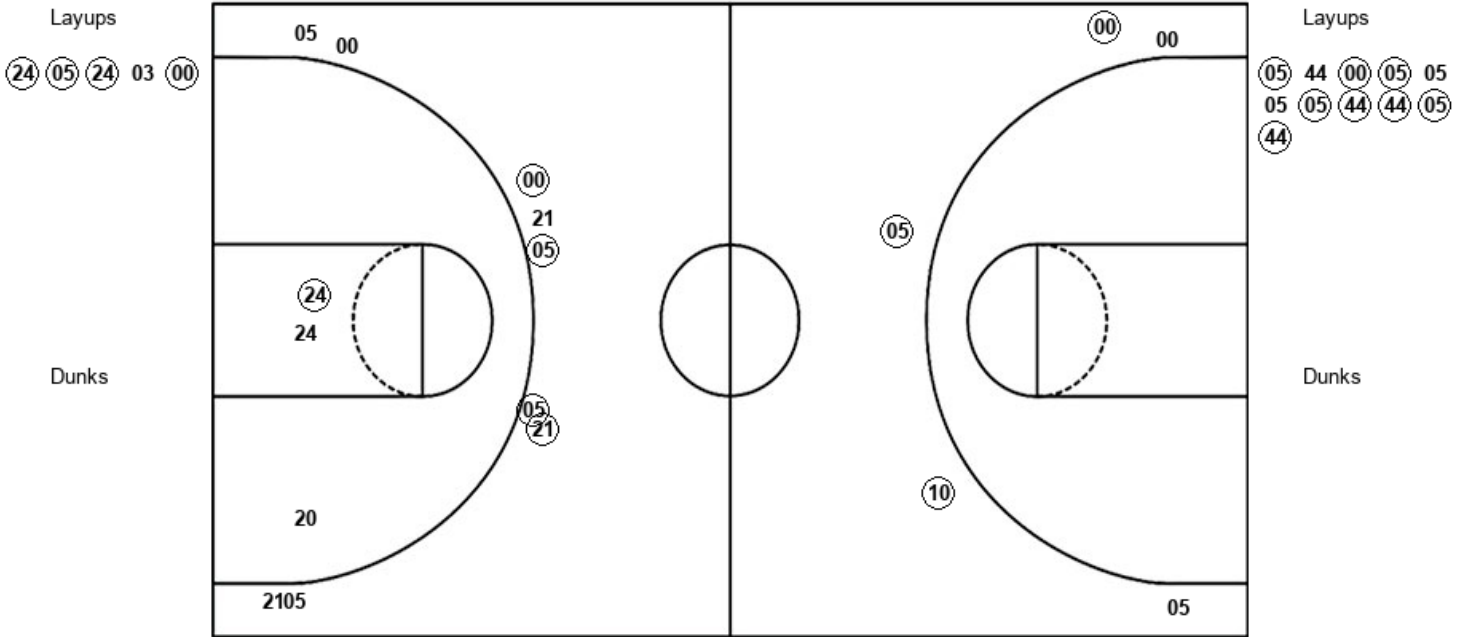
| UTH : Period 2 | Made | Att | Pct |
|--------------------------|----------|-----------|-------------|
| Layups | 2 | 8 | 25.0 |
| Dunks | 0 | 0 | 0 |
| 2PT Field Goals | 2 | 9 | 22.2 |
| 3PT Field Goals | 3 | 5 | 60.0 |
| Total Field Goals | 5 | 14 | 35.7 |

Official Shot Chart
Utah vs Oregon
PERIOD 3 Shots
 February 02, 2019 at Matthew Knight Arena - Eugene, Ore.



Oregon

Utah



| ORE : Period 3 | Made | Att | Pct |
|--------------------------|-------------|------------|-------------|
| Layups | 4 | 5 | 80.0 |
| Dunks | 0 | 0 | 0 |
| 2PT Field Goals | 5 | 8 | 62.5 |
| 3PT Field Goals | 4 | 9 | 44.4 |
| Total Field Goals | 9 | 17 | 52.9 |

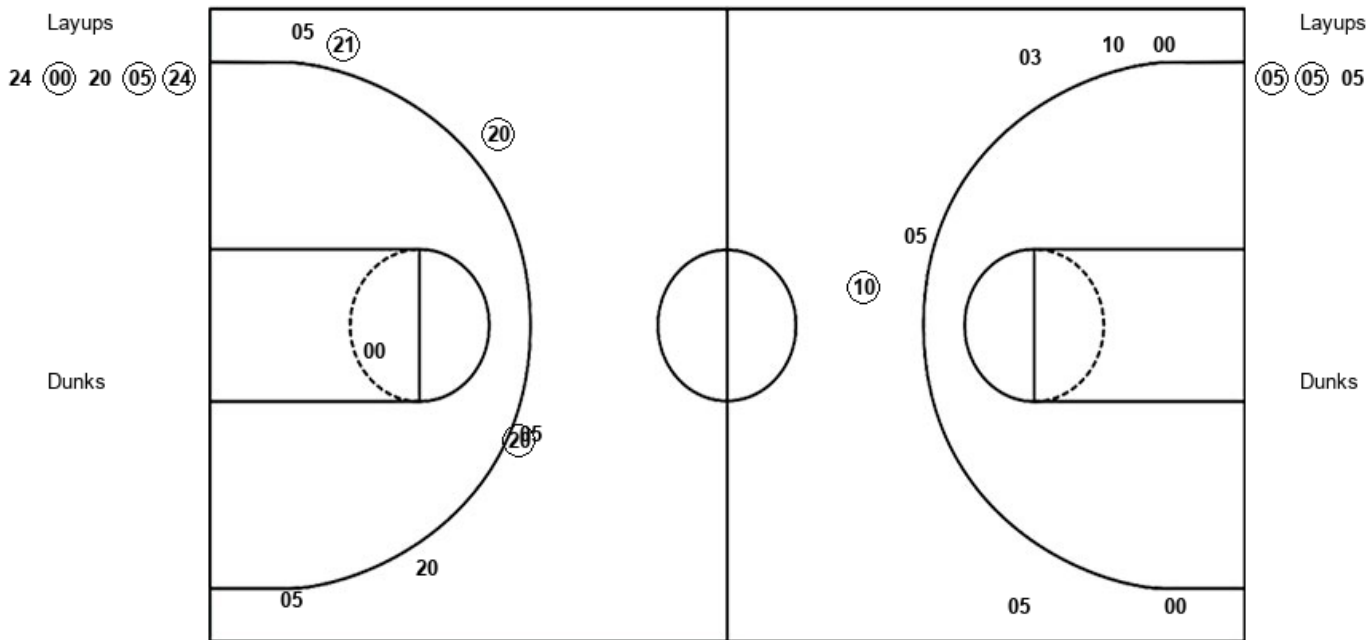
| UTH : Period 3 | Made | Att | Pct |
|--------------------------|-------------|------------|-------------|
| Layups | 8 | 11 | 72.7 |
| Dunks | 0 | 0 | 0 |
| 2PT Field Goals | 8 | 11 | 72.7 |
| 3PT Field Goals | 3 | 5 | 60.0 |
| Total Field Goals | 11 | 16 | 68.8 |

Official Shot Chart
Utah vs Oregon
PERIOD 4 Shots
 February 02, 2019 at Matthew Knight Arena - Eugene, Ore.



Oregon

Utah



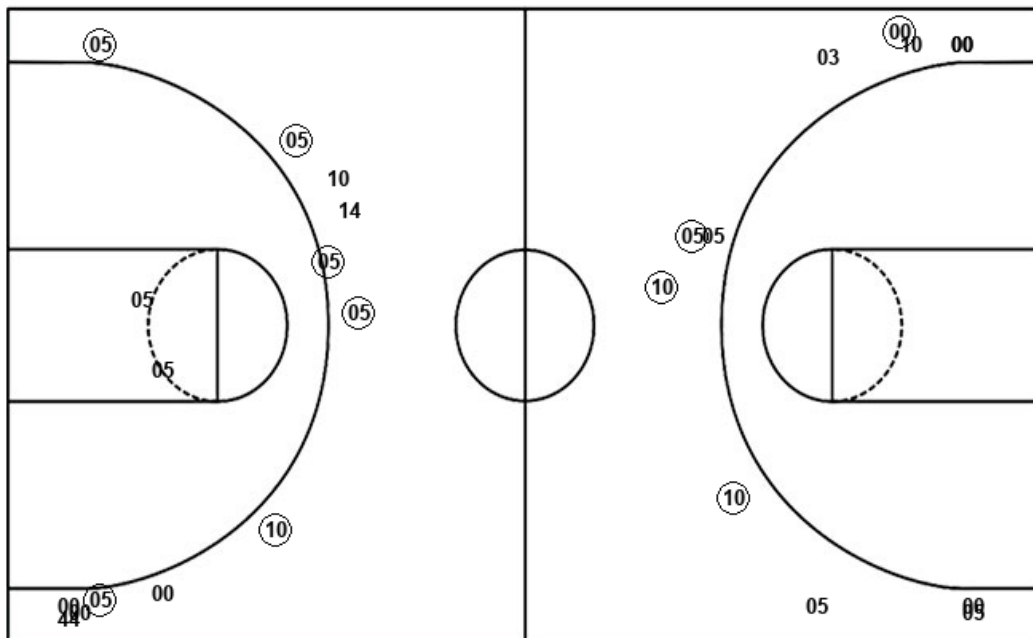
| ORE : Period 4 | Made | Att | Pct |
|--------------------------|-------------|------------|-------------|
| Layups | 3 | 5 | 60.0 |
| Dunks | 0 | 0 | 0 |
| 2PT Field Goals | 3 | 6 | 50.0 |
| 3PT Field Goals | 3 | 7 | 42.9 |
| Total Field Goals | 6 | 13 | 46.2 |

| UTH : Period 4 | Made | Att | Pct |
|--------------------------|-------------|------------|-------------|
| Layups | 2 | 3 | 66.7 |
| Dunks | 0 | 0 | 0 |
| 2PT Field Goals | 2 | 3 | 66.7 |
| 3PT Field Goals | 1 | 7 | 14.3 |
| Total Field Goals | 3 | 10 | 30.0 |

Official Shot Chart
Utah vs Oregon
Utah Team Shots
 February 02, 2019 at Matthew Knight Arena - Eugene, Ore.



Layups



Layups

| | | | | |
|------|------|------|------|------|
| 10 | (10) | 05 | 05 | 10 |
| 10 | 24 | 10 | (44) | 00 |
| 05 | (05) | 11 | 05 | 10 |
| (05) | 44 | (00) | (05) | 05 |
| 05 | (05) | (44) | (44) | (05) |
| (44) | (05) | (05) | 05 | |

Dunks

Dunks

| UTH : Period 1 | Made | Att | Pct |
|--------------------------|----------|-----------|-------------|
| Layups | 1 | 7 | 14.3 |
| Dunks | 0 | 0 | 0 |
| 2PT Field Goals | 1 | 8 | 12.5 |
| 3PT Field Goals | 3 | 7 | 42.9 |
| Total Field Goals | 4 | 15 | 26.7 |

| UTH : Period 2 | Made | Att | Pct |
|--------------------------|----------|-----------|-------------|
| Layups | 2 | 8 | 25.0 |
| Dunks | 0 | 0 | 0 |
| 2PT Field Goals | 2 | 9 | 22.2 |
| 3PT Field Goals | 3 | 5 | 60.0 |
| Total Field Goals | 5 | 14 | 35.7 |

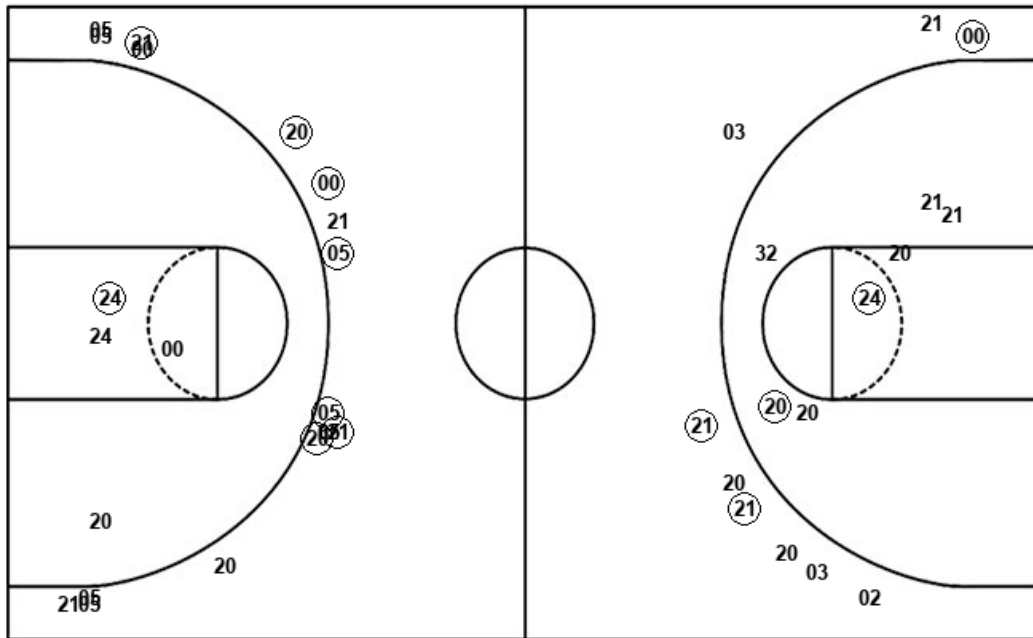
| UTH : Period 3 | Made | Att | Pct |
|--------------------------|-----------|-----------|-------------|
| Layups | 8 | 11 | 72.7 |
| Dunks | 0 | 0 | 0 |
| 2PT Field Goals | 8 | 11 | 72.7 |
| 3PT Field Goals | 3 | 5 | 60.0 |
| Total Field Goals | 11 | 16 | 68.8 |

| UTH : Period 4 | Made | Att | Pct |
|--------------------------|----------|-----------|-------------|
| Layups | 2 | 3 | 66.7 |
| Dunks | 0 | 0 | 0 |
| 2PT Field Goals | 2 | 3 | 66.7 |
| 3PT Field Goals | 1 | 7 | 14.3 |
| Total Field Goals | 3 | 10 | 30.0 |

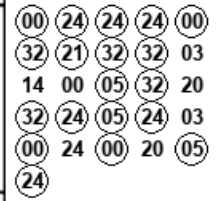
Official Shot Chart
Utah vs Oregon
Oregon Team Shots
 February 02, 2019 at Matthew Knight Arena - Eugene, Ore.



Layups



Layups



Dunks

Dunks

| ORE : Period 1 | Made | Att | Pct |
|--------------------------|-----------|-----------|-------------|
| Layups | 7 | 7 | 100.0 |
| Dunks | 0 | 0 | 0 |
| 2PT Field Goals | 8 | 11 | 72.7 |
| 3PT Field Goals | 2 | 5 | 40.0 |
| Total Field Goals | 10 | 16 | 62.5 |

| ORE : Period 2 | Made | Att | Pct |
|--------------------------|----------|-----------|-------------|
| Layups | 5 | 9 | 55.6 |
| Dunks | 0 | 0 | 0 |
| 2PT Field Goals | 6 | 12 | 50.0 |
| 3PT Field Goals | 1 | 4 | 25.0 |
| Total Field Goals | 7 | 16 | 43.8 |

| ORE : Period 3 | Made | Att | Pct |
|--------------------------|----------|-----------|-------------|
| Layups | 4 | 5 | 80.0 |
| Dunks | 0 | 0 | 0 |
| 2PT Field Goals | 5 | 8 | 62.5 |
| 3PT Field Goals | 4 | 9 | 44.4 |
| Total Field Goals | 9 | 17 | 52.9 |

| ORE : Period 4 | Made | Att | Pct |
|--------------------------|----------|-----------|-------------|
| Layups | 3 | 5 | 60.0 |
| Dunks | 0 | 0 | 0 |
| 2PT Field Goals | 3 | 6 | 50.0 |
| 3PT Field Goals | 3 | 7 | 42.9 |
| Total Field Goals | 6 | 13 | 46.2 |