

**FINAL SCORE****Long Beach St.****48****BEACH****Oregon****110****December 02, 2018 • Matthew Knight Arena - Eugene, OR****FINAL STATISTICS**

**Official Box Score**  
**Long Beach St. vs Oregon**  
**Game Totals -- Final Statistics**  
**December 02, 2018 at Matthew Knight Arena - Eugene, OR**



**Long Beach St. 48**

No.	Player	S	Pts	FG	3FG	FT	OR	DR	TR	PF	A	TO	Blk	Stl	Min	+/-
10	KING, JUSTINA		3	1-7	1-5	0-0	1	0	1	0	0	1	0	0	33	-54
12	HARDY, JASMINE		4	2-11	0-5	0-0	3	5	8	1	1	2	0	1	26	-38
23	GREEN, LAUREN		2	1-4	0-0	0-0	1	2	3	2	0	2	0	0	20	-33
25	HAMILTON-FISHER, KIANNA		5	2-6	0-3	1-2	0	1	1	1	2	1	0	0	27	-39
42	HUNT, NAOMI		5	2-9	0-7	1-3	0	0	0	4	1	4	0	0	35	-54
02	RICE, BRIA		0	0-0	0-0	0-0	0	1	1	3	1	0	1	2	13	-11
03	BORDONARO, SYDNEY		4	1-2	0-1	2-2	0	0	0	2	1	2	0	1	10	-23
21	DAVISON, SHANAIJAH		25	11-19	3-8	0-0	1	1	2	0	1	5	0	1	33	-54
33	MARTINEZ, MIRANDA		0	0-0	0-0	0-0	0	0	0	0	0	0	0	0	2	-4
	TEAM						2	2	4	0		1				
<b>TOTALS</b>			<b>48</b>	<b>20-58</b>	<b>4-29</b>	<b>4-7</b>	<b>8</b>	<b>12</b>	<b>20</b>	<b>13</b>	<b>7</b>	<b>18</b>	<b>1</b>	<b>5</b>	<b>199</b>	

*Shooting By Period*

Period	FG	FG%	3FG	3FG%	FT	FT%
1st Qtr	7-15	47%	1-7	14%	1-1	100%
2nd Qtr	2-12	17%	0-6	00%	0-0	0%
3rd Qtr	6-16	38%	1-7	14%	2-4	50%
4th Qtr	5-15	33%	2-9	22%	1-2	50%
1st Half	9-27	33%	1-13	08%	1-1	100%
2nd Half	11-31	35%	3-16	19%	3-6	50%
<b>Game</b>	<b>20-58</b>	<b>34.5%</b>	<b>4-29</b>	<b>13.8%</b>	<b>4-7</b>	<b>57.1%</b>

*Last FG: 4th-00:35*

*Biggest Run: 9-0*

*Largest lead: By 0 at -*

*Technical Fouls: None.*

**Oregon 110**

No.	Player	S	Pts	FG	3FG	FT	OR	DR	TR	PF	A	TO	Blk	Stl	Min	+/-
00	SABALLY, SATOU		18	6-12	2-7	4-4	0	5	5	4	4	1	2	0	29	46
05	CAZORLA, MAITE		18	7-9	4-6	0-0	0	0	0	0	3	1	0	3	27	58
20	IONESCU, SABRINA		12	5-6	2-3	0-0	2	4	6	0	17	2	0	2	30	46
21	BOLEY, ERIN		24	9-16	4-10	2-2	1	3	4	0	0	3	0	1	30	54
24	HEBARD, RUTHY		19	8-11	0-0	3-4	5	9	14	0	1	1	3	2	25	48
03	CHAVEZ, TAYLOR		7	3-7	1-3	0-0	0	0	0	0	2	0	0	1	23	25
14	GIOMI, LYDIA		2	1-2	0-0	0-0	1	2	3	1	0	0	0	0	18	24
32	GILDON, OTI		10	3-6	0-0	4-4	2	4	6	3	0	0	0	1	17	9
	TEAM						0	3	3	0		0				
<b>TOTALS</b>			<b>110</b>	<b>42-69</b>	<b>13-29</b>	<b>13-14</b>	<b>11</b>	<b>30</b>	<b>41</b>	<b>8</b>	<b>27</b>	<b>8</b>	<b>5</b>	<b>10</b>	<b>199</b>	

*Shooting By Period*

Period	FG	FG%	3FG	3FG%	FT	FT%
1st Qtr	9-19	47%	2-11	18%	4-4	100%
2nd Qtr	11-17	65%	4-6	67%	0-0	0%
3rd Qtr	12-18	67%	5-8	63%	3-3	100%
4th Qtr	10-15	67%	2-4	50%	6-7	86%
1st Half	20-36	56%	6-17	35%	4-4	100%
2nd Half	22-33	67%	7-12	58%	9-10	90%
<b>Game</b>	<b>42-69</b>	<b>60.9%</b>	<b>13-29</b>	<b>44.8%</b>	<b>13-14</b>	<b>92.9%</b>

*Last FG: 4th-00:46*

*Biggest Run: 16-0*

*Largest lead: By 64 at 4-00:46*

*Technical Fouls: None.*

*Game Notes:*

Officials: **Chuck Gonzalez, Cheryl Flores, Teresa Turner**  
Attendance: **5118**

Start Time: **2018-12-02 22:00:20**

End Time: **2018-12-02 23:35:07**

Game Duration: **94**

Score	1st	2nd	3rd	4th	TOT
LBS	16	4	15	13	<b>48</b>
ORE	24	26	32	28	<b>110</b>

**LBS led for 0:00. ORE led for 38:25.**

**Game was tied for 1:23.**

Times tied: **0**

Lead Changes: **0**

Points from	LBS	ORE
In the Paint	20	50
Off Turns	9	23
2nd Chance	9	17
Fast Break	4	16
Bench	29	19

**Official Box Score**  
**Long Beach St. vs Oregon**  
**First Half Statistics Only**  
**December 02, 2018 at Matthew Knight Arena - Eugene, OR**



### Long Beach St. 20

No.	Player	S	Pts	FG	3FG	FT	OR	DR	TR	PF	A	TO	Blk	Stl	Min	+/-
02	RICE, BRIA		0	0-0	0-0	0-0	0	0	0	2	0	0	0	1	3	6
03	BORDONARO, SYDNEY		0	0-0	0-0	0-0	0	0	0	1	0	1	0	0	2	-2
10	KING, JUSTINA		0	0-4	0-2	0-0	1	0	1	0	0	1	0	0	17	-36
12	HARDY, JASMINE		2	1-5	0-1	0-0	1	4	5	0	0	2	0	1	12	-25
21	DAVISON, SHANAIJAH		11	5-7	1-3	0-0	0	1	1	0	1	4	0	1	17	-25
23	GREEN, LAUREN		2	1-1	0-0	0-0	0	1	1	0	0	2	0	0	11	-10
25	HAMILTON-FISHER, KIANNA		2	1-4	0-2	0-0	0	1	1	1	1	0	0	0	18	-28
33	MARTINEZ, MIRANDA		0	0-0	0-0	0-0	0	0	0	0	0	0	0	0	0	0
42	HUNT, NAOMI		3	1-6	0-5	1-1	0	0	0	1	1	2	0	0	20	-30
	TEAM		0	0-0	0-0	0-0	2	1	3	0	0	0	0	0	0	
<b>TOTALS</b>			<b>20</b>	<b>9-27</b>	<b>1-13</b>	<b>1-1</b>	<b>0</b>	<b>0</b>	<b>12</b>	<b>5</b>	<b>3</b>	<b>12</b>	<b>0</b>	<b>3</b>	<b>100</b>	

#### Shooting By Period

Period	FG	FG%	3FG	3FG%	FT	FT%
1st Qtr	7-15	47%	1-7	14%	1-1	100%
2nd Qtr	2-12	17%	0-6	00%	0-0	0%
1st Half	9-27	33%	1-13	08%	1-1	100%
Game	20-58	34.5%	4-29	13.8%	4-7	57.1%

Last FG Half: LBS 2nd-03:11

### Oregon 50

No.	Player	S	Pts	FG	3FG	FT	OR	DR	TR	PF	A	TO	Blk	Stl	Min	+/-
00	SABALLY, SATOU		7	2-5	1-4	2-2	0	2	2	1	3	1	1	0	15	30
03	CHAVEZ, TAYLOR		0	0-3	0-2	0-0	0	0	0	0	1	0	0	0	9	2
05	CAZORLA, MAITE		5	2-3	1-2	0-0	0	0	0	0	3	0	0	3	16	33
14	GIOMI, LYDIA		0	0-0	0-0	0-0	0	2	2	0	0	0	0	0	8	7
20	IONESCU, SABRINA		8	3-4	2-3	0-0	1	2	3	0	8	0	0	0	17	26
21	BOLEY, ERIN		14	6-10	2-6	0-0	0	1	1	0	0	2	0	1	16	31
24	HEBARD, RUTHY		12	5-6	0-0	2-2	3	3	6	0	1	0	1	2	12	23
32	GILDON, OTI		4	2-5	0-0	0-0	1	2	3	2	0	0	0	0	8	-2
	TEAM		0	0-0	0-0	0-0	0	1	1	0	0	0	0	0	0	
<b>TOTALS</b>			<b>50</b>	<b>20-36</b>	<b>6-17</b>	<b>4-4</b>	<b>0</b>	<b>0</b>	<b>18</b>	<b>3</b>	<b>16</b>	<b>3</b>	<b>2</b>	<b>6</b>	<b>100</b>	

#### Shooting By Period

Period	FG	FG%	3FG	3FG%	FT	FT%
1st Qtr	9-19	47%	2-11	18%	4-4	100%
2nd Qtr	11-17	65%	4-6	67%	0-0	0%
1st Half	20-36	56%	6-17	35%	4-4	100%
Game	42-69	60.9%	13-29	44.8%	13-14	92.9%

Last FG Half: ORE 2nd-01:07

#### Game Notes:

Officials: **Chuck Gonzalez, Cheryl Flores, Teresa Turner**  
Attendance: 5118

Start Time: 2018-12-02 22:00:20  
End Time: 2018-12-02 23:35:07  
Game Duration: 94

Score	1st	2nd	3rd	4th	TOT
LBS	16	4	15	13	<b>48</b>
ORE	24	26	32	28	<b>110</b>

Points from (This Period)	LBS	ORE
In the Paint	8	24
Off Turns	5	18
2nd Chance	2	7
Fast Break	2	8
Bench	11	4

**Official Box Score**  
**Long Beach St. vs Oregon**  
**First Quarter Statistics Only**  
**December 02, 2018 at Matthew Knight Arena - Eugene, OR**



### Long Beach St. 16

No.	Player	S	Pts	FG	3FG	FT	OR	DR	TR	PF	A	TO	Blk	Stl	Min	+/-
10	KING, JUSTINA		0	0-0	0-0	0-0	0	0	0	0	0	0	0	0	7	-14
12	HARDY, JASMINE		2	1-3	0-1	0-0	1	3	4	0	0	2	0	0	5	-3
23	GREEN, LAUREN		2	1-1	0-0	0-0	0	1	1	0	0	1	0	0	8	-10
25	HAMILTON-FISHER, KIANNA		2	1-2	0-0	0-0	0	1	1	1	1	0	0	0	9	-8
42	HUNT, NAOMI		3	1-4	0-3	1-1	0	0	0	1	1	0	0	0	10	-8
02	RICE, BRIA		0	0-0	0-0	0-0	0	0	0	2	0	0	0	1	3	6
03	BORDONARO, SYDNEY		0	0-0	0-0	0-0	0	0	0	0	0	0	0	0	1	0
21	DAVISON, SHANAIJAH		7	3-5	1-3	0-0	0	0	0	0	1	1	0	0	7	-3
33	MARTINEZ, MIRANDA		0	0-0	0-0	0-0	0	0	0	0	0	0	0	0	0	0
	TEAM						0	0	0	0		0				
<b>TOTALS</b>			<b>16</b>	<b>7-15</b>	<b>1-7</b>	<b>1-1</b>	<b>0</b>	<b>0</b>	<b>6</b>	<b>4</b>	<b>3</b>	<b>4</b>	<b>0</b>	<b>1</b>	<b>50</b>	

#### Shooting By Period

Period	FG	FG%	3FG	3FG%	FT	FT%
1st Qtr	7-15	47%	1-7	14%	1-1	100%
2nd Qtr	2-12	17%	0-6	00%	0-0	0%
1st Half	7-15	47%	1-7	14%	1-1	100%
1st Half	9-27	33%	1-13	08%	1-1	100%
Game	20-58	34.5%	4-29	13.8%	4-7	57.1%

### Oregon 24

No.	Player	S	Pts	FG	3FG	FT	OR	DR	TR	PF	A	TO	Blk	Stl	Min	+/-
00	SABALLY, SATOU		7	2-5	1-4	2-2	0	0	0	1	0	1	1	0	8	10
05	CAZORLA, MAITE		2	1-2	0-1	0-0	0	0	0	0	2	0	0	1	8	11
20	IONESCU, SABRINA		5	2-2	1-1	0-0	1	2	3	0	4	0	0	0	9	8
21	BOLEY, ERIN		4	2-5	0-3	0-0	0	1	1	0	0	0	0	0	8	14
24	HEBARD, RUTHY		4	1-1	0-0	2-2	2	1	3	0	1	0	0	0	6	6
03	CHAVEZ, TAYLOR		0	0-2	0-2	0-0	0	0	0	0	0	0	0	0	4	-5
14	GIOMI, LYDIA		0	0-0	0-0	0-0	0	1	1	0	0	0	0	0	4	2
32	GILDON, OTI		2	1-2	0-0	0-0	1	1	2	1	0	0	0	0	4	-6
	TEAM						0	0	0	0		0				
<b>TOTALS</b>			<b>24</b>	<b>9-19</b>	<b>2-11</b>	<b>4-4</b>	<b>0</b>	<b>0</b>	<b>10</b>	<b>2</b>	<b>7</b>	<b>1</b>	<b>1</b>	<b>1</b>	<b>50</b>	

#### Shooting By Period

Period	FG	FG%	3FG	3FG%	FT	FT%
1st Qtr	9-19	47%	2-11	18%	4-4	100%
2nd Qtr	11-17	65%	4-6	67%	0-0	0%
1st Half	9-19	47%	2-11	18%	4-4	100%
1st Half	20-36	56%	6-17	35%	4-4	100%
Game	42-69	60.9%	13-29	44.8%	13-14	92.9%

#### Game Notes:

Officials: **Chuck Gonzalez, Cheryl Flores, Teresa Turner**  
Attendance: **5118**

Start Time: **2018-12-02 22:00:20**  
End Time: **2018-12-02 23:35:07**  
Game Duration: **94**

Score	1st	2nd	3rd	4th	TOT
LBS	16	4	15	13	<b>48</b>
ORE	24	26	32	28	<b>110</b>

Points from (This Period)	LBS	ORE
In the Paint	6	10
Off Turns	3	8
2nd Chance	0	5
Fast Break	2	6
Bench	7	2

**Official Play-By-Play**  
**Long Beach St. vs Oregon**  
**First Quarter**

**December 02, 2018 at Matthew Knight Arena - Eugene, OR**



**Period 1**

**Starters:**

**Long Beach St.:** 10 KING,JUSTINA; 12 HARDY,JASMINE; 23 GREEN,LAUREN; 25 HAMILTON-FISHER,KIANNA; 42 HUNT,NAOMI;

**Oregon:** 0 SABALLY,SATOU; 5 CAZORLA,MAITE; 20 IONESCU,SABRINA; 21 BOLEY,ERIN; 24 HEBARD,RUTHY;

Time	VISITORS: Long Beach St.	Score	Margin	HOME: Oregon
09:46				MISSED 3PTR by SABALLY, SATOU
09:39				REBOUND (OFF) by HEBARD, RUTHY
09:36				MISSED 3PTR by BOLEY, ERIN
09:32	REBOUND (DEF) by HARDY, JASMINE			
09:11	MISSED 3PTR by HUNT, NAOMI			
09:06				REBOUND (DEF) by IONESCU, SABRINA
08:50				MISSED 3PTR by SABALLY, SATOU
08:45				REBOUND (OFF) by IONESCU, SABRINA
08:42		3-0	H 3	GOOD! 3PTR by IONESCU, SABRINA
08:42				ASSIST by CAZORLA, MAITE
08:07	MISSED 3PTR by HARDY, JASMINE			
08:07				BLOCK by SABALLY, SATOU
07:55	REBOUND (OFF) by HARDY, JASMINE			
07:54	TURNOVER (TRAVEL) by HARDY, JASMINE			
07:46		5-0	H 5	GOOD! LAYUP by HEBARD, RUTHY
07:46				ASSIST by IONESCU, SABRINA
07:24	GOOD! JUMPER by HAMILTON-FISHER, KIANNA	5-2	H 3	
07:09		7-2	H 5	GOOD! LAYUP by BOLEY, ERIN
07:09				ASSIST by IONESCU, SABRINA
06:51	TURNOVER (TRAVEL) by HARDY, JASMINE			
06:51	SUB OUT: HARDY, JASMINE			
06:51	SUB IN: DAVISON, SHANAIJAH			
06:46				MISSED 3PTR by BOLEY, ERIN
06:43				REBOUND (OFF) by HEBARD, RUTHY
06:43	FOUL (PERSONAL) by HAMILTON-FISHER, KIANNA			
06:43		8-2	H 6	GOOD! FT by HEBARD, RUTHY
06:43		9-2	H 7	GOOD! FT by HEBARD, RUTHY
06:19	MISSED 3PTR by DAVISON, SHANAIJAH			
06:14				REBOUND (DEF) by IONESCU, SABRINA
06:09				MISSED 3PTR by CAZORLA, MAITE
06:05	REBOUND (DEF) by GREEN, LAUREN			
06:03	GOOD! JUMPER by DAVISON, SHANAIJAH [FB]	9-4	H 5	
05:51		11-4	H 7	GOOD! JUMPER by BOLEY, ERIN
05:51				ASSIST by IONESCU, SABRINA
05:36	GOOD! LAYUP by HUNT, NAOMI [PNT]	11-6	H 5	
05:36				FOUL (PERSONAL) by SABALLY, SATOU
05:36	GOOD! FT by HUNT, NAOMI	11-7	H 4	
05:32		13-7	H 6	GOOD! JUMPER by IONESCU, SABRINA [FB]
05:32				ASSIST by CAZORLA, MAITE
05:13	TURNOVER (LOSTBALL) by GREEN, LAUREN			
05:13				SUB OUT: HEBARD, RUTHY
05:13				SUB IN: GIOMI, LYDIA
04:59		16-7	H 9	GOOD! 3PTR by SABALLY, SATOU
04:59				ASSIST by IONESCU, SABRINA
04:50	TURNOVER (BADPASS) by DAVISON, SHANAIJAH			
04:50				STEAL by CAZORLA, MAITE
04:43		18-7	H 11	GOOD! LAYUP by CAZORLA, MAITE [FB]
04:22	MISSED JUMPER by HAMILTON-FISHER, KIANNA			
04:17				REBOUND (DEF) by BOLEY, ERIN
04:03		20-7	H 13	GOOD! LAYUP by SABALLY, SATOU
04:03	TIMEOUT 30SEC			
04:03				SUB OUT: CAZORLA, MAITE
04:03				SUB IN: CHAVEZ, TAYLOR
03:44	MISSED 3PTR by DAVISON, SHANAIJAH			
03:39				REBOUND (DEF) by GIOMI, LYDIA
03:37	FOUL (PERSONAL) by HUNT, NAOMI			
03:37		21-7	H 14	GOOD! FT by SABALLY, SATOU [FB]
03:37				SUB OUT: BOLEY, ERIN
03:37				SUB IN: GILDON, OTI
03:37	SUB OUT: KING, JUSTINA			
03:37	SUB IN: RICE, BRIA			
03:37		22-7	H 15	GOOD! FT by SABALLY, SATOU [FB]
03:14	GOOD! LAYUP by GREEN, LAUREN [PNT]	22-9	H 13	
03:14	ASSIST by DAVISON, SHANAIJAH			
03:01				MISSED 3PTR by CHAVEZ, TAYLOR
02:57				REBOUND (OFF) by GILDON, OTI
02:57	FOUL (PERSONAL) by RICE, BRIA			
02:53				TURNOVER (LOSTBALL) by SABALLY, SATOU
02:53	STEAL by RICE, BRIA			
02:45	GOOD! 3PTR by DAVISON, SHANAIJAH	22-12	H 10	

Time	VISITORS: Long Beach St.	Score	Margin	HOME: Oregon
02:45	ASSIST by HAMILTON-FISHER, KIANNA			
02:24				MISSED 3PTR by SABALLY, SATOU
02:20	REBOUND (DEF) by HAMILTON-FISHER, KIANNA			
02:06				SUB OUT: SABALLY, SATOU
02:06				SUB IN: CAZORLA, MAITE
02:06	SUB OUT: GREEN, LAUREN			
02:06	SUB IN: HARDY, JASMINE			
02:02	GOOD! JUMPER by DAVISON, SHANAIJAH	22-14	H 8	
01:44				MISSED LAYUP by GILDON, OTI
01:40	REBOUND (DEF) by HARDY, JASMINE			
01:35	MISSED 3PTR by HUNT, NAOMI			
01:30				REBOUND (DEF) by GILDON, OTI
01:27				MISSED 3PTR by CHAVEZ, TAYLOR
01:25	REBOUND (DEF) by TEAM			
01:25				FOUL (PERSONAL) by GILDON, OTI
01:25				SUB OUT: CHAVEZ, TAYLOR
01:25				SUB IN: HEBARD, RUTHY
01:25				SUB OUT: GIOMI, LYDIA
01:25				SUB IN: BOLEY, ERIN
01:25	SUB OUT: HAMILTON-FISHER, KIANNA			
01:25	SUB IN: BORDONARO, SYDNEY			
01:04	MISSED LAYUP by HARDY, JASMINE			
01:03				REBOUND (DEF) by HEBARD, RUTHY
01:03	FOUL (PERSONAL) by RICE, BRIA			
01:03				SUB OUT: IONESCU, SABRINA
01:03				SUB IN: CHAVEZ, TAYLOR
00:58				MISSED 3PTR by BOLEY, ERIN
00:53	REBOUND (DEF) by HARDY, JASMINE			
00:36	SUB OUT: RICE, BRIA			
00:36	SUB IN: KING, JUSTINA			
00:33	GOOD! LAYUP by HARDY, JASMINE [PNT]	22-16	H 6	
00:33	ASSIST by HUNT, NAOMI			
00:14		24-16	H 8	GOOD! LAYUP by GILDON, OTI [PNT]
00:14				ASSIST by HEBARD, RUTHY
00:05	MISSED 3PTR by HUNT, NAOMI			
00:00	REBOUND (OFF) by TEAM			

Long Beach St. 16, Oregon 24

Points from (This Period)	LBS	ORE
In the Paint	6	10
Off Turns	3	8
2nd Chance	0	5
Fast Break	2	6
Bench	7	2

**Official Box Score**  
**Long Beach St. vs Oregon**  
**Second Quarter Statistics Only**  
**December 02, 2018 at Matthew Knight Arena - Eugene, OR**



### Long Beach St. 4

No.	Player	S	Pts	FG	3FG	FT	OR	DR	TR	PF	A	TO	Blk	Stl	Min	+/-
10	KING, JUSTINA		0	0-4	0-2	0-0	1	0	1	0	0	1	0	0	10	-22
12	HARDY, JASMINE		0	0-2	0-0	0-0	0	1	1	0	0	0	0	1	7	-22
23	GREEN, LAUREN		0	0-0	0-0	0-0	0	0	0	0	0	1	0	0	3	0
25	HAMILTON-FISHER, KIANNA		0	0-2	0-2	0-0	0	0	0	0	0	0	0	0	9	-20
42	HUNT, NAOMI		0	0-2	0-2	0-0	0	0	0	0	0	2	0	0	10	-22
02	RICE, BRIA		0	0-0	0-0	0-0	0	0	0	0	0	0	0	0	0	0
03	BORDONARO, SYDNEY		0	0-0	0-0	0-0	0	0	0	1	0	1	0	0	1	-2
21	DAVISON, SHANAIJAH		4	2-2	0-0	0-0	0	1	1	0	0	3	0	1	10	-22
33	MARTINEZ, MIRANDA		0	0-0	0-0	0-0	0	0	0	0	0	0	0	0	0	0
	TEAM						2	1	3	0		0				
<b>TOTALS</b>			<b>4</b>	<b>2-12</b>	<b>0-6</b>	<b>0-0</b>	<b>0</b>	<b>0</b>	<b>6</b>	<b>1</b>	<b>0</b>	<b>8</b>	<b>0</b>	<b>2</b>	<b>50</b>	

#### Shooting By Period

Period	FG	FG%	3FG	3FG%	FT	FT%
3rd Qtr	6-16	38%	1-7	14%	2-4	50%
4th Qtr	5-15	33%	2-9	22%	1-2	50%
2nd Half	2-12	17%	0-6	00%	0-0	0%
2nd Half	11-31	35%	3-16	19%	3-6	50%
Game	20-58	34.5%	4-29	13.8%	4-7	57.1%

### Oregon 26

No.	Player	S	Pts	FG	3FG	FT	OR	DR	TR	PF	A	TO	Blk	Stl	Min	+/-
00	SABALLY, SATOU		0	0-0	0-0	0-0	0	2	2	0	3	0	0	0	7	20
05	CAZORLA, MAITE		3	1-1	1-1	0-0	0	0	0	0	1	0	0	2	8	22
20	IONESCU, SABRINA		3	1-2	1-2	0-0	0	0	0	0	4	0	0	0	8	18
21	BOLEY, ERIN		10	4-5	2-3	0-0	0	0	0	0	0	2	0	1	8	17
24	HEBARD, RUTHY		8	4-5	0-0	0-0	1	2	3	0	0	0	1	2	6	17
03	CHAVEZ, TAYLOR		0	0-1	0-0	0-0	0	0	0	0	1	0	0	0	5	7
14	GIOMI, LYDIA		0	0-0	0-0	0-0	0	1	1	0	0	0	0	0	4	5
32	GILDON, OTI		2	1-3	0-0	0-0	0	1	1	1	0	0	0	0	4	4
	TEAM						0	1	1	0		0				
<b>TOTALS</b>			<b>26</b>	<b>11-17</b>	<b>4-6</b>	<b>0-0</b>	<b>0</b>	<b>0</b>	<b>8</b>	<b>1</b>	<b>9</b>	<b>2</b>	<b>1</b>	<b>5</b>	<b>50</b>	

#### Shooting By Period

Period	FG	FG%	3FG	3FG%	FT	FT%
3rd Qtr	12-18	67%	5-8	63%	3-3	100%
4th Qtr	10-15	67%	2-4	50%	6-7	86%
2nd Half	11-17	65%	4-6	67%	0-0	0%
2nd Half	22-33	67%	7-12	58%	9-10	90%
Game	42-69	60.9%	13-29	44.8%	13-14	92.9%

#### Game Notes:

Officials: **Chuck Gonzalez, Cheryl Flores, Teresa Turner**  
Attendance: **5118**

Start Time: **2018-12-02 22:00:20**  
End Time: **2018-12-02 23:35:07**  
Game Duration: **94**

Score	1st	2nd	3rd	4th	TOT
LBS	16	4	15	13	<b>48</b>
ORE	24	26	32	28	<b>110</b>

Points from (This Period)	LBS	ORE
In the Paint	2	14
Off Turns	2	10
2nd Chance	2	2
Fast Break	0	2
Bench	4	2

**Official Play-By-Play**  
**Long Beach St. vs Oregon**  
**Second Quarter**  
**December 02, 2018 at Matthew Knight Arena - Eugene, OR**



**Period 2**

**Starters:**

**Long Beach St.:** 10 KING,JUSTINA; 12 HARDY,JASMINE; 23 GREEN,LAUREN; 25 HAMILTON-FISHER,KIANNA; 42 HUNT,NAOMI;  
**Oregon:** 0 SABALLY,SATOU; 5 CAZORLA,MAITE; 20 IONESCU,SABRINA; 21 BOLEY,ERIN; 24 HEBARD,RUTHY;

Time	VISITORS: Long Beach St.	Score	Margin	HOME: Oregon
09:51				MISSED LAYUP by HEBARD, RUTHY
09:51				REBOUND (OFF) by TEAM
09:51	FOUL (PERSONAL) by BORDONARO, SYDNEY			
09:48				MISSED JUMPER by CHAVEZ, TAYLOR
09:40				REBOUND (OFF) by HEBARD, RUTHY
09:40		26-16	H 10	GOOD! LAYUP by HEBARD, RUTHY
09:22	TURNOVER (BADPASS) by BORDONARO, SYDNEY			
09:22	SUB OUT: BORDONARO, SYDNEY			
09:22	SUB IN: HAMILTON-FISHER, KIANNA			
09:00				TURNOVER (BADPASS) by BOLEY, ERIN
09:00	STEAL by HARDY, JASMINE			
08:53	TURNOVER (TRAVEL) by HUNT, NAOMI			
08:53				SUB OUT: CHAVEZ, TAYLOR
08:53				SUB IN: IONESCU, SABRINA
08:53				SUB OUT: GILDON, OTI
08:53				SUB IN: SABALLY, SATOU
08:38		29-16	H 13	GOOD! 3PTR by IONESCU, SABRINA
08:38				ASSIST by SABALLY, SATOU
08:18	MISSED 3PTR by KING, JUSTINA			
08:13				REBOUND (DEF) by HEBARD, RUTHY
08:10		31-16	H 15	GOOD! LAYUP by BOLEY, ERIN [FB]
08:10				ASSIST by IONESCU, SABRINA
08:01	MISSED 3PTR by HUNT, NAOMI			
07:56				REBOUND (DEF) by SABALLY, SATOU
07:36		33-16	H 17	GOOD! LAYUP by HEBARD, RUTHY [PNT]
07:36				ASSIST by IONESCU, SABRINA
07:34	TIMEOUT 30SEC			
07:24	TURNOVER (BADPASS) by DAVISON, SHANAIJAH			
07:24				STEAL by HEBARD, RUTHY
07:11		35-16	H 19	GOOD! LAYUP by HEBARD, RUTHY
07:11				ASSIST by SABALLY, SATOU
06:53	TURNOVER (BADPASS) by KING, JUSTINA			
06:53				STEAL by HEBARD, RUTHY
06:47		38-16	H 22	GOOD! 3PTR by BOLEY, ERIN
06:47				ASSIST by IONESCU, SABRINA
06:22	MISSED 3PTR by HAMILTON-FISHER, KIANNA			
06:18	REBOUND (OFF) by KING, JUSTINA			
06:16	MISSED LAYUP by KING, JUSTINA			
06:16				BLOCK by HEBARD, RUTHY
06:16	REBOUND (OFF) by TEAM			
06:07	GOOD! JUMPER by DAVISON, SHANAIJAH	38-18	H 20	
05:58		41-18	H 23	GOOD! 3PTR by BOLEY, ERIN
05:58				ASSIST by CAZORLA, MAITE
05:47	TURNOVER (LOSTBALL) by DAVISON, SHANAIJAH			
05:47				STEAL by CAZORLA, MAITE
05:36				MISSED 3PTR by BOLEY, ERIN
05:31	REBOUND (DEF) by HARDY, JASMINE			
05:23	MISSED LAYUP by KING, JUSTINA			
05:18				REBOUND (DEF) by HEBARD, RUTHY
05:08		43-18	H 25	GOOD! LAYUP by HEBARD, RUTHY [PNT]
05:08				ASSIST by IONESCU, SABRINA
04:53	MISSED 3PTR by HAMILTON-FISHER, KIANNA			
04:51	REBOUND (OFF) by TEAM			
04:51	SUB OUT: HARDY, JASMINE			
04:51	SUB IN: GREEN, LAUREN			
04:27	TURNOVER (LOSTBALL) by HUNT, NAOMI			
04:27				STEAL by CAZORLA, MAITE
04:06				MISSED 3PTR by IONESCU, SABRINA
04:02	REBOUND (DEF) by DAVISON, SHANAIJAH			
03:45	TURNOVER (BADPASS) by DAVISON, SHANAIJAH			
03:45				SUB OUT: CAZORLA, MAITE
03:45				SUB IN: CHAVEZ, TAYLOR
03:45				SUB OUT: HEBARD, RUTHY
03:45				SUB IN: GILDON, OTI
03:45				SUB OUT: SABALLY, SATOU
03:45				SUB IN: GIOMI, LYDIA
03:20				TURNOVER (BADPASS) by BOLEY, ERIN
03:20	STEAL by DAVISON, SHANAIJAH			
03:11	GOOD! LAYUP by DAVISON, SHANAIJAH	43-20	H 23	
03:11				TIMEOUT 30SEC



Time	VISITORS: Long Beach St.	Score	Margin	HOME: Oregon
02:52				MISSED LAYUP by GILDON, OTI
02:50	REBOUND (DEF) by TEAM			
02:35	TURNOVER (BADPASS) by GREEN, LAUREN			
02:35				STEAL by BOLEY, ERIN
02:15		45-20	H 25	GOOD! LAYUP by BOLEY, ERIN [PNT]
01:59				SUB OUT: BOLEY, ERIN
01:59				SUB IN: CAZORLA, MAITE
01:59				SUB OUT: GILDON, OTI
01:59				SUB IN: SABALLY, SATOU
01:59	SUB OUT: GREEN, LAUREN			
01:59	SUB IN: HARDY, JASMINE			
01:55	MISSED LAYUP by HARDY, JASMINE			
01:51				REBOUND (DEF) by SABALLY, SATOU
01:47		48-20	H 28	GOOD! 3PTR by CAZORLA, MAITE
01:47				ASSIST by SABALLY, SATOU
01:22	MISSED LAYUP by HARDY, JASMINE			
01:19				REBOUND (DEF) by TEAM
01:19				SUB OUT: IONESCU, SABRINA
01:19				SUB IN: GILDON, OTI
01:07		50-20	H 30	GOOD! LAYUP by GILDON, OTI
01:07				ASSIST by CHAVEZ, TAYLOR
00:58	MISSED 3PTR by HUNT, NAOMI			
00:53				REBOUND (DEF) by GIOMI, LYDIA
00:29				MISSED LAYUP by GILDON, OTI
00:28	REBOUND (DEF) by TEAM			
00:28				FOUL (PERSONAL) by GILDON, OTI
00:05	MISSED 3PTR by KING, JUSTINA			
00:00				REBOUND (DEF) by GILDON, OTI

Long Beach St. 20, Oregon 50

Points from (This Period)	LBS	ORE
In the Paint	2	14
Off Turns	2	10
2nd Chance	2	2
Fast Break	0	2
Bench	4	2

**Official Box Score**  
**Long Beach St. vs Oregon**  
**Second Half Statistics Only**  
**December 02, 2018 at Matthew Knight Arena - Eugene, OR**



**Long Beach St. 28**

No.	Player	S	Pts	FG	3FG	FT	OR	DR	TR	PF	A	TO	Blk	Stl	Min	+/-
02	RICE, BRIA		0	0-0	0-0	0-0	0	1	1	1	1	0	1	1	10	-17
03	BORDONARO, SYDNEY		4	1-2	0-1	2-2	0	0	0	1	1	1	0	1	8	-21
10	KING, JUSTINA		3	1-3	1-3	0-0	0	0	0	0	0	0	0	0	16	-18
12	HARDY, JASMINE		2	1-6	0-4	0-0	2	1	3	1	1	0	0	0	14	-13
21	DAVISON, SHANAIJAH		14	6-12	2-5	0-0	1	0	1	0	0	1	0	0	16	-29
23	GREEN, LAUREN		0	0-3	0-0	0-0	1	1	2	2	0	0	0	0	9	-23
25	HAMILTON-FISHER, KIANNA		3	1-2	0-1	1-2	0	0	0	0	1	1	0	0	9	-11
33	MARTINEZ, MIRANDA		0	0-0	0-0	0-0	0	0	0	0	0	0	0	0	2	-4
42	HUNT, NAOMI		2	1-3	0-2	0-2	0	0	0	3	0	2	0	0	15	-24
	TEAM		0	0-0	0-0	0-0	0	1	1	0	0	1	0	0	0	
<b>TOTALS</b>			<b>28</b>	<b>11-31</b>	<b>3-16</b>	<b>3-6</b>	<b>0</b>	<b>0</b>	<b>8</b>	<b>8</b>	<b>4</b>	<b>6</b>	<b>1</b>	<b>2</b>	<b>99</b>	

*Shooting By Period*

Period	FG	FG%	3FG	3FG%	FT	FT%
3rd Qtr	6-16	38%	1-7	14%	2-4	50%
4th Qtr	5-15	33%	2-9	22%	1-2	50%
2nd Half	11-31	35%	3-16	19%	3-6	50%
Game	20-58	34.5%	4-29	13.8%	4-7	57.1%

*Last FG Half: LBS 4th-00:35*

**Oregon 60**

No.	Player	S	Pts	FG	3FG	FT	OR	DR	TR	PF	A	TO	Blk	Stl	Min	+/-
00	SABALLY, SATOU		11	4-7	1-3	2-2	0	3	3	3	1	0	1	0	14	16
03	CHAVEZ, TAYLOR		7	3-4	1-1	0-0	0	0	0	0	1	0	0	1	15	23
05	CAZORLA, MAITE		13	5-6	3-4	0-0	0	0	0	0	0	1	0	0	10	25
14	GIOMI, LYDIA		2	1-2	0-0	0-0	1	0	1	1	0	0	0	0	11	17
20	IONESCU, SABRINA		4	2-2	0-0	0-0	1	2	3	0	9	2	0	2	13	20
21	BOLEY, ERIN		10	3-6	2-4	2-2	1	2	3	0	0	1	0	0	15	23
24	HEBARD, RUTHY		7	3-5	0-0	1-2	2	6	8	0	0	1	2	0	12	25
32	GILDON, OTI		6	1-1	0-0	4-4	1	2	3	1	0	0	0	1	8	11
	TEAM		0	0-0	0-0	0-0	0	2	2	0	0	0	0	0	0	
<b>TOTALS</b>			<b>60</b>	<b>22-33</b>	<b>7-12</b>	<b>9-10</b>	<b>0</b>	<b>0</b>	<b>23</b>	<b>5</b>	<b>11</b>	<b>5</b>	<b>3</b>	<b>4</b>	<b>99</b>	

*Shooting By Period*

Period	FG	FG%	3FG	3FG%	FT	FT%
3rd Qtr	12-18	67%	5-8	63%	3-3	100%
4th Qtr	10-15	67%	2-4	50%	6-7	86%
2nd Half	22-33	67%	7-12	58%	9-10	90%
Game	42-69	60.9%	13-29	44.8%	13-14	92.9%

*Last FG Half: ORE 4th-00:46*

*Game Notes:*

Officials: **Chuck Gonzalez, Cheryl Flores, Teresa Turner**  
Attendance: **5118**

Start Time: **2018-12-02 22:00:20**  
End Time: **2018-12-02 23:35:07**  
Game Duration: **94**

Score	1st	2nd	3rd	4th	TOT
LBS	16	4	15	13	<b>48</b>
ORE	24	26	32	28	<b>110</b>

Points from (This Period)	LBS	ORE
In the Paint	12	26
Off Turns	4	5
2nd Chance	7	10
Fast Break	2	8
Bench	18	15

**Official Box Score**  
**Long Beach St. vs Oregon**  
**Third Quarter Statistics Only**  
**December 02, 2018 at Matthew Knight Arena - Eugene, OR**



### Long Beach St. 28

No.	Player	S	Pts	FG	3FG	FT	OR	DR	TR	PF	A	TO	Blk	Stl	Min	+/-
10	KING, JUSTINA		0	0-1	0-1	0-0	0	0	0	0	0	0	0	0	7	-13
12	HARDY, JASMINE		0	0-2	0-2	0-0	1	0	1	1	0	0	0	0	5	-8
23	GREEN, LAUREN		0	0-2	0-0	0-0	1	1	2	1	0	0	0	0	8	-13
25	HAMILTON-FISHER, KIANNA		2	1-2	0-1	0-0	0	0	0	0	0	0	0	0	5	-9
42	HUNT, NAOMI		0	0-1	0-1	0-2	0	0	0	0	0	0	0	0	5	-9
02	RICE, BRIA		0	0-0	0-0	0-0	0	1	1	1	1	0	0	0	5	-8
03	BORDONARO, SYDNEY		4	1-1	0-0	2-2	0	0	0	0	1	1	0	1	5	-8
21	DAVISON, SHANAIJAH		9	4-7	1-2	0-0	0	0	0	0	0	0	0	0	8	-13
33	MARTINEZ, MIRANDA		0	0-0	0-0	0-0	0	0	0	0	0	0	0	0	2	-4
	TEAM						0	0	0	0		1				
<b>TOTALS</b>			<b>15</b>	<b>6-16</b>	<b>1-7</b>	<b>2-4</b>	<b>0</b>	<b>0</b>	<b>4</b>	<b>3</b>	<b>2</b>	<b>2</b>	<b>0</b>	<b>1</b>	<b>50</b>	

*Shooting By Period*

Period	FG	FG%	3FG	3FG%	FT	FT%
2nd Half	0-0	0%	0-0	0%	0-0	0%
Game	20-58	34.5%	4-29	13.8%	4-7	57.1%

### Oregon 60

No.	Player	S	Pts	FG	3FG	FT	OR	DR	TR	PF	A	TO	Blk	Stl	Min	+/-
00	SABALLY, SATOU		8	3-6	1-3	1-1	0	2	2	3	1	0	1	0	8	11
05	CAZORLA, MAITE		6	2-2	2-2	0-0	0	0	0	0	0	1	0	0	7	15
20	IONESCU, SABRINA		2	1-1	0-0	0-0	1	2	3	0	9	1	0	1	10	17
21	BOLEY, ERIN		5	2-4	1-2	0-0	1	2	3	0	0	0	0	0	8	11
24	HEBARD, RUTHY		6	3-4	0-0	0-0	2	2	4	0	0	1	1	0	6	12
03	CHAVEZ, TAYLOR		3	1-1	1-1	0-0	0	0	0	0	0	0	0	0	5	8
14	GIOMI, LYDIA		0	0-0	0-0	0-0	0	0	0	0	0	0	0	0	4	5
32	GILDON, OTI		2	0-0	0-0	2-2	0	0	0	0	0	0	0	0	2	6
	TEAM						0	1	1	0		0				
<b>TOTALS</b>			<b>32</b>	<b>12-18</b>	<b>5-8</b>	<b>3-3</b>	<b>0</b>	<b>0</b>	<b>13</b>	<b>3</b>	<b>10</b>	<b>3</b>	<b>2</b>	<b>1</b>	<b>50</b>	

*Shooting By Period*

Period	FG	FG%	3FG	3FG%	FT	FT%
2nd Half	0-0	0%	0-0	0%	0-0	0%
Game	42-69	60.9%	13-29	44.8%	13-14	92.9%

Game Notes:

Officials: **Chuck Gonzalez, Cheryl Flores, Teresa Turner**  
Attendance: **5118**

Start Time: **2018-12-02 22:00:20**

End Time: **2018-12-02 23:35:07**

Game Duration: **94**

Score	1st	2nd	3rd	4th	TOT
LBS	16	4	15	13	<b>48</b>
ORE	24	26	32	28	<b>110</b>

Points from (This Period)	LBS	ORE
In the Paint	8	14
Off Turns	2	2
2nd Chance	2	6
Fast Break	2	5
Bench	13	5

**Official Play-By-Play**  
**Long Beach St. vs Oregon**  
**Third Quarter**  
**December 02, 2018 at Matthew Knight Arena - Eugene, OR**



**Period 3**

**Starters:**

**Long Beach St.:** 10 KING,JUSTINA; 12 HARDY,JASMINE; 23 GREEN,LAUREN; 25 HAMILTON-FISHER,KIANNA; 42 HUNT,NAOMI;  
**Oregon:** 0 SABALLY,SATOU; 5 CAZORLA,MAITE; 20 IONESCU,SABRINA; 21 BOLEY,ERIN; 24 HEBARD,RUTHY;

Time	VISITORS: Long Beach St.	Score	Margin	HOME: Oregon
09:38				MISSED LAYUP by HEBARD, RUTHY
09:31				REBOUND (OFF) by BOLEY, ERIN
09:31		52-20	H 32	GOOD! LAYUP by BOLEY, ERIN
09:17	MISSED LAYUP by DAVISON, SHANAIJAH			
09:17				BLOCK by SABALLY, SATOU
09:10				REBOUND (DEF) by BOLEY, ERIN
09:08				MISSED 3PTR by BOLEY, ERIN
09:01				REBOUND (OFF) by HEBARD, RUTHY
08:59				MISSED 3PTR by SABALLY, SATOU
08:55				REBOUND (OFF) by HEBARD, RUTHY
08:53		54-20	H 34	GOOD! LAYUP by SABALLY, SATOU
08:53				ASSIST by IONESCU, SABRINA
08:27				FOUL (PERSONAL) by SABALLY, SATOU
08:27	MISSED FT by HUNT, NAOMI			
08:27	REBOUND (OFF) by TEAM			
08:27	SUB OUT: MARTINEZ, MIRANDA			
08:27	SUB IN: GREEN, LAUREN			
08:25	MISSED FT by HUNT, NAOMI			
08:23				REBOUND (DEF) by BOLEY, ERIN
08:14		56-20	H 36	GOOD! LAYUP by HEBARD, RUTHY
08:14				ASSIST by SABALLY, SATOU
07:43	TURNOVER (SHOTCLOCK) by			
07:30				TURNOVER (BADPASS) by HEBARD, RUTHY
07:22	MISSED 3PTR by HUNT, NAOMI			
07:21				REBOUND (DEF) by TEAM
07:11				TURNOVER (BADPASS) by CAZORLA, MAITE
06:53	MISSED 3PTR by KING, JUSTINA			
06:49				REBOUND (DEF) by SABALLY, SATOU
06:45		59-20	H 39	GOOD! 3PTR by SABALLY, SATOU
06:45				ASSIST by IONESCU, SABRINA
06:33	MISSED LAYUP by GREEN, LAUREN			
06:33				BLOCK by HEBARD, RUTHY
06:31	REBOUND (OFF) by GREEN, LAUREN			
06:31				FOUL (PERSONAL) by SABALLY, SATOU
06:24	GOOD! LAYUP by DAVISON, SHANAIJAH [PNT]	59-22	H 37	
06:09				MISSED JUMPER by BOLEY, ERIN
06:05				REBOUND (OFF) by IONESCU, SABRINA
06:02		61-22	H 39	GOOD! LAYUP by HEBARD, RUTHY [PNT]
06:02				ASSIST by IONESCU, SABRINA
05:42	GOOD! LAYUP by HAMILTON-FISHER, KIANNA [PNT]	61-24	H 37	
05:31				MISSED 3PTR by SABALLY, SATOU
05:27	REBOUND (DEF) by GREEN, LAUREN			
05:09	MISSED 3PTR by HAMILTON-FISHER, KIANNA			
05:05				REBOUND (DEF) by SABALLY, SATOU
04:59		63-24	H 39	GOOD! LAYUP by SABALLY, SATOU [FB/PNT]
04:59				ASSIST by IONESCU, SABRINA
04:59	FOUL (PERSONAL) by GREEN, LAUREN			
04:59				SUB OUT: CAZORLA, MAITE
04:59				SUB IN: CHAVEZ, TAYLOR
04:59	SUB OUT: KING, JUSTINA			
04:59	SUB IN: RICE, BRIA			
04:59	SUB OUT: HAMILTON-FISHER, KIANNA			
04:59	SUB IN: HARDY, JASMINE			
04:59	SUB OUT: HUNT, NAOMI			
04:59	SUB IN: BORDONARO, SYDNEY			
04:59		64-24	H 40	GOOD! FT by SABALLY, SATOU [FB]
04:42	MISSED JUMPER by GREEN, LAUREN			
04:37				REBOUND (DEF) by IONESCU, SABRINA
04:32				SUB OUT: HEBARD, RUTHY
04:32				SUB IN: GIOMI, LYDIA
04:28				MISSED JUMPER by SABALLY, SATOU
04:24	REBOUND (DEF) by RICE, BRIA			
04:21	TURNOVER (BADPASS) by BORDONARO, SYDNEY			
04:21				STEAL by IONESCU, SABRINA
04:13		66-24	H 42	GOOD! LAYUP by IONESCU, SABRINA [FB/PNT]
04:03	GOOD! LAYUP by DAVISON, SHANAIJAH [PNT]	66-26	H 40	
03:47		69-26	H 43	GOOD! 3PTR by BOLEY, ERIN
03:47				ASSIST by IONESCU, SABRINA
03:30	GOOD! 3PTR by DAVISON, SHANAIJAH	69-29	H 40	
03:13				TURNOVER (LOSTBALL) by IONESCU, SABRINA

Time	VISITORS: Long Beach St.	Score	Margin	HOME: Oregon
03:13	STEAL by BORDONARO, SYDNEY			
03:07	GOOD! LAYUP by DAVISON, SHANAIJAH [FB]	69-31	H 38	
03:07	ASSIST by BORDONARO, SYDNEY			
02:50		72-31	H 41	GOOD! 3PTR by CHAVEZ, TAYLOR
02:50				ASSIST by IONESCU, SABRINA
02:28				FOUL (PERSONAL) by SABALLY, SATOU
02:28				
02:28				SUB OUT: SABALLY, SATOU
02:28				SUB IN: GILDON, OTI
02:28				SUB OUT: BOLEY, ERIN
02:28				SUB IN: CAZORLA, MAITE
02:28	SUB OUT: DAVISON, SHANAIJAH			
02:28	SUB IN: KING, JUSTINA			
02:28	GOOD! FT by BORDONARO, SYDNEY	72-32	H 40	
02:28	GOOD! FT by BORDONARO, SYDNEY	72-33	H 39	
02:08		75-33	H 42	GOOD! 3PTR by CAZORLA, MAITE
02:08				ASSIST by IONESCU, SABRINA
01:54	MISSED 3PTR by HARDY, JASMINE			
01:49				REBOUND (DEF) by IONESCU, SABRINA
01:41		78-33	H 45	GOOD! 3PTR by CAZORLA, MAITE
01:41				ASSIST by IONESCU, SABRINA
01:21	GOOD! JUMPER by BORDONARO, SYDNEY	78-35	H 43	
01:21	ASSIST by RICE, BRIA			
01:11	FOUL (PERSONAL) by RICE, BRIA			
01:03	FOUL (PERSONAL) by HARDY, JASMINE			
01:03		79-35	H 44	GOOD! FT by GILDON, OTI
01:03		80-35	H 45	GOOD! FT by GILDON, OTI
00:46	MISSED 3PTR by HARDY, JASMINE			
00:43	REBOUND (OFF) by HARDY, JASMINE			
00:43				SUB OUT: GIOMI, LYDIA
00:43				SUB IN: HEBARD, RUTHY
00:43	SUB OUT: KING, JUSTINA			
00:43	SUB IN: DAVISON, SHANAIJAH			
00:39	MISSED JUMPER by DAVISON, SHANAIJAH			
00:35				REBOUND (DEF) by HEBARD, RUTHY
00:16		82-35	H 47	GOOD! LAYUP by HEBARD, RUTHY
00:16				ASSIST by IONESCU, SABRINA
00:02	MISSED 3PTR by DAVISON, SHANAIJAH			
00:00				REBOUND (DEF) by HEBARD, RUTHY

Long Beach St. 35, Oregon 82

Points from (This Period)	LBS	ORE
In the Paint	8	14
Off Turns	2	2
2nd Chance	2	6
Fast Break	2	5
Bench	13	5

**Official Box Score**  
**Long Beach St. vs Oregon**  
**Fourth Quarter Statistics Only**  
**December 02, 2018 at Matthew Knight Arena - Eugene, OR**



### Long Beach St. 13

No.	Player	S	Pts	FG	3FG	FT	OR	DR	TR	PF	A	TO	Blk	Stl	Min	+/-
10	KING, JUSTINA		3	1-2	1-2	0-0	0	0	0	0	0	0	0	0	9	-5
12	HARDY, JASMINE		2	1-4	0-2	0-0	1	1	2	0	1	0	0	0	9	-5
23	GREEN, LAUREN		0	0-1	0-0	0-0	0	0	0	1	0	0	0	0	1	-10
25	HAMILTON-FISHER, KIANNA		1	0-0	0-0	1-2	0	0	0	0	1	1	0	0	4	-2
42	HUNT, NAOMI		2	1-2	0-1	0-0	0	0	0	3	0	2	0	0	10	-15
02	RICE, BRIA		0	0-0	0-0	0-0	0	0	0	0	0	0	1	1	5	-9
03	BORDONARO, SYDNEY		0	0-1	0-1	0-0	0	0	0	1	0	0	0	0	3	-13
21	DAVISON, SHANAIJAH		5	2-5	1-3	0-0	1	0	1	0	0	1	0	0	8	-16
33	MARTINEZ, MIRANDA		0	0-0	0-0	0-0	0	0	0	0	0	0	0	0	0	0
	TEAM						0	1	1	0		0				
<b>TOTALS</b>			<b>13</b>	<b>5-15</b>	<b>2-9</b>	<b>1-2</b>	<b>0</b>	<b>0</b>	<b>4</b>	<b>5</b>	<b>2</b>	<b>4</b>	<b>1</b>	<b>1</b>	<b>49</b>	

*Shooting By Period*

Period	FG	FG%	3FG	3FG%	FT	FT%
Game	20-58	34.5%	4-29	13.8%	4-7	57.1%

### Oregon 28

No.	Player	S	Pts	FG	3FG	FT	OR	DR	TR	PF	A	TO	Blk	Stl	Min	+/-
00	SABALLY, SATOU		3	1-1	0-0	1-1	0	1	1	0	0	0	0	0	6	5
05	CAZORLA, MAITE		7	3-4	1-2	0-0	0	0	0	0	0	0	0	0	3	10
20	IONESCU, SABRINA		2	1-1	0-0	0-0	0	0	0	0	0	1	0	1	3	3
21	BOLEY, ERIN		5	1-2	1-2	2-2	0	0	0	0	0	1	0	0	7	12
24	HEBARD, RUTHY		1	0-1	0-0	1-2	0	4	4	0	0	0	1	0	6	13
03	CHAVEZ, TAYLOR		4	2-3	0-0	0-0	0	0	0	0	1	0	0	1	10	15
14	GIOMI, LYDIA		2	1-2	0-0	0-0	1	0	1	1	0	0	0	0	7	12
32	GILDON, OTI		4	1-1	0-0	2-2	1	2	3	1	0	0	0	1	6	5
	TEAM						0	1	1	0		0				
<b>TOTALS</b>			<b>28</b>	<b>10-15</b>	<b>2-4</b>	<b>6-7</b>	<b>0</b>	<b>0</b>	<b>10</b>	<b>2</b>	<b>1</b>	<b>2</b>	<b>1</b>	<b>3</b>	<b>49</b>	

*Shooting By Period*

Period	FG	FG%	3FG	3FG%	FT	FT%
Game	42-69	60.9%	13-29	44.8%	13-14	92.9%

Game Notes:

Officials: **Chuck Gonzalez, Cheryl Flores, Teresa Turner**  
Attendance: **5118**

Start Time: **2018-12-02 22:00:20**

End Time: **2018-12-02 23:35:07**

Game Duration: **94**

Score	1st	2nd	3rd	4th	TOT
LBS	16	4	15	13	<b>48</b>
ORE	24	26	32	28	<b>110</b>

Points from (This Period)	LBS	ORE
In the Paint	4	12
Off Turns	2	3
2nd Chance	5	4
Fast Break	0	3
Bench	5	10

**Official Play-By-Play**  
**Long Beach St. vs Oregon**  
**Fourth Quarter**  
**December 02, 2018 at Matthew Knight Arena - Eugene, OR**



**Period 4**

**Starters:**

**Long Beach St.:** 10 KING,JUSTINA; 12 HARDY,JASMINE; 23 GREEN,LAUREN; 25 HAMILTON-FISHER,KIANNA; 42 HUNT,NAOMI;  
**Oregon:** 0 SABALLY,SATOU; 5 CAZORLA,MAITE; 20 IONESCU,SABRINA; 21 BOLEY,ERIN; 24 HEBARD,RUTHY;

Time	VISITORS: Long Beach St.	Score	Margin	HOME: Oregon
09:50		84-35	H 49	GOOD! LAYUP by CAZORLA, MAITE
09:35	MISSED 3PTR by BORDONARO, SYDNEY			
09:31				REBOUND (DEF) by HEBARD, RUTHY
09:27	FOUL (PERSONAL) by GREEN, LAUREN			
09:27		85-35	H 50	GOOD! FT by BOLEY, ERIN [FB]
09:27		86-35	H 51	GOOD! FT by BOLEY, ERIN [FB]
09:27	MISSED JUMPER by GREEN, LAUREN			
09:27				REBOUND (DEF) by HEBARD, RUTHY
09:27		89-35	H 54	GOOD! 3PTR by BOLEY, ERIN
09:27				ASSIST by CHAVEZ, TAYLOR
09:27	MISSED 3PTR by DAVISON, SHANAIJAH			
09:27				REBOUND (DEF) by HEBARD, RUTHY
09:27		92-35	H 57	GOOD! 3PTR by CAZORLA, MAITE
09:27	GOOD! LAYUP by DAVISON, SHANAIJAH [PNT]	92-37	H 55	
09:27		94-37	H 57	GOOD! LAYUP by CAZORLA, MAITE
09:10	SUB OUT: BORDONARO, SYDNEY			
09:10	SUB IN: KING, JUSTINA			
09:10	SUB OUT: GREEN, LAUREN			
09:10	SUB IN: HARDY, JASMINE			
07:50	TURNOVER (BADPASS) by DAVISON, SHANAIJAH			
07:02				MISSED 3PTR by CAZORLA, MAITE
07:02	REBOUND (DEF) by TEAM			
07:02				SUB OUT: CAZORLA, MAITE
07:02				SUB IN: IONESCU, SABRINA
06:40	MISSED 3PTR by DAVISON, SHANAIJAH			
06:38				REBOUND (DEF) by TEAM
06:38				SUB OUT: GIOMI, LYDIA
06:38				SUB IN: SABALLY, SATOU
06:38				SUB OUT: BOLEY, ERIN
06:38				SUB IN: GILDON, OTI
06:25				MISSED LAYUP by HEBARD, RUTHY
06:24	REBOUND (DEF) by TEAM			
06:24	SUB OUT: RICE, BRIA			
06:24	SUB IN: HAMILTON-FISHER, KIANNA			
06:06	MISSED 3PTR by HARDY, JASMINE			
06:00				REBOUND (DEF) by HEBARD, RUTHY
05:53				TURNOVER (BADPASS) by IONESCU, SABRINA
05:42	TIMEOUT TEAM			
05:35	MISSED LAYUP by HARDY, JASMINE			
05:35				BLOCK by HEBARD, RUTHY
05:24	REBOUND (OFF) by HARDY, JASMINE			
05:22	GOOD! LAYUP by HARDY, JASMINE [PNT]	94-39	H 55	
05:17	FOUL (PERSONAL) by HUNT, NAOMI			
05:17				MISSED FT by HEBARD, RUTHY
05:17				REBOUND (OFF) by TEAM
05:17		95-39	H 56	GOOD! FT by HEBARD, RUTHY [FB]
05:01	TURNOVER (BADPASS) by HAMILTON-FISHER, KIANNA			
05:01				STEAL by IONESCU, SABRINA
04:53				MISSED LAYUP by CHAVEZ, TAYLOR
04:45				REBOUND (OFF) by GILDON, OTI
04:45		97-39	H 58	GOOD! LAYUP by GILDON, OTI
04:38	MISSED 3PTR by HARDY, JASMINE			
04:32				REBOUND (DEF) by GILDON, OTI
04:21		99-39	H 60	GOOD! JUMPER by IONESCU, SABRINA
03:57				
03:57	SUB OUT: HAMILTON-FISHER, KIANNA			
03:57	SUB IN: BORDONARO, SYDNEY			
03:57				SUB OUT: IONESCU, SABRINA
03:57				SUB IN: GIOMI, LYDIA
03:57				SUB OUT: HEBARD, RUTHY
03:57				SUB IN: BOLEY, ERIN
03:45	MISSED 3PTR by HUNT, NAOMI			
03:39	REBOUND (OFF) by DAVISON, SHANAIJAH			
03:32	GOOD! 3PTR by DAVISON, SHANAIJAH	99-42	H 57	
03:08		101-42	H 59	GOOD! JUMPER by CHAVEZ, TAYLOR
02:41	TURNOVER (LOSTBALL) by HUNT, NAOMI			
02:41				STEAL by GILDON, OTI
02:41	FOUL (PERSONAL) by HUNT, NAOMI			
02:33	FOUL (PERSONAL) by HUNT, NAOMI			
02:33		102-42	H 60	GOOD! FT by GILDON, OTI

Time	VISITORS: Long Beach St.	Score	Margin	HOME: Oregon
02:33		103-42	H 61	GOOD! FT by GILDON, OTI
02:19	MISSED JUMPER by DAVISON, SHANAIJAH			
02:15				REBOUND (DEF) by SABALLY, SATOU
02:05		105-42	H 63	GOOD! LAYUP by SABALLY, SATOU [PNT]
02:05	FOUL (PERSONAL) by BORDONARO, SYDNEY			
02:05	SUB OUT: DAVISON, SHANAIJAH			
02:05	SUB IN: HAMILTON-FISHER, KIANNA			
02:05	SUB OUT: BORDONARO, SYDNEY			
02:05	SUB IN: RICE, BRIA			
02:05		106-42	H 64	GOOD! FT by SABALLY, SATOU
01:50	TURNOVER (BADPASS) by HUNT, NAOMI			
01:50				STEAL by CHAVEZ, TAYLOR
01:44				MISSED 3PTR by BOLEY, ERIN
01:44	BLOCK by RICE, BRIA			
01:36	REBOUND (DEF) by HARDY, JASMINE			
01:34	GOOD! 3PTR by KING, JUSTINA	106-45	H 61	
01:34	ASSIST by HARDY, JASMINE			
01:24		108-45	H 63	GOOD! LAYUP by CHAVEZ, TAYLOR [PNT]
01:06				FOUL (PERSONAL) by GIOMI, LYDIA
01:06	MISSED FT by HAMILTON-FISHER, KIANNA			
01:06	REBOUND (OFF) by TEAM			
01:06	GOOD! FT by HAMILTON-FISHER, KIANNA	108-46	H 62	
00:52				MISSED LAYUP by GIOMI, LYDIA
00:46				REBOUND (OFF) by GIOMI, LYDIA
00:46		110-46	H 64	GOOD! LAYUP by GIOMI, LYDIA
00:35	GOOD! JUMPER by HUNT, NAOMI	110-48	H 62	
00:35	ASSIST by HAMILTON-FISHER, KIANNA			
00:28				TURNOVER (BADPASS) by BOLEY, ERIN
00:28	STEAL by RICE, BRIA			
00:28				FOUL (PERSONAL) by GILDON, OTI
00:17	MISSED 3PTR by KING, JUSTINA			
00:11				REBOUND (DEF) by GILDON, OTI

Long Beach St. 48, Oregon 110

Points from (This Period)	LBS	ORE
In the Paint	4	12
Off Turns	2	3
2nd Chance	5	4
Fast Break	0	3
Bench	5	10



**Official Scoring/Possession Reference Chart**  
**Long Beach St. vs Oregon**  
**Period 1**  
**December 02, 2018 at Matthew Knight Arena - Eugene, OR**



**Period 1**

**Starters:**

**Long Beach St.:** 10 KING,JUSTINA; 12 HARDY,JASMINE; 23 GREEN,LAUREN; 25 HAMILTON-FISHER,KIANNA; 42 HUNT,NAOMI;

**Oregon:** 0 SABALLY,SATOU; 5 CAZORLA,MAITE; 20 IONESCU,SABRINA; 21 BOLEY,ERIN; 24 HEBARD,RUTHY;

Time	VISITORS: Long Beach St.	Score	Margin	HOME: Oregon
08:42		3-0	H 3	GOOD! 3PTR by IONESCU, SABRINA
07:46		5-0	H 5	GOOD! LAYUP by HEBARD, RUTHY
07:24	GOOD! JUMPER by HAMILTON-FISHER, KIANNA	5-2	H 3	
07:09		7-2	H 5	GOOD! LAYUP by BOLEY, ERIN
06:43		8-2	H 6	GOOD! FT by HEBARD, RUTHY
06:43		9-2	H 7	GOOD! FT by HEBARD, RUTHY
06:03	GOOD! JUMPER by DAVISON, SHANAIJAH [FB]	9-4	H 5	
05:51		11-4	H 7	GOOD! JUMPER by BOLEY, ERIN
05:36	GOOD! LAYUP by HUNT, NAOMI [PNT]	11-6	H 5	
05:36	GOOD! FT by HUNT, NAOMI	11-7	H 4	
05:32		13-7	H 6	GOOD! JUMPER by IONESCU, SABRINA [FB]
04:59		16-7	H 9	GOOD! 3PTR by SABALLY, SATOU
04:43		18-7	H 11	GOOD! LAYUP by CAZORLA, MAITE [FB]
04:03		20-7	H 13	GOOD! LAYUP by SABALLY, SATOU
03:37		21-7	H 14	GOOD! FT by SABALLY, SATOU [FB]
03:37		22-7	H 15	GOOD! FT by SABALLY, SATOU [FB]
03:14	GOOD! LAYUP by GREEN, LAUREN [PNT]	22-9	H 13	
02:45	GOOD! 3PTR by DAVISON, SHANAIJAH	22-12	H 10	
02:02	GOOD! JUMPER by DAVISON, SHANAIJAH	22-14	H 8	
00:33	GOOD! LAYUP by HARDY, JASMINE [PNT]	22-16	H 6	
00:14		24-16	H 8	GOOD! LAYUP by GILDON, OTI [PNT]

**Long Beach St. 16, Oregon 24**

**Official Scoring/Possession Reference Chart**  
**Long Beach St. vs Oregon**  
**Period 2**  
**December 02, 2018 at Matthew Knight Arena - Eugene, OR**



**Period 2**

**Starters:**

**Long Beach St.:** 10 KING,JUSTINA; 12 HARDY,JASMINE; 23 GREEN,LAUREN; 25 HAMILTON-FISHER,KIANNA; 42 HUNT,NAOMI;

**Oregon:** 0 SABALLY,SATOU; 5 CAZORLA,MAITE; 20 IONESCU,SABRINA; 21 BOLEY,ERIN; 24 HEBARD,RUTHY;

Time	VISITORS: Long Beach St.	Score	Margin	HOME: Oregon
09:40		26-16	H 10	GOOD! LAYUP by HEBARD, RUTHY
08:38		29-16	H 13	GOOD! 3PTR by IONESCU, SABRINA
08:10		31-16	H 15	GOOD! LAYUP by BOLEY, ERIN [FB]
07:36		33-16	H 17	GOOD! LAYUP by HEBARD, RUTHY [PNT]
07:11		35-16	H 19	GOOD! LAYUP by HEBARD, RUTHY
06:47		38-16	H 22	GOOD! 3PTR by BOLEY, ERIN
06:07	GOOD! JUMPER by DAVISON, SHANAIJAH	38-18	H 20	
05:58		41-18	H 23	GOOD! 3PTR by BOLEY, ERIN
05:08		43-18	H 25	GOOD! LAYUP by HEBARD, RUTHY [PNT]
03:11	GOOD! LAYUP by DAVISON, SHANAIJAH	43-20	H 23	
02:15		45-20	H 25	GOOD! LAYUP by BOLEY, ERIN [PNT]
01:47		48-20	H 28	GOOD! 3PTR by CAZORLA, MAITE
01:07		50-20	H 30	GOOD! LAYUP by GILDON, OTI

**Long Beach St. 20, Oregon 50**

**Official Scoring/Possession Reference Chart**  
**Long Beach St. vs Oregon**  
**Period 3**  
**December 02, 2018 at Matthew Knight Arena - Eugene, OR**



**Period 3**

**Starters:**

**Long Beach St.:** 10 KING,JUSTINA; 12 HARDY,JASMINE; 23 GREEN,LAUREN; 25 HAMILTON-FISHER,KIANNA; 42 HUNT,NAOMI;

**Oregon:** 0 SABALLY,SATOU; 5 CAZORLA,MAITE; 20 IONESCU,SABRINA; 21 BOLEY,ERIN; 24 HEBARD,RUTHY;

Time	VISITORS: Long Beach St.	Score	Margin	HOME: Oregon
09:31		52-20	H 32	GOOD! LAYUP by BOLEY, ERIN
08:53		54-20	H 34	GOOD! LAYUP by SABALLY, SATOU
08:14		56-20	H 36	GOOD! LAYUP by HEBARD, RUTHY
06:45		59-20	H 39	GOOD! 3PTR by SABALLY, SATOU
06:24	GOOD! LAYUP by DAVISON, SHANAIJAH [PNT]	59-22	H 37	
06:02		61-22	H 39	GOOD! LAYUP by HEBARD, RUTHY [PNT]
05:42	GOOD! LAYUP by HAMILTON-FISHER, KIANNA [PNT]	61-24	H 37	
04:59		63-24	H 39	GOOD! LAYUP by SABALLY, SATOU [FB/PNT]
04:59		64-24	H 40	GOOD! FT by SABALLY, SATOU [FB]
04:13		66-24	H 42	GOOD! LAYUP by IONESCU, SABRINA [FB/PNT]
04:03	GOOD! LAYUP by DAVISON, SHANAIJAH [PNT]	66-26	H 40	
03:47		69-26	H 43	GOOD! 3PTR by BOLEY, ERIN
03:30	GOOD! 3PTR by DAVISON, SHANAIJAH	69-29	H 40	
03:07	GOOD! LAYUP by DAVISON, SHANAIJAH [FB]	69-31	H 38	
02:50		72-31	H 41	GOOD! 3PTR by CHAVEZ, TAYLOR
02:28	GOOD! FT by BORDONARO, SYDNEY	72-32	H 40	
02:28	GOOD! FT by BORDONARO, SYDNEY	72-33	H 39	
02:08		75-33	H 42	GOOD! 3PTR by CAZORLA, MAITE
01:41		78-33	H 45	GOOD! 3PTR by CAZORLA, MAITE
01:21	GOOD! JUMPER by BORDONARO, SYDNEY	78-35	H 43	
01:03		79-35	H 44	GOOD! FT by GILDON, OTI
01:03		80-35	H 45	GOOD! FT by GILDON, OTI
00:16		82-35	H 47	GOOD! LAYUP by HEBARD, RUTHY

**Long Beach St. 35, Oregon 82**

**Official Scoring/Possession Reference Chart**  
**Long Beach St. vs Oregon**  
**Period 4**  
**December 02, 2018 at Matthew Knight Arena - Eugene, OR**



**Period 4**

**Starters:**

**Long Beach St.:** 10 KING,JUSTINA; 12 HARDY,JASMINE; 23 GREEN,LAUREN; 25 HAMILTON-FISHER,KIANNA; 42 HUNT,NAOMI;

**Oregon:** 0 SABALLY,SATOU; 5 CAZORLA,MAITE; 20 IONESCU,SABRINA; 21 BOLEY,ERIN; 24 HEBARD,RUTHY;

Time	VISITORS: Long Beach St.	Score	Margin	HOME: Oregon
09:50		84-35	H 49	GOOD! LAYUP by CAZORLA, MAITE
09:27		85-35	H 50	GOOD! FT by BOLEY, ERIN [FB]
09:27		86-35	H 51	GOOD! FT by BOLEY, ERIN [FB]
09:27		89-35	H 54	GOOD! 3PTR by BOLEY, ERIN
09:27		92-35	H 57	GOOD! 3PTR by CAZORLA, MAITE
09:27	GOOD! LAYUP by DAVISON, SHANAIJAH [PNT]	92-37	H 55	
09:27		94-37	H 57	GOOD! LAYUP by CAZORLA, MAITE
05:22	GOOD! LAYUP by HARDY, JASMINE [PNT]	94-39	H 55	
05:17		95-39	H 56	GOOD! FT by HEBARD, RUTHY [FB]
04:45		97-39	H 58	GOOD! LAYUP by GILDON, OTI
04:21		99-39	H 60	GOOD! JUMPER by IONESCU, SABRINA
03:32	GOOD! 3PTR by DAVISON, SHANAIJAH	99-42	H 57	
03:08		101-42	H 59	GOOD! JUMPER by CHAVEZ, TAYLOR
02:33		102-42	H 60	GOOD! FT by GILDON, OTI
02:33		103-42	H 61	GOOD! FT by GILDON, OTI
02:05		105-42	H 63	GOOD! LAYUP by SABALLY, SATOU [PNT]
02:05		106-42	H 64	GOOD! FT by SABALLY, SATOU
01:34	GOOD! 3PTR by KING, JUSTINA	106-45	H 61	
01:24		108-45	H 63	GOOD! LAYUP by CHAVEZ, TAYLOR [PNT]
01:06	GOOD! FT by HAMILTON-FISHER, KIANNA	108-46	H 62	
00:46		110-46	H 64	GOOD! LAYUP by GIOMI, LYDIA
00:35	GOOD! JUMPER by HUNT, NAOMI	110-48	H 62	

**Long Beach St. 48, Oregon 110**

**Official Substitutions Log  
Long Beach St. vs Oregon  
Period 1**

**December 02, 2018 at Matthew Knight Arena - Eugene, OR**



VISITORS: Long Beach St.	Time	Score	HOME: Oregon
10 KING, JUSTINA			0 SABALLY, SATOU
12 HARDY, JASMINE			5 CAZORLA, MAITE
23 GREEN, LAUREN			20 IONESCU, SABRINA
25 HAMILTON-FISHER, KIANNA			21 BOLEY, ERIN
42 HUNT, NAOMI			24 HEBARD, RUTHY
SUB OUT: 12 HARDY, JASMINE	06:51	2-7	
SUB IN: 21 DAVISON, SHANAIJAH	06:51		
	05:13	7-13	SUB OUT: HEBARD, RUTHY
	05:13		SUB IN: GIOMI, LYDIA
	04:03	7-20	SUB OUT: CAZORLA, MAITE
	04:03		SUB IN: CHAVEZ, TAYLOR
	03:37	7-21	SUB OUT: BOLEY, ERIN
	03:37		SUB IN: GILDON, OTI
SUB OUT: 10 KING, JUSTINA	03:37		
SUB IN: 2 RICE, BRIA	03:37		
	02:06	12-22	SUB OUT: SABALLY, SATOU
	02:06		SUB IN: CAZORLA, MAITE
SUB OUT: 23 GREEN, LAUREN	02:06		
SUB IN: 12 HARDY, JASMINE	02:06		
	01:25	14-22	SUB OUT: CHAVEZ, TAYLOR
	01:25		SUB IN: HEBARD, RUTHY
	01:25		SUB OUT: GIOMI, LYDIA
	01:25		SUB IN: BOLEY, ERIN
SUB OUT: 25 HAMILTON-FISHER, KIANNA	01:25		
SUB IN: 3 BORDONARO, SYDNEY	01:25		
	01:03	14-22	SUB OUT: IONESCU, SABRINA
	01:03		SUB IN: CHAVEZ, TAYLOR
SUB OUT: 2 RICE, BRIA	00:36	14-22	
SUB IN: 10 KING, JUSTINA	00:36		

**Long Beach St. 16, Oregon 24**

**Official Substitutions Log**  
**Long Beach St. vs Oregon**  
**Period 2**  
**December 02, 2018 at Matthew Knight Arena - Eugene, OR**



VISITORS: Long Beach St.	Time	Score	HOME: Oregon
10 KING,JUSTINA			0 SABALLY,SATOU
12 HARDY,JASMINE			5 CAZORLA,MAITE
23 GREEN,LAUREN			20 IONESCU,SABRINA
25 HAMILTON-FISHER,KIANNA			21 BOLEY,ERIN
42 HUNT,NAOMI			24 HEBARD,RUTHY
SUB OUT: 3 BORDONARO,SYDNEY	09:22	16-26	
SUB IN: 25 HAMILTON-FISHER,KIANNA	09:22		
	08:53	16-26	SUB OUT: CHAVEZ,TAYLOR
	08:53		SUB IN: IONESCU,SABRINA
	08:53		SUB OUT: GILDON,OTI
	08:53		SUB IN: SABALLY,SATOU
SUB OUT: 12 HARDY,JASMINE	04:51	18-43	
SUB IN: 23 GREEN,LAUREN	04:51		
	03:45	18-43	SUB OUT: CAZORLA,MAITE
	03:45		SUB IN: CHAVEZ,TAYLOR
	03:45		SUB OUT: HEBARD,RUTHY
	03:45		SUB IN: GILDON,OTI
	03:45		SUB OUT: SABALLY,SATOU
	03:45		SUB IN: GIOMI,LYDIA
	01:59	20-45	SUB OUT: BOLEY,ERIN
	01:59		SUB IN: CAZORLA,MAITE
	01:59		SUB OUT: GILDON,OTI
	01:59		SUB IN: SABALLY,SATOU
SUB OUT: 23 GREEN,LAUREN	01:59		
SUB IN: 12 HARDY,JASMINE	01:59		
	01:19	20-48	SUB OUT: IONESCU,SABRINA
	01:19		SUB IN: GILDON,OTI

**Long Beach St. 20, Oregon 50**

**Official Substitutions Log**  
**Long Beach St. vs Oregon**  
**Period 3**  
**December 02, 2018 at Matthew Knight Arena - Eugene, OR**



VISITORS: Long Beach St.	Time	Score	HOME: Oregon
10 KING,JUSTINA			0 SABALLY,SATOU
12 HARDY,JASMINE			5 CAZORLA,MAITE
23 GREEN,LAUREN			20 IONESCU,SABRINA
25 HAMILTON-FISHER,KIANNA			21 BOLEY,ERIN
42 HUNT,NAOMI			24 HEBARD,RUTHY
SUB OUT: 33 MARTINEZ,MIRANDA	08:27	20-54	
SUB IN: 23 GREEN,LAUREN	08:27		
	04:59	24-63	SUB OUT: CAZORLA,MAITE
	04:59		SUB IN: CHAVEZ,TAYLOR
SUB OUT: 10 KING,JUSTINA	04:59		
SUB IN: 2 RICE,BRIA	04:59		
SUB OUT: 25 HAMILTON-FISHER,KIANNA	04:59		
SUB IN: 12 HARDY,JASMINE	04:59		
SUB OUT: 42 HUNT,NAOMI	04:59		
SUB IN: 3 BORDONARO,SYDNEY	04:59		
	04:32	24-64	SUB OUT: HEBARD,RUTHY
	04:32		SUB IN: GIOMI,LYDIA
	02:28	31-72	SUB OUT: SABALLY,SATOU
	02:28		SUB IN: GILDON,OTI
	02:28		SUB OUT: BOLEY,ERIN
	02:28		SUB IN: CAZORLA,MAITE
SUB OUT: 21 DAVISON,SHANAIJAH	02:28		
SUB IN: 10 KING,JUSTINA	02:28		
	00:43	35-80	SUB OUT: GIOMI,LYDIA
	00:43		SUB IN: HEBARD,RUTHY
SUB OUT: 10 KING,JUSTINA	00:43		
SUB IN: 21 DAVISON,SHANAIJAH	00:43		

**Long Beach St. 35, Oregon 82**

**Official Substitutions Log**  
**Long Beach St. vs Oregon**  
**Period 4**  
**December 02, 2018 at Matthew Knight Arena - Eugene, OR**



VISITORS: Long Beach St.	Time	Score	HOME: Oregon
10 KING,JUSTINA			0 SABALLY,SATOU
12 HARDY,JASMINE			5 CAZORLA,MAITE
23 GREEN,LAUREN			20 IONESCU,SABRINA
25 HAMILTON-FISHER,KIANNA			21 BOLEY,ERIN
42 HUNT,NAOMI			24 HEBARD,RUTHY
SUB OUT: 3 BORDONARO,SYDNEY	09:10	37-94	
SUB IN: 10 KING,JUSTINA	09:10		
SUB OUT: 23 GREEN,LAUREN	09:10		
SUB IN: 12 HARDY,JASMINE	09:10		
	07:02	37-94	SUB OUT: CAZORLA,MAITE
	07:02		SUB IN: IONESCU,SABRINA
	06:38	37-94	SUB OUT: GIOMI,LYDIA
	06:38		SUB IN: SABALLY,SATOU
	06:38		SUB OUT: BOLEY,ERIN
	06:38		SUB IN: GILDON,OTI
SUB OUT: 2 RICE,BRIA	06:24	37-94	
SUB IN: 25 HAMILTON-FISHER,KIANNA	06:24		
SUB OUT: 25 HAMILTON-FISHER,KIANNA	03:57	39-99	
SUB IN: 3 BORDONARO,SYDNEY	03:57		
	03:57		SUB OUT: IONESCU,SABRINA
	03:57		SUB IN: GIOMI,LYDIA
	03:57		SUB OUT: HEBARD,RUTHY
	03:57		SUB IN: BOLEY,ERIN
SUB OUT: 21 DAVISON,SHANAIJAH	02:05	42-105	
SUB IN: 25 HAMILTON-FISHER,KIANNA	02:05		
SUB OUT: 3 BORDONARO,SYDNEY	02:05		
SUB IN: 2 RICE,BRIA	02:05		

**Long Beach St. 48, Oregon 110**

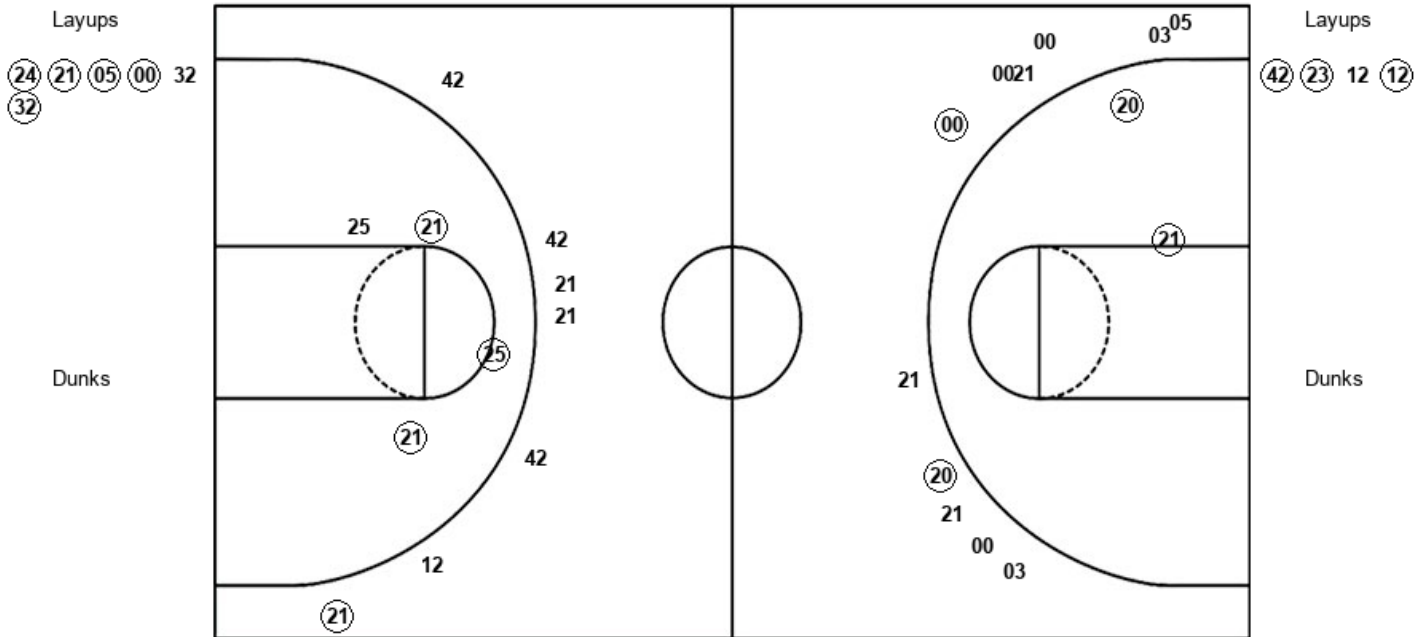


Official Shot Chart  
**Long Beach St. vs Oregon**  
 PERIOD 1 Shots  
 December 02, 2018 at Matthew Knight Arena - Eugene, OR



**Oregon**

**Long Beach St.**



ORE : Period 1	Made	Att	Pct
Layups	5	6	83.3
Dunks	0	0	0
2PT Field Goals	7	8	87.5
3PT Field Goals	2	11	18.2
<b>Total Field Goals</b>	<b>9</b>	<b>19</b>	<b>47.4</b>

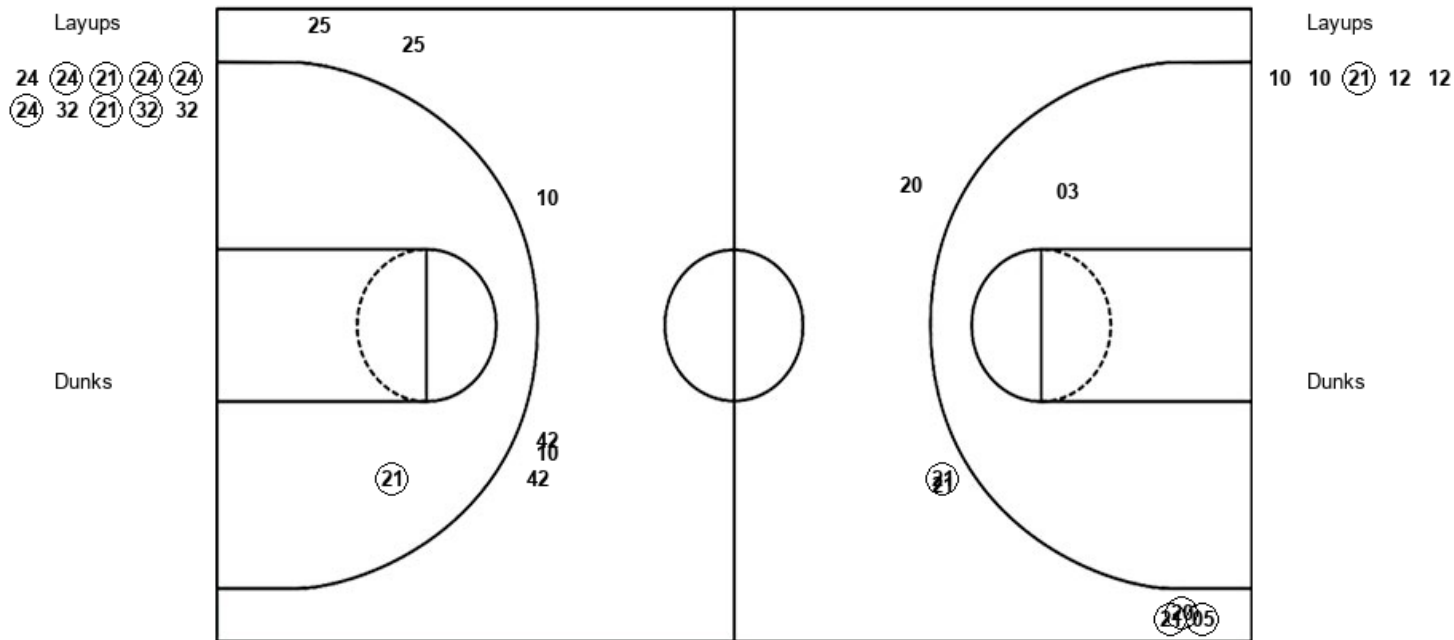
LBS : Period 1	Made	Att	Pct
Layups	3	4	75.0
Dunks	0	0	0
2PT Field Goals	6	8	75.0
3PT Field Goals	1	7	14.3
<b>Total Field Goals</b>	<b>7</b>	<b>15</b>	<b>46.7</b>

Official Shot Chart  
**Long Beach St. vs Oregon**  
 PERIOD 2 Shots  
 December 02, 2018 at Matthew Knight Arena - Eugene, OR



**Oregon**

**Long Beach St.**

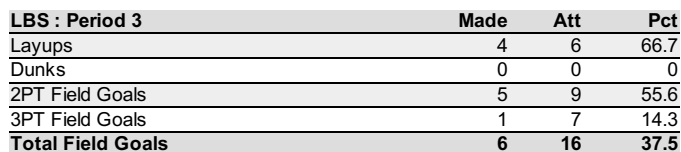


ORE : Period 2	Made	Att	Pct
Layups	7	10	70.0
Dunks	0	0	0
2PT Field Goals	7	11	63.6
3PT Field Goals	4	6	66.7
<b>Total Field Goals</b>	<b>11</b>	<b>17</b>	<b>64.7</b>

LBS : Period 2	Made	Att	Pct
Layups	1	5	20.0
Dunks	0	0	0
2PT Field Goals	2	6	33.3
3PT Field Goals	0	6	00.0
<b>Total Field Goals</b>	<b>2</b>	<b>12</b>	<b>16.7</b>

## O

**Long Beach St.**

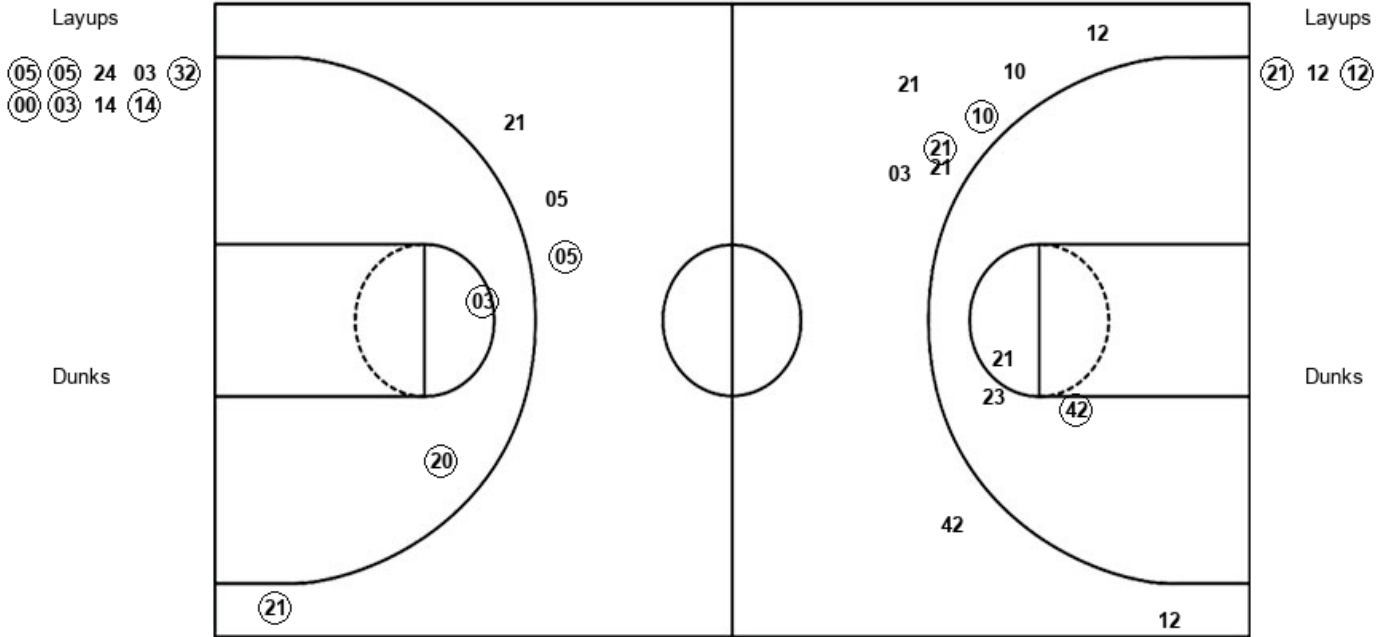


Official Shot Chart  
**Long Beach St. vs Oregon**  
 PERIOD 4 Shots  
 December 02, 2018 at Matthew Knight Arena - Eugene, OR



**Oregon**

**Long Beach St.**



ORE : Period 4	Made	Att	Pct
Layups	6	9	66.7
Dunks	0	0	0
2PT Field Goals	8	11	72.7
3PT Field Goals	2	4	50.0
<b>Total Field Goals</b>	<b>10</b>	<b>15</b>	<b>66.7</b>

LBS : Period 4	Made	Att	Pct
Layups	2	3	66.7
Dunks	0	0	0
2PT Field Goals	3	6	50.0
3PT Field Goals	2	9	22.2
<b>Total Field Goals</b>	<b>5</b>	<b>15</b>	<b>33.3</b>

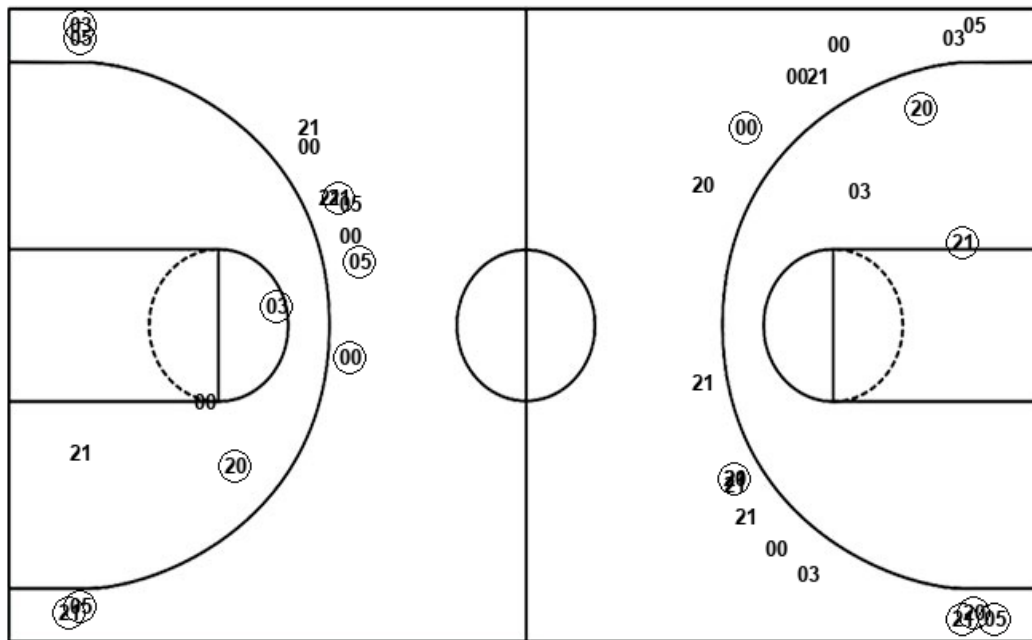


Official Shot Chart  
Long Beach St. vs Oregon  
Oregon Team Shots  
December 02, 2018 at Matthew Knight Arena - Eugene, OR



Layups

Dunks



Layups

Dunks

(24) (21) (05) (00) 32  
(32) 24 (24) (21) (24)  
(24) (24) 32 (21) (32)  
32 24 (21) (00) (24)  
(24) (00) (20) (24) (05)  
(05) 24 03 (32) (00)  
(03) 14 (14)

ORE : Period 1	Made	Att	Pct
Layups	5	6	83.3
Dunks	0	0	0
2PT Field Goals	7	8	87.5
3PT Field Goals	2	11	18.2
<b>Total Field Goals</b>	<b>9</b>	<b>19</b>	<b>47.4</b>

ORE : Period 3	Made	Att	Pct
Layups	7	8	87.5
Dunks	0	0	0
2PT Field Goals	7	10	70.0
3PT Field Goals	5	8	62.5
<b>Total Field Goals</b>	<b>12</b>	<b>18</b>	<b>66.7</b>

ORE : Period 2	Made	Att	Pct
Layups	7	10	70.0
Dunks	0	0	0
2PT Field Goals	7	11	63.6
3PT Field Goals	4	6	66.7
<b>Total Field Goals</b>	<b>11</b>	<b>17</b>	<b>64.7</b>

ORE : Period 4	Made	Att	Pct
Layups	6	9	66.7
Dunks	0	0	0
2PT Field Goals	8	11	72.7
3PT Field Goals	2	4	50.0
<b>Total Field Goals</b>	<b>10</b>	<b>15</b>	<b>66.7</b>