

## FINAL SCORE

**UCLA**

*Ucla*<sup>®</sup>

**84**

**California**

*Cal*<sup>®</sup>

**79**

January 05, 2019 • Haas Pavilion - Berkeley, Calif.

## FINAL STATISTICS

**Official Box Score**  
**UCLA vs California**  
**Game Totals -- Final Statistics**  
**January 05, 2019 at Haas Pavilion - Berkeley, Calif.**



**UCLA 84**

No.	Player	S	Pts	FG	3FG	FT	OR	DR	TR	PF	A	TO	Blk	Stl	Min	+/-
04	CORSARO, LINDSEY		4	1-7	1-3	1-2	1	2	3	4	3	0	0	1	36	3
11	DRUMMER, LAJAHNA		14	5-6	0-0	4-6	3	6	9	4	1	1	0	0	30	9
21	ONYENWERE, MICHAELA		29	12-22	3-5	2-2	4	4	8	2	1	0	1	1	43	5
22	BURKE, KENNEDY		19	7-14	0-0	5-6	2	4	6	4	1	5	0	5	43	3
24	DEAN, JAPREECE		8	3-12	0-2	2-2	0	1	1	1	7	2	0	1	40	10
00	HORVAT, CHANTEL		8	3-6	1-2	1-2	1	0	1	2	2	1	0	1	14	6
02	SMITH, AHLANA		0	0-1	0-0	0-0	0	0	0	0	0	0	0	0	3	-2
33	MILLER, LAURYN		2	1-6	0-2	0-0	1	2	3	3	2	1	4	1	16	-9
<b>TEAM</b>							4	4	8	0						
<b>TOTALS</b>			<b>84</b>	<b>32-74</b>	<b>5-14</b>	<b>15-20</b>	<b>16</b>	<b>23</b>	<b>39</b>	<b>20</b>	<b>17</b>	<b>10</b>	<b>5</b>	<b>10</b>	<b>225</b>	

*Shooting By Period*

Period	FG	FG%	3FG	3FG%	FT	FT%
1st Qtr	7-17	41%	1-2	50%	2-3	67%
2nd Qtr	11-19	58%	2-3	67%	1-2	50%
3rd Qtr	5-16	31%	1-5	20%	0-0	0%
4th Qtr	6-18	33%	1-4	25%	5-7	71%
5th Qtr	3-4	75%	0-0	0%	7-8	88%
1st Half	18-36	50%	3-5	60%	3-5	60%
2nd Half	11-34	32%	2-9	22%	5-7	71%
<b>Game</b>	<b>32-74</b>	<b>43.2%</b>	<b>5-14</b>	<b>35.7%</b>	<b>15-20</b>	<b>75.0%</b>

*Last FG: 5th-01:10*  
*Biggest Run: 8-0*  
*Largest lead: By 12 at 3-07:37*  
*Technical Fouls: None.*

**California 79**

No.	Player	S	Pts	FG	3FG	FT	OR	DR	TR	PF	A	TO	Blk	Stl	Min	+/-
01	THOMAS, ASHA		16	5-10	2-6	4-4	0	2	2	1	1	4	0	3	42	-4
14	SMITH, KIANNA		9	4-8	1-3	0-0	1	3	4	2	3	2	0	0	32	7
24	CALDWELL, RECEE'		4	2-7	0-3	0-0	0	1	1	1	3	5	0	1	29	-19
31	ANIGWE, KRISTINE		32	11-17	0-1	10-13	5	9	14	3	0	3	2	4	44	-7
33	BROWN, JAELYN		6	1-5	0-2	4-4	0	3	3	2	0	1	0	1	23	-3
00	FORBES, MCKENZIE		8	3-8	2-4	0-0	0	1	1	4	4	3	1	0	27	-2
04	STYLES, ALAYSIA		0	0-0	0-0	0-0	0	0	0	0	0	0	0	0	1	-5
30	WEST, CJ		4	1-3	0-0	2-2	1	7	8	3	2	0	1	0	28	8
<b>TEAM</b>							2	2	4	0						
<b>TOTALS</b>			<b>79</b>	<b>27-58</b>	<b>5-19</b>	<b>20-23</b>	<b>9</b>	<b>28</b>	<b>37</b>	<b>16</b>	<b>13</b>	<b>19</b>	<b>4</b>	<b>9</b>	<b>225</b>	

*Shooting By Period*

Period	FG	FG%	3FG	3FG%	FT	FT%
1st Qtr	6-16	38%	2-7	29%	2-2	100%
2nd Qtr	6-10	60%	1-3	33%	3-5	60%
3rd Qtr	9-16	56%	1-5	20%	4-4	100%
4th Qtr	4-10	40%	0-1	00%	8-8	100%
5th Qtr	2-6	33%	1-3	33%	3-4	75%
1st Half	12-26	46%	3-10	30%	5-7	71%
2nd Half	13-26	50%	1-6	17%	12-12	100%
<b>Game</b>	<b>27-58</b>	<b>46.6%</b>	<b>5-19</b>	<b>26.3%</b>	<b>20-23</b>	<b>87.0%</b>

*Last FG: 5th-00:21*  
*Biggest Run: 11-0*  
*Largest lead: By 4 at 4-08:11*  
*Technical Fouls: None.*

Game Notes:

Officials: **Brenda Pantoja, Kyle Bacon, Roy Gulbeyan**  
Attendance: **2107**

Start Time: **2019-01-05 03:06:56**

End Time: **2019-01-05 05:22:53**

Game Duration: **135**

Conference Game;

Score	1st	2nd	3rd	4th	5th	TOT
UCL	17	25	11	18	13	<b>84</b>
CAL	16	16	23	16	8	<b>79</b>

**UCL led for 33:02. CAL led for 7:31.**

**Game was tied for 4:29.**

Times tied: **16**      Lead Changes: **18**

Points from	UCL	CAL
In the Paint	40	38
Off Turns	23	13
2nd Chance	15	11
Fast Break	8	6
Bench	10	12

**Official Box Score**  
**UCLA vs California**  
**First Half Statistics Only**  
**January 05, 2019 at Haas Pavilion - Berkeley, Calif.**



**UCLA 42**

No.	Player	S	Pts	FG	3FG	FT	OR	DR	TR	PF	A	TO	Blk	Stl	Min	+/-
00	HORVAT, CHANTEL		8	3-5	1-1	1-2	1	0	1	2	1	1	0	1	9	10
02	SMITH, AHLANA		0	0-1	0-0	0-0	0	0	0	0	0	0	0	0	3	-2
04	CORSARO, LINDSEY		3	1-3	1-1	0-0	1	0	1	1	1	0	0	0	12	8
11	DRUMMER, LAJAHNA		7	3-3	0-0	1-1	1	2	3	2	1	1	0	0	12	6
21	ONYENWERE, MICHAELA		13	6-10	1-2	0-0	0	1	1	0	0	0	1	1	18	10
22	BURKE, KENNEDY		5	2-6	0-0	1-2	1	3	4	1	1	2	0	3	19	9
24	DEAN, JAPREECE		4	2-4	0-0	0-0	0	0	0	0	4	0	0	1	18	10
33	MILLER, LAURYN		2	1-4	0-1	0-0	1	1	2	2	1	0	1	0	9	-1
	TEAM		0	0-0	0-0	0-0	1	3	4	0	0	0	0	0	0	0
	<b>TOTALS</b>		<b>42</b>	<b>18-36</b>	<b>3-5</b>	<b>3-5</b>	<b>6</b>	<b>10</b>	<b>16</b>	<b>8</b>	<b>9</b>	<b>4</b>	<b>2</b>	<b>6</b>	<b>100</b>	

*Shooting By Period*

Period	FG	FG%	3FG	3FG%	FT	FT%
1st Qtr	7-17	41%	1-2	50%	2-3	67%
2nd Qtr	11-19	58%	2-3	67%	1-2	50%
1st Half	18-36	50%	3-5	60%	3-5	60%
Game	32-74	43.2%	5-14	35.7%	15-20	75.0%

*Last FG Half: UCL 2nd-00:02*

**California 32**

No.	Player	S	Pts	FG	3FG	FT	OR	DR	TR	PF	A	TO	Blk	Stl	Min	+/-
00	FORBES, MCKENZIE		8	3-5	2-3	0-0	0	0	0	0	0	2	0	0	12	-7
01	THOMAS, ASHA		0	0-3	0-2	0-0	0	1	1	1	1	2	0	1	18	-7
04	STYLES, ALAYSIA		0	0-0	0-0	0-0	0	0	0	0	0	0	0	0	1	-5
14	SMITH, KIANNA		5	2-2	1-1	0-0	1	2	3	2	1	1	0	0	12	-3
24	CALDWELL, RECEE'		4	2-5	0-2	0-0	0	0	0	0	3	3	0	1	17	-10
30	WEST, CJ		2	0-0	0-0	2-2	1	2	3	0	0	0	0	0	8	0
31	ANIGWE, KRISTINE		9	4-8	0-1	1-3	3	5	8	1	0	2	0	0	19	-12
33	BROWN, JAELYN		4	1-3	0-1	2-2	0	1	1	1	0	1	0	1	12	-6
	TEAM		0	0-0	0-0	0-0	0	1	1	0	0	0	0	0	0	0
	<b>TOTALS</b>		<b>32</b>	<b>12-26</b>	<b>3-10</b>	<b>5-7</b>	<b>5</b>	<b>12</b>	<b>17</b>	<b>5</b>	<b>5</b>	<b>11</b>	<b>0</b>	<b>3</b>	<b>100</b>	

*Shooting By Period*

Period	FG	FG%	3FG	3FG%	FT	FT%
1st Qtr	6-16	38%	2-7	29%	2-2	100%
2nd Qtr	6-10	60%	1-3	33%	3-5	60%
1st Half	12-26	46%	3-10	30%	5-7	71%
Game	27-58	46.6%	5-19	26.3%	20-23	87.0%

*Last FG Half: CAL 2nd-02:29*

**Game Notes:**

Officials: **Brenda Pantoja, Kyle Bacon, Roy Gulbeyan**  
Attendance: **2107**

Start Time: **2019-01-05 03:06:56**  
End Time: **2019-01-05 05:22:53**  
Game Duration: **135**  
Conference Game;

Score	1st	2nd	3rd	4th	5th	TOT
UCL	17	25	11	18	13	<b>84</b>
CAL	16	16	23	16	8	<b>79</b>

Points from (This Period)	UCL	CAL
In the Paint	20	14
Off Turns	10	4
2nd Chance	4	7
Fast Break	4	2
Bench	10	10

**Official Box Score**  
**UCLA vs California**  
**First Quarter Statistics Only**  
**January 05, 2019 at Haas Pavilion - Berkeley, Calif.**



**UCLA 17**

No.	Player	S	Pts	FG	3FG	FT	OR	DR	TR	PF	A	TO	Blk	Stl	Min	+/-
04	CORSARO, LINDSEY		0	0-1	0-0	0-0	1	0	1	1	1	0	0	0	9	2
11	DRUMMER, LAJAHNA		5	2-2	0-0	1-1	0	0	0	1	1	0	0	0	6	2
21	ONYENWERE, MICHAELA		9	4-7	1-2	0-0	0	1	1	0	0	0	1	0	10	1
22	BURKE, KENNEDY		1	0-3	0-0	1-2	1	2	3	0	0	2	0	1	9	0
24	DEAN, JAPREECE		0	0-0	0-0	0-0	0	0	0	0	1	0	0	0	8	1
00	HORVAT, CHANTEL		2	1-2	0-0	0-0	1	0	1	0	0	1	0	0	2	0
02	SMITH, AHLANA		0	0-1	0-0	0-0	0	0	0	0	0	0	0	0	2	0
33	MILLER, LAURYN		0	0-1	0-0	0-0	1	1	2	1	0	0	0	0	4	-1
	TEAM						0	3	3	0		0				
<b>TOTALS</b>			<b>17</b>	<b>7-17</b>	<b>1-2</b>	<b>2-3</b>	<b>4</b>	<b>7</b>	<b>11</b>	<b>3</b>	<b>3</b>	<b>3</b>	<b>1</b>	<b>1</b>	<b>50</b>	

*Shooting By Period*

Period	FG	FG%	3FG	3FG%	FT	FT%
1st Qtr	7-17	41%	1-2	50%	2-3	67%
2nd Qtr	11-19	58%	2-3	67%	1-2	50%
1st Half	7-17	41%	1-2	50%	2-3	67%
1st Half	18-36	50%	3-5	60%	3-5	60%
Game	32-74	43.2%	5-14	35.7%	15-20	75.0%

**California 16**

No.	Player	S	Pts	FG	3FG	FT	OR	DR	TR	PF	A	TO	Blk	Stl	Min	+/-
01	THOMAS, ASHA		0	0-3	0-2	0-0	0	1	1	1	0	0	0	1	8	-1
14	SMITH, KIANNA		5	2-2	1-1	0-0	1	2	3	1	0	0	0	0	8	-2
24	CALDWELL, RECEE'		2	1-2	0-1	0-0	0	0	0	0	2	1	0	1	10	-1
31	ANIGWE, KRISTINE		4	2-6	0-1	0-0	2	2	4	1	0	2	0	0	9	-3
33	BROWN, JAELYN		0	0-2	0-1	0-0	0	0	0	0	0	0	0	1	7	-2
00	FORBES, MCKENZIE		3	1-1	1-1	0-0	0	0	0	0	0	0	0	0	4	1
04	STYLES, ALAYSIA		0	0-0	0-0	0-0	0	0	0	0	0	0	0	0	0	0
30	WEST, CJ		2	0-0	0-0	2-2	0	1	1	0	0	0	0	0	4	3
	TEAM						0	0	0	0		0				
<b>TOTALS</b>			<b>16</b>	<b>6-16</b>	<b>2-7</b>	<b>2-2</b>	<b>3</b>	<b>6</b>	<b>9</b>	<b>3</b>	<b>2</b>	<b>3</b>	<b>0</b>	<b>3</b>	<b>50</b>	

*Shooting By Period*

Period	FG	FG%	3FG	3FG%	FT	FT%
1st Qtr	6-16	38%	2-7	29%	2-2	100%
2nd Qtr	6-10	60%	1-3	33%	3-5	60%
1st Half	6-16	38%	2-7	29%	2-2	100%
1st Half	12-26	46%	3-10	30%	5-7	71%
Game	27-58	46.6%	5-19	26.3%	20-23	87.0%

Game Notes:

Officials: Brenda Pantoja, Kyle Bacon, Roy Gulbeyan  
Attendance: 2107

Start Time: 2019-01-05 03:06:56  
End Time: 2019-01-05 05:22:53  
Game Duration: 135  
Conference Game;

Score	1st	2nd	3rd	4th	5th	TOT
UCL	17	25	11	18	13	<b>84</b>
CAL	16	16	23	16	8	<b>79</b>

Points from (This Period)	UCL	CAL
In the Paint	8	6
Off Turns	0	4
2nd Chance	2	5
Fast Break	0	2
Bench	2	5

**Official Play-By-Play**  
**UCLA vs California**  
**First Quarter**  
**January 05, 2019 at Haas Pavilion - Berkeley, Calif.**



**Period 1**

**Starters:**

**UCLA:** 4 CORSARO, LINDSEY; 11 DRUMMER, LAJAHNA; 21 ONYENWERE, MICHAELA; 22 BURKE, KENNEDY; 24 DEAN, JAPREECE;

**California:** 1 THOMAS, ASHA; 14 SMITH, KIANNA; 24 CALDWELL, RECEE'; 31 ANIGWE, KRISTINE; 33 BROWN, JAELYN;

Time	VISITORS: UCLA	Score	Margin	HOME: California
09:45	GOOD! LAYUP by DRUMMER, LAJAHNA	0-2	V 2	
09:32				MISSED 3PTR by BROWN, JAELYN
09:28				REBOUND (OFF) by SMITH, KIANNA
09:14		3-2	H 1	GOOD! 3PTR by SMITH, KIANNA
09:04				FOUL (PERSONAL) by SMITH, KIANNA
09:04	MISSED FT by BURKE, KENNEDY			
09:04	REBOUND (OFF) by TEAM			
09:04	GOOD! FT by BURKE, KENNEDY	3-3	T	
08:50	FOUL (PERSONAL) by DRUMMER, LAJAHNA			
08:46				MISSED 3PTR by THOMAS, ASHA
08:46	REBOUND (DEF) by TEAM			
08:26	GOOD! 3PTR by ONYENWERE, MICHAELA	3-6	V 3	
08:26	ASSIST by DRUMMER, LAJAHNA			
07:54				MISSED JUMPER by ANIGWE, KRISTINE
07:54	BLOCK by ONYENWERE, MICHAELA			
07:52	REBOUND (DEF) by TEAM			
07:36	MISSED JUMPER by ONYENWERE, MICHAELA			
07:29	REBOUND (OFF) by CORSARO, LINDSEY			
07:29	TURNOVER (LOSTBALL) by BURKE, KENNEDY			
07:29				STEAL by BROWN, JAELYN
07:14		5-6	V 1	GOOD! LAYUP by ANIGWE, KRISTINE
07:14				ASSIST by CALDWELL, RECEE'
07:01	MISSED JUMPER by ONYENWERE, MICHAELA			
06:58				REBOUND (DEF) by ANIGWE, KRISTINE
06:49				FOUL (OFF) by ANIGWE, KRISTINE
06:49				TURNOVER (OFFENSIVE) by ANIGWE, KRISTINE
06:32	TURNOVER (LOSTBALL) by BURKE, KENNEDY			
06:32				STEAL by CALDWELL, RECEE'
06:16				MISSED LAYUP by THOMAS, ASHA
06:11				REBOUND (OFF) by ANIGWE, KRISTINE
06:11		7-6	H 1	GOOD! LAYUP by ANIGWE, KRISTINE
06:03	GOOD! LAYUP by DRUMMER, LAJAHNA	7-8	V 1	
06:03				FOUL (PERSONAL) by THOMAS, ASHA
06:03	SUB OUT: BURKE, KENNEDY			
06:03	SUB IN: HORVAT, CHANTEL			
06:03	GOOD! FT by DRUMMER, LAJAHNA	7-9	V 2	
06:03	SUB OUT: DRUMMER, LAJAHNA			
06:03	SUB IN: MILLER, LAURYN			
05:44				MISSED JUMPER by BROWN, JAELYN
05:40				REBOUND (OFF) by ANIGWE, KRISTINE
05:40				MISSED LAYUP by ANIGWE, KRISTINE
05:40	REBOUND (DEF) by TEAM			
05:40				SUB OUT: BROWN, JAELYN
05:40				SUB IN: WEST, CJ
05:23	MISSED 3PTR by ONYENWERE, MICHAELA			
05:18				REBOUND (DEF) by WEST, CJ
05:12				MISSED LAYUP by ANIGWE, KRISTINE
05:08	REBOUND (DEF) by MILLER, LAURYN			
05:01	MISSED LAYUP by CORSARO, LINDSEY			
04:58	REBOUND (OFF) by HORVAT, CHANTEL			
04:55	MISSED LAYUP by HORVAT, CHANTEL			
04:52	REBOUND (OFF) by MILLER, LAURYN			
04:36				SUB OUT: SMITH, KIANNA
04:36				SUB IN: FORBES, MCKENZIE
04:36	SUB OUT: CORSARO, LINDSEY			
04:36	SUB IN: BURKE, KENNEDY			
04:27	GOOD! LAYUP by HORVAT, CHANTEL	7-11	V 4	
04:08		10-11	V 1	GOOD! 3PTR by FORBES, MCKENZIE
04:08				ASSIST by CALDWELL, RECEE'
03:55	TURNOVER (BADPASS) by HORVAT, CHANTEL			
03:55				STEAL by THOMAS, ASHA
03:49	FOUL (PERSONAL) by MILLER, LAURYN			
03:49	SUB OUT: HORVAT, CHANTEL			
03:49	SUB IN: CORSARO, LINDSEY			
03:24				MISSED 3PTR by THOMAS, ASHA
03:20	REBOUND (DEF) by BURKE, KENNEDY			
03:10	MISSED JUMPER by MILLER, LAURYN			
03:07				REBOUND (DEF) by THOMAS, ASHA
03:00		12-11	H 1	GOOD! JUMPER by CALDWELL, RECEE'
02:40	GOOD! JUMPER by ONYENWERE, MICHAELA	12-13	V 1	

Time	VISITORS: UCLA	Score	Margin	HOME: California
02:40	ASSIST by DEAN, JAPREECE			
02:13				SUB OUT: THOMAS, ASHA
02:13				SUB IN: SMITH, KIANNA
02:13				SUB OUT: ANIGWE, KRISTINE
02:13				SUB IN: BROWN, JAELYN
02:13	SUB OUT: DEAN, JAPREECE			
02:13	SUB IN: DRUMMER, LAJAHNA			
02:13	SUB OUT: MILLER, LAURYN			
02:13	SUB IN: SMITH, AHLANA			
02:08		14-13	H 1	GOOD! LAYUP by SMITH, KIANNA [PNT]
01:54	GOOD! JUMPER by ONYENWERE, MICHAELA	14-15	V 1	
01:54	ASSIST by CORSARO, LINDSEY			
01:30				MISSED 3PTR by CALDWELL, RECEE'
01:26	REBOUND (DEF) by BURKE, KENNEDY			
01:23	MISSED LAYUP by SMITH, AHLANA			
01:21				REBOUND (DEF) by SMITH, KIANNA
01:17	FOUL (PERSONAL) by CORSARO, LINDSEY			
01:17		15-15	T	GOOD! FT by WEST, CJ [FB]
01:17		16-15	H 1	GOOD! FT by WEST, CJ [FB]
01:17				SUB OUT: WEST, CJ
01:17				SUB IN: ANIGWE, KRISTINE
01:04	MISSED JUMPER by BURKE, KENNEDY			
01:01				REBOUND (DEF) by SMITH, KIANNA
00:48				MISSED 3PTR by ANIGWE, KRISTINE
00:45	REBOUND (DEF) by ONYENWERE, MICHAELA			
00:40	GOOD! JUMPER by ONYENWERE, MICHAELA [PNT]	16-17	V 1	
00:22				TURNOVER (TRAVEL) by CALDWELL, RECEE'
00:22				SUB OUT: FORBES, MCKENZIE
00:22				SUB IN: THOMAS, ASHA
00:22	SUB OUT: CORSARO, LINDSEY			
00:22	SUB IN: DEAN, JAPREECE			
00:06	MISSED LAYUP by BURKE, KENNEDY			
00:02				REBOUND (DEF) by ANIGWE, KRISTINE
00:01				TURNOVER (BADPASS) by ANIGWE, KRISTINE
00:01	STEAL by BURKE, KENNEDY			
00:00	MISSED LAYUP by BURKE, KENNEDY			
00:00	REBOUND (OFF) by BURKE, KENNEDY			

### UCLA 17, California 16

Points from (This Period)	UCL	CAL
In the Paint	8	6
Off Turns	0	4
2nd Chance	2	5
Fast Break	0	2
Bench	2	5

**Official Box Score**  
**UCLA vs California**  
**Second Quarter Statistics Only**  
**January 05, 2019 at Haas Pavilion - Berkeley, Calif.**



**UCLA 25**

No.	Player	S	Pts	FG	3FG	FT	OR	DR	TR	PF	A	TO	Blk	Stl	Min	+/-
04	CORSARO, LINDSEY		3	1-2	1-1	0-0	0	0	0	0	0	0	0	0	3	6
11	DRUMMER, LAJAHNA		2	1-1	0-0	0-0	1	2	3	1	0	1	0	0	6	4
21	ONYENWERE, MICHAELA		4	2-3	0-0	0-0	0	0	0	0	0	0	0	1	8	9
22	BURKE, KENNEDY		4	2-3	0-0	0-0	0	1	1	1	1	0	0	2	10	9
24	DEAN, JAPREECE		4	2-4	0-0	0-0	0	0	0	0	3	0	0	1	10	9
00	HORVAT, CHANTEL		6	2-3	1-1	1-2	0	0	0	2	1	0	0	1	7	10
02	SMITH, AHLANA		0	0-0	0-0	0-0	0	0	0	0	0	0	0	0	1	-2
33	MILLER, LAURYN		2	1-3	0-1	0-0	0	0	0	1	1	0	1	0	5	0
	TEAM						1	0	1	0		0				
<b>TOTALS</b>			<b>25</b>	<b>11-19</b>	<b>2-3</b>	<b>1-2</b>	<b>2</b>	<b>3</b>	<b>5</b>	<b>5</b>	<b>6</b>	<b>1</b>	<b>1</b>	<b>5</b>	<b>50</b>	

*Shooting By Period*

Period	FG	FG%	3FG	3FG%	FT	FT%
3rd Qtr	5-16	31%	1-5	20%	0-0	0%
4th Qtr	6-18	33%	1-4	25%	5-7	71%
2nd Half	11-19	58%	2-3	67%	1-2	50%
2nd Half	11-34	32%	2-9	22%	5-7	71%
Game	32-74	43.2%	5-14	35.7%	15-20	75.0%

**California 16**

No.	Player	S	Pts	FG	3FG	FT	OR	DR	TR	PF	A	TO	Blk	Stl	Min	+/-
01	THOMAS, ASHA		0	0-0	0-0	0-0	0	0	0	0	1	2	0	0	10	-6
14	SMITH, KIANNA		0	0-0	0-0	0-0	0	0	0	1	1	1	0	0	4	-1
24	CALDWELL, RECEE'		2	1-3	0-1	0-0	0	0	0	0	1	2	0	0	7	-9
31	ANIGWE, KRISTINE		5	2-2	0-0	1-3	1	3	4	0	0	0	0	0	10	-9
33	BROWN, JAELYN		4	1-1	0-0	2-2	0	1	1	1	0	1	0	0	5	-4
00	FORBES, MCKENZIE		5	2-4	1-2	0-0	0	0	0	0	0	2	0	0	8	-8
04	STYLES, ALAYSIA		0	0-0	0-0	0-0	0	0	0	0	0	0	0	0	1	-5
30	WEST, CJ		0	0-0	0-0	0-0	1	1	2	0	0	0	0	0	4	-3
	TEAM						0	1	1	0		0				
<b>TOTALS</b>			<b>16</b>	<b>6-10</b>	<b>1-3</b>	<b>3-5</b>	<b>2</b>	<b>6</b>	<b>8</b>	<b>2</b>	<b>3</b>	<b>8</b>	<b>0</b>	<b>0</b>	<b>50</b>	

*Shooting By Period*

Period	FG	FG%	3FG	3FG%	FT	FT%
3rd Qtr	9-16	56%	1-5	20%	4-4	100%
4th Qtr	4-10	40%	0-1	00%	8-8	100%
2nd Half	6-10	60%	1-3	33%	3-5	60%
2nd Half	13-26	50%	1-6	17%	12-12	100%
Game	27-58	46.6%	5-19	26.3%	20-23	87.0%

Game Notes:

Officials: Brenda Pantoja, Kyle Bacon, Roy Gulbeyan  
Attendance: 2107

Start Time: 2019-01-05 03:06:56  
End Time: 2019-01-05 05:22:53  
Game Duration: 135  
Conference Game;

Score	1st	2nd	3rd	4th	5th	TOT
UCL	17	25	11	18	13	<b>84</b>
CAL	16	16	23	16	8	<b>79</b>

Points from (This Period)	UCL	CAL
In the Paint	12	8
Off Turns	10	0
2nd Chance	2	2
Fast Break	4	0
Bench	8	5

**Official By-By-Play  
UCLA vs California  
Second Quarter  
January 05, 2019 at Haas Pavilion - Berkeley, Calif.**



**Period 2**

**Starters:**

**UCLA:** 4 CORSARO, LINDSEY; 11 DRUMMER, LAJAHNA; 21 ONYENWERE, MICHAELA; 22 BURKE, KENNEDY; 24 DEAN, JAPREECE;

**California:** 1 THOMAS, ASHA; 14 SMITH, KIANNA; 24 CALDWELL, RECEE'; 31 ANIGWE, KRISTINE; 33 BROWN, JAELYN;

Time	VISITORS: UCLA	Score	Margin	HOME: California
09:44	MISSED LAYUP by DEAN, JAPREECE			
09:38				REBOUND (DEF) by BROWN, JAELYN
09:28		18-17	H 1	GOOD! JUMPER by ANIGWE, KRISTINE
09:28				ASSIST by THOMAS, ASHA
09:17	MISSED JUMPER by ONYENWERE, MICHAELA			
09:17	REBOUND (OFF) by TEAM			
09:17				FOUL (PERSONAL) by BROWN, JAELYN
09:12	SUB OUT: SMITH, AHLANA			
09:12	SUB IN: HORVAT, CHANTEL			
09:11	GOOD! LAYUP by HORVAT, CHANTEL	18-19	V 1	
08:43	FOUL (PERSONAL) by BURKE, KENNEDY			
08:43		19-19	T	GOOD! FT by BROWN, JAELYN
08:43		20-19	H 1	GOOD! FT by BROWN, JAELYN
08:29	GOOD! 3PTR by HORVAT, CHANTEL	20-22	V 2	
08:29	ASSIST by DEAN, JAPREECE			
08:05				TURNOVER (BADPASS) by SMITH, KIANNA
08:05				SUB OUT: CALDWELL, RECEE'
08:05				SUB IN: FORBES, MCKENZIE
08:05	SUB OUT: DRUMMER, LAJAHNA			
08:05	SUB IN: MILLER, LAURYN			
07:48	MISSED LAYUP by HORVAT, CHANTEL			
07:48				REBOUND (DEF) by ANIGWE, KRISTINE
07:48	FOUL (PERSONAL) by HORVAT, CHANTEL			
07:23		22-22	T	GOOD! LAYUP by FORBES, MCKENZIE
07:14	MISSED 3PTR by MILLER, LAURYN			
07:13				REBOUND (DEF) by TEAM
06:50				MISSED LAYUP by FORBES, MCKENZIE
06:50	BLOCK by MILLER, LAURYN			
06:44	REBOUND (DEF) by BURKE, KENNEDY			
06:41	GOOD! JUMPER by ONYENWERE, MICHAELA	22-24	V 2	
06:41	ASSIST by HORVAT, CHANTEL			
06:27		24-24	T	GOOD! JUMPER by BROWN, JAELYN
06:27				ASSIST by SMITH, KIANNA
06:09	GOOD! JUMPER by DEAN, JAPREECE	24-26	V 2	
06:09	ASSIST by MILLER, LAURYN			
05:44				TURNOVER (BADPASS) by THOMAS, ASHA
05:44	STEAL by HORVAT, CHANTEL			
05:33				FOUL (PERSONAL) by SMITH, KIANNA
05:33	MISSED FT by HORVAT, CHANTEL			
05:33	REBOUND (OFF) by TEAM			
05:33				SUB OUT: THOMAS, ASHA
05:33				SUB IN: CALDWELL, RECEE'
05:33				SUB OUT: SMITH, KIANNA
05:33				SUB IN: STYLES, ALAYSIA
05:33	SUB OUT: ONYENWERE, MICHAELA			
05:33	SUB IN: DRUMMER, LAJAHNA			
05:33	GOOD! FT by HORVAT, CHANTEL	24-27	V 3	
05:25				TURNOVER (BADPASS) by FORBES, MCKENZIE
05:25	STEAL by BURKE, KENNEDY			
05:20	MISSED JUMPER by DEAN, JAPREECE			
05:18	REBOUND (OFF) by DRUMMER, LAJAHNA			
05:18	TURNOVER (TRAVEL) by DRUMMER, LAJAHNA			
05:11				TURNOVER (BADPASS) by BROWN, JAELYN
05:11	STEAL by BURKE, KENNEDY			
05:08	GOOD! LAYUP by BURKE, KENNEDY [FB]	24-29	V 5	
05:08				TIMEOUT 30SEC
05:08				SUB OUT: BROWN, JAELYN
05:08				SUB IN: THOMAS, ASHA
04:45				TURNOVER (BADPASS) by THOMAS, ASHA
04:45	STEAL by DEAN, JAPREECE			
04:39	GOOD! LAYUP by MILLER, LAURYN [FB]	24-31	V 7	
04:39	ASSIST by DEAN, JAPREECE			
04:14	FOUL (PERSONAL) by HORVAT, CHANTEL			
04:14				SUB OUT: STYLES, ALAYSIA
04:14				SUB IN: WEST, CJ
04:11		27-31	V 4	GOOD! 3PTR by FORBES, MCKENZIE
04:11				ASSIST by CALDWELL, RECEE'
03:53	MISSED JUMPER by MILLER, LAURYN			
03:48				REBOUND (DEF) by ANIGWE, KRISTINE
03:44				MISSED 3PTR by FORBES, MCKENZIE



Time	VISITORS: UCLA	Score	Margin	HOME: California
03:40				REBOUND (OFF) by WEST, CJ
03:37				MISSED 3PTR by CALDWELL, RECEE'
03:35				REBOUND (OFF) by ANIGWE, KRISTINE
03:35		29-31	V 2	GOOD! LAYUP by ANIGWE, KRISTINE
03:35	FOUL (PERSONAL) by MILLER, LAURYN			
03:35	SUB OUT: MILLER, LAURYN			
03:35	SUB IN: ONYENWERE, MICHAELA			
03:35				MISSED FT by ANIGWE, KRISTINE
03:33	REBOUND (DEF) by DRUMMER, LAJAHNA			
03:14	GOOD! LAYUP by DRUMMER, LAJAHNA	29-33	V 4	
03:14	ASSIST by BURKE, KENNEDY			
02:54				TURNOVER (BADPASS) by CALDWELL, RECEE'
02:54	SUB OUT: HORVAT, CHANTEL			
02:54	SUB IN: CORSARO, LINDSEY			
02:42	MISSED JUMPER by BURKE, KENNEDY			
02:39				REBOUND (DEF) by ANIGWE, KRISTINE
02:29		31-33	V 2	GOOD! JUMPER by CALDWELL, RECEE' [PNT]
02:03	GOOD! LAYUP by ONYENWERE, MICHAELA	31-35	V 4	
01:48	FOUL (PERSONAL) by DRUMMER, LAJAHNA			
01:48				MISSED FT by ANIGWE, KRISTINE
01:48				REBOUND (OFF) by TEAM
01:48		32-35	V 3	GOOD! FT by ANIGWE, KRISTINE
01:31	GOOD! JUMPER by DEAN, JAPREECE	32-37	V 5	
01:16				MISSED JUMPER by CALDWELL, RECEE'
01:13	REBOUND (DEF) by DRUMMER, LAJAHNA			
01:05	MISSED LAYUP by CORSARO, LINDSEY			
01:02				REBOUND (DEF) by WEST, CJ
01:01				TURNOVER (BADPASS) by FORBES, MCKENZIE
01:01	TIMEOUT 30SEC			
01:01	SUB OUT: DRUMMER, LAJAHNA			
01:01	SUB IN: HORVAT, CHANTEL			
00:48	GOOD! LAYUP by BURKE, KENNEDY	32-39	V 7	
00:25				TURNOVER (BADPASS) by CALDWELL, RECEE'
00:25	STEAL by ONYENWERE, MICHAELA			
00:02	GOOD! 3PTR by CORSARO, LINDSEY	32-42	V 10	
00:02	ASSIST by DEAN, JAPREECE			

### UCLA 42, California 32

Points from (This Period)	UCL	CAL
In the Paint	12	8
Off Turns	10	0
2nd Chance	2	2
Fast Break	4	0
Bench	8	5

**Official Box Score**  
**UCLA vs California**  
**Second Half Statistics Only**  
**January 05, 2019 at Haas Pavilion - Berkeley, Calif.**



**UCLA 29**

No.	Player	S	Pts	FG	3FG	FT	OR	DR	TR	PF	A	TO	Blk	Stl	Min	+/-
00	HORVAT, CHANTEL		0	0-1	0-1	0-0	0	0	0	0	1	0	0	0	5	-4
02	SMITH, AHLANA		0	0-0	0-0	0-0	0	0	0	0	0	0	0	0	0	0
04	CORSARO, LINDSEY		0	0-4	0-2	0-0	0	2	2	2	2	0	0	1	19	-10
11	DRUMMER, LAJAHNA		5	1-2	0-0	3-5	1	2	3	2	0	0	0	0	12	-2
21	ONYENWERE, MICHAELA		12	5-10	2-3	0-0	4	1	5	2	1	0	0	0	20	-10
22	BURKE, KENNEDY		10	4-7	0-0	2-2	1	1	2	2	0	2	0	1	19	-11
24	DEAN, JAPREECE		2	1-8	0-2	0-0	0	0	0	1	2	1	0	0	17	-5
33	MILLER, LAURYN		0	0-2	0-1	0-0	0	1	1	1	1	1	3	1	8	-8
	TEAM		0	0-0	0-0	0-0	3	1	4	0	0	0	0	0	0	0
<b>TOTALS</b>			<b>29</b>	<b>11-34</b>	<b>2-9</b>	<b>5-7</b>	<b>9</b>	<b>8</b>	<b>17</b>	<b>10</b>	<b>7</b>	<b>4</b>	<b>3</b>	<b>3</b>	<b>100</b>	

*Shooting By Period*

Period	FG	FG%	3FG	3FG%	FT	FT%
3rd Qtr	5-16	31%	1-5	20%	0-0	0%
4th Qtr	6-18	33%	1-4	25%	5-7	71%
2nd Half	11-34	32%	2-9	22%	5-7	71%
Game	32-74	43.2%	5-14	35.7%	15-20	75.0%

*Last FG Half: UCL 4th-00:17*

**California 39**

No.	Player	S	Pts	FG	3FG	FT	OR	DR	TR	PF	A	TO	Blk	Stl	Min	+/-
00	FORBES, MCKENZIE		0	0-2	0-1	0-0	0	1	1	2	3	1	1	0	11	6
01	THOMAS, ASHA		13	4-5	1-2	4-4	0	1	1	0	0	2	0	2	19	8
04	STYLES, ALAYSIA		0	0-0	0-0	0-0	0	0	0	0	0	0	0	0	0	0
14	SMITH, KIANNA		4	2-4	0-1	0-0	0	1	1	0	2	0	0	0	18	16
24	CALDWELL, RECEE'		0	0-2	0-1	0-0	0	1	1	0	0	1	0	0	7	-4
30	WEST, CJ		2	1-3	0-0	0-0	0	5	5	3	2	0	1	0	17	13
31	ANIGWE, KRISTINE		18	6-8	0-0	6-6	2	4	6	1	0	1	1	2	20	10
33	BROWN, JAELYN		2	0-2	0-1	2-2	0	2	2	1	0	0	0	0	9	1
	TEAM		0	0-0	0-0	0-0	2	1	3	0	0	1	0	0	0	0
<b>TOTALS</b>			<b>39</b>	<b>13-26</b>	<b>1-6</b>	<b>12-12</b>	<b>4</b>	<b>16</b>	<b>20</b>	<b>7</b>	<b>7</b>	<b>6</b>	<b>3</b>	<b>4</b>	<b>100</b>	

*Shooting By Period*

Period	FG	FG%	3FG	3FG%	FT	FT%
3rd Qtr	9-16	56%	1-5	20%	4-4	100%
4th Qtr	4-10	40%	0-1	00%	8-8	100%
2nd Half	13-26	50%	1-6	17%	12-12	100%
Game	27-58	46.6%	5-19	26.3%	20-23	87.0%

*Last FG Half: CAL 4th-00:42*

Game Notes:

Officials: Brenda Pantoja, Kyle Bacon, Roy Gulbeyan  
Attendance: 2107

Start Time: 2019-01-05 03:06:56  
End Time: 2019-01-05 05:22:53  
Game Duration: 135  
Conference Game;

Score	1st	2nd	3rd	4th	5th	TOT
UCL	17	25	11	18	13	<b>84</b>
CAL	16	16	23	16	8	<b>79</b>

Points from (This Period)	UCL	CAL
In the Paint	14	22
Off Turns	9	7
2nd Chance	9	4
Fast Break	2	4
Bench	0	2

**Official Box Score**  
**UCLA vs California**  
**Third Quarter Statistics Only**  
**January 05, 2019 at Haas Pavilion - Berkeley, Calif.**



**UCLA 42**

No.	Player	S	Pts	FG	3FG	FT	OR	DR	TR	PF	A	TO	Blk	Stl	Min	+/-
04	CORSARO, LINDSEY		0	0-1	0-1	0-0	0	1	1	1	1	0	0	1	9	-12
11	DRUMMER, LAJAHNA		0	0-0	0-0	0-0	1	0	1	2	0	0	0	0	4	-6
21	ONYENWERE, MICHAELA		7	3-7	1-2	0-0	0	1	1	0	1	0	0	0	10	-12
22	BURKE, KENNEDY		4	2-4	0-0	0-0	0	1	1	1	0	1	0	1	9	-13
24	DEAN, JAPREECE		0	0-3	0-1	0-0	0	0	0	0	0	1	0	0	7	-7
00	HORVAT, CHANTEL		0	0-1	0-1	0-0	0	0	0	0	1	0	0	0	5	-4
02	SMITH, AHLANA		0	0-0	0-0	0-0	0	0	0	0	0	0	0	0	0	0
33	MILLER, LAURYN		0	0-0	0-0	0-0	0	0	0	0	1	1	2	1	6	-6
	TEAM						1	0	1	0		0				
<b>TOTALS</b>			<b>11</b>	<b>5-16</b>	<b>1-5</b>	<b>0-0</b>	<b>2</b>	<b>3</b>	<b>5</b>	<b>4</b>	<b>4</b>	<b>3</b>	<b>2</b>	<b>3</b>	<b>50</b>	

*Shooting By Period*

Period	FG	FG%	3FG	3FG%	FT	FT%
5th Qtr	3-4	75%	0-0	0%	7-8	88%
2nd Half	3-4	75%	0-0	0%	7-8	88%
Game	32-74	43.2%	5-14	35.7%	15-20	75.0%

**California 47**

No.	Player	S	Pts	FG	3FG	FT	OR	DR	TR	PF	A	TO	Blk	Stl	Min	+/-
01	THOMAS, ASHA		9	3-4	1-2	2-2	0	1	1	0	0	2	0	1	9	10
14	SMITH, KIANNA		4	2-3	0-1	0-0	0	0	0	0	2	0	0	0	9	13
24	CALDWELL, RECEE'		0	0-2	0-1	0-0	0	1	1	0	0	1	0	0	6	1
31	ANIGWE, KRISTINE		8	4-4	0-0	0-0	1	1	2	0	0	0	1	2	10	12
33	BROWN, JAELYN		2	0-2	0-1	2-2	0	2	2	0	0	0	0	0	8	4
00	FORBES, MCKENZIE		0	0-0	0-0	0-0	0	0	0	0	1	0	0	0	2	8
04	STYLES, ALAYSIA		0	0-0	0-0	0-0	0	0	0	0	0	0	0	0	0	0
30	WEST, CJ		0	0-1	0-0	0-0	0	3	3	0	1	0	0	0	7	12
	TEAM						2	1	3	0		1				
<b>TOTALS</b>			<b>23</b>	<b>9-16</b>	<b>1-5</b>	<b>4-4</b>	<b>3</b>	<b>9</b>	<b>12</b>	<b>0</b>	<b>4</b>	<b>4</b>	<b>1</b>	<b>3</b>	<b>50</b>	

*Shooting By Period*

Period	FG	FG%	3FG	3FG%	FT	FT%
5th Qtr	2-6	33%	1-3	33%	3-4	75%
2nd Half	2-6	33%	1-3	33%	3-4	75%
Game	27-58	46.6%	5-19	26.3%	20-23	87.0%

Game Notes:

Officials: Brenda Pantoja, Kyle Bacon, Roy Gulbeyan  
Attendance: 2107

Start Time: 2019-01-05 03:06:56  
End Time: 2019-01-05 05:22:53  
Game Duration: 135  
Conference Game;

Score	1st	2nd	3rd	4th	5th	TOT
UCL	17	25	11	18	13	<b>84</b>
CAL	16	16	23	16	8	<b>79</b>

Points from (This Period)	UCL	CAL
In the Paint	6	14
Off Turns	4	7
2nd Chance	2	4
Fast Break	2	2
Bench	0	0

**Official By-By-Play**  
**UCLA vs California**  
**Third Quarter**  
**January 05, 2019 at Haas Pavilion - Berkeley, Calif.**



**Period 3**

**Starters:**

**UCLA:** 4 CORSARO, LINDSEY; 11 DRUMMER, LAJAHNA; 21 ONYENWERE, MICHAELA; 22 BURKE, KENNEDY; 24 DEAN, JAPREECE;

**California:** 1 THOMAS, ASHA; 14 SMITH, KIANNA; 24 CALDWELL, RECEE'; 31 ANIGWE, KRISTINE; 33 BROWN, JAELYN;

Time	VISITORS: UCLA	Score	Margin	HOME: California
09:40	FOUL (PERSONAL) by DRUMMER, LAJAHNA			
09:40		33-42	V 9	GOOD! FT by BROWN, JAELYN
09:40		34-42	V 8	GOOD! FT by BROWN, JAELYN
09:27	GOOD! LAYUP by BURKE, KENNEDY	34-44	V 10	
09:27	ASSIST by ONYENWERE, MICHAELA			
09:12		36-44	V 8	GOOD! LAYUP by ANIGWE, KRISTINE
09:12				ASSIST by SMITH, KIANNA
08:56	MISSED 3PTR by DEAN, JAPREECE			
08:53				REBOUND (DEF) by CALDWELL, RECEE'
08:41				TURNOVER (BADPASS) by CALDWELL, RECEE'
08:41	STEAL by BURKE, KENNEDY			
08:35	MISSED LAYUP by BURKE, KENNEDY			
08:35				REBOUND (DEF) by BROWN, JAELYN
08:35	FOUL (PERSONAL) by CORSARO, LINDSEY			
08:35	SUB OUT: DRUMMER, LAJAHNA			
08:35	SUB IN: MILLER, LAURYN			
08:23				TURNOVER (BADPASS) by THOMAS, ASHA
08:23	STEAL by MILLER, LAURYN			
08:18	GOOD! LAYUP by ONYENWERE, MICHAELA [FB]	36-46	V 10	
08:18	ASSIST by MILLER, LAURYN			
08:01				MISSED 3PTR by SMITH, KIANNA
07:55	REBOUND (DEF) by BURKE, KENNEDY			
07:48	MISSED JUMPER by ONYENWERE, MICHAELA			
07:48				BLOCK by ANIGWE, KRISTINE
07:46	REBOUND (OFF) by TEAM			
07:37	GOOD! LAYUP by BURKE, KENNEDY	36-48	V 12	
07:23				MISSED 3PTR by THOMAS, ASHA
07:20	REBOUND (DEF) by CORSARO, LINDSEY			
07:07	TURNOVER (BADPASS) by MILLER, LAURYN			
07:07				STEAL by ANIGWE, KRISTINE
06:57		38-48	V 10	GOOD! LAYUP by SMITH, KIANNA
06:56				TIMEOUT 30SEC
06:56				SUB OUT: SMITH, KIANNA
06:56				SUB IN: WEST, CJ
06:56	SUB OUT: BURKE, KENNEDY			
06:56	SUB IN: HORVAT, CHANTEL			
06:46	TURNOVER (BADPASS) by DEAN, JAPREECE			
06:46				STEAL by THOMAS, ASHA
06:42		40-48	V 8	GOOD! LAYUP by THOMAS, ASHA [FB]
06:33	GOOD! 3PTR by ONYENWERE, MICHAELA	40-51	V 11	
06:33	ASSIST by HORVAT, CHANTEL			
06:14	SUB OUT: CORSARO, LINDSEY			
06:14	SUB IN: BURKE, KENNEDY			
06:00				MISSED 3PTR by CALDWELL, RECEE'
06:00				REBOUND (OFF) by TEAM
06:00				TURNOVER (SHOTCLOCK) by
05:38	MISSED JUMPER by DEAN, JAPREECE			
05:35				REBOUND (DEF) by WEST, CJ
05:29				MISSED JUMPER by CALDWELL, RECEE'
05:29	REBOUND (DEF) by ONYENWERE, MICHAELA			
05:29				SUB OUT: THOMAS, ASHA
05:29				SUB IN: SMITH, KIANNA
05:29	SUB OUT: DEAN, JAPREECE			
05:29	SUB IN: CORSARO, LINDSEY			
05:16	MISSED LAYUP by BURKE, KENNEDY			
05:13				REBOUND (DEF) by BROWN, JAELYN
05:11				MISSED LAYUP by BROWN, JAELYN
05:11	BLOCK by MILLER, LAURYN			
05:11				REBOUND (OFF) by TEAM
05:03		42-51	V 9	GOOD! JUMPER by SMITH, KIANNA
04:46	MISSED JUMPER by ONYENWERE, MICHAELA			
04:43				REBOUND (DEF) by WEST, CJ
04:24				MISSED LAYUP by WEST, CJ
04:24	BLOCK by MILLER, LAURYN			
04:23				REBOUND (OFF) by TEAM
04:23				
04:23				SUB OUT: CALDWELL, RECEE'
04:23				SUB IN: THOMAS, ASHA
04:23	SUB OUT: MILLER, LAURYN			
04:23	SUB IN: DRUMMER, LAJAHNA			

Time	VISITORS: UCLA	Score	Margin	HOME: California
04:13				MISSED 3PTR by BROWN, JAELYN
04:08				REBOUND (OFF) by ANIGWE, KRISTINE
04:08		44-51	V 7	GOOD! LAYUP by ANIGWE, KRISTINE
03:43	MISSED 3PTR by ONYENWERE, MICHAELA			
03:38				REBOUND (DEF) by THOMAS, ASHA
03:36				TURNOVER (LOSTBALL) by THOMAS, ASHA
03:36	STEAL by CORSARO, LINDSEY			
03:13	GOOD! JUMPER by ONYENWERE, MICHAELA	44-53	V 9	
03:13	ASSIST by CORSARO, LINDSEY			
02:53		46-53	V 7	GOOD! LAYUP by ANIGWE, KRISTINE
02:53				ASSIST by WEST, CJ
02:39	MISSED 3PTR by HORVAT, CHANTEL			
02:35				REBOUND (DEF) by WEST, CJ
02:11	FOUL (PERSONAL) by BURKE, KENNEDY			
02:11		47-53	V 6	GOOD! FT by THOMAS, ASHA
02:11				SUB OUT: BROWN, JAELYN
02:11				SUB IN: FORBES, MCKENZIE
02:11	SUB OUT: HORVAT, CHANTEL			
02:11	SUB IN: DEAN, JAPREECE			
02:11		48-53	V 5	GOOD! FT by THOMAS, ASHA
02:00	MISSED JUMPER by DEAN, JAPREECE			
01:57	REBOUND (OFF) by DRUMMER, LAJAHNA			
01:40	MISSED 3PTR by CORSARO, LINDSEY			
01:38				REBOUND (DEF) by ANIGWE, KRISTINE
01:38	FOUL (PERSONAL) by DRUMMER, LAJAHNA			
01:38	SUB OUT: DRUMMER, LAJAHNA			
01:38	SUB IN: MILLER, LAURYN			
01:10		50-53	V 3	GOOD! JUMPER by ANIGWE, KRISTINE
01:10				ASSIST by FORBES, MCKENZIE
00:55	TURNOVER (LOSTBALL) by BURKE, KENNEDY			
00:55				STEAL by ANIGWE, KRISTINE
00:48		53-53	T	GOOD! 3PTR by THOMAS, ASHA
00:48				ASSIST by SMITH, KIANNA
00:48	TIMEOUT 30SEC			
00:36	MISSED JUMPER by ONYENWERE, MICHAELA			
00:35				REBOUND (DEF) by TEAM
00:04		55-53	H 2	GOOD! JUMPER by THOMAS, ASHA [PNT]

### UCLA 53, California 55

Points from (This Period)	UCL	CAL
In the Paint	6	14
Off Turns	4	7
2nd Chance	2	4
Fast Break	2	2
Bench	0	0

**Official Box Score**  
**UCLA vs California**  
**Fourth Quarter Statistics Only**  
**January 05, 2019 at Haas Pavilion - Berkeley, Calif.**



**UCLA 18**

No.	Player	S	Pts	FG	3FG	FT	OR	DR	TR	PF	A	TO	Blk	Stl	Min	+/-
04	CORSARO, LINDSEY		0	0-3	0-1	0-0	0	1	1	1	1	0	0	0	10	2
11	DRUMMER, LAJAHNA		5	1-2	0-0	3-5	0	2	2	0	0	0	0	0	8	4
21	ONYENWERE, MICHAELA		5	2-3	1-1	0-0	4	0	4	2	0	0	0	0	10	2
22	BURKE, KENNEDY		6	2-3	0-0	2-2	1	0	1	1	0	1	0	0	10	2
24	DEAN, JAPREECE		2	1-5	0-1	0-0	0	0	0	1	2	0	0	0	10	2
00	HORVAT, CHANTEL		0	0-0	0-0	0-0	0	0	0	0	0	0	0	0	0	0
02	SMITH, AHLANA		0	0-0	0-0	0-0	0	0	0	0	0	0	0	0	0	0
33	MILLER, LAURYN		0	0-2	0-1	0-0	0	1	1	1	0	0	1	0	2	-2
	TEAM						2	1	3	0		0				
<b>TOTALS</b>			<b>18</b>	<b>6-18</b>	<b>1-4</b>	<b>5-7</b>	<b>7</b>	<b>5</b>	<b>12</b>	<b>6</b>	<b>3</b>	<b>1</b>	<b>1</b>	<b>0</b>	<b>50</b>	

*Shooting By Period*

Period	FG	FG%	3FG	3FG%	FT	FT%
Game	32-74	43.2%	5-14	35.7%	15-20	75.0%

**California 16**

No.	Player	S	Pts	FG	3FG	FT	OR	DR	TR	PF	A	TO	Blk	Stl	Min	+/-
01	THOMAS, ASHA		4	1-1	0-0	2-2	0	0	0	0	0	0	0	1	10	-2
14	SMITH, KIANNA		0	0-1	0-0	0-0	0	1	1	0	0	0	0	0	9	3
24	CALDWELL, RECEE'		0	0-0	0-0	0-0	0	0	0	0	0	0	0	0	1	-5
31	ANIGWE, KRISTINE		10	2-4	0-0	6-6	1	3	4	1	0	1	0	0	10	-2
33	BROWN, JAELYN		0	0-0	0-0	0-0	0	0	0	1	0	0	0	0	1	-3
00	FORBES, MCKENZIE		0	0-2	0-1	0-0	0	1	1	2	2	1	1	0	9	-2
04	STYLES, ALAYSIA		0	0-0	0-0	0-0	0	0	0	0	0	0	0	0	0	0
30	WEST, CJ		2	1-2	0-0	0-0	0	2	2	3	1	0	1	0	10	1
	TEAM						0	0	0	0		0				
<b>TOTALS</b>			<b>16</b>	<b>4-10</b>	<b>0-1</b>	<b>8-8</b>	<b>1</b>	<b>7</b>	<b>8</b>	<b>7</b>	<b>3</b>	<b>2</b>	<b>2</b>	<b>1</b>	<b>50</b>	

*Shooting By Period*

Period	FG	FG%	3FG	3FG%	FT	FT%
Game	27-58	46.6%	5-19	26.3%	20-23	87.0%

Game Notes:

Officials: **Brenda Pantoja, Kyle Bacon, Roy Gulbeyan**  
Attendance: 2107

Start Time: 2019-01-05 03:06:56  
End Time: 2019-01-05 05:22:53  
Game Duration: 135  
Conference Game;

Score	1st	2nd	3rd	4th	5th	TOT
UCL	17	25	11	18	13	<b>84</b>
CAL	16	16	23	16	8	<b>79</b>

Points from (This Period)	UCL	CAL
In the Paint	8	8
Off Turns	5	0
2nd Chance	7	0
Fast Break	0	2
Bench	0	2

**Official By-By-Play  
UCLA vs California  
Fourth Quarter  
January 05, 2019 at Haas Pavilion - Berkeley, Calif.**



**Period 4**

**Starters:**

**UCLA:** 4 CORSARO, LINDSEY; 11 DRUMMER, LAJAHNA; 21 ONYENWERE, MICHAELA; 22 BURKE, KENNEDY; 24 DEAN, JAPREECE;

**California:** 1 THOMAS, ASHA; 14 SMITH, KIANNA; 24 CALDWELL, RECEE'; 31 ANIGWE, KRISTINE; 33 BROWN, JAELYN;

Time	VISITORS: UCLA	Score	Margin	HOME: California
09:50	GOOD! LAYUP by BURKE, KENNEDY	55-55	T	
09:50	ASSIST by DEAN, JAPREECE			
09:27				MISSED LAYUP by WEST, CJ
09:27	BLOCK by MILLER, LAURYN			
09:23	REBOUND (DEF) by MILLER, LAURYN			
09:02	MISSED JUMPER by MILLER, LAURYN			
08:57				REBOUND (DEF) by ANIGWE, KRISTINE
08:53		57-55	H 2	GOOD! LAYUP by WEST, CJ
08:53				ASSIST by FORBES, MCKENZIE
08:33	MISSED 3PTR by MILLER, LAURYN			
08:32				REBOUND (DEF) by ANIGWE, KRISTINE
08:32	FOUL (PERSONAL) by ONYENWERE, MICHAELA			
08:11	FOUL (PERSONAL) by MILLER, LAURYN			
08:11		58-55	H 3	GOOD! FT by ANIGWE, KRISTINE
08:11		59-55	H 4	GOOD! FT by ANIGWE, KRISTINE
07:58	MISSED JUMPER by DEAN, JAPREECE			
07:53				REBOUND (DEF) by FORBES, MCKENZIE
07:46				MISSED 3PTR by FORBES, MCKENZIE
07:44	REBOUND (DEF) by TEAM			
07:44	SUB OUT: MILLER, LAURYN			
07:44	SUB IN: DRUMMER, LAJAHNA			
07:19	MISSED LAYUP by CORSARO, LINDSEY			
07:14				REBOUND (DEF) by SMITH, KIANNA
07:08				MISSED LAYUP by ANIGWE, KRISTINE
07:06	REBOUND (DEF) by CORSARO, LINDSEY			
07:01				FOUL (PERSONAL) by WEST, CJ
07:01				SUB OUT: WEST, CJ
07:01				SUB IN: BROWN, JAELYN
06:58	MISSED JUMPER by DEAN, JAPREECE			
06:58	REBOUND (OFF) by BURKE, KENNEDY			
06:58				FOUL (PERSONAL) by FORBES, MCKENZIE
06:53	GOOD! LAYUP by DRUMMER, LAJAHNA	59-57	H 2	
06:53				FOUL (PERSONAL) by BROWN, JAELYN
06:53	GOOD! FT by DRUMMER, LAJAHNA	59-58	H 1	
06:53				SUB OUT: FORBES, MCKENZIE
06:53				SUB IN: WEST, CJ
06:32	FOUL (PERSONAL) by DEAN, JAPREECE			
06:28				MISSED JUMPER by ANIGWE, KRISTINE
06:26				REBOUND (OFF) by ANIGWE, KRISTINE
06:26				TURNOVER (LOSTBALL) by ANIGWE, KRISTINE
06:04				FOUL (PERSONAL) by ANIGWE, KRISTINE
06:04				SUB OUT: SMITH, KIANNA
06:04				SUB IN: CALDWELL, RECEE'
06:04				SUB OUT: BROWN, JAELYN
06:04				SUB IN: FORBES, MCKENZIE
06:01	MISSED LAYUP by DRUMMER, LAJAHNA			
06:01	REBOUND (OFF) by ONYENWERE, MICHAELA			
06:01				BLOCK by WEST, CJ
05:44	GOOD! LAYUP by BURKE, KENNEDY	59-60	V 1	
05:44	ASSIST by DEAN, JAPREECE			
05:29				TURNOVER (BADPASS) by FORBES, MCKENZIE
05:07	GOOD! 3PTR by ONYENWERE, MICHAELA	59-63	V 4	
05:07	ASSIST by CORSARO, LINDSEY			
04:50	FOUL (PERSONAL) by ONYENWERE, MICHAELA			
04:50		60-63	V 3	GOOD! FT by ANIGWE, KRISTINE
04:50		61-63	V 2	GOOD! FT by ANIGWE, KRISTINE
04:50				SUB OUT: CALDWELL, RECEE'
04:50				SUB IN: SMITH, KIANNA
04:31	MISSED LAYUP by ONYENWERE, MICHAELA			
04:31				BLOCK by FORBES, MCKENZIE
04:31	REBOUND (OFF) by TEAM			
04:30	TURNOVER (BADPASS) by BURKE, KENNEDY			
04:30				STEAL by THOMAS, ASHA
04:21				MISSED LAYUP by SMITH, KIANNA
04:08	REBOUND (DEF) by DRUMMER, LAJAHNA			
04:04				FOUL (PERSONAL) by WEST, CJ
04:04	GOOD! FT by DRUMMER, LAJAHNA	61-64	V 3	
04:04	MISSED FT by DRUMMER, LAJAHNA			
04:00				REBOUND (DEF) by ANIGWE, KRISTINE

Time	VISITORS: UCLA	Score	Margin	HOME: California
03:39	FOUL (PERSONAL) by CORSARO, LINDSEY			
03:39		62-64	V 2	GOOD! FT by ANIGWE, KRISTINE
03:39		63-64	V 1	GOOD! FT by ANIGWE, KRISTINE
03:19	MISSED 3PTR by DEAN, JAPREECE			
03:15	REBOUND (OFF) by ONYENWERE, MICHAELA			
03:13	MISSED 3PTR by CORSARO, LINDSEY			
03:09	REBOUND (OFF) by ONYENWERE, MICHAELA			
02:42	MISSED JUMPER by CORSARO, LINDSEY			
02:39				REBOUND (DEF) by WEST, CJ
02:25		65-64	H 1	GOOD! LAYUP by ANIGWE, KRISTINE
02:25				ASSIST by FORBES, MCKENZIE
02:12	MISSED JUMPER by BURKE, KENNEDY			
02:09				REBOUND (DEF) by WEST, CJ
02:05	FOUL (PERSONAL) by BURKE, KENNEDY			
02:05		66-64	H 2	GOOD! FT by THOMAS, ASHA [FB]
02:05		67-64	H 3	GOOD! FT by THOMAS, ASHA [FB]
01:54	GOOD! JUMPER by DEAN, JAPREECE	67-66	H 1	
01:54	TIMEOUT 30SEC			
01:40		69-66	H 3	GOOD! LAYUP by ANIGWE, KRISTINE
01:40				ASSIST by WEST, CJ
01:11				FOUL (PERSONAL) by FORBES, MCKENZIE
01:11	GOOD! FT by BURKE, KENNEDY	69-67	H 2	
01:11	GOOD! FT by BURKE, KENNEDY	69-68	H 1	
00:42		71-68	H 3	GOOD! JUMPER by THOMAS, ASHA [PNT]
00:18				FOUL (PERSONAL) by WEST, CJ
00:18	GOOD! FT by DRUMMER, LAJAHNA	71-69	H 2	
00:18	MISSED FT by DRUMMER, LAJAHNA			
00:17	REBOUND (OFF) by ONYENWERE, MICHAELA			
00:17	GOOD! LAYUP by ONYENWERE, MICHAELA	71-71	T	
00:17				TIMEOUT 30SEC
00:05				MISSED JUMPER by FORBES, MCKENZIE
00:04	REBOUND (DEF) by DRUMMER, LAJAHNA			
00:04	TIMEOUT TEAM			
00:04				SUB OUT: WEST, CJ
00:04				SUB IN: BROWN, JAELYN
00:00	MISSED JUMPER by DEAN, JAPREECE			
00:00	REBOUND (OFF) by TEAM			

### UCLA 71, California 71

Points from (This Period)	UCL	CAL
In the Paint	8	8
Off Turns	5	0
2nd Chance	7	0
Fast Break	0	2
Bench	0	2

**Official Box Score  
UCLA vs California  
Overtime Statistics Only  
January 05, 2019 at Haas Pavilion - Berkeley, Calif.**



### UCLA 13

No.	Player	S	Pts	FG	3FG	FT	OR	DR	TR	PF	A	TO	Blk	Stl	Min	+/-
00	HORVAT, CHANTEL		0	0-0	0-0	0-0	0	0	0	0	0	0	0	0	0	0
02	SMITH, AHLANA		0	0-0	0-0	0-0	0	0	0	0	0	0	0	0	0	0
04	CORSARO, LINDSEY		1	0-0	0-0	1-2	0	0	0	1	0	0	0	0	5	5
11	DRUMMER, LAJAHNA		2	1-1	0-0	0-0	1	2	3	0	0	0	0	0	5	5
21	ONYENWERE, MICHAELA		4	1-2	0-0	2-2	0	2	2	0	0	0	0	0	5	5
22	BURKE, KENNEDY		4	1-1	0-0	2-2	0	0	0	1	0	1	0	1	5	5
24	DEAN, JAPREECE		2	0-0	0-0	2-2	0	1	1	0	1	1	0	0	5	5
33	MILLER, LAURYN		0	0-0	0-0	0-0	0	0	0	0	0	0	0	0	0	0
	TEAM		0	0-0	0-0	0-0	0	0	0	0	0	0	0	0	0	0
	<b>TOTALS</b>		<b>13</b>	<b>3-4</b>	<b>0-0</b>	<b>7-8</b>	<b>1</b>	<b>5</b>	<b>6</b>	<b>2</b>	<b>1</b>	<b>2</b>	<b>0</b>	<b>1</b>	<b>25</b>	

#### Shooting By Period

Period	FG	FG%	3FG	3FG%	FT	FT%
5th Qtr	3-4	75%	0-0	0%	7-8	88%
2nd Half	3-4	75%	0-0	0%	7-8	88%
Game	32-74	43.2%	5-14	35.7%	15-20	75.0%

Last FG Half: UCL 5th-01:10

### California 8



No.	Player	S	Pts	FG	3FG	FT	OR	DR	TR	PF	A	TO	Blk	Stl	Min	+/-
00	FORBES, MCKENZIE		0	0-1	0-0	0-0	0	0	0	2	1	0	0	0	3	-1
01	THOMAS, ASHA		3	1-2	1-2	0-0	0	0	0	0	0	0	0	0	5	-5
04	STYLES, ALAYSIA		0	0-0	0-0	0-0	0	0	0	0	0	0	0	0	0	0
14	SMITH, KIANNA		0	0-2	0-1	0-0	0	0	0	0	0	1	0	0	3	-6
24	CALDWELL, RECEE'		0	0-0	0-0	0-0	0	0	0	1	0	1	0	0	4	-5
30	WEST, CJ		0	0-0	0-0	0-0	0	0	0	0	0	0	0	0	2	-5
31	ANIGWE, KRISTINE		5	1-1	0-0	3-4	0	0	0	1	0	0	1	2	5	-5
33	BROWN, JAELYN		0	0-0	0-0	0-0	0	0	0	0	0	0	0	0	2	2
	TEAM		0	0-0	0-0	0-0	0	0	0	0	0	0	0	0	0	0
<b>TOTALS</b>			<b>8</b>	<b>2-6</b>	<b>1-3</b>	<b>3-4</b>	<b>0</b>	<b>0</b>	<b>0</b>	<b>4</b>	<b>1</b>	<b>2</b>	<b>1</b>	<b>2</b>	<b>25</b>	

Shooting By Period

Period	FG	FG%	3FG	3FG%	FT	FT%
5th Qtr	2-6	33%	1-3	33%	3-4	75%
2nd Half	2-6	33%	1-3	33%	3-4	75%
Game	27-58	46.6%	5-19	26.3%	20-23	87.0%

Last FG Half: CAL 5th-00:21

Game Notes:

Officials: Brenda Pantoja, Kyle Bacon, Roy Gulbeyan  
Attendance: 2107

Start Time: 2019-01-05 03:06:56  
End Time: 2019-01-05 05:22:53  
Game Duration: 135  
Conference Game;

Score	1st	2nd	3rd	4th	5th	TOT
UCL	17	25	11	18	13	<b>84</b>
CAL	16	16	23	16	8	<b>79</b>

Points from (This Period)	UCL	CAL
In the Paint	6	2
Off Turns	4	2
2nd Chance	2	0
Fast Break	2	0
Bench	0	0

Official Play-By-Play  
UCLA vs California  
Overtime  
January 05, 2019 at Haas Pavilion - Berkeley, Calif.



**Period 5**

**Starters:**

**UCLA:** 4 CORSARO,LINDSEY; 11 DRUMMER,LAJAHNA; 21 ONYENWERE,MICHAELA; 22 BURKE,KENNEDY; 24 DEAN,JAPREECE;

**California:** 1 THOMAS,ASHA; 14 SMITH,KIANNA; 24 CALDWELL,RECEE'; 31 ANIGWE,KRISTINE; 33 BROWN,JAELYN;

Time	VISITORS: UCLA	Score	Margin	HOME: California
04:51				MISSED JUMPER by FORBES, MCKENZIE
04:47	REBOUND (DEF) by ONYENWERE, MICHAELA			
04:27				FOUL (PERSONAL) by FORBES, MCKENZIE
04:27	MISSED FT by CORSARO, LINDSEY			
04:27	REBOUND (OFF) by TEAM			
04:27				SUB OUT: FORBES, MCKENZIE
04:27				SUB IN: CALDWELL, RECEE'
04:27	GOOD! FT by CORSARO, LINDSEY	71-72	V 1	
04:11				TURNOVER (DRIBBLING) by SMITH, KIANNA
03:53	GOOD! LAYUP by DRUMMER, LAJAHNA	71-74	V 3	
03:35				MISSED JUMPER by SMITH, KIANNA
03:32	REBOUND (DEF) by DRUMMER, LAJAHNA			
03:09	MISSED JUMPER by ONYENWERE, MICHAELA			
03:09				BLOCK by ANIGWE, KRISTINE
02:51	REBOUND (OFF) by DRUMMER, LAJAHNA			
02:51	GOOD! LAYUP by BURKE, KENNEDY	71-76	V 5	
02:37	FOUL (PERSONAL) by BURKE, KENNEDY			
02:37		72-76	V 4	GOOD! FT by ANIGWE, KRISTINE
02:37				SUB OUT: SMITH, KIANNA
02:37				SUB IN: BROWN, JAELYN
02:37				SUB OUT: WEST, CJ
02:37				SUB IN: FORBES, MCKENZIE
02:34		73-76	V 3	GOOD! FT by ANIGWE, KRISTINE
02:11	TURNOVER (BADPASS) by DEAN, JAPREECE			
02:11				STEAL by ANIGWE, KRISTINE
01:55		75-76	V 1	GOOD! LAYUP by ANIGWE, KRISTINE
01:28	TURNOVER (BADPASS) by BURKE, KENNEDY			
01:28				STEAL by ANIGWE, KRISTINE
01:15				TURNOVER (BADPASS) by CALDWELL, RECEE'
01:15	STEAL by BURKE, KENNEDY			
01:10	GOOD! LAYUP by ONYENWERE, MICHAELA [FB]	75-78	V 3	
01:10	ASSIST by DEAN, JAPREECE			
00:51	FOUL (PERSONAL) by CORSARO, LINDSEY			
00:51		76-78	V 2	GOOD! FT by ANIGWE, KRISTINE
00:51				MISSED FT by ANIGWE, KRISTINE
00:48	REBOUND (DEF) by ONYENWERE, MICHAELA			
00:24				FOUL (PERSONAL) by ANIGWE, KRISTINE
00:24	GOOD! FT by ONYENWERE, MICHAELA	76-79	V 3	
00:24	GOOD! FT by ONYENWERE, MICHAELA	76-80	V 4	
00:24				TIMEOUT 30SEC
00:21		79-80	V 1	GOOD! 3PTR by THOMAS, ASHA
00:21				ASSIST by FORBES, MCKENZIE
00:21				FOUL (PERSONAL) by FORBES, MCKENZIE
00:21	GOOD! FT by BURKE, KENNEDY	79-81	V 2	
00:21				SUB OUT: BROWN, JAELYN
00:21				SUB IN: WEST, CJ
00:21	GOOD! FT by BURKE, KENNEDY	79-82	V 3	
00:21				TIMEOUT TEAM
00:21				SUB OUT: WEST, CJ
00:21				SUB IN: SMITH, KIANNA
00:11				MISSED 3PTR by SMITH, KIANNA
00:09				FOUL (PERSONAL) by CALDWELL, RECEE'
00:09	GOOD! FT by DEAN, JAPREECE	79-83	V 4	
00:09	GOOD! FT by DEAN, JAPREECE	79-84	V 5	
00:09	REBOUND (DEF) by DEAN, JAPREECE			
00:03				MISSED 3PTR by THOMAS, ASHA
00:00	REBOUND (DEF) by DRUMMER, LAJAHNA			

**UCLA 84, California 79**

Points from (This Period)	UCL	CAL
In the Paint	6	2
Off Turns	4	2
2nd Chance	2	0
Fast Break	2	0
Bench	0	0

**Official Scoring/Possession Reference Chart  
UCLA vs California  
Period 1  
January 05, 2019 at Haas Pavilion - Berkeley, Calif.**



**Period 1**

**Starters:**

**UCLA:** 4 CORSARO,LINDSEY; 11 DRUMMER,LAJAHNA; 21 ONYENWERE,MICHAELA; 22 BURKE,KENNEDY; 24 DEAN,JAPREECE;

**California:** 1 THOMAS,ASHA; 14 SMITH,KIANNA; 24 CALDWELL,RECEE'; 31 ANIGWE,KRISTINE; 33 BROWN,JAELYN;

Time	VISITORS: UCLA	Score	Margin	HOME: California
09:45	GOOD! LAYUP by DRUMMER, LAJAHNA	0-2	V 2	
09:14		3-2	H 1	GOOD! 3PTR by SMITH, KIANNA
09:04	GOOD! FT by BURKE, KENNEDY	3-3	T	
08:26	GOOD! 3PTR by ONYENWERE, MICHAELA	3-6	V 3	
07:14		5-6	V 1	GOOD! LAYUP by ANIGWE, KRISTINE
06:11		7-6	H 1	GOOD! LAYUP by ANIGWE, KRISTINE
06:03	GOOD! LAYUP by DRUMMER, LAJAHNA	7-8	V 1	
06:03	GOOD! FT by DRUMMER, LAJAHNA	7-9	V 2	
04:27	GOOD! LAYUP by HORVAT, CHANTEL	7-11	V 4	
04:08		10-11	V 1	GOOD! 3PTR by FORBES, MCKENZIE
03:00		12-11	H 1	GOOD! JUMPER by CALDWELL, RECEE'
02:40	GOOD! JUMPER by ONYENWERE, MICHAELA	12-13	V 1	
02:08		14-13	H 1	GOOD! LAYUP by SMITH, KIANNA [PNT]
01:54	GOOD! JUMPER by ONYENWERE, MICHAELA	14-15	V 1	
01:17		15-15	T	GOOD! FT by WEST, CJ [FB]
01:17		16-15	H 1	GOOD! FT by WEST, CJ [FB]
00:40	GOOD! JUMPER by ONYENWERE, MICHAELA [PNT]	16-17	V 1	

**UCLA 17, California 16**

**Official Scoring/Possession Reference Chart**  
**UCLA vs California**  
**Period 2**  
**January 05, 2019 at Haas Pavilion - Berkeley, Calif.**



**Period 2**

**Starters:**

**UCLA:** 4 CORSARO,LINDSEY; 11 DRUMMER,LAJAHNA; 21 ONYENWERE,MICHAELA; 22 BURKE,KENNEDY; 24 DEAN,JAPREECE;

**California:** 1 THOMAS,ASHA; 14 SMITH,KIANNA; 24 CALDWELL,RECEE'; 31 ANIGWE,KRISTINE; 33 BROWN,JAELYN;

Time	VISITORS: UCLA	Score	Margin	HOME: California
09:28		18-17	H 1	GOOD! JUMPER by ANIGWE, KRISTINE
09:11	GOOD! LAYUP by HORVAT, CHANTEL	18-19	V 1	
08:43		19-19	T	GOOD! FT by BROWN, JAELYN
08:43		20-19	H 1	GOOD! FT by BROWN, JAELYN
08:29	GOOD! 3PTR by HORVAT, CHANTEL	20-22	V 2	
07:23		22-22	T	GOOD! LAYUP by FORBES, MCKENZIE
06:41	GOOD! JUMPER by ONYENWERE, MICHAELA	22-24	V 2	
06:27		24-24	T	GOOD! JUMPER by BROWN, JAELYN
06:09	GOOD! JUMPER by DEAN, JAPREECE	24-26	V 2	
05:33	GOOD! FT by HORVAT, CHANTEL	24-27	V 3	
05:08	GOOD! LAYUP by BURKE, KENNEDY [FB]	24-29	V 5	
04:39	GOOD! LAYUP by MILLER, LAURYN [FB]	24-31	V 7	
04:11		27-31	V 4	GOOD! 3PTR by FORBES, MCKENZIE
03:35		29-31	V 2	GOOD! LAYUP by ANIGWE, KRISTINE
03:14	GOOD! LAYUP by DRUMMER, LAJAHNA	29-33	V 4	
02:29		31-33	V 2	GOOD! JUMPER by CALDWELL, RECEE' [PNT]
02:03	GOOD! LAYUP by ONYENWERE, MICHAELA	31-35	V 4	
01:48		32-35	V 3	GOOD! FT by ANIGWE, KRISTINE
01:31	GOOD! JUMPER by DEAN, JAPREECE	32-37	V 5	
00:48	GOOD! LAYUP by BURKE, KENNEDY	32-39	V 7	
00:02	GOOD! 3PTR by CORSARO, LINDSEY	32-42	V 10	

**UCLA 42, California 32**

**Official Scoring/Possession Reference Chart**  
**UCLA vs California**  
**Period 3**  
**January 05, 2019 at Haas Pavilion - Berkeley, Calif.**



**Period 3**

**Starters:**

**UCLA:** 4 CORSARO,LINDSEY; 11 DRUMMER,LAJAHNA; 21 ONYENWERE,MICHAELA; 22 BURKE,KENNEDY; 24 DEAN,JAPREECE;

**California:** 1 THOMAS,ASHA; 14 SMITH,KIANNA; 24 CALDWELL,RECEE'; 31 ANIGWE,KRISTINE; 33 BROWN,JAELYN;

Time	VISITORS: UCLA	Score	Margin	HOME: California
09:40		33-42	V 9	GOOD! FT by BROWN, JAELYN
09:40		34-42	V 8	GOOD! FT by BROWN, JAELYN
09:27	GOOD! LAYUP by BURKE, KENNEDY	34-44	V 10	
09:12		36-44	V 8	GOOD! LAYUP by ANIGWE, KRISTINE
08:18	GOOD! LAYUP by ONYENWERE, MICHAELA [FB]	36-46	V 10	
07:37	GOOD! LAYUP by BURKE, KENNEDY	36-48	V 12	
06:57		38-48	V 10	GOOD! LAYUP by SMITH, KIANNA
06:42		40-48	V 8	GOOD! LAYUP by THOMAS, ASHA [FB]
06:33	GOOD! 3PTR by ONYENWERE, MICHAELA	40-51	V 11	
05:03		42-51	V 9	GOOD! JUMPER by SMITH, KIANNA
04:08		44-51	V 7	GOOD! LAYUP by ANIGWE, KRISTINE
03:13	GOOD! JUMPER by ONYENWERE, MICHAELA	44-53	V 9	
02:53		46-53	V 7	GOOD! LAYUP by ANIGWE, KRISTINE
02:11		47-53	V 6	GOOD! FT by THOMAS, ASHA
02:11		48-53	V 5	GOOD! FT by THOMAS, ASHA
01:10		50-53	V 3	GOOD! JUMPER by ANIGWE, KRISTINE
00:48		53-53	T	GOOD! 3PTR by THOMAS, ASHA
00:04		55-53	H 2	GOOD! JUMPER by THOMAS, ASHA [PNT]

**UCLA 53, California 55**

**Official Scoring/Possession Reference Chart**  
**UCLA vs California**  
**Period 4**  
**January 05, 2019 at Haas Pavilion - Berkeley, Calif.**



**Period 4**

**Starters:**

**UCLA:** 4 CORSARO, LINDSEY; 11 DRUMMER, LAJAHNA; 21 ONYENWERE, MICHAELA; 22 BURKE, KENNEDY; 24 DEAN, JAPREECE;

**California:** 1 THOMAS, ASHA; 14 SMITH, KIANNA; 24 CALDWELL, RECEE; 31 ANIGWE, KRISTINE; 33 BROWN, JAELYN;

Time	VISITORS: UCLA	Score	Margin	HOME: California
09:50	GOOD! LAYUP by BURKE, KENNEDY	55-55	T	
08:53		57-55	H 2	GOOD! LAYUP by WEST, CJ
08:11		58-55	H 3	GOOD! FT by ANIGWE, KRISTINE
08:11		59-55	H 4	GOOD! FT by ANIGWE, KRISTINE
06:53	GOOD! LAYUP by DRUMMER, LAJAHNA	59-57	H 2	
06:53	GOOD! FT by DRUMMER, LAJAHNA	59-58	H 1	
05:44	GOOD! LAYUP by BURKE, KENNEDY	59-60	V 1	
05:07	GOOD! 3PTR by ONYENWERE, MICHAELA	59-63	V 4	
04:50		60-63	V 3	GOOD! FT by ANIGWE, KRISTINE
04:50		61-63	V 2	GOOD! FT by ANIGWE, KRISTINE
04:04	GOOD! FT by DRUMMER, LAJAHNA	61-64	V 3	
03:39		62-64	V 2	GOOD! FT by ANIGWE, KRISTINE
03:39		63-64	V 1	GOOD! FT by ANIGWE, KRISTINE
02:25		65-64	H 1	GOOD! LAYUP by ANIGWE, KRISTINE
02:05		66-64	H 2	GOOD! FT by THOMAS, ASHA [FB]
02:05		67-64	H 3	GOOD! FT by THOMAS, ASHA [FB]
01:54	GOOD! JUMPER by DEAN, JAPREECE	67-66	H 1	
01:40		69-66	H 3	GOOD! LAYUP by ANIGWE, KRISTINE
01:11	GOOD! FT by BURKE, KENNEDY	69-67	H 2	
01:11	GOOD! FT by BURKE, KENNEDY	69-68	H 1	
00:42		71-68	H 3	GOOD! JUMPER by THOMAS, ASHA [PNT]
00:18	GOOD! FT by DRUMMER, LAJAHNA	71-69	H 2	
00:17	GOOD! LAYUP by ONYENWERE, MICHAELA	71-71	T	

**UCLA 71, California 71**

**Official Scoring/Possession Reference Chart**  
**UCLA vs California**  
**Period 5**  
**January 05, 2019 at Haas Pavilion - Berkeley, Calif.**



**Period 5**

**Starters:**

**UCLA:** 4 CORSARO, LINDSEY; 11 DRUMMER, LAJAHNA; 21 ONYENWERE, MICHAELA; 22 BURKE, KENNEDY; 24 DEAN, JAPREECE;

**California:** 1 THOMAS, ASHA; 14 SMITH, KIANNA; 24 CALDWELL, RECEE'; 31 ANIGWE, KRISTINE; 33 BROWN, JAELYN;

Time	VISITORS: UCLA	Score	Margin	HOME: California
04:27	GOOD! FT by CORSARO, LINDSEY	71-72	V 1	
03:53	GOOD! LAYUP by DRUMMER, LAJAHNA	71-74	V 3	
02:51	GOOD! LAYUP by BURKE, KENNEDY	71-76	V 5	
02:37		72-76	V 4	GOOD! FT by ANIGWE, KRISTINE
02:34		73-76	V 3	GOOD! FT by ANIGWE, KRISTINE
01:55		75-76	V 1	GOOD! LAYUP by ANIGWE, KRISTINE
01:10	GOOD! LAYUP by ONYENWERE, MICHAELA [FB]	75-78	V 3	
00:51		76-78	V 2	GOOD! FT by ANIGWE, KRISTINE
00:24	GOOD! FT by ONYENWERE, MICHAELA	76-79	V 3	
00:24	GOOD! FT by ONYENWERE, MICHAELA	76-80	V 4	
00:21		79-80	V 1	GOOD! 3PTR by THOMAS, ASHA
00:21	GOOD! FT by BURKE, KENNEDY	79-81	V 2	
00:21	GOOD! FT by BURKE, KENNEDY	79-82	V 3	
00:09	GOOD! FT by DEAN, JAPREECE	79-83	V 4	
00:09	GOOD! FT by DEAN, JAPREECE	79-84	V 5	

**UCLA 84, California 79**



**Official Substitutions Log**  
**UCLA vs California**  
**Period 1**  
**January 05, 2019 at Haas Pavilion - Berkeley, Calif.**



VISITORS: UCLA	Time	Score	HOME: California
4 CORSARO,LINDSEY			1 THOMAS,ASHA
11 DRUMMER,LAJAHNA			14 SMITH,KIANNA
21 ONYENWERE,MICHAELA			24 CALDWELL,RECEE'
22 BURKE,KENNEDY			31 ANIGWE,KRISTINE
24 DEAN,JAPREECE			33 BROWN,JAELYN
SUB OUT: 22 BURKE,KENNEDY	06:03	8-7	
SUB IN: 0 HORVAT,CHANTEL	06:03		
SUB OUT: 11 DRUMMER,LAJAHNA	06:03		
SUB IN: 33 MILLER,LAURYN	06:03		
	05:40	9-7	SUB OUT: BROWN,JAELYN
	05:40		SUB IN: WEST,CJ
	04:36	9-7	SUB OUT: SMITH,KIANNA
	04:36		SUB IN: FORBES,MCKENZIE
SUB OUT: 4 CORSARO,LINDSEY	04:36		
SUB IN: 22 BURKE,KENNEDY	04:36		
SUB OUT: 0 HORVAT,CHANTEL	03:49	11-10	
SUB IN: 4 CORSARO,LINDSEY	03:49		
	02:13	13-12	SUB OUT: THOMAS,ASHA
	02:13		SUB IN: SMITH,KIANNA
	02:13		SUB OUT: ANIGWE,KRISTINE
	02:13		SUB IN: BROWN,JAELYN
SUB OUT: 24 DEAN,JAPREECE	02:13		
SUB IN: 11 DRUMMER,LAJAHNA	02:13		
SUB OUT: 33 MILLER,LAURYN	02:13		
SUB IN: 2 SMITH,AHLANA	02:13		
	01:17	15-16	SUB OUT: WEST,CJ
	01:17		SUB IN: ANIGWE,KRISTINE
	00:22	17-16	SUB OUT: FORBES,MCKENZIE
	00:22		SUB IN: THOMAS,ASHA
SUB OUT: 4 CORSARO,LINDSEY	00:22		
SUB IN: 24 DEAN,JAPREECE	00:22		

**UCLA 17, California 16**

**Official Substitutions Log  
UCLA vs California  
Period 2  
January 05, 2019 at Haas Pavilion - Berkeley, Calif.**



VISITORS: UCLA	Time	Score	HOME: California
4 CORSARO,LINDSEY			1 THOMAS,ASHA
11 DRUMMER,LAJAHNA			14 SMITH,KIANNA
21 ONYENWERE,MICHAELA			24 CALDWELL,RECEE'
22 BURKE,KENNEDY			31 ANIGWE,KRISTINE
24 DEAN,JAPREECE			33 BROWN,JAELYN
SUB OUT: 2 SMITH,AHLANA	09:12	17-18	
SUB IN: 0 HORVAT,CHANTEL	09:12		
	08:05	22-20	SUB OUT: CALDWELL,RECEE'
	08:05		SUB IN: FORBES,MCKENZIE
SUB OUT: 11 DRUMMER,LAJAHNA	08:05		
SUB IN: 33 MILLER,LAURYN	08:05		
	05:33	26-24	SUB OUT: THOMAS,ASHA
	05:33		SUB IN: CALDWELL,RECEE'
	05:33		SUB OUT: SMITH,KIANNA
	05:33		SUB IN: STYLES,ALAYSIA
SUB OUT: 21 ONYENWERE,MICHAELA	05:33		
SUB IN: 11 DRUMMER,LAJAHNA	05:33		
	05:08	29-24	SUB OUT: BROWN,JAELYN
	05:08		SUB IN: THOMAS,ASHA
	04:14	31-24	SUB OUT: STYLES,ALAYSIA
	04:14		SUB IN: WEST,CJ
SUB OUT: 33 MILLER,LAURYN	03:35	31-29	
SUB IN: 21 ONYENWERE,MICHAELA	03:35		
SUB OUT: 0 HORVAT,CHANTEL	02:54	33-29	
SUB IN: 4 CORSARO,LINDSEY	02:54		
SUB OUT: 11 DRUMMER,LAJAHNA	01:01	37-32	
SUB IN: 0 HORVAT,CHANTEL	01:01		

**UCLA 42, California 32**

**Official Substitutions Log  
UCLA vs California  
Period 3  
January 05, 2019 at Haas Pavilion - Berkeley, Calif.**



VISITORS: UCLA	Time	Score	HOME: California
4 CORSARO,LINDSEY			1 THOMAS,ASHA
11 DRUMMER,LAJAHNA			14 SMITH,KIANNA
21 ONYENWERE,MICHAELA			24 CALDWELL,RECEE'
22 BURKE,KENNEDY			31 ANIGWE,KRISTINE
24 DEAN,JAPREECE			33 BROWN,JAELYN
SUB OUT: 11 DRUMMER,LAJAHNA	08:35	44-36	
SUB IN: 33 MILLER,LAURYN	08:35		
	06:56	48-38	SUB OUT: SMITH,KIANNA
	06:56		SUB IN: WEST,CJ
SUB OUT: 22 BURKE,KENNEDY	06:56		
SUB IN: 0 HORVAT,CHANTEL	06:56		
SUB OUT: 4 CORSARO,LINDSEY	06:14	51-40	
SUB IN: 22 BURKE,KENNEDY	06:14		
	05:29	51-40	SUB OUT: THOMAS,ASHA
	05:29		SUB IN: SMITH,KIANNA
SUB OUT: 24 DEAN,JAPREECE	05:29		
SUB IN: 4 CORSARO,LINDSEY	05:29		
	04:23	51-42	SUB OUT: CALDWELL,RECEE'
	04:23		SUB IN: THOMAS,ASHA
SUB OUT: 33 MILLER,LAURYN	04:23		
SUB IN: 11 DRUMMER,LAJAHNA	04:23		
	02:11	53-47	SUB OUT: BROWN,JAELYN
	02:11		SUB IN: FORBES,MCKENZIE
SUB OUT: 0 HORVAT,CHANTEL	02:11		
SUB IN: 24 DEAN,JAPREECE	02:11		
SUB OUT: 11 DRUMMER,LAJAHNA	01:38	53-48	
SUB IN: 33 MILLER,LAURYN	01:38		

**UCLA 53, California 55**

**Official Substitutions Log  
 UCLA vs California  
 Period 4  
 January 05, 2019 at Haas Pavilion - Berkeley, Calif.**



VISITORS: UCLA	Time	Score	HOME: California
4 CORSARO,LINDSEY			1 THOMAS,ASHA
11 DRUMMER,LAJAHNA			14 SMITH,KIANNA
21 ONYENWERE,MICHAELA			24 CALDWELL,RECEE'
22 BURKE,KENNEDY			31 ANIGWE,KRISTINE
24 DEAN,JAPREECE			33 BROWN,JAELYN
SUB OUT: 33 MILLER,LAURYN	07:44	55-59	
SUB IN: 11 DRUMMER,LAJAHNA	07:44		
	07:01	55-59	SUB OUT: WEST,CJ
	07:01		SUB IN: BROWN,JAELYN
	06:53	58-59	SUB OUT: FORBES,MCKENZIE
	06:53		SUB IN: WEST,CJ
	06:04	58-59	SUB OUT: SMITH,KIANNA
	06:04		SUB IN: CALDWELL,RECEE'
	06:04		SUB OUT: BROWN,JAELYN
	06:04		SUB IN: FORBES,MCKENZIE
	04:50	63-61	SUB OUT: CALDWELL,RECEE'
	04:50		SUB IN: SMITH,KIANNA
	00:04	71-71	SUB OUT: WEST,CJ
	00:04		SUB IN: BROWN,JAELYN

**UCLA 71, California 71**



**Official Substitutions Log**  
**UCLA vs California**  
**Period 5**  
**January 05, 2019 at Haas Pavilion - Berkeley, Calif.**



<b>VISITORS: UCLA</b>	<b>Time</b>	<b>Score</b>	<b>HOME: California</b>
4 CORSARO,LINDSEY			1 THOMAS,ASHA
11 DRUMMER,LAJAHNA			14 SMITH,KIANNA
21 ONYENWERE,MICHAELA			24 CALDWELL,RECEE'
22 BURKE,KENNEDY			31 ANIGWE,KRISTINE
24 DEAN,JAPREECE			33 BROWN,JAELYN
	04:27	-	SUB OUT: FORBES,MCKENZIE
	04:27		SUB IN: CALDWELL,RECEE'
	02:37	76-72	SUB OUT: SMITH,KIANNA
	02:37		SUB IN: BROWN,JAELYN
	02:37		SUB OUT: WEST,CJ
	02:37		SUB IN: FORBES,MCKENZIE
	00:21	81-79	SUB OUT: BROWN,JAELYN
	00:21		SUB IN: WEST,CJ
	00:21		SUB OUT: WEST,CJ
	00:21		SUB IN: SMITH,KIANNA

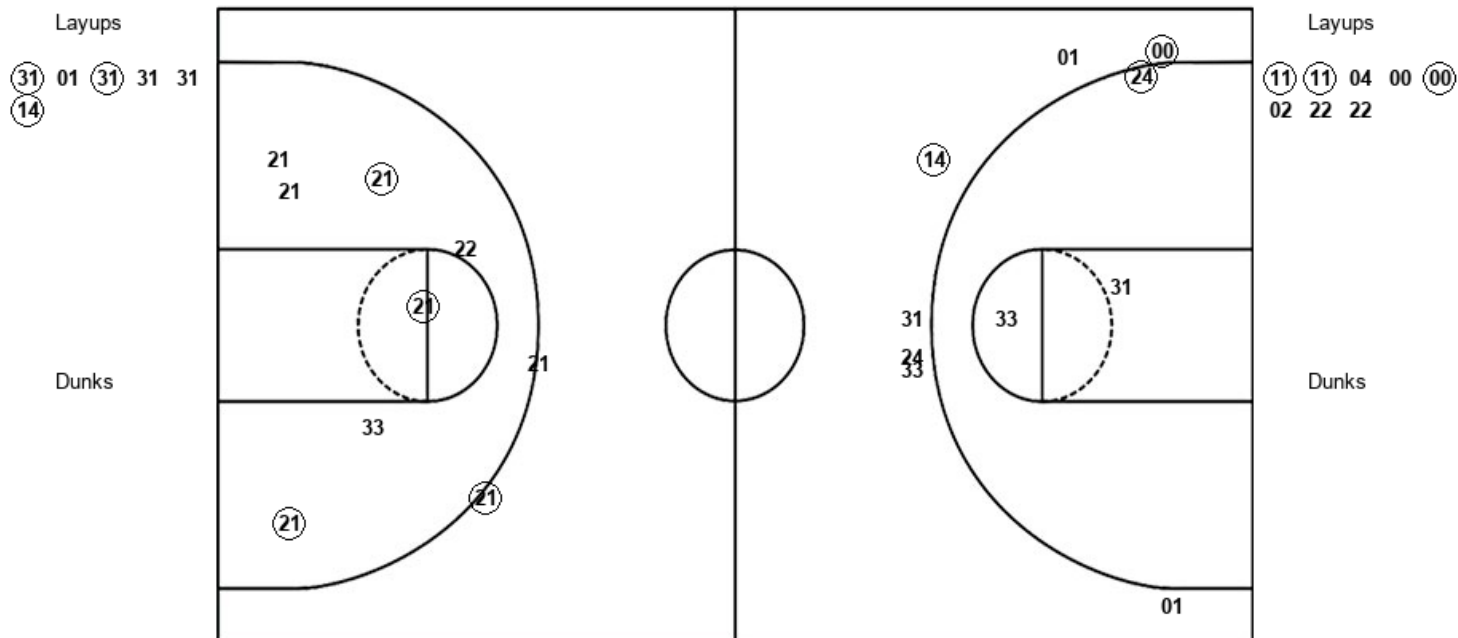
**UCLA 84, California 79**

Official Shot Chart  
**UCLA vs California**  
 PERIOD 1 Shots  
 January 05, 2019 at Haas Pavilion - Berkeley, Calif.



California

UCLA



CAL : Period 1	Made	Att	Pct
Layups	3	6	50.0
Dunks	0	0	0
2PT Field Goals	4	9	44.4
3PT Field Goals	2	7	28.6
<b>Total Field Goals</b>	<b>6</b>	<b>16</b>	<b>37.5</b>

UCL : Period 1	Made	Att	Pct
Layups	3	8	37.5
Dunks	0	0	0
2PT Field Goals	6	15	40.0
3PT Field Goals	1	2	50.0
<b>Total Field Goals</b>	<b>7</b>	<b>17</b>	<b>41.2</b>

**Official Shot Chart**  
**UCLA vs California**  
**PERIOD 2 Shots**  
 January 05, 2019 at Haas Pavilion - Berkeley, Calif.

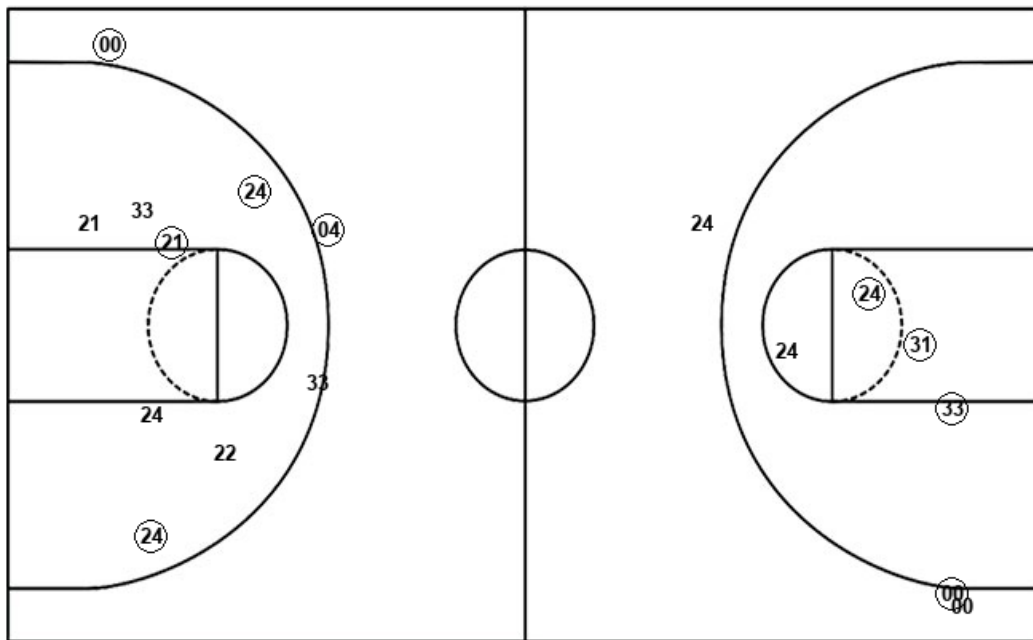


**California**

**UCLA**

Layups  
 (00) 00 (31)

Dunks



Layups

24 (00) 00 (22) (33)  
 (11) (21) 04 (22)

Dunks

<b>CAL : Period 2</b>	<b>Made</b>	<b>Att</b>	<b>Pct</b>
Layups	2	3	66.7
Dunks	0	0	0
2PT Field Goals	5	7	71.4
3PT Field Goals	1	3	33.3
<b>Total Field Goals</b>	<b>6</b>	<b>10</b>	<b>60.0</b>

<b>UCL : Period 2</b>	<b>Made</b>	<b>Att</b>	<b>Pct</b>
Layups	6	9	66.7
Dunks	0	0	0
2PT Field Goals	9	16	56.3
3PT Field Goals	2	3	66.7
<b>Total Field Goals</b>	<b>11</b>	<b>19</b>	<b>57.9</b>

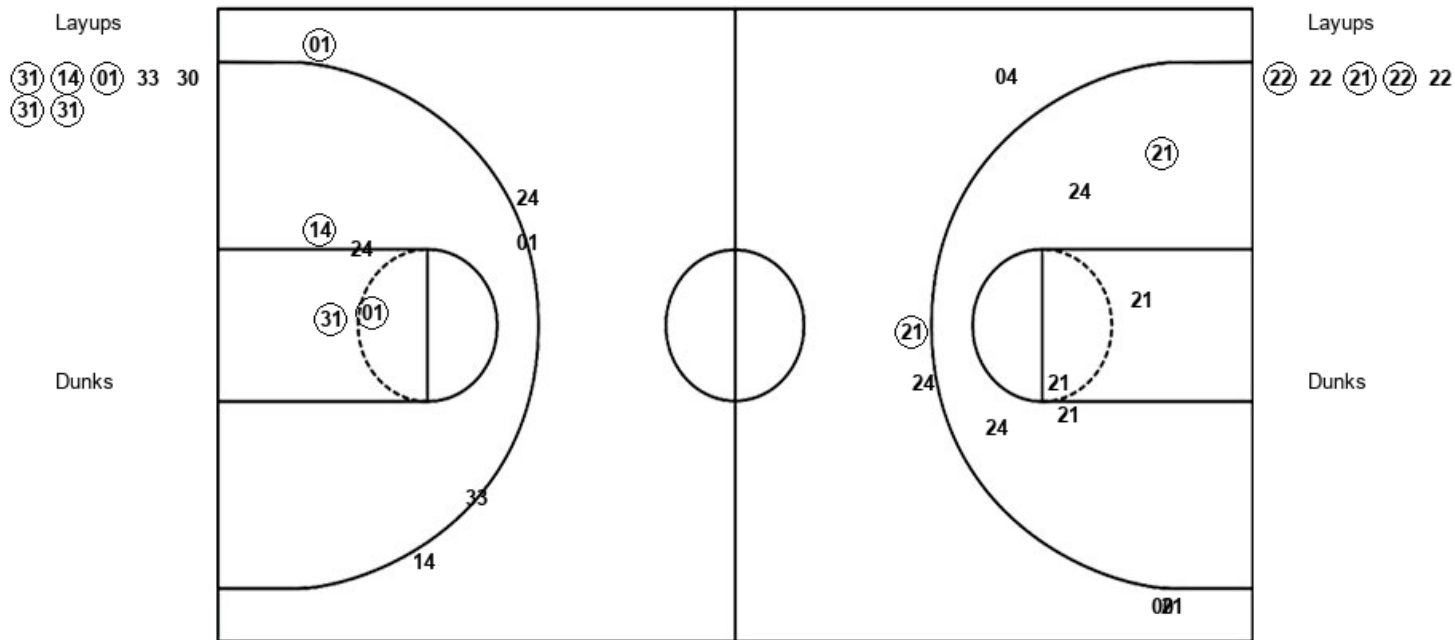


**Official Shot Chart**  
**UCLA vs California**  
**PERIOD 3 Shots**  
 January 05, 2019 at Haas Pavilion - Berkeley, Calif.



**California**

**UCLA**



<b>CAL : Period 3</b>	<b>Made</b>	<b>Att</b>	<b>Pct</b>
Layups	5	7	71.4
Dunks	0	0	0
2PT Field Goals	8	11	72.7
3PT Field Goals	1	5	20.0
<b>Total Field Goals</b>	<b>9</b>	<b>16</b>	<b>56.3</b>

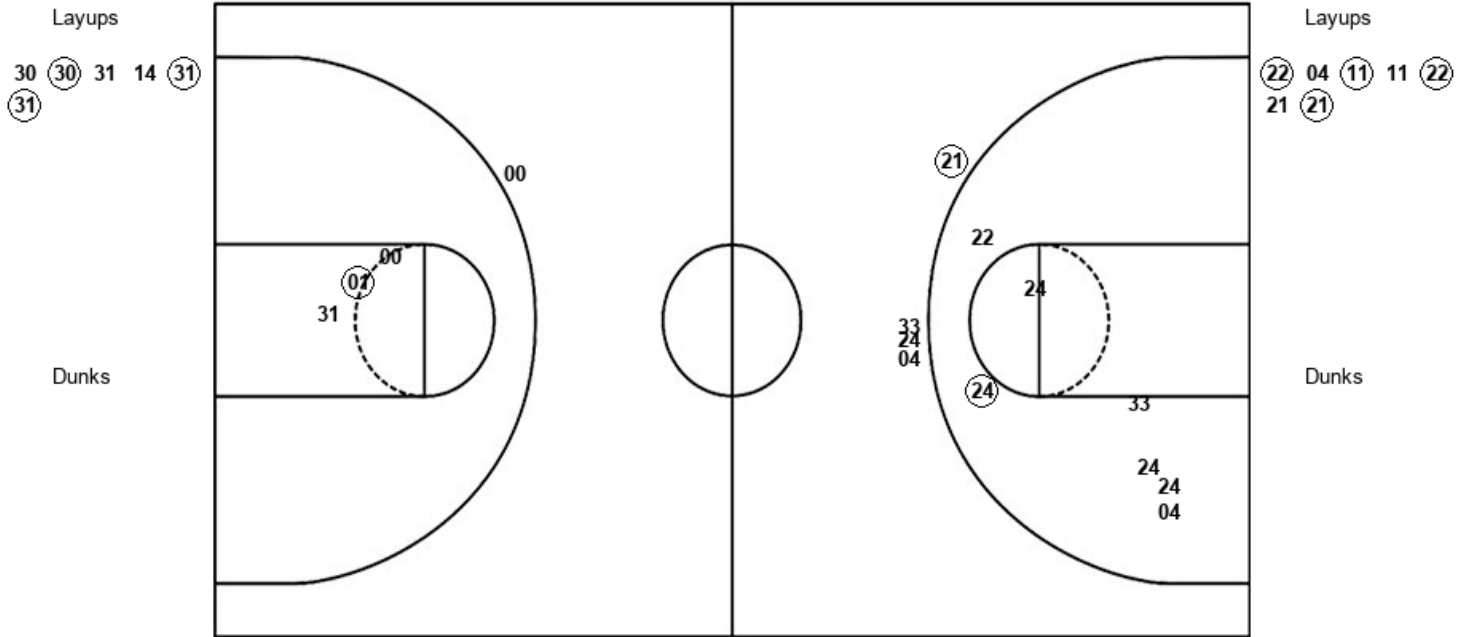
<b>UCL : Period 3</b>	<b>Made</b>	<b>Att</b>	<b>Pct</b>
Layups	3	5	60.0
Dunks	0	0	0
2PT Field Goals	4	11	36.4
3PT Field Goals	1	5	20.0
<b>Total Field Goals</b>	<b>5</b>	<b>16</b>	<b>31.3</b>

**Official Shot Chart**  
**UCLA vs California**  
**PERIOD 4 Shots**  
 January 05, 2019 at Haas Pavilion - Berkeley, Calif.



**California**

**UCLA**



<b>CAL : Period 4</b>	<b>Made</b>	<b>Att</b>	<b>Pct</b>
Layups	3	6	50.0
Dunks	0	0	0
2PT Field Goals	4	9	44.4
3PT Field Goals	0	1	00.0
<b>Total Field Goals</b>	<b>4</b>	<b>10</b>	<b>40.0</b>

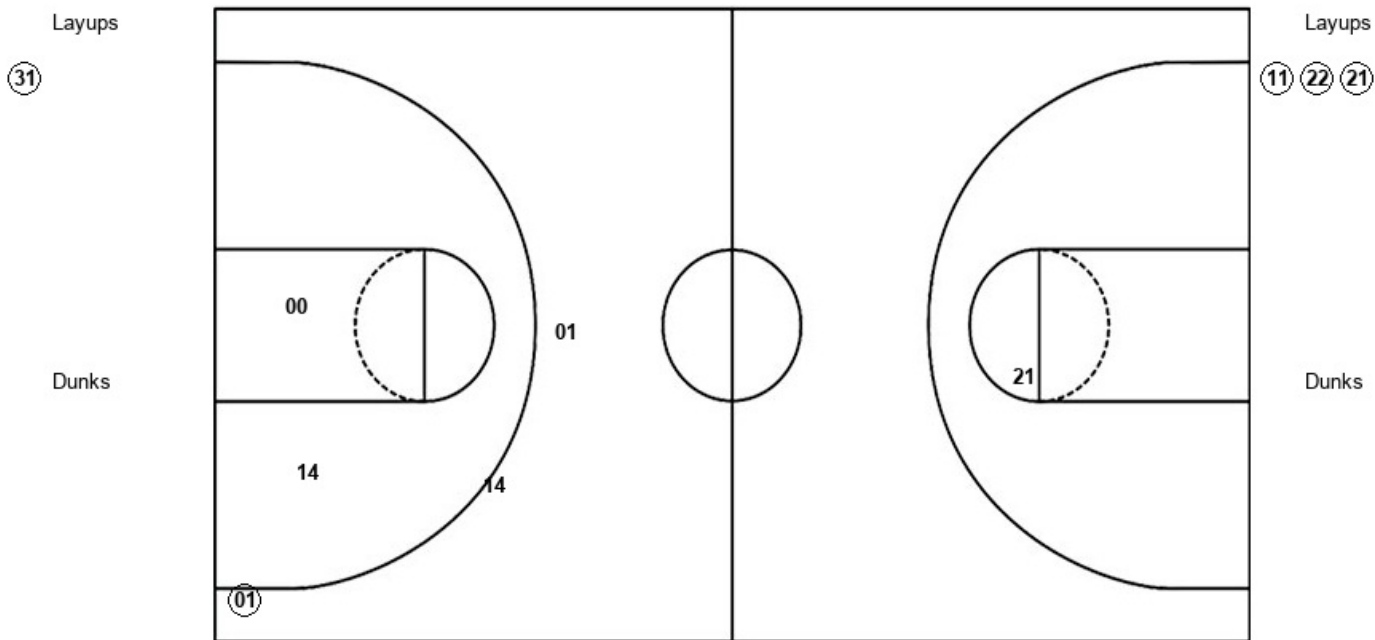
<b>UCL : Period 4</b>	<b>Made</b>	<b>Att</b>	<b>Pct</b>
Layups	4	7	57.1
Dunks	0	0	0
2PT Field Goals	5	14	35.7
3PT Field Goals	1	4	25.0
<b>Total Field Goals</b>	<b>6</b>	<b>18</b>	<b>33.3</b>

**Official Shot Chart**  
**UCLA vs California**  
**PERIOD 5 Shots**  
 January 05, 2019 at Haas Pavilion - Berkeley, Calif.



**California**

**UCLA**



<b>CAL : Period 5</b>	<b>Made</b>	<b>Att</b>	<b>Pct</b>
Layups	1	1	100.0
Dunks	0	0	0
2PT Field Goals	1	3	33.3
3PT Field Goals	1	3	33.3
<b>Total Field Goals</b>	<b>2</b>	<b>6</b>	<b>33.3</b>

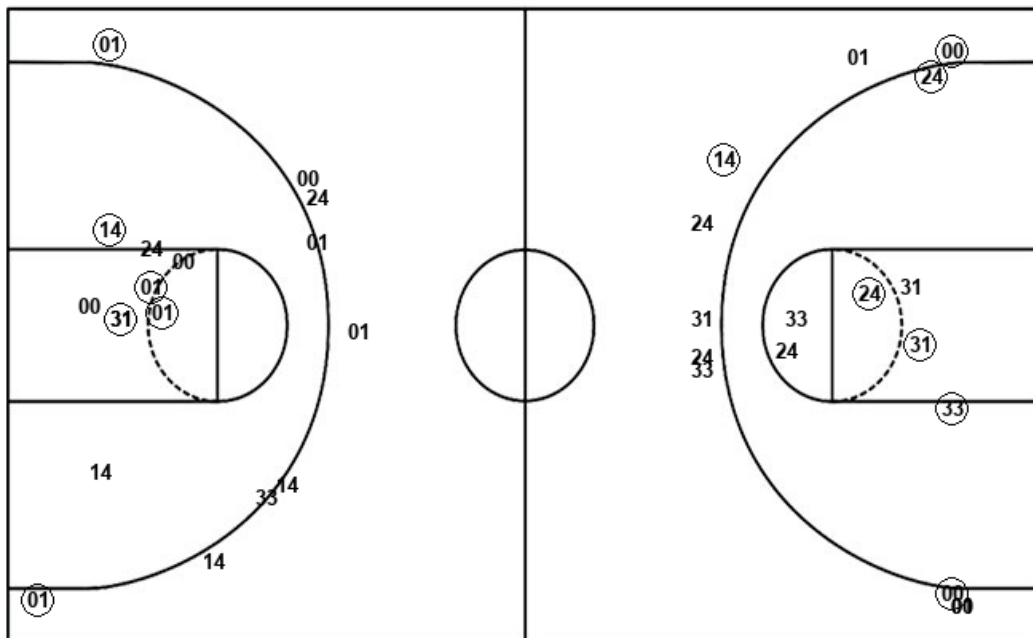
<b>UCL : Period 5</b>	<b>Made</b>	<b>Att</b>	<b>Pct</b>
Layups	3	3	100.0
Dunks	0	0	0
2PT Field Goals	3	4	75.0
3PT Field Goals	0	0	0
<b>Total Field Goals</b>	<b>3</b>	<b>4</b>	<b>75.0</b>



**Official Shot Chart**  
**UCLA vs California**  
 California Team Shots  
 January 05, 2019 at Haas Pavilion - Berkeley, Calif.



Layups



Layups

Dunks

Dunks

CAL : Period 1	Made	Att	Pct
Layups	3	6	50.0
Dunks	0	0	0
2PT Field Goals	4	9	44.4
3PT Field Goals	2	7	28.6
<b>Total Field Goals</b>	<b>6</b>	<b>16</b>	<b>37.5</b>

CAL : Period 2	Made	Att	Pct
Layups	2	3	66.7
Dunks	0	0	0
2PT Field Goals	5	7	71.4
3PT Field Goals	1	3	33.3
<b>Total Field Goals</b>	<b>6</b>	<b>10</b>	<b>60.0</b>

CAL : Period 3	Made	Att	Pct
Layups	5	7	71.4
Dunks	0	0	0
2PT Field Goals	8	11	72.7
3PT Field Goals	1	5	20.0
<b>Total Field Goals</b>	<b>9</b>	<b>16</b>	<b>56.3</b>

CAL : Period 4	Made	Att	Pct
Layups	3	6	50.0
Dunks	0	0	0
2PT Field Goals	4	9	44.4
3PT Field Goals	0	1	00.0
<b>Total Field Goals</b>	<b>4</b>	<b>10</b>	<b>40.0</b>

CAL : Period 5	Made	Att	Pct
Layups	1	1	100.0
Dunks	0	0	0
2PT Field Goals	1	3	33.3
3PT Field Goals	1	3	33.3
<b>Total Field Goals</b>	<b>2</b>	<b>6</b>	<b>33.3</b>