

## FINAL SCORE

**UCLA**



**98**

**Arizona**



**93**

January 27, 2019 • McKale Center (Lute & Bobbi Olson Court) - Tucson, Ariz.

## FINAL STATISTICS

**Official Box Score**  
**UCLA vs Arizona**  
**Game Totals -- Final Statistics**  
**January 27, 2019 at McKale Center (Lute & Bobbi Olson Court) - Tucson, Ariz.**



**UCLA 98**

No.	Player	S	Pts	FG	3FG	FT	OR	DR	TR	PF	A	TO	Blk	Stl	Min	+/-
04	CORSARO, LINDSEY		7	2-10	1-6	2-2	1	4	5	1	2	0	0	1	43	7
11	DRUMMER, LAJAHNA		18	6-16	0-1	6-9	8	9	17	3	1	2	2	1	42	7
21	ONYENWERE, MICHAELA		28	11-25	1-2	5-7	7	6	13	4	1	2	1	1	50	9
22	BURKE, KENNEDY		16	5-12	1-2	5-6	2	2	4	4	3	2	0	5	52	9
24	DEAN, JAPREECE		26	7-20	3-7	9-9	3	4	7	5	3	5	0	1	53	4
02	SMITH, AHLANA		2	1-5	0-2	0-0	2	1	3	3	0	1	0	1	13	-5
03	JEFFERSON, KIARA		0	0-2	0-1	0-0	1	0	1	5	0	1	0	0	8	-2
33	MILLER, LAURYN		1	0-1	0-0	1-2	0	3	3	3	0	2	0	1	13	-4
<b>TEAM</b>							3	2	5	0		1				
<b>TOTALS</b>			<b>98</b>	<b>32-91</b>	<b>6-21</b>	<b>28-35</b>	<b>27</b>	<b>31</b>	<b>58</b>	<b>28</b>	<b>10</b>	<b>16</b>	<b>3</b>	<b>11</b>	<b>275</b>	

*Shooting By Period*

Period	FG	FG%	3FG	3FG%	FT	FT%
1st Qtr	7-18	39%	0-2	00%	2-3	67%
2nd Qtr	4-14	29%	1-3	33%	5-6	83%
3rd Qtr	6-17	35%	3-9	33%	2-4	50%
4th Qtr	6-17	35%	0-3	00%	2-2	100%
5th Qtr	4-10	40%	0-0	0%	2-2	100%
6th Qtr	2-7	29%	1-3	33%	8-9	89%
7th Qtr	3-8	38%	1-1	100%	7-9	78%
1st Half	11-32	34%	1-5	20%	7-9	78%
2nd Half	12-34	35%	3-12	25%	4-6	67%
<b>Game</b>	<b>32-91</b>	<b>35.2%</b>	<b>6-21</b>	<b>28.6%</b>	<b>28-35</b>	<b>80.0%</b>

*Last FG: 7th-01:26*  
*Biggest Run: 7-0*  
*Largest lead: By 6 at 2-05:51*  
*Technical Fouls: None.*

**Arizona 93**

No.	Player	S	Pts	FG	3FG	FT	OR	DR	TR	PF	A	TO	Blk	Stl	Min	+/-
02	MCDONALD, AARI		35	14-25	4-10	3-7	1	11	12	4	7	4	0	4	50	-9
10	STARKS, TEE TEE		5	2-5	1-4	0-3	2	3	5	4	3	6	0	2	51	-4
14	THOMAS, SAM		17	6-14	3-7	2-3	0	3	3	5	2	1	1	1	45	4
20	MCBRYDE, DOMINIQUE		2	1-4	0-1	0-0	0	4	4	5	1	4	0	0	20	-3
25	REESE, CATE		14	7-13	0-0	0-0	4	6	10	5	1	1	1	2	36	-5
04	ALONSO, LUCIA		14	5-9	2-4	2-2	0	1	1	4	3	1	0	0	35	-8
21	GRAHAM, DESTINY		5	1-2	0-0	3-8	3	5	8	4	2	3	1	0	23	-2
24	NIXON, BRYCE		0	0-1	0-0	0-0	0	0	0	0	0	1	0	0	2	0
34	SMITH, SEMAJ		1	0-0	0-0	1-4	0	1	1	1	0	2	1	0	12	2
<b>TEAM</b>							3	1	4	0		0				
<b>TOTALS</b>			<b>93</b>	<b>36-73</b>	<b>10-26</b>	<b>11-27</b>	<b>13</b>	<b>35</b>	<b>48</b>	<b>32</b>	<b>19</b>	<b>23</b>	<b>4</b>	<b>9</b>	<b>275</b>	

*Shooting By Period*

Period	FG	FG%	3FG	3FG%	FT	FT%
1st Qtr	6-15	40%	2-5	40%	0-2	00%
2nd Qtr	8-15	53%	1-5	20%	2-6	33%
3rd Qtr	6-11	55%	2-4	50%	3-5	60%
4th Qtr	5-12	42%	1-2	50%	0-0	0%
5th Qtr	3-7	43%	1-2	50%	3-4	75%
6th Qtr	5-6	83%	2-3	67%	1-2	50%
7th Qtr	3-7	43%	1-5	20%	2-8	25%
1st Half	14-30	47%	3-10	30%	2-8	25%
2nd Half	11-23	48%	3-6	50%	3-5	60%
<b>Game</b>	<b>36-73</b>	<b>49.3%</b>	<b>10-26</b>	<b>38.5%</b>	<b>11-27</b>	<b>40.7%</b>

*Last FG: 7th-01:15*  
*Biggest Run: 6-0*  
*Largest lead: By 5 at 3-06:16*  
*Technical Fouls: None.*

**Game Notes:**

Officials: **Melissa Barlow, Shelly Nakasone, Paul Patterson**  
 Attendance: **2327**

Start Time: **2019-01-27 21:00:49**  
 End Time: **2019-01-27 23:44:14**  
 Game Duration: **163**  
 Conference Game;

Score	1st	2nd	3rd	4th	5th	6th	7th	TOT
UCL	16	14	17	14	10	13	14	<b>98</b>
ARI	14	19	17	11	10	13	9	<b>93</b>

**UCL led for 22:47. ARI led for 24:53.**  
**Game was tied for 7:21.**  
 Times tied: **30**      Lead Changes: **24**

Points from	UCL	ARI
In the Paint	44	40
Off Turns	30	20
2nd Chance	29	9
Fast Break	15	24
Bench	3	20

**Official Box Score**  
**UCLA vs Arizona**  
**First Half Statistics Only**  
**January 27, 2019 at McKale Center (Lute & Bobbi Olson Court) - Tucson, Ariz.**



**UCLA 30**

No.	Player	S	Pts	FG	3FG	FT	OR	DR	TR	PF	A	TO	Blk	Stl	Min	+/-
11	DRUMMER, LAJAHNA		6	3-8	0-1	0-1	2	1	3	3	0	1	0	0	12	-2
21	ONYENWERE, MICHAELA		6	3-9	0-0	0-0	0	4	4	1	1	2	1	0	17	0
22	BURKE, KENNEDY		7	2-4	0-0	3-4	1	1	2	0	1	0	0	2	17	1
24	DEAN, JAPREECE		9	2-3	1-2	4-4	1	1	2	1	0	0	0	1	19	-1
33	MILLER, LAURYN		0	0-1	0-0	0-0	0	2	2	3	0	1	0	1	10	-2
02	SMITH, AHLANA		0	0-2	0-0	0-0	1	0	1	1	0	1	0	1	6	-6
03	JEFFERSON, KIARA		0	0-1	0-0	0-0	0	0	0	2	0	0	0	0	5	-2
04	CORSARO, LINDSEY		2	1-4	0-2	0-0	0	2	2	0	1	0	0	0	15	-3
	TEAM		0	0-0	0-0	0-0	1	1	2	0	0	0	0	0	0	
<b>TOTALS</b>			<b>30</b>	<b>11-32</b>	<b>1-5</b>	<b>7-9</b>	<b>6</b>	<b>12</b>	<b>18</b>	<b>11</b>	<b>3</b>	<b>5</b>	<b>1</b>	<b>5</b>	<b>100</b>	

*Shooting By Period*

Period	FG	FG%	3FG	3FG%	FT	FT%
1st Qtr	7-18	39%	0-2	00%	2-3	67%
2nd Qtr	4-14	29%	1-3	33%	5-6	83%
1st Half	11-32	34%	1-5	20%	7-9	78%
Game	32-91	35.2%	6-21	28.6%	28-35	80.0%

*Last FG Half: UCL 2nd-02:39*

**Arizona 33**

No.	Player	S	Pts	FG	3FG	FT	OR	DR	TR	PF	A	TO	Blk	Stl	Min	+/-
10	STARKS, TEE TEE		5	2-3	1-2	0-1	1	2	3	0	0	3	0	1	17	4
14	THOMAS, SAM		8	3-7	2-5	0-0	0	0	0	1	1	0	0	0	17	7
20	MCBRYDE, DOMINIQUE		2	1-4	0-1	0-0	0	4	4	2	0	2	0	0	14	-1
21	GRAHAM, DESTINY		1	0-1	0-0	1-2	2	3	5	1	1	2	1	0	10	4
24	NIXON, BRYCE		0	0-1	0-0	0-0	0	0	0	0	0	1	0	0	2	0
25	REESE, CATE		6	3-6	0-0	0-0	3	2	5	2	1	0	0	0	8	0
34	SMITH, SEMAJ		1	0-0	0-0	1-4	0	1	1	1	0	2	1	0	8	3
02	MCDONALD, AARI		6	3-5	0-1	0-1	1	5	6	2	3	0	0	1	15	-1
04	ALONSO, LUCIA		4	2-3	0-1	0-0	0	0	0	1	0	0	0	0	9	-1
	TEAM		0	0-0	0-0	0-0	2	0	2	0	0	0	0	0	0	
<b>TOTALS</b>			<b>33</b>	<b>14-30</b>	<b>3-10</b>	<b>2-8</b>	<b>9</b>	<b>17</b>	<b>26</b>	<b>10</b>	<b>6</b>	<b>10</b>	<b>2</b>	<b>2</b>	<b>100</b>	

*Shooting By Period*

Period	FG	FG%	3FG	3FG%	FT	FT%
1st Qtr	6-15	40%	2-5	40%	0-2	00%
2nd Qtr	8-15	53%	1-5	20%	2-6	33%
1st Half	14-30	47%	3-10	30%	2-8	25%
Game	36-73	49.3%	10-26	38.5%	11-27	40.7%

*Last FG Half: ARI 2nd-00:35*

Game Notes:

Officials: **Melissa Barlow, Shelly Nakasone, Paul Patterson**  
Attendance: **2327**

Start Time: **2019-01-27 21:00:49**  
End Time: **2019-01-27 23:44:14**  
Game Duration: **163**  
Conference Game;

Score	1st	2nd	3rd	4th	5th	6th	7th	TOT
UCL	16	14	17	14	10	13	14	<b>98</b>
ARI	14	19	17	11	10	13	9	<b>93</b>

Points from (This Period)	UCL	ARI
In the Paint	18	16
Off Turns	8	8
2nd Chance	6	7
Fast Break	7	6
Bench	0	6

**Official Box Score**  
**UCLA vs Arizona**  
**First Quarter Statistics Only**  
**January 27, 2019 at McKale Center (Lute & Bobbi Olson Court) - Tucson, Ariz.**



**UCLA 16**

No.	Player	S	Pts	FG	3FG	FT	OR	DR	TR	PF	A	TO	Blk	Stl	Min	+/-
04	CORSARO, LINDSEY		2	1-2	0-1	0-0	0	2	2	0	1	0	0	0	8	2
11	DRUMMER, LAJAHNA		4	2-5	0-1	0-1	1	0	1	2	0	1	0	0	7	0
21	ONYENWERE, MICHAELA		2	1-5	0-0	0-0	0	2	2	0	1	1	1	0	8	5
22	BURKE, KENNEDY		4	2-4	0-0	0-0	1	1	2	0	0	0	0	1	9	3
24	DEAN, JAPREECE		4	1-1	0-0	2-2	1	0	1	0	0	0	0	1	9	4
02	SMITH, AHLANA		0	0-0	0-0	0-0	0	0	0	1	0	0	0	0	3	-3
03	JEFFERSON, KIARA		0	0-0	0-0	0-0	0	0	0	0	0	0	0	0	2	0
33	MILLER, LAURYN		0	0-1	0-0	0-0	0	0	0	1	0	0	0	1	5	-1
	TEAM						1	0	1	0		0				
<b>TOTALS</b>			<b>16</b>	<b>7-18</b>	<b>0-2</b>	<b>2-3</b>	<b>4</b>	<b>5</b>	<b>9</b>	<b>4</b>	<b>2</b>	<b>2</b>	<b>1</b>	<b>3</b>	<b>50</b>	

*Shooting By Period*

Period	FG	FG%	3FG	3FG%	FT	FT%
1st Qtr	7-18	39%	0-2	00%	2-3	67%
2nd Qtr	4-14	29%	1-3	33%	5-6	83%
1st Half	7-18	39%	0-2	00%	2-3	67%
1st Half	11-32	34%	1-5	20%	7-9	78%
Game	32-91	35.2%	6-21	28.6%	28-35	80.0%

**Arizona 14**

No.	Player	S	Pts	FG	3FG	FT	OR	DR	TR	PF	A	TO	Blk	Stl	Min	+/-
02	MCDONALD, AARI		4	2-4	0-1	0-0	1	2	3	2	0	0	0	0	8	-2
10	STARKS, TEE TEE		3	1-1	1-1	0-0	0	2	2	0	0	1	0	0	9	-2
14	THOMAS, SAM		3	1-2	1-2	0-0	0	0	0	1	1	0	0	0	7	2
20	MCBRYDE, DOMINIQUE		0	0-1	0-0	0-0	0	1	1	0	0	1	0	0	6	-3
25	REESE, CATE		2	1-3	0-0	0-0	2	1	3	1	1	0	0	0	5	-1
04	ALONSO, LUCIA		2	1-2	0-1	0-0	0	0	0	0	0	0	0	0	4	-4
21	GRAHAM, DESTINY		0	0-1	0-0	0-0	0	1	1	0	1	2	0	0	5	-1
24	NIXON, BRYCE		0	0-1	0-0	0-0	0	0	0	0	0	1	0	0	2	0
34	SMITH, SEMAJ		0	0-0	0-0	0-2	0	1	1	0	0	1	1	0	4	1
	TEAM						2	0	2	0		0				
<b>TOTALS</b>			<b>14</b>	<b>6-15</b>	<b>2-5</b>	<b>0-2</b>	<b>5</b>	<b>8</b>	<b>13</b>	<b>4</b>	<b>3</b>	<b>6</b>	<b>1</b>	<b>0</b>	<b>50</b>	

*Shooting By Period*

Period	FG	FG%	3FG	3FG%	FT	FT%
1st Qtr	6-15	40%	2-5	40%	0-2	00%
2nd Qtr	8-15	53%	1-5	20%	2-6	33%
1st Half	6-15	40%	2-5	40%	0-2	00%
1st Half	14-30	47%	3-10	30%	2-8	25%
Game	36-73	49.3%	10-26	38.5%	11-27	40.7%

Game Notes:

Officials: Melissa Barlow, Shelly Nakasone, Paul Patterson  
Attendance: 2327

Start Time: 2019-01-27 21:00:49  
End Time: 2019-01-27 23:44:14  
Game Duration: 163  
Conference Game;

Score	1st	2nd	3rd	4th	5th	6th	7th	TOT
UCL	16	14	17	14	10	13	14	98
ARI	14	19	17	11	10	13	9	93

Points from (This Period)	UCL	ARI
In the Paint	12	4
Off Turns	4	5
2nd Chance	4	2
Fast Break	4	2
Bench	0	2

**Official Play-By-Play**  
**UCLA vs Arizona**  
**First Quarter**  
**January 27, 2019 at McKale Center (Lute & Bobbi Olson Court) - Tucson, Ariz.**



**Period 1**

**Starters:**

**UCLA:** 11 DRUMMER, LAJAHNA; 21 ONYENWERE, MICHAELA; 22 BURKE, KENNEDY; 24 DEAN, JAPREECE; 4 CORSARO, LINDSEY;

**Arizona:** 10 STARKS, TEE TEE; 14 THOMAS, SAM; 20 MCBRYDE, DOMINIQUE; 25 REESE, CATE; 2 MCDONALD, AARI;

Time	VISITORS: UCLA	Score	Margin	HOME: Arizona
09:41	GOOD! JUMPER by DRUMMER, LAJAHNA	0-2	V 2	
09:41	ASSIST by ONYENWERE, MICHAELA			
09:31				MISSED JUMPER by REESE, CATE
09:28				REBOUND (OFF) by MCDONALD, AARI
09:25				TURNOVER (LOSTBALL) by STARKS, TEE TEE
09:00	MISSED LAYUP by BURKE, KENNEDY			
08:58				REBOUND (DEF) by MCDONALD, AARI
08:29				MISSED LAYUP by MCDONALD, AARI
08:26	REBOUND (DEF) by CORSARO, LINDSEY			
08:18	GOOD! LAYUP by CORSARO, LINDSEY	0-4	V 4	
08:06		3-4	V 1	GOOD! 3PTR by STARKS, TEE TEE
08:06				ASSIST by REESE, CATE
07:48	MISSED 3PTR by CORSARO, LINDSEY			
07:45	REBOUND (OFF) by DRUMMER, LAJAHNA			
07:43	GOOD! LAYUP by DRUMMER, LAJAHNA	3-6	V 3	
07:35				FOUL (PERSONAL) by REESE, CATE
07:28	MISSED FT by DRUMMER, LAJAHNA			
07:26	REBOUND (OFF) by BURKE, KENNEDY			
07:20	MISSED JUMPER by DRUMMER, LAJAHNA			
07:16				REBOUND (DEF) by REESE, CATE
07:14		5-6	V 1	GOOD! LAYUP by MCDONALD, AARI [FB]
07:01	MISSED JUMPER by ONYENWERE, MICHAELA			
07:01				REBOUND (DEF) by MCBRYDE, DOMINIQUE
07:01				SUB OUT: REESE, CATE
07:01				SUB IN: GRAHAM, DESTINY
07:01				SUB OUT: MCBRYDE, DOMINIQUE
07:01				SUB IN: SMITH, SEMAJ
07:01	SUB OUT: BURKE, KENNEDY			
07:01	SUB IN: SMITH, AHLANA			
07:00		7-6	H 1	GOOD! LAYUP by MCDONALD, AARI
06:50	GOOD! JUMPER by ONYENWERE, MICHAELA	7-8	V 1	
06:50	ASSIST by CORSARO, LINDSEY			
06:45				TURNOVER (LOSTBALL) by SMITH, SEMAJ
06:37	TURNOVER (TRAVEL) by ONYENWERE, MICHAELA			
06:37	SUB OUT: ONYENWERE, MICHAELA			
06:37	SUB IN: MILLER, LAURYN			
06:16		10-8	H 2	GOOD! 3PTR by THOMAS, SAM
06:16				ASSIST by GRAHAM, DESTINY
06:06	MISSED 3PTR by DRUMMER, LAJAHNA			
06:01	REBOUND (OFF) by DEAN, JAPREECE			
05:57	MISSED LAYUP by DRUMMER, LAJAHNA			
05:57				REBOUND (DEF) by SMITH, SEMAJ
05:57	FOUL (PERSONAL) by DRUMMER, LAJAHNA			
05:57				SUB OUT: STARKS, TEE TEE
05:57				SUB IN: ALONSO, LUCIA
05:57	SUB OUT: SMITH, AHLANA			
05:57	SUB IN: JEFFERSON, KIARA			
05:42				TURNOVER (LOSTBALL) by GRAHAM, DESTINY
05:42	STEAL by DEAN, JAPREECE			
05:40				FOUL (PERSONAL) by MCDONALD, AARI
05:40	GOOD! FT by DEAN, JAPREECE	10-9	H 1	
05:40	GOOD! FT by DEAN, JAPREECE	10-10	T	
05:40	SUB OUT: DEAN, JAPREECE			
05:40	SUB IN: BURKE, KENNEDY			
05:16		12-10	H 2	GOOD! JUMPER by ALONSO, LUCIA
05:16				ASSIST by THOMAS, SAM
04:48				FOUL (PERSONAL) by THOMAS, SAM
04:48				
04:48				SUB OUT: THOMAS, SAM
04:48				SUB IN: STARKS, TEE TEE
04:48	SUB OUT: DRUMMER, LAJAHNA			
04:48	SUB IN: ONYENWERE, MICHAELA			
04:37	MISSED JUMPER by ONYENWERE, MICHAELA			
04:34				REBOUND (DEF) by MCDONALD, AARI
04:27				MISSED 3PTR by MCDONALD, AARI
04:25				REBOUND (OFF) by TEAM
04:23	FOUL (PERSONAL) by MILLER, LAURYN			
04:23				MISSED FT by SMITH, SEMAJ
04:23				REBOUND (OFF) by TEAM
04:23	SUB OUT: JEFFERSON, KIARA			

Time	VISITORS: UCLA	Score	Margin	HOME: Arizona
04:23	SUB IN: DEAN, JAPREECE			
04:23				MISSED FT by SMITH, SEMAJ
04:21	REBOUND (DEF) by ONYENWERE, MICHAELA			
04:11	MISSED JUMPER by MILLER, LAURYN			
04:11	REBOUND (OFF) by TEAM			
04:11				BLOCK by SMITH, SEMAJ
03:56	GOOD! JUMPER by DEAN, JAPREECE [PNT]	12-12	T	
03:31				TURNOVER (BADPASS) by GRAHAM, DESTINY
03:31	STEAL by MILLER, LAURYN			
03:24	MISSED LAYUP by BURKE, KENNEDY			
03:20				REBOUND (DEF) by GRAHAM, DESTINY
03:16				SUB OUT: SMITH, SEMAJ
03:16				SUB IN: MCBRYDE, DOMINIQUE
03:16	SUB OUT: MILLER, LAURYN			
03:16	SUB IN: DRUMMER, LAJAHNA			
03:03				MISSED JUMPER by GRAHAM, DESTINY
02:59	REBOUND (DEF) by CORSARO, LINDSEY			
02:57	GOOD! LAYUP by BURKE, KENNEDY [FB]	12-14	V 2	
02:30				MISSED LAYUP by MCBRYDE, DOMINIQUE
02:30	BLOCK by ONYENWERE, MICHAELA			
02:30				REBOUND (OFF) by TEAM
02:29				TURNOVER (TRAVEL) by MCBRYDE, DOMINIQUE
02:12	MISSED JUMPER by ONYENWERE, MICHAELA			
02:09				REBOUND (DEF) by STARKS, TEE TEE
02:03				MISSED 3PTR by ALONSO, LUCIA
01:59	REBOUND (DEF) by ONYENWERE, MICHAELA			
01:50				FOUL (PERSONAL) by MCDONALD, AARI
01:50				SUB OUT: ALONSO, LUCIA
01:50				SUB IN: REESE, CATE
01:50				SUB OUT: GRAHAM, DESTINY
01:50				SUB IN: THOMAS, SAM
01:50	SUB OUT: CORSARO, LINDSEY			
01:50	SUB IN: SMITH, AHLANA			
01:41	FOUL (OFF) by DRUMMER, LAJAHNA			
01:41	TURNOVER (OFFENSIVE) by DRUMMER, LAJAHNA			
01:41				SUB OUT: MCDONALD, AARI
01:41				SUB IN: NIXON, BRYCE
01:41	SUB OUT: DRUMMER, LAJAHNA			
01:41	SUB IN: MILLER, LAURYN			
01:28				MISSED JUMPER by NIXON, BRYCE
01:28				REBOUND (OFF) by REESE, CATE
01:28		14-14	T	GOOD! JUMPER by REESE, CATE
00:52	MISSED JUMPER by ONYENWERE, MICHAELA			
00:52				REBOUND (DEF) by STARKS, TEE TEE
00:46				TURNOVER (BADPASS) by NIXON, BRYCE
00:46	STEAL by BURKE, KENNEDY			
00:43	GOOD! LAYUP by BURKE, KENNEDY [FB]	14-16	V 2	
00:26	FOUL (PERSONAL) by SMITH, AHLANA			
00:03				MISSED 3PTR by THOMAS, SAM
00:03				REBOUND (OFF) by REESE, CATE
00:00				MISSED JUMPER by REESE, CATE
00:00	REBOUND (DEF) by BURKE, KENNEDY			

### UCLA 16, Arizona 14

Points from (This Period)	UCL	ARI
In the Paint	12	4
Off Turns	4	5
2nd Chance	4	2
Fast Break	4	2
Bench	0	2

**Official Box Score**  
**UCLA vs Arizona**  
**Second Quarter Statistics Only**  
**January 27, 2019 at McKale Center (Lute & Bobbi Olson Court) - Tucson, Ariz.**



**UCLA 14**

No.	Player	S	Pts	FG	3FG	FT	OR	DR	TR	PF	A	TO	Blk	Stl	Min	+/-
04	CORSARO, LINDSEY		0	0-2	0-1	0-0	0	0	0	0	0	0	0	0	7	-5
11	DRUMMER, LAJAHNA		2	1-3	0-0	0-0	1	1	2	1	0	0	0	0	5	-2
21	ONYENWERE, MICHAELA		4	2-4	0-0	0-0	0	2	2	1	0	1	0	0	9	-5
22	BURKE, KENNEDY		3	0-0	0-0	3-4	0	0	0	0	1	0	0	1	8	-2
24	DEAN, JAPREECE		5	1-2	1-2	2-2	0	1	1	1	0	0	0	0	10	-5
02	SMITH, AHLANA		0	0-2	0-0	0-0	1	0	1	0	0	1	0	1	3	-3
03	JEFFERSON, KIARA		0	0-1	0-0	0-0	0	0	0	2	0	0	0	0	3	-2
33	MILLER, LAURYN		0	0-0	0-0	0-0	0	2	2	2	0	1	0	0	5	-1
	TEAM						0	1	1	0		0				
<b>TOTALS</b>			<b>14</b>	<b>4-14</b>	<b>1-3</b>	<b>5-6</b>	<b>2</b>	<b>7</b>	<b>9</b>	<b>7</b>	<b>1</b>	<b>3</b>	<b>0</b>	<b>2</b>	<b>50</b>	

*Shooting By Period*

Period	FG	FG%	3FG	3FG%	FT	FT%
3rd Qtr	6-17	35%	3-9	33%	2-4	50%
4th Qtr	6-17	35%	0-3	00%	2-2	100%
2nd Half	4-14	29%	1-3	33%	5-6	83%
2nd Half	12-34	35%	3-12	25%	4-6	67%
Game	32-91	35.2%	6-21	28.6%	28-35	80.0%

**Arizona 19**

No.	Player	S	Pts	FG	3FG	FT	OR	DR	TR	PF	A	TO	Blk	Stl	Min	+/-
02	MCDONALD, AARI		2	1-1	0-0	0-1	0	3	3	0	3	0	0	1	7	1
10	STARKS, TEE TEE		2	1-2	0-1	0-1	1	0	1	0	0	2	0	1	8	6
14	THOMAS, SAM		5	2-5	1-3	0-0	0	0	0	0	0	0	0	0	10	5
20	MCBRYDE, DOMINIQUE		2	1-3	0-1	0-0	0	3	3	2	0	1	0	0	8	2
25	REESE, CATE		4	2-3	0-0	0-0	1	1	2	1	0	0	0	0	3	1
04	ALONSO, LUCIA		2	1-1	0-0	0-0	0	0	0	1	0	0	0	0	5	3
21	GRAHAM, DESTINY		1	0-0	0-0	1-2	2	2	4	1	0	0	1	0	5	5
24	NIXON, BRYCE		0	0-0	0-0	0-0	0	0	0	0	0	0	0	0	0	0
34	SMITH, SEMAJ		1	0-0	0-0	1-2	0	0	0	1	0	1	0	0	4	2
	TEAM						0	0	0	0		0				
<b>TOTALS</b>			<b>19</b>	<b>8-15</b>	<b>1-5</b>	<b>2-6</b>	<b>4</b>	<b>9</b>	<b>13</b>	<b>6</b>	<b>3</b>	<b>4</b>	<b>1</b>	<b>2</b>	<b>50</b>	

*Shooting By Period*

Period	FG	FG%	3FG	3FG%	FT	FT%
3rd Qtr	6-11	55%	2-4	50%	3-5	60%
4th Qtr	5-12	42%	1-2	50%	0-0	0%
2nd Half	8-15	53%	1-5	20%	2-6	33%
2nd Half	11-23	48%	3-6	50%	3-5	60%
Game	36-73	49.3%	10-26	38.5%	11-27	40.7%

Game Notes:

Officials: Melissa Barlow, Shelly Nakasone, Paul Patterson  
 Attendance: 2327

Start Time: 2019-01-27 21:00:49  
 End Time: 2019-01-27 23:44:14  
 Game Duration: 163  
 Conference Game;

Score	1st	2nd	3rd	4th	5th	6th	7th	TOT
UCL	16	14	17	14	10	13	14	98
ARI	14	19	17	11	10	13	9	93

Points from (This Period)	UCL	ARI
In the Paint	6	12
Off Turns	4	3
2nd Chance	2	5
Fast Break	3	4
Bench	0	4

**Official Play-By-Play**  
**UCLA vs Arizona**  
**Second Quarter**  
**January 27, 2019 at McKale Center (Lute & Bobbi Olson Court) - Tucson, Ariz.**



**Period 2**

**Starters:**

**UCLA:** 11 DRUMMER, LAJAHNA; 21 ONYENWERE, MICHAELA; 22 BURKE, KENNEDY; 24 DEAN, JAPREECE; 4 CORSARO, LINDSEY;

**Arizona:** 10 STARKS, TEE TEE; 14 THOMAS, SAM; 20 MCBRYDE, DOMINIQUE; 25 REESE, CATE; 2 MCDONALD, AARI;

Time	VISITORS: UCLA	Score	Margin	HOME: Arizona
09:43	MISSED JUMPER by SMITH, AHLANA			
09:40				REBOUND (DEF) by MCDONALD, AARI
09:30				MISSED JUMPER by REESE, CATE
09:27	REBOUND (DEF) by MILLER, LAURYN			
09:11	MISSED JUMPER by ONYENWERE, MICHAELA			
09:07				REBOUND (DEF) by MCDONALD, AARI
09:04		16-16	T	GOOD! JUMPER by REESE, CATE [FB/PNT]
09:04				ASSIST by MCDONALD, AARI
08:45	MISSED JUMPER by ONYENWERE, MICHAELA			
08:43	REBOUND (OFF) by SMITH, AHLANA			
08:39	MISSED JUMPER by SMITH, AHLANA			
08:36				REBOUND (DEF) by MCBRYDE, DOMINIQUE
08:35				TURNOVER (BADPASS) by MCBRYDE, DOMINIQUE
08:35	STEAL by SMITH, AHLANA			
08:29				FOUL (PERSONAL) by MCBRYDE, DOMINIQUE
08:29	GOOD! FT by BURKE, KENNEDY [FB]	16-17	V 1	
08:29	SUB OUT: SMITH, AHLANA			
08:29	SUB IN: DRUMMER, LAJAHNA			
08:29	SUB OUT: ONYENWERE, MICHAELA			
08:29	SUB IN: CORSARO, LINDSEY			
08:29	MISSED FT by BURKE, KENNEDY			
08:26	REBOUND (OFF) by DRUMMER, LAJAHNA			
08:25	GOOD! LAYUP by DRUMMER, LAJAHNA	16-19	V 3	
08:02				MISSED 3PTR by THOMAS, SAM
07:59				REBOUND (OFF) by REESE, CATE
07:57		18-19	V 1	GOOD! LAYUP by REESE, CATE
07:46				FOUL (PERSONAL) by REESE, CATE
07:46	TURNOVER (LOSTBALL) by MILLER, LAURYN			
07:46				STEAL by MCDONALD, AARI
07:46				MISSED JUMPER by THOMAS, SAM
07:46	REBOUND (DEF) by DEAN, JAPREECE			
07:18	MISSED LAYUP by DRUMMER, LAJAHNA			
07:15				REBOUND (DEF) by REESE, CATE
07:02				MISSED 3PTR by STARKS, TEE TEE
07:01	REBOUND (DEF) by TEAM			
07:01				SUB OUT: STARKS, TEE TEE
07:01				SUB IN: ALONSO, LUCIA
07:01				SUB OUT: REESE, CATE
07:01				SUB IN: SMITH, SEMAJ
07:01	SUB OUT: MILLER, LAURYN			
07:01	SUB IN: ONYENWERE, MICHAELA			
06:47				FOUL (PERSONAL) by MCBRYDE, DOMINIQUE
06:20	GOOD! JUMPER by ONYENWERE, MICHAELA [PNT]	18-21	V 3	
06:00				FOUL (OFF) by SMITH, SEMAJ
06:00				TURNOVER (OFFENSIVE) by SMITH, SEMAJ
05:51	GOOD! 3PTR by DEAN, JAPREECE	18-24	V 6	
05:35		20-24	V 4	GOOD! JUMPER by MCBRYDE, DOMINIQUE [PNT]
05:35				ASSIST by MCDONALD, AARI
05:23	MISSED 3PTR by CORSARO, LINDSEY			
05:20				REBOUND (DEF) by MCBRYDE, DOMINIQUE
05:15		22-24	V 2	GOOD! LAYUP by MCDONALD, AARI [FB]
05:15	FOUL (PERSONAL) by DEAN, JAPREECE			
05:15	SUB OUT: BURKE, KENNEDY			
05:15	SUB IN: JEFFERSON, KIARA			
05:15				MISSED FT by MCDONALD, AARI
05:14	REBOUND (DEF) by DRUMMER, LAJAHNA			
05:05	MISSED JUMPER by JEFFERSON, KIARA			
05:02				REBOUND (DEF) by MCDONALD, AARI
04:57				MISSED 3PTR by MCBRYDE, DOMINIQUE
04:53	REBOUND (DEF) by ONYENWERE, MICHAELA			
04:46				FOUL (PERSONAL) by ALONSO, LUCIA
04:46				
04:46				SUB OUT: ALONSO, LUCIA
04:46				SUB IN: STARKS, TEE TEE
04:46				SUB OUT: SMITH, SEMAJ
04:46				SUB IN: GRAHAM, DESTINY
04:46	GOOD! FT by DEAN, JAPREECE [FB]	22-25	V 3	
04:46	GOOD! FT by DEAN, JAPREECE [FB]	22-26	V 4	
04:28		24-26	V 2	GOOD! JUMPER by THOMAS, SAM
03:59	MISSED JUMPER by DRUMMER, LAJAHNA			



Time	VISITORS: UCLA	Score	Margin	HOME: Arizona
03:56				REBOUND (DEF) by MCBRYDE, DOMINIQUE
03:47		27-26	H 1	GOOD! 3PTR by THOMAS, SAM
03:47				ASSIST by MCDONALD, AARI
03:29	MISSED 3PTR by DEAN, JAPREECE			
03:29				REBOUND (DEF) by GRAHAM, DESTINY
03:29	FOUL (PERSONAL) by DRUMMER, LAJAHNA			
03:29	SUB OUT: CORSARO, LINDSEY			
03:29	SUB IN: BURKE, KENNEDY			
03:29	SUB OUT: DRUMMER, LAJAHNA			
03:29	SUB IN: MILLER, LAURYN			
03:10				TURNOVER (BADPASS) by STARKS, TEE TEE
03:10	STEAL by BURKE, KENNEDY			
03:06				FOUL (PERSONAL) by GRAHAM, DESTINY
03:06	GOOD! FT by BURKE, KENNEDY	27-27	T	
03:06	GOOD! FT by BURKE, KENNEDY	27-28	V 1	
02:56				MISSED JUMPER by MCBRYDE, DOMINIQUE
02:51				REBOUND (OFF) by GRAHAM, DESTINY
02:51	FOUL (PERSONAL) by JEFFERSON, KIARA			
02:51				SUB OUT: MCDONALD, AARI
02:51				SUB IN: ALONSO, LUCIA
02:43		29-28	H 1	GOOD! LAYUP by STARKS, TEE TEE
02:43	FOUL (PERSONAL) by MILLER, LAURYN			
02:43				MISSED FT by STARKS, TEE TEE
02:43	REBOUND (DEF) by ONYENWERE, MICHAELA			
02:39	GOOD! LAYUP by ONYENWERE, MICHAELA	29-30	V 1	
02:39	ASSIST by BURKE, KENNEDY			
02:07				MISSED 3PTR by THOMAS, SAM
02:05				REBOUND (OFF) by GRAHAM, DESTINY
02:05	FOUL (PERSONAL) by JEFFERSON, KIARA			
02:05		30-30	T	GOOD! FT by GRAHAM, DESTINY
02:05				SUB OUT: MCBRYDE, DOMINIQUE
02:05				SUB IN: SMITH, SEMAJ
02:05	SUB OUT: JEFFERSON, KIARA			
02:05	SUB IN: CORSARO, LINDSEY			
02:05				MISSED FT by GRAHAM, DESTINY
02:03	REBOUND (DEF) by MILLER, LAURYN			
01:52	FOUL (OFF) by ONYENWERE, MICHAELA			
01:52	TURNOVER (OFFENSIVE) by ONYENWERE, MICHAELA			
01:35	FOUL (PERSONAL) by MILLER, LAURYN			
01:35		31-30	H 1	GOOD! FT by SMITH, SEMAJ
01:35				MISSED FT by SMITH, SEMAJ
01:34				REBOUND (OFF) by STARKS, TEE TEE
01:17				TURNOVER (TRAVEL) by STARKS, TEE TEE
01:17	SUB OUT: MILLER, LAURYN			
01:17	SUB IN: SMITH, AHLANA			
01:03	TURNOVER (BADPASS) by SMITH, AHLANA			
01:03				STEAL by STARKS, TEE TEE
00:35		33-30	H 3	GOOD! JUMPER by ALONSO, LUCIA
00:00	MISSED JUMPER by CORSARO, LINDSEY			
00:00				BLOCK by GRAHAM, DESTINY
00:00				REBOUND (DEF) by GRAHAM, DESTINY

### UCLA 30, Arizona 33

Points from (This Period)	UCL	ARI
In the Paint	6	12
Off Turns	4	3
2nd Chance	2	5
Fast Break	3	4
Bench	0	4

**Official Box Score**  
**UCLA vs Arizona**  
**Second Half Statistics Only**  
**January 27, 2019 at McKale Center (Lute & Bobbi Olson Court) - Tucson, Ariz.**



**UCLA 31**

No.	Player	S	Pts	FG	3FG	FT	OR	DR	TR	PF	A	TO	Blk	Stl	Min	+/-
11	DRUMMER, LAJAHNA		3	1-2	0-0	1-2	0	4	4	0	1	0	1	1	15	4
21	ONYENWERE, MICHAELA		9	4-6	1-1	0-0	4	1	5	1	0	0	0	0	18	4
22	BURKE, KENNEDY		4	2-5	0-1	0-0	1	1	2	4	2	2	0	2	20	3
24	DEAN, JAPREECE		7	3-13	1-4	0-0	1	2	3	2	2	3	0	0	20	3
33	MILLER, LAURYN		1	0-0	0-0	1-2	0	1	1	0	0	1	0	0	3	-2
02	SMITH, AHLANA		2	1-3	0-2	0-0	1	1	2	0	0	0	0	0	7	-2
03	JEFFERSON, KIARA		0	0-1	0-1	0-0	1	0	1	2	0	1	0	0	4	0
04	CORSARO, LINDSEY		5	1-4	1-3	2-2	0	1	1	0	0	0	0	0	13	5
	TEAM		0	0-0	0-0	0-0	1	0	1	0	0	0	0	0	0	0
<b>TOTALS</b>			<b>31</b>	<b>12-34</b>	<b>3-12</b>	<b>4-6</b>	<b>9</b>	<b>11</b>	<b>20</b>	<b>9</b>	<b>5</b>	<b>7</b>	<b>1</b>	<b>3</b>	<b>100</b>	

*Shooting By Period*

Period	FG	FG%	3FG	3FG%	FT	FT%
3rd Qtr	6-17	35%	3-9	33%	2-4	50%
4th Qtr	6-17	35%	0-3	00%	2-2	100%
2nd Half	12-34	35%	3-12	25%	4-6	67%
Game	32-91	35.2%	6-21	28.6%	28-35	80.0%

*Last FG Half: UCL 4th-00:03*

**Arizona 28**

No.	Player	S	Pts	FG	3FG	FT	OR	DR	TR	PF	A	TO	Blk	Stl	Min	+/-
10	STARKS, TEE TEE		0	0-2	0-2	0-2	0	0	0	1	2	1	0	0	20	-3
14	THOMAS, SAM		5	2-4	1-1	0-0	0	3	3	2	0	1	1	1	20	-3
20	MCBRYDE, DOMINIQUE		0	0-0	0-0	0-0	0	0	0	3	1	2	0	0	6	-2
21	GRAHAM, DESTINY		4	1-1	0-0	2-2	0	1	1	2	0	1	0	0	5	0
24	NIXON, BRYCE		0	0-0	0-0	0-0	0	0	0	0	0	0	0	0	0	0
25	REESE, CATE		4	2-5	0-0	0-0	1	4	5	2	0	1	0	2	14	-3
34	SMITH, SEMAJ		0	0-0	0-0	0-0	0	0	0	0	0	0	0	0	3	2
02	MCDONALD, AARI		10	4-7	1-1	1-1	0	3	3	1	2	2	0	1	20	-3
04	ALONSO, LUCIA		5	2-4	1-2	0-0	0	0	0	0	1	1	0	0	12	-3
	TEAM		0	0-0	0-0	0-0	0	1	1	0	0	0	0	0	0	0
<b>TOTALS</b>			<b>28</b>	<b>11-23</b>	<b>3-6</b>	<b>3-5</b>	<b>1</b>	<b>12</b>	<b>13</b>	<b>11</b>	<b>6</b>	<b>9</b>	<b>1</b>	<b>4</b>	<b>100</b>	

*Shooting By Period*

Period	FG	FG%	3FG	3FG%	FT	FT%
3rd Qtr	6-11	55%	2-4	50%	3-5	60%
4th Qtr	5-12	42%	1-2	50%	0-0	0%
2nd Half	11-23	48%	3-6	50%	3-5	60%
Game	36-73	49.3%	10-26	38.5%	11-27	40.7%

*Last FG Half: ARI 4th-01:35*

**Game Notes:**

Officials: **Melissa Barlow, Shelly Nakasone, Paul Patterson**  
 Attendance: **2327**

Start Time: **2019-01-27 21:00:49**  
 End Time: **2019-01-27 23:44:14**  
 Game Duration: **163**  
 Conference Game;

Score	1st	2nd	3rd	4th	5th	6th	7th	TOT
UCL	16	14	17	14	10	13	14	<b>98</b>
ARI	14	19	17	11	10	13	9	<b>93</b>

Points from (This Period)	UCL	ARI
In the Paint	12	12
Off Turns	13	3
2nd Chance	14	2
Fast Break	3	5
Bench	3	9

**Official Box Score**  
**UCLA vs Arizona**  
**Third Quarter Statistics Only**  
**January 27, 2019 at McKale Center (Lute & Bobbi Olson Court) - Tucson, Ariz.**



**UCLA 68**

No.	Player	S	Pts	FG	3FG	FT	OR	DR	TR	PF	A	TO	Blk	Stl	Min	+/-
04	CORSARO, LINDSEY		3	1-3	1-3	0-0	0	1	1	0	0	0	0	0	6	2
11	DRUMMER, LAJAHNA		1	0-1	0-0	1-2	0	1	1	0	1	0	0	1	5	1
21	ONYENWERE, MICHAELA		3	1-3	1-1	0-0	2	1	3	0	0	0	0	0	8	1
22	BURKE, KENNEDY		2	1-1	0-0	0-0	1	0	1	2	1	2	0	0	10	0
24	DEAN, JAPREECE		5	2-6	1-3	0-0	0	1	1	2	2	0	0	0	10	0
02	SMITH, AHLANA		2	1-2	0-1	0-0	1	0	1	0	0	0	0	0	4	-2
03	JEFFERSON, KIARA		0	0-1	0-1	0-0	1	0	1	2	0	1	0	0	4	0
33	MILLER, LAURYN		1	0-0	0-0	1-2	0	1	1	0	0	1	0	0	3	-2
	TEAM						1	0	1	0		0				
<b>TOTALS</b>			<b>17</b>	<b>6-17</b>	<b>3-9</b>	<b>2-4</b>	<b>6</b>	<b>5</b>	<b>11</b>	<b>6</b>	<b>4</b>	<b>4</b>	<b>0</b>	<b>1</b>	<b>50</b>	

*Shooting By Period*

Period	FG	FG%	3FG	3FG%	FT	FT%
5th Qtr	4-10	40%	0-0	0%	2-2	100%
6th Qtr	2-7	29%	1-3	33%	8-9	89%
7th Qtr	3-8	38%	1-1	100%	7-9	78%
2nd Half	9-25	36%	2-4	50%	17-20	85%
Game	32-91	35.2%	6-21	28.6%	28-35	80.0%

**Arizona 60**

No.	Player	S	Pts	FG	3FG	FT	OR	DR	TR	PF	A	TO	Blk	Stl	Min	+/-
02	MCDONALD, AARI		8	3-4	1-1	1-1	0	2	2	0	1	1	0	1	10	0
10	STARKS, TEE TEE		0	0-1	0-1	0-2	0	0	0	0	1	0	0	0	10	0
14	THOMAS, SAM		3	1-2	1-1	0-0	0	1	1	1	0	1	0	1	10	0
20	MCBRYDE, DOMINIQUE		0	0-0	0-0	0-0	0	0	0	2	1	2	0	0	5	-2
25	REESE, CATE		2	1-2	0-0	0-0	1	1	2	1	0	1	0	1	5	0
04	ALONSO, LUCIA		0	0-1	0-1	0-0	0	0	0	0	0	0	0	0	2	0
21	GRAHAM, DESTINY		4	1-1	0-0	2-2	0	1	1	2	0	1	0	0	5	0
24	NIXON, BRYCE		0	0-0	0-0	0-0	0	0	0	0	0	0	0	0	0	0
34	SMITH, SEMAJ		0	0-0	0-0	0-0	0	0	0	0	0	0	0	0	3	2
	TEAM						0	1	1	0		0				
<b>TOTALS</b>			<b>17</b>	<b>6-11</b>	<b>2-4</b>	<b>3-5</b>	<b>1</b>	<b>6</b>	<b>7</b>	<b>6</b>	<b>3</b>	<b>6</b>	<b>0</b>	<b>3</b>	<b>50</b>	

*Shooting By Period*

Period	FG	FG%	3FG	3FG%	FT	FT%
5th Qtr	3-7	43%	1-2	50%	3-4	75%
6th Qtr	5-6	83%	2-3	67%	1-2	50%
7th Qtr	3-7	43%	1-5	20%	2-8	25%
2nd Half	11-20	55%	4-10	40%	6-14	43%
Game	36-73	49.3%	10-26	38.5%	11-27	40.7%

Game Notes:

Officials: Melissa Barlow, Shelly Nakasone, Paul Patterson  
 Attendance: 2327

Start Time: 2019-01-27 21:00:49  
 End Time: 2019-01-27 23:44:14  
 Game Duration: 163  
 Conference Game;

Score	1st	2nd	3rd	4th	5th	6th	7th	TOT
UCL	16	14	17	14	10	13	14	98
ARI	14	19	17	11	10	13	9	93

Points from (This Period)	UCL	ARI
In the Paint	4	6
Off Turns	9	3
2nd Chance	8	2
Fast Break	1	3
Bench	3	4

**Official Play-By-Play**  
**UCLA vs Arizona**  
**Third Quarter**  
**January 27, 2019 at McKale Center (Lute & Bobbi Olson Court) - Tucson, Ariz.**



**Period 3**

**Starters:**

**UCLA:** 11 DRUMMER, LAJAHNA; 21 ONYENWERE, MICHAELA; 22 BURKE, KENNEDY; 24 DEAN, JAPREECE; 4 CORSARO, LINDSEY;

**Arizona:** 10 STARKS, TEE TEE; 14 THOMAS, SAM; 20 MCBRYDE, DOMINIQUE; 25 REESE, CATE; 2 MCDONALD, AARI;

Time	VISITORS: UCLA	Score	Margin	HOME: Arizona
09:50				TURNOVER (BADPASS) by THOMAS, SAM
09:24	MISSED 3PTR by CORSARO, LINDSEY			
09:22	REBOUND (OFF) by ONYENWERE, MICHAELA			
09:15	MISSED 3PTR by JEFFERSON, KIARA			
09:10	REBOUND (OFF) by ONYENWERE, MICHAELA			
09:08	GOOD! 3PTR by CORSARO, LINDSEY	33-33	T	
09:08	ASSIST by DEAN, JAPREECE			
08:52				MISSED JUMPER by REESE, CATE
08:49	REBOUND (DEF) by CORSARO, LINDSEY			
08:34	TURNOVER (LOSTBALL) by BURKE, KENNEDY			
08:34				STEAL by THOMAS, SAM
08:10		36-33	H 3	GOOD! 3PTR by MCDONALD, AARI
08:10				ASSIST by MCBRYDE, DOMINIQUE
07:50	TURNOVER (LOSTBALL) by JEFFERSON, KIARA			
07:50				STEAL by REESE, CATE
07:33	FOUL (PERSONAL) by BURKE, KENNEDY			
07:17				MISSED FT by STARKS, TEE TEE
07:17				REBOUND (OFF) by TEAM
07:17				MISSED FT by STARKS, TEE TEE
07:17	REBOUND (DEF) by ONYENWERE, MICHAELA			
07:11	MISSED 3PTR by DEAN, JAPREECE			
07:11	REBOUND (OFF) by TEAM			
07:03	MISSED JUMPER by ONYENWERE, MICHAELA			
07:03	REBOUND (OFF) by JEFFERSON, KIARA			
07:03	MISSED JUMPER by DEAN, JAPREECE			
07:03				REBOUND (DEF) by MCDONALD, AARI
06:41	FOUL (PERSONAL) by JEFFERSON, KIARA			
06:22	FOUL (PERSONAL) by JEFFERSON, KIARA			
06:22	SUB OUT: JEFFERSON, KIARA			
06:22	SUB IN: DRUMMER, LAJAHNA			
06:16		38-33	H 5	GOOD! JUMPER by MCDONALD, AARI
06:05	MISSED 3PTR by DEAN, JAPREECE			
05:57				REBOUND (DEF) by REESE, CATE
05:56				TURNOVER (LOSTBALL) by REESE, CATE
05:56	STEAL by DRUMMER, LAJAHNA			
05:53				FOUL (PERSONAL) by THOMAS, SAM
05:53				FOUL (PERSONAL) by REESE, CATE
05:51	GOOD! JUMPER by DEAN, JAPREECE	38-35	H 3	
05:51	ASSIST by DRUMMER, LAJAHNA			
05:40				FOUL (OFF) by MCBRYDE, DOMINIQUE
05:40				TURNOVER (OFFENSIVE) by MCBRYDE, DOMINIQUE
05:31	GOOD! JUMPER by BURKE, KENNEDY [PNT]	38-37	H 1	
05:19				FOUL (OFF) by MCBRYDE, DOMINIQUE
05:19				TURNOVER (OFFENSIVE) by MCBRYDE, DOMINIQUE
05:19				SUB OUT: MCBRYDE, DOMINIQUE
05:19				SUB IN: GRAHAM, DESTINY
05:19				SUB OUT: REESE, CATE
05:19				SUB IN: SMITH, SEMAJ
05:07	MISSED 3PTR by CORSARO, LINDSEY			
05:02				REBOUND (DEF) by MCDONALD, AARI
05:01		40-37	H 3	GOOD! LAYUP by MCDONALD, AARI [FB]
05:01	FOUL (PERSONAL) by DEAN, JAPREECE			
05:01		41-37	H 4	GOOD! FT by MCDONALD, AARI [FB]
04:48	MISSED LAYUP by DRUMMER, LAJAHNA			
04:44	REBOUND (OFF) by BURKE, KENNEDY			
04:36	GOOD! 3PTR by ONYENWERE, MICHAELA	41-40	H 1	
04:36	ASSIST by DEAN, JAPREECE			
04:15				MISSED 3PTR by STARKS, TEE TEE
04:13	REBOUND (DEF) by DRUMMER, LAJAHNA			
03:59	MISSED JUMPER by DEAN, JAPREECE			
03:56				REBOUND (DEF) by GRAHAM, DESTINY
03:56	FOUL (PERSONAL) by DEAN, JAPREECE			
03:56				
03:56	SUB OUT: CORSARO, LINDSEY			
03:56	SUB IN: SMITH, AHLANA			
03:56	SUB OUT: ONYENWERE, MICHAELA			
03:56	SUB IN: MILLER, LAURYN			
03:56		42-40	H 2	GOOD! FT by GRAHAM, DESTINY
03:56		43-40	H 3	GOOD! FT by GRAHAM, DESTINY
03:48	TURNOVER (BADPASS) by MILLER, LAURYN			

Time	VISITORS: UCLA	Score	Margin	HOME: Arizona
03:48				STEAL by MCDONALD, AARI
03:19				MISSED JUMPER by MCDONALD, AARI
03:16	REBOUND (DEF) by DEAN, JAPREECE			
03:07	MISSED 3PTR by SMITH, AHLANA			
03:03				REBOUND (DEF) by THOMAS, SAM
02:46				TURNOVER (BADPASS) by GRAHAM, DESTINY
02:39	FOUL (OFF) by BURKE, KENNEDY			
02:39	TURNOVER (OFFENSIVE) by BURKE, KENNEDY			
02:07				MISSED JUMPER by THOMAS, SAM
02:04	REBOUND (DEF) by MILLER, LAURYN			
02:02				FOUL (PERSONAL) by GRAHAM, DESTINY
02:02	MISSED FT by DRUMMER, LAJAHNA			
02:02	REBOUND (OFF) by TEAM			
02:02				SUB OUT: SMITH, SEMAJ
02:02				SUB IN: ALONSO, LUCIA
02:02	GOOD! FT by DRUMMER, LAJAHNA [FB]	43-41	H 2	
02:02	SUB OUT: DRUMMER, LAJAHNA			
02:02	SUB IN: ONYENWERE, MICHAELA			
01:52		45-41	H 4	GOOD! LAYUP by GRAHAM, DESTINY
01:52				ASSIST by STARKS, TEE TEE
01:26	GOOD! 3PTR by DEAN, JAPREECE	45-44	H 1	
01:26	ASSIST by BURKE, KENNEDY			
01:11		48-44	H 4	GOOD! 3PTR by THOMAS, SAM
01:11				ASSIST by MCDONALD, AARI
00:57				FOUL (PERSONAL) by GRAHAM, DESTINY
00:57	GOOD! FT by MILLER, LAURYN	48-45	H 3	
00:57	MISSED FT by MILLER, LAURYN			
00:55				REBOUND (DEF) by TEAM
00:55	SUB OUT: MILLER, LAURYN			
00:55	SUB IN: DRUMMER, LAJAHNA			
00:37				TURNOVER (LOSTBALL) by MCDONALD, AARI
00:30	MISSED JUMPER by ONYENWERE, MICHAELA			
00:30	REBOUND (OFF) by SMITH, AHLANA			
00:30	GOOD! LAYUP by SMITH, AHLANA	48-47	H 1	
00:30				SUB OUT: GRAHAM, DESTINY
00:30				SUB IN: REESE, CATE
00:09				MISSED 3PTR by ALONSO, LUCIA
00:05				REBOUND (OFF) by REESE, CATE
00:02		50-47	H 3	GOOD! LAYUP by REESE, CATE

### UCLA 47, Arizona 50

Points from (This Period)	UCL	ARI
In the Paint	4	6
Off Turns	9	3
2nd Chance	8	2
Fast Break	1	3
Bench	3	4

**Official Box Score**  
**UCLA vs Arizona**  
**Fourth Quarter Statistics Only**  
**January 27, 2019 at McKale Center (Lute & Bobbi Olson Court) - Tucson, Ariz.**



**UCLA 14**

No.	Player	S	Pts	FG	3FG	FT	OR	DR	TR	PF	A	TO	Blk	Stl	Min	+/-
04	CORSARO, LINDSEY		2	0-1	0-0	2-2	0	0	0	0	0	0	0	0	7	3
11	DRUMMER, LAJAHNA		2	1-1	0-0	0-0	0	3	3	0	0	0	1	0	10	3
21	ONYENWERE, MICHAELA		6	3-3	0-0	0-0	2	0	2	1	0	0	0	0	10	3
22	BURKE, KENNEDY		2	1-4	0-1	0-0	0	1	1	2	1	0	0	2	10	3
24	DEAN, JAPREECE		2	1-7	0-1	0-0	1	1	2	0	0	3	0	0	10	3
02	SMITH, AHLANA		0	0-1	0-1	0-0	0	1	1	0	0	0	0	0	3	0
03	JEFFERSON, KIARA		0	0-0	0-0	0-0	0	0	0	0	0	0	0	0	0	0
33	MILLER, LAURYN		0	0-0	0-0	0-0	0	0	0	0	0	0	0	0	0	0
	TEAM						0	0	0	0		0				
<b>TOTALS</b>			<b>14</b>	<b>6-17</b>	<b>0-3</b>	<b>2-2</b>	<b>3</b>	<b>6</b>	<b>9</b>	<b>3</b>	<b>1</b>	<b>3</b>	<b>1</b>	<b>2</b>	<b>50</b>	

*Shooting By Period*

Period	FG	FG%	3FG	3FG%	FT	FT%
Game	32-91	35.2%	6-21	28.6%	28-35	80.0%

**Arizona 11**

No.	Player	S	Pts	FG	3FG	FT	OR	DR	TR	PF	A	TO	Blk	Stl	Min	+/-
02	MCDONALD, AARI		2	1-3	0-0	0-0	0	1	1	1	1	1	0	0	10	-3
10	STARKS, TEE TEE		0	0-1	0-1	0-0	0	0	0	1	1	1	0	0	10	-3
14	THOMAS, SAM		2	1-2	0-0	0-0	0	2	2	1	0	0	1	0	10	-3
20	MCBRYDE, DOMINIQUE		0	0-0	0-0	0-0	0	0	0	1	0	0	0	0	1	0
25	REESE, CATE		2	1-3	0-0	0-0	0	3	3	1	0	0	0	1	9	-3
04	ALONSO, LUCIA		5	2-3	1-1	0-0	0	0	0	0	1	1	0	0	10	-3
21	GRAHAM, DESTINY		0	0-0	0-0	0-0	0	0	0	0	0	0	0	0	0	0
24	NIXON, BRYCE		0	0-0	0-0	0-0	0	0	0	0	0	0	0	0	0	0
34	SMITH, SEMAJ		0	0-0	0-0	0-0	0	0	0	0	0	0	0	0	0	0
	TEAM						0	0	0	0		0				
<b>TOTALS</b>			<b>11</b>	<b>5-12</b>	<b>1-2</b>	<b>0-0</b>	<b>0</b>	<b>6</b>	<b>6</b>	<b>5</b>	<b>3</b>	<b>3</b>	<b>1</b>	<b>1</b>	<b>50</b>	

*Shooting By Period*

Period	FG	FG%	3FG	3FG%	FT	FT%
Game	36-73	49.3%	10-26	38.5%	11-27	40.7%

Game Notes:

Officials: Melissa Barlow, Shelly Nakasone, Paul Patterson  
 Attendance: 2327

Start Time: 2019-01-27 21:00:49  
 End Time: 2019-01-27 23:44:14  
 Game Duration: 163  
 Conference Game;

Score	1st	2nd	3rd	4th	5th	6th	7th	TOT
UCL	16	14	17	14	10	13	14	98
ARI	14	19	17	11	10	13	9	93

Points from (This Period)	UCL	ARI
In the Paint	8	6
Off Turns	4	0
2nd Chance	6	0
Fast Break	2	2
Bench	0	5

**Official Play-By-Play**  
**UCLA vs Arizona**  
**Fourth Quarter**  
**January 27, 2019 at McKale Center (Lute & Bobbi Olson Court) - Tucson, Ariz.**



**Period 4**

**Starters:**

**UCLA:** 11 DRUMMER, LAJAHNA; 21 ONYENWERE, MICHAELA; 22 BURKE, KENNEDY; 24 DEAN, JAPREECE; 4 CORSARO, LINDSEY;

**Arizona:** 10 STARKS, TEE TEE; 14 THOMAS, SAM; 20 MCBRYDE, DOMINIQUE; 25 REESE, CATE; 2 MCDONALD, AARI;

Time	VISITORS: UCLA	Score	Margin	HOME: Arizona
09:55	MISSED JUMPER by BURKE, KENNEDY			
09:51				REBOUND (DEF) by REESE, CATE
09:21				MISSED JUMPER by REESE, CATE
09:17	REBOUND (DEF) by SMITH, AHLANA			
09:13	GOOD! JUMPER by DEAN, JAPREECE	50-49	H 1	
08:45				MISSED JUMPER by REESE, CATE
08:45	BLOCK by DRUMMER, LAJAHNA			
08:40	REBOUND (DEF) by DEAN, JAPREECE			
08:35	TURNOVER (LOSTBALL) by DEAN, JAPREECE			
08:35				STEAL by REESE, CATE
08:21	FOUL (PERSONAL) by BURKE, KENNEDY			
08:20				MISSED LAYUP by MCDONALD, AARI
08:16	REBOUND (DEF) by DRUMMER, LAJAHNA			
08:14				FOUL (PERSONAL) by MCDONALD, AARI
07:56	MISSED 3PTR by DEAN, JAPREECE			
07:56	REBOUND (OFF) by TEAM			
07:56				FOUL (PERSONAL) by THOMAS, SAM
07:54	MISSED JUMPER by DEAN, JAPREECE			
07:50	REBOUND (OFF) by DEAN, JAPREECE			
07:44	MISSED JUMPER by DEAN, JAPREECE			
07:41				REBOUND (DEF) by THOMAS, SAM
07:39		52-49	H 3	GOOD! LAYUP by MCDONALD, AARI [FB]
07:17	MISSED 3PTR by SMITH, AHLANA			
07:13				REBOUND (DEF) by MCDONALD, AARI
06:50				MISSED JUMPER by THOMAS, SAM
06:47	REBOUND (DEF) by DRUMMER, LAJAHNA			
06:44	TURNOVER (BADPASS) by DEAN, JAPREECE			
06:44	SUB OUT: SMITH, AHLANA			
06:44	SUB IN: CORSARO, LINDSEY			
06:27				MISSED 3PTR by STARKS, TEE TEE
06:26	REBOUND (DEF) by TEAM			
06:26				FOUL (PERSONAL) by REESE, CATE
05:57	GOOD! JUMPER by ONYENWERE, MICHAELA	52-51	H 1	
05:44				TURNOVER (LOSTBALL) by MCDONALD, AARI
05:42	TURNOVER (TRAVEL) by DEAN, JAPREECE			
05:41	TIMEOUT 30SEC			
05:41				SUB OUT: REESE, CATE
05:41				SUB IN: MCBRYDE, DOMINIQUE
05:18				TURNOVER (BADPASS) by ALONSO, LUCIA
05:18	STEAL by BURKE, KENNEDY			
05:13	GOOD! LAYUP by BURKE, KENNEDY [FB]	52-53	V 1	
04:41		54-53	H 1	GOOD! JUMPER by ALONSO, LUCIA
04:29	MISSED JUMPER by DEAN, JAPREECE			
04:27	REBOUND (OFF) by TEAM			
04:27				FOUL (PERSONAL) by MCBRYDE, DOMINIQUE
04:27				SUB OUT: MCBRYDE, DOMINIQUE
04:27				SUB IN: REESE, CATE
04:19				FOUL (PERSONAL) by STARKS, TEE TEE
04:19	GOOD! FT by CORSARO, LINDSEY	54-54	T	
04:19	GOOD! FT by CORSARO, LINDSEY	54-55	V 1	
04:10		56-55	H 1	GOOD! JUMPER by THOMAS, SAM [PNT]
04:10				ASSIST by STARKS, TEE TEE
03:53	MISSED JUMPER by BURKE, KENNEDY			
03:50	REBOUND (OFF) by ONYENWERE, MICHAELA			
03:49	GOOD! LAYUP by ONYENWERE, MICHAELA	56-57	V 1	
03:29		58-57	H 1	GOOD! LAYUP by REESE, CATE
03:29				ASSIST by ALONSO, LUCIA
03:15	MISSED JUMPER by DEAN, JAPREECE			
03:12				REBOUND (DEF) by THOMAS, SAM
02:55				TURNOVER (LOSTBALL) by STARKS, TEE TEE
02:55	STEAL by BURKE, KENNEDY			
02:36	GOOD! LAYUP by DRUMMER, LAJAHNA	58-59	V 1	
02:36	ASSIST by BURKE, KENNEDY			
02:05				MISSED JUMPER by MCDONALD, AARI
02:02	REBOUND (DEF) by BURKE, KENNEDY			
01:47	MISSED JUMPER by CORSARO, LINDSEY			
01:47				BLOCK by THOMAS, SAM
01:42				REBOUND (DEF) by REESE, CATE
01:35		61-59	H 2	GOOD! 3PTR by ALONSO, LUCIA

Time	VISITORS: UCLA	Score	Margin	HOME: Arizona
01:35				ASSIST by MCDONALD, AARI
01:06	MISSED 3PTR by BURKE, KENNEDY			
01:02				REBOUND (DEF) by REESE, CATE
00:31				MISSED JUMPER by ALONSO, LUCIA
00:29	REBOUND (DEF) by DRUMMER, LAJAHNA			
00:24	TIMEOUT 30SEC			
00:05	MISSED LAYUP by DEAN, JAPREECE			
00:05	REBOUND (OFF) by ONYENWERE, MICHAELA			
00:03	GOOD! LAYUP by ONYENWERE, MICHAELA	61-61	T	
00:03				TIMEOUT TEAM
00:02	FOUL (PERSONAL) by ONYENWERE, MICHAELA			
00:01	FOUL (PERSONAL) by BURKE, KENNEDY			
00:01	TIMEOUT 30SEC			

### UCLA 61, Arizona 61

Points from (This Period)	UCL	ARI
In the Paint	8	6
Off Turns	4	0
2nd Chance	6	0
Fast Break	2	2
Bench	0	5

**Official Box Score  
UCLA vs Arizona  
Overtime Statistics Only  
January 27, 2019 at McKale Center (Lute & Bobbi Olson Court) - Tucson, Ariz.**



#### UCLA 37

No.	Player	S	Pts	FG	3FG	FT	OR	DR	TR	PF	A	TO	Blk	Stl	Min	+/-
11	DRUMMER, LAJAHNA		9	2-6	0-0	5-6	6	4	10	0	0	1	1	0	15	5
21	ONYENWERE, MICHAELA		13	4-10	0-1	5-7	3	1	4	2	0	0	0	1	15	5
22	BURKE, KENNEDY		5	1-3	1-1	2-2	0	0	0	0	0	0	0	1	15	5
24	DEAN, JAPREECE		10	2-4	1-1	5-5	1	1	2	2	1	2	0	0	15	2
33	MILLER, LAURYN		0	0-0	0-0	0-0	0	0	0	0	0	0	0	0	0	0
02	SMITH, AHLANA		0	0-0	0-0	0-0	0	0	0	2	0	0	0	0	0	3
03	JEFFERSON, KIARA		0	0-0	0-0	0-0	0	0	0	1	0	0	0	0	0	0
04	CORSARO, LINDSEY		0	0-2	0-1	0-0	1	1	2	1	1	0	0	1	15	5
	TEAM		0	0-0	0-0	0-0	1	1	2	0	0	1	0	0	0	0
<b>TOTALS</b>			<b>37</b>	<b>9-25</b>	<b>2-4</b>	<b>17-20</b>	<b>12</b>	<b>8</b>	<b>20</b>	<b>8</b>	<b>2</b>	<b>4</b>	<b>1</b>	<b>3</b>	<b>75</b>	

#### Shooting By Period

Period	FG	FG%	3FG	3FG%	FT	FT%
5th Qtr	4-10	40%	0-0	0%	2-2	100%
6th Qtr	2-7	29%	1-3	33%	8-9	89%
7th Qtr	3-8	38%	1-1	100%	7-9	78%
2nd Half	9-25	36%	2-4	50%	17-20	85%
Game	32-91	35.2%	6-21	28.6%	28-35	80.0%

Last FG Half: UCL 7th-01:26

#### Arizona 32

No.	Player	S	Pts	FG	3FG	FT	OR	DR	TR	PF	A	TO	Blk	Stl	Min	+/-
10	STARKS, TEE TEE		0	0-0	0-0	0-0	1	1	2	3	1	2	0	1	15	-5
14	THOMAS, SAM		4	1-3	0-1	2-3	0	0	0	2	1	0	0	0	8	0
20	MCBRYDE, DOMINIQUE		0	0-0	0-0	0-0	0	0	0	0	0	0	0	0	0	0
21	GRAHAM, DESTINY		0	0-0	0-0	0-4	1	1	2	1	1	0	0	0	8	-6
24	NIXON, BRYCE		0	0-0	0-0	0-0	0	0	0	0	0	0	0	0	0	0
25	REESE, CATE		4	2-2	0-0	0-0	0	0	0	1	0	0	1	0	15	-2
34	SMITH, SEMAJ		0	0-0	0-0	0-0	0	0	0	0	0	0	0	0	0	-3
02	MCDONALD, AARI		19	7-13	3-8	2-5	0	3	3	1	2	2	0	2	15	-5
04	ALONSO, LUCIA		5	1-2	1-1	2-2	0	1	1	3	2	0	0	0	14	-4
	TEAM		0	0-0	0-0	0-0	1	0	1	0	0	0	0	0	0	0
<b>TOTALS</b>			<b>32</b>	<b>11-20</b>	<b>4-10</b>	<b>6-14</b>	<b>3</b>	<b>6</b>	<b>9</b>	<b>11</b>	<b>7</b>	<b>4</b>	<b>1</b>	<b>3</b>	<b>75</b>	

#### Shooting By Period

Period	FG	FG%	3FG	3FG%	FT	FT%
5th Qtr	3-7	43%	1-2	50%	3-4	75%
6th Qtr	5-6	83%	2-3	67%	1-2	50%
7th Qtr	3-7	43%	1-5	20%	2-8	25%
2nd Half	11-20	55%	4-10	40%	6-14	43%
Game	36-73	49.3%	10-26	38.5%	11-27	40.7%

Last FG Half: ARI 7th-01:15



Game Notes:

Officials: **Melissa Barlow,Shelly Nakasone,Paul Patterson**  
Attendance: **2327**

Start Time: **2019-01-27 21:00:49**  
End Time: **2019-01-27 23:44:14**  
Game Duration: **163**  
Conference Game;

Score	1st	2nd	3rd	4th	5th	6th	7th	TOT
UCL	16	14	17	14	10	13	14	<b>98</b>
ARI	14	19	17	11	10	13	9	<b>93</b>

Points from (This Period)	UCL	ARI
In the Paint	14	12
Off Turns	9	9
2nd Chance	9	0
Fast Break	5	13
Bench	0	5

**Official Play-By-Play**  
**UCLA vs Arizona**  
**Overtime**  
**January 27, 2019 at McKale Center (Lute & Bobbi Olson Court) - Tucson, Ariz.**



## Period 5

### Starters:

**UCLA:** 11 DRUMMER, LAJAHNA; 21 ONYENWERE, MICHAELA; 22 BURKE, KENNEDY; 24 DEAN, JAPREECE; 4 CORSARO, LINDSEY;

**Arizona:** 10 STARKS, TEE TEE; 14 THOMAS, SAM; 20 MCBRYDE, DOMINIQUE; 25 REESE, CATE; 2 MCDONALD, AARI;

Time	VISITORS: UCLA	Score	Margin	HOME: Arizona
04:37	TIMEOUT 30SEC			
04:37				
04:31	GOOD! LAYUP by ONYENWERE, MICHAELA	61-63	V 2	
04:12		64-63	H 1	GOOD! 3PTR by ALONSO, LUCIA
04:12				ASSIST by MCDONALD, AARI
03:44	MISSED LAYUP by DRUMMER, LAJAHNA			
03:40	REBOUND (OFF) by DRUMMER, LAJAHNA			
03:39	MISSED LAYUP by DRUMMER, LAJAHNA			
03:36				REBOUND (DEF) by MCDONALD, AARI
03:32				MISSED LAYUP by MCDONALD, AARI
03:30	REBOUND (DEF) by TEAM			
03:26	MISSED LAYUP by CORSARO, LINDSEY			
03:24	REBOUND (OFF) by DRUMMER, LAJAHNA			
03:22	MISSED LAYUP by DRUMMER, LAJAHNA			
03:18	REBOUND (OFF) by DRUMMER, LAJAHNA			
03:17	GOOD! LAYUP by DRUMMER, LAJAHNA	64-65	V 1	
03:06				TURNOVER (BADPASS) by STARKS, TEE TEE
03:06	STEAL by CORSARO, LINDSEY			
02:59	GOOD! LAYUP by ONYENWERE, MICHAELA [FB]	64-67	V 3	
02:51				TIMEOUT 30SEC
02:29				MISSED JUMPER by ALONSO, LUCIA
02:26	REBOUND (DEF) by CORSARO, LINDSEY			
02:01	TURNOVER (BADPASS) by DRUMMER, LAJAHNA			
02:01				STEAL by STARKS, TEE TEE
01:57		66-67	V 1	GOOD! LAYUP by THOMAS, SAM [FB]
01:57				ASSIST by STARKS, TEE TEE
01:57	FOUL (PERSONAL) by ONYENWERE, MICHAELA			
01:57		67-67	T	GOOD! FT by THOMAS, SAM [FB]
01:46				FOUL (PERSONAL) by STARKS, TEE TEE
01:46	GOOD! FT by BURKE, KENNEDY	67-68	V 1	
01:46	GOOD! FT by BURKE, KENNEDY	67-69	V 2	
01:24				MISSED LAYUP by THOMAS, SAM
01:24	BLOCK by DRUMMER, LAJAHNA			
01:19	REBOUND (DEF) by DRUMMER, LAJAHNA			
01:04	MISSED LAYUP by ONYENWERE, MICHAELA			
01:04	REBOUND (OFF) by TEAM			
00:57	TURNOVER (LOSTBALL) by DEAN, JAPREECE			
00:57				STEAL by MCDONALD, AARI
00:53		69-69	T	GOOD! LAYUP by MCDONALD, AARI [FB]
00:53	FOUL (PERSONAL) by CORSARO, LINDSEY			
00:53		70-69	H 1	GOOD! FT by MCDONALD, AARI [FB]
00:29	MISSED JUMPER by ONYENWERE, MICHAELA			
00:26	REBOUND (OFF) by ONYENWERE, MICHAELA			
00:22	TURNOVER (SHOTCLOCK) by			
00:22				TIMEOUT 30SEC
00:22	SUB OUT: BURKE, KENNEDY			
00:22	SUB IN: JEFFERSON, KIARA			
00:21	FOUL (PERSONAL) by JEFFERSON, KIARA			
00:21	SUB OUT: JEFFERSON, KIARA			
00:21	SUB IN: BURKE, KENNEDY			
00:21				MISSED FT by THOMAS, SAM
00:21				REBOUND (OFF) by TEAM
00:21		71-69	H 2	GOOD! FT by THOMAS, SAM [FB]
00:21	TIMEOUT TEAM			
00:16	GOOD! LAYUP by ONYENWERE, MICHAELA	71-71	T	
00:16	ASSIST by CORSARO, LINDSEY			
00:01				MISSED 3PTR by MCDONALD, AARI
00:01	REBOUND (DEF) by DEAN, JAPREECE			

## UCLA 71, Arizona 71

Points from (This Period)	UCL	ARI
In the Paint	8	4
Off Turns	2	7
2nd Chance	2	0
Fast Break	2	7
Bench	0	3

**Period 6**

**Starters:**

**UCLA:** 11 DRUMMER, LAJAHNA; 21 ONYENWERE, MICHAELA; 22 BURKE, KENNEDY; 24 DEAN, JAPREECE; 4 CORSARO, LINDSEY;

**Arizona:** 10 STARKS, TEE TEE; 14 THOMAS, SAM; 20 MCBRYDE, DOMINIQUE; 25 REESE, CATE; 2 MCDONALD, AARI;

Time	VISITORS: UCLA	Score	Margin	HOME: Arizona
04:36	GOOD! 3PTR by DEAN, JAPREECE	71-74	V 3	
04:20				SUB OUT: THOMAS, SAM
04:20				SUB IN: GRAHAM, DESTINY
04:20				SUB OUT: STARKS, TEE TEE
04:20				SUB IN: THOMAS, SAM
04:20				MISSED 3PTR by THOMAS, SAM
04:20				REBOUND (OFF) by GRAHAM, DESTINY
03:52				SUB OUT: ALONSO, LUCIA
03:52				SUB IN: STARKS, TEE TEE
03:52				TURNOVER (TRAVEL) by MCDONALD, AARI
03:25	GOOD! JUMPER by ONYENWERE, MICHAELA [PNT]	71-76	V 5	
03:25				FOUL (PERSONAL) by THOMAS, SAM
03:25	MISSED FT by ONYENWERE, MICHAELA			
03:25	REBOUND (OFF) by DRUMMER, LAJAHNA			
03:20	MISSED 3PTR by CORSARO, LINDSEY			
03:15				REBOUND (DEF) by MCDONALD, AARI
03:11		73-76	V 3	GOOD! LAYUP by MCDONALD, AARI [FB]
02:40				FOUL (PERSONAL) by STARKS, TEE TEE
02:40	GOOD! FT by DRUMMER, LAJAHNA	73-77	V 4	
02:40				SUB OUT: GRAHAM, DESTINY
02:40				SUB IN: ALONSO, LUCIA
02:40	GOOD! FT by DRUMMER, LAJAHNA	73-78	V 5	
02:27		76-78	V 2	GOOD! 3PTR by MCDONALD, AARI
02:27				ASSIST by THOMAS, SAM
02:16	TURNOVER (LOSTBALL) by DEAN, JAPREECE			
02:16				STEAL by MCDONALD, AARI
02:10		78-78	T	GOOD! LAYUP by MCDONALD, AARI [FB]
01:43	MISSED LAYUP by DEAN, JAPREECE			
01:40	REBOUND (OFF) by DRUMMER, LAJAHNA			
01:40	MISSED LAYUP by DRUMMER, LAJAHNA			
01:40	REBOUND (OFF) by ONYENWERE, MICHAELA			
01:40				FOUL (PERSONAL) by THOMAS, SAM
01:40				SUB OUT: THOMAS, SAM
01:40				SUB IN: GRAHAM, DESTINY
01:40	GOOD! FT by ONYENWERE, MICHAELA	78-79	V 1	
01:40	GOOD! FT by ONYENWERE, MICHAELA	78-80	V 2	
01:27	FOUL (PERSONAL) by DEAN, JAPREECE			
01:27				MISSED FT by MCDONALD, AARI
01:27				REBOUND (OFF) by TEAM
01:27		79-80	V 1	GOOD! FT by MCDONALD, AARI
01:04	MISSED 3PTR by ONYENWERE, MICHAELA			
00:59	REBOUND (OFF) by CORSARO, LINDSEY			
00:35	MISSED JUMPER by ONYENWERE, MICHAELA			
00:32				REBOUND (DEF) by MCDONALD, AARI
00:30				TURNOVER (LOSTBALL) by MCDONALD, AARI
00:30	STEAL by ONYENWERE, MICHAELA			
00:16				FOUL (PERSONAL) by MCDONALD, AARI
00:16	GOOD! FT by DEAN, JAPREECE	79-81	V 2	
00:16	GOOD! FT by DEAN, JAPREECE	79-82	V 3	
00:16				TIMEOUT 30SEC
00:06		81-82	V 1	GOOD! JUMPER by REESE, CATE
00:06				ASSIST by MCDONALD, AARI
00:06				FOUL (PERSONAL) by ALONSO, LUCIA
00:05				TIMEOUT 30SEC
00:05	GOOD! FT by DEAN, JAPREECE	81-83	V 2	
00:05	GOOD! FT by DEAN, JAPREECE	81-84	V 3	
00:05				TIMEOUT 30SEC
00:02		84-84	T	GOOD! 3PTR by MCDONALD, AARI
00:02				ASSIST by GRAHAM, DESTINY

**UCLA 84, Arizona 84**

Points from (This Period)	UCL	ARI
In the Paint	2	6
Off Turns	4	2
2nd Chance	2	0
Fast Break	0	4
Bench	0	0

**Period 7**

**Starters:**

**UCLA:** 11 DRUMMER, LAJAHNA; 21 ONYENWERE, MICHAELA; 22 BURKE, KENNEDY; 24 DEAN, JAPREECE; 4 CORSARO, LINDSEY;

**Arizona:** 10 STARKS, TEE TEE; 14 THOMAS, SAM; 20 MCBRYDE, DOMINIQUE; 25 REESE, CATE; 2 MCDONALD, AARI;

Time	VISITORS: UCLA	Score	Margin	HOME: Arizona
04:30	MISSED JUMPER by ONYENWERE, MICHAELA			
04:27				REBOUND (DEF) by ALONSO, LUCIA
04:08		87-84	H 3	GOOD! 3PTR by MCDONALD, AARI
04:08				ASSIST by ALONSO, LUCIA
03:34	MISSED JUMPER by DEAN, JAPREECE			
03:31	REBOUND (OFF) by DRUMMER, LAJAHNA			
03:30	GOOD! LAYUP by DRUMMER, LAJAHNA	87-86	H 1	
03:02		89-86	H 3	GOOD! JUMPER by REESE, CATE
03:02				ASSIST by ALONSO, LUCIA
02:49				FOUL (PERSONAL) by GRAHAM, DESTINY
02:49	GOOD! FT by ONYENWERE, MICHAELA	89-87	H 2	
02:49	MISSED FT by ONYENWERE, MICHAELA			
02:47				REBOUND (DEF) by STARKS, TEE TEE
02:22				MISSED 3PTR by MCDONALD, AARI
02:18				REBOUND (OFF) by STARKS, TEE TEE
02:16				TURNOVER (BADPASS) by STARKS, TEE TEE
02:16	STEAL by BURKE, KENNEDY			
02:11	MISSED LAYUP by BURKE, KENNEDY			
02:11	REBOUND (OFF) by DEAN, JAPREECE			
02:11	GOOD! LAYUP by DEAN, JAPREECE	89-89	T	
02:11				FOUL (PERSONAL) by ALONSO, LUCIA
02:11	GOOD! FT by DEAN, JAPREECE	89-90	V 1	
01:43				MISSED 3PTR by MCDONALD, AARI
01:42				REBOUND (OFF) by TEAM
01:42	FOUL (PERSONAL) by ONYENWERE, MICHAELA			
01:42				MISSED FT by GRAHAM, DESTINY
01:42				REBOUND (OFF) by TEAM
01:42				MISSED FT by GRAHAM, DESTINY
01:42	REBOUND (DEF) by DRUMMER, LAJAHNA			
01:26	GOOD! 3PTR by BURKE, KENNEDY	89-93	V 4	
01:26	ASSIST by DEAN, JAPREECE			
01:15		91-93	V 2	GOOD! LAYUP by MCDONALD, AARI
01:03	TIMEOUT 30SEC			
01:03				
00:53	MISSED JUMPER by BURKE, KENNEDY			
00:49	REBOUND (OFF) by ONYENWERE, MICHAELA			
00:29	MISSED JUMPER by ONYENWERE, MICHAELA			
00:29				BLOCK by REESE, CATE
00:29				REBOUND (DEF) by GRAHAM, DESTINY
00:28	FOUL (PERSONAL) by DEAN, JAPREECE			
00:28				MISSED FT by GRAHAM, DESTINY
00:28				REBOUND (OFF) by TEAM
00:28				MISSED FT by GRAHAM, DESTINY
00:28	SUB OUT: DEAN, JAPREECE			
00:28	SUB IN: SMITH, AHLANA			
00:26	REBOUND (DEF) by DRUMMER, LAJAHNA			
00:26				FOUL (PERSONAL) by REESE, CATE
00:26				SUB OUT: REESE, CATE
00:26				SUB IN: SMITH, SEMAJ
00:26	GOOD! FT by DRUMMER, LAJAHNA	91-94	V 3	
00:26	GOOD! FT by DRUMMER, LAJAHNA	91-95	V 4	
00:26				TIMEOUT 30SEC
00:25	FOUL (PERSONAL) by SMITH, AHLANA			
00:25		92-95	V 3	GOOD! FT by ALONSO, LUCIA [FB]
00:25		93-95	V 2	GOOD! FT by ALONSO, LUCIA [FB]
00:25	TIMEOUT 30SEC			
00:23				FOUL (PERSONAL) by ALONSO, LUCIA
00:23	GOOD! FT by ONYENWERE, MICHAELA [FB]	93-96	V 3	
00:23	GOOD! FT by ONYENWERE, MICHAELA [FB]	93-97	V 4	
00:18				MISSED 3PTR by MCDONALD, AARI
00:18				REBOUND (OFF) by TEAM
00:15				MISSED 3PTR by MCDONALD, AARI
00:10	REBOUND (DEF) by DRUMMER, LAJAHNA			
00:09				FOUL (PERSONAL) by STARKS, TEE TEE
00:09	MISSED FT by DRUMMER, LAJAHNA			
00:09	REBOUND (OFF) by TEAM			
00:09	GOOD! FT by DRUMMER, LAJAHNA [FB]	93-98	V 5	
00:03	FOUL (PERSONAL) by SMITH, AHLANA			
00:03				MISSED FT by MCDONALD, AARI
00:03				REBOUND (OFF) by TEAM
00:03				MISSED FT by MCDONALD, AARI
00:03	REBOUND (DEF) by ONYENWERE, MICHAELA			

<b>Points from (This Period)</b>	<b>UCL</b>	<b>ARI</b>
In the Paint	4	2
Off Turns	3	0
2nd Chance	5	0
Fast Break	3	2
Bench	0	2

Official Scoring/Possession Reference Chart

**UCLA vs Arizona**

Period 1

January 27, 2019 at McKale Center (Lute & Bobbi Olson Court) - Tucson, Ariz.



**Period 1**

**Starters:**

**UCLA:** 11 DRUMMER, LAJAHNA; 21 ONYENWERE, MICHAELA; 22 BURKE, KENNEDY; 24 DEAN, JAPREECE; 4 CORSARO, LINDSEY;

**Arizona:** 10 STARKS, TEE TEE; 14 THOMAS, SAM; 20 MCBRYDE, DOMINIQUE; 25 REESE, CATE; 2 MCDONALD, AARI;

Time	VISITORS: UCLA	Score	Margin	HOME: Arizona
09:41	GOOD! JUMPER by DRUMMER, LAJAHNA	0-2	V 2	
08:18	GOOD! LAYUP by CORSARO, LINDSEY	0-4	V 4	
08:06		3-4	V 1	GOOD! 3PTR by STARKS, TEE TEE
07:43	GOOD! LAYUP by DRUMMER, LAJAHNA	3-6	V 3	
07:14		5-6	V 1	GOOD! LAYUP by MCDONALD, AARI [FB]
07:00		7-6	H 1	GOOD! LAYUP by MCDONALD, AARI
06:50	GOOD! JUMPER by ONYENWERE, MICHAELA	7-8	V 1	
06:16		10-8	H 2	GOOD! 3PTR by THOMAS, SAM
05:40	GOOD! FT by DEAN, JAPREECE	10-9	H 1	
05:40	GOOD! FT by DEAN, JAPREECE	10-10	T	
05:16		12-10	H 2	GOOD! JUMPER by ALONSO, LUCIA
03:56	GOOD! JUMPER by DEAN, JAPREECE [PNT]	12-12	T	
02:57	GOOD! LAYUP by BURKE, KENNEDY [FB]	12-14	V 2	
01:28		14-14	T	GOOD! JUMPER by REESE, CATE
00:43	GOOD! LAYUP by BURKE, KENNEDY [FB]	14-16	V 2	

**UCLA 16, Arizona 14**

**Official Scoring/Possession Reference Chart  
UCLA vs Arizona**



**Period 2  
January 27, 2019 at McKale Center (Lute & Bobbi Olson Court) - Tucson, Ariz.**

**Period 2**

**Starters:**

**UCLA:** 11 DRUMMER, LAJAHNA; 21 ONYENWERE, MICHAELA; 22 BURKE, KENNEDY; 24 DEAN, JAPREECE; 4 CORSARO, LINDSEY;

**Arizona:** 10 STARKS, TEE TEE; 14 THOMAS, SAM; 20 MCBRYDE, DOMINIQUE; 25 REESE, CATE; 2 MCDONALD, AARI;

Time	VISITORS: UCLA	Score	Margin	HOME: Arizona
09:04		16-16	T	GOOD! JUMPER by REESE, CATE [FB/PNT]
08:29	GOOD! FT by BURKE, KENNEDY [FB]	16-17	V 1	
08:25	GOOD! LAYUP by DRUMMER, LAJAHNA	16-19	V 3	
07:57		18-19	V 1	GOOD! LAYUP by REESE, CATE
06:20	GOOD! JUMPER by ONYENWERE, MICHAELA [PNT]	18-21	V 3	
05:51	GOOD! 3PTR by DEAN, JAPREECE	18-24	V 6	
05:35		20-24	V 4	GOOD! JUMPER by MCBRYDE, DOMINIQUE [PNT]
05:15		22-24	V 2	GOOD! LAYUP by MCDONALD, AARI [FB]
04:46	GOOD! FT by DEAN, JAPREECE [FB]	22-25	V 3	
04:46	GOOD! FT by DEAN, JAPREECE [FB]	22-26	V 4	
04:28		24-26	V 2	GOOD! JUMPER by THOMAS, SAM
03:47		27-26	H 1	GOOD! 3PTR by THOMAS, SAM
03:06	GOOD! FT by BURKE, KENNEDY	27-27	T	
03:06	GOOD! FT by BURKE, KENNEDY	27-28	V 1	
02:43		29-28	H 1	GOOD! LAYUP by STARKS, TEE TEE
02:39	GOOD! LAYUP by ONYENWERE, MICHAELA	29-30	V 1	
02:05		30-30	T	GOOD! FT by GRAHAM, DESTINY
01:35		31-30	H 1	GOOD! FT by SMITH, SEMAJ
00:35		33-30	H 3	GOOD! JUMPER by ALONSO, LUCIA

**UCLA 30, Arizona 33**



**Official Scoring/Possession Reference Chart  
UCLA vs Arizona**



**Period 3  
January 27, 2019 at McKale Center (Lute & Bobbi Olson Court) - Tucson, Ariz.**

**Period 3**

**Starters:**

**UCLA:** 11 DRUMMER, LAJAHNA; 21 ONYENWERE, MICHAELA; 22 BURKE, KENNEDY; 24 DEAN, JAPREECE; 4 CORSARO, LINDSEY;

**Arizona:** 10 STARKS, TEE TEE; 14 THOMAS, SAM; 20 MCBRYDE, DOMINIQUE; 25 REESE, CATE; 2 MCDONALD, AARI;

Time	VISITORS: UCLA	Score	Margin	HOME: Arizona
09:08	GOOD! 3PTR by CORSARO, LINDSEY	33-33	T	
08:10		36-33	H 3	GOOD! 3PTR by MCDONALD, AARI
06:16		38-33	H 5	GOOD! JUMPER by MCDONALD, AARI
05:51	GOOD! JUMPER by DEAN, JAPREECE	38-35	H 3	
05:31	GOOD! JUMPER by BURKE, KENNEDY [PNT]	38-37	H 1	
05:01		40-37	H 3	GOOD! LAYUP by MCDONALD, AARI [FB]
05:01		41-37	H 4	GOOD! FT by MCDONALD, AARI [FB]
04:36	GOOD! 3PTR by ONYENWERE, MICHAELA	41-40	H 1	
03:56		42-40	H 2	GOOD! FT by GRAHAM, DESTINY
03:56		43-40	H 3	GOOD! FT by GRAHAM, DESTINY
02:02	GOOD! FT by DRUMMER, LAJAHNA [FB]	43-41	H 2	
01:52		45-41	H 4	GOOD! LAYUP by GRAHAM, DESTINY
01:26	GOOD! 3PTR by DEAN, JAPREECE	45-44	H 1	
01:11		48-44	H 4	GOOD! 3PTR by THOMAS, SAM
00:57	GOOD! FT by MILLER, LAURYN	48-45	H 3	
00:30	GOOD! LAYUP by SMITH, AHLANA	48-47	H 1	
00:02		50-47	H 3	GOOD! LAYUP by REESE, CATE

**UCLA 47, Arizona 50**

**Official Scoring/Possession Reference Chart  
UCLA vs Arizona**



**Period 4  
January 27, 2019 at McKale Center (Lute & Bobbi Olson Court) - Tucson, Ariz.**

**Period 4**

**Starters:**

**UCLA:** 11 DRUMMER, LAJAHNA; 21 ONYENWERE, MICHAELA; 22 BURKE, KENNEDY; 24 DEAN, JAPREECE; 4 CORSARO, LINDSEY;

**Arizona:** 10 STARKS, TEE TEE; 14 THOMAS, SAM; 20 MCBRYDE, DOMINIQUE; 25 REESE, CATE; 2 MCDONALD, AARI;

Time	VISITORS: UCLA	Score	Margin	HOME: Arizona
09:13	GOOD! JUMPER by DEAN, JAPREECE	50-49	H 1	
07:39		52-49	H 3	GOOD! LAYUP by MCDONALD, AARI [FB]
05:57	GOOD! JUMPER by ONYENWERE, MICHAELA	52-51	H 1	
05:13	GOOD! LAYUP by BURKE, KENNEDY [FB]	52-53	V 1	
04:41		54-53	H 1	GOOD! JUMPER by ALONSO, LUCIA
04:19	GOOD! FT by CORSARO, LINDSEY	54-54	T	
04:19	GOOD! FT by CORSARO, LINDSEY	54-55	V 1	
04:10		56-55	H 1	GOOD! JUMPER by THOMAS, SAM [PNT]
03:49	GOOD! LAYUP by ONYENWERE, MICHAELA	56-57	V 1	
03:29		58-57	H 1	GOOD! LAYUP by REESE, CATE
02:36	GOOD! LAYUP by DRUMMER, LAJAHNA	58-59	V 1	
01:35		61-59	H 2	GOOD! 3PTR by ALONSO, LUCIA
00:03	GOOD! LAYUP by ONYENWERE, MICHAELA	61-61	T	

**UCLA 61, Arizona 61**

Official Scoring/Possession Reference Chart

**UCLA vs Arizona**

Period 5

January 27, 2019 at McKale Center (Lute & Bobbi Olson Court) - Tucson, Ariz.



**Period 5**

**Starters:**

**UCLA:** 11 DRUMMER, LAJAHNA; 21 ONYENWERE, MICHAELA; 22 BURKE, KENNEDY; 24 DEAN, JAPREECE; 4 CORSARO, LINDSEY;

**Arizona:** 10 STARKS, TEE TEE; 14 THOMAS, SAM; 20 MCBRYDE, DOMINIQUE; 25 REESE, CATE; 2 MCDONALD, AARI;

Time	VISITORS: UCLA	Score	Margin	HOME: Arizona
04:31	GOOD! LAYUP by ONYENWERE, MICHAELA	61-63	V 2	
04:12		64-63	H 1	GOOD! 3PTR by ALONSO, LUCIA
03:17	GOOD! LAYUP by DRUMMER, LAJAHNA	64-65	V 1	
02:59	GOOD! LAYUP by ONYENWERE, MICHAELA [FB]	64-67	V 3	
01:57		66-67	V 1	GOOD! LAYUP by THOMAS, SAM [FB]
01:57		67-67	T	GOOD! FT by THOMAS, SAM [FB]
01:46	GOOD! FT by BURKE, KENNEDY	67-68	V 1	
01:46	GOOD! FT by BURKE, KENNEDY	67-69	V 2	
00:53		69-69	T	GOOD! LAYUP by MCDONALD, AARI [FB]
00:53		70-69	H 1	GOOD! FT by MCDONALD, AARI [FB]
00:21		71-69	H 2	GOOD! FT by THOMAS, SAM [FB]
00:16	GOOD! LAYUP by ONYENWERE, MICHAELA	71-71	T	

**UCLA 71, Arizona 71**

**Official Scoring/Possession Reference Chart  
UCLA vs Arizona**



**Period 6  
January 27, 2019 at McKale Center (Lute & Bobbi Olson Court) - Tucson, Ariz.**

**Period 6**

**Starters:**

**UCLA:** 11 DRUMMER, LAJAHNA; 21 ONYENWERE, MICHAELA; 22 BURKE, KENNEDY; 24 DEAN, JAPREECE; 4 CORSARO, LINDSEY;

**Arizona:** 10 STARKS, TEE TEE; 14 THOMAS, SAM; 20 MCBRYDE, DOMINIQUE; 25 REESE, CATE; 2 MCDONALD, AARI;

Time	VISITORS: UCLA	Score	Margin	HOME: Arizona
04:36	GOOD! 3PTR by DEAN, JAPREECE	71-74	V 3	
03:25	GOOD! JUMPER by ONYENWERE, MICHAELA [PNT]	71-76	V 5	
03:11		73-76	V 3	GOOD! LAYUP by MCDONALD, AARI [FB]
02:40	GOOD! FT by DRUMMER, LAJAHNA	73-77	V 4	
02:40	GOOD! FT by DRUMMER, LAJAHNA	73-78	V 5	
02:27		76-78	V 2	GOOD! 3PTR by MCDONALD, AARI
02:10		78-78	T	GOOD! LAYUP by MCDONALD, AARI [FB]
01:40	GOOD! FT by ONYENWERE, MICHAELA	78-79	V 1	
01:40	GOOD! FT by ONYENWERE, MICHAELA	78-80	V 2	
01:27		79-80	V 1	GOOD! FT by MCDONALD, AARI
00:16	GOOD! FT by DEAN, JAPREECE	79-81	V 2	
00:16	GOOD! FT by DEAN, JAPREECE	79-82	V 3	
00:06		81-82	V 1	GOOD! JUMPER by REESE, CATE
00:05	GOOD! FT by DEAN, JAPREECE	81-83	V 2	
00:05	GOOD! FT by DEAN, JAPREECE	81-84	V 3	
00:02		84-84	T	GOOD! 3PTR by MCDONALD, AARI

**UCLA 84, Arizona 84**

**Official Scoring/Possession Reference Chart**

**UCLA vs Arizona**

**Period 7**

**January 27, 2019 at McKale Center (Lute & Bobbi Olson Court) - Tucson, Ariz.**



**Period 7**

**Starters:**

**UCLA:** 11 DRUMMER, LAJAHNA; 21 ONYENWERE, MICHAELA; 22 BURKE, KENNEDY; 24 DEAN, JAPREECE; 4 CORSARO, LINDSEY;

**Arizona:** 10 STARKS, TEE TEE; 14 THOMAS, SAM; 20 MCBRYDE, DOMINIQUE; 25 REESE, CATE; 2 MCDONALD, AARI;

Time	VISITORS: UCLA	Score	Margin	HOME: Arizona
04:08		87-84	H 3	GOOD! 3PTR by MCDONALD, AARI
03:30	GOOD! LAYUP by DRUMMER, LAJAHNA	87-86	H 1	
03:02		89-86	H 3	GOOD! JUMPER by REESE, CATE
02:49	GOOD! FT by ONYENWERE, MICHAELA	89-87	H 2	
02:11	GOOD! LAYUP by DEAN, JAPREECE	89-89	T	
02:11	GOOD! FT by DEAN, JAPREECE	89-90	V 1	
01:26	GOOD! 3PTR by BURKE, KENNEDY	89-93	V 4	
01:15		91-93	V 2	GOOD! LAYUP by MCDONALD, AARI
00:26	GOOD! FT by DRUMMER, LAJAHNA	91-94	V 3	
00:26	GOOD! FT by DRUMMER, LAJAHNA	91-95	V 4	
00:25		92-95	V 3	GOOD! FT by ALONSO, LUCIA [FB]
00:25		93-95	V 2	GOOD! FT by ALONSO, LUCIA [FB]
00:23	GOOD! FT by ONYENWERE, MICHAELA [FB]	93-96	V 3	
00:23	GOOD! FT by ONYENWERE, MICHAELA [FB]	93-97	V 4	
00:09	GOOD! FT by DRUMMER, LAJAHNA [FB]	93-98	V 5	

**UCLA 98, Arizona 93**

**Official Substitutions Log  
UCLA vs Arizona  
Period 1**

**January 27, 2019 at McKale Center (Lute & Bobbi Olson Court) - Tucson, Ariz.**



<b>VISITORS: UCLA</b>	<b>Time</b>	<b>Score</b>	<b>HOME: Arizona</b>
11 DRUMMER, LAJAHNA			10 STARKS, TEE TEE
21 ONYENWERE, MICHAELA			14 THOMAS, SAM
22 BURKE, KENNEDY			20 MCBRYDE, DOMINIQUE
24 DEAN, JAPREECE			25 REESE, CATE
4 CORSARO, LINDSEY			2 MCDONALD, AARI
	07:01	6-5	SUB OUT: REESE, CATE
	07:01		SUB IN: GRAHAM, DESTINY
	07:01		SUB OUT: MCBRYDE, DOMINIQUE
	07:01		SUB IN: SMITH, SEMAJ
SUB OUT: 22 BURKE, KENNEDY	07:01		
SUB IN: 2 SMITH, AHLANA	07:01		
SUB OUT: 21 ONYENWERE, MICHAELA	06:37	8-7	
SUB IN: 33 MILLER, LAURYN	06:37		
	05:57	8-10	SUB OUT: STARKS, TEE TEE
	05:57		SUB IN: ALONSO, LUCIA
SUB OUT: 2 SMITH, AHLANA	05:57		
SUB IN: 3 JEFFERSON, KIARA	05:57		
SUB OUT: 24 DEAN, JAPREECE	05:40	10-10	
SUB IN: 22 BURKE, KENNEDY	05:40		
	04:48	10-12	SUB OUT: THOMAS, SAM
	04:48		SUB IN: STARKS, TEE TEE
SUB OUT: 11 DRUMMER, LAJAHNA	04:48		
SUB IN: 21 ONYENWERE, MICHAELA	04:48		
SUB OUT: 3 JEFFERSON, KIARA	04:23	10-12	
SUB IN: 24 DEAN, JAPREECE	04:23		
	03:16	12-12	SUB OUT: SMITH, SEMAJ
	03:16		SUB IN: MCBRYDE, DOMINIQUE
SUB OUT: 33 MILLER, LAURYN	03:16		
SUB IN: 11 DRUMMER, LAJAHNA	03:16		
	01:50	14-12	SUB OUT: ALONSO, LUCIA
	01:50		SUB IN: REESE, CATE
	01:50		SUB OUT: GRAHAM, DESTINY
	01:50		SUB IN: THOMAS, SAM
SUB OUT: 4 CORSARO, LINDSEY	01:50		
SUB IN: 2 SMITH, AHLANA	01:50		
	01:41	14-12	SUB OUT: MCDONALD, AARI
	01:41		SUB IN: NIXON, BRYCE
SUB OUT: 11 DRUMMER, LAJAHNA	01:41		
SUB IN: 33 MILLER, LAURYN	01:41		

**UCLA 16, Arizona 14**

**Official Substitutions Log  
UCLA vs Arizona  
Period 2**

**January 27, 2019 at McKale Center (Lute & Bobbi Olson Court) - Tucson, Ariz.**



VISITORS: UCLA	Time	Score	HOME: Arizona
11 DRUMMER, LAJAHNA			10 STARKS, TEE TEE
21 ONYENWERE, MICHAELA			14 THOMAS, SAM
22 BURKE, KENNEDY			20 MCBRYDE, DOMINIQUE
24 DEAN, JAPREECE			25 REESE, CATE
4 CORSARO, LINDSEY			2 MCDONALD, AARI
SUB OUT: 2 SMITH, AHLANA	08:29	17-16	
SUB IN: 11 DRUMMER, LAJAHNA	08:29		
SUB OUT: 21 ONYENWERE, MICHAELA	08:29		
SUB IN: 4 CORSARO, LINDSEY	08:29		
	07:01	19-18	SUB OUT: STARKS, TEE TEE
	07:01		SUB IN: ALONSO, LUCIA
	07:01		SUB OUT: REESE, CATE
	07:01		SUB IN: SMITH, SEMAJ
SUB OUT: 33 MILLER, LAURYN	07:01		
SUB IN: 21 ONYENWERE, MICHAELA	07:01		
SUB OUT: 22 BURKE, KENNEDY	05:15	24-22	
SUB IN: 3 JEFFERSON, KIARA	05:15		
	04:46	24-22	SUB OUT: ALONSO, LUCIA
	04:46		SUB IN: STARKS, TEE TEE
	04:46		SUB OUT: SMITH, SEMAJ
	04:46		SUB IN: GRAHAM, DESTINY
SUB OUT: 4 CORSARO, LINDSEY	03:29	26-27	
SUB IN: 22 BURKE, KENNEDY	03:29		
SUB OUT: 11 DRUMMER, LAJAHNA	03:29		
SUB IN: 33 MILLER, LAURYN	03:29		
	02:51	28-27	SUB OUT: MCDONALD, AARI
	02:51		SUB IN: ALONSO, LUCIA
	02:05	30-30	SUB OUT: MCBRYDE, DOMINIQUE
	02:05		SUB IN: SMITH, SEMAJ
SUB OUT: 3 JEFFERSON, KIARA	02:05		
SUB IN: 4 CORSARO, LINDSEY	02:05		
SUB OUT: 33 MILLER, LAURYN	01:17	30-31	
SUB IN: 2 SMITH, AHLANA	01:17		

**UCLA 30, Arizona 33**

**Official Substitutions Log  
UCLA vs Arizona  
Period 3**

**January 27, 2019 at McKale Center (Lute & Bobbi Olson Court) - Tucson, Ariz.**



<b>VISITORS: UCLA</b>	<b>Time</b>	<b>Score</b>	<b>HOME: Arizona</b>
11 DRUMMER, LAJAHNA			10 STARKS, TEE TEE
21 ONYENWERE, MICHAELA			14 THOMAS, SAM
22 BURKE, KENNEDY			20 MCBRYDE, DOMINIQUE
24 DEAN, JAPREECE			25 REESE, CATE
4 CORSARO, LINDSEY			2 MCDONALD, AARI
SUB OUT: 3 JEFFERSON, KIARA	06:22	33-36	
SUB IN: 11 DRUMMER, LAJAHNA	06:22		
	05:19	37-38	SUB OUT: MCBRYDE, DOMINIQUE
	05:19		SUB IN: GRAHAM, DESTINY
	05:19		SUB OUT: REESE, CATE
	05:19		SUB IN: SMITH, SEMAJ
SUB OUT: 4 CORSARO, LINDSEY	03:56	40-41	
SUB IN: 2 SMITH, AHLANA	03:56		
SUB OUT: 21 ONYENWERE, MICHAELA	03:56		
SUB IN: 33 MILLER, LAURYN	03:56		
	02:02	40-43	SUB OUT: SMITH, SEMAJ
	02:02		SUB IN: ALONSO, LUCIA
SUB OUT: 11 DRUMMER, LAJAHNA	02:02		
SUB IN: 21 ONYENWERE, MICHAELA	02:02		
SUB OUT: 33 MILLER, LAURYN	00:55	45-48	
SUB IN: 11 DRUMMER, LAJAHNA	00:55		
	00:30	47-48	SUB OUT: GRAHAM, DESTINY
	00:30		SUB IN: REESE, CATE

**UCLA 47, Arizona 50**



Official Substitutions Log

**UCLA vs Arizona**

Period 4

January 27, 2019 at McKale Center (Lute & Bobbi Olson Court) - Tucson, Ariz.



VISITORS: UCLA	Time	Score	HOME: Arizona
11 DRUMMER, LAJAHNA			10 STARKS, TEE TEE
21 ONYENWERE, MICHAELA			14 THOMAS, SAM
22 BURKE, KENNEDY			20 MCBRYDE, DOMINIQUE
24 DEAN, JAPREECE			25 REESE, CATE
4 CORSARO, LINDSEY			2 MCDONALD, AARI
SUB OUT: 2 SMITH, AHLANA	06:44	49-52	
SUB IN: 4 CORSARO, LINDSEY	06:44		
	05:41	51-52	SUB OUT: REESE, CATE
	05:41		SUB IN: MCBRYDE, DOMINIQUE
	04:27	53-54	SUB OUT: MCBRYDE, DOMINIQUE
	04:27		SUB IN: REESE, CATE

**UCLA 61, Arizona 61**



Official Substitutions Log

**UCLA vs Arizona**

Period 5

January 27, 2019 at McKale Center (Lute & Bobbi Olson Court) - Tucson, Ariz.



VISITORS: UCLA	Time	Score	HOME: Arizona
11 DRUMMER, LAJAHNA			10 STARKS, TEE TEE
21 ONYENWERE, MICHAELA			14 THOMAS, SAM
22 BURKE, KENNEDY			20 MCBRYDE, DOMINIQUE
24 DEAN, JAPREECE			25 REESE, CATE
4 CORSARO, LINDSEY			2 MCDONALD, AARI
SUB OUT: 22 BURKE, KENNEDY	00:22	69-70	
SUB IN: 3 JEFFERSON, KIARA	00:22		
SUB OUT: 3 JEFFERSON, KIARA	00:21	69-70	
SUB IN: 22 BURKE, KENNEDY	00:21		

**UCLA 71, Arizona 71**



Official Substitutions Log

**UCLA vs Arizona**

Period 6

January 27, 2019 at McKale Center (Lute & Bobbi Olson Court) - Tucson, Ariz.



VISITORS: UCLA	Time	Score	HOME: Arizona
11 DRUMMER, LAJAHNA			10 STARKS, TEE TEE
21 ONYENWERE, MICHAELA			14 THOMAS, SAM
22 BURKE, KENNEDY			20 MCBRYDE, DOMINIQUE
24 DEAN, JAPREECE			25 REESE, CATE
4 CORSARO, LINDSEY			2 MCDONALD, AARI
	04:20	74-71	SUB OUT: THOMAS, SAM
	04:20		SUB IN: GRAHAM, DESTINY
	04:20		SUB OUT: STARKS, TEE TEE
	04:20		SUB IN: THOMAS, SAM
	03:52	74-71	SUB OUT: ALONSO, LUCIA
	03:52		SUB IN: STARKS, TEE TEE
	02:40	77-73	SUB OUT: GRAHAM, DESTINY
	02:40		SUB IN: ALONSO, LUCIA
	01:40	78-78	SUB OUT: THOMAS, SAM
	01:40		SUB IN: GRAHAM, DESTINY

**UCLA 84, Arizona 84**



**Official Substitutions Log**  
**UCLA vs Arizona**  
**Period 7**  
**January 27, 2019 at McKale Center (Lute & Bobbi Olson Court) - Tucson, Ariz.**



<b>VISITORS: UCLA</b>	<b>Time</b>	<b>Score</b>	<b>HOME: Arizona</b>
11 DRUMMER, LAJAHNA			10 STARKS, TEE TEE
21 ONYENWERE, MICHAELA			14 THOMAS, SAM
22 BURKE, KENNEDY			20 MCBRYDE, DOMINIQUE
24 DEAN, JAPREECE			25 REESE, CATE
4 CORSARO, LINDSEY			2 MCDONALD, AARI
SUB OUT: 24 DEAN, JAPREECE	00:28	93-91	
SUB IN: 2 SMITH, AHLANA	00:28		
	00:26	93-91	SUB OUT: REESE, CATE
	00:26		SUB IN: SMITH, SEMAJ

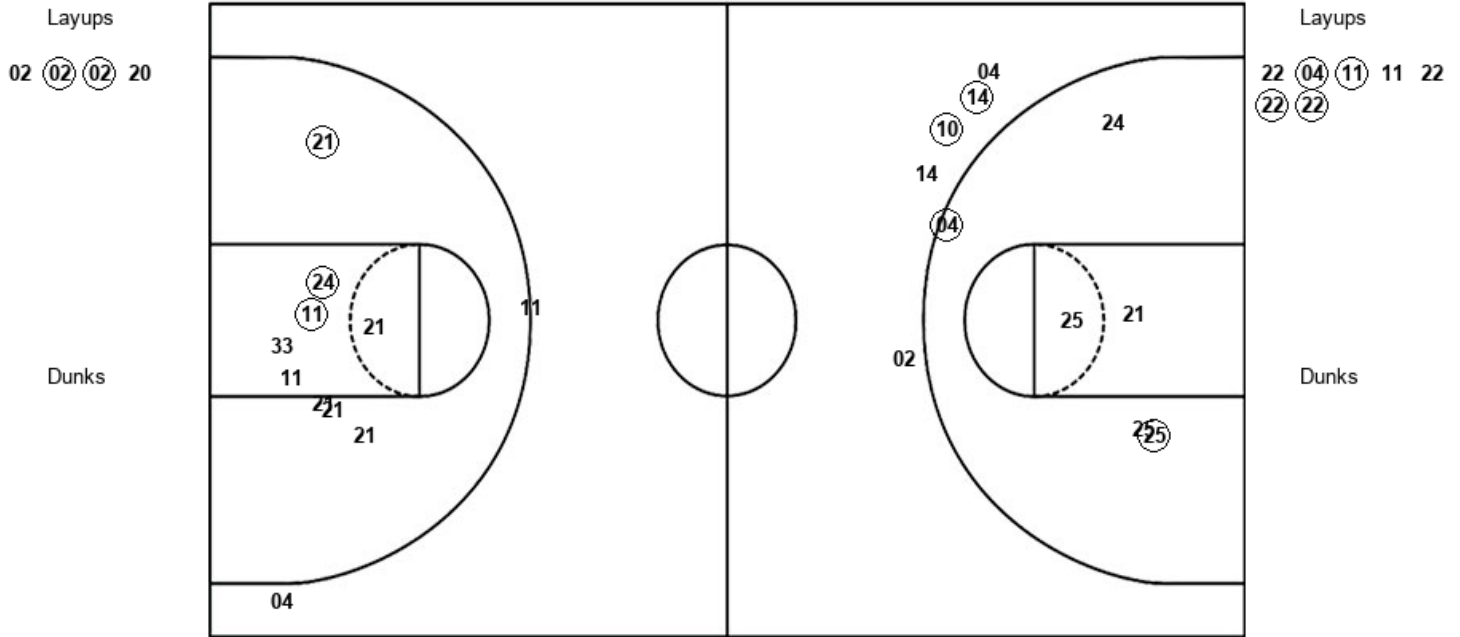
**UCLA 98, Arizona 93**

**Official Shot Chart**  
**UCLA vs Arizona**  
**PERIOD 1 Shots**  
 January 27, 2019 at McKale Center (Lute & Bobbi Olson Court) - Tucson, Ariz.



**Arizona**

**UCLA**



ARI : Period 1	Made	Att	Pct
Layups	2	4	50.0
Dunks	0	0	0
2PT Field Goals	4	10	40.0
3PT Field Goals	2	5	40.0
<b>Total Field Goals</b>	<b>6</b>	<b>15</b>	<b>40.0</b>

UCL : Period 1	Made	Att	Pct
Layups	4	7	57.1
Dunks	0	0	0
2PT Field Goals	7	16	43.8
3PT Field Goals	0	2	00.0
<b>Total Field Goals</b>	<b>7</b>	<b>18</b>	<b>38.9</b>



**Official Shot Chart**  
**UCLA vs Arizona**  
**PERIOD 2 Shots**  
 January 27, 2019 at McKale Center (Lute & Bobbi Olson Court) - Tucson, Ariz.



**Arizona**

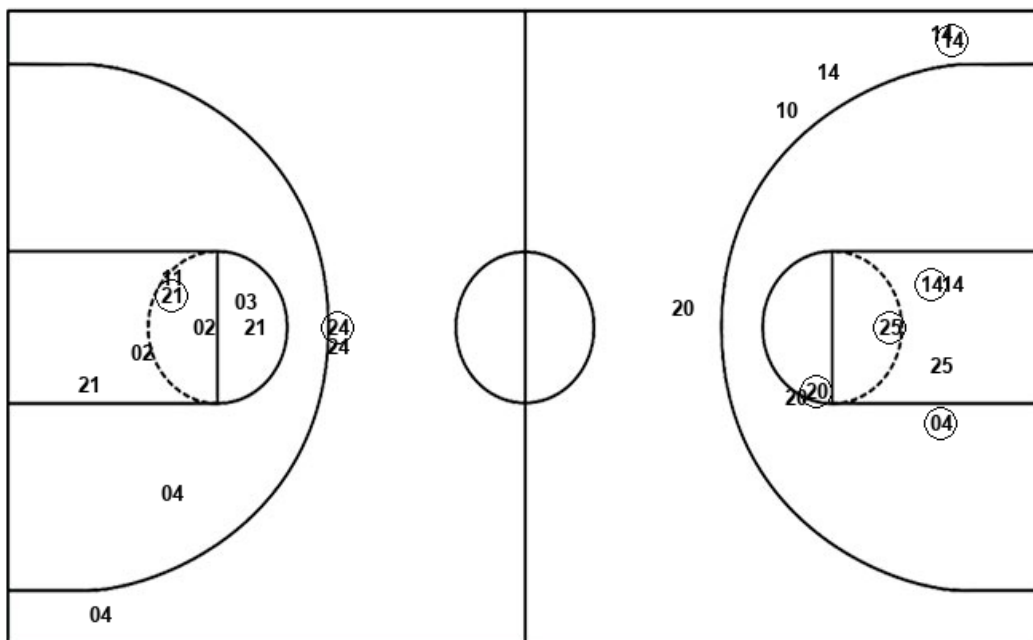
**UCLA**

Layups  
 (25) (02) (10)

Layups  
 (11) 11 (21)

Dunks

Dunks



ARI : Period 2	Made	Att	Pct
Layups	3	3	100.0
Dunks	0	0	0
2PT Field Goals	7	10	70.0
3PT Field Goals	1	5	20.0
<b>Total Field Goals</b>	<b>8</b>	<b>15</b>	<b>53.3</b>

UCL : Period 2	Made	Att	Pct
Layups	2	3	66.7
Dunks	0	0	0
2PT Field Goals	3	11	27.3
3PT Field Goals	1	3	33.3
<b>Total Field Goals</b>	<b>4</b>	<b>14</b>	<b>28.6</b>

**Official Shot Chart**  
**UCLA vs Arizona**  
**PERIOD 3 Shots**  
 January 27, 2019 at McKale Center (Lute & Bobbi Olson Court) - Tucson, Ariz.



**Arizona**

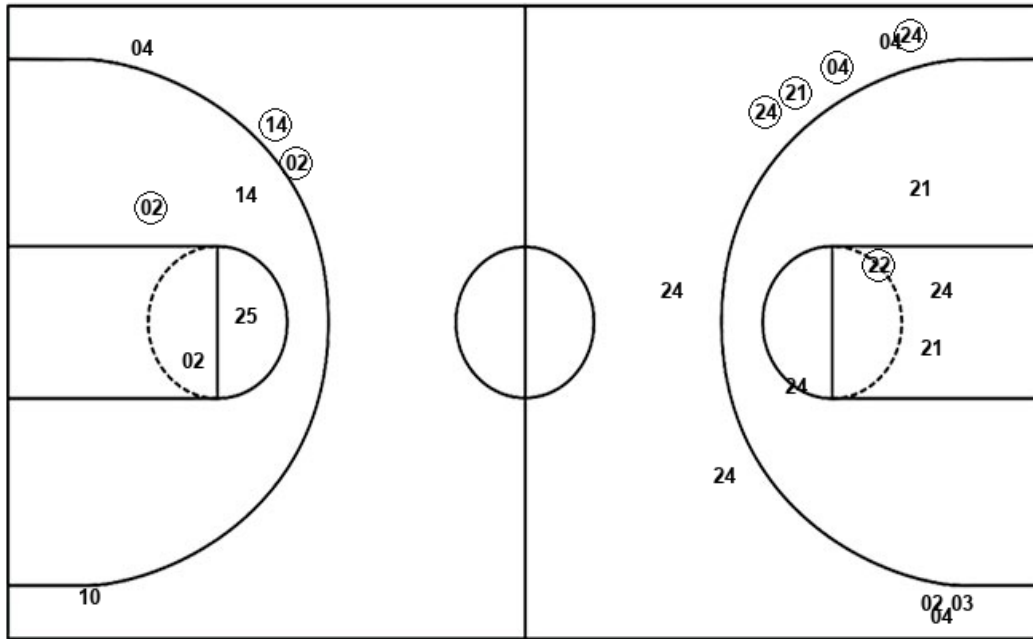
**UCLA**

Layups  
 02 21 25

Layups  
 11 02

Dunks

Dunks



ARI : Period 3	Made	Att	Pct
Layups	3	3	100.0
Dunks	0	0	0
2PT Field Goals	4	7	57.1
3PT Field Goals	2	4	50.0
<b>Total Field Goals</b>	<b>6</b>	<b>11</b>	<b>54.5</b>

UCL : Period 3	Made	Att	Pct
Layups	1	2	50.0
Dunks	0	0	0
2PT Field Goals	3	8	37.5
3PT Field Goals	3	9	33.3
<b>Total Field Goals</b>	<b>6</b>	<b>17</b>	<b>35.3</b>

**Official Shot Chart**  
**UCLA vs Arizona**  
**PERIOD 4 Shots**  
 January 27, 2019 at McKale Center (Lute & Bobbi Olson Court) - Tucson, Ariz.



**Arizona**

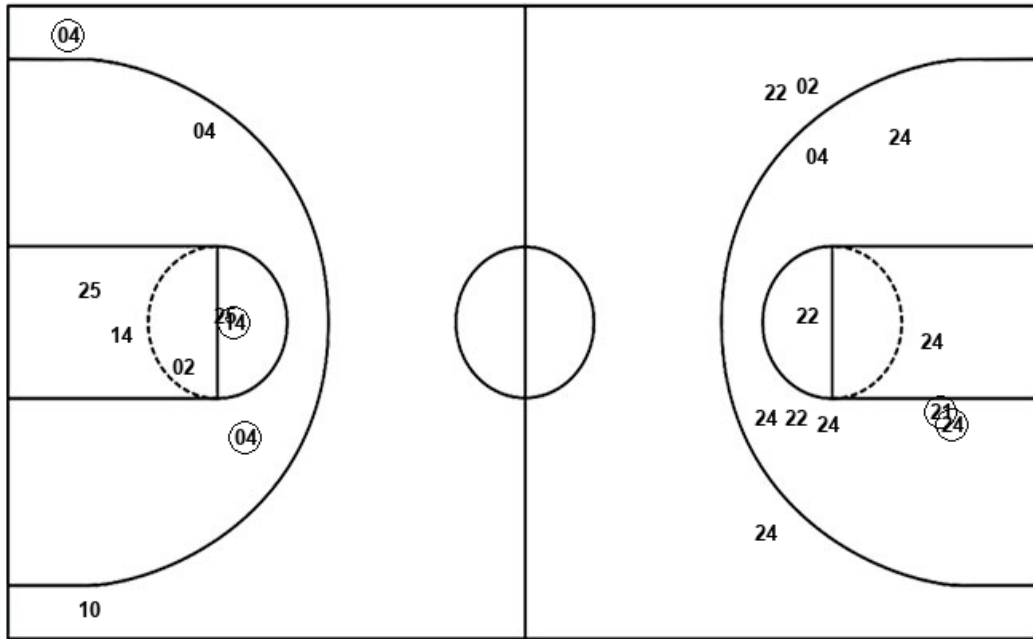
**UCLA**

Layups  
02 (02) (25)

Layups  
(22) (21) (11) 24 (21)

Dunks

Dunks



ARI : Period 4	Made	Att	Pct
Layups	2	3	66.7
Dunks	0	0	0
2PT Field Goals	4	10	40.0
3PT Field Goals	1	2	50.0
<b>Total Field Goals</b>	<b>5</b>	<b>12</b>	<b>41.7</b>

UCL : Period 4	Made	Att	Pct
Layups	4	5	80.0
Dunks	0	0	0
2PT Field Goals	6	14	42.9
3PT Field Goals	0	3	00.0
<b>Total Field Goals</b>	<b>6</b>	<b>17</b>	<b>35.3</b>

**Official Shot Chart**  
**UCLA vs Arizona**  
**PERIOD 5 Shots**  
 January 27, 2019 at McKale Center (Lute & Bobbi Olson Court) - Tucson, Ariz.

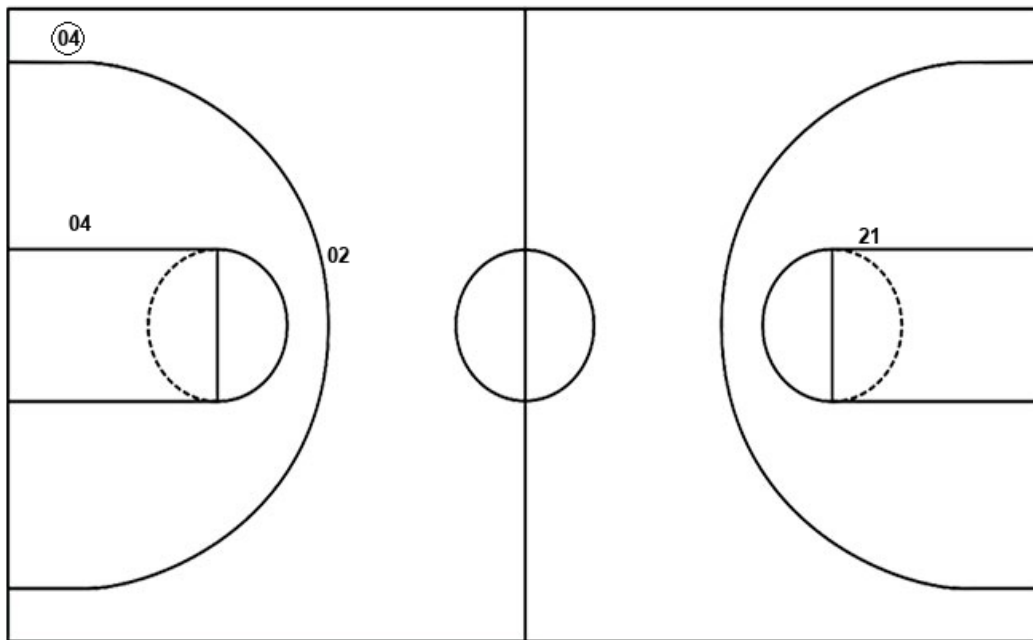


**Arizona**

**UCLA**

Layups  
 02 (14) 14 (02)

Layups  
 (21) 11 11 04 11  
 (11) (21) 21 (21)



Dunks

Dunks

ARI : Period 5	Made	Att	Pct
Layups	2	4	50.0
Dunks	0	0	0
2PT Field Goals	2	5	40.0
3PT Field Goals	1	2	50.0
<b>Total Field Goals</b>	<b>3</b>	<b>7</b>	<b>42.9</b>

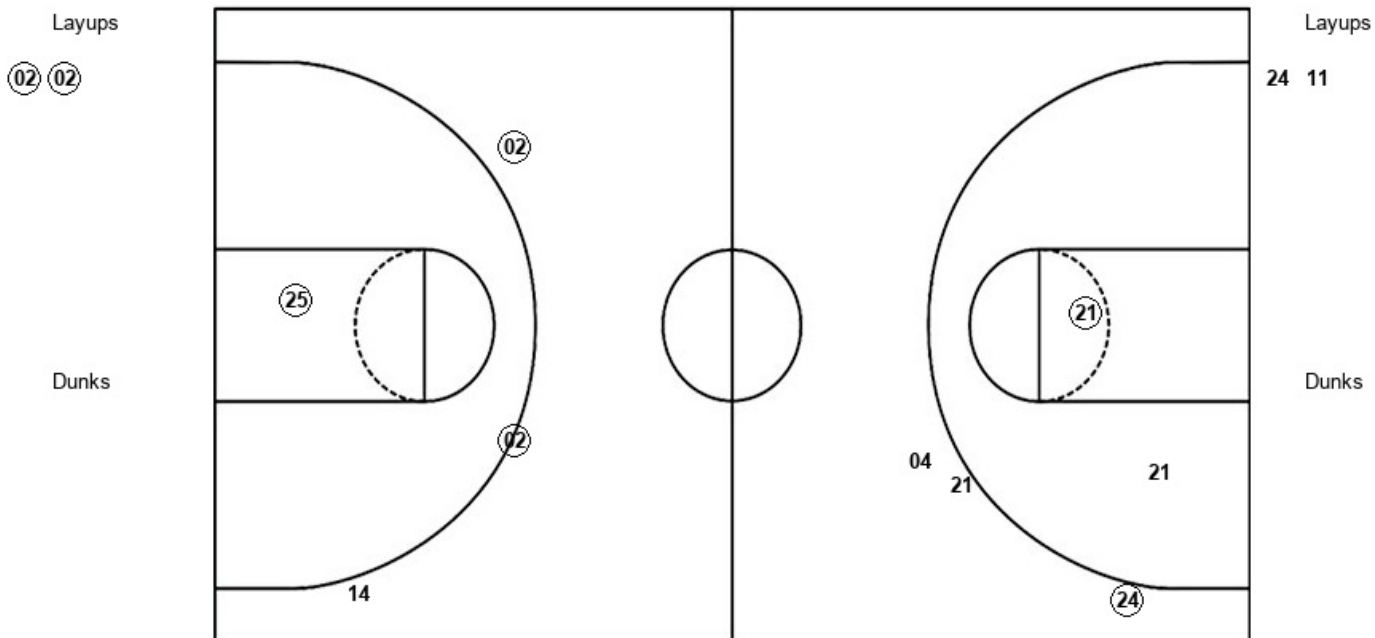
UCL : Period 5	Made	Att	Pct
Layups	4	9	44.4
Dunks	0	0	0
2PT Field Goals	4	10	40.0
3PT Field Goals	0	0	0
<b>Total Field Goals</b>	<b>4</b>	<b>10</b>	<b>40.0</b>

**Official Shot Chart**  
**UCLA vs Arizona**  
**PERIOD 6 Shots**  
 January 27, 2019 at McKale Center (Lute & Bobbi Olson Court) - Tucson, Ariz.



**Arizona**

**UCLA**



ARI : Period 6	Made	Att	Pct
Layups	2	2	100.0
Dunks	0	0	0
2PT Field Goals	3	3	100.0
3PT Field Goals	2	3	66.7
<b>Total Field Goals</b>	<b>5</b>	<b>6</b>	<b>83.3</b>

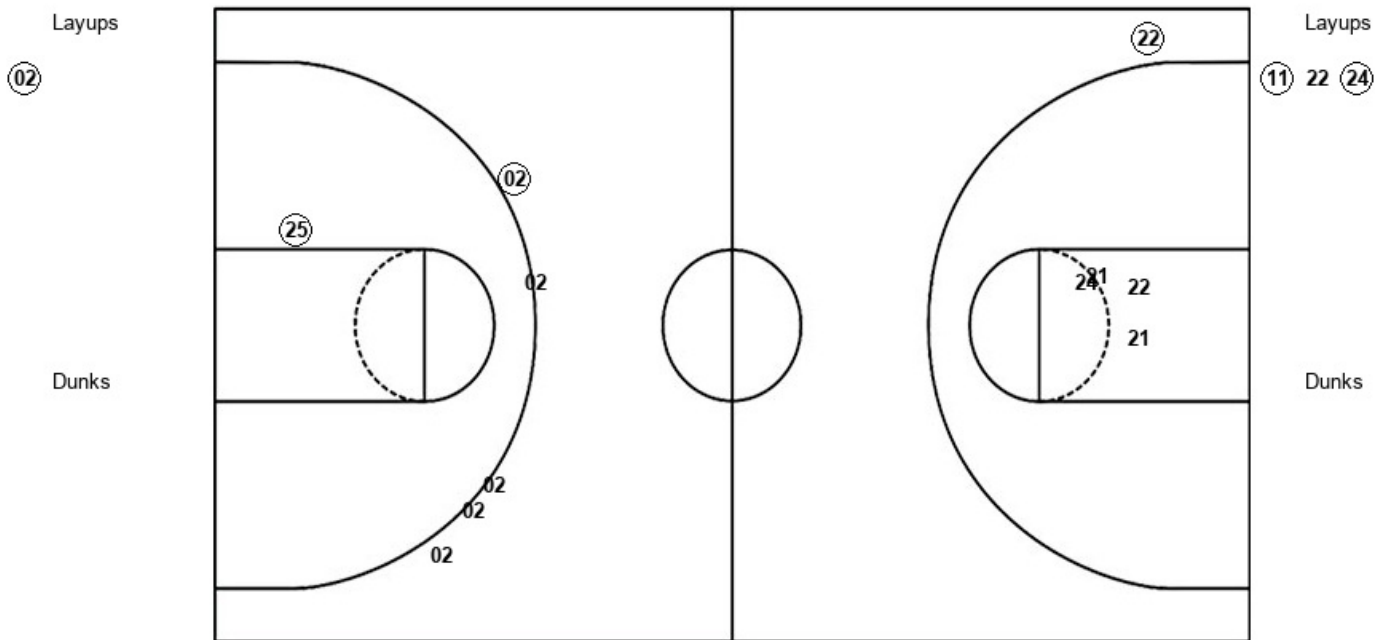
UCL : Period 6	Made	Att	Pct
Layups	0	2	00.0
Dunks	0	0	0
2PT Field Goals	1	4	25.0
3PT Field Goals	1	3	33.3
<b>Total Field Goals</b>	<b>2</b>	<b>7</b>	<b>28.6</b>

**Official Shot Chart**  
**UCLA vs Arizona**  
**PERIOD 7 Shots**  
 January 27, 2019 at McKale Center (Lute & Bobbi Olson Court) - Tucson, Ariz.



**Arizona**

**UCLA**



<b>ARI : Period 7</b>	<b>Made</b>	<b>Att</b>	<b>Pct</b>
Layups	1	1	100.0
Dunks	0	0	0
2PT Field Goals	2	2	100.0
3PT Field Goals	1	5	20.0
<b>Total Field Goals</b>	<b>3</b>	<b>7</b>	<b>42.9</b>

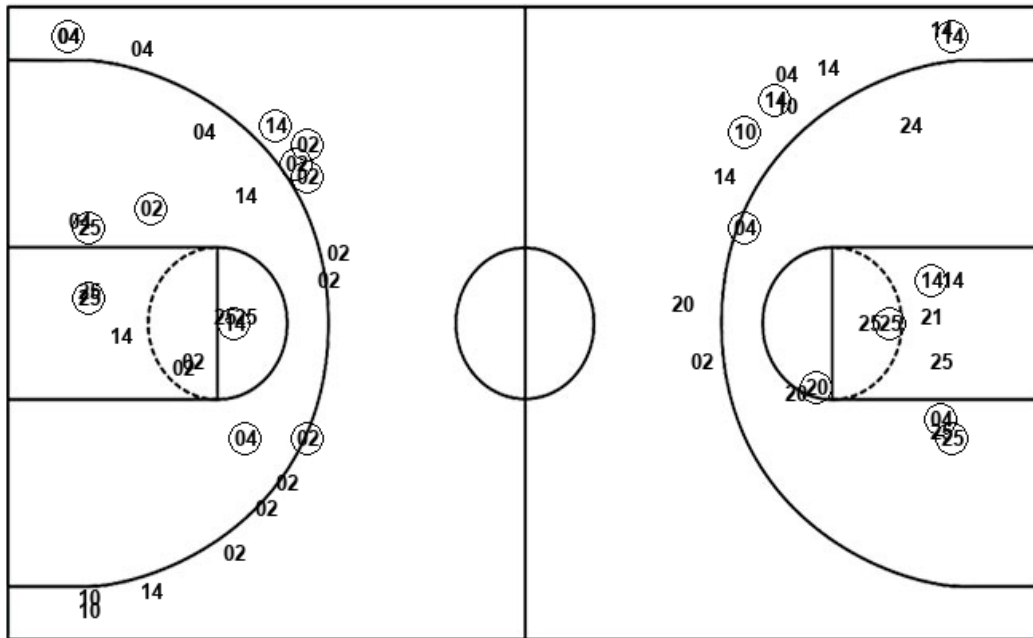
<b>UCL : Period 7</b>	<b>Made</b>	<b>Att</b>	<b>Pct</b>
Layups	2	3	66.7
Dunks	0	0	0
2PT Field Goals	2	7	28.6
3PT Field Goals	1	1	100.0
<b>Total Field Goals</b>	<b>3</b>	<b>8</b>	<b>37.5</b>



**Official Shot Chart**  
**UCLA vs Arizona**  
**Arizona Team Shots**  
 January 27, 2019 at McKale Center (Lute & Bobbi Olson Court) - Tucson, Ariz.



Layups



Layups

02	02	02	20	25
02	10	02	21	25
02	02	25	02	14
14	02	02	02	02

Dunks

Dunks

ARI : Period 1	Made	Att	Pct
Layups	2	4	50.0
Dunks	0	0	0
2PT Field Goals	4	10	40.0
3PT Field Goals	2	5	40.0
<b>Total Field Goals</b>	<b>6</b>	<b>15</b>	<b>40.0</b>

ARI : Period 2	Made	Att	Pct
Layups	3	3	100.0
Dunks	0	0	0
2PT Field Goals	7	10	70.0
3PT Field Goals	1	5	20.0
<b>Total Field Goals</b>	<b>8</b>	<b>15</b>	<b>53.3</b>

ARI : Period 3	Made	Att	Pct
Layups	3	3	100.0
Dunks	0	0	0
2PT Field Goals	4	7	57.1
3PT Field Goals	2	4	50.0
<b>Total Field Goals</b>	<b>6</b>	<b>11</b>	<b>54.5</b>

ARI : Period 4	Made	Att	Pct
Layups	2	3	66.7
Dunks	0	0	0
2PT Field Goals	4	10	40.0
3PT Field Goals	1	2	50.0
<b>Total Field Goals</b>	<b>5</b>	<b>12</b>	<b>41.7</b>

ARI : Period 5	Made	Att	Pct
Layups	2	4	50.0
Dunks	0	0	0
2PT Field Goals	2	5	40.0
3PT Field Goals	1	2	50.0
<b>Total Field Goals</b>	<b>3</b>	<b>7</b>	<b>42.9</b>

ARI : Period 6	Made	Att	Pct
Layups	2	2	100.0
Dunks	0	0	0
2PT Field Goals	3	3	100.0
3PT Field Goals	2	3	66.7
<b>Total Field Goals</b>	<b>5</b>	<b>6</b>	<b>83.3</b>

ARI : Period 7	Made	Att	Pct
Layups	1	1	100.0
Dunks	0	0	0
2PT Field Goals	2	2	100.0
3PT Field Goals	1	5	20.0
<b>Total Field Goals</b>	<b>3</b>	<b>7</b>	<b>42.9</b>