

## FINAL SCORE



**Stanford**

**78**



**Arizona**

**48**

January 13, 2019 • McKale Center (Lute & Bobbi Olson Court) - Tucson,  
Ariz.

## FINAL STATISTICS

**Official Box Score**  
**Stanford vs Arizona**  
**Game Totals -- Final Statistics**  
**January 13, 2019 at McKale Center (Lute & Bobbi Olson Court) - Tucson, Ariz.**



**Stanford 78**

No.	Player	S	Pts	FG	3FG	FT	OR	DR	TR	PF	A	TO	Blk	Stl	Min	+/-
10	JEROME, ALYSSA		2	1-5	0-3	0-0	0	6	6	3	1	3	1	0	27	24
11	SMITH, ALANNA		20	8-16	4-6	0-0	5	9	14	2	2	3	7	0	27	29
21	CARRINGTON, DIJONAI		19	6-16	3-8	4-4	0	8	8	0	1	2	0	0	29	32
23	WILLIAMS, KIANA		13	5-7	3-3	0-0	0	1	1	0	7	0	0	0	25	29
24	HULL, LACIE		2	0-2	0-2	2-2	0	1	1	2	3	1	0	1	23	28
02	COFFEE, SHANNON		2	1-4	0-3	0-0	2	1	3	0	1	0	0	1	13	1
03	WILSON, ANNA		2	1-3	0-2	0-0	0	2	2	0	0	0	0	1	11	7
12	HULL, LEXIE		8	3-4	2-2	0-0	2	3	5	4	0	1	0	0	14	2
14	BREWER, MIKAELA		1	0-1	0-0	1-2	1	0	1	1	0	0	0	1	6	-7
20	MOSCHKAU, ESTELLA		0	0-0	0-0	0-0	0	2	2	2	1	0	0	0	4	-1
54	BROWN, JENNA		9	3-5	1-2	2-2	0	1	1	1	0	4	0	0	20	6
	TEAM						1	1	2	0		0				
<b>TOTALS</b>			<b>78</b>	<b>28-63</b>	<b>13-31</b>	<b>9-10</b>	<b>11</b>	<b>35</b>	<b>46</b>	<b>15</b>	<b>16</b>	<b>14</b>	<b>8</b>	<b>4</b>	<b>200</b>	

*Shooting By Period*

Period	FG	FG%	3FG	3FG%	FT	FT%
1st Qtr	6-19	32%	3-9	33%	6-6	100%
2nd Qtr	9-12	75%	5-6	83%	0-0	0%
3rd Qtr	7-16	44%	2-8	25%	2-2	100%
4th Qtr	6-16	38%	3-8	38%	1-2	50%
1st Half	15-31	48%	8-15	53%	6-6	100%
2nd Half	13-32	41%	5-16	31%	3-4	75%
<b>Game</b>	<b>28-63</b>	<b>44.4%</b>	<b>13-31</b>	<b>41.9%</b>	<b>9-10</b>	<b>90.0%</b>

Last FG: 4th-01:40  
Biggest Run: 27-0  
Largest lead: By 38 at 4-08:30  
Technical Fouls: None.

**Arizona 48**

No.	Player	S	Pts	FG	3FG	FT	OR	DR	TR	PF	A	TO	Blk	Stl	Min	+/-
02	MCDONALD, AARI		17	6-22	0-6	5-6	3	5	8	3	0	3	0	1	33	-22
04	ALONSO, LUCIA		8	3-6	2-3	0-0	1	2	3	1	1	1	0	0	31	-27
14	THOMAS, SAM		9	3-10	3-7	0-0	2	2	4	1	2	2	1	1	35	-22
20	MCBRYDE, DOMINIQUE		4	2-5	0-1	0-0	0	2	2	3	1	1	1	1	33	-28
25	REESE, CATE		6	1-9	0-1	4-6	1	3	4	1	0	2	1	0	32	-23
21	GRAHAM, DESTINY		0	0-3	0-1	0-0	0	1	1	3	0	0	0	1	8	-8
22	MALECHA, LINDSEY		2	1-1	0-0	0-0	0	0	0	1	0	0	0	0	4	0
24	NIXON, BRYCE		0	0-2	0-1	0-0	0	1	1	0	0	0	0	0	12	-14
34	SMITH, SEMAJ		2	1-4	0-1	0-0	2	3	5	1	2	2	0	0	12	-6
	TEAM						1	3	4	0		0				
<b>TOTALS</b>			<b>48</b>	<b>17-62</b>	<b>5-21</b>	<b>9-12</b>	<b>10</b>	<b>22</b>	<b>32</b>	<b>14</b>	<b>6</b>	<b>11</b>	<b>3</b>	<b>4</b>	<b>200</b>	

*Shooting By Period*

Period	FG	FG%	3FG	3FG%	FT	FT%
1st Qtr	5-21	24%	1-8	13%	1-1	100%
2nd Qtr	2-15	13%	0-3	00%	0-0	0%
3rd Qtr	2-12	17%	2-6	33%	5-6	83%
4th Qtr	8-14	57%	2-4	50%	3-5	60%
1st Half	7-36	19%	1-11	09%	1-1	100%
2nd Half	10-26	38%	4-10	40%	8-11	73%
<b>Game</b>	<b>17-62</b>	<b>27.4%</b>	<b>5-21</b>	<b>23.8%</b>	<b>9-12</b>	<b>75.0%</b>

Last FG: 4th-00:16  
Biggest Run: 10-0  
Largest lead: By 0 at -  
Technical Fouls: None.

Game Notes:

Officials: Charles Gonzalez, Richard Waters, Rochelle Bennett

Start Time: 2019-01-13 19:07:12

End Time: 2019-01-13 20:49:27

Game Duration: 102

Conference Game;

Score	1st	2nd	3rd	4th	TOT
STA	21	23	18	16	<b>78</b>
ARI	12	4	11	21	<b>48</b>

STA led for 39:34. ARI led for 0:00.

Game was tied for 0:26.

Times tied: 0 Lead Changes: 0

Points from	STA	ARI
In the Paint	30	18
Off Turns	15	5
2nd Chance	8	7
Fast Break	13	6
Bench	22	4

**Official Box Score**  
**Stanford vs Arizona**  
**First Half Statistics Only**  
**January 13, 2019 at McKale Center (Lute & Bobbi Olson Court) - Tucson, Ariz.**



### Stanford 44

No.	Player	S	Pts	FG	3FG	FT	OR	DR	TR	PF	A	TO	Blk	Stl	Min	+/-
02	COFFEE, SHANNON		0	0-0	0-0	0-0	0	1	1	0	0	0	0	0	3	4
03	WILSON, ANNA		0	0-1	0-1	0-0	0	1	1	0	0	0	0	0	5	2
10	JEROME, ALYSSA		2	1-3	0-2	0-0	0	3	3	0	1	1	0	0	15	22
11	SMITH, ALANNA		10	4-10	2-4	0-0	3	6	9	1	1	3	7	0	17	24
12	HULL, LEXIE		3	1-1	1-1	0-0	0	2	2	2	0	0	0	0	3	2
14	BREWER, MIKAELA		0	0-0	0-0	0-0	0	0	0	0	0	0	0	0	0	0
20	MOSCHKAU, ESTELLA		0	0-0	0-0	0-0	0	0	0	0	0	0	0	0	0	0
21	CARRINGTON, DIJONAI		15	4-7	3-4	4-4	0	8	8	0	0	2	0	0	19	28
23	WILLIAMS, KIANA		10	4-6	2-2	0-0	0	0	0	0	4	0	0	0	17	25
24	HULL, LACIE		2	0-1	0-1	2-2	0	1	1	1	2	0	0	0	13	25
54	BROWN, JENNA		2	1-2	0-0	0-0	0	1	1	0	0	1	0	0	8	8
	TEAM		0	0-0	0-0	0-0	1	1	2	0	0	0	0	0	0	0
<b>TOTALS</b>			<b>44</b>	<b>15-31</b>	<b>8-15</b>	<b>6-6</b>	<b>4</b>	<b>24</b>	<b>28</b>	<b>4</b>	<b>8</b>	<b>7</b>	<b>7</b>	<b>0</b>	<b>100</b>	

#### Shooting By Period

Period	FG	FG%	3FG	3FG%	FT	FT%
1st Qtr	6-19	32%	3-9	33%	6-6	100%
2nd Qtr	9-12	75%	5-6	83%	0-0	0%
1st Half	15-31	48%	8-15	53%	6-6	100%
Game	28-63	44.4%	13-31	41.9%	9-10	90.0%

Last FG Half: STA 2nd-00:40

### Arizona 16

No.	Player	S	Pts	FG	3FG	FT	OR	DR	TR	PF	A	TO	Blk	Stl	Min	+/-
02	MCDONALD, AARI		9	4-14	0-4	1-1	1	2	3	1	0	1	0	0	18	-23
04	ALONSO, LUCIA		0	0-1	0-0	0-0	1	1	2	0	1	0	0	0	15	-24
14	THOMAS, SAM		3	1-4	1-2	0-0	1	1	2	1	0	1	1	1	18	-20
20	MCBRYDE, DOMINIQUE		4	2-5	0-1	0-0	0	0	0	1	0	1	1	0	19	-26
21	GRAHAM, DESTINY		0	0-2	0-1	0-0	0	0	0	2	0	0	0	1	3	-7
22	MALECHA, LINDSEY		0	0-0	0-0	0-0	0	0	0	0	0	0	0	0	0	0
24	NIXON, BRYCE		0	0-2	0-1	0-0	0	0	0	0	0	0	0	0	6	-12
25	REESE, CATE		0	0-6	0-1	0-0	1	2	3	1	0	1	0	0	16	-24
34	SMITH, SEMAJ		0	0-2	0-1	0-0	0	2	2	0	0	0	0	0	3	-4
	TEAM		0	0-0	0-0	0-0	1	3	4	0	0	0	0	0	0	0
<b>TOTALS</b>			<b>16</b>	<b>7-36</b>	<b>1-11</b>	<b>1-1</b>	<b>5</b>	<b>11</b>	<b>16</b>	<b>6</b>	<b>1</b>	<b>4</b>	<b>2</b>	<b>2</b>	<b>100</b>	

#### Shooting By Period

Period	FG	FG%	3FG	3FG%	FT	FT%
1st Qtr	5-21	24%	1-8	13%	1-1	100%
2nd Qtr	2-15	13%	0-3	00%	0-0	0%
1st Half	7-36	19%	1-11	09%	1-1	100%
Game	17-62	27.4%	5-21	23.8%	9-12	75.0%

Last FG Half: ARI 2nd-06:35

#### Game Notes:

Officials: Charles Gonzalez, Richard Waters, Rochelle Bennett

Start Time: 2019-01-13 19:07:12

End Time: 2019-01-13 20:49:27

Game Duration: 102

Conference Game;

Score	1st	2nd	3rd	4th	TOT
STA	21	23	18	16	<b>78</b>
ARI	12	4	11	21	<b>48</b>

Points from (This Period)	STA	ARI
In the Paint	14	8
Off Turns	5	0
2nd Chance	2	2
Fast Break	5	0
Bench	5	0

**Official Box Score**  
**Stanford vs Arizona**  
**First Quarter Statistics Only**  
**January 13, 2019 at McKale Center (Lute & Bobbi Olson Court) - Tucson, Ariz.**



## Stanford 21

No.	Player	S	Pts	FG	3FG	FT	OR	DR	TR	PF	A	TO	Blk	Stl	Min	+/-
10	JEROME, ALYSSA		0	0-2	0-2	0-0	0	2	2	0	0	1	0	0	7	5
11	SMITH, ALANNA		5	2-5	1-2	0-0	3	3	6	1	1	2	3	0	7	5
21	CARRINGTON, DIJONAI		4	0-3	0-1	4-4	0	4	4	0	0	0	0	0	9	9
23	WILLIAMS, KIANA		7	3-5	1-1	0-0	0	0	0	0	1	0	0	0	10	9
24	HULL, LACIE		2	0-1	0-1	2-2	0	0	0	0	1	0	0	0	7	6
02	COFFEE, SHANNON		0	0-0	0-0	0-0	0	1	1	0	0	0	0	0	3	4
03	WILSON, ANNA		0	0-1	0-1	0-0	0	0	0	0	0	0	0	0	1	2
12	HULL, LEXIE		3	1-1	1-1	0-0	0	2	2	2	0	0	0	0	3	2
14	BREWER, MIKAELA		0	0-0	0-0	0-0	0	0	0	0	0	0	0	0	0	0
20	MOSCHKAU, ESTELLA		0	0-0	0-0	0-0	0	0	0	0	0	0	0	0	0	0
54	BROWN, JENNA		0	0-1	0-0	0-0	0	1	1	0	0	0	0	0	3	3
	TEAM						1	0	1	0		0				
<b>TOTALS</b>			<b>21</b>	<b>6-19</b>	<b>3-9</b>	<b>6-6</b>	<b>4</b>	<b>13</b>	<b>17</b>	<b>3</b>	<b>3</b>	<b>3</b>	<b>3</b>	<b>0</b>	<b>50</b>	

### Shooting By Period

Period	FG	FG%	3FG	3FG%	FT	FT%
1st Qtr	6-19	32%	3-9	33%	6-6	100%
2nd Qtr	9-12	75%	5-6	83%	0-0	0%
1st Half	6-19	32%	3-9	33%	6-6	100%
1st Half	15-31	48%	8-15	53%	6-6	100%
Game	28-63	44.4%	13-31	41.9%	9-10	90.0%

## Arizona 12

No.	Player	S	Pts	FG	3FG	FT	OR	DR	TR	PF	A	TO	Blk	Stl	Min	+/-
02	MCDONALD, AARI		7	3-9	0-4	1-1	1	2	3	1	0	0	0	0	10	-9
04	ALONSO, LUCIA		0	0-1	0-0	0-0	1	1	2	0	1	0	0	0	10	-9
14	THOMAS, SAM		3	1-2	1-2	0-0	0	1	1	1	0	1	0	0	10	-9
20	MCBRYDE, DOMINIQUE		2	1-4	0-1	0-0	0	0	0	0	0	0	1	0	9	-7
25	REESE, CATE		0	0-3	0-0	0-0	1	1	2	1	0	1	0	0	6	-5
21	GRAHAM, DESTINY		0	0-0	0-0	0-0	0	0	0	2	0	0	0	0	1	-2
22	MALECHA, LINDSEY		0	0-0	0-0	0-0	0	0	0	0	0	0	0	0	0	0
24	NIXON, BRYCE		0	0-0	0-0	0-0	0	0	0	0	0	0	0	0	0	0
34	SMITH, SEMAJ		0	0-2	0-1	0-0	0	2	2	0	0	0	0	0	3	-4
	TEAM						0	1	1	0		0				
<b>TOTALS</b>			<b>12</b>	<b>5-21</b>	<b>1-8</b>	<b>1-1</b>	<b>3</b>	<b>8</b>	<b>11</b>	<b>5</b>	<b>1</b>	<b>2</b>	<b>1</b>	<b>0</b>	<b>50</b>	

### Shooting By Period

Period	FG	FG%	3FG	3FG%	FT	FT%
1st Qtr	5-21	24%	1-8	13%	1-1	100%
2nd Qtr	2-15	13%	0-3	00%	0-0	0%
1st Half	5-21	24%	1-8	13%	1-1	100%
1st Half	7-36	19%	1-11	09%	1-1	100%
Game	17-62	27.4%	5-21	23.8%	9-12	75.0%

### Game Notes:

Officials: Charles Gonzalez, Richard Waters, Rochelle Bennett

Start Time: 2019-01-13 19:07:12

End Time: 2019-01-13 20:49:27

Game Duration: 102

Conference Game;

Score	1st	2nd	3rd	4th	TOT
STA	21	23	18	16	<b>78</b>
ARI	12	4	11	21	<b>48</b>

Points from (This Period)	STA	ARI
In the Paint	6	6
Off Turns	2	0
2nd Chance	2	2
Fast Break	0	0
Bench	3	0

**Official Play-By-Play  
Stanford vs Arizona**

**First Quarter  
January 13, 2019 at McKale Center (Lute & Bobbi Olson Court) - Tucson, Ariz.**



**Period 1**

**Starters:**

**Stanford:** 10 JEROME, ALYSSA; 11 SMITH, ALANNA; 21 CARRINGTON, DIJONAI; 23 WILLIAMS, KIANA; 24 HULL, LACIE;

**Arizona:** 2 MCDONALD, AARI; 4 ALONSO, LUCIA; 14 THOMAS, SAM; 20 MCBRYDE, DOMINIQUE; 25 REESE, CATE;

Time	VISITORS: Stanford	Score	Margin	HOME: Arizona
09:50	GOOD! 3PTR by SMITH, ALANNA	0-3	V 3	
09:50	ASSIST by HULL, LACIE			
09:29				MISSED JUMPER by MCBRYDE, DOMINIQUE
09:26	REBOUND (DEF) by SMITH, ALANNA			
09:12	GOOD! JUMPER by WILLIAMS, KIANA [PNT]	0-5	V 5	
08:53				MISSED 3PTR by MCDONALD, AARI
08:53	BLOCK by SMITH, ALANNA			
08:47				REBOUND (OFF) by ALONSO, LUCIA
08:46				MISSED 3PTR by THOMAS, SAM
08:43				REBOUND (OFF) by REESE, CATE
08:43				MISSED JUMPER by REESE, CATE
08:37	REBOUND (DEF) by JEROME, ALYSSA			
08:35	TURNOVER (DRIBBLING) by JEROME, ALYSSA			
08:24				FOUL (OFF) by REESE, CATE
08:24				TURNOVER (OFFENSIVE) by REESE, CATE
08:14	MISSED JUMPER by CARRINGTON, DIJONAI			
08:09	REBOUND (OFF) by SMITH, ALANNA			
08:06	MISSED 3PTR by HULL, LACIE			
08:02	REBOUND (OFF) by SMITH, ALANNA			
08:01	TURNOVER (TRAVEL) by SMITH, ALANNA			
07:52				MISSED JUMPER by MCDONALD, AARI
07:52	BLOCK by SMITH, ALANNA			
07:48	REBOUND (DEF) by JEROME, ALYSSA			
07:46	MISSED JUMPER by WILLIAMS, KIANA			
07:41				REBOUND (DEF) by ALONSO, LUCIA
07:39				MISSED 3PTR by MCDONALD, AARI
07:35	REBOUND (DEF) by CARRINGTON, DIJONAI			
07:19	MISSED LAYUP by SMITH, ALANNA			
07:16				REBOUND (DEF) by MCDONALD, AARI
07:11				MISSED 3PTR by MCDONALD, AARI
07:08	REBOUND (DEF) by SMITH, ALANNA			
07:01	MISSED JUMPER by WILLIAMS, KIANA			
06:57				REBOUND (DEF) by REESE, CATE
06:43		3-5	V 2	GOOD! 3PTR by THOMAS, SAM
06:43				ASSIST by ALONSO, LUCIA
06:23				FOUL (PERSONAL) by MCDONALD, AARI
06:23	GOOD! FT by HULL, LACIE	3-6	V 3	
06:23	GOOD! FT by HULL, LACIE	3-7	V 4	
06:08		5-7	V 2	GOOD! LAYUP by MCDONALD, AARI
05:55	MISSED 3PTR by SMITH, ALANNA			
05:51				REBOUND (DEF) by THOMAS, SAM
05:38				MISSED JUMPER by ALONSO, LUCIA
05:35	REBOUND (DEF) by CARRINGTON, DIJONAI			
05:31	MISSED 3PTR by CARRINGTON, DIJONAI			
05:29				REBOUND (DEF) by TEAM
05:13				MISSED LAYUP by REESE, CATE
05:10	REBOUND (DEF) by SMITH, ALANNA			
04:57	GOOD! 3PTR by WILLIAMS, KIANA	5-10	V 5	
04:57	ASSIST by SMITH, ALANNA			
04:37				
04:37	SUB OUT: CARRINGTON, DIJONAI			
04:37	SUB IN: HULL, LEXIE			
04:33				MISSED JUMPER by REESE, CATE
04:33	BLOCK by SMITH, ALANNA			
04:28	REBOUND (DEF) by HULL, LEXIE			
04:23	MISSED LAYUP by SMITH, ALANNA			
04:18	REBOUND (OFF) by SMITH, ALANNA			
04:17	GOOD! LAYUP by SMITH, ALANNA	5-12	V 7	
04:07		7-12	V 5	GOOD! JUMPER by MCBRYDE, DOMINIQUE
03:54	MISSED 3PTR by JEROME, ALYSSA			
03:52	REBOUND (OFF) by TEAM			
03:52				FOUL (PERSONAL) by THOMAS, SAM
03:52				SUB OUT: REESE, CATE
03:52				SUB IN: GRAHAM, DESTINY
03:52	FOUL (OFF) by SMITH, ALANNA			
03:52	TURNOVER (OFFENSIVE) by SMITH, ALANNA			
03:39				MISSED 3PTR by MCBRYDE, DOMINIQUE
03:35	REBOUND (DEF) by HULL, LEXIE			
03:22	MISSED 3PTR by JEROME, ALYSSA			
03:19				REBOUND (DEF) by MCDONALD, AARI

Time	VISITORS: Stanford	Score	Margin	HOME: Arizona
03:15				TURNOVER (TRAVEL) by THOMAS, SAM
03:15	SUB OUT: SMITH, ALANNA			
03:15	SUB IN: COFFEE, SHANNON			
03:15	SUB OUT: JEROME, ALYSSA			
03:15	SUB IN: CARRINGTON, DIJONAI			
03:15				SUB OUT: MCBRYDE, DOMINIQUE
03:15				SUB IN: SMITH, SEMAJ
03:02				FOUL (PERSONAL) by GRAHAM, DESTINY
03:02	GOOD! FT by CARRINGTON, DIJONAI	7-13	V 6	
03:02	SUB OUT: HULL, LACIE			
03:02	SUB IN: BROWN, JENNA			
03:02	GOOD! FT by CARRINGTON, DIJONAI	7-14	V 7	
02:43				MISSED 3PTR by SMITH, SEMAJ
02:40				REBOUND (OFF) by MCDONALD, AARI
02:39		9-14	V 5	GOOD! LAYUP by MCDONALD, AARI
02:25				FOUL (PERSONAL) by GRAHAM, DESTINY
02:25	GOOD! FT by CARRINGTON, DIJONAI	9-15	V 6	
02:25	GOOD! FT by CARRINGTON, DIJONAI	9-16	V 7	
02:25				SUB OUT: GRAHAM, DESTINY
02:25				SUB IN: MCBRYDE, DOMINIQUE
02:11				MISSED JUMPER by MCBRYDE, DOMINIQUE
02:08	REBOUND (DEF) by CARRINGTON, DIJONAI			
02:01	GOOD! 3PTR by HULL, LEXIE	9-19	V 10	
02:01	ASSIST by WILLIAMS, KIANA			
01:43		11-19	V 8	GOOD! JUMPER by MCDONALD, AARI
01:43	FOUL (PERSONAL) by HULL, LEXIE			
01:43		12-19	V 7	GOOD! FT by MCDONALD, AARI
01:34	MISSED JUMPER by CARRINGTON, DIJONAI			
01:31				REBOUND (DEF) by SMITH, SEMAJ
01:21	FOUL (PERSONAL) by HULL, LEXIE			
01:21	SUB OUT: HULL, LEXIE			
01:21	SUB IN: WILSON, ANNA			
01:15				MISSED JUMPER by MCDONALD, AARI
01:12	REBOUND (DEF) by COFFEE, SHANNON			
01:05	MISSED JUMPER by BROWN, JENNA			
01:01				REBOUND (DEF) by SMITH, SEMAJ
00:51				MISSED 3PTR by MCDONALD, AARI
00:46	REBOUND (DEF) by CARRINGTON, DIJONAI			
00:29	GOOD! LAYUP by WILLIAMS, KIANA	12-21	V 9	
00:06				MISSED JUMPER by SMITH, SEMAJ
00:03	REBOUND (DEF) by BROWN, JENNA			
00:00	MISSED 3PTR by WILSON, ANNA			
00:00				BLOCK by MCBRYDE, DOMINIQUE
00:00	REBOUND (OFF) by TEAM			

Stanford 21, Arizona 12

Points from (This Period)	STA	ARI
In the Paint	6	6
Off Turns	2	0
2nd Chance	2	2
Fast Break	0	0
Bench	3	0

**Official Box Score**  
**Stanford vs Arizona**  
**Second Quarter Statistics Only**  
**January 13, 2019 at McKale Center (Lute & Bobbi Olson Court) - Tucson, Ariz.**



### Stanford 23

No.	Player	S	Pts	FG	3FG	FT	OR	DR	TR	PF	A	TO	Blk	Stl	Min	+/-
10	JEROME, ALYSSA	2	1-1	0-0	0-0	0	0	1	1	0	1	0	0	0	8	17
11	SMITH, ALANNA	5	2-5	1-2	0-0	0	0	3	3	0	0	1	4	0	10	19
21	CARRINGTON, DIJONAI	11	4-4	3-3	0-0	0	0	4	4	0	0	2	0	0	10	19
23	WILLIAMS, KIANA	3	1-1	1-1	0-0	0	0	0	0	0	3	0	0	0	7	16
24	HULL, LACIE	0	0-0	0-0	0-0	0	0	1	1	1	1	0	0	0	6	19
02	COFFEE, SHANNON	0	0-0	0-0	0-0	0	0	0	0	0	0	0	0	0	0	0
03	WILSON, ANNA	0	0-0	0-0	0-0	0	0	1	1	0	0	0	0	0	4	0
12	HULL, LEXIE	0	0-0	0-0	0-0	0	0	0	0	0	0	0	0	0	0	0
14	BREWER, MIKAELA	0	0-0	0-0	0-0	0	0	0	0	0	0	0	0	0	0	0
20	MOSCHKAU, ESTELLA	0	0-0	0-0	0-0	0	0	0	0	0	0	0	0	0	0	0
54	BROWN, JENNA	2	1-1	0-0	0-0	0	0	0	0	0	0	1	0	0	5	5
	TEAM						0	1	1	0		0				
<b>TOTALS</b>		<b>23</b>	<b>9-12</b>	<b>5-6</b>	<b>0-0</b>	<b>0</b>	<b>11</b>	<b>11</b>	<b>1</b>	<b>5</b>	<b>4</b>	<b>4</b>	<b>0</b>	<b>50</b>		

#### Shooting By Period

Period	FG	FG%	3FG	3FG%	FT	FT%
3rd Qtr	7-16	44%	2-8	25%	2-2	100%
4th Qtr	6-16	38%	3-8	38%	1-2	50%
2nd Half	9-12	75%	5-6	83%	0-0	0%
2nd Half	13-32	41%	5-16	31%	3-4	75%
Game	28-63	44.4%	13-31	41.9%	9-10	90.0%

### Arizona 4

No.	Player	S	Pts	FG	3FG	FT	OR	DR	TR	PF	A	TO	Blk	Stl	Min	+/-
02	MCDONALD, AARI	2	1-5	0-0	0-0	0	0	0	0	0	0	1	0	0	8	-14
04	ALONSO, LUCIA	0	0-0	0-0	0-0	0	0	0	0	0	0	0	0	0	5	-15
14	THOMAS, SAM	0	0-2	0-0	0-0	0	1	0	1	0	0	0	1	1	8	-11
20	MCBRYDE, DOMINIQUE	2	1-1	0-0	0-0	0	0	0	0	1	0	1	0	0	10	-19
25	REESE, CATE	0	0-3	0-1	0-0	0	0	1	1	0	0	0	0	0	10	-19
21	GRAHAM, DESTINY	0	0-2	0-1	0-0	0	0	0	0	0	0	0	0	1	2	-5
22	MALECHA, LINDSEY	0	0-0	0-0	0-0	0	0	0	0	0	0	0	0	0	0	0
24	NIXON, BRYCE	0	0-2	0-1	0-0	0	0	0	0	0	0	0	0	0	6	-12
34	SMITH, SEMAJ	0	0-0	0-0	0-0	0	0	0	0	0	0	0	0	0	0	0
	TEAM						1	2	3	0		0				
<b>TOTALS</b>		<b>4</b>	<b>2-15</b>	<b>0-3</b>	<b>0-0</b>	<b>2</b>	<b>3</b>	<b>5</b>	<b>1</b>	<b>0</b>	<b>2</b>	<b>1</b>	<b>2</b>	<b>50</b>		

#### Shooting By Period

Period	FG	FG%	3FG	3FG%	FT	FT%
3rd Qtr	2-12	17%	2-6	33%	5-6	83%
4th Qtr	8-14	57%	2-4	50%	3-5	60%
2nd Half	2-15	13%	0-3	00%	0-0	0%
2nd Half	10-26	38%	4-10	40%	8-11	73%
Game	17-62	27.4%	5-21	23.8%	9-12	75.0%

#### Game Notes:

Officials: Charles Gonzalez, Richard Waters, Rochelle Bennett

Start Time: 2019-01-13 19:07:12

End Time: 2019-01-13 20:49:27

Game Duration: 102

Conference Game;

Score	1st	2nd	3rd	4th	TOT
STA	21	23	18	16	<b>78</b>
ARI	12	4	11	21	<b>48</b>

Points from (This Period)	STA	ARI
In the Paint	8	2
Off Turns	3	0
2nd Chance	0	0
Fast Break	5	0
Bench	2	0

**Official Play-By-Play  
Stanford vs Arizona**

**Second Quarter  
January 13, 2019 at McKale Center (Lute & Bobbi Olson Court) - Tucson, Ariz.**



**Period 2**

**Starters:**

**Stanford:** 10 JEROME,ALYSSA; 11 SMITH,ALANNA; 21 CARRINGTON,DIJONAI; 23 WILLIAMS,KIANA; 24 HULL,LACIE;

**Arizona:** 2 MCDONALD,AARI; 4 ALONSO,LUCIA; 14 THOMAS,SAM; 20 MCBRYDE,DOMINIQUE; 25 REESE,CATE;

Time	VISITORS: Stanford	Score	Margin	HOME: Arizona
09:30	GOOD! LAYUP by BROWN, JENNA	12-23	V 11	
09:13				MISSED 3PTR by REESE, CATE
09:08	REBOUND (DEF) by WILSON, ANNA			
09:01	GOOD! LAYUP by SMITH, ALANNA	12-25	V 13	
09:01	ASSIST by WILLIAMS, KIANA			
08:40		14-25	V 11	GOOD! JUMPER by MCBRYDE, DOMINIQUE
08:09	MISSED 3PTR by SMITH, ALANNA			
08:09				REBOUND (DEF) by TEAM
08:09				SUB OUT: ALONSO, LUCIA
08:09				SUB IN: NIXON, BRYCE
07:47				TURNOVER (LOSTBALL) by MCBRYDE, DOMINIQUE
07:47	SUB OUT: WILLIAMS, KIANA			
07:47	SUB IN: JEROME, ALYSSA			
07:35				FOUL (PERSONAL) by MCBRYDE, DOMINIQUE
07:33	TURNOVER (TRAVEL) by SMITH, ALANNA			
07:15				MISSED JUMPER by THOMAS, SAM
07:12	REBOUND (DEF) by CARRINGTON, DIJONAI			
06:44	MISSED JUMPER by SMITH, ALANNA			
06:44				BLOCK by THOMAS, SAM
06:44				REBOUND (DEF) by TEAM
06:35		16-25	V 9	GOOD! LAYUP by MCDONALD, AARI
06:19	TURNOVER (BADPASS) by CARRINGTON, DIJONAI			
06:19	SUB OUT: WILSON, ANNA			
06:19	SUB IN: WILLIAMS, KIANA			
06:19	SUB OUT: BROWN, JENNA			
06:19	SUB IN: HULL, LACIE			
06:05				MISSED JUMPER by MCDONALD, AARI
06:05	BLOCK by SMITH, ALANNA			
05:59	REBOUND (DEF) by CARRINGTON, DIJONAI			
05:48	GOOD! 3PTR by CARRINGTON, DIJONAI	16-28	V 12	
05:21				MISSED JUMPER by MCDONALD, AARI
05:18	REBOUND (DEF) by CARRINGTON, DIJONAI			
04:59	GOOD! 3PTR by CARRINGTON, DIJONAI	16-31	V 15	
04:59	ASSIST by WILLIAMS, KIANA			
04:36				MISSED 3PTR by NIXON, BRYCE
04:33				REBOUND (OFF) by THOMAS, SAM
04:33				
04:26				MISSED JUMPER by REESE, CATE
04:26	BLOCK by SMITH, ALANNA			
04:26				REBOUND (OFF) by TEAM
04:04				MISSED JUMPER by NIXON, BRYCE
04:04	BLOCK by SMITH, ALANNA			
03:58	REBOUND (DEF) by CARRINGTON, DIJONAI			
03:38	TURNOVER (BADPASS) by CARRINGTON, DIJONAI			
03:38				STEAL by THOMAS, SAM
03:33				MISSED LAYUP by MCDONALD, AARI
03:33	REBOUND (DEF) by TEAM			
03:33				SUB OUT: THOMAS, SAM
03:33				SUB IN: ALONSO, LUCIA
03:06	MISSED LAYUP by SMITH, ALANNA			
03:03				REBOUND (DEF) by REESE, CATE
02:51				MISSED LAYUP by MCDONALD, AARI
02:47	REBOUND (DEF) by JEROME, ALYSSA			
02:38	GOOD! JUMPER by CARRINGTON, DIJONAI [PNT]	16-33	V 17	
02:27	FOUL (PERSONAL) by HULL, LACIE			
02:20				TURNOVER (BADPASS) by MCDONALD, AARI
02:15	GOOD! 3PTR by CARRINGTON, DIJONAI [FB]	16-36	V 20	
02:15	ASSIST by WILLIAMS, KIANA			
02:05				MISSED JUMPER by REESE, CATE
02:05	REBOUND (DEF) by SMITH, ALANNA			
01:47	GOOD! 3PTR by WILLIAMS, KIANA	16-39	V 23	
01:47				SUB OUT: MCDONALD, AARI
01:47				SUB IN: GRAHAM, DESTINY
01:47				SUB OUT: NIXON, BRYCE
01:47				SUB IN: THOMAS, SAM
01:47	SUB OUT: WILLIAMS, KIANA			
01:47	SUB IN: BROWN, JENNA			
01:22				MISSED 3PTR by GRAHAM, DESTINY
01:19	REBOUND (DEF) by SMITH, ALANNA			
01:09	GOOD! 3PTR by SMITH, ALANNA	16-42	V 26	



Time	VISITORS: Stanford	Score	Margin	HOME: Arizona
01:09	ASSIST by JEROME, ALYSSA			
00:49				MISSED JUMPER by GRAHAM, DESTINY
00:49	BLOCK by SMITH, ALANNA			
00:43	REBOUND (DEF) by HULL, LACIE			
00:40	GOOD! LAYUP by JEROME, ALYSSA [FB]	16-44	V 28	
00:40	ASSIST by HULL, LACIE			
00:19				MISSED JUMPER by THOMAS, SAM
00:16	REBOUND (DEF) by SMITH, ALANNA			
00:01	TURNOVER (LOSTBALL) by BROWN, JENNA			
00:01				STEAL by GRAHAM, DESTINY

Stanford 44, Arizona 16

Points from (This Period)	STA	ARI
In the Paint	8	2
Off Turns	3	0
2nd Chance	0	0
Fast Break	5	0
Bench	2	0

**Official Box Score**  
**Stanford vs Arizona**  
**Second Half Statistics Only**  
**January 13, 2019 at McKale Center (Lute & Bobbi Olson Court) - Tucson, Ariz.**



### Stanford 34

No.	Player	S	Pts	FG	3FG	FT	OR	DR	TR	PF	A	TO	Blk	Stl	Min	+/-
02	COFFEE, SHANNON		2	1-4	0-3	0-0	2	0	2	0	1	0	0	1	10	-3
03	WILSON, ANNA		2	1-2	0-1	0-0	0	1	1	0	0	0	0	1	6	5
10	JEROME, ALYSSA		0	0-2	0-1	0-0	0	3	3	3	0	2	1	0	13	2
11	SMITH, ALANNA		10	4-6	2-2	0-0	2	3	5	1	1	0	0	0	10	5
12	HULL, LEXIE		5	2-3	1-1	0-0	2	1	3	2	0	1	0	0	11	0
14	BREWER, MIKAELA		1	0-1	0-0	1-2	1	0	1	1	0	0	0	1	6	-7
20	MOSCHKAU, ESTELLA		0	0-0	0-0	0-0	0	2	2	2	1	0	0	0	4	-1
21	CARRINGTON, DIJONAI		4	2-9	0-4	0-0	0	0	0	0	1	0	0	0	11	4
23	WILLIAMS, KIANA		3	1-1	1-1	0-0	0	1	1	0	3	0	0	0	8	4
24	HULL, LACIE		0	0-1	0-1	0-0	0	0	0	1	1	1	0	1	9	3
54	BROWN, JENNA		7	2-3	1-2	2-2	0	0	0	1	0	3	0	0	12	-2
	TEAM		0	0-0	0-0	0-0	0	0	0	0	0	0	0	0	0	
<b>TOTALS</b>			<b>34</b>	<b>13-32</b>	<b>5-16</b>	<b>3-4</b>	<b>7</b>	<b>11</b>	<b>18</b>	<b>11</b>	<b>8</b>	<b>7</b>	<b>1</b>	<b>4</b>	<b>100</b>	

#### Shooting By Period

Period	FG	FG%	3FG	3FG%	FT	FT%
3rd Qtr	7-16	44%	2-8	25%	2-2	100%
4th Qtr	6-16	38%	3-8	38%	1-2	50%
2nd Half	13-32	41%	5-16	31%	3-4	75%
Game	28-63	44.4%	13-31	41.9%	9-10	90.0%

Last FG Half: STA 4th-01:40

### Arizona 32

No.	Player	S	Pts	FG	3FG	FT	OR	DR	TR	PF	A	TO	Blk	Stl	Min	+/-
02	MCDONALD, AARI		8	2-8	0-2	4-5	2	3	5	2	0	2	0	1	15	1
04	ALONSO, LUCIA		8	3-5	2-3	0-0	0	1	1	1	0	1	0	0	16	-3
14	THOMAS, SAM		6	2-6	2-5	0-0	1	1	2	0	2	1	0	0	17	-2
20	MCBRYDE, DOMINIQUE		0	0-0	0-0	0-0	0	2	2	2	1	0	0	1	14	-2
21	GRAHAM, DESTINY		0	0-1	0-0	0-0	0	1	1	1	0	0	0	0	4	-1
22	MALECHA, LINDSEY		2	1-1	0-0	0-0	0	0	0	1	0	0	0	0	4	0
24	NIXON, BRYCE		0	0-0	0-0	0-0	0	1	1	0	0	0	0	0	5	-2
25	REESE, CATE		6	1-3	0-0	4-6	0	1	1	0	0	1	1	0	16	1
34	SMITH, SEMAJ		2	1-2	0-0	0-0	2	1	3	1	2	2	0	0	9	-2
	TEAM		0	0-0	0-0	0-0	0	0	0	0	0	0	0	0	0	
<b>TOTALS</b>			<b>32</b>	<b>10-26</b>	<b>4-10</b>	<b>8-11</b>	<b>5</b>	<b>11</b>	<b>16</b>	<b>8</b>	<b>5</b>	<b>7</b>	<b>1</b>	<b>2</b>	<b>100</b>	

#### Shooting By Period

Period	FG	FG%	3FG	3FG%	FT	FT%
3rd Qtr	2-12	17%	2-6	33%	5-6	83%
4th Qtr	8-14	57%	2-4	50%	3-5	60%
2nd Half	10-26	38%	4-10	40%	8-11	73%
Game	17-62	27.4%	5-21	23.8%	9-12	75.0%

Last FG Half: ARI 4th-00:16

#### Game Notes:

Officials: Charles Gonzalez, Richard Waters, Rochelle Bennett

Start Time: 2019-01-13 19:07:12

End Time: 2019-01-13 20:49:27

Game Duration: 102

Conference Game;

Score	1st	2nd	3rd	4th	TOT
STA	21	23	18	16	<b>78</b>
ARI	12	4	11	21	<b>48</b>

Points from (This Period)	STA	ARI
In the Paint	16	10
Off Turns	10	5
2nd Chance	6	5
Fast Break	8	6
Bench	17	4

**Official Box Score**  
**Stanford vs Arizona**  
**Third Quarter Statistics Only**  
**January 13, 2019 at McKale Center (Lute & Bobbi Olson Court) - Tucson, Ariz.**



### Stanford 34

No.	Player	S	Pts	FG	3FG	FT	OR	DR	TR	PF	A	TO	Blk	Stl	Min	+/-
10	JEROME, ALYSSA		0	0-2	0-1	0-0	0	2	2	2	0	2	1	0	9	8
11	SMITH, ALANNA		5	2-3	1-1	0-0	2	3	5	0	1	0	0	0	7	6
21	CARRINGTON, DIJONAI		2	1-2	0-1	0-0	0	0	0	0	0	0	0	0	4	9
23	WILLIAMS, KIANA		3	1-1	1-1	0-0	0	0	0	0	1	0	0	0	5	5
24	HULL, LACIE		0	0-1	0-1	0-0	0	0	0	1	1	0	0	1	7	4
02	COFFEE, SHANNON		0	0-2	0-2	0-0	0	0	0	0	0	0	0	1	3	1
03	WILSON, ANNA		2	1-1	0-0	0-0	0	0	0	0	0	0	0	1	4	2
12	HULL, LEXIE		2	1-2	0-0	0-0	0	0	0	2	0	0	0	0	5	-1
14	BREWER, MIKAELA		0	0-0	0-0	0-0	0	0	0	0	0	0	0	0	0	0
20	MOSCHKAU, ESTELLA		0	0-0	0-0	0-0	0	1	1	1	0	0	0	0	1	-1
54	BROWN, JENNA		4	1-2	0-1	2-2	0	0	0	0	0	0	0	0	5	2
	TEAM						0	0	0	0		0				
<b>TOTALS</b>		<b>18</b>		<b>7-16</b>	<b>2-8</b>	<b>2-2</b>	<b>2</b>	<b>6</b>	<b>8</b>	<b>6</b>	<b>3</b>	<b>2</b>	<b>1</b>	<b>3</b>	<b>50</b>	

#### Shooting By Period

Period	FG	FG%	3FG	3FG%	FT	FT%
2nd Half	0-0	0%	0-0	0%	0-0	0%
Game	28-63	44.4%	13-31	41.9%	9-10	90.0%

### Arizona 32

No.	Player	S	Pts	FG	3FG	FT	OR	DR	TR	PF	A	TO	Blk	Stl	Min	+/-
02	MCDONALD, AARI		2	0-4	0-1	2-2	2	2	4	1	0	1	0	0	9	-7
04	ALONSO, LUCIA		6	2-3	2-2	0-0	0	0	0	0	0	1	0	0	9	-8
14	THOMAS, SAM		0	0-4	0-3	0-0	1	1	2	0	1	1	0	0	10	-7
20	MCBRYDE, DOMINIQUE		0	0-0	0-0	0-0	0	1	1	1	0	0	0	0	9	-8
25	REESE, CATE		3	0-0	0-0	3-4	0	0	0	0	0	1	0	0	7	-4
21	GRAHAM, DESTINY		0	0-0	0-0	0-0	0	0	0	1	0	0	0	0	1	-1
22	MALECHA, LINDSEY		0	0-0	0-0	0-0	0	0	0	0	0	0	0	0	1	0
24	NIXON, BRYCE		0	0-0	0-0	0-0	0	1	1	0	0	0	0	0	1	1
34	SMITH, SEMAJ		0	0-1	0-0	0-0	1	1	2	0	0	1	0	0	3	-1
	TEAM						0	0	0	0		0				
<b>TOTALS</b>		<b>11</b>		<b>2-12</b>	<b>2-6</b>	<b>5-6</b>	<b>4</b>	<b>6</b>	<b>10</b>	<b>3</b>	<b>1</b>	<b>5</b>	<b>0</b>	<b>0</b>	<b>50</b>	

#### Shooting By Period

Period	FG	FG%	3FG	3FG%	FT	FT%
2nd Half	0-0	0%	0-0	0%	0-0	0%
Game	17-62	27.4%	5-21	23.8%	9-12	75.0%

#### Game Notes:

Officials: Charles Gonzalez, Richard Waters, Rochelle Bennett

Start Time: 2019-01-13 19:07:12

End Time: 2019-01-13 20:49:27

Game Duration: 102

Conference Game;

Score	1st	2nd	3rd	4th	TOT
STA	21	23	18	16	<b>78</b>
ARI	12	4	11	21	<b>48</b>

Points from (This Period)	STA	ARI
In the Paint	10	0
Off Turns	4	0
2nd Chance	5	3
Fast Break	6	0
Bench	8	0

**Official Play-By-Play  
Stanford vs Arizona  
Third Quarter**

**January 13, 2019 at McKale Center (Lute & Bobbi Olson Court) - Tucson, Ariz.**



**Period 3**

**Starters:**

**Stanford:** 10 JEROME,ALYSSA; 11 SMITH,ALANNA; 21 CARRINGTON,DIJONAI; 23 WILLIAMS,KIANA; 24 HULL,LACIE;

**Arizona:** 2 MCDONALD,AARI; 4 ALONSO,LUCIA; 14 THOMAS,SAM; 20 MCBRYDE,DOMINIQUE; 25 REESE,CATE;

Time	VISITORS: Stanford	Score	Margin	HOME: Arizona
09:38	GOOD! 3PTR by WILLIAMS, KIANA	16-47	V 31	
09:38	ASSIST by HULL, LACIE			
09:34				TURNOVER (BADPASS) by THOMAS, SAM
09:34	STEAL by HULL, LACIE			
09:28	GOOD! LAYUP by CARRINGTON, DIJONAI [FB]	16-49	V 33	
09:11				MISSED LAYUP by MCDONALD, AARI
09:03	REBOUND (DEF) by SMITH, ALANNA			
08:56	MISSED 3PTR by CARRINGTON, DIJONAI			
08:53	REBOUND (OFF) by SMITH, ALANNA			
08:49	GOOD! 3PTR by SMITH, ALANNA	16-52	V 36	
08:49	ASSIST by WILLIAMS, KIANA			
08:35	FOUL (PERSONAL) by JEROME, ALYSSA			
08:35				MISSED FT by REESE, CATE
08:35				REBOUND (OFF) by TEAM
08:35		17-52	V 35	GOOD! FT by REESE, CATE
08:13	FOUL (OFF) by JEROME, ALYSSA			
08:13	TURNOVER (OFFENSIVE) by JEROME, ALYSSA			
07:51				MISSED JUMPER by MCDONALD, AARI
07:48				REBOUND (OFF) by THOMAS, SAM
07:39				MISSED LAYUP by MCDONALD, AARI
07:39	BLOCK by JEROME, ALYSSA			
07:35	REBOUND (DEF) by JEROME, ALYSSA			
07:15	TURNOVER (BADPASS) by JEROME, ALYSSA			
07:02				MISSED 3PTR by THOMAS, SAM
06:58	REBOUND (DEF) by SMITH, ALANNA			
06:53	MISSED 3PTR by HULL, LACIE			
06:50	REBOUND (OFF) by SMITH, ALANNA			
06:48	GOOD! LAYUP by SMITH, ALANNA	17-54	V 37	
06:31				MISSED 3PTR by THOMAS, SAM
06:29				REBOUND (OFF) by MCDONALD, AARI
06:18	FOUL (PERSONAL) by HULL, LACIE			
06:18	SUB OUT: CARRINGTON, DIJONAI			
06:18	SUB IN: HULL, LEXIE			
06:05		20-54	V 34	GOOD! 3PTR by ALONSO, LUCIA
06:05				ASSIST by THOMAS, SAM
05:39	MISSED JUMPER by SMITH, ALANNA			
05:36				REBOUND (DEF) by MCDONALD, AARI
05:30				MISSED 3PTR by MCDONALD, AARI
05:26				REBOUND (OFF) by MCDONALD, AARI
05:09		23-54	V 31	GOOD! 3PTR by ALONSO, LUCIA
04:52	GOOD! LAYUP by HULL, LEXIE	23-56	V 33	
04:52	ASSIST by SMITH, ALANNA			
04:34				TURNOVER (TRAVEL) by REESE, CATE
04:34				
04:34				SUB OUT: REESE, CATE
04:34				SUB IN: GRAHAM, DESTINY
04:34	SUB OUT: WILLIAMS, KIANA			
04:34	SUB IN: BROWN, JENNA			
04:28				FOUL (PERSONAL) by MCDONALD, AARI
04:19	SUB OUT: HULL, LACIE			
04:19	SUB IN: WILSON, ANNA			
04:03				FOUL (PERSONAL) by MCBRYDE, DOMINIQUE
03:52	MISSED JUMPER by JEROME, ALYSSA			
03:47				REBOUND (DEF) by MCDONALD, AARI
03:40	FOUL (PERSONAL) by HULL, LEXIE			
03:19				MISSED JUMPER by ALONSO, LUCIA
03:16	REBOUND (DEF) by SMITH, ALANNA			
03:12				FOUL (PERSONAL) by GRAHAM, DESTINY
03:12	GOOD! FT by BROWN, JENNA [FB]	23-57	V 34	
03:12				SUB OUT: GRAHAM, DESTINY
03:12				SUB IN: SMITH, SEMAJ
03:12	SUB OUT: SMITH, ALANNA			
03:12	SUB IN: COFFEE, SHANNON			
03:12	GOOD! FT by BROWN, JENNA [FB]	23-58	V 35	
02:55				TURNOVER (LOSTBALL) by MCDONALD, AARI
02:55	STEAL by COFFEE, SHANNON			
02:39	MISSED 3PTR by COFFEE, SHANNON			
02:36				REBOUND (DEF) by MCBRYDE, DOMINIQUE
02:19				MISSED JUMPER by SMITH, SEMAJ
02:14				REBOUND (OFF) by SMITH, SEMAJ

Time	VISITORS: Stanford	Score	Margin	HOME: Arizona
02:14				TURNOVER (LOSTBALL) by SMITH, SEMAJ
02:14	STEAL by WILSON, ANNA			
02:08	GOOD! LAYUP by BROWN, JENNA [FB]	23-60	V 37	
01:46				TURNOVER (BADPASS) by ALONSO, LUCIA
01:39	MISSED JUMPER by HULL, LEXIE			
01:36				REBOUND (DEF) by THOMAS, SAM
01:34				MISSED LAYUP by THOMAS, SAM
01:31	REBOUND (DEF) by JEROME, ALYSSA			
01:17	MISSED 3PTR by JEROME, ALYSSA			
01:15				REBOUND (DEF) by TEAM
01:15	FOUL (PERSONAL) by HULL, LEXIE			
01:15		24-60	V 36	GOOD! FT by MCDONALD, AARI
01:15				SUB OUT: ALONSO, LUCIA
01:15				SUB IN: REESE, CATE
01:15				SUB OUT: MCBRYDE, DOMINIQUE
01:15				SUB IN: NIXON, BRYCE
01:15	SUB OUT: HULL, LEXIE			
01:15	SUB IN: HULL, LACIE			
01:15		25-60	V 35	GOOD! FT by MCDONALD, AARI
01:15				SUB OUT: MCDONALD, AARI
01:15				SUB IN: MALECHA, LINDSEY
01:15	SUB OUT: JEROME, ALYSSA			
01:15	SUB IN: MOSCHKAU, ESTELLA			
00:59	MISSED 3PTR by BROWN, JENNA			
00:56				REBOUND (DEF) by SMITH, SEMAJ
00:42				MISSED 3PTR by THOMAS, SAM
00:37	REBOUND (DEF) by MOSCHKAU, ESTELLA			
00:22	GOOD! LAYUP by WILSON, ANNA	25-62	V 37	
00:07	FOUL (PERSONAL) by MOSCHKAU, ESTELLA			
00:07		26-62	V 36	GOOD! FT by REESE, CATE
00:07		27-62	V 35	GOOD! FT by REESE, CATE
00:01	MISSED 3PTR by COFFEE, SHANNON			
00:01				REBOUND (DEF) by NIXON, BRYCE

Stanford 62, Arizona 27

Points from (This Period)	STA	ARI
In the Paint	10	0
Off Turns	4	0
2nd Chance	5	3
Fast Break	6	0
Bench	8	0

**Official Box Score**  
**Stanford vs Arizona**  
**Fourth Quarter Statistics Only**  
**January 13, 2019 at McKale Center (Lute & Bobbi Olson Court) - Tucson, Ariz.**



### Stanford 16

No.	Player	S	Pts	FG	3FG	FT	OR	DR	TR	PF	A	TO	Blk	Stl	Min	+/-
10	JEROME, ALYSSA		0	0-0	0-0	0-0	0	1	1	1	0	0	0	0	4	-6
11	SMITH, ALANNA		5	2-3	1-1	0-0	0	0	0	1	0	0	0	0	3	-1
21	CARRINGTON, DIJONAI		2	1-7	0-3	0-0	0	0	0	0	1	0	0	0	7	-5
23	WILLIAMS, KIANA		0	0-0	0-0	0-0	0	1	1	0	2	0	0	0	3	-1
24	HULL, LACIE		0	0-0	0-0	0-0	0	0	0	0	0	1	0	0	2	-1
02	COFFEE, SHANNON		2	1-2	0-1	0-0	2	0	2	0	1	0	0	0	7	-4
03	WILSON, ANNA		0	0-1	0-1	0-0	0	1	1	0	0	0	0	0	2	3
12	HULL, LEXIE		3	1-1	1-1	0-0	2	1	3	0	0	1	0	0	6	1
14	BREWER, MIKAELA		1	0-1	0-0	1-2	1	0	1	1	0	0	0	1	6	-7
20	MOSCHKAU, ESTELLA		0	0-0	0-0	0-0	0	1	1	1	1	0	0	0	3	0
54	BROWN, JENNA		3	1-1	1-1	0-0	0	0	0	1	0	3	0	0	7	-4
	TEAM						0	0	0	0		0				
<b>TOTALS</b>			<b>16</b>	<b>6-16</b>	<b>3-8</b>	<b>1-2</b>	<b>5</b>	<b>5</b>	<b>10</b>	<b>5</b>	<b>5</b>	<b>5</b>	<b>0</b>	<b>1</b>	<b>50</b>	

#### Shooting By Period

Period	FG	FG%	3FG	3FG%	FT	FT%
Game	28-63	44.4%	13-31	41.9%	9-10	90.0%

### Arizona 21

No.	Player	S	Pts	FG	3FG	FT	OR	DR	TR	PF	A	TO	Blk	Stl	Min	+/-
02	MCDONALD, AARI		6	2-4	0-1	2-3	0	1	1	1	0	1	0	1	6	8
04	ALONSO, LUCIA		2	1-2	0-1	0-0	0	1	1	1	0	0	0	0	7	5
14	THOMAS, SAM		6	2-2	2-2	0-0	0	0	0	0	1	0	0	0	7	5
20	MCBRYDE, DOMINIQUE		0	0-0	0-0	0-0	0	1	1	1	1	0	0	1	5	6
25	REESE, CATE		3	1-3	0-0	1-2	0	1	1	0	0	0	1	0	9	5
21	GRAHAM, DESTINY		0	0-1	0-0	0-0	0	1	1	0	0	0	0	0	3	0
22	MALECHA, LINDSEY		2	1-1	0-0	0-0	0	0	0	1	0	0	0	0	3	0
24	NIXON, BRYCE		0	0-0	0-0	0-0	0	0	0	0	0	0	0	0	4	-3
34	SMITH, SEMAJ		2	1-1	0-0	0-0	1	0	1	1	2	1	0	0	6	-1
	TEAM						0	0	0	0		0				
<b>TOTALS</b>			<b>21</b>	<b>8-14</b>	<b>2-4</b>	<b>3-5</b>	<b>1</b>	<b>5</b>	<b>6</b>	<b>5</b>	<b>4</b>	<b>2</b>	<b>1</b>	<b>2</b>	<b>50</b>	

#### Shooting By Period

Period	FG	FG%	3FG	3FG%	FT	FT%
Game	17-62	27.4%	5-21	23.8%	9-12	75.0%

#### Game Notes:

Officials: Charles Gonzalez, Richard Waters, Rochelle Bennett

Start Time: 2019-01-13 19:07:12

End Time: 2019-01-13 20:49:27

Game Duration: 102

Conference Game:

Score	1st	2nd	3rd	4th	TOT
STA	21	23	18	16	<b>78</b>
ARI	12	4	11	21	<b>48</b>

Points from (This Period)	STA	ARI
In the Paint	6	10
Off Turns	6	5
2nd Chance	1	2
Fast Break	2	6
Bench	9	4

**Official Play-By-Play  
Stanford vs Arizona**

**Fourth Quarter  
January 13, 2019 at McKale Center (Lute & Bobbi Olson Court) - Tucson, Ariz.**



**Period 4**

**Starters:**

**Stanford:** 10 JEROME,ALYSSA; 11 SMITH,ALANNA; 21 CARRINGTON,DIJONAI; 23 WILLIAMS,KIANA; 24 HULL,LACIE;

**Arizona:** 2 MCDONALD,AARI; 4 ALONSO,LUCIA; 14 THOMAS,SAM; 20 MCBRYDE,DOMINIQUE; 25 REESE,CATE;

Time	VISITORS: Stanford	Score	Margin	HOME: Arizona
09:41	GOOD! JUMPER by SMITH, ALANNA [PNT]	27-64	V 37	
09:35	FOUL (PERSONAL) by SMITH, ALANNA			
09:35				MISSED FT by MCDONALD, AARI
09:35				REBOUND (OFF) by TEAM
09:35		28-64	V 36	GOOD! FT by MCDONALD, AARI [FB]
09:28	TURNOVER (LOSTBALL) by HULL, LACIE			
09:28				STEAL by MCBRYDE, DOMINIQUE
09:16				MISSED LAYUP by MCDONALD, AARI
09:14	REBOUND (DEF) by JEROME, ALYSSA			
09:05				FOUL (PERSONAL) by ALONSO, LUCIA
08:58	MISSED JUMPER by SMITH, ALANNA			
08:55				REBOUND (DEF) by MCBRYDE, DOMINIQUE
08:37				MISSED 3PTR by MCDONALD, AARI
08:34	REBOUND (DEF) by WILLIAMS, KIANA			
08:30	GOOD! LAYUP by CARRINGTON, DIJONAI [FB]	28-66	V 38	
08:30	ASSIST by WILLIAMS, KIANA			
08:06		30-66	V 36	GOOD! LAYUP by REESE, CATE
08:06				ASSIST by THOMAS, SAM
07:53	MISSED 3PTR by CARRINGTON, DIJONAI			
07:50				REBOUND (DEF) by ALONSO, LUCIA
07:45		32-66	V 34	GOOD! LAYUP by MCDONALD, AARI [FB]
07:32				FOUL (PERSONAL) by MCBRYDE, DOMINIQUE
07:32	SUB OUT: HULL, LACIE			
07:32	SUB IN: BREWER, MIKAELA			
07:30	GOOD! 3PTR by SMITH, ALANNA	32-69	V 37	
07:30	ASSIST by WILLIAMS, KIANA			
07:14		35-69	V 34	GOOD! 3PTR by THOMAS, SAM
07:14				ASSIST by MCBRYDE, DOMINIQUE
06:50	SUB OUT: WILLIAMS, KIANA			
06:50	SUB IN: COFFEE, SHANNON			
06:50	SUB OUT: SMITH, ALANNA			
06:50	SUB IN: BROWN, JENNA			
06:50	TURNOVER (BADPASS) by BROWN, JENNA			
06:50				STEAL by MCDONALD, AARI
06:40	FOUL (PERSONAL) by JEROME, ALYSSA			
06:33		37-69	V 32	GOOD! JUMPER by ALONSO, LUCIA
06:25	MISSED 3PTR by CARRINGTON, DIJONAI			
06:22				REBOUND (DEF) by MCDONALD, AARI
06:22		39-69	V 30	GOOD! LAYUP by MCDONALD, AARI [FB]
06:22	FOUL (PERSONAL) by BREWER, MIKAELA			
06:22				SUB OUT: THOMAS, SAM
06:22				SUB IN: GRAHAM, DESTINY
06:22		40-69	V 29	GOOD! FT by MCDONALD, AARI [FB]
05:56	MISSED 3PTR by CARRINGTON, DIJONAI			
05:55	REBOUND (OFF) by COFFEE, SHANNON			
05:55				FOUL (PERSONAL) by MCDONALD, AARI
05:55				SUB OUT: REESE, CATE
05:55				SUB IN: SMITH, SEMAJ
05:55	SUB OUT: JEROME, ALYSSA			
05:55	SUB IN: HULL, LEXIE			
05:47	MISSED 3PTR by COFFEE, SHANNON			
05:45	REBOUND (OFF) by HULL, LEXIE			
05:45	TURNOVER (TRAVEL) by HULL, LEXIE			
05:24				MISSED 3PTR by ALONSO, LUCIA
05:22	REBOUND (DEF) by HULL, LEXIE			
04:56	MISSED JUMPER by CARRINGTON, DIJONAI			
04:54	REBOUND (OFF) by COFFEE, SHANNON			
04:53	TIMEOUT 30SEC			
04:53				SUB OUT: MCBRYDE, DOMINIQUE
04:53				SUB IN: REESE, CATE
04:49	MISSED JUMPER by CARRINGTON, DIJONAI			
04:49				BLOCK by REESE, CATE
04:43				REBOUND (DEF) by GRAHAM, DESTINY
04:38				MISSED JUMPER by REESE, CATE
04:34				REBOUND (OFF) by SMITH, SEMAJ
04:33		42-69	V 27	GOOD! LAYUP by SMITH, SEMAJ
04:29	FOUL (OFF) by BROWN, JENNA			
04:29	TURNOVER (OFFENSIVE) by BROWN, JENNA			
04:29				
04:29	SUB OUT: BREWER, MIKAELA			

Time	VISITORS: Stanford	Score	Margin	HOME: Arizona
04:29	SUB IN: WILSON, ANNA			
04:13				TURNOVER (LOSTBALL) by MCDONALD, AARI
04:13				SUB OUT: MCDONALD, AARI
04:13				SUB IN: NIXON, BRYCE
03:47	GOOD! 3PTR by HULL, LEXIE	42-72	V 30	
03:47	ASSIST by CARRINGTON, DIJONAI			
03:23				MISSED JUMPER by GRAHAM, DESTINY
03:18	REBOUND (DEF) by WILSON, ANNA			
03:03	MISSED LAYUP by CARRINGTON, DIJONAI			
03:02	REBOUND (OFF) by HULL, LEXIE			
03:02				FOUL (PERSONAL) by SMITH, SEMAJ
03:02				SUB OUT: ALONSO, LUCIA
03:02				SUB IN: MALECHA, LINDSEY
03:02				SUB OUT: GRAHAM, DESTINY
03:02				SUB IN: THOMAS, SAM
03:02	SUB OUT: CARRINGTON, DIJONAI			
03:02	SUB IN: MOSCHKAU, ESTELLA			
02:42	MISSED 3PTR by WILSON, ANNA			
02:39				REBOUND (DEF) by REESE, CATE
02:39	FOUL (PERSONAL) by MOSCHKAU, ESTELLA			
02:39				MISSED FT by REESE, CATE
02:39				REBOUND (OFF) by TEAM
02:39	SUB OUT: WILSON, ANNA			
02:39	SUB IN: BREWER, MIKAELA			
02:39		43-72	V 29	GOOD! FT by REESE, CATE
02:10	GOOD! LAYUP by COFFEE, SHANNON	43-74	V 31	
02:10	ASSIST by MOSCHKAU, ESTELLA			
01:58				TURNOVER (BADPASS) by SMITH, SEMAJ
01:58	STEAL by BREWER, MIKAELA			
01:40	GOOD! 3PTR by BROWN, JENNA	43-77	V 34	
01:40	ASSIST by COFFEE, SHANNON			
01:21				MISSED JUMPER by REESE, CATE
01:17	REBOUND (DEF) by MOSCHKAU, ESTELLA			
01:14	TURNOVER (BADPASS) by BROWN, JENNA			
00:58		46-77	V 31	GOOD! 3PTR by THOMAS, SAM
00:58				ASSIST by SMITH, SEMAJ
00:31	MISSED JUMPER by BREWER, MIKAELA			
00:30	REBOUND (OFF) by BREWER, MIKAELA			
00:30				FOUL (PERSONAL) by MALECHA, LINDSEY
00:30	MISSED FT by BREWER, MIKAELA			
00:30	REBOUND (OFF) by TEAM			
00:30	GOOD! FT by BREWER, MIKAELA	46-78	V 32	
00:16		48-78	V 30	GOOD! LAYUP by MALECHA, LINDSEY
00:16				ASSIST by SMITH, SEMAJ

Stanford 78, Arizona 48

Points from (This Period)	STA	ARI
In the Paint	6	10
Off Turns	6	5
2nd Chance	1	2
Fast Break	2	6
Bench	9	4



**Official Scoring/Possession Reference Chart**

**Stanford vs Arizona**

**Period 1**

**January 13, 2019 at McKale Center (Lute & Bobbi Olson Court) - Tucson, Ariz.**



**Period 1**

**Starters:**

**Stanford:** 10 JEROME, ALYSSA; 11 SMITH, ALANNA; 21 CARRINGTON, DIJONAI; 23 WILLIAMS, KIANA; 24 HULL, LACIE;

**Arizona:** 2 MCDONALD, AARI; 4 ALONSO, LUCIA; 14 THOMAS, SAM; 20 MCBRYDE, DOMINIQUE; 25 REESE, CATE;

Time	VISITORS: Stanford	Score	Margin	HOME: Arizona
09:50	GOOD! 3PTR by SMITH, ALANNA	0-3	V 3	
09:12	GOOD! JUMPER by WILLIAMS, KIANA [PNT]	0-5	V 5	
06:43		3-5	V 2	GOOD! 3PTR by THOMAS, SAM
06:23	GOOD! FT by HULL, LACIE	3-6	V 3	
06:23	GOOD! FT by HULL, LACIE	3-7	V 4	
06:08		5-7	V 2	GOOD! LAYUP by MCDONALD, AARI
04:57	GOOD! 3PTR by WILLIAMS, KIANA	5-10	V 5	
04:17	GOOD! LAYUP by SMITH, ALANNA	5-12	V 7	
04:07		7-12	V 5	GOOD! JUMPER by MCBRYDE, DOMINIQUE
03:02	GOOD! FT by CARRINGTON, DIJONAI	7-13	V 6	
03:02	GOOD! FT by CARRINGTON, DIJONAI	7-14	V 7	
02:39		9-14	V 5	GOOD! LAYUP by MCDONALD, AARI
02:25	GOOD! FT by CARRINGTON, DIJONAI	9-15	V 6	
02:25	GOOD! FT by CARRINGTON, DIJONAI	9-16	V 7	
02:01	GOOD! 3PTR by HULL, LEXIE	9-19	V 10	
01:43		11-19	V 8	GOOD! JUMPER by MCDONALD, AARI
01:43		12-19	V 7	GOOD! FT by MCDONALD, AARI
00:29	GOOD! LAYUP by WILLIAMS, KIANA	12-21	V 9	

**Stanford 21, Arizona 12**

**Official Scoring/Possession Reference Chart**

**Stanford vs Arizona**

**Period 2**

**January 13, 2019 at McKale Center (Lute & Bobbi Olson Court) - Tucson, Ariz.**



**Period 2**

**Starters:**

**Stanford:** 10 JEROME,ALYSSA; 11 SMITH,ALANNA; 21 CARRINGTON,DIJONAI; 23 WILLIAMS,KIANA; 24 HULL,LACIE;

**Arizona:** 2 MCDONALD,AARI; 4 ALONSO,LUCIA; 14 THOMAS,SAM; 20 MCBRYDE,DOMINIQUE; 25 REESE,CATE;

Time	VISITORS: Stanford	Score	Margin	HOME: Arizona
09:30	GOOD! LAYUP by BROWN, JENNA	12-23	V 11	
09:01	GOOD! LAYUP by SMITH, ALANNA	12-25	V 13	
08:40		14-25	V 11	GOOD! JUMPER by MCBRYDE, DOMINIQUE
06:35		16-25	V 9	GOOD! LAYUP by MCDONALD, AARI
05:48	GOOD! 3PTR by CARRINGTON, DIJONAI	16-28	V 12	
04:59	GOOD! 3PTR by CARRINGTON, DIJONAI	16-31	V 15	
02:38	GOOD! JUMPER by CARRINGTON, DIJONAI [PNT]	16-33	V 17	
02:15	GOOD! 3PTR by CARRINGTON, DIJONAI [FB]	16-36	V 20	
01:47	GOOD! 3PTR by WILLIAMS, KIANA	16-39	V 23	
01:09	GOOD! 3PTR by SMITH, ALANNA	16-42	V 26	
00:40	GOOD! LAYUP by JEROME, ALYSSA [FB]	16-44	V 28	

**Stanford 44, Arizona 16**

**Official Scoring/Possession Reference Chart**  
**Stanford vs Arizona**  
**Period 3**

**January 13, 2019 at McKale Center (Lute & Bobbi Olson Court) - Tucson, Ariz.**



**Period 3**

**Starters:**

**Stanford:** 10 JEROME,ALYSSA; 11 SMITH,ALANNA; 21 CARRINGTON,DIJONAI; 23 WILLIAMS,KIANA; 24 HULL,LACIE;

**Arizona:** 2 MCDONALD,AARI; 4 ALONSO,LUCIA; 14 THOMAS,SAM; 20 MCBRYDE,DOMINIQUE; 25 REESE,CATE;

Time	VISITORS: Stanford	Score	Margin	HOME: Arizona
09:38	GOOD! 3PTR by WILLIAMS, KIANA	16-47	V 31	
09:28	GOOD! LAYUP by CARRINGTON, DIJONAI [FB]	16-49	V 33	
08:49	GOOD! 3PTR by SMITH, ALANNA	16-52	V 36	
08:35		17-52	V 35	GOOD! FT by REESE, CATE
06:48	GOOD! LAYUP by SMITH, ALANNA	17-54	V 37	
06:05		20-54	V 34	GOOD! 3PTR by ALONSO, LUCIA
05:09		23-54	V 31	GOOD! 3PTR by ALONSO, LUCIA
04:52	GOOD! LAYUP by HULL, LEXIE	23-56	V 33	
03:12	GOOD! FT by BROWN, JENNA [FB]	23-57	V 34	
03:12	GOOD! FT by BROWN, JENNA [FB]	23-58	V 35	
02:08	GOOD! LAYUP by BROWN, JENNA [FB]	23-60	V 37	
01:15		24-60	V 36	GOOD! FT by MCDONALD, AARI
01:15		25-60	V 35	GOOD! FT by MCDONALD, AARI
00:22	GOOD! LAYUP by WILSON, ANNA	25-62	V 37	
00:07		26-62	V 36	GOOD! FT by REESE, CATE
00:07		27-62	V 35	GOOD! FT by REESE, CATE

**Stanford 62, Arizona 27**

**Official Scoring/Possession Reference Chart**  
**Stanford vs Arizona**  
**Period 4**

**January 13, 2019 at McKale Center (Lute & Bobbi Olson Court) - Tucson, Ariz.**



**Period 4**

**Starters:**

**Stanford:** 10 JEROME,ALYSSA; 11 SMITH,ALANNA; 21 CARRINGTON,DIJONAI; 23 WILLIAMS,KIANA; 24 HULL,LACIE;

**Arizona:** 2 MCDONALD,AARI; 4 ALONSO,LUCIA; 14 THOMAS,SAM; 20 MCBRYDE,DOMINIQUE; 25 REESE,CATE;

Time	VISITORS: Stanford	Score	Margin	HOME: Arizona
09:41	GOOD! JUMPER by SMITH, ALANNA [PNT]	27-64	V 37	
09:35		28-64	V 36	GOOD! FT by MCDONALD, AARI [FB]
08:30	GOOD! LAYUP by CARRINGTON, DIJONAI [FB]	28-66	V 38	
08:06		30-66	V 36	GOOD! LAYUP by REESE, CATE
07:45		32-66	V 34	GOOD! LAYUP by MCDONALD, AARI [FB]
07:30	GOOD! 3PTR by SMITH, ALANNA	32-69	V 37	
07:14		35-69	V 34	GOOD! 3PTR by THOMAS, SAM
06:33		37-69	V 32	GOOD! JUMPER by ALONSO, LUCIA
06:22		39-69	V 30	GOOD! LAYUP by MCDONALD, AARI [FB]
06:22		40-69	V 29	GOOD! FT by MCDONALD, AARI [FB]
04:33		42-69	V 27	GOOD! LAYUP by SMITH, SEMAJ
03:47	GOOD! 3PTR by HULL, LEXIE	42-72	V 30	
02:39		43-72	V 29	GOOD! FT by REESE, CATE
02:10	GOOD! LAYUP by COFFEE, SHANNON	43-74	V 31	
01:40	GOOD! 3PTR by BROWN, JENNA	43-77	V 34	
00:58		46-77	V 31	GOOD! 3PTR by THOMAS, SAM
00:30	GOOD! FT by BREWER, MIKAELA	46-78	V 32	
00:16		48-78	V 30	GOOD! LAYUP by MALECHA, LINDSEY

**Stanford 78, Arizona 48**

**Official Substitutions Log  
Stanford vs Arizona  
Period 1**

**January 13, 2019 at McKale Center (Lute & Bobbi Olson Court) - Tucson, Ariz.**



<b>VISITORS: Stanford</b>	<b>Time</b>	<b>Score</b>	<b>HOME: Arizona</b>
10 JEROME,ALYSSA			2 MCDONALD,AARI
11 SMITH,ALANNA			4 ALONSO,LUCIA
21 CARRINGTON,DIJONAI			14 THOMAS,SAM
23 WILLIAMS,KIANA			20 MCBRYDE,DOMINIQUE
24 HULL,LACIE			25 REESE,CATE
SUB OUT: 21 CARRINGTON,DIJONAI	04:37	10-5	
SUB IN: 12 HULL,LEXIE	04:37		
	03:52	12-7	SUB OUT: REESE,CATE
	03:52		SUB IN: GRAHAM,DESTINY
SUB OUT: 11 SMITH,ALANNA	03:15	12-7	
SUB IN: 2 COFFEE,SHANNON	03:15		
SUB OUT: 10 JEROME,ALYSSA	03:15		
SUB IN: 21 CARRINGTON,DIJONAI	03:15		
	03:15		SUB OUT: MCBRYDE,DOMINIQUE
	03:15		SUB IN: SMITH,SEMAJ
SUB OUT: 24 HULL,LACIE	03:02	13-7	
SUB IN: 54 BROWN,JENNA	03:02		
	02:25	16-9	SUB OUT: GRAHAM,DESTINY
	02:25		SUB IN: MCBRYDE,DOMINIQUE
SUB OUT: 12 HULL,LEXIE	01:21	19-12	
SUB IN: 3 WILSON,ANNA	01:21		

**Stanford 21, Arizona 12**

**Official Substitutions Log  
Stanford vs Arizona  
Period 2**

**January 13, 2019 at McKale Center (Lute & Bobbi Olson Court) - Tucson, Ariz.**



<b>VISITORS: Stanford</b>	<b>Time</b>	<b>Score</b>	<b>HOME: Arizona</b>
10 JEROME,ALYSSA			2 MCDONALD,AARI
11 SMITH,ALANNA			4 ALONSO,LUCIA
21 CARRINGTON,DIJONAI			14 THOMAS,SAM
23 WILLIAMS,KIANA			20 MCBRYDE,DOMINIQUE
24 HULL,LACIE			25 REESE,CATE
	08:09	25-14	SUB OUT: ALONSO,LUCIA
	08:09		SUB IN: NIXON,BRYCE
SUB OUT: 23 WILLIAMS,KIANA	07:47	25-14	
SUB IN: 10 JEROME,ALYSSA	07:47		
SUB OUT: 3 WILSON,ANNA	06:19	25-16	
SUB IN: 23 WILLIAMS,KIANA	06:19		
SUB OUT: 54 BROWN,JENNA	06:19		
SUB IN: 24 HULL,LACIE	06:19		
	03:33	31-16	SUB OUT: THOMAS,SAM
	03:33		SUB IN: ALONSO,LUCIA
	01:47	39-16	SUB OUT: MCDONALD,AARI
	01:47		SUB IN: GRAHAM,DESTINY
	01:47		SUB OUT: NIXON,BRYCE
	01:47		SUB IN: THOMAS,SAM
SUB OUT: 23 WILLIAMS,KIANA	01:47		
SUB IN: 54 BROWN,JENNA	01:47		

**Stanford 44, Arizona 16**

**Official Substitutions Log  
Stanford vs Arizona  
Period 3**

**January 13, 2019 at McKale Center (Lute & Bobbi Olson Court) - Tucson, Ariz.**



<b>VISITORS: Stanford</b>	<b>Time</b>	<b>Score</b>	<b>HOME: Arizona</b>
10 JEROME,ALYSSA			2 MCDONALD,AARI
11 SMITH,ALANNA			4 ALONSO,LUCIA
21 CARRINGTON,DIJONAI			14 THOMAS,SAM
23 WILLIAMS,KIANA			20 MCBRYDE,DOMINIQUE
24 HULL,LACIE			25 REESE,CATE
SUB OUT: 21 CARRINGTON,DIJONAI	06:18	54-17	
SUB IN: 12 HULL,LEXIE	06:18		
	04:34	56-23	SUB OUT: REESE,CATE
	04:34		SUB IN: GRAHAM,DESTINY
SUB OUT: 23 WILLIAMS,KIANA	04:34		
SUB IN: 54 BROWN,JENNA	04:34		
SUB OUT: 24 HULL,LACIE	04:19	56-23	
SUB IN: 3 WILSON,ANNA	04:19		
	03:12	57-23	SUB OUT: GRAHAM,DESTINY
	03:12		SUB IN: SMITH,SEMAJ
SUB OUT: 11 SMITH,ALANNA	03:12		
SUB IN: 2 COFFEE,SHANNON	03:12		
	01:15	60-24	SUB OUT: ALONSO,LUCIA
	01:15		SUB IN: REESE,CATE
	01:15		SUB OUT: MCBRYDE,DOMINIQUE
	01:15		SUB IN: NIXON,BRYCE
SUB OUT: 12 HULL,LEXIE	01:15		
SUB IN: 24 HULL,LACIE	01:15		
	01:15		SUB OUT: MCDONALD,AARI
	01:15		SUB IN: MALECHA,LINDSEY
SUB OUT: 10 JEROME,ALYSSA	01:15		
SUB IN: 20 MOSCHKAU,ESTELLA	01:15		

**Stanford 62, Arizona 27**

**Official Substitutions Log  
Stanford vs Arizona  
Period 4**

**January 13, 2019 at McKale Center (Lute & Bobbi Olson Court) - Tucson, Ariz.**



VISITORS: Stanford	Time	Score	HOME: Arizona
10 JEROME,ALYSSA			2 MCDONALD,AARI
11 SMITH,ALANNA			4 ALONSO,LUCIA
21 CARRINGTON,DIJONAI			14 THOMAS,SAM
23 WILLIAMS,KIANA			20 MCBRYDE,DOMINIQUE
24 HULL,LACIE			25 REESE,CATE
SUB OUT: 24 HULL,LACIE	07:32	66-32	
SUB IN: 14 BREWER,MIKAELA	07:32		
SUB OUT: 23 WILLIAMS,KIANA	06:50	69-35	
SUB IN: 2 COFFEE,SHANNON	06:50		
SUB OUT: 11 SMITH,ALANNA	06:50		
SUB IN: 54 BROWN,JENNA	06:50		
	06:22	69-39	SUB OUT: THOMAS,SAM
	06:22		SUB IN: GRAHAM,DESTINY
	05:55	69-40	SUB OUT: REESE,CATE
	05:55		SUB IN: SMITH,SEMAJ
SUB OUT: 10 JEROME,ALYSSA	05:55		
SUB IN: 12 HULL,LEXIE	05:55		
	04:53	69-40	SUB OUT: MCBRYDE,DOMINIQUE
	04:53		SUB IN: REESE,CATE
SUB OUT: 14 BREWER,MIKAELA	04:29	69-42	
SUB IN: 3 WILSON,ANNA	04:29		
	04:13	69-42	SUB OUT: MCDONALD,AARI
	04:13		SUB IN: NIXON,BRYCE
	03:02	72-42	SUB OUT: ALONSO,LUCIA
	03:02		SUB IN: MALECHA,LINDSEY
	03:02		SUB OUT: GRAHAM,DESTINY
	03:02		SUB IN: THOMAS,SAM
SUB OUT: 21 CARRINGTON,DIJONAI	03:02		
SUB IN: 20 MOSCHKAU,ESTELLA	03:02		
SUB OUT: 3 WILSON,ANNA	02:39	72-42	
SUB IN: 14 BREWER,MIKAELA	02:39		

**Stanford 78, Arizona 48**



Official Shot Chart  
Stanford vs Arizona  
PERIOD 1 Shots

January 13, 2019 at McKale Center (Lute & Bobbi Olson Court) - Tucson, Ariz.



Arizona

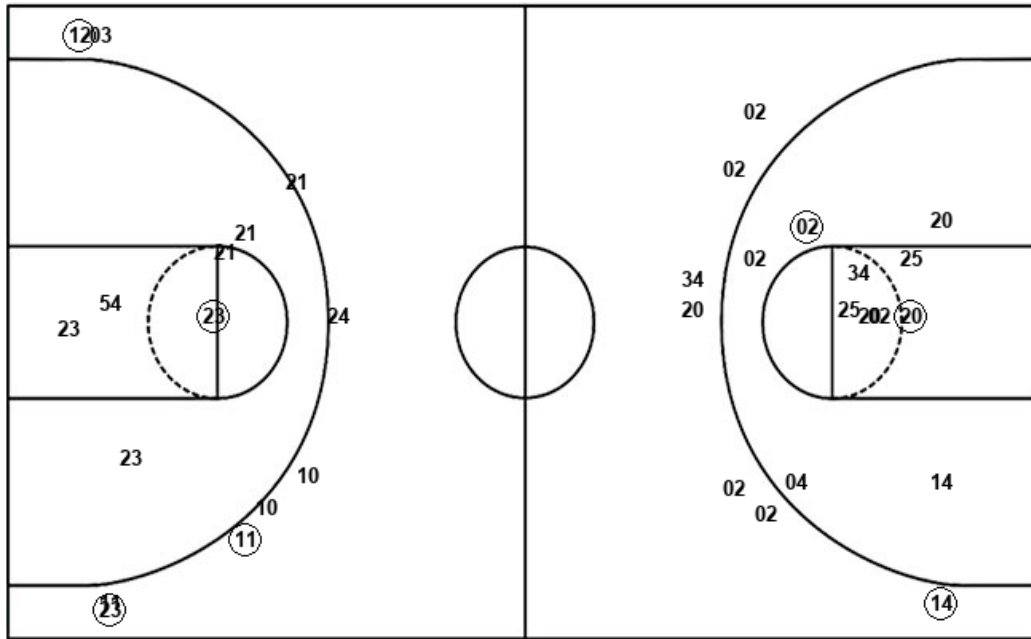
Stanford

Layups  
02 25 02

Layups  
11 11 11 23

Dunks

Dunks



ARI : Period 1	Made	Att	Pct
Layups	2	3	66.7
Dunks	0	0	0
2PT Field Goals	4	13	30.8
3PT Field Goals	1	8	12.5
<b>Total Field Goals</b>	<b>5</b>	<b>21</b>	<b>23.8</b>

STA : Period 1	Made	Att	Pct
Layups	2	4	50.0
Dunks	0	0	0
2PT Field Goals	3	10	30.0
3PT Field Goals	3	9	33.3
<b>Total Field Goals</b>	<b>6</b>	<b>19</b>	<b>31.6</b>

Official Shot Chart  
**Stanford vs Arizona**  
 PERIOD 2 Shots  
 January 13, 2019 at McKale Center (Lute & Bobbi Olson Court) - Tucson, Ariz.

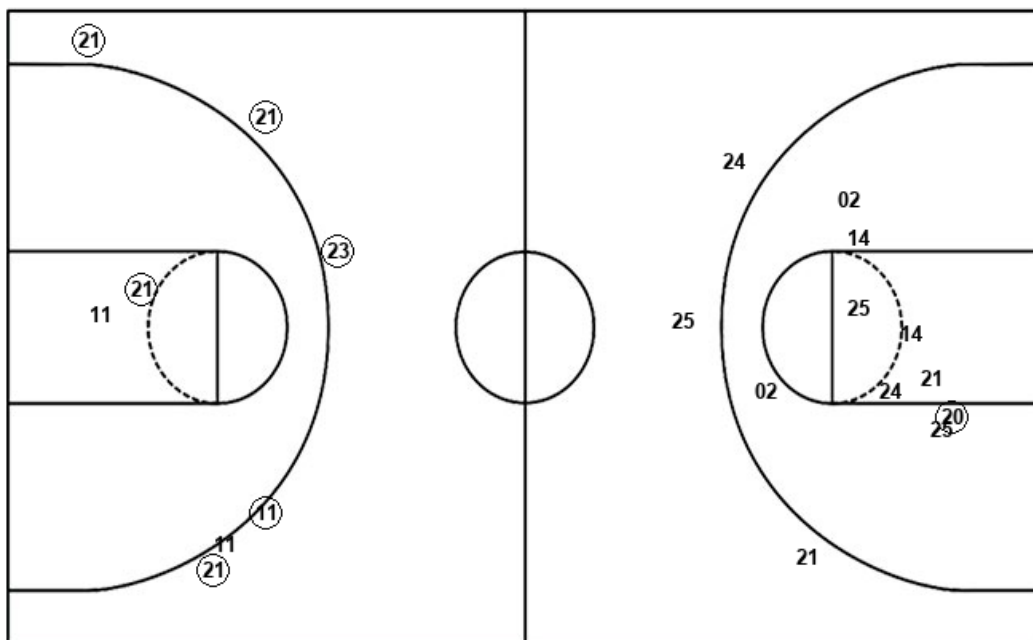


Arizona

Stanford

Layups  
 02 02 02

Dunks



Layups  
 54 11 11 10

Dunks

ARI : Period 2	Made	Att	Pct
Layups	1	3	33.3
Dunks	0	0	0
2PT Field Goals	2	12	16.7
3PT Field Goals	0	3	00.0
<b>Total Field Goals</b>	<b>2</b>	<b>15</b>	<b>13.3</b>

STA : Period 2	Made	Att	Pct
Layups	3	4	75.0
Dunks	0	0	0
2PT Field Goals	4	6	66.7
3PT Field Goals	5	6	83.3
<b>Total Field Goals</b>	<b>9</b>	<b>12</b>	<b>75.0</b>

Official Shot Chart  
**Stanford vs Arizona**  
 PERIOD 3 Shots  
 January 13, 2019 at McKale Center (Lute & Bobbi Olson Court) - Tucson, Ariz.



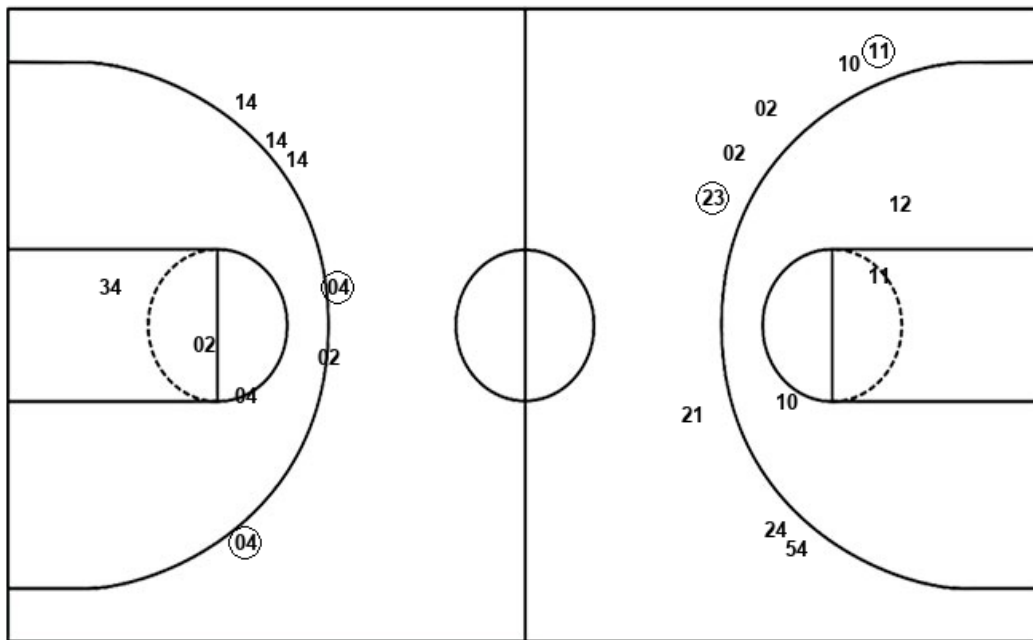
**Arizona**

**Stanford**

Layups

02 02 14

Dunks



Layups

(21) (11) (12) (54) (03)

Dunks

ARI : Period 3	Made	Att	Pct
Layups	0	3	00.0
Dunks	0	0	0
2PT Field Goals	0	6	00.0
3PT Field Goals	2	6	33.3
<b>Total Field Goals</b>	<b>2</b>	<b>12</b>	<b>16.7</b>

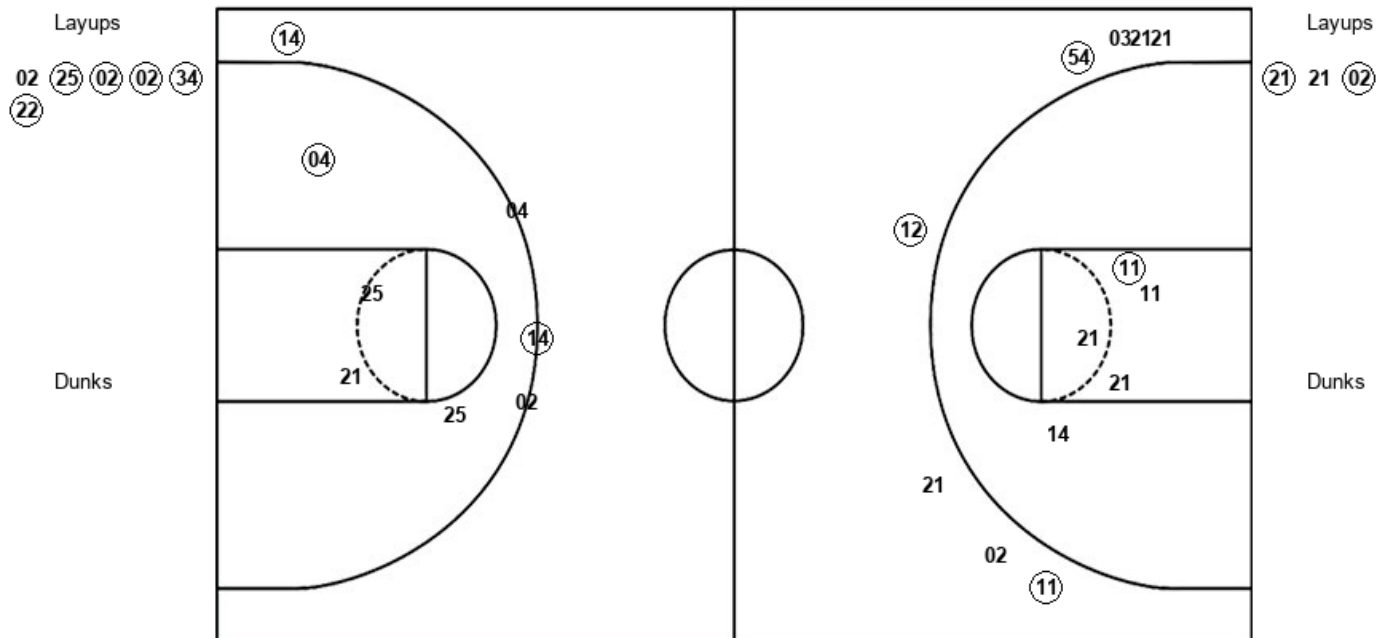
STA : Period 3	Made	Att	Pct
Layups	5	5	100.0
Dunks	0	0	0
2PT Field Goals	5	8	62.5
3PT Field Goals	2	8	25.0
<b>Total Field Goals</b>	<b>7</b>	<b>16</b>	<b>43.8</b>

Official Shot Chart  
**Stanford vs Arizona**  
 PERIOD 4 Shots  
 January 13, 2019 at McKale Center (Lute & Bobbi Olson Court) - Tucson, Ariz.



Arizona

Stanford



ARI : Period 4	Made	Att	Pct
Layups	5	6	83.3
Dunks	0	0	0
2PT Field Goals	6	10	60.0
3PT Field Goals	2	4	50.0
<b>Total Field Goals</b>	<b>8</b>	<b>14</b>	<b>57.1</b>

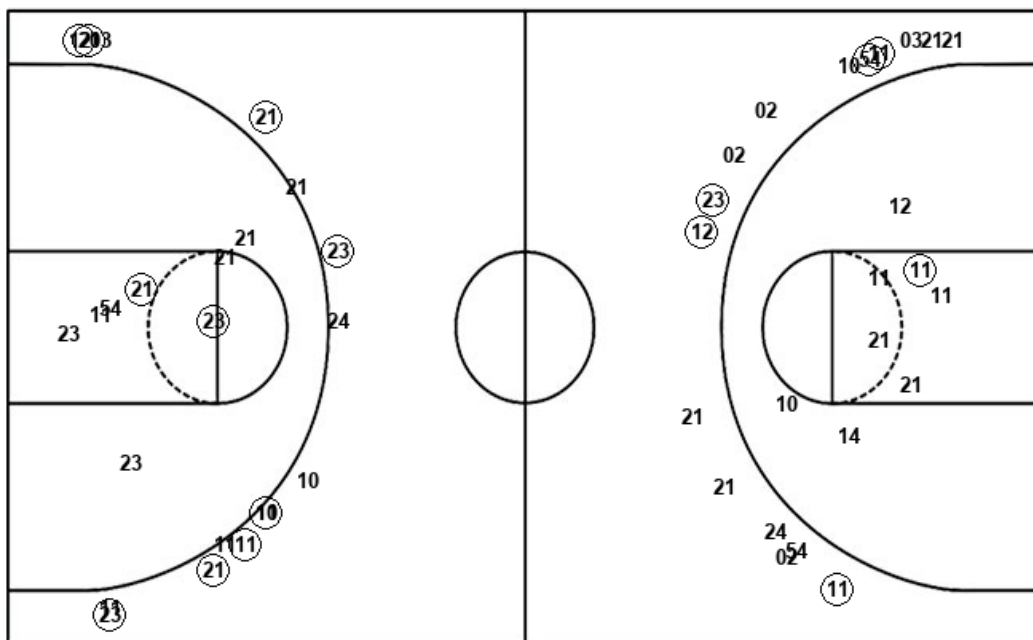
STA : Period 4	Made	Att	Pct
Layups	2	3	66.7
Dunks	0	0	0
2PT Field Goals	3	8	37.5
3PT Field Goals	3	8	37.5
<b>Total Field Goals</b>	<b>6</b>	<b>16</b>	<b>37.5</b>

Official Shot Chart  
**Stanford vs Arizona**  
Stanford Team Shots  
January 13, 2019 at McKale Center (Lute & Bobbi Olson Court) - Tucson, Ariz.



Layups

Dunks



Layups

Dunks

STA : Period 1	Made	Att	Pct
Layups	2	4	50.0
Dunks	0	0	0
2PT Field Goals	3	10	30.0
3PT Field Goals	3	9	33.3
<b>Total Field Goals</b>	<b>6</b>	<b>19</b>	<b>31.6</b>

STA : Period 3	Made	Att	Pct
Layups	5	5	100.0
Dunks	0	0	0
2PT Field Goals	5	8	62.5
3PT Field Goals	2	8	25.0
<b>Total Field Goals</b>	<b>7</b>	<b>16</b>	<b>43.8</b>

STA : Period 2	Made	Att	Pct
Layups	3	4	75.0
Dunks	0	0	0
2PT Field Goals	4	6	66.7
3PT Field Goals	5	6	83.3
<b>Total Field Goals</b>	<b>9</b>	<b>12</b>	<b>75.0</b>

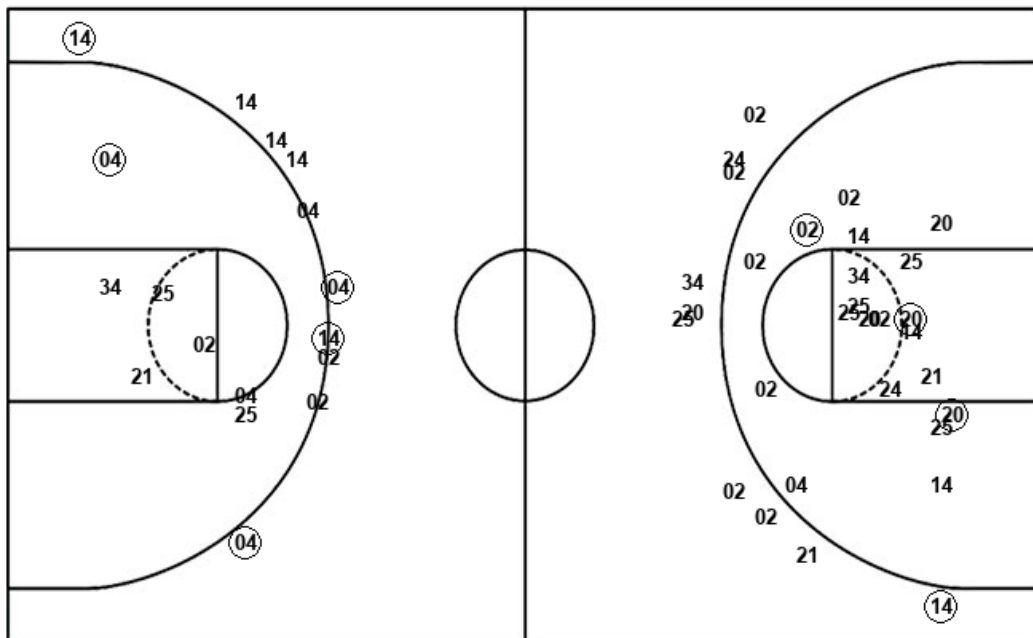
STA : Period 4	Made	Att	Pct
Layups	2	3	66.7
Dunks	0	0	0
2PT Field Goals	3	8	37.5
3PT Field Goals	3	8	37.5
<b>Total Field Goals</b>	<b>6</b>	<b>16</b>	<b>37.5</b>

**Official Shot Chart**  
**Stanford vs Arizona**  
**Arizona Team Shots**  
**January 13, 2019 at McKale Center (Lute & Bobbi Olson Court) - Tucson, Ariz.**



Layups

Dunks



Layups

Dunks

02 25 02 02 02  
 02 02 02 14 02  
 25 02 02 34 22

ARI : Period 1	Made	Att	Pct
Layups	2	3	66.7
Dunks	0	0	0
2PT Field Goals	4	13	30.8
3PT Field Goals	1	8	12.5
<b>Total Field Goals</b>	<b>5</b>	<b>21</b>	<b>23.8</b>

ARI : Period 3	Made	Att	Pct
Layups	0	3	00.0
Dunks	0	0	0
2PT Field Goals	0	6	00.0
3PT Field Goals	2	6	33.3
<b>Total Field Goals</b>	<b>2</b>	<b>12</b>	<b>16.7</b>

ARI : Period 2	Made	Att	Pct
Layups	1	3	33.3
Dunks	0	0	0
2PT Field Goals	2	12	16.7
3PT Field Goals	0	3	00.0
<b>Total Field Goals</b>	<b>2</b>	<b>15</b>	<b>13.3</b>

ARI : Period 4	Made	Att	Pct
Layups	5	6	83.3
Dunks	0	0	0
2PT Field Goals	6	10	60.0
3PT Field Goals	2	4	50.0
<b>Total Field Goals</b>	<b>8</b>	<b>14</b>	<b>57.1</b>