

FINAL SCORE



California

55



Arizona

60

January 12, 2019 • McKale Center (Lute & Bobbi Olson Court) - Tucson, Ariz.

FINAL STATISTICS

Official Box Score
California vs Arizona
Game Totals -- Final Statistics
January 12, 2019 at McKale Center (Lute & Bobbi Olson Court) - Tucson, Ariz.



California 55

No.	Player	S	Pts	FG	3FG	FT	OR	DR	TR	PF	A	TO	Blk	Stl	Min	+/-
01	THOMAS, ASHA		4	1-9	0-6	2-2	0	4	4	1	2	5	0	1	39	-4
14	SMITH, KIANNA		8	3-9	2-5	0-0	0	1	1	3	3	0	0	0	33	-5
24	CALDWELL, RECEE'		13	5-8	3-5	0-0	0	4	4	1	6	4	0	1	39	-5
31	ANIGWE, KRISTINE		19	7-14	0-0	5-8	8	12	20	4	0	4	7	1	40	-3
33	BROWN, JAELYN		9	4-7	0-3	1-3	1	5	6	2	0	1	0	0	27	-8
00	FORBES, MCKENZIE		0	0-4	0-3	0-0	0	0	0	2	1	1	0	0	14	4
04	STYLES, ALAYSIA		0	0-0	0-0	0-0	0	0	0	0	0	1	0	0	5	-3
30	WEST, CJ		2	0-1	0-0	2-2	1	1	2	2	0	1	0	1	4	-1
TEAM							2	3	5	0		1				
TOTALS			55	20-52	5-22	10-15	12	30	42	15	12	18	7	4	200	

Shooting By Period

Period	FG	FG%	3FG	3FG%	FT	FT%
1st Qtr	5-12	42%	1-6	17%	2-3	67%
2nd Qtr	2-12	17%	1-6	17%	4-6	67%
3rd Qtr	6-13	46%	2-5	40%	0-0	0%
4th Qtr	7-15	47%	1-5	20%	4-6	67%
1st Half	7-24	29%	2-12	17%	6-9	67%
2nd Half	13-28	46%	3-10	30%	4-6	67%
Game	20-52	38.5%	5-22	22.7%	10-15	66.7%

Last FG: 4th-00:10
Biggest Run: 12-0
Largest lead: By 3 at 1-08:30
Technical Fouls: None.

Arizona 60

No.	Player	S	Pts	FG	3FG	FT	OR	DR	TR	PF	A	TO	Blk	Stl	Min	+/-
02	MCDONALD, AARI		36	11-17	5-8	9-11	2	3	5	1	2	3	0	4	39	3
04	ALONSO, LUCIA		2	1-5	0-4	0-0	0	2	2	1	2	0	0	0	38	6
14	THOMAS, SAM		7	3-11	0-3	1-1	0	4	4	2	0	0	0	2	39	8
20	MCBRYDE, DOMINIQUE		5	2-7	0-0	1-1	1	2	3	3	0	0	0	2	25	3
25	REESE, CATE		10	4-12	0-1	2-2	0	9	9	3	1	1	2	1	30	12
10	STARKS, TEE TEE		0	0-1	0-0	0-0	1	1	2	1	0	0	0	0	6	-7
21	GRAHAM, DESTINY		0	0-3	0-0	0-0	0	1	1	2	1	1	0	0	16	2
34	SMITH, SEMAJ		0	0-1	0-0	0-0	0	0	0	0	0	1	0	0	8	-2
TEAM							3	1	4	0		0				
TOTALS			60	21-57	5-16	13-15	7	23	30	13	6	6	2	9	200	

Shooting By Period

Period	FG	FG%	3FG	3FG%	FT	FT%
1st Qtr	8-16	50%	2-3	67%	1-1	100%
2nd Qtr	5-12	42%	0-4	00%	4-5	80%
3rd Qtr	3-17	18%	2-6	33%	0-0	0%
4th Qtr	5-12	42%	1-3	33%	8-9	89%
1st Half	13-28	46%	2-7	29%	5-6	83%
2nd Half	8-29	28%	3-9	33%	8-9	89%
Game	21-57	36.8%	5-16	31.3%	13-15	86.7%

Last FG: 4th-04:21
Biggest Run: 10-0
Largest lead: By 14 at 3-05:54
Technical Fouls: None.

Game Notes:

Officials: Penny Davis, Shelley Nakasone, Ifeyinwa Seales
 Attendance: 2557

Start Time: 2019-01-12 02:06:52
 End Time: 2019-01-12 03:59:03
 Game Duration: 112
 Conference Game;

Score	1st	2nd	3rd	4th	TOT
CAL	13	9	14	19	55
ARI	19	14	8	19	60

CAL led for 1:49. ARI led for 35:58.
 Game was tied for 2:14.
 Times tied: 4 Lead Changes: 3

Points from	CAL	ARI
In the Paint	28	18
Off Turns	6	10
2nd Chance	5	6
Fast Break	3	10
Bench	2	0

Official Box Score
California vs Arizona
First Half Statistics Only
January 12, 2019 at McKale Center (Lute & Bobbi Olson Court) - Tucson, Ariz.



California 22

No.	Player	S	Pts	FG	3FG	FT	OR	DR	TR	PF	A	TO	Blk	Stl	Min	+/-
00	FORBES, MCKENZIE		0	0-3	0-2	0-0	0	0	0	2	1	1	0	0	8	1
01	THOMAS, ASHA		2	0-3	0-2	2-2	0	3	3	0	1	3	0	1	20	-11
04	STYLES, ALAYSIA		0	0-0	0-0	0-0	0	0	0	0	0	1	0	0	5	-3
14	SMITH, KIANNA		0	0-4	0-2	0-0	0	0	0	0	2	0	0	0	16	-8
24	CALDWELL, RECEE'		6	2-4	2-4	0-0	0	1	1	1	2	3	0	1	19	-11
30	WEST, CJ		2	0-1	0-0	2-2	1	1	2	2	0	1	0	1	3	-1
31	ANIGWE, KRISTINE		8	3-5	0-0	2-4	3	7	10	0	0	2	1	0	20	-9
33	BROWN, JAELYN		4	2-4	0-2	0-1	0	0	0	1	0	0	0	0	10	-13
	TEAM		0	0-0	0-0	0-0	2	1	3	0	0	0	0	0	0	0
	TOTALS		22	7-24	2-12	6-9	6	13	19	6	6	11	1	3	100	

Shooting By Period

Period	FG	FG%	3FG	3FG%	FT	FT%
1st Qtr	5-12	42%	1-6	17%	2-3	67%
2nd Qtr	2-12	17%	1-6	17%	4-6	67%
1st Half	7-24	29%	2-12	17%	6-9	67%
Game	20-52	38.5%	5-22	22.7%	10-15	66.7%

Last FG Half: CAL 2nd-01:56

Arizona 33

No.	Player	S	Pts	FG	3FG	FT	OR	DR	TR	PF	A	TO	Blk	Stl	Min	+/-
02	MCDONALD, AARI		14	5-7	2-3	2-3	0	2	2	1	2	1	0	3	19	9
04	ALONSO, LUCIA		2	1-3	0-2	0-0	0	1	1	1	0	0	0	0	18	12
10	STARKS, TEE TEE		0	0-1	0-0	0-0	1	1	2	1	0	0	0	0	6	-7
14	THOMAS, SAM		7	3-6	0-2	1-1	0	3	3	1	0	0	0	1	19	14
20	MCBRYDE, DOMINIQUE		2	1-2	0-0	0-0	0	1	1	2	0	0	0	1	8	7
21	GRAHAM, DESTINY		0	0-1	0-0	0-0	0	1	1	1	0	1	0	0	11	6
25	REESE, CATE		8	3-8	0-0	2-2	0	3	3	1	1	1	1	1	14	14
34	SMITH, SEMAJ		0	0-0	0-0	0-0	0	0	0	0	0	1	0	0	5	0
	TEAM		0	0-0	0-0	0-0	2	0	2	0	0	0	0	0	0	0
	TOTALS		33	13-28	2-7	5-6	3	12	15	8	3	4	1	6	100	

Shooting By Period

Period	FG	FG%	3FG	3FG%	FT	FT%
1st Qtr	8-16	50%	2-3	67%	1-1	100%
2nd Qtr	5-12	42%	0-4	00%	4-5	80%
1st Half	13-28	46%	2-7	29%	5-6	83%
Game	21-57	36.8%	5-16	31.3%	13-15	86.7%

Last FG Half: ARI 2nd-02:45

Game Notes:

Officials: Penny Davis, Shelley Nakasone, Ifeyinwa Seales
 Attendance: 2557

Start Time: 2019-01-12 02:06:52
 End Time: 2019-01-12 03:59:03
 Game Duration: 112
 Conference Game;

Score	1st	2nd	3rd	4th	TOT
CAL	13	9	14	19	55
ARI	19	14	8	19	60

Points from (This Period)	CAL	ARI
In the Paint	10	14
Off Turns	4	8
2nd Chance	1	6
Fast Break	2	7
Bench	2	0

Official Box Score
California vs Arizona
First Quarter Statistics Only
January 12, 2019 at McKale Center (Lute & Bobbi Olson Court) - Tucson, Ariz.



California 13

No.	Player	S	Pts	FG	3FG	FT	OR	DR	TR	PF	A	TO	Blk	Stl	Min	+/-
01	THOMAS, ASHA		0	0-2	0-1	0-0	0	3	3	0	0	2	0	0	10	-6
14	SMITH, KIANNA		0	0-2	0-2	0-0	0	0	0	0	2	0	0	0	7	-7
24	CALDWELL, RECEE'		3	1-1	1-1	0-0	0	0	0	0	2	1	0	1	10	-6
31	ANIGWE, KRISTINE		4	2-3	0-0	0-0	1	2	3	0	0	0	1	0	10	-6
33	BROWN, JAELYN		4	2-3	0-1	0-1	0	0	0	0	0	0	0	0	6	-5
00	FORBES, MCKENZIE		0	0-1	0-1	0-0	0	0	0	0	0	1	0	0	4	-1
04	STYLES, ALAYSIA		0	0-0	0-0	0-0	0	0	0	0	0	0	0	0	0	0
30	WEST, CJ		2	0-0	0-0	2-2	0	1	1	2	0	1	0	1	3	1
	TEAM						0	0	0	0		0				
TOTALS			13	5-12	1-6	2-3	1	6	7	2	4	5	1	2	50	

Shooting By Period

Period	FG	FG%	3FG	3FG%	FT	FT%
1st Qtr	5-12	42%	1-6	17%	2-3	67%
2nd Qtr	2-12	17%	1-6	17%	4-6	67%
1st Half	5-12	42%	1-6	17%	2-3	67%
1st Half	7-24	29%	2-12	17%	6-9	67%
Game	20-52	38.5%	5-22	22.7%	10-15	66.7%

Arizona 19

No.	Player	S	Pts	FG	3FG	FT	OR	DR	TR	PF	A	TO	Blk	Stl	Min	+/-
02	MCDONALD, AARI		8	3-5	2-3	0-0	0	1	1	1	1	1	0	2	9	4
04	ALONSO, LUCIA		0	0-0	0-0	0-0	0	1	1	0	0	0	0	0	8	7
14	THOMAS, SAM		5	2-3	0-0	1-1	0	2	2	0	0	0	0	0	9	9
20	MCBRYDE, DOMINIQUE		2	1-2	0-0	0-0	0	1	1	1	0	0	0	1	8	7
25	REESE, CATE		4	2-6	0-0	0-0	0	1	1	1	1	0	0	0	7	5
10	STARKS, TEE TEE		0	0-0	0-0	0-0	0	1	1	0	0	0	0	0	4	-2
21	GRAHAM, DESTINY		0	0-0	0-0	0-0	0	0	0	0	0	0	0	0	2	-1
34	SMITH, SEMAJ		0	0-0	0-0	0-0	0	0	0	0	0	1	0	0	3	1
	TEAM						2	0	2	0		0				
TOTALS			19	8-16	2-3	1-1	2	7	9	3	2	2	0	3	50	

Shooting By Period

Period	FG	FG%	3FG	3FG%	FT	FT%
1st Qtr	8-16	50%	2-3	67%	1-1	100%
2nd Qtr	5-12	42%	0-4	00%	4-5	80%
1st Half	8-16	50%	2-3	67%	1-1	100%
1st Half	13-28	46%	2-7	29%	5-6	83%
Game	21-57	36.8%	5-16	31.3%	13-15	86.7%

Game Notes:

Officials: Penny Davis, Shelley Nakasone, Ifeyinwa Seales
Attendance: 2557

Start Time: 2019-01-12 02:06:52
End Time: 2019-01-12 03:59:03
Game Duration: 112
Conference Game;

Score	1st	2nd	3rd	4th	TOT
CAL	13	9	14	19	55
ARI	19	14	8	19	60

Points from (This Period)	CAL	ARI
In the Paint	8	8
Off Turns	2	4
2nd Chance	0	4
Fast Break	0	5
Bench	2	0

**Official Play-By-Play
California vs Arizona
First Quarter**

January 12, 2019 at McKale Center (Lute & Bobbi Olson Court) - Tucson, Ariz.



Period 1

Starters:

California: 1 THOMAS,ASHA; 14 SMITH,KIANNA; 24 CALDWELL,RECEE'; 31 ANIGWE,KRISTINE; 33 BROWN,JAELYN;

Arizona: 2 MCDONALD,AARI; 4 ALONSO,LUCIA; 14 THOMAS,SAM; 20 MCBRYDE,DOMINIQUE; 25 REESE,CATE;

Time	VISITORS: California	Score	Margin	HOME: Arizona
09:39	GOOD! 3PTR by CALDWELL, RECEE'	0-3	V 3	
09:39	ASSIST by SMITH, KIANNA			
09:19				MISSED JUMPER by REESE, CATE
09:14	REBOUND (DEF) by THOMAS, ASHA			
09:08	MISSED LAYUP by ANIGWE, KRISTINE			
09:04				REBOUND (DEF) by ALONSO, LUCIA
08:52				MISSED JUMPER by MCBRYDE, DOMINIQUE
08:49				REBOUND (OFF) by TEAM
08:47		2-3	V 1	GOOD! LAYUP by REESE, CATE
08:47				ASSIST by MCDONALD, AARI
08:30	GOOD! LAYUP by BROWN, JAELYN	2-5	V 3	
08:30				FOUL (PERSONAL) by REESE, CATE
08:30	MISSED FT by BROWN, JAELYN			
08:30				REBOUND (DEF) by THOMAS, SAM
08:28		5-5	T	GOOD! 3PTR by MCDONALD, AARI
07:51	TURNOVER (BADPASS) by THOMAS, ASHA			
07:41				MISSED LAYUP by REESE, CATE
07:37	REBOUND (DEF) by ANIGWE, KRISTINE			
07:32				FOUL (PERSONAL) by MCBRYDE, DOMINIQUE
07:21	MISSED 3PTR by SMITH, KIANNA			
07:16				REBOUND (DEF) by MCDONALD, AARI
07:10				TURNOVER (BADPASS) by MCDONALD, AARI
07:10	STEAL by CALDWELL, RECEE'			
06:48	GOOD! LAYUP by BROWN, JAELYN	5-7	V 2	
06:48	ASSIST by SMITH, KIANNA			
06:32		8-7	H 1	GOOD! 3PTR by MCDONALD, AARI
06:32				ASSIST by REESE, CATE
06:08	MISSED 3PTR by THOMAS, ASHA			
06:05				REBOUND (DEF) by THOMAS, SAM
05:57				MISSED LAYUP by THOMAS, SAM
05:53	REBOUND (DEF) by THOMAS, ASHA			
05:44	GOOD! LAYUP by ANIGWE, KRISTINE	8-9	V 1	
05:44	ASSIST by CALDWELL, RECEE'			
05:22		10-9	H 1	GOOD! LAYUP by MCBRYDE, DOMINIQUE
05:12	TURNOVER (BADPASS) by CALDWELL, RECEE'			
05:12				STEAL by MCBRYDE, DOMINIQUE
05:05		12-9	H 3	GOOD! JUMPER by MCDONALD, AARI [FB]
04:41	MISSED 3PTR by BROWN, JAELYN			
04:36				REBOUND (DEF) by REESE, CATE
04:15		14-9	H 5	GOOD! JUMPER by REESE, CATE
04:11	TIMEOUT 30SEC			
04:11				
04:11	SUB OUT: SMITH, KIANNA			
04:11	SUB IN: FORBES, MCKENZIE			
04:11	SUB OUT: BROWN, JAELYN			
04:11	SUB IN: WEST, CJ			
04:01	TURNOVER (BADPASS) by THOMAS, ASHA			
04:01				STEAL by MCDONALD, AARI
03:59		16-9	H 7	GOOD! LAYUP by THOMAS, SAM [FB]
03:59	FOUL (PERSONAL) by WEST, CJ			
03:59				SUB OUT: REESE, CATE
03:59				SUB IN: SMITH, SEMAJ
03:59				SUB OUT: ALONSO, LUCIA
03:59				SUB IN: STARKS, TEE TEE
03:59		17-9	H 8	GOOD! FT by THOMAS, SAM [FB]
03:35	MISSED JUMPER by THOMAS, ASHA			
03:35				REBOUND (DEF) by MCBRYDE, DOMINIQUE
03:24				TURNOVER (LOSTBALL) by SMITH, SEMAJ
03:24	STEAL by WEST, CJ			
03:17	TURNOVER (BADPASS) by FORBES, MCKENZIE			
03:17				STEAL by MCDONALD, AARI
03:09				MISSED 3PTR by MCDONALD, AARI
03:06	REBOUND (DEF) by THOMAS, ASHA			
02:15				FOUL (PERSONAL) by MCDONALD, AARI
02:15	GOOD! FT by WEST, CJ	17-10	H 7	
02:15				SUB OUT: THOMAS, SAM
02:15				SUB IN: ALONSO, LUCIA
02:15				SUB OUT: SMITH, SEMAJ
02:15				SUB IN: REESE, CATE
02:15				SUB OUT: MCBRYDE, DOMINIQUE

Time	VISITORS: California	Score	Margin	HOME: Arizona
02:15				SUB IN: GRAHAM, DESTINY
02:15	GOOD! FT by WEST, CJ	17-11	H 6	
02:02				MISSED JUMPER by REESE, CATE
01:59	REBOUND (DEF) by WEST, CJ			
01:45	FOUL (OFF) by WEST, CJ			
01:45	TURNOVER (OFFENSIVE) by WEST, CJ			
01:20				MISSED LAYUP by MCDONALD, AARI
01:16	REBOUND (DEF) by ANIGWE, KRISTINE			
01:04	GOOD! LAYUP by ANIGWE, KRISTINE	17-13	H 4	
01:04	ASSIST by CALDWELL, RECEE'			
00:46				MISSED LAYUP by REESE, CATE
00:46	BLOCK by ANIGWE, KRISTINE			
00:46				REBOUND (OFF) by TEAM
00:46				SUB OUT: MCDONALD, AARI
00:46				SUB IN: THOMAS, SAM
00:46				SUB OUT: REESE, CATE
00:46				SUB IN: SMITH, SEMAJ
00:46	SUB OUT: WEST, CJ			
00:46	SUB IN: SMITH, KIANNA			
00:42		19-13	H 6	GOOD! JUMPER by THOMAS, SAM [PNT]
00:16	MISSED 3PTR by FORBES, MCKENZIE			
00:12	REBOUND (OFF) by ANIGWE, KRISTINE			
00:09	MISSED 3PTR by SMITH, KIANNA			
00:05				REBOUND (DEF) by STARKS, TEE TEE

California 13, Arizona 19

Points from (This Period)	CAL	ARI
In the Paint	8	8
Off Turns	2	4
2nd Chance	0	4
Fast Break	0	5
Bench	2	0

Official Box Score
California vs Arizona
Second Quarter Statistics Only
January 12, 2019 at McKale Center (Lute & Bobbi Olson Court) - Tucson, Ariz.



California 9

No.	Player	S	Pts	FG	3FG	FT	OR	DR	TR	PF	A	TO	Blk	Stl	Min	+/-
01	THOMAS, ASHA		2	0-1	0-1	2-2	0	0	0	0	1	1	0	1	10	-5
14	SMITH, KIANNA		0	0-2	0-0	0-0	0	0	0	0	0	0	0	0	9	-1
24	CALDWELL, RECEE'		3	1-3	1-3	0-0	0	1	1	1	0	2	0	0	9	-5
31	ANIGWE, KRISTINE		4	1-2	0-0	2-4	2	5	7	0	0	2	0	0	10	-3
33	BROWN, JAELYN		0	0-1	0-1	0-0	0	0	0	1	0	0	0	0	4	-8
00	FORBES, MCKENZIE		0	0-2	0-1	0-0	0	0	0	2	1	0	0	0	4	2
04	STYLES, ALAYSIA		0	0-0	0-0	0-0	0	0	0	0	0	1	0	0	5	-3
30	WEST, CJ		0	0-1	0-0	0-0	1	0	1	0	0	0	0	0	0	-2
	TEAM						2	1	3	0		0				
TOTALS			9	2-12	1-6	4-6	5	7	12	4	2	6	0	1	50	

Shooting By Period

Period	FG	FG%	3FG	3FG%	FT	FT%
3rd Qtr	6-13	46%	2-5	40%	0-0	0%
4th Qtr	7-15	47%	1-5	20%	4-6	67%
2nd Half	2-12	17%	1-6	17%	4-6	67%
2nd Half	13-28	46%	3-10	30%	4-6	67%
Game	20-52	38.5%	5-22	22.7%	10-15	66.7%

Arizona 14

No.	Player	S	Pts	FG	3FG	FT	OR	DR	TR	PF	A	TO	Blk	Stl	Min	+/-
02	MCDONALD, AARI		6	2-2	0-0	2-3	0	1	1	0	1	0	0	1	10	5
04	ALONSO, LUCIA		2	1-3	0-2	0-0	0	0	0	1	0	0	0	0	10	5
14	THOMAS, SAM		2	1-3	0-2	0-0	0	1	1	1	0	0	0	1	10	5
20	MCBRYDE, DOMINIQUE		0	0-0	0-0	0-0	0	0	0	1	0	0	0	0	0	0
25	REESE, CATE		4	1-2	0-0	2-2	0	2	2	0	0	1	1	1	7	9
10	STARKS, TEE TEE		0	0-1	0-0	0-0	1	0	1	1	0	0	0	0	2	-5
21	GRAHAM, DESTINY		0	0-1	0-0	0-0	0	1	1	1	0	1	0	0	9	7
34	SMITH, SEMAJ		0	0-0	0-0	0-0	0	0	0	0	0	0	0	0	2	-1
	TEAM						0	0	0	0		0				
TOTALS			14	5-12	0-4	4-5	1	5	6	5	1	2	1	3	50	

Shooting By Period

Period	FG	FG%	3FG	3FG%	FT	FT%
3rd Qtr	3-17	18%	2-6	33%	0-0	0%
4th Qtr	5-12	42%	1-3	33%	8-9	89%
2nd Half	5-12	42%	0-4	00%	4-5	80%
2nd Half	8-29	28%	3-9	33%	8-9	89%
Game	21-57	36.8%	5-16	31.3%	13-15	86.7%

Game Notes:

Officials: Penny Davis, Shelley Nakasone, Ifeyinwa Seales
 Attendance: 2557

Start Time: 2019-01-12 02:06:52
 End Time: 2019-01-12 03:59:03
 Game Duration: 112
 Conference Game;

Score	1st	2nd	3rd	4th	TOT
CAL	13	9	14	19	55
ARI	19	14	8	19	60

Points from (This Period)	CAL	ARI
In the Paint	2	6
Off Turns	2	4
2nd Chance	1	2
Fast Break	2	2
Bench	0	0

**Official Play-By-Play
California vs Arizona
Second Quarter**

January 12, 2019 at McKale Center (Lute & Bobbi Olson Court) - Tucson, Ariz.



Period 2

Starters:

California: 1 THOMAS,ASHA; 14 SMITH,KIANNA; 24 CALDWELL,RECEE'; 31 ANIGWE,KRISTINE; 33 BROWN,JAELYN;

Arizona: 2 MCDONALD,AARI; 4 ALONSO,LUCIA; 14 THOMAS,SAM; 20 MCBRYDE,DOMINIQUE; 25 REESE,CATE;

Time	VISITORS: California	Score	Margin	HOME: Arizona
09:43	MISSED 3PTR by FORBES, MCKENZIE			
09:42	REBOUND (OFF) by TEAM			
09:42				FOUL (PERSONAL) by MCBRYDE, DOMINIQUE
09:42				SUB OUT: MCBRYDE, DOMINIQUE
09:42				SUB IN: STARKS, TEE TEE
09:30				FOUL (PERSONAL) by STARKS, TEE TEE
09:30	MISSED FT by ANIGWE, KRISTINE			
09:30	REBOUND (OFF) by TEAM			
09:30	GOOD! FT by ANIGWE, KRISTINE	19-14	H 5	
09:04				TURNOVER (BADPASS) by REESE, CATE
09:04	STEAL by THOMAS, ASHA			
09:02				FOUL (PERSONAL) by ALONSO, LUCIA
09:02	GOOD! FT by THOMAS, ASHA [FB]	19-15	H 4	
09:02				SUB OUT: REESE, CATE
09:02				SUB IN: GRAHAM, DESTINY
09:02	GOOD! FT by THOMAS, ASHA [FB]	19-16	H 3	
08:50				FOUL (PERSONAL) by GRAHAM, DESTINY
08:35	TURNOVER (TRAVEL) by CALDWELL, RECEE'			
08:15				MISSED JUMPER by GRAHAM, DESTINY
08:13	REBOUND (DEF) by TEAM			
08:02	GOOD! LAYUP by ANIGWE, KRISTINE	19-18	H 1	
08:02	ASSIST by FORBES, MCKENZIE			
07:55				TIMEOUT 30SEC
07:55				SUB OUT: STARKS, TEE TEE
07:55				SUB IN: REESE, CATE
07:43		21-18	H 3	GOOD! JUMPER by THOMAS, SAM [PNT]
07:22	MISSED 3PTR by CALDWELL, RECEE'			
07:19	REBOUND (OFF) by ANIGWE, KRISTINE			
07:18	TURNOVER (LOSTBALL) by ANIGWE, KRISTINE			
07:18				STEAL by MCDONALD, AARI
07:10				MISSED 3PTR by THOMAS, SAM
07:08	REBOUND (DEF) by ANIGWE, KRISTINE			
07:02	TURNOVER (BADPASS) by THOMAS, ASHA			
07:02				STEAL by THOMAS, SAM
06:41	FOUL (PERSONAL) by FORBES, MCKENZIE			
06:41		22-18	H 4	GOOD! FT by REESE, CATE
06:41	SUB OUT: CALDWELL, RECEE'			
06:41	SUB IN: BROWN, JAELYN			
06:41		23-18	H 5	GOOD! FT by REESE, CATE
06:17				FOUL (PERSONAL) by THOMAS, SAM
06:17	MISSED FT by ANIGWE, KRISTINE			
06:17	REBOUND (OFF) by TEAM			
06:17	GOOD! FT by ANIGWE, KRISTINE	23-19	H 4	
06:01				TURNOVER (TRAVEL) by GRAHAM, DESTINY
05:34	MISSED JUMPER by FORBES, MCKENZIE			
05:34				REBOUND (DEF) by THOMAS, SAM
05:33	FOUL (PERSONAL) by FORBES, MCKENZIE			
05:33	SUB OUT: FORBES, MCKENZIE			
05:33	SUB IN: CALDWELL, RECEE'			
05:16		25-19	H 6	GOOD! LAYUP by MCDONALD, AARI
05:16	FOUL (PERSONAL) by BROWN, JAELYN			
05:14				MISSED FT by MCDONALD, AARI
05:13	REBOUND (DEF) by ANIGWE, KRISTINE			
04:59	MISSED JUMPER by SMITH, KIANNA			
04:56				REBOUND (DEF) by MCDONALD, AARI
04:54	FOUL (PERSONAL) by CALDWELL, RECEE'			
04:54		26-19	H 7	GOOD! FT by MCDONALD, AARI [FB]
04:54		27-19	H 8	GOOD! FT by MCDONALD, AARI [FB]
04:54				SUB OUT: MCDONALD, AARI
04:54				SUB IN: STARKS, TEE TEE
04:43	MISSED JUMPER by SMITH, KIANNA			
04:36	REBOUND (OFF) by ANIGWE, KRISTINE			
04:35	MISSED LAYUP by ANIGWE, KRISTINE			
04:35				BLOCK by REESE, CATE
04:35				REBOUND (DEF) by REESE, CATE
04:33				MISSED LAYUP by STARKS, TEE TEE
04:33				REBOUND (OFF) by STARKS, TEE TEE
04:33				SUB OUT: STARKS, TEE TEE
04:33				SUB IN: MCDONALD, AARI

Time	VISITORS: California	Score	Margin	HOME: Arizona
04:33	SUB OUT: SMITH, KIANNA			
04:33	SUB IN: STYLES, ALAYSIA			
04:32		29-19	H 10	GOOD! JUMPER by ALONSO, LUCIA
04:32				ASSIST by MCDONALD, AARI
03:58	MISSED 3PTR by BROWN, JAELYN			
03:54				REBOUND (DEF) by REESE, CATE
03:36	SUB OUT: ANIGWE, KRISTINE			
03:36	SUB IN: WEST, CJ			
03:35		31-19	H 12	GOOD! LAYUP by REESE, CATE
03:12	MISSED 3PTR by CALDWELL, RECEE'			
03:10	REBOUND (OFF) by WEST, CJ			
03:10	MISSED LAYUP by WEST, CJ			
03:10	REBOUND (OFF) by TEAM			
03:10				SUB OUT: REESE, CATE
03:10				SUB IN: SMITH, SEMAJ
03:10	SUB OUT: WEST, CJ			
03:10	SUB IN: SMITH, KIANNA			
03:10	SUB OUT: BROWN, JAELYN			
03:10	SUB IN: ANIGWE, KRISTINE			
03:08	TURNOVER (3SEC) by ANIGWE, KRISTINE			
02:45		33-19	H 14	GOOD! JUMPER by MCDONALD, AARI
02:31	MISSED 3PTR by THOMAS, ASHA			
02:26				REBOUND (DEF) by GRAHAM, DESTINY
02:16				MISSED 3PTR by THOMAS, SAM
02:12	REBOUND (DEF) by ANIGWE, KRISTINE			
01:56	GOOD! 3PTR by CALDWELL, RECEE'	33-22	H 11	
01:56	ASSIST by THOMAS, ASHA			
01:33				MISSED 3PTR by ALONSO, LUCIA
01:29	REBOUND (DEF) by CALDWELL, RECEE'			
01:04	TURNOVER (BADPASS) by CALDWELL, RECEE'			
01:04				SUB OUT: SMITH, SEMAJ
01:04				SUB IN: REESE, CATE
00:54				MISSED JUMPER by REESE, CATE
00:51	REBOUND (DEF) by ANIGWE, KRISTINE			
00:28	TURNOVER (BADPASS) by STYLES, ALAYSIA			
00:28				STEAL by REESE, CATE
00:03				MISSED 3PTR by ALONSO, LUCIA
00:00	REBOUND (DEF) by ANIGWE, KRISTINE			

California 22, Arizona 33

Points from (This Period)	CAL	ARI
In the Paint	2	6
Off Turns	2	4
2nd Chance	1	2
Fast Break	2	2
Bench	0	0

Official Box Score
California vs Arizona
Second Half Statistics Only
January 12, 2019 at McKale Center (Lute & Bobbi Olson Court) - Tucson, Ariz.



California 33

No.	Player	S	Pts	FG	3FG	FT	OR	DR	TR	PF	A	TO	Blk	Stl	Min	+/-
00	FORBES, MCKENZIE		0	0-1	0-1	0-0	0	0	0	0	0	0	0	0	6	3
01	THOMAS, ASHA		2	1-6	0-4	0-0	0	1	1	1	1	2	0	0	19	7
04	STYLES, ALAYSIA		0	0-0	0-0	0-0	0	0	0	0	0	0	0	0	0	0
14	SMITH, KIANNA		8	3-5	2-3	0-0	0	1	1	3	1	0	0	0	18	3
24	CALDWELL, RECEE'		7	3-4	1-1	0-0	0	3	3	0	4	1	0	0	20	6
30	WEST, CJ		0	0-0	0-0	0-0	0	0	0	0	0	0	0	0	0	0
31	ANIGWE, KRISTINE		11	4-9	0-0	3-4	5	5	10	4	0	2	6	1	20	6
33	BROWN, JAELYN		5	2-3	0-1	1-2	1	5	6	1	0	1	0	0	17	5
	TEAM		0	0-0	0-0	0-0	0	2	2	0	0	1	0	0	0	0
TOTALS			33	13-28	3-10	4-6	6	17	23	9	6	7	6	1	100	

Shooting By Period

Period	FG	FG%	3FG	3FG%	FT	FT%
3rd Qtr	6-13	46%	2-5	40%	0-0	0%
4th Qtr	7-15	47%	1-5	20%	4-6	67%
2nd Half	13-28	46%	3-10	30%	4-6	67%
Game	20-52	38.5%	5-22	22.7%	10-15	66.7%

Last FG Half: CAL 4th-00:10

Arizona 27

No.	Player	S	Pts	FG	3FG	FT	OR	DR	TR	PF	A	TO	Blk	Stl	Min	+/-
02	MCDONALD, AARI		22	6-10	3-5	7-8	2	1	3	0	0	2	0	1	20	-6
04	ALONSO, LUCIA		0	0-2	0-2	0-0	0	1	1	0	2	0	0	0	20	-6
10	STARKS, TEE TEE		0	0-0	0-0	0-0	0	0	0	0	0	0	0	0	0	0
14	THOMAS, SAM		0	0-5	0-1	0-0	0	1	1	1	0	0	0	1	20	-6
20	MCBRYDE, DOMINIQUE		3	1-5	0-0	1-1	1	1	2	1	0	0	0	1	17	-4
21	GRAHAM, DESTINY		0	0-2	0-0	0-0	0	0	0	1	1	0	0	0	5	-4
25	REESE, CATE		2	1-4	0-1	0-0	0	6	6	2	0	0	1	0	15	-2
34	SMITH, SEMAJ		0	0-1	0-0	0-0	0	0	0	0	0	0	0	0	3	-2
	TEAM		0	0-0	0-0	0-0	1	1	2	0	0	0	0	0	0	0
TOTALS			27	8-29	3-9	8-9	4	11	15	5	3	2	1	3	100	

Shooting By Period

Period	FG	FG%	3FG	3FG%	FT	FT%
3rd Qtr	3-17	18%	2-6	33%	0-0	0%
4th Qtr	5-12	42%	1-3	33%	8-9	89%
2nd Half	8-29	28%	3-9	33%	8-9	89%
Game	21-57	36.8%	5-16	31.3%	13-15	86.7%

Last FG Half: ARI 4th-04:21

Game Notes:

Officials: Penny Davis, Shelley Nakasone, Ifeyinwa Seales
Attendance: 2557

Start Time: 2019-01-12 02:06:52
End Time: 2019-01-12 03:59:03
Game Duration: 112
Conference Game;

Score	1st	2nd	3rd	4th	TOT
CAL	13	9	14	19	55
ARI	19	14	8	19	60

Points from (This Period)	CAL	ARI
In the Paint	18	4
Off Turns	2	2
2nd Chance	4	0
Fast Break	1	3
Bench	0	0

Official Box Score
California vs Arizona
Third Quarter Statistics Only
 January 12, 2019 at McKale Center (Lute & Bobbi Olson Court) - Tucson, Ariz.



California 33

No.	Player	S	Pts	FG	3FG	FT	OR	DR	TR	PF	A	TO	Blk	Stl	Min	+/-
01	THOMAS, ASHA		0	0-2	0-2	0-0	0	1	1	0	1	1	0	0	10	6
14	SMITH, KIANNA		3	1-3	1-2	0-0	0	1	1	0	1	0	0	0	10	6
24	CALDWELL, RECEE'		5	2-2	1-1	0-0	0	2	2	0	3	1	0	0	10	6
31	ANIGWE, KRISTINE		2	1-4	0-0	0-0	1	3	4	2	0	1	4	0	10	6
33	BROWN, JAELYN		4	2-2	0-0	0-0	0	3	3	0	0	0	0	0	7	5
00	FORBES, MCKENZIE		0	0-0	0-0	0-0	0	0	0	0	0	0	0	0	3	1
04	STYLES, ALAYSIA		0	0-0	0-0	0-0	0	0	0	0	0	0	0	0	0	0
30	WEST, CJ		0	0-0	0-0	0-0	0	0	0	0	0	0	0	0	0	0
	TEAM						0	2	2	0		0				
TOTALS			14	6-13	2-5	0-0	1	12	13	2	5	3	4	0	50	

Shooting By Period

Period	FG	FG%	3FG	3FG%	FT	FT%
2nd Half	0-0	0%	0-0	0%	0-0	0%
Game	20-52	38.5%	5-22	22.7%	10-15	66.7%

Arizona 27

No.	Player	S	Pts	FG	3FG	FT	OR	DR	TR	PF	A	TO	Blk	Stl	Min	+/-
02	MCDONALD, AARI		6	2-5	2-3	0-0	2	0	2	0	0	0	0	0	10	-6
04	ALONSO, LUCIA		0	0-1	0-1	0-0	0	1	1	0	1	0	0	0	10	-6
14	THOMAS, SAM		0	0-4	0-1	0-0	0	0	0	0	0	0	0	0	10	-6
20	MCBRYDE, DOMINIQUE		0	0-2	0-0	0-0	0	0	0	0	0	0	0	1	9	-7
25	REESE, CATE		2	1-3	0-1	0-0	0	5	5	1	0	0	1	0	7	-5
10	STARKS, TEE TEE		0	0-0	0-0	0-0	0	0	0	0	0	0	0	0	0	0
21	GRAHAM, DESTINY		0	0-2	0-0	0-0	0	0	0	1	1	0	0	0	3	-1
34	SMITH, SEMAJ		0	0-0	0-0	0-0	0	0	0	0	0	0	0	0	1	1
	TEAM						0	0	0	0		0				
TOTALS			8	3-17	2-6	0-0	2	6	8	2	2	0	1	1	50	

Shooting By Period

Period	FG	FG%	3FG	3FG%	FT	FT%
2nd Half	0-0	0%	0-0	0%	0-0	0%
Game	21-57	36.8%	5-16	31.3%	13-15	86.7%

Game Notes:

Officials: Penny Davis, Shelley Nakasone, Ifeyinwa Seales
 Attendance: 2557

Start Time: 2019-01-12 02:06:52
 End Time: 2019-01-12 03:59:03
 Game Duration: 112
 Conference Game;

Score	1st	2nd	3rd	4th	TOT
CAL	13	9	14	19	55
ARI	19	14	8	19	60

Points from (This Period)	CAL	ARI
In the Paint	8	2
Off Turns	0	0
2nd Chance	0	0
Fast Break	0	0
Bench	0	0

**Official Play-By-Play
California vs Arizona
Third Quarter**

January 12, 2019 at McKale Center (Lute & Bobbi Olson Court) - Tucson, Ariz.



Period 3

Starters:

California: 1 THOMAS,ASHA; 14 SMITH,KIANNA; 24 CALDWELL,RECEE'; 31 ANIGWE,KRISTINE; 33 BROWN,JAELYN;

Arizona: 2 MCDONALD,AARI; 4 ALONSO,LUCIA; 14 THOMAS,SAM; 20 MCBRYDE,DOMINIQUE; 25 REESE,CATE;

Time	VISITORS: California	Score	Margin	HOME: Arizona
09:33	MISSED 3PTR by THOMAS, ASHA			
09:26				REBOUND (DEF) by REESE, CATE
09:09				MISSED 3PTR by ALONSO, LUCIA
09:02	REBOUND (DEF) by TEAM			
08:56	MISSED 3PTR by SMITH, KIANNA			
08:48				REBOUND (DEF) by ALONSO, LUCIA
08:46				MISSED JUMPER by THOMAS, SAM
08:40	REBOUND (DEF) by BROWN, JAELYN			
08:37	MISSED JUMPER by SMITH, KIANNA			
08:31				REBOUND (DEF) by REESE, CATE
08:23				MISSED 3PTR by REESE, CATE
08:16	REBOUND (DEF) by BROWN, JAELYN			
07:59	TURNOVER (BADPASS) by CALDWELL, RECEE'			
07:59				STEAL by MCBRYDE, DOMINIQUE
07:38				MISSED LAYUP by MCDONALD, AARI
07:38	BLOCK by ANIGWE, KRISTINE			
07:30	REBOUND (DEF) by THOMAS, ASHA			
07:27	TURNOVER (BADPASS) by THOMAS, ASHA			
07:27	TIMEOUT 30SEC			
07:16				MISSED JUMPER by MCBRYDE, DOMINIQUE
07:11	REBOUND (DEF) by ANIGWE, KRISTINE			
06:51	MISSED JUMPER by ANIGWE, KRISTINE			
06:44				REBOUND (DEF) by REESE, CATE
06:31		36-22	H 14	GOOD! 3PTR by MCDONALD, AARI
06:09	GOOD! LAYUP by BROWN, JAELYN	36-24	H 12	
06:09	ASSIST by CALDWELL, RECEE'			
05:54		38-24	H 14	GOOD! JUMPER by REESE, CATE [PNT]
05:54				ASSIST by ALONSO, LUCIA
05:30	GOOD! LAYUP by BROWN, JAELYN	38-26	H 12	
05:30	ASSIST by SMITH, KIANNA			
05:04				MISSED JUMPER by REESE, CATE
05:04	BLOCK by ANIGWE, KRISTINE			
04:52	REBOUND (DEF) by SMITH, KIANNA			
04:49	GOOD! 3PTR by CALDWELL, RECEE'	38-29	H 9	
04:49	ASSIST by THOMAS, ASHA			
04:33				MISSED 3PTR by MCDONALD, AARI
04:28	REBOUND (DEF) by ANIGWE, KRISTINE			
04:22	MISSED LAYUP by ANIGWE, KRISTINE			
04:22				BLOCK by REESE, CATE
04:12				REBOUND (DEF) by REESE, CATE
04:02				MISSED JUMPER by MCDONALD, AARI
03:53				REBOUND (OFF) by MCDONALD, AARI
03:39				MISSED LAYUP by THOMAS, SAM
03:33	REBOUND (DEF) by CALDWELL, RECEE'			
03:30	MISSED 3PTR by THOMAS, ASHA			
03:30	REBOUND (OFF) by ANIGWE, KRISTINE			
03:28				FOUL (PERSONAL) by REESE, CATE
03:28				
03:21	MISSED JUMPER by ANIGWE, KRISTINE			
03:17				REBOUND (DEF) by REESE, CATE
03:01				MISSED JUMPER by MCBRYDE, DOMINIQUE
02:57	REBOUND (DEF) by BROWN, JAELYN			
02:37	GOOD! 3PTR by SMITH, KIANNA	38-32	H 6	
02:37	ASSIST by CALDWELL, RECEE'			
02:36				SUB OUT: REESE, CATE
02:36				SUB IN: GRAHAM, DESTINY
02:36	SUB OUT: BROWN, JAELYN			
02:36	SUB IN: FORBES, MCKENZIE			
02:18	FOUL (PERSONAL) by ANIGWE, KRISTINE			
02:12				MISSED LAYUP by GRAHAM, DESTINY
02:12	BLOCK by ANIGWE, KRISTINE			
02:00				REBOUND (OFF) by MCDONALD, AARI
01:57				MISSED 3PTR by THOMAS, SAM
01:51	REBOUND (DEF) by CALDWELL, RECEE'			
01:43	GOOD! LAYUP by ANIGWE, KRISTINE	38-34	H 4	
01:43	ASSIST by CALDWELL, RECEE'			
01:22				MISSED LAYUP by GRAHAM, DESTINY
01:22	BLOCK by ANIGWE, KRISTINE			
01:22	REBOUND (DEF) by TEAM			
01:16				FOUL (PERSONAL) by GRAHAM, DESTINY

Time	VISITORS: California	Score	Margin	HOME: Arizona
01:16				SUB OUT: MCBRYDE, DOMINIQUE
01:16				SUB IN: SMITH, SEMAJ
01:03	GOOD! JUMPER by CALDWELL, RECEE' [PNT]	38-36	H 2	
00:48		41-36	H 5	GOOD! 3PTR by MCDONALD, AARI
00:48				ASSIST by GRAHAM, DESTINY
00:45	TURNOVER (OTHER) by ANIGWE, KRISTINE			
00:05	FOUL (PERSONAL) by ANIGWE, KRISTINE			
00:05				MISSED LAYUP by THOMAS, SAM
00:05	REBOUND (DEF) by ANIGWE, KRISTINE			

California 36, Arizona 41

Points from (This Period)	CAL	ARI
In the Paint	8	2
Off Turns	0	0
2nd Chance	0	0
Fast Break	0	0
Bench	0	0

Official Box Score
California vs Arizona
Fourth Quarter Statistics Only
 January 12, 2019 at McKale Center (Lute & Bobbi Olson Court) - Tucson, Ariz.



California 19

No.	Player	S	Pts	FG	3FG	FT	OR	DR	TR	PF	A	TO	Blk	Stl	Min	+/-
01	THOMAS, ASHA		2	1-4	0-2	0-0	0	0	0	1	0	1	0	0	9	1
14	SMITH, KIANNA		5	2-2	1-1	0-0	0	0	0	3	0	0	0	0	8	-3
24	CALDWELL, RECEE'		2	1-2	0-0	0-0	0	1	1	0	1	0	0	0	10	0
31	ANIGWE, KRISTINE		9	3-5	0-0	3-4	4	2	6	2	0	1	2	1	10	0
33	BROWN, JAELYN		1	0-1	0-1	1-2	1	2	3	1	0	1	0	0	10	0
00	FORBES, MCKENZIE		0	0-1	0-1	0-0	0	0	0	0	0	0	0	0	3	2
04	STYLES, ALAYSIA		0	0-0	0-0	0-0	0	0	0	0	0	0	0	0	0	0
30	WEST, CJ		0	0-0	0-0	0-0	0	0	0	0	0	0	0	0	0	0
	TEAM						0	0	0	0		1				
TOTALS			19	7-15	1-5	4-6	5	5	10	7	1	4	2	1	50	

Shooting By Period

Period	FG	FG%	3FG	3FG%	FT	FT%
Game	20-52	38.5%	5-22	22.7%	10-15	66.7%

Arizona 19

No.	Player	S	Pts	FG	3FG	FT	OR	DR	TR	PF	A	TO	Blk	Stl	Min	+/-
02	MCDONALD, AARI		16	4-5	1-2	7-8	0	1	1	0	0	2	0	1	10	0
04	ALONSO, LUCIA		0	0-1	0-1	0-0	0	0	0	0	1	0	0	0	10	0
14	THOMAS, SAM		0	0-1	0-0	0-0	0	1	1	1	0	0	0	1	10	0
20	MCBRYDE, DOMINIQUE		3	1-3	0-0	1-1	1	1	2	1	0	0	0	0	8	3
25	REESE, CATE		0	0-1	0-0	0-0	0	1	1	1	0	0	0	0	8	3
10	STARKS, TEE TEE		0	0-0	0-0	0-0	0	0	0	0	0	0	0	0	0	0
21	GRAHAM, DESTINY		0	0-0	0-0	0-0	0	0	0	0	0	0	0	0	2	-3
34	SMITH, SEMAJ		0	0-1	0-0	0-0	0	0	0	0	0	0	0	0	2	-3
	TEAM						1	1	2	0		0				
TOTALS			19	5-12	1-3	8-9	2	5	7	3	1	2	0	2	50	

Shooting By Period

Period	FG	FG%	3FG	3FG%	FT	FT%
Game	21-57	36.8%	5-16	31.3%	13-15	86.7%

Game Notes:

Officials: Penny Davis, Shelley Nakasone, Ifeyinwa Seales
 Attendance: 2557

Start Time: 2019-01-12 02:06:52
 End Time: 2019-01-12 03:59:03
 Game Duration: 112
 Conference Game;

Score	1st	2nd	3rd	4th	TOT
CAL	13	9	14	19	55
ARI	19	14	8	19	60

Points from (This Period)	CAL	ARI
In the Paint	10	2
Off Turns	2	2
2nd Chance	4	0
Fast Break	1	3
Bench	0	0

**Official Play-By-Play
California vs Arizona
Fourth Quarter**

January 12, 2019 at McKale Center (Lute & Bobbi Olson Court) - Tucson, Ariz.



Period 4

Starters:

California: 1 THOMAS,ASHA; 14 SMITH,KIANNA; 24 CALDWELL,RECEE'; 31 ANIGWE,KRISTINE; 33 BROWN,JAELYN;

Arizona: 2 MCDONALD,AARI; 4 ALONSO,LUCIA; 14 THOMAS,SAM; 20 MCBRYDE,DOMINIQUE; 25 REESE,CATE;

Time	VISITORS: California	Score	Margin	HOME: Arizona
09:52	GOOD! JUMPER by CALDWELL, RECEE' [PNT]	41-38	H 3	
09:33		43-38	H 5	GOOD! JUMPER by MCDONALD, AARI
09:13	MISSED 3PTR by FORBES, MCKENZIE			
09:04	REBOUND (OFF) by ANIGWE, KRISTINE			
09:00	GOOD! LAYUP by ANIGWE, KRISTINE	43-40	H 3	
08:51				MISSED LAYUP by SMITH, SEMAJ
08:51	BLOCK by ANIGWE, KRISTINE			
08:36	REBOUND (DEF) by CALDWELL, RECEE'			
08:35				FOUL (PERSONAL) by THOMAS, SAM
08:35	GOOD! FT by BROWN, JAELYN [FB]	43-41	H 2	
08:35	MISSED FT by BROWN, JAELYN			
08:35	REBOUND (OFF) by ANIGWE, KRISTINE			
08:28	MISSED 3PTR by BROWN, JAELYN			
08:22	REBOUND (OFF) by ANIGWE, KRISTINE			
08:22	TURNOVER (SHOTCLOCK) by			
08:03				SUB OUT: GRAHAM, DESTINY
08:03				SUB IN: REESE, CATE
08:03				SUB OUT: SMITH, SEMAJ
08:03				SUB IN: MCBRYDE, DOMINIQUE
08:03	SUB OUT: THOMAS, ASHA			
08:03	SUB IN: SMITH, KIANNA			
07:59		45-41	H 4	GOOD! JUMPER by MCDONALD, AARI
07:36				FOUL (PERSONAL) by REESE, CATE
07:36	GOOD! FT by ANIGWE, KRISTINE	45-42	H 3	
07:36	MISSED FT by ANIGWE, KRISTINE			
07:36				REBOUND (DEF) by THOMAS, SAM
07:21	FOUL (PERSONAL) by SMITH, KIANNA			
07:21	SUB OUT: FORBES, MCKENZIE			
07:21	SUB IN: THOMAS, ASHA			
07:05		48-42	H 6	GOOD! 3PTR by MCDONALD, AARI
07:05				ASSIST by ALONSO, LUCIA
06:47	GOOD! 3PTR by SMITH, KIANNA	48-45	H 3	
06:47	ASSIST by CALDWELL, RECEE'			
06:28				MISSED JUMPER by REESE, CATE
06:23	REBOUND (DEF) by BROWN, JAELYN			
06:12	MISSED 3PTR by THOMAS, ASHA			
06:07	REBOUND (OFF) by BROWN, JAELYN			
06:04	TURNOVER (BADPASS) by BROWN, JAELYN			
06:04				STEAL by MCDONALD, AARI
05:45				MISSED JUMPER by THOMAS, SAM
05:38				REBOUND (OFF) by MCBRYDE, DOMINIQUE
05:29				MISSED 3PTR by MCDONALD, AARI
05:25	REBOUND (DEF) by BROWN, JAELYN			
05:11				FOUL (PERSONAL) by MCBRYDE, DOMINIQUE
05:11	GOOD! FT by ANIGWE, KRISTINE	48-46	H 2	
05:11	GOOD! FT by ANIGWE, KRISTINE	48-47	H 1	
04:58		50-47	H 3	GOOD! JUMPER by MCDONALD, AARI
04:34	GOOD! JUMPER by ANIGWE, KRISTINE [PNT]	50-49	H 1	
04:21		52-49	H 3	GOOD! JUMPER by MCBRYDE, DOMINIQUE
04:19	FOUL (PERSONAL) by BROWN, JAELYN			
04:19				
04:19		53-49	H 4	GOOD! FT by MCBRYDE, DOMINIQUE
04:04	TURNOVER (BADPASS) by ANIGWE, KRISTINE			
04:04				STEAL by THOMAS, SAM
03:44				TURNOVER (BADPASS) by MCDONALD, AARI
03:33	GOOD! JUMPER by THOMAS, ASHA [PNT]	53-51	H 2	
03:04				MISSED JUMPER by MCBRYDE, DOMINIQUE
03:00	REBOUND (DEF) by ANIGWE, KRISTINE			
02:50	MISSED JUMPER by ANIGWE, KRISTINE			
02:44				REBOUND (DEF) by TEAM
02:33				MISSED JUMPER by MCBRYDE, DOMINIQUE
02:33	BLOCK by ANIGWE, KRISTINE			
02:32				REBOUND (OFF) by TEAM
02:22				TURNOVER (LOSTBALL) by MCDONALD, AARI
02:22	STEAL by ANIGWE, KRISTINE			
02:18	TURNOVER (BADPASS) by THOMAS, ASHA			
01:49				MISSED 3PTR by ALONSO, LUCIA
01:44	REBOUND (DEF) by ANIGWE, KRISTINE			
01:21	MISSED LAYUP by ANIGWE, KRISTINE			
01:11	REBOUND (OFF) by ANIGWE, KRISTINE			

Time	VISITORS: California	Score	Margin	HOME: Arizona
01:08	GOOD! JUMPER by ANIGWE, KRISTINE	53-53	T	
00:58	FOUL (PERSONAL) by ANIGWE, KRISTINE			
00:58		54-53	H 1	GOOD! FT by MCDONALD, AARI [FB]
00:58		55-53	H 2	GOOD! FT by MCDONALD, AARI [FB]
00:58	TIMEOUT 30SEC			
00:38	MISSED JUMPER by CALDWELL, RECEE'			
00:34				REBOUND (DEF) by MCDONALD, AARI
00:33	FOUL (PERSONAL) by ANIGWE, KRISTINE			
00:33				TIMEOUT 30SEC
00:33	FOUL (PERSONAL) by SMITH, KIANNA			
00:33		56-53	H 3	GOOD! FT by MCDONALD, AARI
00:33		57-53	H 4	GOOD! FT by MCDONALD, AARI
00:33	TIMEOUT TEAM			
00:23	MISSED JUMPER by THOMAS, ASHA			
00:23				REBOUND (DEF) by MCBRYDE, DOMINIQUE
00:21				TIMEOUT 30SEC
00:19	FOUL (PERSONAL) by THOMAS, ASHA			
00:19				MISSED FT by MCDONALD, AARI
00:19				REBOUND (OFF) by TEAM
00:19		58-53	H 5	GOOD! FT by MCDONALD, AARI [FB]
00:10	GOOD! LAYUP by SMITH, KIANNA	58-55	H 3	
00:10				TIMEOUT TEAM
00:07	FOUL (PERSONAL) by SMITH, KIANNA			
00:07		59-55	H 4	GOOD! FT by MCDONALD, AARI
00:07		60-55	H 5	GOOD! FT by MCDONALD, AARI
00:02	MISSED 3PTR by THOMAS, ASHA			
00:02				REBOUND (DEF) by REESE, CATE

California 55, Arizona 60

Points from (This Period)	CAL	ARI
In the Paint	10	2
Off Turns	2	2
2nd Chance	4	0
Fast Break	1	3
Bench	0	0

**Official Scoring/Possession Reference Chart
California vs Arizona
Period 1**

January 12, 2019 at McKale Center (Lute & Bobbi Olson Court) - Tucson, Ariz.



Period 1

Starters:

California: 1 THOMAS,ASHA; 14 SMITH,KIANNA; 24 CALDWELL,RECEE'; 31 ANIGWE,KRISTINE; 33 BROWN,JAELYN;
Arizona: 2 MCDONALD,AARI; 4 ALONSO,LUCIA; 14 THOMAS,SAM; 20 MCBRYDE,DOMINIQUE; 25 REESE,CATE;

Time	VISITORS: California	Score	Margin	HOME: Arizona
09:39	GOOD! 3PTR by CALDWELL, RECEE'	0-3	V 3	
08:47		2-3	V 1	GOOD! LAYUP by REESE, CATE
08:30	GOOD! LAYUP by BROWN, JAELYN	2-5	V 3	
08:28		5-5	T	GOOD! 3PTR by MCDONALD, AARI
06:48	GOOD! LAYUP by BROWN, JAELYN	5-7	V 2	
06:32		8-7	H 1	GOOD! 3PTR by MCDONALD, AARI
05:44	GOOD! LAYUP by ANIGWE, KRISTINE	8-9	V 1	
05:22		10-9	H 1	GOOD! LAYUP by MCBRYDE, DOMINIQUE
05:05		12-9	H 3	GOOD! JUMPER by MCDONALD, AARI [FB]
04:15		14-9	H 5	GOOD! JUMPER by REESE, CATE
03:59		16-9	H 7	GOOD! LAYUP by THOMAS, SAM [FB]
03:59		17-9	H 8	GOOD! FT by THOMAS, SAM [FB]
02:15	GOOD! FT by WEST, CJ	17-10	H 7	
02:15	GOOD! FT by WEST, CJ	17-11	H 6	
01:04	GOOD! LAYUP by ANIGWE, KRISTINE	17-13	H 4	
00:42		19-13	H 6	GOOD! JUMPER by THOMAS, SAM [PNT]

California 13, Arizona 19

**Official Scoring/Possession Reference Chart
California vs Arizona**

Period 2

January 12, 2019 at McKale Center (Lute & Bobbi Olson Court) - Tucson, Ariz.



Period 2

Starters:

California: 1 THOMAS,ASHA; 14 SMITH,KIANNA; 24 CALDWELL,RECEE'; 31 ANIGWE,KRISTINE; 33 BROWN,JAELYN;

Arizona: 2 MCDONALD,AARI; 4 ALONSO,LUCIA; 14 THOMAS,SAM; 20 MCBRYDE,DOMINIQUE; 25 REESE,CATE;

Time	VISITORS: California	Score	Margin	HOME: Arizona
09:30	GOOD! FT by ANIGWE, KRISTINE	19-14	H 5	
09:02	GOOD! FT by THOMAS, ASHA [FB]	19-15	H 4	
09:02	GOOD! FT by THOMAS, ASHA [FB]	19-16	H 3	
08:02	GOOD! LAYUP by ANIGWE, KRISTINE	19-18	H 1	
07:43		21-18	H 3	GOOD! JUMPER by THOMAS, SAM [PNT]
06:41		22-18	H 4	GOOD! FT by REESE, CATE
06:41		23-18	H 5	GOOD! FT by REESE, CATE
06:17	GOOD! FT by ANIGWE, KRISTINE	23-19	H 4	
05:16		25-19	H 6	GOOD! LAYUP by MCDONALD, AARI
04:54		26-19	H 7	GOOD! FT by MCDONALD, AARI [FB]
04:54		27-19	H 8	GOOD! FT by MCDONALD, AARI [FB]
04:32		29-19	H 10	GOOD! JUMPER by ALONSO, LUCIA
03:35		31-19	H 12	GOOD! LAYUP by REESE, CATE
02:45		33-19	H 14	GOOD! JUMPER by MCDONALD, AARI
01:56	GOOD! 3PTR by CALDWELL, RECEE'	33-22	H 11	

California 22, Arizona 33

**Official Scoring/Possession Reference Chart
California vs Arizona**

Period 3

January 12, 2019 at McKale Center (Lute & Bobbi Olson Court) - Tucson, Ariz.



Period 3

Starters:

California: 1 THOMAS,ASHA; 14 SMITH,KIANNA; 24 CALDWELL,RECEE'; 31 ANIGWE,KRISTINE; 33 BROWN,JAELYN;

Arizona: 2 MCDONALD,AARI; 4 ALONSO,LUCIA; 14 THOMAS,SAM; 20 MCBRYDE,DOMINIQUE; 25 REESE,CATE;

Time	VISITORS: California	Score	Margin	HOME: Arizona
06:31		36-22	H 14	GOOD! 3PTR by MCDONALD, AARI
06:09	GOOD! LAYUP by BROWN, JAELYN	36-24	H 12	
05:54		38-24	H 14	GOOD! JUMPER by REESE, CATE [PNT]
05:30	GOOD! LAYUP by BROWN, JAELYN	38-26	H 12	
04:49	GOOD! 3PTR by CALDWELL, RECEE'	38-29	H 9	
02:37	GOOD! 3PTR by SMITH, KIANNA	38-32	H 6	
01:43	GOOD! LAYUP by ANIGWE, KRISTINE	38-34	H 4	
01:03	GOOD! JUMPER by CALDWELL, RECEE' [PNT]	38-36	H 2	
00:48		41-36	H 5	GOOD! 3PTR by MCDONALD, AARI

California 36, Arizona 41

**Official Scoring/Possession Reference Chart
California vs Arizona**

Period 4

January 12, 2019 at McKale Center (Lute & Bobbi Olson Court) - Tucson, Ariz.



Period 4

Starters:

California: 1 THOMAS,ASHA; 14 SMITH,KIANNA; 24 CALDWELL,RECEE'; 31 ANIGWE,KRISTINE; 33 BROWN,JAELYN;

Arizona: 2 MCDONALD,AARI; 4 ALONSO,LUCIA; 14 THOMAS,SAM; 20 MCBRYDE,DOMINIQUE; 25 REESE,CATE;

Time	VISITORS: California	Score	Margin	HOME: Arizona
09:52	GOOD! JUMPER by CALDWELL, RECEE' [PNT]	41-38	H 3	
09:33		43-38	H 5	GOOD! JUMPER by MCDONALD, AARI
09:00	GOOD! LAYUP by ANIGWE, KRISTINE	43-40	H 3	
08:35	GOOD! FT by BROWN, JAELYN [FB]	43-41	H 2	
07:59		45-41	H 4	GOOD! JUMPER by MCDONALD, AARI
07:36	GOOD! FT by ANIGWE, KRISTINE	45-42	H 3	
07:05		48-42	H 6	GOOD! 3PTR by MCDONALD, AARI
06:47	GOOD! 3PTR by SMITH, KIANNA	48-45	H 3	
05:11	GOOD! FT by ANIGWE, KRISTINE	48-46	H 2	
05:11	GOOD! FT by ANIGWE, KRISTINE	48-47	H 1	
04:58		50-47	H 3	GOOD! JUMPER by MCDONALD, AARI
04:34	GOOD! JUMPER by ANIGWE, KRISTINE [PNT]	50-49	H 1	
04:21		52-49	H 3	GOOD! JUMPER by MCBRYDE, DOMINIQUE
04:19		53-49	H 4	GOOD! FT by MCBRYDE, DOMINIQUE
03:33	GOOD! JUMPER by THOMAS, ASHA [PNT]	53-51	H 2	
01:08	GOOD! JUMPER by ANIGWE, KRISTINE	53-53	T	
00:58		54-53	H 1	GOOD! FT by MCDONALD, AARI [FB]
00:58		55-53	H 2	GOOD! FT by MCDONALD, AARI [FB]
00:33		56-53	H 3	GOOD! FT by MCDONALD, AARI
00:33		57-53	H 4	GOOD! FT by MCDONALD, AARI
00:19		58-53	H 5	GOOD! FT by MCDONALD, AARI [FB]
00:10	GOOD! LAYUP by SMITH, KIANNA	58-55	H 3	
00:07		59-55	H 4	GOOD! FT by MCDONALD, AARI
00:07		60-55	H 5	GOOD! FT by MCDONALD, AARI

California 55, Arizona 60

**Official Substitutions Log
California vs Arizona
Period 1**

January 12, 2019 at McKale Center (Lute & Bobbi Olson Court) - Tucson, Ariz.



VISITORS: California	Time	Score	HOME: Arizona
1 THOMAS,ASHA			2 MCDONALD,AARI
14 SMITH,KIANNA			4 ALONSO,LUCIA
24 CALDWELL,REECE'			14 THOMAS,SAM
31 ANIGWE,KRISTINE			20 MCBRYDE,DOMINIQUE
33 BROWN,JAELYN			25 REESE,CATE
SUB OUT: 14 SMITH,KIANNA	04:11	9-14	
SUB IN: 0 FORBES,MCKENZIE	04:11		
SUB OUT: 33 BROWN,JAELYN	04:11		
SUB IN: 30 WEST,CJ	04:11		
	03:59	9-16	SUB OUT: REESE,CATE
	03:59		SUB IN: SMITH,SEMAJ
	03:59		SUB OUT: ALONSO,LUCIA
	03:59		SUB IN: STARKS,TEE TEE
	02:15	10-17	SUB OUT: THOMAS,SAM
	02:15		SUB IN: ALONSO,LUCIA
	02:15		SUB OUT: SMITH,SEMAJ
	02:15		SUB IN: REESE,CATE
	02:15		SUB OUT: MCBRYDE,DOMINIQUE
	02:15		SUB IN: GRAHAM,DESTINY
	00:46	13-17	SUB OUT: MCDONALD,AARI
	00:46		SUB IN: THOMAS,SAM
	00:46		SUB OUT: REESE,CATE
	00:46		SUB IN: SMITH,SEMAJ
SUB OUT: 30 WEST,CJ	00:46		
SUB IN: 14 SMITH,KIANNA	00:46		

California 13, Arizona 19

**Official Substitutions Log
California vs Arizona
Period 2**

January 12, 2019 at McKale Center (Lute & Bobbi Olson Court) - Tucson, Ariz.



VISITORS: California	Time	Score	HOME: Arizona
1 THOMAS,ASHA			2 MCDONALD,AARI
14 SMITH,KIANNA			4 ALONSO,LUCIA
24 CALDWELL,RECEE'			14 THOMAS,SAM
31 ANIGWE,KRISTINE			20 MCBRYDE,DOMINIQUE
33 BROWN,JAELYN			25 REESE,CATE
	09:42	-	SUB OUT: MCBRYDE,DOMINIQUE
	09:42		SUB IN: STARKS,TEE TEE
	09:02	15-19	SUB OUT: REESE,CATE
	09:02		SUB IN: GRAHAM,DESTINY
	07:55	18-19	SUB OUT: STARKS,TEE TEE
	07:55		SUB IN: REESE,CATE
SUB OUT: 24 CALDWELL,RECEE'	06:41	18-22	
SUB IN: 33 BROWN,JAELYN	06:41		
SUB OUT: 0 FORBES,MCKENZIE	05:33	19-23	
SUB IN: 24 CALDWELL,RECEE'	05:33		
	04:54	19-27	SUB OUT: MCDONALD,AARI
	04:54		SUB IN: STARKS,TEE TEE
	04:33	19-27	SUB OUT: STARKS,TEE TEE
	04:33		SUB IN: MCDONALD,AARI
SUB OUT: 14 SMITH,KIANNA	04:33		
SUB IN: 4 STYLES,ALAYSIA	04:33		
SUB OUT: 31 ANIGWE,KRISTINE	03:36	19-29	
SUB IN: 30 WEST,CJ	03:36		
	03:10	19-31	SUB OUT: REESE,CATE
	03:10		SUB IN: SMITH,SEMAJ
SUB OUT: 30 WEST,CJ	03:10		
SUB IN: 14 SMITH,KIANNA	03:10		
SUB OUT: 33 BROWN,JAELYN	03:10		
SUB IN: 31 ANIGWE,KRISTINE	03:10		
	01:04	22-33	SUB OUT: SMITH,SEMAJ
	01:04		SUB IN: REESE,CATE

California 22, Arizona 33

**Official Substitutions Log
California vs Arizona
Period 3**

January 12, 2019 at McKale Center (Lute & Bobbi Olson Court) - Tucson, Ariz.



VISITORS: California	Time	Score	HOME: Arizona
1 THOMAS,ASHA			2 MCDONALD,AARI
14 SMITH,KIANNA			4 ALONSO,LUCIA
24 CALDWELL,RECEE'			14 THOMAS,SAM
31 ANIGWE,KRISTINE			20 MCBRYDE,DOMINIQUE
33 BROWN,JAELYN			25 REESE,CATE
	02:36	32-38	SUB OUT: REESE,CATE
	02:36		SUB IN: GRAHAM,DESTINY
SUB OUT: 33 BROWN,JAELYN	02:36		
SUB IN: 0 FORBES,MCKENZIE	02:36		
	01:16	34-38	SUB OUT: MCBRYDE,DOMINIQUE
	01:16		SUB IN: SMITH,SEMAJ

California 36, Arizona 41

**Official Substitutions Log
California vs Arizona
Period 4**

January 12, 2019 at McKale Center (Lute & Bobbi Olson Court) - Tucson, Ariz.



VISITORS: California	Time	Score	HOME: Arizona
1 THOMAS,ASHA			2 MCDONALD,AARI
14 SMITH,KIANNA			4 ALONSO,LUCIA
24 CALDWELL,RECEE'			14 THOMAS,SAM
31 ANIGWE,KRISTINE			20 MCBRYDE,DOMINIQUE
33 BROWN,JAELYN			25 REESE,CATE
	08:03	41-43	SUB OUT: GRAHAM,DESTINY
	08:03		SUB IN: REESE,CATE
	08:03		SUB OUT: SMITH,SEMAJ
	08:03		SUB IN: MCBRYDE,DOMINIQUE
SUB OUT: 1 THOMAS,ASHA	08:03		
SUB IN: 14 SMITH,KIANNA	08:03		
SUB OUT: 0 FORBES,MCKENZIE	07:21	42-45	
SUB IN: 1 THOMAS,ASHA	07:21		

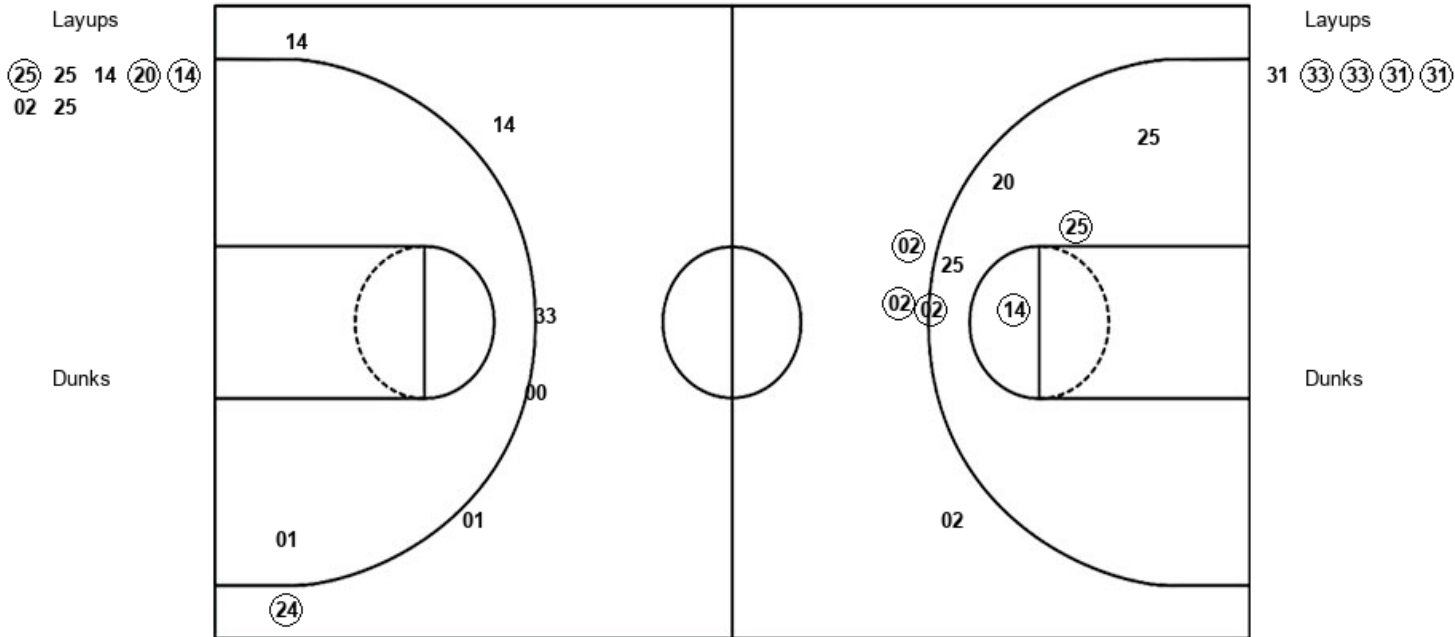
California 55, Arizona 60

Official Shot Chart
California vs Arizona
PERIOD 1 Shots
 January 12, 2019 at McKale Center (Lute & Bobbi Olson Court) - Tucson, Ariz.



Arizona

California



ARI : Period 1	Made	Att	Pct
Layups	3	7	42.9
Dunks	0	0	0
2PT Field Goals	6	13	46.2
3PT Field Goals	2	3	66.7
Total Field Goals	8	16	50.0

CAL : Period 1	Made	Att	Pct
Layups	4	5	80.0
Dunks	0	0	0
2PT Field Goals	4	6	66.7
3PT Field Goals	1	6	16.7
Total Field Goals	5	12	41.7

Official Shot Chart
California vs Arizona
PERIOD 2 Shots
 January 12, 2019 at McKale Center (Lute & Bobbi Olson Court) - Tucson, Ariz.



Arizona

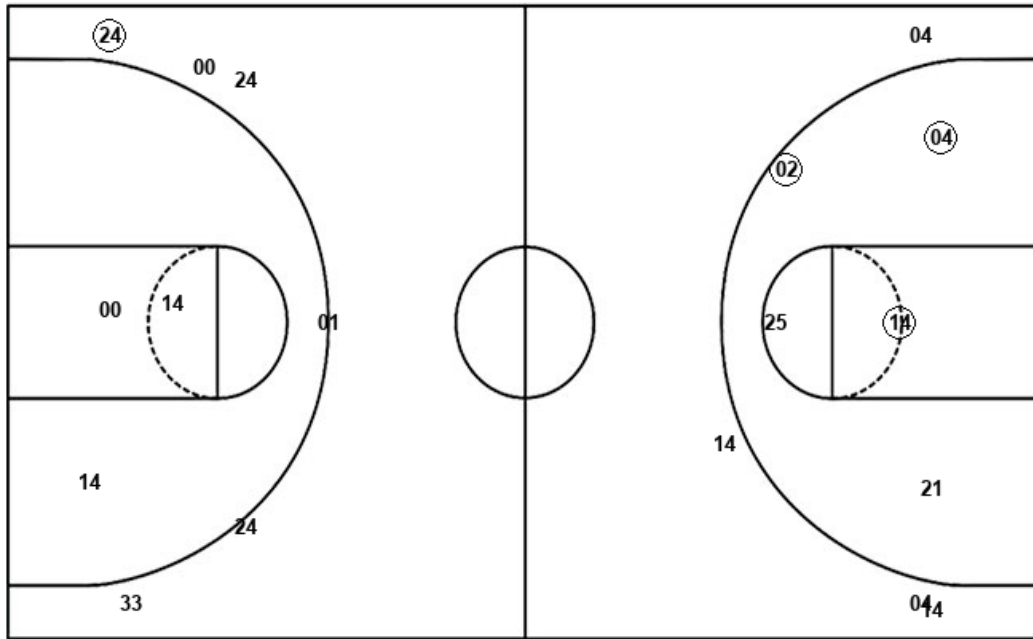
California

Layups
 (02) 10 (25)

Layups
 (31) 31 30

Dunks

Dunks



ARI : Period 2	Made	Att	Pct
Layups	2	3	66.7
Dunks	0	0	0
2PT Field Goals	5	8	62.5
3PT Field Goals	0	4	00.0
Total Field Goals	5	12	41.7

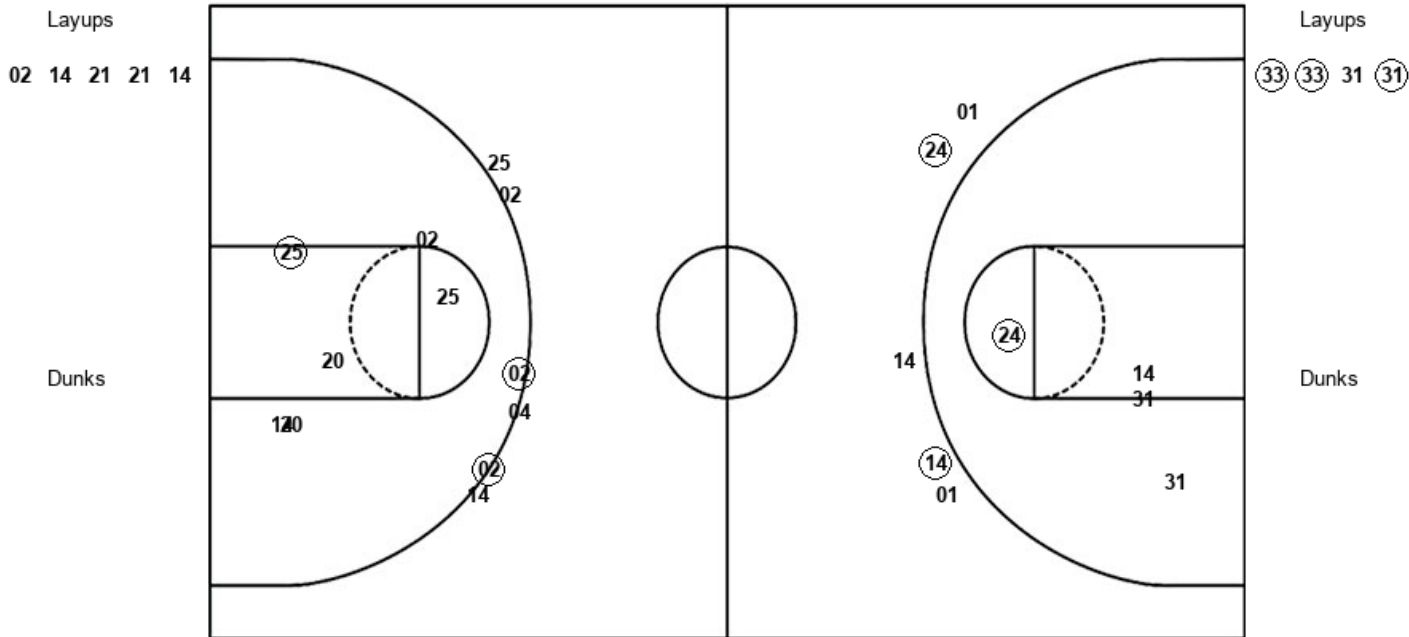
CAL : Period 2	Made	Att	Pct
Layups	1	3	33.3
Dunks	0	0	0
2PT Field Goals	1	6	16.7
3PT Field Goals	1	6	16.7
Total Field Goals	2	12	16.7

Official Shot Chart
California vs Arizona
PERIOD 3 Shots
 January 12, 2019 at McKale Center (Lute & Bobbi Olson Court) - Tucson, Ariz.



Arizona

California



ARI : Period 3	Made	Att	Pct
Layups	0	5	00.0
Dunks	0	0	0
2PT Field Goals	1	11	09.1
3PT Field Goals	2	6	33.3
Total Field Goals	3	17	17.6

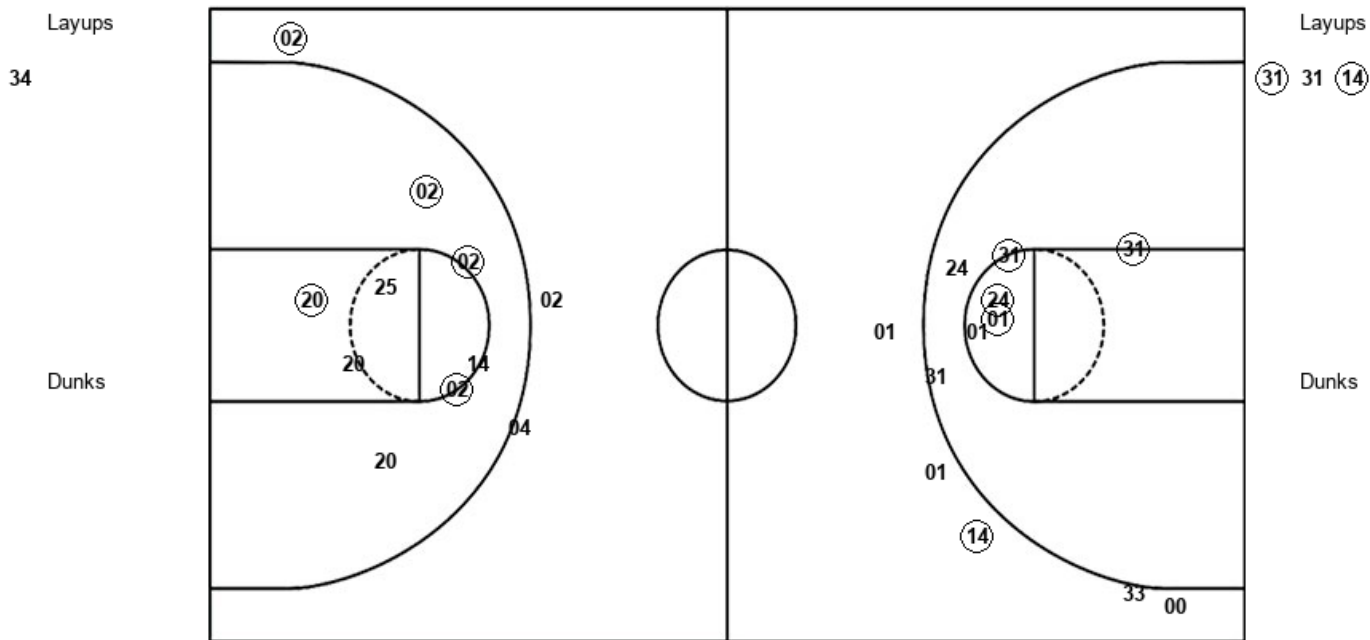
CAL : Period 3	Made	Att	Pct
Layups	3	4	75.0
Dunks	0	0	0
2PT Field Goals	4	8	50.0
3PT Field Goals	2	5	40.0
Total Field Goals	6	13	46.2

Official Shot Chart
California vs Arizona
PERIOD 4 Shots
 January 12, 2019 at McKale Center (Lute & Bobbi Olson Court) - Tucson, Ariz.



Arizona

California



ARI : Period 4	Made	Att	Pct
Layups	0	1	00.0
Dunks	0	0	0
2PT Field Goals	4	9	44.4
3PT Field Goals	1	3	33.3
Total Field Goals	5	12	41.7

CAL : Period 4	Made	Att	Pct
Layups	2	3	66.7
Dunks	0	0	0
2PT Field Goals	6	10	60.0
3PT Field Goals	1	5	20.0
Total Field Goals	7	15	46.7

