

## FINAL SCORE



**Arizona State**

**39**



**Arizona**

**51**

December 31, 2018 • McKale Center (Lute & Bobbi Olson Court) - Tucson, Ariz.

## FINAL STATISTICS

**Official Box Score**  
**Arizona State vs Arizona**  
**Game Totals -- Final Statistics**  
**December 31, 2018 at McKale Center (Lute & Bobbi Olson Court) - Tucson, Ariz.**



**Arizona State 39**

No.	Player	S	Pts	FG	3FG	FT	OR	DR	TR	PF	A	TO	Blk	Stl	Min	+/-
01	RICHARDSON, REILI		5	1-4	1-2	2-2	1	1	2	0	1	3	0	0	23	-10
11	RYAN, ROBBIE		3	1-8	1-5	0-0	1	3	4	1	1	2	0	0	26	-7
22	EKMARK, COURTNEY		3	1-10	1-8	0-0	4	1	5	3	1	1	0	0	28	-10
33	JOHNSON-CHAPMAN, CHARL		2	1-3	0-0	0-0	2	2	4	2	2	1	0	2	21	-4
42	IBIS, KIANNA		11	4-13	1-4	2-5	2	5	7	2	0	1	1	2	25	-9
00	HANSON, TAYA		0	0-2	0-2	0-0	0	2	2	0	1	0	0	0	10	-3
04	RUSSELL, KIARA		8	2-4	0-0	4-4	0	1	1	1	2	1	0	1	20	-7
21	ELENGA, SOPHIA		2	1-4	0-0	0-0	1	3	4	3	0	2	0	0	22	-3
23	MBULITO, IRIS		3	1-4	0-0	1-4	0	0	0	1	1	3	2	1	12	2
32	VAN HYFTE, JAYDE		2	1-2	0-0	0-0	2	0	2	1	1	2	0	0	9	-5
52	RUDEN, JAMIE		0	0-2	0-2	0-0	0	0	0	0	0	1	0	0	3	-4
	TEAM						4	3	7	0		0				
<b>TOTALS</b>			<b>39</b>	<b>13-56</b>	<b>4-23</b>	<b>9-15</b>	<b>17</b>	<b>21</b>	<b>38</b>	<b>14</b>	<b>10</b>	<b>17</b>	<b>3</b>	<b>6</b>	<b>199</b>	

*Shooting By Period*

Period	FG	FG%	3FG	3FG%	FT	FT%
1st Qtr	5-15	33%	1-7	14%	2-4	50%
2nd Qtr	1-12	08%	0-4	00%	5-6	83%
3rd Qtr	3-13	23%	1-4	25%	1-2	50%
4th Qtr	4-16	25%	2-8	25%	1-3	33%
1st Half	6-27	22%	1-11	09%	7-10	70%
2nd Half	7-29	24%	3-12	25%	2-5	40%
<b>Game</b>	<b>13-56</b>	<b>23.2%</b>	<b>4-23</b>	<b>17.4%</b>	<b>9-15</b>	<b>60.0%</b>

Last FG: 4th-00:07  
 Biggest Run: 5-0  
 Largest lead: By 0 at 1-00:35  
 Technical Fouls: None.

**Arizona 51**

No.	Player	S	Pts	FG	3FG	FT	OR	DR	TR	PF	A	TO	Blk	Stl	Min	+/-
02	MCDONALD, AARI		24	9-17	0-3	6-7	1	5	6	3	3	3	0	2	36	6
04	ALONSO, LUCIA		2	0-2	0-1	2-2	0	3	3	3	1	2	0	0	33	18
14	THOMAS, SAM		11	4-7	1-3	2-2	0	4	4	1	0	0	2	2	37	15
20	MCBRYDE, DOMINIQUE		6	3-8	0-1	0-0	1	8	9	4	1	2	2	4	35	14
25	REESE, CATE		2	1-2	0-0	0-0	0	4	4	4	0	1	0	0	15	4
10	STARKS, TEE TEE		4	2-3	0-0	0-0	0	0	0	1	2	2	1	1	22	2
21	GRAHAM, DESTINY		2	1-4	0-0	0-0	0	0	0	3	0	3	0	1	16	0
24	NIXON, BRYCE		0	0-0	0-0	0-0	0	0	0	0	0	0	0	0	0	0
34	SMITH, SEMAJ		0	0-0	0-0	0-0	0	1	1	1	0	1	0	0	6	1
	TEAM						1	2	3	0		1				
<b>TOTALS</b>			<b>51</b>	<b>20-43</b>	<b>1-8</b>	<b>10-11</b>	<b>3</b>	<b>27</b>	<b>30</b>	<b>20</b>	<b>7</b>	<b>15</b>	<b>5</b>	<b>10</b>	<b>199</b>	

*Shooting By Period*

Period	FG	FG%	3FG	3FG%	FT	FT%
1st Qtr	6-10	60%	0-1	00%	5-5	100%
2nd Qtr	4-11	36%	0-2	00%	2-2	100%
3rd Qtr	4-11	36%	1-3	33%	0-0	0%
4th Qtr	6-11	55%	0-2	00%	3-4	75%
1st Half	10-21	48%	0-3	00%	7-7	100%
2nd Half	10-22	45%	1-5	20%	3-4	75%
<b>Game</b>	<b>20-43</b>	<b>46.5%</b>	<b>1-8</b>	<b>12.5%</b>	<b>10-11</b>	<b>90.9%</b>

Last FG: 4th-01:11  
 Biggest Run: 8-0  
 Largest lead: By 15 at 4-01:11  
 Technical Fouls: None.

**Game Notes:**

Officials: Penny Davis, Bart Baldwin, Lorena Ahumada  
 Attendance: 5006

Start Time: 2018-12-31 00:07:27  
 End Time: 2018-12-31 02:00:10  
 Game Duration: 112  
 Conference Game;

Score	1st	2nd	3rd	4th	TOT
ASU	13	7	8	11	<b>39</b>
ARI	17	10	9	15	<b>51</b>

ASU led for 0:00. ARI led for 37:24.  
 Game was tied for 2:28.  
 Times tied: 4      Lead Changes: 0

Points from	ASU	ARI
In the Paint	16	28
Off Turns	10	12
2nd Chance	2	4
Fast Break	8	12
Bench	15	6

**Official Box Score**  
**Arizona State vs Arizona**  
**First Half Statistics Only**  
**December 31, 2018 at McKale Center (Lute & Bobbi Olson Court) - Tucson, Ariz.**



**Arizona State 20**

No.	Player	S	Pts	FG	3FG	FT	OR	DR	TR	PF	A	TO	Blk	Stl	Min	+/-
00	HANSON, TAYA		0	0-2	0-2	0-0	0	0	0	0	0	0	0	0	5	1
01	RICHARDSON, REILI		2	0-0	0-0	2-2	0	0	0	0	0	0	0	0	11	-4
04	RUSSELL, KIARA		8	2-3	0-0	4-4	0	1	1	0	1	0	0	1	12	-4
11	RYAN, ROBBIE		3	1-5	1-3	0-0	0	0	0	0	0	1	0	0	13	-8
21	ELENGA, SOPHIA		0	0-0	0-0	0-0	1	2	3	2	0	2	0	0	12	2
22	EKMARK, COURTNEY		0	0-5	0-4	0-0	1	1	2	1	0	0	0	0	13	-9
23	MBULITO, IRIS		3	1-3	0-0	1-4	0	0	0	1	1	2	2	1	8	3
32	VAN HYFTE, JAYDE		2	1-2	0-0	0-0	2	0	2	1	1	2	0	0	8	-1
33	JOHNSON-CHAPMAN, CHARL		2	1-1	0-0	0-0	1	2	3	1	1	1	0	1	11	-5
42	IBIS, KIANNA		0	0-4	0-0	0-0	0	2	2	2	0	0	0	0	7	-6
52	RUDEN, JAMIE		0	0-2	0-2	0-0	0	0	0	0	0	1	0	0	3	-4
	TEAM		0	0-0	0-0	0-0	3	2	5	0	0	0	0	0	0	0
<b>TOTALS</b>			<b>20</b>	<b>6-27</b>	<b>1-11</b>	<b>7-10</b>	<b>8</b>	<b>10</b>	<b>18</b>	<b>8</b>	<b>4</b>	<b>9</b>	<b>2</b>	<b>3</b>	<b>100</b>	

*Shooting By Period*

Period	FG	FG%	3FG	3FG%	FT	FT%
1st Qtr	5-15	33%	1-7	14%	2-4	50%
2nd Qtr	1-12	08%	0-4	00%	5-6	83%
1st Half	6-27	22%	1-11	09%	7-10	70%
Game	13-56	23.2%	4-23	17.4%	9-15	60.0%

*Last FG Half: ASU 2nd-04:00*

**Arizona 27**

No.	Player	S	Pts	FG	3FG	FT	OR	DR	TR	PF	A	TO	Blk	Stl	Min	+/-
02	MCDONALD, AARI		15	5-9	0-1	5-5	1	3	4	0	1	1	0	1	18	5
04	ALONSO, LUCIA		2	0-0	0-0	2-2	0	2	2	1	1	2	0	0	17	9
10	STARKS, TEE TEE		4	2-3	0-0	0-0	0	0	0	1	1	1	0	1	11	0
14	THOMAS, SAM		2	1-2	0-1	0-0	0	1	1	1	0	0	1	0	17	10
20	MCBRYDE, DOMINIQUE		2	1-5	0-1	0-0	0	3	3	2	0	0	1	2	16	9
21	GRAHAM, DESTINY		0	0-0	0-0	0-0	0	0	0	3	0	3	0	0	6	-5
24	NIXON, BRYCE		0	0-0	0-0	0-0	0	0	0	0	0	0	0	0	0	0
25	REESE, CATE		2	1-2	0-0	0-0	0	3	3	2	0	1	0	0	9	6
34	SMITH, SEMAJ		0	0-0	0-0	0-0	0	1	1	1	0	1	0	0	6	1
	TEAM		0	0-0	0-0	0-0	0	1	1	0	0	1	0	0	0	0
<b>TOTALS</b>			<b>27</b>	<b>10-21</b>	<b>0-3</b>	<b>7-7</b>	<b>1</b>	<b>14</b>	<b>15</b>	<b>11</b>	<b>3</b>	<b>10</b>	<b>2</b>	<b>4</b>	<b>100</b>	

*Shooting By Period*

Period	FG	FG%	3FG	3FG%	FT	FT%
1st Qtr	6-10	60%	0-1	00%	5-5	100%
2nd Qtr	4-11	36%	0-2	00%	2-2	100%
1st Half	10-21	48%	0-3	00%	7-7	100%
Game	20-43	46.5%	1-8	12.5%	10-11	90.9%

*Last FG Half: ARI 2nd-00:31*

Game Notes:

Officials: Penny Davis, Bart Baldwin, Lorena Ahumada  
 Attendance: 5006

Start Time: 2018-12-31 00:07:27  
 End Time: 2018-12-31 02:00:10  
 Game Duration: 112  
 Conference Game;

Score	1st	2nd	3rd	4th	TOT
ASU	13	7	8	11	<b>39</b>
ARI	17	10	9	15	<b>51</b>

Points from (This Period)	ASU	ARI
In the Paint	8	14
Off Turns	5	4
2nd Chance	2	0
Fast Break	4	6
Bench	13	4

**Official Box Score**  
**Arizona State vs Arizona**  
**First Quarter Statistics Only**  
**December 31, 2018 at McKale Center (Lute & Bobbi Olson Court) - Tucson, Ariz.**



**Arizona State 13**

No.	Player	S	Pts	FG	3FG	FT	OR	DR	TR	PF	A	TO	Blk	Stl	Min	+/-
01	RICHARDSON, REILI		0	0-0	0-0	0-0	0	0	0	0	0	0	0	0	5	-3
11	RYAN, ROBBIE		3	1-3	1-2	0-0	0	0	0	0	0	0	0	0	7	-6
22	EKMARK, COURTNEY		0	0-4	0-4	0-0	1	1	2	1	0	0	0	0	7	-5
33	JOHNSON-CHAPMAN, CHARL		2	1-1	0-0	0-0	1	1	2	1	1	1	0	1	8	-4
42	IBIS, KIANNA		0	0-1	0-0	0-0	0	0	0	2	0	0	0	0	2	-6
00	HANSON, TAYA		0	0-0	0-0	0-0	0	0	0	0	0	0	0	0	3	1
04	RUSSELL, KIARA		6	2-2	0-0	2-2	0	0	0	0	0	0	0	1	5	-1
21	ELENGA, SOPHIA		0	0-0	0-0	0-0	0	1	1	0	0	1	0	0	7	1
23	MBULITO, IRIS		0	0-1	0-0	0-2	0	0	0	1	1	1	0	1	3	2
32	VAN HYFTE, JAYDE		2	1-2	0-0	0-0	1	0	1	0	1	1	0	0	3	3
52	RUDEN, JAMIE		0	0-1	0-1	0-0	0	0	0	0	0	0	0	0	1	-2
	TEAM						1	0	1	0		0				
<b>TOTALS</b>			<b>13</b>	<b>5-15</b>	<b>1-7</b>	<b>2-4</b>	<b>4</b>	<b>3</b>	<b>7</b>	<b>5</b>	<b>3</b>	<b>4</b>	<b>0</b>	<b>3</b>	<b>50</b>	

*Shooting By Period*

Period	FG	FG%	3FG	3FG%	FT	FT%
1st Qtr	5-15	33%	1-7	14%	2-4	50%
2nd Qtr	1-12	08%	0-4	00%	5-6	83%
1st Half	5-15	33%	1-7	14%	2-4	50%
1st Half	6-27	22%	1-11	09%	7-10	70%
Game	13-56	23.2%	4-23	17.4%	9-15	60.0%

**Arizona 17**

No.	Player	S	Pts	FG	3FG	FT	OR	DR	TR	PF	A	TO	Blk	Stl	Min	+/-
02	MCDONALD, AARI		13	5-5	0-0	3-3	1	1	2	0	0	1	0	1	10	4
04	ALONSO, LUCIA		2	0-0	0-0	2-2	0	1	1	1	1	1	0	0	9	4
14	THOMAS, SAM		0	0-0	0-0	0-0	0	0	0	0	0	0	1	0	7	7
20	MCBRYDE, DOMINIQUE		0	0-3	0-1	0-0	0	3	3	1	0	0	0	0	8	7
25	REESE, CATE		2	1-2	0-0	0-0	0	2	2	1	0	1	0	0	7	6
10	STARKS, TEE TEE		0	0-0	0-0	0-0	0	0	0	0	0	1	0	0	4	-3
21	GRAHAM, DESTINY		0	0-0	0-0	0-0	0	0	0	2	0	2	0	0	5	-5
24	NIXON, BRYCE		0	0-0	0-0	0-0	0	0	0	0	0	0	0	0	0	0
34	SMITH, SEMAJ		0	0-0	0-0	0-0	0	0	0	0	0	0	0	0	0	0
	TEAM						0	0	0	0		0				
<b>TOTALS</b>			<b>17</b>	<b>6-10</b>	<b>0-1</b>	<b>5-5</b>	<b>1</b>	<b>7</b>	<b>8</b>	<b>5</b>	<b>1</b>	<b>6</b>	<b>1</b>	<b>1</b>	<b>50</b>	

*Shooting By Period*

Period	FG	FG%	3FG	3FG%	FT	FT%
1st Qtr	6-10	60%	0-1	00%	5-5	100%
2nd Qtr	4-11	36%	0-2	00%	2-2	100%
1st Half	6-10	60%	0-1	00%	5-5	100%
1st Half	10-21	48%	0-3	00%	7-7	100%
Game	20-43	46.5%	1-8	12.5%	10-11	90.9%

*Game Notes:*

Officials: Penny Davis, Bart Baldwin, Lorena Ahumada  
Attendance: 5006

Start Time: 2018-12-31 00:07:27  
End Time: 2018-12-31 02:00:10  
Game Duration: 112  
Conference Game;

Score	1st	2nd	3rd	4th	TOT
ASU	13	7	8	11	<b>39</b>
ARI	17	10	9	15	<b>51</b>

Points from (This Period)	ASU	ARI
In the Paint	6	8
Off Turns	5	2
2nd Chance	2	0
Fast Break	2	4
Bench	8	0

**Official By-By-Play  
Arizona State vs Arizona  
First Quarter**

**December 31, 2018 at McKale Center (Lute & Bobbi Olson Court) - Tucson, Ariz.**



**Period 1**

**Starters:**

**Arizona State:** 1 RICHARDSON,REILI; 11 RYAN,ROBBI; 22 EKMARK,COURTNEY; 33 JOHNSON-CHAPMAN,CHARNEA; 42 IBIS,KIANNA;  
**Arizona:** 2 MCDONALD,AARI; 4 ALONSO,LUCIA; 14 THOMAS,SAM; 20 MCBRYDE,DOMINIQUE; 25 REESE,CATE;

Time	VISITORS: Arizona State	Score	Margin	HOME: Arizona
09:27	MISSED JUMPER by IBIS, KIANNA			
09:26				REBOUND (DEF) by MCBRYDE, DOMINIQUE
09:11		2-0	H 2	GOOD! JUMPER by REESE, CATE
09:11				ASSIST by ALONSO, LUCIA
08:44	MISSED 3PTR by EKMARK, COURTNEY			
08:40				REBOUND (DEF) by MCBRYDE, DOMINIQUE
08:27	FOUL (PERSONAL) by IBIS, KIANNA			
08:27		3-0	H 3	GOOD! FT by MCDONALD, AARI
08:27	SUB OUT: JOHNSON-CHAPMAN, CHARNEA			
08:27	SUB IN: ELENGA, SOPHIA			
08:27		4-0	H 4	GOOD! FT by MCDONALD, AARI
08:13	MISSED 3PTR by EKMARK, COURTNEY			
08:09				REBOUND (DEF) by ALONSO, LUCIA
07:51		6-0	H 6	GOOD! LAYUP by MCDONALD, AARI
07:51	FOUL (PERSONAL) by IBIS, KIANNA			
07:51	SUB OUT: RICHARDSON, REILI			
07:51	SUB IN: JOHNSON-CHAPMAN, CHARNEA			
07:51	SUB OUT: RYAN, ROBBI			
07:51	SUB IN: MBULITO, IRIS			
07:51	SUB OUT: IBIS, KIANNA			
07:51	SUB IN: RUSSELL, KIARA			
07:51		7-0	H 7	GOOD! FT by MCDONALD, AARI
07:43	GOOD! LAYUP by JOHNSON-CHAPMAN, CHARNEA [FB]	7-2	H 5	
07:43	ASSIST by MBULITO, IRIS			
07:24		9-2	H 7	GOOD! LAYUP by MCDONALD, AARI
07:14				FOUL (PERSONAL) by ALONSO, LUCIA
07:14	GOOD! FT by RUSSELL, KIARA	9-3	H 6	
07:14	GOOD! FT by RUSSELL, KIARA	9-4	H 5	
07:14	SUB OUT: EKMARK, COURTNEY			
07:14	SUB IN: HANSON, TAYA			
07:14				SUB OUT: ALONSO, LUCIA
07:14				SUB IN: STARKS, TEE TEE
07:04				FOUL (OFF) by REESE, CATE
07:04				TURNOVER (OFFENSIVE) by REESE, CATE
07:04				SUB OUT: REESE, CATE
07:04				SUB IN: GRAHAM, DESTINY
06:56	TURNOVER (TRAVEL) by MBULITO, IRIS			
06:32				TURNOVER (BADPASS) by STARKS, TEE TEE
06:32	STEAL by MBULITO, IRIS			
06:26				FOUL (PERSONAL) by GRAHAM, DESTINY
06:13	TURNOVER (TRAVEL) by ELENGA, SOPHIA			
06:13				SUB OUT: THOMAS, SAM
06:13				SUB IN: ALONSO, LUCIA
06:01				TURNOVER (TRAVEL) by ALONSO, LUCIA
06:01				SUB OUT: MCBRYDE, DOMINIQUE
06:01				SUB IN: REESE, CATE
06:01	SUB OUT: HANSON, TAYA			
06:01	SUB IN: EKMARK, COURTNEY			
06:01	SUB OUT: RUSSELL, KIARA			
06:01	SUB IN: RYAN, ROBBI			
06:01	SUB OUT: MBULITO, IRIS			
06:01	SUB IN: RICHARDSON, REILI			
05:49	SUB OUT: ELENGA, SOPHIA			
05:49	SUB IN: VAN HYFTE, JAYDE			
05:49	GOOD! JUMPER by VAN HYFTE, JAYDE	9-6	H 3	
05:47		11-6	H 5	GOOD! LAYUP by MCDONALD, AARI [FB]
05:38	MISSED 3PTR by EKMARK, COURTNEY			
05:33	REBOUND (OFF) by EKMARK, COURTNEY			
05:31	MISSED JUMPER by VAN HYFTE, JAYDE			
05:26				REBOUND (DEF) by REESE, CATE
04:58	FOUL (PERSONAL) by EKMARK, COURTNEY			
04:58	SUB OUT: JOHNSON-CHAPMAN, CHARNEA			
04:58	SUB IN: ELENGA, SOPHIA			
04:46				TURNOVER (3SEC) by GRAHAM, DESTINY
04:22	GOOD! 3PTR by RYAN, ROBBI	11-9	H 2	
04:22	ASSIST by VAN HYFTE, JAYDE			
04:12				MISSED JUMPER by REESE, CATE
04:08	REBOUND (DEF) by EKMARK, COURTNEY			
03:57	MISSED 3PTR by RYAN, ROBBI			
03:55	REBOUND (OFF) by VAN HYFTE, JAYDE			

Time	VISITORS: Arizona State	Score	Margin	HOME: Arizona
03:55				SUB OUT: REESE, CATE
03:55				SUB IN: MCBRYDE, DOMINIQUE
03:55	TURNOVER (TRAVEL) by VAN HYFTE, JAYDE			
03:36				MISSED JUMPER by MCBRYDE, DOMINIQUE
03:32	REBOUND (DEF) by ELENGA, SOPHIA			
03:11	MISSED JUMPER by RYAN, ROBBI			
03:08	REBOUND (OFF) by TEAM			
03:08				SUB OUT: STARKS, TEE TEE
03:08				SUB IN: THOMAS, SAM
03:08	SUB OUT: RICHARDSON, REILI			
03:08	SUB IN: HANSON, TAYA			
03:08	SUB OUT: EKMARK, COURTNEY			
03:08	SUB IN: MBULITO, IRIS			
03:08	SUB OUT: VAN HYFTE, JAYDE			
03:08	SUB IN: JOHNSON-CHAPMAN, CHARNEA			
03:08				FOUL (PERSONAL) by MCBRYDE, DOMINIQUE
03:08	SUB OUT: RYAN, ROBBI			
03:08	SUB IN: RUSSELL, KIARA			
02:53	MISSED JUMPER by MBULITO, IRIS			
02:53				BLOCK by THOMAS, SAM
02:47	REBOUND (OFF) by JOHNSON-CHAPMAN, CHARNEA			
02:45	GOOD! LAYUP by RUSSELL, KIARA	11-11	T	
02:45	ASSIST by JOHNSON-CHAPMAN, CHARNEA			
02:28				TURNOVER (LOSTBALL) by GRAHAM, DESTINY
02:28	STEAL by JOHNSON-CHAPMAN, CHARNEA			
02:26				FOUL (PERSONAL) by GRAHAM, DESTINY
02:26	MISSED FT by MBULITO, IRIS			
02:26	REBOUND (OFF) by TEAM			
02:26				SUB OUT: GRAHAM, DESTINY
02:26				SUB IN: REESE, CATE
02:26	SUB OUT: ELENGA, SOPHIA			
02:26	SUB IN: RUDEN, JAMIE			
02:26	MISSED FT by MBULITO, IRIS			
02:24				REBOUND (DEF) by REESE, CATE
02:12	FOUL (PERSONAL) by JOHNSON-CHAPMAN, CHARNEA			
02:12				TIMEOUT 30SEC
02:03				MISSED 3PTR by MCBRYDE, DOMINIQUE
02:00				REBOUND (OFF) by MCDONALD, AARI
01:57				TURNOVER (BADPASS) by MCDONALD, AARI
01:57	STEAL by RUSSELL, KIARA			
01:51	MISSED 3PTR by RUDEN, JAMIE			
01:46				REBOUND (DEF) by MCBRYDE, DOMINIQUE
01:35	FOUL (PERSONAL) by MBULITO, IRIS			
01:35		12-11	H 1	GOOD! FT by ALONSO, LUCIA
01:35	SUB OUT: MBULITO, IRIS			
01:35	SUB IN: EKMARK, COURTNEY			
01:35	SUB OUT: HANSON, TAYA			
01:35	SUB IN: RYAN, ROBBI			
01:35		13-11	H 2	GOOD! FT by ALONSO, LUCIA
01:23	MISSED 3PTR by EKMARK, COURTNEY			
01:20				REBOUND (DEF) by MCDONALD, AARI
01:20	SUB OUT: RUDEN, JAMIE			
01:20	SUB IN: ELENGA, SOPHIA			
00:52				MISSED LAYUP by MCBRYDE, DOMINIQUE
00:50	REBOUND (DEF) by JOHNSON-CHAPMAN, CHARNEA			
00:35	GOOD! JUMPER by RUSSELL, KIARA [PNT]	13-13	T	
00:06		15-13	H 2	GOOD! LAYUP by MCDONALD, AARI
00:01	TURNOVER (BADPASS) by JOHNSON-CHAPMAN, CHARNEA			
00:01				STEAL by MCDONALD, AARI
00:01		17-13	H 4	GOOD! JUMPER by MCDONALD, AARI [FB]

### Arizona State 13, Arizona 17

Points from (This Period)	ASU	ARI
In the Paint	6	8
Off Turns	5	2
2nd Chance	2	0
Fast Break	2	4
Bench	8	0

**Official Box Score**  
**Arizona State vs Arizona**  
**Second Quarter Statistics Only**  
**December 31, 2018 at McKale Center (Lute & Bobbi Olson Court) - Tucson, Ariz.**



**Arizona State 7**

No.	Player	S	Pts	FG	3FG	FT	OR	DR	TR	PF	A	TO	Blk	Stl	Min	+/-
01	RICHARDSON, REILI		2	0-0	0-0	2-2	0	0	0	0	0	0	0	0	6	-1
11	RYAN, ROBBIE		0	0-2	0-1	0-0	0	0	0	0	0	1	0	0	6	-2
22	EKMARK, COURTNEY		0	0-1	0-0	0-0	0	0	0	0	0	0	0	0	6	-4
33	JOHNSON-CHAPMAN, CHARL		0	0-0	0-0	0-0	0	1	1	0	0	0	0	0	3	-1
42	IBIS, KIANNA		0	0-3	0-0	0-0	0	2	2	0	0	0	0	0	5	0
00	HANSON, TAYA		0	0-2	0-2	0-0	0	0	0	0	0	0	0	0	2	0
04	RUSSELL, KIARA		2	0-1	0-0	2-2	0	1	1	0	1	0	0	0	7	-3
21	ELENGA, SOPHIA		0	0-0	0-0	0-0	1	1	2	2	0	1	0	0	5	1
23	MBULITO, IRIS		3	1-2	0-0	1-2	0	0	0	0	0	1	2	0	5	1
32	VAN HYFTE, JAYDE		0	0-0	0-0	0-0	1	0	1	1	0	1	0	0	5	-4
52	RUDEN, JAMIE		0	0-1	0-1	0-0	0	0	0	0	0	1	0	0	2	-2
	TEAM						2	2	4	0		0				
<b>TOTALS</b>			<b>7</b>	<b>1-12</b>	<b>0-4</b>	<b>5-6</b>	<b>4</b>	<b>7</b>	<b>11</b>	<b>3</b>	<b>1</b>	<b>5</b>	<b>2</b>	<b>0</b>	<b>50</b>	

*Shooting By Period*

Period	FG	FG%	3FG	3FG%	FT	FT%
3rd Qtr	3-13	23%	1-4	25%	1-2	50%
4th Qtr	4-16	25%	2-8	25%	1-3	33%
2nd Half	1-12	08%	0-4	00%	5-6	83%
2nd Half	7-29	24%	3-12	25%	2-5	40%
Game	13-56	23.2%	4-23	17.4%	9-15	60.0%

**Arizona 10**

No.	Player	S	Pts	FG	3FG	FT	OR	DR	TR	PF	A	TO	Blk	Stl	Min	+/-
02	MCDONALD, AARI		2	0-4	0-1	2-2	0	2	2	0	1	0	0	0	8	1
04	ALONSO, LUCIA		0	0-0	0-0	0-0	0	1	1	0	0	1	0	0	8	5
14	THOMAS, SAM		2	1-2	0-1	0-0	0	1	1	1	0	0	0	0	10	3
20	MCBRYDE, DOMINIQUE		2	1-2	0-0	0-0	0	0	0	1	0	0	1	2	8	2
25	REESE, CATE		0	0-0	0-0	0-0	0	1	1	1	0	0	0	0	2	0
10	STARKS, TEE TEE		4	2-3	0-0	0-0	0	0	0	1	1	0	0	1	7	3
21	GRAHAM, DESTINY		0	0-0	0-0	0-0	0	0	0	1	0	1	0	0	1	0
24	NIXON, BRYCE		0	0-0	0-0	0-0	0	0	0	0	0	0	0	0	0	0
34	SMITH, SEMAJ		0	0-0	0-0	0-0	0	1	1	1	0	1	0	0	6	1
	TEAM						0	1	1	0		1				
<b>TOTALS</b>			<b>10</b>	<b>4-11</b>	<b>0-2</b>	<b>2-2</b>	<b>0</b>	<b>7</b>	<b>7</b>	<b>6</b>	<b>2</b>	<b>4</b>	<b>1</b>	<b>3</b>	<b>50</b>	

*Shooting By Period*

Period	FG	FG%	3FG	3FG%	FT	FT%
3rd Qtr	4-11	36%	1-3	33%	0-0	0%
4th Qtr	6-11	55%	0-2	00%	3-4	75%
2nd Half	4-11	36%	0-2	00%	2-2	100%
2nd Half	10-22	45%	1-5	20%	3-4	75%
Game	20-43	46.5%	1-8	12.5%	10-11	90.9%

*Game Notes:*

Officials: Penny Davis, Bart Baldwin, Lorena Ahumada  
Attendance: 5006

Start Time: 2018-12-31 00:07:27  
End Time: 2018-12-31 02:00:10  
Game Duration: 112  
Conference Game;

Score	1st	2nd	3rd	4th	TOT
ASU	13	7	8	11	<b>39</b>
ARI	17	10	9	15	<b>51</b>

Points from (This Period)	ASU	ARI
In the Paint	2	6
Off Turns	0	2
2nd Chance	0	0
Fast Break	2	2
Bench	5	4

**Official Play-By-Play  
Arizona State vs Arizona  
Second Quarter**

**December 31, 2018 at McKale Center (Lute & Bobbi Olson Court) - Tucson, Ariz.**



**Period 2**

**Starters:**

**Arizona State:** 1 RICHARDSON,REILI; 11 RYAN,ROBBI; 22 EKMARK,COURTNEY; 33 JOHNSON-CHAPMAN,CHARNEA; 42 IBIS,KIANNA;  
**Arizona:** 2 MCDONALD,AARI; 4 ALONSO,LUCIA; 14 THOMAS,SAM; 20 MCBRYDE,DOMINIQUE; 25 REESE,CATE;

Time	VISITORS: Arizona State	Score	Margin	HOME: Arizona
09:33	TURNOVER (BADPASS) by RYAN, ROBBI			
09:33				STEAL by MCBRYDE, DOMINIQUE
09:14				MISSED 3PTR by THOMAS, SAM
09:11	REBOUND (DEF) by IBIS, KIANNA			
08:55	MISSED JUMPER by EKMARK, COURTNEY			
08:53	REBOUND (OFF) by ELENGA, SOPHIA			
08:53	TURNOVER (LOSTBALL) by ELENGA, SOPHIA			
08:53				STEAL by MCBRYDE, DOMINIQUE
08:53	SUB OUT: RYAN, ROBBI			
08:53	SUB IN: MBULITO, IRIS			
08:42				MISSED LAYUP by MCDONALD, AARI
08:42	BLOCK by MBULITO, IRIS			
08:37	REBOUND (DEF) by ELENGA, SOPHIA			
08:31				FOUL (PERSONAL) by REESE, CATE
08:26	MISSED JUMPER by IBIS, KIANNA			
08:22				REBOUND (DEF) by REESE, CATE
08:06	FOUL (PERSONAL) by ELENGA, SOPHIA			
08:06	SUB OUT: EKMARK, COURTNEY			
08:06	SUB IN: HANSON, TAYA			
08:06				TURNOVER (5SEC) by
07:46	TURNOVER (DRIBBLING) by MBULITO, IRIS			
07:46				SUB OUT: REESE, CATE
07:46				SUB IN: GRAHAM, DESTINY
07:28				MISSED JUMPER by MCDONALD, AARI
07:25	REBOUND (DEF) by IBIS, KIANNA			
07:19	MISSED 3PTR by HANSON, TAYA			
07:17				REBOUND (DEF) by TEAM
07:17				SUB OUT: MCDONALD, AARI
07:17				SUB IN: STARKS, TEE TEE
06:51				FOUL (OFF) by GRAHAM, DESTINY
06:51				TURNOVER (OFFENSIVE) by GRAHAM, DESTINY
06:51				SUB OUT: GRAHAM, DESTINY
06:51				SUB IN: SMITH, SEMAJ
06:51	SUB OUT: RICHARDSON, REILI			
06:51	SUB IN: VAN HYFTE, JAYDE			
06:51	SUB OUT: ELENGA, SOPHIA			
06:51	SUB IN: RUSSELL, KIARA			
06:51	SUB OUT: MBULITO, IRIS			
06:51	SUB IN: RYAN, ROBBI			
06:51	SUB OUT: IBIS, KIANNA			
06:51	SUB IN: JOHNSON-CHAPMAN, CHARNEA			
06:40	MISSED 3PTR by HANSON, TAYA			
06:36				REBOUND (DEF) by ALONSO, LUCIA
06:24				TURNOVER (TRAVEL) by ALONSO, LUCIA
06:24	SUB OUT: HANSON, TAYA			
06:24	SUB IN: EKMARK, COURTNEY			
05:55	MISSED JUMPER by RYAN, ROBBI			
05:52	REBOUND (OFF) by VAN HYFTE, JAYDE			
05:47	MISSED LAYUP by RUSSELL, KIARA			
05:45				REBOUND (DEF) by THOMAS, SAM
05:21		19-13	H 6	GOOD! LAYUP by MCBRYDE, DOMINIQUE
05:21				ASSIST by STARKS, TEE TEE
05:13	FOUL (OFF) by VAN HYFTE, JAYDE			
05:13	TURNOVER (OFFENSIVE) by VAN HYFTE, JAYDE			
05:13				SUB OUT: ALONSO, LUCIA
05:13				SUB IN: MCDONALD, AARI
04:55				MISSED LAYUP by STARKS, TEE TEE
04:51	REBOUND (DEF) by JOHNSON-CHAPMAN, CHARNEA			
04:23	MISSED 3PTR by RYAN, ROBBI			
04:23	REBOUND (OFF) by TEAM			
04:23	SUB OUT: EKMARK, COURTNEY			
04:23	SUB IN: IBIS, KIANNA			
04:23	SUB OUT: VAN HYFTE, JAYDE			
04:23	SUB IN: MBULITO, IRIS			
04:23	SUB OUT: JOHNSON-CHAPMAN, CHARNEA			
04:23	SUB IN: ELENGA, SOPHIA			
04:23				
04:19	MISSED JUMPER by IBIS, KIANNA			
04:16				REBOUND (DEF) by SMITH, SEMAJ
04:06				MISSED JUMPER by MCBRYDE, DOMINIQUE



Time	VISITORS: Arizona State	Score	Margin	HOME: Arizona
04:03	REBOUND (DEF) by RUSSELL, KIARA			
04:00	GOOD! LAYUP by MBULITO, IRIS [FB]	19-15	H 4	
04:00	ASSIST by RUSSELL, KIARA			
03:36				FOUL (OFF) by SMITH, SEMAJ
03:36				TURNOVER (OFFENSIVE) by SMITH, SEMAJ
03:36				SUB OUT: SMITH, SEMAJ
03:36				SUB IN: ALONSO, LUCIA
03:09	MISSED JUMPER by IBIS, KIANNA			
03:09				BLOCK by MCBRYDE, DOMINIQUE
03:09	REBOUND (OFF) by TEAM			
03:06	MISSED LAYUP by MBULITO, IRIS			
03:05				REBOUND (DEF) by MCDONALD, AARI
02:46	FOUL (PERSONAL) by ELENGA, SOPHIA			
02:46		20-15	H 5	GOOD! FT by MCDONALD, AARI
02:46		21-15	H 6	GOOD! FT by MCDONALD, AARI
02:26				FOUL (PERSONAL) by MCBRYDE, DOMINIQUE
02:26	MISSED FT by MBULITO, IRIS			
02:26	REBOUND (OFF) by TEAM			
02:26				SUB OUT: MCBRYDE, DOMINIQUE
02:26				SUB IN: SMITH, SEMAJ
02:26	SUB OUT: RYAN, ROBBI			
02:26	SUB IN: VAN HYFTE, JAYDE			
02:26	SUB OUT: ELENGA, SOPHIA			
02:26	SUB IN: RUDEN, JAMIE			
02:26	SUB OUT: IBIS, KIANNA			
02:26	SUB IN: RICHARDSON, REILI			
02:26	GOOD! FT by MBULITO, IRIS	21-16	H 5	
01:55				MISSED LAYUP by MCDONALD, AARI
01:54	REBOUND (DEF) by TEAM			
01:54	SUB OUT: MBULITO, IRIS			
01:54	SUB IN: EKMARK, COURTNEY			
01:37				FOUL (PERSONAL) by STARKS, TEE TEE
01:37	GOOD! FT by RICHARDSON, REILI	21-17	H 4	
01:37	GOOD! FT by RICHARDSON, REILI	21-18	H 3	
01:18		23-18	H 5	GOOD! JUMPER by THOMAS, SAM [PNT]
01:05	MISSED 3PTR by RUDEN, JAMIE			
01:01				REBOUND (DEF) by MCDONALD, AARI
00:55		25-18	H 7	GOOD! JUMPER by STARKS, TEE TEE [FB]
00:55				ASSIST by MCDONALD, AARI
00:46	TURNOVER (BADPASS) by RUDEN, JAMIE			
00:46				STEAL by STARKS, TEE TEE
00:31		27-18	H 9	GOOD! LAYUP by STARKS, TEE TEE
00:05				FOUL (PERSONAL) by THOMAS, SAM
00:05	GOOD! FT by RUSSELL, KIARA	27-19	H 8	
00:05	SUB OUT: VAN HYFTE, JAYDE			
00:05	SUB IN: ELENGA, SOPHIA			
00:05	SUB OUT: RUDEN, JAMIE			
00:05	SUB IN: JOHNSON-CHAPMAN, CHARNEA			
00:05	GOOD! FT by RUSSELL, KIARA	27-20	H 7	
00:05	SUB OUT: EKMARK, COURTNEY			
00:05	SUB IN: MBULITO, IRIS			
00:05				SUB OUT: STARKS, TEE TEE
00:05				SUB IN: NIXON, BRYCE
00:00				MISSED 3PTR by MCDONALD, AARI
00:00	BLOCK by MBULITO, IRIS			
00:00	REBOUND (DEF) by TEAM			

### Arizona State 20, Arizona 27

Points from (This Period)	ASU	ARI
In the Paint	2	6
Off Turns	0	2
2nd Chance	0	0
Fast Break	2	2
Bench	5	4

**Official Box Score**  
**Arizona State vs Arizona**  
**Second Half Statistics Only**  
**December 31, 2018 at McKale Center (Lute & Bobbi Olson Court) - Tucson, Ariz.**



**Arizona State 19**

No.	Player	S	Pts	FG	3FG	FT	OR	DR	TR	PF	A	TO	Blk	Stl	Min	+/-
00	HANSON, TAYA		0	0-0	0-0	0-0	0	2	2	0	1	0	0	0	6	-4
01	RICHARDSON, REILI		3	1-4	1-2	0-0	1	1	2	0	1	3	0	0	13	-6
04	RUSSELL, KIARA		0	0-1	0-0	0-0	0	0	0	1	1	1	0	0	8	-3
11	RYAN, ROBBIE		0	0-3	0-2	0-0	1	3	4	1	1	1	0	0	14	1
21	ELENGA, SOPHIA		2	1-4	0-0	0-0	0	1	1	1	0	0	0	0	10	-5
22	EKMARK, COURTNEY		3	1-5	1-4	0-0	3	0	3	2	1	1	0	0	15	-1
23	MBULITO, IRIS		0	0-1	0-0	0-0	0	0	0	0	0	1	0	0	4	-1
32	VAN HYFTE, JAYDE		0	0-0	0-0	0-0	0	0	0	0	0	0	0	0	1	-4
33	JOHNSON-CHAPMAN, CHARL		0	0-2	0-0	0-0	1	0	1	1	1	0	0	1	11	1
42	IBIS, KIANNA		11	4-9	1-4	2-5	2	3	5	0	0	1	1	2	18	-3
52	RUDEN, JAMIE		0	0-0	0-0	0-0	0	0	0	0	0	0	0	0	0	0
	TEAM		0	0-0	0-0	0-0	1	1	2	0	0	0	0	0	0	0
<b>TOTALS</b>			<b>19</b>	<b>7-29</b>	<b>3-12</b>	<b>2-5</b>	<b>9</b>	<b>11</b>	<b>20</b>	<b>6</b>	<b>6</b>	<b>8</b>	<b>1</b>	<b>3</b>	<b>99</b>	

*Shooting By Period*

Period	FG	FG%	3FG	3FG%	FT	FT%
3rd Qtr	3-13	23%	1-4	25%	1-2	50%
4th Qtr	4-16	25%	2-8	25%	1-3	33%
2nd Half	7-29	24%	3-12	25%	2-5	40%
Game	13-56	23.2%	4-23	17.4%	9-15	60.0%

Last FG Half: ASU 4th-00:07

**Arizona 24**

No.	Player	S	Pts	FG	3FG	FT	OR	DR	TR	PF	A	TO	Blk	Stl	Min	+/-
02	MCDONALD, AARI		9	4-8	0-2	1-2	0	2	2	3	2	2	0	1	18	1
04	ALONSO, LUCIA		0	0-2	0-1	0-0	0	1	1	2	0	0	0	0	15	9
10	STARKS, TEE TEE		0	0-0	0-0	0-0	0	0	0	0	1	1	1	0	11	2
14	THOMAS, SAM		9	3-5	1-2	2-2	0	3	3	0	0	0	1	2	20	5
20	MCBRYDE, DOMINIQUE		4	2-3	0-0	0-0	1	5	6	2	1	2	1	2	20	5
21	GRAHAM, DESTINY		2	1-4	0-0	0-0	0	0	0	0	0	0	0	1	10	5
24	NIXON, BRYCE		0	0-0	0-0	0-0	0	0	0	0	0	0	0	0	0	0
25	REESE, CATE		0	0-0	0-0	0-0	0	1	1	2	0	0	0	0	5	-2
34	SMITH, SEMAJ		0	0-0	0-0	0-0	0	0	0	0	0	0	0	0	0	0
	TEAM		0	0-0	0-0	0-0	1	1	2	0	0	0	0	0	0	0
<b>TOTALS</b>			<b>24</b>	<b>10-22</b>	<b>1-5</b>	<b>3-4</b>	<b>2</b>	<b>13</b>	<b>15</b>	<b>9</b>	<b>4</b>	<b>5</b>	<b>3</b>	<b>6</b>	<b>99</b>	

*Shooting By Period*

Period	FG	FG%	3FG	3FG%	FT	FT%
3rd Qtr	4-11	36%	1-3	33%	0-0	0%
4th Qtr	6-11	55%	0-2	00%	3-4	75%
2nd Half	10-22	45%	1-5	20%	3-4	75%
Game	20-43	46.5%	1-8	12.5%	10-11	90.9%

Last FG Half: ARI 4th-01:11

Game Notes:

Officials: Penny Davis, Bart Baldwin, Lorena Ahumada  
 Attendance: 5006

Start Time: 2018-12-31 00:07:27  
 End Time: 2018-12-31 02:00:10  
 Game Duration: 112  
 Conference Game;

Score	1st	2nd	3rd	4th	TOT
ASU	13	7	8	11	<b>39</b>
ARI	17	10	9	15	<b>51</b>

Points from (This Period)	ASU	ARI
In the Paint	8	14
Off Turns	5	8
2nd Chance	0	4
Fast Break	4	6
Bench	2	2

**Official Box Score**  
**Arizona State vs Arizona**  
**Third Quarter Statistics Only**  
**December 31, 2018 at McKale Center (Lute & Bobbi Olson Court) - Tucson, Ariz.**



**Arizona State 19**

No.	Player	S	Pts	FG	3FG	FT	OR	DR	TR	PF	A	TO	Blk	Stl	Min	+/-
01	RICHARDSON, REILI		0	0-2	0-0	0-0	1	1	2	0	0	2	0	0	7	-4
11	RYAN, ROBBI		0	0-1	0-1	0-0	0	2	2	0	0	1	0	0	7	3
22	EKMARK, COURTNEY		3	1-3	1-2	0-0	1	0	1	1	0	1	0	0	7	2
33	JOHNSON-CHAPMAN, CHARL		0	0-1	0-0	0-0	1	0	1	0	1	0	0	0	6	2
42	IBIS, KIANNA		5	2-4	0-1	1-2	2	2	4	0	0	0	0	1	9	3
00	HANSON, TAYA		0	0-0	0-0	0-0	0	2	2	0	1	0	0	0	4	-3
04	RUSSELL, KIARA		0	0-1	0-0	0-0	0	0	0	0	0	1	0	0	4	-1
21	ELENGA, SOPHIA		0	0-1	0-0	0-0	0	0	0	0	0	0	0	0	4	-3
23	MBULITO, IRIS		0	0-0	0-0	0-0	0	0	0	0	0	0	0	0	1	0
32	VAN HYFTE, JAYDE		0	0-0	0-0	0-0	0	0	0	0	0	0	0	0	1	-4
52	RUDEN, JAMIE		0	0-0	0-0	0-0	0	0	0	0	0	0	0	0	0	0
	TEAM						0	0	0	0		0				
	<b>TOTALS</b>		<b>8</b>	<b>3-13</b>	<b>1-4</b>	<b>1-2</b>	<b>5</b>	<b>7</b>	<b>12</b>	<b>1</b>	<b>2</b>	<b>5</b>	<b>0</b>	<b>1</b>	<b>50</b>	

*Shooting By Period*

Period	FG	FG%	3FG	3FG%	FT	FT%
2nd Half	0-0	0%	0-0	0%	0-0	0%
Game	13-56	23.2%	4-23	17.4%	9-15	60.0%

**Arizona 24**

No.	Player	S	Pts	FG	3FG	FT	OR	DR	TR	PF	A	TO	Blk	Stl	Min	+/-
02	MCDONALD, AARI		2	1-3	0-1	0-0	0	2	2	2	1	2	0	0	8	-3
04	ALONSO, LUCIA		0	0-2	0-1	0-0	0	1	1	1	0	0	0	0	8	4
14	THOMAS, SAM		5	2-3	1-1	0-0	0	1	1	0	0	0	1	2	10	1
20	MCBRYDE, DOMINIQUE		0	0-0	0-0	0-0	0	1	1	0	1	0	1	0	10	1
25	REESE, CATE		0	0-0	0-0	0-0	0	0	0	1	0	0	0	0	2	-3
10	STARKS, TEE TEE		0	0-0	0-0	0-0	0	0	0	0	0	0	0	0	4	1
21	GRAHAM, DESTINY		2	1-3	0-0	0-0	0	0	0	0	0	0	0	1	8	4
24	NIXON, BRYCE		0	0-0	0-0	0-0	0	0	0	0	0	0	0	0	0	0
34	SMITH, SEMAJ		0	0-0	0-0	0-0	0	0	0	0	0	0	0	0	0	0
	TEAM						0	1	1	0		0				
	<b>TOTALS</b>		<b>9</b>	<b>4-11</b>	<b>1-3</b>	<b>0-0</b>	<b>0</b>	<b>6</b>	<b>6</b>	<b>4</b>	<b>2</b>	<b>2</b>	<b>2</b>	<b>3</b>	<b>50</b>	

*Shooting By Period*

Period	FG	FG%	3FG	3FG%	FT	FT%
2nd Half	0-0	0%	0-0	0%	0-0	0%
Game	20-43	46.5%	1-8	12.5%	10-11	90.9%

Game Notes:

Officials: Penny Davis, Bart Baldwin, Lorena Ahumada  
Attendance: 5006

Start Time: 2018-12-31 00:07:27  
End Time: 2018-12-31 02:00:10  
Game Duration: 112  
Conference Game;

Score	1st	2nd	3rd	4th	TOT
ASU	13	7	8	11	<b>39</b>
ARI	17	10	9	15	<b>51</b>

Points from (This Period)	ASU	ARI
In the Paint	4	4
Off Turns	2	2
2nd Chance	0	0
Fast Break	2	2
Bench	0	2

**Official By-By-Play  
Arizona State vs Arizona  
Third Quarter**

**December 31, 2018 at McKale Center (Lute & Bobbi Olson Court) - Tucson, Ariz.**



**Period 3**

**Starters:**

**Arizona State:** 1 RICHARDSON,REILI; 11 RYAN,ROBBI; 22 EKMARK,COURTNEY; 33 JOHNSON-CHAPMAN,CHARNEA; 42 IBIS,KIANNA;  
**Arizona:** 2 MCDONALD,AARI; 4 ALONSO,LUCIA; 14 THOMAS,SAM; 20 MCBRYDE,DOMINIQUE; 25 REESE,CATE;

Time	VISITORS: Arizona State	Score	Margin	HOME: Arizona
09:38				FOUL (PERSONAL) by MCDONALD, AARI
09:38	GOOD! FT by IBIS, KIANNA	27-21	H 6	
09:38	MISSED FT by IBIS, KIANNA			
09:36				REBOUND (DEF) by MCDONALD, AARI
09:25				TURNOVER (BADPASS) by MCDONALD, AARI
09:25	STEAL by IBIS, KIANNA			
09:19	GOOD! LAYUP by IBIS, KIANNA [FB]	27-23	H 4	
09:05				MISSED 3PTR by ALONSO, LUCIA
09:01	REBOUND (DEF) by IBIS, KIANNA			
08:52				FOUL (PERSONAL) by REESE, CATE
08:41	MISSED JUMPER by IBIS, KIANNA			
08:39	REBOUND (OFF) by JOHNSON-CHAPMAN, CHARNEA			
08:39				SUB OUT: REESE, CATE
08:39				SUB IN: GRAHAM, DESTINY
08:16	MISSED JUMPER by RUSSELL, KIARA			
08:13	REBOUND (OFF) by IBIS, KIANNA			
08:07	TURNOVER (LOSTBALL) by RUSSELL, KIARA			
08:07				TIMEOUT 30SEC
08:07				
08:07	SUB OUT: RUSSELL, KIARA			
08:07	SUB IN: RICHARDSON, REILI			
08:07	SUB OUT: RYAN, ROBBI			
08:07	SUB IN: MBULITO, IRIS			
07:42				FOUL (OFF) by MCDONALD, AARI
07:42				TURNOVER (OFFENSIVE) by MCDONALD, AARI
07:14	FOUL (OFF) by EKMARK, COURTNEY			
07:14	TURNOVER (OFFENSIVE) by EKMARK, COURTNEY			
07:14	SUB OUT: EKMARK, COURTNEY			
07:14	SUB IN: HANSON, TAYA			
07:14	SUB OUT: MBULITO, IRIS			
07:14	SUB IN: ELENGA, SOPHIA			
07:14	SUB OUT: JOHNSON-CHAPMAN, CHARNEA			
07:14	SUB IN: RYAN, ROBBI			
06:58				MISSED 3PTR by MCDONALD, AARI
06:55	REBOUND (DEF) by HANSON, TAYA			
06:47	TURNOVER (LOSTBALL) by RICHARDSON, REILI			
06:47				STEAL by THOMAS, SAM
06:22				MISSED JUMPER by MCDONALD, AARI
06:19	REBOUND (DEF) by RICHARDSON, REILI			
06:13	MISSED 3PTR by RYAN, ROBBI			
06:08	REBOUND (OFF) by IBIS, KIANNA			
06:03	MISSED 3PTR by IBIS, KIANNA			
05:59				REBOUND (DEF) by MCDONALD, AARI
05:34		30-23	H 7	GOOD! 3PTR by THOMAS, SAM
05:34				ASSIST by MCDONALD, AARI
05:12	GOOD! JUMPER by IBIS, KIANNA [PNT]	30-25	H 5	
05:12	ASSIST by HANSON, TAYA			
04:50				MISSED LAYUP by THOMAS, SAM
04:47	REBOUND (DEF) by RYAN, ROBBI			
04:41	TURNOVER (BADPASS) by RICHARDSON, REILI			
04:41				STEAL by GRAHAM, DESTINY
04:35		32-25	H 7	GOOD! LAYUP by MCDONALD, AARI [FB]
04:27	MISSED LAYUP by RICHARDSON, REILI			
04:24				REBOUND (DEF) by ALONSO, LUCIA
04:20				TIMEOUT 30SEC
04:20				SUB OUT: MCDONALD, AARI
04:20				SUB IN: STARKS, TEE TEE
04:20	SUB OUT: HANSON, TAYA			
04:20	SUB IN: RUSSELL, KIARA			
04:20	SUB OUT: RYAN, ROBBI			
04:20	SUB IN: JOHNSON-CHAPMAN, CHARNEA			
04:20	SUB OUT: ELENGA, SOPHIA			
04:20	SUB IN: EKMARK, COURTNEY			
04:20	SUB OUT: IBIS, KIANNA			
04:20	SUB IN: VAN HYFTE, JAYDE			
04:04		34-25	H 9	GOOD! JUMPER by THOMAS, SAM
03:46	MISSED LAYUP by JOHNSON-CHAPMAN, CHARNEA			
03:43	REBOUND (OFF) by EKMARK, COURTNEY			
03:38	MISSED JUMPER by EKMARK, COURTNEY			

Time	VISITORS: Arizona State	Score	Margin	HOME: Arizona
03:38				BLOCK by THOMAS, SAM
03:31				REBOUND (DEF) by THOMAS, SAM
03:28		36-25	H 11	GOOD! LAYUP by GRAHAM, DESTINY
03:28				ASSIST by MCBRYDE, DOMINIQUE
03:18	TIMEOUT 30SEC			
03:18	SUB OUT: RICHARDSON, REILI			
03:18	SUB IN: IBIS, KIANNA			
03:18	SUB OUT: VAN HYFTE, JAYDE			
03:18	SUB IN: RYAN, ROBBI			
03:02	MISSED 3PTR by EKMARK, COURTNEY			
03:01				REBOUND (DEF) by TEAM
02:31				MISSED JUMPER by ALONSO, LUCIA
02:28	REBOUND (DEF) by RYAN, ROBBI			
02:08	SUB OUT: RUSSELL, KIARA			
02:08	SUB IN: RICHARDSON, REILI			
02:05				FOUL (PERSONAL) by ALONSO, LUCIA
02:05				SUB OUT: ALONSO, LUCIA
02:05				SUB IN: MCDONALD, AARI
01:49	GOOD! 3PTR by EKMARK, COURTNEY	36-28	H 8	
01:49	ASSIST by JOHNSON-CHAPMAN, CHARNEA			
01:32				MISSED JUMPER by GRAHAM, DESTINY
01:29	REBOUND (DEF) by IBIS, KIANNA			
01:07	TURNOVER (LOSTBALL) by RYAN, ROBBI			
01:07				STEAL by THOMAS, SAM
01:07	SUB OUT: RYAN, ROBBI			
01:07	SUB IN: HANSON, TAYA			
01:07	SUB OUT: JOHNSON-CHAPMAN, CHARNEA			
01:07	SUB IN: ELENGA, SOPHIA			
00:52				MISSED LAYUP by GRAHAM, DESTINY
00:49	REBOUND (DEF) by HANSON, TAYA			
00:42	MISSED LAYUP by ELENGA, SOPHIA			
00:42	REBOUND (OFF) by RICHARDSON, REILI			
00:42				SUB OUT: GRAHAM, DESTINY
00:42				SUB IN: REESE, CATE
00:16	MISSED JUMPER by RICHARDSON, REILI			
00:16				BLOCK by MCBRYDE, DOMINIQUE
00:11				REBOUND (DEF) by MCBRYDE, DOMINIQUE

### Arizona State 28, Arizona 36

Points from (This Period)	ASU	ARI
In the Paint	4	4
Off Turns	2	2
2nd Chance	0	0
Fast Break	2	2
Bench	0	2

**Official Box Score**  
**Arizona State vs Arizona**  
**Fourth Quarter Statistics Only**  
**December 31, 2018 at McKale Center (Lute & Bobbi Olson Court) - Tucson, Ariz.**



**Arizona State 11**

No.	Player	S	Pts	FG	3FG	FT	OR	DR	TR	PF	A	TO	Blk	Stl	Min	+/-
01	RICHARDSON, REILI		3	1-2	1-2	0-0	0	0	0	0	1	1	0	0	6	-2
11	RYAN, ROBBI		0	0-2	0-1	0-0	1	1	2	1	1	0	0	0	7	-2
22	EKMARK, COURTNEY		0	0-2	0-2	0-0	2	0	2	1	1	0	0	0	8	-3
33	JOHNSON-CHAPMAN, CHAR		0	0-1	0-0	0-0	0	0	0	1	0	0	0	1	5	-1
42	IBIS, KIANNA		6	2-5	1-3	1-3	0	1	1	0	0	1	1	1	9	-6
00	HANSON, TAYA		0	0-0	0-0	0-0	0	0	0	0	0	0	0	0	2	-1
04	RUSSELL, KIARA		0	0-0	0-0	0-0	0	0	0	1	1	0	0	0	4	-2
21	ELENGA, SOPHIA		2	1-3	0-0	0-0	0	1	1	1	0	0	0	0	6	-2
23	MBULITO, IRIS		0	0-1	0-0	0-0	0	0	0	0	0	1	0	0	3	-1
32	VAN HYFTE, JAYDE		0	0-0	0-0	0-0	0	0	0	0	0	0	0	0	0	0
52	RUDEN, JAMIE		0	0-0	0-0	0-0	0	0	0	0	0	0	0	0	0	0
	TEAM						1	1	2	0		0				
<b>TOTALS</b>			<b>11</b>	<b>4-16</b>	<b>2-8</b>	<b>1-3</b>	<b>4</b>	<b>4</b>	<b>8</b>	<b>5</b>	<b>4</b>	<b>3</b>	<b>1</b>	<b>2</b>	<b>49</b>	

*Shooting By Period*

Period	FG	FG%	3FG	3FG%	FT	FT%
Game	13-56	23.2%	4-23	17.4%	9-15	60.0%

**Arizona 15**

No.	Player	S	Pts	FG	3FG	FT	OR	DR	TR	PF	A	TO	Blk	Stl	Min	+/-
02	MCDONALD, AARI		7	3-5	0-1	1-2	0	0	0	1	1	0	0	1	10	4
04	ALONSO, LUCIA		0	0-0	0-0	0-0	0	0	0	1	0	0	0	0	7	5
14	THOMAS, SAM		4	1-2	0-1	2-2	0	2	2	0	0	0	0	0	10	4
20	MCBRYDE, DOMINIQUE		4	2-3	0-0	0-0	1	4	5	2	0	2	0	2	10	4
25	REESE, CATE		0	0-0	0-0	0-0	0	1	1	1	0	0	0	0	3	1
10	STARKS, TEE TEE		0	0-0	0-0	0-0	0	0	0	0	1	1	1	0	7	1
21	GRAHAM, DESTINY		0	0-1	0-0	0-0	0	0	0	0	0	0	0	0	2	1
24	NIXON, BRYCE		0	0-0	0-0	0-0	0	0	0	0	0	0	0	0	0	0
34	SMITH, SEMAJ		0	0-0	0-0	0-0	0	0	0	0	0	0	0	0	0	0
	TEAM						1	0	1	0		0				
<b>TOTALS</b>			<b>15</b>	<b>6-11</b>	<b>0-2</b>	<b>3-4</b>	<b>2</b>	<b>7</b>	<b>9</b>	<b>5</b>	<b>2</b>	<b>3</b>	<b>1</b>	<b>3</b>	<b>49</b>	

*Shooting By Period*

Period	FG	FG%	3FG	3FG%	FT	FT%
Game	20-43	46.5%	1-8	12.5%	10-11	90.9%

Game Notes:

Officials: Penny Davis, Bart Baldwin, Lorena Ahumada  
Attendance: 5006

Start Time: 2018-12-31 00:07:27  
End Time: 2018-12-31 02:00:10  
Game Duration: 112  
Conference Game;

Score	1st	2nd	3rd	4th	TOT
ASU	13	7	8	11	<b>39</b>
ARI	17	10	9	15	<b>51</b>

Points from (This Period)	ASU	ARI
In the Paint	4	10
Off Turns	3	6
2nd Chance	0	4
Fast Break	2	4
Bench	2	0

**Official By-By-Play  
Arizona State vs Arizona  
Fourth Quarter**

**December 31, 2018 at McKale Center (Lute & Bobbi Olson Court) - Tucson, Ariz.**



**Period 4**

**Starters:**

**Arizona State:** 1 RICHARDSON,REILI; 11 RYAN,ROBBI; 22 EKMARK,COURTNEY; 33 JOHNSON-CHAPMAN,CHARNEA; 42 IBIS,KIANNA;  
**Arizona:** 2 MCDONALD,AARI; 4 ALONSO,LUCIA; 14 THOMAS,SAM; 20 MCBRYDE,DOMINIQUE; 25 REESE,CATE;

Time	VISITORS: Arizona State	Score	Margin	HOME: Arizona
09:52	MISSED LAYUP by MBULITO, IRIS			
09:52				BLOCK by STARKS, TEE TEE
09:52	REBOUND (OFF) by TEAM			
09:51	MISSED 3PTR by EKMARK, COURTNEY			
09:48				REBOUND (DEF) by REESE, CATE
09:28				TURNOVER (LOSTBALL) by MCBRYDE, DOMINIQUE
09:01	TURNOVER (LOSTBALL) by MBULITO, IRIS			
09:01				STEAL by MCDONALD, AARI
08:50		38-28	H 10	GOOD! LAYUP by MCDONALD, AARI
08:17	GOOD! LAYUP by IBIS, KIANNA	38-30	H 8	
08:17	ASSIST by RICHARDSON, REILI			
08:17				FOUL (PERSONAL) by MCDONALD, AARI
08:17	SUB OUT: RICHARDSON, REILI			
08:17	SUB IN: RYAN, ROBBI			
08:17	SUB OUT: EKMARK, COURTNEY			
08:17	SUB IN: HANSON, TAYA			
08:17	SUB OUT: JOHNSON-CHAPMAN, CHARNEA			
08:17	SUB IN: RUSSELL, KIARA			
08:17	GOOD! FT by IBIS, KIANNA	38-31	H 7	
08:17	SUB OUT: MBULITO, IRIS			
08:17	SUB IN: JOHNSON-CHAPMAN, CHARNEA			
08:04				TURNOVER (LOSTBALL) by STARKS, TEE TEE
08:04	STEAL by JOHNSON-CHAPMAN, CHARNEA			
07:36	TURNOVER (LOSTBALL) by IBIS, KIANNA			
07:36				STEAL by MCBRYDE, DOMINIQUE
07:36				SUB OUT: STARKS, TEE TEE
07:36				SUB IN: ALONSO, LUCIA
07:13		40-31	H 9	GOOD! LAYUP by MCDONALD, AARI
06:46	TIMEOUT 30SEC			
06:46				
06:46	SUB OUT: HANSON, TAYA			
06:46	SUB IN: ELENGA, SOPHIA			
06:46	SUB OUT: IBIS, KIANNA			
06:46	SUB IN: EKMARK, COURTNEY			
06:35	MISSED JUMPER by ELENGA, SOPHIA			
06:35	REBOUND (OFF) by TEAM			
06:35				FOUL (PERSONAL) by REESE, CATE
06:31	MISSED JUMPER by RYAN, ROBBI			
06:31	REBOUND (OFF) by EKMARK, COURTNEY			
06:31				FOUL (PERSONAL) by ALONSO, LUCIA
06:31				SUB OUT: REESE, CATE
06:31				SUB IN: GRAHAM, DESTINY
06:31				FOUL (PERSONAL) by MCBRYDE, DOMINIQUE
06:13	MISSED JUMPER by JOHNSON-CHAPMAN, CHARNEA			
06:10				REBOUND (DEF) by MCBRYDE, DOMINIQUE
05:57				MISSED LAYUP by GRAHAM, DESTINY
05:53	REBOUND (DEF) by RYAN, ROBBI			
05:49	GOOD! LAYUP by ELENGA, SOPHIA [FB]	40-33	H 7	
05:49	ASSIST by RUSSELL, KIARA			
05:40	FOUL (PERSONAL) by RUSSELL, KIARA			
05:40	SUB OUT: ELENGA, SOPHIA			
05:40	SUB IN: IBIS, KIANNA			
05:24	FOUL (PERSONAL) by JOHNSON-CHAPMAN, CHARNEA			
05:24		41-33	H 8	GOOD! FT by MCDONALD, AARI
05:24	SUB OUT: JOHNSON-CHAPMAN, CHARNEA			
05:24	SUB IN: ELENGA, SOPHIA			
05:24				MISSED FT by MCDONALD, AARI
05:23	REBOUND (DEF) by ELENGA, SOPHIA			
05:08	MISSED JUMPER by IBIS, KIANNA			
05:02				REBOUND (DEF) by MCBRYDE, DOMINIQUE
04:37				MISSED 3PTR by THOMAS, SAM
04:34				REBOUND (OFF) by MCBRYDE, DOMINIQUE
04:32		43-33	H 10	GOOD! JUMPER by MCBRYDE, DOMINIQUE
04:20	MISSED JUMPER by ELENGA, SOPHIA			
04:17				REBOUND (DEF) by TEAM
04:17	FOUL (PERSONAL) by EKMARK, COURTNEY			
04:17				SUB OUT: GRAHAM, DESTINY
04:17				SUB IN: STARKS, TEE TEE
04:17	SUB OUT: RUSSELL, KIARA			
04:17	SUB IN: RICHARDSON, REILI			

Time	VISITORS: Arizona State	Score	Margin	HOME: Arizona
04:17	SUB OUT: ELENGA, SOPHIA			
04:17	SUB IN: MBULITO, IRIS			
04:17	SUB OUT: MBULITO, IRIS			
04:17	SUB IN: ELENGA, SOPHIA			
04:14				TURNOVER (LOSTBALL) by MCBRYDE, DOMINIQUE
04:14	STEAL by IBIS, KIANNA			
03:37	GOOD! 3PTR by RICHARDSON, REILI	43-36	H 7	
03:37	ASSIST by RYAN, ROBBI			
03:20		45-36	H 9	GOOD! LAYUP by MCDONALD, AARI
03:08				FOUL (PERSONAL) by MCBRYDE, DOMINIQUE
03:08	MISSED FT by IBIS, KIANNA			
03:08	REBOUND (OFF) by TEAM			
03:08	SUB OUT: RYAN, ROBBI			
03:08	SUB IN: MBULITO, IRIS			
03:08	MISSED FT by IBIS, KIANNA			
03:06				REBOUND (DEF) by MCBRYDE, DOMINIQUE
02:53				MISSED JUMPER by MCDONALD, AARI
02:50	REBOUND (DEF) by IBIS, KIANNA			
02:28	TURNOVER (BADPASS) by RICHARDSON, REILI			
02:28				STEAL by MCBRYDE, DOMINIQUE
02:25				MISSED LAYUP by MCBRYDE, DOMINIQUE
02:25	BLOCK by IBIS, KIANNA			
02:25				REBOUND (OFF) by TEAM
02:10	FOUL (PERSONAL) by ELENGA, SOPHIA			
01:49		47-36	H 11	GOOD! JUMPER by MCBRYDE, DOMINIQUE
01:49				ASSIST by STARKS, TEE TEE
01:43	TIMEOUT 30SEC			
01:43	SUB OUT: MBULITO, IRIS			
01:43	SUB IN: RYAN, ROBBI			
01:41	MISSED 3PTR by IBIS, KIANNA			
01:37				REBOUND (DEF) by THOMAS, SAM
01:33	FOUL (PERSONAL) by RYAN, ROBBI			
01:33		48-36	H 12	GOOD! FT by THOMAS, SAM [FB]
01:31		49-36	H 13	GOOD! FT by THOMAS, SAM [FB]
01:21	MISSED 3PTR by RYAN, ROBBI			
01:16				REBOUND (DEF) by MCBRYDE, DOMINIQUE
01:11		51-36	H 15	GOOD! LAYUP by THOMAS, SAM [FB]
01:11				ASSIST by MCDONALD, AARI
01:01	MISSED 3PTR by RICHARDSON, REILI			
00:57	REBOUND (OFF) by RYAN, ROBBI			
00:52	MISSED 3PTR by IBIS, KIANNA			
00:48	REBOUND (OFF) by EKMARK, COURTNEY			
00:46	MISSED 3PTR by EKMARK, COURTNEY			
00:41				REBOUND (DEF) by THOMAS, SAM
00:14				MISSED 3PTR by MCDONALD, AARI
00:13	REBOUND (DEF) by TEAM			
00:07	GOOD! 3PTR by IBIS, KIANNA	51-39	H 12	
00:07	ASSIST by EKMARK, COURTNEY			

### Arizona State 39, Arizona 51

Points from (This Period)	ASU	ARI
In the Paint	4	10
Off Turns	3	6
2nd Chance	0	4
Fast Break	2	4
Bench	2	0



**Official Scoring/Possession Reference Chart  
Arizona State vs Arizona  
Period 1**

**December 31, 2018 at McKale Center (Lute & Bobbi Olson Court) - Tucson, Ariz.**



**Period 1**

**Starters:**

**Arizona State:** 1 RICHARDSON,REILI; 11 RYAN,ROBBI; 22 EKMARK,COURTNEY; 33 JOHNSON-CHAPMAN,CHARNEA; 42 IBIS,KIANNA;

**Arizona:** 2 MCDONALD,AARI; 4 ALONSO,LUCIA; 14 THOMAS,SAM; 20 MCBRYDE,DOMINIQUE; 25 REESE,CATE;

Time	VISITORS: Arizona State	Score	Margin	HOME: Arizona
09:11		2-0	H 2	GOOD! JUMPER by REESE, CATE
08:27		3-0	H 3	GOOD! FT by MCDONALD, AARI
08:27		4-0	H 4	GOOD! FT by MCDONALD, AARI
07:51		6-0	H 6	GOOD! LAYUP by MCDONALD, AARI
07:51		7-0	H 7	GOOD! FT by MCDONALD, AARI
07:43	GOOD! LAYUP by JOHNSON-CHAPMAN, CHARNEA [FB]	7-2	H 5	
07:24		9-2	H 7	GOOD! LAYUP by MCDONALD, AARI
07:14	GOOD! FT by RUSSELL, KIARA	9-3	H 6	
07:14	GOOD! FT by RUSSELL, KIARA	9-4	H 5	
05:49	GOOD! JUMPER by VAN HYFTE, JAYDE	9-6	H 3	
05:47		11-6	H 5	GOOD! LAYUP by MCDONALD, AARI [FB]
04:22	GOOD! 3PTR by RYAN, ROBBI	11-9	H 2	
02:45	GOOD! LAYUP by RUSSELL, KIARA	11-11	T	
01:35		12-11	H 1	GOOD! FT by ALONSO, LUCIA
01:35		13-11	H 2	GOOD! FT by ALONSO, LUCIA
00:35	GOOD! JUMPER by RUSSELL, KIARA [PNT]	13-13	T	
00:06		15-13	H 2	GOOD! LAYUP by MCDONALD, AARI
00:01		17-13	H 4	GOOD! JUMPER by MCDONALD, AARI [FB]

**Arizona State 13, Arizona 17**

**Official Scoring/Possession Reference Chart  
Arizona State vs Arizona  
Period 2**

**December 31, 2018 at McKale Center (Lute & Bobbi Olson Court) - Tucson, Ariz.**



**Period 2**

**Starters:**

**Arizona State:** 1 RICHARDSON, REILI; 11 RYAN, ROBBIE; 22 EKMARK, COURTNEY; 33 JOHNSON-CHAPMAN, CHARNEA; 42 IBIS, KIANNA;  
**Arizona:** 2 MCDONALD, AARI; 4 ALONSO, LUCIA; 14 THOMAS, SAM; 20 MCBRYDE, DOMINIQUE; 25 REESE, CATE;

Time	VISITORS: Arizona State	Score	Margin	HOME: Arizona
05:21		19-13	H 6	GOOD! LAYUP by MCBRYDE, DOMINIQUE
04:00	GOOD! LAYUP by MBULITO, IRIS [FB]	19-15	H 4	
02:46		20-15	H 5	GOOD! FT by MCDONALD, AARI
02:46		21-15	H 6	GOOD! FT by MCDONALD, AARI
02:26	GOOD! FT by MBULITO, IRIS	21-16	H 5	
01:37	GOOD! FT by RICHARDSON, REILI	21-17	H 4	
01:37	GOOD! FT by RICHARDSON, REILI	21-18	H 3	
01:18		23-18	H 5	GOOD! JUMPER by THOMAS, SAM [PNT]
00:55		25-18	H 7	GOOD! JUMPER by STARKS, TEE TEE [FB]
00:31		27-18	H 9	GOOD! LAYUP by STARKS, TEE TEE
00:05	GOOD! FT by RUSSELL, KIARA	27-19	H 8	
00:05	GOOD! FT by RUSSELL, KIARA	27-20	H 7	

**Arizona State 20, Arizona 27**

**Official Scoring/Possession Reference Chart  
Arizona State vs Arizona  
Period 3**

**December 31, 2018 at McKale Center (Lute & Bobbi Olson Court) - Tucson, Ariz.**



**Period 3**

**Starters:**

**Arizona State:** 1 RICHARDSON, REILI; 11 RYAN, ROBBI; 22 EKMARK, COURTNEY; 33 JOHNSON-CHAPMAN, CHARNEA; 42 IBIS, KIANNA;  
**Arizona:** 2 MCDONALD, AARI; 4 ALONSO, LUCIA; 14 THOMAS, SAM; 20 MCBRYDE, DOMINIQUE; 25 REESE, CATE;

Time	VISITORS: Arizona State	Score	Margin	HOME: Arizona
09:38	GOOD! FT by IBIS, KIANNA	27-21	H 6	
09:19	GOOD! LAYUP by IBIS, KIANNA [FB]	27-23	H 4	
05:34		30-23	H 7	GOOD! 3PTR by THOMAS, SAM
05:12	GOOD! JUMPER by IBIS, KIANNA [PNT]	30-25	H 5	
04:35		32-25	H 7	GOOD! LAYUP by MCDONALD, AARI [FB]
04:04		34-25	H 9	GOOD! JUMPER by THOMAS, SAM
03:28		36-25	H 11	GOOD! LAYUP by GRAHAM, DESTINY
01:49	GOOD! 3PTR by EKMARK, COURTNEY	36-28	H 8	

**Arizona State 28, Arizona 36**

**Official Scoring/Possession Reference Chart  
Arizona State vs Arizona  
Period 4**

**December 31, 2018 at McKale Center (Lute & Bobbi Olson Court) - Tucson, Ariz.**



**Period 4**

**Starters:**

**Arizona State:** 1 RICHARDSON, REILI; 11 RYAN, ROBBI; 22 EKMARK, COURTNEY; 33 JOHNSON-CHAPMAN, CHARNEA; 42 IBIS, KIANNA;  
**Arizona:** 2 MCDONALD, AARI; 4 ALONSO, LUCIA; 14 THOMAS, SAM; 20 MCBRYDE, DOMINIQUE; 25 REESE, CATE;

Time	VISITORS: Arizona State	Score	Margin	HOME: Arizona
08:50		38-28	H 10	GOOD! LAYUP by MCDONALD, AARI
08:17	GOOD! LAYUP by IBIS, KIANNA	38-30	H 8	
08:17	GOOD! FT by IBIS, KIANNA	38-31	H 7	
07:13		40-31	H 9	GOOD! LAYUP by MCDONALD, AARI
05:49	GOOD! LAYUP by ELENGA, SOPHIA [FB]	40-33	H 7	
05:24		41-33	H 8	GOOD! FT by MCDONALD, AARI
04:32		43-33	H 10	GOOD! JUMPER by MCBRYDE, DOMINIQUE
03:37	GOOD! 3PTR by RICHARDSON, REILI	43-36	H 7	
03:20		45-36	H 9	GOOD! LAYUP by MCDONALD, AARI
01:49		47-36	H 11	GOOD! JUMPER by MCBRYDE, DOMINIQUE
01:33		48-36	H 12	GOOD! FT by THOMAS, SAM [FB]
01:31		49-36	H 13	GOOD! FT by THOMAS, SAM [FB]
01:11		51-36	H 15	GOOD! LAYUP by THOMAS, SAM [FB]
00:07	GOOD! 3PTR by IBIS, KIANNA	51-39	H 12	

**Arizona State 39, Arizona 51**

**Official Substitutions Log  
Arizona State vs Arizona  
Period 1**

**December 31, 2018 at McKale Center (Lute & Bobbi Olson Court) - Tucson, Ariz.**



<b>VISITORS: Arizona State</b>	<b>Time</b>	<b>Score</b>	<b>HOME: Arizona</b>
1 RICHARDSON, REILI			2 MCDONALD, AARI
11 RYAN, ROBBI			4 ALONSO, LUCIA
22 EKMARK, COURTNEY			14 THOMAS, SAM
33 JOHNSON-CHAPMAN, CHARNEA			20 MCBRYDE, DOMINIQUE
42 IBIS, KIANNA			25 REESE, CATE
SUB OUT: 33 JOHNSON-CHAPMAN, CHARNEA	08:27	0-3	
SUB IN: 21 ELENGA, SOPHIA	08:27		
SUB OUT: 1 RICHARDSON, REILI	07:51	0-6	
SUB IN: 33 JOHNSON-CHAPMAN, CHARNEA	07:51		
SUB OUT: 11 RYAN, ROBBI	07:51		
SUB IN: 23 MBULITO, IRIS	07:51		
SUB OUT: 42 IBIS, KIANNA	07:51		
SUB IN: 4 RUSSELL, KIARA	07:51		
SUB OUT: 22 EKMARK, COURTNEY	07:14	4-9	
SUB IN: 0 HANSON, TAYA	07:14		
	07:14		SUB OUT: ALONSO, LUCIA
	07:14		SUB IN: STARKS, TEE TEE
	07:04	4-9	SUB OUT: REESE, CATE
	07:04		SUB IN: GRAHAM, DESTINY
	06:13	4-9	SUB OUT: THOMAS, SAM
	06:13		SUB IN: ALONSO, LUCIA
	06:01	4-9	SUB OUT: MCBRYDE, DOMINIQUE
	06:01		SUB IN: REESE, CATE
SUB OUT: 0 HANSON, TAYA	06:01		
SUB IN: 22 EKMARK, COURTNEY	06:01		
SUB OUT: 4 RUSSELL, KIARA	06:01		
SUB IN: 11 RYAN, ROBBI	06:01		
SUB OUT: 23 MBULITO, IRIS	06:01		
SUB IN: 1 RICHARDSON, REILI	06:01		
SUB OUT: 21 ELENGA, SOPHIA	05:49	4-9	
SUB IN: 32 VAN HYFTE, JAYDE	05:49		
SUB OUT: 33 JOHNSON-CHAPMAN, CHARNEA	04:58	6-11	
SUB IN: 21 ELENGA, SOPHIA	04:58		
	03:55	9-11	SUB OUT: REESE, CATE
	03:55		SUB IN: MCBRYDE, DOMINIQUE
	03:08	9-11	SUB OUT: STARKS, TEE TEE
	03:08		SUB IN: THOMAS, SAM
SUB OUT: 1 RICHARDSON, REILI	03:08		
SUB IN: 0 HANSON, TAYA	03:08		
SUB OUT: 22 EKMARK, COURTNEY	03:08		
SUB IN: 23 MBULITO, IRIS	03:08		
SUB OUT: 32 VAN HYFTE, JAYDE	03:08		
SUB IN: 33 JOHNSON-CHAPMAN, CHARNEA	03:08		
SUB OUT: 11 RYAN, ROBBI	03:08		
SUB IN: 4 RUSSELL, KIARA	03:08		
	02:26	11-11	SUB OUT: GRAHAM, DESTINY
	02:26		SUB IN: REESE, CATE
SUB OUT: 21 ELENGA, SOPHIA	02:26		
SUB IN: 52 RUDEN, JAMIE	02:26		
SUB OUT: 23 MBULITO, IRIS	01:35	11-12	
SUB IN: 22 EKMARK, COURTNEY	01:35		
SUB OUT: 0 HANSON, TAYA	01:35		
SUB IN: 11 RYAN, ROBBI	01:35		
SUB OUT: 52 RUDEN, JAMIE	01:20	11-13	
SUB IN: 21 ELENGA, SOPHIA	01:20		

**Arizona State 13, Arizona 17**

**Official Substitutions Log  
Arizona State vs Arizona  
Period 2**

**December 31, 2018 at McKale Center (Lute & Bobbi Olson Court) - Tucson, Ariz.**



VISITORS: Arizona State	Time	Score	HOME: Arizona
1 RICHARDSON,REILI			2 MCDONALD,AARI
11 RYAN,ROBBI			4 ALONSO,LUCIA
22 EKMARK,COURTNEY			14 THOMAS,SAM
33 JOHNSON-CHAPMAN,CHARNEA			20 MCBRYDE,DOMINIQUE
42 IBIS,KIANNA			25 REESE,CATE
SUB OUT: 11 RYAN,ROBBI	08:53	-	
SUB IN: 23 MBULITO,IRIS	08:53		
SUB OUT: 22 EKMARK,COURTNEY	08:06	-	
SUB IN: 0 HANSON,TAYA	08:06		
	07:46	-	SUB OUT: REESE,CATE
	07:46		SUB IN: GRAHAM,DESTINY
	07:17	-	SUB OUT: MCDONALD,AARI
	07:17		SUB IN: STARKS,TEE TEE
	06:51	-	SUB OUT: GRAHAM,DESTINY
	06:51		SUB IN: SMITH,SEMAJ
SUB OUT: 1 RICHARDSON,REILI	06:51		
SUB IN: 32 VAN HYFTE,JAYDE	06:51		
SUB OUT: 21 ELENGA,SOPHIA	06:51		
SUB IN: 4 RUSSELL,KIARA	06:51		
SUB OUT: 23 MBULITO,IRIS	06:51		
SUB IN: 11 RYAN,ROBBI	06:51		
SUB OUT: 42 IBIS,KIANNA	06:51		
SUB IN: 33 JOHNSON-CHAPMAN,CHARNEA	06:51		
SUB OUT: 0 HANSON,TAYA	06:24	-	
SUB IN: 22 EKMARK,COURTNEY	06:24		
	05:13	13-19	SUB OUT: ALONSO,LUCIA
	05:13		SUB IN: MCDONALD,AARI
SUB OUT: 22 EKMARK,COURTNEY	04:23	13-19	
SUB IN: 42 IBIS,KIANNA	04:23		
SUB OUT: 32 VAN HYFTE,JAYDE	04:23		
SUB IN: 23 MBULITO,IRIS	04:23		
SUB OUT: 33 JOHNSON-CHAPMAN,CHARNEA	04:23		
SUB IN: 21 ELENGA,SOPHIA	04:23		
	03:36	15-19	SUB OUT: SMITH,SEMAJ
	03:36		SUB IN: ALONSO,LUCIA
	02:26	15-21	SUB OUT: MCBRYDE,DOMINIQUE
	02:26		SUB IN: SMITH,SEMAJ
SUB OUT: 11 RYAN,ROBBI	02:26		
SUB IN: 32 VAN HYFTE,JAYDE	02:26		
SUB OUT: 21 ELENGA,SOPHIA	02:26		
SUB IN: 52 RUDEN,JAMIE	02:26		
SUB OUT: 42 IBIS,KIANNA	02:26		
SUB IN: 1 RICHARDSON,REILI	02:26		
SUB OUT: 23 MBULITO,IRIS	01:54	16-21	
SUB IN: 22 EKMARK,COURTNEY	01:54		
SUB OUT: 32 VAN HYFTE,JAYDE	00:05	19-27	
SUB IN: 21 ELENGA,SOPHIA	00:05		
SUB OUT: 52 RUDEN,JAMIE	00:05		
SUB IN: 33 JOHNSON-CHAPMAN,CHARNEA	00:05		
SUB OUT: 22 EKMARK,COURTNEY	00:05		
SUB IN: 23 MBULITO,IRIS	00:05		
	00:05		SUB OUT: STARKS,TEE TEE
	00:05		SUB IN: NIXON,BRYCE

**Arizona State 20, Arizona 27**

**Official Substitutions Log  
Arizona State vs Arizona  
Period 3**

**December 31, 2018 at McKale Center (Lute & Bobbi Olson Court) - Tucson, Ariz.**



<b>VISITORS: Arizona State</b>	<b>Time</b>	<b>Score</b>	<b>HOME: Arizona</b>
1 RICHARDSON,REILI			2 MCDONALD,AARI
11 RYAN,ROBBI			4 ALONSO,LUCIA
22 EKMARK,COURTNEY			14 THOMAS,SAM
33 JOHNSON-CHAPMAN,CHARNEA			20 MCBRYDE,DOMINIQUE
42 IBIS,KIANNA			25 REESE,CATE
	08:39	23-27	SUB OUT: REESE,CATE
	08:39		SUB IN: GRAHAM,DESTINY
SUB OUT: 4 RUSSELL,KIARA	08:07	23-27	
SUB IN: 1 RICHARDSON,REILI	08:07		
SUB OUT: 11 RYAN,ROBBI	08:07		
SUB IN: 23 MBULITO,IRIS	08:07		
SUB OUT: 22 EKMARK,COURTNEY	07:14	23-27	
SUB IN: 0 HANSON,TAYA	07:14		
SUB OUT: 23 MBULITO,IRIS	07:14		
SUB IN: 21 ELENGA,SOPHIA	07:14		
SUB OUT: 33 JOHNSON-CHAPMAN,CHARNEA	07:14		
SUB IN: 11 RYAN,ROBBI	07:14		
	04:20	25-32	SUB OUT: MCDONALD,AARI
	04:20		SUB IN: STARKS,TEE TEE
SUB OUT: 0 HANSON,TAYA	04:20		
SUB IN: 4 RUSSELL,KIARA	04:20		
SUB OUT: 11 RYAN,ROBBI	04:20		
SUB IN: 33 JOHNSON-CHAPMAN,CHARNEA	04:20		
SUB OUT: 21 ELENGA,SOPHIA	04:20		
SUB IN: 22 EKMARK,COURTNEY	04:20		
SUB OUT: 42 IBIS,KIANNA	04:20		
SUB IN: 32 VAN HYFTE,JAYDE	04:20		
SUB OUT: 1 RICHARDSON,REILI	03:18	25-36	
SUB IN: 42 IBIS,KIANNA	03:18		
SUB OUT: 32 VAN HYFTE,JAYDE	03:18		
SUB IN: 11 RYAN,ROBBI	03:18		
SUB OUT: 4 RUSSELL,KIARA	02:08	25-36	
SUB IN: 1 RICHARDSON,REILI	02:08		
	02:05	25-36	SUB OUT: ALONSO,LUCIA
	02:05		SUB IN: MCDONALD,AARI
SUB OUT: 11 RYAN,ROBBI	01:07	28-36	
SUB IN: 0 HANSON,TAYA	01:07		
SUB OUT: 33 JOHNSON-CHAPMAN,CHARNEA	01:07		
SUB IN: 21 ELENGA,SOPHIA	01:07		
	00:42	28-36	SUB OUT: GRAHAM,DESTINY
	00:42		SUB IN: REESE,CATE

**Arizona State 28, Arizona 36**

**Official Substitutions Log  
Arizona State vs Arizona  
Period 4**

**December 31, 2018 at McKale Center (Lute & Bobbi Olson Court) - Tucson, Ariz.**



<b>VISITORS: Arizona State</b>	<b>Time</b>	<b>Score</b>	<b>HOME: Arizona</b>
1 RICHARDSON, REILI			2 MCDONALD, AARI
11 RYAN, ROBBIE			4 ALONSO, LUCIA
22 EKMARK, COURTNEY			14 THOMAS, SAM
33 JOHNSON-CHAPMAN, CHARNEA			20 MCBRYDE, DOMINIQUE
42 IBIS, KIANNA			25 REESE, CATE
SUB OUT: 1 RICHARDSON, REILI	08:17	30-38	
SUB IN: 11 RYAN, ROBBIE	08:17		
SUB OUT: 22 EKMARK, COURTNEY	08:17		
SUB IN: 0 HANSON, TAYA	08:17		
SUB OUT: 33 JOHNSON-CHAPMAN, CHARNEA	08:17		
SUB IN: 4 RUSSELL, KIARA	08:17		
SUB OUT: 23 MBULITO, IRIS	08:17		
SUB IN: 33 JOHNSON-CHAPMAN, CHARNEA	08:17		
	07:36	31-38	SUB OUT: STARKS, TEE TEE
	07:36		SUB IN: ALONSO, LUCIA
SUB OUT: 0 HANSON, TAYA	06:46	31-40	
SUB IN: 21 ELENGA, SOPHIA	06:46		
SUB OUT: 42 IBIS, KIANNA	06:46		
SUB IN: 22 EKMARK, COURTNEY	06:46		
	06:31	31-40	SUB OUT: REESE, CATE
	06:31		SUB IN: GRAHAM, DESTINY
SUB OUT: 21 ELENGA, SOPHIA	05:40	33-40	
SUB IN: 42 IBIS, KIANNA	05:40		
SUB OUT: 33 JOHNSON-CHAPMAN, CHARNEA	05:24	33-41	
SUB IN: 21 ELENGA, SOPHIA	05:24		
	04:17	33-43	SUB OUT: GRAHAM, DESTINY
	04:17		SUB IN: STARKS, TEE TEE
SUB OUT: 4 RUSSELL, KIARA	04:17		
SUB IN: 1 RICHARDSON, REILI	04:17		
SUB OUT: 21 ELENGA, SOPHIA	04:17		
SUB IN: 23 MBULITO, IRIS	04:17		
SUB OUT: 23 MBULITO, IRIS	04:17		
SUB IN: 21 ELENGA, SOPHIA	04:17		
SUB OUT: 11 RYAN, ROBBIE	03:08	36-45	
SUB IN: 23 MBULITO, IRIS	03:08		
SUB OUT: 23 MBULITO, IRIS	01:43	36-47	
SUB IN: 11 RYAN, ROBBIE	01:43		

**Arizona State 39, Arizona 51**



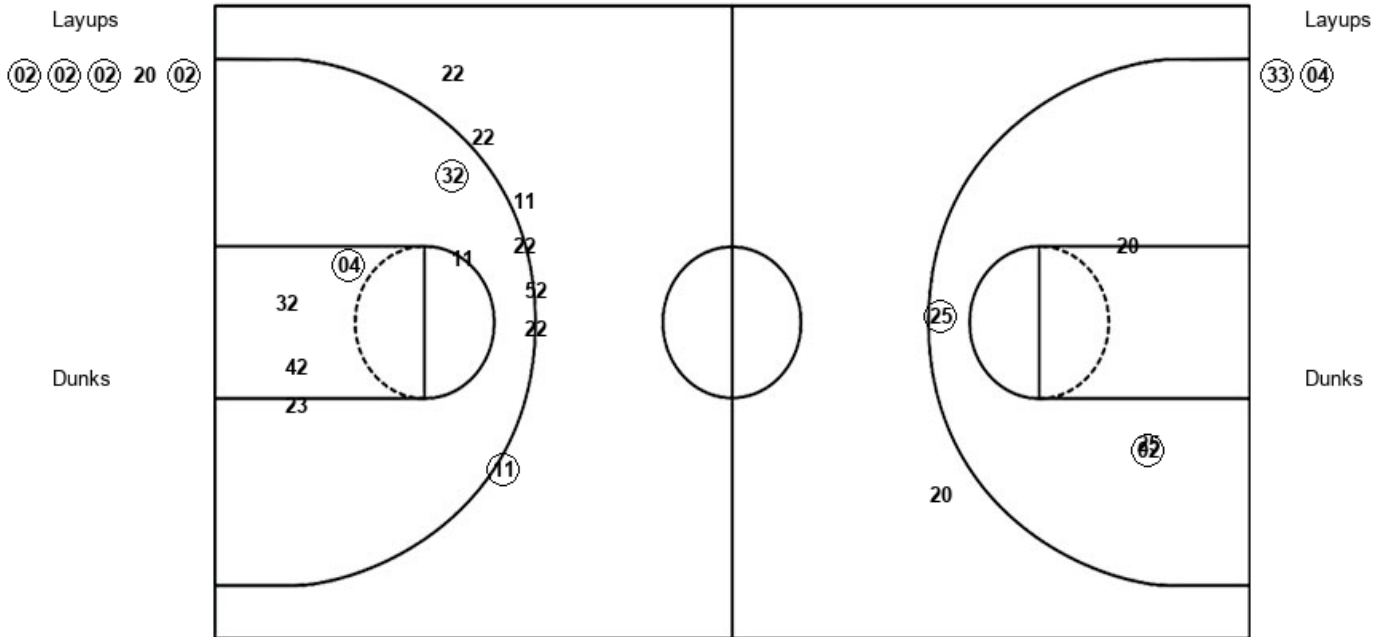
Official Shot Chart  
**Arizona State vs Arizona**  
 PERIOD 1 Shots

December 31, 2018 at McKale Center (Lute & Bobbi Olson Court) - Tucson, Ariz.



Arizona

Arizona State



ARI : Period 1	Made	Att	Pct
Layups	4	5	80.0
Dunks	0	0	0
2PT Field Goals	6	9	66.7
3PT Field Goals	0	1	00.0
<b>Total Field Goals</b>	<b>6</b>	<b>10</b>	<b>60.0</b>

ASU : Period 1	Made	Att	Pct
Layups	2	2	100.0
Dunks	0	0	0
2PT Field Goals	4	8	50.0
3PT Field Goals	1	7	14.3
<b>Total Field Goals</b>	<b>5</b>	<b>15</b>	<b>33.3</b>

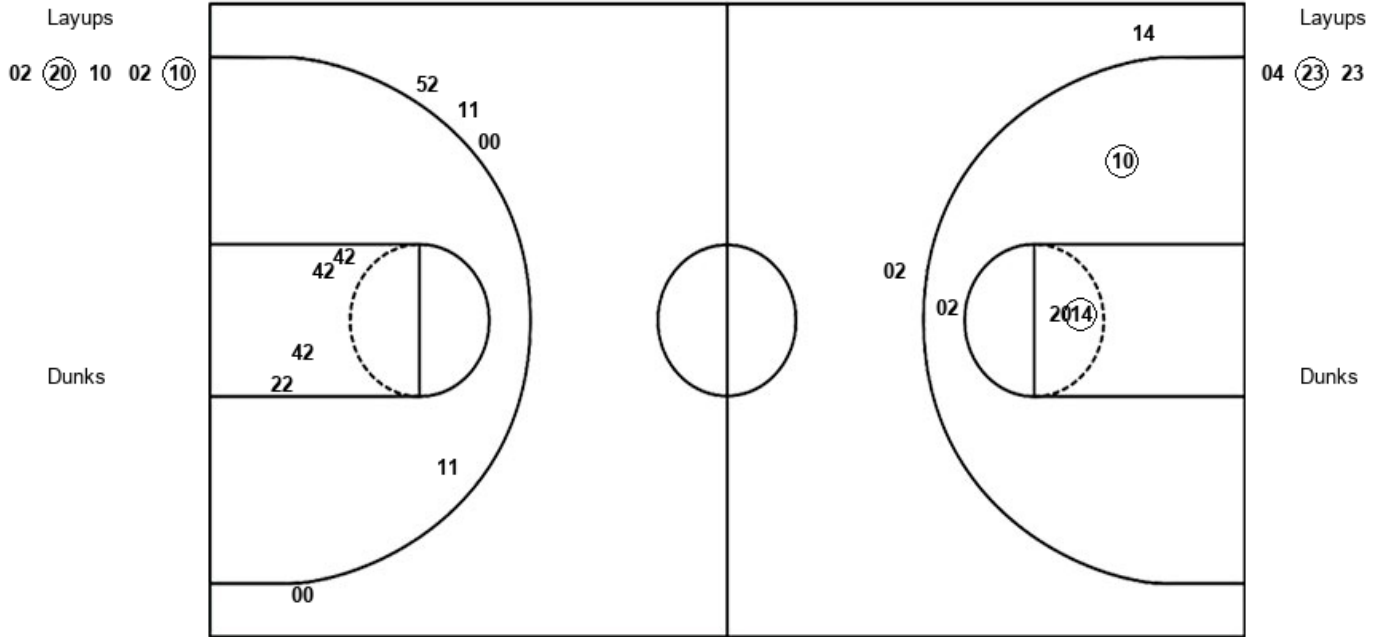
Official Shot Chart  
**Arizona State vs Arizona**  
 PERIOD 2 Shots

December 31, 2018 at McKale Center (Lute & Bobbi Olson Court) - Tucson, Ariz.



**Arizona**

**Arizona State**



ARI : Period 2	Made	Att	Pct
Layups	2	5	40.0
Dunks	0	0	0
2PT Field Goals	4	9	44.4
3PT Field Goals	0	2	00.0
<b>Total Field Goals</b>	<b>4</b>	<b>11</b>	<b>36.4</b>

ASU : Period 2	Made	Att	Pct
Layups	1	3	33.3
Dunks	0	0	0
2PT Field Goals	1	8	12.5
3PT Field Goals	0	4	00.0
<b>Total Field Goals</b>	<b>1</b>	<b>12</b>	<b>08.3</b>

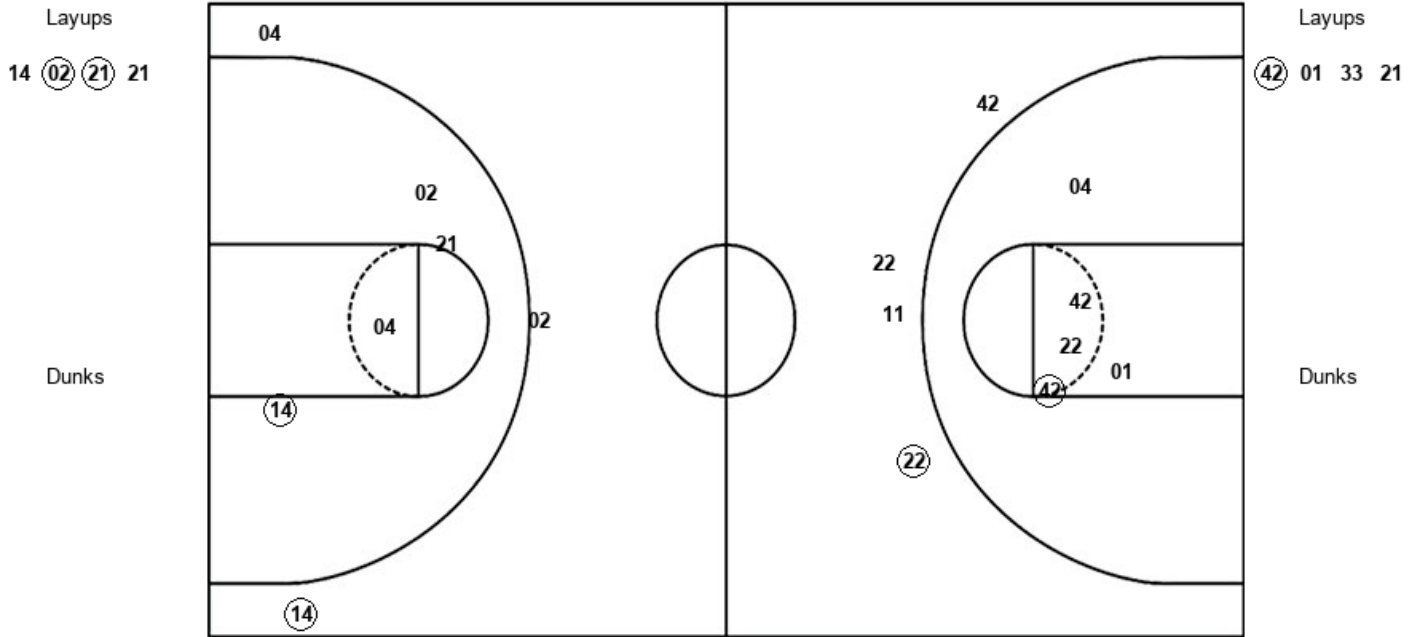
Official Shot Chart  
**Arizona State vs Arizona**  
 PERIOD 3 Shots

December 31, 2018 at McKale Center (Lute & Bobbi Olson Court) - Tucson, Ariz.



**Arizona**

**Arizona State**



ARI : Period 3	Made	Att	Pct
Layups	2	4	50.0
Dunks	0	0	0
2PT Field Goals	3	8	37.5
3PT Field Goals	1	3	33.3
<b>Total Field Goals</b>	<b>4</b>	<b>11</b>	<b>36.4</b>

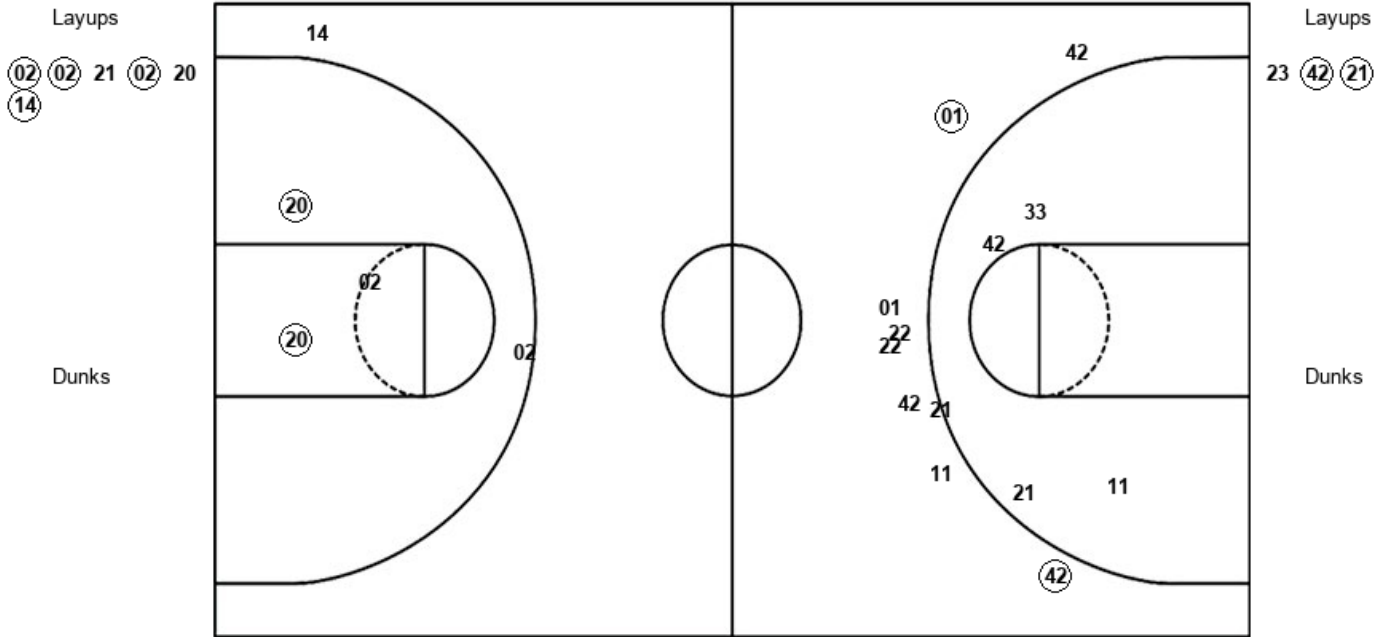
ASU : Period 3	Made	Att	Pct
Layups	1	4	25.0
Dunks	0	0	0
2PT Field Goals	2	9	22.2
3PT Field Goals	1	4	25.0
<b>Total Field Goals</b>	<b>3</b>	<b>13</b>	<b>23.1</b>

**Official Shot Chart**  
**Arizona State vs Arizona**  
**PERIOD 4 Shots**  
 December 31, 2018 at McKale Center (Lute & Bobbi Olson Court) - Tucson, Ariz.



**Arizona**

**Arizona State**



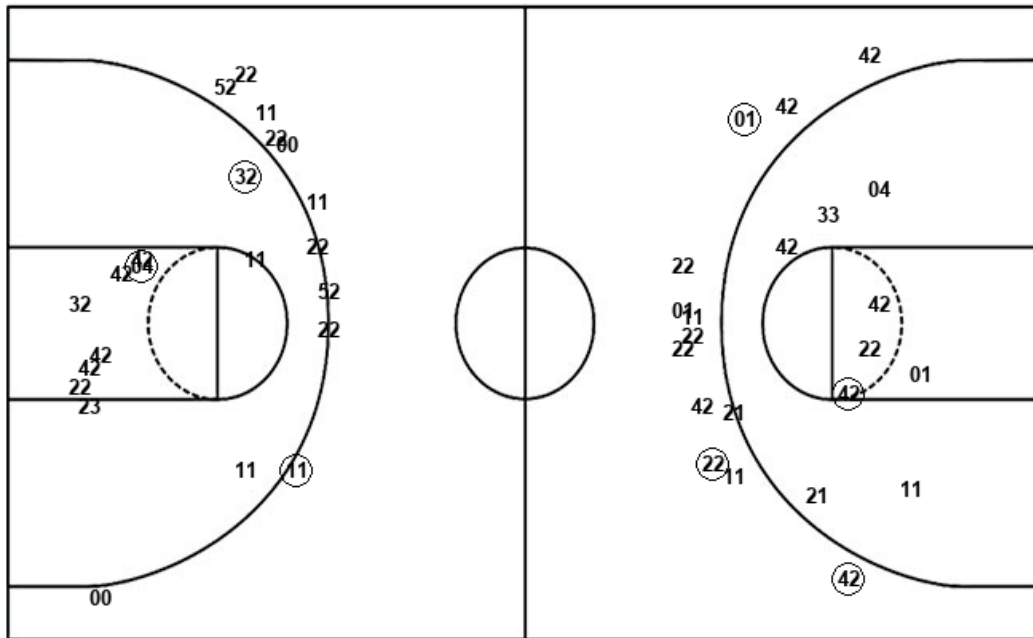
ARI : Period 4	Made	Att	Pct
Layups	4	6	66.7
Dunks	0	0	0
2PT Field Goals	6	9	66.7
3PT Field Goals	0	2	00.0
<b>Total Field Goals</b>	<b>6</b>	<b>11</b>	<b>54.5</b>

ASU : Period 4	Made	Att	Pct
Layups	2	3	66.7
Dunks	0	0	0
2PT Field Goals	2	8	25.0
3PT Field Goals	2	8	25.0
<b>Total Field Goals</b>	<b>4</b>	<b>16</b>	<b>25.0</b>

**Official Shot Chart**  
**Arizona State vs Arizona**  
**Arizona State Team Shots**  
 December 31, 2018 at McKale Center (Lute & Bobbi Olson Court) - Tucson, Ariz.



Layups



Layups

Dunks

Dunks

ASU : Period 1	Made	Att	Pct
Layups	2	2	100.0
Dunks	0	0	0
2PT Field Goals	4	8	50.0
3PT Field Goals	1	7	14.3
<b>Total Field Goals</b>	<b>5</b>	<b>15</b>	<b>33.3</b>

ASU : Period 3	Made	Att	Pct
Layups	1	4	25.0
Dunks	0	0	0
2PT Field Goals	2	9	22.2
3PT Field Goals	1	4	25.0
<b>Total Field Goals</b>	<b>3</b>	<b>13</b>	<b>23.1</b>

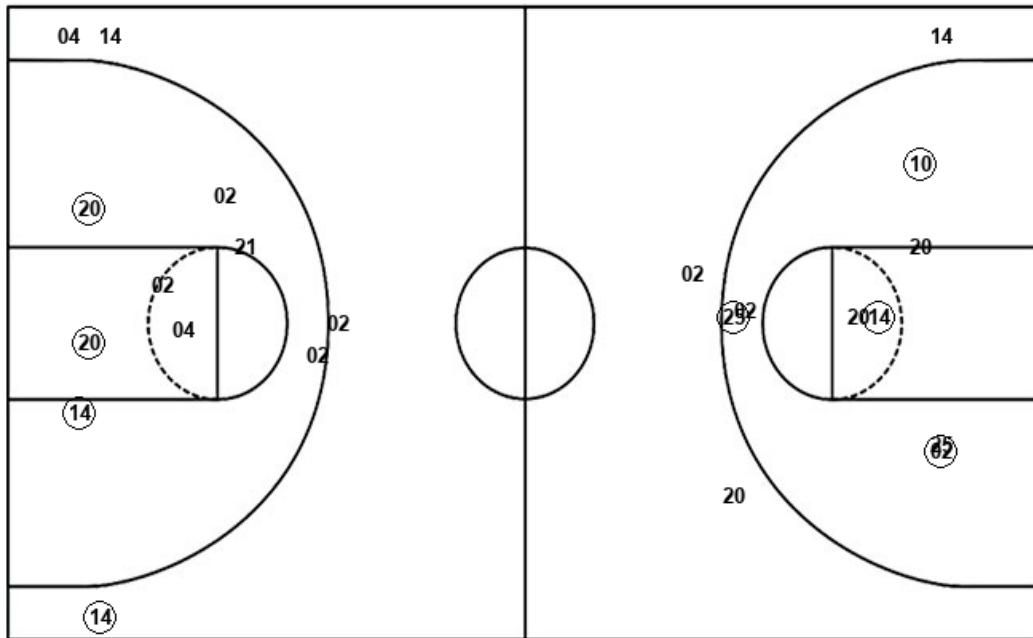
ASU : Period 2	Made	Att	Pct
Layups	1	3	33.3
Dunks	0	0	0
2PT Field Goals	1	8	12.5
3PT Field Goals	0	4	00.0
<b>Total Field Goals</b>	<b>1</b>	<b>12</b>	<b>08.3</b>

ASU : Period 4	Made	Att	Pct
Layups	2	3	66.7
Dunks	0	0	0
2PT Field Goals	2	8	25.0
3PT Field Goals	2	8	25.0
<b>Total Field Goals</b>	<b>4</b>	<b>16</b>	<b>25.0</b>

**Official Shot Chart**  
**Arizona State vs Arizona**  
**Arizona Team Shots**  
 December 31, 2018 at McKale Center (Lute & Bobbi Olson Court) - Tucson, Ariz.



Layups



Layups

- (02) (02) (02) 20 (02)
- 02 (20) 10 02 (10)
- 14 (02) (21) 21 (02)
- (02) 21 (02) 20 (14)

Dunks

Dunks

ARI : Period 1	Made	Att	Pct
Layups	4	5	80.0
Dunks	0	0	0
2PT Field Goals	6	9	66.7
3PT Field Goals	0	1	00.0
<b>Total Field Goals</b>	<b>6</b>	<b>10</b>	<b>60.0</b>

ARI : Period 2	Made	Att	Pct
Layups	2	5	40.0
Dunks	0	0	0
2PT Field Goals	4	9	44.4
3PT Field Goals	0	2	00.0
<b>Total Field Goals</b>	<b>4</b>	<b>11</b>	<b>36.4</b>

ARI : Period 3	Made	Att	Pct
Layups	2	4	50.0
Dunks	0	0	0
2PT Field Goals	3	8	37.5
3PT Field Goals	1	3	33.3
<b>Total Field Goals</b>	<b>4</b>	<b>11</b>	<b>36.4</b>

ARI : Period 4	Made	Att	Pct
Layups	4	6	66.7
Dunks	0	0	0
2PT Field Goals	6	9	66.7
3PT Field Goals	0	2	00.0
<b>Total Field Goals</b>	<b>6</b>	<b>11</b>	<b>54.5</b>