

FINAL SCORE



Northern Arizona

47



Arizona

71

December 22, 2018 • McKale Center (Lute & Bobbi Olson Court) - Tucson, Ariz.

FINAL STATISTICS

Official Box Score
Northern Arizona vs Arizona
Game Totals -- Final Statistics

December 22, 2018 at McKale Center (Lute & Bobbi Olson Court) - Tucson, Ariz.



Northern Arizona 47

No.	Player	S	Pts	FG	3FG	FT	OR	DR	TR	PF	A	TO	Blk	Stl	Min	+/-
01	SCHENCK, REGAN		2	1-4	0-0	0-0	1	1	2	4	1	6	0	1	26	-19
03	MALVAR, CAITLIN		3	1-4	1-4	0-0	1	4	5	1	1	2	0	1	26	-16
15	RASHEED, KHIARICA		8	3-13	0-0	2-2	2	2	4	1	0	2	0	0	23	-21
20	ORNDORFF, LAUREN		4	2-7	0-1	0-2	1	1	2	2	3	3	0	2	26	-27
23	PAPLOW, KALEIGH		13	4-11	1-5	4-6	8	3	11	4	1	2	1	2	37	-25
04	GARY, MORGAN		3	1-6	0-0	1-2	1	3	4	3	0	2	0	0	14	-9
05	MCCORMICK, ALIZE'		2	1-1	0-0	0-0	0	0	0	0	0	0	0	0	2	3
11	BAILEY, JACEY		8	4-9	0-2	0-0	1	4	5	0	0	2	0	1	25	-2
21	TSINGINE, TATE		0	0-0	0-0	0-0	0	0	0	0	1	0	0	0	1	3
25	LEHEW, BRIANNA		2	1-3	0-0	0-0	1	0	1	0	0	1	0	0	7	0
33	CARROLL, PEYTON		2	1-2	0-0	0-2	0	1	1	1	0	2	0	0	13	-7
	TEAM						2	1	3	0		0				
TOTALS			47	19-60	2-12	7-14	18	20	38	16	7	22	1	7	200	

Shooting By Period

Period	FG	FG%	3FG	3FG%	FT	FT%
1st Qtr	5-17	29%	1-4	25%	0-2	00%
2nd Qtr	3-14	21%	0-2	00%	0-0	0%
3rd Qtr	4-12	33%	0-3	00%	5-8	63%
4th Qtr	7-17	41%	1-3	33%	2-4	50%
1st Half	8-31	26%	1-6	17%	0-2	00%
2nd Half	11-29	38%	1-6	17%	7-12	58%
Game	19-60	31.7%	2-12	16.7%	7-14	50.0%

Last FG: 4th-00:17
Biggest Run: 8-0
Largest lead: By 3 at 1-08:25
Technical Fouls: None.

Arizona 71

No.	Player	S	Pts	FG	3FG	FT	OR	DR	TR	PF	A	TO	Blk	Stl	Min	+/-
02	MCDONALD, AARI		20	7-16	0-2	6-8	1	7	8	3	2	4	0	3	28	21
04	ALONSO, LUCIA		5	2-6	1-3	0-0	0	0	0	0	5	3	0	0	27	17
14	THOMAS, SAM		2	1-6	0-3	0-0	2	1	3	2	2	0	4	3	33	27
20	MCBRYDE, DOMINIQUE		12	5-8	2-2	0-0	1	4	5	4	2	2	2	1	26	32
25	REESE, CATE		21	10-13	1-1	0-2	3	5	8	2	1	2	4	2	27	10
10	STARKS, TEE TEE		6	3-3	0-0	0-0	1	0	1	3	2	2	0	1	21	13
21	GRAHAM, DESTINY		5	2-6	0-0	1-2	2	4	6	0	1	2	0	1	21	16
22	MALECHA, LINDSEY		0	0-1	0-0	0-0	0	0	0	0	0	0	0	0	2	-3
24	NIXON, BRYCE		0	0-2	0-1	0-0	0	0	0	2	0	2	0	0	11	-6
34	SMITH, SEMAJ		0	0-0	0-0	0-0	0	0	0	0	0	1	0	0	6	-7
	TEAM						1	4	5	0		0				
TOTALS			71	30-61	4-12	7-12	11	25	36	16	15	18	10	11	200	

Shooting By Period

Period	FG	FG%	3FG	3FG%	FT	FT%
1st Qtr	7-14	50%	2-5	40%	1-4	25%
2nd Qtr	9-19	47%	1-4	25%	0-0	0%
3rd Qtr	10-15	67%	1-1	100%	6-8	75%
4th Qtr	4-13	31%	0-2	00%	0-0	0%
1st Half	16-33	48%	3-9	33%	1-4	25%
2nd Half	14-28	50%	1-3	33%	6-8	75%
Game	30-61	49.2%	4-12	33.3%	7-12	58.3%

Last FG: 4th-02:45
Biggest Run: 17-0
Largest lead: By 35 at 4-09:14
Technical Fouls: None.

Game Notes:

Officials: Kyle Bacon, Tyler Trimble, Cheryl Blue
Attendance: 1866

Start Time: 2018-12-22 01:30:53
End Time: 2018-12-22 03:14:23
Game Duration: 103

Score	1st	2nd	3rd	4th	TOT
NAU	11	6	13	17	47
ARI	17	19	27	8	71

NAU led for 1:32. ARI led for 36:57.
Game was tied for 1:32.
Times tied: 2 Lead Changes: 2

Points from	NAU	ARI
In the Paint	28	48
Off Turns	15	21
2nd Chance	14	11
Fast Break	10	12
Bench	17	11

Official Box Score
Northern Arizona vs Arizona
First Half Statistics Only
December 22, 2018 at McKale Center (Lute & Bobbi Olson Court) - Tucson, Ariz.



Northern Arizona 17

No.	Player	S	Pts	FG	3FG	FT	OR	DR	TR	PF	A	TO	Blk	Stl	Min	+/-
01	SCHENCK, REGAN		0	0-2	0-0	0-0	1	0	1	2	0	3	0	0	16	-14
03	MALVAR, CAITLIN		3	1-3	1-3	0-0	0	3	3	1	1	2	0	1	14	-10
04	GARY, MORGAN		2	1-3	0-0	0-0	0	2	2	1	0	1	0	0	6	-9
05	MCCORMICK, ALIZE'		0	0-0	0-0	0-0	0	0	0	0	0	0	0	0	0	0
11	BAILEY, JACEY		2	1-3	0-1	0-0	1	2	3	0	0	1	0	0	8	0
15	RASHEED, KHIARICA		2	1-7	0-0	0-0	1	1	2	1	0	1	0	0	12	-14
20	ORNDOFF, LAUREN		4	2-5	0-1	0-2	0	1	1	1	1	2	0	1	14	-22
21	TSINGINE, TATE		0	0-0	0-0	0-0	0	0	0	0	0	0	0	0	0	0
23	PAPLOW, KALEIGH		2	1-4	0-1	0-0	4	1	5	0	0	0	0	0	18	-17
25	LEHEW, BRIANNA		2	1-3	0-0	0-0	1	0	1	0	0	0	0	0	5	0
33	CARROLL, PEYTON		0	0-1	0-0	0-0	0	1	1	0	0	1	0	0	6	-9
	TEAM		0	0-0	0-0	0-0	1	1	2	0	0	0	0	0	0	0
TOTALS			17	8-31	1-6	0-2	0	0	21	6	2	11	0	2	100	

Shooting By Period

Period	FG	FG%	3FG	3FG%	FT	FT%
1st Qtr	5-17	29%	1-4	25%	0-2	00%
2nd Qtr	3-14	21%	0-2	00%	0-0	0%
1st Half	8-31	26%	1-6	17%	0-2	00%
Game	19-60	31.7%	2-12	16.7%	7-14	50.0%

Last FG Half: NAU 2nd-00:17

Arizona 36

No.	Player	S	Pts	FG	3FG	FT	OR	DR	TR	PF	A	TO	Blk	Stl	Min	+/-
02	MCDONALD, AARI		5	2-8	0-2	1-2	1	5	6	1	0	3	0	1	14	8
04	ALONSO, LUCIA		5	2-3	1-2	0-0	0	0	0	0	4	1	0	0	15	19
10	STARKS, TEE TEE		4	2-2	0-0	0-0	1	0	1	2	0	1	0	1	10	11
14	THOMAS, SAM		2	1-4	0-2	0-0	1	1	2	0	1	0	2	3	18	20
20	MCBRYDE, DOMINIQUE		12	5-6	2-2	0-0	0	3	3	1	1	0	2	1	15	23
21	GRAHAM, DESTINY		0	0-3	0-0	0-0	2	2	4	0	1	0	0	0	11	9
22	MALECHA, LINDSEY		0	0-0	0-0	0-0	0	0	0	0	0	0	0	0	0	0
24	NIXON, BRYCE		0	0-1	0-1	0-0	0	0	0	1	0	0	0	0	3	-1
25	REESE, CATE		8	4-6	0-0	0-2	1	1	2	1	0	0	3	0	12	10
34	SMITH, SEMAJ		0	0-0	0-0	0-0	0	0	0	0	0	1	0	0	2	-4
	TEAM		0	0-0	0-0	0-0	0	3	3	0	0	0	0	0	0	0
TOTALS			36	16-33	3-9	1-4	0	0	21	6	7	6	7	6	100	

Shooting By Period

Period	FG	FG%	3FG	3FG%	FT	FT%
1st Qtr	7-14	50%	2-5	40%	1-4	25%
2nd Qtr	9-19	47%	1-4	25%	0-0	0%
1st Half	16-33	48%	3-9	33%	1-4	25%
Game	30-61	49.2%	4-12	33.3%	7-12	58.3%

Last FG Half: ARI 2nd-03:15

Game Notes:

Officials: Kyle Bacon, Tyler Trimble, Cheryl Blue
Attendance: 1866

Start Time: 2018-12-22 01:30:53
End Time: 2018-12-22 03:14:23
Game Duration: 103

Score	1st	2nd	3rd	4th	TOT
NAU	11	6	13	17	47
ARI	17	19	27	8	71

Points from (This Period)	NAU	ARI
In the Paint	14	22
Off Turns	6	11
2nd Chance	6	4
Fast Break	4	6
Bench	6	4

Official Box Score
Northern Arizona vs Arizona
First Quarter Statistics Only
December 22, 2018 at McKale Center (Lute & Bobbi Olson Court) - Tucson, Ariz.



Northern Arizona 11

No.	Player	S	Pts	FG	3FG	FT	OR	DR	TR	PF	A	TO	Blk	Stl	Min	+/-
01	SCHENCK, REGAN		0	0-2	0-0	0-0	1	0	1	1	0	0	0	0	7	-1
03	MALVAR, CAITLIN		3	1-2	1-2	0-0	0	2	2	1	1	1	0	0	8	-7
15	RASHEED, KHIARICA		2	1-5	0-0	0-0	1	1	2	1	0	0	0	0	7	-1
20	ORNDOFF, LAUREN		2	1-3	0-1	0-2	0	0	0	1	1	0	0	1	7	-5
23	PAPLOW, KALEIGH		2	1-2	0-1	0-0	3	1	4	0	0	0	0	0	9	-4
04	GARY, MORGAN		2	1-3	0-0	0-0	0	1	1	0	0	1	0	0	4	-3
05	MCCORMICK, ALIZE'		0	0-0	0-0	0-0	0	0	0	0	0	0	0	0	0	0
11	BAILEY, JACEY		0	0-0	0-0	0-0	0	0	0	0	0	1	0	0	5	-4
21	TSINGINE, TATE		0	0-0	0-0	0-0	0	0	0	0	0	0	0	0	0	0
25	LEHEW, BRIANNA		0	0-0	0-0	0-0	0	0	0	0	0	0	0	0	0	0
33	CARROLL, PEYTON		0	0-0	0-0	0-0	0	0	0	0	0	1	0	0	3	-5
	TEAM						1	1	2	0		0				
TOTALS			11	5-17	1-4	0-2	0	0	12	4	2	4	0	1	50	

Shooting By Period

Period	FG	FG%	3FG	3FG%	FT	FT%
1st Qtr	5-17	29%	1-4	25%	0-2	00%
2nd Qtr	3-14	21%	0-2	00%	0-0	0%
1st Half	5-17	29%	1-4	25%	0-2	00%
1st Half	8-31	26%	1-6	17%	0-2	00%
Game	19-60	31.7%	2-12	16.7%	7-14	50.0%

Arizona 17

No.	Player	S	Pts	FG	3FG	FT	OR	DR	TR	PF	A	TO	Blk	Stl	Min	+/-
02	MCDONALD, AARI		5	2-5	0-1	1-2	0	2	2	1	0	2	0	1	8	5
04	ALONSO, LUCIA		2	1-2	0-1	0-0	0	0	0	0	1	1	0	0	8	2
14	THOMAS, SAM		0	0-1	0-1	0-0	1	1	2	0	1	0	1	1	8	7
20	MCBRYDE, DOMINIQUE		6	2-3	2-2	0-0	0	1	1	1	0	0	1	0	7	6
25	REESE, CATE		4	2-3	0-0	0-2	1	1	2	0	0	0	3	0	9	3
10	STARKS, TEE TEE		0	0-0	0-0	0-0	1	0	1	2	0	1	0	0	5	1
21	GRAHAM, DESTINY		0	0-0	0-0	0-0	0	1	1	0	0	0	0	0	4	3
22	MALECHA, LINDSEY		0	0-0	0-0	0-0	0	0	0	0	0	0	0	0	0	0
24	NIXON, BRYCE		0	0-0	0-0	0-0	0	0	0	1	0	0	0	0	1	3
34	SMITH, SEMAJ		0	0-0	0-0	0-0	0	0	0	0	0	0	0	0	0	0
	TEAM						0	1	1	0		0				
TOTALS			17	7-14	2-5	1-4	0	0	10	5	2	4	5	2	50	

Shooting By Period

Period	FG	FG%	3FG	3FG%	FT	FT%
1st Qtr	7-14	50%	2-5	40%	1-4	25%
2nd Qtr	9-19	47%	1-4	25%	0-0	0%
1st Half	7-14	50%	2-5	40%	1-4	25%
1st Half	16-33	48%	3-9	33%	1-4	25%
Game	30-61	49.2%	4-12	33.3%	7-12	58.3%

Game Notes:

Officials: Kyle Bacon, Tyler Trimble, Cheryl Blue
Attendance: 1866

Start Time: 2018-12-22 01:30:53
End Time: 2018-12-22 03:14:23
Game Duration: 103

Score	1st	2nd	3rd	4th	TOT
NAU	11	6	13	17	47
ARI	17	19	27	8	71

Points from (This Period)	NAU	ARI
In the Paint	8	8
Off Turns	4	2
2nd Chance	2	4
Fast Break	2	2
Bench	2	0

Official By-By-Play
Northern Arizona vs Arizona
First Quarter

December 22, 2018 at McKale Center (Lute & Bobbi Olson Court) - Tucson, Ariz.



Period 1

Starters:

Northern Arizona: 1 SCHENCK, REGAN; 3 MALVAR, CAITLIN; 15 RASHEED, KHIARICA; 20 ORNDOFF, LAUREN; 23 PAPLOW, KALEIGH;

Arizona: 2 MCDONALD, AARI; 4 ALONSO, LUCIA; 14 THOMAS, SAM; 20 MCBRYDE, DOMINIQUE; 25 REESE, CATE;

Time	VISITORS: Northern Arizona	Score	Margin	HOME: Arizona
09:45				MISSED JUMPER by MCDONALD, AARI
09:41				REBOUND (OFF) by THOMAS, SAM
09:29		2-0	H 2	GOOD! JUMPER by ALONSO, LUCIA
09:09	GOOD! 3PTR by MALVAR, CAITLIN	2-3	V 1	
09:09	ASSIST by ORNDOFF, LAUREN			
08:49				MISSED JUMPER by REESE, CATE
08:45	REBOUND (DEF) by MALVAR, CAITLIN			
08:25	GOOD! LAYUP by RASHEED, KHIARICA	2-5	V 3	
08:25	ASSIST by MALVAR, CAITLIN			
08:11	FOUL (PERSONAL) by ORNDOFF, LAUREN			
08:10				MISSED 3PTR by MCDONALD, AARI
08:10	REBOUND (DEF) by PAPLOW, KALEIGH			
07:50	MISSED JUMPER by SCHENCK, REGAN			
07:48	REBOUND (OFF) by SCHENCK, REGAN			
07:44	MISSED 3PTR by ORNDOFF, LAUREN			
07:39				REBOUND (DEF) by MCBRYDE, DOMINIQUE
07:37		5-5	T	GOOD! 3PTR by MCBRYDE, DOMINIQUE
07:37				ASSIST by THOMAS, SAM
07:26	MISSED JUMPER by RASHEED, KHIARICA			
07:23	REBOUND (OFF) by PAPLOW, KALEIGH			
07:20	MISSED 3PTR by MALVAR, CAITLIN			
07:15	REBOUND (OFF) by RASHEED, KHIARICA			
07:15	MISSED LAYUP by RASHEED, KHIARICA			
07:15	REBOUND (OFF) by PAPLOW, KALEIGH			
07:15				FOUL (PERSONAL) by MCBRYDE, DOMINIQUE
07:11	TURNOVER (BADPASS) by MALVAR, CAITLIN			
07:00				MISSED LAYUP by MCDONALD, AARI
06:56				REBOUND (OFF) by REESE, CATE
06:54		7-5	H 2	GOOD! LAYUP by REESE, CATE
06:45				FOUL (PERSONAL) by MCDONALD, AARI
06:37	MISSED JUMPER by SCHENCK, REGAN			
06:37				BLOCK by REESE, CATE
06:32				REBOUND (DEF) by REESE, CATE
06:20				MISSED 3PTR by THOMAS, SAM
06:17	REBOUND (DEF) by MALVAR, CAITLIN			
06:07	MISSED JUMPER by RASHEED, KHIARICA			
06:07				BLOCK by REESE, CATE
06:07				REBOUND (DEF) by TEAM
05:49				MISSED LAYUP by MCBRYDE, DOMINIQUE
05:46	REBOUND (DEF) by RASHEED, KHIARICA			
05:39	MISSED 3PTR by PAPLOW, KALEIGH			
05:35				REBOUND (DEF) by MCDONALD, AARI
05:29				SUB OUT: THOMAS, SAM
05:29				SUB IN: STARKS, TEE TEE
05:29	SUB OUT: MALVAR, CAITLIN			
05:29	SUB IN: BAILEY, JACEY			
05:29	SUB OUT: PAPLOW, KALEIGH			
05:29	SUB IN: GARY, MORGAN			
05:13		9-5	H 4	GOOD! LAYUP by REESE, CATE
04:53	MISSED LAYUP by ORNDOFF, LAUREN			
04:53				BLOCK by MCBRYDE, DOMINIQUE
04:53	REBOUND (OFF) by TEAM			
04:53				
04:53	SUB OUT: ORNDOFF, LAUREN			
04:53	SUB IN: PAPLOW, KALEIGH			
04:49	MISSED LAYUP by RASHEED, KHIARICA			
04:49				BLOCK by REESE, CATE
04:42	REBOUND (OFF) by PAPLOW, KALEIGH			
04:41	GOOD! LAYUP by PAPLOW, KALEIGH	9-7	H 2	
04:29	FOUL (PERSONAL) by SCHENCK, REGAN			
04:29		10-7	H 3	GOOD! FT by MCDONALD, AARI
04:29				MISSED FT by MCDONALD, AARI
04:25	REBOUND (DEF) by GARY, MORGAN			
04:24	TURNOVER (DRIBBLING) by GARY, MORGAN			
04:18				MISSED 3PTR by ALONSO, LUCIA
04:16	REBOUND (DEF) by TEAM			
04:00	TURNOVER (BADPASS) by BAILEY, JACEY			
04:00				STEAL by MCDONALD, AARI
03:56				TURNOVER (TRAVEL) by MCDONALD, AARI
03:56				SUB OUT: MCBRYDE, DOMINIQUE

Time	VISITORS: Northern Arizona	Score	Margin	HOME: Arizona
03:56				SUB IN: GRAHAM, DESTINY
03:36	GOOD! JUMPER by GARY, MORGAN [PNT]	10-9	H 1	
03:16	FOUL (PERSONAL) by RASHEED, KHIARICA			
03:16				SUB OUT: ALONSO, LUCIA
03:16				SUB IN: THOMAS, SAM
03:16	SUB OUT: SCHENCK, REGAN			
03:16	SUB IN: MALVAR, CAITLIN			
03:16	SUB OUT: RASHEED, KHIARICA			
03:16	SUB IN: CARROLL, PEYTON			
03:12				TURNOVER (TRAVEL) by MCDONALD, AARI
03:03				FOUL (PERSONAL) by STARKS, TEE TEE
02:54	MISSED JUMPER by GARY, MORGAN			
02:54				BLOCK by THOMAS, SAM
02:48				REBOUND (DEF) by THOMAS, SAM
02:38		12-9	H 3	GOOD! LAYUP by MCDONALD, AARI
02:20	MISSED JUMPER by GARY, MORGAN			
02:17				REBOUND (DEF) by MCDONALD, AARI
02:13		14-9	H 5	GOOD! LAYUP by MCDONALD, AARI [FB]
02:04	TURNOVER (LOSTBALL) by CARROLL, PEYTON			
02:04				STEAL by THOMAS, SAM
01:39	FOUL (PERSONAL) by MALVAR, CAITLIN			
01:39				MISSED FT by REESE, CATE
01:39				REBOUND (OFF) by TEAM
01:39				SUB OUT: MCDONALD, AARI
01:39				SUB IN: ALONSO, LUCIA
01:39	SUB OUT: GARY, MORGAN			
01:39	SUB IN: ORNDOFF, LAUREN			
01:38				MISSED FT by REESE, CATE
01:35				REBOUND (OFF) by STARKS, TEE TEE
01:25				TURNOVER (LOSTBALL) by ALONSO, LUCIA
01:25	STEAL by ORNDOFF, LAUREN			
01:20	GOOD! LAYUP by ORNDOFF, LAUREN [FB]	14-11	H 3	
00:57				FOUL (OFF) by STARKS, TEE TEE
00:57				TURNOVER (OFFENSIVE) by STARKS, TEE TEE
00:57				SUB OUT: REESE, CATE
00:57				SUB IN: MCBRYDE, DOMINIQUE
00:57				SUB OUT: STARKS, TEE TEE
00:57				SUB IN: NIXON, BRYCE
00:48				FOUL (PERSONAL) by NIXON, BRYCE
00:48	MISSED FT by ORNDOFF, LAUREN			
00:48	REBOUND (OFF) by TEAM			
00:48	MISSED FT by ORNDOFF, LAUREN			
00:45				REBOUND (DEF) by GRAHAM, DESTINY
00:33		17-11	H 6	GOOD! 3PTR by MCBRYDE, DOMINIQUE
00:33				ASSIST by ALONSO, LUCIA

Northern Arizona 11, Arizona 17

Points from (This Period)	NAU	ARI
In the Paint	8	8
Off Turns	4	2
2nd Chance	2	4
Fast Break	2	2
Bench	2	0

Official Box Score
Northern Arizona vs Arizona
Second Quarter Statistics Only
December 22, 2018 at McKale Center (Lute & Bobbi Olson Court) - Tucson, Ariz.



Northern Arizona 6

No.	Player	S	Pts	FG	3FG	FT	OR	DR	TR	PF	A	TO	Blk	Stl	Min	+/-
01	SCHENCK, REGAN		0	0-0	0-0	0-0	0	0	0	1	0	3	0	0	9	-13
03	MALVAR, CAITLIN		0	0-1	0-1	0-0	0	1	1	0	0	1	0	1	6	-3
15	RASHEED, KHIARICA		0	0-2	0-0	0-0	0	0	0	0	0	1	0	0	5	-13
20	ORNDOFF, LAUREN		2	1-2	0-0	0-0	0	1	1	0	0	2	0	0	7	-17
23	PAPLOW, KALEIGH		0	0-2	0-0	0-0	1	0	1	0	0	0	0	0	9	-13
04	GARY, MORGAN		0	0-0	0-0	0-0	0	1	1	1	0	0	0	0	2	-6
05	MCCORMICK, ALIZE'		0	0-0	0-0	0-0	0	0	0	0	0	0	0	0	0	0
11	BAILEY, JACEY		2	1-3	0-1	0-0	1	2	3	0	0	0	0	0	3	4
21	TSINGINE, TATE		0	0-0	0-0	0-0	0	0	0	0	0	0	0	0	0	0
25	LEHEW, BRIANNA		2	1-3	0-0	0-0	1	0	1	0	0	0	0	0	5	0
33	CARROLL, PEYTON		0	0-1	0-0	0-0	0	1	1	0	0	0	0	0	3	-4
	TEAM						0	0	0	0		0				
TOTALS			6	3-14	0-2	0-0	0	0	9	2	0	7	0	1	50	

Shooting By Period

Period	FG	FG%	3FG	3FG%	FT	FT%
3rd Qtr	4-12	33%	0-3	00%	5-8	63%
4th Qtr	7-17	41%	1-3	33%	2-4	50%
2nd Half	3-14	21%	0-2	00%	0-0	0%
2nd Half	11-29	38%	1-6	17%	7-12	58%
Game	19-60	31.7%	2-12	16.7%	7-14	50.0%

Arizona 19

No.	Player	S	Pts	FG	3FG	FT	OR	DR	TR	PF	A	TO	Blk	Stl	Min	+/-
02	MCDONALD, AARI		0	0-3	0-1	0-0	1	3	4	0	0	1	0	0	6	3
04	ALONSO, LUCIA		3	1-1	1-1	0-0	0	0	0	0	3	0	0	0	7	17
14	THOMAS, SAM		2	1-3	0-1	0-0	0	0	0	0	0	0	1	2	10	13
20	MCBRYDE, DOMINIQUE		6	3-3	0-0	0-0	0	2	2	0	1	0	1	1	8	17
25	REESE, CATE		4	2-3	0-0	0-0	0	0	0	1	0	0	0	0	3	7
10	STARKS, TEE TEE		4	2-2	0-0	0-0	0	0	0	0	0	0	0	1	5	10
21	GRAHAM, DESTINY		0	0-3	0-0	0-0	2	1	3	0	1	0	0	0	7	6
22	MALECHA, LINDSEY		0	0-0	0-0	0-0	0	0	0	0	0	0	0	0	0	0
24	NIXON, BRYCE		0	0-1	0-1	0-0	0	0	0	0	0	0	0	0	2	-4
34	SMITH, SEMAJ		0	0-0	0-0	0-0	0	0	0	0	0	1	0	0	2	-4
	TEAM						0	2	2	0		0				
TOTALS			19	9-19	1-4	0-0	0	0	11	1	5	2	2	4	50	

Shooting By Period

Period	FG	FG%	3FG	3FG%	FT	FT%
3rd Qtr	10-15	67%	1-1	100%	6-8	75%
4th Qtr	4-13	31%	0-2	00%	0-0	0%
2nd Half	9-19	47%	1-4	25%	0-0	0%
2nd Half	14-28	50%	1-3	33%	6-8	75%
Game	30-61	49.2%	4-12	33.3%	7-12	58.3%

Game Notes:

Officials: Kyle Bacon, Tyler Trimble, Cheryl Blue
Attendance: 1866

Start Time: 2018-12-22 01:30:53
End Time: 2018-12-22 03:14:23
Game Duration: 103

Score	1st	2nd	3rd	4th	TOT
NAU	11	6	13	17	47
ARI	17	19	27	8	71

Points from (This Period)	NAU	ARI
In the Paint	6	14
Off Turns	2	9
2nd Chance	4	0
Fast Break	2	4
Bench	4	4

**Official Play-By-Play
Northern Arizona vs Arizona
Second Quarter**

December 22, 2018 at McKale Center (Lute & Bobbi Olson Court) - Tucson, Ariz.



Period 2

Starters:

Northern Arizona: 1 SCHENCK, REGAN; 3 MALVAR, CAITLIN; 15 RASHEED, KHIARICA; 20 ORNDOFF, LAUREN; 23 PAPLOW, KALEIGH;
Arizona: 2 MCDONALD, AARI; 4 ALONSO, LUCIA; 14 THOMAS, SAM; 20 MCBRYDE, DOMINIQUE; 25 REESE, CATE;

Time	VISITORS: Northern Arizona	Score	Margin	HOME: Arizona
09:50		19-11	H 8	GOOD! LAYUP by REESE, CATE
09:40	MISSED 3PTR by BAILEY, JACEY			
09:37				REBOUND (DEF) by MCBRYDE, DOMINIQUE
09:32				MISSED LAYUP by MCDONALD, AARI
09:29				REBOUND (OFF) by MCDONALD, AARI
09:27				MISSED LAYUP by MCDONALD, AARI
09:22	REBOUND (DEF) by BAILEY, JACEY			
09:20	GOOD! LAYUP by ORNDOFF, LAUREN [FB]	19-13	H 6	
09:06				MISSED JUMPER by REESE, CATE
09:05	REBOUND (DEF) by TEAM			
09:05				FOUL (PERSONAL) by REESE, CATE
09:05	SUB OUT: BAILEY, JACEY			
09:05	SUB IN: SCHENCK, REGAN			
08:47	MISSED JUMPER by RASHEED, KHIARICA			
08:45				REBOUND (DEF) by MCDONALD, AARI
08:27		21-13	H 8	GOOD! JUMPER by THOMAS, SAM
08:19	TURNOVER (BADPASS) by MALVAR, CAITLIN			
08:19				STEAL by THOMAS, SAM
08:03		24-13	H 11	GOOD! 3PTR by ALONSO, LUCIA
08:03				ASSIST by MCBRYDE, DOMINIQUE
07:49	MISSED JUMPER by PAPLOW, KALEIGH			
07:44				REBOUND (DEF) by MCDONALD, AARI
07:25		26-13	H 13	GOOD! LAYUP by REESE, CATE
07:05	MISSED LAYUP by RASHEED, KHIARICA			
07:04				REBOUND (DEF) by TEAM
07:04				SUB OUT: MCDONALD, AARI
07:04				SUB IN: STARKS, TEE TEE
07:04				SUB OUT: REESE, CATE
07:04				SUB IN: GRAHAM, DESTINY
07:04	SUB OUT: MALVAR, CAITLIN			
07:04	SUB IN: GARY, MORGAN			
06:40		28-13	H 15	GOOD! LAYUP by MCBRYDE, DOMINIQUE
06:40				ASSIST by GRAHAM, DESTINY
06:30	MISSED LAYUP by ORNDOFF, LAUREN			
06:30				BLOCK by MCBRYDE, DOMINIQUE
06:30				REBOUND (DEF) by GRAHAM, DESTINY
06:30	FOUL (PERSONAL) by GARY, MORGAN			
06:07		30-13	H 17	GOOD! LAYUP by MCBRYDE, DOMINIQUE
06:07				ASSIST by ALONSO, LUCIA
05:58	TURNOVER (BADPASS) by ORNDOFF, LAUREN			
05:58				STEAL by MCBRYDE, DOMINIQUE
05:53		32-13	H 19	GOOD! LAYUP by MCBRYDE, DOMINIQUE [FB]
05:41	FOUL (OFF) by SCHENCK, REGAN			
05:41	TURNOVER (OFFENSIVE) by SCHENCK, REGAN			
05:41	SUB OUT: PAPLOW, KALEIGH			
05:41	SUB IN: CARROLL, PEYTON			
05:23				MISSED LAYUP by GRAHAM, DESTINY
05:20	REBOUND (DEF) by GARY, MORGAN			
05:14	TURNOVER (LOSTBALL) by RASHEED, KHIARICA			
04:51				MISSED LAYUP by GRAHAM, DESTINY
04:47				REBOUND (OFF) by GRAHAM, DESTINY
04:46				MISSED LAYUP by GRAHAM, DESTINY
04:43	REBOUND (DEF) by ORNDOFF, LAUREN			
04:43				
04:43	SUB OUT: GARY, MORGAN			
04:43	SUB IN: PAPLOW, KALEIGH			
04:43	SUB OUT: RASHEED, KHIARICA			
04:43	SUB IN: LEHEW, BRIANNA			
04:17	TURNOVER (BADPASS) by SCHENCK, REGAN			
03:44		34-13	H 21	GOOD! LAYUP by STARKS, TEE TEE
03:44				ASSIST by ALONSO, LUCIA
03:21	TURNOVER (BADPASS) by ORNDOFF, LAUREN			
03:21				STEAL by THOMAS, SAM
03:15		36-13	H 23	GOOD! LAYUP by STARKS, TEE TEE [FB]
03:15				ASSIST by ALONSO, LUCIA
03:03	TURNOVER (BADPASS) by SCHENCK, REGAN			
03:03				STEAL by STARKS, TEE TEE
02:59				SUB OUT: ALONSO, LUCIA
02:59				SUB IN: MCDONALD, AARI
02:59	SUB OUT: ORNDOFF, LAUREN			

Time	VISITORS: Northern Arizona	Score	Margin	HOME: Arizona
02:59	SUB IN: MALVAR, CAITLIN			
02:58				MISSED LAYUP by THOMAS, SAM
02:55	REBOUND (DEF) by CARROLL, PEYTON			
02:37	MISSED JUMPER by CARROLL, PEYTON			
02:32				REBOUND (DEF) by MCBRYDE, DOMINIQUE
02:29				SUB OUT: STARKS, TEE TEE
02:29				SUB IN: NIXON, BRYCE
02:29				SUB OUT: MCBRYDE, DOMINIQUE
02:29				SUB IN: SMITH, SEMAJ
02:29	SUB OUT: CARROLL, PEYTON			
02:29	SUB IN: BAILEY, JACEY			
02:21				MISSED 3PTR by MCDONALD, AARI
02:18	REBOUND (DEF) by MALVAR, CAITLIN			
01:58	MISSED JUMPER by PAPLOW, KALEIGH			
01:58				BLOCK by THOMAS, SAM
01:50	REBOUND (OFF) by LEHEW, BRIANNA			
01:49	GOOD! LAYUP by LEHEW, BRIANNA	36-15	H 21	
01:43				TURNOVER (BADPASS) by SMITH, SEMAJ
01:14	MISSED LAYUP by LEHEW, BRIANNA			
01:14	REBOUND (OFF) by PAPLOW, KALEIGH			
01:14	TIMEOUT 30SEC			
01:12	MISSED LAYUP by LEHEW, BRIANNA			
01:12				REBOUND (DEF) by TEAM
00:56				MISSED 3PTR by THOMAS, SAM
00:53	REBOUND (DEF) by BAILEY, JACEY			
00:33	MISSED JUMPER by BAILEY, JACEY			
00:30				REBOUND (DEF) by MCDONALD, AARI
00:29				TURNOVER (LOSTBALL) by MCDONALD, AARI
00:29	STEAL by MALVAR, CAITLIN			
00:21	MISSED 3PTR by MALVAR, CAITLIN			
00:18	REBOUND (OFF) by BAILEY, JACEY			
00:17	GOOD! LAYUP by BAILEY, JACEY	36-17	H 19	
00:01				MISSED 3PTR by NIXON, BRYCE
00:01				REBOUND (OFF) by GRAHAM, DESTINY

Northern Arizona 17, Arizona 36

Points from (This Period)	NAU	ARI
In the Paint	6	14
Off Turns	2	9
2nd Chance	4	0
Fast Break	2	4
Bench	4	4

Official Box Score
Northern Arizona vs Arizona
Second Half Statistics Only
December 22, 2018 at McKale Center (Lute & Bobbi Olson Court) - Tucson, Ariz.



Northern Arizona 30

No.	Player	S	Pts	FG	3FG	FT	OR	DR	TR	PF	A	TO	Blk	Stl	Min	+/-
01	SCHENCK, REGAN		2	1-2	0-0	0-0	0	1	1	2	1	3	0	1	10	-5
03	MALVAR, CAITLIN		0	0-1	0-1	0-0	1	1	2	0	0	0	0	0	12	-6
04	GARY, MORGAN		1	0-3	0-0	1-2	1	1	2	2	0	1	0	0	8	0
05	MCCORMICK, ALIZE'		2	1-1	0-0	0-0	0	0	0	0	0	0	0	0	2	3
11	BAILEY, JACEY		6	3-6	0-1	0-0	0	2	2	0	0	1	0	1	16	-2
15	RASHEED, KHIARICA		6	2-6	0-0	2-2	1	1	2	0	0	1	0	0	11	-7
20	ORNDOFF, LAUREN		0	0-2	0-0	0-0	1	0	1	1	2	1	0	1	12	-5
21	TSINGINE, TATE		0	0-0	0-0	0-0	0	0	0	0	1	0	0	0	1	3
23	PAPLOW, KALEIGH		11	3-7	1-4	4-6	4	2	6	4	1	2	1	2	18	-8
25	LEHEW, BRIANNA		0	0-0	0-0	0-0	0	0	0	0	0	1	0	0	2	0
33	CARROLL, PEYTON		2	1-1	0-0	0-2	0	0	0	1	0	1	0	0	6	2
	TEAM		0	0-0	0-0	0-0	1	0	1	0	0	0	0	0	0	
TOTALS			30	11-29	1-6	7-12	0	0	17	10	5	11	1	5	100	

Shooting By Period

Period	FG	FG%	3FG	3FG%	FT	FT%
3rd Qtr	4-12	33%	0-3	00%	5-8	63%
4th Qtr	7-17	41%	1-3	33%	2-4	50%
2nd Half	11-29	38%	1-6	17%	7-12	58%
Game	19-60	31.7%	2-12	16.7%	7-14	50.0%

Last FG Half: NAU 4th-00:17

Arizona 35

No.	Player	S	Pts	FG	3FG	FT	OR	DR	TR	PF	A	TO	Blk	Stl	Min	+/-
02	MCDONALD, AARI		15	5-8	0-0	5-6	0	2	2	2	2	1	0	2	13	13
04	ALONSO, LUCIA		0	0-3	0-1	0-0	0	0	0	0	1	2	0	0	11	-2
10	STARKS, TEE TEE		2	1-1	0-0	0-0	0	0	0	1	2	1	0	0	12	2
14	THOMAS, SAM		0	0-2	0-1	0-0	1	0	1	2	1	0	2	0	15	7
20	MCBRYDE, DOMINIQUE		0	0-2	0-0	0-0	1	1	2	3	1	2	0	0	11	9
21	GRAHAM, DESTINY		5	2-3	0-0	1-2	0	2	2	0	0	2	0	1	9	7
22	MALECHA, LINDSEY		0	0-1	0-0	0-0	0	0	0	0	0	0	0	0	2	-3
24	NIXON, BRYCE		0	0-1	0-0	0-0	0	0	0	1	0	2	0	0	8	-5
25	REESE, CATE		13	6-7	1-1	0-0	2	4	6	1	1	2	1	2	15	0
34	SMITH, SEMAJ		0	0-0	0-0	0-0	0	0	0	0	0	0	0	0	3	-3
	TEAM		0	0-0	0-0	0-0	1	1	2	0	0	0	0	0	0	
TOTALS			35	14-28	1-3	6-8	0	0	15	10	8	12	3	5	100	

Shooting By Period

Period	FG	FG%	3FG	3FG%	FT	FT%
3rd Qtr	10-15	67%	1-1	100%	6-8	75%
4th Qtr	4-13	31%	0-2	00%	0-0	0%
2nd Half	14-28	50%	1-3	33%	6-8	75%
Game	30-61	49.2%	4-12	33.3%	7-12	58.3%

Last FG Half: ARI 4th-02:45

Game Notes:

Officials: Kyle Bacon, Tyler Trimble, Cheryl Blue
Attendance: 1866

Start Time: 2018-12-22 01:30:53

End Time: 2018-12-22 03:14:23

Game Duration: 103

Score	1st	2nd	3rd	4th	TOT
NAU	11	6	13	17	47
ARI	17	19	27	8	71

Points from (This Period)	NAU	ARI
In the Paint	14	26
Off Turns	9	10
2nd Chance	8	7
Fast Break	6	6
Bench	11	7

Official Box Score
Northern Arizona vs Arizona
Third Quarter Statistics Only
December 22, 2018 at McKale Center (Lute & Bobbi Olson Court) - Tucson, Ariz.



Northern Arizona 30

No.	Player	S	Pts	FG	3FG	FT	OR	DR	TR	PF	A	TO	Blk	Stl	Min	+/-
01	SCHENCK, REGAN		2	1-1	0-0	0-0	0	0	0	1	1	3	0	1	6	-11
03	MALVAR, CAITLIN		0	0-1	0-1	0-0	1	0	1	0	0	0	0	0	7	-6
15	RASHEED, KHIARICA		2	0-3	0-0	2-2	0	1	1	0	0	0	0	0	6	-11
20	ORNDOFF, LAUREN		0	0-0	0-0	0-0	1	0	1	0	0	1	0	1	6	-11
23	PAPLOW, KALEIGH		5	1-4	0-2	3-4	2	1	3	3	0	2	1	1	10	-14
04	GARY, MORGAN		0	0-0	0-0	0-0	0	0	0	2	0	1	0	0	4	-3
05	MCCORMICK, ALIZE'		0	0-0	0-0	0-0	0	0	0	0	0	0	0	0	0	0
11	BAILEY, JACEY		4	2-3	0-0	0-0	0	0	0	0	0	1	0	0	6	-11
21	TSINGINE, TATE		0	0-0	0-0	0-0	0	0	0	0	0	0	0	0	0	0
25	LEHEW, BRIANNA		0	0-0	0-0	0-0	0	0	0	0	0	0	0	0	0	0
33	CARROLL, PEYTON		0	0-0	0-0	0-2	0	0	0	1	0	1	0	0	4	-3
	TEAM						0	0	0	0		0				
TOTALS			13	4-12	0-3	5-8	0	0	6	7	1	9	1	3	50	

Shooting By Period

Period	FG	FG%	3FG	3FG%	FT	FT%
2nd Half	0-0	0%	0-0	0%	0-0	0%
Game	19-60	31.7%	2-12	16.7%	7-14	50.0%

Arizona 35

No.	Player	S	Pts	FG	3FG	FT	OR	DR	TR	PF	A	TO	Blk	Stl	Min	+/-
02	MCDONALD, AARI		11	3-5	0-0	5-6	0	2	2	2	2	1	0	2	9	13
04	ALONSO, LUCIA		0	0-1	0-0	0-0	0	0	0	0	1	1	0	0	4	4
14	THOMAS, SAM		0	0-1	0-0	0-0	0	0	0	1	1	0	0	0	8	12
20	MCBRYDE, DOMINIQUE		0	0-0	0-0	0-0	0	1	1	2	1	1	0	0	6	11
25	REESE, CATE		11	5-5	1-1	0-0	1	1	2	1	0	1	0	1	8	6
10	STARKS, TEE TEE		0	0-0	0-0	0-0	0	0	0	0	2	1	0	0	6	11
21	GRAHAM, DESTINY		5	2-3	0-0	1-2	0	1	1	0	0	1	0	1	6	11
22	MALECHA, LINDSEY		0	0-0	0-0	0-0	0	0	0	0	0	0	0	0	0	0
24	NIXON, BRYCE		0	0-0	0-0	0-0	0	0	0	0	0	0	0	0	2	2
34	SMITH, SEMAJ		0	0-0	0-0	0-0	0	0	0	0	0	0	0	0	0	0
	TEAM						1	0	1	0		0				
TOTALS			27	10-15	1-1	6-8	0	0	7	6	7	6	0	4	50	

Shooting By Period

Period	FG	FG%	3FG	3FG%	FT	FT%
2nd Half	0-0	0%	0-0	0%	0-0	0%
Game	30-61	49.2%	4-12	33.3%	7-12	58.3%

Game Notes:

Officials: Kyle Bacon, Tyler Trimble, Cheryl Blue
Attendance: 1866

Start Time: 2018-12-22 01:30:53
End Time: 2018-12-22 03:14:23
Game Duration: 103

Score	1st	2nd	3rd	4th	TOT
NAU	11	6	13	17	47
ARI	17	19	27	8	71

Points from (This Period)	NAU	ARI
In the Paint	6	18
Off Turns	2	10
2nd Chance	0	5
Fast Break	5	6
Bench	4	5

**Official Play-By-Play
Northern Arizona vs Arizona
Third Quarter**

December 22, 2018 at McKale Center (Lute & Bobbi Olson Court) - Tucson, Ariz.



Period 3

Starters:

Northern Arizona: 1 SCHENCK, REGAN; 3 MALVAR, CAITLIN; 15 RASHEED, KHIARICA; 20 ORNDOFF, LAUREN; 23 PAPLOW, KALEIGH;
Arizona: 2 MCDONALD, AARI; 4 ALONSO, LUCIA; 14 THOMAS, SAM; 20 MCBRYDE, DOMINIQUE; 25 REESE, CATE;

Time	VISITORS: Northern Arizona	Score	Margin	HOME: Arizona
09:34				FOUL (PERSONAL) by REESE, CATE
09:34	GOOD! FT by RASHEED, KHIARICA	36-18	H 18	
09:34	GOOD! FT by RASHEED, KHIARICA	36-19	H 17	
09:11				MISSED JUMPER by THOMAS, SAM
09:08	REBOUND (DEF) by RASHEED, KHIARICA			
09:04				FOUL (PERSONAL) by MCBRYDE, DOMINIQUE
09:04	GOOD! FT by PAPLOW, KALEIGH [FB]	36-20	H 16	
09:04	GOOD! FT by PAPLOW, KALEIGH [FB]	36-21	H 15	
08:52		38-21	H 17	GOOD! LAYUP by REESE, CATE
08:52				ASSIST by MCBRYDE, DOMINIQUE
08:37	MISSED JUMPER by PAPLOW, KALEIGH			
08:34	REBOUND (OFF) by ORNDOFF, LAUREN			
08:31	MISSED 3PTR by PAPLOW, KALEIGH			
08:28				REBOUND (DEF) by MCDONALD, AARI
08:24				MISSED JUMPER by MCDONALD, AARI
08:19	REBOUND (DEF) by PAPLOW, KALEIGH			
08:18				FOUL (PERSONAL) by THOMAS, SAM
08:08	MISSED JUMPER by RASHEED, KHIARICA			
08:04				REBOUND (DEF) by MCBRYDE, DOMINIQUE
07:51				TURNOVER (LOSTBALL) by MCBRYDE, DOMINIQUE
07:51	STEAL by PAPLOW, KALEIGH			
07:41	MISSED JUMPER by RASHEED, KHIARICA			
07:37				REBOUND (DEF) by REESE, CATE
07:32				MISSED JUMPER by ALONSO, LUCIA
07:31				REBOUND (OFF) by TEAM
07:31	FOUL (PERSONAL) by PAPLOW, KALEIGH			
07:27				MISSED JUMPER by MCDONALD, AARI
07:17				REBOUND (OFF) by REESE, CATE
07:16		40-21	H 19	GOOD! LAYUP by REESE, CATE
07:09	GOOD! LAYUP by SCHENCK, REGAN	40-23	H 17	
07:03				TIMEOUT 30SEC
07:03				
06:59	FOUL (PERSONAL) by SCHENCK, REGAN			
06:59		41-23	H 18	GOOD! FT by MCDONALD, AARI
06:59		42-23	H 19	GOOD! FT by MCDONALD, AARI
06:48	TURNOVER (LOSTBALL) by SCHENCK, REGAN			
06:48				STEAL by MCDONALD, AARI
06:43		44-23	H 21	GOOD! LAYUP by MCDONALD, AARI [FB]
06:43				ASSIST by STARKS, TEE TEE
06:33	TURNOVER (BADPASS) by SCHENCK, REGAN			
06:33				STEAL by MCDONALD, AARI
06:28		46-23	H 23	GOOD! LAYUP by MCDONALD, AARI [FB]
06:22				SUB OUT: ALONSO, LUCIA
06:22				SUB IN: GRAHAM, DESTINY
06:22				SUB OUT: REESE, CATE
06:22				SUB IN: STARKS, TEE TEE
06:22	SUB OUT: MALVAR, CAITLIN			
06:22	SUB IN: BAILEY, JACEY			
06:22				FOUL (PERSONAL) by MCBRYDE, DOMINIQUE
06:22	FOUL (UNSPORTSMANLIKE) by PAPLOW, KALEIGH			
06:22	TURNOVER (OFFENSIVE) by PAPLOW, KALEIGH			
06:22		47-23	H 24	GOOD! FT by MCDONALD, AARI
06:22		48-23	H 25	GOOD! FT by MCDONALD, AARI
06:22	GOOD! FT by PAPLOW, KALEIGH [FB]	48-24	H 24	
06:22	MISSED FT by PAPLOW, KALEIGH			
06:09		50-24	H 26	GOOD! JUMPER by GRAHAM, DESTINY
06:09				ASSIST by STARKS, TEE TEE
05:41	TURNOVER (LOSTBALL) by SCHENCK, REGAN			
05:27		52-24	H 28	GOOD! LAYUP by MCDONALD, AARI
05:27				ASSIST by THOMAS, SAM
05:26	TURNOVER (LOSTBALL) by PAPLOW, KALEIGH			
05:26	FOUL (PERSONAL) by PAPLOW, KALEIGH			
05:26	SUB OUT: SCHENCK, REGAN			
05:26	SUB IN: MALVAR, CAITLIN			
05:22				TURNOVER (BADPASS) by STARKS, TEE TEE
05:22	STEAL by ORNDOFF, LAUREN			
05:17	TURNOVER (BADPASS) by ORNDOFF, LAUREN			
05:17				STEAL by GRAHAM, DESTINY
05:12		54-24	H 30	GOOD! LAYUP by GRAHAM, DESTINY
04:44	MISSED 3PTR by MALVAR, CAITLIN			

Time	VISITORS: Northern Arizona	Score	Margin	HOME: Arizona
04:40	REBOUND (OFF) by MALVAR, CAITLIN			
04:27	MISSED LAYUP by RASHEED, KHIARICA			
04:23	REBOUND (OFF) by PAPLOW, KALEIGH			
04:20	MISSED JUMPER by BAILEY, JACEY			
04:17				REBOUND (DEF) by MCDONALD, AARI
04:03				FOUL (OFF) by MCDONALD, AARI
04:03				TURNOVER (OFFENSIVE) by MCDONALD, AARI
04:03				SUB OUT: MCBRYDE, DOMINIQUE
04:03				SUB IN: REESE, CATE
04:03	SUB OUT: RASHEED, KHIARICA			
04:03	SUB IN: GARY, MORGAN			
04:03	SUB OUT: ORNDOFF, LAUREN			
04:03	SUB IN: CARROLL, PEYTON			
03:45	TURNOVER (LOSTBALL) by CARROLL, PEYTON			
03:45				STEAL by REESE, CATE
03:27				TURNOVER (3SEC) by GRAHAM, DESTINY
03:12	MISSED 3PTR by PAPLOW, KALEIGH			
03:05				REBOUND (DEF) by GRAHAM, DESTINY
03:02		56-24	H 32	GOOD! LAYUP by REESE, CATE [FB]
03:02				ASSIST by MCDONALD, AARI
02:45	GOOD! JUMPER by BAILEY, JACEY	56-26	H 30	
02:13				MISSED LAYUP by GRAHAM, DESTINY
02:13	BLOCK by PAPLOW, KALEIGH			
02:13				REBOUND (OFF) by TEAM
02:07		58-26	H 32	GOOD! JUMPER by REESE, CATE [PNT]
02:07				ASSIST by MCDONALD, AARI
01:54	GOOD! JUMPER by BAILEY, JACEY [PNT]	58-28	H 30	
01:39	FOUL (PERSONAL) by GARY, MORGAN			
01:39		59-28	H 31	GOOD! FT by MCDONALD, AARI
01:39	SUB OUT: MALVAR, CAITLIN			
01:39	SUB IN: SCHENCK, REGAN			
01:39				SUB OUT: THOMAS, SAM
01:39				SUB IN: NIXON, BRYCE
01:39				MISSED FT by MCDONALD, AARI
01:39				REBOUND (OFF) by TEAM
01:39	FOUL (PERSONAL) by CARROLL, PEYTON			
01:39				MISSED FT by GRAHAM, DESTINY
01:39				REBOUND (OFF) by TEAM
01:39		60-28	H 32	GOOD! FT by GRAHAM, DESTINY
01:25	TURNOVER (BADPASS) by BAILEY, JACEY			
01:09				TURNOVER (DRIBBLING) by REESE, CATE
00:51				FOUL (PERSONAL) by MCDONALD, AARI
00:51	MISSED FT by CARROLL, PEYTON			
00:51	REBOUND (OFF) by TEAM			
00:51				SUB OUT: MCDONALD, AARI
00:51				SUB IN: ALONSO, LUCIA
00:51	MISSED FT by CARROLL, PEYTON			
00:47	REBOUND (OFF) by PAPLOW, KALEIGH			
00:37	FOUL (OFF) by GARY, MORGAN			
00:37	TURNOVER (OFFENSIVE) by GARY, MORGAN			
00:27				TURNOVER (LOSTBALL) by ALONSO, LUCIA
00:27	STEAL by SCHENCK, REGAN			
00:21	GOOD! LAYUP by PAPLOW, KALEIGH [FB]	60-30	H 30	
00:21	ASSIST by SCHENCK, REGAN			
00:08		63-30	H 33	GOOD! 3PTR by REESE, CATE
00:08				ASSIST by ALONSO, LUCIA

Northern Arizona 30, Arizona 63

Points from (This Period)	NAU	ARI
In the Paint	6	18
Off Turns	2	10
2nd Chance	0	5
Fast Break	5	6
Bench	4	5

Official Box Score
Northern Arizona vs Arizona
Fourth Quarter Statistics Only
December 22, 2018 at McKale Center (Lute & Bobbi Olson Court) - Tucson, Ariz.



Northern Arizona 17

No.	Player	S	Pts	FG	3FG	FT	OR	DR	TR	PF	A	TO	Blk	Stl	Min	+/-
01	SCHENCK, REGAN		0	0-1	0-0	0-0	0	1	1	1	0	0	0	0	4	6
03	MALVAR, CAITLIN		0	0-0	0-0	0-0	0	1	1	0	0	0	0	0	5	0
15	RASHEED, KHIARICA		4	2-3	0-0	0-0	1	0	1	0	0	1	0	0	5	4
20	ORNDOFF, LAUREN		0	0-2	0-0	0-0	0	0	0	1	2	0	0	0	6	6
23	PAPLOW, KALEIGH		6	2-3	1-2	1-2	2	1	3	1	1	0	0	1	8	6
04	GARY, MORGAN		1	0-3	0-0	1-2	1	1	2	0	0	0	0	0	4	3
05	MCCORMICK, ALIZE'		2	1-1	0-0	0-0	0	0	0	0	0	0	0	0	2	3
11	BAILEY, JACEY		2	1-3	0-1	0-0	0	2	2	0	0	0	0	1	10	9
21	TSINGINE, TATE		0	0-0	0-0	0-0	0	0	0	0	1	0	0	0	1	3
25	LEHEW, BRIANNA		0	0-0	0-0	0-0	0	0	0	0	0	1	0	0	2	0
33	CARROLL, PEYTON		2	1-1	0-0	0-0	0	0	0	0	0	0	0	0	2	5
	TEAM						1	0	1	0		0				
TOTALS			17	7-17	1-3	2-4	0	0	11	3	4	2	0	2	50	

Shooting By Period

Period	FG	FG%	3FG	3FG%	FT	FT%
Game	19-60	31.7%	2-12	16.7%	7-14	50.0%

Arizona 8

No.	Player	S	Pts	FG	3FG	FT	OR	DR	TR	PF	A	TO	Blk	Stl	Min	+/-
02	MCDONALD, AARI		4	2-3	0-0	0-0	0	0	0	0	0	0	0	0	4	0
04	ALONSO, LUCIA		0	0-2	0-1	0-0	0	0	0	0	0	1	0	0	7	-6
14	THOMAS, SAM		0	0-1	0-1	0-0	1	0	1	1	0	0	2	0	7	-5
20	MCBRYDE, DOMINIQUE		0	0-2	0-0	0-0	1	0	1	1	0	1	0	0	5	-2
25	REESE, CATE		2	1-2	0-0	0-0	1	3	4	0	1	1	1	1	7	-6
10	STARKS, TEE TEE		2	1-1	0-0	0-0	0	0	0	1	0	0	0	0	6	-9
21	GRAHAM, DESTINY		0	0-0	0-0	0-0	0	1	1	0	0	1	0	0	3	-4
22	MALECHA, LINDSEY		0	0-1	0-0	0-0	0	0	0	0	0	0	0	0	2	-3
24	NIXON, BRYCE		0	0-1	0-0	0-0	0	0	0	1	0	2	0	0	6	-7
34	SMITH, SEMAJ		0	0-0	0-0	0-0	0	0	0	0	0	0	0	0	3	-3
	TEAM						0	1	1	0		0				
TOTALS			8	4-13	0-2	0-0	0	0	8	4	1	6	3	1	50	

Shooting By Period

Period	FG	FG%	3FG	3FG%	FT	FT%
Game	30-61	49.2%	4-12	33.3%	7-12	58.3%

Game Notes:

Officials: Kyle Bacon, Tyler Trimble, Cheryl Blue
Attendance: 1866

Start Time: 2018-12-22 01:30:53
End Time: 2018-12-22 03:14:23
Game Duration: 103

Score	1st	2nd	3rd	4th	TOT
NAU	11	6	13	17	47
ARI	17	19	27	8	71

Points from (This Period)	NAU	ARI
In the Paint	8	8
Off Turns	7	0
2nd Chance	8	2
Fast Break	1	0
Bench	7	2

**Official By-By-Play
Northern Arizona vs Arizona
Fourth Quarter**

December 22, 2018 at McKale Center (Lute & Bobbi Olson Court) - Tucson, Ariz.



Period 4

Starters:

Northern Arizona: 1 SCHENCK, REGAN; 3 MALVAR, CAITLIN; 15 RASHEED, KHIARICA; 20 ORNDOFF, LAUREN; 23 PAPLOW, KALEIGH;
Arizona: 2 MCDONALD, AARI; 4 ALONSO, LUCIA; 14 THOMAS, SAM; 20 MCBRYDE, DOMINIQUE; 25 REESE, CATE;

Time	VISITORS: Northern Arizona	Score	Margin	HOME: Arizona
09:58				TURNOVER (BADPASS) by GRAHAM, DESTINY
09:38	MISSED JUMPER by ORNDOFF, LAUREN			
09:33				REBOUND (DEF) by GRAHAM, DESTINY
09:14		65-30	H 35	GOOD! LAYUP by STARKS, TEE TEE
09:14				ASSIST by REESE, CATE
09:02	GOOD! LAYUP by PAPLOW, KALEIGH [PNT]	65-32	H 33	
09:02	ASSIST by ORNDOFF, LAUREN			
08:33				MISSED LAYUP by ALONSO, LUCIA
08:29	REBOUND (DEF) by PAPLOW, KALEIGH			
08:08	TURNOVER (LOSTBALL) by LEHEW, BRIANNA			
08:08				STEAL by REESE, CATE
08:07				TURNOVER (DRIBBLING) by REESE, CATE
07:52				FOUL (PERSONAL) by STARKS, TEE TEE
07:52	MISSED FT by PAPLOW, KALEIGH			
07:52	REBOUND (OFF) by TEAM			
07:52	SUB OUT: LEHEW, BRIANNA			
07:52	SUB IN: RASHEED, KHIARICA			
07:52	GOOD! FT by PAPLOW, KALEIGH	65-33	H 32	
07:30				TURNOVER (BADPASS) by NIXON, BRYCE
07:30	STEAL by BAILEY, JACEY			
07:25	MISSED LAYUP by SCHENCK, REGAN			
07:25				BLOCK by REESE, CATE
07:20	REBOUND (OFF) by PAPLOW, KALEIGH			
07:14	GOOD! 3PTR by PAPLOW, KALEIGH	65-36	H 29	
07:14	ASSIST by ORNDOFF, LAUREN			
06:58				MISSED JUMPER by REESE, CATE
06:55	REBOUND (DEF) by SCHENCK, REGAN			
06:50	MISSED JUMPER by BAILEY, JACEY			
06:48	REBOUND (OFF) by PAPLOW, KALEIGH			
06:48				FOUL (PERSONAL) by NIXON, BRYCE
06:48				SUB OUT: STARKS, TEE TEE
06:48				SUB IN: MCDONALD, AARI
06:48				SUB OUT: GRAHAM, DESTINY
06:48				SUB IN: THOMAS, SAM
06:48				SUB OUT: NIXON, BRYCE
06:48				SUB IN: MCBRYDE, DOMINIQUE
06:30	GOOD! JUMPER by RASHEED, KHIARICA [PNT]	65-38	H 27	
06:11				TURNOVER (BADPASS) by ALONSO, LUCIA
06:11	STEAL by PAPLOW, KALEIGH			
06:03	MISSED JUMPER by ORNDOFF, LAUREN			
06:02				REBOUND (DEF) by REESE, CATE
06:02	FOUL (PERSONAL) by ORNDOFF, LAUREN			
06:00	FOUL (PERSONAL) by SCHENCK, REGAN			
06:00	SUB OUT: SCHENCK, REGAN			
06:00	SUB IN: MALVAR, CAITLIN			
05:47		67-38	H 29	GOOD! LAYUP by MCDONALD, AARI
05:33	MISSED JUMPER by RASHEED, KHIARICA			
05:28				REBOUND (DEF) by REESE, CATE
05:15				MISSED LAYUP by MCDONALD, AARI
05:12	REBOUND (DEF) by BAILEY, JACEY			
05:08	MISSED 3PTR by PAPLOW, KALEIGH			
05:03	REBOUND (OFF) by RASHEED, KHIARICA			
04:53	GOOD! LAYUP by RASHEED, KHIARICA	67-40	H 27	
04:25				MISSED 3PTR by THOMAS, SAM
04:21				REBOUND (OFF) by REESE, CATE
04:20		69-40	H 29	GOOD! LAYUP by REESE, CATE
04:12	GOOD! JUMPER by BAILEY, JACEY	69-42	H 27	
04:03				TIMEOUT 30SEC
04:03				
04:03	SUB OUT: ORNDOFF, LAUREN			
04:03	SUB IN: GARY, MORGAN			
04:02				MISSED 3PTR by ALONSO, LUCIA
03:58				REBOUND (OFF) by MCBRYDE, DOMINIQUE
03:56				MISSED LAYUP by MCBRYDE, DOMINIQUE
03:52	REBOUND (DEF) by GARY, MORGAN			
03:46	MISSED JUMPER by GARY, MORGAN			
03:43				REBOUND (DEF) by REESE, CATE
03:10				MISSED JUMPER by MCBRYDE, DOMINIQUE
03:07	REBOUND (DEF) by MALVAR, CAITLIN			
03:03	MISSED JUMPER by GARY, MORGAN			

Time	VISITORS: Northern Arizona	Score	Margin	HOME: Arizona
03:03	REBOUND (OFF) by TEAM			
03:03				SUB OUT: ALONSO, LUCIA
03:03				SUB IN: NIXON, BRYCE
03:03				SUB OUT: REESE, CATE
03:03				SUB IN: SMITH, SEMAJ
03:03				BLOCK by THOMAS, SAM
03:00	MISSED 3PTR by BAILEY, JACEY			
03:00				REBOUND (DEF) by TEAM
02:45		71-42	H 29	GOOD! LAYUP by MCDONALD, AARI
02:26	TURNOVER (BADPASS) by RASHEED, KHIARICA			
02:26	SUB OUT: RASHEED, KHIARICA			
02:26	SUB IN: CARROLL, PEYTON			
02:26				SUB OUT: MCDONALD, AARI
02:26				SUB IN: STARKS, TEE TEE
02:21	FOUL (PERSONAL) by PAPLOW, KALEIGH			
02:09				FOUL (OFF) by MCBRYDE, DOMINIQUE
02:09				TURNOVER (OFFENSIVE) by MCBRYDE, DOMINIQUE
01:53	GOOD! LAYUP by CARROLL, PEYTON	71-44	H 27	
01:53	ASSIST by PAPLOW, KALEIGH			
01:32				SUB OUT: MCBRYDE, DOMINIQUE
01:32				SUB IN: MALECHA, LINDSEY
01:32	SUB OUT: PAPLOW, KALEIGH			
01:32	SUB IN: MCCORMICK, ALIZE'			
01:30				MISSED JUMPER by MALECHA, LINDSEY
01:27				REBOUND (OFF) by THOMAS, SAM
01:07				TURNOVER (BADPASS) by NIXON, BRYCE
01:01	MISSED LAYUP by GARY, MORGAN			
01:01				BLOCK by THOMAS, SAM
01:01	REBOUND (OFF) by GARY, MORGAN			
01:01				FOUL (PERSONAL) by THOMAS, SAM
01:01	MISSED FT by GARY, MORGAN			
01:01	REBOUND (OFF) by TEAM			
01:01	SUB OUT: MALVAR, CAITLIN			
01:01	SUB IN: TSINGINE, TATE			
01:01	GOOD! FT by GARY, MORGAN [FB]	71-45	H 26	
00:32				MISSED LAYUP by NIXON, BRYCE
00:28	REBOUND (DEF) by BAILEY, JACEY			
00:17	GOOD! JUMPER by MCCORMICK, ALIZE'	71-47	H 24	
00:17	ASSIST by TSINGINE, TATE			

Northern Arizona 47, Arizona 71

Points from (This Period)	NAU	ARI
In the Paint	8	8
Off Turns	7	0
2nd Chance	8	2
Fast Break	1	0
Bench	7	2

**Official Scoring/Possession Reference Chart
Northern Arizona vs Arizona
Period 1**

December 22, 2018 at McKale Center (Lute & Bobbi Olson Court) - Tucson, Ariz.



Period 1

Starters:

Northern Arizona: 1 SCHENCK, REGAN; 3 MALVAR, CAITLIN; 15 RASHEED, KHIARICA; 20 ORNDOFF, LAUREN; 23 PAPLOW, KALEIGH;

Arizona: 2 MCDONALD, AARI; 4 ALONSO, LUCIA; 14 THOMAS, SAM; 20 MCBRYDE, DOMINIQUE; 25 REESE, CATE;

Time	VISITORS: Northern Arizona	Score	Margin	HOME: Arizona
09:29		2-0	H 2	GOOD! JUMPER by ALONSO, LUCIA
09:09	GOOD! 3PTR by MALVAR, CAITLIN	2-3	V 1	
08:25	GOOD! LAYUP by RASHEED, KHIARICA	2-5	V 3	
07:37		5-5	T	GOOD! 3PTR by MCBRYDE, DOMINIQUE
06:54		7-5	H 2	GOOD! LAYUP by REESE, CATE
05:13		9-5	H 4	GOOD! LAYUP by REESE, CATE
04:41	GOOD! LAYUP by PAPLOW, KALEIGH	9-7	H 2	
04:29		10-7	H 3	GOOD! FT by MCDONALD, AARI
03:36	GOOD! JUMPER by GARY, MORGAN [PNT]	10-9	H 1	
02:38		12-9	H 3	GOOD! LAYUP by MCDONALD, AARI
02:13		14-9	H 5	GOOD! LAYUP by MCDONALD, AARI [FB]
01:20	GOOD! LAYUP by ORNDOFF, LAUREN [FB]	14-11	H 3	
00:33		17-11	H 6	GOOD! 3PTR by MCBRYDE, DOMINIQUE

Northern Arizona 11, Arizona 17

**Official Scoring/Possession Reference Chart
Northern Arizona vs Arizona
Period 2**

December 22, 2018 at McKale Center (Lute & Bobbi Olson Court) - Tucson, Ariz.



Period 2

Starters:

Northern Arizona: 1 SCHENCK, REGAN; 3 MALVAR, CAITLIN; 15 RASHEED, KHIARICA; 20 ORNDOFF, LAUREN; 23 PAPLOW, KALEIGH;

Arizona: 2 McDONALD, AARI; 4 ALONSO, LUCIA; 14 THOMAS, SAM; 20 MCBRYDE, DOMINIQUE; 25 REESE, CATE;

Time	VISITORS: Northern Arizona	Score	Margin	HOME: Arizona
09:50		19-11	H 8	GOOD! LAYUP by REESE, CATE
09:20	GOOD! LAYUP by ORNDOFF, LAUREN [FB]	19-13	H 6	
08:27		21-13	H 8	GOOD! JUMPER by THOMAS, SAM
08:03		24-13	H 11	GOOD! 3PTR by ALONSO, LUCIA
07:25		26-13	H 13	GOOD! LAYUP by REESE, CATE
06:40		28-13	H 15	GOOD! LAYUP by MCBRYDE, DOMINIQUE
06:07		30-13	H 17	GOOD! LAYUP by MCBRYDE, DOMINIQUE
05:53		32-13	H 19	GOOD! LAYUP by MCBRYDE, DOMINIQUE [FB]
03:44		34-13	H 21	GOOD! LAYUP by STARKS, TEE TEE
03:15		36-13	H 23	GOOD! LAYUP by STARKS, TEE TEE [FB]
01:49	GOOD! LAYUP by LEHEW, BRIANNA	36-15	H 21	
00:17	GOOD! LAYUP by BAILEY, JACEY	36-17	H 19	

Northern Arizona 17, Arizona 36

**Official Scoring/Possession Reference Chart
Northern Arizona vs Arizona
Period 3**

December 22, 2018 at McKale Center (Lute & Bobbi Olson Court) - Tucson, Ariz.



Period 3

Starters:

Northern Arizona: 1 SCHENCK, REGAN; 3 MALVAR, CAITLIN; 15 RASHEED, KHIARICA; 20 ORNDOFF, LAUREN; 23 PAPLOW, KALEIGH;
Arizona: 2 MCDONALD, AARI; 4 ALONSO, LUCIA; 14 THOMAS, SAM; 20 MCBRYDE, DOMINIQUE; 25 REESE, CATE;

Time	VISITORS: Northern Arizona	Score	Margin	HOME: Arizona
09:34	GOOD! FT by RASHEED, KHIARICA	36-18	H 18	
09:34	GOOD! FT by RASHEED, KHIARICA	36-19	H 17	
09:04	GOOD! FT by PAPLOW, KALEIGH [FB]	36-20	H 16	
09:04	GOOD! FT by PAPLOW, KALEIGH [FB]	36-21	H 15	
08:52		38-21	H 17	GOOD! LAYUP by REESE, CATE
07:16		40-21	H 19	GOOD! LAYUP by REESE, CATE
07:09	GOOD! LAYUP by SCHENCK, REGAN	40-23	H 17	
06:59		41-23	H 18	GOOD! FT by MCDONALD, AARI
06:59		42-23	H 19	GOOD! FT by MCDONALD, AARI
06:43		44-23	H 21	GOOD! LAYUP by MCDONALD, AARI [FB]
06:28		46-23	H 23	GOOD! LAYUP by MCDONALD, AARI [FB]
06:22		47-23	H 24	GOOD! FT by MCDONALD, AARI
06:22		48-23	H 25	GOOD! FT by MCDONALD, AARI
06:22	GOOD! FT by PAPLOW, KALEIGH [FB]	48-24	H 24	
06:09		50-24	H 26	GOOD! JUMPER by GRAHAM, DESTINY
05:27		52-24	H 28	GOOD! LAYUP by MCDONALD, AARI
05:12		54-24	H 30	GOOD! LAYUP by GRAHAM, DESTINY
03:02		56-24	H 32	GOOD! LAYUP by REESE, CATE [FB]
02:45	GOOD! JUMPER by BAILEY, JACEY	56-26	H 30	
02:07		58-26	H 32	GOOD! JUMPER by REESE, CATE [PNT]
01:54	GOOD! JUMPER by BAILEY, JACEY [PNT]	58-28	H 30	
01:39		59-28	H 31	GOOD! FT by MCDONALD, AARI
01:39		60-28	H 32	GOOD! FT by GRAHAM, DESTINY
00:21	GOOD! LAYUP by PAPLOW, KALEIGH [FB]	60-30	H 30	
00:08		63-30	H 33	GOOD! 3PTR by REESE, CATE

Northern Arizona 30, Arizona 63

**Official Scoring/Possession Reference Chart
Northern Arizona vs Arizona
Period 4**

December 22, 2018 at McKale Center (Lute & Bobbi Olson Court) - Tucson, Ariz.



Period 4

Starters:

Northern Arizona: 1 SCHENCK, REGAN; 3 MALVAR, CAITLIN; 15 RASHEED, KHIARICA; 20 ORNDOFF, LAUREN; 23 PAPLOW, KALEIGH;
Arizona: 2 MCDONALD, AARI; 4 ALONSO, LUCIA; 14 THOMAS, SAM; 20 MCBRYDE, DOMINIQUE; 25 REESE, CATE;

Time	VISITORS: Northern Arizona	Score	Margin	HOME: Arizona
09:14		65-30	H 35	GOOD! LAYUP by STARKS, TEE TEE
09:02	GOOD! LAYUP by PAPLOW, KALEIGH [PNT]	65-32	H 33	
07:52	GOOD! FT by PAPLOW, KALEIGH	65-33	H 32	
07:14	GOOD! 3PTR by PAPLOW, KALEIGH	65-36	H 29	
06:30	GOOD! JUMPER by RASHEED, KHIARICA [PNT]	65-38	H 27	
05:47		67-38	H 29	GOOD! LAYUP by MCDONALD, AARI
04:53	GOOD! LAYUP by RASHEED, KHIARICA	67-40	H 27	
04:20		69-40	H 29	GOOD! LAYUP by REESE, CATE
04:12	GOOD! JUMPER by BAILEY, JACEY	69-42	H 27	
02:45		71-42	H 29	GOOD! LAYUP by MCDONALD, AARI
01:53	GOOD! LAYUP by CARROLL, PEYTON	71-44	H 27	
01:01	GOOD! FT by GARY, MORGAN [FB]	71-45	H 26	
00:17	GOOD! JUMPER by MCCORMICK, ALIZE'	71-47	H 24	

Northern Arizona 47, Arizona 71

**Official Substitutions Log
Northern Arizona vs Arizona
Period 1**

December 22, 2018 at McKale Center (Lute & Bobbi Olson Court) - Tucson, Ariz.



VISITORS: Northern Arizona	Time	Score	HOME: Arizona
1 SCHENCK, REGAN			2 MCDONALD, AARI
3 MALVAR, CAITLIN			4 ALONSO, LUCIA
15 RASHEED, KHIARICA			14 THOMAS, SAM
20 ORNDOFF, LAUREN			20 MCBRYDE, DOMINIQUE
23 PAPLOW, KALEIGH			25 REESE, CATE
	05:29	5-7	SUB OUT: THOMAS, SAM
	05:29		SUB IN: STARKS, TEE TEE
SUB OUT: 3 MALVAR, CAITLIN	05:29		
SUB IN: 11 BAILEY, JACEY	05:29		
SUB OUT: 23 PAPLOW, KALEIGH	05:29		
SUB IN: 4 GARY, MORGAN	05:29		
SUB OUT: 20 ORNDOFF, LAUREN	04:53	5-9	
SUB IN: 23 PAPLOW, KALEIGH	04:53		
	03:56	7-10	SUB OUT: MCBRYDE, DOMINIQUE
	03:56		SUB IN: GRAHAM, DESTINY
	03:16	9-10	SUB OUT: ALONSO, LUCIA
	03:16		SUB IN: THOMAS, SAM
SUB OUT: 1 SCHENCK, REGAN	03:16		
SUB IN: 3 MALVAR, CAITLIN	03:16		
SUB OUT: 15 RASHEED, KHIARICA	03:16		
SUB IN: 33 CARROLL, PEYTON	03:16		
	01:39	9-14	SUB OUT: MCDONALD, AARI
	01:39		SUB IN: ALONSO, LUCIA
SUB OUT: 4 GARY, MORGAN	01:39		
SUB IN: 20 ORNDOFF, LAUREN	01:39		
	00:57	11-14	SUB OUT: REESE, CATE
	00:57		SUB IN: MCBRYDE, DOMINIQUE
	00:57		SUB OUT: STARKS, TEE TEE
	00:57		SUB IN: NIXON, BRYCE

Northern Arizona 11, Arizona 17

**Official Substitutions Log
Northern Arizona vs Arizona
Period 2**

December 22, 2018 at McKale Center (Lute & Bobbi Olson Court) - Tucson, Ariz.



VISITORS: Northern Arizona	Time	Score	HOME: Arizona
1 SCHENCK, REGAN			2 MCDONALD, AARI
3 MALVAR, CAITLIN			4 ALONSO, LUCIA
15 RASHEED, KHIARICA			14 THOMAS, SAM
20 ORNDOFF, LAUREN			20 MCBRYDE, DOMINIQUE
23 PAPLOW, KALEIGH			25 REESE, CATE
SUB OUT: 11 BAILEY, JACEY	09:05	13-19	
SUB IN: 1 SCHENCK, REGAN	09:05		
	07:04	13-26	SUB OUT: MCDONALD, AARI
	07:04		SUB IN: STARKS, TEE TEE
	07:04		SUB OUT: REESE, CATE
	07:04		SUB IN: GRAHAM, DESTINY
SUB OUT: 3 MALVAR, CAITLIN	07:04		
SUB IN: 4 GARY, MORGAN	07:04		
SUB OUT: 23 PAPLOW, KALEIGH	05:41	13-32	
SUB IN: 33 CARROLL, PEYTON	05:41		
SUB OUT: 4 GARY, MORGAN	04:43	13-32	
SUB IN: 23 PAPLOW, KALEIGH	04:43		
SUB OUT: 15 RASHEED, KHIARICA	04:43		
SUB IN: 25 LEHEW, BRIANNA	04:43		
	02:59	13-36	SUB OUT: ALONSO, LUCIA
	02:59		SUB IN: MCDONALD, AARI
SUB OUT: 20 ORNDOFF, LAUREN	02:59		
SUB IN: 3 MALVAR, CAITLIN	02:59		
	02:29	13-36	SUB OUT: STARKS, TEE TEE
	02:29		SUB IN: NIXON, BRYCE
	02:29		SUB OUT: MCBRYDE, DOMINIQUE
	02:29		SUB IN: SMITH, SEMAJ
SUB OUT: 33 CARROLL, PEYTON	02:29		
SUB IN: 11 BAILEY, JACEY	02:29		

Northern Arizona 17, Arizona 36

**Official Substitutions Log
Northern Arizona vs Arizona
Period 3**

December 22, 2018 at McKale Center (Lute & Bobbi Olson Court) - Tucson, Ariz.



VISITORS: Northern Arizona	Time	Score	HOME: Arizona
1 SCHENCK, REGAN			2 MCDONALD, AARI
3 MALVAR, CAITLIN			4 ALONSO, LUCIA
15 RASHEED, KHIARICA			14 THOMAS, SAM
20 ORNDOFF, LAUREN			20 MCBRYDE, DOMINIQUE
23 PAPLOW, KALEIGH			25 REESE, CATE
	06:22	23-46	SUB OUT: ALONSO, LUCIA
	06:22		SUB IN: GRAHAM, DESTINY
	06:22		SUB OUT: REESE, CATE
	06:22		SUB IN: STARKS, TEE TEE
SUB OUT: 3 MALVAR, CAITLIN	06:22		
SUB IN: 11 BAILEY, JACEY	06:22		
SUB OUT: 1 SCHENCK, REGAN	05:26	24-52	
SUB IN: 3 MALVAR, CAITLIN	05:26		
	04:03	24-54	SUB OUT: MCBRYDE, DOMINIQUE
	04:03		SUB IN: REESE, CATE
SUB OUT: 15 RASHEED, KHIARICA	04:03		
SUB IN: 4 GARY, MORGAN	04:03		
SUB OUT: 20 ORNDOFF, LAUREN	04:03		
SUB IN: 33 CARROLL, PEYTON	04:03		
SUB OUT: 3 MALVAR, CAITLIN	01:39	28-59	
SUB IN: 1 SCHENCK, REGAN	01:39		
	01:39		SUB OUT: THOMAS, SAM
	01:39		SUB IN: NIXON, BRYCE
	00:51	28-60	SUB OUT: MCDONALD, AARI
	00:51		SUB IN: ALONSO, LUCIA

Northern Arizona 30, Arizona 63

**Official Substitutions Log
Northern Arizona vs Arizona
Period 4**

December 22, 2018 at McKale Center (Lute & Bobbi Olson Court) - Tucson, Ariz.



VISITORS: Northern Arizona	Time	Score	HOME: Arizona
1 SCHENCK, REGAN			2 MCDONALD, AARI
3 MALVAR, CAITLIN			4 ALONSO, LUCIA
15 RASHEED, KHIARICA			14 THOMAS, SAM
20 ORNDOFF, LAUREN			20 MCBRYDE, DOMINIQUE
23 PAPLOW, KALEIGH			25 REESE, CATE
SUB OUT: 25 LEHEW, BRIANNA	07:52	32-65	
SUB IN: 15 RASHEED, KHIARICA	07:52		
	06:48	36-65	SUB OUT: STARKS, TEE TEE
	06:48		SUB IN: MCDONALD, AARI
	06:48		SUB OUT: GRAHAM, DESTINY
	06:48		SUB IN: THOMAS, SAM
	06:48		SUB OUT: NIXON, BRYCE
	06:48		SUB IN: MCBRYDE, DOMINIQUE
SUB OUT: 1 SCHENCK, REGAN	06:00	38-65	
SUB IN: 3 MALVAR, CAITLIN	06:00		
SUB OUT: 20 ORNDOFF, LAUREN	04:03	42-69	
SUB IN: 4 GARY, MORGAN	04:03		
	03:03	42-69	SUB OUT: ALONSO, LUCIA
	03:03		SUB IN: NIXON, BRYCE
	03:03		SUB OUT: REESE, CATE
	03:03		SUB IN: SMITH, SEMAJ
SUB OUT: 15 RASHEED, KHIARICA	02:26	42-71	
SUB IN: 33 CARROLL, PEYTON	02:26		
	02:26		SUB OUT: MCDONALD, AARI
	02:26		SUB IN: STARKS, TEE TEE
	01:32	44-71	SUB OUT: MCBRYDE, DOMINIQUE
	01:32		SUB IN: MALECHA, LINDSEY
SUB OUT: 23 PAPLOW, KALEIGH	01:32		
SUB IN: 5 MCCORMICK, ALIZE'	01:32		
SUB OUT: 3 MALVAR, CAITLIN	01:01	44-71	
SUB IN: 21 TSINGINE, TATE	01:01		

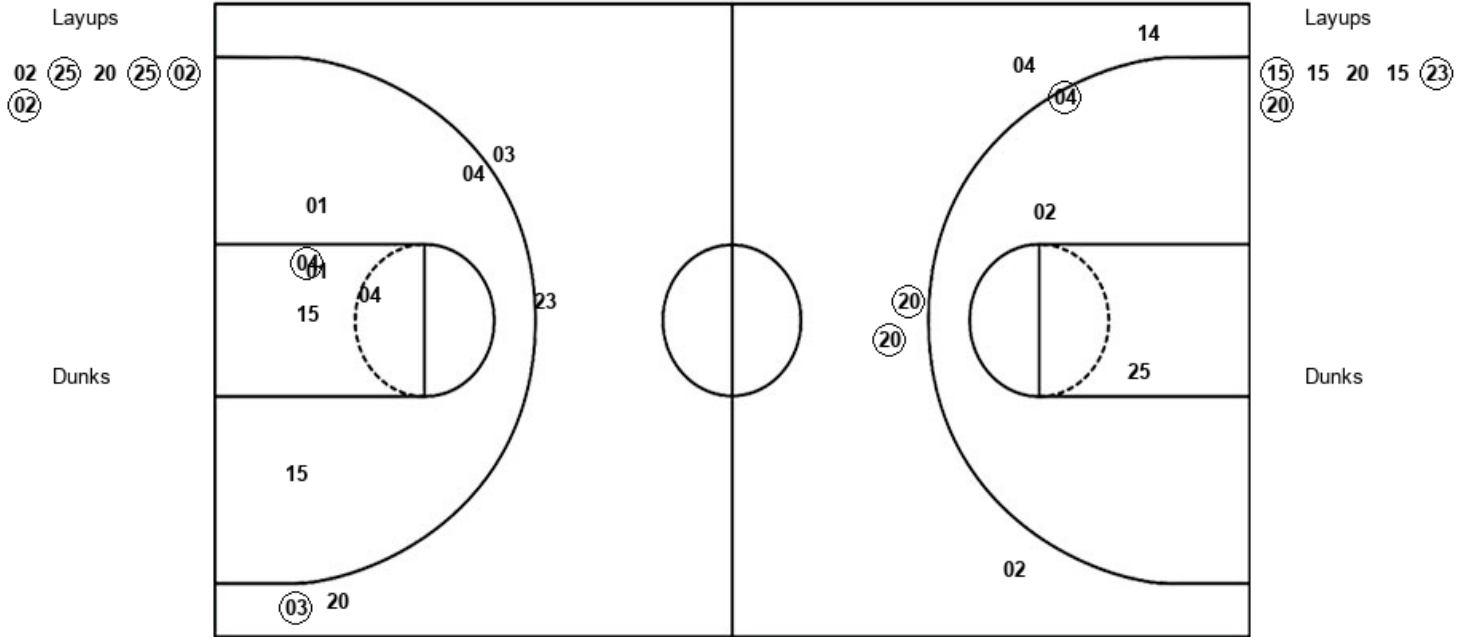
Northern Arizona 47, Arizona 71

Official Shot Chart
Northern Arizona vs Arizona
 PERIOD 1 Shots
 December 22, 2018 at McKale Center (Lute & Bobbi Olson Court) - Tucson, Ariz.



Arizona

Northern Arizona



ARI : Period 1	Made	Att	Pct
Layups	4	6	66.7
Dunks	0	0	0
2PT Field Goals	5	9	55.6
3PT Field Goals	2	5	40.0
Total Field Goals	7	14	50.0

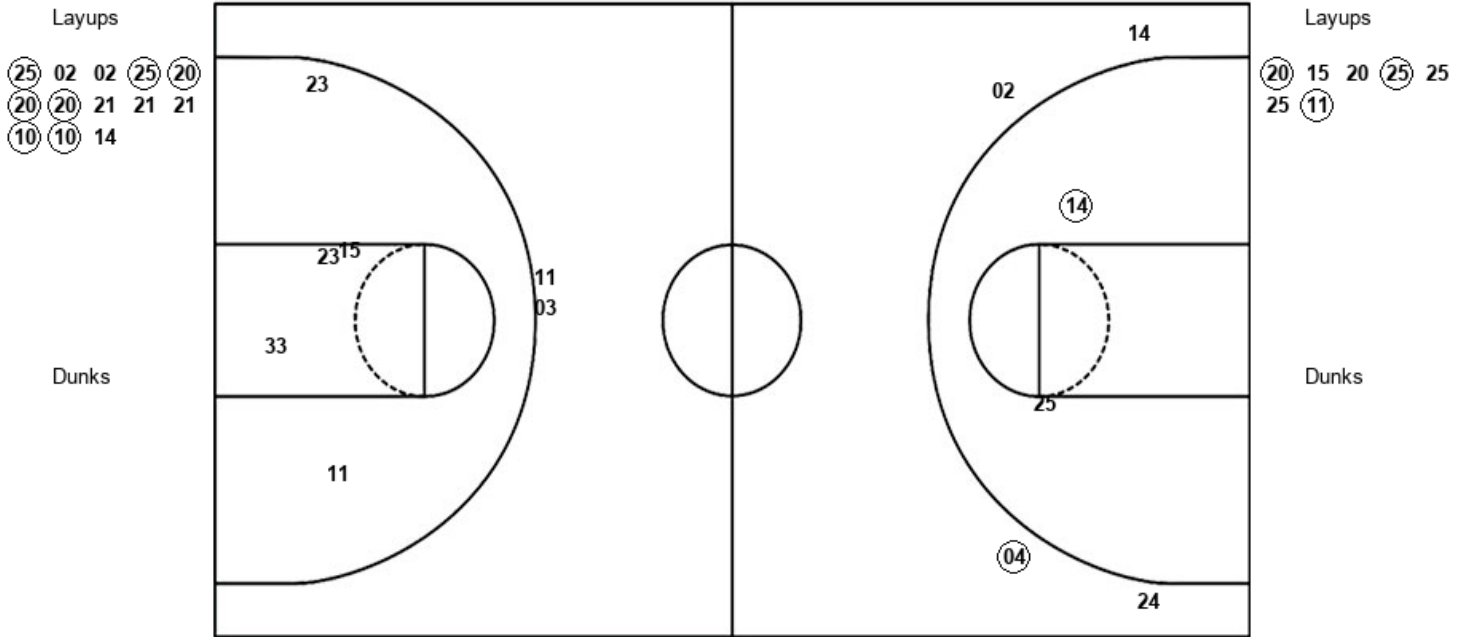
NAU : Period 1	Made	Att	Pct
Layups	3	6	50.0
Dunks	0	0	0
2PT Field Goals	4	13	30.8
3PT Field Goals	1	4	25.0
Total Field Goals	5	17	29.4

Official Shot Chart
Northern Arizona vs Arizona
 PERIOD 2 Shots
 December 22, 2018 at McKale Center (Lute & Bobbi Olson Court) - Tucson, Ariz.



Arizona

Northern Arizona



ARI : Period 2	Made	Att	Pct
Layups	7	13	53.8
Dunks	0	0	0
2PT Field Goals	8	15	53.3
3PT Field Goals	1	4	25.0
Total Field Goals	9	19	47.4

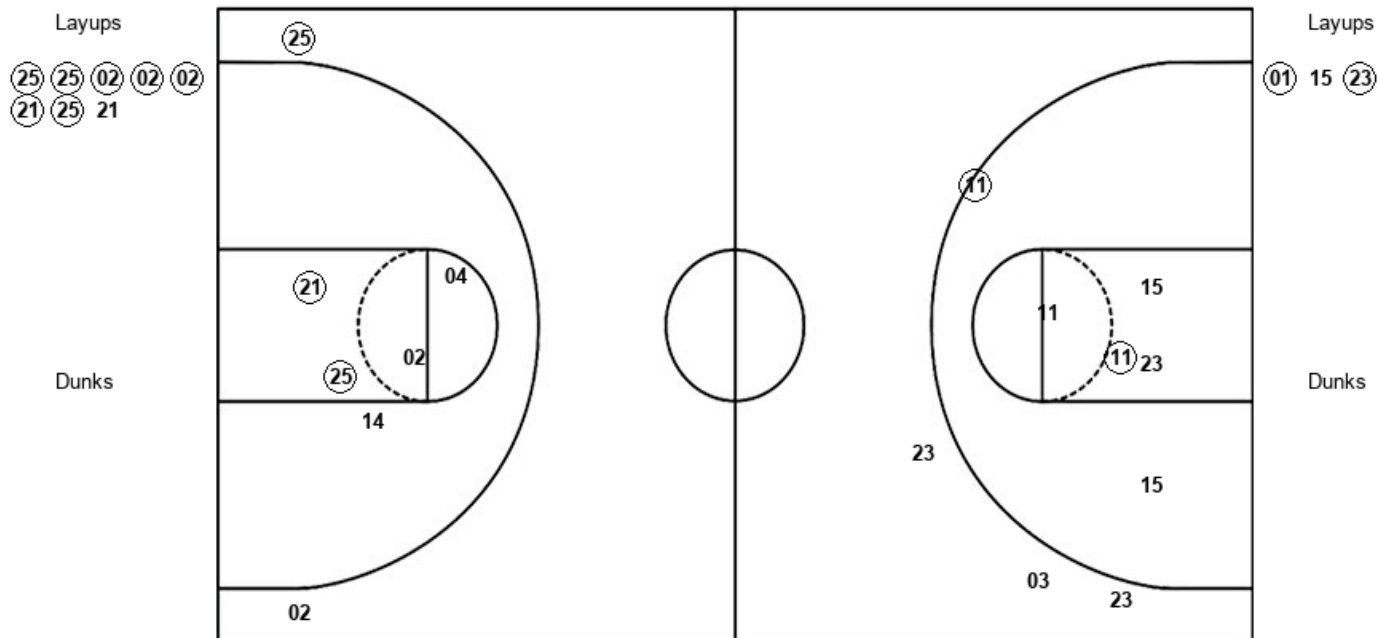
NAU : Period 2	Made	Att	Pct
Layups	3	7	42.9
Dunks	0	0	0
2PT Field Goals	3	12	25.0
3PT Field Goals	0	2	00.0
Total Field Goals	3	14	21.4

Official Shot Chart
Northern Arizona vs Arizona
 PERIOD 3 Shots
 December 22, 2018 at McKale Center (Lute & Bobbi Olson Court) - Tucson, Ariz.



Arizona

Northern Arizona



ARI : Period 3	Made	Att	Pct
Layups	7	8	87.5
Dunks	0	0	0
2PT Field Goals	9	14	64.3
3PT Field Goals	1	1	100.0
Total Field Goals	10	15	66.7

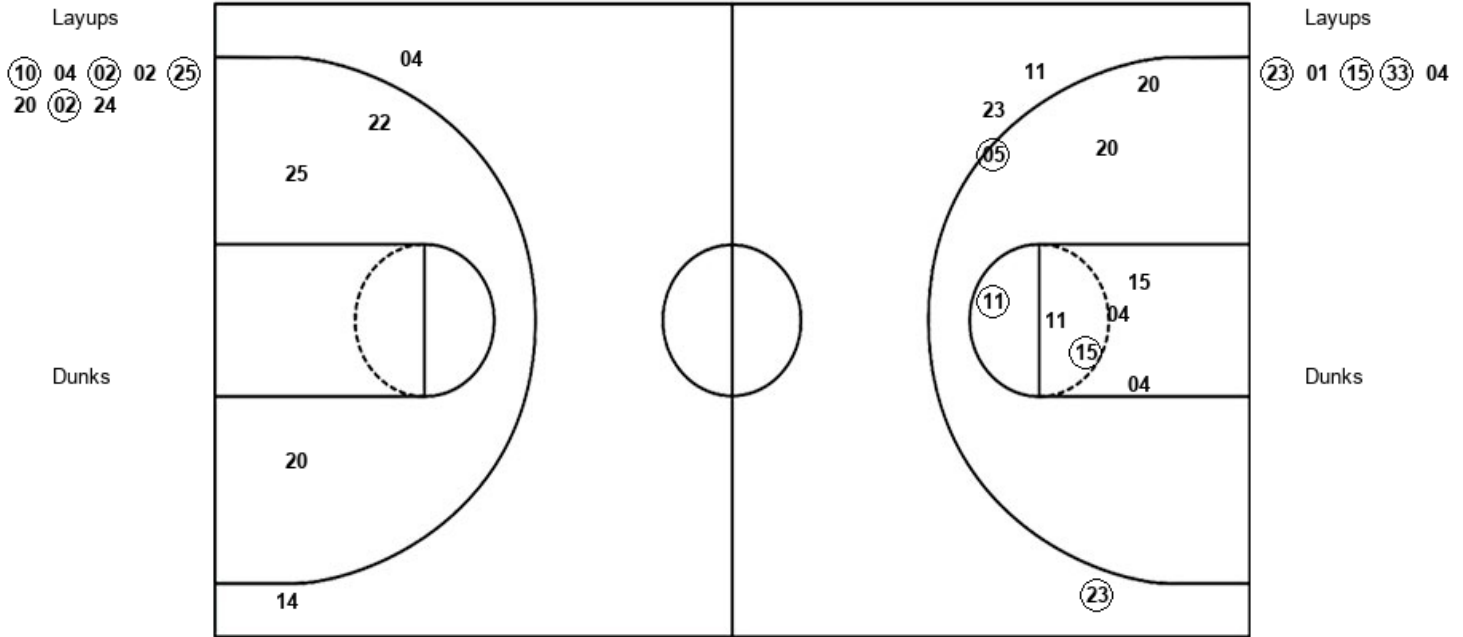
NAU : Period 3	Made	Att	Pct
Layups	2	3	66.7
Dunks	0	0	0
2PT Field Goals	4	9	44.4
3PT Field Goals	0	3	00.0
Total Field Goals	4	12	33.3

Official Shot Chart
Northern Arizona vs Arizona
 PERIOD 4 Shots
 December 22, 2018 at McKale Center (Lute & Bobbi Olson Court) - Tucson, Ariz.



Arizona

Northern Arizona



ARI : Period 4	Made	Att	Pct
Layups	4	8	50.0
Dunks	0	0	0
2PT Field Goals	4	11	36.4
3PT Field Goals	0	2	00.0
Total Field Goals	4	13	30.8

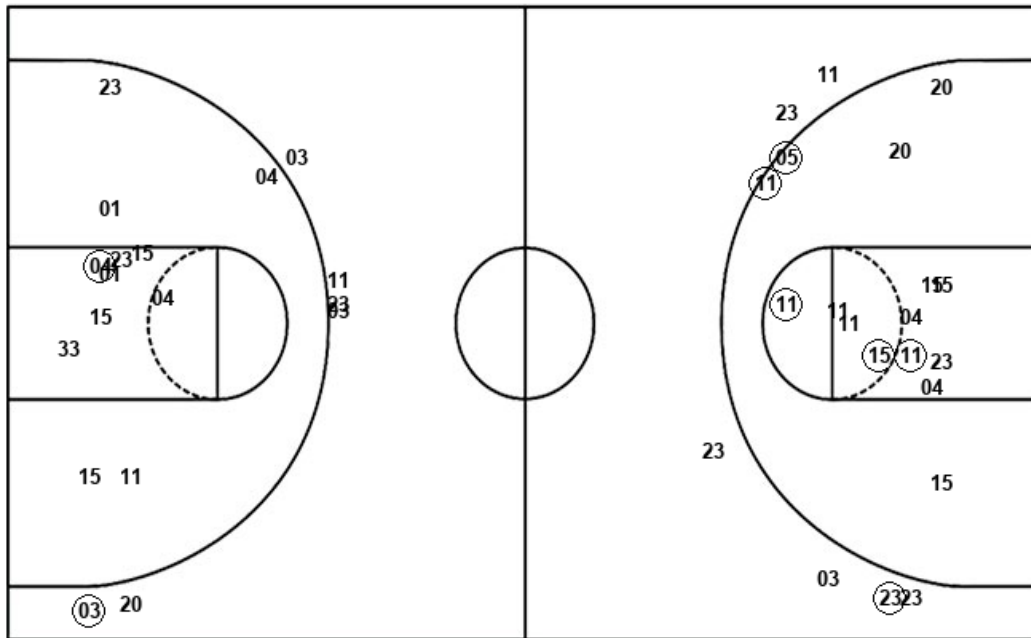
NAU : Period 4	Made	Att	Pct
Layups	3	5	60.0
Dunks	0	0	0
2PT Field Goals	6	14	42.9
3PT Field Goals	1	3	33.3
Total Field Goals	7	17	41.2

Official Shot Chart
Northern Arizona vs Arizona
Northern Arizona Team Shots
December 22, 2018 at McKale Center (Lute & Bobbi Olson Court) - Tucson, Ariz.



Layups

Dunks



Layups

Dunks

NAU : Period 1	Made	Att	Pct
Layups	3	6	50.0
Dunks	0	0	0
2PT Field Goals	4	13	30.8
3PT Field Goals	1	4	25.0
Total Field Goals	5	17	29.4

NAU : Period 3	Made	Att	Pct
Layups	2	3	66.7
Dunks	0	0	0
2PT Field Goals	4	9	44.4
3PT Field Goals	0	3	00.0
Total Field Goals	4	12	33.3

NAU : Period 2	Made	Att	Pct
Layups	3	7	42.9
Dunks	0	0	0
2PT Field Goals	3	12	25.0
3PT Field Goals	0	2	00.0
Total Field Goals	3	14	21.4

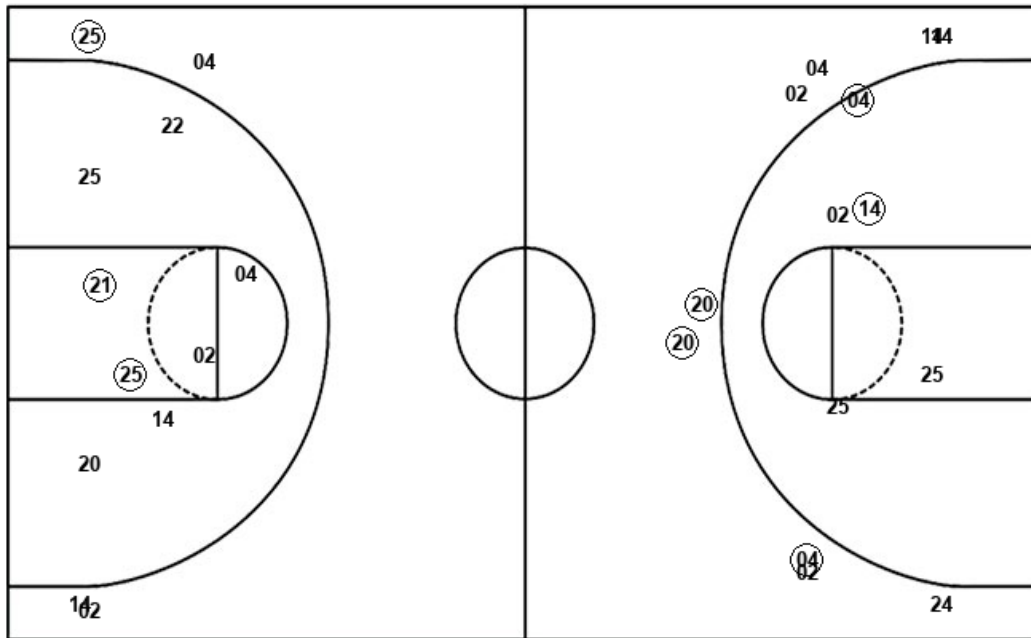
NAU : Period 4	Made	Att	Pct
Layups	3	5	60.0
Dunks	0	0	0
2PT Field Goals	6	14	42.9
3PT Field Goals	1	3	33.3
Total Field Goals	7	17	41.2

Official Shot Chart
Northern Arizona vs Arizona
Arizona Team Shots
December 22, 2018 at McKale Center (Lute & Bobbi Olson Court) - Tucson, Ariz.



Layups

Dunks



Layups

Dunks

02	25	20	25	02
02	25	02	02	25
20	20	20	21	21
21	10	10	14	25
25	02	02	02	21
25	21	10	04	02
02	25	20	02	24

ARI : Period 1	Made	Att	Pct
Layups	4	6	66.7
Dunks	0	0	0
2PT Field Goals	5	9	55.6
3PT Field Goals	2	5	40.0
Total Field Goals	7	14	50.0

ARI : Period 3	Made	Att	Pct
Layups	7	8	87.5
Dunks	0	0	0
2PT Field Goals	9	14	64.3
3PT Field Goals	1	1	100.0
Total Field Goals	10	15	66.7

ARI : Period 2	Made	Att	Pct
Layups	7	13	53.8
Dunks	0	0	0
2PT Field Goals	8	15	53.3
3PT Field Goals	1	4	25.0
Total Field Goals	9	19	47.4

ARI : Period 4	Made	Att	Pct
Layups	4	8	50.0
Dunks	0	0	0
2PT Field Goals	4	11	36.4
3PT Field Goals	0	2	00.0
Total Field Goals	4	13	30.8