

## FINAL SCORE



**Montana**

**51**



**Arizona**

**100**

December 05, 2018 • McKale Center (Lute & Bobbi Olson Court) - Tucson, Ariz.

## FINAL STATISTICS

**Official Box Score**  
**Montana vs Arizona**  
**Game Totals -- Final Statistics**  
**December 05, 2018 at McKale Center (Lute & Bobbi Olson Court) - Tucson, Ariz.**



**Montana 51**

No.	Player	S	Pts	FG	3FG	FT	OR	DR	TR	PF	A	TO	Blk	Stl	Min	+/-
01	MAYHUE, KATIE		17	5-11	2-4	5-10	1	4	5	3	2	6	0	0	35	-41
23	GOLIGOSKI, TAYLOR		3	1-6	1-3	0-0	0	1	1	2	0	1	1	0	18	-14
24	HENDERSON, JACE		1	0-3	0-0	1-2	1	2	3	1	5	3	2	0	25	-30
32	JOHNSTON, MCKENZIE		6	2-4	0-0	2-4	2	1	3	3	2	5	0	0	27	-29
44	STOCKHOLM, EMMA		9	4-8	1-3	0-0	0	2	2	2	0	0	1	1	16	-15
03	HARRINGTON, GABI		3	1-6	0-0	1-2	1	1	2	3	1	1	0	1	22	-36
11	ANDERSON, ABBY		4	1-2	0-0	2-2	1	1	2	0	0	1	2	0	12	-8
13	FROHLICH, KYLIE		0	0-2	0-0	0-0	1	1	2	1	1	2	0	0	17	-21
20	GFELLER, CARMEN		5	2-3	1-1	0-0	1	0	1	0	0	3	0	0	10	-24
22	SCHWEYEN, JORDYN		3	1-3	1-2	0-0	1	0	1	2	0	0	0	0	18	-27
TEAM							0	0	0	0		0				
<b>TOTALS</b>			<b>51</b>	<b>17-48</b>	<b>6-13</b>	<b>11-20</b>	<b>9</b>	<b>13</b>	<b>22</b>	<b>17</b>	<b>11</b>	<b>22</b>	<b>6</b>	<b>2</b>	<b>200</b>	

*Shooting By Period*

Period	FG	FG%	3FG	3FG%	FT	FT%
1st Qtr	4-10	40%	0-1	00%	1-3	33%
2nd Qtr	6-14	43%	2-2	100%	2-5	40%
3rd Qtr	4-11	36%	1-3	33%	5-8	63%
4th Qtr	3-13	23%	3-7	43%	3-4	75%
1st Half	10-24	42%	2-3	67%	3-8	38%
2nd Half	7-24	29%	4-10	40%	8-12	67%
<b>Game</b>	<b>17-48</b>	<b>35.4%</b>	<b>6-13</b>	<b>46.2%</b>	<b>11-20</b>	<b>55.0%</b>

*Last FG: 4th-05:31*  
*Biggest Run: 6-0*  
*Largest lead: By 0 at 1-08:18*  
*Technical Fouls: None.*

**Arizona 100**

No.	Player	S	Pts	FG	3FG	FT	OR	DR	TR	PF	A	TO	Blk	Stl	Min	+/-
02	MCDONALD, AARI		28	9-18	3-7	7-9	4	2	6	3	4	3	0	4	31	32
04	ALONSO, LUCIA		3	1-3	1-3	0-0	0	1	1	2	4	2	0	1	30	41
14	THOMAS, SAM		12	4-10	2-5	2-2	4	4	8	1	6	0	1	3	25	28
20	MCBRYDE, DOMINIQUE		11	4-5	1-1	2-2	0	5	5	2	3	0	0	2	26	28
25	REESE, CATE		20	7-17	0-1	6-6	7	11	18	4	0	5	0	3	25	36
10	STARKS, TEE TEE		9	4-4	1-1	0-2	2	2	4	4	0	1	2	1	17	23
22	MALECHA, LINDSEY		0	0-0	0-0	0-0	0	0	0	1	0	0	0	0	4	8
24	NIXON, BRYCE		4	2-6	0-2	0-0	2	0	2	0	3	0	0	1	18	21
34	SMITH, SEMAJ		13	6-9	1-2	0-0	1	2	3	2	1	1	1	1	23	28
TEAM							3	0	3	0		0				
<b>TOTALS</b>			<b>100</b>	<b>37-72</b>	<b>9-22</b>	<b>17-21</b>	<b>23</b>	<b>27</b>	<b>50</b>	<b>19</b>	<b>21</b>	<b>12</b>	<b>4</b>	<b>16</b>	<b>200</b>	

*Shooting By Period*

Period	FG	FG%	3FG	3FG%	FT	FT%
1st Qtr	8-19	42%	2-7	29%	6-8	75%
2nd Qtr	11-21	52%	3-8	38%	4-6	67%
3rd Qtr	10-13	77%	3-4	75%	0-0	0%
4th Qtr	8-19	42%	1-3	33%	7-7	100%
1st Half	19-40	48%	5-15	33%	10-14	71%
2nd Half	18-32	56%	4-7	57%	7-7	100%
<b>Game</b>	<b>37-72</b>	<b>51.4%</b>	<b>9-22</b>	<b>40.9%</b>	<b>17-21</b>	<b>81.0%</b>

*Last FG: 4th-00:00*  
*Biggest Run: 15-0*  
*Largest lead: By 49 at 4-00:00*  
*Technical Fouls: None.*

*Game Notes:*

Officials: Michol Murray, Lorena Ahumada, Alejandro Moreno

Start Time: 2018-12-05 17:59:02  
 End Time: 2018-12-05 19:46:59  
 Game Duration: 107

Score	1st	2nd	3rd	4th	TOT
MON	9	16	14	12	<b>51</b>
ARI	24	29	23	24	<b>100</b>

MON led for 0:00. ARI led for 39:09.  
 Game was tied for 0:52.  
 Times tied: 2      Lead Changes: 0

Points from	MON	ARI
In the Paint	16	52
Off Turns	9	36
2nd Chance	3	27
Fast Break	4	25
Bench	15	26

**Official Box Score**  
**Montana vs Arizona**  
**First Half Statistics Only**  
**December 05, 2018 at McKale Center (Lute & Bobbi Olson Court) - Tucson, Ariz.**



### Montana 25

No.	Player	S	Pts	FG	3FG	FT	OR	DR	TR	PF	A	TO	Blk	Stl	Min	+/-
01	MAYHUE, KATIE		11	4-6	1-1	2-4	1	1	2	1	1	3	0	0	15	-20
03	HARRINGTON, GABI		3	1-6	0-0	1-2	1	1	2	1	1	0	0	1	13	-23
11	ANDERSON, ABBY		2	1-2	0-0	0-0	0	0	0	0	0	0	1	0	4	-4
13	FROHLICH, KYLIE		0	0-0	0-0	0-0	1	1	2	1	0	1	0	0	7	-9
20	GFELLER, CARMEN		5	2-3	1-1	0-0	1	0	1	0	0	3	0	0	8	-16
22	SCHWEYEN, JORDYN		0	0-0	0-0	0-0	0	0	0	1	0	0	0	0	7	-12
23	GOLIGOSKI, TAYLOR		0	0-2	0-1	0-0	0	0	0	1	0	0	0	0	7	-5
24	HENDERSON, JACE		0	0-1	0-0	0-0	0	2	2	1	3	2	2	0	15	-21
32	JOHNSTON, MCKENZIE		4	2-4	0-0	0-2	1	1	2	2	1	3	0	0	18	-24
44	STOCKHOLM, EMMA		0	0-0	0-0	0-0	0	0	0	2	0	0	0	1	6	-6
	TEAM		0	0-0	0-0	0-0	0	0	0	0	0	0	0	0	0	0
<b>TOTALS</b>			<b>25</b>	<b>10-24</b>	<b>2-3</b>	<b>3-8</b>	<b>0</b>	<b>0</b>	<b>11</b>	<b>10</b>	<b>6</b>	<b>12</b>	<b>3</b>	<b>2</b>	<b>100</b>	

#### Shooting By Period

Period	FG	FG%	3FG	3FG%	FT	FT%
1st Qtr	4-10	40%	0-1	00%	1-3	33%
2nd Qtr	6-14	43%	2-2	100%	2-5	40%
1st Half	10-24	42%	2-3	67%	3-8	38%
Game	17-48	35.4%	6-13	46.2%	11-20	55.0%

Last FG Half: MON 2nd-00:10

### Arizona 53

No.	Player	S	Pts	FG	3FG	FT	OR	DR	TR	PF	A	TO	Blk	Stl	Min	+/-
02	MCDONALD, AARI		12	4-9	2-6	2-4	2	1	3	1	4	1	0	2	16	21
04	ALONSO, LUCIA		3	1-2	1-2	0-0	0	1	1	2	1	2	0	1	14	17
10	STARKS, TEE TEE		9	4-4	1-1	0-2	2	2	4	1	0	0	1	1	11	20
14	THOMAS, SAM		9	3-9	1-4	2-2	4	1	5	1	3	0	0	2	15	19
20	MCBRYDE, DOMINIQUE		2	0-1	0-0	2-2	0	0	0	2	1	0	0	0	9	11
22	MALECHA, LINDSEY		0	0-0	0-0	0-0	0	0	0	0	0	0	0	0	2	4
24	NIXON, BRYCE		0	0-3	0-2	0-0	0	0	0	0	2	0	0	0	8	9
25	REESE, CATE		12	4-7	0-0	4-4	4	6	10	1	0	2	0	2	17	25
34	SMITH, SEMAJ		6	3-5	0-0	0-0	1	1	2	0	1	0	1	1	8	14
	TEAM		0	0-0	0-0	0-0	3	0	3	0	0	0	0	0	0	0
<b>TOTALS</b>			<b>53</b>	<b>19-40</b>	<b>5-15</b>	<b>10-14</b>	<b>0</b>	<b>0</b>	<b>28</b>	<b>8</b>	<b>12</b>	<b>5</b>	<b>2</b>	<b>9</b>	<b>100</b>	

#### Shooting By Period

Period	FG	FG%	3FG	3FG%	FT	FT%
1st Qtr	8-19	42%	2-7	29%	6-8	75%
2nd Qtr	11-21	52%	3-8	38%	4-6	67%
1st Half	19-40	48%	5-15	33%	10-14	71%
Game	37-72	51.4%	9-22	40.9%	17-21	81.0%

Last FG Half: ARI 2nd-00:00

#### Game Notes:

Officials: Michol Murray, Lorena Ahumada, Alejandro Moreno

Start Time: 2018-12-05 17:59:02

End Time: 2018-12-05 19:46:59

Game Duration: 107

Score	1st	2nd	3rd	4th	TOT
MON	9	16	14	12	51
ARI	24	29	23	24	100

Points from (This Period)	MON	ARI
In the Paint	10	26
Off Turns	4	22
2nd Chance	3	19
Fast Break	2	10
Bench	10	15

**Official Box Score**  
**Montana vs Arizona**  
**First Quarter Statistics Only**  
**December 05, 2018 at McKale Center (Lute & Bobbi Olson Court) - Tucson, Ariz.**



**Montana 9**

No.	Player	S	Pts	FG	3FG	FT	OR	DR	TR	PF	A	TO	Blk	Stl	Min	+/-
01	MAYHUE, KATIE		3	1-1	0-0	1-3	0	0	0	0	0	1	0	0	7	-9
23	GOLIGOSKI, TAYLOR		0	0-1	0-1	0-0	0	0	0	1	0	0	0	0	5	-3
24	HENDERSON, JACE		0	0-1	0-0	0-0	0	1	1	1	2	2	2	0	10	-15
32	JOHNSTON, MCKENZIE		4	2-3	0-0	0-0	1	1	2	1	0	2	0	0	10	-15
44	STOCKHOLM, EMMA		0	0-0	0-0	0-0	0	0	0	2	0	0	0	1	6	-6
03	HARRINGTON, GABI		2	1-3	0-0	0-0	0	0	0	1	0	0	0	0	5	-12
11	ANDERSON, ABBY		0	0-0	0-0	0-0	0	0	0	0	0	0	0	0	0	0
13	FROHLICH, KYLIE		0	0-0	0-0	0-0	0	0	0	0	0	0	0	0	0	0
20	GFELLER, CARMEN		0	0-1	0-0	0-0	1	0	1	0	0	2	0	0	4	-9
22	SCHWEYEN, JORDYN		0	0-0	0-0	0-0	0	0	0	0	0	0	0	0	3	-6
	TEAM						0	0	0	0		0				
<b>TOTALS</b>			<b>9</b>	<b>4-10</b>	<b>0-1</b>	<b>1-3</b>	<b>0</b>	<b>0</b>	<b>4</b>	<b>6</b>	<b>2</b>	<b>7</b>	<b>2</b>	<b>1</b>	<b>50</b>	

*Shooting By Period*

Period	FG	FG%	3FG	3FG%	FT	FT%
1st Qtr	4-10	40%	0-1	00%	1-3	33%
2nd Qtr	6-14	43%	2-2	100%	2-5	40%
1st Half	4-10	40%	0-1	00%	1-3	33%
1st Half	10-24	42%	2-3	67%	3-8	38%
Game	17-48	35.4%	6-13	46.2%	11-20	55.0%

**Arizona 24**

No.	Player	S	Pts	FG	3FG	FT	OR	DR	TR	PF	A	TO	Blk	Stl	Min	+/-
02	MCDONALD, AARI		5	2-5	1-3	0-2	2	1	3	0	2	1	0	2	9	11
04	ALONSO, LUCIA		0	0-1	0-1	0-0	0	0	0	1	1	0	0	0	8	11
14	THOMAS, SAM		7	2-6	1-3	2-2	2	0	2	1	1	0	0	2	9	13
20	MCBRYDE, DOMINIQUE		2	0-1	0-0	2-2	0	0	0	2	1	0	0	0	9	11
25	REESE, CATE		6	2-3	0-0	2-2	2	3	5	0	0	1	0	1	10	15
10	STARKS, TEE TEE		4	2-2	0-0	0-0	1	0	1	0	0	0	1	0	4	10
22	MALECHA, LINDSEY		0	0-0	0-0	0-0	0	0	0	0	0	0	0	0	0	0
24	NIXON, BRYCE		0	0-0	0-0	0-0	0	0	0	0	0	0	0	0	0	0
34	SMITH, SEMAJ		0	0-1	0-0	0-0	0	1	1	0	0	0	0	0	1	4
	TEAM						2	0	2	0		0				
<b>TOTALS</b>			<b>24</b>	<b>8-19</b>	<b>2-7</b>	<b>6-8</b>	<b>0</b>	<b>0</b>	<b>14</b>	<b>3</b>	<b>5</b>	<b>3</b>	<b>1</b>	<b>5</b>	<b>50</b>	

*Shooting By Period*

Period	FG	FG%	3FG	3FG%	FT	FT%
1st Qtr	8-19	42%	2-7	29%	6-8	75%
2nd Qtr	11-21	52%	3-8	38%	4-6	67%
1st Half	8-19	42%	2-7	29%	6-8	75%
1st Half	19-40	48%	5-15	33%	10-14	71%
Game	37-72	51.4%	9-22	40.9%	17-21	81.0%

Game Notes:

Officials: Michol Murray, Lorena Ahumada, Alejandro Moreno

Start Time: 2018-12-05 17:59:02  
 End Time: 2018-12-05 19:46:59  
 Game Duration: 107

Score	1st	2nd	3rd	4th	TOT
MON	9	16	14	12	<b>51</b>
ARI	24	29	23	24	<b>100</b>

Points from (This Period)	MON	ARI
In the Paint	6	10
Off Turns	2	10
2nd Chance	0	10
Fast Break	0	4
Bench	2	4

**Official Play-By-Play  
Montana vs Arizona  
First Quarter**

**December 05, 2018 at McKale Center (Lute & Bobbi Olson Court) - Tucson, Ariz.**



**Period 1**

**Starters:**

**Montana:** 1 MAYHUE, KATIE; 23 GOLIGOSKI, TAYLOR; 24 HENDERSON, JACE; 32 JOHNSTON, MCKENZIE; 44 STOCKHOLM, EMMA;

**Arizona:** 2 MCDONALD, AARI; 4 ALONSO, LUCIA; 14 THOMAS, SAM; 20 MCBRYDE, DOMINIQUE; 25 REESE, CATE;

Time	VISITORS: Montana	Score	Margin	HOME: Arizona
09:42				MISSED 3PTR by MCDONALD, AARI
09:37				REBOUND (OFF) by THOMAS, SAM
09:29				MISSED LAYUP by THOMAS, SAM
09:26				REBOUND (OFF) by REESE, CATE
09:25				MISSED LAYUP by REESE, CATE
09:25	BLOCK by HENDERSON, JACE			
09:25				REBOUND (OFF) by REESE, CATE
09:25	FOUL (PERSONAL) by HENDERSON, JACE			
09:25		1-0	H 1	GOOD! FT by REESE, CATE
09:25		2-0	H 2	GOOD! FT by REESE, CATE
09:22	TURNOVER (BADPASS) by HENDERSON, JACE			
09:22				STEAL by THOMAS, SAM
09:16				MISSED 3PTR by THOMAS, SAM
09:12	REBOUND (DEF) by JOHNSTON, MCKENZIE			
09:01	MISSED LAYUP by HENDERSON, JACE			
08:57				REBOUND (DEF) by REESE, CATE
08:55				MISSED 3PTR by ALONSO, LUCIA
08:54	REBOUND (DEF) by TEAM			
08:54				FOUL (PERSONAL) by THOMAS, SAM
08:51	TURNOVER (BADPASS) by MAYHUE, KATIE			
08:51				STEAL by MCDONALD, AARI
08:49				MISSED LAYUP by MCDONALD, AARI
08:49				REBOUND (OFF) by TEAM
08:38				TURNOVER (BADPASS) by MCDONALD, AARI
08:18	GOOD! LAYUP by JOHNSTON, MCKENZIE	2-2	T	
08:02		5-2	H 3	GOOD! 3PTR by MCDONALD, AARI
08:02				ASSIST by ALONSO, LUCIA
07:35	GOOD! JUMPER by MAYHUE, KATIE	5-4	H 1	
07:19		7-4	H 3	GOOD! LAYUP by REESE, CATE
07:19				ASSIST by MCBRYDE, DOMINIQUE
06:57	GOOD! LAYUP by JOHNSTON, MCKENZIE	7-6	H 1	
06:57	ASSIST by HENDERSON, JACE			
06:37				TURNOVER (LOSTBALL) by REESE, CATE
06:37	STEAL by STOCKHOLM, EMMA			
06:35	TURNOVER (BADPASS) by HENDERSON, JACE			
06:35				STEAL by MCDONALD, AARI
06:30				MISSED LAYUP by THOMAS, SAM
06:30	BLOCK by HENDERSON, JACE			
06:30				REBOUND (OFF) by TEAM
06:28		9-6	H 3	GOOD! LAYUP by MCDONALD, AARI
06:28				ASSIST by THOMAS, SAM
06:09	MISSED 3PTR by GOLIGOSKI, TAYLOR			
06:04				REBOUND (DEF) by REESE, CATE
05:50				MISSED 3PTR by MCDONALD, AARI
05:46				REBOUND (OFF) by THOMAS, SAM
05:19				MISSED 3PTR by THOMAS, SAM
05:16				REBOUND (OFF) by MCDONALD, AARI
05:16	FOUL (PERSONAL) by GOLIGOSKI, TAYLOR			
05:16	SUB OUT: GOLIGOSKI, TAYLOR			
05:16	SUB IN: HARRINGTON, GABI			
05:07	FOUL (PERSONAL) by HARRINGTON, GABI			
05:07		10-6	H 4	GOOD! FT by THOMAS, SAM
05:07		11-6	H 5	GOOD! FT by THOMAS, SAM
04:49	GOOD! LAYUP by HARRINGTON, GABI	11-8	H 3	
04:49	ASSIST by HENDERSON, JACE			
04:31		14-8	H 6	GOOD! 3PTR by THOMAS, SAM
04:31				ASSIST by MCDONALD, AARI
04:24				
04:14				FOUL (PERSONAL) by MCBRYDE, DOMINIQUE
04:14	MISSED FT by MAYHUE, KATIE			
04:14	REBOUND (OFF) by TEAM			
04:14	GOOD! FT by MAYHUE, KATIE	14-9	H 5	
04:14				SUB OUT: ALONSO, LUCIA
04:14				SUB IN: STARKS, TEE TEE
04:14	MISSED FT by MAYHUE, KATIE			
04:12				REBOUND (DEF) by REESE, CATE
04:02	FOUL (PERSONAL) by STOCKHOLM, EMMA			
03:59				MISSED LAYUP by MCBRYDE, DOMINIQUE
03:57				REBOUND (OFF) by MCDONALD, AARI
03:57	FOUL (PERSONAL) by STOCKHOLM, EMMA			

Time	VISITORS: Montana	Score	Margin	HOME: Arizona
03:57		15-9	H 6	GOOD! FT by MCBRYDE, DOMINIQUE
03:57	SUB OUT: STOCKHOLM, EMMA			
03:57	SUB IN: GFELLER, CARMEN			
03:57		16-9	H 7	GOOD! FT by MCBRYDE, DOMINIQUE
03:24	MISSED JUMPER by JOHNSTON, MCKENZIE			
03:21	REBOUND (OFF) by JOHNSTON, MCKENZIE			
03:18	MISSED JUMPER by GFELLER, CARMEN			
03:15	REBOUND (OFF) by GFELLER, CARMEN			
03:11	TURNOVER (LOSTBALL) by GFELLER, CARMEN			
03:11				STEAL by THOMAS, SAM
03:03		18-9	H 9	GOOD! LAYUP by REESE, CATE [FB]
03:03				ASSIST by MCDONALD, AARI
02:32	MISSED JUMPER by HARRINGTON, GABI			
02:32				BLOCK by STARKS, TEE TEE
02:32				REBOUND (DEF) by MCDONALD, AARI
02:32	FOUL (PERSONAL) by JOHNSTON, MCKENZIE			
02:32				MISSED FT by MCDONALD, AARI
02:32				REBOUND (OFF) by TEAM
02:32				SUB OUT: THOMAS, SAM
02:32				SUB IN: ALONSO, LUCIA
02:32	SUB OUT: MAYHUE, KATIE			
02:32	SUB IN: SCHWEYEN, JORDYN			
02:32				MISSED FT by MCDONALD, AARI
02:29	REBOUND (DEF) by HENDERSON, JACE			
02:11				FOUL (PERSONAL) by MCBRYDE, DOMINIQUE
01:49	TURNOVER (BADPASS) by GFELLER, CARMEN			
01:43		20-9	H 11	GOOD! LAYUP by STARKS, TEE TEE [FB]
01:29	TURNOVER (BADPASS) by JOHNSTON, MCKENZIE			
01:29				SUB OUT: MCDONALD, AARI
01:29				SUB IN: THOMAS, SAM
01:29				SUB OUT: MCBRYDE, DOMINIQUE
01:29				SUB IN: SMITH, SEMAJ
01:05		22-9	H 13	GOOD! JUMPER by THOMAS, SAM
00:45	MISSED JUMPER by HARRINGTON, GABI			
00:41				REBOUND (DEF) by SMITH, SEMAJ
00:37				TURNOVER (BADPASS) by ALONSO, LUCIA
00:25	TURNOVER (BADPASS) by JOHNSTON, MCKENZIE			
00:25				STEAL by REESE, CATE
00:13				MISSED JUMPER by SMITH, SEMAJ
00:09				REBOUND (OFF) by STARKS, TEE TEE
00:08		24-9	H 15	GOOD! LAYUP by STARKS, TEE TEE

### Montana 9, Arizona 24

Points from (This Period)	MON	ARI
In the Paint	6	10
Off Turns	2	10
2nd Chance	0	10
Fast Break	0	4
Bench	2	4

**Official Box Score**  
**Montana vs Arizona**  
**Second Quarter Statistics Only**  
**December 05, 2018 at McKale Center (Lute & Bobbi Olson Court) - Tucson, Ariz.**



**Montana 16**

No.	Player	S	Pts	FG	3FG	FT	OR	DR	TR	PF	A	TO	Blk	Stl	Min	+/-
01	MAYHUE, KATIE		8	3-5	1-1	1-1	1	1	2	1	1	2	0	0	8	-11
23	GOLIGOSKI, TAYLOR		0	0-1	0-0	0-0	0	0	0	0	0	0	0	0	2	-2
24	HENDERSON, JACE		0	0-0	0-0	0-0	0	1	1	0	1	0	0	0	5	-6
32	JOHNSTON, MCKENZIE		0	0-1	0-0	0-2	0	0	0	1	1	1	0	0	8	-9
44	STOCKHOLM, EMMA		0	0-0	0-0	0-0	0	0	0	0	0	0	0	0	0	0
03	HARRINGTON, GABI		1	0-3	0-0	1-2	1	1	2	0	1	0	0	1	8	-11
11	ANDERSON, ABBY		2	1-2	0-0	0-0	0	0	0	0	0	0	1	0	4	-4
13	FROHLICH, KYLIE		0	0-0	0-0	0-0	1	1	2	1	0	1	0	0	7	-9
20	GFELLER, CARMEN		5	2-2	1-1	0-0	0	0	0	0	0	1	0	0	4	-7
22	SCHWEYEN, JORDYN		0	0-0	0-0	0-0	0	0	0	1	0	0	0	0	4	-6
	TEAM						0	0	0	0		0				
<b>TOTALS</b>			<b>16</b>	<b>6-14</b>	<b>2-2</b>	<b>2-5</b>	<b>0</b>	<b>0</b>	<b>7</b>	<b>4</b>	<b>4</b>	<b>5</b>	<b>1</b>	<b>1</b>	<b>50</b>	

*Shooting By Period*

Period	FG	FG%	3FG	3FG%	FT	FT%
3rd Qtr	4-11	36%	1-3	33%	5-8	63%
4th Qtr	3-13	23%	3-7	43%	3-4	75%
2nd Half	6-14	43%	2-2	100%	2-5	40%
2nd Half	7-24	29%	4-10	40%	8-12	67%
Game	17-48	35.4%	6-13	46.2%	11-20	55.0%

**Arizona 29**

No.	Player	S	Pts	FG	3FG	FT	OR	DR	TR	PF	A	TO	Blk	Stl	Min	+/-
02	MCDONALD, AARI		7	2-4	1-3	2-2	0	0	0	1	2	0	0	0	7	10
04	ALONSO, LUCIA		3	1-1	1-1	0-0	0	1	1	2	0	1	0	1	6	6
14	THOMAS, SAM		2	1-3	0-1	0-0	2	1	3	0	2	0	0	0	6	6
20	MCBRYDE, DOMINIQUE		0	0-0	0-0	0-0	0	0	0	0	0	0	0	0	0	0
25	REESE, CATE		6	2-4	0-0	2-2	2	3	5	1	0	1	0	1	7	10
10	STARKS, TEE TEE		5	2-2	1-1	0-2	1	2	3	1	0	0	0	1	7	10
22	MALECHA, LINDSEY		0	0-0	0-0	0-0	0	0	0	0	0	0	0	0	2	4
24	NIXON, BRYCE		0	0-3	0-2	0-0	0	0	0	0	2	0	0	0	8	9
34	SMITH, SEMAJ		6	3-4	0-0	0-0	1	0	1	0	1	0	1	1	7	10
	TEAM						1	0	1	0		0				
<b>TOTALS</b>			<b>29</b>	<b>11-21</b>	<b>3-8</b>	<b>4-6</b>	<b>0</b>	<b>0</b>	<b>14</b>	<b>5</b>	<b>7</b>	<b>2</b>	<b>1</b>	<b>4</b>	<b>50</b>	

*Shooting By Period*

Period	FG	FG%	3FG	3FG%	FT	FT%
3rd Qtr	10-13	77%	3-4	75%	0-0	0%
4th Qtr	8-19	42%	1-3	33%	7-7	100%
2nd Half	11-21	52%	3-8	38%	4-6	67%
2nd Half	18-32	56%	4-7	57%	7-7	100%
Game	37-72	51.4%	9-22	40.9%	17-21	81.0%

Game Notes:

Officials: Michol Murray, Lorena Ahumada, Alejandro Moreno

Start Time: 2018-12-05 17:59:02

End Time: 2018-12-05 19:46:59

Game Duration: 107

Score	1st	2nd	3rd	4th	TOT
MON	9	16	14	12	<b>51</b>
ARI	24	29	23	24	<b>100</b>

Points from (This Period)	MON	ARI
In the Paint	4	16
Off Turns	2	12
2nd Chance	3	9
Fast Break	2	6
Bench	8	11

**Official Play-By-Play  
Montana vs Arizona  
Second Quarter**

**December 05, 2018 at McKale Center (Lute & Bobbi Olson Court) - Tucson, Ariz.**



**Period 2**

**Starters:**

**Montana:** 1 MAYHUE, KATIE; 23 GOLIGOSKI, TAYLOR; 24 HENDERSON, JACE; 32 JOHNSTON, MCKENZIE; 44 STOCKHOLM, EMMA;

**Arizona:** 2 MCDONALD, AARI; 4 ALONSO, LUCIA; 14 THOMAS, SAM; 20 MCBRYDE, DOMINIQUE; 25 REESE, CATE;

Time	VISITORS: Montana	Score	Margin	HOME: Arizona
09:45				MISSED 3PTR by THOMAS, SAM
09:42				REBOUND (OFF) by STARKS, TEE TEE
09:33		26-9	H 17	GOOD! LAYUP by THOMAS, SAM
09:33				ASSIST by SMITH, SEMAJ
09:16	MISSED JUMPER by GOLIGOSKI, TAYLOR			
09:12				REBOUND (DEF) by ALONSO, LUCIA
08:51				MISSED 3PTR by NIXON, BRYCE
08:46	REBOUND (DEF) by HENDERSON, JACE			
08:27				FOUL (PERSONAL) by STARKS, TEE TEE
08:23	MISSED JUMPER by JOHNSTON, MCKENZIE			
08:17				REBOUND (DEF) by STARKS, TEE TEE
08:09	FOUL (PERSONAL) by SCHWEYEN, JORDYN			
08:09				MISSED FT by STARKS, TEE TEE
08:09				REBOUND (OFF) by TEAM
08:09	SUB OUT: HENDERSON, JACE			
08:09	SUB IN: ANDERSON, ABBY			
08:08				MISSED FT by STARKS, TEE TEE
08:06	REBOUND (DEF) by FROHLICH, KYLIE			
07:40	TURNOVER (LOSTBALL) by JOHNSTON, MCKENZIE			
07:40				STEAL by ALONSO, LUCIA
07:36				MISSED LAYUP by NIXON, BRYCE
07:36	BLOCK by ANDERSON, ABBY			
07:36				REBOUND (OFF) by TEAM
07:33	SUB OUT: SCHWEYEN, JORDYN			
07:33	SUB IN: MAYHUE, KATIE			
07:33	SUB OUT: GOLIGOSKI, TAYLOR			
07:33	SUB IN: HARRINGTON, GABI			
07:30				MISSED JUMPER by THOMAS, SAM
07:27				REBOUND (OFF) by THOMAS, SAM
07:18		29-9	H 20	GOOD! 3PTR by ALONSO, LUCIA
07:18				ASSIST by THOMAS, SAM
06:53	MISSED LAYUP by ANDERSON, ABBY			
06:53				BLOCK by SMITH, SEMAJ
06:47	REBOUND (OFF) by MAYHUE, KATIE			
06:47	GOOD! JUMPER by MAYHUE, KATIE [PNT]	29-11	H 18	
06:47				FOUL (PERSONAL) by ALONSO, LUCIA
06:47				SUB OUT: STARKS, TEE TEE
06:47				SUB IN: MCDONALD, AARI
06:47				SUB OUT: SMITH, SEMAJ
06:47				SUB IN: REESE, CATE
06:47	GOOD! FT by MAYHUE, KATIE	29-12	H 17	
06:46				MISSED 3PTR by MCDONALD, AARI
06:43	REBOUND (DEF) by MAYHUE, KATIE			
06:17	MISSED LAYUP by HARRINGTON, GABI			
06:13				REBOUND (DEF) by REESE, CATE
06:10				MISSED 3PTR by NIXON, BRYCE
06:07				REBOUND (OFF) by THOMAS, SAM
05:58				MISSED LAYUP by REESE, CATE
05:58				REBOUND (OFF) by REESE, CATE
05:58	FOUL (PERSONAL) by MAYHUE, KATIE			
05:58		30-12	H 18	GOOD! FT by REESE, CATE
05:58		31-12	H 19	GOOD! FT by REESE, CATE
05:58				SUB OUT: THOMAS, SAM
05:58				SUB IN: SMITH, SEMAJ
05:58	GOOD! JUMPER by MAYHUE, KATIE	31-14	H 17	
05:30				TURNOVER (BADPASS) by ALONSO, LUCIA
05:30	STEAL by HARRINGTON, GABI			
05:27				FOUL (PERSONAL) by ALONSO, LUCIA
05:27	MISSED FT by JOHNSTON, MCKENZIE			
05:27	REBOUND (OFF) by TEAM			
05:27	MISSED FT by JOHNSTON, MCKENZIE			
05:25				REBOUND (DEF) by REESE, CATE
05:16		33-14	H 19	GOOD! LAYUP by REESE, CATE
05:16				ASSIST by MCDONALD, AARI
05:01	TURNOVER (BADPASS) by MAYHUE, KATIE			
05:01				STEAL by SMITH, SEMAJ
04:53		35-14	H 21	GOOD! LAYUP by SMITH, SEMAJ [FB]
04:41	GOOD! LAYUP by ANDERSON, ABBY	35-16	H 19	
04:41	ASSIST by MAYHUE, KATIE			
04:23		37-16	H 21	GOOD! LAYUP by SMITH, SEMAJ



Time	VISITORS: Montana	Score	Margin	HOME: Arizona
04:23				ASSIST by NIXON, BRYCE
03:58	MISSED JUMPER by HARRINGTON, GABI			
03:58	REBOUND (OFF) by FROHLICH, KYLIE			
03:56				FOUL (PERSONAL) by MCDONALD, AARI
03:56				
03:56				SUB OUT: ALONSO, LUCIA
03:56				SUB IN: STARKS, TEE TEE
03:56	SUB OUT: ANDERSON, ABBY			
03:56	SUB IN: GFELLER, CARMEN			
03:40	TURNOVER (LOSTBALL) by GFELLER, CARMEN			
03:40				STEAL by REESE, CATE
03:33		40-16	H 24	GOOD! 3PTR by MCDONALD, AARI
03:33				ASSIST by NIXON, BRYCE
03:14	GOOD! 3PTR by MAYHUE, KATIE	40-19	H 21	
03:14	ASSIST by JOHNSTON, MCKENZIE			
02:58		43-19	H 24	GOOD! 3PTR by STARKS, TEE TEE
02:58				ASSIST by MCDONALD, AARI
02:44	FOUL (OFF) by FROHLICH, KYLIE			
02:44	TURNOVER (OFFENSIVE) by FROHLICH, KYLIE			
02:44	SUB OUT: FROHLICH, KYLIE			
02:44	SUB IN: HENDERSON, JACE			
02:37				MISSED JUMPER by SMITH, SEMAJ
02:34				REBOUND (OFF) by REESE, CATE
02:31				MISSED JUMPER by REESE, CATE
02:31				REBOUND (OFF) by SMITH, SEMAJ
02:31		45-19	H 26	GOOD! LAYUP by SMITH, SEMAJ [PNT]
02:22	TIMEOUT 30SEC			
02:22				SUB OUT: SMITH, SEMAJ
02:22				SUB IN: THOMAS, SAM
01:56	GOOD! 3PTR by GFELLER, CARMEN	45-22	H 23	
01:56	ASSIST by HARRINGTON, GABI			
01:42				MISSED 3PTR by MCDONALD, AARI
01:39	REBOUND (DEF) by HARRINGTON, GABI			
01:39				FOUL (PERSONAL) by REESE, CATE
01:39	GOOD! FT by HARRINGTON, GABI	45-23	H 22	
01:39	MISSED FT by HARRINGTON, GABI			
01:39	REBOUND (OFF) by HARRINGTON, GABI			
01:38	MISSED JUMPER by HARRINGTON, GABI			
01:34				REBOUND (DEF) by THOMAS, SAM
01:32	FOUL (PERSONAL) by JOHNSTON, MCKENZIE			
01:32		46-23	H 23	GOOD! FT by MCDONALD, AARI [FB]
01:32		47-23	H 24	GOOD! FT by MCDONALD, AARI [FB]
01:32				SUB OUT: NIXON, BRYCE
01:32				SUB IN: MALECHA, LINDSEY
01:32	SUB OUT: JOHNSTON, MCKENZIE			
01:32	SUB IN: SCHWEYEN, JORDYN			
01:31	TURNOVER (LOSTBALL) by MAYHUE, KATIE			
01:31				STEAL by STARKS, TEE TEE
01:26		49-23	H 26	GOOD! LAYUP by STARKS, TEE TEE [FB]
01:10	MISSED JUMPER by MAYHUE, KATIE			
01:07				REBOUND (DEF) by REESE, CATE
00:41		51-23	H 28	GOOD! LAYUP by REESE, CATE
00:41				ASSIST by THOMAS, SAM
00:22	MISSED JUMPER by MAYHUE, KATIE			
00:19				REBOUND (DEF) by STARKS, TEE TEE
00:17				TURNOVER (TRAVEL) by REESE, CATE
00:10	GOOD! JUMPER by GFELLER, CARMEN [FB]	51-25	H 26	
00:10	ASSIST by HENDERSON, JACE			
00:00		53-25	H 28	GOOD! LAYUP by MCDONALD, AARI

### Montana 25, Arizona 53

Points from (This Period)	MON	ARI
In the Paint	4	16
Off Turns	2	12
2nd Chance	3	9
Fast Break	2	6
Bench	8	11

**Official Box Score**  
**Montana vs Arizona**  
**Second Half Statistics Only**  
**December 05, 2018 at McKale Center (Lute & Bobbi Olson Court) - Tucson, Ariz.**



**Montana 26**

No.	Player	S	Pts	FG	3FG	FT	OR	DR	TR	PF	A	TO	Blk	Stl	Min	+/-
01	MAYHUE, KATIE		6	1-5	1-3	3-6	0	3	3	2	1	3	0	0	20	-21
03	HARRINGTON, GABI		0	0-0	0-0	0-0	0	0	0	2	0	1	0	0	9	-13
11	ANDERSON, ABBY		2	0-0	0-0	2-2	1	1	2	0	0	1	1	0	8	-4
13	FROHLICH, KYLIE		0	0-2	0-0	0-0	0	0	0	0	1	1	0	0	10	-12
20	GFELLER, CARMEN		0	0-0	0-0	0-0	0	0	0	0	0	0	0	0	2	-8
22	SCHWEYEN, JORDYN		3	1-3	1-2	0-0	1	0	1	1	0	0	0	0	11	-15
23	GOLIGOSKI, TAYLOR		3	1-4	1-2	0-0	0	1	1	1	0	1	1	0	11	-9
24	HENDERSON, JACE		1	0-2	0-0	1-2	1	0	1	0	2	1	0	0	10	-9
32	JOHNSTON, MCKENZIE		2	0-0	0-0	2-2	1	0	1	1	1	2	0	0	9	-5
44	STOCKHOLM, EMMA		9	4-8	1-3	0-0	0	2	2	0	0	0	1	0	10	-9
	TEAM		0	0-0	0-0	0-0	0	0	0	0	0	0	0	0	0	0
<b>TOTALS</b>			<b>26</b>	<b>7-24</b>	<b>4-10</b>	<b>8-12</b>	<b>0</b>	<b>0</b>	<b>11</b>	<b>7</b>	<b>5</b>	<b>10</b>	<b>3</b>	<b>0</b>	<b>100</b>	

*Shooting By Period*

Period	FG	FG%	3FG	3FG%	FT	FT%
3rd Qtr	4-11	36%	1-3	33%	5-8	63%
4th Qtr	3-13	23%	3-7	43%	3-4	75%
2nd Half	7-24	29%	4-10	40%	8-12	67%
Game	17-48	35.4%	6-13	46.2%	11-20	55.0%

*Last FG Half: MON 4th-05:31*

**Arizona 47**

No.	Player	S	Pts	FG	3FG	FT	OR	DR	TR	PF	A	TO	Blk	Stl	Min	+/-
02	MCDONALD, AARI		16	5-9	1-1	5-5	2	1	3	2	0	2	0	2	15	11
04	ALONSO, LUCIA		0	0-1	0-1	0-0	0	0	0	0	3	0	0	0	16	24
10	STARKS, TEE TEE		0	0-0	0-0	0-0	0	0	0	3	0	1	1	0	6	3
14	THOMAS, SAM		3	1-1	1-1	0-0	0	3	3	0	3	0	1	1	10	9
20	MCBRYDE, DOMINIQUE		9	4-4	1-1	0-0	0	5	5	0	2	0	0	2	17	17
22	MALECHA, LINDSEY		0	0-0	0-0	0-0	0	0	0	1	0	0	0	0	3	4
24	NIXON, BRYCE		4	2-3	0-0	0-0	2	0	2	0	1	0	0	1	10	12
25	REESE, CATE		8	3-10	0-1	2-2	3	5	8	3	0	3	0	1	8	11
34	SMITH, SEMAJ		7	3-4	1-2	0-0	0	1	1	2	0	1	0	0	14	14
	TEAM		0	0-0	0-0	0-0	0	0	0	0	0	0	0	0	0	0
<b>TOTALS</b>			<b>47</b>	<b>18-32</b>	<b>4-7</b>	<b>7-7</b>	<b>0</b>	<b>0</b>	<b>22</b>	<b>11</b>	<b>9</b>	<b>7</b>	<b>2</b>	<b>7</b>	<b>100</b>	

*Shooting By Period*

Period	FG	FG%	3FG	3FG%	FT	FT%
3rd Qtr	10-13	77%	3-4	75%	0-0	0%
4th Qtr	8-19	42%	1-3	33%	7-7	100%
2nd Half	18-32	56%	4-7	57%	7-7	100%
Game	37-72	51.4%	9-22	40.9%	17-21	81.0%

*Last FG Half: ARI 4th-00:00*

Game Notes:

Officials: Michol Murray, Lorena Ahumada, Alejandro Moreno

Start Time: 2018-12-05 17:59:02

End Time: 2018-12-05 19:46:59

Game Duration: 107

Score	1st	2nd	3rd	4th	TOT
MON	9	16	14	12	51
ARI	24	29	23	24	100

Points from (This Period)	MON	ARI
In the Paint	6	26
Off Turns	5	14
2nd Chance	0	8
Fast Break	2	15
Bench	5	11

**Official Box Score**  
**Montana vs Arizona**  
**Third Quarter Statistics Only**  
**December 05, 2018 at McKale Center (Lute & Bobbi Olson Court) - Tucson, Ariz.**



**Montana 26**

No.	Player	S	Pts	FG	3FG	FT	OR	DR	TR	PF	A	TO	Blk	Stl	Min	+/-
01	MAYHUE, KATIE		2	0-0	0-0	2-4	0	0	0	0	0	1	0	0	10	-9
23	GOLIGOSKI, TAYLOR		0	0-1	0-0	0-0	0	0	0	0	0	1	0	0	3	-5
24	HENDERSON, JACE		1	0-2	0-0	1-2	1	0	1	0	2	1	0	0	10	-9
32	JOHNSTON, MCKENZIE		2	0-0	0-0	2-2	1	0	1	1	1	2	0	0	9	-5
44	STOCKHOLM, EMMA		9	4-8	1-3	0-0	0	2	2	0	0	0	1	0	10	-9
03	HARRINGTON, GABI		0	0-0	0-0	0-0	0	0	0	1	0	1	0	0	7	-5
11	ANDERSON, ABBY		0	0-0	0-0	0-0	0	0	0	0	0	0	0	0	0	0
13	FROHLICH, KYLIE		0	0-0	0-0	0-0	0	0	0	0	0	0	0	0	0	0
20	GFELLER, CARMEN		0	0-0	0-0	0-0	0	0	0	0	0	0	0	0	0	0
22	SCHWEYEN, JORDYN		0	0-0	0-0	0-0	0	0	0	0	0	0	0	0	1	-3
<b>TEAM</b>							0	0	0	0		0				
<b>TOTALS</b>			<b>14</b>	<b>4-11</b>	<b>1-3</b>	<b>5-8</b>	<b>0</b>	<b>0</b>	<b>4</b>	<b>2</b>	<b>3</b>	<b>6</b>	<b>1</b>	<b>0</b>	<b>50</b>	

*Shooting By Period*

Period	FG	FG%	3FG	3FG%	FT	FT%
2nd Half	0-0	0%	0-0	0%	0-0	0%
Game	17-48	35.4%	6-13	46.2%	11-20	55.0%

**Arizona 47**

No.	Player	S	Pts	FG	3FG	FT	OR	DR	TR	PF	A	TO	Blk	Stl	Min	+/-
02	MCDONALD, AARI		4	2-4	0-0	0-0	1	0	1	2	0	2	0	1	8	3
04	ALONSO, LUCIA		0	0-0	0-0	0-0	0	0	0	0	2	0	0	0	6	12
14	THOMAS, SAM		3	1-1	1-1	0-0	0	3	3	0	3	0	1	1	10	9
20	MCBRYDE, DOMINIQUE		9	4-4	1-1	0-0	0	3	3	0	1	0	0	1	10	9
25	REESE, CATE		2	1-2	0-1	0-0	0	0	0	3	0	3	0	1	3	4
10	STARKS, TEE TEE		0	0-0	0-0	0-0	0	0	0	3	0	1	1	0	6	3
22	MALECHA, LINDSEY		0	0-0	0-0	0-0	0	0	0	0	0	0	0	0	0	0
24	NIXON, BRYCE		0	0-0	0-0	0-0	0	0	0	0	0	0	0	0	0	0
34	SMITH, SEMAJ		5	2-2	1-1	0-0	0	1	1	1	0	0	0	0	7	5
<b>TEAM</b>							0	0	0	0		0				
<b>TOTALS</b>			<b>23</b>	<b>10-13</b>	<b>3-4</b>	<b>0-0</b>	<b>0</b>	<b>0</b>	<b>8</b>	<b>9</b>	<b>6</b>	<b>6</b>	<b>2</b>	<b>4</b>	<b>50</b>	

*Shooting By Period*

Period	FG	FG%	3FG	3FG%	FT	FT%
2nd Half	0-0	0%	0-0	0%	0-0	0%
Game	37-72	51.4%	9-22	40.9%	17-21	81.0%

*Game Notes:*

Officials: Michol Murray, Lorena Ahumada, Alejandro Moreno

Start Time: 2018-12-05 17:59:02

End Time: 2018-12-05 19:46:59

Game Duration: 107

Score	1st	2nd	3rd	4th	TOT
MON	9	16	14	12	<b>51</b>
ARI	24	29	23	24	<b>100</b>

Points from (This Period)	MON	ARI
In the Paint	6	12
Off Turns	4	4
2nd Chance	0	2
Fast Break	2	4
Bench	0	5

**Official Play-By-Play  
Montana vs Arizona  
Third Quarter**

**December 05, 2018 at McKale Center (Lute & Bobbi Olson Court) - Tucson, Ariz.**



**Period 3**

**Starters:**

**Montana:** 1 MAYHUE, KATIE; 23 GOLIGOSKI, TAYLOR; 24 HENDERSON, JACE; 32 JOHNSTON, MCKENZIE; 44 STOCKHOLM, EMMA;

**Arizona:** 2 MCDONALD, AARI; 4 ALONSO, LUCIA; 14 THOMAS, SAM; 20 MCBRYDE, DOMINIQUE; 25 REESE, CATE;

Time	VISITORS: Montana	Score	Margin	HOME: Arizona
09:34	MISSED JUMPER by GOLIGOSKI, TAYLOR			
09:34				REBOUND (DEF) by THOMAS, SAM
09:34				BLOCK by THOMAS, SAM
09:25		55-25	H 30	GOOD! LAYUP by MCDONALD, AARI [FB]
08:59	GOOD! JUMPER by STOCKHOLM, EMMA	55-27	H 28	
08:59	ASSIST by HENDERSON, JACE			
08:38				MISSED 3PTR by REESE, CATE
08:34				REBOUND (OFF) by MCDONALD, AARI
08:26		57-27	H 30	GOOD! LAYUP by REESE, CATE
08:12	TURNOVER (BADPASS) by JOHNSTON, MCKENZIE			
08:12				STEAL by REESE, CATE
08:08				FOUL (OFF) by REESE, CATE
08:08				TURNOVER (OFFENSIVE) by REESE, CATE
07:55	TURNOVER (LOSTBALL) by GOLIGOSKI, TAYLOR			
07:55				STEAL by THOMAS, SAM
07:42		59-27	H 32	GOOD! LAYUP by MCBRYDE, DOMINIQUE
07:42				ASSIST by ALONSO, LUCIA
07:23	MISSED 3PTR by STOCKHOLM, EMMA			
07:19				REBOUND (DEF) by MCBRYDE, DOMINIQUE
07:18				FOUL (OFF) by REESE, CATE
07:18				TURNOVER (OFFENSIVE) by REESE, CATE
07:18	SUB OUT: GOLIGOSKI, TAYLOR			
07:18	SUB IN: HARRINGTON, GABI			
07:18				SUB OUT: REESE, CATE
07:18				SUB IN: SMITH, SEMAJ
07:17	TURNOVER (BADPASS) by MAYHUE, KATIE			
07:08				TURNOVER (LOSTBALL) by MCDONALD, AARI
07:03				FOUL (PERSONAL) by SMITH, SEMAJ
07:03	GOOD! FT by JOHNSTON, MCKENZIE [FB]	59-28	H 31	
07:03				SUB OUT: MCDONALD, AARI
07:03				SUB IN: STARKS, TEE TEE
07:03	GOOD! FT by JOHNSTON, MCKENZIE [FB]	59-29	H 30	
06:37		62-29	H 33	GOOD! 3PTR by THOMAS, SAM
06:37				ASSIST by ALONSO, LUCIA
06:13	MISSED 3PTR by STOCKHOLM, EMMA			
06:09				REBOUND (DEF) by MCBRYDE, DOMINIQUE
05:40		64-29	H 35	GOOD! JUMPER by MCBRYDE, DOMINIQUE [PNT]
05:40				ASSIST by THOMAS, SAM
05:29	TURNOVER (BADPASS) by HENDERSON, JACE			
05:29				STEAL by MCBRYDE, DOMINIQUE
05:13		66-29	H 37	GOOD! LAYUP by SMITH, SEMAJ
05:13				ASSIST by MCBRYDE, DOMINIQUE
05:11	TIMEOUT 30SEC			
05:11				
05:06				SUB OUT: ALONSO, LUCIA
05:06				SUB IN: MCDONALD, AARI
04:57	GOOD! 3PTR by STOCKHOLM, EMMA	66-32	H 34	
04:57	ASSIST by HENDERSON, JACE			
04:35				MISSED LAYUP by MCDONALD, AARI
04:35	BLOCK by STOCKHOLM, EMMA			
04:35	REBOUND (DEF) by STOCKHOLM, EMMA			
04:22	GOOD! LAYUP by STOCKHOLM, EMMA	66-34	H 32	
04:22	ASSIST by JOHNSTON, MCKENZIE			
03:54		68-34	H 34	GOOD! JUMPER by MCBRYDE, DOMINIQUE
03:41				FOUL (PERSONAL) by STARKS, TEE TEE
03:41				
03:41				SUB OUT: SMITH, SEMAJ
03:41				SUB IN: REESE, CATE
03:30	FOUL (OFF) by HARRINGTON, GABI			
03:30	TURNOVER (OFFENSIVE) by HARRINGTON, GABI			
03:21				FOUL (OFF) by REESE, CATE
03:21				TURNOVER (OFFENSIVE) by REESE, CATE
03:13				FOUL (PERSONAL) by MCDONALD, AARI
03:13	MISSED FT by MAYHUE, KATIE			
03:13	REBOUND (OFF) by TEAM			
03:13				SUB OUT: REESE, CATE
03:13				SUB IN: SMITH, SEMAJ
03:13	MISSED FT by MAYHUE, KATIE			
03:07	REBOUND (OFF) by HENDERSON, JACE			
02:53	MISSED JUMPER by HENDERSON, JACE			

Time	VISITORS: Montana	Score	Margin	HOME: Arizona
02:53				BLOCK by STARKS, TEE TEE
02:46	REBOUND (OFF) by JOHNSTON, MCKENZIE			
02:44	MISSED JUMPER by STOCKHOLM, EMMA			
02:39				REBOUND (DEF) by THOMAS, SAM
02:27		71-34	H 37	GOOD! 3PTR by SMITH, SEMAJ
02:27				ASSIST by THOMAS, SAM
02:03	GOOD! JUMPER by STOCKHOLM, EMMA [PNT]	71-36	H 35	
01:43				FOUL (OFF) by STARKS, TEE TEE
01:43				TURNOVER (OFFENSIVE) by STARKS, TEE TEE
01:35	TURNOVER (LOSTBALL) by JOHNSTON, MCKENZIE			
01:35				STEAL by MCDONALD, AARI
01:35	FOUL (PERSONAL) by JOHNSTON, MCKENZIE			
01:35				FOUL (UNSPORTSMANLIKE) by MCDONALD, AARI
01:35				TURNOVER (OFFENSIVE) by MCDONALD, AARI
01:35	GOOD! FT by MAYHUE, KATIE	71-37	H 34	
01:35	GOOD! FT by MAYHUE, KATIE	71-38	H 33	
01:30	SUB OUT: JOHNSTON, MCKENZIE			
01:30	SUB IN: GOLIGOSKI, TAYLOR			
01:26	MISSED JUMPER by STOCKHOLM, EMMA			
01:22				REBOUND (DEF) by SMITH, SEMAJ
01:20		73-38	H 35	GOOD! LAYUP by MCDONALD, AARI [FB]
00:58				FOUL (PERSONAL) by STARKS, TEE TEE
00:58	GOOD! FT by HENDERSON, JACE	73-39	H 34	
00:58				SUB OUT: STARKS, TEE TEE
00:58				SUB IN: ALONSO, LUCIA
00:58	SUB OUT: GOLIGOSKI, TAYLOR			
00:58	SUB IN: SCHWEYEN, JORDYN			
00:57	MISSED FT by HENDERSON, JACE			
00:56				REBOUND (DEF) by MCBRYDE, DOMINIQUE
00:48				MISSED LAYUP by MCDONALD, AARI
00:44	REBOUND (DEF) by STOCKHOLM, EMMA			
00:33	MISSED JUMPER by HENDERSON, JACE			
00:29				REBOUND (DEF) by THOMAS, SAM
00:07		76-39	H 37	GOOD! 3PTR by MCBRYDE, DOMINIQUE
00:07				ASSIST by THOMAS, SAM

### Montana 39, Arizona 76

Points from (This Period)	MON	ARI
In the Paint	6	12
Off Turns	4	4
2nd Chance	0	2
Fast Break	2	4
Bench	0	5

**Official Box Score**  
**Montana vs Arizona**  
**Fourth Quarter Statistics Only**  
**December 05, 2018 at McKale Center (Lute & Bobbi Olson Court) - Tucson, Ariz.**



**Montana 12**

No.	Player	S	Pts	FG	3FG	FT	OR	DR	TR	PF	A	TO	Blk	Stl	Min	+/-
01	MAYHUE, KATIE		4	1-5	1-3	1-2	0	3	3	2	1	2	0	0	10	-12
23	GOLIGOSKI, TAYLOR		3	1-3	1-2	0-0	0	1	1	1	0	0	1	0	8	-4
24	HENDERSON, JACE		0	0-0	0-0	0-0	0	0	0	0	0	0	0	0	0	0
32	JOHNSTON, MCKENZIE		0	0-0	0-0	0-0	0	0	0	0	0	0	0	0	0	0
44	STOCKHOLM, EMMA		0	0-0	0-0	0-0	0	0	0	0	0	0	0	0	0	0
03	HARRINGTON, GABI		0	0-0	0-0	0-0	0	0	0	1	0	0	0	0	2	-8
11	ANDERSON, ABBY		2	0-0	0-0	2-2	1	1	2	0	0	1	1	0	8	-4
13	FROHLICH, KYLIE		0	0-2	0-0	0-0	0	0	0	0	1	1	0	0	10	-12
20	GFELLER, CARMEN		0	0-0	0-0	0-0	0	0	0	0	0	0	0	0	2	-8
22	SCHWEYEN, JORDYN		3	1-3	1-2	0-0	1	0	1	1	0	0	0	0	10	-12
	TEAM						0	0	0	0		0				
<b>TOTALS</b>			<b>12</b>	<b>3-13</b>	<b>3-7</b>	<b>3-4</b>	<b>0</b>	<b>0</b>	<b>7</b>	<b>5</b>	<b>2</b>	<b>4</b>	<b>2</b>	<b>0</b>	<b>50</b>	

*Shooting By Period*

Period	FG	FG%	3FG	3FG%	FT	FT%
Game	17-48	35.4%	6-13	46.2%	11-20	55.0%

**Arizona 24**

No.	Player	S	Pts	FG	3FG	FT	OR	DR	TR	PF	A	TO	Blk	Stl	Min	+/-
02	MCDONALD, AARI		12	3-5	1-1	5-5	1	1	2	0	0	0	0	1	7	8
04	ALONSO, LUCIA		0	0-1	0-1	0-0	0	0	0	0	1	0	0	0	10	12
14	THOMAS, SAM		0	0-0	0-0	0-0	0	0	0	0	0	0	0	0	0	0
20	MCBRYDE, DOMINIQUE		0	0-0	0-0	0-0	0	2	2	0	1	0	0	1	7	8
25	REESE, CATE		6	2-8	0-0	2-2	3	5	8	0	0	0	0	0	5	7
10	STARKS, TEE TEE		0	0-0	0-0	0-0	0	0	0	0	0	0	0	0	0	0
22	MALECHA, LINDSEY		0	0-0	0-0	0-0	0	0	0	1	0	0	0	0	3	4
24	NIXON, BRYCE		4	2-3	0-0	0-0	2	0	2	0	1	0	0	1	10	12
34	SMITH, SEMAJ		2	1-2	0-1	0-0	0	0	0	1	0	1	0	0	7	9
	TEAM						0	0	0	0		0				
<b>TOTALS</b>			<b>24</b>	<b>8-19</b>	<b>1-3</b>	<b>7-7</b>	<b>0</b>	<b>0</b>	<b>14</b>	<b>2</b>	<b>3</b>	<b>1</b>	<b>0</b>	<b>3</b>	<b>50</b>	

*Shooting By Period*

Period	FG	FG%	3FG	3FG%	FT	FT%
Game	37-72	51.4%	9-22	40.9%	17-21	81.0%

*Game Notes:*

Officials: Michol Murray, Lorena Ahumada, Alejandro Moreno

Start Time: 2018-12-05 17:59:02

End Time: 2018-12-05 19:46:59

Game Duration: 107

Score	1st	2nd	3rd	4th	TOT
MON	9	16	14	12	51
ARI	24	29	23	24	100

Points from (This Period)	MON	ARI
In the Paint	0	14
Off Turns	1	10
2nd Chance	0	6
Fast Break	0	11
Bench	5	6

**Official Play-By-Play  
Montana vs Arizona  
Fourth Quarter**

**December 05, 2018 at McKale Center (Lute & Bobbi Olson Court) - Tucson, Ariz.**



**Period 4**

**Starters:**

**Montana:** 1 MAYHUE, KATIE; 23 GOLIGOSKI, TAYLOR; 24 HENDERSON, JACE; 32 JOHNSTON, MCKENZIE; 44 STOCKHOLM, EMMA;

**Arizona:** 2 MCDONALD, AARI; 4 ALONSO, LUCIA; 14 THOMAS, SAM; 20 MCBRYDE, DOMINIQUE; 25 REESE, CATE;

Time	VISITORS: Montana	Score	Margin	HOME: Arizona
09:58				SUB OUT: THOMAS, SAM
09:58				SUB IN: NIXON, BRYCE
09:58	SUB OUT: HENDERSON, JACE			
09:58	SUB IN: FROHLICH, KYLIE			
09:58	SUB OUT: STOCKHOLM, EMMA			
09:58	SUB IN: GFELLER, CARMEN			
09:55	GOOD! 3PTR by MAYHUE, KATIE	76-42	H 34	
09:50		78-42	H 36	GOOD! LAYUP by MCDONALD, AARI [FB]
09:18	TURNOVER (BADPASS) by FROHLICH, KYLIE			
09:18				STEAL by MCBRYDE, DOMINIQUE
09:15		80-42	H 38	GOOD! LAYUP by MCDONALD, AARI [FB]
09:15	FOUL (PERSONAL) by MAYHUE, KATIE			
09:15		81-42	H 39	GOOD! FT by MCDONALD, AARI [FB]
09:06	TURNOVER (LOSTBALL) by MAYHUE, KATIE			
09:06				STEAL by NIXON, BRYCE
09:01		83-42	H 41	GOOD! LAYUP by NIXON, BRYCE [FB]
08:49	MISSED 3PTR by MAYHUE, KATIE			
08:45	REBOUND (OFF) by SCHWEYEN, JORDYN			
08:44	TURNOVER (TRAVEL) by MAYHUE, KATIE			
08:27		86-42	H 44	GOOD! 3PTR by MCDONALD, AARI
08:27				ASSIST by MCBRYDE, DOMINIQUE
07:57	MISSED JUMPER by SCHWEYEN, JORDYN			
07:54				REBOUND (DEF) by MCBRYDE, DOMINIQUE
07:49	FOUL (PERSONAL) by HARRINGTON, GABI			
07:49		87-42	H 45	GOOD! FT by MCDONALD, AARI [FB]
07:49	SUB OUT: GFELLER, CARMEN			
07:49	SUB IN: GOLIGOSKI, TAYLOR			
07:49	SUB OUT: HARRINGTON, GABI			
07:49	SUB IN: ANDERSON, ABBY			
07:49		88-42	H 46	GOOD! FT by MCDONALD, AARI [FB]
07:34	MISSED 3PTR by MAYHUE, KATIE			
07:31	REBOUND (OFF) by ANDERSON, ABBY			
07:29	TURNOVER (BADPASS) by ANDERSON, ABBY			
07:29				STEAL by MCDONALD, AARI
07:07		90-42	H 48	GOOD! LAYUP by SMITH, SEMAJ
07:07				ASSIST by NIXON, BRYCE
06:34	GOOD! 3PTR by SCHWEYEN, JORDYN	90-45	H 45	
06:34	ASSIST by FROHLICH, KYLIE			
06:18	FOUL (PERSONAL) by SCHWEYEN, JORDYN			
05:51				MISSED 3PTR by SMITH, SEMAJ
05:47				REBOUND (OFF) by MCDONALD, AARI
05:45				MISSED LAYUP by MCDONALD, AARI
05:42	REBOUND (DEF) by MAYHUE, KATIE			
05:31	GOOD! 3PTR by GOLIGOSKI, TAYLOR	90-48	H 42	
05:31	ASSIST by MAYHUE, KATIE			
05:21				TIMEOUT 30SEC
05:21				
05:21				SUB OUT: SMITH, SEMAJ
05:21				SUB IN: REESE, CATE
05:13				MISSED LAYUP by MCDONALD, AARI
05:09	REBOUND (DEF) by ANDERSON, ABBY			
04:59	MISSED 3PTR by SCHWEYEN, JORDYN			
04:56				REBOUND (DEF) by MCDONALD, AARI
04:35				MISSED LAYUP by REESE, CATE
04:32	REBOUND (DEF) by MAYHUE, KATIE			
04:20	MISSED 3PTR by GOLIGOSKI, TAYLOR			
04:16				REBOUND (DEF) by REESE, CATE
04:14	FOUL (PERSONAL) by GOLIGOSKI, TAYLOR			
04:14		91-48	H 43	GOOD! FT by MCDONALD, AARI [FB]
04:14		92-48	H 44	GOOD! FT by MCDONALD, AARI [FB]
03:51	MISSED JUMPER by FROHLICH, KYLIE			
03:47				REBOUND (DEF) by MCBRYDE, DOMINIQUE
03:40				MISSED LAYUP by REESE, CATE
03:40	BLOCK by ANDERSON, ABBY			
03:35	REBOUND (DEF) by MAYHUE, KATIE			
03:29	MISSED LAYUP by FROHLICH, KYLIE			
03:26				REBOUND (DEF) by REESE, CATE
03:05				MISSED LAYUP by REESE, CATE
03:02				REBOUND (OFF) by REESE, CATE
03:01				MISSED LAYUP by REESE, CATE

Time	VISITORS: Montana	Score	Margin	HOME: Arizona
02:57				REBOUND (OFF) by NIXON, BRYCE
02:47	FOUL (PERSONAL) by MAYHUE, KATIE			
02:47		93-48	H 45	GOOD! FT by REESE, CATE
02:47				SUB OUT: MCDONALD, AARI
02:47				SUB IN: MALECHA, LINDSEY
02:47				SUB OUT: MCBRYDE, DOMINIQUE
02:47				SUB IN: SMITH, SEMAJ
02:47		94-48	H 46	GOOD! FT by REESE, CATE
02:33				FOUL (PERSONAL) by SMITH, SEMAJ
02:33	GOOD! FT by ANDERSON, ABBY	94-49	H 45	
02:33	GOOD! FT by ANDERSON, ABBY	94-50	H 44	
02:26				TIMEOUT 30SEC
02:15				TURNOVER (BADPASS) by SMITH, SEMAJ
02:00				FOUL (PERSONAL) by MALECHA, LINDSEY
02:00	MISSED FT by MAYHUE, KATIE			
02:00	REBOUND (OFF) by TEAM			
02:00	GOOD! FT by MAYHUE, KATIE	94-51	H 43	
01:45				MISSED 3PTR by ALONSO, LUCIA
01:41				REBOUND (OFF) by REESE, CATE
01:40		96-51	H 45	GOOD! LAYUP by REESE, CATE
01:21	MISSED LAYUP by GOLIGOSKI, TAYLOR			
01:18				REBOUND (DEF) by REESE, CATE
00:50				MISSED JUMPER by NIXON, BRYCE
00:47	REBOUND (DEF) by GOLIGOSKI, TAYLOR			
00:40	MISSED JUMPER by MAYHUE, KATIE			
00:37				REBOUND (DEF) by REESE, CATE
00:23		98-51	H 47	GOOD! LAYUP by REESE, CATE
00:23				ASSIST by ALONSO, LUCIA
00:15	MISSED LAYUP by MAYHUE, KATIE			
00:11				REBOUND (DEF) by REESE, CATE
00:06				MISSED JUMPER by REESE, CATE
00:06				REBOUND (OFF) by REESE, CATE
00:02				MISSED JUMPER by REESE, CATE
00:02	BLOCK by GOLIGOSKI, TAYLOR			
00:02				REBOUND (OFF) by NIXON, BRYCE
00:00		100-51	H 49	GOOD! LAYUP by NIXON, BRYCE

### Montana 51, Arizona 100

Points from (This Period)	MON	ARI
In the Paint	0	14
Off Turns	1	10
2nd Chance	0	6
Fast Break	0	11
Bench	5	6



**Official Scoring/Possession Reference Chart  
Montana vs Arizona**

**Period 1**

**December 05, 2018 at McKale Center (Lute & Bobbi Olson Court) - Tucson, Ariz.**



**Period 1**

**Starters:**

**Montana:** 1 MAYHUE, KATIE; 23 GOLIGOSKI, TAYLOR; 24 HENDERSON, JACE; 32 JOHNSTON, MCKENZIE; 44 STOCKHOLM, EMMA;

**Arizona:** 2 MCDONALD, AARI; 4 ALONSO, LUCIA; 14 THOMAS, SAM; 20 MCBRYDE, DOMINIQUE; 25 REESE, CATE;

Time	VISITORS: Montana	Score	Margin	HOME: Arizona
09:25		1-0	H 1	GOOD! FT by REESE, CATE
09:25		2-0	H 2	GOOD! FT by REESE, CATE
08:18	GOOD! LAYUP by JOHNSTON, MCKENZIE	2-2	T	
08:02		5-2	H 3	GOOD! 3PTR by MCDONALD, AARI
07:35	GOOD! JUMPER by MAYHUE, KATIE	5-4	H 1	
07:19		7-4	H 3	GOOD! LAYUP by REESE, CATE
06:57	GOOD! LAYUP by JOHNSTON, MCKENZIE	7-6	H 1	
06:28		9-6	H 3	GOOD! LAYUP by MCDONALD, AARI
05:07		10-6	H 4	GOOD! FT by THOMAS, SAM
05:07		11-6	H 5	GOOD! FT by THOMAS, SAM
04:49	GOOD! LAYUP by HARRINGTON, GABI	11-8	H 3	
04:31		14-8	H 6	GOOD! 3PTR by THOMAS, SAM
04:14	GOOD! FT by MAYHUE, KATIE	14-9	H 5	
03:57		15-9	H 6	GOOD! FT by MCBRYDE, DOMINIQUE
03:57		16-9	H 7	GOOD! FT by MCBRYDE, DOMINIQUE
03:03		18-9	H 9	GOOD! LAYUP by REESE, CATE [FB]
01:43		20-9	H 11	GOOD! LAYUP by STARKS, TEE TEE [FB]
01:05		22-9	H 13	GOOD! JUMPER by THOMAS, SAM
00:08		24-9	H 15	GOOD! LAYUP by STARKS, TEE TEE

**Montana 9, Arizona 24**

**Official Scoring/Possession Reference Chart  
Montana vs Arizona  
Period 2**

**December 05, 2018 at McKale Center (Lute & Bobbi Olson Court) - Tucson, Ariz.**



**Period 2**

**Starters:**

**Montana:** 1 MAYHUE, KATIE; 23 GOLIGOSKI, TAYLOR; 24 HENDERSON, JACE; 32 JOHNSTON, MCKENZIE; 44 STOCKHOLM, EMMA;

**Arizona:** 2 MCDONALD, AARI; 4 ALONSO, LUCIA; 14 THOMAS, SAM; 20 MCBRYDE, DOMINIQUE; 25 REESE, CATE;

Time	VISITORS: Montana	Score	Margin	HOME: Arizona
09:33		26-9	H 17	GOOD! LAYUP by THOMAS, SAM
07:18		29-9	H 20	GOOD! 3PTR by ALONSO, LUCIA
06:47	GOOD! JUMPER by MAYHUE, KATIE [PNT]	29-11	H 18	
06:47	GOOD! FT by MAYHUE, KATIE	29-12	H 17	
05:58		30-12	H 18	GOOD! FT by REESE, CATE
05:58		31-12	H 19	GOOD! FT by REESE, CATE
05:58	GOOD! JUMPER by MAYHUE, KATIE	31-14	H 17	
05:16		33-14	H 19	GOOD! LAYUP by REESE, CATE
04:53		35-14	H 21	GOOD! LAYUP by SMITH, SEMAJ [FB]
04:41	GOOD! LAYUP by ANDERSON, ABBY	35-16	H 19	
04:23		37-16	H 21	GOOD! LAYUP by SMITH, SEMAJ
03:33		40-16	H 24	GOOD! 3PTR by MCDONALD, AARI
03:14	GOOD! 3PTR by MAYHUE, KATIE	40-19	H 21	
02:58		43-19	H 24	GOOD! 3PTR by STARKS, TEE TEE
02:31		45-19	H 26	GOOD! LAYUP by SMITH, SEMAJ [PNT]
01:56	GOOD! 3PTR by GFELLER, CARMEN	45-22	H 23	
01:39	GOOD! FT by HARRINGTON, GABI	45-23	H 22	
01:32		46-23	H 23	GOOD! FT by MCDONALD, AARI [FB]
01:32		47-23	H 24	GOOD! FT by MCDONALD, AARI [FB]
01:26		49-23	H 26	GOOD! LAYUP by STARKS, TEE TEE [FB]
00:41		51-23	H 28	GOOD! LAYUP by REESE, CATE
00:10	GOOD! JUMPER by GFELLER, CARMEN [FB]	51-25	H 26	
00:00		53-25	H 28	GOOD! LAYUP by MCDONALD, AARI

**Montana 25, Arizona 53**

**Official Scoring/Possession Reference Chart  
Montana vs Arizona  
Period 3**

**December 05, 2018 at McKale Center (Lute & Bobbi Olson Court) - Tucson, Ariz.**



**Period 3**

**Starters:**

**Montana:** 1 MAYHUE, KATIE; 23 GOLIGOSKI, TAYLOR; 24 HENDERSON, JACE; 32 JOHNSTON, MCKENZIE; 44 STOCKHOLM, EMMA;

**Arizona:** 2 MCDONALD, AARI; 4 ALONSO, LUCIA; 14 THOMAS, SAM; 20 MCBRYDE, DOMINIQUE; 25 REESE, CATE;

Time	VISITORS: Montana	Score	Margin	HOME: Arizona
09:25		55-25	H 30	GOOD! LAYUP by MCDONALD, AARI [FB]
08:59	GOOD! JUMPER by STOCKHOLM, EMMA	55-27	H 28	
08:26		57-27	H 30	GOOD! LAYUP by REESE, CATE
07:42		59-27	H 32	GOOD! LAYUP by MCBRYDE, DOMINIQUE
07:03	GOOD! FT by JOHNSTON, MCKENZIE [FB]	59-28	H 31	
07:03	GOOD! FT by JOHNSTON, MCKENZIE [FB]	59-29	H 30	
06:37		62-29	H 33	GOOD! 3PTR by THOMAS, SAM
05:40		64-29	H 35	GOOD! JUMPER by MCBRYDE, DOMINIQUE [PNT]
05:13		66-29	H 37	GOOD! LAYUP by SMITH, SEMAJ
04:57	GOOD! 3PTR by STOCKHOLM, EMMA	66-32	H 34	
04:22	GOOD! LAYUP by STOCKHOLM, EMMA	66-34	H 32	
03:54		68-34	H 34	GOOD! JUMPER by MCBRYDE, DOMINIQUE
02:27		71-34	H 37	GOOD! 3PTR by SMITH, SEMAJ
02:03	GOOD! JUMPER by STOCKHOLM, EMMA [PNT]	71-36	H 35	
01:35	GOOD! FT by MAYHUE, KATIE	71-37	H 34	
01:35	GOOD! FT by MAYHUE, KATIE	71-38	H 33	
01:20		73-38	H 35	GOOD! LAYUP by MCDONALD, AARI [FB]
00:58	GOOD! FT by HENDERSON, JACE	73-39	H 34	
00:07		76-39	H 37	GOOD! 3PTR by MCBRYDE, DOMINIQUE

**Montana 39, Arizona 76**

**Official Scoring/Possession Reference Chart  
Montana vs Arizona  
Period 4**

**December 05, 2018 at McKale Center (Lute & Bobbi Olson Court) - Tucson, Ariz.**



**Period 4**

**Starters:**

**Montana:** 1 MAYHUE, KATIE; 23 GOLIGOSKI, TAYLOR; 24 HENDERSON, JACE; 32 JOHNSTON, MCKENZIE; 44 STOCKHOLM, EMMA;

**Arizona:** 2 MCDONALD, AARI; 4 ALONSO, LUCIA; 14 THOMAS, SAM; 20 MCBRYDE, DOMINIQUE; 25 REESE, CATE;

Time	VISITORS: Montana	Score	Margin	HOME: Arizona
09:55	GOOD! 3PTR by MAYHUE, KATIE	76-42	H 34	
09:50		78-42	H 36	GOOD! LAYUP by MCDONALD, AARI [FB]
09:15		80-42	H 38	GOOD! LAYUP by MCDONALD, AARI [FB]
09:15		81-42	H 39	GOOD! FT by MCDONALD, AARI [FB]
09:01		83-42	H 41	GOOD! LAYUP by NIXON, BRYCE [FB]
08:27		86-42	H 44	GOOD! 3PTR by MCDONALD, AARI
07:49		87-42	H 45	GOOD! FT by MCDONALD, AARI [FB]
07:49		88-42	H 46	GOOD! FT by MCDONALD, AARI [FB]
07:07		90-42	H 48	GOOD! LAYUP by SMITH, SEMAJ
06:34	GOOD! 3PTR by SCHWEYEN, JORDYN	90-45	H 45	
05:31	GOOD! 3PTR by GOLIGOSKI, TAYLOR	90-48	H 42	
04:14		91-48	H 43	GOOD! FT by MCDONALD, AARI [FB]
04:14		92-48	H 44	GOOD! FT by MCDONALD, AARI [FB]
02:47		93-48	H 45	GOOD! FT by REESE, CATE
02:47		94-48	H 46	GOOD! FT by REESE, CATE
02:33	GOOD! FT by ANDERSON, ABBY	94-49	H 45	
02:33	GOOD! FT by ANDERSON, ABBY	94-50	H 44	
02:00	GOOD! FT by MAYHUE, KATIE	94-51	H 43	
01:40		96-51	H 45	GOOD! LAYUP by REESE, CATE
00:23		98-51	H 47	GOOD! LAYUP by REESE, CATE
00:00		100-51	H 49	GOOD! LAYUP by NIXON, BRYCE

**Montana 51, Arizona 100**

**Official Substitutions Log  
Montana vs Arizona  
Period 1**

**December 05, 2018 at McKale Center (Lute & Bobbi Olson Court) - Tucson, Ariz.**



<b>VISITORS: Montana</b>	<b>Time</b>	<b>Score</b>	<b>HOME: Arizona</b>
1 MAYHUE, KATIE			2 MCDONALD, AARI
23 GOLIGOSKI, TAYLOR			4 ALONSO, LUCIA
24 HENDERSON, JACE			14 THOMAS, SAM
32 JOHNSTON, MCKENZIE			20 MCBRYDE, DOMINIQUE
44 STOCKHOLM, EMMA			25 REESE, CATE
SUB OUT: 23 GOLIGOSKI, TAYLOR	05:16	6-9	
SUB IN: 3 HARRINGTON, GABI	05:16		
	04:14	9-14	SUB OUT: ALONSO, LUCIA
	04:14		SUB IN: STARKS, TEE TEE
SUB OUT: 44 STOCKHOLM, EMMA	03:57	9-15	
SUB IN: 20 GFELLER, CARMEN	03:57		
	02:32	9-18	SUB OUT: THOMAS, SAM
	02:32		SUB IN: ALONSO, LUCIA
SUB OUT: 1 MAYHUE, KATIE	02:32		
SUB IN: 22 SCHWEYEN, JORDYN	02:32		
	01:29	9-20	SUB OUT: MCDONALD, AARI
	01:29		SUB IN: THOMAS, SAM
	01:29		SUB OUT: MCBRYDE, DOMINIQUE
	01:29		SUB IN: SMITH, SEMAJ

**Montana 9, Arizona 24**

**Official Substitutions Log  
Montana vs Arizona  
Period 2**

**December 05, 2018 at McKale Center (Lute & Bobbi Olson Court) - Tucson, Ariz.**



VISITORS: Montana	Time	Score	HOME: Arizona
1 MAYHUE, KATIE			2 MCDONALD, AARI
23 GOLIGOSKI, TAYLOR			4 ALONSO, LUCIA
24 HENDERSON, JACE			14 THOMAS, SAM
32 JOHNSTON, MCKENZIE			20 MCBRYDE, DOMINIQUE
44 STOCKHOLM, EMMA			25 REESE, CATE
SUB OUT: 24 HENDERSON, JACE	08:09	9-26	
SUB IN: 11 ANDERSON, ABBY	08:09		
SUB OUT: 22 SCHWEYEN, JORDYN	07:33	9-26	
SUB IN: 1 MAYHUE, KATIE	07:33		
SUB OUT: 23 GOLIGOSKI, TAYLOR	07:33		
SUB IN: 3 HARRINGTON, GABI	07:33		
	06:47	11-29	SUB OUT: STARKS, TEE TEE
	06:47		SUB IN: MCDONALD, AARI
	06:47		SUB OUT: SMITH, SEMAJ
	06:47		SUB IN: REESE, CATE
	05:58	12-31	SUB OUT: THOMAS, SAM
	05:58		SUB IN: SMITH, SEMAJ
	03:56	16-37	SUB OUT: ALONSO, LUCIA
	03:56		SUB IN: STARKS, TEE TEE
SUB OUT: 11 ANDERSON, ABBY	03:56		
SUB IN: 20 GFELLER, CARMEN	03:56		
SUB OUT: 13 FROHLICH, KYLIE	02:44	19-43	
SUB IN: 24 HENDERSON, JACE	02:44		
	02:22	19-45	SUB OUT: SMITH, SEMAJ
	02:22		SUB IN: THOMAS, SAM
	01:32	23-47	SUB OUT: NIXON, BRYCE
	01:32		SUB IN: MALECHA, LINDSEY
SUB OUT: 32 JOHNSTON, MCKENZIE	01:32		
SUB IN: 22 SCHWEYEN, JORDYN	01:32		

**Montana 25, Arizona 53**

**Official Substitutions Log  
Montana vs Arizona  
Period 3**

**December 05, 2018 at McKale Center (Lute & Bobbi Olson Court) - Tucson, Ariz.**



<b>VISITORS: Montana</b>	<b>Time</b>	<b>Score</b>	<b>HOME: Arizona</b>
1 MAYHUE, KATIE			2 MCDONALD, AARI
23 GOLIGOSKI, TAYLOR			4 ALONSO, LUCIA
24 HENDERSON, JACE			14 THOMAS, SAM
32 JOHNSTON, MCKENZIE			20 MCBRYDE, DOMINIQUE
44 STOCKHOLM, EMMA			25 REESE, CATE
SUB OUT: 23 GOLIGOSKI, TAYLOR	07:18	27-59	
SUB IN: 3 HARRINGTON, GABI	07:18		
	07:18		SUB OUT: REESE, CATE
	07:18		SUB IN: SMITH, SEMAJ
	07:03	28-59	SUB OUT: MCDONALD, AARI
	07:03		SUB IN: STARKS, TEE TEE
	05:06	29-66	SUB OUT: ALONSO, LUCIA
	05:06		SUB IN: MCDONALD, AARI
	03:41	34-68	SUB OUT: SMITH, SEMAJ
	03:41		SUB IN: REESE, CATE
	03:13	34-68	SUB OUT: REESE, CATE
	03:13		SUB IN: SMITH, SEMAJ
SUB OUT: 32 JOHNSTON, MCKENZIE	01:30	38-71	
SUB IN: 23 GOLIGOSKI, TAYLOR	01:30		
	00:58	39-73	SUB OUT: STARKS, TEE TEE
	00:58		SUB IN: ALONSO, LUCIA
SUB OUT: 23 GOLIGOSKI, TAYLOR	00:58		
SUB IN: 22 SCHWEYEN, JORDYN	00:58		

**Montana 39, Arizona 76**

**Official Substitutions Log  
Montana vs Arizona  
Period 4**

**December 05, 2018 at McKale Center (Lute & Bobbi Olson Court) - Tucson, Ariz.**



<b>VISITORS: Montana</b>	<b>Time</b>	<b>Score</b>	<b>HOME: Arizona</b>
1 MAYHUE, KATIE			2 MCDONALD, AARI
23 GOLIGOSKI, TAYLOR			4 ALONSO, LUCIA
24 HENDERSON, JACE			14 THOMAS, SAM
32 JOHNSTON, MCKENZIE			20 MCBRYDE, DOMINIQUE
44 STOCKHOLM, EMMA			25 REESE, CATE
	09:58	-	SUB OUT: THOMAS, SAM
	09:58		SUB IN: NIXON, BRYCE
SUB OUT: 24 HENDERSON, JACE	09:58		
SUB IN: 13 FROHLICH, KYLIE	09:58		
SUB OUT: 44 STOCKHOLM, EMMA	09:58		
SUB IN: 20 GFELLER, CARMEN	09:58		
SUB OUT: 20 GFELLER, CARMEN	07:49	42-87	
SUB IN: 23 GOLIGOSKI, TAYLOR	07:49		
SUB OUT: 3 HARRINGTON, GABI	07:49		
SUB IN: 11 ANDERSON, ABBY	07:49		
	05:21	48-90	SUB OUT: SMITH, SEMAJ
	05:21		SUB IN: REESE, CATE
	02:47	48-93	SUB OUT: MCDONALD, AARI
	02:47		SUB IN: MALECHA, LINDSEY
	02:47		SUB OUT: MCBRYDE, DOMINIQUE
	02:47		SUB IN: SMITH, SEMAJ

**Montana 51, Arizona 100**



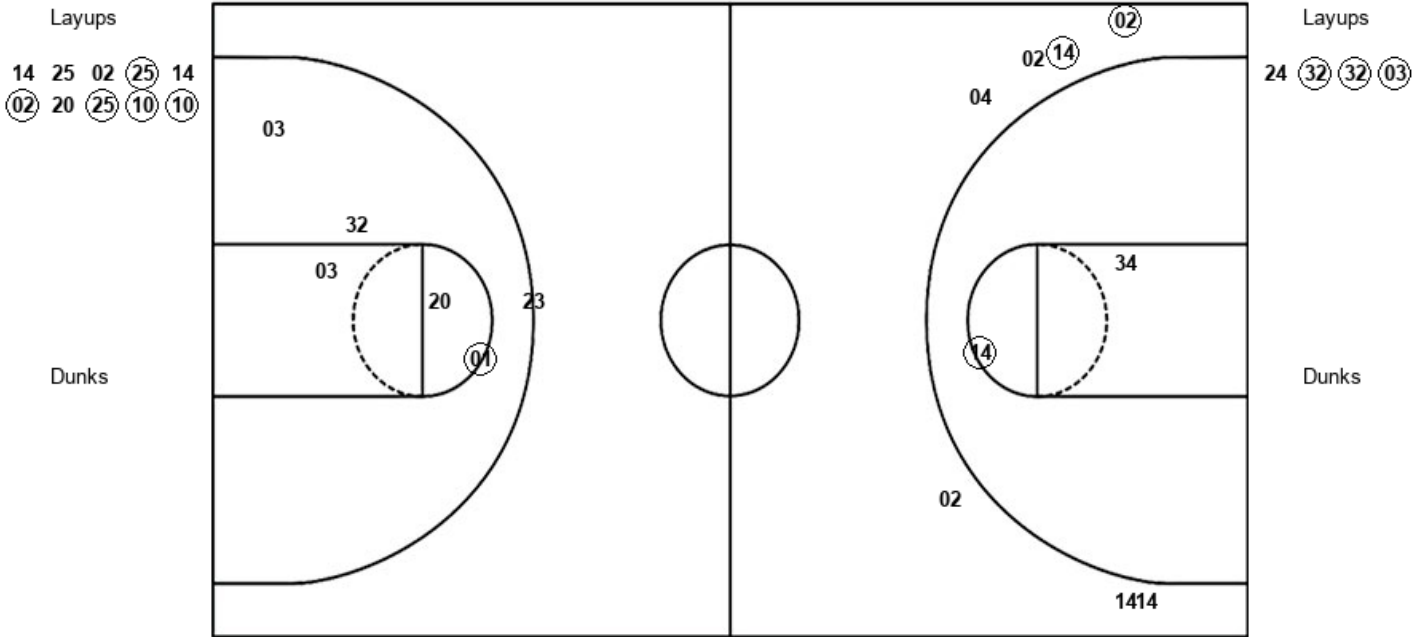
Official Shot Chart  
**Montana vs Arizona**  
 PERIOD 1 Shots

December 05, 2018 at McKale Center (Lute & Bobbi Olson Court) - Tucson, Ariz.



Arizona

Montana



ARI : Period 1	Made	Att	Pct
Layups	5	10	50.0
Dunks	0	0	0
2PT Field Goals	6	12	50.0
3PT Field Goals	2	7	28.6
<b>Total Field Goals</b>	<b>8</b>	<b>19</b>	<b>42.1</b>

MON : Period 1	Made	Att	Pct
Layups	3	4	75.0
Dunks	0	0	0
2PT Field Goals	4	9	44.4
3PT Field Goals	0	1	00.0
<b>Total Field Goals</b>	<b>4</b>	<b>10</b>	<b>40.0</b>

Official Shot Chart  
 Montana vs Arizona  
 PERIOD 2 Shots

December 05, 2018 at McKale Center (Lute & Bobbi Olson Court) - Tucson, Ariz.



Arizona

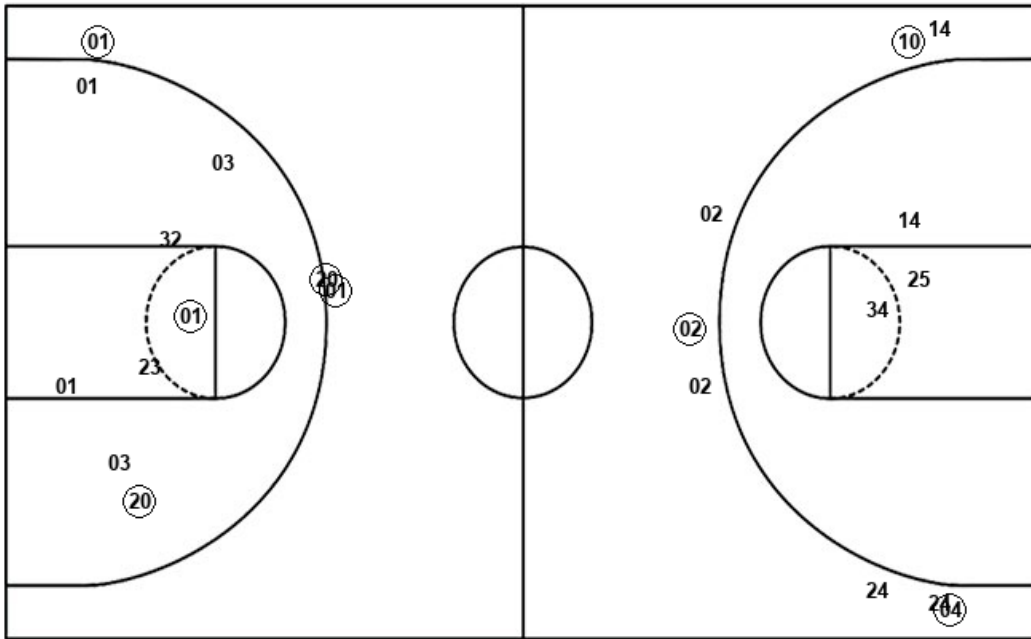
Montana

Layups  
 14 24 25 25 34  
 34 34 10 25 02

Layups  
 11 03 11

Dunks

Dunks



ARI : Period 2	Made	Att	Pct
Layups	8	10	80.0
Dunks	0	0	0
2PT Field Goals	8	13	61.5
3PT Field Goals	3	8	37.5
<b>Total Field Goals</b>	<b>11</b>	<b>21</b>	<b>52.4</b>

MON : Period 2	Made	Att	Pct
Layups	1	3	33.3
Dunks	0	0	0
2PT Field Goals	4	12	33.3
3PT Field Goals	2	2	100.0
<b>Total Field Goals</b>	<b>6</b>	<b>14</b>	<b>42.9</b>

Official Shot Chart  
**Montana vs Arizona**  
 PERIOD 3 Shots

December 05, 2018 at McKale Center (Lute & Bobbi Olson Court) - Tucson, Ariz.

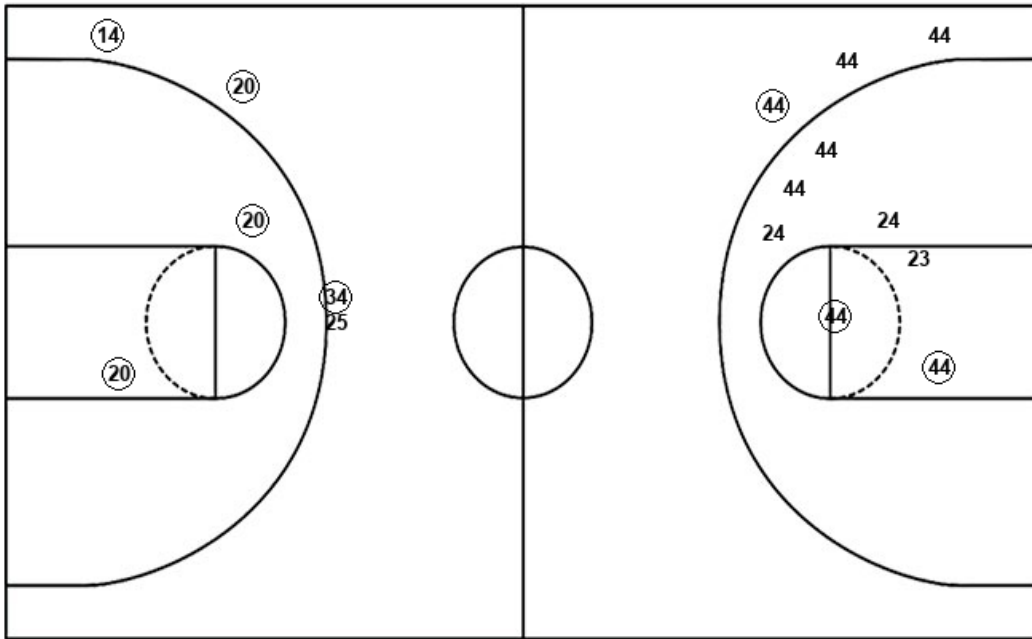


**Arizona**

**Montana**

Layups  
 (02) (25) (20) (34) 02  
 (02) 02

Layups



Dunks

ARI : Period 3	Made	Att	Pct
Layups	5	7	71.4
Dunks	0	0	0
2PT Field Goals	7	9	77.8
3PT Field Goals	3	4	75.0
<b>Total Field Goals</b>	<b>10</b>	<b>13</b>	<b>76.9</b>

MON : Period 3	Made	Att	Pct
Layups	1	1	100.0
Dunks	0	0	0
2PT Field Goals	3	8	37.5
3PT Field Goals	1	3	33.3
<b>Total Field Goals</b>	<b>4</b>	<b>11</b>	<b>36.4</b>

Official Shot Chart  
 Montana vs Arizona  
 PERIOD 4 Shots

December 05, 2018 at McKale Center (Lute & Bobbi Olson Court) - Tucson, Ariz.

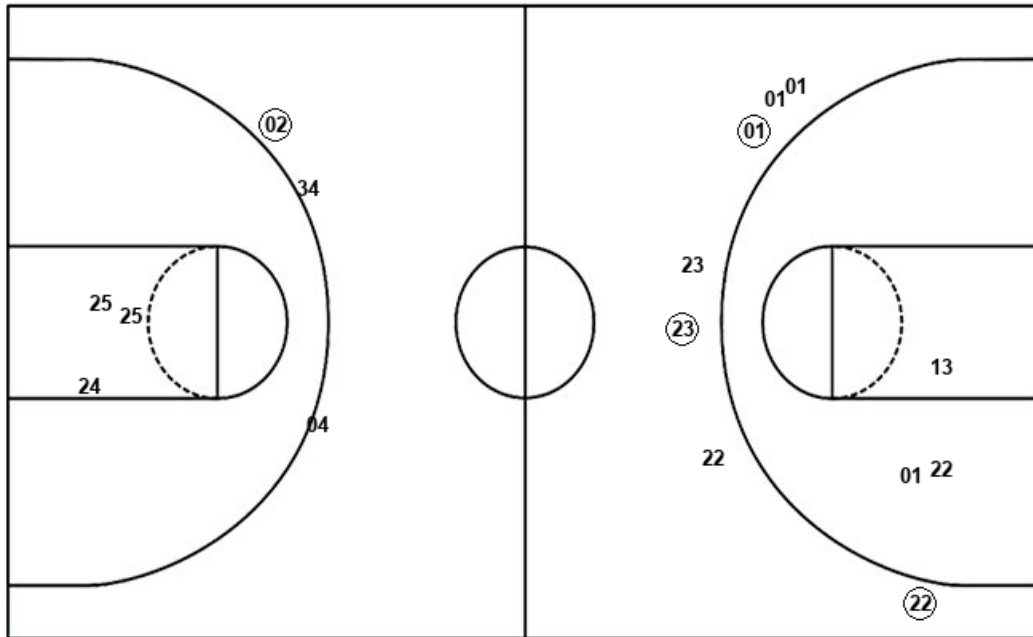


Arizona

Montana

Layups  
 02 02 24 34 02  
 02 25 25 25 25  
 25 25 24

Layups  
 13 23 01



Dunks

Dunks

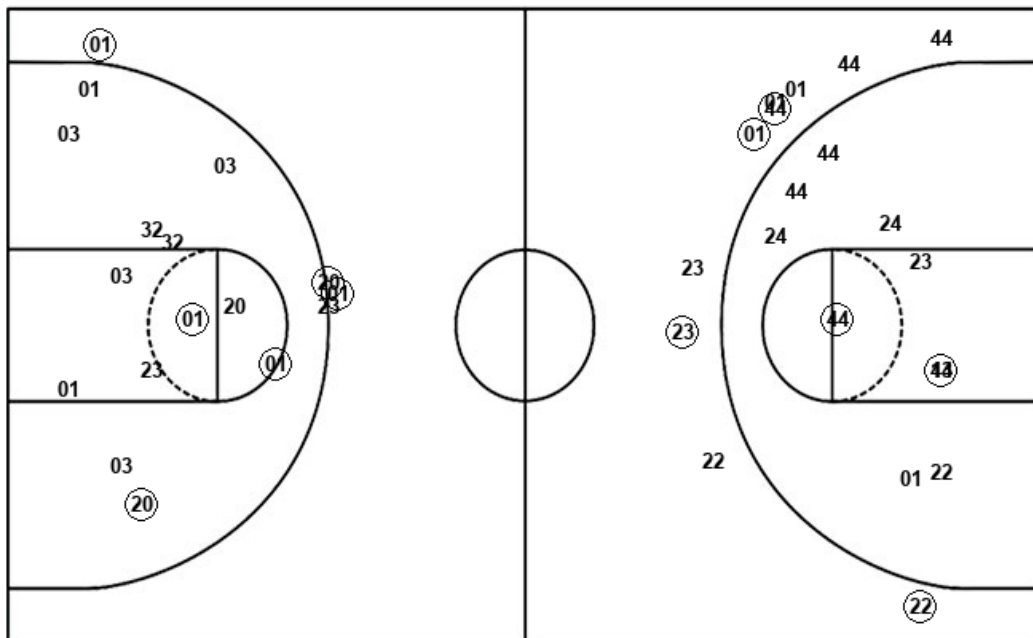
ARI : Period 4	Made	Att	Pct
Layups	7	13	53.8
Dunks	0	0	0
2PT Field Goals	7	16	43.8
3PT Field Goals	1	3	33.3
<b>Total Field Goals</b>	<b>8</b>	<b>19</b>	<b>42.1</b>

MON : Period 4	Made	Att	Pct
Layups	0	3	00.0
Dunks	0	0	0
2PT Field Goals	0	6	00.0
3PT Field Goals	3	7	42.9
<b>Total Field Goals</b>	<b>3</b>	<b>13</b>	<b>23.1</b>

**Official Shot Chart**  
**Montana vs Arizona**  
**Montana Team Shots**  
 December 05, 2018 at McKale Center (Lute & Bobbi Olson Court) - Tucson, Ariz.



Layups



Layups

24 (32) (32) (03) 11  
 03 (11) (44) 13 23  
 01

Dunks

Dunks

MON : Period 1	Made	Att	Pct
Layups	3	4	75.0
Dunks	0	0	0
2PT Field Goals	4	9	44.4
3PT Field Goals	0	1	00.0
<b>Total Field Goals</b>	<b>4</b>	<b>10</b>	<b>40.0</b>

MON : Period 2	Made	Att	Pct
Layups	1	3	33.3
Dunks	0	0	0
2PT Field Goals	4	12	33.3
3PT Field Goals	2	2	100.0
<b>Total Field Goals</b>	<b>6</b>	<b>14</b>	<b>42.9</b>

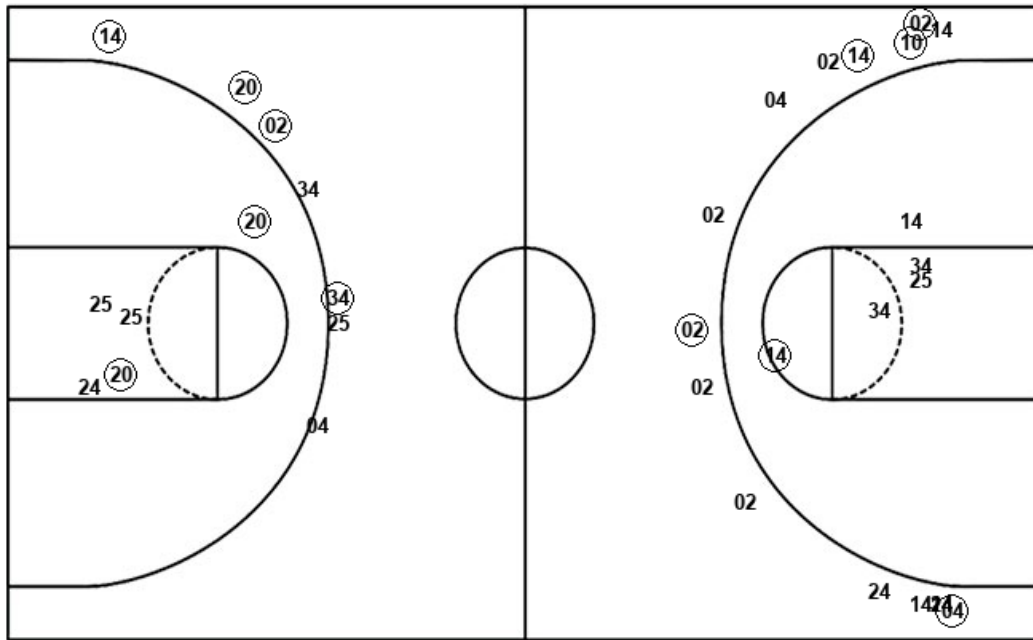
MON : Period 3	Made	Att	Pct
Layups	1	1	100.0
Dunks	0	0	0
2PT Field Goals	3	8	37.5
3PT Field Goals	1	3	33.3
<b>Total Field Goals</b>	<b>4</b>	<b>11</b>	<b>36.4</b>

MON : Period 4	Made	Att	Pct
Layups	0	3	00.0
Dunks	0	0	0
2PT Field Goals	0	6	00.0
3PT Field Goals	3	7	42.9
<b>Total Field Goals</b>	<b>3</b>	<b>13</b>	<b>23.1</b>

**Official Shot Chart**  
**Montana vs Arizona**  
**Arizona Team Shots**  
 December 05, 2018 at McKale Center (Lute & Bobbi Olson Court) - Tucson, Ariz.



Layups



Layups

14	25	02	25	14
02	20	25	10	10
14	24	25	25	34
34	34	10	25	02
02	25	20	34	02
02	02	02	02	24
34	02	02	25	25
25	25	25	25	24

Dunks

Dunks

ARI : Period 1	Made	Att	Pct
Layups	5	10	50.0
Dunks	0	0	0
2PT Field Goals	6	12	50.0
3PT Field Goals	2	7	28.6
<b>Total Field Goals</b>	<b>8</b>	<b>19</b>	<b>42.1</b>

ARI : Period 3	Made	Att	Pct
Layups	5	7	71.4
Dunks	0	0	0
2PT Field Goals	7	9	77.8
3PT Field Goals	3	4	75.0
<b>Total Field Goals</b>	<b>10</b>	<b>13</b>	<b>76.9</b>

ARI : Period 2	Made	Att	Pct
Layups	8	10	80.0
Dunks	0	0	0
2PT Field Goals	8	13	61.5
3PT Field Goals	3	8	37.5
<b>Total Field Goals</b>	<b>11</b>	<b>21</b>	<b>52.4</b>

ARI : Period 4	Made	Att	Pct
Layups	7	13	53.8
Dunks	0	0	0
2PT Field Goals	7	16	43.8
3PT Field Goals	1	3	33.3
<b>Total Field Goals</b>	<b>8</b>	<b>19</b>	<b>42.1</b>