

FINAL SCORE

Incarnate Word

42



Arizona

84



November 28, 2018 • McKale Center (Lute & Bobbi Olson Court) - Tucson, Ariz.

FINAL STATISTICS

Official Box Score
Incarnate Word vs Arizona
Game Totals -- Final Statistics
November 28, 2018 at McKale Center (Lute & Bobbi Olson Court) - Tucson, Ariz.



Incarnate Word 42

No.	Player	S	Pts	FG	3FG	FT	OR	DR	TR	PF	A	TO	Blk	Stl	Min	+/-
02	HENRY, LUNDEN		6	3-9	0-0	0-0	0	4	4	2	0	2	0	0	24	-26
04	BOWIE, GABBI		2	0-3	0-1	2-2	1	2	3	1	3	4	0	0	23	-26
11	ROBINSON, IMANI		9	4-11	1-4	0-2	1	4	5	2	2	7	0	2	26	-30
12	WIGGINS, ANGELICA		11	4-12	2-6	1-2	1	2	3	1	1	0	0	0	24	-25
15	OMOZEE, STARR		6	3-5	0-0	0-0	1	0	1	4	0	2	1	0	20	-25
00	RAY, MACY		0	0-0	0-0	0-0	0	2	2	0	2	2	0	0	10	-11
01	HENRY, ALEXIS		0	0-1	0-0	0-0	1	4	5	0	0	1	0	1	17	-15
05	SPEER, KARA		3	1-3	1-3	0-0	2	0	2	1	0	2	0	1	24	-18
10	JACKSON, VICTORIA		0	0-0	0-0	0-0	0	1	1	0	1	1	0	0	6	-10
22	HOLTER, LIZ		0	0-0	0-0	0-0	0	0	0	1	1	1	0	1	10	-8
32	NOAH, OLIVIA		5	2-8	0-4	1-2	0	1	1	1	0	2	0	0	16	-16
	TEAM						0	5	5	0		1				
TOTALS			42	17-52	4-18	4-8	7	25	32	13	10	25	1	5	200	

Shooting By Period

Period	FG	FG%	3FG	3FG%	FT	FT%
1st Qtr	7-13	54%	1-3	33%	1-2	50%
2nd Qtr	2-14	14%	1-7	14%	2-2	100%
3rd Qtr	3-12	25%	1-4	25%	1-2	50%
4th Qtr	5-13	38%	1-4	25%	0-2	00%
1st Half	9-27	33%	2-10	20%	3-4	75%
2nd Half	8-25	32%	2-8	25%	1-4	25%
Game	17-52	32.7%	4-18	22.2%	4-8	50.0%

Last FG: 4th-01:43
 Biggest Run: 5-0
 Largest lead: By 0 at -
 Technical Fouls: #15 OMOZEE @ 4th - 08:40;

Arizona 84

No.	Player	S	Pts	FG	3FG	FT	OR	DR	TR	PF	A	TO	Blk	Stl	Min	+/-
02	MCDONALD, AARI		24	7-19	1-6	9-9	0	3	3	3	3	3	0	3	29	33
04	ALONSO, LUCIA		14	5-8	4-6	0-0	0	0	0	0	4	1	0	1	25	27
14	THOMAS, SAM		4	2-6	0-2	0-0	0	1	1	0	1	0	0	4	28	30
20	MCBRYDE, DOMINIQUE		9	4-7	0-1	1-2	4	0	4	3	1	0	0	1	23	22
25	REESE, CATE		19	8-15	1-2	2-4	3	7	10	1	1	3	1	1	30	32
10	STARKS, TEE TEE		4	2-4	0-0	0-0	3	6	9	1	2	1	0	3	21	22
22	MALECHA, LINDSEY		4	2-2	0-0	0-0	0	0	0	0	0	0	0	1	4	3
24	NIXON, BRYCE		6	2-8	2-6	0-0	1	3	4	1	1	1	0	0	22	21
34	SMITH, SEMAJ		0	0-1	0-0	0-0	1	5	6	3	0	2	5	2	20	20
	TEAM						2	4	6	0		1				
TOTALS			84	32-70	8-23	12-15	14	29	43	12	13	12	6	16	200	

Shooting By Period

Period	FG	FG%	3FG	3FG%	FT	FT%
1st Qtr	11-19	58%	6-10	60%	3-4	75%
2nd Qtr	6-20	30%	0-6	00%	0-2	00%
3rd Qtr	7-13	54%	1-2	50%	3-3	100%
4th Qtr	8-18	44%	1-5	20%	6-6	100%
1st Half	17-39	44%	6-16	38%	3-6	50%
2nd Half	15-31	48%	2-7	29%	9-9	100%
Game	32-70	45.7%	8-23	34.8%	12-15	80.0%

Last FG: 4th-00:30
 Biggest Run: 11-0
 Largest lead: By 42 at 4-00:30
 Technical Fouls: None.

Game Notes:

Officials: Michael Price, Benny Luna, Teresa Turner
 Attendance: 1059

Start Time: 2018-11-28 01:30:43
 End Time: 2018-11-28 03:09:14
 Game Duration: 98

Score	1st	2nd	3rd	4th	TOT
UIW	16	7	8	11	42
ARI	31	12	18	23	84

UIW led for 0:00. ARI led for 39:27.
 Game was tied for 0:34.
 Times tied: 0 Lead Changes: 0

Points from	UIW	ARI
In the Paint	22	46
Off Turns	3	28
2nd Chance	2	13
Fast Break	4	16
Bench	8	14

Official Box Score
Incarinate Word vs Arizona
First Half Statistics Only
November 28, 2018 at McKale Center (Lute & Bobbi Olson Court) - Tucson, Ariz.



Incarinate Word 23

No.	Player	S	Pts	FG	3FG	FT	OR	DR	TR	PF	A	TO	Blk	Stl	Min	+/-
00	RAY, MACY		0	0-0	0-0	0-0	0	2	2	0	1	1	0	0	7	-7
01	HENRY, ALEXIS		0	0-1	0-0	0-0	1	2	3	0	0	0	0	0	8	-5
02	HENRY, LUNDEN		2	1-4	0-0	0-0	0	3	3	1	0	1	0	0	15	-18
10	JACKSON, VICTORIA		0	0-0	0-0	0-0	0	0	0	0	0	0	0	0	0	0
11	ROBINSON, IMANI		4	2-6	0-1	0-0	1	3	4	0	1	5	0	0	11	-15
12	WIGGINS, ANGELICA		9	3-6	2-4	1-2	0	0	0	1	0	0	0	0	12	-11
15	OMOZEE, STARR		6	3-5	0-0	0-0	1	0	1	1	0	1	1	0	12	-15
22	HOLTER, LIZ		0	0-0	0-0	0-0	0	0	0	0	0	1	0	0	6	-6
32	NOAH, OLIVIA		0	0-3	0-3	0-0	0	0	0	1	0	0	0	0	5	-2
04	BOWIE, GABBI		2	0-1	0-1	2-2	0	1	1	1	3	2	0	0	13	-13
05	SPEER, KARA		0	0-1	0-1	0-0	2	0	2	0	0	1	0	0	10	-8
	TEAM		0	0-0	0-0	0-0	0	3	3	0	0	0	0	0	0	0
TOTALS			23	9-27	2-10	3-4	0	0	19	5	5	12	1	0	100	

Shooting By Period

Period	FG	FG%	3FG	3FG%	FT	FT%
1st Qtr	7-13	54%	1-3	33%	1-2	50%
2nd Qtr	2-14	14%	1-7	14%	2-2	100%
1st Half	9-27	33%	2-10	20%	3-4	75%
Game	17-52	32.7%	4-18	22.2%	4-8	50.0%

Last FG Half: UIW 2nd-04:43

Arizona 43

No.	Player	S	Pts	FG	3FG	FT	OR	DR	TR	PF	A	TO	Blk	Stl	Min	+/-
02	MCDONALD, AARI		9	3-8	1-4	2-2	0	1	1	2	1	1	0	0	12	14
04	ALONSO, LUCIA		14	5-8	4-6	0-0	0	0	0	0	3	0	0	1	18	19
10	STARKS, TEE TEE		0	0-1	0-0	0-0	2	1	3	1	0	0	0	0	7	8
14	THOMAS, SAM		4	2-4	0-1	0-0	0	1	1	0	1	0	0	2	15	17
20	MCBRYDE, DOMINIQUE		5	2-5	0-1	1-2	3	0	3	1	1	0	0	1	15	14
22	MALECHA, LINDSEY		0	0-0	0-0	0-0	0	0	0	0	0	0	0	0	0	0
24	NIXON, BRYCE		0	0-3	0-2	0-0	0	1	1	1	1	0	0	0	11	7
25	REESE, CATE		11	5-10	1-2	0-2	1	2	3	1	0	1	0	1	15	15
34	SMITH, SEMAJ		0	0-0	0-0	0-0	1	3	4	2	0	1	3	1	8	6
	TEAM		0	0-0	0-0	0-0	2	4	6	0	0	0	0	0	0	0
TOTALS			43	17-39	6-16	3-6	0	0	22	8	7	3	3	6	100	

Shooting By Period

Period	FG	FG%	3FG	3FG%	FT	FT%
1st Qtr	11-19	58%	6-10	60%	3-4	75%
2nd Qtr	6-20	30%	0-6	00%	0-2	00%
1st Half	17-39	44%	6-16	38%	3-6	50%
Game	32-70	45.7%	8-23	34.8%	12-15	80.0%

Last FG Half: ARI 2nd-01:25

Game Notes:

Officials: Michael Price, Benny Luna, Teresa Turner
 Attendance: 1059

Start Time: 2018-11-28 01:30:43
 End Time: 2018-11-28 03:09:14
 Game Duration: 98

Score	1st	2nd	3rd	4th	TOT
UIW	16	7	8	11	42
ARI	31	12	18	23	84

Points from (This Period)	UIW	ARI
In the Paint	14	20
Off Turns	0	14
2nd Chance	2	4
Fast Break	2	5
Bench	0	0

Official Box Score
Incarnate Word vs Arizona
First Quarter Statistics Only
November 28, 2018 at McKale Center (Lute & Bobbi Olson Court) - Tucson, Ariz.



Incarnate Word 16

No.	Player	S	Pts	FG	3FG	FT	OR	DR	TR	PF	A	TO	Blk	Stl	Min	+/-
02	HENRY, LUNDEN		2	1-3	0-0	0-0	0	1	1	0	0	1	0	0	8	-13
04	BOWIE, GABBI		0	0-1	0-1	0-0	0	0	0	0	2	0	0	0	7	-10
11	ROBINSON, IMANI		4	2-4	0-1	0-0	0	2	2	0	1	3	0	0	8	-13
12	WIGGINS, ANGELICA		4	1-1	1-1	1-2	0	0	0	0	0	0	0	0	5	-8
15	OMOZEE, STARR		6	3-4	0-0	0-0	0	0	0	1	0	0	0	0	8	-13
00	RAY, MACY		0	0-0	0-0	0-0	0	0	0	0	1	0	0	0	3	-5
01	HENRY, ALEXIS		0	0-0	0-0	0-0	0	0	0	0	0	0	0	0	2	-2
05	SPEER, KARA		0	0-0	0-0	0-0	1	0	1	0	0	1	0	0	5	-8
10	JACKSON, VICTORIA		0	0-0	0-0	0-0	0	0	0	0	0	0	0	0	0	0
22	HOLTER, LIZ		0	0-0	0-0	0-0	0	0	0	0	0	0	0	0	1	-1
32	NOAH, OLIVIA		0	0-0	0-0	0-0	0	0	0	1	0	0	0	0	2	-2
	TEAM						0	1	1	0		0				
TOTALS			16	7-13	1-3	1-2	0	0	5	2	4	5	0	0	50	

Shooting By Period

Period	FG	FG%	3FG	3FG%	FT	FT%
1st Qtr	7-13	54%	1-3	33%	1-2	50%
2nd Qtr	2-14	14%	1-7	14%	2-2	100%
1st Half	7-13	54%	1-3	33%	1-2	50%
1st Half	9-27	33%	2-10	20%	3-4	75%
Game	17-52	32.7%	4-18	22.2%	4-8	50.0%

Arizona 31

No.	Player	S	Pts	FG	3FG	FT	OR	DR	TR	PF	A	TO	Blk	Stl	Min	+/-
02	MCDONALD, AARI		7	2-5	1-3	2-2	0	1	1	0	1	0	0	0	8	13
04	ALONSO, LUCIA		12	4-4	4-4	0-0	0	0	0	0	3	0	0	0	9	14
14	THOMAS, SAM		4	2-2	0-0	0-0	0	1	1	0	1	0	0	2	7	10
20	MCBRYDE, DOMINIQUE		1	0-2	0-0	1-2	1	0	1	1	0	0	0	1	8	11
25	REESE, CATE		7	3-3	1-1	0-0	0	1	1	0	0	0	0	0	7	12
10	STARKS, TEE TEE		0	0-1	0-0	0-0	2	0	2	1	0	0	0	0	4	6
22	MALECHA, LINDSEY		0	0-0	0-0	0-0	0	0	0	0	0	0	0	0	0	0
24	NIXON, BRYCE		0	0-2	0-2	0-0	0	0	0	0	0	0	0	0	4	3
34	SMITH, SEMAJ		0	0-0	0-0	0-0	0	1	1	1	0	1	2	1	4	6
	TEAM						1	1	2	0		0				
TOTALS			31	11-19	6-10	3-4	0	0	9	3	5	1	2	4	50	

Shooting By Period

Period	FG	FG%	3FG	3FG%	FT	FT%
1st Qtr	11-19	58%	6-10	60%	3-4	75%
2nd Qtr	6-20	30%	0-6	00%	0-2	00%
1st Half	11-19	58%	6-10	60%	3-4	75%
1st Half	17-39	44%	6-16	38%	3-6	50%
Game	32-70	45.7%	8-23	34.8%	12-15	80.0%

Game Notes:

Officials: Michael Price, Benny Luna, Teresa Turner
Attendance: 1059

Start Time: 2018-11-28 01:30:43
End Time: 2018-11-28 03:09:14
Game Duration: 98

Score	1st	2nd	3rd	4th	TOT
UIW	16	7	8	11	42
ARI	31	12	18	23	84

Points from (This Period)	UIW	ARI
In the Paint	12	10
Off Turns	0	6
2nd Chance	2	0
Fast Break	0	5
Bench	0	0

**Official Play-By-Play
Incarnate Word vs Arizona
First Quarter**

November 28, 2018 at McKale Center (Lute & Bobbi Olson Court) - Tucson, Ariz.



Period 1

Starters:

Incarnate Word: 2 HENRY, LUNDEN; 11 ROBINSON, IMANI; 12 WIGGINS, ANGELICA; 15 OMOZEE, STARR; 4 BOWIE, GABBI;
Arizona: 2 MCDONALD, AARI; 4 ALONSO, LUCIA; 14 THOMAS, SAM; 20 MCBRYDE, DOMINIQUE; 25 REESE, CATE;

Time	VISITORS: Incarnate Word	Score	Margin	HOME: Arizona
09:43		3-0	H 3	GOOD! 3PTR by ALONSO, LUCIA
09:43				ASSIST by MCDONALD, AARI
09:20	TURNOVER (LOSTBALL) by HENRY, LUNDEN			
09:20				STEAL by THOMAS, SAM
09:14				MISSED LAYUP by MCDONALD, AARI
09:11	REBOUND (DEF) by ROBINSON, IMANI			
09:02	GOOD! LAYUP by ROBINSON, IMANI [PNT]	3-2	H 1	
08:49				MISSED JUMPER by MCBRYDE, DOMINIQUE
08:46				REBOUND (OFF) by TEAM
08:39				MISSED 3PTR by MCDONALD, AARI
08:36	REBOUND (DEF) by HENRY, LUNDEN			
08:17	TURNOVER (BADPASS) by ROBINSON, IMANI			
08:17				STEAL by MCBRYDE, DOMINIQUE
08:10		6-2	H 4	GOOD! 3PTR by ALONSO, LUCIA [FB]
08:10				ASSIST by THOMAS, SAM
07:49	MISSED JUMPER by ROBINSON, IMANI			
07:46				REBOUND (DEF) by THOMAS, SAM
07:43				MISSED 3PTR by MCDONALD, AARI
07:38	REBOUND (DEF) by ROBINSON, IMANI			
07:33	GOOD! JUMPER by HENRY, LUNDEN [PNT]	6-4	H 2	
07:33	ASSIST by ROBINSON, IMANI			
07:04		8-4	H 4	GOOD! JUMPER by THOMAS, SAM [PNT]
06:48	TURNOVER (LOSTBALL) by ROBINSON, IMANI			
06:48				STEAL by THOMAS, SAM
06:43		10-4	H 6	GOOD! LAYUP by THOMAS, SAM [FB]
06:43	TIMEOUT 30SEC			
06:43				
06:43	SUB OUT: WIGGINS, ANGELICA			
06:43	SUB IN: SPEER, KARA			
06:28	GOOD! JUMPER by OMOZEE, STARR [PNT]	10-6	H 4	
06:28	ASSIST by BOWIE, GABBI			
06:16		13-6	H 7	GOOD! 3PTR by REESE, CATE
06:16				ASSIST by ALONSO, LUCIA
05:59	MISSED 3PTR by BOWIE, GABBI			
05:56				REBOUND (DEF) by MCDONALD, AARI
05:48		16-6	H 10	GOOD! 3PTR by MCDONALD, AARI
05:23	MISSED 3PTR by ROBINSON, IMANI			
05:18	REBOUND (OFF) by SPEER, KARA			
05:14	GOOD! LAYUP by OMOZEE, STARR	16-8	H 8	
04:58		18-8	H 10	GOOD! JUMPER by REESE, CATE
04:58				ASSIST by ALONSO, LUCIA
04:34	GOOD! JUMPER by ROBINSON, IMANI [PNT]	18-10	H 8	
04:18	FOUL (PERSONAL) by OMOZEE, STARR			
04:18		19-10	H 9	GOOD! FT by MCDONALD, AARI
04:18				SUB OUT: THOMAS, SAM
04:18				SUB IN: SMITH, SEMAJ
04:18				SUB OUT: MCBRYDE, DOMINIQUE
04:18				SUB IN: STARKS, TEE TEE
04:18	SUB OUT: BOWIE, GABBI			
04:18	SUB IN: RAY, MACY			
04:18		20-10	H 10	GOOD! FT by MCDONALD, AARI
04:01	MISSED JUMPER by HENRY, LUNDEN			
03:58				REBOUND (DEF) by REESE, CATE
03:48		22-10	H 12	GOOD! LAYUP by REESE, CATE
03:48				ASSIST by ALONSO, LUCIA
03:30	MISSED JUMPER by OMOZEE, STARR			
03:30				BLOCK by SMITH, SEMAJ
03:30				REBOUND (DEF) by TEAM
03:30				SUB OUT: ALONSO, LUCIA
03:30				SUB IN: NIXON, BRYCE
03:30				SUB OUT: REESE, CATE
03:30				SUB IN: MCBRYDE, DOMINIQUE
03:30	SUB OUT: HENRY, LUNDEN			
03:30	SUB IN: HENRY, ALEXIS			
03:30	SUB OUT: ROBINSON, IMANI			
03:30	SUB IN: NOAH, OLIVIA			
03:30	SUB OUT: OMOZEE, STARR			
03:30	SUB IN: WIGGINS, ANGELICA			
03:18				MISSED 3PTR by NIXON, BRYCE
03:14				REBOUND (OFF) by MCBRYDE, DOMINIQUE

Time	VISITORS: Incarnate Word	Score	Margin	HOME: Arizona
03:13				MISSED JUMPER by MCBRYDE, DOMINIQUE
03:13	REBOUND (DEF) by TEAM			
02:50				FOUL (PERSONAL) by STARKS, TEE TEE
02:50	MISSED FT by WIGGINS, ANGELICA			
02:50	REBOUND (OFF) by TEAM			
02:50	GOOD! FT by WIGGINS, ANGELICA	22-11	H 11	
02:41		24-11	H 13	GOOD! LAYUP by MCDONALD, AARI
02:23				SUB OUT: MCDONALD, AARI
02:23				SUB IN: ALONSO, LUCIA
02:20	GOOD! 3PTR by WIGGINS, ANGELICA	24-14	H 10	
02:20	ASSIST by RAY, MACY			
01:51		27-14	H 13	GOOD! 3PTR by ALONSO, LUCIA
01:35	TURNOVER (LOSTBALL) by SPEER, KARA			
01:35				STEAL by SMITH, SEMAJ
01:25	FOUL (PERSONAL) by NOAH, OLIVIA			
01:25				MISSED FT by MCBRYDE, DOMINIQUE
01:25				REBOUND (OFF) by TEAM
01:25		28-14	H 14	GOOD! FT by MCBRYDE, DOMINIQUE
01:19				FOUL (PERSONAL) by MCBRYDE, DOMINIQUE
01:19	SUB OUT: RAY, MACY			
01:19	SUB IN: BOWIE, GABBI			
01:19	SUB OUT: HENRY, ALEXIS			
01:19	SUB IN: ROBINSON, IMANI			
01:19	SUB OUT: SPEER, KARA			
01:19	SUB IN: HENRY, LUNDEN			
01:19	SUB OUT: WIGGINS, ANGELICA			
01:19	SUB IN: OMOZEE, STARR			
01:19	SUB OUT: NOAH, OLIVIA			
01:19	SUB IN: HOLTER, LIZ			
01:13	TURNOVER (TRAVEL) by ROBINSON, IMANI			
01:13				SUB OUT: MCBRYDE, DOMINIQUE
01:13				SUB IN: THOMAS, SAM
00:58				MISSED 3PTR by NIXON, BRYCE
00:53				REBOUND (OFF) by STARKS, TEE TEE
00:51				MISSED LAYUP by STARKS, TEE TEE
00:47				REBOUND (OFF) by STARKS, TEE TEE
00:43				FOUL (OFF) by SMITH, SEMAJ
00:43				TURNOVER (OFFENSIVE) by SMITH, SEMAJ
00:36	MISSED JUMPER by HENRY, LUNDEN			
00:36				BLOCK by SMITH, SEMAJ
00:28				REBOUND (DEF) by SMITH, SEMAJ
00:17		31-14	H 17	GOOD! 3PTR by ALONSO, LUCIA
00:01	GOOD! LAYUP by OMOZEE, STARR	31-16	H 15	
00:01	ASSIST by BOWIE, GABBI			

Incarnate Word 16, Arizona 31

Points from (This Period)	UIW	ARI
In the Paint	12	10
Off Turns	0	6
2nd Chance	2	0
Fast Break	0	5
Bench	0	0

Official Box Score
Incarnate Word vs Arizona
Second Quarter Statistics Only
November 28, 2018 at McKale Center (Lute & Bobbi Olson Court) - Tucson, Ariz.



Incarnate Word 7

No.	Player	S	Pts	FG	3FG	FT	OR	DR	TR	PF	A	TO	Blk	Stl	Min	+/-
02	HENRY, LUNDEN		0	0-1	0-0	0-0	0	2	2	1	0	0	0	0	7	-5
04	BOWIE, GABBI		2	0-0	0-0	2-2	0	1	1	1	1	2	0	0	6	-3
11	ROBINSON, IMANI		0	0-2	0-0	0-0	1	1	2	0	0	2	0	0	3	-2
12	WIGGINS, ANGELICA		5	2-5	1-3	0-0	0	0	0	1	0	0	0	0	7	-3
15	OMOZEE, STARR		0	0-1	0-0	0-0	1	0	1	0	0	1	1	0	4	-2
00	RAY, MACY		0	0-0	0-0	0-0	0	2	2	0	0	1	0	0	4	-2
01	HENRY, ALEXIS		0	0-1	0-0	0-0	1	2	3	0	0	0	0	0	6	-3
05	SPEER, KARA		0	0-1	0-1	0-0	1	0	1	0	0	0	0	0	5	0
10	JACKSON, VICTORIA		0	0-0	0-0	0-0	0	0	0	0	0	0	0	0	0	0
22	HOLTER, LIZ		0	0-0	0-0	0-0	0	0	0	0	0	1	0	0	5	-5
32	NOAH, OLIVIA		0	0-3	0-3	0-0	0	0	0	0	0	0	0	0	3	0
	TEAM						0	2	2	0		0				
TOTALS			7	2-14	1-7	2-2	0	0	14	3	1	7	1	0	50	

Shooting By Period

Period	FG	FG%	3FG	3FG%	FT	FT%
3rd Qtr	3-12	25%	1-4	25%	1-2	50%
4th Qtr	5-13	38%	1-4	25%	0-2	00%
2nd Half	2-14	14%	1-7	14%	2-2	100%
2nd Half	8-25	32%	2-8	25%	1-4	25%
Game	17-52	32.7%	4-18	22.2%	4-8	50.0%

Arizona 12

No.	Player	S	Pts	FG	3FG	FT	OR	DR	TR	PF	A	TO	Blk	Stl	Min	+/-
02	MCDONALD, AARI		2	1-3	0-1	0-0	0	0	0	2	0	1	0	0	4	1
04	ALONSO, LUCIA		2	1-4	0-2	0-0	0	0	0	0	0	0	0	1	9	5
14	THOMAS, SAM		0	0-2	0-1	0-0	0	0	0	0	0	0	0	0	8	7
20	MCBRYDE, DOMINIQUE		4	2-3	0-1	0-0	2	0	2	0	1	0	0	0	7	3
25	REESE, CATE		4	2-7	0-1	0-2	1	1	2	1	0	1	0	1	8	3
10	STARKS, TEE TEE		0	0-0	0-0	0-0	0	1	1	0	0	0	0	0	3	2
22	MALECHA, LINDSEY		0	0-0	0-0	0-0	0	0	0	0	0	0	0	0	0	0
24	NIXON, BRYCE		0	0-1	0-0	0-0	0	1	1	1	1	0	0	0	7	4
34	SMITH, SEMAJ		0	0-0	0-0	0-0	1	2	3	1	0	0	1	0	4	0
	TEAM						1	3	4	0		0				
TOTALS			12	6-20	0-6	0-2	0	0	13	5	2	2	1	2	50	

Shooting By Period

Period	FG	FG%	3FG	3FG%	FT	FT%
3rd Qtr	7-13	54%	1-2	50%	3-3	100%
4th Qtr	8-18	44%	1-5	20%	6-6	100%
2nd Half	6-20	30%	0-6	00%	0-2	00%
2nd Half	15-31	48%	2-7	29%	9-9	100%
Game	32-70	45.7%	8-23	34.8%	12-15	80.0%

Game Notes:

Officials: Michael Price, Benny Luna, Teresa Turner
 Attendance: 1059

Start Time: 2018-11-28 01:30:43
 End Time: 2018-11-28 03:09:14
 Game Duration: 98

Score	1st	2nd	3rd	4th	TOT
UIW	16	7	8	11	42
ARI	31	12	18	23	84

Points from (This Period)	UIW	ARI
In the Paint	2	10
Off Turns	0	8
2nd Chance	0	4
Fast Break	2	0
Bench	0	0

**Official Play-By-Play
Incarnate Word vs Arizona
Second Quarter**

November 28, 2018 at McKale Center (Lute & Bobbi Olson Court) - Tucson, Ariz.



Period 2

Starters:

Incarnate Word: 2 HENRY, LUNDEN; 11 ROBINSON, IMANI; 12 WIGGINS, ANGELICA; 15 OMOZEE, STARR; 4 BOWIE, GABBI;

Arizona: 2 MCDONALD, AARI; 4 ALONSO, LUCIA; 14 THOMAS, SAM; 20 MCBRYDE, DOMINIQUE; 25 REESE, CATE;

Time	VISITORS: Incarnate Word	Score	Margin	HOME: Arizona
09:47				MISSED 3PTR by MCBRYDE, DOMINIQUE
09:43	REBOUND (DEF) by BOWIE, GABBI			
09:37				FOUL (PERSONAL) by MCDONALD, AARI
09:37	GOOD! FT by BOWIE, GABBI [FB]	31-17	H 14	
09:37	GOOD! FT by BOWIE, GABBI [FB]	31-18	H 13	
09:10				MISSED LAYUP by MCDONALD, AARI
09:10				REBOUND (OFF) by TEAM
09:10	FOUL (PERSONAL) by HENRY, LUNDEN			
09:03				MISSED 3PTR by THOMAS, SAM
08:59				REBOUND (OFF) by REESE, CATE
08:58				MISSED LAYUP by REESE, CATE
08:56				REBOUND (OFF) by MCBRYDE, DOMINIQUE
08:56		33-18	H 15	GOOD! LAYUP by MCBRYDE, DOMINIQUE
08:56	SUB OUT: OMOZEE, STARR			
08:56	SUB IN: HENRY, ALEXIS			
08:53	TURNOVER (BADPASS) by ROBINSON, IMANI			
08:53	SUB OUT: ROBINSON, IMANI			
08:53	SUB IN: WIGGINS, ANGELICA			
08:31	FOUL (PERSONAL) by BOWIE, GABBI			
08:27		35-18	H 17	GOOD! JUMPER by MCBRYDE, DOMINIQUE
08:15	TURNOVER (BADPASS) by BOWIE, GABBI			
08:15				STEAL by REESE, CATE
08:07				MISSED 3PTR by MCDONALD, AARI
08:02	REBOUND (DEF) by TEAM			
07:45	GOOD! 3PTR by WIGGINS, ANGELICA	35-21	H 14	
07:45	ASSIST by BOWIE, GABBI			
07:29		37-21	H 16	GOOD! LAYUP by MCDONALD, AARI
07:16	TURNOVER (BADPASS) by BOWIE, GABBI			
07:01				FOUL (OFF) by MCDONALD, AARI
07:01				TURNOVER (OFFENSIVE) by MCDONALD, AARI
07:01	SUB OUT: BOWIE, GABBI			
07:01	SUB IN: RAY, MACY			
06:48	TURNOVER (TRAVEL) by RAY, MACY			
06:48				SUB OUT: MCDONALD, AARI
06:48				SUB IN: NIXON, BRYCE
06:31		39-21	H 18	GOOD! JUMPER by REESE, CATE
06:31				ASSIST by NIXON, BRYCE
06:14	MISSED JUMPER by WIGGINS, ANGELICA			
06:11				REBOUND (DEF) by TEAM
06:11	SUB OUT: HENRY, LUNDEN			
06:11	SUB IN: NOAH, OLIVIA			
05:57				MISSED LAYUP by REESE, CATE
05:53	REBOUND (DEF) by HENRY, ALEXIS			
05:49	TURNOVER (BADPASS) by HOLTER, LIZ			
05:33				MISSED 3PTR by ALONSO, LUCIA
05:30				REBOUND (OFF) by MCBRYDE, DOMINIQUE
05:28		41-21	H 20	GOOD! JUMPER by REESE, CATE
05:28				ASSIST by MCBRYDE, DOMINIQUE
05:21	TIMEOUT 30SEC			
05:21				SUB OUT: THOMAS, SAM
05:21				SUB IN: SMITH, SEMAJ
05:21	SUB OUT: HOLTER, LIZ			
05:21	SUB IN: SPEER, KARA			
05:15	MISSED 3PTR by NOAH, OLIVIA			
05:11				REBOUND (DEF) by NIXON, BRYCE
05:00				MISSED JUMPER by REESE, CATE
04:56				REBOUND (OFF) by SMITH, SEMAJ
04:56	FOUL (PERSONAL) by WIGGINS, ANGELICA			
04:56				MISSED FT by REESE, CATE
04:56				REBOUND (OFF) by TEAM
04:56				MISSED FT by REESE, CATE
04:53	REBOUND (DEF) by HENRY, ALEXIS			
04:43	GOOD! LAYUP by WIGGINS, ANGELICA	41-23	H 18	
04:22				MISSED 3PTR by REESE, CATE
04:19	REBOUND (DEF) by RAY, MACY			
04:14	MISSED 3PTR by WIGGINS, ANGELICA			
04:11				REBOUND (DEF) by SMITH, SEMAJ
03:43				MISSED 3PTR by ALONSO, LUCIA
03:40	REBOUND (DEF) by RAY, MACY			

Time	VISITORS: Incarnate Word	Score	Margin	HOME: Arizona
03:31	MISSED 3PTR by NOAH, OLIVIA			
03:28	REBOUND (OFF) by HENRY, ALEXIS			
03:27	MISSED LAYUP by HENRY, ALEXIS			
03:25	REBOUND (OFF) by SPEER, KARA			
03:25				FOUL (PERSONAL) by NIXON, BRYCE
03:25				SUB OUT: MCBRYDE, DOMINIQUE
03:25				SUB IN: STARKS, TEE TEE
03:25				SUB OUT: REESE, CATE
03:25				SUB IN: THOMAS, SAM
03:25	SUB OUT: RAY, MACY			
03:25	SUB IN: HENRY, LUNDEN			
03:25	SUB OUT: HENRY, ALEXIS			
03:25	SUB IN: OMOZEE, STARR			
03:25	SUB OUT: NOAH, OLIVIA			
03:25	SUB IN: BOWIE, GABBI			
03:20	MISSED 3PTR by WIGGINS, ANGELICA			
03:17				REBOUND (DEF) by STARKS, TEE TEE
03:06				MISSED JUMPER by ALONSO, LUCIA
03:05	REBOUND (DEF) by TEAM			
03:05	SUB OUT: WIGGINS, ANGELICA			
03:05	SUB IN: ROBINSON, IMANI			
02:51	MISSED JUMPER by OMOZEE, STARR			
02:48	REBOUND (OFF) by OMOZEE, STARR			
02:48	TURNOVER (TRAVEL) by OMOZEE, STARR			
02:33				MISSED JUMPER by THOMAS, SAM
02:33	BLOCK by OMOZEE, STARR			
02:28	REBOUND (DEF) by ROBINSON, IMANI			
02:14	MISSED JUMPER by ROBINSON, IMANI			
02:11				REBOUND (DEF) by SMITH, SEMAJ
02:06				MISSED JUMPER by NIXON, BRYCE
02:05	REBOUND (DEF) by HENRY, LUNDEN			
02:05				FOUL (PERSONAL) by SMITH, SEMAJ
01:54	MISSED JUMPER by ROBINSON, IMANI			
01:54				BLOCK by SMITH, SEMAJ
01:49	REBOUND (OFF) by ROBINSON, IMANI			
01:48	TURNOVER (BADPASS) by ROBINSON, IMANI			
01:48				STEAL by ALONSO, LUCIA
01:25		43-23	H 20	GOOD! LAYUP by ALONSO, LUCIA
01:15	MISSED 3PTR by SPEER, KARA			
01:14				REBOUND (DEF) by TEAM
01:14				SUB OUT: SMITH, SEMAJ
01:14				SUB IN: REESE, CATE
01:14	SUB OUT: ROBINSON, IMANI			
01:14	SUB IN: WIGGINS, ANGELICA			
01:14				SUB OUT: ALONSO, LUCIA
01:14				SUB IN: MCDONALD, AARI
00:55				MISSED JUMPER by REESE, CATE
00:52	REBOUND (DEF) by HENRY, LUNDEN			
00:47	MISSED JUMPER by HENRY, LUNDEN			
00:43				REBOUND (DEF) by REESE, CATE
00:31				FOUL (OFF) by REESE, CATE
00:31				TURNOVER (OFFENSIVE) by REESE, CATE
00:31	SUB OUT: HENRY, LUNDEN			
00:31	SUB IN: NOAH, OLIVIA			
00:03	MISSED 3PTR by NOAH, OLIVIA			
00:00				REBOUND (DEF) by TEAM

Incarnate Word 23, Arizona 43

Points from (This Period)	UIW	ARI
In the Paint	2	10
Off Turns	0	8
2nd Chance	0	4
Fast Break	2	0
Bench	0	0

Official Box Score
Incarnate Word vs Arizona
Second Half Statistics Only
November 28, 2018 at McKale Center (Lute & Bobbi Olson Court) - Tucson, Ariz.



Incarnate Word 19

No.	Player	S	Pts	FG	3FG	FT	OR	DR	TR	PF	A	TO	Blk	Stl	Min	+/-
00	RAY, MACY		0	0-0	0-0	0-0	0	0	0	0	1	1	0	0	3	-4
01	HENRY, ALEXIS		0	0-0	0-0	0-0	0	2	2	0	0	1	0	1	9	-10
02	HENRY, LUNDEN		4	2-5	0-0	0-0	0	1	1	1	0	1	0	0	10	-8
10	JACKSON, VICTORIA		0	0-0	0-0	0-0	0	1	1	0	1	1	0	0	6	-10
11	ROBINSON, IMANI		5	2-5	1-3	0-2	0	1	1	2	1	2	0	2	15	-15
12	WIGGINS, ANGELICA		2	1-6	0-2	0-0	1	2	3	0	1	0	0	0	12	-14
15	OMOZEE, STARR		0	0-0	0-0	0-0	0	0	0	3	0	1	0	0	7	-10
22	HOLTER, LIZ		0	0-0	0-0	0-0	0	0	0	1	1	0	0	1	4	-2
32	NOAH, OLIVIA		5	2-5	0-1	1-2	0	1	1	0	0	2	0	0	10	-14
04	BOWIE, GABBI		0	0-2	0-0	0-0	1	1	2	0	0	2	0	0	10	-13
05	SPEER, KARA		3	1-2	1-2	0-0	0	0	0	1	0	1	0	1	14	-10
	TEAM		0	0-0	0-0	0-0	0	2	2	0	0	1	0	0	0	0
	TOTALS		19	8-25	2-8	1-4	0	0	13	8	5	13	0	5	100	

Shooting By Period

Period	FG	FG%	3FG	3FG%	FT	FT%
3rd Qtr	3-12	25%	1-4	25%	1-2	50%
4th Qtr	5-13	38%	1-4	25%	0-2	00%
2nd Half	8-25	32%	2-8	25%	1-4	25%
Game	17-52	32.7%	4-18	22.2%	4-8	50.0%

Last FG Half: UIW 4th-01:43

Arizona 41

No.	Player	S	Pts	FG	3FG	FT	OR	DR	TR	PF	A	TO	Blk	Stl	Min	+/-
02	MCDONALD, AARI		15	4-11	0-2	7-7	0	2	2	1	2	2	0	3	16	19
04	ALONSO, LUCIA		0	0-0	0-0	0-0	0	0	0	0	1	1	0	0	7	8
10	STARKS, TEE TEE		4	2-3	0-0	0-0	1	5	6	0	2	1	0	3	13	14
14	THOMAS, SAM		0	0-2	0-1	0-0	0	0	0	0	0	0	0	2	14	13
20	MCBRYDE, DOMINIQUE		4	2-2	0-0	0-0	1	0	1	2	0	0	0	0	9	8
22	MALECHA, LINDSEY		4	2-2	0-0	0-0	0	0	0	0	0	0	0	1	4	3
24	NIXON, BRYCE		6	2-5	2-4	0-0	1	2	3	0	0	1	0	0	11	14
25	REESE, CATE		8	3-5	0-0	2-2	2	5	7	0	1	2	1	0	15	17
34	SMITH, SEMAJ		0	0-1	0-0	0-0	0	2	2	1	0	1	2	1	11	14
	TEAM		0	0-0	0-0	0-0	0	0	0	0	0	1	0	0	0	0
	TOTALS		41	15-31	2-7	9-9	0	0	21	4	6	9	3	10	100	

Shooting By Period

Period	FG	FG%	3FG	3FG%	FT	FT%
3rd Qtr	7-13	54%	1-2	50%	3-3	100%
4th Qtr	8-18	44%	1-5	20%	6-6	100%
2nd Half	15-31	48%	2-7	29%	9-9	100%
Game	32-70	45.7%	8-23	34.8%	12-15	80.0%

Last FG Half: ARI 4th-00:30

Game Notes:

Officials: Michael Price, Benny Luna, Teresa Turner
Attendance: 1059

Start Time: 2018-11-28 01:30:43
End Time: 2018-11-28 03:09:14
Game Duration: 98

Score	1st	2nd	3rd	4th	TOT
UIW	16	7	8	11	42
ARI	31	12	18	23	84

Points from (This Period)	UIW	ARI
In the Paint	8	26
Off Turns	3	14
2nd Chance	0	9
Fast Break	2	11
Bench	8	14

Official Box Score
Incarnate Word vs Arizona
Third Quarter Statistics Only
November 28, 2018 at McKale Center (Lute & Bobbi Olson Court) - Tucson, Ariz.



Incarnate Word 19

No.	Player	S	Pts	FG	3FG	FT	OR	DR	TR	PF	A	TO	Blk	Stl	Min	+/-
02	HENRY, LUNDEN		2	1-2	0-0	0-0	0	0	0	1	0	0	0	0	6	-6
04	BOWIE, GABBI		0	0-1	0-0	0-0	1	0	1	0	0	2	0	0	7	-6
11	ROBINSON, IMANI		5	2-4	1-3	0-0	0	1	1	1	0	1	0	1	7	-6
12	WIGGINS, ANGELICA		0	0-4	0-1	0-0	0	2	2	0	1	0	0	0	8	-12
15	OMOZEE, STARR		0	0-0	0-0	0-0	0	0	0	1	0	1	0	0	6	-6
00	RAY, MACY		0	0-0	0-0	0-0	0	0	0	0	1	1	0	0	3	-4
01	HENRY, ALEXIS		0	0-0	0-0	0-0	0	1	1	0	0	1	0	1	4	-4
05	SPEER, KARA		0	0-0	0-0	0-0	0	0	0	0	0	0	0	0	5	-2
10	JACKSON, VICTORIA		0	0-0	0-0	0-0	0	0	0	0	0	0	0	0	0	0
22	HOLTER, LIZ		0	0-0	0-0	0-0	0	0	0	0	0	0	0	0	0	0
32	NOAH, OLIVIA		1	0-1	0-0	1-2	0	0	0	0	0	0	0	0	4	-4
	TEAM						0	0	0	0		0				
TOTALS			8	3-12	1-4	1-2	0	0	5	3	2	6	0	2	50	

Shooting By Period

Period	FG	FG%	3FG	3FG%	FT	FT%
2nd Half	0-0	0%	0-0	0%	0-0	0%
Game	17-52	32.7%	4-18	22.2%	4-8	50.0%

Arizona 41

No.	Player	S	Pts	FG	3FG	FT	OR	DR	TR	PF	A	TO	Blk	Stl	Min	+/-
02	MCDONALD, AARI		5	1-3	0-0	3-3	0	1	1	0	1	2	0	0	10	10
04	ALONSO, LUCIA		0	0-0	0-0	0-0	0	0	0	0	0	0	0	0	2	2
14	THOMAS, SAM		0	0-2	0-1	0-0	0	0	0	0	0	0	0	2	9	8
20	MCBRYDE, DOMINIQUE		4	2-2	0-0	0-0	1	0	1	2	0	0	0	0	9	8
25	REESE, CATE		2	1-2	0-0	0-0	1	3	4	0	1	0	1	0	10	10
10	STARKS, TEE TEE		4	2-3	0-0	0-0	0	2	2	0	2	1	0	2	8	8
22	MALECHA, LINDSEY		0	0-0	0-0	0-0	0	0	0	0	0	0	0	0	0	0
24	NIXON, BRYCE		3	1-1	1-1	0-0	0	1	1	0	0	1	0	0	1	2
34	SMITH, SEMAJ		0	0-0	0-0	0-0	0	1	1	0	0	0	0	0	1	2
	TEAM						0	0	0	0		1				
TOTALS			18	7-13	1-2	3-3	0	0	10	2	4	5	1	4	50	

Shooting By Period

Period	FG	FG%	3FG	3FG%	FT	FT%
2nd Half	0-0	0%	0-0	0%	0-0	0%
Game	32-70	45.7%	8-23	34.8%	12-15	80.0%

Game Notes:

Officials: Michael Price, Benny Luna, Teresa Turner
 Attendance: 1059

Start Time: 2018-11-28 01:30:43
 End Time: 2018-11-28 03:09:14
 Game Duration: 98

Score	1st	2nd	3rd	4th	TOT
UIW	16	7	8	11	42
ARI	31	12	18	23	84

Points from (This Period)	UIW	ARI
In the Paint	4	12
Off Turns	0	4
2nd Chance	0	2
Fast Break	0	5
Bench	1	7

**Official Play-By-Play
Incarnate Word vs Arizona
Third Quarter**

November 28, 2018 at McKale Center (Lute & Bobbi Olson Court) - Tucson, Ariz.



Period 3

Starters:

Incarnate Word: 2 HENRY, LUNDEN; 11 ROBINSON, IMANI; 12 WIGGINS, ANGELICA; 15 OMOZEE, STARR; 4 BOWIE, GABBI;

Arizona: 2 MCDONALD, AARI; 4 ALONSO, LUCIA; 14 THOMAS, SAM; 20 MCBRYDE, DOMINIQUE; 25 REESE, CATE;

Time	VISITORS: Incarnate Word	Score	Margin	HOME: Arizona
09:45	GOOD! LAYUP by ROBINSON, IMANI	43-25	H 18	
09:22				MISSED 3PTR by THOMAS, SAM
09:19				REBOUND (OFF) by MCBRYDE, DOMINIQUE
09:09	FOUL (PERSONAL) by OMOZEE, STARR			
09:09		44-25	H 19	GOOD! FT by MCDONALD, AARI
09:09		45-25	H 20	GOOD! FT by MCDONALD, AARI
09:02	TURNOVER (BADPASS) by OMOZEE, STARR			
09:02				SUB OUT: ALONSO, LUCIA
09:02				SUB IN: STARKS, TEE TEE
08:55				MISSED LAYUP by MCDONALD, AARI
08:50	REBOUND (DEF) by WIGGINS, ANGELICA			
08:42	MISSED JUMPER by BOWIE, GABBI			
08:39				REBOUND (DEF) by REESE, CATE
08:16		47-25	H 22	GOOD! LAYUP by STARKS, TEE TEE
08:01				FOUL (PERSONAL) by MCBRYDE, DOMINIQUE
07:43	MISSED JUMPER by WIGGINS, ANGELICA			
07:39				REBOUND (DEF) by MCDONALD, AARI
07:27				MISSED LAYUP by REESE, CATE
07:24	REBOUND (DEF) by ROBINSON, IMANI			
07:22	TURNOVER (BADPASS) by ROBINSON, IMANI			
07:14				TURNOVER (LOSTBALL) by MCDONALD, AARI
07:14	STEAL by ROBINSON, IMANI			
07:05	MISSED 3PTR by ROBINSON, IMANI			
07:01				REBOUND (DEF) by REESE, CATE
06:57				TURNOVER (10SEC) by
06:57				TIMEOUT 30SEC
06:57	SUB OUT: BOWIE, GABBI			
06:57	SUB IN: RAY, MACY			
06:55	TURNOVER (BADPASS) by RAY, MACY			
06:55				STEAL by STARKS, TEE TEE
06:33		49-25	H 24	GOOD! LAYUP by MCBRYDE, DOMINIQUE
06:33				ASSIST by STARKS, TEE TEE
06:13	MISSED LAYUP by WIGGINS, ANGELICA			
06:10				REBOUND (DEF) by STARKS, TEE TEE
06:07		51-25	H 26	GOOD! LAYUP by REESE, CATE [FB]
06:07				ASSIST by STARKS, TEE TEE
05:43	MISSED JUMPER by HENRY, LUNDEN			
05:40				REBOUND (DEF) by STARKS, TEE TEE
05:23		53-25	H 28	GOOD! LAYUP by MCBRYDE, DOMINIQUE
05:23				ASSIST by REESE, CATE
05:00	GOOD! JUMPER by HENRY, LUNDEN [PNT]	53-27	H 26	
05:00	ASSIST by WIGGINS, ANGELICA			
04:52		55-27	H 28	GOOD! LAYUP by MCDONALD, AARI [FB]
04:52	FOUL (PERSONAL) by ROBINSON, IMANI			
04:52				
04:52	SUB OUT: WIGGINS, ANGELICA			
04:52	SUB IN: SPEER, KARA			
04:52		56-27	H 29	GOOD! FT by MCDONALD, AARI [FB]
04:25	GOOD! 3PTR by ROBINSON, IMANI	56-30	H 26	
04:25	ASSIST by RAY, MACY			
04:05	FOUL (PERSONAL) by HENRY, LUNDEN			
04:00				TURNOVER (BADPASS) by MCDONALD, AARI
03:59	SUB OUT: RAY, MACY			
03:59	SUB IN: HENRY, ALEXIS			
03:59	SUB OUT: HENRY, LUNDEN			
03:59	SUB IN: BOWIE, GABBI			
03:59	SUB OUT: OMOZEE, STARR			
03:59	SUB IN: NOAH, OLIVIA			
03:38	MISSED 3PTR by ROBINSON, IMANI			
03:35				REBOUND (DEF) by REESE, CATE
03:20				TURNOVER (BADPASS) by STARKS, TEE TEE
03:15	TURNOVER (BADPASS) by BOWIE, GABBI			
03:15				STEAL by THOMAS, SAM
02:54				MISSED JUMPER by THOMAS, SAM
02:54	REBOUND (DEF) by HENRY, ALEXIS			
02:54	SUB OUT: ROBINSON, IMANI			
02:54	SUB IN: WIGGINS, ANGELICA			
02:32	TURNOVER (BADPASS) by BOWIE, GABBI			
02:32				STEAL by STARKS, TEE TEE
02:25				MISSED LAYUP by STARKS, TEE TEE

Time	VISITORS: Incarnate Word	Score	Margin	HOME: Arizona
02:22	REBOUND (DEF) by WIGGINS, ANGELICA			
02:16	TURNOVER (BADPASS) by HENRY, ALEXIS			
02:16				STEAL by THOMAS, SAM
01:53		58-30	H 28	GOOD! LAYUP by STARKS, TEE TEE
01:30				FOUL (PERSONAL) by MCBRYDE, DOMINIQUE
01:30	MISSED FT by NOAH, OLIVIA			
01:30	REBOUND (OFF) by TEAM			
01:29				SUB OUT: STARKS, TEE TEE
01:29				SUB IN: SMITH, SEMAJ
01:29				SUB OUT: THOMAS, SAM
01:29				SUB IN: ALONSO, LUCIA
01:29				SUB OUT: MCBRYDE, DOMINIQUE
01:29				SUB IN: NIXON, BRYCE
01:29	GOOD! FT by NOAH, OLIVIA	58-31	H 27	
01:18		61-31	H 30	GOOD! 3PTR by NIXON, BRYCE
01:18				ASSIST by MCDONALD, AARI
01:00	MISSED 3PTR by WIGGINS, ANGELICA			
00:56	REBOUND (OFF) by BOWIE, GABBI			
00:49	MISSED JUMPER by WIGGINS, ANGELICA			
00:49				BLOCK by REESE, CATE
00:43				REBOUND (DEF) by NIXON, BRYCE
00:32				TURNOVER (BADPASS) by NIXON, BRYCE
00:32	STEAL by HENRY, ALEXIS			
00:05	MISSED LAYUP by NOAH, OLIVIA			
00:01				REBOUND (DEF) by SMITH, SEMAJ
00:00				MISSED LAYUP by MCDONALD, AARI
00:00				REBOUND (OFF) by REESE, CATE

Incarnate Word 31, Arizona 61

Points from (This Period)	UIW	ARI
In the Paint	4	12
Off Turns	0	4
2nd Chance	0	2
Fast Break	0	5
Bench	1	7

Official Box Score
Incarnate Word vs Arizona
Fourth Quarter Statistics Only
November 28, 2018 at McKale Center (Lute & Bobbi Olson Court) - Tucson, Ariz.



Incarnate Word 11

No.	Player	S	Pts	FG	3FG	FT	OR	DR	TR	PF	A	TO	Blk	Stl	Min	+/-
02	HENRY, LUNDEN		2	1-3	0-0	0-0	0	1	1	0	0	1	0	0	4	-2
04	BOWIE, GABBI		0	0-1	0-0	0-0	0	1	1	0	0	0	0	0	3	-7
11	ROBINSON, IMANI		0	0-1	0-0	0-2	0	0	0	1	1	1	0	1	8	-9
12	WIGGINS, ANGELICA		2	1-2	0-1	0-0	1	0	1	0	0	0	0	0	4	-2
15	OMOZEE, STARR		0	0-0	0-0	0-0	0	0	0	2	0	0	0	0	1	-4
00	RAY, MACY		0	0-0	0-0	0-0	0	0	0	0	0	0	0	0	0	0
01	HENRY, ALEXIS		0	0-0	0-0	0-0	0	1	1	0	0	0	0	0	5	-6
05	SPEER, KARA		3	1-2	1-2	0-0	0	0	0	1	0	1	0	1	9	-8
10	JACKSON, VICTORIA		0	0-0	0-0	0-0	0	1	1	0	1	1	0	0	6	-10
22	HOLTER, LIZ		0	0-0	0-0	0-0	0	0	0	1	1	0	0	1	4	-2
32	NOAH, OLIVIA		4	2-4	0-1	0-0	0	1	1	0	0	2	0	0	6	-10
	TEAM						0	2	2	0		1				
TOTALS			11	5-13	1-4	0-2	0	0	8	5	3	7	0	3	50	

Shooting By Period

Period	FG	FG%	3FG	3FG%	FT	FT%
Game	17-52	32.7%	4-18	22.2%	4-8	50.0%

Arizona 23

No.	Player	S	Pts	FG	3FG	FT	OR	DR	TR	PF	A	TO	Blk	Stl	Min	+/-
02	MCDONALD, AARI		10	3-8	0-2	4-4	0	1	1	1	1	0	0	3	6	9
04	ALONSO, LUCIA		0	0-0	0-0	0-0	0	0	0	0	1	1	0	0	5	6
14	THOMAS, SAM		0	0-0	0-0	0-0	0	0	0	0	0	0	0	0	5	5
20	MCBRYDE, DOMINIQUE		0	0-0	0-0	0-0	0	0	0	0	0	0	0	0	0	0
25	REESE, CATE		6	2-3	0-0	2-2	1	2	3	0	0	2	0	0	5	7
10	STARKS, TEE TEE		0	0-0	0-0	0-0	1	3	4	0	0	0	0	1	5	6
22	MALECHA, LINDSEY		4	2-2	0-0	0-0	0	0	0	0	0	0	0	1	4	3
24	NIXON, BRYCE		3	1-4	1-3	0-0	1	1	2	0	0	0	0	0	10	12
34	SMITH, SEMAJ		0	0-1	0-0	0-0	0	1	1	1	0	1	2	1	10	12
	TEAM						0	0	0	0		0				
TOTALS			23	8-18	1-5	6-6	0	0	11	2	2	4	2	6	50	

Shooting By Period

Period	FG	FG%	3FG	3FG%	FT	FT%
Game	32-70	45.7%	8-23	34.8%	12-15	80.0%

Game Notes:

Officials: Michael Price, Benny Luna, Teresa Turner
 Attendance: 1059

Start Time: 2018-11-28 01:30:43
 End Time: 2018-11-28 03:09:14
 Game Duration: 98

Score	1st	2nd	3rd	4th	TOT
UIW	16	7	8	11	42
ARI	31	12	18	23	84

Points from (This Period)	UIW	ARI
In the Paint	4	14
Off Turns	3	10
2nd Chance	0	7
Fast Break	2	6
Bench	7	7

**Official Play-By-Play
Incarnate Word vs Arizona
Fourth Quarter**

November 28, 2018 at McKale Center (Lute & Bobbi Olson Court) - Tucson, Ariz.



Period 4

Starters:

Incarnate Word: 2 HENRY, LUNDEN; 11 ROBINSON, IMANI; 12 WIGGINS, ANGELICA; 15 OMOZEE, STARR; 4 BOWIE, GABBI;
Arizona: 2 MCDONALD, AARI; 4 ALONSO, LUCIA; 14 THOMAS, SAM; 20 MCBRYDE, DOMINIQUE; 25 REESE, CATE;

Time	VISITORS: Incarnate Word	Score	Margin	HOME: Arizona
09:45				MISSED 3PTR by MCDONALD, AARI
09:41				REBOUND (OFF) by NIXON, BRYCE
09:37		63-31	H 32	GOOD! LAYUP by REESE, CATE
09:37				ASSIST by ALONSO, LUCIA
09:27	GOOD! LAYUP by WIGGINS, ANGELICA	63-33	H 30	
09:15				TURNOVER (LOSTBALL) by ALONSO, LUCIA
09:15	STEAL by HOLTER, LIZ			
09:09	MISSED LAYUP by HENRY, LUNDEN			
09:07				REBOUND (DEF) by REESE, CATE
09:07	FOUL (PERSONAL) by ROBINSON, IMANI			
08:50				MISSED 3PTR by NIXON, BRYCE
08:45	REBOUND (DEF) by HENRY, LUNDEN			
08:43	TURNOVER (LOSTBALL) by HENRY, LUNDEN			
08:43				STEAL by MCDONALD, AARI
08:40		65-33	H 32	GOOD! LAYUP by MCDONALD, AARI [FB]
08:40	FOUL (PERSONAL) by OMOZEE, STARR			
08:40	FOUL (TECH) by OMOZEE, STARR			
08:40		66-33	H 33	GOOD! FT by MCDONALD, AARI
08:40		67-33	H 34	GOOD! FT by MCDONALD, AARI
08:40	SUB OUT: OMOZEE, STARR			
08:40	SUB IN: SPEER, KARA			
08:40		68-33	H 35	GOOD! FT by MCDONALD, AARI
08:38	GOOD! LAYUP by HENRY, LUNDEN	68-35	H 33	
08:31				TURNOVER (BADPASS) by REESE, CATE
08:31	STEAL by SPEER, KARA			
08:21	MISSED LAYUP by HENRY, LUNDEN			
08:16				REBOUND (DEF) by NIXON, BRYCE
07:36				TURNOVER (TRAVEL) by REESE, CATE
07:21	GOOD! 3PTR by SPEER, KARA	68-38	H 30	
07:21	ASSIST by HOLTER, LIZ			
07:01				TURNOVER (LOSTBALL) by SMITH, SEMAJ
07:01	STEAL by ROBINSON, IMANI			
06:54	MISSED 3PTR by WIGGINS, ANGELICA			
06:50	REBOUND (OFF) by WIGGINS, ANGELICA			
06:33	MISSED JUMPER by ROBINSON, IMANI			
06:33				BLOCK by SMITH, SEMAJ
06:26				REBOUND (DEF) by MCDONALD, AARI
06:25		70-38	H 32	GOOD! LAYUP by REESE, CATE [FB]
06:25				ASSIST by MCDONALD, AARI
06:04				FOUL (PERSONAL) by SMITH, SEMAJ
06:04	MISSED FT by ROBINSON, IMANI			
06:04	REBOUND (OFF) by TEAM			
06:04	SUB OUT: HENRY, LUNDEN			
06:04	SUB IN: BOWIE, GABBI			
06:04	SUB OUT: WIGGINS, ANGELICA			
06:04	SUB IN: NOAH, OLIVIA			
06:04	MISSED FT by ROBINSON, IMANI			
06:04				REBOUND (DEF) by REESE, CATE
05:52				MISSED LAYUP by REESE, CATE
05:52				REBOUND (OFF) by REESE, CATE
05:52	FOUL (PERSONAL) by HOLTER, LIZ			
05:52	SUB OUT: HOLTER, LIZ			
05:52	SUB IN: JACKSON, VICTORIA			
05:52		71-38	H 33	GOOD! FT by REESE, CATE
05:52		72-38	H 34	GOOD! FT by REESE, CATE
05:34	TURNOVER (BADPASS) by SPEER, KARA			
05:34				STEAL by MCDONALD, AARI
05:27		74-38	H 36	GOOD! LAYUP by MCDONALD, AARI
05:27	FOUL (PERSONAL) by SPEER, KARA			
05:27				SUB OUT: ALONSO, LUCIA
05:27				SUB IN: STARKS, TEE TEE
05:27	SUB OUT: ROBINSON, IMANI			
05:27	SUB IN: HENRY, ALEXIS			
05:27		75-38	H 37	GOOD! FT by MCDONALD, AARI
05:18	MISSED 3PTR by SPEER, KARA			
05:15				REBOUND (DEF) by SMITH, SEMAJ
05:12				MISSED LAYUP by MCDONALD, AARI
05:11	REBOUND (DEF) by TEAM			
04:51	TURNOVER (BADPASS) by NOAH, OLIVIA			
04:51				STEAL by MCDONALD, AARI

Time	VISITORS: Incarnate Word	Score	Margin	HOME: Arizona
04:45				MISSED LAYUP by MCDONALD, AARI
04:45	REBOUND (DEF) by TEAM			
04:45				
04:45				SUB OUT: REESE, CATE
04:45				SUB IN: THOMAS, SAM
04:28	MISSED JUMPER by BOWIE, GABBI			
04:25				REBOUND (DEF) by STARKS, TEE TEE
04:15				MISSED 3PTR by MCDONALD, AARI
04:11	REBOUND (DEF) by BOWIE, GABBI			
04:01	TURNOVER (BADPASS) by JACKSON, VICTORIA			
04:01				STEAL by STARKS, TEE TEE
03:56		77-38	H 39	GOOD! LAYUP by MCDONALD, AARI [FB]
03:41	MISSED 3PTR by NOAH, OLIVIA			
03:38				REBOUND (DEF) by STARKS, TEE TEE
03:34				MISSED LAYUP by MCDONALD, AARI
03:34	REBOUND (DEF) by JACKSON, VICTORIA			
03:33				FOUL (PERSONAL) by MCDONALD, AARI
03:33				SUB OUT: MCDONALD, AARI
03:33				SUB IN: MALECHA, LINDSEY
03:33	SUB OUT: BOWIE, GABBI			
03:33	SUB IN: ROBINSON, IMANI			
03:01	TURNOVER (SHOTCLOCK) by			
02:49		79-38	H 41	GOOD! LAYUP by MALECHA, LINDSEY
02:36	TURNOVER (LOSTBALL) by NOAH, OLIVIA			
02:36				STEAL by SMITH, SEMAJ
02:29				MISSED 3PTR by NIXON, BRYCE
02:25	REBOUND (DEF) by NOAH, OLIVIA			
02:16	GOOD! JUMPER by NOAH, OLIVIA	79-40	H 39	
02:16	ASSIST by ROBINSON, IMANI			
01:51				MISSED JUMPER by SMITH, SEMAJ
01:48	REBOUND (DEF) by HENRY, ALEXIS			
01:43	GOOD! JUMPER by NOAH, OLIVIA [FB]	79-42	H 37	
01:43	ASSIST by JACKSON, VICTORIA			
01:26				MISSED JUMPER by NIXON, BRYCE
01:24				REBOUND (OFF) by STARKS, TEE TEE
01:01		82-42	H 40	GOOD! 3PTR by NIXON, BRYCE
00:43	MISSED JUMPER by NOAH, OLIVIA			
00:43				BLOCK by SMITH, SEMAJ
00:37				REBOUND (DEF) by STARKS, TEE TEE
00:30		84-42	H 42	GOOD! LAYUP by MALECHA, LINDSEY
00:16	TURNOVER (LOSTBALL) by ROBINSON, IMANI			
00:16				STEAL by MALECHA, LINDSEY

Incarnate Word 42, Arizona 84

Points from (This Period)	UIW	ARI
In the Paint	4	14
Off Turns	3	10
2nd Chance	0	7
Fast Break	2	6
Bench	7	7

**Official Scoring/Possession Reference Chart
Incarnate Word vs Arizona
Period 1**

November 28, 2018 at McKale Center (Lute & Bobbi Olson Court) - Tucson, Ariz.



Period 1

Starters:

Incarnate Word: 2 HENRY, LUNDEN; 11 ROBINSON, IMANI; 12 WIGGINS, ANGELICA; 15 OMOZEE, STARR; 4 BOWIE, GABBI;
Arizona: 2 MCDONALD, AARI; 4 ALONSO, LUCIA; 14 THOMAS, SAM; 20 MCBRYDE, DOMINIQUE; 25 REESE, CATE;

Time	VISITORS: Incarnate Word	Score	Margin	HOME: Arizona
09:43		3-0	H 3	GOOD! 3PTR by ALONSO, LUCIA
09:02	GOOD! LAYUP by ROBINSON, IMANI [PNT]	3-2	H 1	
08:10		6-2	H 4	GOOD! 3PTR by ALONSO, LUCIA [FB]
07:33	GOOD! JUMPER by HENRY, LUNDEN [PNT]	6-4	H 2	
07:04		8-4	H 4	GOOD! JUMPER by THOMAS, SAM [PNT]
06:43		10-4	H 6	GOOD! LAYUP by THOMAS, SAM [FB]
06:28	GOOD! JUMPER by OMOZEE, STARR [PNT]	10-6	H 4	
06:16		13-6	H 7	GOOD! 3PTR by REESE, CATE
05:48		16-6	H 10	GOOD! 3PTR by MCDONALD, AARI
05:14	GOOD! LAYUP by OMOZEE, STARR	16-8	H 8	
04:58		18-8	H 10	GOOD! JUMPER by REESE, CATE
04:34	GOOD! JUMPER by ROBINSON, IMANI [PNT]	18-10	H 8	
04:18		19-10	H 9	GOOD! FT by MCDONALD, AARI
04:18		20-10	H 10	GOOD! FT by MCDONALD, AARI
03:48		22-10	H 12	GOOD! LAYUP by REESE, CATE
02:50	GOOD! FT by WIGGINS, ANGELICA	22-11	H 11	
02:41		24-11	H 13	GOOD! LAYUP by MCDONALD, AARI
02:20	GOOD! 3PTR by WIGGINS, ANGELICA	24-14	H 10	
01:51		27-14	H 13	GOOD! 3PTR by ALONSO, LUCIA
01:25		28-14	H 14	GOOD! FT by MCBRYDE, DOMINIQUE
00:17		31-14	H 17	GOOD! 3PTR by ALONSO, LUCIA
00:01	GOOD! LAYUP by OMOZEE, STARR	31-16	H 15	

Incarnate Word 16, Arizona 31

**Official Scoring/Possession Reference Chart
Incarnate Word vs Arizona
Period 2**

November 28, 2018 at McKale Center (Lute & Bobbi Olson Court) - Tucson, Ariz.



Period 2

Starters:

Incarnate Word: 2 HENRY, LUNDEN; 11 ROBINSON, IMANI; 12 WIGGINS, ANGELICA; 15 OMOZEE, STARR; 4 BOWIE, GABBI;

Arizona: 2 MCDONALD, AARI; 4 ALONSO, LUCIA; 14 THOMAS, SAM; 20 MCBRYDE, DOMINIQUE; 25 REESE, CATE;

Time	VISITORS: Incarnate Word	Score	Margin	HOME: Arizona
09:37	GOOD! FT by BOWIE, GABBI [FB]	31-17	H 14	
09:37	GOOD! FT by BOWIE, GABBI [FB]	31-18	H 13	
08:56		33-18	H 15	GOOD! LAYUP by MCBRYDE, DOMINIQUE
08:27		35-18	H 17	GOOD! JUMPER by MCBRYDE, DOMINIQUE
07:45	GOOD! 3PTR by WIGGINS, ANGELICA	35-21	H 14	
07:29		37-21	H 16	GOOD! LAYUP by MCDONALD, AARI
06:31		39-21	H 18	GOOD! JUMPER by REESE, CATE
05:28		41-21	H 20	GOOD! JUMPER by REESE, CATE
04:43	GOOD! LAYUP by WIGGINS, ANGELICA	41-23	H 18	
01:25		43-23	H 20	GOOD! LAYUP by ALONSO, LUCIA

Incarnate Word 23, Arizona 43

**Official Scoring/Possession Reference Chart
Incarnate Word vs Arizona
Period 3**

November 28, 2018 at McKale Center (Lute & Bobbi Olson Court) - Tucson, Ariz.



Period 3

Starters:

Incarnate Word: 2 HENRY, LUNDEN; 11 ROBINSON, IMANI; 12 WIGGINS, ANGELICA; 15 OMOZEE, STARR; 4 BOWIE, GABBI;
Arizona: 2 MCDONALD, AARI; 4 ALONSO, LUCIA; 14 THOMAS, SAM; 20 MCBRYDE, DOMINIQUE; 25 REESE, CATE;

Time	VISITORS: Incarnate Word	Score	Margin	HOME: Arizona
09:45	GOOD! LAYUP by ROBINSON, IMANI	43-25	H 18	
09:09		44-25	H 19	GOOD! FT by MCDONALD, AARI
09:09		45-25	H 20	GOOD! FT by MCDONALD, AARI
08:16		47-25	H 22	GOOD! LAYUP by STARKS, TEE TEE
06:33		49-25	H 24	GOOD! LAYUP by MCBRYDE, DOMINIQUE
06:07		51-25	H 26	GOOD! LAYUP by REESE, CATE [FB]
05:23		53-25	H 28	GOOD! LAYUP by MCBRYDE, DOMINIQUE
05:00	GOOD! JUMPER by HENRY, LUNDEN [PNT]	53-27	H 26	
04:52		55-27	H 28	GOOD! LAYUP by MCDONALD, AARI [FB]
04:52		56-27	H 29	GOOD! FT by MCDONALD, AARI [FB]
04:25	GOOD! 3PTR by ROBINSON, IMANI	56-30	H 26	
01:53		58-30	H 28	GOOD! LAYUP by STARKS, TEE TEE
01:29	GOOD! FT by NOAH, OLIVIA	58-31	H 27	
01:18		61-31	H 30	GOOD! 3PTR by NIXON, BRYCE

Incarnate Word 31, Arizona 61

**Official Scoring/Possession Reference Chart
Incarnate Word vs Arizona
Period 4**

November 28, 2018 at McKale Center (Lute & Bobbi Olson Court) - Tucson, Ariz.



Period 4

Starters:

Incarnate Word: 2 HENRY, LUNDEN; 11 ROBINSON, IMANI; 12 WIGGINS, ANGELICA; 15 OMOZEE, STARR; 4 BOWIE, GABBI;
Arizona: 2 MCDONALD, AARI; 4 ALONSO, LUCIA; 14 THOMAS, SAM; 20 MCBRYDE, DOMINIQUE; 25 REESE, CATE;

Time	VISITORS: Incarnate Word	Score	Margin	HOME: Arizona
09:37		63-31	H 32	GOOD! LAYUP by REESE, CATE
09:27	GOOD! LAYUP by WIGGINS, ANGELICA	63-33	H 30	
08:40		65-33	H 32	GOOD! LAYUP by MCDONALD, AARI [FB]
08:40		66-33	H 33	GOOD! FT by MCDONALD, AARI
08:40		67-33	H 34	GOOD! FT by MCDONALD, AARI
08:40		68-33	H 35	GOOD! FT by MCDONALD, AARI
08:38	GOOD! LAYUP by HENRY, LUNDEN	68-35	H 33	
07:21	GOOD! 3PTR by SPEER, KARA	68-38	H 30	
06:25		70-38	H 32	GOOD! LAYUP by REESE, CATE [FB]
05:52		71-38	H 33	GOOD! FT by REESE, CATE
05:52		72-38	H 34	GOOD! FT by REESE, CATE
05:27		74-38	H 36	GOOD! LAYUP by MCDONALD, AARI
05:27		75-38	H 37	GOOD! FT by MCDONALD, AARI
03:56		77-38	H 39	GOOD! LAYUP by MCDONALD, AARI [FB]
02:49		79-38	H 41	GOOD! LAYUP by MALECHA, LINDSEY
02:16	GOOD! JUMPER by NOAH, OLIVIA	79-40	H 39	
01:43	GOOD! JUMPER by NOAH, OLIVIA [FB]	79-42	H 37	
01:01		82-42	H 40	GOOD! 3PTR by NIXON, BRYCE
00:30		84-42	H 42	GOOD! LAYUP by MALECHA, LINDSEY

Incarnate Word 42, Arizona 84

**Official Substitutions Log
Incarnate Word vs Arizona
Period 1**

November 28, 2018 at McKale Center (Lute & Bobbi Olson Court) - Tucson, Ariz.



VISITORS: Incarnate Word	Time	Score	HOME: Arizona
2 HENRY, LUNDEN			2 MCDONALD, AARI
11 ROBINSON, IMANI			4 ALONSO, LUCIA
12 WIGGINS, ANGELICA			14 THOMAS, SAM
15 OMOZEE, STARR			20 MCBRYDE, DOMINIQUE
4 BOWIE, GABBI			25 REESE, CATE
SUB OUT: 12 WIGGINS, ANGELICA	06:43	4-10	
SUB IN: 5 SPEER, KARA	06:43		
	04:18	10-19	SUB OUT: THOMAS, SAM
	04:18		SUB IN: SMITH, SEMAJ
	04:18		SUB OUT: MCBRYDE, DOMINIQUE
	04:18		SUB IN: STARKS, TEE TEE
SUB OUT: 4 BOWIE, GABBI	04:18		
SUB IN: 0 RAY, MACY	04:18		
	03:30	10-22	SUB OUT: ALONSO, LUCIA
	03:30		SUB IN: NIXON, BRYCE
	03:30		SUB OUT: REESE, CATE
	03:30		SUB IN: MCBRYDE, DOMINIQUE
SUB OUT: 2 HENRY, LUNDEN	03:30		
SUB IN: 1 HENRY, ALEXIS	03:30		
SUB OUT: 11 ROBINSON, IMANI	03:30		
SUB IN: 32 NOAH, OLIVIA	03:30		
SUB OUT: 15 OMOZEE, STARR	03:30		
SUB IN: 12 WIGGINS, ANGELICA	03:30		
	02:23	11-24	SUB OUT: MCDONALD, AARI
	02:23		SUB IN: ALONSO, LUCIA
SUB OUT: 0 RAY, MACY	01:19	14-28	
SUB IN: 4 BOWIE, GABBI	01:19		
SUB OUT: 1 HENRY, ALEXIS	01:19		
SUB IN: 11 ROBINSON, IMANI	01:19		
SUB OUT: 5 SPEER, KARA	01:19		
SUB IN: 2 HENRY, LUNDEN	01:19		
SUB OUT: 12 WIGGINS, ANGELICA	01:19		
SUB IN: 15 OMOZEE, STARR	01:19		
SUB OUT: 32 NOAH, OLIVIA	01:19		
SUB IN: 22 HOLTER, LIZ	01:19		
	01:13	14-28	SUB OUT: MCBRYDE, DOMINIQUE
	01:13		SUB IN: THOMAS, SAM

Incarnate Word 16, Arizona 31

**Official Substitutions Log
Incarnate Word vs Arizona
Period 2**

November 28, 2018 at McKale Center (Lute & Bobbi Olson Court) - Tucson, Ariz.



VISITORS: Incarnate Word	Time	Score	HOME: Arizona
2 HENRY, LUNDEN			2 MCDONALD, AARI
11 ROBINSON, IMANI			4 ALONSO, LUCIA
12 WIGGINS, ANGELICA			14 THOMAS, SAM
15 OMOZEE, STARR			20 MCBRYDE, DOMINIQUE
4 BOWIE, GABBI			25 REESE, CATE
SUB OUT: 15 OMOZEE, STARR	08:56	18-33	
SUB IN: 1 HENRY, ALEXIS	08:56		
SUB OUT: 11 ROBINSON, IMANI	08:53	18-33	
SUB IN: 12 WIGGINS, ANGELICA	08:53		
SUB OUT: 4 BOWIE, GABBI	07:01	21-37	
SUB IN: 0 RAY, MACY	07:01		
	06:48	21-37	SUB OUT: MCDONALD, AARI
	06:48		SUB IN: NIXON, BRYCE
SUB OUT: 2 HENRY, LUNDEN	06:11	21-39	
SUB IN: 32 NOAH, OLIVIA	06:11		
	05:21	21-41	SUB OUT: THOMAS, SAM
	05:21		SUB IN: SMITH, SEMAJ
SUB OUT: 22 HOLTER, LIZ	05:21		
SUB IN: 5 SPEER, KARA	05:21		
	03:25	23-41	SUB OUT: MCBRYDE, DOMINIQUE
	03:25		SUB IN: STARKS, TEE TEE
	03:25		SUB OUT: REESE, CATE
	03:25		SUB IN: THOMAS, SAM
SUB OUT: 0 RAY, MACY	03:25		
SUB IN: 2 HENRY, LUNDEN	03:25		
SUB OUT: 1 HENRY, ALEXIS	03:25		
SUB IN: 15 OMOZEE, STARR	03:25		
SUB OUT: 32 NOAH, OLIVIA	03:25		
SUB IN: 4 BOWIE, GABBI	03:25		
SUB OUT: 12 WIGGINS, ANGELICA	03:05	23-41	
SUB IN: 11 ROBINSON, IMANI	03:05		
	01:14	23-43	SUB OUT: SMITH, SEMAJ
	01:14		SUB IN: REESE, CATE
SUB OUT: 11 ROBINSON, IMANI	01:14		
SUB IN: 12 WIGGINS, ANGELICA	01:14		
	01:14		SUB OUT: ALONSO, LUCIA
	01:14		SUB IN: MCDONALD, AARI
SUB OUT: 2 HENRY, LUNDEN	00:31	23-43	
SUB IN: 32 NOAH, OLIVIA	00:31		

Incarnate Word 23, Arizona 43

**Official Substitutions Log
Incarnate Word vs Arizona
Period 3**

November 28, 2018 at McKale Center (Lute & Bobbi Olson Court) - Tucson, Ariz.



VISITORS: Incarnate Word	Time	Score	HOME: Arizona
2 HENRY, LUNDEN			2 MCDONALD, AARI
11 ROBINSON, IMANI			4 ALONSO, LUCIA
12 WIGGINS, ANGELICA			14 THOMAS, SAM
15 OMOZEE, STARR			20 MCBRYDE, DOMINIQUE
4 BOWIE, GABBI			25 REESE, CATE
	09:02	25-45	SUB OUT: ALONSO, LUCIA
	09:02		SUB IN: STARKS, TEE TEE
SUB OUT: 4 BOWIE, GABBI	06:57	25-47	
SUB IN: 0 RAY, MACY	06:57		
SUB OUT: 12 WIGGINS, ANGELICA	04:52	27-55	
SUB IN: 5 SPEER, KARA	04:52		
SUB OUT: 0 RAY, MACY	03:59	30-56	
SUB IN: 1 HENRY, ALEXIS	03:59		
SUB OUT: 2 HENRY, LUNDEN	03:59		
SUB IN: 4 BOWIE, GABBI	03:59		
SUB OUT: 15 OMOZEE, STARR	03:59		
SUB IN: 32 NOAH, OLIVIA	03:59		
SUB OUT: 11 ROBINSON, IMANI	02:54	30-56	
SUB IN: 12 WIGGINS, ANGELICA	02:54		
	01:29	30-58	SUB OUT: STARKS, TEE TEE
	01:29		SUB IN: SMITH, SEMAJ
	01:29		SUB OUT: THOMAS, SAM
	01:29		SUB IN: ALONSO, LUCIA
	01:29		SUB OUT: MCBRYDE, DOMINIQUE
	01:29		SUB IN: NIXON, BRYCE

Incarnate Word 31, Arizona 61

**Official Substitutions Log
Incarnate Word vs Arizona
Period 4**

November 28, 2018 at McKale Center (Lute & Bobbi Olson Court) - Tucson, Ariz.



VISITORS: Incarnate Word	Time	Score	HOME: Arizona
2 HENRY, LUNDEN			2 MCDONALD, AARI
11 ROBINSON, IMANI			4 ALONSO, LUCIA
12 WIGGINS, ANGELICA			14 THOMAS, SAM
15 OMOZEE, STARR			20 MCBRYDE, DOMINIQUE
4 BOWIE, GABBI			25 REESE, CATE
SUB OUT: 15 OMOZEE, STARR	08:40	33-67	
SUB IN: 5 SPEER, KARA	08:40		
SUB OUT: 2 HENRY, LUNDEN	06:04	38-70	
SUB IN: 4 BOWIE, GABBI	06:04		
SUB OUT: 12 WIGGINS, ANGELICA	06:04		
SUB IN: 32 NOAH, OLIVIA	06:04		
SUB OUT: 22 HOLTER, LIZ	05:52	38-70	
SUB IN: 10 JACKSON, VICTORIA	05:52		
	05:27	38-74	SUB OUT: ALONSO, LUCIA
	05:27		SUB IN: STARKS, TEE TEE
SUB OUT: 11 ROBINSON, IMANI	05:27		
SUB IN: 1 HENRY, ALEXIS	05:27		
	04:45	38-75	SUB OUT: REESE, CATE
	04:45		SUB IN: THOMAS, SAM
	03:33	38-77	SUB OUT: MCDONALD, AARI
	03:33		SUB IN: MALECHA, LINDSEY
SUB OUT: 4 BOWIE, GABBI	03:33		
SUB IN: 11 ROBINSON, IMANI	03:33		

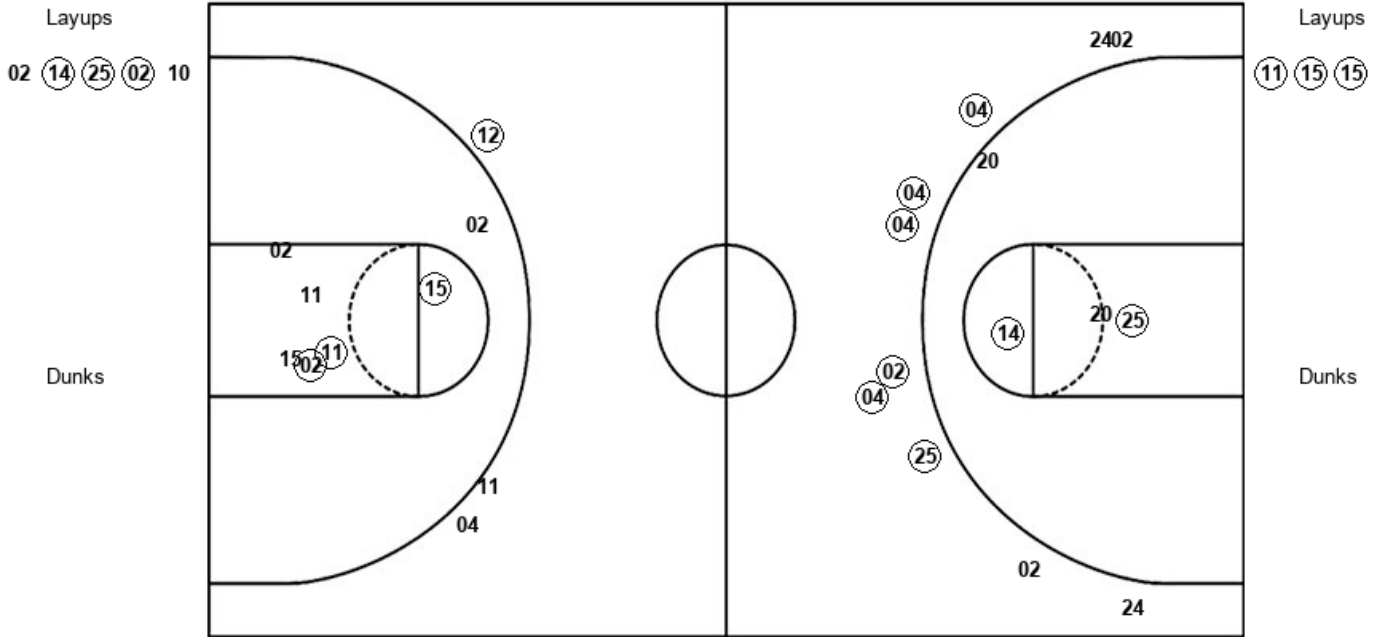
Incarnate Word 42, Arizona 84

Official Shot Chart
Incarnate Word vs Arizona
PERIOD 1 Shots
 November 28, 2018 at McKale Center (Lute & Bobbi Olson Court) - Tucson, Ariz.



Arizona

Incarnate Word



ARI : Period 1	Made	Att	Pct
Layups	3	5	60.0
Dunks	0	0	0
2PT Field Goals	5	9	55.6
3PT Field Goals	6	10	60.0
Total Field Goals	11	19	57.9

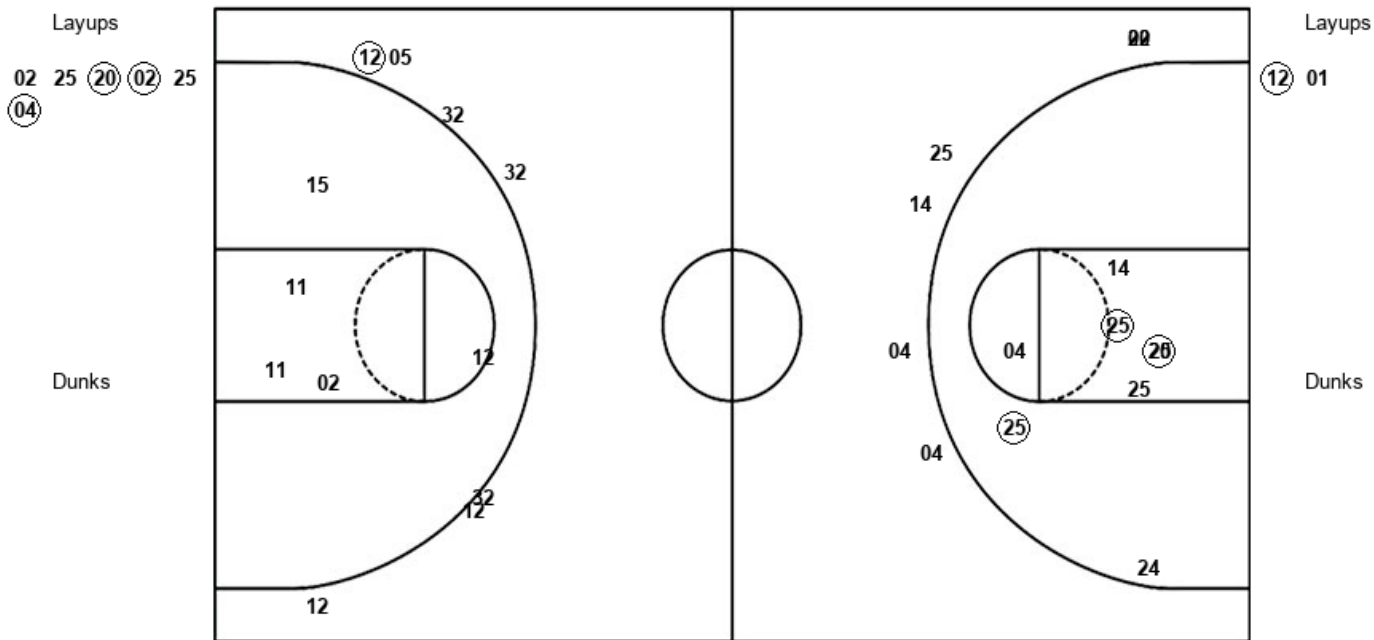
UIW : Period 1	Made	Att	Pct
Layups	3	3	100.0
Dunks	0	0	0
2PT Field Goals	6	10	60.0
3PT Field Goals	1	3	33.3
Total Field Goals	7	13	53.8

Official Shot Chart
Incarnate Word vs Arizona
PERIOD 2 Shots
November 28, 2018 at McKale Center (Lute & Bobbi Olson Court) - Tucson, Ariz.



Arizona

Incarnate Word



ARI : Period 2	Made	Att	Pct
Layups	3	6	50.0
Dunks	0	0	0
2PT Field Goals	6	14	42.9
3PT Field Goals	0	6	00.0
Total Field Goals	6	20	30.0

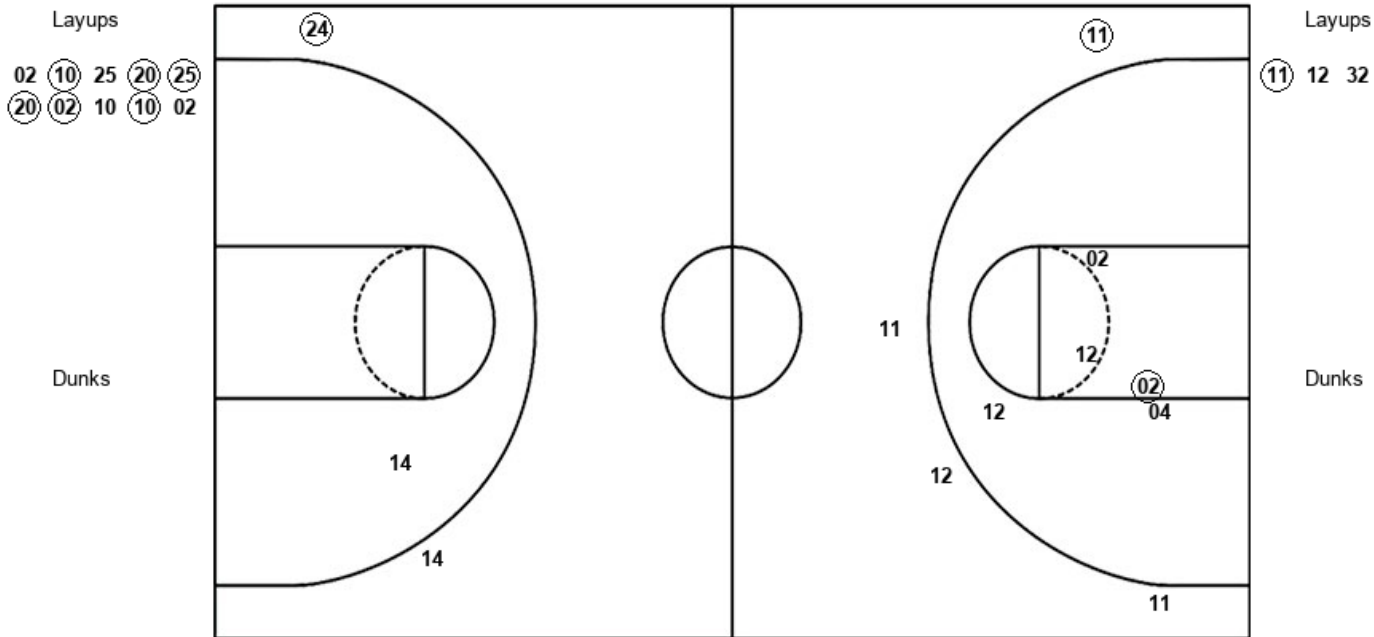
UIW : Period 2	Made	Att	Pct
Layups	1	2	50.0
Dunks	0	0	0
2PT Field Goals	1	7	14.3
3PT Field Goals	1	7	14.3
Total Field Goals	2	14	14.3

Official Shot Chart
Incarnate Word vs Arizona
PERIOD 3 Shots
 November 28, 2018 at McKale Center (Lute & Bobbi Olson Court) - Tucson, Ariz.



Arizona

Incarnate Word



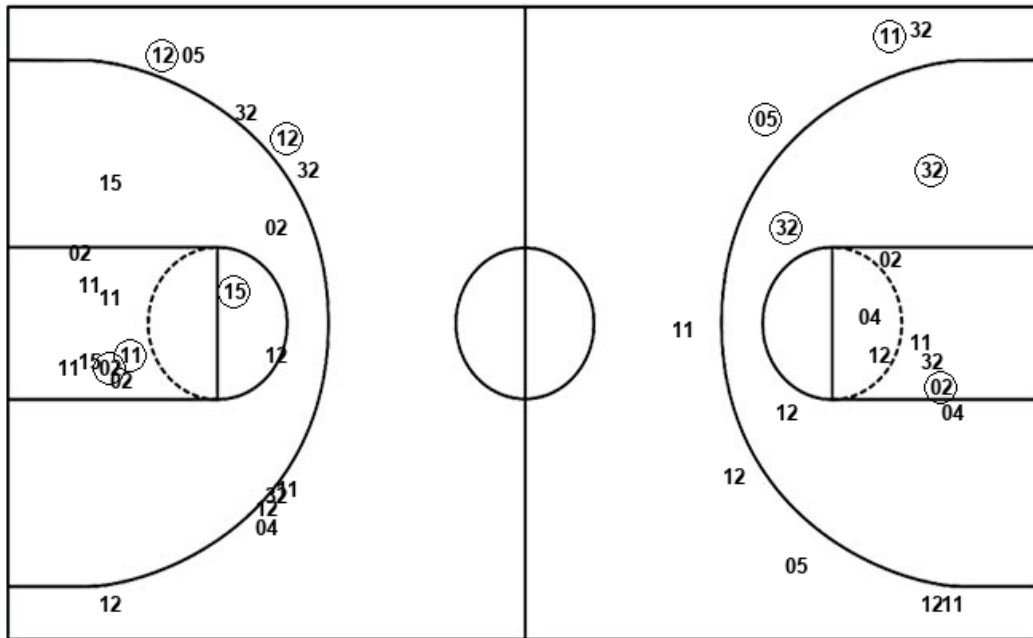
ARI : Period 3	Made	Att	Pct
Layups	6	10	60.0
Dunks	0	0	0
2PT Field Goals	6	11	54.5
3PT Field Goals	1	2	50.0
Total Field Goals	7	13	53.8

UIW : Period 3	Made	Att	Pct
Layups	1	3	33.3
Dunks	0	0	0
2PT Field Goals	2	8	25.0
3PT Field Goals	1	4	25.0
Total Field Goals	3	12	25.0

Official Shot Chart
Incarnate Word vs Arizona
Incarnate Word Team Shots
November 28, 2018 at McKale Center (Lute & Bobbi Olson Court) - Tucson, Ariz.



Layups



Layups

(11) (15) (15) (12) 01
 (11) 12 32 (12) 02
 (02) 02

Dunks

Dunks

UIW : Period 1	Made	Att	Pct
Layups	3	3	100.0
Dunks	0	0	0
2PT Field Goals	6	10	60.0
3PT Field Goals	1	3	33.3
Total Field Goals	7	13	53.8

UIW : Period 3	Made	Att	Pct
Layups	1	3	33.3
Dunks	0	0	0
2PT Field Goals	2	8	25.0
3PT Field Goals	1	4	25.0
Total Field Goals	3	12	25.0

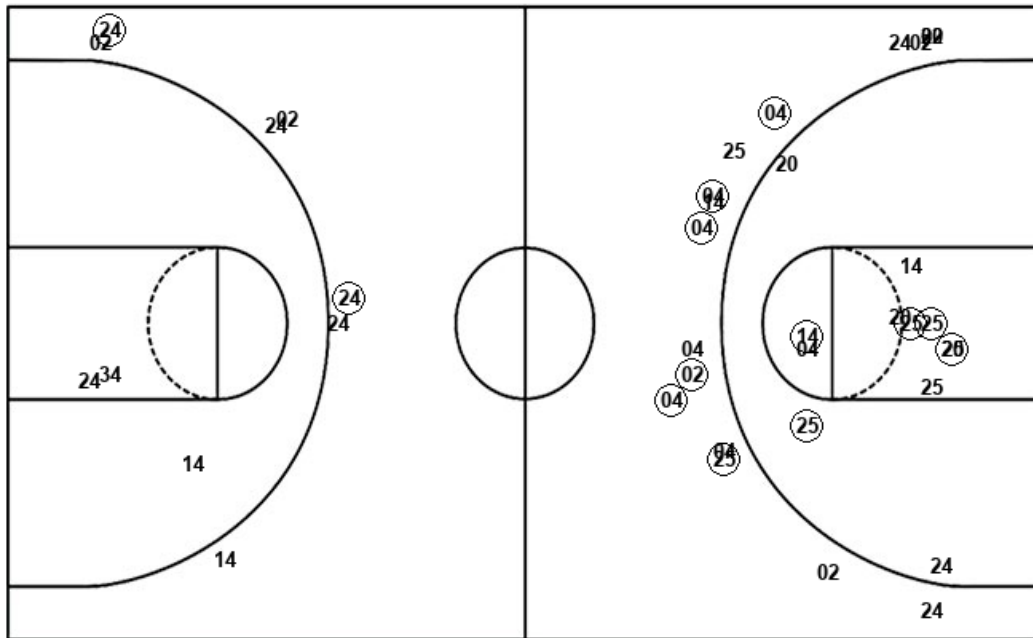
UIW : Period 2	Made	Att	Pct
Layups	1	2	50.0
Dunks	0	0	0
2PT Field Goals	1	7	14.3
3PT Field Goals	1	7	14.3
Total Field Goals	2	14	14.3

UIW : Period 4	Made	Att	Pct
Layups	2	4	50.0
Dunks	0	0	0
2PT Field Goals	4	9	44.4
3PT Field Goals	1	4	25.0
Total Field Goals	5	13	38.5

Official Shot Chart
Incarnate Word vs Arizona
Arizona Team Shots
November 28, 2018 at McKale Center (Lute & Bobbi Olson Court) - Tucson, Ariz.



Layups



Layups

02	14	25	02	10
02	25	20	02	25
04	02	10	25	20
25	20	02	10	10
02	25	02	25	25
02	02	02	02	02
22	22			

Dunks

Dunks

ARI : Period 1	Made	Att	Pct
Layups	3	5	60.0
Dunks	0	0	0
2PT Field Goals	5	9	55.6
3PT Field Goals	6	10	60.0
Total Field Goals	11	19	57.9

ARI : Period 3	Made	Att	Pct
Layups	6	10	60.0
Dunks	0	0	0
2PT Field Goals	6	11	54.5
3PT Field Goals	1	2	50.0
Total Field Goals	7	13	53.8

ARI : Period 2	Made	Att	Pct
Layups	3	6	50.0
Dunks	0	0	0
2PT Field Goals	6	14	42.9
3PT Field Goals	0	6	00.0
Total Field Goals	6	20	30.0

ARI : Period 4	Made	Att	Pct
Layups	7	11	63.6
Dunks	0	0	0
2PT Field Goals	7	13	53.8
3PT Field Goals	1	5	20.0
Total Field Goals	8	18	44.4