

## FINAL SCORE



**South Carolina State**

**32**



**Arizona**

**73**

**November 24, 2018 • McKale Center (Lute and Bobbi Olson Court) -  
Tucson, Ariz.**

## FINAL STATISTICS

**Official Box Score**  
**South Carolina State vs Arizona**  
**Game Totals -- Final Statistics**

November 24, 2018 at McKale Center (Lute and Bobbi Olson Court) - Tucson, Ariz.



**South Carolina State 32**

No.	Player	S	Pts	FG	3FG	FT	OR	DR	TR	PF	A	TO	Blk	Stl	Min	+/-
05	MURRAY, JAQUANNA		3	1-1	0-0	1-2	1	2	3	4	0	0	1	0	25	-18
13	AKINS, JAKAYVEA		4	2-5	0-0	0-0	2	1	3	1	2	2	0	0	31	-35
20	JENKINS, KEMONI		7	3-11	1-4	0-0	1	5	6	2	0	5	3	2	27	-29
22	UDONSI, ESTHER		7	1-12	1-4	4-4	2	4	6	0	0	1	1	2	33	-30
25	BEAMON, RHEIN		8	3-14	0-3	2-9	0	4	4	4	0	4	0	1	36	-33
03	GABRIEL, OLIVIA		0	0-2	0-0	0-2	1	0	1	0	0	0	0	0	6	-15
15	JACKSON, JAEL		1	0-1	0-1	1-3	0	0	0	0	0	0	0	0	4	-3
21	SCOTT, CHRISANA		0	0-4	0-2	0-0	1	0	1	1	0	1	0	0	19	-19
45	PETERSON, DASHANIQUE		2	1-6	0-0	0-0	2	2	4	1	1	0	0	0	19	-23
	TEAM						2	2	4	0		0				
	<b>TOTALS</b>		<b>32</b>	<b>11-56</b>	<b>2-14</b>	<b>8-20</b>	<b>12</b>	<b>20</b>	<b>32</b>	<b>13</b>	<b>3</b>	<b>13</b>	<b>5</b>	<b>5</b>	<b>200</b>	

*Shooting By Period*

Period	FG	FG%	3FG	3FG%	FT	FT%
1st Qtr	3-15	20%	0-1	00%	4-4	100%
2nd Qtr	3-14	21%	0-4	00%	1-2	50%
3rd Qtr	4-14	29%	2-5	40%	2-7	29%
4th Qtr	1-13	08%	0-4	00%	1-7	14%
1st Half	6-29	21%	0-5	00%	5-6	83%
2nd Half	5-27	19%	2-9	22%	3-14	21%
<b>Game</b>	<b>11-56</b>	<b>19.6%</b>	<b>2-14</b>	<b>14.3%</b>	<b>8-20</b>	<b>40.0%</b>

*Last FG: 4th-00:02*

*Biggest Run: 7-0*

*Largest lead: By 0 at -*

*Technical Fouls: None.*

**Arizona 73**

No.	Player	S	Pts	FG	3FG	FT	OR	DR	TR	PF	A	TO	Blk	Stl	Min	+/-
02	MCDONALD, AARI		15	5-10	0-2	5-8	0	6	6	3	5	2	0	0	27	32
04	ALONSO, LUCIA		3	1-6	1-3	0-0	0	4	4	1	5	1	0	0	29	40
14	THOMAS, SAM		4	1-3	1-2	1-2	0	4	4	1	0	0	5	4	28	21
20	MCBRYDE, DOMINIQUE		10	5-9	0-1	0-0	2	4	6	4	1	0	1	0	31	27
25	REESE, CATE		19	8-19	0-2	3-3	6	10	16	4	0	3	0	2	27	22
10	STARKS, TEE TEE		5	2-3	1-1	0-1	2	2	4	2	1	4	0	1	15	17
22	MALECHA, LINDSEY		0	0-1	0-0	0-0	0	0	0	2	0	0	0	0	5	0
24	NIXON, BRYCE		9	3-8	3-8	0-0	0	1	1	0	2	2	0	1	20	25
34	SMITH, SEMAJ		8	4-5	0-0	0-0	2	4	6	0	0	1	3	0	18	21
	TEAM						5	2	7	0		0				
	<b>TOTALS</b>		<b>73</b>	<b>29-64</b>	<b>6-19</b>	<b>9-14</b>	<b>17</b>	<b>37</b>	<b>54</b>	<b>17</b>	<b>14</b>	<b>13</b>	<b>9</b>	<b>8</b>	<b>200</b>	

*Shooting By Period*

Period	FG	FG%	3FG	3FG%	FT	FT%
1st Qtr	7-18	39%	1-2	50%	2-3	67%
2nd Qtr	7-15	47%	3-7	43%	0-0	0%
3rd Qtr	7-17	41%	1-4	25%	3-5	60%
4th Qtr	8-14	57%	1-6	17%	4-6	67%
1st Half	14-33	42%	4-9	44%	2-3	67%
2nd Half	15-31	48%	2-10	20%	7-11	64%
<b>Game</b>	<b>29-64</b>	<b>45.3%</b>	<b>6-19</b>	<b>31.6%</b>	<b>9-14</b>	<b>64.3%</b>

*Last FG: 4th-02:50*

*Biggest Run: 27-0*

*Largest lead: By 43 at 4-00:31*

*Technical Fouls: None.*

Game Notes:

Officials: Anita Ortega, Bart Baldwin, Ifeyinwa Seals  
Attendance: 1247

Start Time: 2018-11-24 01:32:04

End Time: 2018-11-24 03:13:06

Game Duration: 101

Score	1st	2nd	3rd	4th	TOT
SCS	10	7	12	3	<b>32</b>
ARI	17	17	18	21	<b>73</b>

SCS led for 0:00. ARI led for 39:35.

Game was tied for 0:25.

Times tied: 0      Lead Changes: 0

Points from	SCS	ARI
In the Paint	14	42
Off Turns	11	23
2nd Chance	6	19
Fast Break	9	23
Bench	3	22

**Official Box Score**  
**South Carolina State vs Arizona**  
**First Half Statistics Only**

November 24, 2018 at McKale Center (Lute and Bobbi Olson Court) - Tucson, Ariz.



### South Carolina State 17

No.	Player	S	Pts	FG	3FG	FT	OR	DR	TR	PF	A	TO	Blk	Stl	Min	+/-
05	MURRAY, JAQUANNA		2	1-1	0-0	0-0	1	1	2	3	0	0	0	0	11	-11
15	JACKSON, JAEAL		0	0-0	0-0	0-0	0	0	0	0	0	0	0	0	0	0
20	JENKINS, KEMONI		4	2-7	0-2	0-0	1	2	3	0	0	3	2	1	17	-17
21	SCOTT, CHRISANA		0	0-2	0-0	0-0	1	0	1	0	0	1	0	0	8	-1
22	UDONSI, ESTHER		4	0-6	0-1	4-4	1	2	3	0	0	1	0	2	18	-17
25	BEAMON, RHEIN		3	1-7	0-2	1-2	0	3	3	0	0	4	0	0	18	-16
45	PETERSON, DASHANIQUE		0	0-2	0-0	0-0	1	2	3	1	1	0	0	0	12	-5
03	GABRIEL, OLIVIA		0	0-0	0-0	0-0	0	0	0	0	0	0	0	0	0	0
13	AKINS, JAKAYVEA		4	2-4	0-0	0-0	1	1	2	1	0	0	0	0	17	-18
	TEAM		0	0-0	0-0	0-0	2	1	3	0	0	0	0	0	0	0
<b>TOTALS</b>			<b>17</b>	<b>6-29</b>	<b>0-5</b>	<b>5-6</b>	<b>0</b>	<b>0</b>	<b>20</b>	<b>5</b>	<b>1</b>	<b>9</b>	<b>2</b>	<b>3</b>	<b>100</b>	

#### Shooting By Period

Period	FG	FG%	3FG	3FG%	FT	FT%
1st Qtr	3-15	20%	0-1	00%	4-4	100%
2nd Qtr	3-14	21%	0-4	00%	1-2	50%
1st Half	6-29	21%	0-5	00%	5-6	83%
Game	11-56	19.6%	2-14	14.3%	8-20	40.0%

Last FG Half: SCS 2nd-00:28

### Arizona 34

No.	Player	S	Pts	FG	3FG	FT	OR	DR	TR	PF	A	TO	Blk	Stl	Min	+/-
02	MCDONALD, AARI		7	3-6	0-1	1-2	0	4	4	2	1	0	0	0	10	15
04	ALONSO, LUCIA		0	0-2	0-1	0-0	0	1	1	1	2	1	0	0	16	21
10	STARKS, TEE TEE		3	1-1	1-1	0-0	2	0	2	2	0	2	0	0	8	2
14	THOMAS, SAM		3	1-1	1-1	0-0	0	2	2	0	0	0	3	3	16	12
20	MCBRYDE, DOMINIQUE		0	0-2	0-1	0-0	1	1	2	0	1	0	0	0	19	18
22	MALECHA, LINDSEY		0	0-1	0-0	0-0	0	0	0	0	0	0	0	0	2	-3
24	NIXON, BRYCE		6	2-3	2-3	0-0	0	0	0	0	2	2	0	0	9	4
25	REESE, CATE		13	6-15	0-1	1-1	2	5	7	1	0	1	0	2	12	15
34	SMITH, SEMAJ		2	1-2	0-0	0-0	0	0	0	0	0	0	1	0	8	1
	TEAM		0	0-0	0-0	0-0	2	2	4	0	0	0	0	0	0	0
<b>TOTALS</b>			<b>34</b>	<b>14-33</b>	<b>4-9</b>	<b>2-3</b>	<b>0</b>	<b>0</b>	<b>22</b>	<b>6</b>	<b>6</b>	<b>6</b>	<b>4</b>	<b>5</b>	<b>100</b>	

#### Shooting By Period

Period	FG	FG%	3FG	3FG%	FT	FT%
1st Qtr	7-18	39%	1-2	50%	2-3	67%
2nd Qtr	7-15	47%	3-7	43%	0-0	0%
1st Half	14-33	42%	4-9	44%	2-3	67%
Game	29-64	45.3%	6-19	31.6%	9-14	64.3%

Last FG Half: ARI 2nd-01:05

#### Game Notes:

Officials: Anita Ortega, Bart Baldwin, Ifeyinwa Seals  
Attendance: 1247

Start Time: 2018-11-24 01:32:04  
End Time: 2018-11-24 03:13:06  
Game Duration: 101

Score	1st	2nd	3rd	4th	TOT
SCS	10	7	12	3	<b>32</b>
ARI	17	17	18	21	<b>73</b>

Points from (This Period)	SCS	ARI
In the Paint	8	18
Off Turns	6	18
2nd Chance	4	6
Fast Break	4	10
Bench	0	11

**Official Box Score**  
**South Carolina State vs Arizona**  
**First Quarter Statistics Only**  
**November 24, 2018 at McKale Center (Lute and Bobbi Olson Court) - Tucson, Ariz.**



### South Carolina State 10

No.	Player	S	Pts	FG	3FG	FT	OR	DR	TR	PF	A	TO	Blk	Stl	Min	+/-
05	MURRAY, JAQUANNA		0	0-0	0-0	0-0	0	0	0	1	0	0	0	0	4	-6
13	AKINS, JAKAYVEA		2	1-2	0-0	0-0	1	1	2	1	0	0	0	0	8	-10
20	JENKINS, KEMONI		2	1-3	0-0	0-0	1	1	2	0	0	2	2	0	8	-8
22	UDONSI, ESTHER		4	0-4	0-0	4-4	0	1	1	0	0	0	0	2	10	-7
25	BEAMON, RHEIN		2	1-4	0-1	0-0	0	2	2	0	0	3	0	0	9	-8
03	GABRIEL, OLIVIA		0	0-0	0-0	0-0	0	0	0	0	0	0	0	0	0	0
15	JACKSON, JAEI		0	0-0	0-0	0-0	0	0	0	0	0	0	0	0	0	0
21	SCOTT, CHRISANA		0	0-1	0-0	0-0	1	0	1	0	0	0	0	0	4	4
45	PETERSON, DASHANIQUE		0	0-1	0-0	0-0	1	0	1	0	0	0	0	0	6	0
	TEAM						1	1	2	0		0				
<b>TOTALS</b>			<b>10</b>	<b>3-15</b>	<b>0-1</b>	<b>4-4</b>	<b>0</b>	<b>0</b>	<b>11</b>	<b>2</b>	<b>0</b>	<b>5</b>	<b>2</b>	<b>2</b>	<b>50</b>	

#### Shooting By Period

Period	FG	FG%	3FG	3FG%	FT	FT%
1st Qtr	3-15	20%	0-1	00%	4-4	100%
2nd Qtr	3-14	21%	0-4	00%	1-2	50%
1st Half	3-15	20%	0-1	00%	4-4	100%
1st Half	6-29	21%	0-5	00%	5-6	83%
Game	11-56	19.6%	2-14	14.3%	8-20	40.0%

### Arizona 17

No.	Player	S	Pts	FG	3FG	FT	OR	DR	TR	PF	A	TO	Blk	Stl	Min	+/-
02	MCDONALD, AARI		5	2-4	0-0	1-2	0	2	2	2	0	0	0	0	8	8
04	ALONSO, LUCIA		0	0-1	0-0	0-0	0	0	0	0	1	0	0	0	6	11
14	THOMAS, SAM		0	0-0	0-0	0-0	0	1	1	0	0	0	2	2	10	7
20	MCBRYDE, DOMINIQUE		0	0-1	0-0	0-0	1	0	1	0	1	0	0	0	9	8
25	REESE, CATE		9	4-10	0-1	1-1	2	3	5	1	0	1	0	2	6	10
10	STARKS, TEE TEE		0	0-0	0-0	0-0	1	0	1	2	0	1	0	0	4	-3
22	MALECHA, LINDSEY		0	0-0	0-0	0-0	0	0	0	0	0	0	0	0	1	-1
24	NIXON, BRYCE		3	1-1	1-1	0-0	0	0	0	0	0	1	0	0	2	-1
34	SMITH, SEMAJ		0	0-1	0-0	0-0	0	0	0	0	0	0	0	0	4	-4
	TEAM						1	1	2	0		0				
<b>TOTALS</b>			<b>17</b>	<b>7-18</b>	<b>1-2</b>	<b>2-3</b>	<b>0</b>	<b>0</b>	<b>12</b>	<b>5</b>	<b>2</b>	<b>3</b>	<b>2</b>	<b>4</b>	<b>50</b>	

#### Shooting By Period

Period	FG	FG%	3FG	3FG%	FT	FT%
1st Qtr	7-18	39%	1-2	50%	2-3	67%
2nd Qtr	7-15	47%	3-7	43%	0-0	0%
1st Half	7-18	39%	1-2	50%	2-3	67%
1st Half	14-33	42%	4-9	44%	2-3	67%
Game	29-64	45.3%	6-19	31.6%	9-14	64.3%

#### Game Notes:

Officials: Anita Ortega, Bart Baldwin, Ifeyinwa Seals  
Attendance: 1247

Start Time: 2018-11-24 01:32:04  
End Time: 2018-11-24 03:13:06  
Game Duration: 101

Score	1st	2nd	3rd	4th	TOT
SCS	10	7	12	3	<b>32</b>
ARI	17	17	18	21	<b>73</b>

Points from (This Period)	SCS	ARI
In the Paint	4	12
Off Turns	2	11
2nd Chance	2	2
Fast Break	4	6
Bench	0	3

**Official Play-By-Play**  
**South Carolina State vs Arizona**  
**First Quarter**

**November 24, 2018 at McKale Center (Lute and Bobbi Olson Court) - Tucson, Ariz.**



**Period 1**

**Starters:**

**South Carolina State:** 5 MURRAY, JAQUANNA; 20 JENKINS, KEMONI; 22 UDONSI, ESTHER; 25 BEAMON, RHEIN; 13 AKINS, JAKAYVEA;  
**Arizona:** 2 MCDONALD, AARI; 4 ALONSO, LUCIA; 14 THOMAS, SAM; 20 MCBRYDE, DOMINIQUE; 25 REESE, CATE;

Time	VISITORS: South Carolina State	Score	Margin	HOME: Arizona
09:37		2-0	H 2	GOOD! LAYUP by MCDONALD, AARI
09:21	TURNOVER (LOSTBALL) by JENKINS, KEMONI			
09:21				STEAL by THOMAS, SAM
09:09		4-0	H 4	GOOD! LAYUP by REESE, CATE
08:59	MISSED JUMPER by UDONSI, ESTHER			
08:59				REBOUND (DEF) by TEAM
08:46				MISSED LAYUP by REESE, CATE
08:44				REBOUND (OFF) by TEAM
08:41				MISSED LAYUP by REESE, CATE
08:36				REBOUND (OFF) by REESE, CATE
08:33				MISSED LAYUP by REESE, CATE
08:33	BLOCK by JENKINS, KEMONI			
08:23	REBOUND (DEF) by AKINS, JAKAYVEA			
08:15	GOOD! LAYUP by JENKINS, KEMONI [FB/PNT]	4-2	H 2	
08:07				MISSED JUMPER by ALONSO, LUCIA
08:03	REBOUND (DEF) by BEAMON, RHEIN			
07:59	MISSED LAYUP by BEAMON, RHEIN			
07:55				REBOUND (DEF) by REESE, CATE
07:49				MISSED 3PTR by REESE, CATE
07:48	REBOUND (DEF) by TEAM			
07:28	MISSED JUMPER by JENKINS, KEMONI			
07:24				REBOUND (DEF) by REESE, CATE
07:16				MISSED LAYUP by REESE, CATE
07:16				REBOUND (OFF) by MCBRYDE, DOMINIQUE
07:16				MISSED LAYUP by MCBRYDE, DOMINIQUE
07:16				REBOUND (OFF) by REESE, CATE
07:16		6-2	H 4	GOOD! LAYUP by REESE, CATE
07:16	FOUL (PERSONAL) by MURRAY, JAQUANNA			
07:16		7-2	H 5	GOOD! FT by REESE, CATE [FB]
06:41	TURNOVER (TRAVEL) by BEAMON, RHEIN			
06:39		9-2	H 7	GOOD! LAYUP by REESE, CATE
06:39				ASSIST by ALONSO, LUCIA
06:25	SUB OUT: MURRAY, JAQUANNA			
06:25	SUB IN: PETERSON, DASHANIQUE			
06:12	MISSED JUMPER by PETERSON, DASHANIQUE			
06:12				BLOCK by THOMAS, SAM
06:05				REBOUND (DEF) by REESE, CATE
05:51				MISSED JUMPER by REESE, CATE
05:47	REBOUND (DEF) by BEAMON, RHEIN			
05:43	MISSED LAYUP by BEAMON, RHEIN			
05:43				BLOCK by THOMAS, SAM
05:43	REBOUND (OFF) by TEAM			
05:43	MISSED LAYUP by UDONSI, ESTHER			
05:43	REBOUND (OFF) by JENKINS, KEMONI			
05:43	TURNOVER (LOSTBALL) by JENKINS, KEMONI			
05:43				STEAL by REESE, CATE
05:43		11-2	H 9	GOOD! LAYUP by MCDONALD, AARI [FB]
05:04	MISSED 3PTR by BEAMON, RHEIN			
05:00	REBOUND (OFF) by PETERSON, DASHANIQUE			
04:47	TURNOVER (BADPASS) by BEAMON, RHEIN			
04:47				STEAL by REESE, CATE
04:41		13-2	H 11	GOOD! LAYUP by REESE, CATE [FB]
04:20	MISSED JUMPER by JENKINS, KEMONI			
04:17				REBOUND (DEF) by MCDONALD, AARI
04:12	FOUL (PERSONAL) by AKINS, JAKAYVEA			
04:12				
04:12				SUB OUT: ALONSO, LUCIA
04:12				SUB IN: STARKS, TEE TEE
04:12				SUB OUT: REESE, CATE
04:12				SUB IN: SMITH, SEMAJ
04:12	SUB OUT: AKINS, JAKAYVEA			
04:12	SUB IN: SCOTT, CHRISANA			
04:12				MISSED FT by MCDONALD, AARI
04:12				REBOUND (OFF) by TEAM
04:12		14-2	H 12	GOOD! FT by MCDONALD, AARI [FB]
03:47	GOOD! LAYUP by BEAMON, RHEIN	14-4	H 10	
03:31				TURNOVER (BADPASS) by STARKS, TEE TEE
03:31	STEAL by UDONSI, ESTHER			
03:28				FOUL (PERSONAL) by MCDONALD, AARI
03:28	GOOD! FT by UDONSI, ESTHER [FB]	14-5	H 9	

Time	VISITORS: South Carolina State	Score	Margin	HOME: Arizona
03:28	GOOD! FT by UDONSI, ESTHER [FB]	14-6	H 8	
03:09				MISSED JUMPER by SMITH, SEMAJ
03:09	REBOUND (DEF) by UDONSI, ESTHER			
02:41				FOUL (PERSONAL) by STARKS, TEE TEE
02:39	MISSED JUMPER by UDONSI, ESTHER			
02:35				REBOUND (DEF) by MCDONALD, AARI
02:31				MISSED LAYUP by MCDONALD, AARI
02:28				REBOUND (OFF) by STARKS, TEE TEE
02:15				MISSED LAYUP by MCDONALD, AARI
02:15	BLOCK by JENKINS, KEMONI			
02:14	REBOUND (DEF) by JENKINS, KEMONI			
02:14				FOUL (PERSONAL) by MCDONALD, AARI
02:14	SUB OUT: JENKINS, KEMONI			
02:14	SUB IN: AKINS, JAKAYVEA			
02:14				SUB OUT: MCDONALD, AARI
02:14				SUB IN: NIXON, BRYCE
01:47	TURNOVER (BADPASS) by BEAMON, RHEIN			
01:47				STEAL by THOMAS, SAM
01:30		17-6	H 11	GOOD! 3PTR by NIXON, BRYCE
01:30				ASSIST by MCBRYDE, DOMINIQUE
01:26	GOOD! JUMPER by AKINS, JAKAYVEA	17-8	H 9	
01:20				TURNOVER (BADPASS) by NIXON, BRYCE
01:20	STEAL by UDONSI, ESTHER			
00:51	MISSED JUMPER by SCOTT, CHRISANA			
00:47	REBOUND (OFF) by SCOTT, CHRISANA			
00:36				FOUL (PERSONAL) by STARKS, TEE TEE
00:36	GOOD! FT by UDONSI, ESTHER	17-9	H 8	
00:36				SUB OUT: MCBRYDE, DOMINIQUE
00:36				SUB IN: MALECHA, LINDSEY
00:36				SUB OUT: STARKS, TEE TEE
00:36				SUB IN: REESE, CATE
00:36	SUB OUT: BEAMON, RHEIN			
00:36	SUB IN: MURRAY, JAQUANNA			
00:36	GOOD! FT by UDONSI, ESTHER	17-10	H 7	
00:28				FOUL (OFF) by REESE, CATE
00:28				TURNOVER (OFFENSIVE) by REESE, CATE
00:10	MISSED JUMPER by UDONSI, ESTHER			
00:03	REBOUND (OFF) by AKINS, JAKAYVEA			
00:01	MISSED LAYUP by AKINS, JAKAYVEA			
00:01				REBOUND (DEF) by THOMAS, SAM

South Carolina State 10, Arizona 17

Points from (This Period)	SCS	ARI
In the Paint	4	12
Off Turns	2	11
2nd Chance	2	2
Fast Break	4	6
Bench	0	3

**Official Box Score**  
**South Carolina State vs Arizona**  
**Second Quarter Statistics Only**  
**November 24, 2018 at McKale Center (Lute and Bobbi Olson Court) - Tucson, Ariz.**



### South Carolina State 7

No.	Player	S	Pts	FG	3FG	FT	OR	DR	TR	PF	A	TO	Blk	Stl	Min	+/-
05	MURRAY, JAQUANNA		2	1-1	0-0	0-0	1	1	2	2	0	0	0	0	7	-5
13	AKINS, JAKAYVEA		2	1-2	0-0	0-0	0	0	0	0	0	0	0	0	9	-8
20	JENKINS, KEMONI		2	1-4	0-2	0-0	0	1	1	0	0	1	0	1	9	-9
22	UDONSI, ESTHER		0	0-2	0-1	0-0	1	1	2	0	0	1	0	0	8	-10
25	BEAMON, RHEIN		1	0-3	0-1	1-2	0	1	1	0	0	1	0	0	9	-8
03	GABRIEL, OLIVIA		0	0-0	0-0	0-0	0	0	0	0	0	0	0	0	0	0
15	JACKSON, JAEEL		0	0-0	0-0	0-0	0	0	0	0	0	0	0	0	0	0
21	SCOTT, CHRISANA		0	0-1	0-0	0-0	0	0	0	0	0	1	0	0	4	-5
45	PETERSON, DASHANIQUE		0	0-1	0-0	0-0	0	2	2	1	1	0	0	0	6	-5
	TEAM						1	0	1	0		0				
<b>TOTALS</b>			<b>7</b>	<b>3-14</b>	<b>0-4</b>	<b>1-2</b>	<b>0</b>	<b>0</b>	<b>9</b>	<b>3</b>	<b>1</b>	<b>4</b>	<b>0</b>	<b>1</b>	<b>50</b>	

#### Shooting By Period

Period	FG	FG%	3FG	3FG%	FT	FT%
3rd Qtr	4-14	29%	2-5	40%	2-7	29%
4th Qtr	1-13	08%	0-4	00%	1-7	14%
2nd Half	3-14	21%	0-4	00%	1-2	50%
2nd Half	5-27	19%	2-9	22%	3-14	21%
Game	11-56	19.6%	2-14	14.3%	8-20	40.0%

### Arizona 17

No.	Player	S	Pts	FG	3FG	FT	OR	DR	TR	PF	A	TO	Blk	Stl	Min	+/-
02	MCDONALD, AARI		2	1-2	0-1	0-0	0	2	2	0	1	0	0	0	2	7
04	ALONSO, LUCIA		0	0-1	0-1	0-0	0	1	1	1	1	1	0	0	10	10
14	THOMAS, SAM		3	1-1	1-1	0-0	0	1	1	0	0	0	1	1	6	5
20	MCBRYDE, DOMINIQUE		0	0-1	0-1	0-0	0	1	1	0	0	0	0	0	10	10
25	REESE, CATE		4	2-5	0-0	0-0	0	2	2	0	0	0	0	0	6	5
10	STARKS, TEE TEE		3	1-1	1-1	0-0	1	0	1	0	0	1	0	0	4	5
22	MALECHA, LINDSEY		0	0-1	0-0	0-0	0	0	0	0	0	0	0	0	1	-2
24	NIXON, BRYCE		3	1-2	1-2	0-0	0	0	0	0	2	1	0	0	7	5
34	SMITH, SEMAJ		2	1-1	0-0	0-0	0	0	0	0	0	0	1	0	4	5
	TEAM						1	1	2	0		0				
<b>TOTALS</b>			<b>17</b>	<b>7-15</b>	<b>3-7</b>	<b>0-0</b>	<b>0</b>	<b>0</b>	<b>10</b>	<b>1</b>	<b>4</b>	<b>3</b>	<b>2</b>	<b>1</b>	<b>50</b>	

#### Shooting By Period

Period	FG	FG%	3FG	3FG%	FT	FT%
3rd Qtr	7-17	41%	1-4	25%	3-5	60%
4th Qtr	8-14	57%	1-6	17%	4-6	67%
2nd Half	7-15	47%	3-7	43%	0-0	0%
2nd Half	15-31	48%	2-10	20%	7-11	64%
Game	29-64	45.3%	6-19	31.6%	9-14	64.3%

#### Game Notes:

Officials: Anita Ortega, Bart Baldwin, Ifeyinwa Seals  
Attendance: 1247

Start Time: 2018-11-24 01:32:04  
End Time: 2018-11-24 03:13:06  
Game Duration: 101

Score	1st	2nd	3rd	4th	TOT
SCS	10	7	12	3	<b>32</b>
ARI	17	17	18	21	<b>73</b>

Points from (This Period)	SCS	ARI
In the Paint	4	6
Off Turns	4	7
2nd Chance	2	4
Fast Break	0	4
Bench	0	8

**Official Play-By-Play**  
**South Carolina State vs Arizona**  
**Second Quarter**

**November 24, 2018 at McKale Center (Lute and Bobbi Olson Court) - Tucson, Ariz.**



**Period 2**

**Starters:**

**South Carolina State:** 5 MURRAY, JAQUANNA; 20 JENKINS, KEMONI; 22 UDONSI, ESTHER; 25 BEAMON, RHEIN; 13 AKINS, JAKAYVEA;  
**Arizona:** 2 MCDONALD, AARI; 4 ALONSO, LUCIA; 14 THOMAS, SAM; 20 MCBRYDE, DOMINIQUE; 25 REESE, CATE;

Time	VISITORS: South Carolina State	Score	Margin	HOME: Arizona
09:40				TURNOVER (TRAVEL) by ALONSO, LUCIA
09:15	GOOD! LAYUP by MURRAY, JAQUANNA	17-12	H 5	
09:15	ASSIST by PETERSON, DASHANIQUE			
08:57				MISSED 3PTR by NIXON, BRYCE
08:52	REBOUND (DEF) by PETERSON, DASHANIQUE			
08:32				FOUL (PERSONAL) by ALONSO, LUCIA
08:32	MISSED FT by BEAMON, RHEIN			
08:32	REBOUND (OFF) by TEAM			
08:32	GOOD! FT by BEAMON, RHEIN	17-13	H 4	
08:17		20-13	H 7	GOOD! 3PTR by NIXON, BRYCE
07:52	MISSED JUMPER by AKINS, JAKAYVEA			
07:48				REBOUND (DEF) by REESE, CATE
07:37	FOUL (PERSONAL) by MURRAY, JAQUANNA			
07:37	SUB OUT: PETERSON, DASHANIQUE			
07:37	SUB IN: UDONSI, ESTHER			
07:26		23-13	H 10	GOOD! 3PTR by THOMAS, SAM
07:26				ASSIST by NIXON, BRYCE
07:25	TIMEOUT 30SEC			
07:14	MISSED LAYUP by BEAMON, RHEIN			
07:13				REBOUND (DEF) by TEAM
06:55				MISSED LAYUP by REESE, CATE
06:51	REBOUND (DEF) by JENKINS, KEMONI			
06:50	TURNOVER (LOSTBALL) by JENKINS, KEMONI			
06:50				STEAL by THOMAS, SAM
06:43		25-13	H 12	GOOD! LAYUP by REESE, CATE [FB]
06:34	MISSED 3PTR by JENKINS, KEMONI			
06:32	REBOUND (OFF) by UDONSI, ESTHER			
06:32	TURNOVER (TRAVEL) by UDONSI, ESTHER			
06:14				MISSED JUMPER by REESE, CATE
06:13				REBOUND (OFF) by TEAM
06:10		27-13	H 14	GOOD! JUMPER by REESE, CATE
06:10				ASSIST by NIXON, BRYCE
05:51	MISSED 3PTR by UDONSI, ESTHER			
05:51				BLOCK by THOMAS, SAM
05:46				REBOUND (DEF) by THOMAS, SAM
05:30				MISSED 3PTR by MCBRYDE, DOMINIQUE
05:26	REBOUND (DEF) by MURRAY, JAQUANNA			
05:20	MISSED LAYUP by BEAMON, RHEIN			
05:16				REBOUND (DEF) by MCBRYDE, DOMINIQUE
05:01				MISSED JUMPER by REESE, CATE
04:58	REBOUND (DEF) by UDONSI, ESTHER			
04:35	MISSED JUMPER by JENKINS, KEMONI			
04:31				REBOUND (DEF) by REESE, CATE
04:17				TURNOVER (BADPASS) by NIXON, BRYCE
04:17	STEAL by JENKINS, KEMONI			
04:11	MISSED 3PTR by BEAMON, RHEIN			
04:04	REBOUND (OFF) by MURRAY, JAQUANNA			
03:41	GOOD! LAYUP by JENKINS, KEMONI	27-15	H 12	
03:34				TIMEOUT 30SEC
03:34				SUB OUT: THOMAS, SAM
03:34				SUB IN: STARKS, TEE TEE
03:34				SUB OUT: REESE, CATE
03:34				SUB IN: SMITH, SEMAJ
03:34	SUB OUT: BEAMON, RHEIN			
03:34	SUB IN: SCOTT, CHRISANA			
03:31				TURNOVER (LOSTBALL) by STARKS, TEE TEE
03:08	MISSED LAYUP by UDONSI, ESTHER			
03:08				REBOUND (DEF) by ALONSO, LUCIA
03:08	FOUL (PERSONAL) by MURRAY, JAQUANNA			
03:08				SUB OUT: NIXON, BRYCE
03:08				SUB IN: MCDONALD, AARI
03:08	SUB OUT: MURRAY, JAQUANNA			
03:08	SUB IN: PETERSON, DASHANIQUE			
02:55				MISSED 3PTR by MCDONALD, AARI
02:50	REBOUND (DEF) by PETERSON, DASHANIQUE			
02:44	MISSED JUMPER by PETERSON, DASHANIQUE			
02:41				REBOUND (DEF) by MCDONALD, AARI
02:35		29-15	H 14	GOOD! LAYUP by MCDONALD, AARI [FB]
02:16	MISSED JUMPER by SCOTT, CHRISANA			
02:16				BLOCK by SMITH, SEMAJ



Time	VISITORS: South Carolina State	Score	Margin	HOME: Arizona
02:16	REBOUND (OFF) by TEAM			
02:16	SUB OUT: AKINS, JAKAYVEA			
02:16	SUB IN: BEAMON, RHEIN			
02:13	MISSED 3PTR by JENKINS, KEMONI			
02:10				REBOUND (DEF) by MCDONALD, AARI
02:07				MISSED 3PTR by ALONSO, LUCIA
02:02				REBOUND (OFF) by STARKS, TEE TEE
01:47		31-15	H 16	GOOD! JUMPER by SMITH, SEMAJ
01:47				ASSIST by ALONSO, LUCIA
01:18	TURNOVER (BADPASS) by SCOTT, CHRISANA			
01:18	SUB OUT: JENKINS, KEMONI			
01:18	SUB IN: AKINS, JAKAYVEA			
01:05		34-15	H 19	GOOD! 3PTR by STARKS, TEE TEE
01:05				ASSIST by MCDONALD, AARI
00:40				SUB OUT: MCDONALD, AARI
00:40				SUB IN: MALECHA, LINDSEY
00:28	GOOD! JUMPER by AKINS, JAKAYVEA	34-17	H 17	
00:13	FOUL (PERSONAL) by PETERSON, DASHANIQUE			
00:09				MISSED LAYUP by MALECHA, LINDSEY
00:06	REBOUND (DEF) by BEAMON, RHEIN			
00:03	TURNOVER (LOSTBALL) by BEAMON, RHEIN			

South Carolina State 17, Arizona 34

Points from (This Period)	SCS	ARI
In the Paint	4	6
Off Turns	4	7
2nd Chance	2	4
Fast Break	0	4
Bench	0	8

**Official Box Score**  
**South Carolina State vs Arizona**  
**Second Half Statistics Only**

November 24, 2018 at McKale Center (Lute and Bobbi Olson Court) - Tucson, Ariz.



**South Carolina State 15**

No.	Player	S	Pts	FG	3FG	FT	OR	DR	TR	PF	A	TO	Blk	Stl	Min	+/-
05	MURRAY, JAQUANNA		1	0-0	0-0	1-2	0	1	1	1	0	0	1	0	14	-7
15	JACKSON, JAEI		1	0-1	0-1	1-3	0	0	0	0	0	0	0	0	4	-3
20	JENKINS, KEMONI		3	1-4	1-2	0-0	0	3	3	2	0	2	1	1	11	-12
21	SCOTT, CHRISANA		0	0-2	0-2	0-0	0	0	0	1	0	0	0	0	11	-18
22	UDONSI, ESTHER		3	1-6	1-3	0-0	1	2	3	0	0	0	1	0	16	-13
25	BEAMON, RHEIN		5	2-7	0-1	1-7	0	1	1	4	0	0	0	1	18	-17
45	PETERSON, DASHANIQUE		2	1-4	0-0	0-0	1	0	1	0	0	0	0	0	7	-18
03	GABRIEL, OLIVIA		0	0-2	0-0	0-2	1	0	1	0	0	0	0	0	6	-15
13	AKINS, JAKAYVEA		0	0-1	0-0	0-0	1	0	1	0	2	2	0	0	14	-17
	TEAM		0	0-0	0-0	0-0	0	1	1	0	0	0	0	0	0	
<b>TOTALS</b>			<b>15</b>	<b>5-27</b>	<b>2-9</b>	<b>3-14</b>	<b>0</b>	<b>0</b>	<b>12</b>	<b>8</b>	<b>2</b>	<b>4</b>	<b>3</b>	<b>2</b>	<b>100</b>	

*Shooting By Period*

Period	FG	FG%	3FG	3FG%	FT	FT%
3rd Qtr	4-14	29%	2-5	40%	2-7	29%
4th Qtr	1-13	08%	0-4	00%	1-7	14%
2nd Half	5-27	19%	2-9	22%	3-14	21%
Game	11-56	19.6%	2-14	14.3%	8-20	40.0%

*Last FG Half: SCS 4th-00:02*

**Arizona 39**

No.	Player	S	Pts	FG	3FG	FT	OR	DR	TR	PF	A	TO	Blk	Stl	Min	+/-
02	MCDONALD, AARI		8	2-4	0-1	4-6	0	2	2	1	4	2	0	0	16	17
04	ALONSO, LUCIA		3	1-4	1-2	0-0	0	3	3	0	3	0	0	0	13	19
10	STARKS, TEE TEE		2	1-2	0-0	0-1	0	2	2	0	1	2	0	1	8	15
14	THOMAS, SAM		1	0-2	0-1	1-2	0	2	2	1	0	0	2	1	12	9
20	MCBRYDE, DOMINIQUE		10	5-7	0-0	0-0	1	3	4	4	0	0	1	0	12	9
22	MALECHA, LINDSEY		0	0-0	0-0	0-0	0	0	0	2	0	0	0	0	4	3
24	NIXON, BRYCE		3	1-5	1-5	0-0	0	1	1	0	0	0	0	1	11	21
25	REESE, CATE		6	2-4	0-1	2-2	4	5	9	3	0	2	0	0	14	7
34	SMITH, SEMAJ		6	3-3	0-0	0-0	2	4	6	0	0	1	2	0	10	20
	TEAM		0	0-0	0-0	0-0	3	0	3	0	0	0	0	0	0	
<b>TOTALS</b>			<b>39</b>	<b>15-31</b>	<b>2-10</b>	<b>7-11</b>	<b>0</b>	<b>0</b>	<b>32</b>	<b>11</b>	<b>8</b>	<b>7</b>	<b>5</b>	<b>3</b>	<b>100</b>	

*Shooting By Period*

Period	FG	FG%	3FG	3FG%	FT	FT%
3rd Qtr	7-17	41%	1-4	25%	3-5	60%
4th Qtr	8-14	57%	1-6	17%	4-6	67%
2nd Half	15-31	48%	2-10	20%	7-11	64%
Game	29-64	45.3%	6-19	31.6%	9-14	64.3%

*Last FG Half: ARI 4th-02:50*

*Game Notes:*

Officials: Anita Ortega, Bart Baldwin, Ifeyinwa Seals  
Attendance: 1247

Start Time: 2018-11-24 01:32:04

End Time: 2018-11-24 03:13:06

Game Duration: 101

Score	1st	2nd	3rd	4th	TOT
SCS	10	7	12	3	<b>32</b>
ARI	17	17	18	21	<b>73</b>

Points from (This Period)	SCS	ARI
In the Paint	6	24
Off Turns	5	5
2nd Chance	2	13
Fast Break	5	13
Bench	3	11

**Official Box Score**  
**South Carolina State vs Arizona**  
**Third Quarter Statistics Only**  
**November 24, 2018 at McKale Center (Lute and Bobbi Olson Court) - Tucson, Ariz.**



### South Carolina State 15

No.	Player	S	Pts	FG	3FG	FT	OR	DR	TR	PF	A	TO	Blk	Stl	Min	+/-
05	MURRAY, JAQUANNA		1	0-0	0-0	1-2	0	1	1	1	0	0	1	0	8	3
13	AKINS, JAKAYVEA		0	0-1	0-0	0-0	0	0	0	0	2	1	0	0	10	-6
20	JENKINS, KEMONI		3	1-3	1-1	0-0	0	2	2	2	0	0	1	0	7	-4
22	UDONSI, ESTHER		3	1-3	1-2	0-0	0	2	2	0	0	0	1	0	8	3
25	BEAMON, RHEIN		3	1-4	0-1	1-5	0	1	1	1	0	0	0	0	9	-5
03	GABRIEL, OLIVIA		0	0-0	0-0	0-0	0	0	0	0	0	0	0	0	0	0
15	JACKSON, JAEI		0	0-0	0-0	0-0	0	0	0	0	0	0	0	0	0	0
21	SCOTT, CHRISANA		0	0-1	0-1	0-0	0	0	0	1	0	0	0	0	5	-11
45	PETERSON, DASHANIQUE		2	1-2	0-0	0-0	1	0	1	0	0	0	0	0	3	-10
	TEAM						0	1	1	0		0				
<b>TOTALS</b>			<b>12</b>	<b>4-14</b>	<b>2-5</b>	<b>2-7</b>	<b>0</b>	<b>0</b>	<b>8</b>	<b>5</b>	<b>2</b>	<b>1</b>	<b>3</b>	<b>0</b>	<b>50</b>	

#### Shooting By Period

Period	FG	FG%	3FG	3FG%	FT	FT%
2nd Half	0-0	0%	0-0	0%	0-0	0%
Game	11-56	19.6%	2-14	14.3%	8-20	40.0%

### Arizona 39

No.	Player	S	Pts	FG	3FG	FT	OR	DR	TR	PF	A	TO	Blk	Stl	Min	+/-
02	MCDONALD, AARI		7	2-3	0-0	3-4	0	2	2	1	2	2	0	0	9	3
04	ALONSO, LUCIA		0	0-2	0-0	0-0	0	1	1	0	2	0	0	0	7	4
14	THOMAS, SAM		0	0-1	0-1	0-0	0	0	0	1	0	0	1	0	8	-3
20	MCBRYDE, DOMINIQUE		6	3-5	0-0	0-0	1	2	3	3	0	0	1	0	9	5
25	REESE, CATE		0	0-2	0-1	0-0	1	2	3	1	0	1	0	0	8	-3
10	STARKS, TEE TEE		2	1-2	0-0	0-1	0	2	2	0	0	1	0	0	5	11
22	MALECHA, LINDSEY		0	0-0	0-0	0-0	0	0	0	0	0	0	0	0	0	0
24	NIXON, BRYCE		3	1-2	1-2	0-0	0	1	1	0	0	0	0	0	1	3
34	SMITH, SEMAJ		0	0-0	0-0	0-0	0	1	1	0	0	0	1	0	3	10
	TEAM						3	0	3	0		0				
<b>TOTALS</b>			<b>18</b>	<b>7-17</b>	<b>1-4</b>	<b>3-5</b>	<b>0</b>	<b>0</b>	<b>16</b>	<b>6</b>	<b>4</b>	<b>4</b>	<b>3</b>	<b>0</b>	<b>50</b>	

#### Shooting By Period

Period	FG	FG%	3FG	3FG%	FT	FT%
2nd Half	0-0	0%	0-0	0%	0-0	0%
Game	29-64	45.3%	6-19	31.6%	9-14	64.3%

#### Game Notes:

Officials: Anita Ortega, Bart Baldwin, Ifeyinwa Seals  
Attendance: 1247

Start Time: 2018-11-24 01:32:04  
End Time: 2018-11-24 03:13:06  
Game Duration: 101

Score	1st	2nd	3rd	4th	TOT
SCS	10	7	12	3	<b>32</b>
ARI	17	17	18	21	<b>73</b>

Points from (This Period)	SCS	ARI
In the Paint	4	12
Off Turns	4	0
2nd Chance	2	5
Fast Break	5	7
Bench	2	5

**Official Play-By-Play**  
**South Carolina State vs Arizona**  
**Third Quarter**

**November 24, 2018 at McKale Center (Lute and Bobbi Olson Court) - Tucson, Ariz.**



**Period 3**

**Starters:**

**South Carolina State:** 5 MURRAY, JAQUANNA; 20 JENKINS, KEMONI; 22 UDONSI, ESTHER; 25 BEAMON, RHEIN; 13 AKINS, JAKAYVEA;  
**Arizona:** 2 MCDONALD, AARI; 4 ALONSO, LUCIA; 14 THOMAS, SAM; 20 MCBRYDE, DOMINIQUE; 25 REESE, CATE;

Time	VISITORS: South Carolina State	Score	Margin	HOME: Arizona
09:45	FOUL (PERSONAL) by JENKINS, KEMONI			
09:41				MISSED 3PTR by THOMAS, SAM
09:38	REBOUND (DEF) by MURRAY, JAQUANNA			
09:34	GOOD! 3PTR by UDONSI, ESTHER [FB]	34-20	H 14	
09:34	ASSIST by AKINS, JAKAYVEA			
09:07				MISSED LAYUP by MCBRYDE, DOMINIQUE
09:03	REBOUND (DEF) by BEAMON, RHEIN			
08:59	GOOD! LAYUP by BEAMON, RHEIN [FB]	34-22	H 12	
08:59				FOUL (PERSONAL) by MCBRYDE, DOMINIQUE
08:58	MISSED FT by BEAMON, RHEIN			
08:56				REBOUND (DEF) by ALONSO, LUCIA
08:52		36-22	H 14	GOOD! LAYUP by MCDONALD, AARI [FB]
08:52				ASSIST by ALONSO, LUCIA
08:28	MISSED JUMPER by AKINS, JAKAYVEA			
08:24				REBOUND (DEF) by REESE, CATE
08:07				MISSED JUMPER by ALONSO, LUCIA
08:04	REBOUND (DEF) by UDONSI, ESTHER			
07:47				FOUL (PERSONAL) by THOMAS, SAM
07:45	MISSED 3PTR by UDONSI, ESTHER			
07:40				REBOUND (DEF) by REESE, CATE
07:39				TURNOVER (BADPASS) by REESE, CATE
07:20	GOOD! 3PTR by JENKINS, KEMONI	36-25	H 11	
07:20	ASSIST by AKINS, JAKAYVEA			
06:52				MISSED LAYUP by MCBRYDE, DOMINIQUE
06:48	REBOUND (DEF) by UDONSI, ESTHER			
06:26				FOUL (PERSONAL) by REESE, CATE
06:26	MISSED FT by MURRAY, JAQUANNA			
06:26	REBOUND (OFF) by TEAM			
06:26	GOOD! FT by MURRAY, JAQUANNA	36-26	H 10	
06:09				MISSED 3PTR by REESE, CATE
06:05	REBOUND (DEF) by JENKINS, KEMONI			
06:02	MISSED LAYUP by JENKINS, KEMONI			
05:58				REBOUND (DEF) by MCBRYDE, DOMINIQUE
05:56				MISSED LAYUP by MCDONALD, AARI
05:56	BLOCK by UDONSI, ESTHER			
05:56				REBOUND (OFF) by TEAM
05:53				MISSED JUMPER by ALONSO, LUCIA
05:51				REBOUND (OFF) by REESE, CATE
05:51				MISSED LAYUP by REESE, CATE
05:51	BLOCK by MURRAY, JAQUANNA			
05:51				REBOUND (OFF) by TEAM
05:41		38-26	H 12	GOOD! LAYUP by MCBRYDE, DOMINIQUE
05:41				ASSIST by MCDONALD, AARI
05:22				SUB OUT: ALONSO, LUCIA
05:22				SUB IN: STARKS, TEE TEE
05:22	SUB OUT: JENKINS, KEMONI			
05:22	SUB IN: SCOTT, CHRISANA			
05:14	MISSED 3PTR by SCOTT, CHRISANA			
05:09				REBOUND (DEF) by MCBRYDE, DOMINIQUE
05:00				TURNOVER (BADPASS) by MCDONALD, AARI
05:00				
04:30	MISSED JUMPER by BEAMON, RHEIN			
04:30				BLOCK by MCBRYDE, DOMINIQUE
04:21				REBOUND (DEF) by MCDONALD, AARI
04:18				FOUL (OFF) by MCDONALD, AARI
04:18				TURNOVER (OFFENSIVE) by MCDONALD, AARI
04:01				FOUL (PERSONAL) by MCBRYDE, DOMINIQUE
04:01	MISSED FT by BEAMON, RHEIN			
04:01	REBOUND (OFF) by TEAM			
04:01	GOOD! FT by BEAMON, RHEIN	38-27	H 11	
03:31		40-27	H 13	GOOD! LAYUP by MCDONALD, AARI
03:08	MISSED JUMPER by BEAMON, RHEIN			
03:08				REBOUND (DEF) by STARKS, TEE TEE
03:08				BLOCK by THOMAS, SAM
03:04	FOUL (PERSONAL) by BEAMON, RHEIN			
03:04				SUB OUT: MCBRYDE, DOMINIQUE
03:04				SUB IN: SMITH, SEMAJ
03:04	SUB OUT: BEAMON, RHEIN			
03:04	SUB IN: PETERSON, DASHANIQUE			
02:44				TURNOVER (BADPASS) by STARKS, TEE TEE

Time	VISITORS: South Carolina State	Score	Margin	HOME: Arizona
02:25	MISSED LAYUP by UDONSI, ESTHER			
02:21				REBOUND (DEF) by SMITH, SEMAJ
02:18	FOUL (PERSONAL) by MURRAY, JAQUANNA			
02:18		41-27	H 14	GOOD! FT by MCDONALD, AARI [FB]
02:18				SUB OUT: THOMAS, SAM
02:18				SUB IN: MCBRYDE, DOMINIQUE
02:18				SUB OUT: REESE, CATE
02:18				SUB IN: ALONSO, LUCIA
02:18	SUB OUT: MURRAY, JAQUANNA			
02:18	SUB IN: JENKINS, KEMONI			
02:18	SUB OUT: UDONSI, ESTHER			
02:18	SUB IN: BEAMON, RHEIN			
02:18		42-27	H 15	GOOD! FT by MCDONALD, AARI [FB]
02:07	MISSED 3PTR by BEAMON, RHEIN			
02:03				REBOUND (DEF) by MCDONALD, AARI
02:00		44-27	H 17	GOOD! LAYUP by MCBRYDE, DOMINIQUE [FB]
02:00				ASSIST by MCDONALD, AARI
01:41	MISSED LAYUP by PETERSON, DASHANIQUE			
01:41				BLOCK by SMITH, SEMAJ
01:35				REBOUND (DEF) by STARKS, TEE TEE
01:34				MISSED LAYUP by STARKS, TEE TEE
01:34				REBOUND (OFF) by TEAM
01:34	BLOCK by JENKINS, KEMONI			
01:33	FOUL (PERSONAL) by SCOTT, CHRISANA			
01:33		45-27	H 18	GOOD! FT by MCDONALD, AARI [FB]
01:33				MISSED FT by MCDONALD, AARI
01:31	REBOUND (DEF) by JENKINS, KEMONI			
01:24	MISSED LAYUP by JENKINS, KEMONI			
01:19	REBOUND (OFF) by PETERSON, DASHANIQUE			
01:17	GOOD! LAYUP by PETERSON, DASHANIQUE	45-29	H 16	
01:06		47-29	H 18	GOOD! LAYUP by STARKS, TEE TEE
01:06	FOUL (PERSONAL) by JENKINS, KEMONI			
01:05				MISSED FT by STARKS, TEE TEE
01:03				REBOUND (OFF) by MCBRYDE, DOMINIQUE
01:02		49-29	H 20	GOOD! LAYUP by MCBRYDE, DOMINIQUE
00:44				FOUL (PERSONAL) by MCBRYDE, DOMINIQUE
00:44	MISSED FT by BEAMON, RHEIN			
00:44	REBOUND (OFF) by TEAM			
00:44				SUB OUT: MCDONALD, AARI
00:44				SUB IN: NIXON, BRYCE
00:44	MISSED FT by BEAMON, RHEIN			
00:42				REBOUND (DEF) by NIXON, BRYCE
00:18		52-29	H 23	GOOD! 3PTR by NIXON, BRYCE
00:18				ASSIST by ALONSO, LUCIA
00:10	TURNOVER (LOSTBALL) by AKINS, JAKAYVEA			
00:00				MISSED 3PTR by NIXON, BRYCE
00:00	REBOUND (DEF) by TEAM			

South Carolina State 29, Arizona 52

Points from (This Period)	SCS	ARI
In the Paint	4	12
Off Turns	4	0
2nd Chance	2	5
Fast Break	5	7
Bench	2	5

**Official Box Score**  
**South Carolina State vs Arizona**  
**Fourth Quarter Statistics Only**  
**November 24, 2018 at McKale Center (Lute and Bobbi Olson Court) - Tucson, Ariz.**



### South Carolina State 3

No.	Player	S	Pts	FG	3FG	FT	OR	DR	TR	PF	A	TO	Blk	Stl	Min	+/-
05	MURRAY, JAQUANNA		0	0-0	0-0	0-0	0	0	0	0	0	0	0	0	6	-10
13	AKINS, JAKAYVEA		0	0-0	0-0	0-0	1	0	1	0	0	1	0	0	4	-11
20	JENKINS, KEMONI		0	0-1	0-1	0-0	0	1	1	0	0	2	0	1	4	-8
22	UDONSI, ESTHER		0	0-3	0-1	0-0	1	0	1	0	0	0	0	0	8	-16
25	BEAMON, RHEIN		2	1-3	0-0	0-2	0	0	0	3	0	0	0	1	9	-12
03	GABRIEL, OLIVIA		0	0-2	0-0	0-2	1	0	1	0	0	0	0	0	6	-15
15	JACKSON, JAEI		1	0-1	0-1	1-3	0	0	0	0	0	0	0	0	4	-3
21	SCOTT, CHRISANA		0	0-1	0-1	0-0	0	0	0	0	0	0	0	0	6	-7
45	PETERSON, DASHANIQUE		0	0-2	0-0	0-0	0	0	0	0	0	0	0	0	4	-8
	TEAM						0	0	0	0		0				
<b>TOTALS</b>		<b>3</b>	<b>1-13</b>	<b>0-4</b>	<b>1-7</b>	<b>0</b>	<b>0</b>	<b>4</b>	<b>3</b>	<b>0</b>	<b>3</b>	<b>0</b>	<b>2</b>	<b>50</b>		

#### Shooting By Period

Period	FG	FG%	3FG	3FG%	FT	FT%
Game	11-56	19.6%	2-14	14.3%	8-20	40.0%

### Arizona 21

No.	Player	S	Pts	FG	3FG	FT	OR	DR	TR	PF	A	TO	Blk	Stl	Min	+/-
02	MCDONALD, AARI		1	0-1	0-1	1-2	0	0	0	0	2	0	0	0	7	14
04	ALONSO, LUCIA		3	1-2	1-2	0-0	0	2	2	0	1	0	0	0	6	15
14	THOMAS, SAM		1	0-1	0-0	1-2	0	2	2	0	0	0	1	1	4	12
20	MCBRYDE, DOMINIQUE		4	2-2	0-0	0-0	0	1	1	1	0	0	0	0	3	4
25	REESE, CATE		6	2-2	0-0	2-2	3	3	6	2	0	1	0	0	6	10
10	STARKS, TEE TEE		0	0-0	0-0	0-0	0	0	0	0	1	1	0	1	3	4
22	MALECHA, LINDSEY		0	0-0	0-0	0-0	0	0	0	2	0	0	0	0	4	3
24	NIXON, BRYCE		0	0-3	0-3	0-0	0	0	0	0	0	0	0	1	10	18
34	SMITH, SEMAJ		6	3-3	0-0	0-0	2	3	5	0	0	1	1	0	7	10
	TEAM						0	0	0	0		0				
<b>TOTALS</b>		<b>21</b>	<b>8-14</b>	<b>1-6</b>	<b>4-6</b>	<b>0</b>	<b>0</b>	<b>16</b>	<b>5</b>	<b>4</b>	<b>3</b>	<b>2</b>	<b>3</b>	<b>50</b>		

#### Shooting By Period

Period	FG	FG%	3FG	3FG%	FT	FT%
Game	29-64	45.3%	6-19	31.6%	9-14	64.3%

#### Game Notes:

Officials: Anita Ortega, Bart Baldwin, Ifeyinwa Seals  
Attendance: 1247

Start Time: 2018-11-24 01:32:04  
End Time: 2018-11-24 03:13:06  
Game Duration: 101

Score	1st	2nd	3rd	4th	TOT
SCS	10	7	12	3	32
ARI	17	17	18	21	73

Points from (This Period)	SCS	ARI
In the Paint	2	12
Off Turns	1	5
2nd Chance	0	8
Fast Break	0	6
Bench	1	6

**Official Play-By-Play**  
**South Carolina State vs Arizona**  
**Fourth Quarter**

**November 24, 2018 at McKale Center (Lute and Bobbi Olson Court) - Tucson, Ariz.**



**Period 4**

**Starters:**

**South Carolina State:** 5 MURRAY, JAQUANNA; 20 JENKINS, KEMONI; 22 UDONSI, ESTHER; 25 BEAMON, RHEIN; 13 AKINS, JAKAYVEA;  
**Arizona:** 2 MCDONALD, AARI; 4 ALONSO, LUCIA; 14 THOMAS, SAM; 20 MCBRYDE, DOMINIQUE; 25 REESE, CATE;

Time	VISITORS: South Carolina State	Score	Margin	HOME: Arizona
09:48	MISSED JUMPER by PETERSON, DASHANIQUE			
09:48				BLOCK by SMITH, SEMAJ
09:43				REBOUND (DEF) by ALONSO, LUCIA
09:27				TURNOVER (BADPASS) by SMITH, SEMAJ
09:27	STEAL by BEAMON, RHEIN			
08:56	MISSED JUMPER by PETERSON, DASHANIQUE			
08:50				REBOUND (DEF) by MCBRYDE, DOMINIQUE
08:48				TURNOVER (LOSTBALL) by STARKS, TEE TEE
08:48	STEAL by JENKINS, KEMONI			
08:43	TURNOVER (LOSTBALL) by JENKINS, KEMONI			
08:43				STEAL by STARKS, TEE TEE
08:29		54-29	H 25	GOOD! LAYUP by MCBRYDE, DOMINIQUE
08:29				ASSIST by STARKS, TEE TEE
08:02	MISSED JUMPER by GABRIEL, OLIVIA			
07:58				REBOUND (DEF) by SMITH, SEMAJ
07:53				MISSED 3PTR by ALONSO, LUCIA
07:49	REBOUND (DEF) by JENKINS, KEMONI			
07:45	MISSED LAYUP by GABRIEL, OLIVIA			
07:44	REBOUND (OFF) by GABRIEL, OLIVIA			
07:44				FOUL (PERSONAL) by MCBRYDE, DOMINIQUE
07:44	MISSED FT by GABRIEL, OLIVIA			
07:44	REBOUND (OFF) by TEAM			
07:44	SUB OUT: BEAMON, RHEIN			
07:44	SUB IN: UDONSI, ESTHER			
07:43	MISSED FT by GABRIEL, OLIVIA			
07:41				REBOUND (DEF) by SMITH, SEMAJ
07:36		56-29	H 27	GOOD! LAYUP by MCBRYDE, DOMINIQUE [FB]
07:36				ASSIST by ALONSO, LUCIA
07:18				SUB OUT: STARKS, TEE TEE
07:18				SUB IN: MCDONALD, AARI
07:18				SUB OUT: MCBRYDE, DOMINIQUE
07:18				SUB IN: THOMAS, SAM
07:08	TURNOVER (BADPASS) by JENKINS, KEMONI			
07:08				STEAL by THOMAS, SAM
06:58				MISSED 3PTR by MCDONALD, AARI
06:53				REBOUND (OFF) by SMITH, SEMAJ
06:52		58-29	H 29	GOOD! LAYUP by SMITH, SEMAJ
06:31	MISSED 3PTR by JENKINS, KEMONI			
06:27				REBOUND (DEF) by THOMAS, SAM
06:17		60-29	H 31	GOOD! JUMPER by SMITH, SEMAJ
06:17				ASSIST by MCDONALD, AARI
06:14	TIMEOUT 30SEC			
06:14				
06:14				SUB OUT: SMITH, SEMAJ
06:14				SUB IN: REESE, CATE
06:14	SUB OUT: JENKINS, KEMONI			
06:14	SUB IN: BEAMON, RHEIN			
06:14	SUB OUT: SCOTT, CHRISANA			
06:14	SUB IN: MURRAY, JAQUANNA			
06:14	SUB OUT: PETERSON, DASHANIQUE			
06:14	SUB IN: AKINS, JAKAYVEA			
05:47				FOUL (PERSONAL) by REESE, CATE
05:31	MISSED JUMPER by BEAMON, RHEIN			
05:31				BLOCK by THOMAS, SAM
05:26				REBOUND (DEF) by THOMAS, SAM
05:22		63-29	H 34	GOOD! 3PTR by ALONSO, LUCIA [FB]
05:22				ASSIST by MCDONALD, AARI
05:06	MISSED JUMPER by BEAMON, RHEIN			
05:03				REBOUND (DEF) by REESE, CATE
04:53				MISSED JUMPER by THOMAS, SAM
04:49				REBOUND (OFF) by REESE, CATE
04:47		65-29	H 36	GOOD! LAYUP by REESE, CATE
04:21	MISSED JUMPER by UDONSI, ESTHER			
04:17				REBOUND (DEF) by ALONSO, LUCIA
04:14				MISSED 3PTR by NIXON, BRYCE
04:10				REBOUND (OFF) by REESE, CATE
04:08		67-29	H 38	GOOD! LAYUP by REESE, CATE
03:45	TURNOVER (BADPASS) by AKINS, JAKAYVEA			
03:45				STEAL by NIXON, BRYCE
03:40	FOUL (PERSONAL) by BEAMON, RHEIN			

Time	VISITORS: South Carolina State	Score	Margin	HOME: Arizona
03:40				
03:40				SUB OUT: ALONSO, LUCIA
03:40				SUB IN: MALECHA, LINDSEY
03:40	SUB OUT: GABRIEL, OLIVIA			
03:40	SUB IN: JACKSON, JAEI			
03:40				MISSED FT by THOMAS, SAM
03:40				REBOUND (OFF) by TEAM
03:40		68-29	H 39	GOOD! FT by THOMAS, SAM [FB]
03:40				SUB OUT: THOMAS, SAM
03:40				SUB IN: SMITH, SEMAJ
03:25	MISSED 3PTR by JACKSON, JAEI			
03:21	REBOUND (OFF) by UDONSI, ESTHER			
03:09				FOUL (PERSONAL) by MALECHA, LINDSEY
03:09	MISSED FT by BEAMON, RHEIN			
03:09	REBOUND (OFF) by TEAM			
03:09	MISSED FT by BEAMON, RHEIN			
03:07				REBOUND (DEF) by REESE, CATE
02:56				MISSED 3PTR by NIXON, BRYCE
02:52				REBOUND (OFF) by SMITH, SEMAJ
02:50		70-29	H 41	GOOD! JUMPER by SMITH, SEMAJ [PNT]
02:42	MISSED 3PTR by UDONSI, ESTHER			
02:39	REBOUND (OFF) by AKINS, JAKAYVEA			
02:20	MISSED JUMPER by UDONSI, ESTHER			
02:16				REBOUND (DEF) by REESE, CATE
02:02	FOUL (PERSONAL) by BEAMON, RHEIN			
02:02		71-29	H 42	GOOD! FT by REESE, CATE
02:02	SUB OUT: AKINS, JAKAYVEA			
02:02	SUB IN: SCOTT, CHRISANA			
02:02		72-29	H 43	GOOD! FT by REESE, CATE
01:40	MISSED 3PTR by SCOTT, CHRISANA			
01:36				REBOUND (DEF) by SMITH, SEMAJ
01:19				MISSED 3PTR by NIXON, BRYCE
01:14				REBOUND (OFF) by REESE, CATE
01:14				FOUL (OFF) by REESE, CATE
01:14				TURNOVER (OFFENSIVE) by REESE, CATE
00:57				FOUL (PERSONAL) by MALECHA, LINDSEY
00:57	MISSED FT by JACKSON, JAEI			
00:57	REBOUND (OFF) by TEAM			
00:57	MISSED FT by JACKSON, JAEI			
00:57	REBOUND (OFF) by TEAM			
00:57	GOOD! FT by JACKSON, JAEI	72-30	H 42	
00:31	FOUL (PERSONAL) by BEAMON, RHEIN			
00:31				MISSED FT by MCDONALD, AARI
00:31				REBOUND (OFF) by TEAM
00:31		73-30	H 43	GOOD! FT by MCDONALD, AARI
00:02	GOOD! JUMPER by BEAMON, RHEIN [PNT]	73-32	H 41	

South Carolina State 32, Arizona 73

Points from (This Period)	SCS	ARI
In the Paint	2	12
Off Turns	1	5
2nd Chance	0	8
Fast Break	0	6
Bench	1	6



**Official Scoring/Possession Reference Chart**  
**South Carolina State vs Arizona**  
**Period 1**

**November 24, 2018 at McKale Center (Lute and Bobbi Olson Court) - Tucson, Ariz.**



**Period 1**

**Starters:**

**South Carolina State:** 5 MURRAY, JAQUANNA; 20 JENKINS, KEMONI; 22 UDONSI, ESTHER; 25 BEAMON, RHEIN; 13 AKINS, JAKAYVEA;

**Arizona:** 2 MCDONALD, AARI; 4 ALONSO, LUCIA; 14 THOMAS, SAM; 20 MCBRYDE, DOMINIQUE; 25 REESE, CATE;

Time	VISITORS: South Carolina State	Score	Margin	HOME: Arizona
09:37		2-0	H 2	GOOD! LAYUP by MCDONALD, AARI
09:09		4-0	H 4	GOOD! LAYUP by REESE, CATE
08:15	GOOD! LAYUP by JENKINS, KEMONI [FB/PNT]	4-2	H 2	
07:16		6-2	H 4	GOOD! LAYUP by REESE, CATE
07:16		7-2	H 5	GOOD! FT by REESE, CATE [FB]
06:39		9-2	H 7	GOOD! LAYUP by REESE, CATE
05:43		11-2	H 9	GOOD! LAYUP by MCDONALD, AARI [FB]
04:41		13-2	H 11	GOOD! LAYUP by REESE, CATE [FB]
04:12		14-2	H 12	GOOD! FT by MCDONALD, AARI [FB]
03:47	GOOD! LAYUP by BEAMON, RHEIN	14-4	H 10	
03:28	GOOD! FT by UDONSI, ESTHER [FB]	14-5	H 9	
03:28	GOOD! FT by UDONSI, ESTHER [FB]	14-6	H 8	
01:30		17-6	H 11	GOOD! 3PTR by NIXON, BRYCE
01:26	GOOD! JUMPER by AKINS, JAKAYVEA	17-8	H 9	
00:36	GOOD! FT by UDONSI, ESTHER	17-9	H 8	
00:36	GOOD! FT by UDONSI, ESTHER	17-10	H 7	

**South Carolina State 10, Arizona 17**

**Official Scoring/Possession Reference Chart**  
**South Carolina State vs Arizona**  
**Period 2**

**November 24, 2018 at McKale Center (Lute and Bobbi Olson Court) - Tucson, Ariz.**



**Period 2**

**Starters:**

**South Carolina State:** 5 MURRAY, JAQUANNA; 20 JENKINS, KEMONI; 22 UDONSI, ESTHER; 25 BEAMON, RHEIN; 13 AKINS, JAKAYVEA;

**Arizona:** 2 MCDONALD, AARI; 4 ALONSO, LUCIA; 14 THOMAS, SAM; 20 MCBRYDE, DOMINIQUE; 25 REESE, CATE;

Time	VISITORS: South Carolina State	Score	Margin	HOME: Arizona
09:15	GOOD! LAYUP by MURRAY, JAQUANNA	17-12	H 5	
08:32	GOOD! FT by BEAMON, RHEIN	17-13	H 4	
08:17		20-13	H 7	GOOD! 3PTR by NIXON, BRYCE
07:26		23-13	H 10	GOOD! 3PTR by THOMAS, SAM
06:43		25-13	H 12	GOOD! LAYUP by REESE, CATE [FB]
06:10		27-13	H 14	GOOD! JUMPER by REESE, CATE
03:41	GOOD! LAYUP by JENKINS, KEMONI	27-15	H 12	
02:35		29-15	H 14	GOOD! LAYUP by MCDONALD, AARI [FB]
01:47		31-15	H 16	GOOD! JUMPER by SMITH, SEMAJ
01:05		34-15	H 19	GOOD! 3PTR by STARKS, TEE TEE
00:28	GOOD! JUMPER by AKINS, JAKAYVEA	34-17	H 17	

**South Carolina State 17, Arizona 34**

**Official Scoring/Possession Reference Chart**  
**South Carolina State vs Arizona**  
**Period 3**

**November 24, 2018 at McKale Center (Lute and Bobbi Olson Court) - Tucson, Ariz.**



**Period 3**

**Starters:**

**South Carolina State:** 5 MURRAY, JAQUANNA; 20 JENKINS, KEMONI; 22 UDONSI, ESTHER; 25 BEAMON, RHEIN; 13 AKINS, JAKAYVEA;  
**Arizona:** 2 MCDONALD, AARI; 4 ALONSO, LUCIA; 14 THOMAS, SAM; 20 MCBRYDE, DOMINIQUE; 25 REESE, CATE;

Time	VISITORS: South Carolina State	Score	Margin	HOME: Arizona
09:34	GOOD! 3PTR by UDONSI, ESTHER [FB]	34-20	H 14	
08:59	GOOD! LAYUP by BEAMON, RHEIN [FB]	34-22	H 12	
08:52		36-22	H 14	GOOD! LAYUP by MCDONALD, AARI [FB]
07:20	GOOD! 3PTR by JENKINS, KEMONI	36-25	H 11	
06:26	GOOD! FT by MURRAY, JAQUANNA	36-26	H 10	
05:41		38-26	H 12	GOOD! LAYUP by MCBRYDE, DOMINIQUE
04:01	GOOD! FT by BEAMON, RHEIN	38-27	H 11	
03:31		40-27	H 13	GOOD! LAYUP by MCDONALD, AARI
02:18		41-27	H 14	GOOD! FT by MCDONALD, AARI [FB]
02:18		42-27	H 15	GOOD! FT by MCDONALD, AARI [FB]
02:00		44-27	H 17	GOOD! LAYUP by MCBRYDE, DOMINIQUE [FB]
01:33		45-27	H 18	GOOD! FT by MCDONALD, AARI [FB]
01:17	GOOD! LAYUP by PETERSON, DASHANIQUE	45-29	H 16	
01:06		47-29	H 18	GOOD! LAYUP by STARKS, TEE TEE
01:02		49-29	H 20	GOOD! LAYUP by MCBRYDE, DOMINIQUE
00:18		52-29	H 23	GOOD! 3PTR by NIXON, BRYCE

**South Carolina State 29, Arizona 52**

**Official Scoring/Possession Reference Chart**  
**South Carolina State vs Arizona**  
**Period 4**

**November 24, 2018 at McKale Center (Lute and Bobbi Olson Court) - Tucson, Ariz.**



**Period 4**

**Starters:**

**South Carolina State:** 5 MURRAY, JAQUANNA; 20 JENKINS, KEMONI; 22 UDONSI, ESTHER; 25 BEAMON, RHEIN; 13 AKINS, JAKAYVEA;  
**Arizona:** 2 MCDONALD, AARI; 4 ALONSO, LUCIA; 14 THOMAS, SAM; 20 MCBRYDE, DOMINIQUE; 25 REESE, CATE;

Time	VISITORS: South Carolina State	Score	Margin	HOME: Arizona
08:29		54-29	H 25	GOOD! LAYUP by MCBRYDE, DOMINIQUE
07:36		56-29	H 27	GOOD! LAYUP by MCBRYDE, DOMINIQUE [FB]
06:52		58-29	H 29	GOOD! LAYUP by SMITH, SEMAJ
06:17		60-29	H 31	GOOD! JUMPER by SMITH, SEMAJ
05:22		63-29	H 34	GOOD! 3PTR by ALONSO, LUCIA [FB]
04:47		65-29	H 36	GOOD! LAYUP by REESE, CATE
04:08		67-29	H 38	GOOD! LAYUP by REESE, CATE
03:40		68-29	H 39	GOOD! FT by THOMAS, SAM [FB]
02:50		70-29	H 41	GOOD! JUMPER by SMITH, SEMAJ [PNT]
02:02		71-29	H 42	GOOD! FT by REESE, CATE
02:02		72-29	H 43	GOOD! FT by REESE, CATE
00:57	GOOD! FT by JACKSON, JAEL	72-30	H 42	
00:31		73-30	H 43	GOOD! FT by MCDONALD, AARI
00:02	GOOD! JUMPER by BEAMON, RHEIN [PNT]	73-32	H 41	

**South Carolina State 32, Arizona 73**

**Official Substitutions Log**  
**South Carolina State vs Arizona**  
**Period 1**

**November 24, 2018 at McKale Center (Lute and Bobbi Olson Court) - Tucson, Ariz.**



VISITORS: South Carolina State	Time	Score	HOME: Arizona
5 MURRAY, JAQUANNA			2 MCDONALD, AARI
20 JENKINS, KEMONI			4 ALONSO, LUCIA
22 UDONSI, ESTHER			14 THOMAS, SAM
25 BEAMON, RHEIN			20 MCBRYDE, DOMINIQUE
13 AKINS, JAKAYVEA			25 REESE, CATE
SUB OUT: 5 MURRAY, JAQUANNA	06:25	2-9	
SUB IN: 45 PETERSON, DASHANIQUE	06:25		
	04:12	2-13	SUB OUT: ALONSO, LUCIA
	04:12		SUB IN: STARKS, TEE TEE
	04:12		SUB OUT: REESE, CATE
	04:12		SUB IN: SMITH, SEMAJ
SUB OUT: 13 AKINS, JAKAYVEA	04:12		
SUB IN: 21 SCOTT, CHRISANA	04:12		
SUB OUT: 20 JENKINS, KEMONI	02:14	6-14	
SUB IN: 13 AKINS, JAKAYVEA	02:14		
	02:14		SUB OUT: MCDONALD, AARI
	02:14		SUB IN: NIXON, BRYCE
	00:36	9-17	SUB OUT: MCBRYDE, DOMINIQUE
	00:36		SUB IN: MALECHA, LINDSEY
	00:36		SUB OUT: STARKS, TEE TEE
	00:36		SUB IN: REESE, CATE
SUB OUT: 25 BEAMON, RHEIN	00:36		
SUB IN: 5 MURRAY, JAQUANNA	00:36		

**South Carolina State 10, Arizona 17**

**Official Substitutions Log  
South Carolina State vs Arizona  
Period 2**

**November 24, 2018 at McKale Center (Lute and Bobbi Olson Court) - Tucson, Ariz.**



VISITORS: South Carolina State	Time	Score	HOME: Arizona
5 MURRAY, JAQUANNA			2 MCDONALD, AARI
20 JENKINS, KEMONI			4 ALONSO, LUCIA
22 UDONSI, ESTHER			14 THOMAS, SAM
25 BEAMON, RHEIN			20 MCBRYDE, DOMINIQUE
13 AKINS, JAKAYVEA			25 REESE, CATE
SUB OUT: 45 PETERSON, DASHANIQUE	07:37	13-20	
SUB IN: 22 UDONSI, ESTHER	07:37		
	03:34	15-27	SUB OUT: THOMAS, SAM
	03:34		SUB IN: STARKS, TEE TEE
	03:34		SUB OUT: REESE, CATE
	03:34		SUB IN: SMITH, SEMAJ
SUB OUT: 25 BEAMON, RHEIN	03:34		
SUB IN: 21 SCOTT, CHRISANA	03:34		
	03:08	15-27	SUB OUT: NIXON, BRYCE
	03:08		SUB IN: MCDONALD, AARI
SUB OUT: 5 MURRAY, JAQUANNA	03:08		
SUB IN: 45 PETERSON, DASHANIQUE	03:08		
SUB OUT: 13 AKINS, JAKAYVEA	02:16	15-29	
SUB IN: 25 BEAMON, RHEIN	02:16		
SUB OUT: 20 JENKINS, KEMONI	01:18	15-31	
SUB IN: 13 AKINS, JAKAYVEA	01:18		
	00:40	15-34	SUB OUT: MCDONALD, AARI
	00:40		SUB IN: MALECHA, LINDSEY

**South Carolina State 17, Arizona 34**

**Official Substitutions Log  
South Carolina State vs Arizona  
Period 3**

**November 24, 2018 at McKale Center (Lute and Bobbi Olson Court) - Tucson, Ariz.**



VISITORS: South Carolina State	Time	Score	HOME: Arizona
5 MURRAY, JAQUANNA			2 MCDONALD, AARI
20 JENKINS, KEMONI			4 ALONSO, LUCIA
22 UDONSI, ESTHER			14 THOMAS, SAM
25 BEAMON, RHEIN			20 MCBRYDE, DOMINIQUE
13 AKINS, JAKAYVEA			25 REESE, CATE
	05:22	26-38	SUB OUT: ALONSO, LUCIA
	05:22		SUB IN: STARKS, TEE TEE
SUB OUT: 20 JENKINS, KEMONI	05:22		
SUB IN: 21 SCOTT, CHRISANA	05:22		
	03:04	27-40	SUB OUT: MCBRYDE, DOMINIQUE
	03:04		SUB IN: SMITH, SEMAJ
SUB OUT: 25 BEAMON, RHEIN	03:04		
SUB IN: 45 PETERSON, DASHANIQUE	03:04		
	02:18	27-41	SUB OUT: THOMAS, SAM
	02:18		SUB IN: MCBRYDE, DOMINIQUE
	02:18		SUB OUT: REESE, CATE
	02:18		SUB IN: ALONSO, LUCIA
SUB OUT: 5 MURRAY, JAQUANNA	02:18		
SUB IN: 20 JENKINS, KEMONI	02:18		
SUB OUT: 22 UDONSI, ESTHER	02:18		
SUB IN: 25 BEAMON, RHEIN	02:18		
	00:44	29-49	SUB OUT: MCDONALD, AARI
	00:44		SUB IN: NIXON, BRYCE

**South Carolina State 29, Arizona 52**

**Official Substitutions Log  
South Carolina State vs Arizona  
Period 4**

**November 24, 2018 at McKale Center (Lute and Bobbi Olson Court) - Tucson, Ariz.**



<b>VISITORS: South Carolina State</b>	<b>Time</b>	<b>Score</b>	<b>HOME: Arizona</b>
5 MURRAY, JAQUANNA			2 MCDONALD, AARI
20 JENKINS, KEMONI			4 ALONSO, LUCIA
22 UDONSI, ESTHER			14 THOMAS, SAM
25 BEAMON, RHEIN			20 MCBRYDE, DOMINIQUE
13 AKINS, JAKAYVEA			25 REESE, CATE
SUB OUT: 25 BEAMON, RHEIN	07:44	29-54	
SUB IN: 22 UDONSI, ESTHER	07:44		
	07:18	29-56	SUB OUT: STARKS, TEE TEE
	07:18		SUB IN: MCDONALD, AARI
	07:18		SUB OUT: MCBRYDE, DOMINIQUE
	07:18		SUB IN: THOMAS, SAM
	06:14	29-60	SUB OUT: SMITH, SEMAJ
	06:14		SUB IN: REESE, CATE
SUB OUT: 20 JENKINS, KEMONI	06:14		
SUB IN: 25 BEAMON, RHEIN	06:14		
SUB OUT: 21 SCOTT, CHRISANA	06:14		
SUB IN: 5 MURRAY, JAQUANNA	06:14		
SUB OUT: 45 PETERSON, DASHANIQUE	06:14		
SUB IN: 13 AKINS, JAKAYVEA	06:14		
	03:40	29-67	SUB OUT: ALONSO, LUCIA
	03:40		SUB IN: MALECHA, LINDSEY
SUB OUT: 3 GABRIEL, OLIVIA	03:40		
SUB IN: 15 JACKSON, JAEI	03:40		
	03:40		SUB OUT: THOMAS, SAM
	03:40		SUB IN: SMITH, SEMAJ
SUB OUT: 13 AKINS, JAKAYVEA	02:02	29-71	
SUB IN: 21 SCOTT, CHRISANA	02:02		

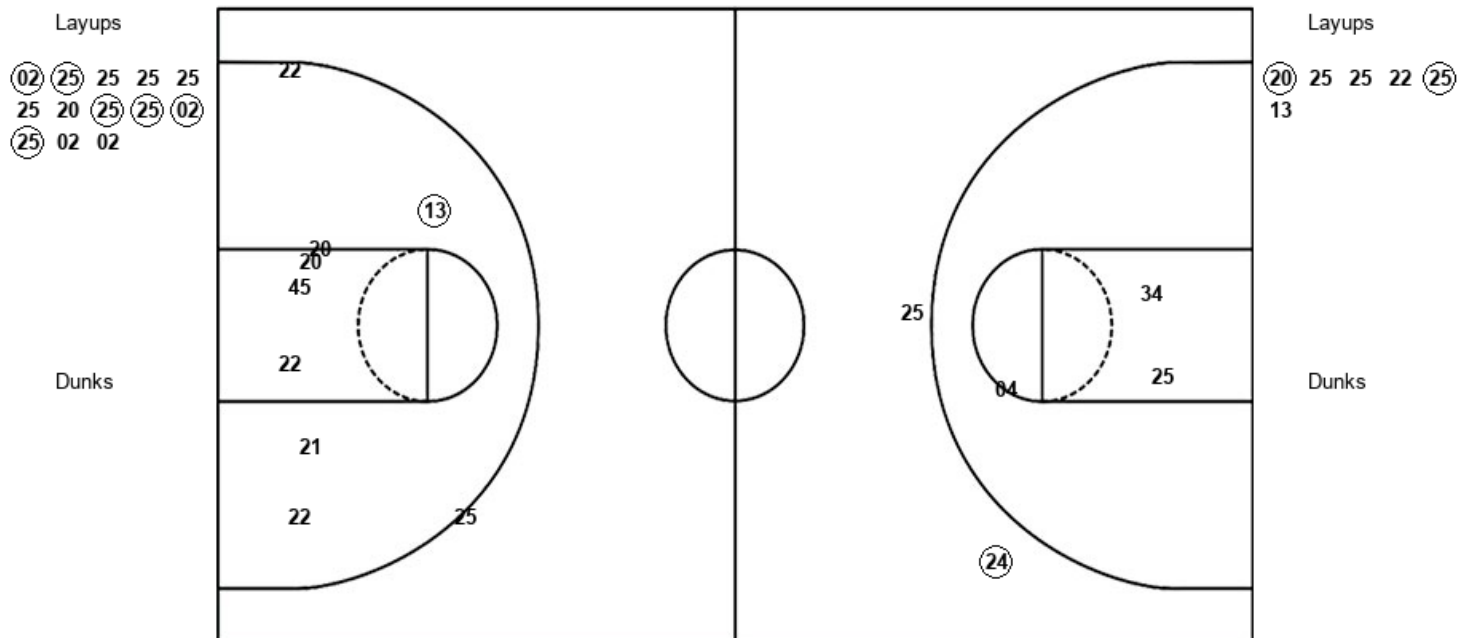
**South Carolina State 32, Arizona 73**



**November 24, 2018 at McKale Center (Lute and Bobbi Olson Court) - Tucson, Ariz.**



## South Carolina State



ARI : Period 1	Made	Att	Pct
Layups	6	13	46.2
Dunks	0	0	0
2PT Field Goals	6	16	37.5
3PT Field Goals	1	2	50.0
<b>Total Field Goals</b>	<b>7</b>	<b>18</b>	<b>38.9</b>

SCS : Period 1	Made	Att	Pct
Layups	2	6	33.3
Dunks	0	0	0
2PT Field Goals	3	14	21.4
3PT Field Goals	0	1	00.0
<b>Total Field Goals</b>	<b>3</b>	<b>15</b>	<b>20.0</b>

Official Shot Chart  
**South Carolina State vs Arizona**  
 PERIOD 2 Shots

November 24, 2018 at McKale Center (Lute and Bobbi Olson Court) - Tucson, Ariz.

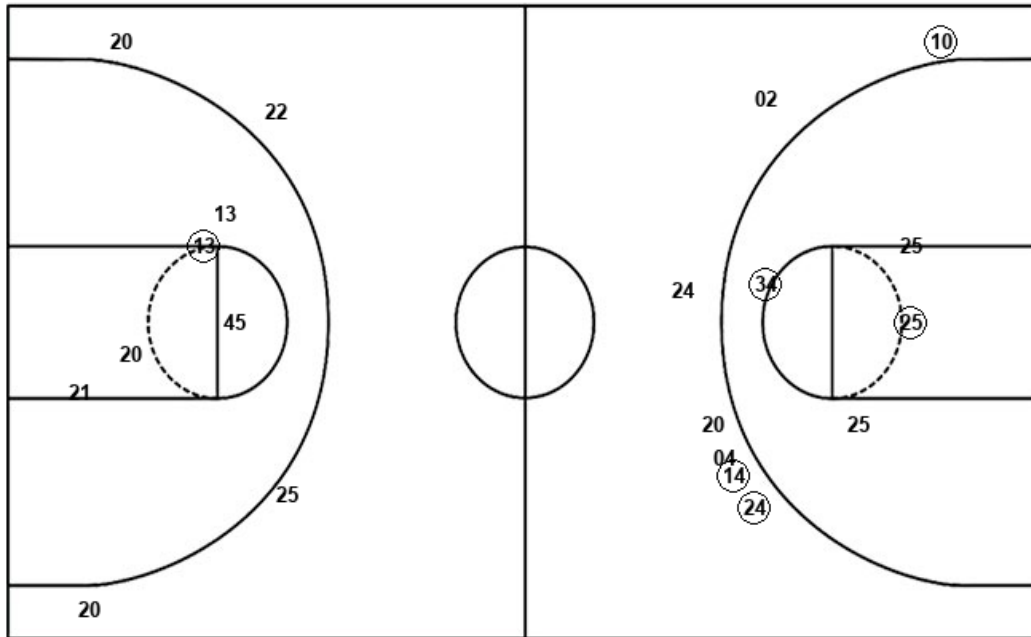


**Arizona**

**South Carolina State**

Layups  
 25 (25) (02) 22

Dunks



Layups  
 (05) 25 25 (20) 22

Dunks

ARI : Period 2	Made	Att	Pct
Layups	2	4	50.0
Dunks	0	0	0
2PT Field Goals	4	8	50.0
3PT Field Goals	3	7	42.9
<b>Total Field Goals</b>	<b>7</b>	<b>15</b>	<b>46.7</b>

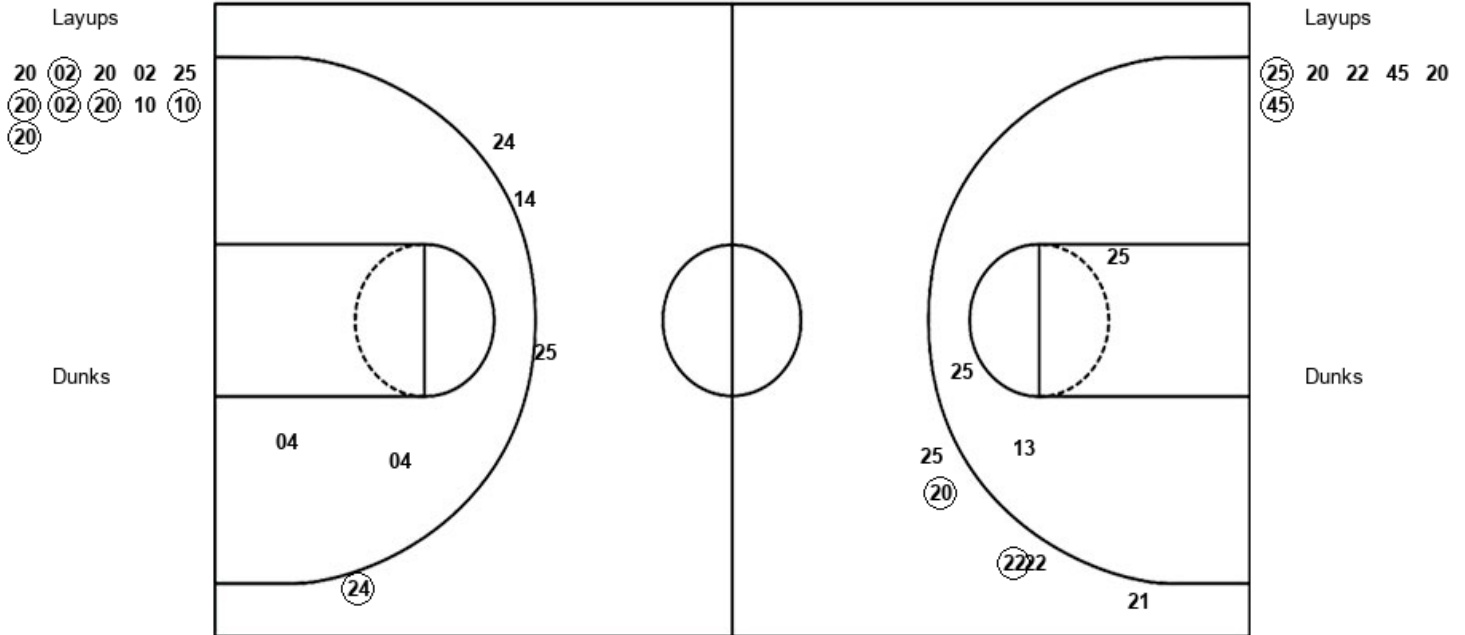
SCS : Period 2	Made	Att	Pct
Layups	2	5	40.0
Dunks	0	0	0
2PT Field Goals	3	10	30.0
3PT Field Goals	0	4	00.0
<b>Total Field Goals</b>	<b>3</b>	<b>14</b>	<b>21.4</b>

Official Shot Chart  
**South Carolina State vs Arizona**  
 PERIOD 3 Shots  
 November 24, 2018 at McKale Center (Lute and Bobbi Olson Court) - Tucson, Ariz.



**Arizona**

**South Carolina State**



ARI : Period 3	Made	Att	Pct
Layups	6	11	54.5
Dunks	0	0	0
2PT Field Goals	6	13	46.2
3PT Field Goals	1	4	25.0
<b>Total Field Goals</b>	<b>7</b>	<b>17</b>	<b>41.2</b>

SCS : Period 3	Made	Att	Pct
Layups	2	6	33.3
Dunks	0	0	0
2PT Field Goals	2	9	22.2
3PT Field Goals	2	5	40.0
<b>Total Field Goals</b>	<b>4</b>	<b>14</b>	<b>28.6</b>

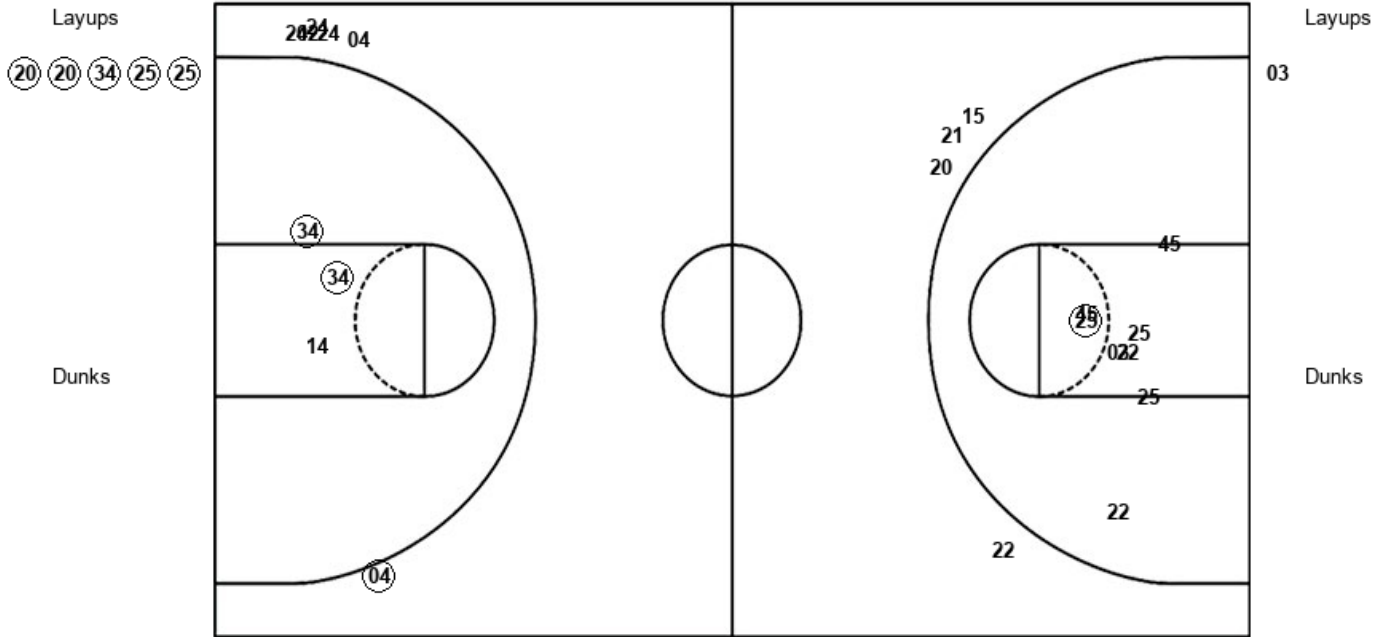
Official Shot Chart  
**South Carolina State vs Arizona**  
 PERIOD 4 Shots

November 24, 2018 at McKale Center (Lute and Bobbi Olson Court) - Tucson, Ariz.



Arizona

South Carolina State



ARI : Period 4	Made	Att	Pct
Layups	5	5	100.0
Dunks	0	0	0
2PT Field Goals	7	8	87.5
3PT Field Goals	1	6	16.7
<b>Total Field Goals</b>	<b>8</b>	<b>14</b>	<b>57.1</b>

SCS : Period 4	Made	Att	Pct
Layups	0	1	00.0
Dunks	0	0	0
2PT Field Goals	1	9	11.1
3PT Field Goals	0	4	00.0
<b>Total Field Goals</b>	<b>1</b>	<b>13</b>	<b>07.7</b>

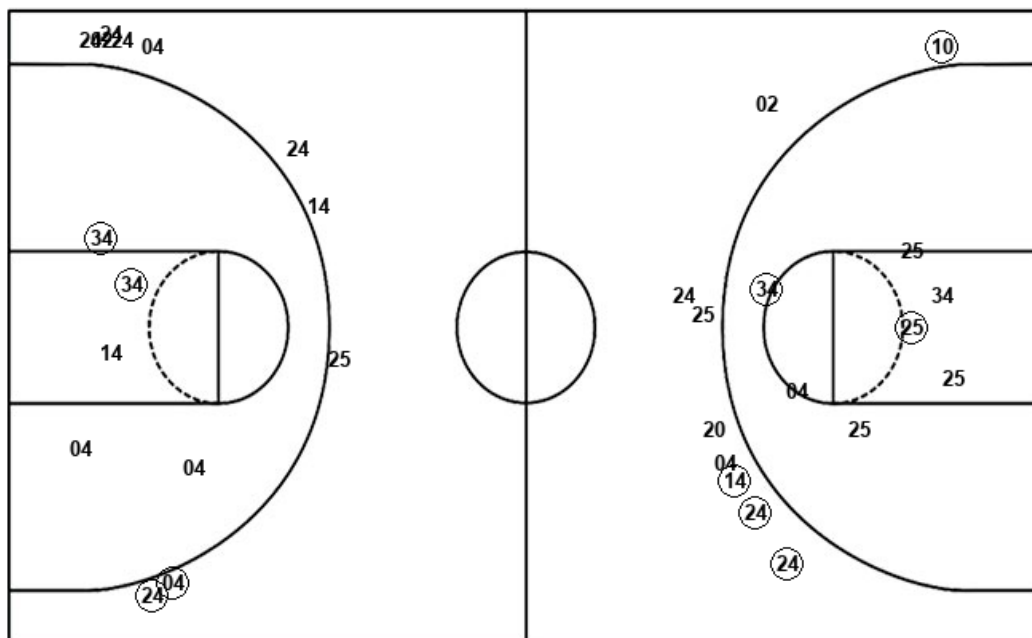


Official Shot Chart  
**South Carolina State vs Arizona**  
 Arizona Team Shots  
 November 24, 2018 at McKale Center (Lute and Bobbi Olson Court) - Tucson, Ariz.



Layups

Dunks



Layups

Dunks

ARI : Period 1	Made	Att	Pct
Layups	6	13	46.2
Dunks	0	0	0
2PT Field Goals	6	16	37.5
3PT Field Goals	1	2	50.0
<b>Total Field Goals</b>	<b>7</b>	<b>18</b>	<b>38.9</b>

ARI : Period 3	Made	Att	Pct
Layups	6	11	54.5
Dunks	0	0	0
2PT Field Goals	6	13	46.2
3PT Field Goals	1	4	25.0
<b>Total Field Goals</b>	<b>7</b>	<b>17</b>	<b>41.2</b>

ARI : Period 2	Made	Att	Pct
Layups	2	4	50.0
Dunks	0	0	0
2PT Field Goals	4	8	50.0
3PT Field Goals	3	7	42.9
<b>Total Field Goals</b>	<b>7</b>	<b>15</b>	<b>46.7</b>

ARI : Period 4	Made	Att	Pct
Layups	5	5	100.0
Dunks	0	0	0
2PT Field Goals	7	8	87.5
3PT Field Goals	1	6	16.7
<b>Total Field Goals</b>	<b>8</b>	<b>14</b>	<b>57.1</b>