

FINAL SCORE



Loyola Marymount

66



Arizona

64

November 14, 2018 • McKale Center (Lute and Bobbi Olson Court) -
Tucson, Ariz.

FINAL STATISTICS

Official Box Score
Loyola Marymount vs Arizona
Game Totals -- Final Statistics

November 14, 2018 at McKale Center (Lute and Bobbi Olson Court) - Tucson, Ariz.



Loyola Marymount 66

No.	Player	S	Pts	FG	3FG	FT	OR	DR	TR	PF	A	TO	Blk	Stl	Min	+/-			
03	GIPSON, CHELSEY		9	2-9	2-5	3-6	1	1	2	5	4	2	0	0	29	5			
11	VELASCO, ANDEE		8	2-10	2-4	2-4	1	4	5	5	3	4	1	1	39	3			
22	STANLEY, RAYCHEL		9	4-8	0-0	1-4	3	1	4	4	0	1	0	0	14	-3			
24	ALFORD, BREE		8	3-11	1-4	1-2	8	5	13	2	2	0	0	0	35	0			
35	BELVIN, CIERRA		2	1-2	0-1	0-0	0	2	2	5	1	3	0	4	18	-6			
01	VELASCO, BIANCA		0	0-2	0-1	0-0	0	0	0	3	0	0	0	1	6	-3			
04	YIM, NAOMI		0	0-3	0-1	0-0	0	1	1	0	0	0	0	1	3	1			
31	JONES, JASMINE		19	6-9	1-1	6-8	0	8	8	0	1	2	1	2	28	3			
32	REED, BRITTNEY		10	4-10	1-1	1-3	0	3	3	4	0	3	0	0	25	8			
42	MANDEL, MEGHAN		1	0-0	0-0	1-2	0	1	1	1	0	0	0	0	3	2			
TEAM																			
TOTALS							66	22-64	7-18	15-29	18	27	45	29	11	15	2	9	200

Shooting By Period

Period	FG	FG%	3FG	3FG%	FT	FT%
1st Qtr	6-21	29%	3-7	43%	5-12	42%
2nd Qtr	7-18	39%	2-6	33%	0-0	0%
3rd Qtr	5-15	33%	2-3	67%	5-7	71%
4th Qtr	4-10	40%	0-2	00%	5-10	50%
1st Half	13-39	33%	5-13	38%	5-12	42%
2nd Half	9-25	36%	2-5	40%	10-17	59%
Game	22-64	34.4%	7-18	38.9%	15-29	51.7%

Last FG: 4th-04:00
Biggest Run: 7-0
Largest lead: By 14 at 2-08:49
Technical Fouls: None.

Arizona 64

No.	Player	S	Pts	FG	3FG	FT	OR	DR	TR	PF	A	TO	Blk	Stl	Min	+/-			
02	MCDONALD, AARI		39	9-21	1-9	20-23	1	7	8	4	2	6	0	3	39	-2			
04	ALONSO, LUCIA		3	1-5	0-2	1-2	0	2	2	4	1	2	0	1	30	3			
14	THOMAS, SAM		5	2-10	0-5	1-1	3	5	8	4	0	1	1	0	29	-2			
20	MCBRYDE, DOMINIQUE		5	2-6	1-2	0-0	4	2	6	5	2	3	1	1	27	1			
25	REESE, CATE		8	3-10	0-0	2-2	2	3	5	2	1	4	0	0	25	-14			
10	STARKS, TEE TEE		0	0-2	0-0	0-0	0	2	2	3	0	0	0	1	24	14			
21	GRAHAM, DESTINY		1	0-3	0-1	1-2	0	5	5	3	0	1	0	0	19	2			
24	NIXON, BRYCE		3	1-2	1-2	0-0	0	0	0	0	0	0	0	0	4	-7			
34	SMITH, SEMAJ		0	0-0	0-0	0-0	0	1	1	1	0	1	0	0	3	-5			
TEAM																			
TOTALS							64	18-59	3-21	25-30	13	30	43	26	6	18	2	6	200

Shooting By Period

Period	FG	FG%	3FG	3FG%	FT	FT%
1st Qtr	1-12	08%	1-6	17%	6-8	75%
2nd Qtr	6-13	46%	0-3	00%	3-3	100%
3rd Qtr	6-19	32%	1-7	14%	5-6	83%
4th Qtr	5-15	33%	1-5	20%	11-13	85%
1st Half	7-25	28%	1-9	11%	9-11	82%
2nd Half	11-34	32%	2-12	17%	16-19	84%
Game	18-59	30.5%	3-21	14.3%	25-30	83.3%

Last FG: 4th-00:15
Biggest Run: 7-0
Largest lead: By 2 at 1-03:45
Technical Fouls: None.

Game Notes:

Officials: Charles Gonzalez, Bart Baldwin, Saif Esho
 Attendance: 852

Start Time: 2018-11-14 01:30:50
 End Time: 2018-11-14 03:44:19
 Game Duration: 133

Score	1st	2nd	3rd	4th	TOT
LMU	20	16	17	13	66
ARI	9	15	18	22	64

LMU led for 36:30. ARI led for 3:00.
 Game was tied for 0:29.
 Times tied: 4 Lead Changes: 3

Points from	LMU	ARI
In the Paint	24	26
Off Turns	16	11
2nd Chance	13	15
Fast Break	15	14
Bench	30	4

Official Box Score
Loyola Marymount vs Arizona
First Half Statistics Only
November 14, 2018 at McKale Center (Lute and Bobbi Olson Court) - Tucson, Ariz.



Loyola Marymount 36

No.	Player	S	Pts	FG	3FG	FT	OR	DR	TR	PF	A	TO	Blk	Stl	Min	+/-
01	VELASCO, BIANCA		0	0-1	0-0	0-0	0	0	0	1	0	0	0	0	3	0
03	GIPSON, CHELSEY		7	2-7	2-5	1-2	1	1	2	2	3	0	0	0	18	12
04	YIM, NAOMI		0	0-3	0-1	0-0	0	1	1	0	0	0	0	1	3	1
11	VELASCO, ANDEE		3	1-7	1-2	0-0	1	2	3	0	1	2	1	1	19	12
31	JONES, JASMINE		14	6-7	1-1	1-2	0	4	4	0	1	0	1	2	16	11
22	STANLEY, RAYCHEL		1	0-1	0-0	1-4	2	1	3	2	0	1	0	0	3	3
24	ALFORD, BREE		5	2-8	0-3	1-2	5	3	8	1	1	0	0	0	18	8
32	REED, BRITTNEY		5	2-5	1-1	0-0	0	1	1	2	0	0	0	0	12	15
35	BELVIN, CIERRA		0	0-0	0-0	0-0	0	0	0	3	1	1	0	2	5	-4
42	MANDEL, MEGHAN		1	0-0	0-0	1-2	0	1	1	1	0	0	0	0	3	2
	TEAM		0	0-0	0-0	0-0	3	0	3	0	0	0	0	0	0	0
TOTALS			36	13-39	5-13	5-12	0	0	26	12	7	4	2	6	100	

Shooting By Period

Period	FG	FG%	3FG	3FG%	FT	FT%
1st Qtr	6-21	29%	3-7	43%	5-12	42%
2nd Qtr	7-18	39%	2-6	33%	0-0	0%
1st Half	13-39	33%	5-13	38%	5-12	42%
Game	22-64	34.4%	7-18	38.9%	15-29	51.7%

Last FG Half: LMU 2nd-00:01

Arizona 24

No.	Player	S	Pts	FG	3FG	FT	OR	DR	TR	PF	A	TO	Blk	Stl	Min	+/-
02	MCDONALD, AARI		12	3-8	0-4	6-8	0	4	4	2	1	2	0	1	19	-12
04	ALONSO, LUCIA		0	0-4	0-2	0-0	0	0	0	1	1	1	0	0	17	-6
10	STARKS, TEE TEE		0	0-2	0-0	0-0	0	1	1	1	0	0	0	0	11	3
14	THOMAS, SAM		3	1-1	0-0	1-1	1	3	4	3	0	1	1	0	9	-12
20	MCBRYDE, DOMINIQUE		0	0-2	0-0	0-0	2	1	3	1	1	2	0	1	13	-14
21	GRAHAM, DESTINY		0	0-2	0-1	0-0	0	4	4	2	0	1	0	0	11	4
24	NIXON, BRYCE		3	1-2	1-2	0-0	0	0	0	0	0	0	0	0	4	-6
25	REESE, CATE		6	2-4	0-0	2-2	1	2	3	1	0	3	0	0	13	-14
34	SMITH, SEMAJ		0	0-0	0-0	0-0	0	1	1	0	0	0	0	0	1	-3
	TEAM		0	0-0	0-0	0-0	0	1	1	0	0	0	0	0	0	0
TOTALS			24	7-25	1-9	9-11	0	0	21	11	3	10	1	2	100	

Shooting By Period

Period	FG	FG%	3FG	3FG%	FT	FT%
1st Qtr	1-12	08%	1-6	17%	6-8	75%
2nd Qtr	6-13	46%	0-3	00%	3-3	100%
1st Half	7-25	28%	1-9	11%	9-11	82%
Game	18-59	30.5%	3-21	14.3%	25-30	83.3%

Last FG Half: ARI 2nd-01:26

Game Notes:

Officials: Charles Gonzalez, Bart Baldwin, Saif Esho
 Attendance: 852

Start Time: 2018-11-14 01:30:50
 End Time: 2018-11-14 03:44:19
 Game Duration: 133

Score	1st	2nd	3rd	4th	TOT
LMU	20	16	17	13	66
ARI	9	15	18	22	64

Points from (This Period)	LMU	ARI
In the Paint	12	10
Off Turns	11	2
2nd Chance	9	7
Fast Break	5	4
Bench	20	3

Official Box Score
Loyola Marymount vs Arizona
First Quarter Statistics Only
November 14, 2018 at McKale Center (Lute and Bobbi Olson Court) - Tucson, Ariz.



Loyola Marymount 20

No.	Player	S	Pts	FG	3FG	FT	OR	DR	TR	PF	A	TO	Blk	Stl	Min	+/-
03	GIPSON, CHELSEY		7	2-6	2-4	1-2	1	1	2	1	1	0	0	0	10	12
11	VELASCO, ANDEE		0	0-3	0-0	0-0	1	2	3	0	1	1	1	1	9	11
22	STANLEY, RAYCHEL		1	0-1	0-0	1-4	2	1	3	2	0	1	0	0	3	3
24	ALFORD, BREE		1	0-4	0-1	1-2	2	0	2	1	1	0	0	0	9	7
35	BELVIN, CIERRA		0	0-0	0-0	0-0	0	0	0	2	1	0	0	2	4	1
01	VELASCO, BIANCA		0	0-0	0-0	0-0	0	0	0	0	0	0	0	0	0	0
04	YIM, NAOMI		0	0-2	0-1	0-0	0	1	1	0	0	0	0	0	1	0
31	JONES, JASMINE		10	4-4	1-1	1-2	0	3	3	0	0	0	1	0	6	10
32	REED, BRITTNEY		0	0-1	0-0	0-0	0	1	1	1	0	0	0	0	6	9
42	MANDEL, MEGHAN		1	0-0	0-0	1-2	0	1	1	0	0	0	0	0	2	2
TEAM							2	0	2	0		0				
TOTALS			20	6-21	3-7	5-12	0	0	18	7	4	2	2	3	50	

Shooting By Period

Period	FG	FG%	3FG	3FG%	FT	FT%
1st Qtr	6-21	29%	3-7	43%	5-12	42%
2nd Qtr	7-18	39%	2-6	33%	0-0	0%
1st Half	6-21	29%	3-7	43%	5-12	42%
1st Half	13-39	33%	5-13	38%	5-12	42%
Game	22-64	34.4%	7-18	38.9%	15-29	51.7%

Arizona 9

No.	Player	S	Pts	FG	3FG	FT	OR	DR	TR	PF	A	TO	Blk	Stl	Min	+/-
02	MCDONALD, AARI		4	0-4	0-3	4-6	0	1	1	1	1	1	0	1	9	-11
04	ALONSO, LUCIA		0	0-2	0-1	0-0	0	0	0	1	0	1	0	0	7	-5
14	THOMAS, SAM		0	0-0	0-0	0-0	0	2	2	2	0	1	1	0	7	-14
20	MCBRYDE, DOMINIQUE		0	0-2	0-0	0-0	0	1	1	1	0	0	0	1	7	-11
25	REESE, CATE		2	0-0	0-0	2-2	1	0	1	1	0	2	0	0	8	-12
10	STARKS, TEE TEE		0	0-1	0-0	0-0	0	0	0	1	0	0	0	0	3	3
21	GRAHAM, DESTINY		0	0-1	0-0	0-0	0	4	4	1	0	0	0	0	3	4
24	NIXON, BRYCE		3	1-2	1-2	0-0	0	0	0	0	0	0	0	0	4	-6
34	SMITH, SEMAJ		0	0-0	0-0	0-0	0	1	1	0	0	0	0	0	1	-3
TEAM							0	1	1	0		0				
TOTALS			9	1-12	1-6	6-8	0	0	11	8	1	5	1	2	50	

Shooting By Period

Period	FG	FG%	3FG	3FG%	FT	FT%
1st Qtr	1-12	08%	1-6	17%	6-8	75%
2nd Qtr	6-13	46%	0-3	00%	3-3	100%
1st Half	1-12	08%	1-6	17%	6-8	75%
1st Half	7-25	28%	1-9	11%	9-11	82%
Game	18-59	30.5%	3-21	14.3%	25-30	83.3%

Game Notes:

Officials: Charles Gonzalez, Bart Baldwin, Saif Esho
 Attendance: 852

Start Time: 2018-11-14 01:30:50
 End Time: 2018-11-14 03:44:19
 Game Duration: 133

Score	1st	2nd	3rd	4th	TOT
LMU	20	16	17	13	66
ARI	9	15	18	22	64

Points from (This Period)	LMU	ARI
In the Paint	6	0
Off Turns	4	0
2nd Chance	5	0
Fast Break	3	2
Bench	11	3

**Official Play-By-Play
Loyola Marymount vs Arizona**

November 14, 2018 at McKale Center (Lute and Bobbi Olson Court) - Tucson, Ariz.



Period 1

Starters:

Loyola Marymount: 3 GIPSON,CHELSEY; 11 VELASCO,ANDEE; 22 STANLEY,RAYCHEL; 24 ALFORD,BREE; 35 BELVIN,CIERRA;

Arizona: 2 MCDONALD,AARI; 4 ALONSO,LUCIA; 14 THOMAS,SAM; 20 MCBRYDE,DOMINIQUE; 25 REESE,CATE;

Time	VISITORS: Loyola Marymount	Score	Margin	HOME: Arizona
09:44	FOUL (PERSONAL) by STANLEY, RAYCHEL			
09:44		1-0	H 1	GOOD! FT by REESE, CATE
09:44		2-0	H 2	GOOD! FT by REESE, CATE
09:24	GOOD! 3PTR by GIPSON, CHELSEY	2-3	V 1	
09:24	ASSIST by BELVIN, CIERRA			
09:12	FOUL (PERSONAL) by BELVIN, CIERRA			
09:05				MISSED 3PTR by MCDONALD, AARI
09:02	REBOUND (DEF) by VELASCO, ANDEE			
08:45	TURNOVER (LOSTBALL) by STANLEY, RAYCHEL			
08:45				STEAL by MCBRYDE, DOMINIQUE
08:45				TURNOVER (DRIBBLING) by REESE, CATE
08:43	MISSED JUMPER by GIPSON, CHELSEY			
08:42	REBOUND (OFF) by GIPSON, CHELSEY			
08:42				FOUL (PERSONAL) by THOMAS, SAM
08:42	MISSED FT by GIPSON, CHELSEY			
08:42	REBOUND (OFF) by TEAM			
08:42	GOOD! FT by GIPSON, CHELSEY [FB]	2-4	V 2	
08:34				MISSED JUMPER by MCDONALD, AARI
08:34	BLOCK by VELASCO, ANDEE			
08:28	REBOUND (DEF) by STANLEY, RAYCHEL			
08:09	MISSED 3PTR by ALFORD, BREE			
08:04				REBOUND (DEF) by THOMAS, SAM
08:00				MISSED JUMPER by ALONSO, LUCIA
07:57				REBOUND (OFF) by REESE, CATE
07:53				TURNOVER (LOSTBALL) by REESE, CATE
07:53	STEAL by BELVIN, CIERRA			
07:46	MISSED JUMPER by GIPSON, CHELSEY			
07:46				BLOCK by THOMAS, SAM
07:46	REBOUND (OFF) by TEAM			
07:44	MISSED JUMPER by STANLEY, RAYCHEL			
07:40				REBOUND (DEF) by MCBRYDE, DOMINIQUE
07:25				TURNOVER (LOSTBALL) by MCDONALD, AARI
07:25	STEAL by BELVIN, CIERRA			
07:13				FOUL (PERSONAL) by MCBRYDE, DOMINIQUE
07:13				SUB OUT: THOMAS, SAM
07:13				SUB IN: STARKS, TEE TEE
07:13				SUB OUT: MCBRYDE, DOMINIQUE
07:13				SUB IN: GRAHAM, DESTINY
07:13	SUB OUT: STANLEY, RAYCHEL			
07:13	SUB IN: JONES, JASMINE			
06:53	MISSED JUMPER by VELASCO, ANDEE			
06:53	REBOUND (OFF) by ALFORD, BREE			
06:47	MISSED LAYUP by ALFORD, BREE			
06:47	MISSED LAYUP by ALFORD, BREE			
06:47	REBOUND (OFF) by ALFORD, BREE			
06:41				REBOUND (DEF) by GRAHAM, DESTINY
06:39				MISSED 3PTR by ALONSO, LUCIA
06:35	REBOUND (DEF) by JONES, JASMINE			
06:26				SUB OUT: ALONSO, LUCIA
06:26				SUB IN: NIXON, BRYCE
06:19	MISSED 3PTR by GIPSON, CHELSEY			
06:13				REBOUND (DEF) by GRAHAM, DESTINY
06:08	FOUL (PERSONAL) by BELVIN, CIERRA			
06:08	SUB OUT: BELVIN, CIERRA			
06:08	SUB IN: REED, BRITTNEY			
06:02	FOUL (PERSONAL) by REED, BRITTNEY			
06:01		5-4	H 1	GOOD! 3PTR by NIXON, BRYCE
06:01				ASSIST by MCDONALD, AARI
05:42	MISSED JUMPER by VELASCO, ANDEE			
05:39	REBOUND (OFF) by VELASCO, ANDEE			
05:37	TURNOVER (BADPASS) by VELASCO, ANDEE			
05:37				STEAL by MCDONALD, AARI
05:32				MISSED LAYUP by GRAHAM, DESTINY
05:32	BLOCK by JONES, JASMINE			
05:28	REBOUND (DEF) by JONES, JASMINE			
05:27				FOUL (PERSONAL) by STARKS, TEE TEE
05:27	SUB OUT: JONES, JASMINE			
05:27	SUB IN: STANLEY, RAYCHEL			
05:27				SUB OUT: MCDONALD, AARI
05:27				SUB IN: ALONSO, LUCIA

Time	VISITORS: Loyola Marymount	Score	Margin	HOME: Arizona
05:27				SUB OUT: REESE, CATE
05:27				SUB IN: MCBRYDE, DOMINIQUE
05:27	MISSED FT by STANLEY, RAYCHEL			
05:27	REBOUND (OFF) by TEAM			
05:27	SUB OUT: VELASCO, ANDEE			
05:27	SUB IN: YIM, NAOMI			
05:27	MISSED FT by STANLEY, RAYCHEL			
05:24				REBOUND (DEF) by GRAHAM, DESTINY
05:11				MISSED LAYUP by STARKS, TEE TEE
05:07	REBOUND (DEF) by YIM, NAOMI			
05:04	MISSED 3PTR by GIPSON, CHELSEY			
04:56	REBOUND (OFF) by STANLEY, RAYCHEL			
04:55	MISSED JUMPER by YIM, NAOMI			
04:55	REBOUND (OFF) by STANLEY, RAYCHEL			
04:54				FOUL (PERSONAL) by ALONSO, LUCIA
04:54				SUB OUT: NIXON, BRYCE
04:54				SUB IN: MCDONALD, AARI
04:54	GOOD! FT by STANLEY, RAYCHEL	5-5	T	
04:54	MISSED FT by STANLEY, RAYCHEL			
04:54				REBOUND (DEF) by GRAHAM, DESTINY
04:46	FOUL (PERSONAL) by STANLEY, RAYCHEL			
04:46				MISSED FT by MCDONALD, AARI
04:46				REBOUND (OFF) by TEAM
04:46	SUB OUT: STANLEY, RAYCHEL			
04:46	SUB IN: MANDEL, MEGHAN			
04:46		6-5	H 1	GOOD! FT by MCDONALD, AARI
04:15	MISSED 3PTR by YIM, NAOMI			
04:14				REBOUND (DEF) by TEAM
04:14	SUB OUT: GIPSON, CHELSEY			
04:14	SUB IN: BELVIN, CIERRA			
04:14	SUB OUT: YIM, NAOMI			
04:14	SUB IN: VELASCO, ANDEE			
04:04				MISSED 3PTR by MCDONALD, AARI
04:00	REBOUND (DEF) by MANDEL, MEGHAN			
03:50				FOUL (PERSONAL) by MCDONALD, AARI
03:50				SUB OUT: STARKS, TEE TEE
03:50				SUB IN: THOMAS, SAM
03:50	MISSED FT by ALFORD, BREE			
03:50	REBOUND (OFF) by TEAM			
03:50	GOOD! FT by ALFORD, BREE	6-6	T	
03:45	FOUL (PERSONAL) by ALFORD, BREE			
03:45		7-6	H 1	GOOD! FT by MCDONALD, AARI [FB]
03:45		8-6	H 2	GOOD! FT by MCDONALD, AARI [FB]
03:45				FOUL (PERSONAL) by GRAHAM, DESTINY
03:45	MISSED FT by MANDEL, MEGHAN			
03:45	REBOUND (OFF) by TEAM			
03:45				SUB OUT: GRAHAM, DESTINY
03:45				SUB IN: REESE, CATE
03:45	SUB OUT: BELVIN, CIERRA			
03:45	SUB IN: GIPSON, CHELSEY			
03:45	SUB OUT: ALFORD, BREE			
03:45	SUB IN: JONES, JASMINE			
03:45	GOOD! FT by MANDEL, MEGHAN	8-7	H 1	
03:29				MISSED 3PTR by MCDONALD, AARI
03:22	REBOUND (DEF) by REED, BRITTNEY			
03:08	GOOD! LAYUP by JONES, JASMINE	8-9	V 1	
03:08				FOUL (PERSONAL) by REESE, CATE
03:08	GOOD! FT by JONES, JASMINE	8-10	V 2	
03:08	SUB OUT: MANDEL, MEGHAN			
03:08	SUB IN: ALFORD, BREE			
02:44				MISSED LAYUP by MCBRYDE, DOMINIQUE
02:41	REBOUND (DEF) by JONES, JASMINE			
02:38	MISSED LAYUP by REED, BRITTNEY			
02:34				REBOUND (DEF) by THOMAS, SAM
02:33				TURNOVER (BADPASS) by THOMAS, SAM
02:33	STEAL by VELASCO, ANDEE			
02:27	MISSED LAYUP by VELASCO, ANDEE			
02:22				REBOUND (DEF) by MCDONALD, AARI
02:14				TURNOVER (TRAVEL) by ALONSO, LUCIA
02:14				SUB OUT: ALONSO, LUCIA
02:14				SUB IN: NIXON, BRYCE
01:54	GOOD! 3PTR by GIPSON, CHELSEY	8-13	V 5	
01:54	ASSIST by ALFORD, BREE			
01:41	FOUL (PERSONAL) by GIPSON, CHELSEY			
01:41				MISSED FT by MCDONALD, AARI
01:41				REBOUND (OFF) by TEAM
01:41		9-13	V 4	GOOD! FT by MCDONALD, AARI
01:23	GOOD! LAYUP by JONES, JASMINE	9-15	V 6	
01:05				MISSED JUMPER by MCBRYDE, DOMINIQUE
01:02	REBOUND (DEF) by VELASCO, ANDEE			

Time	VISITORS: Loyola Marymount	Score	Margin	HOME: Arizona
01:01	GOOD! LAYUP by JONES, JASMINE [FB]	9-17	V 8	
01:01	ASSIST by VELASCO, ANDEE			
01:01				FOUL (PERSONAL) by THOMAS, SAM
01:01				SUB OUT: MCBRYDE, DOMINIQUE
01:01				SUB IN: SMITH, SEMAJ
01:01	MISSED FT by JONES, JASMINE			
01:01				REBOUND (DEF) by SMITH, SEMAJ
00:42				MISSED 3PTR by NIXON, BRYCE
00:38	REBOUND (DEF) by GIPSON, CHELSEY			
00:25	MISSED JUMPER by ALFORD, BREE			
00:22	REBOUND (OFF) by TEAM			
00:02	GOOD! 3PTR by JONES, JASMINE	9-20	V 11	
00:02	ASSIST by GIPSON, CHELSEY			

Loyola Marymount 20, Arizona 9

Points from (This Period)	LMU	ARI
In the Paint	6	0
Off Turns	4	0
2nd Chance	5	0
Fast Break	3	2
Bench	11	3

Official Box Score
Loyola Marymount vs Arizona
Second Quarter Statistics Only
November 14, 2018 at McKale Center (Lute and Bobbi Olson Court) - Tucson, Ariz.



Loyola Marymount 16

No.	Player	S	Pts	FG	3FG	FT	OR	DR	TR	PF	A	TO	Blk	Stl	Min	+/-
03	GIPSON, CHELSEY		0	0-1	0-1	0-0	0	0	0	1	2	0	0	0	8	0
11	VELASCO, ANDEE		3	1-4	1-2	0-0	0	0	0	0	0	1	0	0	10	1
22	STANLEY, RAYCHEL		0	0-0	0-0	0-0	0	0	0	0	0	0	0	0	0	0
24	ALFORD, BREE		4	2-4	0-2	0-0	3	3	6	0	0	0	0	0	9	1
35	BELVIN, CIERRA		0	0-0	0-0	0-0	0	0	0	1	0	1	0	0	1	-5
01	VELASCO, BIANCA		0	0-1	0-0	0-0	0	0	0	1	0	0	0	0	3	0
04	YIM, NAOMI		0	0-1	0-0	0-0	0	0	0	0	0	0	0	1	2	1
31	JONES, JASMINE		4	2-3	0-0	0-0	0	1	1	0	1	0	0	2	10	1
32	REED, BRITTNEY		5	2-4	1-1	0-0	0	0	0	1	0	0	0	0	6	6
42	MANDEL, MEGHAN		0	0-0	0-0	0-0	0	0	0	1	0	0	0	0	1	0
TEAM							1	0	1	0		0				
TOTALS			16	7-18	2-6	0-0	0	0	8	5	3	2	0	3	50	

Shooting By Period

Period	FG	FG%	3FG	3FG%	FT	FT%
3rd Qtr	5-15	33%	2-3	67%	5-7	71%
4th Qtr	4-10	40%	0-2	00%	5-10	50%
2nd Half	7-18	39%	2-6	33%	0-0	0%
2nd Half	9-25	36%	2-5	40%	10-17	59%
Game	22-64	34.4%	7-18	38.9%	15-29	51.7%

Arizona 15

No.	Player	S	Pts	FG	3FG	FT	OR	DR	TR	PF	A	TO	Blk	Stl	Min	+/-
02	MCDONALD, AARI		8	3-4	0-1	2-2	0	3	3	1	0	1	0	0	10	-1
04	ALONSO, LUCIA		0	0-2	0-1	0-0	0	0	0	0	1	0	0	0	10	-1
14	THOMAS, SAM		3	1-1	0-0	1-1	1	1	2	1	0	0	0	0	2	2
20	MCBRYDE, DOMINIQUE		0	0-0	0-0	0-0	2	0	2	0	1	2	0	0	6	-3
25	REESE, CATE		4	2-4	0-0	0-0	0	2	2	0	0	1	0	0	5	-2
10	STARKS, TEE TEE		0	0-1	0-0	0-0	0	1	1	0	0	0	0	0	8	0
21	GRAHAM, DESTINY		0	0-1	0-1	0-0	0	0	0	1	0	1	0	0	8	0
24	NIXON, BRYCE		0	0-0	0-0	0-0	0	0	0	0	0	0	0	0	0	0
34	SMITH, SEMAJ		0	0-0	0-0	0-0	0	0	0	0	0	0	0	0	0	0
TEAM							0	0	0	0		0				
TOTALS			15	6-13	0-3	3-3	0	0	10	3	2	5	0	0	50	

Shooting By Period

Period	FG	FG%	3FG	3FG%	FT	FT%
3rd Qtr	6-19	32%	1-7	14%	5-6	83%
4th Qtr	5-15	33%	1-5	20%	11-13	85%
2nd Half	6-13	46%	0-3	00%	3-3	100%
2nd Half	11-34	32%	2-12	17%	16-19	84%
Game	18-59	30.5%	3-21	14.3%	25-30	83.3%

Game Notes:

Officials: Charles Gonzalez, Bart Baldwin, Saif Esho
 Attendance: 852

Start Time: 2018-11-14 01:30:50
 End Time: 2018-11-14 03:44:19
 Game Duration: 133

Score	1st	2nd	3rd	4th	TOT
LMU	20	16	17	13	66
ARI	9	15	18	22	64

Points from (This Period)	LMU	ARI
In the Paint	6	10
Off Turns	7	2
2nd Chance	4	7
Fast Break	2	2
Bench	9	0

**Official Play-By-Play
Loyola Marymount vs Arizona**

November 14, 2018 at McKale Center (Lute and Bobbi Olson Court) - Tucson, Ariz.



Period 2

Starters:

Loyola Marymount: 3 GIPSON,CHELSEY; 11 VELASCO,ANDEE; 22 STANLEY,RAYCHEL; 24 ALFORD,BREE; 35 BELVIN,CIERRA;

Arizona: 2 MCDONALD,AARI; 4 ALONSO,LUCIA; 14 THOMAS,SAM; 20 MCBRYDE,DOMINIQUE; 25 REESE,CATE;

Time	VISITORS: Loyola Marymount	Score	Margin	HOME: Arizona
09:40		11-20	V 9	GOOD! LAYUP by MCDONALD, AARI
09:26	GOOD! 3PTR by REED, BRITTNEY	11-23	V 12	
09:26	ASSIST by GIPSON, CHELSEY			
08:55				TURNOVER (LOSTBALL) by REESE, CATE
08:55	STEAL by JONES, JASMINE			
08:49	GOOD! LAYUP by JONES, JASMINE [FB]	11-25	V 14	
08:29				MISSED 3PTR by GRAHAM, DESTINY
08:25				REBOUND (OFF) by THOMAS, SAM
08:25		13-25	V 12	GOOD! LAYUP by THOMAS, SAM
08:25	FOUL (PERSONAL) by REED, BRITTNEY			
08:25				SUB OUT: REESE, CATE
08:25				SUB IN: STARKS, TEE TEE
08:25	SUB OUT: REED, BRITTNEY			
08:25	SUB IN: BELVIN, CIERRA			
08:25		14-25	V 11	GOOD! FT by THOMAS, SAM
08:11	MISSED 3PTR by VELASCO, ANDEE			
08:10	REBOUND (OFF) by ALFORD, BREE			
08:10				FOUL (PERSONAL) by THOMAS, SAM
07:56	MISSED 3PTR by ALFORD, BREE			
07:53				REBOUND (DEF) by THOMAS, SAM
07:42		16-25	V 9	GOOD! LAYUP by MCDONALD, AARI
07:39				SUB OUT: THOMAS, SAM
07:39				SUB IN: REESE, CATE
07:39	SUB OUT: BELVIN, CIERRA			
07:39	SUB IN: VELASCO, BIANCA			
07:15	MISSED 3PTR by GIPSON, CHELSEY			
07:12	REBOUND (OFF) by ALFORD, BREE			
06:53	MISSED JUMPER by JONES, JASMINE			
06:49				REBOUND (DEF) by REESE, CATE
06:42	FOUL (PERSONAL) by VELASCO, BIANCA			
06:34		18-25	V 7	GOOD! JUMPER by REESE, CATE
06:34				ASSIST by ALONSO, LUCIA
06:13	MISSED LAYUP by VELASCO, ANDEE			
06:10	REBOUND (OFF) by ALFORD, BREE			
06:09	GOOD! LAYUP by ALFORD, BREE	18-27	V 9	
05:57				MISSED LAYUP by REESE, CATE
05:54	REBOUND (DEF) by ALFORD, BREE			
05:52				FOUL (PERSONAL) by MCDONALD, AARI
05:52	SUB OUT: ALFORD, BREE			
05:52	SUB IN: MANDEL, MEGHAN			
05:52				SUB OUT: REESE, CATE
05:52				SUB IN: MCBRYDE, DOMINIQUE
05:46				FOUL (PERSONAL) by GRAHAM, DESTINY
05:16	MISSED LAYUP by VELASCO, BIANCA			
05:12				REBOUND (DEF) by MCDONALD, AARI
05:10				MISSED 3PTR by ALONSO, LUCIA
05:06				REBOUND (OFF) by MCBRYDE, DOMINIQUE
04:55	FOUL (PERSONAL) by MANDEL, MEGHAN			
04:55				
04:55	SUB OUT: VELASCO, BIANCA			
04:55	SUB IN: REED, BRITTNEY			
04:55	SUB OUT: MANDEL, MEGHAN			
04:55	SUB IN: ALFORD, BREE			
04:55		19-27	V 8	GOOD! FT by MCDONALD, AARI
04:55		20-27	V 7	GOOD! FT by MCDONALD, AARI
04:37	GOOD! LAYUP by REED, BRITTNEY	20-29	V 9	
04:26				TURNOVER (TRAVEL) by MCBRYDE, DOMINIQUE
04:03	MISSED JUMPER by VELASCO, ANDEE			
04:02	REBOUND (OFF) by TEAM			
03:49	GOOD! JUMPER by JONES, JASMINE	20-31	V 11	
03:31				TURNOVER (TRAVEL) by MCBRYDE, DOMINIQUE
03:15	MISSED JUMPER by REED, BRITTNEY			
03:10				REBOUND (DEF) by STARKS, TEE TEE
03:04				MISSED JUMPER by STARKS, TEE TEE
03:00	REBOUND (DEF) by ALFORD, BREE			
02:57	TURNOVER (LOSTBALL) by VELASCO, ANDEE			
02:49		22-31	V 9	GOOD! LAYUP by MCDONALD, AARI [FB]
02:31	GOOD! JUMPER by ALFORD, BREE	22-33	V 11	
02:31	ASSIST by GIPSON, CHELSEY			
02:07				TURNOVER (LOSTBALL) by GRAHAM, DESTINY

Time	VISITORS: Loyola Marymount	Score	Margin	HOME: Arizona
02:07	STEAL by JONES, JASMINE			
01:45	MISSED 3PTR by ALFORD, BREE			
01:42				REBOUND (DEF) by MCDONALD, AARI
01:32	FOUL (PERSONAL) by GIPSON, CHELSEY			
01:32				SUB OUT: GRAHAM, DESTINY
01:32				SUB IN: REESE, CATE
01:32	SUB OUT: GIPSON, CHELSEY			
01:32	SUB IN: YIM, NAOMI			
01:32	SUB OUT: REED, BRITTNEY			
01:32	SUB IN: BELVIN, CIERRA			
01:31				MISSED LAYUP by REESE, CATE
01:27				REBOUND (OFF) by MCBRYDE, DOMINIQUE
01:26		24-33	V 9	GOOD! LAYUP by REESE, CATE
01:26				ASSIST by MCBRYDE, DOMINIQUE
01:04	FOUL (OFF) by BELVIN, CIERRA			
01:04	TURNOVER (OFFENSIVE) by BELVIN, CIERRA			
01:04	SUB OUT: BELVIN, CIERRA			
01:04	SUB IN: REED, BRITTNEY			
00:53				MISSED JUMPER by ALONSO, LUCIA
00:53	REBOUND (DEF) by JONES, JASMINE			
00:42	MISSED LAYUP by REED, BRITTNEY			
00:36				REBOUND (DEF) by REESE, CATE
00:25				MISSED 3PTR by MCDONALD, AARI
00:21	REBOUND (DEF) by ALFORD, BREE			
00:06	MISSED JUMPER by YIM, NAOMI			
00:02				REBOUND (DEF) by MCDONALD, AARI
00:01				TURNOVER (LOSTBALL) by MCDONALD, AARI
00:01	STEAL by YIM, NAOMI			
00:01	GOOD! 3PTR by VELASCO, ANDEE	24-36	V 12	
00:01	ASSIST by JONES, JASMINE			

Loyola Marymount 36, Arizona 24

Points from (This Period)	LMU	ARI
In the Paint	6	10
Off Turns	7	2
2nd Chance	4	7
Fast Break	2	2
Bench	9	0

Official Box Score
Loyola Marymount vs Arizona
Second Half Statistics Only

November 14, 2018 at McKale Center (Lute and Bobbi Olson Court) - Tucson, Ariz.



Loyola Marymount 30

No.	Player	S	Pts	FG	3FG	FT	OR	DR	TR	PF	A	TO	Blk	Stl	Min	+/-
01	VELASCO, BIANCA		0	0-1	0-1	0-0	0	0	0	2	0	0	0	1	4	-3
03	GIPSON, CHELSEY		2	0-2	0-0	2-4	0	0	0	3	1	2	0	0	10	-7
04	YIM, NAOMI		0	0-0	0-0	0-0	0	0	0	0	0	0	0	0	0	0
11	VELASCO, ANDEE		5	1-3	1-2	2-4	0	2	2	5	2	2	0	0	20	-9
31	JONES, JASMINE		5	0-2	0-0	5-6	0	4	4	0	0	2	0	0	13	-8
22	STANLEY, RAYCHEL		8	4-7	0-0	0-0	1	0	1	2	0	0	0	0	10	-6
24	ALFORD, BREE		3	1-3	1-1	0-0	3	2	5	1	1	0	0	0	17	-8
32	REED, BRITTNEY		5	2-5	0-0	1-3	0	2	2	2	0	3	0	0	13	-7
35	BELVIN, CIERRA		2	1-2	0-1	0-0	0	2	2	2	0	2	0	2	13	-2
42	MANDEL, MEGHAN		0	0-0	0-0	0-0	0	0	0	0	0	0	0	0	0	0
	TEAM		0	0-0	0-0	0-0	2	1	3	0	0	0	0	0	0	0
TOTALS			30	9-25	2-5	10-17	0	0	19	17	4	11	0	3	100	

Shooting By Period

Period	FG	FG%	3FG	3FG%	FT	FT%
3rd Qtr	5-15	33%	2-3	67%	5-7	71%
4th Qtr	4-10	40%	0-2	00%	5-10	50%
2nd Half	9-25	36%	2-5	40%	10-17	59%
Game	22-64	34.4%	7-18	38.9%	15-29	51.7%

Last FG Half: LMU 4th-04:00

Arizona 40

No.	Player	S	Pts	FG	3FG	FT	OR	DR	TR	PF	A	TO	Blk	Stl	Min	+/-
02	MCDONALD, AARI		27	6-13	1-5	14-15	1	3	4	2	1	4	0	2	20	10
04	ALONSO, LUCIA		3	1-1	0-0	1-2	0	2	2	3	0	1	0	1	14	9
10	STARKS, TEE TEE		0	0-0	0-0	0-0	0	1	1	2	0	0	0	1	12	11
14	THOMAS, SAM		2	1-9	0-5	0-0	2	2	4	1	0	0	0	0	20	10
20	MCBRYDE, DOMINIQUE		5	2-4	1-2	0-0	2	1	3	4	1	1	1	0	14	15
21	GRAHAM, DESTINY		1	0-1	0-0	1-2	0	1	1	1	0	0	0	0	7	-2
24	NIXON, BRYCE		0	0-0	0-0	0-0	0	0	0	0	0	0	0	0	0	-1
25	REESE, CATE		2	1-6	0-0	0-0	1	1	2	1	1	1	0	0	12	0
34	SMITH, SEMAJ		0	0-0	0-0	0-0	0	0	0	1	0	1	0	0	2	-2
	TEAM		0	0-0	0-0	0-0	3	2	5	0	0	0	0	0	0	0
TOTALS			40	11-34	2-12	16-19	0	0	22	15	3	8	1	4	100	

Shooting By Period

Period	FG	FG%	3FG	3FG%	FT	FT%
3rd Qtr	6-19	32%	1-7	14%	5-6	83%
4th Qtr	5-15	33%	1-5	20%	11-13	85%
2nd Half	11-34	32%	2-12	17%	16-19	84%
Game	18-59	30.5%	3-21	14.3%	25-30	83.3%

Last FG Half: ARI 4th-00:15

Game Notes:

Officials: Charles Gonzalez, Bart Baldwin, Saif Esho
 Attendance: 852

Start Time: 2018-11-14 01:30:50
 End Time: 2018-11-14 03:44:19
 Game Duration: 133

Score	1st	2nd	3rd	4th	TOT
LMU	20	16	17	13	66
ARI	9	15	18	22	64

Points from (This Period)	LMU	ARI
In the Paint	12	16
Off Turns	5	9
2nd Chance	4	8
Fast Break	10	10
Bench	10	1

Official Box Score
Loyola Marymount vs Arizona
Third Quarter Statistics Only
November 14, 2018 at McKale Center (Lute and Bobbi Olson Court) - Tucson, Ariz.



Loyola Marymount 30

No.	Player	S	Pts	FG	3FG	FT	OR	DR	TR	PF	A	TO	Blk	Stl	Min	+/-
03	GIPSON, CHELSEY		2	0-0	0-0	2-2	0	0	0	2	1	0	0	0	5	-2
11	VELASCO, ANDEE		4	1-3	1-2	1-2	0	1	1	1	1	0	0	0	10	-1
22	STANLEY, RAYCHEL		4	2-5	0-0	0-0	1	0	1	2	0	0	0	0	6	-6
24	ALFORD, BREE		3	1-3	1-1	0-0	2	2	4	0	0	0	0	0	8	1
35	BELVIN, CIERRA		0	0-0	0-0	0-0	0	0	0	0	0	1	0	0	7	-5
01	VELASCO, BIANCA		0	0-0	0-0	0-0	0	0	0	1	0	0	0	0	2	2
04	YIM, NAOMI		0	0-0	0-0	0-0	0	0	0	0	0	0	0	0	0	0
31	JONES, JASMINE		1	0-1	0-0	1-2	0	2	2	0	0	0	0	0	6	3
32	REED, BRITTNEY		3	1-3	0-0	1-1	0	2	2	0	0	1	0	0	6	3
42	MANDEL, MEGHAN		0	0-0	0-0	0-0	0	0	0	0	0	0	0	0	0	0
TEAM							0	1	1	0		0				
TOTALS			17	5-15	2-3	5-7	0	0	11	6	2	2	0	0	50	

Shooting By Period

Period	FG	FG%	3FG	3FG%	FT	FT%
2nd Half	0-0	0%	0-0	0%	0-0	0%
Game	22-64	34.4%	7-18	38.9%	15-29	51.7%

Arizona 40

No.	Player	S	Pts	FG	3FG	FT	OR	DR	TR	PF	A	TO	Blk	Stl	Min	+/-
02	MCDONALD, AARI		12	4-8	0-3	4-4	1	2	3	0	0	1	0	0	10	1
04	ALONSO, LUCIA		0	0-0	0-0	0-0	0	0	0	0	0	0	0	0	4	0
14	THOMAS, SAM		2	1-3	0-2	0-0	1	2	3	0	0	0	0	0	10	1
20	MCBRYDE, DOMINIQUE		3	1-3	1-2	0-0	1	1	2	2	0	1	0	0	7	3
25	REESE, CATE		0	0-4	0-0	0-0	1	0	1	1	1	0	0	0	6	1
10	STARKS, TEE TEE		0	0-0	0-0	0-0	0	1	1	2	0	0	0	0	7	1
21	GRAHAM, DESTINY		1	0-1	0-0	1-2	0	1	1	1	0	0	0	0	7	-2
24	NIXON, BRYCE		0	0-0	0-0	0-0	0	0	0	0	0	0	0	0	0	0
34	SMITH, SEMAJ		0	0-0	0-0	0-0	0	0	0	0	0	0	0	0	0	0
TEAM							1	1	2	0		0				
TOTALS			18	6-19	1-7	5-6	0	0	13	6	1	2	0	0	50	

Shooting By Period

Period	FG	FG%	3FG	3FG%	FT	FT%
2nd Half	0-0	0%	0-0	0%	0-0	0%
Game	18-59	30.5%	3-21	14.3%	25-30	83.3%

Game Notes:

Officials: Charles Gonzalez, Bart Baldwin, Saif Esho
 Attendance: 852

Start Time: 2018-11-14 01:30:50
 End Time: 2018-11-14 03:44:19
 Game Duration: 133

Score	1st	2nd	3rd	4th	TOT
LMU	20	16	17	13	66
ARI	9	15	18	22	64

Points from (This Period)	LMU	ARI
In the Paint	6	10
Off Turns	0	2
2nd Chance	2	5
Fast Break	5	4
Bench	4	1

**Official Play-By-Play
Loyola Marymount vs Arizona
Third Quarter**

November 14, 2018 at McKale Center (Lute and Bobbi Olson Court) - Tucson, Ariz.



Period 3

Starters:

Loyola Marymount: 3 GIPSON,CHELSEY; 11 VELASCO,ANDEE; 22 STANLEY,RAYCHEL; 24 ALFORD,BREE; 35 BELVIN,CIERRA;

Arizona: 2 MCDONALD,AARI; 4 ALONSO,LUCIA; 14 THOMAS,SAM; 20 MCBRYDE,DOMINIQUE; 25 REESE,CATE;

Time	VISITORS: Loyola Marymount	Score	Margin	HOME: Arizona
09:50		27-36	V 9	GOOD! 3PTR by MCBRYDE, DOMINIQUE
09:50				ASSIST by REESE, CATE
09:36	MISSED JUMPER by STANLEY, RAYCHEL			
09:33	REBOUND (OFF) by ALFORD, BREE			
09:32	MISSED 3PTR by VELASCO, ANDEE			
09:28				REBOUND (DEF) by MCDONALD, AARI
09:23		29-36	V 7	GOOD! LAYUP by MCDONALD, AARI [FB]
09:07	GOOD! LAYUP by STANLEY, RAYCHEL	29-38	V 9	
08:45		31-38	V 7	GOOD! LAYUP by MCDONALD, AARI
08:45	FOUL (PERSONAL) by GIPSON, CHELSEY			
08:45		32-38	V 6	GOOD! FT by MCDONALD, AARI
08:25	GOOD! 3PTR by VELASCO, ANDEE	32-41	V 9	
08:25	ASSIST by GIPSON, CHELSEY			
08:06				MISSED 3PTR by MCDONALD, AARI
08:02	REBOUND (DEF) by VELASCO, ANDEE			
07:56	MISSED JUMPER by VELASCO, ANDEE			
07:51				REBOUND (DEF) by MCBRYDE, DOMINIQUE
07:48				MISSED LAYUP by REESE, CATE
07:45	REBOUND (DEF) by ALFORD, BREE			
07:32				FOUL (PERSONAL) by REESE, CATE
07:32				SUB OUT: REESE, CATE
07:32				SUB IN: GRAHAM, DESTINY
07:26	GOOD! 3PTR by ALFORD, BREE	32-44	V 12	
07:26	ASSIST by VELASCO, ANDEE			
07:17				TIMEOUT 30SEC
07:17				SUB OUT: ALONSO, LUCIA
07:17				SUB IN: STARKS, TEE TEE
07:08				MISSED 3PTR by THOMAS, SAM
07:04				REBOUND (OFF) by MCBRYDE, DOMINIQUE
07:00				MISSED 3PTR by MCBRYDE, DOMINIQUE
06:58				REBOUND (OFF) by TEAM
06:58	FOUL (PERSONAL) by STANLEY, RAYCHEL			
06:55				FOUL (OFF) by MCBRYDE, DOMINIQUE
06:55				TURNOVER (OFFENSIVE) by MCBRYDE, DOMINIQUE
06:44	TURNOVER (LOSTBALL) by BELVIN, CIERRA			
06:37		34-44	V 10	GOOD! LAYUP by THOMAS, SAM [FB]
06:19	MISSED LAYUP by STANLEY, RAYCHEL			
06:15				REBOUND (DEF) by GRAHAM, DESTINY
06:03		36-44	V 8	GOOD! LAYUP by MCDONALD, AARI
05:48	MISSED JUMPER by ALFORD, BREE			
05:45				REBOUND (DEF) by THOMAS, SAM
05:44	SUB OUT: BELVIN, CIERRA			
05:44	SUB IN: JONES, JASMINE			
05:44	SUB OUT: STANLEY, RAYCHEL			
05:44	SUB IN: REED, BRITNEY			
05:37				FOUL (PERSONAL) by STARKS, TEE TEE
05:37	GOOD! FT by GIPSON, CHELSEY [FB]	36-45	V 9	
05:37	GOOD! FT by GIPSON, CHELSEY [FB]	36-46	V 10	
05:27				TURNOVER (TRAVEL) by MCDONALD, AARI
05:10	MISSED JUMPER by JONES, JASMINE			
05:07	REBOUND (OFF) by ALFORD, BREE			
05:06	MISSED LAYUP by ALFORD, BREE			
05:03				REBOUND (DEF) by THOMAS, SAM
04:55				MISSED 3PTR by MCDONALD, AARI
04:52				REBOUND (OFF) by THOMAS, SAM
04:38	FOUL (PERSONAL) by GIPSON, CHELSEY			
04:38				
04:38	SUB OUT: GIPSON, CHELSEY			
04:38	SUB IN: BELVIN, CIERRA			
04:13	FOUL (PERSONAL) by VELASCO, ANDEE			
04:13		37-46	V 9	GOOD! FT by MCDONALD, AARI
04:13	SUB OUT: ALFORD, BREE			
04:13	SUB IN: STANLEY, RAYCHEL			
04:13		38-46	V 8	GOOD! FT by MCDONALD, AARI
03:59				FOUL (PERSONAL) by MCBRYDE, DOMINIQUE
03:59	MISSED FT by JONES, JASMINE			
03:59	REBOUND (OFF) by TEAM			
03:59	GOOD! FT by JONES, JASMINE	38-47	V 9	
03:39				MISSED JUMPER by MCBRYDE, DOMINIQUE

Time	VISITORS: Loyola Marymount	Score	Margin	HOME: Arizona
03:36	REBOUND (DEF) by REED, BRITTNEY			
03:14	MISSED JUMPER by STANLEY, RAYCHEL			
03:13				REBOUND (DEF) by TEAM
03:13				SUB OUT: MCBRYDE, DOMINIQUE
03:13				SUB IN: REESE, CATE
02:51				MISSED JUMPER by REESE, CATE
02:48				REBOUND (OFF) by TEAM
02:47	SUB OUT: BELVIN, CIERRA			
02:47	SUB IN: VELASCO, BIANCA			
02:40				MISSED JUMPER by MCDONALD, AARI
02:40				REBOUND (OFF) by MCDONALD, AARI
02:40		40-47	V 7	GOOD! LAYUP by MCDONALD, AARI
02:40	FOUL (PERSONAL) by VELASCO, BIANCA			
02:40		41-47	V 6	GOOD! FT by MCDONALD, AARI
02:23	MISSED JUMPER by REED, BRITTNEY			
02:19	REBOUND (OFF) by STANLEY, RAYCHEL			
02:14	GOOD! LAYUP by STANLEY, RAYCHEL [PNT]	41-49	V 8	
02:00	FOUL (PERSONAL) by STANLEY, RAYCHEL			
02:00		42-49	V 7	GOOD! FT by GRAHAM, DESTINY
02:00	SUB OUT: STANLEY, RAYCHEL			
02:00	SUB IN: ALFORD, BREE			
02:00				MISSED FT by GRAHAM, DESTINY
01:58	REBOUND (DEF) by ALFORD, BREE			
01:53	GOOD! LAYUP by REED, BRITTNEY [FB]	42-51	V 9	
01:53				FOUL (PERSONAL) by STARKS, TEE TEE
01:53	GOOD! FT by REED, BRITTNEY [FB]	42-52	V 10	
01:37				MISSED 3PTR by THOMAS, SAM
01:34	REBOUND (DEF) by REED, BRITTNEY			
01:33	TURNOVER (TRAVEL) by REED, BRITTNEY			
01:24				MISSED JUMPER by GRAHAM, DESTINY
01:19				REBOUND (OFF) by REESE, CATE
01:17				MISSED LAYUP by REESE, CATE
01:14	REBOUND (DEF) by JONES, JASMINE			
00:54				FOUL (PERSONAL) by GRAHAM, DESTINY
00:54	GOOD! FT by VELASCO, ANDEE	42-53	V 11	
00:54				SUB OUT: GRAHAM, DESTINY
00:54				SUB IN: ALONSO, LUCIA
00:54	SUB OUT: VELASCO, BIANCA			
00:54	SUB IN: BELVIN, CIERRA			
00:53	MISSED FT by VELASCO, ANDEE			
00:51				REBOUND (DEF) by MCDONALD, AARI
00:36				MISSED JUMPER by REESE, CATE
00:31	REBOUND (DEF) by JONES, JASMINE			
00:13	MISSED LAYUP by REED, BRITTNEY			
00:10				REBOUND (DEF) by STARKS, TEE TEE
00:00				MISSED 3PTR by MCDONALD, AARI
00:00	REBOUND (DEF) by TEAM			

Loyola Marymount 53, Arizona 42

Points from (This Period)	LMU	ARI
In the Paint	6	10
Off Turns	0	2
2nd Chance	2	5
Fast Break	5	4
Bench	4	1

Official Box Score
Loyola Marymount vs Arizona
Fourth Quarter Statistics Only
November 14, 2018 at McKale Center (Lute and Bobbi Olson Court) - Tucson, Ariz.



Loyola Marymount 13

No.	Player	S	Pts	FG	3FG	FT	OR	DR	TR	PF	A	TO	Blk	Stl	Min	+/-
03	GIPSON, CHELSEY		0	0-2	0-0	0-2	0	0	0	1	0	2	0	0	5	-5
11	VELASCO, ANDEE		1	0-0	0-0	1-2	0	1	1	4	1	2	0	0	10	-8
22	STANLEY, RAYCHEL		4	2-2	0-0	0-0	0	0	0	0	0	0	0	0	4	0
24	ALFORD, BREE		0	0-0	0-0	0-0	1	0	1	1	1	0	0	0	9	-9
35	BELVIN, CIERRA		2	1-2	0-1	0-0	0	2	2	2	0	1	0	2	6	3
01	VELASCO, BIANCA		0	0-1	0-1	0-0	0	0	0	1	0	0	0	1	2	-5
04	YIM, NAOMI		0	0-0	0-0	0-0	0	0	0	0	0	0	0	0	0	0
31	JONES, JASMINE		4	0-1	0-0	4-4	0	2	2	0	0	2	0	0	7	-11
32	REED, BRITTNEY		2	1-2	0-0	0-2	0	0	0	2	0	2	0	0	7	-10
42	MANDEL, MEGHAN		0	0-0	0-0	0-0	0	0	0	0	0	0	0	0	0	0
TEAM							2	0	2	0	0	0				
TOTALS			13	4-10	0-2	5-10	0	0	8	11	2	9	0	3	50	

Shooting By Period

Period	FG	FG%	3FG	3FG%	FT	FT%
Game	22-64	34.4%	7-18	38.9%	15-29	51.7%

Arizona 22

No.	Player	S	Pts	FG	3FG	FT	OR	DR	TR	PF	A	TO	Blk	Stl	Min	+/-
02	MCDONALD, AARI		15	2-5	1-2	10-11	0	1	1	2	1	3	0	2	10	9
04	ALONSO, LUCIA		3	1-1	0-0	1-2	0	2	2	3	0	1	0	1	10	9
14	THOMAS, SAM		0	0-6	0-3	0-0	1	0	1	1	0	0	0	0	10	9
20	MCBRYDE, DOMINIQUE		2	1-1	0-0	0-0	1	0	1	2	1	0	1	0	7	12
25	REESE, CATE		2	1-2	0-0	0-0	0	1	1	0	0	1	0	0	6	-1
10	STARKS, TEE TEE		0	0-0	0-0	0-0	0	0	0	0	0	0	0	1	5	10
21	GRAHAM, DESTINY		0	0-0	0-0	0-0	0	0	0	0	0	0	0	0	0	0
24	NIXON, BRYCE		0	0-0	0-0	0-0	0	0	0	0	0	0	0	0	0	-1
34	SMITH, SEMAJ		0	0-0	0-0	0-0	0	0	0	1	0	1	0	0	2	-2
TEAM							2	1	3	0	0	0				
TOTALS			22	5-15	1-5	11-13	0	0	9	9	2	6	1	4	50	

Shooting By Period

Period	FG	FG%	3FG	3FG%	FT	FT%
Game	18-59	30.5%	3-21	14.3%	25-30	83.3%

Game Notes:

Officials: Charles Gonzalez, Bart Baldwin, Saif Esho
 Attendance: 852

Start Time: 2018-11-14 01:30:50
 End Time: 2018-11-14 03:44:19
 Game Duration: 133

Score	1st	2nd	3rd	4th	TOT
LMU	20	16	17	13	66
ARI	9	15	18	22	64

Points from (This Period)	LMU	ARI
In the Paint	6	6
Off Turns	5	7
2nd Chance	2	3
Fast Break	5	6
Bench	6	0

**Official Play-By-Play
Loyola Marymount vs Arizona
Fourth Quarter**

November 14, 2018 at McKale Center (Lute and Bobbi Olson Court) - Tucson, Ariz.



Period 4

Starters:

Loyola Marymount: 3 GIPSON,CHELSEY; 11 VELASCO,ANDEE; 22 STANLEY,RAYCHEL; 24 ALFORD,BREE; 35 BELVIN,CIERRA;

Arizona: 2 MCDONALD,AARI; 4 ALONSO,LUCIA; 14 THOMAS,SAM; 20 MCBRYDE,DOMINIQUE; 25 REESE,CATE;

Time	VISITORS: Loyola Marymount	Score	Margin	HOME: Arizona
09:35				MISSED JUMPER by MCDONALD, AARI
09:32	REBOUND (DEF) by BELVIN, CIERRA			
09:21	FOUL (OFF) by VELASCO, ANDEE			
09:21	TURNOVER (OFFENSIVE) by VELASCO, ANDEE			
09:07				MISSED LAYUP by MCDONALD, AARI
09:04	REBOUND (DEF) by BELVIN, CIERRA			
08:52	FOUL (OFF) by REED, BRITTNEY			
08:52	TURNOVER (OFFENSIVE) by REED, BRITTNEY			
08:45				TURNOVER (LOSTBALL) by ALONSO, LUCIA
08:45	STEAL by BELVIN, CIERRA			
08:45				SUB OUT: STARKS, TEE TEE
08:45				SUB IN: SMITH, SEMAJ
08:45	SUB OUT: JONES, JASMINE			
08:45	SUB IN: STANLEY, RAYCHEL			
08:45	SUB OUT: REED, BRITTNEY			
08:45	SUB IN: GIPSON, CHELSEY			
08:34	GOOD! LAYUP by STANLEY, RAYCHEL	42-55	V 13	
08:34	ASSIST by ALFORD, BREE			
08:10		44-55	V 11	GOOD! LAYUP by REESE, CATE
08:10				ASSIST by MCDONALD, AARI
07:50				FOUL (PERSONAL) by ALONSO, LUCIA
07:43	FOUL (OFF) by BELVIN, CIERRA			
07:43	TURNOVER (OFFENSIVE) by BELVIN, CIERRA			
07:29				TURNOVER (BADPASS) by REESE, CATE
07:29	STEAL by BELVIN, CIERRA			
07:17	GOOD! LAYUP by STANLEY, RAYCHEL	44-57	V 13	
07:02				FOUL (OFF) by SMITH, SEMAJ
07:02				TURNOVER (OFFENSIVE) by SMITH, SEMAJ
07:02				SUB OUT: SMITH, SEMAJ
07:02				SUB IN: MCBRYDE, DOMINIQUE
06:38	MISSED JUMPER by GIPSON, CHELSEY			
06:37	REBOUND (OFF) by TEAM			
06:29	MISSED LAYUP by GIPSON, CHELSEY			
06:24	REBOUND (OFF) by ALFORD, BREE			
06:12	TURNOVER (TRAVEL) by GIPSON, CHELSEY			
06:12	SUB OUT: STANLEY, RAYCHEL			
06:12	SUB IN: JONES, JASMINE			
05:52				MISSED JUMPER by THOMAS, SAM
05:49				REBOUND (OFF) by THOMAS, SAM
05:48				MISSED LAYUP by THOMAS, SAM
05:48				REBOUND (OFF) by MCBRYDE, DOMINIQUE
05:48	SUB OUT: GIPSON, CHELSEY			
05:48	SUB IN: REED, BRITTNEY			
05:48	SUB OUT: BELVIN, CIERRA			
05:48	SUB IN: VELASCO, BIANCA			
05:45		47-57	V 10	GOOD! 3PTR by MCDONALD, AARI
05:25	GOOD! JUMPER by REED, BRITTNEY	47-59	V 12	
05:25	ASSIST by VELASCO, ANDEE			
05:00				MISSED JUMPER by THOMAS, SAM
04:59				REBOUND (OFF) by TEAM
04:59	FOUL (PERSONAL) by REED, BRITTNEY			
04:58				
04:58	SUB OUT: ALFORD, BREE			
04:58	SUB IN: STANLEY, RAYCHEL			
04:53				TURNOVER (LOSTBALL) by MCDONALD, AARI
04:53	STEAL by VELASCO, BIANCA			
04:39	MISSED 3PTR by VELASCO, BIANCA			
04:35				REBOUND (DEF) by REESE, CATE
04:31	FOUL (PERSONAL) by VELASCO, BIANCA			
04:31		48-59	V 11	GOOD! FT by MCDONALD, AARI [FB]
04:31	SUB OUT: VELASCO, BIANCA			
04:31	SUB IN: BELVIN, CIERRA			
04:31		49-59	V 10	GOOD! FT by MCDONALD, AARI [FB]
04:00	GOOD! LAYUP by BELVIN, CIERRA [PNT]	49-61	V 12	
03:46				MISSED 3PTR by THOMAS, SAM
03:42	REBOUND (DEF) by VELASCO, ANDEE			
03:42				FOUL (PERSONAL) by MCDONALD, AARI
03:42	SUB OUT: STANLEY, RAYCHEL			
03:42	SUB IN: ALFORD, BREE			
03:42				SUB OUT: REESE, CATE

Time	VISITORS: Loyola Marymount	Score	Margin	HOME: Arizona
03:42				SUB IN: STARKS, TEE TEE
03:36				FOUL (PERSONAL) by MCDONALD, AARI
03:06	MISSED 3PTR by BELVIN, CIERRA			
03:06				REBOUND (DEF) by TEAM
02:55	FOUL (PERSONAL) by BELVIN, CIERRA			
02:55	SUB OUT: BELVIN, CIERRA			
02:55	SUB IN: GIPSON, CHELSEY			
02:55		50-61	V 11	GOOD! FT by MCDONALD, AARI
02:55		51-61	V 10	GOOD! FT by MCDONALD, AARI
02:47	MISSED LAYUP by REED, BRITTNEY			
02:47				BLOCK by MCBRYDE, DOMINIQUE
02:47				REBOUND (DEF) by ALONSO, LUCIA
02:42	FOUL (PERSONAL) by VELASCO, ANDEE			
02:42				MISSED FT by ALONSO, LUCIA
02:42				REBOUND (OFF) by TEAM
02:42		52-61	V 9	GOOD! FT by ALONSO, LUCIA
02:38	TIMEOUT 30SEC			
02:17	MISSED JUMPER by JONES, JASMINE			
02:14				REBOUND (DEF) by ALONSO, LUCIA
02:09				MISSED 3PTR by THOMAS, SAM
02:05	REBOUND (DEF) by JONES, JASMINE			
02:05	TURNOVER (LOSTBALL) by GIPSON, CHELSEY			
02:05				STEAL by STARKS, TEE TEE
01:56	FOUL (PERSONAL) by VELASCO, ANDEE			
01:56		53-61	V 8	GOOD! FT by MCDONALD, AARI
01:56		54-61	V 7	GOOD! FT by MCDONALD, AARI
01:49	TURNOVER (BADPASS) by JONES, JASMINE			
01:49				STEAL by MCDONALD, AARI
01:36		56-61	V 5	GOOD! LAYUP by MCDONALD, AARI
01:30				FOUL (PERSONAL) by MCBRYDE, DOMINIQUE
01:30	GOOD! FT by JONES, JASMINE [FB]	56-62	V 6	
01:30	SUB OUT: GIPSON, CHELSEY			
01:30	SUB IN: VELASCO, BIANCA			
01:30	GOOD! FT by JONES, JASMINE [FB]	56-63	V 7	
01:17		58-63	V 5	GOOD! JUMPER by ALONSO, LUCIA
01:17				ASSIST by MCBRYDE, DOMINIQUE
01:09	TURNOVER (BADPASS) by VELASCO, ANDEE			
01:09				STEAL by MCDONALD, AARI
01:02	FOUL (PERSONAL) by ALFORD, BREE			
01:02		59-63	V 4	GOOD! FT by MCDONALD, AARI [FB]
01:02	SUB OUT: REED, BRITTNEY			
01:02	SUB IN: STANLEY, RAYCHEL			
01:02	SUB OUT: VELASCO, BIANCA			
01:02	SUB IN: GIPSON, CHELSEY			
01:02		60-63	V 3	GOOD! FT by MCDONALD, AARI [FB]
00:53	TIMEOUT 30SEC			
00:50	TIMEOUT 30SEC			
00:50	SUB OUT: JONES, JASMINE			
00:50	SUB IN: REED, BRITTNEY			
00:34	TURNOVER (TRAVEL) by REED, BRITTNEY			
00:34	SUB OUT: STANLEY, RAYCHEL			
00:34	SUB IN: JONES, JASMINE			
00:31				MISSED 3PTR by MCDONALD, AARI
00:31				REBOUND (OFF) by TEAM
00:26				TURNOVER (BADPASS) by MCDONALD, AARI
00:25	TURNOVER (BADPASS) by JONES, JASMINE			
00:25				STEAL by ALONSO, LUCIA
00:21				MISSED 3PTR by THOMAS, SAM
00:21	REBOUND (DEF) by JONES, JASMINE			
00:18				FOUL (PERSONAL) by ALONSO, LUCIA
00:18	MISSED FT by GIPSON, CHELSEY			
00:18	REBOUND (OFF) by TEAM			
00:18	MISSED FT by GIPSON, CHELSEY			
00:17				REBOUND (DEF) by MCDONALD, AARI
00:17				TIMEOUT 30SEC
00:15		62-63	V 1	GOOD! LAYUP by MCBRYDE, DOMINIQUE
00:13	TIMEOUT 30SEC			
00:11				FOUL (PERSONAL) by ALONSO, LUCIA
00:11	MISSED FT by REED, BRITTNEY			
00:11	REBOUND (OFF) by TEAM			
00:11	MISSED FT by REED, BRITTNEY			
00:08	REBOUND (OFF) by TEAM			
00:07				FOUL (PERSONAL) by MCBRYDE, DOMINIQUE
00:07				SUB OUT: MCBRYDE, DOMINIQUE
00:07				SUB IN: NIXON, BRYCE
00:07	GOOD! FT by JONES, JASMINE [FB]	62-64	V 2	
00:07	GOOD! FT by JONES, JASMINE [FB]	62-65	V 3	
00:05	FOUL (PERSONAL) by GIPSON, CHELSEY			
00:05	SUB OUT: GIPSON, CHELSEY			
00:05	SUB IN: STANLEY, RAYCHEL			

Time	VISITORS: Loyola Marymount	Score	Margin	HOME: Arizona
00:05		63-65	V 2	GOOD! FT by MCDONALD, AARI [FB]
00:05				SUB OUT: NIXON, BRYCE
00:05				SUB IN: REESE, CATE
00:05				TURNOVER (LANEVIOLATION) by MCDONALD, AARI
00:04				FOUL (PERSONAL) by THOMAS, SAM
00:04	MISSED FT by VELASCO, ANDEE			
00:04	REBOUND (OFF) by TEAM			
00:04				SUB OUT: STARKS, TEE TEE
00:04				SUB IN: NIXON, BRYCE
00:04	GOOD! FT by VELASCO, ANDEE [FB]	63-66	V 3	
00:02	FOUL (PERSONAL) by VELASCO, ANDEE			
00:02	SUB OUT: VELASCO, ANDEE			
00:02	SUB IN: VELASCO, BIANCA			
00:02		64-66	V 2	GOOD! FT by MCDONALD, AARI [FB]
00:01				MISSED FT by MCDONALD, AARI
00:01				REBOUND (OFF) by TEAM
00:01				MISSED JUMPER by REESE, CATE
00:01	REBOUND (DEF) by TEAM			

Loyola Marymount 66, Arizona 64

Points from (This Period)	LMU	ARI
In the Paint	6	6
Off Turns	5	7
2nd Chance	2	3
Fast Break	5	6
Bench	6	0

**Official Scoring/Possession Reference Chart
Loyola Marymount vs Arizona
Period 1**

November 14, 2018 at McKale Center (Lute and Bobbi Olson Court) - Tucson, Ariz.



Period 1

Starters:

Loyola Marymount: 3 GIPSON,CHELSEY; 11 VELASCO,ANDEE; 22 STANLEY,RAYCHEL; 24 ALFORD,BREE; 35 BELVIN,CIERRA;
Arizona: 2 MCDONALD,AARI; 4 ALONSO,LUCIA; 14 THOMAS,SAM; 20 MCBRYDE,DOMINIQUE; 25 REESE,CATE;

Time	VISITORS: Loyola Marymount	Score	Margin	HOME: Arizona
09:44		1-0	H 1	GOOD! FT by REESE, CATE
09:44		2-0	H 2	GOOD! FT by REESE, CATE
09:24	GOOD! 3PTR by GIPSON, CHELSEY	2-3	V 1	
08:42	GOOD! FT by GIPSON, CHELSEY [FB]	2-4	V 2	
06:01		5-4	H 1	GOOD! 3PTR by NIXON, BRYCE
04:54	GOOD! FT by STANLEY, RAYCHEL	5-5	T	
04:46		6-5	H 1	GOOD! FT by MCDONALD, AARI
03:50	GOOD! FT by ALFORD, BREE	6-6	T	
03:45		7-6	H 1	GOOD! FT by MCDONALD, AARI [FB]
03:45		8-6	H 2	GOOD! FT by MCDONALD, AARI [FB]
03:45	GOOD! FT by MANDEL, MEGHAN	8-7	H 1	
03:08	GOOD! LAYUP by JONES, JASMINE	8-9	V 1	
03:08	GOOD! FT by JONES, JASMINE	8-10	V 2	
01:54	GOOD! 3PTR by GIPSON, CHELSEY	8-13	V 5	
01:41		9-13	V 4	GOOD! FT by MCDONALD, AARI
01:23	GOOD! LAYUP by JONES, JASMINE	9-15	V 6	
01:01	GOOD! LAYUP by JONES, JASMINE [FB]	9-17	V 8	
00:02	GOOD! 3PTR by JONES, JASMINE	9-20	V 11	

Loyola Marymount 20, Arizona 9

**Official Scoring/Possession Reference Chart
Loyola Marymount vs Arizona
Period 2**

November 14, 2018 at McKale Center (Lute and Bobbi Olson Court) - Tucson, Ariz.



Period 2

Starters:

Loyola Marymount: 3 GIPSON,CHELSEY; 11 VELASCO,ANDEE; 22 STANLEY,RAYCHEL; 24 ALFORD,BREE; 35 BELVIN,CIERRA;
Arizona: 2 MCDONALD,AARI; 4 ALONSO,LUCIA; 14 THOMAS,SAM; 20 MCBRYDE,DOMINIQUE; 25 REESE,CATE;

Time	VISITORS: Loyola Marymount	Score	Margin	HOME: Arizona
09:40		11-20	V 9	GOOD! LAYUP by MCDONALD, AARI
09:26	GOOD! 3PTR by REED, BRITTNEY	11-23	V 12	
08:49	GOOD! LAYUP by JONES, JASMINE [FB]	11-25	V 14	
08:25		13-25	V 12	GOOD! LAYUP by THOMAS, SAM
08:25		14-25	V 11	GOOD! FT by THOMAS, SAM
07:42		16-25	V 9	GOOD! LAYUP by MCDONALD, AARI
06:34		18-25	V 7	GOOD! JUMPER by REESE, CATE
06:09	GOOD! LAYUP by ALFORD, BREE	18-27	V 9	
04:55		19-27	V 8	GOOD! FT by MCDONALD, AARI
04:55		20-27	V 7	GOOD! FT by MCDONALD, AARI
04:37	GOOD! LAYUP by REED, BRITTNEY	20-29	V 9	
03:49	GOOD! JUMPER by JONES, JASMINE	20-31	V 11	
02:49		22-31	V 9	GOOD! LAYUP by MCDONALD, AARI [FB]
02:31	GOOD! JUMPER by ALFORD, BREE	22-33	V 11	
01:26		24-33	V 9	GOOD! LAYUP by REESE, CATE
00:01	GOOD! 3PTR by VELASCO, ANDEE	24-36	V 12	

Loyola Marymount 36, Arizona 24

**Official Scoring/Possession Reference Chart
Loyola Marymount vs Arizona
Period 3**

November 14, 2018 at McKale Center (Lute and Bobbi Olson Court) - Tucson, Ariz.



Period 3

Starters:

Loyola Marymount: 3 GIPSON,CHELSEY; 11 VELASCO,ANDEE; 22 STANLEY,RAYCHEL; 24 ALFORD,BREE; 35 BELVIN,CIERRA;
Arizona: 2 MCDONALD,AARI; 4 ALONSO,LUCIA; 14 THOMAS,SAM; 20 MCBRYDE,DOMINIQUE; 25 REESE,CATE;

Time	VISITORS: Loyola Marymount	Score	Margin	HOME: Arizona
09:50		27-36	V 9	GOOD! 3PTR by MCBRYDE, DOMINIQUE
09:23		29-36	V 7	GOOD! LAYUP by MCDONALD, AARI [FB]
09:07	GOOD! LAYUP by STANLEY, RAYCHEL	29-38	V 9	
08:45		31-38	V 7	GOOD! LAYUP by MCDONALD, AARI
08:45		32-38	V 6	GOOD! FT by MCDONALD, AARI
08:25	GOOD! 3PTR by VELASCO, ANDEE	32-41	V 9	
07:26	GOOD! 3PTR by ALFORD, BREE	32-44	V 12	
06:37		34-44	V 10	GOOD! LAYUP by THOMAS, SAM [FB]
06:03		36-44	V 8	GOOD! LAYUP by MCDONALD, AARI
05:37	GOOD! FT by GIPSON, CHELSEY [FB]	36-45	V 9	
05:37	GOOD! FT by GIPSON, CHELSEY [FB]	36-46	V 10	
04:13		37-46	V 9	GOOD! FT by MCDONALD, AARI
04:13		38-46	V 8	GOOD! FT by MCDONALD, AARI
03:59	GOOD! FT by JONES, JASMINE	38-47	V 9	
02:40		40-47	V 7	GOOD! LAYUP by MCDONALD, AARI
02:40		41-47	V 6	GOOD! FT by MCDONALD, AARI
02:14	GOOD! LAYUP by STANLEY, RAYCHEL [PNT]	41-49	V 8	
02:00		42-49	V 7	GOOD! FT by GRAHAM, DESTINY
01:53	GOOD! LAYUP by REED, BRITTNEY [FB]	42-51	V 9	
01:53	GOOD! FT by REED, BRITTNEY [FB]	42-52	V 10	
00:54	GOOD! FT by VELASCO, ANDEE	42-53	V 11	

Loyola Marymount 53, Arizona 42

**Official Scoring/Possession Reference Chart
Loyola Marymount vs Arizona
Period 4**

November 14, 2018 at McKale Center (Lute and Bobbi Olson Court) - Tucson, Ariz.



Period 4

Starters:

Loyola Marymount: 3 GIPSON,CHELSEY; 11 VELASCO,ANDEE; 22 STANLEY,RAYCHEL; 24 ALFORD,BREE; 35 BELVIN,CIERRA;
Arizona: 2 MCDONALD,AARI; 4 ALONSO,LUCIA; 14 THOMAS,SAM; 20 MCBRYDE,DOMINIQUE; 25 REESE,CATE;

Time	VISITORS: Loyola Marymount	Score	Margin	HOME: Arizona
08:34	GOOD! LAYUP by STANLEY, RAYCHEL	42-55	V 13	
08:10		44-55	V 11	GOOD! LAYUP by REESE, CATE
07:17	GOOD! LAYUP by STANLEY, RAYCHEL	44-57	V 13	
05:45		47-57	V 10	GOOD! 3PTR by MCDONALD, AARI
05:25	GOOD! JUMPER by REED, BRITTNEY	47-59	V 12	
04:31		48-59	V 11	GOOD! FT by MCDONALD, AARI [FB]
04:31		49-59	V 10	GOOD! FT by MCDONALD, AARI [FB]
04:00	GOOD! LAYUP by BELVIN, CIERRA [PNT]	49-61	V 12	
02:55		50-61	V 11	GOOD! FT by MCDONALD, AARI
02:55		51-61	V 10	GOOD! FT by MCDONALD, AARI
02:42		52-61	V 9	GOOD! FT by ALONSO, LUCIA
01:56		53-61	V 8	GOOD! FT by MCDONALD, AARI
01:56		54-61	V 7	GOOD! FT by MCDONALD, AARI
01:36		56-61	V 5	GOOD! LAYUP by MCDONALD, AARI
01:30	GOOD! FT by JONES, JASMINE [FB]	56-62	V 6	
01:30	GOOD! FT by JONES, JASMINE [FB]	56-63	V 7	
01:17		58-63	V 5	GOOD! JUMPER by ALONSO, LUCIA
01:02		59-63	V 4	GOOD! FT by MCDONALD, AARI [FB]
01:02		60-63	V 3	GOOD! FT by MCDONALD, AARI [FB]
00:15		62-63	V 1	GOOD! LAYUP by MCBRYDE, DOMINIQUE
00:07	GOOD! FT by JONES, JASMINE [FB]	62-64	V 2	
00:07	GOOD! FT by JONES, JASMINE [FB]	62-65	V 3	
00:05		63-65	V 2	GOOD! FT by MCDONALD, AARI [FB]
00:04	GOOD! FT by VELASCO, ANDEE [FB]	63-66	V 3	
00:02		64-66	V 2	GOOD! FT by MCDONALD, AARI [FB]

Loyola Marymount 66, Arizona 64

**Official Substitutions Log
Loyola Marymount vs Arizona
Period 1**

November 14, 2018 at McKale Center (Lute and Bobbi Olson Court) - Tucson, Ariz.



VISITORS: Loyola Marymount	Time	Score	HOME: Arizona
3 GIPSON,CHELSEY			2 MCDONALD,AARI
11 VELASCO,ANDEE			4 ALONSO,LUCIA
22 STANLEY,RAYCHEL			14 THOMAS,SAM
24 ALFORD,BREE			20 MCBRYDE, DOMINIQUE
35 BELVIN,CIERRA			25 REESE,CATE
	07:13	4-2	SUB OUT: THOMAS,SAM
	07:13		SUB IN: STARKS,TEE TEE
	07:13		SUB OUT: MCBRYDE, DOMINIQUE
	07:13		SUB IN: GRAHAM,DESTINY
SUB OUT: 22 STANLEY,RAYCHEL	07:13		
SUB IN: 31 JONES,JASMINE	07:13		
	06:26	4-2	SUB OUT: ALONSO,LUCIA
	06:26		SUB IN: NIXON,BRYCE
SUB OUT: 35 BELVIN,CIERRA	06:08	4-2	
SUB IN: 32 REED,BRITTNEY	06:08		
SUB OUT: 31 JONES,JASMINE	05:27	4-5	
SUB IN: 22 STANLEY,RAYCHEL	05:27		
	05:27		SUB OUT: MCDONALD,AARI
	05:27		SUB IN: ALONSO,LUCIA
	05:27		SUB OUT: REESE,CATE
	05:27		SUB IN: MCBRYDE, DOMINIQUE
SUB OUT: 11 VELASCO,ANDEE	05:27		
SUB IN: 4 YIM,NAOMI	05:27		
	04:54	4-5	SUB OUT: NIXON,BRYCE
	04:54		SUB IN: MCDONALD,AARI
SUB OUT: 22 STANLEY,RAYCHEL	04:46	5-5	
SUB IN: 42 MANDEL,MEGHAN	04:46		
SUB OUT: 3 GIPSON,CHELSEY	04:14	5-6	
SUB IN: 35 BELVIN,CIERRA	04:14		
SUB OUT: 4 YIM,NAOMI	04:14		
SUB IN: 11 VELASCO,ANDEE	04:14		
	03:50	5-6	SUB OUT: STARKS,TEE TEE
	03:50		SUB IN: THOMAS,SAM
	03:45	6-8	SUB OUT: GRAHAM,DESTINY
	03:45		SUB IN: REESE,CATE
SUB OUT: 35 BELVIN,CIERRA	03:45		
SUB IN: 3 GIPSON,CHELSEY	03:45		
SUB OUT: 24 ALFORD,BREE	03:45		
SUB IN: 31 JONES,JASMINE	03:45		
SUB OUT: 42 MANDEL,MEGHAN	03:08	10-8	
SUB IN: 24 ALFORD,BREE	03:08		
	02:14	10-8	SUB OUT: ALONSO,LUCIA
	02:14		SUB IN: NIXON,BRYCE
	01:01	17-9	SUB OUT: MCBRYDE, DOMINIQUE
	01:01		SUB IN: SMITH,SEMAJ

Loyola Marymount 20, Arizona 9

**Official Substitutions Log
Loyola Marymount vs Arizona
Period 2**

November 14, 2018 at McKale Center (Lute and Bobbi Olson Court) - Tucson, Ariz.



VISITORS: Loyola Marymount	Time	Score	HOME: Arizona
3 GIPSON,CHELSEY			2 MCDONALD,AARI
11 VELASCO,ANDEE			4 ALONSO,LUCIA
22 STANLEY,RAYCHEL			14 THOMAS,SAM
24 ALFORD,BREE			20 MCBRYDE, DOMINIQUE
35 BELVIN,CIERRA			25 REESE,CATE
	08:25	25-13	SUB OUT: REESE,CATE
	08:25		SUB IN: STARKS,TEE TEE
SUB OUT: 32 REED,BRITTNEY	08:25		
SUB IN: 35 BELVIN,CIERRA	08:25		
	07:39	25-16	SUB OUT: THOMAS,SAM
	07:39		SUB IN: REESE,CATE
SUB OUT: 35 BELVIN,CIERRA	07:39		
SUB IN: 1 VELASCO,BIANCA	07:39		
SUB OUT: 24 ALFORD,BREE	05:52	27-18	
SUB IN: 42 MANDEL,MEGHAN	05:52		
	05:52		SUB OUT: REESE,CATE
	05:52		SUB IN: MCBRYDE, DOMINIQUE
SUB OUT: 1 VELASCO,BIANCA	04:55	27-18	
SUB IN: 32 REED,BRITTNEY	04:55		
SUB OUT: 42 MANDEL,MEGHAN	04:55		
SUB IN: 24 ALFORD,BREE	04:55		
	01:32	33-22	SUB OUT: GRAHAM,DESTINY
	01:32		SUB IN: REESE,CATE
SUB OUT: 3 GIPSON,CHELSEY	01:32		
SUB IN: 4 YIM,NAOMI	01:32		
SUB OUT: 32 REED,BRITTNEY	01:32		
SUB IN: 35 BELVIN,CIERRA	01:32		
SUB OUT: 35 BELVIN,CIERRA	01:04	33-24	
SUB IN: 32 REED,BRITTNEY	01:04		

Loyola Marymount 36, Arizona 24

**Official Substitutions Log
Loyola Marymount vs Arizona
Period 3**

November 14, 2018 at McKale Center (Lute and Bobbi Olson Court) - Tucson, Ariz.



VISITORS: Loyola Marymount	Time	Score	HOME: Arizona
3 GIPSON,CHELSEY			2 MCDONALD,AARI
11 VELASCO,ANDEE			4 ALONSO,LUCIA
22 STANLEY,RAYCHEL			14 THOMAS,SAM
24 ALFORD,BREE			20 MCBRYDE,DOMINIQUE
35 BELVIN,CIERRA			25 REESE,CATE
	07:32	41-32	SUB OUT: REESE,CATE
	07:32		SUB IN: GRAHAM,DESTINY
	07:17	44-32	SUB OUT: ALONSO,LUCIA
	07:17		SUB IN: STARKS,TEE TEE
SUB OUT: 35 BELVIN,CIERRA	05:44	44-36	
SUB IN: 31 JONES,JASMINE	05:44		
SUB OUT: 22 STANLEY,RAYCHEL	05:44		
SUB IN: 32 REED,BRITTNEY	05:44		
SUB OUT: 3 GIPSON,CHELSEY	04:38	46-36	
SUB IN: 35 BELVIN,CIERRA	04:38		
SUB OUT: 24 ALFORD,BREE	04:13	46-37	
SUB IN: 22 STANLEY,RAYCHEL	04:13		
	03:13	47-38	SUB OUT: MCBRYDE,DOMINIQUE
	03:13		SUB IN: REESE,CATE
SUB OUT: 35 BELVIN,CIERRA	02:47	47-38	
SUB IN: 1 VELASCO,BIANCA	02:47		
SUB OUT: 22 STANLEY,RAYCHEL	02:00	49-42	
SUB IN: 24 ALFORD,BREE	02:00		
	00:54	53-42	SUB OUT: GRAHAM,DESTINY
	00:54		SUB IN: ALONSO,LUCIA
SUB OUT: 1 VELASCO,BIANCA	00:54		
SUB IN: 35 BELVIN,CIERRA	00:54		

Loyola Marymount 53, Arizona 42

**Official Substitutions Log
Loyola Marymount vs Arizona
Period 4**

November 14, 2018 at McKale Center (Lute and Bobbi Olson Court) - Tucson, Ariz.



VISITORS: Loyola Marymount	Time	Score	HOME: Arizona
3 GIPSON,CHELSEY			2 MCDONALD,AARI
11 VELASCO,ANDEE			4 ALONSO,LUCIA
22 STANLEY,RAYCHEL			14 THOMAS,SAM
24 ALFORD,BREE			20 MCBRYDE,DOMINIQUE
35 BELVIN,CIERRA			25 REESE,CATE
	08:45	-	SUB OUT: STARKS,TEE TEE
	08:45		SUB IN: SMITH,SEMAJ
SUB OUT: 31 JONES,JASMINE	08:45		
SUB IN: 22 STANLEY,RAYCHEL	08:45		
SUB OUT: 32 REED,BRITTNEY	08:45		
SUB IN: 3 GIPSON,CHELSEY	08:45		
	07:02	57-44	SUB OUT: SMITH,SEMAJ
	07:02		SUB IN: MCBRYDE,DOMINIQUE
SUB OUT: 22 STANLEY,RAYCHEL	06:12	57-44	
SUB IN: 31 JONES,JASMINE	06:12		
SUB OUT: 3 GIPSON,CHELSEY	05:48	57-44	
SUB IN: 32 REED,BRITTNEY	05:48		
SUB OUT: 35 BELVIN,CIERRA	05:48		
SUB IN: 1 VELASCO,BIANCA	05:48		
SUB OUT: 24 ALFORD,BREE	04:58	59-47	
SUB IN: 22 STANLEY,RAYCHEL	04:58		
SUB OUT: 1 VELASCO,BIANCA	04:31	59-48	
SUB IN: 35 BELVIN,CIERRA	04:31		
SUB OUT: 22 STANLEY,RAYCHEL	03:42	61-49	
SUB IN: 24 ALFORD,BREE	03:42		
	03:42		SUB OUT: REESE,CATE
	03:42		SUB IN: STARKS,TEE TEE
SUB OUT: 35 BELVIN,CIERRA	02:55	61-49	
SUB IN: 3 GIPSON,CHELSEY	02:55		
SUB OUT: 3 GIPSON,CHELSEY	01:30	62-56	
SUB IN: 1 VELASCO,BIANCA	01:30		
SUB OUT: 32 REED,BRITTNEY	01:02	63-59	
SUB IN: 22 STANLEY,RAYCHEL	01:02		
SUB OUT: 1 VELASCO,BIANCA	01:02		
SUB IN: 3 GIPSON,CHELSEY	01:02		
SUB OUT: 31 JONES,JASMINE	00:50	63-60	
SUB IN: 32 REED,BRITTNEY	00:50		
SUB OUT: 22 STANLEY,RAYCHEL	00:34	63-60	
SUB IN: 31 JONES,JASMINE	00:34		
	00:07	63-62	SUB OUT: MCBRYDE,DOMINIQUE
	00:07		SUB IN: NIXON,BRYCE
SUB OUT: 3 GIPSON,CHELSEY	00:05	65-62	
SUB IN: 22 STANLEY,RAYCHEL	00:05		
	00:05		SUB OUT: NIXON,BRYCE
	00:05		SUB IN: REESE,CATE
	00:04	65-63	SUB OUT: STARKS,TEE TEE
	00:04		SUB IN: NIXON,BRYCE
SUB OUT: 11 VELASCO,ANDEE	00:02	66-63	
SUB IN: 1 VELASCO,BIANCA	00:02		

Loyola Marymount 66, Arizona 64

Official Shot Chart
Loyola Marymount vs Arizona
PERIOD 1 Shots

November 14, 2018 at McKale Center (Lute and Bobbi Olson Court) - Tucson, Ariz.



Arizona

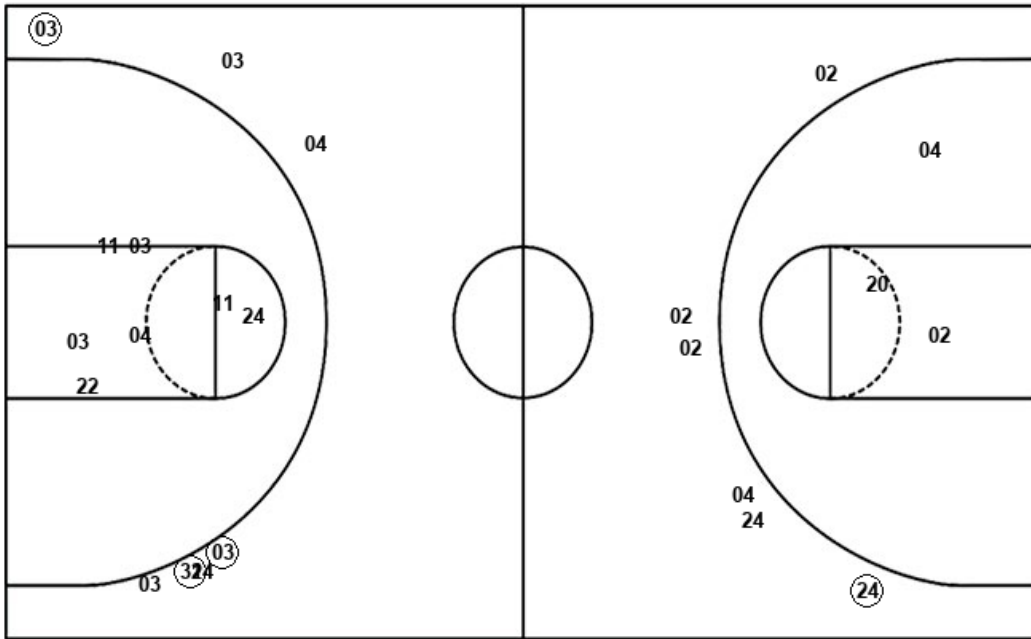
Loyola Marymount

Layups
21 10 20

Layups
24 24 (31) 32 11

Dunks

Dunks



ARI : Period 1	Made	Att	Pct
Layups	0	3	00.0
Dunks	0	0	0
2PT Field Goals	0	6	00.0
3PT Field Goals	1	6	16.7
Total Field Goals	1	12	08.3

LMU : Period 1	Made	Att	Pct
Layups	3	7	42.9
Dunks	0	0	0
2PT Field Goals	3	14	21.4
3PT Field Goals	3	7	42.9
Total Field Goals	6	21	28.6

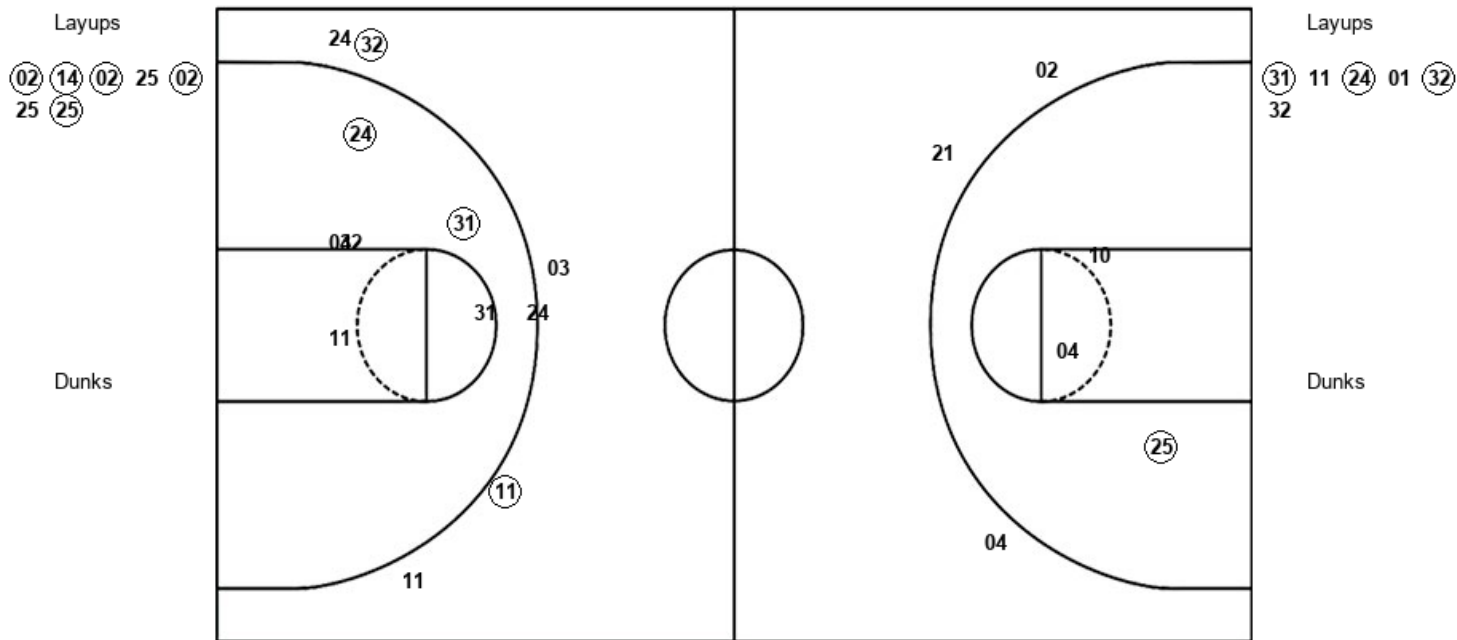
Official Shot Chart
Loyola Marymount vs Arizona
PERIOD 2 Shots

November 14, 2018 at McKale Center (Lute and Bobbi Olson Court) - Tucson, Ariz.



Arizona

Loyola Marymount



ARI : Period 2	Made	Att	Pct
Layups	5	7	71.4
Dunks	0	0	0
2PT Field Goals	6	10	60.0
3PT Field Goals	0	3	00.0
Total Field Goals	6	13	46.2

LMU : Period 2	Made	Att	Pct
Layups	3	6	50.0
Dunks	0	0	0
2PT Field Goals	5	12	41.7
3PT Field Goals	2	6	33.3
Total Field Goals	7	18	38.9

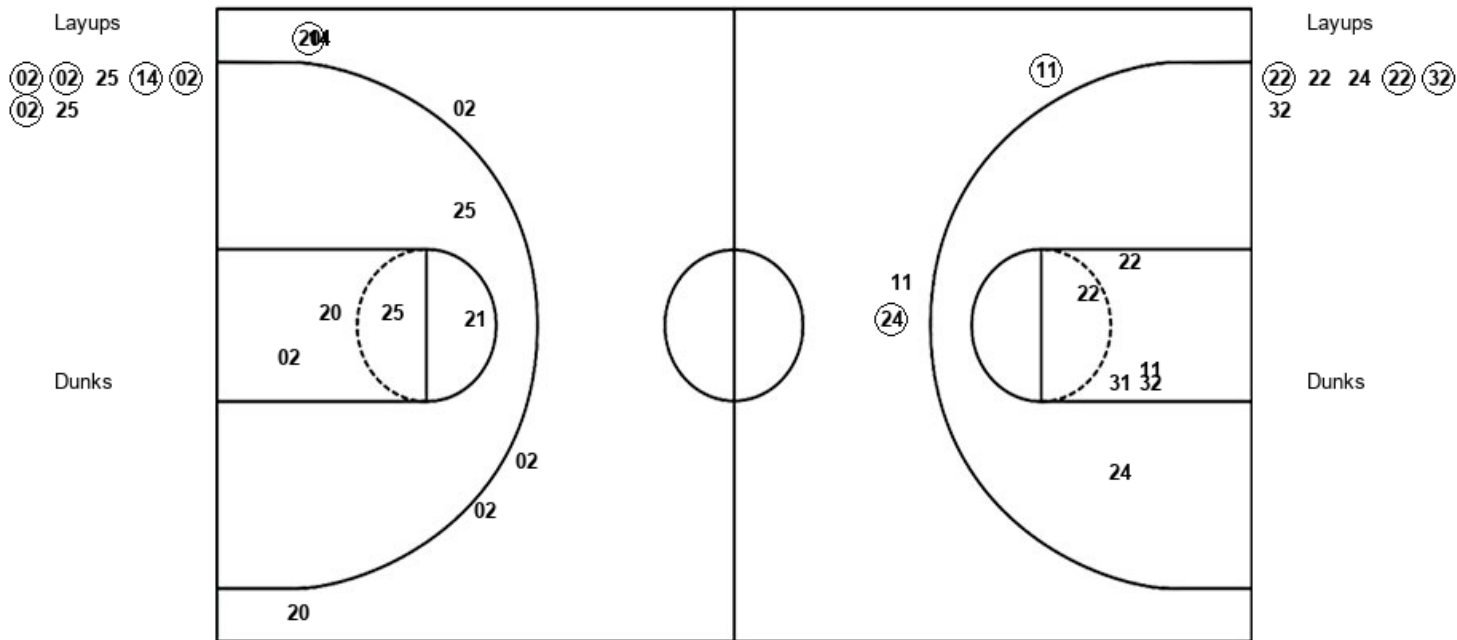
Official Shot Chart
Loyola Marymount vs Arizona
PERIOD 3 Shots

November 14, 2018 at McKale Center (Lute and Bobbi Olson Court) - Tucson, Ariz.



Arizona

Loyola Marymount



ARI : Period 3	Made	Att	Pct
Layups	5	7	71.4
Dunks	0	0	0
2PT Field Goals	5	12	41.7
3PT Field Goals	1	7	14.3
Total Field Goals	6	19	31.6

LMU : Period 3	Made	Att	Pct
Layups	3	6	50.0
Dunks	0	0	0
2PT Field Goals	3	12	25.0
3PT Field Goals	2	3	66.7
Total Field Goals	5	15	33.3

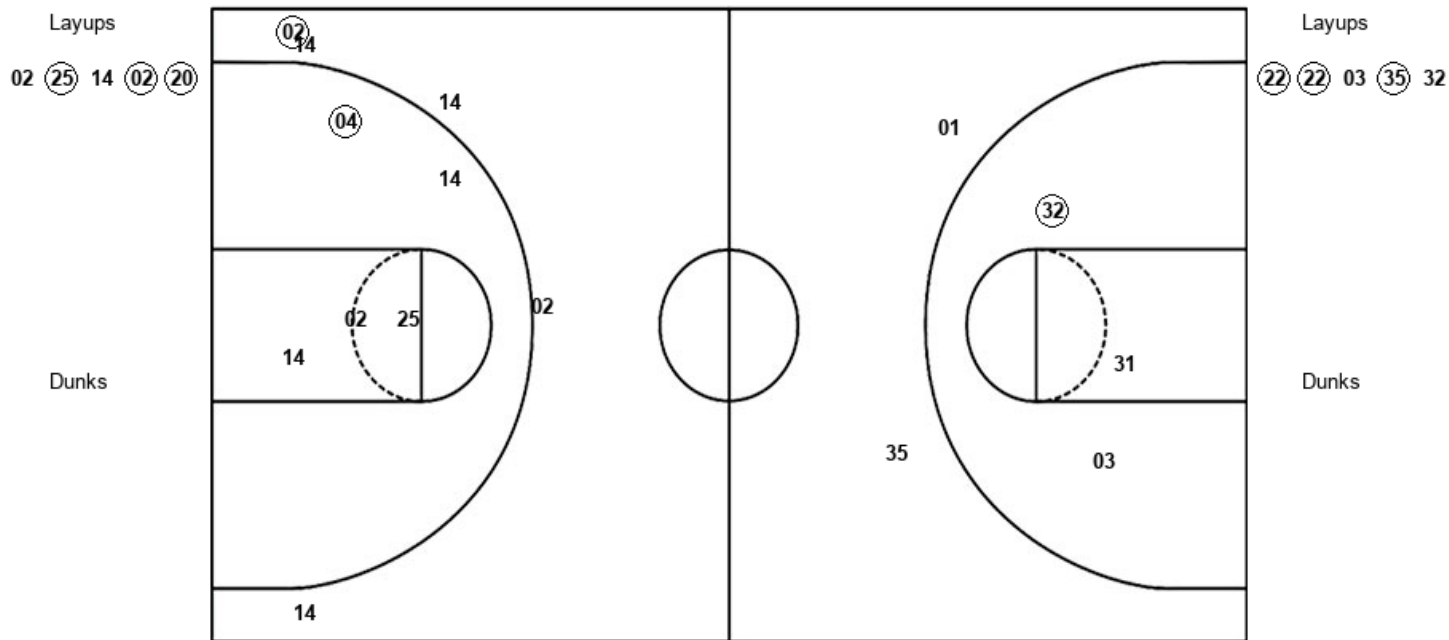
Official Shot Chart
 Loyola Marymount vs Arizona
 PERIOD 4 Shots

November 14, 2018 at McKale Center (Lute and Bobbi Olson Court) - Tucson, Ariz.



Arizona

Loyola Marymount



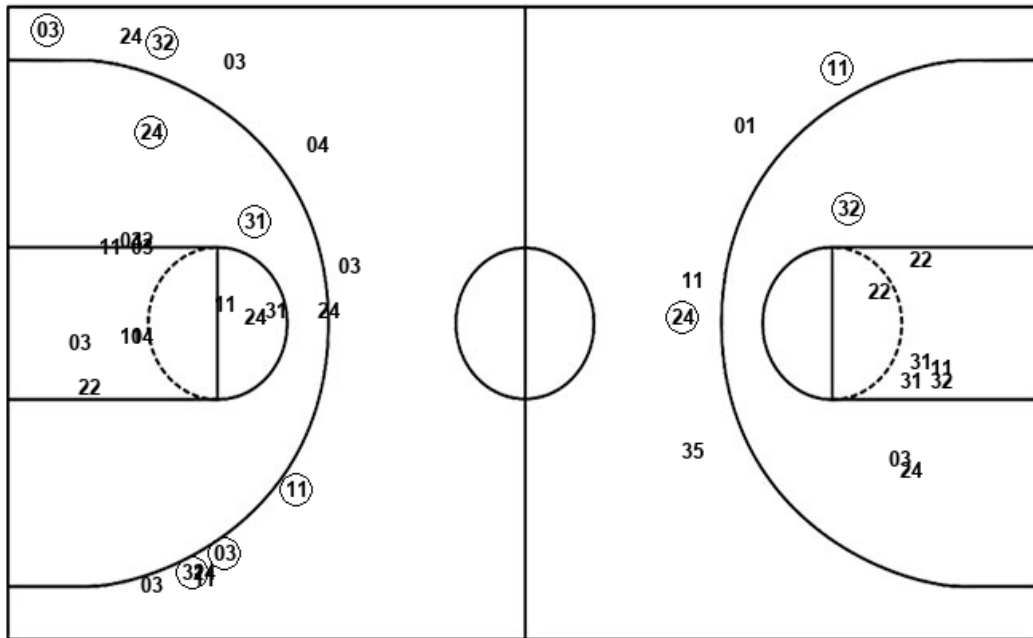
ARI : Period 4	Made	Att	Pct
Layups	3	5	60.0
Dunks	0	0	0
2PT Field Goals	4	10	40.0
3PT Field Goals	1	5	20.0
Total Field Goals	5	15	33.3

LMU : Period 4	Made	Att	Pct
Layups	3	5	60.0
Dunks	0	0	0
2PT Field Goals	4	8	50.0
3PT Field Goals	0	2	00.0
Total Field Goals	4	10	40.0

Official Shot Chart
Loyola Marymount vs Arizona
 Loyola Marymount Team Shots
 November 14, 2018 at McKale Center (Lute and Bobbi Olson Court) - Tucson, Ariz.



Layups



Layups

24 24 (31) 32 11
 (31) (31) (31) 11 (24)
 01 (32) 32 (22) 22
 24 (22) (32) 32 (22)
 (22) 03 (35) 32

Dunks

Dunks

LMU : Period 1	Made	Att	Pct
Layups	3	7	42.9
Dunks	0	0	0
2PT Field Goals	3	14	21.4
3PT Field Goals	3	7	42.9
Total Field Goals	6	21	28.6

LMU : Period 3	Made	Att	Pct
Layups	3	6	50.0
Dunks	0	0	0
2PT Field Goals	3	12	25.0
3PT Field Goals	2	3	66.7
Total Field Goals	5	15	33.3

LMU : Period 2	Made	Att	Pct
Layups	3	6	50.0
Dunks	0	0	0
2PT Field Goals	5	12	41.7
3PT Field Goals	2	6	33.3
Total Field Goals	7	18	38.9

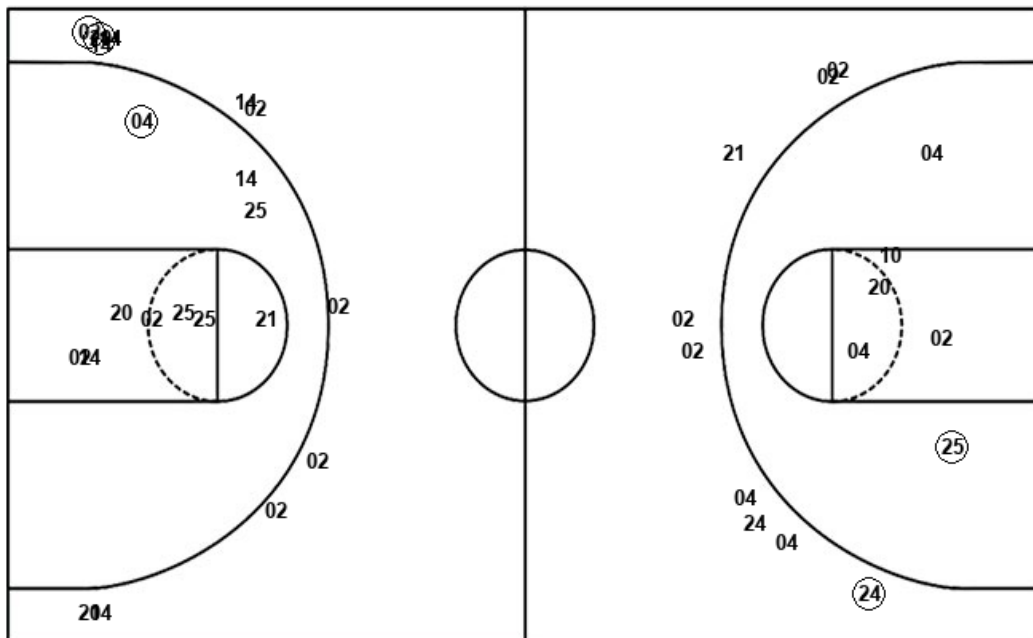
LMU : Period 4	Made	Att	Pct
Layups	3	5	60.0
Dunks	0	0	0
2PT Field Goals	4	8	50.0
3PT Field Goals	0	2	00.0
Total Field Goals	4	10	40.0

Official Shot Chart
Loyola Marymount vs Arizona
Arizona Team Shots

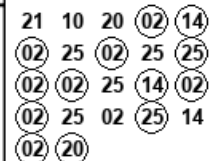
November 14, 2018 at McKale Center (Lute and Bobbi Olson Court) - Tucson, Ariz.



Layups



Layups



Dunks

Dunks

ARI : Period 1	Made	Att	Pct
Layups	0	3	00.0
Dunks	0	0	0
2PT Field Goals	0	6	00.0
3PT Field Goals	1	6	16.7
Total Field Goals	1	12	08.3

ARI : Period 2	Made	Att	Pct
Layups	5	7	71.4
Dunks	0	0	0
2PT Field Goals	6	10	60.0
3PT Field Goals	0	3	00.0
Total Field Goals	6	13	46.2

ARI : Period 3	Made	Att	Pct
Layups	5	7	71.4
Dunks	0	0	0
2PT Field Goals	5	12	41.7
3PT Field Goals	1	7	14.3
Total Field Goals	6	19	31.6

ARI : Period 4	Made	Att	Pct
Layups	3	5	60.0
Dunks	0	0	0
2PT Field Goals	4	10	40.0
3PT Field Goals	1	5	20.0
Total Field Goals	5	15	33.3