

FINAL SCORE**Idaho State****46****Arizona****71****November 10, 2018 • McKale Center - Tucson, Ariz.****FINAL STATISTICS**

Official Box Score
Idaho State vs Arizona
Game Totals -- Final Statistics
November 10, 2018 at McKale Center - Tucson, Ariz.



Idaho State 46

No.	Player	S	Pts	FG	3FG	FT	OR	DR	TR	PF	A	TO	Blk	Stl	Min	+/-
02	KENYON, GRACE		7	3-5	0-2	1-1	1	5	6	4	2	4	0	3	26	-5
03	GRANDON, SAYLAIR		17	5-19	1-7	6-10	1	6	7	1	1	2	0	2	37	-21
04	HINRICHS, MADISON		9	4-7	0-1	1-1	0	4	4	4	0	9	0	1	29	-19
11	TAPASA, SAI		0	0-5	0-0	0-0	2	2	4	3	0	1	1	0	22	-14
14	ORS, ESTEFANIA		0	0-9	0-5	0-0	2	5	7	5	2	2	0	0	29	-12
12	BOURNE, CALLIE		9	2-7	0-2	5-8	2	3	5	1	0	2	1	0	27	-19
13	SMITH, ELLIE		0	0-0	0-0	0-0	0	0	0	1	0	1	0	0	3	-9
22	MOORE, DELANEY		2	1-2	0-0	0-0	0	2	2	0	2	2	0	0	20	-18
25	OLTROGGE, MONTANA		2	0-2	0-1	2-2	0	0	0	2	0	1	0	1	7	-6
	TEAM						2	0	2	0		0				
TOTALS			46	15-56	1-18	15-22	10	27	37	21	7	24	2	7	200	

Shooting By Period

Period	FG	FG%	3FG	3FG%	FT	FT%
1st Qtr	4-14	29%	0-3	00%	1-4	25%
2nd Qtr	4-10	40%	0-4	00%	3-4	75%
3rd Qtr	2-15	13%	0-4	00%	4-6	67%
4th Qtr	5-17	29%	1-7	14%	7-8	88%
1st Half	8-24	33%	0-7	00%	4-8	50%
2nd Half	7-32	22%	1-11	09%	11-14	79%
Game	15-56	26.8%	1-18	05.6%	15-22	68.2%

Last FG: 4th-02:23
Biggest Run: 6-0
Largest lead: By 3 at 1-08:38
Technical Fouls: None.

Arizona 71

No.	Player	S	Pts	FG	3FG	FT	OR	DR	TR	PF	A	TO	Blk	Stl	Min	+/-
02	MCDONALD, AARI		22	8-19	2-8	4-4	1	9	10	2	6	6	0	2	35	24
04	ALONSO, LUCIA		3	1-4	1-4	0-0	0	1	1	4	2	5	0	2	30	20
14	THOMAS, SAM		15	5-10	3-4	2-3	3	6	9	2	0	0	1	4	34	7
20	MCBRYDE, DOMINIQUE		2	0-2	0-0	2-2	1	2	3	4	1	4	1	1	14	-2
25	REESE, CATE		21	6-13	3-4	6-6	1	9	10	5	2	2	0	0	31	23
01	SMITH, SHALYSE		0	0-0	0-0	0-0	0	0	0	0	0	0	0	0	2	3
10	STARKS, TEE TEE		3	1-2	1-1	0-2	0	1	1	2	1	0	0	1	17	20
21	GRAHAM, DESTINY		2	1-4	0-1	0-2	2	4	6	4	1	2	1	0	24	22
22	MALECHA, LINDSEY		0	0-0	0-0	0-0	0	0	0	0	0	0	0	0	2	3
24	NIXON, BRYCE		1	0-0	0-0	1-2	0	0	0	1	1	2	0	0	6	3
34	SMITH, SEMAJ		2	1-3	0-0	0-0	1	1	2	0	0	2	0	0	6	2
	TEAM						2	1	3	0		0				
TOTALS			71	23-57	10-22	15-21	11	34	45	24	14	23	3	10	200	

Shooting By Period

Period	FG	FG%	3FG	3FG%	FT	FT%
1st Qtr	7-16	44%	4-10	40%	2-2	100%
2nd Qtr	6-15	40%	4-5	80%	0-2	00%
3rd Qtr	3-12	25%	0-2	00%	6-7	86%
4th Qtr	7-14	50%	2-5	40%	7-10	70%
1st Half	13-31	42%	8-15	53%	2-4	50%
2nd Half	10-26	38%	2-7	29%	13-17	76%
Game	23-57	40.4%	10-22	45.5%	15-21	71.4%

Last FG: 4th-01:07
Biggest Run: 16-0
Largest lead: By 25 at 4-00:39
Technical Fouls: None.

Game Notes:

Officials: **Melissa Barlow, Richard Waters, Alejandro Moreno**
Attendance: **1226**

Start Time: **2018-11-10 01:31:00**
End Time: **2018-11-10 03:31:50**
Game Duration: **120**

Score	1st	2nd	3rd	4th	TOT
ISU	9	11	8	18	46
ARZ	20	16	12	23	71

ISU led for 4:23. ARZ led for 33:31.
Game was tied for 2:07.
Times tied: 6 Lead Changes: 1

Points from	ISU	ARZ
In the Paint	24	24
Off Turns	12	13
2nd Chance	10	8
Fast Break	9	12
Bench	13	8

Official Box Score
Idaho State vs Arizona
First Half Statistics Only
November 10, 2018 at McKale Center - Tucson, Ariz.



Idaho State 20

No.	Player	S	Pts	FG	3FG	FT	OR	DR	TR	PF	A	TO	Blk	Stl	Min	+/-
11	TAPASA, SAI		0	0-2	0-0	0-0	1	1	2	2	0	1	0	0	12	-5
12	BOURNE, CALLIE		3	1-2	0-1	1-4	1	3	4	0	0	1	1	0	12	-14
13	SMITH, ELLIE		0	0-0	0-0	0-0	0	0	0	1	0	1	0	0	3	-9
14	ORS, ESTEFANIA		0	0-6	0-3	0-0	1	1	2	1	2	1	0	0	14	-7
22	MOORE, DELANEY		2	1-2	0-0	0-0	0	2	2	0	2	2	0	0	13	-17
25	OLTROGGE, MONTANA		0	0-0	0-0	0-0	0	0	0	0	0	0	0	0	1	-4
02	KENYON, GRACE		4	2-3	0-1	0-0	0	3	3	2	2	3	0	1	13	1
03	GRANDON, SAYLAIR		7	2-5	0-1	3-4	0	4	4	0	0	1	0	1	18	-14
04	HINRICHS, MADISON		4	2-4	0-1	0-0	0	2	2	2	0	4	0	0	14	-11
	TEAM		0	0-0	0-0	0-0	1	0	1	0	0	0	0	0	0	
TOTALS			20	8-24	0-7	4-8	0	0	20	8	6	14	1	2	100	

Shooting By Period

Period	FG	FG%	3FG	3FG%	FT	FT%
1st Qtr	4-14	29%	0-3	00%	1-4	25%
2nd Qtr	4-10	40%	0-4	00%	3-4	75%
1st Half	8-24	33%	0-7	00%	4-8	50%
Game	15-56	26.8%	1-18	05.6%	15-22	68.2%

Last FG Half: ISU 2nd-00:53

Arizona 36

No.	Player	S	Pts	FG	3FG	FT	OR	DR	TR	PF	A	TO	Blk	Stl	Min	+/-
01	SMITH, SHALYSE		0	0-0	0-0	0-0	0	0	0	0	0	0	0	0	0	0
02	MCDONALD, AARI		9	4-11	1-5	0-0	0	3	3	1	5	2	0	1	19	16
04	ALONSO, LUCIA		3	1-2	1-2	0-0	0	1	1	1	2	3	0	2	18	17
10	STARKS, TEE TEE		3	1-2	1-1	0-0	0	0	0	1	0	0	0	0	8	12
14	THOMAS, SAM		6	2-5	2-3	0-0	1	2	3	1	0	0	1	1	16	3
20	MCBRYDE, DOMINIQUE		0	0-0	0-0	0-0	0	0	0	3	0	3	1	1	7	-3
21	GRAHAM, DESTINY		2	1-3	0-1	0-2	1	1	2	1	1	0	1	0	15	17
22	MALECHA, LINDSEY		0	0-0	0-0	0-0	0	0	0	0	0	0	0	0	0	0
24	NIXON, BRYCE		0	0-0	0-0	0-0	0	0	0	0	0	0	0	0	0	0
25	REESE, CATE		13	4-8	3-3	2-2	0	5	5	1	1	0	0	0	16	17
34	SMITH, SEMAJ		0	0-0	0-0	0-0	0	1	1	0	0	1	0	0	2	1
	TEAM		0	0-0	0-0	0-0	1	0	1	0	0	0	0	0	0	
TOTALS			36	13-31	8-15	2-4	0	0	16	9	9	9	3	5	100	

Shooting By Period

Period	FG	FG%	3FG	3FG%	FT	FT%
1st Qtr	7-16	44%	4-10	40%	2-2	100%
2nd Qtr	6-15	40%	4-5	80%	0-2	00%
1st Half	13-31	42%	8-15	53%	2-4	50%
Game	23-57	40.4%	10-22	45.5%	15-21	71.4%

Last FG Half: ARZ 2nd-00:05

Game Notes:

Officials: **Melissa Barlow, Richard Waters, Alejandro Moreno**
Attendance: **1226**

Start Time: **2018-11-10 01:31:00**
End Time: **2018-11-10 03:31:50**
Game Duration: **120**

Score	1st	2nd	3rd	4th	TOT
ISU	9	11	8	18	46
ARZ	20	16	12	23	71

Points from (This Period)	ISU	ARZ
In the Paint	12	10
Off Turns	3	7
2nd Chance	2	2
Fast Break	1	2
Bench	5	5

Official Box Score
Idaho State vs Arizona
First Quarter Statistics Only
November 10, 2018 at McKale Center - Tucson, Ariz.



Idaho State 9

No.	Player	S	Pts	FG	3FG	FT	OR	DR	TR	PF	A	TO	Blk	Stl	Min	+/-
02	KENYON, GRACE		2	1-1	0-0	0-0	0	1	1	2	1	1	0	1	5	2
03	GRANDON, SAYLAIR		5	2-5	0-1	1-2	0	2	2	0	0	0	0	1	9	-7
04	HINRICHS, MADISON		0	0-2	0-1	0-0	0	1	1	2	0	3	0	0	8	-11
11	TAPASA, SAI		0	0-0	0-0	0-0	1	0	1	1	0	0	0	0	7	-2
14	ORS, ESTEFANIA		0	0-4	0-1	0-0	0	1	1	0	1	0	0	0	7	-2
12	BOURNE, CALLIE		2	1-1	0-0	0-2	0	1	1	0	0	0	0	0	5	-9
13	SMITH, ELLIE		0	0-0	0-0	0-0	0	0	0	1	0	1	0	0	3	-9
22	MOORE, DELANEY		0	0-1	0-0	0-0	0	0	0	0	1	0	0	0	5	-13
25	OLTROGGE, MONTANA		0	0-0	0-0	0-0	0	0	0	0	0	0	0	0	1	-4
	TEAM						1	0	1	0		0				
TOTALS			9	4-14	0-3	1-4	0	0	8	6	3	5	0	2	50	

Shooting By Period

Period	FG	FG%	3FG	3FG%	FT	FT%
1st Qtr	4-14	29%	0-3	00%	1-4	25%
2nd Qtr	4-10	40%	0-4	00%	3-4	75%
1st Half	4-14	29%	0-3	00%	1-4	25%
1st Half	8-24	33%	0-7	00%	4-8	50%
Game	15-56	26.8%	1-18	05.6%	15-22	68.2%

Arizona 20

No.	Player	S	Pts	FG	3FG	FT	OR	DR	TR	PF	A	TO	Blk	Stl	Min	+/-
02	MCDONALD, AARI		2	1-6	0-4	0-0	0	2	2	1	2	1	0	0	10	11
04	ALONSO, LUCIA		3	1-2	1-2	0-0	0	1	1	1	2	2	0	1	10	11
14	THOMAS, SAM		3	1-3	1-1	0-0	1	2	3	0	0	0	0	0	6	-2
20	MCBRYDE, DOMINIQUE		0	0-0	0-0	0-0	0	0	0	2	0	2	1	0	4	-2
25	REESE, CATE		10	3-3	2-2	2-2	0	4	4	0	1	0	0	0	10	11
01	SMITH, SHALYSE		0	0-0	0-0	0-0	0	0	0	0	0	0	0	0	0	0
10	STARKS, TEE TEE		0	0-0	0-0	0-0	0	0	0	1	0	0	0	0	4	13
21	GRAHAM, DESTINY		2	1-2	0-1	0-0	1	0	1	0	1	0	1	0	6	13
22	MALECHA, LINDSEY		0	0-0	0-0	0-0	0	0	0	0	0	0	0	0	0	0
24	NIXON, BRYCE		0	0-0	0-0	0-0	0	0	0	0	0	0	0	0	0	0
34	SMITH, SEMAJ		0	0-0	0-0	0-0	0	0	0	0	0	0	0	0	0	0
	TEAM						1	0	1	0		0				
TOTALS			20	7-16	4-10	2-2	0	0	12	5	6	5	2	1	50	

Shooting By Period

Period	FG	FG%	3FG	3FG%	FT	FT%
1st Qtr	7-16	44%	4-10	40%	2-2	100%
2nd Qtr	6-15	40%	4-5	80%	0-2	00%
1st Half	7-16	44%	4-10	40%	2-2	100%
1st Half	13-31	42%	8-15	53%	2-4	50%
Game	23-57	40.4%	10-22	45.5%	15-21	71.4%

Game Notes:

Officials: **Melissa Barlow, Richard Waters, Alejandro Moreno**
Attendance: **1226**

Start Time: **2018-11-10 01:31:00**
End Time: **2018-11-10 03:31:50**
Game Duration: **120**

Score	1st	2nd	3rd	4th	TOT
ISU	9	11	8	18	46
ARZ	20	16	12	23	71

Points from (This Period)	ISU	ARZ
In the Paint	6	6
Off Turns	1	2
2nd Chance	0	2
Fast Break	0	0
Bench	2	2

Official Play-By-Play
Idaho State vs Arizona
First Quarter
November 10, 2018 at McKale Center - Tucson, Ariz.



Period 1

Starters:

Idaho State: 11 TAPASA, SAI; 14 ORS, ESTEFANIA; 2 KENYON, GRACE; 3 GRANDON, SAYLAIR; 4 HINRICHS, MADISON;

Arizona: 2 MCDONALD, AARI; 4 ALONSO, LUCIA; 14 THOMAS, SAM; 20 MCBRYDE, DOMINIQUE; 25 REESE, CATE;

Time	VISITORS: Idaho State	Score	Margin	HOME: Arizona
09:45				MISSED JUMPER by THOMAS, SAM
09:40	REBOUND (DEF) by ORS, ESTEFANIA			
09:21	GOOD! LAYUP by GRANDON, SAYLAIR	0-2	V 2	
09:21	ASSIST by KENYON, GRACE			
08:50				FOUL (OFF) by ALONSO, LUCIA
08:50				TURNOVER (OFFENSIVE) by ALONSO, LUCIA
08:38				FOUL (PERSONAL) by MCDONALD, AARI
08:38	GOOD! FT by GRANDON, SAYLAIR	0-3	V 3	
08:35	MISSED FT by GRANDON, SAYLAIR			
08:34				REBOUND (DEF) by THOMAS, SAM
08:32	FOUL (PERSONAL) by HINRICHS, MADISON			
08:32				FOUL (OFF) by MCBRYDE, DOMINIQUE
08:32				TURNOVER (OFFENSIVE) by MCBRYDE, DOMINIQUE
08:19	MISSED JUMPER by ORS, ESTEFANIA			
08:15	REBOUND (OFF) by TAPASA, SAI			
08:14	TURNOVER (DRIBBLING) by HINRICHS, MADISON			
08:08				MISSED 3PTR by MCDONALD, AARI
08:04				REBOUND (OFF) by THOMAS, SAM
08:02	FOUL (PERSONAL) by TAPASA, SAI			
07:54				TURNOVER (BADPASS) by MCDONALD, AARI
07:54	STEAL by GRANDON, SAYLAIR			
07:54	MISSED JUMPER by GRANDON, SAYLAIR			
07:54				REBOUND (DEF) by THOMAS, SAM
07:54		3-3	T	GOOD! 3PTR by THOMAS, SAM
07:54				ASSIST by REESE, CATE
06:56	GOOD! JUMPER by KENYON, GRACE	3-5	V 2	
06:56	ASSIST by ORS, ESTEFANIA			
06:45				MISSED 3PTR by MCDONALD, AARI
06:42	REBOUND (DEF) by KENYON, GRACE			
06:25	MISSED JUMPER by HINRICHS, MADISON			
06:25				BLOCK by MCBRYDE, DOMINIQUE
06:25	REBOUND (OFF) by TEAM			
06:19	FOUL (OFF) by KENYON, GRACE			
06:19	TURNOVER (OFFENSIVE) by KENYON, GRACE			
06:05				TURNOVER (LOSTBALL) by MCBRYDE, DOMINIQUE
06:05	STEAL by KENYON, GRACE			
06:00				FOUL (PERSONAL) by MCBRYDE, DOMINIQUE
06:00				SUB OUT: MCBRYDE, DOMINIQUE
06:00				SUB IN: GRAHAM, DESTINY
05:50	TURNOVER (LOSTBALL) by HINRICHS, MADISON			
05:50				STEAL by ALONSO, LUCIA
05:44				MISSED 3PTR by MCDONALD, AARI
05:41	REBOUND (DEF) by HINRICHS, MADISON			
05:33	FOUL (OFF) by HINRICHS, MADISON			
05:33	TURNOVER (OFFENSIVE) by HINRICHS, MADISON			
05:33	SUB OUT: HINRICHS, MADISON			
05:33	SUB IN: BOURNE, CALLIE			
05:20				TURNOVER (OTHER) by ALONSO, LUCIA
05:07	MISSED JUMPER by ORS, ESTEFANIA			
05:04				REBOUND (DEF) by MCDONALD, AARI
05:00				MISSED JUMPER by MCDONALD, AARI
04:56				REBOUND (OFF) by GRAHAM, DESTINY
04:56				MISSED 3PTR by ALONSO, LUCIA
04:56				REBOUND (OFF) by TEAM
04:56	FOUL (PERSONAL) by KENYON, GRACE			
04:56	SUB OUT: KENYON, GRACE			
04:56	SUB IN: MOORE, DELANEY			
04:56		4-5	V 1	GOOD! FT by REESE, CATE
04:56		5-5	T	GOOD! FT by REESE, CATE
04:44	GOOD! LAYUP by GRANDON, SAYLAIR	5-7	V 2	
04:28		7-7	T	GOOD! LAYUP by GRAHAM, DESTINY
04:28				ASSIST by MCDONALD, AARI
04:15	GOOD! LAYUP by BOURNE, CALLIE	7-9	V 2	
04:15	ASSIST by MOORE, DELANEY			
03:57				MISSED JUMPER by THOMAS, SAM
03:54	REBOUND (DEF) by GRANDON, SAYLAIR			
03:48	MISSED 3PTR by ORS, ESTEFANIA			
03:47	REBOUND (OFF) by TEAM			
03:47	SUB OUT: TAPASA, SAI			
03:47	SUB IN: SMITH, ELLIE			

Time	VISITORS: Idaho State	Score	Margin	HOME: Arizona
03:47	SUB OUT: ORS, ESTEFANIA			
03:47	SUB IN: HINRICHS, MADISON			
03:47				SUB OUT: ALONSO, LUCIA
03:47				SUB IN: STARKS, TEE TEE
03:46				SUB OUT: THOMAS, SAM
03:46				SUB IN: ALONSO, LUCIA
03:42				FOUL (PERSONAL) by STARKS, TEE TEE
03:42	MISSED FT by BOURNE, CALLIE			
03:42	REBOUND (OFF) by TEAM			
03:42	MISSED FT by BOURNE, CALLIE			
03:42				REBOUND (DEF) by REESE, CATE
03:35		10-9	H 1	GOOD! 3PTR by REESE, CATE
03:35				ASSIST by ALONSO, LUCIA
03:04	MISSED 3PTR by GRANDON, SAYLAIR			
03:00				REBOUND (DEF) by ALONSO, LUCIA
02:53		13-9	H 4	GOOD! 3PTR by REESE, CATE
02:53				ASSIST by ALONSO, LUCIA
02:34	MISSED LAYUP by MOORE, DELANEY			
02:34				BLOCK by GRAHAM, DESTINY
02:26				REBOUND (DEF) by REESE, CATE
02:15				MISSED 3PTR by MCDONALD, AARI
02:09	REBOUND (DEF) by GRANDON, SAYLAIR			
02:00	MISSED 3PTR by HINRICHS, MADISON			
01:55				REBOUND (DEF) by MCDONALD, AARI
01:50				MISSED 3PTR by GRAHAM, DESTINY
01:46	REBOUND (DEF) by BOURNE, CALLIE			
01:33	MISSED JUMPER by GRANDON, SAYLAIR			
01:28				REBOUND (DEF) by REESE, CATE
01:17		16-9	H 7	GOOD! 3PTR by ALONSO, LUCIA
01:17				ASSIST by MCDONALD, AARI
00:59	FOUL (OFF) by SMITH, ELLIE			
00:59	TURNOVER (OFFENSIVE) by SMITH, ELLIE			
00:59	SUB OUT: GRANDON, SAYLAIR			
00:59	SUB IN: OLTROGGE, MONTANA			
00:59	SUB OUT: BOURNE, CALLIE			
00:59	SUB IN: ORS, ESTEFANIA			
00:59	SUB OUT: SMITH, ELLIE			
00:59	SUB IN: TAPASA, SAI			
00:42		18-9	H 9	GOOD! JUMPER by MCDONALD, AARI [PNT]
00:21	MISSED JUMPER by ORS, ESTEFANIA			
00:18				REBOUND (DEF) by REESE, CATE
00:00		20-9	H 11	GOOD! JUMPER by REESE, CATE [PNT]
00:00				ASSIST by GRAHAM, DESTINY

Idaho State 9, Arizona 20

Points from (This Period)	ISU	ARZ
In the Paint	6	6
Off Turns	1	2
2nd Chance	0	2
Fast Break	0	0
Bench	2	2

Official Box Score
Idaho State vs Arizona
Second Quarter Statistics Only
November 10, 2018 at McKale Center - Tucson, Ariz.



Idaho State 11

No.	Player	S	Pts	FG	3FG	FT	OR	DR	TR	PF	A	TO	Blk	Stl	Min	+/-
02	KENYON, GRACE		2	1-2	0-1	0-0	0	2	2	0	1	2	0	0	8	-1
03	GRANDON, SAYLAIR		2	0-0	0-0	2-2	0	2	2	0	0	1	0	0	9	-7
04	HINRICH, MADISON		4	2-2	0-0	0-0	0	1	1	0	0	1	0	0	6	0
11	TAPASA, SAI		0	0-2	0-0	0-0	0	1	1	1	0	1	0	0	5	-3
14	ORS, ESTEFANIA		0	0-2	0-2	0-0	1	0	1	1	1	1	0	0	7	-5
12	BOURNE, CALLIE		1	0-1	0-1	1-2	1	2	3	0	0	1	1	0	7	-5
13	SMITH, ELLIE		0	0-0	0-0	0-0	0	0	0	0	0	0	0	0	0	0
22	MOORE, DELANEY		2	1-1	0-0	0-0	0	2	2	0	1	2	0	0	8	-4
25	OLTROGGE, MONTANA		0	0-0	0-0	0-0	0	0	0	0	0	0	0	0	0	0
	TEAM						0	0	0	0		0				
TOTALS			11	4-10	0-4	3-4	0	0	12	2	3	9	1	0	50	

Shooting By Period

Period	FG	FG%	3FG	3FG%	FT	FT%
3rd Qtr	2-15	13%	0-4	00%	4-6	67%
4th Qtr	5-17	29%	1-7	14%	7-8	88%
2nd Half	4-10	40%	0-4	00%	3-4	75%
2nd Half	7-32	22%	1-11	09%	11-14	79%
Game	15-56	26.8%	1-18	05.6%	15-22	68.2%

Arizona 16

No.	Player	S	Pts	FG	3FG	FT	OR	DR	TR	PF	A	TO	Blk	Stl	Min	+/-
02	MCDONALD, AARI		7	3-5	1-1	0-0	0	1	1	0	3	1	0	1	9	5
04	ALONSO, LUCIA		0	0-0	0-0	0-0	0	0	0	0	0	1	0	1	8	6
14	THOMAS, SAM		3	1-2	1-2	0-0	0	0	0	1	0	0	1	1	10	5
20	MCBRYDE, DOMINIQUE		0	0-0	0-0	0-0	0	0	0	1	0	1	0	1	3	-1
25	REESE, CATE		3	1-5	1-1	0-0	0	1	1	1	0	0	0	0	6	6
01	SMITH, SHALYSE		0	0-0	0-0	0-0	0	0	0	0	0	0	0	0	0	0
10	STARKS, TEE TEE		3	1-2	1-1	0-0	0	0	0	0	0	0	0	0	4	-1
21	GRAHAM, DESTINY		0	0-1	0-0	0-2	0	1	1	1	0	0	0	0	9	4
22	MALECHA, LINDSEY		0	0-0	0-0	0-0	0	0	0	0	0	0	0	0	0	0
24	NIXON, BRYCE		0	0-0	0-0	0-0	0	0	0	0	0	0	0	0	0	0
34	SMITH, SEMAJ		0	0-0	0-0	0-0	0	1	1	0	0	1	0	0	2	1
	TEAM						0	0	0	0		0				
TOTALS			16	6-15	4-5	0-2	0	0	4	4	3	4	1	4	50	

Shooting By Period

Period	FG	FG%	3FG	3FG%	FT	FT%
3rd Qtr	3-12	25%	0-2	00%	6-7	86%
4th Qtr	7-14	50%	2-5	40%	7-10	70%
2nd Half	6-15	40%	4-5	80%	0-2	00%
2nd Half	10-26	38%	2-7	29%	13-17	76%
Game	23-57	40.4%	10-22	45.5%	15-21	71.4%

Game Notes:

Officials: Melissa Barlow, Richard Waters, Alejandro Moreno
Attendance: 1226

Start Time: 2018-11-10 01:31:00
End Time: 2018-11-10 03:31:50
Game Duration: 120

Score	1st	2nd	3rd	4th	TOT
ISU	9	11	8	18	46
ARZ	20	16	12	23	71

Points from (This Period)	ISU	ARZ
In the Paint	6	4
Off Turns	2	5
2nd Chance	2	0
Fast Break	1	2
Bench	3	3

Official Play-By-Play
Idaho State vs Arizona
Second Quarter
November 10, 2018 at McKale Center - Tucson, Ariz.



Period 2

Starters:

Idaho State: 11 TAPASA, SAI; 14 ORS, ESTEFANIA; 2 KENYON, GRACE; 3 GRANDON, SAYLAIR; 4 HINRICHS, MADISON;

Arizona: 2 MCDONALD, AARI; 4 ALONSO, LUCIA; 14 THOMAS, SAM; 20 MCBRYDE, DOMINIQUE; 25 REESE, CATE;

Time	VISITORS: Idaho State	Score	Margin	HOME: Arizona
09:50				TURNOVER (3SEC) by SMITH, SEMAJ
09:37	TURNOVER (BADPASS) by HINRICHS, MADISON			
09:37				STEAL by THOMAS, SAM
09:12				TURNOVER (TRAVEL) by ALONSO, LUCIA
08:57				SUB OUT: ALONSO, LUCIA
08:57				SUB IN: MCDONALD, AARI
08:57				SUB OUT: GRAHAM, DESTINY
08:57				SUB IN: MCBRYDE, DOMINIQUE
08:45	MISSED 3PTR by ORS, ESTEFANIA			
08:40				REBOUND (DEF) by SMITH, SEMAJ
08:29		23-9	H 14	GOOD! 3PTR by STARKS, TEE TEE
08:29				ASSIST by MCDONALD, AARI
08:10	MISSED 3PTR by ORS, ESTEFANIA			
08:10				BLOCK by THOMAS, SAM
08:04	REBOUND (OFF) by ORS, ESTEFANIA			
08:02	GOOD! LAYUP by HINRICHS, MADISON	23-11	H 12	
07:51				TURNOVER (BADPASS) by MCDONALD, AARI
07:51				SUB OUT: SMITH, SEMAJ
07:51				SUB IN: GRAHAM, DESTINY
07:51	SUB OUT: TAPASA, SAI			
07:51	SUB IN: MOORE, DELANEY			
07:51	SUB OUT: HINRICHS, MADISON			
07:51	SUB IN: BOURNE, CALLIE			
07:33	TURNOVER (OTHER) by MOORE, DELANEY			
07:10				MISSED LAYUP by STARKS, TEE TEE
07:06	REBOUND (DEF) by KENYON, GRACE			
07:05	TURNOVER (LOSTBALL) by KENYON, GRACE			
07:05				STEAL by MCBRYDE, DOMINIQUE
07:03				FOUL (OFF) by MCBRYDE, DOMINIQUE
07:03				TURNOVER (OFFENSIVE) by MCBRYDE, DOMINIQUE
06:45	GOOD! LAYUP by KENYON, GRACE	23-13	H 10	
06:45	ASSIST by MOORE, DELANEY			
06:33				MISSED JUMPER by GRAHAM, DESTINY
06:27	REBOUND (DEF) by BOURNE, CALLIE			
06:27	TURNOVER (BADPASS) by GRANDON, SAYLAIR			
06:27				SUB OUT: STARKS, TEE TEE
06:27				SUB IN: REESE, CATE
06:27				SUB OUT: MCBRYDE, DOMINIQUE
06:27				SUB IN: ALONSO, LUCIA
06:27	SUB OUT: KENYON, GRACE			
06:27	SUB IN: HINRICHS, MADISON			
06:27	SUB OUT: ORS, ESTEFANIA			
06:27	SUB IN: TAPASA, SAI			
06:13				MISSED JUMPER by REESE, CATE
06:10	REBOUND (DEF) by GRANDON, SAYLAIR			
06:04	MISSED 3PTR by BOURNE, CALLIE			
06:01				REBOUND (DEF) by REESE, CATE
05:38				MISSED JUMPER by MCDONALD, AARI
05:38	BLOCK by BOURNE, CALLIE			
05:31	REBOUND (DEF) by BOURNE, CALLIE			
05:30	TURNOVER (LOSTBALL) by BOURNE, CALLIE			
05:30				STEAL by MCDONALD, AARI
05:22		25-13	H 12	GOOD! LAYUP by MCDONALD, AARI [FB]
05:14	TURNOVER (LOSTBALL) by TAPASA, SAI			
05:14				STEAL by ALONSO, LUCIA
05:09				MISSED LAYUP by REESE, CATE
05:09	REBOUND (DEF) by TAPASA, SAI			
05:09	TIMEOUT 30SEC			
05:09	SUB OUT: GRANDON, SAYLAIR			
05:09	SUB IN: KENYON, GRACE			
04:57	GOOD! JUMPER by HINRICHS, MADISON	25-15	H 10	
04:57	ASSIST by KENYON, GRACE			
04:40				MISSED 3PTR by THOMAS, SAM
04:37	REBOUND (DEF) by HINRICHS, MADISON			
04:25	MISSED LAYUP by TAPASA, SAI			
04:20	REBOUND (OFF) by BOURNE, CALLIE			
04:07	MISSED JUMPER by TAPASA, SAI			
04:04				REBOUND (DEF) by GRAHAM, DESTINY
03:49	FOUL (PERSONAL) by TAPASA, SAI			
03:49				MISSED FT by GRAHAM, DESTINY

Time	VISITORS: Idaho State	Score	Margin	HOME: Arizona
03:49				REBOUND (OFF) by TEAM
03:49	SUB OUT: HINRICHS, MADISON			
03:49	SUB IN: GRANDON, SAYLAIR			
03:49	SUB OUT: TAPASA, SAI			
03:49	SUB IN: ORS, ESTEFANIA			
03:48				MISSED FT by GRAHAM, DESTINY
03:46	REBOUND (DEF) by KENYON, GRACE			
03:27	TURNOVER (BADPASS) by KENYON, GRACE			
03:10				MISSED JUMPER by REESE, CATE
03:07	REBOUND (DEF) by GRANDON, SAYLAIR			
03:04				FOUL (PERSONAL) by REESE, CATE
03:04	MISSED FT by BOURNE, CALLIE			
03:04	REBOUND (OFF) by TEAM			
03:04	GOOD! FT by BOURNE, CALLIE [FB]	25-16	H 9	
02:49				MISSED JUMPER by MCDONALD, AARI
02:46	REBOUND (DEF) by MOORE, DELANEY			
02:46	TURNOVER (BADPASS) by MOORE, DELANEY			
02:32		28-16	H 12	GOOD! 3PTR by THOMAS, SAM
02:32				ASSIST by MCDONALD, AARI
02:10	MISSED 3PTR by KENYON, GRACE			
02:07				REBOUND (DEF) by MCDONALD, AARI
02:00		31-16	H 15	GOOD! 3PTR by MCDONALD, AARI
01:27	FOUL (OFF) by ORS, ESTEFANIA			
01:27	TURNOVER (OFFENSIVE) by ORS, ESTEFANIA			
01:27	SUB OUT: BOURNE, CALLIE			
01:27	SUB IN: HINRICHS, MADISON			
01:12				MISSED JUMPER by REESE, CATE
01:08	REBOUND (DEF) by MOORE, DELANEY			
00:53	GOOD! JUMPER by MOORE, DELANEY	31-18	H 13	
00:53	ASSIST by ORS, ESTEFANIA			
00:35		33-18	H 15	GOOD! LAYUP by MCDONALD, AARI
00:21				FOUL (PERSONAL) by GRAHAM, DESTINY
00:20				FOUL (PERSONAL) by THOMAS, SAM
00:20	GOOD! FT by GRANDON, SAYLAIR	33-19	H 14	
00:20	SUB OUT: KENYON, GRACE			
00:20	SUB IN: TAPASA, SAI			
00:20	SUB OUT: HINRICHS, MADISON			
00:20	SUB IN: BOURNE, CALLIE			
00:20	GOOD! FT by GRANDON, SAYLAIR	33-20	H 13	
00:05		36-20	H 16	GOOD! 3PTR by REESE, CATE
00:05				ASSIST by MCDONALD, AARI

Idaho State 20, Arizona 36

Points from (This Period)	ISU	ARZ
In the Paint	6	4
Off Turns	2	5
2nd Chance	2	0
Fast Break	1	2
Bench	3	3

Official Box Score
Idaho State vs Arizona
Second Half Statistics Only
November 10, 2018 at McKale Center - Tucson, Ariz.



Idaho State 26

No.	Player	S	Pts	FG	3FG	FT	OR	DR	TR	PF	A	TO	Blk	Stl	Min	+/-
11	TAPASA, SAI		0	0-3	0-0	0-0	1	1	2	1	0	0	1	0	10	-9
12	BOURNE, CALLIE		6	1-5	0-1	4-4	1	0	1	1	0	1	0	0	16	-5
13	SMITH, ELLIE		0	0-0	0-0	0-0	0	0	0	0	0	0	0	0	0	0
14	ORS, ESTEFANIA		0	0-3	0-2	0-0	1	4	5	4	0	1	0	0	14	-5
22	MOORE, DELANEY		0	0-0	0-0	0-0	0	0	0	0	0	0	0	0	7	-1
25	OLTROGGE, MONTANA		2	0-2	0-1	2-2	0	0	0	2	0	1	0	1	6	-2
02	KENYON, GRACE		3	1-2	0-1	1-1	1	2	3	2	0	1	0	2	13	-6
03	GRANDON, SAYLAIR		10	3-14	1-6	3-6	1	2	3	1	1	1	0	1	19	-7
04	HINRICHS, MADISON		5	2-3	0-0	1-1	0	2	2	2	0	5	0	1	16	-8
	TEAM		0	0-0	0-0	0-0	1	0	1	0	0	0	0	0	0	
TOTALS			26	7-32	1-11	11-14	0	0	17	13	1	10	1	5	100	

Shooting By Period

Period	FG	FG%	3FG	3FG%	FT	FT%
3rd Qtr	2-15	13%	0-4	00%	4-6	67%
4th Qtr	5-17	29%	1-7	14%	7-8	88%
2nd Half	7-32	22%	1-11	09%	11-14	79%
Game	15-56	26.8%	1-18	05.6%	15-22	68.2%

Last FG Half: ISU 4th-02:23

Arizona 35

No.	Player	S	Pts	FG	3FG	FT	OR	DR	TR	PF	A	TO	Blk	Stl	Min	+/-
01	SMITH, SHALYSE		0	0-0	0-0	0-0	0	0	0	0	0	0	0	0	2	3
02	MCDONALD, AARI		13	4-8	1-3	4-4	1	6	7	1	1	4	0	1	16	8
04	ALONSO, LUCIA		0	0-2	0-2	0-0	0	0	0	3	0	2	0	0	13	3
10	STARKS, TEE TEE		0	0-0	0-0	0-2	0	1	1	1	1	0	0	1	10	8
14	THOMAS, SAM		9	3-5	1-1	2-3	2	4	6	1	0	0	0	3	17	4
20	MCBRYDE, DOMINIQUE		2	0-2	0-0	2-2	1	2	3	1	1	1	0	0	7	1
21	GRAHAM, DESTINY		0	0-1	0-0	0-0	1	3	4	3	0	2	0	0	9	5
22	MALECHA, LINDSEY		0	0-0	0-0	0-0	0	0	0	0	0	0	0	0	2	3
24	NIXON, BRYCE		1	0-0	0-0	1-2	0	0	0	1	1	2	0	0	6	3
25	REESE, CATE		8	2-5	0-1	4-4	1	4	5	4	1	2	0	0	14	6
34	SMITH, SEMAJ		2	1-3	0-0	0-0	1	0	1	0	0	1	0	0	5	1
	TEAM		0	0-0	0-0	0-0	1	1	2	0	0	0	0	0	0	
TOTALS			35	10-26	2-7	13-17	0	0	29	15	5	14	0	5	100	

Shooting By Period

Period	FG	FG%	3FG	3FG%	FT	FT%
3rd Qtr	3-12	25%	0-2	00%	6-7	86%
4th Qtr	7-14	50%	2-5	40%	7-10	70%
2nd Half	10-26	38%	2-7	29%	13-17	76%
Game	23-57	40.4%	10-22	45.5%	15-21	71.4%

Last FG Half: ARZ 4th-01:07

Game Notes:

Officials: **Melissa Barlow, Richard Waters, Alejandro Moreno**
Attendance: **1226**

Start Time: **2018-11-10 01:31:00**
End Time: **2018-11-10 03:31:50**
Game Duration: **120**

Score	1st	2nd	3rd	4th	TOT
ISU	9	11	8	18	46
ARZ	20	16	12	23	71

Points from (This Period)	ISU	ARZ
In the Paint	12	14
Off Turns	9	6
2nd Chance	8	6
Fast Break	8	10
Bench	8	3

Official Box Score
Idaho State vs Arizona
Third Quarter Statistics Only
November 10, 2018 at McKale Center - Tucson, Ariz.



Idaho State 26

No.	Player	S	Pts	FG	3FG	FT	OR	DR	TR	PF	A	TO	Blk	Stl	Min	+/-
02	KENYON, GRACE		0	0-1	0-1	0-0	0	0	0	2	0	0	0	0	4	-3
03	GRANDON, SAYLAIR		3	1-4	0-1	1-3	0	2	2	0	0	1	0	0	10	-4
04	HINRICHS, MADISON		3	1-2	0-0	1-1	0	2	2	0	0	2	0	1	10	-4
11	TAPASA, SAI		0	0-3	0-0	0-0	0	1	1	1	0	0	1	0	6	-5
14	ORS, ESTEFANIA		0	0-3	0-2	0-0	0	1	1	2	0	0	0	0	9	-4
12	BOURNE, CALLIE		2	0-2	0-0	2-2	1	0	1	1	0	1	0	0	6	1
13	SMITH, ELLIE		0	0-0	0-0	0-0	0	0	0	0	0	0	0	0	0	0
22	MOORE, DELANEY		0	0-0	0-0	0-0	0	0	0	0	0	0	0	0	6	1
25	OLTROGGE, MONTANA		0	0-0	0-0	0-0	0	0	0	0	0	0	0	0	0	0
	TEAM						0	0	0	0		0				
TOTALS			8	2-15	0-4	4-6	0	0	7	6	0	4	1	1	50	

Shooting By Period

Period	FG	FG%	3FG	3FG%	FT	FT%
2nd Half	0-0	0%	0-0	0%	0-0	0%
Game	15-56	26.8%	1-18	05.6%	15-22	68.2%

Arizona 35

No.	Player	S	Pts	FG	3FG	FT	OR	DR	TR	PF	A	TO	Blk	Stl	Min	+/-
02	MCDONALD, AARI		2	0-1	0-0	2-2	0	4	4	0	0	2	0	0	8	6
04	ALONSO, LUCIA		0	0-1	0-1	0-0	0	0	0	1	0	2	0	0	8	2
14	THOMAS, SAM		6	2-3	0-0	2-3	1	3	4	0	0	0	0	2	9	1
20	MCBRYDE, DOMINIQUE		0	0-2	0-0	0-0	1	0	1	1	0	0	0	0	1	1
25	REESE, CATE		4	1-2	0-1	2-2	0	2	2	2	0	2	0	0	8	3
01	SMITH, SHALYSE		0	0-0	0-0	0-0	0	0	0	0	0	0	0	0	0	0
10	STARKS, TEE TEE		0	0-0	0-0	0-0	0	1	1	1	1	0	0	0	6	3
21	GRAHAM, DESTINY		0	0-1	0-0	0-0	1	3	4	3	0	2	0	0	7	6
22	MALECHA, LINDSEY		0	0-0	0-0	0-0	0	0	0	0	0	0	0	0	0	0
24	NIXON, BRYCE		0	0-0	0-0	0-0	0	0	0	1	0	0	0	0	1	0
34	SMITH, SEMAJ		0	0-2	0-0	0-0	1	0	1	0	0	1	0	0	3	-2
	TEAM						0	1	1	0		0				
TOTALS			12	3-12	0-2	6-7	0	0	18	9	1	9	0	2	50	

Shooting By Period

Period	FG	FG%	3FG	3FG%	FT	FT%
2nd Half	0-0	0%	0-0	0%	0-0	0%
Game	23-57	40.4%	10-22	45.5%	15-21	71.4%

Game Notes:

Officials: **Melissa Barlow, Richard Waters, Alejandro Moreno**
Attendance: **1226**

Start Time: **2018-11-10 01:31:00**
End Time: **2018-11-10 03:31:50**
Game Duration: **120**

Score	1st	2nd	3rd	4th	TOT
ISU	9	11	8	18	46
ARZ	20	16	12	23	71

Points from (This Period)	ISU	ARZ
In the Paint	4	4
Off Turns	2	1
2nd Chance	3	0
Fast Break	0	4
Bench	2	0

Official Play-By-Play
Idaho State vs Arizona
Third Quarter
November 10, 2018 at McKale Center - Tucson, Ariz.



Period 3

Starters:

Idaho State: 11 TAPASA, SAI; 14 ORS, ESTEFANIA; 2 KENYON, GRACE; 3 GRANDON, SAYLAIR; 4 HINRICHS, MADISON;

Arizona: 2 MCDONALD, AARI; 4 ALONSO, LUCIA; 14 THOMAS, SAM; 20 MCBRYDE, DOMINIQUE; 25 REESE, CATE;

Time	VISITORS: Idaho State	Score	Margin	HOME: Arizona
09:51	MISSED JUMPER by GRANDON, SAYLAIR			
09:46				REBOUND (DEF) by MCDONALD, AARI
09:40				MISSED LAYUP by MCBRYDE, DOMINIQUE
09:36				REBOUND (OFF) by MCBRYDE, DOMINIQUE
09:33				MISSED LAYUP by MCBRYDE, DOMINIQUE
09:33	BLOCK by TAPASA, SAI			
09:27	REBOUND (DEF) by HINRICHS, MADISON			
09:21	MISSED JUMPER by HINRICHS, MADISON			
09:13				REBOUND (DEF) by REESE, CATE
08:54	FOUL (PERSONAL) by ORS, ESTEFANIA			
08:54		37-20	H 17	GOOD! FT by MCDONALD, AARI
08:54		38-20	H 18	GOOD! FT by MCDONALD, AARI
08:44				FOUL (PERSONAL) by MCBRYDE, DOMINIQUE
08:44	GOOD! FT by GRANDON, SAYLAIR	38-21	H 17	
08:44				SUB OUT: MCBRYDE, DOMINIQUE
08:44				SUB IN: GRAHAM, DESTINY
08:43	MISSED FT by GRANDON, SAYLAIR			
08:42				REBOUND (DEF) by REESE, CATE
08:23				MISSED 3PTR by ALONSO, LUCIA
08:23				REBOUND (OFF) by THOMAS, SAM
08:20				FOUL (OFF) by REESE, CATE
08:20				TURNOVER (OFFENSIVE) by REESE, CATE
08:03	TURNOVER (LOSTBALL) by GRANDON, SAYLAIR			
08:03				STEAL by THOMAS, SAM
07:40				TURNOVER (LOSTBALL) by REESE, CATE
07:30	MISSED 3PTR by KENYON, GRACE			
07:27				REBOUND (DEF) by MCDONALD, AARI
07:13				MISSED JUMPER by MCDONALD, AARI
07:10	REBOUND (DEF) by ORS, ESTEFANIA			
07:08	TIMEOUT 30SEC			
07:01	TURNOVER (BADPASS) by HINRICHS, MADISON			
06:54				FOUL (OFF) by GRAHAM, DESTINY
06:54				TURNOVER (OFFENSIVE) by GRAHAM, DESTINY
06:54	SUB OUT: HINRICHS, MADISON			
06:54	SUB IN: BOURNE, CALLIE			
06:27	MISSED JUMPER by BOURNE, CALLIE			
06:25				REBOUND (DEF) by MCDONALD, AARI
06:25	FOUL (PERSONAL) by KENYON, GRACE			
06:25				SUB OUT: ALONSO, LUCIA
06:25				SUB IN: STARKS, TEE TEE
06:25	SUB OUT: BOURNE, CALLIE			
06:25	SUB IN: HINRICHS, MADISON			
06:09		40-21	H 19	GOOD! LAYUP by THOMAS, SAM
06:09	FOUL (PERSONAL) by KENYON, GRACE			
06:09	SUB OUT: KENYON, GRACE			
06:09	SUB IN: MOORE, DELANEY			
06:09				MISSED FT by THOMAS, SAM
06:09				REBOUND (OFF) by GRAHAM, DESTINY
05:55				TURNOVER (LOSTBALL) by MCDONALD, AARI
05:40	MISSED JUMPER by TAPASA, SAI			
05:35				REBOUND (DEF) by GRAHAM, DESTINY
05:23				MISSED JUMPER by GRAHAM, DESTINY
05:21	REBOUND (DEF) by TAPASA, SAI			
05:21				FOUL (PERSONAL) by REESE, CATE
05:21	SUB OUT: ORS, ESTEFANIA			
05:21	SUB IN: BOURNE, CALLIE			
05:08	MISSED JUMPER by GRANDON, SAYLAIR			
05:03				REBOUND (DEF) by GRAHAM, DESTINY
04:54				FOUL (OFF) by GRAHAM, DESTINY
04:54				TURNOVER (OFFENSIVE) by GRAHAM, DESTINY
04:54				
04:54				SUB OUT: REESE, CATE
04:54				SUB IN: NIXON, BRYCE
04:41	MISSED JUMPER by TAPASA, SAI			
04:40				REBOUND (DEF) by GRAHAM, DESTINY
04:40	FOUL (PERSONAL) by TAPASA, SAI			
04:27		42-21	H 21	GOOD! JUMPER by THOMAS, SAM
04:13	MISSED JUMPER by TAPASA, SAI			
04:09	REBOUND (OFF) by BOURNE, CALLIE			
04:05	GOOD! LAYUP by HINRICHS, MADISON	42-23	H 19	

Time	VISITORS: Idaho State	Score	Margin	HOME: Arizona
04:05				FOUL (PERSONAL) by NIXON, BRYCE
04:05				SUB OUT: THOMAS, SAM
04:05				SUB IN: ALONSO, LUCIA
04:05				SUB OUT: NIXON, BRYCE
04:05				SUB IN: REESE, CATE
04:05	SUB OUT: TAPASA, SAI			
04:05	SUB IN: ORS, ESTEFANIA			
04:05	GOOD! FT by HINRICHS, MADISON	42-24	H 18	
03:48				TURNOVER (LOSTBALL) by MCDONALD, AARI
03:37	MISSED 3PTR by ORS, ESTEFANIA			
03:32				REBOUND (DEF) by STARKS, TEE TEE
03:25		44-24	H 20	GOOD! JUMPER by REESE, CATE
03:25				ASSIST by STARKS, TEE TEE
03:04	TURNOVER (LOSTBALL) by BOURNE, CALLIE			
03:01	FOUL (PERSONAL) by BOURNE, CALLIE			
03:00	SUB OUT: MOORE, DELANEY			
03:00	SUB IN: TAPASA, SAI			
03:00		45-24	H 21	GOOD! FT by REESE, CATE [FB]
03:00		46-24	H 22	GOOD! FT by REESE, CATE [FB]
03:00				SUB OUT: MCDONALD, AARI
03:00				SUB IN: SMITH, SEMAJ
03:00				SUB OUT: REESE, CATE
03:00				SUB IN: THOMAS, SAM
03:00	SUB IN: MOORE, DELANEY			
03:00	SUB OUT: BOURNE, CALLIE			
03:00	SUB OUT: TAPASA, SAI			
03:00	SUB IN: BOURNE, CALLIE			
02:33	MISSED JUMPER by BOURNE, CALLIE			
02:33				REBOUND (DEF) by THOMAS, SAM
02:33	FOUL (PERSONAL) by ORS, ESTEFANIA			
02:33		47-24	H 23	GOOD! FT by THOMAS, SAM [FB]
02:33		48-24	H 24	GOOD! FT by THOMAS, SAM [FB]
02:28	MISSED 3PTR by GRANDON, SAYLAIR			
02:25				REBOUND (DEF) by TEAM
02:07				MISSED JUMPER by SMITH, SEMAJ
02:04				REBOUND (OFF) by SMITH, SEMAJ
02:02				MISSED JUMPER by SMITH, SEMAJ
01:58	REBOUND (DEF) by GRANDON, SAYLAIR			
01:54	TURNOVER (LOSTBALL) by HINRICHS, MADISON			
01:54				STEAL by THOMAS, SAM
01:49				MISSED LAYUP by THOMAS, SAM
01:49	REBOUND (DEF) by HINRICHS, MADISON			
01:49				FOUL (PERSONAL) by GRAHAM, DESTINY
01:49	GOOD! FT by BOURNE, CALLIE	48-25	H 23	
01:49				SUB OUT: GRAHAM, DESTINY
01:49				SUB IN: REESE, CATE
01:47	GOOD! FT by BOURNE, CALLIE	48-26	H 22	
01:38				TURNOVER (LOSTBALL) by ALONSO, LUCIA
01:23	GOOD! LAYUP by GRANDON, SAYLAIR	48-28	H 20	
01:23				FOUL (PERSONAL) by STARKS, TEE TEE
01:23	MISSED FT by GRANDON, SAYLAIR			
01:21				REBOUND (DEF) by THOMAS, SAM
00:56				TURNOVER (BADPASS) by SMITH, SEMAJ
00:56	STEAL by HINRICHS, MADISON			
00:48	MISSED LAYUP by ORS, ESTEFANIA			
00:44				REBOUND (DEF) by THOMAS, SAM
00:29				FOUL (OFF) by ALONSO, LUCIA
00:29				TURNOVER (OFFENSIVE) by ALONSO, LUCIA
00:29				SUB OUT: SMITH, SEMAJ
00:29				SUB IN: MCDONALD, AARI
00:20	MISSED 3PTR by ORS, ESTEFANIA			
00:16				REBOUND (DEF) by MCDONALD, AARI
00:00				MISSED 3PTR by REESE, CATE
00:00	REBOUND (DEF) by GRANDON, SAYLAIR			
00:00	SUB OUT: HINRICHS, MADISON			
00:00	SUB IN: KENYON, GRACE			

Idaho State 28, Arizona 48

Points from (This Period)	ISU	ARZ
In the Paint	4	4
Off Turns	2	1
2nd Chance	3	0
Fast Break	0	4
Bench	2	0

Official Box Score
Idaho State vs Arizona
Fourth Quarter Statistics Only
November 10, 2018 at McKale Center - Tucson, Ariz.



Idaho State 18

No.	Player	S	Pts	FG	3FG	FT	OR	DR	TR	PF	A	TO	Blk	Stl	Min	+/-
02	KENYON, GRACE		3	1-1	0-0	1-1	1	2	3	0	0	1	0	2	9	-3
03	GRANDON, SAYLAIR		7	2-10	1-5	2-3	1	0	1	1	1	0	0	1	9	-3
04	HINRICH, MADISON		2	1-1	0-0	0-0	0	0	0	2	0	3	0	0	6	-4
11	TAPASA, SAI		0	0-0	0-0	0-0	1	0	1	0	0	0	0	0	4	-4
14	ORS, ESTEFANIA		0	0-0	0-0	0-0	1	3	4	2	0	1	0	0	5	-1
12	BOURNE, CALLIE		4	1-3	0-1	2-2	0	0	0	0	0	0	0	0	10	-6
13	SMITH, ELLIE		0	0-0	0-0	0-0	0	0	0	0	0	0	0	0	0	0
22	MOORE, DELANEY		0	0-0	0-0	0-0	0	0	0	0	0	0	0	0	1	-2
25	OLTROGGE, MONTANA		2	0-2	0-1	2-2	0	0	0	2	0	1	0	1	6	-2
	TEAM						1	0	1	0		0				
TOTALS			18	5-17	1-7	7-8	0	0	10	7	1	6	0	4	50	

Shooting By Period

Period	FG	FG%	3FG	3FG%	FT	FT%
Game	15-56	26.8%	1-18	05.6%	15-22	68.2%

Arizona 23

No.	Player	S	Pts	FG	3FG	FT	OR	DR	TR	PF	A	TO	Blk	Stl	Min	+/-
02	MCDONALD, AARI		11	4-7	1-3	2-2	1	2	3	1	1	2	0	1	8	2
04	ALONSO, LUCIA		0	0-1	0-1	0-0	0	0	0	2	0	0	0	0	5	1
14	THOMAS, SAM		3	1-2	1-1	0-0	1	1	2	1	0	0	0	1	8	3
20	MCBRYDE, DOMINIQUE		2	0-0	0-0	2-2	0	2	2	0	1	1	0	0	6	0
25	REESE, CATE		4	1-3	0-0	2-2	1	2	3	2	1	0	0	0	6	3
01	SMITH, SHALYSE		0	0-0	0-0	0-0	0	0	0	0	0	0	0	0	2	3
10	STARKS, TEE TEE		0	0-0	0-0	0-2	0	0	0	0	0	0	0	1	4	5
21	GRAHAM, DESTINY		0	0-0	0-0	0-0	0	0	0	0	0	0	0	0	2	-1
22	MALECHA, LINDSEY		0	0-0	0-0	0-0	0	0	0	0	0	0	0	0	2	3
24	NIXON, BRYCE		1	0-0	0-0	1-2	0	0	0	0	1	2	0	0	5	3
34	SMITH, SEMAJ		2	1-1	0-0	0-0	0	0	0	0	0	0	0	0	2	3
	TEAM						1	0	1	0		0				
TOTALS			23	7-14	2-5	7-10	0	0	11	6	4	5	0	3	50	

Shooting By Period

Period	FG	FG%	3FG	3FG%	FT	FT%
Game	23-57	40.4%	10-22	45.5%	15-21	71.4%

Game Notes:

Officials: Melissa Barlow, Richard Waters, Alejandro Moreno
Attendance: 1226

Start Time: 2018-11-10 01:31:00

End Time: 2018-11-10 03:31:50

Game Duration: 120

Score	1st	2nd	3rd	4th	TOT
ISU	9	11	8	18	46
ARZ	20	16	12	23	71

Points from (This Period)	ISU	ARZ
In the Paint	8	10
Off Turns	7	5
2nd Chance	5	6
Fast Break	8	6
Bench	6	3

**Official Play-By-Play
Idaho State vs Arizona
Fourth Quarter
November 10, 2018 at McKale Center - Tucson, Ariz.**



Period 4

Starters:

Idaho State: 11 TAPASA, SAI; 14 ORS, ESTEFANIA; 2 KENYON, GRACE; 3 GRANDON, SAYLAIR; 4 HINRICHS, MADISON;

Arizona: 2 MCDONALD, AARI; 4 ALONSO, LUCIA; 14 THOMAS, SAM; 20 MCBRYDE, DOMINIQUE; 25 REESE, CATE;

Time	VISITORS: Idaho State	Score	Margin	HOME: Arizona
09:57	MISSED LAYUP by BOURNE, CALLIE			
09:57	SUB OUT: MOORE, DELANEY			
09:57	SUB IN: TAPASA, SAI			
09:50				REBOUND (DEF) by REESE, CATE
09:47				MISSED LAYUP by THOMAS, SAM
09:43	REBOUND (DEF) by ORS, ESTEFANIA			
09:40	TURNOVER (LOSTBALL) by ORS, ESTEFANIA			
09:40				STEAL by STARKS, TEE TEE
09:32	FOUL (PERSONAL) by ORS, ESTEFANIA			
09:32				MISSED FT by STARKS, TEE TEE
09:32				REBOUND (OFF) by TEAM
09:32				MISSED FT by STARKS, TEE TEE
09:32	REBOUND (DEF) by ORS, ESTEFANIA			
09:00	MISSED 3PTR by GRANDON, SAYLAIR			
08:56	REBOUND (OFF) by TAPASA, SAI			
08:53	MISSED 3PTR by GRANDON, SAYLAIR			
08:47				REBOUND (DEF) by REESE, CATE
08:42				FOUL (OFF) by MCDONALD, AARI
08:42				TURNOVER (OFFENSIVE) by MCDONALD, AARI
08:25	MISSED JUMPER by GRANDON, SAYLAIR			
08:19	REBOUND (OFF) by ORS, ESTEFANIA			
08:05	GOOD! LAYUP by BOURNE, CALLIE	48-30	H 18	
07:35		51-30	H 21	GOOD! 3PTR by MCDONALD, AARI
07:24	TURNOVER (LOSTBALL) by KENYON, GRACE			
07:24				STEAL by THOMAS, SAM
07:19		53-30	H 23	GOOD! LAYUP by MCDONALD, AARI [FB]
07:14	TIMEOUT TEAM			
07:14	SUB OUT: KENYON, GRACE			
07:14	SUB IN: OLTROGGE, MONTANA			
07:14	SUB OUT: GRANDON, SAYLAIR			
07:14	SUB IN: HINRICHS, MADISON			
07:14	SUB OUT: TAPASA, SAI			
07:14	SUB IN: MOORE, DELANEY			
07:00	MISSED 3PTR by OLTROGGE, MONTANA			
07:00				REBOUND (DEF) by MCDONALD, AARI
06:40				MISSED JUMPER by REESE, CATE
06:40				REBOUND (OFF) by TEAM
06:39		55-30	H 25	GOOD! LAYUP by MCDONALD, AARI
06:39				ASSIST by REESE, CATE
06:27	TURNOVER (TRAVEL) by HINRICHS, MADISON			
06:27				SUB OUT: STARKS, TEE TEE
06:27				SUB IN: MCBRYDE, DOMINIQUE
06:27	SUB OUT: HINRICHS, MADISON			
06:27	SUB IN: GRANDON, SAYLAIR			
06:27	SUB OUT: MOORE, DELANEY			
06:27	SUB IN: KENYON, GRACE			
06:14				TURNOVER (LOSTBALL) by MCDONALD, AARI
06:14	STEAL by KENYON, GRACE			
06:11				FOUL (PERSONAL) by ALONSO, LUCIA
06:11	GOOD! FT by BOURNE, CALLIE [FB]	55-31	H 24	
06:11	GOOD! FT by BOURNE, CALLIE [FB]	55-32	H 23	
05:53				MISSED 3PTR by ALONSO, LUCIA
05:48	REBOUND (DEF) by ORS, ESTEFANIA			
05:48	MISSED LAYUP by GRANDON, SAYLAIR			
05:48	REBOUND (OFF) by TEAM			
05:45	GOOD! JUMPER by KENYON, GRACE [PNT]	55-34	H 21	
05:45	ASSIST by GRANDON, SAYLAIR			
05:40				FOUL (PERSONAL) by REESE, CATE
05:40	GOOD! FT by KENYON, GRACE	55-35	H 20	
05:30		57-35	H 22	GOOD! LAYUP by REESE, CATE
05:30				ASSIST by MCDONALD, AARI
05:18	TURNOVER (LOSTBALL) by OLTROGGE, MONTANA			
05:18				STEAL by MCDONALD, AARI
05:18				TIMEOUT 30SEC
04:51				MISSED JUMPER by REESE, CATE
04:50				REBOUND (OFF) by REESE, CATE
04:50	FOUL (PERSONAL) by OLTROGGE, MONTANA			
04:50		58-35	H 23	GOOD! FT by REESE, CATE
04:50	SUB OUT: BOURNE, CALLIE			
04:50	SUB IN: HINRICHS, MADISON			

Time	VISITORS: Idaho State	Score	Margin	HOME: Arizona
04:50		59-35	H 24	GOOD! FT by REESE, CATE
04:43	GOOD! LAYUP by GRANDON, SAYLAIR	59-37	H 22	
04:43				FOUL (PERSONAL) by ALONSO, LUCIA
04:43				SUB OUT: THOMAS, SAM
04:43				SUB IN: NIXON, BRYCE
04:43	SUB OUT: OLTROGGE, MONTANA			
04:43	SUB IN: BOURNE, CALLIE			
04:43	GOOD! FT by GRANDON, SAYLAIR	59-38	H 21	
04:41	FOUL (PERSONAL) by ORS, ESTEFANIA			
04:41				SUB OUT: ALONSO, LUCIA
04:41				SUB IN: THOMAS, SAM
04:41	SUB OUT: ORS, ESTEFANIA			
04:41	SUB IN: OLTROGGE, MONTANA			
04:39				TURNOVER (BADPASS) by NIXON, BRYCE
04:39	STEAL by OLTROGGE, MONTANA			
04:25	FOUL (OFF) by HINRICHS, MADISON			
04:25	TURNOVER (OFFENSIVE) by HINRICHS, MADISON			
04:13				MISSED 3PTR by MCDONALD, AARI
04:09				REBOUND (OFF) by MCDONALD, AARI
04:07		61-38	H 23	GOOD! LAYUP by MCDONALD, AARI
03:57				FOUL (PERSONAL) by REESE, CATE
03:57				SUB OUT: REESE, CATE
03:57				SUB IN: GRAHAM, DESTINY
03:57	GOOD! FT by OLTROGGE, MONTANA	61-39	H 22	
03:57	GOOD! FT by OLTROGGE, MONTANA	61-40	H 21	
03:56	FOUL (PERSONAL) by OLTROGGE, MONTANA			
03:56		62-40	H 22	GOOD! FT by MCDONALD, AARI [FB]
03:56		63-40	H 23	GOOD! FT by MCDONALD, AARI [FB]
03:49	MISSED LAYUP by GRANDON, SAYLAIR			
03:46	REBOUND (OFF) by GRANDON, SAYLAIR			
03:44	MISSED LAYUP by GRANDON, SAYLAIR			
03:38				REBOUND (DEF) by THOMAS, SAM
03:25				MISSED LAYUP by MCDONALD, AARI
03:22	REBOUND (DEF) by KENYON, GRACE			
03:18	GOOD! LAYUP by HINRICHS, MADISON [FB]	63-42	H 21	
02:48				MISSED 3PTR by MCDONALD, AARI
02:44				REBOUND (OFF) by THOMAS, SAM
02:44	SUB OUT: OLTROGGE, MONTANA			
02:44	SUB IN: TAPASA, SAI			
02:29				TURNOVER (BADPASS) by MCBRYDE, DOMINIQUE
02:29	STEAL by GRANDON, SAYLAIR			
02:23	GOOD! 3PTR by GRANDON, SAYLAIR [FB]	63-45	H 18	
02:14				TIMEOUT 30SEC
02:14	SUB OUT: TAPASA, SAI			
02:14	SUB IN: OLTROGGE, MONTANA			
02:12	SUB OUT: OLTROGGE, MONTANA			
02:12	SUB IN: TAPASA, SAI			
02:08		66-45	H 21	GOOD! 3PTR by THOMAS, SAM
02:08				ASSIST by MCBRYDE, DOMINIQUE
02:01	MISSED 3PTR by GRANDON, SAYLAIR			
01:56				REBOUND (DEF) by MCDONALD, AARI
01:35	FOUL (PERSONAL) by HINRICHS, MADISON			
01:35		67-45	H 22	GOOD! FT by NIXON, BRYCE
01:35				SUB OUT: MCDONALD, AARI
01:35				SUB IN: SMITH, SHALYSE
01:35				SUB OUT: MCBRYDE, DOMINIQUE
01:35				SUB IN: SMITH, SEMAJ
01:35				SUB OUT: GRAHAM, DESTINY
01:35				SUB IN: MALECHA, LINDSEY
01:35	SUB OUT: TAPASA, SAI			
01:35	SUB IN: OLTROGGE, MONTANA			
01:35				MISSED FT by NIXON, BRYCE
01:33	REBOUND (DEF) by KENYON, GRACE			
01:29				FOUL (PERSONAL) by THOMAS, SAM
01:29	MISSED FT by GRANDON, SAYLAIR			
01:29	REBOUND (OFF) by TEAM			
01:29				SUB OUT: THOMAS, SAM
01:29				SUB IN: MCBRYDE, DOMINIQUE
01:29	GOOD! FT by GRANDON, SAYLAIR [FB]	67-46	H 21	
01:07		69-46	H 23	GOOD! LAYUP by SMITH, SEMAJ
01:07				ASSIST by NIXON, BRYCE
00:59	MISSED 3PTR by GRANDON, SAYLAIR			
00:56	REBOUND (OFF) by KENYON, GRACE			
00:47	MISSED JUMPER by OLTROGGE, MONTANA			
00:43				REBOUND (DEF) by MCBRYDE, DOMINIQUE
00:39	FOUL (PERSONAL) by GRANDON, SAYLAIR			
00:39		70-46	H 24	GOOD! FT by MCBRYDE, DOMINIQUE [FB]
00:39		71-46	H 25	GOOD! FT by MCBRYDE, DOMINIQUE [FB]
00:35	TURNOVER (DRIBBLING) by HINRICHS, MADISON			
00:15				TURNOVER (LOSTBALL) by NIXON, BRYCE

Time	VISITORS: Idaho State	Score	Margin	HOME: Arizona
00:15	STEAL by KENYON, GRACE			
00:12	SUB OUT: OLTROGGE, MONTANA			
00:12	SUB IN: MOORE, DELANEY			
00:04	MISSED 3PTR by BOURNE, CALLIE			
00:00				REBOUND (DEF) by MCBRYDE, DOMINIQUE

Idaho State 46, Arizona 71

Points from (This Period)	ISU	ARZ
In the Paint	8	10
Off Turns	7	5
2nd Chance	5	6
Fast Break	8	6
Bench	6	3

Official Scoring/Possession Reference Chart
Idaho State vs Arizona
Period 1
November 10, 2018 at McKale Center - Tucson, Ariz.



Period 1

Starters:

Idaho State: 11 TAPASA, SAI; 14 ORS, ESTEFANIA; 2 KENYON, GRACE; 3 GRANDON, SAYLAIR; 4 HINRICHS, MADISON;

Arizona: 2 MCDONALD, AARI; 4 ALONSO, LUCIA; 14 THOMAS, SAM; 20 MCBRYDE, DOMINIQUE; 25 REESE, CATE;

Time	VISITORS: Idaho State	Score	Margin	HOME: Arizona
09:21	GOOD! LAYUP by GRANDON, SAYLAIR	0-2	V 2	
08:38	GOOD! FT by GRANDON, SAYLAIR	0-3	V 3	
07:54		3-3	T	GOOD! 3PTR by THOMAS, SAM
06:56	GOOD! JUMPER by KENYON, GRACE	3-5	V 2	
04:56		4-5	V 1	GOOD! FT by REESE, CATE
04:56		5-5	T	GOOD! FT by REESE, CATE
04:44	GOOD! LAYUP by GRANDON, SAYLAIR	5-7	V 2	
04:28		7-7	T	GOOD! LAYUP by GRAHAM, DESTINY
04:15	GOOD! LAYUP by BOURNE, CALLIE	7-9	V 2	
03:35		10-9	H 1	GOOD! 3PTR by REESE, CATE
02:53		13-9	H 4	GOOD! 3PTR by REESE, CATE
01:17		16-9	H 7	GOOD! 3PTR by ALONSO, LUCIA
00:42		18-9	H 9	GOOD! JUMPER by MCDONALD, AARI [PNT]
00:00		20-9	H 11	GOOD! JUMPER by REESE, CATE [PNT]

Idaho State 9, Arizona 20

Official Scoring/Possession Reference Chart
Idaho State vs Arizona
Period 2
November 10, 2018 at McKale Center - Tucson, Ariz.



Period 2

Starters:

Idaho State: 11 TAPASA, SAI; 14 ORS, ESTEFANIA; 2 KENYON, GRACE; 3 GRANDON, SAYLAIR; 4 HINRICHS, MADISON;

Arizona: 2 MCDONALD, AARI; 4 ALONSO, LUCIA; 14 THOMAS, SAM; 20 MCBRYDE, DOMINIQUE; 25 REESE, CATE;

Time	VISITORS: Idaho State	Score	Margin	HOME: Arizona
08:29		23-9	H 14	GOOD! 3PTR by STARKS, TEE TEE
08:02	GOOD! LAYUP by HINRICHS, MADISON	23-11	H 12	
06:45	GOOD! LAYUP by KENYON, GRACE	23-13	H 10	
05:22		25-13	H 12	GOOD! LAYUP by MCDONALD, AARI [FB]
04:57	GOOD! JUMPER by HINRICHS, MADISON	25-15	H 10	
03:04	GOOD! FT by BOURNE, CALLIE [FB]	25-16	H 9	
02:32		28-16	H 12	GOOD! 3PTR by THOMAS, SAM
02:00		31-16	H 15	GOOD! 3PTR by MCDONALD, AARI
00:53	GOOD! JUMPER by MOORE, DELANEY	31-18	H 13	
00:35		33-18	H 15	GOOD! LAYUP by MCDONALD, AARI
00:20	GOOD! FT by GRANDON, SAYLAIR	33-19	H 14	
00:20	GOOD! FT by GRANDON, SAYLAIR	33-20	H 13	
00:05		36-20	H 16	GOOD! 3PTR by REESE, CATE

Idaho State 20, Arizona 36

Official Scoring/Possession Reference Chart
Idaho State vs Arizona
Period 3
November 10, 2018 at McKale Center - Tucson, Ariz.



Period 3

Starters:

Idaho State: 11 TAPASA, SAI; 14 ORS, ESTEFANIA; 2 KENYON, GRACE; 3 GRANDON, SAYLAIR; 4 HINRICHS, MADISON;

Arizona: 2 MCDONALD, AARI; 4 ALONSO, LUCIA; 14 THOMAS, SAM; 20 MCBRYDE, DOMINIQUE; 25 REESE, CATE;

Time	VISITORS: Idaho State	Score	Margin	HOME: Arizona
08:54		37-20	H 17	GOOD! FT by MCDONALD, AARI
08:54		38-20	H 18	GOOD! FT by MCDONALD, AARI
08:44	GOOD! FT by GRANDON, SAYLAIR	38-21	H 17	
06:09		40-21	H 19	GOOD! LAYUP by THOMAS, SAM
04:27		42-21	H 21	GOOD! JUMPER by THOMAS, SAM
04:05	GOOD! LAYUP by HINRICHS, MADISON	42-23	H 19	
04:05	GOOD! FT by HINRICHS, MADISON	42-24	H 18	
03:25		44-24	H 20	GOOD! JUMPER by REESE, CATE
03:00		45-24	H 21	GOOD! FT by REESE, CATE [FB]
03:00		46-24	H 22	GOOD! FT by REESE, CATE [FB]
02:33		47-24	H 23	GOOD! FT by THOMAS, SAM [FB]
02:33		48-24	H 24	GOOD! FT by THOMAS, SAM [FB]
01:49	GOOD! FT by BOURNE, CALLIE	48-25	H 23	
01:47	GOOD! FT by BOURNE, CALLIE	48-26	H 22	
01:23	GOOD! LAYUP by GRANDON, SAYLAIR	48-28	H 20	

Idaho State 28, Arizona 48

Official Scoring/Possession Reference Chart
Idaho State vs Arizona
Period 4
November 10, 2018 at McKale Center - Tucson, Ariz.



Period 4

Starters:

Idaho State: 11 TAPASA, SAI; 14 ORS, ESTEFANIA; 2 KENYON, GRACE; 3 GRANDON, SAYLAIR; 4 HINRICHS, MADISON;

Arizona: 2 MCDONALD, AARI; 4 ALONSO, LUCIA; 14 THOMAS, SAM; 20 MCBRYDE, DOMINIQUE; 25 REESE, CATE;

Time	VISITORS: Idaho State	Score	Margin	HOME: Arizona
08:05	GOOD! LAYUP by BOURNE, CALLIE	48-30	H 18	
07:35		51-30	H 21	GOOD! 3PTR by MCDONALD, AARI
07:19		53-30	H 23	GOOD! LAYUP by MCDONALD, AARI [FB]
06:39		55-30	H 25	GOOD! LAYUP by MCDONALD, AARI
06:11	GOOD! FT by BOURNE, CALLIE [FB]	55-31	H 24	
06:11	GOOD! FT by BOURNE, CALLIE [FB]	55-32	H 23	
05:45	GOOD! JUMPER by KENYON, GRACE [PNT]	55-34	H 21	
05:40	GOOD! FT by KENYON, GRACE	55-35	H 20	
05:30		57-35	H 22	GOOD! LAYUP by REESE, CATE
04:50		58-35	H 23	GOOD! FT by REESE, CATE
04:50		59-35	H 24	GOOD! FT by REESE, CATE
04:43	GOOD! LAYUP by GRANDON, SAYLAIR	59-37	H 22	
04:43	GOOD! FT by GRANDON, SAYLAIR	59-38	H 21	
04:07		61-38	H 23	GOOD! LAYUP by MCDONALD, AARI
03:57	GOOD! FT by OLTROGGE, MONTANA	61-39	H 22	
03:57	GOOD! FT by OLTROGGE, MONTANA	61-40	H 21	
03:56		62-40	H 22	GOOD! FT by MCDONALD, AARI [FB]
03:56		63-40	H 23	GOOD! FT by MCDONALD, AARI [FB]
03:18	GOOD! LAYUP by HINRICHS, MADISON [FB]	63-42	H 21	
02:23	GOOD! 3PTR by GRANDON, SAYLAIR [FB]	63-45	H 18	
02:08		66-45	H 21	GOOD! 3PTR by THOMAS, SAM
01:35		67-45	H 22	GOOD! FT by NIXON, BRYCE
01:29	GOOD! FT by GRANDON, SAYLAIR [FB]	67-46	H 21	
01:07		69-46	H 23	GOOD! LAYUP by SMITH, SEMAJ
00:39		70-46	H 24	GOOD! FT by MCBRYDE, DOMINIQUE [FB]
00:39		71-46	H 25	GOOD! FT by MCBRYDE, DOMINIQUE [FB]

Idaho State 46, Arizona 71

Official Substitutions Log
Idaho State vs Arizona
Period 1
November 10, 2018 at McKale Center - Tucson, Ariz.



VISITORS: Idaho State	Time	Score	HOME: Arizona
11 TAPASA,SAI			2 MCDONALD,AARI
14 ORS,ESTEFANIA			4 ALONSO,LUCIA
2 KENYON,GRACE			14 THOMAS,SAM
3 GRANDON,SAYLAIR			20 MCBRYDE,DOMINIQUE
4 HINRICHS,MADISON			25 REESE,CATE
	06:00	5-3	SUB OUT: MCBRYDE,DOMINIQUE
	06:00		SUB IN: GRAHAM,DESTINY
SUB OUT: 4 HINRICHS,MADISON	05:33	5-3	
SUB IN: 12 BOURNE,CALLIE	05:33		
SUB OUT: 2 KENYON,GRACE	04:56	5-3	
SUB IN: 22 MOORE,DELANEY	04:56		
SUB OUT: 11 TAPASA,SAI	03:47	9-7	
SUB IN: 13 SMITH,ELLIE	03:47		
SUB OUT: 14 ORS,ESTEFANIA	03:47		
SUB IN: 4 HINRICHS,MADISON	03:47		
	03:47		SUB OUT: ALONSO,LUCIA
	03:47		SUB IN: STARKS,TEE TEE
	03:46	9-7	SUB OUT: THOMAS,SAM
	03:46		SUB IN: ALONSO,LUCIA
SUB OUT: 3 GRANDON,SAYLAIR	00:59	9-16	
SUB IN: 25 OLTROGGE,MONTANA	00:59		
SUB OUT: 12 BOURNE,CALLIE	00:59		
SUB IN: 14 ORS,ESTEFANIA	00:59		
SUB OUT: 13 SMITH,ELLIE	00:59		
SUB IN: 11 TAPASA,SAI	00:59		

Idaho State 9, Arizona 20

Official Substitutions Log
Idaho State vs Arizona
Period 2
November 10, 2018 at McKale Center - Tucson, Ariz.



VISITORS: Idaho State	Time	Score	HOME: Arizona
11 TAPASA,SAI			2 MCDONALD,AARI
14 ORS,ESTEFANIA			4 ALONSO,LUCIA
2 KENYON,GRACE			14 THOMAS,SAM
3 GRANDON,SAYLAIR			20 MCBRYDE,DOMINIQUE
4 HINRICHS,MADISON			25 REESE,CATE
	08:57	-	SUB OUT: ALONSO,LUCIA
	08:57		SUB IN: MCDONALD,AARI
	08:57		SUB OUT: GRAHAM,DESTINY
	08:57		SUB IN: MCBRYDE,DOMINIQUE
	07:51	11-23	SUB OUT: SMITH,SEMAJ
	07:51		SUB IN: GRAHAM,DESTINY
SUB OUT: 11 TAPASA,SAI	07:51		
SUB IN: 22 MOORE,DELANEY	07:51		
SUB OUT: 4 HINRICHS,MADISON	07:51		
SUB IN: 12 BOURNE,CALLIE	07:51		
	06:27	13-23	SUB OUT: STARKS,TEE TEE
	06:27		SUB IN: REESE,CATE
	06:27		SUB OUT: MCBRYDE,DOMINIQUE
	06:27		SUB IN: ALONSO,LUCIA
SUB OUT: 2 KENYON,GRACE	06:27		
SUB IN: 4 HINRICHS,MADISON	06:27		
SUB OUT: 14 ORS,ESTEFANIA	06:27		
SUB IN: 11 TAPASA,SAI	06:27		
SUB OUT: 3 GRANDON,SAYLAIR	05:09	13-25	
SUB IN: 2 KENYON,GRACE	05:09		
SUB OUT: 4 HINRICHS,MADISON	03:49	15-25	
SUB IN: 3 GRANDON,SAYLAIR	03:49		
SUB OUT: 11 TAPASA,SAI	03:49		
SUB IN: 14 ORS,ESTEFANIA	03:49		
SUB OUT: 12 BOURNE,CALLIE	01:27	16-31	
SUB IN: 4 HINRICHS,MADISON	01:27		
SUB OUT: 2 KENYON,GRACE	00:20	19-33	
SUB IN: 11 TAPASA,SAI	00:20		
SUB OUT: 4 HINRICHS,MADISON	00:20		
SUB IN: 12 BOURNE,CALLIE	00:20		

Idaho State 20, Arizona 36

Official Substitutions Log
Idaho State vs Arizona
Period 3
November 10, 2018 at McKale Center - Tucson, Ariz.



VISITORS: Idaho State	Time	Score	HOME: Arizona
11 TAPASA,SAI			2 MCDONALD,AARI
14 ORS,ESTEFANIA			4 ALONSO,LUCIA
2 KENYON,GRACE			14 THOMAS,SAM
3 GRANDON,SAYLAIR			20 MCBRYDE,DOMINIQUE
4 HINRICHS,MADISON			25 REESE,CATE
	08:44	21-38	SUB OUT: MCBRYDE,DOMINIQUE
	08:44		SUB IN: GRAHAM,DESTINY
SUB OUT: 4 HINRICHS,MADISON	06:54	21-38	
SUB IN: 12 BOURNE,CALLIE	06:54		
	06:25	21-38	SUB OUT: ALONSO,LUCIA
	06:25		SUB IN: STARKS,TEE TEE
SUB OUT: 12 BOURNE,CALLIE	06:25		
SUB IN: 4 HINRICHS,MADISON	06:25		
SUB OUT: 2 KENYON,GRACE	06:09	21-40	
SUB IN: 22 MOORE,DELANEY	06:09		
SUB OUT: 14 ORS,ESTEFANIA	05:21	21-40	
SUB IN: 12 BOURNE,CALLIE	05:21		
	04:54	21-40	SUB OUT: REESE,CATE
	04:54		SUB IN: NIXON,BRYCE
	04:05	23-42	SUB OUT: THOMAS,SAM
	04:05		SUB IN: ALONSO,LUCIA
	04:05		SUB OUT: NIXON,BRYCE
	04:05		SUB IN: REESE,CATE
SUB OUT: 11 TAPASA,SAI	04:05		
SUB IN: 14 ORS,ESTEFANIA	04:05		
SUB OUT: 22 MOORE,DELANEY	03:00	24-44	
SUB IN: 11 TAPASA,SAI	03:00		
	03:00		SUB OUT: MCDONALD,AARI
	03:00		SUB IN: SMITH,SEMAJ
	03:00		SUB OUT: REESE,CATE
	03:00		SUB IN: THOMAS,SAM
SUB IN: 22 MOORE,DELANEY	03:00		
SUB OUT: 12 BOURNE,CALLIE	03:00		
SUB OUT: 11 TAPASA,SAI	03:00		
SUB IN: 12 BOURNE,CALLIE	03:00		
	01:49	25-48	SUB OUT: GRAHAM,DESTINY
	01:49		SUB IN: REESE,CATE
	00:29	28-48	SUB OUT: SMITH,SEMAJ
	00:29		SUB IN: MCDONALD,AARI
SUB OUT: 4 HINRICHS,MADISON	00:00	28-48	
SUB IN: 2 KENYON,GRACE	00:00		

Idaho State 28, Arizona 48

Official Substitutions Log
Idaho State vs Arizona
Period 4
November 10, 2018 at McKale Center - Tucson, Ariz.



VISITORS: Idaho State	Time	Score	HOME: Arizona
11 TAPASA, SAI			2 MCDONALD, AARI
14 ORS, ESTEFANIA			4 ALONSO, LUCIA
2 KENYON, GRACE			14 THOMAS, SAM
3 GRANDON, SAYLAIR			20 MCBRYDE, DOMINIQUE
4 HINRICHS, MADISON			25 REESE, CATE
SUB OUT: 22 MOORE, DELANEY	09:57	-	
SUB IN: 11 TAPASA, SAI	09:57		
SUB OUT: 2 KENYON, GRACE	07:14	30-53	
SUB IN: 25 OLTROGGE, MONTANA	07:14		
SUB OUT: 3 GRANDON, SAYLAIR	07:14		
SUB IN: 4 HINRICHS, MADISON	07:14		
SUB OUT: 11 TAPASA, SAI	07:14		
SUB IN: 22 MOORE, DELANEY	07:14		
	06:27	30-55	SUB OUT: STARKS, TEE TEE
	06:27		SUB IN: MCBRYDE, DOMINIQUE
SUB OUT: 4 HINRICHS, MADISON	06:27		
SUB IN: 3 GRANDON, SAYLAIR	06:27		
SUB OUT: 22 MOORE, DELANEY	06:27		
SUB IN: 2 KENYON, GRACE	06:27		
SUB OUT: 12 BOURNE, CALLIE	04:50	35-58	
SUB IN: 4 HINRICHS, MADISON	04:50		
	04:43	37-59	SUB OUT: THOMAS, SAM
	04:43		SUB IN: NIXON, BRYCE
SUB OUT: 25 OLTROGGE, MONTANA	04:43		
SUB IN: 12 BOURNE, CALLIE	04:43		
	04:41	38-59	SUB OUT: ALONSO, LUCIA
	04:41		SUB IN: THOMAS, SAM
SUB OUT: 14 ORS, ESTEFANIA	04:41		
SUB IN: 25 OLTROGGE, MONTANA	04:41		
	03:57	38-61	SUB OUT: REESE, CATE
	03:57		SUB IN: GRAHAM, DESTINY
SUB OUT: 25 OLTROGGE, MONTANA	02:44	42-63	
SUB IN: 11 TAPASA, SAI	02:44		
SUB OUT: 11 TAPASA, SAI	02:14	45-63	
SUB IN: 25 OLTROGGE, MONTANA	02:14		
SUB OUT: 25 OLTROGGE, MONTANA	02:12	45-63	
SUB IN: 11 TAPASA, SAI	02:12		
	01:35	45-67	SUB OUT: MCDONALD, AARI
	01:35		SUB IN: SMITH, SHALYSE
	01:35		SUB OUT: MCBRYDE, DOMINIQUE
	01:35		SUB IN: SMITH, SEMAJ
	01:35		SUB OUT: GRAHAM, DESTINY
	01:35		SUB IN: MALECHA, LINDSEY
SUB OUT: 11 TAPASA, SAI	01:35		
SUB IN: 25 OLTROGGE, MONTANA	01:35		
	01:29	45-67	SUB OUT: THOMAS, SAM
	01:29		SUB IN: MCBRYDE, DOMINIQUE
SUB OUT: 25 OLTROGGE, MONTANA	00:12	46-71	
SUB IN: 22 MOORE, DELANEY	00:12		

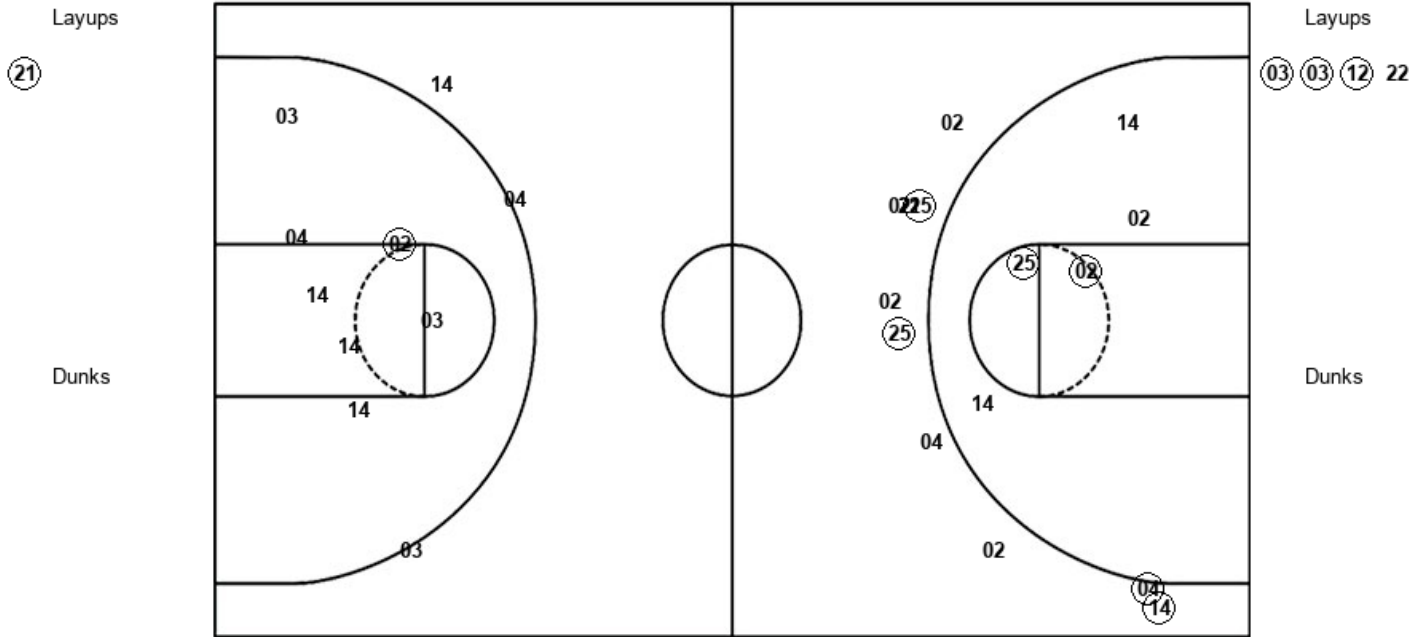
Idaho State 46, Arizona 71

Official Shot Chart
Idaho State vs Arizona
 PERIOD 1 Shots
 November 10, 2018 at McKale Center - Tucson, Ariz.



Arizona

Idaho State



ARZ : Period 1	Made	Att	Pct
Layups	1	1	100.0
Dunks	0	0	0
2PT Field Goals	3	6	50.0
3PT Field Goals	4	10	40.0
Total Field Goals	7	16	43.8

ISU : Period 1	Made	Att	Pct
Layups	3	4	75.0
Dunks	0	0	0
2PT Field Goals	4	11	36.4
3PT Field Goals	0	3	00.0
Total Field Goals	4	14	28.6

Official Shot Chart
Idaho State vs Arizona
 PERIOD 2 Shots
 November 10, 2018 at McKale Center - Tucson, Ariz.

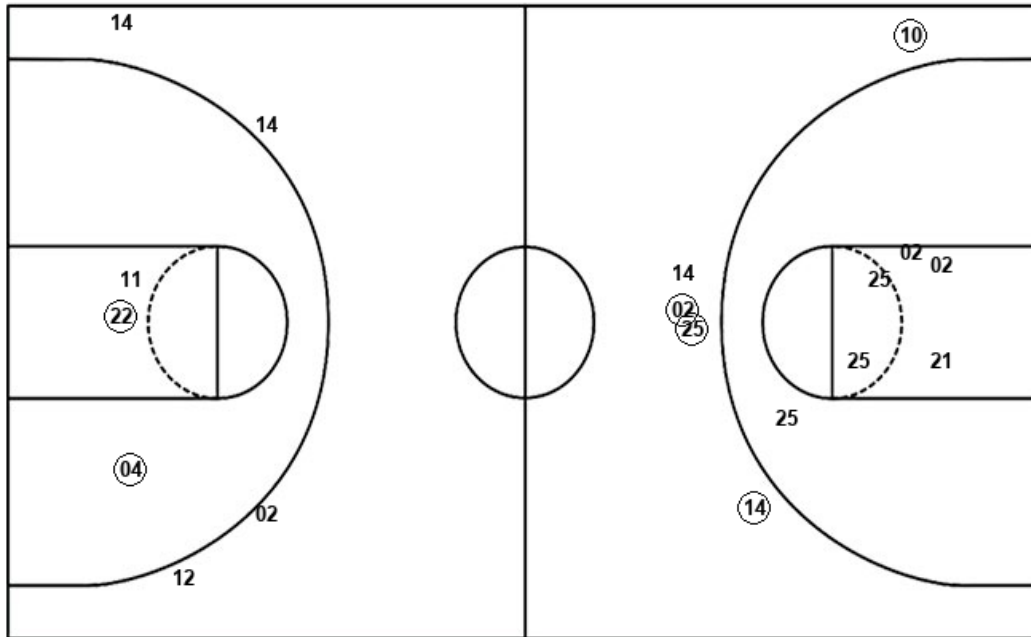


Arizona

Idaho State

Layups
 10 (02) 25 (02)

Dunks



Layups
 (04) (02) 11

Dunks

ARZ : Period 2	Made	Att	Pct
Layups	2	4	50.0
Dunks	0	0	0
2PT Field Goals	2	10	20.0
3PT Field Goals	4	5	80.0
Total Field Goals	6	15	40.0

ISU : Period 2	Made	Att	Pct
Layups	2	3	66.7
Dunks	0	0	0
2PT Field Goals	4	6	66.7
3PT Field Goals	0	4	00.0
Total Field Goals	4	10	40.0

Official Shot Chart
Idaho State vs Arizona
 PERIOD 3 Shots
 November 10, 2018 at McKale Center - Tucson, Ariz.



Arizona

Idaho State

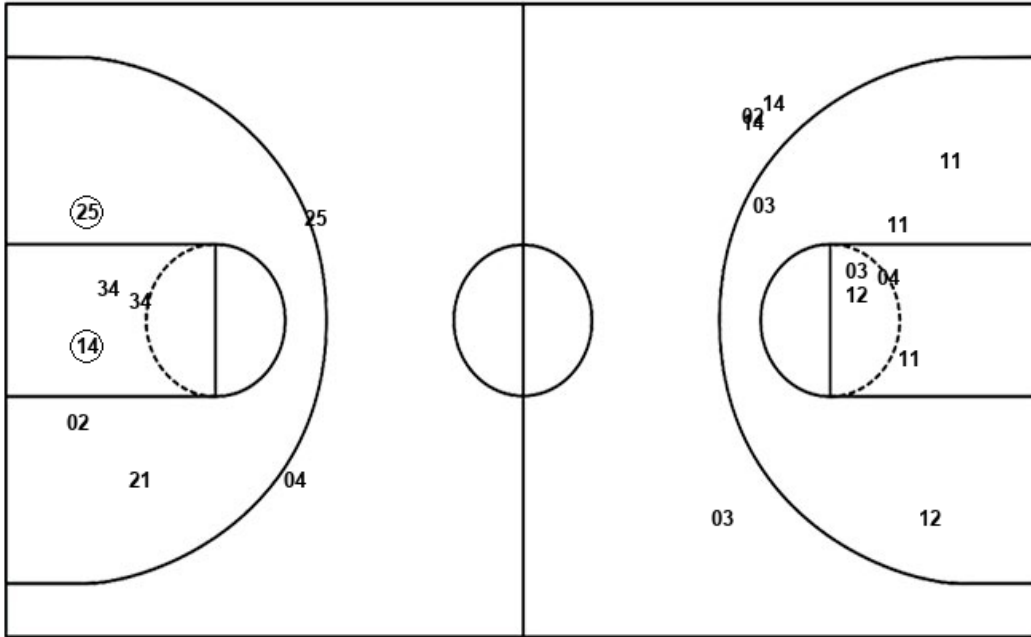
Layups
 20 20 (14) 14

Layups

(04) (03) 14

Dunks

Dunks



ARZ : Period 3	Made	Att	Pct
Layups	1	4	25.0
Dunks	0	0	0
2PT Field Goals	3	10	30.0
3PT Field Goals	0	2	00.0
Total Field Goals	3	12	25.0

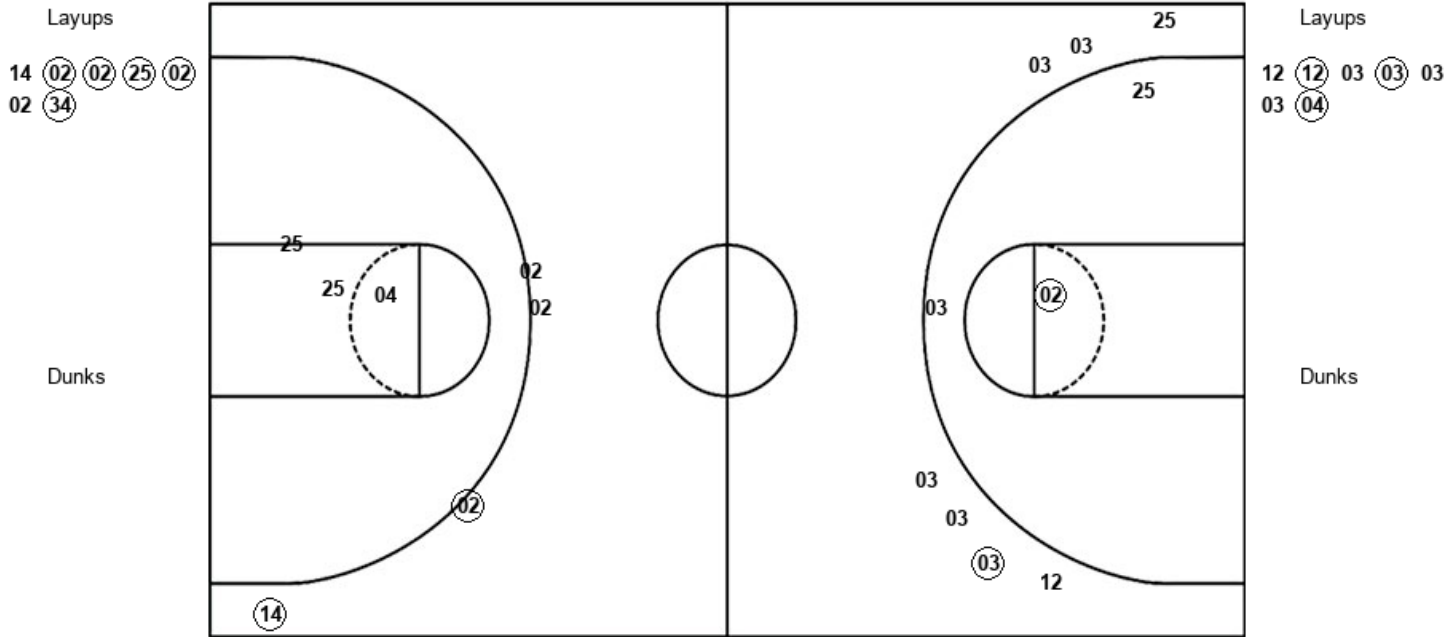
ISU : Period 3	Made	Att	Pct
Layups	2	3	66.7
Dunks	0	0	0
2PT Field Goals	2	11	18.2
3PT Field Goals	0	4	00.0
Total Field Goals	2	15	13.3

Official Shot Chart
Idaho State vs Arizona
 PERIOD 4 Shots
 November 10, 2018 at McKale Center - Tucson, Ariz.



Arizona

Idaho State



ARZ : Period 4	Made	Att	Pct
Layups	5	7	71.4
Dunks	0	0	0
2PT Field Goals	5	9	55.6
3PT Field Goals	2	5	40.0
Total Field Goals	7	14	50.0

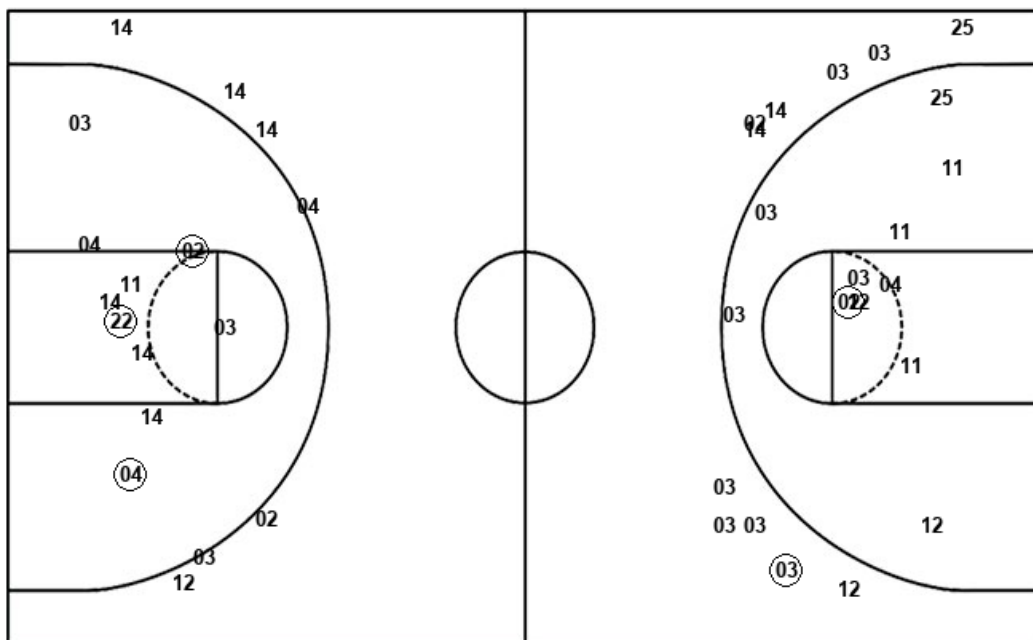
ISU : Period 4	Made	Att	Pct
Layups	3	7	42.9
Dunks	0	0	0
2PT Field Goals	4	10	40.0
3PT Field Goals	1	7	14.3
Total Field Goals	5	17	29.4

Official Shot Chart
Idaho State vs Arizona
Idaho State Team Shots
November 10, 2018 at McKale Center - Tucson, Ariz.



Layups

Dunks



Layups

Dunks

ISU : Period 1	Made	Att	Pct
Layups	3	4	75.0
Dunks	0	0	0
2PT Field Goals	4	11	36.4
3PT Field Goals	0	3	00.0
Total Field Goals	4	14	28.6

ISU : Period 3	Made	Att	Pct
Layups	2	3	66.7
Dunks	0	0	0
2PT Field Goals	2	11	18.2
3PT Field Goals	0	4	00.0
Total Field Goals	2	15	13.3

ISU : Period 2	Made	Att	Pct
Layups	2	3	66.7
Dunks	0	0	0
2PT Field Goals	4	6	66.7
3PT Field Goals	0	4	00.0
Total Field Goals	4	10	40.0

ISU : Period 4	Made	Att	Pct
Layups	3	7	42.9
Dunks	0	0	0
2PT Field Goals	4	10	40.0
3PT Field Goals	1	7	14.3
Total Field Goals	5	17	29.4

