

FINAL SCORE



Creighton

46



Butler

66

February 16, 2019 • Hinkle Fieldhouse - Indianapolis, Ind.

FINAL STATISTICS

Official Box Score
Creighton vs Butler
Game Totals -- Final Statistics
February 16, 2019 at Hinkle Fieldhouse - Indianapolis, Ind.



Creighton 46

No.	Player	S	Pts	FG	3FG	FT	OR	DR	TR	PF	A	TO	Blk	Stl	Min	+/-
01	OWENS, JADE		4	2-6	0-1	0-0	2	3	5	1	0	3	0	2	28	-15
04	CARDA, TEMI		12	3-10	2-5	4-4	0	3	3	2	2	4	1	1	29	-17
05	AGNEW, JAYLYN		12	4-11	4-9	0-0	2	6	8	1	2	1	1	0	33	-24
21	ELGER, OLIVIA		0	0-3	0-2	0-0	0	3	3	3	3	3	0	1	19	-14
45	FABER, AUDREY		7	2-8	1-5	2-2	0	4	4	1	0	2	0	0	32	-9
02	REMBAO, TATUM		0	0-2	0-1	0-0	0	0	0	3	0	2	0	0	3	2
12	GRIGLIONE, GRACEY		2	1-2	0-0	0-1	1	1	2	0	0	2	0	0	6	-9
13	SAUNDERS, RACHAEL		4	1-2	0-1	2-4	2	0	2	1	0	0	0	3	9	3
22	KISSINGER, BROOKE		0	0-3	0-1	0-0	0	0	0	0	1	1	0	0	13	-15
23	TURNER, MORGAN		0	0-0	0-0	0-2	0	2	2	1	0	0	0	0	8	2
24	DWORAK, CHLOE		0	0-0	0-0	0-0	2	0	2	1	0	0	0	0	7	2
33	BROTZKI, PAYTON		5	2-6	0-2	1-1	0	0	0	1	2	0	0	0	12	-6
TEAM							3	3	6	0		2				
TOTALS			46	15-53	7-27	9-14	12	25	37	15	10	20	2	7	200	

Shooting By Period

Period	FG	FG%	3FG	3FG%	FT	FT%
1st Qtr	4-14	29%	4-8	50%	0-0	0%
2nd Qtr	3-12	25%	2-8	25%	2-2	100%
3rd Qtr	3-15	20%	1-8	13%	3-4	75%
4th Qtr	5-12	42%	0-3	00%	4-8	50%
1st Half	7-26	27%	6-16	38%	2-2	100%
2nd Half	8-27	30%	1-11	09%	7-12	58%
Game	15-53	28.3%	7-27	25.9%	9-14	64.3%

Last FG: 4th-00:39
Biggest Run: 8-0
Largest lead: By 4 at 1-02:39
Technical Fouls: None.

Butler 66

No.	Player	S	Pts	FG	3FG	FT	OR	DR	TR	PF	A	TO	Blk	Stl	Min	+/-
11	WEAVER, MICHELLE		10	4-8	2-5	0-0	0	4	4	2	5	1	0	6	33	15
15	JENNINGS, WHITNEY		10	5-13	0-3	0-0	0	4	4	1	1	0	0	2	32	19
23	BREY, SHAE		9	4-6	1-1	0-0	1	4	5	2	1	2	1	1	21	13
24	SPOLYAR, KRISTEN		13	5-11	0-3	3-3	0	5	5	2	1	2	0	0	30	23
34	SCHICKEL, TORI		11	5-9	0-0	1-2	3	4	7	0	1	1	3	2	31	21
01	ROBINSON, JAMILYN		0	0-0	0-0	0-0	0	1	1	0	0	1	0	0	3	-1
05	SEXTON, EMILIA		5	2-2	1-1	0-1	0	1	1	1	0	1	0	1	6	-4
10	CACERES, NAIRA		8	3-5	0-0	2-3	1	3	4	1	3	1	0	0	24	13
14	HUMPHREY, SARAH		0	0-2	0-0	0-0	0	1	1	2	0	0	0	0	14	9
25	ROSS, ELLEN		0	0-0	0-0	0-0	0	0	0	4	0	2	0	0	5	-8
TEAM							1	2	3	1		0				
TOTALS			66	28-56	4-13	6-9	6	29	35	16	12	11	4	12	200	

Shooting By Period

Period	FG	FG%	3FG	3FG%	FT	FT%
1st Qtr	7-17	41%	0-3	00%	0-0	0%
2nd Qtr	8-16	50%	2-5	40%	0-1	00%
3rd Qtr	5-13	38%	0-2	00%	4-4	100%
4th Qtr	8-10	80%	2-3	67%	2-4	50%
1st Half	15-33	45%	2-8	25%	0-1	00%
2nd Half	13-23	57%	2-5	40%	6-8	75%
Game	28-56	50.0%	4-13	30.8%	6-9	66.7%

Last FG: 4th-01:47
Biggest Run: 25-0
Largest lead: By 29 at 4-05:18
Technical Fouls: None.

Game Notes:

Officials: Eric Brewton, Norma Jones, Kevin Pethtel
 Attendance: 882

Start Time: 2019-02-16 00:03:01
 End Time: 2019-02-16 01:44:20
 Game Duration: 101
 Conference Game;

Score	1st	2nd	3rd	4th	TOT
CRE	12	10	10	14	46
BUT	14	18	14	20	66

CRE led for 5:59. BUT led for 32:17.
 Game was tied for 1:44.
 Times tied: 2 Lead Changes: 2

Points from	CRE	BUT
In the Paint	14	42
Off Turns	12	21
2nd Chance	6	4
Fast Break	4	10
Bench	11	13

Official Box Score
Creighton vs Butler
First Half Statistics Only
February 16, 2019 at Hinkle Fieldhouse - Indianapolis, Ind.



Creighton 22

No.	Player	S	Pts	FG	3FG	FT	OR	DR	TR	PF	A	TO	Blk	Stl	Min	+/-
12	GRIGLIONE, GRACEY		0	0-0	0-0	0-0	0	0	0	0	0	0	0	0	0	0
13	SAUNDERS, RACHAEL		0	0-0	0-0	0-0	0	0	0	0	0	0	0	0	0	0
21	ELGER, OLIVIA		0	0-2	0-1	0-0	0	2	2	0	2	2	0	0	10	-8
22	KISSINGER, BROOKE		0	0-3	0-1	0-0	0	0	0	0	1	0	0	0	10	-6
23	TURNER, MORGAN		0	0-0	0-0	0-0	0	1	1	1	0	0	0	0	2	-2
24	DWORAK, CHLOE		0	0-0	0-0	0-0	0	0	0	0	0	0	0	0	0	0
33	BROTZKI, PAYTON		0	0-1	0-0	0-0	0	0	0	1	0	0	0	0	5	-4
45	FABER, AUDREY		3	1-3	1-3	0-0	0	3	3	0	0	1	0	0	19	-8
01	OWENS, JADE		2	1-2	0-0	0-0	1	2	3	0	0	3	0	2	16	-6
02	REMBAO, TATUM		0	0-2	0-1	0-0	0	0	0	1	0	2	0	0	3	3
04	CARDA, TEMI		5	1-3	1-1	2-2	0	2	2	1	2	3	1	0	16	-9
05	AGNEW, JAYLYN		12	4-10	4-9	0-0	2	3	5	0	1	0	1	0	20	-10
	TEAM		0	0-0	0-0	0-0	1	3	4	0	0	1	0	0	0	0
	TOTALS		22	7-26	6-16	2-2	4	16	20	4	6	12	2	2	100	

Shooting By Period

Period	FG	FG%	3FG	3FG%	FT	FT%
1st Qtr	4-14	29%	4-8	50%	0-0	0%
2nd Qtr	3-12	25%	2-8	25%	2-2	100%
1st Half	7-26	27%	6-16	38%	2-2	100%
Game	15-53	28.3%	7-27	25.9%	9-14	64.3%

Last FG Half: CRE 2nd-00:02

Butler 32

No.	Player	S	Pts	FG	3FG	FT	OR	DR	TR	PF	A	TO	Blk	Stl	Min	+/-
01	ROBINSON, JAMILYN		0	0-0	0-0	0-0	0	0	0	0	0	0	0	0	0	0
05	SEXTON, EMILIA		0	0-0	0-0	0-0	0	0	0	0	0	0	0	0	0	0
10	CACERES, NAIRA		6	3-5	0-0	0-1	1	3	4	0	0	0	0	0	11	8
11	WEAVER, MICHELLE		8	3-5	2-4	0-0	0	1	1	0	4	0	0	4	18	10
14	HUMPHREY, SARAH		0	0-1	0-0	0-0	0	1	1	0	0	0	0	0	4	2
15	JENNINGS, WHITNEY		2	1-7	0-2	0-0	0	2	2	1	0	0	0	1	18	5
23	BREY, SHAE		6	3-5	0-0	0-0	0	2	2	1	1	2	1	1	14	8
24	SPOLYAR, KRISTEN		4	2-5	0-2	0-0	0	3	3	1	1	2	0	0	17	9
25	ROSS, ELLEN		0	0-0	0-0	0-0	0	0	0	0	0	0	0	0	0	0
34	SCHICKEL, TORI		6	3-5	0-0	0-0	1	2	3	0	1	0	2	1	18	8
	TEAM		0	0-0	0-0	0-0	1	1	2	1	0	0	0	0	0	0
	TOTALS		32	15-33	2-8	0-1	3	15	18	4	7	4	3	7	100	

Shooting By Period

Period	FG	FG%	3FG	3FG%	FT	FT%
1st Qtr	7-17	41%	0-3	00%	0-0	0%
2nd Qtr	8-16	50%	2-5	40%	0-1	00%
1st Half	15-33	45%	2-8	25%	0-1	00%
Game	28-56	50.0%	4-13	30.8%	6-9	66.7%

Last FG Half: BUT 2nd-01:35

Game Notes:

Officials: Eric Brewton, Norma Jones, Kevin Pethtel
 Attendance: 882

Start Time: 2019-02-16 00:03:01
 End Time: 2019-02-16 01:44:20
 Game Duration: 101
 Conference Game;

Score	1st	2nd	3rd	4th	TOT
CRE	12	10	10	14	46
BUT	14	18	14	20	66

Points from (This Period)	CRE	BUT
In the Paint	2	24
Off Turns	2	13
2nd Chance	5	2
Fast Break	0	4
Bench	0	6

Official Box Score
Creighton vs Butler
First Quarter Statistics Only
February 16, 2019 at Hinkle Fieldhouse - Indianapolis, Ind.



Creighton 12

No.	Player	S	Pts	FG	3FG	FT	OR	DR	TR	PF	A	TO	Blk	Stl	Min	+/-
01	OWENS, JADE		0	0-1	0-0	0-0	0	1	1	0	0	1	0	1	8	-3
04	CARDA, TEMI		3	1-3	1-1	0-0	0	1	1	1	2	2	1	0	10	-2
05	AGNEW, JAYLYN		6	2-3	2-3	0-0	1	2	3	0	1	0	0	0	10	-2
21	ELGER, OLIVIA		0	0-2	0-1	0-0	0	0	0	0	1	0	0	0	5	0
45	FABER, AUDREY		3	1-3	1-3	0-0	0	2	2	0	0	0	0	0	9	0
02	REMBAO, TATUM		0	0-1	0-0	0-0	0	0	0	0	0	2	0	0	2	1
12	GRIGLIONE, GRACEY		0	0-0	0-0	0-0	0	0	0	0	0	0	0	0	0	0
13	SAUNDERS, RACHAEL		0	0-0	0-0	0-0	0	0	0	0	0	0	0	0	0	0
22	KISSINGER, BROOKE		0	0-1	0-0	0-0	0	0	0	0	0	0	0	0	5	-2
23	TURNER, MORGAN		0	0-0	0-0	0-0	0	1	1	1	0	0	0	0	2	-2
24	DWORAK, CHLOE		0	0-0	0-0	0-0	0	0	0	0	0	0	0	0	0	0
33	BROTZKI, PAYTON		0	0-0	0-0	0-0	0	0	0	0	0	0	0	0	0	0
	TEAM						1	1	2	0		0				
TOTALS			12	4-14	4-8	0-0	2	8	10	2	4	5	1	1	50	

Shooting By Period

Period	FG	FG%	3FG	3FG%	FT	FT%
1st Qtr	4-14	29%	4-8	50%	0-0	0%
2nd Qtr	3-12	25%	2-8	25%	2-2	100%
1st Half	4-14	29%	4-8	50%	0-0	0%
1st Half	7-26	27%	6-16	38%	2-2	100%
Game	15-53	28.3%	7-27	25.9%	9-14	64.3%

Butler 14

No.	Player	S	Pts	FG	3FG	FT	OR	DR	TR	PF	A	TO	Blk	Stl	Min	+/-
11	WEAVER, MICHELLE		2	1-3	0-2	0-0	0	1	1	0	2	0	0	2	9	0
15	JENNINGS, WHITNEY		0	0-4	0-1	0-0	0	1	1	0	0	0	0	0	10	2
23	BREY, SHAE		4	2-4	0-0	0-0	0	1	1	0	1	1	1	1	7	2
24	SPLYAR, KRISTEN		4	2-3	0-0	0-0	0	2	2	1	1	1	0	0	10	2
34	SCHICKEL, TORI		4	2-3	0-0	0-0	0	1	1	0	0	0	2	0	10	2
01	ROBINSON, JAMILYN		0	0-0	0-0	0-0	0	0	0	0	0	0	0	0	0	0
05	SEXTON, EMILIA		0	0-0	0-0	0-0	0	0	0	0	0	0	0	0	0	0
10	CACERES, NAIRA		0	0-0	0-0	0-0	1	1	2	0	0	0	0	0	5	2
14	HUMPHREY, SARAH		0	0-0	0-0	0-0	0	0	0	0	0	0	0	0	0	0
25	ROSS, ELLEN		0	0-0	0-0	0-0	0	0	0	0	0	0	0	0	0	0
	TEAM						1	1	2	0		0				
TOTALS			14	7-17	0-3	0-0	2	8	10	1	3	2	3	3	50	

Shooting By Period

Period	FG	FG%	3FG	3FG%	FT	FT%
1st Qtr	7-17	41%	0-3	00%	0-0	0%
2nd Qtr	8-16	50%	2-5	40%	0-1	00%
1st Half	7-17	41%	0-3	00%	0-0	0%
1st Half	15-33	45%	2-8	25%	0-1	00%
Game	28-56	50.0%	4-13	30.8%	6-9	66.7%

Game Notes:

Officials: Eric Brewton, Norma Jones, Kevin Pethtel
Attendance: 882

Start Time: 2019-02-16 00:03:01
End Time: 2019-02-16 01:44:20
Game Duration: 101
Conference Game;

Score	1st	2nd	3rd	4th	TOT
CRE	12	10	10	14	46
BUT	14	18	14	20	66

Points from (This Period)	CRE	BUT
In the Paint	0	14
Off Turns	0	4
2nd Chance	3	2
Fast Break	0	2
Bench	0	0

**Official Play-By-Play
Creighton vs Butler**

**First Quarter
February 16, 2019 at Hinkle Fieldhouse - Indianapolis, Ind.**



Period 1

Starters:

Creighton: 21 ELGER, OLIVIA; 45 FABER, AUDREY; 1 OWENS, JADE; 4 CARDA, TEMI; 5 AGNEW, JAYLYN;

Butler: 11 WEAVER, MICHELLE; 15 JENNINGS, WHITNEY; 23 BREY, SHAE; 24 SPOLYAR, KRISTEN; 34 SCHICKEL, TORI;

Time	VISITORS: Creighton	Score	Margin	HOME: Butler
09:43				MISSED JUMPER by JENNINGS, WHITNEY
09:38	REBOUND (DEF) by AGNEW, JAYLYN			
09:28	MISSED 3PTR by ELGER, OLIVIA			
09:24				REBOUND (DEF) by SPOLYAR, KRISTEN
09:12		2-0	H 2	GOOD! LAYUP by BREY, SHAE
09:12				ASSIST by WEAVER, MICHELLE
08:59	MISSED JUMPER by CARDA, TEMI			
08:55				REBOUND (DEF) by BREY, SHAE
08:45				MISSED JUMPER by SCHICKEL, TORI
08:42	REBOUND (DEF) by OWENS, JADE			
08:23	GOOD! 3PTR by FABER, AUDREY	2-3	V 1	
08:23	ASSIST by AGNEW, JAYLYN			
08:00				MISSED 3PTR by WEAVER, MICHELLE
07:56	REBOUND (DEF) by FABER, AUDREY			
07:40	GOOD! 3PTR by CARDA, TEMI	2-6	V 4	
07:40	ASSIST by ELGER, OLIVIA			
07:16				TURNOVER (LOSTBALL) by BREY, SHAE
07:16	STEAL by OWENS, JADE			
07:09	MISSED 3PTR by AGNEW, JAYLYN			
07:04				REBOUND (DEF) by WEAVER, MICHELLE
06:55				MISSED JUMPER by SPOLYAR, KRISTEN
06:54				REBOUND (OFF) by TEAM
06:50		4-6	V 2	GOOD! JUMPER by SPOLYAR, KRISTEN
06:50				ASSIST by WEAVER, MICHELLE
06:33	MISSED JUMPER by CARDA, TEMI			
06:33				BLOCK by SCHICKEL, TORI
06:32	REBOUND (OFF) by TEAM			
06:20	MISSED LAYUP by ELGER, OLIVIA			
06:20				REBOUND (DEF) by TEAM
06:07				MISSED LAYUP by BREY, SHAE
06:04	REBOUND (DEF) by AGNEW, JAYLYN			
05:58	MISSED 3PTR by FABER, AUDREY			
05:54				REBOUND (DEF) by SPOLYAR, KRISTEN
05:33				MISSED LAYUP by BREY, SHAE
05:30	REBOUND (DEF) by FABER, AUDREY			
05:18	TURNOVER (BADPASS) by OWENS, JADE			
05:18				STEAL by BREY, SHAE
05:14		6-6	T	GOOD! LAYUP by BREY, SHAE [FB]
05:03	MISSED 3PTR by FABER, AUDREY			
04:59	REBOUND (OFF) by AGNEW, JAYLYN			
04:54				
04:54	SUB OUT: OWENS, JADE			
04:54	SUB IN: KISSINGER, BROOKE			
04:54				SUB OUT: BREY, SHAE
04:54				SUB IN: CACERES, NAIRA
04:54	SUB OUT: ELGER, OLIVIA			
04:54	SUB IN: REMBAO, TATUM			
04:41	GOOD! 3PTR by AGNEW, JAYLYN	6-9	V 3	
04:41	ASSIST by CARDA, TEMI			
04:08				MISSED 3PTR by WEAVER, MICHELLE
04:03	REBOUND (DEF) by TEAM			
03:52	TURNOVER (BADPASS) by REMBAO, TATUM			
03:52				STEAL by WEAVER, MICHELLE
03:45				FOUL (OFF) by SPOLYAR, KRISTEN
03:45				TURNOVER (OFFENSIVE) by SPOLYAR, KRISTEN
03:27	MISSED JUMPER by REMBAO, TATUM			
03:23				REBOUND (DEF) by CACERES, NAIRA
03:16		8-9	V 1	GOOD! LAYUP by WEAVER, MICHELLE [PNT]
02:59	TURNOVER (BADPASS) by REMBAO, TATUM			
02:59	SUB OUT: REMBAO, TATUM			
02:59	SUB IN: OWENS, JADE			
02:49				MISSED JUMPER by JENNINGS, WHITNEY
02:44	REBOUND (DEF) by CARDA, TEMI			
02:39	GOOD! 3PTR by AGNEW, JAYLYN	8-12	V 4	
02:39	ASSIST by CARDA, TEMI			
02:20		10-12	V 2	GOOD! LAYUP by SPOLYAR, KRISTEN [PNT]
02:04	MISSED LAYUP by KISSINGER, BROOKE			
02:04				BLOCK by SCHICKEL, TORI
01:59				REBOUND (DEF) by JENNINGS, WHITNEY
01:51		12-12	T	GOOD! LAYUP by SCHICKEL, TORI

Time	VISITORS: Creighton	Score	Margin	HOME: Butler
01:51				ASSIST by SPOLYAR, KRISTEN
01:43	TURNOVER (BADPASS) by CARDA, TEMI			
01:43				STEAL by WEAVER, MICHELLE
01:43	FOUL (PERSONAL) by CARDA, TEMI			
01:43				SUB OUT: WEAVER, MICHELLE
01:43				SUB IN: BREY, SHAE
01:43	SUB OUT: FABER, AUDREY			
01:43	SUB IN: TURNER, MORGAN			
01:33	FOUL (PERSONAL) by TURNER, MORGAN			
01:28		14-12	H 2	GOOD! LAYUP by SCHICKEL, TORI
00:55	MISSED JUMPER by OWENS, JADE			
00:55				BLOCK by BREY, SHAE
00:49				REBOUND (DEF) by SCHICKEL, TORI
00:45				MISSED JUMPER by JENNINGS, WHITNEY
00:41	REBOUND (DEF) by TURNER, MORGAN			
00:16	TURNOVER (LOSTBALL) by CARDA, TEMI			
00:16				SUB OUT: SPOLYAR, KRISTEN
00:16				SUB IN: WEAVER, MICHELLE
00:16	SUB OUT: KISSINGER, BROOKE			
00:16	SUB IN: BROTZKI, PAYTON			
00:16	SUB OUT: AGNEW, JAYLYN			
00:16	SUB IN: FABER, AUDREY			
00:00				MISSED 3PTR by JENNINGS, WHITNEY
00:00	BLOCK by CARDA, TEMI			
00:00				REBOUND (OFF) by CACERES, NAIRA

Creighton 12, Butler 14

Points from (This Period)	CRE	BUT
In the Paint	0	14
Off Turns	0	4
2nd Chance	3	2
Fast Break	0	2
Bench	0	0

Official Box Score
Creighton vs Butler
Second Quarter Statistics Only
February 16, 2019 at Hinkle Fieldhouse - Indianapolis, Ind.



Creighton 10

No.	Player	S	Pts	FG	3FG	FT	OR	DR	TR	PF	A	TO	Blk	Stl	Min	+/-
01	OWENS, JADE	2	1-1	0-0	0-0	0-0	1	1	2	0	0	2	0	1	8	-3
04	CARDA, TEMI	2	0-0	0-0	2-2	0-0	0	1	1	0	0	1	0	0	6	-7
05	AGNEW, JAYLYN	6	2-7	2-6	0-0	0-0	1	1	2	0	0	0	1	0	10	-8
21	ELGER, OLIVIA	0	0-0	0-0	0-0	0-0	0	2	2	0	1	2	0	0	5	-8
45	FABER, AUDREY	0	0-0	0-0	0-0	0-0	0	1	1	0	0	1	0	0	10	-8
02	REMBAO, TATUM	0	0-1	0-1	0-0	0-0	0	0	0	1	0	0	0	0	1	2
12	GRIGLIONE, GRACEY	0	0-0	0-0	0-0	0-0	0	0	0	0	0	0	0	0	0	0
13	SAUNDERS, RACHAEL	0	0-0	0-0	0-0	0-0	0	0	0	0	0	0	0	0	0	0
22	KISSINGER, BROOKE	0	0-2	0-1	0-0	0-0	0	0	0	0	1	0	0	0	5	-4
23	TURNER, MORGAN	0	0-0	0-0	0-0	0-0	0	0	0	0	0	0	0	0	0	0
24	DWORAK, CHLOE	0	0-0	0-0	0-0	0-0	0	0	0	0	0	0	0	0	0	0
33	BROTZKI, PAYTON	0	0-1	0-0	0-0	0-0	0	0	0	1	0	0	0	0	5	-4
TEAM							0	2	2	0		1				
TOTALS		10	3-12	2-8	2-2	2	8	10	2	2	7	1	1	1	50	

Shooting By Period

Period	FG	FG%	3FG	3FG%	FT	FT%
3rd Qtr	3-15	20%	1-8	13%	3-4	75%
4th Qtr	5-12	42%	0-3	00%	4-8	50%
2nd Half	3-12	25%	2-8	25%	2-2	100%
2nd Half	8-27	30%	1-11	09%	7-12	58%
Game	15-53	28.3%	7-27	25.9%	9-14	64.3%

Butler 18

No.	Player	S	Pts	FG	3FG	FT	OR	DR	TR	PF	A	TO	Blk	Stl	Min	+/-
11	WEAVER, MICHELLE	6	2-2	2-2	0-0	0-0	0	0	0	0	2	0	0	2	9	10
15	JENNINGS, WHITNEY	2	1-3	0-1	0-0	0-0	0	1	1	1	0	0	0	1	8	3
23	BREY, SHAE	2	1-1	0-0	0-0	0-0	0	1	1	1	1	1	0	0	7	6
24	SPLYAR, KRISTEN	0	0-2	0-2	0-0	0-0	0	1	1	0	0	1	0	0	7	7
34	SCHICKEL, TORI	2	1-2	0-0	0-0	0-0	1	1	2	0	1	0	0	1	8	6
01	ROBINSON, JAMILYN	0	0-0	0-0	0-0	0-0	0	0	0	0	0	0	0	0	0	0
05	SEXTON, EMILIA	0	0-0	0-0	0-0	0-0	0	0	0	0	0	0	0	0	0	0
10	CACERES, NAIRA	6	3-5	0-0	0-1	0-1	0	2	2	0	0	0	0	0	6	6
14	HUMPHREY, SARAH	0	0-1	0-0	0-0	0-0	0	1	1	0	0	0	0	0	4	2
25	ROSS, ELLEN	0	0-0	0-0	0-0	0-0	0	0	0	0	0	0	0	0	0	0
TEAM							0	0	0	1		0				
TOTALS		18	8-16	2-5	0-1	1	7	8	3	4	2	0	4	50		

Shooting By Period

Period	FG	FG%	3FG	3FG%	FT	FT%
3rd Qtr	5-13	38%	0-2	00%	4-4	100%
4th Qtr	8-10	80%	2-3	67%	2-4	50%
2nd Half	8-16	50%	2-5	40%	0-1	00%
2nd Half	13-23	57%	2-5	40%	6-8	75%
Game	28-56	50.0%	4-13	30.8%	6-9	66.7%

Game Notes:

Officials: Eric Brewton, Norma Jones, Kevin Pethtel
Attendance: 882

Start Time: 2019-02-16 00:03:01
End Time: 2019-02-16 01:44:20
Game Duration: 101
Conference Game;

Score	1st	2nd	3rd	4th	TOT
CRE	12	10	10	14	46
BUT	14	18	14	20	66

Points from (This Period)	CRE	BUT
In the Paint	2	10
Off Turns	2	9
2nd Chance	2	0
Fast Break	0	2
Bench	0	6

**Official Play-By-Play
Creighton vs Butler**

February 16, 2019 at Hinkle Fieldhouse - Indianapolis, Ind.



Period 2

Starters:

Creighton: 21 ELGER, OLIVIA; 45 FABER, AUDREY; 1 OWENS, JADE; 4 CARDA, TEMI; 5 AGNEW, JAYLYN;

Butler: 11 WEAVER, MICHELLE; 15 JENNINGS, WHITNEY; 23 BREY, SHAE; 24 SPOLYAR, KRISTEN; 34 SCHICKEL, TORI;

Time	VISITORS: Creighton	Score	Margin	HOME: Butler
09:50		16-12	H 4	GOOD! JUMPER by JENNINGS, WHITNEY
09:25				FOUL (PERSONAL) by JENNINGS, WHITNEY
09:05	MISSED JUMPER by AGNEW, JAYLYN			
09:01				REBOUND (DEF) by CACERES, NAIRA
08:58				MISSED 3PTR by JENNINGS, WHITNEY
08:54	REBOUND (DEF) by ELGER, OLIVIA			
08:37	MISSED 3PTR by AGNEW, JAYLYN			
08:33				REBOUND (DEF) by BREY, SHAE
08:11				MISSED LAYUP by CACERES, NAIRA
08:07	REBOUND (DEF) by ELGER, OLIVIA			
08:03	GOOD! 3PTR by AGNEW, JAYLYN	16-15	H 1	
08:03	ASSIST by ELGER, OLIVIA			
07:33		18-15	H 3	GOOD! LAYUP by CACERES, NAIRA [PNT]
07:33	FOUL (PERSONAL) by BROTZKI, PAYTON			
07:33				SUB OUT: JENNINGS, WHITNEY
07:33				SUB IN: SPOLYAR, KRISTEN
07:33	SUB OUT: OWENS, JADE			
07:33	SUB IN: CARDA, TEMI			
07:33				MISSED FT by CACERES, NAIRA
07:30	REBOUND (DEF) by FABER, AUDREY			
07:25	TURNOVER (BADPASS) by ELGER, OLIVIA			
07:25				STEAL by WEAVER, MICHELLE
07:20		20-15	H 5	GOOD! LAYUP by CACERES, NAIRA [FB/PNT]
07:20				ASSIST by WEAVER, MICHELLE
07:11				FOUL (PERSONAL) by BREY, SHAE
06:51	TURNOVER (BADPASS) by ELGER, OLIVIA			
06:51				STEAL by WEAVER, MICHELLE
06:32		23-15	H 8	GOOD! 3PTR by WEAVER, MICHELLE
06:32				ASSIST by BREY, SHAE
06:20	TURNOVER (BADPASS) by FABER, AUDREY			
06:20				STEAL by SCHICKEL, TORI
06:09				MISSED LAYUP by CACERES, NAIRA
06:06	REBOUND (DEF) by CARDA, TEMI			
06:00	TURNOVER (BADPASS) by CARDA, TEMI			
06:00				SUB OUT: CACERES, NAIRA
06:00				SUB IN: JENNINGS, WHITNEY
06:00				SUB OUT: SCHICKEL, TORI
06:00				SUB IN: HUMPHREY, SARAH
06:00	SUB OUT: BROTZKI, PAYTON			
06:00	SUB IN: OWENS, JADE			
06:00	SUB OUT: ELGER, OLIVIA			
06:00	SUB IN: KISSINGER, BROOKE			
05:38		25-15	H 10	GOOD! LAYUP by BREY, SHAE
05:30	TURNOVER (BADPASS) by OWENS, JADE			
05:19				MISSED 3PTR by SPOLYAR, KRISTEN
05:16	REBOUND (DEF) by TEAM			
05:09	MISSED 3PTR by AGNEW, JAYLYN			
05:04				REBOUND (DEF) by JENNINGS, WHITNEY
04:44				MISSED LAYUP by HUMPHREY, SARAH
04:44	BLOCK by AGNEW, JAYLYN			
04:40	REBOUND (DEF) by OWENS, JADE			
04:36	MISSED 3PTR by AGNEW, JAYLYN			
04:31				REBOUND (DEF) by HUMPHREY, SARAH
04:13				TURNOVER (TRAVEL) by SPOLYAR, KRISTEN
04:13				SUB OUT: BREY, SHAE
04:13				SUB IN: SCHICKEL, TORI
04:07	TURNOVER (LOSTBALL) by OWENS, JADE			
04:07				STEAL by JENNINGS, WHITNEY
03:56				MISSED 3PTR by SPOLYAR, KRISTEN
03:52	REBOUND (DEF) by AGNEW, JAYLYN			
03:32	MISSED JUMPER by KISSINGER, BROOKE			
03:28				REBOUND (DEF) by SPOLYAR, KRISTEN
03:12		27-15	H 12	GOOD! LAYUP by SCHICKEL, TORI [PNT]
02:57	GOOD! 3PTR by AGNEW, JAYLYN	27-18	H 9	
02:57	ASSIST by KISSINGER, BROOKE			
02:28		30-18	H 12	GOOD! 3PTR by WEAVER, MICHELLE
02:28				ASSIST by SCHICKEL, TORI
02:16				FOUL (BENCHTECHNICAL) by TEAM
02:16	GOOD! FT by CARDA, TEMI	30-19	H 11	

Time	VISITORS: Creighton	Score	Margin	HOME: Butler
02:16	GOOD! FT by CARDA, TEMI	30-20	H 10	
02:16				SUB OUT: HUMPHREY, SARAH
02:16				SUB IN: CACERES, NAIRA
01:44	TURNOVER (SHOTCLOCK) by			
01:44	SUB OUT: CARDA, TEMI			
01:44	SUB IN: ELGER, OLIVIA			
01:35		32-20	H 12	GOOD! LAYUP by CACERES, NAIRA
01:35				ASSIST by WEAVER, MICHELLE
01:22	MISSED 3PTR by KISSINGER, BROOKE			
01:17				REBOUND (DEF) by CACERES, NAIRA
01:05				MISSED JUMPER by JENNINGS, WHITNEY
01:02				REBOUND (OFF) by SCHICKEL, TORI
01:01				MISSED LAYUP by SCHICKEL, TORI
01:01	REBOUND (DEF) by TEAM			
01:01				SUB OUT: SPOLYAR, KRISTEN
01:01				SUB IN: BREY, SHAE
01:01	SUB OUT: KISSINGER, BROOKE			
01:01	SUB IN: REMBAO, TATUM			
01:01	SUB OUT: ELGER, OLIVIA			
01:01	SUB IN: BROTZKI, PAYTON			
00:45	MISSED 3PTR by REMBAO, TATUM			
00:41	REBOUND (OFF) by AGNEW, JAYLYN			
00:36	MISSED LAYUP by BROTZKI, PAYTON			
00:34				REBOUND (DEF) by SCHICKEL, TORI
00:34	FOUL (PERSONAL) by REMBAO, TATUM			
00:34				SUB OUT: WEAVER, MICHELLE
00:34				SUB IN: SPOLYAR, KRISTEN
00:14				TURNOVER (LOSTBALL) by BREY, SHAE
00:14	STEAL by OWENS, JADE			
00:08	MISSED 3PTR by AGNEW, JAYLYN			
00:04	REBOUND (OFF) by OWENS, JADE			
00:02	GOOD! LAYUP by OWENS, JADE [PNT]	32-22	H 10	

Creighton 22, Butler 32

Points from (This Period)	CRE	BUT
In the Paint	2	10
Off Turns	2	9
2nd Chance	2	0
Fast Break	0	2
Bench	0	6

Official Box Score
Creighton vs Butler
Second Half Statistics Only
February 16, 2019 at Hinkle Fieldhouse - Indianapolis, Ind.



Creighton 24

No.	Player	S	Pts	FG	3FG	FT	OR	DR	TR	PF	A	TO	Blk	Stl	Min	+/-
12	GRIGLIONE, GRACEY		2	1-2	0-0	0-1	1	1	2	0	0	2	0	0	6	-9
13	SAUNDERS, RACHAEL		4	1-2	0-1	2-4	2	0	2	1	0	0	0	3	8	3
21	ELGER, OLIVIA		0	0-1	0-1	0-0	0	1	1	3	1	1	0	1	9	-6
22	KISSINGER, BROOKE		0	0-0	0-0	0-0	0	0	0	0	0	1	0	0	3	-9
23	TURNER, MORGAN		0	0-0	0-0	0-2	0	1	1	0	0	0	0	0	6	4
24	DWORAK, CHLOE		0	0-0	0-0	0-0	2	0	2	1	0	0	0	0	7	2
33	BROTZKI, PAYTON		5	2-5	0-2	1-1	0	0	0	0	2	0	0	0	6	-2
45	FABER, AUDREY		4	1-5	0-2	2-2	0	1	1	1	0	1	0	0	14	-1
01	OWENS, JADE		2	1-4	0-1	0-0	1	1	2	1	0	0	0	0	12	-9
02	REMBAO, TATUM		0	0-0	0-0	0-0	0	0	0	2	0	0	0	0	1	-1
04	CARDA, TEMI		7	2-7	1-4	2-2	0	1	1	1	0	1	0	1	14	-8
05	AGNEW, JAYLYN		0	0-1	0-0	0-0	0	3	3	1	1	1	0	0	14	-14
	TEAM		0	0-0	0-0	0-0	2	0	2	0	0	1	0	0	0	0
TOTALS			24	8-27	1-11	7-12	8	9	17	11	4	8	0	5	100	

Shooting By Period

Period	FG	FG%	3FG	3FG%	FT	FT%
3rd Qtr	3-15	20%	1-8	13%	3-4	75%
4th Qtr	5-12	42%	0-3	00%	4-8	50%
2nd Half	8-27	30%	1-11	09%	7-12	58%
Game	15-53	28.3%	7-27	25.9%	9-14	64.3%

Last FG Half: CRE 4th-00:39

Butler 34

No.	Player	S	Pts	FG	3FG	FT	OR	DR	TR	PF	A	TO	Blk	Stl	Min	+/-
01	ROBINSON, JAMILYN		0	0-0	0-0	0-0	0	1	1	0	0	1	0	0	3	-1
05	SEXTON, EMILIA		5	2-2	1-1	0-1	0	1	1	1	0	1	0	1	6	-4
10	CACERES, NAIRA		2	0-0	0-0	2-2	0	0	0	1	3	1	0	0	13	5
11	WEAVER, MICHELLE		2	1-3	0-1	0-0	0	3	3	2	1	1	0	2	15	5
14	HUMPHREY, SARAH		0	0-1	0-0	0-0	0	0	0	2	0	0	0	0	10	7
15	JENNINGS, WHITNEY		8	4-6	0-1	0-0	0	2	2	0	1	0	0	1	14	14
23	BREY, SHAE		3	1-1	1-1	0-0	1	2	3	1	0	0	0	0	8	5
24	SPOLYAR, KRISTEN		9	3-6	0-1	3-3	0	2	2	1	0	0	0	0	14	14
25	ROSS, ELLEN		0	0-0	0-0	0-0	0	0	0	4	0	2	0	0	5	-8
34	SCHICKEL, TORI		5	2-4	0-0	1-2	2	2	4	0	0	1	1	1	14	13
	TEAM		0	0-0	0-0	0-0	0	1	1	0	0	0	0	0	0	0
TOTALS			34	13-23	2-5	6-8	3	14	17	12	5	7	1	5	100	

Shooting By Period

Period	FG	FG%	3FG	3FG%	FT	FT%
3rd Qtr	5-13	38%	0-2	00%	4-4	100%
4th Qtr	8-10	80%	2-3	67%	2-4	50%
2nd Half	13-23	57%	2-5	40%	6-8	75%
Game	28-56	50.0%	4-13	30.8%	6-9	66.7%

Last FG Half: BUT 4th-01:47

Game Notes:

Officials: Eric Brewton, Norma Jones, Kevin Pethtel
 Attendance: 882

Start Time: 2019-02-16 00:03:01
 End Time: 2019-02-16 01:44:20
 Game Duration: 101
 Conference Game;

Score	1st	2nd	3rd	4th	TOT
CRE	12	10	10	14	46
BUT	14	18	14	20	66

Points from (This Period)	CRE	BUT
In the Paint	12	18
Off Turns	10	8
2nd Chance	1	2
Fast Break	4	6
Bench	11	7

Official Box Score
Creighton vs Butler
Third Quarter Statistics Only
February 16, 2019 at Hinkle Fieldhouse - Indianapolis, Ind.



Creighton 24

No.	Player	S	Pts	FG	3FG	FT	OR	DR	TR	PF	A	TO	Blk	Stl	Min	+/-
01	OWENS, JADE		2	1-3	0-1	0-0	1	1	2	0	0	0	0	0	10	-3
04	CARDA, TEMI		7	2-6	1-4	2-2	0	0	0	1	0	0	0	0	10	-3
05	AGNEW, JAYLYN		0	0-0	0-0	0-0	0	3	3	1	1	0	0	0	10	-4
21	ELGER, OLIVIA		0	0-1	0-1	0-0	0	1	1	2	1	1	0	1	6	2
45	FABER, AUDREY		0	0-4	0-2	0-0	0	1	1	0	0	0	0	0	10	-4
02	REMBAO, TATUM		0	0-0	0-0	0-0	0	0	0	2	0	0	0	0	1	-1
12	GRIGLIONE, GRACEY		0	0-0	0-0	0-0	0	0	0	0	0	0	0	0	0	0
13	SAUNDERS, RACHAEL		1	0-0	0-0	1-2	2	0	2	0	0	0	0	0	3	-5
22	KISSINGER, BROOKE		0	0-0	0-0	0-0	0	0	0	0	0	0	0	0	0	-1
23	TURNER, MORGAN		0	0-0	0-0	0-0	0	0	0	0	0	0	0	0	0	0
24	DWORAK, CHLOE		0	0-0	0-0	0-0	0	0	0	0	0	0	0	0	0	0
33	BROTZKI, PAYTON		0	0-1	0-0	0-0	0	0	0	0	0	0	0	0	0	-1
	TEAM						1	0	1	0		0				
TOTALS			10	3-15	1-8	3-4	4	6	10	6	2	1	0	1	50	

Shooting By Period

Period	FG	FG%	3FG	3FG%	FT	FT%
2nd Half	0-0	0%	0-0	0%	0-0	0%
Game	15-53	28.3%	7-27	25.9%	9-14	64.3%

Butler 34

No.	Player	S	Pts	FG	3FG	FT	OR	DR	TR	PF	A	TO	Blk	Stl	Min	+/-
11	WEAVER, MICHELLE		2	1-3	0-1	0-0	0	2	2	1	0	0	0	1	10	4
15	JENNINGS, WHITNEY		2	1-3	0-1	0-0	0	2	2	0	0	0	0	0	10	4
23	BREY, SHAE		0	0-0	0-0	0-0	1	2	3	0	0	0	0	0	4	-5
24	SPOLYAR, KRISTEN		4	1-3	0-0	2-2	0	1	1	0	0	0	0	0	10	3
34	SCHICKEL, TORI		4	2-4	0-0	0-0	1	2	3	0	0	1	1	0	10	3
01	ROBINSON, JAMILYN		0	0-0	0-0	0-0	0	0	0	0	0	0	0	0	0	0
05	SEXTON, EMILIA		0	0-0	0-0	0-0	0	0	0	0	0	0	0	0	0	0
10	CACERES, NAIRA		2	0-0	0-0	2-2	0	0	0	1	2	0	0	0	7	10
14	HUMPHREY, SARAH		0	0-0	0-0	0-0	0	0	0	0	0	0	0	0	0	1
25	ROSS, ELLEN		0	0-0	0-0	0-0	0	0	0	0	0	0	0	0	0	0
	TEAM						0	0	0	0		0				
TOTALS			14	5-13	0-2	4-4	2	9	11	2	2	1	1	1	50	

Shooting By Period

Period	FG	FG%	3FG	3FG%	FT	FT%
2nd Half	0-0	0%	0-0	0%	0-0	0%
Game	28-56	50.0%	4-13	30.8%	6-9	66.7%

Game Notes:

Officials: Eric Brewton, Norma Jones, Kevin Pethtel
 Attendance: 882

Start Time: 2019-02-16 00:03:01
 End Time: 2019-02-16 01:44:20
 Game Duration: 101
 Conference Game;

Score	1st	2nd	3rd	4th	TOT
CRE	12	10	10	14	46
BUT	14	18	14	20	66

Points from (This Period)	CRE	BUT
In the Paint	2	10
Off Turns	0	0
2nd Chance	1	2
Fast Break	2	0
Bench	1	2

Official Play-By-Play
Creighton vs Butler
Third Quarter
February 16, 2019 at Hinkle Fieldhouse - Indianapolis, Ind.



Period 3

Starters:

Creighton: 21 ELGER, OLIVIA; 45 FABER, AUDREY; 1 OWENS, JADE; 4 CARDA, TEMI; 5 AGNEW, JAYLYN;

Butler: 11 WEAVER, MICHELLE; 15 JENNINGS, WHITNEY; 23 BREY, SHAE; 24 SPOLYAR, KRISTEN; 34 SCHICKEL, TORI;

Time	VISITORS: Creighton	Score	Margin	HOME: Butler
09:40				MISSED JUMPER by SCHICKEL, TORI
09:36	REBOUND (DEF) by OWENS, JADE			
09:25	GOOD! LAYUP by OWENS, JADE	32-24	H 8	
09:25	ASSIST by ELGER, OLIVIA			
09:12	FOUL (PERSONAL) by ELGER, OLIVIA			
08:59				MISSED JUMPER by SCHICKEL, TORI
08:55	REBOUND (DEF) by FABER, AUDREY			
08:48				FOUL (PERSONAL) by WEAVER, MICHELLE
08:48	GOOD! FT by CARDA, TEMI [FB]	32-25	H 7	
08:48	GOOD! FT by CARDA, TEMI [FB]	32-26	H 6	
08:30				MISSED LAYUP by WEAVER, MICHELLE
08:27	REBOUND (DEF) by AGNEW, JAYLYN			
08:03	TURNOVER (LOSTBALL) by ELGER, OLIVIA			
08:03				STEAL by WEAVER, MICHELLE
08:02	FOUL (PERSONAL) by ELGER, OLIVIA			
07:47				MISSED 3PTR by WEAVER, MICHELLE
07:43	REBOUND (DEF) by AGNEW, JAYLYN			
07:34	GOOD! JUMPER by CARDA, TEMI	32-28	H 4	
07:09				MISSED LAYUP by SPOLYAR, KRISTEN
07:04	REBOUND (DEF) by AGNEW, JAYLYN			
06:58	MISSED 3PTR by ELGER, OLIVIA			
06:54	REBOUND (OFF) by OWENS, JADE			
06:53	MISSED JUMPER by OWENS, JADE			
06:49				REBOUND (DEF) by BREY, SHAE
06:37				MISSED JUMPER by JENNINGS, WHITNEY
06:35				REBOUND (OFF) by BREY, SHAE
06:35	FOUL (PERSONAL) by CARDA, TEMI			
06:35				SUB OUT: BREY, SHAE
06:35				SUB IN: CACERES, NAIRA
06:35	SUB OUT: ELGER, OLIVIA			
06:35	SUB IN: REMBAO, TATUM			
06:17	FOUL (PERSONAL) by REMBAO, TATUM			
06:02	FOUL (PERSONAL) by REMBAO, TATUM			
06:02		33-28	H 5	GOOD! FT by SPOLYAR, KRISTEN
06:02	SUB OUT: REMBAO, TATUM			
06:02	SUB IN: SAUNDERS, RACHAEL			
06:02		34-28	H 6	GOOD! FT by SPOLYAR, KRISTEN
05:41	MISSED 3PTR by FABER, AUDREY			
05:39	REBOUND (OFF) by SAUNDERS, RACHAEL			
05:39				FOUL (PERSONAL) by CACERES, NAIRA
05:39	GOOD! FT by SAUNDERS, RACHAEL	34-29	H 5	
05:39	MISSED FT by SAUNDERS, RACHAEL			
05:36				REBOUND (DEF) by SCHICKEL, TORI
05:20		36-29	H 7	GOOD! LAYUP by WEAVER, MICHELLE [PNT]
04:53	GOOD! 3PTR by CARDA, TEMI	36-32	H 4	
04:53	ASSIST by AGNEW, JAYLYN			
04:26		38-32	H 6	GOOD! LAYUP by SPOLYAR, KRISTEN
04:06	MISSED 3PTR by CARDA, TEMI			
04:01	REBOUND (OFF) by SAUNDERS, RACHAEL			
03:50	MISSED LAYUP by CARDA, TEMI			
03:50				BLOCK by SCHICKEL, TORI
03:50	REBOUND (OFF) by TEAM			
03:50				
03:47	MISSED 3PTR by FABER, AUDREY			
03:43				REBOUND (DEF) by SCHICKEL, TORI
03:32		40-32	H 8	GOOD! LAYUP by JENNINGS, WHITNEY
03:09	MISSED 3PTR by OWENS, JADE			
03:07				REBOUND (DEF) by WEAVER, MICHELLE
02:50		42-32	H 10	GOOD! LAYUP by SCHICKEL, TORI
02:50				ASSIST by CACERES, NAIRA
02:45	TIMEOUT 30SEC			
02:45				
02:45	SUB OUT: SAUNDERS, RACHAEL			
02:45	SUB IN: ELGER, OLIVIA			
02:35	MISSED JUMPER by FABER, AUDREY			
02:31				REBOUND (DEF) by SPOLYAR, KRISTEN
02:14				MISSED JUMPER by SPOLYAR, KRISTEN
02:11				REBOUND (OFF) by SCHICKEL, TORI
02:10				TURNOVER (LOSTBALL) by SCHICKEL, TORI
02:10	STEAL by ELGER, OLIVIA			

Time	VISITORS: Creighton	Score	Margin	HOME: Butler
01:45	MISSED JUMPER by FABER, AUDREY			
01:42				REBOUND (DEF) by WEAVER, MICHELLE
01:23				MISSED 3PTR by JENNINGS, WHITNEY
01:20	REBOUND (DEF) by ELGER, OLIVIA			
01:13	MISSED 3PTR by CARDA, TEMI			
01:09				REBOUND (DEF) by JENNINGS, WHITNEY
00:55		44-32	H 12	GOOD! LAYUP by SCHICKEL, TORI [PNT]
00:55				ASSIST by CACERES, NAIRA
00:46	MISSED 3PTR by CARDA, TEMI			
00:38				REBOUND (DEF) by JENNINGS, WHITNEY
00:20	FOUL (PERSONAL) by AGNEW, JAYLYN			
00:20		45-32	H 13	GOOD! FT by CACERES, NAIRA
00:20				SUB OUT: SCHICKEL, TORI
00:20				SUB IN: HUMPHREY, SARAH
00:20				SUB OUT: SPOLYAR, KRISTEN
00:20				SUB IN: BREY, SHAE
00:20	SUB OUT: OWENS, JADE			
00:20	SUB IN: BROTZKI, PAYTON			
00:20	SUB OUT: CARDA, TEMI			
00:20	SUB IN: KISSINGER, BROOKE			
00:20		46-32	H 14	GOOD! FT by CACERES, NAIRA
00:02	MISSED JUMPER by BROTZKI, PAYTON			
00:00				REBOUND (DEF) by BREY, SHAE

Creighton 32, Butler 46

Points from (This Period)	CRE	BUT
In the Paint	2	10
Off Turns	0	0
2nd Chance	1	2
Fast Break	2	0
Bench	1	2

Official Box Score
Creighton vs Butler
Fourth Quarter Statistics Only
February 16, 2019 at Hinkle Fieldhouse - Indianapolis, Ind.



Creighton 14

No.	Player	S	Pts	FG	3FG	FT	OR	DR	TR	PF	A	TO	Blk	Stl	Min	+/-
01	OWENS, JADE		0	0-1	0-0	0-0	0	0	0	1	0	0	0	0	2	-6
04	CARDA, TEMI		0	0-1	0-0	0-0	0	1	1	0	0	1	0	1	4	-5
05	AGNEW, JAYLYN		0	0-1	0-0	0-0	0	0	0	0	0	1	0	0	4	-10
21	ELGER, OLIVIA		0	0-0	0-0	0-0	0	0	0	1	0	0	0	0	3	-8
45	FABER, AUDREY		4	1-1	0-0	2-2	0	0	0	1	0	1	0	0	4	3
02	REMBAO, TATUM		0	0-0	0-0	0-0	0	0	0	0	0	0	0	0	0	0
12	GRIGLIONE, GRACEY		2	1-2	0-0	0-1	1	1	2	0	0	2	0	0	6	-9
13	SAUNDERS, RACHAEL		3	1-2	0-1	1-2	0	0	0	1	0	0	0	3	5	8
22	KISSINGER, BROOKE		0	0-0	0-0	0-0	0	0	0	0	0	1	0	0	3	-8
23	TURNER, MORGAN		0	0-0	0-0	0-2	0	1	1	0	0	0	0	0	6	4
24	DWORAK, CHLOE		0	0-0	0-0	0-0	2	0	2	1	0	0	0	0	7	2
33	BROTZKI, PAYTON		5	2-4	0-2	1-1	0	0	0	0	2	0	0	0	6	-1
	TEAM						1	0	1	0		1				
TOTALS			14	5-12	0-3	4-8	4	3	7	5	2	7	0	4	50	

Shooting By Period

Period	FG	FG%	3FG	3FG%	FT	FT%
Game	15-53	28.3%	7-27	25.9%	9-14	64.3%

Butler 20

No.	Player	S	Pts	FG	3FG	FT	OR	DR	TR	PF	A	TO	Blk	Stl	Min	+/-
11	WEAVER, MICHELLE		0	0-0	0-0	0-0	0	1	1	1	1	1	0	1	5	1
15	JENNINGS, WHITNEY		6	3-3	0-0	0-0	0	0	0	0	1	0	0	1	4	10
23	BREY, SHAE		3	1-1	1-1	0-0	0	0	0	1	0	0	0	0	4	10
24	SPLYAR, KRISTEN		5	2-3	0-1	1-1	0	1	1	1	0	0	0	0	4	11
34	SCHICKEL, TORI		1	0-0	0-0	1-2	1	0	1	0	0	0	0	1	4	10
01	ROBINSON, JAMILYN		0	0-0	0-0	0-0	0	1	1	0	0	1	0	0	3	-1
05	SEXTON, EMILIA		5	2-2	1-1	0-1	0	1	1	1	0	1	0	1	6	-4
10	CACERES, NAIRA		0	0-0	0-0	0-0	0	0	0	0	1	1	0	0	6	-5
14	HUMPHREY, SARAH		0	0-1	0-0	0-0	0	0	0	2	0	0	0	0	10	6
25	ROSS, ELLEN		0	0-0	0-0	0-0	0	0	0	4	0	2	0	0	5	-8
	TEAM						0	1	1	0		0				
TOTALS			20	8-10	2-3	2-4	1	5	6	10	3	6	0	4	50	

Shooting By Period

Period	FG	FG%	3FG	3FG%	FT	FT%
Game	28-56	50.0%	4-13	30.8%	6-9	66.7%

Game Notes:

Officials: Eric Brewton, Norma Jones, Kevin Pethtel
 Attendance: 882

Start Time: 2019-02-16 00:03:01
 End Time: 2019-02-16 01:44:20
 Game Duration: 101
 Conference Game;

Score	1st	2nd	3rd	4th	TOT
CRE	12	10	10	14	46
BUT	14	18	14	20	66

Points from (This Period)	CRE	BUT
In the Paint	10	8
Off Turns	10	8
2nd Chance	0	0
Fast Break	2	6
Bench	10	5

Official Play-By-Play
Creighton vs Butler
Fourth Quarter
February 16, 2019 at Hinkle Fieldhouse - Indianapolis, Ind.



Period 4

Starters:

Creighton: 21 ELGER, OLIVIA; 45 FABER, AUDREY; 1 OWENS, JADE; 4 CARDA, TEMI; 5 AGNEW, JAYLYN;

Butler: 11 WEAVER, MICHELLE; 15 JENNINGS, WHITNEY; 23 BREY, SHAE; 24 SPOLYAR, KRISTEN; 34 SCHICKEL, TORI;

Time	VISITORS: Creighton	Score	Margin	HOME: Butler
09:43		48-32	H 16	GOOD! JUMPER by JENNINGS, WHITNEY [PNT]
09:26	FOUL (OFF) by FABER, AUDREY			
09:26	TURNOVER (OFFENSIVE) by FABER, AUDREY			
09:12		50-32	H 18	GOOD! JUMPER by JENNINGS, WHITNEY
08:53				FOUL (PERSONAL) by WEAVER, MICHELLE
08:53	SUB OUT: FABER, AUDREY			
08:53	SUB IN: GRIGLIONE, GRACEY			
08:53				SUB OUT: WEAVER, MICHELLE
08:53				SUB IN: SPOLYAR, KRISTEN
08:53				SUB OUT: CACERES, NAIRA
08:53				SUB IN: SCHICKEL, TORI
08:27	MISSED JUMPER by AGNEW, JAYLYN			
08:25				REBOUND (DEF) by TEAM
07:57		53-32	H 21	GOOD! 3PTR by BREY, SHAE
07:57				ASSIST by JENNINGS, WHITNEY
07:31				FOUL (PERSONAL) by BREY, SHAE
07:22	TURNOVER (BADPASS) by KISSINGER, BROOKE			
07:22				STEAL by SCHICKEL, TORI
07:20	FOUL (PERSONAL) by ELGER, OLIVIA			
07:20		54-32	H 22	GOOD! FT by SCHICKEL, TORI [FB]
07:20	SUB OUT: ELGER, OLIVIA			
07:20	SUB IN: OWENS, JADE			
07:20	SUB OUT: KISSINGER, BROOKE			
07:20	SUB IN: CARDA, TEMI			
07:20	SUB OUT: BROTZKI, PAYTON			
07:20	SUB IN: DWORAK, CHLOE			
07:20				MISSED FT by SCHICKEL, TORI
07:18				REBOUND (OFF) by SCHICKEL, TORI
07:14				MISSED 3PTR by SPOLYAR, KRISTEN
07:09	REBOUND (DEF) by CARDA, TEMI			
06:58	TURNOVER (BADPASS) by AGNEW, JAYLYN			
06:58				STEAL by JENNINGS, WHITNEY
06:52		56-32	H 24	GOOD! LAYUP by JENNINGS, WHITNEY [FB/PNT]
06:20	MISSED JUMPER by OWENS, JADE			
06:20	REBOUND (OFF) by TEAM			
06:20	TURNOVER (SHOTCLOCK) by			
06:20				SUB OUT: BREY, SHAE
06:20				SUB IN: SEXTON, EMILIA
06:20				SUB OUT: JENNINGS, WHITNEY
06:20				SUB IN: WEAVER, MICHELLE
06:20	SUB OUT: AGNEW, JAYLYN			
06:20	SUB IN: TURNER, MORGAN			
06:10				FOUL (PERSONAL) by HUMPHREY, SARAH
06:00				FOUL (PERSONAL) by SPOLYAR, KRISTEN
05:50	MISSED LAYUP by CARDA, TEMI			
05:50				REBOUND (DEF) by SPOLYAR, KRISTEN
05:40	FOUL (PERSONAL) by OWENS, JADE			
05:38		58-32	H 26	GOOD! LAYUP by SPOLYAR, KRISTEN [PNT]
05:38				ASSIST by WEAVER, MICHELLE
05:22	TURNOVER (BADPASS) by GRIGLIONE, GRACEY			
05:22				STEAL by WEAVER, MICHELLE
05:18		60-32	H 28	GOOD! LAYUP by SPOLYAR, KRISTEN [FB]
05:18	FOUL (PERSONAL) by DWORAK, CHLOE			
05:18				SUB OUT: SCHICKEL, TORI
05:18				SUB IN: ROSS, ELLEN
05:18	SUB OUT: GRIGLIONE, GRACEY			
05:18	SUB IN: SAUNDERS, RACHAEL			
05:18	SUB OUT: OWENS, JADE			
05:18	SUB IN: FABER, AUDREY			
05:18		61-32	H 29	GOOD! FT by SPOLYAR, KRISTEN [FB]
04:57				FOUL (PERSONAL) by ROSS, ELLEN
04:57				
04:57				SUB OUT: SPOLYAR, KRISTEN
04:57				SUB IN: CACERES, NAIRA
04:57	GOOD! FT by FABER, AUDREY	61-33	H 28	
04:57	GOOD! FT by FABER, AUDREY	61-34	H 27	
04:34				TURNOVER (LOSTBALL) by CACERES, NAIRA
04:34	STEAL by CARDA, TEMI			
04:33	TURNOVER (TRAVEL) by CARDA, TEMI			
04:04				MISSED LAYUP by HUMPHREY, SARAH

Time	VISITORS: Creighton	Score	Margin	HOME: Butler
04:04	REBOUND (DEF) by TURNER, MORGAN			
04:04				FOUL (PERSONAL) by HUMPHREY, SARAH
04:04	MISSED FT by TURNER, MORGAN			
04:04	REBOUND (OFF) by TEAM			
04:04	MISSED FT by TURNER, MORGAN			
04:01				REBOUND (DEF) by WEAVER, MICHELLE
03:46				FOUL (OFF) by ROSS, ELLEN
03:46				TURNOVER (OFFENSIVE) by ROSS, ELLEN
03:46	SUB OUT: CARDA, TEMI			
03:46	SUB IN: BROTZKI, PAYTON			
03:33	GOOD! LAYUP by FABER, AUDREY	61-36	H 25	
03:33	ASSIST by BROTZKI, PAYTON			
03:15				TURNOVER (LOSTBALL) by ROSS, ELLEN
03:15	STEAL by SAUNDERS, RACHAEL			
03:04	GOOD! LAYUP by BROTZKI, PAYTON	61-38	H 23	
02:53				TURNOVER (BADPASS) by WEAVER, MICHELLE
02:53	STEAL by SAUNDERS, RACHAEL			
02:48	GOOD! LAYUP by SAUNDERS, RACHAEL [FB]	61-40	H 21	
02:48				SUB OUT: WEAVER, MICHELLE
02:48				SUB IN: ROBINSON, JAMILYN
02:48	SUB OUT: FABER, AUDREY			
02:48	SUB IN: GRIGLIONE, GRACEY			
02:28		64-40	H 24	GOOD! 3PTR by SEXTON, EMILIA
02:28				ASSIST by CACERES, NAIRA
02:12	GOOD! LAYUP by GRIGLIONE, GRACEY	64-42	H 22	
02:12	ASSIST by BROTZKI, PAYTON			
02:12				FOUL (PERSONAL) by ROSS, ELLEN
02:12	MISSED FT by GRIGLIONE, GRACEY			
02:09				REBOUND (DEF) by SEXTON, EMILIA
01:47		66-42	H 24	GOOD! JUMPER by SEXTON, EMILIA
01:47	FOUL (PERSONAL) by SAUNDERS, RACHAEL			
01:47				MISSED FT by SEXTON, EMILIA
01:44	REBOUND (DEF) by GRIGLIONE, GRACEY			
01:41	MISSED 3PTR by BROTZKI, PAYTON			
01:36	REBOUND (OFF) by DWORAK, CHLOE			
01:20	MISSED 3PTR by SAUNDERS, RACHAEL			
01:15	REBOUND (OFF) by GRIGLIONE, GRACEY			
01:15	MISSED LAYUP by GRIGLIONE, GRACEY			
01:14	REBOUND (OFF) by TEAM			
01:14	MISSED 3PTR by BROTZKI, PAYTON			
01:14	REBOUND (OFF) by DWORAK, CHLOE			
01:12	TURNOVER (LOSTBALL) by GRIGLIONE, GRACEY			
01:12				STEAL by SEXTON, EMILIA
00:49				TURNOVER (BADPASS) by ROBINSON, JAMILYN
00:49	STEAL by SAUNDERS, RACHAEL			
00:39	GOOD! LAYUP by BROTZKI, PAYTON	66-44	H 22	
00:39				FOUL (PERSONAL) by ROSS, ELLEN
00:39	GOOD! FT by BROTZKI, PAYTON	66-45	H 21	
00:12				TURNOVER (OTHER) by SEXTON, EMILIA
00:04				FOUL (PERSONAL) by SEXTON, EMILIA
00:04	GOOD! FT by SAUNDERS, RACHAEL	66-46	H 20	
00:04	MISSED FT by SAUNDERS, RACHAEL			
00:00				REBOUND (DEF) by ROBINSON, JAMILYN

Creighton 46, Butler 66

Points from (This Period)	CRE	BUT
In the Paint	10	8
Off Turns	10	8
2nd Chance	0	0
Fast Break	2	6
Bench	10	5

Official Scoring/Possession Reference Chart
Creighton vs Butler
Period 1
February 16, 2019 at Hinkle Fieldhouse - Indianapolis, Ind.



Period 1

Starters:

Creighton: 21 ELGER, OLIVIA; 45 FABER, AUDREY; 1 OWENS, JADE; 4 CARDA, TEMI; 5 AGNEW, JAYLYN;

Butler: 11 WEAVER, MICHELLE; 15 JENNINGS, WHITNEY; 23 BREY, SHAE; 24 SPOLYAR, KRISTEN; 34 SCHICKEL, TORI;

Time	VISITORS: Creighton	Score	Margin	HOME: Butler
09:12		2-0	H 2	GOOD! LAYUP by BREY, SHAE
08:23	GOOD! 3PTR by FABER, AUDREY	2-3	V 1	
07:40	GOOD! 3PTR by CARDA, TEMI	2-6	V 4	
06:50		4-6	V 2	GOOD! JUMPER by SPOLYAR, KRISTEN
05:14		6-6	T	GOOD! LAYUP by BREY, SHAE [FB]
04:41	GOOD! 3PTR by AGNEW, JAYLYN	6-9	V 3	
03:16		8-9	V 1	GOOD! LAYUP by WEAVER, MICHELLE [PNT]
02:39	GOOD! 3PTR by AGNEW, JAYLYN	8-12	V 4	
02:20		10-12	V 2	GOOD! LAYUP by SPOLYAR, KRISTEN [PNT]
01:51		12-12	T	GOOD! LAYUP by SCHICKEL, TORI
01:28		14-12	H 2	GOOD! LAYUP by SCHICKEL, TORI

Creighton 12, Butler 14

Official Scoring/Possession Reference Chart
Creighton vs Butler
Period 2
February 16, 2019 at Hinkle Fieldhouse - Indianapolis, Ind.



Period 2

Starters:

Creighton: 21 ELGER, OLIVIA; 45 FABER, AUDREY; 1 OWENS, JADE; 4 CARDA, TEMI; 5 AGNEW, JAYLYN;

Butler: 11 WEAVER, MICHELLE; 15 JENNINGS, WHITNEY; 23 BREY, SHAE; 24 SPOLYAR, KRISTEN; 34 SCHICKEL, TORI;

Time	VISITORS: Creighton	Score	Margin	HOME: Butler
09:50		16-12	H 4	GOOD! JUMPER by JENNINGS, WHITNEY
08:03	GOOD! 3PTR by AGNEW, JAYLYN	16-15	H 1	
07:33		18-15	H 3	GOOD! LAYUP by CACERES, NAIRA [PNT]
07:20		20-15	H 5	GOOD! LAYUP by CACERES, NAIRA [FB/PNT]
06:32		23-15	H 8	GOOD! 3PTR by WEAVER, MICHELLE
05:38		25-15	H 10	GOOD! LAYUP by BREY, SHAE
03:12		27-15	H 12	GOOD! LAYUP by SCHICKEL, TORI [PNT]
02:57	GOOD! 3PTR by AGNEW, JAYLYN	27-18	H 9	
02:28		30-18	H 12	GOOD! 3PTR by WEAVER, MICHELLE
02:16	GOOD! FT by CARDA, TEMI	30-19	H 11	
02:16	GOOD! FT by CARDA, TEMI	30-20	H 10	
01:35		32-20	H 12	GOOD! LAYUP by CACERES, NAIRA
00:02	GOOD! LAYUP by OWENS, JADE [PNT]	32-22	H 10	

Creighton 22, Butler 32

Official Scoring/Possession Reference Chart
Creighton vs Butler
Period 3
February 16, 2019 at Hinkle Fieldhouse - Indianapolis, Ind.



Period 3

Starters:

Creighton: 21 ELGER, OLIVIA; 45 FABER, AUDREY; 1 OWENS, JADE; 4 CARDA, TEMI; 5 AGNEW, JAYLYN;

Butler: 11 WEAVER, MICHELLE; 15 JENNINGS, WHITNEY; 23 BREY, SHAE; 24 SPOLYAR, KRISTEN; 34 SCHICKEL, TORI;

Time	VISITORS: Creighton	Score	Margin	HOME: Butler
09:25	GOOD! LAYUP by OWENS, JADE	32-24	H 8	
08:48	GOOD! FT by CARDA, TEMI [FB]	32-25	H 7	
08:48	GOOD! FT by CARDA, TEMI [FB]	32-26	H 6	
07:34	GOOD! JUMPER by CARDA, TEMI	32-28	H 4	
06:02		33-28	H 5	GOOD! FT by SPOLYAR, KRISTEN
06:02		34-28	H 6	GOOD! FT by SPOLYAR, KRISTEN
05:39	GOOD! FT by SAUNDERS, RACHAEL	34-29	H 5	
05:20		36-29	H 7	GOOD! LAYUP by WEAVER, MICHELLE [PNT]
04:53	GOOD! 3PTR by CARDA, TEMI	36-32	H 4	
04:26		38-32	H 6	GOOD! LAYUP by SPOLYAR, KRISTEN
03:32		40-32	H 8	GOOD! LAYUP by JENNINGS, WHITNEY
02:50		42-32	H 10	GOOD! LAYUP by SCHICKEL, TORI
00:55		44-32	H 12	GOOD! LAYUP by SCHICKEL, TORI [PNT]
00:20		45-32	H 13	GOOD! FT by CACERES, NAIRA
00:20		46-32	H 14	GOOD! FT by CACERES, NAIRA

Creighton 32, Butler 46

Official Scoring/Possession Reference Chart
Creighton vs Butler
Period 4
February 16, 2019 at Hinkle Fieldhouse - Indianapolis, Ind.



Period 4

Starters:

Creighton: 21 ELGER, OLIVIA; 45 FABER, AUDREY; 1 OWENS, JADE; 4 CARDA, TEMI; 5 AGNEW, JAYLYN;

Butler: 11 WEAVER, MICHELLE; 15 JENNINGS, WHITNEY; 23 BREY, SHAE; 24 SPOLYAR, KRISTEN; 34 SCHICKEL, TORI;

Time	VISITORS: Creighton	Score	Margin	HOME: Butler
09:43		48-32	H 16	GOOD! JUMPER by JENNINGS, WHITNEY [PNT]
09:12		50-32	H 18	GOOD! JUMPER by JENNINGS, WHITNEY
07:57		53-32	H 21	GOOD! 3PTR by BREY, SHAE
07:20		54-32	H 22	GOOD! FT by SCHICKEL, TORI [FB]
06:52		56-32	H 24	GOOD! LAYUP by JENNINGS, WHITNEY [FB/PNT]
05:38		58-32	H 26	GOOD! LAYUP by SPOLYAR, KRISTEN [PNT]
05:18		60-32	H 28	GOOD! LAYUP by SPOLYAR, KRISTEN [FB]
05:18		61-32	H 29	GOOD! FT by SPOLYAR, KRISTEN [FB]
04:57	GOOD! FT by FABER, AUDREY	61-33	H 28	
04:57	GOOD! FT by FABER, AUDREY	61-34	H 27	
03:33	GOOD! LAYUP by FABER, AUDREY	61-36	H 25	
03:04	GOOD! LAYUP by BROTZKI, PAYTON	61-38	H 23	
02:48	GOOD! LAYUP by SAUNDERS, RACHAEL [FB]	61-40	H 21	
02:28		64-40	H 24	GOOD! 3PTR by SEXTON, EMILIA
02:12	GOOD! LAYUP by GRIGLIONE, GRACEY	64-42	H 22	
01:47		66-42	H 24	GOOD! JUMPER by SEXTON, EMILIA
00:39	GOOD! LAYUP by BROTZKI, PAYTON	66-44	H 22	
00:39	GOOD! FT by BROTZKI, PAYTON	66-45	H 21	
00:04	GOOD! FT by SAUNDERS, RACHAEL	66-46	H 20	

Creighton 46, Butler 66

Official Substitutions Log
Creighton vs Butler
Period 1
February 16, 2019 at Hinkle Fieldhouse - Indianapolis, Ind.



VISITORS: Creighton	Time	Score	HOME: Butler
21 ELGER, OLIVIA			11 WEAVER, MICHELLE
45 FABER, AUDREY			15 JENNINGS, WHITNEY
1 OWENS, JADE			23 BREY, SHAE
4 CARDA, TEMI			24 SPOLYAR, KRISTEN
5 AGNEW, JAYLYN			34 SCHICKEL, TORI
SUB OUT: 1 OWENS, JADE	04:54	6-6	
SUB IN: 22 KISSINGER, BROOKE	04:54		
	04:54		SUB OUT: BREY, SHAE
	04:54		SUB IN: CACERES, NAIRA
SUB OUT: 21 ELGER, OLIVIA	04:54		
SUB IN: 2 REMBAO, TATUM	04:54		
SUB OUT: 2 REMBAO, TATUM	02:59	9-8	
SUB IN: 1 OWENS, JADE	02:59		
	01:43	12-12	SUB OUT: WEAVER, MICHELLE
	01:43		SUB IN: BREY, SHAE
SUB OUT: 45 FABER, AUDREY	01:43		
SUB IN: 23 TURNER, MORGAN	01:43		
	00:16	12-14	SUB OUT: SPOLYAR, KRISTEN
	00:16		SUB IN: WEAVER, MICHELLE
SUB OUT: 22 KISSINGER, BROOKE	00:16		
SUB IN: 33 BROTZKI, PAYTON	00:16		
SUB OUT: 5 AGNEW, JAYLYN	00:16		
SUB IN: 45 FABER, AUDREY	00:16		

Creighton 12, Butler 14

Official Substitutions Log
Creighton vs Butler
Period 2
February 16, 2019 at Hinkle Fieldhouse - Indianapolis, Ind.



VISITORS: Creighton	Time	Score	HOME: Butler
21 ELGER, OLIVIA			11 WEAVER, MICHELLE
45 FABER, AUDREY			15 JENNINGS, WHITNEY
1 OWENS, JADE			23 BREY, SHAE
4 CARDA, TEMI			24 SPOLYAR, KRISTEN
5 AGNEW, JAYLYN			34 SCHICKEL, TORI
	07:33	15-18	SUB OUT: JENNINGS, WHITNEY
	07:33		SUB IN: SPOLYAR, KRISTEN
SUB OUT: 1 OWENS, JADE	07:33		
SUB IN: 4 CARDA, TEMI	07:33		
	06:00	15-23	SUB OUT: CACERES, NAIRA
	06:00		SUB IN: JENNINGS, WHITNEY
	06:00		SUB OUT: SCHICKEL, TORI
	06:00		SUB IN: HUMPHREY, SARAH
SUB OUT: 33 BROTZKI, PAYTON	06:00		
SUB IN: 1 OWENS, JADE	06:00		
SUB OUT: 21 ELGER, OLIVIA	06:00		
SUB IN: 22 KISSINGER, BROOKE	06:00		
	04:13	15-25	SUB OUT: BREY, SHAE
	04:13		SUB IN: SCHICKEL, TORI
	02:16	20-30	SUB OUT: HUMPHREY, SARAH
	02:16		SUB IN: CACERES, NAIRA
SUB OUT: 4 CARDA, TEMI	01:44	20-30	
SUB IN: 21 ELGER, OLIVIA	01:44		
	01:01	20-32	SUB OUT: SPOLYAR, KRISTEN
	01:01		SUB IN: BREY, SHAE
SUB OUT: 22 KISSINGER, BROOKE	01:01		
SUB IN: 2 REMBAO, TATUM	01:01		
SUB OUT: 21 ELGER, OLIVIA	01:01		
SUB IN: 33 BROTZKI, PAYTON	01:01		
	00:34	20-32	SUB OUT: WEAVER, MICHELLE
	00:34		SUB IN: SPOLYAR, KRISTEN

Creighton 22, Butler 32

**Official Substitutions Log
Creighton vs Butler**



February 16, 2019 at Hinkle Fieldhouse - Indianapolis, Ind.

VISITORS: Creighton	Time	Score	HOME: Butler
21 ELGER, OLIVIA			11 WEAVER, MICHELLE
45 FABER, AUDREY			15 JENNINGS, WHITNEY
1 OWENS, JADE			23 BREY, SHAE
4 CARDA, TEMI			24 SPOLYAR, KRISTEN
5 AGNEW, JAYLYN			34 SCHICKEL, TORI
	06:35	28-32	SUB OUT: BREY, SHAE
	06:35		SUB IN: CACERES, NAIRA
SUB OUT: 21 ELGER, OLIVIA	06:35		
SUB IN: 2 REMBAO, TATUM	06:35		
SUB OUT: 2 REMBAO, TATUM	06:02	28-33	
SUB IN: 13 SAUNDERS, RACHAEL	06:02		
SUB OUT: 13 SAUNDERS, RACHAEL	02:45	32-42	
SUB IN: 21 ELGER, OLIVIA	02:45		
	00:20	32-45	SUB OUT: SCHICKEL, TORI
	00:20		SUB IN: HUMPHREY, SARAH
	00:20		SUB OUT: SPOLYAR, KRISTEN
	00:20		SUB IN: BREY, SHAE
SUB OUT: 1 OWENS, JADE	00:20		
SUB IN: 33 BROTZKI, PAYTON	00:20		
SUB OUT: 4 CARDA, TEMI	00:20		
SUB IN: 22 KISSINGER, BROOKE	00:20		

Creighton 32, Butler 46

Official Substitutions Log
Creighton vs Butler
Period 4
February 16, 2019 at Hinkle Fieldhouse - Indianapolis, Ind.



VISITORS: Creighton	Time	Score	HOME: Butler
21 ELGER, OLIVIA			11 WEAVER, MICHELLE
45 FABER, AUDREY			15 JENNINGS, WHITNEY
1 OWENS, JADE			23 BREY, SHAE
4 CARDA, TEMI			24 SPOLYAR, KRISTEN
5 AGNEW, JAYLYN			34 SCHICKEL, TORI
SUB OUT: 45 FABER, AUDREY	08:53	32-50	
SUB IN: 12 GRIGLIONE, GRACEY	08:53		
	08:53		SUB OUT: WEAVER, MICHELLE
	08:53		SUB IN: SPOLYAR, KRISTEN
	08:53		SUB OUT: CACERES, NAIRA
	08:53		SUB IN: SCHICKEL, TORI
SUB OUT: 21 ELGER, OLIVIA	07:20	32-54	
SUB IN: 1 OWENS, JADE	07:20		
SUB OUT: 22 KISSINGER, BROOKE	07:20		
SUB IN: 4 CARDA, TEMI	07:20		
SUB OUT: 33 BROTZKI, PAYTON	07:20		
SUB IN: 24 DWORAK, CHLOE	07:20		
	06:20	32-56	SUB OUT: BREY, SHAE
	06:20		SUB IN: SEXTON, EMILIA
	06:20		SUB OUT: JENNINGS, WHITNEY
	06:20		SUB IN: WEAVER, MICHELLE
SUB OUT: 5 AGNEW, JAYLYN	06:20		
SUB IN: 23 TURNER, MORGAN	06:20		
	05:18	32-60	SUB OUT: SCHICKEL, TORI
	05:18		SUB IN: ROSS, ELLEN
SUB OUT: 12 GRIGLIONE, GRACEY	05:18		
SUB IN: 13 SAUNDERS, RACHAEL	05:18		
SUB OUT: 1 OWENS, JADE	05:18		
SUB IN: 45 FABER, AUDREY	05:18		
	04:57	32-61	SUB OUT: SPOLYAR, KRISTEN
	04:57		SUB IN: CACERES, NAIRA
SUB OUT: 4 CARDA, TEMI	03:46	34-61	
SUB IN: 33 BROTZKI, PAYTON	03:46		
	02:48	40-61	SUB OUT: WEAVER, MICHELLE
	02:48		SUB IN: ROBINSON, JAMILYN
SUB OUT: 45 FABER, AUDREY	02:48		
SUB IN: 12 GRIGLIONE, GRACEY	02:48		

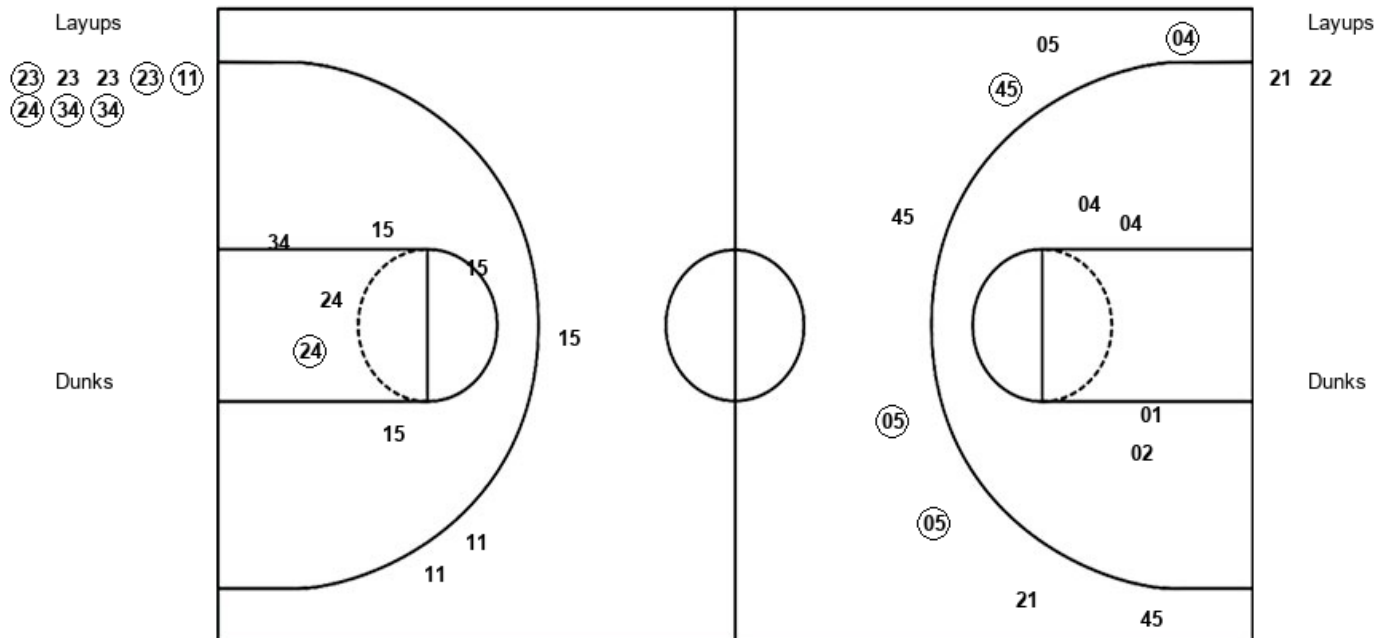
Creighton 46, Butler 66

Official Shot Chart
Creighton vs Butler
PERIOD 1 Shots
 February 16, 2019 at Hinkle Fieldhouse - Indianapolis, Ind.



Butler

Creighton



BUT : Period 1	Made	Att	Pct
Layups	6	8	75.0
Dunks	0	0	0
2PT Field Goals	7	14	50.0
3PT Field Goals	0	3	00.0
Total Field Goals	7	17	41.2

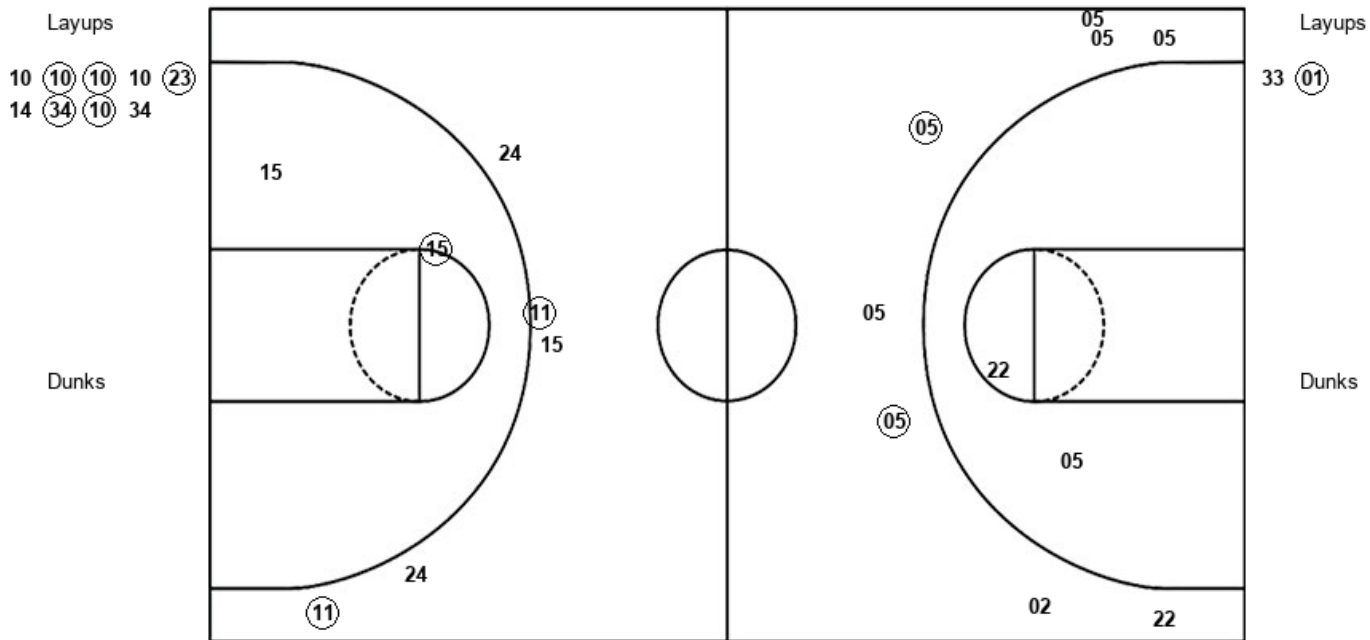
CRE : Period 1	Made	Att	Pct
Layups	0	2	00.0
Dunks	0	0	0
2PT Field Goals	0	6	00.0
3PT Field Goals	4	8	50.0
Total Field Goals	4	14	28.6

Official Shot Chart
Creighton vs Butler
PERIOD 2 Shots
 February 16, 2019 at Hinkle Fieldhouse - Indianapolis, Ind.



Butler

Creighton



BUT : Period 2	Made	Att	Pct
Layups	5	9	55.6
Dunks	0	0	0
2PT Field Goals	6	11	54.5
3PT Field Goals	2	5	40.0
Total Field Goals	8	16	50.0

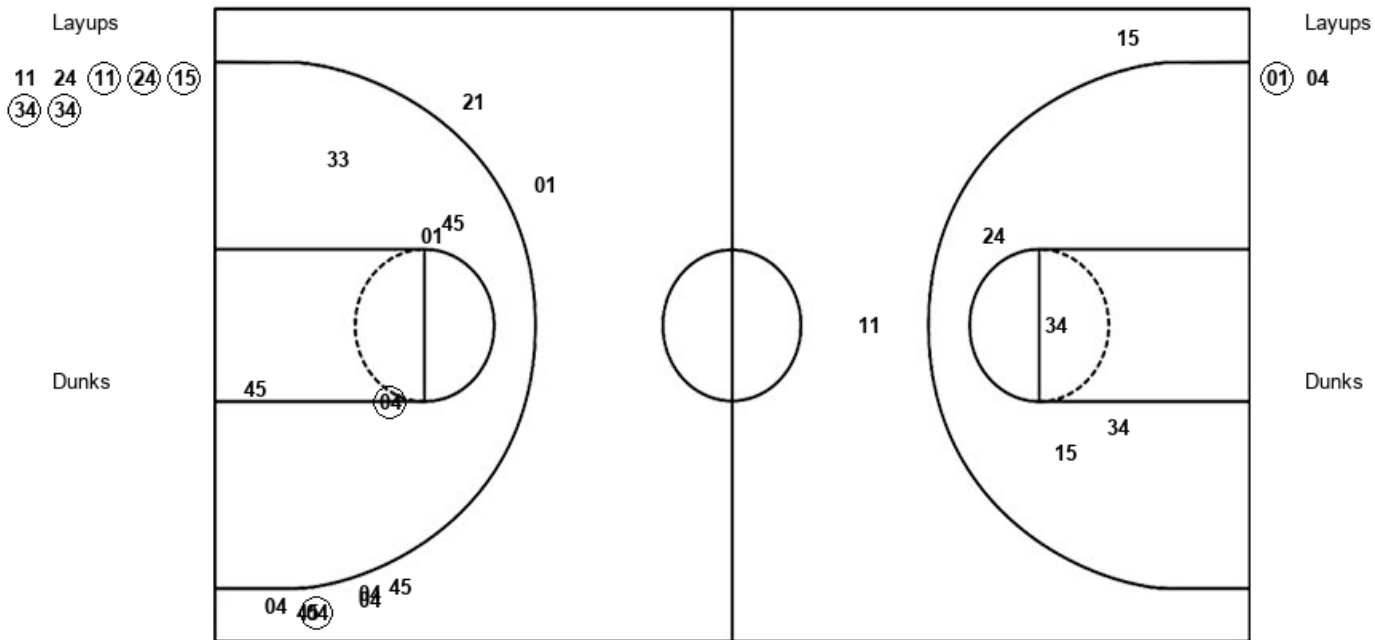
CRE : Period 2	Made	Att	Pct
Layups	1	2	50.0
Dunks	0	0	0
2PT Field Goals	1	4	25.0
3PT Field Goals	2	8	25.0
Total Field Goals	3	12	25.0

Official Shot Chart
Creighton vs Butler
PERIOD 3 Shots
 February 16, 2019 at Hinkle Fieldhouse - Indianapolis, Ind.



Butler

Creighton



BUT : Period 3	Made	Att	Pct
Layups	5	7	71.4
Dunks	0	0	0
2PT Field Goals	5	11	45.5
3PT Field Goals	0	2	00.0
Total Field Goals	5	13	38.5

CRE : Period 3	Made	Att	Pct
Layups	1	2	50.0
Dunks	0	0	0
2PT Field Goals	2	7	28.6
3PT Field Goals	1	8	12.5
Total Field Goals	3	15	20.0

Official Shot Chart
Creighton vs Butler
PERIOD 4 Shots
 February 16, 2019 at Hinkle Fieldhouse - Indianapolis, Ind.

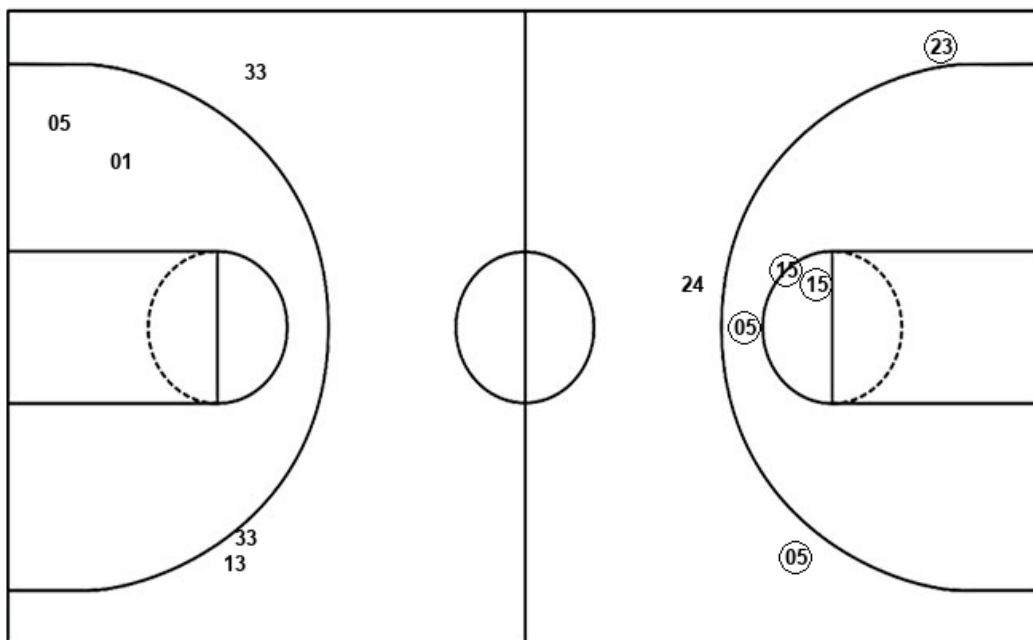


Butler

Creighton

Layups
 15 24 24 14

Layups
 04 45 33 13 12
 12 33



Dunks

Dunks

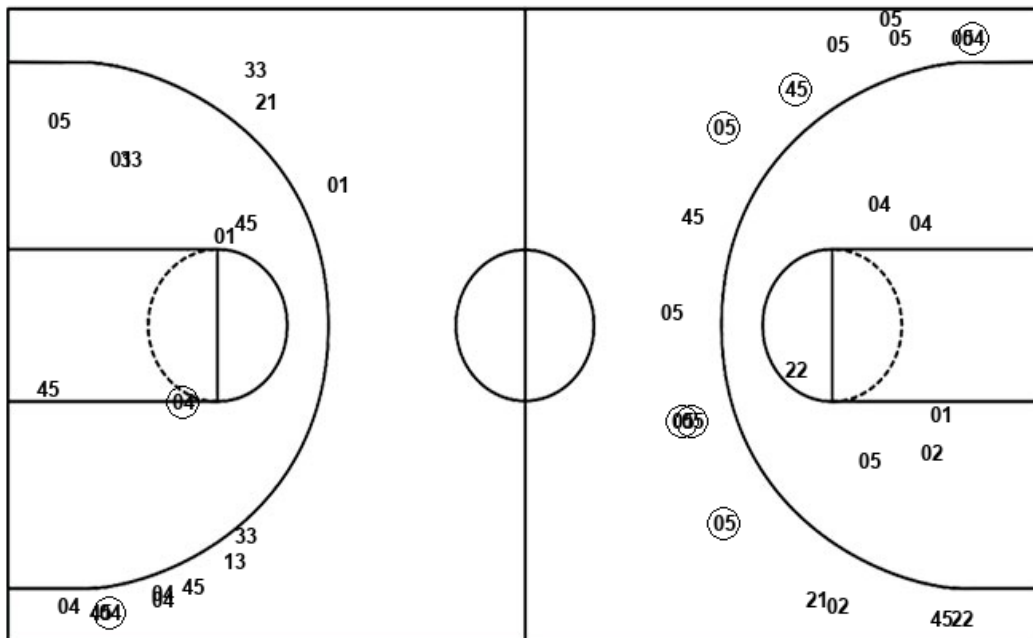
BUT : Period 4	Made	Att	Pct
Layups	3	4	75.0
Dunks	0	0	0
2PT Field Goals	6	7	85.7
3PT Field Goals	2	3	66.7
Total Field Goals	8	10	80.0

CRE : Period 4	Made	Att	Pct
Layups	5	7	71.4
Dunks	0	0	0
2PT Field Goals	5	9	55.6
3PT Field Goals	0	3	00.0
Total Field Goals	5	12	41.7

Official Shot Chart
Creighton vs Butler
Creighton Team Shots
 February 16, 2019 at Hinkle Fieldhouse - Indianapolis, Ind.



Layups



Layups

21 22 33 (01) (01)
 04 04 (45) (33) (13)
 (12) 12 (33)

Dunks

Dunks

CRE : Period 1	Made	Att	Pct
Layups	0	2	00.0
Dunks	0	0	0
2PT Field Goals	0	6	00.0
3PT Field Goals	4	8	50.0
Total Field Goals	4	14	28.6

CRE : Period 2	Made	Att	Pct
Layups	1	2	50.0
Dunks	0	0	0
2PT Field Goals	1	4	25.0
3PT Field Goals	2	8	25.0
Total Field Goals	3	12	25.0

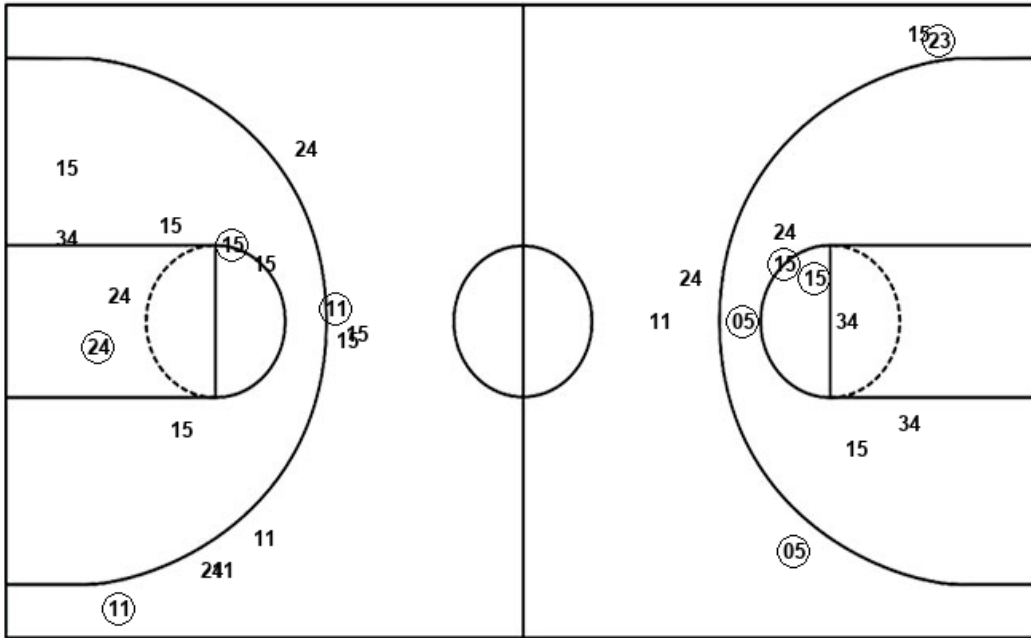
CRE : Period 3	Made	Att	Pct
Layups	1	2	50.0
Dunks	0	0	0
2PT Field Goals	2	7	28.6
3PT Field Goals	1	8	12.5
Total Field Goals	3	15	20.0

CRE : Period 4	Made	Att	Pct
Layups	5	7	71.4
Dunks	0	0	0
2PT Field Goals	5	9	55.6
3PT Field Goals	0	3	00.0
Total Field Goals	5	12	41.7

Official Shot Chart
Creighton vs Butler
Butler Team Shots
 February 16, 2019 at Hinkle Fieldhouse - Indianapolis, Ind.



Layups



Layups



Dunks

Dunks

BUT : Period 1	Made	Att	Pct
Layups	6	8	75.0
Dunks	0	0	0
2PT Field Goals	7	14	50.0
3PT Field Goals	0	3	00.0
Total Field Goals	7	17	41.2

BUT : Period 2	Made	Att	Pct
Layups	5	9	55.6
Dunks	0	0	0
2PT Field Goals	6	11	54.5
3PT Field Goals	2	5	40.0
Total Field Goals	8	16	50.0

BUT : Period 3	Made	Att	Pct
Layups	5	7	71.4
Dunks	0	0	0
2PT Field Goals	5	11	45.5
3PT Field Goals	0	2	00.0
Total Field Goals	5	13	38.5

BUT : Period 4	Made	Att	Pct
Layups	3	4	75.0
Dunks	0	0	0
2PT Field Goals	6	7	85.7
3PT Field Goals	2	3	66.7
Total Field Goals	8	10	80.0