

## FINAL SCORE

**LSU**

**43**



**Rutgers**

**57**



December 15, 2018 • The RAC - Piscataway, N.J.

## FINAL STATISTICS

**Official Box Score**  
**LSU vs Rutgers**  
**Game Totals -- Final Statistics**  
**December 15, 2018 at The RAC - Piscataway, N.J.**



**LSU 43**

No.	Player	S	Pts	FG	3FG	FT	OR	DR	TR	PF	A	TO	Blk	Stl	Min	+/-	
02	NORTON, SHANICE		2	1-3	0-2	0-0	0	0	0	4	0	4	0	2	33	0	
03	POINTER, KHAYLA		21	8-16	2-3	3-4	0	2	2	2	2	7	0	2	35	-16	
05	MITCHELL, AYANA		8	4-9	0-0	0-0	5	4	9	2	2	4	0	2	33	-2	
13	RICHARD-HARRIS, JAELYN		3	1-6	1-4	0-0	2	2	4	4	2	4	0	4	29	-9	
24	AIFUWA, FAUSTINE		5	2-11	0-0	1-2	4	5	9	5	0	1	1	2	30	-4	
01	CHERRY, JAILIN		2	1-3	0-2	0-0	1	2	3	0	1	1	0	0	13	-11	
12	BROOKS, MERCEDES		0	0-5	0-2	0-0	0	0	0	0	0	1	0	0	7	-4	
15	BIDIKUINDILA, YASMINE		0	0-0	0-0	0-0	1	2	3	1	1	0	0	0	6	-7	
23	SEAY, KARLI		2	0-2	0-1	2-2	1	0	1	1	1	0	0	0	11	-12	
25	SPENCER, RAKELL		0	0-0	0-0	0-0	0	0	0	1	0	1	0	0	1	-5	
<b>TEAM</b>							4	1	5	0	2						
<b>TOTALS</b>		<b>43</b>	<b>17-55</b>	<b>3-14</b>	<b>6-8</b>	<b>18</b>	<b>18</b>	<b>36</b>	<b>20</b>	<b>9</b>	<b>25</b>	<b>1</b>	<b>12</b>	<b>200</b>			

*Shooting By Period*

Period	FG	FG%	3FG	3FG%	FT	FT%
1st Qtr	5-10	50%	1-5	20%	2-2	100%
2nd Qtr	3-11	27%	0-1	00%	0-0	0%
3rd Qtr	6-20	30%	1-3	33%	0-0	0%
4th Qtr	3-14	21%	1-5	20%	4-6	67%
1st Half	8-21	38%	1-6	17%	2-2	100%
2nd Half	9-34	26%	2-8	25%	4-6	67%
<b>Game</b>	<b>17-55</b>	<b>30.9%</b>	<b>3-14</b>	<b>21.4%</b>	<b>6-8</b>	<b>75.0%</b>

*Last FG: 4th-01:20*  
*Biggest Run: 9-0*  
*Largest lead: By 8 at 1-00:40*  
*Technical Fouls: #24 AIFUWA (Double) @ 4th - 03:32;*

**Rutgers 57**

No.	Player	S	Pts	FG	3FG	FT	OR	DR	TR	PF	A	TO	Blk	Stl	Min	+/-	
03	WILSON, CHARISE		5	2-6	1-2	0-0	0	1	1	0	1	2	0	0	26	-4	
05	CRYOR, CIANI		10	2-5	1-3	5-6	0	2	2	2	0	4	0	2	16	4	
24	GUIRANTES, ARELLA		16	6-13	1-2	3-6	2	3	5	1	4	1	0	5	37	20	
35	CAREY, STASHA		6	2-4	0-1	2-2	1	0	1	1	1	2	0	0	21	1	
40	HARRIS, VICTORIA		6	3-4	0-0	0-0	2	4	6	4	0	2	1	5	24	20	
01	BROUGHTON, ZIPPORAH		5	2-5	0-1	1-1	0	1	1	1	1	1	0	1	17	15	
02	PELEG PELC, NOGA		5	1-5	1-4	2-2	0	1	1	2	0	2	1	0	19	2	
13	GILLES, MAEL		2	1-2	0-1	0-0	0	1	1	1	0	0	0	0	12	13	
15	JENKINS, CAITLIN		2	0-3	0-0	2-4	4	5	9	2	1	2	0	0	20	-5	
31	MACK, TEKIA		0	0-0	0-0	0-0	1	0	1	1	0	1	0	0	7	-1	
44	WALLACE, JORDAN		0	0-0	0-0	0-0	0	0	0	1	0	0	0	0	1	5	
<b>TEAM</b>							2	0	2	0	1						
<b>TOTALS</b>		<b>57</b>	<b>19-47</b>	<b>4-14</b>	<b>15-21</b>	<b>12</b>	<b>18</b>	<b>30</b>	<b>16</b>	<b>8</b>	<b>18</b>	<b>2</b>	<b>13</b>	<b>200</b>			

*Shooting By Period*

Period	FG	FG%	3FG	3FG%	FT	FT%
1st Qtr	2-10	20%	1-5	20%	2-4	50%
2nd Qtr	8-16	50%	2-5	40%	3-6	50%
3rd Qtr	5-11	45%	0-2	00%	1-1	100%
4th Qtr	4-10	40%	1-2	50%	9-10	90%
1st Half	10-26	38%	3-10	30%	5-10	50%
2nd Half	9-21	43%	1-4	25%	10-11	91%
<b>Game</b>	<b>19-47</b>	<b>40.4%</b>	<b>4-14</b>	<b>28.6%</b>	<b>15-21</b>	<b>71.4%</b>

*Last FG: 4th-01:47*  
*Biggest Run: 10-0*  
*Largest lead: By 14 at 4-00:19*  
*Technical Fouls: #24 GUIRANTES (Double) @ 4th - 03:32;*

*Game Notes:*

*Officials: Beverly Roberts, Denise Brooks, Tiara Cruise*  
*Attendance: 1726*

*Start Time: 2018-12-15 21:07:02*  
*End Time: 2018-12-15 23:16:56*  
*Game Duration: 129*

Score	1st	2nd	3rd	4th	TOT
LSU	13	6	13	11	<b>43</b>
RUT	7	21	11	18	<b>57</b>

*LSU led for 10:32. RUT led for 24:21.*  
*Game was tied for 5:07.*  
*Times tied: 4      Lead Changes: 1*

Points from	LSU	RUT
In the Paint	22	24
Off Turns	15	27
2nd Chance	11	17
Fast Break	7	8
Bench	4	14

**Official Box Score**  
**LSU vs Rutgers**  
**First Half Statistics Only**  
**December 15, 2018 at The RAC - Piscataway, N.J.**



**LSU 19**

No.	Player	S	Pts	FG	3FG	FT	OR	DR	TR	PF	A	TO	Blk	Stl	Min	+/-
01	CHERRY, JAILIN		2	1-2	0-1	0-0	0	2	2	0	1	0	0	0	10	-6
02	NORTON, SHANICE		0	0-0	0-0	0-0	0	0	0	1	0	3	0	0	13	5
03	POINTER, KHAYLA		11	4-6	1-1	2-2	0	2	2	1	1	3	0	0	17	-9
05	MITCHELL, AYANA		4	2-2	0-0	0-0	0	3	3	2	0	2	0	0	16	-1
12	BROOKS, MERCEDES		0	0-5	0-2	0-0	0	0	0	0	0	0	0	0	6	-2
13	RICHARD-HARRIS, JAELYN		0	0-2	0-2	0-0	1	0	1	1	1	4	0	1	13	-6
15	BIDIKUINDILA, YASMINE		0	0-0	0-0	0-0	0	1	1	0	0	0	0	0	2	-8
23	SEAY, KARLI		0	0-1	0-0	0-0	1	0	1	0	1	0	0	0	6	-9
24	AIFUWA, FAUSTINE		2	1-3	0-0	0-0	1	3	4	2	0	0	0	1	15	-4
25	SPENCER, RAKELL		0	0-0	0-0	0-0	0	0	0	1	0	1	0	0	1	-5
	TEAM		0	0-0	0-0	0-0	2	0	2	0	0	1	0	0	0	
	<b>TOTALS</b>		<b>19</b>	<b>8-21</b>	<b>1-6</b>	<b>2-2</b>	<b>0</b>	<b>0</b>	<b>16</b>	<b>8</b>	<b>4</b>	<b>14</b>	<b>0</b>	<b>2</b>	<b>100</b>	

*Shooting By Period*

Period	FG	FG%	3FG	3FG%	FT	FT%
1st Qtr	5-10	50%	1-5	20%	2-2	100%
2nd Qtr	3-11	27%	0-1	00%	0-0	0%
1st Half	8-21	38%	1-6	17%	2-2	100%
Game	17-55	30.9%	3-14	21.4%	6-8	75.0%

*Last FG Half: LSU 2nd-02:07*

**Rutgers 28**

No.	Player	S	Pts	FG	3FG	FT	OR	DR	TR	PF	A	TO	Blk	Stl	Min	+/-
01	BROUGHTON, ZIPPORAH		0	0-2	0-1	0-0	0	0	0	0	0	0	0	0	5	7
02	PELEG PELC, NOGA		3	1-4	1-3	0-0	0	0	0	1	0	0	0	0	10	-2
03	WILSON, CHARISE		5	2-4	1-2	0-0	0	1	1	0	0	1	0	0	18	6
05	CRYOR, CIANI		0	0-2	0-2	0-0	0	0	0	2	0	2	0	0	5	-4
13	GILLES, MAEL		0	0-0	0-0	0-0	0	0	0	0	0	0	0	0	5	5
15	JENKINS, CAITLIN		2	0-2	0-0	2-4	3	2	5	0	1	2	0	0	11	8
24	GUIRANTES, ARELLA		10	4-8	1-2	1-4	1	2	3	0	2	0	0	3	17	15
31	MACK, TEKIA		0	0-0	0-0	0-0	0	0	0	0	0	0	0	0	3	-4
35	CAREY, STASHA		4	1-2	0-0	2-2	1	0	1	1	1	0	0	0	16	8
40	HARRIS, VICTORIA		4	2-2	0-0	0-0	1	1	2	1	0	1	0	2	10	1
44	WALLACE, JORDAN		0	0-0	0-0	0-0	0	0	0	0	0	0	0	0	0	5
	TEAM		0	0-0	0-0	0-0	1	0	1	0	0	1	0	0	0	
	<b>TOTALS</b>		<b>28</b>	<b>10-26</b>	<b>3-10</b>	<b>5-10</b>	<b>0</b>	<b>0</b>	<b>13</b>	<b>5</b>	<b>4</b>	<b>7</b>	<b>0</b>	<b>5</b>	<b>100</b>	

*Shooting By Period*

Period	FG	FG%	3FG	3FG%	FT	FT%
1st Qtr	2-10	20%	1-5	20%	2-4	50%
2nd Qtr	8-16	50%	2-5	40%	3-6	50%
1st Half	10-26	38%	3-10	30%	5-10	50%
Game	19-47	40.4%	4-14	28.6%	15-21	71.4%

*Last FG Half: RUT 2nd-00:04*

Game Notes:

Officials: Beverly Roberts, Denise Brooks, Tiara Cruise  
 Attendance: 1726

Start Time: 2018-12-15 21:07:02  
 End Time: 2018-12-15 23:16:56  
 Game Duration: 129

Score	1st	2nd	3rd	4th	TOT
LSU	13	6	13	11	<b>43</b>
RUT	7	21	11	18	<b>57</b>

Points from (This Period)	LSU	RUT
In the Paint	10	10
Off Turns	5	11
2nd Chance	5	10
Fast Break	2	3
Bench	2	5

**Official Box Score**  
**LSU vs Rutgers**  
**First Quarter Statistics Only**  
**December 15, 2018 at The RAC - Piscataway, N.J.**



**LSU 13**

No.	Player	S	Pts	FG	3FG	FT	OR	DR	TR	PF	A	TO	Blk	Stl	Min	+/-
02	NORTON, SHANICE		0	0-0	0-0	0-0	0	0	0	0	0	2	0	0	10	7
03	POINTER, KHAYLA		9	3-3	1-1	2-2	0	1	1	0	1	2	0	0	8	6
05	MITCHELL, AYANA		2	1-1	0-0	0-0	0	3	3	0	0	1	0	0	9	8
13	RICHARD-HARRIS, JAELYN		0	0-2	0-2	0-0	1	0	1	1	1	2	0	1	7	3
24	AIFUWA, FAUSTINE		2	1-1	0-0	0-0	0	2	2	1	0	0	0	0	8	2
01	CHERRY, JAILIN		0	0-1	0-1	0-0	0	1	1	0	1	0	0	0	5	3
12	BROOKS, MERCEDES		0	0-2	0-1	0-0	0	0	0	0	0	0	0	0	2	3
15	BIDIKUINDILA, YASMINE		0	0-0	0-0	0-0	0	0	0	0	0	0	0	0	0	-1
23	SEAY, KARLI		0	0-0	0-0	0-0	0	0	0	0	0	0	0	0	0	-1
25	SPENCER, RAKELL		0	0-0	0-0	0-0	0	0	0	0	0	0	0	0	0	0
	TEAM						1	0	1	0		1				
	<b>TOTALS</b>		<b>13</b>	<b>5-10</b>	<b>1-5</b>	<b>2-2</b>	<b>0</b>	<b>0</b>	<b>9</b>	<b>2</b>	<b>3</b>	<b>8</b>	<b>0</b>	<b>1</b>	<b>50</b>	

*Shooting By Period*

Period	FG	FG%	3FG	3FG%	FT	FT%
1st Qtr	5-10	50%	1-5	20%	2-2	100%
2nd Qtr	3-11	27%	0-1	00%	0-0	0%
1st Half	5-10	50%	1-5	20%	2-2	100%
1st Half	8-21	38%	1-6	17%	2-2	100%
Game	17-55	30.9%	3-14	21.4%	6-8	75.0%

**Rutgers 7**

No.	Player	S	Pts	FG	3FG	FT	OR	DR	TR	PF	A	TO	Blk	Stl	Min	+/-
03	WILSON, CHARISE		3	1-3	1-2	0-0	0	0	0	0	0	1	0	0	10	-6
05	CRYOR, CIANI		0	0-2	0-2	0-0	0	0	0	2	0	2	0	0	5	-4
24	GUIRANTES, ARELLA		2	1-2	0-0	0-2	1	0	1	0	1	0	0	1	7	0
35	CAREY, STASHA		2	0-0	0-0	2-2	0	0	0	0	0	0	0	0	7	-2
40	HARRIS, VICTORIA		0	0-0	0-0	0-0	0	0	0	1	0	0	0	1	6	-3
01	BROUGHTON, ZIPPORAH		0	0-1	0-0	0-0	0	0	0	0	0	0	0	0	1	0
02	PELEG PELC, NOGA		0	0-1	0-1	0-0	0	0	0	1	0	0	0	0	7	-8
13	GILLES, MAEL		0	0-0	0-0	0-0	0	0	0	0	0	0	0	0	0	0
15	JENKINS, CAITLIN		0	0-1	0-0	0-0	0	1	1	0	0	1	0	0	4	-3
31	MACK, TEKIA		0	0-0	0-0	0-0	0	0	0	0	0	0	0	0	3	-4
44	WALLACE, JORDAN		0	0-0	0-0	0-0	0	0	0	0	0	0	0	0	0	0
	TEAM						0	0	0	0		1				
	<b>TOTALS</b>		<b>7</b>	<b>2-10</b>	<b>1-5</b>	<b>2-4</b>	<b>0</b>	<b>0</b>	<b>2</b>	<b>4</b>	<b>1</b>	<b>5</b>	<b>0</b>	<b>2</b>	<b>50</b>	

*Shooting By Period*

Period	FG	FG%	3FG	3FG%	FT	FT%
1st Qtr	2-10	20%	1-5	20%	2-4	50%
2nd Qtr	8-16	50%	2-5	40%	3-6	50%
1st Half	2-10	20%	1-5	20%	2-4	50%
1st Half	10-26	38%	3-10	30%	5-10	50%
Game	19-47	40.4%	4-14	28.6%	15-21	71.4%

Game Notes:

Officials: Beverly Roberts, Denise Brooks, Tiara Cruise  
Attendance: 1726

Start Time: 2018-12-15 21:07:02  
End Time: 2018-12-15 23:16:56  
Game Duration: 129

Score	1st	2nd	3rd	4th	TOT
LSU	13	6	13	11	<b>43</b>
RUT	7	21	11	18	<b>57</b>

Points from (This Period)	LSU	RUT
In the Paint	8	2
Off Turns	5	5
2nd Chance	3	3
Fast Break	2	0
Bench	0	0

**Official By-By-Play**  
**LSU vs Rutgers**  
**First Quarter**  
**December 15, 2018 at The RAC - Piscataway, N.J.**



**Period 1**

**Starters:**

**LSU:** 2 NORTON, SHANICE; 3 POINTER, KHAYLA; 5 MITCHELL, AYANA; 13 RICHARD-HARRIS, JAELYN; 24 AIFUWA, FAUSTINE;

**Rutgers:** 3 WILSON, CHARISE; 5 CRYOR, CIANI; 24 GUIRANTES, ARELLA; 35 CAREY, STASHA; 40 HARRIS, VICTORIA;

Time	VISITORS: LSU	Score	Margin	HOME: Rutgers
09:35	TURNOVER (BADPASS) by POINTER, KHAYLA			
09:35				STEAL by HARRIS, VICTORIA
09:11				MISSED JUMPER by WILSON, CHARISE
09:07	REBOUND (DEF) by AIFUWA, FAUSTINE			
08:56	TURNOVER (BADPASS) by POINTER, KHAYLA			
08:56				STEAL by GUIRANTES, ARELLA
08:38				FOUL (OFF) by CRYOR, CIANI
08:38				TURNOVER (OFFENSIVE) by CRYOR, CIANI
08:38	SUB OUT: POINTER, KHAYLA			
08:38	SUB IN: CHERRY, JAILIN			
08:08	MISSED 3PTR by CHERRY, JAILIN			
08:06	REBOUND (OFF) by TEAM			
08:03	TURNOVER (SHOTCLOCK) by			
07:39				MISSED JUMPER by GUIRANTES, ARELLA
07:35	REBOUND (DEF) by CHERRY, JAILIN			
07:33	TURNOVER (TRAVEL) by RICHARD-HARRIS, JAELYN			
07:33				SUB OUT: GUIRANTES, ARELLA
07:33				SUB IN: PELEG PELC, NOGA
07:33				SUB OUT: CAREY, STASHA
07:33				SUB IN: MACK, TEKIA
07:19				MISSED 3PTR by WILSON, CHARISE
07:16	REBOUND (DEF) by MITCHELL, AYANA			
07:07				FOUL (PERSONAL) by PELEG PELC, NOGA
06:58	TURNOVER (BADPASS) by RICHARD-HARRIS, JAELYN			
06:41	FOUL (PERSONAL) by RICHARD-HARRIS, JAELYN			
06:41	SUB OUT: RICHARD-HARRIS, JAELYN			
06:41	SUB IN: POINTER, KHAYLA			
06:20				MISSED 3PTR by CRYOR, CIANI
06:16	REBOUND (DEF) by POINTER, KHAYLA			
06:12	GOOD! LAYUP by MITCHELL, AYANA [FB]	0-2	V 2	
06:12	ASSIST by CHERRY, JAILIN			
05:53				MISSED 3PTR by CRYOR, CIANI
05:49	REBOUND (DEF) by MITCHELL, AYANA			
05:36	GOOD! LAYUP by AIFUWA, FAUSTINE	0-4	V 4	
05:36	ASSIST by POINTER, KHAYLA			
05:16				FOUL (OFF) by CRYOR, CIANI
05:16				TURNOVER (OFFENSIVE) by CRYOR, CIANI
05:16				SUB OUT: CRYOR, CIANI
05:16				SUB IN: GUIRANTES, ARELLA
05:04	TURNOVER (LOSTBALL) by NORTON, SHANICE			
04:36				SUB OUT: MACK, TEKIA
04:36				SUB IN: CAREY, STASHA
04:32				TURNOVER (SHOTCLOCK) by
04:16				FOUL (PERSONAL) by HARRIS, VICTORIA
04:16	GOOD! FT by POINTER, KHAYLA	0-5	V 5	
04:16				SUB OUT: HARRIS, VICTORIA
04:16				SUB IN: JENKINS, CAITLIN
04:16	GOOD! FT by POINTER, KHAYLA	0-6	V 6	
04:06				MISSED LAYUP by JENKINS, CAITLIN
04:03	REBOUND (DEF) by AIFUWA, FAUSTINE			
03:55	TURNOVER (TRAVEL) by MITCHELL, AYANA			
03:39				MISSED 3PTR by PELEG PELC, NOGA
03:36				REBOUND (OFF) by GUIRANTES, ARELLA
03:34		3-6	V 3	GOOD! 3PTR by WILSON, CHARISE
03:34				ASSIST by GUIRANTES, ARELLA
03:15	TURNOVER (3SEC) by NORTON, SHANICE			
03:15	SUB OUT: CHERRY, JAILIN			
03:15	SUB IN: RICHARD-HARRIS, JAELYN			
02:53		5-6	V 1	GOOD! LAYUP by GUIRANTES, ARELLA
02:29	GOOD! JUMPER by POINTER, KHAYLA [PNT]	5-8	V 3	
02:11				TURNOVER (LOSTBALL) by WILSON, CHARISE
02:11	STEAL by RICHARD-HARRIS, JAELYN			
02:11	SUB OUT: AIFUWA, FAUSTINE			
02:11	SUB IN: BROOKS, MERCEDES			
02:02	MISSED 3PTR by RICHARD-HARRIS, JAELYN			
01:57	REBOUND (OFF) by RICHARD-HARRIS, JAELYN			
01:50	GOOD! 3PTR by POINTER, KHAYLA	5-11	V 6	
01:50	ASSIST by RICHARD-HARRIS, JAELYN			
01:27				TURNOVER (3SEC) by JENKINS, CAITLIN

Time	VISITORS: LSU	Score	Margin	HOME: Rutgers
01:27				SUB OUT: GUIRANTES, ARELLA
01:27				SUB IN: BROUGHTON, ZIPPORAH
01:05	MISSED LAYUP by BROOKS, MERCEDES			
01:01				REBOUND (DEF) by JENKINS, CAITLIN
00:58				MISSED JUMPER by BROUGHTON, ZIPPORAH
00:54	REBOUND (DEF) by MITCHELL, AYANA			
00:40	GOOD! LAYUP by POINTER, KHAYLA [PNT]	5-13	V 8	
00:34				TIMEOUT 30SEC
00:34				SUB OUT: PELEG PELC, NOGA
00:34				SUB IN: HARRIS, VICTORIA
00:34				SUB OUT: JENKINS, CAITLIN
00:34				SUB IN: GUIRANTES, ARELLA
00:34	SUB OUT: MITCHELL, AYANA			
00:34	SUB IN: AIFUWA, FAUSTINE			
00:15	FOUL (PERSONAL) by AIFUWA, FAUSTINE			
00:15		6-13	V 7	GOOD! FT by CAREY, STASHA
00:15	SUB OUT: NORTON, SHANICE			
00:15	SUB IN: BIDIKUINDILA, YASMINE			
00:15	SUB OUT: AIFUWA, FAUSTINE			
00:15	SUB IN: SEAY, KARLI			
00:15		7-13	V 6	GOOD! FT by CAREY, STASHA
00:03	MISSED 3PTR by RICHARD-HARRIS, JAELYN			
00:02	REBOUND (OFF) by TEAM			
00:00	MISSED 3PTR by BROOKS, MERCEDES			
00:00	REBOUND (OFF) by TEAM			

### LSU 13, Rutgers 7

Points from (This Period)	LSU	RUT
In the Paint	8	2
Off Turns	5	5
2nd Chance	3	3
Fast Break	2	0
Bench	0	0

**Official Box Score**  
**LSU vs Rutgers**  
**Second Quarter Statistics Only**  
**December 15, 2018 at The RAC - Piscataway, N.J.**



**LSU 6**

No.	Player	S	Pts	FG	3FG	FT	OR	DR	TR	PF	A	TO	Blk	Stl	Min	+/-
02	NORTON, SHANICE		0	0-0	0-0	0-0	0	0	0	1	0	1	0	0	3	-2
03	POINTER, KHAYLA		2	1-3	0-0	0-0	0	1	1	1	0	1	0	0	9	-15
05	MITCHELL, AYANA		2	1-1	0-0	0-0	0	0	0	2	0	1	0	0	7	-9
13	RICHARD-HARRIS, JAELYN		0	0-0	0-0	0-0	0	0	0	0	0	2	0	0	6	-9
24	AIFUWA, FAUSTINE		0	0-2	0-0	0-0	1	1	2	1	0	0	0	1	7	-6
01	CHERRY, JAILIN		2	1-1	0-0	0-0	0	1	1	0	0	0	0	0	5	-9
12	BROOKS, MERCEDES		0	0-3	0-1	0-0	0	0	0	0	0	0	0	0	4	-5
15	BIDIKUINDILA, YASMINE		0	0-0	0-0	0-0	0	1	1	0	0	0	0	0	2	-7
23	SEAY, KARLI		0	0-1	0-0	0-0	1	0	1	0	1	0	0	0	6	-8
25	SPENCER, RAKELL		0	0-0	0-0	0-0	0	0	0	1	0	1	0	0	1	-5
TEAM							1	0	1	0		0				
<b>TOTALS</b>			<b>6</b>	<b>3-11</b>	<b>0-1</b>	<b>0-0</b>	<b>0</b>	<b>0</b>	<b>7</b>	<b>6</b>	<b>1</b>	<b>6</b>	<b>0</b>	<b>1</b>	<b>50</b>	

*Shooting By Period*

Period	FG	FG%	3FG	3FG%	FT	FT%
3rd Qtr	6-20	30%	1-3	33%	0-0	0%
4th Qtr	3-14	21%	1-5	20%	4-6	67%
2nd Half	3-11	27%	0-1	00%	0-0	0%
2nd Half	9-34	26%	2-8	25%	4-6	67%
Game	17-55	30.9%	3-14	21.4%	6-8	75.0%

**Rutgers 21**

No.	Player	S	Pts	FG	3FG	FT	OR	DR	TR	PF	A	TO	Blk	Stl	Min	+/-
03	WILSON, CHARISE		2	1-1	0-0	0-0	0	1	1	0	0	0	0	0	8	12
05	CRYOR, CIANI		0	0-0	0-0	0-0	0	0	0	0	0	0	0	0	0	0
24	GUIRANTES, ARELLA		8	3-6	1-2	1-2	0	2	2	0	1	0	0	2	10	15
35	CAREY, STASHA		2	1-2	0-0	0-0	1	0	1	1	1	0	0	0	9	10
40	HARRIS, VICTORIA		4	2-2	0-0	0-0	1	1	2	0	0	1	0	1	4	4
01	BROUGHTON, ZIPPORAH		0	0-1	0-1	0-0	0	0	0	0	0	0	0	0	4	7
02	PELEG PELC, NOGA		3	1-3	1-2	0-0	0	0	0	0	0	0	0	0	3	6
13	GILLES, MAEL		0	0-0	0-0	0-0	0	0	0	0	0	0	0	0	5	5
15	JENKINS, CAITLIN		2	0-1	0-0	2-4	3	1	4	0	1	1	0	0	7	11
31	MACK, TEKIA		0	0-0	0-0	0-0	0	0	0	0	0	0	0	0	0	0
44	WALLACE, JORDAN		0	0-0	0-0	0-0	0	0	0	0	0	0	0	0	0	5
TEAM							1	0	1	0		0				
<b>TOTALS</b>			<b>21</b>	<b>8-16</b>	<b>2-5</b>	<b>3-6</b>	<b>0</b>	<b>0</b>	<b>11</b>	<b>1</b>	<b>3</b>	<b>2</b>	<b>0</b>	<b>3</b>	<b>50</b>	

*Shooting By Period*

Period	FG	FG%	3FG	3FG%	FT	FT%
3rd Qtr	5-11	45%	0-2	00%	1-1	100%
4th Qtr	4-10	40%	1-2	50%	9-10	90%
2nd Half	8-16	50%	2-5	40%	3-6	50%
2nd Half	9-21	43%	1-4	25%	10-11	91%
Game	19-47	40.4%	4-14	28.6%	15-21	71.4%

Game Notes:

Officials: Beverly Roberts, Denise Brooks, Tiara Cruise  
Attendance: 1726

Start Time: 2018-12-15 21:07:02  
End Time: 2018-12-15 23:16:56  
Game Duration: 129

Score	1st	2nd	3rd	4th	TOT
LSU	13	6	13	11	<b>43</b>
RUT	7	21	11	18	<b>57</b>

Points from (This Period)	LSU	RUT
In the Paint	2	8
Off Turns	0	6
2nd Chance	2	7
Fast Break	0	3
Bench	2	5

**Official By-By-Play**  
**LSU vs Rutgers**  
**Second Quarter**  
**December 15, 2018 at The RAC - Piscataway, N.J.**



**Period 2**

**Starters:**

**LSU:** 2 NORTON, SHANICE; 3 POINTER, KHAYLA; 5 MITCHELL, AYANA; 13 RICHARD-HARRIS, JAELYN; 24 AIFUWA, FAUSTINE;

**Rutgers:** 3 WILSON, CHARISE; 5 CRYOR, CIANI; 24 GUIRANTES, ARELLA; 35 CAREY, STASHA; 40 HARRIS, VICTORIA;

Time	VISITORS: LSU	Score	Margin	HOME: Rutgers
09:49		9-13	V 4	GOOD! LAYUP by HARRIS, VICTORIA
09:49				ASSIST by CAREY, STASHA
09:38	GOOD! LAYUP by MITCHELL, AYANA	9-15	V 6	
09:13		11-15	V 4	GOOD! JUMPER by GUIRANTES, ARELLA
08:48	TURNOVER (LOSTBALL) by RICHARD-HARRIS, JAELYN			
08:48				STEAL by HARRIS, VICTORIA
08:48	SUB OUT: BIDIKUINDILA, YASMINE			
08:48	SUB IN: NORTON, SHANICE			
08:29				MISSED 3PTR by BROUGHTON, ZIPPORAH
08:26				REBOUND (OFF) by HARRIS, VICTORIA
08:24		13-15	V 2	GOOD! LAYUP by HARRIS, VICTORIA
08:01				SUB OUT: BROUGHTON, ZIPPORAH
08:01				SUB IN: GILLES, MAEL
08:01	SUB OUT: BROOKS, MERCEDES			
08:01	SUB IN: AIFUWA, FAUSTINE			
07:50	MISSED JUMPER by AIFUWA, FAUSTINE			
07:46				REBOUND (DEF) by HARRIS, VICTORIA
07:28		15-15	T	GOOD! LAYUP by WILSON, CHARISE
07:03	GOOD! JUMPER by POINTER, KHAYLA	15-17	V 2	
06:38				TURNOVER (BADPASS) by HARRIS, VICTORIA
06:38	STEAL by AIFUWA, FAUSTINE			
06:31	FOUL (OFF) by MITCHELL, AYANA			
06:31	TURNOVER (OFFENSIVE) by MITCHELL, AYANA			
06:31				SUB OUT: HARRIS, VICTORIA
06:31				SUB IN: JENKINS, CAITLIN
06:31	SUB OUT: POINTER, KHAYLA			
06:31	SUB IN: SEAY, KARLI			
06:05				MISSED 3PTR by GUIRANTES, ARELLA
06:02				REBOUND (OFF) by CAREY, STASHA
05:57	FOUL (PERSONAL) by NORTON, SHANICE			
05:38				TURNOVER (TRAVEL) by JENKINS, CAITLIN
05:29	TURNOVER (TRAVEL) by NORTON, SHANICE			
05:29	SUB OUT: NORTON, SHANICE			
05:29	SUB IN: POINTER, KHAYLA			
05:15		17-17	T	GOOD! JUMPER by GUIRANTES, ARELLA
04:40	TURNOVER (BADPASS) by RICHARD-HARRIS, JAELYN			
04:40				STEAL by GUIRANTES, ARELLA
04:35				
04:35				SUB OUT: WILSON, CHARISE
04:35				SUB IN: BROUGHTON, ZIPPORAH
04:35	SUB OUT: RICHARD-HARRIS, JAELYN			
04:35	SUB IN: CHERRY, JAILIN			
04:30	SUB OUT: MITCHELL, AYANA			
04:30	SUB IN: BROOKS, MERCEDES			
04:22				MISSED JUMPER by GUIRANTES, ARELLA
04:22				REBOUND (OFF) by TEAM
04:22	FOUL (PERSONAL) by MITCHELL, AYANA			
04:22		18-17	H 1	GOOD! FT by JENKINS, CAITLIN [FB]
04:22				MISSED FT by JENKINS, CAITLIN
04:22	REBOUND (DEF) by AIFUWA, FAUSTINE			
04:22	SUB OUT: BROOKS, MERCEDES			
04:22	SUB IN: MITCHELL, AYANA			
04:13	MISSED LAYUP by POINTER, KHAYLA			
04:13	REBOUND (OFF) by SEAY, KARLI			
04:13	MISSED JUMPER by SEAY, KARLI			
04:13				REBOUND (DEF) by GUIRANTES, ARELLA
04:13		20-17	H 3	GOOD! LAYUP by CAREY, STASHA
03:57	MISSED JUMPER by AIFUWA, FAUSTINE			
03:53				REBOUND (DEF) by JENKINS, CAITLIN
03:23				MISSED JUMPER by GUIRANTES, ARELLA
03:16	REBOUND (DEF) by POINTER, KHAYLA			
02:54	MISSED JUMPER by BROOKS, MERCEDES			
02:54	SUB OUT: MITCHELL, AYANA			
02:54	SUB IN: BROOKS, MERCEDES			
02:47	REBOUND (OFF) by TEAM			
02:47				SUB OUT: BROUGHTON, ZIPPORAH
02:47				SUB IN: PELEG PELC, NOGA
02:47				SUB OUT: GILLES, MAEL
02:47				SUB IN: WILSON, CHARISE
02:47	SUB OUT: MITCHELL, AYANA			



Time	VISITORS: LSU	Score	Margin	HOME: Rutgers
02:47	SUB IN: BROOKS, MERCEDES			
02:36	MISSED 3PTR by BROOKS, MERCEDES			
02:31	REBOUND (OFF) by AIFUWA, FAUSTINE			
02:07	GOOD! JUMPER by CHERRY, JAILIN	20-19	H 1	
02:07	ASSIST by SEAY, KARLI			
01:35		23-19	H 4	GOOD! 3PTR by PELEG PELC, NOGA
01:35				ASSIST by GUIRANTES, ARELLA
01:12	MISSED LAYUP by BROOKS, MERCEDES			
01:11				REBOUND (DEF) by GUIRANTES, ARELLA
01:11	FOUL (PERSONAL) by AIFUWA, FAUSTINE			
01:11	SUB OUT: AIFUWA, FAUSTINE			
01:11	SUB IN: SPENCER, RAKELL			
01:11	SUB OUT: BROOKS, MERCEDES			
01:11	SUB IN: BIDIKUINDILA, YASMINE			
00:57				MISSED JUMPER by CAREY, STASHA
00:57				REBOUND (OFF) by JENKINS, CAITLIN
00:57				MISSED LAYUP by JENKINS, CAITLIN
00:57	REBOUND (DEF) by BIDIKUINDILA, YASMINE			
00:57				FOUL (PERSONAL) by CAREY, STASHA
00:57				SUB OUT: CAREY, STASHA
00:57				SUB IN: HARRIS, VICTORIA
00:41	TURNOVER (BADPASS) by POINTER, KHAYLA			
00:24				MISSED 3PTR by PELEG PELC, NOGA
00:20	REBOUND (DEF) by CHERRY, JAILIN			
00:17	MISSED JUMPER by POINTER, KHAYLA			
00:13				REBOUND (DEF) by WILSON, CHARISE
00:10				MISSED LAYUP by PELEG PELC, NOGA
00:08				REBOUND (OFF) by JENKINS, CAITLIN
00:08	FOUL (PERSONAL) by POINTER, KHAYLA			
00:08				MISSED FT by JENKINS, CAITLIN
00:08				REBOUND (OFF) by TEAM
00:08				SUB OUT: HARRIS, VICTORIA
00:08				SUB IN: WALLACE, JORDAN
00:08		24-19	H 5	GOOD! FT by JENKINS, CAITLIN [FB]
00:08	TURNOVER (BADPASS) by SPENCER, RAKELL			
00:08				STEAL by GUIRANTES, ARELLA
00:07	FOUL (PERSONAL) by SPENCER, RAKELL			
00:07		25-19	H 6	GOOD! FT by GUIRANTES, ARELLA [FB]
00:07	SUB OUT: SEAY, KARLI			
00:07	SUB IN: RICHARD-HARRIS, JAELYN			
00:07				MISSED FT by GUIRANTES, ARELLA
00:06				REBOUND (OFF) by JENKINS, CAITLIN
00:04		28-19	H 9	GOOD! 3PTR by GUIRANTES, ARELLA
00:04				ASSIST by JENKINS, CAITLIN

### LSU 19, Rutgers 28

Points from (This Period)	LSU	RUT
In the Paint	2	8
Off Turns	0	6
2nd Chance	2	7
Fast Break	0	3
Bench	2	5

**Official Box Score**  
**LSU vs Rutgers**  
**Second Half Statistics Only**  
**December 15, 2018 at The RAC - Piscataway, N.J.**



**LSU 24**

No.	Player	S	Pts	FG	3FG	FT	OR	DR	TR	PF	A	TO	Blk	Stl	Min	+/-
01	CHERRY, JAILIN		0	0-1	0-1	0-0	1	0	1	0	0	1	0	0	3	-5
02	NORTON, SHANICE		2	1-3	0-2	0-0	0	0	0	3	0	1	0	2	20	-5
03	POINTER, KHAYLA		10	4-10	1-2	1-2	0	0	0	1	1	4	0	2	18	-7
05	MITCHELL, AYANA		4	2-7	0-0	0-0	5	1	6	0	2	2	0	2	17	-1
12	BROOKS, MERCEDES		0	0-0	0-0	0-0	0	0	0	0	0	1	0	0	1	-2
13	RICHARD-HARRIS, JAELYN		3	1-4	1-2	0-0	1	2	3	3	1	0	0	3	17	-3
15	BIDIKUINDILA, YASMINE		0	0-0	0-0	0-0	1	1	2	1	1	0	0	0	4	1
23	SEAY, KARLI		2	0-1	0-1	2-2	0	0	0	1	0	0	0	0	5	-3
24	AIFUWA, FAUSTINE		3	1-8	0-0	1-2	3	2	5	3	0	1	1	1	15	0
25	SPENCER, RAKELL		0	0-0	0-0	0-0	0	0	0	0	0	0	0	0	0	0
	TEAM		0	0-0	0-0	0-0	2	1	3	0	0	1	0	0	0	0
<b>TOTALS</b>			<b>24</b>	<b>9-34</b>	<b>2-8</b>	<b>4-6</b>	<b>0</b>	<b>0</b>	<b>20</b>	<b>12</b>	<b>5</b>	<b>11</b>	<b>1</b>	<b>10</b>	<b>100</b>	

*Shooting By Period*

Period	FG	FG%	3FG	3FG%	FT	FT%
3rd Qtr	6-20	30%	1-3	33%	0-0	0%
4th Qtr	3-14	21%	1-5	20%	4-6	67%
2nd Half	9-34	26%	2-8	25%	4-6	67%
Game	17-55	30.9%	3-14	21.4%	6-8	75.0%

*Last FG Half: LSU 4th-01:20*

**Rutgers 29**

No.	Player	S	Pts	FG	3FG	FT	OR	DR	TR	PF	A	TO	Blk	Stl	Min	+/-
01	BROUGHTON, ZIPPORAH		5	2-3	0-0	1-1	0	1	1	1	1	1	0	1	12	8
02	PELEG PELC, NOGA		2	0-1	0-1	2-2	0	1	1	1	0	2	1	0	9	4
03	WILSON, CHARISE		0	0-2	0-0	0-0	0	0	0	0	1	1	0	0	8	-10
05	CRYOR, CIANI		10	2-3	1-1	5-6	0	2	2	0	0	2	0	2	11	8
13	GILLES, MAEL		2	1-2	0-1	0-0	0	1	1	1	0	0	0	0	7	8
15	JENKINS, CAITLIN		0	0-1	0-0	0-0	1	3	4	2	0	0	0	0	9	-13
24	GUIRANTES, ARELLA		6	2-5	0-0	2-2	1	1	2	1	2	1	0	2	20	5
31	MACK, TEKIA		0	0-0	0-0	0-0	1	0	1	1	0	1	0	0	4	3
35	CAREY, STASHA		2	1-2	0-1	0-0	0	0	0	0	0	2	0	0	5	-7
40	HARRIS, VICTORIA		2	1-2	0-0	0-0	1	3	4	3	0	1	1	3	14	19
44	WALLACE, JORDAN		0	0-0	0-0	0-0	0	0	0	1	0	0	0	0	0	0
	TEAM		0	0-0	0-0	0-0	1	0	1	0	0	0	0	0	0	0
<b>TOTALS</b>			<b>29</b>	<b>9-21</b>	<b>1-4</b>	<b>10-11</b>	<b>0</b>	<b>0</b>	<b>17</b>	<b>11</b>	<b>4</b>	<b>11</b>	<b>2</b>	<b>8</b>	<b>100</b>	

*Shooting By Period*

Period	FG	FG%	3FG	3FG%	FT	FT%
3rd Qtr	5-11	45%	0-2	00%	1-1	100%
4th Qtr	4-10	40%	1-2	50%	9-10	90%
2nd Half	9-21	43%	1-4	25%	10-11	91%
Game	19-47	40.4%	4-14	28.6%	15-21	71.4%

*Last FG Half: RUT 4th-01:47*

*Game Notes:*

Officials: Beverly Roberts, Denise Brooks, Tiara Cruise  
 Attendance: 1726

Start Time: 2018-12-15 21:07:02  
 End Time: 2018-12-15 23:16:56  
 Game Duration: 129

Score	1st	2nd	3rd	4th	TOT
LSU	13	6	13	11	<b>43</b>
RUT	7	21	11	18	<b>57</b>

Points from (This Period)	LSU	RUT
In the Paint	12	14
Off Turns	10	16
2nd Chance	6	7
Fast Break	5	5
Bench	2	9

**Official Box Score**  
**LSU vs Rutgers**  
**Third Quarter Statistics Only**  
**December 15, 2018 at The RAC - Piscataway, N.J.**



**LSU 24**

No.	Player	S	Pts	FG	3FG	FT	OR	DR	TR	PF	A	TO	Blk	Stl	Min	+/-
02	NORTON, SHANICE		2	1-1	0-0	0-0	0	0	0	0	0	1	0	0	10	2
03	POINTER, KHAYLA		7	3-9	1-2	0-0	0	0	0	1	1	0	0	1	10	2
05	MITCHELL, AYANA		2	1-3	0-0	0-0	4	0	4	0	2	0	0	1	7	6
13	RICHARD-HARRIS, JAELYN		0	0-0	0-0	0-0	0	1	1	1	1	0	0	2	10	2
24	AIFUWA, FAUSTINE		2	1-6	0-0	0-0	2	2	4	1	0	1	1	1	9	3
01	CHERRY, JAILIN		0	0-1	0-1	0-0	1	0	1	0	0	0	0	0	2	-2
12	BROOKS, MERCEDES		0	0-0	0-0	0-0	0	0	0	0	0	1	0	0	1	-2
15	BIDIKUINDILA, YASMINE		0	0-0	0-0	0-0	0	1	1	1	0	0	0	0	1	-1
23	SEAY, KARLI		0	0-0	0-0	0-0	0	0	0	0	0	0	0	0	0	0
25	SPENCER, RAKELL		0	0-0	0-0	0-0	0	0	0	0	0	0	0	0	0	0
	TEAM						1	0	1	0		0				
<b>TOTALS</b>			<b>13</b>	<b>6-20</b>	<b>1-3</b>	<b>0-0</b>	<b>0</b>	<b>0</b>	<b>12</b>	<b>4</b>	<b>4</b>	<b>3</b>	<b>1</b>	<b>5</b>	<b>50</b>	

*Shooting By Period*

Period	FG	FG%	3FG	3FG%	FT	FT%
2nd Half	0-0	0%	0-0	0%	0-0	0%
Game	17-55	30.9%	3-14	21.4%	6-8	75.0%

**Rutgers 29**

No.	Player	S	Pts	FG	3FG	FT	OR	DR	TR	PF	A	TO	Blk	Stl	Min	+/-
03	WILSON, CHARISE		0	0-1	0-0	0-0	0	0	0	0	1	0	0	0	5	-7
05	CRYOR, CIANI		0	0-0	0-0	0-0	0	0	0	0	0	0	0	1	1	1
24	GUIRANTES, ARELLA		2	1-2	0-0	0-0	0	1	1	0	1	0	0	0	10	-2
35	CAREY, STASHA		2	1-2	0-1	0-0	0	0	0	0	0	2	0	0	5	-7
40	HARRIS, VICTORIA		2	1-2	0-0	0-0	1	2	3	1	0	1	1	1	7	7
01	BROUGHTON, ZIPPORAH		3	1-2	0-0	1-1	0	1	1	0	1	0	0	0	6	5
02	PELEG PELC, NOGA		0	0-1	0-1	0-0	0	1	1	1	0	2	1	0	8	-3
13	GILLES, MAEL		2	1-1	0-0	0-0	0	1	1	0	0	0	0	0	3	3
15	JENKINS, CAITLIN		0	0-0	0-0	0-0	0	0	0	0	0	0	0	0	4	-7
31	MACK, TEKIA		0	0-0	0-0	0-0	0	0	0	0	0	0	0	0	0	0
44	WALLACE, JORDAN		0	0-0	0-0	0-0	0	0	0	1	0	0	0	0	0	0
	TEAM						1	0	1	0		0				
<b>TOTALS</b>			<b>11</b>	<b>5-11</b>	<b>0-2</b>	<b>1-1</b>	<b>0</b>	<b>0</b>	<b>8</b>	<b>3</b>	<b>3</b>	<b>5</b>	<b>2</b>	<b>2</b>	<b>50</b>	

*Shooting By Period*

Period	FG	FG%	3FG	3FG%	FT	FT%
2nd Half	0-0	0%	0-0	0%	0-0	0%
Game	19-47	40.4%	4-14	28.6%	15-21	71.4%

Game Notes:

Officials: Beverly Roberts, Denise Brooks, Tiara Cruise  
 Attendance: 1726

Start Time: 2018-12-15 21:07:02  
 End Time: 2018-12-15 23:16:56  
 Game Duration: 129

Score	1st	2nd	3rd	4th	TOT
LSU	13	6	13	11	<b>43</b>
RUT	7	21	11	18	<b>57</b>

Points from (This Period)	LSU	RUT
In the Paint	8	8
Off Turns	4	3
2nd Chance	4	2
Fast Break	2	0
Bench	0	5

**Official Play-By-Play**  
**LSU vs Rutgers**  
**Third Quarter**  
**December 15, 2018 at The RAC - Piscataway, N.J.**



**Period 3**

**Starters:**

**LSU:** 2 NORTON, SHANICE; 3 POINTER, KHAYLA; 5 MITCHELL, AYANA; 13 RICHARD-HARRIS, JAELYN; 24 AIFUWA, FAUSTINE;

**Rutgers:** 3 WILSON, CHARISE; 5 CRYOR, CIANI; 24 GUIRANTES, ARELLA; 35 CAREY, STASHA; 40 HARRIS, VICTORIA;

Time	VISITORS: LSU	Score	Margin	HOME: Rutgers
09:46	MISSED 3PTR by CHERRY, JAILIN			
09:42	REBOUND (OFF) by CHERRY, JAILIN			
09:33	MISSED LAYUP by POINTER, KHAYLA			
09:30	REBOUND (OFF) by TEAM			
09:03	MISSED JUMPER by POINTER, KHAYLA			
08:59				REBOUND (DEF) by HARRIS, VICTORIA
08:49				MISSED 3PTR by PELEG PELC, NOGA
08:47				REBOUND (OFF) by HARRIS, VICTORIA
08:47	FOUL (PERSONAL) by POINTER, KHAYLA			
08:27				MISSED 3PTR by CAREY, STASHA
08:23	REBOUND (DEF) by RICHARD-HARRIS, JAELYN			
08:19	MISSED LAYUP by POINTER, KHAYLA			
08:14	REBOUND (OFF) by AIFUWA, FAUSTINE			
08:13	MISSED LAYUP by AIFUWA, FAUSTINE			
08:13				BLOCK by PELEG PELC, NOGA
08:07				REBOUND (DEF) by HARRIS, VICTORIA
07:59		30-19	H 11	GOOD! LAYUP by CAREY, STASHA [PNT]
07:59				ASSIST by WILSON, CHARISE
07:35				FOUL (PERSONAL) by HARRIS, VICTORIA
07:35				SUB OUT: HARRIS, VICTORIA
07:35				SUB IN: JENKINS, CAITLIN
07:35	SUB OUT: CHERRY, JAILIN			
07:35	SUB IN: MITCHELL, AYANA			
07:32	MISSED LAYUP by MITCHELL, AYANA			
07:29	REBOUND (OFF) by MITCHELL, AYANA			
07:27	GOOD! LAYUP by POINTER, KHAYLA	30-21	H 9	
07:27	ASSIST by MITCHELL, AYANA			
06:52				MISSED JUMPER by WILSON, CHARISE
06:51	REBOUND (DEF) by AIFUWA, FAUSTINE			
06:49	GOOD! JUMPER by AIFUWA, FAUSTINE [PNT]	30-23	H 7	
06:21				MISSED JUMPER by GUIRANTES, ARELLA
06:16	REBOUND (DEF) by AIFUWA, FAUSTINE			
06:13	GOOD! 3PTR by POINTER, KHAYLA	30-26	H 4	
06:13	ASSIST by RICHARD-HARRIS, JAELYN			
05:45				TURNOVER (BADPASS) by CAREY, STASHA
05:45	STEAL by MITCHELL, AYANA			
05:39	GOOD! LAYUP by POINTER, KHAYLA [FB]	30-28	H 2	
05:39	ASSIST by MITCHELL, AYANA			
05:39				TIMEOUT 30SEC
05:39				SUB OUT: PELEG PELC, NOGA
05:39				SUB IN: BROUGHTON, ZIPPORAH
05:15				TURNOVER (LOSTBALL) by CAREY, STASHA
05:15	STEAL by RICHARD-HARRIS, JAELYN			
05:09	MISSED LAYUP by POINTER, KHAYLA			
05:05	REBOUND (OFF) by MITCHELL, AYANA			
05:04	MISSED LAYUP by AIFUWA, FAUSTINE			
04:54	REBOUND (OFF) by AIFUWA, FAUSTINE			
04:54	MISSED LAYUP by AIFUWA, FAUSTINE			
04:53				REBOUND (DEF) by BROUGHTON, ZIPPORAH
04:50				TIMEOUT 30SEC
04:50				SUB OUT: WILSON, CHARISE
04:50				SUB IN: PELEG PELC, NOGA
04:50				SUB OUT: CAREY, STASHA
04:50				SUB IN: HARRIS, VICTORIA
04:44				MISSED JUMPER by HARRIS, VICTORIA
04:44	BLOCK by AIFUWA, FAUSTINE			
04:44				REBOUND (OFF) by TEAM
04:41		32-28	H 4	GOOD! JUMPER by HARRIS, VICTORIA
04:41				ASSIST by BROUGHTON, ZIPPORAH
04:00	MISSED JUMPER by MITCHELL, AYANA			
03:56				REBOUND (DEF) by GUIRANTES, ARELLA
03:44				TURNOVER (BADPASS) by HARRIS, VICTORIA
03:44	STEAL by AIFUWA, FAUSTINE			
03:31				FOUL (PERSONAL) by PELEG PELC, NOGA
03:31				SUB OUT: JENKINS, CAITLIN
03:31				SUB IN: WALLACE, JORDAN
03:21	MISSED JUMPER by POINTER, KHAYLA			
03:21				BLOCK by HARRIS, VICTORIA

Time	VISITORS: LSU	Score	Margin	HOME: Rutgers
03:15				REBOUND (DEF) by PELEG PELC, NOGA
03:14				TURNOVER (BADPASS) by PELEG PELC, NOGA
03:14	STEAL by RICHARD-HARRIS, JAELYN			
03:03	MISSED LAYUP by AIFUWA, FAUSTINE			
03:02	REBOUND (OFF) by MITCHELL, AYANA			
03:02				FOUL (PERSONAL) by WALLACE, JORDAN
03:02				SUB OUT: WALLACE, JORDAN
03:02				SUB IN: GILLES, MAEL
03:00	MISSED JUMPER by AIFUWA, FAUSTINE			
02:57	REBOUND (OFF) by MITCHELL, AYANA			
02:54	GOOD! LAYUP by MITCHELL, AYANA	32-30	H 2	
02:43	FOUL (PERSONAL) by RICHARD-HARRIS, JAELYN			
02:43	SUB OUT: MITCHELL, AYANA			
02:43	SUB IN: BROOKS, MERCEDES			
02:24		34-30	H 4	GOOD! LAYUP by GUIRANTES, ARELLA
01:58	TURNOVER (LOSTBALL) by BROOKS, MERCEDES			
01:58				STEAL by HARRIS, VICTORIA
01:57	SUB OUT: BROOKS, MERCEDES			
01:57	SUB IN: MITCHELL, AYANA			
01:49				TURNOVER (LOSTBALL) by PELEG PELC, NOGA
01:49	STEAL by POINTER, KHAYLA			
01:42	MISSED 3PTR by POINTER, KHAYLA			
01:39				REBOUND (DEF) by GILLES, MAEL
01:24		36-30	H 6	GOOD! LAYUP by GILLES, MAEL [PNT]
01:24				ASSIST by GUIRANTES, ARELLA
01:03	FOUL (OFF) by AIFUWA, FAUSTINE			
01:03	TURNOVER (OFFENSIVE) by AIFUWA, FAUSTINE			
01:03				SUB OUT: PELEG PELC, NOGA
01:03				SUB IN: CRYOR, CIANI
01:03	SUB OUT: AIFUWA, FAUSTINE			
01:03	SUB IN: BIDIKUINDILA, YASMINE			
00:55				MISSED LAYUP by BROUGHTON, ZIPPORAH
00:52	REBOUND (DEF) by BIDIKUINDILA, YASMINE			
00:36	TURNOVER (LOSTBALL) by NORTON, SHANICE			
00:36				STEAL by CRYOR, CIANI
00:18		38-30	H 8	GOOD! LAYUP by BROUGHTON, ZIPPORAH [PNT]
00:18	FOUL (PERSONAL) by BIDIKUINDILA, YASMINE			
00:18		39-30	H 9	GOOD! FT by BROUGHTON, ZIPPORAH
00:01	GOOD! JUMPER by NORTON, SHANICE	39-32	H 7	
00:01	ASSIST by POINTER, KHAYLA			

### LSU 32, Rutgers 39

Points from (This Period)	LSU	RUT
In the Paint	8	8
Off Turns	4	3
2nd Chance	4	2
Fast Break	2	0
Bench	0	5

**Official Box Score**  
**LSU vs Rutgers**  
**Fourth Quarter Statistics Only**  
**December 15, 2018 at The RAC - Piscataway, N.J.**



**LSU 11**

No.	Player	S	Pts	FG	3FG	FT	OR	DR	TR	PF	A	TO	Blk	Stl	Min	+/-
02	NORTON, SHANICE		0	0-2	0-2	0-0	0	0	0	3	0	0	0	2	10	-7
03	POINTER, KHAYLA		3	1-1	0-0	1-2	0	0	0	0	0	4	0	1	8	-9
05	MITCHELL, AYANA		2	1-4	0-0	0-0	1	1	2	0	0	2	0	1	10	-7
13	RICHARD-HARRIS, JAELYN		3	1-4	1-2	0-0	1	1	2	2	0	0	0	1	7	-5
24	AIFUWA, FAUSTINE		1	0-2	0-0	1-2	1	0	1	2	0	0	0	0	6	-3
01	CHERRY, JAILIN		0	0-0	0-0	0-0	0	0	0	0	0	1	0	0	1	-3
12	BROOKS, MERCEDES		0	0-0	0-0	0-0	0	0	0	0	0	0	0	0	0	0
15	BIDIKUINDILA, YASMINE		0	0-0	0-0	0-0	1	0	1	0	1	0	0	0	3	2
23	SEAY, KARLI		2	0-1	0-1	2-2	0	0	0	1	0	0	0	0	5	-3
25	SPENCER, RAKELL		0	0-0	0-0	0-0	0	0	0	0	0	0	0	0	0	0
	TEAM						1	1	2	0		1				
	<b>TOTALS</b>		<b>11</b>	<b>3-14</b>	<b>1-5</b>	<b>4-6</b>	<b>0</b>	<b>0</b>	<b>8</b>	<b>8</b>	<b>1</b>	<b>8</b>	<b>0</b>	<b>5</b>	<b>50</b>	

*Shooting By Period*

Period	FG	FG%	3FG	3FG%	FT	FT%
Game	17-55	30.9%	3-14	21.4%	6-8	75.0%

**Rutgers 18**

No.	Player	S	Pts	FG	3FG	FT	OR	DR	TR	PF	A	TO	Blk	Stl	Min	+/-
03	WILSON, CHARISE		0	0-1	0-0	0-0	0	0	0	0	0	1	0	0	3	-3
05	CRYOR, CIANI		10	2-3	1-1	5-6	0	2	2	0	0	2	0	1	10	7
24	GUIRANTES, ARELLA		4	1-3	0-0	2-2	1	0	1	1	1	1	0	2	10	7
35	CAREY, STASHA		0	0-0	0-0	0-0	0	0	0	0	0	0	0	0	0	0
40	HARRIS, VICTORIA		0	0-0	0-0	0-0	0	1	1	2	0	0	0	2	7	12
01	BROUGHTON, ZIPPORAH		2	1-1	0-0	0-0	0	0	0	1	0	1	0	1	6	3
02	PELEG PELC, NOGA		2	0-0	0-0	2-2	0	0	0	0	0	0	0	0	1	7
13	GILLES, MAEL		0	0-1	0-1	0-0	0	0	0	1	0	0	0	0	4	5
15	JENKINS, CAITLIN		0	0-1	0-0	0-0	1	3	4	2	0	0	0	0	5	-6
31	MACK, TEKIA		0	0-0	0-0	0-0	1	0	1	1	0	1	0	0	4	3
44	WALLACE, JORDAN		0	0-0	0-0	0-0	0	0	0	0	0	0	0	0	0	0
	TEAM						0	0	0	0		0				
	<b>TOTALS</b>		<b>18</b>	<b>4-10</b>	<b>1-2</b>	<b>9-10</b>	<b>0</b>	<b>0</b>	<b>9</b>	<b>8</b>	<b>1</b>	<b>6</b>	<b>0</b>	<b>6</b>	<b>50</b>	

*Shooting By Period*

Period	FG	FG%	3FG	3FG%	FT	FT%
Game	19-47	40.4%	4-14	28.6%	15-21	71.4%

Game Notes:

Officials: Beverly Roberts, Denise Brooks, Tiara Cruise  
Attendance: 1726

Start Time: 2018-12-15 21:07:02  
End Time: 2018-12-15 23:16:56  
Game Duration: 129

Score	1st	2nd	3rd	4th	TOT
LSU	13	6	13	11	<b>43</b>
RUT	7	21	11	18	<b>57</b>

Points from (This Period)	LSU	RUT
In the Paint	4	6
Off Turns	6	13
2nd Chance	2	5
Fast Break	3	5
Bench	2	4

**Official Play-By-Play**  
**LSU vs Rutgers**  
**Fourth Quarter**  
**December 15, 2018 at The RAC - Piscataway, N.J.**



**Period 4**

**Starters:**

**LSU:** 2 NORTON, SHANICE; 3 POINTER, KHAYLA; 5 MITCHELL, AYANA; 13 RICHARD-HARRIS, JAELYN; 24 AIFUWA, FAUSTINE;

**Rutgers:** 3 WILSON, CHARISE; 5 CRYOR, CIANI; 24 GUIRANTES, ARELLA; 35 CAREY, STASHA; 40 HARRIS, VICTORIA;

Time	VISITORS: LSU	Score	Margin	HOME: Rutgers
09:53	TURNOVER (BADPASS) by POINTER, KHAYLA			
09:53				STEAL by HARRIS, VICTORIA
09:44		41-32	H 9	GOOD! LAYUP by CRYOR, CIANI
09:29	MISSED LAYUP by MITCHELL, AYANA			
09:28	REBOUND (OFF) by AIFUWA, FAUSTINE			
09:28				FOUL (PERSONAL) by HARRIS, VICTORIA
08:57	MISSED JUMPER by AIFUWA, FAUSTINE			
08:57	REBOUND (OFF) by TEAM			
08:55	TURNOVER (SHOTCLOCK) by			
08:38	FOUL (PERSONAL) by RICHARD-HARRIS, JAELYN			
08:38		42-32	H 10	GOOD! FT by CRYOR, CIANI
08:38	SUB OUT: RICHARD-HARRIS, JAELYN			
08:38	SUB IN: CHERRY, JAILIN			
08:38		43-32	H 11	GOOD! FT by CRYOR, CIANI
08:17	TURNOVER (LOSTBALL) by MITCHELL, AYANA			
08:17				STEAL by HARRIS, VICTORIA
08:12				MISSED LAYUP by GUIRANTES, ARELLA
08:09	REBOUND (DEF) by MITCHELL, AYANA			
08:01				FOUL (PERSONAL) by BROUGHTON, ZIPPORAH
07:51	TURNOVER (LOSTBALL) by CHERRY, JAILIN			
07:51				STEAL by BROUGHTON, ZIPPORAH
07:46		45-32	H 13	GOOD! LAYUP by BROUGHTON, ZIPPORAH [FB]
07:38	TIMEOUT 30SEC			
07:38				
07:38	SUB OUT: CHERRY, JAILIN			
07:38	SUB IN: SEAY, KARLI			
07:18	MISSED 3PTR by NORTON, SHANICE			
07:15				REBOUND (DEF) by CRYOR, CIANI
06:59				TURNOVER (BADPASS) by CRYOR, CIANI
06:59	STEAL by NORTON, SHANICE			
06:59				FOUL (PERSONAL) by HARRIS, VICTORIA
06:33	MISSED JUMPER by MITCHELL, AYANA			
06:29				REBOUND (DEF) by CRYOR, CIANI
06:23				MISSED 3PTR by GILLES, MAEL
06:21	REBOUND (DEF) by TEAM			
06:21				SUB OUT: HARRIS, VICTORIA
06:21				SUB IN: JENKINS, CAITLIN
06:05				FOUL (PERSONAL) by GILLES, MAEL
05:59				FOUL (PERSONAL) by JENKINS, CAITLIN
05:59	GOOD! FT by AIFUWA, FAUSTINE	45-33	H 12	
05:59				SUB OUT: GILLES, MAEL
05:59				SUB IN: MACK, TEKIA
05:59	SUB OUT: POINTER, KHAYLA			
05:59	SUB IN: RICHARD-HARRIS, JAELYN			
05:59	MISSED FT by AIFUWA, FAUSTINE			
05:56				REBOUND (DEF) by JENKINS, CAITLIN
05:54				TURNOVER (BADPASS) by BROUGHTON, ZIPPORAH
05:54	STEAL by MITCHELL, AYANA			
05:28	MISSED 3PTR by NORTON, SHANICE			
05:22	REBOUND (OFF) by MITCHELL, AYANA			
05:21	MISSED LAYUP by MITCHELL, AYANA			
05:17				REBOUND (DEF) by JENKINS, CAITLIN
05:16				TURNOVER (LOSTBALL) by MACK, TEKIA
05:16	STEAL by RICHARD-HARRIS, JAELYN			
05:06	GOOD! 3PTR by RICHARD-HARRIS, JAELYN	45-36	H 9	
04:53				MISSED LAYUP by CRYOR, CIANI
04:50				REBOUND (OFF) by MACK, TEKIA
04:40		48-36	H 12	GOOD! 3PTR by CRYOR, CIANI
04:40				ASSIST by GUIRANTES, ARELLA
04:08				FOUL (PERSONAL) by JENKINS, CAITLIN
04:08	GOOD! FT by SEAY, KARLI	48-37	H 11	
04:08	GOOD! FT by SEAY, KARLI	48-38	H 10	
04:08				SUB OUT: BROUGHTON, ZIPPORAH
04:08				SUB IN: WILSON, CHARISE
04:08	SUB OUT: SEAY, KARLI			
04:08	SUB IN: POINTER, KHAYLA			
03:43				MISSED JUMPER by JENKINS, CAITLIN
03:40	REBOUND (DEF) by RICHARD-HARRIS, JAELYN			
03:35	MISSED JUMPER by AIFUWA, FAUSTINE			
03:32				REBOUND (DEF) by JENKINS, CAITLIN

Time	VISITORS: LSU	Score	Margin	HOME: Rutgers
03:32	FOUL (PERSONAL) by AIFUWA, FAUSTINE			
03:32	FOUL (TECH) by AIFUWA, FAUSTINE			
03:32				FOUL (TECH) by GUIRANTES, ARELLA
03:32	SUB OUT: AIFUWA, FAUSTINE			
03:32	SUB IN: BIDIKUINDILA, YASMINE			
03:15				TURNOVER (BADPASS) by CRYOR, CIANI
03:15	STEAL by POINTER, KHAYLA			
03:08	GOOD! LAYUP by POINTER, KHAYLA [FB]	48-40	H 8	
03:01				TURNOVER (BADPASS) by WILSON, CHARISE
03:01	STEAL by NORTON, SHANICE			
03:01				TIMEOUT TEAM
02:55				FOUL (PERSONAL) by MACK, TEKIA
02:55	MISSED FT by POINTER, KHAYLA			
02:55	REBOUND (OFF) by TEAM			
02:55				SUB OUT: MACK, TEKIA
02:55				SUB IN: HARRIS, VICTORIA
02:55	GOOD! FT by POINTER, KHAYLA [FB]	48-41	H 7	
02:42				MISSED JUMPER by WILSON, CHARISE
02:37				REBOUND (OFF) by GUIRANTES, ARELLA
02:14				MISSED JUMPER by GUIRANTES, ARELLA
02:11				REBOUND (OFF) by JENKINS, CAITLIN
01:47		50-41	H 9	GOOD! LAYUP by GUIRANTES, ARELLA
01:28	MISSED 3PTR by RICHARD-HARRIS, JAELYN			
01:23	REBOUND (OFF) by BIDIKUINDILA, YASMINE			
01:20	GOOD! LAYUP by MITCHELL, AYANA	50-43	H 7	
01:20	ASSIST by BIDIKUINDILA, YASMINE			
01:20	TIMEOUT 30SEC			
01:20				SUB OUT: WILSON, CHARISE
01:20				SUB IN: PELEG PELC, NOGA
01:15				TURNOVER (LOSTBALL) by GUIRANTES, ARELLA
01:08	TURNOVER (LOSTBALL) by POINTER, KHAYLA			
01:08				STEAL by CRYOR, CIANI
01:08	SUB OUT: BIDIKUINDILA, YASMINE			
01:08	SUB IN: SEAY, KARLI			
01:07	FOUL (PERSONAL) by SEAY, KARLI			
01:07				SUB OUT: JENKINS, CAITLIN
01:07				SUB IN: GILLES, MAEL
01:06	FOUL (PERSONAL) by NORTON, SHANICE			
01:06				MISSED FT by CRYOR, CIANI
01:06				REBOUND (OFF) by TEAM
01:06				SUB OUT: GILLES, MAEL
01:06				SUB IN: MACK, TEKIA
01:06	SUB OUT: SEAY, KARLI			
01:06	SUB IN: BIDIKUINDILA, YASMINE			
01:06		51-43	H 8	GOOD! FT by CRYOR, CIANI [FB]
01:01	TURNOVER (TRAVEL) by POINTER, KHAYLA			
00:59	SUB OUT: BIDIKUINDILA, YASMINE			
00:59	SUB IN: SEAY, KARLI			
00:48	FOUL (PERSONAL) by RICHARD-HARRIS, JAELYN			
00:48		52-43	H 9	GOOD! FT by PELEG PELC, NOGA
00:48		53-43	H 10	GOOD! FT by PELEG PELC, NOGA
00:48	TIMEOUT 30SEC			
00:39	TURNOVER (BADPASS) by POINTER, KHAYLA			
00:39				STEAL by GUIRANTES, ARELLA
00:37	FOUL (PERSONAL) by NORTON, SHANICE			
00:37		54-43	H 11	GOOD! FT by GUIRANTES, ARELLA
00:37		55-43	H 12	GOOD! FT by GUIRANTES, ARELLA
00:20	TURNOVER (BADPASS) by MITCHELL, AYANA			
00:20				STEAL by GUIRANTES, ARELLA
00:19	FOUL (PERSONAL) by NORTON, SHANICE			
00:19		56-43	H 13	GOOD! FT by CRYOR, CIANI [FB]
00:19		57-43	H 14	GOOD! FT by CRYOR, CIANI [FB]
00:12	MISSED 3PTR by SEAY, KARLI			
00:09	REBOUND (OFF) by TEAM			
00:06	MISSED JUMPER by RICHARD-HARRIS, JAELYN			
00:02	REBOUND (OFF) by RICHARD-HARRIS, JAELYN			
00:01	MISSED JUMPER by RICHARD-HARRIS, JAELYN			
00:00				REBOUND (DEF) by HARRIS, VICTORIA

### LSU 43, Rutgers 57

Points from (This Period)	LSU	RUT
In the Paint	4	6
Off Turns	6	13
2nd Chance	2	5
Fast Break	3	5
Bench	2	4



**Official Scoring/Possession Reference Chart**  
**LSU vs Rutgers**  
**Period 1**  
**December 15, 2018 at The RAC - Piscataway, N.J.**



**Period 1**

**Starters:**

**LSU:** 2 NORTON, SHANICE; 3 POINTER, KHAYLA; 5 MITCHELL, AYANA; 13 RICHARD-HARRIS, JAE LYN; 24 AIFUWA, FAUSTINE;

**Rutgers:** 3 WILSON, CHARISE; 5 CRYOR, CIANI; 24 GUIRANTES, ARELLA; 35 CAREY, STASHA; 40 HARRIS, VICTORIA;

Time	VISITORS: LSU	Score	Margin	HOME: Rutgers
06:12	GOOD! LAYUP by MITCHELL, AYANA [FB]	0-2	V 2	
05:36	GOOD! LAYUP by AIFUWA, FAUSTINE	0-4	V 4	
04:16	GOOD! FT by POINTER, KHAYLA	0-5	V 5	
04:16	GOOD! FT by POINTER, KHAYLA	0-6	V 6	
03:34		3-6	V 3	GOOD! 3PTR by WILSON, CHARISE
02:53		5-6	V 1	GOOD! LAYUP by GUIRANTES, ARELLA
02:29	GOOD! JUMPER by POINTER, KHAYLA [PNT]	5-8	V 3	
01:50	GOOD! 3PTR by POINTER, KHAYLA	5-11	V 6	
00:40	GOOD! LAYUP by POINTER, KHAYLA [PNT]	5-13	V 8	
00:15		6-13	V 7	GOOD! FT by CAREY, STASHA
00:15		7-13	V 6	GOOD! FT by CAREY, STASHA

**LSU 13, Rutgers 7**

**Official Scoring/Possession Reference Chart**  
**LSU vs Rutgers**  
**Period 2**  
**December 15, 2018 at The RAC - Piscataway, N.J.**



**Period 2**

**Starters:**

**LSU:** 2 NORTON, SHANICE; 3 POINTER, KHAYLA; 5 MITCHELL, AYANA; 13 RICHARD-HARRIS, JAEALYN; 24 AIFUWA, FAUSTINE;

**Rutgers:** 3 WILSON, CHARISE; 5 CRYOR, CIANI; 24 GUIRANTES, ARELLA; 35 CAREY, STASHA; 40 HARRIS, VICTORIA;

Time	VISITORS: LSU	Score	Margin	HOME: Rutgers
09:49		9-13	V 4	GOOD! LAYUP by HARRIS, VICTORIA
09:38	GOOD! LAYUP by MITCHELL, AYANA	9-15	V 6	
09:13		11-15	V 4	GOOD! JUMPER by GUIRANTES, ARELLA
08:24		13-15	V 2	GOOD! LAYUP by HARRIS, VICTORIA
07:28		15-15	T	GOOD! LAYUP by WILSON, CHARISE
07:03	GOOD! JUMPER by POINTER, KHAYLA	15-17	V 2	
05:15		17-17	T	GOOD! JUMPER by GUIRANTES, ARELLA
04:22		18-17	H 1	GOOD! FT by JENKINS, CAITLIN [FB]
04:13		20-17	H 3	GOOD! LAYUP by CAREY, STASHA
02:07	GOOD! JUMPER by CHERRY, JAILIN	20-19	H 1	
01:35		23-19	H 4	GOOD! 3PTR by PELEG PELC, NOGA
00:08		24-19	H 5	GOOD! FT by JENKINS, CAITLIN [FB]
00:07		25-19	H 6	GOOD! FT by GUIRANTES, ARELLA [FB]
00:04		28-19	H 9	GOOD! 3PTR by GUIRANTES, ARELLA

**LSU 19, Rutgers 28**

**Official Scoring/Possession Reference Chart**  
**LSU vs Rutgers**  
**Period 3**  
**December 15, 2018 at The RAC - Piscataway, N.J.**



**Period 3**

**Starters:**

**LSU:** 2 NORTON, SHANICE; 3 POINTER, KHAYLA; 5 MITCHELL, AYANA; 13 RICHARD-HARRIS, JAEALYN; 24 AIFUWA, FAUSTINE;

**Rutgers:** 3 WILSON, CHARISE; 5 CRYOR, CIANI; 24 GUIRANTES, ARELLA; 35 CAREY, STASHA; 40 HARRIS, VICTORIA;

Time	VISITORS: LSU	Score	Margin	HOME: Rutgers
07:59		30-19	H 11	GOOD! LAYUP by CAREY, STASHA [PNT]
07:27	GOOD! LAYUP by POINTER, KHAYLA	30-21	H 9	
06:49	GOOD! JUMPER by AIFUWA, FAUSTINE [PNT]	30-23	H 7	
06:13	GOOD! 3PTR by POINTER, KHAYLA	30-26	H 4	
05:39	GOOD! LAYUP by POINTER, KHAYLA [FB]	30-28	H 2	
04:41		32-28	H 4	GOOD! JUMPER by HARRIS, VICTORIA
02:54	GOOD! LAYUP by MITCHELL, AYANA	32-30	H 2	
02:24		34-30	H 4	GOOD! LAYUP by GUIRANTES, ARELLA
01:24		36-30	H 6	GOOD! LAYUP by GILLES, MAEL [PNT]
00:18		38-30	H 8	GOOD! LAYUP by BROUGHTON, ZIPPORAH [PNT]
00:18		39-30	H 9	GOOD! FT by BROUGHTON, ZIPPORAH
00:01	GOOD! JUMPER by NORTON, SHANICE	39-32	H 7	

**LSU 32, Rutgers 39**

**Official Scoring/Possession Reference Chart**  
**LSU vs Rutgers**  
**Period 4**  
**December 15, 2018 at The RAC - Piscataway, N.J.**



**Period 4**

**Starters:**

**LSU:** 2 NORTON, SHANICE; 3 POINTER, KHAYLA; 5 MITCHELL, AYANA; 13 RICHARD-HARRIS, JAELYN; 24 AIFUWA, FAUSTINE;

**Rutgers:** 3 WILSON, CHARISE; 5 CRYOR, CIANI; 24 GUIRANTES, ARELLA; 35 CAREY, STASHA; 40 HARRIS, VICTORIA;

Time	VISITORS: LSU	Score	Margin	HOME: Rutgers
09:44		41-32	H 9	GOOD! LAYUP by CRYOR, CIANI
08:38		42-32	H 10	GOOD! FT by CRYOR, CIANI
08:38		43-32	H 11	GOOD! FT by CRYOR, CIANI
07:46		45-32	H 13	GOOD! LAYUP by BROUGHTON, ZIPPORAH [FB]
05:59	GOOD! FT by AIFUWA, FAUSTINE	45-33	H 12	
05:06	GOOD! 3PTR by RICHARD-HARRIS, JAELYN	45-36	H 9	
04:40		48-36	H 12	GOOD! 3PTR by CRYOR, CIANI
04:08	GOOD! FT by SEAY, KARLI	48-37	H 11	
04:08	GOOD! FT by SEAY, KARLI	48-38	H 10	
03:08	GOOD! LAYUP by POINTER, KHAYLA [FB]	48-40	H 8	
02:55	GOOD! FT by POINTER, KHAYLA [FB]	48-41	H 7	
01:47		50-41	H 9	GOOD! LAYUP by GUIRANTES, ARELLA
01:20	GOOD! LAYUP by MITCHELL, AYANA	50-43	H 7	
01:06		51-43	H 8	GOOD! FT by CRYOR, CIANI [FB]
00:48		52-43	H 9	GOOD! FT by PELEG PELC, NOGA
00:48		53-43	H 10	GOOD! FT by PELEG PELC, NOGA
00:37		54-43	H 11	GOOD! FT by GUIRANTES, ARELLA
00:37		55-43	H 12	GOOD! FT by GUIRANTES, ARELLA
00:19		56-43	H 13	GOOD! FT by CRYOR, CIANI [FB]
00:19		57-43	H 14	GOOD! FT by CRYOR, CIANI [FB]

**LSU 43, Rutgers 57**

**Official Substitutions Log**  
**LSU vs Rutgers**  
**Period 1**  
**December 15, 2018 at The RAC - Piscataway, N.J.**



<b>VISITORS: LSU</b>	<b>Time</b>	<b>Score</b>	<b>HOME: Rutgers</b>
2 NORTON, SHANICE			3 WILSON, CHARISE
3 POINTER, KHAYLA			5 CRYOR, CIANI
5 MITCHELL, AYANA			24 GUIRANTES, ARELLA
13 RICHARD-HARRIS, JAELYN			35 CAREY, STASHA
24 AIFUWA, FAUSTINE			40 HARRIS, VICTORIA
SUB OUT: 3 POINTER, KHAYLA	08:38	-	
SUB IN: 1 CHERRY, JAILIN	08:38		
	07:33	-	SUB OUT: GUIRANTES, ARELLA
	07:33		SUB IN: PELEG PELC, NOGA
	07:33		SUB OUT: CAREY, STASHA
	07:33		SUB IN: MACK, TEKIA
SUB OUT: 13 RICHARD-HARRIS, JAELYN	06:41	-	
SUB IN: 3 POINTER, KHAYLA	06:41		
	05:16	4-0	SUB OUT: CRYOR, CIANI
	05:16		SUB IN: GUIRANTES, ARELLA
	04:36	4-0	SUB OUT: MACK, TEKIA
	04:36		SUB IN: CAREY, STASHA
	04:16	5-0	SUB OUT: HARRIS, VICTORIA
	04:16		SUB IN: JENKINS, CAITLIN
SUB OUT: 1 CHERRY, JAILIN	03:15	6-3	
SUB IN: 13 RICHARD-HARRIS, JAELYN	03:15		
SUB OUT: 24 AIFUWA, FAUSTINE	02:11	8-5	
SUB IN: 12 BROOKS, MERCEDES	02:11		
	01:27	11-5	SUB OUT: GUIRANTES, ARELLA
	01:27		SUB IN: BROUGHTON, ZIPPORAH
	00:34	13-5	SUB OUT: PELEG PELC, NOGA
	00:34		SUB IN: HARRIS, VICTORIA
	00:34		SUB OUT: JENKINS, CAITLIN
	00:34		SUB IN: GUIRANTES, ARELLA
SUB OUT: 5 MITCHELL, AYANA	00:34		
SUB IN: 24 AIFUWA, FAUSTINE	00:34		
SUB OUT: 2 NORTON, SHANICE	00:15	13-6	
SUB IN: 15 BIDIKUINDILA, YASMINE	00:15		
SUB OUT: 24 AIFUWA, FAUSTINE	00:15		
SUB IN: 23 SEAY, KARLI	00:15		

**LSU 13, Rutgers 7**

**Official Substitutions Log**  
**LSU vs Rutgers**  
**Period 2**  
**December 15, 2018 at The RAC - Piscataway, N.J.**



<b>VISITORS: LSU</b>	<b>Time</b>	<b>Score</b>	<b>HOME: Rutgers</b>
2 NORTON, SHANICE			3 WILSON, CHARISE
3 POINTER, KHAYLA			5 CRYOR, CIANI
5 MITCHELL, AYANA			24 GUIRANTES, ARELLA
13 RICHARD-HARRIS, JAELYN			35 CAREY, STASHA
24 AIFUWA, FAUSTINE			40 HARRIS, VICTORIA
SUB OUT: 15 BIDIKUINDILA, YASMINE	08:48	15-11	
SUB IN: 2 NORTON, SHANICE	08:48		
	08:01	15-13	SUB OUT: BROUGHTON, ZIPPORAH
	08:01		SUB IN: GILLES, MAEL
SUB OUT: 12 BROOKS, MERCEDES	08:01		
SUB IN: 24 AIFUWA, FAUSTINE	08:01		
	06:31	17-15	SUB OUT: HARRIS, VICTORIA
	06:31		SUB IN: JENKINS, CAITLIN
SUB OUT: 3 POINTER, KHAYLA	06:31		
SUB IN: 23 SEAY, KARLI	06:31		
SUB OUT: 2 NORTON, SHANICE	05:29	17-15	
SUB IN: 3 POINTER, KHAYLA	05:29		
	04:35	17-17	SUB OUT: WILSON, CHARISE
	04:35		SUB IN: BROUGHTON, ZIPPORAH
SUB OUT: 13 RICHARD-HARRIS, JAELYN	04:35		
SUB IN: 1 CHERRY, JAILIN	04:35		
SUB OUT: 5 MITCHELL, AYANA	04:30	17-17	
SUB IN: 12 BROOKS, MERCEDES	04:30		
SUB OUT: 12 BROOKS, MERCEDES	04:22	17-18	
SUB IN: 5 MITCHELL, AYANA	04:22		
SUB OUT: 5 MITCHELL, AYANA	02:54	17-20	
SUB IN: 12 BROOKS, MERCEDES	02:54		
	02:47	17-20	SUB OUT: BROUGHTON, ZIPPORAH
	02:47		SUB IN: PELEG PELC, NOGA
	02:47		SUB OUT: GILLES, MAEL
	02:47		SUB IN: WILSON, CHARISE
SUB OUT: 5 MITCHELL, AYANA	02:47		
SUB IN: 12 BROOKS, MERCEDES	02:47		
SUB OUT: 24 AIFUWA, FAUSTINE	01:11	19-23	
SUB IN: 25 SPENCER, RAKELL	01:11		
SUB OUT: 12 BROOKS, MERCEDES	01:11		
SUB IN: 15 BIDIKUINDILA, YASMINE	01:11		
	00:57	19-23	SUB OUT: CAREY, STASHA
	00:57		SUB IN: HARRIS, VICTORIA
	00:08	19-23	SUB OUT: HARRIS, VICTORIA
	00:08		SUB IN: WALLACE, JORDAN
SUB OUT: 23 SEAY, KARLI	00:07	19-25	
SUB IN: 13 RICHARD-HARRIS, JAELYN	00:07		

**LSU 19, Rutgers 28**

**Official Substitutions Log**  
**LSU vs Rutgers**  
**Period 3**  
**December 15, 2018 at The RAC - Piscataway, N.J.**



VISITORS: LSU	Time	Score	HOME: Rutgers
2 NORTON, SHANICE			3 WILSON, CHARISE
3 POINTER, KHAYLA			5 CRYOR, CIANI
5 MITCHELL, AYANA			24 GUIRANTES, ARELLA
13 RICHARD-HARRIS, JAELYN			35 CAREY, STASHA
24 AIFUWA, FAUSTINE			40 HARRIS, VICTORIA
	07:35	19-30	SUB OUT: HARRIS, VICTORIA
	07:35		SUB IN: JENKINS, CAITLIN
SUB OUT: 1 CHERRY, JAILIN	07:35		
SUB IN: 5 MITCHELL, AYANA	07:35		
	05:39	28-30	SUB OUT: PELEG PELC, NOGA
	05:39		SUB IN: BROUGHTON, ZIPPORAH
	04:50	28-30	SUB OUT: WILSON, CHARISE
	04:50		SUB IN: PELEG PELC, NOGA
	04:50		SUB OUT: CAREY, STASHA
	04:50		SUB IN: HARRIS, VICTORIA
	03:31	28-32	SUB OUT: JENKINS, CAITLIN
	03:31		SUB IN: WALLACE, JORDAN
	03:02	28-32	SUB OUT: WALLACE, JORDAN
	03:02		SUB IN: GILLES, MAEL
SUB OUT: 5 MITCHELL, AYANA	02:43	30-32	
SUB IN: 12 BROOKS, MERCEDES	02:43		
SUB OUT: 12 BROOKS, MERCEDES	01:57	30-34	
SUB IN: 5 MITCHELL, AYANA	01:57		
	01:03	30-36	SUB OUT: PELEG PELC, NOGA
	01:03		SUB IN: CRYOR, CIANI
SUB OUT: 24 AIFUWA, FAUSTINE	01:03		
SUB IN: 15 BIDIKUINDILA, YASMINE	01:03		

**LSU 32, Rutgers 39**

**Official Substitutions Log**  
**LSU vs Rutgers**  
**Period 4**  
**December 15, 2018 at The RAC - Piscataway, N.J.**



<b>VISITORS: LSU</b>	<b>Time</b>	<b>Score</b>	<b>HOME: Rutgers</b>
2 NORTON, SHANICE			3 WILSON, CHARISE
3 POINTER, KHAYLA			5 CRYOR, CIANI
5 MITCHELL, AYANA			24 GUIRANTES, ARELLA
13 RICHARD-HARRIS, JAELYN			35 CAREY, STASHA
24 AIFUWA, FAUSTINE			40 HARRIS, VICTORIA
SUB OUT: 13 RICHARD-HARRIS, JAELYN	08:38	32-42	
SUB IN: 1 CHERRY, JAILIN	08:38		
SUB OUT: 1 CHERRY, JAILIN	07:38	32-45	
SUB IN: 23 SEAY, KARLI	07:38		
	06:21	32-45	SUB OUT: HARRIS, VICTORIA
	06:21		SUB IN: JENKINS, CAITLIN
	05:59	33-45	SUB OUT: GILLES, MAEL
	05:59		SUB IN: MACK, TEKIA
SUB OUT: 3 POINTER, KHAYLA	05:59		
SUB IN: 13 RICHARD-HARRIS, JAELYN	05:59		
	04:08	38-48	SUB OUT: BROUGHTON, ZIPPORAH
	04:08		SUB IN: WILSON, CHARISE
SUB OUT: 23 SEAY, KARLI	04:08		
SUB IN: 3 POINTER, KHAYLA	04:08		
SUB OUT: 24 AIFUWA, FAUSTINE	03:32	38-48	
SUB IN: 15 BIDIKUINDILA, YASMINE	03:32		
	02:55	40-48	SUB OUT: MACK, TEKIA
	02:55		SUB IN: HARRIS, VICTORIA
	01:20	43-50	SUB OUT: WILSON, CHARISE
	01:20		SUB IN: PELEG PELC, NOGA
SUB OUT: 15 BIDIKUINDILA, YASMINE	01:08	43-50	
SUB IN: 23 SEAY, KARLI	01:08		
	01:07	43-50	SUB OUT: JENKINS, CAITLIN
	01:07		SUB IN: GILLES, MAEL
	01:06	43-50	SUB OUT: GILLES, MAEL
	01:06		SUB IN: MACK, TEKIA
SUB OUT: 23 SEAY, KARLI	01:06		
SUB IN: 15 BIDIKUINDILA, YASMINE	01:06		
SUB OUT: 15 BIDIKUINDILA, YASMINE	00:59	43-51	
SUB IN: 23 SEAY, KARLI	00:59		

**LSU 43, Rutgers 57**

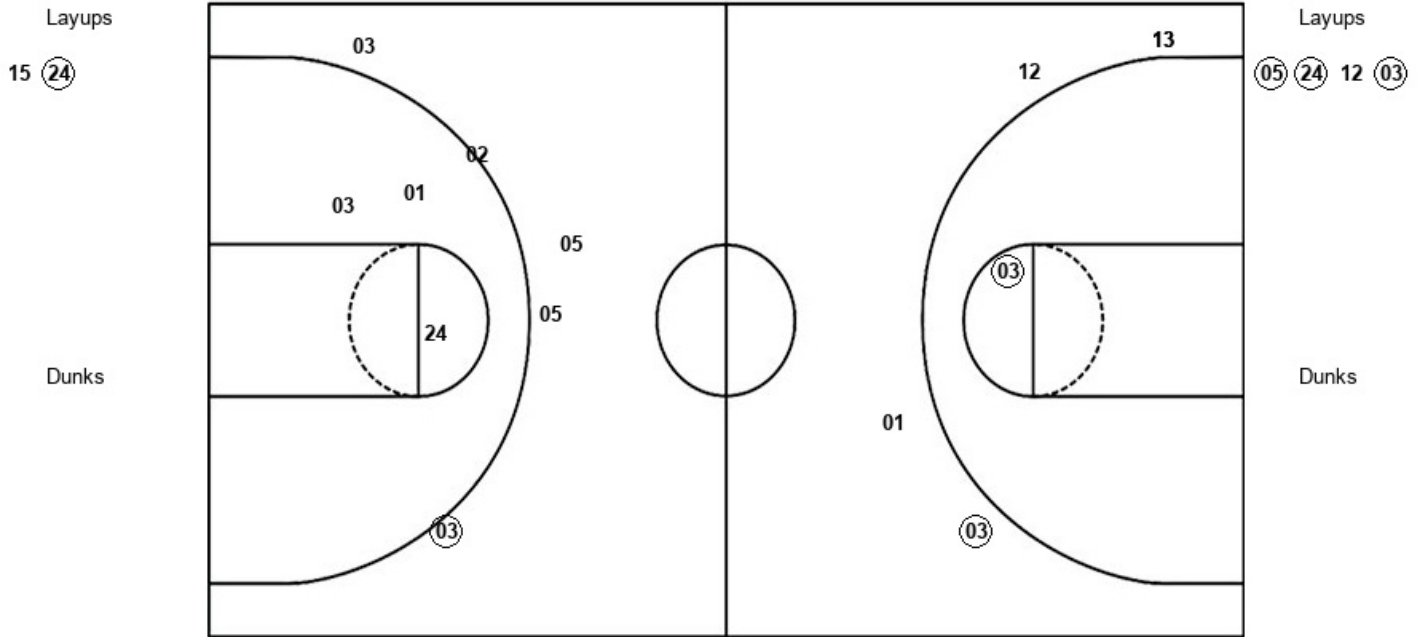


**Official Shot Chart**  
**LSU vs Rutgers**  
**PERIOD 1 Shots**  
 December 15, 2018 at The RAC - Piscataway, N.J.



**Rutgers**

**LSU**



<b>RUT : Period 1</b>	<b>Made</b>	<b>Att</b>	<b>Pct</b>
Layups	1	2	50.0
Dunks	0	0	0
2PT Field Goals	1	5	20.0
3PT Field Goals	1	5	20.0
<b>Total Field Goals</b>	<b>2</b>	<b>10</b>	<b>20.0</b>

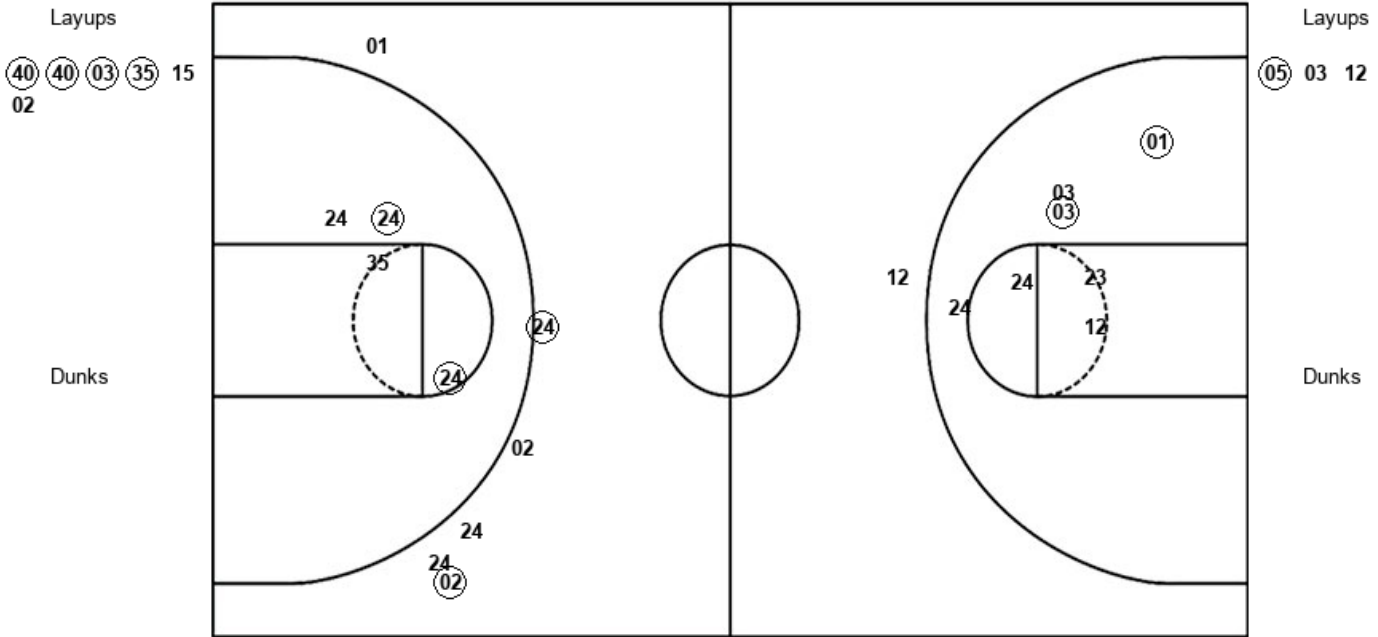
<b>LSU : Period 1</b>	<b>Made</b>	<b>Att</b>	<b>Pct</b>
Layups	3	4	75.0
Dunks	0	0	0
2PT Field Goals	4	5	80.0
3PT Field Goals	1	5	20.0
<b>Total Field Goals</b>	<b>5</b>	<b>10</b>	<b>50.0</b>

**Official Shot Chart**  
**LSU vs Rutgers**  
**PERIOD 2 Shots**  
 December 15, 2018 at The RAC - Piscataway, N.J.



**Rutgers**

**LSU**



<b>RUT : Period 2</b>	<b>Made</b>	<b>Att</b>	<b>Pct</b>
Layups	4	6	66.7
Dunks	0	0	0
2PT Field Goals	6	11	54.5
3PT Field Goals	2	5	40.0
<b>Total Field Goals</b>	<b>8</b>	<b>16</b>	<b>50.0</b>

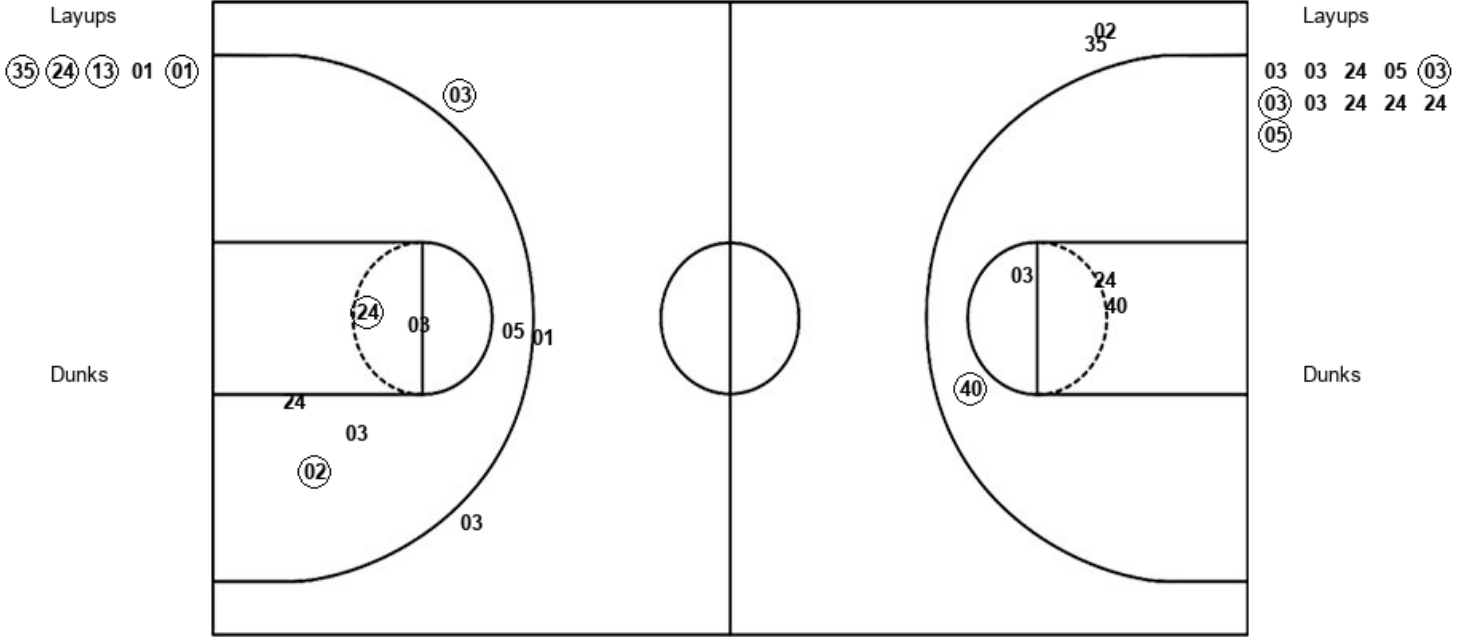
<b>LSU : Period 2</b>	<b>Made</b>	<b>Att</b>	<b>Pct</b>
Layups	1	3	33.3
Dunks	0	0	0
2PT Field Goals	3	10	30.0
3PT Field Goals	0	1	00.0
<b>Total Field Goals</b>	<b>3</b>	<b>11</b>	<b>27.3</b>

Official Shot Chart  
**LSU vs Rutgers**  
 PERIOD 3 Shots  
 December 15, 2018 at The RAC - Piscataway, N.J.



Rutgers

LSU



RUT : Period 3	Made	Att	Pct
Layups	4	5	80.0
Dunks	0	0	0
2PT Field Goals	5	9	55.6
3PT Field Goals	0	2	00.0
<b>Total Field Goals</b>	<b>5</b>	<b>11</b>	<b>45.5</b>

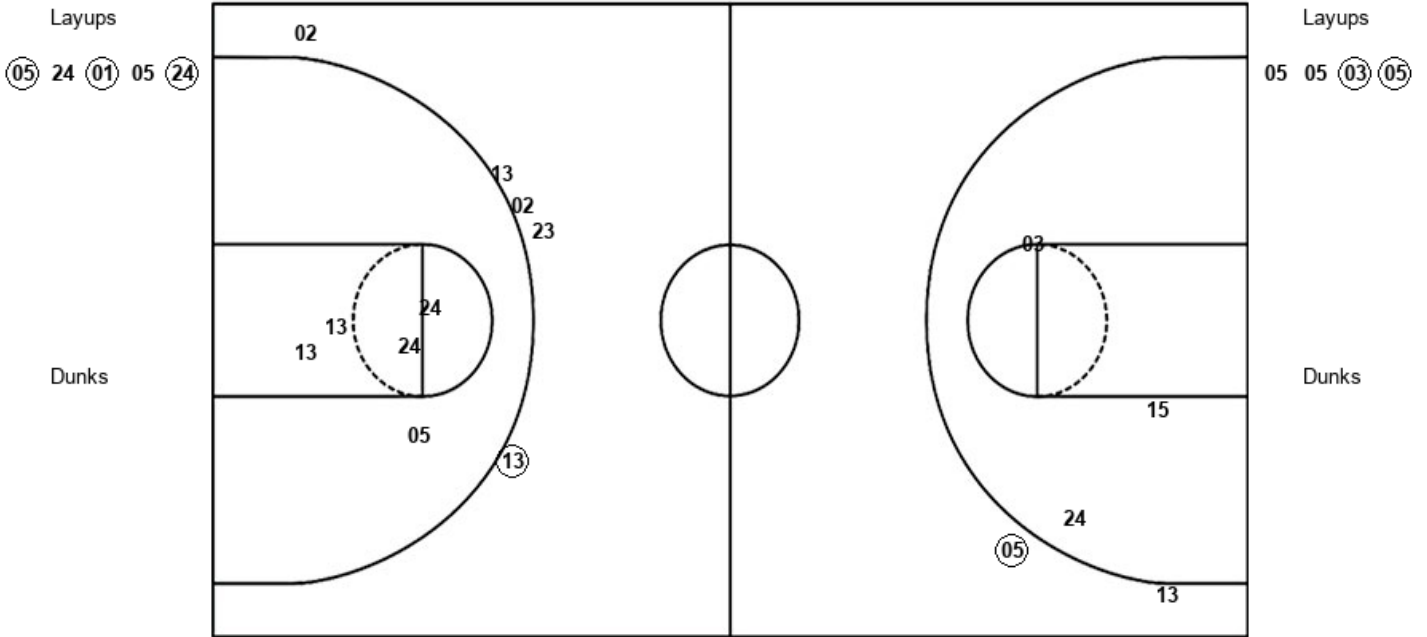
LSU : Period 3	Made	Att	Pct
Layups	3	11	27.3
Dunks	0	0	0
2PT Field Goals	5	17	29.4
3PT Field Goals	1	3	33.3
<b>Total Field Goals</b>	<b>6</b>	<b>20</b>	<b>30.0</b>

Official Shot Chart  
**LSU vs Rutgers**  
 PERIOD 4 Shots  
 December 15, 2018 at The RAC - Piscataway, N.J.



Rutgers

LSU



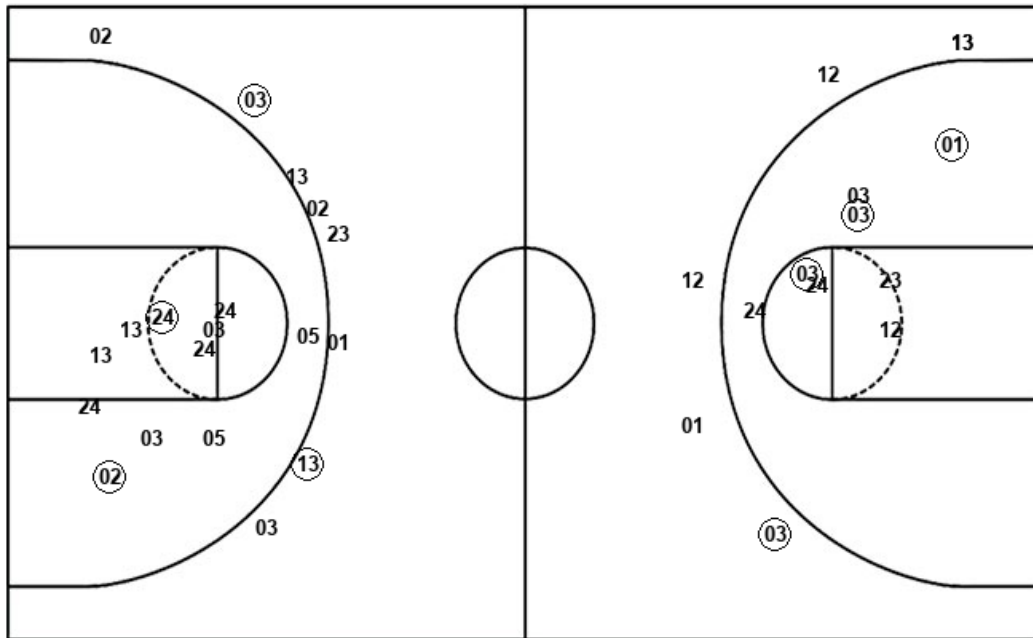
RUT : Period 4	Made	Att	Pct
Layups	3	5	60.0
Dunks	0	0	0
2PT Field Goals	3	8	37.5
3PT Field Goals	1	2	50.0
<b>Total Field Goals</b>	<b>4</b>	<b>10</b>	<b>40.0</b>

LSU : Period 4	Made	Att	Pct
Layups	2	4	50.0
Dunks	0	0	0
2PT Field Goals	2	9	22.2
3PT Field Goals	1	5	20.0
<b>Total Field Goals</b>	<b>3</b>	<b>14</b>	<b>21.4</b>

**Official Shot Chart**  
**LSU vs Rutgers**  
**LSU Team Shots**  
 December 15, 2018 at The RAC - Piscataway, N.J.



Layups



Layups

(05) (24) 12 (03) (05)  
 03 12 03 03 24  
 05 (03) (03) 03 24  
 24 24 (05) 05 05  
 (03) (05)

Dunks

Dunks

LSU : Period 1	Made	Att	Pct
Layups	3	4	75.0
Dunks	0	0	0
2PT Field Goals	4	5	80.0
3PT Field Goals	1	5	20.0
<b>Total Field Goals</b>	<b>5</b>	<b>10</b>	<b>50.0</b>

LSU : Period 3	Made	Att	Pct
Layups	3	11	27.3
Dunks	0	0	0
2PT Field Goals	5	17	29.4
3PT Field Goals	1	3	33.3
<b>Total Field Goals</b>	<b>6</b>	<b>20</b>	<b>30.0</b>

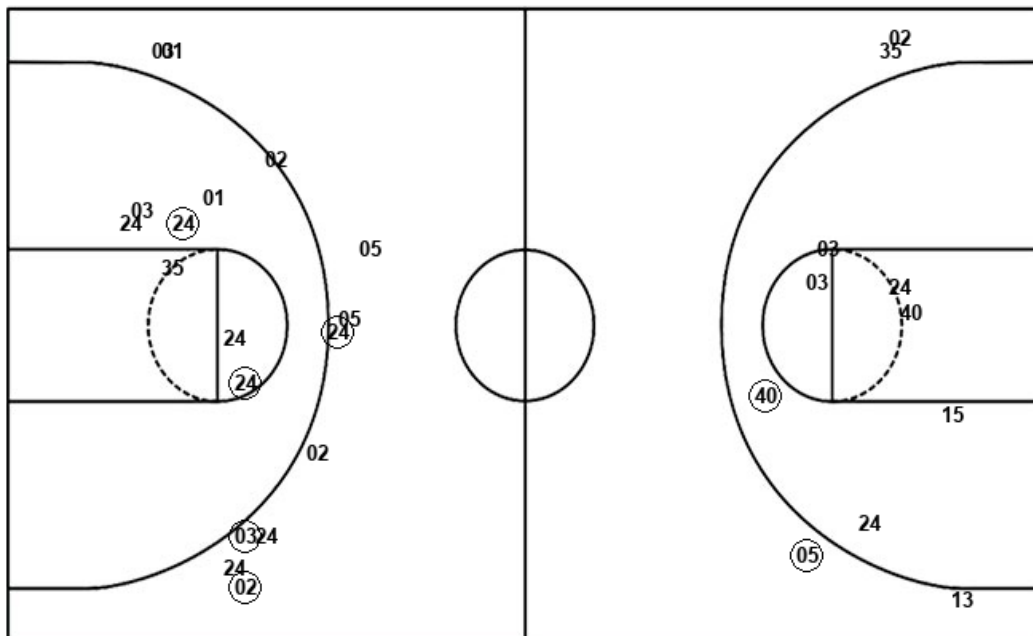
LSU : Period 2	Made	Att	Pct
Layups	1	3	33.3
Dunks	0	0	0
2PT Field Goals	3	10	30.0
3PT Field Goals	0	1	00.0
<b>Total Field Goals</b>	<b>3</b>	<b>11</b>	<b>27.3</b>

LSU : Period 4	Made	Att	Pct
Layups	2	4	50.0
Dunks	0	0	0
2PT Field Goals	2	9	22.2
3PT Field Goals	1	5	20.0
<b>Total Field Goals</b>	<b>3</b>	<b>14</b>	<b>21.4</b>

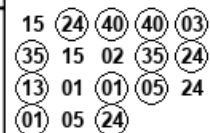
**Official Shot Chart**  
**LSU vs Rutgers**  
**Rutgers Team Shots**  
 December 15, 2018 at The RAC - Piscataway, N.J.



Layups



Layups



Dunks

Dunks

RUT : Period 1	Made	Att	Pct
Layups	1	2	50.0
Dunks	0	0	0
2PT Field Goals	1	5	20.0
3PT Field Goals	1	5	20.0
<b>Total Field Goals</b>	<b>2</b>	<b>10</b>	<b>20.0</b>

RUT : Period 2	Made	Att	Pct
Layups	4	6	66.7
Dunks	0	0	0
2PT Field Goals	6	11	54.5
3PT Field Goals	2	5	40.0
<b>Total Field Goals</b>	<b>8</b>	<b>16</b>	<b>50.0</b>

RUT : Period 3	Made	Att	Pct
Layups	4	5	80.0
Dunks	0	0	0
2PT Field Goals	5	9	55.6
3PT Field Goals	0	2	00.0
<b>Total Field Goals</b>	<b>5</b>	<b>11</b>	<b>45.5</b>

RUT : Period 4	Made	Att	Pct
Layups	3	5	60.0
Dunks	0	0	0
2PT Field Goals	3	8	37.5
3PT Field Goals	1	2	50.0
<b>Total Field Goals</b>	<b>4</b>	<b>10</b>	<b>40.0</b>