

## FINAL SCORE



**Fla. Southern**

**76**



**Palm Beach Atl.**

**46**

**January 09, 2019 • Rubin Arena - West Palm Beach, Fla.**

## FINAL STATISTICS

**Official Box Score**  
**Fla. Southern vs Palm Beach Atl.**  
**Game Totals -- Final Statistics**  
**January 09, 2019 at Rubin Arena - West Palm Beach, Fla.**



**Fla. Southern 76**

No.	Player	S	Pts	FG	3FG	FT	OR	DR	TR	PF	A	TO	Blk	Stl	Min	+/-
21	JENIKE, JULIA		6	3-8	0-5	0-0	1	4	5	2	5	2	0	0	30	17
23	PAZZAGLIA-KHOMENKO, KA1		10	4-6	0-0	2-2	3	4	7	3	1	1	0	1	18	13
24	FUCHS-ROBETIN, ANJA		30	14-16	0-1	2-2	2	4	6	2	3	5	0	2	36	25
32	KALAYDJIEV, BEKKI		2	0-2	0-1	2-4	0	4	4	1	3	4	0	3	25	21
33	ARANDA, MARTA		2	1-5	0-2	0-0	0	2	2	1	1	2	0	0	21	17
02	BURKETT, MONET		3	1-5	1-3	0-0	0	0	0	0	1	0	0	2	18	14
14	STEELE, MACKENZIE		6	1-6	1-5	3-4	1	1	2	0	0	0	0	0	11	12
25	SHELL, ASHLEY		2	0-2	0-0	2-2	2	2	4	0	0	0	0	0	6	0
31	LANDBERG, ELSA		2	0-0	0-0	2-2	0	0	0	3	4	0	0	1	15	9
42	CAMPBELL, CHESNEY		13	6-7	1-1	0-0	3	6	9	4	0	2	0	1	20	22
	TEAM						1	1	2	0		1				
<b>TOTALS</b>			<b>76</b>	<b>30-57</b>	<b>3-18</b>	<b>13-16</b>	<b>13</b>	<b>28</b>	<b>41</b>	<b>16</b>	<b>18</b>	<b>17</b>	<b>0</b>	<b>10</b>	<b>200</b>	

*Shooting By Period*

Period	FG	FG%	3FG	3FG%	FT	FT%
1st Qtr	10-19	53%	1-8	13%	0-0	0%
2nd Qtr	6-8	75%	1-3	33%	5-6	83%
3rd Qtr	9-13	69%	0-3	00%	3-4	75%
4th Qtr	5-17	29%	1-4	25%	5-6	83%
1st Half	16-27	59%	2-11	18%	5-6	83%
2nd Half	14-30	47%	1-7	14%	8-10	80%
<b>Game</b>	<b>30-57</b>	<b>52.6%</b>	<b>3-18</b>	<b>16.7%</b>	<b>13-16</b>	<b>81.3%</b>

Last FG: 4th-01:21  
Biggest Run: 11-0  
Largest lead: By 32 at 4-01:21  
Technical Fouls: None.

**Palm Beach Atl. 46**

No.	Player	S	Pts	FG	3FG	FT	OR	DR	TR	PF	A	TO	Blk	Stl	Min	+/-
00	CUMBIE, CIARA		4	1-2	0-0	2-2	2	3	5	2	0	3	0	2	20	-10
01	ROSS, ANIYAH		2	1-5	0-0	0-0	0	1	1	2	0	1	0	0	17	-18
02	DESHAZIER, DARSAN		1	0-4	0-3	1-2	1	0	1	1	0	1	0	1	19	-17
11	SALHIA, MINA		1	0-4	0-1	1-2	0	2	2	1	0	3	0	0	22	-19
21	GARVIN, JONIKA		21	8-16	0-1	5-6	1	1	2	0	0	2	0	2	34	-24
05	OYEDEJI, IBILOLA		3	0-1	0-1	3-4	0	1	1	3	1	4	0	1	13	-18
12	SELF, VICTORIA		6	3-8	0-2	0-0	2	2	4	4	0	2	0	0	17	-5
13	LAABS, TAYLOR		0	0-3	0-2	0-0	0	0	0	0	2	0	0	1	21	-12
22	MYERS, AUBREY		0	0-0	0-0	0-0	0	0	0	0	0	0	0	0	2	-1
23	CHARLES, CLAUDIA		2	1-6	0-2	0-0	1	2	3	0	1	0	0	0	16	-13
30	STANG, KATIE		6	2-3	2-3	0-0	1	1	2	3	0	1	0	1	19	-13
	TEAM						1	2	3	0		0				
<b>TOTALS</b>			<b>46</b>	<b>16-52</b>	<b>2-15</b>	<b>12-16</b>	<b>9</b>	<b>15</b>	<b>24</b>	<b>16</b>	<b>4</b>	<b>17</b>	<b>0</b>	<b>8</b>	<b>200</b>	

*Shooting By Period*

Period	FG	FG%	3FG	3FG%	FT	FT%
1st Qtr	5-14	36%	1-2	50%	2-2	100%
2nd Qtr	1-9	11%	0-5	00%	4-6	67%
3rd Qtr	4-11	36%	0-3	00%	5-7	71%
4th Qtr	6-18	33%	1-5	20%	1-1	100%
1st Half	6-23	26%	1-7	14%	6-8	75%
2nd Half	10-29	34%	1-8	13%	6-8	75%
<b>Game</b>	<b>16-52</b>	<b>30.8%</b>	<b>2-15</b>	<b>13.3%</b>	<b>12-16</b>	<b>75.0%</b>

Last FG: 4th-00:57  
Biggest Run: 6-0  
Largest lead: By 0 at -  
Technical Fouls: None.

*Game Notes:*

Officials: Dave Bowie, Brenson Parks, David Schwartz  
Attendance: 96

Start Time: 2019-01-09 22:28:29  
End Time: 2019-01-09 23:59:07  
Game Duration: 90  
Conference Game;

Score	1st	2nd	3rd	4th	TOT
FSC	21	18	21	16	<b>76</b>
PBA	13	6	13	14	<b>46</b>

FSC led for 38:40. PBA led for 0:00.  
Game was tied for 1:20.  
Times tied: 0 Lead Changes: 0

Points from	FSC	PBA
In the Paint	38	18
Off Turns	19	14
2nd Chance	14	6
Fast Break	11	11
Bench	26	17

**Official Box Score**  
**Fla. Southern vs Palm Beach Atl.**  
**First Half Statistics Only**  
**January 09, 2019 at Rubin Arena - West Palm Beach, Fla.**



**Fla. Southern 39**

No.	Player	S	Pts	FG	3FG	FT	OR	DR	TR	PF	A	TO	Blk	Stl	Min	+/-
02	BURKETT, MONET		0	0-1	0-1	0-0	0	0	0	0	0	0	0	2	5	8
14	STEELE, MACKENZIE		3	1-4	1-4	0-0	0	1	1	0	0	0	0	0	7	8
21	JENIKE, JULIA		0	0-2	0-2	0-0	0	1	1	1	3	2	0	0	15	12
23	PAZZAGLIA-KHOMENKO, KAT		6	2-3	0-0	2-2	1	2	3	1	0	0	0	1	10	8
24	FUCHS-ROBETIN, ANJA		20	9-10	0-1	2-2	1	4	5	1	1	3	0	1	20	20
25	SHELL, ASHLEY		0	0-0	0-0	0-0	0	0	0	0	0	0	0	0	0	0
31	LANDBERG, ELSA		0	0-0	0-0	0-0	0	0	0	2	3	0	0	1	7	2
32	KALAYDJIEV, BEKKI		1	0-0	0-0	1-2	0	2	2	1	3	2	0	1	13	18
33	ARANDA, MARTA		0	0-3	0-2	0-0	0	1	1	1	1	0	0	0	13	12
42	CAMPBELL, CHESNEY		9	4-4	1-1	0-0	3	4	7	1	0	1	0	0	10	12
	TEAM		0	0-0	0-0	0-0	1	0	1	0	0	1	0	0	0	0
<b>TOTALS</b>			<b>39</b>	<b>16-27</b>	<b>2-11</b>	<b>5-6</b>	<b>6</b>	<b>15</b>	<b>21</b>	<b>8</b>	<b>11</b>	<b>9</b>	<b>0</b>	<b>6</b>	<b>100</b>	

*Shooting By Period*

Period	FG	FG%	3FG	3FG%	FT	FT%
1st Qtr	10-19	53%	1-8	13%	0-0	0%
2nd Qtr	6-8	75%	1-3	33%	5-6	83%
1st Half	16-27	59%	2-11	18%	5-6	83%
Game	30-57	52.6%	3-18	16.7%	13-16	81.3%

Last FG Half: FSC 2nd-00:52

**Palm Beach Atl. 19**

No.	Player	S	Pts	FG	3FG	FT	OR	DR	TR	PF	A	TO	Blk	Stl	Min	+/-
00	CUMBLE, CIARA		4	1-2	0-0	2-2	1	2	3	0	0	2	0	1	12	-7
01	ROSS, ANIYAH		0	0-2	0-0	0-0	0	1	1	2	0	1	0	0	9	-15
02	DESHAZIER, DARSAN		1	0-2	0-1	1-2	1	0	1	1	0	0	0	1	10	-14
05	OYEDEJI, IBILOLA		0	0-0	0-0	0-0	0	0	0	1	0	3	0	0	6	-12
11	SALHIA, MINA		1	0-2	0-0	1-2	0	1	1	1	0	1	0	0	10	-14
12	SELF, VICTORIA		4	2-4	0-2	0-0	1	0	1	0	0	0	0	0	8	-1
13	LAABS, TAYLOR		0	0-1	0-1	0-0	0	0	0	0	1	0	0	1	11	-7
21	GARVIN, JONIKA		6	2-7	0-1	2-2	0	0	0	0	0	1	0	1	19	-18
22	MYERS, AUBREY		0	0-0	0-0	0-0	0	0	0	0	0	0	0	0	0	0
23	CHARLES, CLAUDIA		0	0-2	0-1	0-0	0	0	0	0	1	0	0	0	5	-6
30	STANG, KATIE		3	1-1	1-1	0-0	0	1	1	1	0	0	0	1	10	-6
	TEAM		0	0-0	0-0	0-0	0	0	0	0	0	0	0	0	0	0
<b>TOTALS</b>			<b>19</b>	<b>6-23</b>	<b>1-7</b>	<b>6-8</b>	<b>3</b>	<b>5</b>	<b>8</b>	<b>6</b>	<b>2</b>	<b>8</b>	<b>0</b>	<b>5</b>	<b>100</b>	

*Shooting By Period*

Period	FG	FG%	3FG	3FG%	FT	FT%
1st Qtr	5-14	36%	1-2	50%	2-2	100%
2nd Qtr	1-9	11%	0-5	00%	4-6	67%
1st Half	6-23	26%	1-7	14%	6-8	75%
Game	16-52	30.8%	2-15	13.3%	12-16	75.0%

Last FG Half: PBA 2nd-05:22

Game Notes:

Officials: Dave Bowie, Brenson Parks, David Schwartz  
Attendance: 96

Start Time: 2019-01-09 22:28:29  
End Time: 2019-01-09 23:59:07  
Game Duration: 90  
Conference Game;

Score	1st	2nd	3rd	4th	TOT
FSC	21	18	21	16	<b>76</b>
PBA	13	6	13	14	<b>46</b>

Points from (This Period)	FSC	PBA
In the Paint	22	6
Off Turns	8	6
2nd Chance	6	0
Fast Break	7	4
Bench	12	7

**Official Box Score**  
**Fla. Southern vs Palm Beach Atl.**  
**First Quarter Statistics Only**  
**January 09, 2019 at Rubin Arena - West Palm Beach, Fla.**



**Fla. Southern 21**

No.	Player	S	Pts	FG	3FG	FT	OR	DR	TR	PF	A	TO	Blk	Stl	Min	+/-
21	JENIKE, JULIA		0	0-2	0-2	0-0	0	1	1	1	1	1	0	0	9	6
23	PAZZAGLIA-KHOMENKO, KAT		2	1-2	0-0	0-0	1	0	1	0	0	0	0	1	4	2
24	FUCHS-ROBETIN, ANJA		12	6-7	0-1	0-0	1	2	3	0	0	1	0	1	10	8
32	KALAYDJIEV, BEKKI		0	0-0	0-0	0-0	0	0	0	0	1	0	0	0	5	4
33	ARANDA, MARTA		0	0-3	0-2	0-0	0	1	1	0	1	0	0	0	7	6
02	BURKETT, MONET		0	0-0	0-0	0-0	0	0	0	0	0	0	0	0	1	2
14	STEELE, MACKENZIE		3	1-3	1-3	0-0	0	1	1	0	0	0	0	0	3	2
25	SHELL, ASHLEY		0	0-0	0-0	0-0	0	0	0	0	0	0	0	0	0	0
31	LANDBERG, ELSA		0	0-0	0-0	0-0	0	0	0	1	3	0	0	0	5	4
42	CAMPBELL, CHESNEY		4	2-2	0-0	0-0	1	2	3	1	0	0	0	0	6	6
	TEAM						1	0	1	0		0				
<b>TOTALS</b>			<b>21</b>	<b>10-19</b>	<b>1-8</b>	<b>0-0</b>	<b>4</b>	<b>7</b>	<b>11</b>	<b>3</b>	<b>6</b>	<b>2</b>	<b>0</b>	<b>2</b>	<b>50</b>	

*Shooting By Period*

Period	FG	FG%	3FG	3FG%	FT	FT%
1st Qtr	10-19	53%	1-8	13%	0-0	0%
2nd Qtr	6-8	75%	1-3	33%	5-6	83%
1st Half	10-19	53%	1-8	13%	0-0	0%
1st Half	16-27	59%	2-11	18%	5-6	83%
Game	30-57	52.6%	3-18	16.7%	13-16	81.3%

**Palm Beach Atl. 13**

No.	Player	S	Pts	FG	3FG	FT	OR	DR	TR	PF	A	TO	Blk	Stl	Min	+/-
00	CUMBIE, CIARA		2	1-2	0-0	0-0	1	2	3	0	0	2	0	1	8	-8
01	ROSS, ANIYAH		0	0-1	0-0	0-0	0	1	1	0	0	1	0	0	5	-6
02	DESHAZIER, DARSAN		0	0-1	0-0	0-0	1	0	1	0	0	0	0	0	5	-6
11	SALHIA, MINA		0	0-2	0-0	0-0	0	1	1	0	0	1	0	0	5	-6
21	GARVIN, JONIKA		6	2-5	0-0	2-2	0	0	0	0	0	0	0	1	9	-6
05	OYEDEJI, IBILOLA		0	0-0	0-0	0-0	0	0	0	0	0	0	0	0	0	0
12	SELF, VICTORIA		2	1-1	0-0	0-0	0	0	0	0	0	0	0	0	5	-2
13	LAABS, TAYLOR		0	0-1	0-1	0-0	0	0	0	0	1	0	0	0	5	-2
22	MYERS, AUBREY		0	0-0	0-0	0-0	0	0	0	0	0	0	0	0	0	0
23	CHARLES, CLAUDIA		0	0-0	0-0	0-0	0	0	0	0	1	0	0	0	3	-2
30	STANG, KATIE		3	1-1	1-1	0-0	0	1	1	0	0	0	0	0	5	-2
	TEAM						0	0	0	0		0				
<b>TOTALS</b>			<b>13</b>	<b>5-14</b>	<b>1-2</b>	<b>2-2</b>	<b>2</b>	<b>5</b>	<b>7</b>	<b>0</b>	<b>2</b>	<b>4</b>	<b>0</b>	<b>2</b>	<b>50</b>	

*Shooting By Period*

Period	FG	FG%	3FG	3FG%	FT	FT%
1st Qtr	5-14	36%	1-2	50%	2-2	100%
2nd Qtr	1-9	11%	0-5	00%	4-6	67%
1st Half	5-14	36%	1-2	50%	2-2	100%
1st Half	6-23	26%	1-7	14%	6-8	75%
Game	16-52	30.8%	2-15	13.3%	12-16	75.0%

*Game Notes:*

Officials: **Dave Bowie, Brenson Parks, David Schwartz**  
Attendance: **96**

Start Time: **2019-01-09 22:28:29**

End Time: **2019-01-09 23:59:07**

Game Duration: **90**

Conference Game;

Score	1st	2nd	3rd	4th	TOT
FSC	21	18	21	16	<b>76</b>
PBA	13	6	13	14	<b>46</b>

Points from (This Period)	FSC	PBA
In the Paint	14	6
Off Turns	4	4
2nd Chance	6	0
Fast Break	5	4
Bench	7	5

**Official Play-By-Play**  
**Fla. Southern vs Palm Beach Atl.**  
**First Quarter**  
**January 09, 2019 at Rubin Arena - West Palm Beach, Fla.**



**Period 1**

**Starters:**

**Fla. Southern:** 21 JENIKE, JULIA; 23 PAZZAGLIA-KHOMENKO, KATERINA; 24 FUCHS-ROBETIN, ANJA; 32 KALAYDJIEV, BEKKI; 33 ARANDA, MARTA;  
**Palm Beach Atl.:** 00 CUMBIE, CIARA; 1 ROSS, ANIYAH; 2 DESHAZIER, DARSAN; 11 SALHIA, MINA; 21 GARVIN, JONIKA;

Time	VISITORS: Fla. Southern	Score	Margin	HOME: Palm Beach Atl.
09:51				MISSED LAYUP by GARVIN, JONIKA
09:47				REBOUND (OFF) by DESHAZIER, DARSAN
09:38				MISSED JUMPER by SALHIA, MINA
09:34				REBOUND (OFF) by CUMBIE, CIARA
09:19				MISSED LAYUP by DESHAZIER, DARSAN
09:16	REBOUND (DEF) by FUCHS-ROBETIN, ANJA			
09:12	MISSED 3PTR by JENIKE, JULIA			
09:09	REBOUND (OFF) by PAZZAGLIA-KHOMENKO, KATERINA			
09:07	GOOD! LAYUP by PAZZAGLIA-KHOMENKO, KATERINA	0-2	V 2	
08:40				MISSED LAYUP by CUMBIE, CIARA
08:37	REBOUND (DEF) by FUCHS-ROBETIN, ANJA			
08:34	GOOD! LAYUP by FUCHS-ROBETIN, ANJA	0-4	V 4	
08:05				MISSED JUMPER by ROSS, ANIYAH
08:02	REBOUND (DEF) by JENIKE, JULIA			
07:40	MISSED LAYUP by ARANDA, MARTA			
07:35				REBOUND (DEF) by ROSS, ANIYAH
07:24	FOUL (PERSONAL) by JENIKE, JULIA			
07:14				TURNOVER (BADPASS) by SALHIA, MINA
07:14	STEAL by PAZZAGLIA-KHOMENKO, KATERINA			
06:54	MISSED LAYUP by PAZZAGLIA-KHOMENKO, KATERINA			
06:50				REBOUND (DEF) by CUMBIE, CIARA
06:34		2-4	V 2	GOOD! JUMPER by GARVIN, JONIKA
06:16	MISSED 3PTR by FUCHS-ROBETIN, ANJA			
06:11				REBOUND (DEF) by SALHIA, MINA
06:04	SUB OUT: KALAYDJIEV, BEKKI			
06:04	SUB IN: LANDBERG, ELSA			
06:04	SUB OUT: PAZZAGLIA-KHOMENKO, KATERINA			
06:04	SUB IN: CAMPBELL, CHESNEY			
05:59				MISSED JUMPER by GARVIN, JONIKA
05:56	REBOUND (DEF) by ARANDA, MARTA			
05:51	GOOD! LAYUP by FUCHS-ROBETIN, ANJA [FB/PNT]	2-6	V 4	
05:51	ASSIST by ARANDA, MARTA			
05:35				MISSED JUMPER by SALHIA, MINA
05:31	REBOUND (DEF) by CAMPBELL, CHESNEY			
05:29	MISSED 3PTR by ARANDA, MARTA			
05:26	REBOUND (OFF) by TEAM			
05:13	GOOD! JUMPER by CAMPBELL, CHESNEY	2-8	V 6	
05:13	ASSIST by LANDBERG, ELSA			
04:51				TURNOVER (TRAVEL) by ROSS, ANIYAH
04:51				
04:51				SUB OUT: ROSS, ANIYAH
04:51				SUB IN: STANG, KATIE
04:51				SUB OUT: DESHAZIER, DARSAN
04:51				SUB IN: SELF, VICTORIA
04:51				SUB OUT: SALHIA, MINA
04:51				SUB IN: LAABS, TAYLOR
04:31	GOOD! LAYUP by FUCHS-ROBETIN, ANJA [PNT]	2-10	V 8	
04:27	FOUL (PERSONAL) by LANDBERG, ELSA			
04:17				TURNOVER (BADPASS) by CUMBIE, CIARA
03:58	MISSED 3PTR by JENIKE, JULIA			
03:55				REBOUND (DEF) by STANG, KATIE
03:50		5-10	V 5	GOOD! 3PTR by STANG, KATIE
03:50				ASSIST by LAABS, TAYLOR
03:32	MISSED 3PTR by ARANDA, MARTA			
03:29	REBOUND (OFF) by FUCHS-ROBETIN, ANJA			
03:24	GOOD! LAYUP by FUCHS-ROBETIN, ANJA	5-12	V 7	
03:24	ASSIST by LANDBERG, ELSA			
03:14	FOUL (PERSONAL) by CAMPBELL, CHESNEY			
03:14		6-12	V 6	GOOD! FT by GARVIN, JONIKA
03:14				SUB OUT: CUMBIE, CIARA
03:14				SUB IN: CHARLES, CLAUDIA
03:14	SUB OUT: ARANDA, MARTA			
03:14	SUB IN: STEELE, MACKENZIE			
03:14		7-12	V 5	GOOD! FT by GARVIN, JONIKA
02:57	TURNOVER (BADPASS) by JENIKE, JULIA			
02:57				STEAL by GARVIN, JONIKA
02:53		9-12	V 3	GOOD! LAYUP by GARVIN, JONIKA [FB/PNT]
02:28	GOOD! LAYUP by FUCHS-ROBETIN, ANJA [PNT]	9-14	V 5	
02:28	ASSIST by LANDBERG, ELSA			
02:06				MISSED LAYUP by GARVIN, JONIKA

Time	VISITORS: Fla. Southern	Score	Margin	HOME: Palm Beach Atl.
02:02	REBOUND (DEF) by CAMPBELL, CHESNEY			
02:00	GOOD! 3PTR by STEELE, MACKENZIE [FB]	9-17	V 8	
02:00	ASSIST by JENIKE, JULIA			
01:40		11-17	V 6	GOOD! JUMPER by SELF, VICTORIA [PNT]
01:40				ASSIST by CHARLES, CLAUDIA
01:21				SUB OUT: GARVIN, JONIKA
01:21				SUB IN: CUMBIE, CIARA
01:21	SUB OUT: JENIKE, JULIA			
01:21	SUB IN: BURKETT, MONET			
01:21	SUB OUT: LANDBERG, ELSA			
01:21	SUB IN: KALAYDJIEV, BEKKI			
01:05	MISSED 3PTR by STEELE, MACKENZIE			
01:02				REBOUND (DEF) by CUMBIE, CIARA
00:54				MISSED 3PTR by LAABS, TAYLOR
00:52	REBOUND (DEF) by STEELE, MACKENZIE			
00:41	MISSED 3PTR by STEELE, MACKENZIE			
00:36	REBOUND (OFF) by CAMPBELL, CHESNEY			
00:23	TURNOVER (BADPASS) by FUCHS-ROBETIN, ANJA			
00:23				STEAL by CUMBIE, CIARA
00:19		13-17	V 4	GOOD! LAYUP by CUMBIE, CIARA [FB]
00:06	GOOD! JUMPER by CAMPBELL, CHESNEY	13-19	V 6	
00:06	ASSIST by KALAYDJIEV, BEKKI			
00:00				TURNOVER (BADPASS) by CUMBIE, CIARA
00:00	STEAL by FUCHS-ROBETIN, ANJA			
00:00	GOOD! LAYUP by FUCHS-ROBETIN, ANJA	13-21	V 8	

Fla. Southern 21, Palm Beach Atl. 13

Points from (This Period)	FSC	PBA
In the Paint	14	6
Off Turns	4	4
2nd Chance	6	0
Fast Break	5	4
Bench	7	5

**Official Box Score**  
**Fla. Southern vs Palm Beach Atl.**  
**Second Quarter Statistics Only**  
**January 09, 2019 at Rubin Arena - West Palm Beach, Fla.**



**Fla. Southern 18**

No.	Player	S	Pts	FG	3FG	FT	OR	DR	TR	PF	A	TO	Blk	Stl	Min	+/-
21	JENIKE, JULIA		0	0-0	0-0	0-0	0	0	0	0	2	1	0	0	6	6
23	PAZZAGLIA-KHOMENKO, KAT		4	1-1	0-0	2-2	0	2	2	1	0	0	0	0	6	6
24	FUCHS-ROBETIN, ANJA		8	3-3	0-0	2-2	0	2	2	1	1	2	0	0	10	12
32	KALAYDJIEV, BEKKI		1	0-0	0-0	1-2	0	2	2	1	2	2	0	1	8	14
33	ARANDA, MARTA		0	0-0	0-0	0-0	0	0	0	1	0	0	0	0	6	6
02	BURKETT, MONET		0	0-1	0-1	0-0	0	0	0	0	0	0	0	2	4	6
14	STEELE, MACKENZIE		0	0-1	0-1	0-0	0	0	0	0	0	0	0	0	4	6
25	SHELL, ASHLEY		0	0-0	0-0	0-0	0	0	0	0	0	0	0	0	0	0
31	LANDBERG, ELSA		0	0-0	0-0	0-0	0	0	0	1	0	0	0	1	2	-2
42	CAMPBELL, CHESNEY		5	2-2	1-1	0-0	2	2	4	0	0	1	0	0	4	6
	TEAM						0	0	0	0		1				
<b>TOTALS</b>			<b>18</b>	<b>6-8</b>	<b>1-3</b>	<b>5-6</b>	<b>2</b>	<b>8</b>	<b>10</b>	<b>5</b>	<b>5</b>	<b>7</b>	<b>0</b>	<b>4</b>	<b>50</b>	

*Shooting By Period*

Period	FG	FG%	3FG	3FG%	FT	FT%
3rd Qtr	9-13	69%	0-3	00%	3-4	75%
4th Qtr	5-17	29%	1-4	25%	5-6	83%
2nd Half	6-8	75%	1-3	33%	5-6	83%
2nd Half	14-30	47%	1-7	14%	8-10	80%
Game	30-57	52.6%	3-18	16.7%	13-16	81.3%

**Palm Beach Atl. 6**

No.	Player	S	Pts	FG	3FG	FT	OR	DR	TR	PF	A	TO	Blk	Stl	Min	+/-
00	CUMBIE, CIARA		2	0-0	0-0	2-2	0	0	0	0	0	0	0	0	4	1
01	ROSS, ANIYAH		0	0-1	0-0	0-0	0	0	0	2	0	0	0	0	4	-9
02	DESHAZIER, DARSAN		1	0-1	0-1	1-2	0	0	0	1	0	0	0	1	5	-8
11	SALHIA, MINA		1	0-0	0-0	1-2	0	0	0	1	0	0	0	0	5	-8
21	GARVIN, JONIKA		0	0-2	0-1	0-0	0	0	0	0	0	1	0	0	10	-12
05	OYEDEJI, IBILOLA		0	0-0	0-0	0-0	0	0	0	1	0	3	0	0	6	-12
12	SELF, VICTORIA		2	1-3	0-2	0-0	1	0	1	0	0	0	0	0	3	1
13	LAABS, TAYLOR		0	0-0	0-0	0-0	0	0	0	0	0	0	0	1	6	-5
22	MYERS, AUBREY		0	0-0	0-0	0-0	0	0	0	0	0	0	0	0	0	0
23	CHARLES, CLAUDIA		0	0-2	0-1	0-0	0	0	0	0	0	0	0	0	2	-4
30	STANG, KATIE		0	0-0	0-0	0-0	0	0	0	1	0	0	0	1	5	-4
	TEAM						0	0	0	0		0				
<b>TOTALS</b>			<b>6</b>	<b>1-9</b>	<b>0-5</b>	<b>4-6</b>	<b>1</b>	<b>0</b>	<b>1</b>	<b>6</b>	<b>0</b>	<b>4</b>	<b>0</b>	<b>3</b>	<b>50</b>	

*Shooting By Period*

Period	FG	FG%	3FG	3FG%	FT	FT%
3rd Qtr	4-11	36%	0-3	00%	5-7	71%
4th Qtr	6-18	33%	1-5	20%	1-1	100%
2nd Half	1-9	11%	0-5	00%	4-6	67%
2nd Half	10-29	34%	1-8	13%	6-8	75%
Game	16-52	30.8%	2-15	13.3%	12-16	75.0%

*Game Notes:*

Officials: Dave Bowie, Brenson Parks, David Schwartz  
Attendance: 96

Start Time: 2019-01-09 22:28:29

End Time: 2019-01-09 23:59:07

Game Duration: 90

Conference Game;

Score	1st	2nd	3rd	4th	TOT
FSC	21	18	21	16	<b>76</b>
PBA	13	6	13	14	<b>46</b>

Points from (This Period)	FSC	PBA
In the Paint	8	0
Off Turns	4	2
2nd Chance	0	0
Fast Break	2	0
Bench	5	2

**Official Play-By-Play**  
**Fla. Southern vs Palm Beach Atl.**  
**Second Quarter**  
**January 09, 2019 at Rubin Arena - West Palm Beach, Fla.**



**Period 2**

**Starters:**

**Fla. Southern:** 21 JENIKE, JULIA; 23 PAZZAGLIA-KHOMENKO, KATERINA; 24 FUCHS-ROBETIN, ANJA; 32 KALAYDJIEV, BEKKI; 33 ARANDA, MARTA;  
**Palm Beach Atl.:** 00 CUMBIE, CIARA; 1 ROSS, ANIYAH; 2 DESHAZIER, DARSAN; 11 SALHIA, MINA; 21 GARVIN, JONIKA;

Time	VISITORS: Fla. Southern	Score	Margin	HOME: Palm Beach Atl.
09:34				FOUL (PERSONAL) by OYEDEJI, IBILOLA
09:34	GOOD! FT by FUCHS-ROBETIN, ANJA	13-22	V 9	
09:34	GOOD! FT by FUCHS-ROBETIN, ANJA	13-23	V 10	
09:13				MISSED LAYUP by ROSS, ANIYAH
09:08	REBOUND (DEF) by CAMPBELL, CHESNEY			
09:08				FOUL (PERSONAL) by ROSS, ANIYAH
09:03	TURNOVER (TRAVEL) by KALAYDJIEV, BEKKI			
08:42				TURNOVER (BADPASS) by OYEDEJI, IBILOLA
08:42	STEAL by BURKETT, MONET			
08:22	GOOD! LAYUP by CAMPBELL, CHESNEY [PNT]	13-25	V 12	
08:22	ASSIST by FUCHS-ROBETIN, ANJA			
08:07	FOUL (PERSONAL) by FUCHS-ROBETIN, ANJA			
08:04	FOUL (PERSONAL) by KALAYDJIEV, BEKKI			
08:04				MISSED FT by SALHIA, MINA
08:04				REBOUND (OFF) by TEAM
08:04		14-25	V 11	GOOD! FT by SALHIA, MINA
07:49	TURNOVER (LOSTBALL) by KALAYDJIEV, BEKKI			
07:49				STEAL by DESHAZIER, DARSAN
07:37				MISSED 3PTR by DESHAZIER, DARSAN
07:34	REBOUND (DEF) by CAMPBELL, CHESNEY			
07:28	GOOD! 3PTR by CAMPBELL, CHESNEY	14-28	V 14	
07:28	ASSIST by KALAYDJIEV, BEKKI			
07:06				TURNOVER (BADPASS) by OYEDEJI, IBILOLA
07:06	STEAL by BURKETT, MONET			
06:46				FOUL (PERSONAL) by DESHAZIER, DARSAN
06:46				SUB OUT: ROSS, ANIYAH
06:46				SUB IN: LAABS, TAYLOR
06:46				SUB OUT: DESHAZIER, DARSAN
06:46				SUB IN: CUMBIE, CIARA
06:46				SUB OUT: OYEDEJI, IBILOLA
06:46				SUB IN: STANG, KATIE
06:46				SUB OUT: SALHIA, MINA
06:46				SUB IN: SELF, VICTORIA
06:28	MISSED 3PTR by BURKETT, MONET			
06:24	REBOUND (OFF) by CAMPBELL, CHESNEY			
06:21	MISSED 3PTR by STEELE, MACKENZIE			
06:17	REBOUND (OFF) by CAMPBELL, CHESNEY			
06:15	TURNOVER (BADPASS) by CAMPBELL, CHESNEY			
06:15				STEAL by STANG, KATIE
06:05				MISSED 3PTR by GARVIN, JONIKA
06:02	REBOUND (DEF) by KALAYDJIEV, BEKKI			
05:58	SUB OUT: BURKETT, MONET			
05:58	SUB IN: PAZZAGLIA-KHOMENKO, KATERINA			
05:58	SUB OUT: STEELE, MACKENZIE			
05:58	SUB IN: JENIKE, JULIA			
05:58	SUB OUT: KALAYDJIEV, BEKKI			
05:58	SUB IN: LANDBERG, ELSA			
05:58	SUB OUT: CAMPBELL, CHESNEY			
05:58	SUB IN: ARANDA, MARTA			
05:58				TIMEOUT 30SEC
05:58				
05:33	TURNOVER (SHOTCLOCK) by			
05:22		16-28	V 12	GOOD! JUMPER by SELF, VICTORIA
05:06	TURNOVER (TRAVEL) by JENIKE, JULIA			
04:35				TURNOVER (LOSTBALL) by GARVIN, JONIKA
04:35	STEAL by LANDBERG, ELSA			
04:29	TURNOVER (LOSTBALL) by FUCHS-ROBETIN, ANJA			
04:29				STEAL by LAABS, TAYLOR
04:20	FOUL (PERSONAL) by LANDBERG, ELSA			
04:20	SUB OUT: LANDBERG, ELSA			
04:20	SUB IN: KALAYDJIEV, BEKKI			
04:13				MISSED 3PTR by SELF, VICTORIA
04:09	REBOUND (DEF) by KALAYDJIEV, BEKKI			
04:06				FOUL (PERSONAL) by STANG, KATIE
04:06				SUB OUT: SELF, VICTORIA
04:06				SUB IN: OYEDEJI, IBILOLA
03:54	GOOD! LAYUP by PAZZAGLIA-KHOMENKO, KATERINA [PNT]	16-30	V 14	
03:54	ASSIST by JENIKE, JULIA			
03:32	FOUL (PERSONAL) by PAZZAGLIA-KHOMENKO, KATERINA			
03:32		17-30	V 13	GOOD! FT by CUMBIE, CIARA

Time	VISITORS: Fla. Southern	Score	Margin	HOME: Palm Beach Atl.
03:32		18-30	V 12	GOOD! FT by CUMBIE, CIARA
03:32				SUB OUT: CUMBIE, CIARA
03:32				SUB IN: ROSS, ANIYAH
03:11	GOOD! JUMPER by FUCHS-ROBETIN, ANJA	18-32	V 14	
03:11	ASSIST by JENIKE, JULIA			
02:53				MISSED JUMPER by GARVIN, JONIKA
02:50	REBOUND (DEF) by FUCHS-ROBETIN, ANJA			
02:39				FOUL (PERSONAL) by ROSS, ANIYAH
02:39	GOOD! FT by PAZZAGLIA-KHOMENKO, KATERINA	18-33	V 15	
02:39				SUB OUT: ROSS, ANIYAH
02:39				SUB IN: CHARLES, CLAUDIA
02:39	GOOD! FT by PAZZAGLIA-KHOMENKO, KATERINA	18-34	V 16	
02:16				TURNOVER (BADPASS) by OYEDEJI, IBILOLA
02:16	STEAL by KALAYDJIEV, BEKKI			
02:12	GOOD! LAYUP by FUCHS-ROBETIN, ANJA [FB]	18-36	V 18	
02:12	ASSIST by KALAYDJIEV, BEKKI			
01:56				MISSED JUMPER by CHARLES, CLAUDIA
01:52	REBOUND (DEF) by FUCHS-ROBETIN, ANJA			
01:48				SUB OUT: OYEDEJI, IBILOLA
01:48				SUB IN: DESHAZIER, DARSAN
01:48				SUB OUT: STANG, KATIE
01:48				SUB IN: SALHIA, MINA
01:30	TURNOVER (TRAVEL) by FUCHS-ROBETIN, ANJA			
01:13				MISSED 3PTR by CHARLES, CLAUDIA
01:10	REBOUND (DEF) by PAZZAGLIA-KHOMENKO, KATERINA			
00:52	GOOD! LAYUP by FUCHS-ROBETIN, ANJA [PNT]	18-38	V 20	
00:27	FOUL (PERSONAL) by ARANDA, MARTA			
00:27		19-38	V 19	GOOD! FT by DESHAZIER, DARSAN
00:27				SUB OUT: LAABS, TAYLOR
00:27				SUB IN: CUMBIE, CIARA
00:27				SUB OUT: CHARLES, CLAUDIA
00:27				SUB IN: SELF, VICTORIA
00:27				MISSED FT by DESHAZIER, DARSAN
00:27	REBOUND (DEF) by PAZZAGLIA-KHOMENKO, KATERINA			
00:10				FOUL (PERSONAL) by SALHIA, MINA
00:10	MISSED FT by KALAYDJIEV, BEKKI			
00:10	REBOUND (OFF) by TEAM			
00:10	GOOD! FT by KALAYDJIEV, BEKKI	19-39	V 20	
00:02				MISSED 3PTR by SELF, VICTORIA
00:02				REBOUND (OFF) by SELF, VICTORIA

Fla. Southern 39, Palm Beach Atl. 19

Points from (This Period)	FSC	PBA
In the Paint	8	0
Off Turns	4	2
2nd Chance	0	0
Fast Break	2	0
Bench	5	2

**Official Box Score**  
**Fla. Southern vs Palm Beach Atl.**  
**Second Half Statistics Only**  
**January 09, 2019 at Rubin Arena - West Palm Beach, Fla.**



### Fla. Southern 37

No.	Player	S	Pts	FG	3FG	FT	OR	DR	TR	PF	A	TO	Blk	Stl	Min	+/-
02	BURKETT, MONET		3	1-4	1-2	0-0	0	0	0	0	1	0	0	0	12	6
14	STEELE, MACKENZIE		3	0-2	0-1	3-4	1	0	1	0	0	0	0	0	4	4
21	JENIKE, JULIA		6	3-6	0-3	0-0	1	3	4	1	2	0	0	0	16	5
23	PAZZAGLIA-KHOMENKO, KAT		4	2-3	0-0	0-0	2	2	4	2	1	1	0	0	8	5
24	FUCHS-ROBETIN, ANJA		10	5-6	0-0	0-0	1	0	1	1	2	2	0	1	16	5
25	SHELL, ASHLEY		2	0-2	0-0	2-2	2	2	4	0	0	0	0	0	6	0
31	LANDBERG, ELSA		2	0-0	0-0	2-2	0	0	0	1	1	0	0	0	9	7
32	KALAYDJIEV, BEKKI		1	0-2	0-1	1-2	0	2	2	0	0	2	0	2	11	3
33	ARANDA, MARTA		2	1-2	0-0	0-0	0	1	1	0	0	2	0	0	8	5
42	CAMPBELL, CHESNEY		4	2-3	0-0	0-0	0	2	2	3	0	1	0	1	10	10
	TEAM		0	0-0	0-0	0-0	0	1	1	0	0	0	0	0	0	
<b>TOTALS</b>			<b>37</b>	<b>14-30</b>	<b>1-7</b>	<b>8-10</b>	<b>7</b>	<b>13</b>	<b>20</b>	<b>8</b>	<b>7</b>	<b>8</b>	<b>0</b>	<b>4</b>	<b>100</b>	

#### Shooting By Period

Period	FG	FG%	3FG	3FG%	FT	FT%
3rd Qtr	9-13	69%	0-3	00%	3-4	75%
4th Qtr	5-17	29%	1-4	25%	5-6	83%
2nd Half	14-30	47%	1-7	14%	8-10	80%
Game	30-57	52.6%	3-18	16.7%	13-16	81.3%

Last FG Half: FSC 4th-01:21

### Palm Beach Atl. 27

No.	Player	S	Pts	FG	3FG	FT	OR	DR	TR	PF	A	TO	Blk	Stl	Min	+/-
00	CUMBIE, CIARA		0	0-0	0-0	0-0	1	1	2	2	0	1	0	1	8	-3
01	ROSS, ANIYAH		2	1-3	0-0	0-0	0	0	0	0	0	0	0	0	7	-3
02	DESHAIR, DARSAN		0	0-2	0-2	0-0	0	0	0	0	0	1	0	0	9	-3
05	OYEDEJI, IBILOLA		3	0-1	0-1	3-4	0	1	1	2	1	1	0	1	7	-6
11	SALHIA, MINA		0	0-2	0-1	0-0	0	1	1	0	0	2	0	0	12	-5
12	SELF, VICTORIA		2	1-4	0-0	0-0	1	2	3	4	0	2	0	0	10	-4
13	LAABS, TAYLOR		0	0-2	0-1	0-0	0	0	0	0	1	0	0	0	10	-5
21	GARVIN, JONIKA		15	6-9	0-0	3-4	1	1	2	0	0	1	0	1	16	-6
22	MYERS, AUBREY		0	0-0	0-0	0-0	0	0	0	0	0	0	0	0	2	-1
23	CHARLES, CLAUDIA		2	1-4	0-1	0-0	1	2	3	0	0	0	0	0	10	-7
30	STANG, KATIE		3	1-2	1-2	0-0	1	0	1	2	0	1	0	0	9	-7
	TEAM		0	0-0	0-0	0-0	1	2	3	0	0	0	0	0	0	
<b>TOTALS</b>			<b>27</b>	<b>10-29</b>	<b>1-8</b>	<b>6-8</b>	<b>6</b>	<b>10</b>	<b>16</b>	<b>10</b>	<b>2</b>	<b>9</b>	<b>0</b>	<b>3</b>	<b>100</b>	

#### Shooting By Period

Period	FG	FG%	3FG	3FG%	FT	FT%
3rd Qtr	4-11	36%	0-3	00%	5-7	71%
4th Qtr	6-18	33%	1-5	20%	1-1	100%
2nd Half	10-29	34%	1-8	13%	6-8	75%
Game	16-52	30.8%	2-15	13.3%	12-16	75.0%

Last FG Half: PBA 4th-00:57

#### Game Notes:

Officials: Dave Bowie, Brenson Parks, David Schwartz  
Attendance: 96

Start Time: 2019-01-09 22:28:29

End Time: 2019-01-09 23:59:07

Game Duration: 90

Conference Game;

Score	1st	2nd	3rd	4th	TOT
FSC	21	18	21	16	<b>76</b>
PBA	13	6	13	14	<b>46</b>

Points from (This Period)	FSC	PBA
In the Paint	16	12
Off Turns	11	8
2nd Chance	8	6
Fast Break	4	7
Bench	14	10

**Official Box Score**  
**Fla. Southern vs Palm Beach Atl.**  
**Third Quarter Statistics Only**  
**January 09, 2019 at Rubin Arena - West Palm Beach, Fla.**



**Fla. Southern 37**

No.	Player	S	Pts	FG	3FG	FT	OR	DR	TR	PF	A	TO	Blk	Stl	Min	+/-
21	JENIKE, JULIA		4	2-4	0-2	0-0	1	2	3	1	2	0	0	0	10	8
23	PAZZAGLIA-KHOMENKO, KAT		0	0-0	0-0	0-0	0	0	0	1	1	1	0	0	4	0
24	FUCHS-ROBETIN, ANJA		10	5-5	0-0	0-0	0	0	0	1	2	1	0	0	10	8
32	KALAYDJIEV, BEKKI		0	0-0	0-0	0-0	0	1	1	0	0	0	0	1	6	4
33	ARANDA, MARTA		2	1-1	0-0	0-0	0	1	1	0	0	2	0	0	4	0
02	BURKETT, MONET		0	0-0	0-0	0-0	0	0	0	0	0	0	0	0	2	4
14	STEELE, MACKENZIE		3	0-2	0-1	3-4	1	0	1	0	0	0	0	0	4	4
25	SHELL, ASHLEY		0	0-0	0-0	0-0	0	0	0	0	0	0	0	0	0	0
31	LANDBERG, ELSA		0	0-0	0-0	0-0	0	0	0	1	0	0	0	0	4	4
42	CAMPBELL, CHESNEY		2	1-1	0-0	0-0	0	0	0	2	0	1	0	0	6	8
	TEAM						0	0	0	0		0				
<b>TOTALS</b>			<b>21</b>	<b>9-13</b>	<b>0-3</b>	<b>3-4</b>	<b>2</b>	<b>4</b>	<b>6</b>	<b>6</b>	<b>5</b>	<b>5</b>	<b>0</b>	<b>1</b>	<b>50</b>	

*Shooting By Period*

Period	FG	FG%	3FG	3FG%	FT	FT%
2nd Half	0-0	0%	0-0	0%	0-0	0%
Game	30-57	52.6%	3-18	16.7%	13-16	81.3%

**Palm Beach Atl. 27**

No.	Player	S	Pts	FG	3FG	FT	OR	DR	TR	PF	A	TO	Blk	Stl	Min	+/-
00	CUMBIE, CIARA		0	0-0	0-0	0-0	1	1	2	2	0	1	0	1	8	-3
01	ROSS, ANIYAH		0	0-0	0-0	0-0	0	0	0	0	0	0	0	0	5	-3
02	DESHAIR, DARSAN		0	0-2	0-2	0-0	0	0	0	0	0	1	0	0	6	-3
11	SALHIA, MINA		0	0-1	0-0	0-0	0	1	1	0	0	2	0	0	8	-3
21	GARVIN, JONIKA		10	4-5	0-0	2-3	1	0	1	0	0	0	0	0	8	-5
05	OYEDEJI, IBILOLA		3	0-0	0-0	3-4	0	0	0	0	0	0	0	0	2	-3
12	SELF, VICTORIA		0	0-1	0-0	0-0	0	1	1	2	0	2	0	0	5	-5
13	LAABS, TAYLOR		0	0-2	0-1	0-0	0	0	0	0	0	0	0	0	4	-5
22	MYERS, AUBREY		0	0-0	0-0	0-0	0	0	0	0	0	0	0	0	0	0
23	CHARLES, CLAUDIA		0	0-0	0-0	0-0	0	0	0	0	0	0	0	0	2	-5
30	STANG, KATIE		0	0-0	0-0	0-0	0	0	0	0	0	0	0	0	2	-5
	TEAM						1	0	1	0		0				
<b>TOTALS</b>			<b>13</b>	<b>4-11</b>	<b>0-3</b>	<b>5-7</b>	<b>3</b>	<b>3</b>	<b>6</b>	<b>4</b>	<b>0</b>	<b>6</b>	<b>0</b>	<b>1</b>	<b>50</b>	

*Shooting By Period*

Period	FG	FG%	3FG	3FG%	FT	FT%
2nd Half	0-0	0%	0-0	0%	0-0	0%
Game	16-52	30.8%	2-15	13.3%	12-16	75.0%

Game Notes:

Officials: **Dave Bowie, Brenson Parks, David Schwartz**  
Attendance: **96**

Start Time: **2019-01-09 22:28:29**  
End Time: **2019-01-09 23:59:07**  
Game Duration: **90**  
Conference Game;

Score	1st	2nd	3rd	4th	TOT
FSC	21	18	21	16	<b>76</b>
PBA	13	6	13	14	<b>46</b>

Points from (This Period)	FSC	PBA
In the Paint	10	4
Off Turns	9	6
2nd Chance	2	4
Fast Break	1	2
Bench	5	3

**Official Play-By-Play**  
**Fla. Southern vs Palm Beach Atl.**  
**Third Quarter**  
**January 09, 2019 at Rubin Arena - West Palm Beach, Fla.**



**Period 3**

**Starters:**

**Fla. Southern:** 21 JENIKE, JULIA; 23 PAZZAGLIA-KHOMENKO, KATERINA; 24 FUCHS-ROBETIN, ANJA; 32 KALAYDJIEV, BEKKI; 33 ARANDA, MARTA;  
**Palm Beach Atl.:** 00 CUMBIE, CIARA; 1 ROSS, ANIYAH; 2 DESHAZIER, DARSAN; 11 SALHIA, MINA; 21 GARVIN, JONIKA;

Time	VISITORS: Fla. Southern	Score	Margin	HOME: Palm Beach Atl.
09:51	TURNOVER (TRAVEL) by PAZZAGLIA-KHOMENKO, KATERINA			
09:45				TURNOVER (DRIBBLING) by SALHIA, MINA
09:32	GOOD! JUMPER by ARANDA, MARTA	19-41	V 22	
09:32	ASSIST by JENIKE, JULIA			
09:16				MISSED 3PTR by DESHAZIER, DARSAN
09:11	REBOUND (DEF) by KALAYDJIEV, BEKKI			
08:58	TURNOVER (LOSTBALL) by ARANDA, MARTA			
08:58				STEAL by CUMBIE, CIARA
08:51		21-41	V 20	GOOD! LAYUP by GARVIN, JONIKA
08:32	GOOD! LAYUP by FUCHS-ROBETIN, ANJA [PNT]	21-43	V 22	
08:16		23-43	V 20	GOOD! JUMPER by GARVIN, JONIKA [PNT]
07:57	MISSED 3PTR by JENIKE, JULIA			
07:51				REBOUND (DEF) by SALHIA, MINA
07:45	FOUL (PERSONAL) by PAZZAGLIA-KHOMENKO, KATERINA			
07:45		24-43	V 19	GOOD! FT by GARVIN, JONIKA [FB]
07:45		25-43	V 18	GOOD! FT by GARVIN, JONIKA [FB]
07:31	GOOD! LAYUP by FUCHS-ROBETIN, ANJA	25-45	V 20	
07:31	ASSIST by PAZZAGLIA-KHOMENKO, KATERINA			
07:11				MISSED LAYUP by SALHIA, MINA
07:11				REBOUND (OFF) by TEAM
07:11				SUB OUT: ROSS, ANIYAH
07:11				SUB IN: SELF, VICTORIA
07:09				MISSED 3PTR by DESHAZIER, DARSAN
07:05				REBOUND (OFF) by GARVIN, JONIKA
07:03		27-45	V 18	GOOD! JUMPER by GARVIN, JONIKA
06:46	GOOD! JUMPER by JENIKE, JULIA	27-47	V 20	
06:23				MISSED JUMPER by SELF, VICTORIA
06:19	REBOUND (DEF) by ARANDA, MARTA			
06:12	TURNOVER (LOSTBALL) by ARANDA, MARTA			
06:12				SUB OUT: DESHAZIER, DARSAN
06:12				SUB IN: LAABS, TAYLOR
06:12	SUB OUT: PAZZAGLIA-KHOMENKO, KATERINA			
06:12	SUB IN: LANDBERG, ELSA			
06:12	SUB OUT: KALAYDJIEV, BEKKI			
06:12	SUB IN: CAMPBELL, CHESNEY			
06:12	SUB OUT: ARANDA, MARTA			
06:12	SUB IN: STEELE, MACKENZIE			
05:56				MISSED 3PTR by LAABS, TAYLOR
05:53				REBOUND (OFF) by CUMBIE, CIARA
05:48		29-47	V 18	GOOD! JUMPER by GARVIN, JONIKA
05:48	FOUL (PERSONAL) by JENIKE, JULIA			
05:47				MISSED FT by GARVIN, JONIKA
05:47	REBOUND (DEF) by TEAM			
05:47				FOUL (PERSONAL) by CUMBIE, CIARA
05:22	MISSED 3PTR by JENIKE, JULIA			
05:18	REBOUND (OFF) by STEELE, MACKENZIE			
05:18				FOUL (PERSONAL) by CUMBIE, CIARA
05:18	GOOD! FT by STEELE, MACKENZIE	29-48	V 19	
05:18	GOOD! FT by STEELE, MACKENZIE	29-49	V 20	
05:07	FOUL (PERSONAL) by CAMPBELL, CHESNEY			
04:57				MISSED JUMPER by GARVIN, JONIKA
04:55	REBOUND (DEF) by JENIKE, JULIA			
04:45	MISSED JUMPER by STEELE, MACKENZIE			
04:41				REBOUND (DEF) by CUMBIE, CIARA
04:36				TURNOVER (BADPASS) by SALHIA, MINA
04:36				
04:36				SUB OUT: CUMBIE, CIARA
04:36				SUB IN: CHARLES, CLAUDIA
04:36				SUB OUT: SALHIA, MINA
04:36				SUB IN: STANG, KATIE
04:30	GOOD! JUMPER by FUCHS-ROBETIN, ANJA [PNT]	29-51	V 22	
04:10				MISSED JUMPER by LAABS, TAYLOR
04:06	REBOUND (DEF) by JENIKE, JULIA			
03:47	GOOD! LAYUP by FUCHS-ROBETIN, ANJA	29-53	V 24	
03:47	ASSIST by JENIKE, JULIA			
03:21	FOUL (PERSONAL) by FUCHS-ROBETIN, ANJA			
03:19				TURNOVER (BADPASS) by SELF, VICTORIA
03:01				FOUL (PERSONAL) by SELF, VICTORIA
03:01	GOOD! FT by STEELE, MACKENZIE [FB]	29-54	V 25	
03:01	MISSED FT by STEELE, MACKENZIE			

Time	VISITORS: Fla. Southern	Score	Margin	HOME: Palm Beach Atl.
03:01	REBOUND (OFF) by JENIKE, JULIA			
02:56	MISSED 3PTR by STEELE, MACKENZIE			
02:52				REBOUND (DEF) by SELF, VICTORIA
02:38				FOUL (OFF) by SELF, VICTORIA
02:38				TURNOVER (OFFENSIVE) by SELF, VICTORIA
02:25	TURNOVER (BADPASS) by CAMPBELL, CHESNEY			
02:25				SUB OUT: SELF, VICTORIA
02:25				SUB IN: OYEDEJI, IBILOLA
02:25				SUB OUT: LAABS, TAYLOR
02:25				SUB IN: SALHIA, MINA
02:25				SUB OUT: GARVIN, JONIKA
02:25				SUB IN: CUMBIE, CIARA
02:25				SUB OUT: CHARLES, CLAUDIA
02:25				SUB IN: ROSS, ANIYAH
02:25				SUB OUT: STANG, KATIE
02:25				SUB IN: DESHAZIER, DARSAN
02:16	FOUL (PERSONAL) by LANDBERG, ELSA			
02:16		30-54	V 24	GOOD! FT by OYEDEJI, IBILOLA
02:16	SUB OUT: LANDBERG, ELSA			
02:16	SUB IN: BURKETT, MONET			
02:16	SUB OUT: STEELE, MACKENZIE			
02:16	SUB IN: KALAYDJIEV, BEKKI			
02:16		31-54	V 23	GOOD! FT by OYEDEJI, IBILOLA
02:01	GOOD! JUMPER by CAMPBELL, CHESNEY	31-56	V 25	
02:01	ASSIST by FUCHS-ROBETIN, ANJA			
01:44				TURNOVER (BADPASS) by CUMBIE, CIARA
01:22	GOOD! LAYUP by JENIKE, JULIA [PNT]	31-58	V 27	
01:22	ASSIST by FUCHS-ROBETIN, ANJA			
01:08				TURNOVER (LOSTBALL) by DESHAZIER, DARSAN
01:08	STEAL by KALAYDJIEV, BEKKI			
00:54	GOOD! JUMPER by FUCHS-ROBETIN, ANJA	31-60	V 29	
00:30	FOUL (PERSONAL) by CAMPBELL, CHESNEY			
00:30				MISSED FT by OYEDEJI, IBILOLA
00:30				REBOUND (OFF) by TEAM
00:30		32-60	V 28	GOOD! FT by OYEDEJI, IBILOLA
00:08	TURNOVER (LOSTBALL) by FUCHS-ROBETIN, ANJA			

Fla. Southern 60, Palm Beach Atl. 32

Points from (This Period)	FSC	PBA
In the Paint	10	4
Off Turns	9	6
2nd Chance	2	4
Fast Break	1	2
Bench	5	3

**Official Box Score**  
**Fla. Southern vs Palm Beach Atl.**  
**Fourth Quarter Statistics Only**  
**January 09, 2019 at Rubin Arena - West Palm Beach, Fla.**



**Fla. Southern 16**

No.	Player	S	Pts	FG	3FG	FT	OR	DR	TR	PF	A	TO	Blk	Stl	Min	+/-
21	JENIKE, JULIA		2	1-2	0-1	0-0	0	1	1	0	0	0	0	0	6	-3
23	PAZZAGLIA-KHOMENKO, KAT		4	2-3	0-0	0-0	2	2	4	1	0	0	0	0	4	5
24	FUCHS-ROBETIN, ANJA		0	0-1	0-0	0-0	1	0	1	0	0	1	0	1	6	-3
32	KALAYDJIEV, BEKKI		1	0-2	0-1	1-2	0	1	1	0	0	2	0	1	5	-1
33	ARANDA, MARTA		0	0-1	0-0	0-0	0	0	0	0	0	0	0	0	4	5
02	BURKETT, MONET		3	1-4	1-2	0-0	0	0	0	0	1	0	0	0	10	2
14	STEELE, MACKENZIE		0	0-0	0-0	0-0	0	0	0	0	0	0	0	0	0	0
25	SHELL, ASHLEY		2	0-2	0-0	2-2	2	2	4	0	0	0	0	0	6	0
31	LANDBERG, ELSA		2	0-0	0-0	2-2	0	0	0	0	1	0	0	0	5	3
42	CAMPBELL, CHESNEY		2	1-2	0-0	0-0	0	2	2	1	0	0	0	1	4	2
	TEAM						0	1	1	0		0				
<b>TOTALS</b>			<b>16</b>	<b>5-17</b>	<b>1-4</b>	<b>5-6</b>	<b>5</b>	<b>9</b>	<b>14</b>	<b>2</b>	<b>2</b>	<b>3</b>	<b>0</b>	<b>3</b>	<b>50</b>	

*Shooting By Period*

Period	FG	FG%	3FG	3FG%	FT	FT%
Game	30-57	52.6%	3-18	16.7%	13-16	81.3%

**Palm Beach Atl. 14**

No.	Player	S	Pts	FG	3FG	FT	OR	DR	TR	PF	A	TO	Blk	Stl	Min	+/-
00	CUMBI, CIARA		0	0-0	0-0	0-0	0	0	0	0	0	0	0	0	0	0
01	ROSS, ANIYAH		2	1-3	0-0	0-0	0	0	0	0	0	0	0	0	2	0
02	DESHAIR, DARSAN		0	0-0	0-0	0-0	0	0	0	0	0	0	0	0	3	0
11	SALHIA, MINA		0	0-1	0-1	0-0	0	0	0	0	0	0	0	0	4	-2
21	GARVIN, JONIKA		5	2-4	0-0	1-1	0	1	1	0	0	1	0	1	8	-1
05	OYEDEJI, IBILOLA		0	0-1	0-1	0-0	0	1	1	2	1	1	0	1	5	-3
12	SELF, VICTORIA		2	1-3	0-0	0-0	1	1	2	2	0	0	0	0	5	1
13	LAABS, TAYLOR		0	0-0	0-0	0-0	0	0	0	0	1	0	0	0	6	0
22	MYERS, AUBREY		0	0-0	0-0	0-0	0	0	0	0	0	0	0	0	2	-1
23	CHARLES, CLAUDIA		2	1-4	0-1	0-0	1	2	3	0	0	0	0	0	8	-2
30	STANG, KATIE		3	1-2	1-2	0-0	1	0	1	2	0	1	0	0	7	-2
	TEAM						0	2	2	0		0				
<b>TOTALS</b>			<b>14</b>	<b>6-18</b>	<b>1-5</b>	<b>1-1</b>	<b>3</b>	<b>7</b>	<b>10</b>	<b>6</b>	<b>2</b>	<b>3</b>	<b>0</b>	<b>2</b>	<b>50</b>	

*Shooting By Period*

Period	FG	FG%	3FG	3FG%	FT	FT%
Game	16-52	30.8%	2-15	13.3%	12-16	75.0%

Game Notes:

Officials: Dave Bowie, Brenson Parks, David Schwartz  
Attendance: 96

Start Time: 2019-01-09 22:28:29  
End Time: 2019-01-09 23:59:07  
Game Duration: 90  
Conference Game;

Score	1st	2nd	3rd	4th	TOT
FSC	21	18	21	16	<b>76</b>
PBA	13	6	13	14	<b>46</b>

Points from (This Period)	FSC	PBA
In the Paint	6	8
Off Turns	2	2
2nd Chance	6	2
Fast Break	3	5
Bench	9	7

**Official Play-By-Play**  
**Fla. Southern vs Palm Beach Atl.**  
**Fourth Quarter**  
**January 09, 2019 at Rubin Arena - West Palm Beach, Fla.**



**Period 4**

**Starters:**

**Fla. Southern:** 21 JENIKE, JULIA; 23 PAZZAGLIA-KHOMENKO, KATERINA; 24 FUCHS-ROBETIN, ANJA; 32 KALAYDJIEV, BEKKI; 33 ARANDA, MARTA;  
**Palm Beach Atl.:** 00 CUMBIE, CIARA; 1 ROSS, ANIYAH; 2 DESHAZIER, DARSEN; 11 SALHIA, MINA; 21 GARVIN, JONIKA;

Time	VISITORS: Fla. Southern	Score	Margin	HOME: Palm Beach Atl.
10:00				SUB OUT: CUMBIE, CIARA
10:00				SUB IN: GARVIN, JONIKA
09:48		34-60	V 26	GOOD! LAYUP by ROSS, ANIYAH [PNT]
09:39	MISSED 3PTR by JENIKE, JULIA			
09:36				REBOUND (DEF) by OYEDEJI, IBILOLA
09:31				MISSED 3PTR by SALHIA, MINA
09:28	REBOUND (DEF) by CAMPBELL, CHESNEY			
09:11	GOOD! JUMPER by CAMPBELL, CHESNEY	34-62	V 28	
09:11	ASSIST by BURKETT, MONET			
08:49				TURNOVER (BADPASS) by GARVIN, JONIKA
08:49	STEAL by KALAYDJIEV, BEKKI			
08:47	TURNOVER (LOSTBALL) by KALAYDJIEV, BEKKI			
08:47				STEAL by OYEDEJI, IBILOLA
08:38				MISSED JUMPER by ROSS, ANIYAH
08:35	REBOUND (DEF) by KALAYDJIEV, BEKKI			
08:30	TURNOVER (TRAVEL) by FUCHS-ROBETIN, ANJA			
08:15				MISSED JUMPER by ROSS, ANIYAH
08:12	REBOUND (DEF) by CAMPBELL, CHESNEY			
08:04	MISSED 3PTR by KALAYDJIEV, BEKKI			
08:01	REBOUND (OFF) by FUCHS-ROBETIN, ANJA			
07:56				FOUL (PERSONAL) by OYEDEJI, IBILOLA
07:56				SUB OUT: ROSS, ANIYAH
07:56				SUB IN: CHARLES, CLAUDIA
07:45				FOUL (PERSONAL) by OYEDEJI, IBILOLA
07:26	MISSED LAYUP by FUCHS-ROBETIN, ANJA			
07:26				REBOUND (DEF) by TEAM
07:26	FOUL (PERSONAL) by CAMPBELL, CHESNEY			
07:26				SUB OUT: DESHAZIER, DARSEN
07:26				SUB IN: STANG, KATIE
07:18				MISSED 3PTR by STANG, KATIE
07:15	REBOUND (DEF) by JENIKE, JULIA			
07:02	MISSED JUMPER by CAMPBELL, CHESNEY			
06:58				REBOUND (DEF) by CHARLES, CLAUDIA
06:41				TURNOVER (BADPASS) by OYEDEJI, IBILOLA
06:41	STEAL by CAMPBELL, CHESNEY			
06:34	GOOD! JUMPER by JENIKE, JULIA [PNT]	34-64	V 30	
06:17				TIMEOUT 30SEC
06:17				
06:17				SUB OUT: OYEDEJI, IBILOLA
06:17				SUB IN: SELF, VICTORIA
06:17				SUB OUT: SALHIA, MINA
06:17				SUB IN: LAABS, TAYLOR
06:17	SUB OUT: CAMPBELL, CHESNEY			
06:17	SUB IN: SHELL, ASHLEY			
06:07				MISSED LAYUP by CHARLES, CLAUDIA
06:05				REBOUND (OFF) by STANG, KATIE
06:05				TURNOVER (LOSTBALL) by STANG, KATIE
06:05	STEAL by FUCHS-ROBETIN, ANJA			
05:39	TURNOVER (LOSTBALL) by KALAYDJIEV, BEKKI			
05:39				STEAL by GARVIN, JONIKA
05:33		36-64	V 28	GOOD! LAYUP by GARVIN, JONIKA [FB]
05:13	MISSED JUMPER by KALAYDJIEV, BEKKI			
05:09	REBOUND (OFF) by SHELL, ASHLEY			
05:09	MISSED LAYUP by SHELL, ASHLEY			
05:06				REBOUND (DEF) by SELF, VICTORIA
04:52				MISSED JUMPER by SELF, VICTORIA
04:50				REBOUND (OFF) by SELF, VICTORIA
04:46		38-64	V 26	GOOD! JUMPER by SELF, VICTORIA
04:37				FOUL (PERSONAL) by STANG, KATIE
04:37				
04:37	MISSED FT by KALAYDJIEV, BEKKI			
04:37	REBOUND (OFF) by TEAM			
04:36	GOOD! FT by KALAYDJIEV, BEKKI	38-65	V 27	
04:36	SUB OUT: KALAYDJIEV, BEKKI			
04:36	SUB IN: LANDBERG, ELSA			
04:21		40-65	V 25	GOOD! JUMPER by GARVIN, JONIKA [PNT]
04:21	FOUL (PERSONAL) by PAZZAGLIA-KHOMENKO, KATERINA			
04:21	SUB OUT: JENIKE, JULIA			
04:21	SUB IN: PAZZAGLIA-KHOMENKO, KATERINA			
04:21	SUB OUT: FUCHS-ROBETIN, ANJA			

Time	VISITORS: Fla. Southern	Score	Margin	HOME: Palm Beach Atl.
04:21	SUB IN: ARANDA, MARTA			
04:21		41-65	V 24	GOOD! FT by GARVIN, JONIKA
04:15	MISSED 3PTR by BURKETT, MONET			
04:10				REBOUND (DEF) by CHARLES, CLAUDIA
04:04		44-65	V 21	GOOD! 3PTR by STANG, KATIE [FB]
04:04				ASSIST by LAABS, TAYLOR
03:50	MISSED LAYUP by PAZZAGLIA-KHOMENKO, KATERINA			
03:47				REBOUND (DEF) by GARVIN, JONIKA
03:38				MISSED 3PTR by CHARLES, CLAUDIA
03:36	REBOUND (DEF) by TEAM			
03:17				FOUL (PERSONAL) by SELF, VICTORIA
03:16	MISSED JUMPER by BURKETT, MONET			
03:13	REBOUND (OFF) by SHELL, ASHLEY			
03:13				FOUL (PERSONAL) by STANG, KATIE
03:13	GOOD! FT by SHELL, ASHLEY	44-66	V 22	
03:13	GOOD! FT by SHELL, ASHLEY	44-67	V 23	
02:58				MISSED LAYUP by GARVIN, JONIKA
02:55	REBOUND (DEF) by PAZZAGLIA-KHOMENKO, KATERINA			
02:47				FOUL (PERSONAL) by SELF, VICTORIA
02:47	GOOD! FT by LANDBERG, ELSA	44-68	V 24	
02:47	GOOD! FT by LANDBERG, ELSA	44-69	V 25	
02:31				MISSED JUMPER by GARVIN, JONIKA
02:28				REBOUND (OFF) by CHARLES, CLAUDIA
02:25				MISSED JUMPER by SELF, VICTORIA
02:22	REBOUND (DEF) by SHELL, ASHLEY			
02:14	MISSED JUMPER by ARANDA, MARTA			
02:09	REBOUND (OFF) by PAZZAGLIA-KHOMENKO, KATERINA			
02:09	GOOD! LAYUP by PAZZAGLIA-KHOMENKO, KATERINA	44-71	V 27	
01:54	MISSED JUMPER by SHELL, ASHLEY			
01:50	REBOUND (OFF) by PAZZAGLIA-KHOMENKO, KATERINA			
01:48	GOOD! LAYUP by PAZZAGLIA-KHOMENKO, KATERINA [PNT]	44-73	V 29	
01:46				SUB OUT: GARVIN, JONIKA
01:46				SUB IN: OYEDEJI, IBILOLA
01:46				SUB OUT: SELF, VICTORIA
01:46				SUB IN: MYERS, AUBREY
01:32				MISSED JUMPER by CHARLES, CLAUDIA
01:29	REBOUND (DEF) by SHELL, ASHLEY			
01:21	GOOD! 3PTR by BURKETT, MONET [FB]	44-76	V 32	
01:21	ASSIST by LANDBERG, ELSA			
00:57		46-76	V 30	GOOD! LAYUP by CHARLES, CLAUDIA [PNT]
00:57				ASSIST by OYEDEJI, IBILOLA
00:45	MISSED JUMPER by BURKETT, MONET			
00:44				REBOUND (DEF) by TEAM
00:27				MISSED 3PTR by OYEDEJI, IBILOLA
00:24	REBOUND (DEF) by PAZZAGLIA-KHOMENKO, KATERINA			

Fla. Southern 76, Palm Beach Atl. 46

Points from (This Period)	FSC	PBA
In the Paint	6	8
Off Turns	2	2
2nd Chance	6	2
Fast Break	3	5
Bench	9	7

**Official Scoring/Possession Reference Chart**  
**Fla. Southern vs Palm Beach Atl.**  
**Period 1**  
**January 09, 2019 at Rubin Arena - West Palm Beach, Fla.**



**Period 1**

**Starters:**

**Fla. Southern:** 21 JENIKE, JULIA; 23 PAZZAGLIA-KHOMENKO, KATERINA; 24 FUCHS-ROBETIN, ANJA; 32 KALAYDJIEV, BEKKI; 33 ARANDA, MARTA;  
**Palm Beach Atl.:** 00 CUMBIE, CIARA; 1 ROSS, ANIYAH; 2 DESHAZIER, DARSAN; 11 SALHIA, MINA; 21 GARVIN, JONIKA;

Time	VISITORS: Fla. Southern	Score	Margin	HOME: Palm Beach Atl.
09:07	GOOD! LAYUP by PAZZAGLIA-KHOMENKO, KATERINA	0-2	V 2	
08:34	GOOD! LAYUP by FUCHS-ROBETIN, ANJA	0-4	V 4	
06:34		2-4	V 2	GOOD! JUMPER by GARVIN, JONIKA
05:51	GOOD! LAYUP by FUCHS-ROBETIN, ANJA [FB/PNT]	2-6	V 4	
05:13	GOOD! JUMPER by CAMPBELL, CHESNEY	2-8	V 6	
04:31	GOOD! LAYUP by FUCHS-ROBETIN, ANJA [PNT]	2-10	V 8	
03:50		5-10	V 5	GOOD! 3PTR by STANG, KATIE
03:24	GOOD! LAYUP by FUCHS-ROBETIN, ANJA	5-12	V 7	
03:14		6-12	V 6	GOOD! FT by GARVIN, JONIKA
03:14		7-12	V 5	GOOD! FT by GARVIN, JONIKA
02:53		9-12	V 3	GOOD! LAYUP by GARVIN, JONIKA [FB/PNT]
02:28	GOOD! LAYUP by FUCHS-ROBETIN, ANJA [PNT]	9-14	V 5	
02:00	GOOD! 3PTR by STEELE, MACKENZIE [FB]	9-17	V 8	
01:40		11-17	V 6	GOOD! JUMPER by SELF, VICTORIA [PNT]
00:19		13-17	V 4	GOOD! LAYUP by CUMBIE, CIARA [FB]
00:06	GOOD! JUMPER by CAMPBELL, CHESNEY	13-19	V 6	
00:00	GOOD! LAYUP by FUCHS-ROBETIN, ANJA	13-21	V 8	

**Fla. Southern 21, Palm Beach Atl. 13**

**Official Scoring/Possession Reference Chart**  
**Fla. Southern vs Palm Beach Atl.**  
**Period 2**  
**January 09, 2019 at Rubin Arena - West Palm Beach, Fla.**



**Period 2**

**Starters:**

**Fla. Southern:** 21 JENIKE, JULIA; 23 PAZZAGLIA-KHOMENKO, KATERINA; 24 FUCHS-ROBETIN, ANJA; 32 KALAYDJIEV, BEKKI; 33 ARANDA, MARTA;  
**Palm Beach Atl.:** 00 CUMBIE, CIARA; 1 ROSS, ANIYAH; 2 DESHAZIER, DARSAN; 11 SALHIA, MINA; 21 GARVIN, JONIKA;

Time	VISITORS: Fla. Southern	Score	Margin	HOME: Palm Beach Atl.
09:34	GOOD! FT by FUCHS-ROBETIN, ANJA	13-22	V 9	
09:34	GOOD! FT by FUCHS-ROBETIN, ANJA	13-23	V 10	
08:22	GOOD! LAYUP by CAMPBELL, CHESNEY [PNT]	13-25	V 12	
08:04		14-25	V 11	GOOD! FT by SALHIA, MINA
07:28	GOOD! 3PTR by CAMPBELL, CHESNEY	14-28	V 14	
05:22		16-28	V 12	GOOD! JUMPER by SELF, VICTORIA
03:54	GOOD! LAYUP by PAZZAGLIA-KHOMENKO, KATERINA [PNT]	16-30	V 14	
03:32		17-30	V 13	GOOD! FT by CUMBIE, CIARA
03:32		18-30	V 12	GOOD! FT by CUMBIE, CIARA
03:11	GOOD! JUMPER by FUCHS-ROBETIN, ANJA	18-32	V 14	
02:39	GOOD! FT by PAZZAGLIA-KHOMENKO, KATERINA	18-33	V 15	
02:39	GOOD! FT by PAZZAGLIA-KHOMENKO, KATERINA	18-34	V 16	
02:12	GOOD! LAYUP by FUCHS-ROBETIN, ANJA [FB]	18-36	V 18	
00:52	GOOD! LAYUP by FUCHS-ROBETIN, ANJA [PNT]	18-38	V 20	
00:27		19-38	V 19	GOOD! FT by DESHAZIER, DARSAN
00:10	GOOD! FT by KALAYDJIEV, BEKKI	19-39	V 20	

**Fla. Southern 39, Palm Beach Atl. 19**

**Official Scoring/Possession Reference Chart**  
**Fla. Southern vs Palm Beach Atl.**  
**Period 3**  
**January 09, 2019 at Rubin Arena - West Palm Beach, Fla.**



**Period 3**

**Starters:**

**Fla. Southern:** 21 JENIKE, JULIA; 23 PAZZAGLIA-KHOMENKO, KATERINA; 24 FUCHS-ROBETIN, ANJA; 32 KALAYDJIEV, BEKKI; 33 ARANDA, MARTA;

**Palm Beach Atl.:** 00 CUMBIE, CIARA; 1 ROSS, ANIYAH; 2 DESHAZIER, DARSAN; 11 SALHIA, MINA; 21 GARVIN, JONIKA;

Time	VISITORS: Fla. Southern	Score	Margin	HOME: Palm Beach Atl.
09:32	GOOD! JUMPER by ARANDA, MARTA	19-41	V 22	
08:51		21-41	V 20	GOOD! LAYUP by GARVIN, JONIKA
08:32	GOOD! LAYUP by FUCHS-ROBETIN, ANJA [PNT]	21-43	V 22	
08:16		23-43	V 20	GOOD! JUMPER by GARVIN, JONIKA [PNT]
07:45		24-43	V 19	GOOD! FT by GARVIN, JONIKA [FB]
07:45		25-43	V 18	GOOD! FT by GARVIN, JONIKA [FB]
07:31	GOOD! LAYUP by FUCHS-ROBETIN, ANJA	25-45	V 20	
07:03		27-45	V 18	GOOD! JUMPER by GARVIN, JONIKA
06:46	GOOD! JUMPER by JENIKE, JULIA	27-47	V 20	
05:48		29-47	V 18	GOOD! JUMPER by GARVIN, JONIKA
05:18	GOOD! FT by STEELE, MACKENZIE	29-48	V 19	
05:18	GOOD! FT by STEELE, MACKENZIE	29-49	V 20	
04:30	GOOD! JUMPER by FUCHS-ROBETIN, ANJA [PNT]	29-51	V 22	
03:47	GOOD! LAYUP by FUCHS-ROBETIN, ANJA	29-53	V 24	
03:01	GOOD! FT by STEELE, MACKENZIE [FB]	29-54	V 25	
02:16		30-54	V 24	GOOD! FT by OYEDEJI, IBILOLA
02:16		31-54	V 23	GOOD! FT by OYEDEJI, IBILOLA
02:01	GOOD! JUMPER by CAMPBELL, CHESNEY	31-56	V 25	
01:22	GOOD! LAYUP by JENIKE, JULIA [PNT]	31-58	V 27	
00:54	GOOD! JUMPER by FUCHS-ROBETIN, ANJA	31-60	V 29	
00:30		32-60	V 28	GOOD! FT by OYEDEJI, IBILOLA

**Fla. Southern 60, Palm Beach Atl. 32**

**Official Scoring/Possession Reference Chart**  
**Fla. Southern vs Palm Beach Atl.**  
**Period 4**  
**January 09, 2019 at Rubin Arena - West Palm Beach, Fla.**



**Period 4**

**Starters:**

**Fla. Southern:** 21 JENIKE, JULIA; 23 PAZZAGLIA-KHOMENKO, KATERINA; 24 FUCHS-ROBETIN, ANJA; 32 KALAYDJIEV, BEKKI; 33 ARANDA, MARTA;

**Palm Beach Atl.:** 00 CUMBIE, CIARA; 1 ROSS, ANIYAH; 2 DESHAZIER, DARSAN; 11 SALHIA, MINA; 21 GARVIN, JONIKA;

Time	VISITORS: Fla. Southern	Score	Margin	HOME: Palm Beach Atl.
09:48		34-60	V 26	GOOD! LAYUP by ROSS, ANIYAH [PNT]
09:11	GOOD! JUMPER by CAMPBELL, CHESNEY	34-62	V 28	
06:34	GOOD! JUMPER by JENIKE, JULIA [PNT]	34-64	V 30	
05:33		36-64	V 28	GOOD! LAYUP by GARVIN, JONIKA [FB]
04:46		38-64	V 26	GOOD! JUMPER by SELF, VICTORIA
04:36	GOOD! FT by KALAYDJIEV, BEKKI	38-65	V 27	
04:21		40-65	V 25	GOOD! JUMPER by GARVIN, JONIKA [PNT]
04:21		41-65	V 24	GOOD! FT by GARVIN, JONIKA
04:04		44-65	V 21	GOOD! 3PTR by STANG, KATIE [FB]
03:13	GOOD! FT by SHELL, ASHLEY	44-66	V 22	
03:13	GOOD! FT by SHELL, ASHLEY	44-67	V 23	
02:47	GOOD! FT by LANDBERG, ELSA	44-68	V 24	
02:47	GOOD! FT by LANDBERG, ELSA	44-69	V 25	
02:09	GOOD! LAYUP by PAZZAGLIA-KHOMENKO, KATERINA	44-71	V 27	
01:48	GOOD! LAYUP by PAZZAGLIA-KHOMENKO, KATERINA [PNT]	44-73	V 29	
01:21	GOOD! 3PTR by BURKETT, MONET [FB]	44-76	V 32	
00:57		46-76	V 30	GOOD! LAYUP by CHARLES, CLAUDIA [PNT]

**Fla. Southern 76, Palm Beach Atl. 46**

**Official Substitutions Log**  
**Fla. Southern vs Palm Beach Atl.**  
**Period 1**  
**January 09, 2019 at Rubin Arena - West Palm Beach, Fla.**



VISITORS: Fla. Southern	Time	Score	HOME: Palm Beach Atl.
21 JENIKE, JULIA			00 CUMBIE, CIARA
23 PAZZAGLIA-KHOMENKO, KATERINA			1 ROSS, ANIYAH
24 FUCHS-ROBETIN, ANJA			2 DESHAZIER, DARSAN
32 KALAYDJIEV, BEKKI			11 SALHIA, MINA
33 ARANDA, MARTA			21 GARVIN, JONIKA
SUB OUT: 32 KALAYDJIEV, BEKKI	06:04	4-2	
SUB IN: 31 LANDBERG, ELSA	06:04		
SUB OUT: 23 PAZZAGLIA-KHOMENKO, KATERINA	06:04		
SUB IN: 42 CAMPBELL, CHESNEY	06:04		
	04:51	8-2	SUB OUT: ROSS, ANIYAH
	04:51		SUB IN: STANG, KATIE
	04:51		SUB OUT: DESHAZIER, DARSAN
	04:51		SUB IN: SELF, VICTORIA
	04:51		SUB OUT: SALHIA, MINA
	04:51		SUB IN: LAABS, TAYLOR
	03:14	12-6	SUB OUT: CUMBIE, CIARA
	03:14		SUB IN: CHARLES, CLAUDIA
SUB OUT: 33 ARANDA, MARTA	03:14		
SUB IN: 14 STEELE, MACKENZIE	03:14		
	01:21	17-11	SUB OUT: GARVIN, JONIKA
	01:21		SUB IN: CUMBIE, CIARA
SUB OUT: 21 JENIKE, JULIA	01:21		
SUB IN: 2 BURKETT, MONET	01:21		
SUB OUT: 31 LANDBERG, ELSA	01:21		
SUB IN: 32 KALAYDJIEV, BEKKI	01:21		

**Fla. Southern 21, Palm Beach Atl. 13**

**Official Substitutions Log**  
**Fla. Southern vs Palm Beach Atl.**  
**Period 2**  
**January 09, 2019 at Rubin Arena - West Palm Beach, Fla.**



VISITORS: Fla. Southern	Time	Score	HOME: Palm Beach Atl.
21 JENIKE, JULIA			00 CUMBIE, CIARA
23 PAZZAGLIA-KHOMENKO, KATERINA			1 ROSS, ANIYAH
24 FUCHS-ROBETIN, ANJA			2 DESHAZIER, DARSAN
32 KALAYDJIEV, BEKKI			11 SALHIA, MINA
33 ARANDA, MARTA			21 GARVIN, JONIKA
	06:46	28-14	SUB OUT: ROSS, ANIYAH
	06:46		SUB IN: LAABS, TAYLOR
	06:46		SUB OUT: DESHAZIER, DARSAN
	06:46		SUB IN: CUMBIE, CIARA
	06:46		SUB OUT: OYEDEJI, IBILOLA
	06:46		SUB IN: STANG, KATIE
	06:46		SUB OUT: SALHIA, MINA
	06:46		SUB IN: SELF, VICTORIA
SUB OUT: 2 BURKETT, MONET	05:58	28-14	
SUB IN: 23 PAZZAGLIA-KHOMENKO, KATERINA	05:58		
SUB OUT: 14 STEELE, MACKENZIE	05:58		
SUB IN: 21 JENIKE, JULIA	05:58		
SUB OUT: 32 KALAYDJIEV, BEKKI	05:58		
SUB IN: 31 LANDBERG, ELSA	05:58		
SUB OUT: 42 CAMPBELL, CHESNEY	05:58		
SUB IN: 33 ARANDA, MARTA	05:58		
SUB OUT: 31 LANDBERG, ELSA	04:20	28-16	
SUB IN: 32 KALAYDJIEV, BEKKI	04:20		
	04:06	28-16	SUB OUT: SELF, VICTORIA
	04:06		SUB IN: OYEDEJI, IBILOLA
	03:32	30-18	SUB OUT: CUMBIE, CIARA
	03:32		SUB IN: ROSS, ANIYAH
	02:39	33-18	SUB OUT: ROSS, ANIYAH
	02:39		SUB IN: CHARLES, CLAUDIA
	01:48	36-18	SUB OUT: OYEDEJI, IBILOLA
	01:48		SUB IN: DESHAZIER, DARSAN
	01:48		SUB OUT: STANG, KATIE
	01:48		SUB IN: SALHIA, MINA
	00:27	38-19	SUB OUT: LAABS, TAYLOR
	00:27		SUB IN: CUMBIE, CIARA
	00:27		SUB OUT: CHARLES, CLAUDIA
	00:27		SUB IN: SELF, VICTORIA

**Fla. Southern 39, Palm Beach Atl. 19**

**Official Substitutions Log**  
**Fla. Southern vs Palm Beach Atl.**  
**Period 3**  
**January 09, 2019 at Rubin Arena - West Palm Beach, Fla.**



VISITORS: Fla. Southern	Time	Score	HOME: Palm Beach Atl.
21 JENIKE, JULIA			00 CUMBIE, CIARA
23 PAZZAGLIA-KHOMENKO, KATERINA			1 ROSS, ANIYAH
24 FUCHS-ROBETIN, ANJA			2 DESHAZIER, DARSAN
32 KALAYDJIEV, BEKKI			11 SALHIA, MINA
33 ARANDA, MARTA			21 GARVIN, JONIKA
	07:11	45-25	SUB OUT: ROSS, ANIYAH
	07:11		SUB IN: SELF, VICTORIA
	06:12	47-27	SUB OUT: DESHAZIER, DARSAN
	06:12		SUB IN: LAABS, TAYLOR
SUB OUT: 23 PAZZAGLIA-KHOMENKO, KATERINA	06:12		
SUB IN: 31 LANDBERG, ELSA	06:12		
SUB OUT: 32 KALAYDJIEV, BEKKI	06:12		
SUB IN: 42 CAMPBELL, CHESNEY	06:12		
SUB OUT: 33 ARANDA, MARTA	06:12		
SUB IN: 14 STEELE, MACKENZIE	06:12		
	04:36	49-29	SUB OUT: CUMBIE, CIARA
	04:36		SUB IN: CHARLES, CLAUDIA
	04:36		SUB OUT: SALHIA, MINA
	04:36		SUB IN: STANG, KATIE
	02:25	54-29	SUB OUT: SELF, VICTORIA
	02:25		SUB IN: OYEDEJI, IBILOLA
	02:25		SUB OUT: LAABS, TAYLOR
	02:25		SUB IN: SALHIA, MINA
	02:25		SUB OUT: GARVIN, JONIKA
	02:25		SUB IN: CUMBIE, CIARA
	02:25		SUB OUT: CHARLES, CLAUDIA
	02:25		SUB IN: ROSS, ANIYAH
	02:25		SUB OUT: STANG, KATIE
	02:25		SUB IN: DESHAZIER, DARSAN
SUB OUT: 31 LANDBERG, ELSA	02:16	54-30	
SUB IN: 2 BURKETT, MONET	02:16		
SUB OUT: 14 STEELE, MACKENZIE	02:16		
SUB IN: 32 KALAYDJIEV, BEKKI	02:16		

**Fla. Southern 60, Palm Beach Atl. 32**

**Official Substitutions Log**  
**Fla. Southern vs Palm Beach Atl.**  
**Period 4**  
**January 09, 2019 at Rubin Arena - West Palm Beach, Fla.**



VISITORS: Fla. Southern	Time	Score	HOME: Palm Beach Atl.
21 JENIKE, JULIA			00 CUMBIE, CIARA
23 PAZZAGLIA-KHOMENKO, KATERINA			1 ROSS, ANIYAH
24 FUCHS-ROBETIN, ANJA			2 DESHAZIER, DARSAN
32 KALAYDJIEV, BEKKI			11 SALHIA, MINA
33 ARANDA, MARTA			21 GARVIN, JONIKA
	10:00	-	SUB OUT: CUMBIE, CIARA
	10:00		SUB IN: GARVIN, JONIKA
	07:56	62-34	SUB OUT: ROSS, ANIYAH
	07:56		SUB IN: CHARLES, CLAUDIA
	07:26	62-34	SUB OUT: DESHAZIER, DARSAN
	07:26		SUB IN: STANG, KATIE
	06:17	64-34	SUB OUT: OYEDEJI, IBILOLA
	06:17		SUB IN: SELF, VICTORIA
	06:17		SUB OUT: SALHIA, MINA
	06:17		SUB IN: LAABS, TAYLOR
SUB OUT: 42 CAMPBELL, CHESNEY	06:17		
SUB IN: 25 SHELL, ASHLEY	06:17		
SUB OUT: 32 KALAYDJIEV, BEKKI	04:36	65-38	
SUB IN: 31 LANDBERG, ELSA	04:36		
SUB OUT: 21 JENIKE, JULIA	04:21	65-40	
SUB IN: 23 PAZZAGLIA-KHOMENKO, KATERINA	04:21		
SUB OUT: 24 FUCHS-ROBETIN, ANJA	04:21		
SUB IN: 33 ARANDA, MARTA	04:21		
	01:46	73-44	SUB OUT: GARVIN, JONIKA
	01:46		SUB IN: OYEDEJI, IBILOLA
	01:46		SUB OUT: SELF, VICTORIA
	01:46		SUB IN: MYERS, AUBREY

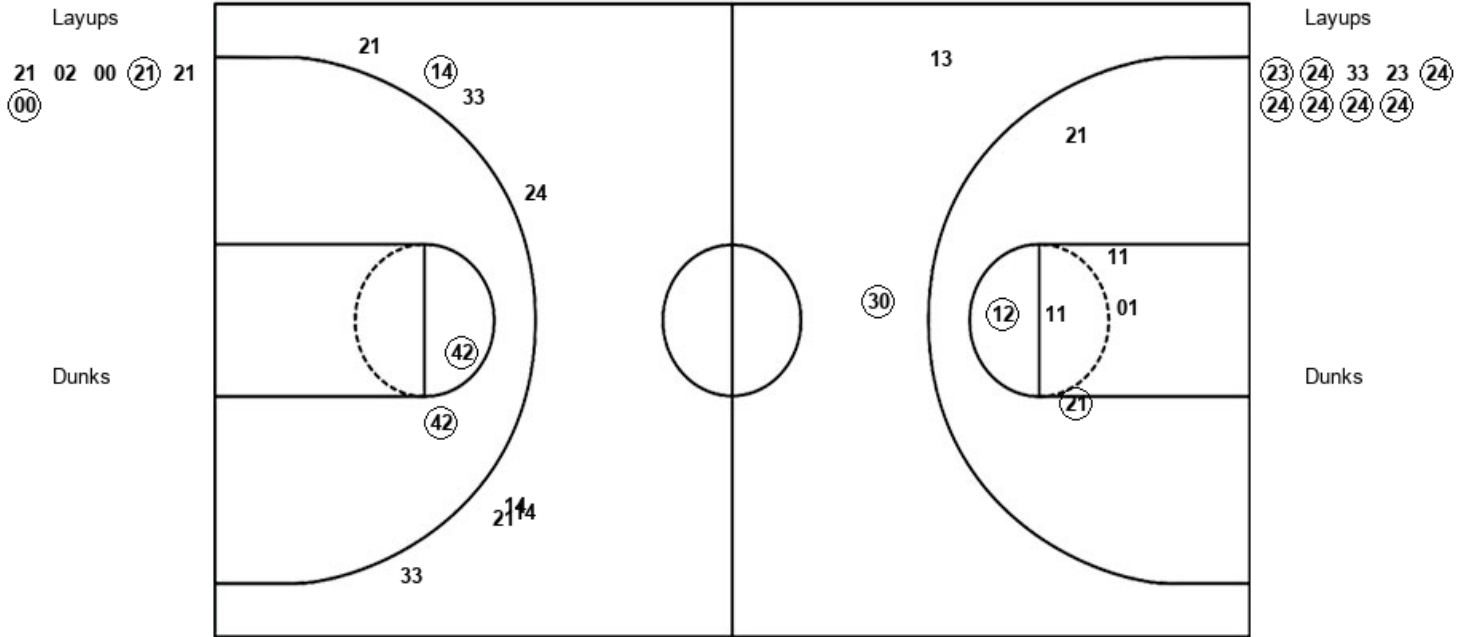
**Fla. Southern 76, Palm Beach Atl. 46**

Official Shot Chart  
**Fla. Southern vs Palm Beach Atl.**  
 PERIOD 1 Shots  
 January 09, 2019 at Rubin Arena - West Palm Beach, Fla.



**Palm Beach Atl.**

**Fla. Southern**



PBA : Period 1	Made	Att	Pct
Layups	2	6	33.3
Dunks	0	0	0
2PT Field Goals	4	12	33.3
3PT Field Goals	1	2	50.0
<b>Total Field Goals</b>	<b>5</b>	<b>14</b>	<b>35.7</b>

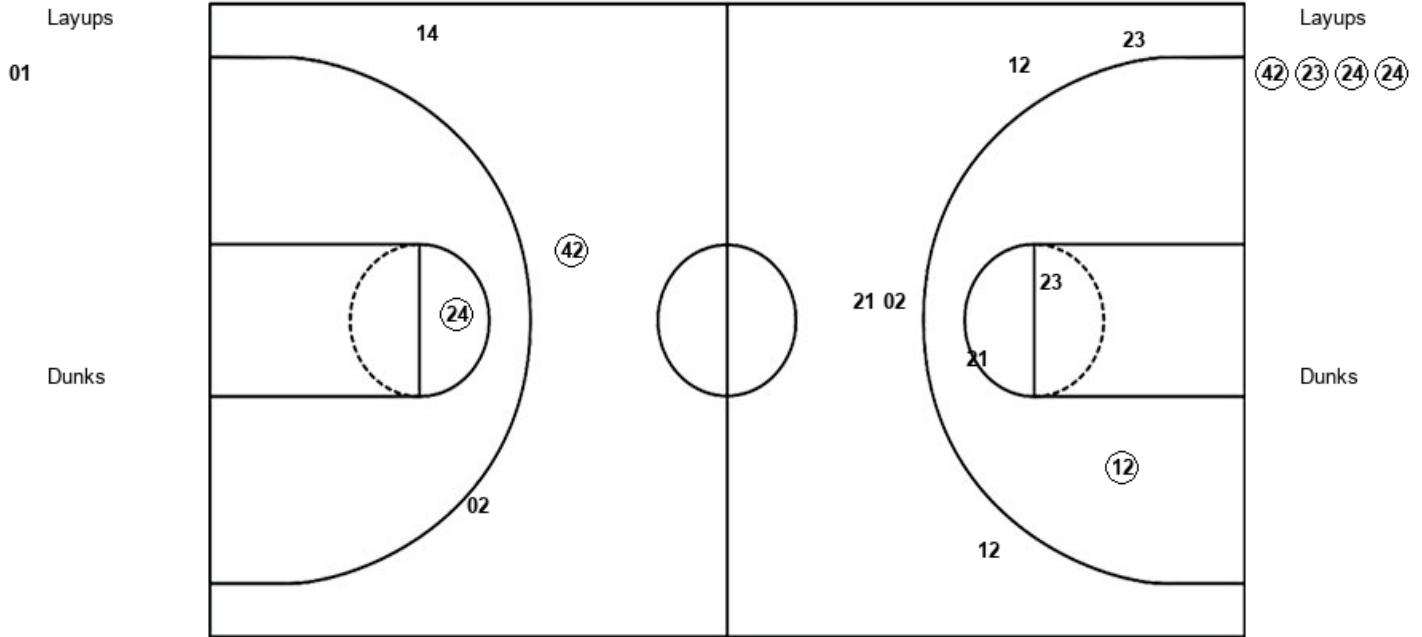
FSC : Period 1	Made	Att	Pct
Layups	7	9	77.8
Dunks	0	0	0
2PT Field Goals	9	11	81.8
3PT Field Goals	1	8	12.5
<b>Total Field Goals</b>	<b>10</b>	<b>19</b>	<b>52.6</b>

Official Shot Chart  
**Fla. Southern vs Palm Beach Atl.**  
 PERIOD 2 Shots  
 January 09, 2019 at Rubin Arena - West Palm Beach, Fla.



**Palm Beach Atl.**

**Fla. Southern**



<b>PBA : Period 2</b>	<b>Made</b>	<b>Att</b>	<b>Pct</b>
Layups	0	1	00.0
Dunks	0	0	0
2PT Field Goals	1	4	25.0
3PT Field Goals	0	5	00.0
<b>Total Field Goals</b>	<b>1</b>	<b>9</b>	<b>11.1</b>

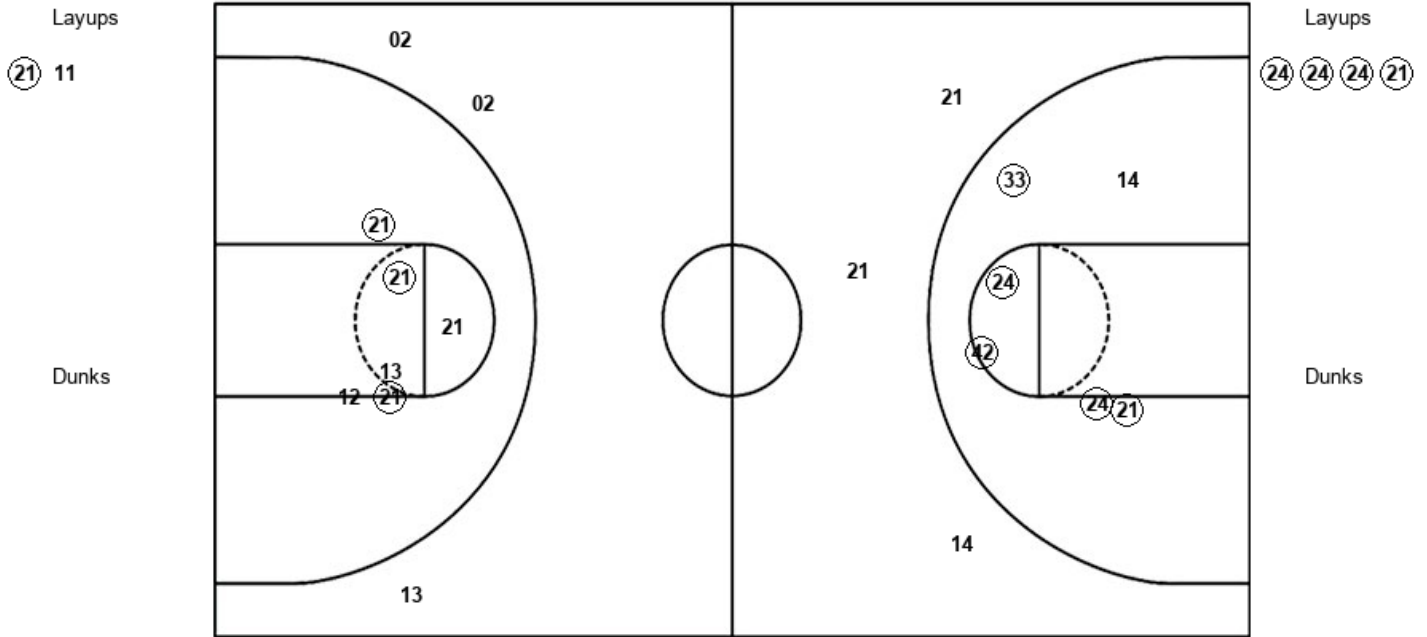
<b>FSC : Period 2</b>	<b>Made</b>	<b>Att</b>	<b>Pct</b>
Layups	4	4	100.0
Dunks	0	0	0
2PT Field Goals	5	5	100.0
3PT Field Goals	1	3	33.3
<b>Total Field Goals</b>	<b>6</b>	<b>8</b>	<b>75.0</b>

Official Shot Chart  
**Fla. Southern vs Palm Beach Atl.**  
 PERIOD 3 Shots  
 January 09, 2019 at Rubin Arena - West Palm Beach, Fla.



**Palm Beach Atl.**

**Fla. Southern**



PBA : Period 3	Made	Att	Pct
Layups	1	2	50.0
Dunks	0	0	0
2PT Field Goals	4	8	50.0
3PT Field Goals	0	3	00.0
<b>Total Field Goals</b>	<b>4</b>	<b>11</b>	<b>36.4</b>

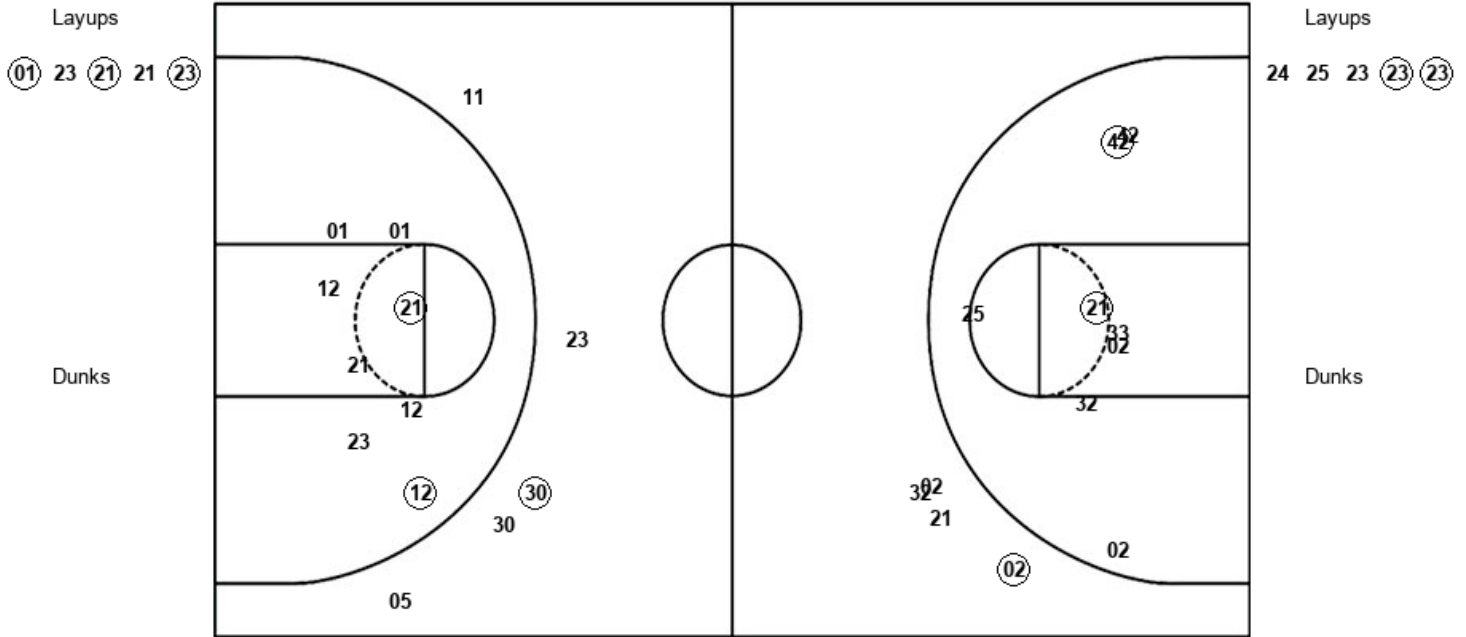
FSC : Period 3	Made	Att	Pct
Layups	4	4	100.0
Dunks	0	0	0
2PT Field Goals	9	10	90.0
3PT Field Goals	0	3	00.0
<b>Total Field Goals</b>	<b>9</b>	<b>13</b>	<b>69.2</b>

Official Shot Chart  
**Fla. Southern vs Palm Beach Atl.**  
 PERIOD 4 Shots  
 January 09, 2019 at Rubin Arena - West Palm Beach, Fla.



**Palm Beach Atl.**

**Fla. Southern**



PBA : Period 4	Made	Att	Pct
Layups	3	5	60.0
Dunks	0	0	0
2PT Field Goals	5	13	38.5
3PT Field Goals	1	5	20.0
<b>Total Field Goals</b>	<b>6</b>	<b>18</b>	<b>33.3</b>

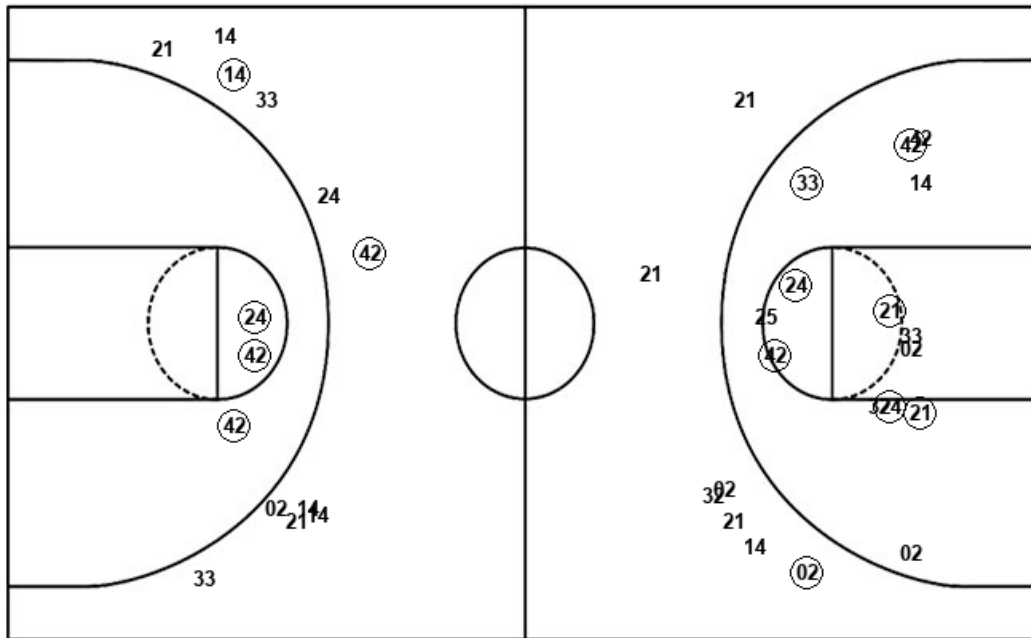
FSC : Period 4	Made	Att	Pct
Layups	2	5	40.0
Dunks	0	0	0
2PT Field Goals	4	13	30.8
3PT Field Goals	1	4	25.0
<b>Total Field Goals</b>	<b>5</b>	<b>17</b>	<b>29.4</b>

Official Shot Chart  
**Fla. Southern vs Palm Beach Atl.**  
 Fla. Southern Team Shots  
 January 09, 2019 at Rubin Arena - West Palm Beach, Fla.



Layups

Dunks



Layups

Dunks

FSC : Period 1	Made	Att	Pct
Layups	7	9	77.8
Dunks	0	0	0
2PT Field Goals	9	11	81.8
3PT Field Goals	1	8	12.5
<b>Total Field Goals</b>	<b>10</b>	<b>19</b>	<b>52.6</b>

FSC : Period 3	Made	Att	Pct
Layups	4	4	100.0
Dunks	0	0	0
2PT Field Goals	9	10	90.0
3PT Field Goals	0	3	00.0
<b>Total Field Goals</b>	<b>9</b>	<b>13</b>	<b>69.2</b>

FSC : Period 2	Made	Att	Pct
Layups	4	4	100.0
Dunks	0	0	0
2PT Field Goals	5	5	100.0
3PT Field Goals	1	3	33.3
<b>Total Field Goals</b>	<b>6</b>	<b>8</b>	<b>75.0</b>

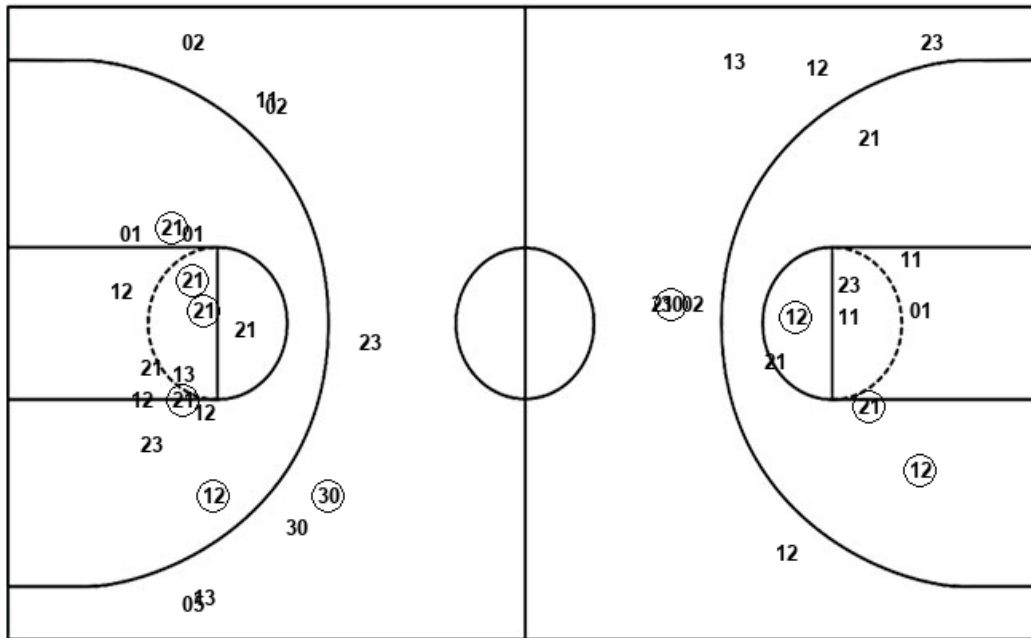
FSC : Period 4	Made	Att	Pct
Layups	2	5	40.0
Dunks	0	0	0
2PT Field Goals	4	13	30.8
3PT Field Goals	1	4	25.0
<b>Total Field Goals</b>	<b>5</b>	<b>17</b>	<b>29.4</b>

Official Shot Chart  
**Fla. Southern vs Palm Beach Atl.**  
 Palm Beach Atl. Team Shots  
 January 09, 2019 at Rubin Arena - West Palm Beach, Fla.



Layups

Dunks



Layups

Dunks

PBA : Period 1	Made	Att	Pct
Layups	2	6	33.3
Dunks	0	0	0
2PT Field Goals	4	12	33.3
3PT Field Goals	1	2	50.0
<b>Total Field Goals</b>	<b>5</b>	<b>14</b>	<b>35.7</b>

PBA : Period 3	Made	Att	Pct
Layups	1	2	50.0
Dunks	0	0	0
2PT Field Goals	4	8	50.0
3PT Field Goals	0	3	00.0
<b>Total Field Goals</b>	<b>4</b>	<b>11</b>	<b>36.4</b>

PBA : Period 2	Made	Att	Pct
Layups	0	1	00.0
Dunks	0	0	0
2PT Field Goals	1	4	25.0
3PT Field Goals	0	5	00.0
<b>Total Field Goals</b>	<b>1</b>	<b>9</b>	<b>11.1</b>

PBA : Period 4	Made	Att	Pct
Layups	3	5	60.0
Dunks	0	0	0
2PT Field Goals	5	13	38.5
3PT Field Goals	1	5	20.0
<b>Total Field Goals</b>	<b>6</b>	<b>18</b>	<b>33.3</b>