

## FINAL SCORE



**Purdue**

**51**



**Indiana**

**73**

March 03, 2019 • Simon Skjodt Assembly Hall - Bloomington, IN

## FINAL STATISTICS

**Official Box Score**  
**Purdue vs Indiana**  
**Game Totals -- Final Statistics**  
**March 03, 2019 at Simon Skjodt Assembly Hall - Bloomington, IN**



**Purdue 51**

No.	Player	S	Pts	FG	3FG	FT	OR	DR	TR	PF	A	TO	Blk	Stl	Min	+/-			
01	MCLAUGHLIN, KARISSA		6	2-6	0-3	2-2	0	2	2	1	3	2	0	1	33	-19			
11	ODEN, DOMINIQUE		8	3-9	0-2	2-2	1	3	4	4	1	1	0	1	32	-19			
23	TRAYLOR, KAYANA		12	4-13	2-7	2-2	0	1	1	2	1	2	1	4	35	-22			
25	FARQUHAR, TAMARA		2	1-7	0-0	0-0	2	3	5	2	0	2	2	0	24	-12			
32	HARRIS, AE'RIANNA		19	6-15	0-0	7-11	2	7	9	3	2	3	2	1	33	-20			
03	WHILBY, LYNDSEY		0	0-0	0-0	0-2	0	1	1	4	0	0	0	0	8	-8			
05	HARDIN, CASSIDY		0	0-5	0-5	0-0	0	3	3	1	1	0	0	0	19	-13			
13	STALLINGS, AJAH		0	0-0	0-0	0-0	0	0	0	0	0	0	0	0	2	6			
30	GONY, NYAGOA		4	1-1	0-0	2-4	2	0	2	1	0	1	0	0	8	3			
45	DIAGNE, FATOU		0	0-0	0-0	0-2	0	1	1	3	0	0	1	0	6	-6			
TEAM																			
<b>TOTALS</b>							<b>51</b>	<b>17-56</b>	<b>2-17</b>	<b>15-25</b>	<b>9</b>	<b>21</b>	<b>30</b>	<b>22</b>	<b>8</b>	<b>11</b>	<b>6</b>	<b>7</b>	<b>200</b>

*Shooting By Period*

Period	FG	FG%	3FG	3FG%	FT	FT%
1st Qtr	5-17	29%	1-6	17%	2-2	100%
2nd Qtr	3-14	21%	0-6	00%	3-3	100%
3rd Qtr	2-12	17%	0-1	00%	5-10	50%
4th Qtr	7-13	54%	1-4	25%	5-10	50%
1st Half	8-31	26%	1-12	08%	5-5	100%
2nd Half	9-25	36%	1-5	20%	10-20	50%
<b>Game</b>	<b>17-56</b>	<b>30.4%</b>	<b>2-17</b>	<b>11.8%</b>	<b>15-25</b>	<b>60.0%</b>

*Last FG: 4th-00:30*  
*Biggest Run: 6-0*  
*Largest lead: By 2 at 1-08:44*  
*Technical Fouls: None.*

**Indiana 73**

No.	Player	S	Pts	FG	3FG	FT	OR	DR	TR	PF	A	TO	Blk	Stl	Min	+/-			
01	YEANEY, BENDU		11	5-9	0-0	1-2	5	3	8	1	7	3	0	2	33	31			
11	ROYSTER, KYM		3	1-3	0-0	1-2	1	3	4	4	0	3	1	0	17	3			
13	PENN, JAELYNN		13	5-11	1-5	2-4	0	3	3	0	2	0	0	0	22	27			
14	PATBERG, ALI		18	8-13	2-3	0-0	0	1	1	3	3	2	1	0	33	14			
50	WISE, BRENNNA		7	1-3	1-2	4-4	1	8	9	3	0	1	1	0	27	27			
02	WARTHEN, KEYANNA		2	0-2	0-0	2-2	1	0	1	2	0	1	0	0	7	-9			
05	WITHROW, GRACE		1	0-0	0-0	1-2	0	0	0	0	0	0	0	0	1	-6			
10	GULBE, ALEKSA		5	1-4	1-2	2-2	2	4	6	2	1	0	0	1	14	-6			
12	MARCHESE, LINSEY		2	1-2	0-0	0-0	2	5	7	4	1	0	0	0	22	20			
34	BERGER, GRACE		11	4-8	0-0	3-5	0	6	6	1	0	3	0	2	23	9			
TEAM																			
<b>TOTALS</b>							<b>73</b>	<b>26-55</b>	<b>5-12</b>	<b>16-23</b>	<b>12</b>	<b>34</b>	<b>46</b>	<b>20</b>	<b>14</b>	<b>15</b>	<b>3</b>	<b>5</b>	<b>200</b>

*Shooting By Period*

Period	FG	FG%	3FG	3FG%	FT	FT%
1st Qtr	8-15	53%	3-5	60%	2-2	100%
2nd Qtr	8-15	53%	1-3	33%	5-6	83%
3rd Qtr	7-13	54%	1-2	50%	4-8	50%
4th Qtr	3-12	25%	0-2	00%	5-7	71%
1st Half	16-30	53%	4-8	50%	7-8	88%
2nd Half	10-25	40%	1-4	25%	9-15	60%
<b>Game</b>	<b>26-55</b>	<b>47.3%</b>	<b>5-12</b>	<b>41.7%</b>	<b>16-23</b>	<b>69.6%</b>

*Last FG: 4th-02:20*  
*Biggest Run: 14-0*  
*Largest lead: By 33 at 3-01:32*  
*Technical Fouls: None.*

*Game Notes:*

Officials: Felicia Grinter, Jesse Dickerson, Doug Knight  
 Attendance: 5857

Start Time: 2019-03-03 17:01:38  
 End Time: 2019-03-03 18:52:35  
 Game Duration: 110  
 Conference Game;

Score	1st	2nd	3rd	4th	TOT
PUR	13	9	9	20	51
IND	21	22	19	11	73

PUR led for 0:18. IND led for 37:14.  
 Game was tied for 2:26.  
 Times tied: 1      Lead Changes: 5

Points from	PUR	IND
In the Paint	18	34
Off Turns	10	12
2nd Chance	11	7
Fast Break	4	10
Bench	4	21

**Official Box Score**  
**Purdue vs Indiana**  
**First Half Statistics Only**  
**March 03, 2019 at Simon Skjodt Assembly Hall - Bloomington, IN**



**Purdue 22**

No.	Player	S	Pts	FG	3FG	FT	OR	DR	TR	PF	A	TO	Blk	Stl	Min	+/-
11	ODEN, DOMINIQUE		4	2-6	0-2	0-0	1	1	2	2	0	0	0	0	19	-21
13	STALLINGS, AJAH		0	0-0	0-0	0-0	0	0	0	0	0	0	0	0	0	0
23	TRAYLOR, KAYANA		7	2-7	1-4	2-2	0	1	1	1	0	1	0	1	18	-19
25	FARQUHAR, TAMARA		2	1-5	0-0	0-0	2	2	4	0	0	1	1	0	14	-10
30	GONY, NYAGOA		0	0-0	0-0	0-0	0	0	0	0	0	0	0	0	2	-4
32	HARRIS, AE'RIANNA		5	2-6	0-0	1-1	2	3	5	1	2	2	1	0	18	-21
45	DIAGNE, FATOU		0	0-0	0-0	0-0	0	1	1	1	0	0	1	0	2	-1
01	MCLAUGHLIN, KARISSA		4	1-4	0-3	2-2	0	1	1	1	2	2	0	0	17	-12
03	WHILBY, LYNDSEY		0	0-0	0-0	0-0	0	0	0	2	0	0	0	0	3	-7
05	HARDIN, CASSIDY		0	0-3	0-3	0-0	0	0	0	0	0	0	0	0	6	-10
	TEAM		0	0-0	0-0	0-0	0	0	0	1	0	0	0	0	0	0
<b>TOTALS</b>			<b>22</b>	<b>8-31</b>	<b>1-12</b>	<b>5-5</b>	<b>5</b>	<b>9</b>	<b>14</b>	<b>9</b>	<b>4</b>	<b>6</b>	<b>3</b>	<b>1</b>	<b>100</b>	

*Shooting By Period*

Period	FG	FG%	3FG	3FG%	FT	FT%
1st Qtr	5-17	29%	1-6	17%	2-2	100%
2nd Qtr	3-14	21%	0-6	00%	3-3	100%
1st Half	8-31	26%	1-12	08%	5-5	100%
Game	17-56	30.4%	2-17	11.8%	15-25	60.0%

Last FG Half: PUR 2nd-02:36

**Indiana 43**

No.	Player	S	Pts	FG	3FG	FT	OR	DR	TR	PF	A	TO	Blk	Stl	Min	+/-
01	YEANEY, BENDU		8	4-6	0-0	0-0	1	1	2	1	5	0	0	1	16	23
02	WARTHEN, KEYANNA		0	0-0	0-0	0-0	0	0	0	0	0	0	0	0	0	0
05	WITHROW, GRACE		0	0-0	0-0	0-0	0	0	0	0	0	0	0	0	0	0
10	GULBE, ALEKSA		5	1-2	1-1	2-2	2	2	4	0	0	0	0	1	5	2
11	ROYSTER, KYM		2	1-3	0-0	0-0	0	3	3	2	0	2	0	0	11	3
12	MARCHESE, LINSEY		2	1-1	0-0	0-0	2	2	4	1	0	0	0	0	9	18
13	PENN, JAELYNN		6	3-8	0-3	0-0	0	3	3	0	2	0	0	0	17	21
14	PATBERG, ALI		10	4-5	2-2	0-0	0	0	0	1	2	0	0	0	17	9
34	BERGER, GRACE		3	1-3	0-0	1-2	0	2	2	0	0	0	0	1	8	10
50	WISE, BRENNNA		7	1-2	1-2	4-4	0	4	4	1	0	1	1	0	15	19
	TEAM		0	0-0	0-0	0-0	0	0	0	0	0	1	0	0	0	0
<b>TOTALS</b>			<b>43</b>	<b>16-30</b>	<b>4-8</b>	<b>7-8</b>	<b>5</b>	<b>17</b>	<b>22</b>	<b>6</b>	<b>9</b>	<b>4</b>	<b>1</b>	<b>3</b>	<b>100</b>	

*Shooting By Period*

Period	FG	FG%	3FG	3FG%	FT	FT%
1st Qtr	8-15	53%	3-5	60%	2-2	100%
2nd Qtr	8-15	53%	1-3	33%	5-6	83%
1st Half	16-30	53%	4-8	50%	7-8	88%
Game	26-55	47.3%	5-12	41.7%	16-23	69.6%

Last FG Half: IND 2nd-00:01

Game Notes:

Officials: Felicia Grinter, Jesse Dickerson, Doug Knight  
 Attendance: 5857

Start Time: 2019-03-03 17:01:38  
 End Time: 2019-03-03 18:52:35  
 Game Duration: 110  
 Conference Game;

Score	1st	2nd	3rd	4th	TOT
PUR	13	9	9	20	<b>51</b>
IND	21	22	19	11	<b>73</b>

Points from (This Period)	PUR	IND
In the Paint	8	20
Off Turns	2	9
2nd Chance	5	6
Fast Break	2	10
Bench	0	10

**Official Box Score**  
**Purdue vs Indiana**  
**First Quarter Statistics Only**  
**March 03, 2019 at Simon Skjodt Assembly Hall - Bloomington, IN**



**Purdue 13**

No.	Player	S	Pts	FG	3FG	FT	OR	DR	TR	PF	A	TO	Blk	Stl	Min	+/-
01	MCLAUGHLIN, KARISSA		0	0-2	0-2	0-0	0	1	1	1	2	1	0	0	8	-6
11	ODEN, DOMINIQUE		2	1-3	0-1	0-0	0	0	0	0	0	0	0	0	10	-8
23	TRAYLOR, KAYANA		7	2-5	1-3	2-2	0	0	0	0	0	0	0	0	10	-8
25	FARQUHAR, TAMARA		2	1-4	0-0	0-0	2	1	3	0	0	1	0	0	9	-7
32	HARRIS, AE'RIANNA		2	1-3	0-0	0-0	2	1	3	0	0	0	0	0	8	-8
03	WHILBY, LYNDSEY		0	0-0	0-0	0-0	0	0	0	0	0	0	0	0	0	0
05	HARDIN, CASSIDY		0	0-0	0-0	0-0	0	0	0	0	0	0	0	0	2	-2
13	STALLINGS, AJAH		0	0-0	0-0	0-0	0	0	0	0	0	0	0	0	0	0
30	GONY, NYAGOA		0	0-0	0-0	0-0	0	0	0	0	0	0	0	0	0	0
45	DIAGNE, FATOU		0	0-0	0-0	0-0	0	1	1	1	0	0	1	0	2	-1
TEAM							0	0	0	0		0				
<b>TOTALS</b>			<b>13</b>	<b>5-17</b>	<b>1-6</b>	<b>2-2</b>	<b>4</b>	<b>4</b>	<b>8</b>	<b>2</b>	<b>2</b>	<b>2</b>	<b>1</b>	<b>0</b>	<b>50</b>	

*Shooting By Period*

Period	FG	FG%	3FG	3FG%	FT	FT%
1st Qtr	5-17	29%	1-6	17%	2-2	100%
2nd Qtr	3-14	21%	0-6	00%	3-3	100%
1st Half	5-17	29%	1-6	17%	2-2	100%
1st Half	8-31	26%	1-12	08%	5-5	100%
Game	17-56	30.4%	2-17	11.8%	15-25	60.0%

**Indiana 21**

No.	Player	S	Pts	FG	3FG	FT	OR	DR	TR	PF	A	TO	Blk	Stl	Min	+/-
01	YEANEY, BENDU		2	1-2	0-0	0-0	0	1	1	0	2	0	0	1	9	7
11	ROYSTER, KYM		2	1-2	0-0	0-0	0	3	3	1	0	2	0	0	7	4
13	PENN, JAELYNN		4	2-5	0-1	0-0	0	2	2	0	1	0	0	0	9	9
14	PATBERG, ALI		3	1-1	1-1	0-0	0	0	0	0	2	0	0	0	9	7
50	WISE, BRENNNA		3	1-2	1-2	0-0	0	1	1	0	0	0	0	0	8	7
02	WARTHEN, KEYANNA		0	0-0	0-0	0-0	0	0	0	0	0	0	0	0	0	0
05	WITHROW, GRACE		0	0-0	0-0	0-0	0	0	0	0	0	0	0	0	0	0
10	GULBE, ALEKSA		5	1-2	1-1	2-2	2	1	3	0	0	0	0	0	2	1
12	MARCHESE, LINSEY		2	1-1	0-0	0-0	1	0	1	1	0	0	0	0	3	4
34	BERGER, GRACE		0	0-0	0-0	0-0	0	0	0	0	0	0	0	0	2	1
TEAM							0	0	0	0		0				
<b>TOTALS</b>			<b>21</b>	<b>8-15</b>	<b>3-5</b>	<b>2-2</b>	<b>3</b>	<b>8</b>	<b>11</b>	<b>2</b>	<b>5</b>	<b>2</b>	<b>0</b>	<b>1</b>	<b>50</b>	

*Shooting By Period*

Period	FG	FG%	3FG	3FG%	FT	FT%
1st Qtr	8-15	53%	3-5	60%	2-2	100%
2nd Qtr	8-15	53%	1-3	33%	5-6	83%
1st Half	8-15	53%	3-5	60%	2-2	100%
1st Half	16-30	53%	4-8	50%	7-8	88%
Game	26-55	47.3%	5-12	41.7%	16-23	69.6%

*Game Notes:*

Officials: Felicia Grinter, Jesse Dickerson, Doug Knight  
Attendance: 5857

Start Time: 2019-03-03 17:01:38  
End Time: 2019-03-03 18:52:35  
Game Duration: 110  
Conference Game;

Score	1st	2nd	3rd	4th	TOT
PUR	13	9	9	20	<b>51</b>
IND	21	22	19	11	<b>73</b>

Points from (This Period)	PUR	IND
In the Paint	6	8
Off Turns	2	5
2nd Chance	2	4
Fast Break	0	4
Bench	0	7

**Official Play-By-Play**  
**Purdue vs Indiana**  
**First Quarter**  
**March 03, 2019 at Simon Skjodt Assembly Hall - Bloomington, IN**



**Period 1**

**Starters:**

**Purdue:** 11 ODEN, DOMINIQUE; 23 TRAYLOR, KAYANA; 25 FARQUHAR, TAMARA; 32 HARRIS, AE'RIANNA; 1 MCLAUGHLIN, KARISSA;

**Indiana:** 1 YEANEY, BENDU; 11 ROYSTER, KYM; 13 PENN, JAELYNN; 14 PATBERG, ALI; 50 WISE, BRENNNA;

Time	VISITORS: Purdue	Score	Margin	HOME: Indiana
09:41	MISSED 3PTR by MCLAUGHLIN, KARISSA			
09:38				REBOUND (DEF) by ROYSTER, KYM
09:15				TURNOVER (LOSTBALL) by ROYSTER, KYM
08:50	MISSED LAYUP by FARQUHAR, TAMARA			
08:44	REBOUND (OFF) by FARQUHAR, TAMARA			
08:44	GOOD! LAYUP by FARQUHAR, TAMARA	0-2	V 2	
08:26		2-2	T	GOOD! LAYUP by ROYSTER, KYM [PNT]
08:26				ASSIST by YEANEY, BENDU
08:11	MISSED 3PTR by TRAYLOR, KAYANA			
08:07	REBOUND (OFF) by HARRIS, AE'RIANNA			
08:05	MISSED LAYUP by HARRIS, AE'RIANNA			
08:02				REBOUND (DEF) by ROYSTER, KYM
07:49				TURNOVER (TRAVEL) by ROYSTER, KYM
07:32	MISSED 3PTR by MCLAUGHLIN, KARISSA			
07:29	REBOUND (OFF) by FARQUHAR, TAMARA			
07:26	MISSED JUMPER by ODEN, DOMINIQUE			
07:23				REBOUND (DEF) by PENN, JAELYNN
07:16		4-2	H 2	GOOD! JUMPER by PENN, JAELYNN [FB]
07:16				ASSIST by PATBERG, ALI
06:54	MISSED LAYUP by HARRIS, AE'RIANNA			
06:50	REBOUND (OFF) by HARRIS, AE'RIANNA			
06:44	MISSED LAYUP by TRAYLOR, KAYANA			
06:41				REBOUND (DEF) by WISE, BRENNNA
06:31		7-2	H 5	GOOD! 3PTR by WISE, BRENNNA
06:31				ASSIST by PATBERG, ALI
06:03	GOOD! JUMPER by ODEN, DOMINIQUE [PNT]	7-4	H 3	
05:48				MISSED LAYUP by PENN, JAELYNN
05:45	REBOUND (DEF) by HARRIS, AE'RIANNA			
05:40	TURNOVER (TRAVEL) by FARQUHAR, TAMARA			
05:40				SUB OUT: ROYSTER, KYM
05:40				SUB IN: MARCHESE, LINSEY
05:21		10-4	H 6	GOOD! 3PTR by PATBERG, ALI
05:21				ASSIST by PENN, JAELYNN
04:52	GOOD! 3PTR by TRAYLOR, KAYANA	10-7	H 3	
04:52	ASSIST by MCLAUGHLIN, KARISSA			
04:41				MISSED 3PTR by WISE, BRENNNA
04:37	REBOUND (DEF) by FARQUHAR, TAMARA			
04:30	MISSED 3PTR by TRAYLOR, KAYANA			
04:27				REBOUND (DEF) by YEANEY, BENDU
04:21		12-7	H 5	GOOD! LAYUP by YEANEY, BENDU [FB]
03:51	TURNOVER (LOSTBALL) by MCLAUGHLIN, KARISSA			
03:51				STEAL by YEANEY, BENDU
03:51	FOUL (PERSONAL) by MCLAUGHLIN, KARISSA			
03:35		14-7	H 7	GOOD! JUMPER by PENN, JAELYNN [PNT]
03:35				ASSIST by YEANEY, BENDU
03:11	GOOD! JUMPER by HARRIS, AE'RIANNA	14-9	H 5	
03:11	ASSIST by MCLAUGHLIN, KARISSA			
02:53				MISSED 3PTR by PENN, JAELYNN
02:48	REBOUND (DEF) by MCLAUGHLIN, KARISSA			
02:45	MISSED 3PTR by ODEN, DOMINIQUE			
02:43				REBOUND (DEF) by PENN, JAELYNN
02:38				MISSED LAYUP by PENN, JAELYNN
02:32				REBOUND (OFF) by MARCHESE, LINSEY
02:32		16-9	H 7	GOOD! LAYUP by MARCHESE, LINSEY
02:15				FOUL (PERSONAL) by MARCHESE, LINSEY
02:15				SUB OUT: MARCHESE, LINSEY
02:15				SUB IN: ROYSTER, KYM
02:15				SUB OUT: PENN, JAELYNN
02:15				SUB IN: BERGER, GRACE
02:15				SUB OUT: WISE, BRENNNA
02:15				SUB IN: GULBE, ALEKSA
02:15	SUB OUT: HARRIS, AE'RIANNA			
02:15	SUB IN: DIAGNE, FATOU			
02:02				FOUL (PERSONAL) by ROYSTER, KYM
02:02	GOOD! FT by TRAYLOR, KAYANA	16-10	H 6	
02:02	SUB OUT: MCLAUGHLIN, KARISSA			
02:02	SUB IN: HARDIN, CASSIDY			
02:02	GOOD! FT by TRAYLOR, KAYANA	16-11	H 5	
01:41				MISSED JUMPER by ROYSTER, KYM

Time	VISITORS: Purdue	Score	Margin	HOME: Indiana
01:39				REBOUND (OFF) by GULBE, ALEKSA
01:39	FOUL (PERSONAL) by DIAGNE, FATOU			
01:39		17-11	H 6	GOOD! FT by GULBE, ALEKSA
01:39				SUB OUT: PATBERG, ALI
01:39				SUB IN: PENN, JAELYNN
01:39		18-11	H 7	GOOD! FT by GULBE, ALEKSA
01:21	MISSED JUMPER by FARQUHAR, TAMARA			
01:18				REBOUND (DEF) by ROYSTER, KYM
01:00				MISSED LAYUP by YEANEY, BENDU
00:57				REBOUND (OFF) by GULBE, ALEKSA
00:55				MISSED LAYUP by GULBE, ALEKSA
00:55	BLOCK by DIAGNE, FATOU			
00:48	REBOUND (DEF) by DIAGNE, FATOU			
00:34	MISSED LAYUP by FARQUHAR, TAMARA			
00:33				REBOUND (DEF) by GULBE, ALEKSA
00:33				SUB OUT: YEANEY, BENDU
00:33				SUB IN: PATBERG, ALI
00:33	SUB OUT: FARQUHAR, TAMARA			
00:33	SUB IN: HARRIS, AE'RIANNA			
00:19		21-11	H 10	GOOD! 3PTR by GULBE, ALEKSA
00:02	GOOD! LAYUP by TRAYLOR, KAYANA [PNT]	21-13	H 8	

### Purdue 13, Indiana 21

Points from (This Period)	PUR	IND
In the Paint	6	8
Off Turns	2	5
2nd Chance	2	4
Fast Break	0	4
Bench	0	7

**Official Box Score**  
**Purdue vs Indiana**  
**Second Quarter Statistics Only**  
**March 03, 2019 at Simon Skjodt Assembly Hall - Bloomington, IN**



**Purdue 9**

No.	Player	S	Pts	FG	3FG	FT	OR	DR	TR	PF	A	TO	Blk	Stl	Min	+/-
01	MCLAUGHLIN, KARISSA		4	1-2	0-1	2-2	0	0	0	0	0	1	0	0	9	-6
11	ODEN, DOMINIQUE		2	1-3	0-1	0-0	1	1	2	2	0	0	0	0	9	-13
23	TRAYLOR, KAYANA		0	0-2	0-1	0-0	0	1	1	1	0	1	0	1	8	-11
25	FARQUHAR, TAMARA		0	0-1	0-0	0-0	0	1	1	0	0	0	1	0	5	-3
32	HARRIS, AE'RIANNA		3	1-3	0-0	1-1	0	2	2	1	2	2	1	0	10	-13
03	WHILBY, LYNDSEY		0	0-0	0-0	0-0	0	0	0	2	0	0	0	0	3	-7
05	HARDIN, CASSIDY		0	0-3	0-3	0-0	0	0	0	0	0	0	0	0	4	-8
13	STALLINGS, AJAH		0	0-0	0-0	0-0	0	0	0	0	0	0	0	0	0	0
30	GONY, NYAGOA		0	0-0	0-0	0-0	0	0	0	0	0	0	0	0	2	-4
45	DIAGNE, FATOU		0	0-0	0-0	0-0	0	0	0	0	0	0	0	0	0	0
TEAM							0	0	0	1		0				
<b>TOTALS</b>			<b>9</b>	<b>3-14</b>	<b>0-6</b>	<b>3-3</b>	<b>1</b>	<b>5</b>	<b>6</b>	<b>7</b>	<b>2</b>	<b>4</b>	<b>2</b>	<b>1</b>	<b>50</b>	

*Shooting By Period*

Period	FG	FG%	3FG	3FG%	FT	FT%
3rd Qtr	2-12	17%	0-1	00%	5-10	50%
4th Qtr	7-13	54%	1-4	25%	5-10	50%
2nd Half	3-14	21%	0-6	00%	3-3	100%
2nd Half	9-25	36%	1-5	20%	10-20	50%
Game	17-56	30.4%	2-17	11.8%	15-25	60.0%

**Indiana 22**

No.	Player	S	Pts	FG	3FG	FT	OR	DR	TR	PF	A	TO	Blk	Stl	Min	+/-
01	YEANEY, BENDU		6	3-4	0-0	0-0	1	0	1	1	3	0	0	0	7	16
11	ROYSTER, KYM		0	0-1	0-0	0-0	0	0	0	1	0	0	0	0	4	-1
13	PENN, JAELYNN		2	1-3	0-2	0-0	0	1	1	0	1	0	0	0	8	12
14	PATBERG, ALI		7	3-4	1-1	0-0	0	0	0	1	0	0	0	0	8	2
50	WISE, BRENNNA		4	0-0	0-0	4-4	0	3	3	1	0	1	1	0	7	12
02	WARTHEN, KEYANNA		0	0-0	0-0	0-0	0	0	0	0	0	0	0	0	0	0
05	WITHROW, GRACE		0	0-0	0-0	0-0	0	0	0	0	0	0	0	0	0	0
10	GULBE, ALEKSA		0	0-0	0-0	0-0	0	1	1	0	0	0	0	1	3	1
12	MARCHESE, LINSEY		0	0-0	0-0	0-0	1	2	3	0	0	0	0	0	6	14
34	BERGER, GRACE		3	1-3	0-0	1-2	0	2	2	0	0	0	0	1	6	9
TEAM							0	0	0	0		1				
<b>TOTALS</b>			<b>22</b>	<b>8-15</b>	<b>1-3</b>	<b>5-6</b>	<b>2</b>	<b>9</b>	<b>11</b>	<b>4</b>	<b>4</b>	<b>2</b>	<b>1</b>	<b>2</b>	<b>50</b>	

*Shooting By Period*

Period	FG	FG%	3FG	3FG%	FT	FT%
3rd Qtr	7-13	54%	1-2	50%	4-8	50%
4th Qtr	3-12	25%	0-2	00%	5-7	71%
2nd Half	8-15	53%	1-3	33%	5-6	83%
2nd Half	10-25	40%	1-4	25%	9-15	60%
Game	26-55	47.3%	5-12	41.7%	16-23	69.6%

*Game Notes:*

Officials: Felicia Grinter, Jesse Dickerson, Doug Knight  
Attendance: 5857

Start Time: 2019-03-03 17:01:38  
End Time: 2019-03-03 18:52:35  
Game Duration: 110  
Conference Game;

Score	1st	2nd	3rd	4th	TOT
PUR	13	9	9	20	<b>51</b>
IND	21	22	19	11	<b>73</b>

Points from (This Period)	PUR	IND
In the Paint	2	12
Off Turns	0	4
2nd Chance	3	2
Fast Break	2	6
Bench	0	3

**Official Play-By-Play  
Purdue vs Indiana  
Second Quarter  
March 03, 2019 at Simon Skjodt Assembly Hall - Bloomington, IN**



**Period 2**

**Starters:**

**Purdue:** 11 ODEN, DOMINIQUE; 23 TRAYLOR, KAYANA; 25 FARQUHAR, TAMARA; 32 HARRIS, AE'RIANNA; 1 MCLAUGHLIN, KARISSA;

**Indiana:** 1 YEANEY, BENDU; 11 ROYSTER, KYM; 13 PENN, JAELYNN; 14 PATBERG, ALI; 50 WISE, BRENNNA;

Time	VISITORS: Purdue	Score	Margin	HOME: Indiana
09:36	MISSED JUMPER by TRAYLOR, KAYANA			
09:33				REBOUND (DEF) by GULBE, ALEKSA
09:25				MISSED 3PTR by PENN, JAELYNN
09:21	REBOUND (DEF) by TRAYLOR, KAYANA			
09:05	TURNOVER (LOSTBALL) by HARRIS, AE'RIANNA			
09:05				STEAL by GULBE, ALEKSA
08:40				SUB OUT: GULBE, ALEKSA
08:40				SUB IN: YEANEY, BENDU
08:40				SUB OUT: ROYSTER, KYM
08:40				SUB IN: MARCHESE, LINSEY
08:40				SUB OUT: BERGER, GRACE
08:40				SUB IN: WISE, BRENNNA
08:40	SUB OUT: HARDIN, CASSIDY			
08:40	SUB IN: ODEN, DOMINIQUE			
08:32		23-13	H 10	GOOD! LAYUP by PATBERG, ALI [PNT]
08:32				ASSIST by YEANEY, BENDU
08:08	MISSED JUMPER by ODEN, DOMINIQUE			
08:05				REBOUND (DEF) by MARCHESE, LINSEY
07:59		25-13	H 12	GOOD! JUMPER by PATBERG, ALI
07:56	TIMEOUT 30SEC			
07:56				
07:56	SUB OUT: TRAYLOR, KAYANA			
07:56	SUB IN: WHILBY, LYNDSEY			
07:56	SUB OUT: GONY, NYAGOA			
07:56	SUB IN: FARQUHAR, TAMARA			
07:43	FOUL (OFF) by HARRIS, AE'RIANNA			
07:43	TURNOVER (OFFENSIVE) by HARRIS, AE'RIANNA			
07:19				MISSED LAYUP by YEANEY, BENDU
07:19	BLOCK by HARRIS, AE'RIANNA			
07:13				REBOUND (OFF) by MARCHESE, LINSEY
07:12				TURNOVER (SHOTCLOCK) by
06:44	MISSED 3PTR by ODEN, DOMINIQUE			
06:41				REBOUND (DEF) by MARCHESE, LINSEY
06:41	FOUL (PERSONAL) by WHILBY, LYNDSEY			
06:24		27-13	H 14	GOOD! JUMPER by YEANEY, BENDU [PNT]
06:24				ASSIST by PENN, JAELYNN
06:04	MISSED LAYUP by FARQUHAR, TAMARA			
06:04				BLOCK by WISE, BRENNNA
06:00				REBOUND (DEF) by WISE, BRENNNA
05:55	FOUL (PERSONAL) by WHILBY, LYNDSEY			
05:55	SUB OUT: WHILBY, LYNDSEY			
05:55	SUB IN: TRAYLOR, KAYANA			
05:43				MISSED 3PTR by PENN, JAELYNN
05:43	BLOCK by FARQUHAR, TAMARA			
05:38	REBOUND (DEF) by ODEN, DOMINIQUE			
05:19	GOOD! JUMPER by ODEN, DOMINIQUE	27-15	H 12	
05:19	ASSIST by HARRIS, AE'RIANNA			
04:54				TURNOVER (LOSTBALL) by WISE, BRENNNA
04:54	STEAL by TRAYLOR, KAYANA			
04:50	FOUL (OFF) by TRAYLOR, KAYANA			
04:50	TURNOVER (OFFENSIVE) by TRAYLOR, KAYANA			
04:50				SUB OUT: MARCHESE, LINSEY
04:50				SUB IN: ROYSTER, KYM
04:50				SUB OUT: PENN, JAELYNN
04:50				SUB IN: GULBE, ALEKSA
04:50				SUB OUT: WISE, BRENNNA
04:50				SUB IN: BERGER, GRACE
04:33				MISSED JUMPER by PATBERG, ALI
04:30	REBOUND (DEF) by FARQUHAR, TAMARA			
04:25				FOUL (PERSONAL) by YEANEY, BENDU
04:25	GOOD! FT by MCLAUGHLIN, KARISSA [FB]	27-16	H 11	
04:25	GOOD! FT by MCLAUGHLIN, KARISSA [FB]	27-17	H 10	
04:13		30-17	H 13	GOOD! 3PTR by PATBERG, ALI
04:13				ASSIST by YEANEY, BENDU
03:50	GOOD! JUMPER by MCLAUGHLIN, KARISSA	30-19	H 11	
03:50	ASSIST by HARRIS, AE'RIANNA			
03:34				MISSED LAYUP by ROYSTER, KYM
03:30				REBOUND (OFF) by YEANEY, BENDU
03:30		32-19	H 13	GOOD! LAYUP by YEANEY, BENDU
03:08	MISSED JUMPER by HARRIS, AE'RIANNA			



Time	VISITORS: Purdue	Score	Margin	HOME: Indiana
03:08	REBOUND (OFF) by TEAM			
03:08				FOUL (PERSONAL) by PATBERG, ALI
03:08				SUB OUT: YEANEY, BENDU
03:08				SUB IN: WISE, BRENNNA
03:08				SUB OUT: GULBE, ALEKSA
03:08				SUB IN: PENN, JAELYNN
03:08	SUB OUT: FARQUHAR, TAMARA			
03:08	SUB IN: HARDIN, CASSIDY			
02:58	MISSED 3PTR by MCLAUGHLIN, KARISSA			
02:55				REBOUND (DEF) by WISE, BRENNNA
02:49				MISSED JUMPER by BERGER, GRACE
02:46	REBOUND (DEF) by HARRIS, AE'RIANNA			
02:43	MISSED 3PTR by HARDIN, CASSIDY			
02:41	REBOUND (OFF) by ODEN, DOMINIQUE			
02:41				FOUL (PERSONAL) by WISE, BRENNNA
02:36	GOOD! LAYUP by HARRIS, AE'RIANNA [PNT]	32-21	H 11	
02:36				FOUL (PERSONAL) by ROYSTER, KYM
02:36				SUB OUT: ROYSTER, KYM
02:36				SUB IN: MARCHESE, LINSEY
02:36	GOOD! FT by HARRIS, AE'RIANNA	32-22	H 10	
02:18				MISSED JUMPER by BERGER, GRACE
02:16	REBOUND (DEF) by HARRIS, AE'RIANNA			
01:56	MISSED JUMPER by HARRIS, AE'RIANNA			
01:56				REBOUND (DEF) by BERGER, GRACE
01:54	FOUL (PERSONAL) by ODEN, DOMINIQUE			
01:54				MISSED FT by BERGER, GRACE
01:54				REBOUND (OFF) by TEAM
01:54				SUB OUT: PATBERG, ALI
01:54				SUB IN: YEANEY, BENDU
01:54		33-22	H 11	GOOD! FT by BERGER, GRACE
01:43	MISSED 3PTR by TRAYLOR, KAYANA			
01:39				REBOUND (DEF) by BERGER, GRACE
01:33		35-22	H 13	GOOD! LAYUP by BERGER, GRACE [FB]
01:16	TURNOVER (LOSTBALL) by MCLAUGHLIN, KARISSA			
01:16				STEAL by BERGER, GRACE
01:13	FOUL (PERSONAL) by ODEN, DOMINIQUE			
01:13		36-22	H 14	GOOD! FT by WISE, BRENNNA [FB]
01:13	SUB OUT: MCLAUGHLIN, KARISSA			
01:13	SUB IN: FARQUHAR, TAMARA			
01:13	FOUL (COACHTECHNICAL) by TEAM			
01:13		37-22	H 15	GOOD! FT by WISE, BRENNNA [FB]
01:13		38-22	H 16	GOOD! FT by WISE, BRENNNA [FB]
01:13	SUB OUT: FARQUHAR, TAMARA			
01:13	SUB IN: WHILBY, LYNDESEY			
01:13		39-22	H 17	GOOD! FT by WISE, BRENNNA [FB]
00:57	MISSED 3PTR by HARDIN, CASSIDY			
00:54				REBOUND (DEF) by WISE, BRENNNA
00:35		41-22	H 19	GOOD! JUMPER by PENN, JAELYNN [PNT]
00:35				ASSIST by YEANEY, BENDU
00:25	MISSED 3PTR by HARDIN, CASSIDY			
00:20				REBOUND (DEF) by PENN, JAELYNN
00:01		43-22	H 21	GOOD! LAYUP by YEANEY, BENDU [PNT]

### Purdue 22, Indiana 43

Points from (This Period)	PUR	IND
In the Paint	2	12
Off Turns	0	4
2nd Chance	3	2
Fast Break	2	6
Bench	0	3

**Official Box Score**  
**Purdue vs Indiana**  
**Second Half Statistics Only**  
**March 03, 2019 at Simon Skjodt Assembly Hall - Bloomington, IN**



**Purdue 29**

No.	Player	S	Pts	FG	3FG	FT	OR	DR	TR	PF	A	TO	Blk	Stl	Min	+/-
11	ODEN, DOMINIQUE		4	1-3	0-0	2-2	0	2	2	2	1	1	0	1	12	2
13	STALLINGS, AJAH		0	0-0	0-0	0-0	0	0	0	0	0	0	0	0	2	6
23	TRAYLOR, KAYANA		5	2-6	1-3	0-0	0	0	0	1	1	1	1	3	17	-3
25	FARQUHAR, TAMARA		0	0-2	0-0	0-0	0	1	1	2	0	1	1	0	10	-2
30	GONY, NYAGOA		4	1-1	0-0	2-4	2	0	2	1	0	1	0	0	6	7
32	HARRIS, AE'RIANNA		14	4-9	0-0	6-10	0	4	4	2	0	1	1	1	14	1
45	DIAGNE, FATOU		0	0-0	0-0	0-2	0	0	0	2	0	0	0	0	4	-5
01	MCLAUGHLIN, KARISSA		2	1-2	0-0	0-0	0	1	1	0	1	0	0	1	17	-7
03	WHILBY, LYNDESEY		0	0-0	0-0	0-2	0	1	1	2	0	0	0	0	5	-1
05	HARDIN, CASSIDY		0	0-2	0-2	0-0	0	3	3	1	1	0	0	0	12	-3
	TEAM		0	0-0	0-0	0-0	2	0	2	0	0	0	0	0	0	0
<b>TOTALS</b>			<b>29</b>	<b>9-25</b>	<b>1-5</b>	<b>10-20</b>	<b>4</b>	<b>12</b>	<b>16</b>	<b>13</b>	<b>4</b>	<b>5</b>	<b>3</b>	<b>6</b>	<b>100</b>	

*Shooting By Period*

Period	FG	FG%	3FG	3FG%	FT	FT%
3rd Qtr	2-12	17%	0-1	00%	5-10	50%
4th Qtr	7-13	54%	1-4	25%	5-10	50%
2nd Half	9-25	36%	1-5	20%	10-20	50%
Game	17-56	30.4%	2-17	11.8%	15-25	60.0%

*Last FG Half: PUR 4th-00:30*

**Indiana 30**

No.	Player	S	Pts	FG	3FG	FT	OR	DR	TR	PF	A	TO	Blk	Stl	Min	+/-
01	YEANEY, BENDU		3	1-3	0-0	1-2	4	2	6	0	2	3	0	1	17	8
02	WARTHEN, KEYANNA		2	0-2	0-0	2-2	1	0	1	2	0	1	0	0	7	-9
05	WITHROW, GRACE		1	0-0	0-0	1-2	0	0	0	0	0	0	0	0	1	-6
10	GULBE, ALEKSA		0	0-2	0-1	0-0	0	2	2	2	1	0	0	0	9	-8
11	ROYSTER, KYM		1	0-0	0-0	1-2	1	0	1	2	0	1	1	0	6	0
12	MARCHESE, LINSEY		0	0-1	0-0	0-0	0	3	3	3	1	0	0	0	13	2
13	PENN, JAELYNN		7	2-3	1-2	2-4	0	0	0	0	0	0	0	0	5	6
14	PATBERG, ALI		8	4-8	0-1	0-0	0	1	1	2	1	2	1	0	16	5
34	BERGER, GRACE		8	3-5	0-0	2-3	0	4	4	1	0	3	0	1	15	-1
50	WISE, BRENNIA		0	0-1	0-0	0-0	1	4	5	2	0	0	0	0	12	8
	TEAM		0	0-0	0-0	0-0	0	1	1	0	0	1	0	0	0	0
<b>TOTALS</b>			<b>30</b>	<b>10-25</b>	<b>1-4</b>	<b>9-15</b>	<b>7</b>	<b>17</b>	<b>24</b>	<b>14</b>	<b>5</b>	<b>11</b>	<b>2</b>	<b>2</b>	<b>100</b>	

*Shooting By Period*

Period	FG	FG%	3FG	3FG%	FT	FT%
3rd Qtr	7-13	54%	1-2	50%	4-8	50%
4th Qtr	3-12	25%	0-2	00%	5-7	71%
2nd Half	10-25	40%	1-4	25%	9-15	60%
Game	26-55	47.3%	5-12	41.7%	16-23	69.6%

*Last FG Half: IND 4th-02:20*

**Game Notes:**

Officials: Felicia Grinter, Jesse Dickerson, Doug Knight  
 Attendance: 5857

Start Time: 2019-03-03 17:01:38  
 End Time: 2019-03-03 18:52:35  
 Game Duration: 110  
 Conference Game;

Score	1st	2nd	3rd	4th	TOT
PUR	13	9	9	20	51
IND	21	22	19	11	73

Points from (This Period)	PUR	IND
In the Paint	10	14
Off Turns	8	3
2nd Chance	6	1
Fast Break	2	0
Bench	4	11

**Official Box Score**  
**Purdue vs Indiana**  
**Third Quarter Statistics Only**  
**March 03, 2019 at Simon Skjodt Assembly Hall - Bloomington, IN**



**Purdue 29**

No.	Player	S	Pts	FG	3FG	FT	OR	DR	TR	PF	A	TO	Blk	Stl	Min	+/-
01	MCLAUGHLIN, KARISSA		0	0-1	0-0	0-0	0	0	0	0	0	0	0	0	9	-10
11	ODEN, DOMINIQUE		0	0-1	0-0	0-0	0	1	1	1	0	0	0	1	5	-4
23	TRAYLOR, KAYANA		0	0-1	0-1	0-0	0	0	0	0	1	1	0	1	10	-10
25	FARQUHAR, TAMARA		0	0-2	0-0	0-0	0	1	1	1	0	1	1	0	6	-11
32	HARRIS, AE'RIANNA		9	2-7	0-0	5-8	0	1	1	2	0	1	0	1	7	-5
03	WHILBY, LYNDSEY		0	0-0	0-0	0-0	0	1	1	2	0	0	0	0	3	-1
05	HARDIN, CASSIDY		0	0-0	0-0	0-0	0	1	1	1	1	0	0	0	6	-6
13	STALLINGS, AJAH		0	0-0	0-0	0-0	0	0	0	0	0	0	0	0	0	0
30	GONY, NYAGOA		0	0-0	0-0	0-0	0	0	0	0	0	0	0	0	2	2
45	DIAGNE, FATOU		0	0-0	0-0	0-2	0	0	0	0	0	0	0	0	3	-5
TEAM							1	0	1	0		0				
<b>TOTALS</b>			<b>9</b>	<b>2-12</b>	<b>0-1</b>	<b>5-10</b>	<b>1</b>	<b>5</b>	<b>6</b>	<b>7</b>	<b>2</b>	<b>3</b>	<b>1</b>	<b>3</b>	<b>50</b>	

*Shooting By Period*

Period	FG	FG%	3FG	3FG%	FT	FT%
2nd Half	0-0	0%	0-0	0%	0-0	0%
Game	17-56	30.4%	2-17	11.8%	15-25	60.0%

**Indiana 30**

No.	Player	S	Pts	FG	3FG	FT	OR	DR	TR	PF	A	TO	Blk	Stl	Min	+/-
01	YEANEY, BENDU		0	0-1	0-0	0-0	2	1	3	0	2	2	0	1	9	12
11	ROYSTER, KYM		1	0-0	0-0	1-2	1	0	1	2	0	1	1	0	2	2
13	PENN, JAELYNN		7	2-3	1-2	2-4	0	0	0	0	0	0	0	0	5	6
14	PATBERG, ALI		8	4-5	0-0	0-0	0	1	1	2	1	1	0	0	9	8
50	WISE, BRENNAN		0	0-0	0-0	0-0	1	2	3	1	0	0	0	0	7	7
02	WARTHEN, KEYANNA		0	0-0	0-0	0-0	0	0	0	0	0	1	0	0	2	-2
05	WITHROW, GRACE		0	0-0	0-0	0-0	0	0	0	0	0	0	0	0	0	0
10	GULBE, ALEKSA		0	0-1	0-0	0-0	0	2	2	0	1	0	0	0	4	2
12	MARCHESE, LINSEY		0	0-0	0-0	0-0	0	2	2	1	1	0	0	0	7	9
34	BERGER, GRACE		3	1-3	0-0	1-2	0	2	2	1	0	1	0	1	7	6
TEAM							0	1	1	0		0				
<b>TOTALS</b>			<b>19</b>	<b>7-13</b>	<b>1-2</b>	<b>4-8</b>	<b>4</b>	<b>11</b>	<b>15</b>	<b>7</b>	<b>5</b>	<b>6</b>	<b>1</b>	<b>2</b>	<b>50</b>	

*Shooting By Period*

Period	FG	FG%	3FG	3FG%	FT	FT%
2nd Half	0-0	0%	0-0	0%	0-0	0%
Game	26-55	47.3%	5-12	41.7%	16-23	69.6%

Game Notes:

Officials: Felicia Grinter, Jesse Dickerson, Doug Knight  
 Attendance: 5857

Start Time: 2019-03-03 17:01:38

End Time: 2019-03-03 18:52:35

Game Duration: 110

Conference Game;

Score	1st	2nd	3rd	4th	TOT
PUR	13	9	9	20	<b>51</b>
IND	21	22	19	11	<b>73</b>

Points from (This Period)	PUR	IND
In the Paint	4	8
Off Turns	2	3
2nd Chance	0	1
Fast Break	0	0
Bench	0	3

**Official Play-By-Play**  
**Purdue vs Indiana**  
**Third Quarter**  
**March 03, 2019 at Simon Skjodt Assembly Hall - Bloomington, IN**



**Period 3**

**Starters:**

**Purdue:** 11 ODEN, DOMINIQUE; 23 TRAYLOR, KAYANA; 25 FARQUHAR, TAMARA; 32 HARRIS, AE'RIANNA; 1 MCLAUGHLIN, KARISSA;

**Indiana:** 1 YEANEY, BENDU; 11 ROYSTER, KYM; 13 PENN, JAELYNN; 14 PATBERG, ALI; 50 WISE, BRENNNA;

Time	VISITORS: Purdue	Score	Margin	HOME: Indiana
09:49	MISSED JUMPER by FARQUHAR, TAMARA			
09:46				REBOUND (DEF) by WISE, BRENNNA
09:35		45-22	H 23	GOOD! LAYUP by PENN, JAELYNN [PNT]
09:14	MISSED JUMPER by HARRIS, AE'RIANNA			
09:12				REBOUND (DEF) by PATBERG, ALI
09:06				MISSED LAYUP by PATBERG, ALI
09:06	BLOCK by FARQUHAR, TAMARA			
09:06				REBOUND (OFF) by ROYSTER, KYM
09:05	FOUL (PERSONAL) by FARQUHAR, TAMARA			
09:05		46-22	H 24	GOOD! FT by ROYSTER, KYM
09:05				MISSED FT by ROYSTER, KYM
09:05				REBOUND (OFF) by WISE, BRENNNA
09:04	FOUL (PERSONAL) by HARRIS, AE'RIANNA			
08:57				MISSED 3PTR by PENN, JAELYNN
08:55				REBOUND (OFF) by YEANEY, BENDU
08:39				TURNOVER (3SEC) by ROYSTER, KYM
08:39	SUB OUT: FARQUHAR, TAMARA			
08:39	SUB IN: WHILBY, LYNDSEY			
08:32				FOUL (PERSONAL) by PATBERG, ALI
08:25				FOUL (PERSONAL) by ROYSTER, KYM
08:24	GOOD! FT by HARRIS, AE'RIANNA	46-23	H 23	
08:24				SUB OUT: ROYSTER, KYM
08:24				SUB IN: MARCHESE, LINSEY
08:24	GOOD! FT by HARRIS, AE'RIANNA	46-24	H 22	
08:09		48-24	H 24	GOOD! JUMPER by PATBERG, ALI
08:09				ASSIST by MARCHESE, LINSEY
07:52	GOOD! LAYUP by HARRIS, AE'RIANNA	48-26	H 22	
07:52	ASSIST by TRAYLOR, KAYANA			
07:35				MISSED LAYUP by YEANEY, BENDU
07:33	REBOUND (DEF) by WHILBY, LYNDSEY			
07:30	FOUL (OFF) by HARRIS, AE'RIANNA			
07:30	TURNOVER (OFFENSIVE) by HARRIS, AE'RIANNA			
07:30	SUB OUT: HARRIS, AE'RIANNA			
07:30	SUB IN: DIAGNE, FATOU			
07:10	FOUL (PERSONAL) by WHILBY, LYNDSEY			
07:09		51-26	H 25	GOOD! 3PTR by PENN, JAELYNN
07:09				ASSIST by PATBERG, ALI
07:01	TIMEOUT 30SEC			
07:01				
06:50				FOUL (PERSONAL) by WISE, BRENNNA
06:36				FOUL (PERSONAL) by PATBERG, ALI
06:36	MISSED FT by DIAGNE, FATOU			
06:36	REBOUND (OFF) by TEAM			
06:36				SUB OUT: PATBERG, ALI
06:36				SUB IN: BERGER, GRACE
06:36	MISSED FT by DIAGNE, FATOU			
06:34				REBOUND (DEF) by WISE, BRENNNA
06:17				TURNOVER (BADPASS) by YEANEY, BENDU
06:17	STEAL by ODEN, DOMINIQUE			
06:07	MISSED 3PTR by TRAYLOR, KAYANA			
06:04				REBOUND (DEF) by TEAM
06:03	SUB OUT: MCLAUGHLIN, KARISSA			
06:03	SUB IN: HARDIN, CASSIDY			
05:55	FOUL (PERSONAL) by WHILBY, LYNDSEY			
05:55				TIMEOUT 30SEC
05:55				
05:55	SUB OUT: WHILBY, LYNDSEY			
05:55	SUB IN: FARQUHAR, TAMARA			
05:55				MISSED FT by PENN, JAELYNN
05:55				REBOUND (OFF) by TEAM
05:55				MISSED FT by PENN, JAELYNN
05:54	REBOUND (DEF) by FARQUHAR, TAMARA			
05:30	MISSED JUMPER by ODEN, DOMINIQUE			
05:27				REBOUND (DEF) by MARCHESE, LINSEY
05:27	FOUL (PERSONAL) by ODEN, DOMINIQUE			
05:27		52-26	H 26	GOOD! FT by PENN, JAELYNN
05:27	SUB OUT: ODEN, DOMINIQUE			
05:27	SUB IN: MCLAUGHLIN, KARISSA			
05:27		53-26	H 27	GOOD! FT by PENN, JAELYNN
05:27				SUB OUT: PENN, JAELYNN

Time	VISITORS: Purdue	Score	Margin	HOME: Indiana
05:27				SUB IN: PATBERG, ALI
05:00	MISSED JUMPER by FARQUHAR, TAMARA			
04:57				REBOUND (DEF) by BERGER, GRACE
04:54				TURNOVER (BADPASS) by BERGER, GRACE
04:54	SUB OUT: DIAGNE, FATOU			
04:54	SUB IN: HARRIS, AE'RIANNA			
04:52	TURNOVER (BADPASS) by FARQUHAR, TAMARA			
04:52				STEAL by YEANEY, BENDU
04:48				TURNOVER (TRAVEL) by YEANEY, BENDU
04:30				FOUL (PERSONAL) by BERGER, GRACE
04:30	MISSED FT by HARRIS, AE'RIANNA			
04:30	REBOUND (OFF) by TEAM			
04:30	MISSED FT by HARRIS, AE'RIANNA			
04:30	REBOUND (OFF) by TEAM			
04:24	MISSED JUMPER by MCLAUGHLIN, KARISSA			
04:21				REBOUND (DEF) by YEANEY, BENDU
04:12		55-26	H 29	GOOD! LAYUP by PATBERG, ALI [PNT]
04:12				ASSIST by YEANEY, BENDU
03:54				FOUL (PERSONAL) by MARCHESE, LINSEY
03:54	MISSED FT by HARRIS, AE'RIANNA			
03:54	REBOUND (OFF) by TEAM			
03:54				SUB OUT: WISE, BRENNNA
03:54				SUB IN: GULBE, ALEKSA
03:54	GOOD! FT by HARRIS, AE'RIANNA	55-27	H 28	
03:36	FOUL (PERSONAL) by HARDIN, CASSIDY			
03:36		56-27	H 29	GOOD! FT by BERGER, GRACE
03:36				MISSED FT by BERGER, GRACE
03:35	REBOUND (DEF) by HARRIS, AE'RIANNA			
03:22	TURNOVER (BADPASS) by TRAYLOR, KAYANA			
03:22				STEAL by BERGER, GRACE
03:16				MISSED JUMPER by BERGER, GRACE
03:13				REBOUND (OFF) by YEANEY, BENDU
03:07				TURNOVER (BADPASS) by PATBERG, ALI
03:07	STEAL by HARRIS, AE'RIANNA			
02:50	MISSED LAYUP by HARRIS, AE'RIANNA			
02:44				REBOUND (DEF) by MARCHESE, LINSEY
02:30		58-27	H 31	GOOD! LAYUP by PATBERG, ALI [PNT]
02:30				ASSIST by GULBE, ALEKSA
02:13	GOOD! JUMPER by HARRIS, AE'RIANNA [PNT]	58-29	H 29	
02:13	ASSIST by HARDIN, CASSIDY			
01:54		60-29	H 31	GOOD! JUMPER by BERGER, GRACE
01:54				ASSIST by YEANEY, BENDU
01:42	MISSED JUMPER by HARRIS, AE'RIANNA			
01:38				REBOUND (DEF) by GULBE, ALEKSA
01:32		62-29	H 33	GOOD! JUMPER by PATBERG, ALI [PNT]
01:30	TIMEOUT 30SEC			
01:30				SUB OUT: YEANEY, BENDU
01:30				SUB IN: WARTHEN, KEYANNA
01:30				SUB OUT: MARCHESE, LINSEY
01:30				SUB IN: ROYSTER, KYM
01:30	SUB OUT: MCLAUGHLIN, KARISSA			
01:30	SUB IN: GONY, NYAGOA			
01:30	SUB OUT: FARQUHAR, TAMARA			
01:30	SUB IN: ODEN, DOMINIQUE			
01:17	MISSED LAYUP by HARRIS, AE'RIANNA			
01:17				BLOCK by ROYSTER, KYM
01:16				REBOUND (DEF) by GULBE, ALEKSA
00:50				MISSED JUMPER by BERGER, GRACE
00:47	REBOUND (DEF) by ODEN, DOMINIQUE			
00:39				FOUL (PERSONAL) by ROYSTER, KYM
00:39	GOOD! FT by HARRIS, AE'RIANNA	62-30	H 32	
00:39				SUB OUT: ROYSTER, KYM
00:39				SUB IN: WISE, BRENNNA
00:39	SUB OUT: ODEN, DOMINIQUE			
00:39	SUB IN: MCLAUGHLIN, KARISSA			
00:39	GOOD! FT by HARRIS, AE'RIANNA	62-31	H 31	
00:19				MISSED JUMPER by GULBE, ALEKSA
00:15	REBOUND (DEF) by HARDIN, CASSIDY			
00:06	MISSED JUMPER by HARRIS, AE'RIANNA			
00:04				REBOUND (DEF) by BERGER, GRACE
00:00				TURNOVER (LOSTBALL) by WARTHEN, KEYANNA
00:00	STEAL by TRAYLOR, KAYANA			

Purdue 31, Indiana 62

<b>Points from (This Period)</b>	<b>PUR</b>	<b>IND</b>
In the Paint	4	8
Off Turns	2	3
2nd Chance	0	1
Fast Break	0	0
Bench	0	3

**Official Box Score**  
**Purdue vs Indiana**  
**Fourth Quarter Statistics Only**  
**March 03, 2019 at Simon Skjodt Assembly Hall - Bloomington, IN**



**Purdue 20**

No.	Player	S	Pts	FG	3FG	FT	OR	DR	TR	PF	A	TO	Blk	Stl	Min	+/-
01	MCLAUGHLIN, KARISSA		2	1-1	0-0	0-0	0	1	1	0	1	0	0	1	8	3
11	ODEN, DOMINIQUE		4	1-2	0-0	2-2	0	1	1	1	1	1	0	0	7	6
23	TRAYLOR, KAYANA		5	2-5	1-2	0-0	0	0	0	1	0	0	1	2	7	7
25	FARQUHAR, TAMARA		0	0-0	0-0	0-0	0	0	0	1	0	0	0	0	4	9
32	HARRIS, AE'RIANNA		5	2-2	0-0	1-2	0	3	3	0	0	0	0	1	0	6
03	WHILBY, LYNDSSEY		0	0-0	0-0	0-2	0	0	0	0	0	0	0	0	2	0
05	HARDIN, CASSIDY		0	0-2	0-2	0-0	0	2	2	0	0	0	0	0	6	3
13	STALLINGS, AJAH		0	0-0	0-0	0-0	0	0	0	0	0	0	0	0	2	6
30	GONY, NYAGOA		4	1-1	0-0	2-4	2	0	2	1	0	1	0	0	4	5
45	DIAGNE, FATOU		0	0-0	0-0	0-0	0	0	0	2	0	0	0	0	1	0
TEAM							1	0	1	0		0				
<b>TOTALS</b>			<b>20</b>	<b>7-13</b>	<b>1-4</b>	<b>5-10</b>	<b>3</b>	<b>7</b>	<b>10</b>	<b>6</b>	<b>2</b>	<b>2</b>	<b>2</b>	<b>3</b>	<b>50</b>	

*Shooting By Period*

Period	FG	FG%	3FG	3FG%	FT	FT%
Game	17-56	30.4%	2-17	11.8%	15-25	60.0%

**Indiana 11**

No.	Player	S	Pts	FG	3FG	FT	OR	DR	TR	PF	A	TO	Blk	Stl	Min	+/-
01	YEANEY, BENDU		3	1-2	0-0	1-2	2	1	3	0	0	1	0	0	8	-4
11	ROYSTER, KYM		0	0-0	0-0	0-0	0	0	0	0	0	0	0	0	4	-2
13	PENN, JAELYNN		0	0-0	0-0	0-0	0	0	0	0	0	0	0	0	0	0
14	PATBERG, ALI		0	0-3	0-1	0-0	0	0	0	0	0	1	1	0	7	-3
50	WISE, BRENNNA		0	0-1	0-0	0-0	0	2	2	1	0	0	0	0	5	1
02	WARTHEN, KEYANNA		2	0-2	0-0	2-2	1	0	1	2	0	0	0	0	5	-7
05	WITHROW, GRACE		1	0-0	0-0	1-2	0	0	0	0	0	0	0	0	1	-6
10	GULBE, ALEKSA		0	0-1	0-1	0-0	0	0	0	2	0	0	0	0	5	-10
12	MARCHESE, LINSEY		0	0-1	0-0	0-0	0	1	1	2	0	0	0	0	6	-7
34	BERGER, GRACE		5	2-2	0-0	1-1	0	2	2	0	0	2	0	0	8	-7
TEAM							0	0	0	0		1				
<b>TOTALS</b>			<b>11</b>	<b>3-12</b>	<b>0-2</b>	<b>5-7</b>	<b>3</b>	<b>6</b>	<b>9</b>	<b>7</b>	<b>0</b>	<b>5</b>	<b>1</b>	<b>0</b>	<b>50</b>	

*Shooting By Period*

Period	FG	FG%	3FG	3FG%	FT	FT%
Game	26-55	47.3%	5-12	41.7%	16-23	69.6%

Game Notes:

Officials: Felicia Grinter, Jesse Dickerson, Doug Knight  
Attendance: 5857

Start Time: 2019-03-03 17:01:38  
End Time: 2019-03-03 18:52:35  
Game Duration: 110  
Conference Game;

Score	1st	2nd	3rd	4th	TOT
PUR	13	9	9	20	<b>51</b>
IND	21	22	19	11	<b>73</b>

Points from (This Period)	PUR	IND
In the Paint	6	6
Off Turns	6	0
2nd Chance	6	0
Fast Break	2	0
Bench	4	8

**Official Play-By-Play  
Purdue vs Indiana  
Fourth Quarter  
March 03, 2019 at Simon Skjodt Assembly Hall - Bloomington, IN**



**Period 4**

**Starters:**

**Purdue:** 11 ODEN, DOMINIQUE; 23 TRAYLOR, KAYANA; 25 FARQUHAR, TAMARA; 32 HARRIS, AE'RIANNA; 1 MCLAUGHLIN, KARISSA;  
**Indiana:** 1 YEANEY, BENDU; 11 ROYSTER, KYM; 13 PENN, JAELYNN; 14 PATBERG, ALI; 50 WISE, BRENNNA;

Time	VISITORS: Purdue	Score	Margin	HOME: Indiana
09:51	FOUL (OFF) by GONY, NYAGOA			
09:51	TURNOVER (OFFENSIVE) by GONY, NYAGOA			
09:26				MISSED LAYUP by MARCHESE, LINSEY
09:22	REBOUND (DEF) by HARDIN, CASSIDY			
09:02				FOUL (PERSONAL) by WARTHEN, KEYANNA
09:02				SUB OUT: BERGER, GRACE
09:02				SUB IN: PATBERG, ALI
08:58	GOOD! LAYUP by HARRIS, AE'RIANNA [PNT]	62-33	H 29	
08:58	ASSIST by ODEN, DOMINIQUE			
08:36				MISSED JUMPER by WISE, BRENNNA
08:32	REBOUND (DEF) by HARRIS, AE'RIANNA			
08:25	MISSED 3PTR by HARDIN, CASSIDY			
08:21				REBOUND (DEF) by MARCHESE, LINSEY
07:58				MISSED LAYUP by WARTHEN, KEYANNA
07:58	BLOCK by HARRIS, AE'RIANNA			
07:54				REBOUND (OFF) by WARTHEN, KEYANNA
07:53				MISSED LAYUP by WARTHEN, KEYANNA
07:50				REBOUND (OFF) by YEANEY, BENDU
07:48				MISSED 3PTR by PATBERG, ALI
07:45	REBOUND (DEF) by MCLAUGHLIN, KARISSA			
07:40				FOUL (PERSONAL) by WARTHEN, KEYANNA
07:40	MISSED FT by GONY, NYAGOA			
07:40	REBOUND (OFF) by TEAM			
07:40				SUB OUT: MARCHESE, LINSEY
07:40				SUB IN: ROYSTER, KYM
07:40	MISSED FT by GONY, NYAGOA			
07:39				REBOUND (DEF) by WISE, BRENNNA
07:08				MISSED JUMPER by PATBERG, ALI
07:06	REBOUND (DEF) by HARDIN, CASSIDY			
07:06				FOUL (PERSONAL) by WISE, BRENNNA
07:06				SUB OUT: WARTHEN, KEYANNA
07:06				SUB IN: BERGER, GRACE
07:06	SUB OUT: GONY, NYAGOA			
07:06	SUB IN: TRAYLOR, KAYANA			
06:48	MISSED JUMPER by TRAYLOR, KAYANA			
06:45				REBOUND (DEF) by BERGER, GRACE
06:31		64-33	H 31	GOOD! LAYUP by YEANEY, BENDU [PNT]
06:18	MISSED JUMPER by ODEN, DOMINIQUE			
06:18				BLOCK by PATBERG, ALI
06:14				REBOUND (DEF) by WISE, BRENNNA
06:03				TURNOVER (LOSTBALL) by BERGER, GRACE
06:03	STEAL by TRAYLOR, KAYANA			
06:03				SUB OUT: ROYSTER, KYM
06:03				SUB IN: GULBE, ALEKSA
06:03				SUB OUT: WISE, BRENNNA
06:03				SUB IN: MARCHESE, LINSEY
06:03	SUB OUT: HARDIN, CASSIDY			
06:03	SUB IN: WHILBY, LYNDSEY			
05:52				FOUL (PERSONAL) by MARCHESE, LINSEY
05:52	MISSED FT by WHILBY, LYNDSEY			
05:52	REBOUND (OFF) by TEAM			
05:52	MISSED FT by WHILBY, LYNDSEY			
05:50				REBOUND (DEF) by BERGER, GRACE
05:40				MISSED 3PTR by GULBE, ALEKSA
05:37				REBOUND (OFF) by YEANEY, BENDU
05:22				MISSED JUMPER by PATBERG, ALI
05:22	BLOCK by TRAYLOR, KAYANA			
05:18	REBOUND (DEF) by HARRIS, AE'RIANNA			
05:11				FOUL (PERSONAL) by GULBE, ALEKSA
05:11	GOOD! FT by HARRIS, AE'RIANNA	64-34	H 30	
05:11	MISSED FT by HARRIS, AE'RIANNA			
05:10				REBOUND (DEF) by YEANEY, BENDU
04:50		66-34	H 32	GOOD! JUMPER by BERGER, GRACE [PNT]
04:41	TURNOVER (LOSTBALL) by ODEN, DOMINIQUE			
04:41				SUB OUT: MARCHESE, LINSEY
04:41				SUB IN: ROYSTER, KYM
04:10				MISSED LAYUP by YEANEY, BENDU
04:09	REBOUND (DEF) by ODEN, DOMINIQUE			
04:09				FOUL (PERSONAL) by GULBE, ALEKSA



Time	VISITORS: Purdue	Score	Margin	HOME: Indiana
04:09	GOOD! FT by ODEN, DOMINIQUE	66-35	H 31	
04:09	SUB OUT: WHILBY, LYNDSEY			
04:09	SUB IN: FARQUHAR, TAMARA			
04:09	GOOD! FT by ODEN, DOMINIQUE	66-36	H 30	
04:04				TURNOVER (LOSTBALL) by PATBERG, ALI
04:04	STEAL by TRAYLOR, KAYANA			
04:00	MISSED LAYUP by TRAYLOR, KAYANA			
04:00	REBOUND (OFF) by TEAM			
03:46	GOOD! JUMPER by HARRIS, AE'RIANNA	66-38	H 28	
03:27				TURNOVER (BADPASS) by YEANEY, BENDU
03:27	STEAL by MCLAUGHLIN, KARISSA			
03:21	GOOD! JUMPER by MCLAUGHLIN, KARISSA [FB]	66-40	H 26	
02:57	FOUL (PERSONAL) by TRAYLOR, KAYANA			
02:57		67-40	H 27	GOOD! FT by YEANEY, BENDU
02:57				SUB OUT: GULBE, ALEKSA
02:57				SUB IN: WISE, BRENNNA
02:57				MISSED FT by YEANEY, BENDU
02:56	REBOUND (DEF) by HARRIS, AE'RIANNA			
02:47	GOOD! JUMPER by ODEN, DOMINIQUE	67-42	H 25	
02:47	ASSIST by MCLAUGHLIN, KARISSA			
02:33	FOUL (PERSONAL) by ODEN, DOMINIQUE			
02:33	SUB OUT: ODEN, DOMINIQUE			
02:33	SUB IN: HARDIN, CASSIDY			
02:33	SUB OUT: HARRIS, AE'RIANNA			
02:33	SUB IN: DIAGNE, FATOU			
02:20		69-42	H 27	GOOD! LAYUP by BERGER, GRACE
02:20	FOUL (PERSONAL) by DIAGNE, FATOU			
02:20				SUB OUT: YEANEY, BENDU
02:20				SUB IN: WARTHEN, KEYANNA
02:20		70-42	H 28	GOOD! FT by BERGER, GRACE
02:10	GOOD! LAYUP by TRAYLOR, KAYANA [PNT]	70-44	H 26	
01:50	FOUL (PERSONAL) by FARQUHAR, TAMARA			
01:50				SUB OUT: PATBERG, ALI
01:50				SUB IN: GULBE, ALEKSA
01:50				SUB OUT: WISE, BRENNNA
01:50				SUB IN: WITHROW, GRACE
01:50	SUB OUT: MCLAUGHLIN, KARISSA			
01:50	SUB IN: STALLINGS, AJAH			
01:50		71-44	H 27	GOOD! FT by WARTHEN, KEYANNA
01:50		72-44	H 28	GOOD! FT by WARTHEN, KEYANNA
01:50				SUB OUT: ROYSTER, KYM
01:50				SUB IN: MARCHESE, LINSEY
01:50	TIMEOUT 30SEC			
01:23	GOOD! 3PTR by TRAYLOR, KAYANA	72-47	H 25	
01:06	FOUL (PERSONAL) by DIAGNE, FATOU			
01:06				MISSED FT by WITHROW, GRACE
01:06				REBOUND (OFF) by TEAM
01:06	SUB OUT: DIAGNE, FATOU			
01:06	SUB IN: GONY, NYAGOA			
01:06		73-47	H 26	GOOD! FT by WITHROW, GRACE
00:59	MISSED 3PTR by HARDIN, CASSIDY			
00:59				FOUL (PERSONAL) by MARCHESE, LINSEY
00:59	GOOD! FT by GONY, NYAGOA	73-48	H 25	
00:59	GOOD! FT by GONY, NYAGOA	73-49	H 24	
00:57	REBOUND (OFF) by GONY, NYAGOA			
00:51				TURNOVER (TRAVEL) by BERGER, GRACE
00:34	MISSED 3PTR by TRAYLOR, KAYANA			
00:31	REBOUND (OFF) by GONY, NYAGOA			
00:30	GOOD! LAYUP by GONY, NYAGOA	73-51	H 22	
00:25				TIMEOUT 30SEC
00:25				SUB OUT: WITHROW, GRACE
00:25				SUB IN: WISE, BRENNNA
00:02				TURNOVER (SHOTCLOCK) by

### Purdue 51, Indiana 73

Points from (This Period)	PUR	IND
In the Paint	6	6
Off Turns	6	0
2nd Chance	6	0
Fast Break	2	0
Bench	4	8

**Official Scoring/Possession Reference Chart**  
**Purdue vs Indiana**  
**Period 1**  
**March 03, 2019 at Simon Skjodt Assembly Hall - Bloomington, IN**



**Period 1**

**Starters:**

**Purdue:** 11 ODEN, DOMINIQUE; 23 TRAYLOR, KAYANA; 25 FARQUHAR, TAMARA; 32 HARRIS, AE'RIANNA; 1 MCLAUGHLIN, KARISSA;  
**Indiana:** 1 YEANEY, BENDU; 11 ROYSTER, KYM; 13 PENN, JAELYNN; 14 PATBERG, ALI; 50 WISE, BRENNNA;

Time	VISITORS: Purdue	Score	Margin	HOME: Indiana
08:44	GOOD! LAYUP by FARQUHAR, TAMARA	0-2	V 2	
08:26		2-2	T	GOOD! LAYUP by ROYSTER, KYM [PNT]
07:16		4-2	H 2	GOOD! JUMPER by PENN, JAELYNN [FB]
06:31		7-2	H 5	GOOD! 3PTR by WISE, BRENNNA
06:03	GOOD! JUMPER by ODEN, DOMINIQUE [PNT]	7-4	H 3	
05:21		10-4	H 6	GOOD! 3PTR by PATBERG, ALI
04:52	GOOD! 3PTR by TRAYLOR, KAYANA	10-7	H 3	
04:21		12-7	H 5	GOOD! LAYUP by YEANEY, BENDU [FB]
03:35		14-7	H 7	GOOD! JUMPER by PENN, JAELYNN [PNT]
03:11	GOOD! JUMPER by HARRIS, AE'RIANNA	14-9	H 5	
02:32		16-9	H 7	GOOD! LAYUP by MARCHESE, LINSEY
02:02	GOOD! FT by TRAYLOR, KAYANA	16-10	H 6	
02:02	GOOD! FT by TRAYLOR, KAYANA	16-11	H 5	
01:39		17-11	H 6	GOOD! FT by GULBE, ALEKSA
01:39		18-11	H 7	GOOD! FT by GULBE, ALEKSA
00:19		21-11	H 10	GOOD! 3PTR by GULBE, ALEKSA
00:02	GOOD! LAYUP by TRAYLOR, KAYANA [PNT]	21-13	H 8	

**Purdue 13, Indiana 21**

**Official Scoring/Possession Reference Chart**  
**Purdue vs Indiana**  
**Period 2**  
**March 03, 2019 at Simon Skjodt Assembly Hall - Bloomington, IN**



**Period 2**

**Starters:**

**Purdue:** 11 ODEN, DOMINIQUE; 23 TRAYLOR, KAYANA; 25 FARQUHAR, TAMARA; 32 HARRIS, AE'RIANNA; 1 MCLAUGHLIN, KARISSA;  
**Indiana:** 1 YEANEY, BENDU; 11 ROYSTER, KYM; 13 PENN, JAELYNN; 14 PATBERG, ALI; 50 WISE, BRENNNA;

Time	VISITORS: Purdue	Score	Margin	HOME: Indiana
08:32		23-13	H 10	GOOD! LAYUP by PATBERG, ALI [PNT]
07:59		25-13	H 12	GOOD! JUMPER by PATBERG, ALI
06:24		27-13	H 14	GOOD! JUMPER by YEANEY, BENDU [PNT]
05:19	GOOD! JUMPER by ODEN, DOMINIQUE	27-15	H 12	
04:25	GOOD! FT by MCLAUGHLIN, KARISSA [FB]	27-16	H 11	
04:25	GOOD! FT by MCLAUGHLIN, KARISSA [FB]	27-17	H 10	
04:13		30-17	H 13	GOOD! 3PTR by PATBERG, ALI
03:50	GOOD! JUMPER by MCLAUGHLIN, KARISSA	30-19	H 11	
03:30		32-19	H 13	GOOD! LAYUP by YEANEY, BENDU
02:36	GOOD! LAYUP by HARRIS, AE'RIANNA [PNT]	32-21	H 11	
02:36	GOOD! FT by HARRIS, AE'RIANNA	32-22	H 10	
01:54		33-22	H 11	GOOD! FT by BERGER, GRACE
01:33		35-22	H 13	GOOD! LAYUP by BERGER, GRACE [FB]
01:13		36-22	H 14	GOOD! FT by WISE, BRENNNA [FB]
01:13		37-22	H 15	GOOD! FT by WISE, BRENNNA [FB]
01:13		38-22	H 16	GOOD! FT by WISE, BRENNNA [FB]
01:13		39-22	H 17	GOOD! FT by WISE, BRENNNA [FB]
00:35		41-22	H 19	GOOD! JUMPER by PENN, JAELYNN [PNT]
00:01		43-22	H 21	GOOD! LAYUP by YEANEY, BENDU [PNT]

**Purdue 22, Indiana 43**

**Official Scoring/Possession Reference Chart**  
**Purdue vs Indiana**  
**Period 3**  
**March 03, 2019 at Simon Skjodt Assembly Hall - Bloomington, IN**



**Period 3**

**Starters:**

**Purdue:** 11 ODEN, DOMINIQUE; 23 TRAYLOR, KAYANA; 25 FARQUHAR, TAMARA; 32 HARRIS, AE'RIANNA; 1 MCLAUGHLIN, KARISSA;  
**Indiana:** 1 YEANEY, BENDU; 11 ROYSTER, KYM; 13 PENN, JAELYNN; 14 PATBERG, ALI; 50 WISE, BRENNNA;

Time	VISITORS: Purdue	Score	Margin	HOME: Indiana
09:35		45-22	H 23	GOOD! LAYUP by PENN, JAELYNN [PNT]
09:05		46-22	H 24	GOOD! FT by ROYSTER, KYM
08:24	GOOD! FT by HARRIS, AE'RIANNA	46-23	H 23	
08:24	GOOD! FT by HARRIS, AE'RIANNA	46-24	H 22	
08:09		48-24	H 24	GOOD! JUMPER by PATBERG, ALI
07:52	GOOD! LAYUP by HARRIS, AE'RIANNA	48-26	H 22	
07:09		51-26	H 25	GOOD! 3PTR by PENN, JAELYNN
05:27		52-26	H 26	GOOD! FT by PENN, JAELYNN
05:27		53-26	H 27	GOOD! FT by PENN, JAELYNN
04:12		55-26	H 29	GOOD! LAYUP by PATBERG, ALI [PNT]
03:54	GOOD! FT by HARRIS, AE'RIANNA	55-27	H 28	
03:36		56-27	H 29	GOOD! FT by BERGER, GRACE
02:30		58-27	H 31	GOOD! LAYUP by PATBERG, ALI [PNT]
02:13	GOOD! JUMPER by HARRIS, AE'RIANNA [PNT]	58-29	H 29	
01:54		60-29	H 31	GOOD! JUMPER by BERGER, GRACE
01:32		62-29	H 33	GOOD! JUMPER by PATBERG, ALI [PNT]
00:39	GOOD! FT by HARRIS, AE'RIANNA	62-30	H 32	
00:39	GOOD! FT by HARRIS, AE'RIANNA	62-31	H 31	

**Purdue 31, Indiana 62**

**Official Scoring/Possession Reference Chart**  
**Purdue vs Indiana**  
**Period 4**  
**March 03, 2019 at Simon Skjodt Assembly Hall - Bloomington, IN**



**Period 4**

**Starters:**

**Purdue:** 11 ODEN, DOMINIQUE; 23 TRAYLOR, KAYANA; 25 FARQUHAR, TAMARA; 32 HARRIS, AE'RIANNA; 1 MCLAUGHLIN, KARISSA;  
**Indiana:** 1 YEANEY, BENDU; 11 ROYSTER, KYM; 13 PENN, JAELYNN; 14 PATBERG, ALI; 50 WISE, BRENNIA;

Time	VISITORS: Purdue	Score	Margin	HOME: Indiana
08:58	GOOD! LAYUP by HARRIS, AE'RIANNA [PNT]	62-33	H 29	
06:31		64-33	H 31	GOOD! LAYUP by YEANEY, BENDU [PNT]
05:11	GOOD! FT by HARRIS, AE'RIANNA	64-34	H 30	
04:50		66-34	H 32	GOOD! JUMPER by BERGER, GRACE [PNT]
04:09	GOOD! FT by ODEN, DOMINIQUE	66-35	H 31	
04:09	GOOD! FT by ODEN, DOMINIQUE	66-36	H 30	
03:46	GOOD! JUMPER by HARRIS, AE'RIANNA	66-38	H 28	
03:21	GOOD! JUMPER by MCLAUGHLIN, KARISSA [FB]	66-40	H 26	
02:57		67-40	H 27	GOOD! FT by YEANEY, BENDU
02:47	GOOD! JUMPER by ODEN, DOMINIQUE	67-42	H 25	
02:20		69-42	H 27	GOOD! LAYUP by BERGER, GRACE
02:20		70-42	H 28	GOOD! FT by BERGER, GRACE
02:10	GOOD! LAYUP by TRAYLOR, KAYANA [PNT]	70-44	H 26	
01:50		71-44	H 27	GOOD! FT by WARTHEN, KEYANNA
01:50		72-44	H 28	GOOD! FT by WARTHEN, KEYANNA
01:23	GOOD! 3PTR by TRAYLOR, KAYANA	72-47	H 25	
01:06		73-47	H 26	GOOD! FT by WITHROW, GRACE
00:59	GOOD! FT by GONY, NYAGOA	73-48	H 25	
00:59	GOOD! FT by GONY, NYAGOA	73-49	H 24	
00:30	GOOD! LAYUP by GONY, NYAGOA	73-51	H 22	

**Purdue 51, Indiana 73**

**Official Substitutions Log**  
**Purdue vs Indiana**  
**Period 1**  
**March 03, 2019 at Simon Skjodt Assembly Hall - Bloomington, IN**



<b>VISITORS: Purdue</b>	<b>Time</b>	<b>Score</b>	<b>HOME: Indiana</b>
11 ODEN, DOMINIQUE			1 YEANEY, BENDU
23 TRAYLOR, KAYANA			11 ROYSTER, KYM
25 FARQUHAR, TAMARA			13 PENN, JAELYNN
32 HARRIS, AE'RIANNA			14 PATBERG, ALI
1 MCLAUGHLIN, KARISSA			50 WISE, BRENNIA
	05:40	4-7	SUB OUT: ROYSTER, KYM
	05:40		SUB IN: MARCHESE, LINSEY
	02:15	9-16	SUB OUT: MARCHESE, LINSEY
	02:15		SUB IN: ROYSTER, KYM
	02:15		SUB OUT: PENN, JAELYNN
	02:15		SUB IN: BERGER, GRACE
	02:15		SUB OUT: WISE, BRENNIA
	02:15		SUB IN: GULBE, ALEKSA
SUB OUT: 32 HARRIS, AE'RIANNA	02:15		
SUB IN: 45 DIAGNE, FATOU	02:15		
SUB OUT: 1 MCLAUGHLIN, KARISSA	02:02	10-16	
SUB IN: 5 HARDIN, CASSIDY	02:02		
	01:39	11-17	SUB OUT: PATBERG, ALI
	01:39		SUB IN: PENN, JAELYNN
	00:33	11-18	SUB OUT: YEANEY, BENDU
	00:33		SUB IN: PATBERG, ALI
SUB OUT: 25 FARQUHAR, TAMARA	00:33		
SUB IN: 32 HARRIS, AE'RIANNA	00:33		

**Purdue 13, Indiana 21**

**Official Substitutions Log**  
**Purdue vs Indiana**  
**Period 2**  
**March 03, 2019 at Simon Skjodt Assembly Hall - Bloomington, IN**



VISITORS: Purdue	Time	Score	HOME: Indiana
11 ODEN,DOMINIQUE			1 YEANEY,BENDU
23 TRAYLOR,KAYANA			11 ROYSTER,KYM
25 FARQUHAR,TAMARA			13 PENN,JAELYNN
32 HARRIS,AE'RIANNA			14 PATBERG,ALI
1 MCLAUGHLIN,KARISSA			50 WISE,BRENNA
	08:40	-	SUB OUT: GULBE,ALEKSA
	08:40		SUB IN: YEANEY,BENDU
	08:40		SUB OUT: ROYSTER,KYM
	08:40		SUB IN: MARCHESE,LINSEY
	08:40		SUB OUT: BERGER,GRACE
	08:40		SUB IN: WISE,BRENNA
SUB OUT: 5 HARDIN,CASSIDY	08:40		
SUB IN: 11 ODEN,DOMINIQUE	08:40		
SUB OUT: 23 TRAYLOR,KAYANA	07:56	13-25	
SUB IN: 3 WHILBY,LYNDSEY	07:56		
SUB OUT: 30 GONY,NYAGOA	07:56		
SUB IN: 25 FARQUHAR,TAMARA	07:56		
SUB OUT: 3 WHILBY,LYNDSEY	05:55	13-27	
SUB IN: 23 TRAYLOR,KAYANA	05:55		
	04:50	15-27	SUB OUT: MARCHESE,LINSEY
	04:50		SUB IN: ROYSTER,KYM
	04:50		SUB OUT: PENN,JAELYNN
	04:50		SUB IN: GULBE,ALEKSA
	04:50		SUB OUT: WISE,BRENNA
	04:50		SUB IN: BERGER,GRACE
	03:08	19-32	SUB OUT: YEANEY,BENDU
	03:08		SUB IN: WISE,BRENNA
	03:08		SUB OUT: GULBE,ALEKSA
	03:08		SUB IN: PENN,JAELYNN
SUB OUT: 25 FARQUHAR,TAMARA	03:08		
SUB IN: 5 HARDIN,CASSIDY	03:08		
	02:36	21-32	SUB OUT: ROYSTER,KYM
	02:36		SUB IN: MARCHESE,LINSEY
	01:54	22-32	SUB OUT: PATBERG,ALI
	01:54		SUB IN: YEANEY,BENDU
SUB OUT: 1 MCLAUGHLIN,KARISSA	01:13	22-36	
SUB IN: 25 FARQUHAR,TAMARA	01:13		
SUB OUT: 25 FARQUHAR,TAMARA	01:13		
SUB IN: 3 WHILBY,LYNDSEY	01:13		

**Purdue 22, Indiana 43**

**Official Substitutions Log  
Purdue vs Indiana  
Period 3  
March 03, 2019 at Simon Skjodt Assembly Hall - Bloomington, IN**



VISITORS: Purdue	Time	Score	HOME: Indiana
11 ODEN,DOMINIQUE			1 YEANEY,BENDU
23 TRAYLOR,KAYANA			11 ROYSTER,KYM
25 FARQUHAR,TAMARA			13 PENN,JAELYNN
32 HARRIS,AE'RIANNA			14 PATBERG,ALI
1 MCLAUGHLIN,KARISSA			50 WISE,BRENNA
SUB OUT: 25 FARQUHAR,TAMARA	08:39	22-46	
SUB IN: 3 WHILBY,LYNDSEY	08:39		
	08:24	23-46	SUB OUT: ROYSTER,KYM
	08:24		SUB IN: MARCHESE,LINSEY
SUB OUT: 32 HARRIS,AE'RIANNA	07:30	26-48	
SUB IN: 45 DIAGNE,FATOU	07:30		
	06:36	26-51	SUB OUT: PATBERG,ALI
	06:36		SUB IN: BERGER,GRACE
SUB OUT: 1 MCLAUGHLIN,KARISSA	06:03	26-51	
SUB IN: 5 HARDIN,CASSIDY	06:03		
SUB OUT: 3 WHILBY,LYNDSEY	05:55	26-51	
SUB IN: 25 FARQUHAR,TAMARA	05:55		
SUB OUT: 11 ODEN,DOMINIQUE	05:27	26-52	
SUB IN: 1 MCLAUGHLIN,KARISSA	05:27		
	05:27		SUB OUT: PENN,JAELYNN
	05:27		SUB IN: PATBERG,ALI
SUB OUT: 45 DIAGNE,FATOU	04:54	26-53	
SUB IN: 32 HARRIS,AE'RIANNA	04:54		
	03:54	26-55	SUB OUT: WISE,BRENNA
	03:54		SUB IN: GULBE,ALEKSA
	01:30	29-62	SUB OUT: YEANEY,BENDU
	01:30		SUB IN: WARTHEN,KEYANNA
	01:30		SUB OUT: MARCHESE,LINSEY
	01:30		SUB IN: ROYSTER,KYM
SUB OUT: 1 MCLAUGHLIN,KARISSA	01:30		
SUB IN: 30 GONY,NYAGOA	01:30		
SUB OUT: 25 FARQUHAR,TAMARA	01:30		
SUB IN: 11 ODEN,DOMINIQUE	01:30		
	00:39	30-62	SUB OUT: ROYSTER,KYM
	00:39		SUB IN: WISE,BRENNA
SUB OUT: 11 ODEN,DOMINIQUE	00:39		
SUB IN: 1 MCLAUGHLIN,KARISSA	00:39		

**Purdue 31, Indiana 62**



**Official Substitutions Log**  
**Purdue vs Indiana**  
**Period 4**  
**March 03, 2019 at Simon Skjodt Assembly Hall - Bloomington, IN**



VISITORS: Purdue	Time	Score	HOME: Indiana
11 ODEN,DOMINIQUE			1 YEANEY,BENDU
23 TRAYLOR,KAYANA			11 ROYSTER,KYM
25 FARQUHAR,TAMARA			13 PENN,JAELYNN
32 HARRIS,AE'RIANNA			14 PATBERG,ALI
1 MCLAUGHLIN,KARISSA			50 WISE,BRENNA
	09:02	-	SUB OUT: BERGER,GRACE
	09:02		SUB IN: PATBERG,ALI
	07:40	33-62	SUB OUT: MARCHESE,LINSEY
	07:40		SUB IN: ROYSTER,KYM
	07:06	33-62	SUB OUT: WARTHEN,KEYANNA
	07:06		SUB IN: BERGER,GRACE
SUB OUT: 30 GONY,NYAGOA	07:06		
SUB IN: 23 TRAYLOR,KAYANA	07:06		
	06:03	33-64	SUB OUT: ROYSTER,KYM
	06:03		SUB IN: GULBE,ALEKSA
	06:03		SUB OUT: WISE,BRENNA
	06:03		SUB IN: MARCHESE,LINSEY
SUB OUT: 5 HARDIN,CASSIDY	06:03		
SUB IN: 3 WHILBY,LYNDSEY	06:03		
	04:41	34-66	SUB OUT: MARCHESE,LINSEY
	04:41		SUB IN: ROYSTER,KYM
SUB OUT: 3 WHILBY,LYNDSEY	04:09	35-66	
SUB IN: 25 FARQUHAR,TAMARA	04:09		
	02:57	40-67	SUB OUT: GULBE,ALEKSA
	02:57		SUB IN: WISE,BRENNA
SUB OUT: 11 ODEN,DOMINIQUE	02:33	42-67	
SUB IN: 5 HARDIN,CASSIDY	02:33		
SUB OUT: 32 HARRIS,AE'RIANNA	02:33		
SUB IN: 45 DIAGNE,FATOU	02:33		
	02:20	42-69	SUB OUT: YEANEY,BENDU
	02:20		SUB IN: WARTHEN,KEYANNA
	01:50	44-70	SUB OUT: PATBERG,ALI
	01:50		SUB IN: GULBE,ALEKSA
	01:50		SUB OUT: WISE,BRENNA
	01:50		SUB IN: WITHROW,GRACE
SUB OUT: 1 MCLAUGHLIN,KARISSA	01:50		
SUB IN: 13 STALLINGS,AJAH	01:50		
	01:50		SUB OUT: ROYSTER,KYM
	01:50		SUB IN: MARCHESE,LINSEY
SUB OUT: 45 DIAGNE,FATOU	01:06	47-72	
SUB IN: 30 GONY,NYAGOA	01:06		
	00:25	51-73	SUB OUT: WITHROW,GRACE
	00:25		SUB IN: WISE,BRENNA

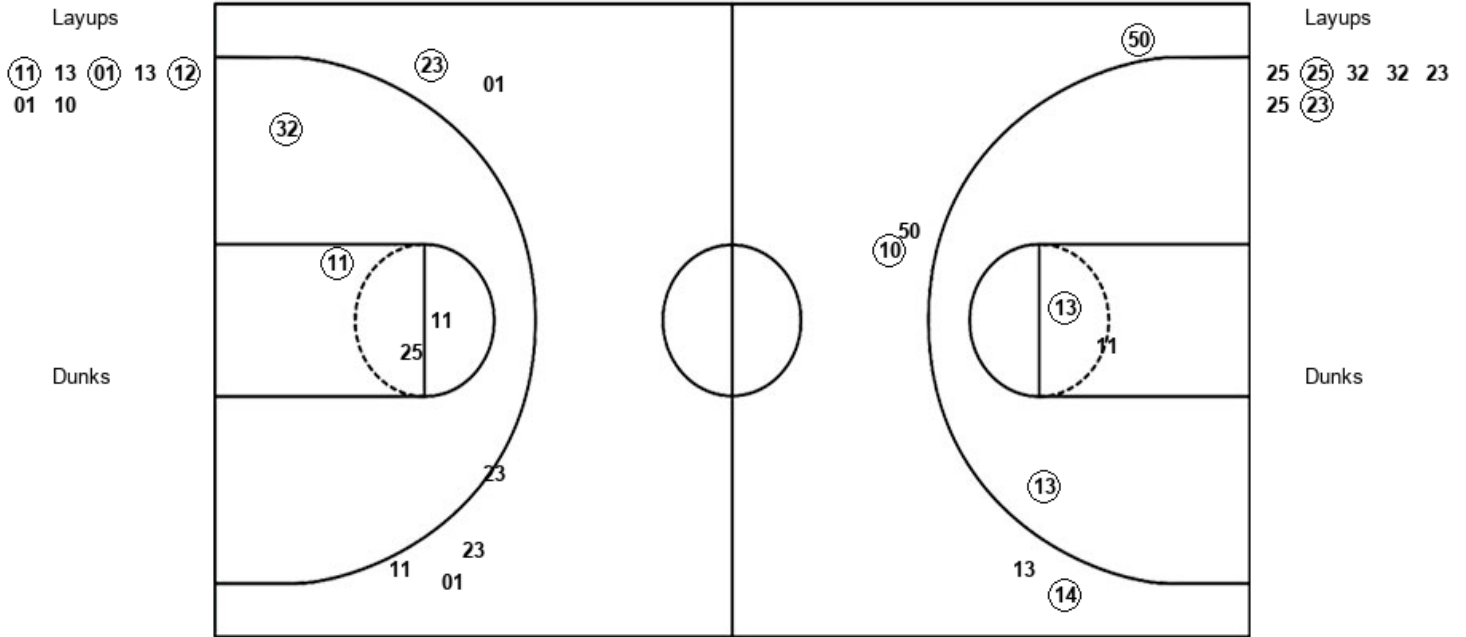
**Purdue 51, Indiana 73**

**Official Shot Chart**  
**Purdue vs Indiana**  
**PERIOD 1 Shots**  
 March 03, 2019 at Simon Skjodt Assembly Hall - Bloomington, IN



**Indiana**

**Purdue**



IND : Period 1	Made	Att	Pct
Layups	3	7	42.9
Dunks	0	0	0
2PT Field Goals	5	10	50.0
3PT Field Goals	3	5	60.0
<b>Total Field Goals</b>	<b>8</b>	<b>15</b>	<b>53.3</b>

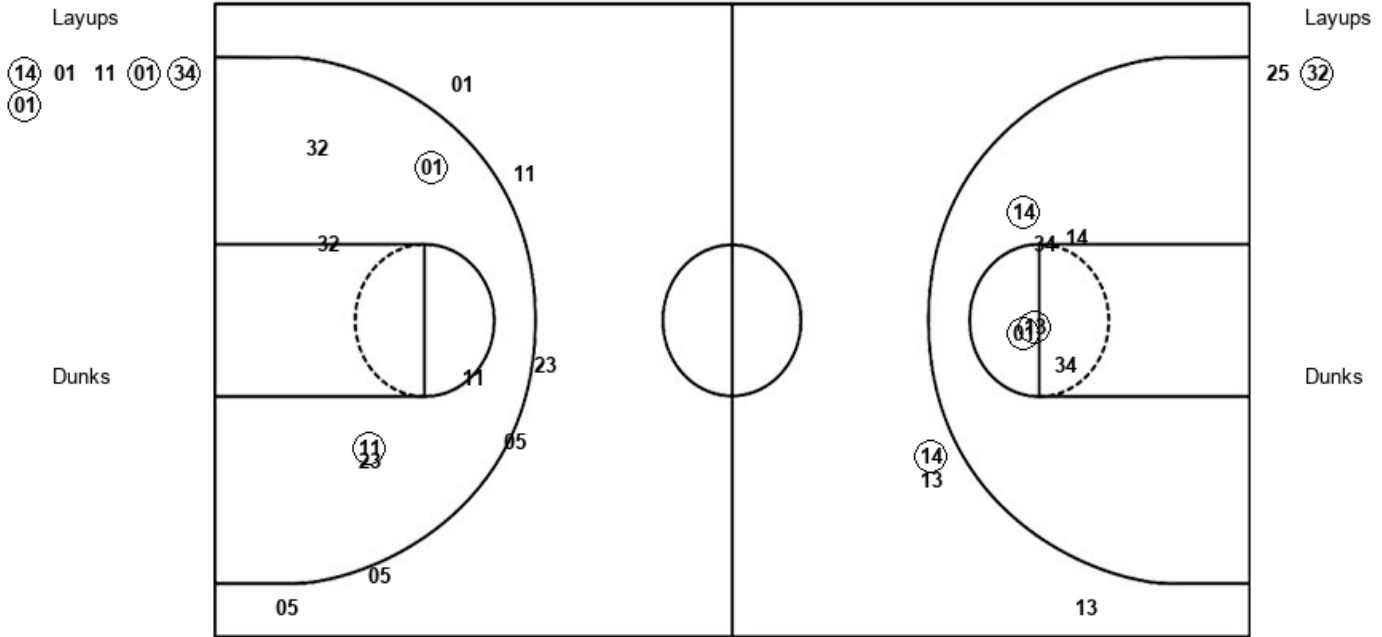
PUR : Period 1	Made	Att	Pct
Layups	2	7	28.6
Dunks	0	0	0
2PT Field Goals	4	11	36.4
3PT Field Goals	1	6	16.7
<b>Total Field Goals</b>	<b>5</b>	<b>17</b>	<b>29.4</b>

**Official Shot Chart**  
**Purdue vs Indiana**  
**PERIOD 2 Shots**  
 March 03, 2019 at Simon Skjodt Assembly Hall - Bloomington, IN



**Indiana**

**Purdue**



IND : Period 2	Made	Att	Pct
Layups	4	6	66.7
Dunks	0	0	0
2PT Field Goals	7	12	58.3
3PT Field Goals	1	3	33.3
<b>Total Field Goals</b>	<b>8</b>	<b>15</b>	<b>53.3</b>

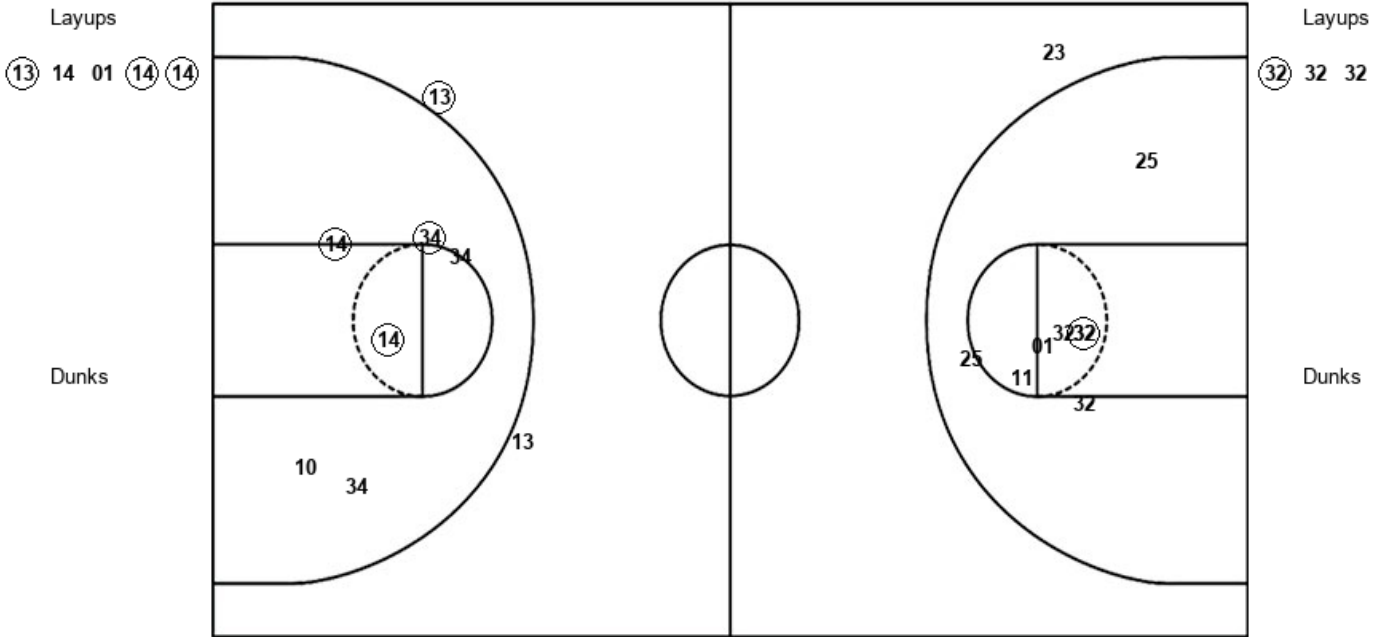
PUR : Period 2	Made	Att	Pct
Layups	1	2	50.0
Dunks	0	0	0
2PT Field Goals	3	8	37.5
3PT Field Goals	0	6	00.0
<b>Total Field Goals</b>	<b>3</b>	<b>14</b>	<b>21.4</b>

**Official Shot Chart**  
**Purdue vs Indiana**  
**PERIOD 3 Shots**  
 March 03, 2019 at Simon Skjodt Assembly Hall - Bloomington, IN



**Indiana**

**Purdue**



IND : Period 3	Made	Att	Pct
Layups	3	5	60.0
Dunks	0	0	0
2PT Field Goals	6	11	54.5
3PT Field Goals	1	2	50.0
<b>Total Field Goals</b>	<b>7</b>	<b>13</b>	<b>53.8</b>

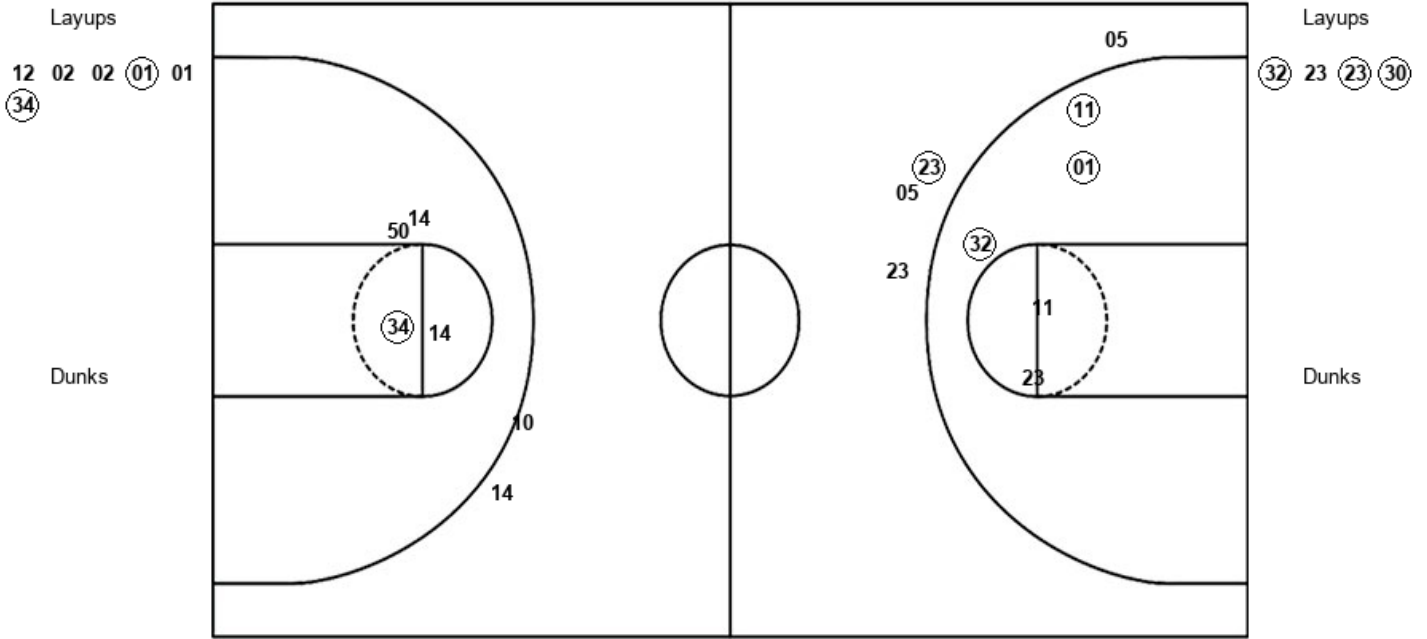
PUR : Period 3	Made	Att	Pct
Layups	1	3	33.3
Dunks	0	0	0
2PT Field Goals	2	11	18.2
3PT Field Goals	0	1	00.0
<b>Total Field Goals</b>	<b>2</b>	<b>12</b>	<b>16.7</b>

**Official Shot Chart**  
**Purdue vs Indiana**  
**PERIOD 4 Shots**  
 March 03, 2019 at Simon Skjodt Assembly Hall - Bloomington, IN



**Indiana**

**Purdue**



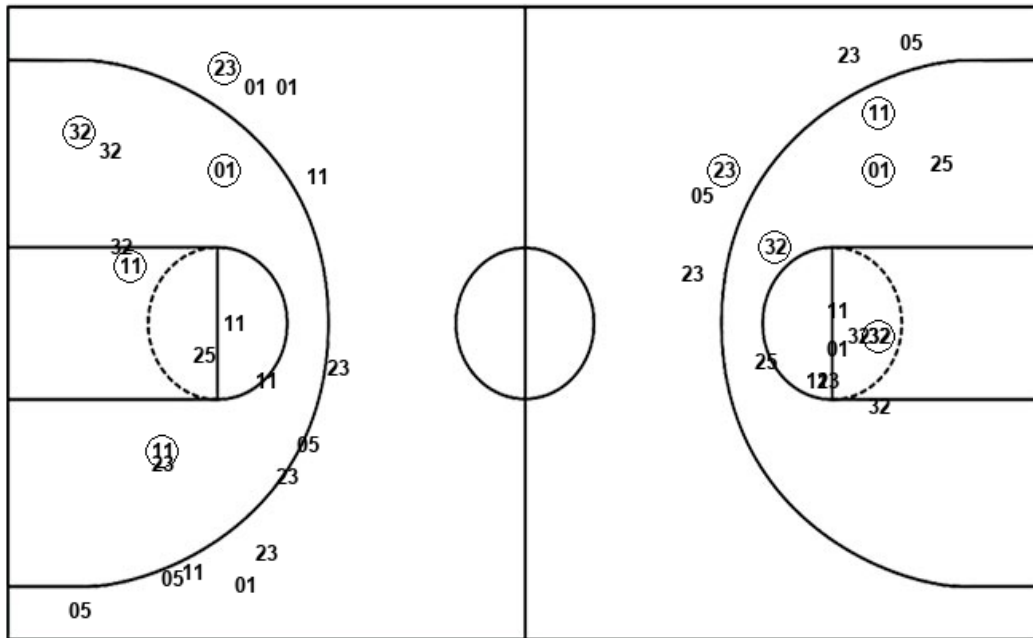
IND : Period 4	Made	Att	Pct
Layups	2	6	33.3
Dunks	0	0	0
2PT Field Goals	3	10	30.0
3PT Field Goals	0	2	00.0
<b>Total Field Goals</b>	<b>3</b>	<b>12</b>	<b>25.0</b>

PUR : Period 4	Made	Att	Pct
Layups	3	4	75.0
Dunks	0	0	0
2PT Field Goals	6	9	66.7
3PT Field Goals	1	4	25.0
<b>Total Field Goals</b>	<b>7</b>	<b>13</b>	<b>53.8</b>

**Official Shot Chart  
Purdue vs Indiana  
Purdue Team Shots  
March 03, 2019 at Simon Skjodt Assembly Hall - Bloomington, IN**



Layups



Layups

25 (25) 32 32 23  
25 (23) 25 (32) (32)  
32 32 (32) 23 (23)  
(30)

Dunks

Dunks

PUR : Period 1	Made	Att	Pct
Layups	2	7	28.6
Dunks	0	0	0
2PT Field Goals	4	11	36.4
3PT Field Goals	1	6	16.7
<b>Total Field Goals</b>	<b>5</b>	<b>17</b>	<b>29.4</b>

PUR : Period 3	Made	Att	Pct
Layups	1	3	33.3
Dunks	0	0	0
2PT Field Goals	2	11	18.2
3PT Field Goals	0	1	00.0
<b>Total Field Goals</b>	<b>2</b>	<b>12</b>	<b>16.7</b>

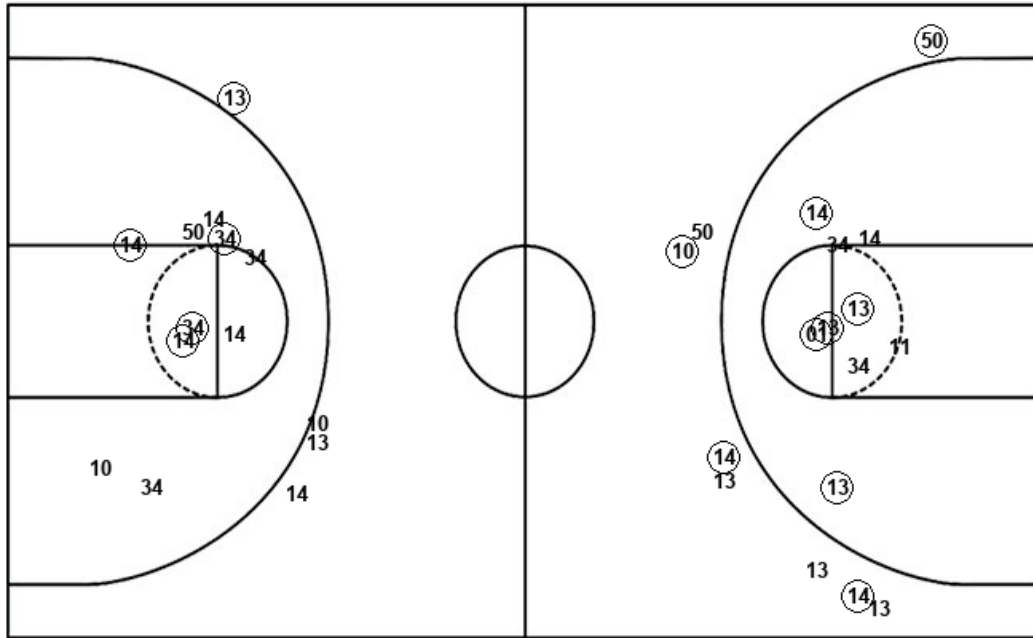
PUR : Period 2	Made	Att	Pct
Layups	1	2	50.0
Dunks	0	0	0
2PT Field Goals	3	8	37.5
3PT Field Goals	0	6	00.0
<b>Total Field Goals</b>	<b>3</b>	<b>14</b>	<b>21.4</b>

PUR : Period 4	Made	Att	Pct
Layups	3	4	75.0
Dunks	0	0	0
2PT Field Goals	6	9	66.7
3PT Field Goals	1	4	25.0
<b>Total Field Goals</b>	<b>7</b>	<b>13</b>	<b>53.8</b>

**Official Shot Chart  
Purdue vs Indiana  
Indiana Team Shots  
March 03, 2019 at Simon Skjodt Assembly Hall - Bloomington, IN**



Layups



Layups

11	13	01	13	12
01	10	14	01	11
01	34	01	13	14
01	14	14	12	02
02	01	01	34	

Dunks

Dunks

IND : Period 1	Made	Att	Pct
Layups	3	7	42.9
Dunks	0	0	0
2PT Field Goals	5	10	50.0
3PT Field Goals	3	5	60.0
<b>Total Field Goals</b>	<b>8</b>	<b>15</b>	<b>53.3</b>

IND : Period 2	Made	Att	Pct
Layups	4	6	66.7
Dunks	0	0	0
2PT Field Goals	7	12	58.3
3PT Field Goals	1	3	33.3
<b>Total Field Goals</b>	<b>8</b>	<b>15</b>	<b>53.3</b>

IND : Period 3	Made	Att	Pct
Layups	3	5	60.0
Dunks	0	0	0
2PT Field Goals	6	11	54.5
3PT Field Goals	1	2	50.0
<b>Total Field Goals</b>	<b>7</b>	<b>13</b>	<b>53.8</b>

IND : Period 4	Made	Att	Pct
Layups	2	6	33.3
Dunks	0	0	0
2PT Field Goals	3	10	30.0
3PT Field Goals	0	2	00.0
<b>Total Field Goals</b>	<b>3</b>	<b>12</b>	<b>25.0</b>