

FINAL SCORE



Northwestern

75



Indiana

69

January 17, 2019 • Simon Skjodt Assembly Hall - Bloomington, IN

FINAL STATISTICS

Official Box Score
Northwestern vs Indiana
Game Totals -- Final Statistics
January 17, 2019 at Simon Skjodt Assembly Hall - Bloomington, IN



Northwestern 75

No.	Player	S	Pts	FG	3FG	FT	OR	DR	TR	PF	A	TO	Blk	Stl	Min	+/-
04	HOPKINS, BRYANA		6	2-5	0-0	2-4	2	5	7	1	2	0	0	1	35	10
10	PULLIAM, LINDSEY		27	8-19	0-4	11-13	0	4	4	4	2	0	0	0	33	5
12	BURTON, VERONICA		19	6-13	5-10	2-2	1	5	6	3	1	2	0	2	37	2
14	KUNAIYI-AKPANAH, PALLAS		11	3-7	0-0	5-8	3	8	11	4	0	2	2	0	20	3
24	HAMILTON, JORDAN		2	1-4	0-0	0-0	0	0	0	4	3	5	1	1	34	2
03	WOOD, SYDNEY		6	3-4	0-0	0-0	2	1	3	1	1	1	1	0	16	9
21	WOLF, ABBIE		4	2-6	0-0	0-0	4	2	6	0	1	1	0	0	19	3
32	JAMISON, AMBER		0	0-0	0-0	0-0	1	0	1	1	0	2	0	0	5	-4
TEAM							2	2	4	0		3				
TOTALS			75	25-58	5-14	20-27	15	27	42	18	10	16	4	4	200	

Shooting By Period

Period	FG	FG%	3FG	3FG%	FT	FT%
1st Qtr	7-14	50%	2-3	67%	2-3	67%
2nd Qtr	8-18	44%	2-4	50%	1-2	50%
3rd Qtr	6-14	43%	0-2	00%	8-8	100%
4th Qtr	4-12	33%	1-5	20%	9-14	64%
1st Half	15-32	47%	4-7	57%	3-5	60%
2nd Half	10-26	38%	1-7	14%	17-22	77%
Game	25-58	43.1%	5-14	35.7%	20-27	74.1%

Last FG: 4th-00:30
Biggest Run: 8-0
Largest lead: By 18 at 4-07:20
Technical Fouls: None.

Indiana 69

No.	Player	S	Pts	FG	3FG	FT	OR	DR	TR	PF	A	TO	Blk	Stl	Min	+/-
01	YEANEY, BENDU		13	4-9	1-3	4-4	0	4	4	5	1	4	1	1	36	-5
11	ROYSTER, KYM		2	1-2	0-0	0-0	4	1	5	2	0	1	0	0	19	3
13	PENN, JAELYNN		13	5-17	2-8	1-2	1	2	3	4	2	0	1	2	32	3
14	PATBERG, ALI		22	8-20	3-8	3-4	2	2	4	4	6	3	0	2	38	-6
50	WISE, BRENNNA		14	4-7	0-1	6-6	1	5	6	5	1	2	1	2	37	-8
02	WARTHEN, KEYANNA		0	0-0	0-0	0-0	0	0	0	0	0	0	0	0	0	-1
10	GULBE, ALEKSA		3	1-3	1-1	0-0	0	3	3	2	1	2	0	1	18	-2
12	MARCHESE, LINSEY		0	0-0	0-0	0-0	0	0	0	0	0	0	0	0	6	-4
34	BERGER, GRACE		2	1-2	0-0	0-0	0	1	1	2	0	0	0	0	14	-10
TEAM							2	1	3	0		0				
TOTALS			69	24-60	7-21	14-16	10	19	29	24	11	12	3	8	200	

Shooting By Period

Period	FG	FG%	3FG	3FG%	FT	FT%
1st Qtr	3-15	20%	2-6	33%	2-2	100%
2nd Qtr	6-15	40%	2-4	50%	2-2	100%
3rd Qtr	4-8	50%	1-3	33%	7-8	88%
4th Qtr	11-22	50%	2-8	25%	3-4	75%
1st Half	9-30	30%	4-10	40%	4-4	100%
2nd Half	15-30	50%	3-11	27%	10-12	83%
Game	24-60	40.0%	7-21	33.3%	14-16	87.5%

Last FG: 4th-00:05
Biggest Run: 9-0
Largest lead: By 0 at -
Technical Fouls: None.

Game Notes:

Officials: Felicia Grinter, Mark Zentz, Katie Lukanich
 Attendance: 3352

Start Time: 2019-01-17 00:01:39
 End Time: 2019-01-17 01:59:39
 Game Duration: 118
 Conference Game;

Score	1st	2nd	3rd	4th	TOT
NWU	18	19	20	18	75
IND	10	16	16	27	69

NWU led for 38:41. IND led for 0:00.
 Game was tied for 1:14.
 Times tied: 0 Lead Changes: 0

Points from	NWU	IND
In the Paint	22	30
Off Turns	15	14
2nd Chance	12	12
Fast Break	4	15
Bench	10	5

Official Box Score
Northwestern vs Indiana
First Half Statistics Only
January 17, 2019 at Simon Skjodt Assembly Hall - Bloomington, IN



Northwestern 37

No.	Player	S	Pts	FG	3FG	FT	OR	DR	TR	PF	A	TO	Blk	Stl	Min	+/-
03	WOOD, SYDNEY		6	3-3	0-0	0-0	2	0	2	0	1	0	1	0	9	3
04	HOPKINS, BRYANA		0	0-2	0-0	0-0	2	2	4	1	1	0	0	0	17	13
10	PULLIAM, LINDSEY		9	4-9	0-1	1-2	0	2	2	2	1	0	0	0	15	10
12	BURTON, VERONICA		16	5-8	4-6	2-2	1	4	5	1	0	0	0	2	19	12
14	KUNAIYI-AKPANAH, PALLAS		2	1-3	0-0	0-1	1	6	7	2	0	1	1	0	8	6
21	WOLF, ABBIE		2	1-4	0-0	0-0	3	1	4	0	1	1	0	0	12	5
24	HAMILTON, JORDAN		2	1-3	0-0	0-0	0	0	0	1	1	2	0	1	16	8
32	JAMISON, AMBER		0	0-0	0-0	0-0	0	0	0	1	0	1	0	0	3	-2
	TEAM		0	0-0	0-0	0-0	1	0	1	0	0	2	0	0	0	
TOTALS			37	15-32	4-7	3-5	10	15	25	8	5	7	2	3	100	

Shooting By Period

Period	FG	FG%	3FG	3FG%	FT	FT%
1st Qtr	7-14	50%	2-3	67%	2-3	67%
2nd Qtr	8-18	44%	2-4	50%	1-2	50%
1st Half	15-32	47%	4-7	57%	3-5	60%
Game	25-58	43.1%	5-14	35.7%	20-27	74.1%

Last FG Half: NWU 2nd-00:29

Indiana 26

No.	Player	S	Pts	FG	3FG	FT	OR	DR	TR	PF	A	TO	Blk	Stl	Min	+/-
01	YEANEY, BENDU		9	3-5	1-2	2-2	0	2	2	1	0	2	0	0	18	-11
02	WARTHEN, KEYANNA		0	0-0	0-0	0-0	0	0	0	0	0	0	0	0	0	0
10	GULBE, ALEKSA		3	1-3	1-1	0-0	0	1	1	1	1	1	0	0	9	-3
11	ROYSTER, KYM		0	0-1	0-0	0-0	1	0	1	2	0	1	0	0	8	-3
12	MARCHESE, LINSEY		0	0-0	0-0	0-0	0	0	0	0	0	0	0	0	5	-4
13	PENN, JAELYNN		3	1-8	1-4	0-0	0	1	1	0	1	0	1	0	15	-4
14	PATBERG, ALI		3	1-7	1-2	0-0	2	1	3	2	3	2	0	0	19	-12
34	BERGER, GRACE		0	0-1	0-0	0-0	0	0	0	0	0	0	0	0	9	-6
50	WISE, BRENNA		8	3-5	0-1	2-2	1	1	2	0	0	0	0	1	18	-12
	TEAM		0	0-0	0-0	0-0	2	1	3	0	0	0	0	0	0	
TOTALS			26	9-30	4-10	4-4	6	7	13	6	5	6	1	1	100	

Shooting By Period

Period	FG	FG%	3FG	3FG%	FT	FT%
1st Qtr	3-15	20%	2-6	33%	2-2	100%
2nd Qtr	6-15	40%	2-4	50%	2-2	100%
1st Half	9-30	30%	4-10	40%	4-4	100%
Game	24-60	40.0%	7-21	33.3%	14-16	87.5%

Last FG Half: IND 2nd-00:56

Game Notes:

Officials: Felicia Grinter, Mark Zentz, Katie Lukanich
 Attendance: 3352

Start Time: 2019-01-17 00:01:39
 End Time: 2019-01-17 01:59:39
 Game Duration: 118
 Conference Game;

Score	1st	2nd	3rd	4th	TOT
NWU	18	19	20	18	75
IND	10	16	16	27	69

Points from (This Period)	NWU	IND
In the Paint	14	8
Off Turns	6	6
2nd Chance	9	8
Fast Break	2	2
Bench	8	3

Official Box Score
Northwestern vs Indiana
First Quarter Statistics Only
January 17, 2019 at Simon Skjodt Assembly Hall - Bloomington, IN



Northwestern 18

No.	Player	S	Pts	FG	3FG	FT	OR	DR	TR	PF	A	TO	Blk	Stl	Min	+/-
04	HOPKINS, BRYANA		0	0-0	0-0	0-0	0	0	0	1	1	0	0	0	10	8
10	PULLIAM, LINDSEY		2	1-4	0-0	0-0	0	0	0	0	1	0	0	0	8	8
12	BURTON, VERONICA		8	2-3	2-3	2-2	0	2	2	1	0	0	0	0	9	9
14	KUNAIYI-AKPANA, PALLAS		2	1-3	0-0	0-1	1	6	7	1	0	1	1	0	8	6
24	HAMILTON, JORDAN		2	1-1	0-0	0-0	0	0	0	0	0	1	0	1	10	8
03	WOOD, SYDNEY		2	1-1	0-0	0-0	1	0	1	0	0	0	0	0	3	-1
21	WOLF, ABBIE		2	1-2	0-0	0-0	1	0	1	0	0	0	0	0	2	2
32	JAMISON, AMBER		0	0-0	0-0	0-0	0	0	0	0	0	0	0	0	0	0
	TEAM						0	0	0	0		2				
TOTALS			18	7-14	2-3	2-3	3	8	11	3	2	4	1	1	50	

Shooting By Period

Period	FG	FG%	3FG	3FG%	FT	FT%
1st Qtr	7-14	50%	2-3	67%	2-3	67%
2nd Qtr	8-18	44%	2-4	50%	1-2	50%
1st Half	7-14	50%	2-3	67%	2-3	67%
1st Half	15-32	47%	4-7	57%	3-5	60%
Game	25-58	43.1%	5-14	35.7%	20-27	74.1%

Indiana 10

No.	Player	S	Pts	FG	3FG	FT	OR	DR	TR	PF	A	TO	Blk	Stl	Min	+/-
01	YEANEY, BENDU		5	1-2	1-2	2-2	0	2	2	0	0	1	0	0	8	-8
11	ROYSTER, KYM		0	0-1	0-0	0-0	0	0	0	2	0	1	0	0	3	-4
13	PENN, JAELYNN		0	0-4	0-2	0-0	0	1	1	0	1	0	0	0	8	-7
14	PATBERG, ALI		0	0-4	0-1	0-0	2	1	3	1	2	2	0	0	9	-9
50	WISE, BRENNAN		2	1-2	0-0	0-0	0	0	0	0	0	0	0	0	8	-9
02	WARTHEN, KEYANNA		0	0-0	0-0	0-0	0	0	0	0	0	0	0	0	0	0
10	GULBE, ALEKSA		3	1-1	1-1	0-0	0	0	0	1	0	0	0	0	6	-5
12	MARCHESE, LINSEY		0	0-0	0-0	0-0	0	0	0	0	0	0	0	0	3	2
34	BERGER, GRACE		0	0-1	0-0	0-0	0	0	0	0	0	0	0	0	6	0
	TEAM						2	0	2	0		0				
TOTALS			10	3-15	2-6	2-2	4	4	8	4	3	4	0	0	50	

Shooting By Period

Period	FG	FG%	3FG	3FG%	FT	FT%
1st Qtr	3-15	20%	2-6	33%	2-2	100%
2nd Qtr	6-15	40%	2-4	50%	2-2	100%
1st Half	3-15	20%	2-6	33%	2-2	100%
1st Half	9-30	30%	4-10	40%	4-4	100%
Game	24-60	40.0%	7-21	33.3%	14-16	87.5%

Game Notes:

Officials: Felicia Grinter, Mark Zentz, Katie Lukanich
Attendance: 3352

Start Time: 2019-01-17 00:01:39
End Time: 2019-01-17 01:59:39
Game Duration: 118
Conference Game;

Score	1st	2nd	3rd	4th	TOT
NWU	18	19	20	18	75
IND	10	16	16	27	69

Points from (This Period)	NWU	IND
In the Paint	6	0
Off Turns	4	2
2nd Chance	2	3
Fast Break	2	0
Bench	4	3

**Official Play-By-Play
Northwestern vs Indiana
First Quarter**

January 17, 2019 at Simon Skjodt Assembly Hall - Bloomington, IN



Period 1

Starters:

Northwestern: 4 HOPKINS, BRYANA; 10 PULLIAM, LINDSEY; 12 BURTON, VERONICA; 14 KUNAIYI-AKPANAH, PALLAS; 24 HAMILTON, JORDAN;
Indiana: 1 YEANEY, BENDU; 11 ROYSTER, KYM; 13 PENN, JAELYNN; 14 PATBERG, ALI; 50 WISE, BRENNNA;

Time	VISITORS: Northwestern	Score	Margin	HOME: Indiana
09:40	MISSED JUMPER by KUNAIYI-AKPANAH, PALLAS			
09:36				REBOUND (DEF) by PENN, JAELYNN
09:31				MISSED JUMPER by PATBERG, ALI
09:26	REBOUND (DEF) by KUNAIYI-AKPANAH, PALLAS			
09:20	MISSED 3PTR by BURTON, VERONICA			
09:15	REBOUND (OFF) by KUNAIYI-AKPANAH, PALLAS			
09:04	MISSED JUMPER by PULLIAM, LINDSEY			
09:01				REBOUND (DEF) by YEANEY, BENDU
08:56				MISSED LAYUP by PATBERG, ALI
08:55				REBOUND (OFF) by TEAM
08:54				TURNOVER (BADPASS) by PATBERG, ALI
08:54	STEAL by HAMILTON, JORDAN			
08:46	GOOD! JUMPER by HAMILTON, JORDAN [FB]	0-2	V 2	
08:26				MISSED LAYUP by ROYSTER, KYM
08:23	REBOUND (DEF) by BURTON, VERONICA			
08:17				FOUL (PERSONAL) by ROYSTER, KYM
08:17	GOOD! FT by BURTON, VERONICA	0-3	V 3	
08:17	GOOD! FT by BURTON, VERONICA	0-4	V 4	
08:07				MISSED LAYUP by PENN, JAELYNN
08:03	REBOUND (DEF) by KUNAIYI-AKPANAH, PALLAS			
07:34	TURNOVER (SHOTCLOCK) by			
07:15	FOUL (PERSONAL) by BURTON, VERONICA			
06:59				MISSED JUMPER by PATBERG, ALI
06:56				REBOUND (OFF) by PATBERG, ALI
06:53				MISSED JUMPER by WISE, BRENNNA
06:50				REBOUND (OFF) by PATBERG, ALI
06:50				FOUL (OFF) by ROYSTER, KYM
06:50				TURNOVER (OFFENSIVE) by ROYSTER, KYM
06:50				SUB OUT: ROYSTER, KYM
06:50				SUB IN: GULBE, ALEKSA
06:31	TURNOVER (BADPASS) by HAMILTON, JORDAN			
06:17				MISSED 3PTR by PENN, JAELYNN
06:13	REBOUND (DEF) by KUNAIYI-AKPANAH, PALLAS			
05:57	GOOD! LAYUP by KUNAIYI-AKPANAH, PALLAS	0-6	V 6	
05:57	ASSIST by HOPKINS, BRYANA			
05:45				MISSED 3PTR by PENN, JAELYNN
05:41	REBOUND (DEF) by KUNAIYI-AKPANAH, PALLAS			
05:33	GOOD! JUMPER by PULLIAM, LINDSEY	0-8	V 8	
05:32				TIMEOUT 30SEC
05:32				
05:32				SUB OUT: PENN, JAELYNN
05:32				SUB IN: BERGER, GRACE
05:14				TURNOVER (TRAVEL) by YEANEY, BENDU
04:59	MISSED JUMPER by PULLIAM, LINDSEY			
04:55				REBOUND (DEF) by YEANEY, BENDU
04:40	FOUL (PERSONAL) by HOPKINS, BRYANA			
04:40		1-8	V 7	GOOD! FT by YEANEY, BENDU
04:40				SUB OUT: WISE, BRENNNA
04:40				SUB IN: MARCHESE, LINSEY
04:40		2-8	V 6	GOOD! FT by YEANEY, BENDU
04:26	MISSED JUMPER by KUNAIYI-AKPANAH, PALLAS			
04:21				REBOUND (DEF) by PATBERG, ALI
03:56				MISSED 3PTR by YEANEY, BENDU
03:51	REBOUND (DEF) by KUNAIYI-AKPANAH, PALLAS			
03:44	GOOD! 3PTR by BURTON, VERONICA	2-11	V 9	
03:14				MISSED JUMPER by BERGER, GRACE
03:14				REBOUND (OFF) by TEAM
03:14				SUB OUT: YEANEY, BENDU
03:14				SUB IN: PENN, JAELYNN
03:14	SUB OUT: PULLIAM, LINDSEY			
03:14	SUB IN: WOOD, SYDNEY			
03:06		5-11	V 6	GOOD! 3PTR by GULBE, ALEKSA
03:06				ASSIST by PATBERG, ALI
02:50	FOUL (OFF) by KUNAIYI-AKPANAH, PALLAS			
02:50	TURNOVER (OFFENSIVE) by KUNAIYI-AKPANAH, PALLAS			
02:40				MISSED LAYUP by PENN, JAELYNN
02:40	BLOCK by KUNAIYI-AKPANAH, PALLAS			
02:35	REBOUND (DEF) by KUNAIYI-AKPANAH, PALLAS			
02:21				FOUL (PERSONAL) by GULBE, ALEKSA
02:21	MISSED FT by KUNAIYI-AKPANAH, PALLAS			

Time	VISITORS: Northwestern	Score	Margin	HOME: Indiana
02:21				SUB OUT: MARCHESE, LINSEY
02:21				SUB IN: WISE, BRENNIA
02:21	REBOUND (OFF) by TEAM			
02:21	SUB OUT: KUNAIYI-AKPANAH, PALLAS			
02:21	SUB IN: WOLF, ABBIE			
02:21	TURNOVER (OTHER) by KUNAIYI-AKPANAH, PALLAS			
02:06		7-11	V 4	GOOD! JUMPER by WISE, BRENNIA
02:06				ASSIST by PATBERG, ALI
01:51	GOOD! LAYUP by WOOD, SYDNEY [PNT]	7-13	V 6	
01:40				MISSED 3PTR by PATBERG, ALI
01:33	REBOUND (DEF) by BURTON, VERONICA			
01:30	GOOD! 3PTR by BURTON, VERONICA	7-16	V 9	
01:10				FOUL (OFF) by PATBERG, ALI
01:10				TURNOVER (OFFENSIVE) by PATBERG, ALI
01:10				SUB OUT: GULBE, ALEKSA
01:10				SUB IN: YEANEY, BENDU
01:10				SUB OUT: PATBERG, ALI
01:10				SUB IN: MARCHESE, LINSEY
01:10	SUB OUT: BURTON, VERONICA			
01:10	SUB IN: PULLIAM, LINDSEY			
00:54	MISSED JUMPER by PULLIAM, LINDSEY			
00:51	REBOUND (OFF) by WOLF, ABBIE			
00:50	MISSED LAYUP by WOLF, ABBIE			
00:47	REBOUND (OFF) by WOOD, SYDNEY			
00:32	GOOD! LAYUP by WOLF, ABBIE	7-18	V 11	
00:32	ASSIST by PULLIAM, LINDSEY			
00:00		10-18	V 8	GOOD! 3PTR by YEANEY, BENDU
00:00				ASSIST by PENN, JAELYNN

Northwestern 18, Indiana 10

Points from (This Period)	NWU	IND
In the Paint	6	0
Off Turns	4	2
2nd Chance	2	3
Fast Break	2	0
Bench	4	3

Official Box Score
Northwestern vs Indiana
Second Quarter Statistics Only
January 17, 2019 at Simon Skjodt Assembly Hall - Bloomington, IN



Northwestern 19

No.	Player	S	Pts	FG	3FG	FT	OR	DR	TR	PF	A	TO	Blk	Stl	Min	+/-
04	HOPKINS, BRYANA		0	0-2	0-0	0-0	2	2	4	0	0	0	0	0	7	5
10	PULLIAM, LINDSEY		7	3-5	0-1	1-2	0	2	2	2	0	0	0	0	7	2
12	BURTON, VERONICA		8	3-5	2-3	0-0	1	2	3	0	0	0	0	2	10	3
14	KUNAIYI-AKPANAH, PALLAS		0	0-0	0-0	0-0	0	0	0	1	0	0	0	0	0	0
24	HAMILTON, JORDAN		0	0-2	0-0	0-0	0	0	0	1	1	1	0	0	6	0
03	WOOD, SYDNEY		4	2-2	0-0	0-0	1	0	1	0	1	0	1	0	6	4
21	WOLF, ABBIE		0	0-2	0-0	0-0	2	1	3	0	1	1	0	0	10	3
32	JAMISON, AMBER		0	0-0	0-0	0-0	0	0	0	1	0	1	0	0	3	-2
	TEAM						1	0	1	0		0				
TOTALS			19	8-18	2-4	1-2	7	7	14	5	3	3	1	2	50	

Shooting By Period

Period	FG	FG%	3FG	3FG%	FT	FT%
3rd Qtr	6-14	43%	0-2	00%	8-8	100%
4th Qtr	4-12	33%	1-5	20%	9-14	64%
2nd Half	8-18	44%	2-4	50%	1-2	50%
2nd Half	10-26	38%	1-7	14%	17-22	77%
Game	25-58	43.1%	5-14	35.7%	20-27	74.1%

Indiana 16

No.	Player	S	Pts	FG	3FG	FT	OR	DR	TR	PF	A	TO	Blk	Stl	Min	+/-
01	YEANEY, BENDU		4	2-3	0-0	0-0	0	0	0	1	0	1	0	0	10	-3
11	ROYSTER, KYM		0	0-0	0-0	0-0	1	0	1	0	0	0	0	0	5	1
13	PENN, JAELYNN		3	1-4	1-2	0-0	0	0	0	0	0	0	1	0	7	3
14	PATBERG, ALI		3	1-3	1-1	0-0	0	0	0	1	1	0	0	0	10	-3
50	WISE, BRENNNA		6	2-3	0-1	2-2	1	1	2	0	0	0	0	1	10	-3
02	WARTHEN, KEYANNA		0	0-0	0-0	0-0	0	0	0	0	0	0	0	0	0	0
10	GULBE, ALEKSA		0	0-2	0-0	0-0	0	1	1	0	1	1	0	0	3	2
12	MARCHESE, LINSEY		0	0-0	0-0	0-0	0	0	0	0	0	0	0	0	2	-6
34	BERGER, GRACE		0	0-0	0-0	0-0	0	0	0	0	0	0	0	0	3	-6
	TEAM						0	1	1	0		0				
TOTALS			16	6-15	2-4	2-2	2	3	5	2	2	2	1	1	50	

Shooting By Period

Period	FG	FG%	3FG	3FG%	FT	FT%
3rd Qtr	4-8	50%	1-3	33%	7-8	88%
4th Qtr	11-22	50%	2-8	25%	3-4	75%
2nd Half	6-15	40%	2-4	50%	2-2	100%
2nd Half	15-30	50%	3-11	27%	10-12	83%
Game	24-60	40.0%	7-21	33.3%	14-16	87.5%

Game Notes:

Officials: Felicia Grinter, Mark Zentz, Katie Lukanich
Attendance: 3352

Start Time: 2019-01-17 00:01:39
End Time: 2019-01-17 01:59:39
Game Duration: 118
Conference Game;

Score	1st	2nd	3rd	4th	TOT
NWU	18	19	20	18	75
IND	10	16	16	27	69

Points from (This Period)	NWU	IND
In the Paint	8	8
Off Turns	2	4
2nd Chance	7	5
Fast Break	0	2
Bench	4	0

**Official Play-By-Play
Northwestern vs Indiana
Second Quarter**

January 17, 2019 at Simon Skjodt Assembly Hall - Bloomington, IN



Period 2

Starters:

Northwestern: 4 HOPKINS, BRYANA; 10 PULLIAM, LINDSEY; 12 BURTON, VERONICA; 14 KUNAIYI-AKPANAH, PALLAS; 24 HAMILTON, JORDAN;
Indiana: 1 YEANEY, BENDU; 11 ROYSTER, KYM; 13 PENN, JAELYNN; 14 PATBERG, ALI; 50 WISE, BRENNNA;

Time	VISITORS: Northwestern	Score	Margin	HOME: Indiana
09:44				TURNOVER (BADPASS) by YEANEY, BENDU
09:44	STEAL by BURTON, VERONICA			
09:28	GOOD! JUMPER by PULLIAM, LINDSEY	10-20	V 10	
09:28	ASSIST by WOOD, SYDNEY			
09:04				MISSED JUMPER by YEANEY, BENDU
09:01	REBOUND (DEF) by PULLIAM, LINDSEY			
08:37	MISSED 3PTR by PULLIAM, LINDSEY			
08:34	REBOUND (OFF) by WOLF, ABBIE			
08:14	GOOD! JUMPER by PULLIAM, LINDSEY	10-22	V 12	
08:00				MISSED JUMPER by PATBERG, ALI
07:57	REBOUND (DEF) by HOPKINS, BRYANA			
07:47	GOOD! LAYUP by WOOD, SYDNEY	10-24	V 14	
07:47	ASSIST by WOLF, ABBIE			
07:46				TIMEOUT 30SEC
07:46				
07:46				SUB OUT: MARCHESE, LINSEY
07:46				SUB IN: GULBE, ALEKSA
07:46				SUB OUT: BERGER, GRACE
07:46				SUB IN: PENN, JAELYNN
07:46	SUB OUT: HOPKINS, BRYANA			
07:46	SUB IN: JAMISON, AMBER			
07:25				MISSED JUMPER by GULBE, ALEKSA
07:21				REBOUND (OFF) by WISE, BRENNNA
07:17	FOUL (PERSONAL) by JAMISON, AMBER			
07:17	SUB OUT: WOLF, ABBIE			
07:17	SUB IN: KUNAIYI-AKPANAH, PALLAS			
07:13	FOUL (PERSONAL) by KUNAIYI-AKPANAH, PALLAS			
07:13	SUB OUT: KUNAIYI-AKPANAH, PALLAS			
07:13	SUB IN: WOLF, ABBIE			
07:07		13-24	V 11	GOOD! 3PTR by PENN, JAELYNN
07:07				ASSIST by GULBE, ALEKSA
06:50	TURNOVER (BADPASS) by JAMISON, AMBER			
06:39				MISSED JUMPER by PENN, JAELYNN
06:36	REBOUND (DEF) by BURTON, VERONICA			
06:24				FOUL (PERSONAL) by PATBERG, ALI
06:24	SUB OUT: WOOD, SYDNEY			
06:24	SUB IN: HAMILTON, JORDAN			
06:00				FOUL (PERSONAL) by YEANEY, BENDU
06:00	MISSED FT by PULLIAM, LINDSEY			
06:00	REBOUND (OFF) by TEAM			
06:00	GOOD! FT by PULLIAM, LINDSEY	13-25	V 12	
05:43				MISSED JUMPER by GULBE, ALEKSA
05:40	REBOUND (DEF) by PULLIAM, LINDSEY			
05:32	MISSED JUMPER by HAMILTON, JORDAN			
05:27				REBOUND (DEF) by GULBE, ALEKSA
05:25				TURNOVER (BADPASS) by GULBE, ALEKSA
05:25	STEAL by BURTON, VERONICA			
05:20	MISSED 3PTR by BURTON, VERONICA			
05:17	REBOUND (OFF) by BURTON, VERONICA			
05:07	MISSED JUMPER by PULLIAM, LINDSEY			
05:02				REBOUND (DEF) by WISE, BRENNNA
04:52				MISSED 3PTR by PENN, JAELYNN
04:49	REBOUND (DEF) by BURTON, VERONICA			
04:45	MISSED JUMPER by BURTON, VERONICA			
04:45				BLOCK by PENN, JAELYNN
04:45	REBOUND (OFF) by TEAM			
04:45				SUB OUT: GULBE, ALEKSA
04:45				SUB IN: ROYSTER, KYM
04:45	SUB OUT: JAMISON, AMBER			
04:45	SUB IN: HOPKINS, BRYANA			
04:37	GOOD! 3PTR by BURTON, VERONICA	13-28	V 15	
04:37	ASSIST by HAMILTON, JORDAN			
04:26		15-28	V 13	GOOD! LAYUP by WISE, BRENNNA [PNT]
04:26				ASSIST by PATBERG, ALI
04:12	TURNOVER (BADPASS) by HAMILTON, JORDAN			
04:12				STEAL by WISE, BRENNNA
04:08		17-28	V 11	GOOD! LAYUP by WISE, BRENNNA [FB]
04:00	TIMEOUT 30SEC			
03:44	GOOD! JUMPER by PULLIAM, LINDSEY [PNT]	17-30	V 13	
03:32				MISSED LAYUP by PENN, JAELYNN

Time	VISITORS: Northwestern	Score	Margin	HOME: Indiana
03:32				REBOUND (OFF) by ROYSTER, KYM
03:32	FOUL (PERSONAL) by PULLIAM, LINDSEY			
03:15		19-30	V 11	GOOD! LAYUP by YEANEY, BENDU
02:58	TURNOVER (TRAVEL) by WOLF, ABBIE			
02:50	FOUL (PERSONAL) by HAMILTON, JORDAN			
02:48	FOUL (PERSONAL) by PULLIAM, LINDSEY			
02:48		20-30	V 10	GOOD! FT by WISE, BRENNNA
02:48	SUB OUT: PULLIAM, LINDSEY			
02:48	SUB IN: WOOD, SYDNEY			
02:48		21-30	V 9	GOOD! FT by WISE, BRENNNA
02:37	MISSED JUMPER by HAMILTON, JORDAN			
02:34	REBOUND (OFF) by HOPKINS, BRYANA			
02:20	MISSED JUMPER by WOLF, ABBIE			
02:17	REBOUND (OFF) by WOOD, SYDNEY			
02:16	GOOD! LAYUP by WOOD, SYDNEY	21-32	V 11	
02:07		23-32	V 9	GOOD! LAYUP by YEANEY, BENDU
01:55	GOOD! LAYUP by BURTON, VERONICA	23-34	V 11	
01:36				MISSED 3PTR by WISE, BRENNNA
01:33	REBOUND (DEF) by HOPKINS, BRYANA			
01:16	MISSED JUMPER by HOPKINS, BRYANA			
01:11	REBOUND (OFF) by HOPKINS, BRYANA			
01:09	MISSED JUMPER by HOPKINS, BRYANA			
01:07	REBOUND (OFF) by WOLF, ABBIE			
01:06	MISSED LAYUP by WOLF, ABBIE			
01:06				REBOUND (DEF) by TEAM
01:06				SUB OUT: PENN, JAELYNN
01:06				SUB IN: BERGER, GRACE
00:56		26-34	V 8	GOOD! 3PTR by PATBERG, ALI
00:29	GOOD! 3PTR by BURTON, VERONICA	26-37	V 11	
00:01				MISSED JUMPER by PATBERG, ALI
00:01	BLOCK by WOOD, SYDNEY			
00:01	REBOUND (DEF) by WOLF, ABBIE			

Northwestern 37, Indiana 26

Points from (This Period)	NWU	IND
In the Paint	8	8
Off Turns	2	4
2nd Chance	7	5
Fast Break	0	2
Bench	4	0

Official Box Score
Northwestern vs Indiana
Second Half Statistics Only
January 17, 2019 at Simon Skjodt Assembly Hall - Bloomington, IN



Northwestern 38

No.	Player	S	Pts	FG	3FG	FT	OR	DR	TR	PF	A	TO	Blk	Stl	Min	+/-
03	WOOD, SYDNEY		0	0-1	0-0	0-0	0	1	1	1	0	1	0	0	7	6
04	HOPKINS, BRYANA		6	2-3	0-0	2-4	0	3	3	0	1	0	0	1	18	-3
10	PULLIAM, LINDSEY		18	4-10	0-3	10-11	0	2	2	2	1	0	0	0	18	-5
12	BURTON, VERONICA		3	1-5	1-4	0-0	0	1	1	2	1	2	0	0	18	-10
14	KUNAIYI-AKPANAH, PALLAS		9	2-4	0-0	5-7	2	2	4	2	0	1	1	0	13	-3
21	WOLF, ABBIE		2	1-2	0-0	0-0	1	1	2	0	0	0	0	0	7	-2
24	HAMILTON, JORDAN		0	0-1	0-0	0-0	0	0	0	3	2	3	1	0	17	-6
32	JAMISON, AMBER		0	0-0	0-0	0-0	1	0	1	0	0	1	0	0	2	-2
	TEAM		0	0-0	0-0	0-0	1	2	3	0	0	1	0	0	0	
TOTALS			38	10-26	1-7	17-22	5	12	17	10	5	9	2	1	100	

Shooting By Period

Period	FG	FG%	3FG	3FG%	FT	FT%
3rd Qtr	6-14	43%	0-2	00%	8-8	100%
4th Qtr	4-12	33%	1-5	20%	9-14	64%
2nd Half	10-26	38%	1-7	14%	17-22	77%
Game	25-58	43.1%	5-14	35.7%	20-27	74.1%

Last FG Half: NWU 4th-00:30

Indiana 43

No.	Player	S	Pts	FG	3FG	FT	OR	DR	TR	PF	A	TO	Blk	Stl	Min	+/-
01	YEANEY, BENDU		4	1-4	0-1	2-2	0	2	2	4	1	2	1	1	18	6
02	WARTHEN, KEYANNA		0	0-0	0-0	0-0	0	0	0	0	0	0	0	0	0	-1
10	GULBE, ALEKSA		0	0-0	0-0	0-0	0	2	2	1	0	1	0	1	10	1
11	ROYSTER, KYM		2	1-1	0-0	0-0	3	1	4	0	0	0	0	0	11	6
12	MARCHESE, LINSEY		0	0-0	0-0	0-0	0	0	0	0	0	0	0	0	0	0
13	PENN, JAELYNN		10	4-9	1-4	1-2	1	1	2	4	1	0	0	2	17	7
14	PATBERG, ALI		19	7-13	2-6	3-4	0	1	1	2	3	1	0	2	20	6
34	BERGER, GRACE		2	1-1	0-0	0-0	0	1	1	2	0	0	0	0	5	-4
50	WISE, BRENNNA		6	1-2	0-0	4-4	0	4	4	5	1	2	1	1	20	4
	TEAM		0	0-0	0-0	0-0	0	0	0	0	0	0	0	0	0	
TOTALS			43	15-30	3-11	10-12	4	12	16	18	6	6	2	7	100	

Shooting By Period

Period	FG	FG%	3FG	3FG%	FT	FT%
3rd Qtr	4-8	50%	1-3	33%	7-8	88%
4th Qtr	11-22	50%	2-8	25%	3-4	75%
2nd Half	15-30	50%	3-11	27%	10-12	83%
Game	24-60	40.0%	7-21	33.3%	14-16	87.5%

Last FG Half: IND 4th-00:05

Game Notes:

Officials: Felicia Grinter, Mark Zentz, Katie Lukanich
 Attendance: 3352

Start Time: 2019-01-17 00:01:39
 End Time: 2019-01-17 01:59:39
 Game Duration: 118
 Conference Game;

Score	1st	2nd	3rd	4th	TOT
NWU	18	19	20	18	75
IND	10	16	16	27	69

Points from (This Period)	NWU	IND
In the Paint	8	22
Off Turns	9	8
2nd Chance	3	4
Fast Break	2	13
Bench	2	2

Official Box Score
Northwestern vs Indiana
Third Quarter Statistics Only
January 17, 2019 at Simon Skjodt Assembly Hall - Bloomington, IN



Northwestern 38

No.	Player	S	Pts	FG	3FG	FT	OR	DR	TR	PF	A	TO	Blk	Stl	Min	+/-
04	HOPKINS, BRYANA		4	2-3	0-0	0-0	0	1	1	0	0	0	0	1	10	4
10	PULLIAM, LINDSEY		10	3-5	0-1	4-4	0	1	1	0	0	0	0	0	8	4
12	BURTON, VERONICA		0	0-2	0-1	0-0	0	1	1	1	1	0	0	0	8	-1
14	KUNAIYI-AKPANAH, PALLAS		4	0-0	0-0	4-4	0	1	1	1	0	0	0	0	3	6
24	HAMILTON, JORDAN		0	0-1	0-0	0-0	0	0	0	2	1	0	0	0	8	1
03	WOOD, SYDNEY		0	0-1	0-0	0-0	0	0	0	1	0	0	0	0	6	8
21	WOLF, ABBIE		2	1-2	0-0	0-0	1	1	2	0	0	0	0	0	7	-2
32	JAMISON, AMBER		0	0-0	0-0	0-0	0	0	0	0	0	0	0	0	0	0
	TEAM						0	0	0	0		0				
TOTALS			20	6-14	0-2	8-8	1	5	6	5	2	0	0	1	50	

Shooting By Period

Period	FG	FG%	3FG	3FG%	FT	FT%
2nd Half	0-0	0%	0-0	0%	0-0	0%
Game	25-58	43.1%	5-14	35.7%	20-27	74.1%

Indiana 43

No.	Player	S	Pts	FG	3FG	FT	OR	DR	TR	PF	A	TO	Blk	Stl	Min	+/-
01	YEANEY, BENDU		2	0-1	0-0	2-2	0	2	2	1	0	2	1	0	9	-1
11	ROYSTER, KYM		0	0-0	0-0	0-0	0	1	1	0	0	0	0	0	5	-2
13	PENN, JAELYNN		3	1-3	1-2	0-0	0	0	0	2	1	0	0	0	7	-2
14	PATBERG, ALI		5	2-3	0-1	1-2	0	1	1	0	1	0	0	0	10	-4
50	WISE, BRENNNA		6	1-1	0-0	4-4	0	2	2	1	0	1	1	0	10	-1
02	WARTHEN, KEYANNA		0	0-0	0-0	0-0	0	0	0	0	0	0	0	0	0	0
10	GULBE, ALEKSA		0	0-0	0-0	0-0	0	1	1	1	0	1	0	0	6	-5
12	MARCHESE, LINSEY		0	0-0	0-0	0-0	0	0	0	0	0	0	0	0	0	0
34	BERGER, GRACE		0	0-0	0-0	0-0	0	0	0	2	0	0	0	0	4	-5
	TEAM						0	0	0	0		0				
TOTALS			16	4-8	1-3	7-8	0	7	7	7	2	4	2	0	50	

Shooting By Period

Period	FG	FG%	3FG	3FG%	FT	FT%
2nd Half	0-0	0%	0-0	0%	0-0	0%
Game	24-60	40.0%	7-21	33.3%	14-16	87.5%

Game Notes:

Officials: Felicia Grinter, Mark Zentz, Katie Lukanich
Attendance: 3352

Start Time: 2019-01-17 00:01:39
End Time: 2019-01-17 01:59:39
Game Duration: 118
Conference Game;

Score	1st	2nd	3rd	4th	TOT
NWU	18	19	20	18	75
IND	10	16	16	27	69

Points from (This Period)	NWU	IND
In the Paint	4	6
Off Turns	4	0
2nd Chance	0	0
Fast Break	0	4
Bench	2	0

**Official Play-By-Play
Northwestern vs Indiana
Third Quarter**

January 17, 2019 at Simon Skjodt Assembly Hall - Bloomington, IN



Period 3

Starters:

Northwestern: 4 HOPKINS, BRYANA; 10 PULLIAM, LINDSEY; 12 BURTON, VERONICA; 14 KUNAIYI-AKPANAH, PALLAS; 24 HAMILTON, JORDAN;
Indiana: 1 YEANEY, BENDU; 11 ROYSTER, KYM; 13 PENN, JAELYNN; 14 PATBERG, ALI; 50 WISE, BRENNNA;

Time	VISITORS: Northwestern	Score	Margin	HOME: Indiana
09:49	MISSED JUMPER by PULLIAM, LINDSEY			
09:46				REBOUND (DEF) by ROYSTER, KYM
09:33				MISSED JUMPER by PENN, JAELYNN
09:30	REBOUND (DEF) by KUNAIYI-AKPANAH, PALLAS			
09:03	MISSED 3PTR by PULLIAM, LINDSEY			
09:02				REBOUND (DEF) by WISE, BRENNNA
08:59	FOUL (PERSONAL) by KUNAIYI-AKPANAH, PALLAS			
08:59	SUB OUT: KUNAIYI-AKPANAH, PALLAS			
08:59	SUB IN: WOLF, ABBIE			
08:44		29-37	V 8	GOOD! 3PTR by PENN, JAELYNN
08:44				ASSIST by PATBERG, ALI
08:21	GOOD! JUMPER by PULLIAM, LINDSEY	29-39	V 10	
08:02		31-39	V 8	GOOD! JUMPER by WISE, BRENNNA [PNT]
08:02				ASSIST by PENN, JAELYNN
07:32	GOOD! LAYUP by HOPKINS, BRYANA [PNT]	31-41	V 10	
07:11	FOUL (PERSONAL) by HAMILTON, JORDAN			
07:11		32-41	V 9	GOOD! FT by WISE, BRENNNA
07:11		33-41	V 8	GOOD! FT by WISE, BRENNNA
06:40	GOOD! JUMPER by PULLIAM, LINDSEY	33-43	V 10	
06:26				SUB OUT: ROYSTER, KYM
06:26				SUB IN: GULBE, ALEKSA
06:14		35-43	V 8	GOOD! JUMPER by PATBERG, ALI [PNT]
05:52	MISSED 3PTR by BURTON, VERONICA			
05:48				REBOUND (DEF) by YEANEY, BENDU
05:48	FOUL (PERSONAL) by HAMILTON, JORDAN			
05:48		36-43	V 7	GOOD! FT by YEANEY, BENDU [FB]
05:48	SUB OUT: HAMILTON, JORDAN			
05:48	SUB IN: WOOD, SYDNEY			
05:48		37-43	V 6	GOOD! FT by YEANEY, BENDU [FB]
05:24	GOOD! JUMPER by WOLF, ABBIE [PNT]	37-45	V 8	
05:24	ASSIST by BURTON, VERONICA			
05:13				MISSED 3PTR by PENN, JAELYNN
05:09	REBOUND (DEF) by WOLF, ABBIE			
04:46	GOOD! JUMPER by PULLIAM, LINDSEY	37-47	V 10	
04:26				MISSED JUMPER by YEANEY, BENDU
04:22	REBOUND (DEF) by BURTON, VERONICA			
04:10	MISSED JUMPER by WOLF, ABBIE			
04:06				REBOUND (DEF) by PATBERG, ALI
04:04	FOUL (PERSONAL) by BURTON, VERONICA			
04:04				
04:04				SUB OUT: YEANEY, BENDU
04:04				SUB IN: ROYSTER, KYM
04:04				SUB OUT: GULBE, ALEKSA
04:04				SUB IN: BERGER, GRACE
04:04	SUB OUT: BURTON, VERONICA			
04:04	SUB IN: KUNAIYI-AKPANAH, PALLAS			
04:04	SUB OUT: WOLF, ABBIE			
04:04	SUB IN: HAMILTON, JORDAN			
04:04		38-47	V 9	GOOD! FT by WISE, BRENNNA [FB]
04:04		39-47	V 8	GOOD! FT by WISE, BRENNNA [FB]
03:56				FOUL (PERSONAL) by PENN, JAELYNN
03:54				FOUL (PERSONAL) by BERGER, GRACE
03:38				FOUL (PERSONAL) by WISE, BRENNNA
03:38	GOOD! FT by KUNAIYI-AKPANAH, PALLAS	39-48	V 9	
03:38	GOOD! FT by KUNAIYI-AKPANAH, PALLAS	39-49	V 10	
03:09				TURNOVER (LOSTBALL) by WISE, BRENNNA
03:09	STEAL by HOPKINS, BRYANA			
03:09				SUB OUT: WISE, BRENNNA
03:09				SUB IN: GULBE, ALEKSA
02:56				FOUL (PERSONAL) by PENN, JAELYNN
02:56	GOOD! FT by PULLIAM, LINDSEY	39-50	V 11	
02:56	GOOD! FT by PULLIAM, LINDSEY	39-51	V 12	
02:45				MISSED 3PTR by PATBERG, ALI
02:42	REBOUND (DEF) by PULLIAM, LINDSEY			
02:42				FOUL (PERSONAL) by GULBE, ALEKSA
02:42	GOOD! FT by PULLIAM, LINDSEY	39-52	V 13	
02:42				SUB OUT: PENN, JAELYNN
02:42				SUB IN: WISE, BRENNNA
02:42				SUB OUT: ROYSTER, KYM
02:42				SUB IN: YEANEY, BENDU

Time	VISITORS: Northwestern	Score	Margin	HOME: Indiana
02:42	GOOD! FT by PULLIAM, LINDSEY	39-53	V 14	
02:27				FOUL (OFF) by YEANEY, BENDU
02:27				TURNOVER (OFFENSIVE) by YEANEY, BENDU
02:14				FOUL (PERSONAL) by BERGER, GRACE
02:14	GOOD! FT by KUNAIYI-AKPANAH, PALLAS	39-54	V 15	
02:14	SUB OUT: PULLIAM, LINDSEY			
02:14	SUB IN: BURTON, VERONICA			
02:14	GOOD! FT by KUNAIYI-AKPANAH, PALLAS	39-55	V 16	
02:14	SUB OUT: KUNAIYI-AKPANAH, PALLAS			
02:14	SUB IN: WOLF, ABBIE			
02:00	FOUL (PERSONAL) by WOOD, SYDNEY			
02:00		40-55	V 15	GOOD! FT by PATBERG, ALI
02:00				MISSED FT by PATBERG, ALI
02:00	REBOUND (DEF) by HOPKINS, BRYANA			
01:46	MISSED JUMPER by HOPKINS, BRYANA			
01:45				REBOUND (DEF) by GULBE, ALEKSA
01:45				TURNOVER (TRAVEL) by GULBE, ALEKSA
01:41	MISSED JUMPER by HAMILTON, JORDAN			
01:41				BLOCK by YEANEY, BENDU
01:35	REBOUND (OFF) by WOLF, ABBIE			
01:28	MISSED LAYUP by WOOD, SYDNEY			
01:28				BLOCK by WISE, BRENNNA
01:23				REBOUND (DEF) by WISE, BRENNNA
01:09		42-55	V 13	GOOD! LAYUP by PATBERG, ALI [PNT]
00:44	GOOD! JUMPER by HOPKINS, BRYANA	42-57	V 15	
00:44	ASSIST by HAMILTON, JORDAN			
00:24				TURNOVER (TRAVEL) by YEANEY, BENDU
00:05	MISSED JUMPER by BURTON, VERONICA			
00:03				REBOUND (DEF) by YEANEY, BENDU

Northwestern 57, Indiana 42

Points from (This Period)	NWU	IND
In the Paint	4	6
Off Turns	4	0
2nd Chance	0	0
Fast Break	0	4
Bench	2	0

Official Box Score
Northwestern vs Indiana
Fourth Quarter Statistics Only
January 17, 2019 at Simon Skjodt Assembly Hall - Bloomington, IN



Northwestern 18

No.	Player	S	Pts	FG	3FG	FT	OR	DR	TR	PF	A	TO	Blk	Stl	Min	+/-
04	HOPKINS, BRYANA		2	0-0	0-0	2-4	0	2	2	0	1	0	0	0	8	-7
10	PULLIAM, LINDSEY		8	1-5	0-2	6-7	0	1	1	2	1	0	0	0	10	-9
12	BURTON, VERONICA		3	1-3	1-3	0-0	0	0	0	1	0	2	0	0	10	-9
14	KUNAIYI-AKPANAH, PALLAS		5	2-4	0-0	1-3	2	1	3	1	0	1	1	0	10	-9
24	HAMILTON, JORDAN		0	0-0	0-0	0-0	0	0	0	1	1	3	1	0	9	-7
03	WOOD, SYDNEY		0	0-0	0-0	0-0	0	1	1	0	0	1	0	0	1	-2
21	WOLF, ABBIE		0	0-0	0-0	0-0	0	0	0	0	0	0	0	0	0	0
32	JAMISON, AMBER		0	0-0	0-0	0-0	1	0	1	0	0	1	0	0	2	-2
	TEAM						1	2	3	0		1				
TOTALS			18	4-12	1-5	9-14	4	7	11	5	3	9	2	0	50	

Shooting By Period

Period	FG	FG%	3FG	3FG%	FT	FT%
Game	25-58	43.1%	5-14	35.7%	20-27	74.1%

Indiana 27

No.	Player	S	Pts	FG	3FG	FT	OR	DR	TR	PF	A	TO	Blk	Stl	Min	+/-
01	YEANEY, BENDU		2	1-3	0-1	0-0	0	0	0	3	1	0	0	1	9	7
11	ROYSTER, KYM		2	1-1	0-0	0-0	3	0	3	0	0	0	0	0	6	8
13	PENN, JAELYNN		7	3-6	0-2	1-2	1	1	2	2	0	0	0	2	10	9
14	PATBERG, ALI		14	5-10	2-5	2-2	0	0	0	2	2	1	0	2	10	10
50	WISE, BRENNNA		0	0-1	0-0	0-0	0	2	2	4	1	1	0	1	10	5
02	WARTHEN, KEYANNA		0	0-0	0-0	0-0	0	0	0	0	0	0	0	0	0	-1
10	GULBE, ALEKSA		0	0-0	0-0	0-0	0	1	1	0	0	0	0	1	4	6
12	MARCHESE, LINSEY		0	0-0	0-0	0-0	0	0	0	0	0	0	0	0	0	0
34	BERGER, GRACE		2	1-1	0-0	0-0	0	1	1	0	0	0	0	0	1	1
	TEAM						0	0	0	0		0				
TOTALS			27	11-22	2-8	3-4	4	5	9	11	4	2	0	7	50	

Shooting By Period

Period	FG	FG%	3FG	3FG%	FT	FT%
Game	24-60	40.0%	7-21	33.3%	14-16	87.5%

Game Notes:

Officials: Felicia Grinter, Mark Zentz, Katie Lukanich

Attendance: 3352

Start Time: 2019-01-17 00:01:39

End Time: 2019-01-17 01:59:39

Game Duration: 118

Conference Game;

Score	1st	2nd	3rd	4th	TOT
NWU	18	19	20	18	75
IND	10	16	16	27	69

Points from (This Period)	NWU	IND
In the Paint	4	16
Off Turns	5	8
2nd Chance	3	4
Fast Break	2	9
Bench	0	2

**Official Play-By-Play
Northwestern vs Indiana
Fourth Quarter**

January 17, 2019 at Simon Skjodt Assembly Hall - Bloomington, IN



Period 4

Starters:

Northwestern: 4 HOPKINS, BRYANA; 10 PULLIAM, LINDSEY; 12 BURTON, VERONICA; 14 KUNAIYI-AKPANAH, PALLAS; 24 HAMILTON, JORDAN;
Indiana: 1 YEANEY, BENDU; 11 ROYSTER, KYM; 13 PENN, JAELYNN; 14 PATBERG, ALI; 50 WISE, BRENNNA;

Time	VISITORS: Northwestern	Score	Margin	HOME: Indiana
09:47	TURNOVER (BADPASS) by JAMISON, AMBER			
09:47				STEAL by PENN, JAELYNN
09:42		44-57	V 13	GOOD! LAYUP by PENN, JAELYNN [FB]
09:19	TURNOVER (BADPASS) by HAMILTON, JORDAN			
09:19				STEAL by YEANEY, BENDU
09:14				MISSED LAYUP by PENN, JAELYNN
09:13				REBOUND (OFF) by ROYSTER, KYM
09:04				MISSED JUMPER by WISE, BRENNNA
09:01	REBOUND (DEF) by PULLIAM, LINDSEY			
08:42	MISSED 3PTR by PULLIAM, LINDSEY			
08:42	REBOUND (OFF) by TEAM			
08:38	MISSED JUMPER by KUNAIYI-AKPANAH, PALLAS			
08:38	REBOUND (OFF) by JAMISON, AMBER			
08:16	TURNOVER (LOSTBALL) by KUNAIYI-AKPANAH, PALLAS			
08:16				STEAL by WISE, BRENNNA
08:09				MISSED 3PTR by PENN, JAELYNN
08:06				REBOUND (OFF) by ROYSTER, KYM
08:06	FOUL (PERSONAL) by PULLIAM, LINDSEY			
08:06	SUB OUT: JAMISON, AMBER			
08:06	SUB IN: HOPKINS, BRYANA			
07:59	FOUL (PERSONAL) by BURTON, VERONICA			
07:59				MISSED FT by PENN, JAELYNN
07:59				REBOUND (OFF) by TEAM
07:59		45-57	V 12	GOOD! FT by PENN, JAELYNN [FB]
07:43	GOOD! LAYUP by KUNAIYI-AKPANAH, PALLAS	45-59	V 14	
07:43	ASSIST by PULLIAM, LINDSEY			
07:43				FOUL (PERSONAL) by WISE, BRENNNA
07:43	GOOD! FT by KUNAIYI-AKPANAH, PALLAS	45-60	V 15	
07:34				MISSED LAYUP by YEANEY, BENDU
07:34	BLOCK by KUNAIYI-AKPANAH, PALLAS			
07:29	REBOUND (DEF) by KUNAIYI-AKPANAH, PALLAS			
07:20	GOOD! 3PTR by BURTON, VERONICA	45-63	V 18	
07:20	ASSIST by HOPKINS, BRYANA			
06:57		48-63	V 15	GOOD! 3PTR by PATBERG, ALI
06:57				ASSIST by YEANEY, BENDU
06:39	MISSED 3PTR by PULLIAM, LINDSEY			
06:36				REBOUND (DEF) by PENN, JAELYNN
06:33				MISSED JUMPER by PATBERG, ALI
06:33	BLOCK by HAMILTON, JORDAN			
06:27				REBOUND (OFF) by PENN, JAELYNN
06:26		50-63	V 13	GOOD! LAYUP by PENN, JAELYNN
05:56	MISSED 3PTR by BURTON, VERONICA			
05:56	REBOUND (OFF) by TEAM			
05:56	TURNOVER (SHOTCLOCK) by			
05:56				SUB OUT: ROYSTER, KYM
05:56				SUB IN: GULBE, ALEKSA
05:43	FOUL (PERSONAL) by HAMILTON, JORDAN			
05:43	SUB OUT: HAMILTON, JORDAN			
05:43	SUB IN: WOOD, SYDNEY			
05:32		52-63	V 11	GOOD! LAYUP by PATBERG, ALI [PNT]
05:32				ASSIST by WISE, BRENNNA
05:08	TURNOVER (LOSTBALL) by BURTON, VERONICA			
05:08				STEAL by PATBERG, ALI
05:02				MISSED JUMPER by PATBERG, ALI
05:00	TURNOVER (LOSTBALL) by WOOD, SYDNEY			
05:00				STEAL by PATBERG, ALI
04:59	REBOUND (DEF) by WOOD, SYDNEY			
04:49				MISSED 3PTR by PATBERG, ALI
04:46	REBOUND (DEF) by TEAM			
04:46	SUB OUT: WOOD, SYDNEY			
04:46	SUB IN: HAMILTON, JORDAN			
04:39	TURNOVER (BADPASS) by HAMILTON, JORDAN			
04:39				STEAL by GULBE, ALEKSA
04:39	FOUL (PERSONAL) by KUNAIYI-AKPANAH, PALLAS			
04:18		54-63	V 9	GOOD! JUMPER by YEANEY, BENDU
04:18				ASSIST by PATBERG, ALI
03:42	MISSED 3PTR by BURTON, VERONICA			
03:38	REBOUND (OFF) by KUNAIYI-AKPANAH, PALLAS			
03:24	MISSED JUMPER by PULLIAM, LINDSEY			

Time	VISITORS: Northwestern	Score	Margin	HOME: Indiana
03:20				REBOUND (DEF) by WISE, BRENNNA
03:17				FOUL (OFF) by PATBERG, ALI
03:17				TURNOVER (OFFENSIVE) by PATBERG, ALI
02:59				FOUL (PERSONAL) by PATBERG, ALI
02:52	MISSED JUMPER by PULLIAM, LINDSEY			
02:49	REBOUND (OFF) by KUNAIYI-AKPANAHAH, PALLAS			
02:33	GOOD! JUMPER by PULLIAM, LINDSEY	54-65	V 11	
02:33				FOUL (PERSONAL) by YEANEY, BENDU
02:33				SUB OUT: GULBE, ALEKSA
02:33				SUB IN: ROYSTER, KYM
02:33	GOOD! FT by PULLIAM, LINDSEY	54-66	V 12	
02:17				MISSED 3PTR by PATBERG, ALI
02:14				REBOUND (OFF) by ROYSTER, KYM
02:12	FOUL (PERSONAL) by PULLIAM, LINDSEY			
02:12		55-66	V 11	GOOD! FT by PATBERG, ALI
02:12		56-66	V 10	GOOD! FT by PATBERG, ALI
02:03	MISSED LAYUP by KUNAIYI-AKPANAHAH, PALLAS			
02:00				REBOUND (DEF) by WISE, BRENNNA
01:52				MISSED 3PTR by YEANEY, BENDU
01:52	REBOUND (DEF) by TEAM			
01:49				FOUL (PERSONAL) by YEANEY, BENDU
01:49	MISSED FT by HOPKINS, BRYANA			
01:49	REBOUND (OFF) by TEAM			
01:49	GOOD! FT by HOPKINS, BRYANA	56-67	V 11	
01:38		58-67	V 9	GOOD! LAYUP by PATBERG, ALI
01:32	TIMEOUT 30SEC			
01:32				
01:32				SUB OUT: ROYSTER, KYM
01:32				SUB IN: BERGER, GRACE
01:29				FOUL (PERSONAL) by PENN, JAELYNN
01:29	GOOD! FT by PULLIAM, LINDSEY	58-68	V 10	
01:29				SUB OUT: BERGER, GRACE
01:29				SUB IN: ROYSTER, KYM
01:29	GOOD! FT by PULLIAM, LINDSEY	58-69	V 11	
01:21		60-69	V 9	GOOD! LAYUP by PATBERG, ALI [FB]
01:16				FOUL (PERSONAL) by WISE, BRENNNA
01:16	GOOD! FT by PULLIAM, LINDSEY	60-70	V 10	
01:16	GOOD! FT by PULLIAM, LINDSEY	60-71	V 11	
01:08		63-71	V 8	GOOD! 3PTR by PATBERG, ALI
00:59				FOUL (PERSONAL) by YEANEY, BENDU
00:59				SUB OUT: YEANEY, BENDU
00:59				SUB IN: BERGER, GRACE
00:59	MISSED FT by HOPKINS, BRYANA			
00:59	REBOUND (OFF) by TEAM			
00:59	GOOD! FT by HOPKINS, BRYANA	63-72	V 9	
00:50				MISSED 3PTR by PENN, JAELYNN
00:50	REBOUND (DEF) by HOPKINS, BRYANA			
00:44				SUB OUT: PATBERG, ALI
00:44				SUB IN: WARTHEN, KEYANNA
00:44	TIMEOUT TEAM			
00:40	TURNOVER (LOSTBALL) by HAMILTON, JORDAN			
00:40				STEAL by PENN, JAELYNN
00:40				SUB OUT: WARTHEN, KEYANNA
00:40				SUB IN: PATBERG, ALI
00:37				FOUL (OFF) by WISE, BRENNNA
00:37				TURNOVER (OFFENSIVE) by WISE, BRENNNA
00:37				SUB OUT: PATBERG, ALI
00:37				SUB IN: WARTHEN, KEYANNA
00:30	GOOD! LAYUP by KUNAIYI-AKPANAHAH, PALLAS [FB]	63-74	V 11	
00:30	ASSIST by HAMILTON, JORDAN			
00:26		65-74	V 9	GOOD! LAYUP by PENN, JAELYNN [FB]
00:25				FOUL (PERSONAL) by PENN, JAELYNN
00:25	GOOD! FT by PULLIAM, LINDSEY	65-75	V 10	
00:25				SUB OUT: WARTHEN, KEYANNA
00:25				SUB IN: PATBERG, ALI
00:25	MISSED FT by PULLIAM, LINDSEY			
00:25				REBOUND (DEF) by BERGER, GRACE
00:21				MISSED 3PTR by PATBERG, ALI
00:18	REBOUND (DEF) by HOPKINS, BRYANA			
00:16				FOUL (PERSONAL) by WISE, BRENNNA
00:16				SUB OUT: WISE, BRENNNA
00:16				SUB IN: GULBE, ALEKSA
00:16	MISSED FT by KUNAIYI-AKPANAHAH, PALLAS			
00:16	REBOUND (OFF) by TEAM			
00:16	MISSED FT by KUNAIYI-AKPANAHAH, PALLAS			
00:16				REBOUND (DEF) by GULBE, ALEKSA
00:09		67-75	V 8	GOOD! LAYUP by BERGER, GRACE [FB]
00:06	TURNOVER (LOSTBALL) by BURTON, VERONICA			
00:05		69-75	V 6	GOOD! LAYUP by ROYSTER, KYM
00:05				ASSIST by PATBERG, ALI

Time	VISITORS: Northwestern	Score	Margin	HOME: Indiana
00:04	TIMEOUT 30SEC			

Northwestern 75, Indiana 69

Points from (This Period)	NWU	IND
In the Paint	4	16
Off Turns	5	8
2nd Chance	3	4
Fast Break	2	9
Bench	0	2

Official Scoring/Possession Reference Chart
Northwestern vs Indiana
Period 1
January 17, 2019 at Simon Skjodt Assembly Hall - Bloomington, IN



Period 1

Starters:

Northwestern: 4 HOPKINS,BRYANA; 10 PULLIAM,LINDSEY; 12 BURTON,VERONICA; 14 KUNAIYI-AKPANAH,PALLAS; 24 HAMILTON,JORDAN;
Indiana: 1 YEANEY,BENDU; 11 ROYSTER,KYM; 13 PENN,JAELYNN; 14 PATBERG,ALI; 50 WISE,BRENNA;

Time	VISITORS: Northwestern	Score	Margin	HOME: Indiana
08:46	GOOD! JUMPER by HAMILTON, JORDAN [FB]	0-2	V 2	
08:17	GOOD! FT by BURTON, VERONICA	0-3	V 3	
08:17	GOOD! FT by BURTON, VERONICA	0-4	V 4	
05:57	GOOD! LAYUP by KUNAIYI-AKPANAH, PALLAS	0-6	V 6	
05:33	GOOD! JUMPER by PULLIAM, LINDSEY	0-8	V 8	
04:40		1-8	V 7	GOOD! FT by YEANEY, BENDU
04:40		2-8	V 6	GOOD! FT by YEANEY, BENDU
03:44	GOOD! 3PTR by BURTON, VERONICA	2-11	V 9	
03:06		5-11	V 6	GOOD! 3PTR by GULBE, ALEKSA
02:06		7-11	V 4	GOOD! JUMPER by WISE, BRENNNA
01:51	GOOD! LAYUP by WOOD, SYDNEY [PNT]	7-13	V 6	
01:30	GOOD! 3PTR by BURTON, VERONICA	7-16	V 9	
00:32	GOOD! LAYUP by WOLF, ABBIE	7-18	V 11	
00:00		10-18	V 8	GOOD! 3PTR by YEANEY, BENDU

Northwestern 18, Indiana 10

Official Scoring/Possession Reference Chart
Northwestern vs Indiana
Period 2
January 17, 2019 at Simon Skjodt Assembly Hall - Bloomington, IN



Period 2

Starters:

Northwestern: 4 HOPKINS,BRYANA; 10 PULLIAM,LINDSEY; 12 BURTON,VERONICA; 14 KUNAIYI-AKPANAH,PALLAS; 24 HAMILTON,JORDAN;
Indiana: 1 YEANEY,BENDU; 11 ROYSTER,KYM; 13 PENN,JAELYNN; 14 PATBERG,ALI; 50 WISE,BRENNA;

Time	VISITORS: Northwestern	Score	Margin	HOME: Indiana
09:28	GOOD! JUMPER by PULLIAM, LINDSEY	10-20	V 10	
08:14	GOOD! JUMPER by PULLIAM, LINDSEY	10-22	V 12	
07:47	GOOD! LAYUP by WOOD, SYDNEY	10-24	V 14	
07:07		13-24	V 11	GOOD! 3PTR by PENN, JAELYNN
06:00	GOOD! FT by PULLIAM, LINDSEY	13-25	V 12	
04:37	GOOD! 3PTR by BURTON, VERONICA	13-28	V 15	
04:26		15-28	V 13	GOOD! LAYUP by WISE, BRENNNA [PNT]
04:08		17-28	V 11	GOOD! LAYUP by WISE, BRENNNA [FB]
03:44	GOOD! JUMPER by PULLIAM, LINDSEY [PNT]	17-30	V 13	
03:15		19-30	V 11	GOOD! LAYUP by YEANEY, BENDU
02:48		20-30	V 10	GOOD! FT by WISE, BRENNNA
02:48		21-30	V 9	GOOD! FT by WISE, BRENNNA
02:16	GOOD! LAYUP by WOOD, SYDNEY	21-32	V 11	
02:07		23-32	V 9	GOOD! LAYUP by YEANEY, BENDU
01:55	GOOD! LAYUP by BURTON, VERONICA	23-34	V 11	
00:56		26-34	V 8	GOOD! 3PTR by PATBERG, ALI
00:29	GOOD! 3PTR by BURTON, VERONICA	26-37	V 11	

Northwestern 37, Indiana 26

Official Scoring/Possession Reference Chart
Northwestern vs Indiana
Period 3
January 17, 2019 at Simon Skjodt Assembly Hall - Bloomington, IN



Period 3

Starters:

Northwestern: 4 HOPKINS,BRYANA; 10 PULLIAM,LINDSEY; 12 BURTON,VERONICA; 14 KUNAIYI-AKPANAH,PALLAS; 24 HAMILTON,JORDAN;
Indiana: 1 YEANEY,BENDU; 11 ROYSTER,KYM; 13 PENN,JAELYNN; 14 PATBERG,ALI; 50 WISE,BRENNA;

Time	VISITORS: Northwestern	Score	Margin	HOME: Indiana
08:44		29-37	V 8	GOOD! 3PTR by PENN, JAELYNN
08:21	GOOD! JUMPER by PULLIAM, LINDSEY	29-39	V 10	
08:02		31-39	V 8	GOOD! JUMPER by WISE, BRENNNA [PNT]
07:32	GOOD! LAYUP by HOPKINS, BRYANA [PNT]	31-41	V 10	
07:11		32-41	V 9	GOOD! FT by WISE, BRENNNA
07:11		33-41	V 8	GOOD! FT by WISE, BRENNNA
06:40	GOOD! JUMPER by PULLIAM, LINDSEY	33-43	V 10	
06:14		35-43	V 8	GOOD! JUMPER by PATBERG, ALI [PNT]
05:48		36-43	V 7	GOOD! FT by YEANEY, BENDU [FB]
05:48		37-43	V 6	GOOD! FT by YEANEY, BENDU [FB]
05:24	GOOD! JUMPER by WOLF, ABBIE [PNT]	37-45	V 8	
04:46	GOOD! JUMPER by PULLIAM, LINDSEY	37-47	V 10	
04:04		38-47	V 9	GOOD! FT by WISE, BRENNNA [FB]
04:04		39-47	V 8	GOOD! FT by WISE, BRENNNA [FB]
03:38	GOOD! FT by KUNAIYI-AKPANAH, PALLAS	39-48	V 9	
03:38	GOOD! FT by KUNAIYI-AKPANAH, PALLAS	39-49	V 10	
02:56	GOOD! FT by PULLIAM, LINDSEY	39-50	V 11	
02:56	GOOD! FT by PULLIAM, LINDSEY	39-51	V 12	
02:42	GOOD! FT by PULLIAM, LINDSEY	39-52	V 13	
02:42	GOOD! FT by PULLIAM, LINDSEY	39-53	V 14	
02:14	GOOD! FT by KUNAIYI-AKPANAH, PALLAS	39-54	V 15	
02:14	GOOD! FT by KUNAIYI-AKPANAH, PALLAS	39-55	V 16	
02:00		40-55	V 15	GOOD! FT by PATBERG, ALI
01:09		42-55	V 13	GOOD! LAYUP by PATBERG, ALI [PNT]
00:44	GOOD! JUMPER by HOPKINS, BRYANA	42-57	V 15	

Northwestern 57, Indiana 42

Official Scoring/Possession Reference Chart
Northwestern vs Indiana
Period 4
January 17, 2019 at Simon Skjodt Assembly Hall - Bloomington, IN



Period 4

Starters:

Northwestern: 4 HOPKINS,BRYANA; 10 PULLIAM,LINDSEY; 12 BURTON,VERONICA; 14 KUNAIYI-AKPANAH,PALLAS; 24 HAMILTON,JORDAN;
Indiana: 1 YEANEY,BENDU; 11 ROYSTER,KYM; 13 PENN,JAELYNN; 14 PATBERG,ALI; 50 WISE,BRENNA;

Time	VISITORS: Northwestern	Score	Margin	HOME: Indiana
09:42		44-57	V 13	GOOD! LAYUP by PENN, JAELYNN [FB]
07:59		45-57	V 12	GOOD! FT by PENN, JAELYNN [FB]
07:43	GOOD! LAYUP by KUNAIYI-AKPANAH, PALLAS	45-59	V 14	
07:43	GOOD! FT by KUNAIYI-AKPANAH, PALLAS	45-60	V 15	
07:20	GOOD! 3PTR by BURTON, VERONICA	45-63	V 18	
06:57		48-63	V 15	GOOD! 3PTR by PATBERG, ALI
06:26		50-63	V 13	GOOD! LAYUP by PENN, JAELYNN
05:32		52-63	V 11	GOOD! LAYUP by PATBERG, ALI [PNT]
04:18		54-63	V 9	GOOD! JUMPER by YEANEY, BENDU
02:33	GOOD! JUMPER by PULLIAM, LINDSEY	54-65	V 11	
02:33	GOOD! FT by PULLIAM, LINDSEY	54-66	V 12	
02:12		55-66	V 11	GOOD! FT by PATBERG, ALI
02:12		56-66	V 10	GOOD! FT by PATBERG, ALI
01:49	GOOD! FT by HOPKINS, BRYANA	56-67	V 11	
01:38		58-67	V 9	GOOD! LAYUP by PATBERG, ALI
01:29	GOOD! FT by PULLIAM, LINDSEY	58-68	V 10	
01:29	GOOD! FT by PULLIAM, LINDSEY	58-69	V 11	
01:21		60-69	V 9	GOOD! LAYUP by PATBERG, ALI [FB]
01:16	GOOD! FT by PULLIAM, LINDSEY	60-70	V 10	
01:16	GOOD! FT by PULLIAM, LINDSEY	60-71	V 11	
01:08		63-71	V 8	GOOD! 3PTR by PATBERG, ALI
00:59	GOOD! FT by HOPKINS, BRYANA	63-72	V 9	
00:30	GOOD! LAYUP by KUNAIYI-AKPANAH, PALLAS [FB]	63-74	V 11	
00:26		65-74	V 9	GOOD! LAYUP by PENN, JAELYNN [FB]
00:25	GOOD! FT by PULLIAM, LINDSEY	65-75	V 10	
00:09		67-75	V 8	GOOD! LAYUP by BERGER, GRACE [FB]
00:05		69-75	V 6	GOOD! LAYUP by ROYSTER, KYM

Northwestern 75, Indiana 69

**Official Substitutions Log
Northwestern vs Indiana
Period 1**

January 17, 2019 at Simon Skjodt Assembly Hall - Bloomington, IN



VISITORS: Northwestern	Time	Score	HOME: Indiana
4 HOPKINS,BRYANA			1 YEANEY,BENDU
10 PULLIAM,LINDSEY			11 ROYSTER,KYM
12 BURTON,VERONICA			13 PENN,JAELYNN
14 KUNAIYI-AKPANAH,PALLAS			14 PATBERG,ALI
24 HAMILTON,JORDAN			50 WISE,BRENNA
	06:50	4-0	SUB OUT: ROYSTER,KYM
	06:50		SUB IN: GULBE,ALEKSA
	05:32	8-0	SUB OUT: PENN,JAELYNN
	05:32		SUB IN: BERGER,GRACE
	04:40	8-1	SUB OUT: WISE,BRENNA
	04:40		SUB IN: MARCHESE,LINSEY
	03:14	11-2	SUB OUT: YEANEY,BENDU
	03:14		SUB IN: PENN,JAELYNN
SUB OUT: 10 PULLIAM,LINDSEY	03:14		
SUB IN: 3 WOOD,SYDNEY	03:14		
	02:21	11-5	SUB OUT: MARCHESE,LINSEY
	02:21		SUB IN: WISE,BRENNA
SUB OUT: 14 KUNAIYI-AKPANAH,PALLAS	02:21		
SUB IN: 21 WOLF,ABBIE	02:21		
	01:10	16-7	SUB OUT: GULBE,ALEKSA
	01:10		SUB IN: YEANEY,BENDU
	01:10		SUB OUT: PATBERG,ALI
	01:10		SUB IN: MARCHESE,LINSEY
SUB OUT: 12 BURTON,VERONICA	01:10		
SUB IN: 10 PULLIAM,LINDSEY	01:10		

Northwestern 18, Indiana 10

**Official Substitutions Log
Northwestern vs Indiana
Period 2**

January 17, 2019 at Simon Skjodt Assembly Hall - Bloomington, IN



VISITORS: Northwestern	Time	Score	HOME: Indiana
4 HOPKINS,BRYANA			1 YEANEY,BENDU
10 PULLIAM,LINDSEY			11 ROYSTER,KYM
12 BURTON,VERONICA			13 PENN,JAELYNN
14 KUNAIYI-AKPANAH,PALLAS			14 PATBERG,ALI
24 HAMILTON,JORDAN			50 WISE,BRENNA
	07:46	24-10	SUB OUT: MARCHESE,LINSEY
	07:46		SUB IN: GULBE,ALEKSA
	07:46		SUB OUT: BERGER,GRACE
	07:46		SUB IN: PENN,JAELYNN
SUB OUT: 4 HOPKINS,BRYANA	07:46		
SUB IN: 32 JAMISON,AMBER	07:46		
SUB OUT: 21 WOLF,ABBIE	07:17	24-10	
SUB IN: 14 KUNAIYI-AKPANAH,PALLAS	07:17		
SUB OUT: 14 KUNAIYI-AKPANAH,PALLAS	07:13	24-10	
SUB IN: 21 WOLF,ABBIE	07:13		
SUB OUT: 3 WOOD,SYDNEY	06:24	24-13	
SUB IN: 24 HAMILTON,JORDAN	06:24		
	04:45	25-13	SUB OUT: GULBE,ALEKSA
	04:45		SUB IN: ROYSTER,KYM
SUB OUT: 32 JAMISON,AMBER	04:45		
SUB IN: 4 HOPKINS,BRYANA	04:45		
SUB OUT: 10 PULLIAM,LINDSEY	02:48	30-20	
SUB IN: 3 WOOD,SYDNEY	02:48		
	01:06	34-23	SUB OUT: PENN,JAELYNN
	01:06		SUB IN: BERGER,GRACE

Northwestern 37, Indiana 26

**Official Substitutions Log
Northwestern vs Indiana
Period 3**

January 17, 2019 at Simon Skjodt Assembly Hall - Bloomington, IN



VISITORS: Northwestern	Time	Score	HOME: Indiana
4 HOPKINS,BRYANA			1 YEANEY,BENDU
10 PULLIAM,LINDSEY			11 ROYSTER,KYM
12 BURTON,VERONICA			13 PENN,JAELYNN
14 KUNAIYI-AKPANAH,PALLAS			14 PATBERG,ALI
24 HAMILTON,JORDAN			50 WISE,BRENNA
SUB OUT: 14 KUNAIYI-AKPANAH,PALLAS	08:59	-	
SUB IN: 21 WOLF,ABBIE	08:59		
	06:26	43-33	SUB OUT: ROYSTER,KYM
	06:26		SUB IN: GULBE,ALEKSA
SUB OUT: 24 HAMILTON,JORDAN	05:48	43-36	
SUB IN: 3 WOOD,SYDNEY	05:48		
	04:04	47-37	SUB OUT: YEANEY,BENDU
	04:04		SUB IN: ROYSTER,KYM
	04:04		SUB OUT: GULBE,ALEKSA
	04:04		SUB IN: BERGER,GRACE
SUB OUT: 12 BURTON,VERONICA	04:04		
SUB IN: 14 KUNAIYI-AKPANAH,PALLAS	04:04		
SUB OUT: 21 WOLF,ABBIE	04:04		
SUB IN: 24 HAMILTON,JORDAN	04:04		
	03:09	49-39	SUB OUT: WISE,BRENNA
	03:09		SUB IN: GULBE,ALEKSA
	02:42	52-39	SUB OUT: PENN,JAELYNN
	02:42		SUB IN: WISE,BRENNA
	02:42		SUB OUT: ROYSTER,KYM
	02:42		SUB IN: YEANEY,BENDU
SUB OUT: 10 PULLIAM,LINDSEY	02:14	54-39	
SUB IN: 12 BURTON,VERONICA	02:14		
SUB OUT: 14 KUNAIYI-AKPANAH,PALLAS	02:14		
SUB IN: 21 WOLF,ABBIE	02:14		

Northwestern 57, Indiana 42

**Official Substitutions Log
Northwestern vs Indiana
Period 4**

January 17, 2019 at Simon Skjodt Assembly Hall - Bloomington, IN



VISITORS: Northwestern	Time	Score	HOME: Indiana
4 HOPKINS,BRYANA			1 YEANEY,BENDU
10 PULLIAM,LINDSEY			11 ROYSTER,KYM
12 BURTON,VERONICA			13 PENN,JAELYNN
14 KUNAIYI-AKPANAH,PALLAS			14 PATBERG,ALI
24 HAMILTON,JORDAN			50 WISE,BRENNA
SUB OUT: 32 JAMISON,AMBER	08:06	57-44	
SUB IN: 4 HOPKINS,BRYANA	08:06		
	05:56	63-50	SUB OUT: ROYSTER,KYM
	05:56		SUB IN: GULBE,ALEKSA
SUB OUT: 24 HAMILTON,JORDAN	05:43	63-50	
SUB IN: 3 WOOD,SYDNEY	05:43		
SUB OUT: 3 WOOD,SYDNEY	04:46	63-52	
SUB IN: 24 HAMILTON,JORDAN	04:46		
	02:33	65-54	SUB OUT: GULBE,ALEKSA
	02:33		SUB IN: ROYSTER,KYM
	01:32	67-58	SUB OUT: ROYSTER,KYM
	01:32		SUB IN: BERGER,GRACE
	01:29	68-58	SUB OUT: BERGER,GRACE
	01:29		SUB IN: ROYSTER,KYM
	00:59	71-63	SUB OUT: YEANEY,BENDU
	00:59		SUB IN: BERGER,GRACE
	00:44	72-63	SUB OUT: PATBERG,ALI
	00:44		SUB IN: WARTHEN,KEYANNA
	00:40	72-63	SUB OUT: WARTHEN,KEYANNA
	00:40		SUB IN: PATBERG,ALI
	00:37	72-63	SUB OUT: PATBERG,ALI
	00:37		SUB IN: WARTHEN,KEYANNA
	00:25	75-65	SUB OUT: WARTHEN,KEYANNA
	00:25		SUB IN: PATBERG,ALI
	00:16	75-65	SUB OUT: WISE,BRENNA
	00:16		SUB IN: GULBE,ALEKSA

Northwestern 75, Indiana 69

Official Shot Chart
Northwestern vs Indiana
PERIOD 1 Shots
 January 17, 2019 at Simon Skjodt Assembly Hall - Bloomington, IN



Indiana

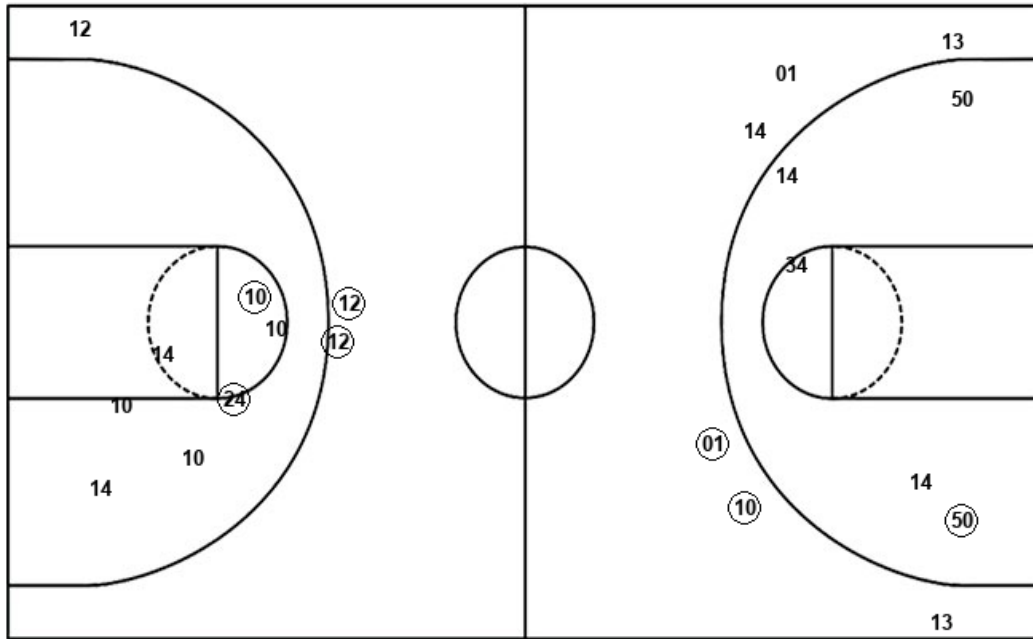
Northwestern

Layups
14 11 13 13

Layups
(14) (03) 21 (21)

Dunks

Dunks



IND : Period 1	Made	Att	Pct
Layups	0	4	00.0
Dunks	0	0	0
2PT Field Goals	1	9	11.1
3PT Field Goals	2	6	33.3
Total Field Goals	3	15	20.0

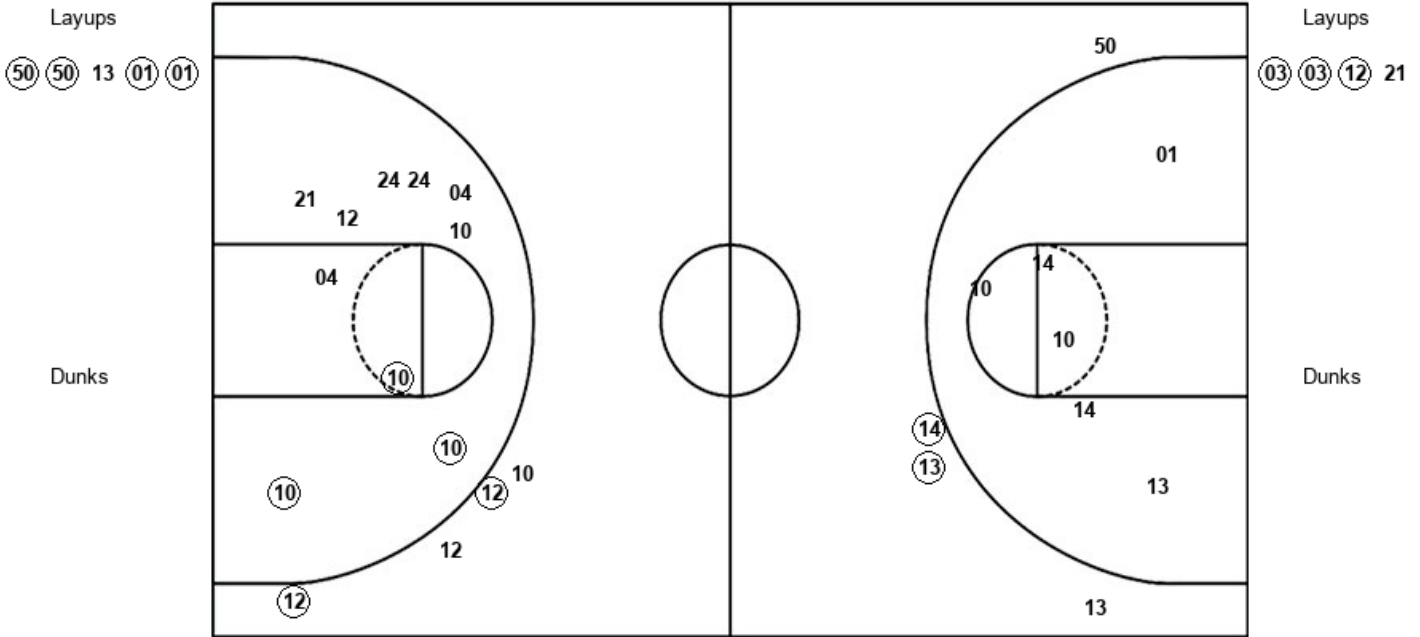
NWU : Period 1	Made	Att	Pct
Layups	3	4	75.0
Dunks	0	0	0
2PT Field Goals	5	11	45.5
3PT Field Goals	2	3	66.7
Total Field Goals	7	14	50.0

Official Shot Chart
Northwestern vs Indiana
 PERIOD 2 Shots
 January 17, 2019 at Simon Skjodt Assembly Hall - Bloomington, IN



Indiana

Northwestern



IND : Period 2	Made	Att	Pct
Layups	4	5	80.0
Dunks	0	0	0
2PT Field Goals	4	11	36.4
3PT Field Goals	2	4	50.0
Total Field Goals	6	15	40.0

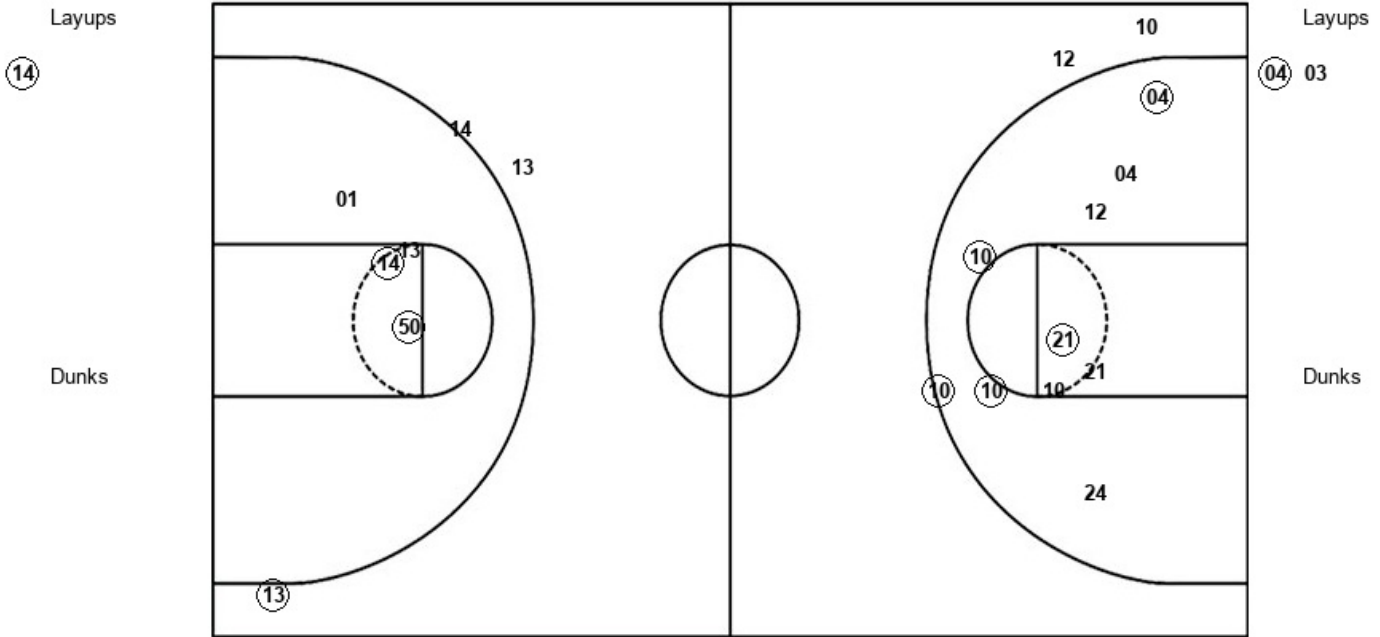
NWU : Period 2	Made	Att	Pct
Layups	3	4	75.0
Dunks	0	0	0
2PT Field Goals	6	14	42.9
3PT Field Goals	2	4	50.0
Total Field Goals	8	18	44.4

Official Shot Chart
Northwestern vs Indiana
 PERIOD 3 Shots
 January 17, 2019 at Simon Skjodt Assembly Hall - Bloomington, IN



Indiana

Northwestern



IND : Period 3	Made	Att	Pct
Layups	1	1	100.0
Dunks	0	0	0
2PT Field Goals	3	5	60.0
3PT Field Goals	1	3	33.3
Total Field Goals	4	8	50.0

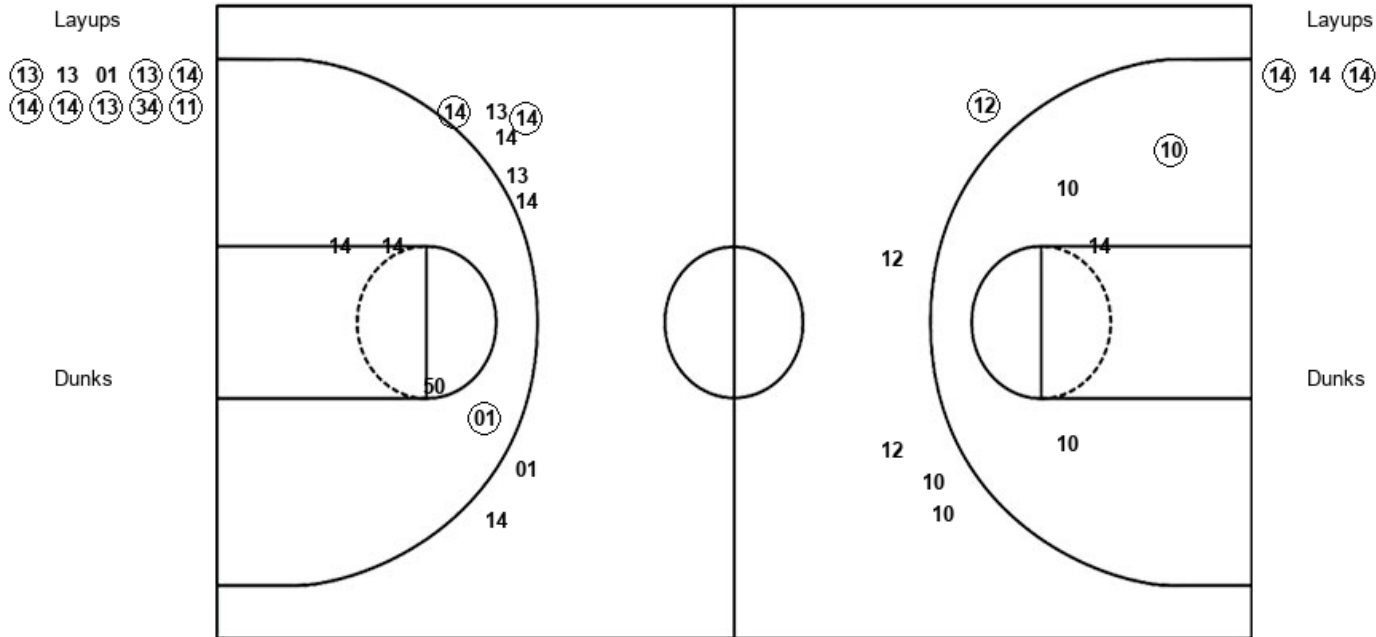
NWU : Period 3	Made	Att	Pct
Layups	1	2	50.0
Dunks	0	0	0
2PT Field Goals	6	12	50.0
3PT Field Goals	0	2	00.0
Total Field Goals	6	14	42.9

Official Shot Chart
Northwestern vs Indiana
PERIOD 4 Shots
 January 17, 2019 at Simon Skjodt Assembly Hall - Bloomington, IN



Indiana

Northwestern



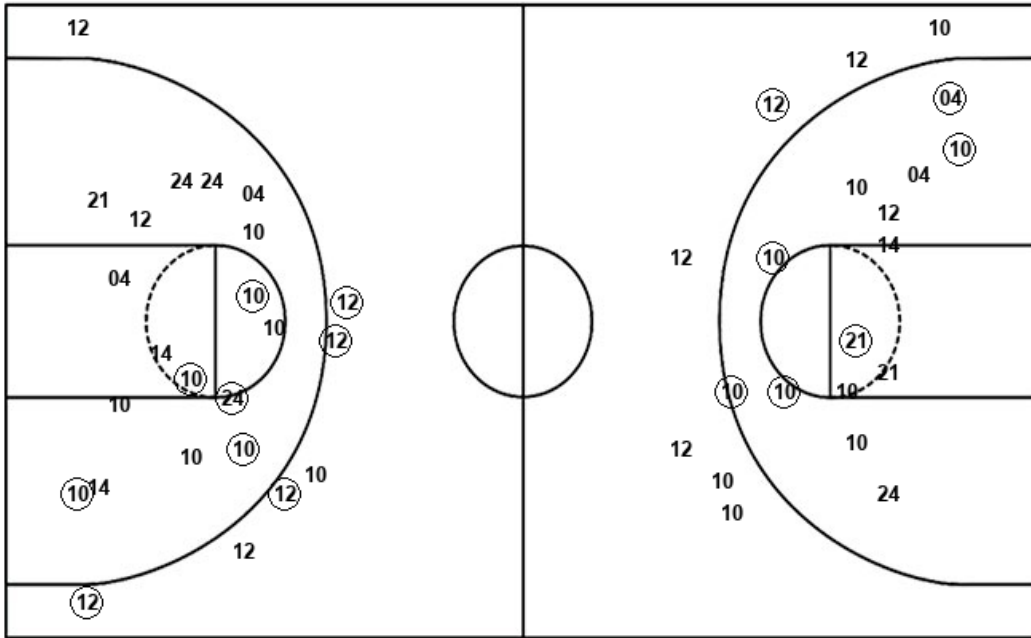
IND : Period 4	Made	Att	Pct
Layups	8	10	80.0
Dunks	0	0	0
2PT Field Goals	9	14	64.3
3PT Field Goals	2	8	25.0
Total Field Goals	11	22	50.0

NWU : Period 4	Made	Att	Pct
Layups	2	3	66.7
Dunks	0	0	0
2PT Field Goals	3	7	42.9
3PT Field Goals	1	5	20.0
Total Field Goals	4	12	33.3

Official Shot Chart
Northwestern vs Indiana
 Northwestern Team Shots
 January 17, 2019 at Simon Skjodt Assembly Hall - Bloomington, IN



Layups



Layups

(14) (03) 21 (21) (03)
 (03) (12) 21 (04) 03
 (14) 14 (14)

Dunks

Dunks

NWU : Period 1	Made	Att	Pct
Layups	3	4	75.0
Dunks	0	0	0
2PT Field Goals	5	11	45.5
3PT Field Goals	2	3	66.7
Total Field Goals	7	14	50.0

NWU : Period 2	Made	Att	Pct
Layups	3	4	75.0
Dunks	0	0	0
2PT Field Goals	6	14	42.9
3PT Field Goals	2	4	50.0
Total Field Goals	8	18	44.4

NWU : Period 3	Made	Att	Pct
Layups	1	2	50.0
Dunks	0	0	0
2PT Field Goals	6	12	50.0
3PT Field Goals	0	2	00.0
Total Field Goals	6	14	42.9

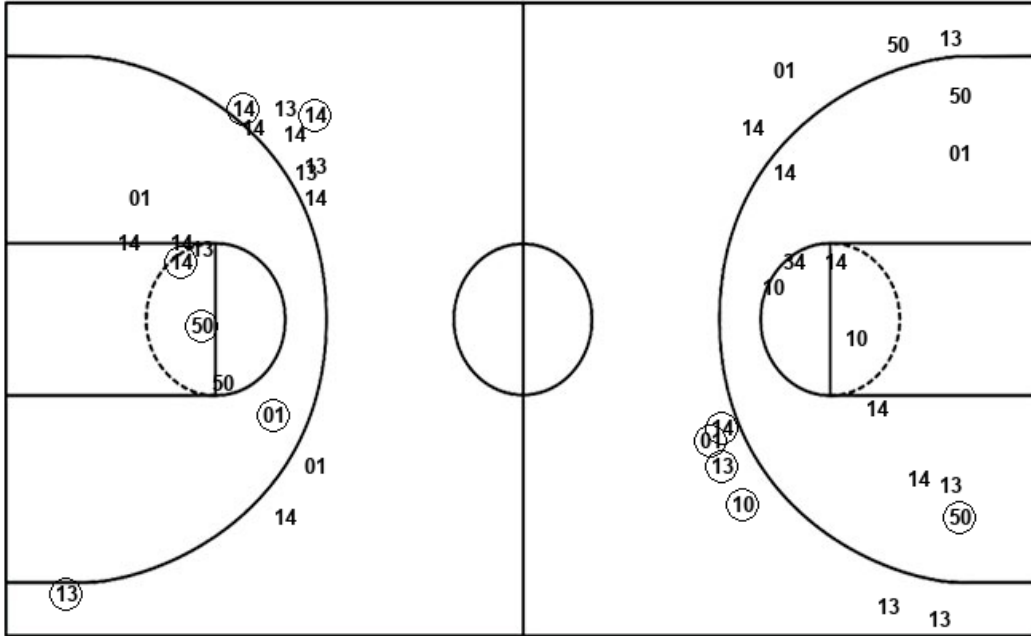
NWU : Period 4	Made	Att	Pct
Layups	2	3	66.7
Dunks	0	0	0
2PT Field Goals	3	7	42.9
3PT Field Goals	1	5	20.0
Total Field Goals	4	12	33.3

**Official Shot Chart
Northwestern vs Indiana
Indiana Team Shots**
January 17, 2019 at Simon Skjodt Assembly Hall - Bloomington, IN



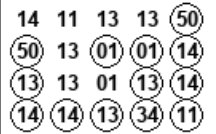
Layups

Dunks



Layups

Dunks



IND : Period 1	Made	Att	Pct
Layups	0	4	00.0
Dunks	0	0	0
2PT Field Goals	1	9	11.1
3PT Field Goals	2	6	33.3
Total Field Goals	3	15	20.0

IND : Period 2	Made	Att	Pct
Layups	4	5	80.0
Dunks	0	0	0
2PT Field Goals	4	11	36.4
3PT Field Goals	2	4	50.0
Total Field Goals	6	15	40.0

IND : Period 3	Made	Att	Pct
Layups	1	1	100.0
Dunks	0	0	0
2PT Field Goals	3	5	60.0
3PT Field Goals	1	3	33.3
Total Field Goals	4	8	50.0

IND : Period 4	Made	Att	Pct
Layups	8	10	80.0
Dunks	0	0	0
2PT Field Goals	9	14	64.3
3PT Field Goals	2	8	25.0
Total Field Goals	11	22	50.0