

FINAL SCORE



Butler

46



Indiana

66

December 06, 2018 • Simon Skjodt Assembly Hall - Bloomington, IN

FINAL STATISTICS

Official Box Score
Butler vs Indiana
Game Totals -- Final Statistics
December 06, 2018 at Simon Skjodt Assembly Hall - Bloomington, IN



Butler 46

No.	Player	S	Pts	FG	3FG	FT	OR	DR	TR	PF	A	TO	Blk	Stl	Min	+/-
11	WEAVER, MICHELLE		5	2-7	0-3	1-2	1	3	4	4	4	1	1	2	31	-14
12	THOMAS, ASHANTI		4	2-7	0-0	0-0	1	2	3	3	0	3	1	1	16	-4
15	JENNINGS, WHITNEY		13	4-14	1-6	4-5	0	4	4	2	1	2	0	5	38	-15
24	SPOLYAR, KRISTEN		9	3-9	1-5	2-2	1	0	1	3	1	3	0	1	23	-17
34	SCHICKEL, TORI		13	6-12	0-0	1-2	7	6	13	2	0	4	1	1	36	-19
01	ROBINSON, JAMILYN		0	0-1	0-0	0-0	0	0	0	0	0	0	0	0	1	0
04	BUFORD, TAYLOR		0	0-0	0-0	0-0	0	0	0	0	0	0	0	0	1	0
05	SEXTON, EMILIA		0	0-3	0-3	0-0	1	1	2	1	1	0	0	1	10	-3
10	CACERES, NAIRA		0	0-5	0-4	0-0	0	3	3	0	1	2	0	2	24	-17
14	HUMPHREY, SARAH		0	0-0	0-0	0-0	0	0	0	0	0	0	0	0	1	0
22	STRONG, KATHERINE		0	0-1	0-0	0-0	0	0	0	2	0	1	0	3	11	-2
23	BREY, SHAE		2	1-2	0-0	0-0	0	0	0	1	0	0	0	0	6	-9
25	ROSS, ELLEN		0	0-0	0-0	0-0	0	1	1	0	0	0	0	0	1	0
	TEAM						2	1	3	0		2				
TOTALS			46	18-61	2-21	8-11	13	21	34	18	8	18	3	16	198	

Shooting By Period

Period	FG	FG%	3FG	3FG%	FT	FT%
1st Qtr	4-15	27%	1-4	25%	0-0	0%
2nd Qtr	6-18	33%	1-7	14%	1-1	100%
3rd Qtr	3-14	21%	0-7	00%	4-6	67%
4th Qtr	5-14	36%	0-3	00%	3-4	75%
1st Half	10-33	30%	2-11	18%	1-1	100%
2nd Half	8-28	29%	0-10	00%	7-10	70%
Game	18-61	29.5%	2-21	09.5%	8-11	72.7%

Last FG: 4th-01:29
Biggest Run: 8-0
Largest lead: By 0 at 1-08:44
Technical Fouls: None.

Indiana 66

No.	Player	S	Pts	FG	3FG	FT	OR	DR	TR	PF	A	TO	Blk	Stl	Min	+/-
01	YEANEY, BENDU		13	5-11	0-1	3-5	3	3	6	3	3	3	1	2	32	20
11	ROYSTER, KYM		4	2-3	0-0	0-0	0	4	4	3	0	1	1	0	25	12
13	PENN, JAELYNN		6	2-10	0-7	2-2	0	0	0	0	1	4	1	3	27	18
14	PATBERG, ALI		16	4-11	2-6	6-6	0	5	5	2	1	7	1	1	36	18
50	WISE, BRENNNA		22	8-11	2-3	4-4	5	6	11	1	2	0	0	2	40	19
02	WARTHEN, KEYANNA		2	1-2	0-1	0-0	0	1	1	1	0	2	0	0	11	3
05	WITHROW, GRACE		0	0-1	0-1	0-0	0	0	0	0	0	0	0	0	1	0
12	MARCHESE, LINSEY		1	0-1	0-0	1-2	1	1	2	4	0	0	0	0	15	9
34	BERGER, GRACE		2	1-3	0-0	0-0	0	5	5	0	0	1	0	0	14	1
	TEAM						1	5	6	0		0				
TOTALS			66	23-53	4-19	16-19	10	30	40	14	7	18	4	8	198	

Shooting By Period

Period	FG	FG%	3FG	3FG%	FT	FT%
1st Qtr	7-17	41%	0-2	00%	4-4	100%
2nd Qtr	7-15	47%	2-6	33%	1-4	25%
3rd Qtr	2-8	25%	0-5	00%	11-11	100%
4th Qtr	7-13	54%	2-6	33%	0-0	0%
1st Half	14-32	44%	2-8	25%	5-8	63%
2nd Half	9-21	43%	2-11	18%	11-11	100%
Game	23-53	43.4%	4-19	21.1%	16-19	84.2%

Last FG: 4th-01:51
Biggest Run: 9-0
Largest lead: By 25 at 4-06:32
Technical Fouls: None.

Game Notes:

Officials: Cameron Inouye, Brian Hall, Mark Berger
Attendance: 3652

Start Time: 2018-12-06 00:01:26
End Time: 2018-12-06 01:44:12
Game Duration: 102

Score	1st	2nd	3rd	4th	TOT
BUT	9	14	10	13	46
IND	18	17	15	16	66

BUT led for 0:00. IND led for 38:01.
Game was tied for 1:39.
Times tied: 2 Lead Changes: 0

Points from	BUT	IND
In the Paint	30	30
Off Turns	15	14
2nd Chance	8	11
Fast Break	13	10
Bench	2	5

Official Box Score
Butler vs Indiana
First Half Statistics Only
December 06, 2018 at Simon Skjodt Assembly Hall - Bloomington, IN



Butler 23

No.	Player	S	Pts	FG	3FG	FT	OR	DR	TR	PF	A	TO	Blk	Stl	Min	+/-
10	CACERES, NAIRA	0	0-1	0-1	0-0	0	1	1	0	0	1	0	1	12	-9	
11	WEAVER, MICHELLE	0	0-3	0-2	0-0	0	2	2	2	3	0	1	1	16	-9	
12	THOMAS, ASHANTI	4	2-6	0-0	0-0	1	2	3	2	0	2	0	0	11	-3	
14	HUMPHREY, SARAH	0	0-0	0-0	0-0	0	0	0	0	0	0	0	0	0	0	
15	JENNINGS, WHITNEY	4	1-8	1-4	1-1	0	1	1	0	0	1	0	1	19	-7	
22	STRONG, KATHERINE	0	0-0	0-0	0-0	0	0	0	0	0	1	0	0	4	-4	
23	BREY, SHAE	0	0-0	0-0	0-0	0	0	0	1	0	0	0	0	2	-7	
24	SPOLYAR, KRISTEN	5	2-7	1-4	0-0	1	0	1	1	1	1	0	1	15	-9	
25	ROSS, ELLEN	0	0-0	0-0	0-0	0	0	0	0	0	0	0	0	0	0	
34	SCHICKEL, TORI	10	5-8	0-0	0-0	5	4	9	1	0	2	0	0	20	-12	
01	ROBINSON, JAMILYN	0	0-0	0-0	0-0	0	0	0	0	0	0	0	0	0	0	
04	BUFORD, TAYLOR	0	0-0	0-0	0-0	0	0	0	0	0	0	0	0	0	0	
05	SEXTON, EMILIA	0	0-0	0-0	0-0	0	0	0	0	0	0	0	0	0	0	
	TEAM	0	0-0	0-0	0-0	2	1	3	0	0	2	0	0	0	0	
TOTALS		23	10-33	2-11	1-1	0	0	20	7	4	10	1	4	100		

Shooting By Period

Period	FG	FG%	3FG	3FG%	FT	FT%
1st Qtr	4-15	27%	1-4	25%	0-0	0%
2nd Qtr	6-18	33%	1-7	14%	1-1	100%
1st Half	10-33	30%	2-11	18%	1-1	100%
Game	18-61	29.5%	2-21	09.5%	8-11	72.7%

Last FG Half: BUT 2nd-01:09

Indiana 35

No.	Player	S	Pts	FG	3FG	FT	OR	DR	TR	PF	A	TO	Blk	Stl	Min	+/-
01	YEANEY, BENDU	8	4-10	0-1	0-2	2	0	2	0	1	1	1	1	15	8	
02	WARTHEN, KEYANNA	0	0-0	0-0	0-0	0	0	0	0	0	0	0	0	2	2	
05	WITHROW, GRACE	0	0-0	0-0	0-0	0	0	0	0	0	0	0	0	0	0	
11	ROYSTER, KYM	0	0-0	0-0	0-0	0	1	1	1	0	1	1	0	11	4	
12	MARCHESE, LINSEY	1	0-1	0-0	1-2	1	0	1	2	0	0	0	0	9	8	
13	PENN, JAELYNN	4	2-6	0-3	0-0	0	0	0	0	1	1	1	1	16	9	
14	PATBERG, ALI	7	2-6	1-3	2-2	0	2	2	1	1	2	1	1	18	10	
34	BERGER, GRACE	2	1-2	0-0	0-0	0	4	4	0	0	0	0	0	9	7	
50	WISE, BRENNNA	13	5-7	1-1	2-2	4	2	6	0	0	0	0	1	20	12	
	TEAM	0	0-0	0-0	0-0	1	4	5	0	0	0	0	0	0	0	
TOTALS		35	14-32	2-8	5-8	0	0	21	4	3	5	4	4	100		

Shooting By Period

Period	FG	FG%	3FG	3FG%	FT	FT%
1st Qtr	7-17	41%	0-2	00%	4-4	100%
2nd Qtr	7-15	47%	2-6	33%	1-4	25%
1st Half	14-32	44%	2-8	25%	5-8	63%
Game	23-53	43.4%	4-19	21.1%	16-19	84.2%

Last FG Half: IND 2nd-01:29

Game Notes:

Officials: Cameron Inouye, Brian Hall, Mark Berger
 Attendance: 3652

Start Time: 2018-12-06 00:01:26
 End Time: 2018-12-06 01:44:12
 Game Duration: 102

Score	1st	2nd	3rd	4th	TOT
BUT	9	14	10	13	46
IND	18	17	15	16	66

Points from (This Period)	BUT	IND
In the Paint	14	18
Off Turns	6	10
2nd Chance	4	9
Fast Break	4	6
Bench	0	3

Official Box Score
Butler vs Indiana
First Quarter Statistics Only
December 06, 2018 at Simon Skjodt Assembly Hall - Bloomington, IN



Butler 9

No.	Player	S	Pts	FG	3FG	FT	OR	DR	TR	PF	A	TO	Blk	Stl	Min	+/-
11	WEAVER, MICHELLE		0	0-1	0-0	0-0	0	0	0	1	1	0	0	0	8	-7
12	THOMAS, ASHANTI		2	1-3	0-0	0-0	0	1	1	1	0	1	0	0	6	-4
15	JENNINGS, WHITNEY		0	0-2	0-0	0-0	0	1	1	0	0	1	0	1	10	-9
24	SPOLYAR, KRISTEN		3	1-4	1-3	0-0	1	0	1	0	0	1	0	0	7	-9
34	SCHICKEL, TORI		4	2-4	0-0	0-0	2	3	5	1	0	1	0	0	10	-9
01	ROBINSON, JAMILYN		0	0-0	0-0	0-0	0	0	0	0	0	0	0	0	0	0
04	BUFORD, TAYLOR		0	0-0	0-0	0-0	0	0	0	0	0	0	0	0	0	0
05	SEXTON, EMILIA		0	0-0	0-0	0-0	0	0	0	0	0	0	0	0	0	0
10	CACERES, NAIRA		0	0-1	0-1	0-0	0	1	1	0	0	0	0	0	5	-2
14	HUMPHREY, SARAH		0	0-0	0-0	0-0	0	0	0	0	0	0	0	0	0	0
22	STRONG, KATHERINE		0	0-0	0-0	0-0	0	0	0	0	0	1	0	0	2	-3
23	BREY, SHAE		0	0-0	0-0	0-0	0	0	0	1	0	0	0	0	1	-2
25	ROSS, ELLEN		0	0-0	0-0	0-0	0	0	0	0	0	0	0	0	0	0
	TEAM						1	1	2	0		1				
TOTALS			9	4-15	1-4	0-0	0	0	11	4	1	6	0	1	50	

Shooting By Period

Period	FG	FG%	3FG	3FG%	FT	FT%
1st Qtr	4-15	27%	1-4	25%	0-0	0%
2nd Qtr	6-18	33%	1-7	14%	1-1	100%
1st Half	4-15	27%	1-4	25%	0-0	0%
1st Half	10-33	30%	2-11	18%	1-1	100%
Game	18-61	29.5%	2-21	09.5%	8-11	72.7%

Indiana 18

No.	Player	S	Pts	FG	3FG	FT	OR	DR	TR	PF	A	TO	Blk	Stl	Min	+/-
01	YEANEY, BENDU		8	4-7	0-1	0-0	1	0	1	0	0	0	1	0	9	9
11	ROYSTER, KYM		0	0-0	0-0	0-0	0	0	0	0	0	0	1	0	6	8
13	PENN, JAELYNN		0	0-2	0-1	0-0	0	0	0	0	0	0	0	1	7	7
14	PATBERG, ALI		2	0-2	0-0	2-2	0	1	1	0	1	1	0	0	8	7
50	WISE, BRENNNA		6	2-4	0-0	2-2	1	2	3	0	0	0	0	1	10	9
02	WARTHEN, KEYANNA		0	0-0	0-0	0-0	0	0	0	0	0	0	0	0	2	2
05	WITHROW, GRACE		0	0-0	0-0	0-0	0	0	0	0	0	0	0	0	0	0
12	MARCHESE, LINSEY		0	0-1	0-0	0-0	1	0	1	1	0	0	0	0	4	1
34	BERGER, GRACE		2	1-1	0-0	0-0	0	2	2	0	0	0	0	0	4	2
	TEAM						0	2	2	0		0				
TOTALS			18	7-17	0-2	4-4	0	0	10	1	1	1	2	2	50	

Shooting By Period

Period	FG	FG%	3FG	3FG%	FT	FT%
1st Qtr	7-17	41%	0-2	00%	4-4	100%
2nd Qtr	7-15	47%	2-6	33%	1-4	25%
1st Half	7-17	41%	0-2	00%	4-4	100%
1st Half	14-32	44%	2-8	25%	5-8	63%
Game	23-53	43.4%	4-19	21.1%	16-19	84.2%

Game Notes:

Officials: Cameron Inouye, Brian Hall, Mark Berger
Attendance: 3652

Start Time: 2018-12-06 00:01:26
End Time: 2018-12-06 01:44:12
Game Duration: 102

Score	1st	2nd	3rd	4th	TOT
BUT	9	14	10	13	46
IND	18	17	15	16	66

Points from (This Period)	BUT	IND
In the Paint	6	8
Off Turns	0	8
2nd Chance	2	2
Fast Break	0	2
Bench	0	2

**Official Play-By-Play
Butler vs Indiana
First Quarter**

December 06, 2018 at Simon Skjodt Assembly Hall - Bloomington, IN



Period 1

Starters:

Butler: 11 WEAVER,MICHELLE; 12 THOMAS,ASHANTI; 15 JENNINGS,WHITNEY; 24 SPOLYAR,KRISTEN; 34 SCHICKEL,TORI;
Indiana: 1 YEANEY,BENDU; 11 ROYSTER,KYM; 13 PENN,JAELYNN; 14 PATBERG,ALI; 50 WISE,BRENNA;

Time	VISITORS: Butler	Score	Margin	HOME: Indiana
09:38	MISSED 3PTR by SPOLYAR, KRISTEN			
09:33	REBOUND (OFF) by SPOLYAR, KRISTEN			
09:32	MISSED JUMPER by SPOLYAR, KRISTEN			
09:32				REBOUND (DEF) by TEAM
09:30				SUB OUT: ROYSTER, KYM
09:30				SUB IN: MARCHESE, LINSEY
09:13		2-0	H 2	GOOD! JUMPER by YEANEY, BENDU
08:44	GOOD! LAYUP by THOMAS, ASHANTI	2-2	T	
08:33				SUB OUT: MARCHESE, LINSEY
08:33				SUB IN: ROYSTER, KYM
08:25				MISSED JUMPER by PATBERG, ALI
08:20	REBOUND (DEF) by SCHICKEL, TORI			
08:11	MISSED LAYUP by WEAVER, MICHELLE			
08:11	REBOUND (OFF) by SCHICKEL, TORI			
08:08	MISSED JUMPER by THOMAS, ASHANTI			
08:04				REBOUND (DEF) by PATBERG, ALI
07:56		4-2	H 2	GOOD! JUMPER by YEANEY, BENDU [PNT]
07:34	MISSED LAYUP by JENNINGS, WHITNEY			
07:30				REBOUND (DEF) by WISE, BRENNNA
07:23	FOUL (PERSONAL) by WEAVER, MICHELLE			
07:23		5-2	H 3	GOOD! FT by PATBERG, ALI [FB]
07:23		6-2	H 4	GOOD! FT by PATBERG, ALI [FB]
07:12	TURNOVER (BADPASS) by JENNINGS, WHITNEY			
07:12	SUB OUT: THOMAS, ASHANTI			
07:12	SUB IN: STRONG, KATHERINE			
06:59				MISSED 3PTR by PENN, JAELYNN
06:55	REBOUND (DEF) by TEAM			
06:35	GOOD! 3PTR by SPOLYAR, KRISTEN	6-5	H 1	
06:35	ASSIST by WEAVER, MICHELLE			
06:22		8-5	H 3	GOOD! JUMPER by YEANEY, BENDU [PNT]
06:12	TURNOVER (BADPASS) by SPOLYAR, KRISTEN			
06:12				STEAL by PENN, JAELYNN
05:59				MISSED LAYUP by PENN, JAELYNN
05:56				REBOUND (OFF) by WISE, BRENNNA
05:55		10-5	H 5	GOOD! LAYUP by WISE, BRENNNA
05:43	TURNOVER (BADPASS) by STRONG, KATHERINE			
05:43				SUB OUT: PENN, JAELYNN
05:43				SUB IN: BERGER, GRACE
05:31		12-5	H 7	GOOD! JUMPER by YEANEY, BENDU
05:17	MISSED LAYUP by JENNINGS, WHITNEY			
05:17				REBOUND (DEF) by BERGER, GRACE
05:17				BLOCK by ROYSTER, KYM
05:06				MISSED LAYUP by YEANEY, BENDU
05:03	REBOUND (DEF) by SCHICKEL, TORI			
05:00				
05:00				SUB OUT: ROYSTER, KYM
05:00				SUB IN: MARCHESE, LINSEY
04:50	SUB OUT: STRONG, KATHERINE			
04:50	SUB IN: CACERES, NAIRA			
04:50	SUB OUT: SPOLYAR, KRISTEN			
04:50	SUB IN: THOMAS, ASHANTI			
04:33		14-5	H 9	GOOD! JUMPER by BERGER, GRACE [PNT]
04:33	TURNOVER (3SEC) by STRONG, KATHERINE			
04:20	MISSED JUMPER by THOMAS, ASHANTI			
04:19	REBOUND (OFF) by TEAM			
04:14	GOOD! LAYUP by SCHICKEL, TORI	14-7	H 7	
03:56				MISSED 3PTR by YEANEY, BENDU
03:52	REBOUND (DEF) by CACERES, NAIRA			
03:41	MISSED 3PTR by CACERES, NAIRA			
03:37				REBOUND (DEF) by BERGER, GRACE
03:31				MISSED JUMPER by PATBERG, ALI
03:28	REBOUND (DEF) by THOMAS, ASHANTI			
03:08	MISSED LAYUP by SCHICKEL, TORI			
03:07				REBOUND (DEF) by WISE, BRENNNA
03:07	FOUL (PERSONAL) by SCHICKEL, TORI			
03:07				SUB OUT: YEANEY, BENDU
03:07				SUB IN: PENN, JAELYNN
02:54				MISSED JUMPER by WISE, BRENNNA
02:51				REBOUND (OFF) by MARCHESE, LINSEY
02:50				MISSED JUMPER by MARCHESE, LINSEY

Time	VISITORS: Butler	Score	Margin	HOME: Indiana
02:46	REBOUND (DEF) by SCHICKEL, TORI			
02:42				FOUL (PERSONAL) by MARCHESE, LINSEY
02:42				SUB OUT: MARCHESE, LINSEY
02:42				SUB IN: ROYSTER, KYM
02:37	GOOD! JUMPER by SCHICKEL, TORI [PNT]	14-9	H 5	
02:19				TURNOVER (BADPASS) by PATBERG, ALI
02:19	STEAL by JENNINGS, WHITNEY			
02:05	TURNOVER (LOSTBALL) by SCHICKEL, TORI			
02:05				STEAL by WISE, BRENNNA
02:04				TIMEOUT 30SEC
01:54		16-9	H 7	GOOD! JUMPER by WISE, BRENNNA
01:54				ASSIST by PATBERG, ALI
01:40	TURNOVER (TRAVEL) by THOMAS, ASHANTI			
01:40				SUB OUT: PATBERG, ALI
01:40				SUB IN: YEANEY, BENDU
01:40				SUB OUT: BERGER, GRACE
01:40				SUB IN: WARTHEN, KEYANNA
01:40	SUB OUT: WEAVER, MICHELLE			
01:40	SUB IN: SPOLYAR, KRISTEN			
01:26				MISSED LAYUP by YEANEY, BENDU
01:23				REBOUND (OFF) by YEANEY, BENDU
01:15	FOUL (PERSONAL) by THOMAS, ASHANTI			
01:15	SUB OUT: THOMAS, ASHANTI			
01:15	SUB IN: BREY, SHAE			
01:11				MISSED JUMPER by WISE, BRENNNA
01:08	REBOUND (DEF) by JENNINGS, WHITNEY			
00:54	MISSED 3PTR by SPOLYAR, KRISTEN			
00:50				REBOUND (DEF) by TEAM
00:22	FOUL (PERSONAL) by BREY, SHAE			
00:22		17-9	H 8	GOOD! FT by WISE, BRENNNA
00:22				SUB OUT: ROYSTER, KYM
00:22				SUB IN: MARCHESE, LINSEY
00:22		18-9	H 9	GOOD! FT by WISE, BRENNNA
00:03	MISSED LAYUP by SCHICKEL, TORI			
00:03				BLOCK by YEANEY, BENDU
00:00	REBOUND (OFF) by SCHICKEL, TORI			

Butler 9, Indiana 18

Points from (This Period)	BUT	IND
In the Paint	6	8
Off Turns	0	8
2nd Chance	2	2
Fast Break	0	2
Bench	0	2

Official Box Score
Butler vs Indiana
Second Quarter Statistics Only
December 06, 2018 at Simon Skjodt Assembly Hall - Bloomington, IN



Butler 14

No.	Player	S	Pts	FG	3FG	FT	OR	DR	TR	PF	A	TO	Blk	Stl	Min	+/-
11	WEAVER, MICHELLE		0	0-2	0-2	0-0	0	2	2	1	2	0	1	1	8	-2
12	THOMAS, ASHANTI		2	1-3	0-0	0-0	1	1	2	1	0	1	0	0	5	1
15	JENNINGS, WHITNEY		4	1-6	1-4	1-1	0	0	0	0	0	0	0	0	9	2
24	SPOLYAR, KRISTEN		2	1-3	0-1	0-0	0	0	0	1	1	0	0	1	8	0
34	SCHICKEL, TORI		6	3-4	0-0	0-0	3	1	4	0	0	1	0	0	10	-3
01	ROBINSON, JAMILYN		0	0-0	0-0	0-0	0	0	0	0	0	0	0	0	0	0
04	BUFORD, TAYLOR		0	0-0	0-0	0-0	0	0	0	0	0	0	0	0	0	0
05	SEXTON, EMILIA		0	0-0	0-0	0-0	0	0	0	0	0	0	0	0	0	0
10	CACERES, NAIRA		0	0-0	0-0	0-0	0	0	0	0	0	1	0	1	7	-7
14	HUMPHREY, SARAH		0	0-0	0-0	0-0	0	0	0	0	0	0	0	0	0	0
22	STRONG, KATHERINE		0	0-0	0-0	0-0	0	0	0	0	0	0	0	0	2	-1
23	BREY, SHAE		0	0-0	0-0	0-0	0	0	0	0	0	0	0	0	1	-5
25	ROSS, ELLEN		0	0-0	0-0	0-0	0	0	0	0	0	0	0	0	0	0
	TEAM						1	0	1	0		1				
TOTALS			14	6-18	1-7	1-1	0	0	9	3	3	4	1	3	50	

Shooting By Period

Period	FG	FG%	3FG	3FG%	FT	FT%
3rd Qtr	3-14	21%	0-7	00%	4-6	67%
4th Qtr	5-14	36%	0-3	00%	3-4	75%
2nd Half	6-18	33%	1-7	14%	1-1	100%
2nd Half	8-28	29%	0-10	00%	7-10	70%
Game	18-61	29.5%	2-21	09.5%	8-11	72.7%

Indiana 17

No.	Player	S	Pts	FG	3FG	FT	OR	DR	TR	PF	A	TO	Blk	Stl	Min	+/-
01	YEANEY, BENDU		0	0-3	0-0	0-2	1	0	1	0	1	1	0	1	6	-1
11	ROYSTER, KYM		0	0-0	0-0	0-0	0	1	1	1	0	1	0	0	5	-4
13	PENN, JAELYNN		4	2-4	0-2	0-0	0	0	0	0	1	1	1	0	9	2
14	PATBERG, ALI		5	2-4	1-3	0-0	0	1	1	1	0	1	1	1	10	3
50	WISE, BRENNNA		7	3-3	1-1	0-0	3	0	3	0	0	0	0	0	10	3
02	WARTHEN, KEYANNA		0	0-0	0-0	0-0	0	0	0	0	0	0	0	0	0	0
05	WITHROW, GRACE		0	0-0	0-0	0-0	0	0	0	0	0	0	0	0	0	0
12	MARCHESE, LINSEY		1	0-0	0-0	1-2	0	0	0	1	0	0	0	0	5	7
34	BERGER, GRACE		0	0-1	0-0	0-0	0	2	2	0	0	0	0	0	5	5
	TEAM						1	2	3	0		0				
TOTALS			17	7-15	2-6	1-4	0	0	11	3	2	4	2	2	50	

Shooting By Period

Period	FG	FG%	3FG	3FG%	FT	FT%
3rd Qtr	2-8	25%	0-5	00%	11-11	100%
4th Qtr	7-13	54%	2-6	33%	0-0	0%
2nd Half	7-15	47%	2-6	33%	1-4	25%
2nd Half	9-21	43%	2-11	18%	11-11	100%
Game	23-53	43.4%	4-19	21.1%	16-19	84.2%

Game Notes:

Officials: Cameron Inouye, Brian Hall, Mark Berger
Attendance: 3652

Start Time: 2018-12-06 00:01:26
End Time: 2018-12-06 01:44:12
Game Duration: 102

Score	1st	2nd	3rd	4th	TOT
BUT	9	14	10	13	46
IND	18	17	15	16	66

Points from (This Period)	BUT	IND
In the Paint	8	10
Off Turns	6	2
2nd Chance	2	7
Fast Break	4	4
Bench	0	1

Official Play-By-Play
Butler vs Indiana
Second Quarter
December 06, 2018 at Simon Skjodt Assembly Hall - Bloomington, IN



Period 2

Starters:

Butler: 11 WEAVER, MICHELLE; 12 THOMAS, ASHANTI; 15 JENNINGS, WHITNEY; 24 SPOLYAR, KRISTEN; 34 SCHICKEL, TORI;

Indiana: 1 YEANEY, BENDU; 11 ROYSTER, KYM; 13 PENN, JAELYNN; 14 PATBERG, ALI; 50 WISE, BRENNNA;

Time	VISITORS: Butler	Score	Margin	HOME: Indiana
10:00				SUB OUT: WARTHEN, KEYANNA
10:00				SUB IN: PATBERG, ALI
09:54		20-9	H 11	GOOD! LAYUP by PENN, JAELYNN
09:35	MISSED 3PTR by WEAVER, MICHELLE			
09:31				REBOUND (DEF) by PATBERG, ALI
09:25		23-9	H 14	GOOD! 3PTR by PATBERG, ALI
09:16	TIMEOUT 30SEC			
09:16				
09:16	SUB OUT: BREY, SHAE			
09:16	SUB IN: JENNINGS, WHITNEY			
08:54	MISSED 3PTR by JENNINGS, WHITNEY			
08:54				BLOCK by PATBERG, ALI
08:48	REBOUND (OFF) by SCHICKEL, TORI			
08:46	MISSED 3PTR by JENNINGS, WHITNEY			
08:45	REBOUND (OFF) by TEAM			
08:45	TURNOVER (SHOTCLOCK) by			
08:38	FOUL (PERSONAL) by SPOLYAR, KRISTEN			
08:15				MISSED LAYUP by YEANEY, BENDU
08:12	REBOUND (DEF) by WEAVER, MICHELLE			
08:02	GOOD! LAYUP by SCHICKEL, TORI	23-11	H 12	
08:02	ASSIST by SPOLYAR, KRISTEN			
07:56				SUB OUT: MARCHESE, LINSEY
07:56				SUB IN: ROYSTER, KYM
07:41				MISSED LAYUP by YEANEY, BENDU
07:41	BLOCK by WEAVER, MICHELLE			
07:41				REBOUND (OFF) by TEAM
07:38				MISSED 3PTR by PENN, JAELYNN
07:34				REBOUND (OFF) by WISE, BRENNNA
07:34		25-11	H 14	GOOD! LAYUP by WISE, BRENNNA
07:10	GOOD! JUMPER by SCHICKEL, TORI	25-13	H 12	
06:58				TURNOVER (TRAVEL) by YEANEY, BENDU
06:57	SUB OUT: CACERES, NAIRA			
06:57	SUB IN: THOMAS, ASHANTI			
06:35	GOOD! JUMPER by THOMAS, ASHANTI [PNT]	25-15	H 10	
06:35	ASSIST by WEAVER, MICHELLE			
06:22				TURNOVER (LOSTBALL) by PENN, JAELYNN
06:22	STEAL by WEAVER, MICHELLE			
06:18	GOOD! 3PTR by JENNINGS, WHITNEY [FB]	25-18	H 7	
06:18	ASSIST by WEAVER, MICHELLE			
06:18				FOUL (PERSONAL) by ROYSTER, KYM
06:18				SUB OUT: PENN, JAELYNN
06:18				SUB IN: BERGER, GRACE
06:18	GOOD! FT by JENNINGS, WHITNEY [FB]	25-19	H 6	
06:05				MISSED JUMPER by YEANEY, BENDU
06:02				REBOUND (OFF) by WISE, BRENNNA
06:01		27-19	H 8	GOOD! LAYUP by WISE, BRENNNA
05:38	TURNOVER (BADPASS) by SCHICKEL, TORI			
05:38				STEAL by YEANEY, BENDU
05:34	FOUL (PERSONAL) by WEAVER, MICHELLE			
05:34				MISSED FT by YEANEY, BENDU
05:34				REBOUND (OFF) by TEAM
05:34				MISSED FT by YEANEY, BENDU
05:34	REBOUND (DEF) by THOMAS, ASHANTI			
05:26				SUB OUT: YEANEY, BENDU
05:26				SUB IN: PENN, JAELYNN
05:18	TURNOVER (TRAVEL) by THOMAS, ASHANTI			
04:56				MISSED 3PTR by PENN, JAELYNN
04:52	REBOUND (DEF) by WEAVER, MICHELLE			
04:42	MISSED 3PTR by WEAVER, MICHELLE			
04:39	REBOUND (OFF) by THOMAS, ASHANTI			
04:36	MISSED JUMPER by THOMAS, ASHANTI			
04:32				REBOUND (DEF) by BERGER, GRACE
04:25				TURNOVER (LOSTBALL) by ROYSTER, KYM
04:25	STEAL by SPOLYAR, KRISTEN			
04:21				FOUL (PERSONAL) by PATBERG, ALI
04:21				SUB OUT: ROYSTER, KYM
04:21				SUB IN: MARCHESE, LINSEY
04:21	SUB OUT: SPOLYAR, KRISTEN			
04:21	SUB IN: CACERES, NAIRA			
04:14	TURNOVER (BADPASS) by CACERES, NAIRA			

Time	VISITORS: Butler	Score	Margin	HOME: Indiana
04:14				STEAL by PATBERG, ALI
04:05		29-19	H 10	GOOD! LAYUP by PATBERG, ALI [FB]
03:45	MISSED LAYUP by JENNINGS, WHITNEY			
03:42				REBOUND (DEF) by BERGER, GRACE
03:31				TURNOVER (LOSTBALL) by PATBERG, ALI
03:31	STEAL by CACERES, NAIRA			
03:24	MISSED JUMPER by JENNINGS, WHITNEY			
03:23				REBOUND (DEF) by TEAM
03:09				MISSED 3PTR by PATBERG, ALI
03:06				REBOUND (OFF) by WISE, BRENNNA
02:57		32-19	H 13	GOOD! 3PTR by WISE, BRENNNA
02:57				ASSIST by PENN, JAELYNN
02:19	MISSED JUMPER by THOMAS, ASHANTI			
02:16	REBOUND (OFF) by SCHICKEL, TORI			
02:15	MISSED JUMPER by SCHICKEL, TORI			
02:15				BLOCK by PENN, JAELYNN
02:09	REBOUND (OFF) by SCHICKEL, TORI			
02:09	GOOD! LAYUP by SCHICKEL, TORI	32-21	H 11	
02:00	FOUL (PERSONAL) by THOMAS, ASHANTI			
02:00				MISSED FT by MARCHESE, LINSEY
02:00				REBOUND (OFF) by TEAM
02:00	SUB OUT: WEAVER, MICHELLE			
02:00	SUB IN: SPOLYAR, KRISTEN			
02:00	SUB OUT: THOMAS, ASHANTI			
02:00	SUB IN: STRONG, KATHERINE			
02:00		33-21	H 12	GOOD! FT by MARCHESE, LINSEY
01:44	MISSED 3PTR by JENNINGS, WHITNEY			
01:42	REBOUND (OFF) by TEAM			
01:42				FOUL (PERSONAL) by MARCHESE, LINSEY
01:42				SUB OUT: BERGER, GRACE
01:42				SUB IN: YEANEY, BENDU
01:42				SUB OUT: MARCHESE, LINSEY
01:42				SUB IN: ROYSTER, KYM
01:35	MISSED 3PTR by SPOLYAR, KRISTEN			
01:30				REBOUND (DEF) by ROYSTER, KYM
01:29		35-21	H 14	GOOD! LAYUP by PENN, JAELYNN [FB]
01:29				ASSIST by YEANEY, BENDU
01:09	GOOD! JUMPER by SPOLYAR, KRISTEN	35-23	H 12	
00:51				MISSED 3PTR by PATBERG, ALI
00:47	REBOUND (DEF) by SCHICKEL, TORI			
00:32	MISSED JUMPER by SPOLYAR, KRISTEN			
00:31				REBOUND (DEF) by TEAM
00:31				SUB OUT: PENN, JAELYNN
00:31				SUB IN: BERGER, GRACE
00:04				MISSED JUMPER by BERGER, GRACE
00:00				REBOUND (OFF) by YEANEY, BENDU

Butler 23, Indiana 35

Points from (This Period)	BUT	IND
In the Paint	8	10
Off Turns	6	2
2nd Chance	2	7
Fast Break	4	4
Bench	0	1

Official Box Score
Butler vs Indiana
Second Half Statistics Only
December 06, 2018 at Simon Skjodt Assembly Hall - Bloomington, IN



Butler 23

No.	Player	S	Pts	FG	3FG	FT	OR	DR	TR	PF	A	TO	Blk	Stl	Min	+/-
10	CACERES, NAIRA		0	0-4	0-3	0-0	0	2	2	0	1	1	0	1	12	-8
11	WEAVER, MICHELLE		5	2-4	0-1	1-2	1	1	2	2	1	1	0	1	15	-5
12	THOMAS, ASHANTI		0	0-1	0-0	0-0	0	0	0	1	0	1	1	1	4	-1
14	HUMPHREY, SARAH		0	0-0	0-0	0-0	0	0	0	0	0	0	0	0	1	0
15	JENNINGS, WHITNEY		9	3-6	0-2	3-4	0	3	3	2	1	1	0	4	19	-8
22	STRONG, KATHERINE		0	0-1	0-0	0-0	0	0	0	2	0	0	0	3	7	2
23	BREY, SHAE		2	1-2	0-0	0-0	0	0	0	0	0	0	0	0	4	-2
24	SPLYAR, KRISTEN		4	1-2	0-1	2-2	0	0	0	2	0	2	0	0	9	-8
25	ROSS, ELLEN		0	0-0	0-0	0-0	0	1	1	0	0	0	0	0	1	0
34	SCHICKEL, TORI		3	1-4	0-0	1-2	2	2	4	1	0	2	1	1	15	-7
01	ROBINSON, JAMILYN		0	0-1	0-0	0-0	0	0	0	0	0	0	0	0	1	0
04	BUFORD, TAYLOR		0	0-0	0-0	0-0	0	0	0	0	0	0	0	0	1	0
05	SEXTON, EMILIA		0	0-3	0-3	0-0	1	1	2	1	1	0	0	1	10	-3
	TEAM		0	0-0	0-0	0-0	0	0	0	0	0	0	0	0	0	0
	TOTALS		23	8-28	0-10	7-10	0	0	14	11	4	8	2	12	98	

Shooting By Period

Period	FG	FG%	3FG	3FG%	FT	FT%
3rd Qtr	3-14	21%	0-7	00%	4-6	67%
4th Qtr	5-14	36%	0-3	00%	3-4	75%
2nd Half	8-28	29%	0-10	00%	7-10	70%
Game	18-61	29.5%	2-21	09.5%	8-11	72.7%

Last FG Half: BUT 4th-01:29

Indiana 31

No.	Player	S	Pts	FG	3FG	FT	OR	DR	TR	PF	A	TO	Blk	Stl	Min	+/-
01	YEANEY, BENDU		5	1-1	0-0	3-3	1	3	4	3	2	2	0	1	17	12
02	WARTHEN, KEYANNA		2	1-2	0-1	0-0	0	1	1	1	0	2	0	0	9	1
05	WITHROW, GRACE		0	0-1	0-1	0-0	0	0	0	0	0	0	0	0	1	0
11	ROYSTER, KYM		4	2-3	0-0	0-0	0	3	3	2	0	0	0	0	13	8
12	MARCHESE, LINSEY		0	0-0	0-0	0-0	0	1	1	2	0	0	0	0	6	1
13	PENN, JAELYNN		2	0-4	0-4	2-2	0	0	0	0	0	3	0	2	11	9
14	PATBERG, ALI		9	2-5	1-3	4-4	0	3	3	1	0	5	0	0	18	8
34	BERGER, GRACE		0	0-1	0-0	0-0	0	1	1	0	0	1	0	0	4	-6
50	WISE, BRENNNA		9	3-4	1-2	2-2	1	4	5	1	2	0	0	1	20	7
	TEAM		0	0-0	0-0	0-0	0	1	1	0	0	0	0	0	0	0
	TOTALS		31	9-21	2-11	11-11	0	0	19	10	4	13	0	4	98	

Shooting By Period

Period	FG	FG%	3FG	3FG%	FT	FT%
3rd Qtr	2-8	25%	0-5	00%	11-11	100%
4th Qtr	7-13	54%	2-6	33%	0-0	0%
2nd Half	9-21	43%	2-11	18%	11-11	100%
Game	23-53	43.4%	4-19	21.1%	16-19	84.2%

Last FG Half: IND 4th-01:51

Game Notes:

Officials: Cameron Inouye, Brian Hall, Mark Berger
 Attendance: 3652

Start Time: 2018-12-06 00:01:26
 End Time: 2018-12-06 01:44:12
 Game Duration: 102

Score	1st	2nd	3rd	4th	TOT
BUT	9	14	10	13	46
IND	18	17	15	16	66

Points from (This Period)	BUT	IND
In the Paint	16	12
Off Turns	9	4
2nd Chance	4	2
Fast Break	9	4
Bench	2	2

Official Box Score
Butler vs Indiana
Third Quarter Statistics Only
December 06, 2018 at Simon Skjodt Assembly Hall - Bloomington, IN



Butler 23

No.	Player	S	Pts	FG	3FG	FT	OR	DR	TR	PF	A	TO	Blk	Stl	Min	+/-
11	WEAVER, MICHELLE		0	0-0	0-0	0-0	0	1	1	2	1	1	0	0	8	0
12	THOMAS, ASHANTI		0	0-1	0-0	0-0	0	0	0	1	0	1	1	1	3	-3
15	JENNINGS, WHITNEY		7	2-4	0-2	3-4	0	2	2	2	0	1	0	3	10	-5
24	SPOLYAR, KRISTEN		0	0-1	0-1	0-0	0	0	0	1	0	0	0	0	2	-3
34	SCHICKEL, TORI		3	1-2	0-0	1-2	2	1	3	0	0	2	0	0	8	-2
01	ROBINSON, JAMILYN		0	0-0	0-0	0-0	0	0	0	0	0	0	0	0	0	0
04	BUFORD, TAYLOR		0	0-0	0-0	0-0	0	0	0	0	0	0	0	0	0	0
05	SEXTON, EMILIA		0	0-2	0-2	0-0	1	0	1	1	0	0	0	1	8	-5
10	CACERES, NAIRA		0	0-3	0-2	0-0	0	0	0	0	1	1	0	0	8	-5
14	HUMPHREY, SARAH		0	0-0	0-0	0-0	0	0	0	0	0	0	0	0	0	0
22	STRONG, KATHERINE		0	0-1	0-0	0-0	0	0	0	1	0	0	0	3	4	-2
23	BREY, SHAE		0	0-0	0-0	0-0	0	0	0	0	0	0	0	0	0	0
25	ROSS, ELLEN		0	0-0	0-0	0-0	0	0	0	0	0	0	0	0	0	0
	TEAM						0	0	0	0		0				
TOTALS			10	3-14	0-7	4-6	0	0	7	8	2	6	1	8	50	

Shooting By Period

Period	FG	FG%	3FG	3FG%	FT	FT%
2nd Half	0-0	0%	0-0	0%	0-0	0%
Game	18-61	29.5%	2-21	09.5%	8-11	72.7%

Indiana 31

No.	Player	S	Pts	FG	3FG	FT	OR	DR	TR	PF	A	TO	Blk	Stl	Min	+/-
01	YEANEY, BENDU		3	0-0	0-0	3-3	1	0	1	1	0	2	0	1	10	5
11	ROYSTER, KYM		0	0-1	0-0	0-0	0	2	2	2	0	0	0	0	7	6
13	PENN, JAELYNN		2	0-3	0-3	2-2	0	0	0	0	0	3	0	2	9	7
14	PATBERG, ALI		6	1-3	0-2	4-4	0	2	2	1	0	3	0	0	9	5
50	WISE, BRENNNA		4	1-1	0-0	2-2	1	2	3	1	0	0	0	0	10	4
02	WARTHEN, KEYANNA		0	0-0	0-0	0-0	0	0	0	0	0	0	0	0	1	0
05	WITHROW, GRACE		0	0-0	0-0	0-0	0	0	0	0	0	0	0	0	0	0
12	MARCHESE, LINSEY		0	0-0	0-0	0-0	0	1	1	1	0	0	0	0	3	0
34	BERGER, GRACE		0	0-0	0-0	0-0	0	0	0	0	0	1	0	0	1	-2
	TEAM						0	1	1	0		0				
TOTALS			15	2-8	0-5	11-11	0	0	10	6	0	9	0	3	50	

Shooting By Period

Period	FG	FG%	3FG	3FG%	FT	FT%
2nd Half	0-0	0%	0-0	0%	0-0	0%
Game	23-53	43.4%	4-19	21.1%	16-19	84.2%

Game Notes:

Officials: Cameron Inouye, Brian Hall, Mark Berger
 Attendance: 3652

Start Time: 2018-12-06 00:01:26
 End Time: 2018-12-06 01:44:12
 Game Duration: 102

Score	1st	2nd	3rd	4th	TOT
BUT	9	14	10	13	46
IND	18	17	15	16	66

Points from (This Period)	BUT	IND
In the Paint	6	2
Off Turns	6	2
2nd Chance	2	2
Fast Break	4	0
Bench	0	0

**Official Play-By-Play
Butler vs Indiana
Third Quarter**

December 06, 2018 at Simon Skjodt Assembly Hall - Bloomington, IN



Period 3

Starters:

Butler: 11 WEAVER, MICHELLE; 12 THOMAS, ASHANTI; 15 JENNINGS, WHITNEY; 24 SPOLYAR, KRISTEN; 34 SCHICKEL, TORI;

Indiana: 1 YEANEY, BENDU; 11 ROYSTER, KYM; 13 PENN, JAELYNN; 14 PATBERG, ALI; 50 WISE, BRENNNA;

Time	VISITORS: Butler	Score	Margin	HOME: Indiana
09:43	MISSED 3PTR by CACERES, NAIRA			
09:39	REBOUND (OFF) by SCHICKEL, TORI			
09:36	MISSED JUMPER by THOMAS, ASHANTI			
09:33				REBOUND (DEF) by ROYSTER, KYM
09:12				TURNOVER (BADPASS) by PENN, JAELYNN
09:12	STEAL by THOMAS, ASHANTI			
08:59	FOUL (OFF) by THOMAS, ASHANTI			
08:59	TURNOVER (OFFENSIVE) by THOMAS, ASHANTI			
08:39				MISSED 3PTR by PENN, JAELYNN
08:37	REBOUND (DEF) by JENNINGS, WHITNEY			
08:37				FOUL (PERSONAL) by WISE, BRENNNA
08:37	SUB OUT: THOMAS, ASHANTI			
08:37	SUB IN: SEXTON, EMILIA			
08:19	FOUL (OFF) by JENNINGS, WHITNEY			
08:19	TURNOVER (OFFENSIVE) by JENNINGS, WHITNEY			
08:06				MISSED 3PTR by PATBERG, ALI
08:02	REBOUND (DEF) by SCHICKEL, TORI			
07:42	MISSED 3PTR by CACERES, NAIRA			
07:40	REBOUND (OFF) by SCHICKEL, TORI			
07:40				FOUL (PERSONAL) by PATBERG, ALI
07:34				FOUL (PERSONAL) by ROYSTER, KYM
07:29	TURNOVER (LOSTBALL) by SCHICKEL, TORI			
07:29				STEAL by PENN, JAELYNN
07:19				MISSED 3PTR by PENN, JAELYNN
07:15	REBOUND (DEF) by WEAVER, MICHELLE			
07:09	MISSED 3PTR by JENNINGS, WHITNEY			
07:06				REBOUND (DEF) by WISE, BRENNNA
06:57		37-23	H 14	GOOD! JUMPER by PATBERG, ALI
06:40	GOOD! LAYUP by SCHICKEL, TORI	37-25	H 12	
06:40	ASSIST by WEAVER, MICHELLE			
06:22				MISSED 3PTR by PENN, JAELYNN
06:18				REBOUND (OFF) by WISE, BRENNNA
06:17		39-25	H 14	GOOD! LAYUP by WISE, BRENNNA
05:55	MISSED JUMPER by CACERES, NAIRA			
05:53				REBOUND (DEF) by PATBERG, ALI
05:49				TURNOVER (LOSTBALL) by PATBERG, ALI
05:49	STEAL by JENNINGS, WHITNEY			
05:43	GOOD! LAYUP by JENNINGS, WHITNEY [FB]	39-27	H 12	
05:43	ASSIST by CACERES, NAIRA			
05:23				MISSED 3PTR by PATBERG, ALI
05:19				REBOUND (OFF) by YEANEY, BENDU
04:59				TURNOVER (LOSTBALL) by YEANEY, BENDU
04:59	STEAL by JENNINGS, WHITNEY			
04:45	TURNOVER (BADPASS) by SCHICKEL, TORI			
04:45				
04:45				SUB OUT: ROYSTER, KYM
04:45				SUB IN: MARCHESE, LINSEY
04:45				SUB OUT: PENN, JAELYNN
04:45				SUB IN: BERGER, GRACE
04:45	SUB OUT: CACERES, NAIRA			
04:45	SUB IN: STRONG, KATHERINE			
04:36				TURNOVER (BADPASS) by PATBERG, ALI
04:18	MISSED LAYUP by SCHICKEL, TORI			
04:14				REBOUND (DEF) by MARCHESE, LINSEY
04:03				TURNOVER (BADPASS) by PATBERG, ALI
04:03	STEAL by STRONG, KATHERINE			
03:59	MISSED LAYUP by STRONG, KATHERINE			
03:56	REBOUND (OFF) by SEXTON, EMILIA			
03:53	GOOD! JUMPER by JENNINGS, WHITNEY [PNT]	39-29	H 10	
03:32	FOUL (PERSONAL) by WEAVER, MICHELLE			
03:24				TURNOVER (BADPASS) by BERGER, GRACE
03:24	STEAL by STRONG, KATHERINE			
03:18	MISSED 3PTR by SEXTON, EMILIA			
03:17				REBOUND (DEF) by TEAM
03:17				SUB OUT: BERGER, GRACE
03:17				SUB IN: PENN, JAELYNN
03:02				TURNOVER (BADPASS) by PENN, JAELYNN
03:02	STEAL by STRONG, KATHERINE			
02:55	TURNOVER (LOSTBALL) by WEAVER, MICHELLE			
02:55				STEAL by YEANEY, BENDU

Time	VISITORS: Butler	Score	Margin	HOME: Indiana
02:55	FOUL (PERSONAL) by JENNINGS, WHITNEY			
02:55		40-29	H 11	GOOD! FT by PATBERG, ALI
02:55		41-29	H 12	GOOD! FT by PATBERG, ALI
02:39				FOUL (PERSONAL) by MARCHESE, LINSEY
02:39	MISSED FT by SCHICKEL, TORI			
02:39	REBOUND (OFF) by TEAM			
02:39				SUB OUT: MARCHESE, LINSEY
02:39				SUB IN: ROYSTER, KYM
02:39	SUB OUT: SEXTON, EMILIA			
02:39	SUB IN: CACERES, NAIRA			
02:39	GOOD! FT by SCHICKEL, TORI	41-30	H 11	
02:29	FOUL (PERSONAL) by WEAVER, MICHELLE			
02:28		42-30	H 12	GOOD! FT by PENN, JAELYNN
02:28	SUB OUT: WEAVER, MICHELLE			
02:28	SUB IN: SEXTON, EMILIA			
02:28		43-30	H 13	GOOD! FT by PENN, JAELYNN
02:09	TURNOVER (BADPASS) by CACERES, NAIRA			
02:09				STEAL by PENN, JAELYNN
01:52				TURNOVER (BADPASS) by YEANEY, BENDU
01:52	STEAL by SEXTON, EMILIA			
01:40	MISSED 3PTR by SEXTON, EMILIA			
01:38				REBOUND (DEF) by PATBERG, ALI
01:38	FOUL (PERSONAL) by STRONG, KATHERINE			
01:37		44-30	H 14	GOOD! FT by PATBERG, ALI
01:37	SUB OUT: STRONG, KATHERINE			
01:37	SUB IN: SPOLYAR, KRISTEN			
01:37	SUB OUT: SCHICKEL, TORI			
01:37	SUB IN: THOMAS, ASHANTI			
01:37		45-30	H 15	GOOD! FT by PATBERG, ALI
01:37				SUB OUT: PATBERG, ALI
01:37				SUB IN: WARTHEN, KEYANNA
01:23	MISSED 3PTR by JENNINGS, WHITNEY			
01:19				REBOUND (DEF) by ROYSTER, KYM
01:13				MISSED LAYUP by ROYSTER, KYM
01:13	BLOCK by THOMAS, ASHANTI			
01:08	REBOUND (DEF) by JENNINGS, WHITNEY			
01:02	MISSED 3PTR by SPOLYAR, KRISTEN			
01:01				REBOUND (DEF) by WISE, BRENNNA
00:57	FOUL (PERSONAL) by SEXTON, EMILIA			
00:57		46-30	H 16	GOOD! FT by WISE, BRENNNA
00:57		47-30	H 17	GOOD! FT by WISE, BRENNNA
00:47				FOUL (PERSONAL) by ROYSTER, KYM
00:47	MISSED FT by JENNINGS, WHITNEY			
00:47	REBOUND (OFF) by TEAM			
00:47				SUB OUT: ROYSTER, KYM
00:47				SUB IN: MARCHESE, LINSEY
00:47	SUB OUT: SEXTON, EMILIA			
00:47	SUB IN: STRONG, KATHERINE			
00:47	GOOD! FT by JENNINGS, WHITNEY	47-31	H 16	
00:18				TURNOVER (BADPASS) by PENN, JAELYNN
00:18	STEAL by JENNINGS, WHITNEY			
00:14				FOUL (PERSONAL) by YEANEY, BENDU
00:14	GOOD! FT by JENNINGS, WHITNEY [FB]	47-32	H 15	
00:14				SUB OUT: WARTHEN, KEYANNA
00:14				SUB IN: PATBERG, ALI
00:14	GOOD! FT by JENNINGS, WHITNEY [FB]	47-33	H 14	
00:01	FOUL (PERSONAL) by SPOLYAR, KRISTEN			
00:00		48-33	H 15	GOOD! FT by YEANEY, BENDU
00:00		49-33	H 16	GOOD! FT by YEANEY, BENDU
00:00				SUB OUT: WISE, BRENNNA
00:00				SUB IN: ROYSTER, KYM
00:00		50-33	H 17	GOOD! FT by YEANEY, BENDU

Butler 33, Indiana 50

Points from (This Period)	BUT	IND
In the Paint	6	2
Off Turns	6	2
2nd Chance	2	2
Fast Break	4	0
Bench	0	0

Official Box Score
Butler vs Indiana
Fourth Quarter Statistics Only
December 06, 2018 at Simon Skjodt Assembly Hall - Bloomington, IN



Butler 13

No.	Player	S	Pts	FG	3FG	FT	OR	DR	TR	PF	A	TO	Blk	Stl	Min	+/-
11	WEAVER, MICHELLE		5	2-4	0-1	1-2	1	0	1	0	0	0	0	1	7	-5
12	THOMAS, ASHANTI		0	0-0	0-0	0-0	0	0	0	0	0	0	0	0	1	2
15	JENNINGS, WHITNEY		2	1-2	0-0	0-0	0	1	1	0	1	0	0	1	9	-3
24	SPOLYAR, KRISTEN		4	1-1	0-0	2-2	0	0	0	1	0	2	0	0	7	-5
34	SCHICKEL, TORI		0	0-2	0-0	0-0	0	1	1	1	0	0	1	1	7	-5
01	ROBINSON, JAMILYN		0	0-1	0-0	0-0	0	0	0	0	0	0	0	0	1	0
04	BUFORD, TAYLOR		0	0-0	0-0	0-0	0	0	0	0	0	0	0	0	1	0
05	SEXTON, EMILIA		0	0-1	0-1	0-0	0	1	1	0	1	0	0	0	2	2
10	CACERES, NAIRA		0	0-1	0-1	0-0	0	2	2	0	0	0	0	1	4	-3
14	HUMPHREY, SARAH		0	0-0	0-0	0-0	0	0	0	0	0	0	0	0	1	0
22	STRONG, KATHERINE		0	0-0	0-0	0-0	0	0	0	1	0	0	0	0	3	4
23	BREY, SHAE		2	1-2	0-0	0-0	0	0	0	0	0	0	0	0	4	-2
25	ROSS, ELLEN		0	0-0	0-0	0-0	0	1	1	0	0	0	0	0	1	0
	TEAM						0	0	0	0		0				
TOTALS			13	5-14	0-3	3-4	0	0	7	3	2	2	1	4	48	

Shooting By Period

Period	FG	FG%	3FG	3FG%	FT	FT%
Game	18-61	29.5%	2-21	09.5%	8-11	72.7%

Indiana 16

No.	Player	S	Pts	FG	3FG	FT	OR	DR	TR	PF	A	TO	Blk	Stl	Min	+/-
01	YEANEY, BENDU		2	1-1	0-0	0-0	0	3	3	2	2	0	0	0	7	7
11	ROYSTER, KYM		4	2-2	0-0	0-0	0	1	1	0	0	0	0	0	6	2
13	PENN, JAELYNN		0	0-1	0-1	0-0	0	0	0	0	0	0	0	0	2	2
14	PATBERG, ALI		3	1-2	1-1	0-0	0	1	1	0	0	2	0	0	9	3
50	WISE, BRENNNA		5	2-3	1-2	0-0	0	2	2	0	2	0	0	1	10	3
02	WARTHEN, KEYANNA		2	1-2	0-1	0-0	0	1	1	1	0	2	0	0	8	1
05	WITHROW, GRACE		0	0-1	0-1	0-0	0	0	0	0	0	0	0	0	1	0
12	MARCHESE, LINSEY		0	0-0	0-0	0-0	0	0	0	1	0	0	0	0	3	1
34	BERGER, GRACE		0	0-1	0-0	0-0	0	1	1	0	0	0	0	0	3	-4
	TEAM						0	0	0	0		0				
TOTALS			16	7-13	2-6	0-0	0	0	9	4	4	4	0	1	48	

Shooting By Period

Period	FG	FG%	3FG	3FG%	FT	FT%
Game	23-53	43.4%	4-19	21.1%	16-19	84.2%

Game Notes:

Officials: Cameron Inouye, Brian Hall, Mark Berger
 Attendance: 3652

Start Time: 2018-12-06 00:01:26
 End Time: 2018-12-06 01:44:12
 Game Duration: 102

Score	1st	2nd	3rd	4th	TOT
BUT	9	14	10	13	46
IND	18	17	15	16	66

Points from (This Period)	BUT	IND
In the Paint	10	10
Off Turns	3	2
2nd Chance	2	0
Fast Break	5	4
Bench	2	2

**Official Play-By-Play
Butler vs Indiana
Fourth Quarter**

December 06, 2018 at Simon Skjodt Assembly Hall - Bloomington, IN



Period 4

Starters:

Butler: 11 WEAVER, MICHELLE; 12 THOMAS, ASHANTI; 15 JENNINGS, WHITNEY; 24 SPOLYAR, KRISTEN; 34 SCHICKEL, TORI;
Indiana: 1 YEANEY, BENDU; 11 ROYSTER, KYM; 13 PENN, JAELYNN; 14 PATBERG, ALI; 50 WISE, BRENNNA;

Time	VISITORS: Butler	Score	Margin	HOME: Indiana
09:50				TURNOVER (BADPASS) by PATBERG, ALI
09:50	STEAL by SCHICKEL, TORI			
09:45				FOUL (PERSONAL) by YEANEY, BENDU
09:45	GOOD! FT by SPOLYAR, KRISTEN	50-34	H 16	
09:45	GOOD! FT by SPOLYAR, KRISTEN	50-35	H 15	
09:18				MISSED 3PTR by WISE, BRENNNA
09:15	REBOUND (DEF) by JENNINGS, WHITNEY			
09:01	MISSED LAYUP by BREY, SHAE			
08:58				REBOUND (DEF) by WISE, BRENNNA
08:45		53-35	H 18	GOOD! 3PTR by WISE, BRENNNA
08:45				ASSIST by YEANEY, BENDU
08:16	MISSED JUMPER by SCHICKEL, TORI			
08:13				REBOUND (DEF) by ROYSTER, KYM
08:05		56-35	H 21	GOOD! 3PTR by PATBERG, ALI
07:55	TIMEOUT 30SEC			
07:55				
07:55	SUB OUT: BREY, SHAE			
07:55	SUB IN: CACERES, NAIRA			
07:46	MISSED JUMPER by JENNINGS, WHITNEY			
07:43				REBOUND (DEF) by YEANEY, BENDU
07:35		58-35	H 23	GOOD! LAYUP by ROYSTER, KYM [FB]
07:35				ASSIST by YEANEY, BENDU
07:21	MISSED 3PTR by WEAVER, MICHELLE			
07:18	REBOUND (OFF) by WEAVER, MICHELLE			
07:13	GOOD! LAYUP by SPOLYAR, KRISTEN	58-37	H 21	
07:13	ASSIST by JENNINGS, WHITNEY			
06:57		60-37	H 23	GOOD! JUMPER by WISE, BRENNNA
06:37	TURNOVER (LOSTBALL) by SPOLYAR, KRISTEN			
06:37				STEAL by WISE, BRENNNA
06:32		62-37	H 25	GOOD! LAYUP by WARTHEN, KEYANNA [FB]
06:32				ASSIST by WISE, BRENNNA
06:15	GOOD! LAYUP by WEAVER, MICHELLE [PNT]	62-39	H 23	
06:06				SUB OUT: ROYSTER, KYM
06:06				SUB IN: MARCHESE, LINSEY
06:05				TURNOVER (BADPASS) by PATBERG, ALI
06:05	STEAL by WEAVER, MICHELLE			
06:03				FOUL (PERSONAL) by YEANEY, BENDU
06:03	GOOD! FT by WEAVER, MICHELLE [FB]	62-40	H 22	
06:03	MISSED FT by WEAVER, MICHELLE			
06:03				REBOUND (DEF) by YEANEY, BENDU
05:54				TURNOVER (BADPASS) by WARTHEN, KEYANNA
05:54	STEAL by CACERES, NAIRA			
05:45	MISSED 3PTR by CACERES, NAIRA			
05:42				REBOUND (DEF) by PATBERG, ALI
05:42	FOUL (PERSONAL) by SCHICKEL, TORI			
05:42				SUB OUT: WARTHEN, KEYANNA
05:42				SUB IN: PENN, JAELYNN
05:42	SUB OUT: WEAVER, MICHELLE			
05:42	SUB IN: STRONG, KATHERINE			
05:36	FOUL (PERSONAL) by STRONG, KATHERINE			
05:07				TIMEOUT 30SEC
05:07				
05:07	SUB OUT: STRONG, KATHERINE			
05:07	SUB IN: WEAVER, MICHELLE			
05:03				MISSED 3PTR by PENN, JAELYNN
05:00	REBOUND (DEF) by CACERES, NAIRA			
04:52	MISSED LAYUP by WEAVER, MICHELLE			
04:49				REBOUND (DEF) by YEANEY, BENDU
04:28		64-40	H 24	GOOD! LAYUP by YEANEY, BENDU [PNT]
04:14	FOUL (OFF) by SPOLYAR, KRISTEN			
04:14	TURNOVER (OFFENSIVE) by SPOLYAR, KRISTEN			
03:47				MISSED JUMPER by PATBERG, ALI
03:44	REBOUND (DEF) by CACERES, NAIRA			
03:34				FOUL (PERSONAL) by MARCHESE, LINSEY
03:34				SUB OUT: PENN, JAELYNN
03:34				SUB IN: WARTHEN, KEYANNA
03:34				SUB OUT: MARCHESE, LINSEY
03:34				SUB IN: ROYSTER, KYM
03:34	SUB OUT: CACERES, NAIRA			
03:34	SUB IN: STRONG, KATHERINE			

Time	VISITORS: Butler	Score	Margin	HOME: Indiana
03:16				FOUL (PERSONAL) by WARTHEN, KEYANNA
03:16				SUB OUT: YEANEY, BENDU
03:16				SUB IN: BERGER, GRACE
03:10	MISSED JUMPER by SCHICKEL, TORI			
03:07				REBOUND (DEF) by WISE, BRENNNA
02:49				MISSED JUMPER by BERGER, GRACE
02:49	BLOCK by SCHICKEL, TORI			
02:44	REBOUND (DEF) by SCHICKEL, TORI			
02:41	GOOD! LAYUP by WEAVER, MICHELLE [FB]	64-42	H 22	
02:41	TIMEOUT 30SEC			
02:41	SUB OUT: WEAVER, MICHELLE			
02:41	SUB IN: THOMAS, ASHANTI			
02:41	SUB OUT: SPOLYAR, KRISTEN			
02:41	SUB IN: BREY, SHAE			
02:41	SUB OUT: SCHICKEL, TORI			
02:41	SUB IN: SEXTON, EMLIA			
02:17				MISSED 3PTR by WARTHEN, KEYANNA
02:13	REBOUND (DEF) by SEXTON, EMLIA			
02:08	GOOD! LAYUP by BREY, SHAE [FB]	64-44	H 20	
02:08	ASSIST by SEXTON, EMLIA			
01:51		66-44	H 22	GOOD! LAYUP by ROYSTER, KYM
01:51				ASSIST by WISE, BRENNNA
01:29	GOOD! JUMPER by JENNINGS, WHITNEY [PNT]	66-46	H 20	
01:13				TURNOVER (LOSTBALL) by WARTHEN, KEYANNA
01:13	STEAL by JENNINGS, WHITNEY			
01:12				SUB OUT: ROYSTER, KYM
01:12				SUB IN: WITHROW, GRACE
01:12				SUB OUT: PATBERG, ALI
01:12				SUB IN: MARCHESE, LINSEY
01:12	SUB OUT: THOMAS, ASHANTI			
01:12	SUB IN: ROBINSON, JAMILYN			
01:12	SUB OUT: JENNINGS, WHITNEY			
01:12	SUB IN: BUFORD, TAYLOR			
01:12	SUB OUT: STRONG, KATHERINE			
01:12	SUB IN: ROSS, ELLEN			
01:12	SUB OUT: BREY, SHAE			
01:12	SUB IN: HUMPHREY, SARAH			
00:57	MISSED JUMPER by ROBINSON, JAMILYN			
00:53				REBOUND (DEF) by BERGER, GRACE
00:34				MISSED 3PTR by WITHROW, GRACE
00:29	REBOUND (DEF) by ROSS, ELLEN			
00:24	MISSED 3PTR by SEXTON, EMLIA			
00:21				REBOUND (DEF) by WARTHEN, KEYANNA

Butler 46, Indiana 66

Points from (This Period)	BUT	IND
In the Paint	10	10
Off Turns	3	2
2nd Chance	2	0
Fast Break	5	4
Bench	2	2

Official Scoring/Possession Reference Chart
Butler vs Indiana
Period 1
December 06, 2018 at Simon Skjodt Assembly Hall - Bloomington, IN



Period 1

Starters:

Butler: 11 WEAVER, MICHELLE; 12 THOMAS, ASHANTI; 15 JENNINGS, WHITNEY; 24 SPOLYAR, KRISTEN; 34 SCHICKEL, TORI;
Indiana: 1 YEANEY, BENDU; 11 ROYSTER, KYM; 13 PENN, JAELYNN; 14 PATBERG, ALI; 50 WISE, BRENNNA;

Time	VISITORS: Butler	Score	Margin	HOME: Indiana
09:13		2-0	H 2	GOOD! JUMPER by YEANEY, BENDU
08:44	GOOD! LAYUP by THOMAS, ASHANTI	2-2	T	
07:56		4-2	H 2	GOOD! JUMPER by YEANEY, BENDU [PNT]
07:23		5-2	H 3	GOOD! FT by PATBERG, ALI [FB]
07:23		6-2	H 4	GOOD! FT by PATBERG, ALI [FB]
06:35	GOOD! 3PTR by SPOLYAR, KRISTEN	6-5	H 1	
06:22		8-5	H 3	GOOD! JUMPER by YEANEY, BENDU [PNT]
05:55		10-5	H 5	GOOD! LAYUP by WISE, BRENNNA
05:31		12-5	H 7	GOOD! JUMPER by YEANEY, BENDU
04:33		14-5	H 9	GOOD! JUMPER by BERGER, GRACE [PNT]
04:14	GOOD! LAYUP by SCHICKEL, TORI	14-7	H 7	
02:37	GOOD! JUMPER by SCHICKEL, TORI [PNT]	14-9	H 5	
01:54		16-9	H 7	GOOD! JUMPER by WISE, BRENNNA
00:22		17-9	H 8	GOOD! FT by WISE, BRENNNA
00:22		18-9	H 9	GOOD! FT by WISE, BRENNNA

Butler 9, Indiana 18

Official Scoring/Possession Reference Chart
Butler vs Indiana
Period 2
December 06, 2018 at Simon Skjodt Assembly Hall - Bloomington, IN



Period 2

Starters:

Butler: 11 WEAVER, MICHELLE; 12 THOMAS, ASHANTI; 15 JENNINGS, WHITNEY; 24 SPOLYAR, KRISTEN; 34 SCHICKEL, TORI;
Indiana: 1 YEANEY, BENDU; 11 ROYSTER, KYM; 13 PENN, JAELYNN; 14 PATBERG, ALI; 50 WISE, BRENNNA;

Time	VISITORS: Butler	Score	Margin	HOME: Indiana
09:54		20-9	H 11	GOOD! LAYUP by PENN, JAELYNN
09:25		23-9	H 14	GOOD! 3PTR by PATBERG, ALI
08:02	GOOD! LAYUP by SCHICKEL, TORI	23-11	H 12	
07:34		25-11	H 14	GOOD! LAYUP by WISE, BRENNNA
07:10	GOOD! JUMPER by SCHICKEL, TORI	25-13	H 12	
06:35	GOOD! JUMPER by THOMAS, ASHANTI [PNT]	25-15	H 10	
06:18	GOOD! 3PTR by JENNINGS, WHITNEY [FB]	25-18	H 7	
06:18	GOOD! FT by JENNINGS, WHITNEY [FB]	25-19	H 6	
06:01		27-19	H 8	GOOD! LAYUP by WISE, BRENNNA
04:05		29-19	H 10	GOOD! LAYUP by PATBERG, ALI [FB]
02:57		32-19	H 13	GOOD! 3PTR by WISE, BRENNNA
02:09	GOOD! LAYUP by SCHICKEL, TORI	32-21	H 11	
02:00		33-21	H 12	GOOD! FT by MARCHESE, LINSEY
01:29		35-21	H 14	GOOD! LAYUP by PENN, JAELYNN [FB]
01:09	GOOD! JUMPER by SPOLYAR, KRISTEN	35-23	H 12	

Butler 23, Indiana 35

Official Scoring/Possession Reference Chart
Butler vs Indiana
Period 3
December 06, 2018 at Simon Skjodt Assembly Hall - Bloomington, IN



Period 3

Starters:

Butler: 11 WEAVER, MICHELLE; 12 THOMAS, ASHANTI; 15 JENNINGS, WHITNEY; 24 SPOLYAR, KRISTEN; 34 SCHICKEL, TORI;
Indiana: 1 YEANEY, BENDU; 11 ROYSTER, KYM; 13 PENN, JAELYNN; 14 PATBERG, ALI; 50 WISE, BRENNNA;

Time	VISITORS: Butler	Score	Margin	HOME: Indiana
06:57		37-23	H 14	GOOD! JUMPER by PATBERG, ALI
06:40	GOOD! LAYUP by SCHICKEL, TORI	37-25	H 12	
06:17		39-25	H 14	GOOD! LAYUP by WISE, BRENNNA
05:43	GOOD! LAYUP by JENNINGS, WHITNEY [FB]	39-27	H 12	
03:53	GOOD! JUMPER by JENNINGS, WHITNEY [PNT]	39-29	H 10	
02:55		40-29	H 11	GOOD! FT by PATBERG, ALI
02:55		41-29	H 12	GOOD! FT by PATBERG, ALI
02:39	GOOD! FT by SCHICKEL, TORI	41-30	H 11	
02:28		42-30	H 12	GOOD! FT by PENN, JAELYNN
02:28		43-30	H 13	GOOD! FT by PENN, JAELYNN
01:37		44-30	H 14	GOOD! FT by PATBERG, ALI
01:37		45-30	H 15	GOOD! FT by PATBERG, ALI
00:57		46-30	H 16	GOOD! FT by WISE, BRENNNA
00:57		47-30	H 17	GOOD! FT by WISE, BRENNNA
00:47	GOOD! FT by JENNINGS, WHITNEY	47-31	H 16	
00:14	GOOD! FT by JENNINGS, WHITNEY [FB]	47-32	H 15	
00:14	GOOD! FT by JENNINGS, WHITNEY [FB]	47-33	H 14	
00:00		48-33	H 15	GOOD! FT by YEANEY, BENDU
00:00		49-33	H 16	GOOD! FT by YEANEY, BENDU
00:00		50-33	H 17	GOOD! FT by YEANEY, BENDU

Butler 33, Indiana 50

Official Scoring/Possession Reference Chart
Butler vs Indiana
Period 4
December 06, 2018 at Simon Skjodt Assembly Hall - Bloomington, IN



Period 4

Starters:

Butler: 11 WEAVER, MICHELLE; 12 THOMAS, ASHANTI; 15 JENNINGS, WHITNEY; 24 SPOLYAR, KRISTEN; 34 SCHICKEL, TORI;
Indiana: 1 YEANEY, BENDU; 11 ROYSTER, KYM; 13 PENN, JAELYNN; 14 PATBERG, ALI; 50 WISE, BRENNNA;

Time	VISITORS: Butler	Score	Margin	HOME: Indiana
09:45	GOOD! FT by SPOLYAR, KRISTEN	50-34	H 16	
09:45	GOOD! FT by SPOLYAR, KRISTEN	50-35	H 15	
08:45		53-35	H 18	GOOD! 3PTR by WISE, BRENNNA
08:05		56-35	H 21	GOOD! 3PTR by PATBERG, ALI
07:35		58-35	H 23	GOOD! LAYUP by ROYSTER, KYM [FB]
07:13	GOOD! LAYUP by SPOLYAR, KRISTEN	58-37	H 21	
06:57		60-37	H 23	GOOD! JUMPER by WISE, BRENNNA
06:32		62-37	H 25	GOOD! LAYUP by WARTHEN, KEYANNA [FB]
06:15	GOOD! LAYUP by WEAVER, MICHELLE [PNT]	62-39	H 23	
06:03	GOOD! FT by WEAVER, MICHELLE [FB]	62-40	H 22	
04:28		64-40	H 24	GOOD! LAYUP by YEANEY, BENDU [PNT]
02:41	GOOD! LAYUP by WEAVER, MICHELLE [FB]	64-42	H 22	
02:08	GOOD! LAYUP by BREY, SHAE [FB]	64-44	H 20	
01:51		66-44	H 22	GOOD! LAYUP by ROYSTER, KYM
01:29	GOOD! JUMPER by JENNINGS, WHITNEY [PNT]	66-46	H 20	

Butler 46, Indiana 66

Official Substitutions Log
Butler vs Indiana
Period 1
December 06, 2018 at Simon Skjodt Assembly Hall - Bloomington, IN



VISITORS: Butler	Time	Score	HOME: Indiana
11 WEAVER, MICHELLE			1 YEANEY, BENDU
12 THOMAS, ASHANTI			11 ROYSTER, KYM
15 JENNINGS, WHITNEY			13 PENN, JAELYNN
24 SPOLYAR, KRISTEN			14 PATBERG, ALI
34 SCHICKEL, TORI			50 WISE, BRENNIA
	09:30	-	SUB OUT: ROYSTER, KYM
	09:30		SUB IN: MARCHESE, LINSEY
	08:33	2-2	SUB OUT: MARCHESE, LINSEY
	08:33		SUB IN: ROYSTER, KYM
SUB OUT: 12 THOMAS, ASHANTI	07:12	2-6	
SUB IN: 22 STRONG, KATHERINE	07:12		
	05:43	5-10	SUB OUT: PENN, JAELYNN
	05:43		SUB IN: BERGER, GRACE
	05:00	5-12	SUB OUT: ROYSTER, KYM
	05:00		SUB IN: MARCHESE, LINSEY
SUB OUT: 22 STRONG, KATHERINE	04:50	5-12	
SUB IN: 10 CACERES, NAIRA	04:50		
SUB OUT: 24 SPOLYAR, KRISTEN	04:50		
SUB IN: 12 THOMAS, ASHANTI	04:50		
	03:07	7-14	SUB OUT: YEANEY, BENDU
	03:07		SUB IN: PENN, JAELYNN
	02:42	7-14	SUB OUT: MARCHESE, LINSEY
	02:42		SUB IN: ROYSTER, KYM
	01:40	9-16	SUB OUT: PATBERG, ALI
	01:40		SUB IN: YEANEY, BENDU
	01:40		SUB OUT: BERGER, GRACE
	01:40		SUB IN: WARTHEN, KEYANNA
SUB OUT: 11 WEAVER, MICHELLE	01:40		
SUB IN: 24 SPOLYAR, KRISTEN	01:40		
SUB OUT: 12 THOMAS, ASHANTI	01:15	9-16	
SUB IN: 23 BREY, SHAE	01:15		
	00:22	9-17	SUB OUT: ROYSTER, KYM
	00:22		SUB IN: MARCHESE, LINSEY

Butler 9, Indiana 18

Official Substitutions Log
Butler vs Indiana
Period 2
December 06, 2018 at Simon Skjodt Assembly Hall - Bloomington, IN



VISITORS: Butler	Time	Score	HOME: Indiana
11 WEAVER, MICHELLE			1 YEANEY, BENDU
12 THOMAS, ASHANTI			11 ROYSTER, KYM
15 JENNINGS, WHITNEY			13 PENN, JAELYNN
24 SPOLYAR, KRISTEN			14 PATBERG, ALI
34 SCHICKEL, TORI			50 WISE, BRENNNA
	10:00	-	SUB OUT: WARTHEN, KEYANNA
	10:00		SUB IN: PATBERG, ALI
SUB OUT: 23 BREY, SHAE	09:16	9-23	
SUB IN: 15 JENNINGS, WHITNEY	09:16		
	07:56	11-23	SUB OUT: MARCHESE, LINSEY
	07:56		SUB IN: ROYSTER, KYM
SUB OUT: 10 CACERES, NAIRA	06:57	13-25	
SUB IN: 12 THOMAS, ASHANTI	06:57		
	06:18	18-25	SUB OUT: PENN, JAELYNN
	06:18		SUB IN: BERGER, GRACE
	05:26	19-27	SUB OUT: YEANEY, BENDU
	05:26		SUB IN: PENN, JAELYNN
	04:21	19-27	SUB OUT: ROYSTER, KYM
	04:21		SUB IN: MARCHESE, LINSEY
SUB OUT: 24 SPOLYAR, KRISTEN	04:21		
SUB IN: 10 CACERES, NAIRA	04:21		
SUB OUT: 11 WEAVER, MICHELLE	02:00	21-32	
SUB IN: 24 SPOLYAR, KRISTEN	02:00		
SUB OUT: 12 THOMAS, ASHANTI	02:00		
SUB IN: 22 STRONG, KATHERINE	02:00		
	01:42	21-33	SUB OUT: BERGER, GRACE
	01:42		SUB IN: YEANEY, BENDU
	01:42		SUB OUT: MARCHESE, LINSEY
	01:42		SUB IN: ROYSTER, KYM
	00:31	23-35	SUB OUT: PENN, JAELYNN
	00:31		SUB IN: BERGER, GRACE

Butler 23, Indiana 35

Official Substitutions Log
Butler vs Indiana
Period 3
December 06, 2018 at Simon Skjodt Assembly Hall - Bloomington, IN



VISITORS: Butler	Time	Score	HOME: Indiana
11 WEAVER, MICHELLE			1 YEANEY, BENDU
12 THOMAS, ASHANTI			11 ROYSTER, KYM
15 JENNINGS, WHITNEY			13 PENN, JAELYNN
24 SPOLYAR, KRISTEN			14 PATBERG, ALI
34 SCHICKEL, TORI			50 WISE, BRENNNA
SUB OUT: 12 THOMAS, ASHANTI	08:37	-	
SUB IN: 5 SEXTON, EMILIA	08:37		
	04:45	27-39	SUB OUT: ROYSTER, KYM
	04:45		SUB IN: MARCHESE, LINSEY
	04:45		SUB OUT: PENN, JAELYNN
	04:45		SUB IN: BERGER, GRACE
SUB OUT: 10 CACERES, NAIRA	04:45		
SUB IN: 22 STRONG, KATHERINE	04:45		
	03:17	29-39	SUB OUT: BERGER, GRACE
	03:17		SUB IN: PENN, JAELYNN
	02:39	29-41	SUB OUT: MARCHESE, LINSEY
	02:39		SUB IN: ROYSTER, KYM
SUB OUT: 5 SEXTON, EMILIA	02:39		
SUB IN: 10 CACERES, NAIRA	02:39		
SUB OUT: 11 WEAVER, MICHELLE	02:28	30-42	
SUB IN: 5 SEXTON, EMILIA	02:28		
SUB OUT: 22 STRONG, KATHERINE	01:37	30-44	
SUB IN: 24 SPOLYAR, KRISTEN	01:37		
SUB OUT: 34 SCHICKEL, TORI	01:37		
SUB IN: 12 THOMAS, ASHANTI	01:37		
	01:37		SUB OUT: PATBERG, ALI
	01:37		SUB IN: WARTHEN, KEYANNA
	00:47	30-47	SUB OUT: ROYSTER, KYM
	00:47		SUB IN: MARCHESE, LINSEY
SUB OUT: 5 SEXTON, EMILIA	00:47		
SUB IN: 22 STRONG, KATHERINE	00:47		
	00:14	32-47	SUB OUT: WARTHEN, KEYANNA
	00:14		SUB IN: PATBERG, ALI
	00:00	33-49	SUB OUT: WISE, BRENNNA
	00:00		SUB IN: ROYSTER, KYM

Butler 33, Indiana 50

Official Substitutions Log
Butler vs Indiana
Period 4
December 06, 2018 at Simon Skjodt Assembly Hall - Bloomington, IN



VISITORS: Butler	Time	Score	HOME: Indiana
11 WEAVER, MICHELLE			1 YEANEY, BENDU
12 THOMAS, ASHANTI			11 ROYSTER, KYM
15 JENNINGS, WHITNEY			13 PENN, JAELYNN
24 SPOLYAR, KRISTEN			14 PATBERG, ALI
34 SCHICKEL, TORI			50 WISE, BRENNIA
SUB OUT: 23 BREY, SHAE	07:55	35-56	
SUB IN: 10 CACERES, NAIRA	07:55		
	06:06	39-62	SUB OUT: ROYSTER, KYM
	06:06		SUB IN: MARCHESE, LINSEY
	05:42	40-62	SUB OUT: WARTHEN, KEYANNA
	05:42		SUB IN: PENN, JAELYNN
SUB OUT: 11 WEAVER, MICHELLE	05:42		
SUB IN: 22 STRONG, KATHERINE	05:42		
SUB OUT: 22 STRONG, KATHERINE	05:07	40-62	
SUB IN: 11 WEAVER, MICHELLE	05:07		
	03:34	40-64	SUB OUT: PENN, JAELYNN
	03:34		SUB IN: WARTHEN, KEYANNA
	03:34		SUB OUT: MARCHESE, LINSEY
	03:34		SUB IN: ROYSTER, KYM
SUB OUT: 10 CACERES, NAIRA	03:34		
SUB IN: 22 STRONG, KATHERINE	03:34		
	03:16	40-64	SUB OUT: YEANEY, BENDU
	03:16		SUB IN: BERGER, GRACE
SUB OUT: 11 WEAVER, MICHELLE	02:41	42-64	
SUB IN: 12 THOMAS, ASHANTI	02:41		
SUB OUT: 24 SPOLYAR, KRISTEN	02:41		
SUB IN: 23 BREY, SHAE	02:41		
SUB OUT: 34 SCHICKEL, TORI	02:41		
SUB IN: 5 SEXTON, EMILIA	02:41		
	01:12	46-66	SUB OUT: ROYSTER, KYM
	01:12		SUB IN: WITHROW, GRACE
	01:12		SUB OUT: PATBERG, ALI
	01:12		SUB IN: MARCHESE, LINSEY
SUB OUT: 12 THOMAS, ASHANTI	01:12		
SUB IN: 1 ROBINSON, JAMILYN	01:12		
SUB OUT: 15 JENNINGS, WHITNEY	01:12		
SUB IN: 4 BUFORD, TAYLOR	01:12		
SUB OUT: 22 STRONG, KATHERINE	01:12		
SUB IN: 25 ROSS, ELLEN	01:12		
SUB OUT: 23 BREY, SHAE	01:12		
SUB IN: 14 HUMPHREY, SARAH	01:12		

Butler 46, Indiana 66

Official Shot Chart
Butler vs Indiana
PERIOD 1 Shots

December 06, 2018 at Simon Skjodt Assembly Hall - Bloomington, IN

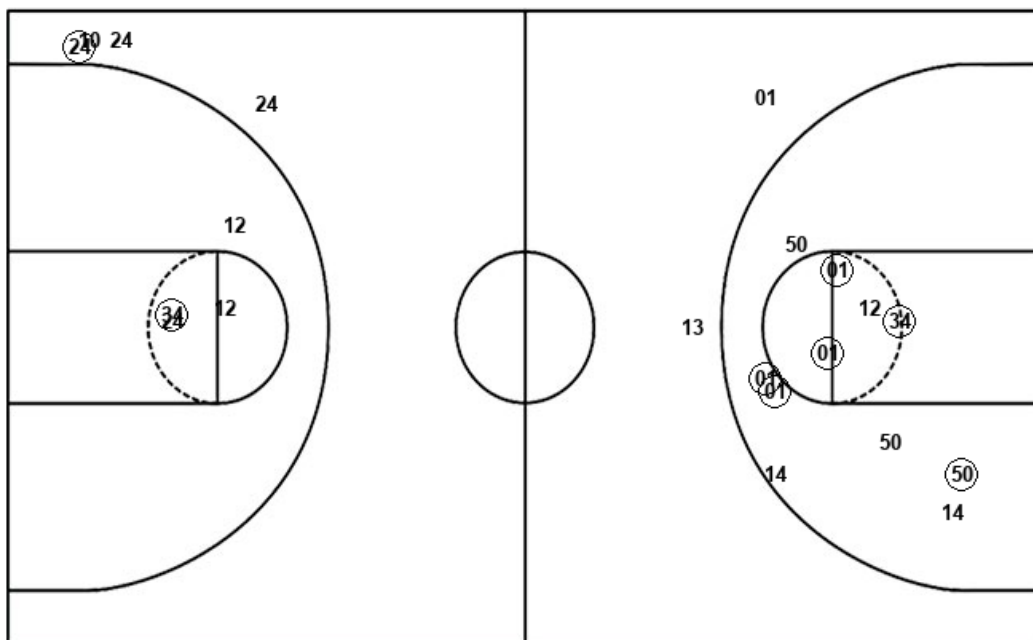


Indiana

Butler

Layups
13 (50) 01 01

Dunks



Layups

(12) 11 15 15 (34)
34 34

Dunks

IND : Period 1	Made	Att	Pct
Layups	1	4	25.0
Dunks	0	0	0
2PT Field Goals	7	15	46.7
3PT Field Goals	0	2	00.0
Total Field Goals	7	17	41.2

BUT : Period 1	Made	Att	Pct
Layups	2	7	28.6
Dunks	0	0	0
2PT Field Goals	3	11	27.3
3PT Field Goals	1	4	25.0
Total Field Goals	4	15	26.7

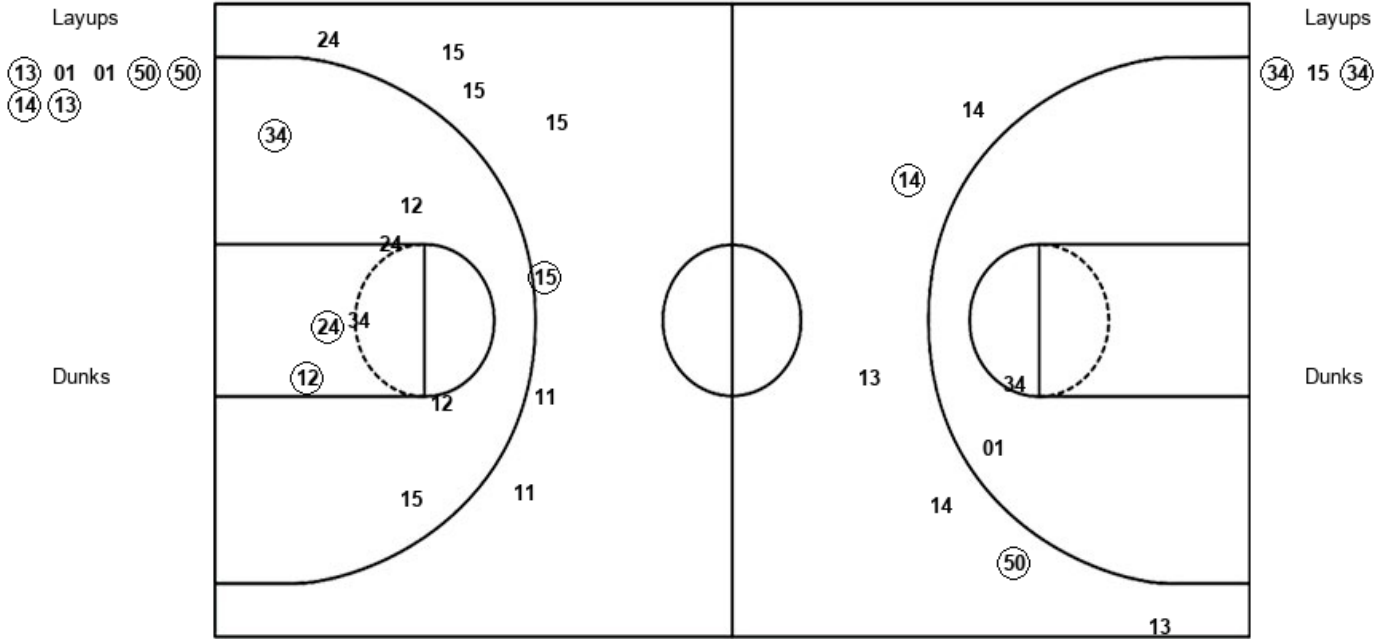
Official Shot Chart
Butler vs Indiana
PERIOD 2 Shots

December 06, 2018 at Simon Skjodt Assembly Hall - Bloomington, IN



Indiana

Butler



IND : Period 2	Made	Att	Pct
Layups	5	7	71.4
Dunks	0	0	0
2PT Field Goals	5	9	55.6
3PT Field Goals	2	6	33.3
Total Field Goals	7	15	46.7

BUT : Period 2	Made	Att	Pct
Layups	2	3	66.7
Dunks	0	0	0
2PT Field Goals	5	11	45.5
3PT Field Goals	1	7	14.3
Total Field Goals	6	18	33.3

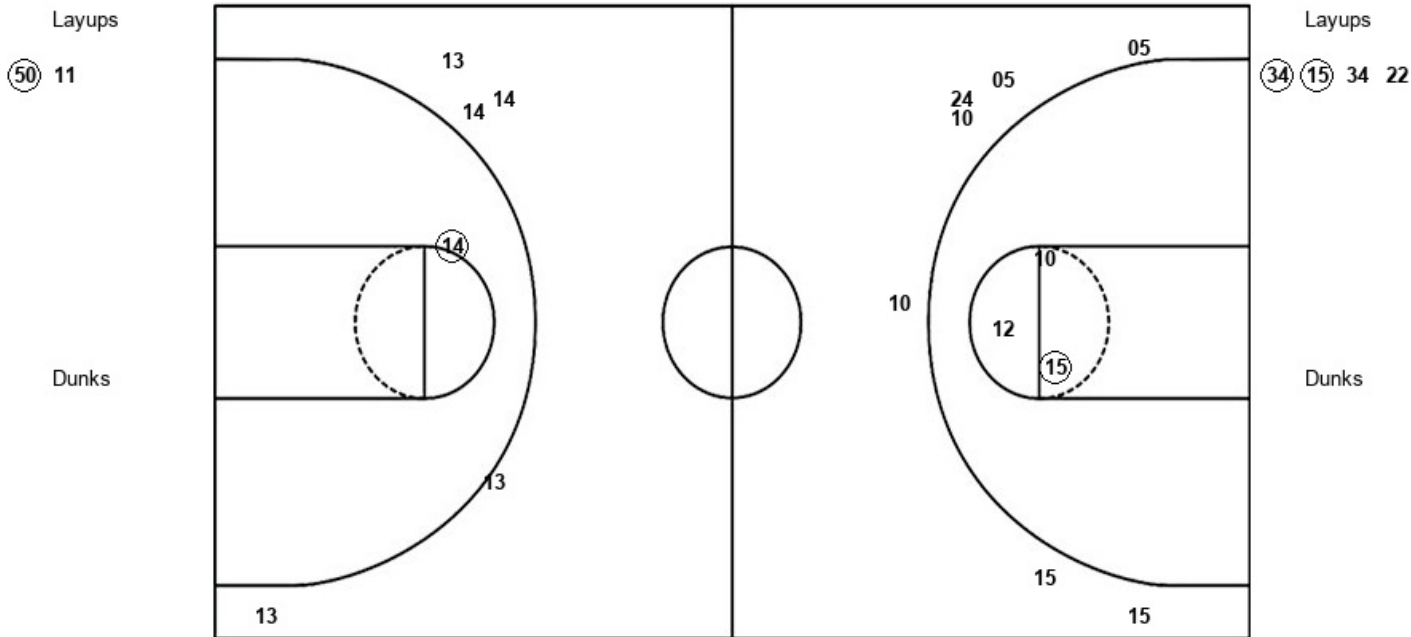
Official Shot Chart
Butler vs Indiana
PERIOD 3 Shots

December 06, 2018 at Simon Skjodt Assembly Hall - Bloomington, IN



Indiana

Butler



IND : Period 3	Made	Att	Pct
Layups	1	2	50.0
Dunks	0	0	0
2PT Field Goals	2	3	66.7
3PT Field Goals	0	5	00.0
Total Field Goals	2	8	25.0

BUT : Period 3	Made	Att	Pct
Layups	2	4	50.0
Dunks	0	0	0
2PT Field Goals	3	7	42.9
3PT Field Goals	0	7	00.0
Total Field Goals	3	14	21.4

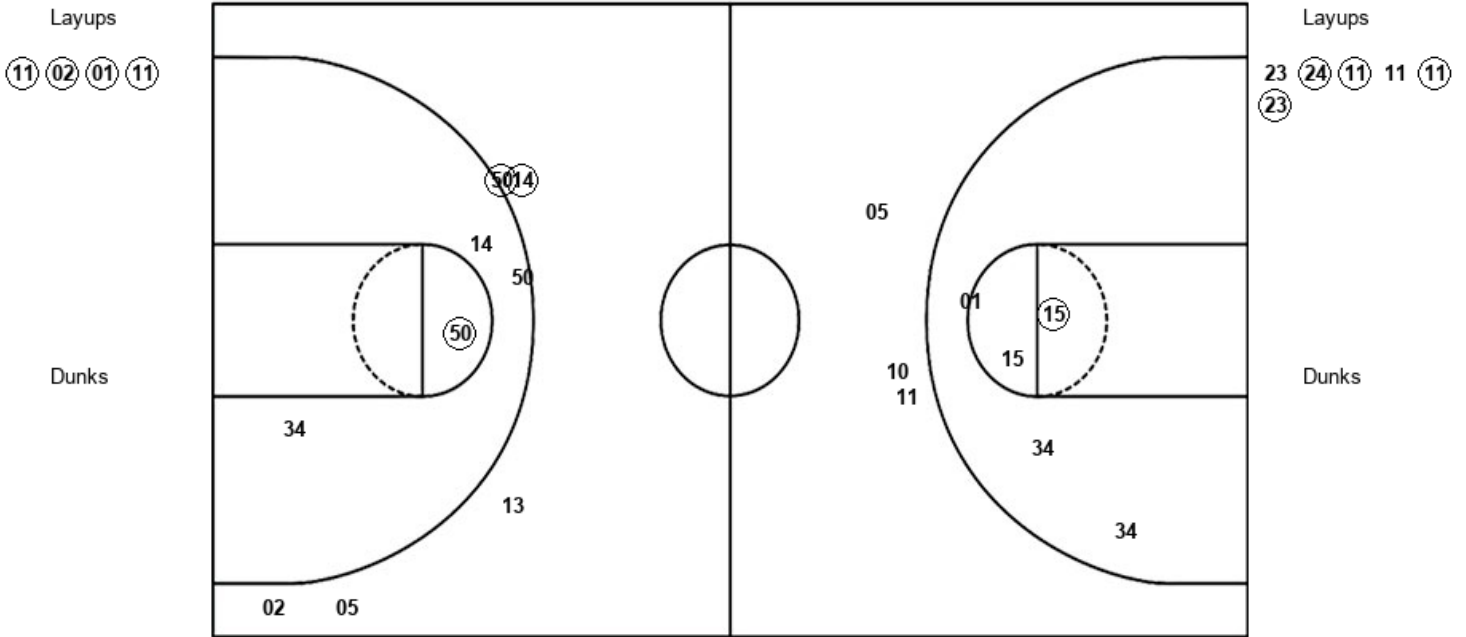
Official Shot Chart
 Butler vs Indiana
 PERIOD 4 Shots

December 06, 2018 at Simon Skjodt Assembly Hall - Bloomington, IN



Indiana

Butler



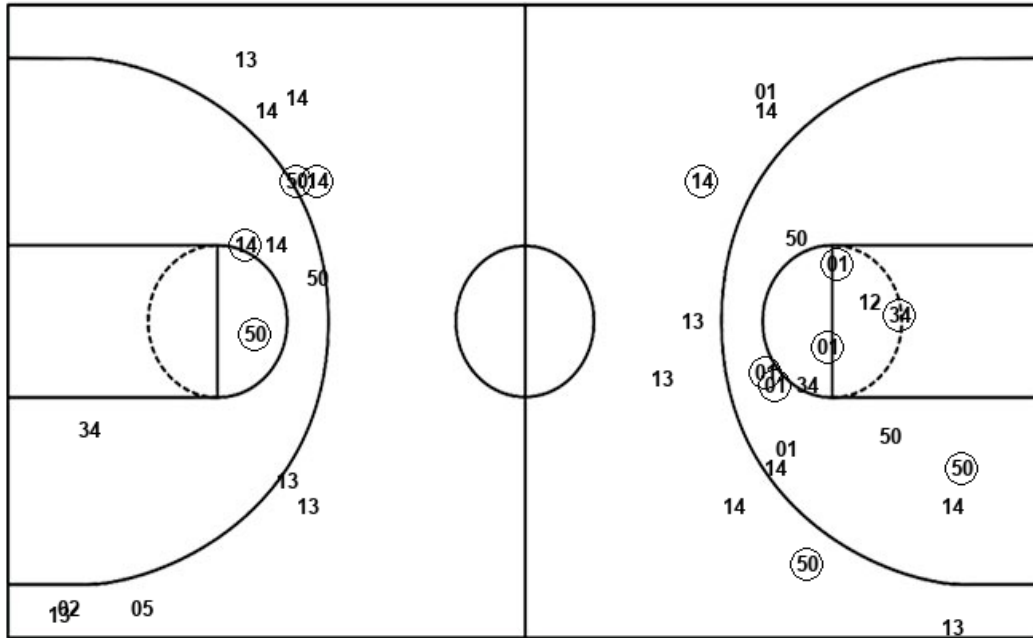
IND : Period 4	Made	Att	Pct
Layups	4	4	100.0
Dunks	0	0	0
2PT Field Goals	5	7	71.4
3PT Field Goals	2	6	33.3
Total Field Goals	7	13	53.8

BUT : Period 4	Made	Att	Pct
Layups	4	6	66.7
Dunks	0	0	0
2PT Field Goals	5	11	45.5
3PT Field Goals	0	3	00.0
Total Field Goals	5	14	35.7

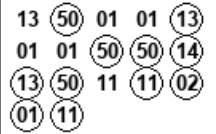
Official Shot Chart
Butler vs Indiana
Indiana Team Shots
 December 06, 2018 at Simon Skjodt Assembly Hall - Bloomington, IN



Layups



Layups



Dunks

Dunks

IND : Period 1	Made	Att	Pct
Layups	1	4	25.0
Dunks	0	0	0
2PT Field Goals	7	15	46.7
3PT Field Goals	0	2	00.0
Total Field Goals	7	17	41.2

IND : Period 3	Made	Att	Pct
Layups	1	2	50.0
Dunks	0	0	0
2PT Field Goals	2	3	66.7
3PT Field Goals	0	5	00.0
Total Field Goals	2	8	25.0

IND : Period 2	Made	Att	Pct
Layups	5	7	71.4
Dunks	0	0	0
2PT Field Goals	5	9	55.6
3PT Field Goals	2	6	33.3
Total Field Goals	7	15	46.7

IND : Period 4	Made	Att	Pct
Layups	4	4	100.0
Dunks	0	0	0
2PT Field Goals	5	7	71.4
3PT Field Goals	2	6	33.3
Total Field Goals	7	13	53.8