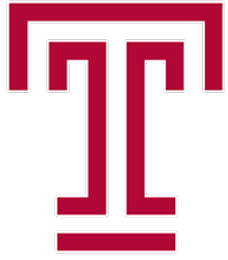


**FINAL SCORE**



**Temple**

**59**



**Villanova**

**69**

**December 06, 2018 • Finneran Pavilion - Villanova, Pa.**

**FINAL STATISTICS**

**Official Box Score**  
**Temple vs Villanova**  
**Game Totals -- Final Statistics**  
**December 06, 2018 at Finneran Pavilion - Villanova, Pa.**

**Temple 59**

No.	Player	S	Pts	FG	3FG	FT	OR	DR	TR	PF	A	TO	Blk	Stl	Min	+/-
1	Rose, Quinton		13	6-14	1-2	0-0	0	4	4	2	0	4	0	2	35	-17
10	Alston, Jr., Shizz		15	5-16	2-7	3-4	1	1	2	4	3	3	0	1	37	-7
15	Pierre-Louis, Nate		19	7-12	0-2	5-6	1	4	5	2	1	0	0	0	35	-7
22	Perry, De'vondre		0	0-1	0-1	0-0	0	3	3	4	1	0	0	1	31	-11
24	Aflakpui, Ernest		5	2-3	0-0	1-2	1	4	5	3	0	0	0	0	24	8
0	Moore li, Alani		5	2-4	1-2	0-0	0	1	1	1	1	1	0	0	14	1
4	Moorman li, J.P.		0	0-0	0-0	0-0	0	2	2	4	0	0	0	0	22	-19
23	Moore, Damion		2	1-1	0-0	0-0	2	1	3	0	1	1	0	0	4	2
	Team						0	3	3	0		0				
<b>TOTALS</b>			<b>59</b>	<b>23-51</b>	<b>4-14</b>	<b>9-12</b>	<b>5</b>	<b>23</b>	<b>28</b>	<b>20</b>	<b>7</b>	<b>9</b>	<b>0</b>	<b>4</b>	<b>200</b>	

*Shooting By Period*

Period	FG	FG%	3FG	3FG%	FT	FT%
1st Half	10-25	40%	1-7	14%	2-2	100%
2nd Half	13-26	50%	3-7	43%	7-10	70%
<b>Game</b>	<b>23-51</b>	<b>45.1%</b>	<b>4-14</b>	<b>28.6%</b>	<b>9-12</b>	<b>75.0%</b>

*Deadball Rebounds:*  
*Last FG: 2nd-00:20*  
*Biggest Run: 7-0*  
*Largest lead: By 7 at 2-16:08*  
*Technical Fouls: None.*

**Villanova 69**

No.	Player	S	Pts	FG	3FG	FT	OR	DR	TR	PF	A	TO	Blk	Stl	Min	+/-
2	Gillespie, Collin		9	1-5	1-4	6-6	1	2	3	2	4	3	0	1	32	7
4	Paschall, Eric		10	3-15	0-6	4-7	3	4	7	2	2	2	1	2	39	12
5	Booth, Phil		9	2-7	1-2	4-4	0	2	2	2	2	1	0	0	31	1
15	Bey, Saddiq		4	2-6	0-3	0-0	2	5	7	1	3	0	0	0	28	1
21	Cosby-Roundtree, Dhamir		8	4-6	0-0	0-2	2	5	7	1	0	0	0	0	23	-6
10	Swider, Cole		3	1-2	1-1	0-0	0	1	1	1	0	0	0	0	10	2
23	Samuels, Jermaine		15	4-6	3-3	4-4	2	5	7	2	0	0	0	0	16	13
24	Cremona, Joe		11	4-5	1-2	2-2	0	0	0	1	0	0	0	0	21	20
	Team						1	1	2	0		1				
<b>TOTALS</b>			<b>69</b>	<b>21-52</b>	<b>7-21</b>	<b>20-25</b>	<b>11</b>	<b>25</b>	<b>36</b>	<b>12</b>	<b>11</b>	<b>7</b>	<b>1</b>	<b>3</b>	<b>200</b>	

*Shooting By Period*

Period	FG	FG%	3FG	3FG%	FT	FT%
1st Half	9-24	38%	4-11	36%	2-3	67%
2nd Half	12-28	43%	3-10	30%	18-22	82%
<b>Game</b>	<b>21-52</b>	<b>40.4%</b>	<b>7-21</b>	<b>33.3%</b>	<b>20-25</b>	<b>80.0%</b>

*Deadball Rebounds:*  
*Last FG: 2nd-00:55*  
*Biggest Run: 12-0*  
*Largest lead: By 10 at 2-00:17*  
*Technical Fouls: None.*

<b>Game Notes:</b>	
Officials: <b>Mike Roberts, Jamie Luckie, Jeffrey Anderson</b>	
Attendance: <b>6501</b>	
Start Time: <b>2018-12-06 01:45:37</b>	End Time: <b>2018-12-06 03:55:01</b>
Game Duration: <b>129</b>	

Score by Period	1st	2nd	TOT
TEM	23	36	<b>59</b>
VIL	24	45	<b>69</b>

**TEM led for 15:34. VIL led for 21:56.**  
**Game was tied for 2:31.**  
 Times tied: 6      Lead Changes: 5

Points from	TEM	VIL
In the Paint	32	26
Off Turns	9	10
2nd Chance	7	13
Fast Break	14	14
Bench	7	29

**Official Box Score**  
**Temple vs Villanova**  
**First Half Statistics Only**  
**December 06, 2018 at Finneran Pavilion - Villanova, Pa.**

**Temple 59**

No.	Player	S	Pts	FG	3FG	FT	OR	DR	TR	PF	A	TO	Blk	Stl	Min	+/-
1	Rose, Quinton		2	1-6	0-0	0-0	0	2	2	0	0	2	0	1	17	-3
10	Alston, Jr., Shizz		9	3-7	1-4	2-2	1	1	2	0	2	2	0	1	19	1
15	Pierre-Louis, Nate		6	3-6	0-1	0-0	1	3	4	1	0	0	0	0	17	-1
22	Perry, De'vondre		0	0-1	0-1	0-0	0	1	1	2	1	0	0	1	13	-3
24	Aflakpui, Ernest		2	1-2	0-0	0-0	0	1	1	2	0	0	0	0	13	2
0	Moore li, Alani		2	1-2	0-1	0-0	0	1	1	0	0	1	0	0	7	0
4	Moorman li, J.P.		0	0-0	0-0	0-0	0	2	2	1	0	0	0	0	11	-3
23	Moore, Damion		2	1-1	0-0	0-0	2	1	3	0	1	1	0	0	4	2
	Team						0	1	1	0		0				
<b>TOTALS</b>			<b>23</b>	<b>10-25</b>	<b>1-7</b>	<b>2-2</b>	<b>0</b>	<b>0</b>	<b>17</b>	<b>6</b>	<b>4</b>	<b>6</b>	<b>0</b>	<b>3</b>	<b>100</b>	

*Shooting By Period*

Period	FG	FG%	3FG	3FG%	FT	FT%
1st Half	10-25	40%	1-7	14%	2-2	100%
2nd Half	13-26	50%	3-7	43%	7-10	70%
<b>Game</b>	<b>23-51</b>	<b>45.1%</b>	<b>4-14</b>	<b>28.6%</b>	<b>9-12</b>	<b>75.0%</b>

*Deadball Rebounds:*  
*Last FG: 2nd-00:20*  
*Biggest Run: 7-0*  
*Largest lead: By 7 at 2-16:08*  
*Technical Fouls: None.*

**Villanova 69**

No.	Player	S	Pts	FG	3FG	FT	OR	DR	TR	PF	A	TO	Blk	Stl	Min	+/-
2	Gillespie, Collin		3	1-2	1-2	0-0	1	0	1	1	3	2	0	1	18	3
4	Paschall, Eric		4	1-5	0-2	2-3	0	2	2	0	1	1	0	1	19	1
5	Booth, Phil		5	2-6	1-2	0-0	0	2	2	0	0	1	0	0	16	-1
15	Bey, Saddiq		0	0-3	0-3	0-0	0	3	3	1	3	0	0	0	14	-2
21	Cosby-Roundtree, Dhamir		6	3-4	0-0	0-0	2	3	5	0	0	0	0	0	16	-2
10	Swider, Cole		3	1-2	1-1	0-0	0	0	0	0	0	0	0	0	7	1
23	Samuels, Jermaine		0	0-1	0-0	0-0	0	0	0	1	0	0	0	0	4	5
24	Cremona, Joe		3	1-1	1-1	0-0	0	0	0	1	0	0	0	0	5	0
	Team						0	1	1	0		1				
<b>TOTALS</b>			<b>24</b>	<b>9-24</b>	<b>4-11</b>	<b>2-3</b>	<b>0</b>	<b>0</b>	<b>14</b>	<b>4</b>	<b>7</b>	<b>5</b>	<b>0</b>	<b>2</b>	<b>100</b>	

*Shooting By Period*

Period	FG	FG%	3FG	3FG%	FT	FT%
1st Half	9-24	38%	4-11	36%	2-3	67%
2nd Half	12-28	43%	3-10	30%	18-22	82%
<b>Game</b>	<b>21-52</b>	<b>40.4%</b>	<b>7-21</b>	<b>33.3%</b>	<b>20-25</b>	<b>80.0%</b>

*Deadball Rebounds:*  
*Last FG: 2nd-00:55*  
*Biggest Run: 12-0*  
*Largest lead: By 10 at 2-00:17*  
*Technical Fouls: None.*

<b>Game Notes:</b>	
Officials: Mike Roberts, Jamie Luckie, Jeffrey Anderson	
Attendance: 6501	
Start Time: 2018-12-06 01:45:37	End Time: 2018-12-06 03:55:01
Game Duration: 129	

Score by Period	1st	2nd	TOT
TEM	23	36	59
VIL	24	45	69

**This period only: TEM led for 15:34. VIL led for 15:55.**  
**Game was tied for 0:31.**

Points from (This Period)	TEM	VIL
In the Paint	14	10
Off Turns	6	4
2nd Chance	4	3
Fast Break	6	0
Bench	4	6

**Official Play-By-Play**  
**Temple vs Villanova**  
**First Half**  
**December 06, 2018 at Finneran Pavilion - Villanova, Pa.**

**Starters:**

**Temple:** 1 ROSE,QUINTON; 10 ALSTON, JR.,SHIZZ; 15 PIERRE-LOUIS,NATE; 22 PERRY,DE'VONDRE; 24 AFLAKPUI,ERNEST;

**Villanova:** 2 GILLESPIE,COLLIN; 4 PASCHALL,ERIC; 5 BOOTH,PHIL; 15 BEY,SADDIQ; 21 COSBY-ROUNDTREE,DHAMIR;

**Period 1**

Time	VISITORS: Temple	Score	Margin	HOME: Villanova
19:39	GOOD! LAYUP by AFLAKPUI,ERNEST	0-2	V 2	
19:39	ASSIST by ALSTON, JR.,SHIZZ			
19:07				TURNOVER (BADPASS) by PASCHALL,ERIC
19:07	STEAL by ROSE,QUINTON			
19:01	GOOD! LAYUP by ROSE,QUINTON [FB]	0-4	V 4	
18:35		3-4	V 1	GOOD! 3PTR by GILLESPIE,COLLIN
18:35				ASSIST by BEY,SADDIQ
18:11	TURNOVER (TRAVEL) by ALSTON, JR.,SHIZZ			
17:50		5-4	H 1	GOOD! DUNK by COSBY-ROUNDTREE,DHAMIR
17:50				ASSIST by BEY,SADDIQ
17:16	MISSED JUMPER by ROSE,QUINTON			
17:12	REBOUND (OFF) by PIERRE-LOUIS,NATE			
17:11	MISSED 3PTR by PERRY,DE'VONDRE			
17:07				REBOUND (DEF) by BEY,SADDIQ
16:45		8-4	H 4	GOOD! 3PTR by BOOTH,PHIL
16:45				ASSIST by GILLESPIE,COLLIN
16:27	MISSED 3PTR by ALSTON, JR.,SHIZZ			
16:23				REBOUND (DEF) by PASCHALL,ERIC
16:00		10-4	H 6	GOOD! LAYUP by COSBY-ROUNDTREE,DHAMIR
16:00				ASSIST by PASCHALL,ERIC
15:47	GOOD! LAYUP by PIERRE-LOUIS,NATE [PNT]	10-6	H 4	
15:47	ASSIST by PERRY,DE'VONDRE			
15:23				MISSED 3PTR by BOOTH,PHIL
15:18	REBOUND (DEF) by AFLAKPUI,ERNEST			
15:10	TURNOVER (LOSTBALL) by ROSE,QUINTON			
15:10				STEAL by PASCHALL,ERIC
15:02				MISSED 3PTR by BEY,SADDIQ
14:56				REBOUND (OFF) by COSBY-ROUNDTREE,DHAMIR
14:55				MISSED 3PTR by GILLESPIE,COLLIN
14:52	REBOUND (DEF) by ROSE,QUINTON			
14:49	MISSED 3PTR by ALSTON, JR.,SHIZZ			
14:45				REBOUND (DEF) by BEY,SADDIQ
14:31				TURNOVER (BADPASS) by BOOTH,PHIL
14:31	STEAL by PERRY,DE'VONDRE			
14:25	GOOD! LAYUP by PIERRE-LOUIS,NATE [FB]	10-8	H 2	
14:25	ASSIST by ALSTON, JR.,SHIZZ			
13:59				MISSED 3PTR by PASCHALL,ERIC
13:56	REBOUND (DEF) by PIERRE-LOUIS,NATE			
13:53	MISSED LAYUP by ROSE,QUINTON			
13:50				REBOUND (DEF) by BOOTH,PHIL
13:23		12-8	H 4	GOOD! LAYUP by COSBY-ROUNDTREE,DHAMIR
13:23				ASSIST by BEY,SADDIQ
13:02	GOOD! JUMPER by PIERRE-LOUIS,NATE	12-10	H 2	
12:34				TURNOVER (BADPASS) by GILLESPIE,COLLIN
12:34	STEAL by ALSTON, JR.,SHIZZ			
12:30	GOOD! DUNK by ALSTON, JR.,SHIZZ [FB]	12-12	T	
12:30				TIMEOUT 30SEC
12:30				SUB OUT: GILLESPIE,COLLIN
12:30				SUB IN: SAMUELS,JERMAINE
12:30				SUB OUT: BOOTH,PHIL
12:30				SUB IN: CREMO,JOE
12:04				MISSED 3PTR by BEY,SADDIQ
12:00				REBOUND (OFF) by COSBY-ROUNDTREE,DHAMIR
11:35				MISSED JUMPER by SAMUELS,JERMAINE
11:31	REBOUND (DEF) by ROSE,QUINTON			
11:26	MISSED LAYUP by ROSE,QUINTON			
11:26				REBOUND (DEF) by BEY,SADDIQ
11:26	FOUL (PERSONAL) by AFLAKPUI,ERNEST			
11:26				SUB OUT: BEY,SADDIQ
11:26				SUB IN: GILLESPIE,COLLIN
11:26				SUB OUT: COSBY-ROUNDTREE,DHAMIR
11:26				SUB IN: SWIDER,COLE
11:26	SUB OUT: AFLAKPUI,ERNEST			
11:26	SUB IN: MOORMAN II,J.P.			
11:14		15-12	H 3	GOOD! 3PTR by SWIDER,COLE
11:14				ASSIST by GILLESPIE,COLLIN
10:46	MISSED 3PTR by ALSTON, JR.,SHIZZ			
10:41	REBOUND (OFF) by ALSTON, JR.,SHIZZ			
10:41	TURNOVER (TRAVEL) by ALSTON, JR.,SHIZZ			
10:41				SUB OUT: CREMO,JOE
10:41				SUB IN: BOOTH,PHIL
10:41	SUB OUT: ALSTON, JR.,SHIZZ			
10:41	SUB IN: MOORE II,ALANI			
10:17		17-12	H 5	GOOD! LAYUP by PASCHALL,ERIC
10:17	FOUL (PERSONAL) by PERRY,DE'VONDRE			

Time	VISITORS: Temple	Score	Margin	HOME: Villanova
10:17				MISSED FT by PASCHALL,ERIC
10:17	REBOUND (DEF) by PERRY,DE'VONDRE			
10:05	MISSED LAYUP by PIERRE-LOUIS,NATE			
10:01				REBOUND (DEF) by PASCHALL,ERIC
09:52				MISSED JUMPER by BOOTH,PHIL
09:47	REBOUND (DEF) by PIERRE-LOUIS,NATE			
09:44	MISSED JUMPER by ROSE,QUINTON			
09:42				REBOUND (DEF) by TEAM
09:42	SUB OUT: PIERRE-LOUIS,NATE			
09:42	SUB IN: ALSTON, JR.,SHIZZ			
09:28				FOUL (OFF) by GILLESPIE,COLLIN
09:28				TURNOVER (OFFENSIVE) by GILLESPIE,COLLIN
09:28				SUB OUT: PASCHALL,ERIC
09:28				SUB IN: COSBY-ROUNDTREE,DHAMIR
09:28	SUB OUT: PERRY,DE'VONDRE			
09:28	SUB IN: MOORE,DAMION			
09:08	TURNOVER (TRAVEL) by MOORE II,ALANI			
08:45				MISSED JUMPER by COSBY-ROUNDTREE,DHAMIR
08:43	REBOUND (DEF) by MOORE,DAMION			
08:43				FOUL (PERSONAL) by SAMUELS,JERMAINE
08:43				SUB OUT: SAMUELS,JERMAINE
08:43				SUB IN: PASCHALL,ERIC
08:43	SUB OUT: ROSE,QUINTON			
08:43	SUB IN: PIERRE-LOUIS,NATE			
08:24	MISSED 3PTR by MOORE II,ALANI			
08:20	REBOUND (OFF) by MOORE,DAMION			
08:18	GOOD! LAYUP by MOORE II,ALANI	17-14	H 3	
08:18	ASSIST by MOORE,DAMION			
07:45				MISSED LAYUP by BOOTH,PHIL
07:41	REBOUND (DEF) by MOORE II,ALANI			
07:38	MISSED JUMPER by PIERRE-LOUIS,NATE			
07:33				REBOUND (DEF) by BOOTH,PHIL
07:29				MISSED JUMPER by SWIDER,COLE
07:24	REBOUND (DEF) by MOORMAN II,J.P.			
07:00	MISSED JUMPER by ALSTON, JR.,SHIZZ			
06:55	REBOUND (OFF) by MOORE,DAMION			
06:54	GOOD! JUMPER by MOORE,DAMION [PNT]	17-16	H 1	
06:32		19-16	H 3	GOOD! LAYUP by BOOTH,PHIL
06:04	TURNOVER (LOSTBALL) by MOORE,DAMION			
06:04				STEAL by GILLESPIE,COLLIN
05:55				
05:55				SUB OUT: BOOTH,PHIL
05:55				SUB IN: CREMO,JOE
05:55				SUB OUT: SWIDER,COLE
05:55				SUB IN: BEY,SADDIQ
05:55	SUB OUT: PIERRE-LOUIS,NATE			
05:55	SUB IN: ROSE,QUINTON			
05:55	SUB OUT: MOORE,DAMION			
05:55	SUB IN: AFLAKPUI,ERNEST			
05:43				MISSED JUMPER by PASCHALL,ERIC
05:42	REBOUND (DEF) by MOORMAN II,J.P.			
05:42				FOUL (PERSONAL) by BEY,SADDIQ
05:20				FOUL (PERSONAL) by CREMO,JOE
05:20	GOOD! FT by ALSTON, JR.,SHIZZ	19-17	H 2	
05:20	GOOD! FT by ALSTON, JR.,SHIZZ	19-18	H 1	
04:56	FOUL (PERSONAL) by MOORMAN II,J.P.			
04:56		20-18	H 2	GOOD! FT by PASCHALL,ERIC
04:56				SUB OUT: CREMO,JOE
04:56				SUB IN: BOOTH,PHIL
04:56		21-18	H 3	GOOD! FT by PASCHALL,ERIC
04:34	MISSED JUMPER by ROSE,QUINTON			
04:30				REBOUND (DEF) by COSBY-ROUNDTREE,DHAMIR
04:20	SUB OUT: MOORE II,ALANI			
04:20	SUB IN: PIERRE-LOUIS,NATE			
03:59				TURNOVER (SHOTCLOCK) by
03:58				
03:34	MISSED LAYUP by AFLAKPUI,ERNEST			
03:31				REBOUND (DEF) by COSBY-ROUNDTREE,DHAMIR
03:03				MISSED JUMPER by BOOTH,PHIL
03:00	REBOUND (DEF) by PIERRE-LOUIS,NATE			
02:47	MISSED 3PTR by PIERRE-LOUIS,NATE			
02:42				REBOUND (DEF) by COSBY-ROUNDTREE,DHAMIR
02:21				MISSED 3PTR by BEY,SADDIQ
02:19	REBOUND (DEF) by TEAM			
02:19				SUB OUT: GILLESPIE,COLLIN
02:19				SUB IN: CREMO,JOE
02:19				SUB OUT: COSBY-ROUNDTREE,DHAMIR
02:19				SUB IN: SWIDER,COLE
02:19	SUB OUT: MOORMAN II,J.P.			
02:19	SUB IN: PERRY,DE'VONDRE			
02:02	GOOD! JUMPER by ALSTON, JR.,SHIZZ	21-20	H 1	
01:40				SUB OUT: BOOTH,PHIL
01:40				SUB IN: GILLESPIE,COLLIN
01:40	SUB OUT: AFLAKPUI,ERNEST			
01:40	SUB IN: MOORMAN II,J.P.			
01:26				MISSED JUMPER by PASCHALL,ERIC
01:21	REBOUND (DEF) by ALSTON, JR.,SHIZZ			

Time	VISITORS: Temple	Score	Margin	HOME: Villanova
01:02	GOOD! 3PTR by ALSTON, JR.,SHIZZ	21-23	V 2	
00:44				MISSED 3PTR by PASCHALL,ERIC
00:39				REBOUND (OFF) by GILLESPIE,COLLIN
00:38		24-23	H 1	GOOD! 3PTR by CREMO,JOE
00:38				ASSIST by GILLESPIE,COLLIN
00:33	TIMEOUT 30SEC			
00:33				SUB OUT: SWIDER,COLE
00:33				SUB IN: COSBY-ROUNDTREE,DHAMIR
00:20	TURNOVER (BADPASS) by ROSE,QUINTON			
00:11	FOUL (PERSONAL) by PERRY,DEVONDRE			
00:11	SUB OUT: PERRY,DEVONDRE			
00:11	SUB IN: AFLAKPUI,ERNEST			
00:11	SUB OUT: MOORMAN II,J.P.			
00:11	SUB IN: MOORE II,ALANI			
00:07	FOUL (PERSONAL) by PIERRE-LOUIS,NATE			
00:05	FOUL (PERSONAL) by AFLAKPUI,ERNEST			

**Temple 23, Villanova 24**

Points from (This Period)	TEM	VIL
In the Paint	14	10
Off Turns	6	4
2nd Chance	4	3
Fast Break	6	0
Bench	4	6

**This period only:TEM led for 15:34. VIL led for 15:55.  
Game was tied for 0:31.**

**Official Box Score**  
**Temple vs Villanova**  
**Second Half Statistics Only**  
**December 06, 2018 at Finneran Pavilion - Villanova, Pa.**

**Temple 59**

No.	Player	S	Pts	FG	3FG	FT	OR	DR	TR	PF	A	TO	Blk	Stl	Min	+/-
1	Rose, Quinton		11	5-8	1-2	0-0	0	2	2	2	0	2	0	1	17	-14
10	Alston, Jr., Shizz		6	2-9	1-3	1-2	0	0	0	4	1	1	0	0	18	-8
15	Pierre-Louis, Nate		13	4-6	0-1	5-6	0	1	1	1	1	0	0	0	17	-6
22	Perry, De'vondre		0	0-0	0-0	0-0	0	2	2	2	0	0	0	0	18	-8
24	Aflakpui, Ernest		3	1-1	0-0	1-2	1	3	4	1	0	0	0	0	11	6
0	Moore li, Alani		3	1-2	1-1	0-0	0	0	0	1	1	0	0	0	7	1
4	Moorman li, J.P.		0	0-0	0-0	0-0	0	0	0	3	0	0	0	0	11	-16
23	Moore, Damion		0	0-0	0-0	0-0	0	0	0	0	0	0	0	0	0	0
	Team						0	2	2	0		0				
<b>TOTALS</b>			<b>36</b>	<b>13-26</b>	<b>3-7</b>	<b>7-10</b>	<b>0</b>	<b>0</b>	<b>11</b>	<b>14</b>	<b>3</b>	<b>3</b>	<b>0</b>	<b>1</b>	<b>100</b>	

*Shooting By Period*

Period	FG	FG%	3FG	3FG%	FT	FT%
1st Half	10-25	40%	1-7	14%	2-2	100%
2nd Half	13-26	50%	3-7	43%	7-10	70%
<b>Game</b>	<b>23-51</b>	<b>45.1%</b>	<b>4-14</b>	<b>28.6%</b>	<b>9-12</b>	<b>75.0%</b>

*Deadball Rebounds:*  
*Last FG: 2nd-00:20*  
*Biggest Run: 7-0*  
*Largest lead: By 7 at 2-16:08*  
*Technical Fouls: None.*

**Villanova 69**

No.	Player	S	Pts	FG	3FG	FT	OR	DR	TR	PF	A	TO	Blk	Stl	Min	+/-
2	Gillespie, Collin		6	0-3	0-2	6-6	0	2	2	1	1	1	0	0	14	4
4	Paschall, Eric		6	2-10	0-4	2-4	3	2	5	2	1	1	1	1	20	11
5	Booth, Phil		4	0-1	0-0	4-4	0	0	0	2	2	0	0	0	15	2
15	Bey, Saddiq		4	2-3	0-0	0-0	2	2	4	0	0	0	0	0	14	3
21	Cosby-Roundtree, Dhamir		2	1-2	0-0	0-2	0	2	2	1	0	0	0	0	7	-4
10	Swider, Cole		0	0-0	0-0	0-0	0	1	1	1	0	0	0	0	3	1
23	Samuels, Jermaine		15	4-5	3-3	4-4	2	5	7	1	0	0	0	0	12	8
24	Cremona, Joe		8	3-4	0-1	2-2	0	0	0	0	0	0	0	0	16	20
	Team						1	0	1	0		0				
<b>TOTALS</b>			<b>45</b>	<b>12-28</b>	<b>3-10</b>	<b>18-22</b>	<b>0</b>	<b>0</b>	<b>22</b>	<b>8</b>	<b>4</b>	<b>2</b>	<b>1</b>	<b>1</b>	<b>100</b>	

*Shooting By Period*

Period	FG	FG%	3FG	3FG%	FT	FT%
1st Half	9-24	38%	4-11	36%	2-3	67%
2nd Half	12-28	43%	3-10	30%	18-22	82%
<b>Game</b>	<b>21-52</b>	<b>40.4%</b>	<b>7-21</b>	<b>33.3%</b>	<b>20-25</b>	<b>80.0%</b>

*Deadball Rebounds:*  
*Last FG: 2nd-00:55*  
*Biggest Run: 12-0*  
*Largest lead: By 10 at 2-00:17*  
*Technical Fouls: None.*

<b>Game Notes:</b>	
Officials: Mike Roberts, Jamie Luckie, Jeffrey Anderson	
Attendance: 6501	
Start Time: 2018-12-06 01:45:37	End Time: 2018-12-06 03:55:01
Game Duration: 129	

Score by Period	1st	2nd	TOT
TEM	23	36	59
VIL	24	45	69

**This period only: TEM led for 15:34. VIL led for 15:55.**  
**Game was tied for 0:31.**

Points from (This Period)	TEM	VIL
In the Paint	18	16
Off Turns	3	6
2nd Chance	3	10
Fast Break	8	14
Bench	3	23

**Official Play-By-Play**  
**Temple vs Villanova**  
**Second Half**  
**December 06, 2018 at Finneran Pavilion - Villanova, Pa.**

**Starters:**

**Temple:** 1 ROSE,QUINTON; 10 ALSTON, JR.,SHIZZ; 15 PIERRE-LOUIS,NATE; 22 PERRY,DE'VONDRE; 24 AFLAKPUI,ERNEST;

**Villanova:** 2 GILLESPIE,COLLIN; 4 PASCHALL,ERIC; 5 BOOTH,PHIL; 15 BEY,SADDIQ; 21 COSBY-ROUNDTREE,DHAMIR;

**Period 2**

Time	VISITORS: Temple	Score	Margin	HOME: Villanova
19:38	FOUL (PERSONAL) by AFLAKPUI,ERNEST			
19:38				MISSED FT by COSBY-ROUNDTREE,DHAMIR
19:38				REBOUND (OFF) by TEAM
19:38				MISSED FT by COSBY-ROUNDTREE,DHAMIR
19:38	REBOUND (DEF) by AFLAKPUI,ERNEST			
19:16	GOOD! 3PTR by ROSE,QUINTON	24-26	V 2	
19:16	ASSIST by PIERRE-LOUIS,NATE			
18:48				MISSED JUMPER by COSBY-ROUNDTREE,DHAMIR
18:44	REBOUND (DEF) by AFLAKPUI,ERNEST			
18:42	GOOD! JUMPER by ROSE,QUINTON [FB]	24-28	V 4	
18:38				TIMEOUT TEAM
18:15				MISSED 3PTR by PASCHALL,ERIC
18:11	REBOUND (DEF) by TEAM			
17:59	GOOD! JUMPER by PIERRE-LOUIS,NATE [PNT]	24-30	V 6	
17:34				MISSED JUMPER by PASCHALL,ERIC
17:30	REBOUND (DEF) by PERRY,DE'VONDRE			
17:20				FOUL (PERSONAL) by BOOTH,PHIL
17:20				SUB OUT: GILLESPIE,COLLIN
17:20				SUB IN: CREMO,JOE
17:20				SUB OUT: COSBY-ROUNDTREE,DHAMIR
17:20				SUB IN: SWIDER,COLE
17:20	SUB OUT: AFLAKPUI,ERNEST			
17:20	SUB IN: MOORMAN II,J.P.			
17:00	MISSED JUMPER by ALSTON, JR.,SHIZZ			
16:54				REBOUND (DEF) by PASCHALL,ERIC
16:48		26-30	V 4	GOOD! DUNK by PASCHALL,ERIC
16:31				FOUL (PERSONAL) by SWIDER,COLE
16:31	MISSED FT by PIERRE-LOUIS,NATE			
16:31	REBOUND (OFF) by TEAM			
16:31	GOOD! FT by PIERRE-LOUIS,NATE	26-31	V 5	
16:14				TURNOVER (LOSTBALL) by PASCHALL,ERIC
16:14	STEAL by ROSE,QUINTON			
16:08	GOOD! LAYUP by ROSE,QUINTON [FB]	26-33	V 7	
15:41	FOUL (PERSONAL) by PIERRE-LOUIS,NATE			
15:41				
15:33				MISSED 3PTR by PASCHALL,ERIC
15:28	REBOUND (DEF) by PIERRE-LOUIS,NATE			
15:17				SUB OUT: BEY,SADDIQ
15:17				SUB IN: COSBY-ROUNDTREE,DHAMIR
15:15	MISSED JUMPER by ALSTON, JR.,SHIZZ			
15:10				REBOUND (DEF) by SWIDER,COLE
15:05	FOUL (PERSONAL) by ALSTON, JR.,SHIZZ			
15:05		27-33	V 6	GOOD! FT by BOOTH,PHIL [FB]
15:05		28-33	V 5	GOOD! FT by BOOTH,PHIL [FB]
14:56	MISSED JUMPER by ROSE,QUINTON			
14:52				REBOUND (DEF) by COSBY-ROUNDTREE,DHAMIR
14:48	FOUL (PERSONAL) by MOORMAN II,J.P.			
14:48				MISSED FT by PASCHALL,ERIC
14:48				REBOUND (OFF) by TEAM
14:48				SUB OUT: SWIDER,COLE
14:48				SUB IN: BEY,SADDIQ
14:48		29-33	V 4	GOOD! FT by PASCHALL,ERIC [FB]
14:34	MISSED 3PTR by ROSE,QUINTON			
14:30				REBOUND (DEF) by COSBY-ROUNDTREE,DHAMIR
14:29	FOUL (PERSONAL) by ROSE,QUINTON			
14:17				MISSED JUMPER by PASCHALL,ERIC
14:14	REBOUND (DEF) by PERRY,DE'VONDRE			
14:05	TURNOVER (BADPASS) by ROSE,QUINTON			
13:51				MISSED JUMPER by BOOTH,PHIL
13:42				REBOUND (OFF) by PASCHALL,ERIC
13:42		31-33	V 2	GOOD! LAYUP by BEY,SADDIQ
13:30	MISSED JUMPER by PIERRE-LOUIS,NATE			
13:25				REBOUND (DEF) by BEY,SADDIQ
13:18		33-33	T	GOOD! JUMPER by COSBY-ROUNDTREE,DHAMIR [FB]
13:18				ASSIST by BOOTH,PHIL
12:58				SUB OUT: BOOTH,PHIL
12:58				SUB IN: GILLESPIE,COLLIN
12:58	SUB OUT: ROSE,QUINTON			
12:58	SUB IN: MOORE II,ALANI			
12:58				SUB OUT: PASCHALL,ERIC
12:58				SUB IN: SAMUELS,JERMAINE
12:57				FOUL (PERSONAL) by SAMUELS,JERMAINE
12:57	GOOD! FT by PIERRE-LOUIS,NATE	33-34	V 1	
12:57	GOOD! FT by PIERRE-LOUIS,NATE	33-35	V 2	
12:56	SUB OUT: MOORMAN II,J.P.			
12:56	SUB IN: AFLAKPUI,ERNEST			



Time	VISITORS: Temple	Score	Margin	HOME: Villanova
12:56				SUB OUT: COSBY-ROUNDTREE,DHAMIR
12:56				SUB IN: PASCHALL,ERIC
12:56				MISSED LAYUP by PASCHALL,ERIC
12:56				REBOUND (OFF) by BEY,SADDIQ
12:52				MISSED LAYUP by BEY,SADDIQ
12:52	REBOUND (DEF) by AFLAKPUI,ERNEST			
12:12	GOOD! LAYUP by PIERRE-LOUIS,NATE [PNT]	33-37	V 4	
11:46				TURNOVER (BADPASS) by GILLESPIE,COLLIN
11:46				
11:46				SUB OUT: BEY,SADDIQ
11:46				SUB IN: BOOTH,PHIL
11:46				SUB OUT: GILLESPIE,COLLIN
11:46				SUB IN: COSBY-ROUNDTREE,DHAMIR
11:32				FOUL (PERSONAL) by COSBY-ROUNDTREE,DHAMIR
11:32	GOOD! FT by ALSTON, JR.,SHIZZ	33-38	V 5	
11:32	MISSED FT by ALSTON, JR.,SHIZZ			
11:32				REBOUND (DEF) by SAMUELS,JERMAINE
11:14		36-38	V 2	GOOD! 3PTR by SAMUELS,JERMAINE
11:14				ASSIST by PASCHALL,ERIC
10:51	GOOD! 3PTR by MOORE II,ALANI	36-41	V 5	
10:51	ASSIST by ALSTON, JR.,SHIZZ			
10:18				SUB OUT: COSBY-ROUNDTREE,DHAMIR
10:18				SUB IN: GILLESPIE,COLLIN
10:18	SUB OUT: PERRY,DE'VONDRE			
10:18	SUB IN: ROSE,QUINTON			
10:18	SUB OUT: ALSTON, JR.,SHIZZ			
10:18	SUB IN: MOORMAN II,J.P.			
10:01		38-41	V 3	GOOD! JUMPER by CREMO,JOE [PNT]
09:44	GOOD! JUMPER by PIERRE-LOUIS,NATE [PNT]	38-43	V 5	
09:17		41-43	V 2	GOOD! 3PTR by SAMUELS,JERMAINE
09:17				ASSIST by BOOTH,PHIL
08:49	GOOD! JUMPER by AFLAKPUI,ERNEST [PNT]	41-45	V 4	
08:49	ASSIST by MOORE II,ALANI			
08:27				MISSED 3PTR by CREMO,JOE
08:24	REBOUND (DEF) by TEAM			
08:24				SUB OUT: CREMO,JOE
08:24				SUB IN: BEY,SADDIQ
08:24	SUB OUT: MOORE II,ALANI			
08:24	SUB IN: ALSTON, JR.,SHIZZ			
08:13				FOUL (PERSONAL) by GILLESPIE,COLLIN
08:13	SUB OUT: PIERRE-LOUIS,NATE			
08:13	SUB IN: PERRY,DE'VONDRE			
08:13	SUB OUT: AFLAKPUI,ERNEST			
08:13	SUB IN: MOORE II,ALANI			
07:56	MISSED LAYUP by MOORE II,ALANI			
07:56				BLOCK by PASCHALL,ERIC
07:51				REBOUND (DEF) by SAMUELS,JERMAINE
07:48				MISSED 3PTR by GILLESPIE,COLLIN
07:42	REBOUND (DEF) by ROSE,QUINTON			
07:25	MISSED JUMPER by ALSTON, JR.,SHIZZ			
07:23				REBOUND (DEF) by GILLESPIE,COLLIN
07:23	FOUL (PERSONAL) by MOORE II,ALANI			
07:23				SUB OUT: BOOTH,PHIL
07:23				SUB IN: CREMO,JOE
06:58				MISSED 3PTR by PASCHALL,ERIC
06:52				REBOUND (OFF) by BEY,SADDIQ
06:52		43-45	V 2	GOOD! DUNK by BEY,SADDIQ
06:42	GOOD! LAYUP by ROSE,QUINTON [PNT]	43-47	V 4	
06:22				MISSED 3PTR by PASCHALL,ERIC
06:22				REBOUND (OFF) by TEAM
06:08				MISSED LAYUP by SAMUELS,JERMAINE
06:03				REBOUND (OFF) by PASCHALL,ERIC
06:03		45-47	V 2	GOOD! DUNK by PASCHALL,ERIC
05:47	MISSED JUMPER by ALSTON, JR.,SHIZZ			
05:43				REBOUND (DEF) by BEY,SADDIQ
05:34	FOUL (PERSONAL) by ALSTON, JR.,SHIZZ			
05:34		46-47	V 1	GOOD! FT by GILLESPIE,COLLIN
05:34	SUB OUT: MOORE II,ALANI			
05:34	SUB IN: PIERRE-LOUIS,NATE			
05:34		47-47	T	GOOD! FT by GILLESPIE,COLLIN
05:20	TURNOVER (TRAVEL) by ROSE,QUINTON			
05:10		50-47	H 3	GOOD! 3PTR by SAMUELS,JERMAINE
05:10				ASSIST by GILLESPIE,COLLIN
04:59	TIMEOUT 30SEC			
04:45	TURNOVER (BADPASS) by ALSTON, JR.,SHIZZ			
04:45				STEAL by PASCHALL,ERIC
04:43	FOUL (PERSONAL) by ALSTON, JR.,SHIZZ			
04:43		51-47	H 4	GOOD! FT by PASCHALL,ERIC [FB]
04:43				MISSED FT by PASCHALL,ERIC
04:43	REBOUND (DEF) by ROSE,QUINTON			
04:26	MISSED JUMPER by ROSE,QUINTON			
04:20				REBOUND (DEF) by SAMUELS,JERMAINE
04:05				MISSED 3PTR by GILLESPIE,COLLIN
04:00				REBOUND (OFF) by PASCHALL,ERIC
04:00				MISSED JUMPER by PASCHALL,ERIC
04:00				REBOUND (OFF) by SAMUELS,JERMAINE

Time	VISITORS: Temple	Score	Margin	HOME: Villanova
04:00	FOUL (PERSONAL) by MOORMAN II,J.P.			
04:00		52-47	H 5	GOOD! FT by SAMUELS,JERMAINE
04:00		53-47	H 6	GOOD! FT by SAMUELS,JERMAINE
04:00				SUB OUT: SAMUELS,JERMAINE
04:00				SUB IN: BOOTH,PHIL
04:00	SUB OUT: MOORMAN II,J.P.			
04:00	SUB IN: AFLAKPUI,ERNEST			
03:41	MISSED JUMPER by ALSTON, JR.,SHIZZ			
03:38				REBOUND (DEF) by PASCHALL,ERIC
03:14	FOUL (PERSONAL) by PERRY,DE'VONDRE			
03:14		54-47	H 7	GOOD! FT by BOOTH,PHIL
03:14		55-47	H 8	GOOD! FT by BOOTH,PHIL
03:14				SUB OUT: CREMO,JOE
03:14				SUB IN: SAMUELS,JERMAINE
03:01				FOUL (PERSONAL) by BOOTH,PHIL
02:55	MISSED 3PTR by PIERRE-LOUIS,NATE			
02:51	REBOUND (OFF) by AFLAKPUI,ERNEST			
02:47	GOOD! 3PTR by ALSTON, JR.,SHIZZ	55-50	H 5	
02:45	TIMEOUT 30SEC			
02:45				SUB OUT: BEY,SADDIQ
02:45				SUB IN: CREMO,JOE
02:24				MISSED JUMPER by GILLESPIE,COLLIN
02:18				REBOUND (OFF) by SAMUELS,JERMAINE
02:18		57-50	H 7	GOOD! LAYUP by SAMUELS,JERMAINE
02:10	GOOD! LAYUP by ALSTON, JR.,SHIZZ [FB]	57-52	H 5	
01:43		59-52	H 7	GOOD! JUMPER by CREMO,JOE [PNT]
01:28	GOOD! LAYUP by ROSE,QUINTON	59-54	H 5	
00:55		61-54	H 7	GOOD! LAYUP by CREMO,JOE
00:47				FOUL (PERSONAL) by PASCHALL,ERIC
00:47	GOOD! FT by AFLAKPUI,ERNEST	61-55	H 6	
00:47	MISSED FT by AFLAKPUI,ERNEST			
00:47				REBOUND (DEF) by SAMUELS,JERMAINE
00:46	FOUL (PERSONAL) by ALSTON, JR.,SHIZZ			
00:46		62-55	H 7	GOOD! FT by SAMUELS,JERMAINE [FB]
00:46		63-55	H 8	GOOD! FT by SAMUELS,JERMAINE [FB]
00:46	MISSED 3PTR by ALSTON, JR.,SHIZZ			
00:42				REBOUND (DEF) by GILLESPIE,COLLIN
00:38	FOUL (PERSONAL) by PERRY,DE'VONDRE			
00:38		64-55	H 9	GOOD! FT by GILLESPIE,COLLIN [FB]
00:38	SUB OUT: AFLAKPUI,ERNEST			
00:38	SUB IN: MOORMAN II,J.P.			
00:38		65-55	H 10	GOOD! FT by GILLESPIE,COLLIN [FB]
00:28				FOUL (PERSONAL) by PASCHALL,ERIC
00:28	GOOD! FT by PIERRE-LOUIS,NATE	65-56	H 9	
00:28	GOOD! FT by PIERRE-LOUIS,NATE	65-57	H 8	
00:28	SUB OUT: HAMILTON,JUSTYN			
00:28	SUB IN: MOORMAN II,J.P.			
00:26	FOUL (PERSONAL) by MOORMAN II,J.P.			
00:26		66-57	H 9	GOOD! FT by GILLESPIE,COLLIN [FB]
00:26				SUB OUT: CREMO,JOE
00:26				SUB IN: COSBY-ROUNDTREE,DHAMIR
00:26				SUB OUT: BOOTH,PHIL
00:26				SUB IN: BEY,SADDIQ
00:26		67-57	H 10	GOOD! FT by GILLESPIE,COLLIN [FB]
00:20	GOOD! LAYUP by PIERRE-LOUIS,NATE [FB]	67-59	H 8	
00:20	TIMEOUT 30SEC			
00:17	FOUL (PERSONAL) by ROSE,QUINTON			
00:17		68-59	H 9	GOOD! FT by CREMO,JOE [FB]
00:17		69-59	H 10	GOOD! FT by CREMO,JOE [FB]
00:17				SUB OUT: COSBY-ROUNDTREE,DHAMIR
00:17				SUB IN: CREMO,JOE
00:09	MISSED 3PTR by ALSTON, JR.,SHIZZ			
00:05				REBOUND (DEF) by SAMUELS,JERMAINE

### Temple 59, Villanova 69

Points from (This Period)	TEM	VIL
In the Paint	18	16
Off Turns	3	6
2nd Chance	3	10
Fast Break	8	14
Bench	3	23

**This period only: TEM led for 15:34. VIL led for 15:55.  
Game was tied for 0:31.**

**Official Scoring/Possession Reference Chart**  
**Temple vs Villanova**  
**Period 1**  
**December 06, 2018 at Finneran Pavilion - Villanova, Pa.**

**Starters:**

**Temple:** 1 ROSE,QUINTON; 10 ALSTON, JR.,SHIZZ; 15 PIERRE-LOUIS,NATE; 22 PERRY,DE'VONDRE; 24 AFLAKPUI,ERNEST;  
**Villanova:** 2 GILLESPIE,COLLIN; 4 PASCHALL,ERIC; 5 BOOTH,PHIL; 15 BEY,SADDIQ; 21 COSBY-ROUNDTREE,DHAMIR;

**Period 1**

Time	VISITORS: Temple	Score	Margin	HOME: Villanova
19:39	GOOD! LAYUP by AFLAKPUI,ERNEST	0-2	V 2	
19:01	GOOD! LAYUP by ROSE,QUINTON [FB]	0-4	V 4	
18:35		3-4	V 1	GOOD! 3PTR by GILLESPIE,COLLIN
17:50		5-4	H 1	GOOD! DUNK by COSBY-ROUNDTREE,DHAMIR
16:45		8-4	H 4	GOOD! 3PTR by BOOTH,PHIL
16:00		10-4	H 6	GOOD! LAYUP by COSBY-ROUNDTREE,DHAMIR
15:47	GOOD! LAYUP by PIERRE-LOUIS,NATE [PNT]	10-6	H 4	
14:25	GOOD! LAYUP by PIERRE-LOUIS,NATE [FB]	10-8	H 2	
13:23		12-8	H 4	GOOD! LAYUP by COSBY-ROUNDTREE,DHAMIR
13:02	GOOD! JUMPER by PIERRE-LOUIS,NATE	12-10	H 2	
12:30	GOOD! DUNK by ALSTON, JR.,SHIZZ [FB]	12-12	T	
11:14		15-12	H 3	GOOD! 3PTR by SWIDER,COLE
10:17		17-12	H 5	GOOD! LAYUP by PASCHALL,ERIC
08:18	GOOD! LAYUP by MOORE II,ALANI	17-14	H 3	
06:54	GOOD! JUMPER by MOORE,DAMION [PNT]	17-16	H 1	
06:32		19-16	H 3	GOOD! LAYUP by BOOTH,PHIL
05:20	GOOD! FT by ALSTON, JR.,SHIZZ	19-17	H 2	
05:20	GOOD! FT by ALSTON, JR.,SHIZZ	19-18	H 1	
04:56		20-18	H 2	GOOD! FT by PASCHALL,ERIC
04:56		21-18	H 3	GOOD! FT by PASCHALL,ERIC
02:02	GOOD! JUMPER by ALSTON, JR.,SHIZZ	21-20	H 1	
01:02	GOOD! 3PTR by ALSTON, JR.,SHIZZ	21-23	V 2	
00:38		24-23	H 1	GOOD! 3PTR by CREMO,JOE

**Temple 23, Villanova 24**

**Official Scoring/Possession Reference Chart**  
**Temple vs Villanova**  
**Period 2**  
**December 06, 2018 at Finneran Pavilion - Villanova, Pa.**

**Starters:**

**Temple:** 1 ROSE,QUINTON; 10 ALSTON, JR.,SHIZZ; 15 PIERRE-LOUIS,NATE; 22 PERRY,DE'VONDRE; 24 AFLAKPUI,ERNEST;  
**Villanova:** 2 GILLESPIE,COLLIN; 4 PASCHALL,ERIC; 5 BOOTH,PHIL; 15 BEY,SADDIQ; 21 COSBY-ROUNDTREE,DHAMIR;

**Period 2**

Time	VISITORS: Temple	Score	Margin	HOME: Villanova
19:16	GOOD! 3PTR by ROSE,QUINTON	24-26	V 2	
18:42	GOOD! JUMPER by ROSE,QUINTON [FB]	24-28	V 4	
17:59	GOOD! JUMPER by PIERRE-LOUIS,NATE [PNT]	24-30	V 6	
16:48		26-30	V 4	GOOD! DUNK by PASCHALL,ERIC
16:31	GOOD! FT by PIERRE-LOUIS,NATE	26-31	V 5	
16:08	GOOD! LAYUP by ROSE,QUINTON [FB]	26-33	V 7	
15:05		27-33	V 6	GOOD! FT by BOOTH,PHIL [FB]
15:05		28-33	V 5	GOOD! FT by BOOTH,PHIL [FB]
14:48		29-33	V 4	GOOD! FT by PASCHALL,ERIC [FB]
13:42		31-33	V 2	GOOD! LAYUP by BEY,SADDIQ
13:18		33-33	T	GOOD! JUMPER by COSBY-ROUNDTREE,DHAMIR [FB]
12:57	GOOD! FT by PIERRE-LOUIS,NATE	33-34	V 1	
12:57	GOOD! FT by PIERRE-LOUIS,NATE	33-35	V 2	
12:12	GOOD! LAYUP by PIERRE-LOUIS,NATE [PNT]	33-37	V 4	
11:32	GOOD! FT by ALSTON, JR.,SHIZZ	33-38	V 5	
11:14		36-38	V 2	GOOD! 3PTR by SAMUELS,JERMAINE
10:51	GOOD! 3PTR by MOORE II,ALANI	36-41	V 5	

Time	VISITORS: Temple	Score	Margin	HOME: Villanova
10:01		38-41	V 3	GOOD! JUMPER by CREMO,JOE [PNT]
09:44	GOOD! JUMPER by PIERRE-LOUIS,NATE [PNT]	38-43	V 5	
09:17		41-43	V 2	GOOD! 3PTR by SAMUELS,JERMAINE
08:49	GOOD! JUMPER by AFLAKPUI,ERNEST [PNT]	41-45	V 4	
06:52		43-45	V 2	GOOD! DUNK by BEY,SADDIQ
06:42	GOOD! LAYUP by ROSE,QUINTON [PNT]	43-47	V 4	
06:03		45-47	V 2	GOOD! DUNK by PASCHALL,ERIC
05:34		46-47	V 1	GOOD! FT by GILLESPIE,COLLIN
05:34		47-47	T	GOOD! FT by GILLESPIE,COLLIN
05:10		50-47	H 3	GOOD! 3PTR by SAMUELS,JERMAINE
04:43		51-47	H 4	GOOD! FT by PASCHALL,ERIC [FB]
04:00		52-47	H 5	GOOD! FT by SAMUELS,JERMAINE
04:00		53-47	H 6	GOOD! FT by SAMUELS,JERMAINE
03:14		54-47	H 7	GOOD! FT by BOOTH,PHIL
03:14		55-47	H 8	GOOD! FT by BOOTH,PHIL
02:47	GOOD! 3PTR by ALSTON, JR.,SHIZZ	55-50	H 5	
02:18		57-50	H 7	GOOD! LAYUP by SAMUELS,JERMAINE
02:10	GOOD! LAYUP by ALSTON, JR.,SHIZZ [FB]	57-52	H 5	
01:43		59-52	H 7	GOOD! JUMPER by CREMO,JOE [PNT]
01:28	GOOD! LAYUP by ROSE,QUINTON	59-54	H 5	
00:55		61-54	H 7	GOOD! LAYUP by CREMO,JOE
00:47	GOOD! FT by AFLAKPUI,ERNEST	61-55	H 6	
00:46		62-55	H 7	GOOD! FT by SAMUELS,JERMAINE [FB]
00:46		63-55	H 8	GOOD! FT by SAMUELS,JERMAINE [FB]
00:38		64-55	H 9	GOOD! FT by GILLESPIE,COLLIN [FB]
00:38		65-55	H 10	GOOD! FT by GILLESPIE,COLLIN [FB]
00:28	GOOD! FT by PIERRE-LOUIS,NATE	65-56	H 9	
00:28	GOOD! FT by PIERRE-LOUIS,NATE	65-57	H 8	
00:26		66-57	H 9	GOOD! FT by GILLESPIE,COLLIN [FB]
00:26		67-57	H 10	GOOD! FT by GILLESPIE,COLLIN [FB]
00:20	GOOD! LAYUP by PIERRE-LOUIS,NATE [FB]	67-59	H 8	
00:17		68-59	H 9	GOOD! FT by CREMO,JOE [FB]
00:17		69-59	H 10	GOOD! FT by CREMO,JOE [FB]

### Temple 59, Villanova 69

## Official Substitutions Log Temple vs Villanova Period 1 December 06, 2018 at Finneran Pavilion - Villanova, Pa.

VISITORS: Temple	Time	Score	HOME: Villanova
1 ROSE,QUINTON			2 GILLESPIE,COLLIN
10 ALSTON, JR.,SHIZZ			4 PASCHALL,ERIC
15 PIERRE-LOUIS,NATE			5 BOOTH,PHIL
22 PERRY,DEVONDRE			15 BEY,SADDIQ
24 AFLAKPUI,ERNEST			21 COSBY-ROUNDTREE,DHAMIR
	12:30	12-12	SUB OUT: GILLESPIE,COLLIN
	12:30		SUB IN: SAMUELS,JERMAINE
	12:30		SUB OUT: BOOTH,PHIL
	12:30		SUB IN: CREMO,JOE
	11:26	12-12	SUB OUT: BEY,SADDIQ
	11:26		SUB IN: GILLESPIE,COLLIN
	11:26		SUB OUT: COSBY-ROUNDTREE,DHAMIR
	11:26		SUB IN: SWIDER,COLE
SUB OUT: 24 AFLAKPUI,ERNEST	11:26		
SUB IN: 4 MOORMAN II,J.P.	11:26		
	10:41	12-15	SUB OUT: CREMO,JOE
	10:41		SUB IN: BOOTH,PHIL
SUB OUT: 10 ALSTON, JR.,SHIZZ	10:41		
SUB IN: 0 MOORE II,ALANI	10:41		
SUB OUT: 15 PIERRE-LOUIS,NATE	09:42	12-17	
SUB IN: 10 ALSTON, JR.,SHIZZ	09:42		
	09:28	12-17	
	09:28		SUB OUT: PASCHALL,ERIC
	09:28		SUB IN: COSBY-ROUNDTREE,DHAMIR
SUB OUT: 22 PERRY,DEVONDRE	09:28		
SUB IN: 23 MOORE,DAMION	09:28		

VISITORS: Temple	Time	Score	HOME: Villanova
	08:43	12-17	SUB OUT: SAMUELS,JERMAINE
	08:43		SUB IN: PASCHALL,ERIC
SUB OUT: 1 ROSE,QUINTON	08:43		
SUB IN: 15 PIERRE-LOUIS,NATE	08:43		
	05:55	16-19	SUB OUT: BOOTH,PHIL
	05:55		SUB IN: CREMO,JOE
	05:55		SUB OUT: SWIDER,COLE
	05:55		SUB IN: BEY,SADDIQ
SUB OUT: 15 PIERRE-LOUIS,NATE	05:55		
SUB IN: 1 ROSE,QUINTON	05:55		
SUB OUT: 23 MOORE,DAMION	05:55		
SUB IN: 24 AFLAKPUI,ERNEST	05:55		
	04:56	18-20	SUB OUT: CREMO,JOE
	04:56		SUB IN: BOOTH,PHIL
SUB OUT: 0 MOORE II,ALANI	04:20	18-21	
SUB IN: 15 PIERRE-LOUIS,NATE	04:20		
	02:19	18-21	SUB OUT: GILLESPIE,COLLIN
	02:19		SUB IN: CREMO,JOE
	02:19		SUB OUT: COSBY-ROUNDTREE,DHAMIR
	02:19		SUB IN: SWIDER,COLE
SUB OUT: 4 MOORMAN II,J.P.	02:19		
SUB IN: 22 PERRY,DE'VONDRE	02:19		
	01:40	20-21	SUB OUT: BOOTH,PHIL
	01:40		SUB IN: GILLESPIE,COLLIN
SUB OUT: 24 AFLAKPUI,ERNEST	01:40		
SUB IN: 4 MOORMAN II,J.P.	01:40		
	00:33	23-24	SUB OUT: SWIDER,COLE
	00:33		SUB IN: COSBY-ROUNDTREE,DHAMIR
SUB OUT: 22 PERRY,DE'VONDRE	00:11	23-24	
SUB IN: 24 AFLAKPUI,ERNEST	00:11		
SUB OUT: 4 MOORMAN II,J.P.	00:11		
SUB IN: 0 MOORE II,ALANI	00:11		

### Temple 23, Villanova 24

## Official Substitutions Log Temple vs Villanova Period 2

December 06, 2018 at Finneran Pavilion - Villanova, Pa.

VISITORS: Temple	Time	Score	HOME: Villanova
1 ROSE,QUINTON			2 GILLESPIE,COLLIN
10 ALSTON, JR.,SHIZZ			4 PASCHALL,ERIC
15 PIERRE-LOUIS,NATE			5 BOOTH,PHIL
22 PERRY,DE'VONDRE			15 BEY,SADDIQ
24 AFLAKPUI,ERNEST			21 COSBY-ROUNDTREE,DHAMIR
	17:20	30-24	SUB OUT: GILLESPIE,COLLIN
	17:20		SUB IN: CREMO,JOE
	17:20		SUB OUT: COSBY-ROUNDTREE,DHAMIR
	17:20		SUB IN: SWIDER,COLE
SUB OUT: 24 AFLAKPUI,ERNEST	17:20		
SUB IN: 4 MOORMAN II,J.P.	17:20		
	15:17	33-26	SUB OUT: BEY,SADDIQ
	15:17		SUB IN: COSBY-ROUNDTREE,DHAMIR
	14:48	33-28	SUB OUT: SWIDER,COLE
	14:48		SUB IN: BEY,SADDIQ
	12:58	33-33	SUB OUT: BOOTH,PHIL
	12:58		SUB IN: GILLESPIE,COLLIN
SUB OUT: 1 ROSE,QUINTON	12:58		
SUB IN: 0 MOORE II,ALANI	12:58		
	12:58		SUB OUT: PASCHALL,ERIC
	12:58		SUB IN: SAMUELS,JERMAINE
SUB OUT: 4 MOORMAN II,J.P.	12:56	35-33	
SUB IN: 24 AFLAKPUI,ERNEST	12:56		
	12:56		SUB OUT: COSBY-ROUNDTREE,DHAMIR
	12:56		SUB IN: PASCHALL,ERIC
	11:46	37-33	SUB OUT: BEY,SADDIQ
	11:46		SUB IN: BOOTH,PHIL
	11:46		SUB OUT: GILLESPIE,COLLIN
	11:46		SUB IN: COSBY-ROUNDTREE,DHAMIR
	10:18	41-36	SUB OUT: COSBY-ROUNDTREE,DHAMIR
	10:18		SUB IN: GILLESPIE,COLLIN
SUB OUT: 22 PERRY,DE'VONDRE	10:18		
SUB IN: 1 ROSE,QUINTON	10:18		
SUB OUT: 10 ALSTON, JR.,SHIZZ	10:18		
SUB IN: 4 MOORMAN II,J.P.	10:18		
	08:24	45-41	SUB OUT: CREMO,JOE
	08:24		SUB IN: BEY,SADDIQ
SUB OUT: 0 MOORE II,ALANI	08:24		
SUB IN: 10 ALSTON, JR.,SHIZZ	08:24		
SUB OUT: 15 PIERRE-LOUIS,NATE	08:13	45-41	
SUB IN: 22 PERRY,DE'VONDRE	08:13		
SUB OUT: 24 AFLAKPUI,ERNEST	08:13		
SUB IN: 0 MOORE II,ALANI	08:13		
	07:23	45-41	SUB OUT: BOOTH,PHIL

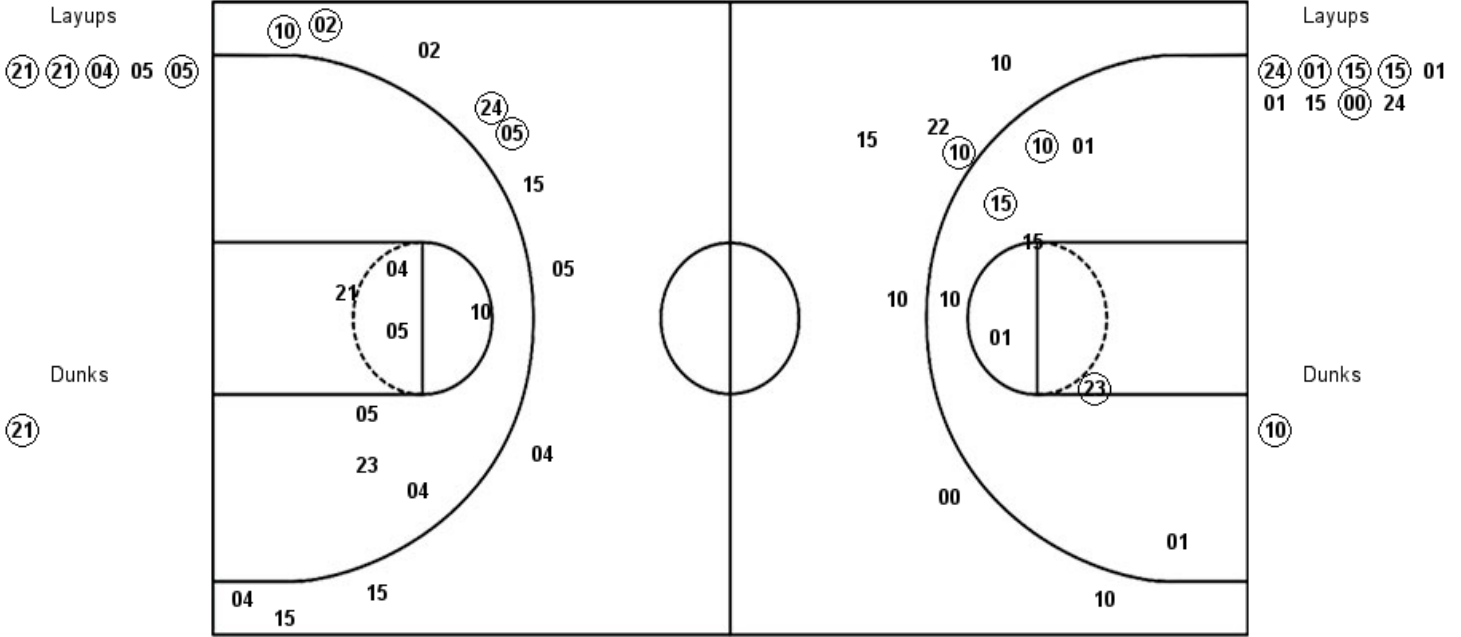
VISITORS: Temple	Time	Score	HOME: Villanova
	07:23		SUB IN: CREMO,JOE
SUB OUT: 0 MOORE II,ALANI	05:34	47-46	
SUB IN: 15 PIERRE-LOUIS,NATE	05:34		
	04:00	47-53	SUB OUT: SAMUELS,JERMAINE
	04:00		SUB IN: BOOTH,PHIL
SUB OUT: 4 MOORMAN II,J.P.	04:00		
SUB IN: 24 AFLAKPUI,ERNEST	04:00		
	03:14	47-55	SUB OUT: CREMO,JOE
	03:14		SUB IN: SAMUELS,JERMAINE
	02:45	50-55	SUB OUT: BEY,SADDIQ
	02:45		SUB IN: CREMO,JOE
SUB OUT: 24 AFLAKPUI,ERNEST	00:38	55-64	
SUB IN: 4 MOORMAN II,J.P.	00:38		
SUB OUT: 21 HAMILTON,JUSTYN	00:28	57-65	
SUB IN: 4 MOORMAN II,J.P.	00:28		
	00:26	57-66	SUB OUT: CREMO,JOE
	00:26		SUB IN: COSBY-ROUNDTREE,DHAMIR
	00:26		SUB OUT: BOOTH,PHIL
	00:26		SUB IN: BEY,SADDIQ
	00:17	59-69	SUB OUT: COSBY-ROUNDTREE,DHAMIR
	00:17		SUB IN: CREMO,JOE

Temple 59, Villanova 69

**Official Shot Chart**  
**Temple vs Villanova**  
**PERIOD 1 Shots**  
 December 06, 2018 at Finneran Pavilion - Villanova, Pa.

**Villanova**

**Temple**



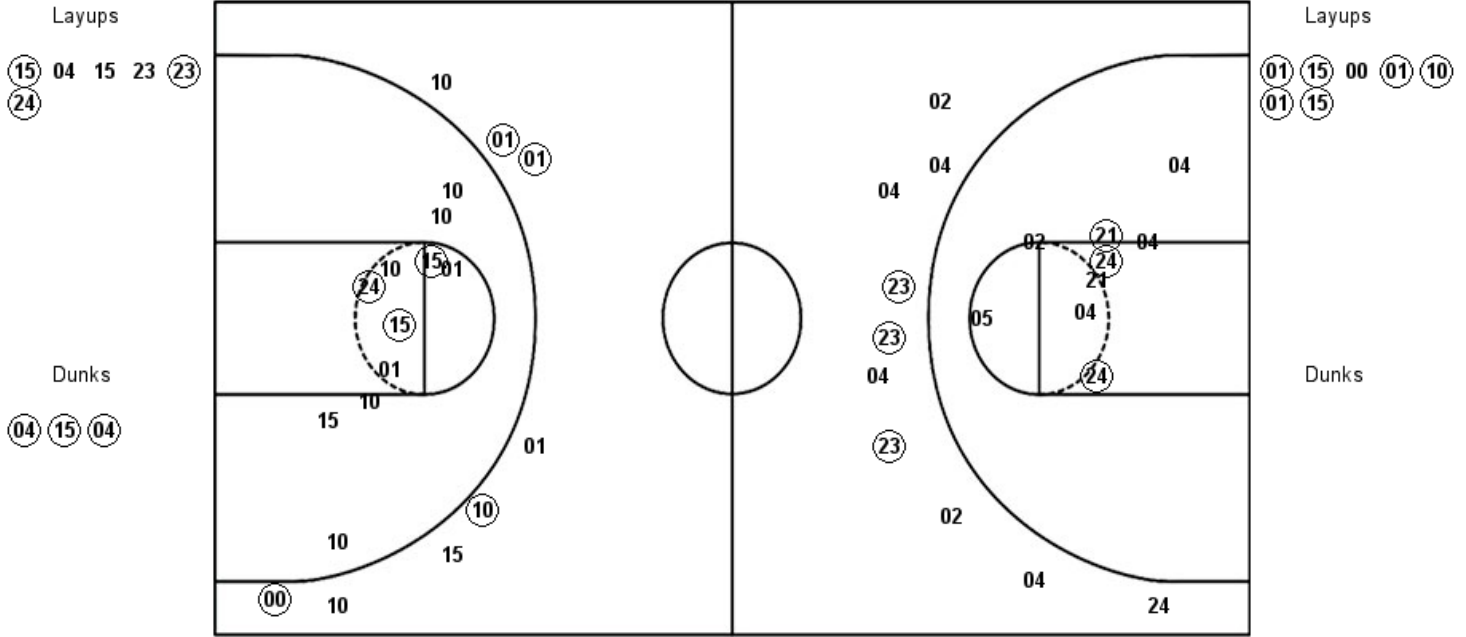
VIL : Period 1	Made	Att	Pct
Layups	4	5	80.0
Dunks	1	1	100.0
2PT Field Goals	5	13	38.5
3PT Field Goals	4	11	36.4
<b>Total Field Goals</b>	<b>9</b>	<b>24</b>	<b>37.5</b>

TEM : Period 1	Made	Att	Pct
Layups	5	9	55.6
Dunks	1	1	100.0
2PT Field Goals	9	18	50.0
3PT Field Goals	1	7	14.3
<b>Total Field Goals</b>	<b>10</b>	<b>25</b>	<b>40.0</b>

**Official Shot Chart**  
**Temple vs Villanova**  
**PERIOD 2 Shots**  
 December 06, 2018 at Finneran Pavilion - Villanova, Pa.

**Villanova**

**Temple**



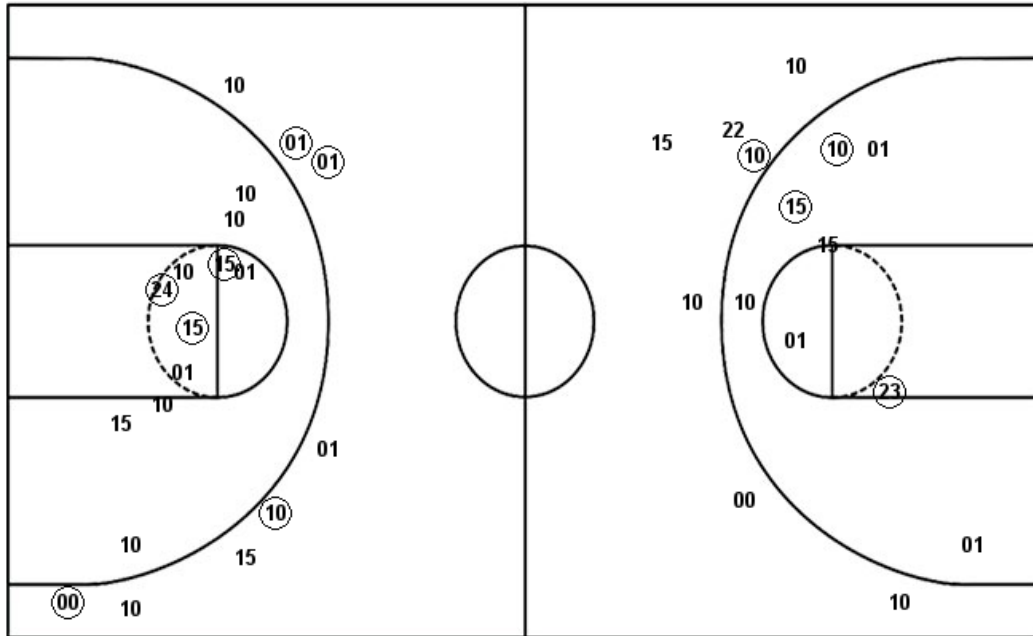
VIL : Period 2	Made	Att	Pct
Layups	3	6	50.0
Dunks	3	3	100.0
2PT Field Goals	9	18	50.0
3PT Field Goals	3	10	30.0
<b>Total Field Goals</b>	<b>12</b>	<b>28</b>	<b>42.9</b>

TEM : Period 2	Made	Att	Pct
Layups	6	7	85.7
Dunks	0	0	0
2PT Field Goals	10	19	52.6
3PT Field Goals	3	7	42.9
<b>Total Field Goals</b>	<b>13</b>	<b>26</b>	<b>50.0</b>



**Official Shot Chart**  
**Temple vs Villanova**  
**Temple Team Shots**  
**December 06, 2018 at Finneran Pavilion - Villanova, Pa.**

Layups



Layups

(24) (01) (15) (15) 01  
 01 15 (00) 24 (01)  
 (15) 00 (01) (10) (01)  
 (15)

Dunks

Dunks

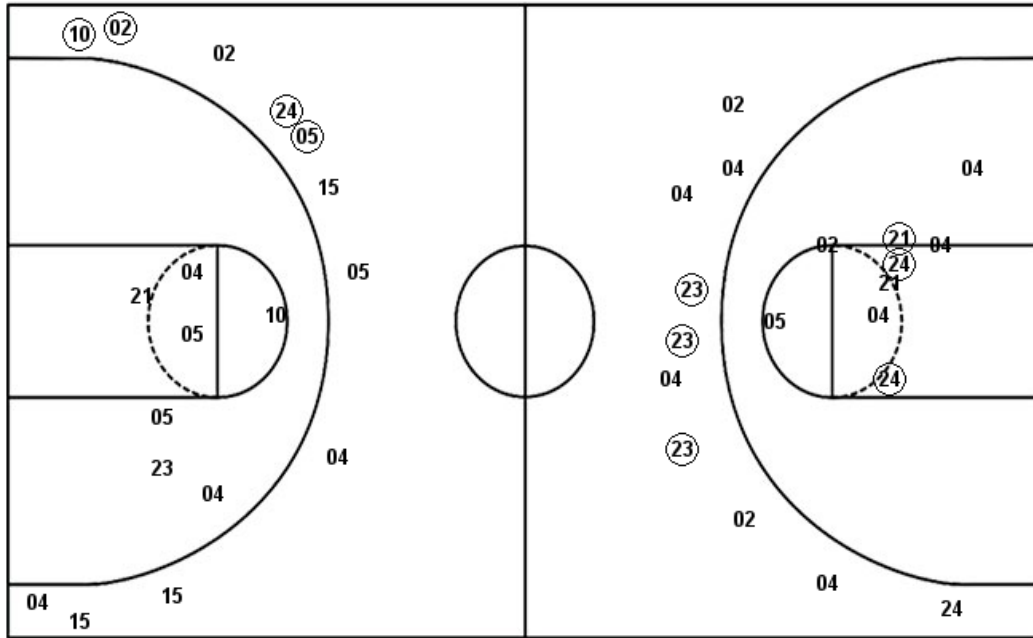
(10)

TEM : Period 1	Made	Att	Pct
Layups	5	9	55.6
Dunks	1	1	100.0
2PT Field Goals	9	18	50.0
3PT Field Goals	1	7	14.3
<b>Total Field Goals</b>	<b>10</b>	<b>25</b>	<b>40.0</b>

TEM : Period 2	Made	Att	Pct
Layups	6	7	85.7
Dunks	0	0	0
2PT Field Goals	10	19	52.6
3PT Field Goals	3	7	42.9
<b>Total Field Goals</b>	<b>13</b>	<b>26</b>	<b>50.0</b>

**Official Shot Chart**  
**Temple vs Villanova**  
**Villanova Team Shots**  
**December 06, 2018 at Finneran Pavilion - Villanova, Pa.**

Layups



Layups

Dunks

Dunks

VIL : Period 1	Made	Att	Pct
Layups	4	5	80.0
Dunks	1	1	100.0
2PT Field Goals	5	13	38.5
3PT Field Goals	4	11	36.4
<b>Total Field Goals</b>	<b>9</b>	<b>24</b>	<b>37.5</b>

VIL : Period 2	Made	Att	Pct
Layups	3	6	50.0
Dunks	3	3	100.0
2PT Field Goals	9	18	50.0
3PT Field Goals	3	10	30.0
<b>Total Field Goals</b>	<b>12</b>	<b>28</b>	<b>42.9</b>