

## FINAL SCORE



**South Alabama**

**65**



**Georgia Southern**

**75**

February 14, 2019 • Hanner Fieldhouse - Statesboro, Ga.

## FINAL STATISTICS

**Official Box Score**  
**South Alabama vs Georgia Southern**  
**Game Totals -- Final Statistics**  
**February 14, 2019 at Hanner Fieldhouse - Statesboro, Ga.**

**South Alabama 65**

No.	Player	S	Pts	FG	3FG	FT	OR	DR	TR	PF	A	TO	Blk	Stl	Min	+/-
01	Mcgee, Herb	18	6-11	3-6	3-3	1	2	3	3	3	3	1	0	2	33	-9
12	Kelly, R.J.	8	4-6	0-2	0-0	0	3	3	5	0	2	1	2	36	-6	
33	Ajayi, Josh	13	5-10	1-2	2-2	1	5	6	3	2	3	2	0	32	-6	
42	Mitchell, Trhae	11	4-8	0-2	3-6	1	6	7	2	4	3	0	1	35	-2	
50	Pettway, John	4	2-6	0-2	0-0	0	1	1	5	2	0	0	2	26	-1	
00	Holden, Kory	9	3-7	3-5	0-0	0	1	1	1	1	2	0	0	17	-2	
03	Morris, Kevin	0	0-0	0-0	0-0	0	0	0	1	0	0	0	0	1	-5	
14	Sikes, Rodrick	2	0-4	0-4	2-2	0	1	1	0	0	2	0	0	18	-19	
	Team						1	1	2	0		1				
<b>TOTALS</b>		<b>65</b>	<b>24-52</b>	<b>7-23</b>	<b>10-13</b>	<b>4</b>	<b>20</b>	<b>24</b>	<b>20</b>	<b>12</b>	<b>14</b>	<b>3</b>	<b>7</b>	<b>200</b>		

*Shooting By Period*

Period	FG	FG%	3FG	3FG%	FT	FT%
1st Half	9-27	33%	5-15	33%	4-6	67%
2nd Half	15-25	60%	2-8	25%	6-7	86%
<b>Game</b>	<b>24-52</b>	<b>46.2%</b>	<b>7-23</b>	<b>30.4%</b>	<b>10-13</b>	<b>76.9%</b>

Last FG: 2nd-00:01  
 Biggest Run: 12-0  
 Largest lead: By 5 at 1-19:00  
 Technical Fouls: None.

**Georgia Southern 75**

No.	Player	S	Pts	FG	3FG	FT	OR	DR	TR	PF	A	TO	Blk	Stl	Min	+/-
00	Glenn, Montae	10	5-6	0-0	0-0	2	2	4	1	0	1	3	0	26	14	
04	Brown, Tookie	14	4-7	1-2	5-6	0	3	3	2	8	2	0	2	39	10	
10	Wishart, Calvin	14	4-8	4-8	2-2	1	6	7	3	1	3	0	2	24	5	
13	Jackson, Quan	13	5-8	2-3	1-2	0	4	4	1	2	4	0	1	39	7	
53	Crawley, Isaiah	8	3-6	0-0	2-2	0	2	2	3	0	3	0	0	21	-4	
02	Mccadden, Elijah	6	3-6	0-0	0-1	1	4	5	1	4	3	0	0	21	16	
23	Carter, Simeon	8	4-7	0-1	0-0	0	3	3	2	0	0	1	0	18	-8	
24	Jones Jr., David-Lee	2	1-4	0-1	0-1	0	0	0	0	0	0	0	1	12	10	
	Team						2	0	2	0		0				
<b>TOTALS</b>		<b>75</b>	<b>29-52</b>	<b>7-15</b>	<b>10-14</b>	<b>6</b>	<b>24</b>	<b>30</b>	<b>13</b>	<b>15</b>	<b>16</b>	<b>4</b>	<b>6</b>	<b>200</b>		

*Shooting By Period*

Period	FG	FG%	3FG	3FG%	FT	FT%
1st Half	17-29	59%	5-9	56%	3-5	60%
2nd Half	12-23	52%	2-6	33%	7-9	78%
<b>Game</b>	<b>29-52</b>	<b>55.8%</b>	<b>7-15</b>	<b>46.7%</b>	<b>10-14</b>	<b>71.4%</b>

Last FG: 2nd-02:19  
 Biggest Run: 8-0  
 Largest lead: By 17 at 2-19:51  
 Technical Fouls: None.

Game Notes:  
 Officials: Rick Randall, Mike Nance, Robert Felder  
 Attendance: 1321

Start Time: 2019-02-14 00:01:58  
 End Time: 2019-02-14 01:48:57  
 Game Duration: 106  
 Conference Game;

Score	1st	2nd	TOT
USA	27	38	<b>65</b>
GAS	42	33	<b>75</b>

USA led for 1:31. GAS led for 36:56.  
 Game was tied for 1:32.  
 Times tied: 1      Lead Changes: 1

Points from	USA	GAS
In the Paint	32	40
Off Turns	17	11
2nd Chance	6	11
Fast Break	13	11
Bench	11	16

**Official Box Score**  
**South Alabama vs Georgia Southern**  
**First Half Statistics Only**  
**February 14, 2019 at Hanner Fieldhouse - Statesboro, Ga.**

**South Alabama 27**

No.	Player	S	Pts	FG	3FG	FT	OR	DR	TR	PF	A	TO	Blk	Stl	Min	+/-
01	Mcgee, Herb		9	3-5	3-5	0-0	0	2	2	0	2	0	0	1	18	-13
12	Kelly, R.J.		2	1-3	0-2	0-0	0	1	1	1	0	0	1	0	17	-14
33	Ajayi, Josh		0	0-3	0-0	0-0	0	0	0	2	0	2	1	0	12	-11
42	Mitchell, Trhae		6	2-5	0-1	2-4	0	4	4	2	1	1	0	0	15	-7
50	Pettway, John		2	1-5	0-2	0-0	0	1	1	3	2	0	0	2	16	-8
00	Holden, Kory		6	2-4	2-3	0-0	0	0	0	1	1	1	0	0	9	-1
03	Morris, Kevin		0	0-0	0-0	0-0	0	0	0	1	0	0	0	0	1	-5
14	Sikes, Rodrick		2	0-2	0-2	2-2	0	0	0	0	0	2	0	0	10	-16
	Team						0	1	1	0		0				
<b>TOTALS</b>			<b>27</b>	<b>9-27</b>	<b>5-15</b>	<b>4-6</b>	<b>0</b>	<b>9</b>	<b>9</b>	<b>10</b>	<b>6</b>	<b>6</b>	<b>2</b>	<b>3</b>	<b>100</b>	

*Shooting By Period*

Period	FG	FG%	3FG	3FG%	FT	FT%
1st Half	9-27	33%	5-15	33%	4-6	67%
Game	24-52	46.2%	7-23	30.4%	10-13	76.9%

*Last FG Half: USA 2nd-00:01*

**Georgia Southern 42**

No.	Player	S	Pts	FG	3FG	FT	OR	DR	TR	PF	A	TO	Blk	Stl	Min	+/-
00	Glenn, Montae		6	3-4	0-0	0-0	1	2	3	0	0	0	1	0	13	9
04	Brown, Tookie		3	1-2	1-2	0-0	0	1	1	1	5	1	0	1	19	15
10	Wishart, Calvin		9	3-4	3-4	0-0	1	3	4	2	1	2	0	0	9	11
13	Jackson, Quan		6	2-3	1-1	1-2	0	4	4	0	2	2	0	0	19	12
53	Crawley, Isaiah		6	2-3	0-0	2-2	0	1	1	2	0	1	0	0	7	7
02	Mccadden, Elijah		4	2-4	0-0	0-1	1	4	5	1	3	2	0	0	15	10
23	Carter, Simeon		8	4-7	0-1	0-0	0	3	3	0	0	0	1	0	11	2
24	Jones Jr., David-Lee		0	0-2	0-1	0-0	0	0	0	0	0	0	0	1	7	9
	Team						1	0	1	0		0				
<b>TOTALS</b>			<b>42</b>	<b>17-29</b>	<b>5-9</b>	<b>3-5</b>	<b>4</b>	<b>18</b>	<b>22</b>	<b>6</b>	<b>11</b>	<b>8</b>	<b>2</b>	<b>2</b>	<b>100</b>	

*Shooting By Period*

Period	FG	FG%	3FG	3FG%	FT	FT%
1st Half	17-29	59%	5-9	56%	3-5	60%
Game	29-52	55.8%	7-15	46.7%	10-14	71.4%

*Last FG Half: GAS 2nd-02:19*

*Game Notes:*

Officials: Rick Randall, Mike Nance, Robert Felder  
Attendance: 1321

Start Time: 2019-02-14 00:01:58  
End Time: 2019-02-14 01:48:57  
Game Duration: 106  
Conference Game;

Score	1st	2nd	TOT
USA	27	38	65
GAS	42	33	75

Points from (This Period)	USA	GAS
In the Paint	6	22
Off Turns	9	2
2nd Chance	0	9
Fast Break	6	5
Bench	8	12

**Official Play-By-Play**  
**South Alabama vs Georgia Southern**  
**First Half**  
**February 14, 2019 at Hanner Fieldhouse - Statesboro, Ga.**

**Period 1**

**Starters:**

**South Alabama:** 12 KELLY,R.J.; 33 AJAYI,JOSH; 42 MITCHELL,TRHAE; 50 PETTWAY,JOHN; 1 MCGEE,HERB;

**Georgia Southern:** 0 GLENN,MONTAE; 10 WISHART,CALVIN; 13 JACKSON,QUAN; 53 CRAWLEY,ISIAIAH; 4 BROWN,TOOKIE;

Time	VISITORS: South Alabama	Score	Margin	HOME: Georgia Southern
19:36	GOOD! LAYUP by KELLY,R.J.	0-2	V 2	
19:36	ASSIST by PETTWAY,JOHN			
19:09				MISSED 3PTR by BROWN,TOOKIE
19:04	REBOUND (DEF) by PETTWAY,JOHN			
19:00	GOOD! 3PTR by MCGEE,HERB [FB]	0-5	V 5	
19:00	ASSIST by PETTWAY,JOHN			
18:43		2-5	V 3	GOOD! DUNK by CRAWLEY,ISIAIAH
18:43				ASSIST by JACKSON,QUAN
18:16	MISSED JUMPER by AJAYI,JOSH			
18:16				BLOCK by GLENN,MONTAE
18:14				REBOUND (DEF) by BROWN,TOOKIE
18:14	FOUL (PERSONAL) by KELLY,R.J.			
18:05				MISSED LAYUP by CRAWLEY,ISIAIAH
18:05	BLOCK by AJAYI,JOSH			
18:05	REBOUND (DEF) by TEAM			
18:05	MISSED LAYUP by PETTWAY,JOHN			
18:05				REBOUND (DEF) by WISHART,CALVIN
18:05				TURNOVER (LOSTBALL) by WISHART,CALVIN
18:05	STEAL by PETTWAY,JOHN			
18:05	MISSED 3PTR by PETTWAY,JOHN			
18:05		5-5	T	REBOUND (DEF) by CRAWLEY,ISIAIAH
18:05				GOOD! 3PTR by WISHART,CALVIN [FB]
18:05				ASSIST by BROWN,TOOKIE
17:14	MISSED JUMPER by MITCHELL,TRHAE			
17:11				REBOUND (DEF) by WISHART,CALVIN
17:07	FOUL (PERSONAL) by PETTWAY,JOHN			
17:07	SUB OUT: PETTWAY,JOHN			
17:07	SUB IN: SIKES,RODRICK			
16:57		8-5	H 3	GOOD! 3PTR by WISHART,CALVIN
16:57				ASSIST by JACKSON,QUAN
16:23	GOOD! LAYUP by MITCHELL,TRHAE	8-7	H 1	
16:13				MISSED LAYUP by JACKSON,QUAN
16:09				REBOUND (OFF) by GLENN,MONTAE
16:08		10-7	H 3	GOOD! LAYUP by GLENN,MONTAE [PNT]
15:58	TURNOVER (BADPASS) by SIKES,RODRICK			
15:58				STEAL by BROWN,TOOKIE
15:53		12-7	H 5	GOOD! LAYUP by CRAWLEY,ISIAIAH [FB]
15:53				ASSIST by BROWN,TOOKIE
15:23				FOUL (PERSONAL) by CRAWLEY,ISIAIAH
15:23				
15:23	MISSED FT by MITCHELL,TRHAE			
15:23	REBOUND (OFF) by TEAM			
15:23	GOOD! FT by MITCHELL,TRHAE	12-8	H 4	
15:04	FOUL (PERSONAL) by MITCHELL,TRHAE			
15:04		13-8	H 5	GOOD! FT by CRAWLEY,ISIAIAH
15:04				SUB OUT: GLENN,MONTAE
15:04				SUB IN: CARTER,SIMEON
15:04	SUB OUT: MITCHELL,TRHAE			
15:04	SUB IN: PETTWAY,JOHN			
15:04		14-8	H 6	GOOD! FT by CRAWLEY,ISIAIAH
15:04				SUB OUT: CRAWLEY,ISIAIAH
15:04				SUB IN: MCCADDEN,ELIJAH
14:41	MISSED LAYUP by AJAYI,JOSH			
14:36				REBOUND (DEF) by JACKSON,QUAN
14:14				MISSED 3PTR by WISHART,CALVIN
14:09	REBOUND (DEF) by MCGEE,HERB			
13:56	MISSED 3PTR by KELLY,R.J.			
13:51				REBOUND (DEF) by CARTER,SIMEON
13:44		16-8	H 8	GOOD! JUMPER by CARTER,SIMEON [PNT]
13:44				ASSIST by WISHART,CALVIN
13:27	TURNOVER (TRAVEL) by SIKES,RODRICK			
13:27				SUB OUT: WISHART,CALVIN
13:27				SUB IN: JONES JR.,DAVID-LEE
13:27	SUB OUT: KELLY,R.J.			
13:27	SUB IN: MITCHELL,TRHAE			
13:27	SUB OUT: SIKES,RODRICK			
13:27	SUB IN: HOLDEN,KORY			
13:18				TURNOVER (LOSTBALL) by JACKSON,QUAN
13:18	STEAL by PETTWAY,JOHN			
13:11	GOOD! 3PTR by MCGEE,HERB [FB]	16-11	H 5	
13:11	ASSIST by HOLDEN,KORY			
12:58		18-11	H 7	GOOD! JUMPER by JACKSON,QUAN
12:42	GOOD! 3PTR by HOLDEN,KORY	18-14	H 4	
12:42	ASSIST by MCGEE,HERB			
12:22		20-14	H 6	GOOD! DUNK by CARTER,SIMEON
12:22				ASSIST by BROWN,TOOKIE

Time	VISITORS: South Alabama	Score	Margin	HOME: Georgia Southern
12:00	MISSED 3PTR by MCGEE,HERB			
11:56				REBOUND (DEF) by JACKSON,QUAN
11:52	FOUL (PERSONAL) by HOLDEN,KORY			
11:52				
11:50				SUB OUT: JACKSON,QUAN
11:50				SUB IN: WISHART,CALVIN
11:42	SUB OUT: AJAYI,JOSH			
11:42	SUB IN: MORRIS,KEVIN			
11:42	FOUL (PERSONAL) by MORRIS,KEVIN			
11:39				MISSED LAYUP by CARTER,SIMEON
11:34				REBOUND (OFF) by WISHART,CALVIN
11:33		23-14	H 9	GOOD! 3PTR by WISHART,CALVIN
11:21	TIMEOUT 30SEC			
11:02	MISSED 3PTR by PETTWAY,JOHN			
10:58				REBOUND (DEF) by CARTER,SIMEON
10:54				MISSED 3PTR by CARTER,SIMEON
10:49	REBOUND (DEF) by MITCHELL,TRHAE			
10:41	MISSED 3PTR by MITCHELL,TRHAE			
10:37				REBOUND (DEF) by WISHART,CALVIN
10:32				FOUL (OFF) by WISHART,CALVIN
10:32				TURNOVER (OFFENSIVE) by WISHART,CALVIN
10:30				SUB OUT: WISHART,CALVIN
10:30				SUB IN: JACKSON,QUAN
10:30	SUB OUT: MCGEE,HERB			
10:30	SUB IN: KELLY,R.J.			
10:30	SUB OUT: MORRIS,KEVIN			
10:30	SUB IN: AJAYI,JOSH			
10:08	MISSED 3PTR by HOLDEN,KORY			
10:08				BLOCK by CARTER,SIMEON
10:03				REBOUND (DEF) by CARTER,SIMEON
10:01				MISSED 3PTR by JONES JR.,DAVID-LEE
09:56	REBOUND (DEF) by MITCHELL,TRHAE			
09:53	TURNOVER (BADPASS) by MITCHELL,TRHAE			
09:53				SUB OUT: JONES JR.,DAVID-LEE
09:53				SUB IN: CRAWLEY,ISAIAH
09:35	FOUL (PERSONAL) by MITCHELL,TRHAE			
09:35	SUB OUT: MITCHELL,TRHAE			
09:35	SUB IN: SIKES,RODRICK			
09:20				TURNOVER (TRAVEL) by CRAWLEY,ISAIAH
09:20				SUB OUT: CARTER,SIMEON
09:20				SUB IN: GLENN,MONTAE
08:59	MISSED LAYUP by AJAYI,JOSH			
08:56				REBOUND (DEF) by GLENN,MONTAE
08:49		25-14	H 11	GOOD! JUMPER by MCCADDEN,ELIJAH [PNT]
08:43				FOUL (PERSONAL) by MCCADDEN,ELIJAH
08:43				SUB OUT: BROWN,TOOKIE
08:43				SUB IN: JONES JR.,DAVID-LEE
08:33	TURNOVER (BADPASS) by HOLDEN,KORY			
08:33				STEAL by JONES JR.,DAVID-LEE
08:23				TURNOVER (TRAVEL) by MCCADDEN,ELIJAH
08:23	SUB OUT: HOLDEN,KORY			
08:23	SUB IN: MCGEE,HERB			
08:12	MISSED LAYUP by PETTWAY,JOHN			
08:09				REBOUND (DEF) by GLENN,MONTAE
07:59				
07:59				SUB OUT: MCCADDEN,ELIJAH
07:59				SUB IN: BROWN,TOOKIE
07:52				TURNOVER (LOSTBALL) by BROWN,TOOKIE
07:52	STEAL by MCGEE,HERB			
07:29				FOUL (PERSONAL) by CRAWLEY,ISAIAH
07:29	GOOD! FT by SIKES,RODRICK	25-15	H 10	
07:29				SUB OUT: CRAWLEY,ISAIAH
07:29				SUB IN: MCCADDEN,ELIJAH
07:29	GOOD! FT by SIKES,RODRICK	25-16	H 9	
07:09		28-16	H 12	GOOD! 3PTR by BROWN,TOOKIE
07:09				ASSIST by MCCADDEN,ELIJAH
06:55	FOUL (OFF) by AJAYI,JOSH			
06:55	TURNOVER (OFFENSIVE) by AJAYI,JOSH			
06:42				MISSED LAYUP by GLENN,MONTAE
06:42	SUB OUT: SIKES,RODRICK			
06:42	SUB IN: MITCHELL,TRHAE			
06:42	BLOCK by KELLY,R.J.			
06:42				REBOUND (OFF) by TEAM
06:35		30-16	H 14	GOOD! LAYUP by GLENN,MONTAE
06:23	SUB OUT: PETTWAY,JOHN			
06:23	SUB IN: SIKES,RODRICK			
06:22	FOUL (OFF) by AJAYI,JOSH			
06:22	TURNOVER (OFFENSIVE) by AJAYI,JOSH			
06:22	SUB OUT: AJAYI,JOSH			
06:22	SUB IN: PETTWAY,JOHN			
05:52				MISSED LAYUP by JONES JR.,DAVID-LEE
05:48	REBOUND (DEF) by MITCHELL,TRHAE			
05:29	MISSED 3PTR by MCGEE,HERB			
05:26				REBOUND (DEF) by MCCADDEN,ELIJAH
05:20		33-16	H 17	GOOD! 3PTR by JACKSON,QUAN
05:20				ASSIST by BROWN,TOOKIE
05:19	TIMEOUT 30SEC			

Time	VISITORS: South Alabama	Score	Margin	HOME: Georgia Southern
05:19				SUB OUT: JONES JR.,DAVID-LEE
05:19				SUB IN: CARTER,SIMEON
05:06	MISSED 3PTR by SIKES,RODRICK			
05:02				REBOUND (DEF) by JACKSON,QUAN
04:47				MISSED JUMPER by CARTER,SIMEON
04:42	REBOUND (DEF) by MITCHELL,TRHAE			
04:23	MISSED 3PTR by SIKES,RODRICK			
04:19				REBOUND (DEF) by MCCADDEN,ELIJAH
04:19				TURNOVER (LOSTBALL) by MCCADDEN,ELIJAH
04:19	SUB OUT: SIKES,RODRICK			
04:19	SUB IN: HOLDEN,KORY			
04:06	GOOD! 3PTR by HOLDEN,KORY	33-19	H 14	
04:06	ASSIST by MCGEE,HERB			
03:52		35-19	H 16	GOOD! LAYUP by GLENN,MONTAE
03:52				ASSIST by MCCADDEN,ELIJAH
03:41	GOOD! LAYUP by PETTWAY,JOHN	35-21	H 14	
03:13				MISSED LAYUP by MCCADDEN,ELIJAH
03:07				REBOUND (OFF) by MCCADDEN,ELIJAH
03:07		37-21	H 16	GOOD! LAYUP by MCCADDEN,ELIJAH
02:50	MISSED JUMPER by HOLDEN,KORY			
02:47				REBOUND (DEF) by MCCADDEN,ELIJAH
02:41	FOUL (PERSONAL) by PETTWAY,JOHN			
02:41				MISSED FT by MCCADDEN,ELIJAH
02:41				
02:40	REBOUND (DEF) by MCGEE,HERB			
02:28	GOOD! JUMPER by MITCHELL,TRHAE	37-23	H 14	
02:00		39-23	H 16	GOOD! JUMPER by CARTER,SIMEON [PNT]
02:00				ASSIST by MCCADDEN,ELIJAH
01:48	GOOD! 3PTR by MCGEE,HERB	39-26	H 13	
01:48	ASSIST by MITCHELL,TRHAE			
01:28	FOUL (PERSONAL) by PETTWAY,JOHN			
01:28				MISSED FT by JACKSON,QUAN
01:28				REBOUND (OFF) by TEAM
01:28				SUB OUT: GLENN,MONTAE
01:28				SUB IN: WISHART,CALVIN
01:28	SUB OUT: PETTWAY,JOHN			
01:28	SUB IN: SIKES,RODRICK			
01:28		40-26	H 14	GOOD! FT by JACKSON,QUAN
01:19	MISSED 3PTR by KELLY,R.J.			
01:13				REBOUND (DEF) by MCCADDEN,ELIJAH
01:08				MISSED LAYUP by MCCADDEN,ELIJAH
01:04	REBOUND (DEF) by KELLY,R.J.			
00:45				FOUL (PERSONAL) by BROWN,TOOKIE
00:38	MISSED JUMPER by MITCHELL,TRHAE			
00:31				REBOUND (DEF) by JACKSON,QUAN
00:31				TURNOVER (TRAVEL) by JACKSON,QUAN
00:12				FOUL (PERSONAL) by WISHART,CALVIN
00:12	MISSED FT by MITCHELL,TRHAE			
00:12	REBOUND (OFF) by TEAM			
00:12	GOOD! FT by MITCHELL,TRHAE	40-27	H 13	
00:12	SUB OUT: MITCHELL,TRHAE			
00:12	SUB IN: MORRIS,KEVIN			
00:12				TIMEOUT 30SEC
00:12				SUB OUT: WISHART,CALVIN
00:12				SUB IN: JONES JR.,DAVID-LEE
00:00		42-27	H 15	GOOD! DUNK by CARTER,SIMEON [PNT]
00:00				ASSIST by BROWN,TOOKIE

### South Alabama 27, Georgia Southern 42

Points from (This Period)	USA	GAS
In the Paint	6	22
Off Turns	9	2
2nd Chance	0	9
Fast Break	6	5
Bench	8	12

**Official Box Score**  
**South Alabama vs Georgia Southern**  
**Second Half Statistics Only**  
**February 14, 2019 at Hanner Fieldhouse - Statesboro, Ga.**

**South Alabama 38**

No.	Player	S	Pts	FG	3FG	FT	OR	DR	TR	PF	A	TO	Blk	Stl	Min	+/-
01	Mcgee, Herb		9	3-6	0-1	3-3	1	0	1	3	1	1	0	1	15	4
12	Kelly, R.J.		6	3-3	0-0	0-0	0	2	2	4	0	2	0	2	19	8
33	Ajayi, Josh		13	5-7	1-2	2-2	1	5	6	1	2	1	1	0	20	5
42	Mitchell, Trhae		5	2-3	0-1	1-2	1	2	3	0	3	2	0	1	20	5
50	Pettway, John		2	1-1	0-0	0-0	0	0	0	2	0	0	0	0	10	7
00	Holden, Kory		3	1-3	1-2	0-0	0	1	1	0	0	1	0	0	8	-1
03	Morris, Kevin		0	0-0	0-0	0-0	0	0	0	0	0	0	0	0	0	0
14	Sikes, Rodrick		0	0-2	0-2	0-0	0	1	1	0	0	0	0	0	8	-3
	Team						1	0	1	0		1				
<b>TOTALS</b>			<b>38</b>	<b>15-25</b>	<b>2-8</b>	<b>6-7</b>	<b>4</b>	<b>11</b>	<b>15</b>	<b>10</b>	<b>6</b>	<b>8</b>	<b>1</b>	<b>4</b>	<b>100</b>	

*Shooting By Period*

Period	FG	FG%	3FG	3FG%	FT	FT%
2nd Half	15-25	60%	2-8	25%	6-7	86%
Game	24-52	46.2%	7-23	30.4%	10-13	76.9%

*Last FG Half: USA -*

**Georgia Southern 33**

No.	Player	S	Pts	FG	3FG	FT	OR	DR	TR	PF	A	TO	Blk	Stl	Min	+/-
00	Glenn, Montae		4	2-2	0-0	0-0	1	0	1	1	0	1	2	0	13	5
04	Brown, Tookie		11	3-5	0-0	5-6	0	2	2	1	3	1	0	1	20	-5
10	Wishart, Calvin		5	1-4	1-4	2-2	0	3	3	1	0	1	0	2	15	-6
13	Jackson, Quan		7	3-5	1-2	0-0	0	0	0	1	0	2	0	1	20	-5
53	Crawley, Isaiah		2	1-3	0-0	0-0	0	1	1	1	0	2	0	0	13	-11
02	Mccadden, Elijah		2	1-2	0-0	0-0	0	0	0	0	1	1	0	0	7	6
23	Carter, Simeon		0	0-0	0-0	0-0	0	0	0	2	0	0	0	0	7	-10
24	Jones Jr., David-Lee		2	1-2	0-0	0-1	0	0	0	0	0	0	0	0	5	1
	Team						1	0	1	0		0				
<b>TOTALS</b>			<b>33</b>	<b>12-23</b>	<b>2-6</b>	<b>7-9</b>	<b>2</b>	<b>6</b>	<b>8</b>	<b>7</b>	<b>4</b>	<b>8</b>	<b>2</b>	<b>4</b>	<b>100</b>	

*Shooting By Period*

Period	FG	FG%	3FG	3FG%	FT	FT%
2nd Half	12-23	52%	2-6	33%	7-9	78%
Game	29-52	55.8%	7-15	46.7%	10-14	71.4%

*Last FG Half: GAS -*

Game Notes:

Officials: Rick Randall, Mike Nance, Robert Felder  
 Attendance: 1321

Start Time: 2019-02-14 00:01:58  
 End Time: 2019-02-14 01:48:57  
 Game Duration: 106  
 Conference Game;

Score	1st	2nd	TOT
USA	27	38	<b>65</b>
GAS	42	33	<b>75</b>

Points from (This Period)	USA	GAS
In the Paint	26	18
Off Turns	8	9
2nd Chance	6	2
Fast Break	7	6
Bench	3	4

**Official Play-By-Play**  
**South Alabama vs Georgia Southern**  
**Second Half**  
**February 14, 2019 at Hanner Fieldhouse - Statesboro, Ga.**

**Period 2**

**Starters:**

**South Alabama:** 12 KELLY,R.J.; 33 AJAYI,JOSH; 42 MITCHELL,TRHAE; 50 PETTWAY,JOHN; 1 MCGEE,HERB;

**Georgia Southern:** 0 GLENN,MONTAE; 10 WISHART,CALVIN; 13 JACKSON,QUAN; 53 CRAWLEY,ISAIAH ; 4 BROWN,TOOKIE;

Time	VISITORS: South Alabama	Score	Margin	HOME: Georgia Southern
19:51		44-27	H 17	GOOD! DUNK by CRAWLEY,ISAIAH
19:51				ASSIST by BROWN,TOOKIE
19:33	MISSED 3PTR by MCGEE,HERB			
19:27	REBOUND (OFF) by AJAYI,JOSH			
19:09	GOOD! LAYUP by KELLY,R.J.	44-29	H 15	
19:09	ASSIST by AJAYI,JOSH			
19:00				SUB OUT: GLENN,MONTAE
19:00				SUB IN: CARTER,SIMEON
18:44				TURNOVER (BADPASS) by CRAWLEY,ISAIAH
18:44	STEAL by MCGEE,HERB			
18:39	GOOD! LAYUP by MCGEE,HERB [FB]	44-31	H 13	
18:31				MISSED LAYUP by CRAWLEY,ISAIAH
18:31	BLOCK by AJAYI,JOSH			
18:24	REBOUND (DEF) by AJAYI,JOSH			
18:08	GOOD! JUMPER by KELLY,R.J. [PNT]	44-33	H 11	
17:35				MISSED JUMPER by BROWN,TOOKIE
17:31	REBOUND (DEF) by MITCHELL,TRHAE			
17:23				FOUL (PERSONAL) by CARTER,SIMEON
17:12				FOUL (PERSONAL) by WISHART,CALVIN
17:12	GOOD! FT by MCGEE,HERB	44-34	H 10	
17:12	GOOD! FT by MCGEE,HERB	44-35	H 9	
16:49				TURNOVER (BADPASS) by CRAWLEY,ISAIAH
16:49	STEAL by KELLY,R.J.			
16:40	GOOD! JUMPER by AJAYI,JOSH [PNT]	44-37	H 7	
16:34				TIMEOUT 30SEC
16:34				SUB OUT: WISHART,CALVIN
16:34				SUB IN: JONES JR.,DAVID-LEE
16:34				SUB OUT: CARTER,SIMEON
16:34				SUB IN: MCCADDEN,ELIJAH
16:34				SUB OUT: CRAWLEY,ISAIAH
16:34				SUB IN: GLENN,MONTAE
16:12				TURNOVER (LOSTBALL) by MCCADDEN,ELIJAH
16:12	STEAL by MITCHELL,TRHAE			
16:08	GOOD! DUNK by PETTWAY,JOHN [FB]	44-39	H 5	
16:08	ASSIST by MITCHELL,TRHAE			
15:54		46-39	H 7	GOOD! LAYUP by JACKSON,QUAN [PNT]
15:31	FOUL (OFF) by AJAYI,JOSH			
15:31	TURNOVER (OFFENSIVE) by AJAYI,JOSH			
15:30		48-39	H 9	GOOD! DUNK by GLENN,MONTAE
15:30				ASSIST by BROWN,TOOKIE
15:30	GOOD! LAYUP by AJAYI,JOSH	48-41	H 7	
14:50		50-41	H 9	GOOD! LAYUP by MCCADDEN,ELIJAH [PNT]
14:30				
14:22	GOOD! LAYUP by MITCHELL,TRHAE	50-43	H 7	
14:22	ASSIST by AJAYI,JOSH			
14:07				MISSED JUMPER by JONES JR.,DAVID-LEE
14:05	REBOUND (DEF) by AJAYI,JOSH			
14:05				FOUL (PERSONAL) by GLENN,MONTAE
13:57	GOOD! LAYUP by MCGEE,HERB	50-45	H 5	
13:57				FOUL (PERSONAL) by BROWN,TOOKIE
13:57	GOOD! FT by MCGEE,HERB	50-46	H 4	
13:38				MISSED JUMPER by MCCADDEN,ELIJAH
13:35				REBOUND (OFF) by GLENN,MONTAE
13:34		52-46	H 6	GOOD! LAYUP by GLENN,MONTAE
13:09	TURNOVER (TRAVEL) by MITCHELL,TRHAE			
12:56	FOUL (PERSONAL) by MCGEE,HERB			
12:39		55-46	H 9	GOOD! 3PTR by JACKSON,QUAN
12:39				ASSIST by MCCADDEN,ELIJAH
12:16	GOOD! 3PTR by AJAYI,JOSH	55-49	H 6	
11:53		57-49	H 8	GOOD! JUMPER by JONES JR.,DAVID-LEE [PNT]
11:53	FOUL (PERSONAL) by PETTWAY,JOHN			
11:53				
11:53	SUB OUT: PETTWAY,JOHN			
11:53	SUB IN: HOLDEN,KORY			
11:52				MISSED FT by JONES JR.,DAVID-LEE
11:50	REBOUND (DEF) by KELLY,R.J.			
11:43	MISSED LAYUP by MCGEE,HERB			
11:43				BLOCK by GLENN,MONTAE
11:39	REBOUND (OFF) by MCGEE,HERB			
11:39	MISSED LAYUP by MCGEE,HERB			
11:39				BLOCK by GLENN,MONTAE
11:39	REBOUND (OFF) by TEAM			
11:30				SUB OUT: JONES JR.,DAVID-LEE
11:30				SUB IN: WISHART,CALVIN
11:23	GOOD! JUMPER by AJAYI,JOSH [PNT]	57-51	H 6	
11:05		60-51	H 9	GOOD! 3PTR by WISHART,CALVIN



Time	VISITORS: South Alabama	Score	Margin	HOME: Georgia Southern
11:05				ASSIST by BROWN, TOOKIE
10:31	TURNOVER (SHOTCLOCK) by			
10:31				SUB OUT: MCCADDEN, ELIJAH
10:31				SUB IN: CRAWLEY, ISAIAH
10:09				MISSED 3PTR by WISHART, CALVIN
10:05	REBOUND (DEF) by AJAYI, JOSH			
10:01	GOOD! 3PTR by HOLDEN, KORY [FB]	60-54	H 6	
10:01	ASSIST by MCGEE, HERB			
09:44				TURNOVER (LOSTBALL) by GLENN, MONTAE
09:44				SUB OUT: GLENN, MONTAE
09:44				SUB IN: CARTER, SIMEON
09:26				FOUL (PERSONAL) by CARTER, SIMEON
09:26	GOOD! FT by AJAYI, JOSH	60-55	H 5	
09:26	SUB OUT: MCGEE, HERB			
09:26	SUB IN: SIKES, RODRICK			
09:26	GOOD! FT by AJAYI, JOSH	60-56	H 4	
09:16				TURNOVER (LOSTBALL) by JACKSON, QUAN
09:16	STEAL by KELLY, R.J.			
09:08	FOUL (OFF) by KELLY, R.J.			
09:08	TURNOVER (OFFENSIVE) by KELLY, R.J.			
08:43				TURNOVER (TRAVEL) by BROWN, TOOKIE
08:38	TURNOVER (LOSTBALL) by HOLDEN, KORY			
08:38				STEAL by BROWN, TOOKIE
08:30		62-56	H 6	GOOD! DUNK by BROWN, TOOKIE [FB]
08:04	GOOD! LAYUP by KELLY, R.J.	62-58	H 4	
08:04	ASSIST by MITCHELL, TRHAE			
07:48		64-58	H 6	GOOD! JUMPER by BROWN, TOOKIE [PNT]
07:26	GOOD! LAYUP by AJAYI, JOSH [PNT]	64-60	H 4	
07:26	ASSIST by MITCHELL, TRHAE			
07:10		66-60	H 6	GOOD! JUMPER by BROWN, TOOKIE
06:44	MISSED JUMPER by HOLDEN, KORY			
06:38				REBOUND (DEF) by CRAWLEY, ISAIAH
06:20				MISSED LAYUP by JACKSON, QUAN
06:17	REBOUND (DEF) by HOLDEN, KORY			
06:11	MISSED LAYUP by AJAYI, JOSH			
06:06	REBOUND (OFF) by MITCHELL, TRHAE			
06:06	GOOD! DUNK by MITCHELL, TRHAE	66-62	H 4	
05:48				MISSED 3PTR by WISHART, CALVIN
05:45	REBOUND (DEF) by AJAYI, JOSH			
05:37	MISSED 3PTR by SIKES, RODRICK			
05:32				REBOUND (DEF) by WISHART, CALVIN
05:14				MISSED JUMPER by BROWN, TOOKIE
05:11				REBOUND (OFF) by TEAM
05:11				
05:11				SUB OUT: CARTER, SIMEON
05:11				SUB IN: GLENN, MONTAE
05:11	SUB OUT: SIKES, RODRICK			
05:11	SUB IN: MCGEE, HERB			
05:11	SUB OUT: HOLDEN, KORY			
05:11	SUB IN: PETTWAY, JOHN			
05:02				TURNOVER (LOSTBALL) by WISHART, CALVIN
04:32	TURNOVER (LOSTBALL) by MCGEE, HERB			
04:32				STEAL by WISHART, CALVIN
04:10				MISSED JUMPER by CRAWLEY, ISAIAH
04:06	REBOUND (DEF) by AJAYI, JOSH			
04:01	MISSED 3PTR by AJAYI, JOSH			
03:57				REBOUND (DEF) by WISHART, CALVIN
03:46	FOUL (PERSONAL) by PETTWAY, JOHN			
03:46				
03:46	SUB OUT: PETTWAY, JOHN			
03:46	SUB IN: SIKES, RODRICK			
03:27				MISSED 3PTR by JACKSON, QUAN
03:23	REBOUND (DEF) by SIKES, RODRICK			
02:57	MISSED 3PTR by MITCHELL, TRHAE			
02:53				REBOUND (DEF) by BROWN, TOOKIE
02:34				MISSED 3PTR by WISHART, CALVIN
02:27	REBOUND (DEF) by KELLY, R.J.			
02:25	TURNOVER (BADPASS) by KELLY, R.J.			
02:25				STEAL by WISHART, CALVIN
02:19		68-62	H 6	GOOD! LAYUP by JACKSON, QUAN [FB]
01:53				FOUL (PERSONAL) by CRAWLEY, ISAIAH
01:53	MISSED FT by MITCHELL, TRHAE			
01:53	REBOUND (OFF) by TEAM			
01:53	GOOD! FT by MITCHELL, TRHAE	68-63	H 5	
01:30	FOUL (PERSONAL) by MCGEE, HERB			
01:13	FOUL (PERSONAL) by MCGEE, HERB			
01:13	SUB OUT: KELLY, R.J.			
01:13	SUB IN: HOLDEN, KORY			
01:13		69-63	H 6	GOOD! FT by BROWN, TOOKIE
01:13				MISSED FT by BROWN, TOOKIE
01:11	REBOUND (DEF) by MITCHELL, TRHAE			
01:07	TURNOVER (LOSTBALL) by MITCHELL, TRHAE			
01:07				STEAL by JACKSON, QUAN
00:39				FOUL (OFF) by JACKSON, QUAN
00:39				TURNOVER (OFFENSIVE) by JACKSON, QUAN
00:39	TIMEOUT TEAM			
00:39				SUB OUT: CRAWLEY, ISAIAH

Time	VISITORS: South Alabama	Score	Margin	HOME: Georgia Southern
00:39				SUB IN: MCCADDEN,ELIJAH
00:39	SUB OUT: MCGEE,HERB			
00:39	SUB IN: KELLY,R.J.			
00:28	MISSED 3PTR by SIKES,RODRICK			
00:23				REBOUND (DEF) by BROWN,TOOKIE
00:20	FOUL (PERSONAL) by KELLY,R.J.			
00:20	SUB OUT: SIKES,RODRICK			
00:20	SUB IN: MCGEE,HERB			
00:20		70-63	H 7	GOOD! FT by BROWN,TOOKIE [FB]
00:20		71-63	H 8	GOOD! FT by BROWN,TOOKIE [FB]
00:13	TIMEOUT 30SEC			
00:11	MISSED 3PTR by HOLDEN,KORY			
00:07	FOUL (PERSONAL) by KELLY,R.J.			
00:07		72-63	H 9	GOOD! FT by WISHART,CALVIN
00:07		73-63	H 10	GOOD! FT by WISHART,CALVIN
00:06				REBOUND (DEF) by WISHART,CALVIN
00:01	GOOD! DUNK by MCGEE,HERB	73-65	H 8	
00:01	FOUL (PERSONAL) by KELLY,R.J.			
00:01	SUB OUT: KELLY,R.J.			
00:01	SUB IN: SIKES,RODRICK			
00:01		74-65	H 9	GOOD! FT by BROWN,TOOKIE
00:01		75-65	H 10	GOOD! FT by BROWN,TOOKIE

### South Alabama 65, Georgia Southern 75

Points from (This Period)	USA	GAS
In the Paint	26	18
Off Turns	8	9
2nd Chance	6	2
Fast Break	7	6
Bench	3	4

**Official Scoring/Possession Reference Chart**  
**South Alabama vs Georgia Southern**  
**Period 1**  
**February 14, 2019 at Hanner Fieldhouse - Statesboro, Ga.**

**Period 1**

**Starters:**

**South Alabama:** 12 KELLY,R.J.; 33 AJAYI,JOSH; 42 MITCHELL,TRHAE; 50 PETTWAY,JOHN; 1 MCGEE,HERB;

**Georgia Southern:** 0 GLENN,MONTAE; 10 WISHART,CALVIN; 13 JACKSON,QUAN; 53 CRAWLEY,ISAIAH ; 4 BROWN,TOOKIE;

Time	VISITORS: South Alabama	Score	Margin	HOME: Georgia Southern
19:36	GOOD! LAYUP by KELLY,R.J.	0-2	V 2	
19:00	GOOD! 3PTR by MCGEE,HERB [FB]	0-5	V 5	
18:43		2-5	V 3	GOOD! DUNK by CRAWLEY,ISAIAH
18:05		5-5	T	GOOD! 3PTR by WISHART,CALVIN [FB]
16:57		8-5	H 3	GOOD! 3PTR by WISHART,CALVIN
16:23	GOOD! LAYUP by MITCHELL,TRHAE	8-7	H 1	
16:08		10-7	H 3	GOOD! LAYUP by GLENN,MONTAE [PNT]
15:53		12-7	H 5	GOOD! LAYUP by CRAWLEY,ISAIAH [FB]
15:23	GOOD! FT by MITCHELL,TRHAE	12-8	H 4	
15:04		13-8	H 5	GOOD! FT by CRAWLEY,ISAIAH
15:04		14-8	H 6	GOOD! FT by CRAWLEY,ISAIAH
13:44		16-8	H 8	GOOD! JUMPER by CARTER,SIMEON [PNT]
13:11	GOOD! 3PTR by MCGEE,HERB [FB]	16-11	H 5	
12:58		18-11	H 7	GOOD! JUMPER by JACKSON,QUAN
12:42	GOOD! 3PTR by HOLDEN,KORY	18-14	H 4	
12:22		20-14	H 6	GOOD! DUNK by CARTER,SIMEON
11:33		23-14	H 9	GOOD! 3PTR by WISHART,CALVIN
08:49		25-14	H 11	GOOD! JUMPER by MCCADDEN,ELIJAH [PNT]
07:29	GOOD! FT by SIKES,RODRICK	25-15	H 10	
07:29	GOOD! FT by SIKES,RODRICK	25-16	H 9	
07:09		28-16	H 12	GOOD! 3PTR by BROWN,TOOKIE
06:35		30-16	H 14	GOOD! LAYUP by GLENN,MONTAE
05:20		33-16	H 17	GOOD! 3PTR by JACKSON,QUAN
04:06	GOOD! 3PTR by HOLDEN,KORY	33-19	H 14	
03:52		35-19	H 16	GOOD! LAYUP by GLENN,MONTAE
03:41	GOOD! LAYUP by PETTWAY,JOHN	35-21	H 14	
03:07		37-21	H 16	GOOD! LAYUP by MCCADDEN,ELIJAH
02:28	GOOD! JUMPER by MITCHELL,TRHAE	37-23	H 14	
02:00		39-23	H 16	GOOD! JUMPER by CARTER,SIMEON [PNT]
01:48	GOOD! 3PTR by MCGEE,HERB	39-26	H 13	
01:28		40-26	H 14	GOOD! FT by JACKSON,QUAN
00:12	GOOD! FT by MITCHELL,TRHAE	40-27	H 13	
00:00		42-27	H 15	GOOD! DUNK by CARTER,SIMEON [PNT]

**South Alabama 27, Georgia Southern 42**

**Official Scoring/Possession Reference Chart**  
**South Alabama vs Georgia Southern**  
**Period 2**  
**February 14, 2019 at Hanner Fieldhouse - Statesboro, Ga.**

**Period 2**

**Starters:**

**South Alabama:** 12 KELLY,R.J.; 33 AJAYI,JOSH; 42 MITCHELL,TRHAE; 50 PETTWAY,JOHN; 1 MCGEE,HERB;

**Georgia Southern:** 0 GLENN,MONTAE; 10 WISHART,CALVIN; 13 JACKSON,QUAN; 53 CRAWLEY,ISAIAH ; 4 BROWN,TOOKIE;

Time	VISITORS: South Alabama	Score	Margin	HOME: Georgia Southern
19:51		44-27	H 17	GOOD! DUNK by CRAWLEY,ISAIAH
19:09	GOOD! LAYUP by KELLY,R.J.	44-29	H 15	
18:39	GOOD! LAYUP by MCGEE,HERB [FB]	44-31	H 13	
18:08	GOOD! JUMPER by KELLY,R.J. [PNT]	44-33	H 11	
17:12	GOOD! FT by MCGEE,HERB	44-34	H 10	
17:12	GOOD! FT by MCGEE,HERB	44-35	H 9	
16:40	GOOD! JUMPER by AJAYI,JOSH [PNT]	44-37	H 7	
16:08	GOOD! DUNK by PETTWAY,JOHN [FB]	44-39	H 5	
15:54		46-39	H 7	GOOD! LAYUP by JACKSON,QUAN [PNT]
15:30		48-39	H 9	GOOD! DUNK by GLENN,MONTAE
15:30	GOOD! LAYUP by AJAYI,JOSH	48-41	H 7	
14:50		50-41	H 9	GOOD! LAYUP by MCCADDEN,ELIJAH [PNT]
14:22	GOOD! LAYUP by MITCHELL,TRHAE	50-43	H 7	
13:57	GOOD! LAYUP by MCGEE,HERB	50-45	H 5	
13:57	GOOD! FT by MCGEE,HERB	50-46	H 4	
13:34		52-46	H 6	GOOD! LAYUP by GLENN,MONTAE
12:39		55-46	H 9	GOOD! 3PTR by JACKSON,QUAN
12:16	GOOD! 3PTR by AJAYI,JOSH	55-49	H 6	
11:53		57-49	H 8	GOOD! JUMPER by JONES JR.,DAVID-LEE [PNT]
11:23	GOOD! JUMPER by AJAYI,JOSH [PNT]	57-51	H 6	
11:05		60-51	H 9	GOOD! 3PTR by WISHART,CALVIN
10:01	GOOD! 3PTR by HOLDEN,KORY [FB]	60-54	H 6	
09:26	GOOD! FT by AJAYI,JOSH	60-55	H 5	
09:26	GOOD! FT by AJAYI,JOSH	60-56	H 4	
08:30		62-56	H 6	GOOD! DUNK by BROWN,TOOKIE [FB]
08:04	GOOD! LAYUP by KELLY,R.J.	62-58	H 4	
07:48		64-58	H 6	GOOD! JUMPER by BROWN,TOOKIE [PNT]
07:26	GOOD! LAYUP by AJAYI,JOSH [PNT]	64-60	H 4	
07:10		66-60	H 6	GOOD! JUMPER by BROWN,TOOKIE
06:06	GOOD! DUNK by MITCHELL,TRHAE	66-62	H 4	
02:19		68-62	H 6	GOOD! LAYUP by JACKSON,QUAN [FB]
01:53	GOOD! FT by MITCHELL,TRHAE	68-63	H 5	
01:13		69-63	H 6	GOOD! FT by BROWN,TOOKIE
00:20		70-63	H 7	GOOD! FT by BROWN,TOOKIE [FB]
00:20		71-63	H 8	GOOD! FT by BROWN,TOOKIE [FB]
00:07		72-63	H 9	GOOD! FT by WISHART,CALVIN
00:07		73-63	H 10	GOOD! FT by WISHART,CALVIN
00:01	GOOD! DUNK by MCGEE,HERB	73-65	H 8	
00:01		74-65	H 9	GOOD! FT by BROWN,TOOKIE
00:01		75-65	H 10	GOOD! FT by BROWN,TOOKIE

**South Alabama 65, Georgia Southern 75**

**Official Substitutions Log**  
**South Alabama vs Georgia Southern**  
**Period 1**  
**February 14, 2019 at Hanner Fieldhouse - Statesboro, Ga.**

VISITORS: South Alabama	Time	Score	HOME: Georgia Southern
12 KELLY, R. J.			0 GLENN, MONTAE
33 AJAYI, JOSH			10 WISHART, CALVIN
42 MITCHELL, TRHAE			13 JACKSON, QUAN
50 PETTWAY, JOHN			53 CRAWLEY, ISIAIAH
1 MCGEE, HERB			4 BROWN, TOOKIE
SUB OUT: 50 PETTWAY, JOHN	17:07	5-5	
SUB IN: 14 SIKES, RODRICK	17:07		
	15:04	8-13	SUB OUT: GLENN, MONTAE
	15:04		SUB IN: CARTER, SIMEON
SUB OUT: 42 MITCHELL, TRHAE	15:04		
SUB IN: 50 PETTWAY, JOHN	15:04		
	15:04		SUB OUT: CRAWLEY, ISIAIAH
	15:04		SUB IN: MCCADDEN, ELIJAH
	13:27	8-16	SUB OUT: WISHART, CALVIN
	13:27		SUB IN: JONES JR., DAVID-LEE
SUB OUT: 12 KELLY, R. J.	13:27		
SUB IN: 42 MITCHELL, TRHAE	13:27		
SUB OUT: 14 SIKES, RODRICK	13:27		
SUB IN: 0 HOLDEN, KORY	13:27		
	11:50	14-20	SUB OUT: JACKSON, QUAN
	11:50		SUB IN: WISHART, CALVIN
SUB OUT: 33 AJAYI, JOSH	11:42	14-20	
SUB IN: 3 MORRIS, KEVIN	11:42		
	10:30	14-23	SUB OUT: WISHART, CALVIN
	10:30		SUB IN: JACKSON, QUAN
SUB OUT: 1 MCGEE, HERB	10:30		
SUB IN: 12 KELLY, R. J.	10:30		
SUB OUT: 3 MORRIS, KEVIN	10:30		
SUB IN: 33 AJAYI, JOSH	10:30		
	09:53	14-23	SUB OUT: JONES JR., DAVID-LEE
	09:53		SUB IN: CRAWLEY, ISIAIAH
SUB OUT: 42 MITCHELL, TRHAE	09:35	14-23	
SUB IN: 14 SIKES, RODRICK	09:35		
	09:20	14-23	SUB OUT: CARTER, SIMEON
	09:20		SUB IN: GLENN, MONTAE
	08:43	14-25	SUB OUT: BROWN, TOOKIE
	08:43		SUB IN: JONES JR., DAVID-LEE
SUB OUT: 0 HOLDEN, KORY	08:23	14-25	
SUB IN: 1 MCGEE, HERB	08:23		
	07:59	14-25	SUB OUT: MCCADDEN, ELIJAH
	07:59		SUB IN: BROWN, TOOKIE
	07:29	15-25	SUB OUT: CRAWLEY, ISIAIAH
	07:29		SUB IN: MCCADDEN, ELIJAH
SUB OUT: 14 SIKES, RODRICK	06:42	16-28	
SUB IN: 42 MITCHELL, TRHAE	06:42		
SUB OUT: 50 PETTWAY, JOHN	06:23	16-30	
SUB IN: 14 SIKES, RODRICK	06:23		
SUB OUT: 33 AJAYI, JOSH	06:22	16-30	
SUB IN: 50 PETTWAY, JOHN	06:22		
	05:19	16-33	SUB OUT: JONES JR., DAVID-LEE
	05:19		SUB IN: CARTER, SIMEON
SUB OUT: 14 SIKES, RODRICK	04:19	16-33	
SUB IN: 0 HOLDEN, KORY	04:19		
	01:28	26-39	SUB OUT: GLENN, MONTAE
	01:28		SUB IN: WISHART, CALVIN
SUB OUT: 50 PETTWAY, JOHN	01:28		
SUB IN: 14 SIKES, RODRICK	01:28		
SUB OUT: 42 MITCHELL, TRHAE	00:12	27-40	
SUB IN: 3 MORRIS, KEVIN	00:12		
	00:12		SUB OUT: WISHART, CALVIN
	00:12		SUB IN: JONES JR., DAVID-LEE

**South Alabama 27, Georgia Southern 42**

**Official Substitutions Log**  
**South Alabama vs Georgia Southern**  
**Period 2**  
**February 14, 2019 at Hanner Fieldhouse - Statesboro, Ga.**

VISITORS: South Alabama	Time	Score	HOME: Georgia Southern
12 KELLY, R. J.			0 GLENN, MONTAE
33 AJAYI, JOSH			10 WISHART, CALVIN
42 MITCHELL, TRHAE			13 JACKSON, QUAN
50 PETTWAY, JOHN			53 CRAWLEY, ISAIAH
1 MCGEE, HERB			4 BROWN, TOOKIE
	19:00	29-44	SUB OUT: GLENN, MONTAE
	19:00		SUB IN: CARTER, SIMEON
	16:34	37-44	SUB OUT: WISHART, CALVIN
	16:34		SUB IN: JONES JR., DAVID-LEE
	16:34		SUB OUT: CARTER, SIMEON
	16:34		SUB IN: MCCADDEN, ELIJAH
	16:34		SUB OUT: CRAWLEY, ISAIAH
	16:34		SUB IN: GLENN, MONTAE
SUB OUT: 50 PETTWAY, JOHN	11:53	49-57	
SUB IN: 0 HOLDEN, KORY	11:53		
	11:30	49-57	SUB OUT: JONES JR., DAVID-LEE
	11:30		SUB IN: WISHART, CALVIN
	10:31	51-60	SUB OUT: MCCADDEN, ELIJAH
	10:31		SUB IN: CRAWLEY, ISAIAH
	09:44	54-60	SUB OUT: GLENN, MONTAE
	09:44		SUB IN: CARTER, SIMEON
SUB OUT: 1 MCGEE, HERB	09:26	55-60	
SUB IN: 14 SIKES, RODRICK	09:26		
	05:11	62-66	SUB OUT: CARTER, SIMEON
	05:11		SUB IN: GLENN, MONTAE
SUB OUT: 14 SIKES, RODRICK	05:11		
SUB IN: 1 MCGEE, HERB	05:11		
SUB OUT: 0 HOLDEN, KORY	05:11		
SUB IN: 50 PETTWAY, JOHN	05:11		
SUB OUT: 50 PETTWAY, JOHN	03:46	62-66	
SUB IN: 14 SIKES, RODRICK	03:46		
SUB OUT: 12 KELLY, R. J.	01:13	63-68	
SUB IN: 0 HOLDEN, KORY	01:13		
	00:39	63-69	SUB OUT: CRAWLEY, ISAIAH
	00:39		SUB IN: MCCADDEN, ELIJAH
SUB OUT: 1 MCGEE, HERB	00:39		
SUB IN: 12 KELLY, R. J.	00:39		
SUB OUT: 14 SIKES, RODRICK	00:20	63-69	
SUB IN: 1 MCGEE, HERB	00:20		
SUB OUT: 12 KELLY, R. J.	00:01	65-73	
SUB IN: 14 SIKES, RODRICK	00:01		

**South Alabama 65, Georgia Southern 75**

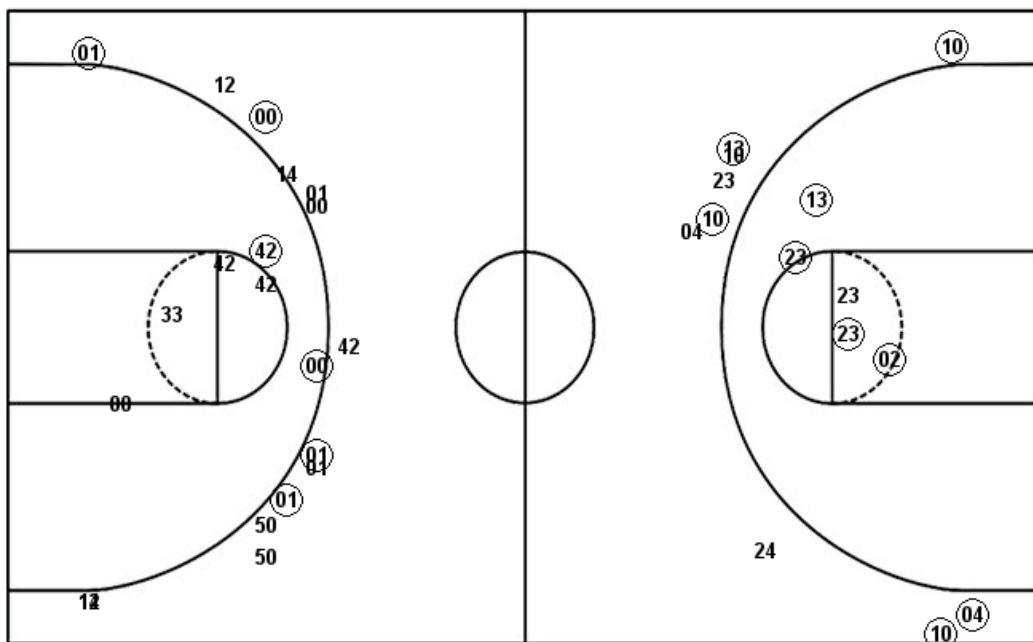
**Official Shot Chart**  
**South Alabama vs Georgia Southern**  
**PERIOD 1 Shots**  
**February 14, 2019 at Hanner Fieldhouse - Statesboro, Ga.**

**Georgia Southern**

**South Alabama**

Layups  
 53 13 00 53 23  
 00 00 24 00 02  
 02 02

Dunks  
 53 23 23



Layups  
 12 50 42 33 33  
 50 50

Dunks

<b>GAS : Period 1</b>	<b>Made</b>	<b>Att</b>	<b>Pct</b>
Layups	5	12	41.7
Dunks	3	3	100.0
2PT Field Goals	12	20	60.0
3PT Field Goals	5	9	55.6
<b>Total Field Goals</b>	<b>17</b>	<b>29</b>	<b>58.6</b>

<b>USA : Period 1</b>	<b>Made</b>	<b>Att</b>	<b>Pct</b>
Layups	3	7	42.9
Dunks	0	0	0
2PT Field Goals	4	12	33.3
3PT Field Goals	5	15	33.3
<b>Total Field Goals</b>	<b>9</b>	<b>27</b>	<b>33.3</b>

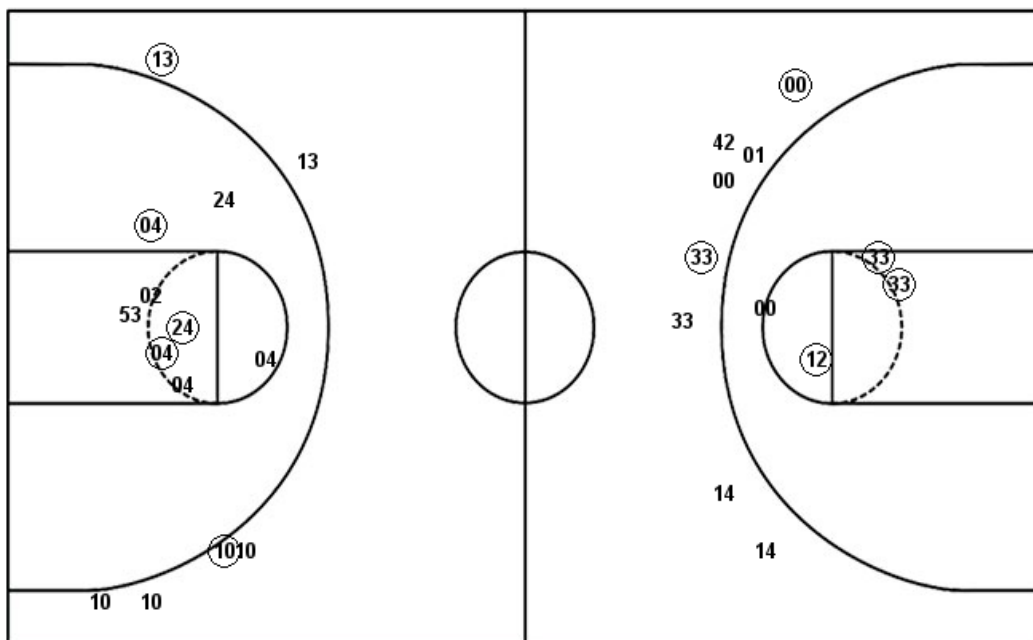
Official Shot Chart  
**South Alabama vs Georgia Southern**  
 PERIOD 2 Shots  
 February 14, 2019 at Hanner Fieldhouse - Statesboro, Ga.

**Georgia Southern**

**South Alabama**

Layups  
 53 13 02 00 13  
 13

Dunks  
 53 00 04



Layups  
 12 01 33 42 01  
 01 01 12 33 33

Dunks  
 50 42 01

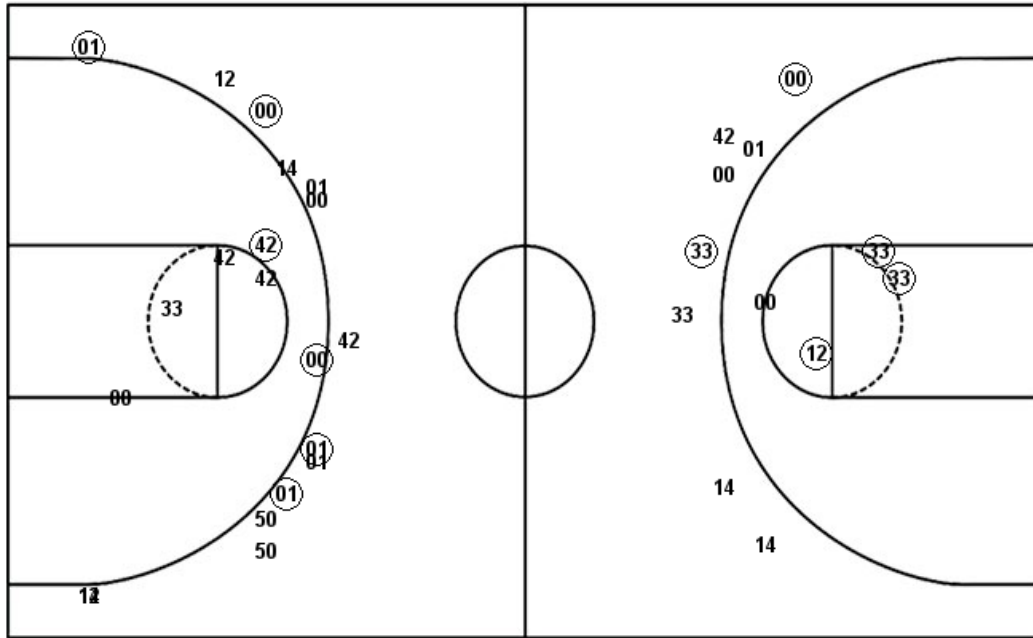
GAS : Period 2	Made	Att	Pct
Layups	4	6	66.7
Dunks	3	3	100.0
2PT Field Goals	10	17	58.8
3PT Field Goals	2	6	33.3
<b>Total Field Goals</b>	<b>12</b>	<b>23</b>	<b>52.2</b>

USA : Period 2	Made	Att	Pct
Layups	7	10	70.0
Dunks	3	3	100.0
2PT Field Goals	13	17	76.5
3PT Field Goals	2	8	25.0
<b>Total Field Goals</b>	<b>15</b>	<b>25</b>	<b>60.0</b>



**Official Shot Chart**  
**South Alabama vs Georgia Southern**  
**South Alabama Team Shots**  
**February 14, 2019 at Hanner Fieldhouse - Statesboro, Ga.**

Layups



Layups

12 50 42 33 33  
 50 50 12 01 33  
 42 01 01 01 12  
 33 33

Dunks

Dunks

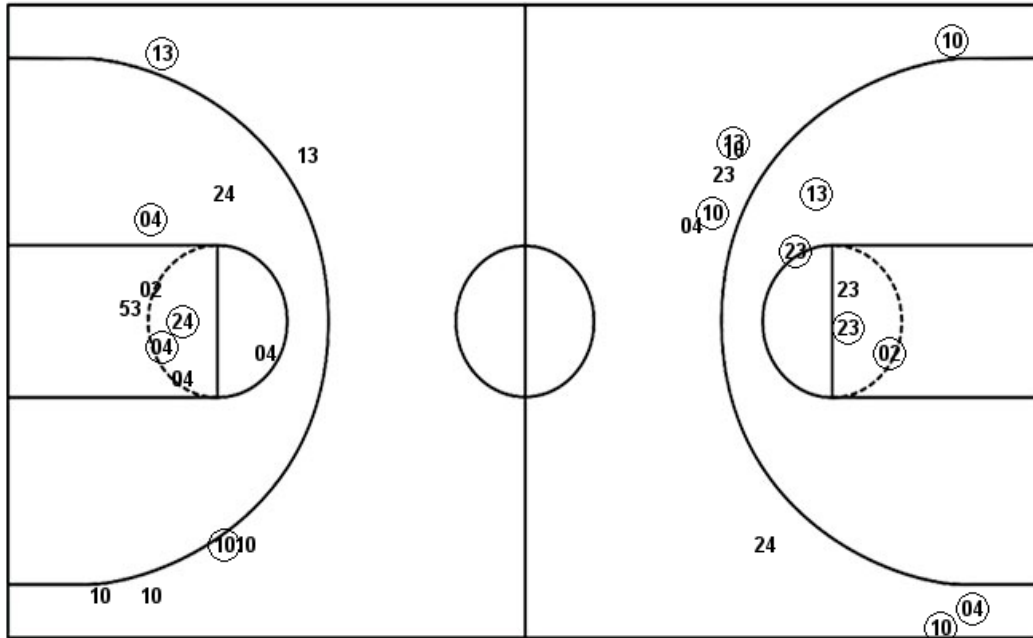
50 42 01

USA : Period 1	Made	Att	Pct
Layups	3	7	42.9
Dunks	0	0	0
2PT Field Goals	4	12	33.3
3PT Field Goals	5	15	33.3
<b>Total Field Goals</b>	<b>9</b>	<b>27</b>	<b>33.3</b>

USA : Period 2	Made	Att	Pct
Layups	7	10	70.0
Dunks	3	3	100.0
2PT Field Goals	13	17	76.5
3PT Field Goals	2	8	25.0
<b>Total Field Goals</b>	<b>15</b>	<b>25</b>	<b>60.0</b>

**Official Shot Chart**  
**South Alabama vs Georgia Southern**  
**Georgia Southern Team Shots**  
**February 14, 2019 at Hanner Fieldhouse - Statesboro, Ga.**

Layups



Layups

53 13 (00) (53) 23  
 00 (00) 24 (00) 02  
 (02) 02 53 13 (02)  
 (00) 13 (13)

Dunks

Dunks

(53) (23) (23) (53) (00)  
 (04)

<b>GAS : Period 1</b>	<b>Made</b>	<b>Att</b>	<b>Pct</b>
Layups	5	12	41.7
Dunks	3	3	100.0
2PT Field Goals	12	20	60.0
3PT Field Goals	5	9	55.6
<b>Total Field Goals</b>	<b>17</b>	<b>29</b>	<b>58.6</b>

<b>GAS : Period 2</b>	<b>Made</b>	<b>Att</b>	<b>Pct</b>
Layups	4	6	66.7
Dunks	3	3	100.0
2PT Field Goals	10	17	58.8
3PT Field Goals	2	6	33.3
<b>Total Field Goals</b>	<b>12</b>	<b>23</b>	<b>52.2</b>