

FINAL SCORE



ETSU

69



Ga. Southern

64

November 28, 2018 • Hanner Fieldhouse - Statesboro, Ga.

FINAL STATISTICS

Official Box Score
ETSU vs Ga. Southern
Game Totals -- Final Statistics
November 28, 2018 at Hanner Fieldhouse - Statesboro, Ga.

ETSU 69

No.	Player	S	Pts	FG	3FG	FT	OR	DR	TR	PF	A	TO	Blk	Stl	Min	+/-
1	Boyd Iii, Tray		17	7-15	3-7	0-1	1	2	3	0	2	3	1	3	35	0
10	Good, Patrick		13	4-8	4-8	1-3	1	5	6	1	2	2	0	2	35	12
11	Rodriguez, Jeromy		9	4-8	0-0	1-1	4	13	17	3	2	3	0	2	27	2
15	Tisdale, Isaiah		15	5-14	1-5	4-4	2	3	5	1	5	3	0	1	35	4
33	Armus, Mladen		7	3-8	0-1	1-4	1	4	5	4	2	3	2	0	27	9
2	Bernard, D'andre		2	1-2	0-1	0-0	0	2	2	1	0	2	0	0	12	2
4	Williamson, Daivien		0	0-3	0-2	0-0	0	1	1	1	0	2	0	0	11	-5
20	Harrison, James		6	3-6	0-0	0-0	2	2	4	2	0	2	1	0	13	-4
21	Tucker, Kevon		0	0-0	0-0	0-0	0	1	1	2	2	1	0	2	5	5
	Team						2	0	2	0		0				
TOTALS			69	27-64	8-24	7-13	13	33	46	15	15	21	4	10	200	

Shooting By Period

Period	FG	FG%	3FG	3FG%	FT	FT%
1st Half	12-30	40%	3-11	27%	5-7	71%
2nd Half	15-34	44%	5-13	38%	2-6	33%
Game	27-64	42.2%	8-24	33.3%	7-13	53.8%

Deadball Rebounds:

Last FG: 2nd-00:38
Biggest Run: 10-0
Largest lead: By 7 at 2-15:03
Technical Fouls: None.

Ga. Southern 64

No.	Player	S	Pts	FG	3FG	FT	OR	DR	TR	PF	A	TO	Blk	Stl	Min	+/-
0	Glenn, Montae		4	2-5	0-0	0-2	1	5	6	2	2	2	2	2	29	-12
2	Mccadden, Elijah		10	4-10	1-4	1-2	1	2	3	0	1	2	0	0	23	6
3	Smith, Ike		5	2-7	0-4	1-2	1	3	4	1	1	3	0	0	29	-2
4	Brown, Tookie		16	6-11	1-4	3-3	1	3	4	3	5	3	0	1	29	3
13	Jackson, Quan		13	5-14	2-6	1-1	0	6	6	1	1	1	0	2	28	-15
10	Wishart, Calvin		0	0-1	0-1	0-0	0	0	0	0	0	1	1	0	12	-11
23	Carter, Simeon		4	2-6	0-1	0-0	1	0	1	3	0	1	1	0	11	7
24	Jones Jr., David-Lee		6	2-5	2-4	0-0	0	1	1	1	1	0	0	1	26	-2
53	Crawley, Isaiah		6	3-5	0-2	0-0	1	3	4	1	1	2	0	0	14	1
	Team						1	4	5	0		1				
TOTALS			64	26-64	6-26	6-10	7	27	34	12	12	16	4	6	200	

Shooting By Period

Period	FG	FG%	3FG	3FG%	FT	FT%
1st Half	11-28	39%	2-12	17%	3-5	60%
2nd Half	15-36	42%	4-14	29%	3-5	60%
Game	26-64	40.6%	6-26	23.1%	6-10	60.0%

Deadball Rebounds:

Last FG: 2nd-02:32
Biggest Run: 9-0
Largest lead: By 7 at 1-10:27
Technical Fouls: None.

Game Notes: Officials: Doug Shows, Ken Washington, Dan Clark Attendance: 2256 Start Time: 2018-11-28 00:02:43 End Time: 2018-11-28 01:50:41 Game Duration: 107
--

Score by Period	1st	2nd	TOT
ETS	32	37	69
GAS	27	37	64

ETS led for 21:14. GAS led for 14:28.
 Game was tied for 4:17.
 Times tied: 12 Lead Changes: 13

Points from	ETS	GAS
In the Paint	34	36
Off Turns	13	19
2nd Chance	7	8
Fast Break	13	15
Bench	8	16

Official Box Score
ETSU vs Ga. Southern
First Half Statistics Only
November 28, 2018 at Hanner Fieldhouse - Statesboro, Ga.

ETSU 69

No.	Player	S	Pts	FG	3FG	FT	OR	DR	TR	PF	A	TO	Blk	Stl	Min	+/-
1	Boyd Iii, Tray		10	4-9	2-4	0-0	1	1	2	0	1	1	0	1	16	1
10	Good, Patrick		4	1-3	1-3	1-3	0	4	4	0	0	2	0	1	18	12
11	Rodriguez, Jeromy		2	1-1	0-0	0-0	1	1	2	2	0	2	0	1	9	-4
15	Tisdale, Isaiah		10	3-7	0-2	4-4	1	2	3	0	4	3	0	0	17	4
33	Armus, Mladen		0	0-2	0-0	0-0	1	3	4	2	0	1	1	0	10	8
2	Bernard, D'andre		2	1-2	0-1	0-0	0	2	2	0	0	1	0	0	11	8
4	Williamson, Daivien		0	0-2	0-1	0-0	0	1	1	1	0	1	0	0	5	-5
20	Harrison, James		4	2-4	0-0	0-0	2	1	3	1	0	2	1	0	10	-3
21	Tucker, Kevon		0	0-0	0-0	0-0	0	1	1	1	1	0	0	2	4	4
	Team						1	0	1	0		0				
TOTALS			32	12-30	3-11	5-7	0	0	23	7	6	13	2	5	100	

Shooting By Period

Period	FG	FG%	3FG	3FG%	FT	FT%
1st Half	12-30	40%	3-11	27%	5-7	71%
2nd Half	15-34	44%	5-13	38%	2-6	33%
Game	27-64	42.2%	8-24	33.3%	7-13	53.8%

Deadball Rebounds:

Last FG: 2nd-00:38
 Biggest Run: 10-0
 Largest lead: By 7 at 2-15:03
 Technical Fouls: None.

Ga. Southern 64

No.	Player	S	Pts	FG	3FG	FT	OR	DR	TR	PF	A	TO	Blk	Stl	Min	+/-
0	Glenn, Montae		0	0-1	0-0	0-0	0	1	1	1	1	1	1	1	13	-8
2	Mccadden, Elijah		8	3-8	1-4	1-2	0	1	1	0	1	0	0	0	13	2
3	Smith, Ike		1	0-3	0-2	1-2	0	2	2	0	1	2	0	0	13	-7
4	Brown, Tookie		4	2-4	0-1	0-0	1	1	2	2	2	2	0	1	10	2
13	Jackson, Quan		5	2-3	0-1	1-1	0	3	3	0	1	0	0	1	12	-4
10	Wishart, Calvin		0	0-1	0-1	0-0	0	0	0	0	0	1	1	0	12	-11
23	Carter, Simeon		2	1-3	0-1	0-0	0	0	0	1	0	1	1	0	7	3
24	Jones Jr., David-Lee		3	1-2	1-1	0-0	0	0	0	1	0	0	0	1	13	-3
53	Crawley, Isaiah		4	2-3	0-1	0-0	1	2	3	0	0	2	0	0	6	1
	Team						0	1	1	0		1				
TOTALS			27	11-28	2-12	3-5	0	0	13	5	6	10	3	4	100	

Shooting By Period

Period	FG	FG%	3FG	3FG%	FT	FT%
1st Half	11-28	39%	2-12	17%	3-5	60%
2nd Half	15-36	42%	4-14	29%	3-5	60%
Game	26-64	40.6%	6-26	23.1%	6-10	60.0%

Deadball Rebounds:

Last FG: 2nd-02:32
 Biggest Run: 9-0
 Largest lead: By 7 at 1-10:27
 Technical Fouls: None.

Game Notes:	
Officials: Doug Shows, Ken Washington, Dan Clark	
Attendance: 2256	
Start Time: 2018-11-28 00:02:43	End Time: 2018-11-28 01:50:41
Game Duration: 107	

Score by Period	1st	2nd	TOT
ETS	32	37	69
GAS	27	37	64

This period only: ETS led for 21:14. GAS led for 21:28.
 Game was tied for 0:17.

Points from (This Period)	ETS	GAS
In the Paint	16	16
Off Turns	7	13
2nd Chance	2	2
Fast Break	9	8
Bench	6	9

Official Play-By-Play
ETSU vs Ga. Southern
First Half
November 28, 2018 at Hanner Fieldhouse - Statesboro, Ga.

Starters:

ETSU: 1 BOYD III,TRAY; 10 GOOD,PATRICK; 11 RODRIGUEZ,JEROMY; 15 TISDALE,ISIAIAH; 33 ARMUS,MLADEN;

Ga. Southern: 0 GLENN,MONTAE; 2 MCCADDEN,ELIJAH; 3 SMITH,IKE; 4 BROWN,TOOKIE; 13 JACKSON,QUAN;

Period 1

Time	VISITORS: ETSU	Score	Margin	HOME: Ga. Southern
19:41		2-0	H 2	GOOD! JUMPER by BROWN,TOOKIE
19:15	MISSED LAYUP by ARMUS,MLADEN			
19:15				BLOCK by GLENN,MONTAE
19:10				REBOUND (DEF) by BROWN,TOOKIE
19:07	FOUL (PERSONAL) by ARMUS,MLADEN			
18:42				MISSED JUMPER by SMITH,IKE
18:37	REBOUND (DEF) by RODRIGUEZ,JEROMY			
18:34	TURNOVER (BADPASS) by BOYD III,TRAY			
18:34				STEAL by GLENN,MONTAE
18:26		4-0	H 4	GOOD! DUNK by JACKSON,QUAN [FB]
18:26				ASSIST by GLENN,MONTAE
18:26	FOUL (PERSONAL) by RODRIGUEZ,JEROMY			
18:26		5-0	H 5	GOOD! FT by JACKSON,QUAN [FB]
18:24	MISSED JUMPER by ARMUS,MLADEN			
18:18				REBOUND (DEF) by JACKSON,QUAN
18:09				MISSED LAYUP by GLENN,MONTAE
18:09	BLOCK by ARMUS,MLADEN			
18:02	REBOUND (DEF) by ARMUS,MLADEN			
17:45	MISSED 3PTR by GOOD,PATRICK			
17:40				REBOUND (DEF) by JACKSON,QUAN
17:37		7-0	H 7	GOOD! LAYUP by BROWN,TOOKIE [FB/PNT]
17:37				ASSIST by JACKSON,QUAN
17:36	TIMEOUT 30SEC			
17:23	GOOD! LAYUP by BOYD III,TRAY	7-2	H 5	
17:06				MISSED LAYUP by MCCADDEN,ELIJAH
17:01	REBOUND (DEF) by GOOD,PATRICK			
16:46	TURNOVER (BADPASS) by TISDALE,ISIAIAH			
16:33				MISSED 3PTR by BROWN,TOOKIE
16:29	REBOUND (DEF) by ARMUS,MLADEN			
16:07	GOOD! 3PTR by BOYD III,TRAY	7-5	H 2	
16:07	ASSIST by TISDALE,ISIAIAH			
15:45				MISSED 3PTR by MCCADDEN,ELIJAH
15:42	REBOUND (DEF) by ARMUS,MLADEN			
15:34				FOUL (PERSONAL) by BROWN,TOOKIE
15:34				SUB OUT: SMITH,IKE
15:34				SUB IN: JONES JR.,DAVID-LEE
15:34				SUB OUT: JACKSON,QUAN
15:34				SUB IN: CRAWLEY,ISIAIAH
15:34	GOOD! FT by TISDALE,ISIAIAH	7-6	H 1	
15:34	GOOD! FT by TISDALE,ISIAIAH	7-7	T	
15:34	GOOD! FT by TISDALE,ISIAIAH	7-8	V 1	
15:06				MISSED JUMPER by BROWN,TOOKIE
15:02	REBOUND (DEF) by TISDALE,ISIAIAH			
15:00	GOOD! LAYUP by BOYD III,TRAY [FB]	7-10	V 3	
14:52		9-10	V 1	GOOD! LAYUP by MCCADDEN,ELIJAH
14:52				ASSIST by BROWN,TOOKIE
14:35	TURNOVER (BADPASS) by GOOD,PATRICK			
14:35				SUB OUT: GLENN,MONTAE
14:35				SUB IN: CARTER,SIMEON
14:35	SUB OUT: GOOD,PATRICK			
14:35	SUB IN: WILLIAMSON,DAIVIEN			
14:35	SUB OUT: ARMUS,MLADEN			
14:35	SUB IN: HARRISON,JAMES			
14:35		11-10	H 1	GOOD! JUMPER by CRAWLEY,ISIAIAH [PNT]
14:27	MISSED 3PTR by BOYD III,TRAY			
14:24	REBOUND (OFF) by RODRIGUEZ,JEROMY			
14:24	TURNOVER (BADPASS) by RODRIGUEZ,JEROMY			
13:59		14-10	H 4	GOOD! 3PTR by MCCADDEN,ELIJAH
13:59				ASSIST by BROWN,TOOKIE
13:34	MISSED 3PTR by WILLIAMSON,DAIVIEN			
13:30				REBOUND (DEF) by CRAWLEY,ISIAIAH
13:25				MISSED LAYUP by MCCADDEN,ELIJAH
13:16				REBOUND (OFF) by CRAWLEY,ISIAIAH
13:16		16-10	H 6	GOOD! LAYUP by CRAWLEY,ISIAIAH
12:57	TURNOVER (TRAVEL) by TISDALE,ISIAIAH			
12:57				SUB OUT: BROWN,TOOKIE
12:57				SUB IN: WISHART,CALVIN
12:57				SUB OUT: MCCADDEN,ELIJAH
12:57				SUB IN: SMITH,IKE
12:57	SUB OUT: TISDALE,ISIAIAH			
12:57	SUB IN: GOOD,PATRICK			
12:57				MISSED 3PTR by CRAWLEY,ISIAIAH
12:57	REBOUND (DEF) by WILLIAMSON,DAIVIEN			
12:28	GOOD! JUMPER by RODRIGUEZ,JEROMY	16-12	H 4	
12:15				TURNOVER (LOSTBALL) by CRAWLEY,ISIAIAH
12:15	STEAL by RODRIGUEZ,JEROMY			

Time	VISITORS: ETSU	Score	Margin	HOME: Ga. Southern
12:00	MISSED 3PTR by BOYD III,TRAY			
11:57				REBOUND (DEF) by CRAWLEY,ISAIAH
11:55				TURNOVER (BADPASS) by CRAWLEY,ISAIAH
11:55	STEAL by BOYD III,TRAY			
11:40	MISSED JUMPER by WILLIAMSON,DAIVIEN			
11:35				REBOUND (DEF) by SMITH,IKE
11:30				MISSED JUMPER by CARTER,SIMEON
11:27	REBOUND (DEF) by GOOD,PATRICK			
11:18	FOUL (OFF) by RODRIGUEZ,JEROMY			
11:18	TURNOVER (OFFENSIVE) by RODRIGUEZ,JEROMY			
11:18				
11:11				SUB OUT: CARTER,SIMEON
11:11				SUB IN: JACKSON,QUAN
11:11				SUB OUT: CRAWLEY,ISAIAH
11:11				SUB IN: GLENN,MONTAE
11:11	SUB OUT: BOYD III,TRAY			
11:11	SUB IN: BERNARD,D'ANDRE			
11:11	SUB OUT: RODRIGUEZ,JEROMY			
11:11	SUB IN: TUCKER,KEVON			
10:59	FOUL (PERSONAL) by HARRISON,JAMES			
10:59				MISSED FT by SMITH,IKE
10:59				REBOUND (OFF) by TEAM
10:59		17-12	H 5	GOOD! FT by SMITH,IKE
10:33	TURNOVER (LOSTBALL) by HARRISON,JAMES			
10:33				STEAL by JACKSON,QUAN
10:27		19-12	H 7	GOOD! LAYUP by JACKSON,QUAN
10:18	FOUL (OFF) by WILLIAMSON,DAIVIEN			
10:18	TURNOVER (OFFENSIVE) by WILLIAMSON,DAIVIEN			
10:13	SUB OUT: HARRISON,JAMES			
10:13	SUB IN: ARMUS,MLADEN			
10:06				MISSED 3PTR by SMITH,IKE
09:59	REBOUND (DEF) by TISDALE,ISAIAH			
09:58	GOOD! LAYUP by TISDALE,ISAIAH [PNT]	19-14	H 5	
09:58				FOUL (PERSONAL) by GLENN,MONTAE
09:58	SUB OUT: BERNARD,D'ANDRE			
09:58	SUB IN: TISDALE,ISAIAH			
09:58	GOOD! FT by TISDALE,ISAIAH	19-15	H 4	
09:49	SUB OUT: WILLIAMSON,DAIVIEN			
09:49	SUB IN: BERNARD,D'ANDRE			
09:47				MISSED 3PTR by SMITH,IKE
09:43	REBOUND (DEF) by TUCKER,KEVON			
09:35	MISSED LAYUP by TISDALE,ISAIAH			
09:35				BLOCK by WISHART,CALVIN
09:35	REBOUND (OFF) by TISDALE,ISAIAH			
09:23				SUB OUT: JONES JR.,DAVID-LEE
09:23				SUB IN: BROWN,TOOKIE
09:20	MISSED 3PTR by TISDALE,ISAIAH			
09:17				REBOUND (DEF) by GLENN,MONTAE
09:13				TURNOVER (LOSTBALL) by SMITH,IKE
09:13	STEAL by TUCKER,KEVON			
09:08	GOOD! DUNK by BERNARD,D'ANDRE [FB]	19-17	H 2	
09:08	ASSIST by TISDALE,ISAIAH			
08:59				TURNOVER (LOSTBALL) by GLENN,MONTAE
08:59	STEAL by TUCKER,KEVON			
08:54	GOOD! LAYUP by TISDALE,ISAIAH [FB]	19-19	T	
08:54	ASSIST by TUCKER,KEVON			
08:23	FOUL (PERSONAL) by TUCKER,KEVON			
08:23				SUB OUT: SMITH,IKE
08:23				SUB IN: MCCADDEN,ELIJAH
08:06				TURNOVER (SHOTCLOCK) by
08:01	TURNOVER (TRAVEL) by TISDALE,ISAIAH			
07:39				MISSED 3PTR by WISHART,CALVIN
07:35				REBOUND (OFF) by BROWN,TOOKIE
07:33				MISSED 3PTR by JACKSON,QUAN
07:29	REBOUND (DEF) by GOOD,PATRICK			
07:14	MISSED 3PTR by GOOD,PATRICK			
07:10				REBOUND (DEF) by JACKSON,QUAN
07:06				TURNOVER (TRAVEL) by BROWN,TOOKIE
06:58				SUB OUT: GLENN,MONTAE
06:58				SUB IN: CARTER,SIMEON
06:58				SUB OUT: WISHART,CALVIN
06:58				SUB IN: JONES JR.,DAVID-LEE
06:58	SUB OUT: TUCKER,KEVON			
06:58	SUB IN: BOYD III,TRAY			
06:56	GOOD! LAYUP by TISDALE,ISAIAH	19-21	V 2	
06:44		21-21	T	GOOD! DUNK by CARTER,SIMEON
06:44				ASSIST by MCCADDEN,ELIJAH
06:27	MISSED JUMPER by BOYD III,TRAY			
06:23	REBOUND (OFF) by BOYD III,TRAY			
06:22	MISSED LAYUP by BOYD III,TRAY			
06:17	REBOUND (OFF) by ARMUS,MLADEN			
06:17	TURNOVER (LOSTBALL) by ARMUS,MLADEN			
06:17				STEAL by BROWN,TOOKIE
06:17				FOUL (OFF) by BROWN,TOOKIE
06:17				TURNOVER (OFFENSIVE) by BROWN,TOOKIE
06:17				SUB OUT: BROWN,TOOKIE
06:17				SUB IN: WISHART,CALVIN

Time	VISITORS: ETSU	Score	Margin	HOME: Ga. Southern
05:57	MISSED JUMPER by TISDALE,ISAIAH			
05:57				BLOCK by CARTER,SIMEON
05:53	REBOUND (OFF) by TEAM			
05:47	MISSED 3PTR by TISDALE,ISAIAH			
05:43				REBOUND (DEF) by TEAM
05:33				MISSED 3PTR by CARTER,SIMEON
05:28	REBOUND (DEF) by BERNARD,D'ANDRE			
05:13	MISSED JUMPER by BOYD III,TRAY			
05:10				REBOUND (DEF) by MCCADDEN,ELIJAH
05:10	FOUL (PERSONAL) by ARMUS,MLADEN			
05:10	SUB OUT: ARMUS,MLADEN			
05:10	SUB IN: HARRISON,JAMES			
05:10		22-21	H 1	GOOD! FT by MCCADDEN,ELIJAH
05:10				MISSED FT by MCCADDEN,ELIJAH
05:10	REBOUND (DEF) by HARRISON,JAMES			
05:10	GOOD! 3PTR by GOOD,PATRICK	22-24	V 2	
05:10	ASSIST by TISDALE,ISAIAH			
04:17				MISSED 3PTR by MCCADDEN,ELIJAH
04:13	REBOUND (DEF) by GOOD,PATRICK			
04:07	MISSED LAYUP by HARRISON,JAMES			
04:02	REBOUND (OFF) by HARRISON,JAMES			
04:01	TURNOVER (LOSTBALL) by HARRISON,JAMES			
04:01				STEAL by JONES JR.,DAVID-LEE
03:59				FOUL (OFF) by CARTER,SIMEON
03:59				TURNOVER (OFFENSIVE) by CARTER,SIMEON
03:59				SUB OUT: MCCADDEN,ELIJAH
03:59				SUB IN: SMITH,IKE
03:59				SUB OUT: WISHART,CALVIN
03:59				SUB IN: CRAWLEY,ISAIAH
03:43				FOUL (PERSONAL) by JONES JR.,DAVID-LEE
03:42				
03:42				SUB OUT: JACKSON,QUAN
03:42				SUB IN: GLENN,MONTAE
03:42				SUB OUT: CARTER,SIMEON
03:42				SUB IN: WISHART,CALVIN
03:42	MISSED FT by GOOD,PATRICK			
03:42	REBOUND (OFF) by TEAM			
03:42	MISSED FT by GOOD,PATRICK			
03:42	REBOUND (OFF) by TEAM			
03:42	GOOD! FT by GOOD,PATRICK	22-25	V 3	
03:19				MISSED LAYUP by JONES JR.,DAVID-LEE
03:19	BLOCK by HARRISON,JAMES			
03:14	REBOUND (DEF) by BERNARD,D'ANDRE			
03:12	GOOD! 3PTR by BOYD III,TRAY [FB]	22-28	V 6	
03:12	ASSIST by TISDALE,ISAIAH			
03:04				TURNOVER (TRAVEL) by WISHART,CALVIN
02:43	MISSED 3PTR by BERNARD,D'ANDRE			
02:38				REBOUND (DEF) by SMITH,IKE
02:34		25-28	V 3	GOOD! 3PTR by JONES JR.,DAVID-LEE [FB]
02:34				ASSIST by SMITH,IKE
02:01	TURNOVER (TRAVEL) by BERNARD,D'ANDRE			
02:01				SUB OUT: CRAWLEY,ISAIAH
02:01				SUB IN: MCCADDEN,ELIJAH
01:44		27-28	V 1	GOOD! JUMPER by MCCADDEN,ELIJAH [PNT]
01:25	GOOD! LAYUP by HARRISON,JAMES	27-30	V 3	
01:25	ASSIST by BOYD III,TRAY			
01:13				MISSED 3PTR by MCCADDEN,ELIJAH
01:08	REBOUND (DEF) by BOYD III,TRAY			
00:46	MISSED DUNK by HARRISON,JAMES			
00:39	REBOUND (OFF) by HARRISON,JAMES			
00:39	GOOD! LAYUP by HARRISON,JAMES	27-32	V 5	
00:27				TURNOVER (LOSTBALL) by SMITH,IKE
00:27	STEAL by GOOD,PATRICK			
00:03	TURNOVER (TRAVEL) by GOOD,PATRICK			
00:03				SUB OUT: WISHART,CALVIN
00:03				SUB IN: BROWN,TOOKIE
00:03				SUB OUT: MCCADDEN,ELIJAH
00:03				SUB IN: JACKSON,QUAN
00:02				TIMEOUT 30SEC

ETSU 32, Ga. Southern 27

Points from (This Period)	ETS	GAS
In the Paint	16	16
Off Turns	7	13
2nd Chance	2	2
Fast Break	9	8
Bench	6	9

This period only:ETS led for 21:14. GAS led for 21:28.
Game was tied for 0:17.

Official Box Score
ETSU vs Ga. Southern
Second Half Statistics Only
November 28, 2018 at Hanner Fieldhouse - Statesboro, Ga.

ETSU 69

No.	Player	S	Pts	FG	3FG	FT	OR	DR	TR	PF	A	TO	Blk	Stl	Min	+/-
1	Boyd Iii, Tray		7	3-6	1-3	0-1	0	1	1	0	1	2	1	2	19	-1
10	Good, Patrick		9	3-5	3-5	0-0	1	1	2	1	2	0	0	1	17	0
11	Rodriguez, Jeromy		7	3-7	0-0	1-1	3	12	15	1	2	1	0	1	19	6
15	Tisdale, Isaiah		5	2-7	1-3	0-0	1	1	2	1	1	0	0	1	18	0
33	Amus, Mladen		7	3-6	0-1	1-4	0	1	1	2	2	2	1	0	16	1
2	Bernard, D'andre		0	0-0	0-0	0-0	0	0	0	1	0	1	0	0	1	-6
4	Williamson, Daivien		0	0-1	0-1	0-0	0	0	0	0	0	1	0	0	6	0
20	Harrison, James		2	1-2	0-0	0-0	0	1	1	1	0	0	0	0	4	-1
21	Tucker, Kevon		0	0-0	0-0	0-0	0	0	0	1	1	1	0	0	1	1
	Team						1	0	1	0		0				
TOTALS			37	15-34	5-13	2-6	0	0	23	8	9	8	2	5	100	

Shooting By Period

Period	FG	FG%	3FG	3FG%	FT	FT%
1st Half	12-30	40%	3-11	27%	5-7	71%
2nd Half	15-34	44%	5-13	38%	2-6	33%
Game	27-64	42.2%	8-24	33.3%	7-13	53.8%

Deadball Rebounds:
Last FG: 2nd-00:38
Biggest Run: 10-0
Largest lead: By 7 at 2-15:03
Technical Fouls: None.

Ga. Southern 64

No.	Player	S	Pts	FG	3FG	FT	OR	DR	TR	PF	A	TO	Blk	Stl	Min	+/-
0	Glenn, Montae		4	2-4	0-0	0-2	1	4	5	1	1	1	1	1	15	-4
2	Mccadden, Elijah		2	1-2	0-0	0-0	1	1	2	0	0	2	0	0	10	4
3	Smith, Ike		4	2-4	0-2	0-0	1	1	2	1	0	1	0	0	16	5
4	Brown, Tookie		12	4-7	1-3	3-3	0	2	2	1	3	1	0	0	19	1
13	Jackson, Quan		8	3-11	2-5	0-0	0	3	3	1	0	1	0	1	16	-11
10	Wishart, Calvin		0	0-0	0-0	0-0	0	0	0	0	0	0	0	0	0	0
23	Carter, Simeon		2	1-3	0-0	0-0	1	0	1	2	0	0	0	0	5	4
24	Jones Jr., David-Lee		3	1-3	1-3	0-0	0	1	1	0	1	0	0	0	13	1
53	Crawley, Isaiah		2	1-2	0-1	0-0	0	1	1	1	1	0	0	0	8	0
	Team						1	3	4	0		0				
TOTALS			37	15-36	4-14	3-5	0	0	21	7	6	6	1	2	100	

Shooting By Period

Period	FG	FG%	3FG	3FG%	FT	FT%
1st Half	11-28	39%	2-12	17%	3-5	60%
2nd Half	15-36	42%	4-14	29%	3-5	60%
Game	26-64	40.6%	6-26	23.1%	6-10	60.0%

Deadball Rebounds:
Last FG: 2nd-02:32
Biggest Run: 9-0
Largest lead: By 7 at 1-10:27
Technical Fouls: None.

Game Notes:
 Officials: **Doug Shows, Ken Washington, Dan Clark**
 Attendance: **2256**
 Start Time: **2018-11-28 00:02:43** End Time: **2018-11-28 01:50:41**
 Game Duration: **107**

Score by Period	1st	2nd	TOT
ETS	32	37	69
GAS	27	37	64

This period only: ETS led for 21:14. GAS led for 21:28.
Game was tied for 0:17.

Points from (This Period)	ETS	GAS
In the Paint	18	20
Off Turns	6	6
2nd Chance	5	6
Fast Break	4	7
Bench	2	7

Official Play-By-Play
ETSU vs Ga. Southern
Second Half
November 28, 2018 at Hanner Fieldhouse - Statesboro, Ga.

Starters:

ETSU: 1 BOYD III,TRAY; 10 GOOD,PATRICK; 11 RODRIGUEZ,JEROMY; 15 TISDALE,ISAIHAH; 33 ARMUS,MLADEN;

Ga. Southern: 0 GLENN,MONTAE; 2 MCCADDEN,ELIJAH; 3 SMITH,IKE; 4 BROWN,TOOKIE; 13 JACKSON,QUAN;

Period 2

Time	VISITORS: ETSU	Score	Margin	HOME: Ga. Southern
19:49	TURNOVER (BADPASS) by ARMUS,MLADEN			
19:49				STEAL by JACKSON,QUAN
19:43				MISSED LAYUP by JACKSON,QUAN
19:38				REBOUND (OFF) by MCCADDEN,ELIJAH
19:37		29-32	V 3	GOOD! LAYUP by MCCADDEN,ELIJAH
19:13	MISSED 3PTR by GOOD,PATRICK			
19:12				REBOUND (DEF) by TEAM
19:11	FOUL (PERSONAL) by ARMUS,MLADEN			
19:08				MISSED JUMPER by JACKSON,QUAN
19:03	REBOUND (DEF) by ARMUS,MLADEN			
18:35	TURNOVER (BADPASS) by BOYD III,TRAY			
18:19				MISSED LAYUP by GLENN,MONTAE
18:19	BLOCK by ARMUS,MLADEN			
18:10				REBOUND (OFF) by GLENN,MONTAE
18:10		31-32	V 1	GOOD! LAYUP by GLENN,MONTAE
17:58	MISSED 3PTR by BOYD III,TRAY			
17:54				REBOUND (DEF) by GLENN,MONTAE
17:47				MISSED JUMPER by BROWN,TOOKIE
17:43	REBOUND (DEF) by RODRIGUEZ,JEROMY			
17:27	GOOD! JUMPER by BOYD III,TRAY [PNT]	31-34	V 3	
17:27	ASSIST by GOOD,PATRICK			
17:07				MISSED 3PTR by SMITH,IKE
17:02	REBOUND (DEF) by RODRIGUEZ,JEROMY			
16:54	MISSED LAYUP by ARMUS,MLADEN			
16:49	REBOUND (OFF) by RODRIGUEZ,JEROMY			
16:49	GOOD! LAYUP by RODRIGUEZ,JEROMY	31-36	V 5	
16:42		34-36	V 2	GOOD! 3PTR by JACKSON,QUAN
16:42				ASSIST by BROWN,TOOKIE
16:22	GOOD! 3PTR by TISDALE,ISAIHAH	34-39	V 5	
16:22	ASSIST by RODRIGUEZ,JEROMY			
16:06		36-39	V 3	GOOD! LAYUP by SMITH,IKE
15:52	MISSED JUMPER by RODRIGUEZ,JEROMY			
15:48				REBOUND (DEF) by JACKSON,QUAN
15:46				MISSED LAYUP by JACKSON,QUAN
15:46	BLOCK by BOYD III,TRAY			
15:46				REBOUND (OFF) by TEAM
15:46				SUB OUT: GLENN,MONTAE
15:46				SUB IN: CRAWLEY,ISAIHAH
15:46				SUB OUT: MCCADDEN,ELIJAH
15:46				SUB IN: CARTER,SIMEON
15:46	SUB OUT: ARMUS,MLADEN			
15:46	SUB IN: HARRISON,JAMES			
15:44				TURNOVER (BADPASS) by JACKSON,QUAN
15:44	STEAL by TISDALE,ISAIHAH			
15:38	GOOD! LAYUP by TISDALE,ISAIHAH [FB]	36-41	V 5	
15:27				MISSED 3PTR by SMITH,IKE
15:22	REBOUND (DEF) by RODRIGUEZ,JEROMY			
15:03	GOOD! JUMPER by HARRISON,JAMES [PNT]	36-43	V 7	
15:03	ASSIST by GOOD,PATRICK			
14:54		38-43	V 5	GOOD! LAYUP by BROWN,TOOKIE [PNT]
14:54	FOUL (PERSONAL) by GOOD,PATRICK			
14:54				SUB OUT: JACKSON,QUAN
14:54				SUB IN: JONES JR.,DAVID-LEE
14:54	SUB OUT: RODRIGUEZ,JEROMY			
14:54	SUB IN: BERNARD,D'ANDRE			
14:54		39-43	V 4	GOOD! FT by BROWN,TOOKIE
14:45	MISSED 3PTR by TISDALE,ISAIHAH			
14:41				REBOUND (DEF) by BROWN,TOOKIE
14:38		42-43	V 1	GOOD! 3PTR by JONES JR.,DAVID-LEE [FB]
14:38				ASSIST by BROWN,TOOKIE
14:16	FOUL (OFF) by BERNARD,D'ANDRE			
14:16	TURNOVER (OFFENSIVE) by BERNARD,D'ANDRE			
14:16	SUB OUT: GOOD,PATRICK			
14:16	SUB IN: WILLIAMSON,DAIVIEN			
14:03				MISSED 3PTR by CRAWLEY,ISAIHAH
13:58				REBOUND (OFF) by CARTER,SIMEON
13:57				MISSED JUMPER by CARTER,SIMEON
13:48				REBOUND (OFF) by SMITH,IKE
13:48		44-43	H 1	GOOD! LAYUP by SMITH,IKE
13:46	TIMEOUT 30SEC			
13:46	SUB OUT: BERNARD,D'ANDRE			
13:46	SUB IN: RODRIGUEZ,JEROMY			
13:46	SUB OUT: HARRISON,JAMES			
13:46	SUB IN: ARMUS,MLADEN			
13:26				FOUL (PERSONAL) by CARTER,SIMEON

Time	VISITORS: ETSU	Score	Margin	HOME: Ga. Southern
13:26	GOOD! FT by ARMUS,MLADEN	44-44	T	
13:26	MISSED FT by ARMUS,MLADEN			
13:26				REBOUND (DEF) by CRAWLEY,ISAIAH
13:22		46-44	H 2	GOOD! LAYUP by BROWN,TOOKIE
13:09	MISSED 3PTR by WILLIAMSON,DAIVIEN			
13:05	REBOUND (OFF) by TEAM			
13:05	SUB OUT: TISDALE,ISAIAH			
13:05	SUB IN: GOOD,PATRICK			
12:56	TURNOVER (OTHER) by WILLIAMSON,DAIVIEN			
12:32				MISSED JUMPER by CARTER,SIMEON
12:27	REBOUND (DEF) by RODRIGUEZ,JEROMY			
12:15				SUB OUT: SMITH,IKE
12:15				SUB IN: JACKSON,QUAN
12:15				SUB OUT: BROWN,TOOKIE
12:15				SUB IN: MCCADDEN,ELIJAH
12:15	SUB OUT: BOYD III,TRAY			
12:15	SUB IN: TISDALE,ISAIAH			
12:15	SUB OUT: WILLIAMSON,DAIVIEN			
12:15	SUB IN: TUCKER,KEVON			
12:09	GOOD! 3PTR by GOOD,PATRICK	46-47	V 1	
12:09	ASSIST by TUCKER,KEVON			
11:55		48-47	H 1	GOOD! LAYUP by CARTER,SIMEON
11:55				ASSIST by CRAWLEY,ISAIAH
11:31	FOUL (OFF) by TUCKER,KEVON			
11:31	TURNOVER (OFFENSIVE) by TUCKER,KEVON			
11:31				
11:31	SUB OUT: TUCKER,KEVON			
11:31	SUB IN: BOYD III,TRAY			
11:14				MISSED JUMPER by MCCADDEN,ELIJAH
11:08	REBOUND (DEF) by RODRIGUEZ,JEROMY			
11:01				FOUL (PERSONAL) by CARTER,SIMEON
11:01	MISSED FT by ARMUS,MLADEN			
11:01	REBOUND (OFF) by TEAM			
11:01				SUB OUT: CARTER,SIMEON
11:01				SUB IN: GLENN,MONTAE
11:01	MISSED FT by ARMUS,MLADEN			
11:01				REBOUND (DEF) by JACKSON,QUAN
11:01				TURNOVER (LOSTBALL) by MCCADDEN,ELIJAH
11:01	STEAL by RODRIGUEZ,JEROMY			
10:49				SUB OUT: MCCADDEN,ELIJAH
10:49				SUB IN: BROWN,TOOKIE
10:42	GOOD! JUMPER by ARMUS,MLADEN	48-49	V 1	
10:33				MISSED 3PTR by JACKSON,QUAN
10:28	REBOUND (DEF) by RODRIGUEZ,JEROMY			
10:20	MISSED JUMPER by TISDALE,ISAIAH			
10:20				REBOUND (DEF) by TEAM
10:07		51-49	H 2	GOOD! 3PTR by JACKSON,QUAN
10:07				ASSIST by BROWN,TOOKIE
09:52	TURNOVER (LOSTBALL) by ARMUS,MLADEN			
09:40				TURNOVER (LOSTBALL) by GLENN,MONTAE
09:40	STEAL by GOOD,PATRICK			
09:29	GOOD! LAYUP by BOYD III,TRAY	51-51	T	
09:14		53-51	H 2	GOOD! LAYUP by CRAWLEY,ISAIAH [PNT]
08:56	MISSED 3PTR by GOOD,PATRICK			
08:50	REBOUND (OFF) by TISDALE,ISAIAH			
08:50	MISSED LAYUP by TISDALE,ISAIAH			
08:50				BLOCK by GLENN,MONTAE
08:50	REBOUND (OFF) by RODRIGUEZ,JEROMY			
08:50	GOOD! LAYUP by RODRIGUEZ,JEROMY [PNT]	53-53	T	
08:50				FOUL (PERSONAL) by CRAWLEY,ISAIAH
08:50	GOOD! FT by RODRIGUEZ,JEROMY	53-54	V 1	
08:35				MISSED 3PTR by JACKSON,QUAN
08:31	REBOUND (DEF) by TISDALE,ISAIAH			
08:29	GOOD! DUNK by ARMUS,MLADEN [FB]	53-56	V 3	
08:29	ASSIST by TISDALE,ISAIAH			
08:06				TURNOVER (LOSTBALL) by BROWN,TOOKIE
08:04				SUB OUT: JONES JR.,DAVID-LEE
08:04				SUB IN: SMITH,IKE
08:04				SUB OUT: CRAWLEY,ISAIAH
08:04	SUB OUT: RODRIGUEZ,JEROMY			
08:04	SUB IN: WILLIAMSON,DAIVIEN			
08:04	SUB OUT: TISDALE,ISAIAH			
08:04	SUB IN: BERNARD,D'ANDRE			
07:56				SUB IN: MCCADDEN,ELIJAH
07:53	TURNOVER (BADPASS) by BOYD III,TRAY			
07:51				
07:51	SUB OUT: BERNARD,D'ANDRE			
07:51	SUB IN: RODRIGUEZ,JEROMY			
07:36				MISSED JUMPER by GLENN,MONTAE
07:31	REBOUND (DEF) by RODRIGUEZ,JEROMY			
07:14	GOOD! DUNK by RODRIGUEZ,JEROMY	53-58	V 5	
07:14	ASSIST by ARMUS,MLADEN			
06:53		55-58	V 3	GOOD! JUMPER by JACKSON,QUAN
06:34	MISSED LAYUP by ARMUS,MLADEN			
06:30				REBOUND (DEF) by MCCADDEN,ELIJAH
06:29				TURNOVER (LOSTBALL) by MCCADDEN,ELIJAH
06:29	STEAL by BOYD III,TRAY			

Time	VISITORS: ETSU	Score	Margin	HOME: Ga. Southern
06:26				SUB OUT: JACKSON,QUAN
06:26				SUB IN: JONES JR.,DAVID-LEE
06:26	SUB OUT: WILLIAMSON,DAIVIEN			
06:26	SUB IN: TISDALE,ISIAIAH			
06:10	MISSED JUMPER by RODRIGUEZ,JEROMY			
06:06				REBOUND (DEF) by GLENN,MONTAE
06:02				TURNOVER (LOSTBALL) by SMITH,IKE
06:02	STEAL by BOYD III,TRAY			
05:57	MISSED LAYUP by TISDALE,ISIAIAH			
05:54	REBOUND (OFF) by GOOD,PATRICK			
05:53	MISSED 3PTR by BOYD III,TRAY			
05:46				REBOUND (DEF) by JONES JR.,DAVID-LEE
05:45		57-58	V 1	GOOD! LAYUP by GLENN,MONTAE [FB]
05:45				ASSIST by JONES JR.,DAVID-LEE
05:23	MISSED 3PTR by TISDALE,ISIAIAH			
05:19				REBOUND (DEF) by GLENN,MONTAE
05:17		59-58	H 1	GOOD! LAYUP by BROWN,TOOKIE [FB]
05:17				ASSIST by GLENN,MONTAE
05:08	TIMEOUT TEAM			
05:08	SUB OUT: BOYD III,TRAY			
05:08	SUB IN: WILLIAMSON,DAIVIEN			
04:52	MISSED 3PTR by ARMUS,MLADEN			
04:48				REBOUND (DEF) by SMITH,IKE
04:44	FOUL (PERSONAL) by ARMUS,MLADEN			
04:44				MISSED FT by GLENN,MONTAE
04:44				REBOUND (OFF) by TEAM
04:44				SUB OUT: MCCADDEN,ELIJAH
04:44				SUB IN: JACKSON,QUAN
04:44	SUB OUT: ARMUS,MLADEN			
04:44	SUB IN: HARRISON,JAMES			
04:44	SUB OUT: GOOD,PATRICK			
04:44	SUB IN: BOYD III,TRAY			
04:44				MISSED FT by GLENN,MONTAE
04:44	REBOUND (DEF) by HARRISON,JAMES			
04:27	GOOD! 3PTR by BOYD III,TRAY	59-61	V 2	
04:08				MISSED JUMPER by JACKSON,QUAN
04:03	REBOUND (DEF) by RODRIGUEZ,JEROMY			
03:44	MISSED JUMPER by BOYD III,TRAY			
03:40				REBOUND (DEF) by GLENN,MONTAE
03:37				MISSED 3PTR by JONES JR.,DAVID-LEE
03:31	REBOUND (DEF) by BOYD III,TRAY			
03:11	MISSED JUMPER by HARRISON,JAMES			
03:07	REBOUND (OFF) by RODRIGUEZ,JEROMY			
03:05	MISSED LAYUP by RODRIGUEZ,JEROMY			
03:02				REBOUND (DEF) by BROWN,TOOKIE
02:59	FOUL (PERSONAL) by HARRISON,JAMES			
02:59				
02:59	SUB OUT: WILLIAMSON,DAIVIEN			
02:59	SUB IN: GOOD,PATRICK			
02:59	SUB OUT: HARRISON,JAMES			
02:59	SUB IN: ARMUS,MLADEN			
02:57				MISSED 3PTR by BROWN,TOOKIE
02:52	REBOUND (DEF) by RODRIGUEZ,JEROMY			
02:40				FOUL (PERSONAL) by GLENN,MONTAE
02:40	MISSED LAYUP by RODRIGUEZ,JEROMY			
02:36				REBOUND (DEF) by TEAM
02:32				MISSED LAYUP by JACKSON,QUAN
02:32	REBOUND (DEF) by RODRIGUEZ,JEROMY			
02:32	GOOD! 3PTR by GOOD,PATRICK	59-64	V 5	
02:32	ASSIST by BOYD III,TRAY			
02:32		62-64	V 2	GOOD! 3PTR by BROWN,TOOKIE
02:25	FOUL (PERSONAL) by RODRIGUEZ,JEROMY			
02:05	TURNOVER (BADPASS) by RODRIGUEZ,JEROMY			
02:05				STEAL by GLENN,MONTAE
01:56				MISSED 3PTR by JONES JR.,DAVID-LEE
01:52	REBOUND (DEF) by GOOD,PATRICK			
01:37	GOOD! LAYUP by ARMUS,MLADEN	62-66	V 4	
01:37	ASSIST by RODRIGUEZ,JEROMY			
00:57	FOUL (PERSONAL) by TISDALE,ISIAIAH			
00:57				SUB OUT: JONES JR.,DAVID-LEE
00:57				SUB IN: MCCADDEN,ELIJAH
00:57		63-66	V 3	GOOD! FT by BROWN,TOOKIE
00:57		64-66	V 2	GOOD! FT by BROWN,TOOKIE
00:38	GOOD! 3PTR by GOOD,PATRICK	64-69	V 5	
00:38	ASSIST by ARMUS,MLADEN			
00:26				MISSED 3PTR by BROWN,TOOKIE
00:21	REBOUND (DEF) by RODRIGUEZ,JEROMY			
00:20				FOUL (PERSONAL) by JACKSON,QUAN
00:19				FOUL (PERSONAL) by SMITH,IKE
00:14				FOUL (PERSONAL) by BROWN,TOOKIE
00:14				SUB OUT: MCCADDEN,ELIJAH
00:14				SUB IN: JONES JR.,DAVID-LEE
00:14	MISSED FT by BOYD III,TRAY			
00:14				REBOUND (DEF) by JACKSON,QUAN
00:08				MISSED 3PTR by JACKSON,QUAN
00:00	REBOUND (DEF) by RODRIGUEZ,JEROMY			

ETSU 69, Ga. Southern 64

Points from (This Period)	ETS	GAS
In the Paint	18	20
Off Turns	6	6
2nd Chance	5	6
Fast Break	4	7
Bench	2	7

This period only:ETS led for 21:14. GAS led for 21:28.
Game was tied for 0:17.

Official Scoring/Possession Reference Chart
ETSU vs Ga. Southern
Period 1
November 28, 2018 at Hanner Fieldhouse - Statesboro, Ga.

Starters:

ETSU: 1 BOYD III, TRAY; 10 GOOD, PATRICK; 11 RODRIGUEZ, JEROMY; 15 TISDALE, ISAAH; 33 ARMUS, MLADEN;
 Ga. Southern: 0 GLENN, MONTAE; 2 MCCADDEN, ELIJAH; 3 SMITH, IKE; 4 BROWN, TOOKIE; 13 JACKSON, QUAN;

Period 1

Time	VISITORS: ETSU	Score	Margin	HOME: Ga. Southern
19:41		2-0	H 2	GOOD! JUMPER by BROWN, TOOKIE
18:26		4-0	H 4	GOOD! DUNK by JACKSON, QUAN [FB]
18:26		5-0	H 5	GOOD! FT by JACKSON, QUAN [FB]
17:37		7-0	H 7	GOOD! LAYUP by BROWN, TOOKIE [FB/PNT]
17:23	GOOD! LAYUP by BOYD III, TRAY	7-2	H 5	
16:07	GOOD! 3PTR by BOYD III, TRAY	7-5	H 2	
15:34	GOOD! FT by TISDALE, ISAAH	7-6	H 1	
15:34	GOOD! FT by TISDALE, ISAAH	7-7	T	
15:34	GOOD! FT by TISDALE, ISAAH	7-8	V 1	
15:00	GOOD! LAYUP by BOYD III, TRAY [FB]	7-10	V 3	
14:52		9-10	V 1	GOOD! LAYUP by MCCADDEN, ELIJAH
14:35		11-10	H 1	GOOD! JUMPER by CRAWLEY, ISAAH [PNT]
13:59		14-10	H 4	GOOD! 3PTR by MCCADDEN, ELIJAH
13:16		16-10	H 6	GOOD! LAYUP by CRAWLEY, ISAAH
12:28	GOOD! JUMPER by RODRIGUEZ, JEROMY	16-12	H 4	
10:59		17-12	H 5	GOOD! FT by SMITH, IKE
10:27		19-12	H 7	GOOD! LAYUP by JACKSON, QUAN
09:58	GOOD! LAYUP by TISDALE, ISAAH [PNT]	19-14	H 5	
09:58	GOOD! FT by TISDALE, ISAAH	19-15	H 4	
09:08	GOOD! DUNK by BERNARD, D'ANDRE [FB]	19-17	H 2	
08:54	GOOD! LAYUP by TISDALE, ISAAH [FB]	19-19	T	
06:56	GOOD! LAYUP by TISDALE, ISAAH	19-21	V 2	
06:44		21-21	T	GOOD! DUNK by CARTER, SIMEON
05:10		22-21	H 1	GOOD! FT by MCCADDEN, ELIJAH
05:10	GOOD! 3PTR by GOOD, PATRICK	22-24	V 2	
03:42	GOOD! FT by GOOD, PATRICK	22-25	V 3	
03:12	GOOD! 3PTR by BOYD III, TRAY [FB]	22-28	V 6	
02:34		25-28	V 3	GOOD! 3PTR by JONES JR., DAVID-LEE [FB]
01:44		27-28	V 1	GOOD! JUMPER by MCCADDEN, ELIJAH [PNT]
01:25	GOOD! LAYUP by HARRISON, JAMES	27-30	V 3	
00:39	GOOD! LAYUP by HARRISON, JAMES	27-32	V 5	

ETSU 32, Ga. Southern 27

Official Scoring/Possession Reference Chart
ETSU vs Ga. Southern
Period 2
November 28, 2018 at Hanner Fieldhouse - Statesboro, Ga.

Starters:

ETSU: 1 BOYD III, TRAY; 10 GOOD, PATRICK; 11 RODRIGUEZ, JEROMY; 15 TISDALE, ISAAH; 33 ARMUS, MLADEN;
 Ga. Southern: 0 GLENN, MONTAE; 2 MCCADDEN, ELIJAH; 3 SMITH, IKE; 4 BROWN, TOOKIE; 13 JACKSON, QUAN;

Period 2

Time	VISITORS: ETSU	Score	Margin	HOME: Ga. Southern
19:37		29-32	V 3	GOOD! LAYUP by MCCADDEN, ELIJAH
18:10		31-32	V 1	GOOD! LAYUP by GLENN, MONTAE
17:27	GOOD! JUMPER by BOYD III, TRAY [PNT]	31-34	V 3	
16:49	GOOD! LAYUP by RODRIGUEZ, JEROMY	31-36	V 5	
16:42		34-36	V 2	GOOD! 3PTR by JACKSON, QUAN
16:22	GOOD! 3PTR by TISDALE, ISAAH	34-39	V 5	
16:06		36-39	V 3	GOOD! LAYUP by SMITH, IKE
15:38	GOOD! LAYUP by TISDALE, ISAAH [FB]	36-41	V 5	
15:03	GOOD! JUMPER by HARRISON, JAMES [PNT]	36-43	V 7	

Time	VISITORS: ETSU	Score	Margin	HOME: Ga. Southern
14:54		38-43	V 5	GOOD! LAYUP by BROWN,TOOKIE [PNT]
14:54		39-43	V 4	GOOD! FT by BROWN,TOOKIE
14:38		42-43	V 1	GOOD! 3PTR by JONES JR.,DAVID-LEE [FB]
13:48		44-43	H 1	GOOD! LAYUP by SMITH,IKE
13:26	GOOD! FT by ARMUS,MLADEN	44-44	T	
13:22		46-44	H 2	GOOD! LAYUP by BROWN,TOOKIE
12:09	GOOD! 3PTR by GOOD,PATRICK	46-47	V 1	
11:55		48-47	H 1	GOOD! LAYUP by CARTER,SIMEON
10:42	GOOD! JUMPER by ARMUS,MLADEN	48-49	V 1	
10:07		51-49	H 2	GOOD! 3PTR by JACKSON,QUAN
09:29	GOOD! LAYUP by BOYD III,TRAY	51-51	T	
09:14		53-51	H 2	GOOD! LAYUP by CRAWLEY,ISAIAH [PNT]
08:50	GOOD! LAYUP by RODRIGUEZ,JEROMY [PNT]	53-53	T	
08:50	GOOD! FT by RODRIGUEZ,JEROMY	53-54	V 1	
08:29	GOOD! DUNK by ARMUS,MLADEN [FB]	53-56	V 3	
07:14	GOOD! DUNK by RODRIGUEZ,JEROMY	53-58	V 5	
06:53		55-58	V 3	GOOD! JUMPER by JACKSON,QUAN
05:45		57-58	V 1	GOOD! LAYUP by GLENN,MONTAE [FB]
05:17		59-58	H 1	GOOD! LAYUP by BROWN,TOOKIE [FB]
04:27	GOOD! 3PTR by BOYD III,TRAY	59-61	V 2	
02:32	GOOD! 3PTR by GOOD,PATRICK	59-64	V 5	
02:32		62-64	V 2	GOOD! 3PTR by BROWN,TOOKIE
01:37	GOOD! LAYUP by ARMUS,MLADEN	62-66	V 4	
00:57		63-66	V 3	GOOD! FT by BROWN,TOOKIE
00:57		64-66	V 2	GOOD! FT by BROWN,TOOKIE
00:38	GOOD! 3PTR by GOOD,PATRICK	64-69	V 5	

ETSU 69, Ga. Southern 64

**Official Substitutions Log
ETSU vs Ga. Southern
Period 1
November 28, 2018 at Hanner Fieldhouse - Statesboro, Ga.**

VISITORS: ETSU	Time	Score	HOME: Ga. Southern
1 BOYD III,TRAY			0 GLENN,MONTAE
10 GOOD,PATRICK			2 MCCADDEN,ELIJAH
11 RODRIGUEZ,JEROMY			3 SMITH,IKE
15 TISDALE,ISAIAH			4 BROWN,TOOKIE
33 ARMUS,MLADEN			13 JACKSON,QUAN
	15:34	5-7	SUB OUT: SMITH,IKE
	15:34		SUB IN: JONES JR.,DAVID-LEE
	15:34		SUB OUT: JACKSON,QUAN
	15:34		SUB IN: CRAWLEY,ISAIAH
	14:35	10-9	SUB OUT: GLENN,MONTAE
	14:35		SUB IN: CARTER,SIMEON
SUB OUT: 10 GOOD,PATRICK	14:35		
SUB IN: 4 WILLIAMSON,DAIVIEN	14:35		
SUB OUT: 33 ARMUS,MLADEN	14:35		
SUB IN: 20 HARRISON,JAMES	14:35		
	12:57	10-16	SUB OUT: BROWN,TOOKIE
	12:57		SUB IN: WISHART,CALVIN
	12:57		SUB OUT: MCCADDEN,ELIJAH
	12:57		SUB IN: SMITH,IKE
SUB OUT: 15 TISDALE,ISAIAH	12:57		
SUB IN: 10 GOOD,PATRICK	12:57		
	11:11	12-16	SUB OUT: CARTER,SIMEON
	11:11		SUB IN: JACKSON,QUAN
	11:11		SUB OUT: CRAWLEY,ISAIAH
	11:11		SUB IN: GLENN,MONTAE
SUB OUT: 1 BOYD III,TRAY	11:11		
SUB IN: 2 BERNARD,D'ANDRE	11:11		
SUB OUT: 11 RODRIGUEZ,JEROMY	11:11		
SUB IN: 21 TUCKER,KEVON	11:11		
SUB OUT: 20 HARRISON,JAMES	10:13	12-19	
SUB IN: 33 ARMUS,MLADEN	10:13		
SUB OUT: 2 BERNARD,D'ANDRE	09:58	14-19	
SUB IN: 15 TISDALE,ISAIAH	09:58		
SUB OUT: 4 WILLIAMSON,DAIVIEN	09:49	15-19	
SUB IN: 2 BERNARD,D'ANDRE	09:49		
	09:23	15-19	SUB OUT: JONES JR.,DAVID-LEE

VISITORS: ETSU	Time	Score	HOME: Ga. Southern
	09:23		SUB IN: BROWN, TOOKIE
	08:23	19-19	SUB OUT: SMITH, IKE
	08:23		SUB IN: MCCADDEN, ELIJAH
	06:58	19-19	SUB OUT: GLENN, MONTAE
	06:58		SUB IN: CARTER, SIMEON
	06:58		SUB OUT: WISHART, CALVIN
	06:58		SUB IN: JONES JR., DAVID-LEE
SUB OUT: 21 TUCKER, KEVON	06:58		
SUB IN: 1 BOYD III, TRAY	06:58		
	06:17	21-21	SUB OUT: BROWN, TOOKIE
	06:17		SUB IN: WISHART, CALVIN
SUB OUT: 33 ARMUS, MLADEN	05:10	21-21	
SUB IN: 20 HARRISON, JAMES	05:10		
	03:59	24-22	SUB OUT: MCCADDEN, ELIJAH
	03:59		SUB IN: SMITH, IKE
	03:59		SUB OUT: WISHART, CALVIN
	03:59		SUB IN: CRAWLEY, ISAIAH
	03:42	24-22	SUB OUT: JACKSON, QUAN
	03:42		SUB IN: GLENN, MONTAE
	03:42		SUB OUT: CARTER, SIMEON
	03:42		SUB IN: WISHART, CALVIN
	02:01	28-25	SUB OUT: CRAWLEY, ISAIAH
	02:01		SUB IN: MCCADDEN, ELIJAH
	00:03	32-27	SUB OUT: WISHART, CALVIN
	00:03		SUB IN: BROWN, TOOKIE
	00:03		SUB OUT: MCCADDEN, ELIJAH
	00:03		SUB IN: JACKSON, QUAN

ETSU 32, Ga. Southern 27

**Official Substitutions Log
ETSU vs Ga. Southern
Period 2
November 28, 2018 at Hanner Fieldhouse - Statesboro, Ga.**

VISITORS: ETSU	Time	Score	HOME: Ga. Southern
1 BOYD III, TRAY			0 GLENN, MONTAE
10 GOOD, PATRICK			2 MCCADDEN, ELIJAH
11 RODRIGUEZ, JEROMY			3 SMITH, IKE
15 TISDALE, ISAIAH			4 BROWN, TOOKIE
33 ARMUS, MLADEN			13 JACKSON, QUAN
	15:46	39-36	SUB OUT: GLENN, MONTAE
	15:46		SUB IN: CRAWLEY, ISAIAH
	15:46		SUB OUT: MCCADDEN, ELIJAH
	15:46		SUB IN: CARTER, SIMEON
SUB OUT: 33 ARMUS, MLADEN	15:46		
SUB IN: 20 HARRISON, JAMES	15:46		
	14:54	43-38	SUB OUT: JACKSON, QUAN
	14:54		SUB IN: JONES JR., DAVID-LEE
SUB OUT: 11 RODRIGUEZ, JEROMY	14:54		
SUB IN: 2 BERNARD, D'ANDRE	14:54		
SUB OUT: 10 GOOD, PATRICK	14:16	43-42	
SUB IN: 4 WILLIAMSON, DAIVIEN	14:16		
SUB OUT: 2 BERNARD, D'ANDRE	13:46	43-44	
SUB IN: 11 RODRIGUEZ, JEROMY	13:46		
SUB OUT: 20 HARRISON, JAMES	13:46		
SUB IN: 33 ARMUS, MLADEN	13:46		
SUB OUT: 15 TISDALE, ISAIAH	13:05	44-46	
SUB IN: 10 GOOD, PATRICK	13:05		
	12:15	44-46	SUB OUT: SMITH, IKE
	12:15		SUB IN: JACKSON, QUAN
	12:15		SUB OUT: BROWN, TOOKIE
	12:15		SUB IN: MCCADDEN, ELIJAH
SUB OUT: 1 BOYD III, TRAY	12:15		
SUB IN: 15 TISDALE, ISAIAH	12:15		
SUB OUT: 4 WILLIAMSON, DAIVIEN	12:15		
SUB IN: 21 TUCKER, KEVON	12:15		
SUB OUT: 21 TUCKER, KEVON	11:31	47-48	
SUB IN: 1 BOYD III, TRAY	11:31		
	11:01	47-48	SUB OUT: CARTER, SIMEON
	11:01		SUB IN: GLENN, MONTAE
	10:49	47-48	SUB OUT: MCCADDEN, ELIJAH
	10:49		SUB IN: BROWN, TOOKIE
	08:04	56-53	SUB OUT: JONES JR., DAVID-LEE
	08:04		SUB IN: SMITH, IKE
	08:04		SUB OUT: CRAWLEY, ISAIAH
SUB OUT: 11 RODRIGUEZ, JEROMY	08:04		
SUB IN: 4 WILLIAMSON, DAIVIEN	08:04		
SUB OUT: 15 TISDALE, ISAIAH	08:04		
SUB IN: 2 BERNARD, D'ANDRE	08:04		
	07:56	56-53	SUB IN: MCCADDEN, ELIJAH
SUB OUT: 2 BERNARD, D'ANDRE	07:51	56-53	
SUB IN: 11 RODRIGUEZ, JEROMY	07:51		
	06:26	58-55	SUB OUT: JACKSON, QUAN
	06:26		SUB IN: JONES JR., DAVID-LEE

VISITORS: ETSU	Time	Score	HOME: Ga. Southern
SUB OUT: 4 WILLIAMSON,DAIVIEN	06:26		
SUB IN: 15 TISDALE,ISAIAH	06:26		
SUB OUT: 1 BOYD III,TRAY	05:08	58-59	
SUB IN: 4 WILLIAMSON,DAIVIEN	05:08		
	04:44	58-59	SUB OUT: MCCADDEN,ELIJAH
	04:44		SUB IN: JACKSON,QUAN
SUB OUT: 33 ARMUS,MLADEN	04:44		
SUB IN: 20 HARRISON,JAMES	04:44		
SUB OUT: 10 GOOD,PATRICK	04:44		
SUB IN: 1 BOYD III,TRAY	04:44		
SUB OUT: 4 WILLIAMSON,DAIVIEN	02:59	61-59	
SUB IN: 10 GOOD,PATRICK	02:59		
SUB OUT: 20 HARRISON,JAMES	02:59		
SUB IN: 33 ARMUS,MLADEN	02:59		
	00:57	66-62	SUB OUT: JONES JR.,DAVID-LEE
	00:57		SUB IN: MCCADDEN,ELIJAH
	00:14	69-64	SUB OUT: MCCADDEN,ELIJAH
	00:14		SUB IN: JONES JR.,DAVID-LEE

ETSU 69, Ga. Southern 64

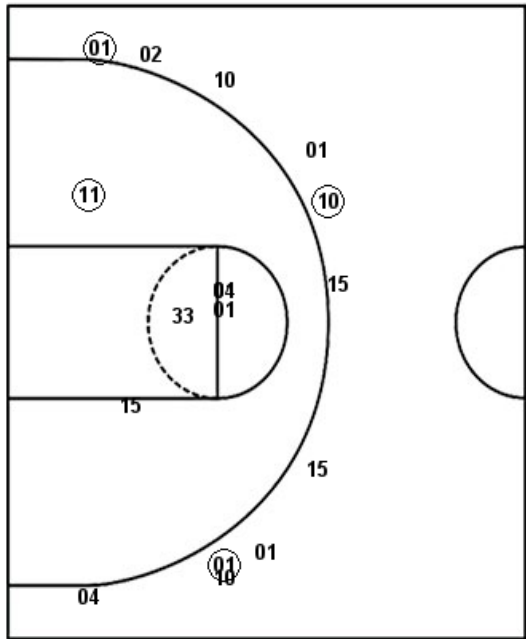
Official Shot Chart
ETSU vs Ga. Southern
PERIOD 1 Shots
 November 28, 2018 at Hanner Fieldhouse - Statesboro, Ga.

Ga. Southern

ETSU

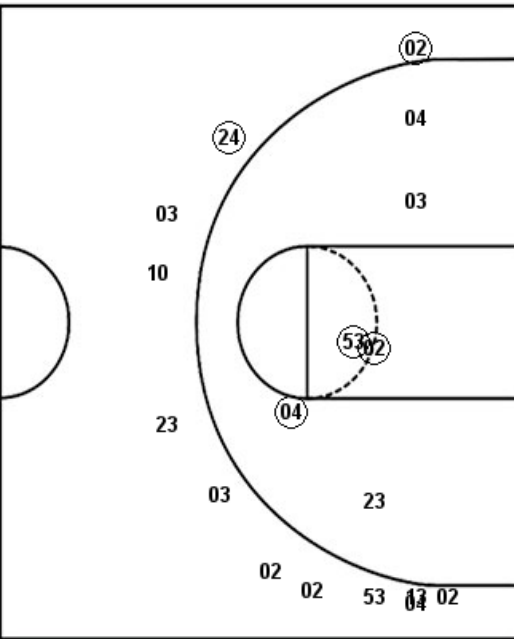
Layups
 00 (04) 02 (02) 02
 (53) (13) 24

Dunks
 (13) (23)



Layups
 33 (01) (01) (15) 15
 (15) (15) 01 20 (20)
 (20)

Dunks
 (02) 20



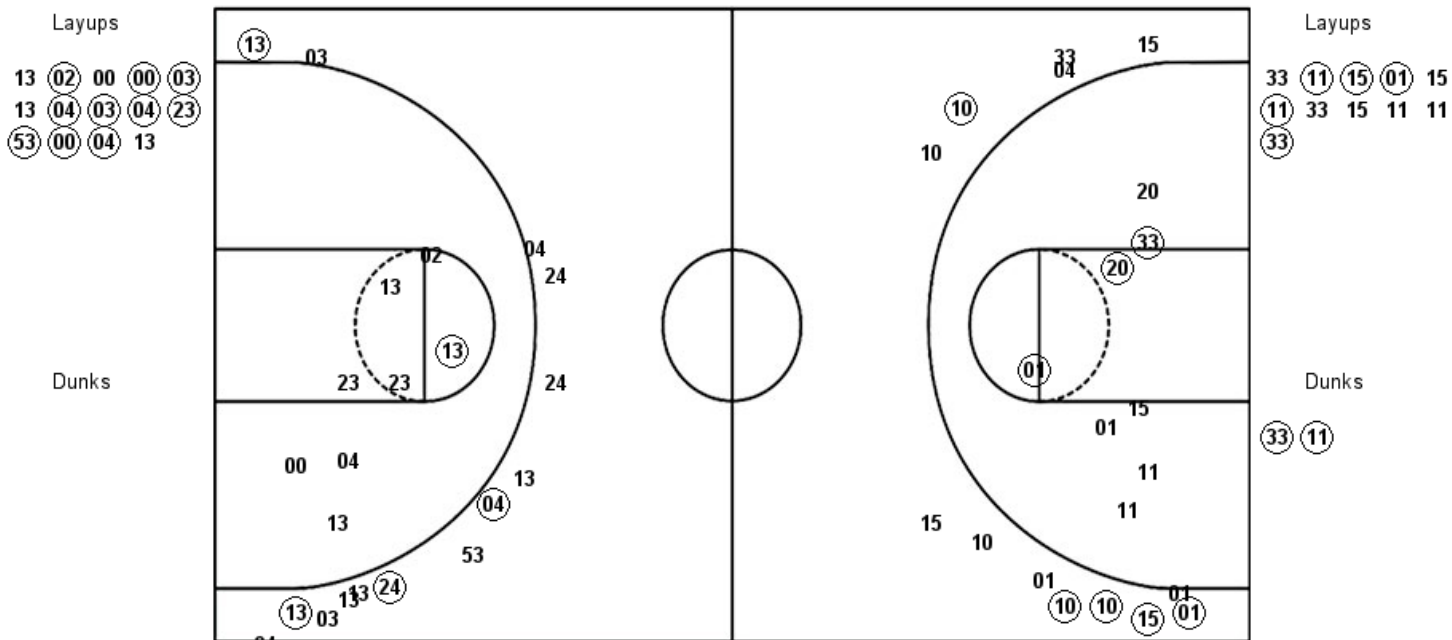
GAS : Period 1	Made	Att	Pct
Layups	4	8	50.0
Dunks	2	2	100.0
2PT Field Goals	9	16	56.3
3PT Field Goals	2	12	16.7
Total Field Goals	11	28	39.3

ETS : Period 1	Made	Att	Pct
Layups	7	11	63.6
Dunks	1	2	50.0
2PT Field Goals	9	19	47.4
3PT Field Goals	3	11	27.3
Total Field Goals	12	30	40.0

Official Shot Chart
ETSU vs Ga. Southern
PERIOD 2 Shots
 November 28, 2018 at Hanner Fieldhouse - Statesboro, Ga.

Ga. Southern

ETSU

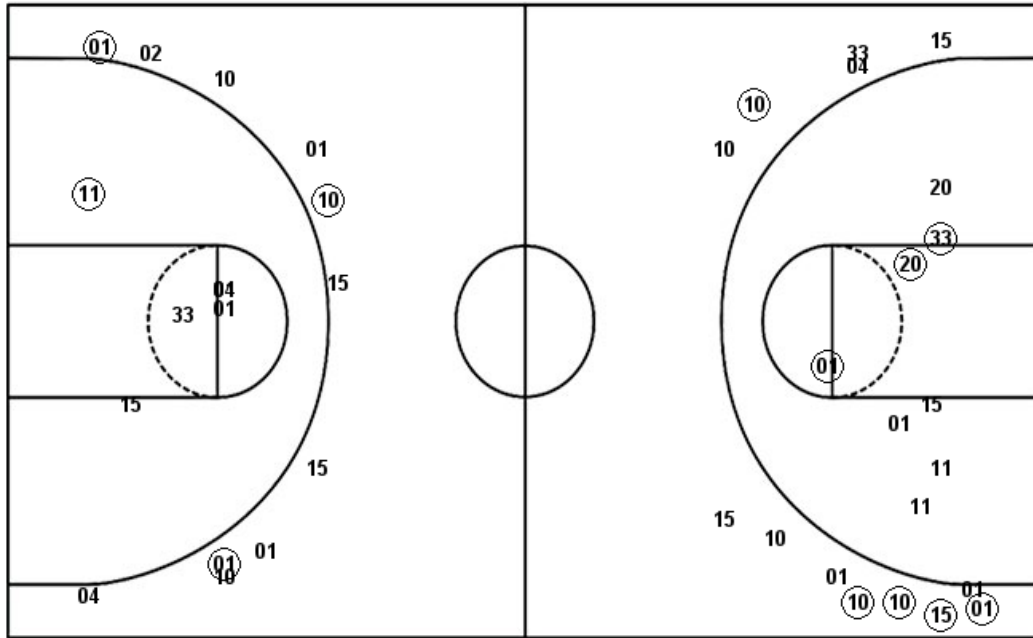


GAS : Period 2	Made	Att	Pct
Layups	10	14	71.4
Dunks	0	0	0
2PT Field Goals	11	22	50.0
3PT Field Goals	4	14	28.6
Total Field Goals	15	36	41.7

ETS : Period 2	Made	Att	Pct
Layups	5	11	45.5
Dunks	2	2	100.0
2PT Field Goals	10	21	47.6
3PT Field Goals	5	13	38.5
Total Field Goals	15	34	44.1

Official Shot Chart
ETSU vs Ga. Southern
ETSU Team Shots
November 28, 2018 at Hanner Fieldhouse - Statesboro, Ga.

Layups



Layups

33 01 01 15 15
 15 15 01 20 20
 20 33 11 15 01
 15 11 33 15 11
 11 33

Dunks

Dunks

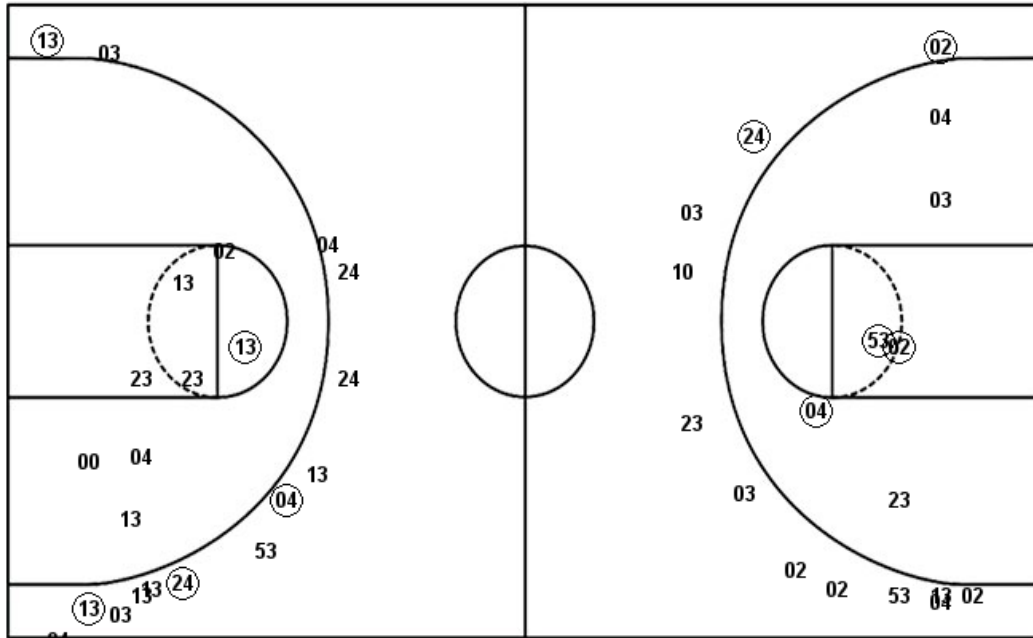
02 20 33 11

ETS : Period 1	Made	Att	Pct
Layups	7	11	63.6
Dunks	1	2	50.0
2PT Field Goals	9	19	47.4
3PT Field Goals	3	11	27.3
Total Field Goals	12	30	40.0

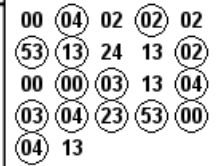
ETS : Period 2	Made	Att	Pct
Layups	5	11	45.5
Dunks	2	2	100.0
2PT Field Goals	10	21	47.6
3PT Field Goals	5	13	38.5
Total Field Goals	15	34	44.1

Official Shot Chart
ETSU vs Ga. Southern
Ga. Southern Team Shots
November 28, 2018 at Hanner Fieldhouse - Statesboro, Ga.

Layups



Layups



Dunks

Dunks



GAS : Period 1	Made	Att	Pct
Layups	4	8	50.0
Dunks	2	2	100.0
2PT Field Goals	9	16	56.3
3PT Field Goals	2	12	16.7
Total Field Goals	11	28	39.3

GAS : Period 2	Made	Att	Pct
Layups	10	14	71.4
Dunks	0	0	0
2PT Field Goals	11	22	50.0
3PT Field Goals	4	14	28.6
Total Field Goals	15	36	41.7