

FINAL SCORE



Princeton

68



Penn

53

February 27, 2019 • The Palestra (Macquarie Court) - Philadelphia,
PA

FINAL STATISTICS

Official Box Score
Princeton vs Penn
Game Totals -- Final Statistics
February 27, 2019 at The Palestra (Macquarie Court) - Philadelphia, PA

Princeton 68

No.	Player	S	Pts	FG	3FG	FT	OR	DR	TR	PF	A	TO	Blk	Stl	Min	+/-
02	Littlefield, Carlie	14	4-11	2-5	4-5	0	5	5	3	6	2	0	2	38	17	
10	Stone, Grace	2	1-5	0-1	0-0	1	1	2	0	3	2	2	1	23	8	
13	Jordan, Sydney	6	3-6	0-0	0-0	1	1	2	3	1	1	0	0	31	20	
25	Rush, Gabrielle	13	4-11	3-10	2-2	1	2	3	0	3	1	0	1	39	15	
31	Alarie, Bella	33	13-21	0-0	7-10	8	2	10	2	3	0	3	0	37	17	
03	Boyer, Sydney	0	0-1	0-1	0-0	0	0	0	0	0	1	0	0	3	2	
12	Connolly, Maggie	0	0-1	0-1	0-0	0	0	0	0	0	0	0	0	5	-5	
22	Baur, Taylor	0	0-1	0-0	0-0	0	4	4	3	0	0	1	0	9	-8	
24	Cunningham, Julia	0	0-0	0-0	0-0	0	0	0	1	0	0	0	0	5	5	
32	Ismail, Qalea	0	0-1	0-0	0-0	0	3	3	2	1	0	0	0	9	4	
Team							4	8	12	0	1					
TOTALS		68	25-58	5-18	13-17	15	26	41	14	17	8	6	4	200		

Shooting By Period

Period	FG	FG%	3FG	3FG%	FT	FT%
1st Qtr	5-15	33%	3-9	33%	2-2	100%
2nd Qtr	7-16	44%	1-3	33%	3-3	100%
3rd Qtr	7-14	50%	0-5	00%	3-4	75%
4th Qtr	6-13	46%	1-1	100%	5-8	63%
1st Half	12-31	39%	4-12	33%	5-5	100%
2nd Half	13-27	48%	1-6	17%	8-12	67%
Game	25-58	43.1%	5-18	27.8%	13-17	76.5%

Last FG: 4th-05:06
Biggest Run: 10-0
Largest lead: By 15 at 4-01:50
Technical Fouls: None.

Penn 53

No.	Player	S	Pts	FG	3FG	FT	OR	DR	TR	PF	A	TO	Blk	Stl	Min	+/-
11	Grasela, Kendall	11	5-12	1-1	0-0	1	3	4	2	3	2	0	0	31	-4	
25	Russell, Ashley	6	1-5	0-0	4-6	2	3	5	2	5	1	0	3	39	-15	
31	Parker, Eleah	10	5-13	0-1	0-0	1	3	4	1	0	3	2	1	29	-16	
33	Sterba, Phoebe	6	2-8	2-4	0-0	1	0	1	4	0	0	1	1	17	-13	
50	Aghayere, Princess	14	5-10	0-2	4-5	4	1	5	5	1	0	0	0	26	-7	
02	Kinum, Katie	0	0-2	0-2	0-0	0	0	0	0	0	0	0	0	8	4	
03	Jones, Michae	2	1-5	0-2	0-0	1	1	2	1	1	1	0	0	19	-11	
21	Lakstigala, Mia	0	0-0	0-0	0-0	0	1	1	1	0	0	0	0	5	-6	
22	Jackson, Deja	0	0-1	0-0	0-0	0	0	0	0	0	0	0	0	1	0	
23	Daley, Kristen	0	0-0	0-0	0-0	0	0	0	0	0	0	0	0	2	0	
24	Crawford, Tori	2	1-5	0-2	0-0	0	3	3	2	1	0	1	0	17	-4	
40	Anderson, Emily	2	1-2	0-0	0-0	1	0	1	0	0	1	0	0	8	-3	
Team							7	6	13	0	0					
TOTALS		53	21-63	3-14	8-11	18	21	39	18	11	8	4	6	200		

Shooting By Period

Period	FG	FG%	3FG	3FG%	FT	FT%
1st Qtr	6-14	43%	0-3	00%	0-2	00%
2nd Qtr	8-20	40%	2-4	50%	1-2	50%
3rd Qtr	6-21	29%	0-5	00%	3-3	100%
4th Qtr	1-8	13%	1-2	50%	4-4	100%
1st Half	14-34	41%	2-7	29%	1-4	25%
2nd Half	7-29	24%	1-7	14%	7-7	100%
Game	21-63	33.3%	3-14	21.4%	8-11	72.7%

Last FG: 4th-05:53
Biggest Run: 7-0
Largest lead: By 2 at 1-09:01
Technical Fouls: None.

Game Notes:

Officials: Joseph Vaszily, Tom Danaher, Maggie Tieman
Attendance: 683

Start Time: 2019-02-27 00:01:42
End Time: 2019-02-27 01:47:55
Game Duration: 106
Conference Game;

Score	1st	2nd	3rd	4th	TOT
PRI	15	18	17	18	68
PEN	12	19	15	7	53

PRI led for 38:34. PEN led for 0:28.
Game was tied for 0:59.
Times tied: 0 Lead Changes: 1

Points from	PRI	PEN
In the Paint	30	32
Off Turns	6	5
2nd Chance	13	20
Fast Break	8	4
Bench	0	6

Official Box Score
Princeton vs Penn
First Half Statistics Only
February 27, 2019 at The Palestra (Macquarie Court) - Philadelphia, PA

Princeton 33

No.	Player	S	Pts	FG	3FG	FT	OR	DR	TR	PF	A	TO	Blk	Stl	Min	+/-
10	Stone, Grace		0	0-2	0-1	0-0	0	0	0	0	2	0	0	0	11	1
12	Connolly, Maggie		0	0-0	0-0	0-0	0	0	0	0	0	0	0	0	2	-2
13	Jordan, Sydney		2	1-2	0-0	0-0	1	0	1	0	1	1	0	0	15	6
22	Baur, Taylor		0	0-1	0-0	0-0	0	2	2	2	0	0	1	0	6	-7
24	Cunningham, Julia		0	0-0	0-0	0-0	0	0	0	1	0	0	0	0	4	5
25	Rush, Gabrielle		11	4-8	3-7	0-0	0	1	1	0	2	1	0	0	20	2
31	Alarie, Bella		13	5-11	0-0	3-3	3	1	4	1	1	0	3	0	18	4
32	Ismail, Qalea		0	0-0	0-0	0-0	0	3	3	0	0	0	0	0	4	-5
02	Littlefield, Carrie		7	2-6	1-3	2-2	0	3	3	2	3	1	0	1	18	4
03	Boyer, Sydney		0	0-1	0-1	0-0	0	0	0	0	0	1	0	0	3	2
	Team		0	0-0	0-0	0-0	3	4	7	0	0	1	0	0	0	
TOTALS			33	12-31	4-12	5-5	7	14	21	6	9	5	4	1	100	

Shooting By Period

Period	FG	FG%	3FG	3FG%	FT	FT%
1st Qtr	5-15	33%	3-9	33%	2-2	100%
2nd Qtr	7-16	44%	1-3	33%	3-3	100%
1st Half	12-31	39%	4-12	33%	5-5	100%
Game	25-58	43.1%	5-18	27.8%	13-17	76.5%

Last FG Half: PRI 2nd-01:22

Penn 31

No.	Player	S	Pts	FG	3FG	FT	OR	DR	TR	PF	A	TO	Blk	Stl	Min	+/-
02	Kinum, Katie		0	0-0	0-0	0-0	0	0	0	0	0	0	0	0	2	4
03	Jones, Michae		0	0-3	0-2	0-0	0	1	1	0	1	0	0	0	7	-5
11	Grasela, Kendall		11	5-7	1-1	0-0	0	3	3	2	2	0	0	0	16	3
21	Lakstigala, Mia		0	0-0	0-0	0-0	0	1	1	1	0	0	0	0	5	-6
22	Jackson, Deja		0	0-0	0-0	0-0	0	0	0	0	0	0	0	0	0	0
23	Daley, Kristen		0	0-0	0-0	0-0	0	0	0	0	0	0	0	0	0	0
24	Crawford, Tori		2	1-4	0-1	0-0	0	1	1	0	1	0	1	0	8	0
25	Russell, Ashley		0	0-2	0-0	0-2	1	2	3	0	2	1	0	1	20	-2
31	Parker, Eleah		10	5-12	0-1	0-0	1	3	4	1	0	2	0	1	19	3
33	Sterba, Phoebe		3	1-3	1-2	0-0	0	0	0	3	0	0	1	1	9	0
40	Anderson, Emily		0	0-0	0-0	0-0	0	0	0	0	0	1	0	0	1	-5
50	Aghayere, Princess		5	2-3	0-0	1-2	2	0	2	2	1	0	0	0	12	-2
	Team		0	0-0	0-0	0-0	4	1	5	0	0	0	0	0	0	
TOTALS			31	14-34	2-7	1-4	8	12	20	9	7	4	2	3	100	

Shooting By Period

Period	FG	FG%	3FG	3FG%	FT	FT%
1st Qtr	6-14	43%	0-3	00%	0-2	00%
2nd Qtr	8-20	40%	2-4	50%	1-2	50%
1st Half	14-34	41%	2-7	29%	1-4	25%
Game	21-63	33.3%	3-14	21.4%	8-11	72.7%

Last FG Half: PEN 2nd-00:38

Game Notes:

Officials: Joseph Vaszily, Tom Danaher, Maggie Tieman
Attendance: 683

Start Time: 2019-02-27 00:01:42
End Time: 2019-02-27 01:47:55
Game Duration: 106
Conference Game;

Score	1st	2nd	3rd	4th	TOT
PRI	15	18	17	18	68
PEN	12	19	15	7	53

Points from (This Period)	PRI	PEN
In the Paint	12	20
Off Turns	3	3
2nd Chance	8	7
Fast Break	4	4
Bench	0	2

Official Box Score
Princeton vs Penn
First Quarter Statistics Only
February 27, 2019 at The Palestra (Macquarie Court) - Philadelphia, PA

Princeton 15

No.	Player	S	Pts	FG	3FG	FT	OR	DR	TR	PF	A	TO	Blk	Stl	Min	+/-
02	Littlefield, Carlie		5	2-5	1-3	0-0	0	2	2	1	2	0	0	0	10	3
10	Stone, Grace		0	0-1	0-1	0-0	0	0	0	0	0	0	0	0	4	2
13	Jordan, Sydney		0	0-0	0-0	0-0	1	0	1	0	1	1	0	0	8	7
25	Rush, Gabrielle		6	2-5	2-5	0-0	0	0	0	0	1	0	0	0	10	3
31	Alarie, Bella		4	1-4	0-0	2-2	1	0	1	0	0	0	1	0	10	3
03	Boyer, Sydney		0	0-0	0-0	0-0	0	0	0	0	0	0	0	0	0	0
12	Connolly, Maggie		0	0-0	0-0	0-0	0	0	0	0	0	0	0	0	0	0
22	Baur, Taylor		0	0-0	0-0	0-0	0	0	0	0	0	0	0	0	2	-4
24	Cunningham, Julia		0	0-0	0-0	0-0	0	0	0	1	0	0	0	0	4	5
32	Ismail, Qalea		0	0-0	0-0	0-0	0	1	1	0	0	0	0	0	2	-4
	Team						2	2	4	0		1				
TOTALS			15	5-15	3-9	2-2	4	5	9	2	4	2	1	0	50	

Shooting By Period

Period	FG	FG%	3FG	3FG%	FT	FT%
1st Qtr	5-15	33%	3-9	33%	2-2	100%
2nd Qtr	7-16	44%	1-3	33%	3-3	100%
1st Half	5-15	33%	3-9	33%	2-2	100%
1st Half	12-31	39%	4-12	33%	5-5	100%
Game	25-58	43.1%	5-18	27.8%	13-17	76.5%

Penn 12

No.	Player	S	Pts	FG	3FG	FT	OR	DR	TR	PF	A	TO	Blk	Stl	Min	+/-
11	Grasela, Kendall		6	3-3	0-0	0-0	0	1	1	1	0	0	0	0	10	-3
25	Russell, Ashley		0	0-1	0-0	0-2	1	1	2	0	2	1	0	0	10	-3
31	Parker, Eleah		6	3-6	0-1	0-0	1	2	3	0	0	2	0	0	10	-3
33	Sterba, Phoebe		0	0-2	0-1	0-0	0	0	0	1	0	0	0	1	8	-2
50	Aghayere, Princess		0	0-0	0-0	0-0	0	0	0	2	0	0	0	0	4	-3
02	Kinum, Katie		0	0-0	0-0	0-0	0	0	0	0	0	0	0	0	0	0
03	Jones, Michae		0	0-0	0-0	0-0	0	0	0	0	0	0	0	0	0	0
21	Lakstigala, Mia		0	0-0	0-0	0-0	0	1	1	0	0	0	0	0	2	-1
22	Jackson, Deja		0	0-0	0-0	0-0	0	0	0	0	0	0	0	0	0	0
23	Daley, Kristen		0	0-0	0-0	0-0	0	0	0	0	0	0	0	0	0	0
24	Crawford, Tori		0	0-2	0-1	0-0	0	1	1	0	0	0	1	0	6	0
40	Anderson, Emily		0	0-0	0-0	0-0	0	0	0	0	0	0	0	0	0	0
	Team						2	0	2	0		0				
TOTALS			12	6-14	0-3	0-2	4	6	10	4	2	3	1	1	50	

Shooting By Period

Period	FG	FG%	3FG	3FG%	FT	FT%
1st Qtr	6-14	43%	0-3	00%	0-2	00%
2nd Qtr	8-20	40%	2-4	50%	1-2	50%
1st Half	6-14	43%	0-3	00%	0-2	00%
1st Half	14-34	41%	2-7	29%	1-4	25%
Game	21-63	33.3%	3-14	21.4%	8-11	72.7%

Game Notes:

Officials: Joseph Vaszily, Tom Danaher, Maggie Tieman
Attendance: 683

Start Time: 2019-02-27 00:01:42
End Time: 2019-02-27 01:47:55
Game Duration: 106
Conference Game;

Score	1st	2nd	3rd	4th	TOT
PRI	15	18	17	18	68
PEN	12	19	15	7	53

Points from (This Period)	PRI	PEN
In the Paint	2	12
Off Turns	3	0
2nd Chance	5	4
Fast Break	0	2
Bench	0	0

**Official Play-By-Play
Princeton vs Penn
First Quarter
February 27, 2019 at The Palestra (Macquarie Court) - Philadelphia, PA**

Period 1

Starters:

Princeton: 10 STONE,GRACE; 13 JORDAN,SYDNEY; 25 RUSH,GABRIELLE; 31 ALARIE,BELLA; 2 LITTLEFIELD,CARLIE;
Penn: 11 GRASELA,KENDALL; 25 RUSSELL,ASHLEY; 31 PARKER,ELEAH; 33 STERBA,PHOEBE; 50 AGHAYERE,PRINCESS;

Time	VISITORS: Princeton	Score	Margin	HOME: Penn
09:30	MISSED 3PTR by LITTLEFIELD,CARLIE			
09:22				REBOUND (DEF) by PARKER,ELEAH
09:12				MISSED 3PTR by PARKER,ELEAH
09:09				REBOUND (OFF) by RUSSELL,ASHLEY
09:01		2-0	H 2	GOOD! JUMPER by GRASELA,KENDALL [PNT]
08:33	GOOD! 3PTR by LITTLEFIELD,CARLIE	2-3	V 1	
08:33	ASSIST by JORDAN,SYDNEY			
08:13				TURNOVER (3SEC) by RUSSELL,ASHLEY
07:50				FOUL (PERSONAL) by GRASELA,KENDALL
07:34	MISSED 3PTR by STONE,GRACE			
07:34	REBOUND (OFF) by TEAM			
07:34				FOUL (PERSONAL) by STERBA,PHOEBE
07:26	MISSED JUMPER by ALARIE,BELLA			
07:24	REBOUND (OFF) by TEAM			
07:19	GOOD! 3PTR by RUSH,GABRIELLE	2-6	V 4	
07:19	ASSIST by LITTLEFIELD,CARLIE			
07:05		4-6	V 2	GOOD! JUMPER by GRASELA,KENDALL [PNT]
06:40	MISSED JUMPER by LITTLEFIELD,CARLIE			
06:37	REBOUND (OFF) by JORDAN,SYDNEY			
06:21	MISSED 3PTR by RUSH,GABRIELLE			
06:18				REBOUND (DEF) by GRASELA,KENDALL
06:06	FOUL (PERSONAL) by LITTLEFIELD,CARLIE			
06:06				MISSED FT by RUSSELL,ASHLEY
06:06				REBOUND (OFF) by TEAM
06:06	SUB OUT: STONE,GRACE			
06:06	SUB IN: CUNNINGHAM,JULIA			
06:06				MISSED FT by RUSSELL,ASHLEY
06:04	REBOUND (DEF) by LITTLEFIELD,CARLIE			
06:04				FOUL (PERSONAL) by AGHAYERE,PRINCESS
05:43	MISSED LAYUP by ALARIE,BELLA			
05:42	REBOUND (OFF) by ALARIE,BELLA			
05:42				FOUL (PERSONAL) by AGHAYERE,PRINCESS
05:42	GOOD! FT by ALARIE,BELLA	4-7	V 3	
05:42				SUB OUT: AGHAYERE,PRINCESS
05:42				SUB IN: CRAWFORD,TORI
05:42	GOOD! FT by ALARIE,BELLA	4-8	V 4	
05:30				TURNOVER (TRAVEL) by PARKER,ELEAH
05:18	MISSED 3PTR by RUSH,GABRIELLE			
05:15				REBOUND (DEF) by CRAWFORD,TORI
04:54	FOUL (PERSONAL) by CUNNINGHAM,JULIA			
04:54				
04:36				MISSED LAYUP by RUSSELL,ASHLEY
04:36	REBOUND (DEF) by TEAM			
04:24	TURNOVER (BADPASS) by JORDAN,SYDNEY			
04:24				STEAL by STERBA,PHOEBE
04:18				MISSED JUMPER by STERBA,PHOEBE
04:16				REBOUND (OFF) by TEAM
04:10				MISSED LAYUP by PARKER,ELEAH
04:10	BLOCK by ALARIE,BELLA			
04:10				REBOUND (OFF) by TEAM
04:07				MISSED 3PTR by STERBA,PHOEBE
04:04	REBOUND (DEF) by LITTLEFIELD,CARLIE			
03:42	GOOD! JUMPER by LITTLEFIELD,CARLIE	4-10	V 6	
03:26				TURNOVER (BADPASS) by PARKER,ELEAH
03:26				SUB OUT: STERBA,PHOEBE
03:26				SUB IN: LAKSTIGALA,MIA
03:05	MISSED 3PTR by LITTLEFIELD,CARLIE			
03:02				REBOUND (DEF) by LAKSTIGALA,MIA
02:54		6-10	V 4	GOOD! LAYUP by PARKER,ELEAH
02:40	GOOD! JUMPER by ALARIE,BELLA [PNT]	6-12	V 6	
02:40	ASSIST by RUSH,GABRIELLE			
02:24				MISSED LAYUP by PARKER,ELEAH
02:20				REBOUND (OFF) by PARKER,ELEAH
02:20		8-12	V 4	GOOD! LAYUP by PARKER,ELEAH
02:10	GOOD! 3PTR by RUSH,GABRIELLE	8-15	V 7	
02:10	ASSIST by LITTLEFIELD,CARLIE			
01:54				SUB OUT: LAKSTIGALA,MIA
01:54				SUB IN: STERBA,PHOEBE
01:54	SUB OUT: JORDAN,SYDNEY			
01:54	SUB IN: ISMAIL,QALEA			
01:54	SUB OUT: CUNNINGHAM,JULIA			
01:54	SUB IN: BAUR,TAYLOR			
01:38				MISSED JUMPER by CRAWFORD,TORI
01:35	REBOUND (DEF) by ISMAIL,QALEA			
01:24	MISSED LAYUP by ALARIE,BELLA			
01:24				BLOCK by CRAWFORD,TORI

Time	VISITORS: Princeton	Score	Margin	HOME: Penn
01:21				REBOUND (DEF) by PARKER,ELEAH
01:14		10-15	V 5	GOOD! LAYUP by PARKER,ELEAH
01:14				ASSIST by RUSSELL,ASHLEY
00:49	MISSED 3PTR by RUSH,GABRIELLE			
00:46				REBOUND (DEF) by RUSSELL,ASHLEY
00:44		12-15	V 3	GOOD! LAYUP by GRASELA,KENDALL [FB]
00:44				ASSIST by RUSSELL,ASHLEY
00:12	TURNOVER (SHOTCLOCK) by			
00:12				SUB OUT: GRASELA,KENDALL
00:12				SUB IN: JONES,MICHAEL
00:00				MISSED 3PTR by CRAWFORD,TORI
00:00	REBOUND (DEF) by TEAM			

Princeton 15, Penn 12

Points from (This Period)	PRI	PEN
In the Paint	2	12
Off Turns	3	0
2nd Chance	5	4
Fast Break	0	2
Bench	0	0

Official Box Score
Princeton vs Penn
Second Quarter Statistics Only
February 27, 2019 at The Palestra (Macquarie Court) - Philadelphia, PA

Princeton 18

No.	Player	S	Pts	FG	3FG	FT	OR	DR	TR	PF	A	TO	Blk	Stl	Min	+/-
02	Littlefield, Carlie		2	0-1	0-0	2-2	0	1	1	1	1	1	0	1	8	1
10	Stone, Grace		0	0-1	0-0	0-0	0	0	0	0	2	0	0	0	7	-1
13	Jordan, Sydney		2	1-2	0-0	0-0	0	0	0	0	0	0	0	0	7	-1
25	Rush, Gabrielle		5	2-3	1-2	0-0	0	1	1	0	1	1	0	0	10	-1
31	Alarie, Bella		9	4-7	0-0	1-1	2	1	3	1	1	0	2	0	8	1
03	Boyer, Sydney		0	0-1	0-1	0-0	0	0	0	0	0	1	0	0	3	2
12	Connolly, Maggie		0	0-0	0-0	0-0	0	0	0	0	0	0	0	0	2	-2
22	Baur, Taylor		0	0-1	0-0	0-0	0	2	2	2	0	0	1	0	4	-3
24	Cunningham, Julia		0	0-0	0-0	0-0	0	0	0	0	0	0	0	0	0	0
32	Ismail, Qalea		0	0-0	0-0	0-0	0	2	2	0	0	0	0	0	2	-1
	Team						1	2	3	0		0				
TOTALS			18	7-16	1-3	3-3	3	9	12	4	5	3	3	1	50	

Shooting By Period

Period	FG	FG%	3FG	3FG%	FT	FT%
3rd Qtr	7-14	50%	0-5	00%	3-4	75%
4th Qtr	6-13	46%	1-1	100%	5-8	63%
2nd Half	7-16	44%	1-3	33%	3-3	100%
2nd Half	13-27	48%	1-6	17%	8-12	67%
Game	25-58	43.1%	5-18	27.8%	13-17	76.5%

Penn 19

No.	Player	S	Pts	FG	3FG	FT	OR	DR	TR	PF	A	TO	Blk	Stl	Min	+/-
11	Grasela, Kendall		5	2-4	1-1	0-0	0	2	2	1	2	0	0	0	6	6
25	Russell, Ashley		0	0-1	0-0	0-0	0	1	1	0	0	0	0	1	10	1
31	Parker, Eleah		4	2-6	0-0	0-0	0	1	1	1	0	0	0	1	9	6
33	Sterba, Phoebe		3	1-1	1-1	0-0	0	0	0	2	0	0	1	0	1	2
50	Aghayere, Princess		5	2-3	0-0	1-2	2	0	2	0	1	0	0	0	8	1
02	Kinum, Katie		0	0-0	0-0	0-0	0	0	0	0	0	0	0	0	2	4
03	Jones, Michae		0	0-3	0-2	0-0	0	1	1	0	1	0	0	0	7	-5
21	Lakstigala, Mia		0	0-0	0-0	0-0	0	0	0	1	0	0	0	0	3	-5
22	Jackson, Deja		0	0-0	0-0	0-0	0	0	0	0	0	0	0	0	0	0
23	Daley, Kristen		0	0-0	0-0	0-0	0	0	0	0	0	0	0	0	0	0
24	Crawford, Tori		2	1-2	0-0	0-0	0	0	0	0	1	0	0	0	2	0
40	Anderson, Emily		0	0-0	0-0	0-0	0	0	0	0	0	1	0	0	1	-5
	Team						2	1	3	0		0				
TOTALS			19	8-20	2-4	1-2	4	6	10	5	5	1	1	2	50	

Shooting By Period

Period	FG	FG%	3FG	3FG%	FT	FT%
3rd Qtr	6-21	29%	0-5	00%	3-3	100%
4th Qtr	1-8	13%	1-2	50%	4-4	100%
2nd Half	8-20	40%	2-4	50%	1-2	50%
2nd Half	7-29	24%	1-7	14%	7-7	100%
Game	21-63	33.3%	3-14	21.4%	8-11	72.7%

Game Notes:

Officials: Joseph Vaszily, Tom Danaher, Maggie Tieman
Attendance: 683

Start Time: 2019-02-27 00:01:42
End Time: 2019-02-27 01:47:55
Game Duration: 106
Conference Game;

Score	1st	2nd	3rd	4th	TOT
PRI	15	18	17	18	68
PEN	12	19	15	7	53

Points from (This Period)	PRI	PEN
In the Paint	10	8
Off Turns	0	3
2nd Chance	3	3
Fast Break	4	2
Bench	0	2

**Official Play-By-Play
Princeton vs Penn
Second Quarter
February 27, 2019 at The Palestra (Macquarie Court) - Philadelphia, PA**

Period 2

Starters:

Princeton: 10 STONE,GRACE; 13 JORDAN,SYDNEY; 25 RUSH,GABRIELLE; 31 ALARIE,BELLA; 2 LITTLEFIELD,CARLIE;

Penn: 11 GRASELA,KENDALL; 25 RUSSELL,ASHLEY; 31 PARKER,ELEAH; 33 STERBA,PHOEBE; 50 AGHAYERE,PRINCESS;

Time	VISITORS: Princeton	Score	Margin	HOME: Penn
09:48				MISSED JUMPER by PARKER,ELEAH
09:48	REBOUND (DEF) by TEAM			
09:48				FOUL (PERSONAL) by STERBA,PHOEBE
09:31	MISSED LAYUP by ALARIE,BELLA			
09:31				BLOCK by STERBA,PHOEBE
09:31	REBOUND (OFF) by TEAM			
09:31				SUB OUT: STERBA,PHOEBE
09:31				SUB IN: LAKSTIGALA,MIA
09:21	MISSED JUMPER by ALARIE,BELLA			
09:18				REBOUND (DEF) by RUSSELL,ASHLEY
08:57		14-15	V 1	GOOD! LAYUP by CRAWFORD,TORI
08:39	GOOD! JUMPER by ALARIE,BELLA [PNT]	14-17	V 3	
08:19				MISSED LAYUP by CRAWFORD,TORI
08:16	REBOUND (DEF) by RUSH,GABRIELLE			
08:05	GOOD! JUMPER by ALARIE,BELLA [PNT]	14-19	V 5	
08:05	ASSIST by STONE,GRACE			
07:45		16-19	V 3	GOOD! JUMPER by PARKER,ELEAH
07:45				ASSIST by CRAWFORD,TORI
07:39				FOUL (PERSONAL) by LAKSTIGALA,MIA
07:39				SUB OUT: CRAWFORD,TORI
07:39				SUB IN: AGHAYERE,PRINCESS
07:39				SUB OUT: PARKER,ELEAH
07:39				SUB IN: ANDERSON,EMLY
07:22	GOOD! LAYUP by JORDAN,SYDNEY	16-21	V 5	
07:22	ASSIST by STONE,GRACE			
07:00				TURNOVER (BADPASS) by ANDERSON,EMLY
07:00	STEAL by LITTLEFIELD,CARLIE			
06:56	MISSED LAYUP by LITTLEFIELD,CARLIE			
06:52				REBOUND (DEF) by JONES,MICHAEL
06:31				MISSED LAYUP by AGHAYERE,PRINCESS
06:27	REBOUND (DEF) by LITTLEFIELD,CARLIE			
06:19	GOOD! 3PTR by RUSH,GABRIELLE	16-24	V 8	
06:19	ASSIST by LITTLEFIELD,CARLIE			
06:18				TIMEOUT 30SEC
06:18				
06:18				SUB OUT: JONES,MICHAEL
06:18				SUB IN: PARKER,ELEAH
06:18				SUB OUT: LAKSTIGALA,MIA
06:18				SUB IN: KINUM,KATIE
06:18				SUB OUT: ANDERSON,EMLY
06:18				SUB IN: GRASELA,KENDALL
05:54		18-24	V 6	GOOD! LAYUP by PARKER,ELEAH
05:54				ASSIST by AGHAYERE,PRINCESS
05:51				FOUL (PERSONAL) by GRASELA,KENDALL
05:28	MISSED 3PTR by RUSH,GABRIELLE			
05:25				REBOUND (DEF) by PARKER,ELEAH
05:21		20-24	V 4	GOOD! LAYUP by AGHAYERE,PRINCESS [FB]
05:21				ASSIST by GRASELA,KENDALL
05:07	SUB OUT: ALARIE,BELLA			
05:07	SUB IN: BAUR,TAYLOR			
04:57	MISSED LAYUP by STONE,GRACE			
04:55				REBOUND (DEF) by GRASELA,KENDALL
04:43				MISSED LAYUP by PARKER,ELEAH
04:40	REBOUND (DEF) by BAUR,TAYLOR			
04:20	MISSED LAYUP by JORDAN,SYDNEY			
04:20				REBOUND (DEF) by GRASELA,KENDALL
04:17	FOUL (PERSONAL) by BAUR,TAYLOR			
04:17				SUB OUT: KINUM,KATIE
04:17				SUB IN: STERBA,PHOEBE
04:17	SUB OUT: STONE,GRACE			
04:17	SUB IN: ISMAIL,QALEA			
04:09		23-24	V 1	GOOD! 3PTR by STERBA,PHOEBE
04:09				ASSIST by GRASELA,KENDALL
03:48	TURNOVER (BADPASS) by RUSH,GABRIELLE			
03:48				STEAL by PARKER,ELEAH
03:43				MISSED LAYUP by GRASELA,KENDALL
03:40	REBOUND (DEF) by ISMAIL,QALEA			
03:36				FOUL (PERSONAL) by STERBA,PHOEBE
03:36	GOOD! FT by LITTLEFIELD,CARLIE [FB]	23-25	V 2	
03:36				SUB OUT: STERBA,PHOEBE
03:36				SUB IN: JONES,MICHAEL
03:36	SUB OUT: JORDAN,SYDNEY			
03:36	SUB IN: BOYER,SYDNEY			
03:36	SUB OUT: BAUR,TAYLOR			
03:36	SUB IN: ALARIE,BELLA			
03:36	GOOD! FT by LITTLEFIELD,CARLIE [FB]	23-26	V 3	

Time	VISITORS: Princeton	Score	Margin	HOME: Penn
03:21				MISSED 3PTR by JONES,MICHAE
03:19				REBOUND (OFF) by AGHAYERE,PRINCESS
03:14				MISSED JUMPER by PARKER,ELEAH
03:12	REBOUND (DEF) by ISMAIL,QALEA			
02:54	GOOD! JUMPER by ALARIE,BELLA	23-28	V 5	
02:54	ASSIST by RUSH,GABRIELLE			
02:40		25-28	V 3	GOOD! JUMPER by GRASELA,KENDALL
02:25	FOUL (OFF) by LITTLEFIELD,CARLIE			
02:25	TURNOVER (OFFENSIVE) by LITTLEFIELD,CARLIE			
02:25	SUB OUT: ISMAIL,QALEA			
02:25	SUB IN: BAUR,TAYLOR			
02:10				MISSED 3PTR by JONES,MICHAE
02:09				REBOUND (OFF) by AGHAYERE,PRINCESS
02:09	FOUL (PERSONAL) by BAUR,TAYLOR			
02:09		26-28	V 2	GOOD! FT by AGHAYERE,PRINCESS
02:08				MISSED FT by AGHAYERE,PRINCESS
02:06	REBOUND (DEF) by BAUR,TAYLOR			
01:56	MISSED 3PTR by BOYER,SYDNEY			
01:53	REBOUND (OFF) by ALARIE,BELLA			
01:53	GOOD! LAYUP by ALARIE,BELLA	26-30	V 4	
01:53				FOUL (PERSONAL) by PARKER,ELEAH
01:53	SUB OUT: LITTLEFIELD,CARLIE			
01:53	SUB IN: CONNOLLY,MAGGIE			
01:53	GOOD! FT by ALARIE,BELLA	26-31	V 5	
01:27				MISSED JUMPER by RUSSELL,ASHLEY
01:27	BLOCK by BAUR,TAYLOR			
01:23	REBOUND (DEF) by ALARIE,BELLA			
01:22	GOOD! LAYUP by RUSH,GABRIELLE [FB]	26-33	V 7	
01:22	ASSIST by ALARIE,BELLA			
01:01		29-33	V 4	GOOD! 3PTR by GRASELA,KENDALL
01:01				ASSIST by JONES,MICHAE
00:51	TURNOVER (LOSTBALL) by BOYER,SYDNEY			
00:51				STEAL by RUSSELL,ASHLEY
00:51	SUB OUT: BOYER,SYDNEY			
00:51	SUB IN: STONE,GRACE			
00:42				MISSED LAYUP by GRASELA,KENDALL
00:42	BLOCK by ALARIE,BELLA			
00:42				REBOUND (OFF) by TEAM
00:38		31-33	V 2	GOOD! JUMPER by AGHAYERE,PRINCESS
00:09	MISSED LAYUP by BAUR,TAYLOR			
00:08	REBOUND (OFF) by ALARIE,BELLA			
00:08	MISSED LAYUP by ALARIE,BELLA			
00:08				REBOUND (DEF) by TEAM
00:08	FOUL (PERSONAL) by ALARIE,BELLA			
00:08	SUB OUT: RUSH,GABRIELLE			
00:08	SUB IN: JORDAN,SYDNEY			
00:08				SUB OUT: GRASELA,KENDALL
00:08				SUB IN: KINUM,KATIE
00:02				MISSED LAYUP by JONES,MICHAE
00:02	BLOCK by ALARIE,BELLA			
00:02				REBOUND (OFF) by TEAM
00:00				MISSED JUMPER by PARKER,ELEAH
00:00	REBOUND (DEF) by TEAM			

Princeton 33, Penn 31

Points from (This Period)	PRI	PEN
In the Paint	10	8
Off Turns	0	3
2nd Chance	3	3
Fast Break	4	2
Bench	0	2

**Official Box Score
Princeton vs Penn
Second Half Statistics Only
February 27, 2019 at The Palestra (Macquarie Court) - Philadelphia, PA**

Princeton 35

No.	Player	S	Pts	FG	3FG	FT	OR	DR	TR	PF	A	TO	Blk	Stl	Min	+/-
10	Stone, Grace		2	1-3	0-0	0-0	1	1	2	0	1	2	2	1	13	7
12	Connolly, Maggie		0	0-1	0-1	0-0	0	0	0	0	0	0	0	0	3	-3
13	Jordan, Sydney		4	2-4	0-0	0-0	0	1	1	3	0	0	0	0	17	14
22	Baur, Taylor		0	0-0	0-0	0-0	0	2	2	1	0	0	0	0	3	-1
24	Cunningham, Julia		0	0-0	0-0	0-0	0	0	0	0	0	0	0	0	1	0
25	Rush, Gabrielle		2	0-3	0-3	2-2	1	1	2	0	1	0	0	1	19	13
31	Alarie, Bella		20	8-10	0-0	4-7	5	1	6	1	2	0	0	0	19	13
32	Ismail, Qalea		0	0-1	0-0	0-0	0	0	0	2	1	0	0	0	5	9
02	Littlefield, Carlie		7	2-5	1-2	2-3	0	2	2	1	3	1	0	1	20	13
03	Boyer, Sydney		0	0-0	0-0	0-0	0	0	0	0	0	0	0	0	0	0
	Team		0	0-0	0-0	0-0	1	4	5	0	0	0	0	0	0	0
TOTALS			35	13-27	1-6	8-12	8	12	20	8	8	3	2	3	100	

Shooting By Period

Period	FG	FG%	3FG	3FG%	FT	FT%
3rd Qtr	7-14	50%	0-5	00%	3-4	75%
4th Qtr	6-13	46%	1-1	100%	5-8	63%
2nd Half	13-27	48%	1-6	17%	8-12	67%
Game	25-58	43.1%	5-18	27.8%	13-17	76.5%

Last FG Half: PRI 4th-05:06

Penn 22

No.	Player	S	Pts	FG	3FG	FT	OR	DR	TR	PF	A	TO	Blk	Stl	Min	+/-
02	Kinum, Katie		0	0-2	0-2	0-0	0	0	0	0	0	0	0	0	6	0
03	Jones, Michae		2	1-2	0-0	0-0	1	0	1	1	0	1	0	0	11	-6
11	Grasela, Kendall		0	0-5	0-0	0-0	1	0	1	0	1	2	0	0	15	-7
21	Lakstigala, Mia		0	0-0	0-0	0-0	0	0	0	0	0	0	0	0	0	0
22	Jackson, Deja		0	0-1	0-0	0-0	0	0	0	0	0	0	0	0	1	0
23	Daley, Kristen		0	0-0	0-0	0-0	0	0	0	0	0	0	0	0	2	0
24	Crawford, Tori		0	0-1	0-1	0-0	0	2	2	2	0	0	0	0	9	-4
25	Russell, Ashley		6	1-3	0-0	4-4	1	1	2	2	3	0	0	2	19	-13
31	Parker, Eleah		0	0-1	0-0	0-0	0	0	0	0	0	1	2	0	10	-19
33	Sterba, Phoebe		3	1-5	1-2	0-0	1	0	1	1	0	0	0	0	7	-13
40	Anderson, Emily		2	1-2	0-0	0-0	1	0	1	0	0	0	0	0	7	2
50	Aghayere, Princess		9	3-7	0-2	3-3	2	1	3	3	0	0	0	1	14	-5
	Team		0	0-0	0-0	0-0	3	5	8	0	0	0	0	0	0	0
TOTALS			22	7-29	1-7	7-7	10	9	19	9	4	4	2	3	100	

Shooting By Period

Period	FG	FG%	3FG	3FG%	FT	FT%
3rd Qtr	6-21	29%	0-5	00%	3-3	100%
4th Qtr	1-8	13%	1-2	50%	4-4	100%
2nd Half	7-29	24%	1-7	14%	7-7	100%
Game	21-63	33.3%	3-14	21.4%	8-11	72.7%

Last FG Half: PEN 4th-05:53

Game Notes:

Officials: Joseph Vaszily, Tom Danaher, Maggie Tieman
Attendance: 683

Start Time: 2019-02-27 00:01:42
End Time: 2019-02-27 01:47:55
Game Duration: 106
Conference Game:

Score	1st	2nd	3rd	4th	TOT
PRI	15	18	17	18	68
PEN	12	19	15	7	53

Points from (This Period)	PRI	PEN
In the Paint	18	12
Off Turns	3	2
2nd Chance	5	13
Fast Break	4	0
Bench	0	4

Official Box Score
Princeton vs Penn
Third Quarter Statistics Only
February 27, 2019 at The Palestra (Macquarie Court) - Philadelphia, PA

Princeton 35

No.	Player	S	Pts	FG	3FG	FT	OR	DR	TR	PF	A	TO	Blk	Stl	Min	+/-
02	Littlefield, Carlie		0	0-1	0-1	0-0	0	1	1	1	1	0	0	0	10	2
10	Stone, Grace		2	1-2	0-0	0-0	0	0	0	0	1	2	2	0	8	5
13	Jordan, Sydney		2	1-2	0-0	0-0	0	1	1	1	0	0	0	0	8	3
25	Rush, Gabrielle		0	0-3	0-3	0-0	0	1	1	0	1	0	0	0	10	2
31	Alarie, Bella		13	5-5	0-0	3-4	4	1	5	1	0	0	0	0	10	2
03	Boyer, Sydney		0	0-0	0-0	0-0	0	0	0	0	0	0	0	0	0	0
12	Connolly, Maggie		0	0-1	0-1	0-0	0	0	0	0	0	0	0	0	2	-3
22	Baur, Taylor		0	0-0	0-0	0-0	0	1	1	1	0	0	0	0	2	-1
24	Cunningham, Julia		0	0-0	0-0	0-0	0	0	0	0	0	0	0	0	0	0
32	Ismail, Qalea		0	0-0	0-0	0-0	0	0	0	0	0	0	0	0	0	0
	Team						0	1	1	0		0				
TOTALS			17	7-14	0-5	3-4	4	6	10	4	3	2	2	0	50	

Shooting By Period

Period	FG	FG%	3FG	3FG%	FT	FT%
2nd Half	0-0	0%	0-0	0%	0-0	0%
Game	25-58	43.1%	5-18	27.8%	13-17	76.5%

Penn 22

No.	Player	S	Pts	FG	3FG	FT	OR	DR	TR	PF	A	TO	Blk	Stl	Min	+/-
11	Grasela, Kendall		0	0-3	0-0	0-0	1	0	1	0	1	0	0	0	10	-2
25	Russell, Ashley		4	1-3	0-0	2-2	1	1	2	1	2	0	0	1	10	-2
31	Parker, Eleah		0	0-1	0-0	0-0	0	0	0	0	0	0	0	0	3	-10
33	Sterba, Phoebe		0	0-1	0-0	0-0	0	0	0	1	0	0	0	0	2	-7
50	Aghayere, Princess		7	3-7	0-2	1-1	2	1	3	0	0	0	0	1	10	-2
02	Kinum, Katie		0	0-2	0-2	0-0	0	0	0	0	0	0	0	0	4	1
03	Jones, Michae		2	1-2	0-0	0-0	1	0	1	0	0	0	0	0	4	4
21	Lakstigala, Mia		0	0-0	0-0	0-0	0	0	0	0	0	0	0	0	0	0
22	Jackson, Deja		0	0-0	0-0	0-0	0	0	0	0	0	0	0	0	0	0
23	Daley, Kristen		0	0-0	0-0	0-0	0	0	0	0	0	0	0	0	0	0
24	Crawford, Tori		0	0-1	0-1	0-0	0	0	0	1	0	0	0	0	3	4
40	Anderson, Emily		2	1-1	0-0	0-0	1	0	1	0	0	0	0	0	4	4
	Team						3	2	5	0		0				
TOTALS			15	6-21	0-5	3-3	9	4	13	3	3	0	0	2	50	

Shooting By Period

Period	FG	FG%	3FG	3FG%	FT	FT%
2nd Half	0-0	0%	0-0	0%	0-0	0%
Game	21-63	33.3%	3-14	21.4%	8-11	72.7%

Game Notes:

Officials: Joseph Vaszily, Tom Danaher, Maggie Tieman
Attendance: 683

Start Time: 2019-02-27 00:01:42
End Time: 2019-02-27 01:47:55
Game Duration: 106
Conference Game;

Score	1st	2nd	3rd	4th	TOT
PRI	15	18	17	18	68
PEN	12	19	15	7	53

Points from (This Period)	PRI	PEN
In the Paint	10	12
Off Turns	0	2
2nd Chance	4	13
Fast Break	2	0
Bench	0	4

**Official Play-By-Play
Princeton vs Penn
Third Quarter
February 27, 2019 at The Palestra (Macquarie Court) - Philadelphia, PA**

Period 3

Starters:

Princeton: 10 STONE,GRACE; 13 JORDAN,SYDNEY; 25 RUSH,GABRIELLE; 31 ALARIE,BELLA; 2 LITTLEFIELD,CARLIE;

Penn: 11 GRASELA,KENDALL; 25 RUSSELL,ASHLEY; 31 PARKER,ELEAH; 33 STERBA,PHOEBE; 50 AGHAYERE,PRINCESS;

Time	VISITORS: Princeton	Score	Margin	HOME: Penn
09:31	GOOD! JUMPER by ALARIE,BELLA	31-35	V 4	
09:31	ASSIST by RUSH,GABRIELLE			
09:11				MISSED LAYUP by AGHAYERE,PRINCESS
09:07	REBOUND (DEF) by JORDAN,SYDNEY			
08:59	MISSED LAYUP by JORDAN,SYDNEY			
08:54	REBOUND (OFF) by ALARIE,BELLA			
08:54	GOOD! LAYUP by ALARIE,BELLA	31-37	V 6	
08:30				MISSED JUMPER by STERBA,PHOEBE
08:28	REBOUND (DEF) by ALARIE,BELLA			
08:15	GOOD! LAYUP by ALARIE,BELLA	31-39	V 8	
08:15				
07:57				MISSED JUMPER by RUSSELL,ASHLEY
07:57	BLOCK by STONE,GRACE			
07:53	REBOUND (DEF) by RUSH,GABRIELLE			
07:47	MISSED 3PTR by LITTLEFIELD,CARLIE			
07:45	REBOUND (OFF) by ALARIE,BELLA			
07:45				FOUL (PERSONAL) by STERBA,PHOEBE
07:45	GOOD! FT by ALARIE,BELLA	31-40	V 9	
07:45				SUB OUT: STERBA,PHOEBE
07:45				SUB IN: KINUM,KATIE
07:45	GOOD! FT by ALARIE,BELLA	31-41	V 10	
07:24	FOUL (PERSONAL) by JORDAN,SYDNEY			
07:16				MISSED JUMPER by PARKER,ELEAH
07:14				REBOUND (OFF) by AGHAYERE,PRINCESS
07:13				MISSED JUMPER by AGHAYERE,PRINCESS
07:10	REBOUND (DEF) by LITTLEFIELD,CARLIE			
07:03	GOOD! JUMPER by JORDAN,SYDNEY [FB]	31-43	V 12	
07:03	ASSIST by LITTLEFIELD,CARLIE			
06:50	FOUL (PERSONAL) by LITTLEFIELD,CARLIE			
06:50				SUB OUT: PARKER,ELEAH
06:50				SUB IN: CRAWFORD,TORI
06:36		33-43	V 10	GOOD! LAYUP by AGHAYERE,PRINCESS
06:36				ASSIST by RUSSELL,ASHLEY
06:23	GOOD! JUMPER by STONE,GRACE	33-45	V 12	
06:05				MISSED 3PTR by KINUM,KATIE
06:03				REBOUND (OFF) by TEAM
05:55		35-45	V 10	GOOD! LAYUP by AGHAYERE,PRINCESS
05:55				ASSIST by RUSSELL,ASHLEY
05:43				FOUL (PERSONAL) by CRAWFORD,TORI
05:31	MISSED 3PTR by RUSH,GABRIELLE			
05:28				REBOUND (DEF) by RUSSELL,ASHLEY
05:21				MISSED 3PTR by KINUM,KATIE
05:21				REBOUND (OFF) by TEAM
05:21	SUB OUT: JORDAN,SYDNEY			
05:21	SUB IN: BAUR,TAYLOR			
05:18		37-45	V 8	GOOD! LAYUP by RUSSELL,ASHLEY
05:18				ASSIST by GRASELA,KENDALL
05:00	TURNOVER (BADPASS) by STONE,GRACE			
05:00				STEAL by AGHAYERE,PRINCESS
04:45				MISSED JUMPER by RUSSELL,ASHLEY
04:45	BLOCK by STONE,GRACE			
04:41	REBOUND (DEF) by BAUR,TAYLOR			
04:22	GOOD! LAYUP by ALARIE,BELLA	37-47	V 10	
03:56				MISSED 3PTR by CRAWFORD,TORI
03:54				REBOUND (OFF) by AGHAYERE,PRINCESS
03:54		39-47	V 8	GOOD! LAYUP by AGHAYERE,PRINCESS
03:54	FOUL (PERSONAL) by BAUR,TAYLOR			
03:54				SUB OUT: KINUM,KATIE
03:54				SUB IN: JONES,MICHAE
03:54				SUB OUT: CRAWFORD,TORI
03:54				SUB IN: ANDERSON,EMLY
03:54		40-47	V 7	GOOD! FT by AGHAYERE,PRINCESS
03:47	GOOD! LAYUP by ALARIE,BELLA	40-49	V 9	
03:47	ASSIST by STONE,GRACE			
03:25				MISSED JUMPER by GRASELA,KENDALL
03:22				REBOUND (OFF) by GRASELA,KENDALL
03:18				MISSED LAYUP by GRASELA,KENDALL
03:17				REBOUND (OFF) by TEAM
03:16	SUB OUT: BAUR,TAYLOR			
03:16	SUB IN: JORDAN,SYDNEY			
03:05				MISSED 3PTR by AGHAYERE,PRINCESS
03:03	REBOUND (DEF) by TEAM			
02:40	TURNOVER (BADPASS) by STONE,GRACE			
02:40				STEAL by RUSSELL,ASHLEY
02:24				MISSED LAYUP by JONES,MICHAE

Time	VISITORS: Princeton	Score	Margin	HOME: Penn
02:20				REBOUND (OFF) by ANDERSON,EMLY
02:20		42-49	V 7	GOOD! LAYUP by ANDERSON,EMLY
02:11	MISSED 3PTR by RUSH,GABRIELLE			
02:09	REBOUND (OFF) by ALARIE,BELLA			
01:52	MISSED JUMPER by STONE,GRACE			
01:52				REBOUND (DEF) by TEAM
01:52	SUB OUT: STONE,GRACE			
01:52	SUB IN: CONNOLLY ,MAGGIE			
01:35				MISSED 3PTR by AGHAYERE,PRINCESS
01:33				REBOUND (OFF) by JONES,MICHAEL
01:21	FOUL (PERSONAL) by ALARIE,BELLA			
01:21		43-49	V 6	GOOD! FT by RUSSELL,ASHLEY
01:21		44-49	V 5	GOOD! FT by RUSSELL,ASHLEY
01:05				FOUL (PERSONAL) by RUSSELL,ASHLEY
01:05	GOOD! FT by ALARIE,BELLA	44-50	V 6	
01:05	MISSED FT by ALARIE,BELLA			
01:05				REBOUND (DEF) by AGHAYERE,PRINCESS
00:39				MISSED LAYUP by GRASELA,KENDALL
00:36				REBOUND (OFF) by RUSSELL,ASHLEY
00:33		46-50	V 4	GOOD! JUMPER by JONES,MICHAEL
00:06	MISSED 3PTR by RUSH,GABRIELLE			
00:06	REBOUND (OFF) by ALARIE,BELLA			
00:02	MISSED 3PTR by CONNOLLY ,MAGGIE			
00:02				REBOUND (DEF) by TEAM

Princeton 50, Penn 46

Points from (This Period)	PRI	PEN
In the Paint	10	12
Off Turns	0	2
2nd Chance	4	13
Fast Break	2	0
Bench	0	4

Official Box Score
Princeton vs Penn
Fourth Quarter Statistics Only
February 27, 2019 at The Palestra (Macquarie Court) - Philadelphia, PA

Princeton 18

No.	Player	S	Pts	FG	3FG	FT	OR	DR	TR	PF	A	TO	Blk	Stl	Min	+/-
02	Littlefield, Carlie		7	2-4	1-1	2-3	0	1	1	0	2	1	0	1	10	11
10	Stone, Grace		0	0-1	0-0	0-0	1	1	2	0	0	0	0	1	5	2
13	Jordan, Sydney		2	1-2	0-0	0-0	0	0	0	2	0	0	0	0	9	11
25	Rush, Gabrielle		2	0-0	0-0	2-2	1	0	1	0	0	0	0	1	9	11
31	Alarie, Bella		7	3-5	0-0	1-3	1	0	1	0	2	0	0	0	9	11
03	Boyer, Sydney		0	0-0	0-0	0-0	0	0	0	0	0	0	0	0	0	0
12	Connolly, Maggie		0	0-0	0-0	0-0	0	0	0	0	0	0	0	0	1	0
22	Baur, Taylor		0	0-0	0-0	0-0	0	1	1	0	0	0	0	0	1	0
24	Cunningham, Julia		0	0-0	0-0	0-0	0	0	0	0	0	0	0	0	1	0
32	Ismail, Qalea		0	0-1	0-0	0-0	0	0	0	2	1	0	0	0	5	9
	Team						1	3	4	0		0				
TOTALS			18	6-13	1-1	5-8	4	6	10	4	5	1	0	3	50	

Shooting By Period

Period	FG	FG%	3FG	3FG%	FT	FT%
Game	25-58	43.1%	5-18	27.8%	13-17	76.5%

Penn 7

No.	Player	S	Pts	FG	3FG	FT	OR	DR	TR	PF	A	TO	Blk	Stl	Min	+/-
11	Grasela, Kendall		0	0-2	0-0	0-0	0	0	0	0	0	2	0	0	5	-5
25	Russell, Ashley		2	0-0	0-0	2-2	0	0	0	1	1	0	0	1	9	-11
31	Parker, Eleah		0	0-0	0-0	0-0	0	0	0	0	0	1	2	0	7	-9
33	Sterba, Phoebe		3	1-4	1-2	0-0	1	0	1	0	0	0	0	0	5	-6
50	Aghayere, Princess		2	0-0	0-0	2-2	0	0	0	3	0	0	0	0	4	-3
02	Kinum, Katie		0	0-0	0-0	0-0	0	0	0	0	0	0	0	0	2	-1
03	Jones, Michae		0	0-0	0-0	0-0	0	0	0	1	0	1	0	0	7	-10
21	Lakstigala, Mia		0	0-0	0-0	0-0	0	0	0	0	0	0	0	0	0	0
22	Jackson, Deja		0	0-1	0-0	0-0	0	0	0	0	0	0	0	0	1	0
23	Daley, Kristen		0	0-0	0-0	0-0	0	0	0	0	0	0	0	0	2	0
24	Crawford, Tori		0	0-0	0-0	0-0	0	2	2	1	0	0	0	0	6	-8
40	Anderson, Emily		0	0-1	0-0	0-0	0	0	0	0	0	0	0	0	3	-2
	Team						0	3	3	0		0				
TOTALS			7	1-8	1-2	4-4	1	5	6	6	1	4	2	1	50	

Shooting By Period

Period	FG	FG%	3FG	3FG%	FT	FT%
Game	21-63	33.3%	3-14	21.4%	8-11	72.7%

Game Notes:

Officials: Joseph Vaszily, Tom Danaher, Maggie Tieman
Attendance: 683

Start Time: 2019-02-27 00:01:42
End Time: 2019-02-27 01:47:55
Game Duration: 106
Conference Game:

Score	1st	2nd	3rd	4th	TOT
PRI	15	18	17	18	68
PEN	12	19	15	7	53

Points from (This Period)	PRI	PEN
In the Paint	8	0
Off Turns	3	0
2nd Chance	1	0
Fast Break	2	0
Bench	0	0

**Official Play-By-Play
Princeton vs Penn
Fourth Quarter
February 27, 2019 at The Palestra (Macquarie Court) - Philadelphia, PA**

Period 4

Starters:

Princeton: 10 STONE,GRACE; 13 JORDAN,SYDNEY; 25 RUSH,GABRIELLE; 31 ALARIE,BELLA; 2 LITTLEFIELD,CARLIE;

Penn: 11 GRASELA,KENDALL; 25 RUSSELL,ASHLEY; 31 PARKER,ELEAH; 33 STERBA,PHOEBE; 50 AGHAYERE,PRINCESS;

Time	VISITORS: Princeton	Score	Margin	HOME: Penn
09:42				FOUL (PERSONAL) by JONES,MICHAE
09:29	GOOD! LAYUP by JORDAN,SYDNEY	46-52	V 6	
09:29	ASSIST by ALARIE,BELLA			
08:55				MISSED LAYUP by GRASELA,KENDALL
08:55	REBOUND (DEF) by TEAM			
08:55				SUB OUT: ANDERSON,EMILY
08:55				SUB IN: PARKER,ELEAH
08:35	GOOD! JUMPER by LITTLEFIELD,CARLIE	46-54	V 8	
08:02				MISSED LAYUP by GRASELA,KENDALL
08:01	REBOUND (DEF) by TEAM			
08:01				SUB OUT: GRASELA,KENDALL
08:01				SUB IN: STERBA,PHOEBE
07:36	MISSED JUMPER by ISMAIL,QALEA			
07:36				BLOCK by PARKER,ELEAH
07:36	REBOUND (OFF) by TEAM			
07:31	MISSED JUMPER by LITTLEFIELD,CARLIE			
07:31				REBOUND (DEF) by TEAM
07:11	FOUL (PERSONAL) by JORDAN,SYDNEY			
07:10	FOUL (PERSONAL) by ISMAIL,QALEA			
07:10		47-54	V 7	GOOD! FT by RUSSELL,ASHLEY
07:10		48-54	V 6	GOOD! FT by RUSSELL,ASHLEY
06:52	GOOD! LAYUP by ALARIE,BELLA	48-56	V 8	
06:52	ASSIST by LITTLEFIELD,CARLIE			
06:52				FOUL (PERSONAL) by AGHAYERE,PRINCESS
06:52				SUB OUT: AGHAYERE,PRINCESS
06:52				SUB IN: CRAWFORD,TORI
06:52	MISSED FT by ALARIE,BELLA			
06:50				REBOUND (DEF) by CRAWFORD,TORI
06:33				TURNOVER (LOSTBALL) by PARKER,ELEAH
06:33	STEAL by LITTLEFIELD,CARLIE			
06:07	GOOD! LAYUP by ALARIE,BELLA	48-58	V 10	
06:07	ASSIST by ISMAIL,QALEA			
06:05				TIMEOUT 30SEC
06:05				
05:53		51-58	V 7	GOOD! 3PTR by STERBA,PHOEBE
05:53				ASSIST by RUSSELL,ASHLEY
05:32	GOOD! 3PTR by LITTLEFIELD,CARLIE	51-61	V 10	
05:32	ASSIST by ALARIE,BELLA			
05:32				FOUL (PERSONAL) by CRAWFORD,TORI
05:32	GOOD! FT by LITTLEFIELD,CARLIE	51-62	V 11	
05:14				MISSED 3PTR by STERBA,PHOEBE
05:11	REBOUND (DEF) by LITTLEFIELD,CARLIE			
05:06	GOOD! LAYUP by ALARIE,BELLA [FB]	51-64	V 13	
05:06	ASSIST by LITTLEFIELD,CARLIE			
04:51	FOUL (PERSONAL) by ISMAIL,QALEA			
04:51				SUB OUT: CRAWFORD,TORI
04:51				SUB IN: AGHAYERE,PRINCESS
04:51	SUB OUT: ISMAIL,QALEA			
04:51	SUB IN: STONE,GRACE			
04:48				MISSED LAYUP by STERBA,PHOEBE
04:46				REBOUND (OFF) by STERBA,PHOEBE
04:45				MISSED LAYUP by STERBA,PHOEBE
04:42	REBOUND (DEF) by STONE,GRACE			
04:18				FOUL (PERSONAL) by AGHAYERE,PRINCESS
04:18	MISSED FT by ALARIE,BELLA			
04:18	REBOUND (OFF) by TEAM			
04:18	GOOD! FT by ALARIE,BELLA	51-65	V 14	
03:57	FOUL (PERSONAL) by JORDAN,SYDNEY			
03:57		52-65	V 13	GOOD! FT by AGHAYERE,PRINCESS
03:57		53-65	V 12	GOOD! FT by AGHAYERE,PRINCESS
03:39				FOUL (PERSONAL) by AGHAYERE,PRINCESS
03:39				SUB OUT: AGHAYERE,PRINCESS
03:39				SUB IN: CRAWFORD,TORI
03:39	GOOD! FT by RUSH,GABRIELLE	53-66	V 13	
03:39	GOOD! FT by RUSH,GABRIELLE	53-67	V 14	
03:24				TURNOVER (BADPASS) by JONES,MICHAE
03:24				SUB OUT: STERBA,PHOEBE
03:24				SUB IN: KINUM,KATIE
02:59	MISSED JUMPER by LITTLEFIELD,CARLIE			
02:59				BLOCK by PARKER,ELEAH
02:54	REBOUND (OFF) by RUSH,GABRIELLE			
02:54	TURNOVER (LOSTBALL) by LITTLEFIELD,CARLIE			
02:54				STEAL by RUSSELL,ASHLEY
02:54				SUB OUT: JONES,MICHAE
02:54				SUB IN: GRASELA,KENDALL
02:31				TURNOVER (BADPASS) by GRASELA,KENDALL

Time	VISITORS: Princeton	Score	Margin	HOME: Penn
02:31	STEAL by RUSH,GABRIELLE			
02:04	MISSED JUMPER by JORDAN,SYDNEY			
02:00	REBOUND (OFF) by ALARIE,BELLA			
02:00	MISSED LAYUP by ALARIE,BELLA			
01:57	REBOUND (OFF) by STONE,GRACE			
01:50				FOUL (PERSONAL) by RUSSELL,ASHLEY
01:50	GOOD! FT by LITTLEFIELD,CARLIE	53-68	V 15	
01:50				SUB OUT: PARKER,ELEAH
01:50				SUB IN: ANDERSON,EMILY
01:50				SUB OUT: KINUM,KATIE
01:50				SUB IN: DALEY,KRISTEN
01:50	MISSED FT by LITTLEFIELD,CARLIE			
01:50				REBOUND (DEF) by CRAWFORD,TORI
01:42				TURNOVER (LOSTBALL) by GRASELA,KENDALL
01:42	STEAL by STONE,GRACE			
01:12	MISSED JUMPER by ALARIE,BELLA			
01:12				REBOUND (DEF) by TEAM
01:12	SUB OUT: ALARIE,BELLA			
01:12	SUB IN: BAUR,TAYLOR			
01:12				SUB OUT: RUSSELL,ASHLEY
01:12				SUB IN: JACKSON,DEJA
01:12	SUB OUT: RUSH,GABRIELLE			
01:12	SUB IN: CUNNINGHAM,JULIA			
01:12	SUB OUT: JORDAN,SYDNEY			
01:12	SUB IN: CONNOLLY,MAGGIE			
00:43				MISSED JUMPER by JACKSON,DEJA
00:41	REBOUND (DEF) by BAUR,TAYLOR			
00:16	MISSED LAYUP by STONE,GRACE			
00:16				REBOUND (DEF) by TEAM
00:16	SUB OUT: LITTLEFIELD,CARLIE			
00:16	SUB IN: BOYER,SYDNEY			
00:00				MISSED JUMPER by ANDERSON,EMILY
00:00	REBOUND (DEF) by TEAM			

Princeton 68, Penn 53

Points from (This Period)	PRI	PEN
In the Paint	8	0
Off Turns	3	0
2nd Chance	1	0
Fast Break	2	0
Bench	0	0

**Official Scoring/Possession Reference Chart
Princeton vs Penn**

Period 1

February 27, 2019 at The Palestra (Macquarie Court) - Philadelphia, PA

Period 1

Starters:

Princeton: 10 STONE, GRACE; 13 JORDAN, SYDNEY; 25 RUSH, GABRIELLE; 31 ALARIE, BELLA; 2 LITTLEFIELD, CARLIE;

Penn: 11 GRASELA, KENDALL; 25 RUSSELL, ASHLEY; 31 PARKER, ELEAH; 33 STERBA, PHOEBE; 50 AGHAYERE, PRINCESS;

Time	VISITORS: Princeton	Score	Margin	HOME: Penn
09:01		2-0	H 2	GOOD! JUMPER by GRASELA, KENDALL [PNT]
08:33	GOOD! 3PTR by LITTLEFIELD, CARLIE	2-3	V 1	
07:19	GOOD! 3PTR by RUSH, GABRIELLE	2-6	V 4	
07:05		4-6	V 2	GOOD! JUMPER by GRASELA, KENDALL [PNT]
05:42	GOOD! FT by ALARIE, BELLA	4-7	V 3	
05:42	GOOD! FT by ALARIE, BELLA	4-8	V 4	
03:42	GOOD! JUMPER by LITTLEFIELD, CARLIE	4-10	V 6	
02:54		6-10	V 4	GOOD! LAYUP by PARKER, ELEAH
02:40	GOOD! JUMPER by ALARIE, BELLA [PNT]	6-12	V 6	
02:20		8-12	V 4	GOOD! LAYUP by PARKER, ELEAH
02:10	GOOD! 3PTR by RUSH, GABRIELLE	8-15	V 7	
01:14		10-15	V 5	GOOD! LAYUP by PARKER, ELEAH
00:44		12-15	V 3	GOOD! LAYUP by GRASELA, KENDALL [FB]

Princeton 15, Penn 12

Official Scoring/Possession Reference Chart
Princeton vs Penn
Period 2
February 27, 2019 at The Palestra (Macquarie Court) - Philadelphia, PA

Period 2

Starters:

Princeton: 10 STONE, GRACE; 13 JORDAN, SYDNEY; 25 RUSH, GABRIELLE; 31 ALARIE, BELLA; 2 LITTLEFIELD, CARLIE;

Penn: 11 GASELA, KENDALL; 25 RUSSELL, ASHLEY; 31 PARKER, ELEAH; 33 STERBA, PHOEBE; 50 AGHAYERE, PRINCESS;

Time	VISITORS: Princeton	Score	Margin	HOME: Penn
08:57		14-15	V 1	GOOD! LAYUP by CRAWFORD, TORI
08:39	GOOD! JUMPER by ALARIE, BELLA [PNT]	14-17	V 3	
08:05	GOOD! JUMPER by ALARIE, BELLA [PNT]	14-19	V 5	
07:45		16-19	V 3	GOOD! JUMPER by PARKER, ELEAH
07:22	GOOD! LAYUP by JORDAN, SYDNEY	16-21	V 5	
06:19	GOOD! 3PTR by RUSH, GABRIELLE	16-24	V 8	
05:54		18-24	V 6	GOOD! LAYUP by PARKER, ELEAH
05:21		20-24	V 4	GOOD! LAYUP by AGHAYERE, PRINCESS [FB]
04:09		23-24	V 1	GOOD! 3PTR by STERBA, PHOEBE
03:36	GOOD! FT by LITTLEFIELD, CARLIE [FB]	23-25	V 2	
03:36	GOOD! FT by LITTLEFIELD, CARLIE [FB]	23-26	V 3	
02:54	GOOD! JUMPER by ALARIE, BELLA	23-28	V 5	
02:40		25-28	V 3	GOOD! JUMPER by GASELA, KENDALL
02:09		26-28	V 2	GOOD! FT by AGHAYERE, PRINCESS
01:53	GOOD! LAYUP by ALARIE, BELLA	26-30	V 4	
01:53	GOOD! FT by ALARIE, BELLA	26-31	V 5	
01:22	GOOD! LAYUP by RUSH, GABRIELLE [FB]	26-33	V 7	
01:01		29-33	V 4	GOOD! 3PTR by GASELA, KENDALL
00:38		31-33	V 2	GOOD! JUMPER by AGHAYERE, PRINCESS

Princeton 33, Penn 31

Official Scoring/Possession Reference Chart
Princeton vs Penn
Period 3
February 27, 2019 at The Palestra (Macquarie Court) - Philadelphia, PA

Period 3

Starters:

Princeton: 10 STONE,GRACE; 13 JORDAN,SYDNEY; 25 RUSH,GABRIELLE; 31 ALARIE,BELLA; 2 LITTLEFIELD,CARLIE;

Penn: 11 GRASELA,KENDALL; 25 RUSSELL,ASHLEY; 31 PARKER,ELEAH; 33 STERBA,PHOEBE; 50 AGHAYERE,PRINCESS;

Time	VISITORS: Princeton	Score	Margin	HOME: Penn
09:31	GOOD! JUMPER by ALARIE,BELLA	31-35	V 4	
08:54	GOOD! LAYUP by ALARIE,BELLA	31-37	V 6	
08:15	GOOD! LAYUP by ALARIE,BELLA	31-39	V 8	
07:45	GOOD! FT by ALARIE,BELLA	31-40	V 9	
07:45	GOOD! FT by ALARIE,BELLA	31-41	V 10	
07:03	GOOD! JUMPER by JORDAN,SYDNEY [FB]	31-43	V 12	
06:36		33-43	V 10	GOOD! LAYUP by AGHAYERE,PRINCESS
06:23	GOOD! JUMPER by STONE,GRACE	33-45	V 12	
05:55		35-45	V 10	GOOD! LAYUP by AGHAYERE,PRINCESS
05:18		37-45	V 8	GOOD! LAYUP by RUSSELL,ASHLEY
04:22	GOOD! LAYUP by ALARIE,BELLA	37-47	V 10	
03:54		39-47	V 8	GOOD! LAYUP by AGHAYERE,PRINCESS
03:54		40-47	V 7	GOOD! FT by AGHAYERE,PRINCESS
03:47	GOOD! LAYUP by ALARIE,BELLA	40-49	V 9	
02:20		42-49	V 7	GOOD! LAYUP by ANDERSON,EMILY
01:21		43-49	V 6	GOOD! FT by RUSSELL,ASHLEY
01:21		44-49	V 5	GOOD! FT by RUSSELL,ASHLEY
01:05	GOOD! FT by ALARIE,BELLA	44-50	V 6	
00:33		46-50	V 4	GOOD! JUMPER by JONES,MICHAEL

Princeton 50, Penn 46

Official Scoring/Possession Reference Chart
Princeton vs Penn
Period 4
February 27, 2019 at The Palestra (Macquarie Court) - Philadelphia, PA

Period 4

Starters:

Princeton: 10 STONE, GRACE; 13 JORDAN, SYDNEY; 25 RUSH, GABRIELLE; 31 ALARIE, BELLA; 2 LITTLEFIELD, CARLIE;

Penn: 11 GRASELA, KENDALL; 25 RUSSELL, ASHLEY; 31 PARKER, ELEAH; 33 STERBA, PHOEBE; 50 AGHAYERE, PRINCESS;

Time	VISITORS: Princeton	Score	Margin	HOME: Penn
09:29	GOOD! LAYUP by JORDAN, SYDNEY	46-52	V 6	
08:35	GOOD! JUMPER by LITTLEFIELD, CARLIE	46-54	V 8	
07:10		47-54	V 7	GOOD! FT by RUSSELL, ASHLEY
07:10		48-54	V 6	GOOD! FT by RUSSELL, ASHLEY
06:52	GOOD! LAYUP by ALARIE, BELLA	48-56	V 8	
06:07	GOOD! LAYUP by ALARIE, BELLA	48-58	V 10	
05:53		51-58	V 7	GOOD! 3PTR by STERBA, PHOEBE
05:32	GOOD! 3PTR by LITTLEFIELD, CARLIE	51-61	V 10	
05:32	GOOD! FT by LITTLEFIELD, CARLIE	51-62	V 11	
05:06	GOOD! LAYUP by ALARIE, BELLA [FB]	51-64	V 13	
04:18	GOOD! FT by ALARIE, BELLA	51-65	V 14	
03:57		52-65	V 13	GOOD! FT by AGHAYERE, PRINCESS
03:57		53-65	V 12	GOOD! FT by AGHAYERE, PRINCESS
03:39	GOOD! FT by RUSH, GABRIELLE	53-66	V 13	
03:39	GOOD! FT by RUSH, GABRIELLE	53-67	V 14	
01:50	GOOD! FT by LITTLEFIELD, CARLIE	53-68	V 15	

Princeton 68, Penn 53

**Official Substitutions Log
Princeton vs Penn
Period 1
February 27, 2019 at The Palestra (Macquarie Court) - Philadelphia, PA**

VISITORS: Princeton	Time	Score	HOME: Penn
10 STONE, GRACE			11 GRASELA, KENDALL
13 JORDAN, SYDNEY			25 RUSSELL, ASHLEY
25 RUSH, GABRIELLE			31 PARKER, ELEAH
31 ALARIE, BELLA			33 STERBA, PHOEBE
2 LITTLEFIELD, CARLIE			50 AGHAYERE, PRINCESS
SUB OUT: 10 STONE, GRACE	06:06	6-4	
SUB IN: 24 CUNNINGHAM, JULIA	06:06		
	05:42	7-4	SUB OUT: AGHAYERE, PRINCESS
	05:42		SUB IN: CRAWFORD, TORI
	03:26	10-4	SUB OUT: STERBA, PHOEBE
	03:26		SUB IN: LAKSTIGALA, MIA
	01:54	15-8	SUB OUT: LAKSTIGALA, MIA
	01:54		SUB IN: STERBA, PHOEBE
SUB OUT: 13 JORDAN, SYDNEY	01:54		
SUB IN: 32 ISMAIL, QALEA	01:54		
SUB OUT: 24 CUNNINGHAM, JULIA	01:54		
SUB IN: 22 BAUR, TAYLOR	01:54		
	00:12	15-12	SUB OUT: GRASELA, KENDALL
	00:12		SUB IN: JONES, MICHAEL

Princeton 15, Penn 12

**Official Substitutions Log
Princeton vs Penn
Period 2
February 27, 2019 at The Palestra (Macquarie Court) - Philadelphia, PA**

VISITORS: Princeton	Time	Score	HOME: Penn
10 STONE, GRACE			11 GRASELA, KENDALL
13 JORDAN, SYDNEY			25 RUSSELL, ASHLEY
25 RUSH, GABRIELLE			31 PARKER, ELEAH
31 ALARIE, BELLA			33 STERBA, PHOEBE
2 LITTLEFIELD, CARLIE			50 AGHAYERE, PRINCESS
	09:31	-	SUB OUT: STERBA, PHOEBE
	09:31		SUB IN: LAKSTIGALA, MIA
	07:39	19-16	SUB OUT: CRAWFORD, TORI
	07:39		SUB IN: AGHAYERE, PRINCESS
	07:39		SUB OUT: PARKER, ELEAH
	07:39		SUB IN: ANDERSON, EMILY
	06:18	24-16	SUB OUT: JONES, MICHAEL
	06:18		SUB IN: PARKER, ELEAH
	06:18		SUB OUT: LAKSTIGALA, MIA
	06:18		SUB IN: KINUM, KATIE
	06:18		SUB OUT: ANDERSON, EMILY
	06:18		SUB IN: GRASELA, KENDALL
SUB OUT: 31 ALARIE, BELLA	05:07	24-20	
SUB IN: 22 BAUR, TAYLOR	05:07		
	04:17	24-20	SUB OUT: KINUM, KATIE
	04:17		SUB IN: STERBA, PHOEBE
SUB OUT: 10 STONE, GRACE	04:17		
SUB IN: 32 ISMAIL, QALEA	04:17		
	03:36	25-23	SUB OUT: STERBA, PHOEBE
	03:36		SUB IN: JONES, MICHAEL
SUB OUT: 13 JORDAN, SYDNEY	03:36		
SUB IN: 3 BOYER, SYDNEY	03:36		
SUB OUT: 22 BAUR, TAYLOR	03:36		
SUB IN: 31 ALARIE, BELLA	03:36		
SUB OUT: 32 ISMAIL, QALEA	02:25	28-25	
SUB IN: 22 BAUR, TAYLOR	02:25		
SUB OUT: 2 LITTLEFIELD, CARLIE	01:53	30-26	
SUB IN: 12 CONNOLLY, MAGGIE	01:53		
SUB OUT: 3 BOYER, SYDNEY	00:51	33-29	
SUB IN: 10 STONE, GRACE	00:51		
SUB OUT: 25 RUSH, GABRIELLE	00:08	33-31	
SUB IN: 13 JORDAN, SYDNEY	00:08		
	00:08		SUB OUT: GRASELA, KENDALL
	00:08		SUB IN: KINUM, KATIE

Princeton 33, Penn 31

Official Substitutions Log
Princeton vs Penn
Period 3
February 27, 2019 at The Palestra (Macquarie Court) - Philadelphia, PA

VISITORS: Princeton	Time	Score	HOME: Penn
10 STONE, GRACE			11 GASELA, KENDALL
13 JORDAN, SYDNEY			25 RUSSELL, ASHLEY
25 RUSH, GABRIELLE			31 PARKER, ELEAH
31 ALARIE, BELLA			33 STERBA, PHOEBE
2 LITTLEFIELD, CARLIE			50 AGHAYERE, PRINCESS
	07:45	40-31	SUB OUT: STERBA, PHOEBE
	07:45		SUB IN: KINUM, KATIE
	06:50	43-31	SUB OUT: PARKER, ELEAH
	06:50		SUB IN: CRAWFORD, TORI
SUB OUT: 13 JORDAN, SYDNEY	05:21	45-35	
SUB IN: 22 BAUR, TAYLOR	05:21		
	03:54	47-39	SUB OUT: KINUM, KATIE
	03:54		SUB IN: JONES, MICHAEL
	03:54		SUB OUT: CRAWFORD, TORI
	03:54		SUB IN: ANDERSON, EMILY
SUB OUT: 22 BAUR, TAYLOR	03:16	49-40	
SUB IN: 13 JORDAN, SYDNEY	03:16		
SUB OUT: 10 STONE, GRACE	01:52	49-42	
SUB IN: 12 CONNOLLY, MAGGIE	01:52		

Princeton 50, Penn 46

**Official Substitutions Log
Princeton vs Penn
Period 4
February 27, 2019 at The Palestra (Macquarie Court) - Philadelphia, PA**

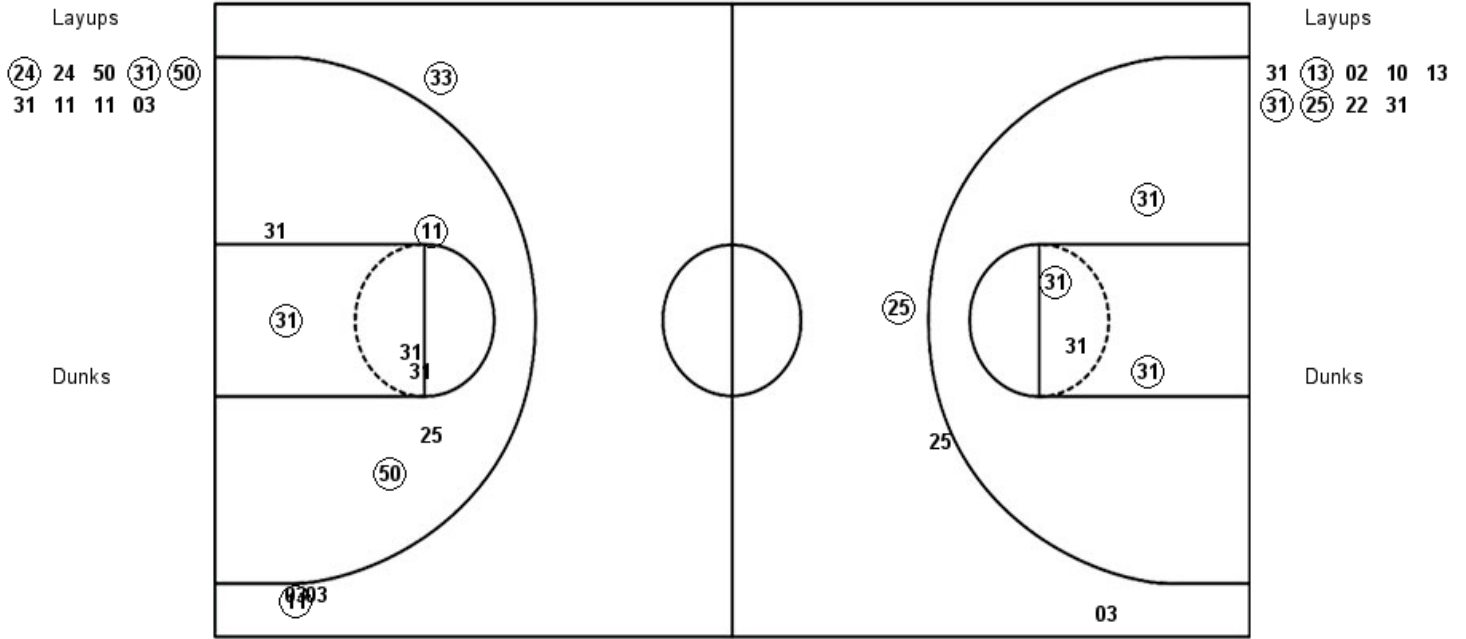
VISITORS: Princeton	Time	Score	HOME: Penn
10 STONE, GRACE			11 GRASELA, KENDALL
13 JORDAN, SYDNEY			25 RUSSELL, ASHLEY
25 RUSH, GABRIELLE			31 PARKER, ELEAH
31 ALARIE, BELLA			33 STERBA, PHOEBE
2 LITTLEFIELD, CARLIE			50 AGHAYERE, PRINCESS
	08:55	52-46	SUB OUT: ANDERSON, EMILY
	08:55		SUB IN: PARKER, ELEAH
	08:01	54-46	SUB OUT: GRASELA, KENDALL
	08:01		SUB IN: STERBA, PHOEBE
	06:52	56-48	SUB OUT: AGHAYERE, PRINCESS
	06:52		SUB IN: CRAWFORD, TORI
	04:51	64-51	SUB OUT: CRAWFORD, TORI
	04:51		SUB IN: AGHAYERE, PRINCESS
SUB OUT: 32 ISMAIL, QALEA	04:51		
SUB IN: 10 STONE, GRACE	04:51		
	03:39	65-53	SUB OUT: AGHAYERE, PRINCESS
	03:39		SUB IN: CRAWFORD, TORI
	03:24	67-53	SUB OUT: STERBA, PHOEBE
	03:24		SUB IN: KINUM, KATIE
	02:54	67-53	SUB OUT: JONES, MICHAEL
	02:54		SUB IN: GRASELA, KENDALL
	01:50	68-53	SUB OUT: PARKER, ELEAH
	01:50		SUB IN: ANDERSON, EMILY
	01:50		SUB OUT: KINUM, KATIE
	01:50		SUB IN: DALEY, KRISTEN
SUB OUT: 31 ALARIE, BELLA	01:12	68-53	
SUB IN: 22 BAUR, TAYLOR	01:12		
	01:12		SUB OUT: RUSSELL, ASHLEY
	01:12		SUB IN: JACKSON, DEJA
SUB OUT: 25 RUSH, GABRIELLE	01:12		
SUB IN: 24 CUNNINGHAM, JULIA	01:12		
SUB OUT: 13 JORDAN, SYDNEY	01:12		
SUB IN: 12 CONNOLLY, MAGGIE	01:12		
SUB OUT: 2 LITTLEFIELD, CARLIE	00:16	68-53	
SUB IN: 3 BOYER, SYDNEY	00:16		

Princeton 68, Penn 53

Official Shot Chart
Princeton vs Penn
PERIOD 2 Shots
February 27, 2019 at The Palestra (Macquarie Court) - Philadelphia, PA

Penn

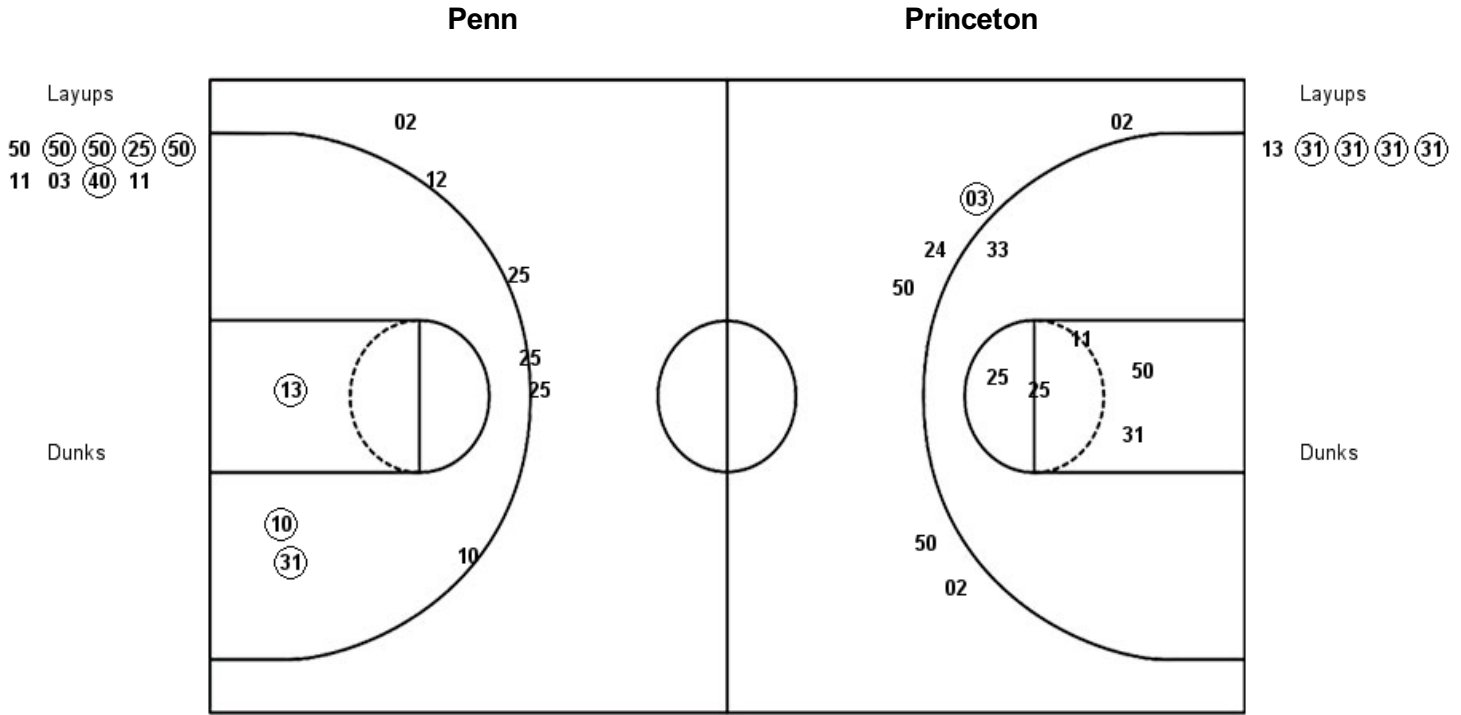
Princeton



PEN : Period 2	Made	Att	Pct
Layups	3	9	33.3
Dunks	0	0	0
2PT Field Goals	6	16	37.5
3PT Field Goals	2	4	50.0
Total Field Goals	8	20	40.0

PRI : Period 2	Made	Att	Pct
Layups	3	9	33.3
Dunks	0	0	0
2PT Field Goals	6	13	46.2
3PT Field Goals	1	3	33.3
Total Field Goals	7	16	43.8

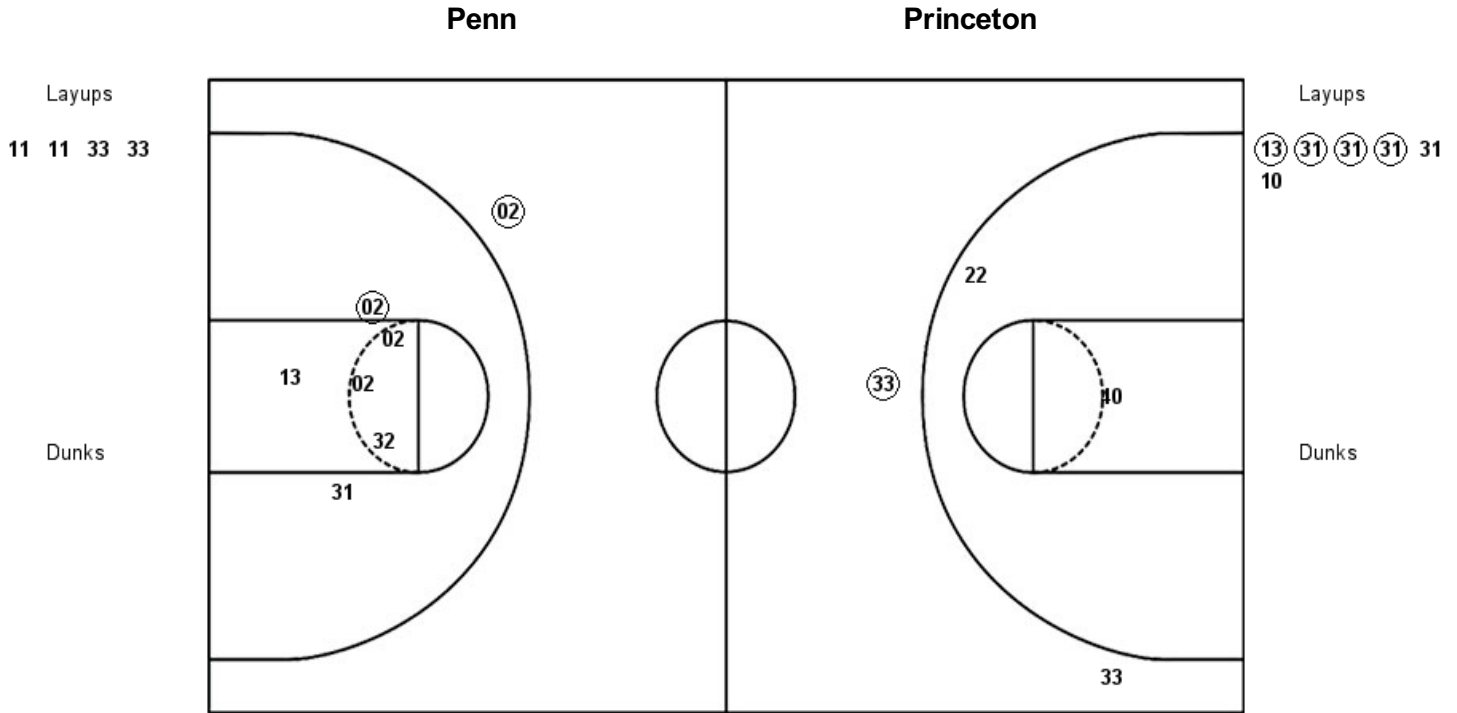
**Official Shot Chart
Princeton vs Penn
PERIOD 3 Shots
February 27, 2019 at The Palestra (Macquarie Court) - Philadelphia, PA**



PEN : Period 3	Made	Att	Pct
Layups	5	9	55.6
Dunks	0	0	0
2PT Field Goals	6	16	37.5
3PT Field Goals	0	5	00.0
Total Field Goals	6	21	28.6

PRI : Period 3	Made	Att	Pct
Layups	4	5	80.0
Dunks	0	0	0
2PT Field Goals	7	9	77.8
3PT Field Goals	0	5	00.0
Total Field Goals	7	14	50.0

**Official Shot Chart
Princeton vs Penn
PERIOD 4 Shots
February 27, 2019 at The Palestra (Macquarie Court) - Philadelphia, PA**

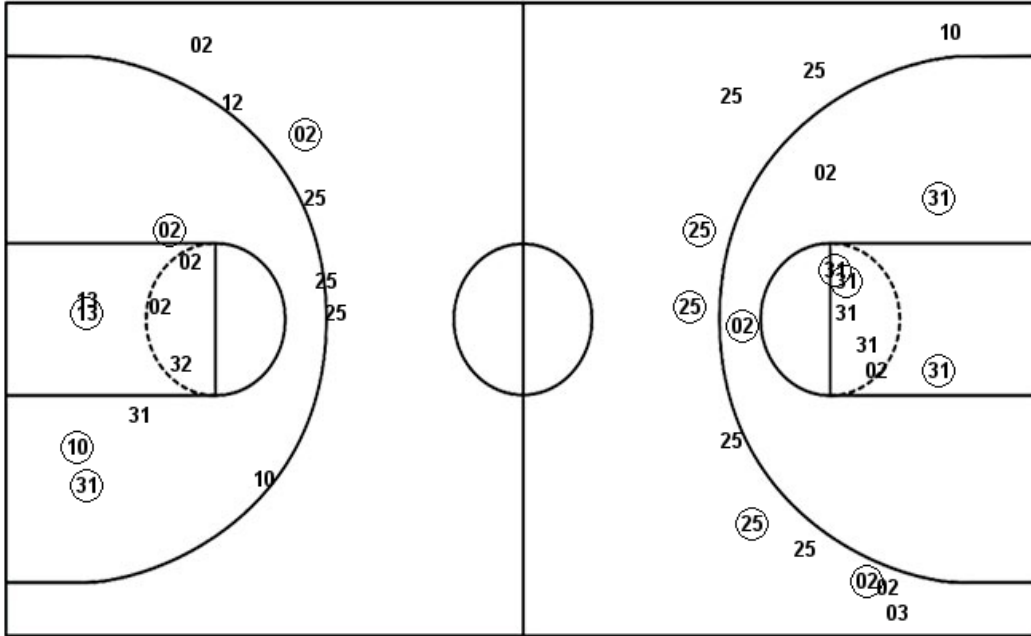


PEN : Period 4	Made	Att	Pct
Layups	0	4	00.0
Dunks	0	0	0
2PT Field Goals	0	6	00.0
3PT Field Goals	1	2	50.0
Total Field Goals	1	8	12.5

PRI : Period 4	Made	Att	Pct
Layups	4	6	66.7
Dunks	0	0	0
2PT Field Goals	5	12	41.7
3PT Field Goals	1	1	100.0
Total Field Goals	6	13	46.2

**Official Shot Chart
Princeton vs Penn
Princeton Team Shots
February 27, 2019 at The Palestra (Macquarie Court) - Philadelphia, PA**

Layups



Layups

31 31 31 (13) 02
10 13 (31) (25) 22
31 13 (31) (31) (31)
(31) (13) (31) (31) (31)
31 10

Dunks

Dunks

PRI : Period 1	Made	Att	Pct
Layups	0	2	00.0
Dunks	0	0	0
2PT Field Goals	2	6	33.3
3PT Field Goals	3	9	33.3
Total Field Goals	5	15	33.3

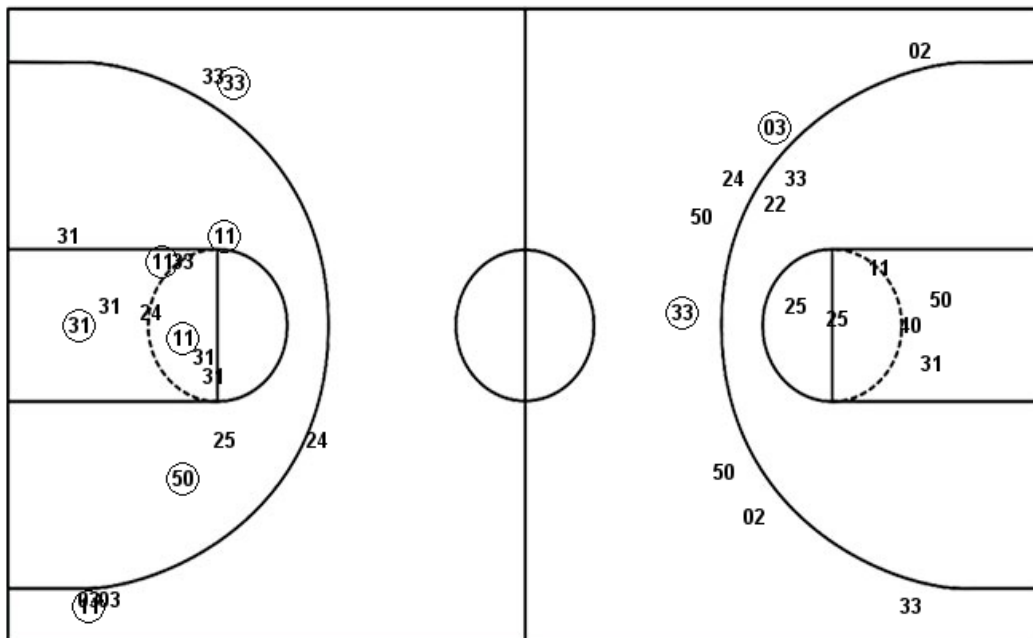
PRI : Period 2	Made	Att	Pct
Layups	3	9	33.3
Dunks	0	0	0
2PT Field Goals	6	13	46.2
3PT Field Goals	1	3	33.3
Total Field Goals	7	16	43.8

PRI : Period 3	Made	Att	Pct
Layups	4	5	80.0
Dunks	0	0	0
2PT Field Goals	7	9	77.8
3PT Field Goals	0	5	00.0
Total Field Goals	7	14	50.0

PRI : Period 4	Made	Att	Pct
Layups	4	6	66.7
Dunks	0	0	0
2PT Field Goals	5	12	41.7
3PT Field Goals	1	1	100.0
Total Field Goals	6	13	46.2

**Official Shot Chart
Princeton vs Penn
Penn Team Shots
February 27, 2019 at The Palestra (Macquarie Court) - Philadelphia, PA**

Layups



Layups

25	31	31	31	31
31	11	24	24	50
31	50	31	11	11
03	50	50	50	25
50	11	03	40	11
11	11	33	33	

Dunks

Dunks

PEN : Period 1	Made	Att	Pct
Layups	4	7	57.1
Dunks	0	0	0
2PT Field Goals	6	11	54.5
3PT Field Goals	0	3	00.0
Total Field Goals	6	14	42.9

PEN : Period 2	Made	Att	Pct
Layups	3	9	33.3
Dunks	0	0	0
2PT Field Goals	6	16	37.5
3PT Field Goals	2	4	50.0
Total Field Goals	8	20	40.0

PEN : Period 3	Made	Att	Pct
Layups	5	9	55.6
Dunks	0	0	0
2PT Field Goals	6	16	37.5
3PT Field Goals	0	5	00.0
Total Field Goals	6	21	28.6

PEN : Period 4	Made	Att	Pct
Layups	0	4	00.0
Dunks	0	0	0
2PT Field Goals	0	6	00.0
3PT Field Goals	1	2	50.0
Total Field Goals	1	8	12.5