

FINAL SCORE



#11 Carson-Newman 91



Lincoln Memorial 80

November 28, 2018 • Tex Turner Arena (Jim Grubb Court) - Harrogate, TN

FINAL STATISTICS

Official Box Score
#11 Carson-Newman vs Lincoln Memorial
Game Totals -- Final Statistics
November 28, 2018 at Tex Turner Arena (Jim Grubb Court) - Harrogate, TN

#11 Carson-Newman 91

| No. | Player | S | Pts | FG | 3FG | FT | OR | DR | TR | PF | A | TO | Blk | Stl | Min | +/- |
|---------------|------------------|---|-----------|--------------|-------------|--------------|-----------|-----------|-----------|-----------|-----------|-----------|----------|----------|------------|-----|
| 1 | Marosites, Kayla | | 22 | 7-14 | 2-3 | 6-6 | 6 | 10 | 16 | 2 | 2 | 1 | 1 | 3 | 39 | 8 |
| 2 | Smith, Briana | | 11 | 1-5 | 1-4 | 8-10 | 2 | 2 | 4 | 3 | 1 | 0 | 0 | 2 | 29 | 19 |
| 3 | Byrd, Addison | | 11 | 5-6 | 1-1 | 0-0 | 0 | 3 | 3 | 0 | 1 | 2 | 0 | 0 | 11 | 15 |
| 21 | Price, Haris | | 19 | 8-18 | 1-4 | 2-2 | 2 | 1 | 3 | 5 | 5 | 2 | 1 | 2 | 38 | 8 |
| 32 | Wester, Mika | | 20 | 7-14 | 0-3 | 6-6 | 3 | 9 | 12 | 3 | 1 | 8 | 2 | 0 | 36 | 19 |
| 4 | Marosites, Kelci | | 6 | 1-5 | 0-3 | 4-5 | 0 | 2 | 2 | 3 | 1 | 2 | 0 | 1 | 24 | 2 |
| 11 | Wykle, Ashton | | 0 | 0-2 | 0-1 | 0-0 | 0 | 1 | 1 | 2 | 2 | 3 | 0 | 0 | 11 | -13 |
| 23 | Griffin, Tori | | 0 | 0-1 | 0-0 | 0-0 | 0 | 0 | 0 | 2 | 0 | 0 | 0 | 0 | 4 | 4 |
| 33 | Bunch, Madison | | 2 | 1-1 | 0-0 | 0-0 | 0 | 0 | 0 | 1 | 0 | 1 | 0 | 1 | 8 | -7 |
| | Team | | | | | | 4 | 2 | 6 | 0 | | 0 | | | | |
| TOTALS | | | 91 | 30-66 | 5-19 | 26-29 | 17 | 30 | 47 | 21 | 13 | 19 | 4 | 9 | 200 | |

Shooting By Period

| Period | FG | FG% | 3FG | 3FG% | FT | FT% |
|-------------|--------------|--------------|-------------|--------------|--------------|--------------|
| 1st Qtr | 8-16 | 50% | 2-6 | 33% | 8-9 | 89% |
| 2nd Qtr | 9-20 | 45% | 2-4 | 50% | 4-4 | 100% |
| 3rd Qtr | 8-16 | 50% | 1-7 | 14% | 10-12 | 83% |
| 4th Qtr | 5-14 | 36% | 0-2 | 00% | 4-4 | 100% |
| 1st Half | 8-16 | 50% | 2-6 | 33% | 8-9 | 89% |
| 2nd Half | 9-20 | 45% | 2-4 | 50% | 4-4 | 100% |
| 3rd Half | 8-16 | 50% | 1-7 | 14% | 10-12 | 83% |
| 4th Half | 5-14 | 36% | 0-2 | 00% | 4-4 | 100% |
| Game | 30-66 | 45.5% | 5-19 | 26.3% | 26-29 | 89.7% |

Deadball Rebounds:

Last FG: 4th-02:26
 Biggest Run: 13-0
 Largest lead: By 24 at 3-00:00
 Technical Fouls: None.

Lincoln Memorial 80

| No. | Player | S | Pts | FG | 3FG | FT | OR | DR | TR | PF | A | TO | Blk | Stl | Min | +/- |
|---------------|--------------------|---|-----------|--------------|-------------|--------------|-----------|-----------|-----------|-----------|-----------|-----------|----------|-----------|------------|-----|
| 12 | Duggins, Sydney | | 8 | 3-6 | 1-3 | 1-1 | 4 | 0 | 4 | 3 | 0 | 0 | 1 | 0 | 14 | -3 |
| 14 | Kirkpatrick, Addi | | 0 | 0-0 | 0-0 | 0-0 | 0 | 0 | 0 | 0 | 0 | 0 | 0 | 0 | 3 | -4 |
| 21 | Griffith, Emily | | 11 | 5-20 | 0-0 | 1-1 | 0 | 6 | 6 | 4 | 1 | 4 | 1 | 3 | 35 | -5 |
| 22 | Newsome, Sydney | | 8 | 2-5 | 0-1 | 4-5 | 2 | 3 | 5 | 2 | 1 | 4 | 0 | 2 | 25 | -9 |
| 24 | Griffith, Rachel | | 16 | 5-10 | 1-3 | 5-5 | 4 | 2 | 6 | 5 | 6 | 0 | 0 | 2 | 32 | -14 |
| 0 | Caudle, Kyndall | | 5 | 1-3 | 1-1 | 2-2 | 0 | 2 | 2 | 0 | 1 | 2 | 1 | 1 | 11 | 0 |
| 1 | Wesemann, Kai | | 9 | 4-10 | 1-4 | 0-0 | 4 | 1 | 5 | 2 | 2 | 0 | 1 | 1 | 16 | 6 |
| 4 | Kiser, Lexi | | 7 | 3-5 | 1-3 | 0-0 | 0 | 0 | 0 | 2 | 1 | 0 | 0 | 0 | 10 | 13 |
| 11 | Maxwell, Dasia | | 12 | 5-17 | 1-3 | 1-4 | 4 | 5 | 9 | 3 | 2 | 1 | 2 | 1 | 19 | -7 |
| 15 | Maney, Jordan | | 2 | 1-4 | 0-0 | 0-0 | 1 | 1 | 2 | 2 | 0 | 3 | 0 | 0 | 9 | -9 |
| 30 | Quarles, Shermeria | | 2 | 1-1 | 0-0 | 0-0 | 2 | 0 | 2 | 0 | 0 | 0 | 0 | 0 | 4 | -4 |
| 35 | Proffitt, Lindsay | | 0 | 0-3 | 0-2 | 0-0 | 1 | 0 | 1 | 1 | 0 | 0 | 0 | 0 | 11 | -11 |
| | Team | | | | | | 4 | 2 | 6 | 0 | | 0 | | | | |
| TOTALS | | | 80 | 30-84 | 6-20 | 14-18 | 26 | 22 | 48 | 24 | 14 | 14 | 6 | 10 | 190 | |

Shooting By Period

| Period | FG | FG% | 3FG | 3FG% | FT | FT% |
|-------------|--------------|--------------|-------------|--------------|--------------|--------------|
| 1st Qtr | 6-19 | 32% | 0-6 | 00% | 3-4 | 75% |
| 2nd Qtr | 8-20 | 40% | 2-3 | 67% | 3-3 | 100% |
| 3rd Qtr | 7-20 | 35% | 2-6 | 33% | 1-2 | 50% |
| 4th Qtr | 9-25 | 36% | 2-5 | 40% | 7-9 | 78% |
| 1st Half | 6-19 | 32% | 0-6 | 00% | 3-4 | 75% |
| 2nd Half | 8-20 | 40% | 2-3 | 67% | 3-3 | 100% |
| 3rd Half | 7-20 | 35% | 2-6 | 33% | 1-2 | 50% |
| 4th Half | 9-25 | 36% | 2-5 | 40% | 7-9 | 78% |
| Game | 30-84 | 35.7% | 6-20 | 30.0% | 14-18 | 77.8% |

Deadball Rebounds:

Last FG: 4th-00:08
 Biggest Run: 7-0
 Largest lead: By 0 at 1-09:01
 Technical Fouls: None.

| | |
|--|-------------------------------|
| Game Notes: | |
| Officials: Ryan Freeman, Chris Collins, Joshua Simmons | |
| Attendance: 2260 | |
| Start Time: 2018-11-28 23:02:44 | End Time: 2018-11-29 00:52:56 |
| Game Duration: 110 | |
| Conference Game: | |

| Score by Period | 1st | 2nd | 3rd | 4th | TOT |
|-----------------|-----|-----|-----|-----|-----|
| C-N | 26 | 24 | 27 | 14 | 91 |
| LMU | 15 | 21 | 17 | 27 | 80 |

C-N led for 39:13. LMU led for 0:00.
 Game was tied for -2:-13.
 Times tied: 2 Lead Changes: 0

| Points from | C-N | LMU |
|--------------|-----|-----|
| In the Paint | 42 | 38 |
| Off Turns | 22 | 22 |
| 2nd Chance | 18 | 22 |
| Fast Break | 20 | 23 |
| Bench | 8 | 37 |

Official Box Score
#11 Carson-Newman vs Lincoln Memorial
First Half Statistics Only
November 28, 2018 at Tex Turner Arena (Jim Grubb Court) - Harrogate, TN

#11 Carson-Newman 91

| No. | Player | S | Pts | FG | 3FG | FT | OR | DR | TR | PF | A | TO | Blk | Stl | Min | +/- |
|---------------|------------------|---|-----------|-------------|------------|------------|----------|----------|-----------|----------|----------|----------|----------|----------|-----------|-----|
| 1 | Marosites, Kayla | | 3 | 1-2 | 1-1 | 0-0 | 1 | 2 | 3 | 0 | 1 | 1 | 0 | 1 | 9 | 8 |
| 2 | Smith, Briana | | 3 | 0-0 | 0-0 | 3-4 | 1 | 1 | 2 | 1 | 1 | 0 | 0 | 0 | 8 | 14 |
| 3 | Byrd, Addison | | 9 | 4-5 | 1-1 | 0-0 | 0 | 1 | 1 | 0 | 1 | 0 | 0 | 0 | 7 | 13 |
| 21 | Price, Haris | | 5 | 2-4 | 0-2 | 1-1 | 0 | 0 | 0 | 1 | 1 | 1 | 1 | 0 | 10 | 11 |
| 32 | Wester, Mika | | 2 | 1-5 | 0-2 | 0-0 | 1 | 3 | 4 | 1 | 1 | 2 | 0 | 0 | 8 | 14 |
| 4 | Marosites, Kelci | | 4 | 0-0 | 0-0 | 4-4 | 0 | 1 | 1 | 0 | 1 | 0 | 0 | 1 | 5 | 2 |
| 11 | Wykle, Ashton | | 0 | 0-0 | 0-0 | 0-0 | 0 | 0 | 0 | 0 | 0 | 0 | 0 | 0 | 2 | -3 |
| 23 | Griffin, Tori | | 0 | 0-0 | 0-0 | 0-0 | 0 | 0 | 0 | 1 | 0 | 0 | 0 | 0 | 1 | -4 |
| 33 | Bunch, Madison | | 0 | 0-0 | 0-0 | 0-0 | 0 | 0 | 0 | 0 | 0 | 0 | 0 | 0 | 0 | 0 |
| | Team | | | | | | 0 | 1 | 1 | 0 | | 0 | | | | |
| TOTALS | | | 26 | 8-16 | 2-6 | 8-9 | 0 | 0 | 12 | 4 | 6 | 4 | 1 | 2 | 50 | |

Shooting By Period

| Period | FG | FG% | 3FG | 3FG% | FT | FT% |
|-------------|--------------|--------------|-------------|--------------|--------------|--------------|
| 1st Qtr | 8-16 | 50% | 2-6 | 33% | 8-9 | 89% |
| 2nd Qtr | 9-20 | 45% | 2-4 | 50% | 4-4 | 100% |
| 3rd Qtr | 8-16 | 50% | 1-7 | 14% | 10-12 | 83% |
| 4th Qtr | 5-14 | 36% | 0-2 | 00% | 4-4 | 100% |
| 1st Half | 8-16 | 50% | 2-6 | 33% | 8-9 | 89% |
| 2nd Half | 9-20 | 45% | 2-4 | 50% | 4-4 | 100% |
| 3rd Half | 8-16 | 50% | 1-7 | 14% | 10-12 | 83% |
| 4th Half | 5-14 | 36% | 0-2 | 00% | 4-4 | 100% |
| Game | 30-66 | 45.5% | 5-19 | 26.3% | 26-29 | 89.7% |

Deadball Rebounds:
Last FG: 4th-02:26
Biggest Run: 13-0
Largest lead: By 24 at 3-00:00
Technical Fouls: None.

Lincoln Memorial 80

| No. | Player | S | Pts | FG | 3FG | FT | OR | DR | TR | PF | A | TO | Blk | Stl | Min | +/- |
|---------------|--------------------|---|-----------|-------------|------------|------------|----------|----------|-----------|----------|----------|----------|----------|----------|-----------|-----|
| 12 | Duggins, Sydney | | 5 | 2-5 | 0-2 | 1-1 | 2 | 0 | 2 | 1 | 0 | 0 | 0 | 0 | 9 | -8 |
| 14 | Kirkpatrick, Addi | | 0 | 0-0 | 0-0 | 0-0 | 0 | 0 | 0 | 0 | 0 | 0 | 0 | 0 | 3 | -4 |
| 21 | Griffith, Emily | | 2 | 1-3 | 0-0 | 0-0 | 0 | 0 | 0 | 2 | 0 | 0 | 0 | 0 | 6 | -3 |
| 22 | Newsome, Sydney | | 4 | 1-3 | 0-1 | 2-3 | 0 | 1 | 1 | 1 | 0 | 2 | 0 | 0 | 10 | -11 |
| 24 | Griffith, Rachel | | 0 | 0-3 | 0-2 | 0-0 | 0 | 1 | 1 | 0 | 0 | 0 | 0 | 0 | 7 | -13 |
| 0 | Caudle, Kyndall | | 0 | 0-0 | 0-0 | 0-0 | 0 | 1 | 1 | 0 | 1 | 1 | 0 | 1 | 4 | -1 |
| 1 | Wesemann, Kai | | 0 | 0-0 | 0-0 | 0-0 | 0 | 0 | 0 | 0 | 0 | 0 | 0 | 0 | 0 | 0 |
| 4 | Kiser, Lexi | | 0 | 0-0 | 0-0 | 0-0 | 0 | 0 | 0 | 0 | 0 | 0 | 0 | 0 | 0 | 0 |
| 11 | Maxwell, Dasia | | 4 | 2-4 | 0-0 | 0-0 | 2 | 2 | 4 | 0 | 0 | 0 | 0 | 0 | 3 | -6 |
| 15 | Maney, Jordan | | 0 | 0-0 | 0-0 | 0-0 | 0 | 1 | 1 | 1 | 0 | 2 | 0 | 0 | 5 | -2 |
| 30 | Quarles, Shermeria | | 0 | 0-0 | 0-0 | 0-0 | 0 | 0 | 0 | 0 | 0 | 0 | 0 | 0 | 0 | 0 |
| 35 | Proffitt, Lindsay | | 0 | 0-1 | 0-1 | 0-0 | 0 | 0 | 0 | 1 | 0 | 0 | 0 | 0 | 1 | -3 |
| | Team | | | | | | 1 | 0 | 1 | 0 | | 0 | | | | |
| TOTALS | | | 15 | 6-19 | 0-6 | 3-4 | 0 | 0 | 11 | 6 | 1 | 5 | 0 | 1 | 49 | |

Shooting By Period

| Period | FG | FG% | 3FG | 3FG% | FT | FT% |
|-------------|--------------|--------------|-------------|--------------|--------------|--------------|
| 1st Qtr | 6-19 | 32% | 0-6 | 00% | 3-4 | 75% |
| 2nd Qtr | 8-20 | 40% | 2-3 | 67% | 3-3 | 100% |
| 3rd Qtr | 7-20 | 35% | 2-6 | 33% | 1-2 | 50% |
| 4th Qtr | 9-25 | 36% | 2-5 | 40% | 7-9 | 78% |
| 1st Half | 6-19 | 32% | 0-6 | 00% | 3-4 | 75% |
| 2nd Half | 8-20 | 40% | 2-3 | 67% | 3-3 | 100% |
| 3rd Half | 7-20 | 35% | 2-6 | 33% | 1-2 | 50% |
| 4th Half | 9-25 | 36% | 2-5 | 40% | 7-9 | 78% |
| Game | 30-84 | 35.7% | 6-20 | 30.0% | 14-18 | 77.8% |

Deadball Rebounds:
Last FG: 4th-00:08
Biggest Run: 7-0
Largest lead: By 0 at 1-09:01
Technical Fouls: None.

Game Notes:
 Officials: Ryan Freeman, Chris Collins, Joshua Simmons
 Attendance: 2260
 Start Time: 2018-11-28 23:02:44 End Time: 2018-11-29 00:52:56
 Game Duration: 110
 Conference Game;

| Score by Period | 1st | 2nd | 3rd | 4th | TOT |
|-----------------|-----|-----|-----|-----|-----------|
| C-N | 26 | 24 | 27 | 14 | 91 |
| LMU | 15 | 21 | 17 | 27 | 80 |

This period only: C-N led for 39:13. LMU led for 39:00.
Game was tied for 0:-13.

| Points from (This Period) | C-N | LMU |
|---------------------------|-----|-----|
| In the Paint | 10 | 10 |
| Off Turns | 8 | 5 |
| 2nd Chance | 0 | 5 |
| Fast Break | 9 | 2 |
| Bench | 4 | 4 |

Official Play-By-Play
#11 Carson-Newman vs Lincoln Memorial
First Quarter
November 28, 2018 at Tex Turner Arena (Jim Grubb Court) - Harrogate, TN

Starters:

#11 Carson-Newman: 21 PRICE,HARIS; 32 WESTER,MIKA; 1 MAROSITES,KAYLA; 2 SMITH,BRIANA; 3 BYRD,ADDISON;

Lincoln Memorial: 12 DUGGINS,SYDNEY; 14 KIRKPATRICK,ADDI; 21 GRIFFITH,EMILY; 22 NEWSOME,SYDNEY; 24 GRIFFITH,RACHEL;

Period 1

| Time | VISITORS: #11 Carson-Newman | Score | Margin | HOME: Lincoln Memorial |
|-------|------------------------------------|-------|--------|------------------------------------|
| 09:45 | | | | MISSED 3PTR by GRIFFITH,RACHEL |
| 09:41 | REBOUND (DEF) by TEAM | | | |
| 09:27 | GOOD! JUMPER by BYRD,ADDISON [PNT] | 0-2 | V 2 | |
| 09:27 | ASSIST by WESTER,MIKA | | | |
| 09:01 | FOUL (PERSONAL) by WESTER,MIKA | | | |
| 09:01 | | 1-2 | V 1 | GOOD! FT by NEWSOME,SYDNEY |
| 09:01 | | 2-2 | T | GOOD! FT by NEWSOME,SYDNEY |
| 08:48 | GOOD! JUMPER by BYRD,ADDISON | 2-4 | V 2 | |
| 08:48 | ASSIST by PRICE,HARIS | | | |
| 08:37 | | | | MISSED 3PTR by DUGGINS,SYDNEY |
| 08:30 | REBOUND (DEF) by WESTER,MIKA | | | |
| 08:23 | GOOD! 3PTR by MAROSITES,KAYLA [FB] | 2-7 | V 5 | |
| 08:23 | ASSIST by SMITH,BRIANA | | | |
| 08:13 | | 4-7 | V 3 | GOOD! LAYUP by NEWSOME,SYDNEY |
| 08:13 | FOUL (PERSONAL) by SMITH,BRIANA | | | |
| 08:13 | | | | SUB OUT: KIRKPATRICK,ADDI |
| 08:13 | | | | SUB IN: MAXWELL,DASIA |
| 08:13 | | | | MISSED FT by NEWSOME,SYDNEY |
| 08:13 | REBOUND (DEF) by BYRD,ADDISON | | | |
| 08:00 | MISSED 3PTR by WESTER,MIKA | | | |
| 07:54 | | | | REBOUND (DEF) by MANEY,JORDAN |
| 07:38 | | | | TURNOVER (3SEC) by MANEY,JORDAN |
| 07:22 | GOOD! JUMPER by WESTER,MIKA [PNT] | 4-9 | V 5 | |
| 07:22 | ASSIST by BYRD,ADDISON | | | |
| 06:51 | | | | MISSED LAYUP by GRIFFITH,EMILY |
| 06:50 | REBOUND (DEF) by SMITH,BRIANA | | | |
| 06:50 | | | | FOUL (PERSONAL) by GRIFFITH,EMILY |
| 06:41 | MISSED 3PTR by PRICE,HARIS | | | |
| 06:37 | REBOUND (OFF) by WESTER,MIKA | | | |
| 06:35 | MISSED JUMPER by WESTER,MIKA | | | |
| 06:30 | | | | REBOUND (DEF) by GRIFFITH,RACHEL |
| 06:24 | | | | MISSED JUMPER by DUGGINS,SYDNEY |
| 06:20 | REBOUND (DEF) by MAROSITES,KAYLA | | | |
| 06:17 | MISSED JUMPER by BYRD,ADDISON | | | |
| 06:12 | REBOUND (OFF) by MAROSITES,KAYLA | | | |
| 06:10 | TURNOVER (3SEC) by WESTER,MIKA | | | |
| 06:10 | | | | SUB OUT: GRIFFITH,EMILY |
| 06:10 | | | | SUB IN: MAXWELL,DASIA |
| 05:53 | | | | TURNOVER (BADPASS) by MANEY,JORDAN |
| 05:53 | STEAL by MAROSITES,KAYLA | | | |
| 05:47 | GOOD! LAYUP by PRICE,HARIS [FB] | 4-11 | V 7 | |
| 05:47 | ASSIST by MAROSITES,KAYLA | | | |
| 05:47 | FOUL (PERSONAL) by PRICE,HARIS | | | |
| 05:36 | | | | MISSED LAYUP by NEWSOME,SYDNEY |
| 05:36 | BLOCK by PRICE,HARIS | | | |
| 05:28 | REBOUND (DEF) by WESTER,MIKA | | | |
| 05:18 | GOOD! LAYUP by BYRD,ADDISON | 4-13 | V 9 | |
| 05:06 | | | | MISSED 3PTR by NEWSOME,SYDNEY |
| 05:02 | | | | REBOUND (OFF) by DUGGINS,SYDNEY |
| 05:00 | | | | MISSED LAYUP by GRIFFITH,RACHEL |
| 05:00 | | | | REBOUND (OFF) by TEAM |
| 04:53 | | | | |
| 04:53 | | | | SUB OUT: MAXWELL,DASIA |
| 04:53 | | | | SUB IN: KIRKPATRICK,ADDI |
| 04:53 | SUB OUT: BYRD,ADDISON | | | |
| 04:53 | SUB IN: MAROSITES,KELCI | | | |
| 04:53 | | | | SUB IN: MANEY,JORDAN |
| 04:50 | MISSED JUMPER by WESTER,MIKA | | | |
| 04:44 | | | | REBOUND (DEF) by MAXWELL,DASIA |
| 04:41 | | | | MISSED LAYUP by MAXWELL,DASIA |
| 04:36 | | | | REBOUND (OFF) by MAXWELL,DASIA |
| 04:35 | | | | MISSED LAYUP by MAXWELL,DASIA |
| 04:35 | REBOUND (DEF) by WESTER,MIKA | | | |
| 04:18 | | | | FOUL (PERSONAL) by MANEY,JORDAN |
| 04:18 | GOOD! FT by SMITH,BRIANA | 4-14 | V 10 | |
| 04:18 | MISSED FT by SMITH,BRIANA | | | |
| 04:18 | | | | REBOUND (DEF) by NEWSOME,SYDNEY |
| 03:59 | | | | MISSED 3PTR by GRIFFITH,RACHEL |
| 03:54 | REBOUND (DEF) by MAROSITES,KELCI | | | |
| 03:42 | MISSED 3PTR by WESTER,MIKA | | | |
| 03:39 | REBOUND (OFF) by SMITH,BRIANA | | | |
| 03:36 | TURNOVER (TRAVEL) by WESTER,MIKA | | | |
| 03:36 | | | | SUB OUT: KIRKPATRICK,ADDI |
| 03:36 | | | | SUB IN: GRIFFITH,EMILY |
| 03:36 | | | | SUB OUT: GRIFFITH,RACHEL |
| 03:36 | | | | SUB IN: CAUDLE,KYNDALL |

| Time | VISITORS: #11 Carson-Newman | Score | Margin | HOME: Lincoln Memorial |
|-------|---|-------|--------|--------------------------------------|
| 03:31 | | | | MISSED 3PTR by DUGGINS,SYDNEY |
| 03:26 | REBOUND (DEF) by MAROSITES,KAYLA | | | |
| 03:23 | | | | FOUL (PERSONAL) by DUGGINS,SYDNEY |
| 03:23 | GOOD! FT by MAROSITES,KELCI [FB] | 4-15 | V 11 | |
| 03:23 | SUB OUT: SMITH,BRIANA | | | |
| 03:23 | SUB IN: WYKLE,ASHTON | | | |
| 03:23 | SUB OUT: WESTER,MIKA | | | |
| 03:23 | SUB IN: GRIFFIN,TORI | | | |
| 03:23 | GOOD! FT by MAROSITES,KELCI [FB] | 4-16 | V 12 | |
| 03:00 | | 6-16 | V 10 | GOOD! JUMPER by DUGGINS,SYDNEY |
| 02:54 | TURNOVER (BADPASS) by PRICE,HARIS | | | |
| 02:54 | | | | STEAL by CAUDLE,KYNDALL |
| 02:42 | | | | MISSED JUMPER by GRIFFITH,EMILY |
| 02:40 | | | | REBOUND (OFF) by DUGGINS,SYDNEY |
| 02:40 | | 8-16 | V 8 | GOOD! JUMPER by DUGGINS,SYDNEY [PNT] |
| 02:40 | FOUL (PERSONAL) by GRIFFIN,TORI | | | |
| 02:40 | | 9-16 | V 7 | GOOD! FT by DUGGINS,SYDNEY |
| 02:22 | MISSED JUMPER by MAROSITES,KAYLA | | | |
| 02:19 | | | | REBOUND (DEF) by MAXWELL,DASIA |
| 02:16 | | | | TURNOVER (TRAVEL) by CAUDLE,KYNDALL |
| 02:16 | SUB OUT: GRIFFIN,TORI | | | |
| 02:16 | SUB IN: BYRD,ADDISON | | | |
| 01:57 | GOOD! 3PTR by BYRD,ADDISON | 9-19 | V 10 | |
| 01:57 | ASSIST by MAROSITES,KELCI | | | |
| 01:45 | | 11-19 | V 8 | GOOD! LAYUP by GRIFFITH,EMILY |
| 01:30 | TURNOVER (DRIBBLING) by MAROSITES,KAYLA | | | |
| 01:24 | | 13-19 | V 6 | GOOD! JUMPER by MAXWELL,DASIA [FB] |
| 01:24 | | | | ASSIST by CAUDLE,KYNDALL |
| 01:21 | GOOD! LAYUP by PRICE,HARIS | 13-21 | V 8 | |
| 01:14 | | | | FOUL (PERSONAL) by GRIFFITH,EMILY |
| 00:59 | | | | SUB OUT: GRIFFITH,EMILY |
| 00:59 | | | | SUB IN: GRIFFITH,RACHEL |
| 00:59 | | | | SUB OUT: DUGGINS,SYDNEY |
| 00:59 | | | | SUB IN: PROFFITT,LINDSAY |
| 00:59 | SUB OUT: MAROSITES,KAYLA | | | |
| 00:59 | SUB IN: WESTER,MIKA | | | |
| 00:59 | SUB OUT: WYKLE,ASHTON | | | |
| 00:59 | SUB IN: SMITH,BRIANA | | | |
| 00:59 | GOOD! FT by PRICE,HARIS | 13-22 | V 9 | |
| 00:57 | | | | MISSED 3PTR by PROFFITT,LINDSAY |
| 00:52 | | | | REBOUND (OFF) by MAXWELL,DASIA |
| 00:50 | | 15-22 | V 7 | GOOD! JUMPER by MAXWELL,DASIA [PNT] |
| 00:50 | | | | FOUL (PERSONAL) by NEWSOME,SYDNEY |
| 00:50 | GOOD! FT by MAROSITES,KELCI | 15-23 | V 8 | |
| 00:50 | GOOD! FT by MAROSITES,KELCI | 15-24 | V 9 | |
| 00:43 | | | | TURNOVER (BADPASS) by NEWSOME,SYDNEY |
| 00:43 | STEAL by MAROSITES,KELCI | | | |
| 00:36 | MISSED 3PTR by PRICE,HARIS | | | |
| 00:34 | | | | REBOUND (DEF) by CAUDLE,KYNDALL |
| 00:28 | | | | TIMEOUT 30SEC |
| 00:08 | | | | TURNOVER (TRAVEL) by NEWSOME,SYDNEY |
| 00:01 | | | | FOUL (PERSONAL) by PROFFITT,LINDSAY |
| 00:01 | GOOD! FT by SMITH,BRIANA [FB] | 15-25 | V 10 | |
| 00:01 | GOOD! FT by SMITH,BRIANA [FB] | 15-26 | V 11 | |

#11 Carson-Newman 26, Lincoln Memorial 15

| Points from (This Period) | C-N | LMU |
|---------------------------|-----|-----|
| In the Paint | 10 | 10 |
| Off Turns | 8 | 5 |
| 2nd Chance | 0 | 5 |
| Fast Break | 9 | 2 |
| Bench | 4 | 4 |

**This period only:C-N led for 39:13. LMU led for 39:00.
Game was tied for 0:-13.**

Official Play-By-Play
#11 Carson-Newman vs Lincoln Memorial
Second Quarter
November 28, 2018 at Tex Turner Arena (Jim Grubb Court) - Harrogate, TN

Starters:

#11 Carson-Newman: 21 PRICE,HARIS; 32 WESTER,MIKA; 1 MAROSITES,KAYLA; 2 SMITH,BRIANA; 3 BYRD,ADDISON;

Lincoln Memorial: 12 DUGGINS,SYDNEY; 14 KIRKPATRICK,ADDI; 21 GRIFFITH,EMILY; 22 NEWSOME,SYDNEY; 24 GRIFFITH,RACHEL;

Period 2

| Time | VISITORS: #11 Carson-Newman | Score | Margin | HOME: Lincoln Memorial |
|-------|-------------------------------------|-------|--------|-------------------------------------|
| 09:47 | | 17-26 | V 9 | GOOD! JUMPER by MAXWELL,DASIA |
| 09:34 | TURNOVER (3SEC) by WESTER,MIKA | | | |
| 09:22 | | | | MISSED JUMPER by MAXWELL,DASIA |
| 09:17 | REBOUND (DEF) by BYRD,ADDISON | | | |
| 09:09 | TURNOVER (LOSTBALL) by BYRD,ADDISON | | | |
| 09:09 | | | | STEAL by NEWSOME,SYDNEY |
| 09:01 | FOUL (PERSONAL) by MAROSITES,KAYLA | | | |
| 09:01 | | | | SUB OUT: CAUDLE,KYNDALL |
| 09:01 | | | | SUB IN: GRIFFITH,EMLY |
| 08:56 | | | | MISSED JUMPER by GRIFFITH,EMLY |
| 08:50 | REBOUND (DEF) by MAROSITES,KAYLA | | | |
| 08:43 | MISSED JUMPER by PRICE,HARIS | | | |
| 08:40 | REBOUND (OFF) by MAROSITES,KAYLA | | | |
| 08:40 | MISSED LAYUP by MAROSITES,KAYLA | | | |
| 08:40 | REBOUND (OFF) by MAROSITES,KAYLA | | | |
| 08:40 | | | | FOUL (PERSONAL) by MAXWELL,DASIA |
| 08:40 | GOOD! FT by MAROSITES,KAYLA | 17-27 | V 10 | |
| 08:40 | | | | SUB OUT: NEWSOME,SYDNEY |
| 08:40 | | | | SUB IN: MANEY,JORDAN |
| 08:40 | GOOD! FT by MAROSITES,KAYLA | 17-28 | V 11 | |
| 08:27 | | | | TURNOVER (LOSTBALL) by MANEY,JORDAN |
| 08:27 | STEAL by SMITH,BRIANA | | | |
| 08:24 | | | | FOUL (PERSONAL) by MAXWELL,DASIA |
| 08:05 | GOOD! JUMPER by BYRD,ADDISON | 17-30 | V 13 | |
| 08:05 | ASSIST by MAROSITES,KAYLA | | | |
| 07:51 | | 19-30 | V 11 | GOOD! JUMPER by MANEY,JORDAN |
| 07:51 | | | | ASSIST by MAXWELL,DASIA |
| 07:28 | MISSED JUMPER by WESTER,MIKA | | | |
| 07:26 | | | | FOUL (PERSONAL) by GRIFFITH,RACHEL |
| 07:24 | | | | SUB OUT: MANEY,JORDAN |
| 07:24 | | | | SUB IN: QUARLES,SHERMERIA |
| 07:24 | GOOD! FT by WESTER,MIKA [FB] | 19-31 | V 12 | |
| 07:24 | GOOD! FT by WESTER,MIKA [FB] | 19-32 | V 13 | |
| 07:22 | REBOUND (OFF) by WESTER,MIKA | | | |
| 07:13 | | | | MISSED 3PTR by PROFFITT,LINDSAY |
| 07:03 | | | | REBOUND (OFF) by QUARLES,SHERMERIA |
| 07:03 | | 21-32 | V 11 | GOOD! LAYUP by QUARLES,SHERMERIA |
| 07:01 | MISSED JUMPER by WESTER,MIKA | | | |
| 07:01 | | | | REBOUND (DEF) by MAXWELL,DASIA |
| 06:48 | | | | TURNOVER (BADPASS) by MAXWELL,DASIA |
| 06:48 | STEAL by PRICE,HARIS | | | |
| 06:48 | GOOD! LAYUP by PRICE,HARIS [FB] | 21-34 | V 13 | |
| 06:41 | | | | MISSED JUMPER by GRIFFITH,EMLY |
| 06:41 | | | | REBOUND (OFF) by GRIFFITH,RACHEL |
| 06:41 | FOUL (PERSONAL) by SMITH,BRIANA | | | |
| 06:41 | SUB OUT: SMITH,BRIANA | | | |
| 06:41 | SUB IN: WYKLE,ASHTON | | | |
| 06:30 | | | | MISSED JUMPER by MAXWELL,DASIA |
| 06:25 | | | | REBOUND (OFF) by GRIFFITH,RACHEL |
| 06:24 | | | | MISSED JUMPER by GRIFFITH,EMLY |
| 06:20 | REBOUND (DEF) by BYRD,ADDISON | | | |
| 06:06 | TURNOVER (LOSTBALL) by BYRD,ADDISON | | | |
| 06:06 | | | | STEAL by GRIFFITH,EMLY |
| 06:06 | SUB OUT: BYRD,ADDISON | | | |
| 06:06 | SUB IN: MAROSITES,KELCI | | | |
| 05:56 | | | | MISSED JUMPER by GRIFFITH,RACHEL |
| 05:55 | | | | REBOUND (OFF) by QUARLES,SHERMERIA |
| 05:55 | FOUL (PERSONAL) by MAROSITES,KELCI | | | |
| 05:51 | | 23-34 | V 11 | GOOD! LAYUP by GRIFFITH,EMLY |
| 05:51 | | | | ASSIST by GRIFFITH,RACHEL |
| 05:40 | GOOD! 3PTR by MAROSITES,KAYLA | 23-37 | V 14 | |
| 05:40 | ASSIST by WYKLE,ASHTON | | | |
| 05:27 | FOUL (PERSONAL) by PRICE,HARIS | | | |
| 05:13 | | 25-37 | V 12 | GOOD! JUMPER by GRIFFITH,EMLY |
| 05:04 | GOOD! JUMPER by WESTER,MIKA | 25-39 | V 14 | |
| 04:45 | | | | MISSED JUMPER by MAXWELL,DASIA |
| 04:41 | REBOUND (DEF) by WESTER,MIKA | | | |
| 04:27 | MISSED JUMPER by PRICE,HARIS | | | |
| 04:23 | | | | REBOUND (DEF) by MAXWELL,DASIA |
| 04:15 | | | | MISSED JUMPER by GRIFFITH,EMLY |
| 04:06 | | | | REBOUND (OFF) by PROFFITT,LINDSAY |
| 04:06 | | | | MISSED LAYUP by PROFFITT,LINDSAY |
| 04:05 | REBOUND (DEF) by MAROSITES,KAYLA | | | |
| 04:00 | MISSED JUMPER by MAROSITES,KAYLA | | | |
| 04:00 | | | | BLOCK by MAXWELL,DASIA |
| 03:54 | REBOUND (OFF) by MAROSITES,KAYLA | | | |

| Time | VISITORS: #11 Carson-Newman | Score | Margin | HOME: Lincoln Memorial |
|-------|--------------------------------------|-------|--------|-----------------------------------|
| 03:47 | MISSED JUMPER by WYKLE,ASHTON | | | |
| 03:47 | REBOUND (OFF) by PRICE,HARIS | | | |
| 03:47 | GOOD! 3PTR by PRICE,HARIS | 25-42 | V 17 | |
| 03:47 | | | | |
| 03:47 | | | | SUB OUT: QUARLES,SHERMERIA |
| 03:47 | | | | SUB IN: NEWSOME,SYDNEY |
| 03:39 | | 27-42 | V 15 | GOOD! LAYUP by GRIFFITH,EMILY |
| 03:39 | FOUL (PERSONAL) by MAROSITES,KELCI | | | |
| 03:39 | | 28-42 | V 14 | GOOD! FT by GRIFFITH,EMILY |
| 03:25 | FOUL (OFF) by WYKLE,ASHTON | | | |
| 03:25 | TURNOVER (OFFENSIVE) by WYKLE,ASHTON | | | |
| 03:05 | | | | MISSED JUMPER by GRIFFITH,EMILY |
| 03:01 | REBOUND (DEF) by MAROSITES,KAYLA | | | |
| 02:55 | MISSED 3PTR by MAROSITES,KELCI | | | |
| 02:52 | | | | REBOUND (DEF) by GRIFFITH,EMILY |
| 02:49 | FOUL (PERSONAL) by WESTER,MIKA | | | |
| 02:49 | | 29-42 | V 13 | GOOD! FT by NEWSOME,SYDNEY [FB] |
| 02:49 | SUB OUT: WYKLE,ASHTON | | | |
| 02:49 | SUB IN: BUNCH,MADISON | | | |
| 02:49 | | 30-42 | V 12 | GOOD! FT by NEWSOME,SYDNEY [FB] |
| 02:22 | GOOD! LAYUP by PRICE,HARIS | 30-44 | V 14 | |
| 02:04 | | | | MISSED LAYUP by GRIFFITH,EMILY |
| 02:00 | REBOUND (DEF) by MAROSITES,KELCI | | | |
| 01:55 | GOOD! LAYUP by WESTER,MIKA [FB] | 30-46 | V 16 | |
| 01:55 | ASSIST by PRICE,HARIS | | | |
| 01:43 | | 33-46 | V 13 | GOOD! 3PTR by MAXWELL,DASIA |
| 01:43 | | | | ASSIST by GRIFFITH,RACHEL |
| 01:17 | GOOD! JUMPER by WESTER,MIKA | 33-48 | V 15 | |
| 01:17 | ASSIST by PRICE,HARIS | | | |
| 00:59 | | | | TURNOVER (3SEC) by NEWSOME,SYDNEY |
| 00:59 | | | | SUB OUT: PROFFITT,LINDSAY |
| 00:59 | | | | SUB IN: DUGGINS,SYDNEY |
| 00:59 | | | | SUB OUT: NEWSOME,SYDNEY |
| 00:59 | | | | SUB IN: WESEMANN,KAI |
| 00:44 | MISSED LAYUP by PRICE,HARIS | | | |
| 00:44 | | | | BLOCK by DUGGINS,SYDNEY |
| 00:44 | REBOUND (OFF) by TEAM | | | |
| 00:38 | MISSED 3PTR by MAROSITES,KAYLA | | | |
| 00:38 | REBOUND (OFF) by TEAM | | | |
| 00:35 | TURNOVER (BADPASS) by BUNCH,MADISON | | | |
| 00:35 | | | | STEAL by GRIFFITH,RACHEL |
| 00:27 | | 36-48 | V 12 | GOOD! 3PTR by DUGGINS,SYDNEY [FB] |
| 00:27 | | | | ASSIST by GRIFFITH,RACHEL |
| 00:03 | MISSED JUMPER by PRICE,HARIS | | | |
| 00:02 | GOOD! LAYUP by MAROSITES,KAYLA | 36-50 | V 14 | |
| 00:00 | REBOUND (OFF) by MAROSITES,KAYLA | | | |

#11 Carson-Newman 50, Lincoln Memorial 36

| Points from (This Period) | C-N | LMU |
|---------------------------|-----|-----|
| In the Paint | 10 | 8 |
| Off Turns | 4 | 5 |
| 2nd Chance | 9 | 4 |
| Fast Break | 6 | 5 |
| Bench | 0 | 9 |

This period only:C-N led for 39:13. LMU led for 39:00.
Game was tied for 0:-13.

Official Box Score
#11 Carson-Newman vs Lincoln Memorial
Second Half Statistics Only
November 28, 2018 at Tex Turner Arena (Jim Grubb Court) - Harrogate, TN

#11 Carson-Newman 91

| No. | Player | S | Pts | FG | 3FG | FT | OR | DR | TR | PF | A | TO | Blk | Stl | Min | +/- |
|---------------|------------------|---|-----------|-------------|------------|------------|----------|----------|-----------|----------|----------|----------|----------|----------|-----------|-----|
| 1 | Marosites, Kayla | | 7 | 2-5 | 1-2 | 2-2 | 4 | 3 | 7 | 1 | 1 | 0 | 0 | 0 | 10 | 3 |
| 2 | Smith, Briana | | 0 | 0-0 | 0-0 | 0-0 | 0 | 0 | 0 | 1 | 0 | 0 | 0 | 1 | 3 | 2 |
| 3 | Byrd, Addison | | 2 | 1-1 | 0-0 | 0-0 | 0 | 2 | 2 | 0 | 0 | 2 | 0 | 0 | 4 | 2 |
| 21 | Price, Haris | | 7 | 3-7 | 1-1 | 0-0 | 1 | 0 | 1 | 1 | 2 | 0 | 0 | 1 | 10 | 3 |
| 32 | Wester, Mika | | 8 | 3-5 | 0-0 | 2-2 | 1 | 1 | 2 | 1 | 0 | 1 | 0 | 0 | 10 | 3 |
| 4 | Marosites, Kelci | | 0 | 0-1 | 0-1 | 0-0 | 0 | 1 | 1 | 2 | 0 | 0 | 0 | 0 | 6 | 1 |
| 11 | Wykle, Ashton | | 0 | 0-1 | 0-0 | 0-0 | 0 | 0 | 0 | 1 | 1 | 1 | 0 | 0 | 4 | 0 |
| 23 | Griffin, Tori | | 0 | 0-0 | 0-0 | 0-0 | 0 | 0 | 0 | 0 | 0 | 0 | 0 | 0 | 0 | 0 |
| 33 | Bunch, Madison | | 0 | 0-0 | 0-0 | 0-0 | 0 | 0 | 0 | 0 | 0 | 1 | 0 | 0 | 3 | 1 |
| | Team | | | | | | 2 | 0 | 2 | 0 | | 0 | | | | |
| TOTALS | | | 24 | 9-20 | 2-4 | 4-4 | 0 | 0 | 15 | 7 | 4 | 5 | 0 | 2 | 50 | |

Shooting By Period

| Period | FG | FG% | 3FG | 3FG% | FT | FT% |
|-------------|--------------|--------------|-------------|--------------|--------------|--------------|
| 1st Qtr | 8-16 | 50% | 2-6 | 33% | 8-9 | 89% |
| 2nd Qtr | 9-20 | 45% | 2-4 | 50% | 4-4 | 100% |
| 3rd Qtr | 8-16 | 50% | 1-7 | 14% | 10-12 | 83% |
| 4th Qtr | 5-14 | 36% | 0-2 | 00% | 4-4 | 100% |
| 1st Half | 8-16 | 50% | 2-6 | 33% | 8-9 | 89% |
| 2nd Half | 9-20 | 45% | 2-4 | 50% | 4-4 | 100% |
| 3rd Half | 8-16 | 50% | 1-7 | 14% | 10-12 | 83% |
| 4th Half | 5-14 | 36% | 0-2 | 00% | 4-4 | 100% |
| Game | 30-66 | 45.5% | 5-19 | 26.3% | 26-29 | 89.7% |

Deadball Rebounds:

Last FG: 4th-02:26
Biggest Run: 13-0
Largest lead: By 24 at 3-00:00
Technical Fouls: None.

Lincoln Memorial 80

| No. | Player | S | Pts | FG | 3FG | FT | OR | DR | TR | PF | A | TO | Blk | Stl | Min | +/- |
|---------------|--------------------|---|-----------|-------------|------------|------------|----------|----------|----------|----------|----------|----------|----------|----------|-----------|-----|
| 12 | Duggins, Sydney | | 3 | 1-1 | 1-1 | 0-0 | 0 | 0 | 0 | 0 | 0 | 0 | 1 | 0 | 1 | 1 |
| 14 | Kirkpatrick, Addi | | 0 | 0-0 | 0-0 | 0-0 | 0 | 0 | 0 | 0 | 0 | 0 | 0 | 0 | 0 | 0 |
| 21 | Griffith, Emily | | 7 | 3-9 | 0-0 | 1-1 | 0 | 1 | 1 | 0 | 0 | 0 | 0 | 1 | 9 | -5 |
| 22 | Newsome, Sydney | | 2 | 0-0 | 0-0 | 2-2 | 0 | 0 | 0 | 0 | 0 | 1 | 0 | 1 | 4 | 3 |
| 24 | Griffith, Rachel | | 0 | 0-1 | 0-0 | 0-0 | 2 | 0 | 2 | 1 | 3 | 0 | 0 | 1 | 10 | -3 |
| 0 | Caudle, Kyndall | | 0 | 0-0 | 0-0 | 0-0 | 0 | 0 | 0 | 0 | 0 | 0 | 0 | 0 | 1 | 2 |
| 1 | Wesemann, Kai | | 0 | 0-0 | 0-0 | 0-0 | 0 | 0 | 0 | 0 | 0 | 0 | 0 | 0 | 1 | 1 |
| 4 | Kiser, Lexi | | 0 | 0-0 | 0-0 | 0-0 | 0 | 0 | 0 | 0 | 0 | 0 | 0 | 0 | 0 | 0 |
| 11 | Maxwell, Dasia | | 5 | 2-5 | 1-1 | 0-0 | 0 | 2 | 2 | 2 | 1 | 1 | 1 | 0 | 0 | 0 |
| 15 | Maney, Jordan | | 2 | 1-1 | 0-0 | 0-0 | 0 | 0 | 0 | 0 | 0 | 1 | 0 | 0 | 3 | -2 |
| 30 | Quarles, Shermeria | | 2 | 1-1 | 0-0 | 0-0 | 2 | 0 | 2 | 0 | 0 | 0 | 0 | 0 | 4 | -4 |
| 35 | Proffitt, Lindsay | | 0 | 0-2 | 0-1 | 0-0 | 1 | 0 | 1 | 0 | 0 | 0 | 0 | 0 | 9 | -4 |
| | Team | | | | | | 0 | 0 | 0 | 0 | | 0 | | | | |
| TOTALS | | | 21 | 8-20 | 2-3 | 3-3 | 0 | 0 | 8 | 3 | 4 | 3 | 2 | 3 | 41 | |

Shooting By Period

| Period | FG | FG% | 3FG | 3FG% | FT | FT% |
|-------------|--------------|--------------|-------------|--------------|--------------|--------------|
| 1st Qtr | 6-19 | 32% | 0-6 | 00% | 3-4 | 75% |
| 2nd Qtr | 8-20 | 40% | 2-3 | 67% | 3-3 | 100% |
| 3rd Qtr | 7-20 | 35% | 2-6 | 33% | 1-2 | 50% |
| 4th Qtr | 9-25 | 36% | 2-5 | 40% | 7-9 | 78% |
| 1st Half | 6-19 | 32% | 0-6 | 00% | 3-4 | 75% |
| 2nd Half | 8-20 | 40% | 2-3 | 67% | 3-3 | 100% |
| 3rd Half | 7-20 | 35% | 2-6 | 33% | 1-2 | 50% |
| 4th Half | 9-25 | 36% | 2-5 | 40% | 7-9 | 78% |
| Game | 30-84 | 35.7% | 6-20 | 30.0% | 14-18 | 77.8% |

Deadball Rebounds:

Last FG: 4th-00:08
Biggest Run: 7-0
Largest lead: By 0 at 1-09:01
Technical Fouls: None.

| | |
|---|--------------------------------------|
| Game Notes: | |
| Officials: Ryan Freeman, Chris Collins, Joshua Simmons | |
| Attendance: 2260 | |
| Start Time: 2018-11-28 23:02:44 | End Time: 2018-11-29 00:52:56 |
| Game Duration: 110 | |
| Conference Game; | |

| Score by Period | 1st | 2nd | 3rd | 4th | TOT |
|-----------------|-----|-----|-----|-----|-----------|
| C-N | 26 | 24 | 27 | 14 | 91 |
| LMU | 15 | 21 | 17 | 27 | 80 |

This period only: C-N led for 39:13. LMU led for 39:00.
Game was tied for 0:-13.

| Points from (This Period) | C-N | LMU |
|---------------------------|-----|-----|
| In the Paint | 10 | 8 |
| Off Turns | 4 | 5 |
| 2nd Chance | 9 | 4 |
| Fast Break | 6 | 5 |
| Bench | 0 | 9 |

Official Play-By-Play
#11 Carson-Newman vs Lincoln Memorial
Third Quarter
November 28, 2018 at Tex Turner Arena (Jim Grubb Court) - Harrogate, TN

Starters:

#11 Carson-Newman: 21 PRICE,HARIS; 32 WESTER,MIKA; 1 MAROSITES,KAYLA; 2 SMITH,BRIANA; 3 BYRD,ADDISON;

Lincoln Memorial: 12 DUGGINS,SYDNEY; 14 KIRKPATRICK,ADDI; 21 GRIFFITH,EMILY; 22 NEWSOME,SYDNEY; 24 GRIFFITH,RACHEL;

Period 3

| Time | VISITORS: #11 Carson-Newman | Score | Margin | HOME: Lincoln Memorial |
|-------|--|-------|--------|---------------------------------------|
| 09:39 | MISSED 3PTR by SMITH,BRIANA | | | |
| 09:34 | | | | REBOUND (DEF) by GRIFFITH,RACHEL |
| 09:31 | | 38-50 | V 12 | GOOD! LAYUP by GRIFFITH,EMILY [FB] |
| 09:31 | | | | ASSIST by GRIFFITH,RACHEL |
| 09:09 | TURNOVER (LOSTBALL) by WESTER,MIKA | | | |
| 09:09 | | | | STEAL by WESEMANN,KAI |
| 08:59 | | 40-50 | V 10 | GOOD! LAYUP by GRIFFITH,RACHEL [FB] |
| 08:59 | | | | ASSIST by WESEMANN,KAI |
| 08:43 | | | | FOUL (PERSONAL) by GRIFFITH,RACHEL |
| 08:38 | | | | FOUL (PERSONAL) by WESEMANN,KAI |
| 08:33 | MISSED 3PTR by MAROSITES,KELCI | | | |
| 08:25 | REBOUND (OFF) by SMITH,BRIANA | | | |
| 08:23 | TURNOVER (LOSTBALL) by MAROSITES,KELCI | | | |
| 08:23 | | | | STEAL by NEWSOME,SYDNEY |
| 08:12 | | 43-50 | V 7 | GOOD! 3PTR by WESEMANN,KAI [FB] |
| 08:12 | | | | ASSIST by NEWSOME,SYDNEY |
| 08:08 | TIMEOUT 30SEC | | | |
| 07:45 | | | | FOUL (PERSONAL) by DUGGINS,SYDNEY |
| 07:45 | GOOD! FT by MAROSITES,KAYLA | 43-51 | V 8 | |
| 07:45 | GOOD! FT by MAROSITES,KAYLA | 43-52 | V 9 | |
| 07:31 | | | | MISSED 3PTR by WESEMANN,KAI |
| 07:26 | | | | REBOUND (OFF) by NEWSOME,SYDNEY |
| 07:25 | | | | MISSED JUMPER by NEWSOME,SYDNEY |
| 07:18 | | | | REBOUND (OFF) by WESEMANN,KAI |
| 07:18 | | 45-52 | V 7 | GOOD! LAYUP by WESEMANN,KAI |
| 07:10 | GOOD! LAYUP by WESTER,MIKA | 45-54 | V 9 | |
| 07:01 | | | | TURNOVER (BADPASS) by GRIFFITH,EMILY |
| 07:01 | STEAL by MAROSITES,KAYLA | | | |
| 06:51 | MISSED 3PTR by WESTER,MIKA | | | |
| 06:48 | | | | REBOUND (DEF) by TEAM |
| 06:39 | | | | MISSED 3PTR by WESEMANN,KAI |
| 06:35 | | | | REBOUND (OFF) by DUGGINS,SYDNEY |
| 06:35 | | | | SUB OUT: WESEMANN,KAI |
| 06:35 | | | | SUB IN: MANEY,JORDAN |
| 06:27 | | | | MISSED JUMPER by GRIFFITH,EMILY |
| 06:23 | | | | REBOUND (OFF) by DUGGINS,SYDNEY |
| 06:20 | | | | MISSED JUMPER by GRIFFITH,EMILY |
| 06:20 | REBOUND (DEF) by TEAM | | | |
| 06:03 | | | | FOUL (PERSONAL) by DUGGINS,SYDNEY |
| 06:03 | GOOD! FT by WESTER,MIKA | 45-55 | V 10 | |
| 06:03 | | | | SUB OUT: DUGGINS,SYDNEY |
| 06:03 | | | | SUB IN: MAXWELL,DASIA |
| 06:03 | GOOD! FT by WESTER,MIKA | 45-56 | V 11 | |
| 05:54 | | | | MISSED JUMPER by MANEY,JORDAN |
| 05:48 | REBOUND (DEF) by WESTER,MIKA | | | |
| 05:33 | GOOD! LAYUP by MAROSITES,KELCI | 45-58 | V 13 | |
| 05:33 | | | | FOUL (PERSONAL) by NEWSOME,SYDNEY |
| 05:33 | MISSED FT by MAROSITES,KELCI | | | |
| 05:33 | | | | REBOUND (DEF) by NEWSOME,SYDNEY |
| 05:24 | | | | MISSED JUMPER by MANEY,JORDAN |
| 05:17 | | | | REBOUND (OFF) by MANEY,JORDAN |
| 05:17 | | | | MISSED LAYUP by MANEY,JORDAN |
| 05:15 | REBOUND (DEF) by MAROSITES,KAYLA | | | |
| 05:07 | | | | FOUL (PERSONAL) by MANEY,JORDAN |
| 05:07 | GOOD! FT by WESTER,MIKA | 45-59 | V 14 | |
| 05:07 | | | | SUB OUT: MANEY,JORDAN |
| 05:07 | | | | SUB IN: WESEMANN,KAI |
| 05:07 | GOOD! FT by WESTER,MIKA | 45-60 | V 15 | |
| 04:55 | | | | MISSED JUMPER by MAXWELL,DASIA |
| 04:51 | REBOUND (DEF) by MAROSITES,KAYLA | | | |
| 04:45 | MISSED 3PTR by MAROSITES,KELCI | | | |
| 04:39 | REBOUND (OFF) by MAROSITES,KAYLA | | | |
| 04:39 | GOOD! LAYUP by MAROSITES,KAYLA | 45-62 | V 17 | |
| 04:25 | | | | TURNOVER (LOSTBALL) by GRIFFITH,EMILY |
| 04:25 | STEAL by PRICE,HARIS | | | |
| 04:19 | GOOD! 3PTR by SMITH,BRIANA [FB] | 45-65 | V 20 | |
| 04:19 | ASSIST by PRICE,HARIS | | | |
| 04:12 | | | | MISSED 3PTR by WESEMANN,KAI |
| 04:09 | | | | REBOUND (OFF) by TEAM |
| 04:09 | | | | |
| 03:45 | | 47-65 | V 18 | GOOD! LAYUP by GRIFFITH,RACHEL |
| 03:23 | MISSED 3PTR by SMITH,BRIANA | | | |
| 03:21 | | | | REBOUND (DEF) by GRIFFITH,EMILY |
| 03:21 | FOUL (PERSONAL) by MAROSITES,KAYLA | | | |
| 03:03 | | 50-65 | V 15 | GOOD! 3PTR by GRIFFITH,RACHEL |
| 03:03 | | | | ASSIST by MAXWELL,DASIA |

| Time | VISITORS: #11 Carson-Newman | Score | Margin | HOME: Lincoln Memorial |
|-------|---------------------------------------|-------|--------|---------------------------------------|
| 02:50 | | | | FOUL (PERSONAL) by GRIFFITH,RACHEL |
| 02:50 | GOOD! FT by SMITH,BRIANA | 50-66 | V 16 | |
| 02:50 | SUB OUT: MAROSITES,KELCI | | | |
| 02:50 | SUB IN: GRIFFIN,TORI | | | |
| 02:50 | MISSED FT by SMITH,BRIANA | | | |
| 02:48 | | | | REBOUND (DEF) by NEWSOME,SYDNEY |
| 02:47 | | | | TURNOVER (BADPASS) by NEWSOME,SYDNEY |
| 02:47 | STEAL by MAROSITES,KAYLA | | | |
| 02:42 | MISSED JUMPER by MAROSITES,KAYLA | | | |
| 02:38 | REBOUND (OFF) by WESTER,MIKA | | | |
| 02:34 | GOOD! LAYUP by PRICE,HARIS | 50-68 | V 18 | |
| 02:34 | | | | FOUL (PERSONAL) by GRIFFITH,EMILY |
| 02:34 | | | | SUB OUT: NEWSOME,SYDNEY |
| 02:34 | | | | SUB IN: CAUDLE,KYNDALL |
| 02:34 | GOOD! FT by PRICE,HARIS | 50-69 | V 19 | |
| 02:23 | | | | MISSED 3PTR by MAXWELL,DASIA |
| 02:20 | REBOUND (DEF) by WESTER,MIKA | | | |
| 02:13 | MISSED 3PTR by PRICE,HARIS | | | |
| 02:05 | | | | REBOUND (DEF) by GRIFFITH,EMILY |
| 02:01 | FOUL (PERSONAL) by WESTER,MIKA | | | |
| 01:55 | | | | MISSED LAYUP by MAXWELL,DASIA |
| 01:51 | REBOUND (DEF) by WESTER,MIKA | | | |
| 01:49 | TURNOVER (LOSTBALL) by WESTER,MIKA | | | |
| 01:49 | | | | STEAL by GRIFFITH,RACHEL |
| 01:42 | | 52-69 | V 17 | GOOD! LAYUP by GRIFFITH,RACHEL [FB] |
| 01:27 | GOOD! JUMPER by MAROSITES,KAYLA [PNT] | 52-71 | V 19 | |
| 01:15 | | | | TURNOVER (BADPASS) by GRIFFITH,EMILY |
| 00:56 | | | | FOUL (PERSONAL) by GRIFFITH,RACHEL |
| 00:56 | GOOD! FT by SMITH,BRIANA | 52-72 | V 20 | |
| 00:56 | | | | SUB OUT: GRIFFITH,RACHEL |
| 00:56 | | | | SUB IN: PROFFITT,LINDSAY |
| 00:56 | GOOD! FT by SMITH,BRIANA | 52-73 | V 21 | |
| 00:45 | | | | TURNOVER (LOSTBALL) by CAUDLE,KYNDALL |
| 00:45 | STEAL by SMITH,BRIANA | | | |
| 00:41 | MISSED JUMPER by GRIFFIN,TORI | | | |
| 00:41 | | | | BLOCK by MAXWELL,DASIA |
| 00:41 | REBOUND (OFF) by TEAM | | | |
| 00:35 | GOOD! LAYUP by MAROSITES,KAYLA [PNT] | 52-75 | V 23 | |
| 00:35 | ASSIST by PRICE,HARIS | | | |
| 00:15 | | | | MISSED LAYUP by WESEMANN,KAI |
| 00:15 | BLOCK by WESTER,MIKA | | | |
| 00:14 | | | | REBOUND (OFF) by TEAM |
| 00:07 | FOUL (PERSONAL) by GRIFFIN,TORI | | | |
| 00:07 | | | | MISSED FT by MAXWELL,DASIA |
| 00:07 | | | | REBOUND (OFF) by TEAM |
| 00:07 | | 53-75 | V 22 | GOOD! FT by MAXWELL,DASIA |
| 00:00 | GOOD! LAYUP by PRICE,HARIS | 53-77 | V 24 | |

#11 Carson-Newman 77, Lincoln Memorial 53

| Points from (This Period) | C-N | LMU |
|---------------------------|-----|-----|
| In the Paint | 14 | 10 |
| Off Turns | 9 | 7 |
| 2nd Chance | 7 | 5 |
| Fast Break | 3 | 9 |
| Bench | 2 | 6 |

This period only:C-N led for 39:13. LMU led for 39:00.
Game was tied for 0:-13.

Official Play-By-Play
#11 Carson-Newman vs Lincoln Memorial
Fourth Quarter
November 28, 2018 at Tex Turner Arena (Jim Grubb Court) - Harrogate, TN

Starters:

#11 Carson-Newman: 21 PRICE,HARIS; 32 WESTER,MIKA; 1 MAROSITES,KAYLA; 2 SMITH,BRIANA; 3 BYRD,ADDISON;

Lincoln Memorial: 12 DUGGINS,SYDNEY; 14 KIRKPATRICK,ADDI; 21 GRIFFITH,EMILY; 22 NEWSOME,SYDNEY; 24 GRIFFITH,RACHEL;

Period 4

| Time | VISITORS: #11 Carson-Newman | Score | Margin | HOME: Lincoln Memorial |
|-------|--|-------|--------|-------------------------------------|
| 10:00 | SUB OUT: GRIFFIN,TORI | | | |
| 10:00 | SUB IN: MAROSITES,KELCI | | | |
| 09:52 | MISSED LAYUP by SMITH,BRIANA | | | |
| 09:52 | | | | BLOCK by WESEMANN,KAI |
| 09:52 | REBOUND (OFF) by TEAM | | | |
| 09:52 | | | | SUB OUT: PROFFITT,LINDSAY |
| 09:52 | | | | SUB IN: KISER,LEXI |
| 09:46 | MISSED JUMPER by MAROSITES,KELCI | | | |
| 09:37 | | | | REBOUND (DEF) by WESEMANN,KAI |
| 09:33 | | 55-77 | V 22 | GOOD! JUMPER by MAXWELL,DASIA [FB] |
| 09:33 | | | | ASSIST by WESEMANN,KAI |
| 09:22 | MISSED JUMPER by MAROSITES,KAYLA | | | |
| 09:17 | | | | REBOUND (DEF) by CAUDLE,KYNDALL |
| 09:12 | | | | MISSED JUMPER by CAUDLE,KYNDALL |
| 09:08 | REBOUND (DEF) by MAROSITES,KAYLA | | | |
| 09:01 | | | | FOUL (PERSONAL) by KISER,LEXI |
| 08:51 | MISSED JUMPER by PRICE,HARIS | | | |
| 08:47 | | | | REBOUND (DEF) by GRIFFITH,EMILY |
| 08:45 | | | | MISSED JUMPER by MAXWELL,DASIA |
| 08:45 | BLOCK by MAROSITES,KAYLA | | | |
| 08:45 | REBOUND (DEF) by MAROSITES,KAYLA | | | |
| 08:45 | | | | FOUL (PERSONAL) by WESEMANN,KAI |
| 08:34 | TURNOVER (BADPASS) by WESTER,MIKA | | | |
| 08:20 | FOUL (PERSONAL) by PRICE,HARIS | | | |
| 08:20 | | 56-77 | V 21 | GOOD! FT by CAUDLE,KYNDALL |
| 08:20 | | 57-77 | V 20 | GOOD! FT by CAUDLE,KYNDALL |
| 08:01 | MISSED LAYUP by MAROSITES,KAYLA | | | |
| 08:01 | | | | BLOCK by CAUDLE,KYNDALL |
| 07:53 | | | | REBOUND (DEF) by GRIFFITH,EMILY |
| 07:50 | | | | MISSED LAYUP by CAUDLE,KYNDALL |
| 07:44 | | | | REBOUND (OFF) by MAXWELL,DASIA |
| 07:44 | | | | MISSED LAYUP by MAXWELL,DASIA |
| 07:42 | | | | REBOUND (OFF) by MAXWELL,DASIA |
| 07:42 | | | | MISSED LAYUP by MAXWELL,DASIA |
| 07:40 | REBOUND (DEF) by SMITH,BRIANA | | | |
| 07:36 | MISSED JUMPER by PRICE,HARIS | | | |
| 07:36 | | | | BLOCK by GRIFFITH,EMILY |
| 07:35 | REBOUND (OFF) by PRICE,HARIS | | | |
| 07:34 | GOOD! JUMPER by PRICE,HARIS | 57-79 | V 22 | |
| 07:34 | TIMEOUT 30SEC | | | |
| 07:17 | | 60-79 | V 19 | GOOD! 3PTR by CAUDLE,KYNDALL |
| 07:17 | | | | ASSIST by KISER,LEXI |
| 07:02 | MISSED 3PTR by SMITH,BRIANA | | | |
| 06:59 | | | | REBOUND (DEF) by MAXWELL,DASIA |
| 06:48 | | | | MISSED JUMPER by GRIFFITH,EMILY |
| 06:43 | REBOUND (DEF) by WESTER,MIKA | | | |
| 06:39 | TURNOVER (LOSTBALL) by MAROSITES,KELCI | | | |
| 06:39 | | | | STEAL by GRIFFITH,EMILY |
| 06:32 | | | | MISSED JUMPER by GRIFFITH,EMILY |
| 06:29 | | | | REBOUND (OFF) by WESEMANN,KAI |
| 06:27 | | | | MISSED JUMPER by WESEMANN,KAI |
| 06:21 | | | | REBOUND (OFF) by WESEMANN,KAI |
| 06:21 | | 62-79 | V 17 | GOOD! LAYUP by WESEMANN,KAI |
| 06:04 | GOOD! JUMPER by WESTER,MIKA [PNT] | 62-81 | V 19 | |
| 05:55 | | | | TIMEOUT TEAM |
| 05:55 | | | | SUB OUT: CAUDLE,KYNDALL |
| 05:55 | | | | SUB IN: GRIFFITH,RACHEL |
| 05:55 | SUB OUT: MAROSITES,KELCI | | | |
| 05:55 | SUB IN: BUNCH,MADISON | | | |
| 05:55 | SUB OUT: SMITH,BRIANA | | | |
| 05:55 | SUB IN: WYKLE,ASHTON | | | |
| 05:49 | | 65-81 | V 16 | GOOD! 3PTR by KISER,LEXI |
| 05:49 | | | | ASSIST by GRIFFITH,RACHEL |
| 05:18 | TURNOVER (LOSTBALL) by WESTER,MIKA | | | |
| 04:52 | | | | MISSED JUMPER by GRIFFITH,RACHEL |
| 04:47 | REBOUND (DEF) by PRICE,HARIS | | | |
| 04:30 | GOOD! JUMPER by WESTER,MIKA [PNT] | 65-83 | V 18 | |
| 04:30 | ASSIST by WYKLE,ASHTON | | | |
| 04:13 | | | | MISSED LAYUP by WESEMANN,KAI |
| 04:13 | BLOCK by WESTER,MIKA | | | |
| 04:05 | | | | REBOUND (OFF) by WESEMANN,KAI |
| 04:05 | | 67-83 | V 16 | GOOD! LAYUP by WESEMANN,KAI |
| 03:50 | MISSED LAYUP by PRICE,HARIS | | | |
| 03:43 | | | | REBOUND (DEF) by GRIFFITH,EMILY |
| 03:43 | | 69-83 | V 14 | GOOD! LAYUP by GRIFFITH,RACHEL [FB] |
| 03:43 | | | | ASSIST by GRIFFITH,EMILY |

| Time | VISITORS: #11 Carson-Newman | Score | Margin | HOME: Lincoln Memorial |
|-------|--|-------|--------|---------------------------------------|
| 03:43 | FOUL (PERSONAL) by PRICE,HARIS | | | |
| 03:43 | | | | SUB OUT: WESEMANN,KAI |
| 03:43 | | | | SUB IN: NEWSOME,SYDNEY |
| 03:43 | | 70-83 | V 13 | GOOD! FT by GRIFFITH,RACHEL [FB] |
| 03:43 | SUB OUT: PRICE,HARIS | | | |
| 03:43 | SUB IN: SMITH,BRIANA | | | |
| 03:36 | | | | FOUL (PERSONAL) by MAXWELL,DASIA |
| 03:22 | GOOD! JUMPER by BUNCH,MADISON | 70-85 | V 15 | |
| 03:09 | | | | MISSED 3PTR by MAXWELL,DASIA |
| 03:04 | REBOUND (DEF) by WYKLE,ASHTON | | | |
| 03:02 | TURNOVER (BADPASS) by WYKLE,ASHTON | | | |
| 02:49 | | | | MISSED 3PTR by KISER,LEXI |
| 02:44 | | | | REBOUND (OFF) by GRIFFITH,RACHEL |
| 02:44 | FOUL (PERSONAL) by BUNCH,MADISON | | | |
| 02:44 | | 71-85 | V 14 | GOOD! FT by GRIFFITH,RACHEL |
| 02:44 | SUB OUT: WESTER,MIKA | | | |
| 02:44 | SUB IN: PRICE,HARIS | | | |
| 02:44 | | 72-85 | V 13 | GOOD! FT by GRIFFITH,RACHEL |
| 02:26 | GOOD! JUMPER by MAROSITES,KAYLA | 72-87 | V 15 | |
| 02:16 | | 74-87 | V 13 | GOOD! JUMPER by KISER,LEXI |
| 02:16 | | | | ASSIST by GRIFFITH,RACHEL |
| 01:52 | MISSED 3PTR by WYKLE,ASHTON | | | |
| 01:49 | | | | REBOUND (DEF) by TEAM |
| 01:49 | FOUL (PERSONAL) by SMITH,BRIANA | | | |
| 01:39 | | 76-87 | V 11 | GOOD! JUMPER by KISER,LEXI |
| 01:20 | TURNOVER (LOSTBALL) by WYKLE,ASHTON | | | |
| 01:20 | | | | STEAL by MAXWELL,DASIA |
| 01:19 | FOUL (UNSPORTSMANLIKE) by WYKLE,ASHTON | | | |
| 01:19 | | 77-87 | V 10 | GOOD! FT by GRIFFITH,RACHEL [FB] |
| 01:19 | | 78-87 | V 9 | GOOD! FT by GRIFFITH,RACHEL [FB] |
| 01:19 | SUB OUT: WYKLE,ASHTON | | | |
| 01:19 | SUB IN: WESTER,MIKA | | | |
| 01:19 | SUB OUT: BUNCH,MADISON | | | |
| 01:19 | SUB IN: MAROSITES,KELCI | | | |
| 01:12 | | | | MISSED JUMPER by GRIFFITH,EMILY |
| 01:10 | | | | REBOUND (OFF) by GRIFFITH,RACHEL |
| 01:05 | | | | MISSED JUMPER by GRIFFITH,EMILY |
| 01:01 | REBOUND (DEF) by MAROSITES,KAYLA | | | |
| 00:57 | | | | FOUL (PERSONAL) by GRIFFITH,EMILY |
| 00:38 | FOUL (OFF) by PRICE,HARIS | | | |
| 00:38 | SUB OUT: PRICE,HARIS | | | |
| 00:38 | SUB IN: BUNCH,MADISON | | | |
| 00:38 | | | | TIMEOUT 30SEC |
| 00:38 | TURNOVER (OFFENSIVE) by PRICE,HARIS | | | |
| 00:36 | FOUL (PERSONAL) by MAROSITES,KELCI | | | |
| 00:36 | | | | MISSED FT by MAXWELL,DASIA |
| 00:36 | | | | REBOUND (OFF) by TEAM |
| 00:36 | | | | MISSED FT by MAXWELL,DASIA |
| 00:33 | REBOUND (DEF) by WESTER,MIKA | | | |
| 00:30 | TURNOVER (LOSTBALL) by WESTER,MIKA | | | |
| 00:30 | | | | STEAL by GRIFFITH,EMILY |
| 00:22 | | | | TURNOVER (LOSTBALL) by GRIFFITH,EMILY |
| 00:22 | STEAL by BUNCH,MADISON | | | |
| 00:22 | TIMEOUT TEAM | | | |
| 00:15 | | | | FOUL (PERSONAL) by KISER,LEXI |
| 00:15 | GOOD! FT by SMITH,BRIANA [FB] | 78-88 | V 10 | |
| 00:15 | GOOD! FT by SMITH,BRIANA [FB] | 78-89 | V 11 | |
| 00:15 | | | | TIMEOUT 30SEC |
| 00:12 | | | | MISSED JUMPER by GRIFFITH,EMILY |
| 00:08 | | 80-89 | V 9 | GOOD! JUMPER by NEWSOME,SYDNEY [PNT] |
| 00:07 | | | | FOUL (PERSONAL) by GRIFFITH,RACHEL |
| 00:07 | GOOD! FT by MAROSITES,KAYLA | 80-90 | V 10 | |
| 00:07 | GOOD! FT by MAROSITES,KAYLA | 80-91 | V 11 | |
| 00:07 | | | | SUB OUT: GRIFFITH,RACHEL |
| 00:07 | | | | SUB IN: PROFFITT,LINDSAY |
| 00:06 | | | | REBOUND (OFF) by NEWSOME,SYDNEY |
| 00:01 | | | | MISSED 3PTR by KISER,LEXI |
| 00:01 | | | | REBOUND (OFF) by TEAM |

#11 Carson-Newman 91, Lincoln Memorial 80

| Points from (This Period) | C-N | LMU |
|---------------------------|-----|-----|
| In the Paint | 8 | 10 |
| Off Turns | 1 | 5 |
| 2nd Chance | 2 | 8 |
| Fast Break | 2 | 7 |
| Bench | 2 | 18 |

This period only:C-N led for 39:13. LMU led for 39:00.
Game was tied for 0:-13.

**Official Scoring/Possession Reference Chart
#11 Carson-Newman vs Lincoln Memorial
Period 1**

November 28, 2018 at Tex Turner Arena (Jim Grubb Court) - Harrogate, TN

Starters:

#11 Carson-Newman: 21 PRICE,HARIS; 32 WESTER,MIKA; 1 MAROSITES,KAYLA; 2 SMITH,BRIANA; 3 BYRD,ADDISON;

Lincoln Memorial: 12 DUGGINS,SYDNEY; 14 KIRKPATRICK,ADDI; 21 GRIFFITH,EMILY; 22 NEWSOME,SYDNEY; 24 GRIFFITH,RACHEL;

Period 1

| Time | VISITORS: #11 Carson-Newman | Score | Margin | HOME: Lincoln Memorial |
|-------|------------------------------------|-------|--------|--------------------------------------|
| 09:27 | GOOD! JUMPER by BYRD,ADDISON [PNT] | 0-2 | V 2 | |
| 09:01 | | 1-2 | V 1 | GOOD! FT by NEWSOME,SYDNEY |
| 09:01 | | 2-2 | T | GOOD! FT by NEWSOME,SYDNEY |
| 08:48 | GOOD! JUMPER by BYRD,ADDISON | 2-4 | V 2 | |
| 08:23 | GOOD! 3PTR by MAROSITES,KAYLA [FB] | 2-7 | V 5 | |
| 08:13 | | 4-7 | V 3 | GOOD! LAYUP by NEWSOME,SYDNEY |
| 07:22 | GOOD! JUMPER by WESTER,MIKA [PNT] | 4-9 | V 5 | |
| 05:47 | GOOD! LAYUP by PRICE,HARIS [FB] | 4-11 | V 7 | |
| 05:18 | GOOD! LAYUP by BYRD,ADDISON | 4-13 | V 9 | |
| 04:18 | GOOD! FT by SMITH,BRIANA | 4-14 | V 10 | |
| 03:23 | GOOD! FT by MAROSITES,KELCI [FB] | 4-15 | V 11 | |
| 03:23 | GOOD! FT by MAROSITES,KELCI [FB] | 4-16 | V 12 | |
| 03:00 | | 6-16 | V 10 | GOOD! JUMPER by DUGGINS,SYDNEY |
| 02:40 | | 8-16 | V 8 | GOOD! JUMPER by DUGGINS,SYDNEY [PNT] |
| 02:40 | | 9-16 | V 7 | GOOD! FT by DUGGINS,SYDNEY |
| 01:57 | GOOD! 3PTR by BYRD,ADDISON | 9-19 | V 10 | |
| 01:45 | | 11-19 | V 8 | GOOD! LAYUP by GRIFFITH,EMILY |
| 01:24 | | 13-19 | V 6 | GOOD! JUMPER by MAXWELL,DASIA [FB] |
| 01:21 | GOOD! LAYUP by PRICE,HARIS | 13-21 | V 8 | |
| 00:59 | GOOD! FT by PRICE,HARIS | 13-22 | V 9 | |
| 00:50 | | 15-22 | V 7 | GOOD! JUMPER by MAXWELL,DASIA [PNT] |
| 00:50 | GOOD! FT by MAROSITES,KELCI | 15-23 | V 8 | |
| 00:50 | GOOD! FT by MAROSITES,KELCI | 15-24 | V 9 | |
| 00:01 | GOOD! FT by SMITH,BRIANA [FB] | 15-25 | V 10 | |
| 00:01 | GOOD! FT by SMITH,BRIANA [FB] | 15-26 | V 11 | |

#11 Carson-Newman 26, Lincoln Memorial 15

**Official Scoring/Possession Reference Chart
#11 Carson-Newman vs Lincoln Memorial
Period 2**

November 28, 2018 at Tex Turner Arena (Jim Grubb Court) - Harrogate, TN

Starters:

#11 Carson-Newman: 21 PRICE,HARIS; 32 WESTER,MIKA; 1 MAROSITES,KAYLA; 2 SMITH,BRIANA; 3 BYRD,ADDISON;

Lincoln Memorial: 12 DUGGINS,SYDNEY; 14 KIRKPATRICK,ADDI; 21 GRIFFITH,EMILY; 22 NEWSOME,SYDNEY; 24 GRIFFITH,RACHEL;

Period 2

| Time | VISITORS: #11 Carson-Newman | Score | Margin | HOME: Lincoln Memorial |
|-------|---------------------------------|-------|--------|----------------------------------|
| 09:47 | | 17-26 | V 9 | GOOD! JUMPER by MAXWELL,DASIA |
| 08:40 | GOOD! FT by MAROSITES,KAYLA | 17-27 | V 10 | |
| 08:40 | GOOD! FT by MAROSITES,KAYLA | 17-28 | V 11 | |
| 08:05 | GOOD! JUMPER by BYRD,ADDISON | 17-30 | V 13 | |
| 07:51 | | 19-30 | V 11 | GOOD! JUMPER by MANEY,JORDAN |
| 07:24 | GOOD! FT by WESTER,MIKA [FB] | 19-31 | V 12 | |
| 07:24 | GOOD! FT by WESTER,MIKA [FB] | 19-32 | V 13 | |
| 07:03 | | 21-32 | V 11 | GOOD! LAYUP by QUARLES,SHERMERIA |
| 06:48 | GOOD! LAYUP by PRICE,HARIS [FB] | 21-34 | V 13 | |
| 05:51 | | 23-34 | V 11 | GOOD! LAYUP by GRIFFITH,EMILY |
| 05:40 | GOOD! 3PTR by MAROSITES,KAYLA | 23-37 | V 14 | |
| 05:13 | | 25-37 | V 12 | GOOD! JUMPER by GRIFFITH,EMILY |
| 05:04 | GOOD! JUMPER by WESTER,MIKA | 25-39 | V 14 | |
| 03:47 | GOOD! 3PTR by PRICE,HARIS | 25-42 | V 17 | |
| 03:39 | | 27-42 | V 15 | GOOD! LAYUP by GRIFFITH,EMILY |

| Time | VISITORS: #11 Carson-Newman | Score | Margin | HOME: Lincoln Memorial |
|-------|---------------------------------|-------|--------|-----------------------------------|
| 03:39 | | 28-42 | V 14 | GOOD! FT by GRIFFITH,EMILY |
| 02:49 | | 29-42 | V 13 | GOOD! FT by NEWSOME,SYDNEY [FB] |
| 02:49 | | 30-42 | V 12 | GOOD! FT by NEWSOME,SYDNEY [FB] |
| 02:22 | GOOD! LAYUP by PRICE,HARIS | 30-44 | V 14 | |
| 01:55 | GOOD! LAYUP by WESTER,MIKA [FB] | 30-46 | V 16 | |
| 01:43 | | 33-46 | V 13 | GOOD! 3PTR by MAXWELL,DASIA |
| 01:17 | GOOD! JUMPER by WESTER,MIKA | 33-48 | V 15 | |
| 00:27 | | 36-48 | V 12 | GOOD! 3PTR by DUGGINS,SYDNEY [FB] |
| 00:02 | GOOD! LAYUP by MAROSITES,KAYLA | 36-50 | V 14 | |

#11 Carson-Newman 50, Lincoln Memorial 36

**Official Scoring/Possession Reference Chart
#11 Carson-Newman vs Lincoln Memorial**

Period 3

November 28, 2018 at Tex Turner Arena (Jim Grubb Court) - Harrogate, TN

Starters:

#11 Carson-Newman: 21 PRICE,HARIS; 32 WESTER,MIKA; 1 MAROSITES,KAYLA; 2 SMITH,BRIANA; 3 BYRD,ADDISON;

Lincoln Memorial: 12 DUGGINS,SYDNEY; 14 KIRKPATRICK,ADDI; 21 GRIFFITH,EMILY; 22 NEWSOME,SYDNEY; 24 GRIFFITH,RACHEL;

Period 3

| Time | VISITORS: #11 Carson-Newman | Score | Margin | HOME: Lincoln Memorial |
|-------|---------------------------------------|-------|--------|-------------------------------------|
| 09:31 | | 38-50 | V 12 | GOOD! LAYUP by GRIFFITH,EMILY [FB] |
| 08:59 | | 40-50 | V 10 | GOOD! LAYUP by GRIFFITH,RACHEL [FB] |
| 08:12 | | 43-50 | V 7 | GOOD! 3PTR by WESEMANN,KAI [FB] |
| 07:45 | GOOD! FT by MAROSITES,KAYLA | 43-51 | V 8 | |
| 07:45 | GOOD! FT by MAROSITES,KAYLA | 43-52 | V 9 | |
| 07:18 | | 45-52 | V 7 | GOOD! LAYUP by WESEMANN,KAI |
| 07:10 | GOOD! LAYUP by WESTER,MIKA | 45-54 | V 9 | |
| 06:03 | GOOD! FT by WESTER,MIKA | 45-55 | V 10 | |
| 06:03 | GOOD! FT by WESTER,MIKA | 45-56 | V 11 | |
| 05:33 | GOOD! LAYUP by MAROSITES,KELCI | 45-58 | V 13 | |
| 05:07 | GOOD! FT by WESTER,MIKA | 45-59 | V 14 | |
| 05:07 | GOOD! FT by WESTER,MIKA | 45-60 | V 15 | |
| 04:39 | GOOD! LAYUP by MAROSITES,KAYLA | 45-62 | V 17 | |
| 04:19 | GOOD! 3PTR by SMITH,BRIANA [FB] | 45-65 | V 20 | |
| 03:45 | | 47-65 | V 18 | GOOD! LAYUP by GRIFFITH,RACHEL |
| 03:03 | | 50-65 | V 15 | GOOD! 3PTR by GRIFFITH,RACHEL |
| 02:50 | GOOD! FT by SMITH,BRIANA | 50-66 | V 16 | |
| 02:34 | GOOD! LAYUP by PRICE,HARIS | 50-68 | V 18 | |
| 02:34 | GOOD! FT by PRICE,HARIS | 50-69 | V 19 | |
| 01:42 | | 52-69 | V 17 | GOOD! LAYUP by GRIFFITH,RACHEL [FB] |
| 01:27 | GOOD! JUMPER by MAROSITES,KAYLA [PNT] | 52-71 | V 19 | |
| 00:56 | GOOD! FT by SMITH,BRIANA | 52-72 | V 20 | |
| 00:56 | GOOD! FT by SMITH,BRIANA | 52-73 | V 21 | |
| 00:35 | GOOD! LAYUP by MAROSITES,KAYLA [PNT] | 52-75 | V 23 | |
| 00:07 | | 53-75 | V 22 | GOOD! FT by MAXWELL,DASIA |
| 00:00 | GOOD! LAYUP by PRICE,HARIS | 53-77 | V 24 | |

#11 Carson-Newman 77, Lincoln Memorial 53

**Official Scoring/Possession Reference Chart
#11 Carson-Newman vs Lincoln Memorial**

Period 4

November 28, 2018 at Tex Turner Arena (Jim Grubb Court) - Harrogate, TN

Starters:

#11 Carson-Newman: 21 PRICE,HARIS; 32 WESTER,MIKA; 1 MAROSITES,KAYLA; 2 SMITH,BRIANA; 3 BYRD,ADDISON;

Lincoln Memorial: 12 DUGGINS,SYDNEY; 14 KIRKPATRICK,ADDI; 21 GRIFFITH,EMILY; 22 NEWSOME,SYDNEY; 24 GRIFFITH,RACHEL;

Period 4

| Time | VISITORS: #11 Carson-Newman | Score | Margin | HOME: Lincoln Memorial |
|------|-----------------------------|-------|--------|------------------------|
|------|-----------------------------|-------|--------|------------------------|

| Time | VISITORS: #11 Carson-Newman | Score | Margin | HOME: Lincoln Memorial |
|-------|-----------------------------------|-------|--------|--------------------------------------|
| 09:33 | | 55-77 | V 22 | GOOD! JUMPER by MAXWELL,DASIA [FB] |
| 08:20 | | 56-77 | V 21 | GOOD! FT by CAUDLE,KYNDALL |
| 08:20 | | 57-77 | V 20 | GOOD! FT by CAUDLE,KYNDALL |
| 07:34 | GOOD! JUMPER by PRICE,HARIS | 57-79 | V 22 | |
| 07:17 | | 60-79 | V 19 | GOOD! 3PTR by CAUDLE,KYNDALL |
| 06:21 | | 62-79 | V 17 | GOOD! LAYUP by WESEMANN,KAI |
| 06:04 | GOOD! JUMPER by WESTER,MIKA [PNT] | 62-81 | V 19 | |
| 05:49 | | 65-81 | V 16 | GOOD! 3PTR by KISER,LEXI |
| 04:30 | GOOD! JUMPER by WESTER,MIKA [PNT] | 65-83 | V 18 | |
| 04:05 | | 67-83 | V 16 | GOOD! LAYUP by WESEMANN,KAI |
| 03:43 | | 69-83 | V 14 | GOOD! LAYUP by GRIFFITH,RACHEL [FB] |
| 03:43 | | 70-83 | V 13 | GOOD! FT by GRIFFITH,RACHEL [FB] |
| 03:22 | GOOD! JUMPER by BUNCH,MADISON | 70-85 | V 15 | |
| 02:44 | | 71-85 | V 14 | GOOD! FT by GRIFFITH,RACHEL |
| 02:44 | | 72-85 | V 13 | GOOD! FT by GRIFFITH,RACHEL |
| 02:26 | GOOD! JUMPER by MAROSITES,KAYLA | 72-87 | V 15 | |
| 02:16 | | 74-87 | V 13 | GOOD! JUMPER by KISER,LEXI |
| 01:39 | | 76-87 | V 11 | GOOD! JUMPER by KISER,LEXI |
| 01:19 | | 77-87 | V 10 | GOOD! FT by GRIFFITH,RACHEL [FB] |
| 01:19 | | 78-87 | V 9 | GOOD! FT by GRIFFITH,RACHEL [FB] |
| 00:15 | GOOD! FT by SMITH,BRIANA [FB] | 78-88 | V 10 | |
| 00:15 | GOOD! FT by SMITH,BRIANA [FB] | 78-89 | V 11 | |
| 00:08 | | 80-89 | V 9 | GOOD! JUMPER by NEWSOME,SYDNEY [PNT] |
| 00:07 | GOOD! FT by MAROSITES,KAYLA | 80-90 | V 10 | |
| 00:07 | GOOD! FT by MAROSITES,KAYLA | 80-91 | V 11 | |

#11 Carson-Newman 91, Lincoln Memorial 80

Official Substitutions Log #11 Carson-Newman vs Lincoln Memorial Period 1

November 28, 2018 at Tex Turner Arena (Jim Grubb Court) - Harrogate, TN

| VISITORS: #11 Carson-Newman | Time | Score | HOME: Lincoln Memorial |
|-----------------------------|-------|-------|---------------------------|
| 21 PRICE,HARIS | | | 12 DUGGINS,SYDNEY |
| 32 WESTER,MIKA | | | 14 KIRKPATRICK,ADDI |
| 1 MAROSITES,KAYLA | | | 21 GRIFFITH,EMILY |
| 2 SMITH,BRIANA | | | 22 NEWSOME,SYDNEY |
| 3 BYRD,ADDISON | | | 24 GRIFFITH,RACHEL |
| | 08:13 | 7-4 | SUB OUT: KIRKPATRICK,ADDI |
| | 08:13 | | SUB IN: MAXWELL,DASIA |
| | 06:10 | 9-4 | SUB OUT: GRIFFITH,EMILY |
| | 06:10 | | SUB IN: MAXWELL,DASIA |
| | 04:53 | 13-4 | SUB OUT: MAXWELL,DASIA |
| | 04:53 | | SUB IN: KIRKPATRICK,ADDI |
| SUB OUT: 3 BYRD,ADDISON | 04:53 | | |
| SUB IN: 4 MAROSITES,KELCI | 04:53 | | |
| | 04:53 | | SUB IN: MANEY,JORDAN |
| | 03:36 | 14-4 | SUB OUT: KIRKPATRICK,ADDI |
| | 03:36 | | SUB IN: GRIFFITH,EMILY |
| | 03:36 | | SUB OUT: GRIFFITH,RACHEL |
| | 03:36 | | SUB IN: CAUDLE,KYNDALL |
| SUB OUT: 2 SMITH,BRIANA | 03:23 | 15-4 | |
| SUB IN: 11 WYKLE,ASHTON | 03:23 | | |
| SUB OUT: 32 WESTER,MIKA | 03:23 | | |
| SUB IN: 23 GRIFFIN,TORI | 03:23 | | |
| SUB OUT: 23 GRIFFIN,TORI | 02:16 | 16-9 | |
| SUB IN: 3 BYRD,ADDISON | 02:16 | | |
| | 00:59 | 21-13 | SUB OUT: GRIFFITH,EMILY |
| | 00:59 | | SUB IN: GRIFFITH,RACHEL |
| | 00:59 | | SUB OUT: DUGGINS,SYDNEY |
| | 00:59 | | SUB IN: PROFFITT,LINDSAY |
| SUB OUT: 1 MAROSITES,KAYLA | 00:59 | | |
| SUB IN: 32 WESTER,MIKA | 00:59 | | |
| SUB OUT: 11 WYKLE,ASHTON | 00:59 | | |
| SUB IN: 2 SMITH,BRIANA | 00:59 | | |

#11 Carson-Newman 26, Lincoln Memorial 15

Official Substitutions Log
#11 Carson-Newman vs Lincoln Memorial
Period 2
November 28, 2018 at Tex Turner Arena (Jim Grubb Court) - Harrogate, TN

| VISITORS: #11 Carson-Newman | Time | Score | HOME: Lincoln Memorial |
|-----------------------------|-------|-------|-----------------------------|
| 21 PRICE, HARI S | | | 12 DUGGINS, SYDNEY |
| 32 WESTER, MIKA | | | 14 KIRKPATRICK, ADDI |
| 1 MAROSITES, KAYLA | | | 21 GRIFFITH, EMILY |
| 2 SMITH, BRIANA | | | 22 NEWSOME, SYDNEY |
| 3 BYRD, ADDISON | | | 24 GRIFFITH, RACHEL |
| | 09:01 | 26-17 | SUB OUT: CAUDLE, KYNDALL |
| | 09:01 | | SUB IN: GRIFFITH, EMILY |
| | 08:40 | 27-17 | SUB OUT: NEWSOME, SYDNEY |
| | 08:40 | | SUB IN: MANEY, JORDAN |
| | 07:24 | 30-19 | SUB OUT: MANEY, JORDAN |
| | 07:24 | | SUB IN: QUARLES, SHERMERIA |
| SUB OUT: 2 SMITH, BRIANA | 06:41 | 34-21 | |
| SUB IN: 11 WYKLE, ASHTON | 06:41 | | |
| SUB OUT: 3 BYRD, ADDISON | 06:06 | 34-21 | |
| SUB IN: 4 MAROSITES, KELCI | 06:06 | | |
| | 03:47 | 42-25 | SUB OUT: QUARLES, SHERMERIA |
| | 03:47 | | SUB IN: NEWSOME, SYDNEY |
| SUB OUT: 11 WYKLE, ASHTON | 02:49 | 42-29 | |
| SUB IN: 33 BUNCH, MADISON | 02:49 | | |
| | 00:59 | 48-33 | SUB OUT: PROFFITT, LINDSAY |
| | 00:59 | | SUB IN: DUGGINS, SYDNEY |
| | 00:59 | | SUB OUT: NEWSOME, SYDNEY |
| | 00:59 | | SUB IN: WESEMANN, KAI |

#11 Carson-Newman 50, Lincoln Memorial 36

Official Substitutions Log
#11 Carson-Newman vs Lincoln Memorial
Period 3
November 28, 2018 at Tex Turner Arena (Jim Grubb Court) - Harrogate, TN

| VISITORS: #11 Carson-Newman | Time | Score | HOME: Lincoln Memorial |
|-----------------------------|-------|-------|---------------------------|
| 21 PRICE, HARI S | | | 12 DUGGINS, SYDNEY |
| 32 WESTER, MIKA | | | 14 KIRKPATRICK, ADDI |
| 1 MAROSITES, KAYLA | | | 21 GRIFFITH, EMILY |
| 2 SMITH, BRIANA | | | 22 NEWSOME, SYDNEY |
| 3 BYRD, ADDISON | | | 24 GRIFFITH, RACHEL |
| | 06:35 | 54-45 | SUB OUT: WESEMANN, KAI |
| | 06:35 | | SUB IN: MANEY, JORDAN |
| | 06:03 | 55-45 | SUB OUT: DUGGINS, SYDNEY |
| | 06:03 | | SUB IN: MAXWELL, DASIA |
| | 05:07 | 59-45 | SUB OUT: MANEY, JORDAN |
| | 05:07 | | SUB IN: WESEMANN, KAI |
| SUB OUT: 4 MAROSITES, KELCI | 02:50 | 66-50 | |
| SUB IN: 23 GRIFFIN, TORI | 02:50 | | |
| | 02:34 | 68-50 | SUB OUT: NEWSOME, SYDNEY |
| | 02:34 | | SUB IN: CAUDLE, KYNDALL |
| | 00:56 | 72-52 | SUB OUT: GRIFFITH, RACHEL |
| | 00:56 | | SUB IN: PROFFITT, LINDSAY |

#11 Carson-Newman 77, Lincoln Memorial 53

Official Substitutions Log
#11 Carson-Newman vs Lincoln Memorial
Period 4
November 28, 2018 at Tex Turner Arena (Jim Grubb Court) - Harrogate, TN

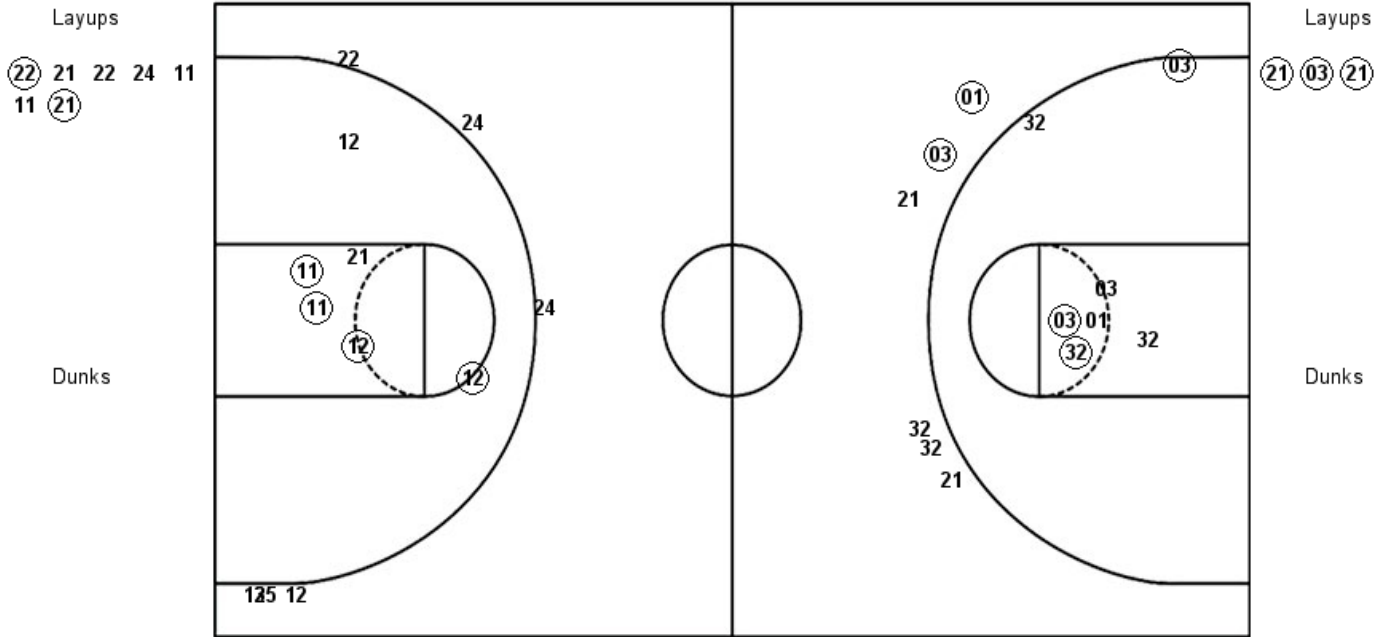
| VISITORS: #11 Carson-Newman | Time | Score | HOME: Lincoln Memorial |
|-----------------------------|-------|-------|----------------------------|
| 21 PRICE, HARIS | | | 12 DUGGINS, SYDNEY |
| 32 WESTER, MIKA | | | 14 KIRKPATRICK, ADDI |
| 1 MAROSITES, KAYLA | | | 21 GRIFFITH, EMLY |
| 2 SMITH, BRIANA | | | 22 NEWSOME, SYDNEY |
| 3 BYRD, ADDISON | | | 24 GRIFFITH, RACHEL |
| SUB OUT: 23 GRIFFIN, TORI | 10:00 | - | |
| SUB IN: 4 MAROSITES, KELCI | 10:00 | | |
| | 09:52 | - | SUB OUT: PROFFITT, LINDSAY |
| | 09:52 | | SUB IN: KISER, LEXI |
| | 05:55 | 81-62 | SUB OUT: CAUDLE, KYNDALL |
| | 05:55 | | SUB IN: GRIFFITH, RACHEL |
| SUB OUT: 4 MAROSITES, KELCI | 05:55 | | |
| SUB IN: 33 BUNCH, MADISON | 05:55 | | |
| SUB OUT: 2 SMITH, BRIANA | 05:55 | | |
| SUB IN: 11 WYKLE, ASHTON | 05:55 | | |
| | 03:43 | 83-69 | SUB OUT: WESEMANN, KAI |
| | 03:43 | | SUB IN: NEWSOME, SYDNEY |
| SUB OUT: 21 PRICE, HARIS | 03:43 | | |
| SUB IN: 2 SMITH, BRIANA | 03:43 | | |
| SUB OUT: 32 WESTER, MIKA | 02:44 | 85-71 | |
| SUB IN: 21 PRICE, HARIS | 02:44 | | |
| SUB OUT: 11 WYKLE, ASHTON | 01:19 | 87-78 | |
| SUB IN: 32 WESTER, MIKA | 01:19 | | |
| SUB OUT: 33 BUNCH, MADISON | 01:19 | | |
| SUB IN: 4 MAROSITES, KELCI | 01:19 | | |
| SUB OUT: 21 PRICE, HARIS | 00:38 | 87-78 | |
| SUB IN: 33 BUNCH, MADISON | 00:38 | | |
| | 00:07 | 91-80 | SUB OUT: GRIFFITH, RACHEL |
| | 00:07 | | SUB IN: PROFFITT, LINDSAY |

#11 Carson-Newman 91, Lincoln Memorial 80

Official Shot Chart
#11 Carson-Newman vs Lincoln Memorial
 PERIOD 1 Shots
 November 28, 2018 at Tex Turner Arena (Jim Grubb Court) - Harrogate, TN

Lincoln Memorial

#11 Carson-Newman



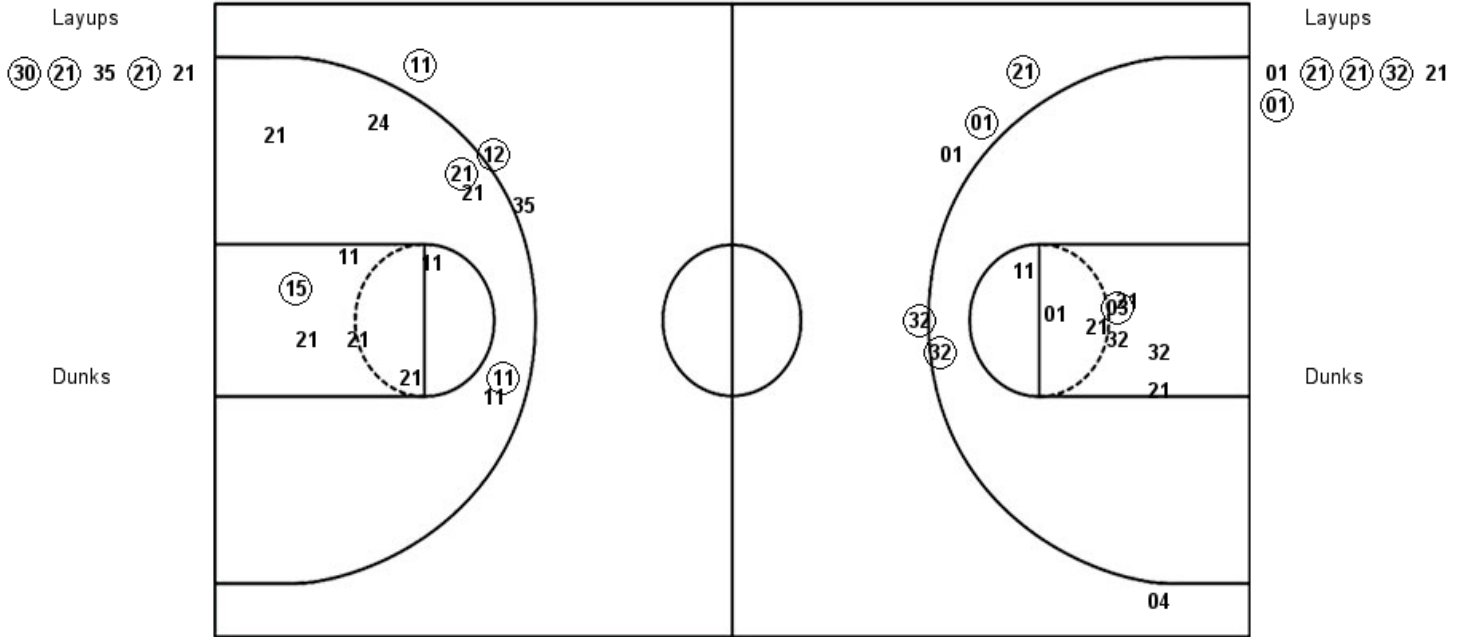
| LMU : Period 1 | Made | Att | Pct |
|--------------------------|----------|-----------|-------------|
| Layups | 2 | 7 | 28.6 |
| Dunks | 0 | 0 | 0 |
| 2PT Field Goals | 6 | 13 | 46.2 |
| 3PT Field Goals | 0 | 6 | 00.0 |
| Total Field Goals | 6 | 19 | 31.6 |

| C-N : Period 1 | Made | Att | Pct |
|--------------------------|----------|-----------|-------------|
| Layups | 3 | 3 | 100.0 |
| Dunks | 0 | 0 | 0 |
| 2PT Field Goals | 6 | 10 | 60.0 |
| 3PT Field Goals | 2 | 6 | 33.3 |
| Total Field Goals | 8 | 16 | 50.0 |

Official Shot Chart
#11 Carson-Newman vs Lincoln Memorial
PERIOD 2 Shots
 November 28, 2018 at Tex Turner Arena (Jim Grubb Court) - Harrogate, TN

Lincoln Memorial

#11 Carson-Newman



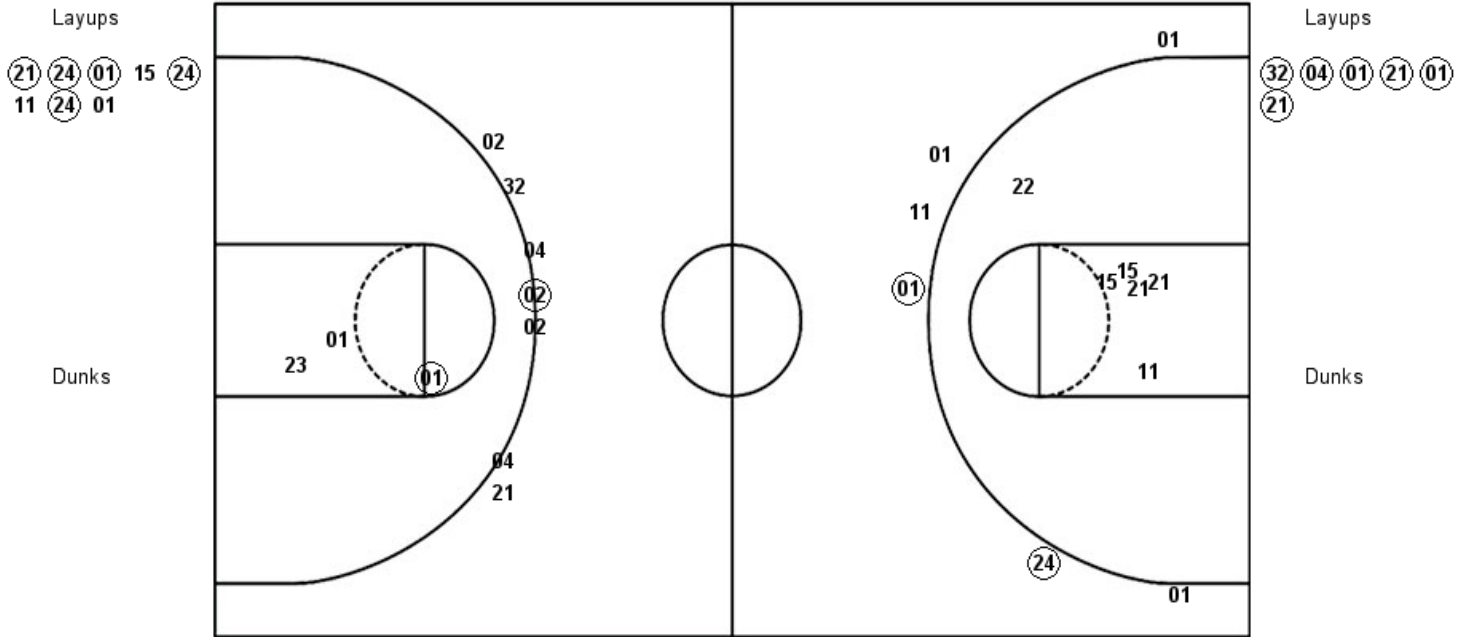
| LMU : Period 2 | Made | Att | Pct |
|--------------------------|----------|-----------|-------------|
| Layups | 3 | 5 | 60.0 |
| Dunks | 0 | 0 | 0 |
| 2PT Field Goals | 6 | 17 | 35.3 |
| 3PT Field Goals | 2 | 3 | 66.7 |
| Total Field Goals | 8 | 20 | 40.0 |

| C-N : Period 2 | Made | Att | Pct |
|--------------------------|----------|-----------|-------------|
| Layups | 4 | 6 | 66.7 |
| Dunks | 0 | 0 | 0 |
| 2PT Field Goals | 7 | 16 | 43.8 |
| 3PT Field Goals | 2 | 4 | 50.0 |
| Total Field Goals | 9 | 20 | 45.0 |

Official Shot Chart
#11 Carson-Newman vs Lincoln Memorial
 PERIOD 3 Shots
 November 28, 2018 at Tex Turner Arena (Jim Grubb Court) - Harrogate, TN

Lincoln Memorial

#11 Carson-Newman



| LMU : Period 3 | Made | Att | Pct |
|--------------------------|----------|-----------|-------------|
| Layups | 5 | 8 | 62.5 |
| Dunks | 0 | 0 | 0 |
| 2PT Field Goals | 5 | 14 | 35.7 |
| 3PT Field Goals | 2 | 6 | 33.3 |
| Total Field Goals | 7 | 20 | 35.0 |

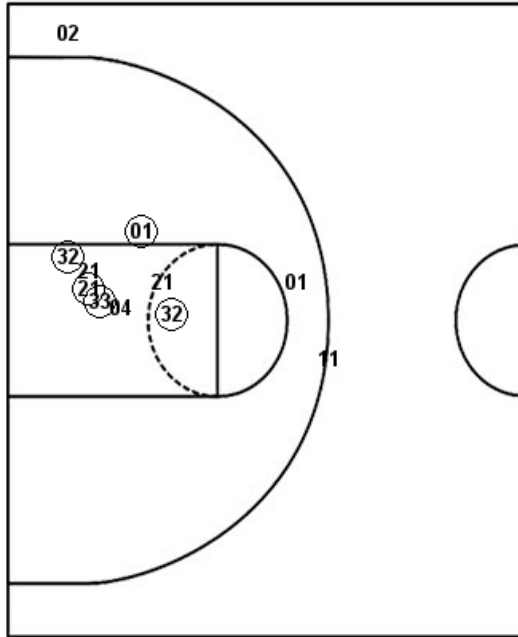
| C-N : Period 3 | Made | Att | Pct |
|--------------------------|----------|-----------|-------------|
| Layups | 6 | 6 | 100.0 |
| Dunks | 0 | 0 | 0 |
| 2PT Field Goals | 7 | 9 | 77.8 |
| 3PT Field Goals | 1 | 7 | 14.3 |
| Total Field Goals | 8 | 16 | 50.0 |

Official Shot Chart
#11 Carson-Newman vs Lincoln Memorial
 PERIOD 4 Shots
 November 28, 2018 at Tex Turner Arena (Jim Grubb Court) - Harrogate, TN

Lincoln Memorial

#11 Carson-Newman

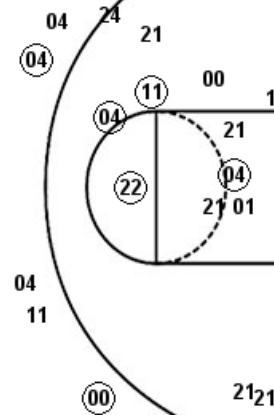
Layups
 00 11 11 (01) 01
 (01) (24)



Dunks

Layups

02 01 21



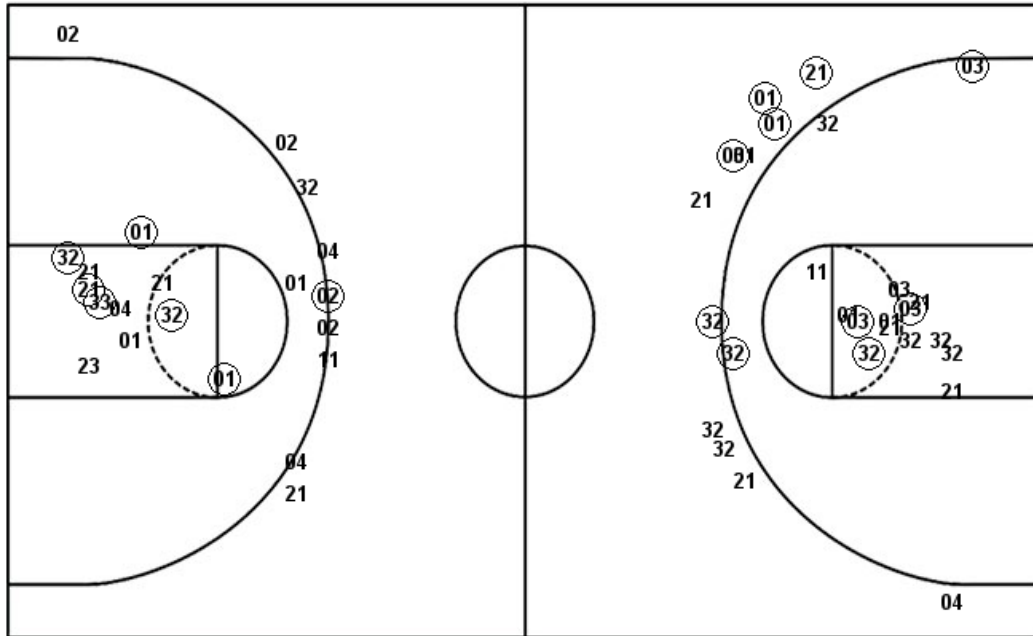
Dunks

| LMU : Period 4 | Made | Att | Pct |
|--------------------------|----------|-----------|-------------|
| Layups | 3 | 7 | 42.9 |
| Dunks | 0 | 0 | 0 |
| 2PT Field Goals | 7 | 20 | 35.0 |
| 3PT Field Goals | 2 | 5 | 40.0 |
| Total Field Goals | 9 | 25 | 36.0 |

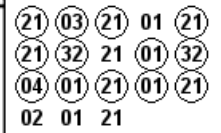
| C-N : Period 4 | Made | Att | Pct |
|--------------------------|----------|-----------|-------------|
| Layups | 0 | 3 | 00.0 |
| Dunks | 0 | 0 | 0 |
| 2PT Field Goals | 5 | 12 | 41.7 |
| 3PT Field Goals | 0 | 2 | 00.0 |
| Total Field Goals | 5 | 14 | 35.7 |

Official Shot Chart
#11 Carson-Newman vs Lincoln Memorial
#11 Carson-Newman Team Shots
November 28, 2018 at Tex Turner Arena (Jim Grubb Court) - Harrogate, TN

Layups



Layups



Dunks

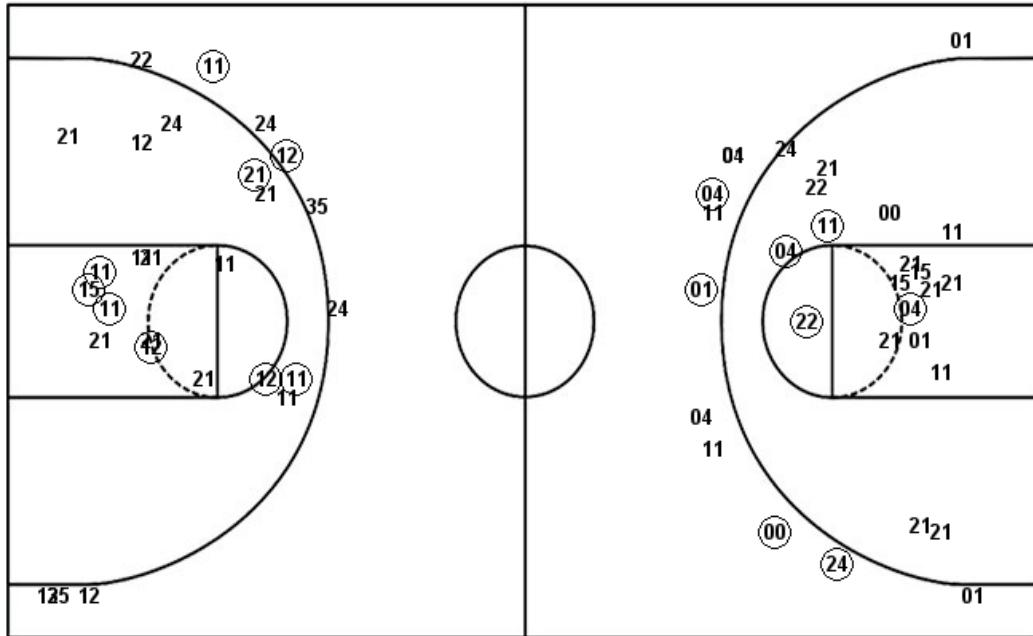
Dunks

| C-N : Period 1 | Made | Att | Pct |
|--------------------------|----------|-----------|-------------|
| Layups | 3 | 3 | 100.0 |
| Dunks | 0 | 0 | 0 |
| 2PT Field Goals | 6 | 10 | 60.0 |
| 3PT Field Goals | 2 | 6 | 33.3 |
| Total Field Goals | 8 | 16 | 50.0 |
| C-N : Period 3 | Made | Att | Pct |
| Layups | 6 | 6 | 100.0 |
| Dunks | 0 | 0 | 0 |
| 2PT Field Goals | 7 | 9 | 77.8 |
| 3PT Field Goals | 1 | 7 | 14.3 |
| Total Field Goals | 8 | 16 | 50.0 |

| C-N : Period 2 | Made | Att | Pct |
|--------------------------|----------|-----------|-------------|
| Layups | 4 | 6 | 66.7 |
| Dunks | 0 | 0 | 0 |
| 2PT Field Goals | 7 | 16 | 43.8 |
| 3PT Field Goals | 2 | 4 | 50.0 |
| Total Field Goals | 9 | 20 | 45.0 |
| C-N : Period 4 | Made | Att | Pct |
| Layups | 0 | 3 | 00.0 |
| Dunks | 0 | 0 | 0 |
| 2PT Field Goals | 5 | 12 | 41.7 |
| 3PT Field Goals | 0 | 2 | 00.0 |
| Total Field Goals | 5 | 14 | 35.7 |

Official Shot Chart
#11 Carson-Newman vs Lincoln Memorial
Lincoln Memorial Team Shots
November 28, 2018 at Tex Turner Arena (Jim Grubb Court) - Harrogate, TN

Layups



Layups

(22) 21 22 24 11
 11 (21) (30) (21) 35
 (21) 21 (21) (24) (01)
 15 (24) 11 (24) 01
 00 11 11 (01) 01
 (01) (24)

Dunks

Dunks

| LMU : Period 1 | Made | Att | Pct |
|--------------------------|----------|-----------|-------------|
| Layups | 2 | 7 | 28.6 |
| Dunks | 0 | 0 | 0 |
| 2PT Field Goals | 6 | 13 | 46.2 |
| 3PT Field Goals | 0 | 6 | 00.0 |
| Total Field Goals | 6 | 19 | 31.6 |
| LMU : Period 3 | Made | Att | Pct |
| Layups | 5 | 8 | 62.5 |
| Dunks | 0 | 0 | 0 |
| 2PT Field Goals | 5 | 14 | 35.7 |
| 3PT Field Goals | 2 | 6 | 33.3 |
| Total Field Goals | 7 | 20 | 35.0 |

| LMU : Period 2 | Made | Att | Pct |
|--------------------------|----------|-----------|-------------|
| Layups | 3 | 5 | 60.0 |
| Dunks | 0 | 0 | 0 |
| 2PT Field Goals | 6 | 17 | 35.3 |
| 3PT Field Goals | 2 | 3 | 66.7 |
| Total Field Goals | 8 | 20 | 40.0 |
| LMU : Period 4 | Made | Att | Pct |
| Layups | 3 | 7 | 42.9 |
| Dunks | 0 | 0 | 0 |
| 2PT Field Goals | 7 | 20 | 35.0 |
| 3PT Field Goals | 2 | 5 | 40.0 |
| Total Field Goals | 9 | 25 | 36.0 |