

FINAL SCORE

Palm Beach Atlantic 65



Florida Southern 64



**February 13, 2019 • Jenkins Field House (Streamline Sale Arena) -
Lakeland, Fla.**

FINAL STATISTICS

Official Box Score
Palm Beach Atlantic vs Florida Southern
Game Totals -- Final Statistics

February 13, 2019 at Jenkins Field House (Streamline Sale Arena) - Lakeland, Fla.

Palm Beach Atlantic 65

No.	Player	S	Pts	FG	3FG	FT	OR	DR	TR	PF	A	TO	Blk	Stl	Min	+/-
01	Ross, Aniyah		0	0-1	0-0	0-0	1	1	2	2	1	0	0	1	16	-2
02	Deshazier, Darsan		3	0-3	0-1	3-4	0	2	2	3	1	0	0	2	23	-1
11	Salhia, Mina		8	1-5	0-0	6-9	0	3	3	1	2	5	0	0	34	0
12	Self, Victoria		0	0-2	0-0	0-0	0	0	0	2	0	1	0	0	13	-6
21	Garvin, Jonika		38	17-27	0-1	4-5	3	11	14	2	1	6	2	1	37	-1
05	Oyedeki, Ibilola		0	0-1	0-0	0-0	0	0	0	0	0	0	0	0	3	-3
13	Laabs, Taylor		2	1-6	0-3	0-0	0	0	0	1	1	2	0	0	21	5
23	Charles, Claudia		6	2-5	2-4	0-0	0	12	12	1	0	1	0	1	28	5
30	Stang, Katie		0	0-0	0-0	0-0	0	0	0	1	1	0	0	0	5	6
34	Patrick, Caroline		8	2-3	2-2	2-2	1	1	2	0	0	0	0	0	20	2
	Team						0	2	2	0		1				
TOTALS			65	23-53	4-11	15-20	5	32	37	13	7	16	2	5	200	

Shooting By Period

Period	FG	FG%	3FG	3FG%	FT	FT%
1st Qtr	5-14	36%	0-0	0%	2-3	67%
2nd Qtr	10-14	71%	3-3	100%	1-2	50%
3rd Qtr	4-15	27%	1-7	14%	3-4	75%
4th Qtr	4-10	40%	0-1	00%	9-11	82%
1st Half	15-28	54%	3-3	100%	3-5	60%
2nd Half	8-25	32%	1-8	13%	12-15	80%
Game	23-53	43.4%	4-11	36.4%	15-20	75.0%

Last FG: 4th-00:55
Biggest Run: 10-0
Largest lead: By 10 at 2-00:05
Technical Fouls: None.

Florida Southern 64

No.	Player	S	Pts	FG	3FG	FT	OR	DR	TR	PF	A	TO	Blk	Stl	Min	+/-
13	Claybrone, Mercedes		11	4-11	1-3	2-2	4	9	13	2	2	2	0	0	34	0
21	Jenike, Julia		0	0-4	0-1	0-0	0	3	3	2	1	0	0	1	21	-6
22	Giardina, Camille		18	6-16	2-7	4-6	1	1	2	2	2	0	1	2	24	11
24	Fuchs-Robetin, Anja		12	6-16	0-2	0-0	5	4	9	4	1	3	0	1	25	9
31	Landberg, Elsa		8	2-7	2-7	2-2	1	1	2	4	0	0	0	1	19	11
02	Burkett, Monet		0	0-0	0-0	0-0	0	0	0	0	0	0	0	0	7	-5
14	Steele, Mackenzie		11	4-11	3-9	0-0	0	4	4	0	0	1	0	0	22	-1
25	Shell, Ashley		2	1-3	0-0	0-0	0	0	0	0	0	0	0	0	9	-9
32	Kalaydjiev, Bekki		2	1-2	0-0	0-0	1	0	1	2	0	2	0	2	21	-12
33	Aranda, Marta		0	0-1	0-1	0-0	0	1	1	1	0	3	0	0	6	-1
42	Campbell, Chesney		0	0-1	0-1	0-0	3	2	5	1	1	0	1	0	12	-2
	Team						2	0	2	0		0				
TOTALS			64	24-72	8-31	8-10	17	25	42	18	7	11	2	7	200	

Shooting By Period

Period	FG	FG%	3FG	3FG%	FT	FT%
1st Qtr	4-18	22%	2-9	22%	4-6	67%
2nd Qtr	5-12	42%	2-5	40%	0-0	0%
3rd Qtr	7-19	37%	0-4	00%	2-2	100%
4th Qtr	8-23	35%	4-13	31%	2-2	100%
1st Half	9-30	30%	4-14	29%	4-6	67%
2nd Half	15-42	36%	4-17	24%	4-4	100%
Game	24-72	33.3%	8-31	25.8%	8-10	80.0%

Last FG: 4th-01:17
Biggest Run: 9-0
Largest lead: By 6 at 1-01:30
Technical Fouls: #0 TEAM @ 4th - 02:55;

Game Notes:

Officials: Will Schrieber, John Akins, Darryl Dawkins
Attendance: 226

Start Time: 2019-02-13 22:29:35
End Time: 2019-02-14 00:13:21
Game Duration: 103
Conference Game;

Score	1st	2nd	3rd	4th	TOT
PBA	12	24	12	17	65
FSC	14	12	16	22	64

PBA led for 29:05. FSC led for 6:16.
Game was tied for 4:39.
Times tied: 3 Lead Changes: 6

Points from	PBA	FSC
In the Paint	34	22
Off Turns	13	23
2nd Chance	4	12
Fast Break	12	8
Bench	16	15

Official Box Score
Palm Beach Atlantic vs Florida Southern
First Half Statistics Only
February 13, 2019 at Jenkins Field House (Streamline Sale Arena) - Lakeland, Fla.

Palm Beach Atlantic 36

No.	Player	S	Pts	FG	3FG	FT	OR	DR	TR	PF	A	TO	Blk	Stl	Min	+/-
11	Salhia, Mina		4	1-4	0-0	2-3	0	2	2	1	2	2	0	0	18	12
12	Self, Victoria		0	0-1	0-0	0-0	0	0	0	2	0	0	0	0	5	-2
13	Laabs, Taylor		2	1-2	0-0	0-0	0	0	0	0	1	1	0	0	12	2
21	Garvin, Jonika		20	10-16	0-0	0-0	1	4	5	0	0	2	1	1	17	8
23	Charles, Claudia		3	1-2	1-1	0-0	0	6	6	1	0	1	0	1	15	12
30	Stang, Katie		0	0-0	0-0	0-0	0	0	0	1	1	0	0	0	5	6
34	Patrick, Caroline		6	2-2	2-2	0-0	0	0	0	0	0	0	0	0	9	7
01	Ross, Aniyah		0	0-0	0-0	0-0	1	0	1	2	1	0	0	1	9	0
02	Deshazier, Darsan		1	0-0	0-0	1-2	0	1	1	2	0	0	0	1	8	8
05	Oyedeki, Ibilola		0	0-1	0-0	0-0	0	0	0	0	0	0	0	0	3	-3
	Team		0	0-0	0-0	0-0	0	2	2	0	0	0	0	0	0	
TOTALS			36	15-28	3-3	3-5	2	15	17	9	5	6	1	4	100	

Shooting By Period

Period	FG	FG%	3FG	3FG%	FT	FT%
1st Qtr	5-14	36%	0-0	0%	2-3	67%
2nd Qtr	10-14	71%	3-3	100%	1-2	50%
1st Half	15-28	54%	3-3	100%	3-5	60%
Game	23-53	43.4%	4-11	36.4%	15-20	75.0%

Last FG Half: PBA 2nd-00:05

Florida Southern 26

No.	Player	S	Pts	FG	3FG	FT	OR	DR	TR	PF	A	TO	Blk	Stl	Min	+/-
13	Claybrone, Mercedes		7	2-7	1-2	2-2	3	3	6	1	1	2	0	0	19	-9
14	Steele, Mackenzie		9	3-6	3-6	0-0	0	3	3	0	0	1	0	0	10	-4
21	Jenike, Julia		0	0-2	0-1	0-0	0	2	2	1	1	0	0	0	12	-10
22	Giardina, Camille		2	0-2	0-1	2-4	0	0	0	0	0	0	0	0	5	0
24	Fuchs-Robetin, Anja		4	2-5	0-1	0-0	2	1	3	0	0	0	0	0	5	0
25	Shell, Ashley		2	1-3	0-0	0-0	0	0	0	0	0	0	0	0	9	-9
31	Landberg, Elsa		0	0-1	0-1	0-0	0	0	0	2	0	0	0	1	7	-1
32	Kalaydjiev, Bekki		2	1-2	0-0	0-0	1	0	1	0	0	2	0	2	13	-9
33	Aranda, Marta		0	0-1	0-1	0-0	0	1	1	1	0	3	0	0	6	-1
42	Campbell, Chesney		0	0-1	0-1	0-0	1	1	2	1	0	0	0	0	7	-2
02	Burkett, Monet		0	0-0	0-0	0-0	0	0	0	0	0	0	0	0	7	-5
	Team		0	0-0	0-0	0-0	0	0	0	0	0	0	0	0	0	
TOTALS			26	9-30	4-14	4-6	7	11	18	6	2	8	0	3	100	

Shooting By Period

Period	FG	FG%	3FG	3FG%	FT	FT%
1st Qtr	4-18	22%	2-9	22%	4-6	67%
2nd Qtr	5-12	42%	2-5	40%	0-0	0%
1st Half	9-30	30%	4-14	29%	4-6	67%
Game	24-72	33.3%	8-31	25.8%	8-10	80.0%

Last FG Half: FSC 2nd-03:27

Game Notes:

Officials: Will Schrieber, John Akins, Darryl Dawkins
Attendance: 226

Start Time: 2019-02-13 22:29:35
End Time: 2019-02-14 00:13:21
Game Duration: 103
Conference Game;

Score	1st	2nd	3rd	4th	TOT
PBA	12	24	12	17	65
FSC	14	12	16	22	64

Points from (This Period)	PBA	FSC
In the Paint	22	6
Off Turns	13	6
2nd Chance	4	6
Fast Break	6	2
Bench	11	13

Official Box Score
Palm Beach Atlantic vs Florida Southern
First Quarter Statistics Only
February 13, 2019 at Jenkins Field House (Streamline Sale Arena) - Lakeland, Fla.

Palm Beach Atlantic 12

No.	Player	S	Pts	FG	3FG	FT	OR	DR	TR	PF	A	TO	Blk	Stl	Min	+/-
01	Ross, Aniyah		0	0-0	0-0	0-0	1	0	1	1	0	0	0	0	5	-2
02	Deshazier, Darsan		0	0-0	0-0	0-0	0	1	1	2	0	0	0	1	3	2
11	Salhia, Mina		4	1-2	0-0	2-3	0	2	2	0	1	1	0	0	8	0
12	Self, Victoria		0	0-1	0-0	0-0	0	0	0	2	0	0	0	0	5	-2
21	Garvin, Jonika		6	3-8	0-0	0-0	0	1	1	0	0	2	1	0	10	-2
05	Oyedepi, Ibilola		0	0-1	0-0	0-0	0	0	0	0	0	0	0	0	3	-3
13	Laabs, Taylor		2	1-1	0-0	0-0	0	0	0	0	0	1	0	0	7	-4
23	Charles, Claudia		0	0-1	0-0	0-0	0	3	3	0	0	0	0	0	5	0
30	Stang, Katie		0	0-0	0-0	0-0	0	0	0	0	0	0	0	0	0	0
34	Patrick, Caroline		0	0-0	0-0	0-0	0	0	0	0	0	0	0	0	4	1
	Team						0	1	1	0		0				
TOTALS			12	5-14	0-0	2-3	1	8	9	5	1	4	1	1	50	

Shooting By Period

Period	FG	FG%	3FG	3FG%	FT	FT%
1st Qtr	5-14	36%	0-0	0%	2-3	67%
2nd Qtr	10-14	71%	3-3	100%	1-2	50%
1st Half	5-14	36%	0-0	0%	2-3	67%
1st Half	15-28	54%	3-3	100%	3-5	60%
Game	23-53	43.4%	4-11	36.4%	15-20	75.0%

Florida Southern 14

No.	Player	S	Pts	FG	3FG	FT	OR	DR	TR	PF	A	TO	Blk	Stl	Min	+/-
13	Claybrone, Mercedes		2	0-4	0-1	2-2	3	2	5	0	1	1	0	0	9	3
21	Jenike, Julia		0	0-0	0-0	0-0	0	1	1	1	0	0	0	0	5	0
22	Giardina, Camille		2	0-2	0-1	2-4	0	0	0	0	0	0	0	0	5	0
24	Fuchs-Robetin, Anja		4	2-5	0-1	0-0	2	1	3	0	0	0	0	0	5	0
31	Landberg, Elsa		0	0-0	0-0	0-0	0	0	0	0	0	0	0	1	5	0
02	Burkett, Monet		0	0-0	0-0	0-0	0	0	0	0	0	0	0	0	0	0
14	Steele, Mackenzie		6	2-4	2-4	0-0	0	2	2	0	0	1	0	0	5	2
25	Shell, Ashley		0	0-0	0-0	0-0	0	0	0	0	0	0	0	0	0	0
32	Kalaydjiev, Bekki		0	0-1	0-0	0-0	1	0	1	0	0	1	0	1	5	2
33	Aranda, Marta		0	0-1	0-1	0-0	0	1	1	1	0	1	0	0	5	2
42	Campbell, Chesney		0	0-1	0-1	0-0	1	1	2	1	0	0	0	0	6	1
	Team						0	0	0	0		0				
TOTALS			14	4-18	2-9	4-6	7	8	15	3	1	4	0	2	50	

Shooting By Period

Period	FG	FG%	3FG	3FG%	FT	FT%
1st Qtr	4-18	22%	2-9	22%	4-6	67%
2nd Qtr	5-12	42%	2-5	40%	0-0	0%
1st Half	4-18	22%	2-9	22%	4-6	67%
1st Half	9-30	30%	4-14	29%	4-6	67%
Game	24-72	33.3%	8-31	25.8%	8-10	80.0%

Game Notes:

Officials: **Will Schrieber, John Akins, Darryl Dawkins**
Attendance: 226

Start Time: **2019-02-13 22:29:35**
End Time: **2019-02-14 00:13:21**
Game Duration: 103
Conference Game;

Score	1st	2nd	3rd	4th	TOT
PBA	12	24	12	17	65
FSC	14	12	16	22	64

Points from (This Period)	PBA	FSC
In the Paint	8	2
Off Turns	3	4
2nd Chance	2	6
Fast Break	2	0
Bench	2	6

Official Play-By-Play
Palm Beach Atlantic vs Florida Southern
First Quarter

February 13, 2019 at Jenkins Field House (Streamline Sale Arena) - Lakeland, Fla.

Period 1

Starters:

Palm Beach Atlantic: 11 SALHIA,MINA; 12 SELF,VICTORIA; 21 GARVIN,JONIKA; 1 ROSS,ANIYAH; 2 DESHAZIER,DARSAN;

Florida Southern: 13 CLAYBRONE,MERCEDEZ; 21 JENIKE,JULIA; 22 GIARDINA,CAMILLE; 24 FUCHS-ROBETIN,ANJA; 31 LANDBERG,ELSA;

Time	VISITORS: Palm Beach Atlantic	Score	Margin	HOME: Florida Southern
09:43	MISSED JUMPER by GARVIN,JONIKA			
09:39				REBOUND (DEF) by CLAYBRONE,MERCEDEZ
09:37				TURNOVER (BADPASS) by CLAYBRONE,MERCEDEZ
09:37	STEAL by DESHAZIER,DARSAN			
09:24	GOOD! JUMPER by SALHIA,MINA	0-2	V 2	
09:24				FOUL (PERSONAL) by JENIKE,JULIA
09:24	GOOD! FT by SALHIA,MINA	0-3	V 3	
09:06				MISSED JUMPER by FUCHS-ROBETIN,ANJA
09:03				REBOUND (OFF) by CLAYBRONE,MERCEDEZ
09:01				MISSED JUMPER by CLAYBRONE,MERCEDEZ
09:01	BLOCK by GARVIN,JONIKA			
08:55	REBOUND (DEF) by DESHAZIER,DARSAN			
08:43	MISSED JUMPER by GARVIN,JONIKA			
08:40				REBOUND (DEF) by FUCHS-ROBETIN,ANJA
08:34				MISSED JUMPER by GIARDINA,CAMILLE
08:31				REBOUND (OFF) by FUCHS-ROBETIN,ANJA
08:31	FOUL (PERSONAL) by DESHAZIER,DARSAN			
08:24				MISSED JUMPER by CLAYBRONE,MERCEDEZ
08:20	REBOUND (DEF) by GARVIN,JONIKA			
08:17	MISSED JUMPER by GARVIN,JONIKA			
08:12				REBOUND (DEF) by CLAYBRONE,MERCEDEZ
07:58		2-3	V 1	GOOD! JUMPER by FUCHS-ROBETIN,ANJA
07:34	MISSED JUMPER by GARVIN,JONIKA			
07:31	REBOUND (OFF) by ROSS,ANIYAH			
07:26	GOOD! LAYUP by GARVIN,JONIKA [PNT]	2-5	V 3	
07:26	ASSIST by SALHIA,MINA			
07:11	FOUL (PERSONAL) by DESHAZIER,DARSAN			
07:11		3-5	V 2	GOOD! FT by GIARDINA,CAMILLE
07:11	SUB OUT: DESHAZIER,DARSAN			
07:11	SUB IN: LAABS,TAYLOR			
07:10				MISSED FT by GIARDINA,CAMILLE
07:08				REBOUND (OFF) by CLAYBRONE,MERCEDEZ
07:07	FOUL (PERSONAL) by ROSS,ANIYAH			
07:07	SUB OUT: ROSS,ANIYAH			
07:07	SUB IN: CHARLES,CLAUDIA			
07:03		5-5	T	GOOD! LAYUP by FUCHS-ROBETIN,ANJA
06:31	TURNOVER (TRAVEL) by SALHIA,MINA			
06:22				MISSED 3PTR by FUCHS-ROBETIN,ANJA
06:14				REBOUND (OFF) by FUCHS-ROBETIN,ANJA
06:01	FOUL (PERSONAL) by SELF,VICTORIA			
06:01		6-5	H 1	GOOD! FT by GIARDINA,CAMILLE
06:01				SUB OUT: CLAYBRONE,MERCEDEZ
06:01				SUB IN: CAMPBELL,CHESNEY
06:01	SUB OUT: SELF,VICTORIA			
06:01	SUB IN: OYEDEJI,IBILOLA			
06:01				MISSED FT by GIARDINA,CAMILLE
05:58	REBOUND (DEF) by CHARLES,CLAUDIA			
05:44				FOUL (PERSONAL) by CAMPBELL,CHESNEY
05:44	MISSED FT by SALHIA,MINA			
05:44	REBOUND (OFF) by TEAM			
05:44	GOOD! FT by SALHIA,MINA	6-6	T	
05:30				MISSED 3PTR by GIARDINA,CAMILLE
05:27	REBOUND (DEF) by CHARLES,CLAUDIA			
05:09	TURNOVER (BADPASS) by GARVIN,JONIKA			
05:09				STEAL by LANDBERG,ELSA
05:00				MISSED LAYUP by FUCHS-ROBETIN,ANJA
04:56	REBOUND (DEF) by SALHIA,MINA			
04:42	MISSED JUMPER by OYEDEJI,IBILOLA			
04:39				REBOUND (DEF) by JENIKE,JULIA
04:36				
04:36				SUB OUT: JENIKE,JULIA
04:36				SUB IN: ARANDA,MARTA
04:36				SUB OUT: GIARDINA,CAMILLE
04:36				SUB IN: KALAYDJIEV,BEKKI
04:36				SUB OUT: FUCHS-ROBETIN,ANJA
04:36				SUB IN: CLAYBRONE,MERCEDEZ
04:36				SUB OUT: LANDBERG,ELSA
04:36				SUB IN: STEELE,MACKENZIE
04:36	SUB OUT: CHARLES,CLAUDIA			
04:36	SUB IN: ROSS,ANIYAH			
04:32				FOUL (OFF) by ARANDA,MARTA
04:32				TURNOVER (OFFENSIVE) by ARANDA,MARTA
04:20	TURNOVER (TRAVEL) by LAABS,TAYLOR			
04:04		9-6	H 3	GOOD! 3PTR by STEELE,MACKENZIE
03:41	MISSED LAYUP by GARVIN,JONIKA			
03:38				REBOUND (DEF) by ARANDA,MARTA

Time	VISITORS: Palm Beach Atlantic	Score	Margin	HOME: Florida Southern
03:32				MISSED LAYUP by KALAYDJIEV,BEKKI
03:31				REBOUND (OFF) by CAMPBELL,CHESNEY
03:31	SUB OUT: SALHIA,MINA			
03:31	SUB IN: PATRICK,CAROLINE			
03:27		12-6	H 6	GOOD! 3PTR by STEELE,MACKENZIE
03:27				ASSIST by CLAYBRONE,MERCEDEZ
03:04	GOOD! LAYUP by GARVIN,JONIKA [PNT]	12-8	H 4	
02:53				MISSED 3PTR by CAMPBELL,CHESNEY
02:50				REBOUND (OFF) by KALAYDJIEV,BEKKI
02:50				TURNOVER (3SEC) by KALAYDJIEV,BEKKI
02:50	SUB OUT: OYEDEJI,IBIOLA			
02:50	SUB IN: SELF,VICTORIA			
02:28	MISSED JUMPER by SELF,VICTORIA			
02:23				REBOUND (DEF) by CAMPBELL,CHESNEY
02:20				MISSED 3PTR by STEELE,MACKENZIE
02:16				REBOUND (OFF) by CLAYBRONE,MERCEDEZ
02:15				MISSED 3PTR by ARANDA,MARTA
02:11	REBOUND (DEF) by TEAM			
02:11	SUB OUT: ROSS,ANIYAH			
02:11	SUB IN: CHARLES,CLAUDIA			
01:50	MISSED JUMPER by CHARLES,CLAUDIA			
01:46				REBOUND (DEF) by STEELE,MACKENZIE
01:30	FOUL (PERSONAL) by SELF,VICTORIA			
01:30		13-8	H 5	GOOD! FT by CLAYBRONE,MERCEDEZ
01:30	SUB OUT: SELF,VICTORIA			
01:30	SUB IN: SALHIA,MINA			
01:30		14-8	H 6	GOOD! FT by CLAYBRONE,MERCEDEZ
01:25	TURNOVER (BADPASS) by GARVIN,JONIKA			
01:25				STEAL by KALAYDJIEV,BEKKI
01:20				MISSED 3PTR by STEELE,MACKENZIE
01:17	REBOUND (DEF) by SALHIA,MINA			
01:00	GOOD! JUMPER by GARVIN,JONIKA [PNT]	14-10	H 4	
00:44				TURNOVER (TRAVEL) by STEELE,MACKENZIE
00:33	MISSED JUMPER by SALHIA,MINA			
00:27				REBOUND (DEF) by STEELE,MACKENZIE
00:25				MISSED JUMPER by CLAYBRONE,MERCEDEZ
00:22	REBOUND (DEF) by CHARLES,CLAUDIA			
00:15	GOOD! LAYUP by LAABS,TAYLOR [FB]	14-12	H 2	
00:01				MISSED 3PTR by CLAYBRONE,MERCEDEZ
00:01	REBOUND (DEF) by TEAM			

Palm Beach Atlantic 12, Florida Southern 14

Points from (This Period)	PBA	FSC
In the Paint	8	2
Off Turns	3	4
2nd Chance	2	6
Fast Break	2	0
Bench	2	6

Official Box Score
Palm Beach Atlantic vs Florida Southern
Second Quarter Statistics Only
February 13, 2019 at Jenkins Field House (Streamline Sale Arena) - Lakeland, Fla.

Palm Beach Atlantic 24

No.	Player	S	Pts	FG	3FG	FT	OR	DR	TR	PF	A	TO	Blk	Stl	Min	+/-
01	Ross, Aniyah		0	0-0	0-0	0-0	0	0	0	1	1	0	0	1	4	2
02	Deshazier, Darsan		1	0-0	0-0	1-2	0	0	0	0	0	0	0	0	5	6
11	Salhia, Mina		0	0-2	0-0	0-0	0	0	0	1	1	1	0	0	10	12
12	Self, Victoria		0	0-0	0-0	0-0	0	0	0	0	0	0	0	0	0	0
21	Garvin, Jonika		14	7-8	0-0	0-0	1	3	4	0	0	0	0	1	7	10
05	Oyedeki, Ibilola		0	0-0	0-0	0-0	0	0	0	0	0	0	0	0	0	0
13	Laabs, Taylor		0	0-1	0-0	0-0	0	0	0	0	1	0	0	0	5	6
23	Charles, Claudia		3	1-1	1-1	0-0	0	3	3	1	0	1	0	1	10	12
30	Stang, Katie		0	0-0	0-0	0-0	0	0	0	1	1	0	0	0	5	6
34	Patrick, Caroline		6	2-2	2-2	0-0	0	0	0	0	0	0	0	0	5	6
	Team						0	1	1	0		0				
TOTALS			24	10-14	3-3	1-2	1	7	8	4	4	2	0	3	50	

Shooting By Period

Period	FG	FG%	3FG	3FG%	FT	FT%
3rd Qtr	4-15	27%	1-7	14%	3-4	75%
4th Qtr	4-10	40%	0-1	00%	9-11	82%
2nd Half	10-14	71%	3-3	100%	1-2	50%
2nd Half	8-25	32%	1-8	13%	12-15	80%
Game	23-53	43.4%	4-11	36.4%	15-20	75.0%

Florida Southern 12

No.	Player	S	Pts	FG	3FG	FT	OR	DR	TR	PF	A	TO	Blk	Stl	Min	+/-
13	Claybrone, Mercedes		5	2-3	1-1	0-0	0	1	1	1	0	1	0	0	10	-12
21	Jenike, Julia		0	0-2	0-1	0-0	0	1	1	0	1	0	0	0	7	-10
22	Giardina, Camille		0	0-0	0-0	0-0	0	0	0	0	0	0	0	0	0	0
24	Fuchs-Robetin, Anja		0	0-0	0-0	0-0	0	0	0	0	0	0	0	0	0	0
31	Landberg, Elsa		0	0-1	0-1	0-0	0	0	0	2	0	0	0	0	2	-1
02	Burkett, Monet		0	0-0	0-0	0-0	0	0	0	0	0	0	0	0	7	-5
14	Steele, Mackenzie		3	1-2	1-2	0-0	0	1	1	0	0	0	0	0	5	-6
25	Shell, Ashley		2	1-3	0-0	0-0	0	0	0	0	0	0	0	0	9	-9
32	Kalaydjiev, Bekki		2	1-1	0-0	0-0	0	0	0	0	0	1	0	1	8	-11
33	Aranda, Marta		0	0-0	0-0	0-0	0	0	0	0	0	2	0	0	1	-3
42	Campbell, Chesney		0	0-0	0-0	0-0	0	0	0	0	0	0	0	0	1	-3
	Team						0	0	0	0		0				
TOTALS			12	5-12	2-5	0-0	0	3	3	3	1	4	0	1	50	

Shooting By Period

Period	FG	FG%	3FG	3FG%	FT	FT%
3rd Qtr	7-19	37%	0-4	00%	2-2	100%
4th Qtr	8-23	35%	4-13	31%	2-2	100%
2nd Half	5-12	42%	2-5	40%	0-0	0%
2nd Half	15-42	36%	4-17	24%	4-4	100%
Game	24-72	33.3%	8-31	25.8%	8-10	80.0%

Game Notes:

Officials: **Will Schrieber, John Akins, Darryl Dawkins**
Attendance: 226

Start Time: **2019-02-13 22:29:35**
End Time: **2019-02-14 00:13:21**
Game Duration: 103
Conference Game;

Score	1st	2nd	3rd	4th	TOT
PBA	12	24	12	17	65
FSC	14	12	16	22	64

Points from (This Period)	PBA	FSC
In the Paint	14	4
Off Turns	10	2
2nd Chance	2	0
Fast Break	4	2
Bench	9	7

Official Play-By-Play
Palm Beach Atlantic vs Florida Southern
Second Quarter

February 13, 2019 at Jenkins Field House (Streamline Sale Arena) - Lakeland, Fla.

Period 2

Starters:

Palm Beach Atlantic: 11 SALHIA,MINA; 12 SELF,VICTORIA; 21 GARVIN,JONIKA; 1 ROSS,ANIYAH; 2 DESHAZIER,DARSAN;

Florida Southern: 13 CLAYBRONE,MERCEDEZ; 21 JENIKE,JULIA; 22 GIARDINA,CAMILLE; 24 FUCHS-ROBETIN,ANJA; 31 LANDBERG,ELSA;

Time	VISITORS: Palm Beach Atlantic	Score	Margin	HOME: Florida Southern
09:43				TURNOVER (BADPASS) by ARANDA,MARTA
09:43	STEAL by ROSS,ANIYAH			
09:23	GOOD! 3PTR by PATRICK,CAROLINE	14-15	V 1	
09:23	ASSIST by ROSS,ANIYAH			
08:51				TURNOVER (BADPASS) by ARANDA,MARTA
08:51				SUB OUT: ARANDA,MARTA
08:51				SUB IN: BURKETT,MONET
08:51				SUB OUT: CAMPBELL,CHESNEY
08:51				SUB IN: SHELL,ASHLEY
08:38	GOOD! 3PTR by PATRICK,CAROLINE	14-18	V 4	
08:38	ASSIST by LAABS,TAYLOR			
08:19		16-18	V 2	GOOD! JUMPER by CLAYBRONE,MERCEDEZ
08:02	GOOD! 3PTR by CHARLES,CLAUDIA	16-21	V 5	
08:02	ASSIST by SALHIA,MINA			
07:44		19-21	V 2	GOOD! 3PTR by STEELE,MACKENZIE
07:27	TURNOVER (LOSTBALL) by SALHIA,MINA			
07:27				STEAL by KALAYDJIEV,BEKKI
07:22		21-21	T	GOOD! LAYUP by KALAYDJIEV,BEKKI [FB]
06:57	MISSED LAYUP by LAABS,TAYLOR			
06:54				REBOUND (DEF) by STEELE,MACKENZIE
06:37	FOUL (PERSONAL) by ROSS,ANIYAH			
06:37				SUB OUT: KALAYDJIEV,BEKKI
06:37				SUB IN: LANDBERG,ELSA
06:37				SUB OUT: STEELE,MACKENZIE
06:37				SUB IN: JENIKE,JULIA
06:37	SUB OUT: LAABS,TAYLOR			
06:37	SUB IN: STANG,KATIE			
06:37	SUB OUT: CHARLES,CLAUDIA			
06:37	SUB IN: GARVIN,JONIKA			
06:37	SUB OUT: PATRICK,CAROLINE			
06:37	SUB IN: DESHAZIER,DARSAN			
06:34	FOUL (PERSONAL) by SALHIA,MINA			
06:22				MISSED LAYUP by SHELL,ASHLEY
06:22	REBOUND (DEF) by TEAM			
06:13				FOUL (PERSONAL) by LANDBERG,ELSA
06:13	SUB OUT: ROSS,ANIYAH			
06:13	SUB IN: CHARLES,CLAUDIA			
06:06	MISSED JUMPER by SALHIA,MINA			
06:02	REBOUND (OFF) by GARVIN,JONIKA			
06:01	GOOD! LAYUP by GARVIN,JONIKA	21-23	V 2	
05:55		24-23	H 1	GOOD! 3PTR by CLAYBRONE,MERCEDEZ
05:55				ASSIST by JENIKE,JULIA
05:32	FOUL (OFF) by CHARLES,CLAUDIA			
05:32	TURNOVER (OFFENSIVE) by CHARLES,CLAUDIA			
05:15				MISSED JUMPER by JENIKE,JULIA
05:13	REBOUND (DEF) by GARVIN,JONIKA			
05:06				FOUL (PERSONAL) by CLAYBRONE,MERCEDEZ
04:59	GOOD! LAYUP by GARVIN,JONIKA [PNT]	24-25	V 1	
04:59	ASSIST by STANG,KATIE			
04:42	FOUL (PERSONAL) by STANG,KATIE			
04:42				
04:28				MISSED 3PTR by LANDBERG,ELSA
04:25	REBOUND (DEF) by CHARLES,CLAUDIA			
04:10				FOUL (PERSONAL) by LANDBERG,ELSA
04:10	MISSED FT by DESHAZIER,DARSAN			
04:10	REBOUND (OFF) by TEAM			
04:10				SUB OUT: LANDBERG,ELSA
04:10				SUB IN: KALAYDJIEV,BEKKI
04:10	GOOD! FT by DESHAZIER,DARSAN	24-26	V 2	
04:00				TURNOVER (BADPASS) by CLAYBRONE,MERCEDEZ
04:00	STEAL by CHARLES,CLAUDIA			
03:55	GOOD! JUMPER by GARVIN,JONIKA [FB/PNT]	24-28	V 4	
03:27		26-28	V 2	GOOD! LAYUP by SHELL,ASHLEY
03:05	GOOD! JUMPER by GARVIN,JONIKA [PNT]	26-30	V 4	
02:42				MISSED LAYUP by CLAYBRONE,MERCEDEZ
02:39	REBOUND (DEF) by GARVIN,JONIKA			
02:16	GOOD! JUMPER by GARVIN,JONIKA [PNT]	26-32	V 6	
01:59				MISSED 3PTR by JENIKE,JULIA
01:55	REBOUND (DEF) by CHARLES,CLAUDIA			
01:51	MISSED LAYUP by SALHIA,MINA			
01:48				REBOUND (DEF) by JENIKE,JULIA
01:32				MISSED LAYUP by SHELL,ASHLEY
01:28	REBOUND (DEF) by GARVIN,JONIKA			
01:28	TIMEOUT 30SEC			
01:26				SUB OUT: BURKETT,MONET
01:26				SUB IN: STEELE,MACKENZIE

Time	VISITORS: Palm Beach Atlantic	Score	Margin	HOME: Florida Southern
01:26	SUB OUT: STANG,KATIE			
01:26	SUB IN: PATRICK,CAROLINE			
01:17	SUB OUT: DESHAZIER,DARSAN			
01:17	SUB IN: LAABS,TAYLOR			
01:12	MISSED JUMPER by GARVIN,JONIKA			
01:09				REBOUND (DEF) by CLAYBRONE,MERCEDEZ
00:53				TURNOVER (BADPASS) by KALAYDJIEV,BEKKI
00:53	STEAL by GARVIN,JONIKA			
00:48	GOOD! LAYUP by GARVIN,JONIKA [FB]	26-34	V 8	
00:30				MISSED 3PTR by STEELE,MACKENZIE
00:28	REBOUND (DEF) by CHARLES,CLAUDIA			
00:05	GOOD! LAYUP by GARVIN,JONIKA	26-36	V 10	

Palm Beach Atlantic 36, Florida Southern 26

Points from (This Period)	PBA	FSC
In the Paint	14	4
Off Turns	10	2
2nd Chance	2	0
Fast Break	4	2
Bench	9	7

Official Box Score
Palm Beach Atlantic vs Florida Southern
Second Half Statistics Only
February 13, 2019 at Jenkins Field House (Streamline Sale Arena) - Lakeland, Fla.

Palm Beach Atlantic 29

No.	Player	S	Pts	FG	3FG	FT	OR	DR	TR	PF	A	TO	Blk	Stl	Min	+/-
11	Salhia, Mina		4	0-1	0-0	4-6	0	1	1	0	0	3	0	0	16	-12
12	Self, Victoria		0	0-1	0-0	0-0	0	0	0	0	0	1	0	0	8	-4
13	Laabs, Taylor		0	0-4	0-3	0-0	0	0	0	1	0	1	0	0	9	3
21	Garvin, Jonika		18	7-11	0-1	4-5	2	7	9	2	1	4	1	0	20	-9
23	Charles, Claudia		3	1-3	1-3	0-0	0	6	6	0	0	0	0	0	13	-7
30	Stang, Katie		0	0-0	0-0	0-0	0	0	0	0	0	0	0	0	0	0
34	Patrick, Caroline		2	0-1	0-0	2-2	1	1	2	0	0	0	0	0	12	-5
01	Ross, Aniyah		0	0-1	0-0	0-0	0	1	1	0	0	0	0	0	7	-2
02	Deshazier, Darsan		2	0-3	0-1	2-2	0	1	1	1	1	0	0	1	15	-9
05	Oyedeki, Ibilola		0	0-0	0-0	0-0	0	0	0	0	0	0	0	0	0	0
	Team		0	0-0	0-0	0-0	0	0	0	0	0	1	0	0	0	
TOTALS			29	8-25	1-8	12-15	3	17	20	4	2	10	1	1	100	

Shooting By Period

Period	FG	FG%	3FG	3FG%	FT	FT%
3rd Qtr	4-15	27%	1-7	14%	3-4	75%
4th Qtr	4-10	40%	0-1	00%	9-11	82%
2nd Half	8-25	32%	1-8	13%	12-15	80%
Game	23-53	43.4%	4-11	36.4%	15-20	75.0%

Last FG Half: PBA 4th-00:55

Florida Southern 38

No.	Player	S	Pts	FG	3FG	FT	OR	DR	TR	PF	A	TO	Blk	Stl	Min	+/-
13	Claybrone, Mercedes		4	2-4	0-1	0-0	1	6	7	1	1	0	0	0	16	9
14	Steele, Mackenzie		2	1-5	0-3	0-0	0	1	1	0	0	0	0	0	12	3
21	Jenike, Julia		0	0-2	0-0	0-0	0	1	1	1	0	0	0	1	9	4
22	Giardina, Camille		16	6-14	2-6	2-2	1	1	2	2	2	0	1	2	19	11
24	Fuchs-Robetin, Anja		8	4-11	0-1	0-0	3	3	6	4	1	3	0	1	20	9
25	Shell, Ashley		0	0-0	0-0	0-0	0	0	0	0	0	0	0	0	0	0
31	Landberg, Elsa		8	2-6	2-6	2-2	1	1	2	2	0	0	0	0	12	12
32	Kalaydjiev, Bekki		0	0-0	0-0	0-0	0	0	0	2	0	0	0	0	8	-3
33	Aranda, Marta		0	0-0	0-0	0-0	0	0	0	0	0	0	0	0	0	0
42	Campbell, Chesney		0	0-0	0-0	0-0	2	1	3	0	1	0	1	0	4	0
02	Burkett, Monet		0	0-0	0-0	0-0	0	0	0	0	0	0	0	0	0	0
	Team		0	0-0	0-0	0-0	2	0	2	0	0	0	0	0	0	
TOTALS			38	15-42	4-17	4-4	10	14	24	12	5	3	2	4	100	

Shooting By Period

Period	FG	FG%	3FG	3FG%	FT	FT%
3rd Qtr	7-19	37%	0-4	00%	2-2	100%
4th Qtr	8-23	35%	4-13	31%	2-2	100%
2nd Half	15-42	36%	4-17	24%	4-4	100%
Game	24-72	33.3%	8-31	25.8%	8-10	80.0%

Last FG Half: FSC 4th-01:17

Game Notes:

Officials: **Will Schrieber, John Akins, Darryl Dawkins**
Attendance: **226**

Start Time: **2019-02-13 22:29:35**
End Time: **2019-02-14 00:13:21**
Game Duration: **103**
Conference Game:

Score	1st	2nd	3rd	4th	TOT
PBA	12	24	12	17	65
FSC	14	12	16	22	64

Points from (This Period)	PBA	FSC
In the Paint	12	16
Off Turns	0	17
2nd Chance	0	6
Fast Break	6	6
Bench	5	2

Official Box Score
Palm Beach Atlantic vs Florida Southern
Third Quarter Statistics Only
February 13, 2019 at Jenkins Field House (Streamline Sale Arena) - Lakeland, Fla.

Palm Beach Atlantic 29

No.	Player	S	Pts	FG	3FG	FT	OR	DR	TR	PF	A	TO	Blk	Stl	Min	+/-
01	Ross, Aniyah		0	0-1	0-0	0-0	0	0	0	0	0	0	0	0	3	-4
02	Deshazier, Darsan		0	0-1	0-0	0-0	0	0	0	0	1	0	0	1	6	-6
11	Salhia, Mina		0	0-1	0-0	0-0	0	1	1	0	0	2	0	0	10	-5
12	Self, Victoria		0	0-0	0-0	0-0	0	0	0	0	0	0	0	0	3	-4
21	Garvin, Jonika		9	3-5	0-1	3-4	1	3	4	1	1	1	0	0	10	-4
05	Oyedepi, Ibilola		0	0-0	0-0	0-0	0	0	0	0	0	0	0	0	0	0
13	Laabs, Taylor		0	0-3	0-3	0-0	0	0	0	1	0	1	0	0	4	2
23	Charles, Claudia		3	1-3	1-3	0-0	0	4	4	0	0	0	0	0	7	0
30	Stang, Katie		0	0-0	0-0	0-0	0	0	0	0	0	0	0	0	0	0
34	Patrick, Caroline		0	0-1	0-0	0-0	1	0	1	0	0	0	0	0	7	1
	Team						0	0	0	0		0				
TOTALS			12	4-15	1-7	3-4	2	8	10	2	2	4	0	1	50	

Shooting By Period

Period	FG	FG%	3FG	3FG%	FT	FT%
2nd Half	0-0	0%	0-0	0%	0-0	0%
Game	23-53	43.4%	4-11	36.4%	15-20	75.0%

Florida Southern 38

No.	Player	S	Pts	FG	3FG	FT	OR	DR	TR	PF	A	TO	Blk	Stl	Min	+/-
13	Claybrone, Mercedes		2	1-3	0-1	0-0	0	5	5	1	1	0	0	0	10	4
21	Jenike, Julia		0	0-2	0-0	0-0	0	1	1	0	0	0	0	0	8	6
22	Giardina, Camille		6	3-6	0-2	0-0	0	1	1	1	1	0	0	2	10	4
24	Fuchs-Robetin, Anja		6	3-6	0-0	0-0	3	2	5	2	0	3	0	0	10	4
31	Landberg, Elsa		2	0-0	0-0	2-2	1	0	1	0	0	0	0	0	4	7
02	Burkett, Monet		0	0-0	0-0	0-0	0	0	0	0	0	0	0	0	0	0
14	Steele, Mackenzie		0	0-2	0-1	0-0	0	0	0	0	0	0	0	0	2	-2
25	Shell, Ashley		0	0-0	0-0	0-0	0	0	0	0	0	0	0	0	0	0
32	Kalaydjiev, Bekki		0	0-0	0-0	0-0	0	0	0	1	0	0	0	0	6	-3
33	Aranda, Marta		0	0-0	0-0	0-0	0	0	0	0	0	0	0	0	0	0
42	Campbell, Chesney		0	0-0	0-0	0-0	0	0	0	0	0	0	0	0	0	0
	Team						0	0	0	0		0				
TOTALS			16	7-19	0-4	2-2	4	9	13	5	2	3	0	2	50	

Shooting By Period

Period	FG	FG%	3FG	3FG%	FT	FT%
2nd Half	0-0	0%	0-0	0%	0-0	0%
Game	24-72	33.3%	8-31	25.8%	8-10	80.0%

Game Notes:

Officials: Will Schrieber, John Akins, Darryl Dawkins
Attendance: 226

Start Time: 2019-02-13 22:29:35

End Time: 2019-02-14 00:13:21

Game Duration: 103

Conference Game;

Score	1st	2nd	3rd	4th	TOT
PBA	12	24	12	17	65
FSC	14	12	16	22	64

Points from (This Period)	PBA	FSC
In the Paint	6	10
Off Turns	0	4
2nd Chance	0	4
Fast Break	2	2
Bench	3	0

Official Play-By-Play
Palm Beach Atlantic vs Florida Southern
Third Quarter
February 13, 2019 at Jenkins Field House (Streamline Sale Arena) - Lakeland, Fla.

Period 3

Starters:

Palm Beach Atlantic: 11 SALHIA,MINA; 12 SELF,VICTORIA; 21 GARVIN,JONIKA; 1 ROSS,ANIYAH; 2 DESHAZIER,DARSAN;

Florida Southern: 13 CLAYBRONE,MERCEDEZ; 21 JENIKE,JULIA; 22 GIARDINA,CAMILLE; 24 FUCHS-ROBETIN,ANJA; 31 LANDBERG,ELSA;

Time	VISITORS: Palm Beach Atlantic	Score	Margin	HOME: Florida Southern
09:46	MISSED LAYUP by SALHIA,MINA			
09:43				REBOUND (DEF) by CLAYBRONE,MERCEDEZ
09:21		28-36	V 8	GOOD! JUMPER by FUCHS-ROBETIN,ANJA [PNT]
09:21				ASSIST by CLAYBRONE,MERCEDEZ
08:47	MISSED 3PTR by GARVIN,JONIKA			
08:43				REBOUND (DEF) by FUCHS-ROBETIN,ANJA
08:39		30-36	V 6	GOOD! LAYUP by FUCHS-ROBETIN,ANJA [FB]
08:21				FOUL (PERSONAL) by FUCHS-ROBETIN,ANJA
08:21	MISSED FT by GARVIN,JONIKA			
08:21	REBOUND (OFF) by TEAM			
08:21	GOOD! FT by GARVIN,JONIKA	30-37	V 7	
08:05		32-37	V 5	GOOD! LAYUP by GIARDINA,CAMILLE
07:37	MISSED LAYUP by ROSS,ANIYAH			
07:34				REBOUND (DEF) by JENIKE,JULIA
07:26				MISSED 3PTR by CLAYBRONE,MERCEDEZ
07:21				REBOUND (OFF) by FUCHS-ROBETIN,ANJA
07:18				TURNOVER (TRAVEL) by FUCHS-ROBETIN,ANJA
07:18	SUB OUT: ROSS,ANIYAH			
07:18	SUB IN: LAABS,TAYLOR			
07:18	SUB OUT: SELF,VICTORIA			
07:18	SUB IN: CHARLES,CLAUDIA			
07:03	TURNOVER (LOSTBALL) by LAABS,TAYLOR			
07:03				STEAL by GIARDINA,CAMILLE
07:03				MISSED LAYUP by CLAYBRONE,MERCEDEZ
07:03				REBOUND (OFF) by LANDBERG,ELSA
07:03	FOUL (PERSONAL) by LAABS,TAYLOR			
07:03		33-37	V 4	GOOD! FT by LANDBERG,ELSA
07:03	SUB OUT: LAABS,TAYLOR			
07:03	SUB IN: PATRICK,CAROLINE			
07:03		34-37	V 3	GOOD! FT by LANDBERG,ELSA
06:40	MISSED LAYUP by DESHAZIER,DARSAN			
06:36	REBOUND (OFF) by GARVIN,JONIKA			
06:36	MISSED LAYUP by GARVIN,JONIKA			
06:31				REBOUND (DEF) by CLAYBRONE,MERCEDEZ
06:30				MISSED 3PTR by GIARDINA,CAMILLE
06:28	REBOUND (DEF) by CHARLES,CLAUDIA			
06:27				SUB OUT: LANDBERG,ELSA
06:27				SUB IN: KALAYDJIEV,BEKKI
06:27	TURNOVER (OTHER) by GARVIN,JONIKA			
06:16		36-37	V 1	GOOD! LAYUP by GIARDINA,CAMILLE
05:58	GOOD! LAYUP by GARVIN,JONIKA	36-39	V 3	
05:58	ASSIST by DESHAZIER,DARSAN			
05:49		38-39	V 1	GOOD! JUMPER by GIARDINA,CAMILLE
05:16	GOOD! LAYUP by GARVIN,JONIKA	38-41	V 3	
05:03				MISSED JUMPER by FUCHS-ROBETIN,ANJA
05:00	REBOUND (DEF) by CHARLES,CLAUDIA			
04:39	MISSED 3PTR by CHARLES,CLAUDIA			
04:36				REBOUND (DEF) by GIARDINA,CAMILLE
04:14				TURNOVER (BADPASS) by FUCHS-ROBETIN,ANJA
04:14	STEAL by DESHAZIER,DARSAN			
04:01	TURNOVER (LOSTBALL) by SALHIA,MINA			
04:01	SUB OUT: DESHAZIER,DARSAN			
04:01	SUB IN: LAABS,TAYLOR			
04:01				
03:50				MISSED JUMPER by JENIKE,JULIA
03:47	REBOUND (DEF) by GARVIN,JONIKA			
03:41	MISSED 3PTR by LAABS,TAYLOR			
03:38				REBOUND (DEF) by CLAYBRONE,MERCEDEZ
03:31				MISSED 3PTR by GIARDINA,CAMILLE
03:28				REBOUND (OFF) by FUCHS-ROBETIN,ANJA
03:27		40-41	V 1	GOOD! LAYUP by FUCHS-ROBETIN,ANJA
03:08				FOUL (PERSONAL) by CLAYBRONE,MERCEDEZ
03:04	MISSED 3PTR by LAABS,TAYLOR			
03:01				REBOUND (DEF) by CLAYBRONE,MERCEDEZ
02:55				MISSED JUMPER by JENIKE,JULIA
02:51	REBOUND (DEF) by CHARLES,CLAUDIA			
02:36	GOOD! 3PTR by CHARLES,CLAUDIA	40-44	V 4	
02:36	ASSIST by GARVIN,JONIKA			
02:09	FOUL (PERSONAL) by GARVIN,JONIKA			
02:09				SUB OUT: JENIKE,JULIA
02:09				SUB IN: STEELE,MACKENZIE
02:04		42-44	V 2	GOOD! JUMPER by CLAYBRONE,MERCEDEZ
02:04				ASSIST by GIARDINA,CAMILLE
01:49				FOUL (PERSONAL) by GIARDINA,CAMILLE
01:39	MISSED 3PTR by LAABS,TAYLOR			
01:36				REBOUND (DEF) by CLAYBRONE,MERCEDEZ

Time	VISITORS: Palm Beach Atlantic	Score	Margin	HOME: Florida Southern
01:22				FOUL (OFF) by FUCHS-ROBETIN,ANJA
01:22				TURNOVER (OFFENSIVE) by FUCHS-ROBETIN,ANJA
01:17	MISSED 3PTR by CHARLES,CLAUDIA			
01:12	REBOUND (OFF) by PATRICK,CAROLINE			
01:11	MISSED JUMPER by PATRICK,CAROLINE			
01:08				REBOUND (DEF) by FUCHS-ROBETIN,ANJA
01:03				MISSED 3PTR by STEELE,MACKENZIE
01:00	REBOUND (DEF) by CHARLES,CLAUDIA			
00:52	GOOD! LAYUP by GARVIN,JONIKA [FB]	42-46	V 4	
00:37				MISSED JUMPER by GIARDINA,CAMILLE
00:33	REBOUND (DEF) by SALHIA,MINA			
00:30	TURNOVER (BADPASS) by SALHIA,MINA			
00:30				STEAL by GIARDINA,CAMILLE
00:23				MISSED LAYUP by STEELE,MACKENZIE
00:21	REBOUND (DEF) by GARVIN,JONIKA			
00:17				FOUL (PERSONAL) by KALAYDJIEV,BEKKI
00:17	GOOD! FT by GARVIN,JONIKA	42-47	V 5	
00:17	SUB OUT: SALHIA,MINA			
00:17	SUB IN: ROSS,ANIYAH			
00:17	SUB OUT: CHARLES,CLAUDIA			
00:17	SUB IN: DESHAZIER,DARSAN			
00:17	SUB OUT: PATRICK,CAROLINE			
00:17	SUB IN: SELF,VICTORIA			
00:17	GOOD! FT by GARVIN,JONIKA	42-48	V 6	
00:02				MISSED LAYUP by FUCHS-ROBETIN,ANJA
00:02				REBOUND (OFF) by FUCHS-ROBETIN,ANJA
00:01				MISSED LAYUP by FUCHS-ROBETIN,ANJA
00:01	REBOUND (DEF) by GARVIN,JONIKA			

Palm Beach Atlantic 48, Florida Southern 42

Points from (This Period)	PBA	FSC
In the Paint	6	10
Off Turns	0	4
2nd Chance	0	4
Fast Break	2	2
Bench	3	0

Official Box Score
Palm Beach Atlantic vs Florida Southern
Fourth Quarter Statistics Only
February 13, 2019 at Jenkins Field House (Streamline Sale Arena) - Lakeland, Fla.

Palm Beach Atlantic 17

No.	Player	S	Pts	FG	3FG	FT	OR	DR	TR	PF	A	TO	Blk	Stl	Min	+/-
01	Ross, Aniyah		0	0-0	0-0	0-0	0	1	1	0	0	0	0	0	4	2
02	Deshazier, Darsan		2	0-2	0-1	2-2	0	1	1	1	0	0	0	0	9	-3
11	Salhia, Mina		4	0-0	0-0	4-6	0	0	0	0	0	1	0	0	6	-7
12	Self, Victoria		0	0-1	0-0	0-0	0	0	0	0	0	1	0	0	5	0
21	Garvin, Jonika		9	4-6	0-0	1-1	1	4	5	1	0	3	1	0	10	-5
05	Oyedemi, Ibilola		0	0-0	0-0	0-0	0	0	0	0	0	0	0	0	0	0
13	Laabs, Taylor		0	0-1	0-0	0-0	0	0	0	0	0	0	0	0	5	1
23	Charles, Claudia		0	0-0	0-0	0-0	0	2	2	0	0	0	0	0	6	-7
30	Stang, Katie		0	0-0	0-0	0-0	0	0	0	0	0	0	0	0	0	0
34	Patrick, Caroline		2	0-0	0-0	2-2	0	1	1	0	0	0	0	0	5	-6
	Team						0	0	0	0		1				
TOTALS			17	4-10	0-1	9-11	1	9	10	2	0	6	1	0	50	

Shooting By Period

Period	FG	FG%	3FG	3FG%	FT	FT%
Game	23-53	43.4%	4-11	36.4%	15-20	75.0%

Florida Southern 22

No.	Player	S	Pts	FG	3FG	FT	OR	DR	TR	PF	A	TO	Blk	Stl	Min	+/-
13	Claybrone, Mercedes		2	1-1	0-0	0-0	1	1	2	0	0	0	0	0	6	5
21	Jenike, Julia		0	0-0	0-0	0-0	0	0	0	1	0	0	0	1	1	-2
22	Giardina, Camille		10	3-8	2-4	2-2	1	0	1	1	1	0	1	0	9	7
24	Fuchs-Robetin, Anja		2	1-5	0-1	0-0	0	1	1	2	1	0	0	1	10	5
31	Landberg, Elsa		6	2-6	2-6	0-0	0	1	1	2	0	0	0	0	8	5
02	Burkett, Monet		0	0-0	0-0	0-0	0	0	0	0	0	0	0	0	0	0
14	Steele, Mackenzie		2	1-3	0-2	0-0	0	1	1	0	0	0	0	0	10	5
25	Shell, Ashley		0	0-0	0-0	0-0	0	0	0	0	0	0	0	0	0	0
32	Kalaydjiev, Bekki		0	0-0	0-0	0-0	0	0	0	1	0	0	0	0	2	0
33	Aranda, Marta		0	0-0	0-0	0-0	0	0	0	0	0	0	0	0	0	0
42	Campbell, Chesney		0	0-0	0-0	0-0	2	1	3	0	1	0	1	0	4	0
	Team						2	0	2	0		0				
TOTALS			22	8-23	4-13	2-2	6	5	11	7	3	0	2	2	50	

Shooting By Period

Period	FG	FG%	3FG	3FG%	FT	FT%
Game	24-72	33.3%	8-31	25.8%	8-10	80.0%

Game Notes:

Officials: **Will Schrieber, John Akins, Darryl Dawkins**
Attendance: **226**

Start Time: **2019-02-13 22:29:35**
End Time: **2019-02-14 00:13:21**
Game Duration: **103**
Conference Game;

Score	1st	2nd	3rd	4th	TOT
PBA	12	24	12	17	65
FSC	14	12	16	22	64

Points from (This Period)	PBA	FSC
In the Paint	6	6
Off Turns	0	13
2nd Chance	0	2
Fast Break	4	4
Bench	2	2

Official Play-By-Play
Palm Beach Atlantic vs Florida Southern
Fourth Quarter
February 13, 2019 at Jenkins Field House (Streamline Sale Arena) - Lakeland, Fla.

Period 4

Starters:

Palm Beach Atlantic: 11 SALHIA,MINA; 12 SELF,VICTORIA; 21 GARVIN,JONIKA; 1 ROSS,ANIYAH; 2 DESHAZIER,DARSAN;

Florida Southern: 13 CLAYBRONE,MERCEDEZ; 21 JENIKE,JULIA; 22 GIARDINA,CAMILLE; 24 FUCHS-ROBETIN,ANJA; 31 LANDBERG,ELSA;

Time	VISITORS: Palm Beach Atlantic	Score	Margin	HOME: Florida Southern
09:41	FOUL (OFF) by GARVIN,JONIKA			
09:41	TURNOVER (OFFENSIVE) by GARVIN,JONIKA			
09:31		44-48	V 4	GOOD! LAYUP by GIARDINA,CAMILLE
09:07				FOUL (PERSONAL) by GIARDINA,CAMILLE
09:07	GOOD! FT by DESHAZIER,DARSAN	44-49	V 5	
09:07	GOOD! FT by DESHAZIER,DARSAN	44-50	V 6	
08:54				MISSED JUMPER by GIARDINA,CAMILLE
08:50	REBOUND (DEF) by ROSS,ANIYAH			
08:34	MISSED LAYUP by SELF,VICTORIA			
08:33				REBOUND (DEF) by CLAYBRONE,MERCEDEZ
08:31				SUB OUT: CLAYBRONE,MERCEDEZ
08:31				SUB IN: CAMPBELL,CHESNEY
08:01				MISSED JUMPER by GIARDINA,CAMILLE
07:58	REBOUND (DEF) by GARVIN,JONIKA			
07:44				FOUL (PERSONAL) by KALAYDJIEV,BEKKI
07:44				SUB OUT: KALAYDJIEV,BEKKI
07:44				SUB IN: LANDBERG,ELSA
07:33	GOOD! LAYUP by GARVIN,JONIKA	44-52	V 8	
07:33				FOUL (PERSONAL) by FUCHS-ROBETIN,ANJA
07:33	GOOD! FT by GARVIN,JONIKA	44-53	V 9	
07:15				MISSED 3PTR by LANDBERG,ELSA
07:09				REBOUND (OFF) by CAMPBELL,CHESNEY
07:08		46-53	V 7	GOOD! LAYUP by FUCHS-ROBETIN,ANJA
07:08				ASSIST by CAMPBELL,CHESNEY
06:57	MISSED LAYUP by DESHAZIER,DARSAN			
06:54				REBOUND (DEF) by STEELE,MACKENZIE
06:50				MISSED 3PTR by STEELE,MACKENZIE
06:46				REBOUND (OFF) by CAMPBELL,CHESNEY
06:37				MISSED 3PTR by GIARDINA,CAMILLE
06:35	REBOUND (DEF) by GARVIN,JONIKA			
06:31	GOOD! LAYUP by GARVIN,JONIKA [FB]	46-55	V 9	
06:24	FOUL (PERSONAL) by DESHAZIER,DARSAN			
06:24		47-55	V 8	GOOD! FT by GIARDINA,CAMILLE [FB]
06:24	SUB OUT: LAABS,TAYLOR			
06:24	SUB IN: SALHIA,MINA			
06:24	SUB OUT: ROSS,ANIYAH			
06:24	SUB IN: CHARLES,CLAUDIA			
06:24	SUB OUT: DESHAZIER,DARSAN			
06:24	SUB IN: PATRICK,CAROLINE			
06:24				TIMEOUT 30SEC
06:24				
06:24		48-55	V 7	GOOD! FT by GIARDINA,CAMILLE [FB]
06:19	TURNOVER (TRAVEL) by SELF,VICTORIA			
06:19	SUB OUT: SELF,VICTORIA			
06:19	SUB IN: DESHAZIER,DARSAN			
06:04		51-55	V 4	GOOD! 3PTR by LANDBERG,ELSA
06:04				ASSIST by GIARDINA,CAMILLE
05:54				FOUL (PERSONAL) by LANDBERG,ELSA
05:38	GOOD! JUMPER by GARVIN,JONIKA	51-57	V 6	
05:25				MISSED 3PTR by LANDBERG,ELSA
05:23	REBOUND (DEF) by GARVIN,JONIKA			
05:08	MISSED JUMPER by GARVIN,JONIKA			
05:08				BLOCK by CAMPBELL,CHESNEY
05:03				REBOUND (DEF) by LANDBERG,ELSA
04:57				MISSED 3PTR by STEELE,MACKENZIE
04:53	REBOUND (DEF) by GARVIN,JONIKA			
04:35	MISSED JUMPER by GARVIN,JONIKA			
04:32				REBOUND (DEF) by CAMPBELL,CHESNEY
04:26				MISSED JUMPER by FUCHS-ROBETIN,ANJA
04:21				REBOUND (OFF) by GIARDINA,CAMILLE
04:18				MISSED JUMPER by GIARDINA,CAMILLE
04:16	REBOUND (DEF) by CHARLES,CLAUDIA			
04:13	TIMEOUT 30SEC			
04:13				
04:02				SUB OUT: GIARDINA,CAMILLE
04:02				SUB IN: JENIKE,JULIA
04:02				SUB OUT: CAMPBELL,CHESNEY
04:02				SUB IN: CLAYBRONE,MERCEDEZ
04:00	TURNOVER (BADPASS) by GARVIN,JONIKA			
04:00				STEAL by FUCHS-ROBETIN,ANJA
04:00				MISSED LAYUP by FUCHS-ROBETIN,ANJA
04:00	BLOCK by GARVIN,JONIKA			
04:00				REBOUND (OFF) by TEAM
03:51				MISSED 3PTR by FUCHS-ROBETIN,ANJA
03:49	REBOUND (DEF) by PATRICK,CAROLINE			
03:49				FOUL (PERSONAL) by JENIKE,JULIA

Time	VISITORS: Palm Beach Atlantic	Score	Margin	HOME: Florida Southern
03:49	GOOD! FT by PATRICK,CAROLINE	51-58	V 7	
03:49	GOOD! FT by PATRICK,CAROLINE	51-59	V 8	
03:26				MISSED 3PTR by LANDBERG,ELSA
03:22	REBOUND (DEF) by DESHAZIER,DARSAN			
03:07	TURNOVER (BADPASS) by GARVIN,JONIKA			
03:07				STEAL by JENIKE,JULIA
03:00		53-59	V 6	GOOD! JUMPER by STEELE,MACKENZIE [FB]
02:55				FOUL (PERSONAL) by FUCHS-ROBETIN,ANJA
02:55				FOUL (TECH) by TEAM
02:55	MISSED FT by SALHIA,MINA			
02:55	REBOUND (OFF) by TEAM			
02:55	GOOD! FT by SALHIA,MINA [FB]	53-60	V 7	
02:55	GOOD! FT by SALHIA,MINA	53-61	V 8	
02:55				SUB OUT: JENIKE,JULIA
02:55				SUB IN: GIARDINA,CAMILLE
02:55	GOOD! FT by SALHIA,MINA	53-62	V 9	
02:41		55-62	V 7	GOOD! LAYUP by CLAYBRONE,MERCEDEZ
02:36				FOUL (PERSONAL) by LANDBERG,ELSA
02:36	MISSED FT by SALHIA,MINA			
02:36	REBOUND (OFF) by TEAM			
02:36	GOOD! FT by SALHIA,MINA [FB]	55-63	V 8	
02:28		58-63	V 5	GOOD! 3PTR by LANDBERG,ELSA
02:28				ASSIST by FUCHS-ROBETIN,ANJA
01:53	MISSED 3PTR by DESHAZIER,DARSAN			
01:53				BLOCK by GIARDINA,CAMILLE
01:53	REBOUND (OFF) by GARVIN,JONIKA			
01:53	TURNOVER (SHOTCLOCK) by			
01:40		61-63	V 2	GOOD! 3PTR by GIARDINA,CAMILLE
01:33	TURNOVER (BADPASS) by SALHIA,MINA			
01:21	SUB OUT: DESHAZIER,DARSAN			
01:21	SUB IN: SELF,VICTORIA			
01:21	SUB OUT: PATRICK,CAROLINE			
01:21	SUB IN: LAABS,TAYLOR			
01:17		64-63	H 1	GOOD! 3PTR by GIARDINA,CAMILLE
00:55	GOOD! JUMPER by GARVIN,JONIKA [PNT]	64-65	V 1	
00:38				MISSED 3PTR by GIARDINA,CAMILLE
00:35	REBOUND (DEF) by CHARLES,CLAUDIA			
00:35	TIMEOUT 30SEC			
00:20	MISSED JUMPER by LAABS,TAYLOR			
00:18				REBOUND (DEF) by FUCHS-ROBETIN,ANJA
00:14				MISSED JUMPER by FUCHS-ROBETIN,ANJA
00:14				REBOUND (OFF) by TEAM
00:14	SUB OUT: LAABS,TAYLOR			
00:14	SUB IN: DESHAZIER,DARSAN			
00:14				TIMEOUT 30SEC
00:01				MISSED 3PTR by LANDBERG,ELSA
00:01				REBOUND (OFF) by CLAYBRONE,MERCEDEZ

Palm Beach Atlantic 65, Florida Southern 64

Points from (This Period)	PBA	FSC
In the Paint	6	6
Off Turns	0	13
2nd Chance	0	2
Fast Break	4	4
Bench	2	2

**Official Scoring/Possession Reference Chart
Palm Beach Atlantic vs Florida Southern**

Period 1

February 13, 2019 at Jenkins Field House (Streamline Sale Arena) - Lakeland, Fla.

Period 1

Starters:

Palm Beach Atlantic: 11 SALHIA,MINA; 12 SELF,VICTORIA; 21 GARVIN,JONIKA; 1 ROSS,ANIYAH; 2 DESHAZIER,DARSAN;

Florida Southern: 13 CLAYBRONE,MERCEDEZ; 21 JENIKE,JULIA; 22 GIARDINA,CAMILLE; 24 FUCHS-ROBETIN,ANJA; 31 LANDBERG,ELSA;

Time	VISITORS: Palm Beach Atlantic	Score	Margin	HOME: Florida Southern
09:24	GOOD! JUMPER by SALHIA,MINA	0-2	V 2	
09:24	GOOD! FT by SALHIA,MINA	0-3	V 3	
07:58		2-3	V 1	GOOD! JUMPER by FUCHS-ROBETIN,ANJA
07:26	GOOD! LAYUP by GARVIN,JONIKA [PNT]	2-5	V 3	
07:11		3-5	V 2	GOOD! FT by GIARDINA,CAMILLE
07:03		5-5	T	GOOD! LAYUP by FUCHS-ROBETIN,ANJA
06:01		6-5	H 1	GOOD! FT by GIARDINA,CAMILLE
05:44	GOOD! FT by SALHIA,MINA	6-6	T	
04:04		9-6	H 3	GOOD! 3PTR by STEELE,MACKENZIE
03:27		12-6	H 6	GOOD! 3PTR by STEELE,MACKENZIE
03:04	GOOD! LAYUP by GARVIN,JONIKA [PNT]	12-8	H 4	
01:30		13-8	H 5	GOOD! FT by CLAYBRONE,MERCEDEZ
01:30		14-8	H 6	GOOD! FT by CLAYBRONE,MERCEDEZ
01:00	GOOD! JUMPER by GARVIN,JONIKA [PNT]	14-10	H 4	
00:15	GOOD! LAYUP by LAABS,TAYLOR [FB]	14-12	H 2	

Palm Beach Atlantic 12, Florida Southern 14

**Official Scoring/Possession Reference Chart
Palm Beach Atlantic vs Florida Southern**

Period 2

February 13, 2019 at Jenkins Field House (Streamline Sale Arena) - Lakeland, Fla.

Period 2

Starters:

Palm Beach Atlantic: 11 SALHIA,MINA; 12 SELF,VICTORIA; 21 GARVIN,JONIKA; 1 ROSS,ANIYAH; 2 DESHAZIER,DARSAN;

Florida Southern: 13 CLAYBRONE,MERCEDEZ; 21 JENIKE,JULIA; 22 GIARDINA,CAMILLE; 24 FUCHS-ROBETIN,ANJA; 31 LANDBERG,ELSA;

Time	VISITORS: Palm Beach Atlantic	Score	Margin	HOME: Florida Southern
09:23	GOOD! 3PTR by PATRICK,CAROLINE	14-15	V 1	
08:38	GOOD! 3PTR by PATRICK,CAROLINE	14-18	V 4	
08:19		16-18	V 2	GOOD! JUMPER by CLAYBRONE,MERCEDEZ
08:02	GOOD! 3PTR by CHARLES,CLAUDIA	16-21	V 5	
07:44		19-21	V 2	GOOD! 3PTR by STEELE,MACKENZIE
07:22		21-21	T	GOOD! LAYUP by KALAYDJIEV,BEKKI [FB]
06:01	GOOD! LAYUP by GARVIN,JONIKA	21-23	V 2	
05:55		24-23	H 1	GOOD! 3PTR by CLAYBRONE,MERCEDEZ
04:59	GOOD! LAYUP by GARVIN,JONIKA [PNT]	24-25	V 1	
04:10	GOOD! FT by DESHAZIER,DARSAN	24-26	V 2	
03:55	GOOD! JUMPER by GARVIN,JONIKA [FB/PNT]	24-28	V 4	
03:27		26-28	V 2	GOOD! LAYUP by SHELL,ASHLEY
03:05	GOOD! JUMPER by GARVIN,JONIKA [PNT]	26-30	V 4	
02:16	GOOD! JUMPER by GARVIN,JONIKA [PNT]	26-32	V 6	
00:48	GOOD! LAYUP by GARVIN,JONIKA [FB]	26-34	V 8	
00:05	GOOD! LAYUP by GARVIN,JONIKA	26-36	V 10	

Palm Beach Atlantic 36, Florida Southern 26

**Official Scoring/Possession Reference Chart
Palm Beach Atlantic vs Florida Southern**

Period 3

February 13, 2019 at Jenkins Field House (Streamline Sale Arena) - Lakeland, Fla.

Period 3

Starters:

Palm Beach Atlantic: 11 SALHIA,MINA; 12 SELF,VICTORIA; 21 GARVIN,JONIKA; 1 ROSS,ANIYAH; 2 DESHAZIER,DARSAN;

Florida Southern: 13 CLAYBRONE,MERCEDEZ; 21 JENIKE,JULIA; 22 GIARDINA,CAMILLE; 24 FUCHS-ROBETIN,ANJA; 31 LANDBERG,ELSA;

Time	VISITORS: Palm Beach Atlantic	Score	Margin	HOME: Florida Southern
09:21		28-36	V 8	GOOD! JUMPER by FUCHS-ROBETIN,ANJA [PNT]
08:39		30-36	V 6	GOOD! LAYUP by FUCHS-ROBETIN,ANJA [FB]
08:21	GOOD! FT by GARVIN,JONIKA	30-37	V 7	
08:05		32-37	V 5	GOOD! LAYUP by GIARDINA,CAMILLE
07:03		33-37	V 4	GOOD! FT by LANDBERG,ELSA
07:03		34-37	V 3	GOOD! FT by LANDBERG,ELSA
06:16		36-37	V 1	GOOD! LAYUP by GIARDINA,CAMILLE
05:58	GOOD! LAYUP by GARVIN,JONIKA	36-39	V 3	
05:49		38-39	V 1	GOOD! JUMPER by GIARDINA,CAMILLE
05:16	GOOD! LAYUP by GARVIN,JONIKA	38-41	V 3	
03:27		40-41	V 1	GOOD! LAYUP by FUCHS-ROBETIN,ANJA
02:36	GOOD! 3PTR by CHARLES,CLAUDIA	40-44	V 4	
02:04		42-44	V 2	GOOD! JUMPER by CLAYBRONE,MERCEDEZ
00:52	GOOD! LAYUP by GARVIN,JONIKA [FB]	42-46	V 4	
00:17	GOOD! FT by GARVIN,JONIKA	42-47	V 5	
00:17	GOOD! FT by GARVIN,JONIKA	42-48	V 6	

Palm Beach Atlantic 48, Florida Southern 42

**Official Scoring/Possession Reference Chart
Palm Beach Atlantic vs Florida Southern
Period 4**

February 13, 2019 at Jenkins Field House (Streamline Sale Arena) - Lakeland, Fla.

Period 4

Starters:

Palm Beach Atlantic: 11 SALHIA,MINA; 12 SELF,VICTORIA; 21 GARVIN,JONIKA; 1 ROSS,ANIYAH; 2 DESHAZIER,DARSAN;

Florida Southern: 13 CLAYBRONE,MERCEDEZ; 21 JENIKE,JULIA; 22 GIARDINA,CAMILLE; 24 FUCHS-ROBETIN,ANJA; 31 LANDBERG,ELSA;

Time	VISITORS: Palm Beach Atlantic	Score	Margin	HOME: Florida Southern
09:31		44-48	V 4	GOOD! LAYUP by GIARDINA,CAMILLE
09:07	GOOD! FT by DESHAZIER,DARSAN	44-49	V 5	
09:07	GOOD! FT by DESHAZIER,DARSAN	44-50	V 6	
07:33	GOOD! LAYUP by GARVIN,JONIKA	44-52	V 8	
07:33	GOOD! FT by GARVIN,JONIKA	44-53	V 9	
07:08		46-53	V 7	GOOD! LAYUP by FUCHS-ROBETIN,ANJA
06:31	GOOD! LAYUP by GARVIN,JONIKA [FB]	46-55	V 9	
06:24		47-55	V 8	GOOD! FT by GIARDINA,CAMILLE [FB]
06:24		48-55	V 7	GOOD! FT by GIARDINA,CAMILLE [FB]
06:04		51-55	V 4	GOOD! 3PTR by LANDBERG,ELSA
05:38	GOOD! JUMPER by GARVIN,JONIKA	51-57	V 6	
03:49	GOOD! FT by PATRICK,CAROLINE	51-58	V 7	
03:49	GOOD! FT by PATRICK,CAROLINE	51-59	V 8	
03:00		53-59	V 6	GOOD! JUMPER by STEELE,MACKENZIE [FB]
02:55	GOOD! FT by SALHIA,MINA [FB]	53-60	V 7	
02:55	GOOD! FT by SALHIA,MINA	53-61	V 8	
02:55	GOOD! FT by SALHIA,MINA	53-62	V 9	
02:41		55-62	V 7	GOOD! LAYUP by CLAYBRONE,MERCEDEZ
02:36	GOOD! FT by SALHIA,MINA [FB]	55-63	V 8	
02:28		58-63	V 5	GOOD! 3PTR by LANDBERG,ELSA
01:40		61-63	V 2	GOOD! 3PTR by GIARDINA,CAMILLE
01:17		64-63	H 1	GOOD! 3PTR by GIARDINA,CAMILLE
00:55	GOOD! JUMPER by GARVIN,JONIKA [PNT]	64-65	V 1	

Palm Beach Atlantic 65, Florida Southern 64

**Official Substitutions Log
Palm Beach Atlantic vs Florida Southern
Period 1**

February 13, 2019 at Jenkins Field House (Streamline Sale Arena) - Lakeland, Fla.

VISITORS: Palm Beach Atlantic	Time	Score	HOME: Florida Southern
11 SALHIA, MINA			13 CLAYBRONE, MERCEDEZ
12 SELF, VICTORIA			21 JENIKE, JULIA
21 GARVIN, JONIKA			22 GIARDINA, CAMILLE
1 ROSS, ANIYAH			24 FUCHS-ROBETIN, ANJA
2 DESHAZIER, DARSAN			31 LANDBERG, ELSA
SUB OUT: 2 DESHAZIER, DARSAN	07:11	5-3	
SUB IN: 13 LAABS, TAYLOR	07:11		
SUB OUT: 1 ROSS, ANIYAH	07:07	5-3	
SUB IN: 23 CHARLES, CLAUDIA	07:07		
	06:01	5-6	
	06:01		SUB OUT: CLAYBRONE, MERCEDEZ
SUB OUT: 12 SELF, VICTORIA	06:01		SUB IN: CAMPBELL, CHESNEY
SUB IN: 5 OYEDEJI, IBILOLA	06:01		
	04:36	6-6	
	04:36		SUB OUT: JENIKE, JULIA
	04:36		SUB IN: ARANDA, MARTA
	04:36		SUB OUT: GIARDINA, CAMILLE
	04:36		SUB IN: KALAYDJIEV, BEKKI
	04:36		SUB OUT: FUCHS-ROBETIN, ANJA
	04:36		SUB IN: CLAYBRONE, MERCEDEZ
	04:36		SUB OUT: LANDBERG, ELSA
	04:36		SUB IN: STEELE, MACKENZIE
SUB OUT: 23 CHARLES, CLAUDIA	04:36		
SUB IN: 1 ROSS, ANIYAH	04:36		
SUB OUT: 11 SALHIA, MINA	03:31	6-9	
SUB IN: 34 PATRICK, CAROLINE	03:31		
SUB OUT: 5 OYEDEJI, IBILOLA	02:50	8-12	
SUB IN: 12 SELF, VICTORIA	02:50		
SUB OUT: 1 ROSS, ANIYAH	02:11	8-12	
SUB IN: 23 CHARLES, CLAUDIA	02:11		
SUB OUT: 12 SELF, VICTORIA	01:30	8-13	
SUB IN: 11 SALHIA, MINA	01:30		

Palm Beach Atlantic 12, Florida Southern 14

Official Substitutions Log
Palm Beach Atlantic vs Florida Southern
Period 2

February 13, 2019 at Jenkins Field House (Streamline Sale Arena) - Lakeland, Fla.

VISITORS: Palm Beach Atlantic	Time	Score	HOME: Florida Southern
11 SALHIA, MINA			13 CLAYBRONE, MERCEDEZ
12 SELF, VICTORIA			21 JENIKE, JULIA
21 GARVIN, JONIKA			22 GIARDINA, CAMILLE
1 ROSS, ANIYAH			24 FUCHS-ROBETIN, ANJA
2 DESHAZIER, DARSAN			31 LANDBERG, ELSA
	08:51	15-14	SUB OUT: ARANDA, MARTA
	08:51		SUB IN: BURKETT, MONET
	08:51		SUB OUT: CAMPBELL, CHESNEY
	08:51		SUB IN: SHELL, ASHLEY
	06:37	21-21	SUB OUT: KALAYDJIEV, BEKKI
	06:37		SUB IN: LANDBERG, ELSA
	06:37		SUB OUT: STEELE, MACKENZIE
	06:37		SUB IN: JENIKE, JULIA
SUB OUT: 13 LAABS, TAYLOR	06:37		
SUB IN: 30 STANG, KATIE	06:37		
SUB OUT: 23 CHARLES, CLAUDIA	06:37		
SUB IN: 21 GARVIN, JONIKA	06:37		
SUB OUT: 34 PATRICK, CAROLINE	06:37		
SUB IN: 2 DESHAZIER, DARSAN	06:37		
SUB OUT: 1 ROSS, ANIYAH	06:13	21-21	
SUB IN: 23 CHARLES, CLAUDIA	06:13		
	04:10	25-24	SUB OUT: LANDBERG, ELSA
	04:10		SUB IN: KALAYDJIEV, BEKKI
	01:26	32-26	SUB OUT: BURKETT, MONET
	01:26		SUB IN: STEELE, MACKENZIE
SUB OUT: 30 STANG, KATIE	01:26		
SUB IN: 34 PATRICK, CAROLINE	01:26		
SUB OUT: 2 DESHAZIER, DARSAN	01:17	32-26	
SUB IN: 13 LAABS, TAYLOR	01:17		

Palm Beach Atlantic 36, Florida Southern 26

Official Substitutions Log
Palm Beach Atlantic vs Florida Southern
Period 3

February 13, 2019 at Jenkins Field House (Streamline Sale Arena) - Lakeland, Fla.

VISITORS: Palm Beach Atlantic	Time	Score	HOME: Florida Southern
11 SALHIA, MINA			13 CLAYBRONE, MERCEDEZ
12 SELF, VICTORIA			21 JENIKE, JULIA
21 GARVIN, JONIKA			22 GIARDINA, CAMILLE
1 ROSS, ANIYAH			24 FUCHS-ROBETIN, ANJA
2 DESHAZIER, DARSAN			31 LANDBERG, ELSA
SUB OUT: 1 ROSS, ANIYAH	07:18	37-32	
SUB IN: 13 LAABS, TAYLOR	07:18		
SUB OUT: 12 SELF, VICTORIA	07:18		
SUB IN: 23 CHARLES, CLAUDIA	07:18		
SUB OUT: 13 LAABS, TAYLOR	07:03	37-33	
SUB IN: 34 PATRICK, CAROLINE	07:03		
	06:27	37-34	SUB OUT: LANDBERG, ELSA
	06:27		SUB IN: KALAYDJIEV, BEKKI
SUB OUT: 2 DESHAZIER, DARSAN	04:01	41-38	
SUB IN: 13 LAABS, TAYLOR	04:01		
	02:09	44-40	SUB OUT: JENIKE, JULIA
	02:09		SUB IN: STEELE, MACKENZIE
SUB OUT: 11 SALHIA, MINA	00:17	47-42	
SUB IN: 1 ROSS, ANIYAH	00:17		
SUB OUT: 23 CHARLES, CLAUDIA	00:17		
SUB IN: 2 DESHAZIER, DARSAN	00:17		
SUB OUT: 34 PATRICK, CAROLINE	00:17		
SUB IN: 12 SELF, VICTORIA	00:17		

Palm Beach Atlantic 48, Florida Southern 42

**Official Substitutions Log
Palm Beach Atlantic vs Florida Southern
Period 4**

February 13, 2019 at Jenkins Field House (Streamline Sale Arena) - Lakeland, Fla.

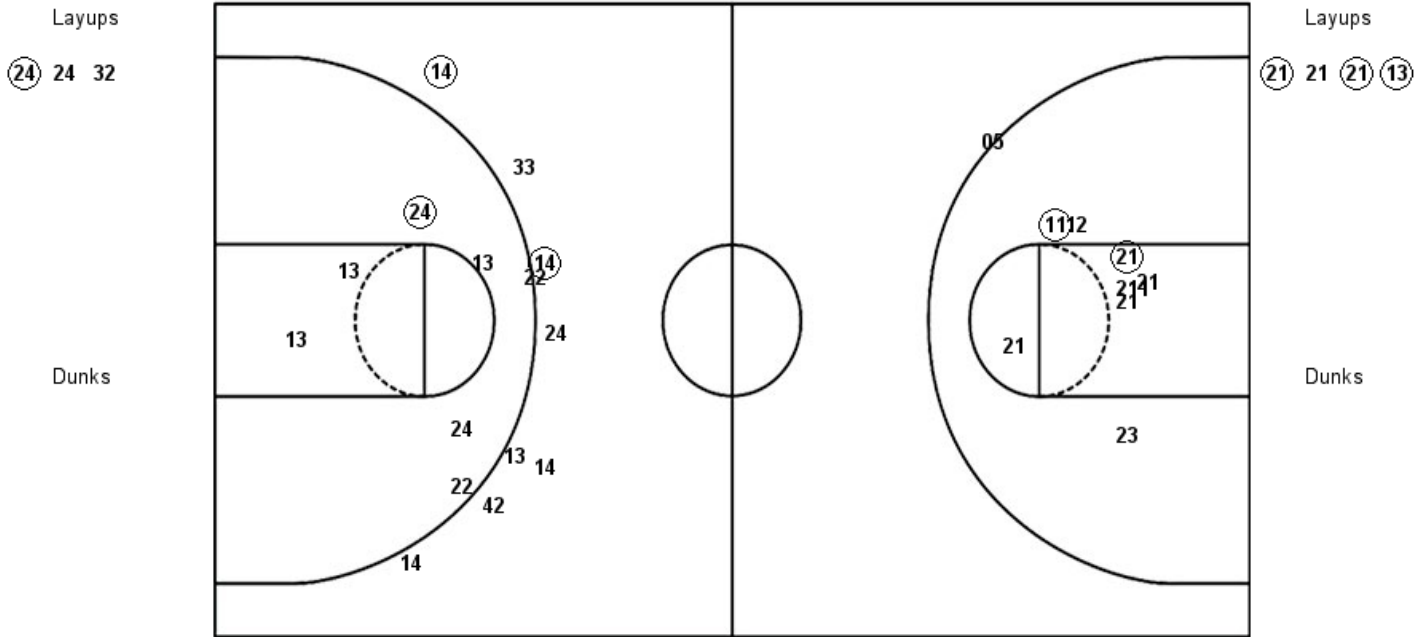
VISITORS: Palm Beach Atlantic	Time	Score	HOME: Florida Southern
11 SALHIA, MINA			13 CLAYBRONE, MERCEDEZ
12 SELF, VICTORIA			21 JENIKE, JULIA
21 GARVIN, JONIKA			22 GIARDINA, CAMILLE
1 ROSS, ANIYAH			24 FUCHS-ROBETIN, ANJA
2 DESHAZIER, DARSAN			31 LANDBERG, ELSA
	08:31	50-44	SUB OUT: CLAYBRONE, MERCEDEZ
	08:31		SUB IN: CAMPBELL, CHESNEY
	07:44	50-44	SUB OUT: KALAYDJIEV, BEKKI
	07:44		SUB IN: LANDBERG, ELSA
SUB OUT: 13 LAABS, TAYLOR	06:24	55-47	
SUB IN: 11 SALHIA, MINA	06:24		
SUB OUT: 1 ROSS, ANIYAH	06:24		
SUB IN: 23 CHARLES, CLAUDIA	06:24		
SUB OUT: 2 DESHAZIER, DARSAN	06:24		
SUB IN: 34 PATRICK, CAROLINE	06:24		
SUB OUT: 12 SELF, VICTORIA	06:19	55-48	
SUB IN: 2 DESHAZIER, DARSAN	06:19		
	04:02	57-51	SUB OUT: GIARDINA, CAMILLE
	04:02		SUB IN: JENIKE, JULIA
	04:02		SUB OUT: CAMPBELL, CHESNEY
	04:02		SUB IN: CLAYBRONE, MERCEDEZ
	02:55	61-53	SUB OUT: JENIKE, JULIA
	02:55		SUB IN: GIARDINA, CAMILLE
SUB OUT: 2 DESHAZIER, DARSAN	01:21	63-61	
SUB IN: 12 SELF, VICTORIA	01:21		
SUB OUT: 34 PATRICK, CAROLINE	01:21		
SUB IN: 13 LAABS, TAYLOR	01:21		
SUB OUT: 13 LAABS, TAYLOR	00:14	65-64	
SUB IN: 2 DESHAZIER, DARSAN	00:14		

Palm Beach Atlantic 65, Florida Southern 64

Official Shot Chart
Palm Beach Atlantic vs Florida Southern
PERIOD 1 Shots
February 13, 2019 at Jenkins Field House (Streamline Sale Arena) - Lakeland, Fla.

Florida Southern

Palm Beach Atlantic



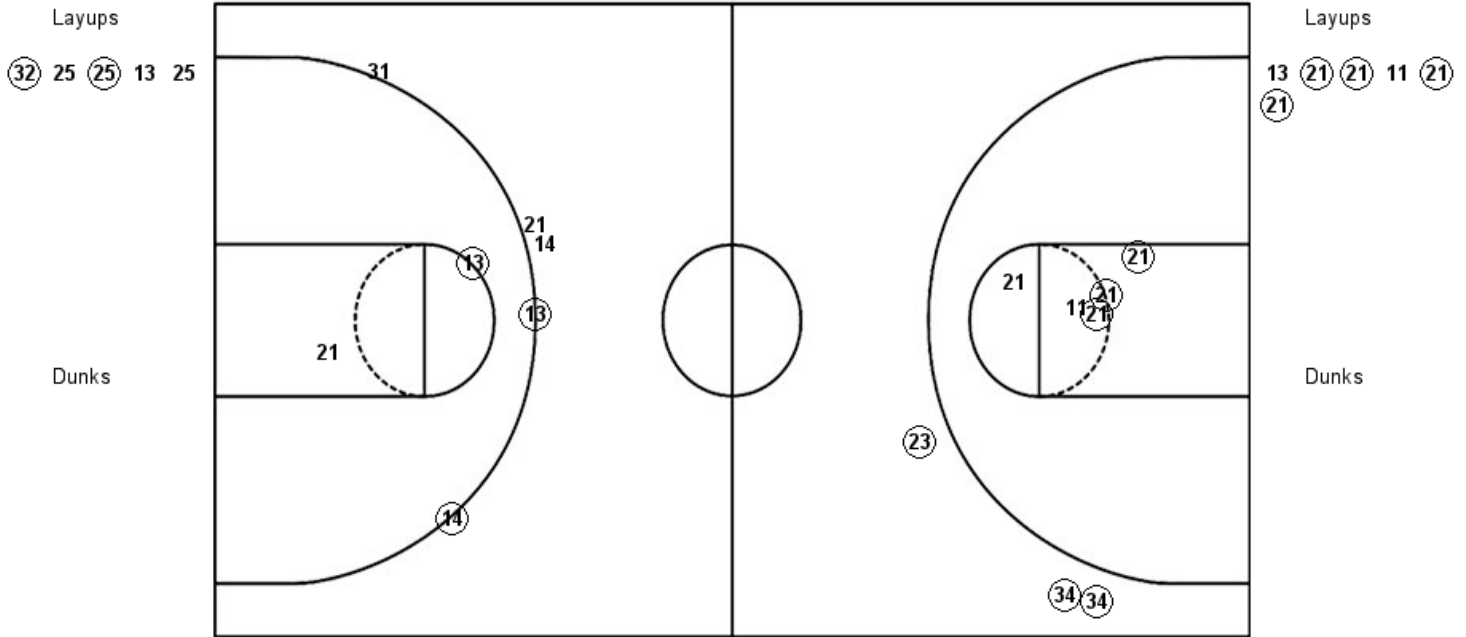
FSC : Period 1	Made	Att	Pct
Layups	1	3	33.3
Dunks	0	0	0
2PT Field Goals	2	9	22.2
3PT Field Goals	2	9	22.2
Total Field Goals	4	18	22.2

PBA : Period 1	Made	Att	Pct
Layups	3	4	75.0
Dunks	0	0	0
2PT Field Goals	5	14	35.7
3PT Field Goals	0	0	0
Total Field Goals	5	14	35.7

Official Shot Chart
Palm Beach Atlantic vs Florida Southern
PERIOD 2 Shots
February 13, 2019 at Jenkins Field House (Streamline Sale Arena) - Lakeland, Fla.

Florida Southern

Palm Beach Atlantic



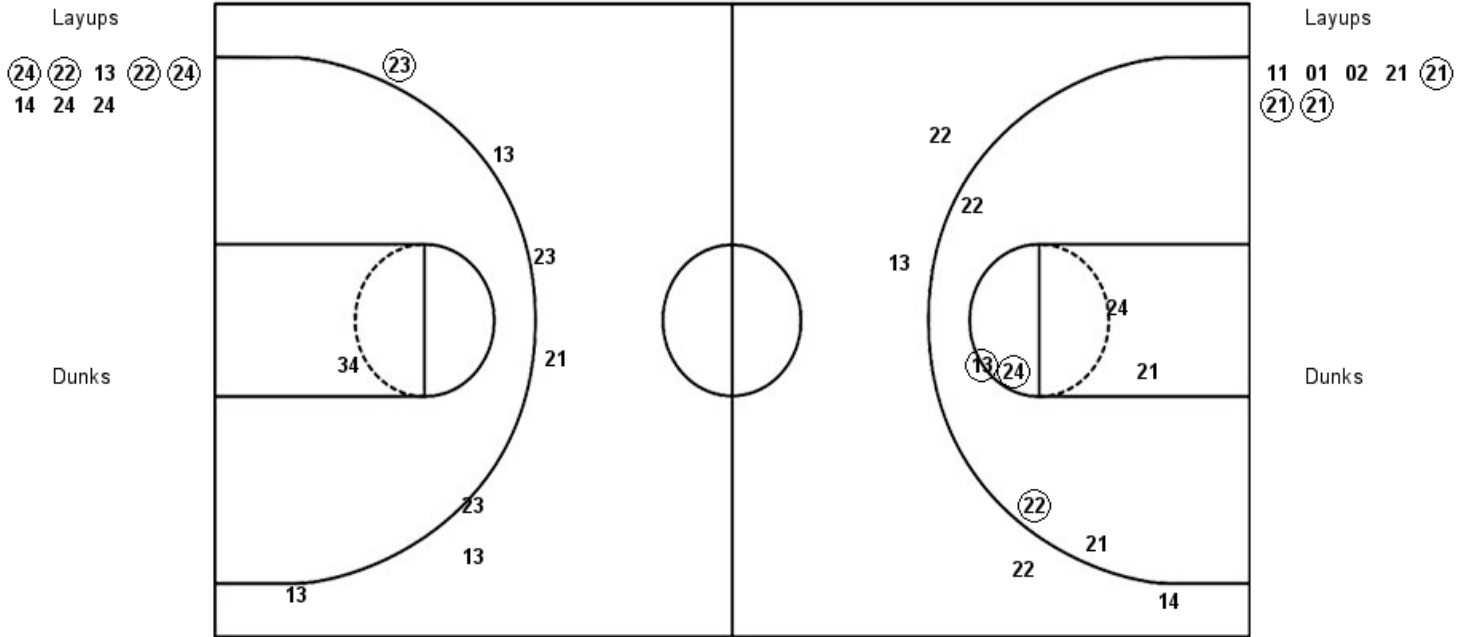
FSC : Period 2	Made	Att	Pct
Layups	2	5	40.0
Dunks	0	0	0
2PT Field Goals	3	7	42.9
3PT Field Goals	2	5	40.0
Total Field Goals	5	12	41.7

PBA : Period 2	Made	Att	Pct
Layups	4	6	66.7
Dunks	0	0	0
2PT Field Goals	7	11	63.6
3PT Field Goals	3	3	100.0
Total Field Goals	10	14	71.4

Official Shot Chart
Palm Beach Atlantic vs Florida Southern
PERIOD 3 Shots
February 13, 2019 at Jenkins Field House (Streamline Sale Arena) - Lakeland, Fla.

Florida Southern

Palm Beach Atlantic



FSC : Period 3	Made	Att	Pct
Layups	4	8	50.0
Dunks	0	0	0
2PT Field Goals	7	15	46.7
3PT Field Goals	0	4	00.0
Total Field Goals	7	19	36.8

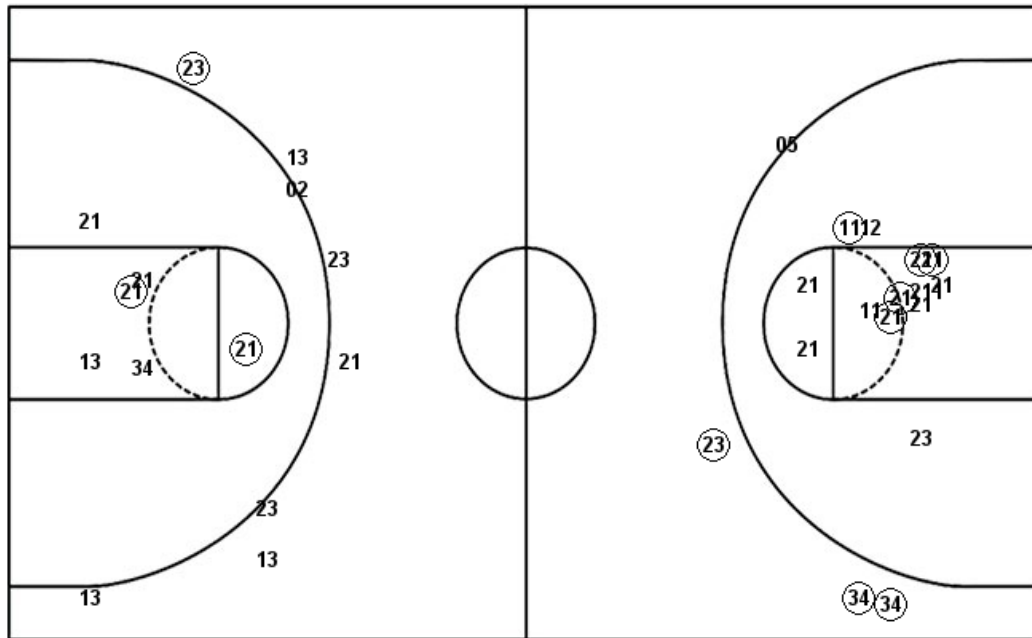
PBA : Period 3	Made	Att	Pct
Layups	3	7	42.9
Dunks	0	0	0
2PT Field Goals	3	8	37.5
3PT Field Goals	1	7	14.3
Total Field Goals	4	15	26.7

Palm Beach Atlantic

Official Shot Chart
Palm Beach Atlantic vs Florida Southern
Palm Beach Atlantic Team Shots
February 13, 2019 at Jenkins Field House (Streamline Sale Arena) - Lakeland, Fla.

Layups

Dunks



Layups

Dunks

PBA : Period 1	Made	Att	Pct
Layups	3	4	75.0
Dunks	0	0	0
2PT Field Goals	5	14	35.7
3PT Field Goals	0	0	0
Total Field Goals	5	14	35.7

PBA : Period 3	Made	Att	Pct
Layups	3	7	42.9
Dunks	0	0	0
2PT Field Goals	3	8	37.5
3PT Field Goals	1	7	14.3
Total Field Goals	4	15	26.7

PBA : Period 2	Made	Att	Pct
Layups	4	6	66.7
Dunks	0	0	0
2PT Field Goals	7	11	63.6
3PT Field Goals	3	3	100.0
Total Field Goals	10	14	71.4

PBA : Period 4	Made	Att	Pct
Layups	2	4	50.0
Dunks	0	0	0
2PT Field Goals	4	9	44.4
3PT Field Goals	0	1	00.0
Total Field Goals	4	10	40.0

FSC : Period 4	Made	Att	Pct
Layups	3	4	75.0
Dunks	0	0	0
2PT Field Goals	4	10	40.0
3PT Field Goals	4	13	30.8
Total Field Goals	8	23	34.8